

We value the cow and mother of our offering
AS MUCH AS THE BULL WE BREED THEM TO.

APRIL **1** 2019
Wawota, Saskatchewan



Eastondale

12th ANNUAL **ON THE FARM**
BULL & FEMALE SALE

ANGUS

Eastondale

Angus

APRIL **1** 2019

SALE TIME 1:30 PM

EASTONDALE ANGUS

Dale, Shelly and Erika Easton
Box 410, Wawota, Sk, S0G 5A0
Tel: 306.739.2805
Cell: 306.577.7456

Email: eastondale.angus@sasktel.net
www.eastondaleangus.com

Find us on facebook



DIRECTIONS TO THE FARM

10 miles west of Wawota, SK on Highway 48
or 5 miles north of Kenosee Lake on Highway
9, 1/2 mile east on Highway 48

ACCOMMODATIONS

Kenosee Inn 306.577.2099
(5 mins south of farm)

Live Sale Broadcast @ **LIVESTOCK+** media

www.livestockplus.ca

CASTLEROCK MARKETING
Shane & Tammy Castle
306.741.7485
Dean McAvoy
306.612.3326
Devin Warrilow
780.581.4329
www.castlerockmarketing.com



Join us for lunch at 12:00 pm
Pre sale viewing and Eastondale hospitality after the sale

SALE DAY PHONES

Home	306.739.2805
Dale	306.577.7456
Erika	306.577.7457
Shane	306.741.7485
 Nolan Glover	204.305.0654

SALE STAFF

Auctioneer Ryan Dorran	403.507.6483
Ring Staff Nathan Marin	306.869.7130
Ring Staff Scott Tibble	204.734.0210
Castlerock Marketing Shane Castle	306.741.7485
Castlerock Marketing Devin Warrilow	780.581.4329

BULL VIDEOS

www.eastondaleangus.com or www.castlerockmarketing.com

INSURANCE

Shackelton Insurance Brokerage Ltd, Terry Shackelton 306-224-2155

SEMEN INTEREST

Eastondale Angus reserves 1/3 semen interest on all sale bulls.

BULL BOARD

We will keep the bulls free of charge until May 1st. After May 1st at cost.
All bulls staying at Eastondale must be insured.

12th ANNUAL ON THE FARM
BULL & FEMALE SALE



WELCOME TO OUR 12TH ANNUAL SALE

Please consider this your invitation to our annual sale! We would be truly honored to have you join us at the farm on April 1st to evaluate this year's bull and female offering. We are proud of our offering this year. We feel there are bulls of all types, for whatever you feel you need to generate the optimum return out of your cowherd.

The bulls were weaned a little earlier this year on September 20th with the dryer grass conditions. They ran on a 20-acre paddock with supplementation until December 15th. The bulls are fed a TMR ration targeted for 3 pounds per day gain. We believe they are in a condition to show their genetic potential but in no way have we pushed these bulls hard. They will have a sale day weight available a few days before the sale and all bulls will have a breeding soundness evaluation. We have also had bull's DNA tested for the Leptin gene and will be available upon request.

The females are not sorted and fed separately from our own open replacement females but fed right with them and selected out of the pen of 70 in early February. We have always had great conception rates with our open replacements we have bred and believe these sale females will be no different.

We thank all friends and neighbors who have helped us not only to make this sale happen but also those who have helped with things throughout the year. We were lucky enough to employ a young man to help us this calving and sale season! Thanks to Nolan Glover of Boissevain, MB, for being part of the Eastondale family. If you would like another opinion Nolan would give you a hand going over the bulls and females before sale time.

Thanks again the Ken Weichel and the people of Nutrien Ag Solutions of Kipling, for their sponsorship of a bag of grass seed for every lot purchased.

We would love to have you stop in before sale day to get a more personal tour of the cattle than maybe we can give you sale day but if you can't then take advantage of the videos or call before the sale, so we can help answer some questions. Our capable sale staff would also be glad to give you insights into our program.

Hope to see you April 1st! Remember Petey's mouth watering steaks will be served at 12:00.

Take Care,
Dale, Shelly & Erika





A WORD FROM CASTLEROCK

Eastondale Angus has once again brought forward a strong set of genetics this year for the Annual on the Farm Bull and Female Sale! Staying the course has made this possible as Dale has stated many times, the cow is more important than the bull in comprising the next generation. Make sure you have a look at the number of fabulous females throughout the catalogue, but one step better is to tour the herd. Time and time again visitors comment they had their hair blown back on how good the cows are. A strong set of cows like this doesn't come easy, takes years and years and decades and going on seven decades in the Angus breed.

Repeat customers have been the backbone of the the bull sale over the years knowing they are getting a quality product year in and year out backed by a great family. Nothing fancy, just good working cattle that provide profitable genetics for their customers. Always willing to do his part in the Angus fraternity Dale is going to

start his second term on the Canadian Angus Association board, a great commitment of time and energy that is greatly appreciated by all. Join us on April 1st for a great day of Angus genetics that will be offered, with each purchase you will receive a Canadian Angus Association registration paper and the assurance that you have done business with a family of integrity who believes in the breed. No fancy words, no reinventing the wheel just good cattle doing what they were bred to do.

If you are unable to join us sale day but wish to bid on some cattle feel free to make use of the internet bidding with Livestock Media Plus or contact, Dale, Nolan, sales staff or ourselves at Castlerock Marketing! We are here to help!

See you sale day!

Shane Castle

View
VIDEOS
of the bulls
ONLINE

www.castlerockmarketing.com



Performance
Balanced Traits
Calving Ease
Genetic Integrity
Maternal Strength

THIS ALL ADDS UP TO CUSTOMER PROFITABILITY



TERMS & CONDITIONS

Terms: The terms of the sale are cash or cheque payable at par at the sale unless satisfactory credit arrangements have been made previous to the sale. The right of property shall not pass until after settlement is made. All settlements must be made with the clerks of the sale before any cattle will be released. The auctioneer shall have the right to refuse bids from anyone who has a previous record of default in payment or who has not made proper credit clearance to the sale with the owner or Sales Manager.

Bidding: Each animal is to be sold to the highest bidder. No by-bidding will be permitted. A reasonable price base may be set.

Disputes: In case of disputes, bidding will be reopened between the parties involved. If no further bid is made, the buyer will be the person from whom the auctioneer accepted the last bid. The auctioneer's decision in such matters is final.

Purchaser's Risk: Each animal becomes the risk of the purchaser as soon as sold. Animals will be cared for at the purchaser's risk for a reasonable length of time.

Announcements: Errors discovered in the catalogue will be corrected by announcements from the auction stand at sale time and such corrections will take precedence over the printed matter in the catalogue. Buyers are cautioned to pay close attention to announcements.

Certificate of Registry: Each animal will carry papers issued by the Canadian Angus Association. A certificate of registry duly transferred will be furnished to the buyers for each animal after settlement has been made.

Breeders Guarantee, Bulls: Should any bull (14) fourteen months of age or over, fail to prove a breeder after being used on cows known to be breeders, the matter shall be reported in writing to the seller within (6) six months following date of purchase or (6) six months after the bull has reached (14) fourteen months of age.

The seller will then have the right and privilege of (6) six months to prove the bull a breeder. No guarantee is given that semen collected from the bull will freeze.

In no event shall the seller be responsible for more than the purchase price.

The seller is not responsible for damage caused by foreign bodies after the animal has been sold nor for sickness not apparent at sale time.

Exception guarantee: In cases where the animal was subjected to hormonal or surgical reproduction techniques after the sale, this guarantee shall be null and void.

Settlement: Transportation charges on animals returned to the seller are for account of the purchaser. No incidental expenses such as feed, care, A.I., signing fees, interest, veterinary charges, etc., will be charged by either party when making settlement. If the seller is successful in proving the animal in question to be a breeder, the said animal will be reclaimed by the purchaser at his expense. Should the seller fail to prove the animal a breeder, then the buyer is guaranteed a satisfactory replacement F.O.B. ranch or location of origin or a refund of the actual price. Should a dispute arise over the quality of the replacement animal, the Sale Management will appoint a mediator.

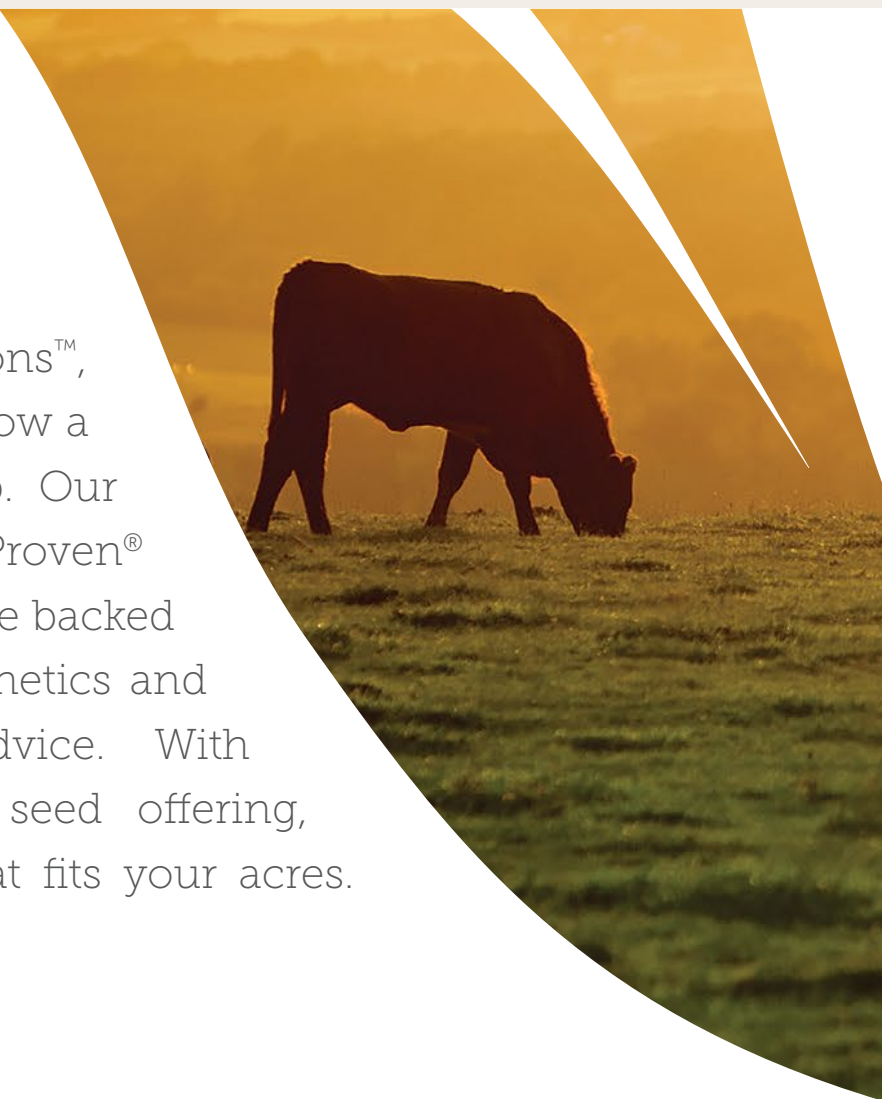
Accidents: Although every precaution will be taken to protect the safety and comfort of buyers, neither the sales manager, auctioneer, or sellers assume any responsibility in this matter and disclaim any liability, legal or otherwise, in the event of accident or loss of property.

Mail or Telephone Bids: Bidders unable to attend the sale may phone or mail their bids and instructions to the sale manager, auctioneer, or special representatives. Bids must be received in sufficient time prior to the sale.

Rights and Obligations: The above terms and conditions of the sale shall continue a contract between the buyer and the seller and be equally binding to both. Resale of animals following purchase in this sale shall constitute a separate transaction which is not covered by the terms and conditions of this sale.

Partners in
possibility.

At Nutrien Ag Solutions™, we want to help you grow a productive forage crop. Our impressive line-up of Proven® Seed forage products are backed by industry leading genetics and expert agronomic advice. With our extensive forage seed offering, we have an option that fits your acres.
nutrienagsolutions.ca



Visit your local Nutrien Ag Solutions location today.

KIPLING • 306.736.2282

Nutrien Ag Solutions™ and design is a trademark of Nutrien Ag Solutions, Inc. 02/2019



CPS proudly serves your community from

CPS Kipling • 306.736.2282

Ken • 306.424.7327

Shelby • 306.495.7495



Proud to sponsor each customer with a bag of grass seed equal to the number of bull or female purchases made.



I EASTONDALE REALLY WINDY 62'18
MALE / REG# 2048298 / VKE 62F / FEBRUARY 19, 2018

V D A R REALLY WINDY 4097 DMF AMF CAF OHF NHF OSF DDF
EASTONDALE REALLY WINDY 06'13
 EASTONDALE ANNIE K 60'11

BEAR CREEK T.D. 796A
EASTONDALE FOREVER LADY 97'16
 EASTONDALE FOREVER LADY 29'12

A A R REALLY WINDY 1205 DMF AMF CAF OHF NHF DDF
 VDAR BLACKBIRD 2031
 B HILLS FRL DURATION 606
 EASTONDALE ANNIE K 57'08
 SSA 4336 DENSITY 26T
 LLB LASSIE 796W
 DRYLAND MAX 533
 EASTONDALE FOREVER LADY 13'09

BW	ADJ 205D	ADJ 365D	BW	WW	YW	MILK	TM
91	813	1421	3.2	65	107	18	51

- A definite feature and standout in the pen as he has been all his life
- Thick over his top and has great muscle shape
- Note his strong performance data
- Good foot under him
- Calved unassisted out of a heifer



GDAR Forever Lady 9136, the start of the Forever Lady's at Eastondale



Dam of Eastondale Really Windy 06'13



2 EASTONDALE REALLY WINDY 18'18

MALE / REG# 2047841 / VK 18F / FEBRUARY 09, 2018

V D A R REALLY WINDY 4097 DMF AMF CAF OHF NHF OSF DDF
EASTONDALE REALLY WINDY 06'13
 EASTONDALE ANNIE K 60'11

A A R REALLY WINDY 1205 DMF AMF CAF OHF NHF DDF
 VDAR BLACKBIRD 2031
 B HILLS FRL DURATION 606
 EASTONDALE ANNIE K 57'08

SILVER DOME DYNASTY 19T
EASTONDALE DUCHESS 46'12
 LOOKOUT DUCHESS 31W

WANDERING CRK DYNASTY JRM 2F
 SILVER DOME OAKLEAF 119L
 LOOKOUT PACESETTER 258M
 FAIRMAC DUCHESS 236M

BW	ADJ 205D	ADJ 365D	BW	WW	YW	MILK	TM
84	706	1314	1.8	44	63	18	40

- A member of our Agribition pen of three bulls
- The Windy 6A sons have always been structurally correct and popular in our sales



3 EASTONDALE REALLY WINDY 49'18

MALE / REG# 2047862 / VK 49F / FEBRUARY 16, 2018

V D A R REALLY WINDY 4097 DMF AMF CAF OHF NHF OSF DDF
EASTONDALE REALLY WINDY 06'13
 EASTONDALE ANNIE K 60'11

A A R REALLY WINDY 1205 DMF AMF CAF OHF NHF DDF
 VDAR BLACKBIRD 2031
 B HILLS FRL DURATION 606
 EASTONDALE ANNIE K 57'08

S A V 004 TRAVELER 5658
EASTONDALE CASSIE 08'10
 EASTONDALE CASSIE 131'08

S A V 8180 TRAVELER 004 DMF AMF CAF OHF NHF OSF DDF
 S A V ABIGALE 0451
 B HILLS FRL DURATION 606
 G B T CASSIE 2J

BW	ADJ 205D	ADJ 365D	BW	WW	YW	MILK	TM
75	674	1265	-0.3	45	69	18	41

- One of my personal favorite bulls in our offering
- I highly rate his mother
- Heifer bull with performance



Dam of Lot 3

4 EASTONDALE ELEMENT 46'17

MALE / REG# 2075073 / VK 46F / FEBRUARY 15, 2018

POSS ELEMENT 215 DMF OSF DDF
4M ELEMENT 405
 4M BLACKBIRD 2004

POSS EASY IMPACT 0119
 POSS ERICA 004
 SITZ UPWARD 307R DMF AMF CAF NHF OSF DDF
 RIVERBEND BLACKBIRD 4301 NHF

SANKEYS LARAMIE 114
EASTONDALE LADY WHITNEY 21'16
 EASTONDALE LADY WHITNEY 01'07

SANKEYS LAZER 609 OF 6N DMF AMF
 LAFLINS GEORGINA OF 6N 614
 EASTONDALE ALLIANCE 155'05
 EASTONDALE LADY WHITNEY 78'04

BW	ADJ 205D	ADJ 365D	BW	WW	YW	MILK	TM
83	687	1117	1.4	60	98	23	53

- Heifer bull candidate
- Note the weaning weight for a first calf heifer

5 EASTONDALE ELEMENT 77'18

MALE / REG# 2047880 / VK 77F / FEBRUARY 24, 2018

POSS ELEMENT 215 DMF OSF DDF
4M ELEMENT 405
 4M BLACKBIRD 2004

POSS EASY IMPACT 0119
 POSS ERICA 004
 SITZ UPWARD 307R DMF AMF CAF NHF OSF DDF
 RIVERBEND BLACKBIRD 4301 NHF

EASTONDALE REALLY WINDY 06'13
EASTONDALE MAYFLOWER 145'15
 EASTONDALE MAYFLOWER 159'14

V D A R REALLY WINDY 4097 DMF AMF CAF OHF NHF OSF DDF
 EASTONDALE ANNIE K 60'11
 BAD LANDS INITIATIVE 375X
 EASTONDALE MAYFLOWER 132'11

BW	ADJ 205D	ADJ 365D	BW	WW	YW	MILK	TM
87	815	1338	2.9	71	108	24	59

- A heifers first calf with above average performance

LOT 6

- Member of our Agribition pen of three bulls
- He has surpassed his pen mates in performance by miles with a 112 WW ratio and a 142 yearling weight ratio
- Top 2% of the breed in weaning weight EPD and top 1% of the breed in yearling weight EPD



Dam of Lot 6



Granddam of Lot 6



6 EASTONDALE ELEMENT 25'18

MALE / REG# 2047845 / VK 25F / FEBRUARY 11, 2018

POSS ELEMENT 215 DMF OSF DDF
4M ELEMENT 405
 4M BLACKBIRD 2004

MINBURN MAIN EVENT 40W
EASTONDALE FOREVER LADY 68'14
 EASTONDALE FOREVER LADY 22'11

POSS EASY IMPACT 0119
 POSS ERICA 004
 SITZ UPWARD 307R DMF AMF CAF NHF OSF DDF
 RIVERBEND BLACKBIRD 4301 NHF

MINBURN MAIN EVENT 181N
 MINBURN BLACKBIRD 100P
 HF TIGER 5T AMF CAF OHF NHF OSF DDF
 GDAR FOREVER LADY 9136

BW	ADJ 205D	ADJ 365D	BW	WW	YW	MILK	TM
88	793	1525	2.2	68	123	24	58

7 EASTONDALE ELEMENT 28'18

MALE / REG# 2047849 / VK 28F / FEBRUARY 12, 2018

POSS ELEMENT 215 DMF OSF DDF
4M ELEMENT 405
 4M BLACKBIRD 2004

DRYLAND MAX 533
EASTONDALE BLACKBIRD 149'10
 EASTONDALE BLACKBIRD 24G

POSS EASY IMPACT 0119
 POSS ERICA 004
 SITZ UPWARD 307R DMF AMF CAF NHF OSF DDF
 RIVERBEND BLACKBIRD 4301 NHF

GEIS MAXIMUM 80'01
 HOLLBROOK BLACKWOOD 4H
 DM TRIPLE THREAT 16C
 KENWAW BLACKBIRD 4C

BW	ADJ 205D	ADJ 365D	BW	WW	YW	MILK	TM
85	690	1153	1.2	42	68	28	49

LOT 7

- Moderate framed easy fleshing bull
- A calf that doesn't over power you but hard to fault





8

EASTONDALE ELEMENT 11'18

MALE / REG# 2048289 / VKE 11F / FEBRUARY 05, 2018

POSS ELEMENT 215 DMF OSF DDF
4M ELEMENT 405
 4M BLACKBIRD 2004

SOO LINE TRADITION 6034
EASTONDALE PAULINE 69'11
 EASTONDALE PAULINE 126'08

POSS EASY IMPACT 0119
 POSS ERICA 004
 SITZ UPWARD 307R DMF AMF CAF NHF OSF DDF
 RIVERBEND BLACKBIRD 4301 NHF
 SITZ TRADITION RLS 8702
 H A BELETTA 0219
 DRYLAND MAX 533
 EASTONDALE PAULINE 08'03

BW	ADJ 205D	ADJ 365D	BW	WW	YW	MILK	TM
88	671	1194	2.3	44	78	24	46

- One of my phenotypical favorites in our offering
- Again, out of the Pauline cow family



Dam of Lot 8



9

EASTONDALE ELEMENT 21'18

MALE / REG# 2047843 / VK 21F / FEBRUARY 09, 2018

POSS ELEMENT 215 DMF OSF DDF
4M ELEMENT 405
 4M BLACKBIRD 2004

MINBURN MAIN EVENT 40W
EASTONDALE CASSIE 19'12
 EASTONDALE CASSIE 19'07

POSS EASY IMPACT 0119
 POSS ERICA 004
 SITZ UPWARD 307R DMF AMF CAF NHF OSF DDF
 RIVERBEND BLACKBIRD 4301 NHF
 MINBURN MAIN EVENT 181N
 MINBURN BLACKBIRD 100P
 DRYLAND MAX 533
 G B T CASSIE 2J

BW	ADJ 205D	ADJ 365D	BW	WW	YW	MILK	TM
90	689	1215	2.1	53	96	21	48

- Really long made bull
- A maternal brother sold to Yonkin Angus Ranch of Hamilton, Montana in last years sale
- His dam is a long, deep sided, beautiful uddered female



Dam of Lot 9



10

EASTONDALE ELEMENT 30'18

MALE / REG# 2047848 / VK 30F / FEBRUARY 12, 2018

POSS ELEMENT 215 DMF OSF DDF
4M ELEMENT 405
 4M BLACKBIRD 2004

NF EVEREADY AS2
EASTONDALE CASSIE 63'16
 EASTONDALE CASSIE 52'09

POSS EASY IMPACT 0119
 POSS ERICA 004
 SITZ UPWARD 307R DMF AMF CAF NHF OSF DDF
 RIVERBEND BLACKBIRD 4301 NHF
 IDEAL 4636 OF 452 6187
 SHANES SHILO 52
 MINBURN MAIN EVENT 38T
 G B T CASSIE 2J

BW	ADJ 205D	ADJ 365D	BW	WW	YW	MILK	TM
85	753	1266	1.8	62	105	23	54

- Heifers first calf
- 4M Element 405 sons have been popular in every sale they have been offered



II

EASTONDALE TITLEST 01'18

MALE / REG# 2047830 / VK 1F / JANUARY 23, 2018

RA LINCOLN W144 AMF NHF DDF
S TITLEST 1145 AMF CAF NHF OSF DDF
 S CORA 572 DDF

REICH LEAD ON 424 DMF AMF CAF OHF NHF DDF
 RA BRANDY P11
 VERMILION DATELINE 7078 DMF AMF CAF OHF NHF DDF
 H L LADY DIVIDEND 422

BW	ADJ 205D	ADJ 365D	BW	WW	YW	MILK	TM
86	745	1363	1.3	55	96	24	52

SOO LINE MOTIVE 9016
STOREBO MOTIVE 64D
 STOREBO ROSEBUD 112A

HF KODIAK 5R AMF CAF OHF NHF MAF DDF
 TLA BEAUTY 5R
 RED WILBAR RECHARGE 337X
 CRESCENT CREEK ROSEBUD 111Y

- Definite sale feature
- Calving Ease
- Result of an in dam purchase out of the Touch of Class sale
- Good footed
- Dam is DNA'd to not have the red gene



Dam of Lot 11



Sire of Lot 11

I2

EASTONDALE ROGUE 78'18

MALE / REG# 2047879 / VK 78F / FEBRUARY 24, 2018

G D A R ROGUE 640
KBJ ROGUE II 203H
 KBJ QUEEN 69X

DOUBLE BAR ROGUE CAF OHF
 G D A R FOREVER LADY 086
 KBJ ROUND MR MAJOR 129T
 KBJ ROUND QUEEN 126S

DRYLAND MAX 533
EASTONDALE BETSY 120'12
 EASTONDALE BETSY 108'03

GEIS MAXIMUM 80'01
 HOLLBROOK BLACKWOOD 4H
 B.B.A.R HERO 1267
 EASTONDALE BETSY 43'99

BW	ADJ 205D	ADJ 365D	BW	WW	YW	MILK	TM
81	748	1117	1.3	32	43	23	41

- Heifer bull with good weaning weight potential
 - Lots of scrotal size and great shape
 - A maternal brother sold to long time bull customers
- Bourhis Ranching





- Thick made bull
- His mother has potential for a great future here



Dam of Lot 13

I3 EASTONDALE ACTIVE DUTY 70'18
MALE / REG# 2047873 / VK 70F / FEBRUARY 21, 2018

R B ACTIVE DUTY 0010X AMF NHF DDF CAF DMF
MINBURN ACTIVE DUTY 72C
 MINBURN BLACKBIRD 130Y

LCC NEW STANDARD AMF NHF CAF DDC OHF OSF
 B A LADY 6807 305
 BEVERLY HILLS CINGULAR 640 (EE)
 MINBURN BLACKBIRD 143M

SANKEYS LARAMIE 114
EASTONDALE GAMMER 62'15
 EASTONDALE GAMMER 38'11

SANKEYS LAZER 609 OF 6N AMF DMF
 LAFLINS GEORGINA OF 6N 614
 B HILLS FRL DURATION 606
 EASTONDALE GAMMER 38'09

BW	ADJ 205D	ADJ 365D	BW	WW	YW	MILK	TM
88	670		2.4	48	85	21	45

I4 EASTONDALE ACTIVE DUTY 66'18
MALE / REG# 2047871 / VK 66F / FEBRUARY 20, 2018

R B ACTIVE DUTY 0010X DMF AMF CAF NHF DDF
MINBURN ACTIVE DUTY 72C
 MINBURN BLACKBIRD 130Y

LCC NEW STANDARD AMF CAF OHF NHF OSF DDC
 B A LADY 6807 305
 BEVERLY HILLS CINGULAR 640
 MINBURN BLACKBIRD 143M

VD A R REALLY WINDY 4097 DMF AMF CAF OHF NHF OSF DDF
EASTONDALE BELETTA 34'15
 BEVERLY HILLS FRL BELETTA

EASTONDALE REALLY WINDY 06'13
EASTONDALE BELETTA 34'15
 BEVERLY HILLS FRL BELETTA

SINCLAIR RITO LEGACY 3R9 DMF AMF CAF OHF OSF DDF
 H A BELETTA 0219

BW	ADJ 205D	ADJ 365D	BW	WW	YW	MILK	TM
95	739	1303	5.7	57	96	21	47



- An absolute tank of a bull
- I wish I had a whole herd of cows that looked like this bull's mother



Dam of Lot 14

I5 EASTONDALE ACTIVE DUTY 23'18

MALE / REG# 2047838 / VK 23F / FEBRUARY 09, 2018

R B ACTIVE DUTY 0010X DMF AMF CAF NHF DDF
MINBURN ACTIVE DUTY 72C
 MINBURN BLACKBIRD 130Y

LCC NEW STANDARD AMF CAF OHF NHF OSF DDC
 B A LADY 6807 305
 BEVERLY HILLS CINGULAR 640
 MINBURN BLACKBIRD 143M
 MINBURN MAIN EVENT 181N
 MINBURN BLACKBIRD 100P
 KBJ TOMMY BOY 44W
 DRYLAND FOREVER LADY 59Z

MINBURN MAIN EVENT 40W
EASTONDALE FOREVER LADY 107'14
 SFL FOREVER LADY 69Y

BW	ADJ 205D	ADJ 365D	BW	WW	YW	MILK	TM
88	683	1195	2.2	48	88	20	44

- Really nice, easy fleshing, good uddered dam
- Moderate framed calf with fleshing ability



LOT 15

I6 EASTONDALE ACTIVE DUTY 29'18

MALE / REG# 2075071 / VK 29F / FEBRUARY 12, 2018

R B ACTIVE DUTY 0010X DMF AMF CAF NHF DDF
MINBURN ACTIVE DUTY 72C
 MINBURN BLACKBIRD 130Y

LCC NEW STANDARD AMF CAF OHF NHF OSF DDC
 B A LADY 6807 305
 BEVERLY HILLS CINGULAR 640
 MINBURN BLACKBIRD 143M

KA BLACK CEDAR 290
EASTONDALE SUSAN 40'13
 EASTONDALE SUSAN 62'00

COLE CREEK BLACK CEDAR 46P AMF CAF OHF NHF OSF DDF
 KA HAZEL 7048
 CONNEALY KINCAID OHF
 EASTONDALE SUSAN 13'98

BW	ADJ 205D	ADJ 365D	BW	WW	YW	MILK	TM
88	729	1290	3.8	45	84	25	47

- Bigger framed bull
- Nice young, good uddered dam
- Above herd average in both weaning and yearling weight ratio



Dam of Lot 16



LOT 16

I7 EASTONDALE ACTIVE DUTY 32'18

MALE / REG# 2047853 / VK 32F / FEBRUARY 13, 2018

R B ACTIVE DUTY 0010X DMF AMF CAF NHF DDF
MINBURN ACTIVE DUTY 72C
 MINBURN BLACKBIRD 130Y

LCC NEW STANDARD AMF CAF OHF NHF OSF DDC
 B A LADY 6807 305
 BEVERLY HILLS CINGULAR 640
 MINBURN BLACKBIRD 143M

MINBURN MAIN EVENT 40W
EASTONDALE ANNIE K 30'14
 EASTONDALE ANNIE K 25'08

MINBURN MAIN EVENT 181N
 MINBURN BLACKBIRD 100P
 DRYLAND MAX 533
 EASTONDALE ANNIE K 39'05

BW	ADJ 205D	ADJ 365D	BW	WW	YW	MILK	TM
82	757	1341	1.9	51	94	24	50

- Moderate, thick and easy fleshing package
- Could be used on heifers yet has real nice performance numbers



Dam of Lot 17



LOT 17



18 EASTONDALE ACTIVE DUTY 34'18
MALE / REG# 2047852 / VK 34F / FEBRUARY 13, 2018

R B ACTIVE DUTY 0010X DMF AMF CAF NHF DDF
MINBURN ACTIVE DUTY 72C
 MINBURN BLACKBIRD 130Y

LCC NEW STANDARD AMF CAF OHF NHF OSF DDC
 B A LADY 6807 305
 BEVERLY HILLS CINGULAR 640
 MINBURN BLACKBIRD 143M

SANKEYS LARAMIE 114
EASTONDALE LADY WHITNEY 46'15
 EASTONDALE LADY WHITNEY 01'07

SANKEYS LAZER 609 OF 6N DMF AMF
 LAFLINS GEORGINA OF 6N 614
 EASTONDALE ALLIANCE 155'05
 EASTONDALE LADY WHITNEY 78'04

BW	ADJ 205D	ADJ 365D	BW	WW	YW	MILK	TM
100	647	1187	4.5	41	74	23	44

- Thick and stout
- Brother sold to Mack Clark of Bassano, AB in last years sale



Dam of Lot 18



19 EASTONDALE ACTIVE DUTY 37'18
MALE / REG# 2074411 / VK 37F / FEBRUARY 13, 2018

R B ACTIVE DUTY 0010X DMF AMF CAF NHF DDF
MINBURN ACTIVE DUTY 72C
 MINBURN BLACKBIRD 130Y

LCC NEW STANDARD AMF CAF OHF NHF OSF DDC
 B A LADY 6807 305
 BEVERLY HILLS CINGULAR 640
 MINBURN BLACKBIRD 143M

SOO LINE KODIAK 1131
EASTONDALE HEROINE 29'14
 EASTONDALE HEROINE 30'08

HF KODIAK 5R AMF CAF OHF NHF MAF DDF
 GEIS PRIDE 114'99 MAF
 DRYLAND MAX 533
 MERIT HEROINE 7007

BW	ADJ 205D	ADJ 365D	BW	WW	YW	MILK	TM
79	703	1163	1	45	79	20	43

- Moderate framed heifer bull
- His dam is a peach



Dam of Lot 19



20 EASTONDALE ACTIVE DUTY 43'18
MALE / REG# 2048294 / VKE 43F / FEBRUARY 14, 2018

R B ACTIVE DUTY 0010X DMF AMF CAF NHF DDF
MINBURN ACTIVE DUTY 72C
 MINBURN BLACKBIRD 130Y

LCC NEW STANDARD AMF CAF OHF NHF OSF DDC
 B A LADY 6807 305
 BEVERLY HILLS CINGULAR 640
 MINBURN BLACKBIRD 143M

SANKEYS LARAMIE 114
EASTONDALE SUSAN 145'14
 EASTONDALE SUSAN 53'09

SANKEYS LAZER 609 OF 6N DMF AMF
 LAFLINS GEORGINA OF 6N 614
 EASTONDALE GRADUATE 135'07
 BAILEY'S SUSAN 89'06

BW	ADJ 205D	ADJ 365D	BW	WW	YW	MILK	TM
90	711	1174	4.1	51	89	24	50

- Two maternal sisters to this bull have been feature bred heifers in the last two Touch of Class sales
- Susan's are a strong cow family



Maternal Sister to Lot 20

21 EASTONDALE ACTIVE DUTY 57'18

MALE / REG# 2048297 / VKE 57F / FEBRUARY 18, 2018

R B ACTIVE DUTY 0010X DMF AMF CAF NHF DDF
MINBURN ACTIVE DUTY 72C
 MINBURN BLACKBIRD 130Y

LCC NEW STANDARD AMF CAF OHF NHF OSF DDC
 B A LADY 6807 305
 BEVERLY HILLS CINGULAR 640
 MINBURN BLACKBIRD 143M

SANKEYS LARAMIE 114
EASTONDALE PAULINE 109'15
 EASTONDALE PAULINE 126'08

SANKEYS LAZER 609 OF 6N DMF AMF
 LAFLINS GEORGINA OF 6N 614
 DRYLAND MAX 533
 EASTONDALE PAULINE 08'03

BW	ADJ 205D	ADJ 365D	BW	WW	YW	MILK	TM
85	661	1193	2.5	39	71	22	42

- Note the Pauline cow family again
- Structurally sound bull



Dam of Lot 21



LOT 21

22 EASTONDALE ACTIVE DUTY 69'18

MALE / REG# 2048299 / VKE 69F / FEBRUARY 21, 2018

R B ACTIVE DUTY 0010X DMF AMF CAF NHF DDF
MINBURN ACTIVE DUTY 72C
 MINBURN BLACKBIRD 130Y

LCC NEW STANDARD AMF CAF OHF NHF OSF DDC
 B A LADY 6807 305
 BEVERLY HILLS CINGULAR 640
 MINBURN BLACKBIRD 143M

CONNEALY CONSENSUS 7229 DMF AMF CAF OHF NHF OSF DDF
EASTONDALE BONNIE LADY 03'14
 EASTONDALE BONNIE LADY 113'10

CONNEALY CONSENSUS DDF
 BLUE LILLY OF CONANGA 16 CAF
 DRYLAND MAX 533
 EASTONDALE BONNIE LADY 103'03

BW	ADJ 205D	ADJ 365D	BW	WW	YW	MILK	TM
82	711	1139	1.5	43	69	24	46

- A heifer bull candidate
- A brother sold in the 2017 bull sale and a maternal sister retained in herd



LOT 22

23 EASTONDALE DENSITY 131'18

MALE / REG# 2058155 / VK 131F / MARCH 28, 2018

SSA 4336 DENSITY 26T
BEAR CREEK T.D. 796A
 LLB LASSIE 796W

S A V 004 DENSITY 4336 DMF AMF CAF OHF NHF OSF DDF
 SOUTH SHADOW RUBY 12N
 FIGURE 8 ANGUS TOM BOY 509R
 LLB LASSIE 487R

HYLINE RIGHT WAY 781 DMF AMF CAF OHF NHF OSF DDF
FRL BELETTA 812U
 BEVERLY HILLS BELETTA 310

HYLINE RIGHT TIME 338 AMF CAF OHF NHF DDF
 HYLINE ELLEN 86
 SITZ TRAVELER 043
 H A BELETTA 0219

BW	ADJ 205D	ADJ 365D	BW	WW	YW	MILK	TM
90	785		3.6	60	102	21	51

- Youngest bull in the offering, just past a year old on sale day
- His dam is a big powerful cow with a super foot on her
- Another elite dam
- A brother to this bull was the high selling bull in our 2012 bull sale, selling to Cudmore Farms of Wawota



LOT 23



- Member of our Agribition pen of three bulls
- Moves extremely well
- 5 other brothers have made the cut for the bull sale
- Dam still sound and producing at age eleven



Dam of Lot 24

24 EASTONDALE REFLECTION 26'18
 MALE / REG# 2047847 / VK 26F / FEBRUARY 11, 2018

LLB REFLECTION 607A
HF REFLECTION 241C
 HF TIBBIE 77Z

B HILLS FRL DURATION 606
EASTONDALE BETSY 87'08
 EASTONDALE BETSY 89'01

MCATL REFLECTION 120-577
 SOO LINE DANA 9028
 CONNEALY CONSENSUS 7229 DMF AMF CAF OHF NHF OSF DDF
 HF TIBBIE 100M

LEACHMAN RIGHT TIME DMF AMF OSF
 H A BELETTA 0219
 STEVENSON BRUNO 561G DMF CAF NHF DDF
 EASTONDALE BETSY 43'99

BW	ADJ 205D	ADJ 365D	BW	WW	YW	MILK	TM
90	708	1262	3.4	59	100	21	51

25 EASTONDALE REFLECTION 120'18
 MALE / REG# 2047908 / VK 120F / MARCH 15, 2018

LLB REFLECTION 607A
HF REFLECTION 241C
 HF TIBBIE 77Z

B HILLS FRL DURATION 606
EASTONDALE DUCHESS 68'10
 EASTONDALE DUCHESS 110'03

MCATL REFLECTION 120-577
 SOO LINE DANA 9028
 CONNEALY CONSENSUS 7229 DMF AMF CAF OHF NHF OSF DDF
 HF TIBBIE 100M

LEACHMAN RIGHT TIME DMF AMF OSF
 H A BELETTA 0219
 CJD SCOTCHMAN 10K
 SUNMOUND DUCHESS 9F

BW	ADJ 205D	ADJ 365D	BW	WW	YW	MILK	TM
84	723	1319	2.3	56	106	22	48



- This bull is very thick made
- Two brothers of this good bull have sold in past sales and two good young maternal sisters have been retained back into our herd

26 EASTONDALE REFLECTION 22'18

MALE / REG# 2047840 / VK 22F / FEBRUARY 09, 2018

LLB REFLECTION 607A
HF REFLECTION 241C
 HF TIBBIE 77Z

MCATL REFLECTION 120-577
 SOO LINE DANA 9028
 CONNEALY CONSENSUS 7229 DMF AMF CAF OHF NHF OSF DDF
 HF TIBBIE 100M

COLE CREEK BLACK CEDAR 46P AMF CAF OHF NHF OSF DDF
EASTONDALE FOREVER LADY 08'13
 EASTONDALE FOREVER LADY 37'11

C H QUANTUM 6247
 COLE CREEK CLOVA JUANADA 67
 PAPA FORTE 1921 DMF
 GDAR FOREVER LADY 9136

BW	ADJ 205D	ADJ 365D	BW	WW	YW	MILK	TM
80	690	1215	1.1	44	80	25	47

- A bull that is always noticed in the pen
- Maternal brother sold to J Lazy A Ranch of Sexsmith, AB
- Big topped and deep sided



27 EASTONDALE REFLECTION 106'18

MALE / REG# 2047896 / VK 106F / MARCH 08, 2018

LLB REFLECTION 607A
HF REFLECTION 241C
 HF TIBBIE 77Z

MCATL REFLECTION 120-577
 SOO LINE DANA 9028
 CONNEALY CONSENSUS 7229 DMF AMF CAF OHF NHF OSF DDF
 HF TIBBIE 100M

GDAR GAME DAY 449 DMF AMF CAF OHF NHF OSF DDF
AW PAULINE 24A
 AWH PAULINE 9U*

BOYD NEW DAY 8005 DMF AMF CAF OHF NHF OSF DDF
 G D A R MISS WIX 474
 CRESCENT CREEK CHIEF 40P
 AWH PAULINE 21P

BW	ADJ 205D	ADJ 365D	BW	WW	YW	MILK	TM
81	745	1326	1.7	56	104	22	49

- Really good Reflection son with lots of style and balance
- Nice low birth weight with above average performance



28 EASTONDALE REFLECTION 118'18

MALE / REG# 2047907 / VK 118F / MARCH 14, 2018

LLB REFLECTION 607A
HF REFLECTION 241C
 HF TIBBIE 77Z

MCATL REFLECTION 120-577
 SOO LINE DANA 9028
 CONNEALY CONSENSUS 7229 DMF AMF CAF OHF NHF OSF DDF
 HF TIBBIE 100M

EASTONDALE BREAK AWAY 32'07
EASTONDALE ANNIE K 03'11
 SOO LINE ANNIE K 199P

HYLINE RIGHT WAY 781 DMF AMF CAF OHF NHF OSF DDF
 GDAR FOREVER LADY 9136
 CUDLOBE YELLOWSTONE 80M
 GEIS ANNIE K 195'99

BW	ADJ 205D	ADJ 365D	BW	WW	YW	MILK	TM
80	798	1344	1.5	65	119	25	57

- Big rugged made bull
- Note his spread from birth to yearling EPDs
- Dam has elite cow status in CAA herd book
- Maternal sister sold for \$5000 to Glasman Farms, Russel, MB



Dam of Lot 28



Maternal sister to Lot 28



29 EASTONDALE REFLECTION 74'18
MALE / REG# 2047878 / VK 74F / FEBRUARY 23, 2018

LLB REFLECTION 607A
HF REFLECTION 241C
 HF TIBBIE 77Z

KA BLACK CEDAR 290
EASTONDALE TOPSY 38'12
 EASTONDALE TOPSY 33'03

MCATL REFLECTION 120-577
 SOO LINE DANA 9028
 CONNEALY CONSENSUS 7229 DMF AMF CAF OHF NHF OSF DDF
 HF TIBBIE 100M

COLE CREEK BLACK CEDAR 46P AMF CAF OHF NHF OSF DDF
 KA HAZEL 7048
 CJD SCOTCHMAN 10K
 TOPSY OF PLEASANT VISTA 3C

BW	ADJ 205D	ADJ 365D	BW	WW	YW	MILK	TM
87	671	1254	2.7	48	92	24	47

- Big strong, solid ranch bull



30 EASTONDALE FORTITUDE 17'18
MALE / REG# 2047844 / VK 17F / FEBRUARY 09, 2018

GAR-EGL PROTEGE DMF AMF CAF OHF NHF OSF DDF
PA FORTITUDE 2500 AMF CAF NHF DDF
 G G CLARA 0171 DDF

DRYLAND MAX 533
EASTONDALE GAMMER 74'09
 EASTONDALE GAMMER 105'06

RITO 112 OF 2536 RITO 616 DMF AMF CAF OHF NHF OSF DDF
 L B 6807 ISABEL 339
 SYDGEN C C & 7 AMF CAF OHF NHF OSF DDF
 G G CLARA 7192 DDF

GEIS MAXIMUM 80'01
 HOLLBROOK BLACKWOOD 4H
 B.B.A.R HERO 1267
 MINBURN GAMMER 35K

BW	ADJ 205D	ADJ 365D	BW	WW	YW	MILK	TM
87	751	1325	1.5	47	80	23	47

- Dam is an elite cow in the Canadian Angus Herd book
- Length of spine, lots of scale plus performance
- Good all around prospect



Dam of Lot 31

31 EASTONDALE COMMANDO 12'18
MALE / REG# 2048291 / VKE 12F / FEBRUARY 05, 2018

EF COMPLEMENT 8088 AMF CAF OHF NHF DDF
EF COMMANDO 1366 DMF AMF CAF NHF OSF DDF
 RIVERBEND YOUNG LUCY W1470 DDF

DRYLAND MAX 533
EASTONDALE PAULINE 126'08
 EASTONDALE PAULINE 08'03

BASIN FRANCHISE P142 DMF AMF CAF OHF NHF OSF DDF
 EF EVERELDA ENTENSE 6117
 B/R AMBUSH 28 AMF CAF NHF DDF
 RIVERBEND YOUNG LUCY T1080

GEIS MAXIMUM 80'01
 HOLLBROOK BLACKWOOD 4H
 LEACHMAN RIGHT TIME DMF AMF OSF
 EASTONDALE PAULINE 1'01

BW	ADJ 205D	ADJ 365D	BW	WW	YW	MILK	TM
86	616	1115	0.9	33	62	26	43

- Has one of the best dams in the herd
- Style plus masculinity
- 3 top end maternal sisters in herd
- 3 brothers have sold through past bull sales

LOT 32

- Biggest framed bull in our offering
- If your concerned about selling bulls by the pound then consider this bull
- Good brother sold in last years sale to the Erickson family of Maryfield, SK



Dam of Lot 32



32 EASTONDALE THUNDER 60'i18
 MALE / REG# 2047870 / VK 60F / FEBRUARY 19, 2018

BAR DOUBLE M THUNDER 67A
BAR DOUBLE M THUNDER 14C
 BAR DOUBLE M ANNABELLA 38Z

S A V BISMARCK 5682 DMF AMF CAF OHF NHF OSF DDF
TRIARA 3T EVERELDA ET 628X
 THREE TREES EVERELDA 1544 DDC

CONNELLY THUNDER DMF AMF CAF OHF NHF OSF DDF
 BAR MM EILEEN 182S
 MERIT 9649
 BAR DOUBLE M ANNABELLA 220W

G A R GRID MAKER DMF AMF CAF OHF NHF OSF DDF
 S A V ABIGALE 0451
 B/R NEW DESIGN 036 AMF CAF OHF NHF DDC
 THREE TREES ENTENSE 567G AMF NHF

BW	ADJ 205D	ADJ 365D	BW	WW	YW	MILK	TM
82	863	1342	1.7	66	109	24	59

33 EASTONDALE THUNDER 31'i18
 MALE / REG# 2047850 / VK 31F / FEBRUARY 12, 2018

BAR DOUBLE M THUNDER 67A
BAR DOUBLE M THUNDER 14C
 BAR DOUBLE M ANNABELLA 38Z

LLB TRADITION 242S
KBJ DUCHESS 162U
 KBJ DUCHESS 13N

CONNELLY THUNDER DMF AMF CAF OHF NHF OSF DDF
 BAR MM EILEEN 182S
 MERIT 9649
 BAR DOUBLE M ANNABELLA 220W

SITZ TRADITION RLS 8702
 PAHL MISS ROSEBUD 86L
 KBJ ROGUE II 203H
 LUNN DUCHESS 11L

BW	ADJ 205D	ADJ 365D	BW	WW	YW	MILK	TM
84	680	1151	2.4	50	86	16	41

LOT 33

- Always been favorite of mine
- His brother was a sale feature last year selling to Bear Creek Angus of Maple Creek



Maternal brother to Lot 33





34 EASTONDALE THUNDER 58'18

MALE / REG# 2047919 / VK 58F / FEBRUARY 18, 2018

BAR DOUBLE M THUNDER 67A
BAR DOUBLE M THUNDER 14C
 BAR DOUBLE M ANNABELLA 38Z

CONNELY THUNDER DMF AMF CAF OHF NHF OSF DDF
 BAR MM EILEEN 182S
 MERIT 9649
 BAR DOUBLE M ANNABELLA 220W

BELVIN PANIC SWITCH 2'11 DMF AMF CAF NHF OSF MAF DDF
SUNNY GROVE SHEILA 25A
 SUNNY GROVE SHEILA 71W

S A V PIONEER 7301 DMF AMF CAF OHF NHF OSF DDF
 BELVIN LADY BLOSSOM 14'09
 GLENCROFT EXTRA 5S
 SUNNY GROVE SHEILA 27P

BW	ADJ 205D	ADJ 365D	BW	WW	YW	MILK	TM
87	641	1182	2.1	49	95	18	45

- A bull that is easy to find and like in the pen
- Maternal brother sold in last years sale to long time customer T Taylor Enterprises

LOT 34



35 EASTONDALE THUNDER 85'18

MALE / REG# 2047882 / VK 85F / FEBRUARY 26, 2018

BALDRIDGE KABOOM K243 KCF CAF
CONNELY THUNDER DMF AMF CAF OHF NHF OSF DDF
 PARKA OF CONANGA 241 AMF CAC NHF

JAUER 353 TRAVELER 589 27
 PLEASANTA OF CONANGA 736
 BON VIEW BANDO 598 DMF DWF AMF CAC OHF NHF OSF DDF
 PARTINA OF CONANGA 6237

SOO LINE KODIAK 1131
EASTONDALE RUBY 142'14
 WWED 8180 RUBY 80P

HF KODIAK 5R AMF CAF OHF NHF MAF DDF
 GEIS PRIDE 114'99 MAF
 SITZ TRAVELER 8180 AMF CAF OHF NHF DDF
 FCR RUBY 25K

BW	ADJ 205D	ADJ 365D	BW	WW	YW	MILK	TM
82	656	1064	0.8	38	62	21	39

- Sleep all night heifer bull
- Real smooth headed and smooth shouldered

Live Sale
BROADCAST
www.livestockmediaplus.com



Dam of Lot 36

36 EASTONDALE VALUE 806'18

MALE / REG# ?256663 / VK 806F / JANUARY 17, 2018

SITZ TRAVELER 6802
SITZ VALUE 7097 AMF NHF CAF DDF
 SITZ EISA EVERGREEN 791

SITZ TRAVELER 9929
 SITZ BARBARAMERE NELLE 2988
 G D A R RAINMAKER 340
 SITZ EISA EVERGREEN 1659

G D A R ROYCE 131
GDAR FOREVER LADY 9136
 G D A R FOREVER LADY 223

TRAVELER 124 G D A R
 G D A R RACHEL 5115
 O C C BLUE PRINT 704Z
 G D A R FOREVER LADY 9300

BW	ADJ 205D	ADJ 365D	BW	WW	YW	MILK	TM
82			0.9	36	68	21	39

- 806 is a result of the last of our Forever Lady 9136 embryos we had
- Maternally bred like no other, as the Value daughters are always good, and coming from 9136, it's going to work
- We could go on about her impact but that is apparent throughout the catalogue, buy with confidence!

37 EASTONDALE THUNDER 113'18

MALE / REG# 2067692 / VK 113F / MARCH 12, 2018

BAR DOUBLE M THUNDER 67A
BAR DOUBLE M THUNDER 14C
 BAR DOUBLE M ANNABELLA 38Z

CONNELLY THUNDER DMF AMF CAF OHF NHF OSF DDF
 BAR MM EILEEN 182S
 MERIT 9649
 BAR DOUBLE M ANNABELLA 220W

DRYLAND MAX 533
EASTONDALE ANNIE K 29'08
 EASTONDALE ANNIE K 57'05

GEIS MAXIMUM 80'01
 HOLLBROOK BLACKWOOD 4H
 BOYD NEW DAY 8005 DMF AMF CAF OHF NHF OSF DDF
 CELINE OF TWO M 16H

BW	ADJ 205D	ADJ 365D	BW	WW	YW	MILK	TM
85	746	1206	2.9	53	91	18	46

- His Mother is a good 11-year-old still producing here
- He should sire a great set of steer calves



Maternal brother to Lot 37

38 EASTONDALE KODIAK 36'18

MALE / REG# 2047851 / VK 36F / FEBRUARY 13, 2018

SANDY BAR ADVANTAGE 43M DDF
HF KODIAK 5R AMF CAF OHF NHF MAF DDF
 WILBAR RUBY 955N

TC ADVANTAGE DMF AMF CAF OHF NHF OSF DDC
 SANDY BAR JEMINA 44K
 VERMILION YELLOWSTONE DMF AMF CAF OHF NHF DDF
 WILBAR RUBY 161J

WILLOWVIEW PIONEER 6X
NORTHERN VIEW SUSAN 124C
 EASTONDALE SUSAN 47'12

S A V PIONEER 7301 DMF AMF CAF OHF NHF OSF DDF
 WILLOWVIEW GRAND JUNE 36P
 BAD LANDS INITIATIVE 375X
 BAILEY'S SUSAN 5'02

BW	ADJ 205D	ADJ 365D	BW	WW	YW	MILK	TM
64	633	1193	-3.3	37	64	16	35

- Sleep at night heifer bull
- You must really appreciate this bull's young dam



Dam of Lot 38

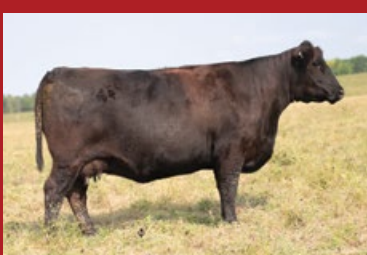
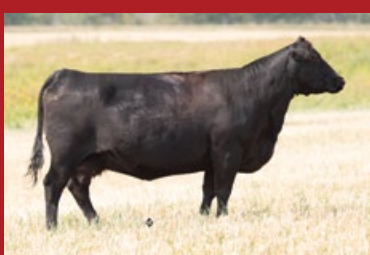
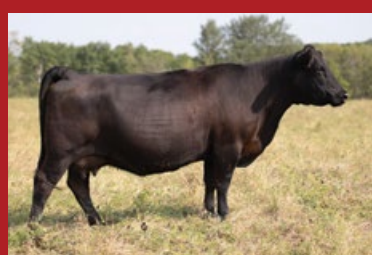


LOT 38





The Females of EASTONDALE





39 EASTONDALE FOREVER LADY 14'18
FEMALE / REG# 2067676 / VK 14F / FEBRUARY 07, 2018

VDAR REALLY WINDY 4097 DMF AMF CAF OHF NHF OSF DDF
EASTONDALE REALLY WINDY 06'13
 EASTONDALE ANNIE K 60'11

BAD LANDS INITIATIVE 375X
EASTONDALE FOREVER LADY 27'13
 EASTONDALE FOREVER LADY 02'08

AAR REALLY WINDY 1205 DMF AMF CAF OHF NHF DDF
 VDAR BLACKBIRD 2031
 B HILLS FRL DURATION 606
 EASTONDALE ANNIE K 57'08
 SANDY CREEK INITIATIVE 52T
 BAD LANDS LADY 311N
 HYLINE RIGHT WAY 781 DMF AMF CAF OHF NHF OSF DDF
 GDAR FOREVER LADY 9136

BW	ADJ 205D	ADJ 365D	BW	WW	YW	MILK	TM
595	886		2.6	57	90	19	47

40 EASTONDALE MISS III'18
FEMALE / REG# 2047900 / VK 111F / MARCH 09, 2018

LLB REFLECTION 607A
HF REFLECTION 241C
 HF TIBBIE 77Z

DRYLAND MAX 533
EASTONDALE MISS 79'11
 DFCC 60P SUZIE 4U

MCATL REFLECTION 120-577
 SOO LINE DANA 9028
 CONNEALY CONSENSUS 7229 DMF AMF CAF OHF NHF OSF DDF
 HF TIBBIE 100M

GEIS MAXIMUM 80'01
 HOLLBROOK BLACKWOOD 4H
 BWB VENTURE 60P
 EGGEN FAME MISS 28P

BW	ADJ 205D	ADJ 365D	BW	WW	YW	MILK	TM
85	703	1017	3.5	55	99	25	53

These heifers were selected out of our pen of 70 open replacement females. We tried to select females from all the sires that we had represented in the bull offering. There are females from proven cows here as well as good young cows in our herd. We would not be scared to breed and retain any of these females for our own use.





LOT 41

41 EASTONDALE TOPSY 116'18
 FEMALE / REG# 2047905 / VK 116F / MARCH 13, 2018

CROWFOOT EQUATION 5793R
EASTONDALE EQUATION 93'15
 BAR-E-L MAGNOLIA 15T

SOO LINE TRADITION 6034
EASTONDALE TOPSY 58'11
 EASTONDALE TOPSY 33'03

O C C LEGACY 839L
 CROWFOOT FORKS 755K
 S A V 004 DENSITY 4336 DMF AMF CAF OHF NHF OSF DDF
 BAR-E-L MAGNOLIA 184R

SITZ TRADITION RLS 8702
 H A BELETTA 0219
 CJD SCOTCHMAN 10K
 TOPSY OF PLEASANT VISTA 3C

BW	ADJ 205D	ADJ 365D	BW	WW	YW	MILK	TM
83	637	894	2.6	34	55	24	41

42 EASTONDALE PRINCESS 95'18
 FEMALE / REG# 2047891 / VK 95F / MARCH 01, 2018

BAR DOUBLE M THUNDER 67A
BAR DOUBLE M THUNDER 14C
 BAR DOUBLE M ANNABELLA 38Z

EASTONDALE ALL THE WAY 11'08
EASTONDALE PRINCESS 71'13
 CFS PRINCESS 87X

CONNEALY THUNDER AMF NHF CAF DDF OHF DMF OSF
 BAR MM EILEEN 182S
 MERIT 9649
 BAR DOUBLE M ANNABELLA 220W

HYLINE RIGHT WAY 781 AMF NHF CAF DDF OHF DMF OSF
 GDAR FOREVER LADY 9136
 EASTONDALE EXHALE 18'07
 CFS PRINCESS 1N

BW	ADJ 205D	ADJ 365D	BW	WW	YW	MILK	TM
88	662	844	2.9	56	95	22	49



LOT 42



Dam of Lot 42

43 EASTONDALE QUEEN MOTHER 05'18

FEMALE / REG# 2047834 / VK 5F / FEBRUARY 03, 2018

POSS ELEMENT 215 DMF OSF DDF
4M ELEMENT 405
 4M BLACKBIRD 2004

POSS EASY IMPACT 0119
 POSS ERICA 004
 SITZ UPWARD 307R DMF AMF CAF NHF OSF DDF
 RIVERBEND BLACKBIRD 4301 NHF

B HILLS FRL DURATION 606
EASTONDALE QUEEN MOTHER 98'11
 EASTONDALE QUEEN MOTHER 58'08

LEACHMAN RIGHT TIME DMF AMF OSF
 H A BELETTA 0219
 DRYLAND MAX 533
 EASTONDALE QUEEN MOTHER 90F

BW	ADJ 205D	ADJ 365D	BW	WW	YW	MILK	TM
68	548	814	2.3	52	88	21	47



LOT 43

44 EASTONDALE HENRIETTA 16'18

FEMALE / REG# 2047835 / VK 16F / FEBRUARY 07, 2018

R B ACTIVE DUTY 0010X DMF AMF CAF NHF DDF
MINBURN ACTIVE DUTY 72C
 MINBURN BLACKBIRD 130Y

LCC NEW STANDARD AMF CAF OHF NHF OSF DDC
 B A LADY 6807 305
 BEVERLY HILLS CINGULAR 640
 MINBURN BLACKBIRD 143M

NF EVEREADY AS2
EASTONDALE HENRIETTA 116'15
 EASTONDALE HENRIETTA 39'12

IDEAL 4636 OF 452 6187
 SHANES SHILO S2
 COLE CREEK BLACK CEDAR 46P AMF CAF OHF NHF OSF DDF
 EASTONDALE HENRIETTA 84'10

BW	ADJ 205D	ADJ 365D	BW	WW	YW	MILK	TM
96	672	995	6.4	54	96	22	50



LOT 44

45 EASTONDALE HENRIETTA 19'18

FEMALE / REG# 2047842 / VK 19F / FEBRUARY 09, 2018

GAR-EGL PROTEGE DMF AMF CAF OHF NHF OSF DDF
PA FORTITUDE 2500 AMF CAF NHF DDF
 G G CLARA 0171 DDF

RITO 112 OF 2536 RITO 616 DMF AMF CAF OHF NHF OSF DDF
 L B 6807 ISABEL 339
 SYDGEN C C & 7 AMF CAF OHF NHF OSF DDF
 G G CLARA 7192 DDF

COLE CREEK BLACK CEDAR 46P AMF CAF OHF NHF OSF DDF
EASTONDALE HENRIETTA 39'12
 EASTONDALE HENRIETTA 84'10

C H QUANTUM 6247
 COLE CREEK CLOVA JUANADA 67
 B HILLS FRL DURATION 606
 EASTONDALE HENRIETTA 63'04

BW	ADJ 205D	ADJ 365D	BW	WW	YW	MILK	TM
	628	926	2.3	49	88	16	40



LOT 45



46 EASTONDALE HENRIETTA 24'18
FEMALE / REG# 2047837 / VK 24F / FEBRUARY 09, 2018

V D A R REALLY WINDY 4097 DMF AMF CAF OHF NHF OSF DDF
EASTONDALE REALLY WINDY 06'13
 EASTONDALE ANNIE K 60'11

BEAR CREEK T.D. 796A
EASTONDALE HENRIETTA 81'16
 EASTONDALE HENRIETTA 39'12

A A R REALLY WINDY 1205 DMF AMF CAF OHF NHF DDF
 VDAR BLACKBIRD 2031
 B HILLS FRL DURATION 606
 EASTONDALE ANNIE K 57'08

SSA 4336 DENSITY 26T
 LLB LASSIE 796W
 COLE CREEK BLACK CEDAR 46P AMF CAF OHF NHF OSF DDF
 EASTONDALE HENRIETTA 84'10

BW	ADJ 205D	ADJ 365D	BW	WW	YW	MILK	TM
75	592	874	0.5	54	89	14	42

LOT 46



47 EASTONDALE GAMMER 54'18
FEMALE / REG# 2047864 / VK 54F / FEBRUARY 18, 2018

GAR-EGL PROTEGE DMF AMF CAF OHF NHF OSF DDF
PA FORTITUDE 2500 AMF CAF NHF DDF
 G G CLARA 0171 DDF

NF EVEREADY AS2
EASTONDALE GAMMER 94'16
 EASTONDALE GAMMER 38'11

RITO 112 OF 2536 RITO 616 DMF AMF CAF OHF NHF OSF DDF
 L B 6807 ISABEL 339
 SYDGEN C C & 7 AMF CAF OHF NHF OSF DDF
 G G CLARA 7192 DDF

IDEAL 4636 OF 452 6187
 SHANES SHILO S2
 B HILLS FRL DURATION 606
 EASTONDALE GAMMER 38'09

BW	ADJ 205D	ADJ 365D	BW	WW	YW	MILK	TM
81	642	984	1.3	51	96	20	45

LOT 47



48 EASTONDALE ERICA 56'18
FEMALE / REG# 2047866 / VK 56F / FEBRUARY 18, 2018

V D A R REALLY WINDY 4097 DMF AMF CAF OHF NHF OSF DDF
EASTONDALE REALLY WINDY 06'13
 EASTONDALE ANNIE K 60'11

ALBERDA TRAVELER 416 DMF AMF CAF OHF NHF OSF DDF
LOCUST GROVE ERICA 7D
 LLB ERICA 220N

A A R REALLY WINDY 1205 DMF AMF CAF OHF NHF DDF
 VDAR BLACKBIRD 2031
 B HILLS FRL DURATION 606
 EASTONDALE ANNIE K 57'08

D H D TRAVELER 6807 DMF AMF NHF OSF
 ALBERDA QUEEN KIMBERLY 222
 B/R NEW FRONTIER 095 DMF AMF CAF OHF NHF OSF DDF
 MADER ERICA 22L

BW	ADJ 205D	ADJ 365D	BW	WW	YW	MILK	TM
95	649	1028	4.4	52	82	21	48

LOT 48

49**EASTONDALE SUSAN 101'18****FEMALE / REG# 2048302 / VKE 101F / MARCH 06, 2018**

R B ACTIVE DUTY 0010X DMF AMF CAF NHF DDF
MINBURN ACTIVE DUTY 72C
 MINBURN BLACKBIRD 130Y

SOO LINE KODIAK 1131
EASTONDALE SUSAN 156'14
 BAILEY'S SUSAN 89'06

LCC NEW STANDARD AMF CAF OHF NHF OSF DDC
 B A LADY 6807 305
 BEVERLY HILLS CINGULAR 640
 MINBURN BLACKBIRD 143M
 HF KODIAK 5R AMF CAF OHF NHF MAF DDF
 GEIS PRIDE 114'99 MAF
 DRYLAND ICEBERG 231
 BAILEY'S SUSAN 5'02

BW	ADJ 205D	ADJ 365D	BW	WW	YW	MILK	TM
84	649	950	2.9	48	89	23	47



LOT 49

50**EASTONDALE ANNIE K 115'18****FEMALE / REG# 2047904 / VK 115F / MARCH 13, 2018**

R B ACTIVE DUTY 0010X DMF AMF CAF NHF DDF
MINBURN ACTIVE DUTY 72C
 MINBURN BLACKBIRD 130Y

JUSTAMERE 406S PANAMAJACK 336U
EASTONDALE ANNIE K 57'12
 EASTONDALE ANNIE K 71'09

LCC NEW STANDARD AMF CAF OHF NHF OSF DDC
 B A LADY 6807 305
 BEVERLY HILLS CINGULAR 640
 MINBURN BLACKBIRD 143M
 JUSTAMERE 253 BADA BING 406S
 EXAR EMPRESS 2429
 LOOKOUT HUCK 25T
 SOO LINE ANNIE K 199P

BW	ADJ 205D	ADJ 365D	BW	WW	YW	MILK	TM
87	665	1001	4.7	51	90	23	50



LOT 50

THANK YOU

TO OUR 2018 BUYERS

Steinley Farms Ltd.
 Triple L Angus
 Bourhis Ranch Ltd
 Stuart Cattle Station
 Boutin-Lincoln Cattle Co.
 Minburn Angus
 Bear Creek Angus
 Borderland Cattle Co.
 A.S. Galten Farms
 Right Cross Ranch
 Cam Clark

Violet & Fred Lnsdall
 Westview Farms
 Russell Debnam
 Clayridge Stock Farm
 Ryan McLean
 Ed Brown
 Brown Ranch Inc.
 Ferch Farms
 Scott Lees
 Taylor Enterprises Inc.
 Jay & Robin Thompson

Swenco Angus
 Nicola & Daryl Erickson
 Lois & Bob Brickley
 Taylor Ranching
 Jeff Younkin
 Josh Henrion
 Bill MacPherson
 Lane Dalrymple
 Rosehill Farms Inc.
 James & Roseanne Perras
 Lock Farms Ltd

Neset Lake Angus
 Glasman Farms
 L Dee Stock Farm
 Steven & Chelynn Brown
 Celeste Grey
 Blackhawk Angus
 Swan Hills Ranch
 Standard Hill Livestock
 Hamilton Farms
 JPM Farms
 Dale & Janet Metz
 K Lazy T Angus

CASTLEROCK MARKETING
Box 415, Swift Current, SK S9H 3V8



Eastondale
12th ANNUAL **ON THE FARM** *ANGUS*
BULL & FEMALE SALE