



**Double  
Cattle Co.**

*12<sup>th</sup> Annual*

**Bull Sale**

**2016**

**Saturday, March 27, 2021 2:00PM**  
**NORTHERN LIVESTOCK SALES, PRINCE ALBERT, SASKATCHEWAN**



Celebrating over  
**75 YEARS**  
in the purebred industry  
1943-2021

Welcome to our 2021 Bull Sale. It is nice to see 2020 in the rear view mirror and we are hoping that 2021 will be better for everyone.

First, thank you to customers from our past sales, we appreciate your support and are proud to have our genetics in your pastures. This is an excellent set of bulls on offer again this year. We continue to place a great deal of emphasis on muscle, shape and phenotype with calving ease and performance in mind. The focus on the maternal side is just as important with milking ability, udder quality and longevity. In our herd, soundness of feet and legs is key in raising the "right kind" of animals from the ground up. Our bulls are raised to add payweight to your calf crop and dollars in your pocket.

New this year, we are introducing a tremendous set of **RED ANGUS BULLS**. These bulls will knock your socks off and are definitely worth a look.

We invite you to make arrangements before the sale to view bulls anytime on the farm. We will also have videos posted on our website at [www.doublefcattle.com](http://www.doublefcattle.com), **Facebook** and **DLMS** prior to sale day.

If you require information about the sale offering please contact us. We would be happy to assist in any way we can.

**COVID INFO** - The Northern Livestock Sales staff will be following the most recent government protocols. There will be only a limited amount of people allowed in the sale ring area and we will accommodate according to regulations. Although, we love to see everyone to visit, we ask that you only attend if you are interested in the sale offering.

If you feel uncomfortable about attending the sale or have any questions, please contact myself or one of the sale reps.

Thank You,  
*Kelly, Angie, Garret and Jacob*



**KELLY, ANGIE, GARRET & JACOB FEIGE**

Box 50, Parkside, Saskatchewan S0J 2A0  
Phone: 306-747-2376 Cell: 306-747-7498  
kafeige@sasktel.net [www.doublefcattle.com](http://www.doublefcattle.com)

## WELCOME FROM OBI LIVESTOCK LTD.



**OBI Livestock Ltd.**

Mark Holowaychuk (403)896-4990  
Roger Peters (403)828-9815  
Kylie Simpson (780)385-8446  
Jesse Emery (780)284-3490

Email:

[o.b.i@shaw.ca](mailto:o.b.i@shaw.ca)

Website:

[www.cattlemanagement.ca](http://www.cattlemanagement.ca)

It is my pleasure to be working the Feige Family in their 12th Annual Bull Sale. Double F Cattle Co. produces top notch bulls for the purebred and commercial operations year after year. Thick, stout bulls with loads of eye appeal and power will be found sale day. A very uniform set will be offered for your analysis this spring. Kelly, Angie, Garret and Jacob run a family run operation that focus on the cows being the backbone to their herd. When you tour the females, you can't help notice the consistency with the udder quality, docility and doability. A testament to the time and efforts they make over the many years of producing the correct genetics. The herdbulls they source are always sought after by many cattleman and the herd bull battery now in place is one to take notice for all; Merit Sting 7047E, DFCC 4838 ET Knuckles 25E, Bar-E-L Strongbow 107D, GF Barely Legal 13E and Peak Dot No Doubt 31F. Quite the line up!

This year a new venture has began for Double F Cattle Co., the Red Angus Division. These bulls on offer here this year come from selected females from the U2 Dispersal Sale and what a set of females they did obtain. The coupons those females were carrying are available for you to analyze, they sure did well for the first go on the Red Angus end of it. This will continue every year forward now with again you the commercial man in mind. Double F Cattle Co. listen to their clients and try their best to produce the bulls they want.

If I can help you in any way, please do not hesitate to call me or call the Feige Family or any of the other sales staff and we will help you with your needs. See in you in Prince Albert on the 27th of March.

*Mark Holowaychuk*  
OBI Livestock Ltd.  
(403)896-4490



# Double 'F' Cattle Co.

## 12<sup>th</sup> Annual Bull Sale

**Saturday, March 27, 2021 :: Northern Livestock Sales**  
PRINCE ALBERT, SK :: 2:00 PM

Sale Location - South on Highway #2, turn east on the Elevator Road  
(across from Flaman's)

### BREEDING GUARANTEE

All bulls will be semen evaluated by a certified veterinarian.  
We fully guarantee all bulls sold 100%.

### DELIVERY

Free delivery up to 250 miles or receive \$100.00/bull  
discount for taking your bull home sale day!

### WINTERING

You can send your purchase(s) back to the farm and pick them up at your  
convenience by April 15, 2020. Bulls will be kept for a cost of \$3.00/head/day.  
Bulls returning to Double 'F' must be insured.

### SIGHT UNSEEN PURCHASE PROGRAM

For those of you who cannot attend the sale, we offer a sight unseen purchase  
program. Call any one of the sales staff and they will  
recommend suitable bulls. Your order will be handled with strict confidence.

### TO OUR CATTLEMEN FRIENDS

In order to do what we do we require the help of some very special people. The  
advertising included in our catalogue are businesses  
that provide us with great service and we hope you will support them.  
Thank-You!

### PICTURES AND VIDEOS

Pictures and videos taken at the beginning of February.  
Taken by Tyler Harris Photography

### VIDEOS

Videos will be available at [www.doublefcattle.com](http://www.doublefcattle.com)

CATALOGUE CREATED BY  
14 West Creations

### On Offer

53 Yearling Bulls  
Black and Red Angus

**AUCTION WILL BE CONDUCTED  
LIVE WITH BIDDING ALSO  
AVAILABLE ON DLMS**

### SALE STAFF

Auctioneer...  
Brent Carey (403) 549-2478  
Ryan Hurlburt - Ringman (306) 292-9812  
Randy Ames - Ringman (306) 858-7788

### SALE DAY PHONES

Mark Holowaychuk, OBI (403) 896-4990  
Kelly Feige (306) 747-7498  
Brandon Sander-Sales Consultant (306) 747-9034

### NORTHERN LIVESTOCK SALES BUYER REPRESENTATIVES

Glen Smith (306) 960-4732  
Boyd Stuart (306) 841-7998  
Brent Brooks (306) 240-5340

### ACCOMMODATIONS

Days Inn (306) 763-1336  
Super 8 Motel (306) 953-0088  
Holiday Inn (306) 730-1000  
Prince Albert Inn (306) 922-5000

### BUYER'S DRAW

Sponsored By: Masterfeeds

### INSURANCE

Will be available sale day. All bulls returning  
to Double 'F' must be insured.

IF YOU NO LONGER WISH TO RECEIVE OUR CATALOGUE  
please contact us at [kafeige@sasktel.net](mailto:kafeige@sasktel.net) or 306-747-2376

ONLINE BIDDING - [www.DLMS.ca](http://www.DLMS.ca) **DLMS**  
Mark Shologan (780) 699-5082 [www.dlms.ca](http://www.dlms.ca)





**MERIT STING 7047E**



**BAR-E-L STRONGBOW 107D**



**HLC VENOM 744D**

# REFERENCE *sires*



**DFCC 4838 EL KNUCKLES 25E**



**GF BARELY LEGAL 13E**



**PEAK DOT NO DOUBT 31F**

Take Advantage of our  
**SIGHT UNSEEN PROGRAM**  
Call Kelly for more information 306-747-7498

Lot  
58



STRONGBOW UDDER



DFCC CALI 83C - DAM

**Lot 58H**  
**2152584** DFCC 107D **HOOK** 58H  
 DFCC 58H February 06, 2020

*performance*  
 BW 77  
 Sep 27 880  
 Jan 6 1372

*sire* **BAR E-L STRONGBOW 107D** HF G-MAN 29B  
 BAR E-L LADY 127Y

*dam* **DFCC CALI 83C** MUSGRAVE BOULDER  
 DFCC ST WOW 11X

BW	WW	YW	Milk	CE	MCE
1.9	57	106	26	6.0	5.0

- Big tanky bull with size and power.
- Like the character in this bull.
- Dam is a top producer.

**Lot 21H**  
**2152558** DFCC 744D **HARLEY** 21H  
 DFCC 21H January 24, 2020

*performance*  
 BW 86  
 Sep 27 830  
 Jan 6 1206

*sire* **HLC VENOM 744D** SANKEYS JUSTIFIED 101  
 DOUBLE D MISS MARION 20R

*dam* **DFCC 5Y DUCHESS 38D** NORSEMAN KODIAK 5'11  
 DFCC 71X ALICE 20A

BW	WW	YW	Milk	CE	MCE
3.1	44	80	21	-4.0	1.0

- Explosive muscle expression.
- Lots of stretch and neat fronted.



HARLEY 21H



Lot  
2



HOOVER 2H



GRANDDAM:  
RED U-2 FEATURE 64B

Lot  
2H

RED DFCC 295E **HOOVER 2H**  
2154828 DFCC 2H January 04, 2020

performance

BW	67
Sep 27	830
Jan 6	1186

sire **RED U2 BLUE COLLAR 295E**

RED U-2 RECKONING 149A  
RED U-2 ANEXA 439A

dam **RED U2 FEATURE 53D**

RED TR ROLLS ROYCE 44B  
RED U-2 FEATURE 64B

BW	WW	YW	Milk	CE	MCE
-0.3	35	62	23	5.0	7.0

**SELLING FULL POSSESSION AND HALF SEMEN INTEREST**

• **SALE FEATURE**

- This guy just keeps getting better and better.
- Loads of style, shape and performance here.
- Backed by a strong cow family.
- We are so impressed by these cows we purchased from **U2** and feel that our red herd can't help but be successful with these female as the cornerstone cows.
- **Heifer approved**

Lot  
3



Lot  
3H

RED DFCC 147F **HARD ROCK 3H**  
2162455 DFCC 3H January 14, 2020

performance

BW	83
Sep 27	920
Jan 6	1291

sire **RED U2 EMBLEM 147F**

RED YCLC COPENHAGEN 653C  
RED U2 MS DIVIDE 28Z

dam **RED U-2 PRIDE 282A**

RED U-2 MAMA'S BOY 167X  
RED U-2 PRIDE 377Y

BW	WW	YW	Milk	CE	MCE
2.0	50	79	25	1.0	4.0

- Big time muscle, thickness and top.
- Canadian pedigree.
- Excellent milking, moderate dam.



RED U-2 PRIDE 282A

Lot  
123



STING UDDER

2152650 DFCC 7047E **HOME RUN** 123H  
DFCC 123H March 07, 2020

*sire* **MERIT STING 7047E**

BAR S RANGE BOSS 4002  
MERIT SOCIALITE 5121C

*dam* **CFS QUEENETTE 3T**

LLB FULLBACK 27M  
SANDY BAR QUEENETTE 404J

- **3T** has done it again!!! Jake's **3T** cow has an impressive record here.
- She has raised and headlined 11 of our sales.
- **3T's** daughter also has a bull in the sale.
- Her natural progeny has brought in over \$100,000 with all of her bulls going to purebred breeders.
- **3T** also is the mother of **KNUCKLES** a herd sire we have working here.
- This March bull is consistent with past **3T** sons checking all the boxes to make to him an impressive herd sire in the making.
- He is the one you will want in your pasture!!!!

Lot  
123H

performance

BW	86
Sep 27	870
Jan 6	1321

BW	WW	YW	Milk	CE	MCE
4.2	58	100	25	0.0	7.0

Lot  
27H

performance

BW	82
Sep 27	860
Jan 6	1312

2152560 DFCC 744D **HAUG** 27H  
DFCC 27H January 26, 2020

*sire* **HLC VENOM 744D**

SANKEYS JUSTIFIED 101  
DOUBLE D MISS MARION 20R

*dam* **DFCC 5Y DEMI 76D**

NORSEMAN KODIAK 5'11  
DFCC 176W NIKKI 37Z

- Picture says it all!
- Put a star by him for your pick!
- Pen favorite



HAUG 27H



Lot  
4



RED DFCC 137E **HEADLINER 4H**  
2153422 DFCC 4H January 15, 2020

HEADLINER 4H

RED U-2 COUNTESS 532A

- AKA **big fella**...**big top, big nuts, big length, big muscle!**
- One of those bulls that always catches your attention in the pen.
- Powerhouse... check out his September and January weights.
- Moderate birth weight.
- Mother is a top **U2** cow and my favorite.

Lot  
4H

*sure* RED MRLA RESOURCE 137E

MRLA RELOAD 56C  
MRLA MISS 4422B

*dam* RED U-2 COUNTESS 532A

RED HOWE MAGNUM 169W  
RED FLYING K COUNTESS 2N

performance

BW	81
Sep 27	890
Jan 6	1362

BW	WW	YW	Milk	CE	MCE
1.8	33	83	24	3.0	6.0

Lot  
8



Lot  
8H

DFCC 107D **HI-LINER 8H**  
Unregistered DFCC 8H January 21, 2020

*sure* BAR E-L STRONGBOW 107D

HF G-MAN 29B  
BAR E-L LADY 127Y

*dam* DFCC 176W FIREFLY 38Z

HF HEMI 176W  
DFCC 33T PRECIOUS 44W

performance

BW	77
Sep 27	870
Jan 6	1288

PE BW	PE WW	PE YW	PE Milk	PE CE	PE MCE
3.6	51	82	21	-1.0	3.0

- With **8H's** performance and extra length, his calves will push the scales down in the fall.
- If you want a bull to brag about to your neighbors....here he is!!



Lot  
9



Lot  
9H

2152548 DFCC 13E **HARVEY** 9H  
DFCC 9H January 21, 2020

performance

BW 77  
Sep 27 900  
Jan 6 1277

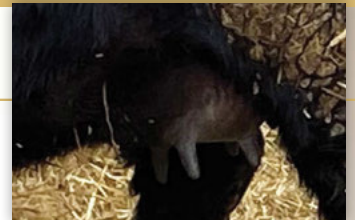
sire **GF BARELY LEGAL 13E**

LEACHMAN SAUGAHATCHEE 3000C  
HCC BLACK MERCEDES 13N

dam **DFCC 5X AUDREY 43A**

YOUNG DALE XPORT 5X  
DBRL 67P LADY TRAV 11S

- A stand out with his stoutness, shape and heavy muscle.
- One of the best **BARELY LEGAL** sons in the sale.
- Low birth weight but still packs a punch.
- **Heifer approved**



BARELY LEGAL UDDER

BW	WW	YW	Milk	CE	MCE
2.3	37	72	24	5.0	8.0

Lot  
10H

2152550 DFCC 107D **HAVOR** 10H  
DFCC 10H January 21, 2020

performance

BW 84  
Sep 27 940  
Jan 6 1296

sire **BAR E-L STRONGBOW 107D**

HF G-MAN 29B  
BAR E-L LADY 127Y

dam **DFCC 176W BROOK 24B**

HF HEMI 176W  
LODGE COUNTESS 40T

- Very athletic bull that will go out and cover a lot of ground.
- This sire and dam combination is second to none.
- Style and shape.

BW	WW	YW	Milk	CE	MCE
3.0	53	78	22	-1.0	3.0

Lot  
10



Lot  
11



Lot  
11H

2152554 DFCC 13E **HOSS** 11H  
DFCC 11H January 21, 2020

performance

BW 78  
Sep 27 740  
Jan 6 1111

*sire* **GF BARELY LEGAL 13E**

LEACHMAN SAUGAHATCHEE 3000C  
HCC BLACK MERCEDES 13N

*dam* **DFCC 18C EMELINE 111E**

RRAR INTERNATIONAL 18C  
MJT ATLANTA 257X

BW	WW	YW	Milk	CE	MCE
2.7	38	69	22	4.0	6.0

- Moderate frame.
- Super thick and a big ass.
- Will put the pounds on your calves and dollars in your jeans!

Lot  
14



Lot  
14H

RED DFCC 149A **HURRICANE** 14H  
2153426 DFCC 14H January 21, 2020

performance

BW 83  
Sep 27 840  
Jan 6 1242

*sire* **RED U-2 RECKONING 149A**

RED U-2 RECON 192Y  
RED U-2 ANEXA 271Y

*dam* **RED U2 GOLD EDGE 163E**

RED TR ROLLS ROYCE 44B  
RED U-2 GOLD EDGE 283B

BW	WW	YW	Milk	CE	MCE
2.9	43	80	24	-3.0	3.0



HURRICANE 14H



HURRICANE 14H



RED U-2 RECKONING 149A

- **SALE FEATURE**
- **HERD BULL** powerhouse.
- Checks all the boxes- shape, hair, heavy muscle, length and top.
- **Hurricane** will have everyone talking!!
- Dam that is hard to fault.

Lot **18H** DFCC 31F **HARVEY** 18H  
 2190438 DFCC 18H January 24, 2020

performance sire **PEAK DOT NO DOUBT 31F** HOOVER NO DOUBT  
 PEAK DOT PANSY 205D  
 dam **DFCC 15C FLORA 18F** DFCC 36Z CAPITAL 15C  
 DFCC 32T FOREVER 9W

PE BW	PE WW	PE YW	PE Milk	PE CE	PE MCE
1.6	42	79	20	4.0	8.5

- Nice fronted with long body and muscle.
- Dam- a first calver with a promising future.
- **Heifer approved**



Lot **26H** DFCC 13E **HERO** 26H  
 2152541 DFCC 26H January 26, 2020

performance sire **GF BARELY LEGAL 13E** LEACHMAN SAUGAHATCHEE 3000C  
 HCC BLACK MERCEDES 13N  
 dam **DFCC 18C ELYSIA 81E** RRAR INTERNATIONAL 18C  
 DFCC 71X BREATHLESS 47B

BW	WW	YW	Milk	CE	MCE
4.4	46	84	23	1.0	5.0

- Attractive bull from every angle.
- Extra spine.
- Smooth and big topped.



Lot **29H** DFCC 31F **HOCUS** 29H  
 2152561 DFCC 29H January 28, 2020

performance sire **PEAK DOT NO DOUBT 31F** HOOVER NO DOUBT  
 PEAK DOT PANSY 205D  
 dam **DFCC 15C FLIRT 'N' 112F** DFCC 36Z CAPITAL 15C  
 DFCC 804 SUGAR 4X

BW	WW	YW	Milk	CE	MCE
2.7	55	95	21	1.0	8.0

- Stamped just right for heifers.
- Dam has a flawless udder- you will want to keep replacements.
- **Heifer approved**



Take Advantage of our  
**SIGHT UNSEEN PROGRAM**  
 Call Kelly for more information 306-747-7498

Lot  
31



Lot  
31H

DFCC 744D **HARLEM** 31H  
2152564 DFCC 31H January 29, 2020

performance

sire **HLC VENOM 744D**

SANKEYS JUSTIFIED 101  
DOUBLE D MISS MARION 20R

BW 80  
Sep 27 770  
Jan 6 1182

dam **DFCC 60P PRECIOUS 48U**

BWB VENTURE 60P  
ANH ENCHANTRESS 1K

BW	WW	YW	Milk	CE	MCE
2.9	31	60	18	-3.0	0.0

- This bull's pedigree is very impressive on paper.
- Long- spined with plenty of butt, guts and nuts!!

Lot  
36



Lot  
36H

DFCC 744D **HIGH-WAY MAN** 36H  
2152576 DFCC 36H February 01, 2020

performance

sire **HLC VENOM 744D**

SANKEYS JUSTIFIED 101  
DOUBLE D MISS MARION 20R

BW 88  
Sep 27 820  
Jan 6 1266

dam **CFS LADY 87P**

GBT RANGER 3L  
CFS LADY 62H

BW	WW	YW	Milk	CE	MCE
4.6	44	81	22	-7.0	1.0

- Looking for longevity...his Dam **87P** just keeps on bring it!
- Long as a train and still has great structure.

Lot  
38



Lot  
38H

RED DFCC 149A **HI-WAY** 38H  
2153428 DFCC 38H February 01, 2020

performance

sire **RED U-2 RECKONING 149A**

RED U-2 RECON 192Y  
RED U-2 ANEXA 271Y

BW 73  
Sep 27 820  
Jan 6 1070

dam **RED U2 FEATURE 259E**

RED U-2 REVERENCE 198C  
RED U-2 FEATURE 217C

BW	WW	YW	Milk	CE	MCE
0.4	29	37	26	2.0	7.0

- Really easy to look at with his length and smoothness.
- Moderate frame.
- Low birth weight.



RED U2 FEATURE 259E

Lot  
35



**Lot 35H** DFCC 107D **HUGH** 35H  
 2152575 DFCC 35H February 01, 2020

*performance*  
 BW 70  
 Sep 27 810  
 Jan 6 1272

*sire* **BAR E-L STRONGBOW 107D** HF G-MAN 29B  
 BAR E-L LADY 127Y

*dam* **DFCC 3049A DARLING 115D** MERIT BIG DAWG 3049A  
 DFCC 71X CRYSTAL 137Z

BW	WW	YW	Milk	CE	MCE
2.0	52	93	18	5.0	8.0

- Has that **HERD BULL** look with his size and power.
- Sister sold in 2020 Touch Of Class Sale to **PARKWOOD FARMS**.
- Will be easy to find sale day.
- Check out his performance!

**Lot 44H** DFCC 107D **HUB** 44H  
 Unregistered DFCC 44H February 02, 2020

*performance*  
 BW 88  
 Sep 27 900  
 Jan 6 1287

*sire* **BAR E-L STRONGBOW 107D** HF G-MAN 29B  
 BAR E-L LADY 127Y

*dam* **DFCC 5Y BREATHE 56B** NORSEMAN KODIAK 5'11  
 HAWKE NW MARION'S G.I.C. 122W

PE BW	PE WW	PE YW	PE Milk	PE CE	PE MCE
3.0	53	82	22	0.5	3.0

- Built like a tank!
- Probably thickest bull in sale.
- Look him up sale day!!!



Lot  
41



BARELY LEGAL UDDER

Lot  
41H

2152578 DFCC 13E **HAYDEN** 41H  
DFCC 41H February 02, 2020

performance

BW	84
Sep 27	890
Jan 6	1331

*sire* GF BARELY LEGAL 13E

LEACHMAN SAUGAHATCHEE 3000C  
HCC BLACK MERCEDES 13N

*dam* DFCC 1Z CHEETAH 77C

K-COW WINDMILL 1Z  
LODGE BARESS 56R

- This guy attracts attention!
- Lots of length, shape, and capacity.

BW	WW	YW	Milk	CE	MCE
2.8	47	87	20	4.0	7.0

Lot  
48



Lot  
48H

2152582 DFCC 13E **HORNET** 48H  
DFCC 48H February 03, 2020

performance

BW	90
Sep 27	780
Jan 6	1192

*sire* GF BARELY LEGAL 13E

LEACHMAN SAUGAHATCHEE 3000C  
HCC BLACK MERCEDES 13N

*dam* DFCC 176W SASHA 91Z

HF HEMI 176W  
CALLAMERE BLACKCAP 32K

BW	WW	YW	Milk	CE	MCE
4.0	39	69	19	-2.0	3.0

- Long with big hip, bone and thickness.
- Dam is a broody made female.

Lot  
42



**Lot 42H** DFCC 31F **HUNTER** 42H  
 2152579 DFCC 42H February 02, 2020

*performance*

BW	69
Sep 27	860
Jan 6	1306

*sire* PEAK DOT NO DOUBT 31F HOOVER NO DOUBT  
 PEAK DOT PANSY 205D

*dam* DFCC 15C FOREVER BLISS 77F DFCC 36Z CAPITAL 15C  
 DFCC 176W ADDIE 5A

BW	WW	YW	Milk	CE	MCE
1.6	61	112	21	4.0	9.0

- Excellent heifer bull with performance.
- Neat fronted yet stout in the rear.
- A top **NO DOUBT** son.
- Dam has a udder that you wish all your cows had!
- **Heifer approved**

**Lot 50H** DFCC 13E **HARBOR** 50H  
 2152583 DFCC 50H February 03, 2020

*performance*

BW	90
Sep 27	840
Jan 6	1260

*sire* GF BARELY LEGAL 13E LEACHMAN SAUGHATCHEE 3000C  
 HCC BLACK MERCEDES 13N

*dam* DFCC 192W SEXY 51Y F V FINAL ANSWER 192W  
 EGGEN BIG SKY 16K MISS 9M

BW	WW	YW	Milk	CE	MCE
4.2	39	78	19	1.0	6.0

- **50H** will get out and breed a bunch of cows.
- He is a well-made bull with big time hair and length.



Lot  
46



MATERNAL SISTER TO 46H

**Lot 46H**  
**2152580 DFCC 107D HOT SHOT 46H**  
**DFCC 46H February 02, 2020**

*sure* **BAR E-L STRONGBOW 107D** HF G-MAN 29B  
 BAR E-L LADY 127Y

*dam* **MJT ATLANTA 257X** GEIS KODIAK 53'07  
 R & M 27J ATALANTA 84L

performance	BW	WW	YW	Milk	CE	MCE
BW	85					
Sep 27	860					
Jan 6	1306					
	4.1	52	92	24	-1.0	2.0

- You can't help but notice this bull!
- A person admires how powerful he is but still is so smooth fronted.
- I love this cow family as they consistently produce the top calves.



**Lot 59H**  
**2152585 DFCC 31F HORIZON 59H**  
**DFCC 59H February 06, 2020**

*sure* **PEAK DOT NO DOUBT 31F** HOOVER NO DOUBT  
 PEAK DOT PANSY 205D

*dam* **DFCC 4061 FIREFLY 14F** KOUPALS B&B ATLAS 4061  
 CFS QUEENETTE 3T

performance	BW	WW	YW	Milk	CE	MCE
BW	73					
Sep 27	840					
Jan 6	1276					
	2.7	59	111	24	2.0	9.0

- A stout bull that will be an outstanding herdsire.
- His dam is the only daughter from Jake's 3T and is an opportunity not to be passed up!.
- Excellent pedigree.
- **Heifer approved**



Lot  
53



Lot **53H** DFCC 31F **HUCK** 53H  
 2190437 DFCC 35H February 04, 2020

*sire* PEAK DOT NO DOUBT 31F HOOVER NO DOUBT  
 PEAK DOT PANSY 205D

*dam* DFCC 323C FIESTA 15F U-2 CASH ADVANCE 323C  
 DFCC SY DEMI 76D

performance	PE BW	PE WW	PE YW	PE Milk	PE CE	PE MCE
BW 67	2.3	50	94	17	3.0	9.5
Sep 27 840						
Jan 6 1194						

- This guy makes a person do a double take!!!
- Impressive thickness and muscle.
- Heifer approved

Lot **60H** DFCC 13E **HARPER** 60H  
 2152586 DFCC 38H February 06, 2020

*sire* GF BARELY LEGAL 13E LEACHMAN SAUGAHATCHEE 3000C  
 HCC BLACK MERCEDES 13N

*dam* MJT ELNORA 328X GEIS KODIAK 53'07  
 MJT ELNORA 210P

performance	BW	WW	YW	Milk	CE	MCE
BW 85	4.1	43	81	26	0.0	5.0
Sep 27 870						
Jan 6 1298						

- 60H has a 'Hey, Look at me!' attitude and has it all to back it up!
- His dam, a MJT cow has been a good one for us.



Lot  
61



Lot  
61H

2152587 DFCC 107D **HEAT** 61H  
DFCC 61H February 07, 2020

performance

BW	79
Sep 27	850
Jan 6	1237

Sire **BAR E-L STRONGBOW 107D**

HF G-MAN 29B  
BAR E-L LADY 127Y

dam **DFCC 5X ANNAMARIE 75A**

YOUNG DALE XPORT 5X  
DBRL IM BLACKBIRD 94U

BW	WW	YW	Milk	CE	MCE
2.5	46	70	24	2.0	4.0

- An attractive bull with loads of style and muscle.
- With a birth weight of 79 and September weaning weight 850...it is the best of both worlds!
- **Heifer approved**

Lot  
63



STRONGBOW UDDER

Lot  
63H

2152588 DFCC 107D **HECTOR** 63H  
DFCC 63H February 07, 2020

performance

BW	81
Sep 27	900
Jan 6	1380

Sire **BAR E-L STRONGBOW 107D**

HF G-MAN 29B  
BAR E-L LADY 127Y

dam **DFCC 5Y DELTA 48D**

NORSEMAN KODIAK 5'11  
DFCC 60P MARIA 34U

BW	WW	YW	Milk	CE	MCE
3.4	62	104	22	0.0	3.0

- This **STRONGBOW** bull is a show stopper!
- Admired for muscle, style stoutness, wide base and overall power, 63H is hard to fault.
- Backed up by an outstanding cow family
- Recommended to anyone that is seriously looking for a **Game Changer** herd sire.

Lot  
**64H**

DFCC 7047E **HURLEY** 64H  
2152592 DFCC 64H February 07, 2020

performance

BW 82  
Sep 27 810  
Jan 6 1296

sire **MERIT STING 7047E**

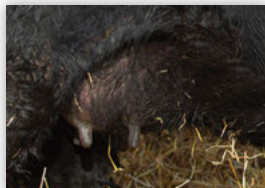
BAR S RANGE BOSS 4002  
MERIT SOCIALITE 5121C

dam **DFCC 542Z BELLA 62B**

MUSGRAVE AVIATOR  
POPLAR MEADOWS ANNIE K 5'12

BW	WW	YW	Milk	CE	MCE
2.2	59	111	15	6.0	12.0

- An attractive **STING** son with lots of thickness and top like dad.
- Mother is an **AVIATOR** cow working nicely here.



ANOTHER STING UDDER



Lot  
**64**

Lot  
**65H**

DFCC 25E **HATCHET** 65H  
2152593 DFCC 65H February 07, 2020

performance

BW 77  
Sep 27 840  
Jan 6 1289

sire **DFCC 4838 EL KNUCKLES 25E**

S A V SEEDSTOCK 4838  
CFS QUEENETTE 3T

dam **DFCC 176W SIZZLE 9Z**

HF HEMI 176W  
DMM DYNA ELBA 19M

BW	WW	YW	Milk	CE	MCE
2.3	50	93	21	2.0	5.0

- Super long bodied but still has rib and shape.
- Will be an easy calving bull.
- These females will make excellent cows.



EL KNUCKLES UDDER



Lot  
**65**

Lot  
**66H**

DFCC 13E **HARDY** 66H  
2152594 DFCC 66H February 07, 2020

performance

BW 83  
Sep 27 870  
Jan 6 1295

sire **GF BARELY LEGAL 13E**

LEACHMAN SAUGAHATCHEE 3000C  
HCC BLACK MERCEDES 13N

dam **DFCC 36Z CORAL 63C**

HF BINGHAMTON 36Z  
DFCC 33T SWEET AND SASSY 9X

BW	WW	YW	Milk	CE	MCE
2.3	51	93	20	5.0	6.0

- A very solid bull that puts it all together.



BARELY LEGAL FEMALE



Lot  
**66**

Take Advantage of our  
**SIGHT UNSEEN PROGRAM**  
Call Kelly for more information 306-747-7498

Lot  
70



STRONGBOW UDDER

Lot  
70H

Applied For **DFCC 107D HOCUS 70H**  
DFCC 70H February 08, 2020

performance

BW 78  
Sep 27 870  
Jan 6 1309

sire **BAR-E-L STRONGBOW 107D**

HF G-MAN 29B  
BAR E-L LADY 127Y

dam **DFCC CECILLA 97C**

MUSGRAVE BOULDER  
DFCC 5T WOW 11X

- Sharp looking with deep body and excellent muscle expression.
- Highly productive cow family.
- Owned with **BLIND CREEK HOLDINGS.**
- Heifer approved

PE BW	PE WW	PE YW	PE Milk	PE CE	PE MCE
2.5	54	91	27	3.3	3.8

Lot  
74



Lot  
74H

2152597 **DFCC 31F HARRISON 74H**  
DFCC 74H February 09, 2020

performance

BW 70  
Sep 27 800  
Jan 6 1173

sire **PEAK DOT NO DOUBT 31F**

HOOVER NO DOUBT  
PEAK DOT PANSY 205D

dam **DFCC 323C FLARE 9F**

U-2 CASH ADVANCE 323C  
DFCC 3513A CASH 61D

BW	WW	YW	Milk	CE	MCE
1.9	54	97	20	5.0	11.0

- The sleep easy kind.
- Got to like his style, shape and clean front.
- Dam has one of the best udders here.
- Heifer approved

Lot  
**75H**

DFCC 107D **HUSKY 75H**  
2152598 DFCC 75H February 10, 2020

Lot  
**75**



performance

BW 78  
Sep 27 840  
Jan 6 1248

sire **BAR E-L STRONGBOW 107D**

HF G-MAN 29B  
BAR E-L LADY 127Y

dam **DFCC 71X BAILEY 90B**

DURALTA 4T TURBO 71X  
DFCC 33T SWEET AND SASSY 9X

BW	WW	YW	Milk	CE	MCE
1.8	50	85	20	4.0	4.0

- A meat machine here...wide from front to back.
- With his performance, your calves are sure to push down the scales in the fall.
- This is the kind of bull I would buy for my commercial herd.



HUSKY 75H

Lot  
**76**



DFCC 7047E **HOLY ROLLER 76H**  
2152600 DFCC 76H February 10, 2020

Lot  
**76H**

performance

BW 81  
Sep 27 910  
Jan 6 1271

sire **MERIT STING 7047E**

BAR S RANGE BOSS 4002  
MERIT SOCIALITE 5121C

dam **DFCC 176W BEAUTY 59B**

HF HEMI 176W  
DFCC 32T HOT GIRL E.T. 32Y

BW	WW	YW	Milk	CE	MCE
3.2	57	93	20	2.0	8.0

- It is hard to fault in this stout well made **STING** bull. He definitely catches your eye and grabs your attention!
- What makes him extra special is the maternal side of the pedigree with an **ALL STAR** lineup!

Lot  
79



Lot  
79H

2152605 DFCC 25E **HIGHLAND** 79H  
DFCC 79H February 10, 2020

performance

BW 70  
Sep 27 800  
Jan 6 1163

sire DFCC 4838 EL KNUCKLES 25E

S A V SEEDSTOCK 4838  
CFS QUEENETTE 3T

dam DFCC 323C ELLA 17E

U-2 CASH ADVANCE 323C  
DFCC 1Z CHEETAH 77C

BW	WW	YW	Milk	CE	MCE
0.8	41	75	18	6.0	9.0

- An eye appealing **KNUCKLES** son.
- Will be easy calving with his length and shape but won't give up performance.

Lot  
82



Lot  
82H

2152629 DFCC 31F **HANKER** 82H  
DFCC 82H February 12, 2020

performance

BW 83  
Sep 27 700  
Jan 6 1149

sire PEAK DOT NO DOUBT 31F

HOOVER NO DOUBT  
PEAK DOT PANSY 205D

dam DFCC 323C FLICKA 107F

U-2 CASH ADVANCE 323C  
DFCC 90B DAWN 100D

BW	WW	YW	Milk	CE	MCE
4.8	47	99	15	-1.0	8.0

- **HANKER** is a chunk but still has smoothness thru the front.
- His dam is a 1st calver that I know will be know will be in the herd for a long time.

Lot  
85



Lot  
85H

2152631 DFCC 13E **HOLDEN** 85H  
DFCC 85H February 12, 2020

performance

BW 76  
Sep 27 880  
Jan 6 1276

sire GF BARELY LEGAL 13E

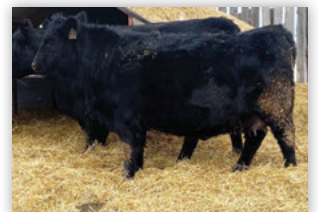
LEACHMAN SAUGAHATCHEE 3000C  
HCC BLACK MERCEDES 13N

dam DFCC 5Y DAPHNE 19D

NORSEMAN KODIAK 5'11  
MJT DUCHESS 325X

BW	WW	YW	Milk	CE	MCE
1.5	47	78	23	6.0	8.0

- This stud will have all your heifers saying 'Ohh La La!!'
- Have this guy marked on sale day.
- **Heifer approved**



BARELY LEGAL FEMALE

lot  
**90H**

DFCC 7047E **HUSTLER** 90H  
2152634 DFCC 90H February 14, 2020

performance

BW 80  
Sep 27 860  
Jan 6 1342

sire **MERIT STING 7047E**

BAR S RANGE BOSS 4002  
MERIT SOCIALITE 5121C

dam **DFCC 22W MISTY 71Y**

BROOKMORE TOTAL 22W  
DFCC 33T PRETTY GIRL 41W

BW	WW	YW	Milk	CE	MCE
3.4	57	104	21	4.0	9.0

- If you want replacements this is your guy.
- Total package -tons of length, rib and butt.
- Comes from a great maternal cow family that gets it done every year.

lot  
**90**



lot  
**93H**

DFCC 107D **HANK** 93H  
2152539 DFCC 93H February 15, 2020

performance

BW 80  
Sep 27 800  
Jan 6 1242

sire **BAR E-L STRONGBOW 107D**

HF G-MAN 29B  
BAR E-L LADY 127Y

dam **DFCC 32T FOREVER 43W**

EASTONDALE BREAK AWAY 32'07  
EGGEN BIG SKY 16K MISS 20N

BW	WW	YW	Milk	CE	MCE
2.7	45	81	21	2.0	3.0

- These **DAVEY** sons are very consistent .... long body, big top, smoothness and overall power!

lot  
**93**



lot  
**94H**

DFCC 31F **HAWK** 94H  
2152637 DFCC 94H February 15, 2020

performance

BW 81  
Sep 27 770  
Jan 6 1234

sire **PEAK DOT NO DOUBT 31F**

HOOVER NO DOUBT  
PEAK DOT PANSY 205D

dam **DFCC 107D FINE 'N' DANDY 58F**

BAR-E-L STRONGBOW 107D  
POPLAR MEADOWS ANNIE K 5'12

BW	WW	YW	Milk	CE	MCE
4.0	62	118	19	1.0	7.0

- The WOW factor!!!
- Picture says it all ...outstanding bull.

lot  
**94**



Take Advantage of our  
**SIGHT UNSEEN PROGRAM**  
Call Kelly for more information 306-747-7498

Lot  
92



Lot  
**92H**

performance

BW	75
Sep 27	910
Jan 6	1326

BW	WW	YW	Milk	CE	MCE
1.9	55	98	21	3.0	8.0

2152636      DFCC 25E **HILL TOPPER** 92H  
DFCC 92H      February 14, 2020

sire **DFCC 4838 EL KNUCKLES 25E**      S A V SEEDSTOCK 4838  
CFS QUEENETTE 3T

dam **DFCC 3049A DELA 31D**      MERIT BIG DAWG 3049A  
EGGEN FAME MISS 8P

- Like this guy a lot, has that **HERD BULL** look about him.
- He turns heads in the pen with his big old hip, big top and cool looks!



EL KNUCKLES UDDER



Lot  
96

Lot  
**96H**

performance

BW	82
Sep 27	850
Jan 6	1202

PE BW	PE WW	PE YW	PE Milk	PE CE	PE MCE
1.6	42	77	25	2.3	5.3

Unregistered      DFCC 13E **HOODOO** 96H  
DFCC 96H      February 12, 2020

sire **DFCC 4838 EL KNUCKLES 25E**      S A V SEEDSTOCK 4838  
CFS QUEENETTE 3T

dam **NRA 61D**      RED T-K COBRA 34B  
RED BRYLOR ROGA 14A

- Like what this bull brings to the table.
- His extra length and top will help sire a stout set of calves.



Lot  
**98H**

RED DFCC 50B **HUM DINGER** 98H  
2153429 DFCC 98H February 16, 2020

performance

BW 68  
Sep 27 770  
Jan 6 1088

sire **RED HOWE SHINE 50B**

RED XO CROWFOOT SHINE 235Z  
RED HOWE MS ENVIOUS 34W

dam **RED EYE HILL MS POTEET 17F**

RED FLYING K ROOSEVELT 46C  
RED EYE HILL POTEET 1618

BW	WW	YW	Milk	CE	MCE
0.4	39	54	22	6.0	8.0

- Cherry red
- Really smooth with tremendous muscle.
- Dam is top first calver from **EYE HILL** with a beautiful udder.
- Wish I had a pasture of first calvers like her.
- **Heifer approved**



HUM DINGER 98H

Lot  
**98**



Lot  
**101H**

DFCC 7047E **HOOLOGAN** 101H  
2152644 DFCC 101H February 18, 2020

performance

BW 80  
Sep 27 800  
Jan 6 1204

sire **MERIT STING 7047E**

BAR S RANGE BOSS 4002  
MERIT SOCIALITE 5121C

dam **DFCC 1Z EMMA 30E**

K-COW WINDMILL 1Z  
DFCC 176W STELLA 79Y

BW	WW	YW	Milk	CE	MCE
3.4	55	89	18	1.0	7.0

- Thick with extra middle, muscle and big arse.
- Very clean fronted.
- Dam is a hard working **WINDMILL** daughter.



STING UDDER

Lot  
**101**



Lot  
**106H**

RED DFCC 196E **HAWKEYE** 106H  
2153431 DFCC 106H February 22, 2020

performance

BW 64  
Sep 27 700  
Jan 6 1082

sire **RED ACC MAGNUM 196E**

RED U-2 MAGNUM 227C  
RED ACC SIERRA 18Z

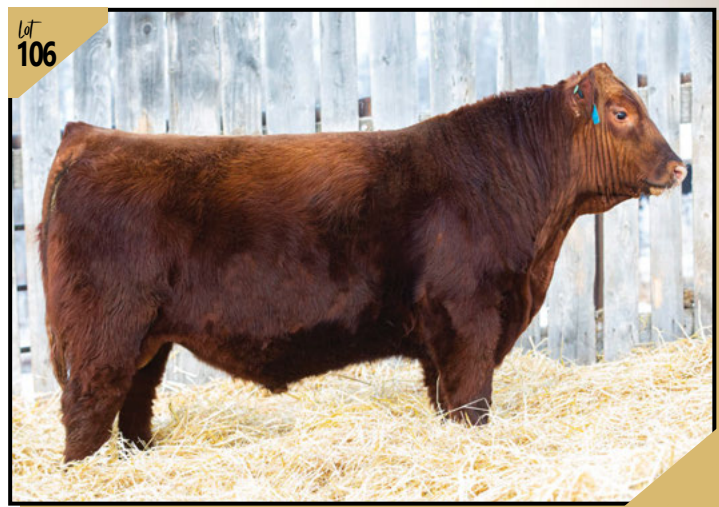
dam **RED ACC TIBBIE 33F**

RED BLAIRSWEST POWER UP 1B  
RED ACC TIBBIE 29D

BW	WW	YW	Milk	CE	MCE
-2.4	29	52	23	11.0	8.0

- Smooth made.
- Loads of shape.
- **Heifer approved**

Lot  
**106**



Lot  
108



Lot  
**108H**  
2152647 DFCC 7047E **HIGH FLYER** 108H  
DFCC 108H February 23, 2020

performance  
BW 85  
Sep 27 940  
Jan 6 1282

Sire **MERIT STING 7047E**  
Dam **DFCC 488Z DANIKA 55D**

BAR S RANGE BOSS 4002  
MERIT SOCIALITE 5121C  
MJT TOUCH DOWN 488Z  
DFCC 36Z BIANCA 101B

BW	WW	YW	Milk	CE	MCE
3.7	66	99	22	3.0	8.0

- #1 indexing bull at weaning time.
- Just a big soggy bull.
- Lots of milk in cow family.



FULL SISTER TO 108H DFCC 488Z DANIKA 55D DAM

Lot  
112



Lot  
**112H**  
2152648 DFCC 7047E **HYDE** 112H  
DFCC 112H March 01, 2020

performance  
BW 79  
Sep 27 780  
Jan 6 1170

Sire **MERIT STING 7047E**  
Dam **POPLAR MEADOWS ANNIE K 5'12**

BAR S RANGE BOSS 4002  
MERIT SOCIALITE 5121C  
S A V BISMARCK 5682  
HF ANNIE K 4X

BW	WW	YW	Milk	CE	MCE
2.3	59	114	18	8.0	11.0

- March **STING** bull...doesn't give up anything to older ones!!
- Square made and is loaded with red meat from front to back.



ANOTHER STING UDDER

Lot  
119



Lot  
**119H**  
2153132 DFCC 107D **HAMMER** 119H  
DFCC 119H March 02, 2020

performance  
BW 84  
Sep 27 830  
Jan 6 1241

Sire **BAR E-L STRONGBOW 107D**  
Dam **DFCC 18T DATELINE 35W**

HF G-MAN 29B  
BAR E-L LADY 127Y  
NORSEMAN DATELINE 18'07  
EGGEN FREEDOM 174P MS 5T

BW	WW	YW	Milk	CE	MCE
4.3	56	92	22	-2.0	3.0

- Younger bull but still competes.
- Awesome profiling bull.
- Long bodied and good looking.

Take Advantage of our  
**SIGHT UNSEEN PROGRAM**  
Call Kelly for more information 306-747-7498

Lot **127H** DFCC 13E **HULK** 127H  
 2152546 DFCC 127H March 12, 2020

performance sire **GF BARELY LEGAL 13E** LEACHMAN SAUGHATCHEE 3000C  
 HCC BLACK MERCEDES 13N  
 BW 85  
 Sep 27 790 dam **MCKEVITT BENNITA 18E** WINDY WILLOWS FOCAL POINT 6C  
 Jan 6 1206 MCKEVITT BENNITA 6C

BW	WW	YW	Milk	CE	MCE
3.4	57	100	27	4.0	7.0

- One of those bulls that is built right from the ground up!
- Don't over look him as he may be the sleeper of the sale.
- Mother is a classy cow from **MCKEVITT ANGUS**.



Lot **140H** DFCC 7047E **HOUND DOG** 140H  
 2152652 DFCC 140H March 23, 2020

performance sire **MERIT STING 7047E** BAR S RANGE BOSS 4002  
 MERIT SOCIALITE 5121C  
 BW 84  
 Sep 27 800 dam **DFCC 33T SWEET AND SASSY 9X** SOUTHLAND OLD SKOOL 33T  
 Jan 6 1119 EGGEN BIG SKY 16K MISS 99M

BW	WW	YW	Milk	CE	MCE
2.7	55	88	18	3.0	8.0

- If you are a pedigree person...this is one that may interest you.
- A very well made bull that has loads of longevity in family.
- Dam is still one of the top producers.



## Terms and conditions

**TERMS:** The terms of the sale are cash or cheque, payable at par at the sale location. The right of property shall not pass until after settlement has been made; no invoicing on buyers in attendance unless previous arrangements have been made. Every animal sells to the highest bidder and in cases of dispute the auctioneer's decision will be final. Announcements from the auction block will take precedence over the printed matter in the catalogue. Current exchange rates will be announced sale day. All monies are in Canadian funds.

**CERTIFICATE OF REGISTRATION:** Each animal will carry papers issued by the Canadian Angus Association. A certificate of registry duly transferred will be furnished to the buyer for each animal after payment has been made.

**HEALTH:** All animals in the sale have met all necessary health requirements.

**GUARANTEE:** Each animal becomes the purchaser's risk immediately after the animal is sold. All animals in this sale will be sold under the terms and guarantees set forth by the Canadian Angus Association with regard to health, freedom from defects and from both reproductive and specific genetic unsoundness.

**LIABILITIES:** All persons attend the sale at their own risk. The sellers, facility owner, auctioneer and sale manager assume no liability, legal or otherwise, for any accidents that occur.

**DELIVERY:** Every assistance will be given in getting your purchases home. Free delivery up to 250 miles. Each animal becomes the risk of the purchaser as soon as sold.

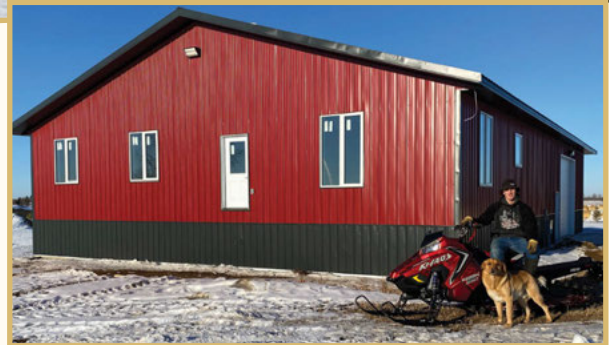
**PHONE, WIRE, MAIL BIDS:** Bidders unable to attend the sale may phone, wire or mail their bids and instructions to the sale manager, auctioneer or special representatives. Bids must be received in sufficient time prior to the sale.

**INSURANCE:** Agents will be in attendance to insure your purchases. Bulls returning to the consignor's farm must be insured.

**THE RIGHT TO COLLECT SEMEN:** Double 'F' Cattle Co. reserves the right to Collect semen on any of the bulls sold at their expense and the buyer's convenience.

**ERRORS:** All announcements at sale time, written or oral, supersede any written material in the catalogue.

# LIFE IN *pictures*



Your money just got smarter.

**Affinity**  
Credit Union

Tricia Bell B.Comm  
AGRICULTURE ACCOUNT MANAGER

p: 306.747.6302 f: 306.747.3161  
tricia.bell@affinitycu.ca

31 Main St., Box 204, Shellbrook, Sask S0J 2E0  
TeleService\* 306.934.4000 866.863.6237

affinitycu.ca

EQUIPMENT **Redhead** **CASE IH**  
redheadequipment.ca

PRINCE ALBERT Hwy 11 S | 306.763.6454

Thank you  
TO ALL OF OUR SPONSORS



**CRAWL CONSTRUCTION**  
**From renos to new builds**

**Justin Crawl**  
**306 714-8020**  
**Shellbrook SK**

**NORHEIM NOR RANCHING**

*Your Livestock Equipment Specialists*



**1.306.955.1350**  
**NORHEIMRANCHING.COM**

Stochmanski Livestock Hauling



Box 1012, Shellbrook, SK SOJ 2E0  
(306) 764-7654

*J & R Meats*

**James & Rose Grypiuk**  
**Box 1116, Shellbrook, SK**

**Phone: 306-747-2919**

**"For all your retail & custom needs"**

**13 km west & 3 km north of Shellbrook, SK**

**miEnergy**



**Agricultural, Commercial and Utility Scale Solar**

Discover how putting the sun to work on your farm can save you money and offer energy independence.

**mienergy.ca sales@mienergy.ca 306-683-2247**

**RASK**  
**Tax Service Ltd.**

R.R. 1 Birch Hills, SK SOJ 0G0 Ph: 749-2275

**Dennis Rask**  
749-2759

**Darrin Rask**  
749-3180  
Fax: 749-2235



**Masterfeeds**

an **Altech** company

**Roger Kostron**

Account Sales Specialist

rkostron@masterfeeds.com

Phone: 306-790-5576 // 1-877-440-2727

Cell: 306-491-9096 // Fax: 306-790-5573

745 Park Street, Regina, Saskatchewan, Canada S4N 4Y4



# LAKE COUNTRY



10% discount on your next PickSeed forage purchase

**PICKSEED**  
*good things growing...*

**Corn Seed Promo**  
**Buy 10, Get 1 FREE**



## FEED

**PROMO CODE PIC2021**  
Offer ends 03/31/2021

*For more information, contact your Lake Country Co-op Agro Advisor.*

**CO-OP AGRO** IT'S HERE.

## AFFORDABLE LIVESTOCK EQUIPMENT

Your one stop shop for all your handling and feeding needs..



Post Mounted Continuous Panel

Continuous Fence  
Ideal for permanent  
riding arenas and  
corral systems  
Standard 5 Bar or  
6, 7, & 8 Bar x  
24' Section for  
Cattle or Horses



▲ 30' Belted  
Silage Feeder

### We Also Manufacture:

- Windbreaks
  - 21' Belted Feed Troughs
  - Bale Feeders
  - Framed Gates
  - Bison Equipment
  - Sheep & Goat Equipment
  - Animal Shelters
  - Horse Training Round Pens
  - Travel Panels
  - FEL Mount Cement Mixer
  - FS Panels / Attached Gates
- Several Sizes Available  
Custom Orders Welcome



◀ Feedlot  
Bunk  
Feeders  
21'  
sections

▼ 21' Belted Trough



Large Selection of Freestanding Corral Panels  
For Cattle, Horses, Sheep, & Bison  
24' x 6 Bar (Shown) Also 21' x 5 Bar  
Lots of different weights and sizes available

**CALL TODAY 1-844-500-5341**

Jack, Becky & Steven Taylor

[www.affordablelivestockequipment.com](http://www.affordablelivestockequipment.com)

SHOP OUR FULL INVENTORY AT:  
**FARMWORLD.CA**

**Trimble XCN-1050 and NAV 900**

**20% OFF!**

*NOW* **\$4,950**  
 While supply lasts

Large 10.1" color touch-screen display -  
 One integrated camera - Works with  
 AutoSync™ - Easy transferability  
 between vehicles



**3600W INVERTER/GENERATOR**

**20% OFF!**

*NOW* **\$1,150**  
 While supply lasts



• 212CC Powerease • Electric Start  
 • 3000 running watt output • 2x USB ports • LED control panel •  
 Ultra quiet • Auto throttle saves fuel • 9L/2.2 gal fuel tank

**New yard and acreage tractors are arriving! Limited availability, call now.**

**Workmaster 25S**

25 HP, 100LC front loader, 990 lbs. of 3-PT lift capacity, 4.6 gpm of dedicated flow for implement operation, 540 RPM rear PTO



**Workmaster 75**

2 post ROPS, 75 HP, 72" 555LU front loader, 3500 lbs. of 3-PT lift capacity, 12.6 gpm implement pump, 540 RPM rear PTO



**Workmaster 120**

Heat, AC Cab, 120 HP, 84" 632TL front loader, 3200 lbs. of 3-PT lift capacity, 16.9 gpm implement pump, 540 RPM rear PTO



**FREE! 5 YEAR POWERTRAIN WARRANTY ON NEW T4.120 AND T5.120 TRACTORS**



**T4.120**

Deluxe cab, w/ heat and AC, 120 HP, 4WD, 84" 800TL front loader, 16.9 gpm implement pump, 5620 lbs. of 3-PT lift capacity, 540/1000 RPM rear PTO.



**T5.120**

Deluxe ComfortRide cab, w/ instructor seat, heat and AC, 120 HP, 4WD, 84" 800TL front loader, 16.9 gpm implement pump, 8084 lbs. of 3-PT lift capacity, 540/1000 RPM rear PTO.

**Shop our full selection of pre-owned inventory at: FARMWORLD.CA**



**\$325K**

U3840

**2016 New Holland T9.530**  
 ENG HRS: 1491, HYDRAULIC PUMP, NO PTO



**\$349K**

HN4064A

**2014 New Holland T9.700**  
 ENG HRS: 3011, 6 HYD OUTLETS, 1000 PTO



**\$169K**

U23496

**2018 New Holland T7.190**  
 ENG HRS: 768, 4 HYD OUTLETS, LOADER



**\$59K**

U23484

**2019 NEW HOLLAND POWERSTAR 75**  
 ENG HRS: 375, 2 REAR REMOTES



**\$34.9K**

HN3891

**2019 NH 195 MANURE SPREADER**  
 16.5Lx16.1 10PR HI-FLOAT, UPPER BEATER



**\$82K**

PN3852

**2019 NH C232 COMPACT LOADER**  
 ENCLOSED CAB W/HVAC, 84" BUCKET



**\$265K**

PB3771A

**2013 BOURGAULT 3320 & L6550**  
 76ft 10" SPACING, 4.8 SEMI PNEUMATIC



**\$43K**

PT3853A

**2016 NEW HOLLAND 560 BALER**  
 BALES: 12020, PTO-1000, NET WITH TWINE

**Return Undeliverable  
Canadian Addresses to:**

Double F Cattle Co.  
Box 50  
Parkside, SK S0J 2A0



**SEE YOU AT THE SALE  
March 27**