



Peak Dot  Ranch Ltd.

February 14, 2022

*Elite Embryos
And Semen*

Internet Bidding Available

DLMS
www.dlms.ca

For more information call DLMS:
Mark Shologan 780.699.5082 or
DLMS Purebred Team 780.991.3025



Frozen Genetics Sale

Peak Dot Ranch Ltd.

Contact... Peak Dot Ranch
Carson Moneo Clay Moneo
306-266-4414 306-266-4411
Fax 266-4930 Email: peakdot@gmail.com
TEXT: 306-640-8760



Peak Dot Ranch Ltd.

Elite Embryos and Semen Sale

February 14, 2022

Race Horse Closeout Monday at 7:00 pm C.S.T
FARM GATE TIMED AUCTIONS



SALE STAFF

Scott Bohrson.....Consultant (Bohrson Marketing Services) (403) 370-3010
Rob Voice.....Consultant (Bohrson Marketing Services) (306) 270-6082
Taylor RichardsConsultant (Bohrson Marketing Services) (306) 821-4169

Embryo Guarantees

Guaranteeing 90 day pregnancies if done by an accredited veterinarian

3 embryos - 1 pregnancy

Embryos stored at Davis Rairdan International

Live Online

Internet Bidding Available
DLMS
www.dlms.ca
For more information call DLMS:
Mark Shologan 780.699.5082 or
DLMS Purebred Team 780.991.3025



www.dlms.ca

Lot 1

**Lot 1A - 3 conventional Embryos
by Ellingson Big River**

**Lot 1B - 3 conventional Embryos
by Ellingson Big River**

**Lot 1C - 3 conventional Embryos
by Woodhill Revival**

Peak Dot Priscilla 239A is a true beef cow that you want to duplicate and have a pasture full of as she is so maternal in her type with an attractive front end, nice head, huge barrel, level top, strong udder and good feet while being athletic and sound. This big hipped female has natural shape and muscle throughout and has not only been a good looking individual but a highly productive donor. We pride ourselves on sourcing the best cow families in the business and Priscilla 239A is most certainly one of them. Ellingson Big River 0052 & Woodhill Revival H028 are exclusive genetics and here is the opportune time to access their bloodlines while combined with one of the best cows in the business.

PEAK DOT PRISCILLA 239A

VISION UNANIMOUS 1418 x PRISCILLA OF PEAK DOT 695X (SAV BULLETIN 7904)

Embryos are qualified for Canada & USA



Ellingson Big River



Woodhill Revival



Lot 2

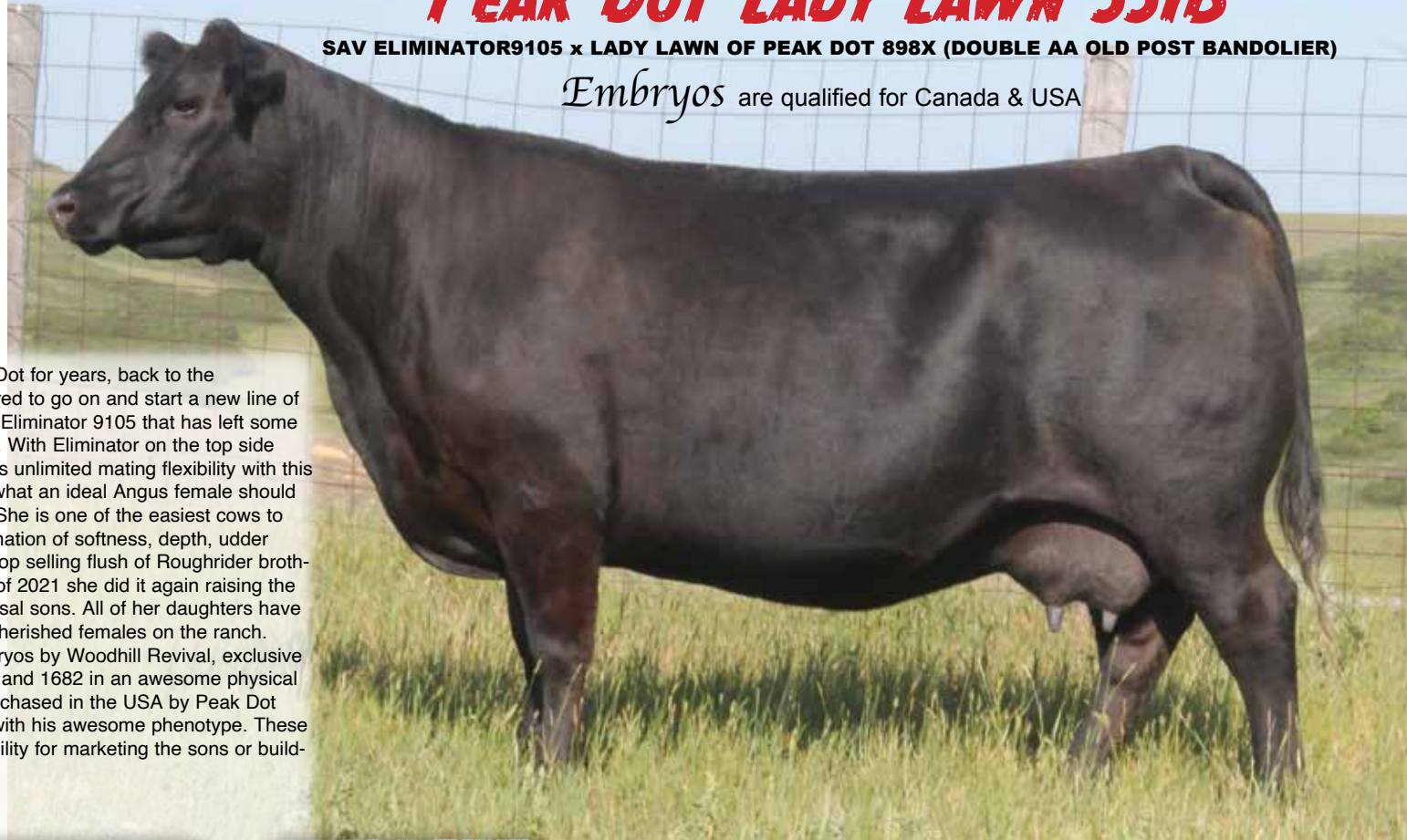
**Lot 2A - 3 conventional Embryos
by Brookdale Brutus**

**Lot 2B - 3 conventional Embryos
by Woodhill Revival**

PEAK DOT LADY LAWN 551B

SAV ELIMINATOR9105 x LADY LAWN OF PEAK DOT 898X (DOUBLE AA OLD POST BANDOLIER)

Embryos are qualified for Canada & USA



The Lady Lawn cow family has been featured at Peak Dot for years, back to the Remington Lady Lawn144R donor that Peak Dot acquired to go on and start a new line of females. 551B is a daughter of Peak Dot herdsire SAV Eliminator 9105 that has left some of the best udders in the Angus breed with his progeny. With Eliminator on the top side and out-cross Canadian genetics on the bottom, there is unlimited mating flexibility with this proven donor and her progeny. When you think about what an ideal Angus female should look like this second generation donor comes to mind. She is one of the easiest cows to mate because she works on about any bull. Her combination of softness, depth, udder quality and productivity is impressive. 551B raised the top selling flush of Roughrider brothers in the 2020 spring Peak Dot sale and in the spring of 2021 she did it again raising the lead off \$24,000 Roughrider son and one the top Colossal sons. All of her daughters have been retained by Peak Dot and are some of the most cherished females on the ranch. The matings are as current as we can design with embryos by Woodhill Revival, exclusive new sire that combines Confidence Plus, Hoover Dam, and 1682 in an awesome physical package; and Brookdale Brutus one of the top bulls purchased in the USA by Peak Dot and Semex that is creating a tidal wave of excitement with his awesome phenotype. These matings carry endless possibilities and strong predictability for marketing the sons or building your own Lady Lawn cow family into the future.



Brookdale Brutus



Woodhill Revival



Lot 3

**Lot 3A - 3 conventional Embryos
by SAV Jessie James**

**Lot 3B - 3 conventional Embryos
by SAV Jessie James**

**Lot 3C - 3 conventional Embryos
by Ellingson Big River**

**Lot 3D - 3 conventional Embryos
by Woodhill Revival**

**Lot 3E - 3 conventional Embryos
by SAV Bloodline 9578**

Peak Dot Mia 247C is the ideal donor and one that needs to be invested in with confidence as she is extremely fertile and can raise big time progeny. The Unanimous cattle flat our produce and 247C is among the very best donors at Peak Dot and raised a personal favorite bull to sell in 2021, the \$35,000 Peak Dot Newfound 83H. He was extremely stout, hairy, big hipped, good looking, strong footed and he would've got many of those qualities from his dam. Fertility runs deep in the genetics as 247C is one of the top embryo producing donors we flushed this summer with Canadian Donors and we did just shy of averaging 30 in total per flush. These are four super matings with SAV Jessie James, SAV Bloodline, Ellingson Big River and Woodhill Revival.



**Peak Dot Newfound 83H
\$35,000 son of Peak Dot Mia 247C**

PEAK DOT MIA 247C

VISION UNANIMOUS 1418 x MIA OF PEAK DOT 316Y (PEAK DOT BOLD 204U)

Embryos are qualified for Canada & USA



SAV Jessie James



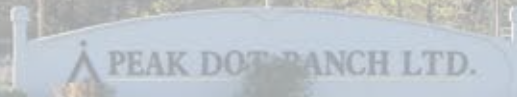
Ellingson Big River



Woodhill Revival



SAV Bloodline 9578



Lot 4

**Lot 4A - 3 conventional Embryos
by Ellingson Big River**

**Lot 4B - 3 conventional Embryos
by Ellingson Big River**

**Lot 4C - 3 conventional Embryos
by Ellingson Big River**

Peak Dot Mia 2058D is without question the best Mia female we have ever raised. This beautiful brood cow has ideal body type, udder quality, fleshing-ability, docility and perfect feet. All very important traits. She offers a intriguing pedigree and an exceptional balanced set of EPDs. Her mating to the powerful Ellingson Big River will result in progeny with incredible phenotype, performance, herd improving numbers and maternal excellence.

PEAK DOT MIA 2058D

GAFFNEY GAME CHANGER 371 x PEAK DOT MIA 353B (VISION UNANIMOUS 1418)

Embryos are qualified for Canada & USA



Ellingson Big River



Lot 5

**Lot 5A - 3 conventional Embryos
by Ellingson Big River**

**Lot 5B - 3 conventional Embryos
by Ellingson Big River**

**Lot 5C - 3 conventional Embryos
by Ellingson Big River**

Peak Dot Pride 13F is a model female and show cases why Hoover No Doubt is so popular as she is a perfect uddered female with massive volume, extra dimension and an outstanding EPD profile. Her grandam Peak Dot Pride 88B is an Elite/Premier Dam with nursing ratio of 110 on her first four calves. She is also the dam of Peak Dot and Glassman Farms herdsire Peak Dot Lancaster and Peak Dot and Hillcrest Enterprises herdsire Peak Dot Seedstock 38F.

Here is an opportunity to buy a exciting mating with big performance, maternal excellence and top-of-the-breed numbers.

PEAK DOT PRIDE 13F

HOOVER NO DOUBT x PEAK DOT PRIDE 7D (BUSHS EASY DECISION 98)

Embryos are qualified for Canada & USA



**Peak Dot Pride 88B
Maternal Grandam**



Ellingson Big River



Lot 6

**Lot 6A - 3 conventional Embryos
by Ellingson Three Rivers**

**Lot 6B - 3 conventional Embryos
by Ellingson Big River**

**Lot 6C - 3 conventional Embryos
by Brookdale Brutus**

The Peak Dot program is one of the cornerstones of the Canadian Angus industry with their semi annual production sales putting hundreds of good bulls into the industry year over year. The Peak Dot donor roster is not to be overlooked as they have retained their top females for a number of years now and their ET progeny pens are absolutely stacked with quality. The 402U donor has stood the test of time and is one they are still building around as she has an outstanding production- record and is powerful in every dimension. Prototypically she is excellent - super fronted, long and deep with a well attached udder. Maternally she is as good as it gets going back to Lady of Peak Dot 782L the most influential cow in Peak Dot history with 68 progeny. 402U herself is up to 48 registered calves in the CAA registry with her sons highlighting the bull sales and her daughters continuing to build the Lady cow family as the largest at Peak Dot.

PEAK DOT LADY 402U

SAV AUTOGRAPH 5204 x LADY OF PEAK DOT 431R (PEAK DOT HOBSON 57N)

Embryos are qualified for Canada & USA



Progeny from Lady of Peak Dot 402U



Lot 7

**Lot 7A - 3 conventional Embryos
by Ellingson Big River**

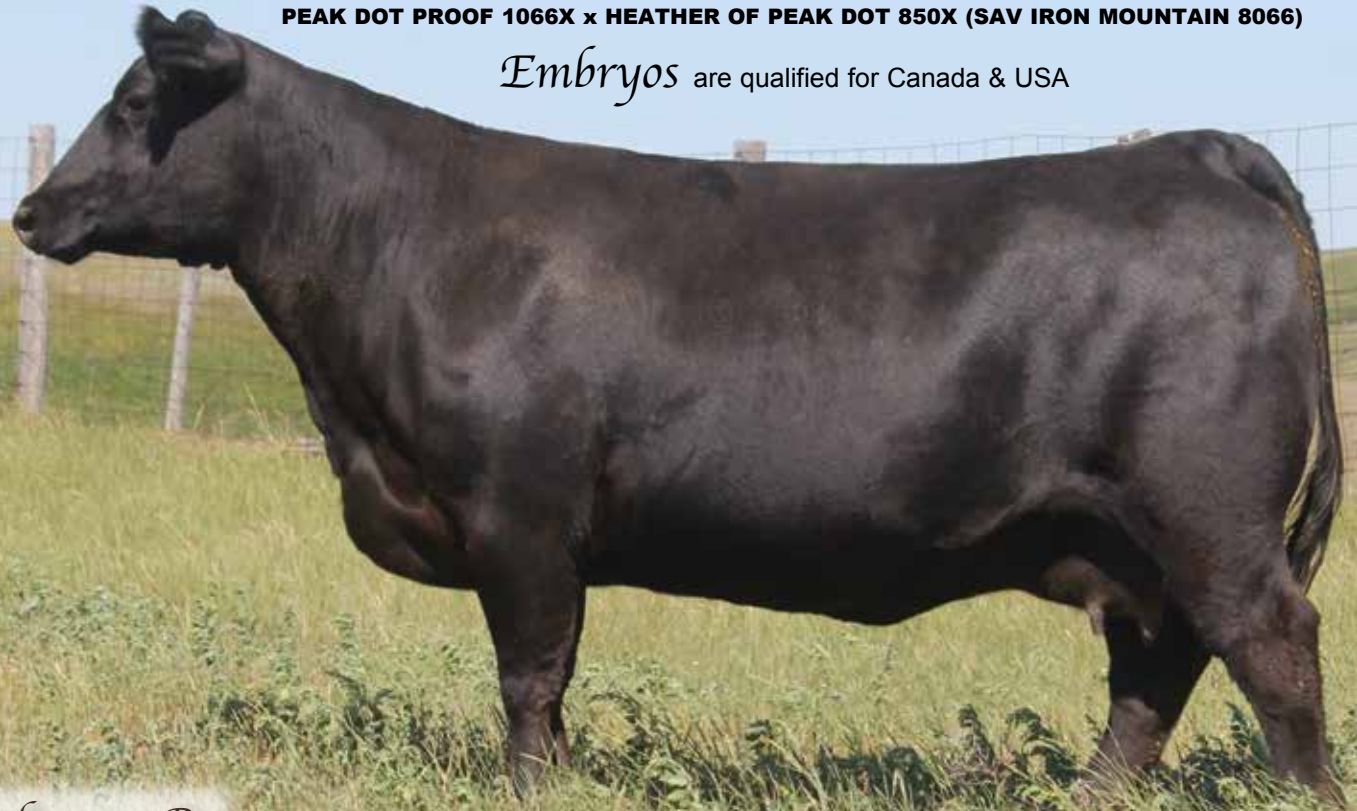
**Lot 7B - 3 conventional Embryos
by Brookdale Brutus**

Peak Dot Heather 541B is an impressive looking donor that is a big time producer that has raised many feature bulls in years past and daughters retained at Peak Dot at the top of their program. The successful progeny that this donor has produced over multiple sires is a true testament to her breeding capabilities. She is awesome udder, good footed, big hipped, well balanced, attractive fronted and has that true maternal look. We think the world of the matings here. We don't need to say anymore, the proof is in 541B progeny used in support pictures here and there are many many more that didn't fit on the page ... Peak Dot Heather 541B flat out produces the highly valuable kind.

PEAK DOT HEATHER 541B

PEAK DOT PROOF 1066X x HEATHER OF PEAK DOT 850X (SAV IRON MOUNTAIN 8066)

Embryos are qualified for Canada & USA



Progeny from Peak Dot Heather 541B



Lot 8

Semen Package.....

- Lot 8A - 10 straws Big River
- Lot 8B - 10 straws Big River
- Lot 8C - 10 straws Big River
- Lot 8D - 10 straws Big River
- Lot 8E - 10 straws Big River

Big Performance: A moderate 86lbs birth weight combined with a 1006lbs weaning weight and a 1674lbs yearling weight.

Big Fertility: 42cm scrotal at a year and has put up a large volume of quality semen.

Big Maternal: His dam EA Blackcap 4053 is one of the best donor females on the Ellingson Angus Ranch and has earned Pathfinder status with a production record birth ratio of 5/97, a nursing ratio of 5/107 and a yearling ratio of 3/102.

Big Power: Explosive body capacity, ample bone, structural soundness and fluent mobility.
Top 1% for hoof claw and angle EPDs.
Top 1% for weaning and Yearling EPDs.

Big River EPDs

CE:+3 BW:+2.4 WW:+93 YW:+154 Milk:+24
Marb:+56 REA:+63 CW:+58 \$C:+265

Ellingson **Big River**

ELLINGSON THREE RIVERS x EA BLACKCAP 4053 (KROUPAL ADVANCE)

Semen qualified for Canada



Next Generation Herdsire!

Ellingson Big River is the next big important piece in our breeding program here at Peak Dot as we continue to improve overall maternal, foot and udder quality, fertility and milking ability. His muscle density, base width and bone circumference and performance is unmatched. He has generated all kinds of interest from breeders across the country after selling in last years record breaking Ellingson Angus Bull Sale and is well on his way to becoming one of the most popular Ellingson bulls in recent times.

Lot 9

Semen Packages.....

Lot 9A - 10 straws Boost

Lot 9B - 10 straws Boost

Lot 9C - 10 straws Boost

Lot 9D - 10 straws Boost

Lot 9E - 10 straws Boost

Calving Ease with Performance

Incredible mass, volume, length and stoutness with abundant depth, thickness and excellent scrotal development. This bull is something special. He has a birth weight of 68lbs then went on to wean off at 934lbs and weighed just under 1700lbs at a year of age! He earned a weaning ratio of 124 and ranks in the very top 1% for weaning weight and yearling weight EPDs, top 10% for REA and top 3% for CED. His grandam Erica of Peak Dot 478U is the most influential cow at Peak Dot with 54 progeny.

Boost was purchased by Semex Beef. Unfortunately Boost had an untimely death before all his health test were completed for exportable semen leaving a limited amount of semen and it is Canadian qualified only.

We AI bred several females to Boost at Peak Dot in 2021 and plan on using more in the future as he will play a major role here moving forward.

Boost EPDs...

CE+13 BW:0.2 WW:+80 YW:+141 Milk:+24
Marb:+61 REA:+67 CW:+59 \$C:+345



Peak Dot
BOOST

MUSGRAVE COLOSSAL x PEAK DOT ERICA 738B (VISION UNANIMOUS)

Semen qualified for Canada

*\$60,000 top selling
Colossal son in the
2021 Peak Dot Ranch
Bull Sale.*

Lot 10

- Lot 10A - 10 straws Mosaic
- Lot 10B - 10 straws Mosaic
- Lot 10C - 10 straws Mosaic
- Lot 10D - 10 straws Mosaic
- Lot 10E - 10 straws Mosaic

Peak Dot Mosaic was the \$60,000 sale feature from the 2020 Peak Dot Ranch Spring bull sale selling to SSS Cattle Co. He offers extra natural width and depth of body in a structurally sound package. He is backed by some of the best cows on the ranch with two consecutive generations of donors. Mosaic sons posted impressive weaning weights with tremendous depth of body, width and ideal growth curves for real-world cattle producers. His first sons will headline the 2022 Spring Peak Dot Ranch Bull Sale!

PEAK DOT MOSAIC

ELLINGSON ROUGH RIDER x PEAK DOT LADY 38C (EASY DECISION 98)

Semen qualified for Canada



MOSAIC EPDs

CE:+0 BW:+3.5 WW:+70 YW:+122 Milk:+20
Marb:+50 REA:+69 CW:+57 \$C:+318



PEAK DOT LADY 626A

The maternal grandam of Mosaic



Lot 11

- Lot 11A - 10 straws Predominant**
- Lot 11B - 10 straws Predominant**
- Lot 11C - 10 straws Predominant**
- Lot 11D - 10 straws Predominant**
- Lot 11E - 10 straws Predominant**

SAV 004 PREDOMINANT 4438
Predominant was one of the most influential herdsire s ever purchased by Peak Dot Ranch. For years his sons topped sale after sale at Peak Dot and across the country. Commercial ranchers loved the Predominant sons for there excellent feet, added thickness and volume. We still have customers tell us some of the best bulls and females they ever owned were Predominant sons and daughters.
Predominant daughters are beautiful broody females with extra body depth, capacity and excellent udders. Do not miss this chance to purchase this limited semen on one of the best proven herdsire to ever come out of the SAV program.

SAV 004 PREDOMINANT 4438

SAV 8180 TRAVELER 004 x SAV EMBLYNETTE 1182 (SAF 598 BANDO 5175)

Semen qualified for Canada and USA



SAV 004 PREDOMINANT 4438
Sons



SAV 004 PREDOMINANT 4438
Daughters





Peak Dot  Ranch Ltd.

Spring Bull Sale

April 6, 2022