



Peak Dot  Ranch Ltd.

Fall Bull Sale

Saturday, Dec. 7, 2019

At the Ranch, Wood Mountain, Saskatchewan

Selling 147 Coming 2 Year Old Bulls

FOR SURE



Peak.Dot.For.Sure.513F-Lot.15

Welcome to Peak Dot Ranch...

Established in 1950...

The Moneo Family



Terry and Barbara



Carson, Lana, Koen and Riley



Clay, Shannon, Matt, Madison, Merit, and Mavryk



Scott, Mia and Luke Turner

It is our pleasure to welcome you to the Annual Peak Dot Ranch Fall Bull Sale. Our program, since its early beginnings, has always been committed to producing bulls for the commercial cowman.

The coming two year old bulls in this sale are developed and managed exclusively for this event. They are never pushed and are grown out to be fertile and problem free. 90% of the bulls in this sale are low moderate birth weight bulls and come recommended for heifers. The bulls are penned and sorted by sire group with many groups of half, three-quarter and full brothers available for a more uniform and genetically consistent calf crop. Good honest cattle, repeat customers, long-standing relationships and real genetic value is what we want to produce.

We hope to see you all at the sale and if any one can not make it or has any questions please feel free to contact Carson or Clay. We offer a sight unseen program that has become very popular. The growing success of this program is driven by the disciplined manner in which it is handled.

You can count on the cattle you purchase from this fourth generation family owned ranching operation. After 60 years of doing business with ranchers and commercial cattlemen and women, we have earned a reputation we are very proud of. We look forward to being your source for good quality Angus and appreciate the confidence you have shown in our program. Come early to view the cattle. Be our guests and enjoy a beef barbecue with refreshments.

Sincerely,
Clay and Carson Moneo



Peak Dot  Ranch Ltd.

ESTABLISHED IN 1950

Box 105, Wood Mountain, SK S0H 4L0

Terry Moneo 306-266-4303 Carson Moneo 306-266-4414 Clay Moneo 306-266-4411 Scott and Mia Turner 306-640-7498

Fax 266-4930 Email: peakdot@gmail.com

www.peakdotranch.com





Sale starts at 1:00 p.m. C.S.T. Sharp!

Peak Dot Ranch Ltd.

FALL BULL SALE

Saturday, Dec. 7, 2019

Selling 147 Bulls

At the Ranch, Wood Mountain, Saskatchewan

SALE DAY PHONES:

Line 1....(306)642-7415

Line 2.....(306)640-9241

Please phone (306)266-4414 ahead preferably a day or two before the sale to ensure that we can have a phone line available for you on sale day.

SALE LOCATION:

Sale will be held at the Peak Dot Ranch sale barn, 3 1/2 miles south of Wood Mountain, SK 25 miles from the Montana border(West Poplar entry).

AIR TRAVEL:

Air Strip at Assiniboia There will be transportation provided from Assiniboia.

Call us ahead for details and to arrange transportation.

ACCOMMODATIONS:

Canalta Assiniboia (306) 642-1010

121 Steak house/ Lounge & Motel Assiniboia (306) 642-4662

BAR B INN Assiniboia (306)642-5555

Grasslands Inn, Mankota (306)478-2909

Parkside Inn Ponteix (306)625-3553

Limerick Hotel (306)263-2133

Cottonwood Inn, Glasgow, MT, USA (406) 228-8213

Holiday Inn Express, Swift Current (306) 773-8288

FOOD:

Barbecue Beef Dinner begins at 11:30 a.m.C.S.T.

Sale starts at 1:00 p.m. C.S.T. Sharp!



SALE STAFF:

Ryan Dorrان..... Auctioneer (403) 507-6483

Craig Flewelling.....Ring Service (403) 556-0515

Dory Gerrard.....Ring Service (403) 302-1016

Nate Marin.....Ring Service (306) 869-7130

Tony Heins.....Cattle Business Weekly (701) 400-44355

Scott Bohrsن.....Consultant (Bohrson Marketing Services) (403) 370-3010

Rob Voice.....Consultant (Bohrson Marketing Services) (306) 361-6775

Matt Criddle.....Consultant (Bohrson Marketing Services) (306) 539-6934

Taylor RichardsConsultant (Bohrson Marketing Services) (306) 821-4169

Jared Murrin.....Consultant (Western Ag Reporter) (406) 321-1542

VOLUME DISCOUNTS:

Starting at 3 bulls, 3% and increasing 1% for each additional bull up to 10 bulls - 10% maximum discount



Never Miss An Auction Again!
Watch & Bid online for FREE!

Visit www.DVAuction.com
and Register Today!

For General Questions Please Contact Our Office:
(402) 316-5460 or support@dvauction.com

VIDEOS:

Videos available at www.peakdotranch.com
and DV Auction

SIGHT UNSEEN PURCHASE PLAN:

We would like you to attend the sale, but if you cannot, you can have Carson personally handle your purchase . Call him with your specification and discuss the offering, preferably a week before the sale. Carson gladly will assist you with your sale selections and represent you on sale day. We guarantee full satisfaction upon delivery or you don't own them.

Carson Moneo (306)266-4414

TRUCKING AND DELIVERY:

Free delivery in a 500 mile radius to central points on purebred purchases totalling \$2500.00 or more. For purchases going beyond the 500 miles we will help coordinate delivery to get the cattle to you as economically as we can. **\$100 Discount per bull if you haul your own sale day.**

SALE ORDER:

A sale order will be available sale day or online days ahead at www.peakdotranch.com

TERMS AND CONDITIONS:

Cattle will sell according to the terms and conditions of the Canadian Angus Association.

TERMS OF SALE:

Cash or cheque, payable to the Clerk of the Sale on Sale Day. **We also now accept Visa,Master Card and Debit cards.** Release shall not be given unless satisfactory settlement has been made with the seller.

U.S. FUNDS: Shall be accepted at the Rate of Exchange current on Sale Day.

U.S. BUYERS:

We welcome our U.S. customers. Peak Dot will do all the necessary testing for export. Delivery will be looked after by Peak Dot within a 500 mile radius. For purchases going beyond the 500 miles we will help coordinate delivery to get the cattle to you as economically as we can.

INSURANCE:

An insurance representative will be present on Sale Day.

BULL WINTERING:

Peak Dot will winter bulls for \$2 a day. Bulls will be semen tested before delivery in spring.

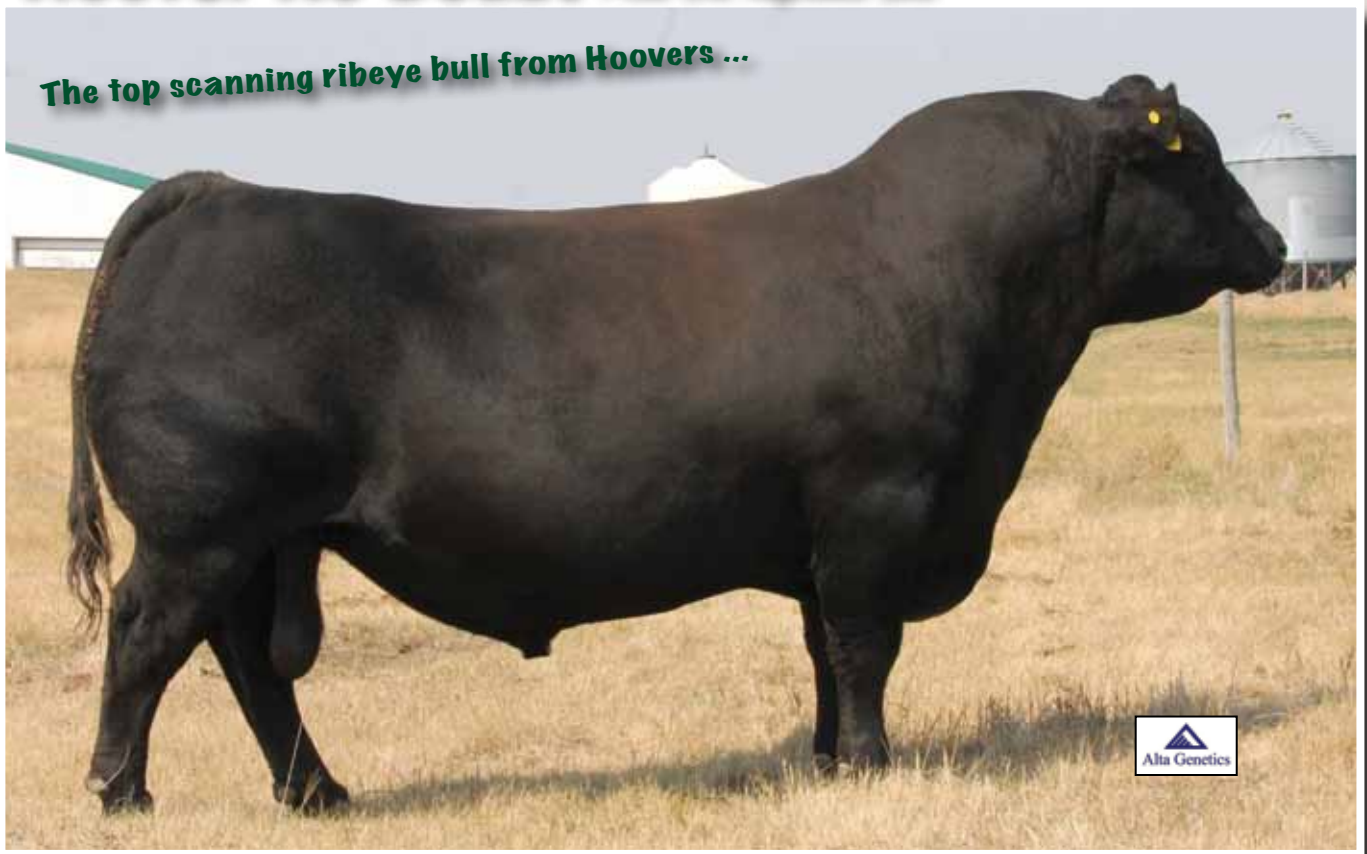
Cull Bull Incentive Program

This year we're offering the best cull bull incentive program you will find anywhere. With the cull bull market down a bit from previous years we are going to help you get the most out of those old broken, down worn out bulls. Why take a chance on bunch of open cows this fall when you can replace them with fresh strong new bulls. All you have to do is email us prior to the bull sale or bring a copy of your bill of sale from the auction market after selling your cull bulls and you will receive a \$500 credit on each new replacement bull you buy. (eg: If you cull 5 bulls you will receive a \$500 deduction for each of the 5 replacement bulls you buy.) Credits must be used on a per bull basis and you cannot use more than 1 credit toward a new bull.

No Doubt Bulls...

Hoover No Doubt *Peak Dot Reference Sire*

The top scanning ribeye bull from Hoovers ...



Hoover No Doubt was the \$67,500 top-selling bull in the 2015 Hoover Angus Sale, and became the top-selling bull in the 90-year history at Hoover Angus! He was selected by Alta Genetics, Peak Dot Ranch, and Diamond J Angus.

No Doubt was a hunk that turned in an adjusted 1540 pound yearling weight, ratio 113 to be the #1 adjusted yearling weight bull in the 2015 Hoover sale! He also scanned a 3.91 IMF, ratio 108, and tied as the top scanning ribeye bull (among 81 yearlings) with a 17.3" ribeye, ratio 114! No Doubt is a superb disposition bull that has the style and eye appeal everyone likes. He is exceptionally stout, and has definitely put meat and muscle in his calves. No Doubt has superior foot shape, and his calves have excellent feet and legs and ideal body type. His dam became one of the top valued cows in the breed in the fall of 2018.

Hoover No Doubt has become one of the most popular sought after sires in the Angus breed with a huge demand for semen. No Doubt semen sold at auction in for \$3000 a straw.

MOGCK SURE SHOT	
MOGCK BULLSEYE	CED +3
MOGCK MARY 1256	BW +3.7
HOOVER NO DOUBT	WW +80
SYDGEN CC&7	YW +147
MISS BLACKCAP ELLISTON J2	MILK +20
MISS BLACKCAP ELLISTON D145	RE +1.00
	\$W +52.56
	\$B +186.90

Top selling No Doubt sons from past Bull Sales..



PEAK DOT FORE SURE
Purchased by Alta Genetics.



PEAK DOT YOU GOT IT
Purchased by Alta Genetics.

No Doubt Bulls...



PEAK DOT NO DOUBT 153F - LOT 1



Peak Dot Heather 541B
The dam of lot 1



Peak Dot Mia 4A
Dam of lot 2 pictured with a maternal brother
Purchased by J&S Cattle



PEAK DOT NO DOUBT 202F - LOT 2



Peak Dot Tour of Duty 20C
Maternal brother to lot 2
Purchased by Jason George



Peak Dot Mia 4A
The dam of lot 2
Pictured here as yearling

1 PEAK DOT NO DOUBT 153F	
Male	PDAR 153F January 01 2018 2023931
MOGCK BULLSEYE	MOGCK SURE SHOT
HOOVER NO DOUBT	MOGCK MARY 1255
MISS BLACKCAP ELLSTON J2	SYDGEN C C & 7
	MISS BLACKCAP ELLSTON D154
PEAK DOT PROOF 1066X	S A V PIONEER 7301
PEAK DOT HEATHER 541B	BARBARA OF PEAK DOT 314T
HEATHER OF PEAK DOT 850X	S A V IRON MOUNTAIN 8066
	HEATHER OF PEAK DOT 513K
BW: 77lbs. Adj 205 day Wt: 775 lbs. Adj 365 day Wt: 1407 lbs.	
BW:+2.9 WW: +65 YW: +120 Milk: +15	

>Recommended for heifers or cows
>A stand out herdsire prospect. Big topped, squared hiped, massive volume and muscle dimension.
>Yearling ratio 109.
>Dam has true breed character and is an embryo donor.

2 PEAK DOT NO DOUBT 202F	
Male	PDAR 202F January 16 2018 2023952
MOGCK BULLSEYE	MOGCK SURE SHOT
HOOVER NO DOUBT	MOGCK MARY 1255
MISS BLACKCAP ELLSTON J2	SYDGEN C C & 7
	MISS BLACKCAP ELLSTON D154
S A V ELIMINATOR 9105	RITO 707 OF IDEAL 3407 7075
PEAK DOT MIA 4A	S A V ABIGALE 5646
MIA OF PEAK DOT 838T	S A V 004 CAPACITY 5234
	MIA OF PEAK DOT 637N
BW: 60lbs. Adj 205 day Wt: 658 lbs. Adj 365 day Wt: 1385 lbs.	
BW:+0.1 WW: +48 YW: +99 Milk: +23	

>Recommended for heifers or cows
>A personal favorite. Deep and soggy, naturally thick and loaded with meat. Yearling ratio of 126.
>Maternal brother Peak Dot Tour of Duty 20C is a Herd sire for Jason George.
>Phenomenal dam displays massive thickness and volume and ranks in the top 9% for milk.

No Doubt Bulls...



PEAK DOT NO DOUBT 423F - LOT 3



PEAK DOT NO DOUBT 225F - LOT 4

3 PEAK DOT NO DOUBT 423F	
Male	PDAR 423F February 21 2018 2031150
MOGCK BULLSEYE	MOGCK SURE SHOT
HOOVER NO DOUBT	MOGCK MARY 1255
MISS BLACKCAP ELLSTON J2	SYDGEN C C & 7
S A V IRON MOUNTAIN 8066	MISS BLACKCAP ELLSTON D154
LADY OF PEAK DOT 539Y	TC GRIDIRON 258
LADY OF PEAK DOT 782L	S A V MADAME PRIDE 3249
	DOUBLE AA RITO 287'97
	LADY OF PEAK DOT 575E
BW: 75lbs. Adj 205 day Wt: 758 lbs. Adj 365 day Wt: 1318 lbs.	
BW:+3.0 WW: +51 YW: +89 Milk: +18	

4 PEAK DOT NO DOUBT 225F	
Male	PDAR 225F January 20 2018 2042526
HOOVER NO DOUBT	MOGCK BULLSEYE
PEAK DOT NO DOUBT 325D	MISS BLACKCAP ELLSTON J2
HEROINE OF PEAK DOT 766Y	S A V ELIMINATOR 9105
S A V IRON MOUNTAIN 8066	HEROINE OF PEAK DOT 464S
JESSICA OF PEAK DOT 771Y	TC GRIDIRON 258
JESSICA OF PEAK DOT 308W	S A V MADAME PRIDE 3249
	PEAK DOT PRIME CUT 28N
	JESSICA OF PEAK DOT 596K
BW: 81lbs. Adj 205 day Wt: 748 lbs. Adj 365 day Wt: 1417 lbs.	
BW:+3.3 WW: +49 YW: +95 Milk: +17	

>Recommended for heifers

>A bull that brings calving ease, performance and maternal power to the table.

>Donor Grandam has 68 progeny listed with the CAA.

>Recommended for cows and heifers.

>An attractive looking growth bull with a tremendous amount of muscle expression.

>Yearling ratio 104.

No Doubt Bulls...



PEAK DOT NO DOUBT 503F - LOT 5

5	PEAK DOT NO DOUBT 503F
Male	PDAR 503F March 07 2018 2029422
MOGCK BULLSEYE	MOGCK SURE SHOT
HOOVER NO DOUBT	MOGCK MARY 1255
MISS BLACKCAP ELLSTON J2	SYDGEN C C & 7
PEAK DOT PIONEER 569X	MISS BLACKCAP ELLSTON D154
PEAK DOT ROSE 576C	S A V PIONEER 7301
PEAK DOT ROSE 450Z	SUSIE OF PEAK DOT 585T
	PEAK DOT PIONEER 9X
	ROSE OF PEAK DOT 961X
BW: 68lbs. Adj 205 day Wt: 765 lbs. Adj 365 day Wt: 1450 lbs.	
BW:+2.2 WW: +60 YW: +117 Milk: +16	

>Recommended for heifers
 >An easy calving, low birth weight bull.
 >Ranks in the top 3% for yearling weight EPD. Yearling ratio of 119.



PEAK DOT NO DOUBT 169F - LOT 6

6	PEAK DOT NO DOUBT 169F
Male	PDAR 169F January 09 2018 2023940
MOGCK BULLSEYE	MOGCK SURE SHOT
HOOVER NO DOUBT	MOGCK MARY 1255
MISS BLACKCAP ELLSTON J2	SYDGEN C C & 7
PEAK DOT ELIMINATOR 777Y	MISS BLACKCAP ELLSTON D154
PEAK DOT PANSY 1137B	S A V ELIMINATOR 9105
PANSY OF PEAK DOT 909X	ANNIE K OF PEAK DOT 585U
	S A V IRON MOUNTAIN 8066
	PANSY OF PEAK DOT 552S
BW: 72lbs. Adj 205 day Wt: 645 lbs. Adj 365 day Wt: 1267 lbs.	
BW:+2.6 WW: +43 YW: +94 Milk: +12	

>Recommended for heifers
 >A well built calving-ease bull with a muscular look.
 >Yearling ratio of 108.



PEAK DOT NO DOUBT 587F - LOT 7

7	PEAK DOT NO DOUBT 587F
Male	PDAR 587F April 19 2018 2029541
MOGCK BULLSEYE	MOGCK SURE SHOT
HOOVER NO DOUBT	MOGCK MARY 1255
MISS BLACKCAP ELLSTON J2	SYDGEN C C & 7
JINDRA DOUBLE VISION	MISS BLACKCAP ELLSTON D154
PEAK DOT ANNIE K 1005B	CONNEALY REFLECTION
ANNIE K OF PEAK DOT 526S	HOFF RACHEL 8312 405
	S A V 004 PREDOMINANT 4438
	PRIDE OF J AND J 215G
BW: 77lbs. Adj 205 day Wt: 879 lbs. Adj 365 day Wt: 1439 lbs.	
BW:+3.7 WW: +68 YW: +125 Milk: +20	

>Recommended for heifers
 >A five star calving ease bull with thickness, muscle and volume and performance.
 >Weaning ratio of 106. Yearling ratio of 104.
 >Dam is a young broody Double Vision daughter

No Doubt Bulls...



PEAK DOT NO DOUBT 545F - LOT 8



DUCHESS OF PEAK DOT 654N
The maternal grandam of lot 9

8 PEAK DOT NO DOUBT 545F	
Male	PDAR 545F March 21 2018 2029481
MOGCK BULLSEYE	MOGCK SURE SHOT
HOOVER NO DOUBT	MOGCK MARY 1255
MISS BLACKCAP ELLSTON J2	SYDGEN C C & 7
R B TOUR OF DUTY 177	MISS BLACKCAP ELLSTON D154
PEAK DOT DUCHESS 612C	WERNER WAR PARTY 2417
PEAK DOT DUCHESS 479A	B A LADY 6807 305
	PEAK DOT IRON MOUNTAIN 867X
	DUCHESS OF PEAK DOT 469U
BW: 74lbs. Adj 205 day Wt: 766 lbs. Adj 365 day Wt: 1345 lbs.	
BW:+3.7 WW: +60 YW: +113 Milk: +20	

>Recommended for heifers
>Good bull, thick and very correct in his structure. Yearling ratio of 108.
>Dam is an easy fleshing Tour of Duty daughter.



PEAK DOT NO DOUBT 3036F - LOT 9

9 PEAK DOT NO DOUBT 3036F	
Male (ET)	PDAR 3036F February 20 2018 2065467
MOGCK BULLSEYE	MOGCK SURE SHOT
HOOVER NO DOUBT	MOGCK MARY 1255
MISS BLACKCAP ELLSTON J2	SYDGEN C C & 7
HF POWER-UP 72N	MISS BLACKCAP ELLSTON D154
DUCHESS OF PEAK DOT 610T	RIVERBEND POWERLINE 0050
DUCHESS OF PEAK DOT 654N	HF ROSEBUD 23G
	S A V SAUGAHATCHEE 9374
	DUCHESS OF PEAK DOT 554K
BW: 86lbs. Adj 205 day Wt: 759 lbs. Adj 365 day Wt: 1387 lbs.	
BW:+3.7 WW: +59 YW: +112 Milk: +22	

>Recommended for cows
>Performance bull with maternal value.
>Dam has 31 progeny listed with the CAA.
>Backed by 3 generations of embryo donors.

10 PEAK DOT NO DOUBT 433F	
Male	PDAR 433F February 24 2018 2029361
MOGCK BULLSEYE	MOGCK SURE SHOT
HOOVER NO DOUBT	MOGCK MARY 1255
MISS BLACKCAP ELLSTON J2	SYDGEN C C & 7
S A V ELIMINATOR 9105	MISS BLACKCAP ELLSTON D154
ANNIE K OF PEAK DOT 748Y	RITO 707 OF IDEAL 3407 7075
ANNIE K OF PEAK DOT 829T	S A V ABIGALE 5646
	S A V 004 PREDOMINANT 4438
	DOUBLE AA ANNIE K 625'01
BW: 85lbs. Adj 205 day Wt: 692 lbs. Adj 365 day Wt: 1351 lbs.	
BW:+4.2 WW: +47 YW: +100 Milk: +24	

>Recommended for Cows
>Powerful build. Loaded with meat and muscle from end to end.
>Yearling ratio of 114.
>Dam is a deeper sided cow that stems back to Annie K cow family.



DUCHESS OF PEAK DOT 610T
The dam of lot 9

No Doubt Bulls...

11 PEAK DOT NO DOUBT 451F
 Male PDAR 451F February 27 2018 2029375

HOOVER NO DOUBT	MOGCK BULLSEYE
PEAK DOT NO DOUBT 209D	MISS BLACKCAP ELLSTON J2
MAYFLOWER OF PEAK DOT 64Y	S A V IRON MOUNTAIN 8066
KR CASH FLOW	MAYFLOWER OF PEAK DOT 435U
PEAK DOT SUSIE 350C	BARSTOW CASH
SUSIE OF PEAK DOT 485U	WK LASS 1591
	S A V 004 CAPACITY 5234
	SUSIE OF PEAK DOT 527K

BW: 81lbs. Adj 205 day Wt: 840 lbs. Adj 365 day Wt: 1431 lbs.
 BW:+3.9 WW: +56 YW: +100 Milk: +17

>Recommended for cows
 >Plenty of body capacity and thickness in this good bull. Weaning and yearling ratios of 102.
 >Dam is an excellent CashFlow daughter, thick made and easy fleshing.



PEAK DOT NO DOUBT 209D
 The sire of lot 11

12 PEAK DOT NO DOUBT 372F
 Male PDAR 372F February 09 2018 2029319

HOOVER NO DOUBT	MOGCK BULLSEYE
PEAK DOT NO DOUBT 280D	MISS BLACKCAP ELLSTON J2
BARBARA OF PEAK DOT 978X	S A V IRON MOUNTAIN 8066
BUSHES EASY DECISION 98	BARBARA OF PEAK DOT 821S
PEAK DOT HEATHER 113C	VIN-MAR O'REILLY FACTOR
PEAK DOT HEATHER 1131Z	BUSHES BIG BLACKBIRD 7885
	PEAK DOT DOMINATOR 42U
	HEATHER OF PEAK DOT 856S

BW: 95lbs. Adj 205 day Wt: 781 lbs. Adj 365 day Wt: 1252 lbs.
 BW:+5.6 WW: +53 YW: +91 Milk: +14

>Recommended for Cows
 >Growth bull, expressive muscle shape and a wide top.
 >Dam is a broody Easy Decision daughter.



PEAK DOT NO DOUBT 280D
 The sire of lots 12 and 13

13 PEAK DOT NO DOUBT 2997F
 Male PDAR 2997F March 28 2018 2069578

HOOVER NO DOUBT	MOGCK BULLSEYE
PEAK DOT NO DOUBT 280D	MISS BLACKCAP ELLSTON J2
BARBARA OF PEAK DOT 978X	S A V IRON MOUNTAIN 8066
PEAK DOT PIONEER 9X	BARBARA OF PEAK DOT 821S
PEAK DOT MIA 2118D	S A V PIONEER 7301
C-BAR MIA 728R	DUCHESS OF PEAK DOT 610T
	PEAK DOT HOBSON 20N
	C-BAR MIA 661M

BW: 81lbs. Adj 205 day Wt: 793 lbs. Adj 365 day Wt: 1314 lbs.
 BW:+4.5 WW: +49 YW: +94 Milk: +17

>Recommended for heifers or cows
 >A bull that will add length and pounds to his calves.
 >Yearling ratio of 105.

14 PEAK DOT YOU GOT IT 374F
 Male PDAR 374F February 11 2018 2029320

HOOVER NO DOUBT	MOGCK BULLSEYE
PEAK DOT YOU GOT IT	MISS BLACKCAP ELLSTON J2
PEAK DOT LADY 69B	S A V RADIANCE 0801
PEAK DOT ELIMINATOR 834Z	LADY OF PEAK DOT 924Y
PEAK DOT PANSY 323C	S A V ELIMINATOR 9105
PANSY OF PEAK DOT 443U	ANNIE K OF PEAK DOT 450U
	MOHNEN DYNAMITE 1356
	PANSY OF PEAK DOT 770P

BW: 75lbs. Adj 205 day Wt: 884 lbs. Adj 365 day Wt: 1410 lbs.
 BW:+3.7 WW: +66 YW: +114 Milk: +21

>Recommended for heifers or cows
 >A bull with added length and substance.
 >Very good mother. Moderate thick and easy fleshing.



PEAK DOT YOU GOT IT
 The sire of lot 14

For Sure Bulls ...



PEAK DOT FOR SURE 513F - LOT 15

15	PEAK DOT FOR SURE 513F
Male	PDAR 513F March 09 2018 2029432
HOOVER NO DOUBT	MOGCK BULLSEYE
PEAK DOT FOR SURE	MISS BLACKCAP ELLSTON J2
BARDOLIA OF PEAK DOT 639X	S A V IRON MOUNTAIN 8066
	BARDOLIA OF PEAK DOT 423U
PEAK DOT EPIC 1069X	S A V PIONEER 7301
PEAK DOT LADY 407A	JL MISSIE 06 137
LADY OF PEAK DOT 545Y	S A V IRON MOUNTAIN 8066
	LADY OF PEAK DOT 476S
BW: 88lbs. Adj 205 day Wt: 952 lbs. Adj 365 day Wt: 1533 lbs.	
BW:+5.4 WW: +70 YW: +124 Milk: +20	



- >Recommended for cows
- >An Fore Sure son with scale crushing performance.
- >Ranks in the top 1% for weaning and yearling weight EPDs.
- >Weaning ratio of 116.
- >Dam weans big calves. She is a full bodied daughter of Epic.

Peak Dot For Sure *Peak Dot Reference Sire*



MOGCK BULLSEYE	CED +4
HOOVER NO DOUBT	BW +3.7
MISS BLACKCAP ELLSTON J2	WW +67
PEAK DOT FOR SURE	YW +121
SAV IRON MOUNTAIN 8066	MILK +22
BARDOLIA OF PEAK DOT 639X	RE +.63
BARDOLIA OF PEAK DOT 423U	\$W +56.43
	\$B +155.90



Bardolia of Peak Dot 639X
The dam of For Sure



Peak Dot Herdbook 151C
The maternal brother to For Sure

Peak Dot For Sure is the \$80,000 lot 1 bull from the 2017 spring sale selling to Alta genetics. His first calf crop are stand outs in terms of outstanding thickness, muscle shape, stoutness and power. His dam is one of the most amazing females in the breed in terms of body shape, volume and sheer elegance. She is also the dam of featured herdsire Peak Dot Herdbook 151C.

For Sure Bulls ...



PEAK DOT FOR SURE 482F - LOT 16



PEAK DOT LADY 809A

The dam of lot 16 pictured here as a yearling



LADY OF PEAK DOT 631U

The maternal grandam of lot 16

16	PEAK DOT FOR SURE 482F
Male	PDAR 482F March 04 2018 2029403
HOOVER NO DOUBT	MOGCK BULLSEYE
PEAK DOT FOR SURE	MISS BLACKCAP ELLSTON J2
BARDOLIA OF PEAK DOT 639X	S A V IRON MOUNTAIN 8066
	BARDOLIA OF PEAK DOT 423U
S A V BULLET 0473	S A V BISMARCK 5682
PEAK DOT LADY 809A	S A V EMBLYNETTE 7566
LADY OF PEAK DOT 631U	S A V 004 PREDOMINANT 4438
	LADY OF PEAK DOT 937P
BW: 78lbs. Adj 205 day Wt: 879 lbs. Adj 365 day Wt: 1428 lbs.	
BW:+3.2 WW: +60 YW: +100 Milk: +20	

>Recommended for heifers or cows
 >A thick made, heavy set, stout bull. Weaning ratio of 107.
 >Dam has ideal body type and impeccable udder quality. Grandam is an embryo donor.

17	PEAK DOT FOR SURE 501F
Male	PDAR 501F March 06 2018 2031148
HOOVER NO DOUBT	MOGCK BULLSEYE
PEAK DOT FOR SURE	MISS BLACKCAP ELLSTON J2
BARDOLIA OF PEAK DOT 639X	S A V IRON MOUNTAIN 8066
	BARDOLIA OF PEAK DOT 423U
VISION UNANIMOUS 1418	VISIONTOPLINE ROYAL STOCKMAN
PEAK DOT BARDOLA 501C	VISION EDELLA 665
BARDOLIA OF PEAK DOT 85Y	S A V IRON MOUNTAIN 8066
	BARDOLIA OF PEAK DOT 929W
BW: 84lbs. Adj 205 day Wt: 845 lbs. Adj 365 day Wt: 1451 lbs.	
BW:+4.1 WW: +67 YW: +122 Milk: +16	

>Recommended for cows
 >A stout functional good bull with good performance.
 >Ranks in the top 1% for yearling weight EPD and top 2% for weaning weight EPD.
 >Weaning ratio of 102. Yearling ratio 105.

Next Step Bulls ...

RBM Next Step C531 *Peak Dot Reference Sire*



SYDGEN 928 DESTINATION 5420	BW +1.0
PRAIRIE PRIDE NEXT STEP 2036	WW +68
FLYING V MISS PRIDE 426	YW +124
RBM NEXT STEP C531	MILK +15
J&J IRON MOUNTAIN 437	
RBM PRIDEMERE A369	
RBM PRIDEMERE X153	

Next Step C531 is the \$42,000 top selling bull from the 2017 RBM Livestock bull sale in Watertown SD to Peak Dot Ranch. He blends proven calving-ease with flawless phenotype, thickness and muscle shape. His first calf crop have proven him as a low birth weight sire that can be used with confidence on virgin heifers.

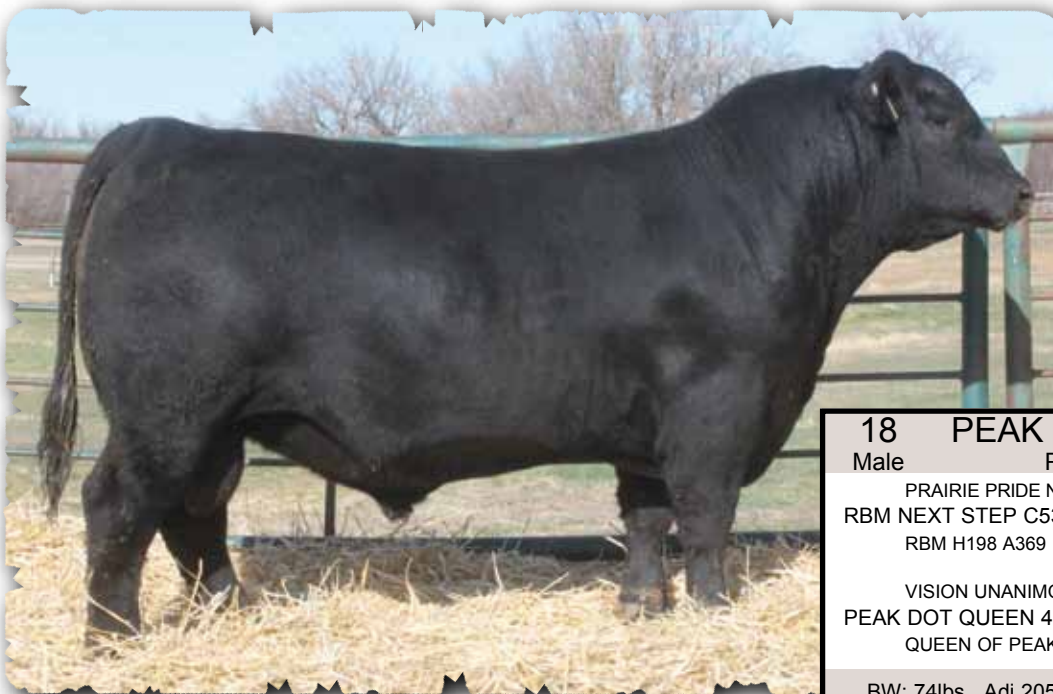
Calving-ease, Phenotype and Performance

RBM Next Step D143 *Peak Dot Reference Sire*



SYDGEN 928 DESTINATION 5420	BW +0.9
PRAIRIE PRIDE NEXT STEP 2036	WW +57
FLYING V MISS PRIDE 426	YW +111
RBM NEXT STEP D143	MILK +21
RBM ANSWER X085	
RBM MISS PRIDE A32	
RBM MISS PRIDE Y209	

We could not decide on which Next Step son we liked better in the RBM 2017 bull sale. So we purchased Next Step D143 along with Next Step C531. They are so much alike that even still today we do not favor one over the other. Next Step D143 combines the proven calving-ease of Next Step and Final Answer. He represents everything we strive to produce. He is a thick, muscular stout-rumped beef bull with massive volume and eye appeal. Anyone who has a large group of heifers to breed this year should take a serious look at the Next Step Bull pen. They offer true calving-ease without sacrificing thickness, muscle, capacity and performance.



18 PEAK DOT NEXT STEP 2111F

Male PDAR 2111F March 28 2018 2053920

PRAIRIE PRIDE NEXT STEP 2036	SYDGEN 928 DESTINATION 5420
RBM NEXT STEP C531	FLYING V MISS PRIDE 426
RBM H198 A369	H&K CC&7 H198
	RBM PRIDEMERE X153
VISION UNANIMOUS 1418	VISIONTOPLINE ROYAL STOCKMAN
PEAK DOT QUEEN 477B	VISION EDELLA 665
QUEEN OF PEAK DOT 619U	S A V 004 PREDOMINANT 4438
	QUEEN OF PEAK DOT 536N

BW: 74lbs. Adj 205 day Wt: 830 lbs. Adj 365 day Wt: 1308 lbs.
 BW:+1.3 WW: +60 YW: +108 Milk: +16

>Recommended for heifers

>A calving ease bull with bred in muscle expression and herd bull presence. Weaning ratio of 100.

>Ranks in the top 10% for weaning weight and yearling weight EPD.

PEAK DOT NEXT STEP 2111F - LOT 18

Next Step Bulls ...



PEAK DOT NEXT STEP 2095F - LOT 19



Lot 19



PEAK DOT NEXT STEP 2069F - LOT 20



LADY OF PEAK DOT 534M
Grandam of lot 19



LADY OF PEAK DOT 807X
Dam of lot 19

19	PEAK DOT NEXT STEP 2095F
Male	PDAR 2095F March 26 2018 2053905
PRAIRIE PRIDE NEXT STEP 2036	SYDGEN 928 DESTINATION 5420
RBM NEXT STEP C531	FLYING V MISS PRIDE 426
RBM H198 A369	H&K CC&7 H198
	RBM PRIDEMERE X153
S A V 004 PREDOMINANT 4438	S A V 8180 TRAVELER 004
LADY OF PEAK DOT 807X	S A V EMBLYNETTE 1182
LADY OF PEAK DOT 534M	BASIN PRIME CUT 354K
	LADY OF PEAK DOT 132A
BW: 80lbs. Adj 205 day Wt: 764 lbs. Adj 365 day Wt: 1227 lbs.	
BW:+2.0 WW: +49 YW: +86 Milk: +20	

>Recommended for heifers or cows
 >A strong top, smooth shoulders and a nice head on this very stout fellow. Rich in Maternal value.
 >Flawless mother is listed as an Elite dam with the CAA. She is a donor cow with 16 progeny.
 >Grandam is a donor with 29 progeny. A maternal sister is an embryo donor.

20	PEAK DOT NEXT STEP 2069F
Male	PDAR 2069F March 22 2018 2053869
PRAIRIE PRIDE NEXT STEP 2036	SYDGEN 928 DESTINATION 5420
RBM NEXT STEP D143	FLYING V MISS PRIDE 426
RBM MISS PRIDE A32	RBM ANSWER X085
	RBM MISS PRIDE Y209
PEAK DOT PROOF 1066X	S A V PIONEER 7301
PEAK DOT ANNIE K 329B	BARBARA OF PEAK DOT 314T
ANNIE K OF PEAK DOT 1083X	S A V IRON MOUNTAIN 8066
	ANNIE K OF PEAK DOT 930P
BW: 82lbs. Adj 205 day Wt: 799 lbs. Adj 365 day Wt: 1295 lbs.	
BW:+3.3 WW: +55 YW: +104 Milk: +17	

>Recommended for heifers or cows
 >Easy fleshing bull with balanced number across the board.
 >Grandam and great grandam are embryo donors.

Next Step Bulls . . .



PEAK DOT NEXT STEP 2054F - LOT 21



PEAK DOT NEXT STEP 2052F - LOT 22



PEAK DOT NEXT STEP 2070F - LOT 23



PEAK DOT NEXT STEP 2029F - LOT 24



21 PEAK DOT NEXT STEP 2054F
Male PDAR 2054F March 20 2018 2053855
 PRAIRIE PRIDE NEXT STEP 2036 SYDGEN 928 DESTINATION 5420
 RBM NEXT STEP C531 FLYING V MISS PRIDE 426
 RBM H198 A369 H&K CC&7 H198
 RBM PRIDEMERE X153
 PEAK DOT BOLD 204U MOHNEN DYNAMITE 1356
 PEAK DOT LADY 573A QUEEN OF PEAK DOT 652S
 LADY OF PEAK DOT 805X S A V 004 PREDOMINANT 4438
 LADY OF PEAK DOT 534M
BW: 78lbs. Adj 205 day Wt: 718 lbs. Adj 365 day Wt: 1218 lbs.
BW:+1.5 WW: +47 YW: +96 Milk: +13

>Recommended for heifers
 >A well bred bull blending Next Step with Bold. Yearling ratio of 101.
 >Maternal brothers sold to Daryl Crowley and Cottonwood Livestock.
 >Great grandam is an embryo donor with 29 progeny.

22 PEAK DOT NEXT STEP 2052F
Male PDAR 2052F March 19 2018 2053315
 PRAIRIE PRIDE NEXT STEP 2036 SYDGEN 928 DESTINATION 5420
 RBM NEXT STEP D143 FLYING V MISS PRIDE 426
 RBM MISS PRIDE A32 RBM ANSWER X085
 RBM MISS PRIDE Y209
 PEAK DOT PROOF 1066X S A V PIONEER 7301
 PEAK DOT PANSY 382B BARBARA OF PEAK DOT 314T
 PANSY OF PEAK DOT 300Y S A V IRON MOUNTAIN 8066
 PANSY OF PEAK DOT 478R
BW: 72lbs. Adj 205 day Wt: 800 lbs. Adj 365 day Wt: 1278 lbs.
BW:+0.8 WW: +52 YW: +99 Milk: +16

>Recommended for heifers
 >A low birth bull that performed very well. Thick, correct and easy fleshing.
 >Two maternal sisters sold to Northway Cattle one is an embryo donor for them.
 >Dam is an attractive Proof daughter.

23 PEAK DOT NEXT STEP 2070F
Male PDAR 2070F March 22 2018 2053870
 PRAIRIE PRIDE NEXT STEP 2036 SYDGEN 928 DESTINATION 5420
 RBM NEXT STEP C531 FLYING V MISS PRIDE 426
 RBM H198 A369 H&K CC&7 H198
 RBM PRIDEMERE X153
 PEAK DOT RANGLAND 29W SANDY BAR GRASSLANDS 94T
 PEAK DOT ANNIE K 381Z JUNE OF PEAK DOT 812S
 ANNIE K OF PEAK DOT 822X DOUBLE AA OLD POST BANDOLIER
 DOUBLE AA ANNIE K 578'01
BW: 74lbs. Adj 205 day Wt: 760 lbs. Adj 365 day Wt: 1245 lbs.
BW:+2.0 WW: +46 YW: +83 Milk: +17

>Recommended for heifers or cows
 >A calving ease bull that is genetically outstanding and phenotypically flawless.
 >Dam is a Fancy Ranchland daughter. Great grandam is an embryo donor.

24 PEAK DOT NEXT STEP 2029F
Male PDAR 2029F March 19 2018 2053296
 PRAIRIE PRIDE NEXT STEP 2036 SYDGEN 928 DESTINATION 5420
 RBM NEXT STEP C531 FLYING V MISS PRIDE 426
 RBM H198 A369 H&K CC&7 H198
 RBM PRIDEMERE X153
 VISION UNANIMOUS 1418 VISIONTOPLINE ROYAL STOCKMAN
 PEAK DOT ANNIE K 618A VISION EDELLA 665
 ANNIE K OF PEAK DOT 932W DOUBLE AA OLD POST BANDOLIER
 DOUBLE AA ANNIE K 578'01
BW: 74lbs. Adj 205 day Wt: 779 lbs. Adj 365 day Wt: 1376 lbs.
BW:+2.0 WW: +57 YW: +104 Milk: +18

>Recommended for heifers
 >Next Step calves come easy and this guy comes recommended for heifers.
 >Yearling ratio of 121.
 >Dam has been a very consistent producer. Great grandam is an embryo donor.

Next Step Bulls . . .



PEAK DOT NEXT STEP 2051F - LOT 25



PEAK DOT NEXT STEP 2087F - LOT 26



PEAK DOT NEXT STEP 106F - LOT 27



PEAK DOT NEXT STEP 2007F - LOT 28

25 PEAK DOT NEXT STEP 2051F
Male PDAR 2051F March 20 2018 2053314
 PRAIRIE PRIDE NEXT STEP 2036 SYDGEN 928 DESTINATION 5420
 RBM NEXT STEP C531 FLYING V MISS PRIDE 426
 RBM H198 A369 H&K CC&7 H198
 RBM PRIDEMERE X153
 PEAK DOT BOLD 204U MOHNEN DYNAMITE 1356
 PEAK DOT LADY 433C QUEEN OF PEAK DOT 652S
 LADY OF PEAK DOT 948W S A V 004 PREDOMINANT 4438
 LADY OF PEAK DOT 782L
BW: 82lbs. Adj 205 day Wt: 844 lbs. Adj 365 day Wt: 1381 lbs.
BW:+2.9 WW: +60 YW: +110 Milk: +18

>Recommended for heifers or cows
 >A bull that looked great all summer long. Be sure to check him out.
 >Weaning ratio of 101. Yearling ratio of 109
 >Dam is very good Bold daughter her grandam is a past embryo donor with 68 progeny.

26 PEAK DOT NEXT STEP 2087F
Male PDAR 2087F March 24 2018 2053899
 PRAIRIE PRIDE NEXT STEP 2036 SYDGEN 928 DESTINATION 5420
 RBM NEXT STEP D143 FLYING V MISS PRIDE 426
 RBM MISS PRIDE A32 RBM ANSWER X085
 RBM MISS PRIDE Y209
 PEAK DOT PROOF 1066X S A V PIONEER 7301
 PEAK DOT DUCHESS 2208D BARBARA OF PEAK DOT 314T
 DUCHESS OF PEAK DOT 486U S A V 004 CAPACITY 5234
 DUCHESS OF PEAK DOT 517R
BW: 70lbs. Adj 205 day Wt: 805 lbs. Adj 365 day Wt: 1335 lbs.
BW:+2.3 WW: +51 YW: +95 Milk: +22

>Recommended for heifers
 >Low birth weight Performance bull. Long hiped and big nutted. Weaning ratio of 101.
 >Yearling ratio of 107.

27 PEAK DOT NEXT STEP 106F
Male PDAR 106F March 15 2018 2029221
 PRAIRIE PRIDE NEXT STEP 2036 SYDGEN 928 DESTINATION 5420
 RBM NEXT STEP D143 FLYING V MISS PRIDE 426
 RBM MISS PRIDE A32 RBM ANSWER X085
 RBM MISS PRIDE Y209
 VISION UNANIMOUS 1418 VISIONTOPLINE ROYAL STOCKMAN
 PEAK DOT ERICA 462C VISION EDELLA 665
 ERICA OF PEAK DOT 803X DUFF ENCORE 702
 ERICA OF PEAK DOT 730T
BW: 82lbs. Adj 205 day Wt: 805 lbs. Adj 365 day Wt: 1401 lbs.
BW:+3.4 WW: +56 YW: +106 Milk: +17

>Recommended for cows
 >A phenotypic stand out with length, muscle and eye-catching style in an athletic package.
 >Yearling ratio of 103.
 >Dam is deep-bodded and easy fleshing. Great grandam is a embryo donor.

28 PEAK DOT NEXT STEP 2007F
Male PDAR 2007F March 15 2018 2053274
 PRAIRIE PRIDE NEXT STEP 2036 SYDGEN 928 DESTINATION 5420
 RBM NEXT STEP D143 FLYING V MISS PRIDE 426
 RBM MISS PRIDE A32 RBM ANSWER X085
 RBM MISS PRIDE Y209
 4M ELEMENT 405 POSS ELEMENT 215
 PEAK DOT BAMBI 2010D 4M BLACKBIRD 2004
 BAMBI OF PEAK DOT 514U S A V 004 CAPACITY 5234
 BAMBI OF PEAK DOT 491R
BW: 82lbs. Adj 205 day Wt: 805 lbs. Adj 365 day Wt: 1289 lbs.
BW:+2.8 WW: +53 YW: +95 Milk: +20

>Recommended for heifers or cows
 >A well made bull with good performance weights.
 >Young dam just weaned off another excellent bull calf by Musgrave Colossal this year.

Next Step Bulls . . .



PEAK DOT NEXT STEP 2005F - LOT 29

29 PEAK DOT NEXT STEP 2005F
 Male PDAR 2005F March 15 2018 2053272
 PRAIRIE PRIDE NEXT STEP 2036 SYDGEN 928 DESTINATION 5420
 RBM NEXT STEP C531 FLYING V MISS PRIDE 426
 RBM H198 A369 H&K CC&7 H198
 RBM PRIDEMERE X153
 VISION UNANIMOUS 1418 VISIONTOPLINE ROYAL STOCKMAN
 PEAK DOT LADY 346C VISION EDELLA 665
 LADY OF PEAK DOT 480U S A V 004 PREDOMINANT 4438
 LADY OF PEAK DOT 327J
 BW: 79lbs. Adj 205 day Wt: 792 lbs. Adj 365 day Wt: 1345 lbs.
 BW:+2.7 WW: +59 YW: +111 Milk: +15

>Recommended for heifers or cows
 >Plenty of body capacity and thickness in this bull. Yearling ratio of 112.
 >Dam is a no miss producer.



30 PEAK DOT NEXT STEP 2083F
 Male PDAR 2083F March 24 2018 2053895
 PRAIRIE PRIDE NEXT STEP 2036 SYDGEN 928 DESTINATION 5420
 RBM NEXT STEP C531 FLYING V MISS PRIDE 426
 RBM H198 A369 H&K CC&7 H198
 RBM PRIDEMERE X153
 PEAK DOT BOLD 204U MOHNEN DYNAMITE 1356
 HEATHER OF PEAK DOT 344Z QUEEN OF PEAK DOT 652S
 HEATHER OF PEAK DOT 924U S A V 004 PREDOMINANT 4438
 HEATHER OF PEAK DOT 544K
 BW: 76lbs. Adj 205 day Wt: 823 lbs. Adj 365 day Wt: 1361 lbs.
 BW:+1.4 WW: +55 YW: +102 Milk: +17

>Recommended for heifers
 >A great calving ease bull. Thick and smooth with a nice looking head.
 >Yearling ratio of 109.
 >Maternal brothers sold to Mantario Grazing, Bar 88, Hunt Farms and JLB Ranch.

32 PEAK DOT NEXT STEP 2042F
 Male PDAR 2042F March 19 2018 2053305
 PRAIRIE PRIDE NEXT STEP 2036 SYDGEN 928 DESTINATION 5420
 RBM NEXT STEP C531 FLYING V MISS PRIDE 426
 RBM H198 A369 H&K CC&7 H198
 RBM PRIDEMERE X153
 S A V 004 PREDOMINANT 4438 S A V 8180 TRAVELER 004
 SUSIE OF PEAK DOT 618U S A V EMBLYNETTE 1182
 SUSIE OF PEAK DOT 954P S A R NEW TREND 4100 2080
 CEDAR CREEK SUSIE 25B
 BW: 76lbs. Adj 205 day Wt: 770 lbs. Adj 365 day Wt: 1361 lbs.
 BW:+1.4 WW: +54 YW: +105 Milk: +14

>Recommended for heifers.
 >A low birth Next Step bull with thickness, muscle, power and a superior structure
 >Yearling ratio of 120.
 >Maternal siblings have sold to Darwin Balog, Hillcrest Enterprises, Chapman Angus and Sunderland Ranch.

31 PEAK DOT NEXT STEP 2040F
 Male PDAR 2040F March 19 2018 2053303
 PRAIRIE PRIDE NEXT STEP 2036 SYDGEN 928 DESTINATION 5420
 RBM NEXT STEP C531 FLYING V MISS PRIDE 426
 RBM H198 A369 H&K CC&7 H198
 RBM PRIDEMERE X153
 VISION UNANIMOUS 1418 VISIONTOPLINE ROYAL STOCKMAN
 PEAK DOT BARBARA 384A VISION EDELLA 665
 BARBARA OF PEAK DOT 163Y S A V IRON MOUNTAIN 8066
 BARBARA OF PEAK DOT 466U
 BW: 74lbs. Adj 205 day Wt: 795 lbs. Adj 365 day Wt: 1201 lbs.
 BW:+1.4 WW: +55 YW: +92 Milk: +15

>Recommended for heifers
 >A low birth weight bull that comes highly recommended
 >Maternal brother Peak Dot Top Soil 2153E working at Bandura Ranches.
 >Dam is a stout made Unanimous daughter with lots of middle.
 >Grandam is listed as an Elite dam with the CAA.

33 PEAK DOT NEXT STEP 94F
 Male PDAR 94F February 25 2018 2029564
 PRAIRIE PRIDE NEXT STEP 2036 SYDGEN 928 DESTINATION 5420
 RBM NEXT STEP D143 FLYING V MISS PRIDE 426
 RBM MISS PRIDE A32 RBM ANSWER X085
 RBM MISS PRIDE Y209
 4M ELEMENT 405 POSS ELEMENT 215
 PEAK DOT CEDAR 97D 4M BLACKBIRD 2004
 PEAK DOT CEDAR 328B VISION UNANIMOUS 1418
 CEDAR OF PEAK DOT 1065X
 BW: 78lbs. Adj 205 day Wt: 819 lbs. Adj 365 day Wt: 1489 lbs.
 BW:+3.6 WW: +67 YW: +124 Milk: +18

>Recommended for heifers
 >A low birth weight bull with massive growth. Ranks in the top 1% for weaning and yearling weight EPD.
 >Yearling ratio of 116.
 >Element dam comes with an excellent udder structure and EPDs in the top 1% for weaning and yearling weight.

Next Step Bulls ...



PEAK DOT NEXT STEP 2072F - LOT 34

34	PEAK DOT NEXT STEP 2072F
Male	PDAR 2072F March 22 2018 2053872
	PRAIRIE PRIDE NEXT STEP 2036 SYDGEN 928 DESTINATION 5420
RBM NEXT STEP C531	FLYING V MISS PRIDE 426
RBM H198 A369	H&K CC&7 H198
	RBM PRIDEMERE X153
S A V 004 PREDOMINANT 4438	S A V 8180 TRAVELER 004
ERICA OF PEAK DOT 481U	S A V EMBLYNETTE 1182
PEAK DOT TRAFALGAR 518K	SCA 03H OF IDEAL 1418
	ERICA OF PEAK DOT 430D
BW: 70lbs. Adj 205 day Wt: 768 lbs. Adj 365 day Wt: 1265 lbs.	
BW:+0.6 WW: +46 YW: +83 Milk: +19	

>Recommended for heifers
 >A proud looking bull with a wide chest and thickness throughout.
 >Yearling ratio of 101.
 >Dam has produced top end bulls in past sales selling to Simmie Colony, Fairlane Farms and Mark Walter.
 >Grandam is listed as an Elite dam with the CAA.



PEAK DOT NEXT STEP 2091F - LOT 35

35	PEAK DOT NEXT STEP 2091F
Male	PDAR 2091F March 25 2018 2053902
	PRAIRIE PRIDE NEXT STEP 2036 SYDGEN 928 DESTINATION 5420
RBM NEXT STEP D143	FLYING V MISS PRIDE 426
RBM MISS PRIDE A32	RBM ANSWER X085
	RBM MISS PRIDE Y209
PEAK DOT PROOF 1066X	S A V PIONEER 7301
PEAK DOT LASSIE 407B	BARBARA OF PEAK DOT 314T
LASSIE OF PEAK DOT 430U	PEAK DOT PRIME CUT 433M
	LASSIE OF PEAK DOT 475N
BW: 78lbs. Adj 205 day Wt: 831 lbs. Adj 365 day Wt: 1371 lbs.	
BW:+1.9 WW: +54 YW: +101 Milk: +20	

>Recommended for heifers
 >A gentle calving ease bull with length and volume. Weaning ratio of 102.
 >Weaning ratio 100. Yearling ratio 109.



PEAK DOT NEXT STEP 2060F - LOT 36

36	PEAK DOT NEXT STEP 2060F
Male	PDAR 2060F March 21 2018 2053860
	PRAIRIE PRIDE NEXT STEP 2036 SYDGEN 928 DESTINATION 5420
RBM NEXT STEP C531	FLYING V MISS PRIDE 426
RBM H198 A369	H&K CC&7 H198
	RBM PRIDEMERE X153
PEAK DOT HOBSON 459T	STEVENSON BRUNO 6371
PANSY OF PEAK DOT 214Y	ERICA OF PEAK DOT 348M
PANSY OF PEAK DOT 914U	MOHNEN DYNAMITE 1356
	PANSY OF PEAK DOT 396J
BW: 78lbs. Adj 205 day Wt: 815 lbs. Adj 365 day Wt: 1308 lbs.	
BW:+2.3 WW: +56 YW: +103 Milk: +14	

>Recommended for heifers
 >A low birth bull that performed very well. Thick, correct and easy fleshing.
 >Maternal brothers sold to JLB Ranch and Tom Heller.
 >Grandam is an Elite cow with CAA. Great grandam is a past embryo donor.

Next Step Bulls ...

37 PEAK DOT NEXT STEP 2064F
Male PDAR 2064F March 21 2018 2053865
 PRAIRIE PRIDE NEXT STEP 2036SYDGEN 928 DESTINATION 5420
 RBM NEXT STEP C531 FLYING V MISS PRIDE 426
 RBM H198 A369 H&K CC&7 H198
 RBM PRIDEMERE X153
 VISION UNANIMOUS 1418 VISIONTOPLINE ROYAL STOCKMAN
 PEAK DOT LADY 359C VISION EDELLA 665
 LADY OF PEAK DOT 603U S A V 004 PREDOMINANT 4438
 LADY OF PEAK DOT 923P
 BW: 80lbs. Adj 205 day Wt: 811 lbs. Adj 365 day Wt: 1401 lbs.
 BW:+2.8 WW: +61 YW: +110 Milk: +17

>Recommended for heifers or cows
 >Lots of muscle and maturity in this March born bull. Yearling ratio 119.
 >Maternal brother sold to Daryl Crowley.

41 PEAK DOT NEXT STEP 2108F
Male PDAR 2108F March 28 2018 2053917
 PRAIRIE PRIDE NEXT STEP 2036SYDGEN 928 DESTINATION 5420
 RBM NEXT STEP D143 FLYING V MISS PRIDE 426
 RBM MISS PRIDE A32 RBM ANSWER X085
 RBM MISS PRIDE Y209
 KR CASH FLOW BARSTOW CASH
 PEAK DOT LADY 2308D WK LASS 1591
 LADY OF PEAK DOT 432U MOHNEN DYNAMITE 1356
 LADY OF PEAK DOT 638N
 BW: 70lbs. Adj 205 day Wt: 792 lbs. Adj 365 day Wt: 1378 lbs.
 BW:+2.4 WW: +55 YW: +108 Milk: +18

>Recommended for heifers
 >A calving ease bull with a good muscle pattern.
 >Dam is a young well made Cashflow daughter.

38 PEAK DOT NEXT STEP 2105F
Male PDAR 2105F March 27 2018 2053914
 PRAIRIE PRIDE NEXT STEP 2036SYDGEN 928 DESTINATION 5420
 RBM NEXT STEP D143 FLYING V MISS PRIDE 426
 RBM MISS PRIDE A32 RBM ANSWER X085
 RBM MISS PRIDE Y209
 S A V PIONEER 7301 S A V FINAL ANSWER 0035
 QUEEN OF PEAK DOT 556X S A V BLACKBIRD 5297
 QUEEN OF PEAK DOT 601T HF POWER-UP 72N
 QUEEN OF PEAK DOT 536N
 BW: 70lbs. Adj 205 day Wt: 797 lbs. Adj 365 day Wt: 1285 lbs.
 BW:+0.9 WW: +45 YW: +87 Milk: +21

>Recommended for heifers
 >A well bred true calving ease bull combining Next Step and Pioneer.
 >A maternal brother is a popular herdsire at Holloway Angus.

42 PEAK DOT NEXT STEP 116F
Male PDAR 116F March 28 2018 2029590
 PRAIRIE PRIDE NEXT STEP 2036SYDGEN 928 DESTINATION 5420
 RBM NEXT STEP D143 FLYING V MISS PRIDE 426
 RBM MISS PRIDE A32 RBM ANSWER X085
 RBM MISS PRIDE Y209
 PEAK DOT UNANIMOUS 409B VISION UNANIMOUS 1418
 PEAK DOT LADY 2139D HEROINE OF PEAK DOT 434U
 PEAK DOT LADY 451A PEAK DOT PIONEER 9X
 LADY OF PEAK DOT 425U
 BW: 72lbs. Adj 205 day Wt: 859 lbs. Adj 365 day Wt: 1339 lbs.
 BW:+1.7 WW: +56 YW: +102 Milk: +20

>Recommended for heifers
 >A well built calving ease bull with solid performance and functional pedigree.
 >Weaning ratio of 104.
 >Young dam is a heavy milking Unanimous 409B daughter that comes with a low birth EPD of 0.9

39 PEAK DOT NEXT STEP 2022F
Male PDAR 2022F March 17 2018 2053289
 PRAIRIE PRIDE NEXT STEP 2036SYDGEN 928 DESTINATION 5420
 RBM NEXT STEP D143 FLYING V MISS PRIDE 426
 RBM MISS PRIDE A32 RBM ANSWER X085
 RBM MISS PRIDE Y209
 S A V ELIMINATOR 9105 RITO 707 OF IDEAL 3407 7075
 PEAK DOT LADY LAWN 548B S A V ABIGALE 5646
 LADY LAWN OF PEAK DOT 895XDOUBLE AA OLD POST BANDOLIER
 REMINGTON LADY LAWN 144R
 BW: 80lbs. Adj 205 day Wt: 851 lbs. Adj 365 day Wt: 1321 lbs.
 BW:+1.8 WW: +52 YW: +97 Milk: +21

>Recommended for heifers
 >Style and substance
 >Weaning ratio of 102.
 >Dam is moderate and wedge shaped.

43 PEAK DOT NEXT STEP 2062F
Male PDAR 2062F March 21 2018 2053862
 PRAIRIE PRIDE NEXT STEP 2036SYDGEN 928 DESTINATION 5420
 RBM NEXT STEP C531 FLYING V MISS PRIDE 426
 RBM H198 A369 H&K CC&7 H198
 RBM PRIDEMERE X153
 PEAK DOT GRASSLANDS 537W SANDY BAR GRASSLANDS 94T
 PEAK DOT MIA 377Z CEDAR OF PEAK DOT 844T
 MIA OF PEAK DOT 613U MOHNEN DYNAMITE 1356
 MIA OF PEAK DOT 731R
 BW: 80lbs. Adj 205 day Wt: 804 lbs. Adj 365 day Wt: 1440 lbs.
 BW:+2.6 WW: +59 YW: +111 Milk: +15

>Recommended for heifers or cows
 >A longer bull with extra body mass and width. Yearling ratio of 116.
 >Maternal brothers sold to David Brozik and Ken Schmidt.
 >Dam is broody Grasslands daughter.

40 PEAK DOT NEXT STEP 2014F
Male PDAR 2014F March 16 2018 2053281
 PRAIRIE PRIDE NEXT STEP 2036SYDGEN 928 DESTINATION 5420
 RBM NEXT STEP C531 FLYING V MISS PRIDE 426
 RBM H198 A369 H&K CC&7 H198
 RBM PRIDEMERE X153
 PEAK DOT BOLD 204U MOHNEN DYNAMITE 1356
 PEAK DOT LADY 487A QUEEN OF PEAK DOT 652S
 LADY OF PEAK DOT 483U S A V 004 CAPACITY 5234
 LADY OF PEAK DOT 731G
 BW: 74lbs. Adj 205 day Wt: 753 lbs. Adj 365 day Wt: 1327 lbs.
 BW:+1.3 WW: +52 YW: +101 Milk: +15

>Recommended for heifers
 >Powerful build. Loaded with meat and muscle from end to end.
 >Yearling weight ratio of 116
 >Maternal brother sold to 52 Ranch.
 >Dam is a deeper sided cow.

44 PEAK DOT NEXT STEP 2065F
Male PDAR 2065F April 09 2018 NO PAPER
 PRAIRIE PRIDE NEXT STEP 2036SYDGEN 928 DESTINATION 5420
 RBM NEXT STEP C531 FLYING V MISS PRIDE 426
 RBM H198 A369 H&K CC&7 H198
 RBM PRIDEMERE X153
 HOOVER NO DOUBT MOGCK BULLSEYE
 PEAK DOT LADY 287D MISS BLACKCAP ELLSTON J2
 LADY OF PEAK DOT 979U S A V 004 PREDOMINANT 4438
 LADY OF PEAK DOT 782L
 BW: 67lbs. Adj 205 day Wt: 939 lbs. Adj 365 day Wt: 1444 lbs.
 BW:+2.7 WW: +69 YW: +117 Milk: +20

>Recommended for heifers.
 >A low birth Next Step bull with thickness, muscle, power and a superior structure
 >Weaning ratio of 115. Ranks in top 1% for weaning weight EPD.
 >Dam traces back to the herd matriarch Lady of Peak Dot 782L who has 68 progeny.
 >Just for the commercial cattlemen, this good bull sells with out papers

Next Step Bulls . . .



RBM Next Step D143

A summer snap shot of Next Step D143 out in the breeding pasture. The Next Step bulls offer true calving-ease without sacrificing thickness, muscle, capacity and performance.

45	PEAK DOT NEXT STEP 342F
Male	PDAR 342F February 05 2018 2023991
PRAIRIE PRIDE NEXT STEP 2036 SYDGEN 928 DESTINATION 5420	
RBM NEXT STEP D143	FLYING V MISS PRIDE 426
RBM MISS PRIDE A32	RBM ANSWER X085
	RBM MISS PRIDE Y209
BUSHES EASY DECISION 98	VIN-MAR O'REILLY FACTOR
PEAK DOT JESSICA 122D	BUSHES BIG BLACKBIRD 7885
JESSICA OF PEAK DOT 403W	MOHNEN DYNAMITE 1356
	JESSICA OF PEAK DOT 426N
BW: 77lbs. Adj 205 day Wt: 795 lbs. Adj 365 day Wt: 1448 lbs.	
BW:+2.6 WW: +63 YW: +118 Milk: +19	

>Recommended for heifers
 >A sure bet calving ease bull that is smooth made. Yearling ratio of 113.
 >Ranks in the top 6% for weaning weight and top 2% for yearling weight EPDs.
 >Dam is a very nice uddered with breed leading EPDs.

47	PEAK DOT NEXT STEP 2092F
Male	PDAR 2092F March 25 2018 2053903
PRAIRIE PRIDE NEXT STEP 2036 SYDGEN 928 DESTINATION 5420	
RBM NEXT STEP D143	FLYING V MISS PRIDE 426
RBM MISS PRIDE A32	RBM ANSWER X085
	RBM MISS PRIDE Y209
PEAK DOT UNANIMOUS 409B	VISION UNANIMOUS 1418
PEAK DOT QUEEN 2247D	HEROINE OF PEAK DOT 434U
QUEEN OF PEAK DOT 963X	DUFF ENCORE 702
	QUEEN OF PEAK DOT 652S
BW: 68lbs. Adj 205 day Wt: 779 lbs. Adj 365 day Wt: 1337 lbs.	
BW:+1.4 WW: +53 YW: +108 Milk: +17	

>Recommended for heifers
 >An attractive low birth weight bull complete with a powerful rump.
 >Yearling ratio 113.
 >Dam is a full bodied Unanimous 409B daughter.

46	PEAK DOT NEXT STEP 2080F
Male	PDAR 2080F March 24 2018 2053893
PRAIRIE PRIDE NEXT STEP 2036 SYDGEN 928 DESTINATION 5420	
RBM NEXT STEP D143	FLYING V MISS PRIDE 426
RBM MISS PRIDE A32	RBM ANSWER X085
	RBM MISS PRIDE Y209
PEAK DOT ELIMINATOR 723A	S A V ELIMINATOR 9105
PEAK DOT QUEEN 2175D	HEROINE OF PEAK DOT 962U
QUEEN OF PEAK DOT 942U	MOHNEN DYNAMITE 1356
	QUEEN OF PEAK DOT 710P
BW: 72lbs. Adj 205 day Wt: 859 lbs. Adj 365 day Wt: 1478 lbs.	
BW:+2.1 WW: +57 YW: +117 Milk: +21	

>Recommended for heifers
 >A stylish well made bull with good performance and impressive EPDs.
 >Weaning ratio of 104. Yearling ratio of 125.
 >Dam traces back to popular embryo donor Queen of Peak Dot 710P.

48	PEAK DOT NEXT STEP 2088F
Male	PDAR 2088F March 24 2018 2053900
PRAIRIE PRIDE NEXT STEP 2036 SYDGEN 928 DESTINATION 5420	
RBM NEXT STEP C531	FLYING V MISS PRIDE 426
RBM H198 A369	H&K CC&7 H198
	RBM PRIDEMERE X153
MOHNEN DYNAMITE 1356	BALDRIDGE KABOOM K243
PANSY OF PEAK DOT 443U	MOHNEN JILT 910
PANSY OF PEAK DOT 770P	STEVENSON BRUNO 6371
	PANSY OF PEAK DOT 741G
BW: 74lbs. Adj 205 day Wt: 814 lbs. Adj 365 day Wt: 1249 lbs.	
BW:+1.4 WW: +50 YW: +87 Milk: +19	

>Recommended for heifers
 >A calving ease bull with bred in muscle expression and herd bull presence.
 >Dynamite dam has a long outstanding production record.

Herdbook Bulls . . .

Peak Dot Herdbook 151C

Peak Dot Reference Sire



VIN-MAR O'RILEY FACTOR
 BUSHES EASY DECISION 98
 BUSHES BIG BLACKBIRD 7885
PEAK DOT HERDBOOK 151C
 SAV IRON MOUNTAIN 8066
 BARDOILA OF PEAK DOT 639X
 BARDOILA OF PEAK DOT 423U

BW +2.1
 WW +68
 YW +117
 MILK +23



BARDOILA OF PEAK DOT 639X
 The dam of Herdbook

Herdbook was a \$35,000 feature bull from the 2016 spring sale selling to Hillcrest Enterprises. Herdbook consistently sires cattle that are thick-topped, heavy muscled, and stout rumped. His dam is one of the most amazing females in the breed in terms of body shape, volume and sheer elegance. She is also the dam of new up and coming herdsire Peak Dot For Sure owned by Alta Genetics.



PEAK DOT HERDBOOK 2245F - LOT 49

49 PEAK DOT HERDBOOK 2245F

Male PDAR 2245F May 11 2018 2069515
 BUSHES EASY DECISION 98 VIN-MAR O'REILLY FACTOR
 PEAK DOT HERDBOOK 151C BUSHES BIG BLACKBIRD 7885
 BARDOILA OF PEAK DOT 639X SAV IRON MOUNTAIN 8066
 PEAK DOT BOLD 204U BARDOILA OF PEAK DOT 423U
 LADY OF PEAK DOT 63Y MOHNEN DYNAMITE 1356
 LADY OF PEAK DOT 468U QUEEN OF PEAK DOT 652S
 STEVENSON BRUNO 6371
 LADY OF PEAK DOT 782L

BW: 75lbs. Adj 205 day Wt: 884 lbs. Adj 365 day Wt: 1410 lbs.
 BW:+1.6 WW: +56 YW: +97 Milk: +23

>Recommended for heifers
 >A five star calving ease bull with thickness, muscle and volume and performance.
 >Weaning ratio of 107. Yearling ratio of 106



LADY OF PEAK DOT 782L
 The maternal great grandam of lot 49

Herdbook Bulls ...



PEAK DOT HERDBOOK 2243F - LOT 50

50	PEAK DOT HERDBOOK 2243F	
Male	PDAR 2243F May 11 2018 2069511	
	BUSHES EASY DECISION 98	VIN-MAR O'REILLY FACTOR
	PEAK DOT HERDBOOK 151C	BUSHES BIG BLACKBIRD 7885
	BARDOLIA OF PEAK DOT 639X	S A V IRON MOUNTAIN 8066
		BARDOLIA OF PEAK DOT 423U
	VISION UNANIMOUS 1418	VISIONTOPLINE ROYAL STOCKMAN
	PEAK DOT LADY 574B	VISION EDELLA 665
	LADY OF PEAK DOT 933U	S A V 004 PREDOMINANT 4438
		LADY OF PEAK DOT 615K
	BW: 85lbs. Adj 205 day Wt: 975 lbs. Adj 365 day Wt: 1551 lbs.	
	BW:+3.2 WW: +73 YW: +131 Milk: +20	

>Recommended for heifers or cows
 >Extra power in this bull's pedigree.
 >Weaning ratio of 118. Yearling ratio of 116.
 >Dam is a very nice uddered Unanimous daughter.



PEAK DOT HERDBOOK 309F - LOT 51

51	PEAK DOT HERDBOOK 309F	
Male	PDAR 309F February 01 2018 2042388	
	BUSHES EASY DECISION 98	VIN-MAR O'REILLY FACTOR
	PEAK DOT HERDBOOK 151C	BUSHES BIG BLACKBIRD 7885
	BARDOLIA OF PEAK DOT 639X	S A V IRON MOUNTAIN 8066
		BARDOLIA OF PEAK DOT 423U
	PEAK DOT BOLD 204U	MOHNEN DYNAMITE 1356
	LADY OF PEAK DOT 287Y	QUEEN OF PEAK DOT 652S
	LADY OF PEAK DOT 589T	PEAK DOT HOBSON 57N
		LADY OF PEAK DOT 521M
	BW: 70lbs. Adj 205 day Wt: 718 lbs. Adj 365 day Wt: 1403 lbs.	
	BW:+1.2 WW: +50 YW: +99 Milk: +18	

>Recommended for heifers
 >Low birth, broad-backed bull with a stout rump.
 >Dam is moderate and feminine with a nice udder.
 >Embryo donor dam has 10 progeny recorded with CAA.

52	PEAK DOT HERDBOOK 2284F	
Male TW	PDAR 2284F May 30 2018 2069621	
	BUSHES EASY DECISION 98	VIN-MAR O'REILLY FACTOR
	PEAK DOT HERDBOOK 151C	BUSHES BIG BLACKBIRD 7885
	BARDOLIA OF PEAK DOT 639X	S A V IRON MOUNTAIN 8066
		BARDOLIA OF PEAK DOT 423U
	VISION UNANIMOUS 1418	VISIONTOPLINE ROYAL STOCKMAN
	PEAK DOT BARDOLIA 386B	VISION EDELLA 665
	BARDOLIA OF PEAK DOT 307X	DUFF ENCORE 702
		BARDOLIA OF PEAK DOT 901T
	BW: 82lbs. Adj 205 day Wt: 891 lbs. Adj 365 day Wt: 1466 lbs.	
	BW:+2.4 WW: +60 YW: +100 Milk: +18	

>Recommended for heifers or cows
 >A stout functional good bull with good performance. Weaning and yearling ratios of 100.
 >Comes from a well proven cow family.
 >A maternal brother sold to Mantario Grazing Ltd.



LADY OF PEAK DOT 287Y
 The dam of lot 51

Herdbook Bulls ...

53 PEAK DOT HERDBOOK 2202F
 Male PDAR 2202F April 23 2018 2069604

BUSHES EASY DECISION 98	VIN-MAR O'REILLY FACTOR
PEAK DOT HERDBOOK 151C	BUSHES BIG BLACKBIRD 7885
BARDOLIA OF PEAK DOT 639X	S A V IRON MOUNTAIN 8066
VISION UNANIMOUS 1418	BARDOLIA OF PEAK DOT 423U
PEAK DOT MIA 586C	VISIONTOPLINE ROYAL STOCKMAN
MIA OF PEAK DOT 768Z	VISION EDELLA 665
	S A V BULLET 0473
	MIA OF PEAK DOT 909U

BW: 84lbs. Adj 205 day Wt: 879 lbs. Adj 365 day Wt: 1366 lbs.
 BW:+4.0 WW: +68 YW: +110 Milk: +20

>Recommended for cows or heifers
 >Built to last, abundant depth and thickness. Weaning ratio of 105.
 >Dam is a heavy milking cow from the popular Mia cow family.



54 PEAK DOT HERDBOOK 2269F
 Male PDAR 2269F May 23 2018 2069606

BUSHES EASY DECISION 98	VIN-MAR O'REILLY FACTOR
PEAK DOT HERDBOOK 151C	BUSHES BIG BLACKBIRD 7885
BARDOLIA OF PEAK DOT 639X	S A V IRON MOUNTAIN 8066
VISION UNANIMOUS 1418	BARDOLIA OF PEAK DOT 423U
PEAK DOT LADY 567A	VISIONTOPLINE ROYAL STOCKMAN
LADY OF PEAK DOT 763T	VISION EDELLA 665
	PEAK DOT HOBSON 57N
	LADY OF PEAK DOT 370J

BW: 74lbs. Adj 205 day Wt: 889 lbs. Adj 365 day Wt: 1505 lbs.
 BW:+1.8 WW: +71 YW: +124 Milk: +20

>Recommended for heifers
 >A smooth patterned bull with thickness and fleshing ability
 >Weaning ratio of 108. Yearling ratio of 125.
 >Maternal brother sold to Simmie Colony.



55 PEAK DOT HERDBOOK 2259F
 Male PDAR 2259F May 19 2018 2069589

BUSHES EASY DECISION 98	VIN-MAR O'REILLY FACTOR
PEAK DOT HERDBOOK 151C	BUSHES BIG BLACKBIRD 7885
BARDOLIA OF PEAK DOT 639X	S A V IRON MOUNTAIN 8066
MOHNEN DYNAMITE 1356	BARDOLIA OF PEAK DOT 423U
LADY OF PEAK DOT 425U	BALDRIDGE KABOOM K243
LADY OF PEAK DOT 507S	MOHNEN JILT 910
	S A V 004 PREDOMINANT 4438
	LADY OF PEAK DOT 652N

BW: 76lbs. Adj 205 day Wt: 896 lbs. Adj 365 day Wt: 1387 lbs.
 BW:+0.4 WW: +59 YW: +100 Milk: +20

>Recommended for heifers
 >A stout made calving ease bull that moves around the pen with ease.
 >Posted some impressive weights every time across the scale.



PANSY OF PEAK DOT 910U
 The dam of lot 57

56 PEAK DOT HERDBOOK 2274F
 Male PDAR 2274F May 24 2018 2069517

BUSHES EASY DECISION 98	VIN-MAR O'REILLY FACTOR
PEAK DOT HERDBOOK 151C	BUSHES BIG BLACKBIRD 7885
BARDOLIA OF PEAK DOT 639X	S A V IRON MOUNTAIN 8066
PEAK DOT BOLD 204U	BARDOLIA OF PEAK DOT 423U
PEAK DOT DUCHESS 466B	MOHNEN DYNAMITE 1356
DUCHESS OF PEAK DOT 606U	QUEEN OF PEAK DOT 652S
	S A V 004 PREDOMINANT 4438
	DUCHESS OF PEAK DOT 716R

BW: 79lbs. Adj 205 day Wt: 916 lbs. Adj 365 day Wt: 1435 lbs.
 BW:+2.3 WW: +59 YW: +103 Milk: +23

>Recommended for cows or heifers
 >Check him out. A stud that posted some impressive numbers. Ranks in the top 10% for weaning and yearling EPDs.
 >Weaning index of 111. Yearling index of 105
 >Maternal brother sold to IV Ranches.



PANSY OF PEAK DOT 911U
 Full sister to the dam of lot 57

57 PEAK DOT HERDBOOK 2116F
 Male PDAR 2116F April 02 2018 2053924

BUSHES EASY DECISION 98	VIN-MAR O'REILLY FACTOR
PEAK DOT HERDBOOK 151C	BUSHES BIG BLACKBIRD 7885
BARDOLIA OF PEAK DOT 639X	S A V IRON MOUNTAIN 8066
S A V 004 PREDOMINANT 4438	BARDOLIA OF PEAK DOT 423U
PANSY OF PEAK DOT 910U	S A V 8180 TRAVELER 004
PANSY OF PEAK DOT 329J	S A V EMBLYNETTE 1182
	MERIT 6105
	PANSY OF PEAK DOT 760G

BW: 68lbs. Adj 205 day Wt: 790 lbs. Adj 365 day Wt: 1356 lbs.
 BW:+1.0 WW: +55 YW: +99 Milk: +19

>Recommended for heifers
 >A low birth EPD bull that is broad and wide backed.
 >Yearling ratio of 104
 >Dam and grandam are past embryo donors.

Liberty Bulls...

Peak Dot Liberty 117C *Peak Dot Reference Sire*



VIN-MAR O'REILLY FACTOR
 BUSHES EASY DECISION 98
 BUSHES BIG BLACKBIRD 7885
PEAK DOT LIBERTY 117C
 PEAK DOT VOLT 950U
 LADY OF PEAK DOT 623Z
 LADY OF PEAK DOT 509R

BW +2.5
 WW +68
 YW +120
 MILK +23

Featured \$47,000 second high selling bull at Peak Dot Ranch 2016 spring bull sale to Alta Genetics. Liberty is gaining worldwide attention for his growth and performance combined with eye-appealing phenotype. You will appreciate his son's for the outstanding width across their tops and nice heads.



PEAK DOT LIBERTY 258F - LOT 58

58 PEAK DOT LIBERTY 258F

Male PDAR 258F January 24 2018 2029265
 BUSHES EASY DECISION 98 VIN-MAR O'REILLY FACTOR
 PEAK DOT LIBERTY 117C BUSHES BIG BLACKBIRD 7885
 LADY OF PEAK DOT 623Z PEAK DOT VOLT 950U
 LADY OF PEAK DOT 509R
 PEAK DOT PIONEER 9X S A V PIONEER 7301
 PEAK DOT MAYFLOWER 1129Z DUCHESS OF PEAK DOT 610T
 MAYFLOWER OF PEAK DOT 356W DUFF ENCORE 702
 MAYFLOWER OF PEAK DOT 479R
 BW: 82lbs. Adj 205 day Wt: 812 lbs. Adj 365 day Wt: 1420 lbs.
 BW:+2.9 WW: +55 YW: +98 Milk: +23



>Recommended for heifers or cows
 >A Herdbull. Well muscled, smooth shoulder bull. Should leave some nice looking daughters.
 >Dam has flawless phenotype, capacity and fleshing ability.

Liberty, Outcome and Jump Start Bulls...



PEAK DOT OUTCOME
The Sire of lot 63



PEAK DOT DIVISION 86A
The dam of lot 63



ERICA OF PEAK DOT 478U
The grandam of lot 64

59 PEAK DOT LIBERTY 533F
Male PDAR 533F March 14 2018 2029452

BUSHES EASY DECISION 98	VIN-MAR O'REILLY FACTOR
PEAK DOT LIBERTY 117C	BUSHES BIG BLACKBIRD 7885
LADY OF PEAK DOT 623Z	PEAK DOT VOLT 950U
	LADY OF PEAK DOT 509R
BUSHES EASY DECISION 98	VIN-MAR O'REILLY FACTOR
PEAK DOT LADY 1002C	BUSHES BIG BLACKBIRD 7885
LADY OF PEAK DOT 637U	S A V 004 CAPACITY 5234
	LADY OF PEAK DOT 744R

BW: 77lbs. Adj 205 day Wt: 970 lbs. Adj 365 day Wt: 1477 lbs.
BW:+3.2 WW: +73 YW: +118 Milk: +25

>Recommended for heifers
>Liberty calves come easy and this guy comes recommended for heifers. Weaning ratio 119.
>Maternal brother sold to Bruce Alford.

63 PEAK DOT OUTCOME 290F
Male PDAR 290F January 29 2018 2029282

BUSHES EASY DECISION 98	VIN-MAR O'REILLY FACTOR
PEAK DOT OUTCOME	BUSHES BIG BLACKBIRD 7885
PEAK DOT ERICA 736B	VISION UNANIMOUS 1418
	ERICA OF PEAK DOT 478U
VISION UNANIMOUS 1418	VISIONTOPLINE ROYAL STOCKMAN
PEAK DOT DIVISION 86A	VISION EDELLA 665
DIVISION OF PEAK DOT 690X	S A V BULLETIN 7904
	DIVISION OF PEAK DOT 964U

BW: 76lbs. Adj 205 day Wt: 781 lbs. Adj 365 day Wt: 1310 lbs.
BW:+2.7 WW: +58 YW: +100 Milk: +20

>Recommended for heifers
>A sure bet calving-ease bull.
>Donor dam is among the very best of the Unanimous daughters.

60 PEAK DOT LIBERTY 380F
Male PDAR 380F February 13 2018 2029322

BUSHES EASY DECISION 98	VIN-MAR O'REILLY FACTOR
PEAK DOT LIBERTY 117C	BUSHES BIG BLACKBIRD 7885
LADY OF PEAK DOT 623Z	PEAK DOT VOLT 950U
	LADY OF PEAK DOT 509R
VISION UNANIMOUS 1418	VISIONTOPLINE ROYAL STOCKMAN
PEAK DOT ERICA 735B	VISION EDELLA 665
ERICA OF PEAK DOT 478U	S A V 004 PREDOMINANT 4438
	ERICA OF PEAK DOT 326R

BW: 79lbs. Adj 205 day Wt: 829 lbs. Adj 365 day Wt: 1390 lbs.
BW:+2.7 WW: +65 YW: +113 Milk: +20

>Recommended for heifers or cows
>A strong top, smooth shoulders and a nice head on this very stout fellow. Weaning ratio 101.
>Offers immense breeding potential from a proven cow family, Grandam donor is one of the main anchors in the Peak Dot program with 53 progeny.

64 PEAK DOT EASY JUMP START 440F
Male PDAR 440F February 24 2018 2029367

BUSHES EASY DECISION 98	VIN-MAR O'REILLY FACTOR
PEAK DOT EASY JUMP START 142C	BUSHES BIG BLACKBIRD 7885
LADY OF PEAK DOT 942Y	S A V ELIMINATOR 9105
	LADY OF PEAK DOT 405S
VISION UNANIMOUS 1418	VISIONTOPLINE ROYAL STOCKMAN
PEAK DOT ERICA 738B	VISION EDELLA 665
ERICA OF PEAK DOT 478U	S A V 004 PREDOMINANT 4438
	ERICA OF PEAK DOT 326R

BW: 79lbs. Adj 205 day Wt: 758 lbs. Adj 365 day Wt: 1390 lbs.
BW:+2.6 WW: +54 YW: +107 Milk: +19

>Recommended for heifers or cows
>A powerful herd sire prospect with volume, thickness and muscle shape.
>Dam is a herd favorite and is backed by two generations of outstanding donor cows.
>Grandam is the world class donor Erica of Peak 478U. She currently has 53 progeny.

61 PEAK DOT LIBERTY 581F
Male PDAR 581F April 13 2018 2029536

BUSHES EASY DECISION 98	VIN-MAR O'REILLY FACTOR
PEAK DOT LIBERTY 117C	BUSHES BIG BLACKBIRD 7885
LADY OF PEAK DOT 623Z	PEAK DOT VOLT 950U
	LADY OF PEAK DOT 509R
S A V BULLET 0473	S A V BISMARCK 5682
PEAK DOT JUNE 249A	S A V EMBLYNETTE 7566
JUNE OF PEAK DOT 264M	HF YOUNG GUN 139J
	CEDAR CREEK LADY 33B

BW: 74lbs. Adj 205 day Wt: 887 lbs. Adj 365 day Wt: 1403 lbs.
BW: +2.8 WW: +60 YW: +103 Milk: +18

>Recommended for heifers
>A stout made calving ease bull with muscle expression and masculinity.
>Weaning ratio of 107.
>Bullet daughters come equipped with nice well attached udders and ample milk.

65 PEAK DOT EASY JUMP START 579F
Male PDAR 579F April 10 2018 2029535

BUSHES EASY DECISION 98	VIN-MAR O'REILLY FACTOR
PEAK DOT EASY JUMP START 142C	BUSHES BIG BLACKBIRD 7885
LADY OF PEAK DOT 942Y	S A V ELIMINATOR 9105
	LADY OF PEAK DOT 405S
MOHNNEN DYNAMITE 1356	BALDRIDGE KABOOM K243
PENNY OF PEAK DOT 1113X	MOHNNEN JILT 910
PENNY OF PEAK DOT 543K	DOUBLE AA RITO 28797
	PENNY OF PEAK DOT 541E

BW: 72lbs. Adj 205 day Wt: 758 lbs. Adj 365 day Wt: 1405 lbs.
BW:+2.7 WW: +50 YW: +104 Milk: +18

>Recommended for heifers.
>A low birth Jump Start bull with thickness, muscle, power and a superior structure
>Yearling ratio of 121.
>Maternal siblings have sold to Terry Smith, Harlay Throssall, Lloyd Clarke and Rocking R Angus Ranch.

62 PEAK DOT LIBERTY 585F
Male PDAR 585F April 18 2018 2029539

BUSHES EASY DECISION 98	VIN-MAR O'REILLY FACTOR
PEAK DOT LIBERTY 117C	BUSHES BIG BLACKBIRD 7885
LADY OF PEAK DOT 623Z	PEAK DOT VOLT 950U
	LADY OF PEAK DOT 509R
STEVENSON BRUNO 6371	STEVENSON BRUNO 561G
MIA OF PEAK DOT 731R	STEVENSON QUEEN 828F
MIA OF PEAK DOT 539E	HF WALK-ON 14C
	MIA OF PEAK DOT 604Z

BW: 75lbs. Adj 205 day Wt: 886 lbs. Adj 365 day Wt: 1409 lbs.
BW:+2.7 WW: +56 YW: +94 Milk: +23

>Recommended for heifers
>Low birth weight with lots of performance.
>Weaning ratio of 107
>Mature dam has a long proven production record.

66 PEAK DOT EASY DECISION 2992F
Male PDAR 2992F May 19 2018 2069615

BUSHES EASY DECISION 98	VIN-MAR O'REILLY FACTOR
PEAK DOT EASY DECISION 952C	BUSHES BIG BLACKBIRD 7885
MIA OF PEAK DOT 40Y	PEAK DOT RESOLUTE 37W
	MIA OF PEAK DOT 534R
S A V TOPSOIL 4354	S A V HARVESTOR 0338
PEAK DOT BARBARA 2052D	S A V EMBLYNETTE 9044
BARBARA OF PEAK DOT 163Y	S A V IRON MOUNTAIN 8066
	BARBARA OF PEAK DOT 466U

BW: 74lbs. Adj 205 day Wt: 898 lbs. Adj 365 day Wt: 1365 lbs.
BW:+3.9 WW: +58 YW: +95 Milk: +21

>Recommended for cows or heifers
>A long bodied, rugged-built stud rich in maternal heritage.
>Grandam is listed as an Elite dam with the CAA.

Attractive Bulls . . .

Schiefelbein ATTRACTIVE 4565

Peak Dot Reference Sire



SITZ TOP GAME 561X
 JMB TRACTION 292
 JMB EMULOTA 013
SCHIEFELBEIN ATTRACTIVE 4565
 SAV FINAL ANSWER 0035
 FROSTY ANSWER 3979
 FROSTY ELBA LIZZY 1106

BW +1.9
 WW +77
 YW +137
 MILK +36



FROSTY ANSWER 3979
 The dam of Attractive

One of the top selling bulls we purchased along with Semex from the 2016 Schiefelbein sale. Attractive is a calving-ease bull that will add growth and a good set of feet and legs. His dam is one of the best cows we have found in all our travels. She has produced over \$200,000 and is one of the main anchors in the Schiefelbein embryo program. Attractive has a great disposition and so do his sons.



PEAK DOT ATTRACTIVE 580F - LOT 67



Peak Dot Attractive 186F
 This paternal brother to lot 67 was the top selling bull in the spring sale to U2 Ranch and Richmond Ranch

67	PEAK DOT ATTRACTIVE 580F
Male	PDAR 580F April 12 2018 2031146
JMB TRACTION 292	SITZ TOP GAME 561X
SCHIEFELBEIN ATTRACTIVE 4565	JMB EMULOTA 013
FROSTY ANSWER 3979	S A V FINAL ANSWER 0035
	FROSTY ELBA LIZZY 1106
STEVENSON BRUNO 6371	STEVENSON BRUNO 561G
MIA OF PEAK DOT 592U	STEVENSON QUEEN 828F
MIA OF PEAK DOT 637N	S A V SAUGAHATCHEE 9374
	MIA OF PEAK DOT 501E
BW: 81lbs. Adj 205 day Wt: 823 lbs. Adj 365 day Wt: 1513 lbs.	
BW:+4.2 WW: +58 YW: +116 Milk: +32	



>Recommended for heifers or cows
 >An Attractive son that will add muscle and fleshing ability.
 >Ranks in the top 3% for yearling weight EPD and top 1% for milk EPD.
 >Out of a Broody Bruno daughter.

Attractive Bulls ...



PEAK DOT ATTRACTIVE 341F - LOT 68

68 PEAK DOT ATTRACTIVE 341F
 Male PDAR 341F February 05 2018 2042529
 JMB TRACTION 292 SITZ TOP GAME 561X
 SCHIEFELBEIN ATTRACTIVE 4565 JMB EMULOTA 013
 FROSTY ANSWER 3979 S A V FINAL ANSWER 0035
 SANDY BAR GRASSLANDS 94T WILBAR ADVANTAGE 202R
 PRINCESS OF PEAK DOT 428Y SANDY BAR JEMINA 22N
 PRINCESS OF PEAK DOT 413S STEVENSON BRUNO 6371
 CEDAR CREEK LADY 341G
 BW: 74lbs. Adj 205 day Wt: 701 lbs. Adj 365 day Wt: 1349 lbs.
 BW:+2.1 WW: +45 YW: +85 Milk: +28

>Recommended for heifers
 >An attractive bull complete with a powerful rump and superior structure.
 >Ranks in the top 6% for Milk EPD. Yearling ratio 112.



PEAK DOT ATTRACTIVE 104F - LOT 69

69 PEAK DOT ATTRACTIVE 104F
 Male PDAR 104F March 08 2018 2029219
 JMB TRACTION 292 DMF SITZ TOP GAME 561X
 SCHIEFELBEIN ATTRACTIVE 4565 JMB EMULOTA 013
 FROSTY ANSWER 3979 S A V FINAL ANSWER 0035
 PEAK DOT PRIME 733B FROSTY ELBA LIZZY 1106
 PEAK DOT BARBARA 356D VISION UNANIMOUS 1418
 BARBARA OF PEAK DOT 880Y ERICA OF PEAK DOT 478U
 S A V IRON MOUNTAIN 8066
 BARBARA OF PEAK DOT 925P
 BW: 71lbs. Adj 205 day Wt: 914 lbs. Adj 365 day Wt: 1510 lbs.
 BW:+2.9 WW: +71 YW: +127 Milk: +26

>Recommended for heifers
 >A five star calving ease bull with thickness, muscle, volume and performance. Weaning ratio of 113.
 >Dam is a two year old broody Prime daughter.



PEAK DOT ATTRACTIVE 117F - LOT 70

70 PEAK DOT ATTRACTIVE 117F
 Male PDAR 117F March 28 2018 2029591
 JMB TRACTION 292 SITZ TOP GAME 561X
 SCHIEFELBEIN ATTRACTIVE 4565 JMB EMULOTA 013
 FROSTY ANSWER 3979 S A V FINAL ANSWER 0035
 S A V TOPSOIL 4354 FROSTY ELBA LIZZY 1106
 PEAK DOT LADY 2097D S A V HARVESTOR 0338
 LADY OF PEAK DOT 648U PEAK DOT PRIME CUT 28N
 LADY OF PEAK DOT 514S
 BW: 72lbs. Adj 205 day Wt: 859 lbs. Adj 365 day Wt: 1296 lbs.
 BW:+3.1 WW: +65 YW: +103 Milk: +29

>Recommended for heifers
 >A low birth bull that performed very well. Thick, correct and easy fleshing. Weaning ratio of 104
 >Ranks in the top 3% for Milk EPD.
 >Dam is an attractive Top Soil daughter.

Attractive Bulls . . .



PEAK DOT ATTRACTIVE 195F - LOT 71

71 PEAK DOT ATTRACTIVE 195F	
Male	PDAR 195F January 15 2018 2023947
JMB TRACTION 292	SITZ TOP GAME 561X
SCHIEFELBEIN ATTRACTIVE 4565	JMB EMULOTA 013
FROSTY ANSWER 3979	S A V FINAL ANSWER 0035
S A V BULLETIN 7904	FROSTY ELBA LIZZY 1106
HYALITE OF PEAK DOT 27Y	S A V NET WORTH 4200
LADY OF PEAK DOT 831P	CHAMPION HILL GEORGINA 2175
	S A R NEW TREND 4100 2080
	LADY OF PEAK DOT 772G
BW: 65lbs. Adj 205 day Wt: 754 lbs. Adj 365 day Wt: 1319 lbs.	
BW:+0.7 WW: +44 YW: +86 Milk: +35	

>Recommended for heifers
 >A sure bet calving-ease bull that ranks in the top 1% for milk.
 >Feminine angular dam ranks in the top 1% for milk EPD.



PEAK DOT ATTRACTIVE 114F - LOT 72

72 PEAK DOT ATTRACTIVE 114F	
Male	PDAR 114F March 23 2018 2029588
JMB TRACTION 292	SITZ TOP GAME 561X
SCHIEFELBEIN ATTRACTIVE 4565	JMB EMULOTA 013
FROSTY ANSWER 3979	S A V FINAL ANSWER 0035
HOOVER NO DOUBT	FROSTY ELBA LIZZY 1106
PEAK DOT JESSICA 290D	MOGCK BULLSEYE
JESSICA OF PEAK DOT 247Y	MISS BLACKCAP ELLSTON J2
	PEAK DOT RANCLAND 29W
	JESSICA OF PEAK DOT 654U
BW: 56lbs. Adj 205 day Wt: 798 lbs. Adj 365 day Wt: 1333 lbs.	
BW:+1.1 WW: +62 YW: +112 Milk: +28	

>Recommended for heifers
 >A complete package with a powerful rump and hip structure. One of the lowest birth weight bulls in the sale.
 >Weaning ratio 113. Yearling ratio 103.
 >Dam is an attractive No Doubt daughter.



Cash Flow Bulls ...

KR CASH FLOW *Peak Dot Reference Sire*



SITZ DASH 10277
 BARSTOW CASH
 BARSTOW QUEEN W16
KR CASH FLOW
 WK RETURN
 WK LASS 1591
 VERMILLION LASS 0029

BW +3.9
 WW +67
 YW +123
 MILK +25



2014 National Western Stock Show Reserve Champion Pen

Cash Flow pictured on the right was the lead bull in the 2014 National Western Stock Show Reserve Champion Pen of bulls

Cash Flow was the lead bull from the 2014 NWSS Reserve Champion pen. He went on to become the high selling Barstow Cash son in the spring of 2014. We purchased this bull along with Semex for his extended length of body, wide pin setting and exceptional overall thickness. His ET dam is backed by a Pathfinder grandam. His first progeny are thick made cattle with muscle expression and volume throughout.

Peak Dot Cash Flow 424D *Peak Dot Reference Sire*



PEAK DOT CASHFLOW 424D

The \$40,000 featured Cashflow son from the 2017 Spring bull sale to Hillcrest Enterprises. Admired for his softness, balance, structural integrity and strong maternal heritage. We expect his daughters to be front pasture dams for both phenotype and production.



HEROINE OF PEAK DOT 225Z
 The dam of Peak Dot Cashflow 424D



HEROINE OF PEAK DOT 958U
 The grandam of Peak Dot Cashflow 424D



HEROINE OF PEAK DOT 958U
 The great grandam of Peak Dot Cashflow 424D



The Peak Dot Cow Herd...

For decades Peak Dot has focused on breeding a cow herd that is stacked with generations of females that are fertile, functional, productive and problem free. We have spent years of selecting for quality udders, feet and docility. Buy bulls with confidence knowing they come from a very strong, consistent genetic female base.



Cash Flow Bulls ...



PEAK DOT CASH FLOW 3031F - LOT 73

73	PEAK DOT CASH FLOW 3031F
Male	PDAR 3031F February 08 2018 2029824
BARSTOW CASH	SITZ DASH 10277
KR CASH FLOW	BARSTOW QUEEN W16
WK LASS 1591	WK RETURN
VISION UNANIMOUS 1418	VERMILION LASS 0029
PEAK DOT LADY 415C	VISIONTOPLINE ROYAL STOCKMAN
LADY OF PEAK DOT 725W	VISION EDELLA 665
	DUFF ENCORE 702
	LADY OF PEAK DOT 405S
BW: 84lbs. Adj 205 day Wt: 808 lbs. Adj 365 day Wt: 1400 lbs.	
BW: +4.0 WW: +59 YW: +103 Milk: +16	

>Recommended for cows
 >A stylish well muscled bull with lots of thickness.
 >Dam is a young productive looking Unanimous daughter.



PEAK DOT CASH FLOW 2163F - LOT 74

74	PEAK DOT CASH FLOW 2163F
Male	PDAR 2163F April 13 2018 2069558
KR CASH FLOW	BARSTOW CASH
PEAK DOT CASH FLOW 424D	WK LASS 1591
HEROINE OF PEAK DOT 225Z	S A V ELIMINATOR 9105
PEAK DOT BOLD 204U	HEROINE OF PEAK DOT 958U
PEAK DOT BARDOLIA 482B	MOHNEN DYNAMITE 1356
BARDOLIA OF PEAK DOT 624U	QUEEN OF PEAK DOT 652S
	S A V 004 PREDOMINANT 4438
	BARDOLIA OF PEAK DOT 734R
BW: 75lbs. Adj 205 day Wt: 770 lbs. Adj 365 day Wt: 1297 lbs.	
BW: +2.1 WW: +48 YW: +87 Milk: +21	

>Recommended for heifers or cows
 >An indestructible bull, wide topped and heavy legged like many of the Cash Flow sons.
 >Yearling ratio 107
 >Maternal brother sold to Bentley Colony.



PEAK DOT CASH FLOW 2190F - LOT 75

75	PEAK DOT CASH FLOW 2190F
Male	PDAR 2190F April 18 2018 2069559
KR CASH FLOW	BARSTOW CASH
PEAK DOT CASH FLOW 424D	WK LASS 1591
HEROINE OF PEAK DOT 225Z	S A V ELIMINATOR 9105
VISION UNANIMOUS 1418	HEROINE OF PEAK DOT 958U
PEAK DOT MIA 353B	VISIONTOPLINE ROYAL STOCKMAN
MIA OF PEAK DOT 171Y	VISION EDELLA 665
	S A V IRON MOUNTAIN 8066
	MIA OF PEAK DOT 595U
BW: 85lbs. Adj 205 day Wt: 933 lbs. Adj 365 day Wt: 1446 lbs.	
BW: +3.6 WW: +74 YW: +127 Milk: +18	

>Recommended for cows
 >Growth bull, expressive muscle shape and a wide top. Top 1% for weaning and Yearling EPD.
 >Weaning ratio of 112. Yearling ratio 104
 >Dam is a broody Unanimous daughter that ranks in the top 2% for weaning and yearling weight EPD.

Cash Flow Bulls . . .



PEAK DOT CASH FLOW 2120F - LOT 76



PEAK DOT CASH FLOW 362F - LOT 77



PEAK DOT CASH FLOW 2238F - LOT 78



PEAK DOT CASH FLOW 2189F - LOT 79

76 PEAK DOT CASH FLOW 2120F
Male PDAR 2120F April 04 2018 2053927

KR CASH FLOW	BARSTOW CASH
PEAK DOT CASH FLOW 424D	WK LASS 1591
HEROINE OF PEAK DOT 225Z	S A V ELIMINATOR 9105
	HEROINE OF PEAK DOT 958U
PEAK DOT PRIME CUT 433M	BASIN PRIME CUT 354K OSF
BARDALIA OF PEAK DOT 412U	BARDOLIA OF PEAK DOT 572E
BARDALIA OF PEAK DOT 402N	S A R FAME 2089
	LADY OF PEAK DOT 324J

**BW: 66lbs. Adj 205 day Wt: 740 lbs. Adj 365 day Wt: 1309 lbs.
 BW:-1.0 WW: +47 YW: +81 Milk: +14**

>Recommended for heifers
 >Clean fronted, moderate framed, wide based, extra muscle expression with a 66lb birth weight.
 >Yearling ratio 115.
 >Dam is a Broody Prime Cut daughter with an excellent track record.

77 PEAK DOT CASH FLOW 362F
Male PDAR 362F February 08 2018 2056963

KR CASH FLOW	BARSTOW CASH
PEAK DOT CASH FLOW 424D	WK LASS 1591
HEROINE OF PEAK DOT 225Z	S A V ELIMINATOR 9105
	HEROINE OF PEAK DOT 958U
PEAK DOT PROOF 1066X	S A V PIONEER 7301
PEAK DOT BARDOLIA 601B	BARBARA OF PEAK DOT 314T
BARDOLIA OF PEAK DOT 841X	S A V IRON MOUNTAIN 8066
	BARDOLIA OF PEAK DOT 796P

**BW: 79lbs. Adj 205 day Wt: 796 lbs. Adj 365 day Wt: 1376 lbs.
 BW:+3.2 WW: +62 YW: +110 Milk: +12**

>Recommended for cows
 >A bull that displays body depth and expressive muscle shape. Yearling ratio of 101.
 > Dam is a stout made Proof daughter with lots of middle

78 PEAK DOT CASH FLOW 2238F
Male PDAR 2238F May 10 2018 2069519

KR CASH FLOW	BARSTOW CASH
PEAK DOT CASH FLOW 424D	WK LASS 1591
HEROINE OF PEAK DOT 225Z	S A V ELIMINATOR 9105
	HEROINE OF PEAK DOT 958U
VISION UNANIMOUS 1418	VISIONTOPLINE ROYAL STOCKMAN
PEAK DOT ROSE 543C	VISION EDELLA 665
ROSE OF PEAK DOT 649Y	S A V IRON MOUNTAIN 8066
	ROSE OF PEAK DOT 643T

**BW: 80lbs. Adj 205 day Wt: 886 lbs. Adj 365 day Wt: 1375 lbs.
 BW:+3.2 WW: +65 YW: +106 Milk: +20**

>Recommended for heifers or cows
 >A deep flanked Cash flow son that would work anywhere. Weaning ratio of 107.
 >Stems back to the great Rose of Peak Dot 643T who along with several of her daughters have been flush cows.

79 PEAK DOT CASH FLOW 2189F
Male PDAR 2189F April 18 2018 2069584

KR CASH FLOW	BARSTOW CASH
PEAK DOT CASH FLOW 424D	WK LASS 1591
HEROINE OF PEAK DOT 225Z	S A V ELIMINATOR 9105
	HEROINE OF PEAK DOT 958U
S A V 004 CAPACITY 5234	S A V 8180 TRAVELER 004
LASSIE OF PEAK DOT 455U	S A V ERICA 1141
LASSIE OF PEAK DOT 996H	MERIT 6105
	LASSIE OF PEAK DOT 428D

**BW: 84lbs. Adj 205 day Wt: 813 lbs. Adj 365 day Wt: 1303 lbs.
 BW:+3.6 WW: +49 YW: +84 Milk: +19**

>Recommended for large heifers or cows
 >A powerful bull that will cover a lot of cows and get them all bred.
 >Maternal siblings have sold to Joe Holbrook, Hillcrest Enterprise, Bleak Lake Farms, Riskin Cattle, N3 Stock Farms and Smith Ranches.

Revamped Bulls ...

Revamped Peak Dot Reference Sire

Uniquely double bred to SAV Blackcap May 4136



RITO 707OF IDEAL 3407 7075
 SAV RESOURCE 1441
S A V BLACKCAP MAY 4136

REVAMPED
 S A V HERITAGE 6295
 SAV MADAME PRIDE 9065
 S A V MADAME PRIDE 5485

RR RITO 707
 IDEAL 3407 OF 1418
 S A V 8180 TRAVELER 004
 S A V MAY 2397
 CAR DUKE 104
S A V BLACKCAP MAY 4136
 GAR INTERGRITY
 SAV MADAM PRIDE 1093

BW +3.4
WW +72
YW +137
MILK +21



SAV BLACKCAP MAY 4136

The top income cow in Angus Breed history with \$9.5 million in direct progeny sales.

Revamped is one of the most uniquely bred SAV bull you will find anywhere in the country. He combines the proven and predictable SAV Resource, SAV Heritage with two shots of the legendary SAV Blackcap May 4136. SAV Blackcap May 4136 is the Angus breed's most influential genetic contributor and all time top income-producing cow, generating an outstanding \$9.5 million in progeny sales.

Revamped bulls display expressive muscle shape, outstanding thickness, natural fleshing ability and superb structure.



PEAK DOT REVAMPED 578F - LOT 80

80	PEAK DOT REVAMPED 578F
Male	PDAR 578F April 09 2018 2029534
S A V RESOURCE 1441	RITO 707 OF IDEAL 3407 7075
LFE REVAMPED 3010C DDF	S A V BLACKCAP MAY 4136
S A V MADAME PRIDE 9065	S A V HERITAGE 6295
	S A V MADAME PRIDE 5485
	D H D TRAVELER 6807
DUFF ENCORE 702	O C C DIXIE ERICA 814G
QUEEN OF PEAK DOT 349X	MERIT 6105
QUEEN OF PEAK DOT 587K	CEDAR CREEK QUEEN 29B
BW: 74lbs. Adj 205 day Wt: 839 lbs. Adj 365 day Wt: 1479 lbs.	
BW:+3.8 WW: +59 YW: +115 Milk: +17	



- >Recommended for heifers
- >Nice phenotype with very good maternal genetics.
- >Weaning ratio of 104. Yearling ratio of 119.
- >Dam is listed as an Elite dam with the CAA and comes from a great line of cows.

Revamped Bulls ...



PEAK DOT REVAMPED 553F - LOT 81

81	PEAK DOT REVAMPED 553F	
Male	PDAR 553F March 25 2018 2029490	
	S A V RESOURCE 1441	RITO 707 OF IDEAL 3407 7075
LFE REVAMPED 3010C	S A V BLACKCAP MAY 4136	
	S A V MADAME PRIDE 9065	S A V HERITAGE 6295
	VISION UNANIMOUS 1418	VISIONTOPLINE ROYAL STOCKMAN
PEAK DOT HEATHER 224B	VISION EDELLA 665	
HEATHER OF PEAK DOT 609T	HF POWER-UP 72N	
	HEATHER OF PEAK DOT 206M	
	BW: 74lbs. Adj 205 day Wt: 859 lbs. Adj 365 day Wt: 1350 lbs.	
	BW:+3.2 WW: +69 YW: +123 Milk: +19	

>Recommended for heifers

>A bull that brings calving ease, performance and maternal power to the table. Weaning ratio of 104.

>Ranks in the top 1% for weaning and yearling weight EPD.

>Dam has two daughters that sold to Northway Cattle.



PEAK DOT REVAMPED 524F - LOT 82

82	PEAK DOT REVAMPED 524F	
Male	PDAR 524F March 12 2018 2029442	
	S A V RESOURCE 1441	RITO 707 OF IDEAL 3407 7075
LFE REVAMPED 3010C	S A V BLACKCAP MAY 4136	
	S A V MADAME PRIDE 9065	S A V HERITAGE 6295
	VISION UNANIMOUS 1418	VISIONTOPLINE ROYAL STOCKMAN
PEAK DOT LADY 80C	VISION EDELLA 665	
LADY OF PEAK DOT 392W	DUFF ENCORE 702	
	LADY OF PEAK DOT 638N	
	BW: 80lbs. Adj 205 day Wt: 793 lbs. Adj 365 day Wt: 1416 lbs.	
	BW:+3.3 WW: +57 YW: +109 Milk: +18	

>Recommended for cows

>A bull with a strong straight top and good muscle definition. Yearling ratio 108.

>Deep bodied Unanimous dam has two daughters in the herd.



PEAK DOT REVAMPED 539F - LOT 83

83	PEAK DOT REVAMPED 539F	
Male	PDAR 539F March 16 2018 2029456	
	S A V RESOURCE 1441	RITO 707 OF IDEAL 3407 7075
LFE REVAMPED 3010C	S A V BLACKCAP MAY 4136	
	S A V MADAME PRIDE 9065	S A V HERITAGE 6295
	S A V MADAME PRIDE 5485	VIN-MAR O'REILLY FACTOR
BUSHES EASY DECISION 98	BUSHES BIG BLACKBIRD 7885	
PEAK DOT LADY 218C	PEAK DOT RESOLUTE 37W	
LADY OF PEAK DOT 541Z	LADY OF PEAK DOT 672X	
	BW: 77lbs. Adj 205 day Wt: 831 lbs. Adj 365 day Wt: 1280 lbs.	
	BW:+3.5 WW: +66 YW: +122 Milk: +20	

>Recommended for heifers or cows

>A well built calving ease bull with solid performance and functional pedigree.

>Dam is a heavy milking Easy Decision daughter that ranks in the top 3% of the breed for weaning weight EPD and top 1% for yearling weight EPD.

Revamped Bulls ...



PEAK DOT REVAMPED 570F - LOT 84

84	PEAK DOT REVAMPED 570F
Male	PDAR 570F April 04 2018 2029525
S A V RESOURCE 1441	RITO 707 OF IDEAL 3407 7075
LFE REVAMPED 3010C DDF	S A V BLACKCAP MAY 4136
S A V MADAME PRIDE 9065	S A V HERITAGE 6295
PEAK DOT BOLD 204U	S A V MADAME PRIDE 5485
ERICA OF PEAK DOT 896Y	MOHNEN DYNAMITE 1356
ERICA OF PEAK DOT 281W	QUEEN OF PEAK DOT 652S
	S A V 004 CAPACITY 5234
	ERICA OF PEAK DOT 212S
BW: 71lbs. Adj 205 day Wt: 753 lbs. Adj 365 day Wt: 1338 lbs. BW:+2.6 WW: +50 YW: +101 Milk: +22	

>Recommended for heifers
 >A stout well made bull that will hold up in rough conditions.
 >Yearling ratio 109.
 >Maternal brothers sold to Skogen GK Livestock and Chipping Hill Cattle Co.

85	PEAK DOT REVAMPED 445F
Male	PDAR 445F February 25 2018 2029371
S A V RESOURCE 1441	RITO 707 OF IDEAL 3407 7075
LFE REVAMPED 3010C	S A V BLACKCAP MAY 4136
S A V MADAME PRIDE 9065	S A V HERITAGE 6295
S A V ELIMINATOR 9105	S A V MADAME PRIDE 5485
PEAK DOT BLACK LASS 254B	RITO 707 OF IDEAL 3407 7075
BLACK LASS PEAK DOT 843S	S A V ABIGALE 5646
	BASIN PRIME CUT 354K
	CEDAR CREEK 302G
BW: 80lbs. Adj 205 day Wt: 848 lbs. Adj 365 day Wt: 1210 lbs. BW:+3.0 WW: +60 YW: +110 Milk: +19	

>Recommended for Cows or heifers
 >Loaded with shape, substance and style.
 >Eliminator dam comes equipped with a well made udder and small teat size.

86	PEAK DOT REVAMPED 483F
Male	PDAR 483F March 04 2018 2033628
S A V RESOURCE 1441	RITO 707 OF IDEAL 3407 7075
LFE REVAMPED 3010C DDF	S A V BLACKCAP MAY 4136
S A V MADAME PRIDE 9065	S A V HERITAGE 6295
S A V IRON MOUNTAIN 8066	S A V MADAME PRIDE 5485
LADY OF PEAK DOT 580Y	TC GRIDIRON 258 DMF
LADY OF PEAK DOT 387J	S A V MADAME PRIDE 3249
	DOUBLE AA BARDOLIER 3'97
	LADY OF PEAK DOT 248X
BW: 82lbs. Adj 205 day Wt: 674 lbs. Adj 365 day Wt: 1205 lbs. BW:+3.3 WW: +44 YW: +82 Milk: +11	

>Recommended for cows
 >Moderate framed and thick.
 >Very well made Iron Mountain dam. Grandam is a donor with 30 progeny.



PEAK DOT REVAMPED 445F - LOT 85



PEAK DOT REVAMPED 483F - LOT 86

Earnhardt Bulls . . .

JANSSEN EARNHARDT 5003

Peak Dot Reference Sire



SAV HERITAGE 6295
 SAV HARVESTOR 0338
 SAV EMBLYNETE 7749
JANSSEN EARNHARDT 5003
 SAV BRAND NAME 9115
 SAV MISS BOBBIE 2407
 SAV MISS BOBBIE 0045

BW +2.8
 WW +63
 YW +111
 MILK +22



SAV MISS BOBBIE 2407
 The dam of Earnhardt

Earnhardt is a stout and powerful son of SAV Harvester 0338 out of the uniquely bred and perfectly built SAV Miss Bobbie 2407. He was the top weaning bull of his entire calf crop at Janssen Angus. He offers a moderate birth weight with a 205 day weight of 977 pounds along with a 365-day weight that broke the 1,400 pound yearling weight barrier. A large number of Earnhardt and Top Soil daughters have been retained by Peak Dot for replacements.



PEAK DOT EARNHARDT 281F - LOT 87

87 PEAK DOT EARNHARDT 281F

Male PDAR 281F January 28 2018 2029276

S A V HARVESTOR 0338	S A V HERITAGE 6295
JANSSEN EARNHARDT 5003	S A V EMBLYNETTE 7749
S A V MISS BOBBIE 2470	S A V BRAND NAME 9115
	S A V MISS BOBBIE 0045
S A V ELIMINATOR 9105	RITO 707 OF IDEAL 3407 7075
PEAK DOT LADY 1193A	S A V ABIGALE 5646
LADY OF PEAK DOT 270W	DUFF ENCORE 702
	LADY OF PEAK DOT 566K

BW: 80lbs. Adj 205 day Wt: 817 lbs. Adj 365 day Wt: 1320 lbs.
 BW:+3.1 WW: +60 YW: +99 Milk: +18



PEAK DOT LADY 1193A
 The dam of lot 87

>Recommended for heifers or cows.
 >A stylish very correct individual rich in maternal value.
 >Dam comes with a quality udder and is a embryo donor.

Earnhardt Bulls



PEAK DOT EARNHARDT 295F - LOT 88



PEAK DOT EARNHARDT 220F - LOT 89



PEAK DOT EARNHARDT 328F - LOT 90



PEAK DOT EARNHARDT 338F - LOT 91

88 PEAK DOT EARNHARDT 295F

Male PDAR 295F January 29 2018 2029287

S A V HARVESTOR 0338	S A V HERITAGE 6295
JANSSEN EARNHARDT 5003	S A V EMBLYNETTE 7749
S A V MISS BOBBIE 2470	S A V BRAND NAME 9115
	S A V MISS BOBBIE 0045
DUFF ENCORE 702	D H D TRAVELER 6807
LADY OF PEAK DOT 241W	O C C DIXIE ERICA 814G
LADY OF PEAK DOT 608K	2TM STOCKMANS OSCAR 210
	LADY OF PEAK DOT 208R

BW: 81lbs. Adj 205 day Wt: 700 lbs. Adj 365 day Wt: 1300 lbs.
 BW:+3.5 WW: +38 YW: +62 Milk: +15

>Recommended for heifers or cows
 >A great hiped with expressive muscle shape and volume.
 >Duff Encore dam is feminine with a well attached udder.

89 PEAK DOT EARNHARDT 220F

Male PDAR 220F January 19 2018 2023959

S A V HARVESTOR 0338	S A V HERITAGE 6295
JANSSEN EARNHARDT 5003	S A V EMBLYNETTE 7749
S A V MISS BOBBIE 2470	S A V BRAND NAME 9115
	S A V MISS BOBBIE 0045
PEAK DOT DOMINATOR 42U	S A V 004 PREDOMINANT 4438
PANSY OF PEAK DOT 358X	LADY OF PEAK DOT 871L
PANSY OF PEAK DOT 323J	PEAK DOT GENERAL STONE 13F
	PANSY OF PEAK DOT 446D

BW: 87lbs. Adj 205 day Wt: 910 lbs. Adj 365 day Wt: 1239 lbs.
 BW:+2.3 WW: +58 YW: +72 Milk: +16

>Recommended for cows
 >A proud looking bull with good performance. Weaning ratio of 110.
 >Dam is a front pasture cow.

90 PEAK DOT EARNHARDT 328F

Male PDAR 328F February 03 2018 2029304

S A V HARVESTOR 0338	S A V HERITAGE 6295
JANSSEN EARNHARDT 5003	S A V EMBLYNETTE 7749
S A V MISS BOBBIE 2470	S A V BRAND NAME 9115
	S A V MISS BOBBIE 0045
S A V RADIANCE 0801	S A V BRILLIANCE 8077
PEAK DOT ANN 46A	S A V ELBA 801
ANN OF PEAK DOT 1137X	PEAK DOT VOLT 950U
	ANN OF PEAK DOT 824T

BW: 69lbs. Adj 205 day Wt: 719 lbs. Adj 365 day Wt: 1258 lbs.
 BW:+0.7 WW: +42 YW: +71 Milk: +17

>Recommended for heifers
 >An exceptional low birth bull with good performance numbers.
 >Dam is a model Angus cow.

91 PEAK DOT EARNHARDT 338F

Male PDAR 338F February 05 2018 2023989

S A V HARVESTOR 0338	S A V HERITAGE 6295
JANSSEN EARNHARDT 5003	S A V EMBLYNETTE 7749
S A V MISS BOBBIE 2470	S A V BRAND NAME 9115
	S A V MISS BOBBIE 0045
PEAK DOT GLADIATOR 800Y	S A V ELIMINATOR 9105
PEAK DOT MAYFLOWER 12B	ANNIE K OF PEAK DOT 533U
MAYFLOWER OF PEAK DOT 928Y	S A V ELIMINATOR 9105
	MAYFLOWER OF PEAK DOT 345T

BW: 80lbs. Adj 205 day Wt: 835 lbs. Adj 365 day Wt: 1295 lbs.
 BW:+2.5 WW: +51 YW: +78 Milk: +21

>Recommended for heifers or cows
 >A moderate framed beef bull with a balanced set of numbers. Weaning ratio 101.
 >A maternal brother sold to Jerry Klassen.

Charlo Bulls...

Coleman Charlo 5369 *Peak Dot Reference Sire*



OCC PAXTON 730P
 COLEMAN CHARLO 0256
 BOHI ABIGALE 6014
COLEMAN CHARLO 5369
 APEX WINDY 078
 COLEMAN DONNA 3354
 COLEMAN DONNA 6143

BW +1.9
 WW +56
 YW +96
 MILK +16

Coleman Charlo 5369 is the \$30,000 feature bull from the 2017 Coleman Angus bull sale selected by Peak Dot And Semex. He offers proven calving-ease feed efficiency with thickness and fleshing ability. His dam is sired by the exceptionally docile APEX Windy 078 and stems from the famous Donna cow family at Coleman Angus. You will appreciate the gentle nature and true breed character of these Charlo sons.



COLEMAN DONNA 6143
 The maternal grandam



COLEMAN DONNA J311
 Maternal great grandam



COLEMAN DONNA 9260
 Maternal sister to dam



PEAK DOT CHARLO 120F - LOT 92



COLEMAN CHARLO 5369

A snap shot of Charlo this summer out breeding cows. Lot 92 is a near replica of his sire.

92	PEAK DOT CHARLO 120F
Male	PDAR 120F April 03 2018 2029596
COLEMAN CHARLO 0256	O C C PAXTON 730P
COLEMAN CHARLO 5369	BOHI ABIGALE 6014
COLEMAN DONNA 3354	APEX WINDY 078
	COLEMAN DONNA 6143
	MOGCK BULLSEYE
HOOVER NO DOUBT	MISS BLACKCAP ELLSTON J2
PEAK DOT HEROINE 260D	PEAK DOT PREDOMINANT 4T
HEROINE OF PEAK DOT 342Y	HEROINE OF PEAK DOT 721P
BW: 69lbs. Adj 205 day Wt: 839 lbs. Adj 365 day Wt: 1368 lbs.	
BW:+2.2 WW: +56 YW: +100 Milk: +18	

>Recommended for Heifers or cows
 >A performance bull with thickness, muscle, volume and natural fleshing-ability.
 >Ranks in the top 15% for weaning and yearling EPD. Weaning ratio of 102.
 >Out of a No Doubt daughter with an excellent udder.

Innovation Bulls ...



MAR INNOVATION 251



LADY OF PEAK DOT 476S

The maternal grandam of lot 93



PEAK DOT INNOVATION 530F - LOT 93

93	PEAK DOT INNOVATION 530F
Male	PDAR 530F 2029450 March 13 2018
MAR INNOVATION 251	CONNEALY IMPRESSION
PEAK DOT INNOVATION 62D	MAR FINAL KAHUNA 856
PEAK DOT MAYFLOWER 303B	S A V RADIANCE 0801
PEAK DOT BOLD 204U	PEAK DOT MAYFLOWER 407Z
LADY OF PEAK DOT 623Y	MOHNEN DYNAMITE 1356
LADY OF PEAK DOT 476S	QUEEN OF PEAK DOT 652S
	HF POWER-UP 72N
	LADY OF PEAK DOT 566N
BW: 78lbs. Adj 205 day Wt: 891 lbs. Adj 365 day Wt: 1355 lbs.	
BW:+3.7 WW: +59 YW: +107 Milk: +22	

>Recommended for cows or heifers

>An complete package with a powerful rump and hip structure loads of maternal value. Weaning ratio of 109

>Dam is an attractive Bold daughter backed by 3 generations of donors.

94	PEAK DOT INNOVATION 2179F
Male	PDAR 2179F April 15 2018 2069582
MAR INNOVATION 251	CONNEALY IMPRESSION
PEAK DOT INNOVATION 62D	MAR FINAL KAHUNA 856
PEAK DOT MAYFLOWER 303B	S A V RADIANCE 0801
GAFFNEY GAME CHANGER 371	PEAK DOT MAYFLOWER 407Z
PEAK DOT LASSIE 2099D	CONNEALY CONFIDENCE 0100
PEAK DOT LASSIE 407B	R B LADY STANDARD 305-890
	PEAK DOT PROOF 1066X
	LASSIE OF PEAK DOT 430U
BW: 78lbs. Adj 205 day Wt: 783 lbs. Adj 365 day Wt: 1358 lbs.	
BW:+4.3 WW: +54 YW: +104 Milk: +25	

>Recommended for heifers or cows

>A real breeding bull with an attractive look.

>Yearling ratio 116.

>Dam is a beautiful wedge shaped Game Changer daughter.

95	PEAK DOT INNOVATION 2151F
Male	PDAR 2151F April 10 2018 2069533
MAR INNOVATION 251	CONNEALY IMPRESSION
PEAK DOT INNOVATION 62D	MAR FINAL KAHUNA 856
PEAK DOT MAYFLOWER 303B	S A V RADIANCE 0801
PEAK DOT UNANIMOUS 409B	PEAK DOT MAYFLOWER 407Z
PEAK DOT PENNY 2134D	VISION UNANIMOUS 1418
PEAK DOT PENNY 561A	HEROINE OF PEAK DOT 434U
	PEAK DOT PIONEER 569X
	PENNY OF PEAK DOT 742W
BW: 60lbs. Adj 205 day Wt: 721 lbs. Adj 365 day Wt: 1303 lbs.	
BW:+2.1 WW: +45 YW: +96 Milk: +16	

>Recommended for heifers

>Easy fleshing calving ease bull.

>Yearling ratio 118.



PEAK DOT INNOVATION 2179F - LOT 94



PEAK DOT INNOVATION 2151F - LOT 95

Peak Dot Country 604B



Peak Dot Reference Sire

VISIONTOPLINE ROYAL STOCKMAN	BW +2.7
VISION UNANIMOUS 1418	WW +66
VISION EDELLA 665	YW +114
PEAK DOT COUNTRY 604B	MILK +13
SAV IRON MOUNTAIN 8066	
ERICA OF PEAK DOT 668X	
ERICA OF PEAK DOT 478U	



ERICA OF PEAK DOT 478U

The maternal grandam of Peak Dot Country 604B

Country is a deep-bodied individual that offers an abundance of width and fleshing ability. He was the top performing bull from the 2013 calf crop earning a 205 day weaning weight of 1056 lbs for a weaning ratio of 146. His Iron Mountain dam has the look. His grandam is the most popular cow on the place and her influence can be seen throughout this offering.



PEAK DOT COUNTRY 905F - LOT 96

96	PEAK DOT COUNTRY 905F
Male	PDAR 905F April 01 2018 2029847
VISION UNANIMOUS 1418	VISIONTOPLINE ROYAL STOCKMAN
PEAK DOT COUNTRY 604B	VISION EDELLA 665
ERICA OF PEAK DOT 668X	S A V IRON MOUNTAIN 8066
	ERICA OF PEAK DOT 478U
VISION UNANIMOUS 1418	VISIONTOPLINE ROYAL STOCKMAN
PEAK DOT MAYFLOWER 653C	VISION EDELLA 665
MAYFLOWER OF PEAK DOT 407S	BASIN PRIME CUT 354K OSF
	MAYFLOWER OF PEAK DOT 504K
BW: 88lbs. Adj 205 day Wt: 803 lbs. Adj 365 day Wt: 1415 lbs.	
BW:+5.9 WW:+60 YW:+110 Milk:+15	



PEAK DOT COUNTRY 905F

Lot 96

>Recommended for cows
 >A naturally thick deep flanked bull with strong full top. Yearling ratio of 124.
 >Uniquely double bred back to Vision Unanimous 1418 for predictability and consistency.



PEAK DOT COUNTRY 908F - LOT 97

97	PEAK DOT COUNTRY 908F	
Male	PDAR 908F April 03 2018 2029852	
VISION UNANIMOUS 1418	VISIONTOPLINE ROYAL STOCKMAN	
PEAK DOT COUNTRY 604B	VISION EDELLA 665	
ERICA OF PEAK DOT 668X	S A V IRON MOUNTAIN 8066	
	ERICA OF PEAK DOT 478U	
PEAK DOT PIONEER 9X	S A V PIONEER 7301	
PEAK DOT BARBARA 1108B	DUCHESS OF PEAK DOT 610T	
BARBARA OF PEAK DOT 298W	PEAK DOT PREDOMINANT 82S	
	BARBARA OF PEAK DOT 435N	
BW: 87lbs. Adj 205 day Wt: 898 lbs. Adj 365 day Wt: 1408 lbs. BW:+3.6 WW: +60 YW: +105 Milk: +20		

>Recommended for heifers or cows
 >Excellent performance. Top 10% for weaning and yearling EPD. Weaning ratio of 107.
 >A heavy milking productive Pioneer 9X dam.
 >Grandam is listed as an Elite dam with CAA.



PEAK DOT COUNTRY 914F - LOT 98

98	PEAK DOT COUNTRY 914F	
Male	PDAR 914F April 12 2018 2029860	
VISION UNANIMOUS 1418	VISIONTOPLINE ROYAL STOCKMAN	
PEAK DOT COUNTRY 604B	VISION EDELLA 665	
ERICA OF PEAK DOT 668X	S A V IRON MOUNTAIN 8066	
	ERICA OF PEAK DOT 478U	
PEAK DOT PIONEER 9X	S A V PIONEER 7301	
PEAK DOT QUEEN 506C	DUCHESS OF PEAK DOT 610T	
QUEEN OF PEAK DOT 120Y	S A V IRON MOUNTAIN 8066	
	QUEEN OF PEAK DOT 619U	
BW: 77lbs. Adj 205 day Wt: 851 lbs. Adj 365 day Wt: 1361 lbs. BW:+2.1 WW: +59 YW: +105 Milk: +14		

>Recommended for heifers
 >Very stout made bull with lots of capacity, volume and thickness with only a 77lbs birth weight.
 >Weaning ratio of 103. Yearling ratio of 103
 >Dam is a moderate sized wide based cow who has produced a bull that sold to Ailsacraig Farms Ltd.



PEAK DOT COUNTRY 920F - LOT 99

99	PEAK DOT COUNTRY 920F	
Male	PDAR 920F May 04 2018 2029869	
VISION UNANIMOUS 1418	VISIONTOPLINE ROYAL STOCKMAN	
PEAK DOT COUNTRY 604B	VISION EDELLA 665	
ERICA OF PEAK DOT 668X	S A V IRON MOUNTAIN 8066	
	ERICA OF PEAK DOT 478U	
S A V 004 PREDOMINANT 4438	S A V 8180 TRAVELER 004	
LADY OF PEAK DOT 801S	S A V EMBLYNETTE 1182	
LADY OF PEAK DOT 937P	S A R NEW TREND 4100 2080	
	LADY OF PEAK DOT 548K	
BW: 78lbs. Adj 205 day Wt: 850 lbs. Adj 365 day Wt: 1398 lbs. BW:+3.3 WW: +53 YW: +97 Milk: +18		

>Recommended for heifers or cows
 >A low birth weight bull with a tremendous top and thickness. Rich in maternal value.
 >Weaning ratio of 102. Yearling ratio of 111.
 >Nice uddered broody dam has raised progeny selling to Northway Cattle, Athabasca Colony, Francis Brown and Dan Webster.

Country Bulls ...



PEAK DOT COUNTRY 921F - LOT 100

100 PEAK DOT COUNTRY 921F
 Male PDAR 921F May 10 2018 2072835
 VISION UNANIMOUS 1418 VISIONTOPLINE ROYAL STOCKMAN
 PEAK DOT COUNTRY 604B VISION EDELLA 665
 ERICA OF PEAK DOT 668X S A V IRON MOUNTAIN 8066
 ERICA OF PEAK DOT 478U
 S A V 004 PREDOMINANT 4438 S A V 8180 TRAVELER 004
 ANNIE K OF PEAK DOT 359W S A V EMBLYNETTE 1182
 ANNIE K OF PEAK DOT 800P PEAK DOT PANAMA 121G
 DOUBLE AA ANNIE K 271'95
 BW: 87lbs. Adj 205 day Wt: 835 lbs. Adj 365 day Wt: 1394 lbs.
 BW:+4.4 WW: +53 YW: +99 Milk: +17

>Recommended for cows
 >A long bodied meat wagon. Yearling ratio of 113.
 >Dam has raised progeny which have sold to Hillcrest Enterprises and Northway Cattle.
 >Grandam is listed as an Elite dam with the CAA.



PEAK DOT COUNTRY 900F - LOT 101

101 PEAK DOT COUNTRY 900F
 Male PDAR 900F March 15 2018 2029842
 VISION UNANIMOUS 1418 VISIONTOPLINE ROYAL STOCKMAN
 PEAK DOT COUNTRY 604B VISION EDELLA 665
 ERICA OF PEAK DOT 668X S A V IRON MOUNTAIN 8066
 ERICA OF PEAK DOT 478U
 JINDRA DOUBLE VISION CONNEALY REFLECTION
 PEAK DOT LADY 53C HOFF RACHEL 8312 405
 LADY OF PEAK DOT 596Y PEAK DOT BOLD 204U
 LADY OF PEAK DOT 782L
 BW: 70lbs. Adj 205 day Wt: 818 lbs. Adj 365 day Wt: 1371 lbs.
 BW:+2.3 WW: +59 YW: +107 Milk: +18

>Recommended for heifers
 >A calving-ease bull with performance and a proud look. Weaning index of 112.
 >Top 10% of the breed for weaning and yearling weight EPD.
 >Solid built Double Vision dam.



PEAK DOT COUNTRY 906F - LOT 102

102 PEAK DOT COUNTRY 906F
 Male PDAR 906F April 02 2018 2029849
 VISION UNANIMOUS 1418 VISIONTOPLINE ROYAL STOCKMAN
 PEAK DOT COUNTRY 604B VISION EDELLA 665
 ERICA OF PEAK DOT 668X S A V IRON MOUNTAIN 8066
 ERICA OF PEAK DOT 478U
 S A V 004 PREDOMINANT 4438 S A V 8180 TRAVELER 004
 DIVINA OF PEAK DOT 706T S A V EMBLYNETTE 1182
 DIVINA OF PEAK DOT 911H PEAK DOT STOCKMAN 12F
 CEDAR CREEK ANNIE K 903A
 BW: 91lbs. Adj 205 day Wt: 830 lbs. Adj 365 day Wt: 1372 lbs.
 BW:+5.8 WW: +54 YW: +97 Milk: +15

>Recommended for cows
 >Easy fleshing stout and solid. Yearling ratio 110.
 >Dam from a proven cow line and has raised progeny selling to Northway Cattle, Lawson Grazing, Barr Water & Vacuum, Chapman Angus, P&B Cattle, Lane View Farms and Philip Kostawich.

Country Bulls ...



PEAK DOT COUNTRY 903F - LOT 103

103	PEAK DOT COUNTRY 903F
Male	PDAR 903F March 31 2018 2029845
VISION UNANIMOUS 1418	VISIONTOPLINE ROYAL STOCKMAN
PEAK DOT COUNTRY 604B	VISION EDELLA 665
ERICA OF PEAK DOT 668X	S A V IRON MOUNTAIN 8066
	ERICA OF PEAK DOT 478U
KR CASH FLOW	BARSTOW CASH DDF
PEAK DOT LASSIE 78C	WK LASS 1591
PEAK DOT LASSIE 1220Z	PEAK DOT IRON MOUNTAIN 669X
	LASSIE OF PEAK DOT 278W
BW: 80lbs. Adj 205 day Wt: 790 lbs. Adj 365 day Wt: 1236 lbs.	
BW:+3.6 WW: +52 YW: +90 Milk: +20	

>Recommended for heifers or cows
 >A bull with length, thickness and superior structure.
 >Maternal brother to the \$60,000 Glassman Farms Herdsire Peak Dot Lithium 114E

104	PEAK DOT COUNTRY 918F
Male	PDAR 918F April 19 2018 2029866
VISION UNANIMOUS 1418	VISIONTOPLINE ROYAL STOCKMAN
PEAK DOT COUNTRY 604B	VISION EDELLA 665
ERICA OF PEAK DOT 668X	S A V IRON MOUNTAIN 8066
	ERICA OF PEAK DOT 478U
PEAK DOT HOBSON 57N	STEVENSON BRUNO 6371
ANNIE K OF PEAK DOT 805T	LADY OF PEAK DOT 558K
DOUBLE AA ANNIE K 631'01	DOUBLE AA BLACKMAN 252'96
	DOUBLE AA ANNIE K 568'96
BW: 88lbs. Adj 205 day Wt: 845 lbs. Adj 365 day Wt: 1312 lbs.	
BW:+5.0 WW: +50 YW: +87 Milk: +13	

>Recommended for cows
 >A good looking bull smooth and athletic in his movement. Durable and built for ranch country.
 >Weaning ratio of 100.
 >Dam is moderate with an attractive front. Grandam is an Elite dam with the CAA.

105	PEAK DOT COUNTRY 910F
Male	PDAR 910F April 04 2018 2029854
VISION UNANIMOUS 1418	VISIONTOPLINE ROYAL STOCKMAN
PEAK DOT COUNTRY 604B	VISION EDELLA 665
ERICA OF PEAK DOT 668X	S A V IRON MOUNTAIN 8066
	ERICA OF PEAK DOT 478U
S A V AUTOGRAPH 5204	S A V 8180 TRAVELER 004
LADY OF PEAK DOT 411T	S A V CHERYL 9030
LADY OF PEAK DOT 449R	S A R FAME 2089
	LADY OF PEAK DOT 461J
BW: 88lbs. Adj 205 day Wt: 871 lbs. Adj 365 day Wt: 1419 lbs.	
BW:+4.2 WW: +53 YW: +93 Milk: +19	

>Recommended for cows
 >A big performance powerhouse with added size and length of body.
 >Weaning ratio of 105. Yearling ratio of 111.
 >Dam is a proven Autograph daughter with a solid production record.



PEAK DOT LITHIUM 114E

This maternal brother to lot 103 was one of the top selling bulls in the 2018 spring sale to Glassman Farms.

106	PEAK DOT COUNTRY 915F
Male	PDAR 915F April 14 2018 2029862
VISION UNANIMOUS 1418	VISIONTOPLINE ROYAL STOCKMAN
PEAK DOT COUNTRY 604B	VISION EDELLA 665
ERICA OF PEAK DOT 668X	S A V IRON MOUNTAIN 8066
	ERICA OF PEAK DOT 478U
KDF POWERLINE 28N	RIVERBEND POWERLINE 0050
ROSILLA OF PEAK DOT 585S	LADY BONNIE OF K DEEN KY 75K
ROSILLA OF PEAK DOT 642N	HF MOST WANTED 46H
	ROSILLA OF PEAK DOT 615F
BW: 84lbs. Adj 205 day Wt: 832 lbs. Adj 365 day Wt: 1277 lbs.	
BW:+3.6 WW: +47 YW: +82 Milk: +15	

>Recommended for heifers or cows
 >This attractive Country son has a great top and excellent rump structure.
 >Siblings have sold to J5 Livestock, Gordie Howe and Neil Vancurren.

Country Bulls ...



PEAK DOT COUNTRY 911F - LOT 107

107	PEAK DOT COUNTRY 911F
Male	PDAR 911F April 08 2018 2029855
VISION UNANIMOUS 1418	VISIONTOPLINE ROYAL STOCKMAN
PEAK DOT COUNTRY 604B	VISION EDELLA 665
ERICA OF PEAK DOT 668X	S A V IRON MOUNTAIN 8066
	ERICA OF PEAK DOT 478U
PEAK DOT ELIMINATOR 723A	S A V ELIMINATOR 9105
PEAK DOT SUSIE 56C	HEROINE OF PEAK DOT 962U
PEAK DOT SUSIE 147A	S A V BULLETIN 7904
	SUSIE OF PEAK DOT 319X
BW: 85lbs. Adj 205 day Wt: 877 lbs. Adj 365 day Wt: 1312 lbs.	
BW:+4.1 WW: +55 YW: +98 Milk: +19	

>Recommended for heifers or cows
 >Husky made bull with extra muscle expression. Weaning ratio of 105.
 >Dam is backed by four generations of outstanding cows. Maternal sisters at Peak Dot and Northway.



108	PEAK DOT COUNTRY 922F
Male	PDAR 922F May 15 2018 2029870
VISION UNANIMOUS 1418	VISIONTOPLINE ROYAL STOCKMAN
PEAK DOT COUNTRY 604B	VISION EDELLA 665
ERICA OF PEAK DOT 668X	S A V IRON MOUNTAIN 8066
	ERICA OF PEAK DOT 478U
BASIN PRIME CUT 354K OSF	SUMMITCREST PRIME CUT 1G42
MAYFLOWER OF PEAK DOT 407S	BASIN HEIRESS 353
MAYFLOWER OF PEAK DOT 504KHF	MOST WANTED 46H
	MAYFLOWER OF PEAK DOT 907H
BW: 79lbs. Adj 205 day Wt: 825 lbs. Adj 365 day Wt: 1330 lbs.	
BW:+3.5 WW: +44 YW: +76 Milk: +17	

>Recommended for heifers
 >Country bulls are consistently loaded with shape, substance and style. Weaning ratio of 102.
 >Older proven dam comes equipped with a well made udder and small teat size. Grandam is a past embryo donor.



109	PEAK DOT COUNTRY 924F
Male	PDAR 924F May 17 2018 2029872
VISION UNANIMOUS 1418	VISIONTOPLINE ROYAL STOCKMAN
PEAK DOT COUNTRY 604B	VISION EDELLA 665
ERICA OF PEAK DOT 668X	S A V IRON MOUNTAIN 8066
	ERICA OF PEAK DOT 478U
S A V 004 CAPACITY 5234	S A V 8180 TRAVELER 004
QUEEN OF PEAK DOT 755T	S A V ERICA 1141
QUEEN OF PEAK DOT 326J	MERIT 6105
	QUEEN OF PEAK DOT 705G
BW: 80lbs. Adj 205 day Wt: 852 lbs. Adj 365 day Wt: 1287 lbs.	
BW:+2.8 WW: +47 YW: +76 Milk: +15	

>Recommended for cows or heifers
 >A smooth patterned bull with thickness and fleshing ability. Weaning ratio of 102.
 >Dam is wedge shaped with a quality udder. Maternal brothers at Battle Creek Grazing and Smith Ranches.

110	PEAK DOT COUNTRY 390F
Male	PDAR 390F February 14 2018 2029328
VISION UNANIMOUS 1418	VISIONTOPLINE ROYAL STOCKMAN
PEAK DOT COUNTRY 604B	VISION EDELLA 665
ERICA OF PEAK DOT 668X	S A V IRON MOUNTAIN 8066
	ERICA OF PEAK DOT 478U
S A V IRON MOUNTAIN 8066	TC GRIDIRON 258
LADY OF PEAK DOT 567Y	S A V MADAME PRIDE 3249
LADY OF PEAK DOT 782L	DOUBLE AA RITO 28797
	LADY OF PEAK DOT 575E
BW: 77lbs. Adj 205 day Wt: 878 lbs. Adj 365 day Wt: 1464 lbs.	
BW:+4.1 WW: +56 YW: +93 Milk: +17	

>Recommended for cows
 >Maternal brother is U2 Ranch Herdsire Peak Dot No Doubt 171D
 >Well built dam has raised bulls purchased by U2 Ranch, Patrick Molsberry, Jack Gunter and Kevin Forward

Vision Unanimous 1418 *Peak Dot Reference Sire*



VISION EDELLA 665

The dam of Unanimous

GAMBLES ROYAL FLUSH
 VISION TOPLINE ROYAL STOCKMAN
 LAGRAN PRIDE 7140
VISION UNANIMOUS 1418
 BOYD ON TARGET 1083
 VISION EDELLA 665
 VISION EDELLA 337

BW +2.9
 WW +74
 YW +128
 MILK +17



Visitors Nova Piratinings Farms Brazil

Nova Piratinings Farms Brazil purchased 15,000 semen straws on Vision Unanimous 1418 and 3000 semen straws of Bush Easy Decision 98

We purchased Unanimous as the lot 1 top selling bull in the 2012 Vision Angus Bull sale. Unanimous sons have been well received topping several sales around the country. They are a true testament to him displaying impressive three-dimensional pounds, mass and body on a moderate frame. His sons are solid on their feet, very stout built and gentle to handle while his daughters are extremely feminine and broody. Unanimous has generated much excitement within the Angus breed and will continue be a major contributor to the future of the beef cattle industry.

VISION UNANIMOUS 1418 DAUGHTERS ...



PEAK DOT DIVISION 86A

Unanimous daughter



PEAK DOT PRISCILLA 239A

Unanimous daughter



PEAK DOT LADY 780A

Unanimous daughter



PEAK DOT BANNORA 83A

Unanimous daughter

Unanimous Bulls ...



PEAK DOT UNANIMOUS 564F - LOT 111



PEAK DOT UNANIMOUS 498F - LOT 112



111	PEAK DOT UNANIMOUS 564F
Male	PDAR 564F March 28 2018 2029501
VISIONTOPLINE ROYAL STOCKMAN	GAMBLES ROYAL FLUSH
VISION UNANIMOUS 1418	LAGRAND PRIDE 7140
VISION EDELLA 665	BOYD ON TARGET 1083
	VISION EDELLA 337
S A V BULLET 0473	S A V BISMARCK 5682
PEAK DOT ANNIE K 1082Z	S A V EMBLYNETTE 7566
ANNIE K OF PEAK DOT 385W	DUFF ENCORE 702
	ANNIE K OF PEAK DOT 306M
BW: 71lbs. Adj 205 day Wt: 789 lbs. Adj 365 day Wt: 1485 lbs.	
BW:+2.8 WW: +64 YW: +121 Milk: +15	

112	PEAK DOT UNANIMOUS 498F
Male	PDAR 498F March 05 2018 2029419
VISIONTOPLINE ROYAL STOCKMAN	GAMBLES ROYAL FLUSH
VISION UNANIMOUS 1418	LAGRAND PRIDE 7140
VISION EDELLA 665	BOYD ON TARGET 1083
	VISION EDELLA 337
S A V BULLETIN 7904	S A V NET WORTH 4200
PRIDE OF PEAK DOT 344X	CHAMPION HILL GEORGINA 2175
PRIDE OF PEAK DOT 532K	DOUBLE AA RITO 287'97
	WAYNE'S PRIDE OF 95
BW: 88lbs. Adj 205 day Wt: 916 lbs. Adj 365 day Wt: 1528 lbs.	
BW:+5.1 WW: +56 YW: +96 Milk: +21	

>Recommended for heifers
 >A calving-ease bull with performance. Yearling index of 130.
 >Ranks in top 1% for yearling EPD.

>Recommended for cows
 >A stout functional good bull with good performance. Weaning ratio of 116.
 >Dam is a broody looking Bulletin daughter with a solid production record.

Unanimous Bulls ...



PEAK DOT UNANIMOUS 391F - LOT 113

113 PEAK DOT UNANIMOUS 391F
 Male PDAR 391F February 14 2018 2029329
 VISIONTOPLINE ROYAL STOCKMAN GAMBLES ROYAL FLUSH
 VISION UNANIMOUS 1418 LAGRAN PRIDE 7140
 VISION EDELLA 665 BOYD ON TARGET 1083
 S A R NEW TREND 4100 2080 L F NEW TREND 4100
 LADY OF PEAK DOT 923P CHAMPION HILL POCAHONTAS
 LADY OF PEAK DOT 520E HF WALK-ON 14C
 LADY OF PEAK DOT 631Z
 BW: 78lbs. Adj 205 day Wt: 838 lbs. Adj 365 day Wt: 1471 lbs.
 BW:+3.0 WW: +54 YW: +91 Milk: +18

>Recommended for heifers or cows
 >A smooth patterned bull with thickness, fleshing ability and worlds of maternal value.
 >Weaning ratio of 102. Yearling ratio 109.
 >Dam is an older cow in the herd that has stood the test of time with a long outstanding production record.

114 PEAK DOT UNANIMOUS 516F
 Male PDAR 516F March 09 2018 2072834
 VISIONTOPLINE ROYAL STOCKMAN GAMBLES ROYAL FLUSH
 VISION UNANIMOUS 1418 LAGRAN PRIDE 7140
 VISION EDELLA 665 BOYD ON TARGET 1083
 PEAK DOT BOLD 204U VISION EDELLA 337
 BARBARA OF PEAK DOT 862Y MOHNEN DYNAMITE 1356
 BARBARA OF PEAK DOT 285W QUEEN OF PEAK DOT 652S
 PEAK DOT PREDOMINANT 92S
 BARBARA OF PEAK DOT 563K
 BW: 80lbs. Adj 205 day Wt: 837 lbs. Adj 365 day Wt: 1200 lbs.
 BW:+3.2 WW: +56 YW: +100 Milk: +18

>Recommended for heifers or cows
 >A masculine bull with lots of muscle expression and herd bull presence.
 >Feminine nice uddered Bold dam.

115 PEAK DOT UNANIMOUS 514F
 Male PDAR 514F March 09 2018 2029433
 VISIONTOPLINE ROYAL STOCKMAN GAMBLES ROYAL FLUSH
 VISION UNANIMOUS 1418 LAGRAN PRIDE 7140
 VISION EDELLA 665 BOYD ON TARGET 1083
 S A V 004 PREDOMINANT 4438 VISION EDELLA 337
 LASSIE OF PEAK DOT 240W S A V 8180 TRAVELER 004
 LASSIE OF PEAK DOT 350J S A V EMBLYNETTE 1182
 PEAK DOT WALK-ON 51G
 LASSIE OF PEAK DOT 428D
 BW: 78lbs. Adj 205 day Wt: 826 lbs. Adj 365 day Wt: 1485 lbs.
 BW:+2.0 WW: +58 YW: +105 Milk: +15

>Recommended for heifers
 > A lower birth weight bull with a strong straight top and good muscle definition.
 >Weaning ratio 114, ranks in the top 10% for weaning and yearling EPD.

Heifers for Sale...

Peak Dot Ranch has registered Angus heifers for sale by private treaty. This is a seldom offered chance to acquire some of the top females from our program. This is a perfect set of heifers for anyone wanting to start a new Angus herd, or strengthen an existing one. Contact Peak Dot Ranch for more information on this opportunity.

View a complete list of the Private treaty heifers at: www.peakdotranch.com



116 PEAK DOT UNANIMOUS 421F
 Male PDAR 421F February 21 2018 2029352
 VISIONTOPLINE ROYAL STOCKMAN GAMBLES ROYAL FLUSH
 VISION UNANIMOUS 1418 LAGRAN PRIDE 7140
 VISION EDELLA 665 BOYD ON TARGET 1083
 S A V IRON MOUNTAIN 8066 VISION EDELLA 337
 HYALTIE OF PEAK DOT 605X TC GRIDIRON 258
 HYALTIE OF PEAK DOT 880P S A V MADAME PRIDE 3249
 S A R NEW TREND 4100 2080
 HYALITE OF PEAK DOT 742L
 BW: 67lbs. Adj 205 day Wt: 759 lbs. Adj 365 day Wt: 1292 lbs.
 BW:+0.5 WW: +47 YW: +85 Milk: +11

>Recommended for heifers
 >A calving-ease bull with performance.
 >Solid built Iron Mountain dam has produced progeny purchased by Northway Cattle, Lane Valley Farms and Lazy H Ranch.

Unanimous 1019B Bulls ...

Peak Dot Unanimous 1019B *Peak Dot Reference Sire*



VISIONTOPLINE ROYAL STOCKMAN	BW +2.5
VISION UNANIMOUS 1418	
VISION EDELLA 665	WW +41
PEAK DOT UNANIMOUS 1019B	YW +73
STEVENSON BRUNO 561G	MILK +22
MIA OF PEAK DOT 592U	
MIA OF PEAK DOT 637N	

One of the top selling Unanimous sons from the 2016 Peak Dot Spring bull sale selected by Hillcrest. He offers massive thickness, volume and expressive muscle shape. His Stevenson Bruno dam is moderate framed, easy fleshing and has a quality udder. The phenomenal sons by Unanimous 1019B display masculinity, muscle and maturity at an early age.



PEAK DOT UNANIMOUS 2184F - LOT 117

117 PEAK DOT UNANIMOUS 2184F

Male	PDAR 2184F April 17 2018 2069556
VISION UNANIMOUS 1418	VISIONTOPLINE ROYAL STOCKMAN
PEAK DOT UNANIMOUS 1019B	VISION EDELLA 665
MIA OF PEAK DOT 592U	STEVENSON BRUNO 6371
	MIA OF PEAK DOT 637N
S A V PIONEER 7301	S A V FINAL ANSWER 0035
MIA OF PEAK DOT 1017X	S A V BLACKBIRD 5297
MIA OF PEAK DOT 578U	STEVENSON BRUNO 6371
	GALE OF PEAK DOT 317M
BW: 80lbs. Adj 205 day Wt: 974 lbs. Adj 365 day Wt: 1371 lbs.	
BW:+2.1 WW: +53 YW: +83 Milk: +23	



>Recommended for heifers or cows
 >Excellent performance. Weaning ratio of 118.
 >A heavy milking productive dam by Pioneer has two daughters working at Northway Cattle and two daughters at Hillcrest Enterprises.

Unanimous 1019B Bulls ...



PEAK DOT UNANIMOUS 2142F - LOT 118

118 PEAK DOT UNANIMOUS 2142F
 Male PDAR 2142F April 10 2018 2069623
 VISION UNANIMOUS 1418 VISIONTOPLINE ROYAL STOCKMAN
 PEAK DOT UNANIMOUS 1019B VISION EDELLA 665
 MIA OF PEAK DOT 592U STEVENSON BRUNO 6371
 S A V RADIANCE 0801 MIA OF PEAK DOT 637N
 S A V BRILLIANCE 8077
 PEAK DOT BARDOLIA 296B S A V ELBA 801
 PEAK DOT BARDOLIA 353Z PEAK DOT BOLD 204U
 BARDOLIA OF PEAK DOT 231W
 BW: 76lbs. Adj 205 day Wt: 886 lbs. Adj 365 day Wt: 1419 lbs
 BW:+2.2 WW: +52 YW: +100 Milk: +21

>Recommended for heifers
 >A sure bet calving ease bull that is smooth made.
 >Weaning ratio of 107. Yearling ratio of 108.



PEAK DOT UNANIMOUS 2170F - LOT 119

119 PEAK DOT UNANIMOUS 2170F
 Male PDAR 2170F April 14 2018 2069554
 VISION UNANIMOUS 1418 VISIONTOPLINE ROYAL STOCKMAN
 PEAK DOT UNANIMOUS 1019B VISION EDELLA 665
 MIA OF PEAK DOT 592U STEVENSON BRUNO 6371
 DUFF ENCORE 702 MIA OF PEAK DOT 637N
 D H D TRAVELER 6807
 QUEEN OF PEAK DOT 963X O C C DIXIE ERICA 814G
 QUEEN OF PEAK DOT 652S S A V 004 PREDOMINANT 4438
 QUEEN OF PEAK DOT 806P
 BW: 80lbs. Adj 205 day Wt: 830 lbs. Adj 365 day Wt: 1335 lbs.
 BW:+2.8 WW: +45 YW: +84 Milk: +19

>Recommended for heifers or cows
 >Deep and soggy, naturally thick and loaded with meat. Yearling ratio of 102.
 >Phenomenal grandam is a second generation donor with massive thickness and volume. She has produced 11 progeny which have sold across Canada and the United States.



PEAK DOT UNANIMOUS 2130F - LOT 120

120 PEAK DOT UNANIMOUS 2130F
 Male PDAR 2130F April 08 2018 2069613
 VISION UNANIMOUS 1418 VISIONTOPLINE ROYAL STOCKMAN
 PEAK DOT UNANIMOUS 1019B VISION EDELLA 665
 MIA OF PEAK DOT 592U STEVENSON BRUNO 6371
 S A V ELIMINATOR 9105 MIA OF PEAK DOT 637N
 RITO 707 OF IDEAL 3407 7075
 PEAK DOT HEROINE 507B S A V ABIGALE 5646
 HEROINE OF PEAK DOT 663X S A V IRON MOUNTAIN 8066
 HEROINE OF PEAK DOT 434U
 BW: 80lbs. Adj 205 day Wt: 783 lbs. Adj 365 day Wt: 1128 lbs.
 BW:+2.3 WW: +38 YW: +66 Milk: +19

>Recommended for heifers or cows
 >Good bull, thick and very correct in his structure.
 >Dam is an easy fleshing Eliminator daughter has a son working at J5 Livestock and a Daughter in the donor pen at Northway Cattle.



PEAK DOT UNANIMOUS 2164F - LOT 121

121 PEAK DOT UNANIMOUS 2164F
 Male PDAR 2164F April 13 2018 2069557
 VISION UNANIMOUS 1418 VISIONTOPLINE ROYAL STOCKMAN
 PEAK DOT UNANIMOUS 1019B VISION EDELLA 665
 MIA OF PEAK DOT 592U STEVENSON BRUNO 6371
 S A V ELIMINATOR 9105 MIA OF PEAK DOT 637N
 RITO 707 OF IDEAL 3407 7075
 PEAK DOT PENNY 563C S A V ABIGALE 5646
 PEAK DOT PENNY 371Z PEAK DOT RANCLAND 29W
 PENNY OF PEAK DOT 625U
 BW: 74lbs. Adj 205 day Wt: 784 lbs. Adj 365 day Wt: 1212 lbs.
 BW:+2.0 WW: +40 YW: +73 Milk: +20

>Recommended for heifers or cows
 >A well built calving ease bull with solid performance and functional pedigree.
 >Dam is a heavy milking Eliminator daughter

Unanimous 409B Bulls ...

Peak Dot Unanimous 409B *Peak Dot Reference Sire*



VISIONTOPLINE ROYAL STOCKMAN	BW +1.0
VISION UNANIMOUS 1418	WW +60
VISION EDELLA 665	YW +109
PEAK DOT UNANIMOUS 409B	MILK +20
SAV 004 IRON MOUNTAIN 8066	
HEROINE OF PEAK DOT 434U	
HEROINE OF PEAK DOT 464S	



HEROINE OF PEAK DOT 434U

The Dam of Peak Dot Unanimous 409B

Peak Dot Unanimous 409B is another addition to our line up of Unanimous sons. His stoutness and overall power was unmatched in the 2015 bull season and he's passed all that down on to his first set of bulls. His sons are impressive. They are calving ease bulls with extra muscle, substance of bone, adequate performance. Owned by Hillcrest Enterprises.



PEAK DOT UNANIMOUS 2127F - LOT 122

122 PEAK DOT UNANIMOUS 2127F

Male	PDAR 2127F April 08 2018 2069610
VISION UNANIMOUS 1418	VISIONTOPLINE ROYAL STOCKMAN
PEAK DOT UNANIMOUS 1019B	VISION EDELLA 665
MIA OF PEAK DOT 592U	STEVENSON BRUNO 6371
	MIA OF PEAK DOT 637N
S A V ELIMINATOR 9105	RITO 707 OF IDEAL 3407 7075
ERICA OF PEAK DOT 750Z	S A V ABIGALE 5646
ERICA OF PEAK DOT 478U	S A V 004 PREDOMINANT 4438
	ERICA OF PEAK DOT 326R
BW: 84lbs. Adj 205 day Wt: 896 lbs. Adj 365 day Wt: 1479 lbs.	
BW:+2.8 WW: +56 YW: +107 Milk: +24	



ERICA OF PEAK DOT 478U

The maternal grandam of lot 122

>Recommended for cows or heifers

>A proud looking muscular bull with volume and fleshing ability rich in maternal merit.

>Dam is a embryo donor that is also listed as an Elite dam with the CAA. Her donor dam has 53 progeny and is also the dam of Alta sire Peak Dot Prime and the maternal grandam of Alta sires Peak Dot Country and Peak Dot Outcome. She has always produced top selling lots no matter who she has been mated to. Last year her daughter was the \$25,000 pick of the entire Peak Dot heifer pen selling in the New Years Resolution sale to Hillcrest Enterprises.

Unanimous 409B Bulls ...



PEAK DOT UNANIMOUS 2225F - LOT 123



PEAK DOT UNANIMOUS 2113F - LOT 124



PEAK DOT UNANIMOUS 2204F - LOT 125



PEAK DOT UNANIMOUS 2196F - LOT 126

123 PEAK DOT UNANIMOUS 2225F

Male PDAR 2225F May 05 2018 2069551
 VISION UNANIMOUS 1418 VISIONTOPLINE ROYAL STOCKMAN
 PEAK DOT UNANIMOUS 409B VISION EDELLA 665
 HEROINE OF PEAK DOT 434U S A V 004 PREDOMINANT 4438
 HEROINE OF PEAK DOT 464S
 S A V IRON MOUNTAIN 8066 TC GRIDIRON 258
 BARDOLIA OF PEAK DOT 139Y S A V MADAME PRIDE 3249
 BARDOLIA OF PEAK DOT 231W S A V 004 PREDOMINANT 4438
 BARDOLIA OF PEAK DOT 796P
 BW: 80lbs. Adj 205 day Wt: 868 lbs. Adj 365 day Wt: 1447 lbs.
 BW:+2.6 WW: +56 YW: +105 Milk: +11

>Recommended for cows or heifers
 >A performance bull with thickness, muscle, volume and natural fleshing-ability.
 >Ranks in the top 10% for yearling EPD.
 > Weaning ratio of 104. Yearling ratio 117.

124 PEAK DOT UNANIMOUS 2113F

Male PDAR 2113F March 31 2018 2053921
 VISION UNANIMOUS 1418 VISIONTOPLINE ROYAL STOCKMAN
 PEAK DOT UNANIMOUS 409B VISION EDELLA 665
 HEROINE OF PEAK DOT 434U S A V 004 PREDOMINANT 4438
 HEROINE OF PEAK DOT 464S
 S A V ELIMINATOR 9105 RITO 707 OF IDEAL 3407 7075
 PEAK DOT DUCHESS 577A S A V ABIGALE 5646
 DUCHESS OF PEAK DOT 818X S A V 004 CAPACITY 5234
 DUCHESS OF PEAK DOT 582K
 BW: 80lbs. Adj 205 day Wt: 883 lbs. Adj 365 day Wt: 1301 lbs.
 BW:+2.4 WW: +57 YW: +92 Milk: +18

>Recommended for cows or heifers
 >A Unanimous 409B son with ideal phenotype and superb structure. Weaning ratio of 106.
 >Very productive dam is elegant and nice uddered. Grandam is a donor.

125 PEAK DOT UNANIMOUS 2204F

Male PDAR 2204F April 24 2018 2069585
 VISION UNANIMOUS 1418 VISIONTOPLINE ROYAL STOCKMAN
 PEAK DOT UNANIMOUS 409B VISION EDELLA 665
 HEROINE OF PEAK DOT 434U S A V 004 PREDOMINANT 4438
 HEROINE OF PEAK DOT 464S
 S A V BULLET 0473 S A V BISMARCK 5682
 LADY OF PEAK DOT 792Z S A V EMBLYNETTE 7566
 LADY OF PEAK DOT 402U S A V AUTOGRAPH 5204
 LADY OF PEAK DOT 431R
 BW: 76lbs. Adj 205 day Wt: 855 lbs. Adj 365 day Wt: 1365 lbs.
 BW:+2.0 WW: +57 YW: +100 Milk: +19

>Recommended for heifers
 >A low birth weight calving ease bull with added length and substance.
 >Weaning and Yearling ratios of 100.
 >Donor Grandam has 15 progeny.

126 PEAK DOT UNANIMOUS 2196F

Male PDAR 2196F April 25 2018 NO PAPER
 VISION UNANIMOUS 1418 VISIONTOPLINE ROYAL STOCKMAN
 PEAK DOT UNANIMOUS 409B VISION EDELLA 665
 HEROINE OF PEAK DOT 434U S A V 004 PREDOMINANT 4438
 HEROINE OF PEAK DOT 464S
 PEAK DOT PIONEER 9X S A V PIONEER 7301
 PEAK DOT ROSE 549A DUCHESS OF PEAK DOT 610T
 ROSE OF PEAK DOT 659U STEVENSON BRUNO 6371
 ROSE OF PEAK DOT 441N
 BW: 66lbs. Adj 205 day Wt: 887 lbs. Adj 365 day Wt: 1455 lbs.
 BW:-0.1 WW: +52 YW: +94 Milk: +22

>Recommended for heifers
 >A calving-ease bull with performance.
 >Special for the commercial cow man, this good bull sells with out a registration paper.

Unanimous 409B Bulls ...

127 PEAK DOT UNANIMOUS 2155F

Male PDAR 2155F April 12 2018 2069546
 VISION UNANIMOUS 1418 VISIONTOPLINE ROYAL STOCKMAN
 PEAK DOT UNANIMOUS 409B VISION EDELLA 665
 HEROINE OF PEAK DOT 434U S A V 004 PREDOMINANT 4438
 PEAK DOT PIONEER 569X HEROINE OF PEAK DOT 464S
 PEAK DOT ERICA 476A S A V PIONEER 7301
 ERICA OF PEAK DOT 462U SUSIE OF PEAK DOT 585T
 PEAK DOT PRIME CUT 433M
 ERICA OF PEAK DOT 606N
 BW: 82lbs. Adj 205 day Wt: 797 lbs. Adj 365 day Wt: 1308 lbs.
 BW:+3.0 WW: +49 YW: +88 Milk: +13

>Recommended for heifers or cows.
 >Moderate framed good topped and thick. Weaning ratio of 103.
 >Dam is well built Pioneer 569X daughter.
 >A maternal brother sold to Wooddale Ag last year.

128 PEAK DOT UNANIMOUS 2244F

Male PDAR 2244F May 11 2018 2069516
 VISION UNANIMOUS 1418 VISIONTOPLINE ROYAL STOCKMAN
 PEAK DOT UNANIMOUS 409B VISION EDELLA 665
 HEROINE OF PEAK DOT 434U S A V 004 PREDOMINANT 4438
 S A V IRON MOUNTAIN 8066 HEROINE OF PEAK DOT 464S
 ROSE OF PEAK DOT 959X TC GRIDIRON 258
 ROSE OF PEAK DOT 441N S A V MADAME PRIDE 3249
 PEAK DOT PANAMA 121G
 CEDAR CREEK ROSE 47B
 BW: 86lbs. Adj 205 day Wt: 884 lbs. Adj 365 day Wt: 1323 lbs.
 BW:+3.6 WW: +53 YW: +88 Milk: +17

>Recommended for cows or heifers
 >A complete package with a powerful rump and hip structure. Weaning ratio of 106.
 >Dam has maternal sisters in the embryo program and grand is a past embryo donor.

129 PEAK DOT UNANIMOUS 2141F

Male PDAR 2141F April 10 2018 2069622
 VISION UNANIMOUS 1418 VISIONTOPLINE ROYAL STOCKMAN
 PEAK DOT UNANIMOUS 409B VISION EDELLA 665
 HEROINE OF PEAK DOT 434U S A V 004 PREDOMINANT 4438
 PEAK DOT PIONEER 9X HEROINE OF PEAK DOT 464S
 PEAK DOT NEONIA 537C S A V PIONEER 7301
 NEONIA OF PEAK DOT 467Y DUCHESS OF PEAK DOT 610T
 S A V IRON MOUNTAIN 8066
 NEONIA OF PEAK DOT 614T
 BW: 80lbs. Adj 205 day Wt: 922 lbs. Adj 365 day Wt: 1344 lbs.
 BW:+2.6 WW: +61 YW: +98 Milk: +19

>Recommended for heifers or cows
 >Pounds and performance.
 >Weaning ratio of 111. Weaning weight of 922lbs.

130 PEAK DOT UNANIMOUS 2159F

Male PDAR 2159F April 12 2018 2069542
 VISION UNANIMOUS 1418 VISIONTOPLINE ROYAL STOCKMAN
 PEAK DOT UNANIMOUS 409B VISION EDELLA 665
 HEROINE OF PEAK DOT 434U S A V 004 PREDOMINANT 4438
 PEAK DOT PROOF 1066X HEROINE OF PEAK DOT 464S
 PEAK DOT DUCHESS 589C S A V PIONEER 7301
 DUCHESS OF PEAK DOT 225Y BARBARA OF PEAK DOT 314T
 PEAK DOT RANGLAND 29W
 DUCHESS OF PEAK DOT 649U
 BW: 86lbs. Adj 205 day Wt: 897 lbs. Adj 365 day Wt: 1402 lbs.
 BW:+4.2 WW: +61 YW: +107 Milk: +19

>Recommended for cows
 >Easy fleshing stout and solid. Weaning ratio 107. Yearling ratio of 102.
 >A maternal brother sold to Wooddale Ag.

131 PEAK DOT UNANIMOUS 2200F

Male PDAR 2200F April 23 2018 2069603
 VISION UNANIMOUS 1418 VISIONTOPLINE ROYAL STOCKMAN
 PEAK DOT UNANIMOUS 409B VISION EDELLA 665
 HEROINE OF PEAK DOT 434U S A V 004 PREDOMINANT 4438
 PEAK DOT ENTOURAGE 3W HEROINE OF PEAK DOT 464S
 PRIDE OF PEAK DOT 190Y DUFF ENCORE 702
 PRIDE OF PEAK DOT 632U BARDOLIA OF PEAK DOT 879S
 PEAK DOT PREDOMINANT 82S
 PRIDE OF PEAK DOT 581S
 BW: 79lbs. Adj 205 day Wt: 807 lbs. Adj 365 day Wt: 1242 lbs.
 BW:+2.1 WW: +43 YW: +70 Milk: +19

>Recommended for heifers or cows
 >A stout functional good bull with good performance.
 >Maternal brothers at J5 and JLB Ranch.



Peak Dot Unanimous 339B



Peak Dot Reference Sire

VISIONTOPLINE ROYAL STOCKMAN	BW +2.4
VISION UNANIMOUS 1418	WW +70
VISION EDELLA 665	YW +114
PEAK DOT UNANIMOUS 339B	MILK +13
SAV 004 IRON MOUNTAIN 8066	
PANSY OF PEAK DOT 99Y	
PANSY OF PEAK DOT 917U	

Peak Dot Unanimous 339B was a feature of the April 2015 sale. He has proven himself to be an easy calving sire with exceptional performance and cow family strength that goes back for generations. His sons are long, deep and correct. His daughters are perfect fronted cows with ideal udders and body structure.

Unanimous 339B Bulls ...



PEAK DOT UNANIMOUS 2173F - LOT 132



PEAK DOT ROSE 643T
The maternal grandam of lot 132

132 PEAK DOT UNANIMOUS 2173F	
Male	PDAR 2173F April 15 2018 2069580
VISION UNANIMOUS 1418	VISIONTOPLINE ROYAL STOCKMAN
PEAK DOT UNANIMOUS 339B	VISION EDELLA 665
PANSY OF PEAK DOT 99Y	S A V IRON MOUNTAIN 8066
	PANSY OF PEAK DOT 917U
S A V IRON MOUNTAIN 8066	TC GRIDIRON 258 DMF
ROSE OF PEAK DOT 649Y	S A V MADAME PRIDE 3249
ROSE OF PEAK DOT 643T	S A V 004 PREDOMINANT 4438
	ROSE OF PEAK DOT 441N
BW: 86lbs. Adj 205 day Wt: 900 lbs. Adj 365 day Wt: 1390 lbs.	
BW:+3.5 WW: +62 YW: +100 Milk: +19	

>Recommended for heifers
>A stylish well made Unanimous son with 900lb weaning weight. Weaning ratio of 108.
>Dam is a moderate sized Iron Mountain daughter that goes back to donor cow Rose of Peak Dot 643T.



PEAK DOT UNANIMOUS 2198F - LOT 133

133 PEAK DOT UNANIMOUS 2198F	
Male	PDAR 2198F April 23 2018 2069600
VISION UNANIMOUS 1418	VISIONTOPLINE ROYAL STOCKMAN
PEAK DOT UNANIMOUS 339B	VISION EDELLA 665
PANSY OF PEAK DOT 99Y	S A V IRON MOUNTAIN 8066
	PANSY OF PEAK DOT 917U
DOUBLE AA OLD POST BANDOLIER	DOUBLE AA BLACKMAN 252'96
DIVINA OF PEAK DOT 223W	DOUBLE AA ANNIE K 548'99
DIVINA OF PEAK DOT 893P	ELLIOTT FORTUNE 16M
	DIVISION OF PEAK DOT 764L
BW: 76lbs. Adj 205 day Wt: 868 lbs. Adj 365 day Wt: 1414 lbs.	
BW:+2.5 WW: +52 YW: +88 Milk: +18	

>Recommended for heifers or cows
>A well built calving ease bull with solid performance and functional pedigree.
>Weaning ratio of 105. Yearling ratio of 111.
>Dam is a heavy milking outcross Canadian bred cow.



PEAK DOT UNANIMOUS 2186F - LOT 134

134 PEAK DOT UNANIMOUS 2186F	
Male	PDAR 2186F April 18 2018 2069553
VISION UNANIMOUS 1418	VISIONTOPLINE ROYAL STOCKMAN
PEAK DOT UNANIMOUS 339B	VISION EDELLA 665
PANSY OF PEAK DOT 99Y	S A V IRON MOUNTAIN 8066
	PANSY OF PEAK DOT 917U
S A V 004 PREDOMINANT 4438	S A V 8180 TRAVELER 004
QUEEN OF PEAK DOT 743T	S A V EMBLYNETTE 1182
QUEEN OF PEAK DOT 851L	HF YOUNG GUN 139J
	PEAK DOT STOCKMAN 500E
BW: 77lbs. Adj 205 day Wt: 847 lbs. Adj 365 day Wt: 1432 lbs.	
BW:+1.7 WW: +53 YW: +95 Milk: +19	

>Recommended for heifers
>A stylish nice fronted calving ease bull with shape substance and style.
>Weaning ratio of 102. Yearling ratio of 118.
>Dam has volume and capacity. Listed as an Elite dam with the CAA.

Unanimous 339B Bulls ...

135 PEAK DOT UNANIMOUS 2275F

Male PDAR 2275F May 28 2018 2069573
 VISION UNANIMOUS 1418 VISIONTOPLINE ROYAL STOCKMAN
 PEAK DOT UNANIMOUS 339B VISION EDELLA 665
 PANSY OF PEAK DOT 99Y S A V IRON MOUNTAIN 8066
 PANSY OF PEAK DOT 917U
 PEAK DOT IRON MOUNTAIN 867X S A V IRON MOUNTAIN 8066
 PEAK DOT LADY 484A LADY OF PEAK DOT 839S
 LADY OF PEAK DOT 480U S A V 004 PREDOMINANT 4438
 LADY OF PEAK DOT 327J
 BW: 78lbs. Adj 205 day Wt: 911 lbs. Adj 365 day Wt: 1460 lbs.
 BW:+2.0 WW: +59 YW: +101 Milk: +21

>Recommended for heifers
 >A lower birth weight bull with a strong straight top and good muscle definition
 >Weaning ratio of 110. Yearling ratio of 111.
 >Dam ranks in the top 3% of the breed for milk EPD.

136 PEAK DOT UNANIMOUS 2147F

Male PDAR 2147F April 11 2018 2069529
 VISION UNANIMOUS 1418 VISIONTOPLINE ROYAL STOCKMAN
 PEAK DOT UNANIMOUS 339B VISION EDELLA 665
 PANSY OF PEAK DOT 99Y S A V IRON MOUNTAIN 8066
 PANSY OF PEAK DOT 917U
 S A V IRON MOUNTAIN 8066 TC GRIDIRON 258 DMF
 PANSY OF PEAK DOT 967X S A V MADAME PRIDE 3249
 PANSY OF PEAK DOT 552S PEAK DOT HOBSON 57N
 PANSY OF PEAK DOT 443D
 BW: 85lbs. Adj 205 day Wt: 778 lbs. Adj 365 day Wt: 1230 lbs.
 BW:+3.4 WW: +51 YW: +84 Milk: +9

>Recommended for heifers or cows
 >Built to last, abundant depth and thickness.
 >Maternal siblings at JLB Ranch and Kara Wilson.

137 PEAK DOT UNANIMOUS 2227F

Male PDAR 2227F May 06 2018 2069552
 VISION UNANIMOUS 1418 VISIONTOPLINE ROYAL STOCKMAN
 PEAK DOT UNANIMOUS 339B VISION EDELLA 665
 PANSY OF PEAK DOT 99Y S A V IRON MOUNTAIN 8066
 PANSY OF PEAK DOT 917U
 PEAK DOT PRIME CUT 433M BASIN PRIME CUT 354K
 ROSILLA OF PEAK DOT 405U BARDOLIA OF PEAK DOT 572E
 ROSILLA OF PEAK DOT 422N S A R FAME 2089
 ROSILLA OF PEAK DOT 358J
 BW: 82lbs. Adj 205 day Wt: 958 lbs. Adj 365 day Wt: 1442 lbs.
 BW:+2.7 WW: +66 YW: +104 Milk: +13

>Recommended for heifers
 >A smooth patterned bull with thickness and fleshing ability. Weaning ratio of 116.
 >Out of a broody well made Prime Cut daughter. Maternal brothers sold to Dunn Ranching, Smith Ranches, John Gabrach and Blake Perkins.

138 PEAK DOT UNANIMOUS 2288F

Male PDAR 2288F May 30 2018 2069618
 VISION UNANIMOUS 1418 VISIONTOPLINE ROYAL STOCKMAN
 PEAK DOT UNANIMOUS 339B VISION EDELLA 665
 PANSY OF PEAK DOT 99Y S A V IRON MOUNTAIN 8066
 PANSY OF PEAK DOT 917U
 S A V 004 PREDOMINANT 4438 S A V 8180 TRAVELER 004
 LADY OF PEAK DOT 603U S A V EMBLYNETTE 1182
 LADY OF PEAK DOT 923P S A R NEW TREND 4100 2080
 LADY OF PEAK DOT 520E
 BW: 84lbs. Adj 205 day Wt: 1004 lbs. Adj 365 day Wt: 1599 lbs.
 BW:+3.5 WW: +73 YW: +119 Milk: +20

>Recommended for cows
 >A bull with off the charts performance and weights.
 >Weaning weight 1004lbs. Weaning ratio 122. Yearling ratio 120.
 >Maternal siblings have sold to Box Elder Farming, Murry Nielsen, Dale Howe and Hillcrest Enterprises

139 PEAK DOT UNANIMOUS 2272F

Male PDAR 2272F May 24 2018 2070960
 VISION UNANIMOUS 1418 VISIONTOPLINE ROYAL STOCKMAN
 PEAK DOT UNANIMOUS 339B VISION EDELLA 665
 PANSY OF PEAK DOT 99Y S A V IRON MOUNTAIN 8066
 PANSY OF PEAK DOT 917U
 PEAK DOT BOLD 204U MOHNEN DYNAMITE 1356
 PEAK DOT SUSIE 541A QUEEN OF PEAK DOT 652S
 SUSIE OF PEAK DOT 647U S A V 004 CAPACITY 5234
 SUSIE OF PEAK DOT 794P
 BW: 80lbs. Adj 205 day Wt: 838 lbs. Adj 365 day Wt: 1338 lbs.
 BW:+2.3 WW: +52 YW: +90 Milk: +17

>Recommended for heifers or cows
 >A long bodied meat wagon. Weaning ratio of 100. Yearling ratio of 101.
 >A maternal brother sold to Myles Jones

140 PEAK DOT UNANIMOUS 2199F

Male PDAR 2199F April 23 2018 2069601
 VISION UNANIMOUS 1418 VISIONTOPLINE ROYAL STOCKMAN
 PEAK DOT UNANIMOUS 485A VISION EDELLA 665
 ERICA OF PEAK DOT 481U S A V 004 PREDOMINANT 4438
 PEAK DOT BOLD 204U PEAK DOT TRAFALGAR 518K
 PEAK DOT LADY 396C MOHNEN DYNAMITE 1356
 LADY OF PEAK DOT 934U QUEEN OF PEAK DOT 652S
 LADY OF PEAK DOT 615K
 BW: 85lbs. Adj 205 day Wt: 773 lbs. Adj 365 day Wt: 1262 lbs.
 BW:+4.0 WW: +42 YW: +83 Milk: +18

>Recommended for heifers or cows
 >A well muscled, smooth shoulder bull. Should leave some nice looking daughters.
 >Dam has flawless phenotype, capacity and fleshing ability.

Peak Dot Universal 551A *Peak Dot Reference Sire*



Peak Dot Universal was the top selling \$54,000 bull from the 2014 Spring Bull Sale. He is owned by Hillcrest Enterprises, Semex Beef and Peak Dot. Universal is a sire whose popularity continues to grow. He is one of the most consistent bulls we have ever used for breeding deep bodied cattle that always stay in good flesh. His sons are deep middle thick made calving ease bulls that should sire highly productive females.

VISION TOPLINE ROYAL STOCKMAN BW +3.3
 VISION UNANIMOUS 1418 WW +54
 VISION EDELLA 655 YW +104
PEAK DOT UNIVERSAL 551A MILK +15
 SAV IRON MOUNTAIN 8066
 HEROINE OF PEAK DOT 663X
 HEROINE OF PEAK DOT 434U



HEROINE OF PEAK DOT 434U
 The maternal grandam of Universal

Universal Bulls ...



PEAK DOT UNIVERSAL 2128F - LOT 141

141 PEAK DOT UNIVERSAL 2128F	
Male	PDAR 2128F April 08 2018 2069611
VISION UNANIMOUS 1418	VISIONTOPLINE ROYAL STOCKMAN
PEAK DOT UNIVERSAL 551A	VISION EDELLA 665
HEROINE OF PEAK DOT 663X	S A V IRON MOUNTAIN 8066
	HEROINE OF PEAK DOT 434U
S A V ELIMINATOR 9105	RITO 707 OF IDEAL 3407 7075
PEAK DOT SUSIE 503C	S A V ABIGALE 5646
SUSIE OF PEAK DOT 97Y	PEAK DOT BOLD 204U
	SUSIE OF PEAK DOT 485U
BW: 86lbs. Adj 205 day Wt: 950 lbs. Adj 365 day Wt: 1478 lbs.	
BW:+3.9 WW: +64 YW: +116 Milk: +18	

>Recommended for cows
 >A thick made, heavy set, stout bull. Weaning ratio of 114. Yearling ratio of 107.
 >950lbs weaning weight
 >Dam has ideal body type and impeccable udder quality.

142 PEAK DOT UNIVERSAL 2206F	
Male	PDAR 2206F May 05 2018 2069602
VISION UNANIMOUS 1418	VISIONTOPLINE ROYAL STOCKMAN
PEAK DOT UNIVERSAL 551A	VISION EDELLA 665
HEROINE OF PEAK DOT 663X	S A V IRON MOUNTAIN 8066
	HEROINE OF PEAK DOT 434U
S A V PIONEER 7301	S A V FINAL ANSWER 0035
LADY OF PEAK DOT 325X	S A V BLACKBIRD 5297
LADY OF PEAK DOT 575K	DOUBLE AA RITO 28797
	LADY OF PEAK DOT 764G
BW: 80lbs. Adj 205 day Wt: 752 lbs. Adj 365 day Wt: 1267 lbs.	
BW:+3.0 WW: +46 YY: +91 Milk: +12	

>Recommended for cows or heifers
 >A long bodied, rugged-built stud rich in maternal heritage. Yearling ratio of 104.
 >Great grandam is listed as a Premier Elite Dam with CAA.
 >Maternal brothers selected by Tom Skelton, Ken Drysdale, Athabasca Colony, Allen Wiens and Danny Le Brun.

143 PEAK DOT PRIME 480F	
Male	PDAR 480F March 04 2018 2029402
VISION UNANIMOUS 1418	VISIONTOPLINE ROYAL STOCKMAN
PEAK DOT PRIME 733B	VISION EDELLA 665
ERICA OF PEAK DOT 478U	S A V 004 PREDOMINANT 4438
	ERICA OF PEAK DOT 326R
JINDRA DOUBLE VISION	CONNEALY REFLECTION
PEAK DOT MIA 1026B	HOFF RACHEL 8312 405
MIA OF PEAK DOT 578U	STEVENSON BRUNO 6371
	GALE OF PEAK DOT 317M
BW: 60lbs. Adj 205 day Wt: 925 lbs. Adj 365 day Wt: 1490 lbs.	
BW:+0.6 WW: +63 YW: +108 Milk: +20	

>Recommended for heifers
 >A sure bet calving ease bull with nice clean front end and plenty of performance. Weaning ratio of 116.
 >Dam is a easy fleshing Double Vision daughter.

Peak Dot Prime 733B Peak Dot Reference Sire



VISIONTOPLINE ROYAL STOCKMAN	BW +3.7
VISION UNANIMOUS 1418	WW +71
VISION EDELLA 665	YW +123
PEAK DOT PRIME 733B	MILK +15
SAV 004 PREDOMINANT 4438	
ERICA OF PEAK DOT 478U	
ERICA OF PEAK DOT 326R	

Prime is a powerfully built with tremendous length, volume and body depth, muscle and pounds. He offers a bit more bone and stands on a very sturdy frame. He was selected by Alta genetics from the 2015 Spring bull sale and added to their sire roster. His gorgeous dam has been a very consistent embryo producer resulting in high caliber progeny no matter who she has been mated to. She is one of the most influential cows at Peak Dot and along with several of her daughters will lead the way as we continue to stack our cowherd with fertility, longevity and maternal value.



ERICA OF PEAK DOT 478U
The dam of Prime

Unanimous 402B Bulls ...

Peak Dot Unanimous 402B *Peak Dot Reference Sire*



A Unanimous son used with an amazing amount of muscle, top and thickness and a ton of maternal value. His nice uddered dam by Predominant is a Peak Dot embryo donor and an Elite dam. His sons come with moderate birth weights, great performance and will sire great replacement females. Owned by Hillcrest Enterprises.

VISIONTOPLINE ROYAL STOCKMAN
 VISION UNANIMOUS 1418
 VISION EDELLA 665
PEAK DOT UNANIMOUS 402B
 SAV 004 PREDOMINANT 4438
 LADY OF PEAK DOT 416U
 LADY OF PEAK DOT 634K

BW +1.7
 WW +68
 YW +126
 MILK +21



LADY OF PEAK DOT 416U
 The dam of
 Peak Dot Unanimous 402B



PEAK DOT UNANIMOUS 2255F - LOT 144

144 PEAK DOT UNANIMOUS 2255F

Male	PDAR 2255F May 15 2018 2069527
VISION UNANIMOUS 1418	VISIONTOPLINE ROYAL STOCKMAN
PEAK DOT UNANIMOUS 402B	VISION EDELLA 665
LADY OF PEAK DOT 416U	S A V 004 PREDOMINANT 4438
	LADY OF PEAK DOT 634K
PEAK DOT ELIMINATOR 834Z	S A V ELIMINATOR 9105
PEAK DOT HYALITE 554C	ANNIE K OF PEAK DOT 450U
HYALITE OF PEAK DOT 272Z	CONNEALY IMPRESSION
	HYALITE OF PEAK DOT 212W
BW: 84lbs. Adj 205 day Wt: 876 lbs. Adj 365 day Wt: 1528 lbs.	
BW:+3.3 WW: +66 YW: +131 Milk: +18	



>Recommended for heifers or cows
 >A moderate birth weight bull with massive growth.
 >Ranks in the top 3% for weaning and top 1% for yearling weight EPD.
 >Weaning ratio of 105. Yearling ratio of 132.

Unanimous 402B Bulls ...



PEAK DOT UNANIMOUS 2247F - LOT 145

145 PEAK DOT UNANIMOUS 2247F
 Male PDAR 2247F May 14 2018 2069503
 VISION UNANIMOUS 1418 VISIONTOPLINE ROYAL STOCKMAN
 PEAK DOT UNANIMOUS 402B VISION EDELLA 665
 LADY OF PEAK DOT 416U S A V 004 PREDOMINANT 4438
 S A V ELIMINATOR 9105 LADY OF PEAK DOT 634K
 PEAK DOT DUCHESS 517C RITO 707 OF IDEAL 3407 7075
 DUCHESS OF PEAK DOT 188Y S A V ABIGALE 5646
 PEAK DOT HOBSON 459T DDF
 DUCHESS OF PEAK DOT 930U
 BW: 72lbs. Adj 205 day Wt: 937 lbs. Adj 365 day Wt: 1549 lbs.
 BW:+1.5 WW: +70 YW: +130 Milk: +24

>Recommended for heifers
 >True calving ease bull with big spread in numbers from birth to weaning and yearling weights.
 >Weaning ratio of 114. Yearling ratio of 124.

146 PEAK DOT UNANIMOUS 2231F
 Male PDAR 2231F May 08 2018 2069548
 VISION UNANIMOUS 1418 VISIONTOPLINE ROYAL STOCKMAN
 PEAK DOT UNANIMOUS 402B VISION EDELLA 665
 LADY OF PEAK DOT 416U S A V 004 PREDOMINANT 4438
 DUFF ENCORE 702 LADY OF PEAK DOT 634K
 BARDOLIA OF PEAK DOT 307X D H D TRAVELER 6807
 BARDOLIA OF PEAK DOT 901T O C C DIXIE ERICA 814G
 S A V 004 PREDOMINANT 4438
 BARDOLIA OF PEAK DOT 963H
 BW: 82lbs. Adj 205 day Wt: 923 lbs. Adj 365 day Wt: 1287 lbs.
 BW:+2.4 WW: +57 YW: +92 Milk: +17

>Recommended for heifers or cows
 >Nice phenotype with very good maternal genetics. Weaning ratio 111.
 >Maternal brothers have sold to Chad Hysuick, Alistair Hagan and Hagen Valley Ranch.

147 PEAK DOT UNANIMOUS 2168F
 Male PDAR 2168F April 14 2018 2069560
 VISION UNANIMOUS 1418 VISIONTOPLINE ROYAL STOCKMAN
 PEAK DOT UNANIMOUS 402B VISION EDELLA 665
 LADY OF PEAK DOT 416U S A V 004 PREDOMINANT 4438
 PEAK DOT ELIMINATOR 777Y LADY OF PEAK DOT 634K
 PEAK DOT LADY 478B S A V ELIMINATOR 9105
 LADY OF PEAK DOT 620U ANNIE K OF PEAK DOT 585U
 MOHNEN DYNAMITE 1356
 LADY OF PEAK DOT 460S
 BW: 72lbs. Adj 205 day Wt: 754 lbs. Adj 365 day Wt: 1446 lbs.
 BW:+1.8 WW: +56 YW: +117 Milk: +18

>Recommended for heifers or cows
 >Very correct well made calving ease bull. Lots of spring in his ribs. Walks out with a nice long stride.
 >Ranks in the top 3% for Yearling weight EPD. Yearling ratio of 140
 >Dam is a well made balanced and very correct in her structure.
 >Maternal brothers sold to Don Hamilton and Steven Gunter

BALES FOR SALE
1000 Alfalfa/Grass Bales
 1500lbs avg. weight
 68-70 inches 2.25 wraps \$.08/lb

BALES FOR SALE
1000 Oat Bales
 1700 lbs avg. weight
 68-70 inches 3 wraps \$.06/lb.

Contact: Carson 306-640-8760
email: peakdot@gmail.com

COUNTRY



Peak Dot Country 905F - Lot 98



Peak Dot Ranch Ltd.

FALL BULL SALE

Saturday, Dec. 7, 2019

Box 105, Wood Mountain, SK, Canada S0H 4L0

Terry Moneo Carson Moneo Clay Moneo Scott and Mia Turner
306-266-4303 306-266-4414 306-266-4411 306-640-7498

Fax 266-4930 Email: peakdot@gmail.com
www.peakdotranch.com

