



Peak Dot  Ranch Ltd.

Fall Bull Sale

Thursday, Dec. 6, 2018

At the Ranch, Wood Mountain, Saskatchewan

Selling 165 Coming 2 Year Old Bulls



Peak Dot No Doubt 2157E - Lot 23

Welcome to Peak Dot Ranch... Established in 1950...

The Moneo Family



Terry and Barbara



Carson, Lana, Koen and Riley



Clay, Shannon, Matt, Madison, Merit, and Mavryk



Scott, Mia and Luke Turner

It is our pleasure to welcome you to the Annual Peak Dot Ranch Fall Bull Sale. Our program, since its early beginnings, has always been committed to producing bulls for the commercial cowman.

The coming two year old bulls in this sale are developed and managed exclusively for this event. They are never pushed and are grown out to be fertile and problem free. 90% of the bulls in this sale are low moderate birth weight bulls and come recommended for heifers. The bulls are penned and sorted by sire group with many groups of half, three-quarter and full brothers available for a more uniform and genetically consistent calf crop. Good honest cattle, repeat customers, long-standing relationships and real genetic value is what we want to produce.

We hope to see you all at the sale and if any one can not make it or has any questions please feel free to contact Carson or Clay. We offer a sight unseen program that has become very popular. The growing success of this program is driven by the disciplined manner in which it is handled.

You can count on the cattle you purchase from this fourth generation family owned ranching operation. After 60 years of doing business with ranchers and commercial cattlemen and women, we have earned a reputation we are very proud of. We look forward to being your source for good quality Angus and appreciate the confidence you have shown in our program. Come early to view the cattle. Be our guests and enjoy a beef barbecue with refreshments.

Sincerely,
Clay and Carson Moneo



Peak Dot  Ranch Ltd.

ESTABLISHED IN 1950

Box 105, Wood Mountain, SK S0H 4L0

Terry Moneo 306-266-4303 Carson Moneo 306-266-4414 Clay Moneo 306-266-4411 Scott and Mia Turner 306-266-2056

Fax 266-4930 Email: peakdot@gmail.com

www.peakdotranch.com





Sale starts at 1:00 p.m. C.S.T. Sharp!

Peak Dot Ranch Ltd.

FALL BULL SALE

Thursday, Dec. 6, 2018

Selling 165 Bulls

At the Ranch, Wood Mountain, Saskatchewan

SALE DAY PHONES:

Line 1....(306)642-7415

Line 2.....(306)640-9241

Please phone (306)266-4414 ahead preferably a day or two before the sale to ensure that we can have a phone line available for you on sale day.

SALE LOCATION:

Sale will be held at the Peak Dot Ranch sale barn, 3 1/2 miles south of Wood Mountain, SK 25 miles from the Montana border(West Poplar entry).

AIR TRAVEL:

Air Strip at Assiniboia There will be transportation provided from Assiniboia.

Call us ahead for details and to arrange transportation.

ACCOMMODATIONS:

Canalta Assiniboia (306) 642-1010

121 Steak house/ Lounge & Motel Assiniboia (306) 642-4662

BAR B INN Assiniboia (306)642-5555

Grasslands Inn, Mankota (306)478-2909

Parkside Inn Ponteix (306)625-3553

Limerick Hotel (306)263-2133

Cottonwood Inn, Glasgow, MT, USA (406) 228-8213

Holiday Inn Express, Swift Current (306) 773-8288

FOOD:

Barbecue Beef Dinner begins at 11:30 a.m.C.S.T.

Sale starts at 1:00 p.m. C.S.T. Sharp!



SALE STAFF:

Steve Dorrان.....Auctioneer (403) 226-2985 (403) 540-9498

Ryan Dorrان..... Consultant, Auctioneer (403) 507-6483

Andy Rest.....Ring Service (406) 254-7576

Craig Flewelling.....Ring Service (403) 556-0515

Dory Gerrard.....Ring Service (403) 302-1016

Nate Marin.....Ring Service (306) 869-7130

Alan Sears.....Ring Service (970) 454-3986 (970)396-7521

Tony Heins.....Cattle Business Weekly (701) 400-44355

Scott Bohrsن.....Consultant (Bohrsن Marketing Services) (403) 370-3010

Rob Voice.....Consultant (Bohrsن Marketing Services) (306) 361-6775

Matt Criddle.....Consultant (Bohrsن Marketing Services) (306) 539-6934

Taylor RichardsConsultant (Bohrsن Marketing Services) (306) 821-4169

Geoff Anderson..... Consultant (Bohrsن Marketing Services) (306) 731-7921

VOLUME DISCOUNTS:

Starting at 3 bulls, 3% and increasing 1% for each additional bull up to 10 bulls - 10% maximum discount

SIGHT UNSEEN PURCHASE PLAN:

We would like you to attend the sale, but if you cannot, you can have Carson personally handle your purchase . Call him with your specification and discuss the offering, preferably a week before the sale. Carson gladly will assist you with your sale selections and represent you on sale day. We guarantee full satisfaction upon delivery or you don't own them.

Carson Moneo (306)266-4414

TRUCKING AND DELIVERY:

Free delivery in a 500 mile radius to central points on purebred purchases totalling \$2500.00 or more. For purchases going beyond the 500 miles we will help coordinate delivery to get the cattle to you as economically as we can. **\$100 Discount per bull if you haul your own sale day.**

SALE ORDER:

A sale order will be available sale day or online days ahead at www.peakdotranch.com

TERMS AND CONDITIONS:

Cattle will sell according to the terms and conditions of the Canadian Angus Association.

TERMS OF SALE:

Cash or cheque, payable to the Clerk of the Sale on Sale Day. **We also now accept Visa,Master Card and Debit cards.** Release shall not be given unless satisfactory settlement has been made with the seller.

U.S. FUNDS: Shall be accepted at the Rate of Exchange current on Sale Day.

U.S. BUYERS:

We welcome our U.S. customers. Peak Dot will do all the necessary testing for export. Delivery will be looked after by Peak Dot within a 500 mile radius. For purchases going beyond the 500 miles we will help coordinate delivery to get the cattle to you as economically as we can.

INSURANCE:

An insurance representative will be present on Sale Day.

BULL WINTERING:

Peak Dot will winter bulls for \$2 a day. Bulls will be semen tested before delivery in spring.

Cull Bull Incentive Program

This year we're offering the best cull bull incentive program you will find anywhere. With the cull bull market down a bit from previous years we are going to help you get the most out of those old broken, down worn out bulls. Why take a chance on bunch of open cows this fall when you can replace them with fresh strong new bulls. All you have to do is email us prior to the bull sale or bring a copy of your bill of sale from the auction market after selling your cull bulls and you will receive a \$500 credit on each new replacement bull you buy. (eg: If you cull 5 bulls you will receive a \$500 deduction for each of the 5 replacement bulls you buy.) Credits must be used on a per bull basis and you cannot use more than 1 credit toward a new bull.

Element Bulls . . .

4M ELEMENT 405 *Peak Dot Reference Sire*



Calving-ease with added growth

**SEMEX
Beef**

POSS EASY IMPACT
POSS ELEMENT 215
POSS ERICA 004
4M ELEMENT 405
SITZ UPWARD 307R
4M BLACKBIRD 2004
RIVERBEND BLACKBIRD 4301

CED +16
BW -0.3
WW +72
YW +120
MILK +27
RE +.34
\$W +73.43
\$B +114



4M BLACKBIRD 2004
The dam 4M Element 405

Element was the lot 1 top selling bull we purchased from 4M Angus in Blue Hill Nebraska. We later sold an interest to Semex Beef where he became a leading member of their sire roster.

Element combines calving-ease with added growth and muscle shape from a maternally superior cow family. Two daughters of Riverbend Blackbird 4302 are featured donors at 4M Angus, one of which is the dam of Element. Another daughter of Blackbird 4301 is a featured donor for Vintage Angus and Herbster Angus. She is the dam of VAR Reserve, VAR Generation, and VAR Frontier.

The first 100 Element progeny born have averaged 73lbs for females and 77lbs for male.

Element offers a large EPD spread from -0.3 BW to +72 WW and +120 YW.

Top selling Element sons from past Bull Sales..



PEAK DOT PERFECTION 102D
Purchased by Northway Cattle co.



PEAK DOT ESSENTIAL 78E
Purchased by Alta Genetics.



PEAK DOT LITHIUM 114E
Purchased by Glasman Farms.

Element Bulls ...



PEAK DOT ELEMENT 47E - Lot 1

PEAK DOT ELEMENT 47E - LOT 1

1	PEAK DOT ELEMENT 47E	
Male	PDAR 47E 1955672 Jan 25 2017	
	POSS ELEMENT 215	POSS EASY IMPACT 0119
4M ELEMENT 405	POSS ERICA 004	
4M BLACKBIRD 2004	SITZ UPWARD 307R	
	RIVERBEND BLACKBIRD 4301	VISIONTOPLINE ROYAL STOCKMAN
VISION UNANIMOUS 1418	VISION EDELLA 665	
PEAK DOT BARBARA 130C	S A V IRON MOUNTAIN 8066	
BARBARA OF PEAK DOT 46Z	BARBARA OF PEAK DOT 712W	
BW: 68lbs. Adj 205 day Wt: 883lbs. Adj 365 day Wt: 1253 lbs.		
BW:+1.0 WW: +63 YW: +99 Milk: +21		

>Recommended for heifers



PEAK DOT ELEMENT 5008E - LOT 2

2	PEAK DOT ELEMENT 5008E	
Male	PDAR 5008E 1990249 March 22 2017	
	POSS ELEMENT 215	POSS EASY IMPACT 0119
4M ELEMENT 405	POSS ERICA 004	
4M BLACKBIRD 2004	SITZ UPWARD 307R	
	RIVERBEND BLACKBIRD 4301	VISIONTOPLINE ROYAL STOCKMAN
VISION UNANIMOUS 1418	VISION EDELLA 665	
PEAK DOT PANSY 482C	S A V IRON MOUNTAIN 8066	
PANSY OF PEAK DOT 913X	PANSY OF PEAK DOT 552S	
BW: 74lbs. Adj 205 day Wt: 1106 lbs. Adj 365 day Wt: 1571 lbs.		
BW:+2.5 WW: +77 YW: +130 Milk: +21		

>Recommended for heifers



PEAK DOT ELEMENT 2013E - LOT 3

3	PEAK DOT ELEMENT 2013E	
Male	PDAR 2013E 1990179 March 15 2017	
	POSS ELEMENT 215	POSS EASY IMPACT 0119
4M ELEMENT 405	POSS ERICA 004	
4M BLACKBIRD 2004	SITZ UPWARD 307R	
	RIVERBEND BLACKBIRD 4301	TC GRIDIRON 258
S A V IRON MOUNTAIN 8066	S A V MADAME PRIDE 3249	
ANNIE K OF PEAK DOT 299Y	SCA 03H OF IDEAL 1418	
ANNIE K OF PEAK DOT 306M	WAYNE'S PRIDE 22E	
BW: 70lbs. Adj 205 day Wt: 775 lbs. Adj 365 day Wt: 1497 lbs.		
BW:+0.7 WW: +62 YW: +116 Milk: +18		

>Recommended for heifers

Element Bulls ...



PEAK DOT ELEMENT 2100E - LOT 4

4	PEAK DOT ELEMENT 2100E	
Male	PDAR 2100E	1990277 March 23 2017
	POSS ELEMENT 215	POSS EASY IMPACT 0119
4M ELEMENT 405		POSS ERICA 004
	4M BLACKBIRD 2004	SITZ UPWARD 307R
		RIVERBEND BLACKBIRD 4301
	PEAK DOT BOLD 204U	MOHNEN DYNAMITE 1356
PEAK DOT LADY 433C		QUEEN OF PEAK DOT 652S
	LADY OF PEAK DOT 948W	S A V 004 PREDOMINANT 4438
		LADY OF PEAK DOT 782L
BW: 75lbs. Adj 205 day Wt: 796 lbs. Adj 365 day Wt: 1413 lbs.		
BW:+2.6 WW: +59 YW: +104 Milk: +24		

>Recommended for heifers.



PEAK DOT ELEMENT 2012E - LOT 5

5	PEAK DOT ELEMENT 2012E	
Male	PDAR 2012E	1990178 March 15 2017
	POSS ELEMENT 215	POSS EASY IMPACT 0119
4M ELEMENT 405		POSS ERICA 004
	4M BLACKBIRD 2004	SITZ UPWARD 307R
		RIVERBEND BLACKBIRD 4301
	S A V ELIMINATOR 9105	RITO 707 OF IDEAL 3407 7075
PEAK DOT LADY 376B		S A V ABIGALE 5646
	LADY OF PEAK DOT 230Y	PEAK DOT BOLD 204U
		LADY OF PEAK DOT 933U
BW: 75lbs. Adj 205 day Wt: 801 lbs. Adj 365 day Wt: 1537 lbs.		
BW:+2.5 WW: +65 YW: +127 Milk: +24		

>Recommended for heifers



PEAK DOT ELEMENT 2168E - LOT 6

6	PEAK DOT ELEMENT 2168E	
Male	PDAR 2168E	2006049 April 03 2017
	POSS ELEMENT 215	POSS EASY IMPACT 0119
4M ELEMENT 405		POSS ERICA 004
	4M BLACKBIRD 2004	SITZ UPWARD 307R
		RIVERBEND BLACKBIRD 4301
	S A V ELIMINATOR 9105	RITO 707 OF IDEAL 3407 7075
LADY OF PEAK DOT 242Z		S A V ABIGALE 5646
	LADY OF PEAK DOT 946W	S A V 004 PREDOMINANT 4438
		LADY OF PEAK DOT 782L
BW: 85lbs. Adj 205 day Wt: 742 lbs. Adj 365 day Wt: 1393 lbs.		
BW:+3.3 WW: +59 YW: +107 Milk: +23		

>Recommended for heifers or cows

Element Bulls ...



PEAK DOT ELEMENT 2055E - LOT 7



PEAK DOT ELEMENT 2143E - LOT 8

7 PEAK DOT ELEMENT 2055E	
Male	PDAR 2055E 1990228 March 19 2017
POSS ELEMENT 215	POSS EASY IMPACT 0119
4M ELEMENT 405	POSS ERICA 004
4M BLACKBIRD 2004	SITZ UPWARD 307R
	RIVERBEND BLACKBIRD 4301
PEAK DOT ELIMINATOR 777Y	S A V ELIMINATOR 9105
PEAK DOT LADY 478B	ANNIE K OF PEAK DOT 585U
LADY OF PEAK DOT 620U	MOHNEN DYNAMITE 1356
	LADY OF PEAK DOT 460S
BW: 70lbs. Adj 205 day Wt: 813 lbs. Adj 365 day Wt: 1453 lbs.	
BW:+1.2 WW:+63 YW:+112 Milk:+22	

>Recommended for heifers

8 PEAK DOT ELEMENT 2143E	
Male	PDAR 2143E 1990324 March 26 2017
POSS ELEMENT 215	POSS EASY IMPACT 0119
4M ELEMENT 405	POSS ERICA 004
4M BLACKBIRD 2004	SITZ UPWARD 307R
	RIVERBEND BLACKBIRD 4301
KR CASH FLOW	BARSTOW CASH
PEAK DOT PANSY 390C	WK LASS 1591
PANSY OF PEAK DOT 914U	MOHNEN DYNAMITE 1356 D
	PANSY OF PEAK DOT 396J
BW: 70lbs. Adj 205 day Wt: 775 lbs. Adj 365 day Wt: 1444 lbs.	
BW:+2.6 WW:+63 YW:+114 Milk:+20	

>Recommended for heifers

Element Bulls ...



PEAK DOT ELEMENT 2138E - LOT 9



BARBARA OF PEAK DOT 602U
The maternal grandam of lot 11

9 PEAK DOT ELEMENT 2138E	
Male	PDAR 2138E 1990314 March 26 2017
POSS ELEMENT 215	POSS EASY IMPACT 0119
4M ELEMENT 405	POSS ERICA 004
4M BLACKBIRD 2004	SITZ UPWARD 307R
	RIVERBEND BLACKBIRD 4301
PEAK DOT PROOF 1066X	S A V PIONEER 7301
PEAK DOT ROSE 383C	BARBARA OF PEAK DOT 314T
ROSE OF PEAK DOT 659U	STEVENSON BRUNO 6371
	ROSE OF PEAK DOT 441N
BW: 70lbs. Adj 205 day Wt: 825 lbs. Adj 365 day Wt: 1430 lbs.	
BW:+1.9 WW: +61 YW: +104 Milk: +26	

>Recommended for heifers



PEAK DOT ELEMENT 2122E - LOT 10

10 PEAK DOT ELEMENT 2122E	
Male	PDAR 2122E 1990299 March 24 2017
POSS ELEMENT 215	POSS EASY IMPACT 0119
4M ELEMENT 405	POSS ERICA 004
4M BLACKBIRD 2004	SITZ UPWARD 307R
	RIVERBEND BLACKBIRD 4301
PEAK DOT PROOF 1066X	S A V PIONEER 7301
PEAK DOT BARDOLIA 348B	BARBARA OF PEAK DOT 314T
BARDOLIA OF PEAK DOT 139Y	S A V IRON MOUNTAIN 8066
	BARDOLIA OF PEAK DOT 231W
BW: 70lbs. Adj 205 day Wt: 718 lbs. Adj 365 day Wt: 1363 lbs.	
BW:+2.0 WW: +54 YW: +103 Milk: +18	

>Recommended for heifers



PEAK DOT ELEMENT 2078E - LOT 11

11 PEAK DOT ELEMENT 2078E	
Male	PDAR 2078E 1990253 March 22 2017
POSS ELEMENT 215	POSS EASY IMPACT 0119
4M ELEMENT 405	POSS ERICA 004
4M BLACKBIRD 2004	SITZ UPWARD 307R
	RIVERBEND BLACKBIRD 4301
S A V ELIMINATOR 9105	RITO 707 OF IDEAL 3407 7075
BARBARA OF PEAK DOT 767Z	S A V ABIGALE 5646
BARBARA OF PEAK DOT 602U	S A V 004 PREDOMINANT 4438
	BARBARA OF PEAK DOT 501M
BW: 75lbs. Adj 205 day Wt: 763 lbs. Adj 365 day Wt: 1528 lbs.	
BW:+1.9 WW: +65 YW: +127 Milk: +23	

>Recommended for heifers

Element Bulls . . .



PEAK DOT ELEMENT 2076E - LOT 12



BARDOLIA OF PEAK DOT 604U
The maternal grandam of lot 13

12	PEAK DOT ELEMENT 2076E
Male	PDAR 2076E 1990251 March 22 2017
	POSS ELEMENT 215 POSS EASY IMPACT 0119
4M ELEMENT 405	POSS ERICA 004
4M BLACKBIRD 2004	SITZ UPWARD 307R
	RIVERBEND BLACKBIRD 4301
S A V PIONEER 7301	S A V FINAL ANSWER 0035
QUEEN OF PEAK DOT 556X	S A V BLACKBIRD 5297
QUEEN OF PEAK DOT 601T	HF POWER-UP 72N
	OF PEAK DOT 536N
BW: 70lbs. Adj 205 day Wt: 673 lbs. Adj 365 day Wt: 1300 lbs.	
BW:+1.2 WW: +42 YW: +78 Milk: +23	

>Recommended for heifers



PEAK DOT ELEMENT 2014E - LOT 13

13	PEAK DOT ELEMENT 2014E
Male	PDAR 2014E 1990180 March 15 2017
	POSS ELEMENT 215 POSS EASY IMPACT 0119
4M ELEMENT 405	POSS ERICA 004
4M BLACKBIRD 2004	SITZ UPWARD 307R
	RIVERBEND BLACKBIRD 4301
VISION UNANIMOUS 1418	VISIONTOPLINE ROYAL STOCKMAN
PEAK DOT BARDOLIA 360C	VISION EDELLA 665
BARDOLIA OF PEAK DOT 604U	S A V 004 PREDOMINANT 4438
	BARDOLIA OF PEAK DOT 708R
BW: 80lbs. Adj 205 day Wt: 811 lbs. Adj 365 day Wt: 1341 lbs.	
BW:+2.9 WW: +63 YW: +99 Milk: +23	

>Recommended for heifers or cows



PEAK DOT ELEMENT 2001E - LOT 14

14	PEAK DOT ELEMENT 2001E
Male	PDAR 2001E 1990082 March 10 2017
	POSS ELEMENT 215 POSS EASY IMPACT 0119
4M ELEMENT 405	POSS ERICA 004
4M BLACKBIRD 2004	SITZ UPWARD 307R
	RIVERBEND BLACKBIRD 4301
S A V BULLET 0473	S A V BISMARCK 5682
PEAK DOT BARDOLIA 434A	S A V EMBLYNETTE 7566
BARDOLIA OF PEAK DOT 307X	DUFF ENCORE 702
	BARDOLIA OF PEAK DOT 901T
BW: 60lbs. Adj 205 day Wt: 695 lbs. Adj 365 day Wt: 1379 lbs.	
BW:+0.2 WW: +54 YW: +103 Milk: +20	

>Recommended for heifers

Element Bulls ...



PEAK DOT ELEMENT 42E - LOT 15

15	PEAK DOT ELEMENT 42E	
Male	PDAR 42E	1955669 January 24 2017
	POSS ELEMENT 215	POSS EASY IMPACT 0119
4M ELEMENT 405		POSS ERICA 004
	4M BLACKBIRD 2004	SITZ UPWARD 307R
		RIVERBEND BLACKBIRD 4301
	PEAK DOT ELIMINATOR 723A	S A V ELIMINATOR 9105
PEAK DOT BARDOLIA 632C		HEROINE OF PEAK DOT 962U
	PEAK DOT BARDOLIA 627A	PEAK DOT GRASSLANDS 537W
		BARDOLIA OF PEAK DOT 944U
BW: 85lbs. Adj 205 day Wt: 866 lbs. Adj 365 day Wt: 1319 lbs.		
BW:+4.4 WW: +59 YW: +107 Milk: +24		

>Recommended for cows.



PEAK DOT ELEMENT 2039E - LOT 16

16	PEAK DOT ELEMENT 2039E	
Male	PDAR 2039E	1990210 March 19 2017
	POSS ELEMENT 215	POSS EASY IMPACT 0119
4M ELEMENT 405		POSS ERICA 004
	4M BLACKBIRD 2004	SITZ UPWARD 307R
		RIVERBEND BLACKBIRD 4301
	S A V ELIMINATOR 9105	RITO 707 OF IDEAL 3407 7075
PEAK DOT LADY 447C		S A V ABIGALE 5646
	LADY OF PEAK DOT 572X	SANDY BAR GRASSLANDS 94T
		LADY OF PEAK DOT 615T
BW: 72lbs. Adj 205 day Wt: 752 lbs. Adj 365 day Wt: 1400 lbs.		
BW:+1.8 WW: +56 YW: +104 Milk: +22		

>Recommended for heifers



PEAK DOT ELEMENT 2059E - LOT 17

17	PEAK DOT ELEMENT 2059E	
Male	PDAR 2059E	1990234 March 20 2017
	POSS ELEMENT 21	POSS EASY IMPACT 0119
4M ELEMENT 405		POSS ERICA 004
	4M BLACKBIRD 2004	SITZ UPWARD 307R
		RIVERBEND BLACKBIRD 4301
	S A V 004 CAPACITY 5234	S A V 8180 TRAVELER 004
MIA OF PEAK DOT 490U		S A V ERICA 1141
	MIA OF PEAK DOT 740P	S A R NEW TREND 4100 2080
		MIA OF PEAK DOT 912H
BW: 65lbs. Adj 205 day Wt: 799 lbs. Adj 365 day Wt: 1435 lbs.		
BW:+0.1 WW: +56 YW: +96 Milk: +25		

>Recommended for heifers

Element Bulls ...



PEAK DOT ELEMENT 2094E - LOT 18

18	PEAK DOT ELEMENT 2094E	
Male	PDAR 2094E	1990269 March 23 2017
POSS ELEMENT 215	POSS EASY IMPACT 0119	
4M ELEMENT 405	POSS ERICA 004	
4M BLACKBIRD 2004	SITZ UPWARD 307R	
	RIVERBEND BLACKBIRD 4301	
VISION UNANIMOUS 1418	VISIONTOPLINE ROYAL STOCKMAN	
PEAK DOT LADY 359C	VISION EDELLA 665	
LADY OF PEAK DOT 603U	S A V 004 PREDOMINANT 4438	
	LADY OF PEAK DOT 923P	
BW: 76lbs. Adj 205 day Wt: 776 lbs. Adj 365 day Wt: 1360 lbs.		
BW:+2.7 WW: +58 YW: +97 Milk: +22		

>Recommended for heifers

200 Commercial Bred Heifers for Sale
 Al'd June 23 4M Element 405.
 Exposed to Peak Dot Ranch calving-ease bulls
 for 60 days.



Call Owen Cairns Hillcrest Enterprises
 Cornach, SK at 306-267-7775



PEAK DOT ELEMENT 2006E - LOT 19

19	PEAK DOT ELEMENT 2006E	
Male	PDAR 2006E	1990172 March 13 2017
POSS ELEMENT 215	POSS EASY IMPACT 0119	
4M ELEMENT 405	POSS ERICA 004	
4M BLACKBIRD 2004	SITZ UPWARD 307R	
	RIVERBEND BLACKBIRD 4301	
S A V IRON MOUNTAIN 8066	TC GRIDIRON 258	
EROCA OF PEAK DOT 617X	S A V MADAME PRIDE 3249	
ERICA OF PEAK DOT 408U	PEAK DOT PREDOMINANT 82S	
	ERICA OF PEAK DOT 212S	
BW: 70lbs. Adj 205 day Wt: 611 lbs. Adj 365 day Wt: 1227 lbs.		
BW:+1.2 WW: +45 YW: +85 Milk: +14		

>Recommended for heifers

21	PEAK DOT ELEMENT 5007E	
Male	PDAR 5007E	1990237 March 16 2017
POSS ELEMENT 215	POSS EASY IMPACT 0119	
4M ELEMENT 405	POSS ERICA 004	
4M BLACKBIRD 2004	SITZ UPWARD 307R	
	RIVERBEND BLACKBIRD 4301	
PEAK DOT BOLD 204U	MOHNEN DYNAMITE 1356	
PEAK DOT BARBARA 354C	QUEEN OF PEAK DOT 652S	
BARBARA OF PEAK DOT 496U	S A V 004 PREDOMINANT 4438	
	BARBARA OF PEAK DOT 455N	
BW: 70lbs. Adj 205 day Wt: 913 lbs. Adj 365 day Wt: 1395 lbs.		
BW:+2.0 WW: +53 YW: +94 Milk: +22		

>Recommended for heifers.2

20	PEAK DOT ELEMENT 2085E	
Male	PDAR 2085E	1990260 March 23 2017
POSS ELEMENT 215	POSS EASY IMPACT 0119	
4M ELEMENT 405	POSS ERICA 004	
4M BLACKBIRD 2004	SITZ UPWARD 307R	
	RIVERBEND BLACKBIRD 4301	
S A V IRON MOUNTAIN 8066	TC GRIDIRON 258	
PANSY OF PEAK DOT 300Y	S A V MADAME PRIDE 3249	
PANSY OF PEAK DOT 478R	BASIN AMBUSH 7980	
	PANSY OF PEAK DOT 273M	
BW: 70lbs. Adj 205 day Wt: 731 lbs. Adj 365 day Wt: 1338 lbs.		
BW:+1.0 WW: +54 YW: +99 Milk: +17		

>Recommended for heifers.

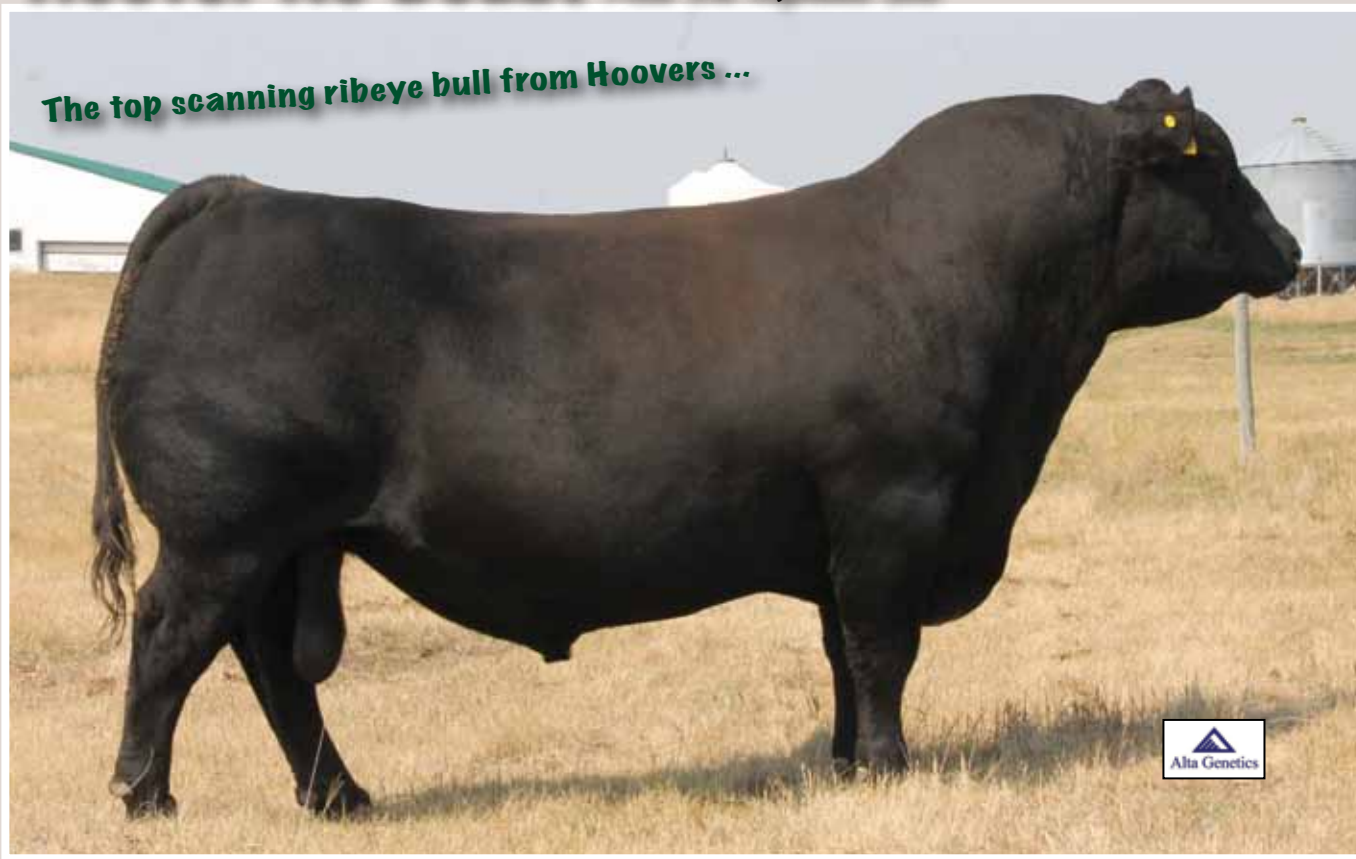
22	PEAK DOT ELEMENT 2245E	
Male	PDAR 2245E NO PAPER	MAY 17 2017
POSS ELEMENT 215	POSS EASY IMPACT 0119	
4M ELEMENT 405	POSS ERICA 004	
4M BLACKBIRD 2004	SITZ UPWARD 307R	
	RIVERBEND BLACKBIRD 4301	
PEAK DOT ELIMINATOR 786Z	S A V ELIMINATOR 9105	
PEAK DOT BARDOLIA 500C	QUEEN OF PEAK DOT 657S	
BARDOLIA OF PEAK DOT 74Y	S A V IRON MOUNTAIN 8066	
	BARDOLIA OF PEAK DOT 423U	
BW: 68lbs. Adj 205 day Wt: 700lbs. Adj 365 day Wt: 1238 lbs.		
BW:+0.0 WW: +61 YW: +101 Milk: +20		

>Recommended for heifers.

No Doubt Bulls...

Hoover No Doubt *Peak Dot Reference Sire*

The top scanning ribeye bull from Hoovers ...



Hoover No Doubt was the \$67,500 top-selling bull in the 2015 Hoover Angus Sale, and became the top-selling bull in the 88-year history at Hoover Angus! He was selected by Alta Genetics, Peak Dot Ranch, and Diamond J Angus.

No Doubt was a hunk that turned in an adjusted 1540 pound yearling weight, ratio 113 to be the #1 adjusted yearling weight bull in the 2015 Hoover sale! He also scanned a 3.91 IMF, ratio 108, and tied as the top scanning ribeye bull (among 81 yearlings) with a 17.3" ribeye, ratio 114! No Doubt is a superb disposition bull that has the style and eye appeal everyone likes. He is exceptionally stout, and has definitely put meat and muscle in his calves. No Doubt has superior foot shape, and his calves are good footed.

Hoover No Doubt has become one of the most popular thought after sires in the Angus breed with a huge demand for semen. Excitement around No Doubt continues to build with Spruce Mountain Ranch Colorado recently purchasing possession from Peak Dot.

MOGCK SURE SHOT	CED +3
MOGCK BULLSEYE	BW +3.8
MOGCK MARY 1256	WW +80
HOOVER NO DOUBT	YW +146
SYDGEN CC&7	MILK +18
MISS BLACKCAP ELLISTON J2	RE +.99
MISS BLACKCAP ELLISTON D145	\$W +54.59
	\$B +188.61

Top selling No Doubt sons from past Bull Sales..



PEAK DOT FORE SURE
Purchased by Alta Genetics.



PEAK DOT YOU GOT IT
Purchased by Alta Genetics.

No Doubt Bulls...



PEAK DOT NO DOUBT 2157E - LOT 23



PEAK DOT NO DOUBT 2157E - LOT 23



PEAK DOT NO DOUBT 2066E - LOT 24

23	PEAK DOT NO DOUBT 2157E		
Male	PDAR 2157E	1990342	March 29 2017
	MOGCK BULLSEYE	MOGCK SURE SHOT	
	HOOVER NO DOUBT	MOGCK MARY 1255	
	MISS BLACKCAP ELLSTON J2	SYDGEN C C & 7	
		MISS BLACKCAP ELLSTON D154	
	PEAK DOT RANCLAND 29W	SANDY BAR GRASSLANDS 94T	
	BARDOLIA OF PEAK DOT 233Y	JUNE OF PEAK DOT 812S	
	BARDOLIA OF PEAK DOT 923W	MOHNEN DYNAMITE 1356	
		BARDOLIA OF PEAK DOT 963H	
	BW: 75lbs. Adj 205 day Wt: 824 lbs. Adj 365 day Wt: 1537 lbs.		
	BW:+3.0 WW: +71 YW: +133 Milk: +17		

>Recommended for heifers or cows
 >Herd bull! He combines natural thickness, muscle and volume with superior structure and true Angus breed charter. Ranks in the top 1% for weaning and yearling weight EPD.
 >His productive Ranchland dam has long running successful production record.

24	PEAK DOT NO DOUBT 2066E		
Male	PDAR 2066E	1990240	March 21 2017
	MOGCK BULLSEYE DMF	MOGCK SURE SHOT	
	HOOVER NO DOUBT	MOGCK MARY 1255	
	MISS BLACKCAP ELLSTON J2	SYDGEN C C & 7	
		MISS BLACKCAP ELLSTON D154	
	VISION UNANIMOUS 1418	VISIONTOPLINE ROYAL STOCKMAN	
	PEAK DOT LADY 567A	VISION EDELLA 665	
	LADY OF PEAK DOT 763T	PEAK DOT HOBSON 57N	
		LADY OF PEAK DOT 370J	
	BW: 75lbs. Adj 205 day Wt: 818 lbs. Adj 365 day Wt: 1446 lbs.		
	BW:+2.1 WW: +68 YW: +124 Milk: +17		

>Recommended for heifers or cows
 >A powerhouse with length, muscle, style and flawless phenotype.
 >Dam is made right with a well attached udder.

No Doubt Bulls...



PEAK DOT NO DOUBT 566E - LOT 25



PEAK DOT NO DOUBT 2159E - LOT 26

25	PEAK DOT NO DOUBT 566E
Male	PDAR 566E 1967431 April 07 2017
MOGCK BULLSEYE	MOGCK SURE SHOT
HOOVER NO DOUBT	MOGCK MARY 1255
MISS BLACKCAP ELLSTON J2	SYDGEN C C & 7
DUFF ENCORE 702	MISS BLACKCAP ELLSTON D154
MAYFLOWER OF PEAK DOT 356W	D H D TRAVELER 6807 D
MAYFLOWER OF PEAK DOT 479R	C C DIXIE ERICA 814G
	BASIN PRIME CUT 354K OSF
	MAYFLOWER OF PEAK DOT 505K
BW: 88lbs. Adj 205 day Wt: 763 lbs. Adj 365 day Wt: 1386 lbs.	
BW:+4.9 WW: +53 YW: +101 Milk: +18	

>Recommended for cows

26	PEAK DOT NO DOUBT 2159E
Male	PDAR 2159E 1990344 March 30 2017
MOGCK BULLSEYE	MOGCK SURE SHOT
HOOVER NO DOUBT	MOGCK MARY 1255
MISS BLACKCAP ELLSTON J2	SYDGEN C C & 7
PEAK DOT PRIME CUT 433M	MISS BLACKCAP ELLSTON D154
LASSIE OF PEAK DOT 430U	BASIN PRIME CUT 354K
LASSIE OF PEAK DOT 475N	BARDOLIA OF PEAK DOT 572E
	BASIN PRIME CUT 354K OSF
	LASSIE OF PEAK DOT 372C
BW: 87lbs. Adj 205 day Wt: 953 lbs. Adj 365 day Wt: 1489 lbs.	
BW:+4.3 WW: +73 YW: +119 Milk: +17	

>Recommended for cows

No Doubt Bulls...

27 PEAK DOT NO DOUBT 2106E

Male PDAR 2106E 1990283 March 24 2017
 MOGCK BULLSEYE DMF MOGCK SURE SHOT
 HOOVER NO DOUBT MOGCK MARY 1255
 MISS BLACKCAP ELLSTON J2 SYDGEN C C & 7
 MISS BLACKCAP ELLSTON D154
 PEAK DOT BOLD 204U MOHNEN DYNAMITE 1356
 PEAK DOT BARDOLIA 353Z QUEEN OF PEAK DOT 652S
 BARDOLIA OF PEAK DOT 231W S A V 004 PREDOMINANT 4438
 BARDOLIA OF PEAK DOT 796P
 BW: 84lbs. Adj 205 day Wt: 773 lbs. Adj 365 day Wt: 1333 lbs.
 BW:+3.6 WW: +56 YW: +111 Milk: +15

>Recommended for heifers or cows



PEAK DOT NO DOUBT 2106E - LOT 27

28 PEAK DOT NO DOUBT 3003E

Male (ET) PDAR 3003E 2001563 February 11 2017
 MOGCK BULLSEYE MOGCK SURE SHOT
 HOOVER NO DOUBT MOGCK MARY 1255
 MISS BLACKCAP ELLSTON J2 SYDGEN C C & 7
 MISS BLACKCAP ELLSTON D154
 HF POWER-UP 72N RIVERBEND POWERLINE 0050
 DUCHESS OF PEAK DOT 610T HF ROSEBUD 23G
 DUCHESS OF PEAK DOT 654N S A V SAUGAHATCHEE 9374
 DUCHESS OF PEAK DOT 554K
 BW: 74lbs. Adj 205 day Wt: 840 lbs. Adj 365 day Wt: 1281 lbs.
 BW:+3.6 WW: +58 YW: +111 Milk: +20

>Recommended for heifers



PEAK DOT NO DOUBT 3003E - LOT 28

29 PEAK DOT NO DOUBT 2090E

Male PDAR 2090E 1990265 March 23 2017
 MOGCK BULLSEYE MOGCK SURE SHOT
 HOOVER NO DOUBT MOGCK MARY 1255
 MISS BLACKCAP ELLSTON J2 SYDGEN C C & 7
 MISS BLACKCAP ELLSTON D154
 PEAK DOT RANCLAND 29W SANDY BAR GRASSLANDS 94T
 PEAK DOT DUCHESS 490A JUNE OF PEAK DOT 812S
 DUCHESS OF PEAK DOT 485X S A V IRON MOUNTAIN 8066
 DUCHESS OF PEAK DOT 559S
 BW: 70lbs. Adj 205 day Wt: 732 lbs. Adj 365 day Wt: 1300 lbs.
 BW:+2.1 WW: +61 YW: +110 Milk: +14

>Recommended for heifers



DUCHESS OF PEAK DOT 610T
 The dam of lot 28

30 PEAK DOT NO DOUBT 22252E

Male PDAR 2252E NO PAPER MAY 06 2017
 MOGCK BULLSEYE MOGCK SURE SHOT
 HOOVER NO DOUBT MOGCK MARY 1255
 MISS BLACKCAP ELLSTON J2 SYDGEN C C & 7
 MISS BLACKCAP ELLSTON D154
 PEAK DOT ENTOURAGE 3W DUFF ENCORE 702
 MAYFLOWER OF PEAK DOT 180Y BARDOLIA OF PEAK DOT 879S
 MAYFLOWER OF PEAK DOT 671U PEAK DOT PREDOMINANT 92S
 MAYFLOWER OF PEAK DOT 830L
 BW: 83lbs. Adj 205 day Wt: 856 lbs. Adj 365 day Wt: 1338 lbs.
 BW:+3.0 WW: +57 YW: +101 Milk: +19

>Recommended for heifers or cows



DUCHESS OF PEAK DOT 654N
 The grandam of lot 28



Attractive Bulls ...

Schiefelbein **ATTRACTIVE 4565** *Peak Dot Reference Sire*

Calving-ease with maternal excellence



SITZ TOP GAME 561X
 JMB TRACTION 292
 JMB EMULOTA 013
SCHIEFELBEIN ATTRACTIVE 4565
 SAV FINAL ANSWER 0035
 FROSTY ANSWER 3979
 FROSTY ELBA LIZZY 1106

BW +1.9
 WW +75
 YW +128
 MILK +33



FROSTY ANSWER 3979
 The dam of Attractive

One of the top selling bulls we purchased along with Semex from the 2016 Schiefelbein sale. Attractive is a calving-ease bull that will add growth and a good set of feet and legs. His dam is one of the best cows we have found in all our travels. She has produced over \$200,000 and is one of the main anchors in the Schiefelbein embryo program. Attractive has a great disposition and so do his sons.



PEAK DOT ATTRACTIVE 369E - LOT 31

31	PEAK DOT ATTRACTIVE 369E
Male	PDAR 369E February 21 2017 1967991
JMB TRACTION 292 DDF	SITZ TOP GAME 561X DDF
SCHIEFELBEIN ATTRACTIVE 4565	JMB EMULOTA 013 DDF
FROSTY ANSWER 3979	SAV FINAL ANSWER 0035
	FROSTY ELBA LIZZY 1106
SAV BULLET 0473	SAV BISMARCK 5682
PEAK DOT ERICA 1134Z	SAV EMBLYNETTE 7566
ERICA OF PEAK DOT 321W	SAV 004 CAPACITY 5234 CAF
	ERICA OF PEAK DOT 255S
BW: 83lbs. Adj 205 day Wt: 920 lbs. Adj 365 day Wt: 1342 lbs.	
BW:+3.2 WW: +60 YW: +101 Milk: +29	



>Recommended for heifers or cows

Wind Chill Bulls...

BUSHES WIND CHILL 982

Peak Dot Reference Sire



SITZ UPWARD 307R
 KROUPAL B&B IDENTITY
 B&B ERICA 605
BUSHES WINDCHILL 982
 BUSHES TROOPER
 BUSHES LADY TROOPER 1453
 BUSHES UPTOWN LADY 7703

BW +4.1
 WW +77
 YW +141
 MILK +34



Bush Wind Chill 982

A bull we purchased from Bush Angus in Briton South Dakota and then later sold to Alta Genetics. He ranks in the top 1% for weaning EPD, yearling EPD, milk EPD and \$F EPD. His progeny are soft made, long and show an abundance of muscle. His dam is a beautiful looking Trooper daughter that has an average yearling ratio of 110 on 2 calves.



PEAK DOT WIND CHILL 399E - LOT 32



PEAK DOT WIND CHILL 503E - LOT 33

32	PEAK DOT WIND CHILL 399E
Male	PDAR 399E 1967725 February 25 2017
KROUPALS B&B IDENTITY	SITZ UPWARD 307R
BUSHES WIND CHILL 982	B&B ERICA 605
BUSHES LADY TROOPER 1453	BUSHES TROOPER 402
	BUSHES UPTOWN LADY 7703
STEVENSON BRUNO 6371	STEVENSON BRUNO 561G
ANNIE K OF PEAK DOT 585U	STEVENSON QUEEN 828F
DOUBLE AA ANNIEK 203'01	DOUBLE AA RITO 206'97
	DOUBLE AA ANNIE K 58'90
BW: 84lbs. Adj 205 day Wt: 758 lbs. Adj 365 day Wt: 1357 lbs.	
BW:+3.7 WW: +48 YW: +97 Milk: +22	

>Recommended for cows

33	PEAK DOT WIND CHILL 503E
Male	PDAR 503E 1967441 March 15 2017
KROUPALS B&B IDENTITY	SITZ UPWARD 307R
BUSHES WIND CHILL 982	B&B ERICA 605
BUSHES LADY TROOPER 1453	BUSHES TROOPER 402
	BUSHES UPTOWN LADY 7703
PEAK DOT EPIC 1069X	S A V PIONEER 7301
PEAK DOT MIA 104A	JL MISSIE 06 137
MIA OF PEAK DOT 1098X	PEAK DOT PREDOMINANT 82S
	MIA OF PEAK DOT 440T
BW: 86lbs. Adj 205 day Wt: 977 lbs. Adj 365 day Wt: 1360 lbs.	
BW:+4.9 WW: +66 YW: +110 Milk: +27	

>Recommended for cows

Phantom Bulls . . .

QLC PHANTOM W063 *Peak Dot Reference Sire*



SANKEYS LAZER
 HY-VIEW PHANTOM
 REIDOCA BARBARA 515
QLC PHANTOM W063
 SEDGWICKS POWERSTROKE 7502
 QLC C22 ROBUST K800W
 MISS ROBUST FK 929

BW +3.3
 WW +65
 YW +115
 MILK +15

A bull we purchased from Quirk Land and Cattle in Hastings Nebraska and then later sold to Alta Genetics. Out of a beautiful Powerstroke dam. Phantom breeds in performance along with great structure and eye appeal.



PEAK DOT PHANTOM 382E - LOT 34

34 PEAK DOT PHANTOM 382E
 Male PDAR 382E 1968215 February 22 2017
 HY-VIEW PHANTOM DDF SANKEYS LAZER 609 OF 6N
 QLC PHANTOM W063C REIDOCA BARBARA 515
 QLC C22 ROBUST K800W SEDGWICKS POWERSTROKE 7502
 MISS ROBUST FK 929
 PEAK DOT BOLD 204U MOHNEN DYNAMITE 1356
 PEAK DOT LADY 626A QUEEN OF PEAK DOT 652S
 LADY OF PEAK DOT 943W S A V 004 PREDOMINANT 4438
 LADY OF PEAK DOT 782L
 BW: 70lbs. Adj 205 day Wt: 741 lbs. Adj 365 day Wt: 1208 lbs.
 BW:+1.6 WW: +39 YW: +76 Milk: +16

>Recommended for heifers



PEAK DOT PHANTOM 551E - LOT 35

35 PEAK DOT PHANTOM 551E
 Male PDAR 551E 1969530 April 01 2017
 HY-VIEW PHANTOM DDF SANKEYS LAZER 609 OF 6N
 QLC PHANTOM W063C REIDOCA BARBARA 515
 QLC C22 ROBUST K800W SEDGWICKS POWERSTROKE 7502
 MISS ROBUST FK 929
 KR CASH FLOW BARSTOW CASH
 PEAK DOT MIA 1003C WK LASS 1591
 MIA OF PEAK DOT 595U PEAK DOT PREDOMINANT 135S
 MIA OF PEAK DOT 534R
 BW: 75lbs. Adj 205 day Wt: 648 lbs. Adj 365 day Wt: 1243 lbs.
 BW:+3.9 WW: +45 YW: +88 Milk: +12

>Recommended for heifers



PEAK DOT PHANTOM 493E - LOT 36

36 PEAK DOT PHANTOM 493E
 Male PDAR 493E 1967374 March 12 2017
 HY-VIEW PHANTOM DDF SANKEYS LAZER 609 OF 6N
 QLC PHANTOM W063C REIDOCA BARBARA 515
 QLC C22 ROBUST K800W SEDGWICKS POWERSTROKE 7502
 MISS ROBUST FK 929
 PEAK DOT BOLD 204U MOHNEN DYNAMITE 1356
 PEAK DOT BARBARA 451B QUEEN OF PEAK DOT 652S
 BARBARA OF PEAK DOT 496U S A V 004 PREDOMINANT 4438
 BARBARA OF PEAK DOT 455N
 BW: 85lbs. Adj 205 day Wt: 840 lbs. Adj 365 day Wt: 1256 lbs.
 BW:+4.0 WW: +50 YW: +89 Milk: +17

>Recommended for heifers or cows

Topsoil Bulls . . .

SAV TOPSOIL 4354 *Peak Dot Reference Sire*



SAV HERITAGE 6295
 SAV HARVESTOR 0338
 SAV EMBLYNETE 7749
SAV TOPSOIL 4354
 SAV BISMARCK 5682
 SAV EMBLYNETTE 90441
 SAV EMBLYNETTE 5573

BW +3.4
 WW +73
 YW +125
 MILK +28

SAV Topsoil 4354 was a feature from the 2015 SAV sale. We purchased this bull with Alta Genetics. He combines all the power, sheer thickness and performance from SAV Harvestor combined with the calving-ease, phenotype, and maternal strength of SAV Bismarck.

His Bismarck dam is the second lowest birth EPD cow in the entire SAV herd. She is blessed with striking femininity, superb udder quality and abundant milk.

Topsoil Pathfinder grandam is a full sister to SAV 004 Predominant 4438.

Topsoil sired a high quality set of sons and daughters at Peak Dot including a top notch very consistent set of bulls for this sale event.



PEAK DOT TOPSOIL 2153E - LOT 37

37	PEAK DOT TOPSOIL 2153E
Male	PDAR 2153E 1990334 March 27 2017
S A V HARVESTOR 0338	S A V HERITAGE 6295
S A V TOPSOIL 4354 DMF	S A V EMBLYNETTE 7749
S A V EMBLYNETTE 9044	S A V BISMARCK 5682
	S A V EMBLYNETTE 5573
VISION UNANIMOUS 1418	VISIONTOPLINE ROYAL STOCKMAN
PEAK DOT BARBARA 384A	VISION EDELLA 665
BARBARA OF PEAK DOT 163Y	S A V IRON MOUNTAIN 8066
	BARBARA OF PEAK DOT 466U
BW: 70lbs. Adj 205 day Wt: 828 lbs. Adj 365 day Wt: 1496 lbs.	
BW:+2.9 WW: +67 YW: +113 Milk: +21	



>Recommended for heifers or cows

Topsoil Bulls...



PEAK DOT TOP SOIL 2131E - LOT 38

38	PEAK DOT TOPSOIL 2131E
Male	PDAR 2131E 1990307 March 25 2017
S A V HARVESTOR 0338	S A V HERITAGE 6295
S A V TOPSOIL 4354	S A V EMBLYNETTE 7749
S A V EMBLYNETTE 9044	S A V BISMARCK 5682
	S A V EMBLYNETTE 5573
PEAK DOT BOLD 204U	MOHNEN DYNAMITE 1356
MIA OF PEAK DOT 114Y	QUEEN OF PEAK DOT 652S
MIA OF PEAK DOT 490U	S A V 004 CAPACITY 5234
	MIA OF PEAK DOT 740P
BW: 86lbs. Adj 205 day Wt: 806 lbs. Adj 365 day Wt: 1359 lbs.	
BW:+4.7 WW: +57 YW: +95 Milk: +24	

>Recommended for cows



PEAK DOT TOPSOIL 2093E - LOT 39

39	PEAK DOT TOPSOIL 2093E
Male	PDAR 2093E 1990268 March 23 2017
S A V HARVESTOR 0338	S A V HERITAGE 6295
S A V TOPSOIL 4354	S A V EMBLYNETTE 7749
S A V EMBLYNETTE 9044	S A V BISMARCK 5682
	S A V EMBLYNETTE 5573
DOUBLE AA OLD POST BANDOLIER	DOUBLE AA BLACKMAN 252'96
LADY LAWN OF PEAK DOT 896X	DOUBLE AA ANNIE K 548'99
REMINGTON LADY LAWN 144R	HAPPYVALE BLACK JUMBO 1B
	ANGUS ACRES LADY LAWN 15B
BW: 86lbs. Adj 205 day Wt: 743 lbs. Adj 365 day Wt: 1443 lbs.	
BW:+5.2 WW: +52 YW: +98 Milk: +18	

>Recommended for cows



PEAK DOT TOPSOIL 2025E - LOT 40

40	PEAK DOT TOPSOIL 2025E
Male	PDAR 2025E 1990196 March 16 2017
S A V HARVESTOR 0338	S A V HERITAGE 6295
S A V TOPSOIL 4354	S A V EMBLYNETTE 7749
S A V EMBLYNETTE 9044	S A V BISMARCK 5682
	S A V EMBLYNETTE 5573
PEAK DOT BOLD 204U	MOHNEN DYNAMITE 1356
PEAK DOT ERICA 397B	QUEEN OF PEAK DOT 652S
ERICA OF PEAK DOT 408U	PEAK DOT PREDOMINANT 82S
	ERICA OF PEAK DOT 212S
BW: 85lbs. Adj 205 day Wt: 782 lbs. Adj 365 day Wt: 1393 lbs.	
BW:+5.5 WW: +56 YW: +105 Milk: +21	

>Recommended for cows

Topsoil Bulls...



PEAK DOT TOPSOIL 2144E - LOT 41

41	PEAK DOT TOPSOIL 2144E
Male	PDAR 2144E 1990325 APRIL 26 2017
S A V HARVESTOR 0338	S A V HERITAGE 6295
S A V TOPSOIL 4354	S A V EMBLYNETTE 7749
S A V EMBLYNETTE 9044	S A V BISMARCK 5682
S A V 004 PREDOMINANT 4438	S A V EMBLYNETTE 5573
QUEEN OF PEAK DOT 619U	S A V 8180 TRAVELER 004
QUEEN OF PEAK DOT 536N	S A V EMBLYNETTE 1182
	SAV SAUGAHATCHEE 9374
	QUEEN OF PEAK DOT 322F
BW: 83lbs. Adj 205 day Wt: 900 lbs. Adj 365 day Wt: 1355 lbs.	
BW:+3.5 WW: +54 YW: +90 Milk: +23	

>Recommended for heifers or cows



PEAK DOT TOPSOIL 2414E - LOT 42

42	PEAK DOT TOPSOIL 2414E
Male	PDAR 2414E 1990428 March 27 2017
S A V HARVESTOR 0338	S A V HERITAGE 6295
S A V TOPSOIL 4354	S A V EMBLYNETTE 7749
S A V EMBLYNETTE 9044	S A V BISMARCK 5682
MOHNEN DYNAMITE 1356	S A V EMBLYNETTE 5573
DIVISION OF PEAK DOT 964U	BALDRIDGE KABOOM K243
DIVISION OF PEAK DOT 764L	MOHNEN JILT 910
	DOUBLE AA RITO 287'97
	DIVINA OF PEAK DOT 911H
BW: 85lbs. Adj 205 day Wt: 824 lbs. Adj 365 day Wt: 1300 lbs.	
BW:+5.2 WW: +61 YW: +104 Milk: +21	

>Recommended for cows



PEAK DOT TOPSOIL 524E - LOT 43

43	PEAK DOT TOPSOIL 524E
Male	PDAR 524E 1961606 March 18 2017
S A V HARVESTOR 0338	S A V HERITAGE 6295
S A V TOPSOIL 4354	S A V EMBLYNETTE 7749
S A V EMBLYNETTE 9044	S A V BISMARCK 5682
S A V 004 CAPACITY 5234 CAF	S A V EMBLYNETTE 5573
PANSY OF PEAK DOT 555U	S A V 8180 TRAVELER 004
PANSY OF PEAK DOT 741G	S A V ERICA 1141 CAF OHF
	2TM STOCKMANS OSCAR 210
	LADY OF PEAK DOT 114A
BW: 79lbs. Adj 205 day Wt: 895 lbs. Adj 365 day Wt: 1341 lbs.	
BW:+3.8 WW: +50 YW: +79 Milk: +23	

>Recommended for heifers or cows

Topsoil Bulls...



PEAK DOT TOPSOIL 5009E - LOT 44

44	PEAK DOT TOPSOIL 5009E	
Male	PDAR 5009E 1990256 APRIL 22 2017	
	S A V HARVESTOR 0338	S A V HERITAGE 6295
S A V TOPSOIL 4354		S A V EMBLYNETTE 7749
	S A V EMBLYNETTE 9044	S A V BISMARCK 5682
		S A V EMBLYNETTE 5573
	VISION UNANIMOUS 1418	VISIONTOPLINE ROYAL STOCKMAN
PEAK DOT PANSY 482C		VISION EDELLA 665
	PANSY OF PEAK DOT 913X	S A V IRON MOUNTAIN 8066
		PANSY OF PEAK DOT 552S
	BW: 74lbs. Adj 205 day Wt: 895 lbs. Adj 365 day Wt: 1400 lbs.	
	BW:+4.0 WW: +66 YW: +110 Milk: +20	

>Recommended for heifes or cows



PEAK DOT TOPSOIL 2107E - LOT 45

45	PEAK DOT TOPSOIL 2107E	
Male	PDAR 2107E 1990284 March 24 2017	
	S A V HARVESTOR 0338	S A V HERITAGE 6295
S A V TOPSOIL 4354		S A V EMBLYNETTE 7749
	S A V EMBLYNETTE 9044	S A V BISMARCK 5682
		S A V EMBLYNETTE 5573
	PEAK DOT BOLD 204U	MOHNEN DYNAMITE 1356
PEAK DOT BARDOLIA 464B		QUEEN OF PEAK DOT 652S
	BARDOLIA OF PEAK DOT 604U	S A V 004 PREDOMINANT 4438 F
		BARDOLIA OF PEAK DOT 708R
	BW: 88lbs. Adj 205 day Wt: 753 lbs. Adj 365 day Wt: 1281 lbs.	
	BW:4.1 WW: +51 YW: +79 Milk: +23	

>Recommended for cows



PEAK DOT TOPSOIL 459E - LOT 46

46	PEAK DOT TOPSOIL 459E	
Male	PDAR 459E 1961516 March 07 2017	
	S A V HARVESTOR 0338	S A V HERITAGE 6295
S A V TOPSOIL 4354		S A V EMBLYNETTE 7749
	S A V EMBLYNETTE 9044	S A V BISMARCK 5682
		S A V EMBLYNETTE 5573
	PEAK DOT PROOF 1066X	S A V PIONEER 7301
PEAK DOT JESSICA 14B		BARBARA OF PEAK DOT 314T
	JESSICA OF PEAK DOT 761Y	S A V ELIMINATOR 9105
		JESSICA OF PEAK DOT 528U
	BW: 76lbs. Adj 205 day Wt: 793 lbs. Adj 365 day Wt: 1234 lbs.	
	BW:+3.4 WW: +49 YW: +85 Milk: +23	

>Recommended for heifers

Topsoil Bulls...



PEAK DOT TOPSOIL 2079E - LOT 47

47	PEAK DOT TOPSOIL 2079E	
Male	PDAR 2079E	1990254 March 22 2017
S A V HARVESTOR 0338	S A V HERITAGE 6295	
S A V TOPSOIL 4354	S A V EMBLYNETTE 7749	
S A V EMBLYNETTE 9044	S A V BISMARCK 5682	
	S A V EMBLYNETTE 5573	
PEAK DOT BOLD 204U	MOHNEN DYNAMITE 1356	
PEAK DOT DUCHESS 466B	QUEEN OF PEAK DOT 652S	
DUCHESS OF PEAK DOT 606U	S A V 004 PREDOMINANT 4438	
	DUCHESS OF PEAK DOT 716R	
BW: 89lbs. Adj 205 day Wt: 788 lbs. Adj 365 day Wt: 1483 lbs. BW:+5.6 WW: +55 YW: +102 Milk: +25		

>Recommended for cows

50	PEAK DOT TOPSOIL 546E	
Male	PDAR 546E	1968009 March 29 2017
S A V HARVESTOR 0338	S A V HERITAGE 6295	
S A V TOPSOIL 4354	S A V EMBLYNETTE 7749	
S A V EMBLYNETTE 9044	S A V BISMARCK 5682	
	S A V EMBLYNETTE 5573	
S A V RADIANCE 0801	S A V BRILLIANCE 8077	
PEAK DOT MAYFLOWER 303B	S A V ELBA 801	
PEAK DOT MAYFLOWER 407Z	PEAK DOT RANGLAND 29W	
	MAYFLOWER OF PEAK DOT 309X	
BW: 77lbs. Adj 205 day Wt: 690 lbs. Adj 365 day Wt: 1210 lbs. BW:+3.9 WW: +43 YW: +74 Milk: +24		

>Recommended for heifers

48	PEAK DOT TOPSOIL 2160E	
Male	PDAR 2160E	1990345 March 30 2017
S A V HARVESTOR 0338	S A V HERITAGE 6295	
S A V TOPSOIL 4354	S A V EMBLYNETTE 7749	
S A V EMBLYNETTE 9044	S A V BISMARCK 5682	
	S A V EMBLYNETTE 5573	
PEAK DOT RANGLAND 29W	SANDY BAR GRASSLANDS 94T	
DIVINA OF PEAK DOT 205Y	JUNE OF PEAK DOT 812S	
DIVINA OF PEAK DOT 223W	DOUBLE AA OLD POST BANDOLIER	
	DIVINA OF PEAK DOT 893P	
BW: 87lbs. Adj 205 day Wt: 891 lbs. Adj 365 day Wt: 1537 lbs. BW:+5.2 WW: +65 YW: +108 Milk: +26		

>Recommended for cows

49	PEAK DOT TOPSOIL 570E	
Male	PDAR 570E	1961654 April 09 2017
S A V HARVESTOR 0338	S A V HERITAGE 6295	
S A V TOPSOIL 4354	S A V EMBLYNETTE 7749	
S A V EMBLYNETTE 9044	S A V BISMARCK 5682	
	S A V EMBLYNETTE 5573	
PEAK DOT PIONEER 9X	S A V PIONEER 7301	
PEAK DOT ERICA 166B	DUCHESS OF PEAK DOT 610T	
ERICA OF PEAK DOT 730T	S A V ELIMINATOR 9105	
	PEAK DOT TRAFLAGAR 518K	
BW: 83lbs. Adj 205 day Wt: 718 lbs. Adj 365 day Wt: 1225 lbs. BW:+4.2 WW: +48 YW: +80 Milk: +24		

>Recommended for heifers or cows



Radiance Bulls ...

SAV Radiance 0801 *Peak Dot Reference Sire*



SAV BISMARCK 5682
SAV BRILLIANCE 8077
SAV BLACKCAP MAY 5270
SAV RADIANCE 0801
SAV NET WORTH 4200
SAV ELBA 801
SAV ELBA 1094

BW +1.0
WW +49
YW +99
MILK +27

SAV Radiance 0801 was the high selling SAV Brilliance 8077 son from the record breaking 2012 SAV Sale to Peak Dot Ranch. SAV Radiance has excelled at nearly every measure. He combines a herd improving EPD profile and impeccable pedigree with powerful phenotype - massive and deep with tons of muscle. His perfect uddered dam by Net Worth is a daughter of the # 1 milk EPD and high-income-producing cow in SAV history. Radiance has proven himself as a calving-ease sire and his sons come highly recommend for heifers.



SAV ELBA 801
The dam of Radiance



SAV ELBA 1094
The maternal grandam of Radiance



SAV ELBA 7099
The maternal great grandam of Radiance



2018 Semex Argentina Tour

Radiance Bulls ...



PEAK DOT RADIANCE 460E - LOT 51

51	PEAK DOT RADIANCE 460E
Male	PDAR 460E 1968205 March 08 2017
S A V BRILLIANCE 8077	S A V BISMARCK 5682
S A V RADIANCE 0801	S A V BLACKCAP MAY 5270
S A V ELBA 801	S A V NET WORTH 4200
DUFF ENCORE 702 DMF	S A V ELBA 1094 CAF
LADY OF PEAK DOT 714W	D H D TRAVELER 6807
LADY OF PEAK DOT 514S	O C C DIXIE ERICA 814G
	S A V 004 PREDOMINANT 4438
	LADY OF PEAK DOT 717P
BW: 85lbs. Adj 205 day Wt: 739 lbs. Adj 365 day Wt: 1337 lbs.	
BW:+3.7 WW: +38 YW: +85 Milk: +17	

>Recommended for cows.



PEAK DOT RADIANCE 439E - LOT 52

52	PEAK DOT RADIANCE 439E
Male	PDAR 439E 1968054 March 04 2017
S A V BRILLIANCE 8077	S A V BISMARCK 5682
S A V RADIANCE 0801	S A V BLACKCAP MAY 5270
S A V ELBA 801	S A V NET WORTH 4200
PEAK DOT IRON MOUNTAIN 1047X	S A V ELBA 1094
PEAK DOT PRIDE 282A	S A V IRON MOUNTAIN 8066
PRIDE OF PEAK DOT 495N	PANSY OF PEAK DOT 541U
	S A V SAUGAHATCHEE 9374
	CEDAR OF PEAK DOT 545K
BW: 77lbs. Adj 205 day Wt: 710 lbs. Adj 365 day Wt: 1310 lbs.	
BW:+3.1WW: +43 YW: +92Milk: +11	

>Recommended for heifers



Lady of Peak Dot 714W
The dam of lot 51

53	PEAK DOT RADIANCE 509E
Male	PDAR 509E 1967429 March 16 2017
S A V BRILLIANCE 8077	S A V BISMARCK 5682
S A V RADIANCE 0801	S A V BLACKCAP MAY 5270
S A V ELBA 801	S A V NET WORTH 4200
BASIN PRIME CUT 354K OSF	S A V ELBA 1094
BARDOLIA OF PEAK DOT 857T	SUMMITCREST PRIME CUT 1G42
BARDOLIA OF PEAK DOT 963H	BASIN HEIRESS 353
	O S U PANAMA 4178
	BARDOLIA OF PEAK DOT 627F
BW: 73lbs. Adj 205 day Wt: 791 lbs. Adj 365 day Wt: 1263 lbs.	
BW:+1.8 WW: +38 YW: +76 Milk: +19	

>Recommended for heifers

Earnhardt Bulls . . .

JANSSEN EARNHARDT 5003

Peak Dot Reference Sire



SAV HERITAGE 6295
 SAV HARVESTOR 0338
 SAV EMBLYNETE 7749
JANSSEN EARNHARDT 5003
 SAV BRAND NAME 9115
 SAV MISS BOBBIE 2407
 SAV MISS BOBBIE 0045

BW +3.4
 WW +63
 YW +111
 MILK +22



SAV MISS BOBBIE 2407
 The dam of Earnhardt

Earnhardt is a stout and powerful son of SAV Harvester 0338 out of the uniquely bred and perfectly built SAV Miss Bobbie 2407. He was the top weaning bull of his entire calf crop at Janssen Angus. He offers a moderate birth weight with a 205 day weight of 977 pounds along with a 365-day weight that broke the 1,400 pound yearling weight barrier. A large number of Earnhardt and Top Soil daughters have been retained by Peak Dot for replacements.



PEAK DOT EARNHARDT 499E - LOT 54



PEAK DOT EARNHARDT 311E - LOT 55

54 PEAK DOT EARNHARDT 499E	
Male	PDAR 499E 1967169 March 14 2017
S A V HARVESTOR 0338	S A V HERITAGE 6295
JANSSEN EARNHARDT 5003	S A V EMBLYNETTE 7749
S A V MISS BOBBIE 2470	S A V BRAND NAME 9115
	S A V MISS BOBBIE 0045
S A V 004 CAPACITY 5234	S A V 8180 TRAVELER 004
BARDOLIA OF PEAK DOT 820T	S A V ERICA 1141
BARDOLIA OF PEAK DOT 641K	HF MOST WANTED 46H
	BARDOLIA OF PEAK DOT 810G
BW: 80lbs. Adj 205 day Wt: 802 lbs. Adj 365 day Wt: 1314 lbs.	
BW:+3.1 WW: +46 YW: +78 Milk: +22	

>Recommended for heifers or cows.

55 PEAK DOT EARNHARDT 311E	
Male	PDAR 311E 2001027 February 11 2017
S A V HARVESTOR 0338	S A V HERITAGE 6295
JANSSEN EARNHARDT 5003	S A V EMBLYNETTE 7749
S A V MISS BOBBIE 2470	S A V BRAND NAME 9115
	S A V MISS BOBBIE 0045
S A V IRON MOUNTAIN 8066	TC GRIDIRON 258
LADY OF PEAK DOT 544Y	S A V MADAME PRIDE 3249
LADY OF PEAK DOT 534M	BASIN PRIME CUT 354K
	LADY OF PEAK DOT 132A
BW: 75lbs. Adj 205 day Wt: 835 lbs. Adj 365 day Wt: 1299 lbs.	
BW:+2.2 WW: +50 YW: +83 Milk: +21	

>Recommended for heifers or cows.

Honor Bulls ...

SAV Honor 4842 *Peak Dot Reference Sire*



S A V 707 RITO 9969
 S A V REVERE 1180
 A C DUKE GIRL 57
SAV HONOR 4842
 SAV 8180 TRAVELER 004
 SAV BLACKCAP MAY 4136
 SAV MAY 2397

BW +2.3
 WW +27
 YW +65
 MILK +29



SAV Blackcap May 4136
 The dam of Honor

Our pick of the 2015 SAV sale. Honor posted an October actual weaning weight of 1065lbs. Honor is a direct son of the famous SAV Blackcap May 4136. SAV Blackcap 4136 may ranks among the top producing cows at SAV with \$1.9 million in progeny sales. SAV Honor is a maternal brother to SAV Seedstock and SAV Renown. SAV Honor is owned with Semex.



PEAK DOT HONOR 3015E - LOT 56

56 PEAK DOT HONOR 3015E

Male PDAR 3015E 2005661 February 19 2017
 S A V REVERE 1180 S A V 707 RITO 9969
 S A V HONOR 4842 A C DUKE GIRL 57
 S A V BLACKCAP MAY 4136 S A V 8180 TRAVELER 004
 S A V MAY 2397
 PEAK DOT ELIMINATOR 723A S A V ELIMINATOR 9105
 PEAK DOT ANNIE K 174C HEROINE OF PEAK DOT 962U
 ANNIE K OF PEAK DOT 116Y PEAK DOT ENTOURAGE 3W
 ANNIE K OF PEAK DOT 911W
 BW: 88lbs. Adj 205 day Wt: 796 lbs. Adj 365 day Wt: 1345 lbs.
 BW:+4.1 WW: +35 YW: +76 Milk: +30



>Recommended for cows or heifers

Honor Bulls ...



PEAK DOT HONOR 3019E - LOT 57

57	PEAK DOT HONOR 3019E	
Male	PDAR 3019E	2005664 February 27 2017
S A V REVERE 1180	S A V 707 RITO 9969	
S A V HONOR 4842	A C DUKE GIRL 57	
S A V BLACKCAP MAY 4136	S A V 8180 TRAVELER 004	
	S A V MAY 2397	
VISION UNANIMOUS 1418	VISIONTOPLINE ROYAL STOCKMAN	
PEAK DOT LADY 415C	VISION EDELLA 665	
LADY OF PEAK DOT 725W	DUFF ENCORE 702	
	LADY OF PEAK DOT 405S	
BW: 78lbs. Adj 205 day Wt: 695 lbs. Adj 365 day Wt: 1180 lbs. BW:+2.5 WW:+30 YW:+62 Milk:+21		

>Recommended for heifers or cows

58	PEAK DOT HONOR 127E	
Male	PDAR 127E	1967734 March 06 2017
S A V REVERE 1180	S A V 707 RITO 9969	
S A V HONOR 4842	A C DUKE GIRL 57	
S A V BLACKCAP MAY 4136	S A V 8180 TRAVELER 004	
	S A V MAY 2397	
BUSHS EASY DECISION 98	VIN-MAR O'REILLY FACTOR	
PEAK DOT HEROINE 136C	BUSHS BIG BLACKBIRD 7885	
PEAK DOT HEROINE 1188Z	PEAK DOT PIONEER 569X	
	HEROINE OF PEAK DOT 248W	
BW: 68lbs. Adj 205 day Wt: 818 lbs. Adj 365 day Wt: 1210 lbs. BW:+1.4 WW:+39 YW:+70 Milk:+24		

>Recommended for heifers

59	PEAK DOT HONOR 537E	
Male	PDAR 537E	1967729 March 23 2017
S A V REVERE 1180	S A V 707 RITO 9969	
S A V HONOR 4842	A C DUKE GIRL 57	
S A V BLACKCAP MAY 4136	S A V 8180 TRAVELER 004	
	S A V MAY 2397	
KR CASH FLOW	BARSTOW CASH	
PEAK DOT SUSIE 350C	WK LASS 1591	
SUSIE OF PEAK DOT 485U	S A V 004 CAPACITY 5234	
	SUSIE OF PEAK DOT 527K	
BW: 78lbs. Adj 205 day Wt: 790 lbs. Adj 365 day Wt: 1252 lbs. BW:+4.0 WW:+33 YW:+67 Milk:+24		

>Recommended for heifers or cows



60	PEAK DOT SEEDSTOCK 230E	
Male	PDAR 230E	1956126 January 28 2017
S A V REGISTRY 2831	RITO 707 OF IDEAL 3407 7075	
S A V SEEDSTOCK 4838	S A V MADAME PRIDE 0075	
S A V BLACKCAP MAY 4136	S A V 8180 TRAVELER 004	
	S A V MAY 2397	
S A R NEW TREND 4100 2080	L F NEW TREND 4100	
BARDOLIA OF PEAK DOT 428S	CHAMPION HILL POCAHONTAS	
BARDOLIA OF PEAK DOT 585K	HF MOST WANTED 46H	
	BARDOLIA OF PEAK DOT 963H	
BW: 60lbs. Adj 205 day Wt: 829 lbs. Adj 365 day Wt: 1186 lbs. BW:-0.3 WW:+39 YW:+62 Milk:+27		

>Recommended for heifers

Pioneer 9X Bulls ...

Peak Dot Pioneer 9X *Peak Dot Reference Sire*



SAV FINAL ANSWER 0035
 SAV PIONEER 7301
 SAV BLACKBIRD 5297
PEAK DOT PIONEER 9X
 HF POWER UP 72N
 DUCHESS OF PEAK DOT 610T
 DUCHESS OF PEAK DOT 654N

BW +1.1
 WW +63
 YW +113
 MILK +21



Duchess of Peak Dot 610T
 The dam of Peak Dot Pioneer 9X



Duchess of Peak Dot 654N
 The grandam of Peak Dot Pioneer 9X

Peak Dot Pioneer 9X was a feature of the April 2010 sale. He has proven himself to be an easy calving sire with exceptional performance and cow family strength that goes back for generations. His progeny are long, deep and correct, they are among some of the top performing individuals in this sale.



PEAK DOT PIONEER 2220E - LOT 61

61	PEAK DOT PIONEER 2220E
Male	PDAR 2220E 2005219 April 15 2017
S A V PIONEER 7301 DMF	S A V FINAL ANSWER 0035
PEAK DOT PIONEER 9X	S A V BLACKBIRD 5297
DUCHESS OF PEAK DOT 610T	HF POWER-UP 72N
VISION UNANIMOUS 1418	DUCHESS OF PEAK DOT 654N
PEAK DOT DUCHESS 540A	VISIONTOPLINE ROYAL STOCKMAN
DUCHESS OF PEAK DOT 646U	VISION EDELLA 665 CAF
	PEAK DOT PREDOMINANT 92S
	DUCHESS OF RAINBOW HILLS 119R
BW: 79lbs. Adj 205 day Wt: 873 lbs. Adj 365 day Wt: 1581 lbs.	
BW:+2.5 WW: +67 YW: +123 Milk: +24	

>Recommended for heifers or cows



Visitors from Croatia

Pioneer 9X Bulls ...



PEAK DOT PIONEER 2263E - LOT 62

62	PEAK DOT PIONEER 2263E
Male	PDAR 2263E 2005278 May 08 2017
S A V PIONEER 7301	S A V FINAL ANSWER 0035
PEAK DOT PIONEER 9X	S A V BLACKBIRD 5297
DUCHESS OF PEAK DOT 610T	HF POWER-UP 72N
	DUCHESS OF PEAK DOT 654N
S A V 004 PREDOMINANT 4438	S A V 8180 TRAVELER 004
HEROINE OF PEAK DOT 484U	S A V EMBLYNETTE 1182
HEROINE OF PEAK DOT 481R	BASIN PRIME CUT 354K OSF
	PEAK DOT HEROINE 246B
BW: 82lbs. Adj 205 day Wt: 826 lbs. Adj 365 day Wt: 1507 lbs. BW:+2.6 WW:+57 YW: +110 Milk: +23	

>Recommended for heifers or cows.



PEAK DOT PIONEER 2185E - LOT 63

63	PEAK DOT PIONEER 2185E
Male	PDAR 2185E 2005166 April 07 2017
S A V PIONEER 7301	S A V FINAL ANSWER 0035
PEAK DOT PIONEER 9X	S A V BLACKBIRD 5297
DUCHESS OF PEAK DOT 610T	HF POWER-UP 72N
	DUCHESS OF PEAK DOT 654N
MOHNEN DYNAMITE 1356	BALDRIDGE KABOOM K243
DUCHESS OF PEAK DOT 615U	MOHNEN JILT 910
DUCHESS OF PEAK DOT 486S	BASIN PRIME CUT 354K OSF
	DUCHESS OF PEAK DOT 755G
BW: 80lbs. Adj 205 day Wt: 875 lbs. Adj 365 day Wt: 1378 lbs. BW:+2.5 WW: +52 YW: +88 Milk: +22	

>Recommended for heifers or cows.



PEAK DOT PIONEER 2191E - LOT 64

64	PEAK DOT PIONEER 2191E
Male	PDAR 2191E 2005172 April 09 2017
S A V PIONEER 7301	S A V FINAL ANSWER 0035
PEAK DOT PIONEER 9X	S A V BLACKBIRD 5297
DUCHESS OF PEAK DOT 610T	HF POWER-UP 72N
	DUCHESS OF PEAK DOT 654N
S A V 004 CAPACITY 5234	S A V 8180 TRAVELER 004
LADY OF PEAK DOT 483U	S A V ERICA 1141
LADY OF PEAK DOT 731G	HF WALK-ON 14C
	LADY OF PEAK DOT 433D
BW: 84lbs. Adj 205 day Wt: 821 lbs. Adj 365 day Wt: 1482 lbs. BW:+4.0 WW: +51 YW: +99 Milk: +21	

>Recommended for cows

Pioneer 9X Bulls ...



PEAK DOT PIONEER 2198E - LOT 65

65	PEAK DOT PIONEER 2198E	
Male	PDAR 2198E 2005178 April 11 2017	
S A V PIONEER 7301	S A V FINAL ANSWER 0035	
PEAK DOT PIONEER 9X	S A V BLACKBIRD 5297	
DUCHESS OF PEAK DOT 610T	HF POWER-UP 72N	
	DUCHESS OF PEAK DOT 654N	
MOHNEN DYNAMITE 1356	BALDRIDGE KABOOM K243	
BARDOLIA OF PEAK DOT 923W	MOHNEN JILT 910	
BARDOLIA OF PEAK DOT 963H	O S U PANAMA 4178	
	BARDOLIA OF PEAK DOT 627F	
BW: 83lbs. Adj 205 day Wt: 798 lbs. Adj 365 day Wt: 1333 lbs. BW:+2.7 WW: +47 YW: +88 Milk: +19		

>Recommended for heifers or cows.



PEAK DOT PIONEER 2239E - LOT 66

66	PEAK DOT PIONEER 2239E	
Male	PDAR 2239E 2005236 April 19 2017	
S A V PIONEER 7301	S A V FINAL ANSWER 0035	
PEAK DOT PIONEER 9X	S A V BLACKBIRD 5297	
DUCHESS OF PEAK DOT 610T	HF POWER-UP 72N	
	DUCHESS OF PEAK DOT 654N	
PEAK DOT RANGLAND 29W	SANDY BAR GRASSLANDS 94T	
PEAK DOT LADY 497B	JUNE OF PEAK DOT 812S	
LADY OF PEAK DOT 642U	STEVENSON BRUNO 6371	
	LADY OF PEAK DOT 789L	
BW: 82lbs. Adj 205 day Wt: 782 lbs. Adj 365 day Wt: 1352 lbs. BW:+3.1 WW: +47 YW: +88 Milk: +22		

>Recommended for heifers or cows.

67	PEAK DOT PIONEER 2426E	
Male	PDAR 2426E 2005300 April 07 2017	
S A V PIONEER 7301	S A V FINAL ANSWER 0035	
PEAK DOT PIONEER 9X	S A V BLACKBIRD 5297	
DUCHESS OF PEAK DOT 610T	HF POWER-UP 72N	
	DUCHESS OF PEAK DOT 654N	
S A V 004 PREDOMINANT 4438	S A V 8180 TRAVELER 004	
LADY OF PEAK DOT 626U	S A V EMBLYNETTE 1182	
LADY OF PEAK DOT 617F	CHAMPION HILL GENERAL STONE	
	LADY OF PEAK DOT 227B	
BW: 84lbs. Adj 205 day Wt: 867 lbs. Adj 365 day Wt: 1343 lbs. BW:+2.5 WW: +50 YW: +81 Milk: +21		

>Recommended for heifers or cows.



Gladiator Bulls ...



PEAK DOT GLADIATOR 3011E - LOT 68



PEAK DOT GLADIATOR 3022E - LOT 69



68	PEAK DOT GLADIATOR 3011E
Male	PDAR 3011E 2007750 February 09 2017
PEAK DOT GLADIATOR 800Y	S A V ELIMINATOR 9105
PEAK DOT GLADIATOR 43B	ANNIE K OF PEAK DOT 533U
DUCHESS OF PEAK DOT 75Y	S A V IRON MOUNTAIN 8066
	DUCHESS OF PEAK DOT 469U
STEVENSON BRUNO 6371	STEVENSON BRUNO 561G
MIA OF PEAK DOT 534R	STEVENSON QUEEN 828F
MIA OF PEAK DOT 511K	SCA 03H OF IDEAL 1418
	MIA OF PEAK DOT 950H
BW: 79lbs. Adj 205 day Wt: 786 lbs. Adj 365 day Wt: 1380 lbs.	
BW:+1.7 WW: +37 YW: +73 Milk: +21	

>Recommended for heifers or cows.

69	PEAK DOT GLADIATOR 3022E
Male	PDAR 3022E 2007752 March 01 2017
PEAK DOT GLADIATOR 800Y	S A V ELIMINATOR 9105
PEAK DOT GLADIATOR 43B	ANNIE K OF PEAK DOT 533U
DUCHESS OF PEAK DOT 75Y	S A V IRON MOUNTAIN 8066
	DUCHESS OF PEAK DOT 469U
PEAK DOT RESOLUTE 37W	S A V 004 PREDOMINANT 4438
MIA OF PEAK DOT 40Y	MIA OF PEAK DOT 406R
MIA OF PEAK DOT 534R	STEVENSON BRUNO 6371
	MIA OF PEAK DOT 511K
BW: 83lbs. Adj 205 day Wt: 805 lbs. Adj 365 day Wt: 1318 lbs.	
BW:+3.0 WW: +40 YW: +66 Milk: +21	

>Recommended for heifers or cows.

Eliminator 723A Bulls ...

Peak Dot Eliminator 723A

Peak Dot Reference Sire



RITO 707 OF IDEAL 3407 7075	BW	+2.6
SAV ELIMINATOR 9105	WW	+60
SAV ABIGALE 5646	YW	+114
PEAK DOT ELIMINATOR 723A	MILK	+27
SAV 004 PREDOMINANT 4438		
HEROINE OF PEAK DOT 962U		
HEROINE OF PEAK DOT 509K		

Peak Dot Eliminator 723A was a feature in the 2014 spring sale selling to Hillcrest Enterprises. Eliminator 723A is rich in maternal heritage. His SAV Predominant dam served in the embryo program along with her full sister and dam. This cow family carries the ideal udder structure we strive to produce. Eliminator 723A is sure to be a udder improver and will add thickness and muscle density.

SAV Eliminator 9105

Sire of Peak Dot Eliminator 723A

SAV Eliminator 9105 is the powerful lead off Rito 707 of Ideal 3407 7075 son selected by Peak Dot and Johnson Livestock as a \$95,000 feature of the 2010 SAV Sale. He was the #1 marbling bull of his calf crop with an IMF ratio of 155 and scanned a 365 - day REA of 15.8 inches with a yearling scrotal measurement of 41cm. Eliminator has consistently sired pounds, length, sheer thickness and extreme muscle density.



HEROINE OF PEAK DOT 962U

The dam of Peak Dot Eliminator 723A



HEROINE OF PEAK DOT 958U

The full sister to the dam of Peak Dot Eliminator 723A



PEAK DOT ELIMINATOR 2199E - LOT 70

70 PEAK DOT ELIMINATOR 2199E

Male	PDAR 2199E 2005179	April 11 2017
S A V ELIMINATOR 9105	RITO 707 OF IDEAL 3407 7075	
PEAK DOT ELIMINATOR 723A	S A V ABIGALE 5646	
HEROINE OF PEAK DOT 962U	S A V 004 PREDOMINANT 4438	
STEVENSON BRUNO 6371	HEROINE OF PEAK DOT 509K	
LADY OF PEAK DOT 468U	STEVENSON BRUNO 561G	
LADY OF PEAK DOT 782L	STEVENSON QUEEN 828F	
	DOUBLE AA RITO 287*97	
	LADY OF PEAK DOT 575E	

BW: 79lbs. Adj 205 day Wt: 780 lbs. Adj 365 day Wt: 1298 lbs.
 BW:+2.9 WW: +38 YW: +69 Milk: +25

>Recommended for heifers

Eliminator 723A Bulls ...



PEAK DOT ELIMINATOR 2266E - LOT 71

71	PEAK DOT ELIMINATOR 2266E
Male	PDAR 2266E 2005280 May 08 2017
S A V ELIMINATOR 9105	RITO 707 OF IDEAL 3407 7075
PEAK DOT ELIMINATOR 723A	S A V ABIGALE 5646
HEROINE OF PEAK DOT 962U	S A V 004 PREDOMINANT 4438
VISION UNANIMOUS 1418	HEROINE OF PEAK DOT 509K
PEAK DOT LADY 486B	VISIONTOPLINE ROYAL STOCKMAN
LADY OF PEAK DOT 629U	VISION EDELLA 665
	S A V 004 PREDOMINANT 4438
	LADY OF PEAK DOT 525M
BW: 72lbs. Adj 205 day Wt: 854 lbs. Adj 365 day Wt: 1455 lbs.	
BW:+2.0 WW: +60 YW: +104 Milk: +20	

>Recommended for heifers



PEAK DOT ELIMINATOR 2210E - LOT 72

72	PEAK DOT ELIMINATOR 2210E
Male	PDAR 2210E 2005191 April 13 2017
S A V ELIMINATOR 9105	RITO 707 OF IDEAL 3407 7075
PEAK DOT ELIMINATOR 723A	S A V ABIGALE 5646
HEROINE OF PEAK DOT 962U	S A V 004 PREDOMINANT 4438
CONNEALY IMPRESSION	HEROINE OF PEAK DOT 509K
HYALITE OF PEAK DOT 272Z	CONNEALY REFLECTION
HYALITE OF PEAK DOT 212W	PEARL PAMMY OF CONANGA 194
	DOUBLE AA OLD POST BANDOLIER
	HYALITE OF PEAK DOT 447N
BW: 81lbs. Adj 205 day Wt: 749 lbs. Adj 365 day Wt: 1375 lbs.	
BW:+3.3 WW: +46 YW: +96 Milk: +18	

>Recommended for heifers or cows.



PEAK DOT ELIMINATOR 2163E - LOT 73

73	PEAK DOT ELIMINATOR 2163E
Male	PDAR 2163E 2005148 March 30 2017
S A V ELIMINATOR 9105	RITO 707 OF IDEAL 3407 7075
PEAK DOT ELIMINATOR 723A	S A V ABIGALE 5646
HEROINE OF PEAK DOT 962U	S A V 004 PREDOMINANT 4438
PEAK DOT BOLD 204U	HEROINE OF PEAK DOT 509K
HEATHER OF PEAK DOT 344Z	MOHNEN DYNAMITE 1356
HEATHER OF PEAK DOT 924U	QUEEN OF PEAK DOT 652S
	S A V 004 PREDOMINANT 4438
	HEATHER OF PEAK DOT 544K
BW: 80lbs. Adj 205 day Wt: 745 lbs. Adj 365 day Wt: 1375 lbs.	
BW:+3.1 WW: +43 YW: +90 Milk: +22	

>Recommended for heifers or cows.

Eliminator 723A Bulls ...



PEAK DOT ELIMINATOR 2214E - LOT 74

74	PEAK DOT ELIMINATOR 2214E
Male	PDAR 2214E 2005195 April 14 2017
S A V ELIMINATOR 9105	RITO 707 OF IDEAL 3407 7075
PEAK DOT ELIMINATOR 723A	S A V ABIGALE 5646
HEROINE OF PEAK DOT 962U	S A V 004 PREDOMINANT 4438
	HEROINE OF PEAK DOT 509K
S A V 004 CAPACITY 5234	S A V 8180 TRAVELER 004
HEATHER OF PEAK DOT 612U	S A V ERICA 1141 CAF
HEATHER OF PEAK DOT 948P	S A R NEW TREND 4100 2080
	HEATHER OF PEAK DOT 787L
BW: 83lbs. Adj 205 day Wt: 780 lbs. Adj 365 day Wt: 1379 lbs.	
BW:+4.0 WW: +48 YW: +91 Milk: +22	

>Recommended for heifers or cows.



PEAK DOT ELIMINATOR 2225E - LOT 75

75	PEAK DOT ELIMINATOR 2225E
Male	PDAR 2225E 2005225 April 16 2017
S A V ELIMINATOR 9105	RITO 707 OF IDEAL 3407 7075
PEAK DOT ELIMINATOR 723A	S A V ABIGALE 5646
HEROINE OF PEAK DOT 962U	S A V 004 PREDOMINANT 4438
	HEROINE OF PEAK DOT 509K
S A V 004 PREDOMINANT 4438	S A V 8180 TRAVELER 004
MAYFLOWER OF PEAK DOT 309X	S A V EMBLYNETTE 1182
MAYFLOWER OF PEAK DOT 658	KDF POWERLINE 28N
	MAYFLOWER OF PEAK DOT 959P
BW: 70lbs. Adj 205 day Wt: 822 lbs. Adj 365 day Wt: 1377 lbs.	
BW:+1.4 WW: +47 YW: +86 Milk: +25	

>Recommended for heifers



PEAK DOT ELIMINATOR 2242E - LOT 76

76	PEAK DOT ELIMINATOR 2242E
Male	PDAR 2242E 2006642 April 20 2017
S A V ELIMINATOR 9105	RITO 707 OF IDEAL 3407 7075
PEAK DOT ELIMINATOR 723A	S A V ABIGALE 5646
HEROINE OF PEAK DOT 962U	S A V 004 PREDOMINANT 4438
	HEROINE OF PEAK DOT 509K
VISION UNANIMOUS 1418	VISIONTOPLINE ROYAL STOCKMAN
PEAK DOT BARDOLIA 386B	VISION EDELLA 665
BARDOLIA OF PEAK DOT 307X	DUFF ENCORE 702
	BARDOLIA OF PEAK DOT 901T
BW: 74lbs. Adj 205 day Wt: 790 lbs. Adj 365 day Wt: 1397 lbs.	
BW:+2.7 WW: +52 YW: +98 Milk: +17	

>Recommended for heifers

Eliminator 723A Bulls ...

77 PEAK DOT ELIMINATOR 2270E
 Male PDAR 2270E 2005282 May 13 2017
 S A V ELIMINATOR 9105 RITO 707 OF IDEAL 3407 7075
 PEAK DOT ELIMINATOR 723A S A V ABIGALE 5646
 HEROINE OF PEAK DOT 962U S A V 004 PREDOMINANT 4438
 HEROINE OF PEAK DOT 509K
 MOHNEN DYNAMITE 1356 BALDRIDGE KABOOM K243
 QUEEN OF PEAK DOT 942U MOHNEN JILT 910
 QUEEN OF PEAK DOT 710P STEVENSON BRUNO 6371
 QUEEN OF PEAK DOT 705G

BW: 83lbs. Adj 205 day Wt: 840 lbs. Adj 365 day Wt: 1377 lbs.
 BW:+3.2 WW: +46 YW: +89 Milk: +20

>Recommended for heifers or cows

79 PEAK DOT ELIMINATOR 2280E
 Male PDAR 2280E 2005287 May 13 2017
 S A V ELIMINATOR 9105 RITO 707 OF IDEAL 3407 7075
 PEAK DOT ELIMINATOR 723A S A V ABIGALE 5646
 HEROINE OF PEAK DOT 962U S A V 004 PREDOMINANT 4438
 HEROINE OF PEAK DOT 509K
 S A V 004 CAPACITY 5234 CAF S A V 8180 TRAVELER 004
 DUCHESS OF PEAK DOT 817X S A V ERICA 1141 CAF OHF
 DUCHESS OF PEAK DOT 582K HF MOST WANTED 46H
 DUCHESS OF PEAK DOT 945H

BW: 77lbs. Adj 205 day Wt: 889 lbs. Adj 365 day Wt: 1460 lbs.
 BW:+2.7 WW: +52 YW: +94 Milk: +23

>Recommended for heifers

78 PEAK DOT ELIMINATOR 2262E
 Male PDAR 2262E 2005277 May 08 2017
 S A V ELIMINATOR 9105 RITO 707 OF IDEAL 3407 7075
 PEAK DOT ELIMINATOR 723A S A V ABIGALE 5646
 HEROINE OF PEAK DOT 962U S A V 004 PREDOMINANT 4438
 HEROINE OF PEAK DOT 509K
 VISION UNANIMOUS 1418 VISIONTOPLINE ROYAL STOCKMAN
 PEAK DOT LADY 433B VISION EDELLA 665
 LADY OF PEAK DOT 468U STEVENSON BRUNO 6371
 LADY OF PEAK DOT 782L

BW: 72lbs. Adj 205 day Wt: 847 lbs. Adj 365 day Wt: 1399 lbs.
 BW:+1.9 WW: +52 YW: +95 Milk: +22

>Recommended for heifers

80 PEAK DOT ELIMINATOR 2257E
 Male PDAR 2257E 2005274 May 03 2017
 S A V ELIMINATOR 9105 RITO 707 OF IDEAL 3407 7075
 PEAK DOT ELIMINATOR 723A S A V ABIGALE 5646
 HEROINE OF PEAK DOT 962U S A V 004 PREDOMINANT 4438
 HEROINE OF PEAK DOT 509K
 DOUBLE AA OLD POST BANDOLIER DOUBLE AA BLACKMAN 252'96
 ANNIE K OF PEAK DOT 911W DOUBLE AA ANNIE K 548'99
 DOUBLE AA ANNIE K 608'01 DOUBLE AA BARDOLENE 587'98
 DOUBLE AA ANNIE K 280'97

BW: 82lbs. Adj 205 day Wt: 837 lbs. Adj 365 day Wt: 1244 lbs.
 BW:+3.4 WW: +37 YW: +65 Milk: +26

>Recommended for heifers or cows

The Peak Dot Cow Herd...

For decades Peak Dot has focused on breeding a cow herd that is stacked with generations of females that are fertile, functional, productive and problem free. We have spent years of selecting for quality udders, feet and docility. Buy bulls with confidence knowing they come from a very strong, consistent genetic female base.



Easy Decision Bulls...

BUSHES EASY DECISION 98 *Peak Dot Reference Sire*



**SEMEX
Beef**



2014 National Western Stock Show Champion Pen
Easy Decision was the lead bull in the 2014 Champion Pen of bulls

SAV FINAL ANSWER 0035
VIN-MAR O'REILLEY FACTOR
VIN-MAR EDELLA 2827
BUSHES EASY DECISION 98
BUSHES BIG TIME 452
BUSH BIG BLACKBIRD 7885
BUSHES DAKOTA BLACKBIRD 4763

CED +5
BW +3.0
WW +85
YW +149
MILK +20
RE +.69
\$W +65.52
\$F +140.83
\$B +194.44

Easy Decision a big time performance bull that is rapidly becoming one of the most popular new bulls in the Angus breed. His first two calve crops have exceeded all expectations and have proven him as a low birth weight sire that consistently breeds added pounds at weaning and structural soundness. Easy Decision is backed by four consecutive generations of Pathfinder dams. Easy Decision was the lead bull of the 2014 National Western Stock Show Champion pen of 3 bulls. Easy Decision first calf crop was the feature attraction of the 2016 Peak Dot bull sale with the top 5 sons averaging \$35,500.

Top selling Easy Decision sons from past Bull Sales..



PEAK DOT LIBERTY 117C
Purchased by Alta Genetics .



PEAK DOT EASY DECISION 34D
Purchased by Northway Cattle co..



PEAK DOT JUMP START 142C
Purchased by Semex .



PEAK DOT OUTCOME 5D
Purchased by Alta Genetics .

Easy Decision Bulls...



PEAK DOT EASY DECISION 2083EE - LOT 81

81 PEAK DOT EASY DECISION 2083E

Male	PDAR 2083E	1990258	March 23 2017
VIN-MAR O'REILLY FACTOR	S A V FINAL ANSWER 0035		
BUSHES EASY DECISION 98	VIN-MAR EDELLA 2827		
BUSHES BIG BLACKBIRD 7885	BUSHES BIG TIME 452		
	BUSHES DAKOTA BLACKBIRD 4763		
PEAK DOT BOLD 204U	MOHNEN DYNAMITE 1356		
PEAK DOT LADY 573A	QUEEN OF PEAK DOT 652S		
LADY OF PEAK DOT 805X	S A V 004 PREDOMINANT 4438		
	LADY OF PEAK DOT 534M		
BW: 85lbs. Adj 205 day Wt: 763 lbs. Adj 365 day Wt: 1424 lbs.			
BW:+4.0 WW: +62 YW: +122 Milk: +17			

>Recommended for heifers or cows



PEAK DOT EASY DECISION 2115E - LOT 82

82 PEAK DOT EASY DECISION 2115E

Male	PDAR 2115E	1990292	March 24 2017
VIN-MAR O'REILLY FACTOR	S A V FINAL ANSWER 0035		
BUSHES EASY DECISION 98	VIN-MAR EDELLA 2827		
BUSHES BIG BLACKBIRD 7885	BUSHES BIG TIME 452		
	BUSHES DAKOTA BLACKBIRD 4763		
S A V BULLET 0473 AMF	S A V BISMARCK 5682		
PANSY OF PEAK DOT 779Z	S A V EMBLYNETTE 7566		
PANSY OF PEAK DOT 904U	S A V 004 PREDOMINANT 4438		
	PANSY OF PEAK DOT 329J		
BW: 75lbs. Adj 205 day Wt: 905 lbs. Adj 365 day Wt: 1476 lbs.			
BW:+2.6 WW: +74 YW: +123 Milk: +16			

>Recommended for heifers



PEAK DOT EASY DECISION 2411E - LOT 83

83 PEAK DOT EASY DECISION 2411E

Male	PDAR 2411E	1990425	March 24 2017
VIN-MAR O'REILLY FACTOR	S A V FINAL ANSWER 0035		
BUSHES EASY DECISION 98	VIN-MAR EDELLA 2827		
BUSHES BIG BLACKBIRD 7885	BUSHES BIG TIME 452		
	BUSHES DAKOTA BLACKBIRD 4763		
MOHNEN DYNAMITE 1356	BALDRIDGE KABOOM K243		
DUCHESS OF PEAK DOT 932U	MOHNEN JILT 910		
DUCHESS OF PEAK DOT 502M	S A R NEW TREND 4100 2080		
	DUCHESS OF PEAK DOT 945H		
BW: 80lbs. Adj 205 day Wt: 850 lbs. Adj 365 day Wt: 1325 lbs.			
BW:+2.9 WW: +65 YW: +109 Milk: +17			

>Recommended for heifers or cows

Easy Decision Bulls...



PEAK DOT EASY DECISION 2134E - LOT 84

84 PEAK DOT EASY DECISION 2134E
 Male PDAR 2134E 1990310 March 26 2017
 VIN-MAR O'REILLY FACTOR S A V FINAL ANSWER 0035
 BUSHS EASY DECISION 98 VIN-MAR EDELLA 2827
 BUSHS BIG BLACKBIRD 7885 BUSHS BIG TIME 452
 BUSHS DAKOTA BLACKBIRD 4763
 PEAK DOT GRASSLANDS 537W SANDY BAR GRASSLANDS 94T
 PEAK DOT ROSE 432Z CEDAR OF PEAK DOT 844T
 ROSE OF PEAK DOT 457U PEAK DOT PRIME CUT 433M
 ROSE OF PEAK DOT 487N
 BW: 80lbs. Adj 205 day Wt: 874 lbs. Adj 365 day Wt: 1426 lbs.
 BW:+2.9 WW: +67 YW: +108 Milk: +21

>Recommended for heifers or cows



PEAK DOT EASY DECISION 2101E - LOT 85

85 PEAK DOT EASY DECISION 2101E
 Male PDAR 2101E 1990278 March 23 2017
 VIN-MAR O'REILLY FACTOR S A V FINAL ANSWER 0035
 BUSHS EASY DECISION 98 VIN-MAR EDELLA 2827
 BUSHS BIG BLACKBIRD 7885 BUSHS BIG TIME 452
 BUSHS DAKOTA BLACKBIRD 4763
 S A V 004 CAPACITY 5234 S A V 8180 TRAVELER 004
 ROSILLA OF PEAK DOT 493U S A V ERICA 1141
 ROSILLA OF PEAK DOT 484R BASIN PRIME CUT 354K
 ROSILLA OF PEAK DOT 565E
 BW: 85lbs. Adj 205 day Wt: 858 lbs. Adj 365 day Wt: 1437 lbs.
 BW:+3.3 WW: +64 YW: +114 Milk: +20

>Recommended for heifers or cows



PEAK DOT EASY DECISION 2062E - LOT 86

86 PEAK DOT EASY DECISION 2062E
 Male PDAR 2062E 1990236 March 20 2017
 VIN-MAR O'REILLY FACTOR S A V FINAL ANSWER 0035
 BUSHS EASY DECISION 98 D VIN-MAR EDELLA 2827
 BUSHS BIG BLACKBIRD 7885 BUSHS BIG TIME 452
 BUSHS DAKOTA BLACKBIRD 4763
 PEAK DOT EPIC 1069X S A V PIONEER 7301
 PEAK DOT ROSILLA 390A JL MISSIE 06 137
 ROSILLA OF PEAK DOT 191Y PEAK DOT EASY KEEPER 902T
 ROSILLA OF PEAK DOT 936U
 BW: 80lbs. Adj 205 day Wt: 869 lbs. Adj 365 day Wt: 1507 lbs.
 BW:+4.0 WW: +72 YW: +127 Milk: +21

>Recommended for heifers or cows

Easy Decision Bulls...



PEAK DOT EASY DECISION 2142E - LOT 87



PEAK DOT EASY DECISION 2406E - LOT 88



PEAK DOT EASY DECISION 2161E - LOT 89

87 PEAK DOT EASY DECISION 2142E

Male	PDAR 2142E	1990323	March 26 2017
	VIN-MAR O'REILLY FACTOR		S A V FINAL ANSWER 0035
	BUSHES EASY DECISION 98		VIN-MAR EDELLA 2827
	BUSHES BIG BLACKBIRD 7885		BUSHES BIG TIME 452
			BUSHES DAKOTA BLACKBIRD 4763
	S A V 004 PREDOMINANT 4438		S A V 8180 TRAVELER 004
	BARDOLIA OF PEAK DOT 423U		S A V EMBLYNETTE 1182
	BARDOLIA OF PEAK DOT 428S		S A R NEW TREND 4100 2080
			BARDOLIA OF PEAK DOT 585K
BW: 80lbs. Adj 205 day Wt: 837 lbs. Adj 365 day Wt: 1515 lbs.			
BW:+3.7 WW: +66 YW: +119 Milk: +24			

>Recommended for heifers or cows

88 PEAK DOT EASY DECISION 2406E

Male	PDAR 2406E	1990389	March 22 2017
	VIN-MAR O'REILLY FACTOR		S A V FINAL ANSWER 0035
	BUSHES EASY DECISION 98		VIN-MAR EDELLA 2827
	BUSHES BIG BLACKBIRD 7885		BUSHES BIG TIME 452
			BUSHES DAKOTA BLACKBIRD 4763
	MOHNEN DYNAMITE 1356		BALDRIDGE KABOOM K243
	PANSY OF PEAK DOT 411U		MOHNEN JILT 910 AMF
	PANSY OF PEAK DOT 709P		STEVENSON RAINMAKER D15K
			PANSY OF PEAK DOT 396J
BW: 87lbs. Adj 205 day Wt: 810 lbs. Adj 365 day Wt: 1418 lbs.			
BW:+4.1 WW: +68 YW: +118 Milk: +15			

>Recommended for cows

89 PEAK DOT EASY DECISION 2161E

Male	PDAR 2161E	2005146	March 30 2017
	VIN-MAR O'REILLY FACTOR		S A V FINAL ANSWER 0035
	BUSHES EASY DECISION 98		VIN-MAR EDELLA 2827
	BUSHES BIG BLACKBIRD 7885		BUSHES BIG TIME 452
			BUSHES DAKOTA BLACKBIRD 4763
	S A V IRON MOUNTAIN 806		TC GRIDIRON 258
	ROSE OF PEAK DOT 959X		S A V MADAME PRIDE 3249
	ROSE OF PEAK DOT 441N		PEAK DOT PANAMA 121G
			CEDAR CREEK ROSE 47B
BW: 88lbs. Adj 205 day Wt: 834 lbs. Adj 365 day Wt: 1450 lbs.			
BW:+4.7 WW: +66 YW: +117 Milk: +18			

>Recommended for cows

Easy Decision Bulls...



PEAK DOT EASY DECISION 2419E - LOT 90

90 PEAK DOT EASY DECISION 2419E	
Male	PDAR 2419E 1990432 March 29 2017
VIN-MAR O'REILLY FACTOR	S A V FINAL ANSWER 0035
BUSHS EASY DECISION 98	VIN-MAR EDELLA 2827
BUSHS BIG BLACKBIRD 7885	BUSHS BIG TIME 452
	BUSHS DAKOTA BLACKBIRD 4763
S A V IRON MOUNTAIN 8066	TC GRIDIRON 258
MIA OF PEAK DOT 138Y	S A V MADAME PRIDE 3249
MIA OF PEAK DOT 907U	S A V 004 PREDOMINANT 4438
	MIA OF PEAK DOT 405J
BW: 80lbs. Adj 205 day Wt: 917 lbs. Adj 365 day Wt: 1496 lbs.	
BW:+2.9 WW: +78 YW: +133 Milk: +14	

>Recommended for heifers or cows



PEAK DOT EASY DECISION 2417E - LOT 91

91 PEAK DOT EASY DECISION 2417E	
Male	PDAR 2417E 1990431 March 29 2017
VIN-MAR O'REILLY FACTOR	S A V FINAL ANSWER 0035
BUSHS EASY DECISION 98	VIN-MAR EDELLA 2827
BUSHS BIG BLACKBIRD 7885	BUSHS BIG TIME 452
	BUSHS DAKOTA BLACKBIRD 4763
S A V IRON MOUNTAIN 8066	TC GRIDIRON 258
LADY OF PEAK DOT 918X	S A V MADAME PRIDE 3249
LADY OF PEAK DOT 566N	S A V SAUGAHATCHEE 9374
	LADY OF PEAK DOT 387J
BW: 80lbs. Adj 205 day Wt: 829 lbs. Adj 365 day Wt: 1260 lbs.	
BW:+2.8 WW: +63 YW: +100 Milk: +14	

>Recommended for heifers or cows

92 PEAK DOT EASY DECISION 2126E	
Male	PDAR 2126E 1990303 March 25 2017
VIN-MAR O'REILLY FACTOR	S A V FINAL ANSWER 0035
BUSHS EASY DECISION 98	VIN-MAR EDELLA 2827
BUSHS BIG BLACKBIRD 7885	BUSHS BIG TIME 452
	BUSHS DAKOTA BLACKBIRD 4763
S A V 004 PREDOMINANT 4438	S A V 8180 TRAVELER 004
JUNE OF PEAK DOT 460U	S A V EMBLYNETTE 1182
JUNE OF PEAK DOT 494S	STEVENSON BRUNO 6371
	CEDAR CREEK JUNE 134E
BW: 70lbs. Adj 205 day Wt: 790 lbs. Adj 365 day Wt: 1265 lbs.	
BW:+1.2 WW: +59 YW: +109 Milk: +22	

>Recommended for heifers

93 PEAK DOT EASY DECISION 2128E	
Male	PDAR 2128E 1990305 March 25 2017
VIN-MAR O'REILLY FACTOR	S A V FINAL ANSWER 0035
BUSHS EASY DECISION 98	VIN-MAR EDELLA 2827
BUSHS BIG BLACKBIRD 7885	BUSHS BIG TIME 452
	BUSHS DAKOTA BLACKBIRD 4763
DOUBLE AA OLD POST BANDOLIER	DOUBLE AA BLACKMAN 252'96
HYALITE OF PEAK DOT 212W	DOUBLE AA ANNIE K 548'99
HYALITE OF PEAK DOT 447N	S A R FAME 2089
	LADY OF PEAK DOT 349C
BW: 74lbs. Adj 205 day Wt: 829 lbs. Adj 365 day Wt: 1320 lbs.	
BW:+2.0 WW: +60 YW: +98 Milk: +17	

>Recommended for heifers

Easy Decision Bulls...

94 PEAK DOT EASY DECISION 2413E

Male PDAR 2413E 1990427 March 26 2017
 VIN-MAR O'REILLY FACTOR S A V FINAL ANSWER 0035
 BUSHS EASY DECISION 98 VIN-MAR EDELLA 2827
 BUSHS BIG BLACKBIRD 7885 BUSHS BIG TIME 452
 BUSHS DAKOTA BLACKBIRD 4763
 S A V 004 PREDOMINANT 4438 S A V 8180 TRAVELER 004
 BARDOLIA OF PEAK DOT 231W S A V EMBLYNETTE 1182
 BARDOLIA OF PEAK DOT 796P STEVENSON BRUNO 6371
 BARDOLIA OF PEAK DOT 775L

BW: 80lbs. Adj 205 day Wt: 802 lbs. Adj 365 day Wt: 1251 lbs.
 BW:+2.0 WW: +55 YW: +90 Milk: +16

>Recommended for heifers or cows

96 PEAK DOT EASY DECISION 2135E

Male PDAR 2135E 1990311 March 26 2017
 VIN-MAR O'REILLY FACTOR S A V FINAL ANSWER 0035
 BUSHS EASY DECISION 98 VIN-MAR EDELLA 2827
 BUSHS BIG BLACKBIRD 7885 BUSHS BIG TIME 452
 BUSHS DAKOTA BLACKBIRD 4763
 VISION UNANIMOUS 1418 VISIONTOPLINE ROYAL STOCKMAN
 PEAK DOT LADY 529A VISION EDELLA 665
 LADY OF PEAK DOT 626U S A V 004 PREDOMINANT 4438
 LADY OF PEAK DOT 617F

BW: 80lbs. Adj 205 day Wt: 827 lbs. Adj 365 day Wt: 1262 lbs.
 BW:+2.5 WW: +64 YW: +104 Milk: +19

>Recommended for heifers or cows

95 PEAK DOT EASY DECISION 2112E

Male PDAR 2112E 1990289 March 24 2017
 VIN-MAR O'REILLY FACTOR S A V FINAL ANSWER 0035
 BUSHS EASY DECISION 98 VIN-MAR EDELLA 2827
 BUSHS BIG BLACKBIRD 7885 BUSHS BIG TIME 452
 BUSHS DAKOTA BLACKBIRD 4763
 PEAK DOT PIONEER 569X S A V PIONEER 7301
 PEAK DOT BARDOLIA 581A SUSIE OF PEAK DOT 585T
 BARDOLIA OF PEAK DOT 841X S A V IRON MOUNTAIN 8066
 BARDOLIA OF PEAK DOT 796P BARDOLIA OF PEAK DOT 796P

BW: 73lbs. Adj 205 day Wt: 811 lbs. Adj 365 day Wt: 1260 lbs.
 BW:+1.7 WW: +58 YW: +98 Milk: +14

>Recommended for heifers

97 PEAK DOT EASY DECISION 2077E

Male PDAR 2077E 1990252 March 22 2017
 VIN-MAR O'REILLY FACTOR S A V FINAL ANSWER 0035
 BUSHS EASY DECISION 98 VIN-MAR EDELLA 2827
 BUSHS BIG BLACKBIRD 7885 BUSHS BIG TIME 452
 BUSHS DAKOTA BLACKBIRD 4763
 MCATL PURE PRODUCT 903-55 CONNEALY FINAL PRODUCT
 PEAK DOT DUCHESS 386A M A ESTA 55-252 CAF
 DUCHESS OF PEAK DOT 177Y PEAK DOT HOBSON 459T
 DUCHESS OF PEAK DOT 929U

BW: 75lbs. Adj 205 day Wt: 755 lbs. Adj 365 day Wt: 1214 lbs.
 BW:+2.6 WW: +58 YW: +101 Milk: +18

>Recommended for heifers

Peak Dot Easy Decision 952C *Peak Dot Reference Sire*



BW +3.7
 WW +58
 YW +104
 MILK +21

VIN-MAR O'RILEY FACTOR
 BUSHS EASY DECISION 98
 BUSHS BIG BLACKBIRD 7885
PEAK DOT EASY DECISION 952C
 PEAK DOT RESOLUTE 37W
 MIA OF PEAK DOT 40Y
 MIA OF PEAK DOT 534R

The lead off bull in the power flush from Mia of Peak Dot 40Y in the 2016 Peak Dot spring sale selling to Hillcrest Enterprises. Peak Dot Easy Decision 952C offers sons that are consistently thick deep bodied bulls. They are very similar in type and kind.

Easy Decision 952c Bulls...



PEAK DOT EASY DECISION 2235E - LOT 98



PEAK DOT EASY DECISION 2219E - LOT 99

98 PEAK DOT EASY DECISION 2235E

Male PDAR 2235E 2005235 April 18 2017
 BUSHS EASY DECISION 98 VIN-MAR O'REILLY FACTOR
 PEAK DOT EASY DECISION 952C BUSHS BIG BLACKBIRD 7885
 MIA OF PEAK DOT 40Y PEAK DOT RESOLUTE 37W
 MIA OF PEAK DOT 534R
 PEAK DOT UNIVERSAL 551A VISION UNANIMOUS 1418
 PEAK DOT BARDOLIA 384C HEROINE OF PEAK DOT 663X
 BARDOLIA OF PEAK DOT 669U PEAK DOT PREDOMINANT 92S
 BARDOLIA OF PEAK DOT 713R
 BW: 70lbs. Adj 205 day Wt: 894 lbs. Adj 365 day Wt: 1534 lbs.
 BW:+3.0 WW: +64 YW: +113 Milk: +21

>Recommended for heifers

99 PEAK DOT EASY DECISION 2219E

Male PDAR 2219E 2005218 April 15 2017
 BUSHS EASY DECISION 98 VIN-MAR O'REILLY FACTOR
 PEAK DOT EASY DECISION 952C BUSHS BIG BLACKBIRD 7885
 MIA OF PEAK DOT 40Y PEAK DOT RESOLUTE 37W
 MIA OF PEAK DOT 534R
 PEAK DOT ELIMINATOR 786Z S A V ELIMINATOR 9105
 PEAK DOT PANSY 590C QUEEN OF PEAK DOT 657S
 PANSY OF PEAK DOT 779Z S A V BULLET 0473
 PANSY OF PEAK DOT 904U
 BW: 80lbs. Adj 205 day Wt: 815 lbs. Adj 365 day Wt: 1471 lbs.
 BW:+5.1 WW: +56 YW: +105 Milk: +17

>Recommended for cows

Easy Decision 952c Bulls...



PEAK DOT EASY DECISION 2194E - LOT 100

100 PEAK DOT EASY DECISION 2194E
 Male PDAR 2194E 2005174 April 10 2017
 BUSHES EASY DECISION 98 VIN-MAR O'REILLY FACTOR
 PEAK DOT EASY DECISION 952C BUSHES BIG BLACKBIRD 7885
 MIA OF PEAK DOT 40Y PEAK DOT RESOLUTE 37W
 MIA OF PEAK DOT 534R
 PEAK DOT BOLD 204U MOHNEN DYNAMITE 1356
 PEAK DOT ERICA 347C QUEEN OF PEAK DOT 652S
 ERICA OF PEAK DOT 481U S A V 004 PREDOMINANT 4438
 PEAK DOT TRAFALGAR 518K
 BW: 68lbs. Adj 205 day Wt: 809 lbs. Adj 365 day Wt: 1425 lbs.
 BW:+2.9 WW: +51 YW: +96 Milk: +20

>Recommended for heifers



PEAK DOT EASY DECISION 2186E - LOT 101

101 PEAK DOT EASY DECISION 2186E
 Male PDAR 2186E 2005167 April 08 2017
 BUSHES EASY DECISION 98 VIN-MAR O'REILLY FACTOR
 PEAK DOT EASY DECISION 952C BUSHES BIG BLACKBIRD 7885
 MIA OF PEAK DOT 40Y PEAK DOT RESOLUTE 37W
 MIA OF PEAK DOT 534R
 VISION UNANIMOUS 1418 VISIONTOPLINE ROYAL STOCKMAN
 PEAK DOT HEATHER 446C VISION EDELLA 665
 HEATHER OF PEAK DOT 561X S A V 004 PREDOMINANT 4438
 HEATHER OF PEAK DOT 626T
 BW: 80lbs. Adj 205 day Wt: 816 lbs. Adj 365 day Wt: 1388 lbs.
 BW:+4.4 WW: +60 YW: +107 Milk: +20

>Recommended for heifers or cows



PEAK DOT EASY DECISION 2174E - LOT 102

102 PEAK DOT EASY DECISION 2174E
 Male PDAR 2174E 2005157 April 05 2017
 BUSHES EASY DECISION 98 VIN-MAR O'REILLY FACTOR
 PEAK DOT EASY DECISION 952C BUSHES BIG BLACKBIRD 7885
 MIA OF PEAK DOT 40Y PEAK DOT RESOLUTE 37W
 MIA OF PEAK DOT 534R
 VISION UNANIMOUS 1418 VISIONTOPLINE ROYAL STOCKMAN
 PEAK DOT ANNIE K 516C VISION EDELLA 665
 ANNIE K OF PEAK DOT 183Y PEAK DOT DYNAMITE 126U
 ANNIE K OF PEAK DOT 450U
 BW: 85lbs. Adj 205 day Wt: 793 lbs. Adj 365 day Wt: 1304 lbs.
 BW:+4.0 WW: +54 YW: +91 Milk: +17

>Recommended for heifers or cows

Liberty Bulls...

Peak Dot Liberty 117C *Peak Dot Reference Sire*



VIN-MAR O'RILEY FACTOR	BW	+2.5
BUSHES EASY DECISION 98	WW	+67
BUSHES BIG BLACKBIRD 7885	YW	+112
PEAK DOT LIBERTY 117C	MILK	+23
PEAK DOT VOLT 950U		
LADY OF PEAK DOT 623Z		
LADY OF PEAK DOT 509R		

Featured \$47,000 second high selling bull at Peak Dot Ranch 2016 spring bull sale to Alta Genetics. Liberty is gaining worldwide attention for his growth and performance combined with eye-appealing phenotype. You will appreciate his first set of son's outstanding width across their tops and nice heads.



PEAK DOT LIBERTY 420E - LOT 103

103 PEAK DOT LIBERTY 420E

Male PDAR 420E 2000878 2000878 March 01 2017

BUSHES EASY DECISION 98	VIN-MAR O'REILLY FACTOR
PEAK DOT LIBERTY 117C	BUSHES BIG BLACKBIRD 7885
LADY OF PEAK DOT 623Z	PEAK DOT VOLT 950U
	LADY OF PEAK DOT 509R
PEAK DOT PIONEER 9X	S A V PIONEER 7301
PEAK DOT MIA 1158A	DUCHESS OF PEAK DOT 610T
MIA OF PEAK DOT 246W	SANDY BAR GRASSLANDS 94T
	MIA OF PEAK DOT 927P
BW: 71lbs. Adj 205 day Wt: 732 lbs. Adj 365 day Wt: 1181 lbs.	
BW:+1.1 WW: +42 YW: +83 Milk: +18	



>Recommended for heifers

Liberty Bulls...



PEAK DOT LIBERTY 2247E - LOT 104

104	PEAK DOT LIBERTY 2247E
Male	PDAR 2247E 2005267 April 23 2017
BUSHES EASY DECISION 98	VIN-MAR O'REILLY FACTOR
PEAK DOT LIBERTY 117C	BUSHES BIG BLACKBIRD 7885
LADY OF PEAK DOT 623Z	PEAK DOT VOLT 950U
	LADY OF PEAK DOT 509R
S A V BULLETIN 7904	S A V NET WORTH 4200
BAMBIE OF PEAK DOT 701X	CHAMPION HILL GEORGINA 2175
BAMBI OF PEAK DOT 769T	PEAK DOT HOBSON 57N
	BAMBI OF PEAK DOT 515N
BW: 71lbs. Adj 205 day Wt: 856 lbs. Adj 365 day Wt: 1389 lbs. BW:+1.7 WW: +51 YW: +92 Milk: +26	

>Recommended for heifers

105	PEAK DOT LIBERTY 2293E
Male	PDAR 2293E 2005295 May 26 2017
BUSHES EASY DECISION 98	VIN-MAR O'REILLY FACTOR
PEAK DOT LIBERTY 117C	BUSHES BIG BLACKBIRD 7885
LADY OF PEAK DOT 623Z	PEAK DOT VOLT 950U
	LADY OF PEAK DOT 509R
PEAK DOT RANCLAND 29W	SANDY BAR GRASSLANDS 94T
DUCHESS OF PEAK DOT 225Y	JUNE OF PEAK DOT 812S
DUCHESS OF PEAK DOT 649U	STEVENSON BRUNO 6371
	DUCHESS OF PEAK DOT 945H
BW: 69lbs. Adj 205 day Wt: 860 lbs. Adj 365 day Wt: 1503 lbs. BW:+1.5 WW: +58 YW: +107 Milk: +24	

>Recommended for heifers

106	PEAK DOT LIBERTY 2175E
Male	PDAR 2175E 2005158 April 05 2017
BUSHES EASY DECISION 98	VIN-MAR O'REILLY FACTOR
PEAK DOT LIBERTY 117C	BUSHES BIG BLACKBIRD 7885
LADY OF PEAK DOT 623Z	PEAK DOT VOLT 950U
	LADY OF PEAK DOT 509R
VISION UNANIMOUS 1418	VISIONTOPLINE ROYAL STOCKMAN
PEAK DOT MIA 456B	VISION EDELLA 665
MIA OF PEAK DOT 547X	S A V PIONEER 7301
	MIA OF PEAK DOT 641T
BW: 85lbs. Adj 205 day Wt: 868 lbs. Adj 365 day Wt: 1626 lbs. BW:+4.8 WW: +76 YW: +140 Milk: +21	

>Recommended for heifers or cows

107	PEAK DOT LIBERTY 44E
Male	PDAR 44E 1968299 January 25 2017
BUSHES EASY DECISION 98	VIN-MAR O'REILLY FACTOR
PEAK DOT LIBERTY 117C	BUSHES BIG BLACKBIRD 7885
LADY OF PEAK DOT 623Z	PEAK DOT VOLT 950U
	LADY OF PEAK DOT 509R
PEAK DOT ENTOURAGE 3W	SANDY BAR GRASSLANDS 94T
HYLITE OF PEAK DOT 124Y	BARDOLIA OF PEAK DOT 879S
HYLITE OF PEAK DOT 212W	DOUBLE AA OLD POST BANDOLIER
	HYLITE OF PEAK DOT 447N
BW: 82lbs. Adj 205 day Wt: 898 lbs. Adj 365 day Wt: 1218 lbs. BW:+2.6 WW: +57 YW: +87 Milk: +24	

>Recommended for heifers or cows

In order to increase longevity and athleticism bulls are ran on pasture grass through the summer months and then feed in large electric wire pens. A bull is only as good as his ability and willingness to travel and breed.

These age-advantaged bulls have the capacity to efficiently cover more ground, breed more cows and adequately maintain their condition.



Jump Start Bulls...

Peak Dot Easy Jump Start 142C *Peak Dot Reference Sire*



VIN-MAR O'RILEY FACTOR
 BUSHES EASY DECISION 98
 BUSHES BIG BLACKBIRD 7885
PEAK DOT JUMP START 142C
 SAV ELIMINATOR 9105
 LADY OF PEAK DOT 942Y
 LADY OF PEAK DOT 405S

BW +2.8
 WW +65
 YW +122
 MILK +22

Featured and \$51,000 high selling bull at Peak Dot Ranch 2016 spring bull sale to Semex beef. His dam is an excellent uddered SAV Eliminator daughter with a posted 70lb birth weight and 84 ratio. Jump Start is a calving-ease sire that offers early maturity and expressive muscle shape and lots of performance.



PEAK DOT EASY JUMP START 550E - LOT 108

108 PEAK DOT EASY JUMP START 550E

Male	PDAR 550E	196804	April 01 2017
BUSHES EASY DECISION 98	VIN-MAR O'REILLY FACTOR		
PEAK DOT EASY JUMP START 142C	BUSHES BIG BLACKBIRD 7885		
LADY OF PEAK DOT 942Y	S A V ELIMINATOR 9105		
	LADY OF PEAK DOT 405S		
VISION UNANIMOUS 1418	VISIONTOPLINE ROYAL STOCKMAN		
PEAK DOT ERICA 735B	VISION EDELLA 665		
ERICA OF PEAK DOT 478U	S A V 004 PREDOMINANT 4438		
	ERICA OF PEAK DOT 326R		
BW: 80lbs. Adj 205 day Wt: 833 lbs. Adj 365 day Wt: 1492 lbs.			
BW:+3.1 WW: +67 YW: +126 Milk: +20			



Erica of Peak Dot 478U

The maternal grandam of lot 108

>Recommended for heifers or cows

Jump Start Bulls...



PEAK DOT EASY JUMP START 341E - LOT 109

109 PEAK DOT EASY JUMP START 341E

Male PDAR 341E 1967737 February 16 2017
 BUSHES EASY DECISION 98 VIN-MAR O'REILLY FACTOR
 PEAK DOT EASY JUMP START 142C BUSHES BIG BLACKBIRD 7885
 LADY OF PEAK DOT 942Y S A V ELIMINATOR 9105
 PEAK DOT BOLD 204U MOHNEN DYNAMITE 1356
 QUEEN MOTHER OF PEAK DOT 293Y QUEEN OF PEAK DOT 652S
 QUEEN MOTHER OF PEAK DOT 498S S A V 004 PREDOMINANT 4438
 QUEEN MOTHER OF PEAK DOT 703L
 BW: 83lbs. Adj 205 day Wt: 785 lbs. Adj 365 day Wt: 1330 lbs.
 BW:+3.2 WW: +47 YW: +100 Milk: +18

>Recommended for heifers or cows



Lady of Peak Dot 476S
The dam of lot 110

110 PEAK DOT EASY JUMP START 345E

Male PDAR 345E 1968017 February 16 2017
 BUSHES EASY DECISION 98 VIN-MAR O'REILLY FACTOR
 PEAK DOT EASY JUMP START 142C BUSHES BIG BLACKBIRD 7885
 LADY OF PEAK DOT 942Y S A V ELIMINATOR 9105
 HF POWER-UP 72N LADY OF PEAK DOT 405S
 RIVERBEND POWERLINE 0050
 LADY OF PEAK DOT 476S HF ROSEBUD 23G
 LADY OF PEAK DOT 566N S A V SAUGAHATCHEE 9374
 LADY OF PEAK DOT 387J
 BW: 75lbs. Adj 205 day Wt: 829 lbs. Adj 365 day Wt: 1272 lbs.
 BW:+3.3 WW: +48 YW: +89 Milk: +18

>Recommended for heifers



Herdbook Bulls ...

Peak Dot Herdbook 151C

Peak Dot Reference Sire



BARDOLIA OF PEAK DOT 639X
The dam of Herdbook

VIN-MAR O'RILEY FACTOR
BUSHES EASY DECISION 98
BUSHES BIG BLACKBIRD 7885
PEAK DOT HERDBOOK 151C
SAV IRON MOUNTAIN 8066
BARDOILA OF PEAK DOT 639X
BARDOILA OF PEAK DOT 423U

Herdbook was a \$35,000 feature bull from the 2016 spring sale selling to Hillcrest Enterprises. Herdbook consistently sires cattle that are thick-topped, heavy muscled, and stout rumped. His dam is one of the most amazing females in the breed in terms of body shape, volume and sheer elegance. She is also the dam of new up and coming herdsire Peak Dot Fore Sure owned by Alta Genetics.



PEAK DOT HERDBOOK 2169E - LOT 111

111 PEAK DOT HERDBOOK 2169E

Male PDAR 2169E 2005152 April 03 2017

BUSHES EASY DECISION 98	VIN-MAR O'REILLY FACTOR
PEAK DOT HERDBOOK 151C	BUSHES BIG BLACKBIRD 7885
BARDOILA OF PEAK DOT 639X	S A V IRON MOUNTAIN 8066
	BARDOILA OF PEAK DOT 423U
PEAK DOT ELIMINATOR 786Z	S A V ELIMINATOR 9105
PEAK DOT BARDOLA 508C	QUEEN OF PEAK DOT 657S
BARDOILA OF PEAK DOT 131Y	S A V IRON MOUNTAIN 8066
	BARDOILA OF PEAK DOT 650U
BW: 55lbs. Adj 205 day Wt: 802 lbs. Adj 365 day Wt: 1351 lbs.	
BW:-0.1 WW: +52 YW: +88 Milk: +17	

>Recommended for heifers



Herdbook Bulls ...



PEAK DOT HERDBOOK 2226E - LOT 112



PEAK DOT HERDBOOK 2250E - LOT 113



PEAK DOT HERDBOOK 2255E - LOT 114



PEAK DOT HERDBOOK 348E - LOT 115



112 PEAK DOT HERDBOOK 2226E
 Male PDAR 2226E 2005226 April 16 2017
 BUSHES EASY DECISION 98 VIN-MAR O'REILLY FACTOR
 PEAK DOT HERDBOOK 151C BUSHES BIG BLACKBIRD 7885
 BARDOLIA OF PEAK DOT 639X S A V IRON MOUNTAIN 8066
 PEAK DOT PROOF 1066X BARDOLIA OF PEAK DOT 423U
 PEAK DOT LADY LAWN 478C S A V PIONEER 7301
 LADY LAWN OF PEAK DOT 895X BARBARA OF PEAK DOT 314T
 DOUBLE AA OLD POST BANDOLIER
 REMINGTON LADY LAWN 144R
 BW: 76lbs. Adj 205 day Wt: 786 lbs. Adj 365 day Wt: 1328 lbs.
 BW:+3.4 WW: +51 YW: +86 Milk: +17

>Recommended for heifers

113 PEAK DOT HERDBOOK 2250E
 Male PDAR 2250E 2005270 April 26 2017
 BUSHES EASY DECISION 98 VIN-MAR O'REILLY FACTOR
 PEAK DOT HERDBOOK 151C BUSHES BIG BLACKBIRD 7885
 BARDOLIA OF PEAK DOT 639X S A V IRON MOUNTAIN 8066
 R B TOUR OF DUTY 177 BARDOLIA OF PEAK DOT 423U
 PEAK DOT BERGITTA 608C WERNER WAR PARTY 2417
 PEAK DOT BERGITTA 466A B A LADY 6807 305
 PEAK DOT GRASSLANDS 537W
 BERGITTA OF PEAK DOT 453U
 BW: 72lbs. Adj 205 day Wt: 897 lbs. Adj 365 day Wt: 1357 lbs.
 BW:+1.9 WW: +59 YW: +91 Milk: +26

114 PEAK DOT HERDBOOK 2255E
 Male PDAR 2255E 2005272 May 03 2017
 BUSHES EASY DECISION 98 VIN-MAR O'REILLY FACTOR
 PEAK DOT HERDBOOK 151C BUSHES BIG BLACKBIRD 7885
 BARDOLIA OF PEAK DOT 639X S A V IRON MOUNTAIN 8066
 JINDRA DOUBLE VISION BARDOLIA OF PEAK DOT 423U
 PEAK DOT BARDOLIA 579C CONNEALY REFLECTION A
 BARDOLIA OF PEAK DOT 462Z HOFF RACHEL 8312 405
 PEAK DOT PIONEER 548X
 BARDOLIA OF PEAK DOT 628U
 BW: 70lbs. Adj 205 day Wt: 836 lbs. Adj 365 day Wt: 1387 lbs.
 BW:+2.6 WW: +57 YW: +102 Milk: +23

>Recommended for heifers

115 PEAK DOT HERDBOOK 348E
 Male TWIN PDAR 348E 1972070 February 16 2017
 BUSHES EASY DECISION 98 VIN-MAR O'REILLY FACTOR
 PEAK DOT HERDBOOK 151C BUSHES BIG BLACKBIRD 7885
 BARDOLIA OF PEAK DOT 639X S A V IRON MOUNTAIN 8066
 S A V ELIMINATOR 9105 BARDOLIA OF PEAK DOT 423U
 DUCHESS OF PEAK DOT 811Y RITO 707 OF IDEAL 3407 7075
 DUCHESS OF PEAK DOT 716R S A V ABIGALE 5646
 STEVENSON BRUNO 6371
 DUCHESS OF PEAK DOT 554K
 BW: 67lbs. Adj 205 day Wt: 707 lbs. Adj 365 day Wt: 1216 lbs.
 BW:+2.2 WW: +57 YW: +98 Milk: +26

>Recommended for heifers

Unanimous Bulls . . .

Vision Unanimous 1418 *Peak Dot Reference Sire*



GAMBLES ROYAL FLUSH
 VISION TOPLINE ROYAL STOCKMAN
 LAGRAND PRIDE 7140
VISION UNANIMOUS 1418
 BOYD ON TARGET 1083
 VISION EDELLA 665
 VISION EDELLA 337

BW +2.9
 WW +74
 YW +128
 MILK +17

We purchased Unanimous as the lot 1 top selling bull in the 2012 Vision Angus Bull sale. Unanimous sons have been well received topping several sales around the country. They are a true testament to him displaying impressive three-dimensional pounds, mass and body on a moderate frame. His sons are solid on their feet, very stout built and gentle to handle while his daughters are extremely feminine and broody. Unanimous has generated much excitement within the Angus breed and will continue to be a major contributor to the future of the beef cattle industry.



PEAK DOT UNANIMOUS 475E - LOT 116



PEAK DOT UNANIMOUS 517E - LOT 117



PEAK DOT UNANIMOUS 536E - LOT 118

116 PEAK DOT UNANIMOUS 475E	
Male	PDAR 475E 1967825 March 09 2017
VISIONTOPLINE ROYAL STOCKMAN	GAMBLES ROYAL FLUSH
VISION UNANIMOUS 1418	LAGRAND PRIDE 7140
VISION EDELLA 665	BOYD ON TARGET 1083
	VISION EDELLA 337
STEVENSON BRUNO 6371	STEVENSON BRUNO 561G
BARDOLIA OF PEAK DOT 531U	STEVENSON QUEEN 828F
BARDOLIA OF PEAK DOT 860L	HF YOUNG GUN 139J
	BARDOLIA OF PEAK DOT 512E
BW: 85lbs. Adj 205 day Wt: 811 lbs. Adj 365 day Wt: 1185 lbs.	
BW:+3.4 WW: +42 YW: +73 Milk: +17	

>Recommended for heifers or cows

117 PEAK DOT UNANIMOUS 517E	
Male	PDAR 517E 1967392 March 18 2017
VISIONTOPLINE ROYAL STOCKMAN	GAMBLES ROYAL FLUSH
VISION UNANIMOUS 1418	LAGRAND PRIDE 7140
VISION EDELLA 665	BOYD ON TARGET 1083
	VISION EDELLA 337
PEAK DOT PREDOMINANT 82S	S A V 004 PREDOMINANT 4438
MIA OF PEAK DOT 433W	PRIDE OF PEAK DOT 532K
MIA OF PEAK DOT 637N	S A V SAUGAHATCHEE 9374
	MIA OF PEAK DOT 501E
BW: 85lbs. Adj 205 day Wt: 894 lbs. Adj 365 day Wt: 1369 lbs.	
BW:+4.0 WW: +60 YW: +102 Milk: +17	

>Recommended for cows

118 PEAK DOT UNANIMOUS 536E	
Male	PDAR 536E 1967731 March 23 2017
VISIONTOPLINE ROYAL STOCKMAN	GAMBLES ROYAL FLUSH
VISION UNANIMOUS 1418	LAGRAND PRIDE 7140
VISION EDELLA 665	BOYD ON TARGET 1083
	VISION EDELLA 337
DUFF ENCORE 702	D H D TRAVELER 6807
LADY OF PEAK DOT 334X	O C C DIXIE ERICA 814G
LADY OF PEAK DOT 405T	PEAK DOT PRIME CUT 152P
	LADY OF PEAK DOT 466N
BW: 82lbs. Adj 205 day Wt: 786 lbs. Adj 365 day Wt: 1250 lbs.	
BW:+3.8 WW: +41 YW: +72 Milk: +16	

>Recommended for heifers or cows

Unanimous 402B Bulls . . .

Peak Dot Unanimous 402B *Peak Dot Reference Sire*



VISIONTOPLINE ROYAL STOCKMAN BW +1.5
 VISION UNANIMOUS 1418 WW +60
 VISION EDELLA 665 YW +103
PEAK DOT UNANIMOUS 402B MILK +21
 SAV 004 PREDOMINANT 4438
 LADY OF PEAK DOT 416U
 LADY OF PEAK DOT 634K



LADY OF PEAK DOT 416U

The dam of
 Peak Dot Unanimous 402B

A Unanimous son used with an amazing amount of muscle, top and thickness and a ton of maternal value. His nice uddered dam by Predominant is a Peak Dot embryo donor and an Elite dam. His sons come with moderate birth weights, great performance and will sire great replacement females. Owned by Hillcrest Enterprises.



PEAK DOT UNANIMOUS 2230E - LOT 119

119 PEAK DOT UNANIMOUS 2230E

Male PDAR 2230E 2005230 April 17 2017
 VISION UNANIMOUS 1418 VISIONTOPLINE ROYAL STOCKMAN
 PEAK DOT UNANIMOUS 402B VISION EDELLA 665
 LADY OF PEAK DOT 416U S A V 004 PREDOMINANT 4438
 S A V ELIMINATOR 9105 LADY OF PEAK DOT 634K
 PEAK DOT BARDOLIA 563B RITO 707 OF IDEAL 3407 7075
 BARDOLIA OF PEAK DOT 921W S A V ABIGALE 5646
 MOHNEN DYNAMITE 1356
 BARDOLIA OF PEAK DOT 963H
 BW: 79lbs. Adj 205 day Wt: 866 lbs. Adj 365 day Wt: 1594 lbs.
 BW:+3.6 WW: +66 YW: +130 Milk: +21



>Recommended for heifers or cows

Unanimous 402B Bulls ...



PEAK DOT UNANIMOUS 2240E - LOT 120

120 PEAK DOT UNANIMOUS 2240E
 Male PDAR 2240E 2005264 April 19 2017
 VISION UNANIMOUS 1418 VISIONTOPLINE ROYAL STOCKMAN
 PEAK DOT UNANIMOUS 402B VISION EDELLA 665
 LADY OF PEAK DOT 416U S A V 004 PREDOMINANT 4438
 S A V IRON MOUNTAIN 8066 LADY OF PEAK DOT 634K
 TC GRIDIRON 258
 PANSY OF PEAK DOT 69Y S A V MADAME PRIDE 3249
 MOHNEN DYNAMITE 1356
 PANSY OF PEAK DOT 915U PANSY OF PEAK DOT 396J
 BW: 80lbs. Adj 205 day Wt: 811 lbs. Adj 365 day Wt: 1402 lbs.
 BW:+2.8 WW: +53 YW: +98 Milk: +14

>Recommended for heifers



PEAK DOT UNANIMOUS 2217E - LOT 121

121 PEAK DOT UNANIMOUS 2217E
 Male PDAR 2217E 2005198 April 14 2017
 VISION UNANIMOUS 1418 VISIONTOPLINE ROYAL STOCKMAN
 PEAK DOT UNANIMOUS 402B VISION EDELLA 665
 LADY OF PEAK DOT 416U S A V 004 PREDOMINANT 4438
 PEAK DOT PIONEER 9X LADY OF PEAK DOT 634K
 S A V PIONEER 7301
 PEAK DOT LADY 451A DUCHESS OF PEAK DOT 610T
 LADY OF PEAK DOT 425U MOHNEN DYNAMITE 1356
 LADY OF PEAK DOT 507S
 BW: 78lbs. Adj 205 day Wt: 788 lbs. Adj 365 day Wt: 1430 lbs.
 BW:+1.8 WW: +55 YW: +105 Milk: +20

>Recommended for heifers



PEAK DOT UNANIMOUS 2204E - LOT 122

122 PEAK DOT UNANIMOUS 2204E
 Male PDAR 2204E 2005185 April 11 2017
 VISION UNANIMOUS 1418 VISIONTOPLINE ROYAL STOCKMAN
 PEAK DOT UNANIMOUS 402B VISION EDELLA 665
 LADY OF PEAK DOT 416U S A V 004 PREDOMINANT 4438
 S A V IRON MOUNTAIN 8066 LADY OF PEAK DOT 634K
 TC GRIDIRON 258
 LADY OF PEAK DOT 706Y S A V MADAME PRIDE 3249
 S A V SAUGHATCHEE 9374
 LADY OF PEAK DOT 566N LADY OF PEAK DOT 387J
 BW: 79lbs. Adj 205 day Wt: 816 lbs. Adj 365 day Wt: 1449 lbs.
 BW:+2.7 WW: +57 YW: +108 Milk: +13

>Recommended for heifers

123 PEAK DOT UNANIMOUS 2248E
 Male PDAR 2248E 2005268 April 24 2017
 VISION UNANIMOUS 1418 VISIONTOPLINE ROYAL STOCKMAN
 PEAK DOT UNANIMOUS 402B VISION EDELLA 665
 LADY OF PEAK DOT 416U S A V 004 PREDOMINANT 4438
 S A V IRON MOUNTAIN 8066 LADY OF PEAK DOT 634K
 TC GRIDIRON 258
 BARBARA OF PEAK DOT 623X S A V MADAME PRIDE 3249
 PARADISE BRUTUS 35R
 SSA BARBARA 28T BARBARA OF PEAK DOT 881P
 BW: 71lbs. Adj 205 day Wt: 805 lbs. Adj 365 day Wt: 1400 lbs.
 BW:+1.2 WW: +51 YW: +98 Milk: +13

>Recommended for heifers



PEAK DOT UNANIMOUS 2248E - LOT 123

Unanimous 402B Bulls ...



PEAK DOT UNANIMOUS 2218E - LOT 124

124 PEAK DOT UNANIMOUS 2218E	
Male	PDAR 2218E 2005199 April 14 2017
VISION UNANIMOUS 1418	VISIONTOPLINE ROYAL STOCKMAN
PEAK DOT UNANIMOUS 402B	VISION EDELLA 665
LADY OF PEAK DOT 416U	S A V 004 PREDOMINANT 4438
	LADY OF PEAK DOT 634K
	S A V PIONEER 7301
PEAK DOT PROOF 1066X	BARBARA OF PEAK DOT 314T
PEAK DOT ANNIE K 329B	S A V IRON MOUNTAIN 8066
ANNIE K OF PEAK DOT 1083X	ANNIE K OF PEAK DOT 930P
BW: 76lbs. Adj 205 day Wt: 810 lbs. Adj 365 day Wt: 1508 lbs.	
BW:+3.7 WW: +62 YW: +120 Milk: +18	

>Recommended for heifers



125 PEAK DOT UNANIMOUS 2171E	
Male	PDAR 2171E 2005154 April 03 2017
VISION UNANIMOUS 1418	VISIONTOPLINE ROYAL STOCKMAN
PEAK DOT UNANIMOUS 402B	VISION EDELLA 665
LADY OF PEAK DOT 416U	S A V 004 PREDOMINANT 4438
	LADY OF PEAK DOT 634K
	RITO 707 OF IDEAL 3407 7075
S A V ELIMINATOR 9105	S A V ABIGALE 5646
PEAK DOT LADY LAWN 548B	DOUBLE AA OLD POST BANDOLIER
LADY LAWN OF PEAK DOT 895X	REMINGTON LADY LAWN 144R
BW: 85lbs. Adj 205 day Wt: 825 lbs. Adj 365 day Wt: 1258 lbs.	
BW:+3.3WW: +51 YW: +88Milk: +19	

>Recommended for heifers or cows

127 PEAK DOT UNANIMOUS 2234E	
Male	PDAR 2234E 2005234 April 18 2017
VISION UNANIMOUS 1418	VISIONTOPLINE ROYAL STOCKMAN
PEAK DOT UNANIMOUS 402B	VISION EDELLA 665
LADY OF PEAK DOT 416U	S A V 004 PREDOMINANT 4438
	LADY OF PEAK DOT 634K
	TC GRIDIRON 258
S A V IRON MOUNTAIN 8066	S A V MADAME PRIDE 3249
DUCHESS OF PEAK DOT 1004X	MOHNEN DYNAMITE 1356
DUCHESS OF PEAK DOT 532U	DUCHESS OF PEAK DOT 874L
BW: 75lbs. Adj 205 day Wt: 921 lbs. Adj 365 day Wt: 1407 lbs.	
BW:+1.6 WW: +64 YW: +105 Milk: +18	

>Recommended for heifers

126 PEAK DOT UNANIMOUS 2253E	
Male	PDAR 2253E 2005271 May 01 2017
VISION UNANIMOUS 1418	VISIONTOPLINE ROYAL STOCKMAN
PEAK DOT UNANIMOUS 402B	VISION EDELLA 665
LADY OF PEAK DOT 416U	S A V 004 PREDOMINANT 4438
	LADY OF PEAK DOT 634K
	S A V BRILLIANCE 8077
S A V RADIANCE 0801	S A V ELBA 801
PEAK DOT BARBARA 289B	S A V ELIMINATOR 9105
BARBARA OF PEAK DOT 275Z	BARBARA OF PEAK DOT 446U
BW: 73lbs. Adj 205 day Wt: 810 lbs. Adj 365 day Wt: 1475 lbs.	
BW:+1.9 WW: +54 YW: +108 Milk: +22	

>Recommended for heifers

128 PEAK DOT UNANIMOUS 2187E	
Male	PDAR 2187E 2005168 April 08 2017
VISION UNANIMOUS 1418	VISIONTOPLINE ROYAL STOCKMAN
PEAK DOT UNANIMOUS 402B	VISION EDELLA 665
LADY OF PEAK DOT 416U	S A V 004 PREDOMINANT 4438
	LADY OF PEAK DOT 634K
	S A V ELIMINATOR 9105
PEAK DOT GLADIATOR 800Y	ANNIE K OF PEAK DOT 533U
PEAK DOT NEONIA 432B	S A V IRON MOUNTAIN 8066
NEONIA OF PEAK DOT 467Y	NEONIA OF PEAK DOT 614T
BW: 84lbs. Adj 205 day Wt: 816 lbs. Adj 365 day Wt: 1351 lbs.	
BW:+3.4 WW: +55 YW: +100 Milk: +19	

>Recommended for heifers or cows

Unanimous 409B Bulls ...

Peak Dot Unanimous 409B *Peak Dot Reference Sire*



VISIONTOPLINE ROYAL STOCKMAN BW +1.0
 VISION UNANIMOUS 1418 WW +54
 VISION EDELLA 665 YW +109
PEAK DOT UNANIMOUS 409B MILK +20
 SAV 004IRON MOUNTAIN 8066
 HEROINE OF PEAK DOT 434U
 HEROINE OF PEAK DOT 464S



HEROINE OF PEAK DOT 434U
 The Dam of Peak Dot Unanimous 409B

Peak Dot Unanimous 409B is another addition to our line up of Unanimous sons. His stoutness and overall power was unmatched in the 2015 bull season and he's passed all that down on to his first set of bulls. His sons are impressive. They are calving ease bulls with extra muscle, substance of bone, adequate performance. Owned by Hillcrest Enterprises.



PEAK DOT UNANIMOUS 2443E - LOT 129

129 PEAK DOT UNANIMOUS 2443E

Male PDAR 2443E 2005311 April 24 2017
 VISION UNANIMOUS 1418 VISIONTOPLINE ROYAL STOCKMAN
 PEAK DOT UNANIMOUS 409B VISION EDELLA 665
 HEROINE OF PEAK DOT 434U S A V 004 PREDOMINANT 4438
 S A V IRON MOUNTAIN 8066 HEROINE OF PEAK DOT 464S
 JESSICA OF PEAK DOT 633Y TC GRIDIRON 258
 JESSICA OF PEAK DOT 734T S A V MADAME PRIDE 3249
 S A V 004 PREDOMINANT 4438
 JESSICA OF PEAK DOT 207M
 BW: 77lbs. Adj 205 day Wt: 825 lbs. Adj 365 day Wt: 1376 lbs.
 BW:+2.7 WW: +53 YW: +95 Milk: +15

>Recommended for heifers



Unanimous 409B Bulls ...



PEAK DOT UNANIMOUS 2428E - LOT 130

130 PEAK DOT UNANIMOUS 2428E
Male PDAR 2428E 2005302 April 11 2017
VISION UNANIMOUS 1418 VISIONTOPLINE ROYAL STOCKMAN
PEAK DOT UNANIMOUS 409B VISION EDELLA 665
HEROINE OF PEAK DOT 434U S A V 004 PREDOMINANT 4438
PEAK DOT GRASSLANDS 537W HEROINE OF PEAK DOT 464S
PEAK DOT LADY 462A SANDY BAR GRASSLANDS 94T
LADY OF PEAK DOT 445U CEDAR OF PEAK DOT 844T
MOHNEN DYNAMITE 1356
LADY OF PEAK DOT 608K
BW: 77lbs. Adj 205 day Wt: 892 lbs. Adj 365 day Wt: 1329 lbs.
BW:+2.1 WW: +49 YW: +79 Milk: +17

>Recommended for heifers

132 PEAK DOT UNANIMOUS 2249E
Male PDAR 2249E 2005269 April 25 2017
VISION UNANIMOUS 1418 VISIONTOPLINE ROYAL STOCKMAN
PEAK DOT UNANIMOUS 409B VISION EDELLA 665
HEROINE OF PEAK DOT 434U S A V 004 PREDOMINANT 4438
PEAK DOT PIONEER 9X HEROINE OF PEAK DOT 464S
PEAK DOT ROSE 549A S A V PIONEER 7301
ROSE OF PEAK DOT 659U DUCHESS OF PEAK DOT 610T
STEVENSON BRUNO 6371
ROSE OF PEAK DOT 441N
BW: 66lbs. Adj 205 day Wt: 887 lbs. Adj 365 day Wt: 1455 lbs.
BW:-0.1 WW: +52 YW: +94 Milk: +22

>Recommended for heifers

131 PEAK DOT UNANIMOUS 2190E
Male PDAR 2190E 2005171 April 09 2017
VISION UNANIMOUS 1418 VISIONTOPLINE ROYAL STOCKMAN
PEAK DOT UNANIMOUS 409B VISION EDELLA 665
HEROINE OF PEAK DOT 434U S A V 004 PREDOMINANT 4438
S A V ELIMINATOR 9105 HEROINE OF PEAK DOT 464S
DUCHESS OF PEAK DOT 297Z RITO 707 OF IDEAL 3407 7075
DUCHESS OF PEAK DOT 486U S A V ABIGALE 5646
S A V 004 CAPACITY 5234 CAF
DUCHESS OF PEAK DOT 517R
BW: 84lbs. Adj 205 day Wt: 835 lbs. Adj 365 day Wt: 1275 lbs.
BW:+2.8 WW: +49 YW: +78 Milk: +24

>Recommended for heifers or cows

133 PEAK DOT UNANIMOUS 2221E
Male PDAR 2221E 2005221 April 15 2017
VISION UNANIMOUS 1418 VISIONTOPLINE ROYAL STOCKMAN
PEAK DOT UNANIMOUS 409B VISION EDELLA 665
HEROINE OF PEAK DOT 434U S A V 004 PREDOMINANT 4438
PEAK DOT IRON MOUNTAIN 867 S A V IRON MOUNTAIN 8066
PEAK DOT LADY 484A LADY OF PEAK DOT 839S
LADY OF PEAK DOT 480U S A V 004 PREDOMINANT 4438
LADY OF PEAK DOT 327J
BW: 83lbs. Adj 205 day Wt: 930 lbs. Adj 365 day Wt: 1380 lbs.
BW:+2.7 WW: +53 YW: +87 Milk: +22

>Recommended for heifers or cows

Unanimous 454B Bulls ...

134 PEAK DOT UNANIMOUS 2427E

Male PDAR 2427E 2005301 April 10 2017
 VISION UNANIMOUS 1418 VISIONTOPLINE ROYAL STOCKMAN
 PEAK DOT UNANIMOUS 454B VISION EDELLA 665
 BAMBI OF PEAK DOT 514U S A V 004 CAPACITY 5234 CAF
 S A V IRON MOUNTAIN 8066 BAMBI OF PEAK DOT 491R
 LADY OF PEAK DOT 301Y TC GRIDIRON 258
 LADY OF PEAK DOT 446N S A V MADAME PRIDE 3249
 BASIN PRIME CUT 354K
 LADY OF PEAK DOT 533K

BW: 79lbs. Adj 205 day Wt: 751 lbs. Adj 365 day Wt: 1340 lbs.
 BW:+3.2 WW: +51 YW: +85 Milk: +12

>Recommended for heifers or cows



PEAK DOT UNANIMOUS 2427E - LOT 134

135 PEAK DOT UNANIMOUS 2222E

Male PDAR 2222E 2005222 April 15 2017
 VISION UNANIMOUS 1418 VISIONTOPLINE ROYAL STOCKMAN
 PEAK DOT UNANIMOUS 454B VISION EDELLA 665
 BAMBI OF PEAK DOT 514U S A V 004 CAPACITY 5234
 S A V IRON MOUNTAIN 8066 BAMBI OF PEAK DOT 491R
 BARDOLIA OF PEAK DOT 139Y TC GRIDIRON 258
 BARDOLIA OF PEAK DOT 231W S A V MADAME PRIDE 3249
 S A V 004 PREDOMINANT 4438
 BARDOLIA OF PEAK DOT 796P

BW: 80lbs. Adj 205 day Wt: 806 lbs. Adj 365 day Wt: 1368 lbs.
 BW:+2.9 WW:+52 YW: +86 Milk: +11

>Recommended for heifers or cows



PEAK DOT UNANIMOUS 2222E - LOT 135

136 PEAK DOT UNANIMOUS 2233E

Male PDAR 2233E 2005233 April 18 2017
 VISION UNANIMOUS 1418 VISIONTOPLINE ROYAL STOCKMAN
 PEAK DOT UNANIMOUS 454B VISION EDELLA 665
 BAMBI OF PEAK DOT 514U S A V 004 CAPACITY 5234
 S A V IRON MOUNTAIN 8066 BAMBI OF PEAK DOT 491R
 ROSE OF PEAK DOT 961X TC GRIDIRON 258
 ROSE OF PEAK DOT 441N S A V MADAME PRIDE 3249
 PEAK DOT PANAMA 121G
 CEDAR CREEK ROSE 47B

BW: 74lbs. Adj 205 day Wt: 799 lbs. Adj 365 day Wt: 1393 lbs.
 BW:+2.6 WW: +51 YW: +83 Milk: +17

>Recommended for heifers



PEAK DOT UNANIMOUS 2233E - LOT 136

137 PEAK DOT UNANIMOUS 2439E

Male PDAR 2439E 2005309 April 24 2017
 VISION UNANIMOUS 1418 VISIONTOPLINE ROYAL STOCKMAN
 PEAK DOT UNANIMOUS 454B VISION EDELLA 665
 BAMBI OF PEAK DOT 514U S A V 004 CAPACITY 5234
 S A V IRON MOUNTAIN 8066 BAMBI OF PEAK DOT 491R
 LADY OF PEAK DOT 545Y TC GRIDIRON 258
 LADY OF PEAK DOT 476S S A V MADAME PRIDE 3249
 HF POWER-UP 72N
 LADY OF PEAK DOT 566N

BW: 80lbs. Adj 205 day Wt: 791 lbs. Adj 365 day Wt: 1253 lbs.
 BW:+3.9 WW: +53 YW: +80 Milk: +11

>Recommended for heifers or cows



PEAK DOT UNANIMOUS 2439E - LOT 137

138 PEAK DOT UNANIMOUS 2215E

Male PDAR 2215E 2005196 April 14 2017
 VISION UNANIMOUS 1418 VISIONTOPLINE ROYAL STOCKMAN
 PEAK DOT UNANIMOUS 454B VISION EDELLA 665
 BAMBI OF PEAK DOT 514U S A V 004 CAPACITY 5234
 S A V BULLET 0473 BAMBI OF PEAK DOT 491R
 PANSY OF PEAK DOT 810Z S A V BISMARCK 5682
 PANSY OF PEAK DOT 910U S A V EMBLYNETTE 7566
 S A V 004 PREDOMINANT 4438
 PANSY OF PEAK DOT 329J

BW: 82lbs. Adj 205 day Wt: 813 lbs. Adj 365 day Wt: 1309 lbs.
 BW:+3.8 WW: +54 YW: +84 Milk: +16

>Recommended for heifers or cows

Unanimous 339B Bulls . . .



PEAK DOT UNANIMOUS 2216E - LOT 139

139 PEAK DOT UNANIMOUS 2216E

Male PDAR 2216E 2005197 April 14 2017
 VISION UNANIMOUS 1418 VISIONTOPLINE ROYAL STOCKMAN
 PEAK DOT UNANIMOUS 339B VISION EDELLA 665
 PANSY OF PEAK DOT 99Y S A V IRON MOUNTAIN 8066
 PEAK DOT BOLD 204U PANSY OF PEAK DOT 917U
 PEAK DOT SUSIE 541A MOHNEN DYNAMITE 1356
 SUSIE OF PEAK DOT 647U QUEEN OF PEAK DOT 652S
 S A V 004 CAPACITY 5234
 SUSIE OF PEAK DOT 794P
 BW: 79lbs. Adj 205 day Wt: 877 lbs. Adj 365 day Wt: 1325 lbs.
 BW:+2.6 WW: +55 YW: +83 Milk: +18

>Recommended for heifers



PEAK DOT UNANIMOUS 2433E - LOT 140

140 PEAK DOT UNANIMOUS 2433E

Male PDAR 2433E 2005305 April 18 2017
 VISION UNANIMOUS 1418 VISIONTOPLINE ROYAL STOCKMAN
 PEAK DOT UNANIMOUS 339B VISION EDELLA 665
 PANSY OF PEAK DOT 99Y S A V IRON MOUNTAIN 8066
 PEAK DOT BOLD 204U PANSY OF PEAK DOT 917U
 LADY OF PEAK DOT 230Y MOHNEN DYNAMITE 1356
 LADY OF PEAK DOT 933U QUEEN OF PEAK DOT 652S
 S A V 004 PREDOMINANT 4438
 LADY OF PEAK DOT 615K
 BW: 72lbs. Adj 205 day Wt: 859 lbs. Adj 365 day Wt: 1410 lbs.
 BW:+2.0 WW: +58 YW: +99 Milk: +15

>Recommended for heifers



PEAK DOT UNANIMOUS 2232E - LOT 141

141 PEAK DOT UNANIMOUS 2232E

Male PDAR 2232E 2005232 April 18 2017
 VISION UNANIMOUS 1418 VISIONTOPLINE ROYAL STOCKMAN
 PEAK DOT UNANIMOUS 339B VISION EDELLA 665
 PANSY OF PEAK DOT 99Y S A V IRON MOUNTAIN 8066
 MOHNEN DYNAMITE 1356 PANSY OF PEAK DOT 917U
 PANSY OF PEAK DOT 914U BALDRIDGE KABOOM K243
 PANSY OF PEAK DOT 396J MOHNEN JILT 910
 DOUBLE AA RITO 28797
 PANSY OF PEAK DOT 668Z
 BW: 78lbs. Adj 205 day Wt: 859 lbs. Adj 365 day Wt: 1400 lbs.
 BW:+2.9 WW: +61 YW: +99 Milk: +13

>Recommended for heifers

Unanimous 339B Bulls ...

142 PEAK DOT UNANIMOUS 2202E
 Male PDAR 2202E 2005183 April 11 2017

VISION UNANIMOUS 1418	VISIONTOPLINE ROYAL STOCKMAN
PEAK DOT UNANIMOUS 339B	VISION EDELLA 665
PANSY OF PEAK DOT 99Y	S A V IRON MOUNTAIN 8066
	PANSY OF PEAK DOT 917U
MOHNEN DYNAMITE 1356	BALDRIDGE KABOOM K243
JUNE OF PEAK DOT 441U	MOHNEN JILT 910
JUNE OF PEAK DOT 834L	PEAK DOT WALK-ON 51G
	CEDAR CREEK JUNE 134E

BW: 74lbs. Adj 205 day Wt: 826 lbs. Adj 365 day Wt: 1353 lbs.
 BW:+2.2WW: +57 YW: +88Milk: +12

>Recommended for heifers

144 PEAK DOT UNANIMOUS 2425E
 Male PDAR 2425E 2005299 April 07 2017

VISION UNANIMOUS 1418	VISIONTOPLINE ROYAL STOCKMAN
PEAK DOT UNANIMOUS 339B	VISION EDELLA 665
PANSY OF PEAK DOT 99Y	S A V IRON MOUNTAIN 8066
	PANSY OF PEAK DOT 917U
PEAK DOT PRIME CUT 433M	BASIN PRIME CUT 354K
BARDOLIA OF PEAK DOT 442U	BARDOLIA OF PEAK DOT 572E
BARDOLIA OF PEAK DOT 407N	S A R FAME 2089
	BARDOLIA OF PEAK DOT 394J

BW: 83lbs. Adj 205 day Wt: 794 lbs. Adj 365 day Wt: 1319 lbs.
 BW:+3.7WW: +52 YW: +79Milk: +11

>Recommended for heifers or cows

143 PEAK DOT UNANIMOUS 2424E
 Male PDAR 2424E 2005298 April 07 2017

VISION UNANIMOUS 1418	VISIONTOPLINE ROYAL STOCKMAN
PEAK DOT UNANIMOUS 339B	VISION EDELLA 665
PANSY OF PEAK DOT 99Y	S A V IRON MOUNTAIN 8066
	PANSY OF PEAK DOT 917U
S A V IRON MOUNTAIN 8066	TC GRIDIRON 258
BARDOLIA OF PEAK DOT 841X	S A V MADAME PRIDE 3249
BARDOLIA OF PEAK DOT 796P	STEVENSON BRUNO 6371
	BARDOLIA OF PEAK DOT 775L

BW: 83lbs. Adj 205 day Wt: 841 lbs. Adj 365 day Wt: 1338 lbs.
 BW:+3.5WW: +56 YW: +89Milk: +11

>Recommended for heifers or cows

145 PEAK DOT UNANIMOUS 2212E
 Male PDAR 2212E 2005193 April 13 2017

VISION UNANIMOUS 1418	VISIONTOPLINE ROYAL STOCKMAN
PEAK DOT UNANIMOUS 339B	VISION EDELLA 665
PANSY OF PEAK DOT 99Y	S A V IRON MOUNTAIN 8066
	PANSY OF PEAK DOT 917U
PEAK DOT PRIME CUT 433M	BASIN PRIME CUT 354K
ROSILLA OF PEAK DOT 405U	BARDOLIA OF PEAK DOT 572E
ROSILLA OF PEAK DOT 422N	S A R FAME 2089
	ROSILLA OF PEAK DOT 358J

BW: 79lbs. Adj 205 day Wt: 797 lbs. Adj 365 day Wt: 1240 lbs.
 BW:+2.4WW: +48 YW: +70Milk: +11

>Recommended for heifers

Country Bulls ...



PEAK DOT COUNTRY 387E - LOT 146



PEAK DOT COUNTRY 604B
 The sire of lot 146



146 PEAK DOT COUNTRY 387E
 Male PDAR 387E 1967735 February 22 2017

VISION UNANIMOUS 1418	VISIONTOPLINE ROYAL STOCKMAN
PEAK DOT COUNTRY 604B	VISION EDELLA 665
ERICA OF PEAK DOT 668X	S A V IRON MOUNTAIN 8066
	ERICA OF PEAK DOT 478U
S A V IRON MOUNTAIN 8066	TC GRIDIRON 258
JESSICA OF PEAK DOT 771Y	S A V MADAME PRIDE 3249
JESSICA OF PEAK DOT 308W	PEAK DOT PRIME CUT 28N
	JESSICA OF PEAK DOT 596K

BW: 70lbs. Adj 205 day Wt: 761 lbs. Adj 365 day Wt: 1233 lbs.
 BW:+1.6 WW: +42 YW: +74 Milk: +15

>Recommended for heifers

Unanimous 704B Bulls ...



PEAK DOT UNANIMOUS 2178E - LOT 147



HYALITE OF PEAK DOT 831S
The maternal grandam of lot 146

147 PEAK DOT UNANIMOUS 2178E
Male PDAR 2178E 2007413 April 05 2017

VISION UNANIMOUS 1418	VISIONTOPLINE ROYAL STOCKMAN
PEAK DOT UNANIMOUS 704B	VISION EDELLA 665
LADY OF PEAK DOT 242Z	S A V ELIMINATOR 9105
	LADY OF PEAK DOT 946W
S A V IRON MOUNTAIN 8066	TC GRIDIRON 258
HYALITE OF PEAK DOT 628Y	S A V MADAME PRIDE 3249
HYALITE OF PEAK DOT 831S	S A V 004 PREDOMINANT 4438
	HYALITE OF PEAK DOT 742L

BW: 87lbs. Adj 205 day Wt: 716 lbs. Adj 365 day Wt: 1361 lbs.
BW:+4.9 WW: +52 YW: +101 Milk: +12

>Recommended for cows



PEAK DOT UNANIMOUS 2429E - LOT 148

148 PEAK DOT UNANIMOUS 2429E
Male PDAR 2429E 2005303 April 14 2017

VISION UNANIMOUS 1418	VISIONTOPLINE ROYAL STOCKMAN
PEAK DOT UNANIMOUS 704B	VISION EDELLA 665
LADY OF PEAK DOT 242Z	S A V ELIMINATOR 9105
	LADY OF PEAK DOT 946W
PEAK DOT HOBSON 459T	STEVENSON BRUNO 6371
ROSILLA OF PEAK DOT 231Y	ERICA OF PEAK DOT 348M
ROSILLA OF PEAK DOT 405U	PEAK DOT PRIME CUT 433M
	ROSILLA OF PEAK DOT 422N

BW: 82lbs. Adj 205 day Wt: 831 lbs. Adj 365 day Wt: 1299 lbs.
BW:+3.5 WW: +53 YW: +88 Milk: +15

>Recommended for heifers or cows



PEAK DOT UNANIMOUS 2238E - LOT 149

149 PEAK DOT UNANIMOUS 2238E
Male PDAR 2238E 2006094 April 19 2017

VISION UNANIMOUS 1418	VISIONTOPLINE ROYAL STOCKMAN
PEAK DOT UNANIMOUS 704B	VISION EDELLA 665
LADY OF PEAK DOT 242Z	S A V ELIMINATOR 9105
	LADY OF PEAK DOT 946W
S A V IRON MOUNTAIN 8066	TC GRIDIRON 258
PANSY OF PEAK DOT 967X	S A V MADAME PRIDE 3249
PANSY OF PEAK DOT 552S	PEAK DOT HOBSON 57N
	PANSY OF PEAK DOT 443D

BW: 78lbs. Adj 205 day Wt: 829 lbs. Adj 365 day Wt: 1388 lbs.
BW:+3.1 WW: +55 YW: +94 Milk: +12

>Recommended for heifers

Universal Bulls . . .

Peak Dot Universal 551A *Peak Dot Reference*



VISION TOPLINE ROYAL STOCKMAN
VISION UNANIMOUS 1418
VISION EDELLA 655
PEAK DOT UNIVERSAL 551A
SAV IRON MOUNTAIN 8066
HEROINE OF PEAK DOT 663X
HEROINE OF PEAK DOT 434U

BW +3.3
WW +54
YW +104
MILK +15

Peak Dot Universal was the top selling \$54,000 bull from the 2014 Spring Bull Sale. He is owned by Hillcrest Enterprises, Semex Beef and Peak Dot. Universal is a sire whose popularity continues to grow. He is one of the most consistent bulls we have ever used for breeding deep bodied cattle that always stay in good flesh. His sons are deep middle thick made calving ease bulls that should sire highly productive females.



Visitors Bopil Farms Brazil

Bopil Farms Brazil purchased 10,000 semen straws on Peak Dot Universal 551A and 3000 straws of Peak Dot Mountain Top 940X



HEROINE OF PEAK DOT 434U
The maternal grandam of Universal

Universal Bulls . . .



PEAK DOT UNIVERSAL 2179E - LOT 150

150	PEAK DOT UNIVERSAL 2179E
Male	PDAR 2179E 2005659 April 05 2017
VISION UNANIMOUS 1418	VISIONTOPLINE ROYAL STOCKMAN
PEAK DOT UNIVERSAL 551A	VISION EDELLA 665
HEROINE OF PEAK DOT 663X	S A V IRON MOUNTAIN 8066
S A V PIONEER 7301	HEROINE OF PEAK DOT 434U
LADY OF PEAK DOT 325X	S A V FINAL ANSWER 0035
LADY OF PEAK DOT 575K	S A V BLACKBIRD 5297
	DOUBLE AA RITO 287'97
	LADY OF PEAK DOT 764G
BW: 88lbs. Adj 205 day Wt: 784 lbs. Adj 365 day Wt: 1409 lbs.	
BW:+4.8 WW: +55 YW: +106 Milk: +13	

>Recommended for cows



PEAK DOT UNIVERSAL 2431E - LOT 151

151	PEAK DOT UNIVERSAL 2431E
Male	PDAR 2431E 2005304 April 15 2017
VISION UNANIMOUS 1418	VISIONTOPLINE ROYAL STOCKMAN
PEAK DOT UNIVERSAL 551A	VISION EDELLA 665
HEROINE OF PEAK DOT 663X	S A V IRON MOUNTAIN 8066
S A V IRON MOUNTAIN 8066	HEROINE OF PEAK DOT 434U
DUCHESS OF PEAK DOT 611X	TC GRIDIRON 258
DUCHESS OF PEAK DOT 470U	S A V MADAME PRIDE 3249
	PEAK DOT PREDOMINANT 82S
	DUCHESS OF PEAK DOT 302R
BW: 85lbs. Adj 205 day Wt: 814 lbs. Adj 365 day Wt: 1393 lbs.	
BW:+4.0 WW: +53 YW: +97 Milk: +10	

>Recommended for heifers or cows



PEAK DOT UNIVERSAL 2177E - LOT 152

152	PEAK DOT UNIVERSAL 2177E
Male	PDAR 2177E 2005160 April 05 2017
VISION UNANIMOUS 1418	VISIONTOPLINE ROYAL STOCKMAN
PEAK DOT UNIVERSAL 551A	VISION EDELLA 665
HEROINE OF PEAK DOT 663X	S A V IRON MOUNTAIN 8066
DUFF ENCORE 702	HEROINE OF PEAK DOT 434U
QUEEN OF PEAK DOT 963X	D H D TRAVELER 6807
QUEEN OF PEAK DOT 652S A	O C C DIXIE ERICA 814G
	S A V 004 PREDOMINANT 4438
	QUEEN OF PEAK DOT 806P
BW: 85lbs. Adj 205 day Wt: 747 lbs. Adj 365 day Wt: 1375 lbs.	
BW:+4.3 WW: +46 YW: +94 Milk: +14	

>Recommended for heifers or cows

153	PEAK DOT UNIVERSAL 2224E
Male	PDAR 2224E 2005224 April 15 2017
VISION UNANIMOUS 1418	VISIONTOPLINE ROYAL STOCKMAN
PEAK DOT UNIVERSAL 551A	VISION EDELLA 665
HEROINE OF PEAK DOT 663X	S A V IRON MOUNTAIN 8066
S A V ELIMINATOR 9105	HEROINE OF PEAK DOT 434U
PEAK DOT DUCHESS 577A	RITO 707 OF IDEAL 3407 7075
DUCHESS OF PEAK DOT 818X	S A V ABIGALE 5646
	S A V 004 CAPACITY 5234 CAF
	DUCHESS OF PEAK DOT 582K
BW: 82lbs. Adj 205 day Wt: 761 lbs. Adj 365 day Wt: 1348 lbs.	
BW:+3.7 WW: +47 YW: +89 Milk: +16	

>Recommended for heifers or cows

Foothills Bulls...

Peak Dot Foothills 1012B *Peak Dot Reference Sire*

Muscle, thickness and Performance ...



Contact Genex for semen

One of the top selling Unanimous sons from the 2016 Peak Dot Spring bull sale selected by Genex. Foothills offers massive thickness, volume and expressive muscle shape. His SAV 004 Predominant 4438 dam is moderate framed, easy fleshing and has a quality udder. Grandam is a past embryo donor. The phenomenal first calfcrop of sons by Foothills display masculinity, muscle and maturity at an early age.

VISIONTOPLINE ROYAL STOCKMAN
VISION UNANIMOUS 1418
VISION EDELLA 665
PEAK DOT FOOTHILLS 1012B
SAV 004 PREDOMINANT 4438
MAYFLOWER OF PEAK DOT 345T
MAYFLOWER OF PEAK DOT 392J

BW +3.6
WW +74
YW +130
MILK +11



LADY OF PEAK DOT 387J
The materna grandam of lot 154t

PEAK DOT FOOTHILLS 243E - LOT 154

154 PEAK DOT FOOTHILLS 243E

Male PDAR 243E 1968505 January 30 2017
VISION UNANIMOUS 1418 VISIONTOPLINE ROYAL STOCKMAN
PEAK DOT FOOTHILLS 1012B D VISION EDELLA 665
MAYFLOWER OF PEAK DOT 345T S A V 004 PREDOMINANT 4438
S A V IRON MOUNTAIN 8066 MAYFLOWER OF PEAK DOT 392J
LADY OF PEAK DOT 580Y TC GRIDIRON 258 D
LADY OF PEAK DOT 387J S A V MADAME PRIDE 3249
DOUBLE AA BARDOLIER 3'97
LADY OF PEAK DOT 248X

BW: 84lbs. Adj 205 day Wt: 643 lbs. Adj 365 day Wt: 1141 lbs.
BW:+3.9 WW: +40 YW: +78 Milk: +7

>Recommended for heifers or cows

Foothills - Unanimous 1019B Bulls...

155 PEAK DOT FOOTHILLS 414E

Male PDAR 414E 1968156 February 28 2017
 VISION UNANIMOUS 1418 VISIONTOPLINE ROYAL STOCKMAN
 PEAK DOT FOOTHILLS 1012B VISION EDELLA 665
 MAYFLOWER OF PEAK DOT 345 S A V 004 PREDOMINANT 4438
 PEAK DOT PRIME CUT 28N BASIN PRIME CUT 354K OSF
 LASSIE OF PEAK DOT 287W MIA OF PEAK DOT 315C
 LASSIE OF PEAK DOT 475N BASIN PRIME CUT 354K OSF
 LASSIE OF PEAK DOT 372C
 BW: 86lbs. Adj 205 day Wt: 835 lbs. Adj 365 day Wt: 1243 lbs.
 BW:+3.9 WW: +47 YW: +82 Milk: +17

>Recommended for cows

156 PEAK DOT FOOTHILLS 545E

Male PDAR 545E 1968296 March 28 2017
 VISION UNANIMOUS 1418 VISIONTOPLINE ROYAL STOCKMAN
 PEAK DOT FOOTHILLS 1012B VISION EDELLA 665
 MAYFLOWER OF PEAK DOT 345 S A V 004 PREDOMINANT 4438
 S A V IRON MOUNTAIN 8066 TC GRIDIRON 258
 PEAK DOT MIA 860Y S A V MADAME PRIDE 3249
 MIA OF PEAK DOT 589U S A V 004 CAPACITY 5234
 MIA OF PEAK DOT 415R
 BW: 84lbs. Adj 205 day Wt: 700 lbs. Adj 365 day Wt: 1161 lbs.
 BW:+3.9 WW: +43 YW: +71 Milk: +9

>Recommended for heifers or cows



PEAK DOT UNANIMOUS 46E - LOT 158

158 PEAK DOT UNANIMOUS 46E

Male PDAR 46E 1968050 January 25 2017
 VISION UNANIMOUS 1418 VISIONTOPLINE ROYAL STOCKMAN
 PEAK DOT UNANIMOUS 1019B VISION EDELLA 665
 MIA OF PEAK DOT 592U STEVENSON BRUNO 6371
 S A V RADIANCE 0801 MIA OF PEAK DOT 637N
 S A V BRILLIANCE 8077
 PEAK DOT MIA 179A S A V ELBA 801
 MIA OF PEAK DOT 406R BASIN PRIME CUT 354K
 MIA OF PEAK DOT 316J
 BW: 81lbs. Adj 205 day Wt: 763 lbs. Adj 365 day Wt: 1275 lbs.
 BW:+2.4 WW: +40 YW: +80 Milk: +21

>Recommended for heifers or cows



PEAK DOT UNANIMOUS 1019B

The SIRE of lot 157-158



MIA OF PEAK DOT 406R

The maternal grandam of lot 158

157 PEAK DOT UNANIMOUS 539E

Male PDAR 539E 1968090 March 25 2017
 VISION UNANIMOUS 1418 VISIONTOPLINE ROYAL STOCKMAN
 PEAK DOT UNANIMOUS 1019B VISION EDELLA 665
 MIA OF PEAK DOT 592U STEVENSON BRUNO 6371
 SANDY BAR GRASSLANDS 94T MIA OF PEAK DOT 637N
 WILBAR ADVANTAGE 202R
 LADY OF PEAK DOT 326X SANDY BAR JEMINA 22N
 LADY OF PEAK DOT 808S S A V 004 PREDOMINANT 4438
 LADY OF PEAK DOT 521M
 BW: 85lbs. Adj 205 day Wt: 896 lbs. Adj 365 day Wt: 1343 lbs.
 BW:+3.9 WW: +41 YW: +71 Milk: +24

>Recommended for heifers or cows



Prime Bulls ...

Peak Dot Prime 733B *Peak Dot Reference Sire*



Prime is a powerfully built with tremendous length, volume and body depth, muscle and pounds. He offers a bit more bone and stands on a very sturdy frame. He was selected by Alta genetics from the 2015 Spring bull sale and added to their sire roster. His gorgeous dam has been a very consistent embryo producer resulting in high caliber progeny no matter who she has been mated to. She is one of the most influential cows at Peak Dot and along with several of her daughters will lead the way as we continue to stack our cowherd with fertility, longevity and maternal value.

VISIONTOPLINE ROYAL STOCKMAN
 VISION UNANIMOUS 1418
 VISION EDELLA 665
PEAK DOT PRIME 733B
 SAV 004 PREDOMINANT 4438
 ERICA OF PEAK DOT 478U
 ERICA OF PEAK DOT 326R

BW +4.7
 WW +73
 YW +123
 MILK +12



ERICA OF PEAK DOT 478U
 The dam of Prime



PEAK DOT PRIME 533E - LOT 159

159	PEAK DOT PRIME 533E	
Male	PDAR 533E	1970809 March 21 2017
	VISION UNANIMOUS 1418	VISIONTOPLINE ROYAL STOCKMAN
	PEAK DOT PRIME 733B	VISION EDELLA 665
	ERICA OF PEAK DOT 478U	S A V 004 PREDOMINANT 4438
		ERICA OF PEAK DOT 326R
	S A V ELIMINATOR 9105	RITO 707 OF IDEAL 3407 7075
	PEAK DOT ANNIE K 355B	S A V ABIGALE 5646
	ANNIE K OF PEAK DOT 183Y	PEAK DOT DYNAMITE 126U
		ANNIE K OF PEAK DOT 450U
BW: 83lbs. Adj 205 day Wt: 982 lbs. Adj 365 day Wt: 1422 lbs.		
BW:+3.7 WW: +72 YW: +118 Milk: +17		

>Recommended for heifers or cows

160	PEAK DOT PRIME 300E	
Male	PDAR 300E	1968038 February 09 2017
	VISION UNANIMOUS 1418	VISIONTOPLINE ROYAL STOCKMAN
	PEAK DOT PRIME 733B	VISION EDELLA 665
	ERICA OF PEAK DOT 478U	S A V 004 PREDOMINANT 4438
		ERICA OF PEAK DOT 326R
	S A V 004 CAPACITY 5234	S A V 8180 TRAVELER 004
	LADY OF PEAK DOT 402W	S A V ERICA 1141 CAF
	LADY OF PEAK DOT 509R	KDF POWERLINE 28N
		LADY OF PEAK DOT 634K
BW: 86lbs. Adj 205 day Wt: 691 lbs. Adj 365 day Wt: 1243 lbs.		
BW:+4.7 WW: +44 YW: +88 Milk: +14		

>Recommended for cows

Unanimous 712B Bulls ...

Peak Dot Unanimous 712B *Peak Dot Reference Sire*



A Unanimous son best described as a real rancher's bull. His flawless structure and excellent foot gives him athletic mobility that is not often found on bulls that carry this much volume and mass. His nice uddered Eliminator dam goes back to Erica of Peak Dot 478U.

VISIONTOPLINE ROYAL STOCKMAN	BW +2.4
VISION UNANIMOUS 1418	WW +60
VISION EDELLA 665	YW +108
PEAK DOT UNANIMOUS 712B	MILK +16
SAV ELIMINATOR 9105	
ERICA OF PEAK DOT 752Z	
ERICA OF PEAK DOT 478U	



ERICA OF PEAK DOT 478U

The Maternal grandam of Unanimous 712B



PEAK DOT UNANIMOUS 905E - LOT 161

161	PEAK DOT UNANIMOUS 905E
Male	PDAR 905E 1985265 April 16 2017
VISION UNANIMOUS 1418	VISIONTOPLINE ROYAL STOCKMAN
PEAK DOT UNANIMOUS 712B	VISION EDELLA 665
ERICA OF PEAK DOT 752Z	S A V ELIMINATOR 9105
	ERICA OF PEAK DOT 478U
S A V 004 PREDOMINANT 4438	S A V 8180 TRAVELER 004
DIVINA OF PEAK DOT 706T	S A V EMBLYNETTE 1182
DIVINA OF PEAK DOT 911H	PEAK DOT STOCKMAN 12F
	CEDAR CREEK ANNIE K 903A
BW: 95lbs. Adj 205 day Wt: 844 lbs. Adj 365 day Wt: 1397 lbs.	
BW:+4.7 WW: +54 YW: +96 Milk: +15	



>Recommended for cows

Unanimous 712B Bulls ...



PEAK DOT UNANIMOUS 912E - LOT 162

162 PEAK DOT UNANIMOUS 912E

Male PDAR 912E 1985387 May 01 2017
 VISION UNANIMOUS 1418 VISIONTOPLINE ROYAL STOCKMAN
 PEAK DOT UNANIMOUS 712B VISION EDELLA 665
 ERICA OF PEAK DOT 752Z S A V ELIMINATOR 9105
 ERICA OF PEAK DOT 478U
 S A V 004 CAPACITY 5234 S A V 8180 TRAVELER 004
 BARDOLIA OF PEAK DOT 717T S A V ERICA 1141
 BARDOLIA OF PEAK DOT 574N BASIN AMBUSH 7980
 LADY OF PEAK DOT 307Y
 BW: 80lbs. Adj 205 day Wt: 878 lbs. Adj 365 day Wt: 1406 lbs.
 BW:+1.4 WW: +47 YW: +82 Milk: +20

>Recommended for heifers or cows



PEAK DOT UNANIMOUS 919E - LOT 163

163 PEAK DOT UNANIMOUS 919E

Male PDAR 919E 1999703 April 06 2017
 VISION UNANIMOUS 1418 VISIONTOPLINE ROYAL STOCKMAN
 PEAK DOT UNANIMOUS 712B VISION EDELLA 665
 ERICA OF PEAK DOT 752Z S A V ELIMINATOR 9105
 ERICA OF PEAK DOT 478U
 KDF POWERLINE 28N RIVERBEND POWERLINE 0050
 ROSILLA OF PEAK DOT 585S LADY BONNIE OF K DEEN KY 75K
 ROSILLA OF PEAK DOT 642N HF MOST WANTED 46H
 ROSILLA OF PEAK DOT 615F
 BW: 80lbs. Adj 205 day Wt: 814 lbs. Adj 365 day Wt: 1328 lbs.
 BW:+1.4 WW: +43 YW: +80 Milk: +15

>Recommended for heifers or cows



PEAK DOT UNANIMOUS 907E - LOT 164

164 PEAK DOT UNANIMOUS 907E

Male PDAR 907E 1985267 April 19 2017
 VISION UNANIMOUS 1418 VISIONTOPLINE ROYAL STOCKMAN
 PEAK DOT UNANIMOUS 712B VISION EDELLA 665
 ERICA OF PEAK DOT 752Z S A V ELIMINATOR 9105
 ERICA OF PEAK DOT 478U
 BASIN PRIME CUT 354K OSF SUMMITCREST PRIME CUT 1G42
 BLACK LASS PEAK DOT 843S BASIN HEIRESS 353
 CEDAR CREEK 302G CHAMPION HILL GENERAL STONE
 CEDAR IMPRESSIVE
 BW: 94lbs. Adj 205 day Wt: 887 lbs. Adj 365 day Wt: 1379 lbs.
 BW:+3.1 WW: +49 YW: +86 Milk: +17

>Recommended for cows

165 PEAK DOT UNANIMOUS 904E

Male PDAR 904E 1985264 April 16 2017
 VISION UNANIMOUS 1418 VISIONTOPLINE ROYAL STOCKMAN
 PEAK DOT UNANIMOUS 712B VISION EDELLA 665
 ERICA OF PEAK DOT 752Z S A V ELIMINATOR 9105
 ERICA OF PEAK DOT 478U
 S A V 004 CAPACITY 5234 S A V 8180 TRAVELER 004
 QUEEN OF PEAK DOT 755T S A V ERICA 1141
 QUEEN OF PEAK DOT 326J MERIT 6105
 QUEEN OF PEAK DOT 705G
 BW: 91lbs. Adj 205 day Wt: 777 lbs. Adj 365 day Wt: 1199 lbs.
 BW:+2.7 WW: +38 YW: +65 Milk: +16

>Recommended for cows



PEAK DOT UNANIMOUS 904E - LOT 165

OUTCOME

Outcome was the high selling feature bull in last years sale. He was admird for his proud herdbull look and scale crushing performance numbers, exceptional length, volume, muscle and dimension.

CED +7
BW +1.3
WW +75
YW +127
MILK +20
RE +.67
\$W +70.34
\$B +150.31



Contact Alta Genetics for semen



Peak Dot Ranch Ltd.

FALL BULL SALE

Thursday, DEC. 6, 2018

Box 105, Wood Mountain, SK, Canada S0H 4L0

Terry Moneo Carson Moneo Clay Moneo Scott and Mia Turner
306-266-4303 306-266-4414 306-266-4411 306-266-2056

Fax 266-4930 Email: peakdot@gmail.com

www.peakdotranch.com

