

8th Annual
PALMER CHAROLAIS with
NIELSON LAND & CATTLE CO.

**BULL
SALE** Charolais, Red
& Black Angus
**MONDAY
MARCH 11** 2019
2:00 PM

At Palmer Charolais, Bladworth, SK
(from Hwy 11 at Bladworth: 2.5 miles W on Townline Rd, 1 mile N)



Videos of the bulls may be viewed at www.bylivestock.com



ROCKY MOUNTAIN EQUIPMENT.

Rocky Mountain Equipment is the largest agricultural equipment dealer in Canada and we pride ourselves on providing our customers with dependable equipment, service and support - anytime and anywhere.



New Holland round baling history started in 1974 with the Model 850. Today, the same size baler, the Roll-Belt™ 560, is still designed and built to get the most out of every season.



New Speedrower® SP windrowers allow you to get the job done quicker than ever before, while giving you the industry-leading power, control, comfort and performance you've come to expect from New Holland.



The 13-foot Discbine 313 and 16-foot, three-inch Discbine 316 are designed with increased durability and features that lead to cleaner cutting, more efficient crop flow, and smoother, more effective conditioning.

Contact your local New Holland dealer today!

RME Outlook | 610 Saskatchewan Ave. | 306.867.544



PALMER CHAROLAIS *with* NIELSON LAND & CATTLE CO.

8th Annual Charolais, Red & Black Angus

Monday, March 11, 2019 • 2 PM • At Palmer Charolais, Bladworth, SK

BULL SALE

On offer: 57 Yearling & 7 Two Year Old Charolais Bulls

44 Red & Black Angus Yearling Bulls • 8 Red & Black Angus Heifers

Join us for lunch before the sale sponsored by



Sale Day Phones

| | |
|--|--------------|
| Velon Herback..... | 306-567-7033 |
| Leah Herback | 306-567-8119 |
| Larry Nielson..... | 306-567-7493 |
| Brendon Ehrhardt | 306-734-7494 |
| Helge By | 306-536-4261 |
| Candace By..... | 306-536-3374 |
| Jon Wright | 306-807-8424 |
| Todd Thaubergher | 306-533-1140 |
| Glen Mills, Discriminating Cattle Agent | 306-567-8078 |
| Craig Scott, Discriminating Cattle Agent | 403-651-9441 |

Staff

| | |
|----------------------------------|--------------|
| Brent Carey, Auctioneer | 403-650-9028 |
| Bryan Wolters, Ring service..... | 780-581-8396 |

Accommodations

| | |
|--|--------------|
| C & T Motel, 100 Borden St, Davidson | 306-567-2033 |
| Jubilee Motor Inn, Davidson | 306-567-3000 |

Viewing the Bulls

All of the bulls will be at the sale site for viewing two days before the sale or at the farms anytime.

Videos of the Bulls

Videos of the bulls are available for viewing at www.bylivestock.com.

Video Sale

As the bulls will be sold by video presentation and will not be coming through an auction ring, please come early to view the bulls prior to sale time. Lunch will be served for your convenience.

Delivery

Palmer: We'd prefer to give you free board for the yearlings until pasture time and free delivery up to 300 km. All we ask is that you insure your purchases. All two year old bulls must be picked up or delivery will be made as soon as possible after the sale. **Nielson:** Free board and delivery up to 300 km.

Semen Tests

All bulls will pass a semen test before delivery.

Decision Deferred Bulls (DD)

We will stand behind all decision deferred bulls in the sale. Asking 12-14 month old bulls to pass a semen test in February after a cold winter is a lot to expect. But we feel semen testing is worthwhile as it provides you the security

PALMER CHAROLAIS

Box 17, Bladworth, SK S0G 0J0
Velon & Leah Herback • l.herback@sasktel.net
306-567-5545 • cell 306-567-7033
Bob & Monette Palmer
www.palmercharolais.com

NIELSON LAND & CATTLE CO.

Box 357, Craik, SK S0G 0V0
Larry & Laurie Nielson 306-734-5145
cell 306-567-7493 • nielson@xplornet.ca
Brendon & Jenna Ehrhardt
306-734-2750 • cell 306-734-7494

Sale Manager:



124 Shannon Road
Regina, SK S4S 5B1
306-584-7937
Helge By 306-536-4261
Candace By 306-536-3374
Jon Wright 306-807-8424
charolaisbanner@gmail.com

of knowing the bull will pass, as all bulls with semen abnormalities have been eliminated. You can buy a DD bull with confidence, knowing that with a little time, they will pass and we will stand behind them.

Bull Warranty

We guarantee to provide you with a sound, fertile bull capable of servicing a reasonable number of cows. In the event that your bull is a non-satisfactory breeder, the seller will not, under any circumstances, be responsible for more than the original selling price of any bull or female sold in the sale. The consignors will not provide replacement or credit for physical injury or mismanagement. Therefore we stress the importance of insurance on your bull. An insurance agent will be available on sale day.

Terms & Conditions

The sale will be conducted under the terms of the Canadian Charolais Association and Canadian Angus Association. Copies will be available sale day.

Right to Draw Semen

In the event that we would like semen on any of the bulls selling, we reserve the privilege of drawing semen in the off season, at our expense, for in-herd use only.

Sight Unseen Purchase Program

If you are unable to attend the sale but are interested in our bulls, give any one of the contributors a call. We will personally go over the bulls and your program with you, and recommend the bulls that would best suit your needs. We will then get you in touch with one of our sales staff, who will represent you in a professional manner. You have the option of leaving an order or bidding over



the phone. Bulls are guaranteed to meet your approval when delivered. The sale will be broadcast on DLMS.ca

Insurance

Michelle Matycio, 306-227-3117, will be available to sell insurance sale day.

Credit Card Purchases

Purchases may be made on Visa or Mastercard. A 3% surcharge will be applied.

Breed Average EPD

| | CE | BW | WW | YW | M | TM |
|--------------------|-----|-----|------|------|------|------|
| Charolais | 4.5 | 1.1 | 43.3 | 83.1 | 21.1 | 42.8 |
| Black Angus | 3 | 2.3 | 45 | 78 | 21 | 43 |
| Red Angus | 2.4 | 1.2 | 45 | 78 | 21 | 43 |

View bull videos online at www.bylivestock.com

Velon 306-567-7033

Welcome to our 8th Annual Bull Sale



Bob and Monette Palmer; Velon, Leah, Hunter, Halle, Hayla & Hinton Herback



Larry and Laurie Nielson • Brendon & Jenna Ehrhardt and family



Welcome to the 8th Annual Sale. These two operations have continued to improve the consistency and quality of the bull pen every year from the start. We would like to invite you out to see a great offering of bulls and heifers and enjoy some homegrown hospitality and a great lunch sponsored by Rocky Mountain

Equipment. It will be barbeque beef and you won't want to miss it. This will again be a video sale so the animals will not be coming through the ring and you can view the videos anytime online prior to the sale at www.bylivestock.com.

This year Velon has three sire groups in his yearling pen and they are good. The first sons of Duty-Free are impressive and many of them are out of first-calf heifers as he used him on his heifer pen to try him out. Great EPD, good hair, sound, eye appeal, length they have it all and there are a number of bulls that would work in many purebred operations. There are also good performance, meat sons of the Bodacious and Bushwacker bulls and a good selection of 1/2 and 3/4 brothers for added consistency. Velon also runs a herd of commercial cows and understands what it takes to be profitable raising commercial calves.

He weaned his bull calves in October and gave them all their shots. The bulls are then fed a growing not fattening ration that ensures they will last for you the customer. After the sale he would like to keep your yearling bulls and provide fee board and delivery up to 300 km when you need them. The bulls staying need to be insured, or you need to understand they are at the buyer's risk. The two year old bulls need to go as soon as possible after the sale as a pen them can be a real problem in the spring.

The Nielson Land & Cattle operation bull pen is very impressive this year. They have spared no expense in securing some of the top bulls and females to improve the quality of the herd and it is working. The first sons of Justamere M.A.G.A are a sire group I really like. They are wide based, deep ribbed bulls that have volume and performance. You need to check them out. Of course, the Richmond Call to Dutys are again a solid group in the black side. For you Red Angus enthusiasts the Kargo sons are sure worth a second look and they are solid built and correct. Again, this year there are a number of the bulls that will work extremely well in the heifer pen but still have enough performance to go on the cows.

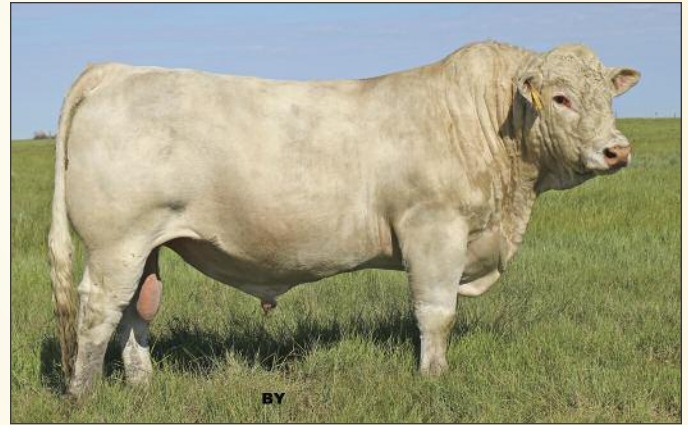
The herd health is as good as it gets as well, with the cattle vaccinated for everything they need. The sale cattle are fed a high roughage TMR ration so they are not hurt in any way and will last in the real world. Again, the heifers offered are good quality replacement females that will go out and work for you. Larry will keep the bulls and provide free delivery up to 300 km as well.

You can buy with confidence at this sale knowing the cattle are sound and functional and these breeders will stand behind what they produce. Feel free to stop by the farms anytime to view the offering with all the bulls and heifers ready for viewing at Palmer Charolais two days before the sale. Please come early and join us for lunch on sale day and to view the bulls.

If you require any additional information, or have any questions, just give any of us a call. Whether you need an Angus bull to breed some heifers or to make a great cowherd or a Charolais bull to make the market topping buckskin or silver feeder calves, come to have a look. We know you won't be disappointed.

Sincerely,
Helge & Candace By • Jon Wright

RS: Duty-Free



TURNBULLS DUTY-FREE 358D Homo Pld

PMC701309 CTP 358D January 31 2016

PLEASANT DAWN MAGNUM 56T(QP) PLEASANT DAWN MAXIMUM138X(P)
PLEASANT DAWN MVP 316Y(P) **CTP MISS GOOGLE 358Z(P)**
 PLEASANT DAWN RIO 216P(P) RTP MISS SELECT 14K(P)

| | | | | | |
|--------|--------|-------|--------|------|-------|
| CE 9.7 | BW -.7 | WW 68 | YW 137 | M 20 | TM 54 |
|--------|--------|-------|--------|------|-------|



LOT 1 **HVA HIGH TIDE 83F** Homo Pld

PMC748716 HVA 83F January 03 2018

| | | | | | |
|--------|-------|---------------|--------|-----------|-------|
| CE 7.2 | BW .1 | WW 64 | YW 126 | M 19 | TM 51 |
| BW 92 | | OCT 2 WW 1100 | | LEPTIN TT | |

PLEASANT DAWN MVP 316Y(P) HTA MICHIGAN 306A(P)
TURNBULLS DUTY-FREE 358D(P) **HVA MOLLY 83D(P)**
 CTP MISS GOOGLE 358Z(P) HTA DELIGHT 438B(P)

LOT 2 **HVA FORREST 223F** Homo Pld

PMC748554 HVA 223F January 01 2018

| | | | | | |
|--------|---------|--------------|--------|------|-------|
| CE 9.5 | BW -1.1 | WW 57 | YW 116 | M 19 | TM 48 |
| BW 88 | | OCT 2 WW 966 | | | |

PLEASANT DAWN MVP 316Y(P) MERIT 8789U(P)
TURNBULLS DUTY-FREE 358D(P) **HVA RIVER DANCE 223D(P)**
 CTP MISS GOOGLE 358Z(P) LAE BLUE ROSE 22X(P)

LOT 3 **RGP THORN 1F** Homo Pld

PMC748657 RGP 1F January 11 2018

| | | | | | |
|--------|------|--------------|-------|------|-------|
| CE 6.6 | BW 1 | WW 48 | YW 99 | M 24 | TM 48 |
| BW 90 | | OCT 2 WW 936 | | | |

PLEASANT DAWN MVP 316Y(P) PCC GUNSLINGER 316A(P)
TURNBULLS DUTY-FREE 358D(P) **RGP GRENADINE 1D(P)**
 CTP MISS GOOGLE 358Z(P) RGP WHITNEY 1100W(P)



YB

LOT 4 **HVA 19CRIMES 105F** Homo Pld
 PMC748534 HVA 105F January 09 2018

| | | | | | |
|--------|--------|-------|---------------|------|-------|
| CE 4.2 | BW 1.8 | WW 64 | YW 123 | M 22 | TM 54 |
| BW 102 | | | OCT 2 WW 1114 | | |

PLEASANT DAWN MVP 316Y(P)
TURNBULLS DUTY-FREE 358D(P)
 CTP MISS GOOGLE 358Z(P)

HIGH BLUFF BISMARK 82B
HVA BONNIE 105D(P)
 LAE GOSSIP GIRL 105X(P)



BY

LOT 5 **RGF MUDSLINGER 10F** 4th Gen Pld
 PMC748663 RGF 10F January 01 2018

| | | | | | |
|--------|--------|-------|--------------|------|-------|
| CE 3 | BW 2.3 | WW 59 | YW 115 | M 19 | TM 49 |
| BW 100 | | | OCT 2 WW 970 | | |

PLEASANT DAWN MVP 316Y(P)
TURNBULLS DUTY-FREE 358D(P)
 CTP MISS GOOGLE 358Z(P)

CSS SIR JR NAVIGATOR 44Y(P)
RGF NARCISSUS 10D(P)
 RGF RIVER DANCE 100Y(P)



YB

LOT 6 **HVA FARMER 300F** Homo Pld
 SMC748559 HVA 300F January 03 2018

| | | | | | |
|--------|--------|-------|---------------|------|-------|
| CE 4.6 | BW 1.8 | WW 58 | YW 114 | M 19 | TM 48 |
| BW 102 | | | OCT 2 WW 1074 | | |

PLEASANT DAWN MVP 316Y(P)
TURNBULLS DUTY-FREE 358D(P)
 CTP MISS GOOGLE 358Z(P)

CSS SIR JR NAVIGATOR 44Y(P)
HVA NOREEN 300C(P)
 JMB MERIT SANDY 30X(P)



LOT 7 **HVA FORTUNE 5F** Homo Pld
 PMC748655 RGP 5F January 04 2018

| | | | | | |
|--------|-------|---------------|--------|------|-------|
| CE 6.3 | BW .5 | WW 61 | YW 121 | M 20 | TM 50 |
| BW 96 | | OCT 2 WW 1055 | | | |

PLEASANT DAWN MVP 316Y(P) HTA VEGAS 134Y(QP)
TURNBULLS DUTY-FREE 358D(P) **HVA VALUE ADDED 5D(P)**
 CTP MISS GOOGLE 358Z(P) HTA SONJA 332A(P)



LOT 8 **HVA FREE FORM 209F** 4th Gen Pld, Scurs
 SMC748549 HVA 209F January 07 2018

| | | | | | |
|--------|--------|---------------|--------|-----------|-------|
| CE 2 | BW 3.5 | WW 61 | YW 120 | M 19 | TM 50 |
| BW 104 | | OCT 2 WW 1005 | | LEPTIN TT | |

PLEASANT DAWN MVP 316Y(P) CSS SIR JR NAVIGATOR 44Y(P)
TURNBULLS DUTY-FREE 358D(P) **HVA NIRVANA 209D(P)**
 CTP MISS GOOGLE 358Z(P) HVA RITA 210Y(P)



Y8

LOT 9 **HVA FUGITIVE 228F** 4th Gen Pld, Scurs
 SMC748555 HVA 228F January 07 2018

| | | | | | |
|--------|--------|-------|--------------|------|-------|
| CE 5.8 | BW 1.1 | WW 55 | YW 112 | M 24 | TM 52 |
| BW 94 | | | OCT 2 WW 996 | | |

PLEASANT DAWN MVP 316Y(P)
TURNBULLS DUTY-FREE 358D(P)
 CTP MISS GOOGLE 358Z(P)

HTA VEGAS 134Y(QP)
HVA PARCHMENT 228D(P)
 RGP SNOWDROP 22S(P)



Y8

LOT 10 **HVA FIELDS 442F** 4th Gen Pld, Scurs
 SMC748567 HVA 442F January 06 2018

| | | | | | |
|--------|-------|-------|--------------|------|-------|
| CE 5.5 | BW .9 | WW 56 | YW 111 | M 20 | TM 48 |
| BW 92 | | | OCT 2 WW 925 | | |

PLEASANT DAWN MVP 316Y(P)
TURNBULLS DUTY-FREE 358D(P)
 CTP MISS GOOGLE 358Z(P)

HTA VEGAS 134Y(QP)
HVA PATRICIA 442D(P)
 HVA FIFTH ANGEL 441Z(P)



Y8

LOT 11 **HVA FELIX 614F** Homo Pld
 PMC748575 HVA 614F January 07 2018

| | | | | | |
|--------|-------|-------|---------------|------|-------|
| CE 7.1 | BW .2 | WW 61 | YW 120 | M 21 | TM 52 |
| BW 96 | | | OCT 2 WW 1065 | | |

PLEASANT DAWN MVP 316Y(P)
TURNBULLS DUTY-FREE 358D(P)
 CTP MISS GOOGLE 358Z(P)

HTA MICHIGAN 306A(P)
HVA MILLICENT 614D(P)
 HVA RACHEL 614B



BY

LOT 12 HVA FIREBALL 662F Homo Pld
 PMC748490 HVA 662F January 10 2018

| | | | | | |
|--------|-------|--------------|--------|------|-------|
| CE 7.8 | BW .2 | WW 57 | YW 117 | M 22 | TM 51 |
| BW 90 | | OCT 2 WW 984 | | | |

PLEASANT DAWN MVP 316Y(P)
TURNBULLS DUTY-FREE 358D(P)
 CTP MISS GOOGLE 358Z(P)

RGP REMINGTON 101Y(P)
HTA SARA 662D(P)
 HTA SARA 9107W(P)



BY

LOT 13 HVA BIG DOG 176F Dbl Pld
 PMC748548 HVA 176F January 09 2018

| | | | | | |
|--------|-------|--------------|--------|------|-------|
| CE 7.4 | BW .5 | WW 59 | YW 114 | M 22 | TM 52 |
| BW 92 | | OCT 2 WW 998 | | | |

PLEASANT DAWN MVP 316Y(P)
TURNBULLS DUTY-FREE 358D(P)
 CTP MISS GOOGLE 358Z(P)

HIGH BLUFF BISMARK 82B
HVA TIFFANY 176D(P)
 HVA TREASURE 106Z(P)



BY

LOT 14 HVA 19CRIMES 91F Homo Pld
 PMC748528 HVA 91F January 10 2018

| | | | | | |
|--------|--------|--------------|--------|------|-------|
| CE 4.9 | BW 2.5 | WW 51 | YW 106 | M 23 | TM 49 |
| BW 104 | | OCT 2 WW 976 | | | |

PLEASANT DAWN MVP 316Y(P)
TURNBULLS DUTY-FREE 358D(P)
 CTP MISS GOOGLE 358Z(P)

SPARROWS DURANGO 585P(P)
HVA TWILIGHT 91T(P)
 HVA MELBA 917M(P)



LOT 15 RGP TOMBSTONE 310F Polled
 PMC748691 RGP 310F January 10 2018

| | | | | | |
|-------|--------|-------|---------------|------|-------|
| CE 4 | BW 2.3 | WW 67 | YW 130 | M 24 | TM 58 |
| BW 96 | | | OCT 2 WW 1116 | | |

PLEASANT DAWN MVP 316Y(P)
TURNBULLS DUTY-FREE 358D(P)
 CTP MISS GOOGLE 358Z(P)

HIGH BLUFF BISMARK 82B
RGF BARBARA 310D
 RGP WHITE ROSE 311A(P)



LOT 16 HVA FABULOUS 423F Dbl Pld
 PMC748565 HVA 423F January 13 2018

| | | | | | |
|--------|--------|-------|---------------|------|-------|
| CE 3.9 | BW 1.8 | WW 61 | YW 121 | M 24 | TM 55 |
| BW 104 | | | OCT 2 WW 1070 | | |

PLEASANT DAWN MVP 316Y(P)
TURNBULLS DUTY-FREE 358D(P)
 CTP MISS GOOGLE 358Z(P)

HIGH BLUFF BODACIOUS 78B(P)
HVA BROCADE 423D(P)
 HVA VERMILLION 422A



LOT 17 RGP OVERNIGHT 495F 3rd Gen Pld, Scurs
 SEMC753161 RGP 495F January 26 2018

| | | | | | |
|--------|--------|-------|---------------|------|-------|
| CE 5.8 | BW 1.2 | WW 48 | YW 103 | M 28 | TM 52 |
| BW 106 | | | OCT 2 WW 1000 | | |

PLEASANT DAWN MVP 316Y(P)
TURNBULLS DUTY-FREE 358D(P)
 CTP MISS GOOGLE 358Z(P)

SPARROWS DURANGO 585P(P)
RGF TAPESTRY 32T(P)
 RGP NIGHTINGALE 312N(P)



LOT 18 HVA FALCON 250F Homo Pld
 PMC748556 HVA 250F January 28 2018

| | | | | | |
|--------|------|--------------|--------|------|-------|
| CE 4.8 | BW 1 | WW 64 | YW 125 | M 17 | TM 49 |
| BW 92 | | OCT 2 WW 992 | | | |

PLEASANT DAWN MVP 316Y(P)
TURNBULLS DUTY-FREE 358D(P)
 CTP MISS GOOGLE 358Z(P)

MERIT 8789U(P)
HVA RHONDA 250D(P)
 HVA RODEO 255R(P)



LOT 19 RGP PERFECT STORM 6F Red Factor, Dbl Pld, Scurs
 QSMC748660 RGP 6F February 26 2018

| | | | | | |
|--------|--------|--------------|--------|-----------|-------|
| CE 7.6 | BW -.9 | WW 65 | YW 125 | M 21 | TM 54 |
| BW 90 | | OCT 2 WW 980 | | LEPTIN TT | |

PLEASANT DAWN MVP 316Y(P)
TURNBULLS DUTY-FREE 358D(P)
 CTP MISS GOOGLE 358Z(P)

HTA MICHIGAN 306A(P)
RGP MARIGOLD 6D(QP)
 RGP RHEA 61B(Q)

LOT 20 RGP HAMMER 499F Homo Pld

PEMC753158 RGP 499F January 24 2018

| | | | | | |
|--------|--------|-------|---------------|------|-------|
| CE 6.7 | BW 1.4 | WW 52 | YW 108 | M 26 | TM 52 |
| BW 108 | | | OCT 2 WW 1045 | | |

PLEASANT DAWN MVP 316Y(P) SPARROWS DURANGO 585P(P)
 TURNBULLS DUTY-FREE 358D(P) RGP TAPESTRY 32T(P)
 CTP MISS GOOGLE 358Z(P) RGP NIGHTINGALE 312N(P)

LOT 21 HVA LOGGER 439F 3rd Gen Pld

PMC748729 HVA 439F January 30 2018

| | | | | | |
|--------|--------|-------|--------------|------|-------|
| CE 4.2 | BW 2.4 | WW 58 | YW 113 | M 20 | TM 49 |
| BW 98 | | | OCT 2 WW 886 | | |

PLEASANT DAWN MVP 316Y(P) PCC GUNSLINGER 316A(P)
 TURNBULLS DUTY-FREE 358D(P) HVA GRACE 439D(P)
 CTP MISS GOOGLE 358Z(P) HVA CHINA DOLL 420Z(P)

RS: Bodacious



HIGH BLUFF BODACIOUS 78B Dbl Pld

PMC361652 HBSF 78B February 11 2014

MERIT 9809W(P) SILVERSTREAM PERFORMER38
 SHSH HD 14Y(P) HARVIE MS GELLIA 12W(P)
 SHSH MADONNA 21U(P) HARVIE MISS GELLIA 35G(P)

| | | | | | |
|--------|-------|-------|-------|------|-------|
| CE 1.9 | BW .6 | WW 45 | YW 88 | M 36 | TM 59 |
|--------|-------|-------|-------|------|-------|



LOT 22 HVA THRETHEIVES 66F Homo Pld

PMC748515 HVA 66F January 01 2018

| | | | | | |
|--------|-------|-------|---------------|------|-------|
| CE 6.6 | BW -1 | WW 42 | YW 82 | M 30 | TM 51 |
| BW 88 | | | OCT 2 WW 1030 | | |

SHSH HD 14Y(P) WHITECAP PLUS 179Y(P)
 HIGH BLUFF BODACIOUS 78B(P) HVA WHISTLE 66A(P)
 HARVIE MS GELLIA 12W(P) HVA RUBY 166Y(P)

Velon 306.567.7033



YB

LOT 23 **HVA 21 LIES 22F** Homo Pld
 PMC748500 HVA 22F January 05 2018

| | | | | | |
|--------|--------|-------|---------------|------|-------|
| CE 1.7 | BW 1.9 | WW 52 | YW 102 | M 25 | TM 51 |
| BW 106 | | | OCT 2 WW 1075 | | |

SHSH HD 14Y(P)
HIGH BLUFF BODACIOUS 78B(P)
 HARVIE MS GELLIA 12W(P)
 MERIT 8789U(P)
HVA ROSEANN 22A(P)
 LAE BLUE ROSE 22X(P)



BY

LOT 24 **HVA JAILBREAK 636F** 3rd Gen Pld
 PMC748576 HVA 636F January 01 2018

| | | | | | |
|--------|------|-------|---------------|------|-------|
| CE 5.3 | BW 0 | WW 44 | YW 86 | M 28 | TM 50 |
| BW 90 | | | OCT 2 WW 1048 | | |

SHSH HD 14Y(P)
HIGH BLUFF BODACIOUS 78B(P)
 HARVIE MS GELLIA 12W(P)
 HTA MICHIGAN 306A(P)
HVA MARIPOSA 636C(P)
 HVA WHISTLE 66A(P)



YB

LOT 25 **RGF FRANCHISE 102F** 3rd Gen Pld
 PMC748680 RGF 102F January 03 2018

| | | | | | |
|--------|--------|-------|---------------|------|-------|
| CE 1 | BW 1.8 | WW 43 | YW 87 | M 29 | TM 51 |
| BW 104 | | | OCT 2 WW 1022 | | |

SHSH HD 14Y(P)
HIGH BLUFF BODACIOUS 78B(P)
 HARVIE MS GELLIA 12W(P)
 HTA VEGAS 134Y(QP)
RGF VERONICA 102B(P)
 RGP ROSEBUD 100X(P)



LOT 26 HVA FORCE 77F Homo Pld
 PMC748519 HVA 77F January 31 2018

| | | | | | |
|--------|--------|-------|---------------|------|-----------|
| CE .6 | BW 2.1 | WW 48 | YW 92 | M 30 | TM 54 |
| BW 110 | | | OCT 2 WW 1038 | | LEPTIN TT |

| | |
|---|---|
| SHSH HD 14Y(P) HIGH BLUFF BODACIOUS 78B(P) HARVIE MS GELLIA 12W(P) | CSS SIR JR NAVIGATOR 44Y(P) HVA NADINE 77A(P) HVA WHISTLE 777W |
|---|---|



LOT 27 HVA FREE ZONE 951F 3rd Gen Pld
 PMC748609 HVA 951F January 08 2018

| | | | | | |
|--------|--------|-------|---------------|------|-------|
| CE -.8 | BW 2.7 | WW 51 | YW 99 | M 29 | TM 54 |
| BW 108 | | | OCT 2 WW 1018 | | |

| | |
|---|---|
| SHSH HD 14Y(P) HIGH BLUFF BODACIOUS 78B(P) HARVIE MS GELLIA 12W(P) | MERIT 8789U(P) HVA RICHELLE 951B(P) HVA TRUMPET 51T(P) |
|---|---|



LOT 28 HVA FLASH 92F Homo Pld
 PMC748529 HVA 92F January 26 2018

| | | | | | |
|--------|--------|-------|---------------|------|-------|
| CE 3.3 | BW 1.4 | WW 51 | YW 96 | M 27 | TM 52 |
| BW 96 | | | OCT 2 WW 1004 | | |

| | |
|---|---|
| SHSH HD 14Y(P) HIGH BLUFF BODACIOUS 78B(P) HARVIE MS GELLIA 12W(P) | HTA MICHIGAN 306A(P) HVA METRONOME 92C(P) HVA CAROL 91A(P) |
|---|---|



LOT 29 RGP FANTASY 33F 3rd Gen Pld
 PMC748671 RGP 33F February 03 2018

| | | | | | |
|--------|--------|---------------|--------|-----------|-------|
| CE .4 | BW 2.5 | WW 51 | YW 102 | M 31 | TM 56 |
| BW 106 | | OCT 2 WW 1040 | | LEPTIN TT | |

SHSH HD 14Y(P)
HIGH BLUFF BODACIOUS 78B(P)
 HARVIE MS GELLIA 12W(P)

MERIT 8789U(P)
RGP ROSE BUD 33B(P)
 RGP TAPESTRY 32T(P)



LOT 30 RGP FANDANDGO 1111F 3rd Gen Pld
 PMC748711 RGP 1111F January 26 2018

| | | | | | |
|--------|-------|--------------|-------|------|-------|
| CE 2.4 | BW .7 | WW 43 | YW 87 | M 28 | TM 50 |
| BW 98 | | OCT 2 WW 948 | | | |

SHSH HD 14Y(P)
HIGH BLUFF BODACIOUS 78B(P)
 HARVIE MS GELLIA 12W(P)

MERIT 8789U(P)
RGP RITA 1111B(P)
 RGP RHAPSODY 1100R(P)



LOT 31 RGP SMOKE RING 351F 3rd Gen Pld
 PMC748693 RGP 351F January 29 2018

| | | | | | |
|--------|--------|--------------|-------|------|-------|
| CE 2 | BW 2.1 | WW 40 | YW 81 | M 27 | TM 47 |
| BW 102 | | OCT 2 WW 918 | | | |

SHSH HD 14Y(P)
HIGH BLUFF BODACIOUS 78B(P)
 HARVIE MS GELLIA 12W(P)

CSS SIR JR NAVIGATOR 44Y(P)
RGP NOLA 351B(P)
 RGP MILAN 351X(P)



LOT 32 HVA FOOTLOOSE 222F 3rd Gen Pld
 PMC748553 HVA 222F January 30 2018

| | | | | | |
|--------|--------|-------|--------------|------|-------|
| CE 0 | BW 2.9 | WW 40 | YW 81 | M 30 | TM 50 |
| BW 102 | | | OCT 2 WW 880 | | |

SHSH HD 14Y(P) CSS SIR JR NAVIGATOR 44Y(P)
HIGH BLUFF BODACIOUS 78B(P) **HVA NOREEN 222C(P)**
 HARVIE MS GELLIA 12W(P) RGP SNOWDROP 22S(P)



LOT 33 RGP SHAKEDOWN 412F Homo Pld
 PMC748694 RGP 412F February 02 2018

| | | | | | |
|--------|--------|-------|---------------|------|-------|
| CE 2.8 | BW 1.5 | WW 54 | YW 103 | M 31 | TM 57 |
| BW 106 | | | OCT 2 WW 1095 | | |

SHSH HD 14Y(P) WHITECAP PLUS 179Y(P)
HIGH BLUFF BODACIOUS 78B(P) **RGP WHITE ROSE 412B(P)**
 HARVIE MS GELLIA 12W(P) RGP ROXANNE 422Z



LOT 34 HVA FRICTION 153F Homo Pld
 PMC748544 HVA 153F February 05 2018

| | | | | | |
|--------|-------|-------|--------------|------|-------|
| CE 5.7 | BW .1 | WW 46 | YW 88 | M 31 | TM 54 |
| BW 98 | | | OCT 2 WW 996 | | |

SHSH HD 14Y(P) WHITECAP PLUS 179Y(P)
HIGH BLUFF BODACIOUS 78B(P) **HVA WISHBONE 153A(P)**
 HARVIE MS GELLIA 12W(P) JMB MONETTE 153Y(P)

Thank you Todd Hudson, JGL Livestock, for purchasing our calves in 2018. Also thanks to Todd Hudson, Kristin Hunter and Phillip Lynn of Buffalo Plains Cattle Co. for being volume buyer at our 2017 and 2018 bull sales.



RS: Bushwacker



HIGH BLUFF BUSHWACKER 27B

MC358307 HBSF 27B January 31 2014

MERIT 9809W(P) HTA DURMAX 642S
SHSH HD 14Y(P) **HIGH BLUFF NATASSJA 20W**
 SHSH MADONNA 21U(P) HIGH BLUFF NATASSJA 120N(P)

| | | | | | |
|------|--------|-------|--------|------|-------|
| CE 1 | BW 1.3 | WW 62 | YW 110 | M 27 | TM 57 |
|------|--------|-------|--------|------|-------|



LOT 35 HVA UPRISING 872F Horned

| | | | | | |
|----------|----------|-----------------|--------------|------|-------|
| MC748604 | HVA 872F | January 25 2018 | | | |
| CE 3.8 | BW 1.4 | WW 51 | YW 93 | M 18 | TM 43 |
| BW 94 | | | OCT 2 WW 978 | | |

SHSH HD 14Y(P) HTA PARKER 12X(P)
HIGH BLUFF BUSHWACKER 27B **HVA DUCHESS 872Z**
 HIGH BLUFF NATASSJA 20W HVA MINUTE 871X(P)

LOT 36 HVA BRIXS 871F Polled

| | | | | | |
|-----------|----------|-----------------|--------------|------|-------|
| PMC748602 | HVA 871F | January 11 2018 | | | |
| CE 4.8 | BW 1.4 | WW 48 | YW 89 | M 19 | TM 43 |
| BW 98 | | | OCT 2 WW 998 | | |

SHSH HD 14Y(P) MERIT 8511U(P)
HIGH BLUFF BUSHWACKER 27B **HVA MINUTE 871X(P)**
 HIGH BLUFF NATASSJA 20W HVA LILAC 871U(P)

LOT 37 HVA FREESTYLE 3F Polled

| | | | | | |
|-----------|--------|-----------------|--------------|------|-------|
| PMC748652 | RGP 3F | January 17 2018 | | | |
| CE 2.9 | BW 2 | WW 49 | YW 91 | M 24 | TM 48 |
| BW 104 | | | OCT 2 WW 992 | | |

SHSH HD 14Y(P) MXS MONTANA 718T(P)
HIGH BLUFF BUSHWACKER 27B **HCWHITE FANTASY 3X(P)**
 HIGH BLUFF NATASSJA 20W SHSH WHITE FANTASY 30R(P)



BY

LOT 38 RGP LADYS MAN 100F Horned
 MC748679 RGP 100F January 24 2018

| | | | | | |
|--------|--------|-------|---------------|------|-------|
| CE -3 | BW 2.5 | WW 57 | YW 106 | M 23 | TM 51 |
| BW 110 | | | OCT 2 WW 1068 | | |

SHSH HD 14Y(P)
HIGH BLUFF BUSHWACKER 27B
 HIGH BLUFF NATASSJA 20W

MERIT 8789U(P)
RGP RIVER DANCE 100Y(P)
 RGP RHAPSODY 1100R(P)



BY

LOT 39 RGP RED HEAT 91F Red Factor, Polled
 QPMC748677 RGP 91F January 10 2018

| | | | | | |
|--------|------|-------|---------------|------|-------|
| CE -1 | BW 4 | WW 50 | YW 102 | M 30 | TM 55 |
| BW 108 | | | OCT 2 WW 1115 | | |

SHSH HD 14Y(P)
HIGH BLUFF BUSHWACKER 27B
 HIGH BLUFF NATASSJA 20W

SPARROWS DURANGO 585P(P)
RGP ULTRAVIOLET 91U(P)
 RGP NUTMEG 9177N(QP)



BY

LOT 40 HVA FANG 12F Horned
 MC748497 HVA 12F January 11 2018

| | | | | | |
|--------|------|-------|---------------|------|-------|
| CE 1.6 | BW 1 | WW 58 | YW 101 | M 25 | TM 53 |
| BW 102 | | | OCT 2 WW 1140 | | |

SHSH HD 14Y(P)
HIGH BLUFF BUSHWACKER 27B
 HIGH BLUFF NATASSJA 20W

RGF REAL ESTATE 129R(P)
HVA WEEKEND 12W
 HVA LUCINDA 12L(P)



LOT 41 HVA FACE 112F Polled
 PMC748536 HVA 112F January 15 2018

| | | | | | |
|--------|--------|---------------|--------|-----------|-------|
| CE 2.4 | BW 1.7 | WW 55 | YW 100 | M 20 | TM 47 |
| BW 98 | | OCT 2 WW 1098 | | LEPTIN TT | |

SHSH HD 14Y(P)
HIGH BLUFF BUSHWACKER 27B
 HIGH BLUFF NATASSJA 20W

HTA PARKER 12X(P)
HVA MOONDUST 112Z(P)
 HVA MOLLY 111X(P)



LOT 42 HVA TRADER JOE 866F Polled
 PMC748598 HVA 866F January 19 2018

| | | | | | |
|--------|--------|---------------|--------|------|-------|
| CE -.4 | BW 2.1 | WW 61 | YW 109 | M 25 | TM 56 |
| BW 112 | | OCT 2 WW 1155 | | | |

SHSH HD 14Y(P)
HIGH BLUFF BUSHWACKER 27B
 HIGH BLUFF NATASSJA 20W

HTA VEGAS 134Y(QP)
HVA VELMA 866A(P)
 HVA LAUREL 806U(P)



LOT 43 RGP PROMISE LAND 31F Horned
 MC748670 RGP 31F January 24 2018

| | | | | | |
|--------|--------|---------------|--------|------|-------|
| CE 1.5 | BW 1.5 | WW 55 | YW 106 | M 27 | TM 55 |
| BW 100 | | OCT 2 WW 1035 | | | |

SHSH HD 14Y(P)
HIGH BLUFF BUSHWACKER 27B
 HIGH BLUFF NATASSJA 20W

MERIT 8789U(P)
RGP ROXANNE 31Y(P)
 RGP TAPESTRY 32T(P)



| | | | | | | |
|-----------|---------------|---------------|-----------------|-------|------|-------|
| LOT 44 | HVA 2F | | Horned | | | |
| | MC748483 | HVA 2F | January 21 2018 | | | |
| | CE 1.3 | BW 2 | WW 53 | YW 99 | M 25 | TM 52 |
| | BW 102 | OCT 2 WW 1012 | | | | |

SHSH HD 14Y(P)
HIGH BLUFF BUSHWACKER 27B
 HIGH BLUFF NATASSJA 20W

HTA COUNTDOWN 9103W(P)
HVA MAGAZINE 2Z
 RGP SNOWDROP 22S(P)

| | | | | | | |
|-----------|-----------------------------|--------------|-----------------|-------|------|-------|
| LOT 45 | RGP LUCKY STRIKE 81F | | Polled | | | |
| | PMC748676 | RGP 81F | January 27 2018 | | | |
| | CE 0 | BW 2.7 | WW 51 | YW 98 | M 19 | TM 45 |
| | BW 106 | OCT 2 WW 894 | | | | |

SHSH HD 14Y(P)
HIGH BLUFF BUSHWACKER 27B
 HIGH BLUFF NATASSJA 20W

MERIT 8789U(P)
RGP RHONDA 81Z(P)
 RGP POTPOURRI 817P(P)

| | | | | | | |
|-----------|---------------------------|--------------|-----------------|-------|------|-------|
| LOT 46 | RGP WILD SIDE 747F | | POLLED | | | |
| | PMC748701 | RGP 747F | January 27 2018 | | | |
| | CE -1.4 | BW 4.3 | WW 52 | YW 96 | M 17 | TM 44 |
| | BW 108 | OCT 2 WW 980 | | | | |

SHSH HD 14Y(P)
HIGH BLUFF BUSHWACKER 27B
 HIGH BLUFF NATASSJA 20W

HTA PARKER 12X(P)
RGP PRIMA DONNA 747Z(P)
 RGP ISOBELLA 737X(P)

| | | | | | | |
|-----------|-------------------------|--------------|------------------|--------|------|-------|
| LOT 47 | RGP FUTURE 1109F | | Polled | | | |
| | PMC748708 | RGP 1109F | February 02 2018 | | | |
| | CE 3.1 | BW 1.2 | WW 55 | YW 101 | M 26 | TM 53 |
| | BW 98 | OCT 2 WW 990 | | | | |

SHSH HD 14Y(P)
HIGH BLUFF BUSHWACKER 27B
 HIGH BLUFF NATASSJA 20W

MVY SHOWCASE 8A
RGP SUNDANCE 1100C(P)
 RGP WHITNEY 1100W(P)

| | | | | | | |
|-----------|--------------------------|--------------|------------------|--------|------|-------|
| LOT 48 | HVA MR PALMER 30F | | Polled | | | |
| | PMC748614 | HVA 30F | February 05 2018 | | | |
| | CE 1.3 | BW 2.1 | WW 53 | YW 100 | M 22 | TM 49 |
| | BW 100 | OCT 2 WW 948 | | | | |

SHSH HD 14Y(P)
HIGH BLUFF BUSHWACKER 27B
 HIGH BLUFF NATASSJA 20W

MERIT 8671U(P)
JMB MERIT SANDY 30X(P)
 JMB LADY SANDRA 815U(P)



BY

LOT 49 RGP RED WOLF 387F Red Factor, Polled
 QPMC748712 RGP 387F February 03 2018

| | | | | | |
|--------|--------|-------|---------------|------|-------|
| CE 3.2 | BW 1.2 | WW 56 | YW 100 | M 25 | TM 52 |
| BW 104 | | | OCT 2 WW 1022 | | |

SHSH HD 14Y(P)
HIGH BLUFF BUSHWACKER 27B
 HIGH BLUFF NATASSJA 20W

LANG'S RED SOLDIER 22S(Q)
SRK WHIRLWIND 387W(QP)
 LANOIE REDLINE 387R(QP)

LOT 50 HVA FREELOADER 241F Horned
 MC748740 HVA 241F January 28 2018

| | | | | | |
|--------|--------|-------|---------------|------|-------|
| CE -.4 | BW 3.4 | WW 59 | YW 109 | M 25 | TM 54 |
| BW 106 | | | OCT 2 WW 1038 | | |

SHSH HD 14Y(P)
HIGH BLUFF BUSHWACKER 27B
 HIGH BLUFF NATASSJA 20W

HTA COUNTDOWN 9103W(P)
HVA COUNTESS 241Y(P)
 HVA THYME 41T(P)

LOT 51 HVA MITT 8F Polled
 PMC748484 HVA 8F February 07 2018

| | | | | | |
|--------|------|-------|--------------|------|-------|
| CE 1.1 | BW 3 | WW 66 | YW 119 | M 24 | TM 57 |
| BW 108 | | | OCT 2 WW 990 | | |

SHSH HD 14Y(P)
HIGH BLUFF BUSHWACKER 27B
 HIGH BLUFF NATASSJA 20W

LT LEDGER 0332 P(P)
WHITECAP MS BLOSSOM 8C(P)
 WHITECAP MS BLOSSOM 88A(P)



LOT 50

ya

LOT 52 HVA FERRARI 482F Polled
 PMC748569 HVA 482F February 09 2018

| | | | | | |
|---------|--------|-------|--------------|------|-------|
| CE -1.2 | BW 3.9 | WW 53 | YW 103 | M 27 | TM 54 |
| BW 110 | | | OCT 2 WW 972 | | |

SHSH HD 14Y(P)
HIGH BLUFF BUSHWACKER 27B
 HIGH BLUFF NATASSJA 20W

SPARROWS DURANGO 585P(P)
HVA LAURA 482X(P)
 RGP PAPAYA 481P(P)



Y8

LOT 53 RGP REWIND 1100F POLLED
 PMC748709 RGP 1100F March 04 2018

| | | | | | |
|--------|--------|--------------|--------|------|-------|
| CE -6 | BW 3.6 | WW 56 | YW 105 | M 26 | TM 54 |
| BW 108 | | OCT 2 WW 992 | | | |

SHSH HD 14Y(P)
HIGH BLUFF BUSHWACKER 27B
 HIGH BLUFF NATASSJA 20W

SPARROWS DURANGO 585P(P)
RGP WHITNEY 1100W(P)
 RGP RHAPSODY 1100R(P)

LOT 54 RGP HUSTLER 737F Polled
 PMC748700 RGP 737F February 22 2018

| | | | | | |
|--------|--------|--------------|-------|------|-------|
| CE 1.4 | BW 2.1 | WW 54 | YW 97 | M 21 | TM 48 |
| BW 104 | | OCT 2 WW 972 | | | |

SHSH HD 14Y(P)
HIGH BLUFF BUSHWACKER 27B
 HIGH BLUFF NATASSJA 20W

SVY AD INVINCIBLE P 748T(P)
RGP ISOBELLA 737X(P)
 RGP LAUREEN 727L(P)

LOT 55 HVA FUSION 23F Polled
 PMC748501 HVA 23F January 17 2018

| | | | | | |
|--------|--------|---------------|-------|------|-------|
| CE 1 | BW 3.6 | WW 47 | YW 90 | M 24 | TM 48 |
| BW 104 | | OCT 2 WW 1006 | | | |

RGP CORPORAL 1100Z(P)
SHSH KILL THE LIGHTS 31C(P)
 SHSH CALLIE 48Z(P)

PCC GUNSLINGER 316A(P)
HVA GOLDEN GIRL 23C
 MXS MEGARA 123Y(P)

Two Year Olds

LOT 56 RGP BOGATA 92E Homo Pld
 PMC725193 RGP 92E February 16 2017

| | | | | | |
|--------|--------|----------------|-------|------|-------|
| CE -6 | BW 2.4 | WW 49 | YW 94 | M 28 | TM 52 |
| BW 106 | | SEPT 26 WW 850 | | | |

SHSH HD 14Y(P)
HIGH BLUFF BODACIOUS 78B(P)
 HARVIE MS GELLIA 12W(P)

MERIT 8789U(P)
RGP WINTER BELLS 92A(P)
 RGP TREASURE 922T(P)

LOT 57 HVA BELLWETHER 160E Horned
 MC725368 HVA 160E March 09 2017

| | | | | | |
|--------|--------|----------------|--------|------|-------|
| CE -2 | BW 2.5 | WW 59 | YW 108 | M 22 | TM 51 |
| BW 104 | | SEPT 26 WW 818 | | | |

SHSH HD 14Y(P)
HIGH BLUFF BUSHWACKER 27B
 HIGH BLUFF NATASSJA 20W

MERIT 8789U(P)
HVA MILKSHAKE 160Z(P)
 HVA ADELE 16U(P)



BY

LOT 58 HVA MEMPHIS 140E Polled
 PMC725223 HVA 140E March 06 2017

| | | | | | |
|--------|--------|-------|----------------|------|-------|
| CE .9 | BW 3.2 | WW 53 | YW 100 | M 19 | TM 45 |
| BW 104 | | | SEPT 26 WW 822 | | |

KEYS ALL STATE 149X(P)
 HTA MICHIGAN 306A(P)
 HTA SARA 105Y(P)

CSS SIR JR NAVIGATOR 44Y(P)
 HVA NICKEL 140C
 HVA DOLLY 147Z



BY

LOT 59 HVA KODIAK 55E Polled
 PMC725327 HVA 55E March 22 2017

| | | | | | |
|--------|--------|-------|----------------|------|-------|
| CE -.5 | BW 3.8 | WW 51 | YW 96 | M 24 | TM 50 |
| BW 102 | | | SEPT 26 WW 820 | | |

SHSH HD 14Y(P)
 HIGH BLUFF BUSHWACKER 27B
 HIGH BLUFF NATASSJA 20W

HVA WIZARD 281W(P)
 HVA SHADOW 55Y(P)
 HVA SIGNET 55S



YB

LOT 60 RGP MICHIGAN RUM 62E Red Factor, Polled
 QPMC760867 RGP 62E April 06 2017

| | | | | | |
|--------|-------|-------|----------------|------|-------|
| CE 2.5 | BW .6 | WW 51 | YW 98 | M 21 | TM 46 |
| BW 102 | | | SEPT 26 WW 780 | | |

KEYS ALL STATE 149X(P)
 HTA MICHIGAN 306A(P)
 HTA SARA 105Y(P)

MERIT 8789U(P)
 RGP RUM FLAVORED 62C(Q)
 RGP SALLY 61U



BY

| | | | | | | |
|-----------|-----------------------|---------|------------------|-------|------|-------|
| LOT 61 | HVA EUREKA 22E | | Homo Pld | | | |
| | PMC719836 | HVA 22E | February 13 2017 | | | |
| | CE -.2 | BW 4.7 | WW 49 | YW 99 | M 20 | TM 44 |
| | BW 100 | | SEPT 26 WW 762 | | | |

RGP CORPORAL 1100Z(P)
SHSH KILL THE LIGHTS 31C(P)
 SHSH CALLIE 48Z(P)

MERIT 8789U(P)
HVA ROSEANN 22A(P)
 LAE BLUE ROSE 22X(P)

| | | | | | | |
|-----------|--------------------------|----------|----------------|--------|------|-------|
| LOT 62 | RGP TWO GUNS 251E | | Polled | | | |
| | PMC725212 | RGP 251E | April 12 2017 | | | |
| | CE -.4 | BW 1.7 | WW 51 | YW 102 | M 24 | TM 50 |
| | BW 108 | | SEPT 26 WW 798 | | | |

SHSH HD 14Y(P)
HIGH BLUFF BUSHWACKER 27B
 HIGH BLUFF NATASSJA 20W

4-G PAYROLL 364S(P)
RGP MARZIPAN 251U(P)
 RGP KIA 250K(P)

Special thanks to our 2018 buyers for having confidence in our programs:

- | | | | | |
|---|--|--|--|--|
| Bar U Livestock Big Johnson Charolais, AB Big Valley Charolais Bruce Montgomery Buffalo Plains Cattle Co. Carder Cattle Investments, AB Carmichael Red Angus Chris Stephens Chris Walsh Colin Oueletter Dale Johnson Dale Nieman | Dan Malinowski Ernie Sorensen Finley Cameron, ON Forsythe Grazing Co-op Glenn King Hackamore Farms Ltd. Harder Cattle Co. Ltgd. Hazeldean Farms Heartland Livestock HTA Charolais, MB Huron Farming Comany Indi Land & Cattle | JD Ranch Ltd. Jeff Stammers, AB Jerrad Schollar JLL Livestock John Craig Justamere, AB K & C Cattle Co. Kattle Kountry of Mortlach Inc. King Mac Enterprise Inc. Lazy K Farms L-DEE Stock Farm Logan Ranching, AB | Mac Ag Ltd. Mark Lenz, AB Matador Pasture Co-op Ltd. McFarlane Acres Ltd. Messner Cattle Co. Ltd. North Central Livestock, AB Omie Ranch Ltd. Palmer Farm Inc. Rene's Ag Spray Ltd. Rob & Neil Hoffman, AB Running Steady Ranch, AB Ryan Peterson | Scott Culligan Shamrock Grazing Ltd. Springwater Ranch, SK Still Meadows Angus, BC Stony Hills Acres Ltd. Turnbull Charolais, AB Tyler & Shauna Getz Watkins Rock Solid Ranch Ltd. Wendt & Murray Farms Ltd., AB Willner Elbow Grazing Corp Wraz Red Angus |
|---|--|--|--|--|

BIRTH WEIGHT & CALVING EASE

University studies in Wyoming and data from Montana and Colorado lend credence to the following conclusions:

1. The birth weight itself influences calving ease by 65%.
2. The female has 60-70% influence on birth weight of her calf.
3. The bull has 30-40% influence on birth weight of his progeny.
4. Pelvic measurement and angle as well as the shape of the calf have 35-40% influence on calving ease.
5. Length of gestation greatly affects birth weight. A fetus can gain over one pound per day in the last days of gestation.
6. Weather and temperature the last 30 days affect the length of gestation.
7. Size and maturity of the cow influence calving ease.

www.paysen.com

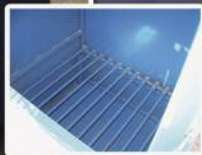
*A Proud Supporter of the
Saskatchewan Stock
Growers Association!*



- Squeeze Chutes • Portable Loading Chutes
- Crowding Tubs • All Types of Feeders • Working Alleys
 - Rodeo Equipment • Calving Chutes
- Calf Tables • Feeder Panels & Texas Gates
- New Z one piece Ear Tags • Gates & Panels
 - Steel Water Troughs • Maternity Pens
 - El Toro Electric Branders & Twine Cutters
 - Bison Handling Equipment
- Grain Bin Hopper Cones & Flat Steel Floors



Our headgates & squeeze chutes are
NOW AVAILABLE
with neck extender!



GARBAGE INCINERATORS

Contained fire results in a complete burn leaving only ash.

Eliminates grass and yard fire hazard.

Eliminates animal intrusion into garbage.

Easy ash removal from back door.



Box 309 Central Butte, SK S0H 0T0

PH: 306-796-4508

Fax: 796-4909 Email: ple@sasktel.net

**QUALITY
LIVESTOCK
EQUIPMENT**

It's no secret . . .

*if you book today,
you'll save money!*

Blair's Forage Month: March, 2019

You'll save money when you book your Brett Young forage seed during the month of March, 2019. Brett Young offers a wide selection of high performance legume and grass varieties. Brett Young can custom build a blend to suit your specific needs, or recommend a stock blend that provides high productivity in a wide range of environments. In addition to custom blends, they offer industry-leading alfalfa varieties and an impressive forage guarantee program.

Contact your nearest Blair's location today . . .

Lanigan: 306.365.3150 | Liberty: 306.847.4444 | Lipton: 306.336.2260 | McLean: 306.699.2822

Nokomis: 306.528.3150 | Rosthern: 306.232.4223 | Strongfield: 306.857.2225 | Watrous: 306.946.3150

 **Blair's**
family of companies

www.blairs.ag

BrettYoung[™]

www.brettyoung.ca

RS: Justamere

JUSTAMERE 40 M.A.G.A. 105D

1930939 AFA 105D January 1 2016

EXAR LUTTON 1831 AMF NHF CAF DDF OHF DMF SQ CREDENCE 67S AMF CAF NHF DDF OHF
EXAR PAY STUB 40 5S **EXAR MISS BARBARA 1075**
 ROLLIN ROCK BLACKBIRD 7537 EXAR MISS BARBARA 9943

| | | | | | |
|--------|-------|-------|-------------|-------|---------|
| BW 1.7 | WW 43 | YW 74 | M 26 | TM 48 | CE 10.5 |
| BW 84 | | | ADJ YW 1163 | | |



WRIGHT

LOT 63 NRA MAGA 7F

2072083 NRA 7F January 18 2018

| | | | | | |
|-------|-------|-------|----------------|-------|--------|
| BW .9 | WW 50 | YW 91 | M 23 | TM 48 | CE 6.5 |
| BW 74 | | | SEPT 25 WW 905 | | |

EXAR PAY STUB 40 5S VISION UNANIMOUS 1418 DDF NHF CAF AMF
JUSTAMERE 40 M.A.G.A. 105D **NRA WOW 29C**
 EXAR MISS BARBARA 1075 DFCC 5T WOW 11X

LOT 64 NRA MAGA 8F

2072082 NRA 8F January 18 2018

| | | | | | |
|-------|-------|-------|----------------|-------|--------|
| BW .7 | WW 34 | YW 62 | M 19 | TM 38 | CE 7.8 |
| BW 78 | | | SEPT 25 WW 780 | | |

EXAR PAY STUB 40 5S
JUSTAMERE 40 M.A.G.A. 105D
 EXAR MISS BARBARA 1075
 HF KODIAK 5R MAF AMF NHF CAF DDF OHF
GEIS MISSIE 913'09
 GEIS MISSIE 189'05



THORW

Larry 306.567.7493



WRIGHT

LOT 65 NRA MAGA 29F

2072091 NRA 29F January 26 2018

| | | | | | |
|--------|-------|-------|----------------|-------|--------|
| BW 2.4 | WW 42 | YW 70 | M 24 | TM 44 | CE 6.3 |
| BW 84 | | | SEPT 25 WW 877 | | |

EXAR PAY STUB 40 5S
JUSTAMERE 40 M.A.G.A. 105D
 EXAR MISS BARBARA 1075
 EASTONDALE BREAK AWAY 32'07
NRA FREEDOM 12Z
 EGGEN FREEDOM 174P MS 80T



WRIGHT

LOT 66 NRA MAGA 41F

2072097 NRA 41F January 30 2018

| | | | | | |
|--------|-------|-------|----------------|-------|--------|
| BW 2.6 | WW 53 | YW 93 | M 24 | TM 49 | CE 6.8 |
| BW 81 | | | SEPT 25 WW 853 | | |

EXAR PAY STUB 40 5S
JUSTAMERE 40 M.A.G.A. 105D
 EXAR MISS BARBARA 1075
 VIN-MAR JOHNNY CASH 3513 DMF AMF CAF OHF NHF OSF DDF
NRA ROSEBUD 12D
 NRA ROSEBUD 22B

LOT 67 NRA MAGA72F

2072116 NRA 72F February 6 2018

| | | | | | |
|--------|-------|----------------|------|-------|--------|
| BW 2.5 | WW 43 | YW 74 | M 23 | TM 43 | CE 6.3 |
| BW 83 | | SEPT 25 WW 839 | | | |

EXAR PAY STUB 40 5S
JUSTAMERE 40 M.A.G.A. 105D
 EXAR MISS BARBARA 1075
 MICH POWER UP 32U
NRA FAME 9X
 DFCC 16S SIZZLE 39U



RS: Easy Decision

PEAK DOT EASY DECISION 30C

1848207 PDAR 30C February 7 2015

VIN-MAR O'REILLY FACTOR
BUSHS EASY DECISION 98 OHF CAF AMF NHF DDF MAF OSF DMF
 BUSHS BIG BLACKBIRD 7885
 S A V ELIMINATOR 9105 CAF NHF AMF OSF
PANSY OF PEAK DOT 780Y
 PANSY OF PEAK DOT 353W

| | | | | | |
|--------|-------|--------|------|-------|-------|
| BW 4.3 | WW 64 | YW 114 | M 26 | TM 58 | CE -1 |
|--------|-------|--------|------|-------|-------|



WRIGHT

LOT 68 NRA EASY DECISION 161F

2072141 NRA 161F March 1 2018

| | | | | | |
|--------|-------|----------------|------|-------|--------|
| BW 2.7 | WW 59 | YW 103 | M 26 | TM 53 | CE 1.5 |
| BW 84 | | SEPT 25 WW 826 | | | |

BUSHS EASY DECISION 98 OHF CAF AMF NHF DDF MAF OSF DMF
PEAK DOT EASY DECISION 30C
 PANSY OF PEAK DOT 780Y
 SITZ ALLIANCE 6595 AMF NHF DMF CAF DDF OHF OSF
JL ANNIE 1063
 BAILEY'S ANNIE 10'07

Larry 306.567.7493

LOT 69 NRA EASY DECISION 83F

2072121 NRA 83F February 8 2018

| | | | | | |
|--------|-------|-------|----------------|-------|--------|
| BW 1.5 | WW 44 | YW 84 | M 29 | TM 58 | CE 2.5 |
| BW 83 | | | SEPT 25 WW 754 | | |

BUSHES EASY DECISION 98 OHF CAF AMF NHF DDF MAF OSF DMF
PEAK DOT EASY DECISION 30C
 PANSY OF PEAK DOT 780Y
 HF PREDOMINANT 213U
DIAMOND T AMBER 1209 - 213U (RC)
 RED DIAMOND T AMBER-NT22D 9905



LOT 70 NRA EASY DECISION 88F

2072123 NRA 88F February 9 2018

| | | | | | |
|--------|-------|-------|----------------|-------|--------|
| BW 2.3 | WW 49 | YW 87 | M 25 | TM 52 | CE 2.5 |
| BW 84 | | | SEPT 25 WW 804 | | |

BUSHES EASY DECISION 98 OHF CAF AMF NHF DDF MAF OSF DMF
PEAK DOT EASY DECISION 30C
 PANSY OF PEAK DOT 780Y
 CONNEALY CONSENSUS 7229 CAF DDF AMF NHF OHF OSF DMF
HF ROSEBUD 105A
 HF ROSEBUD 42X



LOT 71 NRA EASY DECISION 128F

2072132 NRA 128F February 16 2018

| | | | | | |
|--------|-------|-------|----------------|-------|-------|
| BW 3.2 | WW 49 | YW 87 | M 28 | TN 57 | CE -1 |
| BW 86 | | | SEPT 25 WW 773 | | |

BUSHES EASY DECISION 98 OHF CAF AMF NHF DDF MAF OSF DMF
PEAK DOT EASY DECISION 30C
 PANSY OF PEAK DOT 780Y
 EASTONDALE BREAK AWAY 32'07
DFCC 32T SASSY 8Z
 DRYLAND PRIDE 550



LOT 72 NRA EASY DECISION 132F

2072133 NRA 132F February 17 2018

| | | | | | |
|--------|-------|-------|----------------|-------|------|
| BW 2.3 | WW 49 | YW 91 | M 27 | TM 51 | CE 0 |
| BW 85 | | | SEPT 25 WW 825 | | |

BUSHES EASY DECISION 98 OHF CAF AMF NHF DDF MAF OSF DMF
PEAK DOT EASY DECISION 30C
 PANSY OF PEAK DOT 780Y
 WILBAR TIGERSHARK 420Y
NRA COUNTESS 27B
 LODGE COUNTESS 35T



RS: Call of Duty

RICHMOND CALL OF DUTY 1C

SRD 1C1832983 SRD 1C January 1 2015

CONNELLY CONSENSUS 7229 CAF DDF AMF NHF OHF OSF

HF DECISIVE 56Z

WILBAR RUBY 955N

B P F SPECIAL FOCUS 504 AMF CAF NHF DMF DDF OHF

RICHMOND SPECIAL FATE SRD50A

SOUTHLAND FATE 302X

| | | | | | |
|--------|-------|-------|------|-------|------|
| BW 1.1 | WW 58 | YW 95 | M 30 | TM 59 | CE 8 |
|--------|-------|-------|------|-------|------|



LOT 73 NRA RICHMOND 78F

2072119 NRA 78F February 7 2018

| | | | | | |
|--------|-------|-------|------|-------|------|
| BW 2.2 | WW 61 | YW 97 | M 25 | TM 51 | CE 3 |
|--------|-------|-------|------|-------|------|

| | |
|-------|----------------|
| BW 83 | SEPT 25 WW 905 |
|-------|----------------|

HF DECISIVE 56Z

RICHMOND CALL OF DUTY SRD 1C

RICHMOND SPECIAL FATE SRD50A

RED NRA ARSON 230A

RED NRA FINESSE 69C

RED NRA FINESSE 20U



WRIGHT

LOT 74 NRA RICHMOND 58F

2072110 NRA 58F February 3 2018

| | | | | | |
|--------|-------|--------|------|-------|------|
| BW 2.1 | WW 64 | YW 103 | M 26 | TM 52 | CE 7 |
|--------|-------|--------|------|-------|------|

| | |
|-------|-----------------|
| BW 83 | SEPT 25 WW 1004 |
|-------|-----------------|

HF DECISIVE 56Z

RICHMOND CALL OF DUTY SRD 1C

RICHMOND SPECIAL FATE SRD50A

S A V CAMARO 9272 1552424 AMF NHF DDF

LOCUST GROVE TIBBIE 1B

LLB TIBBIE 694X

LOT
75

NRA RICHMOND 130F

2072134 NRA 130F February 17 2018

| | | | | | |
|-------|-------|-------|----------------|-------|------|
| BW 1 | WW 42 | YW 67 | M 29 | TM 52 | CE 7 |
| BW 84 | | | SEPT 25 WW 764 | | |

HF DECISIVE 56Z
RICHMOND CALL OF DUTY SRD 1C
 RICHMOND SPECIAL FATE SRD50A
 WILBAR TIGERSHARK 420Y
NRA ROSEBUD 107A
 MVF ROSEBUD 303T



RS: Seedstock

S A V SEEDSTOCK 4838

1890621 IMP 4838B January 15 2014

RITO 707 OF IDEAL 3407 7075 OSF
 S A V REGISTRY 2831 AMF DDF NHF OHF CAF DMF OSF
S A V MADAME PRIDE 0075 CAF DDF
 S A V 8180 TRAVELER 004 AMF NHF CAF DMF DWF OSF DDF OHF
 S A V BLACKCAP MAY 4136 CAF
 S A V MAY 2397 CAF

| | | | | | |
|--------|-------|--------|------|-------|-------|
| BW 3.5 | WW 63 | YW 107 | M 21 | TM 53 | CE -1 |
|--------|-------|--------|------|-------|-------|



LOT
76

NRA SEEDSTOCK 48F

2072103 NRA 48F February 1 2018

| | | | | | |
|--------|-------|--------|----------------|-------|------|
| BW 2.8 | WW 63 | YW 109 | M 24 | TM 53 | CE 4 |
| BW 86 | | | SEPT 25 WW 934 | | |

S A V REGISTRY 2831 AMF DDF NHF OHF CAF DMF OSF
S A V SEEDSTOCK 4838 DMF AMF CAF OHF NHF OSF DDF
 S A V BLACKCAP MAY 4136 CAF
 HF TIGER 5T CAF NHF AMF OSF DDF OHF
NRA TIBBIE 95X
 MVF TIBBIE 18U

Larry 306.567.7493

LOT
77

NRA SEEDSTOCK 19F

2072086 NRA 19F January 22 2018

| | | | | | |
|--------|-------|----------------|------|-------|------|
| BW 2.1 | WW 41 | YW 70 | M 18 | TM 38 | CE 3 |
| BW 85 | | SEPT 25 WW 855 | | | |

S A V REGISTRY 2831 AMF DDF NHF OHF CAF DMF OSF
S A V SEEDSTOCK 4838 DMF AMF CAF OHF NHF OSF DDF
 S A V BLACKCAP MAY 4136 CAF
 K C F BENNETT TOTAL AMF NHF CAF DDF OHF DMF OSF
LODGE LAURA 13U
 LODGE DELEGATE LAURA 13L



LOT
78

NRA SEEDSTOCK 56F

2074180 NRA 56F February 3 2018

| | | | | | |
|--------|-------|----------------|------|-------|------|
| BW 2.4 | BW 58 | YW 102 | M 25 | TM 53 | CE 1 |
| BW 84 | | SEPT 25 WW 800 | | | |

S A V REGISTRY 2831 AMF DDF NHF OHF CAF DMF OSF
S A V SEEDSTOCK 4838
 S A V BLACKCAP MAY 4136 CAF
 CONNEALY FINAL PRODUCT AMF CAF NHF DMF DDF
GF RITA 66Z
 WHITESTONE RITA 666T



LOT
79

NRA SEEDSTOCK 117F

2074240 NRA 117F February 13 2018

| | | | | | |
|--------|-------|----------------|------|-------|------|
| BW 2.4 | BW 58 | YW 102 | M 25 | TM 53 | CE 1 |
| BW 84 | | SEPT 25 WW 800 | | | |

S A V REGISTRY 2831 AMF DDF NHF OHF CAF DMF OSF
S A V SEEDSTOCK 4838
 S A V BLACKCAP MAY 4136 CAF
 CONNEALY FINAL PRODUCT AMF CAF NHF DMF DDF
GF RITA 66Z
 WHITESTONE RITA 666T



RS: Cast Iron

MERIT CAST IRON 5094C

1864024 TJL 5094C March 3 20156

DAMERON FIRST CLASS
EXAR ONE-IRON 3889B
 GREENS PRINCESS 1012 CAF AMF NHF DDF
 BEVERLY HILLS VISA 734
MERIT JILT 2077
 MERIT JILT 9631

| | | | | | |
|------|-------|--------|------|-------|--------|
| BW 9 | WW 78 | YW 127 | M 21 | TM 60 | CE -12 |
|------|-------|--------|------|-------|--------|





LOT 80 **NRA CAST IRON 11F**
 2074182 NRA 11F January 21 2018

| | | | | | |
|-------|-------|--------|----------------|-------|---------|
| BW 6 | WW 63 | YW 104 | M 24 | TM 55 | CE -4.5 |
| BW 89 | | | SEPT 25 WW 939 | | |

EXAR ONE-IRON 3889B
MERIT CAST IRON 5094C
 MERIT JILT 2077
 S A V NET WORTH 4200 AMF NHF CAF DDF OHF DMF OSF
GF ULTIMATE NET WORTH 1U
 HFI BLACKBIRD 1K

LOT 81 **NRA CAST IRON 16F**
 2074220 NRA 16F January 22 2018

| | | | | | |
|--------|-------|--------|----------------|-------|--------|
| BW 5.9 | WW 63 | YW 104 | M 24 | TM 55 | CE 4.5 |
| BW 84 | | | SEPT 25 WW 833 | | |

EXAR ONE-IRON 3889B
MERIT CAST IRON 5094C
 MERIT JILT 2077
 S A V NET WORTH 4200 AMF NHF CAF DDF OHF DMF OSF
GF ULTIMATE NET WORTH 1U
 HFI BLACKBIRD 1K

LOT 82 **NRA CAST IRON 68F**
 2072115 NRA 68F February 5 2018

| | | | | | |
|-------|-------|-------|----------------|-------|---------|
| BW 5 | WW 56 | YW 99 | M 21 | TM 51 | CE -6.5 |
| BW 86 | | | SEPT 25 WW 822 | | |

EXAR ONE-IRON 3889B
MERIT CAST IRON 5094C
 MERIT JILT 2077
 MVF DATELINE 36W
NRA LASS 89Z
 MVF LASS 323U



RS: Cutting Edge

S A V CUTTING EDGE 4857

1892318 IMP 4857B February 1 2014

- S A V HERITAGE 6295 AMF NHF CAF DDF OHF DMF OSF
- S A V HARVESTOR 0338 AMF CAF NHF DDF DMF OHF OSF**
- S A V EMBLYNETTE 7749 CAF
- B C C BUSHWACKER 41-93 AMF NHF CAF DDF OHF DMF OSF
- S A V BLACKCAP MAY 5530 CAF**
- S A V MAY 7238 CAF DDF

| | | | | | |
|--------|-------|--------|------|-------|-------|
| BW 6.5 | WW 68 | YW 116 | M 24 | TM 58 | CE -2 |
|--------|-------|--------|------|-------|-------|



LOT
83

NRA CUTTING EDGE 54F

2072106 NRA 54F February 2 2018

| | | | | | |
|--------|-------|-------|----------------|-------|------|
| BW 4.1 | WW 48 | YW 82 | M 21 | TM 47 | CE 1 |
| BW 87 | | | SEPT 25 WW 772 | | |

- S A V HARVESTOR 0338 AMF CAF NHF DDF DMF OHF OSF
- S A V CUTTING EDGE 4857 DMF AMF CAF OHF NHF OSF DDF**
- S A V BLACKCAP MAY 5530 CAF
- S A V 8180 TRAVELER 004 AMF NHF CAF DMF DWF OSF DDF OHF
- GERLEI ROSEBUD 26W**
- GERLEI ROSEBUD 2R



WRIGHT

LOT 84 NRA CUTTING EDGE 26F

2072089 NRA 26F January 23 2018

| | | | | | |
|--------|-------|-------|----------------|-------|--------|
| BW 3.8 | WW 48 | YW 81 | M 21 | TM 44 | CE 2.5 |
| BW 85 | | | SEPT 25 WW 835 | | |

- S A V HARVESTOR 0338 AMF CAF NHF DDF DMF OHF OSF
- S A V CUTTING EDGE 4857 DMF AMF CAF OHF NHF OSF DDF**
- S A V BLACKCAP MAY 5530 CAF
- TC ADVANTAGE AMF NHF CAF DDC OHF DMF OSF
- LODGE LAURA 9T**
- LODGE LAURA 8N

LOT
85

NRA CUTTING EDGE 67F

2072112 NRA 67F February 4 2018

| | | | | | |
|--------|-------|-------|----------------|-------|--------|
| BW 5.3 | WW 51 | YW 91 | M 21 | TM 47 | CE -.5 |
| BW 94 | | | SEPT 25 WW 820 | | |

S A V HARVESTOR 0338 AMF CAF NHF DDF DMF OHF OSF
S A V CUTTING EDGE 4857 DMF AMF CAF OHF NHF OSF DDF
 S A V BLACKCAP MAY 5530 CAF
 MVF DATELINE 36W
NRA SASSY 42Z
 DFCC 60P SASSY 18U



Sire Group: **EXAR INSPIRATION 5063B**

LOT
86

NRA INSPIRATION 59F

2072107 NRA 59F February 3 2018

| | | | | | |
|--------|-------|-------|----------------|-------|------|
| BW 3.3 | WW 49 | YW 90 | M 18 | TM 43 | CE 4 |
| BW 80 | | | SEPT 25 WW 800 | | |

PVF INSIGHT 0129 CAF DDF AMF NHF DMF OSF
EXAR INSPIRATION 5063B OSF
 EXAR BLACKCAP 9840
 S A V HARVESTOR 0338 AMF CAF NHF DDF DMF OHF OSF
NRA BACARDI 47D
 DFCC 60P BACARDI 49U



LOT
87

NRA INSPIRATION 171F

2072142 NRA 171F March 7 2018

| | | | | | |
|--------|-------|--------|----------------|-------|------|
| BW 2.8 | WW 61 | YW 114 | M 17 | TM 45 | CE 4 |
| BW 78 | | | SEPT 25 WW 798 | | |

PVF INSIGHT 0129 CAF DDF AMF NHF DMF OSF
EXAR INSPIRATION 5063B OSF
 EXAR BLACKCAP 9840
 VIN-MAR JOHNNY CASH 3513 DMF AMF CAF OHF NHF OSF DDF
NRA BLANCA 2D
 DFCC 5Y BLANCA 76B



LOT
88

NRA SUDDEN LOOK 97F

2074238 NRA 97F February 11 2018

| | | | | | |
|--------|-------|-------|----------------|-------|------|
| BW 1.2 | WW 53 | YW 93 | M 23 | TM 49 | CE 6 |
| BW 85 | | | SEPT 25 WW 770 | | |

B C LOOKOUT 7024 AMF NHF CAF DDF OHF DMF OSF
74-51 SUDDEN LOOK 1023
 EXG LUCY P061 R3
 CONNEALY FINAL PRODUCT AMF CAF NHF DMF DDF
GF RITA 66Z
 WHITESTONE RITA 666T





SUDDEN LOOK, SIRE TO LOTS 88 & 89

LOT 89

NRA SUDDEN LOOK 77F

2074236

NRA 77F

February 7 2018

| | | | | | |
|--------|-------|-------|----------------|-------|------|
| BW 1.2 | WW 53 | YW 93 | M 23 | TM 49 | CE 6 |
| BW 83 | | | SEPT 25 WW 780 | | |

B C LOOKOUT 7024 AMF NHF CAF DDF OHF DMF OSF
74-51 SUDDEN LOOK 1023
 EXG LUCY P061 R3
 CONNEALY FINAL PRODUCT AMF CAF NHF DMF DDF
GF RITA 66Z
 WHITESTONE RITA 666T

RS: Opportunity

RED BADLANDS OPPORTUNITY 53Y

1786417

IMP 053Y

February 18 2011

RED HXC HEMI 4400P OSF
RED HXC JACKHAMMER 8800U AMF OSF
 RED HXC JOLENE 301N OSF
 RED BADLANDS PFFR NEWDESIGN347 OSF
RED BADLANDS MEDORA 7S OSF
 RED BADLANDS MEDORA 440 OSF

| | | | | | |
|------|-------|--------|-----|-------|------|
| BW 5 | WW 69 | YW 122 | M 9 | TM 44 | CE 3 |
|------|-------|--------|-----|-------|------|





LOT 90 RED NRA OPPORTUNITY 34F

| | | | | | |
|---------|---------|-----------------|------|-------|--------|
| 2072096 | NRA 34F | January 29 2018 | | | |
| BW 3.2 | WW 63 | YW 103 | M 18 | TM 48 | CE 2.5 |
| BW 84 | | SEPT 25 WW 891 | | | |

RED HXC JACKHAMMER 8800U AMF OSF
RED BADLANDS OPPORTUNITY 53Y AMF OSF
 RED BADLANDS MEDORA 7S OSF
 RED BRYLOR RED KODIAK 3A AMF MAF NHF OSF
RED NRA AMBER 51C
 DIAMOND T AMBER 1209 - 213U (RC)



LOT 91 RED NRA OPPORTUNITY 62F

| | | | | | |
|---------|---------|-----------------|------|-------|-------|
| 2072111 | NRA 62F | February 4 2018 | | | |
| BW 3.8 | WW 52 | YW 88 | M 19 | TM 45 | CE -3 |
| BW 88 | | SEPT 25 WW 886 | | | |

RED HXC JACKHAMMER 8800U AMF OSF
RED BADLANDS OPPORTUNITY 53Y AMF OSF
 RED BADLANDS MEDORA 7S OSF
 RED T-K CALLAWAY 67X
RED NRA CALLY 25A
 RED NRA PATRIOT 56S

RS: Kargo

RED JENSEN KARGO 48B

1779496 BJT 48B February 23 2014

| | | | | | |
|--------|-------|-------|------|-------|-------|
| BW 2.2 | WW 45 | YW 74 | M 25 | TM 48 | CE -3 |
|--------|-------|-------|------|-------|-------|

RED RINGSTEAD KARGO 541R
RED THAT'LL DO KARGO 67W
 RED THAT'LL DO ROBERTA 129S

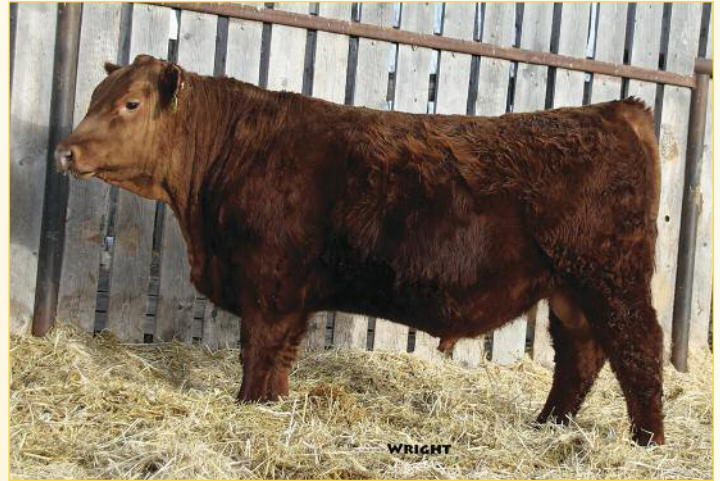
RED JENSEN DESIGN 21T MAF
RED JENSEN LAKIMA 914W
 RED JENSEN LAKIMA 741T OSF

LOT 92 RED NRA KARGO 118F

2074545 NRA 118F February 14 2018

| | | | | | |
|--------|-------|-------|----------------|-------|--------|
| BW 2.1 | WW 37 | YW 61 | M 22 | TM 41 | CE -.5 |
| BW 83 | | | SEPT 25 WW 775 | | |

RED THAT'LL DO KARGO 67W
RED JENSEN KARGO 48B
 RED JENSEN LAKIMA 914W
 RED BLU DAWN CROSS OVER 305S
RED NRA X OVER LADY 36W
 RED NRA VAQUERO LADY 45M



LOT 93 RED NRA KARGO 167F

2074201 NRA 167F March 4 2018

| | | | | | |
|--------|-------|-------|----------------|-------|--------|
| BW 1.7 | WW 30 | YW 55 | M 20 | TM 37 | CE 1.5 |
| BW 85 | | | SEPT 25 WW 690 | | |

RED THAT'LL DO KARGO 67W
RED JENSEN KARGO 48B
 RED JENSEN LAKIMA 914W
 RED BRYLOR MASTER PLAN 17M MAC
RED NRA PLAN LADY MAF
 RED NRA PATRIOT 18S



LOT 94 RED NRA KARGO 157F

| | | | | | |
|---------|----------|------------------|------|-------|-------|
| 2074200 | NRA 157F | February 27 2018 | | | |
| BW 3.4 | WW 52 | YW 82 | M 24 | TM 45 | CE -3 |
| BW 86 | | SEPT 25 WW 882 | | | |

RED THAT'LL DO KARGO 67W
RED JENSEN KARGO 48B
 RED JENSEN LAKIMA 914W

RED T-K WESTERNER 41X
RED NRA PRISM 65Z
 RED SMW PRISM 25P

LOT 95 RED NRA KARGO 126F

| | | | | | |
|---------|----------|------------------|------|-------|------|
| 2074241 | NRA 126F | February 15 2018 | | | |
| BW 2.5 | WW 29 | YW 51 | M 26 | TM 41 | CE 1 |
| BW 84 | | SEPT 25 WW 705 | | | |

RED THAT'LL DO KARGO 67W
RED JENSEN KARGO 48B
 RED JENSEN LAKIMA 914W
 RED DIAMOND T HIPS STOUT 107U NHF OSF MAF
RED DIAMOND T AMBER 1530 - 107
 RED DIAMOND T AMBER 1108 - BR

LOT 96 RED NRA KARGO 133F

| | | | | | |
|---------|----------|------------------|------|-------|--------|
| 2074235 | NRA 133F | February 18 2018 | | | |
| BW .6 | WW 42 | YW 71 | M 24 | TM 46 | CE 3.5 |
| BW 82 | | SEPT 25 WW 763 | | | |

RED THAT'LL DO KARGO 67W
RED JENSEN KARGO 48B
 RED JENSEN LAKIMA 914W
 RED YY HITCH 23X
RED WRAZ DYNA QUEEN 66B
 RED PASQUIA DYNA QUEEN 47Y



LOT
97

RED NRA KARGO 146F

2074546 NRA 146F February 21 2018

| | | | | | |
|--------|-------|-------|----------------|-------|--------|
| BW 1.8 | WW 46 | YW 75 | M 25 | TM 48 | CE -.5 |
| BW 85 | | | SEPT 25 WW 700 | | |

- RED THAT'LL DO KARGO 67W
- RED JENSEN KARGO 48B**
- RED JENSEN LAKIMA 914W
- RED YY HITCH 23X
- RED WRAZ SEREBL 105A**
- RED WRAZ SEREBL 107X



RS: Underdog

RED JJL UNDERDOG 117D

1902140 JJL 117D January 8 2016

- RED DIMLER JACK 25T OSF NHF
- RED WHEEL JACK 80A MAF NHF DDF CAF AMF DMF OSF**
- RED WHEEL HICK CHICK 7T
- RED PASQUIA TOAST 15W
- RED WRAZ BARRA 5Y**
- RED WRAZ BARRA 59W

| | | | | | |
|---------|-------|-------|------------|-------|------|
| BW -1.5 | WW 37 | YW 66 | M 15 | TM 34 | CE 7 |
| BW 77 | | | ADJ WW 768 | | |



LOT
98

RED NRA UNDERDOG 31F

2072094 NRA 31F January 28 2018

| | | | | | |
|--------|-------|-------|----------------|-------|--------|
| BW -.2 | WW 41 | YW 63 | M 19 | TM 40 | CE 6.5 |
| BW 78 | | | SEPT 25 WW 754 | | |

- RED WHEEL JACK 80A MAF NHF DDF CAF AMF DMF OSF
- RED JJL UNDERDOG 117D**
- RED WRAZ BARRA 5Y
- RED BRYLOR RED KODIAK 3A AMF MAF NHF OSF
- RED NRA ANN 35D**
- RED NRA ANN 10B

Larry 306.567.7493

LOT 99 **RED NRA UNDERDOG 10F**
 2072084 NRA 10F January 20 2018

| | | | | | |
|-------|-------|-------|----------------|-------|--------|
| BW .9 | WW 39 | YW 59 | M 18 | TM 37 | CE 6.5 |
| BW 83 | | | SEPT 25 WW 770 | | |

RED WHEEL JACK 80A MAF NHF DDF CAF AMF DMF OSF
RED JJJ UNDERDOG 117D
 RED WRAZ BARRA 5Y
 RED BRYLOR RED KODIAK 3A AMF MAF NHF OSF
RED NRA MABLE 39D
 RED DTA MABLE 25X



Sire Group: **RED JENSEN CACTUS SKY 7D**
LOT 100 **RED NRA CACTUS 93F**
 2074603 NRA 93F February 10 2018

| | | | | | |
|--------|-------|-------|----------------|-------|-------|
| BW 1.7 | WW 31 | YW 58 | M 20 | TM 36 | CE .5 |
| BW 85 | | | SEPT 25 WW 710 | | |

RED JENSEN CACTUS SKY 25S
RED JENSEN CACTUS SKY 7D
 RED JENSEN ANNIE 803U
 RED BAR-E-L WARDEN 144W
RED T-K RINA 9A
 RED T-K RINA 87X



LOT 101 **RED NRA CACTUS 185F**
 2074606 NRA 185F March 18 2018

| | | | | | |
|--------|-------|-------|----------------|-------|------|
| BW 2.6 | WW 39 | YW 70 | M 25 | TM 44 | CE 1 |
| BW 85 | | | SEPT 25 WW 730 | | |

RED JENSEN CACTUS SKY 25S
RED JENSEN CACTUS SKY 7D
 RED JENSEN ANNIE 803U
 RED BRYLOR SKOR 38A
RED NRA PATRIOT 151C
 RED NRA PATRIOT 56S

Sire Group: **RED WILDMAN MERCHANT 623D**



LOT
102

RED NRA MERCHANT 149F

2074236 NRA 149F February 23 2018

| | | | | | |
|--------|-------|----------------|------|-------|-------|
| BW 2.9 | WW 28 | YW 49 | M 23 | TM 40 | CE -3 |
| BW 85 | | SEPT 25 WW 729 | | | |

RED FLYING K MAX 159Y
RED WILDMAN MERCHANT 623D
 RED WILDMAN MISS STOCKY 001X
 RED BRYLOR DVSF PRONGHORN 405P
RED NRA SYRINGA 52U
 RED GLESBAR SYRINGA 45J

LOT
103

RED NRA MERCHANT 194F

2071323 NRA 194F March 25 2018

| | | | | | |
|--------|-------|----------------|------|-------|--------|
| BW 2.3 | WW 47 | YW 78 | M 20 | TM 41 | CE 2.8 |
| BW 85 | | SEPT 25 WW 710 | | | |

RED FLYING K MAX 159
RED WILDMAN MERCHANT 623D
 RED WILDMAN MISS STOCKY 001X
 RED YY HITCH 23X
RED WRAZ FOXY LADY 61B
 RED WRAZ FOXY LADY 220Z



Sire Group: **RED JENSEN DEMO 6C**

LOT
104

RED NRA DEMO 18F

2072085 NRA 18F January 22 2018

| | | | | | |
|--------|-------|----------------|------|-------|-------|
| BW 3.2 | WW 42 | YW 70 | M 16 | TM 36 | CE -1 |
| BW 85 | | SEPT 25 WW 875 | | | |

RED BAR-E-L LPH ZORRO 7Z
RED JENSEN DEMO 6C
 RED JENSEN TARANA 153Y
 RED RIVERDALE HAWK 361T
RED NRA HAWK LADY 24W
 RED VAQUERO LADY 61N



Sire Group: **RED DKF DISTINGUISHED 16D**

Sire Group: **RED TWG TOMMY JACK 166A**

LOT 105 **RED NRA DISTINGUISHED 111F**
 2072127 NRA 111F February 13 2018

| | | | | | |
|--------|-------|-------|----------------|-------|--------|
| BW 2.6 | WW 44 | YW 68 | M 21 | TM 43 | CE 4.5 |
| BW 86 | | | SEPT 25 WW 717 | | |

DKF ENTOURAGE 16B (EE)
RED DKF DISTINGUISHED 16D
 RED RSL CHETA BELL 51B
 RED DKF POWER 50B
RED DKF MISS GOT POWER 99D
 RED DKF MISS ARAB-8E 140A



LOT 106 **RED NRA JACK 122F**
 2072130 NRA 122F February 14 2018

| | | | | | |
|--------|-------|-------|----------------|-------|--------|
| BW 1.5 | WW 48 | YW 74 | M 17 | TM 39 | CE 7.8 |
| BW 82 | | | SEPT 25 WW 778 | | |

RED SIX MILE GAME FACE 164Y OSF MAF NHF AMF
RED TWG TOMMY JACK 166A
 RED DAMAR PASSION X166 RA
 RED BRYLOR RED KODIAK 3A AMF MAF NHF OSF
RED BAR 4A RIVIERA 116D (RC)
 RED RKY MTN RIVIERA 12W



Heifers - Lots 107-112



LOT 107 **NRA BACARDI CAST 38F**
 2072099 NRA 38F January 30 2018

| | | | | | |
|--------|-------|-------|----------------|-------|---------|
| BW 4.2 | WW 46 | YW 77 | M 20 | TM 44 | CE -3.5 |
| BW 84 | | | SEPT 25 WW 667 | | |

DAMERON FIRST CLASS
 EXAR ONE-IRON 3889B
 GREENS PRINCESS 1012 CAF AMF NHF DDF
MERIT CAST IRON 5094C
 BEVERLY HILLS VISA 734
 MERIT JILT 2077
 MERIT JILT 9631
 V F VENTURE FORWARD AMF NHF CAF DDF OHF OSF DMF
 BWB VENTURE 60P
 BWB LASS 32'02 OF ULTRAVOX 32M
DFCC 60P BACARDI 49U
 MJT ESSOTERIC EXTRA 16K
 EGGEN BIG SKY MISS 50P
 GEIS ANNIE K 123'99



LOT 108 **NRA COUNTESS 139F**
 2072137 NRA 139F February 20 2018

| | | | | | |
|--------|-------|-------|----------------|-------|------|
| BW 2.6 | WW 51 | YW 91 | M 29 | TM 55 | CE 2 |
| BW 85 | | | SEPT 25 WW 640 | | |

VIN-MAR O'REILLY FACTOR
 BUSHES EASY DECISION 98 OHF CAF AMF NHF DDF MAF OSF DMF
 BUSHES BIG BLACKBIRD 7885
PEAK DOT EASY DECISION 30C
 S A V ELIMINATOR 9105 CAF NHF AMF OSF
 PANSY OF PEAK DOT 780Y
 PANSY OF PEAK DOT 353W
 S A V YOUNG JOCK 6457 CAF
 JL JOCK 9002 CAF (RC)
 S A V MADAME PRIDE 7798 CAF
LODGE COUNTESS 54Y
 TC ADVANTAGE AMF NHF CAF DDC OHF DMF OSF
 LODGE COUNTESS 5W
 LODGE COUNTESS 86S

Larry 306.567.7493

LOT
109

NRA LAURA 76F

2072118 NRA 76F February 7 2018

| | | | | | |
|--------|-------|-------|----------------|-------|------|
| BW 3.2 | WW 58 | YW 94 | M 22 | TM 47 | CE 2 |
| BW 85 | | | SEPT 25 WW 764 | | |

VIN-MAR O'REILLY FACTOR
BUSHS EASY DECISION 98 OHF CAF AMF NHF DDF MAF OSF DMF
BUSHS BIG BLACKBIRD 7885

PEAK DOT EASY DECISION 30C

S A V ELIMINATOR 9105 CAF NHF AMF OSF
PANSY OF PEAK DOT 780Y
PANSY OF PEAK DOT 353W
BR MIDLAND AMF NHF CAF DDF DMF OHF
CUDLOBE MIDLAND 21R
STEVENSON ENCHANTRESS 425F

LODGE LAURA 53U

BUSHS GRAND DESIGN AMF NHF CAF DDF OHF DMF OSF
LODGE LAURA 52R
LODGE DELEGATE LAURA 13L



LOT
110

NRA TIBBIE 143F

2072139 NRA 143F February 21 2018

| | | | | | |
|--------|-------|-------|----------------|-------|------|
| BW 1.9 | WW 57 | YW 94 | M 30 | TM 56 | CE 7 |
| BW 84 | | | SEPT 25 WW 733 | | |

CONNELLY CONSENSUS 7229 CAF DDF AMF NHF OHF OSF DMF
HF DECISIVE 56Z
WILBAR RUBY 955N

RICHMOND CALL OF DUTY SRD 1C

B P F SPECIAL FOCUS 504 AMF CAF NHF DMF DDF OHF OSF
RICHMOND SPECIAL FATE SRD50A
SOUTHLAND FATE 302X
LEACHMAN RIGHT TIME AMF DMF OSF
L T BANDWAGON 3105 AMF NHF CAF DDF OHF DMF
L T MS VIKINGS VALUE 0256

NRA TIBBIE 1A

BXB VENTURE SON 9P
BLAIRS TIBBIE 511Y
MVF TIBBIE 25N



LOT
111

RED NRA FINESSE 33F

2072093 NRA 33F January 28 2018

| | | | | | |
|--------|-------|-------|----------------|-------|------|
| BW 1.2 | WW 37 | YW 59 | M 19 | TM 37 | CE 2 |
| BW 83 | | | SEPT 25 WW 648 | | |

RED DIMLER JACK 25T OSF NHF
RED WHEEL JACK 80A MAF NHF DDF CAF AMF DMF OSF
RED WHEEL HICK CHICK 7T

RED JJL UNDERDOG 117D

RED PASQUIA TOAST 15W
RED WRAZ BARRA 5Y
RED WRAZ BARRA 59W
RED VGW GAME PLAN 816 OSF MAF NHF AMF
RED SIX MILE & CO JAGGER 780A
RED SIX MILE CHETA 702W OSF MAF

RED NRA FINESSE 48D

RED BRYLOR ROMAN 160R
RED NRA FINESSE 20U
RED L-DEE FINESSE 92J



LOT
112

NRA LADY 89F

Pending NRA 89F February 9 2018

| | | | | | |
|--------|-------|-------|----------------|-------|---------|
| BW 2.1 | WW 44 | YW 70 | M 24 | TH 46 | CE -1.5 |
| BW 82 | | | SEPT 25 WW 627 | | |

RED RINGSTEAD KARGO 541R
RED THAT'LL DO KARGO 67W
RED THAT'LL DO ROBERTA 129S

RED JENSEN KARGO 48B

RED JENSEN DESIGN 21T MAF
RED JENSEN LAKIMA 914W
RED JENSEN LAKIMA 741T OSF
RED JJL DOUBLE TAKE 21U
RED T-K CALLAWAY 67X
RED T-K PRINCESS 3N

RED NRA VAQ LADY 48B

RED SHODEREE VAQUERO 125J
RED NRA VAQUERO LADY 36L
RED MC DOUGALL UMPIRETTE 93D



Larry 306.567.7493

LOT
113

RED NRA LADY 115F

2072128 NRA 115F February 13 2018

| | | | | | |
|--------|-------|-------|----------------|-------|---------|
| BW 5.2 | WW 52 | YW 93 | M 14 | TM 39 | CE -2.5 |
| BW 90 | | | SEPT 25 WW 669 | | |

- RED HXC HEMI 4400P OSF
- RED HXC JACKHAMMER 8800U AMF OSF
- RED HXC JOLENE 301N OSF

RED BADLANDS OPPORTUNITY 53Y AMF OSF

- RED BADLANDS PFFR NEWDESIGN347 OSF
- RED BADLANDS MEDORA 7S OSF
- RED BADLANDS MEDORA 440 OSF
- RED BRYLOR DVSF PATRIOT 402M
- RED BRYLOR DVSF PRONGHORN 405P
- RED BRYLOR MISS ROC 60J

RED NRA CHIEF LADY 45U

- RED RIVERDALE CHIEF 477M
- RED NRA CHIEF LADY 14P
- RED NRA VAQUERO LADY 34M



LOT
114

RED NRA KURUBA 137F

2074605 NRA 137F February 19 2018

| | | | | | |
|--------|-------|-------|----------------|-------|------|
| BW 1.4 | WW 39 | YW 67 | M 23 | TM 43 | CE 0 |
| BW 83 | | | SEPT 25 WW 640 | | |

- RED RINGSTEAD KARGO 541R
- RED THAT'LL DO KARGO 67W
- RED THAT'LL DO ROBERTA 129S

RED JENSEN KARGO 48B

- RED JENSEN DESIGN 21T MAF
- RED JENSEN LAKIMA 914W
- RED JENSEN LAKIMA 741T OSF
- RED VRRR LEAD OVERLOAD 5T OSF
- RED VRRR TOP STAR Y236
- RED VRRR MS CHEROKEE STAR T204 OSF

RED WRAZ KURUBA 110B

- RED BUF CRK HOB0 1961 OSF MAF
- RED GINN HOB0 KURUBA
- RED GINN KNIGHT HAWK KURUBA11T



Terms & Conditions:

Terms: The terms of the sale are cash or cheque payable immediately after the sale in Canadian funds. All settlements must be made with the sale clerks before cattle will be released. The right of property will not pass until final payment is made.

Bidding: Each animal will sell to the highest bidder. Bidders unable to attend the sale may phone their bids and instructions to the sale manager, auctioneer or special representatives. Bids must be received in sufficient time prior to the sale.

Disputes: Bidding will be reopened between the parties involved. If no further bid is made, the buyer will be the person from whom the auctioneer accepted the last bid. The auctioneer's decision is final.

Announcements: Announcements made from the auction block will take precedence over printed matter in the catalogue. Buyers are cautioned to pay close attention to announcements.

Purchaser's Risk: Each animal becomes the risk of the purchaser as soon as sold. Animals will be cared for at the purchaser's risk for a reasonable length of time. All animals left with the seller must be insured.

Certificate of Registration: Each animal will carry papers issued by the Canadian Charolais Association. A certificate of registry duly transferred will be furnished to the buyer after payment has been made.

Delivery: Assistance will be given in making delivery after the sale. The purchaser agrees shipping arrangements will be at the convenience of the seller, but will be as soon as practical after the sale, at the buyer's risk.

Breeder Guarantee – Bulls: Should any bull fourteen months of age or over, fail to prove

a breeder after being used on cows known to be breeders, the matter shall be reported in writing to the seller within six months following the date of purchase or six months after the bull has reached fourteen months of age. The seller has the right and privilege of six months to prove the bull a breeder. No guarantee is given that semen collected from the bull will freeze.

Exception Guarantee: In case where the animal is subjected to any hormonal or surgical reproductive techniques after the sale, this guarantee shall be null and void. The seller is not responsible for damage caused by foreign bodies after the animal has been sold or for sickness not apparent at sale time. In no event shall the seller be responsible for more than the purchase price.

Accidents: Although every precaution will be taken to protect the safety and comfort of buyers, neither the sale manager, auctioneer, or sellers assume any responsibility and disclaim any liability, legal or otherwise, in the event of accident or loss of property. By Livestock is only acting as a medium between the buyer and seller and is not responsible for failure on the part of either party to live up to their obligations; or for the truth of any warranties or representations, expressed or implied. By Livestock assumes no obligation to enforce or collect monies between parties. By Livestock assumes no responsibility for any credit extended by the seller to the buyer. Any legal action taken in exceptional cases must be between the buyer and the seller. The buyer must look to the seller for fulfillment of all guarantees and representations.

Insurance: Insurance will be available sale day.

Pictures: By attending the sale you are granting permission for your picture to be used for promotional and advertising purposes relating to the sale.



FEED MORE CORN. GET MORE BEEF.

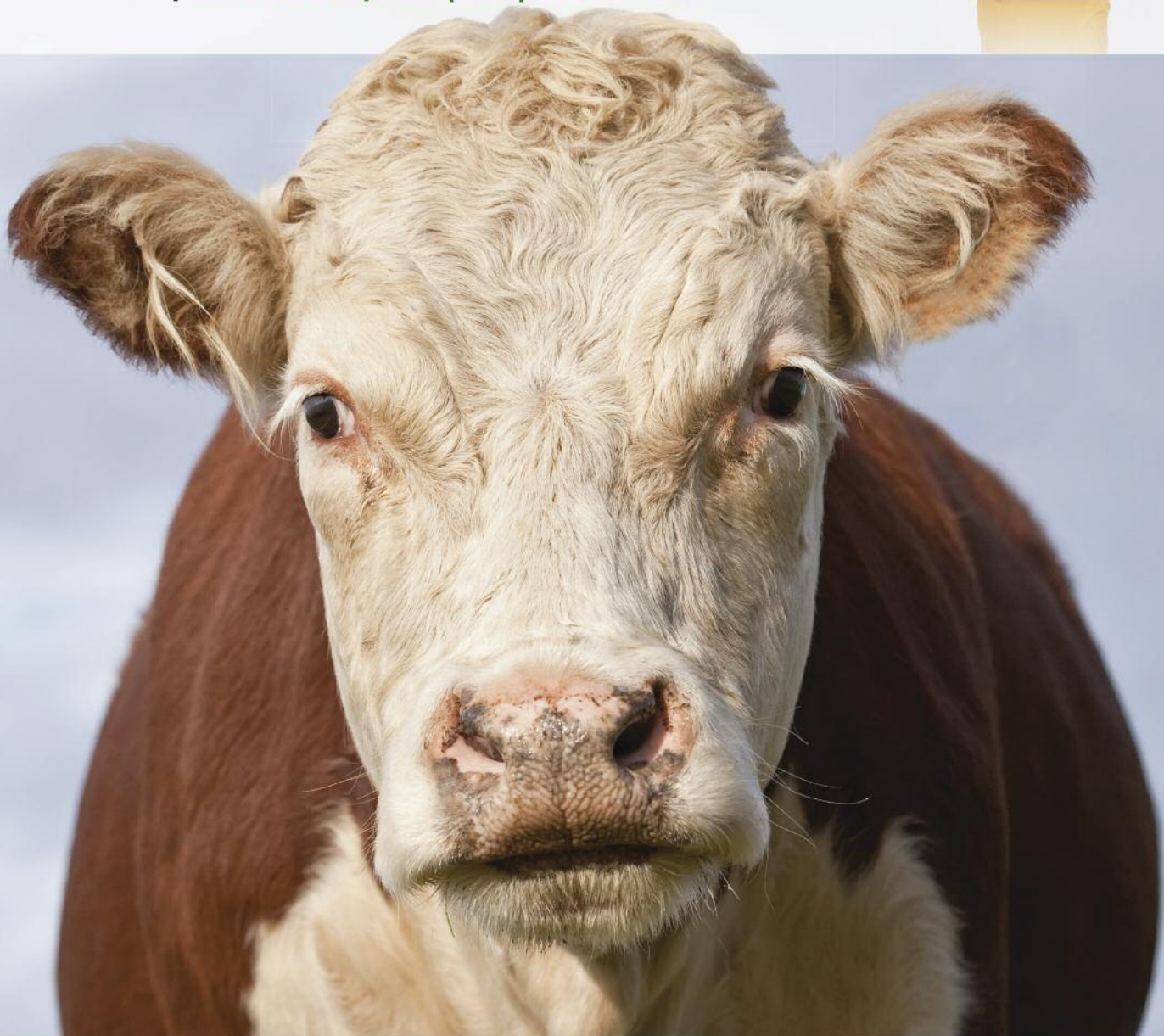
Western Canadian beef producers are seeing the benefits of corn. Corn offers a high-quality and nutrient dense feed, enabling you to get the most beef from every tonne. Pioneer® brand corn silage products provide excellent early starch production for high-energy feed and an early silage harvest.

For more information about the corn hybrids that will work best on your farm, call:

Rob Stone, Davidson, SK (306) 567-8528



STONE FARMS





Helge & Candace By
 124 Shannon Road
 Regina, SK S4S 5B1
 306-584-7937



8th Annual
PALMER CHAROLAIS with
NIELSON LAND & CATTLE CO.

BULL SALE Charolais, Red & Black Angus
MONDAY MARCH 11 2:00 PM 2019

At Palmer Charolais, Bladworth, SK
 (from Hwy 11 at Bladworth: 2.5 miles W on Townline Rd, 1 mile N)

