



30TH
Annual **BULL SALE**
MARCH 16, 2021
BALOG AUCTION . LETHBRIDGE . AB



LEEUWENBURGH
LX ANGUS

Welcome



Willard, Charles, Dennis, Johnny, Jack

It's our pleasure to welcome you to our family's 30th Annual Bull Sale. A sincere thanks to our customers and friends who have loyally supported our program, not only last year but over the past thirty. We feel truly blessed to be involved with such great people that support our passion in Angus cattle. It is humbling and over whelming to look back over the years and see that you need Gods blessing, and so many things to go well to be able to sustain a family operation as ours, for such a time period. In saying that, we are as optimistic as ever about the beef business and will continue to work diligently to breed and provide better seed stock for our customers.

Our program has always been focused on the commercial cattlemen and women. Whether you sell calves in the fall or feed them through to a finished product, we believe we have a bull for everyone's needs. We run our own commercial herd, so we know as well as anyone the challenges that are faced. Our focus has always been on performance, maternal traits, and the basics such as, feed efficiency, fertility, and productivity. We are not here to produce show

cattle, but instead an animal that will expand your profit margin, instead of cutting into it.

This is the largest bull offering we've ever had, and we can confidently say it is also the most potent group of ranch ready bulls raised here to date. Performance, quality, and consistency like never before. As we increase our volume of bulls and maintain quality, we feel we are supplying greater value to the commercial cattlemen.

Over the years our development of the bulls has been well accepted. The bulls are raised on a high roughage ration, allowing them to express their genetics, but also with the goal that they will be an athletic breeder for years to come. They are raised in a large pen to force them to get plenty of exercise and allow us to constantly evaluate the group as they travel. After all, this is an extremely important part of what cattle need to do to thrive, so we value this highly.

Please take the time to evaluate the offering and don't hesitate to call or stop by the farm. We are fully committed to our product and love to discuss your needs. We look forward to your call and hope to see everyone again on March 16th.

Sincerely,

Dennis Leeuwenburgh

Dennis Leeuwenburgh

Welcome Fellow Cattlemen to the Leeuwenburgh Angus 30th Annual Bull Sale!

Congratulations to the Leeuwenburgh Family on this tremendous milestone! 30 Years of outstanding sales and service to the industry. Many wonderful moments have been achieved in this very successful program. High selling bulls! Record setting sale averages and new customers to compliment the program every year. The one very important element has never changed - Outstanding People, Outstanding Bulls!

Once again this year, new exciting genetics backed up with powerful performane and calving ease to compliment easy doing and easy keeping cattle. Repeat customers who have shared the success of this proven program, are a true testament to why you should use a Leeuwenburgh bull. This years offering is very strong and very uniform.

Be Part Of This Great Program!!

See you at the sale

Respectfully,

Bob Balog

R.C. (Bob) Balog





SALE DAY PHONES

BALOG AUCTION.....(403) 320-1980
 DENNIS LEEUWENBURGH.....(403) 308-3003
 JOHNNY LEEUWENBURGH.....(403) 382-1794
 JACK LEEUWENBURGH.....(403) 330-6123

SALE STAFF

AUCTIONEER

BOB BALOG

RING STAFF

LOUIS BALOG.....(403) 331-0611
 BRAD BALOG.....(403) 642-7444
 MARK LENZ.....(403) 330-7600

CASTLEROCK MARKETING

SHANE CASTLE.....(306) 741-7485
 DEVIN WARRILOW.....(780) 581-4329
 MARK FORSYTH.....(306) 784-7844

TERMS & CONDITIONS

Cattle will sell under the standard terms & conditions put forward from the breed association and Balog Auction. These are available upon request.

**ALL BULLS ARE FULLY TESTED AND 100% GUARANTEED
 NO BULLS SOLD PRIOR TO THE SALE!**

Everything possible will be done to assure that every bull in this sale will be a breeder. Dr. Mitch Oviatt, (Ranch Docs, Lethbridge) will scrotal measure and physically evaluate every bull. Any animal that has not proven itself within 6 months of sale, (September 30, 2021 if in healthy condition, may be returned to the seller at the buyer's expense. The seller reserves the privilege of trying for a 6-month period to prove the animal a breeder. The seller at his option may either return the purchase price or replace the animal with another of equal quality in full settlement and satisfaction of all claims. Any complaints regarding any animal in this sale shall be made to the breeder. All complaints must be reported in writing by the buyer to the seller within 6 months and any animal returned must be free of disease and in good health.

CATALOGUE INFORMATION

All information is up to date as of publication date. Pedigree's and EPD's are supplied by the Canadian Angus Association, and all other information has been supplied by the seller. Information in this catalogue is believed to be accurate, but any errors discovered in the catalogue, will be corrected by announcements, from the auction stand at sale time, and such corrections will take precedence over the printed matter in this document.

IN - HERD SEMEN INTEREST

Leeuwenburgh Angus reserves the right to draw semen on any bull sold at the buyer's convenience and our cost.

DELIVERY -\$100 CREDIT IF BULL IS TAKEN HOME SALE DAY

Assistance will be given in making delivery after the sale.

PRESALE LUNCH

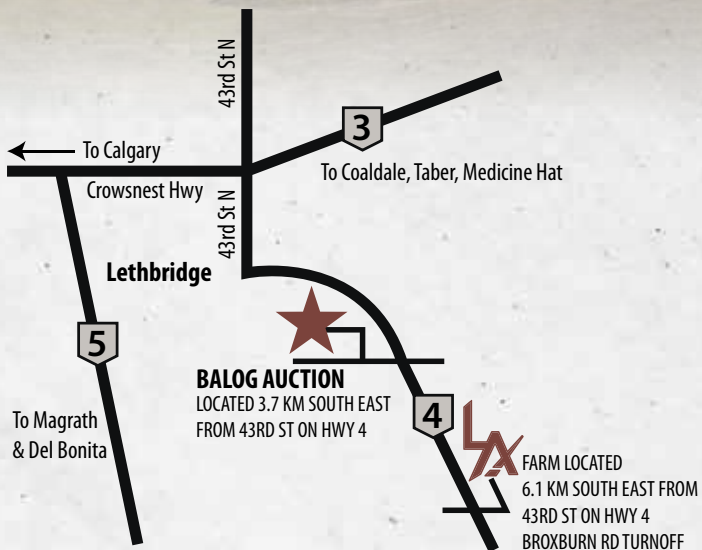
Join us for lunch at 11:30am Sale Day

INSURANCE

Available at Balog Auction Services - Maureen- 403-320-1980
 We strongly suggest you insure your bull purchases.

ACCOMMODATIONS in Lethbridge, less than a 10 minute drive

Hampton Inn & Suites by Hilton.....(403) 942-2142
 Best Western Plus Service Inn & Suites.....(403) 329-6844
 Quality Inn & Suites.....(403) 331-6440
 Fairfield Inn & Suites by Marriott.....(587) 425-0388



In Appreciation

Thanks Josh, BJ & Jordan, for all your help and effort throughout the year!



Josh Pickett



BJ Scheirlink



Jordan Leusink

Internet Bidding Available



Bull videos available online at cattlevids.ca



ELECTRIC 4D DAM-SCARLET 62Z

A



RED LWNBRG ELECTRIC 4D

TED 4D · 1901064 · January 05 2016

RED ANDRAS IN FOCUS B175
 RED ANDRAS FUSION R236
 RED ANDRAS BELLE B167

MYTTY IN FOCUS
 RED DI ESTONIA 316
 RED ANDRAS THUNDER B105
 RED ANDRAS BELLE 416

PERF DATA	
BW	77
WW	910
205D	787
365D	1429

RED LAZY MC COWBOY CUT 26U
 RED LWNBRG SCARLET 62Z
 RED TED GRAND CANYON 144R

RED LAZY MC STOUT 30S
 RED LAZY MC STAR 185M
 RED LCHMN GRND CANYON 1244G
 RED TED INIGA SILVEIRAS

EPDS	BW	WW	YW	M	MAR	REA	CWT
	-2.2	64	108	19	0.22	0.39	41

Electric is a bull that we are excited about for many reasons. He passes on his natural muscle like no Red Angus bull we have used. His dam's track record was exceptional and was lost way too early. Electric's grandam was designated Premier in 2012 by the CAA, with a 107 ratio on 6 calves. His stats combine top of the breed calving ease, with top 1% growth for both weaning and yearling. Electric is now deceased, and we are down to our last ten straws of semen on this powerhouse bull.

1



1



RED LWNBRG WIRELESS 25H

TED 25H · 2149999 · January 14 2020

RED ANDRAS FUSION R236
 RED LWNBRG ELECTRIC 4D
 RED LWNBRG SCARLET 62Z

RED ANDRAS IN FOCUS B175
 RED ANDRAS BELLE B167
 RED LAZY MC COWBOY CUT 26U
 RED TED GRAND CANYON 144R

PERF DATA	
BW	70
WW	830
205D	818
365D	1298

RED BAR-E-L FIRST DOWN 161D
 RED LWNBRG FIRST DOWN 106F
 RED LWNBRG PEACEMAKER 96C

RED CROWFOOT 4ACES 2193Z
 RED BAR-E-L GLORIA 87R
 RED GMRA PEACEMAKER 1216
 RED TED SAKIC 27Z

EPDS	BW	WW	YW	M	MAR	REA	CWT
	-1.1	52	88	22			

- An early stand out, showing great muscle presence, volume, and Angus character
- Hard to fault structure, he travels the pen with a herd bull attitude and has a beautiful front end
- Calving ease and cow making pedigree to back up his impressive stat line
- Herd bull kind of dam and cow family
- WI 108



LOT 2 DAM - FLEX 85C

2 **LX** **RED LWNBRG ELECTRIC 34H**
 TED 34H · 2150006 · January 17 2020

RED ANDRAS FUSION R236
 RED LWNBRG ELECTRIC 4D
 RED LWNBRG SCARLET 62Z

RED MRLA FLEX 49Z
 RED LWNBRG FLEX 85C
 RED TED CATALYST 20Z

RED ANDRAS IN FOCUS B175
 RED ANDRAS BELLE B167
 RED LAZY MC COWBOY CUT 26U
 RED TED GRAND CANYON 144R

MRLA 53W
 RED GET-A-LONG FIREFLY 363
 RED TED CATALYST 107T
 RED TED KINCHEN SAGEBRUSH 163R

PERF DATA	
BW	85
WW	900
205D	818
365D	1418

- Gentle mannered Electric son, with heavy bone and muscle that is sure to add pounds
- Real world beef bull that is a personal favourite, with so many positives to offer
- Massive capacity, great rib shape, and a big correct foot • WI 106 YI 121
- Dam is as equally impressive, has a perfect udder, and stands on good feet
- Grandam 20Z is still producing and is CAA Premier

EPDS	BW	WW	YW	M	MAR	REA	CWT
	0.4	60	96	21	0.22	0.62	34



3 **LX** **RED LWNBRG INFRARED 47H**
 TED 47H · 2150012 · January 21 2020

RED ANDRAS FUSION R236
 RED LWNBRG ELECTRIC 4D
 RED LWNBRG SCARLET 62Z

RED LWNBRG ROLLIN DEEP 90B
 RED LWNBRG CROSS OVER 150D OSF
 RED TED ROMEO 149S OSC

RED ANDRAS IN FOCUS B175
 RED ANDRAS BELLE B167
 RED LAZY MC COWBOY CUT 26U
 RED TED GRAND CANYON 144R

RED BIEBER ROLLIN DEEP Y118
 RED TED KINCHEN SAGEBRUSH 74R
 RED BUF CRK ROMEO L081
 RED TED HOLDEN HI HO 52N

PERF DATA	
BW	87
WW	800
205D	756
365D	1247

- A soggy deep bull that has a lot of style and presence
- A bull that has been popular throughout the summer and will certainly be a favourite come sale day
- Dam is a typical Crossover daughter, with an excellent udder, authentic Angus character and design
- She comes from four generations of cows in her lineage that possess great feet and fleshing ability
- Infrared 47H is the type of bull that will sire consistency, and fill up the replacement pen

EPDS	BW	WW	YW	M	MAR	REA	CWT
	-0.2	45	78	20	0.36	0.08	22

4



4



RED LWNBRG ELECTRIC 49H

TED 49H · 2150013 · January 21 2020

RED ANDRAS FUSION R236
 RED LWNBRG ELECTRIC 4D
 RED LWNBRG SCARLET 62Z

RED ANDRAS IN FOCUS B175
 RED ANDRAS BELLE B167
 RED LAZY MC COWBOY CUT 26U
 RED TED GRAND CANYON 144R

PERF DATA	
BW	98
WW	870
205D	805
365D	1470

RED MESSMER PACKER S008
 RED TED PACKER 134A
 RED TED RED SPREAD 174R

RED MESSMER JOSHUA 019P
 RED MESSMER MILLIE 124P
 RED LCHMN RED SPREAD 1271F
 RED TED FARGO 33L

EPDS	BW	WW	YW	M	MAR	REA	CWT
	0.6	60	109	21	0.22	0.4	40

- Another Electric son that is the pinnacle of performance
- Rugged & massive in his make up, he will certainly sire calves that punch down the scale
- He presents incredible thickness, muscle shape & body depth, with added bone and sound feet
- Dam is a big sound cow, that consistently brings home a heavy calf WI 102, number one ranked YI bull, with a whopping 134

5



5



RED LWNBRG ELECTRIC 50H

TED 50H · 2150014 · January 22 2020

RED ANDRAS FUSION R236
 RED LWNBRG ELECTRIC 4D
 RED LWNBRG SCARLET 62Z

RED ANDRAS IN FOCUS B175
 RED ANDRAS BELLE B167
 RED LAZY MC COWBOY CUT 26U
 RED TED GRAND CANYON 144R

PERF DATA	
BW	82
WW	840
205D	853
365D	1436

RED BAR-E-L FIRST DOWN 161D
 RED LWNBRG FIRST DOWN 109F
 RED LWNBRG ROLLIN DEEP 4C

RED CROWFOOT 4ACES 2193Z
 RED BAR-E-L GLORIA 87R
 RED BIEBER ROLLIN DEEP Y118
 RED TED ROMEO 169S

EPDS	BW	WW	YW	M	MAR	REA	CWT
	0	58	98	23	0.38	0.13	31

- The Electric x First Down mating was a smash hit, and it is evident in Lot 1 and in this calving ease stand out
- Top of the breed growth EPD's, with a WI of 111 and YI 117
- Heavy milking cows in his blood that are moderate and capacious
- Calving ease on both sides of his pedigree, recommended for well-developed heifers

6



6



RED LWNBRG ELECTRIC 6H

TED 6H · 2149987 · January 07 2020

RED ANDRAS FUSION R236
 RED LWNBRG ELECTRIC 4D
 RED LWNBRG SCARLET 62Z

RED ANDRAS IN FOCUS B175
 RED ANDRAS BELLE B167
 RED LAZY MC COWBOY CUT 26U
 RED TED GRAND CANYON 144R

PERF DATA	
BW	80
WW	900
205D	824
365D	1293

RED LWNBRG ROLD GOLD 77C
 RED LWNBRG BELLE 28E
 RED LWNBRG BELLE 89C

RED BIEBER ROLLIN DEEP Y118
 RED CROWFOOT BRNDINA 2063Z
 RED ANDRAS FUSION R236
 RED TED COMBINATION 129T

EPDS	BW	WW	YW	M	MAR	REA	CWT
	-0.4	61	103	22	0.52	0.48	37

- A long-bodied, calving ease bull that gives up nothing in terms of growth
- Clean fronted like his dam
- Like most of Electric's sons, his growth is in the top 1% of the breed
- Weaning index 108

LOT 6 & DAM BELLE 28E





7 **RED LWNBRG ELECTRIC 87H**

TED 87H · 2150031 · January 27 2020

RED ANDRAS FUSION R236
RED LWNBRG ELECTRIC 4D
RED LWNBRG SCARLET 62Z

LWNBRG CROSS OVER 66B
LWNBRG CROSSOVER 186D
TED HARVESTOR 104A

RED ANDRAS IN FOCUS B175
RED ANDRAS BELLE B167
RED LAZY MC COWBOY CUT 26U
RED TED GRAND CANYON 144R

RED BIEBER ROLLIN DEEP Y118
TED BISMARK 50Y
S A V HARVESTOR 0338
RED TED MAKE MY DAY 215P

PERF DATA	
BW	83
WW	815
205D	809
365D	1261

- A unique low birth weight bull, that is nice headed, smooth made, with the right kind of design for mature heifers
- Dam is deep and moderate with ample milk and a flawless udder, typical of all Crossover daughters
- Combines some of our favourite outcross genetics, tracing back to Bismark and Harvestor
- WI 105

EPDS	BW	WW	YW	M	MAR	REA	CWT
	-0.2	60	100	22	0.41	0.12	43

8 **RED LWNBRG ELECTIC 91H**

TED 91H · 2150034 · January 28 2020

RED ANDRAS FUSION R236
RED LWNBRG ELECTRIC 4D
RED LWNBRG SCARLET 62Z

MRLA RELOAD 56C
RED LWNBRG RELOAD 99E
RED TED LARAMIE 21Z

RED ANDRAS IN FOCUS B175
RED ANDRAS BELLE B167
RED LAZY MC COWBOY CUT 26U
RED TED GRAND CANYON 144R

S A V RESOURCE 1441
RED MRLA MISS 641Y
RED GMRA LARAMIE 5110
RED TED COMBINATION 40T

PERF DATA	
BW	80
WW	705
205D	708
365D	1211

EPDS	BW	WW	YW	M	MAR	REA	CWT
	-0.6	42	77	16	0.18	0.51	32

- Impressive low birth weight, Electric son, whose physical appearance will catch your eye
- Stylish, smooth, and sound with a very clean front end and great skull shape
- Dam is a granddaughter of SAV Resource
- Maternal brother also sold as a heifer bull in 2020 to Heins



MAT BROTHER - PROLINE 99G

SAV RESOURCE 1441



- The only Broxburn son to sell this year
- An absolute stand out from birth that has extra length and superb structure
- This high-powered beef bull has a proud herd bull presence, and is at the top of the breed for both weaning and yearling • WI 113 YI 106
- Dam has a perfect foot, udder, is powerful and broody, the kind of cow that will push a herd to the next level

9 **RED LWNBRG BROXBURN 68H**
 TED 68H • 2150026 • January 25 2020

LWNBRG CROSS OVER 66B RED LWNBRG BROXBURN 68D RED TED SHOCO DATA 18W	RED BIEBER ROLLIN DEEP Y118	<table border="1"> <thead> <tr> <th colspan="2">PERF DATA</th> </tr> </thead> <tbody> <tr> <td>BW</td> <td>93</td> </tr> <tr> <td>WW</td> <td>890</td> </tr> <tr> <td>205D</td> <td>874</td> </tr> <tr> <td>365D</td> <td>1399</td> </tr> </tbody> </table>	PERF DATA		BW	93	WW	890	205D	874	365D	1399
	PERF DATA											
BW	93											
WW	890											
205D	874											
365D	1399											
RED SSS CONTENDER 121B RED LWNBRG CONTENDER 4E RED LWNBRG ROLLIN DEEP 104B	RED SHOCO DATA RED TED COMBINATION 40R RED SSS SOLUTION 329Z RED SSS DYNA 688X RED BIEBER ROLLIN DEEP Y118 RED LWNBRG BOXCAR 139X											

EPDS	BW	WW	YW	M	MAR	REA	CWT
	2.6	64	102	23	0.32	0.09	25



10 **RED LWNBRG WESTWARD 104H**
 TED 104H • 2150040 • January 31 2020

RED LWNBRG BROXBURN 68D RED LWNBRG JETSTREAM 47F RED TED MASTER PLAN 42T	LWNBRG CROSS OVER 66B RED TED SHOCO DATA 18W RED BRYLOR MASTER PLAN 17M RED TED GLACIER MARIAS 26L	<table border="1"> <thead> <tr> <th colspan="2">PERF DATA</th> </tr> </thead> <tbody> <tr> <td>BW</td> <td>91</td> </tr> <tr> <td>WW</td> <td>930</td> </tr> <tr> <td>205D</td> <td>895</td> </tr> <tr> <td>365D</td> <td>1363</td> </tr> </tbody> </table>	PERF DATA		BW	91	WW	930	205D	895	365D	1363
	PERF DATA											
BW	91											
WW	930											
205D	895											
365D	1363											
TED HARVESTOR 154A LWNBRG HARVESTOR 79C RED TED MAKE MY DAY 161R	S A V HARVESTOR 0338 RED LWNBRG ANISTON 137S RED BJR MAKE MY DAY 981 RED TED SPECIAL 25K											

EPDS	BW	WW	YW	M	MAR	REA	CWT
	1.4	64	108	21	0.21	0.27	29

- Major league herd sire with powerful phenotype, performance, and cow power that runs very deep in his pedigree
- Massive, long bodied, big hipped with awesome rib shape
- Second ranked calf at weaning, with a 930lb actual weaning weight, for an index of 116
- Outcross genetics on both sides of the pedigree, tracing back to Bismark and Harvestor
- Pedigree has 3 CAA Elite Dams
- His sire Jetstream 475 was a feature bull to Elk Meadows in 2019
- Paternal brother sold to Arend Pelleboer

LOT 10 & DAM HARVESTOR 79C



PATERNAL BROTHER - JETSTREAM 47F



B**RED BAR-E-L FIRST DOWN 161D**

JTL 161D · 1922963 · March 11 2016

XO CROWFOOT 0102X
 RED CROWFOOT 4ACES 2193Z
 RED CROWFOOT MISS STRTCH

RED CROWFOOT MOONSHINE 8081U
 XO CROWFOOT BLACKBIRD 8810U
 RED SSS OLE 746P
 RED CROWFOOT LADY 3320N

PERF DATA

BW	86
WW	720
205D	804
365D	1474

RED BAR-E-L APPROVAL 4L
 RED BAR-E-L GLORIA 87R
 RED BAR-E-L FIRST LADY 95J

RED TER-RON CARLTON 810H
 RED BAR-E-L CLASS 10J
 RED YY RED KNIGHT 640F
 RED LITTLE DE GLORIA 270Y

EPDS	BW	WW	YW	M	MAR	REA	CWT
	-0.1	32	55	22	0.33	0.4	11

First Down has earned a complete confidence as a maternal herd bull. First daughters are beautiful productive young cows. The kind that produce as good as they look. We feel strongly about First Down's ability to raise future donors like his dam 87R and his Elite grandam 95J. Correct in body design, his first sons sold very well, and many are rising to the top of the pen again. His progeny have natural shape and are very balanced. He has proven to be a reliable calving ease herd bull, with 65 progeny averaging 78 pounds, and the calf health and vigour is second to none. No doubt a bull that will have a heavy influence on our herd for years to come. Owned with Dvorak Ranches.

**RED ANGUS****VOLTAGE 154F - MATERNAL BROTHER****11****RED LWNBRG FIRST DOWN 2H**

TED 2H · 2149986 · January 04 2020

RED CROWFOOT 4ACES 2193Z
 RED BAR-E-L FIRST DOWN 161D
 RED BAR-E-L GLORIA 87R

XO CROWFOOT 0102X
 RED CROWFOOT MISS STRTCH
 RED BAR-E-L APPROVAL 4L
 RED BAR-E-L FIRST LADY 95J

PERF DATA

BW	80
WW	840
205D	726
365D	1269

RED TED CATALYST30Y
 RED LWNBRG CATALYST 68B
 RED TED MAKE MY DAY 161R

RED TED CATALYST 107T
 RED TED HOLDEN HI HO 52N
 RED BJR MAKE MY DAY 981
 RED TED SPECIAL 25K

EPDS	BW	WW	YW	M	MAR	REA	CWT
	0.2	39	68	24	0.25	0.44	21

- A unique low birth weight First Down son, that is well balanced and hard to find a hole in, it has been a favourite all summer
- Exceptional cow family that produces quality
- Herd bull structure and herd bull cow family, featuring the same CAA Premier Grandam as Lot 10
- Dam has sons working at Mayfield Colony and Powder Creek Farms
- This First Down son has every quality needed to build a herd around
- YI 109



12



MATERNAL BROTHER - ENDZONE 37F



MATERNAL BROTHER - FIRST DOWN 91G

12



RED LWNBRG FIRST DOWN 101H

TED 101H · 2150038 · January 30 2020

RED CROWFOOT 4ACES 2193Z
RED BAR-E-L FIRST DOWN 161D
RED BAR-E-L GLORIA 87R

RED BRYLOR RED KODIAK 3A
RED LWNBRG KODIAK 121C
RED TED WANDER 119A

XO CROWFOOT 0102X
RED CROWFOOT MISS STRTCH
RED BAR-E-L APPROVAL 4L
RED BAR-E-L FIRST LADY 95J

BLACK BRYLOR KODIAK 204Y
RED BRYLOR FAYETTE 40Y
RED GET-A-LONG WANDER 90S
RED TED SPITFIRE 96Y

PERF DATA	
BW	84
WW	700
205D	671
365D	1100

EPDS	BW	WW	YW	M	MAR	REA	CWT
	0.3	32	57	21	0.16	0.5	23

- Phenotypic standout by First Down with good shape and style
- Calving ease front end and skull shape
- His perfect footed dam has a great production record with a herd sire working at Tempest Angus and another son at Cavan Ranches

13



RED LWNBRG FIRST DOWN 110H

TED 110H · 2150042 · January 31 2020

RED CROWFOOT 4ACES 2193Z
RED BAR-E-L FIRST DOWN 161D
RED BAR-E-L GLORIA 87R

RED 5L DEFENDER 560-30Z
RED LWNBRG DEFENDER 99F
RED LWNBRG ROLLIN DEEP 123D

XO CROWFOOT 0102X
RED CROWFOOT MISS STRTCH
RED BAR-E-L APPROVAL 4L
RED BAR-E-L FIRST LADY 95J

RED 5L ADVOCATE 817-14W
5L BLACK ADINA 525-560
RED LWNBRG ROLLIN DEEP 90B
RED TED COMBINATION 129T

PERF DATA	
BW	70
WW	840
205D	882
365D	1430

EPDS	BW	WW	YW	M	MAR	REA	CWT
	-1.6	46	75	25	0.49	0.18	16

- Elite, calving ease First Down son, that must be seen in person to be appreciated
- He checks all the boxes with a great skull, good neck extension and smooth shoulder, with added length of spine
- A 117 weaning index, ranking him #1 in the entire 2021 offering
- YI 110 • These First Down bulls offer incredible balance and maternal value



FIRST DOWN 161D

C



RED LWNBRG QUADTRAC 61F

TED 61F · 2053391 · January 19 2018

TED HARVESTOR 154A
RED LWNBRG HARVESTOR 103C
RED LWNBRG CADENCE 141Y

RED TED CHATEAU 142Y
RED LWNBRG CHATEAU 69B
RED TED SPITFIRE 96Y

S A V HARVESTOR 0338
RED LWNBRG ANISTON 137S
RED BLADES NATURAL 11W
RED LWNBRG OPTIMA 100W

RED GLACIER CHATEAU 744
RED TED RAMBLER 52L
RED TED MAKE MY DAY 31R
RED TED BECTON LANCER 127N

PERF DATA	
BW	96
WW	805
205D	782
365D	1362

EPDS	BW	WW	YW	M	MAR	REA	CWT
	5.4	57	101	19	0.09	0.58	33

A sale feature in our 2019 sale to Ross Ranches. A unique individual in pedigree, mixing some of our latest out cross bloodlines with some time proven cow making genetics on his maternal side. His dam is the ideal angus cow, with superior foot quality. The Chateau and Make My Day cows always rise to the top of the herd in terms of fertility, function and longevity. 69B was flushed in the spring and will be a foundation cow in our program for years to come. Quadtrac himself proved to be an excellent breeder and has passed on his length, growth and dark red hair coat to his progeny.



DAM - CHATEAU 69B



FULL BROTHER - TRACTION 57E
OWNED BY MCINTYRE RANCHING CO

14



RED LWNBRG QUADTRAC 94H

TED 94H · 2150035 · January 29 2020

RED LWNBRG HARVESTOR 103C
RED LWNBRG QUADTRAC 61F
RED LWNBRG CHATEAU 69B

TED HARVESTOR 154A
RED LWNBRG CADENCE 141Y
RED TED CHATEAU 142Y
RED TED SPITFIRE 96Y

PERF DATA

BW	87
WW	820
205D	799
365D	1222

RED ANDRAS FUSION R236
RED LWNBRG FUSION 7D
RED LWNBRG ROLLIN DEEP 36B

RED ANDRAS IN FOCUS B175
RED ANDRAS BELLE B167
RED BIEBER ROLLIN DEEP Y118
RED TED LODI PRINCE 155P

EPDS	BW	WW	YW	M	MAR	REA	CWT
	4.2	54	95	25	0.38	0.43	35

- Super fronted Quadtrack son, with a lot of shape, muscle, and Angus character
- First class cow family with Granddam being designated CAA Premier and great Grandam CAA Elite
- The Fusion mama cows have really risen to the top of our herd with fertility and consistent production



15



RED LWNBRG PREMIER 38H

TED 38H · 2150008 · January 18 2020

RED LWNBRG HARVESTOR 103C
RED LWNBRG QUADTRAC 61F
RED LWNBRG CHATEAU 69B

TED HARVESTOR 154A
RED LWNBRG CADENCE 141Y
RED TED CHATEAU 142Y
RED TED SPITFIRE 96Y

PERF DATA

BW	86
WW	870
205D	832
365D	1309

LWNBRG CROSS OVER 66B
LWNBRG CROSSOVER 182D
RED LWNBRG IMPACT 88B

RED BIEBER ROLLIN DEEP Y118
TED BISMARK 50Y
RED LWNBRG IMPACT 91Z
RED TED DAKOTA COPPER 11U

EPDS	BW	WW	YW	M	MAR	REA	CWT
	3.1	56	91	25	0.22	0.5	33

- A big-time herd sire prospect with extra length, muscle, and growth
- High end performance and outcross genetics from both sides of his pedigree
- Superior structure and fault free movement that really commands your attention
- Crossover dam that has a beautiful udder and ideal body type
- A bull that will no doubt fill the replacement pen
- Paternal brother sold to M Bar Ranch in 2020
- WI 108



16



RED LWNBRG QUADTRAC 35H

TED 35H · 2150007 · January 17 2020

RED LWNBRG HARVESTOR 103C
RED LWNBRG QUADTRAC 61F
RED LWNBRG CHATEAU 69B

TED HARVESTOR 154A
RED LWNBRG CADENCE 141Y
RED TED CHATEAU 142Y
RED TED SPITFIRE 96Y

PERF DATA

BW	94
WW	790
205D	747
365D	1267

RED FABULOUS FRONT LINE 315N
RED TED FRONTLINE 92W
RED TED GLACIER MARIAS 26L

RED MEADOW CK 904 52K
RED CRESCENT CREEK ANNIE 1G
RED GLACIER MARIAS 548
RED TED BARNEY 3X

EPDS	BW	WW	YW	M	MAR	REA	CWT
	3.1	38	63	22	0.08	0.37	15

- A smooth long bodied bull that is athletic and emulates a lot of the same characteristics as his sire
- Built for hard country with the fertility, consistency, and low inputs
- Dam has some solid old school genetics going back to Crescent Creek Annie 1G & Marias 26L
- Paternal brothers have sold to John Haarman and Ken Gruninger





LOT 17 & DAM FUSION 96D

17



RED LWNBRG QUADTRAC 7H

TED 7H · 2169512 · January 10 2020

RED LWNBRG HARVESTOR 103C
 RED LWNBRG QUADTRAC 61F
 RED LWNBRG CHATEAU 69B

TED HARVESTOR 154A
 RED LWNBRG CADENCE 141Y
 RED TED CHATEAU 142Y
 RED TED SPITFIRE 96Y

PERF DATA	
BW	88
WW	830
205D	751
365D	1311

RED ANDRAS FUSION R236
 RED LWNBRG FUSION 96D
 RED LWNBRG ROLLIN DEEP 104B

RED ANDRAS IN FOCUS B175
 RED ANDRAS BELLE B167
 RED BIEBER ROLLIN DEEP Y118
 RED LWNBRG BOXCAR 139X

EPDS	BW	WW	YW	M	MAR	REA	CWT
	1.9	46	78	20	0.34	0.4	22

- An attractive blend of length, style, and balance from this Quadtrack son
- Dam is the front pasture kind that seems to do everything right, and has since entered the donor pen
- Her first two sons were calving ease bulls that sold to Ryan Gogolinski and Heins
- YI 113



18

GRP

FRONTIER 28C

18



RED LWNBRG QUADTRAC 116H

TED 116H · 2150045 · February 03 2020

- As you enter the bullpen this stand out will be the first to greet you
- He is thick, muscular, and stout rumped, with a stylish look and sound structure
- His dam is well on her way to continuing her mama's great production record
- These cows are moderate, efficient, and tanky, they possess high fertility, always calving at the front of the group
- A grass roots cow family based on genetics we built our herd around

RED LWNBRG HARVESTOR 103C
 RED LWNBRG QUADTRAC 61F
 RED LWNBRG CHATEAU 69B

TED HARVESTOR 154A
 RED LWNBRG CADENCE 141Y
 RED TED CHATEAU 142Y
 RED TED SPITFIRE 96Y

PERF DATA	
BW	83
WW	720
205D	740
365D	1235

RED LWNBRG FRONTIER 28C
 RED LWNBRG FRONTIER 26E
 RED LWNBRG IMPACT 96B

RED BRYLOR RED KODIAK 3A
 RED TED PATRIOT 66Z
 RED LWNBRG IMPACT 91Z
 RED TED MAKE MY DAY 57L

EPDS	BW	WW	YW	M	MAR	REA	CWT
	2.1	48	80	21	0.06	0.58	32



19



RED LWNBRG QUADTRAC 31H

TED 31H · 2150005 · January 16 2020

RED LWNBRG HARVESTOR 103C
 RED LWNBRG QUADTRAC 61F
 RED LWNBRG CHATEAU 69B

TED HARVESTOR 154A
 RED LWNBRG CADENCE 141Y
 RED TED CHATEAU 142Y
 RED TED SPITFIRE 96Y

PERF DATA	
BW	97
WW	900
205D	816
365D	1382

RED BIEBER ROLLIN DEEP Y118
 RED LWNBRG ROLLIN DEEP 85B
 RED TED OLES OSCAR 74Z

RED BIEBER ROOSEVELT W384
 RED BIEBER TILLY 399W
 RED CROWFOOT OLE'S OSCAR 2042M
 RED TED SHOCO DATA 18W

EPDS	BW	WW	YW	M	MAR	REA	CWT
	3.6	55	99	24	0.36	0.49	34

- A massive deep long bodied Quadtrac son with chart topping performance
- He came off the dam at over 900 pounds for a weaning index of 104 and finished with a yearling index of 114
- His dam was designated CAA Elite in 2020 with a 110 ratio on five cows
- We have two of her daughters retained in our herd, and she has since entered the donor program
- Maternal brother sold in 2020 to Ben Cooksley



MATERNAL SISTER - HARVESTOR 20F



MATERNAL BROTHER - FALLOUT 100G



DAM - ROLLIN DEEP 85B

20



RED LWNBRG HARVESTOR 133H

TED 133H · 2150051 · February 10 2020

TED HARVESTOR 154A
 RED LWNBRG HARVESTOR 41E
 RED TED KARWEIK 74T

S A V HARVESTOR 0338
 RED LWNBRG ANISTON 137S
 RED BRYLOR/WSP KARWEIK 1P
 RED TED NEW TREND 53N

PERF DATA	
BW	87
WW	750
205D	769
365D	1244

RED LAZY MC GUNNER 144B
 RED LWNBRG GUNNER 121D
 RED TED MULBERRY 95U

RED LAZY MC TROOPER 21Y
 RED LAZY MC STAR 185M
 RED FINE LINE MULBERRY 26P
 RED TED KICHEN SAGEBRUSH 109P

EPDS	BW	WW	YW	M	MAR	REA	CWT
	2.7	43	78	17	0.33	0.28	25

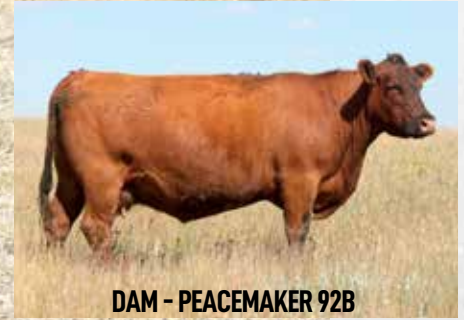
- A Harvester son that displays length, muscle, and balance from a strong maternal line
- His beautiful dam has ideal body type, with impeccable udder quality, and perfect feet
- Maternal side of the pedigree is anchored by two legendary cow makers, in Mulberry 26P and Sagebrush 487
- Maternal brother sold in 2019 to Kal Kota Ranch



DAM - GUNNER 121D



21



DAM - PEACEMAKER 92B

- A personal favourite that is structurally correct in an attractive package
- His donor dam is one of the top cows in our herd and is a ranch favorite, with stellar phenotype, impeccable udder, foot quality and high-level milk production, she has three daughters working in our herd
- Monumental maternal value in this Harvester son
- Maternal brother working at Lone Stone Farms and another at Powder Creek

21



RED LWNBRG HARVESTOR 131H

TED 131H · 2150050 · February 09 2020

TED HARVESTOR 154A
 RED LWNBRG HARVESTOR 41E
 RED TED KARWEIK 74T

S A V HARVESTOR 0338
 RED LWNBRG ANISTON 137S
 RED BRYLOR/WSP KARWEIK 1P
 RED TED NEW TREND 53N

RED GMRA PEACEMAKER 1216
 RED LWNBRG PEACEMAKER 92B
 RED TED NEW TREND 108P

RED FRITZ JUSTICE 8013
 RED GMRA THELMA 930
 RED BRYLOR NEW TREND 22D
 RED TED BOOM BOOM 55H

PERF DATA	
BW	97
WW	750
205D	750
365D	1207

EPDS	BW	WW	YW	M	MAR	REA	CWT
	3.7	39	73	21	0.43	0.26	23

22



22



RED LWNBRG HARVESTOR 168H

TED 168H · 2150072 · February 23 2020

TED HARVESTOR 154A
 RED LWNBRG HARVESTOR 41E
 RED TED KARWEIK 74T

S A V HARVESTOR 0338
 RED LWNBRG ANISTON 137S
 RED BRYLOR/WSP KARWEIK 1P
 RED TED NEW TREND 53N

RED LWNBRG ROLLIN DEEP 90B
 RED LWNBRG ROLLIN DEEP 123D
 RED TED COMBINATION 129T

RED BIEBER ROLLIN DEEP Y118
 RED TED KINCHEN SAGEBRUSH 74R
 RED LSF COMBINATION A301M
 RED TED MAKE MY DAY 57L

PERF DATA	
BW	88
WW	690
205D	750
365D	1224

EPDS	BW	WW	YW	M	MAR	REA	CWT
	2.5	35	63	20	0.43	0.33	21

- Harvester son with extra extension, growth, and frame in a smooth design
- His dam is a daughter of the 90B herd bull that resides at MC Quantock
- Three generations of extremely strong footed cows

RED LWNBRG HARVESTOR 41E
 SIRE OF LOTS 20, 21, 22



74T & 41E





MATERNAL BROTHER - HARVESTOR 46E

23



RED LWNBRG HARVESTOR 161H

TED 161H · 2150067 · February 19 2020

TED HARVESTOR 154A
RED LWNBRG HARVESTOR 103C
RED LWNBRG CADENCE 141Y

RED BIEBER ROLLIN DEEP Y118
RED LWNBRG ROLLIN DEEP 25C
RED TED SAKIC 3W

S A V HARVESTOR 0338
RED LWNBRG ANISTON 137S
RED BLADES NATURAL 11W
RED LWNBRG OPTIMA 100W

RED BIEBER ROOSEVELT W384
RED BIEBER TILLY 399W
RED SIX MILE SAKIC 832S
RED TED CHATEAU 15T

PERF DATA	
BW	88
WW	685
205D	716
365D	1230

- The fact that this bull is as good as he is for being one of the youngest in the offering, is absolutely no surprise as his dam is one of our top producers
- Superior shape and muscle, he catches your eye
- He will produce the type of females that thrive in any environment and produce at a high level
- A maternal brother is a herd sire at Mcgowan's, and another brother was a sale feature in 2020 to M Bar Ranch

EPDS	BW	WW	YW	M	MAR	REA	CWT
	1.8	47	82	19	0.37	0.3	39

24



RED LWNBRG HARDTOP 8H

TED 8H · 2169504 · January 10 2020

RED YCLC COPENHAGEN 653C
RED U2 NOVA 627F
RED U-2 LADY 368C

RED HOWE MAGNUM 169W
RED U2 MISS 194Z
RED FLYING K MS COPPER 82N

RED U-2 AUTHENTIC 139A
RED YCLC COUNTESS 265Z
RED U-2 RECON 192Y
RED U-2 LADY 21Z

RED LAZY MC HUSTLE 18T
RED HOWE MS MAT 216N
RED CREEK SIDE COPPER
RED FLYING K MISS PATRIOT 21A

PERF DATA	
BW	88
WW	870
205D	770
365D	1250

EPDS	BW	WW	YW	M	MAR	REA	CWT
	1.7	44	76	25	0.21	-0.03	20

- This Nova son came from a nice uddered, super footed Magnum daughter that we purchased at the U2 dispersal, an attractive clean fronted bull that displays extra length and natural thickness
- He carries a unique pedigree combining genetics from the outcross Creek Side Copper, that has been in the breed for 40 years, and the top of the breed growth bull Nova 627F



NOVA 627F - SIRE OF LOTS 24 & 25

25



DAM - BEAUTY 237E



25



RED LWNBRG NOVA 169H

TED 169H · 2185086 · February 24 2020

RED YCLC COPENHAGEN 653C
 RED U2 NOVA 627F
 RED U-2 LADY 368C

RED U-2 AUTHENTIC 139A
 RED YCLC COUNTESS 265Z
 RED U-2 RECON 192Y
 RED U-2 LADY 21Z

PERF DATA	
BW	83
WW	700
205D	787
365D	1261

RED U-2 RENOWN 193C
 RED U2 BEAUTY 237E
 RED U2 BEAUTY 319W

RED U-2 RECKONING 149A
 RED U-2 ENVIOUS 147X
 RED U-2 BIG LEAGUE 544R
 RED FLYING K BEAUTY 11N

EPDS	BW	WW	YW	M	MAR	REA	CWT
	3.8	55	86	20			

- Moderate, stout, packed full of muscle with that herd bull character
- His dam was a cow that we knew we had to own when we first saw her at Unger's, beautifully designed Angus cow with outstanding feet and udder
- Her first son sold to M Diamond Angus, and we expect many more great things from this cow in years to come
- Recommended for heifers and cows

26



BLUE COLLAR 295E - SIRE OF LOTS 26 & 27



DAM - DYNASTY 399Y

26



RED LWNBRG BLUESTONE 84H

TED 84H · 2171142 · January 26 2020

RED U-2 RECKONING 149A
 RED U2 BLUE COLLAR 295E
 RED U-2 ANEXA 439A

RED U-2 RECON 192Y
 RED U-2 ANEXA 271Y
 RED MINBURN COPENHAGEN 3Y
 RED U-2 ANEXA 443Y

PERF DATA	
BW	99
WW	840
205D	793
365D	1261

RED FLYING K AMBUSH 51T
 RED U-2 DYNASTY 399Y
 RED U-2 DYNASTY 4014P

RED SVR AMBUSH 59P
 RED FLYING K MS DYNAMO 122P
 RED U-2 DYNASTY 320M
 RED U-2 EMILY 229M

EPDS	BW	WW	YW	M	MAR	REA	CWT
	4.6	44	71	26	0.32	-0.05	11

- A bull that will surely grab your attention with his powerful phenotype, incredible thickness, muscle dimension, length, and superior structure
- We love it when power bulls have a great length of spine, like this stud
- His dam is a big strong, deep ribbed mama cow, that has top of the breed fertility and functionality
- Straight Canadian pedigree

27



DAM - MISTY 258B



27



RED LWNBRG BLUE COLLAR 67H

TED 67H · 2185018 · January 24 2020

RED U-2 RECKONING 149A
 RED U2 BLUE COLLAR 295E
 RED U-2 ANEXA 439A

RED U-2 RECON 192Y
 RED U-2 ANEXA 271Y
 RED MINBURN COPENHAGEN 3Y
 RED U-2 ANEXA 443Y

PERF DATA	
BW	93
WW	770
205D	721
365D	1167

RED U-2 STRIKE FORCE 24Y
 RED U-2 MISTY 258B
 RED U-2 MISTY 421Y

RED U2 MISSION 61W
 RED U-2 LASSIE 8012U
 RED HOWE MAGNUM 169W
 RED U2 MISTY 110W

EPDS	BW	WW	YW	M	MAR	REA	CWT
	2.1	43	71	26			

- A high-quality Blue Collar son with plenty of gas in his tank and a great future ahead of him
- His beautiful Strike Force dam has ideal body type and superb udder quality
- He possesses all the qualities of a dominant cow maker
- All Canadian pedigree

D**RED TOPHAM MCLOVIN 757E**

TOP 757E · 1961020 · March 16 2017

RED T-K RECOIL 72Y
 RED DWAJO SUNDANCE 114A
 RED DWAJO LUCY 21T

RED BAR-E-L WARDEN 144W
 RED T-K ANNA 54T
 RED U-2 ALL STAR 1513R
 RED DWAJO LUCY 73N

RED FLYING K PATRICK 85S
 RED TOPHAM MS MADONA 977W
 RED TOPHAM MS MADONA 754T

RED PATRIOT 629 OSF
 RED FLYING K BERRY 141K
 RED BRYLOR SDL RICHTER 212R
 RED TOPHAM MS MADONNA 438P

PERF DATA	
BW	91
WW	710
205D	770
365D	1218

EPDS	BW	WW	YW	M	MAR	REA	CWT
	1.5	48	82	28			

McLovin was added to our sire lineup through AI in 2019. He was the feature bull at Topham's sale and was admired for his sound structure, great foot, and abundance of natural muscle. He has stamped his calves with these exact qualities. After seeing his dam, we knew this was a bull we could confidently breed into our herd. His daughters look very promising with loads of depth, shape and true Angus character.

**RED ANGUS****28****RED LWNBRG CRAFTSMAN 18H**

TED 18H · 2182680 · January 13 2020

RED DWAJO SUNDANCE 114A
 RED TOPHAM MCLOVIN 757E
 RED TOPHAM MS MADONA 977W

RED T-K RECOIL 72Y
 RED DWAJO LUCY 21T
 RED FLYING K PATRICK 85S
 RED TOPHAM MS MADONA 754T

RED ANDRAS FUSION R236
 RED LWNBRG FUSION 5D
 RED TED CATALYST 20W

RED ANDRAS IN FOCUS B175
 RED ANDRAS BELLE B167
 RED TED CATALYST 107T
 RED TED HOBO 76H

PERF DATA	
BW	83
WW	820
205D	750
365D	1207

EPDS	BW	WW	YW	M	MAR	REA	CWT
	-0.5	39	69	24			

- A super complete McLovin son, balanced in both phenotype and numbers
- Big, deep, massive bull, with abundant rib, shape, muscle, and true Angus character
- These McLovin sons will be appreciated for their bone, muscle, sound feet, and skull shape
- This bull's dam is moderate and deep ribbed, and has been an excellent producer
- Maternal sister is one of the top bred heifers we have to calve this year



29



- A Mclovin son with extra extension, deep middled, with softness in a smooth patterned package
- He is backed by three generations of maternally superior females, that excel with very low input
- This gentle natured herd sire has all the qualities that drive profit in our industry
- Maternal brothers working for Crystal Springs Farming and Steve Schlaht

29



RED LWNBRG MCLOVIN 97H

TED 97H · 2182696 · January 30 2020

RED DWAJO SUNDANCE 114A
 RED TOPHAM MCLOVIN 757E
 RED TOPHAM MS MADONA 977W

RED T-K RECOIL 72Y
 RED DWAJO LUCY 21T
 RED FLYING K PATRICK 85S
 RED TOPHAM MS MADONA 754T

TED HARVESTOR 154A
 RED LWNBRG HARVESTOR 41C
 RED TED KINCHEN SAGEBRUSH 163R

S A V HARVESTOR 0338
 RED LWNBRG ANISTON 137S
 RED KINCHEN SAGEBRUSH 487
 RED TED BASIN DRIFTER 95M

PERF DATA	
BW	85
WW	850
205D	814
365D	1294

EPDS	BW	WW	YW	M	MAR	REA	CWT
	1.2	51	83	23			

30



30



RED LWNBRG MCLOVIN 43H

TED 43H · 2182685 · January 20 2020

RED DWAJO SUNDANCE 114A
 RED TOPHAM MCLOVIN 757E
 RED TOPHAM MS MADONA 977W

RED T-K RECOIL 72Y
 RED DWAJO LUCY 21T
 RED FLYING K PATRICK 85S
 RED TOPHAM MS MADONA 754T

RED LWNBRG FRONTIER 28C
 RED LWNBRG FRONTIER 23E
 RED TED SAKIC 16Y

RED BRYLOR RED KODIAK 3A
 RED TED PATRIOT 66Z
 RED SIX MILE SAKIC 832S
 RED TED LODI PRINCE 155P

PERF DATA	
BW	77
WW	750
205D	728
365D	1157

EPDS	BW	WW	YW	M	MAR	REA	CWT
	0.2	40	66	25			

- Calving ease bull with a neat look, that combines muscle and structural soundness
- Straight Canadian pedigree, with a beautiful up and coming dam, that has a son working at Leslie Obbagy
- He travels well and will be perfect for the heifer pen

DAM - FRONTIER 23E



31



RED LWNBRG MCLOVIN 88H

TED 88H · 2182695 · January 27 2020

RED DWAJO SUNDANCE 114A
RED TOPHAM MCLOVIN 757E
RED TOPHAM MS MADONA 977W

RED T-K RECOIL 72Y
RED DWAJO LUCY 21T
RED FLYING K PATRICK 85S
RED TOPHAM MS MADONA 754T

PERF DATA	
BW	87
WW	790
205D	764
365D	1221

RED ANDRAS FUSION R236
RED LWNBRG FUSION 125D
RED TED COWBOY CUT 56Z

RED ANDRAS IN FOCUS B175
RED ANDRAS BELLE B167
RED LAZY MC COWBOY CUT 26U
RED TED CHEYENNE 20U

EPDS	BW	WW	YW	M	MAR	REA	CWT
	1.2	41	77	22			

- Big, bold, bone and muscle, with added length, is what comes to mind when you see this guy move around the pen
- Rancher kind of bull, with solid feet and authentic Angus character
- Demonstrates pounds in the right package with masculinity and added frame



31

32



RED LWNBRG MCLOVIN 112H

TED 112H · 2182699 · February 02 2020

RED DWAJO SUNDANCE 114A
RED TOPHAM MCLOVIN 757E
RED TOPHAM MS MADONA 977W

RED T-K RECOIL 72Y
RED DWAJO LUCY 21T
RED FLYING K PATRICK 85S
RED TOPHAM MS MADONA 754T

PERF DATA	
BW	82
WW	800
205D	814
365D	1277

RED LWNBRG HARVESTOR 103C
RED LWNBRG HARVESTOR 105E
RED LWNBRG KODIAK 35C

TED HARVESTOR 154A
RED LWNBRG CADENCE 141Y
RED BRYLOR RED KODIAK 3A
RED XO CROWFOOT VERNICE 2453Z

EPDS	BW	WW	YW	M	MAR	REA	CWT
	0.5	52	85	24			

- A bull that would work well on heifers
- Nice headed, smooth shouldered, with added length and attractive profile
- Dam is beautiful uddered, moderate in size, and had another low BW calf early this year already
- Straight Canadian pedigree, with strong feet
- Weaning index of 106



32

33



RED LWNBRG MCLOVIN 103H

TED 103H · 2182697 · January 31 2020

RED DWAJO SUNDANCE 114A
RED TOPHAM MCLOVIN 757E
RED TOPHAM MS MADONA 977W

RED T-K RECOIL 72Y
RED DWAJO LUCY 21T
RED FLYING K PATRICK 85S
RED TOPHAM MS MADONA 754T

PERF DATA	
BW	80
WW	760
205D	769
365D	1232

RED LWNBRG HARVESTOR 103C
RED LWNBRG HARVESTOR 127E
RED TED GRID MAKER 18Z

TED HARVESTOR 154A
RED LWNBRG CADENCE 141Y
RED HG GRIDMAKER 806
RED TED DAKOTA COPPER 167W

EPDS	BW	WW	YW	M	MAR	REA	CWT
	1.7	48	85	20			

- Smooth patterned bull, with a calving ease conformation
- Low BW bull that still has enough muscle, shape, and masculinity that he could easily graduate to the cowherd as he matures
- These balanced Mclovin sons have a lot to like about them, and will make a lot of cowboys' short lists on sale day



33

34



MATERNAL BROTHER - PROLINE 80G



34



RED LWNBRG MCLOVIN 147H

TED 147H · 2182700 · February 16 2020

RED DWAJO SUNDANCE 114A
RED TOPHAM MCLOVIN 757E
RED TOPHAM MS MADONA 977W

RED T-K RECOIL 72Y
RED DWAJO LUCY 21T
RED FLYING K PATRICK 85S
RED TOPHAM MS MADONA 754T

PERF DATA	
BW	99
WW	650
205D	707
365D	1176

RED ANDRAS FUSION R236
RED LWNBRG FUSION 33E
RED TED NETWORK 53A

RED ANDRAS IN FOCUS B175
RED ANDRAS BELLE B167
RED BADLANDS NET WORTH 23U
RED TED KINCHEN SAGEBRUSH 16R

EPDS	BW	WW	YW	M	MAR	REA	CWT
	3.3	38	72	26			

- A moderate framed bull that is easy to look at, with a great hair coat
- Super complete, with depth and plenty of shape
- Dam was injured late in the spring which may contribute to a lower weaning weight, but he sure made-up lost ground in a hurry
- Maternal brother was a sale feature to the top producing cowherd at Wolfcreek
- Could be sale sleeper with great potential
- Grandam is CAA Elite with a 109 ratio on 5 calves

35



HARVESTOR 35G
MATERNAL BROTHER OF
LOTS 35 & 36



35



RED LWNBRG MCLOVIN 78H

TED 78H · 2182692 · January 26 2020

RED DWAJO SUNDANCE 114A
RED TOPHAM MCLOVIN 757E
RED TOPHAM MS MADONA 977W

RED T-K RECOIL 72Y
RED DWAJO LUCY 21T
RED FLYING K PATRICK 85S
RED TOPHAM MS MADONA 754T

PERF DATA	
BW	66
WW	700
205D	697
365D	

RED ANDRAS FUSION R236
RED LWNBRG FUSION 8E
RED LWNBRG PEACEMAKER 92B

RED ANDRAS IN FOCUS B175
RED ANDRAS BELLE B167
RED GMRA PEACEMAKER 1216
RED TED NEW TREND 108P

EPDS	BW	WW	YW	M	MAR	REA	CWT
	0.1	44	75	28			

- These two Mclovin twins more than hold their own with the rest of the group
- One of the top cow families on our ranch
- Dam is a moderate, deep belly dragger
- 8E's first son is working at Park Livestock
- Real world ranch bulls, with muscle, thickness, and built for ranch country

36



36



RED LWNBRG MCLOVIN 79H

TED 79H · 2182691 · January 26 2020

RED DWAJO SUNDANCE 114A
RED TOPHAM MCLOVIN 757E
RED TOPHAM MS MADONA 977W

RED T-K RECOIL 72Y
RED DWAJO LUCY 21T
RED FLYING K PATRICK 85S
RED TOPHAM MS MADONA 754T

PERF DATA	
BW	68
WW	640
205D	641
365D	

RED ANDRAS FUSION R236
RED LWNBRG FUSION 8E
RED LWNBRG PEACEMAKER 92B

RED ANDRAS IN FOCUS B175
RED ANDRAS BELLE B167
RED GMRA PEACEMAKER 1216
RED TED NEW TREND 108P

EPDS	BW	WW	YW	M	MAR	REA	CWT
	0.1	44	75	28			

F**RED SIX MILE JOHN WICK 882E**

SIXM 882E · 1994984 · February 19 2017

RED U-2 RECON 192Y
RED U-2 RECKONING 149A
RED U-2 ANEXA 271YRED BRYLOR WEST JET 69W
RED U-2 LARKABA 8133U
RED HOWE MAGNUM 169W
RED U-2 ANEXA 333NRED 6 MILE FULL THROTTLE 171T
RED SIX MILE & CO GLORIA 29A
RED SIX MILE GLORIA 746WRED TER-RON FULLY LOADED 540R
RED SIX MILE WITZEL 360J
RED 5L NORSEMAN KING 229I
RED SIX MILE GLORIA 361T**PERF DATA**

BW	78
WW	701
205D	694
365D	1382

EPDS	BW	WW	YW	M	MAR	REA	CWT
	1.2	64	121	24			

We felt confident we could infuse John Wick into our herd through AI. A bull that is sound in structure and offers a lot of growth and has that head turning look. His first calf crop here is outstanding with a couple sons that will no doubt be sale highlights. His daughters look the part and are correct in body design. After seeing John Wick's calves develop through the early spring, we knew we had to keep his genetics in our herd and we were fortunate enough to get semen on his red carrier son, Pro Elimination 234G. His first calves are hitting the ground now and will be a big part of our breeding in the future.

**RED ANGUS****37****37****RED LWNBRG WICK 85H**

TED 85H · 2168798 · January 26 2020

RED U-2 RECKONING 149A
RED SIX MILE JOHN WICK 882E
RED SIX MILE & CO GLORIA 29ARED U-2 RECON 192Y
RED U-2 ANEXA 271Y
RED 6 MILE FULL THROTTLE 171T
RED SIX MILE GLORIA 746WRED LWNBRG ELECTRIC 4D
RED LWNBRG ELECTRIC 76F
RED LWNBRG CROSS OVER 150DRED ANDRAS FUSION R236
RED LWNBRG SCARLET 62Z
RED LWNBRG ROLLIN DEEP 90B
RED TED ROMEO 149S**PERF DATA**

BW	82
WW	840
205D	866
365D	1294

EPDS	BW	WW	YW	M	MAR	REA	CWT
	0.5	64	113	23			

**DAM - ELECTRIC 76F
FULL SISTER TO HERDSIRE ELECTRIC 4D**

- A Wick son that has the look and performance of a big-time herd sire
- Started light and exploded for a wean index of 113 and has top 1% of the breed growth numbers to back it up
- Thick topped with tremendous volume, depth, and muscle
- His dam is already one of the best-looking cows we've ever raised with expanded width and tremendous power in a beautiful package
- Her full brother sells as Lot 3
- Grandam 150D is a donor cow for us, and her sire 90B has over 40 daughters working in the MC Quantock herd



38



GPR

38



RED LWNBRG WICK 81H

TED 81H · 2168799 · January 26 2020

RED U-2 RECKONING 149A
 RED SIX MILE JOHN WICK 882E
 RED SIX MILE & CO GLORIA 29A

RED U-2 RECON 192Y
 RED U-2 ANEXA 271Y
 RED 6 MILE FULL THROTTLE 171T
 RED SIX MILE GLORIA 746W

PERF DATA	
BW	77
WW	850
205D	875
365D	1446

RED BRYLOR AUTOMATIC 95B
 RED LWNBRG AUTOMATIC 143F
 RED LWNBRG PEACEMAKER 95B

RED WHEEL DODGE CITY 61Y
 BLACK BRYLOR LAKME 155Y
 RED GMRA PEACEMAKER 1216
 RED TED CATALYST 72Y

EPDS	BW	WW	YW	M	MAR	REA	CWT
	1.2	62	107	26	0.31	0.34	40

- A personal favourite of mine, that has been flat out good from the day he was born
- Rugged and robust, the kind that ranchers love to own
- Calving ease Wick son, that will be a very versatile breeding tool, and pass on top of the breed performance
- Wean and yearling indexes of 115
- Strong maternal merit, heavy milking, fertile cows with excellent udder quality throughout his pedigree
- Dam has three sisters retained in our herd and a maternal brother sold to Ric Arthur's in 2018

39



RED LWNBRG WICK 55H

TED 55H · 2168796 · January 23 2020

RED U-2 RECKONING 149A
 RED SIX MILE JOHN WICK 882E
 RED SIX MILE & CO GLORIA 29A

RED U-2 RECON 192Y
 RED U-2 ANEXA 271Y
 RED 6 MILE FULL THROTTLE 171T
 RED SIX MILE GLORIA 746W

PERF DATA	
BW	70
WW	745
205D	767
365D	1305

RED LWNBRG HARVESTOR 103C
 RED LWNBRG HARVESTOR 43F
 RED LWNBRG FUSION 128D

TED HARVESTOR 154A
 RED LWNBRG CADENCE 141Y
 RED ANDRAS FUSION R236
 RED TED OLES OSCAR 121X

EPDS	BW	WW	YW	M	MAR	REA	CWT
	2.4	63	116	23	0.39	0.26	40

- A twin that came off grass at a respectable 750 actual weaning, from a stunning first calf Harvester daughter
- Extra frame and length, in an athletic package
- His grandam is a beautiful donor cow for us, and is flawless in terms of body type, efficiency, and maternal quality, and her first son was purchased by Mudlake Ranch in 2020 and another sells as Lot 43



LOT 39 & DAM HARVESTOR 43F

F



RED T-K HIGH PRESSURE 148F

EU 148F · 2026264 · March 22 2018

RED BAR-E-L WARDEN 144W
 RED T-K COBRA 34B
 RED T-K RINA 87X

RED BAR-E-L RIBEYE 103R
 RED BAR-E-L LARKABA 72N
 RED SSS ARSON 6U
 RED JRA RINA 8T

PERF DATA	
BW	80
WW	670
205D	813
365D	

RED HAMCO PACKER 133Y
 RED T-K MISS RAMBO 69C
 RED T-K MISS RAMBO 62A

RED MESSMER PACKER S008
 RED HAMCO MIMI 520W
 RED SIX MILE TROY 243T
 RED T-K MISS RAMBO 127U

EPDS	BW	WW	YW	M	MAR	REA	CWT
	-0.3	32	50	28			

When we had the opportunity to buy 148F in 2019, it did not take much thought. If you study the history and production of the cows in his pedigree you will soon see why we valued this bull so highly. A Cobra son whose 87X dam is a high-quality donor. High Pressure's dam was a high selling cow at the T-K dispersal and is a donor cow at Hawkeye Ranching. A moderate birth bull, that averaged 75 pounds on his first calf crop. His progeny are very good footed and possess a beautiful skull shape and blood red hair coat. An exceptional herd bull that adds maternal excellence.



DAM - 69C



40



RED LWNBRG HIGH PRESSURE 125H

TED 125H · 2180969 · February 06 2020

RED T-K COBRA 34B
RED T-K HIGH PRESSURE 148F
RED T-K MISS RAMBO 69C

RED BAR-E-L WARDEN 144W
RED T-K RINA 87X
RED HAMCO PACKER 133Y
RED T-K MISS RAMBO 62A

PERF DATA	
BW	87
WW	750
205D	740
365D	1198

RED GET-A-LONG WANDER 90S
RED LWNBRG WANDER 47C
RED TED MAX 133A

RED BUF CRK HOBO 1961
RED SSFA JOANNA 93T
RED RCR MAX 262Y
RED TED KINCHEN SAGEBRUSH 70R

EPDS	BW	WW	YW	M	MAR	REA	CWT
	0.3	33	50	22	0.37	-0.04	10

- Eye-catching High-Pressure son with an authentic Angus look, muscle, moderation, and length
- His cherry red dam is the model of efficiency and has high quality milk
- Keep every daughter out of this stud and build a productive, functional cowherd that will last and have high returns



41



RED LWNBRG HIGH PRESSURE 111H

TED 111H · 2180967 · February 01 2020

RED T-K COBRA 34B
RED T-K HIGH PRESSURE 148F
RED T-K MISS RAMBO 69C

RED BAR-E-L WARDEN 144W
RED T-K RINA 87X
RED HAMCO PACKER 133Y
RED T-K MISS RAMBO 62A

PERF DATA	
BW	75
WW	720
205D	770
365D	1215

RED COUNT RIDGE ICON 1D
RED LWNBRG ICON 86F
RED LWNBRG FLEX 175D

RED RMI REDMAN 1T
RED DELAR GOLD EDGE 2Y
RED LWNBRG FLEX 79B
RED TED ROMEO 59T

EPDS	BW	WW	YW	M	MAR	REA	CWT
	-1	37	62	26	0.23	0.09	10

- Certified calving ease bull, that has a great look, and is built right from the ground up
- Low BW genetics from both sides of the pedigree
- Dam is awesome uddered, long sided with ample depth and rib, and a beauty front end, exactly the design we strive for
- All Canadian pedigree



42



RED LWNBRG HIGH PRESSURE 148H

TED 148H · 2180970 · February 16 2020

RED T-K COBRA 34B
RED T-K HIGH PRESSURE 148F
RED T-K MISS RAMBO 69C

RED BAR-E-L WARDEN 144W
RED T-K RINA 87X
RED HAMCO PACKER 133Y
RED T-K MISS RAMBO 62A

PERF DATA	
BW	77
WW	710
205D	806
365D	1315

RED SIX MILE CROWSNEST 313D
RED LWNBRG CROWSNEST 103F
RED LWNBRG SCARLET 62Z

RED SIX MILE WILD WEST 0913W
RED SIX MILE BERRY 373X
RED LAZY MC COWBOY CUT 26U
RED TED GRAND CANYON 144R

EPDS	BW	WW	YW	M	MAR	REA	CWT
	0.8	39	65	28	0.21	0.02	12

- Another straight Canadian bred bull, whose dam is a maternal sister to the herd bull
- Electric 4D that was purchased by George and Laura Baxter in 2017
- Bone, width, and substance, with good foot design and added maternal integrity
- Recommend for heifers but will still add plenty of pay weight
- Wean index of 106 and yearling index of 102



CROWSNEST 313D



43



GRP

43

RED LWNBRG HIGH PRESSURE 184H

TED 184H · 2180978 · March 08 2020

RED T-K COBRA 34B
RED T-K HIGH PRESSURE 148F
RED T-K MISS RAMBO 69C

RED BAR-E-L WARDEN 144W
RED T-K RINA 87X
RED HAMCO PACKER 133Y
RED T-K MISS RAMBO 62A

RED ANDRAS FUSION R236
RED LWNBRG FUSION 128D
RED TED OLES OSCAR 121X

RED ANDRAS IN FOCUS B175
RED ANDRAS BELLE B167
RED CROWFOOT OLE'S OSCAR 2042M
RED TED GRAND CANYON 124T

PERF DATA	
BW	84
WW	725
205D	831
365D	1328

EPDS	BW	WW	YW	M	MAR	REA	CWT
	-0.4	39	68	29	0.46	0.03	13

- He is one of the top maternal and cow making bulls we have in the entire offering and carries himself with a proud herd bull look
- Donor dam is one of our very best, from a cow family that is the herd bull kind
- His sire 148F has a stacked pedigree maternally, with his dam being a high selling cow at the T-K dispersal and is now working as a top donor at Hawkeye Ranching
- The kind of bull that constructs foundation females that drive profit
- A March born bull, one of the youngest bulls in the offering, with a wean index of 108 and a yearling adjusted weight over 1300, he fits right in with his pen mates that are two months older

44



GRP

44

RED LWNBRG HIGH PRESSURE 64H

TED 64H · 2180965 · January 24 2020

RED T-K COBRA 34B
RED T-K HIGH PRESSURE 148F
RED T-K MISS RAMBO 69C

RED BAR-E-L WARDEN 144W
RED T-K RINA 87X
RED HAMCO PACKER 133Y
RED T-K MISS RAMBO 62A

RED BRYLOR AUTOMATIC 95B
RED LWNBRG AUTOMATIC 62F
RED LWNBRG IMPACT 96B

RED WHEEL DODGE CITY 61Y
BLACK BRYLOR LAKME 155Y
RED LWNBRG IMPACT 91Z
RED TED MAKE MY DAY 57L

PERF DATA	
BW	68
WW	740
205D	765
365D	1280

EPDS	BW	WW	YW	M	MAR	REA	CWT
	-0.2	41	65	26	0.23	0.08	18

- Heifer bull that started small, but took care of business on grass with 750 lb actual weaning
- Moderate made cow family with natural thickness, that is very sound footed and fertile
- Real world all Canadian bloodlines, that will thrive in any environment
- Dam has four maternal sisters working in our herd and a brother at John Haarman
- Wean index of 101 and yearling at 103

DAM - AUTOMATIC 62F



45



GRP

45

RED LWNBRG HIGH PRESSURE 156H

TED 156H · 2180971 · February 17 2020

RED T-K COBRA 34B
RED T-K HIGH PRESSURE 148F
RED T-K MISS RAMBO 69C

RED BAR-E-L WARDEN 144W
RED T-K RINA 87X
RED HAMCO PACKER 133Y
RED T-K MISS RAMBO 62A

RED COUNT RIDGE ICON 1D
RED LWNBRG ICON 73F
RED TED LARAMIE 4Z

RED RMJ REDMAN 1T
RED DELAR GOLD EDGE 2Y
RED GMRA LARAMIE 511O
RED TED SAKIC 103W

PERF DATA	
BW	78
WW	600
205D	695
365D	1095

EPDS	BW	WW	YW	M	MAR	REA	CWT
	-0.8	22	39	24	0.24	-0.09	3

- A sure-fire calving ease bull by High Pressure that combines balance and eye appeal
- Dam is a fancy square made mama cow, that comes from 4 generations of moderate cows that weaned a high percentage of their body weight

46



RED LWNBRG HIGH PRESSURE 186H

TED 186H · 2180979 · March 10 2020

RED T-K COBRA 34B
RED T-K HIGH PRESSURE 148F
RED T-K MISS RAMBO 69C

RED BAR-E-L WARDEN 144W
RED T-K RINA 87X
RED HAMCO PACKER 133Y
RED T-K MISS RAMBO 62A

PERF DATA	
BW	93
WW	630
205D	738
365D	1201

LWNBRG CROSS OVER 66B
LWNBRG CROSSOVER 141D
RED TED CHATEAU 6U

RED BIEBER ROLLIN DEEP Y118
TED BISMARCK 50Y
RED GLACIER CHATEAU 744
RED TED RAMBLER 52L

EPDS	BW	WW	YW	M	MAR	REA	CWT
	0.7	34	55	25	0.29	0.06	8

- A younger March born Pressure son, that has a bit more BW, as his dam went two weeks over her due date
- Outcross dam by Crossover 66B, who has left us with a tremendous group of cows
- Grandam 6U has perfect feet still, and is a top producing cow in our herd with a ratio of 106 on 11 calves, and her dam being the CAA Elite 52L, who had a ratio of 109 on 11 calves as well
- Dams maternal brother is herd sire Flex 79B at Lonestone Farms



FLEX 79B - BROTHER TO DAM 141D



47



RED LWNBRG ENDZONE 86H

TED 86H · 2150030 · January 26 2020

RED LWNBRG BROXBURN 68D
RED LWNBRG ENDZONE 37F
RED LWNBRG KODIAK 121C

LWNBRG CROSS OVER 66B
RED TED SHOCCO DATA 18W
RED BRYLOR RED KODIAK 3A
RED TED WANDER 119A

PERF DATA	
BW	102
WW	800
205D	755
365D	1275

RED 6 MILE FULL THROTTLE 171T
RED TED FULL THROTTLE 69A
RED TED MULBERRY 95U

RED TER-RON FULLY LOADED 540R
RED SIX MILE WITZEL 360J
RED FINE LINE MULBERRY 26P
RED TED KICHEN SAGEBRUSH 109P

EPDS	BW	WW	YW	M	MAR	REA	CWT
	3.8	49	90	20	0.02	0.42	30

- The one and only son in the offering of Endzone 37F who is owned by Dave Slingerland
- Power bull that is excellent haired, rugged, with excellent shape and overall body depth
- Dam is a big strong cow that produces with the best of our herd, and has excellent feet and udder
- Maternal brothers working for Lost River Ranch and Park Livestock
- All Canadian pedigree



MATERNAL BROTHER - HARVESTOR 7F





- This Malbec son came in dam from a bred heifer that was in our opinion one of the best footed heifers available at the U2 dispersal
- She also has a unique outcross pedigree, going back to the great female maker XO Crowfoot 0102X and the Elite BUF CRK Hobo, who has close to 2000 progeny to his name
- A low BW bull that displays great overall depth, shape, and Angus character
- Wean index 103 and Yearling index of 107

48 **LX** **RED LWNBRG MALBEC 9H**
 TED 9H · 2149990 · January 11 2020

RED U-2 RECKONING 149A
RED U2 MALBEC 195D
 RED U-2 MABEL 60A

RED OLE FARMS.COM 414C
RED U2 MANDY 246F
 RED U2 ENVIOUS 279D

RED U-2 RECON 192Y
 RED U-2 ANEXA 271Y
 RED MINBURN COPENHAGEN 3Y
 RED U-2 MABEL 7061T

XO CROWFOOT 0102X
 RED OLE TIA 618Y
 RED U-2 ENTOURAGE 282B
 RED U-2 ENVIOUS 138Y

PERF DATA	
BW	78
WW	810
205D	793
365D	1325

EPDS	BW	WW	YW	M	MAR	REA	CWT
	-0.7	36	63	24	0.24	-0.09	3



49 **LX** **RED LWNBRG BERINGER 144H**
 TED 144H · 2150057 · February 14 2020

RED U2 MALBEC 195D
RED U2 MALBEC 104F
 RED U-2 LASS 465A

RED TGA 2312Z
RED U2 MS 634F
 RED U-2 MS 225B

RED U-2 RECKONING 149A
 RED U-2 MABEL 60A
 RED U-2 AMBUSH 423Y
 RED U-2 LASS 111Y

SBCC 4P TRACKER 213T
 RED TGA MISS WACO 8095U
 RED U-2 STRIKE FORCE 24Y
 RED FLYING K MS SENSATION 35M

PERF DATA	
BW	72
WW	715
205D	805
365D	1245

EPDS	BW	WW	YW	M	MAR	REA	CWT
	-1.6	35	61	24	0.28	-0.01	14

- A Malbec grandson that came to us in dam from Unger's
- Wean index of 106
- A moderate heifer bull with calving ease on both sides of the pedigree
- Displays functional phenotype, thickness, and great Angus character



G **LX** **RED LWNBRG REDZONE 10F**
 TED 10F · 2053361 · January 07 2018

RED CROWFOOT 4ACES 2193Z
RED BAR-E-L FIRST DOWN 161D
 RED BAR-E-L GLORIA 87R

RED GMRA PEACEMAKER 1216
RED LWNBRG RONA 110C
 RED TED DAKOTA COPPER 7W

XO CROWFOOT 0102X
 RED CROWFOOT MISS STRTCH
 RED BAR-E-L APPROVAL 4L
 RED BAR-E-L FIRST LADY 95J

RED FRITZ JUSTICE 8013
 RED GMRA THELMA 930
 RED OHRR DAKOTA COPPER 29K
 RED TED NEW TREND 108P

PERF DATA	
BW	77
WW	800
205D	762
365D	1291

EPDS	BW	WW	YW	M	MAR	REA	CWT
	0	44	71	26	0.21	0.35	17

A feature First Down son that sold in our 2019 sale to Elk Meadows and Milburn Angus. A bull with a huge correct foot, expressive muscle, in a moderate package. His dam completes his résumé and has an excellent production record. His first calf crop is impressive, with an abundance of growth and performance. He possesses a lot of the same qualities of his great sire, with a touch more frame and added punch.



DAM - OLES'S OSCAR 133W



CONTENDER 1E - MATERNAL BROTHER

50 **LX** **RED LWNBRG REDZONE 77H**
 TED 77H · 2150028 · January 26 2020

RED BAR-E-L FIRST DOWN 161D
 RED LWNBRG REDZONE 10F
 RED LWNBRG RONA 110C
 RED CROWFOOT OLE'S OSCAR 2042M
 RED TED OLES'S OSCAR 133W
 RED TED GLACIER MARIAS 27N

RED CROWFOOT 4ACES 2193Z
 RED BAR-E-L GLORIA 87R
 RED GMRA PEACEMAKER 1216
 RED TED DAKOTA COPPER 7W
 RED MLK CRK CUB 722
 RED CROWFOOT OMEGA 9179J
 RED GLACIER MARIAS 548
 RED TED SOMETHIN SPECIAL 114K

PERF DATA	
BW	83
WW	740
205D	725
365D	1251

- A Redzone son that is the perfect example of a genuine beef bull
- Full of red meat, muscle, thickness, volume, and pounds
- Started light, but had a steady growth curve to a 106 yearling index
- Dam is a square hiped, great uddered cow that has made a habit of producing stout-made, easy to look at sons
- Maternal brothers have sold in previous sales to CCRA Ranch, Albion Ridge and Park Livestock

EPDS	BW	WW	YW	M	MAR	REA	CWT
	-0.1	35	57	20	0.25	0.28	8

51 **LX** **RED LWNBRG REDZONE 149H**
 TED 149H · 2150063 · February 16 2020

RED BAR-E-L FIRST DOWN 161D
 RED LWNBRG REDZONE 10F
 RED LWNBRG RONA 110C
 RED TED CATALYST 107T
 RED TED CATALYST 63Y
 RED TED COMBINATION 40T

RED CROWFOOT 4ACES 2193Z
 RED BAR-E-L GLORIA 87R
 RED GMRA PEACEMAKER 1216
 RED TED DAKOTA COPPER 7W
 RED GP CATALYST Q25
 RED TED GOLD ROBBER 23L
 RED LSF COMBINATION A301M
 RED TED NONE BETTER 24J

PERF DATA	
BW	95
WW	835
205D	861
365D	1467

EPDS	BW	WW	YW	M	MAR	REA	CWT
	1.8	52	87	26	0.26	0.4	25

- High octane growth bull, that will sire calves that will really push down the scale and fill up the replacement pen
- Big time performance numbers and potent cow power
- Massive dimension, volume, capacity, and muscle
- Wean index of 111 and yearling at 122
- Dam is CAA Elite with excellent fertility, fleshing ease and abundant milk, she has a ratio of 105 on 8 calves
- Maternal brother was a sale feature in 2018 to C. Rooke Ranching





HARVESTOR 103C – MATERNAL GRANDSIRE

52



RED LWNBRG REDZONE 56H

TED 56H · 2150017 · January 23 2020

RED BAR-E-L FIRST DOWN 161D
RED LWNBRG REDZONE 10F
RED LWNBRG RONA 110C

RED CROWFOOT 4ACES 2193Z
RED BAR-E-L GLORIA 87R
RED GMRA PEACEMAKER 1216
RED TED DAKOTA COPPER 7W

PERF DATA	
BW	71
WW	770
205D	790
365D	1305

RED LWNBRG HARVESTOR 103C
RED LWNBRG HARVESTOR 35F
RED TED PATRIOT 81Z

TED HARVESTOR 154A
RED LWNBRG CADENCE 141Y
RED GLACIER MARIAS 548
RED TED HOLDEN HI HO 4N

EPDS	BW	WW	YW	M	MAR	REA	CWT
	1.3	52	83	24	0.32	0.02	26

- A long bodied, smooth shouldered heifer bull
- Ample growth with top 10% growth numbers and a wean index of 104 and yearling at 103
- Dam did an excellent job on her first try and grandam has a ratio of 107 on 7 calves and has four daughters in our herd



DAM – BELLE 89C

53



RED LWNBRG REDZONE 166H

TED 166H · 2150071 · February 22 2020

RED BAR-E-L FIRST DOWN 161D
RED LWNBRG REDZONE 10F
RED LWNBRG RONA 110C

RED CROWFOOT 4ACES 2193Z
RED BAR-E-L GLORIA 87R
RED GMRA PEACEMAKER 1216
RED TED DAKOTA COPPER 7W

PERF DATA	
BW	88
WW	800
205D	848
365D	1273

RED ANDRAS FUSION R236
RED LWNBRG BELLE 89C
RED TED COMBINATION 129T

RED ANDRAS IN FOCUS B175
RED ANDRAS BELLE B167
RED LSF COMBINATION A301M
RED TED MAKE MY DAY 57L

EPDS	BW	WW	YW	M	MAR	REA	CWT
	0.8	51	83	27	0.32	0.46	28

- A larger framed, athletic beef bull that is bred to produce pounds
- Top 10% growth numbers to go along with a wean index of 111
- Dam has a perfect foot, with two daughters working in our herd, and a 109 ratio on her first two sons



H



RED LWNBRG REVOLVE 166E

TED 166E · 1968429 · March 17 2017

S A V RESOURCE 1441
MRLA RELOAD 56C
RED MRLA MISS 641Y

RITO 707 OF IDEAL 3407 7075
S A V BLACKCAP MAY 4136
RED BAR-E-L WARDEN 144W
RED MRLA 793R

PERF DATA	
BW	84
WW	620
205D	836
365D	1322

RED BIEBER ROLLIN DEEP Y118
RED LWNBRG ROLLIN DEEP 36B
RED TED LODI PRINCE 155P

RED BIEBER ROOSEVELT W384
RED BIEBER TILLY 399W
RED LODI PRINCE 263Z
RED TED GLACIER MARIAS 26L

EPDS	BW	WW	YW	M	MAR	REA	CWT
	2.1	38	73	20	0.49	0.6	33

An SAV Resource Grandson that has his pedigree anchored by one of the most potent cow families we have on the ranch. His CAA Premier dam is a standout cow with excellent feet, udder, great fleshing ability and fertility. Grand dam 155P and great Grand Dam are also CAA Elite cows. Resolve's sire, Reload 56C has had a huge impact on the Red Angus breed with prolific progeny like MRLA Resource 137E, MRLA Upload 165E and grandson U2 Township 17G. Reload 56C was lost this spring and we feel Revolve 166E will be the bull to carry on these outcross genetics and even add an abundance of maternal merit.

54



RED LWNBRG REVOLVE 163H

TED 163H · 2150068 · February 19 2020

MRLA RELOAD 56C
RED LWNBRG REVOLVE 166E
RED LWNBRG ROLLIN DEEP 36B

RED GMRA LARAMIE 5110
RED TED LARAMIE 4Z
RED TED SAKIC 103W

S A V RESOURCE 1441
RED MRLA MISS 641Y
RED BIEBER ROLLIN DEEP Y118
RED TED LODI PRINCE 155P

RED LCC CHEYENNE B221L
RED GMRA LAKOTA 341
RED SIX MILE SAKIC 832S
RED TED GLACIER MARIAS 24L

PERF DATA	
BW	96
WW	740
205D	773
365D	1282

EPDS	BW	WW	YW	M	MAR	REA	CWT
	3.1	37	65	22	0.34	0.4	26

- A proud looking cow bull with awesome presence, muscle, and natural thickness
- Has a lot of the same qualities as his sire Revolve 166E who is a grandson of the legendary SAV Resource
- He was a sale feature in 2018 to Wards Red Angus
- His dam 36B and grandam 155P are both CAA Elite
- Dam is one of the thickest, easiest fleshing females on the farm with 4 daughters working in our herd



54



DAM - LARAMIE 4Z

55



RED LWNBRG REVOLVE 187H

TED 187H · 2150080 · March 12 2020

MRLA RELOAD 56C
RED LWNBRG REVOLVE 166E
RED LWNBRG ROLLIN DEEP 36B

RED BRYLOR MASTER PLAN 17M
RED TED MASTER PLAN 42T
RED TED GLACIER MARIAS 26L

S A V RESOURCE 1441
RED MRLA MISS 641Y
RED BIEBER ROLLIN DEEP Y118
RED TED LODI PRINCE 155P

RED BASIN SENSATION 702E
RED BRYLOR BONITA 66K
RED GLACIER MARIAS 548
RED TED BARNEY 3X

PERF DATA	
BW	88
WW	650
205D	781
365D	1398

EPDS	BW	WW	YW	M	MAR	REA	CWT
	0.9	35	65	20	0.25	0.43	22

- The youngest bull in the offering, and a product of the oldest cow we have on the farm
- She still is producing, has an excellent udder and unbelievable foot
- Grassroots cow family, featuring Marias 548 Elite grandam and Elite Basin Sensation 702E
- Cow making genetics that are functional and built to thrive for a long time in any environment



55



JETSTREAM 47F
MATERNAL BROTHER

56



RED LWNBRG REVOLVE 179H

TED 179H · 2150077 · March 01 2020

MRLA RELOAD 56C
RED LWNBRG REVOLVE 166E
RED LWNBRG ROLLIN DEEP 36B

RED BRYLOR RED KODIAK 3A
RED LWNBRG KODIAK 35C
RED XO CROWFOOT VERNICE 2453Z

S A V RESOURCE 1441
RED MRLA MISS 641Y
RED BIEBER ROLLIN DEEP Y118
RED TED LODI PRINCE 155P

BLACK BRYLOR KODIAK 204Y
RED BRYLOR FAYETTE 40Y
RED YY EXPEDITOR 3X
RED XO CROWFOOT VERNICE 9938W

PERF DATA	
BW	81
WW	650
205D	715
365D	1126

EPDS	BW	WW	YW	M	MAR	REA	CWT
	-1.1	28	50	22	0.34	0.41	19

- A March born Revolve son that is well constructed, a bull that comes recommended for heifers
- Sound functional dam has been a consistent low BW producing cow, with great udder and feet
- Outcross genetics for most programs, going back to HF Tibbie cow and SAV Resource
- Maternal brother sold in last years sale to Brian Hicken



56



57

57



RED LWNBRG ORIGINAL 115H

TED 115H · 2150044 · February 03 2020

RED U-2 AUTHENTIC 139A
RED YCLC COPENHAGEN 653C
RED YCLC COUNTESS 265Z

RED MINBURN COPENHAGEN 3Y
RED U-2 STORMY 7202T
RED SSS ENDORSE 802X
RED YCLC RES 179P 291S

RED U-2 AMBUSH 423Y
RED U-2 BEAUTY 226B
RED U2 BEAUTY 192Z

RED FLYING K AMBUSH 51T
RED U-2 ANEXA 5F
RED U2 MISSION 61W
RED FLYING K BEAUTY 92U

PERF DATA	
BW	84
WW	830
205D	809
365D	1300

EPDS	BW	WW	YW	M	MAR	REA	CWT
	2.6	54	79	20	0.2	0.08	22

- A chunk of a bull with a strong bone and a correct structure
- Lots of depth like his mama, with plenty of thickness and a powerful top
- Really admired this cow when we first saw her, and love how moderate she is, but still has a huge barreled rib, and a strong square hip
- An excellent bull for pay weight and his blood is rich with maternal excellence

DAM - BEAUTY 226B



58

58



RED LWNBRG OUTLOOK 26H

TED 26H · 2150002 · January 14 2020

RED 5L DEFENDER 560-30Z
RED LWNBRG OUTLOOK 14F
RED LWNBRG FUSION 7D

RED 5L ADVOCATE 817-14W
5L BLACK ADINA 525-560
RED ANDRAS FUSION R236
RED LWNBRG ROLLIN DEEP 36B

RED BRYLOR AUTOMATIC 95B
LWNBRG AUTOMATIC 114F
LWNBRG PACKER 98B

RED WHEEL DODGE CITY 61Y
BLACK BRYLOR LAKME 155Y
RED TED PACKER 107Z
TED NET WORTH 14X

PERF DATA	
BW	85
WW	800
205D	794
365D	1251

EPDS	BW	WW	YW	M	MAR	REA	CWT
	2.1	50	87	25	0.58	0.12	39

- Outcross genetics featuring donor cow 14X who is a Networth 4200 daughter that has as much positive influence on our purebred and commercial herds as any cow we've raised
- Three heavy producing daughters working in our purebred herd and a powerhouse son in our commercial herd that sires incredible pay weight
- This Outlook son will add frame and sire calves that gain on feed

OUTLOOK 14F
SIRE OF LOTS 58 & 59



59



RED LWNBRG OUTLOOK 96H

TED 96H · 2150039 · January 30 2020

RED 5L DEFENDER 560-30Z
RED LWNBRG OUTLOOK 14F
RED LWNBRG FUSION 7D

RED 5L ADVOCATE 817-14W
5L BLACK ADINA 525-560
RED ANDRAS FUSION R236
RED LWNBRG ROLLIN DEEP 36B

PERF DATA	
BW	94
WW	800
205D	767
365D	1281

RED TED CHATEAU 142Y
RED LWNBRG CHATEAU 69B
RED TED SPITFIRE 96Y

RED GLACIER CHATEAU 744
RED TED RAMBLER 52L
RED TED MAKE MY DAY 31R
RED TED BECTON LANCER 127N

EPDS	BW	WW	YW	M	MAR	REA	CWT
	1.8	45	80	25	0.48	0.39	31

- A big stretchy bull that's big boned with great hair and a cherry red hair coat
- Will sire pay weight and the maternal power to add to the replacement pen
- Dam is a perfect footed donor dam
- Maternal brother to herd sire Qaudtrac 61F
- A maternal sister retained in our herd, and brothers that work for McIntyre Ranching, Jerry Frey, and R&V White Ranches

60



RED LWNBRG WATCHMAN 27H

TED 27H · 2150001 · January 14 2020

RED 5L DEFENDER 560-30Z
RED LWNBRG WATCHMAN 84F
RED TED WANDER 47A

RED 5L ADVOCATE 817-14W
5L BLACK ADINA 525-560
RED GET-A-LONG WANDER 90S
RED TED CATALYST 139T

LWNBRG CROSS OVER 66B
RED LWNBRG CROSSOVER 193D
RED TED DETOUR 84A

RED BIEBER ROLLIN DEEP Y118
TED BISMARCK 50Y
RED LAZY MC CC DETOUR 2W
RED TED LODI PRINCE 118N

PERF DATA	
BW	74
WW	750
205D	712
365D	1108

EPDS	BW	WW	YW	M	MAR	REA	CWT
	-2.7	27	55	23	0.35	0	17

- One of the two sons from Watchman 84F that works as a heifer bull at Keho Colony
- Excellent heifer bull, with calving ease on both sides of the pedigree
- Dam is a beautiful Crossover daughter, with a sweet udder



61**RED LWNBRG WATCHMAN 40H**

TED 40H · 2150010 · January 20 2020

RED 5L DEFENDER 560-30Z
RED LWNBRG WATCHMAN 84F
RED TED WANDER 47ARED GMRA PEACEMAKER 1216
RED LWNBRG PEACEMAKER 96C
RED TED SAKIC 27ZRED 5L ADVOCATE 817-14W
5L BLACK ADINA 525-560
RED GET-A-LONG WANDER 905
RED TED CATALYST 139TRED FRITZ JUSTICE 8013
RED GMRA THELMA 930
RED SIX MILE SAKIC 832S
RED TED DAKOTA COPPER 66T

PERF DATA	
BW	81
WW	760
205D	700
365D	1157

EPDS	BW	WW	YW	M	MAR	REA	CWT
	-1.3	27	59	21	0.32	0.46	18

- Another moderate bull recommended for heifers
- Same cow family as Lot 1
- Sire is excellent footed, and is admired for his structure and very complete body design

62**RED LWNBRG HARVESTOR 99H**

TED 99H · Not Registered · January 30 2020

TED HARVESTOR 154A
RED LWNBRG HARVESTOR 175E
RED LWNBRG FUSION 117CRED LWNBRG HARVESTOR 103C
RED LWNBRG HARVESTOR 20E
RED LWNBRG PACKER 62CS A V HARVESTOR 0338
RED LWNBRG ANISTON 137S
RED ANDRAS FUSION R236
RED TED SAKIC 29YTED HARVESTOR 154A
RED LWNBRG CADENCE 141Y
RED TED PACKER 107Z
RED TED DAKOTA COPPER 11U

PERF DATA	
BW	89
WW	820
205D	824
365D	1275

EPDS	BW	WW	YW	M	MAR	REA	CWT
	2.2	47	89	20	0.34	0.37	30

63**RED LWNBRG HARVESTOR 175H**

TED 175H · Not Registered · February 28 2020

TED HARVESTOR 154A
RED LWNBRG HARVESTOR 175E
RED LWNBRG FUSION 117CRED TED PACKER 107Z
LWNBRG PACKER 98B
TED NET WORTH 14XS A V HARVESTOR 0338
RED LWNBRG ANISTON 137S
RED ANDRAS FUSION R236
RED TED SAKIC 29YRED MESSMER PACKER S008
RED TED FRONTLINE 151W
S A V NET WORTH 4200
TED REVIVAL 113P

PERF DATA	
BW	87
WW	690
205D	752
365D	1186

EPDS	BW	WW	YW	M	MAR	REA	CWT
	3	44	85	24	0.43	0.42	31

- A super thick chunk of bull that won't be hard to find on sale day
- Muscle and balance with natural good looks
- Outcross blood with a solid cow family and featuring ranch favourite 14X

**63**

GRANDAM - NETWORTH 14X



DAM - PACKER 98B

64**RED LWNBRG REVOLVE 174G**

TED 174G · 2133034 · July 04 2019

MRLA RELOAD 56C
RED LWNBRG REVOLVE 166E
RED LWNBRG ROLLIN DEEP 36BRED TED CATALYST 107T
RED TED CATALYST 20Z
RED TED KINCHEN SAGEBRUSH 163RS A V RESOURCE 1441
RED MRLA MISS 641Y
RED BIEBER ROLLIN DEEP Y118
RED TED LODI PRINCE 155PRED GP CATALYST 025
RED TED GOLD ROBBER 23L
RED KINCHEN SAGEBRUSH 487
RED TED BASIN DRIFTER 95M

PERF DATA	
BW	80
WW	720
205D	1000
365D	1790

EPDS	BW	WW	YW	M	MAR	REA	CWT
	0.7	40	69	22	0.3	0.52	26

- An extra age bull that has more than extra maturity as an advantage
- One of the top maternal cow making bulls in our entire offering
- 4 CAA qualified mama cows in his pedigree, including his dam 20Z, who has 3 daughters working in our herd and sons working at Wolfcreek and Crystal Springs
- Loaded with natural muscle and a bold rib, this guy would be a major asset to anyone's cow herd

**64**

SIRE - REVOLVE 166E



DAM - CATALYST 20Z



65



SAV RESOURCE 1441
PATERNAL GRANDSIRE



65



RED LWNBRG REVOLVE 175G

TED 175G · 2130160 · July 05 2019

MRLA RELOAD 56C
RED LWNBRG REVOLVE 166E
RED LWNBRG ROLLIN DEEP 36B

S A V RESOURCE 1441
RED MRLA MISS 641Y
RED BIEBER ROLLIN DEEP Y118
RED TED LODI PRINCE 155P

PERF DATA	
BW	80
WW	680
205D	950
365D	1670

RED YY EXPEDITOR 3X
RED CROWFOOT BRNDINA 2063Z
RED CROWFOOT BRNDINA 8111U

RED YY EXPLORER 825U
RED HF TIBBIE 203U
RED CROWFOOT OLE'S OSCAR 2042M
RED CROWFOOT BRNDINA 6378S

EPDS	BW	WW	YW	M	MAR	REA	CWT
	-0.8	29	56	22	0.47	0.5	17

- A low birthweight, Outcross extra age bull, that is long bodied with a sound structure
- Dam is a beautiful cherry red cow that you would love to have a whole herd of, and was a purchase as a heifer calf from the Crowfoot Dispersal
- She has sons working for Tracy and Laura Jans, Wolfcreek, and Crescent Hill

66



66



RED LWNBRG REVOLVE 180G

TED 180G · 2130165 · July 08 2019

MRLA RELOAD 56C
RED LWNBRG REVOLVE 166E
RED LWNBRG ROLLIN DEEP 36B

S A V RESOURCE 1441
RED MRLA MISS 641Y
RED BIEBER ROLLIN DEEP Y118
RED TED LODI PRINCE 155P

PERF DATA	
BW	89
WW	685
205D	980
365D	1630

RED TNTS BANK STATEMENT T272
RED TED BANK STATEMENT 76A
RED TED FRONTLINE 34W

RED LIC MISSION STATEMENT P27
RED NSFMS MISS DYNAMICS M14
RED FABULOUS FRONT LINE 315N
RED TED KINCHEN SAGEBRUSH 24P

EPDS	BW	WW	YW	M	MAR	REA	CWT
	1.8	35	63	21	0.39	0.45	20

- A moderate bull that is stout with good muscle and has a herd bull presence
- Dam is an absolute tank and is as thick as any angus cow we own

67



67



RED LWNBRG HARVESTOR 182G

TED 182G · 2130167 · July 17 2019

TED HARVESTOR 154A
RED LWNBRG HARVESTOR 175E
RED LWNBRG FUSION 117C

S A V HARVESTOR 0338
RED LWNBRG ANISTON 137S
RED ANDRAS FUSION R236
RED TED SAKIC 29Y

PERF DATA	
BW	68
WW	520
205D	740
365D	1290

RED LWNBRG FLEX 79B
RED LWNBRG FLEX 16D
RED TED FULL THROTTLE 69A

RED MRLA FLEX 49Z
RED TED CHATEAU 6U
RED 6 MILE FULL THROTTLE 171T
RED TED MULBERRY 95U

EPDS	BW	WW	YW	M	MAR	REA	CWT
	3.1	53	96	22	0.28	0.1	33

- Twin bulls (Lot 67 & 68) that started light, but took off on grass and display good thickness and soundness
- Long bodied extra age bulls that are athletic, built for hard country
- Cow is a heavy producer tracing back to maternal greats like Mulberry and Network 4200
- Cow making genetics

68



RED LWNBRG HARVESTOR 183G

TED 183G · 2130168 · July 17 2019

TED HARVESTOR 154A
RED LWNBRG HARVESTOR 175E
RED LWNBRG FUSION 117C

S A V HARVESTOR 0338
RED LWNBRG ANISTON 137S
RED ANDRAS FUSION R236
RED TED SAKIC 29Y

PERF DATA	
BW	70
WW	610
205D	840
365D	1510

RED LWNBRG FLEX 79B
RED LWNBRG FLEX 16D
RED TED FULL THROTTLE 69A

RED MRLA FLEX 49Z
RED TED CHATEAU 6U
RED 6 MILE FULL THROTTLE 171T
RED TED MULBERRY 95U

EPDS	BW	WW	YW	M	MAR	REA	CWT
	3.1	53	96	22	0.28	0.1	33

• Twin to lot 67



68

EXTRA AGE

69



RED LWNBRG HARVESTOR 185G

TED 185G · 2130170 · July 28 2019

TED HARVESTOR 154A
RED LWNBRG HARVESTOR 175E
RED LWNBRG FUSION 117C

S A V HARVESTOR 0338
RED LWNBRG ANISTON 137S
RED ANDRAS FUSION R236
RED TED SAKIC 29Y

PERF DATA	
BW	78
WW	640
205D	910
365D	1510

RED LAZY MC CC DETOUR 2W
RED TED DETOUR 102A
RED TED OLES OSCAR 25X

RED RMJ REDMAN 1T
RED LAZY MC BESS 12S
RED CROWFOOT OLE'S OSCAR 2042M
RED TED KINCHEN SAGEBRUSH 70R

EPDS	BW	WW	YW	M	MAR	REA	CWT
	0.2	37	67	25	0.25	-0.06	15

- A personal favourite with his dark color, great presence and balanced structure, a bull you will want to keep every female from
- His dam is an absolute gorgeous cow that is a donor dam for us and has a ratio of 107
- Majestic phenotype, impeccable udder quality, and excellent feet are the highlights of this cow family
- Brothers working at Heins and Greidanus



69

70



LWNBRG ELECTRIC 80H

TED 80H · 2150027 · January 26 2020

RED ANDRAS FUSION R236
RED LWNBRG ELECTRIC 4D
RED LWNBRG SCARLET 62Z

RED ANDRAS IN FOCUS B175
RED ANDRAS BELLE B167
RED LAZY MC COWBOY CUT 26U
RED TED GRAND CANYON 144R

PERF DATA	
BW	73
WW	775
205D	804
365D	1336

RED BAR-E-L FIRST DOWN 161D
LWNBRG FIRST DOWN 29F
LWNBRG CROSS OVER 113D

RED CROWFOOT 4ACES 2193Z
RED BAR-E-L GLORIA 87R
LWNBRG CROSS OVER 66B
RED LWNBRG CADENCE 141Y

EPDS	BW	WW	YW	M	MAR	REA	CWT
	-1.8	54	90	21	0.39	0.07	30

- An excellent red carrier heifer bull that is well put together
- Good muscle with ample performance for a low birthweight bull
- Wean index of 106 and yearling index of 107
- A real opportunity to own breed leading outcross genetics, that have added breeding versatility



70

RED CARRIER



71



GRP

SIRE - BACK ROAD 48F



GRP

71



LWNBURG BACK ROAD 137H

TED 137H · 2150054 · February 11 2020

LWNBURG RESERVE 163C
LWNBURG BACK ROAD 48F
LWNBURG UNANIMOUS 133C

S A V RESOURCE 1441
TED IN FOCUS 16W
VISION UNANIMOUS 1418
TED NET WORTH 14X

RED TED CATALYST30Y
RED TED CATALYST 40A
RED TED KINCHEN SAGEBRUSH 163R

RED TED CATALYST 107T
RED TED HOLDEN HI HO 52N
RED KINCHEN SAGEBRUSH 487
RED TED BASIN DRIFTER 95M

PERF DATA	
BW	86
WW	700
205D	706
365D	1152

EPDS	BW	WW	YW	M	MAR	REA	CWT
	0.7	42	79	20	0.32	0.34	26

- A proud fronted bull that could work on heifers and cows
- Moderate with style, muscle, and superior structure
- Dam is the model of efficiency and has a massive hip, deep rib, and authentic Angus character
- Sire was a massive powerhouse that sold as a sale feature to Black Acre Farms in 2019

72



GRP

RESERVE 84G
MATERNAL BROTHER



GRP

72



LWNBURG DUALLY 69H

TED 69H · 2185019 · January 25 2020

DL SONIC 444
DL DUALLY
DL INCENTIVE 2103

KG SOLUTION 0018
DL BARBARA 792
DL INCENTIVE 22E
DL KARAMA 39

TED HARVESTOR 108A
LWNBURG HARVESTOR 7C
TED NEW STANDARD 29Z

S A V HARVESTOR 0338
RED LWNBURG BOXCAR 139X
LCC NEW STANDARD
TED NET WORTH 14X

PERF DATA	
BW	85
WW	870
205D	816
365D	1376

EPDS	BW	WW	YW	M	MAR	REA	CWT
	1.1	71	124	22	0.49	0.4	46

- An outstanding Dually son that immediately grabs your attention, a deserving bull to lead off the black division
- Long bodied, bold rib with an abundance of muscle
- Dam is a moderate tanky cow with a great production record and a highlight son last year to Fath Farms
- Grandam 29Z is a donor quality cow that is a major asset in our herd

73



GRP

RESERVE 48E
MATERNAL BROTHER



GRP

73



LWNBURG DUALLY 109H

TED 109H · 2185022 · January 31 2020

DL SONIC 444
DL DUALLY
DL INCENTIVE 2103

KG SOLUTION 0018
DL BARBARA 792
DL INCENTIVE 22E
DL KARAMA 39

S A V NET WORTH 4200
TED NETWORTH 90X
ALLEN CROFT TJ BLACKCAP 034N

S A V 8180 TRAVELER 004
S A V MAY 2410
ALLEN CROFT ILLINI 01 144J
ALLEN CROFT JCT BLACKCAP 033J

PERF DATA	
BW	92
WW	890
205D	856
365D	1319

EPDS	BW	WW	YW	M	MAR	REA	CWT
	1.9	64	115	18	0.44	0.45	42

- Another typical Dually son displaying exceptional growth
- Larger framed with good length of spine, thick topped with ample muscle and bone
- Dam is a farm favourite and exactly what you look for in an Angus cow, quality feet, udders, and quiet disposition

74



LWNBURG DUALLY 158H

TED 158H · 2170192 · February 17 2020

DL SONIC 444
DL DUALLY
DL INCENTIVE 2103

KG SOLUTION 0018
DL BARBARA 792
DL INCENTIVE 22E
DL KARAMA 39

LWNBURG RESERVE 163C
LWNBURG RESERVE 142E
TED SITZ ALLIANCE 151S

S A V RESOURCE 1441
TED IN FOCUS 16W
SITZ ALLIANCE 6595
TED EXTRA H6 95P

PERF DATA	
BW	85
WW	770
205D	836
365D	1453

EPDS	BW	WW	YW	M	MAR	REA	CWT
	1.1	66	120	17	0.5	0.39	39

- This Dually son that has such a good profile with added length, muscle, and rib shape
- Top end growth with a wean index of 108 and yearling index of 124
- The mating of Dually and Reserve really worked well, and this bull should sire scale crushing calves and fill up the replacement pen



74

75



LWNBURG DUALLY 22H

TED 22H · 2169506 · January 14 2020

DL SONIC 444
DL DUALLY
DL INCENTIVE 2103

KG SOLUTION 0018
DL BARBARA 792
DL INCENTIVE 22E
DL KARAMA 39

VISION UNANIMOUS 1418
LWNBURG UNANIMOUS 133C
TED NET WORTH 14X

VISIONTOPLINE ROYAL STOCKMAN
VISION EDELLA 665
S A V NET WORTH 4200
TED REVIVAL 113P

PERF DATA	
BW	100
WW	960
205D	863
365D	1478

EPDS	BW	WW	YW	M	MAR	REA	CWT
	5	81	144	19	0.64	0.38	54

- A larger outlined bull with massive growth numbers and actual performance
- Wean index of 110 and yearling index at 124
- Came off grass with an actual weight near 1000lbs
- Consistent cow family that never disappoints and is one of the strongest we own



75



GRANDAM - NETWORTH 14X

BACK ROAD 48F - MAT BROTHER

RESERVE 80E - MAT BROTHER

76



LWNBURG DUALLY 98H

TED 98H · 2169507 · January 30 2020

DL SONIC 444
DL DUALLY
DL INCENTIVE 2103

KG SOLUTION 0018
DL BARBARA 792
DL INCENTIVE 22E
DL KARAMA 39

TED HARVESTOR 108A
LWNBURG HARVESTOR 92C
RED LWNBURG ANISTON 137S

S A V HARVESTOR 0338
RED LWNBURG BOXCAR 139X
RED BRYLOR MASTER PLAN 17M
RED TED FARGO 33L

PERF DATA	
BW	92
WW	830
205D	796
365D	1430

EPDS	BW	WW	YW	M	MAR	REA	CWT
	2.3	65	112	14	0.33	0.2	33

- The consistent power that these Dually sons exhibits is extraordinary
- Cattle still sell by the pound and any of these Dually sons will certainly add pounds
- Yearling Index 127



76

77



GRP



77 LXA

LWNBURG DUALY 139H

TED 139H · 2169510 · February 12 2020

DL SONIC 444
DL DUALY
DL INCENTIVE 2103

LWNBURG CROSS OVER 66B
LWNBURG CROSSOVER 9D
RED LWNBURG PEACEMAKER 77B

KG SOLUTION 0018
DL BARBARA 792
DL INCENTIVE 22E
DL KARAMA 39

RED BIEBER ROLLIN DEEP Y118
TED BISMARK 50Y
RED GMRA PEACEMAKER 1216
RED TED GOLDEN BOY 119Y

PERF DATA	
BW	89
WW	690
205D	715
365D	1355

EPDS	BW	WW	YW	M	MAR	REA	CWT
	1.3	59	105	15			

78



GRP

78 LXA

LWNBURG TRAPPER 89H

TED 89H · 2150033 · January 28 2020

PAINTROCK MOUNTAIN MAN
PAINTROCK TRAPPER
EMULOUS OF PAINTROCK 93-9

S A V POTENTIAL 0205
LWNBURG POTENTIAL 27B
BLACKBIRD OF RAINBOW HILLS 50S

KESSLERS FRONTMAN R001
ENCHANTRESS OF PR 3635
ISAACS ALLIANCE 7161
PAINTROCK EMULOUS 446-6

S A V PIONEER 7301
S A V ELBA 7021
RAINBOW HILLS PRIME CUT 114P
BLACKBIRD RAINBOW HILLS 145C

PERF DATA	
BW	90
WW	770
205D	732
365D	1212

EPDS	BW	WW	YW	M	MAR	REA	CWT
	1.1	46	81	27	0.37	0.42	33

- A real beef bull packed with muscle, thick topped with a bold rib and tons of performance
- Dam is an awesome cow and makes you really appreciate the Angus breed with her efficiency, and grandam is still going at 15 years of age

DAM - POTENTIAL 27B



79



LWNBURG TRAPPER 61H

TED 61H · 2150018 · January 24 2020

PAINTROCK MOUNTAIN MAN
PAINTROCK TRAPPER
EMULOUS OF PAINTROCK 93-9

KESSLERS FRONTMAN R001
ENCHANTRESS OF PR 3635
ISAACS ALLIANCE 7161
PAINTROCK EMULOUS 446-6

LWNBURG RESERVE 163C
LWNBURG RESERVE 141E
TED HARVESTOR 28A

S A V RESOURCE 1441
TED IN FOCUS 16W
S A V HARVESTOR 0338
TED NEW STANDARD 29X

PERF DATA	
BW	82
WW	760
205D	749
365D	1240

EPDS	BW	WW	YW	M	MAR	REA	CWT
	-0.2	47	83	26	0.39	0.35	35

- A bull that could be used on heifers and cows
- These Trapper sons are real athletic, with a ton of shape and structural soundness
- Best part is the sisters to these bulls, they look to be great females and have a bright future ahead of them

79



PAINTROCK TRAPPER

BLACK ANGUS

80



BALDRIDGE COMMAND

80



LWNBURG COMMAND 44H

TED 44H · 2150011 · January 21 2020

EF COMMANDO 1366
BALDRIDGE COMMAND C036
BALDRIDGE BLACKBIRD A030

EF COMPLEMENT 8088
RIVERBEND YOUNG LUCY W1470
HOOVER DAM
BALDRIDGE BLACKBIRD X89

LWNBURG CROSS OVER 66B
LWNBURG CROSSOVER 79D
TED IN FOCUS 135W

RED BIEBER ROLLIN DEEP Y118
TED BISMARK 50Y
MYTTY IN FOCUS
BORDER BUTTE DP BEAUTY 37'03

PERF DATA	
BW	90
WW	845
205D	797
365D	1191

EPDS	BW	WW	YW	M	MAR	REA	CWT
	0.6	58	100	29			

- A common-sense cow bull with thickness, muscle capacity, and all the functional traits to excel in the real world
- Pedigree loaded with super deep bodied, heavy producing cows
- Full sister working in our herd is a stunning cow with perfect feet and udder



BOLT EPD'S

Genetic Evaluation by the Red Angus Association of America

If a Lot # is missing in this list it means the CAA does not have BOLT EPD on file for this animal at this time.

Lot	Current as of January 27, 2021	BW	WW	YW	M	MARB	CW	REA
1	RED LWNBRG WIRELESS 25H	-2.3	70	110	26	0.37	28	0.08
2	RED LWNBRG ELECTRIC 34H	-1.6	75	115	25	0.38	28	0.17
3	RED L30WNBORG INFRARED 47H	-1.8	64	104	21	0.36	22	0.08
4	RED LWNBRG ELECTRIC 49H	0.4	82	134	21	0.35	45	0.28
5	RED LWNBRG ELECTRIC 50H	-1.2	76	120	26	0.38	31	0.13
6	RED LWNBRG ELECTRIC 6H	-1.8	78	124	24	0.56	35	0.21
7	RED LWNBRG ELECTRIC 87H	-1.6	78	125	24	0.41	43	0.12
8	RED LWNBRG ELECTIC 91H	-2.2	60	100	17	0.33	25	0.11
9	RED LWNBRG BROXBURN 68H	1.1	83	127	25	0.39	43	0.31
10	RED LWNBRG WESTWARD 104H	0.4	82	131	21	0.32	44	0.18
11	RED LWNBRG FIRST DOWN 2H	-0.5	63	100	27	0.38	16	0.12
12	RED LWNBRG FIRST DOWN 101H	-0.9	55	88	23	0.29	16	-0.05
13	RED LWNBRG FIRST DOWN 110H	-2	67	106	28	0.49	16	0.18
14	RED LWNBRG QUADTRAC 94H	2.1	74	120	24	0.42	32	0.13
15	RED LWNBRG PREMIER 38H	1.4	77	119	26	0.22	28	0.24
16	RED LWNBRG QUADTRAC 35H	1.8	60	91	20	0.24	12	0.03
17	RED LWNBRG QUADTRAC 7H	0.5	66	106	20	0.44	22	0.12
18	RED LWNBRG QUADTRAC 116H	0.6	69	109	20	0.23	24	0.17
19	RED LWNBRG QUADTRAC 31H	2.5	77	126	25	0.41	29	0.21
20	RED LWNBRG HARVESTOR 133H	0.8	61	99	23	0.38	23	-0.06
21	RED LWNBRG HARVESTOR 131H	2.1	59	95	25	0.46	21	0.03
22	RED LWNBRG HARVESTOR 168H	1.7	57	91	22	0.44	17	0.01
23	RED LWNBRG HARVESTOR 161H	-0.3	62	104	18	0.29	32	-0.09
24	RED LWNBRG HARDTOP 8H	1.4	61	98	28	0.21	20	-0.03
26	RED LWNBRG BLUESTONE 84H	2.1	59	87	29	0.32	11	-0.05
28	RED LWNBRG CRAFTSMAN 18H	-2.8	57	94	23	0.38	22	0.07
29	RED LWNBRG MCLOVIN 97H	0.2	72	113	21	0.24	30	0.1
30	RED LWNBRG MCLOVIN 43H	-2.4	61	94	25	0.22	24	0.05
31	RED LWNBRG MCLOVIN 88H	-0.3	62	103	18	0.4	25	0.04
32	RED LWNBRG MCLOVIN 112H	-1.6	68	108	21	0.28	29	0.1
33	RED LWNBRG MCLOVIN 103H	-0.2	67	110	17	0.23	32	0.09
34	RED LWNBRG MCLOVIN 147H	1.7	62	102	23	0.53	23	0
35	RED LWNBRG MCLOVIN 78H	-1.1	63	100	25	0.38	20	0.18
36	RED LWNBRG MCLOVIN 79H	-1.1	63	100	25	0.38	20	0.18
37	RED LWNBRG WICK 85H	-0.9	83	132	26	0.32	34	0.34
38	RED LWNBRG WICK 81H	0	82	128	29	0.31	40	0.34
39	RED LWNBRG WICK 55H	0.2	81	135	24	0.39	40	0.26
40	RED LWNBRG HIGH PRESSURE 125H	-1.6	52	78	22	0.37	10	-0.04
41	RED LWNBRG HIGH PRESSURE 111H	-2.4	54	84	27	0.23	10	0.09
42	RED LWNBRG HIGH PRESSURE 148H	-0.8	56	84	29	0.21	12	0.02
43	RED LWNBRG HIGH PRESSURE 184H	-1.7	54	86	29	0.46	13	0.03
44	RED LWNBRG HIGH PRESSURE 64H	-1.2	59	88	27	0.23	18	0.08
45	RED LWNBRG HIGH PRESSURE 156H	-2.1	43	65	23	0.24	3	-0.09
46	RED LWNBRG HIGH PRESSURE 186H	-1.2	51	76	25	0.29	8	0.06
47	RED LWNBRG ENDZONE 86H	1.4	70	117	20	0.21	30	0.13
48	RED LWNBRG MALBEC 9H	-1.9	56	85	24	0.27	12	0.02
49	RED LWNBRG BERINGER 144H	-3.3	47	76	25	0.28	14	-0.01
50	RED LWNBRG REDZONE 77H	-2.5	53	80	22	0.45	9	-0.09
51	RED LWNBRG REDZONE 149H	0.6	73	114	27	0.34	24	0.08
52	RED LWNBRG REDZONE 56H	-0.9	70	108	26	0.32	26	0.02
53	RED LWNBRG REDZONE 166H	0.1	69	107	27	0.49	20	0.1
54	RED LWNBRG REVOLVE 163H	0.9	54	86	22	0.29	17	0.03
55	RED LWNBRG REVOLVE 187H	-1.2	52	85	19	0.24	18	0.1
56	RED LWNBRG REVOLVE 179H	-3.5	41	67	22	0.3	12	0.06
57	RED LWNBRG ORIGINAL 115H	1.1	66	95	26	0.2	22	0.08
58	RED LWNBRG OUTLOOK 26H	0.6	73	116	25	0.58	39	0.12
59	RED LWNBRG OUTLOOK 96H	0.5	66	107	26	0.54	25	0.14
60	RED LWNBRG WATCHMAN 27H	-2.8	50	85	25	0.35	17	0
61	RED LWNBRG WATCHMAN 40H	-2.4	50	85	25	0.42	14	0.06
64	RED LWNBRG REVOLVE 174G	-1.9	53	85	23	0.31	12	0.1
65	RED LWNBRG REVOLVE 175G	-4	40	67	22	0.39	5	0.03
66	RED LWNBRG REVOLVE 180G	0.5	51	83	20	0.3	9	0.1
67	RED LWNBRG HARVESTOR 182G	0.7	71	118	23	0.28	33	0.1
68	RED LWNBRG HARVESTOR 183G	0.7	71	118	23	0.28	33	0.1
69	RED LWNBRG HARVESTOR 185G	-2.9	51	85	24	0.25	15	-0.06
70	LWNBRG ELECTRIC 80H	-3.3	71	114	24	0.39	30	0.07
71	LWNBRG BACK ROAD 137H	-1.6	47	76	18	0.28	17	-0.04

CANADIAN AngusONE EVALUATION

Please note that the EPDs listed in this sale catalogue are the product of the new Canadian AngusONE Genetic Evaluation. These EPDs are calculated by Angus Genetics Inc in partnership with the American Angus Association. Therefore, EPDs for Canadian Red Angus, Canadian Black Angus, and American Black Angus animals are directly comparable to each other. This is a completely new base for Canadian Red Angus however, therefore, please be advised that the EPDs are not comparable to last year's EPDs for Red Angus. These EPDs are on a completely different scale, so please familiarize yourself with the new Breed Average and with the new threshold number for traits of importance to you. The right EPD for you will depend on your cow herd, your management, and your breeding goals. For more information on using EPDs please contact your Association, the Canadian Angus Association, at 1-888-571-3580, and for more information about the genetics offered in this catalogue and what might best suit your breeding needs please contact the seller.

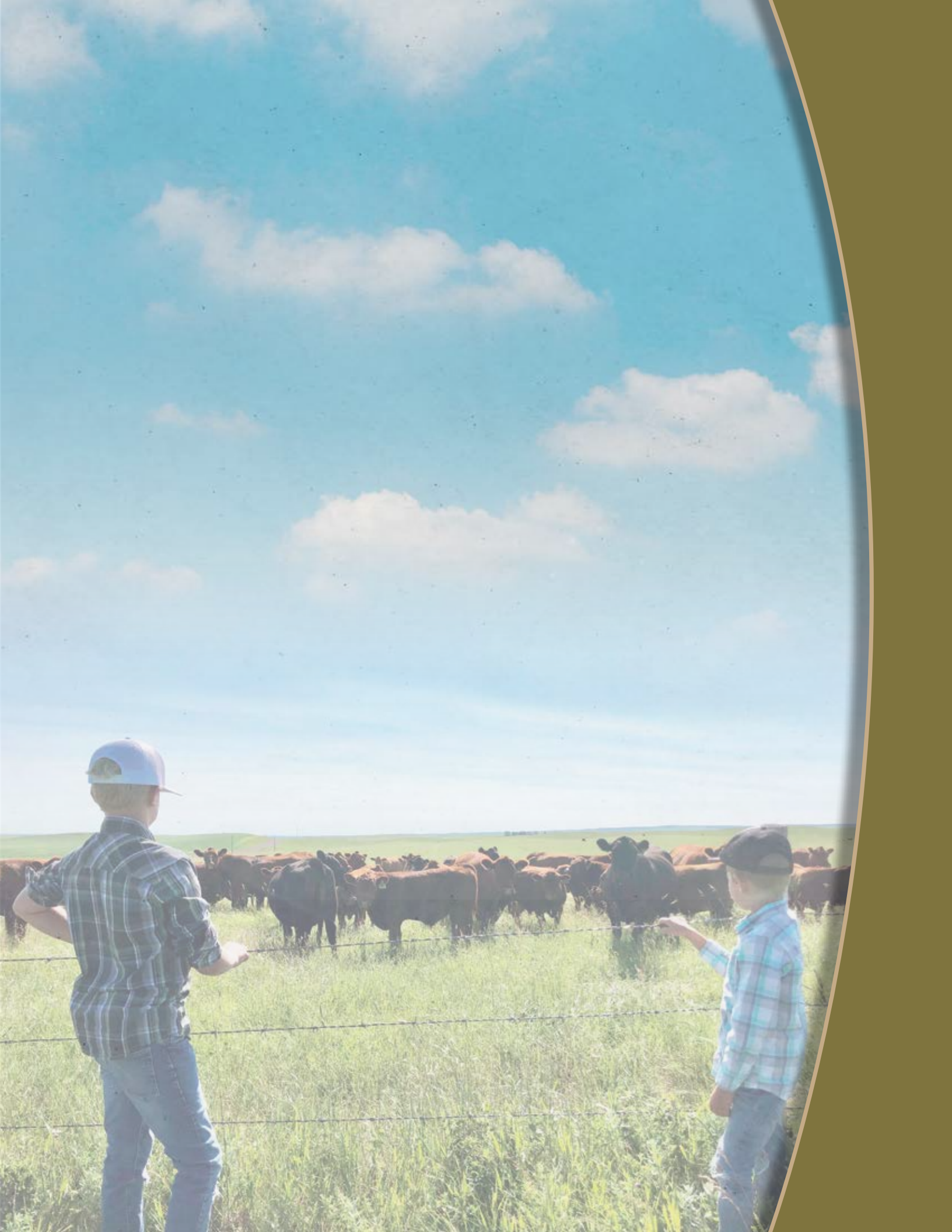
- EPD:** Expected Progeny Difference is the prediction of how progeny of each animal are expected to perform relative to the progeny of other animals in the Angus breed. As data continues to accumulate, accuracy levels rise and EPD's can shift accordingly.
- BW:** Birth weight is related to calving ease. Lower birth weights tend to reduce the incidence of calving difficulties. Lower birth weight EPD is more desirable for heifers.
- WW:** Weaning Weight is an indicator of growth from birth to weaning (205 days of age). During this period, the calf's growth is influenced by its mother's ability to produce milk and its own ability to grow.
- YW:** Yearling Weight is an indicator of growth from birth to yearling (365 days of age). The calf's growth during this period is influenced by its own ability to grow plus its mother's maternal abilities. It is the best estimate for total growth.
- MILK:** Milk EPD reflects the milking ability of a sire's daughters expressed in pounds of calf weaned.
- CARCASS EPD**
- MARB:(%IMF)** Marbling EPD is a predictor of the level of intramuscular fat and is derived using CUP ultrasound data and actual carcass data. Marbling determines quality grade.
- REA:** (Ribeye Area) Ribeye area is expressed in inches² and is a predictor of the area of ribeye muscle at the 12th/13th rib.
- CWT:** Is a predictor of transmitting ability for hot carcass weight.

AVERAGE EPD'S FOR ALL RED CALVES BORN IN 2020

BW	WW	YW	M	MARB	REA	CWT
1.1	36	62	23	0.26	0.32	21

AVERAGE EPD'S FOR ALL BLACK CALVES BORN IN 2020

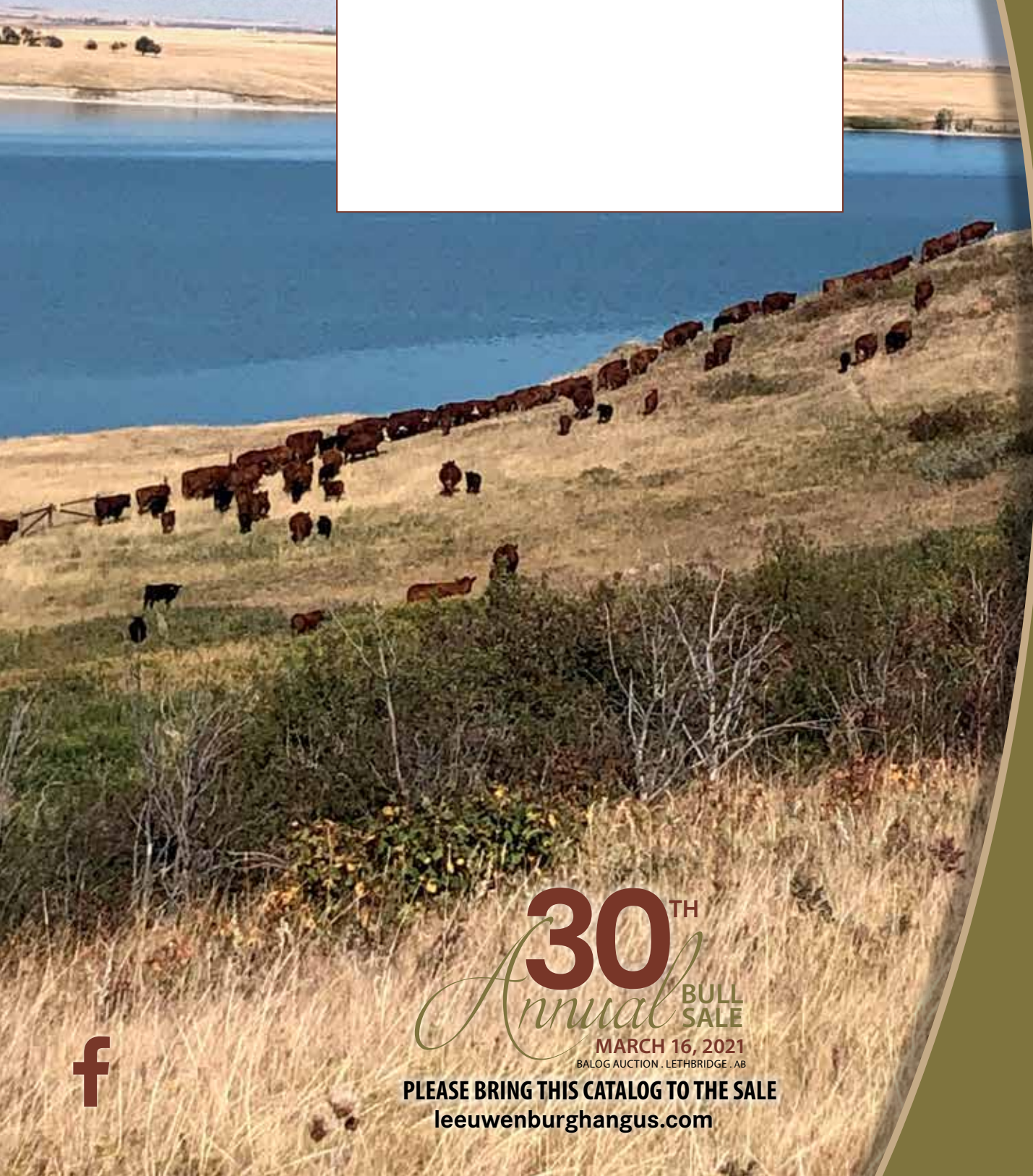
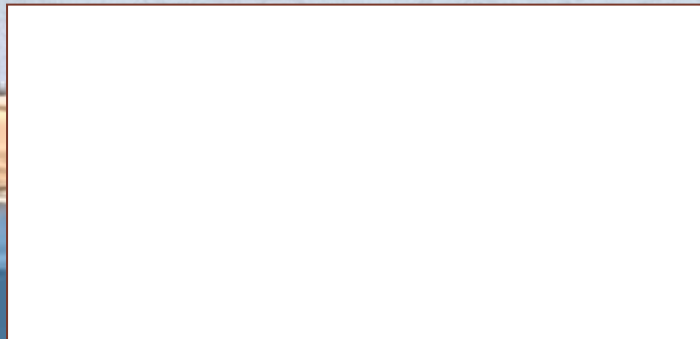
BW	WW	YW	M	MARB	REA	CWT
2.1	48	86	51	0.40	0.47	37



LEEUWENBURGH ANGUS
BOX 25
LETHBRIDGE AB T1J 3Y3



RETURN POSTAGE GUARANTEED
PORT DE RETOUR GARANTI



30TH
Annual BULL SALE
MARCH 16, 2021
BALOG AUCTION · LETHBRIDGE · AB

PLEASE BRING THIS CATALOG TO THE SALE
leeuwenburghangus.com