

Cornerstone "More Bang for **Bull & Female Sale** Your Buck!"

Featuring:

WRAZ RED ANGUS

45 Red Angus Yearling Bulls

1 Red Angus Herdsire

ALSO ON OFFER

Open Commercial Heifers

BRIMNER CATTLE CO.

30 Charolais Yearling Bulls



Saturday, April 20, 2019 • 1:30 P.M.

Whitewood Auction Mart, Whitewood, SK

Cornerstone "More Bang for Your Buck!"

1:30 P.M. Bull & Female Sale

Saturday, April 20, 2019 • Whitewood Auction Mart, Whitewood, SK

**76 BULLS
SELL**

**45 Red Angus Yearlings • 1 Red Angus Herdsire
Open Commercial Heifers • 30 Charolais Yearlings**

Sale Day Phones

Whitewood Livestock.....	306-735-2822
Kelly Brimmer	306-577-7698
Phil Birnie.....	306-577-7440
Gordon Murray.....	306-646-7980
Helge By	306-536-4261
Candace By	306-536-3374
Jon Wright	306-807-8424
Brent Carey, Auctioneer.....	403-650-9028
Shane Castle, Consultant	306-741-7485
Gerry Walter, ON/Eastern Rep	519-524-0047/519-524-8879
Bryan Mackenzie, Alberta/West	403-627-8266

Commercial Contacts

Jim Hallberg	306-861-0917
Glen Vargo	306-736-7710
Rhett Parks	306-735-7813
Chad Kelly.....	306-735-7810
Bob Toner, Director of Field Services for the Canadian Angus Association, will have Angus tags available at the sale.	

U.S. Buyers

We will do the required tests and deliver to the U.S. border at cost as soon after the sale as possible. The exchange rate will be announced at the start of the sale.
US Contact: Paul Haugen of Boot Jack – 1-406-366 2855.

Semen Testing

Bulls will be semen tested prior to sale day by a licensed veterinarian.

Delivery

Free delivery up to 150 km or bring your trailer sale day and receive a \$50 credit.

Board

Free board for bulls until June 1st, but all bulls left at the farm must be insured.

Insurance

Insurance will be available sale day. All bulls returning to the farm must be insured.

Credit Card Purchases

Mastercard and Visa may be used for payment of your purchases. A 3% surcharge will apply.

Terms & Conditions

The sale will be conducted under the Terms and Conditions of the Canadian Charolais Association and Canadian Angus Association. Copies will be available at the settlement desk on sale day.

Canadian Charolais Breed Average EPD

CE 4.5 BW 1.1 WW 43.3 YW 83.1 M 21.1 TM 42.8

OPEN HOUSE at WRAZ

**Saturday, April 6, anytime after 1:30 p.m.
until the cows come home.**

*Presale viewing of the bulls, their sires, dams & siblings
with calves at foot. WRAZ ultrasound data will be available.*

From Wawota: 5 miles E on #48, 1 mile N on #601, 1/4 mile W.



**Join us for lunch
on sale day**

The Percentage Calving Chart

1. An average cow of any breed should be able to calve 7% of her body weight.
2. Most Charolais cows will weigh between 1400-1800 lb., expected calf weight range 98 to 126 lb.
3. Most Red Angus cows will weigh between 1200 to 1600 lb., expected calf weight range 84 to 112 lb.
4. Calving Ease is MORE important than birth weight because a longer sided calf may calve easily, but the birth weight is higher.

7% Calving Chart	
Cow Wt.	Calf Wt.
1200 lb.	84 lb.
1400 lb.	98 lb.
1600 lb.	112 lb.
1800 lb.	126 lb.

**Brimner
Cattle Co.**

Kelly, Tracy, William & Wyatt Brimmer
Box 93, Manor, SK S0C 1R0
T 306-448-2028 C 306-577-7698

Sale Manager

By
LIVESTOCK

306-584-7937
Helge By 306-536-4261
Candace By 306-536-3374
Jon Wright 306-807-8424
charolaisbanner@gmail.com
www.bylivestock.com

WR^{ed}Angus^z
"The program you
can count on"

Phil & Lana Birnie & family
Box 461, Wawota, SK S0G 5A0
T 306-739-2988 C 306-577-7440
wraz@sasktel.net
Gordon Murray T 306-739-2177
C 306-646-7980



If you are worried you haven't got your bull shopping done by the middle of April, it is not a problem. The Cornerstone Bull Sale has bulls that will fit in any purebred or commercial operation in both the Red Angus and Charolais. There are bulls that will work in the heifer pen to bulls that will give you as much performance as you could want. The WRAZ program is hitting stride with genetics selling across North America in the frozen variety and the females that he sells in their Pride of the Prairies Female Sale in December. There are some unique bloodlines that command your attention. The Brimner Charolais breeding program is also very solid utilizing walking sires with proven bloodlines giving you a consistent product. Bulls from this sale that have gone into purebred operations have worked well and with the number of repeat customers, you know that they are working at all levels of the industry.

Red cows and white bulls have been the Cornerstone of the commercial industry for decades and will continue to be popular from the sale ring to the packing house. Using a quality bull is the first step to herd improvement and they are here in both breeds.

Again this year, there is a good offering of open Red Angus and Red Angus X Charolais open replacement heifers that would be excellent additions to an existing operation or a great place to start a new herd. As an added bonus, there are some good Red Angus cow/calf pairs ready to go to work for you.

If Jon, Candace or I can be of any assistance before the sale, or on sale day, please don't hesitate to give us a call. We would be happy to help you find a bull that is right for your program.

Sincerely,

Helge & Candace By 306.536.4261 • Jon Wright 306.807.8424 • By Livestock

Welcome to the 11th Annual Cornerstone "More Bang for Your Buck" Bull & Female Sale



First of all if you are reading this thank you so much for your interest and support in our program. We would not be here without you and truly value our relationships with you. We are here to help in any way we can and are constantly seeking out new genetics that we feel the beef industry requires. As the sale name implies we want to supply you with genetics that will keep your program going forward in the way you require as well as give you a good return on your investment dollar.

We have worked hard to produce and are proud of what we have to offer you in the pages of this catalogue. The



WRAZ bulls have been culled heavily from 293 registered pairs. We feel strongly about structure, femininity and maternal qualities in our herd of 300 ish females. We have been culling ruthlessly for many years to keep a strong female base to supply you

with the highest quality genetics that we can.

Integrity is of the utmost importance to both of our programs and we want you to know we stand behind our genetics 100%. WE WILL BE THERE FOR YOU BEFORE, DURING AND AFTER THE SALE. We always do our best but we all know that breeding issues may arise. PLEASE if

anything should come up call immediately so we can make sure you have a quality bull to breed your females. We keep back a quality group of bulls that are just a little too young for the sale in each sire group on offer to look after you if something should happen.

Herd nutrition is very important to us and the herd is on a year round mineral program and the rations are balanced as recommended by Dr. Darryl Gibb and Tracy Hum of Gowans Feed Consulting.

We also feel strongly about herd health. Dr. Henry McCarthy from the Wawota Vet Clinic looks after our herd health and vaccination protocol. We are on a whole herd health program and vaccinate according to Dr. McCarthy's recommendations which includes: Ivermectin, Blackleg vaccination, Bovisheild Gold FP5 (fetal protection) on the bred

heifers and cows and the calves are vaccinated at turnout and pre-weaning on the Selectvac Gold program. All of the WRaz bulls are semen tested and have passed their semen evaluation unless otherwise stated before the sale by Dr. Henry McCarthy. All of the open heifers in the sale have been palpated to ensure they are open and are sound for breeding.

Cheers,
Phil



Phil & Lana Birnie & Family
Box 461, Wawota, SK S0G 5A0
T 306-739-2988 • C 306-577-7440
wraz@sasktel.net
Gordon Murray
T 306-739-2177 • C 306-646-7980

A BIT ABOUT VBP+ & BIXS

I know everyone would like everything to stay the same forever but the only thing constant is change.

I have attended many an industry conference with the latest being the Sask. Beef Industry Conference in Regina. There was once again an outstanding line up of speakers on a wide range of important industry topics. One topic that I have heard about over and over for a long time now is the Verified Beef Production Program. The most recent rebranding and marriage of VBP & BIXS is now known as VBP+ and TrustBIX if I understand correctly. The changes were necessary to add the latest technology and verification processes necessary to have producer to plate traceability for the Canadian Beef Industry.

VBP+ is the vehicle producers, feeders and packers sign up with to become verifiable entities.

TrustBIX is the independent third party that compiles and stores all the information to enable traceability from the end user of OUR beef production to any place along that supply chain as well as the verifier for payouts to the tag/entity. This is my over simplified personal version of a very complex but proven system.

Some of our great industry players have come together with the Accelerated Canadian Beef Sustainability Project and the proof is in the pudding. The program works as long as the RFID tag/animal originates and stays within VBP+ verified entities - producer/feeder/packer. There were payouts ranging from roughly \$16 to \$22 for each entity along the way. The biggest thing to take from this is IT WORKED!

I will not get any more technical than that. I have signed up and I am to the point of being verified myself and it is not as big of deal as you think. Let's help ourselves and JUST DO IT - GET SIGNED UP!

The end markets are crying for our verified product and the verified product will only open and sustain even more markets for our second to none Canadian Beef. The market will find the product elsewhere if we do not get on the verified beef train together. I will also add at this time as a Red Angus producer I love the fact that with the addition of an Angus Indicator (tag) to any animal that has one Angus parent they become eligible to enter the Verifiable Angus Beef market. We red hided guys were not eligible for the Certified Angus Beef market (Black

hided only). Do not get me wrong here - We need every breed out there in this fabulous Canadian Beef Industry. Tag them how you like but if you have one angus parent why not put the eligible tag in to open as many markets for your product as you possibly can - you have to put an RFID tag of some kind in by law - if your animal is eligible for an angus tag its eligible for the Verified Angus Beef program, otherwise it's not. If the market you choose is not an angus market they can still go to any other market along the way.

Ok enough said. Take care out there!

~ Phil

Canadian Angus Tag Program

The Canadian Angus Tag Program is the largest branded tag program in the world. The tags visually and electronically identify cattle that are guaranteed Angus. Animals wearing the green RFID tags are a minimum of 50% Angus genetics. Canadian Angus tags are CCIA approved. Order your tags today and have them delivered right to your mailbox.

*You have to tag them anyway,
why not tag them **Angus**?*



Order your Angus tags today:
Call 1-888-571-3580 Visit www.cdnangus.ca



Reference Sire

RED WRAZ MONOPOLY 32D

WRAZ 32D

Sire of Lot 1

Red WRAZ Monopoly 32D is an extraordinary calving ease sire. He has bred beyond my expectations with consistent low birth, excellent eye appeal, great growth and outstanding shape. He did not sire many progeny to date but the ones he did are outstanding. Use his sons with confidence in your heifer pen



1

RED WRAZ CARTEL 147F

2067338

WRAZ 147F

March 4 2018

BW 61

Nov 9 WW 718

RED TER-RON MONOPOLY 84A OSF AMF DMF
RED WRAZ MONOPOLY 32D
RED PASQUIA FAYET 3B
RED HAMCO NEW TREND 238B
RED WRAZ COUNTESS 607D
RED BRYLOR PSQ'S VAQUERO 13U

Cartel 147F is definitely a feature calving ease sire. With calving ease on both sides of his pedigree and a birthweight to match he will be a huge asset in the heifer pen. There are some very interesting females throughout this pedigree as well as the very hard to come by Pasquale. His dam was high selling female at our 2017 Pride of the Prairies sale to Murray & Karen Crawford – Ramblin Rose near Rocanville. We were very fortunate to have the opportunity to lease her back. This is exactly what we are striving for at WRAZ. A top end female that produces a top end son on her first try – I would say his future looks pretty bright!



Dam: COUNTESS 607D

Reference Sire

RED COCKBURN ASSASSIN 624D

CWJ 624D

Sire of Lots 2 – 4

Assassin 624D was the high selling bull of the season to Brylor Ranch for \$77,500.00 He has been used successfully in a number of programs across the country now. His sons are great haired with lots of shape. In general they are big ribbed and easy doing with tremendous growth. We have very successfully used him on heifers the past two years.



2

RED WRAZ SNIPER 88F

2043572

WRAZ 88F

February 18 2018

BW 74

Nov 9 WW 814

RED PIE SPECIALIST 430 MAF OSF
RED COCKBURN ASSASSIN 624D AMF CAF DDF OHF OSF NHF
RED COCKBURN CORA 254Z
RED BRYLOR NEW TREND 22D OSF MAF
RED HAMCO JESSI 30X
RED HAMCO JESSI 280S

I am really pleased to have had the opportunity to purchase a semen package on the \$77,500 Assassin from Brylor. Sniper 88F has been a standout since birth. There are not many bulls with a 74 lb birthweight that check all the boxes like this guy does. More than one astute cattleman has followed him around the pasture. Loose hided with tons of hair and an extremely easy going temperament. I really like this bull and there may be terms announced on sale day as I would really like to use him in our program. His New Trend dam 30X will become part of the WRAZ ET program this summer. Please do not hesitate to call closer to sale day for more details.



Dam: Jessi 30X

3**RED WRAZ MARIO 36F**2052028
BW 93WRAZ 36F
Nov 9 WW 728

February 6 2018

RED PIE SPECIALIST 430 MAF OSF
 RED COCKBURN ASSASSIN 624D AMF CAF DDF OHF OSF NHF
 RED COCKBURN CORA 254Z
 RED VRRRA TOP STAR Y236
 RED WRAZ MARIA 132D
 RED WRAZ MARIA 95Z

Here is another interesting son of Assassin from our treasured Maria cow family. Mario 36F would be a great asset breeding mature females to produce top end females for your replacement pen. Keep all the daughters!

**4****RED WRAZ ASSASSIN 58F**2052029
BW 78WRAZ 58F
Nov 9 WW 684

February 13 2018

RED PIE SPECIALIST 430 MAF OSF
 RED COCKBURN ASSASSIN 624D AMF CAF DDF OHF OSF NHF
 RED COCKBURN CORA 254Z
 RED DURALTA 275X BRUTE 135B
 RED WRAZ FANCY 104D
 RED RILEY'S FANCY 28U

Here is another Assassin son that would work well in the heifer pen. Pasquale is on the dam side of this pedigree once again adding maternal calving ease as well as topping up the female production side of things. Grand dam 28U has an outstanding son, Lot 35, in the offering.





Reference Sire

RED JYL COMPASS 41B

JYL 41B

Sire of Lots 5 – 18



Dam of Compass & Final Deal, JYL 4W



Granddam of Compass & Final Deal, RCMP 7P



Sire of 41B: RED CHOPPER K OZZI 109T

41B is a maternal brother to Reference Sire Red JYL Final Deal 78Z – who sells as lot 19 and is sire of lots 20-28.

Compass 41B was purchased to add frame, a dark foot and lots of dark red hair. His dam JYL 4W is an outcross Black Red Gene Carrier by Final Answer. She is an excellent female, you will drive a lot of miles to find one that compares, especially when you research her outstanding production. I like this female so much that I have added another son/maternal brother Final Deal 78Z to our herd bull battery as a mature sire. I am very pleased with the 41B progeny.

Co-owned with Nielson Land & Cattle.

5

RED WRAZ ZOOM 61F

2043553

WRAZ 61F

February 14 2018

BW 64

Oct 2 WW 774



RED CHOPPER K OZZI 109T
RED JYL COMPASS 41B
JYL PRINCESS 4W (RC)
RED DIMLER INDEED 105R
RED WRAZ MISTRESS 91W
RED KMAC MISTRESS 607S

Zoom has a tremendously low birthweight for the amount of shape and growth he has shown. I would not generally recommend many of the 41B sons for use on heifers but the dam and grand dam of this guy consistently pull out birthweight on their progeny so go ahead and put him in the heifer pen. The bonus is when he is physically too big to breed heifers you can use him on the cows where his maternal strength will be a huge asset for making replacement females. Dam 91W has been a great producer with sons at Tom & Johnny Howe and Hebert Livestock. Daughters at Ramblin Rose, Hillcrest Ranching and J lazy A Ranch.



Dam: MISTRESS 91W

6

RED WRAZ MOZZI 129F

2044176

WRAZ 129F

February 28 2018

BW 71

Nov 9 WW 742

Mozzi 129F is stout made with a thick dark red coat of hair. He has a very moderate birth weight of 71 lbs. His dam Rosa 26Z has a very solid production record with a son to Tom & John Howe and a daughter to Alice Rookes of Rooke Red Angus. If you have not had the opportunity to meet the Rooke family and check out their herd it would be worth your while to stop by and say hello. They are a very friendly, hardworking bunch well worth getting to know. Their place is just south of #1 Highway west of Brandon near Alexander – watch for their sign.



7

RED WRAZ RENO 103F

2044162

WRAZ 103F

February 21 2018

BW 79

Oct 2 WW 786

Reno is a very correct, dark red, attractive son of Compass 41B with a very moderate birthweight. His dam 8X has a little more frame and excellent milk production. The average birth weight of her sons has been 83 and daughters 78 lbs. The eye appeal alone that he will add will raise the price of his progeny next fall!





RED CHOPPER K OZZI 109T
RED JJL COMPASS 41B
 JJL PRINCESS 4W (RC)
 RED PASQUIA ICON 57T
RED WRAZ MS PRINCE 31W
 RED PFRA MS PRINCE 149M

Powerful son of Compass 41B out of one of the top cow families in the herd. She has consistently put useful bulls in the sale pen as well as excellent females. We have retained a daughter 44B – she also has a bull 198f in the sale. Another daughter 90C went to Jim Lindsay (Ontario). Sons have sold to Bruce Holloway, Anton Kreutner and Phil Draper.



Dam: MS PRINCE 31W

RED WRAZ OZZIE 51F

2043548

WRAZ 51F

February 10 2018

BW 96

Nov 9 WW 790



RED CHOPPER K OZZI 109T
RED JJL COMPASS 41B
 JJL PRINCESS 4W (RC)
 RED WRAZ EAGLE 89W
RED PASQUIA DYNA QUEEN 47Y
 RED ALLAVON DYNA QUEEN 61S

This son of 41B should be used on the cows and would be a great choice for producing replacement females. Dyna Queen 47Y has done a good job for us. The maternal strengths are shining through in her daughters. We have retained a full sister to this guy here at WRAZ. She has recently calved with a dandy first calf – she is a great first time mother. Maternal sister 66B at Neilson Land & Cattle put a son in their recent bull sale.

RED WRAZ OSBORN 53F

2043550

WRAZ 53F

February 11 2018

BW 79

Nov 9 WW 742



RED CHOPPER K OZZI 109T
RED JJL COMPASS 41B
 JJL PRINCESS 4W (RC)
 RED BUF CRK HOB0 1961 OSF MAF
RED GINN HOB0 KURUBA
 RED GINN KNIGHT HAWK KURUBA11T

This moderate birthweight son of Compass 41B comes our Kuruba 1W female sired by the old time female producer Hobo 1961. She has produced sons to Corey Flaman and Craig, Twila & Travis Lincoln. We have retained a daughter, there is another at Larry Neilson's as well as most recently a bred heifer to real nice young couple Christina & Reid Daley of Double Barrel Angus.

11**RED WRAZ COMPASS 67F**2043556
BW 85WRAZ 67F
Nov 9 WW 772

February 15 2018

RED CHOPPER K OZZI 109T
RED JJL COMPASS 41B
JJL PRINCESS 4W (RC)RED YY HITCH 23X
RED WRAZ FANCY 148A
RED JJL FANCY 31Y

Dam 148A is a little more refined and moderate made female. She has produced a son to Randy Pillar and grand dam 31Y produced one of our top selling bulls last year to Alvin Ginter.

12**RED WRAZ MARIA'S MAMBO 72F**2043561
BW 85WRAZ 72F
Nov 9 WW 812

February 15 2018

— If you would like to produce replacement females Maria's Mambo 72F would be a strong candidate. Grand dam Maria 70U is designated CAA Premiere Dam with 5 of her 10 progeny designated as Grande Calves. This Maria cow family all stems from the Cornerstone Female Maria 2J. Not many females have 17 natural calves to their credit. Her feet at 19 years were as good or better than any in the breed.

RED CHOPPER K OZZI 109T
RED JJL COMPASS 41B
JJL PRINCESS 4W (RC)
RED PASQUIA TOAST 15W
RED WRAZ MARIA 95Z
RED WRAZ MISS MARIA 70U



Dam: MARIA 95Z

**13****RED WRAZ DOUBLE TAKE 77F**2043562
BW 82WRAZ 77F
Nov 9 WW 664

February 15 2018

— Dam 41W is sired by the Tycoon bull that left us a group of really impressive females. She has been a solid producer with one son working in the purebred herd of U6 Livestock another for Anton Kreutner. Daughters are working for Hillcrest Colony and Southview Ranch. Keep the females!

RED CHOPPER K OZZI 109T
RED JJL COMPASS 41B
JJL PRINCESS 4W (RC)
RED K ADAMS TYCOON 2T
RED WRAZ JETTA 41W
RED T-K JETTA 19S



Dam: JETTA 41W

**14****RED WRAZ OSBORN 74F**2043564
BW 78WRAZ 74F
Nov 9 WW 744

February 16 2018

Dam to this guy is one of my picks of our females. Her feet and udder are impressive even today nearing 10 years of age. Sons are at work for Hebert Livestock Ventures and Wacoalty Enterprises. A top end daughter in the fall female sale sold to Broughton Farms — we had the opportunity to keep her in the herd on lease from Broughton's. We have retained the next daughter in our herd. Grand dam 109L had 13 progeny as well. Great cow family here — Keep all the daughters!

RED CHOPPER K OZZI 109T
RED JJL COMPASS 41B
JJL PRINCESS 4W (RC)
RED BRYLOR JETER 203U MAC
RED BRYLOR MS LOGAN 3X MAF
RED PFRA MS LOGAN 109L



Dam: MS LOGAN 3X





15 RED WRAZ OZZIE 35F

2043539	WRAZ 35F	February 5 2018
BW 83	Nov 9 WW 762	

RED CHOPPER K OZZI 109T
 RED JLL COMPASS 41B
 JLL PRINCESS 4W (RC)
 RED WRAZ SILVERADO 2U
 RED WRAZ MARIA 26X
 RED CLAY FIRST MARIA 2J

Dam 26X is a direct daughter of Maria 2J – she was a model Red Angus female and a Cornerstone females of the WRAZ program producing her 17th consecutive calf before she left us on home pasture this summer in her 19th year. Her feet were as near perfect as I have found to date. Maria 26X has followed in her footsteps with daughters 6Z in our ET program, 43A, 87E here at WRAZ, 96C owned by Broughton Farms but here on lease to WRAZ, 30B at New Horizon and son 52D at Burdick Range Red Angus near Moosejaw. Enough said except – keep all the daughters!



16 RED WRAZ TRUE NORTH 43F

2043543	WRAZ 43F	February 8 2018
BW 81	Nov 9 WW 720	

RED CHOPPER K OZZI 109T
 RED JLL COMPASS 41B
 JLL PRINCESS 4W (RC)
 RED PASQUIA TOAST 15W
 RED WRAZ FREYJA 9Z
 RED FREYJA OF KINARED 438N

Dam 9Z is a dark, dark red female that might have as much frame as any female in the herd. She consistently has low birthweight progeny. CAA website has Male average at 70 lb and Female average at 78 lbs. There are not many Compass 41B sons I would recommend in the heifer pen but if you need a heifer bull with a little more frame or one for a few heifers and some cows then this guy would be a good choice.



17 WRAZ RC MAMBO 179F

2045664	WRAZ 179F	March 12 2018
BW 96	Nov 9 WW 756	

RED CHOPPER K OZZI 109T
 RED JLL COMPASS 41B
 JLL PRINCESS 4W (RC)
 RED DIMLER INDEED 105R
 WRAZ TIBBIE 109Y (RC)
 WRAZ RC TIBBIE 127T (RC)

Dam 109Y is a black red gene carrier female and this black hided son carries the red gene as well. This guy will end up with a fair bit of frame and should be used on cows. He will add milk if you could use that in your replacement females. Daughter 85B at MDF, two daughters retained here at WRAZ and a son to WCF in Ontario.

18 RED WRAZ MAMBO 206F

2046763	WRAZ 206F	March 22 2018
BW 93	Nov 9 WW 728	

RED CHOPPER K OZZI 109T
 RED JLL COMPASS 41B
 JLL PRINCESS 4W (RC)
 RED BRYLOR NEW TREND 22D OSF MAF
 RED WRAZ FAYET 1W
 RED DELAR FAYET 760R

One of the younger bulls in the offering and I recommend you use him on cows. He will be 13 months old on sale day so a later calving herd would be an ideal home for him to grow up a little.

THIS REFERENCE SIRE SELLS!

Selling 1/3 interest and full possession

19

RED JJL FINAL DEAL 78Z

JJL 78Z

Sire of Lots 20– 28

RED T-K AVALANCHE 8S OSF
RED T-K BIG DEAL 98U AMF MAF
RED T-K PRINCESS 14N

S A V FINAL ANSWER 0035 AMF NHF CAF DDF OHF OSF DMF
JJL PRINCESS 4W (RC)
RED RIVERDALE PRINCESS 7P



HERE IS WHAT WE STRONGLY BELIEVE COULD BE THE OPPORTUNITY OF THE YEAR! This son of the beautiful Final Answer daughter JJL Princess 4W is maybe the most consistent calving ease sire out there today. The CAA site shows an average BW of 76 lbs on both males and females to date which is the average at WRAZ last year. There is a crop of calves on the ground at Brylor Ranch not yet registered. The average BW this year at Brylor where he was used exclusively on cows is 77 lbs for males and 74 lbs for females. Bryan is very impressed with the sharpness and amazing grow to his calves. Leon Roy was the original owner of Final Deal 78Z purchased as a calf and after 3 years found the same extremely consistent birthweights as well. You may notice there are only a few calves registered from Leon – the reason is Leon only recently registered his Burdick Range Red Angus herd with the CAA and started to register the progeny from his very good purebred herd of females. All of the 78Z daughters at Leon's went to the same buyer for 3 years in a row for good reason – they are flat good!! **Make no mistake – We are not selling this bull – we are offering to share him as a mature sire because he is genetically far too good for him not to breed as many females as possible! He is so easy doing he will easily gain weight while out breeding.** The picture is from fall of 2018 on pasture still with his group of females. He had been breeding at Brylor then July 2 we met at Swift Current and then I put him out with another group of females here at WRAZ. He is an extraordinary herd sire whose genetics need to be replicated as much as possible in this great breed!

The terms are as follows: Currently owned 50 – 50 Brylor/WRAZ. The new owner will be buying 1/3 interest & full possession in Final Deal 78Z. With your investment the new owner will walk the bull plus 50 straws of semen for in herd use will be included. At fall of the hammer the new owner will share equally in any semen sales from that point on with Brylor & WRAZ – 1/3 each. There has been limited amounts of semen sold to date in both Canada & the US. There is semen currently in store in both Canada and the US and that inventory will be shared equally with no additional expense to the new owner. Any future expenses for collection of semen will be shared equally. Please call if you have any further questions.

Semen available: BRYLOR Semen Sales – Bryan 1.403.627.8266 or WRAZ – Phil 1.306.577.7440



Granddam of Final Deal, RCMP 7P



Dam of Final Deal, JJL 4W



The first and only 78Z daughter sold to date. Open heifer, Red WRAZ Pteet 112F sold for \$5500

20**RED WRAZ DEALER 45F**

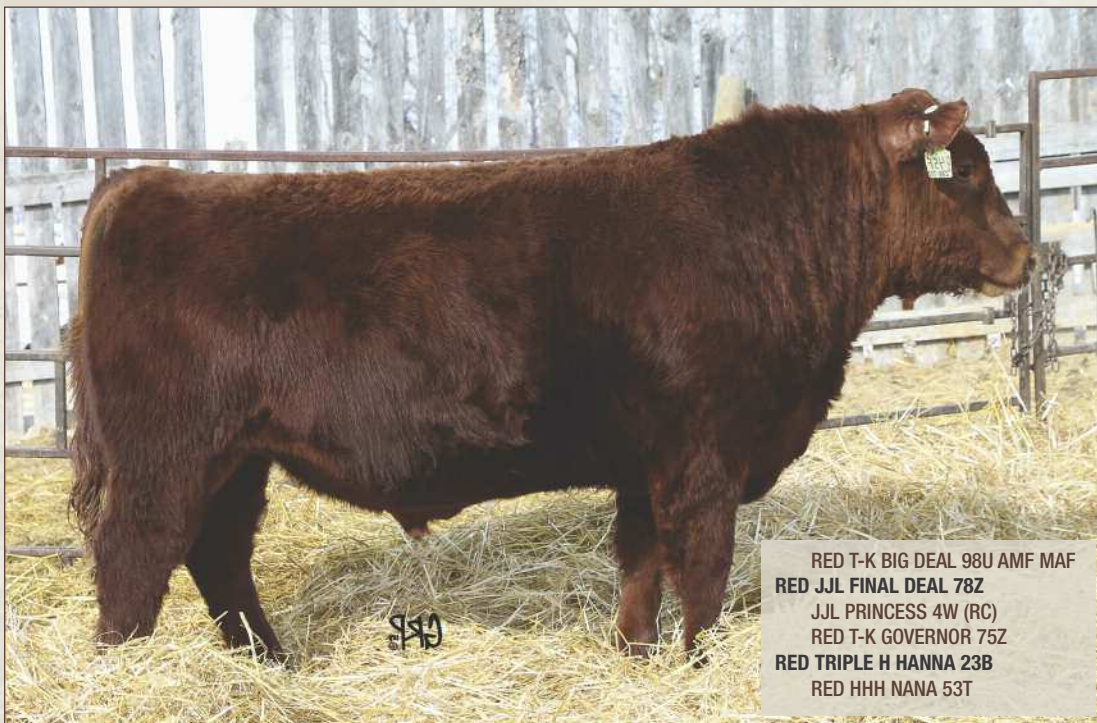
2043545

WRAZ 45F

February 9 2018

BW 71

Nov 9 WW 732



RED T-K BIG DEAL 98U AMF MAF
 RED JJL FINAL DEAL 78Z
 JJL PRINCESS 4W (RC)
 RED T-K GOVERNOR 75Z
 RED TRIPLE H HANNA 23B
 RED HHH NANA 53T

Final Deal has done a fabulous job on 3 different herds – the proof is in the progeny. This low BW son of Final Deal has plenty of shape along with the calving ease he possesses. His dam was purchased out of the Brandon Keystone sale from one of the top cow families at Triple H.

21**RED WRAZ GOOD DEAL 52F**

2043549

WRAZ 52F

February 10 2018

BW 60

Nov 9 WW 750



RED T-K BIG DEAL 98U AMF MAF
 RED JJL FINAL DEAL 78Z
 JJL PRINCESS 4W (RC)
 RED SIX MILE TYPHOON 289T
 RED DOUBLE C MAGGIE 301X
 RED DOUBLE C MAGGIE 84R



Dam: MAGGIE 301X

Here is another calving ease specialist from our very consistent calving ease sire Final Deal 78Z. Good Deal has calving ease built in on both sides of his pedigree yet possesses as much shape as any calving ease bull in the pen. Get in on the ground floor of these 78Z sons – they are definitely a GOOD DEAL for our industry – just wait till the females start becoming available!

22**RED WRAZ NEXT DEAL 80F**

2043568

WRAZ 80F

February 17 2018

BW 80

Nov 9 WW 784



RED T-K BIG DEAL 98U AMF MAF
RED JJL FINAL DEAL 78Z
 JJL PRINCESS 4W (RC)
 DMM CREED 75W CAF OSF MAF AMF NHF DDF (RC)
WRAZ RC VELESA 39A (RC)
 RED VELESA OF KINARED 502N

Outcross genetics here in a calving ease package!

Here is a Final Deal 78Z son worth a close look. We

cannot say enough about his sire Final Deal 78Z — what a highly consistent calving ease sire he is! He is a feed efficient, easy doing gentle giant and he is even dark red. Not only is 78Z's dam a black red carrier but 80F's dam is a black red carrier as well. She is a daughter of Creed 75W and our CAA Premier Dam Velea 502N female. Her 15 natural progeny BW averages are males 86 lbs and females 74 lbs. He would be safe to use on heifers but do not hesitate to use him on the cows to produce high quality replacement females.

23**RED WRAZ TINY 27F**

2043537

WRAZ 27F

February 03 2018

BW 50

Nov 9 WW 698

RED T-K BIG DEAL 98U AMF MAF
RED JJL FINAL DEAL 78Z
 JJL PRINCESS 4W (RC)

RED MRLA 116U
RED NU-HORIZON EBONY 117Y
 RED NU-HORIZON BRANDY 910W

Well here is what happens when you breed Final Deal to one of your top producing cows and you sort the herd into a close to calving pen. Tiny was born early after we did a sort of the cow herd and they were sorting out their pecking order again. He would have been 10 -15 lbs heavier if he would have been full term. Tiny's dam has done an outstanding job here. She produced our high seller to Red Ember Ranch last year — you will see his progeny in the future. That outstanding production placed her on the CAA Premier Dam list with 3 of her 5 progeny being Grand Calves with an average male BW of 77 lbs & avg WW 814.

25**RED WRAZ FINAL DEAL 226F**

2046774

WRAZ 226F

April 2 2018

BW 72

Nov 9 WW 630

RED T-K BIG DEAL 98U AMF MAF
RED JJL FINAL DEAL 78Z
 JJL PRINCESS 4W (RC)

RED EKW GOLDEN DEED 10U
RED WRAZ PRINCESS 413B
 RED WCF HAWK PRINCESS 23U

Here is another Final Deal 78Z son safe for use on your heifers. Dam 413B is an attractive young, milky female that has shown solid production. She just had another dandy bull calf this morning.

24**RED WRAZ GOOD DEAL 114F**

2044170

WRAZ 114F

February 23 2018

BW 85

Nov 9 WW 692

RED T-K BIG DEAL 98U AMF MAF
RED JJL FINAL DEAL 78Z
 JJL PRINCESS 4W (RC)
 RED BASIN SENSATION 702E OSF
RED FRASER EMMY 144Y
 RED FRASER EMMY 978W

Emmy 144Y was purchased from our good friend Jeff Fraser. She has been a solid producer with sons in past sales to High Calibre Red Angus and Lloyd Harmon and most recently one of the top selling daughters sold out of our annual Pride of the Prairies female sale to Count Ridge.





Check out this interesting sons of 78Z from a very strong cow family. The cornerstone of the Velesa cow family is 502N a CAA Premier dam with 15 progeny and more than one daughter retained. This fella's dam is one of those daughters Velesa 2X she is a twin to Velesa 3X both have produced well here.

RED T-K BIG DEAL 98U AMF MAF
RED JJL FINAL DEAL 78Z
 JJL PRINCESS 4W (RC)
 RED BRYLOR/WSP KARWEIK 1P MAF
RED WRAZ VELESA 2X
 RED VELESA OF KINARED 502N

RED WRAZ FINAL DEAL 68F

2043557

WRAZ 68F

February 15 2018

BW 80

Nov 9 WW 654



RED T-K BIG DEAL 98U AMF MAF
RED JJL FINAL DEAL 78Z
 JJL PRINCESS 4W (RC)
 RED MLK CRK CUB 722 MAF OSF
RED WRAZ ABIGAIL 43W
 RED CUMNOCK ABIGAIL 654L

Moderate BW son of Final Deal 78Z if you would like to pull out some BW on your cows. He would work well on a group of well grown out heifers or young cows. Nice hair and shape to this guy. Dam 43W has been a steady producer. Don Johnson has a son by Big Rock.

RED WRAZ GOOD DEAL 198F

2046758

WRAZ 198F

March 19 2018

BW 72

Nov 9 WW 624



RED T-K BIG DEAL 98U AMF MAF
RED JJL FINAL DEAL 78Z
 JJL PRINCESS 4W (RC)
 RED BRYLOR JKC GHOST RIDER108Y DDF
RED WRAZ MS PRINCE 44B
 RED WRAZ MS PRINCE 31W

This guy deserves a close look based on the very solid moderate framed cow family alone not to mention the added awesomeness of 78Z. Great grand dam 149M was the picture perfect phenotype that caught the eye of everyone. She also produced a son to WCF, a daughter to 4 West, the very good grand dam to this guy 31W with sons to many good programs and another strong son in this sale 107F. Dam 44B is following in the footsteps of this strong cow family and has had very consistent BW progeny. She just had another very eye appealing 78 lb calf yesterday. He is safe for the heifer pen.

Reference Sire

RRAR ROULETTE 5D

RRAR 5D

Sire of Lots 29 – 31

Owned with Cam Tibbett – Camo Cattle Co.

RRAR Roulette 5D is a total Black Pedigree calving ease sire that showed tremendous growth. The sire group is generally shorter gestation which seems to be coming through in his progeny. Sons to date have avg BW of 75 lbs with avg adj WW 703 and avg adj YW 1131. He seems to so far be doing a great job of producing Red hides for us. We will use Roulette on a large group of females this spring.



29

RED WRAZ ROULETTE 11F

2077902

WRAZ 11F

January 24 2018

BW 79

Nov 9 WW 690

RRAR RISING STAR 12B (RC)
RRAR ROULETTE 5D (RC)
RRAR BLACKWILLOW 12A
RED KBJ LIMITLESS 947A
RED WRAZ BARB 70D
GLESBAR BARB 90B

Here is a 79 lb BW first son from the total outcross low birth (short gestation) - high growth, Black Red Carrier sire RRAR Roulette 5D. Roulette 5D started out at 80 lbs and weighed over 1500 lbs on sale day. We are very pleased with the results on his first set of progeny. His first sons have averaged BW of 75 and adj WW of 703 adj YW of 1131. The dam to this guy Barb 70D is red but the grand dam Barb 90B is a black red carrier – not a total outcross but definitely a big change of bloodlines. There is power in the cow family but I would use him on well grown out heifers.



RED WRAZ ROULETTE 236F

2046780

WRAZ 236F

April 9 2018

BW 71

Nov 9 WW 610

RRAR RISING STAR 12B (RC)
 RRAR ROULETTE 5D (RC)
 RRAR BLACKWILLOW 12A
 XO CROWFOOT 0102X (RC)
 RED WRAZ LANA 561C
 RED WCF OLY 64P LANA 76T

This April born son of Roulette 5D has really done well. I really appreciate the black red carrier 0102X females I have here – they all have excellent maternal instincts and very good udders. He will be a calving ease specialist and he has a very interesting outcross pedigree for you to change up to. This guy's pedigree is mostly black and just a 71 lb BW. Heifer approved!

**WRAZ RC BLACKJACK 213F**

2046767

WRAZ 213F

March 25 2018

BW 80

Nov 9 WW 628

RRAR RISING STAR 12B (RC)
 RRAR ROULETTE 5D (RC)
 RRAR BLACKWILLOW 12A
 RED YY HITCH 23X
 RED WRAZ COUNTESS 521C
 RED WCF HAWK 14M M KNIGHT 54W

This guy is black hided if you would need a black one in your heifer pen. His dam is red so he definitely carries the red gene. There is lots of calving ease in this pedigree as well yet there is also strong growth as well. This guy could be the best of both worlds. He will definitely work well on heifers.



Reference Sire

RED FLYING K MAX 110C

FKR 110C

Sire of Lots 32 – 34

This is another sire that is the product of the JLL Livestock group of females we purchased. Jarret & Jenna feel that Max is one of the best breeding bulls that they have ever used in their operation. They purchased Max to use on heifers and produce heifer bulls. He did a great job on calving ease with well beyond expected growth! Calving ease with tremendous growth – an interesting combination not often possible. His first daughters are keepers in their heifer pen.



32 RED WRAZ MAX 3F

2038011

WRAZ 3F

January 11 2018

BW 92

Oct 2 WW 862

RED ML MAX 862U
RED FLYING K MAX 110C
 RED FLYING K ANITA 782T
 RED T-K BIG DEAL 98U AMF MAF
RED JLL MATI 16X
 RIVERDALE MATI 350L (RC)

This Max 110C son is out of my pick of the JLL females we purchased. As I research her pedigree I see she has recently made the CAA list of Premier Dam's with 7 out of 7 Grand Calves! That is quite an accomplishment in the world of bovine females. I was very sad last March when I found her laying natural on the bedpack with her eyes closed for the last time. It often seems only the good dye young. He did amazingly well considering his surrogate dam did not really ever accept him fully. With all of this said I would like to somehow incorporate her genetics into the WRAZ herd through this great young son. Lets talk!



Dam: MATI 16X

33**RED WRAZ MAX 17F**

2042599

WRAZ 17F

January 28 2018

BW 91

Nov 9 WW 726



These Max 110C sons are solid. I like how they are put together and they are all out of top end females. You will find grand dam Princess 7P in more than a few pedigrees in this offering for good reason. She is Grand dam to Ref Sires 78Z & 41B and the closely related 8F in lot 34 below. If you would like 2 closely related sons of Max check these guys out and build yourself a really good set of replacement females!

RED ML MAX 862U
RED FLYING K MAX 110C
 RED FLYING K ANITA 782T
 RED NRA HAWK 132Y
RED J.J.L PRINCESS 35A
 RED RIVERDALE PRINCESS 7P

34**RED WRAZ MAXIMUM 8F**

2042595

WRAZ 8F

January 21 2018

BW 94

Nov 9 WW 828



RED ML MAX 862U
RED FLYING K MAX 110C
 RED FLYING K ANITA 782T
 RED T-K BIG DEAL 98U AMF MAF
RED J.J.L PRINCESS 73Z
 RED RIVERDALE PRINCESS 7P

Dam: **PRINCESS 73Z**

Once again Princess 7P is grand dam. Max 8F is very closely related to 17F in Lot 33 above. This one might be the more powerful of the two but they are very close in quality. Use either or both of these Max sons to build your replacement female pen to a higher level. I really appreciate these Max sons.

Reference Sire

RED MRLA MILLENIUM 75B

MRLA 75B

Sire of Lots 35 – 37

BW .3 WW 48 YW 82 M 25 TM 49 CE 5

Millenium has been used on large groups of heifers so I am very confident in the calving in his sons. His dam played a major role in his choice as a herd sire and I am also very pleased with his daughters – they are very long bodied with above average hair coats. When he got physically too big to breed heifers he was graduated to the cows. You can use his sons for calving ease but they will leave you a great set of females too if you use them on the cows.

Co-owned with McMillen Ranching.



35 RED WRAZ PAQUALE'S ERA 76F

2043566

WRAZ 76F

February 16 2018

BW 83

Nov 9 WW 772

RED MRLA NEW ERA 87Y OSF MAF NHF AMF
 RED MRLA MILLENIUM 75B
 RED MRLA MISS 580U
 RED BRYLOR SDL PASQUALE 213P
 RED RILEY'S FANCY 28U
 RED LAMBS FANCY 24S

Here is in my opinion the best son yet of Millenium 75B. Millenium sons have been excellent for calving ease and adding a good thick hair coat. His daughters are now producing and I am very pleased with them. The odd one can be a tad motherly but that is a good thing. Maternal instincts can be bred out and then we are in trouble! The females are big middle and broody with a ton of hair. The bottom side of this pedigree has another calving ease and maternal legend in Pasquale. All kinds of calving ease as well as strong maternal in his pedigree. His dam 28U has a good record of producing good ones with a son to Robert Maszeros and a daughter at T & S Red Angus. Use him in the heifer pen until he is physically too big and then turn him loose on the cows.



Dam: FANCY 28U



36

RED WRAZ FAYETTE 131F

2044177

WRAZ 131F

March 1 2018

BW 90

Nov 9 WW 754

RED MRLA NEW ERA 87Y OSF MAF NHF AMF

RED MRLA MILLENIUM 75B

RED MRLA MISS 580U

RED CROWFOOT MOONSHINE 3084A

RED WRAZ FAYETTE 70C

RED BRYLOR FAYETTE 26U

Millenium here that I would recommend you use on the cows. There is some punch, length and frame on the bottom side of his pedigree and with that comes a little extra BW. Now the other thing that comes along with that is females with that little extra length and frame. I know we need em easy doing and efficient but lets not get them too small. The industry is still paying by the pound!



37

RED WRAZ MILLENIUM 159F

2045652

WRAZ 159F

March 8 2018

BW 94

Nov 9 WW 706

RED MRLA NEW ERA 87Y OSF MAF NHF AMF

RED MRLA MILLENIUM 75B

RED MRLA MISS 580U

RED BAKERS RIDER PRIDE 100Z

RED WRAZ SAMARIA 141C

RED U6 SAMARIA 60A

This fella better stay in the cow pen for this year. His sister last year was only 68 lbs but he came out at 94 lbs so its best to test him first. One thing about it there is plenty of maternal in this pedigree so his females will be an asset.



38

WRAZ 7F

Pending

WRAZ 7F

January 20 2018

BW 68

Nov 9 WW 674

RED WRAZ TIDAL WAVE 56A

RED VIKSE TIDAL WAVE 130D

RED VIKSE HAMILEE 181W

S CAPITALIST 396

AW QUEEN RUTH 67D

AW QUEEN RUTH 38Z

This tidy little black hided son of Mak'n Waves from a straight black Queen Ruth female has a great calving ease pedigree and look to him. He came into this world at just 68 lbs. If you need a black hided heifer bull this could be the one. He will sell as pending registration with the possibility he gets a registration paper but no guarantee. He may stay non registered as his sire has not been sire verified to date.

39

RED WRAZ OPPORTUNITY 54F

2043551

WRAZ 54F

February 12 2018

BW 87

Nov 9 WW 786

RED BADLANDS OPPORTUNITY 53Y AMF OSF
RED BAR 4A OPPORTUNITY 515C
 RED MEM COUNTESS 15U
 RED FINE LINE MULBERRY 26P OSF AMF MAF DDF
RED JAS BAYBERRY 35B
 RED WILBAR BAYBERRY 888T

I quite like these Opportunity 515C sons unfortunately there are not many of them. The few we got are good and I really appreciate his females as well. There is plenty of maternal strength in this pedigree. This sire will be used again this spring after the progeny exceeded all expectations. Do not overlook him he may just be the Opportunity you have been waiting for!



40

RED WRAZ PACKER 133F

2044179

WRAZ 133F

March 1 2018

BW 73

Nov 9 WW 652

RED WILBAR PACKER 383B
RED FRASER PACKER 678D
 RED FRASER POTEET 612S
 RED BRYLOR OPPORTUNITY 98B
RED WRAZ ICECAP 73D
 RED JB WINTER ICECAP 9019

Packer 678D has certainly proven to be a true calving ease sire. This one started life as a heifer's first calf at 73 lbs. Dam 73D did a good job on her first try and I really like the grand dam 19W to this guy as well. Heifer approved.





41

RED WRAZ NEW TREND 166F

2045656

WRAZ 166F

March 9 2018

BW 78

Nov 9 WW 622

RED BRYLOR NEW TREND 22D OSF MAF
RED HAMCO NEW TREND 238B
 RED HAMCO SAL 143X
 RED CROWFOOT MOONSHINE 3084A
RED WRAZ MISS MORRISON 46C
 RED RIVERDALE MISS MORRIS 439M

Here is one of the few New Trend grandsons this year. Although he has a lower BW I would keep this one in the cow pen. There is plenty of maternal here for your cow herd. We are partnered on the sire so we alternate breeding years - you will see more sons again next year.



42

WRAZ 197F

Pending

WRAZ 197F

March 18 2018

BW 77

Nov 9 WW 706

RED VGW NAVIGATOR 010
RED VGW NEXT STEP 554
 RED VGW R667-STAR 0815
 BLACK BRYLOR KODIAK 204Y
RED BRYLOR 56X FAYETTE 56C
 RED MARCER FAYETTE 56X

Here is a total different pedigree on the sire side. This guy is the result of Gordon's in dam purchase from Brylor Ranch. The sire to this guy is very long bodied and he moves like a cat on an extremely good foot. With the calving ease sire Kodiak 3A on the bottom and the mid 80's average BW on 88 progeny for Next Step I would personally use this guy in the heifer group or the cows.



43

WRAZ 225F

Pending

WRAZ 225F

March 14 2018

BW 74

Nov 9 WW 612

RED WFRA 3094
RED WFRA MR MISUNDERSTOOD 5060
 RED WFRA RUBY 968
 RED SMOKY CABLE 401R
RED NORLINE RUBY 55X
 RED SMOKY RUBY 89T

Another totally different sire for this young bull and likely for most a new pedigree on the dam side too. I like how this guy has come together. He was an in dam purchase from the Form & Function sale after I had become familiar with the service sire Mr Misunderstood in Fort Worth - I quite liked the bull. He is pending registration as we await confirmation of his sire. The seller assures me the sire will be as the catalogue reads. If all goes well we will have results by sale day.

RED FINE LINE MULBERRY 26P OSF AMF MAF DDF
 RED BRYLOR JKC GHOST RIDER108Y DDF
 RED BRYLOR CHEROK 22L

RED CHOPPER K OZZI 109T
 RED JJI BARRA 53B
 RED WRAZ BARRA 5Y



Sire: Ghost Rider 108Y



Daughter of Ghost Rider 6F



Dam of Sire: Cheroke 22L

We have not had a Ghost Rider like this one in the sale for a while! He carries a little more BW but he is very long bodied and there is enough bull here to go along with it. Can you imagine the set of calves this guy will sire. He will sire eye appeal, lots of hair and plenty of growth. This pedigree is loaded with maternal greatness and I would bet that in 5 years his females will put a very big smile of satisfaction on his new owners face. Our Ghost Rider daughters are producing very well.

Guest Consignor: Red Ember Ranch

Coreen Langford • RED EMBER RANCH • Box 101, Kisbey, SK S0C 1L0 • C 306-575-0254 • red.ember.ranch@gmail.com

45

RED EMBER SLADE 8F

2065796

EMBR 8F

March 14 2018

BW 94

Nov 9 WW 820



RED BRYLOR JKC GHOST RIDER108Y DDF
RED WRAZ GHOST RIDER 111C
RED WRAZ SHEBA 40X

RED LJC MISSION STATEMENT P27 OSF MAF
RED KENRAY ASTER 53A
RED KENRAY ASTER 24Y

I was waiting for this calf from the first day I considered the mating. The cow came to us from our good friends at KenRay Ranch and she is a herd highlight! This is her third bull calf weaning around 820 lbs. She is an easy doing, consistent performance cow whose temperament is absolutely top notch. Aster 53A is a forage conversion machine! Sons have sold to KenRay Ranch and Jamie Dick.

Reference Sire to lots 45 & 46:

Red Wraz Ghost rider 111C

Ghostrider 111C is a nice long bull with loads of shape, he adds width to every one of his calves. He has already sired more calves than any bull previously used at Red Ember and hes going out again this spring. He's easy doing, has great feet and an exceptionally nice temperament. His dam 40X produced several breeder bulls and was included in the WRAZ flush program before selling to Brylor Ranch/On The Mark through Red Round Up for \$10,000 at 8 years of age.

46

RED EMBER GHOST RIDER 13F

2065798

EMBR 13F

March 18 2018

BW 82

Nov 9 WW 710

RED BRYLOR JKC GHOST RIDER108Y DDF
RED WRAZ GHOST RIDER 111C
RED WRAZ SHEBA 40X

RED BAKERS RIDER PRIDE 100Z
RED WRAZ CHRISTY 135B
WRAZ RC CHRISTY 75T (RC)



*Sheba 40X, paternal
Grand dam of lots 45 & 46*

Dam 135B is a very exciting young cow. She is one of the more moderate framed females in my herd but she's very long bodied and therefore far from the smallest. I have retained a full sister to 13F; she is an impressive young heifer and showing excellent udder development.

47**RED EMBER ROUGHRIDER 6F**

2065795

EMBR 6F

March 11 2018

BW 64

Nov 9 WW 612

RED BRYLOR ROUGHRIDER 214Y
 RED FRASER ROUGHRIDER 582C
 RED FRASER POTEET 59X
 RED WRAZ BIG ROCK 60Z
 RED EMBER TULIP LASS 7B
 RED EMBER LASS 2X

Calving ease bull here. With only a 64 lb birth weight and a bw epd of -4.7 (top 1% of the breed) use this guy on heifers with confidence. Sired by Red Fraser Roughrider 582C and out of a Big Rock 60Z daughter this guy is bred tons of calving ease on top of ultra-low birth weight. Dam 7B is a member of my Lass cow family, the largest cow family in my herd. They are all round excellent mother cows with great feet.



I would like to start by thanking all my past customers and everyone that has shown interest and taken time to come view the cattle available at Red Ember Ranch. Without your support I would not be able to continue moving forward with this dream. I would also like to thank WRAZ and BRIMNER for allowing me again to be a part of their sale. It is a treat to be involved in a sale that offers such quality stock all backed by reliable breeders! I am proud of these bulls and will stand behind them. Please let me know if anything unexpected arises. I'm here to help.

While 2018 was a tricky year considering our less than optimal moisture conditions it was a great opportunity to identify the cows that could still wean a great calf and maintain condition. The bulls I've selected for this year's offering are from the very top of that group. They were weaned and fed alongside the WRAZ bulls for your convenience and are available for viewing there. Mothers, sires and siblings are all available for viewing anytime at Red Ember Ranch, 3 miles south and 4 miles west of Kisbey, SK. I am also very happy to send as many pictures as you would like. Feel free to contact me for further information.



Coreen Langford • RED EMBER RANCH • Box 101, Kisbey, SK S0C 1L0 • C 306-575-0254 • red.ember.ranch@gmail.com

**48****COMMERCIAL OPEN HEIFERS**

Replacement quality, palpated open heifers – guaranteed open and guaranteed to breed. Buy with confidence – these females will make great cows.

Heifer Consignors:

- WRAZ • Emmatt Creek • Ramblin Rose
- Cudmore Farms • Darrell Petterson



PRIDE OF THE PRAIRIES

WRAZ RED ANGUS  KENRAY RANCH



SASKATOON LIVESTOCK SALES, 1PM

An elite offering of Red Angus cattle from two of the most reputable programs throughout the prairies.
Cows, Bred Heifers, Heifer Calves, Genetic Opportunities.

december 14²⁰¹⁹

WRAZ RED ANGUS

Phil & Lana Birnie and Family
Box 461, Wawota, SK, S0G 5A0
Tel 306.739.2988
Phil 306.577.7440
Herdsman, Gordon 306.646.7980
www.wraz.ca

KENRAY RANCH

Sheldon Kyle
Ray & Donelda Kyle
PO Box 218, Redvers, SK, S0C 2H0
Sheldon 306.452.7545
Ray 306.452.7447
www.kenrayranch.com



CASTLEROCK MARKETING

Shane & Tammy Castle 306.741.7485 Dean McAvoy 306. 612. 3326 Devin Warrilow 780.581.4329 Mike Earley 519. 661. 8713
castlerock.mktg@sasktel.net | www.castlerockmarketing.com



Welcome to the 10th Annual Cornerstone Bull Sale!

First off, we would like to thank you for your support over the years. For over 40 years, we have been in this business and our goal is still the same – to raise sound, functional bulls to go out and do the job for you.

These aren't a bunch of pampered bulls. Just good athletic bulls, many of which are 1/2 and 3/4 brothers to provide you consistency to move your program forward. I've had several calls from guys with black cows wanting to switch to Charolais bulls. This is a no-brainer. More pounds plus a price premium! We use these same genetics on our commercial cows, from smaller black cows, to Simx cows. The Charolais bull just works! Who doesn't like a \$.10/lb premium on their calves!

If you have any questions, feel free to call or stop in to see the bulls in their natural environment.

See you April 20th in Whitewood.

~ Kelly

BRIMNER CATTLE CO.

Kelly, Tracy, William & Wyatt Brimner • Box 93, Manor, SK S0C 1R0
306-448-2028 • cell 306-577-7698 • ktbrim@sasktel.net





Reference Sire

Dbl Pld

SOS GAME OF THRONES 98D

PMC709267

SOS 98D

January 27 2016

SIRE OF LOTS 49 – 52

CE 3.9 BW .9 WW 37 YW 77 M 26 TM 44

Game of Thrones was used successfully on heifers and really the eye appeal, shape and middle he puts in his calves is exceptional. He has an excellent foot and moves like a cat. I kept most of his heifers and think they are going to turn into great brood cows.

49

BRIMNER BULL 29F

PMC759634

GBR 29F

February 15 2018

BW 90

205 DW 800

3rd Gen Pld

CE 6.9

BW -.5

WW 34

YW 70

M 23

TM 40



SPARROWS KINGSTON 139Y(P)
SOS GAME OF THRONES 98D(P)
SOS KHALEESI 57B(P)
BAR J TROJAN 68X(P)
GBR MISS 9D(P)
GBR MISS 147A(P)

Good, soggy bull made for easy calving.

50

BRIMNER BULL 34F

PMC759639

GBR 34F

February 16 2018

BW 99

205 DW 862

3rd Gen Pld

CE 4

BW 1.2

WW 36

YW 72

M 24

TM 42

SPARROWS KINGSTON 139Y(P)
SOS GAME OF THRONES 98D(P)
SOS KHALEESI 57B(P)
BAR J TROJAN 68X(P)
GBR MISS 13D(P)
GBR DELUXE 181W(P)

This bull is a tank. Good, soggy, Game of Thrones son.

51 BRIMNER BULL 43F

QPMC759646	GBR 43F	February 18 2018	BW 100	205 DW 832	Red Factor, 3rd Gen Pld
CE 4	BW 1.1	WW 39	YW 76	M 25	TM 44

SPARROWS KINGSTON 139Y(P)
SOS GAME OF THRONES 98D(P)
 SOS KHALEESI 57B(P)
 MCTAVISH EXCEL 20B(P)
GBR MISS 197D(QP)
 GBR LADY 81X(QP)

Real nice haired, red factor bull
 with natural thickness.



52 BRIMNER BULL 20F

PMC759627	GBR 20F	February 14 2018
BW 85	205 DW 786	3rd Gen Pld
CE 7.7	BW -1.4	WW 37
YW 72	M 26	TM 45

SPARROWS KINGSTON 139Y(P)
SOS GAME OF THRONES 98D(P)
 SOS KHALEESI 57B(P)
 PLEASANTDAWN INFUSION413A(P)
GBR MISS 139D(P)
 GBR MISS 40B(P)

These SOS Game of Thrones sons are made right for
 calving and body type.



53 BRIMNER BULL 28F

PMC759633	GBR 28F	February 15 2018
BW 89	205 DW 813	3rd Gen Pld
CE 3	BW 1.6	WW 42
YW 81	M 25	TM 46

SPARROWS KINGSTON 139Y(P)
SOS GAME OF THRONES 98D(P)
 SOS KHALEESI 57B(P)
 PLEASANTDAWN INFUSION413A(P)
GBR MISS 24D(P)
 GBR MISS 51B(P)

Another good calving ease SOS Game of Thrones son.





Reference Sire

Dbl Pld

XAL CUSTOM MADE 1C

PMC363707

XAL 1C

January 01 2015

SIRE OF LOTS 53-65

CE 9.2 BW -1.4 WW 33 YW 62 M 24 TM 41

Custom Made definitely stamps his calves with the same eye appeal, muscle and shape that he has. He has calved well here for us and his first daughters are coming into production this spring and show great potential.

54

BRIMNER BULL164F

QSMC759696

GBR 164F

March 11 2018

BW 86

205 DW 769

Red Factor, 3rd Gen Pld/s

CE 7.2

BW -.6

WW 35

YW 63

M 23

TM 41



XAL FIRE IT UP 5A(P)
XAL CUSTOM MADE 1C(P)
GERRARD EVETTA 1A(P)
BAR J TROJAN 68X(P)
GBR MISS 104C(QP)
GBR LADY 9U(QP)

Real attractive Custom Made son. Natural muscled and quiet.

55

BRIMNER BULL 7F

QSMC759619

GBR 7F

February 08 2018

BW 96

205 DW 771 Red Factor, 3rd Gen Pld/s

CE 2.8

BW 2.1

WW 38

YW 74

M 23

TM 42

XAL FIRE IT UP 5A(P)
XAL CUSTOM MADE 1C(P)
GERRARD EVETTA 1A(P)
ROSSO RED COLE 13S(QP)
GBR LADY 85X(QP)
GBR BUBBLES 82R(QP)

Good, long-bodied, red factor Custom Made son.

56

BRIMNER BULL 212F

QPMC759717

GBR 212F

March 31 2018

BW 93

205 DW 821

Red Factor, 3rd Gen Pld

CE 5.9

BW .6

WW 38

YW 71

M 22

TM 41

XAL FIRE IT UP 5A(P)

XAL CUSTOM MADE 1C(P)

GERRARD EVETTA 1A(P)

G. BROS. STANDOUT 8S(P)

GBR MISS 40Z(QP)

BRIMNER LADY 106T(QP)

You have to admire the length and muscle in this young red factor bull.



57

BRIMNER BULL 9F

PMC759622

GBR 9F

February 09 2018

BW 89

205 DW 751

3rd Gen Pld

CE 5.7

BW .8

WW 41

YW 73

M 23

TM 43

XAL FIRE IT UP 5A(P)

XAL CUSTOM MADE 1C(P)

GERRARD EVETTA 1A(P)

HBC ENCORE 834U(P)

GBR MISS 62Z(P)

GBR DELUXE 181W(P)

This long-bodied, Custom Made son comes from a great momma cow. Maternal brother is working at McTavish Charolais and Rosso Charolais.





58

BRIMNER BULL 61F

QPMC759657 GBR 61F February 21 2018

BW 98 205 DW 859 Red Factor, 3rd Gen Pld

CE 6.1 BW .3 WW 38 YW 71 M 23 TM 42

XAL FIRE IT UP 5A(P)

XAL CUSTOM MADE 1C(P)

GERRARD EVETTA 1A(P)

G. BROS. STANDOUT 8S(P)

GBR LADY 91X(QP)

BRIMNER LADY 106T(QP)

Custom Made stamps his sons with eye appeal and natural muscle.



59

BRIMNER BULL 70F

SMC759666 GBR 70F February 23 2018

BW 102 205 DW 770 3rd Gen Pld/s

CE 8.9 BW -1.5 WW 36 YW 68 M 25 TM 43

XAL FIRE IT UP 5A(P)

XAL CUSTOM MADE 1C(P)

GERRARD EVETTA 1A(P)

4-G RIPTIDE 18S(P)

GBR MISS 3Z(QP)

GBR LADY 170X(QP)

Real correct Custom Made son. Great feet and legs.



60

BRIMNER BULL 79F

PMC759670 GBR 79F February 23 2018

BW 107 205 DW 847 3rd Gen Pld

CE 3.3 BW 1.7 WW 37 YW 70 M 23 TM 41

XAL FIRE IT UP 5A(P)

XAL CUSTOM MADE 1C(P)

GERRARD EVETTA 1A(P)

ROSSO RED COLE 13S(QP)

GBR LADY 79Y(P)

GBR LIZZIE 39R(QP)

Here is a real powerhouse. Solid made Custom Made son.

61**BRIMNER BULL 101F**

QPMC759676 GBR 101F February 25 2018

BW 95 205 DW 747 Red Factor, 3rd Gen Pld

CE 5.5	BW .4	WW 36	YW 67	M 24	TM 42
--------	-------	-------	-------	------	-------

XAL FIRE IT UP 5A(P)
 XAL CUSTOM MADE 1C(P)
 GERRARD EVETTA 1A(P)
 ROSSO RED COLE 13S(QP)
 GBR LADY 170X(QP)
 GBR BELLA 87S(QP)

Moderate, thick made, red factor bull.

**62****BRIMNER BULL 111F**

PMC759679 GBR 111F February 27 2018

BW 87 205 DW 844 3rd Gen Pld

CE 7.2	BW -.6	WW 33	YW 62	M 26	TM 43
--------	--------	-------	-------	------	-------

XAL FIRE IT UP 5A(P)
 XAL CUSTOM MADE 1C(P)
 GERRARD EVETTA 1A(P)
 BAR J TROJAN 68X(P)
 GBR MISS 176B(P)
 GBR LIZZIE 39R(QP)

This is one powerful, soggy Custom Made son with a small birthweight. Great maternal strengths in this guy.

**63****BRIMNER BULL 125F**

QPMC759687 GBR 125F March 02 2018

BW 106 205 DW 733 Red Factor, 3rd Gen Pld

CE 7.8	BW -.9	WW 37	YW 71	M 24	TM 43
--------	--------	-------	-------	------	-------

XAL FIRE IT UP 5A(P)
 XAL CUSTOM MADE 1C(P)
 GERRARD EVETTA 1A(P)
 4-G RIPTIDE 18S(P)
 GBR LADY 4X(QP)
 GBR REDLADY 120N(QP)

Real stout meat machine in a moderate frame. His dam is a 1900 lb plus cow.





64

BRIMNER BULL 191F

PMC759708 GBR 191F March 18 2018

BW 110 205 DW 807 3rd Gen Pld

CE 7.4 BW -.9 WW 35 YW 68 M 25 TM 43

XAL FIRE IT UP 5A(P)

XAL CUSTOM MADE 1C(P)

GERRARD EVETTA 1A(P)

BAR J TROJAN 68X(P)

GBR MISS 18Z(QP)

GBR LADY 4X(QP)

Real smooth, solid made bull that will catch your eye.
His dam is a 1900 lb plus cow.



65

BRIMNER BULL 196F

PMC759713 GBR 196F March 20 2018

BW 95 205 DW 790 3rd Gen Pld

CE 5.2 BW .9 WW 39 YW 77 M 22 TM 41

XAL FIRE IT UP 5A(P)

XAL CUSTOM MADE 1C(P)

GERRARD EVETTA 1A(P)

MCTAVISH TUFF 113Z(P)

GBR MISS 91B(P)

GBR MISS 157S(P)

This smooth Custom Made son is a cowboy's kind of
bull – eye appeal, lots of hair, natural muscle and nice
birth weight.



66

BRIMNER BULL 207F

PMC759715 GBR 207F March 29 2018

BW 100 205 DW 783 3rd Gen Pld

CE 5.7 BW .9 WW 39 YW 73 M 24 TM 43

XAL FIRE IT UP 5A(P)

XAL CUSTOM MADE 1C(P)

GERRARD EVETTA 1A(P)

HBC ENCORE 834U(P)

GBR LADY 109X(P)

GBR JESSICA 46N(QP)

Real smooth made, moderate bull that is made to calve
easy.

Reference Sire

DbI Pld

McTAVISH EXCEL 20B

PMC358992

BBMT 20B

January 28 2014

SIRE OF LOTS 66-70

CE .5 BW 3.6 WW 39 YW 69 M 23 TM 43

Excel adds length, power and great hair coats. Excellent structured and a nice big hoof. His calves show great vigour at birth.



67

BRIMNER BULL117F

PMC759681

GBR 117F

February 28 2018

BW 91

205 DW 872

3rd Gen Pld

CE 3.2

BW 1.7

WW 43

YW 77

M 25

TM 47

SVY MONUMENT PLD 159Y
MCTAVISH EXCEL 20B(P)
MCTAVISH ABBIE 59U(P)

PLEASANTDAWN INFUSION413A(P)
GBR MISS 42C(P)
GBR LADY 7X(P)



A definite pen favourite here! He has herdbull written all over him. Loads of hair, great feet and legs. Nice small head and smooth shouldered. This guy is a tank! Don't miss this bull sale day.



68

BRIMNER BULL 10F

PMC759624 GBR 10F February 10 2018
BW 92 205 DW 801 3rd Gen Pld

CE 4.5 BW 1.5 WW 38 YW 69 M 20 TM 39

SVY MONUMENT PLD 159Y
MCTAVISH EXCEL 20B(P)
MCTAVISH ABBIE 59U(P)
PLEASANTDAWN MATCH 465X(P)
GBR MISS 117A(P)
KSF MISS PINBALL 50R(P)

This Excel son has some stretch and length. This is the kind of bull to use on some smaller black cows. Maternal brother is working at Neilson Cattle Co., Willow Brook.



69

BRIMNER BULL 31F

PMC759636 GBR 31F February 15 2018
BW 100 205 DW 779 3rd Gen Pld

CE 7.1 BW -.1 WW 36 YW 64 M 21 TM 39

SVY MONUMENT PLD 159Y
MCTAVISH EXCEL 20B(P)
MCTAVISH ABBIE 59U(P)
ROSSO PRIMETIME 38W(P)
G. BROS MAGGY MAY 350A(P)
G. BROS PUDGE 138W(P)

This long-bodied Excel son has excellent structure and feet. Full brother is working for Shawn Stuart, Lajord.



70

BRIMNER BULL 57F

PMC759655 GBR 57F February 21 2018
BW 89 205 DW 817 3rd Gen Pld

CE 2.5 BW 2.2 WW 38 YW 72 M 24 TM 43

SVY MONUMENT PLD 159Y
MCTAVISH EXCEL 20B(P)
MCTAVISH ABBIE 59U(P)
BAR J TROJAN 68X(P)
GBR MISS 181C(P)
GBR GILLIAN 11W(QP)

This is one stout Excel son out of a dam that consistently throws smaller birth weights.

71 BRIMNER BULL 122F

SMC759685	GBR 122F	March 02 2018	BW 106	205 DW 760	3rd Gen Pld
CE 3.6	BW 1.7	WW 37	YW 70	M 24	TM 42

This guy is the Walmart Greeter of the pen. Nice smooth-made, hairy Excel son.



SVY MONUMENT PLD 159Y
MCTAVISH EXCEL 20B(P)
MCTAVISH ABBIE 59U(P)
BAR J TROJAN 68X(P)
GBR MISS 68B(P)
GBR LADY 97Y(P)

Reference Sire

4th Gen Pld

PLEASANTDAWN INFUSION 413A

PMC350392 ASH 413A 20 January 2013

Sire of lots 71-75

CE 8.8	BW -2.4	WW 49	YW 86	M 27	TM 51
--------	---------	-------	-------	------	-------

Infusion has produced great natural muscled bulls with good performance. Daughters are nice uddered with ample milk. Calving Ease + Performance + Maternal!



72

BRIMNER BULL 76F

PMC759668 GBR 76F February 23 2018
BW 94 205 DW 771 4th Gen Pld

CE 8.4	BW -1	WW 43	YW 79	M 22	TM 44
--------	-------	-------	-------	------	-------

PLEASANT DAWN RIO136X(P)
PLEASANTDAWN INFUSION413A(P)
PLEASANT DAWN MAGGIE 40Y(P)
PLEASANTDAWN MATCH 465X(P)
GBR MISS 113Z(P)
GBR JESSICA 25W(P)

Real smooth made Infusion son.

73

BRIMNER BULL 95F

SMC759674 GBR 95F February 25 2018
BW 98 205 DW 816 4th Gen Pld/s

CE 3.3	BW .8	WW 48	YW 84	M 25	TM 49
--------	-------	-------	-------	------	-------

PLEASANT DAWN RIO136X(P)
PLEASANTDAWN INFUSION413A(P)
PLEASANT DAWN MAGGIE 40Y(P)
HBC ENCORE 834U(P)
GBR MISS 82Z(P)
BRIMNER LADY 133T(P)

Solid made Infusion son. A full brother is working at Peter Kotylak's place, Montemartre.

74**BRIMNER BULL 145F**

PMC759693

GBR 145F

March 06 2018

BW 82 lb

205 DW 748

4th Gen Pld

CE 8.4

BW -2.3

WW 43

YW 81

M 27

TM 49

PLESANT DAWN RI0136X(P)
 PLEASANTDAWN INFUSION413A(P)
 PLEASANT DAWN MAGGIE 40Y(P)
 BAR J TROJAN 68X(P)
 GBR MISS 109B(P)
 GBR LADY 96X(P)

Great calving ease in this solid made bull.

**75****BRIMNER BULL 52F**

PMC759651

GBR 52F

February 20 2018

BW 97

205 DW 876

4th Gen Pld

CE 7.3

BW -.6

WW 40

YW 77

M 25

TM 45

PLESANT DAWN RI0136X(P)
 PLEASANTDAWN INFUSION413A(P)
 PLEASANT DAWN MAGGIE 40Y(P)
 FFBB RED BUCKLE PLD 16X
 GBR MISS 19B(P)
 BEAVER CREEK XOXO 810X(P)

Every thing is right with this guy. Length, quarter and natural thickness.

76**BRIMNER BULL 110F**

PMC759678 GBR 110F February 27 2018

BW 93 205 DW 821 4th Gen Pld

CE 6.6 BW -.9 WW 45 YW 84 M 25 TM 48

PLESANT DAWN RIO136X(P)
 PLEASANTDAWN INFUSION413A(P)
 PLEASANT DAWN MAGGIE 40Y(P)
 BAR J TROJAN 68X(P)
 GBR MISS 63C(P)
 GBR LADY 28X(P)

I really like this guy, Always catches your eye in the pen. Smooth and stout.

**77****BRIMNER BULL 136F**

PMC759690 GBR 136F March 04 2018

BW 110 205 DW 809 4th Gen Pld

CE 3.1 BW .8 WW 49 YW 91 M 27 TM 51

PLESANT DAWN RIO136X(P)
 PLEASANTDAWN INFUSION413A(P)
 PLEASANT DAWN MAGGIE 40Y(P)
 BAR J TROJAN 68X(P)
 GBR MISS 91Z(P)
 GBR LADY 102X(P)

Good stout, smooth shouldered Infusion son.

**78****BRIMNER BULL 127F**

PMC759688 GBR 127F March 02 2018

BW 105 205 DW 829 4th Gen Pld

CE 6.7 BW -.6 WW 47 YW 86 M 27 TM 51

PLESANT DAWN RIO136X(P)
 PLEASANTDAWN INFUSION413A(P)
 PLEASANT DAWN MAGGIE 40Y(P)
 HBC ENCORE 834U(P)
 GBR LADY 129Y(P)
 GBR REBECCA 12W(P)

Great cow family here. Real stout Infusion son. A full brother is working at Greg Freitag's, Alameda.



Thank you to everyone who attended and bid at our 2018 sale. Special thanks to these buyers:

- | | | | | |
|-------------------------|----------------------------|--------------------------|--------------------------|---------------------------|
| ❖ Alan R. Psutka | ❖ Cody & Michele Anderson | ❖ Don Ferguson | ❖ John Wilson | ❖ Pleasant Dawn Farm |
| ❖ Boutin Lincoln Cattle | ❖ Con & Carol Krug | ❖ Douglas Hindmarch | ❖ Kempstone Livestock | ❖ Prime Ridge Stock Farms |
| ❖ Brad Goettling | ❖ Coyote Coulee Cattle Co. | ❖ Garth Taylor | ❖ Ken Emms | ❖ Randy Sawley |
| ❖ Brehaut Brothers | ❖ Cudmore Farms Ltd. | ❖ Gordon Dickson | ❖ Knoll Farms | ❖ Red Ember Ranch |
| ❖ Brian Plumbtree | ❖ Curtis Smyth | ❖ Greg Freitag | ❖ Maurice Colleaux | ❖ Right Cross Ranch |
| ❖ Brimner Cattle Co. | ❖ Darrel Petterson | ❖ Henry McCarthy | ❖ Neilson Cattle Company | ❖ Rose Hill Farms Inc. |
| | ❖ Dave Wray | ❖ I.T.S. Farms | ❖ Pasquia Red Angus | ❖ Silver Creek Farms |
| | ❖ Diamond S Angus | ❖ Jarrod & Julie Chinski | ❖ Peter Graham | ❖ Stephen Farms |
| | | ❖ Jens Hansen | ❖ Peter Kotylak | ❖ U6 Livestock |
| | | ❖ John Howe | ❖ Philip Draper | ❖ WCF Red Angus |



Canadian Charolais Association **SCHOLARSHIPS**

If you are using registered Charolais bulls, your children are eligible to apply for a Canadian Charolais Association Scholarship.

For complete details, go to www.charolais.com.

Charolais scholarships are also available from your provincial associations. Check out their websites at www.charolaisbanner.com for more information.

Terms & Conditions:

Terms: The terms of the sale are cash or cheque payable immediately after the sale in Canadian funds. All settlements must be made with the sale clerks before cattle will be released. The right of property will not pass until final payment is made.

Bidding: Each animal will sell to the highest bidder. Bidders unable to attend the sale may phone their bids and instructions to the sale manager, auctioneer or special representatives. Bids must be received in sufficient time prior to the sale.

Disputes: Bidding will be reopened between the parties involved. If no further bid is made, the buyer will be the person from whom the auctioneer accepted the last bid. The auctioneer's decision is final.

Announcements. Announcements made from the auction block will take precedence over printed matter in the catalogue. Buyers are cautioned to pay close attention to announcements.

Purchaser's Risk: Each animal becomes the risk of the purchaser as soon as sold. Animals will be cared for at the purchaser's risk for a reasonable length of time. All animals left with the seller must be insured.

Certificate of Registration: Each animal will carry papers issued by the breed Association. A certificate of registry duly transferred will be furnished to the buyer after payment has been made.

Delivery: Assistance will be given in making delivery after the sale. The purchaser agrees shipping arrangements will be at the convenience of the seller, but will be as soon as practical after the sale, at the buyer's risk.

Breeder Guarantee - Bulls: Should any bull fourteen months of age or over, fail to prove a breeder after being used on cows known to be breeders, the matter shall be reported in writing to the seller within six

months following the date of purchase or six months after the bull has reached fourteen months of age. The seller has the right and privilege of six months to prove the bull a breeder. No guarantee is given that semen collected from the bull will freeze.

Exception Guarantee: In case where the animal is subjected to any hormonal or surgical reproductive techniques after the sale, this guarantee shall be null and void. The seller is not responsible for damage caused by foreign bodies after the animal has been sold or for sickness not apparent at sale time. In no event shall the seller be responsible for more than the purchase price.

Accidents: Although every precaution will be taken to protect the safety and comfort of buyers, neither the sale manager, auctioneer, or sellers assume any responsibility and disclaim any liability, legal or otherwise, in the event of accident or loss of property.

By Livestock is only acting as a medium between the buyer and seller and is not responsible for failure on the part of either party to live up to their obligations; or for the truth of any warranties or representations, expressed or implied. By Livestock assumes no obligation to enforce or collect monies between parties. By Livestock assumes no responsibility for any credit extended by the seller to the buyer. Any legal action taken in exceptional cases must be between the buyer and the seller. The buyer must look to the seller for fulfilment of all guarantees and representations.

Insurance: Insurance will be available sale day.

Pictures: By attending the sale you are granting permission for your picture to be used for promotional and advertising purposes relating to the sale.

By
LIVESTOCK

124 Shannon Road
Regina, SK S4S 5B1
306-584-7937



Cornerstone *"More Bang for Your Buck!"*

1:30 P.M. Bull & Female Sale

Saturday, April 20, 2019 • Whitewood Auction Mart, Whitewood, SK

Featuring:

BRIMNER CATTLE CO.
30 Charolais Yearling Bulls

WRAZ RED ANGUS
45 Red Angus Yearling Bulls
1 Red Angus Herdsire

ALSO ON OFFER
Open Commercial Heifers

WR^{ed}Angus
"The program you can count on"

Phil & Lana Birnie and family
Box 461, Wawota, SK S0G 5A0
wraz@sasktel.net • www.wraz.ca
T 306-739-2988 • C 306-577-7440
Gordon Murray T 306-739-2177
C 306-646-7980

**Brimner
Cattle Co.**

Kelly, Tracy, William & Wyatt Brimner
Box 93, Manor, SK S0C 1R0
T 306-448-2028 • C 306-577-7698