



MASTERPIECE SALE

CANADA'S FINEST RED AND BLACK ANGUS GENETICS
November 22nd, 2017 / Canadian Western Agribition

DONATION HEIFER

Canadian Junior Angus Association

Thank You NU-HORIZON ANGUS

Nu-Horizon Angus is very proud to be able to donate the CHOICE of these two heifer calves this year in the Masterpiece Sale. The Canadian Junior Angus Association means a great deal to us as they have sponsored Kodie to go across Canada with trips to Showdown and GOAL. With the sponsorship and travel bursaries CJAA has given Kodie the opportunity to build many friendships and make connections with various people of all ages.

Canadian Junior Angus Association Donation Heifer. Thank you to Nu Horizon Angus for their generous donation. The proceeds will go directly to the Canadian Junior Angus scholarship program, from which \$4,500 in scholarships is awarded annually to members of the CJAA. Again this year, the heifer will be sold by a Dutch auction, just before the Masterpiece Sale commences.

Dutch Auction procedure:

- The final bid in each round will denote the amount of that bidder's donation. Ex: Round 1 – Final Bid is \$300 to John Doe. John's donation is \$300. Round 2 – Final Bid is \$250 to Tom Jones. Tom's donation is \$250. Round 3 – the heifer is re-auctioned on a downward scale until no further bids are received.
- Each \$10 purchased (donated) represents one chance in the draw. Ex: John Doe has 30 chances, Tom Jones has 25 chances and so on down the scale.
- One ticket for every \$10, bearing the contributors name, will be entered in the draw.
- At the end of the sale, one ticket will be drawn with that person winning the 2017 DONATION LOT



CHOICE OF DONATION HEIFER CALF

Donated by Nu Horizon Angus

NU-HORIZON TIBBIE 7012E

Female / TK 7012E / January 22, 2017

EASTONDALE REALLY WINDY 02'13 V D A R REALLY WINDY 4097 AMF CAF NHF DDF OHF
FREYBURN WINDY 129C EASTONDALE GAMMER 38'11
 GERLEI LADY 90U STUART DESTINATION 32S
 BROOKING RANSOM 228 BLUESTONE LADY 3L
NU-HORIZON TIBBIE 459B S A V BEST INTEREST 0136 AMF CAF NHF DDF
 MVF TIBBIE 458U TLA BEAUTY 6R
 MVF VRD DATELINE 34P
 MVF TIBBIE 8L

PERF	BW	205D	EPDS	BW	WW	YW	Milk	TM
				2.0	45	80	17	40



CHOICE OF DONATION HEIFER CALF

Donated by Nu Horizon Angus

RED NU-HORIZON ABBY 7091E

Female / TK 7091E

RED SOO LINE POWER EYE 161X OSF DDF MAF NHF AMF
RED BLAIRSWEST POWER UP 1B RED COCKBURN RIBEYE 308U AMF NHF
 RED BLAIRSWEST SUGRLAND 1Z RED TR LYNN 301R
 RED DURALTA SAMIVITE 201S RED RINGSTEAD KARGO 443W
RED SIX MILE ABBY 323X RED BLAIRS SUGRLAND 5X
 RED SIX MILE ABBY 571R RED SPRING CREEK CREDIT 25L
 RED SIX MILE LASA 9N
 RED SIX MILE LINE DRIVE 647L
 RED SIX MILE ABBY 121N

PERF	BW	205D	EPDS	BW	WW	YW	Milk	TM





MASTERPIECE SALE

November 22nd, 2017 / Canadian Western Agribition

Fall is always an exciting time for anyone in the livestock industry as the fruits of ones labor comes to fruition! This work starts long before the calves are born as breeders pour over the breeding charts perfect their works with each calf crop with progress in mind. The fall means the marketing of these cattle in many shows across the country and there is no better place then Canadian Western Agribition to highlight these breed leading genetics.

The Masterpiece Sale has held a long standing position in Regina before it made its way to Agribition as a venue for breeders to market their seedstock. Over the years many noteworthy cattle have passed through the ring at the Masterpiece Sale that have left their mark on the breed in many herds across the world. It is with sadness we have lost two integral men that poured their blood, sweat and tears into the Masterpiece Sale, Doug Henderson and Rob Holowaychuk you will be missed but not forgotten in your works. I think it goes without saying that whether it be in organizing successful sales or breeding top quality cattle, having a positive impact on the industry is all we can ask for. The Masterpiece Sale contains a lineup of high end heifer calves, bred heifer and of course the frozen section which contains great opportunity to access genetics that aren't readily available throughout the year. So whether it be a show heifer, brood cow prospect you are searching for or the opportunity to access some of the breeds leading sires or up and coming donor cows, they quality runs deep in the sale.

We will be at Agribition for Sunday afternoon or should you have any questions regarding the offering or need assistance please feel welcome to give ourselves at Castlerock, sales staff or any of the consignors a call.

See you Sale Day! *Shane Castle*

CANADA'S FINEST RED AND BLACK ANGUS GENETICS

SCHEDULE OF EVENTS

November 22, 2017, Sale time 1:00 pm

Auditorium, Canadian Western Agribition, Regina, Saskatchewan

SALE DAY PHONES

Shane Castle	306.741.7485
Dean McAvoy	306.612.3326
Mike Earley	519.661.6713
Devin Warrilow	780.581.4329

SALES STAFF

Auctioneer- Brent Carey	403.650.9028
Nate Marin	306.869.7130
Mark Stock	403.357.8104
Craig Flewelling	403.556.0515
Tony Heins	701.400.4435
Bryan MacKenzie	403.627.8266

CASTLEROCK MARKETING

Box 415, Swift Current, Sask, S9H 3V8

www.castlerockmarketing.com

Shane & Tammy Castle 306.741.7485

Dean McAvoy 306.612.3326

Mike Earley 519.661.8713

Devin Warrilow 780.581.4329

SPECIAL REPRESENTATIVES

Rob Smith, CEO of the Canadian Angus Association

Brett Wildman, President of the Canadian Angus Association

Michael Wheeler, President of the Saskatchewan Angus Association

Belinda Wagner, Saskatchewan Angus Association, 306.757.6133

BID AND WATCH ONLINE

WATCH & BID LIVE ONLINE AT DLMS.CA

1. Visit www.dlms.ca to fill out and submit the registration form under "Registration".
2. Click on "Downloads" and follow the four-step instructions located on the screen.
3. Click "Test" and you will see the Test Video and Bid Control Box
4. To be approved as a bidder, please e-mail mshologan@dlms.ca or call 780.699.5082.



A WORD

FROM THE SHOW AND SALE COMMITTEE

On behalf of the Saskatchewan Angus Association, welcome to the 2017 edition of Agribition and the Masterpiece Sale. This is the first show and sale in the completed new facilities. This is now a world class facility fit for some of the best cattle anywhere. Expect a sale offering of unsurpassed quality in the Masterpiece tradition.

As we mark these new beginnings, we need to reflect on the storied history of the Masterpiece. For me those memories take me back to my first Angus purchases in 1984, and the legacy those first and subsequent Masterpiece purchases have created in our herd and in the herds of many other operations across our country and beyond. I would also like to take this opportunity to honour the memory of two individuals that have been instrumental in the success of the Masterpiece. Rob Holowaychuk and Doug Henderson were tireless promoters of the Angus breed. Both were an integral part of our Angus family. They will be greatly missed and not soon forgotten.

Trent Liebreich

Saskatchewan Angus Association Show and Sale chairman



LOT 1

We are bringing a knockout heifer to town that not only carries the paperwork to say she is a good one but maternal production that verifies this as well. 720E's dam first two calves were bulls that we offered in our Bull Sale every spring where they were well accepted. This being her third calf we think she really outdid herself on this one, she is our Sunshine! The granddam 7J produced here to the ripe old age of 17 years and was a no miss cow to be here that long, we only have room for the good ones. The sire, PF Hoover Dam, well what more can be said then what he's accomplished at Youngdale as an excellent breeding sire. We thank our good friends at Youngdale for allowing us to use this bull. This heifer carries a serious look to her in being competitive, look her up!



HEIFER CALF

Consigned by Dallas Johnston

1

DJCC SUNSHINE 720E

Female / 2000248 / JDX 720E / January 25, 2017

HOOVER DAM AMF CAF OHF NHF DDF
PF HOOVER DAM 041
P F QUEEN MOTHER 446

SCC HERITAGE 92W
DJCC SUNSHINE 15A
NEW FORCE SUNSHINE 7J

SYDGEN C C & 7 AMF CAF OHF NHF DDF
ERICA OF ELLSTON C124
TC FREEDOM 104 AMF CAF OHF NHF DDF
BT QUEEN MOTHER 74J

S A V HERITAGE 6295 AMF CAF OHF NHF DDF
SCC 4480 PRIDE 45M
PERRYVILLE ARLIE 5G
NEW FORCE MAXIE 56D

PERF	BW	205D	EPDS	BW	WW	YW	Milk	TM
	88			-0.4	38	68	23	41

HEIFER CALF

Consigned by Triple L Angus

2

TRIPLE L BLACKCAP 2E

Female / 2003532 / RKT 2E / January 24, 2017

TC STOCKMAN 365 OHF DDF
NORTHERN IMPROVEMENT 4480
BLACKCAP OF R R 5367

CAPTAIN MORGAN 201X
TRIPLE L BLACKCAP 21C
TRIPLE L BLACKCAP 26W

TC STOCKMAN
TC PRIDE 0014
R R VANTAGE 3352
BLACKCAP OF R R 0238

TC FREEDOM 104 AMF CAF OHF NHF DDF
BCF MISS ERICA 1061
S A V 004 DENSITY 4336 AMF CAF OHF NHF DDF
ELLIOTT BLACKCAP 1R

PERF	BW	205D	EPDS	BW	WW	YW	Milk	TM
	78			0.1	38	63	24	43

LOT 2



A heifer calf that is hard to part with for many reasons. The cow family here at Triple L has been fantastic to the great great granddam Blackcap 15H, we have every cow from there on has done great things in their production. 2E's granddam by Density has been stellar and will become a donor for us in the spring of 2018. Being sired by Northern Improvement 4480 is a certainly a rarity as there's very little semen to be had. Northern Improvement, topped the Bull Sale at in Denver in 1998, later becoming Reserve Champion bull in the big show. He sires, low birthweight, high quality cattle that carry a flawless phenotype with tremendous hair, oh ya and the females are fantastic. The homework is done, the pedigree is sound and the heifer is a knockout, she has caught a lot of eyes this fall!

LOT 3

Rosebud 156E is a daughter of the very talked about, high selling bull from Himan Angus. The buyers certainly did "Cowboy Up" when this outlier walked into the ring. He sold for \$350,000.00 to Express Ranches, OK, and Wilks Ranch, Tx for 2/3 interest. A 10% semen interest was put on offer at the Bases Loaded Sale in Denver 2017, where it gathered up another \$120,000.00, selling to a consortium of breeders. Finally when all the dust settled, we were able to purchase the Canadian semen rights on this powerful outcross prospect. Cowboy Up brings an outcross pedigree and a cow family, which is the definition of maternal performance. This bull displays incredible growth and performance, he is wide based, heavy quartered, good footed and maintains traditional Angus character. His EPD profile is also very note worthy! He's in the Top 1% of the Breed for WW, YW, RADG, CW, \$W, \$F, and \$B. A maternal brother to Rosebud 156E sold in the HF sale in 2016 to Merit Cattle Co. (Trent and Janelle Liebrech), HF Unit 14C for 2/3 interest for \$17,000.00. Rosebud 276Z is a moderate framed cow with a beautiful udder, very feminine female with loads of volume. If you want to be in on the ground floor of the "Cowboy Up" experience, wade in now, as there won't be a huge supply of live progeny on offer.



HF Unit 14C

HEIFER CALF

Consigned by Hamilton Farms

3

HF ROSEBUD 156E

Female / 1978674 / HAMI 156E / January 27, 2017

HA OUTSIDE 3008
HA COYBOY UP 5405
HA BLACKCAP LADY 1602

CARRUTHERS NET WORTH 53U
HF ROSEBUD 276Z
HF ROSEBUD 68X

KG SOLUTION 0018 AMF CAF NHF DDF
HA EVER LADY 1575
HP PROGRAM 7328
HA BLACKCAP LADY 5515

S A V NET WORTH 4200 AMF CAF OHF NHF DDF
CARRUTHERS MAYFLOWER 43N
HF PROGRESS 20K
HF ROSEBUD 278U

PERF	BW	205D	EPDS	BW	WW	YW	Milk	TM
	80			2.1	66	115	15	47

HEIFER CALF

Consigned by Hamilton Farms

4

HF ANNIE 10E

Female / 1976080 / HAMI 10E / January 10, 2017

BARSTOW CASH DDF
BSF HOT LOTTO 1401 DMF DWF AMF CAF NHF DDF
BSF PRINCESS EL CAP W2

HF SWAGGER 75W
HF ANNIE 212Y
HF ANNIE 82W

SITZ DASH 10277 AMF CAF OHF NHF DDF
BARSTOW QUEEN W16 OHF DDF
SILVEIRAS EL CAPITAN 6510 AMF CAF OHF NHF DDF
B S F PRINCESS TCF N2

HF TIGER 5T AMF CAF OHF NHF OSF DDF
HF MISS BLACKCAP 27R
HF KODIAK 5R AMF CAF OHF NHF MAF DDF
DOUBLE AA ANNIE K 291'98

PERF	BW	205D	EPDS	BW	WW	YW	Milk	TM
	79			0.3	61	103	22	53



Sire

LOT 4

Hot Lotto has continued to impress us with his 2nd calf crop with both stoutness and ruggedness of the bulls and the excessive capacity, and still maintaining that ultra maternal presence and angus character in the females. We have high aspirations for the Hot Lotto females, like his dam, who looks the part and produces the right kind! We believe they will survive the test of time. The Hot Lotto bulls were very well received in our bull sale this spring, with 3 of the top selling bulls going to ST Sexing Genetics, Alta Genetics and HBH Farms, MB averaging over \$50,000. A maternal sister to Annie 10E sold through our sale in 2016 to Grand River Angus, MI for \$7500. The dam of 10E and her grand dam have picture perfect udders, so we would expect no less from Annie 10E, and her grand dam is also designated as an Elite Dam in the CAA. Here is a proud heifer with so much muscle shape and top, and great hair, she could certainly be very competitive in the shows next spring or fall, if that is what you're looking for.

LOT 5

Rosebud 63E is another Hot Lotto daughter, which like we mentioned before with Hot Lotto, they will certainly fill the mold of a female that could definitely breed a great herd sire. The Lotto X Rebel combination should produce, high performing, big bodied cattle with plenty of Angus character. Our Rebel daughters are lovely uddered, stout made females with loads of volume, great hair and super mothers. Rebel was the high selling bull in 2012 sale, for \$95,000 for 2/3 interest, selling to Stevenson Angus Ranch, TC Ranch, and Larry Green, and has since sired sale toppers himself, like HF Defender 146B, going to LCL Angus for \$26,000 for 2/3 interest. The grand dam of Rosebud 63E is Rosebud 98P who produced HF Prowler 43U, who has certainly left his mark in the industry, as a great Calving Ease Sire, with plenty of end product as well. Rosebud 98P still roams the pastures at HF, with a calf at side at 13 years of age, and she is still in our donor program as well. Longevity is certainly in the genes!



HF Prowler
maternal sib to
dam of Lot 5

HEIFER CALF

Consigned by Hamilton Farms

5

HF ROSEBUD 63E

Female / 1976100 / HAMI 63E / January 19, 2017

BARSTOW CASH DDF
BSF HOT LOTTO 1401 DMF DMF AMF CAF NHF DDF
BSF PRINCESS EL CAP W2

HF REBEL 53Y AMF CAF OHF NHF DDF
HF ROSEBUD 36A
HF ROSEBUD 98P

SITZ DASH 10277 AMF CAF OHF NHF DDF
BARSTOW QUEEN W16 OHF DDF
SILVEIRAS EL CAPITAN 6510 AMF CAF OHF NHF DDF
B S F PRINCESS TCF N2

HF TIGER 5T AMF CAF OHF NHF OSF DDF
HF TIBBIE 103T
RIVERBEND POWERLINE 0050
HF ROSEBUD 138J

PERF	BW	205D	EPDS	BW	WW	YW	Milk	TM
	85		2.7	67	112	22	55	

HEIFER CALF

Consigned by Northern View Angus

6

NORTHERN VIEW LUCY 71E

Female / 1975209 / FTA 71E / January 01, 2017

MOHNEN HEARTRATE 1751 DDF
MOHNEN PULSE 533 DMF AMF CAF NHF OSF DDF
MOHNEN JILT 2360 DDF

NORTHERN VIEW QUANTUM 82R
NORTHERN VIEW LUCY 89T
NORTHERN VIEW LUCY 83R

S A V HEARTBEAT 9222 AMF CAF NHF DDF
MOHNEN JILT 787 DDF
H A R B WINDY 702 J H AMF CAF OHF NHF DDF
MOHNEN JILT 2477

C H QUANTUM 3330
NORTHERN VIEW PRINCESS 79N
NORTHERN VIEW FLYING ELIXIR70M
NORTHERN VIEW LUCY 72J

PERF	BW	205D	EPDS	BW	WW	YW	Milk	TM
	82	825	1.4	48	90	23	44	



LOT 6

Our Lucy cow family was first attained from Bell Angus, Pense Sk. in 1998. There are numerous high selling seed stock and retained progeny which trace back to 5G. Lucy 89T, 83R-(btw all her daughters have been retained and she is calving again this spring at the age of 13), 87X, 75X ... are Lucy cows which produce quality, structurally sound and high performing cattle. The longevity and durability of this cow family is fantastic. The udder quality, milk production and femininity really are exemplified in Lucy 71E. I truly appreciate the shape and top in this heifer when I stand behind her. The feminine look she has in her front end is quite appealing. I am pleased with the structure of her feet and the design of her legs. She looks very good in and out of the wash rack. Her disposition has been great. With only 92 Pulse calves being registered in Canada this is a fairly unique genetic opportunity. We used him as a calving ease sire. He sires easy doing, lively calves that grow and look great. Lucy 71E would make a great Jr. Project and a productive female future.

LOT 7

The dam is a Six Mile Delia 246y that we bought from Sooline dispersal. All for her calves have been exceptionally good. Cottonwood Della 72E is off the A.I. sire MAR Innovation 251, his daughters are making a name for themselves as super functional and durable cattle. This heifer has it all. She will be a great female.



HEIFER CALF

Consigned by Cottonwood Angus Farms

7

COTTONWOOD DELLA 72E

Female / 1991318 / RTBG 72E / February 17, 2017

CONNEALY IMPRESSION AMF CAF OHF NHF DDF
MAR INNOVATION 251 AMF CAF NHF DDF
MAR FINAL KAHUNA 856

S A V PREFERENCE 9184 CAF
SIX MILE DELLA 246Y
JACK CREEK DELLA 5R

CONNEALY REFLECTION AMF CAF OHF NHF DDF
PEARL PAMMY OF CONANGA 194 CAF DDF
S A V FINAL ANSWER 0035 AMF CAF OHF NHF DDF
MAR KAHUNA PRECISION 328 674 DDF
S A V PROVIDENCE 6922 AMF CAF OHF NHF DDF
S A V BESSIE HEIRESS 4149 CAF
A-LINE BRAVE HEART 1N
JACK CREEK DELLA 37M

PERF	BW	205D	EPDS	BW	WW	YW	Milk	TM
	74		3.3	60	99	23	53	

HEIFER CALF

Consigned by Thistlewood Angus

8

THISTLEWOOD COUNTESS 1E

Female / 1998855 / TWF 1E / January 08, 2017

WERNER WAR PARTY 2417 AMF CAF NHF DDF
R B TOUR OF DUTY 177 AMF CAF NHF DDF
B A LADY 6807 305

S A V HERITAGE 6295 AMF CAF OHF NHF DDF
FIRST LINE COUNTESS 21Y
FIRST LINE COUNTESS 6N

CONNEALY ONWARD DMF AMF CAF NHF DDF
BAAR USA LADY JAYE 489 AMF
VERMILION DATELINE 7078 AMF CAF OHF NHF DDF
G D LADY HI FLYER 302
CAR DUKE 104 AMF CAF NHF OSF DDF
S A V BLACKCAP MAY 4136 CAF
BASIN PRIME CUT 354K
FIRST LINE COUNTESS 9H

PERF	BW	205D	EPDS	BW	WW	YW	Milk	TM
	80	768	2.5	57	101	27	56	



LOT 8

A direct daughter of the performance sire, Tour of Duty out of a beautiful SAV Heritage cow we purchased from First Line Angus. 1E has all the tools to be a competitive show heifer along with a top end cow prospect. If you know anything about the Countess cow family from First Line they are special! EPD's place this heifer in the top 10% of weaning, yearling and milk. This is our first trip out to Agribition and we thought would like to display a strong set of genetics that make up our herd.

Thistlewood will give a \$100 back if a junior completes 4-H club with heifer.

LOT 9

A real sweet made heifer calf that is out of EXAR Powerhouse and this being his first set of calves to hit the ground we are excited. Connealy Consensus and New Design 878 give this heifer a strong background of cattle that are full of style but make tremendous cows. When it comes to the Bardella cow family from LLB the list could go on forever. The Bardella cow family is highly guarded at LLB for being productive, profitable cows as the dam of 5E has been for us. A maternal brother to 5E is the sire of our 7E heifer calf that we have also consigned to the mighty Masterpiece Sale.

Thistlewood will give a \$100 back if a junior completes 4-H club with heifer.



HEIFER CALF

Consigned by Thistlewood Angus

9

THISTLEWOOD BARDELLA 5E

Female / 1998856 / TWF 5E / February 02, 2017

CONNEALY CONSENSUS 7229 AMF CAF OHF NHF OSF DDF
EXAR POWERHOUSE 2077B
EXAR JUNE 7889

S A V PRODIGY 8101 AMF NHF
LLB BARDELLA 91Z
LLB BARDELLA 775W

CONNEALY CONSENSUS DDF
BLUE LILLY OF CONANGA 16 CAF
BON VIEW NEW DESIGN 1407 AMF CAF NHF
EXAR JUNE C 3577 CAF
S A V NET WORTH 4200 AMF CAF OHF NHF DDF
S A V BLACKBIRD 3155
TIMBER TRAIL GRIDLOCK
LLB BARDELLA 83R

PERF	BW	205D	EPDS	BW	WW	YW	Milk	TM
	72	792		1.3	55	97	25	54

HEIFER CALF

Consigned by Thistlewood Angus

10

THISTLEWOOD MAMA SAID 7E

Female / 2002473 / TWF 7E / February 07, 2017

REMITALL WEST BIG WHEELS 42Z
THISTLE WOOD HOT WHEELS 49B
LLB BARDELLA 91Z

UPPER GLEN HOUDINI 39T
THISTLE WOOD LUCY 82A
LUCY OF TULLAMORE 31W

REMITALL WIDELOAD 595U AMF CAF NHF OSF MAF
REMITALL WEST BLACKCAP 887U
S A V PRODIGY 8101 AMF NHF
LLB BARDELLA 775W
W C C SPECIAL DESIGN L309 AMF CAF OHF NHF DDF
GLEN ISLAY MAGGIE 17F
SOUTHLAND FULL THROTTLE 15R
LUCY OF TULLAMORE 16L

PERF	BW	205D	EPDS	BW	WW	YW	Milk	TM
	73	676						



LOT 10

A different twist of paper on this fancy heifer calf, sired by our own Hot Wheels bull, Lucy 7E comes with a strong pedigree to back up her attractive makeup. Every cow in this pedigree has been a sure thing in regards to production and that's where it really counts. What's more interesting to boot is the outcross pedigree this heifer carries. We think this heifer is pretty darn special and when you come to CWA we think you will too.

Thistlewood will give a \$100 back if a junior completes 4-H club with heifer.

LOT 11

HSA BLACKBIRD 17E is a long spined, feminine heifer. She has that "look at me" presence and has been noticed by everyone who toured the farm this year. Her dam is one of the best looking cows on the farm. A pedigree that combines the Blackbird and Evening Tinge cow families with some of the most proven female makers in the breed make this girl a sure bet whether you need a show prospect or a really solid cow!



HEIFER CALF

Consigned by Henry Stewart

11		HSA BLACKBIRD 17E							
		Female / 1966601 / HS 17E / February 13, 2017							
P E R F	BW	205D	E P D S		BW	WW	YW	Milk	TM
	61	585			-1	39	68	21	41

S A V BISMARCK 5682 AMF CAF OHF NHF DDF
ISLA BANK BISMARCK 1302
HF EVENING TINGE 138W

LLB 184S BANDO 684U
TALL TREE MISS BANDO 34B
TTA SASS 12X

G A R GRID MAKER AMF CAF OHF NHF DDF
S A V ABIGALE 0451
HF TIGER 5T AMF CAF OHF NHF OSF DDF
SWEETWATER EVENING TINGE 13R

LLB 2166 BANDO 184S
LLB QUEEN MOTHER 291M
TTA DATELINE 3S
ROSE HILL BLACKBIRD 38S

CONSIGNORS

HAMILTON FARMS
Rob & Gail Hamilton
403.932.5980
403.540.3186

DUAL E CATTLE CO
Eric & Erin Yewsiuk
306.560.7085

COTTONWOOD ANGUS
Brett, Treena, Teal Marie & Timber
Gaupe
306.537.4710

BLAIRS. AG
306.365.7922

WRAZ RED ANGUS
Phil & Lana Birnie
306.577.7440

TRIPLE H RED ANGUS
Perry & Dawn Hart
Cory Hart
306.718.7007

THISTLEWOOD ANGUS
Allan Carey-Mclean
403.586.4851

U6 LIVESTOCK
Garnet & Shirley Yewsiuk
306.560.8460
Evan & Brittany Yewsiuk
306.554.8708

BRYLOR RANCH
Bryan & Sherry MacKenzie
403.627.8266

TRIPLE L ANGUS
Randy & Kim Tetzlaff
306.231.6969

LEEUWENBURGH ANGUS
Dennis
403.308.3003
Johnny
403-382-1794

WILBAR CATTLE CO
Bryan & Tracey Willms
306.492.7504
306.380.6772

T & S RED ANGUS
Terry & Stacey Hunt
306.322.4547

CLAIR LANE STOCK FARM
Paul and Karley Sinclair
519.993.1251

JAYMARANDY ANGUS
Mark Angus
204.281.5099

HS ANGUS
Henry Stewart
306.269.0201

DJ CATTLE CO
Dallas & Lynne Johnston
204.841.3880

NORTHERN VIEW ANGUS
Troy & Amy Frick
306.728.8911

LOT 12

We are excited to be once again consigning a female to the Masterpiece Sale. On offer is Red Dual E Samaria 1D, a moderate framed, easy keeper. We appreciate her for her exceptional spring of rib and structure. Coming from our Samaria cow family, her temperament and udder structure is second to none. Paired with a Ter-Ron Parker 34A son, 1D's calf is sure to be a favorite in your 2018 calf pen. Exposed to Red U6 Gingerbread 49D from April 8 to June 4, 2017. She has been checked safe for an early February calf.



BRED HEIFER

Consigned by Dual-E Cattle Co

12

RED DUAL-E SAMARIA 1D

Female / 1911570 / EUSX 1D / January 18, 2016

RED BAKERS RIDER PRIDE 100Z
RED BAKERS PRIDE 314B
RED KBJ LASSIE 1058T

RED WRAZ COLEMAN 44Z
RED U6 SAMARIA 62B
RED U6 SAMARIA 3X

RED BIEBER ROUGH RIDER 10712 OSF
RED BAKERS MINOLA 218N
RED MINBURN WINDY 5178
RED KBJ LASSIE 990P
RED PASQUIA TOAST 15W
RED WRAZ JETTA 41W
BLACK WHEEL ODYSSEY 117U
RED U6 SAMARIA 5U

PERF	BW	205D	EPDS	BW	WW	YW	Milk	TM
	72	630		-0.5	48	77	18	41

HEIFER CALF

Consigned by Wilbar Cattle Co

13

RED WILBAR HANA 217E

Female / 1980684 / WJD 217E / January 30, 2017

DKF ELIMINATOR 15A
RED DKF RAZOR 55C AMF OSF
DKF MISS NET WORTH 21A

WILBAR SERENGETI 92A
WILBAR HANA 813C
RED WILBAR HANA 402P

S A V ELIMINATOR 9105 AMF CAF NHF OSF
RED DKF MISS POWER 17P
S A V NET WORTH 4200 AMF CAF OHF NHF DDF
DKF MISS POWER UP 95X
WILBAR SERENGETI 101W
RED WILBAR SCAARA 539R MAF
RED BJR MONU 4X-303 OSF MAF DDF
RED WILBAR HANA 206M

PERF	BW	205D	EPDS	BW	WW	YW	Milk	TM
	84			-0.2	57	92	22	49



Sire

LOT 13

This will be the first daughter to sell in Canada out of our new outcross herd bull, RAZOR. Razor offers fresh new genetics to the red breed that have been proven on the black side of things with great success. His breed leading tabulation ranks him in the top 10% in several traits while maintaining a balanced overall EPD profile. Phenotypically, Razor progeny are stylish, stout & correct with some extra rib shape. To add to an already interesting pedigree, Hana 217E's black dam traces back to Wilbar Ruby 161J who is the grand-dam of HF Kodiak 5R and also includes SAF 598 Bando 5175 who was one of the great sires of his time in the SAV program. 217E is a truly exceptional individual out of our black-red carrier program. OUTCROSS genetics at its finest.

LOT 14

Cherokee 22E will be the first heifer on offer sired by Red Pasquia Hustle 12B. (Lazy MC Hustle 18T son) We are very pleased with the consistency and appeal of his progeny and 22E is one of the best to date. She has been a standout right from birth. Big hiped, hairy and deep as the day is long! Her Dam, HRA 126X has been one of our top producing cows with a very nice phenotype, a perfect udder and great feet. We have one daughter retained in our herd and others have sold at Frontline Female Sale, Keystone Klassic and now Masterpiece. Whether it be on the show string or in the pasture, we are very excited about what the future holds for Cherokee 22E.



HEIFER CALF

Consigned by Triple H Cattle Co

14 RED TRIPLE H CHEROKEE 22E

Female / 1977928 / HRA 22E / February 16, 2017

RED LAZY MC HUSTLE 18T
RED PASQUIA HUSTLE 12B
RED PASQUIA ROSE 22X

RED RJ MITCHELL EQUALIZE 123S
RED TRIPLE H DORITA 126X
RED DEER RANGE CHEROKEE 668T

LAZY MC BOOM 44R
RED LAZY MC LARKABA 70R
RED BRYLOR TOAST 30T MAF
RED PASQUIA ROSE 56R

RED SVR EQUALIZE 134N
RED YEO LANA 2N
RED DEER RANGE CACHE 99P
RED DEER RANGE CHEROKEE 96M

PERF	BW	205D	EPDS	BW	WW	YW	Milk	TM
	76	630		-2.4	48	73	23	47

HEIFER CALF

Consigned by Terry & Stacey Hunt

15 RED T&S SAGE 57E

Female / 1975170 / TSH 57E / February 03, 2017

RED VGW GAME PLAN 816 AMF NHF OSF MAF
RED SIX MILE GRAND SLAM 130Z AMF NHF OSF MAF
RED SIX MILE REBECCA 216X

RED GLACIER CHATEAU 744 OSF
RED T&S SAGE 57S
RED T&S SAGE 123M

RED VGW GAME PLAN 508 AMF OSF MAF
RED VGW TW DOLL 0270
RED SSS BUCC 30U OSF MAF
RED WILBAR REBECCA 234M

RED LMAN KING ROB 8621 OSF MAF
RED GLACIER REBALA
RED KINCHEN SAGEBRUSH 487
RED HANDFORD MISSY 121H

PERF	BW	205D	EPDS	BW	WW	YW	Milk	TM
	80	703		-2	57	92	21	50



LOT 15

The decision to part with 57E has been one of our most difficult as we feel she is one of the best calves we have ever raised. She is one of those calves you could pic out from birth that she was going to be special. She is deep, long bodied, and dark red with lots of hip. This girl has it all, 80lb birth wt, adj 205 wt of 703lbs, YW epd+94, milk epd+21. to top it off she was the calf who would come up to you in the pen to be scratched. She is sired by Red Six Mile Grand Slam 130z who we picked for his length of body and impressive epd's. We cant's say enough about her mother 57s, a deep bodied Chateau 744 female who is part of our largest "Sage" cow family. This lady always raises on of the best calves every year and her daughters are excellent producers. We can't wait to see what the future holds for this girl.

LOT 16

We chose the Journey bull to sire more females that are just like his Elite and Premier Dam, Alana 13S. Misson accomplished. 14E we think just may be the best of the bunch. With such maternal power in her all Canadian pedigree, there's no mystery as to what kind of cow she will make! The only question is why we ever agreed to let her out of our herd. Stop by our stall in The Yards and see what this genetic gem is all about.



HEIFER CALF

Consigned by U6 Livestock

16	RED U6 ROXIE 14E					
	Female / 1976003 / USX 14E / January 19, 2017					
PERF	BW	205D	EPDS	BW	WW	YW
	85			1	60	94
					Milk	TM
					22	52

RED JLL FINAL DESIGN 50Y
RED U6 JOURNEY 13B
RED U6 ALANA 13S

RED T-K BIG DEAL 98U AMF MAF
JLL FINAL DESIGN 3W
RED U6 TWENTY X 29P
RED U6 ALANA 20N

RED SIX MILE TYPHOON 289T
RED DOUBLE C ROXIE 563Y
RED DOUBLE C ROXIE 823M

RED SIX MILE PARK AVE. 392P
RED SHODEREE GINA 957E
RED CUMNOCK BIG JOHN 732D
RED RAFTER FL ROXIE 25C

PICK OF THE HERD

Consigned by Leewenburgh Angus

17	Offering pick of our entire 2017 heifer crop. Our most consistent heifer pen to date loaded with power and outcross options.	
----	--	--

First progeny to sell from LWNBRG Harvester 103C. A herd bull that offers breeding versatility and value. He passes along his awesome foot and profile. Bull calves are standouts but it looks at this point in the year that his females will be the ticket. Consistent, deep bodied and easy fleshing make this a great opportunity to get in on the ground floor with these true outcross genetics.

First RED progeny to sell from the popular SAV Resource 1441, they are standouts in the pen. Worth the drive to see!

LWNBRG Crossover 66B represents one of our very best cows in TED 50Y and maternal giant RED Beiber Rollin deep. We are going to be calving his daughters in January. He sired a select group of extra age red and black females. -Ai'd to over 300 hfrs in the previous two years. Exceptional calving ease and calf vigour.

Strong group from Andras Fusion. Our go to AI bull for calving ease. First daughters have exceeded expectation and weaned some of our best calves in the first year. His bulls have been our best selling sire group for the past few years. Add length and power with the SSS Contender 121B daughters. Larger framed heifers that are put together very well. they look to be big time power producing cows down the road.

Other bulls represented in the group are SIXM High Caliber 177C and LWNBRG Frontier 28C. Frontier sire group blends calving ease and phenotype. Real world performance in these females that will be hard to pass up. High maternal pedigree with the TED 66Z cow who weans incredible pay weight every year. Maternal sister in the heifer pen is a standout.



LOT 18

Young Dale Grace 107W is a truly powerful cow with the ability to deliver incredible phenotype and style with the ever important structure and perfect real world hoof design. She is moderate in frame, massive in dimension and clicks with each and every bull ever mated with. We have 3 daughters in our program and a son that sold to Mantei Angus for \$11,000 in the spring of 2017. Her most notable product is Young Dale Grace 169B that has been shown for 2 years now placing no less than reserve division. Last year she and her daughter Jaymarandy Grace 640D went on to be the Reserve Grand Champion females at Manitoba Ag-Ex and Champion 2 year old Black Angus female at CWA in 2016. If fertility is where you hang your hat then a cow that can produce 25 #1 embryos per flush is a great place to start. Grace 107W is mated with the amazing Colburn Primo whose sisters have been reported by many as some of the best phenotype females ever produced anywhere and winning shows continuously in the US. With a pedigree that holds the productive and prolific Young Dale Pollyanna 22P and the phenotype of the Primo's there is no limit to the possibilities. 107W and her bull calf at side were recently named Grand Champion Female in Brandon, as well her bull calf was named Junior Bull Calf Champion and a member of the Champion Pair of Bulls.



EMBRYOS - CHOICE LOT

Consigned by Jaymarandy Angus

18

Buyers choice of 3 or 5 embryos

COLBURN PRIMO
X
YOUNG DALE GRACE 107W

19

Buyers choice of 3 or 5 embryos

BROOKING BANKNOTE 4040
X
JAYMARANDY GRACE 640D

Both sets of embryos are exportable to the US. Guaranteed 1 pregnancy for 3 embryos or 2 for 5. Buyer is responsible for shipping. Embryos are stored at Beausejour Animal Hospital.



Alongside her Dam at CWA 2016

LOT 19

Jaymarandy Grace 640D is a direct daughter of the prolific Young Dale Grace 169B and was at her side as the Champion Black Angus 2 year old female at CWA 2016 and Reserve Grand Champion at Manitoba Ag-Ex 2016. 640D is neat in her design, powerful in her dimension and has the backing of the Grace's and the great Young Dale Pollyanna 22P. She is a double digit female for both CEM and CED and boasts exceptional birth weight numbers in the top 15%, milk in the top 30, top 15% total maternal, and top 25% for both WW and YW epds. Her combination with the \$125,000 Brooking Banknote yielded 17 #1 embryos in her first flush. She is unique in her make up with an exceptional leg set, perfect feet, extreme fertility and is paired with one of the industries leading Angus herd sires.

LOT 20

Assassin has to be one of the most dynamic and talked about young bulls in the entire Red Angus breed in 2017. From his fantastic performance to his awesome profile and now his breeding ability as a yearling in the pasture. He has got it all to be a super stud in Canada! Assassin was the \$77,500 High Seller back in March at the Cockburn/Merit Bull Sale. He's been sampled heavily by some of the countries leading breeders at \$10,000 a package (100 straws). At Brylor's TWAV sale saw Assassin's service add a whopping \$2800 per lot over and above the avg of the sale that day. Pretty easy math to pay for a package for your next sale day!

No more semen available until the Fall of 2018.



CHOICE SEMEN PACKAGE

Consigned by Brylor Ranch

20A	RED COCKBURN ASSASSIN 25 straws, one buyer only.
------------	--

20B	RED COCKBURN ASSASSIN 50 straws, split the package once with a partner of your choice.
------------	--

Male / 1942328 / CWJ 624D / February 15, 2016

RED LSF SAGA 1040Y OSF RED PIE SPECIALIST 430 MAF OSF RED PIE PLAYMATE 232 RED LAZY MC HUSTLE 18T RED COCKBURN CORA 254Z RED WILBAR CORA 443P	RED BECKTON EPIC R397 K OSF AMF CAF NHF RED LSF MINOLA T7172 W9041 OSF RED PIE CODE RED 9058 OSF DDF RED PIE PLAYMATE 028 LAZY MC BOOM 44R RED LAZY MC LARKABA 70R RED TER-RON TORNADO 157M RED HEAD CORA 159L
--	---

PERF	BW	205D	EPDS	BW	WW	YW	Milk	TM
			-2.5	57	94	29	57	

SEMEN COLLECTION

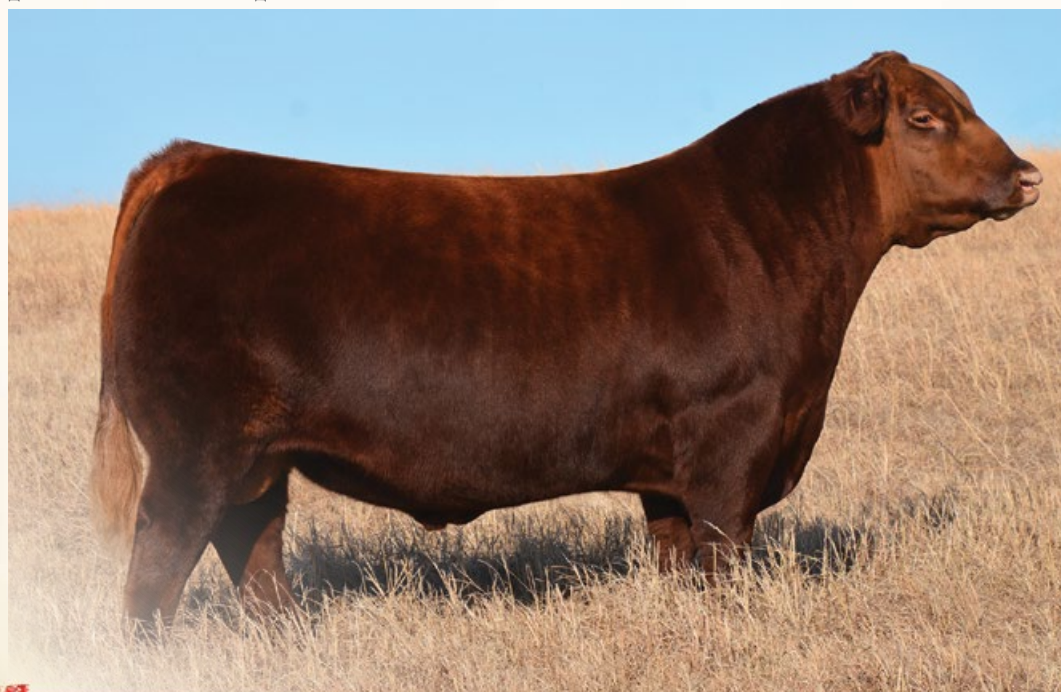
Consigned by Brylor Ranch and Blairs, Ag

21	RED TWG TOMMY JACK 166A Selling one "owners use" semen collection jump
-----------	--

Male / 1944044 / IMP 0166A / October 19, 2013

RED VGW GAME PLAN 816 OSF MAF NHF AMF RED SIX MILE GAME FACE 164Y OSF MAF NHF AMF RED SIX MILE LAKOTO 35W MAF OSF RED FINE LINE MULBERRY 26P OSF AMF MAF DDF RED DAMAR PASSION X166 RED DFRA JOPLIN 501L OSF DDF	RED VGW GAME PLAN 508 AMF OSF MAF RED VGW TW DOLL 0270 RED LAZY MC SMASH 41N OSF RED STEWART LAKOTO 612S RED COMPASS MULBERRY 449M RED DUS FAYETTE 8G RED BJR MONU 4X-303 OSF MAF DDF RED BJR JOPLIN 6232-3246
---	---

PERF	BW	205D	EPDS	BW	WW	YW	Milk	TM
	-0.5	59	90	12				



LOT 21

Here's a pretty cool and creative opportunity for the progressive minded breeder! Very little semen has been released on the bull in Canada so here's the chance to be right in at ground zero on an amazing young herd bull. He was named Grand Champion Bull at Fort Worth in 2015. His dam also won that same show in 2013. She's a phenomenal daughter of Mulberry. Tommy's sire was the \$65,000 Game Face bull to L83, Ledoen's in North Dakota. His first semen offered was fetching \$500 US Dollars per straw. Tommy has calving ease big time, massive amounts of hair and unequalled eye appeal!

Selling the right to one successful "owners use" jump on Tommy Jack. Buyer to assume all collection costs. Owners will deliver the bull to the stud of choice (mutually agreed upon).

LOT 22

The last ever embryos to sell from the world famous Olivia 706P. We have no more eggs on our beloved old donor cow. We thought it would be only fitting to sell these eggs on her in Saskatchewan as that's where she was born and raised at T-S (Gilles Stringer) at Ponteix. Olivia raised a \$12,000 son named Stringer 29S, \$56,700 heifer named Olivia 2T, another son called Mariota 90B for \$55,000, Opportunity 98B at \$19,000 and last but not least On the Mark 26Z at \$17,000! Damar bought some eggs which produced a heifer that in turn produced the current National Champion Bull in Damar Trump. Eberle 50Y (who is also a Regina boy, the hockey player not the bull) is a bull ET brother to the 40Y cow who produced the highly regarded Red Brylor Kodiak 3A. Another daughter of hers just topped the 2017 mighty Red Roundup Sale at \$17,000 to Christy's in New York.



EMBRYO PACKAGE

Consigned by Brylor Ranch

22

SELLING 4 #1 GRADE EMBRYOS

Guarantee 2 pregnancies if implanted by an accredited vet

RED BRYLOR EBERLE 50Y

X
RED T-S OLIVIA 706P

PROJECTED
EPDS

BW

-0.5

WW

61

YW

94

Milk

28

TM

58

CHOICE EMBRYO PACKAGE

Consigned by Wrag Red Angus

23A

RED SPITTALBURN BAYBERRY 704T

3 exportable embryos, guarantee 1 pregnancy

23B

RED SPITTALBURN BAYBERRY 704T

4 embryos, no pregnancy guarantee

RED SIX MILE CUSTOM MADE 505C

X
RED SPITTALBURN BAYBERRY 704T

PROJECTED
EPDS

BW

WW

YW

Milk

TM



LOT 23

A \$35000 Bayberry 704T son - Red Triple L Endorse 20C recently sired the Champion heifer calf at Red Round Up 2017. She was heifer calf champion and led off the sale at \$8000 to the keen eye of Ter Ron. The progeny of Bayberry 704T that have been sold have averaged over \$10000. The next great one could certainly be in this embryo package sired by Custom Made 505C. He is a son of the wildly popular U2 Reckoning stud that has been in high demand lately. The embryos are selling FOB Bow Valley Genetics.

On offer 3 exportable embryos. Guarantee of 1 pregnancy if implanted by a certified embryologist. Option B buy 3 but get 4 embryos in place of the guaranteed pregnancy.

LOT 24

Red Brylor Kodiak 3A is just now showing his true value to the red gene pool. Many breeders have sampled him through AI and his calving ease is proven and consistent. Kodiak 3A sons have been in great demand for the heifer pen but I believe his daughters in the end will carry his legacy. Recent herd tours show his daughters just flat work in many different areas under a wide range of management. His daughters are the right kind with a little extra eye appeal and udder quality second to very few. We guarantee to sell no more than 80 straws before the fall of 2018. The semen is exportable and sells FOB Alta Genetics, Balzac AB.



SEMEN PACKAGE

Consigned by Wrag Red Angus

24A **RED BRYLOR KODIAK 3A**

10 Straws

24B **RED BRYLOR KODIAK 3A**

10 Straws

Male 1736024 / LMP / 3A / January 11, 2013

HF KODIAK 5R MAF AMF NHF CAF DDF OHF
BLACK BRYLOR KODIAK 204Y OSF
RED XXX LAKME 70M MAF OSF

RED BRYLOR SDL PASQUALE 213P
RED BRYLOR FAYETTE 40Y
RED FL FAYETTE 33M

SANDY BAR ADVANTAGE 43M DDF
WILBAR RUBY 955N
RED BRYLOR NEW TREND 22D OSF MAF
RED FINE LINE LAKME 21J

RED VGW RAMBLER 1000 OSF
RED XXX LAKME 70M MAF OSF
RED TED HI HO 35K
RED DUS FAYETTE 8G

PERF	BW	205D	EPDS	BW	WW	YW	Milk	TM
			-4.2	63	77	16	48	

SEMEN PACKAGE

Consigned by Clair Lane Stock Farm

25A **VERMILION DATELINE 7078**

3 Straws

25B **VERMILION DATELINE 7078**

3 Straws

Male / 1018284 / IMP 7078G / February 4, 1997

D H D TRAVELER 6807 AMF NHF
CONNEALY DATELINE DDF
EILA EILA OF CONANGA AMF DDF

LEACHMAN RIGHT TIME AMF DMF
VERMILION BLACKBIRD 5044
VERMILION BLACKBIRD 3525

Q A S TRAVELER 23-4 AMF NHF CAF DDF OHF
BEMINDFUL MAID D H D 0807
SCOTCH CAP AMF NHF CAF DDF OHF
ELLA EILA OF CONANGA

N BAR EMULATION EXT AMF NHF CAF DDF OHF
LEACHMAN ERICA 0025
B A R STACKER 31
VERMILION BLACKBIRD 9398

PERF	BW	205D	EPDS	BW	WW	YW	Milk	TM
			5.5	56	102	19	47	

LOT 25



VRD took the breed by storm in the early 2000's and blew the doors off the barn with his performance and style. His sons, carry good frame, length and are the cowboy kind. Even today he is in the top 10% of the breed for performance. Now we all now we can be skeptical of the EPD's from time to time but you ask anyone who used this great breeding bull, the growth is real. Daughters have fantastic udders with good milk flow. Phenotypically, VRD was one of the most pleasing bulls to see in stud back in the day and he passed that on to his calves every time.

LOT 26

Immortal is the only way to describe EXT, his genetics are still in extremely high demand. A daughter was one of the top seller in the 2016 Masterpiece Sale. Genetics that you can't go wrong with, a must have!



SEMEN PACKAGE

Consigned by Clair Lane Stock Farm

26A

N BAR EMULATION EXT

3 Straws, Selling FOB Eastgen

26B

N BAR EMULATION EXT

3 Straws, Selling FOB Eastgen

EMULATION 31 DWF
EMULATION N BAR 5522
ANKONY 8F78 LASS 8F275

F C R ELATION LAD 652
MISS EMULOUS 243
ANKONIAN DYNAMO 27542
ANKONY B999 LASS 26832

EMULATION 31 DWF
N BAR PRIMROSE 2424 OHF
PRIMROSE N BAR 9962

F C R ELATION LAD 652
MISS EMULOUS 243
LAD 118K OF J R S
N BAR PRIMROSE 5329

PERF	BW	205D	EPDS	BW	WW	YW	Milk	TM
			1.4	36	64	20	38	

Terms and Conditions

1. Terms: The terms of the sale are cash or cheque at par. No releases will be given until satisfactory settlement has been made. All monies are in Canadian Funds, other funds will be accepted at the current rate of exchange.
2. Bids: Every animal entering the ring will be sold to the highest bidder.
3. Disputes: In case of disputes, bidding will be reopened between the parties involved. If no further bid is made, the buyer will be the person from whom the auctioneer accepted the last bid. The auctioneer's decision in such matters will be final.
4. Announcements: Any changes from information in this catalogue will be announced from the auction block; such changes will take precedence over the printed matter in the catalogue. Buyers are therefore cautioned to pay close attention to any such announcements.
5. Purchaser's Risk: Each animal becomes the risk of the purchaser as soon as sold.
6. Certificate of Registration: Each animal in the sale will carry registration papers issued by the Canadian Angus Association. A certificate duly transferred will be furnished to the buyer for each animal after full and total payment has been made.
7. Accidents: Every precaution will be exercised to protect the safety and comfort of those attending the sale. Neither the owners, auctioneer, or any sale staff assume any responsibility in this matter and disclaim any liability, legal or otherwise, in the event of accident or loss of property.
8. Liability: All persons attending the sale do so at their own risk; sellers and/or sales management and/or any of the sales staff assume no liability legal or otherwise for any accidents occurring in, on, or about the premises.
9. Insurance: Livestock insurance and/or transit insurance will be available.
10. Export testing: In the case of animals purchased for export, the necessary customs, health, and export certificates will be supplied and expenses will be at half cost; the other half of the cost will be responsibility of buyer.

• General Information •

Mail Bids: May be entrusted in complete confidence to any of the sale staff or representatives listed

MASTERPIECE SALE

CASTLEROCK MARKETING Box 415, Swift Current, SK S9H 3V8



MASTERPIECE SALE

CANADA'S FINEST RED AND BLACK ANGUS GENETICS