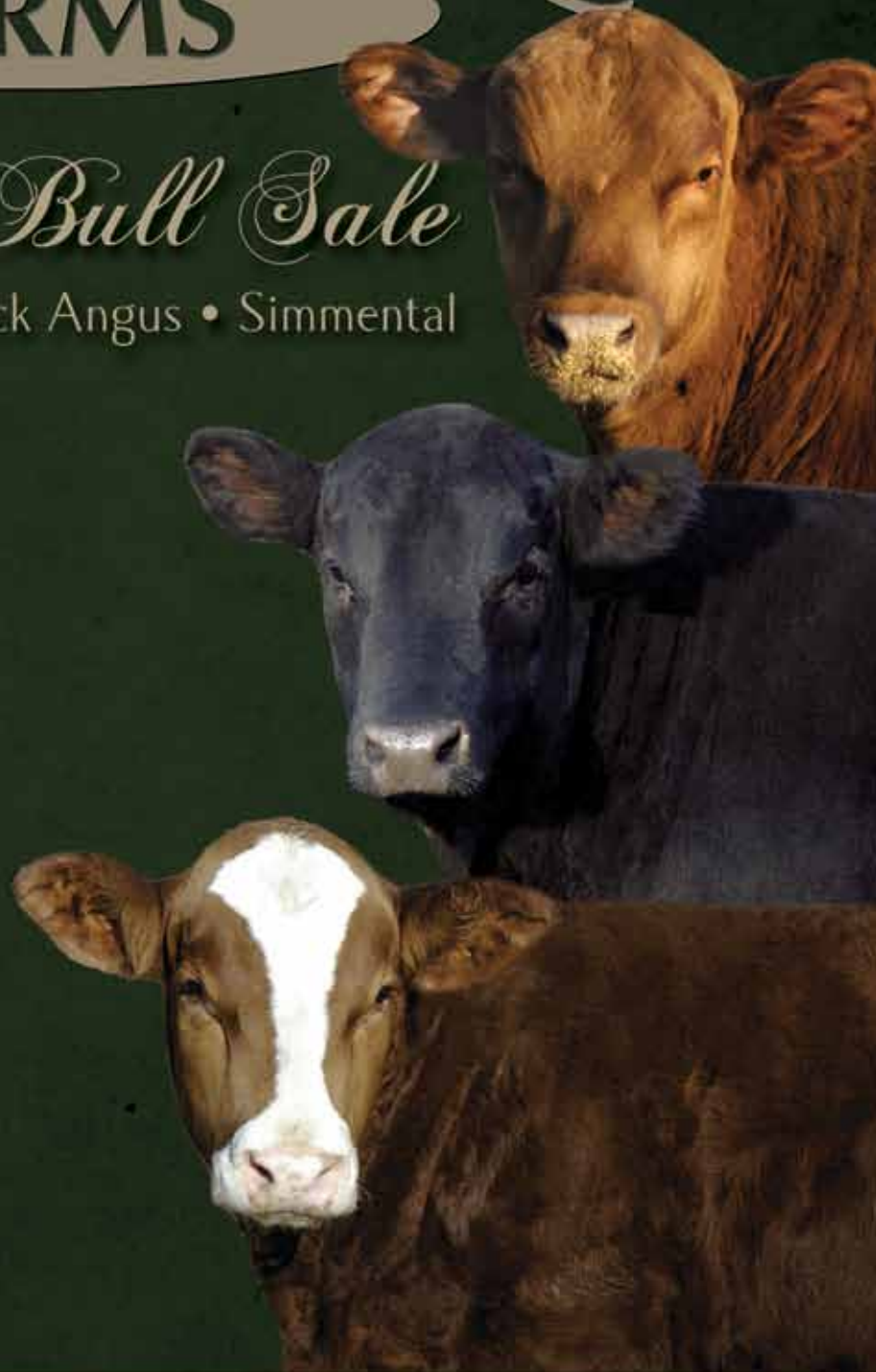


MAR MAC FARMS

Guests Bull Sale

Red Angus • Black Angus • Simmental



1:30 p.m. March 7, 2012

Mar Mac Sale Barn • Brandon, Manitoba

Downhill Simmentals • Magnusville Farm • Perkin Land & Cattle Co.

Welcome to the 2012 edition of the Mar Mac & Guests Bull Sale.

Mar Mac Farms is a 4th generation family farm where we make our living with our cattle. We dedicate our time year round to producing top quality genetics and have learned the importance of customer service and honest relations with our valued friends in the livestock business. Someone recently asked me how I could stay so enthusiastic about the purebred cattle business or the cattle industry in general. I told them that the answer was easy, it is the people. This industry has introduced us to some of the best people we have ever worked with or had the opportunity to learn from.

Times are exciting in the cattle business right now with the cattle numbers low and demand for the slaughter cows and bulls very high. Now is the time to take your old herd sire and get top dollar and invest in fresh new genetics for the future. It has been proven that top quality genetics command premiums at the auction mart.

This year, we feel we have a top notch set of bulls. Our Red Angus bulls sired by Ribeye have some extra width in their hips and natural thickness that will pay dividends for the calves they produce, Our Black Angus Bulls may be the strongest to date. We do not have big numbers but just look at the quality. Our Simmental Bulls improve every year and the sons of Tennessee are stout quartered, thick meaty individuals. Every year we try and improve the offering for you our customers and we work hard to achieve this goal.

Our guest consigners this year are Downhill Simmentals (Everett Olson), Magnusville Farm (Shawn and Aaron Magnusson), and Perkin Land and Cattle (Darryl and Tanya Perkin and family).

As always our bulls have been raised without creep feed, their weaning weights are produced by their mother's milk. These bulls have been developed on a home grown ration that will enhance longevity. You may find fatter bulls at other sales, but these bulls are fed to last. They have been selected for ease of fleshing, temperament and structural correctness. They are culled heavily, if we could not feel comfortable using any of these bulls ourselves we would not be comfortable selling them to you. Any of the bulls that we cull we castrate and feed to finish at home. This certainly is the best teacher of the right type of cattle that work for our customers.

The mothers of these bulls are sound practical cows. Our cows have to maintain their condition on swath grazing and a roughage ration, they do not get any grain. They also have to calve and nurse with no assistance, and then rebreed or they do not stay here. Please feel free to come and see the bulls at any time prior to the sale, we would be honoured to have you inspect the bulls and their mothers. If you cannot attend our sale but are interested in our program we would be happy to help you select a sire for your operation through our sight unseen purchase program or talk to any of the sale staff and they would be happy assist you. This year you will also be able to bid on the internet by going to Liveauctions.TV. Videos will be posted on our web site.

We look forward to meeting with you on sale day. Although we can't visit with everyone on sale day we would like to say a heartfelt thank you for attending and let you know that your attendance is appreciated.

Sincerely Blair, Lois Brett and Melissa

PS our sale barn is heated but the bulls are on display outside, so dress accordingly



MAR MAC FARMS

Guests Bull Sale

March 7, 2012 • 1:30 P.M. • Mar Mac Farms Sale Barn

On Offer:

26 Red Angus Yearlings • 9 Black Angus Yearlings
51 Simmental Yearlings • 2 Simmental Two Year Olds

Sale Staff

Auctioneer

Jerry Kanewischer.....403-382-9374

Ringside

Helge By.....306-546-3940

Cell: 306-536-4261

Nate Marin.....306-869-2519

Cell: 306-869-7130

Ted Serhienko.....306-933-4200

Cell: 306-221-2711

Photography

Grant & Lauralee Rolston.....403-593-2217

Sale Day Phones

Sale Barn.....204-728-3058

Blair.....204-729-5439

Lois.....204-573-5192

Brett.....204-729-1018

Everett.....204-867-0076

Perkins.....204-534-8137

- The Mar Mac Farms & Guests reserve the right to draw semen on any bulls in the sale for their in herd use.
- Videos of bulls are available online as well as pictures of all bulls that are not pictured in the catalogue
- View catalogue online at www.marmacfarms.net



Everyone is
checking out the
catalogue

Mar Mac Farms

Blair, Lois, Brett and Melissa McRae

RR#1 Box 57, Brandon Manitoba

Home: 204-728-3058 • Fax 204-727-7744

Blair Cell: 204-729-5439 • Lois Cell: 204-573-5192

marmac@inetlink.ca

Downhill Simmentals

Everett Olson

Rapid City, Manitoba

Home: 204-826-2643

Cell: 204-826-0076

Magnusville Farms

Shawn & Aaron Magnusson

Riverton, Manitoba

Phone: 204-378-5225

Perkin Land & Cattle Co.

Darryl, Tanya, Liam & Ivy Perkin

Elgin, Manitoba

Phone: 204-769-2159

Cell: 204-534-8137

www.perkinlandandcattle.com

Values we believe in...

Commitment...

We are committed to producing a top quality product with the traits you demand. These bulls are selected for calving ease, fertility, easy fleshing, thickness and milk. These traits will command premiums for your calves in the auction barns or on the rail.

Quality...

Only the top end of our bulls sell... We would use any of them in our own program. We have been very strict on our culling this year, so you get only the best.

At the Mar Mac & Guests Bull Sale our 50 plus years of experience as a family ran operation means **CUSTOMER SERVICE** is an important part of our business.

We guarantee our bulls 100%, sight unseen purchase satisfaction, wintering program, personal contact after the sale of the bull and the coffee is always on for you to come and view our program.

Buyer Selection Programs...

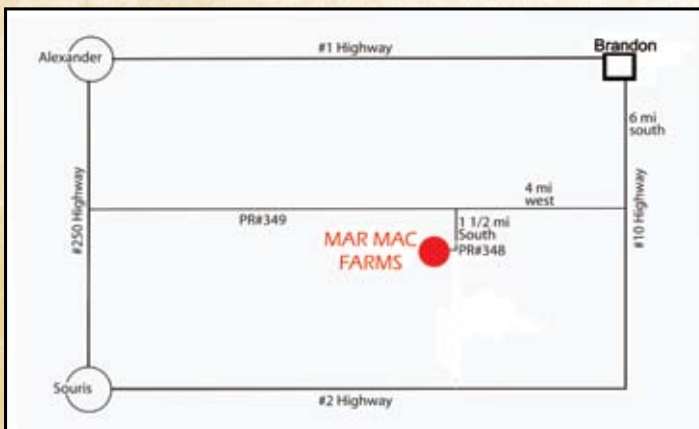
Give Blair, Lois or any other of the consignors a call anytime... Call us a few days in advance of the sale with your bull needs and we will compile a list of bulls that we feel will work for you. As we are with the bulls everyday, we know the qualities in each bull. If we buy a bull for you sight unseen and you do not like him, you don't own him - no problem!

Can't Get Away... we know it is hard to get away from home with cows calving, barley to deliver or whatever your busy schedule entails. We are trying to help you out by offering online bidding with Live Auctions. Please go online a few days before to register. We encourage you to come to the farm ahead of time and check out which bull(s) you are interested in and then bid online if you desire. Any questions please give us a call!

Online viewing and bidding available...

We invite those of you who are unable to attend the sale to be part of the action! We would never want to give someone an excuse not to attend this event, but if the situation arises, we have you covered. With the help of LiveAuctions.TV we are now able to give you a live connection to the auction. Real-time bidding will be available via the internet for this sale. Buyers must create an account at LiveAuctions.TV least two days prior to the sale.

Visit <http://LiveAuctions.tv> to register and watch online
Contact Jill Mader at 403-990-9187 for assistance.



PLEASE NOTE: you can not come north from HWY #2 on PR # 348 as the bridge is out!



Mar Mac Farms are now Registered Verified Beef Producers

We can supply you with quality bulls & Customer Service

Bull Guarantee...

All bulls have complete a breeding soundness evaluation by Virden Animal Clinic. If your bull fails to be a satisfactory breeder, we will replace him with a bull of equal value or give you your money back. We guarantee you will have a sound bull to service your cows. We will not provide a replacement if your bull has been miss managed. At no time shall the liability exceed the purchase price of your bull. Bulls under one year of age on semen test day will be tested after their birthday, before you need them. Bulls that we suggest for heifers have that in the foot notes.

The Cost of Fuel...

is atrocious, so drive your car! We offer to board you bull free until April 15, after that cost until you need him. As well, we will deliver your bull free to central points in Western Canada or the US Border and cost will be shared to Eastern Canada. We will make every effort to get the bull to your farm. Delivery will be as close to the date you request your bull, but will be at our convenience. If you want to pick up your bull at the farm, you can save \$50 off the purchase price. If you can not take your bull when we are in your area, we would appreciate if you made arrangements to pick up your bull.



Peace of Mind...

Your new bull is a valuable asset and we recommend insuring your bull for infertility coverage and all risk mortality. If you are taking advantage of our wintering program, your new bull must be insured so we both have peace of mind. Insurance will be available from Stockman's Agencies (a division of Livestock Insurance Managers).

Accidents...

Although every precaution will be taken to protect the safety and comfort of the buyers, neither the sales staff, auctioneer or consignors assume any responsibility in this matter and disclaim any liability, legal or otherwise, in the event of an accident or loss of property.

Terms...

The terms of the sale are cash or cheque payable in Canadian Funds. The right of property shall not pass until after settlement is made. All settlements must be made with the clerks before any cattle are released.

J & S Meat Processing

- Custom Slaughtering
- Cutting and Wrapping
- Retail Meat Sales

Contact:
John or Pat Janz • Souris, Manitoba
(204)483-2234



This is the 8th year that J&S Meats have cooked the beef for our sale and it is always GREAT! Call them for your beef needs.

South Brandon Carroll 4-H Beef Club will sell pies for lunch as a fund raiser. The club will be celebrating 60 year in 2012

BREED AVERAGE EPD'S: BW: 0.5 WW: 26 YW: 50 MILK: 14



Ref a

Purebred

Red Cockburn *Ribeye* 346U

CWJ 346U • February 12, 2008 • 1481970

RED TER-RON DIGGER 11L
RED BAR-E-L RIBEYE 103R OSF
RED BAR-E-L MARCIE 50N

RED LAZY MC DIVIDE 8J
RED BRYLOR BRANDY 11C
RED YY RED KNIGHT 640F OSF
RED RIBLONG SHAWNEE 37E

RED SSS BUST'N 596F
RED COCKBURN MS BOOT JACK 27N
RED COCKBURN MS BOOT JACK 86L

RED LCC HEAVEN OR BUST'1000B OSF MAF
RED SSS MISS VALENTINE 344X
RED BVR RAB-STAR 56C MAF OSF
RED COCKBURN MS BOOT JACK 10H

| EPD'S | BW | WW | YW | MM | Weights | BW | ADJ WW | ADJ YW | JAN. 25 |
|-------|-----|----|----|----|---------|----|--------|--------|---------|
| | 3.5 | 49 | 88 | 4 | | 80 | 711 | 1359 | - |

In 2009 we purchased Ribeye to add easy fleshing, thick, deep quartered Red Angus to our herd. Our show team in 2011 were all sired by Ribeye, we won Get of Sire and Premier Breeder at the Canadian Angus National Show. Ribeye has never let us down, his good temperament, strong dam and granddam are also assets to Ribeye. Check out his sons.



Ref b

Purebred

Red McRae's *Vision* 50T

KOF 50T • January 29, 2007 • 1408583

RED COMPASS MULBERRY 449M
RED FINE LINE MULBERRY 26P OSF AMF MAF
RED DUS FAYETTE 8G

RED HR RAMBO ET 91K
RED BRYLOR MISS ROC 20H
RED SILVEIRAS REDFORD OSF
RED MC DOUGALL FAYETTE 59A

RED MCRAE'S BLAZER 336C
RED MCRAE'S FRADO 53J MAF OSF
RED WILLIAMETTE FRADO 89W

RED FCC RAMBO 502 OSF
RED VALUE LASS OF WAYLIN 30W
RED TROUBADOUR FRADO 4T
RED ROXANNE FRADO 18R

| EPD'S | BW | WW | YW | MM | Weights | BW | ADJ WW | ADJ YW | JAN. 25 |
|-------|----|----|----|----|---------|----|--------|--------|---------|
| | 14 | 35 | 71 | 18 | | 86 | 742 | 1240 | - |

What a record he has! This Mulberry son out of our donor female 53J is just starting to make his mark. He is the sire to the 2010 Agribition Reserve Champion Female for Wildcat Creek, KS and to a 2011 RBC Supreme top ten finalist for Lazy MC Ranch and Mile High Cattle Co. AB. Vision is going to be used heavily in our program. He should work well on Ribeye Females.

Owned with Ken & Rebecca McKenzie, Deadwood, Alberta



Ref c

Purebred

Red McRae's *Mission* 71W

KOF 71W • February 6, 2009 • 1531039

RED LJC LANCER 806 OSF
RED LJC MISSION STATEMENT P27 OSF MAF
RED LJC HANNAH 106 OSF

RED BECKTON LANCER T A664 OSF
RED LJC HB LIZZIE 606
RED HOLDEN HI HO 753
RED LJC KJ JAMIE 516

RED JB MOHICAN 5001
RED MCRAE'S RUBY 10T
RED MCRAE'S RUBY 58J

RED STEWART MR. MAKER 9M
RED TOWAW SYBIL 135F
RED MCRAE'S BLAZER 336C
RED MISS YOGO 611

| EPD'S | BW | WW | YW | MM | Weights | BW | ADJ WW | ADJ YW | JAN. 25 |
|-------|------|----|----|----|---------|----|--------|--------|---------|
| | -2.0 | 24 | 56 | 20 | | 78 | 664 | 1219 | - |

Our calving ease specialist. A son of Red McRae's Ruby 10T. 10T has quite a track record. Mission as a first calf and Red McRae's Top Cut as a second calf who is now working at Lazy RC Ranch and was the top selling bull in the 2011 sale. Her latest calf was Heifer Calf Champion at the 2011 National Angus Show (pictured in the inside back cover.)

Lot 1

Purebred

Red Mar Mac *Currency* 20Y

KOF 20Y • January 30, 2011 • 1616795

RED BAR-E-L RIBEYE 103R OSF
RED COCKBURN RIBEYE 346U OSF MAF
 RED COCKBURN MS BOOT JACK 27N

RED TER-RON DIGGER 11
 RED BAR-E-L MARCIE 50N
 RED SSS BUST'N 596F
 RED COCKBURN MS BOOT JACK 86L

RED JAS STACKER 34P
RED BUCK VALLEY ROSE 12T
 RED BUCK VALLEY ROSE 29

RED STOCKMAN OF CUDLOBE 12L
 RED SIX MILE ABIGAIL 802M
 RED HEAD BOOM 78F
 KRED KARLEN VALUE ROSE 2G

| EPD'S | BW | WW | YW | MM | Weights | BW | ADJWW | ADJYW | JAN. 25 |
|-------|-----|----|----|----|---------|----|-------|-------|---------|
| | 0.8 | 33 | 63 | 13 | | 86 | 686 | 1258 | 1215 |

Suggested Heifer Bull

Here is a smooth made Ribeye son whose dam is a heavy milking female. A bull that will add length of body to his calves.



Lot 2

Purebred

Red Mar Mac *Top Loin* 28Y

KOF 28Y • January 30, 2011 • 1616800

RED TER-RON DIGGER 11
 RED BAR-E-L RIBEYE 103R OSF
 RED BAR-E-L MARCIE 50N
RED COCKBURN RIBEYE 346U OSF MAF
 RED SSS BUST'N 596F
 RED COCKBURN MS BOOT JACK 27N
 RED COCKBURN MS BOOT JACK 86L

RED HLH BUSTER 406 603 OSF MAF
 RED BADLANDS MR BEEF 805 OSF MAF
 RED BADLANDS KEEPSAKE 632

RED MCRAE'S EASTER 24P
 RED BIEBER DSIGN 1325-082
 RED RDL EASTER 3E
 RED RDL CASSIE 8C

| EPD'S | BW | WW | YW | MM | BW | ADJWW | ADJYW | JAN. 25 |
|-------|-----|----|----|----|----|-------|-------|---------|
| | 0.3 | 43 | 79 | 9 | 88 | 806 | 1073 | 1180 |

Top Loin was a member of our 2011 National Show Team. At Mar Mac cow families are important and Top Loin goes back to the Easter cow family who were moderate framed, very feminine females will loads of productivity.



Lot 3

Purebred

Red Mar Mac *Denver* 34Y

KOF 34Y • February 2, 2011 • 1616802

RED BAR-E-L RIBEYE 103R OSF
RED COCKBURN RIBEYE 346U OSF MAF
 RED COCKBURN MS BOOT JACK 27N

RED TER-RON DIGGER 11
 RED BAR-E-L MARCIE 50N
 RED SSS BUST'N 596F
 RED COCKBURN MS BOOT JACK 86L

RED JB MOHICAN 5001
RED MCRAE'S SIERA 92U
 RED BUCK VALLEY SIERA 69L

RED STEWART MR. MAKER 9M
 RED TOWAW SYBIL 135F
 BUCK VALLEY PATRIOT 15H
 RED BVR SIERA-STAR 70D

| EPD'S | BW | WW | YW | MM | Weights | BW | ADJWW | ADJYW | JAN. 25 |
|-------|-----|----|----|----|---------|----|-------|-------|---------|
| | 0.6 | 36 | 65 | 10 | | 84 | 670 | 1214 | 1136 |

A smooth made Ribeye son with 84 pound birth weight and 1214 yearling weight. The Mohican Ribeye cross has left some performance and balance in their progeny.





Lot
4

Purebred

Red Mar Mac *Porterhouse* 72Y

KOF 72Y • February 9, 2011 • 1616814

| | |
|---|-------------------------------|
| RED BAR-E-L RIBEYE 103R OSF | RED TER-RON DIGGER 11 |
| RED COCKBURN RIBEYE 346U OSF MAF | RED BAR-E-L MARCIE 50N |
| RED COCKBURN MS BOOT JACK 27N | RED SSS BUST'N 596F |
| | RED COCKBURN MS BOOT JACK 86L |
| RED CUMNOCK ROYCE 974M | CFCC 30K |
| RED BUCK VALLEY PRINCESS 11S | RED CUMNOCK QUEEN 423J |
| RED BUCK VALLEY PRINCESS 25M | RED PRESCOTT CANYON 916J |
| | RED BUCK VALLEY PRINCESS 86D |

| EPD'S | BW | WW | YW | MM | Weights | BW | ADJWW | ADJYW | JAN.25 |
|-------|----|----|----|----|---------|----|-------|-------|--------|
| | 21 | 29 | 54 | 9 | | 98 | 613 | 1241 | 1160 |

An easy fleshing, full of red meat Ribeye son out of the Princess cow family. Princess has had three sons in the bull sale and her daughter sold at Red Roundup to Blair's. Ag, Lanigan, SK. A Ribeye son backed up by strong maternal genetics.

Lot
5

Purebred

Red Mar Mac *Tenderloin* 76Y

KOF 76Y • February 10, 2011 • 1616823

| | |
|---|-------------------------------|
| RED BAR-E-L RIBEYE 103R OSF | RED TER-RON DIGGER 11 |
| RED COCKBURN RIBEYE 346U OSF MAF | RED BAR-E-L MARCIE 50N |
| RED COCKBURN MS BOOT JACK 27N | RED SSS BUST'N 596F |
| | RED COCKBURN MS BOOT JACK 86L |
| RED BUCK VALLEY TRACKER 16K | RED BUCK VALLEY FLYER 40H |
| RED BUCK VALLEY SIERA 11P | BUCK VALLEY GLORY 19H |
| RED BUCK VALLEY SIERA 37K | RED DKF RYEBURN 15H |
| | RED BUCK VALLEY SIERA 42H |

| EPD'S | BW | WW | YW | MM | Weights | BW | ADJWW | ADJYW | JAN.25 |
|-------|----|----|----|----|---------|----|-------|-------|--------|
| | 24 | 34 | 64 | 7 | | 96 | 655 | 1059 | 1070 |

A growthy Ribeye son out of the Siera cow family that was a feature cow in the females purchased from Buck Valley.



Lot
7

Purebred

Red Mar Mac *Flat Iron* 88Y

KOF 88Y • February 12, 2011 • 1616821

| |
|---|
| RED TER-RON DIGGER 11 |
| RED BAR-E-L RIBEYE 103R OSF |
| RED BAR-E-L MARCIE 50N |
| RED COCKBURN RIBEYE 346U OSF MAF |
| RED SSS BUST'N 596F |
| RED COCKBURN MS BOOT JACK 27N |
| RED COCKBURN MS BOOT JACK 86L |
| RED RBJR ADVANCE A709 OSF MAF |
| RED PERKS ADVANCE 121R OSF |
| RED PERKS MISS RAMBO 8105 OSF |
| RED MCRAE'S KERRY 61R |
| RED MCRAE'S BLAZER 336C |
| RED MCRAE'S KERRY 79H |
| RED RDL KERI 30B |

| EPD'S | BW | WW | YW | MM | BW | ADJWW | ADJYW | JAN.25 |
|-------|-----|----|----|----|-----|-------|-------|--------|
| | 3.2 | 42 | 77 | 6 | 100 | 734 | 1198 | 1155 |

Flat Iron was our 2011 show bull who was a member of our National Show first place Get of Sire and Premier Breeder. The Kerry cow was started by our donor female 79H who mothered many top bulls including the high selling Perks Advance son to L83 Ranch, North Dakota. Kerry 61R is a full sister to those bulls and she never lets us down. Look at the hip and length of body in Flat Iron and the dark cherry red color. You will drive a lot of miles to find an individual with the structure and maternal background of 88Y.



Red McRae's Velvet - Full sister to Lot 9

Lot 8 Purebred
 Red Mar Mac *Complete* 92Y
 KOF 92Y • February 13, 2011 • 1616823

- | | |
|----------------------------------|-------------------------------|
| RED BAR-E-L RIBEYE 103R OSF | RED TER-RON DIGGER 11 |
| RED COCKBURN RIBEYE 346U OSF MAF | RED BAR-E-L MARCIE 50N |
| RED COCKBURN MS BOOT JACK 27N | RED SSS BUST'N 596F |
| | RED COCKBURN MS BOOT JACK 86L |
| BUCK VALLEY PATRIOT 15H | RED VV PATRIOT 16L 25C 14E |
| RED BUCK VALLEY SIERA 69L | NEW FORCE MAXINE 57D |
| RED BVR SIERA-STAR 70D | RED CUMNOCK STAR 139Z |
| | RED CUMNOCK SIERA 853X |

| EPD'S | BW | WW | YW | MM | Weights | BW | ADJWW | ADJYW | JAN. 25 |
|-------|----|----|----|----|---------|----|-------|-------|---------|
| 2.6 | 36 | 61 | 6 | | | 98 | 649 | 1183 | 1080 |

A moderate framed dark cherry red son of Ribeye produced by a heavy milking female

Lot 9 Purebred
 Red Mar Mac *Mastermind* 110Y
 KOF 110Y • February 17, 2011 • 1616829

- | | |
|----------------------------------|---|
| RED BAR-E-L RIBEYE 103R OSF | RED TER-RON DIGGER 11 |
| RED COCKBURN RIBEYE 346U OSF MAF | RED BAR-E-L MARCIE 50N |
| RED COCKBURN MS BOOT JACK 27N | RED SSS BUST'N 596F |
| | RED COCKBURN MS BOOT JACK 86L |
| RED SUNSET RIDGE CONGO 19R | BJR MONU 4X-303 OSF MAF |
| RED BENNIE'S VELVET 14T | RED DEER RANGE SOXRO 422L |
| RED VELVET OF CUDLOBE 1P | RED SODAK PRECISION 7408-97 AMF NHC OSF |
| | RED VELVET OF CUDLOBE 2K |

| EPD'S | BW | WW | YW | MM | Weights | BW | ADJWW | ADJYW | JAN. 25 |
|-------|----|----|----|----|---------|----|-------|-------|---------|
| 3.2 | 42 | 75 | 6 | | | 92 | 592 | 1369 | 1167 |

A Mellow easy fleshing son of Ribeye that is sure to catch your eye. Melissa selected his dam from Bennie Red Angus and what a job she has done. His full sister sold in the 2011 Keystone Klassic Sale to McTavish Red Angus. If you want to add ease of fleshing, volume and production to your calf crop check out 110Y.

Lot 10 Purebred
 Red Mar Mac *Captain* 111Y
 KOF 111Y • February 17, 2011 • 1639264

- | | |
|----------------------------------|----------------------------------|
| RED BAR-E-L RIBEYE 103R OSF | RED TER-RON DIGGER 11 |
| RED COCKBURN RIBEYE 346U OSF MAF | RED BAR-E-L MARCIE 50N |
| RED COCKBURN MS BOOT JACK 27N | RED SSS BUST'N 596F |
| | RED COCKBURN MS BOOT JACK 86L |
| RED PRESCOTT CANYON 916J | RED BUF CRK CHF 824-1658 OSC MAF |
| RED BUCK VALLEY HANA 23M | RED BLUE SPRUCE BLACKBIRD 60D |
| RED BUCK VALLEY HANA 13F | RED CUMNOCK CAPTAIN 612C |
| | RED BUCK VALLEY HANA 42C |

| EPD'S | BW | WW | YW | MM | Weights | BW | ADJWW | ADJYW | JAN. 25 |
|-------|----|----|----|----|---------|----|-------|-------|---------|
| 3.0 | 43 | 73 | 7 | | | 98 | 741 | 1395 | 1300 |

Now here is a performance bull adjusted yearling weight of 1395. Full of Volume and strong topped Ribeye son out of a performance female in our herd.



Lot
11

Purebred

Red Mar Mac *Ribeye* 147Y

KOF 147Y • March 1, 2011 • 1616839

RED BAR-E-L RIBEYE 103R OSF
RED COCKBURN RIBEYE 346U OSF MAF
 RED COCKBURN MS BOOT JACK 27N

RED TER-RON DIGGER 11
 RED BAR-E-L MARCIE 50N
 RED SSS BUST'N 596F
 RED COCKBURN MS BOOT JACK 86L

RED JB MOHICAN 5001
RED MCRAE'S RUBY LEE 48U
 RED MCRAE'S RUBY LEE 73M

RED STEWART MR. MAKER 9M
 RED TOWAW SYBIL 135F
 RED F BAR BULLSEYE 118H
 RED MCRAE'S RUBY 44E

| EPD'S | BW | WW | YW | MM | Weights | BW | ADJ WW | ADJ YW | JAN. 25 |
|-------|----|----|----|----|---------|----|--------|--------|---------|
| | 17 | 35 | 64 | 9 | | 88 | 593 | 1110 | 977 |

Suggested Heifer Bull.

147Y is out of the Ruby Lee cow family that are moderate framed, easy doing Red Angus. Here is a heifer bull with strong maternal traits. His full sister is a replacement female in our program.



Lot
12

Purebred

Red Mar Mac *Ribeye* 157Y

KOF 157Y • March 6, 2011 • 1616844

RED BAR-E-L RIBEYE 103R OSF
RED COCKBURN RIBEYE 346U OSF MAF
 RED COCKBURN MS BOOT JACK 27N

RED TER-RON DIGGER 11
 RED BAR-E-L MARCIE 50N
 RED SSS BUST'N 596F
 RED COCKBURN MS BOOT JACK 86L

RED MCRAE'S TRADITION 53N
RED MCRAE'S GLORIA 131U
 RED BUCK VALLEY GLORY 59R

RED RKY MTN TRENDSETTER 28J
 RED RDL EASTER 3E
 RED CUMNOCK ROYCE 974M
 RED BUCK VALLEY GLORY 78N

| EPD'S | BW | WW | YW | MM | Weights | BW | ADJ WW | ADJ YW | JAN. 25 |
|-------|----|----|----|----|---------|----|--------|--------|---------|
| | 20 | 33 | 61 | 8 | | 84 | 585 | 1133 | 990 |

Suggested Heifer Bull.

A stylish Ribeye son whose full brother sold in our bull sale last year to Ian and Donna McKay. A heifer bull that will add length of body to a calf crop.

Lot
14

Purebred

Red Mar Mac *Ribeye* 185Y

KOF 185Y • March 30, 2011 • 1616857

RED BAR-E-L RIBEYE 103R OSF
RED COCKBURN RIBEYE 346U OSF MAF
 RED COCKBURN MS BOOT JACK 27N

RED TER-RON DIGGER 11
 RED BAR-E-L MARCIE 50N
 RED SSS BUST'N 596F
 RED COCKBURN MS BOOT JACK 86L

RED SIX MILE INDEED 902M
RED MJ QUEEN 15P
 RED MJ QUEEN 501G

RED TOWAW INDEED 104H OSF
 RED GEIS LASS 22596
 RED BJR THE DUKE 502-5176
 RED CUMNOCK QUEEN 125Z

| EPD'S | BW | WW | YW | MM | Weights | BW | ADJ WW | ADJ YW | JAN. 25 |
|-------|-----|----|----|----|---------|-----|--------|--------|---------|
| | 3.8 | 42 | 76 | 9 | | 102 | 722 | - | 995 |

A performance Ribeye son out of the female Brett purchased in the M+J Farms Red Angus Sale. His full brother sold in last years sale to Turko Farms. Two half sisters are in Brett's Red Angus herd. Strong cow family with lots of performance.

Mar Mac Facts
 Mar Mac & Guests bulls are affordable...



Most bulls in the sale sell in the \$2000-\$5000 range
 97% of the bulls sell to commercial cattle producers
 70% of our bulls have been sold to repeat buyers



TOTAL FARM SUPPLY LTD.

JOHN HOFER

Dealer For:

Landmark Feeds

FeedRate

1530 - 18th Street North
 Brandon, Manitoba R7C 1A5
 Phone (204) 727-3276
 Toll Free 1-877-797-3276
 Fax (204) 726-8631
 Home (204) 725-1704 or Cell. 724-0560
 Email totalfarm@westman.wave.ca

Thank you to Total Farm Supply for donating the coffee for the sale!

Lot 15 Purebred
 Red Mar Mac *Premium Blend* 7Y
 KOF 7Y • February 9, 2011 • 1616815

RED VGW RAMBLER 1000 OSF
RED BRYLOR SDL PASQUALE 213P
 RED XXX LAKME 70M OSF MAF

RED BJR RAMBLER 5162 OSF
 RED VGW UMPIRE YUMA 9266
 RED BRYLOR NEW TREND 22D OSF MAF
 RED FINE LINE LAKME 21J

RED MCRAE'S VISION 65T
RED MCRAE'S KERRY 88W
 RED MCRAE'S KERI 69K

RED FINE LINE MULBERRY 26P AMF OSF MAF
 RED MCRAE'S FRADO 53J OSF MAF
 RED F BAR BULLSEYE 118H
 RED RDL KERI 30B

| EPD'S | BW | WW | YW | MM | Weights | BW | ADJWW | ADJYW | JAN. 25 |
|-------|-----|----|----|----|---------|----|-------|-------|---------|
| | -14 | 25 | 50 | 21 | | 78 | 649 | 1251 | 1100 |

Suggested Heifer Bull
 A Pasquale son out of strong maternal background, with the Keri and Frado cow families. A two year old heifer's first calf with low birth weight and performance.



Lot 16 Purebred
 Red Mar Mac *Mulberry* 33Y
 KOF 33Y • February 2, 2011 • 1616801

RED COMPASS MULBERRY 449M
RED FINE LINE MULBERRY 26P AMF OSF MAF
 RED DUS FAYETTE 8G

RED HR RAMBO ET 91K
 RED BRYLOR MISS ROC 20H
 RED SILVEIRAS REDFORD OSF
 RED MC DOUGALL FAYETTE 59A

RED PERKS ADVANCE 121R OSF
RED MCRAE'S FRADO 33S
 RED MCRAE'S FRADO 92H

RED RBJR ADVANCE A709 OSF MAF
 RED PERKS MISS RAMBO 8105 OSF
 RED MCRAE'S BLAZER 336C
 RED WILLIAMETTE FRADO 89W

| EPD'S | BW | WW | YW | MM | Weights | BW | ADJWW | ADJYW | JAN. 25 |
|-------|----|----|----|----|---------|----|-------|-------|---------|
| | 16 | 41 | 82 | 15 | | 90 | 666 | 1269 | 1215 |

Mulberry never lets you down. A moderate framed thick meaty bull out of the Frado cow family. You can never get enough Mulberry genetics in a program. 33Y's dam is a feminine good milking female.

Lot 17 Purebred
 Red Mar Mac *Mulberry* 35Y
 KOF 35Y • February 3, 2011 • 1616803

RED COMPASS MULBERRY 449M
RED FINE LINE MULBERRY 26P AMF OSF MAF
 RED DUS FAYETTE 8G

RED HR RAMBO ET 91K
 RED BRYLOR MISS ROC 20H
 RED SILVEIRAS REDFORD OSF
 RED MC DOUGALL FAYETTE 59A

RED BUCK VALLEY TRACKER 16K
RED BUCK VALLEY TARA 25P
 RED BUCK VALLEY TARA 77J

RED BUCK VALLEY FLYER 40H
 BUCK VALLEY GLORY 19H
 RED HEAD BOOM 78F
 RED BUCK VALLEY TARA 90D

| EPD'S | BW | WW | YW | MM | Weights | BW | ADJWW | ADJYW | JAN. 25 |
|-------|----|----|----|----|---------|----|-------|-------|---------|
| | 16 | 33 | 67 | 17 | | 96 | 615 | 1217 | 1164 |

A long bodied correct Mulberry son out of a larger framed female. 35Y will add frame and some calving ease.

Lot 18 Purebred
 Red Mar Mac *Roughrider* 61Y
 KOF 61Y • February 7, 2011 • 1616812

RED BASIN TRENDSETTER 6074 OSF MAF
RED BIEBER ROUGH RIDER 10712 OSF
 RED BIEBER ADELLE 8958 OSF

RED BRYLOR NEW TREND 22D OSF MAF
 RED BASIN ROSE F521 OSF
 RED BIEBER TITAN 6894
 RED BIEBER ADELLE 7226 OSF

RED BUCK VALLEY TRACKER 16K
RED BUCK VALLEY ROSE 24M
 RED BUCK VALLEY ROSE 29K

RED RED BUCK VALLEY FLYER 40H
 BUCK VALLEY GLORY 19H
 RED HEAD BOOM 78F
 RED KARLEN VALUE ROSE 2G

| EPD'S | BW | WW | YW | MM | Weights | BW | ADJWW | ADJYW | JAN. 25 |
|-------|----|----|----|----|---------|----|-------|-------|---------|
| | 13 | 25 | 47 | 13 | | 84 | 603 | 1023 | 1006 |

Suggested Heifer Bull
 Roughrider was used in our program for some outcross genetics and calving ease. This bull will work good on a group of heifers with his smooth body type yet lots of volume.



Our bulls weaning weights are taken on their mothers milk only, NOT creep feed!



Lot 19 Purebred
 Red Mar Mac *Worthwhile* 8Y
 KOF 8Y • January 25, 2011 • 1616788

PFFR SHAQ 607 SAV 8180 TRAVELER 004 AMF CAF NHF
 RED BADLANDS NET WORTH 23U OSF MAF RED RRM-NANCY 8965-9606
 RED BADLANDS MEDORA 406 OSF RED LCC CHEYENNE B221L OSF MAF
 RED BADLANDS MEDORA 440 OSF

RED F BAR BULLSEYE 118H F BAR GAZELLA KING 42F
 RED MCRAE'S KATIE 29M RED RIVERDALE CHETA 34A
 RED MCRAE'S FRADO 53J OSF MAF RED MCRAE'S BLAZER 336C
 RED WILLIAMETTE FRADO 89W

| EPD'S | BW | WW | YW | MM | Weights | BW | ADJ WW | ADJ YW | JAN. 25 |
|-------|-----|----|----|----|---------|----|--------|--------|---------|
| | 3.2 | 32 | 61 | 18 | | 90 | 602 | 1168 | 1147 |

Worthwhile is sired by the outcross sire Red Badlands Net Worth. Worthwhile is a very correct thick topped individual out of the Frado cow family. The Frado family has been donor females in our herd that add length of body, natural thickness and sound functional individuals.



Lot 20 Purebred
 Red Mar Mac *Net Worth* 107Y
 KOF 107Y • February 17, 2011 • 1616827

PFFR SHAQ 607 SAV 8180 TRAVELER 004 AMF CAF NHF
 RED BADLANDS NET WORTH 23U OSF MAF RED RRM-NANCY 8965-9606
 RED BADLANDS MEDORA 406 OSF RED LCC CHEYENNE B221L OSF MAF
 RED BADLANDS MEDORA 440 OSF

RED RKY MTN TRENDSETTER 28J RED BRYLOR NEW TREND 22D OSF MAF
 RED MCRAE'S EASTER 42N RED RKY MTN COPPER LADY 8D
 RED RDL EASTER 3E RED BIEBER DSIGN 1325-082
 RED RDL CASSIE 8C

| EPD'S | BW | WW | YW | MM | Weights | BW | ADJ WW | ADJ YW | JAN. 25 |
|-------|-----|----|----|----|---------|----|--------|--------|---------|
| | 2.9 | 43 | 80 | 15 | | 88 | 690 | 1174 | 1131 |

A big performance Net Worth son out of the Easter cow family. As you can see many of the bulls come from cow families that have worked in our program.



Lot 21 Purebred
 Red Mar Mac *Sequoia* 27Y
 KOF 27Y • January 30, 2011 • 1616799

RED BJR HIGH CAPACITY 008 OSF MAF
 RED UBAR SEQUOIA 202
 RED FORSTER COPPRQUEEN 7168 OSF
 RED MCRAE'S SEQUENCE 27U OSF MAF
 RED F BAR BULLSEYE 118H
 RED MCRAE'S KERI 69K
 RED RDL KERI 30B

RED SLC BAR NONE 182F
 RED CRIPPS MAX 927J
 RED SSS JOANNA 718F
 RED GYPSY OF TAG-A-LONG 10N
 RED BLUE SPRUCE CHIEF 60E
 RED GYPSY OF TAG-A-LONG 9G
 RED PRINCESS OF TAG-A-LONG 13D

| EPD'S | BW | WW | YW | MM | BW | ADJ WW | ADJ YW | JAN. 25 |
|-------|-----|----|----|----|----|--------|--------|---------|
| | 0.4 | 26 | 45 | 11 | 90 | 681 | 1315 | 1260 |

A big rugged son out of Sequence, our Sequoia son that sold to Robert McRae and Jason Potter. Boy what a set of calves he has left us. 27Y is out of a female that sold in the Tag-A-Long dispersal who always brings in a stout calf. Look at the yearling adjusted weight of 1315.

Lot 22

Purebred

Red Mar Mac *Sentence* 47Y
KOF 47Y • February 5, 2011 • 1616806

RED UBAR SEQUOIA 202
RED MCRAE'S SEQUENCE 27U OSF MAF
RED MCRAE'S KERI 69K

RED BJR HIGH CAPACITY 008 OSF MAF
RED FORSTER COPPRQUEEN 7168 OSF
RED F BAR BULLSEYE 118H
RED RDL KERI 30B

RED TAG-A-LONG HUMONGUS 58N
RED SHAWNEE OF TAG-A-LONG 32R
RED SHAWNEE OF TAG-A-LONG 12J

RED CRIPPS MAX 927J
RED PRINCESS OF TAG-A-LONG 13D
RED TAG-A-LONG KING JOHN 6G
RED TAG-A-LONG SHAWNEE 21C

| EPD'S | BW | WW | YW | MM | Weights | BW | ADJWW | ADJYW | JAN.25 |
|-------|----|----|----|----|---------|----|-------|-------|--------|
| | 88 | 21 | 42 | 12 | | 88 | 603 | 1146 | 1100 |

Suggested Heifer Bull

A smooth made Sequence son out of another one of those Tag- A-Long females who produce top offspring.



Lot 23

Purebred

Red Mar Mac *Round Up* 52Y
KOF 52Y • February 6, 2011 • 1616808

RED UBAR SEQUOIA 202
RED MCRAE'S SEQUENCE 27U OSF MAF
RED MCRAE'S KERI 69K

RED BJR HIGH CAPACITY 008 OSF MAF
RED FORSTER COPPRQUEEN 7168 OSF
RED F BAR BULLSEYE 118H
RED RDL KERI 30B

RED CUMNOCK ROYCE 974M
RED BUCK VALLEY TARA 81R
RED BUCK VALLEY TARA 76

CFCC 30K
RED CUMNOCK QUEEN 423J
RED PRESCOTT CANYON 916J
RED BUCK VALLEY TARA 77J

| EPD'S | BW | WW | YW | MM | Weights | BW | ADJWW | ADJYW | JAN.25 |
|-------|-----|----|----|----|---------|----|-------|-------|--------|
| | 0.4 | 27 | 47 | 17 | | 80 | 664 | 1200 | 1192 |

A powerful dark red colored Sequence Son out of another one of those heavy milking functional Royce females.

Lot 24

Purebred

Red Mar Mac *Roundup* 114Y
KOF 114Y • February 17, 2011 • 1644656

RED UBAR SEQUOIA 202
RED MCRAE'S SEQUENCE 27U OSF MAF
RED MCRAE'S KERI 69K

RED BJR HIGH CAPACITY 008 OSF MAF
RED FORSTER COPPRQUEEN 7168 OSF
RED F BAR BULLSEYE 118H
RED RDL KERI 30B

RED FINE LINE MULBERRY 26P AMF OSF MAF
RED MCRAE'S HANA 11U**
RED BUCK VALLEY HANA 39K

RED COMPASS MULBERRY 449M
RED DUS FAYETTE 8G
BUCK VALLEY PATRIOT 15H
RED BUCK VALLEY HANA 114E

| EPD'S | BW | WW | YW | MM | Weights | BW | ADJWW | ADJYW | JAN.25 |
|-------|------|----|----|----|---------|----|-------|-------|--------|
| | -0.5 | 28 | 49 | 17 | | 80 | 628 | 1096 | 1010 |

Suggested Heifer Bull

A Sequence son whose dam is a Mulberry female. Her first calf sold in the bull sale last year to Ritchie Campbell. Two Calves and both in the bull sale quite an accomplishment for a female.

Lot 25

Purebred

Red Mar Mac *Sequoia* 122Y
KOF 122Y • February 18, 2011 • 1616831

RED UBAR SEQUOIA 202
RED MCRAE'S SEQUENCE 27U OSF MAF
RED MCRAE'S KERI 69K

RED BJR HIGH CAPACITY 008 OSF MAF
RED FORSTER COPPRQUEEN 7168 OSF
RED F BAR BULLSEYE 118H
RED RDL KERI 30B

RED CUMNOCK ROYCE 974M
RED BUCK VALLEY MIST 25S
BUCK VALLEY MIST 43H

CFCC 30K
RED CUMNOCK QUEEN 423J
RED TCR ESQUIRE 27E
DUSTY DAELE MISSY 9D

| EPD'S | BW | WW | YW | MM | Weights | BW | ADJWW | ADJYW | JAN.25 |
|-------|-----|----|----|----|---------|----|-------|-------|--------|
| | 0.2 | 21 | 37 | 16 | | 92 | 709 | 1358 | 1200 |

A dark red Sequence son out of another feminine Royce female. 122Y will add the dark color and performance to his calves.



In our program we try to develop bulls with strong tops and thick quarters, as that is where the money is at in the auction marts!



Lot 26 Purebred
 Red Mar Mac *Top Dog* 155Y
 KOF 155Y • March 5, 2011 • 1616843

| | |
|----------------------------------|-----------------------------------|
| RED UBAR SEQUOIA 202 | RED BJR HIGH CAPACITY 008 OSF MAF |
| RED MCRAE'S SEQUENCE 27U OSF MAF | RED FORSTER COPPRQUEEN 7168 OSF |
| RED MCRAE'S KERI 69K | RED F BAR BULLSEYE 118H |
| | RED RDL KERI 30B |
| RED FLYING K PRINCE 171M | RED LODI PRINCE 2632 OSF MAF |
| RED MCRAE'S REBA 66P | RED FLYING K BARONNESS 81G |
| RED MCRAE'S REBA 25J | RED BJR MAKE MY DAY 981 OSF MAF |
| | RED BJR ANDRE 2206-966 |

| EPD'S | BW | WW | YW | MM | Weights | BW | ADJ WW | ADJ YW | JAN. 25 |
|-------|-----|----|----|----|---------|----|--------|--------|---------|
| | -19 | 12 | 26 | 18 | | 78 | 602 | 1221 | 1077 |



Red McRae's Reba Lee 121W

Suggested Heifer Bull
 Top Dog's dam is the granddam of Red McRae's Reba 121W who was Reserve Grand Champion Female at Agribition 2010. A very smooth long bodied Red Angus bull that has lots of maternal strength in his pedigree.

Shawn & Aaron Magnusson
 RR#1 Riverton, Manitoba R0K 1W0
 204-378-5225

We would like to welcome you to another Mar Mac Bull Sale. We would like to thank Blair and Lois for letting us be a part of this sale. We stand behind our bulls 100%, so you can feel confident in your purchase of our bulls. Can't wait to see you on Sale day.

Magnusville Farms



Lot 27 Purebred
 Red Magnusville *Tucker* 7Y
 MAGN 7Y • March 4, 2011 • 1610493

| | |
|------------------------------------|--------------------------------------|
| RED LCC MAJOR LEAGUE A502M OSF MAF | RED BFCCK CHEROKEE CNYN 4912 OSF MAF |
| RED T-BAR MAJOR LEAGUE HI 4U | RED KRN REBA'S ROBIN OSF |
| RED T-BAR HI BETTER MAGGI 59L | RED HOLDEN HI HO HUM 8124 |
| | RED ELKRIDGE MAGGI 1J |
| RED SEVEN-PLUS SOVREIGNPLAYBOY | RED LCHMN SOVEREIGN 1930E |
| RED SEVEN-PLUS TREELVEN | RED SEVEN-PLUS BOBI-TWIN |
| RED SEVEN-PLUS VISA | RED BIEBER VIRILE 7038 OSF |
| | RED RDL CARRIE 14C |

| EPD'S | BW | WW | YW | MM | Weights | BW | ADJ WW | ADJ YW | JAN. 25 |
|-------|----|----|----|----|---------|----|--------|--------|---------|
| | - | - | - | - | | 88 | 556 | - | 1070 |

7T is a solid cow that you wish you had a complete herd of. She has done a great job on her bull calf.

Lot 27

BREED AVERAGE EPD's: BW: 2.8 WW: 42 YW: 74 MILK: 17

Ref a

Purebred

HF *Tiger* 5T

HFDF 5T • January 1, 2007 • 1402252

SANDY BAR ADVANTAGE 43M
HF KODIAK 5R MAF AMF NHF CA
 WILBAR RUBY 955N

TC ADVANTAGE AMF NHF CAF
 SANDY BAR JEMINA 44K
 VERMILION YELLOWSTONE AMF NHF CAF
 WILBAR RUBY 161J

TC FREEDOM 104 CAF AMF NH
HF ECHO 84R
 HFDF ECHO 6N

CONNELLY FOREFRONT AMF NHF CAF
 T C RUBY 9095 CAF
 RIVERBEND POWERLINE 0050
 HF ECHO 83J

| EPD'S | BW | WW | YW | MM | Weights | BW | ADJ WW | ADJ YW | JAN. 25 |
|-------|-----|----|-----|----|---------|----|--------|--------|---------|
| | 0.4 | 67 | 124 | 24 | | 76 | 796 | 1338 | - |

We were always impressed with the calving ease, performance, natural thickness and volume in the Tiger cattle. He has done an exceptional job in our breeding program. Owned by Hamilton Farms, Ring Creek Farm and Pat and Len Friedel.



Ref a

Ref b

Purebred

TC *Aberdeen* 759

IMP 759T • January 27, 2007 • 1485453

B A R EXT TRAVELER 205 AMF CAF
C R A Bextor 872 5205 608 AMF CAF
 CRA LADY JAYE 608 498 S EASY

N BAR EMULATION EXT AMF CAF
 B A R QUEEN TRAVELER 3015
 G A R Sleep Easy 1009 AMF CAF
 H H F 917 LADY 975 498

BON VIEW NEW DESIGN 208 CAC AMF NHF
TC Blackbird 4034 CAF
 TC BLACKBIRD 1013

B/R NEW DESIGN 036 AMF CAF
 BON VIEW ERICA 443
 S A F Fame AMF CAF
 TC BLACKBIRD 9032

| EPD'S | BW | WW | YW | MM | Weights | BW | ADJ WW | ADJ YW | JAN. 25 |
|-------|-----|----|-----|----|---------|----|--------|--------|---------|
| | 0.8 | 59 | 106 | 42 | | 80 | 708 | 1465 | - |

We selected Aberdeen to add to our black program with his tremendous profile, growth and calving ease. Marketed by Genex Inc.



Ref b

Lot 28

Purebred

Mar Mac *Top Dog* 7Y

KOF 7Y • January 24, 2011 • 1616787

SANDY BAR ADVANTAGE 43M
 HF KODIAK 5R AMF CAF NHF MAF
 WILBAR RUBY 955N
HF TIGER 5T AMF CAF NHF
 TC FREEDOM 104 AMF CAF NHF
 HF ECHO 84R
 HFDF ECHO 6N

EXAR MANNA 2466
 JUSTAMERE 2466 TEMPO 192R
 BRANDEIS ROSEBUD 6J
MCRAE'S CASSIDY 111W
 STEVENSON BRUNO 561G CAF NHF
 MCRAE'S CASSIDY 62P
 MCRAE'S BRIDGET 19F AMF NHF

| EPD'S | BW | WW | YW | MM | BW | ADJ WW | ADJ YW | JAN. 25 |
|-------|----|----|-----|----|----|--------|--------|---------|
| | 19 | 53 | 101 | 23 | 80 | 660 | 1400 | 1237 |

Suggested Heifer Bull

Boy what a set of bulls Tiger has left us. This is a two year old's first calf and what a job she has done. This clean fronted, smooth, volumey son of Tiger will work on cows or heifers. Don't miss Top Dog. Look at his performance numbers.



Lot 28



Lot 29

Purebred

Mar Mac **Tiger** 159Y

KOF 159Y • March 6, 2011 • 1616845

SANDY BAR ADVANTAGE 43M
 HF KODIAK 5R AMF CAF NHF MAF
 WILBAR RUBY 955N
HF TIGER 5T AMF CAF NHF
 TC FREEDOM 104 AMF CAF NHF
 HF ECHO 84R
 HFDF ECHO 6N

STEVENSON BRUNO 561G CAF NHF
 MCRAE'S POWER POINT 48M
 MCRAE'S BRIDGET 19F AMF NHF
MCRAE'S BRIDGET 125T
 FAR KRUGERRAND 410H AMF CAF NHF
 MCRAE'S BRIDGET 51N
 MCRAE'S BRANDI 81C

| EPD'S | BW | WW | YW | MM | BW | ADJ WW | ADJ YW | JAN. 25 |
|-------|----|----|-----|----|----|--------|--------|---------|
| | 17 | 53 | 102 | 20 | 88 | 664 | 1366 | 1133 |

Suggested Heifer Bull

Mar Mac has produced a number of top black bulls like McRae's Focus, McRae's Direct Impact and now Mar Mac Tiger 159Y. What an individual, look at his strong top, depth of quarter, smooth fronted and well balanced individual. Then look at his mother McRae's Bridget 125T, three calves all bulls with an average weaning weight of 703 and average 1373 for yearling weight. 125T goes back to our New Trend 315 donor female (81C). If our herd was not so closely bred this bull would stay in our herd. Great disposition.

Terms on 159Y to be announced on sale day as Mar Mac would like to keep an interest in this exciting individual.

Lot 29



Lot 30

Purebred

Mar Mac **Aberdeen** 19Y

KOF 19Y • January 28, 2011 • 1616794

C R A BEXTOR 872 5205 608 AMF CAF NHF
TC ABERDEEN 759 AMF CAF NHF
 TC BLACKBIRD 4034 CAF

B A R EXT TRAVELER 205 AMF CAF NHF
 CRA LADY JAYE 608 498 S EASY
 BON VIEW NEW DESIGN 208 AMF CAC NHF
 TC BLACKBIRD 1013
 CONNEALY FREIGHTLINER AMF CAF NHF
MCRAE'S BRANDI 15S
 MCRAE'S BRANDI 51K

| EPD'S | BW | WW | YW | MM | Weights | BW | ADJ WW | ADJ YW | JAN. 25 |
|-------|-----|----|----|----|---------|----|--------|--------|---------|
| | 0.2 | 48 | 90 | 27 | | 82 | 652 | 1261 | 1219 |

Suggested Heifer Bull

This may be the strongest set of Black Angus bulls we have ever offered. Here is an Aberdeen son out of a Freightliner son going back to the Brandi 81C cow family who was one of the foundations of our Black Angus Program.

Lot 30



Lot 31

Purebred

Mar Mac **Aberdeen** 42Y

KOF 42Y • February 4, 2011 • 16455931

C R A BEXTOR 872 5205 608 AMF CAF NHF
TC ABERDEEN 759 AMF CAF NHF
 TC BLACKBIRD 4034 CAF

B A R EXT TRAVELER 205 AMF CAF NHF
 CRA LADY JAYE 608 498 S EASY
 BON VIEW NEW DESIGN 208 AMF CAC NHF
 TC BLACKBIRD 1013
 BMVF BACKDRAFT 26D
 ISLA BANK HEROINE 11C
 TRAVELER 3173 G D A R
 MCRAE'S FANCY LADY 67S

| EPD'S | BW | WW | YW | MM | Weights | BW | ADJ WW | ADJ YW | JAN. 25 |
|-------|-----|----|----|----|---------|----|--------|--------|---------|
| | 2.2 | 40 | 74 | 25 | | 96 | 619 | 1212 | 1126 |

A smooth made Aberdeen son out of Brett's Sarah cow who never lets you down. A strong maternal bull here that should leave some productive daughters.

Lot 31

Lot 32 Purebred
 Mar Mac *Mandate* 75Y
 KOF 75Y • February 10, 2011 • 1616818

B A R EXT TRAVELER 205 AMF CAF NHF
 C R A BEXTOR 872 5205 608 AMF CAF NHF
 C R A LADY JAYE 608 498 S EASY
TC ABERDEEN 759 AMF CAF NHF
 B O N V I E W N E W D E S I G N 208 AMF CAC NHF
 T C B L A C K B I R D 4034 CAF
 T C B L A C K B I R D 1013

S A F 598 B A N D O 5175 AMF CAC
 L T 598 B A N D O 9074 AMF CAF NHF
 M I L L C O U L E E B A R B A R A K 323

MCRAE'S SARAH 17P
 M V F B A C K D R A F T 168G
 M C R A E ' S S A R A H 25K
 M C R A E ' S S A R A H 77A

| EPD'S | BW | WW | YW | MM | BW | ADJWW | ADJYW | JAN. 25 |
|-------|----|----|----|----|----|-------|-------|---------|
| | 16 | 46 | 85 | 28 | 94 | 637 | 191 | 1155 |

A ¾ brother to Lot 31 out of the Sarah cow family and Bando 9074 daughter. Check out Brett's Mandate bull to add to your beef program.



Lot 33 Purebred
 Mar Mac *Mandan* 131Y
 KOF 131Y • February 21, 2011 • 1616833

C R A BEXTOR 872 5205 608 AMF CAF NHF
TC ABERDEEN 759 AMF CAF NHF
 T C B L A C K B I R D 4034 CAF

B A R EXT TRAVELER 205 AMF CAF NHF
 C R A LADY JAYE 608 498 S EASY
 B O N V I E W N E W D E S I G N 208 AMF CAC NHF
 T C B L A C K B I R D 1013

S A V F I N A L A N S W E R 0035 AMF CAF NHF
MCRAE'S BRANDI 9T
 M C R A E ' S B R A N D I 35G

I T Z T R A V E L E R 8180 AMF CAF NHF
 S A V E M U L O U S 8145 CAF
 S T E V E N S O N F O R T U N E 425C AMF CAF NHF
 M C R A E ' S B R A N D I 81C

| EPD'S | BW | WW | YW | MM | Weights | BW | ADJWW | ADJYW | JAN. 25 |
|-------|----|----|----|----|---------|----|-------|-------|---------|
| | 10 | 58 | 99 | 28 | | 84 | 711 | 1353 | 1240 |

Suggested Heifer Bull
 Look at this Aberdeen son with Final Answer, Stevenson Fortune 425C and our foundation female Brandi 81C in his ancestry. A suggested heifer bull with lots of performance too.



Lot 34 Purebred
 Mar Mac *Expectation* 142Y
 KOF 142Y • February 27, 2011 • 1616836

S I T Z T R A V E L E R 8180 AMF CAF NHF
S A V F I N A L A N S W E R 0035 AMF CAF NHF
 S A V E M U L O U S 8145 CAF

B G D A R T R A V E L E R 71 AMF CAF NHF
 S I T Z E V E R E L D A E N T E N S E 1137
 B O N V I E W B A N D O 598 AMF CAC
 S A V S K Y E M U L O U S 2124

H O F F F I R S T E D I T I O N 058 242 AMF NHF
MCRAE'S BRANDY 79W
 M C R A E ' S B R A N D I 51K

H O F F H E A D O F T H E C L A S S S C 534
 H O F F W I T C H O F S C 7131 058
 S T E V E N S O N R O Y C E 741C CAF NHF
 M C R A E ' S B R A N D I 81C

| EPD'S | BW | WW | YW | MM | Weights | BW | ADJWW | ADJYW | JAN. 25 |
|-------|-----|----|----|----|---------|----|-------|-------|---------|
| | 0.9 | 52 | 93 | 20 | | 80 | 693 | 1343 | 1142 |

Suggested Heifer Bull
 A Final Answer son who also goes back to our foundation female 81C. You can see the consistency 81C left in our black program.





Lot 35

Lot 35

Purebred

Mar Mac *Turbo* 162Y

KOF 162Y • March 10, 2011 • 1616848

JUSTAMERE 2466 TEMPO 192R
MCRAE'S TEMPO 97W
 MCRAE'S TAFFY 59P

EXAR MANNA 2466
 BRANDEIS ROSEBUD 6J
 MCRAE'S DIRECT IMPACT 37K
 MCRAE'S TAFFI 120M

CONNEALY KINCAID
MCRAE'S CASSIDY 16M
 MCRAE'S BRIDGET 19F AMF NHF

TEHAMA BANDO 155 AMF CAF NHF
 CONNEALY 6807 647 AMF NHF
 STEVENSON FORTUNE 425C AMF CAF NHF
 MCRAE'S BRANDI 81C

| EPD'S | BW | WW | YW | MM | Weights | BW | ADJ WW | ADJ YW | JAN. 25 |
|-------|-----|----|----|----|---------|----|--------|--------|---------|
| | 4.8 | 32 | 68 | 17 | | 92 | 628 | 1410 | 1170 |

162Y's sire sold in last year sale to Wytinck Farms. These two sons Lot 35 and 36 are cow bulls that will add some performance to your calf crop.



Lot 36 - Sire

Lot 36

Purebred

Mar Mac *Tempo* 176Y

KOF 176Y • March 19, 2011 • 1651489

JUSTAMERE 2466 TEMPO 192R
MCRAE'S TEMPO 97W
 MCRAE'S TAFFY 59P

EXAR MANNA 2466
 BRANDEIS ROSEBUD 6J
 MCRAE'S DIRECT IMPACT 37K
 MCRAE'S TAFFI 120M

JUSTAMERE 2466 TEMPO 192R
MCRAE'S BRIDGET 95W
 MCRAE'S BRIDGET 19F AMF NHF

EXAR MANNA 2466
 BRANDEIS ROSEBUD 6J
 STEVENSON FORTUNE 425C AMF CAF NHF
 MCRAE'S BRANDI 81C

| EPD'S | BW | WW | YW | MM | Weights | BW | ADJ WW | ADJ YW | JAN. 25 |
|-------|-----|----|----|----|---------|----|--------|--------|---------|
| | 6.1 | 26 | 63 | 19 | | 94 | 630 | 1255 | 1010 |

Look at this birthdate a young Tempo grandson.

More Than Just a Tag



It's a Program

Only Angus tags

- guarantee minimum 50% Angus genetics
- qualify your cattle for participating Canadian Angus Rancher Endorsed beef programs
- are supported by our commercial field staff
- are delivered to you



Canadian Angus Association
 142, 6715 - 8 Street NE, Calgary, Alberta T2E 7H7
www.cdnangus.ca • cdnangus@cdnangus.ca
 1-866-571-8093



BREED AVERAGE EPD'S: CE: 5.6 BW: 2.6 WW: 36.4 YW: 61.5 MILK: 6.8

Ref a

Red • Polled • Purebred

Twin Brae *Tennessee*

BGD 883T • November 3, 2007 • PRG700427

CNS DREAM ON L186
RED BARON HR P101
HS REFLECTIONS J34

NICHOLS BLK DESTINY G151
CNS SHEEZA DREAM K107W
BS MR ARAPAHOE 811A
HF/GFI RUBY RED 33E

NLC 64Y TOMCAT
CZAR MS LADY KAT 83H
SPRING VALLEY D508

CHERITHBROOK MR ABE
KS BM N713
TT RED DELIGHT
SPRING VALLEY W414

| EPD'S | CE | BW | WW | YW | MM | Weights | BW | ADJWW | ADJYW | JAN.25 |
|-------|-----|------|------|----|----|---------|-----|-------|-------|--------|
| 3.0 | 5.0 | 54.7 | 80.1 | 52 | | 98 | 880 | 1490 | - | |

Tennessee has left length, strong topped offspring that are sure to catch your eye sale day. If you want calves that will sell well at the auction marts try a Tennessee son.



Ref b

Red • Polled • Purebred

OBB *Hot Rod Son* 322U

OBB 322U • February 22, 2008 • PG722930

BS MR CORRECTOR 9111J
WCS MR HOT ROD 210M
WCS MS DASH 4 CASH 017K

BS MR CORRECTOR 1110C
KS MISS FIRST STAR 7G
CASHTIME 6F
GW MISS NORTHERN 524C

IPU RED VENTURE 53L
VENTURE LASS 143P
OBB MISS BUILDER 211M

HOOK'S RED QUORUM 55H
IPU RED KARLA 22J
LCHMN BODYBUILDER 7303F
OBB LADY ZIMA 21G

| EPD'S | CE | BW | WW | YW | MM | Weights | BW | ADJWW | ADJYW | JAN.25 |
|-------|-----|------|------|----|----|---------|-----|-------|-------|--------|
| 7.5 | 0.9 | 37.5 | 53.7 | 13 | | 110 | 759 | - | - | |

Outcross genetics that we purchased from Circle 7. His offspring are moderate framed, thick, and structurally correct.



Ref c

Red • Polled • Purebred

KNK/CRSR *Red Bull* 53T

FGN 53T • March 26, 2007 • PG713478

TRACKER 998J
THSF FREEDOM 300N
SAFN MISS ZING 02H

LRS PREFERRED STOCK 370C
699F
SAC JET TOP 2D
SAC MISS ZING 88E

REYNOLDSON MR MACHO L133
MISS MACHO 53P
JDJ 9AS PLAYGIRL 040K

PVF-BF BF26 BLACK JOKER
REYNOLDSON BLK COAL F665
GW LUCKY STRIKE 147G
ER MISS JB91X 9A

| EPD'S | CE | BW | WW | YW | MM | Weights | BW | ADJWW | ADJYW | JAN.25 |
|-------|-----|------|------|----|----|---------|-----|-------|-------|--------|
| 0.5 | 4.7 | 39.4 | 77.1 | 21 | | 88 | 725 | 1465 | - | |

A homozygous polled Freedom some who has left an impressive set of bulls and females this year. Marketed by Semex.





Lot 37 Red • Homozygous Polled • Purebred
 Mar Mac **Red Bull** 98Y
 KOB 98Y • February 14, 2011 • PTG746247

BH TRACKER 998J
 THSF FREEDOM 300N
 SAFN MISS ZING 02H
KNK/CRSR RED BULL 53T
 REYNOLDSON MR MACHO L133
 JDJ MISS MACHO 53P
 JDJ 9AS PLAYGIRL 040K

**HOMOZYGOUS
 POLLED**

STF MONTANA BLACK KF25
 STF STARQUEST N114
 STF LEONA L260
MAR MAC PATRICIA 74R
 LCHMN BODYBUILDER 7303F
 MAR MAC PATTY 2K
 MAR MAC MISS 22H

| EPD'S | CE | BW | WW | YW | MM | BW | ADJWW | ADJYW | JAN. 25 |
|-------|-----|------|------|-----|-----|-----|-------|-------|---------|
| 2.0 | 4.3 | 35.3 | 69.3 | 4.4 | 104 | 701 | 1405 | 1215 | |

A stout Red Bull son that is sure to catch your eye sale day. His dam is Patty 74R a Starquest female that we have used in our donor program. Her dam was a Bodybuilder female who added performance and milk in her progeny. A well balanced thick meaty Red Bull son with adjusted yearling weight of 1405.



Lot 38 Red • Polled • Purebred
 Mar Mac **Red Bull** 126Y
 KOB 126Y • February 19, 2011 • PTG746243

THSF FREEDOM 300N
KNK/CRSR RED BULL 53T
 JDJ MISS MACHO 53P

BH TRACKER 998J
 SAFN MISS ZING 02H
 REYNOLDSON MR MACHO L133
 JDJ 9AS PLAYGIRL 040K

STF STARQUEST N114
MAR MAC PATRICIA 74R
 MAR MAC PATTY 2K

STF MONTANA BLACK KF25
 STF LEONA L260
 LCHMN BODYBUILDER 7303F
 MAR MAC MISS 22H

| EPD'S | CE | BW | WW | YW | MM | Weights | BW | ADJWW | ADJYW | JAN. 25 |
|-------|-----|------|------|-----|----|---------|-----|-------|-------|---------|
| 2.0 | 4.5 | 35.4 | 69.4 | 4.4 | | 106 | 694 | 1216 | 1102 | |

A full brother to 98Y moderated framed with lots of volume.



Lot 39 Red • Homozygous Polled • Purebred
 Mar Mac **Tomahawk** 137Y
 KOB 137Y • February 25, 2011 • PG753574

THSF FREEDOM 300N
KNK/CRSR RED BULL 53T
 JDJ MISS MACHO 53P

BH TRACKER 998J
 SAFN MISS ZING 02H
 REYNOLDSON MR MACHO L133
 JDJ 9AS PLAYGIRL 040K

REMINGTON RED LABEL HR
MAR MAC UTAH'S DREAM 79U
 MAR MAC NIKE 73H

CNS DREAM ON L186
 HS REFLECTIONS J34
 DAY TWELVE OCLOCK HIGH
 MAR MAC KITTY 16E

| EPD'S | CE | BW | WW | YW | MM | Weights | BW | ADJWW | ADJYW | JAN. 25 |
|-------|-----|------|------|-----|----|---------|-----|-------|-------|---------|
| 3.0 | 4.4 | 44.0 | 77.0 | 3.6 | | 105 | 726 | 1273 | 1175 | |

Tomahawk is a Red Bull son of Melissa's out of a stout heavy milking Red Label female. Tomahawk's dam is a young two year old that we are looking for great things out of, as her dam was Melissa's first Simmental cows.

Lot
40

Red • Homozygous Polled • Purebred

Mar Mac *Mandan* 85Y

KOB 85Y • February 12, 2011 • PG744817

WCS MR HOT ROD 210M
OBB HOT ROD SON 322U
OBB VENTURE LASS 143P

BS MR CORRECTOR 9111J
WCS MS DASH 4 CASH 017K
IPU RED VENTURE 53L
OBB MISS BUILDER 211M

PELTONS POWERCAT 344G
MAR MAC LIL' DEVIL 25L
MAR-MAC PRISSY 25C

NLC 64Y TOMCAT
COTTONWOOD ENHANCED 803D
ASR CACTUS RED Z002
MAR MAC PRISSY 30A

| EPD'S | CE | BW | WW | YW | MM | Weights | BW | ADJWW | ADJYW | JAN.25 |
|-------|-----|------|------|----|----|---------|-----|-------|-------|--------|
| 5.5 | 2.5 | 39.2 | 63.6 | 11 | | | 106 | 698 | 1397 | 1269 |

Mandan is a son of the Hot Rod bull we purchased from Circle 7. Hot Rod left us moderate birth weights and yet performance. We are looking forward to seeing his daughters milking this spring. 85Y's dam Lil' Devil goes back to Brett's first Simmental female Prissy. Some good outcross genetics here.

HOMOZYGOUS
POLLED



Lot
41

Red • Polled • Purebred

Mar Mac *Hot Rod* 145Y

KOB 145Y • February 28, 2011 • PTG753575

WCS MR HOT ROD 210M
OBB HOT ROD SON 322U
OBB VENTURE LASS 143P

BS MR CORRECTOR 9111J
WCS MS DASH 4 CASH 017K
IPU RED VENTURE 53L
OBB MISS BUILDER 211M

BAR 5 SA HEMISPHERE 411R
MAR MAC LADY 116U
MAR MAC JET 2M

BAR 5 SA HERO 823M
BAR 5 SA LADY SISKI 804L
PELTONS POWERCAT 344G
MAR MAC PILOT 2G

| EPD'S | CE | BW | WW | YW | MM | Weights | BW | ADJWW | ADJYW | JAN.25 |
|-------|-----|------|------|-----|----|---------|----|-------|-------|--------|
| 6.8 | 2.0 | 35.6 | 59.1 | 2.2 | | | 90 | 691 | 1217 | 1090 |

Suggested Heifer Bull

Outcross pedigree on this Hot Rod son of Brett's going back to Hemisphere and Powercat. A good bull for the heifer pen.

Lot
42

Red • Horned • Purebred

Mar Mac *Captain* 179Y

KOB 179Y • MARCH 21, 2011 • PG744836

RED BARON HR P101
TWIN BRAE TENNASEE
CZAR MS LADY KAT 83H

CNS DREAM ON L186
HS REFLECTIONS J34
NLC 64Y TOMCAT
SPRING VALLEY D508

STF STARQUEST N114
MAR MAC PATRICIA 74R
MAR MAC PATTY 2K

STF MONTANA BLACK KF25
STF LEONA L260
LCHMN BODYBUILDER 7303F
MAR MAC MISS 22H

| EPD'S | CE | BW | WW | YW | MM | Weights | BW | ADJWW | ADJYW | JAN.25 |
|-------|-----|------|------|-----|----|---------|-----|-------|-------|--------|
| 3.0 | 4.7 | 48.4 | 77.6 | 5.6 | | | 102 | 768 | 1402 | 1180 |

Captain is a horned Tennasee son out of our donor female. This thick strong topped solid red bull will add some pounds to a calf crop and would work really well on a herd of straight bred Angus or Hereford cows.

Lot
43

Red • Polled • Purebred

Mar Mac *Nashville* 14Y

KOB 14Y • January 27, 2011 • PG744799

RED BARON HR P101
TWIN BRAE TENNASEE
CZAR MS LADY KAT 83H

CNS DREAM ON L186
HS REFLECTIONS J34
NLC 64Y TOMCAT
SPRING VALLEY D508

REMINGTON RED LABEL HR
MAR MAC SIENNA 56S
MAR MAC ROSIE 68J

CNS DREAM ON L186
HS REFLECTIONS J34
DAY TWELVE OCLOCK HIGH
MAR MAC KITTY 16E

| EPD'S | CE | BW | WW | YW | MM | Weights | BW | ADJWW | ADJYW | JAN.25 |
|-------|-----|------|------|-----|----|---------|----|-------|-------|--------|
| 4.5 | 3.7 | 43.7 | 67.2 | 0.3 | | | 98 | 604 | 1145 | 1100 |

A red baldy Tennasee son out of a thick meaty good milking Red Label female. Nashville should leave some good females.





Lot 43

Lot 44

Red • Polled • Purebred

Mar Mac *Maoerick* 46Y

KOB 46Y • January 30, 2011 • PG744809

RED BARON HR P101
TWIN BRAE TENNASEE
CZAR MS LADY KAT 83H

CNS DREAM ON L186
HS REFLECTIONS J34
NLC 64Y TOMCAT
SPRING VALLEY D508

TWIN-CHIEF PANAMA 588P
MAR MAC SUNBEAM 7S
MAR MAC SUNBEAM 11L

CG HOMEBUILDER 803H
TWIN-CHIEF JAZZY 588J
LCHMN BODYBUILDER 7303F
MAR MAC MISS 16J

| EPD'S | CE | BW | WW | YW | MM | Weights | BW | ADJ WW | ADJ YW | JAN. 25 |
|-------|-----|------|------|-----|----|---------|-----|--------|--------|---------|
| 2.5 | 4.7 | 45.1 | 72.3 | 6.3 | | 108 | 666 | 1255 | 1218 | |

A performance Tennasee son whose strong Bodybuilder cow family will leave some great Simmental females.



Lot 44

Lot 45

Red • Polled • Purebred

Mar Mac *Memphis* 102Y

KOB 102Y • February 15, 2011 • PG744821

RED BARON HR P101
TWIN BRAE TENNASEE
CZAR MS LADY KAT 83H

CNS DREAM ON L186
HS REFLECTIONS J34
NLC 64Y TOMCAT
SPRING VALLEY D508

IPU RED NUGGET 132N
MAR MAC REBECCA 30R
MAR MAC NIKE 73H

R PLUS RED RIBEYE 1134L
HAAS RANCH C22
DAY TWELVE OCLOCK HIGH
MAR MAC KITTY 16E

| EPD'S | CE | BW | WW | YW | MM | Weights | BW | ADJ WW | ADJ YW | JAN. 25 |
|-------|-----|------|------|-----|----|---------|-----|--------|--------|---------|
| 2.0 | 6.0 | 60.6 | 93.5 | 3.8 | | 108 | 760 | 1288 | 1215 | |

A red baldy Tennasee bull that will add some length of body and performance to your calf crop. Memphis is Melissa's bull that has a tremendous disposition and out of the strong Nike cow family.



Lot 45

Lot 46

Red • Polled • Purebred

Mar Mac *Ten* 156Y

KOB 156Y • March 6, 2011 • PG753796

RED BARON HR P101
TWIN BRAE TENNASEE
CZAR MS LADY KAT 83H

CNS DREAM ON L186
HS REFLECTIONS J34
NLC 64Y TOMCAT
SPRING VALLEY D508

ELLINGSON THE ROCK J928
CONRAY NATALIA 152N
CONRAY ARLA 152K

MV RED LIGHT 406
ELLINGSON MSAMERICA F708
ABC REDSTREAM 615G
CONRAY SUSAN 52F

| EPD'S | CE | BW | WW | YW | MM | Weights | BW | ADJ WW | ADJ YW | JAN. 25 |
|-------|-----|------|------|-----|----|---------|-----|--------|--------|---------|
| 5.3 | 2.7 | 40.3 | 63.5 | 4.6 | | 100 | 745 | 1120 | 1207 | |

Ten is a dark cherry red son of Tennasee that is sure to catch your eye sale day. Because this female is not on Total Herd as purchased from Conray Dispersal. His weights are actual yearling and weaning weights on dates weighed. Just a March bull with lots of potential.

Lot 47 Black • Homozygous Polled • Purebred
 Mar Mac **Black Rod** 173Y
 KOB 173Y • March 14, 2011 • BPG744835

BS MR CORRECTOR 9111J
 WCS MR HOT ROD 210M
 WCS MS DASH 4 CASH 017K
OBB HOT ROD SON 322U
 IPU RED VENTURE 53L
 OBB VENTURE LASS 143P
 OBB MISS BUILDER 211M

KAPPES ROCK SOLID H32
 BLUERIDGE ROCO 30P
 NAC DESTINY 11L

MAR MAC BLACK MACHO 177T
 RIV BLACK CHOCTAW 866H
 MAR MAC B MACHO GR 110L
 BR MISS MACHO 982J

| EPD'S | CE | BW | WW | YW | MM | BW | ADJWW | ADJYW | JAN. 25 |
|-------|-----|------|------|-----|----|-----|-------|-------|---------|
| 9.5 | 0.0 | 36.1 | 56.4 | 3.6 | 90 | 725 | 1283 | 110 | |

Black Rod is just a March son of Hot Rod with some outcross genetics for the black Simmentals. Boy what an individual he is moderate framed, strong thick topped and lots of depth of body. Don't miss this March bull that has an exciting future ahead of him.



Lot 48 Black • Polled • Purebred
 Mar Mac **Force** 77Y
 KOB 77Y • February 10, 2011 • BPG744814

NICHOLS BLK DESTINY G151
HOOKS SHEAR FORCE 38K
 C&D TRACY

NICHOLS BLK DESTINY D12
 NICHOLS DEBRA D81
 CIRCLE S LEACHMAN 600U
 BETSY

MAR MAC TRITON 45T
MAR MAC B MACHO GR 141W
 MAR MAC B MACHO GR 110L

REMINGTON RED LABEL HR
 MAR MAC REBECCA 30R
 RIV BLACK CHOCTAW 866H
 BR MISS MACHO 982J

| EPD'S | CE | BW | WW | YW | MM | Weights | BW | ADJWW | ADJYW | JAN. 25 |
|-------|------|------|------|-----|----|---------|----|-------|-------|---------|
| 13.5 | -2.6 | 25.1 | 46.7 | 7.5 | | | 80 | 660 | 1174 | 1055 |

If you are looking for some calving ease in the black Simmental program here is the answer. A Shear Force son out of a Red Label granddaughter.

Lot 49 Black • Polled • Purebred
 Mar Mac **Shotgun** 109Y
 KOB 109Y • February 17, 2011 • PG744824

TNT GUNNER N208
TNT TOP GUN R244
 TNT MISS SADIE M68

RC STINGER 072K
 TNT MISS HONEY L9
 TNT IMPACT H21
 TNT MISS JADEN J318

KENCO/MF POWERLINE 204L
MAR MAC SIERRA 53S
 MAR MAC CARLI 14N

HC POWER DRIVE 88H
 SAFN GLAMOUR 11J
 PPSR NOPHALT 20H
 MAR MAC ZOEY 60L

| EPD'S | CE | BW | WW | YW | MM | Weights | BW | ADJWW | ADJYW | JAN. 25 |
|-------|-----|------|------|-----|----|---------|-----|-------|-------|---------|
| 5.5 | 2.7 | 43.2 | 81.9 | 2.2 | | | 102 | 690 | 1223 | 1150 |

Melissa's black Top Gun son out of a Powerline – Nophalt female, Sierra a daughter of our donor female Carli. Lots of performance in this thick meaty black bull.

Lot 50 Black • Horned • Purebred
 Mar Mac **Pure Smoke** 138Y
 KOB 138Y • February 25, 2011 • BG744729

RED BARON HR P101
TWIN BRAE TENNASEE
 CZAR MS LADY KAT 83H

CNS DREAM ON L186
 HS REFLECTIONS J34
 NLC 64Y TOMCAT
 SPRING VALLEY D508

PPSR NOPHALT 20H
MAR MAC CARLI 14N
 MAR MAC ZOEY 60L

LCHMN BLACK ASPHALT 7068
 MISS PRICKLY PEAR 615F
 LCHMN BODYBUILDER 7303F
 MAR MAC ROSIE 68J

| EPD'S | CE | BW | WW | YW | MM | Weights | BW | ADJWW | ADJYW | JAN. 25 |
|-------|-----|------|------|-----|----|---------|-----|-------|-------|---------|
| 2.5 | 5.5 | 47.2 | 75.9 | 7.9 | | | 115 | 683 | 1113 | 1090 |

Melissa's black Tennasee son that is horned but will work on some smaller framed cows to add some growth and performance. Look at the depth of quarter and good disposition in all of the Tennasee bulls.



Mar Mac Farms

SIMMENTAL TWO YEAR OLD BULLS

Lot
51

Red • Polled • Purebred

Mar Mac *Arthur* 93X

KOB 93X • February 13, 2010 • PG728902

WLE EXCEL
STR KING ARTHUR N310
JF MISS SELINA 812H

LRS PREFERRED STOCK 370C
NICHOLS JOLIETTE C75
BH RIGHT TIME 520E
GFI SELINA F70

GLS MR LAREDO 7L
NOR-WEST GINGER 55N
BAR-L MISS ACE HIGH 26G

BBS ZIMA D55
ELTON MS UNIVERSE 52D
RICHMOND MR ACE 44E
BAR-L TRUST LADY 46B

| EPD'S | CE | BW | WW | YW | MM | Weights | BW | ADJWW | ADJYW | JAN. 25 |
|-------|-----|------|------|-----|----|---------|-----|-------|-------|---------|
| 4.5 | 4.7 | 44.6 | 74.0 | 2.0 | | 108 | 803 | 121 | 2033 | |

Lot
52

Red • Polled • Purebred

Mar Mac *Chunky* 127X

KOB 127X • February 22, 2010 • PG728722

WCS MR HOT ROD 210M
OBB HOT ROD SON 322U
OBB VENTURE LASS 143P

BS MR CORRECTOR 9111J
WCS MS DASH 4 CASH 017K
IPU RED VENTURE 53L
OBB MISS BUILDER 211M

LCHMN BODYBUILDER 7303F
MAR MAC MAXINE 44N
MAR MAC MAXY 22E

3C WALLY C240 BLK
LSF MOMENTO D8
BR MR MAX 8012X
MAR-MAC PRISSY 25C

| EPD'S | CE | BW | WW | YW | MM | Weights | BW | ADJWW | ADJYW | JAN. 25 |
|-------|-----|------|------|-----|----|---------|-----|-------|-------|---------|
| 5.0 | 2.6 | 44.3 | 63.0 | 5.0 | | 94 | 881 | 1308 | 2025 | |

Every year we keep some spare bulls around in case some of the bulls get injured or something happens. Here are two two year old red baldy bulls that will cover a big number of cows with lots of length and top.

*Thanks to all our
bull buyers from 2011.
Your support to our
programs is greatly
appreciated!*

Downhill Simmentals

SIMMENTAL REFERENCE SIRE

Ref
a

Red • Polled • Purebred

Mader P *New Deal* 21W

MDR 21W • January 17, 2009 • PTG712456

REMINGTON RED LABEL HR
REMINGTON ON TARGET 2S
DRAKE SOFT TOUCH 15M

CNS DREAM ON L186
HS REFLECTIONS J34
G&L AVALANCHE 149F
DRAKE MISS P36D

ER RED DECK 639D
JDN PRAIRIE PARFAIT 27L
LFE TRUFFLE 42H

KS BLACK CLOUD A27
ER MISS MAX 57Y
LFE VINTAGE RED 359F
LFE TRUFFLE 60E

| EPD'S | CE | BW | WW | YW | MM | Weights | BW | ADJWW | ADJYW | JAN. 25 |
|-------|-----|------|------|-----|----|---------|-----|-------|-------|---------|
| 6.5 | 3.9 | 46.2 | 84.3 | 4.7 | | 96 | 803 | 1491 | - | |



Ref a

Everett Olson
RR#1 Rapid City, Manitoba R0K 1W0
204-826-2643 • 204-867-0076

Welcome to the sale. First of all I would like to thank Blair and Lois for continuing to make me a part of their sale. It was a different sight in the auction marts this fall with strong prices and everyone with big smiles on their faces. My bulls this year are out of my new herd sire Mader New Deal, Red Teddy and the Freedom son Red Bull. I continue to crop just over 1100 acres of grain and have grown my purebred herd to 35 calving cows and 20 purebred Salers that are now used as embryo recipis or crossbred Simmental. The bulls have been kept at Mar Mac since weaning and are there for your viewing. Thank you in advance for attending and your interest in my program. If you have any questions don't hesitate to call.



Lot 53 Red • Homozygous Polled • Purebred
 Downhill *JOJO* 23Y
 DHS 23Y • February 23, 2011 • PG747226

HOMOZYGOUS POLLED

- NICHOLS BLK DESTINY D12
- WHEATLAND BULL 131L
- WHEATLAND LADY 908J
- WHEATLAND RED TEDDY 457P**
- ER RED DECK 639D
- WHEATLAND LADY 902J
- WHEATLAND LADY 702G
- REMINGTON RED LABEL HR
- REMINGTON ON TARGET 2S
- DRAKE SOFT TOUCH 15M
- MADER P SPOTLIGHT 43U**
- HART EXTRA EFFORT G289
- IPU MS BLACK EFFORT 45S
- DCR MS PERFECTOR M162

| EPD'S | CE | BW | WW | YW | MM | BW | ADJ | WW | ADJ | YW | JAN. 25 |
|-------|-----|------|------|-----|----|-----|------|------|-----|----|---------|
| 8.5 | 0.1 | 25.3 | 51.0 | α.1 | 88 | 699 | 1397 | 1200 | | | |

A bull that has been another standout all summer. He is very wide topped with huge rib and is a bull that would work well on cows or in the heifer pen. His dam was purchased out of the Checkers sale from Mader Ranches and she has quickly become a favorite here. A bull that will work for any cattleman commercial or purebred.



Lot 54 Red • Homozygous Polled Test Pending • Purebred
 Downhill *Money Talks* 19Y
 DHS 19Y • January 31, 2011 • PG747219

- REMINGTON ON TARGET 2S
- MADER P NEW DEAL 21W**
- JDN PRAIRIE PARFAIT 27L
- SS GOLDRUSH
- GIBBY'S SARA LEE 22S**
- GIBBY'S NATALIA 7N
- REMINGTON RED LABEL HR
- DRAKE SOFT TOUCH 15M
- ER RED DECK 639D
- LFE TRUFFLE 42H
- MV RED LIGHT 406
- STF E'QUARTA'
- BAR 5 POL BLAZE 384J
- LORNA'S STAR MISS SALLY

| EPD'S | CE | BW | WW | YW | MM | Weights | BW | ADJ | WW | ADJ | YW | JAN. 25 |
|-------|-----|------|------|-----|----|---------|-----|------|------|-----|----|---------|
| 6.5 | 3.3 | 42.4 | 72.7 | 4.8 | | 100 | 762 | 1423 | 1345 | | | |

Another powerhouse bull out of New Deal and a hard milking dam with a shot of fleck in her. Another dark red, very correct, long spined bull who has caught many cattlemen's eyes this summer. A bull that will add pounds to his calves. Homozygous test results will be available sale day.





Lot 55

Lot 55

Red • Polled • Purebred

Downhill *Big Gun* 17Y

DHS 17Y • January 30, 2011 • PG7472221

WHEATLAND BULL 131L
WHEATLAND RED TEDDY 457P
WHEATLAND LADY 902J

NICHOLS BLK DESTINY D12
WHEATLAND LADY 908J
ER RED DECK 639D
WHEATLAND LADY 702G

TNT FIVE STAR P275
IPU RED STARLETTE 159T
MISS 4S 229J

TNT FORTUNE BUILDER H122
TNT MISS ALMA J83
MCC RED EXTENDER 26G
SSP MISS FERGIE 612C

| EPD'S | CE | BW | WW | YW | MM | Weights | BW | ADJWW | ADJYW | JAN. 25 |
|-------|-----|------|------|------|----|---------|-----|-------|-------|---------|
| 5.5 | 2.5 | 44.5 | 73.3 | -0.3 | | 99 | 750 | 1310 | 1282 | |

A long spined big nutted blaze face that will have friends on sale day. The blaze face bulls have become very popular so here is a chance to get one that will give you those heavy blaze face steers that are very sought after at the auction ring.



Lot 56

Lot 56

Red • Polled • Purebred

Downhill *Dirty Deeds* 8Y

DHS 8Y • January 9, 2011 • PG747236

WHEATLAND BULL 131L
WHEATLAND RED TEDDY 457P
WHEATLAND LADY 902J

NICHOLS BLK DESTINY D12
WHEATLAND LADY 908J
ER RED DECK 639D
WHEATLAND LADY 702G

TNT RED MERCEDES S293
IPU MS. MERCEDES 88W
IPU MS RED QUORUM 603S

TNT GUNNER N208
TNT MISS ELLIE M19
HOOK'S RED QUORUM 55H
MFI RED MISS ROBIN GER 4070

| EPD'S | CE | BW | WW | YW | MM | Weights | BW | ADJWW | ADJYW | JAN. 25 |
|-------|-----|------|------|-----|----|---------|-----|-------|-------|---------|
| 5.5 | 2.2 | 33.2 | 60.6 | 4.3 | | 100 | 693 | 1285 | 1202 | |

A long spined Red Teddy son out of a first calf heifer and what a job she did. A bull that will just go and give you the calves that will wean off heavy in the fall.



Lot 58

Lot 58

Red • Polled • Purebred

Downhill *Who Made Who* 5Y

DHS 5Y • January 4, 2011 • PG747216

REMINGTON ON TARGET 2S
MADER P NEW DEAL 21W
JDN PRAIRIE PARFAIT 27L

REMINGTON RED LABEL HR
DRAKE SOFT TOUCH 15M
ER RED DECK 639D
LFE TRUFFLE 42H

MRL 65P
JRTG MISS 100U
JRTG MISS 51R

LRS RED REALITY 33J
MISS MRL 774K
LRS RED REALITY 33J
WXR 23K MS KAY

| EPD'S | CE | BW | WW | YW | MM | Weights | BW | ADJWW | ADJYW | JAN. 25 |
|-------|-----|------|------|-----|----|---------|-----|-------|-------|---------|
| 6.5 | 3.6 | 47.3 | 82.1 | 3.4 | | 96 | 645 | 1331 | 1275 | |

Another good red bull out of my senior herd sire New Deal. This guy will produce calves that will press the scale down in the fall.

SIMMENTAL YEARLING BULLS

Downhill Simmentals

Lot 59 Red • Polled • Purebred
Downhill *Thunderstruck* 4Y
DHS 4Y • January 4, 2011 • PG747234

REMINGTON ON TARGET 2S
MADER P NEW DEAL 21W
JDN PRAIRIE PARFAIT 27L

REMINGTON RED LABEL HR
DRAKE SOFT TOUCH 15M
ER RED DECK 639D
LFE TRUFFLE 42H

WHEATLAND RED TEDDY 457P
ACS MS RED EMPRESS 825U
ACS MS BLACKCAT 30M

WHEATLAND BULL 131L
WHEATLAND LADY 902J
BLCC BLACK KASH 42K
HAAS RANCH G217

| EPD'S | CE | BW | WW | YW | MM | Weights | BW | ADJWW | ADJYW | JAN. 25 |
|-------|----|------|------|-----|----|---------|----|-------|-------|---------|
| 9.0 | 13 | 35.3 | 64.8 | 3.8 | | | 86 | 664 | 1202 | 1176 |

If your after a heifer bull this is your guy. His dam consistently gives low birth weight calves that come quick and get up and nurse even quicker. His dam is a full sister to ACS Red Knight who is working at Kenner Simmentals in North Dakota and she has been a great producer here.

Lot 62 Black • Polled • Purebred
Downhill *Black Ice* 3Y
DHS 3Y • January 2, 2011 • BPG747227

REMINGTON ON TARGET 2S
MADER P NEW DEAL 21W
JDN PRAIRIE PARFAIT 27L

REMINGTON RED LABEL HR
DRAKE SOFT TOUCH 15M
ER RED DECK 639D
LFE TRUFFLE 42H

WHEATLAND RED TEDDY 457P
HAAS RANCH U68
HAAS RANCHN3

WHEATLAND BULL 131L
WHEATLAND LADY 902J
BOZ REDCOAT
HAAS RANCH J326

| EPD'S | CE | BW | WW | YW | MM | Weights | BW | ADJWW | ADJYW | JAN. 25 |
|-------|-----|------|------|-----|----|---------|----|-------|-------|---------|
| 6.5 | 2.0 | 38.7 | 71.4 | 5.2 | | | 95 | 628 | 1121 | 1058 |

A very correct built stout New Deal son that will produce those thick even calves that will be sought after.

Lot 60 Black • Homozygous Polled • Purebred
Downhill *Black in Black* 6Y
DHS 19Y • January 31, 2011 • BPG747219

THSF FREEDOM 300N
KNK/CRSR RED BULL 53T
JDJ MISS MACHO 53P

BH TRACKER 998J
SAFN MISS ZING 02H
REYNOLDSON MR MACHO L133
JDJ 9AS PLAYGIRL 040K

IPU RED TOUCHDOWN 32S
IPU MS BLK TOUCHLESS 95U
IPU 304Y MS 600U 6L

WHEATLAND RED TEDDY 457P
IPU RED POCAHONTAS 52N
CIRCLE S LEACHMAN 600U
CIRCLE S 304Y

| EPD'S | CE | BW | WW | YW | MM | Weights | BW | ADJWW | ADJYW | JAN. 25 |
|-------|-----|------|------|-----|----|---------|----|-------|-------|---------|
| 6.0 | 2.1 | 31.0 | 56.3 | 4.9 | | | 95 | 659 | 1286 | 1200 |

Here is a bull I am quite fond of. His dam produced my high selling bull last year to Glen Bollman and she has done it again with this black calf out of the freedom son red bull. If you're looking for some performance in the blacks this is your guy.



Lot 61 Black • Polled • Purebred
Downhill *Night Prowler* 15Y
DHS 15Y • January 24, 2011 • BPG747222

WHEATLAND BULL 131L
WHEATLAND RED TEDDY 457P
WHEATLAND LADY 902J

NICHOLS BLK DESTINY D12
WHEATLAND LADY 908J
ER RED DECK 639D
WHEATLAND LADY 702G

WINCHESTER HR P8315
MAR MAC TIARRA 160T
MAR MAC CARLI 14N

CNS DREAM ON L186
HS REFLECTIONS J34
PPSR NOPHALT 20H
MAR MAC ZOEY 60L

| EPD'S | CE | BW | WW | YW | MM | Weights | BW | ADJWW | ADJYW | JAN. 25 |
|-------|-----|------|------|-----|----|---------|----|-------|-------|---------|
| 9.0 | 0.5 | 28.4 | 50.3 | 0.1 | | | 96 | 696 | 1243 | 1178 |

Here is a bull with a stacked pedigree. On the top side Red Teddy needs no introduction to what he has done in the industry. Night Prowlers dam has been an outstanding female since day one here going back to Mar Mac Carli who has done an awesome job for Mar Mac Farms. With an actual weaning weight of 796 lbs this guy will add some jam to his calves.



Perkin Land & Cattle Co.

Perkin Land & Cattle Co.
Darryl, Tanya, Liam & Ivy
Scott, Meagan, Foster & Nyah • Brian & Leona
Box 138 Elgin, Manitoba R0K 0T0
204-769-2159 • dperkin@wgcwave.ca
www.perkinlandandcattle.com



At PLCC, we really enjoy the people we meet in the cattle business, whether commercial or purebred breeders and hats off to those of you who were hearty enough to stick it out. We strive to produce functional cattle for the beef business that possess high maternal qualities along with the exceptional muscle and pounds that set Simmental apart. We have 100 breeding females, sell all of our bulls here with McRae's and have a female sale in Killarney the first Saturday in December. We invite everyone to visit our farm to come and see our herd of cows or the bulls that are fed here all winter. We really enjoy the visit and a chance to discuss your breeding needs. All of the bulls are pictured on our website and there will be individual videos of the bulls as well. We are located 7 miles west of Minto or 4 miles east of Elgin on Highway 23, then 2 ¼ miles south on Croll Rd. Give us a call or drop in!



Lot 63

Lot 63

Red • Polled • Purebred

Perks *Dr. Of Style* 182Y

PLCC 182Y • February 19, 2011 • PG753253

NF DR. ATKINS P35F
 CDI/PLCC DR. PHIL 145U
 CDI MISS SHEAR FORCE 3N

WCS MR HOT ROD 210M
 HSR F353C MISS ELEGANT
 HOOKS SHEAR FORCE 38K
 CDI MS FRANKIE 20L

CONRAY POWER SURGE 2485N
PERKS MELODY 82R
 ROLLING JN MELODY 82M

LAZY S RED SHOCKER 226L
 CONRAY FANCY 485F
 ROLLING JN JUDGE 80J
 CAR-OL LAS 12G

| EPD'S | CE | BW | WW | YW | MM | Weights | BW | ADJ/WW | ADJ/YW | JAN. 22 |
|-------|-----|------|------|----|----|---------|-----|--------|--------|---------|
| 3.0 | 4.2 | 44.7 | 71.0 | 17 | | | 109 | 736 | 1304 | 1210 |

%IMF 2.47 Back Fat 3.60 Ribeye 14.75 %LMY 67.2

DNA tested Inconclusive Polled. I don't know where to start with this bull. 182Y has been an absolute stand-out all summer with that herd bull look. His length of spine and tremendous muscle expression all packed onto a moderate frame make this bull pretty special, and he has a nice, balanced set of EPDs to boot. Dr. Phil has 12 sons in the pen this year and they are an impressive group – he has done what we thought he would and more. 182Y's sister raised our high selling bull last year with her first calf, going to Art & Jackie Jonasson.



Lot 64

Lot 64

Red • Polled/S • Purebred

Perks *V-Not* 103Y

PLCC 103Y • February 28, 2011 • PG753253

NF DR. ATKINS P35F
 CDI/PLCC DR. PHIL 145U
 CDI MISS SHEAR FORCE 3N

WCS MR HOT ROD 210M
 HSR F353C MISS ELEGANT
 HOOKS SHEAR FORCE 38K
 CDI MS FRANKIE 20L

LCHMN BODYBUILDER 7303F
PERKS NETTY 3N
 TEMPLEHALL LOUISE 6L

3C WALLY C240 BLK
 LSF MOMENTO D8
 PARKHILL CHARLIE 030G
 TEMPLEHALL SKYE 2G

| EPD'S | CE | BW | WW | YW | MM | Weights | BW | ADJ/WW | ADJ/YW | JAN. 22 |
|-------|-----|------|------|-----|----|---------|-----|--------|--------|---------|
| 5.0 | 2.9 | 33.6 | 57.3 | 4.7 | | | 102 | 710 | 1374 | 1235 |

%IMF 2.90 Back Fat 8.10 Ribeye 15.60 %LMY 63.5

One of our youngest bulls, but can this bull pack on the pounds! His Bodybuilder dam is a cherry red, moderate cow that also sold a daughter at Simmsational to Kopp Farms. He is a typical Phil – dark red, easy doing and loads of natural thickness and ranked first in his contemporary group for weight per day of age.

Lot 65

Red • Polled • Purebred

Perks *Yes-Man* 412Y

PLCC 412Y • March 28, 2011 • PG753263

NF DR. ATKINS P35F
CDI/PLCC DR. PHIL 145U
CDI MISS SHEAR FORCE 3N

WCS MR HOT ROD 210M
HSR F353C MISS ELEGANT
HOOKS SHEAR FORCE 38K
CDI MS FRANKIE 20L

WLB MR. NUGGET 132N 355R
PERKS GIRL POWER 112T
PERKS GIRL POWER 12R

IPU RED NUGGET 132N
DCR MS 299 DEST L205
KENCO/MF POWERLINE 204L
FTS EXTRAORDINARY LADY

| EPD'S | CE | BW | WW | YW | MM | Weights | BW | ADJWW | ADJYW | JAN. 22 |
|-------|-----|------|------|-----|----|---------|-----|-------|-------|---------|
| 3.0 | 4.6 | 49.8 | 80.9 | 9.3 | | 104 | 675 | 1433 | 1187 | |

%IMF 3.03 Back Fat 6.10 Ribeye 17.85 %LMY 67.0

This cow family has been so consistent on our farm with 412Y's great grand dam, Lady and grand dam, Girl Power 12R putting numerous bulls through this sale, including 2 high sellers. This is 112T's first bull but, wow, did she ever do a tremendous job. He is the youngest bull, virtually April, but he is so thick and powerful that you will fall in love with him. These Nugget cows are proving to be phenomenal bull makers and they are extremely milky as well. Check out 412Y's performance and milk EPDs, he has over a 4 lbs WPDA in the pen.



Lot 66

Red • Polled • Purebred

Perks *Dr. Scholls* 403Y

PLCC 403Y • February 10, 2011 • PG753261

NF DR. ATKINS P35F
CDI/PLCC DR. PHIL 145U
CDI MISS SHEAR FORCE 3N

WCS MR HOT ROD 210M
HSR F353C MISS ELEGANT
HOOKS SHEAR FORCE 38K
CDI MS FRANKIE 20L

WLB MR. NUGGET 132N 355R
PERKS LOUISE 3T
TEMPLEHALL LOUISE 6L

IPU RED NUGGET 132N
DCR MS 299 DEST L205
PARKHILL CHARLIE 030G
TEMPLEHALL SKYE 2G

| EPD'S | CE | BW | WW | YW | MM | Weights | BW | ADJWW | ADJYW | JAN. 22 |
|-------|-----|------|------|-----|----|---------|-----|-------|-------|---------|
| 5.5 | 3.0 | 42.8 | 70.3 | 7.7 | | 97 | 652 | 1300 | 1190 | |

%IMF 2.31 Back Fat 4.80 Ribeye 15.71 %LMY 66.7

There are 3 bulls in this sale from the "3" cow family with 403Y's dam and Lot 64's dam being half sisters and 3T being the grand dam of Lot 82. Another Phil x Nugget combination that is really impressing us, he has done a tremendous job on test gaining over 4.5 lbs/day.



Lot 67

Red • Polled/S • Purebred

Perks *Doc Hollywood* 126Y

PLCC 126Y • February 16, 2011 • SG753253

NF DR. ATKINS P35F
CDI/PLCC DR. PHIL 145U
CDI MISS SHEAR FORCE 3N

WCS MR HOT ROD 210M
HSR F353C MISS ELEGANT
HOOKS SHEAR FORCE 38K
CDI MS FRANKIE 20L

WLB MR. NUGGET 132N 355R
PERKS MERCY 26T
ROLLING JN MERCY 26M

IPU RED NUGGET 132N
DCR MS 299 DEST L205
GFI BRANDO H02
ROLLING JN GIZI 27G

| EPD'S | CE | BW | WW | YW | MM | Weights | BW | ADJWW | ADJYW | JAN. 22 |
|-------|-----|------|------|-----|----|---------|-----|-------|-------|---------|
| 7.0 | 2.6 | 45.6 | 73.6 | 8.5 | | 99 | 687 | 1245 | 1140 | |

%IMF 3.17 Back Fat 7.10 Ribeye 13.4 %LMY 62.8

Another dark red Phil x Nugget bull that exhibits the tremendous length that we get so often from Nugget and the softness and style we get from Phil. This is the first bull from 26T, but her dam, 26M has had a son sell to Travis Clarke and raised us a bull that we used, Tsunami, as well as gave us 3 daughters. Lots of maternal in this pedigree as this cow family can really milk.

Lot 68

Red • Polled • Purebred

Perks *Yamaha* 20Y

PLCC 20Y • February 3, 2011 • PG753219

NF DR. ATKINS P35F
CDI/PLCC DR. PHIL 145U
CDI MISS SHEAR FORCE 3N

WCS MR HOT ROD 210M
HSR F353C MISS ELEGANT
HOOKS SHEAR FORCE 38K
CDI MS FRANKIE 20L

HOOKS SHEAR FORCE 38K
BLBR MISS SHEAR BLACK 20U
MRL MISS 964S

NICHOLS BLK DESTINY G151
C&D TRACY
LFE MR LEWIS 409M
MRL MISS 497N

| EPD'S | CE | BW | WW | YW | MM | Weights | BW | ADJWW | ADJYW | JAN. 22 |
|-------|------|------|------|-----|----|---------|-----|-------|-------|---------|
| 10.5 | -0.1 | 31.7 | 50.8 | 6.2 | | 92 | 730 | 1245 | 1163 | |

%IMF 3.30 Back Fat 6.10 Ribeye 13.79 %LMY 64.1

Suggested Heifer Bull

Another dark red Phil out of a cow we bought at Shades from Storle's. We lost her first calf due to pneumonia but her bull this year is going to raise some impressive cows if his daughters look like his mother. A sure heifer bull with that high calving ease EPD and minus for birth weight.



Lot
69

Black • Polled • Purebred

Perks *Dr. Dre* 73Y

PLCC 73Y • January 30, 2011 • PG753234

NF DR. ATKINS P35F
CDI/PLCC DR. PHIL 145U
CDI MISS SHEAR FORCE 3N

WCS MR HOT ROD 210M
HSR F353C MISS ELEGANT
HOOKS SHEAR FORCE 38K
CDI MS FRANKIE 20L

REMINGTON ON TARGET 2S
TESS MS BLACK 59U
BBN MS DYNAMITE RED 158P

REMINGTON RED LABEL HR
DRAKE SOFT TOUCH 15M
TNT DYNAMITE BLACK L137
MISS ARNOLD H1556

| EPD'S | CE | BW | WW | YW | MM | Weights | BW | ADJWW | ADJYW | JAN. 22 |
|-------|-----|-----|------|----|----|---------|-----|-------|-------|---------|
| 5.5 | 3.2 | 412 | 70.0 | 42 | | 97 | 683 | 1229 | 1150 | |

%IMF 2.64 Back Fat 3.80 Ribeye 15.23 %LMY 67.3

This Phil comes from another cow that we purchased at Shades, a high seller from Tessier's. Her first calf was shown alongside her at the National Simmental Show held in Brandon where they were 2nd in class to the Grand Champion Female. She is a deep bodied, very moderate, tank of a cow that has a promising future if she keeps producing like this. 73Y is a stylish, well made calf with tons of hair and a great temperament.



Lot
70

Red • Polled/S • Purebred

Perks *Dr. Feelgood* 715Y

PLCC 715Y • February 8, 2011 • SG753270

NF DR. ATKINS P35F
CDI/PLCC DR. PHIL 145U
CDI MISS SHEAR FORCE 3N

WCS MR HOT ROD 210M
HSR F353C MISS ELEGANT
HOOKS SHEAR FORCE 38K
CDI MS FRANKIE 20L

LCC RED HEAT 7462J
CONRAY NINA 515N
TFED CARAMEL 315J

NLC TOM TOM 3F
NLC F21 FILLY
ABC MR MAINSTREAM 520F
CONRAY SANDRA 15E

| EPD'S | CE | BW | WW | YW | MM | Weights | BW | ADJWW | ADJYW | JAN. 22 |
|-------|-----|------|------|-----|----|---------|-----|-------|-------|---------|
| 4.5 | 3.1 | 40.8 | 68.3 | 9.7 | | 109 | 761 | 1489 | 1388 | |

%IMF 2.58 Back Fat 5.60 Ribeye 18.27 %LMY 67.8

This bull has been a man among boys his whole life, he excelled early and continues to excel. He is the heaviest bull in the pen and probably the longest with a monster ribeye of 18.27, 4 lbs WPDA and 4.5 lbs ADG – the first in his contemporary group. 715Y's Nugget half sister is an absolute tank as well and her first two Phil heifers are phenomenal. This cow family is a must-see - tons of capacity, lots of milk in tidy udders and the ability to produce.

Lot
71

Red • Polled • Purebred

Perks *Yo-Yo* 378Y

PLCC 378Y • February 15, 2011 • PG753259

NF DR. ATKINS P35F
CDI/PLCC DR. PHIL 145U
CDI MISS SHEAR FORCE 3N

WCS MR HOT ROD 210M
HSR F353C MISS ELEGANT
HOOKS SHEAR FORCE 38K
CDI MS FRANKIE 20L

KENCO/MF POWERLINE 204
PERKS RHONDA 278S
CONRAY RHONDA 778P

HC POWER DRIVE 88H
SAFN GLAMOUR 11J
PARKHILL CHARLIE 030G
TNY MAYA 278M

| EPD'S | CE | BW | WW | YW | MM | Weights | BW | ADJWW | ADJYW | JAN. 22 |
|-------|-----|------|------|-----|----|---------|-----|-------|-------|---------|
| 7.5 | 1.2 | 28.5 | 53.1 | 8.0 | | 96 | 641 | 1196 | 1112 | |

%IMF 2.50 Back Fat 5.30 Ribeye 14.54 %LMY 65.4

Another Phil son that is mothered by a beautiful Powerline female. 378Y's grand dam has a perfect udder, the most flawless on our farm and sold a bull through this sale last year to Barry Brigden. Very moderate cows, they have both raised some powerful daughters that we've kept or marketed through the Pembina sale or our production sale in Killamey. A good combination of calving ease and milk, this bull should produce tremendous females.

Lot
72

Red • Polled • Purebred

Perks *Doc Rivers* 158Y

PLCC 158Y • February 14, 2011 • PG753252

NF DR. ATKINS P35F
CDI/PLCC DR. PHIL 145U
CDI MISS SHEAR FORCE 3N

WCS MR HOT ROD 210M
HSR F353C MISS ELEGANT
HOOKS SHEAR FORCE 38K
CDI MS FRANKIE 20L

TWIN CHIEF MIDAS 248M
PERKS SHOCKER 58T
TESS MS SHOCKER 357P

CG HOMEBUILDER 803H
TWIN-CHIEF HELEN 248H
LAZY S RED SHOCKER 226L
TESS MS RED WRANGLER 57H

| EPD'S | CE | BW | WW | YW | MM | Weights | BW | ADJWW | ADJYW | JAN. 22 |
|-------|-----|------|------|-----|----|---------|----|-------|-------|---------|
| 6.0 | 2.9 | 38.8 | 66.1 | 5.7 | | 99 | - | 1150 | 1060 | |

%IMF 3.10 Back Fat 6.40 Ribeye 13.07 %LMY 63.3

Suggested Heifer Bull

158Y is mothered by one of our standout Midas females. She was the best bred heifer in her contemporary group and her dam is a foundation female that has raised many high sellers, including bulls to Perry Hendry and Oliver Farms. 158Y had a slower start due to a leg injury that affected his mother but he's been doing 4 lbs/day since on test. A definite candidate for the heifer pen.

Lot 73

Red • Polled • Purebred

Perks *Dr. Y* 243Y

PLCC 243Y • February 21, 2011 • PG753267

NF DR. ATKINS P35F
CDI/PLCC DR. PHIL 145U
CDI MISS SHEAR FORCE 3N

WCS MR HOT ROD 210M
HSR F353C MISS ELEGANT
HOOKS SHEAR FORCE 38K
CDI MS FRANKIE 20L

PERKS RED BLOCK 56P
PERKS MIRA 43S
ROLLING JN MIRA 43M

WFL MR WESTWAY 247M
TFED CONRAY MAURA 156M
WHF RED ROOKIE 160E
TWIN-CHIEF DAWN 594D

| EPD'S | CE | BW | WW | YW | MM | Weights | BW | ADJWW | ADJYW | JAN. 22 |
|-------|-----|------|------|-----|----|---------|-----|-------|-------|---------|
| 15 | 5.8 | 50.2 | 73.4 | 6.0 | | | 113 | 757 | 1258 | 1165 |

%IMF 2.71 Back Fat 5.80 Ribeye 14.38 %LMY 64.8

One of our favorite bulls for the entire summer, 243Y has an outstanding hip and squareness to him that we really like. 43S's first bull calf sold to Richard Unrau and her next 2 heifers were kept in the herd. 43S's sister has sold two females through the Pembina Triangle sale and we have kept the other two. Lots of maternal in this pedigree – this bull will make some highly productive cows.



Lot 74

Red • Polled • Purebred

Perks *Dr. Diamond* 36Y

PLCC 36Y • February 19, 2011 • PG753221

NF DR. ATKINS P35F
CDI/PLCC DR. PHIL 145U
CDI MISS SHEAR FORCE 3N

WCS MR HOT ROD 210M
HSR F353C MISS ELEGANT
HOOKS SHEAR FORCE 38K
CDI MS FRANKIE 20L

LFE MR LEWIS 302M
BDS BLK DIAMOND 36T
BDS FORTUNE QUEEN 219L

LFE MR LEWIS 327K
LFE COCOA 120K
SRS FORTUNE 500
TH MISS JENNY J909

| EPD'S | CE | BW | WW | YW | MM | Weights | BW | ADJWW | ADJYW | JAN. 22 |
|-------|-----|------|------|----|----|---------|-----|-------|-------|---------|
| 15 | 5.3 | 37.8 | 64.8 | 14 | | | 114 | 675 | 1385 | 1250 |

%IMF 2.19 Back Fat 4.80 Ribeye 15.25 %LMY 66.4

This Phil son is a real chunk of a bull – he just keeps getting more impressive every day. He has gained over 4 lbs/day since weaning and was first in his contemporary group for adjusted yearling weight and ADG. We purchased his dam from Black Diamond at Shades and she is a phenotypically awesome cow. His temperament is bomb proof as evidenced by his picture where we couldn't get his head up.



Lot 75

Red • Polled/S • Purebred

Perks *Yakity Yak* 127Y

PLCC 127Y • February 8, 2011 • SG753250

CNS DREAM ON L186
ANKONIAN COLOSSAL S064
ANKONY MISS CANDACE P6

NICHOLS BLK DESTINY G151
CNS SHEEZA DREAM K107W
BOZ REDCOAT
GFI CANDACE G51

ELLINGSON THE ROCK J928
CONRAY TRINITY 1427R
TFED TRINITY 1027K

MV RED LIGHT 406
ELLINGSON MSAMERICA F708
ABC MR MAINSTREAM 520F
CONRAY CLAROL 627F

| EPD'S | CE | BW | WW | YW | MM | Weights | BW | ADJWW | ADJYW | JAN. 22 |
|-------|-----|------|------|-----|----|---------|----|-------|-------|---------|
| 8.5 | 0.2 | 36.5 | 58.1 | 2.6 | | | 96 | 672 | 1259 | 1182 |

%IMF 2.58 Back Fat 4.30 Ribeye 16.87 %LMY 68.0

A really good Colossal son, we just can't put all the pictures in the catalogue, but be sure to check out our website to see him in his glory. Dark cherry red, long and with that roundness in his muscle expression that Colossal stamps all his calves with, another bull gaining over 4.5 lbs/day on test.

Lot 76

Red • Polled/S • Purebred

Perks *Yanmar* 78Y

PLCC 78Y • February 1, 2011 • SG753237

CNS DREAM ON L186
ANKONIAN COLOSSAL S064
ANKONY MISS CANDACE P6

NICHOLS BLK DESTINY G151
CNS SHEEZA DREAM K107W
BOZ REDCOAT
GFI CANDACE G51

LCC RED HEAT 7462J
TFED CONRAY LAURIE 378M
TFED LAURA 178K

NLC TOM TOM 3F
NLC F21 FILLY
ABC MR MAINSTREAM 520F
TNY CHILLIE 78F

| EPD'S | CE | BW | WW | YW | MM | Weights | BW | ADJWW | ADJYW | JAN. 22 |
|-------|-----|------|------|-----|----|---------|-----|-------|-------|---------|
| 3.5 | 2.6 | 37.2 | 60.7 | 8.8 | | | 109 | 675 | 1374 | 1286 |

%IMF 1.97 Back Fat 4.10 Ribeye 14.96 %LMY 66.9

78Y has a very impressive Red Heat dam. She has only had three previous bull calves and they have all gone through this sale. 378M is extremely deep bodied and a real cornerstone cow for us. 78Y is a typical bull for her, gaining over 5 lbs/day on test with lots of hair and natural thickness.



KOP Crosby - Sire of lots 77, 78, 79



WFL Miss 21F Doll 20P - Dam of lots 77, 78, 79

Pedigree for Lots 77, 78, 79

MUIRHEAD LIVE WIRE 95R
KOP CROSBY 137W
 KOP MS BENGIE 6P

KENCO/MF POWERLINE 204L
 GFP MISS BEARCLAW 100M
 R PLUS 2169M
 KOP MS FREIGHTLINER 34M

HC POWER DRIVE 88H
WFL MISS 21F DOLL 20P
 PARKHILL RED DOLL 21F

WLE POWER STROKE
 KAPPES LADY IRISH F88
 SPRING VALLEY D880
 PARKHILL 21C

Another year and another crop of calves from our flush cow WFL Miss Doll. She has been so fertile, flushing post calving and then re-breeding every year for a natural calf. These 3 sons are from KOP Crosby, the bull that KOPP Farms sold \$30000 worth of semen off of in 2010. They are deep, thick and fancy and ridiculously hairy. The 2 blacks are impossible to tell which one is better and the red is a little smaller but equally impressive in his own right. There is so much maternal in this pedigree, Doll's calving ease and milk are proven and her daughters are really broody cows.

Lot 77

Red • Polled • Purebred

Perks **Powerplay** 1221Y

PLCC 1221Y • January 30, 2011 • PG753812

| EPD'S | CE | BW | WW | YW | MM | Weights | BW | ADJWW | ADJYW | JAN. 22 |
|-------|------|----------|------|--------|-------|---------|------|-------|-------|---------|
| 6.0 | 1.6 | 41.1 | 70.0 | 10.7 | | 74 | 546 | 1072 | 1020 | |
| %IMF | 3.34 | Back Fat | 6.10 | Ribeye | 12.93 | %LMY | 63.5 | | | |

Lot 78

Black • Homozygous Polled • Purebred

Perks **Powerplay** 1321Y

PLCC 1321Y • February 1, 2011 • BPTG753814

| EPD'S | CE | BW | WW | YW | MM | Weights | BW | ADJWW | ADJYW | JAN. 22 |
|-------|------|----------|------|--------|-------|---------|------|-------|-------|---------|
| 6.0 | 3.0 | 44.2 | 74.1 | 10.7 | | 85 | 657 | 1204 | 1160 | |
| %IMF | 2.82 | Back Fat | 7.60 | Ribeye | 13.66 | %LMY | 62.5 | | | |

Lot 79

Black • Homozygous Polled • Purebred

Perks **Powerplay** 1421Y

PLCC 1421Y • February 1, 2011 • BPTG753816

| EPD'S | CE | BW | WW | YW | MM | Weights | BW | ADJWW | ADJYW | JAN. 22 |
|-------|------|----------|------|--------|-------|---------|------|-------|-------|---------|
| 6.0 | 3.0 | 44.2 | 74.1 | 10.7 | | 85 | 657 | 1195 | 1132 | |
| %IMF | 2.86 | Back Fat | 6.10 | Ribeye | 14.76 | %LMY | 64.8 | | | |



Lot 77

HOMOZYGOUS POLLED



Lot 78

HOMOZYGOUS POLLED



Lot 79

SIMMENTAL YEARLING BULLS

Perkin Land & Cattle Co.

Lot 80 Red • Homozygous Polled • Purebred
Perks *Up-In-Arms* 5Y
PLCC 5Y • February 24, 2011 • PG753791

- REMINGTON RED LABEL HR
- REMINGTON ON TARGET 2S
- DRAKE SOFT TOUCH 15M
- MADER P ROYAL ARMS 36W**
- IPI BLACK QUATTRO 95M
- IPI MS QUATTRO 17P
- LBR MIDNIGHTDUTCHESG701

- CMS RED POLLED ICON 16P
- CMS TRADEMARK 756T
- CMS LUBA 23L
- KOP MS TRADEMARK 110W**
- R PLUS 2169M
- KOP MS BENGIE 16S
- KOP MS FLASHBACK 97N

| EPD'S | CE | BW | WW | YW | MM | BW | ADJ WW | ADJ YW | JAN. 22 |
|-------|-----|------|------|------|----|-----|--------|--------|---------|
| 6.0 | 3.1 | 37.2 | 67.4 | 12.8 | 99 | 755 | 1352 | 1160 | |

%IMF 2.61 Back Fat 5.30 Ribeye 16.33 %LMY 66.7
Homo Polled by parentage. Our first Royal Arms calf and boy, what a bull! He is so soggy and thick, he has an absolute presence about him. We purchased his dam from Kopp Farms at their spring bull sale for \$5100 and immediately flushed her. We sold one of those flush calves at Shades for \$5500 and are every bit as excited about this son. **Co-owned with Snowflake Creek Ranch.**

HOMOZYGOUS POLLED



Lot 80

Lot 81 Black • Polled • Purebred
Perks *Blk Colossal* 1085Y
PLCC 1085Y • February 12, 2011 • BPG753271

- NICHOLS BLK DESTINY G151
- CNS DREAM ON L186
- CNS SHEEZA DREAM K107W
- ANKONIAN COLOSSAL S064**
- BOZ REDCOAT
- ANKONY MISS CANDACE P6
- GFI CANDACE G51

- PU RED NUGGET 132N
- WLB MR. NUGGET 132N 355R
- DCR MS 299 DEST L205
- PERKS ROBIN 3585U**
- BBS ZIMA D55
- TFED RED ROBIN 2785H
- CONRAY JADE 1385F

| EPD'S | CE | BW | WW | YW | MM | BW | ADJ WW | ADJ YW | JAN. 22 |
|-------|-----|------|------|-----|----|-----|--------|--------|---------|
| 4.5 | 3.7 | 57.9 | 89.3 | 5.7 | 98 | 758 | 1277 | 1408 | |

%IMF 2.36 Back Fat 4.80 Ribeye 15.74 %LMY 66.7
This Colossal bull is what our program is all about. Out of a high performance Nugget cow, this bull is going to produce scale topping calves with the style and substance to get noticed. 1085Y is long and powerful, big ribbed with lots of testicle and was second in his contemporary group for ADG, gaining 4 lbs/day since weaning. If you are in the beef business, whether commercial or seed stock, then this is your bull.



Lot 81



CDI/PLCC Dr. Phil 145U - ReferenceSire



Ankonian Colossal S064 - Reference Sire



Lot
82

Black • Polled/S • Purebred

Perks *Vager* 503Y

PLCC 503Y • January 26, 2011 • BSG753268

3C WALLY C240 BLK
LCHMN BODYBUILDER 7303F
LSF MOMENTO D8

EMMONS BLACK HERCULES
CROCUS 9278 BL
LEACHMAN RED BALDY 438W
LBR B-248

WESTFALL VOYAGER 721P
PERKS LOUISE 403W
PERKS LOUISE 3T

SVJ POWER SURGE
DRAKE SUMMER SISTER
WLB MR. NUGGET 132N 355R
TEMPLEHALL LOUISE 6L

| EPD'S | CE | BW | WW | YW | MM | Weights | BW | ADJWW | ADJYW | JAN. 22 |
|-------|-----|------|------|-----|----|---------|----|-------|-------|---------|
| 5.3 | 2.6 | 29.8 | 55.5 | 9.4 | | | 77 | 669 | 1224 | 1091 |

%IMF 1.95 Back Fat 3.60 Ribeye 12.76 %LMY 65.8

A little different breeding than the rest of these bulls, a Bodybuilder bull out of a Voyager first calf heifer. He is not our biggest bull, but he is well balanced and big ribbed. Bodybuilder has done a lot of good things for the cattle industry, put his influence into your herd with this son.



Lot
83

Red • Polled • Purebred

Perks *Vahoo* 678Y

PLCC 678Y • January 25, 2011 • PG753269

CNS DREAM ON L186
ANKONIAN COLOSSAL S064
ANKONY MISS CANDACE P6

NICHOLS BLK DESTINY G151
CNS SHEEZA DREAM K107W
BOZ REDCOAT
GFI CANDACE G51

WHF RED DOC 940E
TNY CALLY 278L
KWD MS PENNY 15J

ER BIG SKY 545B
ER MISS REDLINE 40B
DR PEPPER 320E
KWD FIRST CHOICE 13Z

| EPD'S | CE | BW | WW | YW | MM | Weights | BW | ADJWW | ADJYW | JAN. 22 |
|-------|------|------|------|-----|----|---------|----|-------|-------|---------|
| 10.5 | -0.1 | 31.9 | 53.4 | 4.4 | | | 85 | 733 | 1303 | 1273 |

%IMF 2.56 Back Fat 4.10 Ribeye 15.35 %LMY 67.2

Wow! This will be this cow's fourth bull to go through this sale. She is so consistent with her curve bending low birth weight to big yearling weights that I really feel like this bull is where we ought to be. Her 4 bull calves average birth weight is 87.5 lbs and her 4 daughters, who were all retained in the herd, averaged 70 lbs. She has a perfect udder and so do all of her daughters.



Lot
84

Red • Polled • Purebred

Perks *Vaktree* 435Y

PLCC 435Y • February 16, 2011 • PG753265

CNS DREAM ON L186
ANKONIAN COLOSSAL S064
ANKONY MISS CANDACE P6

NICHOLS BLK DESTINY G151
CNS SHEEZA DREAM K107W
BOZ REDCOAT
GFI CANDACE G51

PERKS TSUNAMI 26P
PERKS NORA 35S
TFED CONRAY NORA 835M

LEACHMAN RWF BALDY 297X
ROLLING JN MERCY 26M
ELLINGSON THE ROCK J928
CONRAY MINDY 335E

| EPD'S | CE | BW | WW | YW | MM | Weights | BW | ADJWW | ADJYW | JAN. 22 |
|-------|-----|------|------|-----|----|---------|----|-------|-------|---------|
| 9.0 | 0.5 | 37.4 | 63.3 | 3.2 | | | 92 | 734 | 1336 | 1240 |

%IMF 3.09 Back Fat 6.10 Ribeye 14.70 %LMY 64.7

Another Colossal son with that blaze on his face that everyone likes. His dam sold a bull last year to Heinz Herman and his grand dam has sold a bull to Twin Brae Simmentals and females through the Pembina sale and our production sale. 35S's sister was just moved into our flush program last spring and we are eagerly awaiting her calves off of R Plus Hard Rock to arrive. A very complete and balanced bull that has been gaining over 4.5 lbs/day on test.



What a fall Mar Mac Had:

National Red Angus Show - Brandon, Manitoba Heifer Calf Champion, Reserve Junior Champion Female. First place Get of Sire on Ribeye 346U's and Premier Breeder of the Red Angus Show.

Agribition 2011 - Reserve Intermediate Heifer Calf Champion at 2nd and 3rd's in the strong Red Angus Show. Red McRae's Reba Lee 53W and her calf were in the Top Ten Finalist at the RBC Beef Supreme at Agribition. Reba Lee and her calf were also #4 for the Show Female of the Year in the Canadian Angus Association. Congratulations to Lazy MC Ranch AB and Mile High Cattle Co. for purchasing Reba Lee at Red Roundup 2010.

Top selling bred heifer at the Keystone Konnection Sale was Mar Mac Carli 91X selling to Annette Cross, Nova Scotia.

Melissa Graduated from Lethbridge College, Lethbridge, AB in 2011 in Communication Arts, Advertising and Public Relations. Melissa is now working at T Bar C Cattle Co. in Saskatoon.



Mar Mac is a family run operation and during the year we require some added help while at the shows and events. We could not achieve our goals without the help of our families, very good friends and neighbors in the Roseland Community. Special Thanks to Dalyse Robertson who spends hours on our website. Thank you to our bidders and buyers who attended and supported the Mar Mac Farms and Guests Volume 8. Your support to our breeding program is much appreciated.

See you down the road.

EPDS: Expected Progeny Difference

The expected difference in performance of a bulls progeny when compared to the average progeny performance of all bulls evaluated. EPD's cannot be compared cross bred. Breed Averaged are at the start of each breed section.

| | |
|-----------|---|
| CE | Calving Ease - percentage of unassisted births with the more positive number indicating greater calving ease. |
| BW | Birth Weight - the birth weight of a bulls progeny when compared to the breed average, in pounds. |
| WW | Weaning Weight - the adjusted weaning weight of a bulls progeny when compared to the breed average, in pounds. |
| YW | Yearling Weight - the adjusted weaning weight of a bulls progeny when compared to the breed average, in pounds. |
| MM | Milk - a measure of amount of pre weaning performance gained by calves which can be attributed to the milking ability of a bull's daughters. The EPD is expressed in pounds of calf. |
| TM | Total Maternal - each of these terms measures a sire's ability to transmit milk production and growth rate through his daughters. It predicts the weaning weight of a sire's daughter's calves. It is equal to the milk EPD plus 1/2 of this weaning weight EPD. |

Return to:
Mar Mac Farms
RR#1 Box 57
Brandon, Manitoba
R7A 5Y1

