

FUNCTIONAL, MODERATE & MATERNAL. ANGUS GENETICS FROM A 3RD GENERATION PUREBRED BULL SUPPLIER 66 YEARS IN THE BUSINESS.

ENGINEERED TO BREED MORE COWS & BUILT TO LAST

750 "FORAGE DEVELOPED" BULLS SOLD TO 85% REPEAT CUSTOMERS ACROSS CANADA INDICATE VERSATILITY, VIRILITY & VALUE!

Chapman
Cattle Company

10th Annual

"FORAGE-DEVELOPED"
BULL SALE

100 2-YEAR-OLD ANGUS BULLS

FEBRUARY 18TH, 2016
2PM STETTLE AUCTION MART • STETTLE, AB

ONLINE BIDDING AVAILABLE

Hello...

FROM CHAPMAN CATTLE COMPANY

Bull sale season is always exciting, with a new catalogue to study at almost any time. I study all catalogues front to back, including those of other breeds. What is noticeable is a large number of bull suppliers choose to outcross. In other words, they aren't creating "Old Line" Janssens.

I read an interesting article "Creating Predictable Paternal Bull Gene Pools for Grassfed Meat Production," written by Gearld Fry of Bovine Engineering & Consulting. He suggests that many seedstock suppliers are constantly changing herd bulls after a year or two in order to prevent the resulting progeny from being too closely related by any single sire line.

According to Fry, a benefit to outcrossing is that "one seldom ever has to be concerned about lining up gene pairs, as all the breeding will be heterosis driven." Heterosis breeding therefore results in a continuity of unrelated individuals that offers the least amount of predictability.

Fry adds that outcrossing "constantly changes the phenotypical structure of the cattle and heterosis change is most always genetically regressive, particularly in the bulls." Thus, the predictability that the commercial breeder needs will vary significantly as the effect of heterosis diminishes after the first cross. In other words, that first cross has been realized within the outcross bull being sold. "With outcrossing of the many different female family lines, the seedstock breeder is receiving most of the heterosis (hybrid vigor) in his calves rather than this benefit accruing to his commercial customer," adds Fry.

Liken this to a breeder of outcross racing pigeons. That outcrossed pigeon could very well be a champion racer; however, the predictability of that pigeon siring progeny that show or perform as well, is less than that of the "Old Line" Janssens. There are good outcross pigeons out there; however, I would build my brood of hens with the "Old Line" Janssens, because of their continuity of lineage and their ability to induce heterosis beyond the first cross

We invite you to join us on Thursday, February 18th at 2:00pm at the Stettler Auction Mart. Our bulls are a uniform sort – out of multi-generational dams that have been environmentally pressured. These bulls reflect that selection pressure – it's bred in just like the "Old Line" Janssens.

Silas Chapman



OLD LINE Janssens

WRITTEN BY HEBERT, G., AND HONEY, D. J., SR

1950-1970, the pre "Merckx" era of the fabulous Janssen Brothers, was where it all began.

Names like "Bange of '51", "Winterjongen", "Lichte of '50", "Blauwe of '48", "Oude Witoger of '65", and the "Geeloger of '67", were just a few of the many greats the Janssen Brothers raced and bred to form the most successful line of racing pigeons in the world.

These awesome racers not only helped the Janssen Brothers fill their pockets on race day, but the potent blood that ran through their veins, would boost almost any loft of that era to absolute greatness.

The ability to produce a high percentage of outstanding racers has been a trademark of the Janssen pigeon since then.

Over and over again the stories go on about how this man, or that, was able to obtain one or two eggs from the brothers of Arendonk, and form a loft of unparalleled greatness that would bring the competition to their knees for some of their birds.

Gust Hofkens, Joseph De Klak, Herman Brothers of Germany, Albert Van de Flaes, and the list

goes on, were some of the fanciers who made the pilgrimage to see the brothers of Arendonk and changed history in pigeon racing forever.

Everyone knows what the Janssen pigeons did after the "Oude Merckx" and his fabulous sons made their mark in racing and breeding; but where did they come from? Did the Brothers just get lucky breeding birds from several lofts to make their elite pigeons?

No, not in the least. The old line Janssens were there, tearing up the best of their day. They won more than their share of races, and with the unmatched ability to breed pigeons that not only kept the quality of pigeons in their loft very high, they could breed winners and breeders for other lofts as well.

**THE "VERNAZZA"
JANSSENS OF CALIFORNIA**

The early Janssens of the U.S. made a tremendous impact almost immediately after arriving in America. The early '60s in California was one of these places.

Henry "Hank" Vernazza, of the Martinez Club, had bought several imports from Piet deWeerd of the new Janssen Strain. His record for over a decade was unbelievable. Soon thereafter other fanciers were dying for some of these new Vernazza pigeons. Jim Calia was one of those fanciers.

Jim obtained as many of Hank Vernazza's pigeons as he could and started his own strain of very successful pigeons known today throughout the U.S., and much of the World. The Vernazza pigeons are responsible for the foundation birds of more lofts in the US than any other line of pigeon we know of. To this day, many futurity birds and combine winners are bred from descendants of these pigeons.

The most famous, and surely one of the best producing hens the world of pigeon racing has ever seen, is the "Red Hen". She was one of the original birds Hank purchased from Van de Flaes, through DeWeerd. The "Red Hen" was not an "original Janssen" from the brothers of Arendonk, as her breeder was Albert Van de Flaes of Ravels, Belgium. She was a daughter of Van de Flaes "Red Fox", a National winner of many races. He, being bred from the "Bange of '51" stock of Janssens of Arendonk.

After learning what an impact the "Red Hen" was having in America, Van de Flaes sent a cousin to mate with her. This cousin's name was the "Poot" cock", a black check that would turn California upside down with his youngsters from the "Red Hen".

It is said that the "Red Hen" is the mother or grandmother to more than 200 winners. This is simply unheard of in the racing pigeon sport.

Through experiments, it was determined that the "Red Hen"

had the ability to produce outstanding racers for as many as 6 or 7 generations. Hank was not going to leave this incredible ability stand idle. He mixed the blood of this wonder hen into every pigeon he raised, and likewise, every Vernazza strain pigeon alive today still has the blood of that same "Red Hen" running through their veins.

THE "MEXICO" JANSSENS OF MAURICE JEMAL

Maurice Jemal was the type of fancier who could spot a good pigeon when he saw one. The day Piet de Weerd brought by those Janssen pigeons, Jemal's life changed! He bought as many as he could afford, and ordered more for the next year; he "had never seen a finer pigeon".

Some were original Arendonk Janssens while some came from Van de Flaes.

After some experimenting, Jemal started a system of breeding virtually unmatched in the US. (Even today most fanciers don't understand his system correctly.) Maurice Jemal took the competition by storm, winning more races than anyone before that time.

Breeding was another nightmare for his competitors. Jemal's "inbred pigeons" would breed racers like no one had ever seen in Texas! Over and over again he had the top pigeons.

It seemed impossible to beat Jemal, so they joined him and bought his pigeons. After a while, if you didn't have "Mexico" Janssens in your loft, you didn't have a prayer to ever win a race in Texas.

Several fanciers of that time told me they were the best. Trouble is no one kept up the breeding system Jemal invented, and those early birds were soon bred out of the bloodline.

One fancier told me they were so good, you could tell what kind of a pigeon it would be right in the nest. The blue ones were the racers, and the red ones were the breeders, it was that simple.

There are a few of the old birds with most of this bloodline still intact, but the ones who've got them, won't get rid of them!

THE "DURKINS JANSSENS" OF THE NORTHEAST US

Out of the Northeast came another group of early Janssens that we came to know as the Durkins. One of the men who flew and bred these birds was Harold Durkins, he and Russ Burns raced very successfully with them. Unknown to many fanciers, these birds were not imported by Durkins himself. Through Piet De Weerd, John Spuria and Herb Brazzo imported the Janssens, and from these birds Harold was able to obtain this fabulous bloodline. Not unlike the "Vernazzas" and the "Mexicos", they were an immediate success.

Racing and breeding racers, the new Janssen strain was proving its worth in every loft. No one noticed this more than Russ Burns, Russ capitalized on the racing ability of these new sensations like no one else. His awards and records stand to this day, as a mark to work for, 36 Registered AU Champions!

Harold Durkins realized the quality of the Janssen pigeon, and bred numerous birds that have founded many lofts also, and after some consulting with Henry Vernazza, they swapped birds into each other's lofts. This is the sign of two men who knew quality, and knew how to keep such quality birds breed-

ing quality. Many fanciers can use a strain of pigeons to breed and race, but very few can keep

Many fanciers can use a strain of pigeons to breed and race, but very few can keep the strain intact, and continue to breed quality pigeons years after they were introduced.

the strain intact, and continue to breed quality pigeons years after they were introduced. We have to thank these men, for keeping the "Old Line Janssens" in such a pure state, so we can enjoy the abilities they are known for to this day.

For a little recap, the Old Line Janssens are responsible for... the Vernazzas, the Mexicos, the Durkins, the Merckx, the DeKlaks, the Vos', the Van de Faes, the Hortogs, the 969s, the Calias, the Russ Burns, 019s, the Continental Class, the Zazuetas, the Lumachis, and the list could go on and on!



REFERENCES

Fry, G. Creating Predictable Herd Genetics for Good Eating Grassfed Beef. "n.d." Retrieved January 8, 2016, from http://www.bovineengineering.com/NL_herd_genetics.html
Hebert, G., and Honey, D. J., Sr. "Old Line" Janssens. "n.d." Retrieved January 8, 2016, from http://mumtazticloft.com/a_OldLineJanssens.asp

TERMS AND CONDITIONS

SALE DATE | FEBRUARY 18, 2016
SALE DAY PHONE | 403-742-2368

SALE STAFF

Don Raffan, Auctioneer 250-558-6789
Joe Ferris, Ring Staff 250-558-8745
Dean Edge, Ring Staff 403-704-0280
Shane Castle, Buyer Rep 306-741-7485
Greg Hayden, Buyer Rep 403-742-2368
Jim Abel, Buyer Rep 403-742-2368
Blake Chapman, Buyer Rep 403-741-5760

BIDS

Buyers may call or send their bids to any of the sale professionals listed above or directly to Chapman Cattle Company. Complete satisfaction is guaranteed for cattle purchased sight unseen, as well as all bulls sold.

SALE LOCATION

Stettler Auction Mart, Stettler, Alberta

TERMS & CONDITIONS

All cattle sell under the standard terms and conditions of the Canadian Angus Association. Terms of the sale are cash, payable on Sale Day unless prior arrangements have been made with Chapman Cattle Company.

INSURANCE

Ownership risk to purchaser begins when the Auctioneer's hammer falls. All cattle returning to Chapman Cattle Company must be insured. Although all precautions will be made for the well-being of your cattle until possession has transferred, Chapman Cattle Company will not be liable for any sickness, injury or death that causes loss of use of the specified cattle. A Live-stock Insurance agent will be available Sale Day to discuss your coverage options.

ANNOUNCEMENTS

All announcements from the sale block on sale day take precedence of any printed material.

FOOD

Coffee and donuts in the a.m. Lunch will be prepared and served starting at 12:00 p.m.

HOTELS

Canalta Hotel, Stettler 403-742-3371
Ramada Inn, Stettler 403-742-6555
Super 8 Motel, Stettler 403-742-3391
Heartlander Motel, Stettler 403-742-3401

LIABILITY

All persons who attend the sale do so at their own risk and the owners, facility management, and Sale Day staff assume no liability, and disclaims all liability, legal or otherwise, for any reason.

HEALTH

All sale bulls have been vaccinated under the Pfizer Gold Program, poured with Ivomec and Boss, supplemented with Multi-Min 90, fertility tested and guaranteed sound.

STORM DATE

FEBRUARY 19, 2016 – 2:00pm – Stettler Auction Mart

DELIVERY

Upon Settlement, please choose one of the following options and inform the clerk at the time of settlement. Please leave detailed delivery instructions upon doing so.

A. \$100 Discount off of the total invoice per buyer if bulls are picked up Sale Day

B. Free Board & Delivery to Central Points. Every attempt will be made to deliver your new bull(s) to your bull pen commencing after the sale and will be done at the expense of Chapman Cattle Company for bulls selling within the Prairie Provinces and BC. All bulls going beyond will be delivered at cost. Chapman Cattle Company assumes no liability of death or injury for bulls returning to the ranch. All bulls MUST be insured.

CHAPMAN CATTLE COMPANY

Silas Chapman

tel 403-741-2099

email silas@chapmancattle.com

web www.chapmancattle.com

SIGHT UNSEEN PURCHASES

Can't make it to the sale? We guarantee you won't be disappointed in the Chapman 'Forage-Developed' bulls that you buy sight unseen. In fact, we sell many bulls across Canada every year this way. Our experience over the past 65 years is the sooner you contact us, the better we are able to match the right cattle to your specifications. When cattle purchased "sight-unseen" are delivered, the buyer has the right of refusal for any animals that are not as they were represented.

GUARANTEE

We're confident that our 'Forage-Developed' bulls will meet and exceed your standards for longevity and performance. If for any reason you're not satisfied with your purchase from us, you don't have to pay; just call for a prompt and courteous credit or refund.

FOLLOW-UP & CONSULTING

We are interested about your program too, your success, and the effectiveness of our cattle in your herd. Feel free to contact us at any time.

Complete information on the bulls is available online, including: catalogue, video, individual performance, EPDs, scrotal measurements and sale weights at www.chapmancattle.com. Please let us know if we can provide you with any additional information or assistance. We look forward to seeing you on sale day!

INTERNET BIDDING

To participate in internet bidding is as easy as 1,2,3...

PRE-REGISTER in advance at www.stettlerauction.ab.ca by clicking Sign Up Here under On-Line Auctions. You will receive a validation email with your user name and password once registration has been completed.

SALE DAY click View Live Auctions. You will be prompted to enter your user name and password to login into the system. Once logged in you will be able to view the auction live and bid. Bids can be submitted by phone or over the internet. Sale Day Phone to place bids is (403) 742-2368.

For technical assistance please contact the Stettler Auction Mart - Greg Hayden or Jim Abel 403-742-2368.

You will be contacted the week after the sale for settlement and delivery instructions. In an effort to cover liability issues and protect buyer's interest, we require all bulls returning to Chapman Cattle Co. to be insured. A Stockmen's Insurance agent will be available to assist you with coverage options. If at all possible, we invite you to stop by and evaluate the bulls prior to sale day.



HOW TO INTERPRET BULL DATA

BW Actual scaled birth weight taken within 24 hours of birth

WW Actual weaning weight off the dam with no supplement

205D Weaning weight adjusted to 205 days of age for easy comparison

WR In-herd comparison based on Adj. 205d weight, with 100 being the group average

10/23 WT Weight off grass October 23, 2015 with no supplement

ADG Gain on grass with no supplement – same short grass pasture our cows graze

AOD Age of dam in 2014

SIRE

MC CUMBER 8R101 RITO 161

MALE IMP 161Y #1707970 JANUARY 26, 2011



R R RITO 707 AMF CAF NHF DDF
SINCLAIR ENTREPRENEUR 8R101 CAF NHF DDF
N BAR KINCHTRY BEAUTY Z1925

PINE CREEK RIGHT TIME 1147 AMF NHF
B PRIDE 463 OF MC CUMBER
B PRIDE 273 OF MC CUMBER

RITO N BAR
ERISKAY OF ROLLIN ROCK 3
N BAR EMULATION EXT AMF CAF NHF DDF
N BAR KINCHTRY BEAUTY 4310

LEACHMAN RIGHT TIME DMF AMF
SITZ EVERELDA ENTENSE 1137
BT TRAVELER 228K
B PRIDE 690 OF MC CUMBER

BW	WW	YW	MILK	TM	SC	CE	MCE	REA	CW	MARB	FAT
2.4	57	84	15	46	0.46	3.3	5.5	-0.23	24	-0.04	0.05

Impressive phenotype and genotype describes 161 who's proving to be a reliable source of herd building genetics. There is no guesswork with this bull: his Pathfinder donor dam, 463 has not missed posting a WWR 7@110, YWR 7@106, IMF 6@110, REA @100, and her grand dam was still in production at the age 18. His sire is the result of mating the standard for performance and longevity, Rito 707, with an N-Bar donor who was still in production at the age of 17. It is no

surprise that the 161 daughters are some of the best young cows to surface here, warranting accelerated use of this bull moving forward. Utilize these sons for their genetic merit to sire great replacement females and steer calves with added stature, capacity and style.



161



SIRE



DAM



LOT 2

LOT 1

CHAPMAN RITO 4519B

MALE SWC 4519B #1830794 APRIL 01, 2014

SINCLAIR ENTREPRENEUR 8R101 CAF NHF DDF
MC CUMBER 8R101 RITO 161
B PRIDE 463 OF MC CUMBER

CROWFOOT VENTURE 1698L
CHAPMAN ERICA 42P
CHAPMAN ERICA 207M

R R RITO 707 AMF CAF NHF DDF
N BAR KINCHTRY BEAUTY Z1925
PINE CREEK RIGHT TIME 1147 AMF NHF
B PRIDE 273 OF MC CUMBER

BASIN MAX 104J AMF CAF NHF
GLADWALL SARITA 8255
SITZ ALLIANCE 6595 DMF AMF CAF NHF DDF
PAT B ERICA 620

BW	WW	205D	WR	10/23WT	ADG	BW	WW	YW	MILK	TM
88	703	629	105	1420	2.53	1.8	48	83	22	46

AOD: 10 SALE DAY SC: SALE DAY WT:

A performance standout & one of the heaviest bulls throughout. Dam is a favorite & designated Elite and ratios 8/105 with sons to Bluesky Ron Maron, Brian Coutts & Skocdopole.

LOT 2

CHAPMAN RITO 4517B

MALE SWC 4517B # MARCH 25, 2014

SINCLAIR ENTREPRENEUR 8R101 CAF NHF DDF
MC CUMBER 8R101 RITO 161
B PRIDE 463 OF MC CUMBER

CROWFOOT MACHO 4549P
CHAPMAN EILEEN 709T
CROWFOOT G EILEEN 4784P

R R RITO 707 AMF CAF NHF DDF
N BAR KINCHTRY BEAUTY Z1925
PINE CREEK RIGHT TIME 1147 AMF NHF
B PRIDE 273 OF MC CUMBER

O C C MAGNUM 749M
CROWFOOT BLACKBIRD 2537M
O C C HUNTER 928H
CROWFOOT G EILEEN 9156

BW	WW	205D	WR	10/23WT	ADG	BW	WW	YW	MILK	TM
85	700	610	102	1315	1.98	1.5	50	78	19	44

AOD: 10 SALE DAY SC: SALE DAY WT:

Muscle and performance and depth of body with these 161 sons. Elite dam that ratios 7/108. Sons to A7 Ranches, Larry Meyers, Jack Hayden & Tomahawk Ranch.

LOT 3

CHAPMAN RITO 4518B

MALE SWC 4518B #1830812 MARCH 27, 2014

SINCLAIR ENTREPRENEUR 8R101 CAF NHF DDF
MC CUMBER 8R101 RITO 161
B PRIDE 463 OF MC CUMBER

CROWFOOT MACHO 4549P
CHAPMAN EILEEN 709T
CROWFOOT G EILEEN 4784P

R R RITO 707 AMF CAF NHF DDF
N BAR KINCHTRY BEAUTY Z1925
PINE CREEK RIGHT TIME 1147 AMF NHF
B PRIDE 273 OF MC CUMBER

O C C MAGNUM 749M
CROWFOOT BLACKBIRD 2537M
O C C HUNTER 928H
CROWFOOT G EILEEN 9156

BW	WW	205D	WR	10/23WT	ADG	BW	WW	YW	MILK	TM
86	706	620	104	1385	2.45	2.3	48	77	17	41

AOD: 7 SALE DAY SC: SALE DAY WT:

High indexing bull that stands down on all four corners. Crowfoot Macho dam maintains a great udder and ratios 5/108. Sister mates to these 161 sons really look the part.

LOT **4**

CHAPMAN RITO 4527B

MALE SWC 4527B #1830882 APRIL 15, 2014

SINCLAIR ENTREPRENEUR 8R101 CAF NHF DDF
MC CUMBER 8R101 RITO 161
B PRIDE 463 OF MC CUMBER

CROWFOOT EQUATION 5793R
CHAPMAN BLACKBIRD 016X
CHAPMAN BLACKBIRD 719T

R R RITO 707 AMF CAF NHF DDF
N BAR KINCHTRY BEAUTY Z1925
PINE CREEK RIGHT TIME 1147 AMF NHF
B PRIDE 273 OF MC CUMBER

O C C LEGACY 839L
CROWFOOT FORKS 755K
CROWFOOT MACHO 4549P
CHAPMAN BLACKBIRD 319N

BW	WW	205D	WR	10/23WT	ADG	BW	WW	YW	MILK	TM
87	713	689	117	1375	2.22	2.7	54	94	22	49

AOD: 4 SALE DAY SC: SALE DAY WT:

We mate bulls to entire age groups of cows, typically 50-60 per bull, and these cows born in 2010 really connected with 161. Dam ratio's 3/112 and had one of the top bulls last year.



LOT 4

LOT **5**

CHAPMAN RITO 4556B

MALE SWC 4556B #1830905 APRIL 18, 2014

SINCLAIR ENTREPRENEUR 8R101 CAF NHF DDF
MC CUMBER 8R101 RITO 161
B PRIDE 463 OF MC CUMBER

CROWFOOT JOKER 6172S
CHAPMAN NEONIA 0157X
CHAPMAN NEONIA 756T

R R RITO 707 AMF CAF NHF DDF
N BAR KINCHTRY BEAUTY Z1925
PINE CREEK RIGHT TIME 1147 AMF NHF
B PRIDE 273 OF MC CUMBER

O C C JOKER 620J DDF
CFCC 1801L
CHAPMAN ALLIANCE 262M
CHAPMAN NEONIA 4408

BW	WW	205D	WR	10/23WT	ADG	BW	WW	YW	MILK	TM
95	713	698	117	1460	3.24	4.8	53	79	22	49

AOD: 4 SALE DAY SC: SALE DAY WT:

One of the heaviest bulls weaned and again off pasture in November. Rito x Joker blends performance and efficiency in a right size package. Dam ratios 4/102.



LOT 5

LOT **6**

CHAPMAN RITO 4569B

MALE SWC 4569B #1830894 APRIL 21, 2014

SINCLAIR ENTREPRENEUR 8R101 CAF NHF DDF
MC CUMBER 8R101 RITO 161
B PRIDE 463 OF MC CUMBER

CROWFOOT JOKER 6172S
CHAPMAN MISS RIO 0114X
CHAPMAN MISS RIO 717T

R R RITO 707 AMF CAF NHF DDF
N BAR KINCHTRY BEAUTY Z1925
PINE CREEK RIGHT TIME 1147 AMF NHF
B PRIDE 273 OF MC CUMBER

O C C JOKER 620J DDF
CFCC 1801L
CHAPMAN PAY DAY 4456
CHAPMAN MISS RIO 541R

BW	WW	205D	WR	10/23WT	ADG	BW	WW	YW	MILK	TM
90	697	690	116	1210	1.96	3.0	49	71	20	45

AOD: 4 SALE DAY SC: SALE DAY WT:

121 Rito 161 progeny born to date with zero assistance. High indexing bull posting a WI @ 116. Dam ratios 4/100 and has the traditional Angus female look that Joker does so well.



LOT 6

LOT **7**

CHAPMAN RITO 4574B

MALE SWC 4574B #1830884 APRIL 23, 2014

SINCLAIR ENTREPRENEUR 8R101 CAF NHF DDF
MC CUMBER 8R101 RITO 161
B PRIDE 463 OF MC CUMBER

SINCLAIR TELECAST 01S3 AMF CAF NHF DDF
CHAPMAN EILEEN 018X
CHAPMAN EILEEN 449P

R R RITO 707 AMF CAF NHF DDF
N BAR KINCHTRY BEAUTY Z1925
PINE CREEK RIGHT TIME 1147 AMF NHF
B PRIDE 273 OF MC CUMBER

N BAR SHADOW X4124
IDEAL 4465 OF 6807 4286 AMF NHF
V D A R RITO 953 AMF
CHAPMAN EILEEN 217M

BW	WW	205D	WR	10/23WT	ADG	BW	WW	YW	MILK	TM
91	612	628	104	1305	3.13	2.9	50	69	19	44

AOD: 4 SALE DAY SC: SALE DAY WT:

Good bull with a highly maternal pedigree. The Eileen cow family is known here for impeccable udder type. 449P granddam is designated Elite, and Great granddam was an ET donor.



LOT 7



LOT 8 **CHAPMAN RITO 4575B** MALE SWC 4575B #1842018 APRIL 23, 2014

SINCLAIR ENTREPRENEUR 8R101 CAF NHF DDF
MC CUMBER 8R101 RITO 161
B PRIDE 463 OF MC CUMBER

SINCLAIR NET PRESENT VALUE AMF CAF NHF DDF
CHAPMAN BLACKBIRD 0020X
CHAPMAN BLACKBIRD 319N

R R RITO 707 AMF CAF NHF DDF
N BAR KINCHTRY BEAUTY Z1925
PINE CREEK RIGHT TIME 1147 AMF NHF
B PRIDE 273 OF MC CUMBER

N BAR PRIME TIME D806 AMF CAF NHF DDF
IDEAL 4465 OF 6807 4286 AMF NHF
BASIN EXPEDITION K47
BEVALEN BLACKBIRD 7K

BW	WW	205D	WR	10/23WT	ADG	BW	WW	YW	MILK	TM
91	687	628	104	1415	3.63	2.6	43	66	21	43

AOD: 4 SALE DAY SC: SALE DAY WT:

These Rito bulls will be easy to notice for their capacity. High WW and big gain on grass after a roughage only background diet. Granddam is designated Elite.

LOT 9 **CHAPMAN RITO 4576B** MALE SWC 4576B #1830892 APRIL 23, 2014

SINCLAIR ENTREPRENEUR 8R101 CAF NHF DDF
MC CUMBER 8R101 RITO 161
B PRIDE 463 OF MC CUMBER

CROWFOOT JOKER 6172S
CHAPMAN PRIDE 0106X
CHAPMAN PRIDE 775T

R R RITO 707 AMF CAF NHF DDF
N BAR KINCHTRY BEAUTY Z1925
PINE CREEK RIGHT TIME 1147 AMF NHF
B PRIDE 273 OF MC CUMBER

O C C JOKER 620J DDF
CFCC 1801L
CHAPMAN ALLIANCE 259M
KLUZAK PRIDE 25G

BW	WW	205D	WR	10/23WT	ADG	BW	WW	YW	MILK	TM
94	710	708	119	1420	2.94	3.6	54	81	22	49

AOD: 4 SALE DAY SC: SALE DAY WT:

Another 161 that stood hit the mark for WW, YW and off grass in November. Backed by the productive Pride cow family, dam ratios 4/115. Good bull.



LOT 10 **CHAPMAN RITO 4592B** MALE SWC 4592B #1830881 APRIL 26, 2014

SINCLAIR ENTREPRENEUR 8R101 CAF NHF DDF
MC CUMBER 8R101 RITO 161
B PRIDE 463 OF MC CUMBER

MC CUMBER 536P EXT 7196
CHAPMAN ROSE 015X
BARBWALL P ROSE LEE 5140

R R RITO 707 AMF CAF NHF DDF
N BAR KINCHTRY BEAUTY Z1925
PINE CREEK RIGHT TIME 1147 AMF NHF
B PRIDE 273 OF MC CUMBER

SITZ JLS EMULATION EXT 536P
LASSIE 434 OF MC CUMBER
SHOSHONE LANCE 2315
BAR PATRIOT ROSE LEE B 2120

BW	WW	205D	WR	10/23WT	ADG	BW	WW	YW	MILK	TM
86	669	677	114	1270	2.65	2.1	54	72	15	42

AOD: 4 SALE DAY SC: SALE DAY WT:

Neat maternal pedigree being McCumber bred bull on top and bottom. High indexing bull at weaning. Dam ratios 3/99 with a lineage known for udder quality and fertility.

LOT 11 **CHAPMAN RITO 4617B** MALE SWC 4617B #1830897 APRIL 29, 2014

SINCLAIR ENTREPRENEUR 8R101 CAF NHF DDF
MC CUMBER 8R101 RITO 161
B PRIDE 463 OF MC CUMBER

CROWFOOT JOKER 6172S
CHAPMAN JEANNE 0119X
CHAPMAN JEANNE 778T

R R RITO 707 AMF CAF NHF DDF
N BAR KINCHTRY BEAUTY Z1925
PINE CREEK RIGHT TIME 1147 AMF NHF
B PRIDE 273 OF MC CUMBER

O C C JOKER 620J DDF
CFCC 1801L
CHAPMAN ALLIANCE 259M
CHAPMAN JEANNE 4402

BW	WW	205D	WR	10/23WT	ADG	BW	WW	YW	MILK	TM
93	661	677	113	1295	2.70	4.0	50	73	22	47

AOD: 4 SALE DAY SC: SALE DAY WT:

Based on the weaning indexes and phenotype, Rito 161 will add pay weight without increasing mature frame. 75 Joker daughters in production here alone. Dam ratios 4/103.

LOT 12 **CHAPMAN RITO 4624B** MALE SWC 4624B #1830891 APRIL 30, 2014

SINCLAIR ENTREPRENEUR 8R101 CAF NHF DDF
MC CUMBER 8R101 RITO 161
B PRIDE 463 OF MC CUMBER

CROWFOOT JOKER 6172S
CHAPMAN PRINCENE 0103X
CHAPMAN PRINCENE 670S

R R RITO 707 AMF CAF NHF DDF
N BAR KINCHTRY BEAUTY Z1925
PINE CREEK RIGHT TIME 1147 AMF NHF
B PRIDE 273 OF MC CUMBER

O C C JOKER 620J DDF
CFCC 1801L
SITZ TRADITION RLS 8702
GLADWALL PRINCENE 6320

BW	WW	205D	WR	10/23WT	ADG	BW	WW	YW	MILK	TM
83	575	593	99	1305	3.39	2.2	47	69	18	42

AOD: 4 SALE DAY SC: SALE DAY WT:

A lower birth weight Rito that sits right in the middle of the bell curve. Dam ratios 4/95 from the Princene cow family known for added payweight and milk flow.



LOT 13 CHAPMAN RITO 4633B

MALE SWC 4633B #1830909 MAY 03, 2014

SINCLAIR ENTREPRENEUR 8R101 CAF NHF DDF
MC CUMBER 8R101 RITO 161
B PRIDE 463 OF MC CUMBER

DOUBLE AA OLD POST BANDOLIER AMF CAF NHF DDF
REMINGTON LADY ERICA 810X
CROWFOOT LADY ERICA 3785N

R R RITO 707 AMF CAF NHF DDF
N BAR KINCHTRY BEAUTY Z1925
PINE CREEK RIGHT TIME 1147 AMF NHF
B PRIDE 273 OF MC CUMBER
DOUBLE AA BLACKMAN 252'96
DOUBLE AA ANNIE K 548'99
O C C JOKER 620J DDF
PAT LADY ERICA 8984

BW	WW	205D	WR	10/23WT	ADG	BW	WW	YW	MILK	TM
84	669	697	119	1290	2.46	2.4	52	79	19	45

AOD: 4 SALE DAY SC: SALE DAY WT:

Combination moderate birth with a WI @ 119. Dam ratios 4/111 with a son to Rodvang Farms. Grandmothers 3785N & 8984 are ET donors here combining for 53 recorded calves.



LOT 13

LOT 14 CHAPMAN RITO 4643B

MALE SWC 4643B #1830901 MAY 07, 2014

SINCLAIR ENTREPRENEUR 8R101 CAF NHF DDF
MC CUMBER 8R101 RITO 161
B PRIDE 463 OF MC CUMBER

SINCLAIR MEMENTO 8RL5
CHAPMAN NELLIE 0124X
CHAPMAN NELLIE 210M

R R RITO 707 AMF CAF NHF DDF
N BAR KINCHTRY BEAUTY Z1925
PINE CREEK RIGHT TIME 1147 AMF NHF
B PRIDE 273 OF MC CUMBER
SINCLAIR RITO LEGACY 3R9 AMF CAF DDF
SINCLAIR LADY 06S3 4465
SITZ ALLIANCE 6595 DMF AMF CAF NHF DDF
GLADWALL BELLE L NELLIE 581

BW	WW	205D	WR	10/23WT	ADG	BW	WW	YW	MILK	TM
80	594	631	107	1410	3.37	0.9	50	79	17	42

AOD: 4 SALE DAY SC: SALE DAY WT:

A low birth, high WI bull that was near the top off grass! Dam possesses an impeccable udder and ratios 5/113 and grandmother is an ET donor with 3 herd bulls retained.



LOT 14

LOT 15 CHAPMAN RITO 4647B

MALE SWC 4647B #1830908 MAY 06, 2014

SINCLAIR ENTREPRENEUR 8R101 CAF NHF DDF
MC CUMBER 8R101 RITO 161
B PRIDE 463 OF MC CUMBER

CROWFOOT MACHO 4549P
CHAPMAN ROSEWALL 0195X
CROWFOOT ROSEWALL 5770R

R R RITO 707 AMF CAF NHF DDF
N BAR KINCHTRY BEAUTY Z1925
PINE CREEK RIGHT TIME 1147 AMF NHF
B PRIDE 273 OF MC CUMBER
O C C MAGNUM 749M
CROWFOOT BLACKBIRD 2537M
O C C LEGACY 839L
CROWFOOT ROSEWALL 1666L

BW	WW	205D	WR	10/23WT	ADG	BW	WW	YW	MILK	TM
85	632	667	113	1190	2.59	2.6	50	67	17	42

AOD: 4 SALE DAY SC: SALE DAY WT:

Moderate bull posting solid weaning data of 667# and a WI of 113 in a large performance group. Dam is a true 1350# cow and ratios 3/98 with a good bull to Kelly Walker last year.



LOT 15

LOT 16 CHAPMAN RITO 4666B

MALE SWC 4666B #1830890 MAY 13, 2014

SINCLAIR ENTREPRENEUR 8R101 CAF NHF DDF
MC CUMBER 8R101 RITO 161
B PRIDE 463 OF MC CUMBER

SINCLAIR MEMENTO 8RL5
CHAPMAN PEARL 0102X
CROWFOOT PEARL 1828L

R R RITO 707 AMF CAF NHF DDF
N BAR KINCHTRY BEAUTY Z1925
PINE CREEK RIGHT TIME 1147 AMF NHF
B PRIDE 273 OF MC CUMBER
SINCLAIR RITO LEGACY 3R9 AMF CAF DDF
SINCLAIR LADY 06S3 4465
TOMWALL GDAR ROYCE 916
GLADWALL L PEARL 7192

BW	WW	205D	WR	10/23WT	ADG	BW	WW	YW	MILK	TM
86	631	687	116	1250	2.79	1.7	56	81	20	48

AOD: 4 SALE DAY SC: SALE DAY WT:

This bull should sire steer calves and sweet replacements. His wedge shaped dam ratios 4/99 and sets the standard around here for udder type. Granddam designated Elite.



LOT 16



LOT **17**

CHAPMAN RITO 4681B

MALE SWC 4681B #1830903 MAY 19, 2014

SINCLAIR ENTREPRENEUR 8R101 CAF NHF DDF
MC CUMBER 8R101 RITO 161
 B PRIDE 463 OF MC CUMBER

CROWFOOT JOKER 6172S
CHAPMAN IDELETTE 0137X
 CHAPMAN IDELETTE 764T

R R RITO 707 AMF CAF NHF DDF
 N BAR KINCHTRY BEAUTY Z1925
 PINE CREEK RIGHT TIME 1147 AMF NHF
 B PRIDE 273 OF MC CUMBER

O C C JOKER 620J DDF
 CFCC 1801L
 DDA EMBLAZON 27C AMF CAF NHF DDF
 HAPPYVALE NJP IDELETTE 111M

BW	WW	205D	WR	10/23WT	ADG	BW	WW	YW	MILK	TM
83	630	705	120	1275	2.66	1.4	54	75	20	47

AOD: 4 SALE DAY SC: _____ SALE DAY WT: _____

Mass = density x volume with lower added birth define Rito x Joker. Wait until they are 5-6 year old bulls! Dam ratios 4/106 with a good bull last year to Snake Lake Ranches.



LOT **18**

CHAPMAN RITO 4684B

MALE SWC 4684B #1830910 MAY 20, 2014

SINCLAIR ENTREPRENEUR 8R101 CAF NHF DDF
MC CUMBER 8R101 RITO 161
 B PRIDE 463 OF MC CUMBER

DOUBLE AA OLD POST BANDOLIER AMF CAF NHF DDF
REMINGTON LADY ERICA 815X
 CROWFOOT LADY ERICA 3785N

R R RITO 707 AMF CAF NHF DDF
 N BAR KINCHTRY BEAUTY Z1925
 PINE CREEK RIGHT TIME 1147 AMF NHF
 B PRIDE 273 OF MC CUMBER

DOUBLE AA BLACKMAN 252'96
 DOUBLE AA ANNIE K 548'99
 O C C JOKER 620J DDF
 PAT LADY ERICA 8984

BW	WW	205D	WR	10/23WT	ADG	BW	WW	YW	MILK	TM
76	605	681	117	1320	2.78	1.0	52	82	19	45

AOD: 4 SALE DAY SC: _____ SALE DAY WT: _____

A full brother in blood to Lot 13. Low birth with added performance posting a WI and YI of 117 & 112 respectively. Dam ratios 4/109 with a son to Boulding Ranches.



COLE CREEK GOLDMERE 581

SIRES

COLE CREEK CEDAR RIDGE 181

MALE IMP 581Y # 1715235 FEBRUARY 23 2011

MALE IMP 181Y #1715228 FEBRUARY 08, 2011

COLE CREEK GOLDMERE 31N
COLE CREEK GOLDMERE 70V
COLE CREEK CLOVA JUANDA 16N

COLE CREEK GOLDMERE 31N
COLE CREEK JUANDA 92T
COLE CREEK JUANDA 32P

JUANDA GOLDMERE OF P J M
COLE CREEK CLOVA 397
HBR ECLIPSE 7116
COLE CREEK CLOVA JUANDA 988

JUANDA GOLDMERE OF P J M
COLE CREEK CLOVA 397
CH QUANTUM 6247
COLE CREEK JUANDA 429

COLE CREEK BLACK CEDAR 46P
COLE CREEK CEDAR RIDGE 1V DMF DWF AMF CAF NHF DDF
COLE CREEK CLOVANADA 49S

HBR ENCORE 0544
COLE CREEK JUANADACAP 42P
COLE CREEK JUANADA CAP 882

C H QUANTUM 6247
COLE CREEK CLOVA JUANADA 67
HBR ENCORE 0544
COLE CREEK CLOVANADA 709

SHOSHONE ENCORE 6310
C A R MISS FOREVER 546
JUANADA 7 OF P J M
COLE CREEK RITA BLACKCAP 20W

BW	WW	YW	MILK	TM	SC	CE	MCE	REA	CW	MARB	FAT
0.1	41	58	25	46	1.05	12	7	0.64	5	0.01	0.029

BW	WW	YW	MILK	TM	SC	CE	MCE	REA	CW	MARB	FAT
0.2	23	69	30	42	0.82	9	7	0.45	14	0.19	0.043

Along with Crowfoot Cattle, we decided to add some Cole Creek genetics to our herds because we admired the doability, the fertility, the correctness, and purity of pedigree and Angus character. We bought 4 of the 5 high selling bulls in the Cole Creek 2012 Bull Sale. When you check out the progeny from these bulls you will surely agree that move definitely had its merit. The bulls we purchased had very correct feet, good scrotal shape and development, very athletic in their movement and exceptional libido. The Cole Creek herd of cows is run as tough as any purebred herd on the continent. The fertility of that herd is really impressive. Utilize these sons on heifers or cows for all those attributes that we purchased their sires on.



LOT 20

LOT 20 CHAPMAN GOLDMERE 4545B

MALE SWC 4545B #1839481 APRIL 17, 2014

COLE CREEK GOLDMERE 70V
COLE CREEK GOLDMERE 581
COLE CREEK JUANADA 92T

SINCLAIR RITO 9R7
CHAPMAN NELLIE 2020Z
CHAPMAN NELLIE 744T

COLE CREEK GOLDMERE 31N
COLE CREEK CLOVA JUANDA 16N
COLE CREEK GOLDMERE 31N
COLE CREEK JUANADA 32P

RITO REVOLVE OR5
SINCLAIR K BTY 6PV5 25F3
CHAPMAN PAY DAY 4456
CHAPMAN NELLIE 524R

BW	WW	205D	WR	10/23WT	ADG	BW	WW	YW	MILK	TM
84	741	779	135	1490	3.48	1.6	56	77	26	54

AOD: 2 SALE DAY SC: SALE DAY WT:

Solid 581 son who weaned off his young 9R7 dam as the heaviest bull calf overall on just her 1st try. Goes back to donor dam 210M.

LOT 22 CHAPMAN GOLDMERE 4653B

MALE SWC 4653B #1839491 MAY 09, 2014

COLE CREEK GOLDMERE 70V
COLE CREEK GOLDMERE 581
COLE CREEK JUANADA 92T

CHAPMAN RITO LEGACY 218U
CHAPMAN EILEEN 2036Z
CHAPMAN EILEEN 006X

COLE CREEK GOLDMERE 31N
COLE CREEK CLOVA JUANDA 16N
COLE CREEK GOLDMERE 31N
COLE CREEK JUANADA 32P

SINCLAIR RITO LEGACY 3R9 AMF CAF DDF
PAT LADY ERICA 8984
V D A R RITO 953 AMF
CHAPMAN EILEEN 791T

BW	WW	205D	WR	10/23WT	ADG	BW	WW	YW	MILK	TM
86	600	700	119	1345	3.27	2.2	39	63	25	45

AOD: 2 SALE DAY SC: SALE DAY WT:

We're really excited about our young cows coming into production, as this good Goldmere son weaned off his young dam at 700# on her 1st go. Good bull.

LOT 19 CHAPMAN GOLDMERE 4558B

MALE SWC 4558B #1839490 APRIL 18, 2014

COLE CREEK GOLDMERE 70V
COLE CREEK GOLDMERE 581
COLE CREEK JUANADA 92T

CHAPMAN RITO LEGACY 218U
CHAPMAN ELEVATE 2081Z
CHAPMAN ELEVATE 325N

COLE CREEK GOLDMERE 31N
COLE CREEK CLOVA JUANADA 16N
COLE CREEK GOLDMERE 31N
COLE CREEK JUANADA 32P

SINCLAIR RITO LEGACY 3R9 AMF CAF DDF
PAT LADY ERICA 8984
CROWFOOT BRUNO 1670L
GLADWALL ELEVATE 110T

BW	WW	205D	WR	10/23WT	ADG	BW	WW	YW	MILK	TM
77	713	755	131	1440	2.99	0.5	44	69	26	48

AOD: 2 SALE DAY SC: SALE DAY WT:

Excellent bull combining low birth with performance, weaning off his young dam as the 2nd overall heaviest bull calf to ratio 131. Grandmother designated Elite.

LOT 21 CHAPMAN GOLDMERE 4640B

MALE SWC 4640B #1839472 MAY 05, 2014

COLE CREEK GOLDMERE 70V
COLE CREEK GOLDMERE 581
COLE CREEK JUANADA 92T

SINCLAIR RITO 9R7
CHAPMAN LADY ERICA 2099Z
PAT LADY ERICA 8984

COLE CREEK GOLDMERE 31N
COLE CREEK CLOVA JUANADA 16N
COLE CREEK GOLDMERE 31N
COLE CREEK JUANADA 32P

RITO REVOLVE OR5
SINCLAIR K BTY 6PV5 25F3
N BAR IMPACT U1253
PAT PIED PIPER 92T

BW	WW	205D	WR	10/23WT	ADG	BW	WW	YW	MILK	TM
76	582	671	115	1285	2.99	1.1	44	70	22	44

AOD: 2 SALE DAY SC: SALE DAY WT:

Low birth Goldmere son who's adjusted WW puts him near the top off his 1st time dam. Granddam is long time ET donor here still in production at 18 years of age.



LOT 22

COLE CREEK CEDAR RIDGE 181 PROGENY



LOT 23 CHAPMAN MONTANA 4504B

MALE SWC 4504B #1830948 FEBRUARY 16, 2014

COLE CREEK CEDAR RIDGE 1V DMF DWF AMF CAF NHF DDF
COLE CREEK CEDAR RIDGE 181
COLE CREEK JUANADACAP 42P

FUNKS BALLARD 952 GFAR
XO CROWFOOT ELISEVER 1416Y
XO CROWFOOT ELISEVA 950W

COLE CREEK BLACK CEDAR 46P
COLE CREEK CLOVANADA 49S
HBR ENCORE 0544
COLE CREEK JUANADA CAP 882

SHOSHONE BALLARD 628
MISS FOREVER 413 G F A R
CROWFOOT 6071S
CROWFOOT CJ BRUNO 7739T

BW	WW	205D	WR	10/23WT	ADG	BW	WW	YW	MILK	TM
78	680	573	104	1420	2.33	-0.9	31	76	25	41

AOD: 3 SALE DAY SC: SALE DAY WT:

Combines lower birth with solid individual performance. Dam ratios 109 on 3 calves. 1st bull to Lloyd Price, daughter retained.



LOT 24

LOT 24 CHAPMAN MONTANA 4506B

MALE SWC 4506B #1830951 FEBRUARY 16, 2014

COLE CREEK CEDAR RIDGE 1V DMF DWF AMF CAF NHF DDF
COLE CREEK CEDAR RIDGE 181
COLE CREEK JUANADACAP 42P

CROWFOOT EQUATION 5793R
XO CROWFOOT KAWICH 1557Y
CROWFOOT KAWICH 1758L

COLE CREEK BLACK CEDAR 46P
COLE CREEK CLOVANADA 49S
HBR ENCORE 0544
COLE CREEK JUANADA CAP 882

O C C LEGACY 839L
CROWFOOT FORKS 755K
BASIN PARTNER 137H
GLADWALL KAWICH LADY 7171

BW	WW	205D	WR	10/23WT	ADG	BW	WW	YW	MILK	TM
82	687	579	105	1370	2.40	0.9	29	71	28	43

AOD: 3 SALE DAY SC: SALE DAY WT:

Dam ratios 100 on 3 calves. Same cow family as two of last year's high selling bulls to Crescent Creek and Bill Armstrong

LOT 25 CHAPMAN MONTANA 4510B

MALE SWC 4510B #1830950 FEBRUARY 23, 2014

COLE CREEK CEDAR RIDGE 1V DMF DWF AMF CAF NHF DDF
COLE CREEK CEDAR RIDGE 181
COLE CREEK JUANADACAP 42P

XO CROWFOOT JOKER 8814U
XO CROWFOOT PEARL 1535Y
CROWFOOT 4833P

COLE CREEK BLACK CEDAR 46P
COLE CREEK CLOVANADA 49S
HBR ENCORE 0544
COLE CREEK JUANADA CAP 882

CROWFOOT JOKER 6172S
CROWFOOT FORKS 699K
O C C HUNTER 928H
GLADWALL L PEARL 7190

BW	WW	205D	WR	10/23WT	ADG	BW	WW	YW	MILK	TM
90	627	547	96	1315	2.50	2.5	27	63	22	36

AOD: 3 SALE DAY SC: SALE DAY WT:

The Cole Creek influence on 8814U daughters should promote excellent feet, fertility and udder structure. Dam ratios 94 on 3 calves.

LOT 26 CHAPMAN MONTANA 4511B

MALE SWC 4511B #1830888 FEBRUARY 24, 2014

COLE CREEK CEDAR RIDGE 1V DMF DWF AMF CAF NHF DDF
COLE CREEK CEDAR RIDGE 181
COLE CREEK JUANADACAP 42P

XO CROWFOOT JOKER 8814U
CROWFOOT LADY ERICA 66X
CROWFOOT LADY ERICA 6276S

COLE CREEK BLACK CEDAR 46P
COLE CREEK CLOVANADA 49S
HBR ENCORE 0544
COLE CREEK JUANADA CAP 882

CROWFOOT JOKER 6172S
CROWFOOT FORKS 699K
O C C LEGACY 839L
CROWFOOT LADY ERICA 1628L

BW	WW	205D	WR	10/23WT	ADG	BW	WW	YW	MILK	TM
76	635	529	95	1375	2.61	0.2	25	64	24	37

AOD: 4 SALE DAY SC: SALE DAY WT:

A strong February born bull where the Adj. WW worked against him vs. the April calves. Dam ratios 98 on 4 calves with a son to Arrowood Colony.

LOT 27 CHAPMAN MONTANA 4512B

MALE SWC 4512B #1830939 FEBRUARY 27, 2014

COLE CREEK CEDAR RIDGE 1V DMF DWF AMF CAF NHF DDF
COLE CREEK CEDAR RIDGE 181
COLE CREEK JUANADACAP 42P

XO CROWFOOT JOKER 8814U
CROWFOOT PRIDE 1063Y
CROWFOOT PRIDE 6052S

COLE CREEK BLACK CEDAR 46P
COLE CREEK CLOVANADA 49S
HBR ENCORE 0544
COLE CREEK JUANADA CAP 882

CROWFOOT JOKER 6172S
CROWFOOT FORKS 699K
WHITNEY CREEK MAXIMUS 24
CROWFOOT PRIDE 4735P

BW	WW	205D	WR	10/23WT	ADG	BW	WW	YW	MILK	TM
86	645	566	101	1370	2.42	1.9	29	71	25	40

AOD: 3 SALE DAY SC: SALE DAY WT:

Exceptional libido in these Cole Creek sons. Dam ratios 103 on 3 calves with a daughter to Circle Cross Ranching Co.

LOT 28 CHAPMAN MONTANA 4546B

MALE SWC 4546B #1839469 APRIL 17, 2014

COLE CREEK CEDAR RIDGE 1V DMF DWF AMF CAF NHF DDF
COLE CREEK CEDAR RIDGE 181
COLE CREEK JUANADACAP 42P

O C C HUNTER 928H
CROWFOOT G EILEEN 4784P
CROWFOOT G EILEEN 9156

COLE CREEK BLACK CEDAR 46P
COLE CREEK CLOVANADA 49S
HBR ENCORE 0544
COLE CREEK JUANADA CAP 882

O C C FOCUS 813F
O C C DIXIE ERICA 960E
D V PRIDES COMMODORE
GLADWALL G EILEEN 7993

BW	WW	205D	WR	10/23WT	ADG	BW	WW	YW	MILK	TM
73	611	581	99	1300	2.73	-1.1	29	63	23	38

AOD: 10 SALE DAY SC: SALE DAY WT:

Low birth Cedar Ridge by a productive aged OCC Hunter dam with a son to Rodvang Farms. Several daughters retained. Granddam designated Elite.

LOT 29 CHAPMAN MONTANA 4549B
MALE SWC 4549B #1839503 APRIL 18, 2014

COLE CREEK CEDAR RIDGE 1V DMF DWF AMF CAF NHF DDF
COLE CREEK CEDAR RIDGE 181
COLE CREEK JUANADACAP 42P

O C C MAGNUM 749M
CROWFOOT PAT B ERICA 4420P
CROWFOOT PAT B ERICA 2448M

COLE CREEK BLACK CEDAR 46P
COLE CREEK CLOVANADA 49S
HBR ENCORE 0544
COLE CREEK JUANADA CAP 882
O C C EUREKA 865E
O C C JUANADA 818E
G A R TRAVELER 1489 DMF AMF CAF DDF
PAT B ERICA 729

BW	WW	205D	WR	10/23WT	ADG	BW	WW	YW	MILK	TM
76	562	537	89	1280	2.45	-1.8	29	67	20	35

AOD: 10 SALE DAY SC: SALE DAY WT:

Calving ease built in with excellent post-weaning growth off an aged OCC
Magnum dam ratioing 99 on 8 calves with a son to Arns Brae Farms



LOT 29

LOT 30 CHAPMAN MONTANA 4551B
MALE SWC 4551B #1839487 APRIL 18, 2014

COLE CREEK CEDAR RIDGE 1V DMF DWF AMF CAF NHF DDF
COLE CREEK CEDAR RIDGE 181
COLE CREEK JUANADACAP 42P

BLACK GEM RAIN AGAIN 340N
CHAPMAN LOVEMERE 607S
CROWFOOT LOVEMERE R 9221

COLE CREEK BLACK CEDAR 46P
COLE CREEK CLOVANADA 49S
HBR ENCORE 0544
COLE CREEK JUANADA CAP 882
G D A R RAINMAKER 340
LANDMARK FRED A 911
N BAR TRANSITION A583
BARBWALL LOVEMERE R 330

BW	WW	205D	WR	10/23WT	ADG	BW	WW	YW	MILK	TM
84	626	598	100	1370	3.11	0.9	25	58	24	37

AOD: 8 SALE DAY SC: SALE DAY WT:

Proven Montana pedigree of N Bar and GDAR. Dam designated Elite with a son to
Danny Reimer and 3 daughters retained.



LOT 31 CHAPMAN MONTANA 4568B
MALE SWC 4568B #1839509 APRIL 21, 2014

COLE CREEK CEDAR RIDGE 1V DMF DWF AMF CAF NHF DDF
COLE CREEK CEDAR RIDGE 181
COLE CREEK JUANADACAP 42P

S B R WATERTON 6148S
CHAPMAN PRIDE 806U
CHAPMAN FAHRENESS 678S

COLE CREEK BLACK CEDAR 46P
COLE CREEK CLOVANADA 49S
HBR ENCORE 0544
COLE CREEK JUANADA CAP 882
LIONHEART OF WICKWIRE
OCTORARO MISS WIX 803
D D A FAHREN 21X
BARBWALL G PRIDE 632

BW	WW	205D	WR	10/23WT	ADG	BW	WW	YW	MILK	TM
78	605	585	98	1230	1.95	-0.4	26	65	26	39

AOD: 6 SALE DAY SC: SALE DAY WT:

Good low birth weight pedigree combining DDA 21X. SBR Waterton and Cedar
Ridge. Pedigree indicates udder fixer. Brother to Hays Stock Grazing Co-op.



LOT 31

LOT 32 CHAPMAN MONTANA 4583B
MALE SWC 4583B #1839501 APRIL 24, 2014

COLE CREEK CEDAR RIDGE 1V DMF DWF AMF CAF NHF DDF
COLE CREEK CEDAR RIDGE 181
COLE CREEK JUANADACAP 42P

CROWFOOT JOKER 6172S
CHAPMAN NEONIA 9029W
CHAPMAN NEONIA 690S

COLE CREEK BLACK CEDAR 46P
COLE CREEK CLOVANADA 49S
HBR ENCORE 0544
COLE CREEK JUANADA CAP 882
O C C JOKER 620J DDF
CFCC 1801L
CHAPMAN GLORY 467P
HAPPYVALE JRP NEONIA 6M

BW	WW	205D	WR	10/23WT	ADG	BW	WW	YW	MILK	TM
79	574	562	94	1295	3.02	0.4	23	54	25	37

AOD: 5 SALE DAY SC: SALE DAY WT:

Low birth pedigree combining Cedar Ridge on a double bred OCC dam. Expect
moderate mature size & additional years service on your heifers.



LOT 32

COLE CREEK CEDAR RIDGE 181 PROGENY

LOT 33 CHAPMAN MONTANA 4584B

MALE SWC 4584B #1839515 APRIL 24, 2014

COLE CREEK CEDAR RIDGE 1V DMF DWF AMF CAF NHF DDF
COLE CREEK CEDAR RIDGE 181
 COLE CREEK JUANADACAP 42P

SINCLAIR RITO LEGACY 3R9 AMF CAF DDF
CHAPMAN EILEEN 831U
 CHAPMAN EILEEN 533R

COLE CREEK BLACK CEDAR 46P
 COLE CREEK CLOVANADA 49S
 HBR ENCORE 0544
 COLE CREEK JUANADA CAP 882

R R RITO 707 AMF CAF NHF DDF
 IDEAL 4465 OF 6807 4286 AMF NHF
 MC CUMBER 7111 TOTAL VALUE
 GLADWALL G V EILEEN 6230

BW	WW	205D	WR	10/23WT	ADG	BW	WW	YW	MILK	TM
82	598	586	98	1460	3.61	0.6	27	69	23	37

AOD: 6 SALE DAY SC: SALE DAY WT:

One of the heaviest bulls as a yearling and again off grass in November. Dam ratios 108 on 5 calves. Excellent udder cow family. 6230 granddam ET donor.



LOT 35



LOT 36



LOT 37

LOT 34 CHAPMAN MONTANA 4601B

MALE SWC 4601B #1839514 APRIL 28, 2014

COLE CREEK CEDAR RIDGE 1V DMF DWF AMF CAF NHF DDF
COLE CREEK CEDAR RIDGE 181
 COLE CREEK JUANADACAP 42P

SITZ TRADITION RLS 8702
CHAPMAN PRINCENE 670S
 GLADWALL PRINCENE 6320

COLE CREEK BLACK CEDAR 46P
 COLE CREEK CLOVANADA 49S
 HBR ENCORE 0544
 COLE CREEK JUANADA CAP 882

VERMILION DATELINE 7078 AMF CAF NHF DDF
 R L S EISA EVERGREEN 5018
 TOMWALL PIED PIPER 357
 GLADWALL PRINCENE 1236

BW	WW	205D	WR	10/23WT	ADG	BW	WW	YW	MILK	TM
92	615	612	101	1305	2.78	2.7	36	70	26	44

AOD: 8 SALE DAY SC: SALE DAY WT:

Dam ratios 99 on 7 head, with sons to Greg Pennock, Blue Goose & La-Zee Cattle. Dam is double bred Shoshone PP 7105 = good udders & milk flow.

LOT 35 CHAPMAN MONTANA 4627B

MALE SWC 4627B #1839470 MAY 02, 2014

COLE CREEK CEDAR RIDGE 1V DMF DWF AMF CAF NHF DDF
COLE CREEK CEDAR RIDGE 181
 COLE CREEK JUANADACAP 42P

CROWFOOT EQUATION 5793R
CHAPMAN CHLOE 8054U
 CHAPMAN CHLOE 205M

COLE CREEK BLACK CEDAR 46P
 COLE CREEK CLOVANADA 49S
 HBR ENCORE 0544
 COLE CREEK JUANADA CAP 882

O C C LEGACY 839L
 CROWFOOT FORKS 755K
 LEACHMAN RIGHT TIME DMF AMF
 GLADWALL B CHLOE 623

BW	WW	205D	WR	10/23WT	ADG	BW	WW	YW	MILK	TM
92	576	583	95	1330	3.15	2.0	24	61	26	38

AOD: 6 SALE DAY SC: SALE DAY WT:

Good bull with a ton of maternal goodness bred in. Dam produced a son to Doug Johnson and has an early favorite sired by Rito 9R7 for next years sale.

LOT 36 CHAPMAN MONTANA 4660B

MALE SWC 4660B #1839495 MAY 07, 2014

COLE CREEK CEDAR RIDGE 1V DMF DWF AMF CAF NHF DDF
COLE CREEK CEDAR RIDGE 181
 COLE CREEK JUANADACAP 42P

CROWFOOT EQUATION 5793R
CHAPMAN ROSE 9085W
 CROWFOOT ROSE 3767N

COLE CREEK BLACK CEDAR 46P
 COLE CREEK CLOVANADA 49S
 HBR ENCORE 0544
 COLE CREEK JUANADA CAP 882

O C C LEGACY 839L
 CROWFOOT FORKS 755K
 O C C HUNTER 928H
 CROWFOOT BECKY 1809L

BW	WW	205D	WR	10/23WT	ADG	BW	WW	YW	MILK	TM
83	589	610	102	1300	3.08	-0.1	30	61	29	44

AOD: 5 SALE DAY SC: SALE DAY WT:

Cole Creek x Equation should ensure years of sound service out of these bulls. Dam ratios 5/95, Granddam 102/11, Great ET donor Granddam 14/101.

LOT 37 CHAPMAN MONTANA 4662B

MALE SWC 4662B #1839512 MAY 07, 2014

COLE CREEK CEDAR RIDGE 1V DMF DWF AMF CAF NHF DDF
COLE CREEK CEDAR RIDGE 181
 COLE CREEK JUANADACAP 42P

CROWFOOT EQUATION 5793R
CHAPMAN LURA 748T
 CHAPMAN LURA 446P

COLE CREEK BLACK CEDAR 46P
 COLE CREEK CLOVANADA 49S
 HBR ENCORE 0544
 COLE CREEK JUANADA CAP 882

O C C LEGACY 839L
 CROWFOOT FORKS 755K
 LEACHMAN RIGHT TIME DMF AMF
 GLADWALL L LURA 6174

BW	WW	205D	WR	10/23WT	ADG	BW	WW	YW	MILK	TM
89	538	556	91	1220	2.46	1.2	26	69	24	37

AOD: 7 SALE DAY SC: SALE DAY WT:

Another Cole Creek x Equation bred bull ensuring longevity, fertility and a pedigree built to sire those desirable and marketable replacements. Dam ratios 6/101

CROWFOOT EQUATION 5793R

SIRES

XO CROWFOOT EQU 268Z

MALE CFCC 5793R #1254914 JANUARY 26, 2005

MALE XO 268Z #1689402 FEBRUARY 19, 2012

O C C ECHELON 857E DDF
O C C LEGACY 839L
O C C DIXIE ERICA 960E

TOMWALL PIED PIPER 413
CROWFOOT FORKS 755K
GLADWALL B REV ERICA 7289

D H D TRAVELER 6807 AMF NHF
DIXIE ERICA OF C H 1019
O C C ANCHOR 771A DMF CAF DDF
DIXIE ERICA OF R R 4345

SHOSHONE P P 7105
GLADWALL ROSE OF L 282
A A R OPTIMA 771
GLADWALL B REV ERICA 1246

O C C LEGACY 839L
CROWFOOT EQUATION 5793R
CROWFOOT FORKS 755K

CROWFOOT 6071S
XO CROWFOOT DIXIE ERICA 828U
CROWFOOT DIXIE ERICA 6422S

O C C ECHELON 857E DDF
O C C DIXIE ERICA 960E
TOMWALL PIED PIPER 413
GLADWALL B REV ERICA 7289

O C C ECHELON 857E DDF
CROWFOOT G EILEEN 9156
SITZ ALLIANCE 9160
CROWFOOT DIXIE ERICA 1626L

BW	WW	YW	MILK	TM	SC	CE	MCE	REA	CW	MARB	FAT
3.7	39	78	31	51	1.44	-3	-2	-0.08	23	0.14	0.031

BW	WW	YW	MILK	TM	SC	CE	MCE	REA	CW	MARB	FAT
-0.2	33	60	23	48	1.07	5.4	3	-0.09	7	-0.12	0.039

Equation 5793R defines what a "True Herd Sire" is all about, having the ability to sire impressive and productive daughters, while continuing his down-line through sons equal to, or better than himself. We have 60 direct daughters currently in production with more on the way, and those daughters annually contribute a higher percentage of bulls to our sale. XO Crowfoot EQU 268Z looks a lot like his sire, and has successfully been used on cows and heifers. The dam of 268Z was designated Elite in 2014. Chapman Equation 8541U is out of an old ET donor that was proven on crossbred cows but lost early to a stifle injury. Utilize these sons for their bred-in ability to enhance structure and produce daughters that are extra productive with great udders.



LOT 38 CHAPMAN EQUIVALENCE 4609B

MALE SWC 4609B #1839492 APRIL 29, 2014

CROWFOOT EQUATION 5793R
XO CROWFOOT EQU 268Z
XO CROWFOOT DIXIE ERICA 828U

CROWFOOT MACHO 4549P
CHAPMAN LOVEMERE PET 708T
CROWFOOT LOVEMERE PET 5791R

O C C LEGACY 839L
CROWFOOT FORKS 755K
CROWFOOT 6071S
CROWFOOT DIXIE ERICA 6422S

O C C MAGNUM 749M
CROWFOOT BLACKBIRD 2537M
O C C MOONSHINE 740M
CROWFOOT 3778N

BW	WW	205D	WR	10/23WT	ADG	BW	WW	YW	MILK	TM
88	608	608	101	1495	3.80	2.7	37	71	25	44

AOD: 7 SALE DAY SC: SALE DAY WT:

One of the heaviest bulls off grass last fall. Dam ratios 6/103 with a son to Blue Goose Cattle Co., and is a maternal sister to resident herdsire Memento 0513X.



XO CROWFOOT EQU 268Z PROGENY



LOT 39 CHAPMAN EQUIVALENCE 4554B

MALE SWC 4554B #1839465 APRIL 18, 2014

CROWFOOT EQUATION 5793R
XO CROWFOOT EQU 268Z
XO CROWFOOT DIXIE ERICA 828U

CROWFOOT 2711M
CHAPMAN ROSEWALL 9015W
CROWFOOT ROSEWALL 5770R

O C C LEGACY 839L
CROWFOOT FORKS 755K
CROWFOOT 6071S
CROWFOOT DIXIE ERICA 6422S

LEACHMAN RIGHT TIME DMF AMF
GLADWALL B CHLOE 7135
O C C LEGACY 839L
CROWFOOT ROSEWALL 1666L

BW	WW	205D	WR	10/23WT	ADG	BW	WW	YW	MILK	TM
85	612	585	97	1320	2.93	1.7	40	69	23	43

AOD: 5 SALE DAY SC: SALE DAY WT:

Maternally bred bull who's dam ratio's 4/103. The 268Z sire probably has the best feet here emulating his sire, and his dam is designated Elite.

LOT 40 CHAPMAN EQUIVALENCE 4571B

MALE SWC 4571B #1839499 APRIL 21, 2014

CROWFOOT EQUATION 5793R
XO CROWFOOT EQU 268Z
XO CROWFOOT DIXIE ERICA 828U

CROWFOOT JOKER 6172S
CHAPMAN NELLIE 9043W
CHAPMAN NELLIE 668S

O C C LEGACY 839L
CROWFOOT FORKS 755K
CROWFOOT 6071S
CROWFOOT DIXIE ERICA 6422S

O C C JOKER 620J DDF
CFCC 1801L
S A V 004 PREDOMINANT 4438 AMF CAF NHF DDF
GLADWALL BELLE L NELLIE 6247

BW	WW	205D	WR	10/23WT	ADG	BW	WW	YW	MILK	TM
76	626	605	102	1395	3.49	0.7	39	65	26	46

AOD: 5 SALE DAY SC: SALE DAY WT:

Another bull near the top off grass combining Crowfoot Equation with Crowfoot Joker - a cross that works as well here as it did at Crowfoot. Dam ratios 4/99



LOT 40

LOT 41 CHAPMAN EQUIVALENCE 4572B

MALE SWC 4572B #1839484 APRIL 22, 2014

CROWFOOT EQUATION 5793R
XO CROWFOOT EQU 268Z
XO CROWFOOT DIXIE ERICA 828U

CHAPMAN LEGACY 026S
CHAPMAN ERICA 928W
CHAPMAN ERICA 637S

O C C LEGACY 839L
CROWFOOT FORKS 755K
CROWFOOT 6071S
CROWFOOT DIXIE ERICA 6422S

O C C LEGACY 839L
PAT LADY ERICA 8984
CROWFOOT VENTURE 1698L
CHAPMAN ERICA 42P

BW	WW	205D	WR	10/23WT	ADG	BW	WW	YW	MILK	TM
78	636	618	104	1380	3.03	-0.3	36	67	25	43

AOD: 5 SALE DAY SC: SALE DAY WT:

A good bull with that elusive combination of low birth and growth. Double bred Venture 1698L with Legacy 026S - both used on heifers here. Dam ratios 5/104.

LOT 42 CHAPMAN EQUIVALENCE 4649B

MALE SWC 4649B #1839505 MAY 08, 2014

CROWFOOT EQUATION 5793R
XO CROWFOOT EQU 268Z
XO CROWFOOT DIXIE ERICA 828U

O C C MAGNUM 749M
CROWFOOT PATTIE QUEEN 4584P
CROWFOOT PATTIE QUEEN 2552M

O C C LEGACY 839L
CROWFOOT FORKS 755K
CROWFOOT 6071S
CROWFOOT DIXIE ERICA 6422S

O C C EUREKA 865E
O C C JUANADA 818E
O C C HUNTER 928H
GLADWALL PATTIE QUEEN 640

BW	WW	205D	WR	10/23WT	ADG	BW	WW	YW	MILK	TM
88	637	662	111	1270	2.63	0.8	41	67	24	45

AOD: 10 SALE DAY SC: SALE DAY WT:

Herd bull producing dam ratio'ing 9/104, also producing sons to Simpson Ventures, Pine Haven Colony, Donald & Bill Day, Blue Goose & one herd sire retained.

LOT 43 CHAPMAN EQUIVALENCE 4664B

MALE SWC 4664B #1839488 MAY 13, 2014

CROWFOOT EQUATION 5793R
XO CROWFOOT EQU 268Z
XO CROWFOOT DIXIE ERICA 828U

CROWFOOT VENTURE 1698L
CHAPMAN G PRIDE 608S
CHAPMAN PRIDE 416P

O C C LEGACY 839L
CROWFOOT FORKS 755K
CROWFOOT 6071S
CROWFOOT DIXIE ERICA 6422S

BASIN MAX 104J AMF CAF NHF
GLADWALL SARITA 8255
VDAR DATABANK 1061 CAF DDF
BARB WALL G PRIDE 310

BW	WW	205D	WR	10/23WT	ADG	BW	WW	YW	MILK	TM
85	592	629	105	1345	3.30	0.2	35	67	22	40

AOD: 8 SALE DAY SC: SALE DAY WT:

Solid individual performance at weaning and then again off grass. Dam ratios 8/99 with another good bull to Clyde McCoy. Lots of calving ease bred in here!

LOT 44 CHAPMAN EQUATION 4599B

MALE SWC 4599B #1830803 APRIL 28, 2014

O C C LEGACY 839L
CROWFOOT EQUATION 5793R
CROWFOOT FORKS 755K

RED 5L NORSEMAN KING 2291 OSF MAF
CROWFOOT BARDOLENE 5066R
CROWFOOT BARDOLENE 9133J

O C C ECHELON 857E DDF
O C C DIXIE ERICA 960E
TOMWALL PIED PIPER 413
GLADWALL B REV ERICA 7289

RED VGW KING OF THE WEST OSF MAF
RED NORSEMAN 1312 PJM
BASIN AMBUSH 3905 AMF CAF NHF DDF
BASIN BARDOLENE 121G

BW	WW	205D	WR	10/23WT	ADG	BW	WW	YW	MILK	TM
93	653	650	108	1375	2.71	2.7	39	80	25	45

AOD: 9 SALE DAY SC: SALE DAY WT:

Excellent individual performance all the way through. Dam ratios 9/99 with sons to Ernie Matai & Kelly Walker. Donor granddam designated Elite.

LOT 45 CHAPMAN EQUATION 4628B

MALE SWC 4628B #1885654 MAY 02, 2014

O C C LEGACY 839L
CROWFOOT EQUATION 5793R
CROWFOOT FORKS 755K

CROWFOOT BRUNO 1670L
CHAPMAN ELEVATE 325N
GLADWALL ELEVATE 1101

O C C ECHELON 857E DDF
O C C DIXIE ERICA 960E
TOMWALL PIED PIPER 413
GLADWALL B REV ERICA 7289

STEVENSON BRUNO 561G CAF NHF DDF
GLADWALL B REV ERICA 7289
SHOSHONE P P 7105
GLADWALL ELEVATE 9314

BW	WW	205D	WR	10/23WT	ADG	BW	WW	YW	MILK	TM
82	614	622	100	1365	2.99	2.5	34	63	28	44

AOD: 11 SALE DAY SC: SALE DAY WT:

A direct son of Equation out of an Elite dam ratio'ing 10/104, who produced a top bull to Blue Sky Colony & multiple highly productive daughters retained in herd.



LOT 45

LOT 46 CHAPMAN JOKER 4634B

MALE TW SWC 4634B #1885655 MAY 03, 2014

CROWFOOT JOKER 6172S
CROWFOOT JOKER 2029Z
CROWFOOT BLACKBIRD 6369S

S A V 004 PREDOMINANT 4438 AMF CAF NHF DDF
CHAPMAN KAWICH LADY 659S
CHAPMAN KAWICH LADY 3316

O C C JOKER 620J DDF
CFCC 1801L
O C C LEGACY 839L
CROWFOOT BLACKBIRD 1687L

S A V 8180 TRAVELER 004 DMF DMF AMF CAF NHF OSF DDF
S A V EMBLYNETTE 1182
HIGH VALLEY 707 OF 469 DWC
GLADWALL KAWICH LADY 6186

BW	WW	205D	WR	10/23WT	ADG	BW	WW	YW	MILK	TM
76	563	573	100	1325	3.01	2.3	38	65	20	38

AOD: 8 SALE DAY SC: SALE DAY WT:

Twin brother to 4635B who's dam raised both calves naturally. Dam ratio's 8/106 who also produced good bulls to Doug Reid, Blue Goose & Stimson Ranching.

LOT 48 CHAPMAN EQUATION 4671B

MALE SWC 4671B #1830799 MAY 15, 2014

O C C LEGACY 839L
CROWFOOT EQUATION 5793R
CROWFOOT FORKS 755K

LEACHMAN RIGHT TIME DMF AMF
CHAPMAN KAWICH LADY 434P
GLADWALL KAWICH LADY 6171

O C C ECHELON 857E DDF
O C C DIXIE ERICA 960E
TOMWALL PIED PIPER 413
GLADWALL B REV ERICA 7289

N BAR EMULATION EXT AMF CAF NHF DDF
LEACHMAN ERICA 0025
N BAR IMPACT U1253
GLADWALL KAWICH LADY 4186

BW	WW	205D	WR	10/23WT	ADG	BW	WW	YW	MILK	TM
86	572	613	102	1240	3.04	1.5	36	63	27	45

AOD: 10 SALE DAY SC: SALE DAY WT:

Genetic gem here: dam ratios 10/106 and produced herd bulls to Rodvang Farms, Blue Goose, Clyde McCoy & Bill Armstrong & granddam to last years high seller.



LOT 48

LOT 49 CHAPMAN EQUATION 4533B

MALE SWC 4533B #1848872 APRIL 15, 2014

CROWFOOT EQUATION 5793R
CHAPMAN EQUATION 8541U
CHAPMAN NELLIE 210M

CHAPMAN LEGACY 026S
CHAPMAN EILEEN 952W
CHAPMAN EILEEN 216M

O C C LEGACY 839L
CROWFOOT FORKS 755K
SITZ ALLIANCE 659S DMF AMF CAF NHF DDF
GLADWALL BELLE L NELLIE 581

O C C LEGACY 839L
PAT LADY ERICA 8984
CROWFOOT AMBUSH 9137J
GLADWALL G V EILEEN 6230

BW	WW	205D	WR	10/23WT	ADG	BW	WW	YW	MILK	TM
81	643	607	102	1305	2.63	0.7	30	53	22	37

AOD: 5 SALE DAY SC: SALE DAY WT:

Maternally prepotent with above average performance; pedigree contains 4 ET donor dams up close in 210M, 8984, 216M & 6230; double bred OCC Legacy too!



LOT 49

SIRES



A stout and powerful son of OCC Joker 620J, 6172S has proven year after year his ability to sire moderate, efficient and functional cattle ideal for grass utilization. The HD50k dna test validates his genetic propensity to convert less feed into more pounds. With over 75 daughters in production here, it is evident they are the most efficient and productive. His son 2029Z also has progeny in the sale. He was purchased as the high selling bull in the last Crowfoot Bull Sale. The Blackbird cow family behind 2029Z is very good. In fact, we are retaining sons of 2029Z's mother and grandmother to use in 2016. Utilize Joker sons for their maternal potential, favorable carcass traits, and conversion efficiency – proven genetics for any grass-based outfit.

CROWFOOT JOKER 6172S

MALE CFCC 6172S #1316033 JANUARY 28, 2006

O C C EMBLAZON 854E DMF AMF CAF NHF OSF DDF
O C C JOKER 620J DDF
O C C JUANADA 709V

TOMWALL GDAR ROYCE 964
CFCC 1801L
GLADWALL PEARL ENECHOR 8155

D H D TRAVELER 6807 AMF NHF
DIXIE ERICA OF C H 1019
COLE CREEK OSCAR 92R
JUANADA OF ROLLIN ROCK 0355

G D A R ROYCE 131
GLADWALL L BL NELLIE 752
AMITIE ACRES L EXT 1376
GLADWALL PEARL ENECHOR 3165

BW	WW	YW	MILK	TM	SC	CE	MCE	REA	CW	MARB	FAT
2.7	32	52	23	41	0	1.2	3.6	-0.05	6	0.12	-0.013

CROWFOOT JOKER 2029Z

MALE CFCC 2029Z #1689327 FEBRUARY 12, 2012

O C C JOKER 620J DDF
CROWFOOT JOKER 6172S
CFCC 1801L

O C C LEGACY 839L
CROWFOOT BLACKBIRD 6369S
CROWFOOT BLACKBIRD 1687L

O C C EMBLAZON 854E DMF AMF CAF NHF OSF DDF
O C C JUANADA 709V
TOMWALL GDAR ROYCE 964
GLADWALL PEARL ENECHOR 8155

O C C ECHELON 857E DDF
O C C DIXIE ERICA 960E
C H ALLIANCE 9339
C H BLACKBIRD 9717

BW	WW	YW	MILK	TM	SC	CE	MCE	REA	CW	MARB	FAT
2.2	34	57	22	39	0.49	3	5	0.21	8	0.14	0.015



LOT 50

CHAPMAN JOKER 4705B

MALE SWC 4705B #1839462 JUNE 03, 2014

O C C JOKER 620J DDF
CROWFOOT JOKER 6172S
CFCC 1801L

CHAPMAN ALLIANCE 262M
CHAPMAN NEONIA 774T
HAPPYVALE T. NEONIA 131L

O C C EMBLAZON 854E DMF AMF CAF NHF OSF DDF
O C C JUANADA 709V
TOMWALL GDAR ROYCE 964
GLADWALL PEARL ENECHOR 8155

SITZ ALLIANCE 6595 DMF AMF CAF NHF DDF
GLADWALL G EILEEN 6339
BACK ROADS 1418 LEGEND 1582
TAFIKA 22D NEONIA 96F

BW	WW	205D	WR	10/23WT	ADG	BW	WW	YW	MILK	TM
84	562	660	112	1455	4.26	1.6	40	64	26	46

AOD: 7 SALE DAY SC: SALE DAY WT:

Lots of performance here with a WW ratio of 112 and one of the top bulls off grass in November. Dam ratios 5/104 from the Neonia cow family of Happyvale fame.



LOT 51

CHAPMAN JOKER 4540B

MALE SWC 4540B #1833680 APRIL 16, 2014

O C C JOKER 620J DDF
CROWFOOT JOKER 6172S
CFCC 1801L

D D A FAHREN 21X
CHAPMAN ROSE 627S
GLADWALL ROSE OF L 6310

O C C EMBLAZON 854E DMF AMF CAF NHF OSF DDF
O C C JUANADA 709V
TOMWALL GDAR ROYCE 964
GLADWALL PEARL ENECHOR 8155

FAHREN OF WYE UMF 5830
D D A MELISA 549
N BAR TRANSITION A583
GLADWALL ROSE OF L 196

BW	WW	205D	WR	10/23WT	ADG	BW	WW	YW	MILK	TM
85	625	593	99	1390	3.06	0.1	30	54	19	34

AOD: 8 SALE DAY SC: SALE DAY WT:

Joker sons continue to thrive within grass based operations. Productive 21X dam ratio'ing 9/100 with sons to Kevin Wawrynchuk, Blue Goose, and the PFRA.

LOT 52 CHAPMAN JOKER 4541B

MALE SWC 4541B #1833117 APRIL 16, 2014

O C C JOKER 620J DDF
CROWFOOT JOKER 6172S
CFCC 1801L

BOYD NEW DAY 8005 AMF CAF NHF DDF
CHAPMAN LADY 4407
HAPPYVALE LADY 43L

O C C EMBLAZON 854E DMF AMF CAF NHF OSF DDF
O C C JUANADA 709V
TOMWALL GDAR ROYCE 964
GLADWALL PEARL ENECHOR 8155

A A R NEW TREND
S V F FOREVER LADY 57D
MV F STOCKMAN 122H
LLB LADY 220G

BW	WW	205D	WR	10/23WT	ADG	BW	WW	YW	MILK	TM
79	679	643	109	1295	2.51	0.6	41	67	25	46

AOD: 10 SALE DAY SC: SALE DAY WT:

Good bull from a very productive dam, ratio'ing 10/103. Brothers to Sauter Ranches, Doug Johnson, Jim Simpson, & Walter Farms.

LOT 53 CHAPMAN JOKER 4577B

MALE SWC 4577B #1839471 APRIL 24, 2014

O C C JOKER 620J DDF
CROWFOOT JOKER 6172S
CFCC 1801L

CHAPMAN PAY DAY 4456
CHAPMAN MISS RIO 717T
CHAPMAN MISS RIO 541R

O C C EMBLAZON 854E DMF AMF CAF NHF OSF DDF
O C C JUANADA 709V
TOMWALL GDAR ROYCE 964
GLADWALL PEARL ENECHOR 8155

CROWFOOT VENTURE 1698L
CHAPMAN NELLIE 210M
CROWFOOT BRUNO 1670L
RED CHAPMAN MISS RIO 225M

BW	WW	205D	WR	10/23WT	ADG	BW	WW	YW	MILK	TM
88	581	569	93	1340	3.30	1.9	32	55	21	37

AOD: 7 SALE DAY SC: SALE DAY WT:

Based on Zoetis HD50k DNA marker for dry matter intake, Joker bred cattle score exceptionally well. Expect bred in efficiency, functionality and moderation.

LOT 54 CHAPMAN JOKER 4676B

MALE SWC 4676B #1839485 MAY 16, 2014

O C C JOKER 620J DDF
CROWFOOT JOKER 6172S
CFCC 1801L

CHAPMAN LEGACY 026S
CHAPMAN PRIDE 834U
CROWFOOT R G PRIDE 4410P

O C C EMBLAZON 854E DMF AMF CAF NHF OSF DDF
O C C JUANADA 709V
TOMWALL GDAR ROYCE 964
GLADWALL PEARL ENECHOR 8155

O C C LEGACY 839L
PAT LADY ERICA 8984
O C C MAGNUM 749M
CROWFOOT WJ 2514M

BW	WW	205D	WR	10/23WT	ADG	BW	WW	YW	MILK	TM
76	566	610	104	1320	3.27	0.6	29	46	21	36

AOD: 6 SALE DAY SC: SALE DAY WT:

Low birth son of Joker who weighed in near the top of his class off grass. Dam is a very nice cow rich in OCC lineage with another son to Boulding Ranches.



LOT 54

LOT 55 CHAPMAN JOKER 4682B

MALE SWC 4682B #1833118 MAY 20, 2014

O C C JOKER 620J DDF
CROWFOOT JOKER 6172S
CFCC 1801L

SITZ ALLIANCE 6595 DMF AMF CAF NHF DDF
HAPPYVALE DELIA 35S
SWENCO DELIA 13H

O C C EMBLAZON 854E DMF AMF CAF NHF OSF DDF
O C C JUANADA 709V
TOMWALL GDAR ROYCE 964
GLADWALL PEARL ENECHOR 8155

SITZ TRAVELER 8180 AMF CAF NHF DDF
SITZ BARBARAMERE JET 2698
GET-A-LONG CAST IRON 359
SWENCO DELIA 26A

BW	WW	205D	WR	10/23WT	ADG	BW	WW	YW	MILK	TM
89	547	599	99	1405	3.80	2.9	32	58	23	39

AOD: 8 SALE DAY SC: SALE DAY WT:

A Joker with a bit more frame & near the top for gain off grass. His 6595 dam has maintained a great udder, ratios 7/101, with herd bulls to Skocdopole & Grant Tailieu.

LOT 56 CHAPMAN JOKER 4689B

MALE SWC 4689B #1835113 MAY 23, 2014

O C C JOKER 620J DDF
CROWFOOT JOKER 6172S
CFCC 1801L

O C C MOONSHINE 740M
CROWFOOT ELCONA 5896R
CROWFOOT ELCONA W H 9298

O C C EMBLAZON 854E DMF AMF CAF NHF OSF DDF
O C C JUANADA 709V
TOMWALL GDAR ROYCE 964
GLADWALL PEARL ENECHOR 8155

O C C JUST RIGHT 619J DDF
O C C DIXIE ERICA 816B
N BAR TRANSITION A583
GLADWALL ELCONA W H 6298

BW	WW	205D	WR	10/23WT	ADG	BW	WW	YW	MILK	TM
80	586	653	111	1190	2.37	0.7	34	58	23	40

AOD: 9 SALE DAY SC: SALE DAY WT:

Nice birth to weaning spread with a WW index of 111. Dam ratios 8/109 and phenotypically is right in type. Sons to Jack Ziegler & Bar P Land & Cattle.





LOT 57

LOT 57 **CHAPMAN JOKER 4691B** MALE SWC 4691B #1839498 MAY 23, 2014

O C C JOKER 620J DDF
CROWFOOT JOKER 6172S
CFCC 1801L

S A V 004 PREDOMINANT 4438 AMF CAF NHF DDF
CHAPMAN NELLIE 668S
GLADWALL BELLE L NELLIE 6247

O C C EMBLAZON 854E DMF AMF CAF NHF OSF DDF
O C C JUANADA 709V
TOMWALL GDAR ROYCE 964
GLADWALL PEARL ENECHOR 8155

S A V 8180 TRAVELER 004 DMF DWF AMF CAF NHF OSF DDF
S A V EMBLYNETTE 1182
N BAR IMPACT U1253
GLADWALL BELLE L NELLIE 4254

BW	WW	205D	WR	10/23WT	ADG	BW	WW	YW	MILK	TM
94	571	634	105	1365	3.77	3.7	40	61	24	44

AOD: 8 SALE DAY SC: SALE DAY WT:

Grass-based Joker son who's post-yearling gain on grass was near the top, indicative of Joker-bred cattle. Dam is a bigger SAV-bred cow with a ratio of 6/100.



LOT 58

LOT 58 **CHAPMAN JOKER 4563B** MALE SWC 4563B #1839493 APRIL 20, 2014

CROWFOOT JOKER 6172S
CROWFOOT JOKER 2029Z
CROWFOOT BLACKBIRD 6369S

MC CUMBER 536P EXT 7196
CHAPMAN VERNICE 948W
CROWFOOT VERNICE 4211P

O C C JOKER 620J DDF
CFCC 1801L
O C C LEGACY 839L
CROWFOOT BLACKBIRD 1687L

SITZ JLS EMULATION EXT 536P
LASSIE 434 OF MC CUMBER
WHITNEY CREEK MAXIMUS 24
RED CROWFOOT VERNICE 1082L

BW	WW	205D	WR	10/23WT	ADG	BW	WW	YW	MILK	TM
88	637	614	102	1450	3.54	2.1	42	67	18	39

AOD: 5 SALE DAY SC: SALE DAY WT:

Really nice numbers on this good bull across the board, and also one of the heaviest to come off grass. 7196 daughters have superb udders! Dam ratios 5/105



LOT 59

LOT 59 **CHAPMAN JOKER 4611B** MALE SWC 4611B #1839500 APRIL 29, 2014

CROWFOOT JOKER 6172S
CROWFOOT JOKER 2029Z
CROWFOOT BLACKBIRD 6369S

CROWFOOT MACHO 4549P
CHAPMAN NELLIE 9019W
CHAPMAN NELLIE 744T

O C C JOKER 620J DDF
CFCC 1801L
O C C LEGACY 839L
CROWFOOT BLACKBIRD 1687L

O C C MAGNUM 749M
CROWFOOT BLACKBIRD 2537M
CHAPMAN PAY DAY 4456
CHAPMAN NELLIE 524R

BW	WW	205D	WR	10/23WT	ADG	BW	WW	YW	MILK	TM
86	590	590	98	1285	2.97	2.3	30	55	20	35

AOD: 5 SALE DAY SC: SALE DAY WT:

Good bull sired by the high selling bull in Crowfoot's 2013 Bull Sale. Dam ratios 5/99. Joker-bred cattle are a perfect compliment for any grass based system.

LOT 60 **CHAPMAN JOKER 4635B** MALE TW SWC 4635B #1834536 MAY 03, 2014

CROWFOOT JOKER 6172S
CROWFOOT JOKER 2029Z
CROWFOOT BLACKBIRD 6369S

S A V 004 PREDOMINANT 4438 AMF CAF NHF DDF
CHAPMAN KAWICH LADY 659S
CHAPMAN KAWICH LADY 3316

O C C JOKER 620J DDF
CFCC 1801L
O C C LEGACY 839L
CROWFOOT BLACKBIRD 1687L

S A V 8180 TRAVELER 004 DMF DWF AMF CAF NHF OSF DDF
S A V EMBLYNETTE 1182
HIGH VALLEY 7D7 OF 469 DMC
GLADWALL KAWICH LADY 6186

BW	WW	205D	WR	10/23WT	ADG	BW	WW	YW	MILK	TM
76	636	647	100	1345	2.96	2.3	38	65	20	38

AOD: 8 SALE DAY SC: SALE DAY WT:

Twin brother to 4634B who's dam raised both calves naturally. Dam ratios 8/106. Same cow family as our \$48,000 high seller last year.

CROWFOOT JOKER 2029Z & HONESTY 2074Z PROGENY

LOT **61**

CHAPMAN JOKER 4661B

MALE SWC 4661B #1885711 MAY 07, 2014

CROWFOOT JOKER 6172S
CROWFOOT JOKER 2029Z
 CROWFOOT BLACKBIRD 6369S

O C C MOONSHINE 740M
CHAPMAN BLOSSOM 8085U
 HAPPYVALE BLOSSOM 4M

O C C JOKER 620J DDF
 CFCC 1801L
 O C C LEGACY 839L
 CROWFOOT BLACKBIRD 1687L

O C C JUST RIGHT 619J DDF
 O C C DIXIE ERICA 816B
 SITZ ALLIANCE 6595 DMF AMF CAF NHF DDF
 HAPPYVALE BLOSSOM 102K

BW	WW	205D	WR	10/23WT	ADG	BW	WW	YW	MILK	TM
82	556	575	96	1280	3.44	0.8	30	52	20	35

AOD: 6 SALE DAY SC: SALE DAY WT:

Moderate bull situated for heifers. Dam ratios 6/94 with 3 daughters retained.
 Nice maternal pedigree combining Joker, Moonshine, Legacy & Sitz Alliance.



LOT **62**

CHAPMAN HONESTY 4500B

MALE SWC 4500B #1830941 FEBRUARY 14, 2014

CROWFOOT 6758S
CROWFOOT HONESTY 2074Z AMF
 CROWFOOT BLACKBIRD 8059U

CROWFOOT EQUATION 5793R
CROWFOOT BELEVATE 1070Y
 CROWFOOT BELAVATE 6258S

S A V 004 PREDOMINANT 4438 AMF CAF NHF DDF
 CROWFOOT FORKS 456K
 HILLFIRE LEGACY 422 AMF
 CROWFOOT BLACKBIRD 1687L

O C C LEGACY 839L
 CROWFOOT FORKS 755K
 SITZ ALLIANCE 9160
 CROWFOOT BELEVATE 3759N

BW	WW	205D	WR	10/23WT	ADG	BW	WW	YW	MILK	TM
83	685	575	104	1460	3.54	1.4	51	88	22	48

AOD: 3 SALE DAY SC: SALE DAY WT:

One of the heaviest bulls off grass this past November. Dam ratios 3/100.
 Crowfoot 2074Z has sired some excellent females at Fairview Angus, MT.



LOT 62



SIRE



daughters with extra rib shape. A search of the Angus database identifies only two bulls with a lower birth weight EPD than 9R7, with an accuracy >80%, that are in the top 1% and 3% for WW and YW. 9R7 has been used heavy and has been an excellent breeding bull having naturally sired 330 calves in his first 5 years with more expected in 2016. Perennial favorites among buyers, utilize 9R7 sons for added payweight, capacity, structural soundness with the herd bull look.

SINCLAIR RITO 9R7

MALE IMP 9R7W #1583293 FEBRUARY 07, 2009

R R RITO 707 AMF CAF NHF DDF
RITO REVOLVE OR5
IDEAL 1456 OF 8103 8114

SINCLAIR NET PRESENT VALUE AMF CAF NHF DDF
SINCLAIR K BTY 6PV5 25F3
SINCLAIR K BTY 25F3 Z189

RITO N BAR
ERISKAY OF ROLLIN ROCK 3
IDEAL 8103 OF ELDO 5110 5213
IDEAL 8114 OF ELDO 5110 3127

N BAR PRIME TIME D806 AMF CAF NHF DDF
IDEAL 4465 OF 6807 4286 AMF NHF
EMULATION N BAR 5522
N BAR KINCHTRY BEAUTY 1740

BW	WW	YW	MILK	TM	SC	CE	MCE	REA	CW	MARB	FAT
3.3	68	108	16	52	0.86	-1.1	-2.9	0.13	39	-0.34	0.035

9R7 is a high capacity, wide based, thick made bull that is old line Rito, ensuring correctness and functionality. 9R7 weaned off his mother at 742 lbs and recorded a 365 day weight of 1355 lbs for a weaning and yearling ratio of 114 and 122 respectively in a very competitive Sinclair program. He has a classy, masculine beef bull look along with a wide, deep quarter and excellent scrotal development that he stamps into his sons with authority, yet leaving wedge-shaped, feminine



LOT 63

LOT 63

CHAPMAN RITO 4564B

MALE SWC 4564B #1830914 APRIL 20, 2014

RITO REVOLVE OR5
SINCLAIR RITO 9R7
SINCLAIR K BTY 6PV5 25F3

CHAPMAN LEGACY 026S
CHAPMAN ROSE 103Y
CHAPMAN ROSE 802U

R R RITO 707 AMF CAF NHF DDF
IDEAL 1456 OF 8103 8114
SINCLAIR NET PRESENT VALUE AMF CAF NHF DDF
SINCLAIR K BTY 25F3 Z189

O C C LEGACY 839L
PAT LADY ERICA 8984
S B R WATERTON 6148S
CHAPMAN ROSE 631S

BW	WW	205D	WR	10/23WT	ADG	BW	WW	YW	MILK	TM
78	654	668	114	1510	3.35	1.3	52	91	22	48

AOD: 3 SALE DAY SC: SALE DAY WT:

This 9R7 herd sire prospect posts a WI & YI of 114 and 132 and the heaviest bull off pasture. His Legacy dam is rich in maternal lineage and ratios 3/109 with a son to Jeff Albers.

LOT 64

CHAPMAN RITO 4535B

MALE SWC 4535B #1830915 APRIL 15, 2014

RITO REVOLVE OR5
SINCLAIR RITO 9R7
SINCLAIR K BTY 6PV5 25F3

CROWFOOT EQUATION 5793R
CHAPMAN LADY ERICA 104Y
PAT LADY ERICA 8984

R R RITO 707 AMF CAF NHF DDF
IDEAL 1456 OF 8103 8114
SINCLAIR NET PRESENT VALUE AMF CAF NHF DDF
SINCLAIR K BTY 25F3 Z189

O C C LEGACY 839L
CROWFOOT FORKS 755K
N BAR IMPACT U1253
PAT PIED PIPER 921

BW	WW	205D	WR	10/23WT	ADG	BW	WW	YW	MILK	TM
90	742	738	126	1470	3.00	3.3	58	98	22	51

AOD: 3 SALE DAY SC: SALE DAY WT:

Herd bull prospect with exceptional individual performance. 3rd heaviest bull off pasture. His young dam ratios 3/118 and is an ET daughter of our 8984 donor, still producing at 18.

LOT 65

CHAPMAN RITO 4520B

MALE SWC 4520B #1830947 APRIL 08, 2014

RITO REVOLVE OR5
SINCLAIR RITO 9R7
SINCLAIR K BTY 6PV5 25F3

CROWFOOT JOKER 6172S
CHAPMAN ZARA PATRIOT 1095Y
CROWFOOT ZARA PATRIOT 5865R

R R RITO 707 AMF CAF NHF DDF
IDEAL 1456 OF 8103 8114
SINCLAIR NET PRESENT VALUE AMF CAF NHF DDF
SINCLAIR K BTY 25F3 Z189

O C C JOKER 620J DDF
CFCC 1801L
O C C MOONSHINE 740M
PAT ZARA PATRIOT 8148

BW	WW	205D	WR	10/23WT	ADG	BW	WW	YW	MILK	TM
72	749	724	126	1365	2.27	1.3	58	90	20	49

AOD: 3 SALE DAY SC: SALE DAY WT:

Big time spread starting with a BW 76 and a WI and YI of 126 and 107 respectively. These Rito bulls all have that herd bull look. Dam weans a high % of herself and ratios 3/116.

LOT 66 **CHAPMAN RITO 4521B**

MALE SWC 4521B #1830919 APRIL 09, 2014

RITO REVOLVE 0R5
SINCLAIR RITO 9R7
SINCLAIR K BTY 6PV5 25F3

CHAPMAN WATERTON 018U
CHAPMAN LURA 1001Y
CHAPMAN LURA 9035W

R R RITO 707 AMF CAF NHF DDF
IDEAL 1456 OF 8103 8114
SINCLAIR NET PRESENT VALUE AMF CAF NHF DDF
SINCLAIR K BTY 25F3 Z189

S B R WATERTON 6148S
CHAPMAN ROSE 610S
CROWFOOT JOKER 6172S
CROWFOOT L LURA 9144

BW	WW	205D	WR	10/23WT	ADG	BW	WW	YW	MILK	TM
73	612	602	102	1375	2.94	0.8	51	87	17	43

AOD: 3 SALE DAY SC: SALE DAY WT:

Low birth and one of the top bulls off grass. The Emulation 31 behind his dam has really promoted low birth, excellent newborn calf vigour and perfect udders. Good heifer prospect.



LOT 66

LOT 67 **CHAPMAN RITO 4523B**

MALE SWC 4523B #1830918 APRIL 10, 2014

RITO REVOLVE 0R5
SINCLAIR RITO 9R7
SINCLAIR K BTY 6PV5 25F3

CHAPMAN LEGACY 026S
CHAPMAN CHLOE 125Y
CHAPMAN CHLOE 814U

R R RITO 707 AMF CAF NHF DDF
IDEAL 1456 OF 8103 8114
SINCLAIR NET PRESENT VALUE AMF CAF NHF DDF
SINCLAIR K BTY 25F3 Z189

O C C LEGACY 839L
PAT LADY ERICA 8984
SINCLAIR EXTRA 4X13 AMF CAF NHF DDF
CHAPMAN CHLOE 204M

BW	WW	205D	WR	10/23WT	ADG	BW	WW	YW	MILK	TM
78	578	574	96	1230	2.44	1.6	45	77	15	38

AOD: 3 SALE DAY SC: SALE DAY WT:

Another low birth Rito. The 9R7 sire is in the top 1% & 3% for WW & YW EPDs, yet we have not touched a calf at birth on 327 recorded calves born. His young dam ratios 2/99.



LOT 67

LOT 68 **CHAPMAN RITO 4534B**

MALE SWC 4534B #1830926 APRIL 15, 2014

RITO REVOLVE 0R5
SINCLAIR RITO 9R7
SINCLAIR K BTY 6PV5 25F3

SINCLAIR HYDRO 90K6
CHAPMAN G EILEEN 1038Y
CHAPMAN G EILEEN 9018W

R R RITO 707 AMF CAF NHF DDF
IDEAL 1456 OF 8103 8114
SINCLAIR NET PRESENT VALUE AMF CAF NHF DDF
SINCLAIR K BTY 25F3 Z189

O C C KIDDO 832K AMF CAF NHF DDF
SINCLAIR ERISKAY 4E8 2N1
CROWFOOT MACHO 4549P
CHAPMAN EILEEN 709T

BW	WW	205D	WR	10/23WT	ADG	BW	WW	YW	MILK	TM
90	658	660	110	1425	3.01	3.1	53	89	17	44

AOD: 3 SALE DAY SC: SALE DAY WT:

9R7 has naturally sired over 330 progeny in 5 years. This sire group does a lot well! Lots of performance here from a young dam rich in OCC lineage who ratios 3/112.



LOT 68

LOT 69 **CHAPMAN RITO 4536B**

MALE SWC 4536B #1830930 APRIL 15, 2014

RITO REVOLVE 0R5
SINCLAIR RITO 9R7
SINCLAIR K BTY 6PV5 25F3

CROWFOOT JOKER 6172S
CHAPMAN G PRIDE 1049Y
CHAPMAN PRIDE 3309

R R RITO 707 AMF CAF NHF DDF
IDEAL 1456 OF 8103 8114
SINCLAIR NET PRESENT VALUE AMF CAF NHF DDF
SINCLAIR K BTY 25F3 Z189

O C C JOKER 620J DDF
CFCC 1801L
SITZ VALUE 7097 AMF CAF NHF DDF
BARBWALL G PRIDE 539

BW	WW	205D	WR	10/23WT	ADG	BW	WW	YW	MILK	TM
91	692	692	116	1380	2.25	4.0	57	99	21	50

AOD: 3 SALE DAY SC: SALE DAY WT:

The 9R7 sons have a tick more BW but I haven't touched one in 330 born - excellent calving ease and the calves are coal black. Dam ratios 3/122 from the productive Pride's.

LOT 70 **CHAPMAN RITO 4560B**

MALE SWC 4560B #1830928 APRIL 19, 2014

RITO REVOLVE 0R5
SINCLAIR RITO 9R7
SINCLAIR K BTY 6PV5 25F3

CROWFOOT JOKER 6172S
CHAPMAN PRINCENE 1048Y
CHAPMAN PRINCENE 3314

R R RITO 707 AMF CAF NHF DDF
IDEAL 1456 OF 8103 8114
SINCLAIR NET PRESENT VALUE AMF CAF NHF DDF
SINCLAIR K BTY 25F3 Z189

O C C JOKER 620J DDF
CFCC 1801L
SITZ TRAVELER 9929
GLADWALL PRINCENE 6320

BW	WW	205D	WR	10/23WT	ADG	BW	WW	YW	MILK	TM
81	580	595	100	1350	2.56	2.9	50	91	21	46

AOD: 3 SALE DAY SC: SALE DAY WT:

Rito x Joker again. Both sires were HD50k dna tested and blend muscle and growth with feed efficiency and responsible mature size. His young dam posts a ratio of 3/117.



LOT 71

LOT 71

CHAPMAN RITO 4573B

MALE SWC 4573B #1830916 APRIL 22, 2014

RITO REVOLVE 0R5
SINCLAIR RITO 9R7
SINCLAIR K BTY 6PV5 25F3

SINCLAIR RITO LEGACY 3R9 AMF CAF NHF DDF
CHAPMAN LADY ERICA 107Y
PAT LADY ERICA 8984

R R RITO 707 AMF CAF NHF DDF
IDEAL 1456 OF 8103 8114
SINCLAIR NET PRESENT VALUE AMF CAF NHF DDF
SINCLAIR K BTY 25F3 Z189

R R RITO 707 AMF CAF NHF DDF
IDEAL 4465 OF 6807 4286 AMF NHF
N BAR IMPACT U1253
PAT PIED PIPER 921

BW	WW	205D	WR	10/23WT	ADG	BW	WW	YW	MILK	TM
85	560	582	97	1310	3.21	2.7	44	78	16	38

AOD: 3 SALE DAY SC: SALE DAY WT:

A double bred Rito balancing moderate birth weight with solid post weaning gain. Dam posts a ratio of 3/98 and is an ET from the Lady Erica 8984 donor still producing at 18.



LOT 72

LOT 72

CHAPMAN RITO 4589B

MALE SWC 4589B #1830925 APRIL 25, 2014

RITO REVOLVE 0R5
SINCLAIR RITO 9R7
SINCLAIR K BTY 6PV5 25F3

CROWFOOT JOKER 6172S
CHAPMAN JEANNE 1016Y
CHAPMAN JEANNE 4402

R R RITO 707 AMF CAF NHF DDF
IDEAL 1456 OF 8103 8114
SINCLAIR NET PRESENT VALUE AMF CAF NHF DDF
SINCLAIR K BTY 25F3 Z189

O C C JOKER 620J DDF
CFCC 1801L
CROWFOOT BRUNO 1670L
GLADWALL JEANNE T 2114

BW	WW	205D	WR	10/23WT	ADG	BW	WW	YW	MILK	TM
92	578	607	100	1255	2.59	4.0	49	83	18	43

AOD: 3 SALE DAY SC: SALE DAY WT:

Another Rito x Joker with solid individual performance. 9R7 and his sons combine excellent feet with big scrotal and can cover a lot of cows. Dam ratios 3/101.



LOT 73

LOT 73

CHAPMAN RITO 4594B

MALE SWC 4594B #1887670 APRIL 27, 2014

RITO REVOLVE 0R5
SINCLAIR RITO 9R7
SINCLAIR K BTY 6PV5 25F3

CROWFOOT EQUATION 5793R
CHAPMAN LADY ERICA 112Y
PAT LADY ERICA 8984

R R RITO 707 AMF CAF NHF DDF
IDEAL 1456 OF 8103 8114
SINCLAIR NET PRESENT VALUE AMF CAF NHF DDF
SINCLAIR K BTY 25F3 Z189

O C C LEGACY 839L
CROWFOOT FORKS 755K
N BAR IMPACT U1253
PAT PIED PIPER 921

BW	WW	205D	WR	10/23WT	ADG	BW	WW	YW	MILK	TM
82	638	632	100	1290	2.94	-	-	-	-	-

AOD: 3 SALE DAY SC: SALE DAY WT:

Herd bull prospect with only an 82# BW out of the Lady Erica cow family. Dam is an ET that posts a ratio of 3/103. With Equation added in, this bull should sire great replacements.

LOT 74

CHAPMAN RITO 4614B

MALE SWC 4614B #1830917 APRIL 29, 2014

RITO REVOLVE 0R5
SINCLAIR RITO 9R7
SINCLAIR K BTY 6PV5 25F3

CHAPMAN LEGACY 026S
CHAPMAN BLOSSOM 115Y
CHAPMAN BLOSSOM 815U

R R RITO 707 AMF CAF NHF DDF
IDEAL 1456 OF 8103 8114
SINCLAIR NET PRESENT VALUE AMF CAF NHF DDF
SINCLAIR K BTY 25F3 Z189

O C C LEGACY 839L
PAT LADY ERICA 8984
SINCLAIR RITO LEGACY 3R9 AMF CAF DDF
BAR J P BLOSSOM 62K

BW	WW	205D	WR	10/23WT	ADG	BW	WW	YW	MILK	TM
80	591	629	106	1290	2.50	2.1	51	89	17	43

AOD: 3 SALE DAY SC: SALE DAY WT:

Low birth/ high indexing bull. Only 2 bulls in the database combine breed leading WW & YW EPDs with a BW EPD lower than 9R7 with an accuracy >.80. Dam ratios 2/111.

LOT **75**

CHAPMAN RITO 4615B

MALE SWC 4615B #1830921 APRIL 29, 2014

RITO REVOLVE 0R5
SINCLAIR RITO 9R7
SINCLAIR K BTY 6PV5 25F3

SINCLAIR RITO 9R7
CHAPMAN PRINCENE 1003Y
CHAPMAN PRINCENE 670S

R R RITO 707 AMF CAF NHF DDF
IDEAL 1456 OF 8103 8114
SINCLAIR NET PRESENT VALUE AMF CAF NHF DDF
SINCLAIR K BTY 25F3 Z189

RITO REVOLVE 0R5
SINCLAIR K BTY 6PV5 25F3
SITZ TRADITION RLS 8702
GLADWALL PRINCENE 6320

BW	WW	205D	WR	10/23WT	ADG	BW	WW	YW	MILK	TM
95	679	717	120	1490	3.28	4.8	68	107	18	52

AOD: 3 SALE DAY SC: SALE DAY WT:

Father daughter mating resulting in a big time performance bull with predictability posting a WI and YI of 120 ... And the 2nd heaviest weight off grass. Dam ratios 3/110.



LOT 75

LOT **76**

CHAPMAN RITO 4707B

MALE SWC 4707B UNREGISTERED JUNE 03, 2014

RITO REVOLVE 0R5
SINCLAIR RITO 9R7
SINCLAIR K BTY 6PV5 25F3

R R RITO 707 AMF CAF NHF DDF
IDEAL 1456 OF 8103 8114
SINCLAIR NET PRESENT VALUE AMF CAF NHF DDF
SINCLAIR K BTY 25F3 Z189

REGISTERED ANGUS

BW	WW	205D	WR	10/23WT	ADG	BW	WW	YW	MILK	TM
85	533	625	100	1170	2.16	-	-	-	-	-

AOD: 3 SALE DAY SC: SALE DAY WT:

A young 9R7 son that stands up well to his older contemporaries. Dam is a 3 year old Purebred Angus cow. Good bull but sells without papers.



LOT 76

LOT **77**

CHAPMAN RITO 4623B

MALE SWC 4623B UNREGISTERED APRIL 30, 2014

RITO REVOLVE 0R5
SINCLAIR RITO 9R7
SINCLAIR K BTY 6PV5 25F3

R R RITO 707 AMF CAF NHF DDF
IDEAL 1456 OF 8103 8114
SINCLAIR NET PRESENT VALUE AMF CAF NHF DDF
SINCLAIR K BTY 25F3 Z189

REGISTERED ANGUS

BW	WW	205D	WR	10/23WT	ADG	BW	WW	YW	MILK	TM
81	570	575	100	1275	2.96	-	-	-	-	-

AOD: 3 SALE DAY SC: SALE DAY WT:

Low birth Rito son with balanced numbers across the board. Dam is a Purebred Angus cow where the DNA was inconclusive. Sells without papers.



LOT 77

SIRE

CHAPMAN MEMENTO 0505X

MALE SWC 0505X #1571495 FEBRUARY 26, 2010



SINCLAIR RITO LEGACY 3R9 AMF CAF DDF
SINCLAIR MEMENTO 8RL5
SINCLAIR LADY 06S3 4465

O C C JOKER 620J DDF
CROWFOOT REV ERICA 5752R
CROWFOOT ERICA 3906N

R R RITO 707 AMF CAF NHF DDF
IDEAL 4465 OF 6807 4286 AMF NHF
N BAR SHADOW X4124
IDEAL 4465 OF 6807 4286 AMF NHF

O C C EMBLAZON 854E DMF AMF CAF NHF OSF DDF
O C C JUANADA 709V
BASIN EXPEDITION K47
CROWFOOT FORKS 755K

BW	WW	YW	MILK	TM	SC	CE	MCE	REA	CW	MARB	FAT
0.8	26	43	24	37	-0.46	2	4	0.41	-2	0.07	0.015

0505X pedigree consists of multiple generations of top females known for fertility, udder composition, and adaptability. He easily stamps his progeny to fit any grass-based program: siring easy fleshing, forage efficient cattle that will thrive in even the harshest environments. He has bred over 300 cows naturally in the past 4 years; obviously possessing exceptional libido and is highly fertile, testing 96% as a 5 year old bull. One of the best parts about 0505X is his outstanding dam

and the cow family behind him. His donor dam, Rev Erica 5752R, is a true 1350 lb cow; a moderate, easy fleshing, good footed daughter of OCC Joker 620J. Her udder is typical of the Joker-bred females and sets the standard for quality with small well placed teats, and snug rear and fore udder attachment. 0505X is one of 4 Memento brothers used in 2015 to naturally service 240 females – this line is the real deal and early on has proven its ability to sire added capacity, appetite and conversion, and super sweet udders on the daughters. Moderate, efficient, maternal – not just buzzwords.



LOT 78

LOT 78 CHAPMAN MEMENTO 4582B

MALE SWC 4582B #1839482 APRIL 25, 2014

SINCLAIR MEMENTO 8RL5
CHAPMAN MEMENTO 0505X
CROWFOOT REV ERICA 5752R

CROWFOOT EQUATION 5793R
CHAPMAN JEANNE 750T
CHAPMAN JEANNE 202M

SINCLAIR RITO LEGACY 3R9 AMF CAF DDF
SINCLAIR LADY 06S3 4465
O C C JOKER 620J DDF
CROWFOOT ERICA 3906N

O C C LEGACY 839L
CROWFOOT FORKS 755K
LEACHMAN RIGHT TIME DMF AMF
GLADWALL JEANNE T 2114

BW	WW	205D	WR	10/23WT	ADG	BW	WW	YW	MILK	TM
88	589	579	95	1360	3.16	2.0	30	60	23	38

AOD: 7 SALE DAY SC: SALE DAY WT:

One of the top bulls in the offering phenotypically who really puts it together. Dam is a top Equation daughter with a ratio of 104 on seven calves. Herd Bull !



LOT 79

LOT 79 CHAPMAN MEMENTO 4502B

MALE SWC 4502B #1830878 FEBRUARY 10, 2014

SINCLAIR MEMENTO 8RL5
CHAPMAN MEMENTO 0505X
CROWFOOT REV ERICA 5752R

CROWFOOT EQUATION 5793R
XO CROWFOOT PRINCENE 8831U
CROWFOOT PRINCENE 3731N

SINCLAIR RITO LEGACY 3R9 AMF CAF DDF
SINCLAIR LADY 06S3 4465
O C C JOKER 620J DDF
CROWFOOT ERICA 3906N

O C C LEGACY 839L
CROWFOOT FORKS 755K
BASIN EXPEDITION K47
GLADWALL PRINCENE 7225

BW	WW	205D	WR	10/23WT	ADG	BW	WW	YW	MILK	TM
79	691	534	96	1310	2.10	1.0	26	56	25	38

AOD: 6 SALE DAY SC: SALE DAY WT:

A good February born bull purchased in-dam out of the Crowfoot Dispersal. These early calves were weighed late so their Adjusted weights are off. Dam ratio 5/102



LOT 81

LOT 80 CHAPMAN EQUATOR 4514B

MALE SWC 4514B #1887669 MARCH 08, 2014

SINCLAIR MEMENTO 8RL5
CHAPMAN MEMENTO 0505X
CROWFOOT REV ERICA 5752R

XO CROWFOOT JOKER 8814U
CROWFOOT ROSE 176X
CROWFOOT ROSE 6311S

SINCLAIR RITO LEGACY 3R9 AMF CAF DDF
SINCLAIR LADY 06S3 4465
O C C JOKER 620J DDF
CROWFOOT ERICA 3906N

CROWFOOT JOKER 6172S
CROWFOOT FORKS 699K
O C C ECHOLON 857E DDF
CROWFOOT ROSE 3900N

BW	WW	205D	WR	10/23WT	ADG	BW	WW	YW	MILK	TM
85	680	589	106	1335	2.89	2.8	32	52	24	40

AOD: 4 SALE DAY SC: SALE DAY WT:

The Memento's were very popular last year, and combine low birth with efficiency and base width. Daughters are great to say the least! Dam ratios 4/106.

LOT 81 CHAPMAN MEMENTO 4525B

MALE SWC 4525B #1839494 APRIL 10, 2014

SINCLAIR MEMENTO 8RL5
CHAPMAN MEMENTO 0505X
CROWFOOT REV ERICA 5752R

CHAPMAN LEGACY 026S
CHAPMAN BAND 940W
BARBWALL ZARA BOND 469

SINCLAIR RITO LEGACY 3R9 AMF CAF DDF
SINCLAIR LADY 06S3 4465
O C C JOKER 620J DDF
CROWFOOT ERICA 3906N

O C C LEGACY 839L
PAT LADY ERICA 8984
TOMWALL RAINMAKER 0110
B ZARA BAND 192

BW	WW	205D	WR	10/23WT	ADG	BW	WW	YW	MILK	TM
79	559	518	85	1255	2.80	-0.2	19	36	18	28

AOD: 5 SALE DAY SC: SALE DAY WT:

Low birth weight bull/ low birth weight pedigree. Pedigree consists of some top cows, incl. ET donors 8984, 5752R, and 06S3 4465. Should make good replacements.

LOT 82 CHAPMAN MEMENTO 4590B

MALE SWC 4590B #1839468 APRIL 26, 2014

SINCLAIR MEMENTO 8RL5
CHAPMAN MEMENTO 0505X
CROWFOOT REV ERICA 5752R

CHAPMAN ALLIANCE 262M
CHAPMAN ROSE 545R
GLADWALL ROSE OF L 1173

SINCLAIR RITO LEGACY 3R9 AMF CAF DDF
SINCLAIR LADY 06S3 4465
O C C JOKER 620J DDF
CROWFOOT ERICA 3906N

SITZ ALLIANCE 6595 DMF AMF CAF NHF DDF
GLADWALL G EILEEN 6339
D V PRIDES COMMODORE
GLADWALL ROSE OF L 744

BW	WW	205D	WR	10/23WT	ADG	BW	WW	YW	MILK	TM
80	602	594	100	1310	2.90	0.5	30	48	20	35

AOD: 9 SALE DAY SC: SALE DAY WT:

Above average performance with an acceptable birth weight for heifers. Dam ratios 9/101 with sons to Boulding Ranches. Lots of daughters retained from dam.

LOT 83 CHAPMAN MEMENTO 4619B

MALE SWC 4619B #1839480 APRIL 30, 2014

SINCLAIR MEMENTO 8RL5
CHAPMAN MEMENTO 0505X
CROWFOOT REV ERICA 5752R

O C C MOONSHINE 740M
CROWFOOT CHLOE 5879R
CROWFOOT FORKS 669K

SINCLAIR RITO LEGACY 3R9 AMF CAF DDF
SINCLAIR LADY 06S3 4465
O C C JOKER 620J DDF
CROWFOOT ERICA 3906N

O C C JUST RIGHT 619J DDF
O C C DIXIE ERICA 816B
TOMWALL PIED PIPER 413
GLADWALL B CHLOE 762

BW	WW	205D	WR	10/23WT	ADG	BW	WW	YW	MILK	TM
89	616	619	102	1305	2.79	1.2	28	49	22	36

AOD: 9 SALE DAY SC: SALE DAY WT:

A very balanced bull. Dam is another true 1350# cow ratios 9/100 with sons to Heiberg Farms and 2 to Dave Hanson. Lots of longevity in this top cow family.

LOT 84 CHAPMAN MEMENTO 4632B

MALE SWC 4632B #1839466 MAY 03, 2014

SINCLAIR MEMENTO 8RL5
CHAPMAN MEMENTO 0505X
CROWFOOT REV ERICA 5752R

S B R WATERTON 6148S
CHAPMAN PRIDE 907W
CHAPMAN PRIDE 721T

SINCLAIR RITO LEGACY 3R9 AMF CAF DDF
SINCLAIR LADY 06S3 4465
O C C JOKER 620J DDF
CROWFOOT ERICA 3906N

LIONHEART OF WICKWIRE
OCTORARO MISS WIX 803
CROWFOOT VENTURE 1698L
CHAPMAN PRIDE 530R

BW	WW	205D	WR	10/23WT	ADG	BW	WW	YW	MILK	TM
85	581	591	98	1295	3.03	0.9	27	49	23	37

AOD: 5 SALE DAY SC: SALE DAY WT:

If you have udders to improve, this bull has the pedigree, plus balanced individual performance. Dam ratios 3/99 with a son to Skocdopole. Good bull.

LOT 85 CHAPMAN MEMENTO 4638B

MALE SWC 4638B #1839511 MAY 05, 2014

SINCLAIR MEMENTO 8RL5
CHAPMAN MEMENTO 0505X
CROWFOOT REV ERICA 5752R

O C C MOONSHINE 740M
CHAPMAN B PRIDE 8063U
CHAPMAN PRIDE 3327

SINCLAIR RITO LEGACY 3R9 AMF CAF DDF
SINCLAIR LADY 06S3 4465
O C C JOKER 620J DDF
CROWFOOT ERICA 3906N

O C C JUST RIGHT 619J DDF
O C C DIXIE ERICA 816B
CROWFOOT BRUNO 1670L
GLADWALL B GAY PRIDE 5128

BW	WW	205D	WR	10/23WT	ADG	BW	WW	YW	MILK	TM
90	564	578	95	1275	2.94	2.2	28	52	20	34

AOD: 6 SALE DAY SC: SALE DAY WT:

The Memento daughters are so nice - a good choice to incorporate if keeping replacements. Dam ratios 6/99 with sons to Donald & Bill Day and Bluesky Colony.

LOT 86 CHAPMAN MEMENTO 4641B

MALE SWC 4641B #1839504 MAY 06, 2014

SINCLAIR MEMENTO 8RL5
CHAPMAN MEMENTO 0505X
CROWFOOT REV ERICA 5752R

O C C GLORY 950G
CHAPMAN GLORIA 424P
GLADWELL D DIAMOND 621

SINCLAIR RITO LEGACY 3R9 AMF CAF DDF
SINCLAIR LADY 06S3 4465
O C C JOKER 620J DDF
CROWFOOT ERICA 3906N

O C C EXODUS 712E
O C C DIXIE ERICA 971E
HYLINE GOLD 474
M H R MISS RAINMAKER 1034

BW	WW	205D	WR	10/23WT	ADG	BW	WW	YW	MILK	TM
78	555	572	96	1210	2.61	0.2	29	47	20	35

AOD: 10 SALE DAY SC: SALE DAY WT:

A good bull, bred-in low birth weight and moderate mature size expectancy - should breed heifers for years. Dam ratios 10/99 with a herd bull to Doug Johnson.

LOT 87 CHAPMAN MEMENTO 4654B

MALE SWC 4654B #1839508 MAY 11, 2014

SINCLAIR MEMENTO 8RL5
CHAPMAN MEMENTO 0505X
CROWFOOT REV ERICA 5752R

HIGH VALLEY 7D7 OF 469 DWC
CHAPMAN KAWICH LADY 3316
GLADWALL KAWICH LADY 6186

SINCLAIR RITO LEGACY 3R9 AMF CAF DDF
SINCLAIR LADY 06S3 4465
O C C JOKER 620J DDF
CROWFOOT ERICA 3906N

D H D TRAVELER 6807 AMF NHF
HIGH VALLEY 469 6V16
SHOSHONE PRINCE 6135
GLADWALL KAWICH LADY 9218

BW	WW	205D	WR	10/23WT	ADG	BW	WW	YW	MILK	TM
83	569	626	105	1220	2.81	1.7	29	44	18	33

AOD: 11 SALE DAY SC: SALE DAY WT:

Lower birth weight bull posting a WW index of 105. Dam ratios 9/99, is from the same cow family as last year's high selling bull, also producing a top bull to Kent Isaac.

LOT 88 CHAPMAN MEMENTO 4657B

MALE SWC 4657B #1839486 MAY 12, 2014

SINCLAIR MEMENTO 8RL5
CHAPMAN MEMENTO 0505X
CROWFOOT REV ERICA 5752R

CROWFOOT EQUATION 5793R
CHAPMAN KAWICH LADY 9051W
CHAPMAN KAWICH LADY 3316

SINCLAIR RITO LEGACY 3R9 AMF CAF DDF
SINCLAIR LADY 06S3 4465
O C C JOKER 620J DDF
CROWFOOT ERICA 3906N

O C C LEGACY 839L
CROWFOOT FORKS 755K
HIGH VALLEY 7D7 OF 469 DWC
GLADWALL KAWICH LADY 6186

BW	WW	205D	WR	10/23WT	ADG	BW	WW	YW	MILK	TM
88	575	608	101	1365	3.28	2.6	31	55	22	38

AOD: 5 SALE DAY SC: SALE DAY WT:

The Memento x Equation is a nice maternal pedigree - utilize to improve udders and type. Solid all around individual performance and one of the heavier bulls off grass.

LOT 89 CHAPMAN MEMENTO 4663B

MALE SWC 4663B UNREGISTERED MAY 07, 2014

SINCLAIR MEMENTO 8RL5
CHAPMAN MEMENTO 0505X
CROWFOOT REV ERICA 5752R

SINCLAIR RITO LEGACY 3R9 AMF CAF DDF
SINCLAIR LADY 06S3 4465
O C C JOKER 620J DDF
CROWFOOT ERICA 3906N

REGISTERED ANGUS

BW	WW	205D	WR	10/23WT	ADG	BW	WW	YW	MILK	TM
95	625	647	100	1355	2.90	-	-	-	-	-

AOD: 6 SALE DAY SC: SALE DAY WT:

A Memento with lots of growth off a Registered Angus cow - DNA inconclusive and sells as an unregistered Angus bull. Good bull.



SIRE

CHAPMAN RITO LEGACY 218U

MALE YUS 218U #1474046 APRIL 25, 2008



R R RITO 707 AMF CAF NHF DDF
SINCLAIR RITO LEGACY 3R9 AMF CAF DDF
IDEAL 4465 OF 6807 4286 AMF NHF

RITO N BAR
ERISKAY OF ROLLIN ROCK 3
D H D TRAVELER 6807 AMF NHF
E E 4286 OF IDEAL 2240 1254

N BAR IMPACT U1253
PAT LADY ERICA 8984
PAT PIED PIPER 921

LEMMON IMPACT
N BAR CLOVA PRIDE 1696
SHOSHONE P P 7105
PAT LADY ERICA 613

BW	WW	YW	MILK	TM	SC	CE	MCE	REA	CW	MARB	FAT
-0.3	20	57	19	29	0.08	4	4	-0.06	6	-0.04	0.013

'218' was retained from the 2008 calf crop as the top son of Sinclair Rito Legacy 3R9 in order to carry on the RR 707 lineage; as well as the lineage of his donor dam, Pat Lady Erica 8984, who has earned lifetime weaning and yearling ratios of 108 and 110 respectively on 10 natural calves with 12 daughters in production. She is still in production at 18 years of age with multiple embryo calves due in 2016 by N Bar Emulation EXT, DHD Traveler 6807, OCC Legacy 839L & OCC Joker

620J. '218' posted weaning and yearling indexes of 108 and 104 respectively, along with a BW of 72 lbs. He is a true calving ease sire that balances functionality with performance. Utilize '218' sons for calving ease, traditional Angus characteristics and maternal lineage.

LOT 90 CHAPMAN RITO LEGACY 4555B

MALE SWC 4555B #1839489 APRIL 18, 2014

SINCLAIR RITO LEGACY 3R9 AMF CAF DDF
CHAPMAN RITO LEGACY 218U
PAT LADY ERICA 8984

R R RITO 707 AMF CAF NHF DDF
IDEAL 4465 OF 6807 4286 AMF NHF
N BAR IMPACT U1253
PAT PIED PIPER 921

CROWFOOT EQUATION 5793R
CHAPMAN ZARA BAND 9083W
CHAPMAN ZARA BAND 438P

O C C LEGACY 839L
CROWFOOT FORKS 755K
LEACHMAN RIGHT TIME DMF AMF
GLADWALL B ZARA BAND 6355

BW	WW	205D	WR	10/23WT	ADG	BW	WW	YW	MILK	TM
85	674	644	108	1395	2.84	1.5	34	68	23	40

AOD: 5 SALE DAY SC: SALE DAY WT:

Moderate birth with a WW and YW index of 108 and 112 respectively. Big gain on grass as well. Dam ratio's 6/109. Son to Daryk & Bonnie Simonson.

LOT 91 CHAPMAN RITO LEGACY 4531B

MALE SWC 4531B #1839496 APRIL 15, 2014

SINCLAIR RITO LEGACY 3R9 AMF CAF DDF
CHAPMAN RITO LEGACY 218U
PAT LADY ERICA 8984

R R RITO 707 AMF CAF NHF DDF
IDEAL 4465 OF 6807 4286 AMF NHF
N BAR IMPACT U1253
PAT PIED PIPER 921

RED SSS JUSTICE 174R
CHAPMAN PRIDE 780T
CHAPMAN PRIDE 4409

RED BJR JR 105
RED SSS EMULY 163C
CROWFOOT VENTURE 1698L
CHAPMAN PRIDE 226M

BW	WW	205D	WR	10/23WT	ADG	BW	WW	YW	MILK	TM
78	597	564	94	1350	3.02	0.5	25	58	18	31

AOD: 7 SALE DAY SC: SALE DAY WT:

Low birth Rito to go either way on heifers or cows. Dam ratios 6/100 also with a herd bull to Huxley Colony & Stimson Ranching. Good bull.



LOT 91



LOT 92 CHAPMAN RITO LEGACY 4542B

MALE SWC 4542B #1833121 APRIL 16, 2014

SINCLAIR RITO LEGACY 3R9 AMF CAF DDF
CHAPMAN RITO LEGACY 218U
 PAT LADY ERICA 8984

CROWFOOT JOKER 6172S
CHAPMAN ERICA 9052W
 CHAPMAN ERICA 660S

R R RITO 707 AMF CAF NHF DDF
 IDEAL 4465 OF 6807 4286 AMF NHF
 N BAR IMPACT U1253
 PAT PIED PIPER 921

O C C JOKER 620J DDF
 CFCC 1801L
 S A V 004 PREDOMINANT 4438 AMF CAF NHF DDF
 HAPPYVALE ERICA 182N

BW	WW	205D	WR	10/23WT	ADG	BW	WW	YW	MILK	TM
87	657	623	104	1375	2.78	1.8	31	63	24	40

AOD: 5 SALE DAY SC: SALE DAY WT:

Solid individual performance all the way through with this Rito x Joker son. Dam ratios 2/105 with another good Rito 9R7 son to Hays Stock Grazing Coop.

LOT 93 CHAPMAN RITO LEGACY 4561B

MALE SWC 4561B #1839502 APRIL 20, 2014

SINCLAIR RITO LEGACY 3R9 AMF CAF DDF
CHAPMAN RITO LEGACY 218U
 PAT LADY ERICA 8984

CROWFOOT EQUATION 5793R
CHAPMAN K PRIDE 9033W
 CHAPMAN PRIDE 4409

R R RITO 707 AMF CAF NHF DDF
 IDEAL 4465 OF 6807 4286 AMF NHF
 N BAR IMPACT U1253
 PAT PIED PIPER 921

O C C LEGACY 839L
 CROWFOOT FORKS 755K
 CROWFOOT VENTURE 1698L
 CHAPMAN PRIDE 226M

BW	WW	205D	WR	10/23WT	ADG	BW	WW	YW	MILK	TM
79	621	598	101	1235	2.08	0.6	32	71	22	38

AOD: 5 SALE DAY SC: SALE DAY WT:

Low birth with jacked up post-weaning gain. Old line Rito x Traveler lineage crossed well here. Dam has produced a son to Bluesky Colony. Productive cow family.

LOT 94 CHAPMAN RITO LEGACY 4570B

MALE SWC 4570B #1833116 APRIL 21, 2014

SINCLAIR RITO LEGACY 3R9 AMF CAF DDF
CHAPMAN RITO LEGACY 218U
 PAT LADY ERICA 8984

RED YY HEAT 902J
CROWFOOT PRIDE 5923R
 CROWFOOT FORKS 643K

R R RITO 707 AMF CAF NHF DDF
 IDEAL 4465 OF 6807 4286 AMF NHF
 N BAR IMPACT U1253
 PAT PIED PIPER 921

RED YY RED KNIGHT 640F OSF
 RED LINDA DEVOLANE 2X
 TOMWALL NB IMPACT U1253 6238
 BARB WALL G PRIDE 843

BW	WW	205D	WR	10/23WT	ADG	BW	WW	YW	MILK	TM
85	595	576	95	1180	2.14	0.2	28	61	18	32

AOD: 9 SALE DAY SC: SALE DAY WT:

Moderate Rito son balancing multiple traits by an Elite dam ratio'ing 8/104, with sons to Barry Shaw, Elfeldt Red Angus, Gerald Walter, and Hays Stock Grazing Coop.

LOT 95 CHAPMAN RITO LEGACY 4578B

MALE SWC 4578B #1839510 APRIL 24, 2014

SINCLAIR RITO LEGACY 3R9 AMF CAF DDF
CHAPMAN RITO LEGACY 218U
 PAT LADY ERICA 8984

DDA EMBLAZON 27C AMF CAF NHF DDF
CHAPMAN ROSE 8057U
 CHAPMAN ROSE 440S

R R RITO 707 AMF CAF NHF DDF
 IDEAL 4465 OF 6807 4286 AMF NHF
 N BAR IMPACT U1253
 PAT PIED PIPER 921

O C C EMBLAZON 854E DMF AMF CAF NHF OSF DDF
 D D A MELISA 824
 CROWFOOT VENTURE 1698L
 CHAPMAN ROSE 208M

BW	WW	205D	WR	10/23WT	ADG	BW	WW	YW	MILK	TM
86	574	562	92	1265	2.72	0.9	25	57	17	30

AOD: 6 SALE DAY SC: SALE DAY WT:

Another good Rito with a pedigree indicating lower birth weights and highly maternal. Elite dam with a ratio of 6/100 with herd bulls to Doug Johnson & Townview Farms.

MULTIPLE SIRES

Here are three bulls from different sires but all have the genetics to sire great replacements. 7196 was an extremely long bodied Emulation bred bull with a lot of muscle expression down his top. His Pathfinder Dam (the American designation for elite Angus cows) posts a WI 8@105, YI 8@104, IMF 8@103, and REA 8@109. Sinclair In Time 9RT10 is also of Emulation breeding who is also a Pathfinder with a WI 9/111 and a YI 9/107. HF Smokin' Aces is backed by a powerful and prolific dam in HF Erica 26T. The dam of Lot 98 is an Equation daughter who headlined the Crowfoot Dispersal and has a faultless udder in overall type.

LOT 96 **CHAPMAN 7196 EXT 4688B**

MALE SWC 4688B #1839506 MAY 21, 2014

SITZ JLS EMULATION EXT 536P
MC CUMBER 536P EXT 7196
LASSIE 434 OF MC CUMBER

DDA EMBLAZON 27C AMF CAF NHF DDF
CHAPMAN BELLE L NELLIE 767T
GLADWALL BELLE L NELLIE 6247

N BAR EMULATION EXT AMF CAF NHF DDF
IDEAL 4465 OF 6807 4286 AMF NHF
PINE CREEK RIGHT TIME 1147 AMF NHF
LASSIE 2140 OF MC CUMBER

O C C EMBLAZON 854E DMF AMF CAF NHF OSF DDF
D D A MELISA 824
N BAR IMPACT U1253
GLADWALL BELLE L NELLIE 4254

BW	WW	205D	WR	10/23WT	ADG	BW	WW	YW	MILK	TM
88	571	629	105	1250	3.05	2.4	45	62	18	41

AOD: 7 SALE DAY SC: SALE DAY WT:

If you want to improve udders and newborn calf vigor, this bull is a good choice. EXT on Emblazon equals maternal.



LOT 96

LOT 97 **CHAPMAN IN TIME 4524B**

MALE SWC 4524B #1833120 APRIL 10, 2014

LEACHMAN RIGHT TIME DMF AMF
SINCLAIR IN TIME 9RT10
N BAR ENCHANTRESS 4908

CROWFOOT JOKER 6172S
CHAPMAN LURA 9046W
CHAPMAN LURA 614S

N BAR EMULATION EXT AMF CAF NHF DDF
LEACHMAN ERICA 0025
BASIN EMULATION 5953
COFFEY ENCHANTRESS 424

O C C JOKER 620J DDF
CFCC 1801L
CROWFOOT VENTURE 1698L
CHAPMAN LURA 446P

BW	WW	205D	WR	10/23WT	ADG	BW	WW	YW	MILK	TM
77	561	520	86	1195	2.14	0.1	19	52	16	26

AOD: 5 SALE DAY SC: SALE DAY WT:

Low birth weight bull suitable for heifers. Dam ratios 5/103 with a son to Huxley Colony and Dan & Andrea Webster. Cow family known for balanced udders.



LOT 97

LOT 98 **CHAPMAN HAMI 4505B**

MALE SWC 4505B #1887668 FEBRUARY 19, 2014

GREENS PREMIUM 7578 CAF
HF SMOKIN' ACES 105Y
HF ERICA 26T

CROWFOOT EQUATION 5793R
XO CROWFOOT PRINCENE 968W
CROWFOOT PRINCENE 3731N

WK ULTIMATUM
GREENS LORI 5078 CAF
HF KODIAK 5R AMF CAF NHF MAF DDF
HF ERICA 182R

O C C LEGACY 839L
CROWFOOT FORKS 755K
BASIN EXPEDITION K47
GLADWALL PRINCENE 722S

BW	WW	205D	WR	10/23WT	ADG	BW	WW	YW	MILK	TM
86	644	514	90	1405	2.91	1.0	33	58	22	42

AOD: 5 SALE DAY SC: SALE DAY WT:

Unique pedigree. Dam has an impeccable udder, perhaps the best out of the Crowfoot Dispersal, and possesses a ratio 5/101, with a son at Circle Cross Ranching.



LOT 98

MULTIPLE SIRE PROGENY

In 2013, we rented a ranch that was set up for intensive rotational grazing, so to best utilize the grass we experimented and ran 220 cows with multiple herd sires. In fact, quite a few of the bulls in this catalog are the result of multi-sire breeding. The following bulls would be sons the herd sires mentioned in this catalog, and are out of some very good cows. Unfortunately the DNA testing is not as fool proof as what you see on a crime scene investigation TV show. Each bull sells with individual performance data minus the EPDs. Registration papers will be furnished if parentage is identified.

LOT **99** **CHAPMAN MULTI 4562B** MALE SWC 4562B UNREGISTERED APRIL 20, 2014

MULTI SIRE

REGISTERED ANGUS

BW	WW	205D	WR	10/23WT	ADG	BW	WW	YW	MILK	TM
93	630	607	100	1420	3.29	-	-	-	-	-

AOD: 5 SALE DAY SC: SALE DAY WT:

Good bull with that hit all the marks from weaning all the way through to coming off grass. Sells unregistered as the multi-sire DNA came in inconclusive.

LOT **100** **CHAPMAN MULTI 4706B** MALE SWC 4706B UNREGISTERED APRIL 29, 2014

CROWFOOT EQUATION 5793R
XO CROWFOOT EQU 268Z
XO CROWFOOT DIXIE ERICA 828U

O C C LEGACY 839L
CROWFOOT FORKS 755K
CROWFOOT 6071S
CROWFOOT DIXIE ERICA 6422S

REGISTERED ANGUS

BW	WW	205D	WR	10/23WT	ADG	BW	WW	YW	MILK	TM
88	608	608	100	1495	4.00	-	-	-	-	-

AOD: 7 SALE DAY SC: SALE DAY WT:

Good bull with that hit all the marks from weaning all the way through to coming off grass. Sells unregistered as the multi-sire DNA came in inconclusive.

LOT **101** **CHAPMAN MULTI 4618B** MALE SWC 4618B PENDING APRIL 29, 2014

MULTI SIRE

TOMWALL B EMULATION 070G
CHAPMAN ZARA BAND 438P
BAR B ZARA BAND 1987

BASIN EMULATION 5653
GLADWALL CLOVA PRIDE 8180
D V PRIDES COMMODORE
BAR B ZARA BAND 969

BW	WW	205D	WR	10/23WT	ADG	BW	WW	YW	MILK	TM
98	683	683	100	1420	3.82	-	-	-	-	-

AOD: 10 SALE DAY SC: SALE DAY WT:

Performance bull near the top in all categories. Sells unregistered as the multi-sire DNA came in inconclusive. Dam ratios 9/108: sons to Bluesky & Larry Meyers.

LOT **102** **CHAPMAN MULTI 4625B** MALE SWC 4625B PENDING MAY 02, 2014

MULTI SIRE

CROWFOOT AMBUSH 9137J
CHAPMAN EILEEN 449P
GLADWALL G V EILEEN 6230

BASIN AMBUSH 3905
STEVENSON HEATHER 499G
N BAR IMPACT V53
GLADWALL G V EILEEN 4101

BW	WW	205D	WR	10/23WT	ADG	BW	WW	YW	MILK	TM
89	603	611	100	1245	2.60	-	-	-	-	-

AOD: 10 SALE DAY SC: SALE DAY WT:

Good bull that sells unregistered as sire DNA is inconclusive. Dam designated Elite, ratio'ing 8/107 with sons to Sandie Davie, Shelly Auvigne, and Skocdopole Ranches.

LOT **103** **CHAPMAN MULTI 4631B** MALE SWC 4631B PENDING MAY 02, 2014

MULTI SIRE

CROWFOOT VENTURE 1698L
CHAPMAN ROSE 802U
CHAPMAN ROSE 429P

BASIN MAX 104J AMF CAF NHF
GLADWALL SARITA 8255
OCC GLORY 950G
GLADWALL ROSE OF L 6310

BW	WW	205D	WR	10/23WT	ADG	BW	WW	YW	MILK	TM
82	585	592	100	1290	2.97	-	-	-	-	-

AOD: 6 SALE DAY SC: SALE DAY WT:

Heifer bull from a low birth pedigree. Sells unregistered as the sire DNA was inconclusive. Dam ratios 6/102 with a herd bull to Walter Farms & Tomahawk Ranches.

LOT **104** **CHAPMAN MULTI 4642B** MALE SWC 4642B PENDING MAY 07, 2014

MULTI SIRE

CROWFOOT BRUNO 1670L
CHAPMAN BLACK LADY 715T
WINDOVER BLACK LADY 74L

STEVENSON BRUNO 561G CAF NHF DDF
GLADWALL B REV ERICA 7289
CARLSON 598 BANDO 3185
HARMON BLACK LADY 6117

BW	WW	205D	WR	10/23WT	ADG	BW	WW	YW	MILK	TM
88	612	633	100	1290	3.01	-	-	-	-	-

AOD: 7 SALE DAY SC: SALE DAY WT:

Balanced individual performance. Sells unregistered as the sire DNA was inconclusive. Dam produced a top herd bull by Rito 9R7 to the Lacombe Research Centre.

EPDS EXPLAINED

EPDs are predictions on how each bull rates against his own contemporary group and the rest of the breed. EPDs evaluate group averages and offspring's performance, however they cannot predict individual performance or weights.

For example, if Bull A (WW EPD of +10) & Bull B (WW of +60) were randomly mated with 10 similar cows, we would expect the group avg. weaning weight of Bull A's offspring to be 50 lbs. lighter than Bull B's ($60 - 10 = 50$).

BW = Birth Weight: expressed in pounds, is a prediction of a sire's ability to transmit birth weight to his progeny.

WW = Weaning Weight: expressed in pounds, is a predictor of a sire's ability to transmit weaning growth to his progeny.

YW = Yearling Weight: expressed in pounds, is a predictor of a sire's ability to transmit yearling growth to his progeny.

MILK = A predictor of a sire's genetic merit for milk and mothering ability as expressed in his daughters.

TM = Total Maternal = 50% Weaning Weight + Milk. This index is the expected amount of pounds that a sire's daughters' calves will differ from the breed average assuming the daughters are mated to sires of average genetic merit for Weaning Weight.

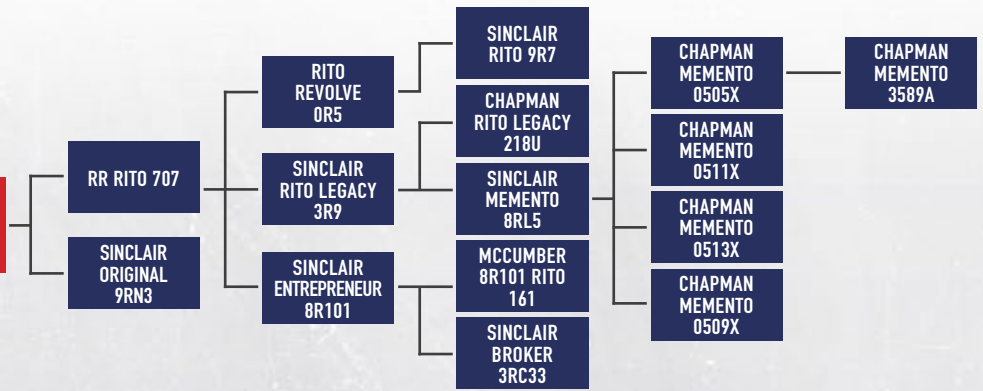
BREED AVERAGES

BW	2.3	WW	43	YW	77	MILK	18	TM	40
----	-----	----	----	----	----	------	----	----	----

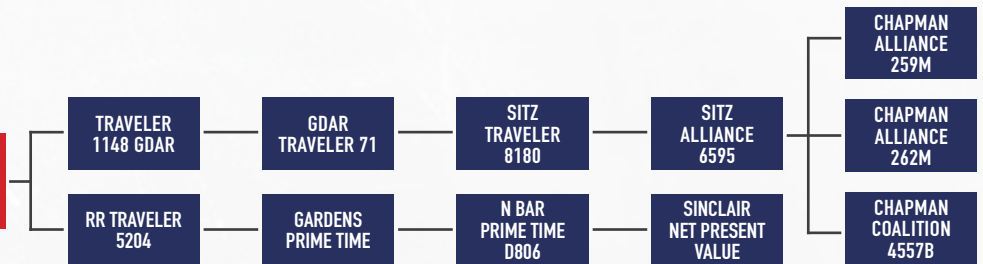


RITO

RITO N BAR

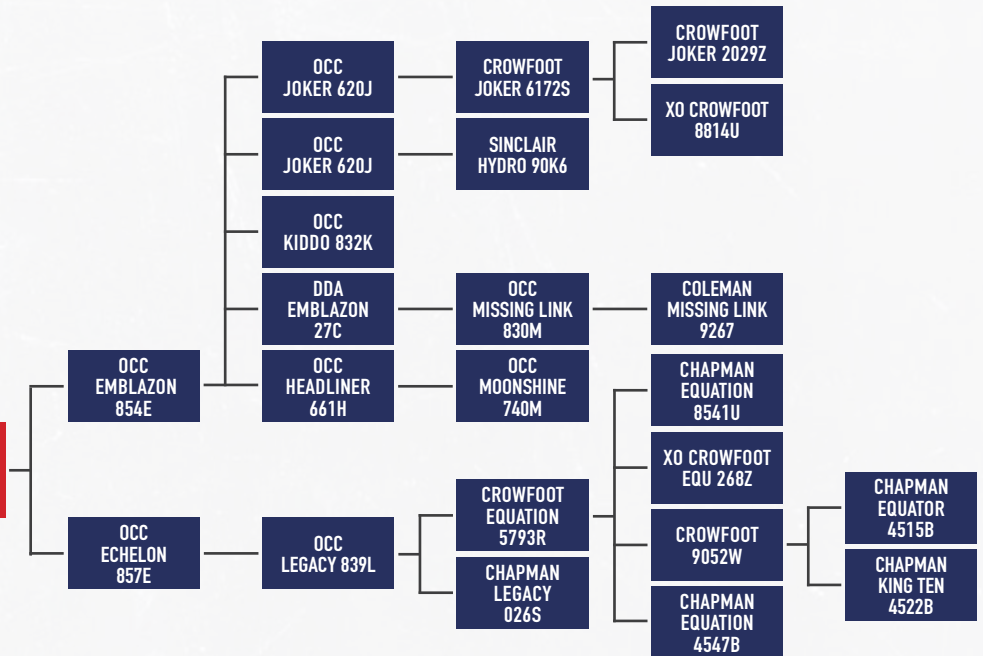


QAS TRAVELER 23-4



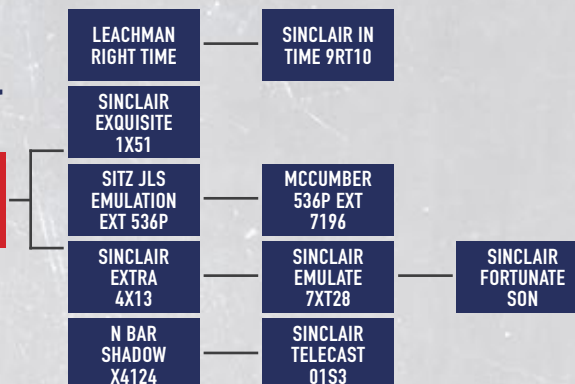
TRAVELER

DHD TRAVELER 6807



EMULATION

N BAR EMULATION EXT



S•I•R•E•S I•N RESIDENCE



RUDOW ADMINISTRATOR 333
RUDOW'S WHOLESOME 953 X DCC 814G GUNSMOKE 564



MCCUMBER 8R101 RITO 161
SINCLAIR ENTREPRENEUR 8R101 X PINE CREEK RIGHT



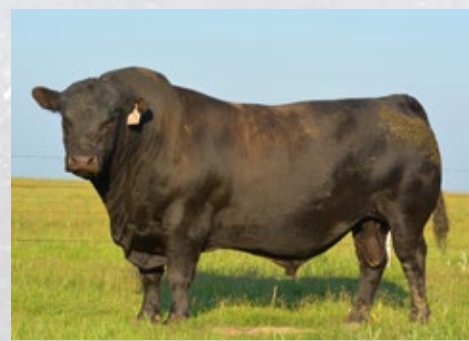
CHAPMAN MEMENTO 0505X
SINCLAIR MEMENTO 8RL5 X OCC JOKER 620J



CHAPMAN MEMENTO 0509X
SINCLAIR MEMENTO 8RL5 X OCC MOONSHINE 740M



CHAPMAN MEMENTO 0511X
SINCLAIR MEMENTO 8RL5 X OCC MOONSHINE 740M



CHAPMAN MEMENTO 0513X
SINCLAIR MEMENTO 8RL5 X OCC MOONSHINE 740M



CHAPMAN MEMENTO 3589A
CHAPMAN MEMENTO 0505X X CROWFOOT EQUATION



SINCLAIR RITO 9R7
RITO REVOLVE 0R5 X SINCLAIR NET PRESENT VALUE



SINCLAIR EXQUISITE 1X51
N BAR EMULATION EXT X N BAR EMULATION EXT



SINCLAIR BROKER 3RC33
SINCLAIR ENTREPRENEUR 8R101 X N BAR EMULATION



TRENDSETTER POWERHOUSE 1254
DUFF ANGUS 011 X OCC ANCHOR 7

ADDITIONAL WALKING SIRES:

CROWFOOT JOKER 2029Z
CROWFOOT JOKER 6172S X OCC LEGACY 839L
XO CROWFOOT EQU 268Z
CROWFOOT EQUATION 5793R X CROWFOOT 6071S
RICHMOND BANDIT SRD 67B
COLE CREEK GOLDMERE 581 X CROWFOOT EQUATION 5793R

2016 EMBRYO CALVES SIRED BY:

DHD TRAVELER 6807 • N BAR EMULATION EXT
• OCC LEGACY 839L • OCC JOKER 620J •
SINCLAIR FORTUNATE SON • SINCLAIR RITO 9R7

**ENGINEERED TO
BREED MORE COWS &
BUILT TO LAST**

WWW.CHAPMANCATTLE.COM