

8th ANNUAL
Chapman
Cattle Company
Red and Black Angus

2:00PM THURSDAY
February 13th
2014
Stettler Auction Mart
STETTLER, AB

100%
FORAGE-DEVELOPED
Angus Bull Sale



Canada's Largest
Public Offering of

100%

'Forage-Developed'
2 Yr. Old Bulls
Angus & Red Angus

ENGINEERED to BREED
BUILT to LAST

TERMS *and* CONDITIONS

SALE DATE | FEBRUARY 13, 2014

SALE DAY PHONE | 403-742-2368

Sale Professionals

Don Raffan, Auctioneer	250-558-6789
Joe Ferris, Ring Staff	250-558-8745
Dean Edge, Ring Staff	403-704-0280
Shane Castle, Buyer Rep	306-741-7485
Greg Hayden, Buyer Rep	403-742-2368
Jim Abel, Buyer Rep	403-742-2368
Blake Chapman, Buyer Rep	403-741-5760

Bids

Buyer may call or send their bids to any of the sale professionals listed above or directly to Chapman Cattle Company. Complete satisfaction is guaranteed for cattle purchased sight unseen as well as all bulls sold.

Sale Location

Stettler Auction Mart, Stettler, Alberta

Terms & Conditions

All cattle sell under the standard terms and conditions of the Canadian Angus Association. Terms of the sale are cash, payable on Sale Day unless prior arrangements have been made with Chapman Cattle Company.

Insurance

Ownership risk to purchaser commences when the Auctioneer's hammer falls. All cattle returning to Chapman Cattle Company must be insured. Although all precautions will be made for the well-being of your cattle until possession has transferred, Chapman Cattle Company will not be liable for any sickness, injury or death that causes loss of use of the specified cattle. A Livestock Insurance agent will be available Sale Day to discuss your coverage options.

Announcements

All announcements from the sale block on sale day take precedence of any printed material.

Food

Coffee and donuts in the a.m. Lunch will be prepared and served starting at 12:00pm.

Hotels

Canalta Hotel, Stettler	403-742-3371
Ramada Inn, Stettler	403-742-6555
Super 8 Motel, Stettler	403-742-3391
Heartlander Motel, Stettler	403-742-3401

Liability

All persons who attend the sale do so at their own risk and the owners, management, and Sale Day staff assume no liability, and disclaims all liability, legal or otherwise, for any reason.

Health

All sale bulls have been vaccinated under the Pfizer Gold Program, poured with Ivomec and Boss, supplemented with Multi-Min 90, fertility tested and guaranteed sound.

Storm Date

FEBRUARY 14, 2014 – 2:00pm – Stettler Auction Mart

Delivery

Upon Settlement, please choose one of the following options and inform the clerk at the time of settlement.

Please leave detailed delivery instructions upon doing so.

- A. \$100 Discount off of the Total Invoice per buyer if bulls are picked up Sale Day
- B. Free Board & Delivery to Central Points

Every attempt will be made to deliver your new bull(s) to your bull pen commencing after the sale and will be done at the expense of Chapman Cattle Company for bulls selling within the Prairie Provinces and BC. All bulls going beyond will be delivered at cost. Chapman Cattle Company assumes no liability of death or injury for bulls returning to the ranch. All bulls MUST be insured.



DON RAFFAN
Auctioneer

Silas Chapman
phone: (403) 741-2099
fax: (403) 742-0503
silas@chapmancattle.com



Sight-Unseen Purchases

Can't make it to the sale? We guarantee you won't be disappointed in the Chapman 'Forage-Developed' bulls that you buy sight unseen. In fact, we sell many bulls across Canada every year this way. Our experience over the past 65 years is the sooner you contact us, the better we are able to match the right cattle to your specifications. When cattle purchased "sight-unseen" are delivered, the buyer has the right of refusal for any animals that are not as they were represented.

Guarantee

We're confident that our 'Forage-Developed' bulls will meet and exceed your standards for longevity and performance. If for any reasons you're not satisfied with a bull you purchase from us, you don't have to pay – just call us for a prompt and courteous credit or refund.

Follow-Up and Consulting

We are interested about your program too, your success, and the effectiveness of our cattle in your herd. Feel free to contact us at any time.

Call us at (403) 741-2099
email us at silas@chapmancattle.com
or through our website at www.chapmancattle.com

Complete Bull Information available on-line including catalog, video, individual performance, EPD's, scrotal measurements and sale weights at www.chapmancattle.com. Please let us know if we can provide you with any additional information or assistance. We look forward to seeing you on sale day!

We will be Broadcasting the Sale Live Ringside!
LIVE RING – LIVE VIDEO – LIVE AUCTIONEER

INTERNET BIDDING

To participate in internet bidding is as easy as 1,2,3...

PRE-REGISTER in advance at www.stettlerauction.ab.ca by clicking Sign Up Here under On-Line Auctions. You will receive a validation email with your user name and password once registration has been completed.

SALE DAY- click View Live Auctions. You will be prompted to enter your user name and password to login into the system. Once logged in you will be able to view the auction live and bid. Bids can be submitted by phone or over the internet. Sale Day Phone to place bids is (403) 742-2368.

For technical assistance please contact the Stettler Auction Mart - Greg Hayden or Jim Abel 403-742-2368

You will be contacted the week after the sale for settlement and delivery instructions. In an effort to cover liability issues and protect buyer's interest, we require all bulls returning to Chapman Cattle Co. to be insured. A Stockmen's Insurance agent will be available to assist you with coverage options. If at all possible, we invite you to stop by and evaluate the bulls prior to sale day.



HELLO

from Chapman Cattle Company



First and foremost I would like to thank all of the buyers and bidders for your expressed interest through the past seven bull sales. It is very rewarding to hear the success these bulls are having in your programs, and that they are doing exactly what we had promoted their merit on. The feedback has been very positive including 'the bull continued to look as good or better after breeding season'; 'those bulls continued to grow and gain weight'; 'I plan on using that bull for replacements'; and my favorite

'we have purchased at least 30 of your 'All-Forage' bulls since your first Bull Sale in 2007 and we still have all but one!

A few months ago, long-time Auctioneer and friend Mr. Don Raffan and I were reflecting on our first 100% 'Forage-Developed' Bull Sale in 2007. To interject, we have been selling bulls for 65 years, but 2007 was a real gamble – changing what we had been doing for the past 58 years and going forward with the exact opposite mindset of conventional bull development. Basically, our move to developing these bulls was, and still is, antagonistic to the norm; a paradigm shift towards a simple yet abstract of thinking, that being...

Sell people what they want – NOT what they need!

We all know what we want out of these bulls – to service the most cows for the most years with the most positive genetic influence our money can buy. We also want to walk out to the bull pen and admire the bull for how he looks long after he's been delivered and feel confident that we made the right choice on sale day.

What we don't want is to replace bulls that don't breed due to low fertility, low libido or structural issues. We also don't want to look at a bull in the fall and know we are either stuck with him for another 2,3 or 4 years (or however long he lasts), or bite the bullet and cull him because he is the exact opposite phenotype of what we thought we were buying on sale day.

We should want a bull offering where the selection pressure is amplified when the feed is restricted to an all-forage diet. Rest assured, these bulls, by the time they are 2 years of age, have gone through a Navy Seals boot camp, rather than hot yoga class, and the survivors are rock solid Angus bulls!

Forage-developing these bulls measures all the same traits that relate to performance; and can be used in conjunction with fertility as a measure of reproductive adaptability, in order to select for cattle that will be more likely to express the desired type. The evidence is that cattle selected in the environment in which they are to perform show faster genetic progress in the traits being selected for than if the environment were different.

With that, please accept this as your invitation to join us February 13, 2014 at 2:00pm in Stettler, AB. The bulls look really good – our most uniform group yet – out of multi-generational dams that have been environmentally pressured for fertility and efficiency. These bulls reflect that selection pressure – it's bred in. We know you have options when it comes to your bull purchases, but we are confident this is as honest a representation of 2 Year Old Angus bulls as there will be to sell anywhere in Canada

Silas Chapman

WELCOME

from Castle Rock Marketing



Welcome to the Chapman Cattle Co Bull Sale! In working with Chapman's over the past years we have seen a continuance of the cattle and the direction the herd is set on achieving. The bulls each year offer the same predictable function, sound made,

forage grown and backed by genetics that have not only served their herd well but through the numerous repeat customers that stay involved with this program. No expense has been spared in attaining the genetics that best serve this herd. Crowfoot Cattle Co has been a long time source for Silas in bolstering the herd lineup. Having custom grazed a number of their cattle it was easy to see that the genetics fit into the plan for Chapman Cattle Co and its road to attaining those goals. Sinclair Cattle Co has also recently been another source which has been looked upon to further the genetic qualities that the N Bar herd offers and was the backbone not only to Sinclair but to the Walling herd which had a marked impacts on the Crowfoot herd as well.

Customers return each year to select their next genetic pieces being happy with the previous purchases. It is often commented that the bulls go out and breed well and often times go forward gaining body condition. The bull pen consists of a small percentage of the male calves that are born each year meaning you the customer is getting the cream of the crop each time. If you have every raised Two Year old bulls you will know those that can make it to the sale truly are survivors as they tend to take care of a lot of the culling themselves. The bulls are in prime condition to serve their purpose in being athletic, sound breeding bulls that will do their job well. But don't take our word for it, stop by Chapmans to have a look or stop by the Stettler Auction Mart February 13 and find out for yourself.

By all means feel free to contact Silas or myself if you have any questions regarding the offering or absentee bidding! We will look after your properly!

See you sale day!

Shane Castle

Advantages of Forage Developed Bulls

What is a 100% 'Forage-Developed Bull'? This is a bull that has been developed and tested for his ability to perform on an all forage (grass/hay) diet. Typically, most bulls are developed and tested on a high concentrate (grain) ration similar to the rations used to fatten cattle in a feedlot. Even claims of a high-roughage diet may not accurately define how that bull has been developed.

It is common knowledge that these hot feedlot rations will negatively affect a bull's fertility, digestive system and liver function, as well as the soundness of his feet and legs.

It stands to reason, the bulls that perform best in a forage-raised environment should sire cattle that are also more efficient foragers. Therefore, this is a very important economic trait for ranchers who produce their own replacement females to select for.

Chapman Cattle Company started marketing foragetested bulls in 2006. Why? the reasons are twofold. First, we believed in the basic concept of forage testing our maternal genetics since we were already moving our cowherd towards a grass-based production system. Second, it provided a way for us to market our late spring born bull calves as long yearlings.

The bulls are initially weaned in November where they begin their forage testing. They are roughed through their first winter on mixed hay with little, or no, protein supplement. This stage of development always does an excellent job of "separating the men from the boys".

The bulls will spend their second summer on an allgrass diet. It's not uncommon for them to gain over 2 pounds per day during the summer. In October, the bulls come off grass and are weighed. This marks the end of their forage test. Since the bulls are run in large groups, our ratios should accurately reflect their true genetic merit when comparing gain.

At the end of their forage test, the less efficient and unadapted bulls are culled, as well as those with structural problems. Most of the survivors will be offered for sale in our spring bull sale with a complete breeding soundness guarantee.

Although this program has an extremely high fallout rate, we believe it is the best way to performance test our maternal genetics.

There are several obvious advantages to using older, forage-tested bulls. Since these bulls are older and more mature they are able to handle a heavier workload.

Since they are in range condition, in contrast to being overweight, they're able to maintain or gain weight during their first breeding season. Many customers have reiterated testimonials how their Chapman bull was the only bull not to lose condition throughout the breeding season.

Since these bulls have never been confined to smaller pens and/ or forced to eat a high concentrate ration, they will be much healthier and will last much longer. Bull longevity is an extremely important economic trait.

Ultimately, since these bulls have proven their ability to survive and perform in an all-forage environment, they should pass that genetic potential on to their offspring.

2013 RESIDENT HERDSIRES



Chapman Rito Legacy 218U
Sinclair Rito Legacy 3R9 x N Bar Impact U1253

Chapman Memento 0505X

Sinclair Memento 8RL5 x OCC Joker 620J 0505X



Cole Creek Cedar Ridge 181

Cole Creek Cedar Ridge 1V x HBR Encore 0544



Cole Creek Goldmere 581

Cole Creek Goldmere 70V x Cole Creek Goldmere 31N



Crowfoot Joker 6172S

OCC Joker 620J x Tomwall GDAR Royce 964



Crowfoot Equation 5793R

OCC Legacy 839L x Tomwall Pied Piper 413



Chapman Equation 8541U

Crowfoot Equation 5793R x Sitz Alliance 6595



Sinclair Rito 9R7

Rito Revolve 0R5 x Sinclair Net Present Value



Sinclair Exquisite 1X51

N Bar Emulation EXT x N Bar Emulation EXT



McCumber 536P EXT 7196

Sitz JLS Emulation EXT 536P x Pine Creek Right Time 1147



McCumber 8R101 Rito 161

Sinclair Entrepreneur 8R101 x Pine Creek Right Time 1147



Red Bar-E-L Gambler 87X

Red Lazy MC Cowboy Cut 26U x Red Bar-E-L Approval 4L



Crowfoot Joker 2029Z | Crowfoot Joker 6172S x OCC Legacy 839L

XO Crowfoot EQU 268Z | Crowfoot Equation 5793R x Crowfoot 6071S

Chapman Rito 1547Y | Sinclair Rito 9R7 x Sitz Alliance 6595



SIRE

A

SINCLAIR RITO 9R7

Male Tattoo: IMP 9R7 DOB: Feb 7, 2009 Reg#: 1583293

R R RITO 707 AMF CAF NHF
RITO REVOLVE OR5 (14038735)
 IDEAL 1456 OF 8103 8114

RITO N BAR
 ERISKAY OF ROLLIN ROCK 3
 IDEAL 8103 OF ELDO 5110 5213
 IDEAL 8114 OF ELDO 5110 3127

SINCLAIR NET PRESENT VALUE AMF CAF NHF
SINCLAIR K BTY 6PV5 25F3 (15365619)
 SINCLAIR K BTY 25F3 Z189

N BAR PRIME TIME D806 AMF CAF NHF
 IDEAL 4465 OF 6807 4286 AMF NHF
 EMULATION N BAR 5522
 N BAR KINCHTRY BEAUTY 1740

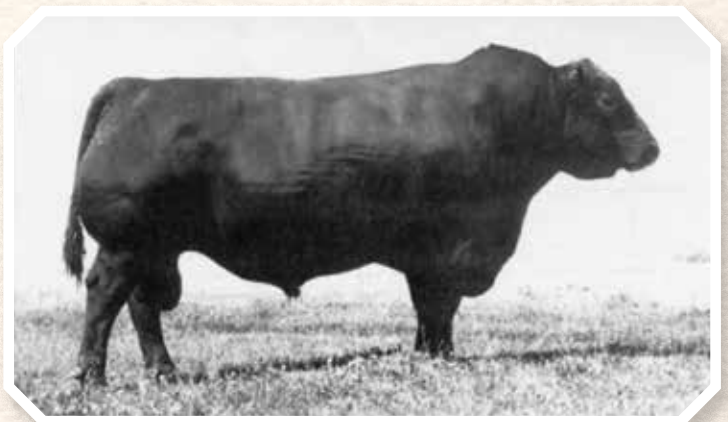
Spring '14 EPD'S: BW: +3.9 WW: +77 YW: +126 Milk: +17 TM: +56

SC	CE	MCE	REA	CW	Marb	Fat
0.86	-3.0	-4.0	0.17	27	-0.08	0.023

9R7 is a high capacity, wide based, thick made bull that is old line Rito, ensuring correctness and functionality. In fact, the dam of his sire, OR5, traces 19 times to RR Rito 707 who was born in 1967. 9R7 weaned off his mother at 742 lbs and recorded a 365 day weight of 1355 lbs for a weaning and yearling ratio of 114 and 122 respectively in a very competitive Sinclair program. 9R7 has a classy, masculine beef bull look along with a wide, deep quarter and excellent scrotal development that he stamps into his sons with authority, yet leaving wedge-shaped, feminine daughters with extra rib shape. 9R7 has been used heavy and will continue to see a lot of cows here, and through his sons. Utilize 9R7 sons for added performance, capacity and structural correctness.



RITO REVOLVE OR5 - Sire



R R Rito 707 - Parental Grandsire to Rito 9R7



LOT 1
CHAPMAN RITO 2503Z

Male Tattoo: SWC 2503Z DOB: Jan 30, 2012 Reg#: 1703195

RITO REVOLVE OR5
SINCLAIR RITO 9R7 (1583293)
SINCLAIR K BTY 6PV5 25F3

R R RITO 707 AMF CAF NHF DDF
IDEAL 1456 OF 8103 8114
SINCLAIR NET PRESENT VALUE AMF CAF NHF DDF
SINCLAIR K BTY 25F3 Z189

CHAPMAN ALLIANCE 259M
CHAPMAN TILDA 784T (1418472)
SANDY BAR TILDA 7F

SITZ ALLIANCE 6595 DMF AMF CAF NHF DDF
GLADWELL D DIAMOND 621
BAR 20 RAINMAKER 344D
SB TILDA 13C

Spring '14 EPD'S: BW: +2.7 WW: +57 YW: +95 Milk: +17 TM: +46

BW	Act WW	ADJ 205	WR	ADJ 365	Scotal Circ.
84		643	90	1011	39cm

LOT 2
CHAPMAN RITO 2504Z

Male Tattoo: SWC 2504Z DOB: Jan 31, 2011 Reg#: 1703197

RITO REVOLVE OR5
SINCLAIR RITO 9R7 (1583293)
SINCLAIR K BTY 6PV5 25F3

R R RITO 707 AMF CAF NHF DDF
IDEAL 1456 OF 8103 8114
SINCLAIR NET PRESENT VALUE AMF CAF NHF DDF
SINCLAIR K BTY 25F3 Z189

CROWFOOT 3500N
RED CHAPMAN PRISCILLA 732T (1418587)
RED CROWFOOT GREEN 1015L

O C C ECHELON 857E DDF
RED MS FORSTER BRITE 8055
RED OH BOOMER 552E
RED CROWFOOT GREEN 683F

Spring '14 EPD'S: BW: +1.4 WW: +67 YW: +110 Milk: +16 TM: +49

BW	Act WW	ADJ 205	WR	ADJ 365	Scotal Circ.
91	-	670	93	1116	40cm

LOT 3
CHAPMAN RITO 2505Z

Male Tattoo: SWC 2505Z DOB: Feb 2, 2012 Reg#: 1703198

RITO REVOLVE OR5
SINCLAIR RITO 9R7 (1583293)
SINCLAIR K BTY 6PV5 25F3

R R RITO 707 AMF CAF NHF DDF
IDEAL 1456 OF 8103 8114
SINCLAIR NET PRESENT VALUE AMF CAF NHF DDF
SINCLAIR K BTY 25F3 Z189

CROWFOOT VENTURE 1698L
CHAPMAN BLACK LADY 3302 (1175105)
WINDOVER BLACK LADY 74L

BASIN MAX 104J AMF CAF NHF
GLADWALL SARITA 8255
CARLSON 598 BANDO 3185
HARMON BLACK LADY 6117

Spring '14 EPD'S: BW: +1.7 WW: +58 YW: +99 Milk: +19 TM: +48

BW	Act WW	ADJ 205	WR	ADJ 365	Scotal Circ.
86	-	727	103	1086	39cm

- BREED EPD AVERAGES -

Red & Black Angus Breed Averages are compiled from the total number of Red Angus calves registered in 2013 to compare the **RED & BLACK ANGUS BULLS** in this catalogue to:

	BW	WW	YW	Milk	TM
BLACK ANGUS	+2.8	+42	+73	+19	+39
RED ANGUS	-0.6	+47	+73	+16	+39



LOT 4 **CHAPMAN RITO 2507Z**

Male Tattoo: SWC 2507Z DOB: Feb 4, 2012 Reg#: 1703202

RITO REVOLVE OR5
SINCLAIR RITO 9R7 (1583293)
 SINCLAIR K BTY 6PV5 25F3

R R RITO 707 AMF CAF NHF DDF
 IDEAL 1456 OF 8103 8114
 SINCLAIR NET PRESENT VALUE AMF CAF NHF DDF
 SINCLAIR K BTY 25F3 Z189

CHAPMAN PAY DAY 4456
CHAPMAN MISS RIO 717T (1418581)
 CHAPMAN MISS RIO 541R

CROWFOOT VENTURE 1698L
 CHAPMAN NELLIE 210M
 CROWFOOT BRUNO 1670L
 RED CHAPMAN MISS RIO 225M

Spring '14 EPD'S: BW: +1.8 WW: +59 YW: +98 Milk: +18 TM: +48

BW	Act WW	ADJ 205	WR	ADJ 365	Scotal Circ.
85	-	677	95	1026	38cm

LOT 5 **CHAPMAN RITO 2508Z**

Male Tattoo: SWC 2508Z DOB: Feb 6, 2012 Reg#: 1703204

RITO REVOLVE OR5
SINCLAIR RITO 9R7 (1583293)
 SINCLAIR K BTY 6PV5 25F3

DDA EMBLAZON 27C AMF CAF NHF DDF
CHAPMAN KAWICH LADY 766T (1481701)
 GLADWALL KAWICH LADY 6186

R R RITO 707 AMF CAF NHF DDF
 IDEAL 1456 OF 8103 8114
 SINCLAIR NET PRESENT VALUE AMF CAF NHF DDF
 SINCLAIR K BTY 25F3 Z189

OCC EMBLAZON 854E DMF AMF CAF NHF OSF DDF
 D D A MELISA 824
 SHOSHONE PRINCE 6135
 GLADWALL KAWICH LADY 9218

Spring '14 EPD'S: BW: +2.7 WW: +60 YW: +89 Milk: +17 TM: +47

BW	Act WW	ADJ 205	WR	ADJ 365	Scotal Circ.
87	-	714	101	1085	41cm

LOT 6 **CHAPMAN RITO 2509Z**

Male Tattoo: SWC 2509Z DOB: Feb 7, 2012 Reg#: 1703206

RITO REVOLVE OR5
SINCLAIR RITO 9R7 (1583293)
 SINCLAIR K BTY 6PV5 25F3

TOMWALL GDAR ROYCE 916
CROWFOOT PEARL 1828L (1061573)
 GLADWALL L PEARL 7192

R R RITO 707 AMF CAF NHF DDF
 IDEAL 1456 OF 8103 8114
 SINCLAIR NET PRESENT VALUE AMF CAF NHF DDF
 SINCLAIR K BTY 25F3 Z189

G D A R ROYCE 131
 GLADWALL L BL NELLIE 752
 AMITIE ACRES L EXT 1376
 GLADWALL L PEARL 395

Spring '14 EPD'S: BW: +3.2 WW: +62 YW: +101 Milk: +21 TM: +52

BW	Act WW	ADJ 205	WR	ADJ 365	Scotal Circ.
92	-	736	103	1157	40cm

LOT 7 **CHAPMAN RITO 2510Z**

Male Tattoo: SWC 2510Z DOB: Feb 7, 2012 Reg#: 1703205

RITO REVOLVE OR5
SINCLAIR RITO 9R7 (1583293)
 SINCLAIR K BTY 6PV5 25F3

R R RITO 707 AMF CAF NHF DDF
 IDEAL 1456 OF 8103 8114
 SINCLAIR NET PRESENT VALUE AMF CAF NHF DDF
 SINCLAIR K BTY 25F3 Z189

CROWFOOT EQUATION 5793R
CHAPMAN IDELETTE 781T (1418633)
 CHAPMAN IDELETTE 442P

O C C LEGACY 839L
 CROWFOOT FORKS 755K
 CROWFOOT VENTURE 1698L
 PARKE AVENUE IDELETTE 63M

Spring '14 EPD'S: BW: +3.9 WW: +63 YW: +108 Milk: +21 TM: +53

BW	Act WW	ADJ 205	WR	ADJ 365	Scotal Circ.
95	-	733	102	1029	38cm



LOT 8 **CHAPMAN RITO 2511Z**

Male Tattoo: SWC 2511Z DOB: Feb 8, 2012 Reg#: 1703207

RITO REVOLVE OR5
SINCLAIR RITO 9R7 (1583293)
 SINCLAIR K BTY 6PV5 25F3

R R RITO 707 AMF CAF NHF DDF
 IDEAL 1456 OF 8103 8114
 SINCLAIR NET PRESENT VALUE AMF CAF NHF DDF
 SINCLAIR K BTY 25F3 Z189

N BAR EMULATION EXT AMF CAF NHF DDF
CHAPMAN BELLE L NELLIE 769T (1418621)
 GLADWALL BELLE L NELLIE 8381

EMULATION N BAR 5522
 N BAR PRIMROSE 2424
 N BAR IMPACT U1253
 GLADWALL BELLE L NELLIE 581

Spring '14 EPD'S: BW: +1.1 WW: +60 YW: +98 Milk: +14 TM: +44

BW	Act WW	ADJ 205	WR	ADJ 365	Scotal Circ.
83	-	687	97	1105	38cm



LOT 9 **CHAPMAN RITO 2512Z**

Male Tattoo: SWC 2512Z DOB: Feb 12, 2012 Reg#: 1703208

RITO REVOLVE OR5
SINCLAIR RITO 9R7 (1583293)
 SINCLAIR K BTY 6PV5 25F3

R R RITO 707 AMF CAF NHF DDF
 IDEAL 1456 OF 8103 8114
 SINCLAIR NET PRESENT VALUE AMF CAF NHF DDF
 SINCLAIR K BTY 25F3 Z189

CHAPMAN ALLIANCE 259M
CHAPMAN BLOSSOM 798T (1418640)
 HAPPYVALE BLOSSOM 4M

SITZ ALLIANCE 6595 DMF AMF CAF NHF DDF
 GLADWELL D DIAMOND 621
 SITZ ALLIANCE 6595 DMF AMF CAF NHF DDF
 HAPPYVALE BLOSSOM 102K

Spring '14 EPD'S: BW: +2.6 WW: +67 YW: +108 Milk: +23 TM: +57

BW	Act WW	ADJ 205	WR	ADJ 365	Scotal Circ.
89	-	747	106	1181	40cm





LOT 10 **CHAPMAN RITO 2514Z**

Male Tattoo: SWC 2514Z DOB: Feb 13, 2012 Reg#: 1703210

RITO REVOLVE OR5
SINCLAIR RITO 9R7 (1583293)
 SINCLAIR K BTY 6PV5 25F3

R R RITO 707 AMF CAF NHF DDF
 IDEAL 1456 OF 8103 8114
 SINCLAIR NET PRESENT VALUE AMF CAF NHF DDF
 SINCLAIR K BTY 25F3 Z189

CHAPMAN ALLIANCE 259M
CHAPMAN JEANNE 778T (1418630)
 CHAPMAN JEANNE 4402

SITZ ALLIANCE 6595 DMF AMF CAF NHF DDF
 GLADWELL D DIAMOND 621
 CROWFOOT BRUNO 1670L
 GLADWALL JEANNE T 2114

Spring '14 EPD'S: BW: +3.5 WW: +62 YW: +100 Milk: +20 TM: +51

BW	Act WW	ADJ 205	WR	ADJ 365	Scotal Circ.
96	-	729	102	1221	38cm



LOT 11 **CHAPMAN RITO 2515Z**

Male Tattoo: SWC 2515Z DOB: Feb 14, 2012 Reg#: 1703211

RITO REVOLVE OR5
SINCLAIR RITO 9R7 (1583293)
 SINCLAIR K BTY 6PV5 25F3

R R RITO 707 AMF CAF NHF DDF
 IDEAL 1456 OF 8103 8114
 SINCLAIR NET PRESENT VALUE AMF CAF NHF DDF
 SINCLAIR K BTY 25F3 Z189

CROWFOOT MACHO 4549P
CHAPMAN LOVEMERE PET 708T (1418574)
 CROWFOOT LOVEMERE PET 5791R

O C C MAGNUM 749M
 CROWFOOT BLACKBIRD 2537M
 O C C MOONSHINE 740M
 CROWFOOT 3778N

Spring '14 EPD'S: BW: +5.2 WW: +58 YW: +98 Milk: +19 TM: +48

BW	Act WW	ADJ 205	WR	ADJ 365	Scotal Circ.
96	-	679	93	948	39cm



LOT 12 **CHAPMAN RITO 2516Z**

Male Tattoo: SWC 2516Z DOB: Feb 15, 2012 Reg#: 1703213

RITO REVOLVE OR5
SINCLAIR RITO 9R7 (1583293)
 SINCLAIR K BTY 6PV5 25F3

R R RITO 707 AMF CAF NHF DDF
 IDEAL 1456 OF 8103 8114
 SINCLAIR NET PRESENT VALUE AMF CAF NHF DDF
 SINCLAIR K BTY 25F3 Z189

CHAPMAN ALLIANCE 262M
CHAPMAN PATRICIA 726T (1418586)
 CHAPMAN PATRICIA 4406

SITZ ALLIANCE 6595 DMF AMF CAF NHF DDF
 GLADWALL G EILEEN 6339
 BOYD NEW DAY 8005 AMF CAF NHF DDF
 HAPPYVALE PATRICIA 121L

Spring '14 EPD'S: BW: +2 WW: +63 YW: +106 Milk: +20 TM: +52

BW	Act WW	ADJ 205	WR	ADJ 365	Scrotal Circ.
83	-	710	101	1055	38cm

LOT

13

CHAPMAN RITO 2517Z

Male Tattoo: SWC 2517Z DOB: Feb 20, 2012 Reg#: 1703216

RITO REVOLVE OR5
SINCLAIR RITO 9R7 (1583293)
 SINCLAIR K BTY 6PV5 25F3

R R RITO 707 AMF CAF NHF DDF
 IDEAL 1456 OF 8103 8114
 SINCLAIR NET PRESENT VALUE AMF CAF NHF DDF
 SINCLAIR K BTY 25F3 Z189

RED SSS JUSTICE 174R
CHAPMAN PRIDE 780T (1418632)
 CHAPMAN PRIDE 4409

RED BJR JR 105
 RED SSS EMULY 163C
 CROWFOOT VENTURE 1698L
 CHAPMAN PRIDE 226M

Spring '14 EPD'S: BW: +2.8 WW: +63 YW: +100 Milk: +19 TM: +51

BW	Act WW	ADJ 205	WR	ADJ 365	Scrotal Circ.
86	-	751	107	1157	38cm



Selling 2/3 interest and full possession

LOT

14

CHAPMAN RITO 2518Z

Male Tattoo: SWC 2518Z DOB: Feb 21, 2012 Reg#: 1703218

RITO REVOLVE OR5
SINCLAIR RITO 9R7 (1583293)
 SINCLAIR K BTY 6PV5 25F3

R R RITO 707 AMF CAF NHF DDF
 IDEAL 1456 OF 8103 8114
 SINCLAIR NET PRESENT VALUE AMF CAF NHF DDF
 SINCLAIR K BTY 25F3 Z189

O C C GLORY 950G
CHAPMAN TILDA 740T (1418596)
 CHAPMAN TILDA 228M

O C C EXODUS 712E
 O C C DIXIE ERICA 971E
 BASIN PARTNER 137H
 SANDY BAR TILDA 7F

Spring '14 EPD'S: BW: +2.7 WW: +59 YW: +99 Milk: +19 TM: +49

BW	Act WW	ADJ 205	WR	ADJ 365	Scotal Circ.
85	-	702	99	1264	40cm



LOT

15

CHAPMAN RITO 2519Z

Male Tattoo: SWC 2519Z DOB: Feb 21, 2012 Reg#: 1703217

RITO REVOLVE OR5
SINCLAIR RITO 9R7 (1583293)
 SINCLAIR K BTY 6PV5 25F3

R R RITO 707 AMF CAF NHF DDF
 IDEAL 1456 OF 8103 8114
 SINCLAIR NET PRESENT VALUE AMF CAF NHF DDF
 SINCLAIR K BTY 25F3 Z189

CROWFOOT EQUATION 5793R
CHAPMAN LURA 748T (1418601)
 CHAPMAN LURA 446P

O C C LEGACY 839L
 CROWFOOT FORKS 755K
 LEACHMAN RIGHT TIME DMF AMF
 GLADWALL L LURA 6174

Spring '14 EPD'S: BW: +1.8 WW: +62 YW: +107 Milk: +20 TM: +51

BW	Act WW	ADJ 205	WR	ADJ 365	Scrotal Circ.
85	-	729	103	1069	40cm



LOT 16 **CHAPMAN RITO 2520Z**

Male Tattoo: SWC 2520Z DOB: Feb 23, 2012 Reg#: 1703219

RITO REVOLVE OR5
SINCLAIR RITO 9R7 (1583293)
 SINCLAIR K BTY 6PV5 25F3

R R RITO 707 AMF CAF NHF DDF
 IDEAL 1456 OF 8103 8114
 SINCLAIR NET PRESENT VALUE AMF CAF NHF DDF
 SINCLAIR K BTY 25F3 Z189

N BAR IMPACT U1253
GLADWALL BELLE NELLIE 8381 (990880)
 GLADWALL BELLE L NELLIE 581

LEMMON IMPACT
 N BAR CLOVA PRIDE 1696
 LEACHMAN EXT 3500
 GLADWALL BELLE L NELLIE 6250

Spring '14 EPD'S: BW: +2.2 WW: +51 YW: +83 Milk: +15 TM: +41

BW	Act WW	ADJ 205	WR	ADJ 365	Scotal Circ.
88	-	675	94	1114	36cm



LOT 17 **CHAPMAN RITO 2526Z**

Male Tattoo: SWC 2526Z DOB: Mar 3, 2012 Reg#: 1703225

RITO REVOLVE OR5
SINCLAIR RITO 9R7 (1583293)
 SINCLAIR K BTY 6PV5 25F3

R R RITO 707 AMF CAF NHF DDF
 IDEAL 1456 OF 8103 8114
 SINCLAIR NET PRESENT VALUE AMF CAF NHF DDF
 SINCLAIR K BTY 25F3 Z189

RED YY HEAT 902J
CROWFOOT PRIDE 5923R (1255034)
 CROWFOOT FORKS 643K

RED YY RED KNIGHT 640F OSF
 RED LINDA DEVOLANE 2X
 TOMWALL NB IMPACT U1253 6238
 BARBWALL G PRIDE 843

Spring '14 EPD'S: BW: +2.2 WW: +60 YW: +100 Milk: +17 TM: +47

BW	Act WW	ADJ 205	WR	ADJ 365	Scrotal Circ.
88	-	714	100	1134	40cm

LOT 18 **CHAPMAN RITO 2531Z**

Male Tattoo: SWC 2531Z DOB: Mar 8, 2012 Reg#: 1703231

RITO REVOLVE OR5
SINCLAIR RITO 9R7 (1583293)
 SINCLAIR K BTY 6PV5 25F3

R R RITO 707 AMF CAF NHF DDF
 IDEAL 1456 OF 8103 8114
 SINCLAIR NET PRESENT VALUE AMF CAF NHF DDF
 SINCLAIR K BTY 25F3 Z189

CHAPMAN PAY DAY 4456
CHAPMAN PRIDE 710T (1418576)
 CHAPMAN PRIDE 551R

CROWFOOT VENTURE 1698L
 CHAPMAN NELLIE 210M
 CHAPMAN PARTNER 277M
 CHAPMAN PRIDE 226M

Spring '14 EPD'S: BW: +2.4 WW: +57 YW: +94 Milk: +21 TM: +50

BW	Act WW	ADJ 205	WR	ADJ 365	Scrotal Circ.
85	-	711	100	1157	39cm



LOT 19 **CHAPMAN RITO 2533Z**

Male Tattoo: SWC 2533Z DOB: Mar 9, 2012 Reg#: 1703233

RITO REVOLVE OR5
SINCLAIR RITO 9R7 (1583293)
 SINCLAIR K BTY 6PV5 25F3

R R RITO 707 AMF CAF NHF DDF
 IDEAL 1456 OF 8103 8114
 SINCLAIR NET PRESENT VALUE AMF CAF NHF DDF
 SINCLAIR K BTY 25F3 Z189

RED SSS JUSTICE 174R
CHAPMAN HANNI 768T (1418619)
 CHAPMAN HANNI 4401

RED BJR JR 105
 RED SSS EMULY 163C
 CROWFOOT BRUNO 1670L
 RED CHAPMAN HANNI 002K

Spring '14 EPD'S: BW: +2.6 WW: +57 YW: +97 Milk: +14 TM: +43

BW	Act WW	ADJ 205	WR	ADJ 365	Scrotal Circ.
88	-	679	95	1101	39cm

LOT 20 CHAPMAN RITO 2534Z

Male Tattoo: SWC 2534Z DOB: Mar 16, 2012 Reg#: 1703236

RITO REVOLVE OR5
SINCLAIR RITO 9R7 (1583293)
 SINCLAIR K BTY 6PV5 25F3

R R RITO 707 AMF CAF NHF DDF
 IDEAL 1456 OF 8103 8114
 SINCLAIR NET PRESENT VALUE AMF CAF NHF DDF
 SINCLAIR K BTY 25F3 Z189

CHAPMAN PAY DAY 4456
CHAPMAN BLACK LADY 715T (1418580)
 CHAPMAN BLACK LADY 526R

CROWFOOT VENTURE 1698L
 CHAPMAN NELLIE 210M
 CROWFOOT BRUNO 1670L
 WINDOVER BLACK LADY 74L

Spring '14 EPD'S: BW: +1.7 WW: +59 YW: +98 Milk: +20 TM: +50

BW	Act WW	ADJ 205	WR	ADJ 365	Scrotal Circ.
92	-	758	107	1120	39cm



LOT 21 CHAPMAN RITO 2535Z

Male Tattoo: SWC 2535Z DOB: Mar 16, 2012 Reg#: 1703237

RITO REVOLVE OR5
SINCLAIR RITO 9R7 (1583293)
 SINCLAIR K BTY 6PV5 25F3

R R RITO 707 AMF CAF NHF DDF
 IDEAL 1456 OF 8103 8114
 SINCLAIR NET PRESENT VALUE AMF CAF NHF DDF
 SINCLAIR K BTY 25F3 Z189

CHAPMAN ALLIANCE 262M
CHAPMAN PRINCENE 752T (1418608)
 CHAPMAN PRINCENE 422P

SITZ ALLIANCE 6595 DMF AMF CAF NHF DDF
 GLADWALL G EILEEN 6339
 VDAR DATABANK 1061 CAF DDF
 GLADWALL PRINCENE 2179

Spring '14 EPD'S: BW: +3 WW: +64 YW: +104 Milk: +21 TM: +53

BW	Act WW	ADJ 205	WR	ADJ 365	Scotal Circ.
87	-	733	110	1113	39cm



LOT 22 CHAPMAN RITO 2538Z

Male Tattoo: SWC 2538Z DOB: Mar 16, 2012 Reg#: 1703234

RITO REVOLVE OR5
SINCLAIR RITO 9R7 (1583293)
 SINCLAIR K BTY 6PV5 25F3

R R RITO 707 AMF CAF NHF DDF
 IDEAL 1456 OF 8103 8114
 SINCLAIR NET PRESENT VALUE AMF CAF NHF DDF
 SINCLAIR K BTY 25F3 Z189

CHAPMAN ALLIANCE 262M
CHAPMAN NEONIA 756T (1418611)
 CHAPMAN NEONIA 4408

SITZ ALLIANCE 6595 DMF AMF CAF NHF DDF
 GLADWALL G EILEEN 6339
 BOYD NEW DAY 8005 AMF CAF NHF DDF
 HAPPYVALE T. NEONIA 131L

Spring '14 EPD'S: BW: +4.5 WW: +63 YW: +105 Milk: +21 TM: +53

BW	Act WW	ADJ 205	WR	ADJ 365	Scrotal Circ.
95	-	722	101	970	42cm



LOT 23 CHAPMAN RITO 2560Z

Male Tattoo: SWC 2560Z DOB: Apr 17, 2012 Reg#: 1703265

RITO REVOLVE OR5
SINCLAIR RITO 9R7 (1583293)
 SINCLAIR K BTY 6PV5 25F3

R R RITO 707 AMF CAF NHF DDF
 IDEAL 1456 OF 8103 8114
 SINCLAIR NET PRESENT VALUE AMF CAF NHF DDF
 SINCLAIR K BTY 25F3 Z189

CROWFOOT EQUATION 5793R
CHAPMAN PEARL 8061U (1468666)
 CHAPMAN PEARL 4404

O C C LEGACY 839L
 CROWFOOT FORKS 755K
 CROWFOOT VENTURE 1698L
 CHAPMAN PEARL 209M

Spring '14 EPD'S: BW: +3.3 WW: +56 YW: +100 Milk: +22 TM: +50

BW	Act WW	ADJ 205	WR	ADJ 365	Scrotal Circ.
88	-	685	115	1174	36cm

LOT 25 CHAPMAN RITO 2567Z

Male Tattoo: SWC 2567Z DOB: Apr 18, 2012 Reg#: 1703272

RITO REVOLVE OR5
SINCLAIR RITO 9R7 (1583293)
 SINCLAIR K BTY 6PV5 25F3

R R RITO 707 AMF CAF NHF DDF
 IDEAL 1456 OF 8103 8114
 SINCLAIR NET PRESENT VALUE AMF CAF NHF DDF
 SINCLAIR K BTY 25F3 Z189

O C C MOONSHINE 740M
CHAPMAN ZARA BAND 8074U (1468676)
 CHAPMAN ZARA BAND 438P

O C C JUST RIGHT 619J DDF
 O C C DIXIE ERICA 816B
 LEACHMAN RIGHT TIME DMF AMF
 GLADWALL B ZARA BAND 635S

Spring '14 EPD'S: BW: +2 WW: +57 YW: +94 Milk: +15 TM: +44

BW	Act WW	ADJ 205	WR	ADJ 365	Scrotal Circ.
83	-	684	116	1121	38cm

LOT 24 CHAPMAN RITO 2565Z

Male Tattoo: SWC 2565Z DOB: Apr 18, 2012 Reg#: 1703274

RITO REVOLVE OR5
SINCLAIR RITO 9R7 (1583293)
 SINCLAIR K BTY 6PV5 25F3

R R RITO 707 AMF CAF NHF DDF
 IDEAL 1456 OF 8103 8114
 SINCLAIR NET PRESENT VALUE AMF CAF NHF DDF
 SINCLAIR K BTY 25F3 Z189

CROWFOOT MACHO 4549P
CHAPMAN LOVEMERE 8020U (1468629)
 CHAPMAN LOVEMERE 607S

O C C MAGNUM 749M
 CROWFOOT BLACKBIRD 2537M
 BLACK GEM RAIN AGAIN 340N
 CROWFOOT LOVEMERE R 922I

Spring '14 EPD'S: BW: +2.4 WW: +51 YW: +86 Milk: +17 TM: +43

BW	Act WW	ADJ 205	WR	ADJ 365	Scrotal Circ.
78	-	602	101	1031	39cm

LOT 26 CHAPMAN RITO 2578Z

Male Tattoo: SWC 2578Z DOB: Apr 20, 2012 Reg#: 1703280

RITO REVOLVE OR5
SINCLAIR RITO 9R7 (1583293)
 SINCLAIR K BTY 6PV5 25F3

R R RITO 707 AMF CAF NHF DDF
 IDEAL 1456 OF 8103 8114
 SINCLAIR NET PRESENT VALUE AMF CAF NHF DDF
 SINCLAIR K BTY 25F3 Z189

CROWFOOT MACHO 4549P
CHAPMAN G PRIDE 8013U (1468622)
 CHAPMAN G PRIDE 672S

O C C MAGNUM 749M
 CROWFOOT BLACKBIRD 2537M
 CHAPMAN MR. MARBLES 258M
 CHAPMAN PRIDE 215M

Spring '14 EPD'S: BW: +2.1 WW: +60 YW: +97 Milk: +20 TM: +50

BW	Act WW	ADJ 205	WR	ADJ 365	Scrotal Circ.
81	-	732	125	1148	39cm

LOT 27 CHAPMAN RITO 2580Z

Male Tattoo: SWC 2580Z DOB: Apr 21, 2012 Reg#: 1703286

RITO REVOLVE OR5
SINCLAIR RITO 9R7 (1583293)
 SINCLAIR K BTY 6PV5 25F3

R R RITO 707 AMF CAF NHF DDF
 IDEAL 1456 OF 8103 8114
 SINCLAIR NET PRESENT VALUE AMF CAF NHF DDF
 SINCLAIR K BTY 25F3 Z189

DDA EMBLAZON 27C AMF CAF NHF DDF
CHAPMAN ROSE 8057U (1468662)
 CHAPMAN ROSE 440S

O C C EMBLAZON 854E DMF AMF CAF NHF OSF DDF
 D D A MELISA 824
 CROWFOOT VENTURE 1698L
 CHAPMAN ROSE 208M

Spring '14 EPD'S: BW: +4 WW: +57 YW: +96 Milk: +17 TM: +46

BW	Act WW	ADJ 205	WR	ADJ 365	Scrotal Circ.
96	-	685	113	934	37cm





Selling 2/3 interest and full possession

LOT 28 CHAPMAN RITO 2592Z

Male Tattoo: SWC 2592Z DOB: Apr 23, 2012 Reg#: 1703307

RITO REVOLVE OR5
SINCLAIR RITO 9R7 (1583293)
 SINCLAIR K BTY 6PV5 25F3

R R RITO 707 AMF CAF NHF DDF
 IDEAL 1456 OF 8103 8114
 SINCLAIR NET PRESENT VALUE AMF CAF NHF DDF
 SINCLAIR K BTY 25F3 Z189

CROWFOOT MACHO 4549P
CHAPMAN PRINCENE 8024U (1468632)
 CHAPMAN PRINCENE 616S

O C C MAGNUM 749M
 CROWFOOT BLACKBIRD 2537M
 CROWFOOT VENTURE 1698L
 CHAPMAN PRINCENE 422P

Spring '14 EPD'S: BW: +2.6 WW: +57 YW: +96 Milk: +15 TM: +44

BW	Act WW	ADJ 205	WR	ADJ 365	Scrotal Circ.
84	-	680	115	1112	37cm

LOT 29 CHAPMAN RITO 2603Z

Male Tattoo: SWC 2603Z DOB: Apr 25, 2012 Reg#: 1703314

RITO REVOLVE OR5
SINCLAIR RITO 9R7 (1583293)
 SINCLAIR K BTY 6PV5 25F3

R R RITO 707 AMF CAF NHF DDF
 IDEAL 1456 OF 8103 8114
 SINCLAIR NET PRESENT VALUE AMF CAF NHF DDF
 SINCLAIR K BTY 25F3 Z189

CROWFOOT EQUATION 5793R
CHAPMAN PRINCESS 8059U (1468665)
 CHAPMAN PRINCESS 4413

O C C LEGACY 839L
 CROWFOOT FORKS 755K
 CHAPMAN ALLIANCE 262M
 CHAPMAN PRINCESS 214M

Spring '14 EPD'S: BW: +3.3 WW: +57 YW: +102 Milk: +20 TM: +49

BW	Act WW	ADJ 205	WR	ADJ 365	Scrotal Circ.
86	-	671	112	1031	38cm

LOT 30 CHAPMAN RITO 2607Z

Male Tattoo: SWC 2607Z DOB: Apr 27, 2012 Reg#: 1703320

RITO REVOLVE OR5
SINCLAIR RITO 9R7 (1583293)
 SINCLAIR K BTY 6PV5 25F3

R R RITO 707 AMF CAF NHF DDF
 IDEAL 1456 OF 8103 8114
 SINCLAIR NET PRESENT VALUE AMF CAF NHF DDF
 SINCLAIR K BTY 25F3 Z189

O C C MOONSHINE 740M
CHAPMAN DUCHESS 8009U (1468618)
 CHAPMAN DUCHESS 4403

O C C JUST RIGHT 619J DDF
 O C C DIXIE ERICA 816B
 CROWFOOT BRUNO 1670L
 RED CHAPMAN DUCHESS 103L

Spring '14 EPD'S: BW: +3.6 WW: +55 YW: +96 Milk: +18 TM: +46

BW	Act WW	ADJ 205	WR	ADJ 365	Scrotal Circ.
88	-	661	111	990	39cm

**“SIGHT-UNSEEN”
Purchase Plan**

We would prefer to have everyone in attendance for sale day, but realistically we know there are scheduling conflicts and distance limitations. Regardless of the situation, we handle many sight-unseen bull purchases every year, and have successfully placed cattle into 6 provinces this way. Almost every one of those original sight-unseen purchases has resulted in repeat orders. In fact, of all the bulls sold sight-unseen, we have only had to bring 1 bull home! We know the cattle well, and realistically some of our customers prefer to allow us to select their bull power for them. Please contact Silas, Blake, or Shane Castle to discuss your bull requirements.

100% Satisfaction Guaranteed!

LOT 31 CHAPMAN RITO 2620Z

Male Tattoo: SWC 2620Z DOB: May 3, 2012 Reg#: 1703332

RITO REVOLVE OR5
SINCLAIR RITO 9R7 (1583293)
 SINCLAIR K BTY 6PV5 25F3

R R RITO 707 AMF CAF NHF DDF
 IDEAL 1456 OF 8103 8114
 SINCLAIR NET PRESENT VALUE AMF CAF NHF DDF
 SINCLAIR K BTY 25F3 Z189

CROWFOOT EQUATION 5793R
CHAPMAN IDELETTE 8042U (1468644)
 CHAPMAN IDELETTE 442P

O C C LEGACY 839L
 CROWFOOT FORKS 755K
 CROWFOOT VENTURE 1698L
 PARKE AVENUE IDELETTE 63M

Spring '14 EPD'S: BW: +2.8 WW: +51 YW: +94 Milk: +21 TM: +47

BW	Act WW	ADJ 205	WR	ADJ 365	Scrotal Circ.
85	-	636	106	939	37cm

LOT 32 **CHAPMAN RITO 2621Z**

Male Tattoo: SWC 2621Z DOB: May 3, 2012 Reg#: 1703331

RITO REVOLVE OR5
SINCLAIR RITO 9R7 (1583293)
SINCLAIR K BTY 6PV5 25F3

R R RITO 707 AMF CAF NHF DDF
IDEAL 1456 OF 8103 8114
SINCLAIR NET PRESENT VALUE AMF CAF NHF DDF
SINCLAIR K BTY 25F3 Z189

O C C MOONSHINE 740M
CHAPMAN B PRIDE 8063U (1468669)
CHAPMAN PRIDE 3327

O C C JUST RIGHT 619J DDF
O C C DIXIE ERICA 816B
CROWFOOT BRUNO 1670L
GLADWALL B GAY PRIDE 5128

Spring '14 EPD'S: BW: +2.6 WW: +58 YW: +97 Milk: +17 TM: +46

BW	Act WW	ADJ 205	WR	ADJ 365	Scrotal Circ.
85	-	709	120	1195	39cm

LOT 33 **CHAPMAN RITO 2646Z**

Male Tattoo: SWC 2646Z DOB: May 18, 2012 Reg#: 1703358

RITO REVOLVE OR5
SINCLAIR RITO 9R7 (1583293)
SINCLAIR K BTY 6PV5 25F3

R R RITO 707 AMF CAF NHF DDF
IDEAL 1456 OF 8103 8114
SINCLAIR NET PRESENT VALUE AMF CAF NHF DDF
SINCLAIR K BTY 25F3 Z189

CROWFOOT JOKER 6172S
CHAPMAN PEARL 8002U (1468611)
CROWFOOT PEARL 1828L

O C C JOKER 620J DDF
CFCC 1801L
TOMWALL GDAR ROYCE 916
GLADWALL L PEARL 719Z

Spring '14 EPD'S: BW: +2.4 WW: +56 YW: +93 Milk: +21 TM: +49

BW	Act WW	ADJ 205	WR	ADJ 365	Scrotal Circ.
84	-	693	117	996	39cm



LOT 34 **CHAPMAN RITO 2650Z**

Male Tattoo: SWC 2650Z DOB: May 20, 2012 Reg#: 1703360

RITO REVOLVE OR5
SINCLAIR RITO 9R7 (1583293)
SINCLAIR K BTY 6PV5 25F3

R R RITO 707 AMF CAF NHF DDF
IDEAL 1456 OF 8103 8114
SINCLAIR NET PRESENT VALUE AMF CAF NHF DDF
SINCLAIR K BTY 25F3 Z189

CROWFOOT EQUATION 5793R
CHAPMAN LURA 8064U (1468668)
CHAPMAN LURA 446P

O C C LEGACY 839L
CROWFOOT FORKS 755K
LEACHMAN RIGHT TIME DMF AMF
GLADWALL L LURA 6174

Spring '14 EPD'S: BW: +1.3 WW: +59 YW: +102 Milk: +20 TM: +50

BW	Act WW	ADJ 205	WR	ADJ 365	Scrotal Circ.
84	-	739	126	1065	38cm

SIRE B **McCUMBER 536P EXT 7196**

Male Tattoo: IMP 7196T DOB: March 11 2007 Reg#: 1478134

N BAR EMULATION EXT AMF CAF NHF DDF
SITZ JLS EMULATION EXT 536P (14809623)
IDEAL 4465 OF 6807 4286 AMF NHF

EMULATION N BAR 5522
N BAR PRIMROSE 2424
D H D TRAVELER 6807 AMF NHF
E E 4286 OF IDEAL 2240 1254

PINE CREEK RIGHT TIME 1147 AMF NHF
LASSIE 434 OF MC CUMBER (14798054)
LASSIE 2140 OF MC CUMBER

LEACHMAN RIGHT TIME DMF AMF
SITZ EVERELDA ENTENSE 1137
BT NEW TREND 172K
LASSIE 914 OF MC CUMBER

Spring '14 EPD'S: BW: +2.1 WW: +48 YW: +68 Milk: +23 TM: +47

SC	CE	MCE	REA	CW	Marb	Fat
0.32	2.0	6.0	0.15	26	0.24	0.017



LOT 35 CHAPMAN 7196 EXT 2524Z

Male(RC) Tattoo: SWC 2524Z DOB: Feb 26, 2012 Reg#: 1703223

SITZ JLS EMULATION EXT 536P
MC CUMBER 536P EXT 7196 (1478134)
 LASSIE 434 OF MC CUMBER

N BAR EMULATION EXT AMF CAF NHF DDF
 IDEAL 4465 OF 6807 4286 AMF NHF
 PINE CREEK RIGHT TIME 1147 AMF NHF
 LASSIE 2140 OF MC CUMBER

RED CROWFOOT RAMBLER 1038L
RED CHAPMAN RACHEL 9074W (1531358)
 RED CROWFOOT GREEN 1014L

RED VGW RAMBLER 1000 OSF
 CROWFOOT VERNICE 907J
 RED OH BOOMER 552E
 RED CROWFOOT GREEN 683F

Spring '14 EPD'S: BW:-2.4 WW:+46 YW:+72 Milk:+16 TM:+39

BW	Act WW	ADJ 205	WR	ADJ 365	Scotal Circ.
82	-	673	95	1143	38cm

LOT 37 CHAPMAN 7196 EXT 2537Z

Male Tattoo: SWC 2537Z DOB: Mar 16, 2012 Reg#: 1703235

SITZ JLS EMULATION EXT 536P
MC CUMBER 536P EXT 7196 (1478134)
 LASSIE 434 OF MC CUMBER

N BAR EMULATION EXT AMF CAF NHF DDF
 IDEAL 4465 OF 6807 4286 AMF NHF
 PINE CREEK RIGHT TIME 1147 AMF NHF
 LASSIE 2140 OF MC CUMBER

CROWFOOT EQUATION 5793R
CHAPMAN CHLOE 9058W (1531347)
 GLADWALL B CHLOE 623

O C C LEGACY 839L
 CROWFOOT FORKS 755K
 J A R COOL HAND LUKE
 GLADWALL B CHLOE 524

Spring '14 EPD'S: BW:+6.3 WW:+51 YW:+74 Milk:+12 TM:n/a

BW	Act WW	ADJ 205	WR	ADJ 365	Scotal Circ.
97	-	751	105	1089	34cm

LOT 38 CHAPMAN 7196 EXT 2545Z

Male Tattoo: SWC 2545Z DOB: Apr 7, 2012 Reg#: 1703243

SITZ JLS EMULATION EXT 536P
MC CUMBER 536P EXT 7196 (1478134)
 LASSIE 434 OF MC CUMBER

N BAR EMULATION EXT AMF CAF NHF DDF
 IDEAL 4465 OF 6807 4286 AMF NHF
 PINE CREEK RIGHT TIME 1147 AMF NHF
 LASSIE 2140 OF MC CUMBER

DDA SURE ENOUGH 6D
CHAPMAN LANA 9055W (1574134)
 DDA LANA 317

DDA EMBLAZON 28A
 DDA MARY 156
 D D A FAHREN 21X
 LANA 167 DDA

Spring '14 EPD'S: BW:+0.9 WW:+44 YW:+60 Milk:+17 TM:+39

BW	Act WW	ADJ 205	WR	ADJ 365	Scrotal Circ.
77	-	639	108	927	40cm

LOT 36 CHAPMAN 7196 EXT 2530Z

Male(RC) Tattoo: SWC 2530Z DOB: Mar 6, 2012 Reg#: 1703230

SITZ JLS EMULATION EXT 536P
MC CUMBER 536P EXT 7196 (1478134)
 LASSIE 434 OF MC CUMBER

N BAR EMULATION EXT AMF CAF NHF DDF
 IDEAL 4465 OF 6807 4286 AMF NHF
 PINE CREEK RIGHT TIME 1147 AMF NHF
 LASSIE 2140 OF MC CUMBER

RED CROWFOOT RAMBLER 1038L
RED CHAPMAN DUCHESS 9081W (1531364)
 RED CHAPMAN DUCHESS 103L

RED VGW RAMBLER 1000 OSF
 CROWFOOT VERNICE 907J
 RED OH BOOMER 552E
 RED C C DUCHESS 24G

Spring '14 EPD'S: BW:-2.2 WW:+45 YW:+72 Milk:+19 TM:+42

BW	Act WW	ADJ 205	WR	ADJ 365	Scrotal Circ.
78	-	668	95	1101	36cm



STOCKMENS INSURANCE

LLOYD'S CORRESPONDENTS
Larry Toner 306-932-4866

Outline of COVERAGE OPTIONS FOR BULLS MORTALITY AND INFERTILITY

1 Year All Risk Mortality- This is loss by death only but does also cover Humane Destruction.

1 Year All Risk Mortality and Accident only Infertility: Death is covered here as well as accident only infertility which would include Stifle Injury or Broken Penis, or other Injury that makes him unable to breed. There is NO SEMEN QUALITY PROTECTION here.

1 Year All Risk Mortality and Accident, Sickness and Disease Infertility. Includes all of the ABOVE coverage plus if a Namable disease is causing the infertility, he is covered. Also if a bull develops warts on his penis to the point he cannot be recovered, he is covered. The vet must be able to name the disease that caused his loss of fertility.

1 Year All Risk Mortality and Comprehensive Infertility: Covers everything above and loss of fertility for any reason. If the bull freezes his testicles, He is covered, if unexplainable abnormalities show up in his semen to the point the vet fails him on a breeding soundness exam, he IS covered. The vet does not have to be able to come up with any diagnosis; if the bull does not pass he is covered. Also we have Temporary Loss of Use. If your bull loses fertility and you are able to recover him with a drug protocol and rest under a vet's instruction, we will payout 20% of the bull's value.

Semen test required for last two options

**NO DEDUCTIBLE
 100% COVERAGE**

LLOYD'S CORRESPONDENTS
 R. R. #4, Box 277, Site 412
 SASKATOON, SASKATCHEWAN S7K 3J7
 PH: 306/931-0088 | FAX: 306/931-8782

CROWFOOT JOKER 6172S SON



SIRE

C

CROWFOOT JOKER 6172S

Male Tattoo: CFCC 6172S DOB: Jan 28, 2006 Reg#: 1316033

O C C EMBLAZON 854E AMF CAF NHF OSF
O C C JOKER 620J (1079149)
 O C C JUANADA 709V

D H D TRAVELER 6807 AMF NHF
 DIXIE ERICA OF C H 1019
 COLE CREEK OSCAR 92R
 JUANADA OF ROLLIN ROCK 0355

TOMWALL GDAR ROYCE 964
CFCC 1801L (1085514)
 GLADWALL PEARL ENECHOR 8155

G D A R ROYCE 131
 GLADWALL L BL NELLIE 752
 AMITIE ACRES L EXT 1376
 GLADWALL PEARL ENECHOR 3165

Spring '14 EPD'S: BW: +3.0 WW: +37 YW: +61 Milk: +27 TM: +46

SC	CE	MCE	REA	CW	Marb	Fat
0.00	3.0	6.0	0.17	3	0.23	-0.005

A stout and powerful son of OCC Joker 620J, 6172S has proven year after year his ability to sire moderate, efficient, functional cattle ideal for grass utilization. With over 50 daughters currently in production here, it is evident they are among the most efficient and productive, as evident by the demand for Joker females at the recent Crowfoot Dispersal. He was temporarily injured in 2011; so there is only one son available this year, but expect more sons next year again. Utilize Joker sons for their maternal potential, favorable carcass traits, and conversion efficiency - proven genetics for any grass-based outfit.

LOT

39

CHAPMAN JOKER 2555Z

Male Tattoo: SWC 2555Z DOB: Apr 16, 2012 Reg#: 1718469

O C C JOKER 620J DDF
CROWFOOT JOKER 6172S (1316033)
 CFCC 1801L

O C C EMBLAZON 854E DMF AMF CAF NHF OSF DDF
 O C C JUANADA 709V
 TOMWALL GDAR ROYCE 964
 GLADWALL PEARL ENECHOR 8155

CROWFOOT MACHO 4549P
CHAPMAN VERNICE 812U (1474041)
 CROWFOOT VERNICE 4211P

O C C MAGNUM 749M
 CROWFOOT BLACKBIRD 2537M
 WHITNEY CREEK MAXIMUS 24
 RED CROWFOOT VERNICE 1082L

Spring '14 EPD'S: BW: +3.4 WW: +40 YW: +64 Milk: +23 TM: +43

BW	Act WW	ADJ 205	WR	ADJ 365	Scrotal Circ.
92	-	676	112	922	36cm

SIRE

D

CHAPMAN RITO LEGACY 218U



Male Tattoo: **YUS 218U** DOB: April 25, 2008 Reg#: **1474046**

R R RITO 707 AMF CAF NHF DDF
SINCLAIR RITO LEGACY 3R9 AMF CAF (1436721)
 IDEAL 4465 OF 6807 4286 AMF NHF

RITO N BAR
 ERISKAY OF ROLLIN ROCK 3
 D H D TRAVELER 6807 AMF NHF
 E E 4286 OF IDEAL 2240 1254

N BAR IMPACT U1253
PAT LADY ERICA 8984 (990548)
 PAT PIED PIPER 921

LEMMON IMPACT
 N BAR CLOVA PRIDE 1696
 SHOSHONE P P 7105
 PAT LADY ERICA 613

Spring '14 EPD'S: BW: +0.5 WW: +32 YW: +56 Milk: +16 TM: +32

SC	CE	MCE	REA	CW	Marb	Fat
0.04	3.0	3.0	-0.04	-6	-0.05	0.008

"218" was retained from the 2008 calf crop as the top son of **Sinclair Rito Legacy 3R9** in order to carry on the **RR Rito 707** lineage; as well as the lineage of his donor dam, **Pat Lady Erica 8984**, who has earned lifetime weaning and yearling ratios of 108 and 110 respectively on 10 natural calves with 12 daughters in production. '218U' posted weaning and yearling indexes of 108 and 104 respectively, and with a BW of 72 lbs., he is a true calving ease bull that balances functionality with performance. Utilize '218' sons for calving ease, traditional Angus characteristics and maternal lineage.

LOT

40

CHAPMAN LEGACY 2536Z

Male Tattoo: **SWC 2536Z** DOB: Mar 16, 2012 Reg#: **1718468**

SINCLAIR RITO LEGACY 3R9 AMF CAF
CHAPMAN RITO LEGACY 218U (1474046)
 PAT LADY ERICA 8984

R R RITO 707 AMF CAF NHF DDF
 IDEAL 4465 OF 6807 4286 AMF NHF
 N BAR IMPACT U1253
 PAT PIED PIPER 921

S B R WATERTON 6148S
CHAPMAN EILEEN 804U (1474027)
 CHAPMAN EILEEN 636S

LIONHEART OF WICKWIRE
 OCTORARO MISS WIX 803
 D D A FAHREN 21X
 CHAPMAN EILEEN 216M

Spring '14 EPD'S: BW: +0.9 WW: +23 YW: +43 Milk: +13 TM: +25

BW	Act WW	ADJ 205	WR	ADJ 365	Scrotal Circ.
84	-	516	83	928	39cm

LOT

41

CHAPMAN LEGACY 2541Z

Male Tattoo: **SWC 2541Z** DOB: Mar 31, 2012 Reg#: **1718479**

SINCLAIR RITO LEGACY 3R9 AMF CAF
CHAPMAN RITO LEGACY 218U (1474046)
 PAT LADY ERICA 8984

R R RITO 707 AMF CAF NHF DDF
 IDEAL 4465 OF 6807 4286 AMF NHF
 N BAR IMPACT U1253
 PAT PIED PIPER 921

CROWFOOT VENTURE 1698L
CHAPMAN G PRIDE 608S (1347027)
 CHAPMAN PRIDE 416P

BASIN MAX 104J AMF CAF NHF
 GLADWALL SARITA 8255
 VDAR DATABANK 1061 CAF DDF
 BARBWALL G PRIDE 310

Spring '14 EPD'S: BW: +0.2 WW: +30 YW: +57 Milk: +16 TM: +31

BW	Act WW	ADJ 205	WR	ADJ 365	Scrotal Circ.
83	-	607	101	1202	39cm

LOT

42

CHAPMAN LEGACY 2546Z

Male Tattoo: **SWC 2546Z** DOB: Apr 7, 2012 Reg#: **1718480**

SINCLAIR RITO LEGACY 3R9 AMF CAF
CHAPMAN RITO LEGACY 218U (1474046)
 PAT LADY ERICA 8984

R R RITO 707 AMF CAF NHF DDF
 IDEAL 4465 OF 6807 4286 AMF NHF
 N BAR IMPACT U1253
 PAT PIED PIPER 921

SITZ TRADITION RLS 8702
CHAPMAN PRINCENE 670S (1347057)
 GLADWALL PRINCENE 6320

VERMILION DATELINE 7078 AMF CAF NHF DDF
 R L S EISA EVERGREEN 5018
 TOMWALL PIED PIPER 357
 GLADWALL PRICENE 1236

Spring '14 EPD'S: BW: +3.4 WW: +42 YW: +66 Milk: +19 TM: +40

BW	Act WW	ADJ 205	WR	AOD	Scotal Circ.
96	-	651	107	1014	38cm





LOT

43

CHAPMAN LEGACY 2559Z

Male Tattoo: SWC 2559Z DOB: Apr 17, 2012 Reg#: 1718466

SINCLAIR RITO LEGACY 3R9 AMF CAF
CHAPMAN RITO LEGACY 218U (1474046)
PAT LADY ERICA 8984

R R RITO 707 AMF CAF NHF DDF
IDEAL 4465 OF 6807 4286 AMF NHF
N BAR IMPACT U1253
PAT PIED PIPER 921

CROWFOOT EQUATION 5793R
CHAPMAN ZARA 022X (1568050)
CHAPMAN ZARA 731T

O C C LEGACY 839L
CROWFOOT FORKS 755K
CROWFOOT MACHO 4549P
BARBWALL B ZARA 646

Spring '14 EPD'S: BW: +0.2 WW: +34 YW: +62 Milk: +19 TM: +36

BW	Act WW	ADJ 205	WR	ADJ 365	Scrotal Circ.
68	-	595	101	969	37cm

LOT

44

CHAPMAN LEGACY 2569Z

Male Tattoo: SWC 2569Z DOB: Apr 18, 2012 Reg#: 1718476

SINCLAIR RITO LEGACY 3R9 AMF CAF
CHAPMAN RITO LEGACY 218U (1474046)
PAT LADY ERICA 8984

R R RITO 707 AMF CAF NHF DDF
IDEAL 4465 OF 6807 4286 AMF NHF
N BAR IMPACT U1253
PAT PIED PIPER 921

CROWFOOT VENTURE 1698L
CHAPMAN ROSE 621S (1339281)
CHAPMAN ROSE 43P

BASIN MAX 104J AMF CAF NHF
GLADWALL SARITA 8255
CROWFOOT BRUNO 1670L
GLADWALL ROSE OF L 6242

Spring '14 EPD'S: BW: +0.2 WW: +28 YW: +54 Milk: +22 TM: +36

BW	Act WW	ADJ 205	WR	ADJ 365	Scotal Circ.
81	-	601	100	1064	39cm

LOT

45

CHAPMAN LEGACY 2585Z

Male Tattoo: SWC 2585Z DOB: Apr 22, 2012 Reg#: 1718472

SINCLAIR RITO LEGACY 3R9 AMF CAF
CHAPMAN RITO LEGACY 218U (1474046)
PAT LADY ERICA 8984

R R RITO 707 AMF CAF NHF DDF
IDEAL 4465 OF 6807 4286 AMF NHF
N BAR IMPACT U1253
PAT PIED PIPER 921

CHAPMAN ALLIANCE 262M
CHAPMAN ROSE 545R (1276041)
GLADWALL ROSE OF L 1173

SITZ ALLIANCE 6595 DMF AMF CAF NHF DDF
GLADWALL G EILEEN 6339
S V PRIDES COMMODORE
GLADWALL ROSE OF L 744

Spring '14 EPD'S: BW: -0.4 WW: +38 YW: +60 Milk: +16 TM: +35

BW	Act WW	ADJ 205	WR	ADJ 365	Scotal Circ.
75	-	681	117	995	39cm

LOT

46

CHAPMAN LEGACY 2605Z

Male Tattoo: SWC 2605Z DOB: Apr 27, 2012 Reg#: 1721615

SINCLAIR RITO LEGACY 3R9 AMF CAF
CHAPMAN RITO LEGACY 218U (1474046)
PAT LADY ERICA 8984

R R RITO 707 AMF CAF NHF DDF
IDEAL 4465 OF 6807 4286 AMF NHF
N BAR IMPACT U1253
PAT PIED PIPER 921

CROWFOOT VENTURE 1698L
CHAPMAN PRIDE 721T (1425533)
CHAPMAN PRIDE 530R

BASIN MAX 104J AMF CAF NHF
GLADWALL SARITA 8255
MC CUMBER 7111 TOTAL VALUE
BARBWALL G PRIDE 632

Spring '14 EPD'S: BW: +0.3 WW: +29 YW: +56 Milk: +21 TM: +36

BW	Act WW	ADJ 205	WR	ADJ 365	Scrotal Circ.
82	-	643	108	1037	36cm

LOT

47

CHAPMAN LEGACY 2616Z

Male Tattoo: YUS 191Y DOB: April 26 2011 Reg#: n/a

SINCLAIR RITO LEGACY 3R9 AMF CAF
CHAPMAN RITO LEGACY 218U (1474046)
PAT LADY ERICA 8984

R R RITO 707 AMF CAF NHF DDF
IDEAL 4465 OF 6807 4286 AMF NHF
N BAR IMPACT U1253
PAT PIED PIPER 921

CHAPMAN LEGACY 026S
CHAPMAN BLACKBIRD 943W (1526200)
CHAPMAN BLACKBIRD 719T

O C C LEGACY 839L
PAT LADY ERICA 8984
CROWFOOT MACHO 4549P
CHAPMAN BLACKBIRD 319N

Spring '14 EPD's: N/A

BW	Act WW	ADJ 205	WR	ADJ 365	Scotal Circ.
80	-	579	100	1025	39cm

LOT
48 **CHAPMAN LEGACY 2628Z**

Male Tattoo: SWC 2628Z DOB: May 7, 2012 Reg#: 1718475

SINCLAIR RITO LEGACY 3R9 AMF CAF
CHAPMAN RITO LEGACY 218U (1474046)
PAT LADY ERICA 8984

R R RITO 707 AMF CAF NHF DDF
IDEAL 4465 OF 6807 4286 AMF NHF
N BAR IMPACT U1253
PAT PIED PIPER 921

O C C MAGNUM 749M
CROWFOOT PATTIE QUEEN 4584P (1228451)
CROWFOOT PATTIE QUEEN 2552M

O C C EUREKA 865E
O C C JUANADA 818E
O C C HUNTER 928H
GLADWALL PATTIE QUEEN 640

Spring '14 EPD'S: BW: +1.2 WW: +39 YW: +62 Milk: +17 TM: +37

BW	Act WW	ADJ 205	WR	ADJ 365	Scrotal Circ.
90	-	732	124	1124	39cm

JOIN US

We invite you to come early on
Sale Day for **pre-sale viewing**, vis-
it with your friends and neighbors
and enjoy a **complimentary lunch**
on Chapman Cattle Company!

SIRE
E **CROWFOOT EQUATION 5793R**



Male Tattoo: CFCC 5793R DOB: Jan 26, 2005 Reg#: 1254914

O C C ECHELON 857E
O C C LEGACY 839L (1193688)
O C C DIXIE ERICA 960E

TOMWALL PIED PIPER 413
CROWFOOT FORKS 755K (1012951)
GLADWALL B REV ERICA 7289

D H D TRAVELER 6807 AMF NHF
DIXIE ERICA OF C H 1019
O C C ANCHOR 771A CAF
DIXIE ERICA OF R R 4345

SHOSHONE P P 7105
GLADWALL ROSE OF L 282
A A R OPTIMA 771
GLADWALL B REV ERICA 1246

Spring '14 EPD'S: BW: +3.9 WW: +39 YW: +83 Milk: +31 TM: +51

SC	CE	MCE	REA	CW	Marb	Fat
1.42	-1.0	-2.0	-0.12	5	0.13	0.043

Similar to Joker, Equation defines what a 'True Herd Sire' is all about, having the ability to sire impressive and productive daughters, while continuing his down-line through sons equal too, or better than himself. With over 50 Equation daughters currently in production here, and more on the way, it is evident they are the right type. Utilize Equation sons to add capacity, structural soundness, and produce daughters that are extra productive with great udders.

LOT

49

CROWFOOT EQUATION 2558Z

Male Tattoo: SWC 2558Z DOB: Apr 16, 2012 Reg#: 1703261

O C C LEGACY 839L
CROWFOOT EQUATION 5793R (1254914)
 CROWFOOT FORKS 755K

O C C ECHELON 857E DDF
 O C C DIXIE ERICA 960E
 TOMWALL PIED PIPER 413
 GLADWALL B REV ERICA 7289

N BAR EMULATION EXT AMF CAF NHF DDF
OLE PEARL 107T (1419918)
 GLADWALL L PEARL 7192

EMULATION N BAR 5522
 NN BAR PRIMROSE 2424
 AMITIE ACRES L EXT 1376
 GLADWALL L PEARL 395

Spring '14 EPD'S: BW: +3.7 WW: +42 YW: +81 Milk: +26 TM: +47					
BW	Act WW	ADJ 205	WR	ADJ 365	Scotal Circ.
95	-	682	113	1080	40cm



LOT

50

CHAPMAN EQUATION 2564Z

Male Tattoo: SWC 2564Z DOB: Apr 18, 2012 Reg#: 1703266

O C C LEGACY 839L
CROWFOOT EQUATION 5793R (1254914)
 CROWFOOT FORKS 755K

O C C ECHELON 857E DDF
 O C C DIXIE ERICA 960E
 TOMWALL PIED PIPER 413
 GLADWALL B REV ERICA 7289

O C C EMBLAZON 854E DMF AMF CAF NHF OSF DDF
DDA TINA 362 (1496153)
 D D A TINA 613

D H D TRAVELER 6807 AMF NHF
 DIXIE ERICA OF C H 1019
 D D A BARTOR
 D D A TINA 441

Spring '14 EPD'S: BW: +2.9 WW: +42 YW: +73 Milk: +21 TM: +42					
BW	Act WW	ADJ 205	WR	ADJ 365	Scotal Circ.
91	-	699	117	936	38cm

LOT

51

CHAPMAN EQUATION 2566Z

Male Tattoo: SWC 2566Z DOB: Apr 18, 2012 Reg#: 1703273

O C C LEGACY 839L
CROWFOOT EQUATION 5793R (1254914)
 CROWFOOT FORKS 755K

O C C ECHELON 857E DDF
 O C C DIXIE ERICA 960E
 TOMWALL PIED PIPER 413
 GLADWALL B REV ERICA 7289

O C C EMBLAZON 854E DMF AMF CAF NHF OSF DDF
DDA HOLLY 239 (1496154)
 DDA HOLLY 084

H D TRAVELER 6807 AMF NHF
 DIXIE ERICA OF C H 1019
 SHOSHONE 130-6357
 D D A HOLLY 427

Spring '14 EPD'S: BW: +2.9 WW: +48 YW: +77 Milk: +23 TM: +47					
BW	Act WW	ADJ 205	WR	ADJ 365	Scotal Circ.
88	-	716	121	1156	39cm

LOT

52

CHAPMAN EQUATOR 2573Z

Male Tattoo: SWC 2573Z DOB: Apr 18, 2012 Reg#: 1703267

O C C LEGACY 839L
CROWFOOT EQUATION 5793R (1254914)
 CROWFOOT FORKS 755K

O C C ECHELON 857E DDF
 O C C DIXIE ERICA 960E
 TOMWALL PIED PIPER 413
 GLADWALL B REV ERICA 7289

O C C MOONSHINE 740M
CROWFOOT ELCONA 5896R (1255009)
 CROWFOOT ELCONA W H 9298

O C C JUST RIGHT 619J DDF
 O C C DIXIE ERICA 816B
 N BAR TRANSITION A583
 GLADWALL ELCONA W H 6298

Spring '14 EPD'S: BW: +2.2 WW: +40 YW: +78 Milk: +26 TM: +46					
BW	Act WW	ADJ 205	WR	ADJ 365	Scotal Circ.
87	-	706	119	1088	38cm

LOT

53

CHAPMAN EQUATION 2574Z

Male Tattoo: SWC 2574Z DOB: Apr 19, 2012 Reg#: 1703278

O C C LEGACY 839L
CROWFOOT EQUATION 5793R (1254914)
 CROWFOOT FORKS 755K

O C C ECHELON 857E DDF
 O C C DIXIE ERICA 960E
 TOMWALL PIED PIPER 413
 GLADWALL B REV ERICA 7289

O C C LEGACY 839L
CROWFOOT BELLENELLIE 4716P (1207900)
 CROWFOOT BELLE L NELLIE 2646M

O C C ECHELON 857E DDF
 O C C DIXIE ERICA 960E
 SITZ ALLIANCE 6595 DMF AMF CAF NHF DDF
 GLADWALL BELLE L NELLIE 6286

Spring '14 EPD'S: BW: +1.8 WW: +35 YW: +69 Milk: +26 TM: +44					
BW	Act WW	ADJ 205	WR	ADJ 365	Scotal Circ.
82	-	647	109	990	39cm

LOT

54

CHAPMAN EQUATION 2579Z

Male Tattoo: SWC 2579Z DOB: Apr 21, 2012 Reg#: 1703292

O C C LEGACY 839L
CROWFOOT EQUATION 5793R (1254914)
 CROWFOOT FORKS 755K

O C C ECHELON 857E DDF
 O C C DIXIE ERICA 960E
 TOMWALL PIED PIPER 413
 GLADWALL B REV ERICA 7289

CROWFOOT BRUNO 1670L
CHAPMAN DUCHESS 4403 (1201299)
 RED CHAPMAN DUCHESS 103L

STEVENSON BRUNO 561G CAF NHF DDF
 GLADWALL B REV ERICA 7289
 RED OH BOOMER 552E
 RED C C DUCHESS 24G

Spring '14 EPD'S: BW: +4.7 WW: +40 YW: +79 Milk: +28 TM:-

BW	Act WW	ADJ 205	WR	ADJ 365	Scrotal Circ.
82	-	624	100	927	38cm



LOT

55

CHAPMAN EQUATION 2584Z

Male Tattoo: SWC 2584Z DOB: Apr 22, 2012 Reg#: 1703302

O C C LEGACY 839L
CROWFOOT EQUATION 5793R (1254914)
 CROWFOOT FORKS 755K

O C C ECHELON 857E DDF
 O C C DIXIE ERICA 960E
 TOMWALL PIED PIPER 413
 GLADWALL B REV ERICA 7289

RED 5L NORSEMAN KING 2291 OSF MAF
CROWFOOT BARDOLENE 5066R (1254660)
 CROWFOOT BARDOLENE 9133J

RED VGW KING OF THE WEST OSF MAF
 RED NORSEMAN 1312 PJM
 BASIN AMBUSH 3905 AMF CAF NHF DDF
 BASIN BARDOLENE 121G

Spring '14 EPD'S: BW: +2.1 WW: +41 YW: +81 Milk: +24 TM: +45

BW	Act WW	ADJ 205	WR	ADJ 365	Scotal Circ.
89	-	693	116	1067	38cm



LOT

56

CHAPMAN EQUATION 2591Z

Male Tattoo: SWC 2591Z DOB: Apr 23, 2012 Reg#: 1703306

O C C LEGACY 839L
CROWFOOT EQUATION 5793R (1254914)
 CROWFOOT FORKS 755K

O C C ECHELON 857E DDF
 O C C DIXIE ERICA 960E
 TOMWALL PIED PIPER 413
 GLADWALL B REV ERICA 7289

SITZ TRAVELER 9929
CHAPMAN PRINCENE 3314 (1197829)
 GLADWALL PRINCENE 6320

D H D TRAVELER 6807 AMF NHF
 SITZ EVERELDA ENTENSE 1137
 TOMWALL PIED PIPER 357
 GLADWALL PRINCENE 1236

Spring '14 EPD'S: BW: +4.4 WW: +43 YW: +77 Milk: +29 TM: +51

BW	Act WW	ADJ 205	WR	ADJ 365	Scrotal Circ.
96	-	718	120	990	38cm

LOT

57

CHAPMAN EQUATION 2610Z

Male (ET) Tattoo: SWC 2610Z DOB: Apr 28, 2012 Reg#: 1721290

O C C LEGACY 839L
CROWFOOT EQUATION 5793R (1254914)
 CROWFOOT FORKS 755K

O C C ECHELON 857E DDF
 O C C DIXIE ERICA 960E
 TOMWALL PIED PIPER 413
 GLADWALL B REV ERICA 7289

N BAR IMPACT U1253
PAT LADY ERICA 8984 (990548)
 PAT PIED PIPER 921

LEMMON IMPACT
 N BAR CLOVA PRIDE 1696
 SHOSHONE P P 7105
 PAT LADY ERICA 613

Spring '14 EPD'S: BW: +2 WW: +32 YW: +65 Milk: +23 TM: n/a

BW	Act WW	ADJ 205	WR	ADJ 365	Scotal Circ.
88	-	681	100	999	38cm

LOT
58 **CHAPMAN EQUATION 2611Z**

Male Tattoo: SWC 2611Z DOB: May 1, 2012 Reg#: 1703327

O C C LEGACY 839L
CROWFOOT EQUATION 5793R (1254914)
CROWFOOT FORKS 755K

O C C ECHELON 857E DDF
O C C DIXIE ERICA 960E
TOMWALL PIED PIPER 413
GLADWALL B REV ERICA 7289

DDA EMBLAZON 19A
DDA INA 347 (1496135)
D D A INA 357

O C C EMBLAZON 854E DMF AMF CAF NHF OSF DDF
D D A SANDY 607
BARTOR OF WYE UMF 5609
INA DIAMOND 909

Spring '14 EPD'S: BW: +3.8 WW: +38 YW: +66 Milk: +22 TM: +41

BW	Act WW	ADJ 205	WR	ADJ 365	Scotal Circ.
94	-	681	113	1021	39cm

LOT
60 **CHAPMAN EQUATION 2641Z**

Male Tattoo: SWC 2641Z DOB: May 15, 2012 Reg#: 1703357

O C C LEGACY 839L
CROWFOOT EQUATION 5793R (1254914)
CROWFOOT FORKS 755K

O C C ECHELON 857E DDF
O C C DIXIE ERICA 960E
TOMWALL PIED PIPER 413
GLADWALL B REV ERICA 7289

BASIN PARTNER 137H
CHAPMAN TILDA 228M (1118350)
SANDY BAR TILDA 7F

BASIN EMULATION 178C
BASIN TROJAN ERICA D S 637Y AMF
BAR 20 RAINMAKER 344D
SB TILDA 13C

Spring '14 EPD'S: BW: +3.4 WW: +38 YW: +71 Milk: +27 TM: +46

BW	Act WW	ADJ 205	WR	ADJ 365	Scrotal Circ.
86	-	677	114	1057	40cm

LOT
62 **CHAPMAN EQUATION 2654Z**

Male Tattoo: SWC 2654Z DOB: May 27, 2012 Reg#: 1703363

O C C LEGACY 839L
CROWFOOT EQUATION 5793R (1254914)
CROWFOOT FORKS 755K

O C C ECHELON 857E DDF
O C C DIXIE ERICA 960E
TOMWALL PIED PIPER 413
GLADWALL B REV ERICA 7289

O C C MOONSHINE 740M
CROWFOOT REV ROSE 5900R (1255013)
CROWFOOT CH REV ROSE 1627L

O C C JUST RIGHT 619J DDF
O C C DIXIE ERICA 816B
C&D 455 ROCKETT
C H REV ROSE 9297

Spring '14 EPD'S: BW: +1.9 WW: +33 YW: +71 Milk: +26 TM: +43

BW	Act WW	ADJ 205	WR	ADJ 365	Scrotal Circ.
84	-	654	110	908	38cm

LOT
59 **CHAPMAN EQUATION 2627Z**

Male Tattoo: SWC 2627Z DOB: May 7, 2012 Reg#: 1703342

O C C LEGACY 839L
CROWFOOT EQUATION 5793R (1254914)
CROWFOOT FORKS 755K

O C C ECHELON 857E DDF
O C C DIXIE ERICA 960E
TOMWALL PIED PIPER 413
GLADWALL B REV ERICA 7289

CROWFOOT BRUNO 1670L
CHAPMAN HANNI 4401 (1201297)
RED CHAPMAN HANNI 002K

STEVENSON BRUNO 561G CAF NHF DDF
GLADWALL B REV ERICA 7289
RED LCHMN GRND CANYON 1244G OSC MAF
RED HR CHEROKEE LADY 33D

Spring '14 EPD'S: BW: +2.7 WW: +34 YW: +75 Milk: +22 TM: +39

BW	Act WW	ADJ 205	WR	ADJ 365	Scrotal Circ.
86	-	564	92	1041	35cm

LOT
61 **CHAPMAN EQUATION 2645Z**

Male Tattoo: SWC 2645Z DOB: May 18, 2012 Reg#: 1703359

O C C LEGACY 839L
CROWFOOT EQUATION 5793R (1254914)
CROWFOOT FORKS 755K

O C C ECHELON 857E DDF
O C C DIXIE ERICA 960E
TOMWALL PIED PIPER 413
GLADWALL B REV ERICA 7289

LEACHMAN RIGHT TIME DMF AMF
CHAPMAN KAWICH LADY 434P (1227555)
GLADWALL KAWICH LADY 6171

N BAR EMULATION EXT AMF CAF NHF DDF
LEACHMAN ERICA 0025
N BAR IMPACT U1253
GLADWALL KAWICH LADY 4186

Spring '14 EPD'S: BW: +1.6 WW: +36 YW: +72 Milk: +25 TM: +43

BW	Act WW	ADJ 205	WR	ADJ 365	Scrotal Circ.
86	-	655	109	926	39cm

LOT
63 **CHAPMAN EQUATION 2659**

Male Tattoo: SWC 2659Z DOB: April 26 2011 Reg#: 1654341

O C C LEGACY 839L
CROWFOOT EQUATION 5793R (1254914)
CROWFOOT FORKS 755K

O C C ECHELON 857E DDF
O C C DIXIE ERICA 960E
TOMWALL PIED PIPER 413
GLADWALL B REV ERICA 7289

CHAPMAN ALLIANCE 262M
CHAPMAN TILDA 4414 (1213938)
CHAPMAN TILDA 228M

SITZ ALLIANCE 6595
GLADWALL G EILEEN 6339
BASIN PARTNER 137H
SANDY BAR TILDA 7F

Spring '14 EPD'S: BW: +2.1 WW: +35 YW: +71 Milk: +30 TM: -

BW	Act WW	ADJ 205	WR	ADJ 365	Scotal Circ.
82	-	758	100	1026	41cm

SIRE

F

CHAPMAN LEGACY 026S



PAT LADY ERICA 8984



026S is a paternal brother to Crowfoot Equation 5793R, who was purchased in-dam from Crowfoot Cattle Co. in '05. His donor dam, Pat Lady Erica 8984, is still perhaps the most productive cow Crowfoot has sold to-date from the original Walling cowherd. She posts a WR/108, YR/110, is extremely sound as a fifteen year old cow, and has resided at Bow Valley Genetics to gather as many embryo's as possible from her. Utilize sons of 026S on cows or heifers for their traditional Angus characteristics with built-in calving-ease, longevity, excellent disposition and strong maternal characteristics.



Male Tattoo: YUS 026S DOB: January 29 2006 Reg#: 1339280

O C C ECHELON 857E
O C C LEGACY 839L (1193688)
 O C C DIXIE ERICA 960E

N BAR IMPACT U1253
PAT LADY ERICA 8984 (990548)
 PAT PIED PIPER 921

D H D TRAVELER 6807 AMF NHF
 DIXIE ERICA OF C H 1019
 O C C ANCHOR 771A CAF
 DIXIE ERICA OF R R 4345

LEMMON IMPACT
 N BAR CLOVA PRIDE 1696
 SHOSHONE P P 7105
 PAT LADY ERICA 613

Spring '14 EPD'S: BW: +1.2 WW: +23 YW: +43 Milk: +13 TM: +25

SC	CE	MCE	REA	CW	Marb	Fat
0.34	6.0	5.0	0.08	3	-0.06	0.030

LOT

64

CHAPMAN LEGACY 2562Z

Male Tattoo: SWC 2562Z DOB: Apr 17, 2012 Reg#: 1718474

O C C LEGACY 839L
CHAPMAN LEGACY 026S (1339280)
 PAT LADY ERICA 8984

SHALOM WAIGROUP 519/94
CHAPMAN KIWI 661S (1367058)
 BARBWALL B ZARA 646

O C C ECHELON 857E DDF
 O C C DIXIE ERICA 960E
 N BAR IMPACT U1253
 PAT PIED PIPER 921

SHALOM WAIGROUP EXTRA
 NIRVANA DULCIE 124-74
 AMBUSH BANDO 01
 BARBWALL B ZARA 433

Spring '14 EPD'S: BW: +0.4 WW: +25 YW: +46 Milk: +9 TM: +22

BW	Act WW	ADJ 205	WR	ADJ 365	Scrotal Circ.
82	-	613	102	1033	38cm

LOT

65

CHAPMAN LEGACY 2638Z

Male(ET) Tattoo: SWC 2638Z DOB: May 14, 2012 Reg#: 1718467

O C C LEGACY 839L
CHAPMAN LEGACY 026S (1339280)
 PAT LADY ERICA 8984

D D A FAHREN 21X
CHAPMAN ROSE 627S (1349561)
 GLADWALL ROSE OF L 6310

O C C ECHELON 857E DDF
 O C C DIXIE ERICA 960E
 N BAR IMPACT U1253
 PAT PIED PIPER 921

FAHREN OF WYE UMF 5830
 D D A MELISA 549
 N BAR TRANSITION A583
 GLADWALL ROSE OF L 196

Spring '14 EPD'S: BW: -0.4 WW: +25 YW: +45 Milk: +14 TM: +27

BW	Act WW	ADJ 205	WR	ADJ 365	Scrotal Circ.
84	-	631	105	926	38cm

SIRE

G

COLEMAN MISSING LINK 9267

Pictured: OCC MISSING LINK 830M



Male(ET) Tattoo: IMP 926W DOB: August 17 2009 Reg#: 1648867

O C C HEADLINER 661H
O C C MISSING LINK 830M (1655506)
 O C C DIXIE ERICA 946K

O C C EMBLAZON 854E DMF AMF CAF NHF OSF DDF
 O C C JUANADA 858F
 O C C GLORY 950G
 O C C DIXIE ERICA 816B

S A V 8180 TRAVELER 004 DMF DWF
BOHI PURE PRIDE 6096 (15353378)
 B C PURE PRIDE 413 854E 304

SITZ TRAVELER 8180 AMF CAF NHF DDF
 BOYD FOREVER LADY 8003
 O C C EMBLAZON 854E DMF AMF CAF NHF OSF DDF
 CAF PURE PRIDE EXT 99

Spring '14 EPD'S: BW: +3.1 WW: +25 YW: +56 Milk: +26 TM: +39

SC	CE	MCE	REA	CW	Marb	Fat
0.52	2.0	-1.0	0.63	31	0.17	0.051

LOT

66

CHAPMAN MISSING LINK 2595Z

Male Tattoo: SWC 2595Z DOB: Apr 24, 2012 Reg#: 1770805

O C C MISSING LINK 830M
COLEMAN MISSING LINK 9267 (1648867)
 BOHI PURE PRIDE 6096

O C C HEADLINER 661H
 O C C DIXIE ERICA 960E
 S A V 8180 TRAVELER 004 DMF DWF
 B C PURE PRIDE 413 854E 304

CROWFOOT JOKER 6172S
CHAPMAN NEONIA 0157X (1571555)
 CHAPMAN NEONIA 756T

O C C JOKER 620J DDF
 CFCC 1801L
 CHAPMAN ALLIANCE 262M
 CHAPMAN NEONIA 4408

Spring '14 EPD'S: BW: +3.1 WW: +33 YW: +64 Milk: +26 TM: +43

BW	Act WW	ADJ 205	WR	ADJ 365	Scrotal Circ.
74	-	626	106	922	38cm

LOT

67

CHAPMAN MISSING LINK 2642Z

Male Tattoo: SWC 2642Z DOB: May 18, 2012 Reg#: 1770807

O C C MISSING LINK 830M
COLEMAN MISSING LINK 9267 (1648867)
 BOHI PURE PRIDE 6096

O C C HEADLINER 661H
 O C C DIXIE ERICA 946K
 S A V 8180 TRAVELER 004 DMF DWF
 B C PURE PRIDE 413 854E 304

RED CROWFOOT COWBOY 7206T
RED CHAPMAN SCAARA 0169X (1571569)
 RED CHAPMAN SCAARA 439P

RED 5L NORSEMAN KING 2291 OSF MAF
 CROWFOOT BLACKBIRD 4739P
 RED OH BOOMER 552E
 RED MISS SCAARA 486E

Spring '14 EPD'S: BW: -1.5 WW: +31 YW: +62 Milk: +23 TM: +38

BW	Act WW	ADJ 205	WR	ADJ 365	Scrotal Circ.
74	-	556	93	1119	35cm

**Chapman Cattle Co. acquires
 25 Hand-Picked Angus Cows
 from the recent 2013 Crowfoot Cattle Dispersal**

"The acquisition of 25 hand-picked Angus mother cows out of the recent Crowfoot dispersal will serve to bolster an already formidable herd of functional Angus cows: a herd that is a genetic replica of what was the Crowfoot breeding program. Over a decade ago we purchased several age groups of cows from Crowfoot and many of these cows go back to those dams. As well, we have co-owned or shared more than a dozen herd sires between the two herds; bulls like Equation, Joker, Rambler, Macho, Memento and the Cole Creek brothers - so the downline in terms of genetic continuity in volume is evident moving forward!" Silas Chapman



SAV FINAL ANSWER 0035



Male Tattoo: IMP 035K DOB: February 22 2000 Reg#: 1061938

G D A R TRAVELER 71 AMF CAF NHF DDF TRAVELER 1148 G D A R
SITZ TRAVELER 8180 AMF (866597) G D A R MISS BLACKCAP 567
 SITZ EVERELDA ENTENSE 1137 G D A R RAINMAKER 340
 SITZ EVERELDA ENTENSE 2335
 BON VIEW BANDO 598 AMF CAC DDF TEHAMA BANDO 155 AMF CAF NHF DDF
SAVEMULOUS 8145 CAF (13094078) BON VIEW DORA 56
 S A V SKY EMULOUS 2124 ELLANIN SKY DIVER
 TAIL N 0383

Spring '14 EPD'S: BW:-1.0 WW:+61 YW:+103 Milk:+25 TM:+56

SC	CE	MCE	REA	CW	Marb	Fat
1.37	13.0	13.0	0.47	5	0.52	0.031

LOT 68 CHAPMAN FINAL ANSWER 2540Z

Male Tattoo: SWC 2540Z DOB: Mar 29, 2012 Reg#: 1770803

SITZ TRAVELER 8180 AMF CAF NHF DDF G D A R TRAVELER 71 AMF CAF NHF DDF
SAV FINAL ANSWER 0035 AMF (1061938) SITZ EVERELDA ENTENSE 1137
 S A V EMULOUS 8145 CAF BON VIEW BANDO 598 AMF CAC DDF
 S A V SKY EMULOUS 2124
 DOUBLE AA OLD POST BANDOLIER AMF DOUBLE AA BLACKMAN 252'96
REMINGTON LADY ERICA 843X (1634478) DOUBLE AA ANNIE K 548'99
 CROWFOOT LADY ERICA 3785N O C C JOKER 620J DDF
 PAT LADY ERICA 8984

Spring '14 EPD'S: BW:+0.8 WW:+46 YW:+78 Milk:+20 TM:+43

BW	Act WW	ADJ 205	WR	ADJ 365	Scotal Circ.
74	-	602	102	1277	37cm



LOT 69 CHAPMAN FINAL ANSWER 2542Z

Male Tattoo: SWC 2542Z DOB: Mar 31, 2012 Reg#: 1770804

SITZ TRAVELER 8180 AMF CAF NHF DDF G D A R TRAVELER 71 AMF CAF NHF DDF
SAV FINAL ANSWER 0035 AMF (1061938) SITZ EVERELDA ENTENSE 1137
 S A V EMULOUS 8145 CAF BON VIEW BANDO 598 AMF CAC DDF
 S A V SKY EMULOUS 2124
 DOUBLE AA OLD POST BANDOLIER AMF DOUBLE AA BLACKMAN 252'96
REMINGTON LADY ERICA 810X (1636833) DOUBLE AA ANNIE K 548'99
 CROWFOOT LADY ERICA 3785N O C C JOKER 620J DDF
 PAT LADY ERICA 8984

Spring '14 EPD'S: BW:+3.2 WW:+49 YW:+82 Milk:+21 TM:+46

BW	Act WW	ADJ 205	WR	AOD	Scrotal Circ.
90	-	652	108	1072	39cm



LOT

70

CHAPMAN OLE 2521Z

Male Tattoo: SWC 2521Z DOB: Feb 26, 2012 Reg#: 1770808

DOUBLE AA OLD POST BANDOLIER
REMVINGTONOLDPOST827W (1541599)
 SCA 24E OF IDEAL 1418 7394

DOUBLE AA BLACKMAN 252'96
 DOUBLE AA ANNIE K 548'99
 IDEAL 1418 OF 8103 4286 AMF CAF NHF
 IDEAL 7394 SUPER X 5189 5275

O C C JOKER 620J DDF
CROWFOOTLADYERICA3785N (1151997)
 PAT LADY ERICA 8984

O C C EMBLAZON 854E DMF AMF CAF
 O C C JUANADA 709V
 N BAR IMPACT U1253
 PAT PIED PIPER 921

Spring '14 EPD'S: N/A

BW	Act WW	ADJ 205	WR	ADJ 365	Scrotal Circ.
83	-	633	100	968	37cm



DAM - CROWFOOT LADY ERICA 3785N

SIRE

I

HF UNDISPUTED 183U



Male Tattoo: HAMI 183U DOB: January 22 2008 Reg#: 1473972

SANDY BAR ADVANTAGE 43M DDF
HF KODIAK 5RAMFCFNFHMAF (1274305)
 WILBAR RUBY 955N

TC ADVANTAGE AMF CAF NHF DDC
 SANDY BAR JEMINA 44K
 VERMILION YELLOWSTONE AMF CAF
 WILBAR RUBY 161J

HF FREE WHEELER 191N
HF ANNIE 53R (1274267)
 HF ANNIE 42J

TC FREEDOM 104 AMF CAF NHF DDF
 DURALTA 14C ECHO 32E
 MVHF DREAMWALKER 29A
 HF MISS ANNIE 16G

Spring '14 EPD'S: BW:-1.7 WW:+7 YW:+33 Milk:+16 TM:+20

SC	CE	MCE	REA	CW	Marb	Fat
0.81	12.0	4.0	0.07	19	0.36	0.000

LOT

71

CHAPMAN KODIAK 2549Z

Male Tattoo: SWC 2549Z DOB: Apr 12, 2012 Reg#: 1703250

HF KODIAK 5R AMF CAF NHF MAF
HF UNDISPUTED 183U (1473972)
 HF ANNIE 53R

SANDY BAR ADVANTAGE 43M DDF
 WILBAR RUBY 955N
 HF FREE WHEELER 191N
 HF ANNIE 42J

CROWFOOT EQUATION 5793R
CHAPMAN ROSE 9027W (1531327)
 CHAPMAN ROSE 208M

O C C LEGACY 839L
 CROWFOOT FORKS 755K
 LEACHMAN RIGHT TIME DMF AMF
 GLADWALL ROSE OF L 661

Spring '14 EPD'S: BW:+0.5 WW:+25 YW:+58 Milk:+20 TM:+33

BW	Act WW	ADJ 205	WR	ADJ 365	Scrotal Circ.
78	-	645	109	942	38cm



LOT 72 CHAPMAN KODIAK 2576Z

Male Tattoo: SWC 2576Z DOB: Apr 20, 2012 Reg#: 1703282

HF KODIAK 5R AMF CAF NHF MAF
HF UNDISPUTED 183U (1473972)
 HF ANNIE 53R

SANDY BAR ADVANTAGE 43M DDF
 WILBAR RUBY 955N
 HF FREE WHEELER 191N
 HF ANNIE 42J

CROWFOOT MACHO 4549P
CHAPMAN NEONIA 9014W (1531320)
 CHAPMAN NEONIA 756T

O C C MAGNUM 749M
 CROWFOOT BLACKBIRD 2537M
 CHAPMAN ALLIANCE 262M
 CHAPMAN NEONIA 4408

Spring '14 EPD'S: BW: +0.1 WW: +23 YW: +52 Milk: +18 TM: +30

BW	Act WW	ADJ 205	WR	ADJ 365	Scrotal Circ.
73	-	585	99	939	37cm

LOT 73 CHAPMAN KODIAK 2587Z

Male Tattoo: SWC 2587Z DOB: Apr 22, 2012 Reg#: 1703300

HF KODIAK 5R AMF CAF NHF MAF
HF UNDISPUTED 183U (1473972)
 HF ANNIE 53R

SANDY BAR ADVANTAGE 43M DDF
 WILBAR RUBY 955N
 HF FREE WHEELER 191N
 HF ANNIE 42J

CROWFOOT EQUATION 5793R
CHAPMAN JEANNE 9065W (1531352)
 CHAPMAN JEANNE 202M

O C C LEGACY 839L
 CROWFOOT FORKS 755K
 LEACHMAN RIGHT TIME DMF AMF
 GLADWALL JEANNE T 2114

Spring '14 EPD'S: BW: -0.5 WW: +25 YW: +56 Milk: +18 TM: +31

BW	Act WW	ADJ 205	WR	ADJ 365	Scrotal Circ.
76	-	617	104	986	35cm

LOT 74 CHAPMAN KODIAK 2588Z

Male Tattoo: SWC 2588Z DOB: Apr 22, 2012 Reg#: 1703297

HF KODIAK 5R AMF CAF NHF MAF
HF UNDISPUTED 183U (1473972)
 HF ANNIE 53R

SANDY BAR ADVANTAGE 43M DDF
 WILBAR RUBY 955N
 HF FREE WHEELER 191N
 HF ANNIE 42J

CROWFOOT EQUATION 5793R
CHAPMAN TILDA 9080W (1531363)
 CHAPMAN TILDA 4414

O C C LEGACY 839L
 CROWFOOT FORKS 755K
 CHAPMAN ALLIANCE 262M
 CHAPMAN TILDA 228M

Spring '14 EPD'S: BW: +0.8 WW: +26 YW: +53 Milk: +23 TM: +36

BW	Act WW	ADJ 205	WR	ADJ 365	Scotal Circ.
77	-	661	112	995	37cm



LOT 75 CHAPMAN KODIAK 2604Z

Male Tattoo: SWC 2604Z DOB: Apr 25, 2012 Reg#: 1703312

HF KODIAK 5R AMF CAF NHF MAF
HF UNDISPUTED 183U (1473972)
 HF ANNIE 53R

SANDY BAR ADVANTAGE 43M DDF
 WILBAR RUBY 955N
 HF FREE WHEELER 191N
 HF ANNIE 42J

C H ALLIANCE 9339
CHAPMAN ROSE 212M (1118185)
 GLADWALL ROSE OF L 6310

SITZ ALLIANCE 6595 DMF AMF CAF NHF DDF
 C H ERICA LASSIE 7266
 N BAR TRANSITION A583
 GLADWALL ROSE OF L 196

Spring '14 EPD'S: BW: +0.4 WW: +21 YW: +47 Milk: +17 TM: +28

BW	Act WW	ADJ 205	WR	ADJ 365	Scrotal Circ.
79	-	606	101	972	38cm

LOT 76 CHAPMAN KODIAK 2617Z

Male Tattoo: SWC 2617Z DOB: May 2, 2012 Reg#: 1703330

HF KODIAK 5R AMF CAF NHF MAF
HF UNDISPUTED 183U (1473972)
 HF ANNIE 53R

SANDY BAR ADVANTAGE 43M DDF
 WILBAR RUBY 955N
 HF FREE WHEELER 191N
 HF ANNIE 42J

LEACHMAN RIGHT TIME DMF AMF
CHAPMAN CHLOE 428P (1227553)
 GLADWALL B CHLOE 623

N BAR EMULATION EXT AMF CAF NHF DDF
 LEACHMAN ERICA 0025
 J A R COOL HAND LUKE
 GLADWALL B CHLOE 524

Spring '14 EPD'S: BW: -0.1 WW: +16 YW: +39 Milk: +14 TM: +22

BW	Act WW	ADJ 205	WR	ADJ 365	Scrotal Circ.
83	-	557	91	957	37cm

SIRE

J

BAR-E-L GAMBLER 87X



Male Tattoo: **YHB 87X** DOB: February 20, 2010 Reg#: **1567613**

RED LAZY MC STOUT 30S
RED LAZY MC COWBOY CUT 26U (1441140)
 RED LAZY MC STAR 185M OSF

RED LAZY MC SMASH 41N OSF
 RED LAZY MC SCYTHIA 78N
 LAZY MC WORLDWIDE 5K
 RED LAZY MC STAR 100J

RED BAR-E-L APPROVAL 4L
RED BAR-E-L MINOLA 243T (1403174)
 RED RINGSTEAD MINOLA 75N

RED TER-RON CARLTON 810H
 RED BAR-E-L CLASS 10
 RED TOWAW MATRIX 19D
 RED HOWE MS MINOLA DDH 98D

Spring '14 EPD'S: BW: +1.0 WW: +28 YW: +55 Milk: +23 TM: +

SC	CE	MCE	REA	CW	Marb	Fat
-	-4.0	1.0	0.35	5	-0.08	0.020

'Gambler' was selected as the \$12,000 high-selling bull from the 2011 Bar-E-L Bull Sale, and has been used successfully in both herds. He is a wide-based, sound-structured, big-scrotal bull with outstanding performance that is extremely fluid in his movement. These footnotes on the reference sires generally reflect the bull's ability to sire productive and efficient daughters first and foremost, and Gambler's daughters look like they will be the 'Money Making Kind', backed by one of the top cows at -EL. However, if you are looking for a stout, rugged Red Angus bull to cover a lot of cows than these sons will fit the bill.

LOT

77

RED CHAPMAN GAMBLER 2543Z

Male (Twin) Tattoo: **SWC 2543Z** DOB: Apr 2, 2012 Reg#: **1703241**

RED LAZY MC COWBOY CUT 26U AMF NHF OSF MAF
RED BAR-E-L GAMBLER 87X (1567613)
 RED BAR-E-L MINOLA 243T

RED LAZY MC STOUT 30S
 RED LAZY MC STAR 185M OSF
 RED BAR-E-L APPROVAL 4L
 RED RINGSTEAD MINOLA 75N

RED OH BOOMER 552E
RED CROWFOOT GREEN 1014L (1084855)
 RED CROWFOOT GREEN 683F

RED SSS BOOMER 803B
 RED O H MISS RIO 62A
 RED CROWFOOT HEAVENLY 443D
 RED TOM GREEN GTG 84D

Spring '14 EPD'S: BW: +0.1 WW: +38 YW: +65 Milk: +14 TM: 34

BW	Act WW	ADJ 205	WR	ADJ 365	Scrotal Circ.
68	-	569	100	954	38cm



LOT

78

RED CHAPMAN GAMBLER 2547Z

Male (Twin) Tattoo: **SWC 2547Z** DOB: Apr 10, 2012 Reg#: **1703248**

RED LAZY MC COWBOY CUT 26U AMF NHF OSF MAF
RED BAR-E-L GAMBLER 87X (1567613)
 RED BAR-E-L MINOLA 243T

RED LAZY MC STOUT 30S
 RED LAZY MC STAR 185M OSF
 RED BAR-E-L APPROVAL 4L
 RED RINGSTEAD MINOLA 75N

RED CROWFOOT RAMBLER 1038L
RED CHAPMAN PRISCILLA 626S (1409938)
 RED CHAPMAN PRISCILLA 419P

RED VGW RAMBLER 1000 OSF
 CROWFOOT VERNICE 907J
 RED CROWFOOT DOUBLE DUTY 2126M
 RED CROWFOOT GREEN 1015L

Spring '14 EPD'S: BW: -2.0 WW: +31 YW: +59 Milk: +14 TM: +30

BW	Act WW	ADJ 205	WR	ADJ 365	Scrotal Circ.
74	-	498	100	1112	35cm

LOT

79

RED CHAPMAN GAMBLER 2577Z

Male Tattoo: **SWC 2577Z** DOB: April 20, 2012 Reg#: **1703284**

RED LAZY MC COWBOY CUT 26U AMF NHF OSF MAF
RED BAR-E-L GAMBLER 87X (1567613)
 RED BAR-E-L MINOLA 243T

RED LAZY MC STOUT 30S
 RED LAZY MC STAR 185M OSF
 RED BAR-E-L APPROVAL 4L
 RED RINGSTEAD MINOLA 75N

RED BAR-E-L ENCORE 89K
RED CHAPMAN MISS RIO 225M (1129943)
 RED CHAPMAN MISS RIO 909J

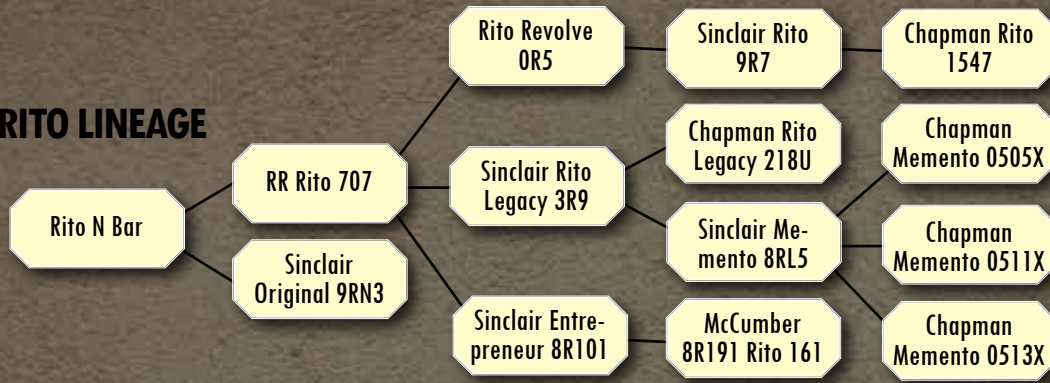
RED YY RED KNIGHT 640F OSF
 RED ALDER ABG HYJEBU 98G
 RED LMAN KING ROB 8621 OSF MAF
 RED O H MISS RIO 81A

Spring '14 EPD'S: BW: +1.9 WW: +43 YW: +72 Milk: +18 TM: +40

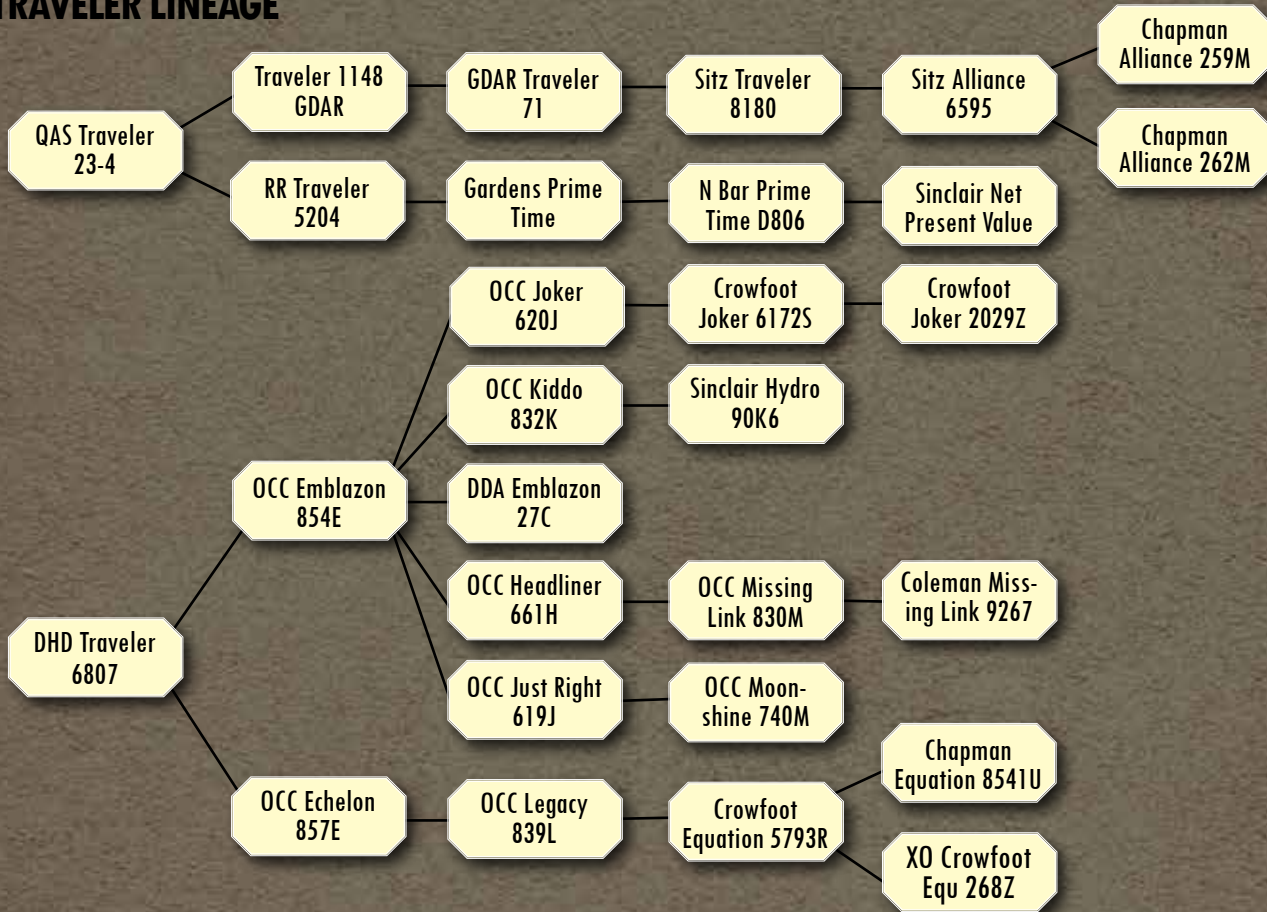
BW	Act WW	ADJ 205	WR	ADJ 365	Scotal Circ.
98	-	568	90	1048	38cm

GENEALOGY CHART

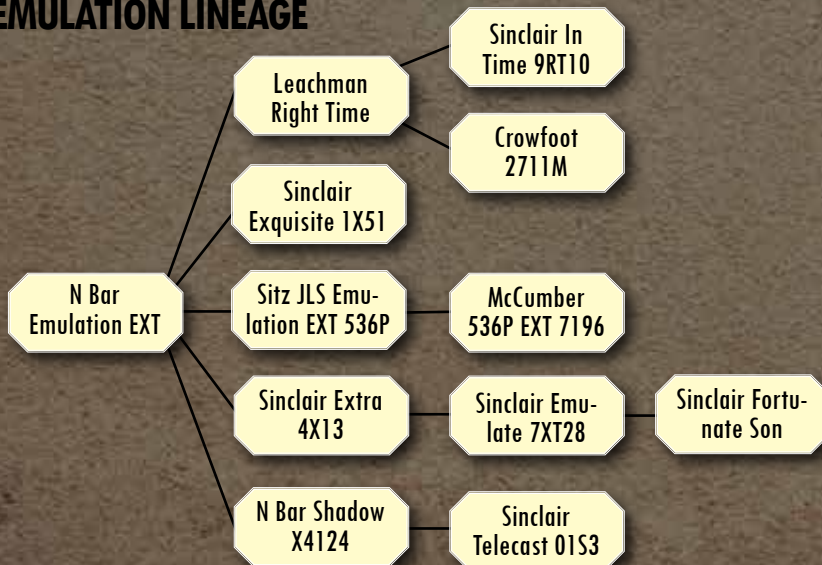
RITO LINEAGE



TRAVELER LINEAGE



EMULATION LINEAGE



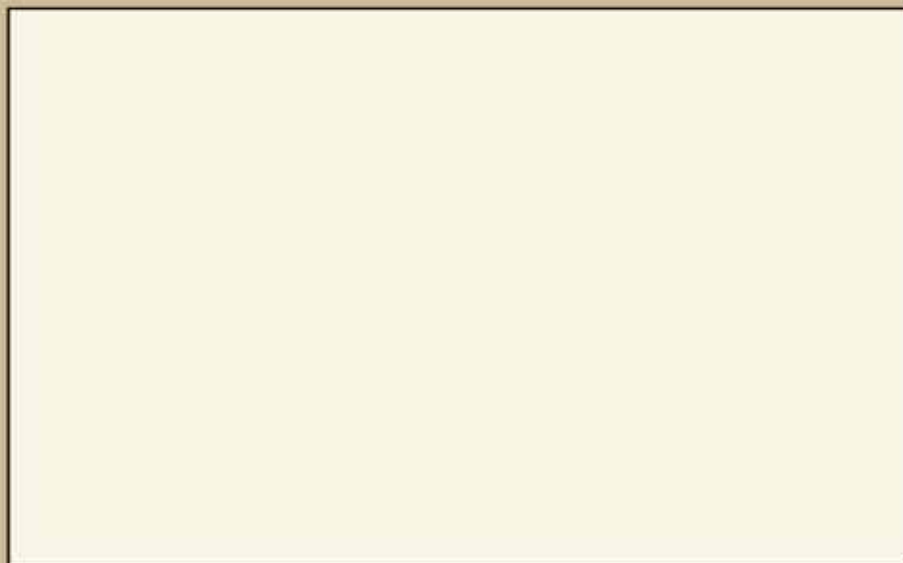
CHAPMAN CATTLE CO.

Box 728,
Stettler, AB
T0C 2L0

R
P
G
/
P
R
G



RETURN POSTAGE GUARANTEED
PORT DE RETOUR GARANTI



Chapman
Cattle Company
Red and Black Angus

ENGINEERED to BREED
BUILT to LAST

www.chapmancattle.com

PRINTED IN CANADA / FOR FREE DISTRIBUTION

In order to save trees, please email us if you do not wish to receive a catalog or are no longer in the cattle business. Thank you.