

45 Yearlings and
4 - 2 Year Old Bulls

Your Choice Bull Sale

ANGUS & SIMMENTAL

Over 45 years of
serving your herd sire needs



FRIDAY

April 16 2010
1:00 PM (CST)

Cowtown Livestock, Maple Creek, SK

Welcome to the 2010 edition of the

Your Choice **Bull Sale**

With all the seedstock programs available to you, we are privileged to receive your interest. Your opinion, based on the individual needs of your operation and environment, is appreciated; be it with questions, concerns, comments and ultimately your cheque book, which sets the direction for our family's breeding decisions and management ... and has for over 45 years.

To help you with your selection, we've included performance data in the form of actual and adjusted weights, EPDs, photographs and footnotes. Don's footnotes recommend the calving-ease bulls, the cow-makers and the beef-makers. Sire groups and cow families are cross-referenced and an index of sale bulls can be found on the last page. We are impressed with the depth, width and volume in this year's bull pen ... we think you will be too!

The Simmental bulls, from Darby and Sarah, are fewer this year as they have joined with other Simmental breeders to bring to you, the Southwest Showcase Bull Sale, Monday April 5th, 2010 at Heartland Livestock, Swift Current, Sk.

This year we also welcome back Chad Weiss. His four 2 year old Angus bulls, await your appraisal.

On April 15th - the day before our Bull Sale - you'll have the opportunity to purchase from 100 home-grown Black replacement heifers. This will be our 24th annual offering of straight-bred Angus females, all sired by bulls produced in our registered herd.

A "Back to B(l)ack" chance - females on the 15th and bulls on the 16th - both at Cowtown in Maple Creek.

We welcome pre-sale viewing of the cattle. Please let us know if we can be of any assistance or answer any questions you may have regarding the sale offerings. We look forward to visiting with you at any time.

Thank you for your continued support. We sincerely appreciate all our past customers as well as any potential new customers reading this . . . we welcome the opportunity to earn your business and truly offer "Your Choice" of Angus and Simmental cattle genetics.

For your convenience,
page 2 offers an
index to guide
you through the
information.



*Don and Connie Delorme
Darby, Sarah and Isabella Delorme
Benny, Kalee and Nevaeh Hofer*

SALE INFORMATION

Friday, April 16, 2010 ~ 1:00 pm (CST)

Sale will be held at Cowtown Livestock
1 mile East of Maple Creek, Sask.

Cowtown Office: (306) 662-2648
Wayne Bowyer-Manager: (306) 662-7371

Sight Unseen Purchase Program: If you would like to place a bid on any lot but cannot attend the sale, please contact the Cowtown Office or Wayne Bowyer. They will competently and discretely handle your bidding instructions.

No yearlings are sold before the sale.

Viewing the Bulls: The bulls are available for your appraisal at the ranch until Wednesday, April 14 at which time they will be moved to the Cowtown yards where they will be available for viewing from the time of their arrival until sale time on April 16th. We encourage you to stop in and take a look at this year's offering, as well as the sires, dams and siblings. The bulls and their dams can also be viewed online at:
www.southshadowangus.ca or www.boundaryranch.ca

Buyer Registration: Please register for a buyer number at the office prior to purchasing.

Sale Order: Bulls will sell in catalogue order ~ Index page 44

Bull Evaluation & Health: All bulls will have a complete fertility exam and semen test done prior to sale. Bulls will not be sold on a 'deferred' result. Current weights and scrotal measurements will also be available prior to sale. Bulls have been vaccinated: Trasvax 8, IBR/P13/BVD (StarVac/SomnuStar PH) and pesticide poured.

Bull Guarantee: We guarantee to provide you with a sound, fertile bull capable of servicing a reasonable number of females. In the event that your bull is a non-satisfactory breeder, he will be replaced with a bull of equal value, or a credit will be given towards the purchase of another South Shadow bull. We will not provide replacement or credit for physical injury or mismanagement. Each animal becomes the responsibility of the purchaser as soon as sold. If you have a problem with a bull please notify us immediately.

Terms: All bulls sell under the suggested Terms & Conditions of the Canadian Angus and Simmental Associations. Terms of sale are cash or cheque payable to Cowtown Livestock. No bulls will be released without satisfactory settlement.

When making settlement for your purchases, please leave specific instructions - name and address - for transferring of registration certificates.

Insurance: Insurance will be available sale day.

Don and Connie Delorme

Box 28, Robsart Saskatchewan, S0N 2G0
(306) 299 - 4494 ~ delormeangus@xplornet.com
Don cell: (306) 299-7778

Darby, Sarah and Isabella Delorme

Box 36, Robsart Saskatchewan, S0N 2G0
(306) 299 - 2006 ~ boundaryranch@xplornet.com
Darby cell: (306) 662-7993 / Sarah cell: (360) 299-7779

Kalee, Benny and Nevaeh Hofer

Box 12, Robsart Saskatchewan, S0N 2G0
(306) 299 - 2051 ~ kaleedelorme@hotmail.com

Guest Consignor - Chad Weiss

(306) 558 - 4401 ~ wick_weiss35@hotmail.com

www.SouthShadowAngus.com

SALE INFORMATION

Be sure to join us for a Complimentary Pre-Sale Lunch

Cattle are available online at the family's ranch web sites:
www.SouthShadowAngus.ca - www.BoundaryRanch.ca

- **Pages 38-39:** Herd Management ... the Feeding!
- **Page 39:** Weight/Performance Averages Summary Report
- **Pages 40:** Performance Information / Elite Cow Program
- **Page 41-43:** How to Read and Use EPDs
- **Page 44:** Bull Index with tag#, sire, dam and page number
- The Angus and Simmental bulls were *not* wintered together. EPDs *cannot* be compared across breeds ~ please use the following charts to compare your selection against the breed average.

| Average Black EPDs for all Calves born in 2009 | | | | | | | |
|--|-----|-----|------|-----|-----|------|------|
| BW | WW | YW | MILK | TM | YG | CE | MCE |
| +3.0 | +40 | +71 | +17 | +37 | +31 | +1.2 | +4.0 |

| Average SIMMENTAL Spring 2010 EPDs | | | | | | | |
|------------------------------------|-----|------|------|-----|------|------|------|
| CE | BW | WW | YW | MCE | MWW | MILK | SC |
| 7.2 | 2.8 | 36.1 | 60.3 | 5.5 | 25.1 | 7.0 | 0.13 |

Sale Accomodations:

Maple Grove Motel: 306-662-2658
Commercial Hotel: 306-662-2673
Maple Creek Motor Inn: 306-662-4431
Cypress Park Resort Inn: 306-662-4477
Cypress Hills Motor Inn: 306-662-2639



As you turn the pages in this book you will find pedigrees carrying the family member's prefixes of SSA, DLD, KD, NPP and the foundation IJS. In 2009, the Jay En Dee (IJS) herd name was transferred to Darby and Sarah's daughter, Isabella and the Prairie Pride (NPP) herd name, which was Alfred and Jo's in the 60's & 70's, was registered to Nevaeh. These names will be shared with the new siblings arriving this year!!



COMMERCIAL REPLACEMENT HEIFERS

From the Delorme and Wardberg commercial herds is the 24th Annual offering of 100 straightbred Black Angus yearling heifers.

Heifers are consigned to the April 15th

Replacement Female Sale at Cowtown Livestock.

The Black Cow "is" our commercial herd and has been since 1948, when Grandpa (Ole) Wardberg brought the first to this area. Yes, a few colored ones have come and gone but we seem to get along best with the Blacks ~ the type of cattle that are sympathetic to our environmental and industry challenges. On April 15th you'll have the opportunity to purchase from 100 home-grown Black replacement heifers. This will be our 24th annual offering of straight-bred Angus females, all sired by bulls produced in our registered herd.

A "Back to B(l)ack" opportunity from our program to Yours
HEIFERS on the 15th and **BULLS** on the 16th
both at Cowtown in Maple Creek.



ANGUS REFERENCE SIRES

SSAP RAIN ON 35R

SSA 35R

1260304

January 30, 2005

Cudlobe Rainmaker 39K
SOUTH SHADOW RAIN MAN 2M
 South Shadow Diamond 13K

Stevenson Rainmaker 630G
 Cudlobe Kyma 18H
 Papa Equator 2928
 Jay En Dee Pride 43D
 B/R New Design 036
 Bon View Gammer 85
 Q A S Traveler 23-4
 Jay En Dee Joyce 21-91D

Bon View New Design 878
SOUTH SHADOW JOYCE 28N
 Jay En Dee Joyce 32G

| EPDs / Accuracy | | | | | | | |
|-----------------|---------|---------|---------|-----|---------|-----------|----------|
| BW | WW | YW | MILK | TM | YG | MCE | MCE |
| -1.1 59% | +27 45% | +65 31% | +25 19% | +39 | +39 31% | +10.0 38% | +8.0 14% |

35R is a very stylish, good-footed bull - muscular, lots of nuts and an old style Angus head. At this time next year we'll have 10 calving daughters - those producing now are smaller framed, like his mother, and you can't beat their udder quality.

| Act BW | ADJ. 205 | ADJ. 365 |
|--------|----------|----------|
| 72 | 600 | 1081 |

Sire of Sale Bulls: 101W (pg 18), 102W (pg 18), 112W (pg 19), 104W (pg 37), 119W (pg 37), 141W (pg 38), 89W (pg 36),



SSAP NEW ELIXIR 4R

SSA 4R

1260325

January 12, 2005

B/R New Design 036
B/R New Frontier 095
 White Fence Pride HI

VDAR New Trend 315
 B/R Blackcap Empress 76
 Connealy Dateline
 Pleasant Pill of Conanga
 Ankonian Elixir DB
 Ankony Lass 206T
 Jay En Dee New Trend 14B
 Jay En Dee Eileen 73P

Ankonian Elixir 100
SOUTH SHADOW EILEEN 5M
 Jay En Dee Eileen 36D

| EPDs / Accuracy | | | | | | | |
|-----------------|---------|---------|---------|-----|---------|-----------|-----------|
| BW | WW | YW | MILK | TM | YG | MCE | MCE |
| -3.5 65% | +30 52% | +61 43% | +19 22% | +34 | +31 43% | +15.0 50% | +13.0 21% |

4R's sons have allowed a lot of cattlemen and women to sleep peaceably through calving season. This is his last set of bulls offered. He sired very correct, easy-fleshing sons and daughters. We have a half-dozen daughters producing, they are smaller cows with good udders. A few more are in the replacement pen.

| Act BW | ADJ. 205 | ADJ. 365 |
|--------|----------|----------|
| 67 | 576 | 1062 |

Sire of Sale Bulls: 125W (pg 35), 18W (pg 9), 30W (pg 15), 54W (pg 14), 75W (pg 35),



ANGUS REFERENCE SIRES

BIG SKY DLD RIGHT WAY 68S

TGK 68S 1369137 February 6, 2006

Hyline Right Time 338
Hyline Right Way 781
 Hyline Ellen 86

Acumen Bold Ruler 30X
Big Sky Dyna 435
 Prospect Dyna 27S

Leachman Right Time
 Hyline Pride 265
 Hyline SVF Rito 1116
 Hyline Ellen 9062
 Nelson Bold Ruler
 Glenmere Barbara 30R
 Premier Independence KN
 Eileenmere Dyna SGY 2M

EPDs / Accuracy

| BW | WW | YW | MILK | TM | YG | CE | MCE |
|----------|---------|----------|---------|-----|---------|-----------|----------|
| +7.7 58% | +68 46% | +101 29% | +18 22% | +52 | +33 29% | -11.0 36% | +1.0 18% |

68S has been siring thick, hairy calves with extra rib. That extra length is sure to add pounds at weaning. The 2010 born calves are his last. He bred a lot of cows, as he was used in our commercial herd also.

| Act BW | ADJ. 205 | ADJ. 365 |
|--------|----------|----------|
| 87 | ET | ET |

Sire of Sale Bulls: 103W (pg 33), 106W (pg 16), 107W (pg 17), 113W (pg 32), 118W (pg 11), 132W (pg 11), 137W (pg 17), 145W (pg 33), 84W (pg 10), 97W (pg 36)



Dyna 435



SSA 109L IN FOCUS 8T

SSA 8T 1407793 January 10, 2007

SAF Focus of ER
Mytty In Focus
 Mytty Countess 906

FAR Krugerrand 410H
SSAP EILEEN 19R
 Jay En Dee Eileen 36D

SAF Fame
 GDAR Forever Lady
 Sitz Alliance 6595
 Baldrige Countess 357
 Krugerrand of Donamere 490
 FAR Erianna 286F
 Jay En Dee New Trend 14B
 Jay En Dee Eileen 73P

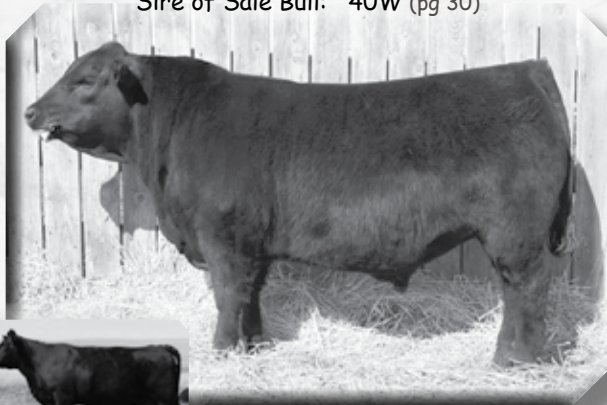
EPDs / Accuracy

| BW | WW | YW | MILK | TM | YG | CE | MCE |
|----------|---------|---------|---------|-----|---------|----------|-----------|
| +0.3 38% | +52 28% | +95 25% | +21 21% | +47 | +43 25% | +9.0 31% | +10.0 19% |

8T was a very popular entry in our 2008 sale but failed the semen test at that time. We hand bred him to two heifers ... and we got this guy and a female. He has sired some fancy sons and daughters in 2010 also. He's smaller framed, thick, deep, wide and "calving ease"! His 2009 Net Worth sired half sister was a keeper.

| Act BW | ADJ. 205 | ADJ. 365 |
|--------|----------|----------|
| 75 | 709 | 1194 |

Sire of Sale Bull: 40W (pg 30)



EILEEN 19R

ANGUS REFERENCE SIRES

S A V HERITAGE 6295

IMP 6295S

1481376

March 1, 2006

CAR Tracker 614
CAR Duke 104
 CAR Miss Raindancer

CAR Tracker 614
 Lady New Trend 027
 GDAR Rainmaker 340
 CAR Lady 011 Rito 245
 Sitz Traveler 8180
 Boyd Forever Lady 8003
 SAF 598 Bando 5175
 SAV May 7238

SAV 8181 Traveler 8181
SAV Blackcap May 4136
 SAV May 2397

EPDs / Accuracy

| BW | WW | YW | MILK | TM | YG | CE | MCE |
|---------|---------|----------|---------|-----|---------|---------|---------|
| +6.384% | +72.76% | +120.26% | +28.20% | +64 | +48.26% | -2.051% | +4.019% |

Heritage shares the same bottom cow family as Net Worth and Density (both sired 2010 calves here). The (Prospector) May cow family goes back to Jay En Dee

| Act BW | ADJ. 205 | ADJ. 365 |
|--------|----------|----------|
| 88 | 965 | 1597 |

Mandy, a cow bred by Don's parents in the early 1980's. Heritage comes along with top rankings in weaning and yearling EPDs.

Sire of Sale Bulls: 60W (pg 31), 64W (pg 13), 70W (pg 30)



S A V NET WORTH 4200

IMP 4200P

1309743

Born: 2004

Sitz Traveler 8180
S A V 8180 Traveler 004
 Boyd Forever Lady 8003

G D A R Traveler 71
 Sitz Everalda Intense 1137
 AAR New Trend
 S V F Forever Lady 57D
 Bon View Bando 598
 S A F Royal Lass 1002
 Rito 9FB3 of 5H11 Fullback
 S A R Prospector May 9124

S A F 598 Bando 5175
S A V MAY 2410
 S A V May 6269

EPDs / Accuracy

| BW | WW | YW | MILK | TM | YG | CE | MCE |
|---------|---------|----------|---------|-----|---------|---------|---------|
| +4.896% | +59.94% | +112.90% | +32.61% | +62 | +53.90% | +2.067% | +5.052% |

Unprecedented thickness, muscle, volume and power in his progeny. His EPDs rank in top 10% of: WW, YW, RE & SF His first daughters in production here are thick, easy-fleshing and good uddered. Note the ancestry that Network shares with Heritage (above) ... that of Prospector May 9124 and her Jay En Dee heritage.

| Act BW | ADJ. 205 | ADJ. 365 |
|--------|----------|----------|
| 90 | 995 | 1573 |

Sire of Sale Bulls: 15W (pg 16), 36W (pg 34), 39W (pg 10), 47W (pg 28), 55W (pg 34), 56W (pg 9), 58W (pg 15), 79W (pg 28)



ANGUS REFERENCE SIRES

K C F BENNETT TOTAL

IMP 0239J 1083033 Born: 1999

Sitz Treveler 8180
Sitz Alliance 6595
 Sitz Barbaramere Jet 2698

N Bar Emulation EXT
EXT of Conanga 6790
 Lady Enchantress of Conanga

GDAR Traveler 71
 Sitz Everelda Entence
 3 Bar Spike 1766
 Sitz Baramere Jet 155
 Emulation N Bar 5522
 N Bar Primrose 2424
 Hoff Northlander SC 6029
 Entalletta Of Canoanga

EPDs / Accuracy

| BW | WW | YW | MILK | TM | YG | CE | MCE |
|----------|---------|---------|---------|-----|---------|----------|-----------|
| +0.0 95% | +45 92% | +83 89% | +21 80% | +44 | +38 89% | +8.0 87% | +10.0 72% |

Total is becoming known for his daughters, they have the EXT like udders; are easy fleshing & deep-bodied while not sacrificing body mass and performance. He has been marketed as a calving ease sire although our three calves have been 98, 82 and the lone heifer was 77 #s.

| Act BW | ADJ. 205 | ADJ. 365 |
|--------|----------|----------|
| 79 | 691 | 1432 |

Sire of Sale Bulls: 43W (pg 31), 48W (pg 32)



WOODHILL COMMANDER 143L-132N

IMP 132N 1244520 Born: 2003

S A F Focus of ER
Woodhill Admiral 77K
 Woodhill Lass 344-1178

BCC Bushwacker 41-93
Woodhill Erica 1167-143L
 Woodhill Erica 854-1167

SAF Fame
 G D A R Forever Lady 246
 RR Scotchcap 9440
 Woodhill Lass 1172-344
 Paramount Ambush 2172
 RC Anita Bando
 VF Venture Forward
 Woodhill Erica 497-854-24

EPDs / Accuracy

| BW | WW | YW | MILK | TM | YG | CE | MCE |
|----------|---------|---------|---------|-----|---------|----------|-----------|
| +1.0 86% | +46 79% | +81 71% | +27 41% | +50 | +35 66% | +8.0 66% | +11.0 36% |

A proven sire that offers a unique blend of muscle and maternal genetics with moderation of mature size. Many forage based and grass finishing operations have used this bull for his excellent ability to convert grass into muscle very efficiently. We only have two first-calf heifers; they appear to be easy-fleshing, nice uddered and moderate-framed.

| Act BW | ADJ. 205 | ADJ. 365 |
|--------|----------|----------|
| 64 | 995 | 1238 |

Sire of Sale Bulls: 11W (pg 12), 45W (pg 12), 59W (pg 29), 74W (pg 29)



ANGUS & SIMMENTAL REFERENCE SIRES

DUFF NEW ATTRACTION 6110

IMP 6110S 1426175 Born: 2006

O C C Doctor 940D
O C C Genesis 872G
 Blackbird of R R 1204

O C C Anchor 771A
O C C Dixie Erica 764C
 O C C Dixie Erica 764C

Rito 9FB3 of 5H11 Fullback
 Dixie Erica of C H
 PBC 707 1M F0203
 Blackbird Of RR 7023
 DHD Traveler 6807
 O C C Juanada 709V
 N Bar Emulation EXT
 O C C Dixie Erica 739A

EPDs / Accuracy

| BW | WW | YW | MILK | TM | YG | CE | MCE |
|----------|---------|---------|---------|-----|---------|----------|----------|
| +4.6 68% | +33 56% | +59 17% | +14 16% | +31 | +26 17% | +4.0 42% | -2.0 14% |

We selected Attraction to moderate frame, add muscle and improve efficiency. He shows a lot of masculinity with a super look and pattern with superior balance and excellent shape. We used him again in the 2009 breeding season and are pleased with the 10 calves on the ground.

| Act BW | ADJ. 205 | ADJ. 365 |
|--------|----------|----------|
| 87 | 771 | 1224 |

Sire of Sale Bulls: 67W (pg 13), 69W (pg 14)



SIMMENTAL REFERENCE SIRES

Purebred Red Simmental

KIMLAKE FIXATION 16T

Homozygous Polled CLO 16T 675894 January 13, 2007

TE MCCLINTOCK G28
TCF/RCC TEMPTATION GJ640
 BOZ SWEET TEMPTATION

CG RED HERITAGE 806H
MISS TEE 133N
 MISS TEE 23H

NICHOLS BLK DESTINY D12
 TE ERICA E207 B
 BOZ REDCOAT
 WBR MISS JUNIOR 2Z
 ER RED DECK 639D
 TAYR CHANDRA 230C
 ER BIG SKY 545B
 NUH RED MAGIC 7F

| Act. BW | ADJ. 205 | ADJ. 365 | EPDs | | | | | | | |
|---------|----------|----------|------|-----|------|-------|-----|------|------|------|
| | | | CE | BW | WW | YW | MCE | MWW | MILK | SC |
| 104 | 820 | 1471 | 4.4 | 5.1 | 61.2 | 100.3 | 7.2 | 38.4 | 7.8 | 1.18 |

WALKING HERDSIRE. Fixation was the high selling bull calf at the Northern Classic Bull Sale in 2008. We purchased him because he was the total package for us. Sired by Temptation, we expected to get excellent females with great udders and so far they look great. The bull himself had incredible muscle expression, lot's of style and was clean throughout. His performance numbers are unbeatable; Top 1% for WW, YW, & SC, 2% for MWWT, and 10% for MCE. We lost Fixation last winter so this is his only calf crop; take advantage.

Sire of Sale Bull: 116W (pg 25)



SIMMENTAL REFERENCE SIRES

Purebred Hetero Black Simmental

SHS ENTICER P1B

Multiple Polled

FGN 1P

684082

March 17, 2004

TE MCCLINTOCK G28
TCF/RCC TEMPTATION GJ640
BOZ SWEET TEMPTATION

RHR GRANITE 140G
ROCKY HILLS JO
ROCKY HILLS E JAY

NICHOLS BLK DESTINY D12
TE ERICA E207 B
BOZ REDCOAT
WBR MISS JUNIOR 2Z
WALL STREET
ROCKY HILLS DIXIE
CIRCLE S LEACHMAN 600U
Z56

| Act. BW | Act. 205 | Act. 365 | EPDs | | | | | | | |
|-----------|------------|-------------|------------|------------|-------------|-------------|------------|-------------|------------|------------|
| | | | CE | BW | WW | YW | MCE | MWW | MILK | SC |
| 70 | 814 | 1480 | 7.2 | 2.0 | 42.8 | 75.8 | 4.7 | 27.6 | 6.2 | N/A |

Sires very eye appealing and marketable cattle. We used him because of the many Champions he sired in the States and his great numbers. We will use him again because of the overall quality of his calves.

Sire of Sale Bull: 26W (pg 24)



Purebred Homo Black Simmental

ACC1 HUSTLER 2N

Homozygous Polled

FGN 2N

666672

March 23, 2003

WLE POWER STROKE
SS GOLD MINE L42
GW MISS LUCKY BUCK 858G

LRS PREFERRED STOCK 370C
CPR KORONA
BH CRIMSON ROSE 620F

BURNS BULL X339U
NICHOLS JOLIETTE C75
LCHMAN LUCKY BUCK 7049C
GW MISS BRODERICK 116Z
CIRCLE S LEACHMAN 600U
LAS MISS PRINCESS 020Z
MEYERS BLACKTOP 206Y
BH MATTIE 413D

| Act. BW | Act. 205 | Act. 365 | EPDs | | | | | | | |
|-----------|------------|-------------|------------|------------|-------------|-------------|------------|-------------|------------|------------|
| | | | CE | BW | WW | YW | MCE | MWW | MILK | SC |
| 82 | 837 | 1400 | 9.6 | 0.1 | 25.2 | 48.5 | 5.3 | 18.5 | 6.0 | N/A |

Sires calves that are low birth weight and have lots of vigor. Offspring are deep bodied, extremely long, heavily muscled, have good growth and are very sound. Hustler himself is very correct.

Sire of Sale Bull: 52W (pg 25)



YEARLING ANGUS BULLS



18W

SSA 4R NEW ELIXIR 18W

JOYCE 77T

| | | | | | |
|---|--|-----------------|---------------------|------|--|
| SSA 18W | 1533636 | January 5, 2009 | 148 DAY TEST | | |
| B/R New Frontier 095 SSAP NEW ELIXIR 4R South Shadow Eileen 5M | B/R New Design 036 White Fence Pride H1 Ankonian Elixir 100 Jay En Dee Eileen 36D Cudlobe Rainmaker 39K South Shadow Diamond 13K Bon View New Design 878 Jay En Dee Joyce 32G | | Feb 2 | 1180 | |
| South Shadow Rain Man 2M SSA JOYCE 77T South Shadow Joyce 28N | | | Sept 7 | 670 | |
| | | | ADG | 3.45 | |
| | | | INDEX | | |
| | | | 205 | 101 | |
| | | | 365 | 121 | |

EPDs / Accuracy

| BW | WW | YW | MILK | TM | YG | CE | MCE | AOD |
|----------|---------|---------|---------|-----|---------|-----------|----------|----------|
| -3.4 34% | +29 23% | +63 15% | +23 10% | +38 | +34 15% | +14.0 26% | +11.0 9% | 2 |

Recommended for heifers. 18W was the highest gaining bull through the winter, Indexing 121. He is super long & smooth with a very correct foundation.

| | | |
|-----------|------------|-------------|
| Actual BW | ADJ. 205 | ADJ. 365 |
| 74 | 647 | 1198 |

77T and 24S (son sells as #103S, pg 33) are half sisters to our reference sire, Rain On 35R (pg 33). The top side is nothing to sneeze at, Eileen 36D - the little work horse in our herd and still producing. Take a look - a very proud bull and one of the last 4R sons to be offered.



56W

SSA 4200 NETWORTH 56W

EILEEN 20N

| | | | | | |
|--|---|------------------|---------------------|------|--|
| SSA 56W | 1503501 | January 20, 2009 | 148 DAY TEST | | |
| SAV 8180 Traveler 004 SAV Net Worth 4200 SAV May 2410 | Sitz Traveler 8180 Boyd Forever Lady 8003 SAF 598 Bando 5175 SAV May 6269 Stevenson Rainmaker 630G Cudlobe Kyma 18H Pine Drive Big Sky South Shadow Eileen 17F | | Feb 2 | 1254 | |
| Cudlobe Rainmaker 39K SSAP Eileen 20N South Shadow Eileen 16L | | | Sept 7 | 767 | |
| | | | ADG | 3.29 | |
| | | | INDEX | | |
| | | | 205 | 104 | |
| | | | 365 | 115 | |

EPDs / Accuracy

| BW | WW | YW | MILK | TM | YG | CE | MCE | AOD |
|----------|---------|---------|---------|-----|---------|----------|----------|----------|
| +5.3 36% | +45 26% | +84 20% | +30 18% | +53 | +39 20% | -3.0 27% | +1.0 15% | 6 |

A powerful, thick, heavy muscled Net Worth son with herdbull written all over him. Exceptional phenotype with a real breeding bull look. His "Eileen" Dam is very feminine & maternally functional; 16L is a direct daughter of Pine Drive Big Sky - 17F is a daughter of 36D and with 39K as 20N's sire, we had to let this fella come to town - we just have to many females related to him - like tag#145W (page 35). 20N son to T & T Jacksteit. Dam 20N: Designated Elite since 2008. Calves 4, Average Ratio 109.

| | | |
|------------|------------|-------------|
| Actual BW | ADJ. 205 | ADJ. 365 |
| 106 | 695 | 1222 |

YEARLING ANGUS BULLS



39W

SSA 4200 NETWORTH 39W

EILEEN 36D

SSA 39W 1503491 January 16, 2009

SAV 8180 Traveler 004
SAV Net Worth 4200
SAV May 2410

Jay En Dee New Trend 14B
JAY EN DEE EILEEN 36D
Jay En Dee Eileen 73P

Sitz Traveler 8180
Boyd Forever Lady 8003
SAF 598 Bando 5175
SAV May 6269
V D A R New Trend 315
Jay En Dee Patsy 41T
Dakota Poundmaker 128M
Jay En Dee Eileen 47L

| 148 DAY TEST | |
|--------------|------|
| Feb 2 | 1133 |
| Sept 7 | 693 |
| ADG | 2.97 |
| INDEX | |
| 205 | 98 |
| 365 | 104 |

EPDs / Accuracy

| BW | WW | YW | MILK | TM | YG | CE | MCE | AOD |
|----------|---------|---------|---------|-----|---------|----------|----------|-----------|
| +2.7 36% | +37 28% | +65 23% | +23 21% | +42 | +28 23% | +3.0 27% | +5.0 17% | 15 |

39W is a stout, wide-based son of a sweet little cow that has added much to our program over the years!

Watch for the Eileens, they'll be found top or bottom.

Pictured at 15 yrs of age, raising this Networth son on good shortgrass with no help.

36D sons to: N Gray, Mckelvey Farms, Bircham Ranch, C & N Schock, Horton Ranch (x2), G Cameron, J & L Allemand plus three we have used ourselves

| Actual BW | ADJ. 205 | ADJ. 365 |
|-----------|------------|-------------|
| 90 | 645 | 1121 |



84W

SSA 68S RIGHT WAY 84W

EILEEN 10S

SSA 84W 1503511 February 10, 2009

Hyline Right Way 781
Big Sky DLD Right Way 68S
Big Sky Dyna 435

South Shadow Rain Man 2M
SSA EILEEN 10S
SSAP Eileen 42P

Hyline Right Time 338
Hyline Ellen 86
Acumen Bold Leader 30X
Prospect Dyna 27S
Cudlobe Rainmaker 39K
South Shadow Diamond 13K
Grandview Womack Direct
South Shadow Eileen 17F

| 148 DAY TEST | |
|--------------|------|
| Feb 2 | 1180 |
| Sept 7 | 702 |
| ADG | 3.24 |
| INDEX | |
| 205 | 113 |
| 365 | 113 |

EPDs / Accuracy

| BW | WW | YW | MILK | TM | YG | CE | MCE | AOD |
|----------|---------|---------|---------|-----|---------|----------|---------|----------|
| +2.8 33% | +52 22% | +84 12% | +22 10% | +48 | +32 12% | +2.0 22% | +6.0 8% | 3 |

A high indexing son of 68S who sires good hair, square hips, growth and disposition. The Dam, 10S, is a half-sister to our new calving-ease sire 35U. And there is no surprise that she goes back to Eileen 36D - when you find a good cow family - stick with it!

| Actual BW | ADJ. 205 | ADJ. 365 |
|-----------|------------|-------------|
| 87 | 728 | 1245 |

YEARLING ANGUS BULLS



132W SSA 68S RIGHT WAY 132W

EILEEN 3S

SSA 132W 1503546 March 8, 2009

Hyline Right Way 781
Big Sky DLD Right Way 68S
 Big Sky Dyna 435

South Shadow Rain Man 2M
SSA EILEEN 3S
 SSAP Eileen 6P

Hyline Right Time 338
 Hyline Ellen 86
 Acumen Bold Leader 30X
 Prospect Dyna 27S
 Cudlobe Rainmaker 39K
 South Shadow Diamond 13K
 Sitz Alliance 6592
 South Shadow Eileen 36D

| 148 DAY TEST | |
|--------------|------|
| Feb 2 | 1072 |
| Sept 7 | 690 |
| ADG | 2.58 |
| INDEX | |
| 205 | 123 |
| 365 | 90 |

EPDs / Accuracy

| BW | WW | YW | MILK | TM | YG | CE | MCE | AOD |
|----------|---------|---------|---------|-----|---------|----------|---------|----------|
| +4.7 33% | +54 22% | +88 12% | +26 10% | +53 | +33 12% | -4.0 22% | +1.0 8% | 3 |

Stout, clean, wide-based, highest 205 ADJ WT with an index of 123... and only a March 8 calf. Double-bred Rain Man on the bottom side with 36D again ... which means maternal, maternal, maternal - his 205 performance reflects this. He's looking for some tail folks ... can you help him out! 3S's first son to: Wilfley Holding

| Actual BW | ADJ. 205 | ADJ. 365 |
|------------|------------|-------------|
| 103 | 799 | 1212 |



118W SSA 68S RIGHT WAY 118W

AKITA 19S

SSA 118W 1503539 February 24, 2009

Hyline Right Way 781
Big Sky DLD Right Way 68S
 Big Sky Dyna 435

SSAP Dateline 18P
SSA AKITA 19S
 SSAP Akita 14P

Hyline Right Time 338
 Hyline Ellen 86
 Acumen Bold Leader 30X
 Prospect Dyna 27S
 Vermillion Dateline 7078
 South Shadow Eileen 5G
 South Shadow Rain Man 2M
 South Shadow Akita 8M

| 148 DAY TEST | |
|--------------|------|
| Feb 2 | 1045 |
| Sept 7 | 640 |
| ADG | 2.74 |
| INDEX | |
| 205 | 107 |
| 365 | 96 |

EPDs / Accuracy

| BW | WW | YW | MILK | TM | YG | CE | MCE | AOD |
|----------|---------|---------|---------|-----|---------|----------|---------|----------|
| +6.3 33% | +52 22% | +87 12% | +18 10% | +44 | +35 12% | -6.0 22% | +3.0 8% | 3 |

These Right Way 68S sons are the younger end of the bulls but are right up there with the rest of the gang. His Dam is one of the few daughters sired by SSA Dateline 18P before we lost him to an injury. They are moderate framed, excellent uddered and very productive ... once again going back to 36D.

| Actual BW | ADJ. 205 | ADJ. 365 |
|------------|------------|-------------|
| 103 | 706 | 1180 |

YEARLING ANGUS BULLS



11W

SSA 132 COMMANDER 11W

AKITA 32P

SSA 11W 1503475 January 4, 2009

Woodhill Admiral 77K
Woodhill Commander 143L-132N
 Woodhill Erica 1167-143L

Gardens EXT 4137
SSAP AKITA 32P
 Jay En Dee Pride 30D

S A F Focus of E R
 Woodhill Lass 344-1178
 B C C Bushwacker 41-93
 Woodhill Erica 854-1167
 N Bar Emulation EXT
 Green Garden Bonnie 1134
 Jay En Dee New Trend 14B
 Jay En Dee Pride 31A

| 148 DAY TEST | |
|--------------|------|
| Feb 2 | 1170 |
| Sept 7 | 710 |
| ADG | 3.11 |
| INDEX | |
| 205 | 94 |
| 365 | 109 |

EPDs / Accuracy

| BW | WW | YW | MILK | TM | YG | CE | MCE | AOD |
|----------|---------|---------|---------|-----|---------|-----------|-----------|-----|
| -1.7 35% | +32 26% | +63 21% | +23 16% | +39 | +31 20% | +12.0 27% | +12.0 13% | 5 |

This Commander son is long, deep quartered, muscular and very masculine. His mother is a front pasture type with exceptional udder qualities. Commander sired only heifer calves for us two years ago and these moderate framed, sweet-uddered girls are now in production. 32P sons to: D Eremenko and the Chavtur Family.

| Actual BW | ADJ. 205 | ADJ. 365 |
|-----------|----------|----------|
| 74 | 604 | 1101 |



45W

SSA 132 COMMANDER 45W

DIAMOND 10P

SSA 45W 1503495 January 17, 2009

Woodhill Admiral 77K
Woodhill Commander 143L-132N
 Woodhill Erica 1167-143L

Rockn D Ambush 1531
SSAP DIAMOND 10P
 Jay En Dee Pride 43D

S A F Focus of E R
 Woodhill Lass 344-1178
 B C C Bushwacker 41-93
 Woodhill Erica 854-1167
 Paramount Ambush 2171
 MS Blackcap Band of R D 1301
 Jay En Dee New Trend 14B
 Jay En Dee Pride 9R

| 148 DAY TEST | |
|--------------|------|
| Feb 2 | 964 |
| Sept 7 | 574 |
| ADG | 2.64 |
| INDEX | |
| 205 | 75 |
| 365 | 92 |

EPDs / Accuracy

| BW | WW | YW | MILK | TM | YG | CE | MCE | AOD |
|----------|---------|---------|---------|-----|---------|----------|-----------|-----|
| +1.3 35% | +27 25% | +54 19% | +15 16% | +29 | +27 19% | +7.0 27% | +10.0 14% | 5 |

Another clean made bull. His Dam is a flush daughter sired by the carcass sire Ambush. 10P's Dam is also a paternal sister to Eileen 36D. Johnny and Florence's 14B bull was the sire to at least half of our 30 foundation purchases. A great maternal line with longevity, as many of them produced well past their 10 year.

| Actual BW | ADJ. 205 | ADJ. 365 |
|-----------|----------|----------|
| 89 | 516 | 937 |

10P's first calf went to the T & C Leismeister

YEARLING ANGUS BULLS



64W

SSA 6295 HERITAGE 64W

JOYCE 2P

| | | | | | |
|--------------------------|--------------------------|------------------|--------------|------|--|
| SSA 64W | 1533638 | January 25, 2009 | 148 DAY TEST | | |
| CAR Duke 104 | CAR Tracker 904 | | Feb 2 | 1033 | |
| SAV Heritage 6295 | CAR Miss Raindancer 421 | | Sept 7 | 660 | |
| SAV Blackcap May 4136 | SAV 8180 Traveler 004 | | ADG | 2.61 | |
| South Shadow Rain Man 2M | SAV May 2397 | | INDEX | | |
| SSAP JOYCE 2P | Cudlobe Rainmaker 39K | | 205 | 92 | |
| South Shadow Joyce 17M | South Shadow Diamond 13K | | 365 | 91 | |
| | SAF 598 Bando 5175 | | | | |
| | South Shadow Joyce 9F | | | | |

EPDs / Accuracy

| BW | WW | YW | MILK | TM | YG | CE | MCE | AOD |
|----------|---------|---------|---------|-----|---------|----------|----------|-----|
| +0.4 35% | +47 25% | +90 12% | +25 11% | +49 | +44 12% | +9.0 25% | +10.0 9% | 5 |

64W is out of another new A.I. sire. He has great length of body, tremendous growth & soundness of structure, reflecting his sire's phenotype. Female siblings are being reported as having awesome maternal qualities. His Dam, 2P is one of those no holes, structured females. A bull calf, 75W (page 35) is out of a half sister to this fella. A 2P son to Cavan Ranch

| Actual BW | ADJ. 205 | ADJ. 365 |
|-----------|----------|----------|
| 86 | 609 | 1027 |



67W

SSA 6110 ATTRACTION 67W

ERROLLINE 54P

| | | | | | |
|---------------------------------|----------------------------|------------------|--------------|------|--|
| SSA 67W | 1503505 | January 25, 2009 | 148 DAY TEST | | |
| OCC Genesis 872G | OCC Doctor 940D | | Feb 2 | 1220 | |
| Duff New Attraction 6110 | Blackbird of RR 1204 | | Sept 7 | 720 | |
| OCC Dixie Erica 814G | OCC Anchor 771A | | ADG | 3.38 | |
| South Shadow Macho 25L | OCC Dixie Erica 764C | | INDEX | | |
| SSAP ERROLLINE 54P | Ankonian Elixir 100 | | 205 | 100 | |
| South Shadow Errolline 7H | South Shadow Diamond 33G | | 365 | 118 | |
| | Jay En Dee Traveler 23-29C | | | | |
| | Jay En Dee Errolline 86E | | | | |

EPDs / Accuracy

| BW | WW | YW | MILK | TM | YG | CE | MCE | AOD |
|----------|---------|---------|--------|-----|---------|----------|---------|-----|
| +4.9 34% | +35 23% | +67 10% | +17 9% | +35 | +32 10% | -1.0 22% | -1.0 7% | 5 |

Long, stout, sound-structured son of Attraction, a muscle sire. He has been an eye-catcher since birth. His Dam is a hard-working, great uddered daughter out of an Elite Dam. 54P son to Hanson Ranches.

| Actual BW | ADJ. 205 | ADJ. 365 |
|-----------|----------|----------|
| 98 | 665 | 1205 |

Maternal Grand Dam, Errolline 7H, Designated Elite since 2004. Calves 3, Average Ratio 110.

YEARLING ANGUS BULLS



69W

DLD 6110 ATTRACTION 69W

DLD AKITA 31P

SSA 69W 1503565 January 27, 2009

OCC Genesis 872G
Duff New Attraction 6110
 OCC Dixie Erica 814G

South Shadow Rain Man 2M
DLD AKITA 31P
 Rising Storm Akita 12M

OCC Doctor 940D
 Blackbird of RR 1204
 OCC Anchor 771A
 OCC Dixie Erica 764C
 Cudlobe Rainmaker 39K
 South Shadow Diamond 13K
 SAF 598 Bando 5175
 South Shadow Akita 3H

| 148 DAY TEST | |
|--------------|------|
| Feb 2 | 1086 |
| Sept 7 | 705 |
| ADG | 2.57 |
| INDEX | |
| 205 | 99 |
| 365 | 90 |

EPDs / Accuracy

| BW | WW | YW | MILK | TM | YG | CE | MCE | AOD |
|----------|---------|---------|--------|-----|---------|----------|---------|----------|
| +2.4 34% | +35 23% | +68 10% | +21 9% | +39 | +33 10% | +5.0 23% | +1.0 7% | 5 |

69W is moderate-framed, sound and clean-made. His Dam had the heaviest at weaning and yearling in 2008.

| Actual BW | ADJ. 205 | ADJ. 365 |
|-----------|------------|-------------|
| 97 | 656 | 1068 |



54W

SSA 4R NEW ELIXIR 54W

ERROLLINE 55T

SSA 54W 1503499 January 19, 2009

B/R New Frontier 095
SSAP NEW ELIXIR 4R
 South Shadow Eileen 5M

B C Matrix 4132
SSA ERROLLINE 55T
 South Shadow Errolline 42N

B/R New Design 036
 White Fence Pride H1
 Ankonian Elixir 100
 Jay En Dee Eileen 36D
 O C C Emblazon 854E
 CAF Pure Pride EXT 99
 South Shadow Pine Drive 10K
 South Shadow Errolline 11F

| 148 DAY TEST | |
|--------------|------|
| Feb 2 | 1000 |
| Sept 7 | 600 |
| ADG | 2.70 |
| INDEX | |
| 205 | 95 |
| 365 | 95 |

EPDs / Accuracy

| BW | WW | YW | MILK | TM | YG | CE | MCE | AOD |
|----------|---------|---------|---------|-----|---------|----------|---------|----------|
| +0.2 34% | +36 23% | +66 15% | +17 10% | +35 | +30 15% | +9.0 25% | +8.0 8% | 2 |

Recommended for Heifers. Dam is sired by Matrix. His daughters here are moderate framed, angular fronted, easy fleshing and super uddered. On the bottom side, 11F's tenth calf was in last year's bull sale. The top, there is 36D and she appears in the same spot in our new 'heifer bull' also.

| Actual BW | ADJ. 205 | ADJ. 365 |
|-----------|------------|-------------|
| 78 | 615 | 1048 |

YEARLING ANGUS BULLS



30W

SSA 4R NEW ELIXIR 30W

EILEEN 78T

| | | | | |
|---------------------------|-------------------------|------------------|--------------|------|
| SSA 30W | 1503484 | January 12, 2009 | 148 DAY TEST | |
| B/R New Frontier 095 | B/R New Design 036 | | Feb 2 | 960 |
| SSAP NEW ELIXIR 4R | White Fence Pride H1 | | Sept 7 | 570 |
| South Shadow Eileen 5M | Ankonian Elixir 100 | | ADG | 2.64 |
| SSAP Dateline 18P | Jay En Dee Eileen 36D | | INDEX | |
| SSA EILEEN 78T | Vermilion Dateline 7078 | | 205 | 89 |
| South Shadow Eileen 30N | South Shadow Eileen 5G | | 365 | 92 |
| | Cudlobe Rainmaker 39K | | | |
| | South Shadow Eileen 36L | | | |

EPDs / Accuracy

| BW | WW | YW | MILK | TM | YG | CE | MCE | AOD |
|----------|---------|---------|--------|-----|---------|-----------|----------|-----|
| -1.6 34% | +30 22% | +62 14% | +17 9% | +32 | +32 14% | +12.0 25% | +11.0 8% | 2 |

Recommended for heifers.

Another one of those clean-fronted, long, smooth shouldered sons of 4R which makes them the calving-ease specialists that they are. Dam is a sweet-made daughter of our Dateline 18P sire.

| | | |
|-----------|------------|------------|
| Actual BW | ADJ. 205 | ADJ. 365 |
| 74 | 575 | 997 |



58W

SSA 4200 NETWORK 58W

DIAMOND 14L

| | | | | |
|---------------------------------|----------------------------|------------------|--------------|------|
| SSA 58W | 1503502 | January 21, 2009 | 148 DAY TEST | |
| SAV 8180 Traveler 004 | Sitz Traveler 8180 | | Feb 2 | 1240 |
| SAV Net Worth 4200 | Boyd Forever Lady 8003 | | Sept 7 | 765 |
| SAV May 2410 | SAF 598 Bando 5175 | | ADG | 3.21 |
| Ankonian Elixir 100 | SAV May 6269 | | INDEX | |
| SOUTH SHADOW DIAMOND 14L | Ankonian Elixir DB | | 205 | 103 |
| Jay En Dee Pride 29-7G | Ankony Lass 206T | | 365 | 112 |
| | Jay En Dee Traveler 23-29C | | | |
| | Ja En Dee Pride 86D | | | |

EPDs / Accuracy

| BW | WW | YW | MILK | TM | YG | CE | MCE | AOD |
|----------|---------|---------|---------|-----|---------|----------|----------|-----|
| +6.8 36% | +47 27% | +93 21% | +26 19% | +50 | +46 21% | -7.0 27% | +0.0 15% | 8 |

A stout, deep-quartered, long hipped, muscular son by 4200. He should sire calves with a lot of style and ability to push that scale down. Dam is bigger framed, long, full of meat with a sweet front and awesome udder. She also can not resist a scratch, a very quiet cow.

14L sons to: D Wilk, Horton Ranch and Cross C Cattle

Dam 14L:

Designated Elite since 2007. Calves 3, Average Ratio 106.

| | | |
|------------|------------|-------------|
| Actual BW | ADJ. 205 | ADJ. 365 |
| 112 | 697 | 1210 |

YEARLING ANGUS BULLS



EILEEN 16L

15W

SSA 4200 NETWORTH 15W

SSA 15W 1503476 January 4, 2009

SAV 8180 Traveler 004
SAV Net Worth 4200
 SAV May 2410

Pine Drive Big Sky
South Shadow Eileen 16L
 South Shadow Eileen 17F

Sitz Traveler 8180
 Boyd Forever Lady 8003
 SAF 598 Bando 5175
 SAV May 6269
 Le Mar Eileenmere Lad 549
 Benlock Blackcap 108K
 Jay En Dee Touchstone 131-32D
 Jay En Dee Eileen 36D

| 148 DAY TEST | |
|--------------|------|
| Feb 2 | 1050 |
| Sept 7 | 670 |
| ADG | 2.57 |
| INDEX | |
| 205 | 86 |
| 365 | 90 |

EPDs / Accuracy

| BW | WW | YW | MILK | TM | YG | CE | MCE | AOD |
|----------|---------|---------|---------|-----|---------|----------|----------|-----|
| +3.9 36% | +37 27% | +68 21% | +21 19% | +40 | +31 21% | +2.0 26% | +4.0 13% | 8 |

A long, smooth-made bull. Dam is a direct daughter of the legendary Pine Drive Big Sky. She has great udder structure, is long sided and very feminine.

Many were impressed with her at our Open House & Customer Appreciation days. She has three daughters in herd - one an Elite Dam, another brings tag # 125W (page 37) to town... of course she is an Eileen!

16L son to: B Wig

| Actual BW | ADJ. 205 | ADJ. 365 |
|-----------|----------|----------|
| 88 | 573 | 984 |



EILEEN 32S

106W

SSA 68S RIGHT WAY 106W

SSA 106W 1503530 February 21, 2009

Hyline Right Way 781
Big Sky DLD Right Way 68S
 Big Sky Dyna 435

South Shadow Bando 24M
SSA EILEEN 32S
 South Shadow Eileen 8N

Hyline Right Time 338
 Hyline Ellen 86
 Acumen Bold Leader 30X
 Prospect Dyna 27S
 SAF 598 Bando 5175
 Jay En Dee Georgina 27G
 BT Outback 41H
 South Shadow Eileen 43J

| 148 DAY TEST | |
|--------------|------|
| Feb 2 | 1134 |
| Sept 7 | 625 |
| ADG | 3.44 |
| INDEX | |
| 205 | 102 |
| 365 | 120 |

EPDs / Accuracy

| BW | WW | YW | MILK | TM | YG | CE | MCE | AOD |
|----------|---------|---------|---------|-----|---------|-----------|---------|-----|
| +7.5 33% | +54 22% | +90 12% | +17 10% | +44 | +36 12% | -10.0 21% | +0.0 8% | 3 |

An end of February bull calf but notice his weights and performance. Dam is deep, easy-fleshing and very balanced with excellent udder qualities. She had a long thick son in last years sale also ... unfortunately he took an arse whoopin in the bull pen and never did get over the injury.

| Actual BW | ADJ. 205 | ADJ. 365 |
|-----------|----------|----------|
| 105 | 681 | 1232 |

YEARLING ANGUS BULLS



107W

SSA 68S RIGHT WAY 107W

EILEEN 14S

SSA 107W 1503531 February 21, 2009

Hyline Right Way 781
Big Sky DLD Right Way 68S
 Big Sky Dyna 435

South Shadow Rain Man 2M
SSA EILEEN 14S
 SSAP Eileen 24P

Hyline Right Time 338
 Hyline Ellen 86
 Acumen Bold Leader 30X
 Prospect Dyna 27S
 Cudlobe Rainmaker 39K
 South Shadow Diamond 13K
 BT Direction 65D
 South Shadow Eileen 38K

| 148 DAY TEST | |
|--------------|------|
| Feb 2 | 1065 |
| Sept 7 | 620 |
| ADG | 3.01 |
| INDEX | |
| 205 | 103 |
| 365 | 105 |

EPDs / Accuracy

| BW | WW | YW | MILK | TM | YG | CE | MCE | AOD |
|----------|---------|---------|---------|-----|---------|----------|---------|----------|
| +3.9 33% | +48 22% | +82 12% | +21 10% | +45 | +34 12% | -1.0 22% | +2.0 8% | 3 |

Another one of those younger Right Way bulls with good numbers and excellent growth. They are wide topped and square-hipped. The Dam is one of many Rain Man 2M daughters in our herd - 2M is also the sire to Rain On 35R in our reference sire section.

| Actual BW | ADJ. 205 | ADJ. 365 |
|-----------|------------|-------------|
| 95 | 677 | 1158 |



137W

SSA 68S RIGHT WAY 137W

AKITA 17S

SSA 137W 1503551 March 12, 2009

Hyline Right Way 781
Big Sky DLD Right Way 68S
 Big Sky Dyna 435

South Shadow Rain Man 2M
SSA AKITA 17S
 SSAP Akita 32P

Hyline Right Time 338
 Hyline Ellen 86
 Acumen Bold Leader 30X
 Prospect Dyna 27S
 Cudlobe Rainmaker 39K
 South Shadow Diamond 13K
 Gardens EXT 4137
 Jay En Dee Pride 30D

| 148 DAY TEST | |
|--------------|------|
| Feb 2 | 970 |
| Sept 7 | 585 |
| ADG | 2.60 |
| INDEX | |
| 205 | 106 |
| 365 | 91 |

EPDs / Accuracy

| BW | WW | YW | MILK | TM | YG | CE | MCE | AOD |
|----------|---------|---------|---------|-----|---------|----------|---------|----------|
| +3.7 33% | +46 22% | +81 13% | +23 10% | +46 | +35 13% | -1.0 22% | +4.0 8% | 3 |

A young bull with good hair, masculinity and depth. Dam is a very stylish 2M daughter also. 17S's Dam, 32P, has a bull offered as #11W (page 12). 17S son to Bitter Lake Ranching

| Actual BW | ADJ. 205 | ADJ. 365 |
|-----------|------------|-------------|
| 97 | 694 | 1110 |

YEARLING ANGUS BULLS



101W

SSA 35R RAIN ON 101W

JOYCE 50R

| | | | | |
|--|--|-------------------|--------------|------|
| SSA 101W | 1503525 | February 18, 2009 | 148 DAY TEST | |
| South Shadow Rain Man 2M SSAP RAIN ON 35R Jay En Dee Joyce 28N | Cudlobe Rainmaker 38K South Shadow Diamond 13K Bon View New Design 878 Jay En Dee Joyce 32G Pine Drive Big Sky Jay En Dee Eileen 36D Ankonian Elixir 100 Jay En Dee Joyce 74E | | Feb 2 | 1094 |
| | | | Sept 7 | 660 |
| South Shadow Pine Drive 10K SSAP JOYCE 50R South Shadow Joyce 10M | | | ADG | 2.93 |
| | | | INDEX | |
| | | | 205 | 106 |
| | | | 365 | 103 |

EPDs / Accuracy

| BW | WW | YW | MILK | TM | YG | CE | MCE | AOD |
|----------|---------|---------|---------|-----|---------|----------|---------|-----|
| +2.0 33% | +34 22% | +64 13% | +24 10% | +41 | +30 13% | +3.0 22% | +6.0 7% | 4 |

A very solid, moderate framed, moderate birth weight and long spined calf showing early maturity.

| Actual BW | ADJ. 205 | ADJ. 365 |
|-----------|----------|----------|
| 89 | 687 | 1157 |

Maternal Grand Dam, Joyce 10M:
Designated Elite since 2009. Calves 5, Average Ratio 108.
Her son, also sired by 35R, is 119W (pg 37).



102W

SSA 35R RAIN ON 102W

DIAMOND 16R

| | | | | |
|---|---|-------------------|--------------|------|
| SSA 102W | 1503526 | February 18, 2009 | 148 DAY TEST | |
| South Shadow Rain Man 2M SSAP RAIN ON 35R Jay En Dee Joyce 28N | Cudlobe Rainmaker 38K South Shadow Diamond 13K Bon View New Design 878 Jay En Dee Joyce 32G Krugerrand Of Donamere 490 FAR Erianna 286F South Shadow Fortune 7F Jay En Dee Pride 43D | | Feb 2 | 1015 |
| FAR Krugerrand 410H SSAP DIAMOND 16R South Shadow Diamond 29H | | | Sept 7 | 594 |
| | | | ADG | 2.84 |
| | | | INDEX | |
| | | | 205 | 96 |
| | | | 365 | 99 |

EPDs / Accuracy

| BW | WW | YW | MILK | TM | YG | CE | MCE | AOD |
|----------|---------|---------|---------|-----|---------|-----------|---------|-----|
| -0.7 34% | +29 22% | +65 13% | +18 11% | +33 | +36 13% | +10.0 13% | +9.0 8% | 4 |

Recommended for heifers.
He's deep, hairy and smooth made - out of a smaller framed Dam with loads of style.

| Actual BW | ADJ. 205 | ADJ. 365 |
|-----------|----------|----------|
| 80 | 620 | 1075 |

16R's first son to R & L Parsonage.

Maternal Grand Dam, Diamond 29H:
Designated Elite since 2004. Calves 3, Average Ratio 105.

YEARLING ANGUS BULLS



112W

SSA 35R RAIN ON 112W

DIAMOND 1M

| | | | | | |
|--------------------------|-----------------------------|-------------------|---------------------|------|--|
| SSA 112W | 1503535 | February 23, 2009 | 148 DAY TEST | | |
| South Shadow Rain Man 2M | Cudlobe Rainmaker 38K | | Feb 2 | 1060 | |
| SSAP RAIN ON 35R | South Shadow Diamond 13K | | Sept 7 | 625 | |
| Jay En Dee Joyce 28N | Bon View New Design 878 | | ADG | 2.94 | |
| BT Outback 41H | Jay En Dee Joyce 32G | | INDEX | | |
| SSAP DIAMOND 1M | OGL Battle Cry 427 | | 205 | 99 | |
| South Shadow Diamond 9J | Eriskay of Rollin Rock 7222 | | 365 | 103 | |
| | QAS Traveler 23-4 | | | | |
| | Jay En Dee Pride 55G | | | | |

| EPDs / Accuracy | | | | | | | | AOD |
|-----------------|---------|---------|---------|-----|---------|----------|---------|-----|
| BW | WW | YW | MILK | TM | YG | CE | MCE | |
| +1.1 34% | +27 23% | +61 14% | +19 11% | +33 | +34 14% | +5.0 22% | +5.0 8% | 7 |

Younger bull with an nice "Angus" head. Should sire good growth, fix some udder problems and add length. Dam is a solid-made, moderate framed female.

1M sons to: T & D Murphy, G & T Guenther

| | | |
|-----------|------------|-------------|
| Actual BW | ADJ. 205 | ADJ. 365 |
| 88 | 650 | 1120 |

Yearling Angus bulls continue on page 28



NEXT YEAR'S SALE

The 2010 BORN Bulls ~ Reference Sires:

ANGUS

SSA 109 IN FOCUS 35U ~ SSA 104 FREEDOM 92U
 SSA 109L IN FOCUS 8T ~ Big Sky DLD Right Way 68S
 Ankonian Werner Wild Fire 96 ~ SAV Net Worth 4200
 SAV Final Answer 0035 ~ SAV 004 Density 4336
 B C Lookout 7024 ~ Duff Encore 702
 Dunlouse Commander Bond ~ FV 20K King 308M
 Duff New Attraction 6110

SIMMENTAL

Black Sires

ACC1 Hustler 2N ~ Hook's Shear Force 38K
 Remington On Target 2S ~ GWS Ebony's Trademark 6N ~

Red Sires

KS Bravado P68 ~ KBSR Easy Money R3
 TNT Top Gun R244 ~ Boundary 2 Tempting





Hooking them up tandem





BOUNDARY RANCH

Purebred Simmental & Black Angus
 Darby, Sarah & Isabella Delorme

Box 36, Robsart, Sk. S0N 2G0

Phone: (306) 299 - 2006

Sarah's Cell: (306) 299 - 7779

Darby's Cell: (306) 662 - 7993

email: boundaryranch@explornet.com



View Sale Bulls and Cowherd at www.boundaryranch.ca

Welcome to the Boundary Ranch Division of the Delorme Livestock Program. We made the decision to join the Southwest Showcase Bull Sale group and therefore our consignment to the Your Choice Bull Sale is much smaller this year. It was however very important to us to not only continue with this sale but to maintain the quality of bulls that we usually bring to this sale; We hope to have accomplished that feat with this set of bulls. Some things to note:

- The South Shadow Angus and Boundary Ranch bulls were not fed together this year.
- EPD's are a useful tool for selecting bulls but they cannot be compared across breeds. Please use the Simmental breed average EPD's provided below.
- The 116W bull is Homozygous Polled and therefore will never have progeny with horns. He can however have progeny with scurs and 116W does himself have scurs.
- All the bulls have been Igenity profiled. If you would like to learn more about their Igenity scores please ask us.
- 26W is a Red/Non-Diluter; he can be used on black cows and none of his progeny will be gray or rat tailed.

Give us a call and we would be happy to go over the catalogue with you or come to the farm for a visit and we'll tour you through our herd.

| Average SIMMENTAL Spring 2010 EPDs | | | | | | | |
|------------------------------------|-----|------|------|-----|------|------|------|
| CE | BW | WW | YW | MCE | MWW | MILK | SC |
| 7.2 | 2.8 | 36.1 | 60.3 | 5.5 | 25.1 | 7.0 | 0.13 |



BOUNDARY ENTICER 26W

Polled-Red/Non-Diluter

BOUN 26W 712810 January 11 2009

TCF/RCC TEMPTATION GJ640
SHS ENTICER P1B
 ROCKY HILLS JO

WFL BLACK BUDDY 931K
KIMLAKE SARAH 623S
 KIMLAKE SARAH 1101M

TE MCCLINTOCK G28
 BOZ SWEET TEMPTATION
 RHR GRANITE 140G
 ROCKY HILLS E JAY
 BDV FESTUS 35G
 PARKHILL RED DOLL 21F
 SSS-SCF CHUCKWAGON 008J
 LFE SARAH 610K

| 131 DAY TEST | |
|--------------|-------|
| Sept 7 | 740 |
| Jan 16 | 1225 |
| ADG | 3.7 |
| INDEX | |
| 205 | 94.3 |
| 365 | 105.5 |

| Act. BW | ADJ. 205 | ADJ. 365 | EPDs | | | | | | | | AOD |
|---------|----------|----------|------|-----|------|------|-----|------|------|-----|-----|
| | | | CE | BW | WW | YW | MCE | MWW | MILK | SC | |
| 97 | 677 | 1269 | 8.4 | 2.0 | 39.6 | 67.1 | 5.6 | 25.9 | 6.1 | N/A | 3 |



RED / NON-DILUTER. 26W is naturally thick, wide, deep and has tons of style. His dam is consistently throwing these top end hairy rascals. Her two year old "Silk Tassel" daughter is a lesson in what a black female should look like. Check him out sale day; you won't be disappointed.

YEARLING SIMMENTAL BULLS



52W

BOUNDARY HUSTLER 52W Polled/Scurred-Hetero Black

BOUN 52W 712815

January 19, 2009

131 DAY TEST

SS GOLD MINE L42
ACC1 HUSTLER 2N
CPR KORONA

WLE POWER STROKE
GW MISS LUCKY BUCK 858G
LRS PREFERRED STOCK
BH CRIMSON ROSE 620F
BDV FESTUS 35G
PARKHILL RED DOLL 21F
GW-CPL RED ALERT
SWS MS LUCK 27D

Sept 7 804

Jan 16 1207

ADG 3.08

INDEX

205 101.0

365 101.2

WFL BLACK BUDDY 931K
KIMLAKE NOREMAC 248M
KIMLAKE NOREMAC 73F

| Act. BW | ADJ. 205 | ADJ. 365 | EPDs | | | | | | | | AOD |
|---------|----------|----------|------|-----|------|------|-----|------|------|-----|-----|
| | | | CE | BW | WW | YW | MCE | MWW | MILK | SC | |
| 102 | 725 | 1218 | 9.0 | 1.7 | 34.0 | 57.7 | 5.6 | 25.5 | 8.5 | N/A | 7 |



NOREMAC 248M

If you want an incredibly wide and long bull, 52W is your guy. He's got lot's of hair and very sound feet, a family trait for certain. An excellent maternal brother sold to Andy Hofer in our first consignment to this sale.



116W

BOUNDARY FIXATION 116W Homo Polled/ Scurred-Black

BOUN 116W 712825

February 23, 2009

131 DAY TEST

TCF/RCC TEMPTATION GJ640
KIMLAKE FIXATION 16T
MISS TEE 133N

TE MCCLINTOCK G28
BOZ SWEET TEMPTATION
CG HERITAGE 806H
MISS TEE 23H
BDV FESTUS 35G
PARKHILL RED DOLL 21F
SPRINGCREEK WARREN 50H
LFE BLACK MISS 617F

Sept 7 695

Jan 16 1030

ADG 2.56

INDEX

205 101.7

365 94.8

WFL BLACK BUDDY 931K
KIMLAKE MYRA 563R
LFE MISS BLACK 147L

| Act. BW | ADJ. 205 | ADJ. 365 | EPDs | | | | | | | | AOD |
|---------|----------|----------|------|-----|------|------|-----|------|------|------|-----|
| | | | CE | BW | WW | YW | MCE | MWW | MILK | SC | |
| 108 | 730 | 1140 | 2.8 | 6.3 | 56.8 | 88.5 | 7.9 | 31.9 | 3.5 | 0.90 | 4 |



MYRA 563R

HOMOZYGOUS POLLED. 116W is as smooth and clean made as they come with excellent muscle expression. His performance EPDs are in the top 1, 2 & 3% respectively for WW, YW & MCE. He's a month younger than the other 2 Simmentals in the sale.

TWO YEAR OLD ANGUS BULLS

Guest Consigner: Bear Creek Angus

The last few years I have been purchasing registered heifers and cows while initiating an A.I. program. Though my herd is yet small, I am using A.I. to inject top quality genetics while maintaining the fundamentals: Feet, Udder, and Fertility. My mandate is, "Only sell bulls that I would personally use."

These bulls are calved in April and to ensure maturity, kept until they are two years old. The bull's dams and sires are sound, which will reflect in their offspring. As calves, they are wintered on a growing ration, then turned out on grass about the 20th of April. They are brought in about Dec 27th and fed tub-ground hay and rye bales along with screening pellets. They are brought in about Dec 27th and fed tub-ground hay, rye bales, and screening pellets. They are vaccinated with 7-way containing Haemophilus; IBR/PI3/IBR.

I would like to thank my Aunt and Uncle for allowing me to be part of their bull sale.

Chad Weiss: (306) 558-4401



CBW BEAR CREEK LUTHER 22U

22U

CBW 22U 1440085 March 9, 2008
 Remital Luther 71L Sitz Alliance 6595
LLB Luther 201P Remital Glacier Lily 117J
 GEIS Dewdrop 69'01 Kilmurs Daquantae 1H
 MJLC Dewdrop 50J
 Standard Hill Next Step 8M CA Future Direction 5321
Isla Bank Pridista 22R Standard Hill Elba 9K
 Isla Bank Pridista 40N Chico Hannibal 43H
 Black Ridge Pridista 815G

| | |
|-----------|------------|
| Actual BW | ADJ. 205 |
| 85 | 733 |

EPDs / Accuracy

| BW | WW | YW | MILK | TM | YG | CE | MCE | AOD |
|----------|---------|---------|---------|-----|---------|----------|---------|----------|
| +2.5 33% | +42 22% | +75 18% | +23 10% | +44 | +33 18% | +5.0 21% | +8.0 6% | 4 |

CBW 71U and CBW 22U : We ourselves are using a half brother of 22U and 71U from LLB Luther, and the calves from him are tremendous. I have no doubt these two bulls will do the same, providing strong tops, thickness front to back, and sheer length of body that makes those pounds when they run across the scale.

BEAR CREEK TIME ZONE 96U

96U

WBA 96U 1440078 April 1, 2008
 KBJ Conquer All 447J
Duralita 429M KBJ Biene 324E
 Freyburn Lady 7L Ebon Hill Equalizer 117'97
 Lady Of Bar 20 479E
 AJC HAF Traveler 01L Sitz Traveler 043
Young Dale Eugenie 96P AJC HAF Kirsten 45J
 Double J Eugenie 208L LLB Tex 76J
 Double J Eugenie 46G

| | |
|------------|------------|
| Actual BW | ADJ. 205 |
| 105 | 738 |

EPDs / Accuracy

| BW | WW | YW | MILK | TM | YG | CE | MCE | AOD |
|----------|---------|---------|--------|-----|---------|-----------|---------|----------|
| +7.0 30% | +36 18% | +69 17% | +13 8% | +31 | +33 17% | -11.0 19% | -4.0 5% | 5 |

96U: A Powerhouse from a tremendous cow with a perfect foot and udder structure combined with the performance of KBJ Conquer-All 447J. If you want jam and growth in your calves, this bull will get it done.

TWO YEAR OLD ANGUS BULLS



2U

BEAR CREEK TIMEKEEPER 2U

WBA 2U 1440079 April 11, 2008

KBJ Conquor 429M
Duralta 429M Time Zone 30R
 Freyburn Lady 7L
 Bel 2164 Stckman 9K
Callamere Lady 2R
 Callamere Lady 27J

KBJ Conquor All 447J
 KBJ Biene 324E
 Ebon Hill Equalizer 117'97
 Lady Of Bar 20 479E
 TC Stockman 2164
 Bell Blackbird 22E
 YV Goliath 56Z
 Callamere Lady 26X

| | |
|-----------|------------|
| Actual BW | ADJ. 205 |
| 86 | 695 |

EPDs / Accuracy

| BW | WW | YW | MILK | TM | YG | CE | MCE | AOD |
|----------|---------|---------|--------|-----|---------|----------|---------|----------|
| +3.4 31% | +27 19% | +53 18% | +11 7% | +25 | +25 18% | -2.0 19% | +2.0 5% | 4 |

2U: Moderate framed and thick, 2U's mother is a beautiful, easy fleshing, stylish cow. I think this bull reflects that. He is moderate, thick, good-footed, and will perform well on anyone's herd.

71U

CBW BEAR CREEK GRIFFON 71U

CBW 71U 1440086 February 6, 2008

Remitall Luther 71L
LLB Luther 201P
 GEIS Dewdrop 69'01
 Chico Hannibal 43H
Isla Bank Augusta 71P
 Isla Bank Augusta 21A

Sitz Alliance 6595
 Remitall Glacier Lily 117J
 Kilmurs Daquantae 1H
 MJLC Dewdrop 50J
 TC Stockman 365
 Chico Rosebud 2E
 GV Cornhusker 584
 Isla Bank Augusta 45U

| | |
|-----------|------------|
| Actual BW | ADJ. 205 |
| 82 | 630 |

EPDs / Accuracy

| BW | WW | YW | MILK | TM | YG | CE | MCE | AOD |
|----------|---------|---------|---------|-----|---------|-----------|---------|----------|
| +2.3 34% | +29 23% | +54 19% | +19 11% | +34 | +25 19% | +25.0 19% | +8.0 8% | 5 |

CBW 71U and CBW 22U : We ourselves are using a half brother of 22U and 71U from LLB Luther, and the calves from him are tremendous. I have no doubt these two bulls will do the same, providing strong tops, thickness front to back, and sheer length of body that makes those pounds when they run across the scale.



YEARLING ANGUS BULLS



47W

SSA 4200 NETWORK 47W

ERROLLINE 19H

| | | | | | | |
|--|---------|------------------|--------------------------|------------------------|--------|------|
| SSA 47W | 1503496 | January 17, 2009 | 148 DAY TEST | | | |
| SAV 8180 Traveler 004 SAV Net Worth 4200 SAV May 2410 | | | Sitz Traveler 8180 | Boyd Forever Lady 8003 | Feb 2 | 1225 |
| South Shadow Fortune 7F SOUTH SHADOW ERROLLINE 19H South Shadow Errolline 14F | | | SAF 598 Bando 5175 | SAV May 6269 | Sept 7 | 615 |
| | | | Minerts Fortune 2000 | Jay En Dee Pride 50D | ADG | 2.68 |
| | | | Jay En Dee Errolline 38U | Century Touchstone 131 | INDEX | |
| | | | | | 205 | 113 |
| | | | | | 365 | 104 |

| EPDs / Accuracy | | | | | | | | AOD |
|-----------------|---------|---------|---------|-----|---------|----------|----------|-----------|
| BW | WW | YW | MILK | TM | YG | CE | MCE | |
| +3.3 36% | +48 27% | +82 21% | +24 19% | +48 | +34 21% | +2.0 27% | +6.0 14% | 11 |

What a tank, huge topped, wide based, clean lines, loads of hair - just a very well put together bull! 19H's sons have gone to the Armstrong, Wilson, Trumppour, Schock and Stubor Ranches. Her other son and two daughters are working in our herds.

| | | |
|-----------|------------|-------------|
| Actual BW | ADJ. 205 | ADJ. 365 |
| 94 | 731 | 1204 |



79W

SSA 4200 NETWORK 79W

AKITA 52R

| | | | | | | |
|---|---------|------------------|-----------------------------|--------------------------|--------|------|
| SSA 79W | 1503510 | February 3, 2009 | 148 DAY TEST | | | |
| SAV 8180 Traveler 004 SAV Net Worth 4200 SAV May 2410 | | | Sitz Traveler 8180 | Boyd Forever Lady 8003 | Feb 2 | 1108 |
| South Shadow Rain Man 2M SSAP Akita 52R South Shadow Akita 40M | | | SAF 598 Bando 5175 | SAV May 6269 | Sept 7 | 677 |
| | | | Cudlobe Rainmaker 39K | South Shadow Diamond 13K | ADG | 2.82 |
| | | | South Shadow Pine Drive 10K | South Shadow Akita 13H | INDEX | |
| | | | | | 205 | 104 |
| | | | | | 365 | 99 |

| EPDs / Accuracy | | | | | | | | AOD |
|-----------------|---------|---------|---------|-----|---------|----------|----------|----------|
| BW | WW | YW | MILK | TM | YG | CE | MCE | |
| -1.0 35% | +43 25% | +86 19% | +29 16% | +51 | +43 19% | +7.0 26% | +7.0 13% | 4 |

Deep-sided, long, lots of hair, tight-sheathed, nicely structured bull. Dam is a 2M daughter that is deep, nicely uddered and very easy fleshing.

| | | |
|-----------|------------|-------------|
| Actual BW | ADJ. 205 | ADJ. 365 |
| 87 | 675 | 1127 |

YEARLING ANGUS BULLS



74W

SSA 132 COMMANDER 74W

DIAMOND 26N

SSA 74W 1503509 January 29, 2009

Woodhill Admiral 77K
Woodhill Commander 143L-132N
 Woodhill Erica 1167-143L

South Shadow Rain Man 2M
SSAP DIAMOND 51R
 South Shadow Diamond 26N

S A F Focus of E R
 Woodhill Lass 344-1178
 B C C Bushwacker 41-93
 Woodhill Erica 854-1167
 Cudlobe Rainmaker 39K
 South Shadow Diamond 13K
 CA Future Direction 5321
 South Shadow Daimond 3K

| 148 DAY TEST | |
|--------------|------|
| Feb 2 | 1090 |
| Sept 7 | 680 |
| ADG | 3.06 |
| INDEX | |
| 205 | 100 |
| 365 | 100 |

EPDs / Accuracy

| BW | WW | YW | MILK | TM | YG | CE | MCE | AOD |
|---------|--------|--------|--------|-----|--------|----------|----------|-----|
| -0.8 5% | +34 5% | +71 5% | +28 5% | +45 | +38 5% | +10.5 5% | +10.5 5% | 4 |

Moderate birth weight but we aren't recommending him for heifers - he's a deep-sided, thick topped individual ... and very friendly. We lost his Dam and he was fostered onto a 2 yr old heifer. Stubby has the same problem as 132W on page 11.

| Actual BW | ADJ. 205 | ADJ. 365 |
|-----------|----------|----------|
| 77 | 652 | 1096 |



59W

SSA 132 COMMANDER 59W

RUBY 70S

SSA 59W 1503503 January 21, 2009

Woodhill Admiral 77K
Woodhill Commander 143L-132N
 Woodhill Erica 1167-143L

CA Future Direction 5321
SSA RUBY 70S
 Early Sunset Ruby 54G

S A F Focus of E R
 Woodhill Lass 344-1178
 B C C Bushwacker 41-93
 Woodhill Erica 854-1167
 GAR Precision 1680
 CA Miss Power Fix 308
 Early Sunset Hightime 113D
 Early Sunset Ruby 44D

| 148 DAY TEST | |
|--------------|------|
| Feb 2 | 1044 |
| Sept 7 | 695 |
| ADG | 2.36 |
| INDEX | |
| 205 | 100 |
| 365 | 83 |

EPDs / Accuracy

| BW | WW | YW | MILK | TM | YG | CE | MCE | AOD |
|----------|---------|---------|---------|-----|---------|----------|----------|-----|
| +4.7 35% | +38 26% | +69 19% | +25 15% | +44 | +30 19% | -2.0 27% | +4.0 13% | 3 |

Larger framed bull out of a smaller framed cow? Loads of dimension and shape. Dam is level-uddered, long and easy-fleshing.

| Actual BW | ADJ. 205 | ADJ. 365 |
|-----------|----------|----------|
| 104 | 671 | 1048 |

YEARLING ANGUS BULLS



40W

SSA 8T IN FOCUS 40W

RUBY 29T

SSA 40W 1503492 January 16, 2009

| 148 DAY TEST | |
|--------------|------|
| Feb 2 | 1150 |
| Sept 7 | 685 |
| ADG | 3.14 |
| INDEX | |
| 205 | 107 |
| 365 | 110 |

Mytty In Focus
SSA 109L IN FOCUS 8T
 SSAP EILEEN 19R

SAF Focus of ER
 Mytty Countess 906
 FAR Krugerrand 410H
 Jay End Dee Eileen 36D
 South Shadow Rain Man 2M
 South Shadow Joyce 28N
 B/R New Frontier 095
 South Shadow Ruby 63L

SSAP Rain On 35R
SSA RUBY 29T
 SSAP Ruby 33R

EPDs / Accuracy

| BW | WW | YW | MILK | TM | YG | CE | MCE | AOD |
|----------|---------|--------|--------|-----|--------|----------|---------|-----|
| +0.5 30% | +45 18% | +84 9% | +22 9% | +45 | +40 9% | +8.0 22% | +9.0 7% | 2 |

Recommended for heifers. Calving-ease, growth and lots of maternal. Deep-sided, wide-topped fleshy rascal. We are liking his 2010 calves also! The Ruby 'daughters' are doing super jobs here.

| Actual BW | ADJ. 205 | ADJ. 365 |
|-----------|----------|----------|
| 82 | 684 | 1187 |



70W

SSA 6295 HERITAGE 70W

AKITA 17R

SSA 70W 1533638 January 25, 2009

| 148 DAY TEST | |
|--------------|------|
| Feb 2 | 1215 |
| Sept 7 | 748 |
| ADG | 3.16 |
| INDEX | |
| 205 | 109 |
| 365 | 111 |

CAR Duke 104
SAV Heritage 6295
 SAV Blackcap May 4136

CAR Tracker 904
 CAR Miss Raindancer 421
 SAV 8180 Traveler 004
 SAV May 2397
 B/R New Design 8036
 White Fence Pride H1
 Jay En Dee Rito 7A
 Jay En Dee Pride 79S

B/R New Frontier 095
SSAP AKITA 17R
 Jay En Dee Pride 13D

EPDs / Accuracy

| BW | WW | YW | MILK | TM | YG | CE | MCE | AOD |
|----------|---------|---------|---------|-----|---------|----------|---------|-----|
| +4.8 35% | +57 25% | +93 12% | +23 11% | +52 | +36 12% | +0.0 24% | +4.0 9% | 4 |

Long, smooth, hairy, clean-fronted with awesome numbers across the board. He should produce excellent females and heavy calves at weaning. Dam is deep and thick with lots of substance. 17R sons to J Hanson and P DeMars

| Actual BW | ADJ. 205 | ADJ. 365 |
|-----------|----------|----------|
| 96 | 711 | 1216 |

YEARLING ANGUS BULLS



60W

SSA 6295 HERITAGE 60W

RAIN MAN 2M

| | | | | | |
|----------------------------|-----------------------------|------------------|--------------|------|--|
| SSA 60W | 1503504 | January 23, 2009 | 148 DAY TEST | | |
| CAR Duke 104 | CAR Tracker 904 | | Feb 2 | 1033 | |
| SAV Heritage 6295 | CAR Miss Raindancer 421 | | Sept 7 | 580 | |
| SAV Blackcap May 4136 | SAV 8180 Traveler 004 | | ADG | 3.06 | |
| South Shadow Rain Man 2M | SAV May 2397 | | INDEX | | |
| SSAP ERROLLINE 34R | Cudlobe Rainmaker 39K | | 205 | 100 | |
| South Shadow Errolline 42N | South Shadow Diamond 13K | | 365 | 100 | |
| | South Shadow Pine Drive 10K | | | | |
| | South Shadow Errolline 11F | | | | |

| EPDs / Accuracy "1" | | | | | | | | AOD |
|---------------------|--------|--------|--------|-----|--------|---------|---------|-----|
| BW | WW | YW | MILK | TM | YG | CE | MCE | |
| +3.3 5% | +50 5% | +90 5% | +25 5% | +50 | +41 5% | +2.0 5% | +4.5 5% | 4 |

Another long-sided, square-based, neat-headed, hairy dude. Heritage sure does strengthen the EPDs. The low accuracy is due to him not being compared to his contemporaries - he's a foster child that was bottle-fed for a month.

| Actual BW | ADJ. 205 | ADJ. 365 |
|-----------|----------|----------|
| 94 | 549 | 1039 |



43W

SSA 239 TOTAL 43W

PRIDE 41M

| | | | | | |
|-------------------------------------|-----------------------------|------------------|--------------|------|--|
| SSA 43W | 1533637 | January 16, 2009 | 148 DAY TEST | | |
| Sitz Alliance 6595 | Sitz Traveler 8180 | | Feb 2 | 1180 | |
| Woodhill Commander 143L-132N | Sitz Barabaramere Jet 2698 | | Sept 7 | 733 | |
| EXT of Conanga 6790 | N Bar Emulation EXT | | ADG | 3.02 | |
| South Shadow Pine Drive 10K | Lady Enchantress of Conanga | | INDEX | | |
| SOUTH SHADOW PRIDE 41M | Pine Drive Big Sky | | 205 | 99 | |
| Jay En Dee Pride 62G | Jay En Dee Eileen 36D | | 365 | 106 | |
| | Jay En Dee Right Time 1E | | | | |
| | Jay En Dee Pride 2A | | | | |

| EPDs / Accuracy | | | | | | | | AOD |
|-----------------|---------|---------|---------|-----|---------|----------|----------|-----|
| BW | WW | YW | MILK | TM | YG | CE | MCE | |
| +1.9 36% | +39 26% | +65 21% | +16 20% | +36 | +26 21% | +4.0 27% | +7.0 17% | 7 |

Long, stretchy bull, if you require some extra length check out this guy. He has one sweet-look'n, long, powerful mama, his daughters should be broody gals. 41M sons to: J & L Allemand, M Darling, T & R Farnsworth and W Hyam

| Actual BW | ADJ. 205 | ADJ. 365 |
|-----------|----------|----------|
| 93 | 654 | 1137 |

YEARLING ANGUS BULLS



48W

SSA 239 TOTAL 48W

PATSY 23L

SSA 48W 1503497 January 17, 2009

Sitz Alliance 6595
KCF Bennett Total
EXT of Conanga 6790

Belvin Black Magic 42'97
SOUTH SHADOW PATSY 23L
Jay En Dee Patsy 22D

Sitz Traveler 8180
Sitz Barbaramere Jet 2698
N Bar Emulation EXT
Lady Enchantress of Conanga
SAF Batman
Belvin Lady Blossom 23'84
Century Touchstone 131
Jay En Dee Patsy 41T

| 148 DAY TEST | |
|--------------|------|
| Feb 2 | 1012 |
| Sept 7 | 615 |
| ADG | 2.68 |
| INDEX | |
| 205 | 80 |
| 365 | 94 |

EPDs / Accuracy

| BW | WW | YW | MILK | TM | YG | CE | MCE | AOD |
|----------|---------|---------|---------|-----|---------|----------|----------|-----|
| +3.2 36% | +29 27% | +61 21% | +19 21% | +34 | +32 21% | +0.0 28% | +5.0 18% | 8 |

Long-strided, loads of hair. Remember going to school and there was always one kid being picked on ... well, this is him! Harrassed all winter and still seemed to come along fairly good.
23L son to the Bircham Ranch

| Actual BW | ADJ. 205 | ADJ. 365 |
|-----------|----------|----------|
| 82 | 562 | 1086 |

Maternal Grand Dam, 22D:
Designated Elite since 2005. Calves 5, Average Ratio 109.



113W

SSA 68S RIGHT WAY 113W

RUBY 20S

SSA 113W 1503536 February 23, 2009

Hyline Right Way 781
Big Sky DLD Right Way 68S
Big Sky Dyna 435

South Shadow Bando 24M
SSA RUBY 20S
South Shadow Ruby 12N

Hyline Right Time 338
Hyline Ellen 86
Acumen Bold Leader 30X
Prospect Dyna 27S
SAF 598 Bando 5175
Jay En Dee Georgina 27G
Cudlobe Rainmaker 39K
South Shadow Ruby 63L

| 148 DAY TEST | |
|--------------|------|
| Feb 2 | 1135 |
| Sept 7 | 685 |
| ADG | 3.04 |
| INDEX | |
| 205 | 119 |
| 365 | 106 |

EPDs / Accuracy

| BW | WW | YW | MILK | TM | YG | CE | MCE | AOD |
|----------|---------|---------|---------|-----|---------|----------|---------|-----|
| +1.5 32% | +59 21% | +92 11% | +23 10% | +53 | +33 11% | +5.0 21% | +8.0 8% | 3 |

A well-structured, meaty, young rascal. His personal numbers and EPDs suggest above average growth; progeny should weigh up at weaning. Look to keep some of his daughters ... the Ruby cow family is doing very well here! P DeMar took home her first son last year.

| Actual BW | ADJ. 205 | ADJ. 365 |
|-----------|----------|----------|
| 76 | 751 | 1237 |

YEARLING ANGUS BULLS



103W

SSA 38S RIGHT WAY 103W

JOYCE 24S

SSA 103W 1503528 February 19, 2009

Hyline Right Way 781
Big Sky DLD Right Way 68S
 Big Sky Dyna 435

South Shadow Bando 24M
SSA JOYCE 24S
 South Shadow Joyce 28N

Hyline Right Time 338
 Hyline Ellen 86
 Acumen Bold Leader 30X
 Prospect Dyna 27S
 SAF 598 Bando 5175
 Jay En Dee Georgina 27G
 Bon View New Design 878
 Jay En Dee Joyce 32G

| 148 DAY TEST | |
|--------------|------|
| Feb 2 | 1060 |
| Sept 7 | 643 |
| ADG | 2.82 |
| INDEX | |
| 205 | 106 |
| 365 | 99 |

EPDs / Accuracy

| BW | WW | YW | MILK | TM | YG | CE | MCE | AOD |
|----------|---------|---------|---------|-----|---------|----------|---------|-----|
| +4.6 33% | +53 22% | +82 13% | +19 10% | +46 | +28 12% | -1.0 21% | +5.0 8% | 3 |

Deep-sided, strong topped, well-balanced and lots of hair. The Dam is a maternal sister to our reference sire, Rain On 35R (page 3). Another sister is the mother to our lead off bull, 18W (page 9).

| Actual BW | ADJ. 205 | ADJ. 365 |
|-----------|----------|----------|
| 94 | 695 | 1146 |



145W

SSA 68S RIGHT WAY 145W

ERROLLINE 55R

SSA 97W 1503558 March 24, 2009

Hyline Right Way 781
Big Sky DLD Right Way 68S
 Big Sky Dyna 435

South Shadow Rain Man 2M
SSAP ERROLLINE 55R
 South Shadow Errolline 21N

Hyline Right Time 338
 Hyline Ellen 86
 Acumen Bold Leader 30X
 Prospect Dyna 27S
 Cudlobe Rainmaker 39K
 South Shadow Diamond 13K
 Sitz Alliance 6595
 South Shadow Errolline 7H

| 148 DAY TEST | |
|--------------|------|
| Feb 2 | 966 |
| Sept 7 | 565 |
| ADG | 2.71 |
| INDEX | |
| 205 | 104 |
| 365 | 95 |

EPDs / Accuracy

| BW | WW | YW | MILK | TM | YG | CE | MCE | AOD |
|----------|---------|---------|---------|-----|---------|----------|---------|-----|
| +4.2 34% | +48 22% | +85 13% | +23 11% | +47 | +37 13% | -2.0 22% | +3.0 7% | 4 |

The youngest bull in the sale; set square, deep-sided and very correct. He'll sire growth and high maternal qualities ... his Grand Dam and Great Grand Dam are both Elite cows.

| Actual BW | ADJ. 205 | ADJ. 365 |
|-----------|----------|----------|
| 98 | 687 | 1121 |

Maternal Elite Dams:

21N - Designated Elite since 2008. Calves 4, Average Ratio 109.
 7H - Designated Elite since 2004. Calves 3, Average Ratio 110.

YEARLING ANGUS BULLS



36W

SSA 4200 NETWORK 36W

DIAMOND 26P

SSA 36W 1503490 January 15, 2009

SAV 8180 Traveler 004
SAV Net Worth 4200
SAV May 2410

Grandview Womack Direct
SSAP DIAMOND 26P
South Shadow Diamond 29H

Sitz Traveler 8180
Boyd Forever Lady 8003
SAF 598 Bando 5175
SAV May 6269
B/R New Design 036
Mengs Miss Skymere 78B
South Shadow Fortune 7F
Jay En Dee Pride 43D

| 148 DAY TEST | |
|--------------|------|
| Feb 2 | 1290 |
| Sept 7 | 793 |
| ADG | 3.36 |
| INDEX | |
| 205 | 107 |
| 365 | 118 |

EPDs / Accuracy

| BW | WW | YW | MILK | TM | YG | CE | MCE | AOD |
|----------|---------|---------|---------|-----|---------|----------|----------|-----|
| +5.4 36% | +48 26% | +87 21% | +27 18% | +51 | +39 21% | -0.0 26% | +5.0 15% | 5 |

A big, soggy tank; lots of length, thickness, wide-based, and topped with lots of middle. Dam has beautiful udder shape and lots of milk. 26P sons to: W Good and L Armstrong.

| Actual BW | ADJ. 205 | ADJ. 365 |
|-----------|----------|----------|
| 102 | 705 | 1242 |

Maternal Grand Dam 29H:
Designated Elite since 2004. Calves 3, Average Ratio 105.



55W

SSA 4200 NETWORK 55W

BLACKBIRD 35P

SSA 55W 1503500 January 20, 2009

SAV 8180 Traveler 004
SAV Net Worth 4200
SAV May 2410

Gardens EXT 4137 S2
SOUTH SHADOW BLACKBIRD 35P
Jay En Dee Blackbird 11W

Sitz Traveler 8180
Boyd Forever Lady 8003
SAF 598 Bando 5175
SAV May 6269
N Bar Emulation EXT
Green Garden Bonnie 1134 S1
AAR Maverick 2240
Jay En Dee Blackbird 278T

| 148 DAY TEST | |
|--------------|------|
| Feb 2 | 1122 |
| Sept 7 | 590 |
| ADG | 3.19 |
| INDEX | |
| 205 | 87 |
| 365 | 112 |

EPDs / Accuracy

| BW | WW | YW | MILK | TM | YG | CE | MCE | AOD |
|----------|---------|---------|---------|-----|---------|----------|----------|-----|
| +4.7 36% | +41 27% | +82 21% | +18 19% | +39 | +41 21% | -1.0 28% | +1.0 16% | 5 |

Solid made, long-sided, neat head and should sire good uddered, feminine females with longevity. His maternal Grand Dam was one of the matriachs of the breed ... produced 17 calves - naturally and caught to A.I. with the last two!

| Actual BW | ADJ. 205 | ADJ. 365 |
|-----------|----------|----------|
| 97 | 590 | 1100 |

L Schulz took home her first bull calf.

YEARLING ANGUS BULLS



75W

PRAIRIE PRIDE 4R NEW ELIXIR 75

JOYCE 18T

| | | | | | |
|---|--|------------------|--------------|------|--|
| NPP 75W | 1542503 | January 30, 2009 | 148 DAY TEST | | |
| B/R New Frontier 095 SSAP NEW ELIXIR 4R South Shadow Eileen 5M | B/R New Design 036 White Fence Pride H1 Ankonian Elixir 100 Jay En Dee Eileen 36D B/R New Design 036 White Fence Pride H1 South Shadow Rain Man 2M South Shadow Joyce 17M | | Feb 2 | 940 | |
| B/R New Frontier 095 SSA JOYCE 18T SSAP Joyce 2P | | | Sept 7 | 510 | |
| | | | ADG | 2.91 | |
| | | | INDEX | | |
| | | | 205 | 86 | |
| | | | 365 | 102 | |

EPDs / Accuracy ~ 1

| BW | WW | YW | MILK | TM | YG | CE | MCE | AOD |
|---------|--------|--------|--------|-----|--------|----------|----------|----------|
| -1.6 5% | +37 5% | +76 5% | +20 5% | +39 | +39 5% | +12.0 5% | +11.5 5% | 2 |

Recommended for heifers.
 A long, smooth shouldered calf - his calves should pop out with ease. The weather will be your only worry. The Grand Dam, 2P also has a bull offered; # 64W (page 13). Our granddaughter, Nevaeh's first calf. The herd name, Prairie Pride was used by her Great Grandparent's, Alfred & Jo Wardberg in the 60's and 70's.

| Actual BW | ADJ. 205 | ADJ. 365 |
|-----------|------------|-------------|
| 71 | 554 | 1019 |



125W

SSA 4R NEW ELIXIR 125W

EILEEN 96T

| | | | | | |
|--|--|-------------------|--------------|------|--|
| SSA 125W | 1503542 | February 27, 2009 | 148 DAY TEST | | |
| B/R New Frontier 095 SSAP NEW ELIXIR 4R South Shadow Eileen 5M | B/R New Design 036 White Fence Pride H1 Ankonian Elixir 100 Jay En Dee Eileen 36D Cudlobe Rainmaker 39K South Shadow Diamond 13K Pine Drive Big Sky South Shadow Eileen 17F | | Feb 2 | 963 | |
| South Shadow Rain Man 2M SSA EILEEN 96T South Shadow Eileen 16L | | | Sept 7 | 570 | |
| | | | ADG | 2.66 | |
| | | | INDEX | | |
| | | | 205 | 108 | |
| | | | 365 | 93 | |

EPDs / Accuracy

| BW | WW | YW | MILK | TM | YG | CE | MCE | AOD |
|----------|---------|---------|---------|-----|---------|-----------|----------|----------|
| -2.8 34% | +30 23% | +60 15% | +22 10% | +37 | +30 15% | +13.0 26% | +10.0 9% | 2 |

Recommended for heifers.
 Should make a good ranch hand in the heifer pen. 96T's Dam, 16L, has a feature bull offered as tag # 15W (page 16). A 3/4 sister, sired by Rainmaker 39K, is a designated Elite Dam; her bull calf is second in the sale: tag# 56W (page 9).

| Actual BW | ADJ. 205 | ADJ. 365 |
|-----------|------------|-------------|
| 70 | 678 | 1103 |

YEARLING ANGUS BULLS



97W

SSA 68S RIGHT WAY 97W

DIAMOND 49S

SSA 97W 1503522 February 16, 2009

Hyline Right Way 781
Big Sky DLD Right Way 68S
 Big Sky Dyna 435

South Shadow Bando 24M
SSA DIAMOND 49S
 South Shadow Diamond 4N

Hyline Right Time 338
 Hyline Ellen 86
 Acumen Bold Leader 30X
 Prospect Dyna 27S
 SAF 598 Bando 5175
 Jay En Dee Georgina 27G
 Rockn D Ambush 1531
 Jay En Dee Pride 43D

| 148 DAY TEST | |
|--------------|------|
| Feb 2 | 1080 |
| Sept 7 | 635 |
| ADG | 3.01 |
| INDEX | |
| 205 | 104 |
| 365 | 105 |

EPDs / Accuracy

| BW | WW | YW | MILK | TM | YG | CE | MCE | AOD |
|----------|---------|---------|---------|-----|---------|----------|---------|-----|
| +4.3 33% | +53 22% | +83 12% | +16 10% | +43 | +30 12% | -1.0 21% | +6.0 8% | 3 |

Moderate-framed, solid made; out of a very feminine mama. Above average gain, before and after weaning.

| Actual BW | ADJ. 205 | ADJ. 365 |
|-----------|----------|----------|
| 89 | 678 | 1074 |



89W

SSA 35R RAIN ON 89W

RUBY 30P

SSA 89W 1503514 February 14, 2009

South Shadow Rain Man 2M
SSAP RAIN ON 35R
 Jay En Dee Joyce 28N

Millcreek Recise
SSAP RUBY 30P
 South Shadow Ruby 63L

Cudlobe Rainmaker 38K
 South Shadow Diamond 13K
 Bon View New Design 878
 Jay En Dee Joyce 32G
 White Oak Precise 6002
 Mill Creek Karen
 South Shadow Over Driver 27J
 Early Sunset Ruby 54G

| 148 DAY TEST | |
|--------------|------|
| Feb 2 | 972 |
| Sept 7 | 620 |
| ADG | 2.38 |
| INDEX | |
| 205 | 100 |
| 365 | 100 |

EPDs / Accuracy ~ I

| BW | WW | YW | MILK | TM | YG | CE | MCE | AOD |
|---------|--------|--------|--------|-----|--------|---------|---------|-----|
| -0.4 5% | +28 5% | +55 5% | +20 5% | +34 | +28 5% | +9.5 5% | +8.5 5% | 5 |

A stylish, deep-sided, great haired bull. Dam is extra long and really thick. This guy is a TWIN. 30P's first bull calf and the Grand Dam, 63L, also had her first bull calf: 141W (page 38). Tag #113W (page 32) also comes from the Ruby family.

| Actual BW | ADJ. 205 | ADJ. 365 |
|-----------|----------|----------|
| 69 | 645 | 1047 |

YEARLING ANGUS BULLS



119W

SSA 35R RAIN ON 119W

JOYCE 10M

| | | | |
|---|---|-------------------|---|
| SSA 119W | 1503540 | February 24, 2009 | 148 DAY TEST Feb 2 972 Sept 7 560 ADG 2.78 INDEX 205 99 365 97 |
| South Shadow Rain Man 2M SSAP RAIN ON 35R Jay En Dee Joyce 28N Ankonian Elixir 100 SSAP JOYCE 10M South Shadow Joyce 74E | Cudlobe Rainmaker 38K South Shadow Diamond 13K Bon View New Design 878 Jay En Dee Joyce 32G Ankonian Elixir DB Ankony Lass 206T JR Juice 2005 Jay En Dee Joyce 20T | | |

EPDs / Accuracy

| BW | WW | YW | MILK | TM | YG | CE | MCE | AOD |
|----------|---------|---------|---------|-----|---------|----------|---------|----------|
| +1.0 34% | +34 23% | +71 14% | +27 12% | +44 | +38 14% | +5.0 23% | +7.0 9% | 7 |

A stylish younger bull out of a extra long, framier, correct cow. A 10M daughter brings bull calf: 101W (page 18). 10M sons to: R Toney, Mckelvey Farms and Hanson Ranch

| Actual BW | ADJ. 205 | ADJ. 365 |
|-----------|------------|-------------|
| 90 | 647 | 1092 |

The Dam, Joyce 10M:

Designated Elite since 2009. Calves 5, Average Ratio 108

The Grand Dam, Joyce 74E

Designated Elite since 2006. Calves 8, Average Ratio 107.



104W

SSA 35R RAIN ON 104W

ERROLLINE 28P

| | | | |
|--|---|-------------------|---|
| SSA 104W | 1503529 | February 20, 2009 | 148 DAY TEST Feb 2 990 Sept 7 620 ADG 2.50 INDEX 205 96 365 88 |
| South Shadow Rain Man 2M SSAP RAIN ON 35R Jay En Dee Joyce 28N Millcreek Precise SSAP ERROLLINE 28P South Shadow Errolline 7L | Cudlobe Rainmaker 38K South Shadow Diamond 13K Bon View New Design 878 Jay En Dee Joyce 32G White Oak Precise 6002 Mill Creek Karen Bon View New Design 878 South Shadow Errolline 42J | | |

EPDs / Accuracy

| BW | WW | YW | MILK | TM | YG | CE | MCE | AOD |
|----------|---------|---------|---------|-----|---------|----------|---------|----------|
| +1.4 34% | +29 22% | +61 13% | +20 11% | +35 | +31 13% | +6.0 22% | +5.0 8% | 5 |

Long, correct made bull. Dam is smaller framed and very clean uddered.

| Actual BW | ADJ. 205 | ADJ. 365 |
|-----------|------------|-------------|
| 93 | 636 | 1036 |

28P sons to: Cavan Ranch and P Sehn

Maternal Grand Dam, Errolline 7L:

Designated Elite since 2006. Calves 3, Average Ratio 105.

YEARLING ANGUS BULLS / FEED RATIONS



141W

SSA 35R RAIN ON 141W

RUBY 63L

| | | | | | |
|------------------------------|----------------------------|----------------|--------------|------|--|
| SSA 141W | 1503555 | March 18, 2009 | 148 DAY TEST | | |
| South Shadow Rain Man 2M | Cudlobe Rainmaker 38K | | Feb 2 | 972 | |
| SSAP RAIN ON 35R | South Shadow Diamond 13K | | Sept 7 | 560 | |
| Jay En Dee Joyce 28N | Bon View New Design 878 | | ADG | 2.78 | |
| South Shadow Over Drive 27J | Jay En Dee Joyce 32G | | INDEX | | |
| SOUTH SHADOW RUBY 63L | Pine Drive Big Sky | | 205 | 99 | |
| Early Sunset Ruby 54G | Jay En Dee Joyce 74E | | 365 | 97 | |
| | Early Sunset Hightime 113D | | | | |
| | Early Sunset Ruby 44D | | | | |

| EPDs / Accuracy | | | | | | | | AOD |
|-----------------|---------|---------|---------|-----|---------|----------|---------|----------|
| BW | WW | YW | MILK | TM | YG | CE | MCE | |
| +1.0 33% | +26 22% | +55 12% | +21 11% | +35 | +29 12% | +5.0 22% | +6.0 8% | 8 |

Second youngest bull in the sale and 63L's first son. Smooth made and travels well, will cover lots of ground. Dam is soggy, very beefy and has left us some tremendous females. Look for the Ruby family in the index on page 44 - these females have 5 bulls in the sale.

| Actual BW | ADJ. 205 | ADJ. 365 |
|-----------|------------|-------------|
| 90 | 647 | 1092 |



Herd Management the feeding

'Ranch-raised' is a relative term - Normally the papered herd is running with the grade cattle from July 1 to mid-November. The timing of the two different production cycles, in relation to the seasonal conditions (temperature and wind!) dictate the rations. If we calved-out our commercial herd, in the same, less than elaborate conditions (the calving barn is a wee bit drafty) we'd likely manage those grade cattle the same way as the papered herd. With that said, no one would miss heaving the calf sling up to the scale hook for birth weights! Both herds get the same vaccinations and mineral, neither see creep and the rations, when not grazing, come from the same piles of home-grown feed.

The feed program for this year's Angus sale bulls:

- SEPT/OCT: 15#s TGR, 20#s Silage
- NOV: 15#s TGR, 20#s Silage, 3#s Rolled Barley, 1# Cereal Chaff
- DEC: 15#s TGR, 20#s Silage, 4#s Rolled Barley, 2#s Cereal Chaff
- JAN: 10#s TGR, 20#s Silage, 5#s Rolled Barley, 2#s Cereal Chaff
- FEB: 10#s TGR, 20#s Silage, 6#s Rolled Barley, 2#s Cereal Chaff, 1# of Pellets with Rumensin and a Mineral Package
- MAR/APR: 10#s TGR, 20#s Silage, 6.3#s Rolled Barley, 2#s Cereal Chaff 1# of Pellets with Rumensin and a Mineral Package

The cereal silage (50% moisture) is an oats/barley/trit mix as is the baled greenfeed part of the tub ground ration (TGR). The silage was chopped when the oats and barley were between the milk and soft dough stages, with empty triticale heads. The greenfeed was cut and wrapped 2 - 3 weeks later.

The baled *dryland* grass/hay is 55% crested wheatgrass/45% alfalfa. The ratio of the tubground ration; weaning to Jan was a 50/50 mix of greenfeed and dryland grass/hay. Since early Jan the mix has been 1/3 dryland grass/hay and 2/3 greenfeed.

No feed value tests were done.

Wintered in a 10 acre lot with a hike into the barnyard for water.

SIRE GROUP PERFORMANCE AVERAGES

In the chart below you will find the 2009 born performance per Sire Group; actual and adjusted weights with the ADGs

Average Performance for our Calves born in 2009

| Sire Group | BW | ACTUAL WW | 205 Adjusted WW | WW ADG | ACTUAL YW | 365 Adjusted YW | YW ADG | LIFE ADG |
|------------|----|-----------|-----------------|--------|-----------|-----------------|--------|----------|
| 68S- M | 93 | 628 | 707 | 3.00 | 1051 | 1157 | 2.86 | 2.92 |
| 68S- F | 89 | 702 | 691 | 2.93 | 886 | 945 | 1.69 | 2.29 |
| 6110S- M | 92 | 684 | 627 | 2.61 | 1139 | 1120 | 3.08 | 2.81 |
| 0239J- M | 98 | 674 | 603 | 2.48 | 1096 | 1060 | 2.85 | 2.64 |
| 0239J- F | 77 | 745 | 602 | 2.56 | 965 | 895 | 1.83 | 2.24 |
| 6295S-M | 89 | 640 | 610 | 2.55 | 1098 | 1094 | 2.94 | 2.75 |
| 6295S- F | 81 | 745 | 601 | 2.53 | 980 | 914 | 1.96 | 2.28 |
| 4200P-M | 96 | 734 | 671 | 2.80 | 1185 | 1162 | 3.05 | 2.92 |
| 4200- F | 82 | 782 | 618 | 2.62 | 991 | 898 | 1.75 | 2.24 |
| 8T- M | 82 | 685 | 689 | 2.96 | 1150 | 1150 | 3.14 | 3.03 |
| 8T- F | 82 | 701 | 628 | 2.66 | 954 | 954 | 2.09 | 2.39 |
| 4R- M | 75 | 557 | 625 | 2.69 | 968 | 1062 | 2.76 | 2.71 |
| 4R- F | 73 | 586 | 569 | 2.43 | 780 | 817 | 1.61 | 2.04 |
| 35R- M | 86 | 607 | 657 | 2.79 | 995 | 1071 | 2.63 | 2.70 |
| 35R- F | 84 | 647 | 611 | 2.56 | 821 | 821 | 1.48 | 2.07 |
| 132N- M | 86 | 662 | 603 | 2.53 | 1067 | 1046 | 2.72 | 2.63 |

Reference Sires:

- 68S - Big Sky DLD Right Way 68S (walking sire)
- 6110S - Duff New Attraction 6110 (A.I.)
- 0239J - KCF Bennett Total (A.I.)
- 6295S - SAV Heritage 6295 (A.I.)
- 4200P - SAV Net Worth 4200P (A.I.)
- 8T - SSA 109L In Focus 8T (walking sire)
- 4R - SSAP New Elixir 4R (walking sire)
- 35R - SSAP Rain On 35R (walking sire)
- 132N - Woodhill Commander 143L-132N (A.I.)

(M) Bulls: Actual Weaning WT taken Sept 7, 2009 Avg Age: 221
 Actual Yearling WT taken Feb 2, 2010 Avg Age: 368

(F) Heifers: Actual Weaning WT taken Oct 4, 2009 Avg Age: 252
 Actual Yearling WT taken Feb 2, 2010 Avg Age: 373



The Bulls trail
from feed to water

The Performance Information

As a further means to improve our herd we have submitted animal data to the Canadian Angus Performance, CAP program. The first data was submitted with the program's initiation and along with EPD data offers another tool for our customer's bull selection.

BW: Actual Birthweight and Adjusted Weights

Adjusted 205 WT

Weanling weights adjusted to 205 days of age-Dam's age considered in formula

| Actual BW | ADJ. 205 | ADJ. 365 |
|-----------|------------|-------------|
| 88 | 666 | 1111 |

Adjusted 365 WT

Yearling weights adjusted to 365 days of age

205 and 365 (GAIN) INDEX

Comparison of one calf to all other contemporaries in the group.

| INDEX | |
|-------|-----|
| 205 | 100 |
| 365 | 100 |

Average being 100.
205 Index: 100
365 Index: 100

Days On Test / Actual Weights / ADG

- The test weights are for performance comparison WITHIN OUR HERD only.
- Consider and keep in mind that feed management differs with each breeder.

| 148 DAY TEST | |
|--------------|------|
| Feb 2 | 1043 |
| Sept 7 | 599 |
| ADG | 3.00 |

Age of Dam at Calf's birth

| AOD |
|----------|
| 5 |



Based on Spring 2010 EPDs BLACK ANGUS

Average Black EPDs for all Calves born in 2009

| BW | WW | YW | MILK | TM | YG | CE | MCE |
|-------------|------------|------------|------------|------------|------------|-------------|-------------|
| +3.0 | +40 | +71 | +17 | +37 | +31 | +1.2 | +4.0 |

Average SIMMENTAL EPDs

Average SIMMENTAL Spring 2010 EPDs

| CE | BW | WW | YW | MCE | MWW | MILK | SC |
|------------|------------|-------------|-------------|------------|-------------|------------|-------------|
| 7.2 | 2.8 | 36.1 | 60.3 | 5.5 | 25.1 | 7.0 | 0.13 |



The Elite Program

Canadian Angus Elite Cow: has a minimum of five calves, four of which must be registered, to determine her regularity of calving and ability to consistently produce calves with a superior weaning weight year after year, display early puberty, breeding and early calving, followed by regularity of calving and high performance offspring. The Canadian Angus Elite Cow Report identifies superior cows in the Canadian Angus herdbook.

Canadian Elite Cow Criteria

- The cow must be enrolled in the Canadian Angus Performance Program.
- The cow must have a calf with a 205-day weight recorded within the past 18 months.
- The cow's first calf must be born and weaned within 1,000 days.
- The cow must maintain a regular calving interval. (regular is considered to be 365 + 30 days/number of calving intervals)
- The cow must have at least 5 progeny, of which at least 4 must be registered.
- The cow must have an above average weaning weight EPD with an accuracy of at least 25.
- The cow's progeny must all have an above average weaning weight EPD with an accuracy of over 25.

EPD INFORMATION

How To Read EPDs and Performance Data

EPD's are a measure of the expected differences in performance of a sire's/dam's progeny when compared to the average progeny of all sires/dams evaluated within the same breed. This prediction is based on actual performance, progeny performance and relatives' performance.

- ~ EPDs can be used to compare bulls/cows from different herds.
- ~ EPDs cannot be used to compare bulls/cows of different breeds.
- ~ EPDs allow breeders to estimate a young animal's breeding value that animal's value as a parent
- ~ EPDs allow a fair comparison of breeding value by removing environmental bias such as climate, feed and special management
- ~ EPDs the best tool available to compare animals between herds, countries and year of birth
- ~ EPDs help breeders make informed decisions regarding breeding stock selection by evaluating numerous traits, such as growth related traits (BW, WW, YW, Milk)

Interim EPDs - are indicated by an "I" preceding the EPD value. Interim EPDs are available for animals that were not included in the National Cattle Evaluation. The accuracy of Interim EPDs is generally indicated by a 5% percentile, as there is less data used to produce these estimates. A pedigree estimated EPD (PE) is the average of two parental EPD values ($\frac{1}{2}$ sire, $\frac{1}{2}$ dam).

- **BIRTH WEIGHT (BW):** The birth weights of a bull's/cow's progeny when compared to the breed average, in pounds. Negative values indicate lighter BW while positive numbers indicate heavier.
- **WEANING WEIGHT (WW):** The adjusted weaning weights of a bull's/cow's progeny when compared to the breed average, in pounds.
- **YEARLING WEIGHT (YW):** The adjusted yearling weights of a bull's/cow's progeny when compared to the breed average, in pounds.
- **MILK:** A measure of the amount of pre-weaning performance gained by calves which can be attributed to the milking ability of a bull's/cow's daughters. The EPD is expressed in pounds of calf.
- **TOTAL MATERNAL [TM]:** Indicates the performance based on the calf's inherent genes for growth (WW EPD) and the influence of his mother's milk EPD. It is an indication of the weight of calf a bull's daughter will wean.
- **YEARLING GAIN [YG]:** The yearling gain indicates the ability of his calves to grow between 205 days of age (weaning) and 365 days of age.
- **CALVING EASE DIRECT (CED) EPD** – the average difference in ease with which a sire's calves will be born when he is bred to first calf heifers.
- **MATERNAL CALVING EASE (MCE)** – is expressed as a difference in percentage of unassisted births with a higher value indicating greater calving ease in first-calf daughters. It predicts the average ease with which a sire's daughters will calve as first-calf heifers when compared to daughters of other sires.
- **ACCURACY (%):** the reliability that can be placed on the EPDs. An accuracy of close to 100 indicates higher reliability. Accuracy is impacted by the number of progeny and ancestral records included in the analysis.

Low accuracy = less than 40

Low to medium accuracy = 40 – 60

Medium to High accuracy = 60 – 80

High accuracy = greater than 80

continued...

EPD INFORMATION

| EPDs / Accuracy | | | | | | | | AOD |
|-----------------|---------|---------|---------|-----|---------|-----------|----------|-----|
| BW | WW | YW | MILK | TM | YG | MCE | MCE | |
| -1.1 59% | +27 45% | +65 31% | +25 19% | +39 | +39 31% | +10.0 38% | +8.0 14% | 6 |

Accuracy is the measure of reliability of an EPD. Higher percentiles, indicate larger amounts of available information and greater certainty that a bull's EPD will not change significantly as more progeny information becomes available.



The Possible Change table, can help a producer determine the involved risk associated with an EPD by considering the possible change value for each trait at various accuracy levels.

For example, an animal with an accuracy of 10% can expect its BW EPD to change ± 2.4 pounds, whereas an animal with an accuracy of 80% can expect its BW EPD to change ± 0.5 pounds.

Accuracy values should be printed in sale catalogues. Without an accuracy level, you have no way to gauge how much that EPD is likely to change as that animal gets older and more information is available on it. Generally ... accuracies above 50% are available (earned) by having progeny in large numbers (ex: semen sales) or a consistency of pedigree/related matings (ex: line bred programs). Females producing well into their teens will also earn a higher accuracy value.

BLACK ANGUS — POSSIBLE CHANGE TABLE

| Accuracy % | BW | WW | YW | Milk |
|------------|------|-------|-------|------|
| 100 | 0 | 0 | 0 | 0 |
| 90 | 0.26 | 1.16 | 1.70 | 0.97 |
| 80 | 0.53 | 2.32 | 3.40 | 1.94 |
| 70 | 0.79 | 3.48 | 5.11 | 2.91 |
| 60 | 1.05 | 4.64 | 6.81 | 3.88 |
| 50 | 1.31 | 5.80 | 8.51 | 4.85 |
| 40 | 1.58 | 6.96 | 10.21 | 5.82 |
| 30 | 1.84 | 8.12 | 11.92 | 6.79 |
| 20 | 2.10 | 9.27 | 13.62 | 7.76 |
| 10 | 2.36 | 10.43 | 15.32 | 8.73 |

HOW TO USE EPDS

EPDs can be useful tools when planning breeding programs, however, remember that they are not perfect or absolute. EPD's are a measure of the expected differences in performance of a sire's/dam's progeny when compared to the average progeny of all sires/dams evaluated within the same breed. This prediction is based on actual performance, progeny performance and relatives' performance.

Attention should be paid to the heritability:

| Trait | Heritability Range | Level |
|--------------|--------------------|----------|
| reproductive | less than 0.20 | low |
| growth | 0.20 – 0.40 | moderate |
| carcass | greater than 0.40 | high |

... and correlations of the traits a breeder wants to improve upon within the herd. Some traits are more heritable than others, resulting in swift progress being made in comparison to other less heritable traits. Also, many traits are correlated meaning that the expression of one trait is related to the expression of another trait. The correlation between traits can be either positive or negative and close attention should be paid to these relationships, when developing selection criteria in a breeding program.

Understanding the heritability and the effects of correlation between traits will aid in developing a genetic selection program that will optimize improvement on desired traits while minimizing undesirable side effects.

HOW TO USE EPDS IN SIRE SELECTION

Each individual breeder must set his own selection goals, based on the needs of his operation, the situation for that trait in his herd, and his production environment.

It would be easier if we could assume that the highest EPDs are the best. Unfortunately, it isn't that simple. Like most decisions, using EPDs for sire selection involves tradeoffs.. For example, bulls with high growth EPDs may sire calves with a higher birth weight as well. And there may be other impacts on your operation to consider.

For example, when breeding heifers it is desirable to produce calves with lower birth weights, so a breeder may want to pay special attention to birth weight EPDs of prospective bulls. If all calves were sold as feeders, the milk EPD would generally not rate much attention. Yearling weight will be important if you want to ensure finished steers in the appropriate weight range.

It should also be kept in mind that reaction to selection can differ from trait to trait. This is because some traits have higher heritability than others, and are more easily passed to offspring. For instance growth traits such as weaning weight respond faster to selection, than reproductive traits such as age at first calving.

A balance of traits is required, and the perfect balance for you will depend on your climatic, nutritional and economic environment, as well as the management goals you have set for your herd.

One way to select for several traits are to set minimum and maximum acceptable levels for each trait, and then choose sires that meet criteria. Another method would be rank all sires, on each trait, then develop a weighted index which ranks each bull from one (most desirable) to five for each trait. The bull with the lowest total score would be your first choice.

A SAMPLE SIRE SUMMARY EVALUATION

| Bull | BW | | WW | | YW | | Milk | |
|------|------|------|------|------|-------|------|------|------|
| | EPD | Acc. | EPD | Acc. | EPD | Acc. | EPD | Acc. |
| A | 6.6 | 0.75 | 31.3 | 0.75 | 39.5 | 0.68 | -5.6 | 0.58 |
| B | 0.1 | 0.82 | 14.6 | 0.83 | 24.6 | 0.80 | 6.0 | 0.73 |
| C | 0.0 | 0.89 | 0.3 | 0.89 | 11.1 | 0.88 | 18.9 | 0.87 |
| D | -5.9 | 0.87 | -3.8 | 0.87 | -14.4 | 0.86 | 10.3 | 0.85 |

Producer 1 is looking for a sire that can be used on heifers; he wants a bull that will produce low birth weights and he wants to keep some heifer calves as replacements. Growth performance is not his first priority. The sire that fits his needs is sire D. He has a low birth weight EPD and above-average milk EPD.

Producer 2 has a sound-breeding program; he is looking for a sire that will maintain performance and milking ability. He will select a bull that will increase growth performance and milk while maintaining calving ease. Sire B is his choice.

Producer 3 has a herd of above-average-frame cows and is not planning on keeping heifers as replacements. She is looking for a bull that will give her the most profit at weaning. Sire A will give her the best result in weaning weight. If heifers are kept as replacements, they will, on average, be inferior for maternal milk.

Producer 4 wants to maintain his calving performance and growth performance but would like to increase the milking ability in his females. Sire C is his choice.



INDEX OF SALE BULLS

◀ ▶ *Bulls sell in catalogue order* ▶ ▶

The tag #s of recommended *Calving Ease Bulls* are marked with a 'black background' for your convenience

| TAG # | SIRE | COW FAMILY / DAM # | PAGE |
|---------------------------------------|----------------|--------------------|------|
| Yearling Black Angus Bulls | | | |
| 18W | New Elixir 4R | Joyce 77T | 9 |
| 56W | Net Worth 4200 | Eileen 20N | 9 |
| 39W | Net Worth 4200 | Eileen 36D | 10 |
| 84W | Right Way 68S | Eileen 10S | 10 |
| 132W | Right Way 68S | Eileen 3S | 11 |
| 118W | Right Way 68S | Akita 19S | 11 |
| 11W | Commander | Akita 32P | 12 |
| 45W | Commander | Diamond 10P | 12 |
| 64W | Heritage | Joyce 2P | 13 |
| 67W | Attraction | Errolline 54P | 13 |
| 69W | Attraction | Akita 31P | 14 |
| 54W | New Elixir 4R | Errolline 55T | 14 |
| 30W | New Elixir 4R | Eileen 78T | 15 |
| 58W | Net Worth 4200 | Diamond 14L | 15 |
| 15W | Net Worth 4200 | Eileen 16L | 16 |
| 106W | Right Way 68S | Eileen 32S | 16 |
| 107W | Right Way 68S | Eileen 14S | 17 |
| 137W | Right Way 68S | Akita 17S | 17 |
| 101W | Rain On 35R | Joyce 50R | 18 |
| 102W | Rain On 35R | Diamond 16R | 18 |
| 112W | Rain On 35R | Diamond 1M | 19 |
| Yearling Simmental Bulls | | | |
| 26W | Enticer P1B | Sarah 623S | 24 |
| 52W | Hustler 2N | Noremac 248M | 25 |
| 116W | Fixation 16T | Myra 563R | 25 |
| Two Year Old Black Angus Bulls | | | |
| 22U | Luther 201P | Pridista 22R | 26 |
| 96U | Time Zone 30R | Eugenie 26P | 26 |
| 2U | Time Zone 30R | Lady 2R | 27 |
| 71U | Luther 201P | Augusta 71P | 27 |
| Yearling Black Angus Bulls | | | |
| 47W | Net Worth 4200 | Errolline 19H | 28 |
| 79W | Net Worth 4200 | Akita 52R | 28 |
| 74W | Commander | Diamond 51R | 29 |
| 59W | Commander | Ruby 70S | 29 |
| 40W | In Focus 8T | Ruby 29T | 30 |
| 70W | Heritage | Akita 17R | 30 |
| 60W | Heritage | Errolline 34R | 31 |
| 43W | Total | Pride 41M | 31 |
| 48W | Total | Patsy 23L | 32 |
| 113W | Right Way 68S | Ruby 20S | 32 |
| 103W | Right Way 68S | Joyce 24S | 33 |
| 145W | Right Way 68S | Errolline 55R | 33 |
| 36W | Ne Worth 4200 | Diamond 26P | 34 |
| 55W | Net Worth 4200 | Blackbird 35P | 34 |
| 75W | New Elixir 4R | Joyce 18T | 35 |
| 125W | New Elixir 4R | Eileen 96T | 35 |
| 97W | Right Way 68S | Diamond 49S | 36 |
| 89W | Rain On 35R | Ruby 30P | 36 |
| 119W | Rain On 35R | Joyce 10M | 37 |
| 104W | Rain On 35R | Errolline 28P | 37 |
| 141W | Rain On 35R | Ruby 63L | 38 |

Please bring this catalogue with you to the sale.

Our 2009 Customers

| | |
|---------------------------------|-----------------------------------|
| Bircham Ranch (2) * | W Hyam * |
| Bitterlake Ranching (2) * | R & L Parsonage |
| Ebon Hill/Bircham Ranching * | Sheidaghan Angus |
| A, N, & J Chavtur * | B Wig |
| 76 Grazing Co-op (2) * | T & C Leismeister * |
| D & M Wilson * | P Sehn |
| D & S Hanson (2) * | Manyberries Creek Ranching Ltd |
| D Wilk * | Wilfley Holdings (2) |
| Cypress Colony | J Whitney (3) * |
| Reynolds Farms | D & J Moorhead * |
| D Howell | Diamond K Cattle |
| P DeMars * | All Around Angus |
| J & L Baynton | D Kathol |
| Arendt Ent. Ltd | R & H Arendt |
| Cross C Cattle Co Ltd * | Sandhill Ent Ltd (2) * |
| E Wig | J & C Blakley |
| Cobrett Farms Ltd (2) | D & S Elliott * |

** repeat customer*

BIDDERS, BUYERS AND SPECTATORS
THANK YOU FOR YOUR SUPPORT

*Remember . . . Visitors and
Inquiries are Always Welcome*

Add Value to your Angus

Order your Angus Tags
1-866-571-8093
www.cdnangus.ca

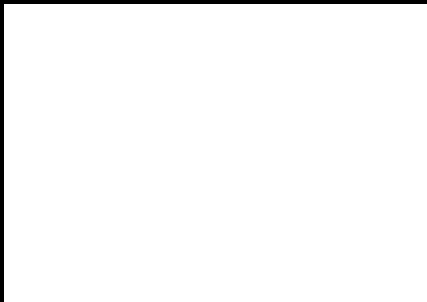


Creating Value for Angus Tagged Cattle

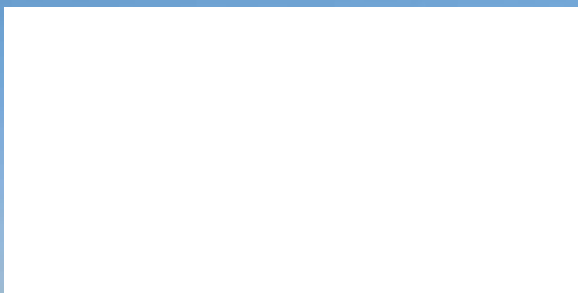


www.rancherendorsed.com

RETURN TO
The Delorme's
Box 28, Robsart, SK
S0N 2G0



Your Choice
BULL SALE
ANGUS & SIMMENTAL



To view the cattle

Give us a call or look us up . . .
at the ranch or on the web

www.SouthShadowAngus.ca

THE DELORME FAMILIES

South Shadow Angus:

Don & Connie Delorme

Boundary Angus & Simmental:

Darby, Sarah & Isabella Delorme

Kay Dee Angus:

Benny, Kalee & Nevaeh Hofer