

*Your
Choice*

**60 Yearlings
10 - 2 Year Olds**

BLACK ANGUS BULL SALE



FRIDAY, APRIL 18, 2014 - 1:00 PM -

**COWTOWN LIVESTOCK
MAPLE CREEK, SK**

Welcome to the 2014 Your Choice Black Angus Bull Sale

Welcome to the tenth edition of this sale format! In 2005, our family moved from private treaty bull sales to the ring at Cowtown. The progressive management to make our cattle offering into what you, our customer, demands still holds true . . . for the past 10 years and the previous 40 before that! The breeding herd has a strong backing – generations of, in fact – starting with the Delorme's IJS prefix in the 60's plus the Wardberg homestead brought in one of the first set of Black females in this area, in the 1940s. After all these years we are still very passionate about the Angus Cow in our registered and commercial herds.

We are excited to offer another group of top end Angus bulls to you. With the variety and selection of bulls available, there is sure to be something for everyone, depending on what is important to you and what direction you want your herd to go. We continue to strive for functionality, along with performance and these bulls show great potential.

A great deal of emphasis is placed on our cow herd so you will find that we continue to picture and promote the females that make our operation viable and give us the opportunity to offer quality breeding stock to you. If you are looking to expand your cow herd– check page 37 for our 28th offering of **commercial replacement heifers**. We've also continued with the private treaty opportunity to purchase the top-cut of the crossbred heifers, as **Breds**, in the fall (page 31). These heifers are all a fantastic set of females, definitely the front pasture type!

We'd welcome your company to look at the sale bulls, cows and walking sires that raised them. Time and distance putting limits on a road trip? Our web site as well as a Facebook presence will help you keep track of the cattle and horses. We hope you can be with us on April 18th. If you are unable to be with us in person, we have a competent support team to help you with absentee purchases. As well, the sale is available for online viewing and bidding at [www. Agrimart.ca](http://www.Agrimart.ca) (see page 1 for details).

Thank you to the many customers who have become friends and repeat customers over the years. You have taken the time out of your busy schedule to look through our catalog which is very much appreciated. We look forward to hearing from you and welcome the opportunity to earn your business and truly offer "Your Choice" of Angus genetics.



Connie & Don Delorme

**South Shadow Angus,
APHA & AQHA Horses**
306-299-4494

Don cell: 306-299-7778
dcdelorme@sasktel.net
Box 28, Robsart, SK S0N 2G0



Darby, Sarah,
Isabella & Mackayla Delorme

**Boundary Ranch
Angus & Simmental**

306-299-2006

Darby cell: 306-662-7993
boundaryranch@sasktel.net

Box 36, Robsart, SK S0N 2G0
Jay En Dee Angus: Isabella & Mackayla



Kalee, Nevaeh
& Aeverie Hofer

Kay Dee Angus
587-253-1507

Medicine Hat, AB

Prairie Pride Angus: Nevaeh & Aeverie



Jo & Alfred Wardberg

**Your
Choice**

BULL SALE: 3rd Friday in April

HEIFERS: Replacements in the Spring
Breds in the Fall

HORSES: by Private Treaty

www.DelormeAngus.ca



Flo & John Delorme

SALE INFORMATION

Friday, April 18, 2014 ~ 1:00 PM CST @ Cowtown Livestock Exchange

Sale will be held at Cowtown Livestock Exchange 1 mile East of Maple Creek, Sask.

Sight Unseen Purchase Program: If you would like to place a bid on any lot but cannot attend the sale, please contact the Cowtown Office (306) 662-2648 or Wayne Bowyer, Manager (306) 662-7371. They will competently and discretely handle your bidding instructions.

Viewing the Bulls: The bulls are available for your appraisal at the ranch until **Monday, April 14th** at which time they will be moved to the Cowtown yards where they will be available for viewing from the time of their arrival until sale time on April 18th. We encourage you to stop in and take a look at this year's offering, as well as the sires, dams and siblings.

Terms:

All bulls sell under the suggested Terms & Conditions of the Canadian Angus Associations. Terms of sale are cash or cheque payable to Cowtown Livestock. No bulls will be released without satisfactory settlement. When making settlement for your purchases, please leave specific instructions for transferring of registration certificates.

Sale Accomodations:

Redmond House (Lodging & Dining): 306-662-2717
Commercial Hotel: 306-409-0018
Maple Creek Motor Inn: 306-662-4431
Cypress Park Resort Inn: 306-662-4477
Cypress Hills Motor Inn: 306-662-2639

Bull Evaluation & Health: All bulls will have a complete fertility exam and semen test done prior to sale. Bulls will not be sold on a 'deferred' result. Current weights and scrotal measurements will also be available prior to sale. Bulls have been vaccinated: Travax 8, IBR/P13/BVD (Inforce 3/SomnuStar PH and Pyramid FP 5/Presponse) and pesticide poured.

Sale Order: Bulls will sell in catalogue order ~ Index page 48

Buyer Registration: Please register for a buyer number at the office prior to purchasing.

Semen Collection: The Delorme Family consignments reserve the right to collect 200 straws of semen off any bull in the sale at their expense and the buyer's convenience.

Announcements: Any errors discovered in this catalog will be corrected from the auction stand at sale time and such corrections will take precedence over printed material contained in this catalog.

Bull Guarantee: We guarantee to provide you with a sound, fertile bull capable of servicing a reasonable number of females. In the event that your bull is a non-satisfactory breeder, he will be replaced with a bull of equal value, or a credit will be given towards the purchase of another South Shadow bull. We will not provide replacement or credit for physical injury or mismanagement. Each animal becomes the responsibility of the purchaser as soon as sold. If you have a problem with a bull please notify us immediately.

Insurance: Insurance will be available sale day, on location from a Blythman Agency's representative. (306) 662-2604

Trucking Incentive: Any buyer taking his bulls home on sale day will receive a \$50.00 discount applied to each bull that is taken home.

Keep and Feed Program: We will keep your bull(s) here at the ranch until you are ready for them and can come pick them up. The bull(s) can remain until May 1, 2014 at no cost, on the condition that you insure your bulls. After May 1, there will be a \$3 per day charge.

Online Viewing and /or Bidding: This year's sale will once again offer streaming video from ringside. To pre-register, visit www.agrimart.ca - then tune in to www.agrimart.ca/cowtown/



View the Catalog & Videos online at: www.DelormeAngus.ca

SALE DAY PHONES

Wayne Bowyer @ Cowtown (306) 662-7371 • Cowtown Office (306) 662-2648
Don's Cell (306) 299-7778 • Darby's Cell (306) 662-7993 • Chad's Cell (306) 662 - 7060

Be sure to join us for a Complimentary Pre-Sale Lunch at 11:00

For Your Convenience

- Page 44:** Herd Management .. the Feeding! / How to Read Performance / Elite Cow Program
- Page 45:** Weight/Performance Averages Summary Report
- Page 45-47:** How to Read and Use EPDs
- Page 48:** Bull Index with tag #, sire, dam & page number
 “**ES**” = Elite Sire in the pedigrees

As you turn the pages in this book you will find pedigrees carrying the family member's prefixes of SSA, DLD, KD, NPP and the foundation IJS. In 2009, the Jay En Dee (IJS) herd name was transferred to Darby and Sarah's daughters; Isabella and Mackayla and the Prairie Pride (NPP) herd name, which was Alfred and Jo's in the 60's & 70's, was registered to Kalee's daughters; Nevaeh and Aeverie.

REFERENCE SIREs ~ Walking and A.I.

Reference Sire SSA 109 IN FOCUS 35U

SSA 35U 1456393 01/22/2008

SAF Focus of ER
Mytty In Focus
 Mytty Countess 906

Grandview Womack Direct
SSAP EILEEN 42P
 South Shadow Eileen 17F

SAF Fame
 GDAR Forever Lady
 Sitz Alliance 6595
 Baldrige Countess 357
 B/R New Design 036
 Mengs Miss Skymere 78B
 Jay En Dee Touchstone 131-32D
 Jay En Dee Eileen 36D

EPDs / Accuracy							Act	ADJ.	ADJ.
BW	WW	YW	MILK	TM	CE	MCE	BW	205	365
+0.4 68%	+48 56%	+79 55%	+20 28%	+44	+11 48%	+12 23%	72	661	1167

WALKING HERD SIRE: 35U started his breeding career with first calf heifers. He sired long, smooth calves with good performance, nice dispositions and big nuts. He was used heavily in both our registered and commercial herds. His service here would still be welcomed but a breeding season injury took care of that! Both 35U and 92U (below) offer trait improvement for feet, dispositions and calving ease.

EPDs in the top: 9% BW, 30% WW, 4% CE, 3% MCE.

Sire of Sale Bulls: 20A (pg 12), 43A (pg 11), 151A (pg 12), 165A (pg 38), 173A (pg 37), 183A (pg 12), 192A (pg 39)



SSAP Eileen 42P

Mytty In Focus

Reference Sire SSAP 104 FREEDOM 92U

SSA 92U 1488119 02/19/2008

Connealy Forefront
TC FREEDOM 104
 TC Ruby 9095

Whitestone Widespread MB
SOUTH SHADOW AKITA 21L
 South Shadow Akita 7G

Connealy Frontline
 Eileen Heartland Conanga
 TC Stockman 365
 TC Ruby 4068
 N Bar Emulation EXT
 MB Rachel 2173
 Minerts Fortune 2000
 Jay En Dee Pride 14-89E

EPDs / Accuracy							Act	ADJ.	ADJ.
BW	WW	YW	MILK	TM	CE	MCE	BW	205	365
+1.4 66%	+37 54%	+43 53%	+17 23%	+36	+9 37%	+13 20%	67	576	1062

WALKING HERD SIRE: 92U has a lot of performance with a big foot & large testicles. He has never been in a halter but sure has a very quiet disposition. His sire, TC Freedom has left exceptional females. His dam was sired by the Widespread bull who expressed a lot of muscle and performance. 21L was sold & flushed with embryos going to the UK. Be sure to take a second look at his 3 sons - the youngest on offer this year.

EPDs in the top: 9% BW, 8% CE, 1% MCE.

Sire of Sale Bulls: 201A (pg 22), 212A (pg 43), 215A (pg 43)



SSA Akita 21L

TC Freedom 109

REFERENCE SIRES

Reference Sire **EARLY SUNSET TOM BOY**

CWB 6Y 1605412 01/06/2011

Figure 8 Angus Tom Boy 509R
EARLY SUNSET TOMMY BOY 8W
 Early Sunset Queen 5T

New Force Prospector 5S
EARLY SUNSET LADY ANN 110W
 Early Sunset Lady Ann 139R

Adelphi Tom Boy 20H
 Figure 8 Angus Lady 604J
 Te Stout 407
 Early Sunset Queen 36P
 K G Power Design
 Aitken Acres Ruby 5M
 W C C Timeline J4
 Early Sunset Lady Ann 17F

EPDs / Accuracy							Act	ADJ.	ADJ.						
BW	WW	YW	MILK	TM	CE	MCE	BW	205	365						
+0.7	46%	+30	33%	+56	31%	+8	10%	+23	+10	34%	+12	7%	75	-	-

WALKING HERD SIRE: A very balanced bull with good feet, legs and lots of muscle. His smooth shoulder and small head aided all of his progeny to arrive unassisted from first calf heifers. His Dam is a very feminine, nice uddered female. EPDs in the top: 10% BW, 7% CE, 3% MCE.

Sire of Sale Bulls: 63A (pg 20), 71A (pg 19),
 77A (pg 42), 87A (pg 41), 92A (pg 42), 162A (pg 20), 191A (pg 42)



Tom Boy 509R



Tom Boy Son: 162A

Reference Sire **WILL ROLE MODEL**

IMP 1139U 1659103 12/29/2008

Feltons Meat Packer 62
CONNELLY PACKER 547
 Bestrelle Of Conanga 539

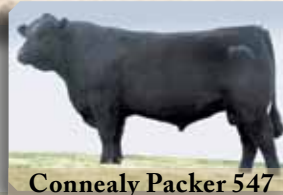
V D A R Lucys Boy
WILL HENRIETTA PRIDE 113A
 Sitz Henrietta Pride 1209

Finks 5522-6148
 Graham N Mistress 8
 Dalebanks Extender 6012
 Besta Of Conanga 6538
 Traveler 1148 G D A R
 V D A R Pine Drive Lucy 5
 GDAR SVF Royce 176G
 Sitz Henrietta Pride 2505

EPDs / Accuracy							Act	ADJ.	ADJ.						
BW	WW	YW	MILK	TM	CE	MCE	BW	205	365						
+0.9	80%	+52	79%	+101	52%	+18	24%	+44	+9	60%	+10	18%	78	875	1405

Phenotype and Calving Ease. We used Role Model because of his stand-out phenotype. His pedigree is packed with remarkable cows and is an outcross to our herd. Role Model is considered a top marbling and calving ease prospect. EPDs in the top: 10% for BW, CE, MCE, 15% WW, 6% YW

Sire of Sale Bulls: 9A (pg 7), 64A (pg 39), 94A (pg 39), 95A (pg 7)



Connelly Packer 547



Model Son: 64A

Reference Sire **WOODHILL FORESIGHT**

IMP 54L 1191517 03/12/2001

Papa Optima 9818
PAPA FORTE 1921
 Papa Envious Blackbird 8832

Bon View Bando 598
BON VIEW GAMMER 85
 Bon View Gammer 233

Scotch Cap
 Blackcap D H D 2816
 Papa Rito T Power D H D 6838
 Envious Blackbird Of Rr 7066
 Tehama Bando 155
 Bon View Dora 56
 N Bar Emulation EXT
 Bon View Gammer 2409

EPDs / Accuracy							Act	ADJ.	ADJ.						
BW	WW	YW	MILK	TM	CE	MCE	BW	205	365						
+3.8	97%	+60	96%	+102	95%	+24	93%	+54	+0.0	87%	+4	88%	98	731	1312

Power and Maternal Carcass Sire. Foresight packs muscle and volume in a smaller frame and is said to be a SC improver. Overall maternal and docility improvements reported in his daughters as well as performance and carcass merit.

EPDs in the top: 20% WW, 7% YW, 15% MILK, 10% TM, 10% MCE.
 Sire of Sale Bulls: 8A (pg 22), 15A (pg 21), 134A (pg 40), 147A (pg 41)



Papa Forte 1921



Forte 1921 Daughter

REFERENCE SIRES

Reference Sire **CONNELY FINAL PRODUCT**

IMP 7212T 1643843 01/23/2007

G A R Retail Product
CONNELY PRODUCT 568
 Pride Fine Of Conanga 566

Connealy Deep Canyon 454
EBONISTA OF CONANGA 471
 Ebonisa Of Conanga 5469

G A R Precision 1680
 G A R Ext 4927
 Bon View New Design 878
 Pride Fan Of Conanga 6456
 Larks Canyon 74D4
 Romna Of Conanga 64452
 Papa Universe 515
 Ebony Asy Of Conanga

EPDs / Accuracy							Act	ADJ.	ADJ.
BW	WW	YW	MILK	TM	CE	MCE	BW	205	365
+0.8 97%	+66 95%	+119 93%	+43 65%	+76	+3 93%	+9 53%	73	752	1341

Curve Bender with Muscle & Maternal. Final Product offers performance in a sound structure. His progeny are thick across the back and down through the hindquarter.

Top: 10% WW, 1% WW/MILK/YW/TM, 1% REA.

Sire of Sale Bulls: 7A (pg 15), 38A (pg 40),
 82A (pg 40), 106A (pg 16), 120A (pg 16)



Product Son: 7A



Product Son: 120A

Reference Sire **SITZ UPWARD 307R**

IMP 307R 1385926 03/01/2005

Connealy Lead On
CONNELY ONWARD
 Altune Of Conanga 6104

Sitz Value 7097
SITZ HENRIETTA PRIDE 81M
 Sitz Henrietta Pride 1370

Connealy Leadtime
 Eligence Plus Of Conanga
 G A R Traveler 1489
 Avalon 1418 Of Conanga 6276
 Sitz Traveler 6802
 Sitz Eisa Evergreen 791
 O C C Great Plains 943G
 Sitz Henrietta Pride 2155

EPDs / Accuracy							Act	ADJ.	ADJ.
BW	WW	YW	MILK	TM	CE	MCE	BW	205	365
+2.5 98%	+71 97%	+133 96%	+41 93%	+77	+7 91%	+9 89%	85	902	1395

EPDs and Phenotype. His progeny are moderate framed, thick and easy fleshing, with performance. Has a flawless EPD tabulation, with an outstanding balanced phenotype, great muscle expression and exceptional daughters.

Top: 1% WW/YW/MILK/TM, 20% CE, 15% MCE 1% SC and 2% REA.

Sire of Sale Bulls: 6A (pg 18), 53A (pg 36), 72A (pg 18)
 76A (pg 36), 80A (pg 17), 136A (pg 17), 139A (pg 35)



2012 Upward Son: 24Z



Connealy Onward

Reference Sire **S A V PIONEER 7301**

IMP 7301T 1481377 Born: 2007

Sitz Traveler 8180
S A V FINAL ANSWER 0035
 S A V EMULOUS 8145

BOYD NEW DAY 8005
S A V BLACKBIRD 5297
 S A V BLACKBIRD 1082

GDAR Traveler 71
 Sitz Everelda Entense 1137
 Bon View Bando 598
 S A V Sky Emulous 2124
 A A R New Trend
 S V F Forever Lady 57D
 S A F 598 Bando 5175
 S A V Blackbid 4036

EPDs / Accuracy							Act	ADJ.	ADJ.
BW	WW	YW	MILK	TM	CE	MCE	BW	205	365
+2.0 97%	+61 95%	+110 93%	+34 85%	+65	+5 91%	+4 78%	69	965	1446

Performance, Phenotype & Maternal. Pioneer was bred for performance and maternal and should offer some calving ease from his Sire, Final Answer.

He has excellent EPDs ranking: 30% BW, 3% WW, 1% YW/MILK/TM, 2% SC and 1% REA.

Sire of Sale Bulls: 17A (pg 20), 114A (pg 21)



Blackbird 5297



Final Answer 0035

Reference Sire **S A V BISMARCK 5682**

IMP 5682R 1369591 02/012005

G D A R Traveler 044
G A R GRID MAKER
G A R Precision 2536

Schoenes Fix It 826
S A V ABIGALE 0451
S A V Abigale 6062

DHD Traveler 6807
G D A R Blackcap Lady 840
G A R Precision 1680
G A R Ext 2104
A A R New Trend
Sky High Blackbird 4119
Bon View Emulation Ext 473
Circle A Abigale 3008

EPDs / Accuracy							Act	ADJ.	ADJ.						
BW	WW	YW	MILK	TM	CE	MCE	BW	205	365						
+0.3	98%	+58	97%	+97	95%	+27	92%	+56	+14	95%	+16	88%	76	884	1596

Possesses the extra muscle and performance of Grid Maker while offering more moderate BW. Darby and Sarah loved the Bismark females they saw at Agribition in 2010 and so we decided to use him in our program.

Top: 8% BW, 6% WW, 9% YW, 8% MILK, 4% TM, 1% CE/MCE.

Sire of Sale Bulls: 25A (pg 9), 31A (pg 10),
119A (pg 32), 133A (pg 32),



DAM: Abigale 0451



SIRE: Grid Maker

Reference Sire **S A V FINAL ANSWER 0035**

IMP 035K 1061938 02/22/2000

G D A R Traveler 71
TRAVELER 1148 G D A R
Sitz Everelda Entense 1137

Bon View Bando 598
S A V EMULOUS 8145
S A V Sky Emulous 2124

Traveler 1148 G D A R
G D A R Miss Blackcap 567
G D A R Rainmaker 340
Sitz Everelda Entense 2335
Tehama Bando 155
Bon View Dora 56
Ellanin Sky Diver
Tail N 0383

EPDs / Accuracy							Act	ADJ.	ADJ.						
BW	WW	YW	MILK	TM	CE	MCE	BW	205	365						
-1.0	98%	+91	98%	+103	97%	+25	94%	+56	+13	96%	+13	91%	69	843	1360

Calving Ease and Growth. Low birth weights combined with high growth to yearling, and easy fleshing calves. Sires deep, smooth calves, and his daughters have excellent udders.

Top: 2% BW, 3% WW, 4% YW, 15% MILK, 4%TM, 1% CE/MCE.

Sire of Sale Bulls: 10A (pg 8), 90A (pg 9), 163A (pg 8)



SIRE: GDAR Traveler 71



0035 Daughter: DLD 904

Reference Sire **CONNELLY CONSENSUS 7229**

IMP 9122W 1593730 01/15/2009

KMK Alliance 6595 187
CONNELLY CONSENSUS
Blinda Of Conanga 004

Woodhill Admiral 77K
BLUE LILLY OF CONANGA 16
Blue Cash Of Conanga 6020

Sitz Alliance 6595
G A R Ext 916
Rito 616 Of 4B20 6807
Blenda Of Conanga 129
S A F Focus Of E R
Woodhill Lass 344-1178
Connelly Timeline
Blue Time Of Conanga

EPDs / Accuracy							Act	ADJ.	ADJ.						
BW	WW	YW	MILK	TM	CE	MCE	BW	205	365						
+2.2	97%	+64	95%	+105	93%	+34	60%	+66	+5	91%	+7	53%	78	817	1420

Performance, Eye Appeal & Outcross. Consensus is an outcross pedigree for us. His calves are the "cattlemen's kind". Calves have tremendous growth and eye appeal. An all time high seller for Connelly Angus at \$210,000! Top 1% WW/MILK/TM, 3% YW

Sire of Sale Bulls: 57A (pg 14), 83A (pg 15), 84A (pg 14),
88A (pg 35), 101A (pg 34), 112A (pg 34), 126A (pg 13)



Two Consensus sons offered: 112A & 88A

REFERENCE SIRES

Reference Sire **MYTTY IN FOCUS**

IMP 109L 1251205 02/18/2001

S A F Fame
S A F FOCUS OF E R
G D A R Forever Lady 246

Sitz Alliance 6595
MYTTY COUNTESS 906
Baldrige Countess 357

Minerts Fortune 2000
S A F Royal Lass 1027
Transformer 100 E A R
G D A R Forever Lady 718
Sitz Traveler 8180
Sitz Barbaramere Jet 2698
Bon View Emulation Ext 473
Baldrige Countess 235

EPDs / Accuracy							Act	ADJ.	ADJ.						
BW	WW	YW	MILK	TM	CE	MCE	BW	205	365						
-1.3	99%	+54	98%	+95	97%	+26	96%	+53	+14	97%	+14	94%	81	773	1287

Calving Ease, Maternal & Frame Reducer. In Focus has crossed well with our females - most notably being the 35U walking bull on page 2. We currently have 7 daughters & numerous granddaughters carrying In Focus in their pedigree.

Top: 1% BW, 10% WW/YW/MILK, 8% TM, 1% CE/MCE, 1% Marbling

Sire of Sale Bull: 37A (pg 31)



Focus Daughter: 879U



2008 Focus Son: 8U

Reference Sire **CONNELY THUNDER**

IMP 587R 1385922 01/28/2005

Jauer 353 Traveler 589 27
BALDRIDGE KABOOM K243 KCF
Pleasant Of Conanga 736

Bon View Bando 598
PARKA OF CONANGA 241
Partina Of Conanga 6237

Jauer 7111 Traveler 353 719
Jauer 6807 Traveler 27 085
G T Maximum
Pleasant Pill Of Conanga
Tehama Bando 155
Bon View Dora 56
Schoenes Fix It 826
Party Date Of Conanga

EPDs / Accuracy							Act	ADJ.	ADJ.						
BW	WW	YW	MILK	TM	CE	MCE	BW	205	365						
-0.6	97%	+46	95%	+91	93%	+29	89%	+52	+11	91%	+13	82%	79	817	1481

Thunder's popularity continues to grow as he consistently sires well balanced, super sound, easy fleshing and docile progeny. His high accuracy proof and outcross pedigree provides a new choice in calving-ease. We lik'em!

Top: 3% BW, 15% YW, 4% MILK, 10% TM, 4% CE, 1% MCE and 1% REA.

Sire of Sale Bulls: 34A (pg 33), 73A (pg 33),
79A (pg 10), 104A (pg 11)



2011 Son: 47Y



2012 Daughter: 7Z



SOUTH SHADOW ROLE MODEL 95A

SSA 95A 1725673 01/20/2013



DAM: Eileen 30X



30X Son: 143Z



SOD: Density 4336



Well here we are again, another year and trying to do another sale order. We've always started the sale with our top-gaining bull on feed. The bulls are not pushed for excessive gains; we develop them for soundness and longevity, so our customers can reap the profits from the genetics. 95A had a 365 day Index of 147! He is long, thick spined with a deep round rump and awesome foot. With Density and Rain Man on the bottom side of his pedigree, 95A is destined to produce great females.

EPDs in the top: 20% BW, 9% YW, 15% CE, 25% MCE

EPDs / Accuracy							
BW	WW	YW	MILK	TM	CE	MCE	
+1.5	36%	+45	27%	+97	25%	+19	12%
				+42	+8	26%	+8
							9%



Connealy Packer 547
WILL ROLE MODEL
Will Henrietta Pride 113A

S A V 004 Density 4336
SSA EILEEN 30X
SSA Eileen 10S **[ELITE]**

Feltons Meat Packer 62
Bestrelle Of Conanga 539
V D A R Lucys Boy
Sitz Henrietta Pride 1209
S A V 8180 Traveler 004
S A V May 7238
South Shadow Rain Man 2M
SSAP Eileen 42P

GEST	Actual BW	ADJ. 205	ADJ. 365	94 Day Test / Actual Weights		AOD
				Oct 18 WW	Jan 20 YW	
277	88	597	1090	710	1000	3.09
						3

SOUTH SHADOW ROLE MODEL 9A

SSA 9A 1725670 01/05/2013

EPDs / Accuracy							
BW	WW	YW	MILK	TM	CE	MCE	
+2.0	P%	+47	P%	+78	P%	+19	P%
				+42	+6	P%	+6
							P%



Connealy Packer 547
WILL ROLE MODEL
Will Henrietta Pride 113A

South Shadow Pine Drive 10K
SOUTH SHADOW DIAMOND 51N
South Shadow Diamond 31K

Feltons Meat Packer 62
Bestrelle Of Conanga 539
V D A R Lucys Boy
Sitz Henrietta Pride 1209
Pine Drive Big Sky
Jay En Dee Eileen 36D
M C A Courtyard 9
Jay En Dee Pride 55G

GEST	Actual BW	ADJ. 205	ADJ. 365	94 Day Test / Actual Weights		AOD
				Oct 18 WW	Jan 20 YW	
276	92	696	1088	935	1165	2.45
						10

Larger framed bull, with lots of middle, a big scrotal and a 365 day index of 116. His dam is a very productive, moderate framed, excellent structured Pine Drive 10K daughter that was bred for maternal and longevity.

EPDs in the top: 25% CE



DAM: Diamond 51N



51N Daughter: 934

SOUTH SHADOW FINAL ANSWER 10A

SSA 10A 1725513 01/06/2013



DAM: Patsy 987W



MGD: Patsy 22S



SOD: Right Way 68S

Herd Bull Look! Loads of character, Lots of muscle. 10A is a real soggy, good boned, big footed, big scrotal bull with a 365 day Index of 129. Out of a very productive, great footed, beautiful uddered, Right Way 68S daughter. 68S left us very easy-doing females with great tidy udders. Grandam is a direct daughter of Masterplan 3 that we sold to Everblack Angus as a 5 yr. old. 10A is a 3/4 brother to 90A (page 9).

EPDs in the top: 8% WW, 10% YW, 20% Milk, 10% TM

EPDs / Accuracy						
BW	WW	YW	MILK	TM	CE	MCE
+2.3 P%	+57 P%	+94 P%	+24 P%	+52	+3.5 P%	+6.5 P%



Sitz Traveler 8180
S A V FINAL ANSWER 0035
S A V Emulous 8145

Big Sky Dld Right Way 68S
SSA PATSY 987W
SSA Patsy 22S

G D A R Traveler 71
Sitz Everelda Entense 1137
Bon View Bando 598
S A V Sky Emulous 2124
Hyline Right Way 781
Big Sky Dyna 435
Jay En Dee Masterplan 3
South Shadow Patsy 23L

GEST	Actual BW	ADJ. 205	ADJ. 365	94 Day Test / Actual Weights		AOD	
				Oct 18 WW	Jan 20 YW		ADG
274	93	675	1109	880	1135	2.71	4



KAY DEE FINAL ANSWER 163A

KD 163A 1764052 02/09/2013

EPDs / Accuracy						
BW	WW	YW	MILK	TM	CE	MCE
+0.7 37%	+47 28%	+84 28%	+21 21%	+45	+8 27%	+10 17%



Sitz Traveler 8180
S A V FINAL ANSWER 0035
S A V Emulous 8145

SSAP Rain On 35R
KD BLACKBIRD 52T
South Shadow Blackbird 15R

G D A R Traveler 71
Sitz Everelda Entense 1137
Bon View Bando 598
S A V Sky Emulous 2124
South Shadow Rain Man 2M
South Shadow Joyce 28N
B/R New Frontier 095 ES
Jay En Dee Blackbird 11W

GEST	Actual BW	ADJ. 205	ADJ. 365	94 Day Test / Actual Weights		AOD	
				Oct 18 WW	Jan 20 YW		ADG
283	93	683	1040	815	1025	2.23	6

Long, clean and masculine with a smooth front-end and Indexes of 106 for WW and YW. His Dam is a very feminine 35R daughter with great feet and an udder that's second to none. MGGD, 11W, lived until the ripe old age of 19 yrs, producing 17 calves for 2 generations of our family.

EPDs in the top: 10% BW, 15% CE, 10% MCE



MGGD: Blackbird 11W



DAM: Blackbird 52T

BLACK ANGUS YEARLING BULLS

SOUTH SHADOW FINAL ANSWER 90A

SSA 90A 1725550 01/19/2013

EPDs / Accuracy

BW	WW	YW	MILK	TM	CE	MCE
-1.7 37%	+48 28%	+81 28%	+24 20%	+48	+13 27%	+12 17%

Sitz Traveler 8180
S A V FINAL ANSWER 0035
 S A V Emulous 8145

Big Sky Dld Right Way 68S
SSA EILEEN 986W
 SSAP Eileen 20R

G D A R Traveler 71
 Sitz Everelda Entense 1137
 Bon View Bando 598
 S A V Sky Emulous 2124
 Hyline Right Way 781
 Big Sky Dyna 435
 South Shadow Rain Man 2M
 South Shadow Eileen 30N

90A

GEST	Actual BW	ADJ. 205	ADJ. 365	94 Day Test / Actual Weights			AOD
				Oct 18 WW	Jan 20 YW	ADG	
276	76	577	884	720	900	1.91	4

Recommended for heifers.

Great hair, masculine and a low BW EPD of -1.7. Dam is super uddered and footed. 90A is a 3/4 brother to 10A (page 8).

EPDs in the top: 1% BW, 20% Milk/TM, 1% CE, 3% MCE



DAM: Eileen 986W

MGD: Eileen 20R

SOUTH SHADOW BISMARCK 25A

SSA 25A 1725516 01/09/2013



DAM: Errolline 22R



MGGD: Errolline 7L



22R Son: 165Y



EPDs / Accuracy

BW	WW	YW	MILK	TM	CE	MCE
-0.4 P%	+45 P%	+85 P%	+28 P%	+50	+11.5 P%	+9.5 P%

G A R Grid Maker
S A V BISMARCK 5682
 S A V Abigale 0451

South Shadow Rain Man 2M
SSAP ERROLLINE 22R
 South Shadow Errolline 1N

G D A R Traveler 044
 G A R Precision 2536
 Schoenes Fix It 826
 S A V Abigale 6062
 Cudlobe Rainmaker 39K
 South Shadow Diamond 13K
 Cudlobe Rainmaker 39K
 South Shadow Errolline 7L [ELITE]

25A

GEST	Actual BW	ADJ. 205	ADJ. 365	94 Day Test / Actual Weights			AOD
				Oct 18 WW	Jan 20 YW	ADG	
280	94	647	1056	855	1095	2.55	8

Really thick, long, wide based, with a super look to him. He had a 365 day Index of 121. Dam, 22R, is a larger 2M daughter that is double bred Rainmaker 39K and always produces the good ones.

EPDs in the top: 4% BW, 25% YW, 6% Milk, 15% TM, 2% CE, 10% MCE

SOUTH SHADOW BISMARCK 31A

SSA 31A 1725519 01/10/2013

EPDs / Accuracy

BW	WW	YW	MILK	TM	CE	MCE
+2.2 P%	+46 P%	+72 P%	+19 P%	+42	+8.5 P%	+12 P%

G A R Grid Maker
S A V BISMARCK 5682
 S A V Abigale 0451

G D A R Traveler 044
 G A R Precision 2536
 Schoenes Fix It 826
 S A V Abigale 6062
 B/R New Design 036
 Mengs Miss Skymere 78B
 Jay En Dee Touchstone 131-32D
 Jay En Dee Eileen 36D

31A

Grandview Womack Direct
SSAP EILEEN 42P
 South Shadow Eileen 17F

GEST	Actual BW	ADJ. 205	ADJ. 365	94 Day Test / Actual Weights			AOD
				Oct 18 WW	Jan 20 YW	ADG	
278	82	620	876	820	970	1.60	9

Super footed, smooth made, long spined and structurally sound. Dam is the mother of our In Focus 35U herd sire (page 2) that was used successfully on our heifers. She is also a granddaughter of Eileen 36D who produced to 18 years young.

EPDs in the top: 10% CE, 3% MCE



DAM: Eileen 42P



42P Son: 35U

SOUTH SHADOW THUNDER 79A

SSA 79A 1725544 01/16/2013



DAM: Akita 19S



2011 - 19S Son: 8Y



2010 - 19S Son: 10X

Recommended for heifers.

79A has lots of natural thickness, depth and width from front to back. Dam is a moderate framed, very feminine Dateline 18P daughter. With 36D and Rain Man 2M in his pedigree, look for some tremendous females from his calf crop.

EPDs in the top: 1% BW, 15% Milk, 1% CE, 1% MCE

EPDs / Accuracy

BW	WW	YW	MILK	TM	CE	MCE
-1.6 37%	+37 28%	+80 28%	+25 21%	+44	+13 29%	+13 17%

Baldrige Kaboom K243 Kcf
CONNELLY THUNDER
 Parka Of Conanga 241

Jauer 353 Traveler 589 27
 Pleasanta Of Conanga 736
 Bon View Bando 598
 Partina Of Conanga 6237
 Vermilion Dateline 7078 ES
 South Shadow Eileen 5G
 South Shadow Rain Man 2M
 South Shadow Akita 8M

79A

SSAP Dateline 18P
SSA AKITA 19S
 SSAP Akita 14P

GEST	Actual BW	ADJ. 205	ADJ. 365	94 Day Test / Actual Weights			AOD
				Oct 18 WW	Jan 20 YW	ADG	
278	73	593	1001	770	1010	2.55	7

BLACK ANGUS YEARLING BULLS

SOUTH SHADOW THUNDER 104A

SSA 104A 1725557 01/21/2013

EPDs / Accuracy

BW	WW	YW	MILK	TM	CE	MCE						
+3.3	37%	+42	28%	+78	28%	+23	21%	+44	+2	27%	+7	17%

104A

Baldrige Kaboom K243 Kcf
CONNELLY THUNDER
 Parka Of Conanga 241

SSAP Dateline 18P
SSA ERROLLINE 75T
 South Shadow Errolline 11F

Jauer 353 Traveler 589 27
 Pleasanta Of Conanga 736
 Bon View Bando 598
 Partina Of Conanga 6237
 Vermilion Dateline 7078 **ES**
 South Shadow Eileen 5G
 Jay En Dee Touchstone 131-32D
 Jay En Dee Errolline 12D

GEST	Actual BW	ADJ. 205	ADJ. 365	94 Day Test / Actual Weights			AOD
				Oct 18 WW	Jan 20 YW	ADG	
277	100	662	1001	985	1030	2.02	6

Larger framed bull with lots of stretch out of a smaller framed, good footed cow, with a great udder. A maternal brother sold to Three Vee Angus in last year's sale.

EPDs in the top: 25% Milk



DAM: Errolline 75T



SOD: Dateline 18P

SOUTH SHADOW 35U IN FOCUS 43A

SSA 43A 1725525 01/11/2013



DAM: Pride 41M



41M Daughter: 18R



SOD: Pine Drive 10K



EPDs / Accuracy

BW	WW	YW	MILK	TM	CE	MCE						
+2.7	36%	+50	25%	+74	25%	+18	14%	+43	+4	21%	+6	10%

43A

Mytty In Focus
SSA 109 IN FOCUS 35U
 SSAP Eileen 42P

South Shadow Pine Drive 10K
SOUTH SHADOW PRIDE 41M
 Jay En Dee Pride 62G

S A F Focus Of E R **ES**
 Mytty Countess 906
 Grandview Womack Direct
 South Shadow Eileen 17F
 Pine Drive Big Sky
 Jay En Dee Eileen 36D
 Jay En Dee Right Time 1E
 Jay En Dee Pride 2A

GEST	Actual BW	ADJ. 205	ADJ. 365	94 Day Test / Actual Weights			AOD
				Oct 18 WW	Jan 20 YW	ADG	
276	100	771	1103	980	1175	2.07	11

Bigger framed, free moving bull that will cover a lot of ground. Our heaviest actual weaning weight bull. Dam is sound, perfect footed and good uddered. His daughters should make broody cows. 41M's Daughter (13R) plus a granddaughter (32T) offer herd sire prospects in tag's # 119A and 183A (pages 32 & 12 respectively).

EPDs in the top: 25% WW

BLACK ANGUS YEARLING BULLS

SOUTH SHADOW 35U IN FOCUS 151A

SSA 151A 1725579 02/04/2013

EPDs / Accuracy												
BW	WW	YW	MILK	TM	CE	MCE						
+1.0	35%	+45	25%	+80	25%	+21	13%	+44	+9	23%	+11	11%

151A

Mytty In Focus
SSA 109 IN FOCUS 35U
SSAP Eileen 42P

K C F Bennett Total
SSA AKITA 944W
South Shadow Akita 31N

S A F Focus Of E R ES
Mytty Countess 906
Grandview Womack Direct
South Shadow Eileen 17F
Sitz Alliance 6595 ES
EXT Of Conanga 6790
DMM Dynasty 03G
Jay En Dee Pride 14-89E [ELITE]

GEST	Actual BW	ADJ. 205	ADJ. 365	94 Day Test / Actual Weights			AOD
				Oct 18 WW	Jan 20 YW	ADG	
279	89	682	1057	810	1030	2.34	4

A docile, loose hided, masculine, soggy bull with lots of rib. His dam is moderate framed, easy fleshing with a strong foot. Grandam, 31N, offers a son on page 14, Tag# 57A. GGD is an Elite female.

EPDs in the top: 15% BW, 10% CE, 7% MCE



SOD: Bennett Total



DAM: Akita 944W



2012 32T Son: 24Z



DAM: Pride 32T

BOUNDARY 35U IN FOCUS 183A

DLD 183A 1725636 02/22/2013

EPDs / Accuracy												
BW	WW	YW	MILK	TM	CE	MCE						
+0.2	35%	+40	25%	+72	25%	+19	13%	+39	+10	21%	+10	9%

183A

Mytty In Focus
SSA 109 IN FOCUS 35U
SSAP Eileen 42P

SSAP Rain On 35R
SSA PRIDE 32T
SSAP Pride 13R [ELITE]

S A F Focus Of E R ES
Mytty Countess 906
Grandview Womack Direct
South Shadow Eileen 17F
South Shadow Rain Man 2M
South Shadow Joyce 28N
B/R New Frontier 095 ES
South Shadow Pride 41M

GEST	Actual BW	ADJ. 205	ADJ. 365	94 Day Test / Actual Weights			AOD
				Oct 18 WW	Jan 20 YW	ADG	
279	92	685	1042	780	990	2.23	6

Long spined with smooth shoulders, good heel depth and loads of hair out of a deep, feminine, good uddered cow, who raised the top-seller last year. He had a WW & YW Index of 106. His Grandam, 13R, is an Elite Dam and offers a son on page 32, Tag# 119A.

EPDs in the top: 7% BW, 7% CE, 10% MCE

SOUTH SHADOW 35U IN FOCUS 20A

SSA 20A 1725669 01/08/2013

EPDs / Accuracy												
BW	WW	YW	MILK	TM	CE	MCE						
-0.1	P%	+34	P%	+62	P%	+19	P%	+36	+11	P%	+11.5	P%

20A

Mytty In Focus
SSA 109 IN FOCUS 35U
SSAP Eileen 42P

Gardens EXT 4137 S2
SSAP AKITA 32P
Jay En Dee Pride 30D

S A F Focus Of E R ES
Mytty Countess 906
Grandview Womack Direct
South Shadow Eileen 17F
N Bar Emulation EXT ES
Green Garden Bonnie 1134 S1
Jay En Dee New Trend 14B
Jay En Dee Pride 31A

GEST	Actual BW	ADJ. 205	ADJ. 365	94 Day Test / Actual Weights			AOD
				Oct 18 WW	Jan 20 YW	ADG	
276	79	609	974	810	1025	2.29	9

Twin. Long, free moving and sound. Dam is a moderate framed, and long bodied with a perfect udder. 32P has sons working in 4 different herds.

EPDs in the top: 5% BW, 4% CE, 4% MCE



2010 32P Son: 9X



DAM: Akita 32P

BLACK ANGUS YEARLING BULLS

SOUTH SHADOW CONSENSUS 126A

SSA 126A 1725567 01/26/2013



DAM: Ruby 86X



MGD: Ruby 20S



MGGD: Ruby 12N



126A has that masculine, herd bull look to him – he is long, clean made and correct with a big loin and rump. Like all of our Consensus calves, 126A is very docile. His beautiful dam is out of the great Ruby cow family and she is sired by Density, a great female producer in his own right. The combination should take all the guess work out of producing superior replacements.

EPDs in the top: 10% WW, 7% YW, 6% Milk, 4% TM, 25% CE

EPDs / Accuracy								
BW	WW	YW	MILK	TM	CE	MCE		
+1.9	37%	+55	28%	+99	28%	+28	18%	
				+56	+6	29%	+7	15%

126A

Connealy Consensus
CONNEALY CONSENSUS 7229
Blue Lilly Of Conanga 16

S A V 004 Density 4336
SSA RUBY 86X
SSA Ruby 20S [ELITE]

KMK Alliance 6595 187
Blinda Of Conanga 004
Woodhill Admiral 77K
Blue Cash Of Conanga 6020
S A V 8180 Traveler 004
S A V May 7238
South Shadow Bando 24M
South Shadow Ruby 12N

GEST	Actual BW	ADJ. 205	ADJ. 365	94 Day Test / Actual Weights			AOD
				Oct 18 WW	Jan 20 YW	ADG	
283	90	662	1045	780	1005	2.39	3



BLACK ANGUS YEARLING BULLS

SOUTH SHADOW CONSENSUS 57A

SSA 57A 1725530 01/13/2013



DAM: Akita 31N



31N Daughter: 76X



31N Son: 27Y

Very quiet, deep bodied, with a big hip, wide top, good hair and a good big foot. His dam is also quiet, and all her daughters have excellent udders. With New Trend and Dynasty on the bottom side of his pedigree, he should be a no miss maternal bull, with good growth. Maternal Grandam is an Elite Female.

EPDs in the top: 25% WW, 25% YW, 8% MILK, 10% TM

EPDs / Accuracy												
BW	WW	YW	MILK	TM	CE	MCE						
+2.2	38%	+49	29%	+85	29%	+27	20%	+52	+5	28%	+6	16%



Connealy Consensus
CONNEALY CONSENSUS 7229
Blue Lilly Of Conanga 16

DMM Dynasty 03G
SOUTH SHADOW AKITA 31N
Jay En Dee Pride 14-89E(ELITE)

KMK Alliance 6595 187
Blinda Of Conanga 004
Woodhill Admiral 77K
Blue Cash Of Conanga 6020
Wandering CRK Dynasty JRM 2F
DMM Miss Essence 22B
Jay En Dee New Trend 14B
Jay En Dee Pride 31A

GEST	Actual BW	ADJ. 205	ADJ. 365	94 Day Test / Actual Weights			AOD
				Oct 18 WW	Jan 20 YW	ADG	
281	85	638	1030	835	1065	2.45	10



BOUNDARY CONSENSUS 84A

DLD 84A 1725626 01/18/2013



Connealy Consensus
CONNEALY CONSENSUS 7229
Blue Lilly Of Conanga 16

S A V Final Answer 0035
DLD DIAMOND MIST 29X
DLD Diamond Mist 869U

KMK Alliance 6595 187
Blinda Of Conanga 004
Woodhill Admiral 77K
Blue Cash Of Conanga 6020
Sitz Traveler 8180
S A V Emulous 8145
Woodhill Commander 143L-132N
Big Sky Diamond Mist 61R

GEST	Actual BW	ADJ. 205	ADJ. 365	94 Day Test / Actual Weights			AOD
				Oct 18 WW	Jan 20 YW	ADG	
279	88	616	982	740	955	2.29	3

Good blend of maternal and performance oriented EPDs in this bull. His Dam is a smaller framed, deep bodied, Final Answer daughter that had a great Thunder calf in last year's sale that sold to Cody & Nora Schok. 84A is moderate framed, but packs some hearty beef; he's thick topped, with a long hip and had a YW Index of 109. Looks to be easy keeping and has an excellent disposition. Maternal Great Grandam is an Elite Female.

EPDs in the top: 20% BW, 10% WW, 10% YW, 6% MILK, 4% TM 20% CE, 10% MCE



MGD: 869U



DAM: Diamond Mist 29X

BLACK ANGUS YEARLING BULLS

BOUNDARY CONSENSUS 83A

DLD 83A 1725625 01/17/2013

EPDs / Accuracy

BW	WW	YW	MILK	TM	CE	MCE
+3.2 37%	+52 28%	+94 28%	+27 18%	+53	+3 26%	+7 13%

Connealy Consensus
CONNEALY CONSENSUS 7229
 Blue Lilly Of Conanga 16

KMK Alliance 6595 187
 Blinda Of Conanga 004
 Woodhill Admiral 77K
 Blue Cash Of Conanga 6020
 C A Future Direction 5321
 South Shadow Georgina 20L
 Aberan DMM Decision 26H
 Big Sky Dyna 435

83A

SSAP Future Elixir 31R
DLD DYNA TGK 8114U
 Big Sky Dyna 295 [ELITE]

GEST	Actual BW	ADJ. 205	ADJ. 365	94 Day Test / Actual Weights			AOD
				Oct 18 WW	Jan 20 YW	ADG	
283	87	598	1024	770	1020	2.66	5

Long bodied, smooth shouldered and clean fronted bull. Another bull with good performance and maternal numbers. He also had the actual performance numbers to back it up – he Indexed 126 for YW! His dam is a nice, balanced cow, with extra length. Maternal Grandam is an Elite Female. EPDs in the top: 15% WW, 10% YW, 8% Milk, 8% TM



DAM: Dyna 114U



MGD: Dyna 295

SOUTH SHADOW FINAL PRODUCT 7A

SSA 7A 1725511 01/05/2013



DAM: Diamond 53Y



MGD: Diamond 47S



SOD: Wild Fire 96



EPDs / Accuracy

BW	WW	YW	MILK	TM	CE	MCE
+2.1 P%	+54 P%	+99 P%	+31 P%	+58	+3.5 P%	+6 P%

Connealy Product 568
CONNEALY FINAL PRODUCT
 Ebonista Of Conanga 471

G A R Retail Product
 Pride Fine Of Conanga 566
 Connealy Deep Canyon 454
 Ebonisa Of Conanga 5469
 S A V 8180 Traveler 004
 FSR Elba Special Design S406
 BT Right Time 24J
 Jay En Dee Pride 43D

7A

Ankonian Werner Wild Fire 96
SSA DIAMOND 53Y
 SSA Diamond 47S

GEST	Actual BW	ADJ. 205	ADJ. 365	94 Day Test / Actual Weights			AOD
				Oct 18 WW	Jan 20 YW	ADG	
276	90	696	1082	825	1055	2.45	2

Larger framed, deep sided, thick topped, clean fronted bull with great hair and awesome neck extension. This bull has a fabulous set of EPDs and had a 365 day Index of 116.

His Dam is a first calf heifer that is a super feminine, good uddered Wild Fire daughter. His Grandam 47S, is deep, thick, wide and easy fleshing.

EPDs in the top: 10% WW, 7% YW, 1% Milk, 2% TM

BLACK ANGUS YEARLING BULLS

SOUTH SHADOW PRODUCT 120A

SSA 120A 1764047 01/25/2013



DAM: Eileen 10S



MGD: Eileen 42P



SOD: Rain Man 2M

Long spined, clean, and correct. He has a strong, wide top and massive, round quarter. His Dam is a very stylish, easy fleshing, New Frontier daughter that is an Elite Female. She has sons working for Paul Demars and Horton Ranch. 10S is the grandam to 95A (page 7) and 63A (page 20)

EPDs in the top:
25% BW, 25% WW, 15% YW, 1% Milk, 2% TM

EPDs / Accuracy												
BW	WW	YW	MILK	TM	CE	MCE						
+1.8	37%	+50	29%	+91	29%	+33	20%	+58	+3	29%	+5	15%



Connealy Product 568
CONNEALY FINAL PRODUCT
Ebonista Of Conanga 471

South Shadow Rain Man 2M
SSA EILEEN 10S [ELITE]
SSAP Eileen 42P

G A R Retail Product
Pride Fine Of Conanga 566
Connealy Deep Canyon 454
Ebonisa Of Conanga 5469
Cudlobe Rainmaker 39K
South Shadow Diamond 13K
Grandview Womack Direct
South Shadow Eileen 17F

GEST	Actual BW	ADJ. 205	ADJ. 365	94 Day Test / Actual Weights			AOD
				Oct 18 WW	Jan 20 YW	ADG	
279	101	698	1038	875	1075	2.13	7



SOUTH SHADOW PRODUCT 106A

SSA 106A 1764048 01/22/2013



Connealy Product 568
CONNEALY FINAL PRODUCT
Ebonista Of Conanga 471

F A R Krugerrand 410H
SSAP DIAMOND 16R
South Shadow Diamond 29H

G A R Retail Product
Pride Fine Of Conanga 566
Connealy Deep Canyon 454
Ebonisa Of Conanga 5469
Krugerrand Of Donamere 490
F A R Erianna 286F
South Shadow Fortune 7F
Jay En Dee Pride 43D

EPDs / Accuracy												
BW	WW	YW	MILK	TM	CE	MCE						
+0.1	38%	+48	29%	+83	29%	+27	21%	+51	+8	28%	+10	15%

GEST	Actual BW	ADJ. 205	ADJ. 365	94 Day Test / Actual Weights			AOD
				Oct 18 WW	Jan 20 YW	ADG	
279	84	630	893	800	955	1.65	8

Lots of hair, deep bodied and quiet. Dam has great feet, is moderate framed, deep bodied and also very quiet. Grandson to an Elite Dam, 29H.

EPDs in the top: 7% BW, 8% Milk, 10% TM, 15% CE, 10% MCE



16R Son: 72Y



DAM: Diamond 16R

BLACK ANGUS YEARLING BULLS

BOUNDARY UPWARD 80A

DLD 80A 1725624 01/16/2013



DAM: Akita 904W



MGD: Akita 69T



904W Son: DLD 12Y



Comes from a moderate framed, wedge shaped Final Answer daughter, with a real good udder. She produces a top end calf every year and had the high seller two years ago going to Anhorn Angus. 80A is a real power bull with great maternal genetics behind him. He has lots of depth of body, big foot and good heel depth, with big nuts. Great performance, Indexing 114 for WW and 109 for YW.

EPDs in the top:

15% BW, 1% WW/YW/Milk/TM, 10% CE, 7% MCE

EPDs / Accuracy

BW	WW	YW	MILK	TM	CE	MCE
+1.0 37%	+66 28%	+118 29%	+33 22%	+66	+9 30%	+11 18%



Connealy Onward
SITZ UPWARD 307R
Sitz Henrietta Pride 81M

S A V Final Answer 0035
DLD AKITA 904W
DLD Akita 69T

Connealy Lead On
Altune Of Conanga 6104
Sitz Value 7097
Sitz Henrietta Pride 1370
Sitz Traveler 8180
S A V Emulous 8145
SSAP Future Elixir 31R
DLD Akita 25P

GEST	Actual BW	ADJ. 205	ADJ. 365	94 Day Test / Actual Weights			AOD
				Oct 18 WW	Jan 20 YW	ADG	
274	90	725	1091	920	1135	2.29	4

SOUTH SHADOW UPWARD 136A

SSA 136A 1725571 01/29/2013

EPDs / Accuracy

BW	WW	YW	MILK	TM	CE	MCE
+4.0 37%	+62 28%	+112 28%	+35 21%	+66	+2 28%	+5 18%



Connealy Onward
SITZ UPWARD 307R
Sitz Henrietta Pride 81M

Duff New Attraction 6110
SSA JOYCE 115X
SSAP Joyce 39R

Connealy Lead On
Altune Of Conanga 6104
Sitz Value 7097
Sitz Henrietta Pride 1370
O C C Genesis 872G
O C C Dixie Erica 814G
Vermilion Dateline 7078 ES
Jay En Dee Joyce 74E [ELITE]

GEST	Actual BW	ADJ. 205	ADJ. 365	94 Day Test / Actual Weights			AOD
				Oct 18 WW	Jan 20 YW	ADG	
283	93	739	1156	870	1115	2.61	3

Big, soggy, thick made bull with tremendous growth epds. Dam is picture perfect, moderate framed, long, feminine made female with a fantastic udder. Indexing 116 for WW and 124 for YW.

EPDs in the top: 2% WW, 1%YW/Milk/TM



DAM: Joyce 115X



115X Son: 129Z

BLACK ANGUS YEARLING BULLS



54T Son: 83Y



DAM: Akita 54T

BOUNDARY UPWARD 6A

DLD 6A 1725615 01/05/2013

EPDs / Accuracy

BW	WW	YW	MILK	TM	CE	MCE
+3.4 P%	+57 P%	+107 P%	+24 P%	+52	+4.5 P%	+7.5 P%



Connealy Onward
SITZ UPWARD 307R
Sitz Henrietta Pride 81M

B C Matrix 4132
DLD AKITA 54T
DLD Akita 38N

Connealy Lead On
Altune Of Conanga 6104
Sitz Value 7097
Sitz Henrietta Pride 1370
O C C Emblazon 854E
CAF Pure Pride EXT 99
Ankonian Elixir 100
South Shadow Akita 3H

GEST	Actual BW	ADJ. 205	ADJ. 365	94 Day Test / Actual Weights			AOD
				Oct 18 WW	Jan 20 YW	ADG	
275	68	621	1038	840	1085	2.61	6

Recommended for heifers. Another nice haired, smooth made, deep, big hipped, Upward son with good feet. The dam is an easy fleshing, deep, broody made, female. 6A had a low 68 lb BW and being Sired by Upward, we feel he should work on well grown heifers.

EPDs in the top: 8% WW, 2% YW, 20% Milk, 10% TM

SOUTH SHADOW UPWARD 72A

SSA 72A 1725540 01/15/2013

EPDs / Accuracy

BW	WW	YW	MILK	TM	CE	MCE
+3.4 37%	+56 29%	+106 29%	+32 22%	+60	+5 29%	+7 19%



Connealy Onward
SITZ UPWARD 307R
Sitz Henrietta Pride 81M

S A V Net Worth 4200
SSA ERROLLINE 908W
South Shadow Errolline 42N

Connealy Lead On
Altune Of Conanga 6104
Sitz Value 7097
Sitz Henrietta Pride 1370
S A V 8180 Traveler 004
S A V May 2410
South Shadow Pine Drive 10K
South Shadow Errolline 11F

GEST	Actual BW	ADJ. 205	ADJ. 365	94 Day Test / Actual Weights			AOD
				Oct 18 WW	Jan 20 YW	ADG	
277	92	638	1038	805	1040	2.50	4

A moderate birth weight bull with performance and a strong maternal pedigree. Dam is a larger framed, big performance female, with a great udder. YW index of 119

EPDs in the top: 9% WW, 3% YW, 1% Milk, 1% TM



908 Son: 127Y



DAM: Errolline 908W



BLACK ANGUS YEARLING BULLS

SOUTH SHADOW TOM BOY 56A

SSA 56A 1725529 01/12/2013



DAM: Errolline 17Y



MGD: Errolline 848U



SOD: Density 4336



Recommended for heifers.

He has a long strong top, deep quarter, with a smooth clean look. His dam is a feminine Density daughter with a great udder, typical of his daughters. He is a 3/4 brother to 71A, and he indexed 108 for WW and 106 for YW.

EPDs in the top: 4% BW, 2% CE, 7% MCE

EPDs / Accuracy												
BW	WW	YW	MILK	TM	CE	MCE						
-0.3	33%	+44	21%	+79	21%	+17	8%	+39	+12	23%	+11	6%



Early Sunset Tommy Boy 8W
EARLY SUNSET TOM BOY
 Early Sunset Lady Ann 110W

Figure 8 Angus Tom Boy 509R
 Early Sunset Queen 5T
 New Force Prospector 5S
 Early Sunset Lady Ann 139R
 S A V 8180 Traveler 004
 S A V May 7238
 Mytty In Focus
 SSAP Errolline 34R

S A V 004 Density 4336
SSA ERROLLINE 17Y
 SSA Errolline 848U

GEST	Actual BW	ADJ. 205	ADJ. 365	94 Day Test / Actual Weights			AOD
				Oct 18 WW	Jan 20 YW	ADG	
276	72	674	1031	790	1000	2.23	2

SOUTH SHADOW TOM BOY 71A

SSA 71A 1725539 01/15/2013

EPDs / Accuracy												
BW	WW	YW	MILK	TM	CE	MCE						
+2.2	P%	+36	P%	+59	P%	+14	P%	+32	+7	P%	+8	P%



Early Sunset Tommy Boy 8W
EARLY SUNSET TOM BOY
 Early Sunset Lady Ann 110W

Figure 8 Angus Tom Boy 509R
 Early Sunset Queen 5T
 New Force Prospector 5S
 Early Sunset Lady Ann 139R
 S A V 8180 Traveler 004
 S A V May 7238
 South Shadow Pine Drive 10K
 South Shadow Errolline 7L **[ELITE]**

S A V 004 Density 4336
SSA ERROLLINE 41Y
 SSAP Errolline 57R

GEST	Actual BW	ADJ. 205	ADJ. 365	94 Day Test / Actual Weights			AOD
				Oct 18 WW	Jan 20 YW	ADG	
280	88	657	937	765	920	1.78	2

Long, thick, and structurally sound. These Tom Boys are very sound footed with great leg structure. Dam is moderate framed, ultra feminine, with a lot of style. GGD is an elite female.

EPDs in the top: 20% CE, 25% MCE



DAM: Errolline 41Y



SOD: Density 4336

BLACK ANGUS YEARLING BULLS



MGD: Diamond 73T



DAM: Diamond 132Y

BOUNDARY TOM BOY 162A

DL D 162A 1725634 02/09/2013

EPDs / Accuracy												
BW	WW	YW	MILK	TM	CE	MCE						
+2.4	32%	+35	20%	+64	19%	+15	6%	+33	+6	21%	+10	5%



Early Sunset Tommy Boy 8W
EARLY SUNSET TOM BOY
 Early Sunset Lady Ann 110W
 SSA 4200 Network 73W
DL D DIAMOND 132Y
 SSA Diamond 73T

Figure 8 Angus Tom Boy 509R
 Early Sunset Queen 5T
 New Force Prospector 5S
 Early Sunset Lady Ann 139R
 S A V Net Worth 4200
 SSAP Joyce 18R [ELITE]
 SSAP Dateline 18P
 South Shadow Diamond 1M

GEST	Actual BW	ADJ. 205	ADJ. 365	94 Day Test / Actual Weights		AOD	
				Oct 18 WW	Jan 20 YW		ADG
287	82	644	951	680	860	1.91	2

Very square made, moderate framed bull, with a big hip, great base width and smooth shoulders. 162A comes from a long line of beautiful, pear shaped females with perfect udders.

EPDs in the top: 25% CE, 10% MCE

SOUTH SHADOW TOM BOY 63A

SSA 63A 1725533 01/13/2013

EPDs / Accuracy												
BW	WW	YW	MILK	TM	CE	MCE						
+0.5	33%	+36	21%	+74	21%	+17	8%	+35	+10	23%	+11	6%



Early Sunset Tommy Boy 8W
EARLY SUNSET TOM BOY
 Early Sunset Lady Ann 110W
 Connealy Thunder
SSA EILEEN 34Y
 SSA Eileen 10S [ELITE]

Figure 8 Angus Tom Boy 509R
 Early Sunset Queen 5T
 New Force Prospector 5S
 Early Sunset Lady Ann 139R
 Baldridge Kaboom K243 Kcf
 Parka Of Conanga 241
 South Shadow Rain Man 2M
 SSAP Eileen 42P

GEST	Actual BW	ADJ. 205	ADJ. 365	94 Day Test / Actual Weights		AOD	
				Oct 18 WW	Jan 20 YW		ADG
278	83	619	994	710	930	2.34	2

Recommended for heifers. Long, clean, thick made bull, with a small head that's typical of the Tom Boy progeny. His progeny are also very correct in their skeletal structure. Dam is a beautiful Thunder daughter and with 2M as her dam's sire he should be a sure bet heifer bull. Grand dam is 10S (120A/page 16) an elite female.

EPDs in the top: 10% BW, 7% CE, 7% MCE

SOUTH SHADOW PIONEER 17A

SSA 17A 1768466 01/07/2013

EPDs / Accuracy												
BW	WW	YW	MILK	TM	CE	MCE						
+3.8	P%	+49	P%	+85	P%	+27	P%	+51	+1	P%	+2.5	P%



S A V Final Answer 0035
S A V PIONEER 7301
 S A V Blackbird 5297
 Duff New Attraction 6110
SSA EILEEN 111X
 SSAP Eileen 42P

Sitz Traveler 8180
 S A V Emulous 8145
 Boyd New Day 8005
 S A V Blackbird 1082
 O C C Genesis 872G
 O C C Dixie Erica 814G
 Grandview Womack Direct
 South Shadow Eileen 17F

GEST	Actual BW	ADJ. 205	ADJ. 365	94 Day Test / Actual Weights		AOD	
				Oct 18 WW	Jan 20 YW		ADG
281	91	688	1122	865	1120	2.71	3

Long spined, excellent moving bull, with a bigger frame, lots of thickness and a YW Index of 129. Dam is a daughter of 42P; the mother of our walking bull 35U. If you need to increase milk production in your cows, here's the bull.

EPDs in the top: 25% WW, 25% YW, 8% Milk, 10% TM



MGD: Eileen 42P



DAM: Eileen 111X

BLACK ANGUS YEARLING BULLS

PRAIRIE PRIDE PIONEER 114A

NPP 114A 1725641 01/24/2013

EPDs / Accuracy

BW	WW	YW	MILK	TM	CE	MCE
+1.6 37%	+53 29%	+103 29%	+25 22%	+52	+6 29%	+7 18%

114A

S A V Final Answer 0035
S A V PIONEER 7301
 S A V Blackbird 5297

B/R New Frontier 095 **ES**
SSA JOYCE 18T
 SSAP Joyce 2P

Sitz Traveler 8180
 S A V Emulous 8145
 Boyd New Day 8005
 S A V Blackbird 1082
 B/R New Design 036
 White Fence Pride H1
 South Shadow Rain Man 2M
 South Shadow Joyce 17M

GEST	Actual BW	ADJ. 205	ADJ. 365	94 Day Test / Actual Weights			AOD
				Oct 18 WW	Jan 20 YW	ADG	
276	95	659	1076	830	1075	2.61	6

Larger framed with great movement, this bull indexed 124 for YW and has an excellent EPD profile. 114A should be able to cover a lot of ground and cows. His Dam has a perfect udder and is a super thick, New Frontier daughter, with a flawless phenotype.

EPDs in the top: 20% BW, 15%WW, 4% YW, 15% MILK, 10% TM, 25% CE



DAM: Joyce 18T



MGD: Joyce 2P

SOUTH SHADOW FORESIGHT 15A

SSA 15A 1725514 01/07/2013



DAM: Patsy 82S



MGD: Patsy 19J



82S Son: 69Z



EPDs / Accuracy

BW	WW	YW	MILK	TM	CE	MCE
+2.1 P%	+47 P%	+80 P%	+22 P%	+45	+4 P%	+6.5 P%

15A

Papa Forte 1921
WOODHILL FORESIGHT
 Bon View Gammer 85

South Shadow Bando 24M
SSA PATSY 82S
 South Shadow Patsy 19J

Papa Optima 9818
 Papa Envious Blackbird 8832
 Bon View Bando 598
 Bon View Gammer 233
 S A F 598 Bando 5175 **ES**
 Jay En Dee Georgina 27G
 TC Bonus
 Jay En Dee Patsy 13-90E

GEST	Actual BW	ADJ. 205	ADJ. 365	94 Day Test / Actual Weights			AOD
				Oct 18 WW	Jan 20 YW	ADG	
276	100	656	1073	870	1115	2.61	7

Bigger framed bull, free moving, long, deep bull with a 365 day Index of 124. Dam is super feminine Bando 24M daughter with lots of milk. Foresight produces good growth and is known for his very productive females.

BLACK ANGUS YEARLING BULLS

SOUTH SHADOW FORESIGHT 8A

SSA 8A 1725512 01/05/2013

EPDs / Accuracy						
BW	WW	YW	MILK	TM	CE	MCE
+4.0 P%	+48 P%	+84 P%	+25 P%	+49	+3.5 P%	+5 P%



Papa Forte 1921
WOODHILL FORESIGHT
 Bon View Gammer 85

F V 20K King 308M
SSA AKITA 76X
 South Shadow Akita 31N

Papa Optima 9818
 Papa Envious Blackbird 8832
 Bon View Bando 598
 Bon View Gammer 233
 Rafter S Ronan Tex 20K
 Queen 362E
 DMM Dynasty 03G
 Jay En Dee Pride 14-89E [ELITE]

GEST	Actual BW	ADJ. 205	ADJ. 365	94 Day Test / Actual Weights			AOD
				Oct 18 WW	Jan 20 YW	ADG	
276	81	706	978	900	1060	1.70	3

Long, deep, good haired, stylish bull. His dam is a moderate framed King daughter with an excellent udder. She produced one of our top-selling heifer bulls last year, going to Tony & Carolyn Leistmeister. EPDs in the top: 15% Milk, 15% TM



76X Son: 98Z



DAM: Akita 76X

SOUTH SHADOW 92U FREEDOM 201A

SSA 201A 1725599 03/08/2013

EPDs / Accuracy						
BW	WW	YW	MILK	TM	CE	MCE
+2.7 35%	+37 25%	+42 24%	+18 14%	+37	+4 19%	+9 10%



TC Freedom 104
SSA 104 FREEDOM 92U
 South Shadow Akita 21L

South Shadow Over Drive 27J
SOUTH SHADOW RUBY 63L
 Early Sunset Ruby 54G

Connealy Forefront
 T C Ruby 9095
 Whitestone Widespread Mb
 South Shadow Akita 7G
 Pine Drive Big Sky
 Jay En Dee Joyce 74E [ELITE]
 Early Sunset Hightime 113D
 Early Sunset Ruby 44D

GEST	Actual BW	ADJ. 205	ADJ. 365	94 Day Test / Actual Weights			AOD
				Oct 18 WW	Jan 20 YW	ADG	
-	98	754	949	785	900	1.22	12

A younger, March calf, 201A is very impressive. He is wide topped, soft made, with loads of base width, muscle, and great spring of rib. He had a WW Index of 117 and like most of the 92U progeny, 201A is also very quiet. Dam is deep sided, wide, and easy fleshing. She has probably had the biggest positive impact on our herd on the female end. EPDs in the top: 15% MCE



63L Daughter: 97X



DAM: Ruby 63L

Notes

Yearling Angus bulls continue on page 31







Every Barn Needs A Little Paint Prospects For Sale

FRECKLE FACE SMOKE

SMOOTH SIR

*2x NRCHA Futurity Champion
Son of NRCHA Hall of Famer*

SSAP COWBOYIZM

*Dynamite On A Cow!
Son of NCHA Hall of Famer*

Son of Mr Parteebuilt

PAGE MR STAR BUCKS

MR PARTEEBUILT

FQHR Foundation Bred

*Son of World Champion
The Foundation of our Mares*

For more than 25 years we have been shaping up an APHA breeding herd and raising all-a-round, versatile, performance horses for the ranch and for the arena. The ranch-raised weanlings, yearlings and riding horses are valued by their new owners and excel in all areas of the equine industry.

*Inquire today about the horses we currently have for sale
[www. PaintHorses.ca](http://www.PaintHorses.ca)*

BLACK ANGUS TWO YEAR OLD BULLS

BEAR CREEK ANGUS

Chad and Nikki Weiss

Home (306) 558-0011
cell (306) 662-7060
Maple Creek, SK
www.bearcreekangus.ca



First off, I would like to thank Uncle Donald and Aunty Connie for letting me join their sale again. We've seen a drastic change in cattle prices lately with swings in grain prices, but raising cattle still hasn't changed and neither has my program.

These bulls are bred for functionality first and foremost with strict attention paid to feed, udders, and fertility. My program remains calving in April and to ensure maturity, retaining the bulls until two-year olds. As calves, they are wintered on a growing ration then turned out on grass in the middle of April.

They are brought in at the end of December and fed tub-ground hay and screening pellets. Vaccinated with 7-way containing Haemophilous; IBR/PI3/IBR, they've also received magnets and this spring were vaccinated with fusogard (the footrot preventative) shot. They are ready to go to work.

I'm very proud to offer these bulls and hope everyone will find what they are searching for in their next sire. Please do not hesitate to call or stop by the ranch to view the bulls and our program. Our website: www.bearcreekangus.ca also hosts pictures of the sires and many of the dams. Hopefully we'll see you at the sale.

Bear Creek Reference Sires



SSA 4336 DENSITY 26T

Purchased from the Delormes, enough good cannot be said about the influence 26T has left upon our herd. Year after year he has produced a consistent crop of bulls and heifers, most of the time out-producing popular A.I. sires. I believe anyone can appreciate the long-spined, naturally muscling cattle with no flaws that he produces.



JL MULTIPLE COPY 0096

Purchased from Johnson Livestock, 96X has since crippled himself, but was an amazing breeder when sound. Johnson's have probably sold more Carbon Copy bulls then any other progeny and 96X has produced good, high-performing cattle for us.



CONNELY CONSENSUS 7229

7229 has an excellent spread between BW and W/W, the calves always gaining well. They're full of hair and this year we have our first daughters milking and they're excellent. Beautiful phenotypically with correct udders and leg structure. If you're looking for maternal power, this bull has those qualities while not sacrificing the weight on sale day.

Bear Creek Density 365Z

WBA 365Z 1668912 04/09/2012

EPDS / Accuracy

BW	WW	YW	MILK	TM	CE	MCE
+1.6 34%	+41 24%	+81 21%	+13 13%	+34	+6.0 19%	+6.0 9%

S A V 004 Density 4336
SSA 4336 DENSITY 26T
South Shadow Ruby 12N

MVF Heads Up 029M
MVF MISS QUALITY 365R
MVF Miss Quality 30N

S A V 8180 TRAVELER 004
S A V MAY 7238
CUDLOBE RAINMAKER 39K
SOUTH SHADOW RUBY 63L
Angus Acres Heads Up 31D
MVF Tibbie 10G
Bon View New Design 878
BxB Lady Wonder 347L

Actual BW	ADJ. 205	ADJ. 365	AOD
86	634	1203	7



The best naturally muscled bull on offer, has a lot to offer any program with good feet, a wide-top, and a good-hip. His mother was a gorgeous cow that unfortunately hurt herself and had to be sold.

Two Year Old



Bear Creek Xerox 15Z

WBA 15Z 1668928 04/15/2012

EPDs / Accuracy

BW	WW	YW	MILK	TM	CE	MCE
+5.0 32%	+51 20%	+89 19%	+22 10%	+48	-2.0 16%	+2.0 6%



S A V Carbon Copy 7664
JL MULTIPLE COPY 0096
 Gbt Lola 29P

SSA 4336 Density 26T
WBA EUGENIE 15W
 Young Dale Eugenie 96P

S A V 8180 Traveler 004
 S A V Blackcap May 4546
 B.B.A.R Hero 1267
 MFA Lola 76G
 S A V 004 Density 4336
 South Shadow Ruby 12N
 AJC H A F Traveler 01L
 Double J Eugenie 208L

Actual BW	ADJ. 205	ADJ. 365	AOD
91	656	1163	3

Another Tank of a bull from a beautiful 26T daughter from our 96P cow. I can't say enough good things about this cow family.

Two Year Old



Bear Creek Density 350Z

CBW 350Z 1668942 04/22/2012

EPDs / Accuracy

BW	WW	YW	MILK	TM	CE	MCE
+2.9 34%	+44 24%	+81 16%	+13 13%	+35	+0.0 19%	+3.0 9%



S A V 004 Density 4336
SSA 4336 DENSITY 26T
 South Shadow Ruby 12N

Remington Spartan 93R
LLB ELINE ERICA 350W
 Erica Of Tullamore 3H

S A V 8180 Traveler 004
 S A V May 7238
 Cudlobe Rainmaker 39K
 South Shadow Ruby 63L
 Angus Acres Spartan 160L
 Lazy J Royal Lady 60G
 Westwind Rito 8503 D J H 019
 Angus Hills Eline Erica 3A

Actual BW	ADJ. 205	ADJ. 365	AOD
86	671	1078	3

A moderate, very well put together 26T son. I think this bull will go out and produce gorgeous females.

Two Year Old



Bear Creek Xerox 2Z

CBW 2Z 1668938 03/28/2012

EPDs / Accuracy

BW	WW	YW	MILK	TM	CE	MCE
+3.0 32%	+57 21%	+95 19%	+20 11%	+49	+4.0 19%	+6.0 8%



S A V Carbon Copy 7664
JL MULTIPLE COPY 0096
 Gbt Lola 29P

S A V 004 Density 4336
ROCK CREEK PRIDE 2W
 Rock Creek Black Pride 2W

S A V 8180 Traveler 004
 S A V Blackcap May 4546
 B.B.A.R Hero 1267
 Mfa Lola 76G
 S A V 8180 Traveler 004
 S A V MAY 7238
 Boyd New Day 8005
 Rock Creek Ms Pride 12R

Actual BW	ADJ. 205	ADJ. 365	AOD
89	690	1183	3

One of my favourite's as a calf, this bull comes from a moderate-framed density cow and posted an actual weight of 700 lbs at weaning.

Two Year Old



Bear Creek Consensus 796Z

CBW 796Z 1668944 03/19/2012

EPDs / Accuracy

BW	WW	YW	MILK	TM	CE	MCE
+1.3 P%	+54 P%	+88 P%	+24 P%	+50	+7.5 P%	+8.5 P%



Connealy Consensus
CONNEALY CONSENSUS 7229
Blue Lilly Of Conanga 16

Figure 8 Angus Tom Boy 509R
LLB LASSIE 796W
LLB Lassie 487R

Kmk Alliance 6595 I87
Blinda Of Conanga 004
Woodhill Admiral 77K
Blue Cash Of Conanga 6020
Adelphi Tom Boy 20H
Figure 8 Angus Lady 604J
LLB New Frontier 95N
LLB Lassie 209N

Actual BW	ADJ. 205	ADJ. 365	AOD
60	658	1157	3

One of the thickest Consensus sons you'll find. He's a good-footed, powerful bull, who is also a twin.

Two Year Old



Bear Creek Consensus 393Z

WBA 393Z 1668918 03/21/2012

EPDs / Accuracy

BW	WW	YW	MILK	TM	CE	MCE
+1.8 35%	+62 27%	+96 25%	+28 19%	+59	+4.0 27%	+8.0 15%



Connealy Consensus
CONNEALY CONSENSUS 7229
Blue Lilly Of Conanga 16

MVF Widespread 273P
MVF TIBBIE 393T
MVF Tibbie 877P

Kmk Alliance 6595 I87
Blinda Of Conanga 004
Woodhill Admiral 77K
Blue Cash Of Conanga 6020
Western Widespread 1L
MVF Ellen 111J
S A F 598 Bando 5175
MVF Tibbie 68K

Actual BW	ADJ. 205	ADJ. 365	AOD
80	729	1180	5

A well built Consensus son. Eye-appealing with lots of growth.

Two Year Old



Bear Creek Density 75Z

WBA 75Z 1668919 04/17/2012

EPDs / Accuracy

BW	WW	YW	MILK	TM	CE	MCE
+3.9 33%	+38 22%	+69 21%	+12 12%	+31	+1.0 18%	+2.0 7%



S A V 004 Density 4336
SSA 4336 DENSITY 26T
South Shadow Ruby 12N

Duralta 429M Time Zone 30R
BEAR CREEK LAVENDER LADY 756T
Ebon Hill Lavender Lady 356'03

S A V 8180 Traveler 004
S A V May 7238
Cudlobe Rainmaker 39K
South Shadow Ruby 63L
KBJ Conquer 429M
Freyburn Lady 7L
Ebon Hill Black Power 41'99
Ebon Hill Lavender Lady 256'97

Actual BW	ADJ. 205	ADJ. 365	AOD
91	612	1105	5

Study the 26T's well. They offer unparalleled consistency, performance, and functionality; and this bull is no exception with a tidy head, lots of length and thickness.

Two Year Old



BLACK ANGUS TWO YEAR OLD BULLS

Bear Creek Density 5Z

CBW 5Z 1668935 04/09/2012

EPDs / Accuracy

BW	WW	YW	MILK	TM	CE	MCE
+3.4 34%	+37 23%	+66 22%	+15 13%	+34	-2.0 18%	+1.0 7%



S A V 004 Density 4336
SSA 4336 DENSITY 26T
 South Shadow Ruby 12N

Duralta 429M Time Zone 30R
CBW BLACKBIRD 5U
 Callamere Blackbird 56R

S A V 8180 TRAVELER 004
 S A V MAY 7238
 CUDLOBE RAINMAKER 39K
 SOUTH SHADOW RUBY 63L
 KBJ Conquer 429M
 Freyburn Lady 7L
 Bell 2164 Stockman 9K
 Callamere Blackbird 35K

Actual BW	ADJ. 205	ADJ. 365	AOD
94	611	1049	4

Much like 75Z, this bull is put together correctly with meat, correct leg structure, and length of spine. Mother is a red-gene carrier and I will have results on this bull to whether he carries the gene by sale day.

Two Year Old



Bear Creek Density 16Z

WBA 16Z 1668913 04/05/2012

EPDs / Accuracy

BW	WW	YW	MILK	TM	CE	MCE
+1.3 33%	+44 23%	+73 22%	+18 13%	+40	+5.0 18%	+5.0 9%



S A V 004 Density 4336
SSA 4336 DENSITY 26T
 South Shadow Ruby 12N

Crescent Creek Chief 47N
BEAR CREEK JENNIFER 16'06
 Finell Jennifer Rito 16N

S A V 8180 Traveler 004
 S A V May 7238
 Cudlobe Rainmaker 39K
 South Shadow Ruby 63L
 Dwajo Chief 92E
 Crescent Creek Lass 11E
 Hollbrook Rito 12J
 Finell Tex Jennifer 4K

Actual BW	ADJ. 205	ADJ. 365	AOD
83	700	1170	6

Lots of growth and performance, this bull is correct and eye-appealing.

Two Year Old



Bear Creek Density 26Z

WBA 26Z 1668909 04/16/2012

EPDs / Accuracy

BW	WW	YW	MILK	TM	CE	MCE
+3.7 35%	+37 24%	+65 23%	+11 14%	+30	-1.0 18%	+0.0 8%



S A V 004 Density 4336
SSA 4336 DENSITY 26T
 South Shadow Ruby 12N

Double AA Blackman 267'98
CALLAMERE ROSEGAY 26P
 Callamere Rosegay 59F

S A V 8180 Traveler 004
 S A V May 7238
 Cudlobe Rainmaker 39K
 South Shadow Ruby 63L
 Double AA Blackman 24'93
 Double AA Annie K 562'91
 Callamere Stockman 2D
 Callamere Rosegay 25X

Actual BW	ADJ. 205	ADJ. 365	AOD
97	623	1102	8

Powerful, with more performance and length, this bull has several full sisters working in our herd that are beautiful cows. Mother is a red-gene carrier and I will have results by sale day.

Two Year Old



BLACK ANGUS YEARLING BULLS

SOUTH SHADOW IN FOCUS 37A

SSA 37A 1725522 01/10/2013



DAM: Errolline 31Y



MGD: Errolline 7L



SOD: Bob 7003



EPDs / Accuracy						
BW	WW	YW	MILK	TM	CE	MCE
+1.3 P%	+52 P%	+87 P%	+29 P%	+55	+8 P%	+9 P%

Recommended for heifers.

Big nuts, lots of hair, full girth, with big volume, the kind that keeps drawing your eye. 37A should produce easy fleshing progeny. Maternal Grandam is an Elite Female bringing 134A [page 40] to town this year.



S A F Focus Of E R **ES**
MYTTY IN FOCUS
 Mytty Countess 906

S A F Fame
 G D A R Forever Lady 246
 Sitz Alliance 6595 **ES**
 Baldridge Countess 357
 Hoff Insignia 697 224
 Hoff Blackbird S C 244 939
 Bon View New Design 878 **ES**
 South Shadow Errolline 42J

Salt Creek Bob 7003
SSA ERROLLINE 31Y
 South Shadow Errolline 7L **ELITE**

EPDs in the top:

15% BW, 15% WW, 20% YW, 4% Milk, 5% TM, 15% CE/MCE

GEST	Actual BW	ADJ. 205	ADJ. 365	94 Day Test / Actual Weights			AOD
				Oct 18 WW	Jan 20 YW	ADG	
277	67	645	1005	750	965	2.29	2

BRED HEIFERS FOR SALE

Our Fall Offering of 10 - 20 Bred Heifers ~ by Private Treaty

Relatively new to our program are the F1 crossbred Black Simmental/Angus Heifers. In the fall of 2012 we offered our first set of bred Black F1 Heifers. These heifers were the top-cut from our home-raised group. The remaining crossbreds sell as open yearlings in the spring with the straightbred Black Angus replacement heifers. Depending on the 2014 grass conditions, a group of purebred Black Angus bred females may also be offered in the fall.

These are a fantastic set of females, definitely the front pasture type!



BLACK ANGUS YEARLING BULLS

SOUTH SHADOW BISMARCK 119A

SSA 119A 1725564 01/25/2013



DAM: Pride 13R



13R Daughter: 99X



13R Daughter: 32T

Recommended for heifers.

Proud, free moving, with tremendous body shape and muscling, 119A had a 365 day Index of 126. He is a sound, good footed bull that will sire tremendous females. 13R is a moderate framed, great uddered, highly productive, Elite Female. 13R's Dam (41M) plus the daughter (32T) offer herd sire prospects in tag's # 43A and 183A (pages 11 & 12 respectively).

EPDs in the top: 4% BW, 1% CE, 1% MCE

EPDs / Accuracy												
BW	WW	YW	MILK	TM	CE	MCE						
-0.4	38%	+44	29%	+81	30%	+22	23%	+44	+13	29%	+13	19%



G A R Grid Maker
S A V BISMARCK 5682
 S A V Abigale 0451

B/R New Frontier 095 **ES**
SSAP PRIDE 13R [ELITE]
 South Shadow Pride 41M

G D A R Traveler 044
 G A R Precision 2536
 Schoenes Fix It 826
 S A V Abigale 6062
 B/R New Design 036
 White Fence Pride H1
 South Shadow Pine Drive 10K
 Jay En Dee Pride 62G

GEST	Actual BW	ADJ. 205	ADJ. 365	94 Day Test / Actual Weights		AOD	
				Oct 18 WW	Jan 20 YW		
282	84	620	1046	780	1030	2.66	8



Jr. Herd Sire
SSA 68S Right Way 134X



BLACK ANGUS YEARLING BULLS

SOUTH SHADOW THUNDER 73A

SSA 73A 1725541 01/16/2013

EPDs / Accuracy

BW	WW	YW	MILK	TM	CE	MCE	
0.0	38%	+33 29%	+75 29%	+25 22%	+42	+10 29%	+10 18%

73A

Baldridge Kaboom K243 Kcf
CONNEALY THUNDER
Parka Of Conanga 241

South Shadow Rain Man 2M
SSA JOYCE 77T
South Shadow Joyce 28N

Jauer 353 Traveler 589 27
Pleasant Of Conanga 736
Bon View Bando 598
Partina Of Conanga 6237
Cudlobe Rainmaker 39K
South Shadow Diamond 13K
Bon View New Design 878 ES
Jay En Dee Joyce 32G

GEST	Actual BW	ADJ. 205	ADJ. 365	94 Day Test / Actual Weights			AOD
				Oct 18 WW	Jan 20 YW	ADG	
278	96	621	1029	800	1040	2.55	6

A moderate, smooth, well made, balanced bull with a small head and good performance, Indexing 121 for YW. His Dam is a feminine, heavy milking Rain Man daughter that had the high seller in our 2010 sale going to Pahl Livestock.

EPDs in the top: 6% BW, 15% MILK, 7% CE, 10% MCE



DAM: Joyce 77T



MGD: Joyce 28N

SOUTH SHADOW THUNDER 34A

SSA 34A 1725521 01/10/2013

EPDs / Accuracy

BW	WW	YW	MILK	TM	CE	MCE	
-2.1	P%	+35 P%	+73 P%	+27 P%	+45	+13 P%	+11.5 P%

34A

Baldridge Kaboom K243 Kcf
CONNEALY THUNDER
Parka Of Conanga 241

South Shadow Rain Man 2M
SSAP EILEEN 20R
South Shadow Eileen 30N

Jauer 353 Traveler 589 27
Pleasant Of Conanga 736
Bon View Bando 598
Partina Of Conanga 6237
Cudlobe Rainmaker 39K
South Shadow Diamond 13K
Cudlobe Rainmaker 39K
South Shadow Eileen 36L

GEST	Actual BW	ADJ. 205	ADJ. 365	94 Day Test / Actual Weights			AOD
				Oct 18 WW	Jan 20 YW	ADG	
277	82	617	966	815	1020	2.18	8

Recommended for heifers.

Docile, long, stretchy bull, built to calve easy. Dam is a double bred Rainmaker daughter who has always had smaller birth weight calves.

EPDs in the top: 1% BW, 8% MILK, 1% CE, 4% MCE



DAM: Eileen 20R



MGD: Eileen 30N



SOUTH SHADOW CONSENSUS 112A

SSA 112A 1725560 01/23/2013



DAM: Ruby 33R



MGD: Ruby 63L



SOD: New Frontier

Recommended for heifers.

This quiet fella is moderate framed, with great leg and foot structure. He also has loads of base width, muscle and depth of body. His Dam is one of those great Ruby cows. She is a big, deep ribbed, perfect uddered, easy fleshing, New Frontier daughter. His Grandam, 63L, has had the greatest impact on our cow herd, producing exceptional daughters and herdsires. As you go through the sale listing, you will see a lot of Ruby cows. They are good footed and super uddered girls.

EPDs in the top: 10% BW, 15% Milk, 20% TM, 10% CE, 7% MCE

EPDs / Accuracy												
BW	WW	YW	MILK	TM	CE	MCE						
+0.6	38%	+45	29%	+78	29%	+25	20%	+48	+9	29%	+11	16%



Connealy Consensus
CONNEALY CONSENSUS 7229
Blue Lilly Of Conanga 16

B/R New Frontier 095 **ES**
SSAP RUBY 33R
South Shadow Ruby 63L

KMK Alliance 6595 I87
Blinda Of Conanga 004
Woodhill Admiral 77K
Blue Cash Of Conanga 6020
B/R New Design 036
White Fence Pride H1
South Shadow Over Drive 27J
Early Sunset Ruby 54G

GEST	Actual BW	ADJ. 205	ADJ. 365	94 Day Test / Actual Weights			AOD
				Oct 18 WW	Jan 20 YW	ADG	
278	81	577	909	730	925	2.07	8



SOUTH SHADOW CONSENSUS 101A

SSA 101A 1725553 01/20/2013



Connealy Consensus
CONNEALY CONSENSUS 7229
Blue Lilly Of Conanga 16

B/R New Frontier 095 **ES**
SSAP JOYCE 18R [ELITE]
South Shadow Joyce 25K[ELITE]

KMK Alliance 6595 I87
Blinda Of Conanga 004
Woodhill Admiral 77K
Blue Cash Of Conanga 6020
B/R New Design 036
White Fence Pride H1
E&B 1483 Scotchman 543
South Shadow Joyce 9F

EPDs / Accuracy												
BW	WW	YW	MILK	TM	CE	MCE						
+1.7	38%	+56	29%	+96	30%	+27	20%	+55	+6	29%	+10	16%

GEST	Actual BW	ADJ. 205	ADJ. 365	94 Day Test / Actual Weights			AOD
				Oct 18 WW	Jan 20 YW	ADG	
279	91	711	1068	910	1120	2.23	8

Bigger framed, super deep with great hair. Dam is deep bodied and always brings home the good ones. Her 2011 son was the high seller going to Bill Armstrong, and she has two sons walking our pastures. 101A's Dam, 18R, and Grandam 25K are both Elite females.

EPDs in the top: 25% BW, 9% WW, 10% YW, 8% MILK, 5% TM, 25% CE, 10% MCE



18R Son: 73W



DAM: Joyce 18R

BLACK ANGUS YEARLING BULLS

SOUTH SHADOW CONSENSUS 88A

SSA 88A 1725548 01/19/2013

EPDs / Accuracy

BW	WW	YW	MILK	TM	CE	MCE						
-2.0	38%	+52	29%	+86	29%	+30	21%	+56	+12	29%	+11	15%

Connealy Consensus
CONNEALY CONSENSUS 7229
 Blue Lilly Of Conanga 16

KMK Alliance 6595 187
 Blinda Of Conanga 004
 Woodhill Admiral 77K
 Blue Cash Of Conanga 6020
 Stevenson Rainmaker 630G **ES**
 Cudlobe Kyma 18H
 South Shadow Over Drive 27J
 Early Sunset Ruby 54G

88A

Cudlobe Rainmaker 39K
SOUTH SHADOW RUBY 12N
 South Shadow Ruby 63L

GEST	Actual BW	ADJ. 205	ADJ. 365	94 Day Test / Actual Weights			AOD
				Oct 18 WW	Jan 20 YW	ADG	
277	75	682	980	880	1055	1.86	10

Recommended for heifers. Smooth, clean made bull, with a very long hip and a couple of extra ribs and awesome feet. 12N sired the high selling bull in 2008, going to Bear Creek Angus and her daughters are exceptionally beautiful.

EPDs in the top: 1% BW, 15% WW, 25% YW, 2% Milk, 4% TM, 2% CE, 7% MCE



DAM: Ruby 12N



12N Daughter: 20S

SOUTH SHADOW UPWARD 139A

SSA 139A 1725573 01/30/2013



DAM: Errolline 10T



10T Son: 88Y



SOD: New Frontier



EPDs / Accuracy												
BW	WW	YW	MILK	TM	CE	MCE						
+1.8	37%	+54	28%	+94	28%	+31	22%	+58	+8	29%	+10	19%

Connealy Onward
SITZ UPWARD 307R
 Sitz Henrietta Pride 81M

Connealy Lead On
 Altune Of Conanga 6104
 Sitz Value 7097
 Sitz Henrietta Pride 1370
 B/R New Design 036 **ES**
 White Fence Pride HI
 South Shadow Fortune 7F
 South Shadow Errolline 14F

139A

B/R New Frontier 095 **ES**
SSA ERROLLINE 10T (ELITE)
 South Shadow Errolline 19H

GEST	Actual BW	ADJ. 205	ADJ. 365	94 Day Test / Actual Weights			AOD
				Oct 18 WW	Jan 20 YW	ADG	
285	89	675	973	835	1010	1.86	6

A long bodied, square hipped, big round butt bull with a thick top. Loads of hair, a good, big foot with lots of heel. His dam is a very special, easy fleshing New Frontier daughter who is an elite female. Indexing 105 for WW.

EPDs in the top: 25% BW, 10% WW, 10% YW, 1% MILK, 2% TM, 15% CE, 10% MCE

BLACK ANGUS YEARLING BULLS

BOUNDARY UPWARD 76A

DLD 76A 1725623 01/16/2013



DAM: 869U



MGD: 61R



MGGD: 350N

Recommended for heifers.

Top 8 percent or better for all measurable traits. 76A is smooth shouldered and hairy, with a huge hip, big foot and awesome disposition. His Dam is a moderate framed tank that is very easy keeping and also loves a scratch. Heifer bull with a short gestation of 272.

EPDs in the top: 7% BW, 8% WW, 3% YW, 2% Milk, 1% TM, 4% CE, 1% MCE

EPDs / Accuracy												
BW	WW	YW	MILK	TM	CE	MCE						
+0.1	37%	+57	28%	+105	28%	+30	21%	+59	+11	28%	+13	17%



Connealy Onward
SITZ UPWARD 307R
Sitz Henrietta Pride 81M

Woodhill Commander 143L-132N
DLD DIAMOND MIST 869U
Big Sky Diamond Mist 61R

Connealy Lead On
Altune Of Conanga 6104
Sitz Value 7097
Sitz Henrietta Pride 1370
Woodhill Admiral 77K
Woodhill Erica 1167-143L
Big Sky Travel On 344
Big Sky Diamond Mist 350 **ELITE**

GEST	Actual	ADJ.	ADJ.	94 Day Test / Actual Weights			AOD
	BW	205	365	Oct 18 WW	Jan 20 YW	ADG	
272	74	615	1015	800	1035	2.50	5

SOUTH SHADOW UPWARD 53A

SSA 53A 1725527 01/12/2013



Connealy Onward
SITZ UPWARD 307R
Sitz Henrietta Pride 81M

S A V Final Answer 0035
SSA ERROLLINE 921W
SSAP Errolline 1R

Connealy Lead On
Altune Of Conanga 6104
Sitz Value 7097
Sitz Henrietta Pride 1370
Sitz Traveler 8180
S A V Emulous 8145
F A R Krugerrand 410H
South Shadow Errolline 11F

GEST	Actual	ADJ.	ADJ.	94 Day Test / Actual Weights			AOD
	BW	205	365	Oct 18 WW	Jan 20 YW	ADG	
276	90	598	990	760	990	2.45	4

Moderate framed, square hipped, long spined with a nice small head. Dam is a smaller framed, Final Answer daughter that produced our high selling bull in our 2012 sale. He also had a YW index of 116.

EPDs in the top: 10% BW, 9% WW, 2% YW, 4% Milk, 3% TM, 7% CE/MCE



MGD: Errolline 1R



DAM: Errolline 921W

SOUTH SHADOW 35U IN FOCUS 173A

SSA 173A 1725586 02/12/2013



DAM: Eileen 49R



At 15 Yrs

MGD: Eileen 36D



49R Son: 48Y



Recommended for heifers.

Proud looking, nice headed bull, with smooth shoulders, and a clean front-end. Eileen 36D can be found top and bottom side of his pedigree, who produced to 18 years of age. His Dam is a sweet made, super uddered female that produced the high selling bull in our 2008 sale to FR Angus and our 4th high seller to Cory Richardson in 2012.

EPDs in the top: 10% BW, 7% CE, 1% MCE

EPDs / Accuracy							
BW	WW	YW	MILK	TM	CE	MCE	
+0.7 P%	+37 P%	+62 P%	+19 P%	+37	+10 P%	+12.5 P%	



Mytty In Focus
SSA 109 IN FOCUS 35U
SSAP Eileen 42P

B/R New Frontier 095 ES
SSAP EILEEN 49R
Jay En Dee Eileen 36D

S A F Focus Of E R ES
Mytty Countess 906
Grandview Womack Direct
South Shadow Eileen 17F
B/R New Design 036
White Fence Pride H1
Jay En Dee New Trend 14B
Jay En Dee Eileen 73P

GEST	Actual BW	ADJ. 205	ADJ. 365	94 Day Test / Actual Weights		AOD
				Oct 18 WW	Jan 20 YW	
283	82	611	998	735	950	2.42 8

COMMERCIAL REPLACEMENT HEIFERS

From the Delorme and Wardberg commercial herds is the 28th Annual offering of 80 Black yearling heifers.

Straight Bred Black Angus & Black Simmental/Angus

Contact us for the sale details



The Black Cow 'is' our commercial herd and has been since 1948, when Grandpa (Ole) Wardberg brought the first to this area. Yes, a few colored ones have come and gone through the second and third generations of the family, but we seem to get along best with the Blacks ~ the type of cattle that are sympathetic to our environmental and industry challenges. In April you'll have the opportunity to purchase from 80 home-grown Black replacement heifers. This will be our 28th annual offering of *straight-bred Angus* females, all sired by home-raised bulls. 2014 marks the 4th annual offering of the *F1 crossbred Black Simmental/Angus Heifers*. These are also sired by home-raised bulls from Darby and Sarah's purebred Simmental herd. Half of the commercial herd are bred to Black Angus sires, the other half, Black Simmental sires. *Packaged in groups of 10 or more per breed sire.* Photos of the Sires, Dams and Heifers are available on our ranch web site.

These fancy heifers will equally represent the two breed sire groups.

BLACK ANGUS YEARLING BULLS

KAY DEE 35U IN FOCUS 165A

KD 165A 1725614 02/11/2013



MGD: Eileen 992W



MGD: Eileen 2N



SOD: Rain On 35R

Recommended for heifers.

Really smooth and clean made, with a nice small head, this bull should calve easy. Another bull that has Eileen 36D top and bottom side of his pedigree. His Dam is a daughter of 2N; also the dam of our Walking Herdsire 134X.

EPDs in the top: 2% BW, 2% CE, 3% MCE

EPDs / Accuracy												
BW	WW	YW	MILK	TM	CE	MCE						
-0.9	35%	+36	24%	+65	25%	+21	12%	+39	+12	21%	+12	9%



Mytty In Focus
SSA 109 IN FOCUS 35U
SSAP Eileen 42P

SSAP Rain On 35R
SSA EILEEN 992W
South Shadow Eileen 2N

S A F Focus Of E R **ES**
Mytty Countess 906
Grandview Womack Direct
South Shadow Eileen 17F
South Shadow Rain Man 2M
South Shadow Joyce 28N
Sitz Alliance 6595 **ES**
Jay En Dee Eileen 36D

GEST	Actual BW	ADJ. 205	ADJ. 365	94 Day Test / Actual Weights			AOD
				Oct 18 WW	Jan 20 YW	ADG	
282	82	648	988	750	950	2.13	4



BLACK ANGUS YEARLING BULLS

SOUTH SHADOW 35U IN FOCUS 192A

SSA 192A 1725594 03/01/2013

EPDs / Accuracy

BW	WW	YW	MILK	TM	CE	MCE
+3.7 35%	+45 25%	+73 25%	+16 14%	+39	+3 23%	+8 10%

192A

Mytty In Focus
SSA 109 IN FOCUS 35U
SSAP Eileen 42P

B/R New Frontier 095 ES
SSA DIAMOND 44T
SSAP Diamond 38P

S A F Focus Of E R ES
Mytty Countess 906
Grandview Womack Direct
South Shadow Eileen 17F
B/R New Design 036
White Fence Pride H1
F A R Krugerrand 410H
Jay En Dee Pride 29-7G

GEST	Actual BW	ADJ. 205	ADJ. 365	94 Day Test / Actual Weights			AOD
				Oct 18 WW	Jan 20 YW	ADG	
-	100	641	854	710	835	1.33	6

Long, correct, smooth shouldered bull. His Dam is a powerful cow with a great udder.

EPDs in the top: 25% MCE



DAM: Diamond 44T



44T Son: 77X

SOUTH SHADOW ROLE MODEL 64A

SSA 64A 1764050 01/14/2013

EPDs / Accuracy

BW	WW	YW	MILK	TM	CE	MCE
+1.2 37%	+48 27%	+89 26%	+23 13%	+47	+8 26%	+8 10%

64A

Connealy Packer 547
WILL ROLE MODEL
Will Henrietta Pride 113A

S A V Net Worth 4200
SSA DIAMOND 909W
South Shadow Diamond 9J

Feltons Meat Packer 62
Bestrelle Of Conanga 539
V D A R Lucys Boy
Sitz Henrietta Pride 1209
S A V 8180 Traveler 004
S A V May 2410
Q A S Traveler 23-4
Jay En Dee Pride 55G

GEST	Actual BW	ADJ. 205	ADJ. 365	94 Day Test / Actual Weights			AOD
				Oct 18 WW	Jan 20 YW	ADG	
275	89	679	1045	865	1080	2.29	4

Tremendous depth, thickness, rib shape, and deep flanked. WW Index of 106, YW Index of 109. Dam is a moderate framed, easy fleshing, Net-worth daughter.

EPDs in the top: 15% BW, 20% YW, 25% MILK, 25% TM, 15% CE, 25% MCE



DAM: Diamond 909W



MGD: Diamond 9J

SOUTH SHADOW ROLE MODEL 94A

SSA 94A 1768465 01/19/2013

EPDs / Accuracy

BW	WW	YW	MILK	TM	CE	MCE
+0.5 37%	+43 28%	+84 26%	+17 13%	+39	+9 25%	+10 9%

94A

Connealy Packer 547
WILL ROLE MODEL
Will Henrietta Pride 113A

Mytty In Focus
SSA EILEEN 879U
South Shadow Eileen 5G

Feltons Meat Packer 62
Bestrelle Of Conanga 539
V D A R Lucys Boy
Sitz Henrietta Pride 1209
S A F Focus Of E R ES
Mytty Countess 906
Jay En Dee Traveler 23-29C
Jay En Dee Eileen 36D

GEST	Actual BW	ADJ. 205	ADJ. 365	94 Day Test / Actual Weights			AOD
				Oct 18 WW	Jan 20 YW	ADG	
271	89	610	1001	780	1010	2.45	5

Thick topped, deep, hairy bull with a YW Index of 116. Dam is a moderate framed, feminine, good footed cow.

EPDs in the top: 10% BW, 10% CE, 10% MCE



DAM: Eileen 879U



MGD: Eileen 5G

BLACK ANGUS YEARLING BULLS



SOUTH SHADOW FINAL PRODUCT 82A

SSA 82A 1725545 01/17/2013

EPDs / Accuracy												
BW	WW	YW	MILK	TM	CE	MCE						
-0.7	37%	+52	29%	+93	29%	+31	20%	+57	+10	29%	+11	15%



Connealy Product 568
CONNEALY FINAL PRODUCT
 Ebonista Of Conanga 471
 Mytty In Focus
SSA ERROLLINE 814U
 SSAP Errolline 1R

G A R Retail Product
 Pride Fine Of Conanga 566
 Connealy Deep Canyon 454
 Ebonisa Of Conanga 5469
 S A F Focus Of E R **ES**
 Mytty Countess 906
 F A R Krugerrand 410H
 South Shadow Errolline 11F

GEST	Actual BW	ADJ. 205	ADJ. 365	94 Day Test / Actual Weights			AOD
				Oct 18 WW	Jan 20 YW	ADG	
281	83	612	893	790	955	1.76	5

Recommended for heifers. Deep bodied with loads of volume, big testicles and clean fronted. Dam is a deep, broody female bred for low birth weights.

EPDs in the top: 3% BW, 15% WW, 10% YW, 1% Milk, 3% TM, 7% CE/MCE



814U Daughter: 52Z



DAM: Errolline 814U



SOUTH SHADOW FINAL PRODUCT 38A

SSA 38A 1725523 01/10/2013

EPDs / Accuracy												
BW	WW	YW	MILK	TM	CE	MCE						
-0.1	P%	+52	P%	+97	P%	+33	P%	+59	+8	P%	+9	P%



Connealy Product 568
CONNEALY FINAL PRODUCT
 Ebonista Of Conanga 471
 Mytty In Focus
SSA ERROLLINE 848U
 SSAP Errolline 34R

G A R Retail Product
 Pride Fine Of Conanga 566
 Connealy Deep Canyon 454
 Ebonisa Of Conanga 5469
 S A F Focus Of E R **ES**
 Mytty Countess 906
 South Shadow Rain Man 2M
 South Shadow Errolline 42N

GEST	Actual BW	ADJ. 205	ADJ. 365	94 Day Test / Actual Weights			AOD
				Oct 18 WW	Jan 20 YW	ADG	
278	71	581	998	770	1015	2.61	5

Recommended for heifers. Very docile, long hipped, smooth made bull. Dam is also very docile, easy fleshing and bred for calving ease. 38A is a 3/4 brother to 82A (page 40).

EPDs in the top: 5% BW, 15% WW, 9% YW, 1% Milk, 1% TM, 15% CE/MCE



MGGD: Errolline 42N



DAM: Errolline 848U



SOUTH SHADOW FORESIGHT 134A

SSA 134A 1725570 01/29/2013

EPDs / Accuracy												
BW	WW	YW	MILK	TM	CE	MCE						
+3.6	38%	+49	30%	+82	30%	+20	24%	+45	+1	30%	+5	20%



Papa Forte 1921
WOODHILL FORESIGHT
 Bon View Gammer 85
 Bon View New Design 878 **ES**
SOUTH SHADOW ERROLLINE 7L
 South Shadow Errolline 42J

Papa Optima 9818
 Papa Envious Blackbird 8832
 Bon View Bando 598
 Bon View Gammer 233
 B/R New Design 036
 Bon View Gammer 85
 Freyburn Monsoon Overdrive 17G
 South Shadow Errolline 14F

GEST	Actual BW	ADJ. 205	ADJ. 365	94 Day Test / Actual Weights			AOD
				Oct 18 WW	Jan 20 YW	ADG	
283	98	694	1034	825	1025	2.13	12

Long spined, good footed, smooth made with good muscle expression. This year's resident pet, 134A is always looking for a scratch. His Dam is an Elite Female.

EPDs in the top: 25% WW



7L Son: 91X



DAM: Errolline 7L

BLACK ANGUS YEARLING BULLS

SOUTH SHADOW FORESIGHT 147A

SSA 147A 1725576 02/02/2013

EPDs / Accuracy

BW	WW	YW	MILK	TM	CE	MCE						
+4.0	37%	+55	29%	+90	29%	+24	22%	+52	+0	29%	+4	19%

147A

Papa Forte 1921
WOODHILL FORESIGHT
Bon View Gammer 85

S A V Net Worth 4200
SSA EILEEN 932W
South Shadow Eileen 5G

Papa Optima 9818
Papa Envious Blackbird 8832
Bon View Bando 598
Bon View Gammer 233
S A V 8180 Traveler 004
S A V May 2410
Jay En Dee Traveler 23-29C
Jay En Dee Eileen 36D

GEST	Actual BW	ADJ. 205	ADJ. 365	94 Day Test / Actual Weights			AOD
				Oct 18 WW	Jan 20 YW	ADG	
280	101	728	1034	870	1050	1.91	4

Deep sided, with good growth and strong maternal traits. His Dam is a moderate framed, Network daughter with Traveler on the top and bottom side of her pedigree.

EPDs in the top: 10% WW, 15% YW, 20% Milk, 10% TM



DAM: Eileen 932W



5G Son: Dateline 18P

SOUTH SHADOW TOM BOY 87A

SSA 87A 1725547 01/18/2013



DAM: Blackcap 64Y



MGD: Blackcap 942W



SOD: In Focus 35U



EPDs / Accuracy												
BW	WW	YW	MILK	TM	CE	MCE						
+0.3	32%	+33	20%	+64	20%	+13	7%	+30	+11	23%	+12	5%

87A

Early Sunset Tommy Boy 8W
EARLY SUNSET TOM BOY
Early Sunset Lady Ann 110W

SSA 109 In Focus 35U
SSA BLACKCAP 64Y
SSA Blackcap 942W

Figure 8 Angus Tom Boy 509R
Early Sunset Queen 5T
New Force Prospector 5S
Early Sunset Lady Ann 139R
Mytty In Focus
SSAP Eileen 42P
S A V Heritage 6295
SSAP Blackcap 55P

GEST	Actual BW	ADJ. 205	ADJ. 365	94 Day Test / Actual Weights			AOD
				Oct 18 WW	Jan 20 YW	ADG	
275	76	540	846	595	775	1.91	2

Recommended for heifers.

$\frac{3}{4}$ brother to 191A (page 42). A real docile, moderate framed tank, that is thick made, deep flanked with a long hip and natural muscling. Dam is very feminine with a super level udder.

EPDs in the top: 8% BW, 4% CE, 3% MCE

BLACK ANGUS YEARLING BULLS



MGD: Errolline 826



DAM: Errolline 82Y

SOUTH SHADOW TOM BOY 77A

SSA 77A 1725543 01/16/2013

EPDs / Accuracy						
BW	WW	YW	MILK	TM	CE	MCE
+1.6 P%	+42 P%	+82 P%	+20 P%	+41	+8 P%	+10.5 P%



Early Sunset Tommy Boy 8W
EARLY SUNSET TOM BOY
 Early Sunset Lady Ann 110W
 Sitz Upward 307R
SSA ERROLLINE 82Y
 SSA Errolline 826U
 Figure 8 Angus Tom Boy 509R
 Early Sunset Queen 5T
 New Force Prospector 5S
 Early Sunset Lady Ann 139R
 Connealy Onward
 Sitz Henrietta Pride 81M
 S A V Net Worth 4200
 South Shadow Errolline 19H

GEST	Actual BW	ADJ. 205	ADJ. 365	94 Day Test / Actual Weights			AOD
				Oct 18 WW	Jan 20 YW	ADG	
-	61	708	1040	830	1025	2.07	2

Twin. He is a long, clean, smooth made bull with a low BW. His dam is a very feminine Upward daughter and we are very impressed with the Upward 2 yr. olds calving this year.
 EPDs in the top: 20% WW15% CE, 7% MCE

SOUTH SHADOW TOM BOY 191A

SSA 191A 1725593 02/28/2013

EPDs / Accuracy						
BW	WW	YW	MILK	TM	CE	MCE
+3.5 32%	+38 20%	+63 20%	+17 7%	+36	+4 23%	+7 5%



Early Sunset Tommy Boy 8W
EARLY SUNSET TOM BOY
 Early Sunset Lady Ann 110W
 SSA 109 In Focus 35U
SSA DIAMOND 126Y
 SSA Diamond 909W
 Figure 8 Angus Tom Boy 509R
 Early Sunset Queen 5T
 New Force Prospector 5S
 Early Sunset Lady Ann 139R
 Mytty In Focus
 SSAP Eileen 42P
 S A V Net Worth 4200
 South Shadow Diamond 9J

GEST	Actual BW	ADJ. 205	ADJ. 365	94 Day Test / Actual Weights			AOD
				Oct 18 WW	Jan 20 YW	ADG	
-	97	704	993	700	870	1.81	2

Smooth shouldered and nice old style angus head. Dam is very feminine with small teats and a level udder with lots of milk. 3/4 brother to 87A on page 41. MGD, 909W, offers a son, 64A on page 39. 109 WW index.



SOD: In Focus 35U



DAM: Diamond 126Y

SOUTH SHADOW TOM BOY 92A

SSA 92A 1725551 01/19/2013

EPDs / Accuracy						
BW	WW	YW	MILK	TM	CE	MCE
+1.2 33%	+47 21%	+80 21%	+21 8%	+45	+10 24%	+11 6%



Early Sunset Tommy Boy 8W
EARLY SUNSET TOM BOY
 Early Sunset Lady Ann 110W
 Sydgen Mandate 6079
SSA EILEEN 80Y
 SSA Eileen 906W
 Figure 8 Angus Tom Boy 509R
 Early Sunset Queen 5T
 New Force Prospector 5S
 Early Sunset Lady Ann 139R
 S S Objective T510 Ot26
 Sydgen Gina 4235
 S A V Net Worth 4200
 SSAP Eileen 49R

GEST	Actual BW	ADJ. 205	ADJ. 365	94 Day Test / Actual Weights			AOD
				Oct 18 WW	Jan 20 YW	ADG	
282	90	718	1050	825	1020	2.07	2

Good footed, long and smooth made with a great hair coat. Dam is a beautiful, fantastic uddered, Mandate daughter. 112 WW index.
 EPDs in the top: 15% BW, 7% CE/MCE



SOD: Mandate



DAM: Eileen 80Y

BLACK ANGUS YEARLING BULLS

BOUNDARY 92U FREEDOM 215A

DLD 215A 1725639 03/18/2013

EPDs / Accuracy

BW	WW	YW	MILK	TM	CE	MCE
+2.2 35%	+38 24%	+54 24%	+17 11%	+36	+6 20%	+11 9%

215A

TC Freedom 104
SSA 104 FREEDOM 92U
 South Shadow Akita 21L

SSAP New Elixir 4R
DLD DIAMOND MIST 951W
 DLD Diamond Mist 15T

Connealy Forefront
 T C Ruby 9095
 Whitestone Widespread Mb
 South Shadow Akita 7G
 B/R New Frontier 095 **ES**
 South Shadow Eileen 5M
 Minerts Fortune 2000
 Big Sky RS Diamond Mist 53R **Elite**

GEST	Actual BW	ADJ. 205	ADJ. 365	94 Day Test / Actual Weights			AOD
				Oct 18 WW	Jan 20 YW	ADG	
-	94	667	990	675	865	2.02	4

215A is a young bull but showing some good growth. Typical 92U son; Hairy, smooth made, wide topped, with a good foot. Maternal great Grandam is an Elite Female.

EPDs in the top: 25% CE, 7% MCE



DAM: Diamond Mist 951W

MGD: Diamond Mist 15T

SOUTH SHADOW 92U FREEDOM 212A

SSA 212A 1725605 03/16/2013

EPDs / Accuracy

BW	WW	YW	MILK	TM	CE	MCE
+3.8 35%	+43 25%	+61 25%	+20 12%	+42	+1 20%	+8 10%

212A

TC Freedom 104
SSA 104 FREEDOM 92U
 South Shadow Akita 21L

S A V Heritage 6295
SSA BLACKCAP 942W
 SSAP Blackcap 55F

Connealy Forefront
 T C Ruby 9095
 Whitestone Widespread Mb
 South Shadow Akita 7G
 CAR Duke 104
 S A V Blackcap May 4136
 South Shadow Macho 25L
 Jay En Dee Blackcap 23F

GEST	Actual BW	ADJ. 205	ADJ. 365	94 Day Test / Actual Weights			AOD
				Oct 18 WW	Jan 20 YW	ADG	
-	100	714	910	730	845	1.22	4

Smooth made, hairy bull with a great profile, this bull is structurally correct. Dam is a very moderate, feminine, beautiful udded, Heritage daughter. The 92U sire group may well be Connie's favorite this year.

EPDs in the top: 25% MCE



DAM: Blackcap 942W

Dam of Sire: Akita 21L

NEXT YEAR'S SALE and the future of the herd !

2014 CALF CROP Sired BY

- (South Shadow) SSA 68S Right Way 134X
- (South Shadow) SSA 104 Freedom 92U
- (Boundary) DLD Density 8Z
- Early Sunset Tom Boy 6Y
- Woodhill Foresight
- EXAR Upshot 0562B
- EXAR Significant 1769B
- Shipwheel Chinook
- Connealy Thunder



We'll see you folks at next year's sale !

- Connealy Final Product
- Connealy Consensus 7229
- S A V Bismarck 5682
- S A V Final Answer 0035
- S A V Brilliance 8077
- S A V 004 Density 4336
- VDAR Lucys Boy
- Will Role Model
- NBAR Emulation EXT

Herd Management the feeding

'Ranch-raised' is a relative term - Normally the papered herd is running with the grade cattle from July 1 to mid-November. The timing of the two different production cycles, in relation to the seasonal conditions (temperature and wind!) dictate the rations. If we calved-out our commercial herd, in the same, less than elaborate conditions (the calving barn is a wee bit drafty) we'd likely manage those grade cattle the same way as the papered herd. Both herds get the same vaccinations and mineral, neither see creep and the rations, when not grazing, come from the same piles of home-grown feed.

The feed program for this year's Angus sale bulls:

OCT/DEC: Free choice long hay
 DEC: 10#s Hay, 6#s Green Feed, 17#s Silage, 2#s Rolled Barley
 JAN: 10#s Hay, 6#s Green Feed, 18#s Silage, 3#s Rolled Barley
 FEB: 10#s Hay, 6#s Green Feed, 19#s Silage, 5#s Rolled Barley
 MAR: 10#s Hay, 5#s Green Feed, 19#s Silage, 6#s Rolled Barley
 APR: 10#s Hay, 5#s Green Feed, 21#s Silage, 6.5#s Rolled Barley
 and a top-coat Mineral Package on ration

Hay: baled dryland grass/hay is 55% crested wheatgrass/45% alfalfa.

SILAGE: The cereal silage (59% moisture) is an oat/barley mix chopped between the milk and soft dough stages.

Wintered in a 10 acre lot with a hike into the barnyard for water.



The Performance Information

As a further means to improve our herd we have submitted animal data to the Canadian Angus Performance, CAP program. The first data was submitted with the program's initiation and along with EPD data offers another tool for our customer's bull selection.

BW: Actual Birthweight and Adjusted Weights

Adjusted 205 WT
 Weanling weights adjusted to 205 days of age-Dam's age considered in formula

Actual BW	ADJ. 205	ADJ. 365
88	666	1111

Adjusted 365 WT
 Yearling weights adjusted to 365 days of age

205/WW and 365/YW (GAIN) RATIO

Comparison of one calf to all other contemporaries in the group.

RATIO
WW 100
YW 100

Average being 100.
205 Index: 100
365 Index: 100

Days On Test / Actual Weights / ADG

- The test weights are for performance comparison WITHIN OUR HERD only.
- Consider and keep in mind that feed management differs with each breeder.

90 DAY TEST	
Jan 20	1000
Oct 18	780
ADG	2.44

Age of Dam at Calf's Birth

AOD
5

The Elite/Premier Program

Canadian Angus Elite Cow: has a minimum of five calves, four of which must be registered, to determine her regularity of calving and ability to consistently produce calves with a superior weaning weight year after year, display early puberty, breeding and early calving, followed by regularity of calving and high performance offspring. The Canadian Angus Elite Cow Report identifies superior cows in the Canadian Angus herdbook.

Canadian Elite/Premier Cow Criteria

- The cow must be enrolled in the Canadian Angus Performance Program.
- The cow must have a calf with a 205-day weight recorded within the past 18 months.
- The cow's first calf must be born and weaned within 1,000 days.
- The cow must maintain a regular calving interval. (regular is considered to be 365 + 30 days/number of calving intervals)
- The cow must have at least 5 progeny, of which at least 4 must be registered.
- The cow must have an above average weaning weight EPD with an accuracy of at least 25.
- The cow's progeny must all have an above average weaning weight EPD with an accuracy of over 25.

Pedigrees :

“ **[ELITE]** ” = Elite Dam “ **ES** ” = Elite Sire

Average Performance for our Calves born in 2013

Sire Group	BW	ACTUAL WW	205 Adjusted WW	WW ADG	ACTUAL YW	365 Adjusted YW	YW ADG	LIFE ADG	# of Calves
TDR - M	89	753	589	2.44	960	945	2.20	2.35	6
TDR - F	91	820	612	2.58	988	936	1.98	2.32	3
CON - M	83	789	630	2.67	1000	990	2.25	2.49	8
CON - F	82	697	568	2.38	840	825	1.68	2.04	5
RM - M	94	840	638	2.68	1065	1047	2.40	2.61	5
RM - F	73	755	599	2.49	877	851	1.85	2.13	3
FP - M	91	840	678	2.84	1044	1013	2.17	2.53	7
FP - F	84	753	609	2.54	898	896	1.80	2.22	2
FCS - M	67	750	-	-	965	1005	2.29	2.57	1
FA - M	87	805	630	2.67	1020	1011	2.28	2.53	3
FA - F	75	785	639	2.73	890	845	1.62	2.11	3
BIS - M	85	808	634	2.69	1026	984	2.14	2.46	4
BIS - F	82	760	571	2.40	893	841	1.57	2.08	3
FS - M	95	874	714	3.00	1050	1005	1.90	2.50	5
FS - F	84	760	-	-	795	739	1.34	1.80	3
PION - M	93	848	659	2.75	1098	1099	2.66	2.76	2
PION - F	91	788	-	0	950	893	1.90	2.20	3
UPW - M	85	811	648	2.74	1022	1005	2.25	2.52	9
UPW - F	75	736	593	2.51	902	873	1.88	2.18	5
92U - M	95	685	682	2.86	856	932	1.54	2.29	6
92U - F	82	611	562	2.34	699	743	1.19	1.81	5
35U - M	87	755	652	2.75	912	920	1.86	2.28	12
35U - F	91	709	590	2.44	805	809	1.38	1.97	4
6Y - M	82	693	637	2.72	885	957	1.99	2.40	11
6Y - F	72	654	605	2.59	791	820	1.41	2.04	9

Reference Sires:

- TDR - Connealy Thunder (A.I.)
 - CON - Connealy Consensus 7229 (A.I.)
 - RM - Will Role Model (A.I.)
 - FP - Connealy Final Product (A.I.)
 - FCS - Mytty In Focus (A.I.)
 - FA - S A V Final Answer 0035 (A.I.)
 - BIS - SAV Bismarck 5682 (A.I.)
 - FS - Woodhill Foresight (A.I.)
 - PION - SAV Pioneer 7301 (A.I.)
 - UPW - Sitz Upward 307R (A.I.)
 - 92U - SSA 104 Freedom 92U (walking sire)
 - 35U - SSA 109 IN Focus 35U (walking sire)
 - 6Y - Early Sunset Tom Boy (walking sire)
- Daughters only and not charted: 1x EXT, 3x SSA 68S Right Way 134X

Actual Weaning WT on Oct 18, 2013
Actual Yearling WT on Jan 20, 2014

View the Catalog, Videos and our ranch program online at:
www.DeformeAngus.ca

Average Black EPDs for all Calves born in 2013

BW	WW	YW	MILK	TM	CE	MCE
+2.7	+43	+75	+19	+41	+2.9	+5.7

How To Read EPDs and Performance Data

EPD's are a measure of the expected differences in performance of a sire's/dam's progeny when compared to the average progeny of all sires/dams evaluated within the same breed. This prediction is based on actual performance, progeny performance and relatives' performance.

- ~ EPDs can be used to compare bulls/cows from different herds.
- ~ EPDs cannot be used to compare bulls/cows of different breeds.
- ~ EPDs allow breeders to estimate a young animal's breeding value and that animal's value as a parent
- ~ EPDs allow a fair comparison of breeding value by removing environmental bias such as climate, feed and special management
- ~ EPDs are the best tool available to compare animals between herds, countries and year of birth
- ~ EPDs help breeders make informed decisions regarding breeding stock selection by evaluating numerous traits, such as growth related traits (BW, WW, YW, Milk)

Interim EPDs - are indicated by an "I" preceding the EPD value. Interim EPDs are available for animals that were not included in the National Cattle Evaluation. The accuracy of Interim EPDs is generally indicated by a 5% percentile, as there is less data used to produce these estimates. A pedigree estimated EPD (PE) is the average of two parental EPD values (½ sire, ½ dam).

- BIRTH WEIGHT (BW): The birth weights of a bull's/cow's progeny when compared to the breed average, in pounds. Negative values indicate lighter BW while positive numbers indicate heavier.
- WEANING WEIGHT (WW): The adjusted weaning weights of a bull's/cow's progeny when compared to the breed average, in pounds.
- YEARLING WEIGHT (YW): The adjusted yearling weights of a bull's/cow's progeny when compared to the breed average, in pounds.

continued...

HOW TO USE EPDS IN SIRE SELECTION

Each individual breeder must set his own selection goals, based on the needs of his operation, the situation for that trait in his herd, and his production environment.

It would be easier if we could assume that the highest EPDs are the best. Unfortunately, it isn't that simple. Like most decisions, using EPDs for sire selection involves tradeoffs. For example, bulls with high growth EPDs may sire calves with a higher birth weight as well. And there may be other impacts on your operation to consider.

For example, when breeding heifers it is desirable to produce calves with lower birth weights, so a breeder may want to pay special attention to birth weight EPDs of prospective bulls. If all calves were sold as feeders, the milk EPD would generally not rate much attention. Yearling weight will be important if you want to ensure finished steers in the appropriate weight range.

It should also be kept in mind that reaction to selection can differ from trait to trait. This is because some traits have higher heritability than others, and are more easily passed to offspring. For instance growth traits such as weaning weight respond faster to selection, than reproductive traits such as age at first calving.

A balance of traits is required, and the perfect balance for you will depend on your climatic, nutritional and economic environment, as well as the management goals you have set for your herd.

One way to select for several traits are to set minimum and maximum acceptable levels for each trait, and then choose sires that meet criteria. Another method would be rank all sires, on each trait, then develop a weighted index which ranks each bull from one (most desirable) to five for each trait. The bull with the lowest total score would be your first choice.

A SAMPLE SIRE SUMMARY EVALUATION

Bull	BW		WW		YW		Milk	
	EPD	Acc.	EPD	Acc.	EPD	Acc.	EPD	Acc.
A	6.6	0.75	31.3	0.75	39.5	0.68	-5.6	0.58
B	0.1	0.82	14.6	0.83	24.6	0.80	6.0	0.73
C	0.0	0.89	0.3	0.89	11.1	0.88	18.9	0.87
D	-5.9	0.87	-3.8	0.87	-14.4	0.86	10.3	0.85

Producer 1 is looking for a sire that can be used on heifers; he wants a bull that will produce low birth weights and he wants to keep some heifer calves as replacements. Growth performance is not his first priority. The sire that fits his needs is sire D. He has a low birth weight EPD and above-average milk EPD.

Producer 2 has a sound-breeding program; he is looking for a sire that will maintain performance and milking ability. He will select a bull that will increase growth performance and milk while maintaining calving ease. Sire B is his choice.

Producer 3 has a herd of above-average-frame cows and is not planning on keeping heifers as replacements. She is looking for a bull that will give her the most profit at weaning. Sire A will give her the best result in weaning weight. If heifers are kept as replacements, they will, on average, be inferior for maternal milk.

Producer 4 wants to maintain his calving performance and growth performance but would like to increase the milking ability in his females. Sire C is his choice.



EPD INFORMATION

- **MILK:** A measure of the amount of pre-weaning performance gained by calves which can be attributed to the milking ability of a bull's/cow's daughters. The EPD is expressed in pounds of calf.
- **TOTAL MATERNAL [TM]:** Indicates the performance based on the calf's inherent genes for growth (WW EPD) and the influence of his mother's milk EPD. It is an indication of the weight of calf a bull's daughter will wean.
- **CALVING EASE DIRECT (CE) EPD** – the average difference in ease with which a sire's calves will be born when he is bred to first calf heifers.
- **MATERNAL CALVING EASE (MCE)** – is expressed as a difference in percentage of unassisted births with a higher value indicating greater calving ease in first-calf daughters. It predicts the average ease with which a sire's daughters will calve as first-calf heifers when compared to daughters of other sires.
- **ACCURACY (%):** the reliability that can be placed on the EPDs.

An accuracy of close to 100 indicates higher reliability. Accuracy is impacted by the number of progeny and ancestral records included in the analysis.

Low accuracy = less than 40

Low to medium accuracy = 40 – 60

Medium to High accuracy = 60 – 80

High accuracy = greater than 80

EPDs / Accuracy							AOD
BW	WW	YW	MILK	TM	CE	MCE	
+2.7 61%	+43 48%	+75 45%	+19 21%	+41	+2.9 39%	+5.7 15%	10

Accuracy is the measure of reliability of an EPD. Higher percentiles, indicate larger amounts of available information and greater certainty that a bull's EPD will not change significantly as more progeny information becomes available.

The Possible Change table, can help a producer determine the involved risk associated with an EPD by considering the possible change value for each trait at various accuracy levels.

For example, an animal with an accuracy of 10% can expect its BW EPD to change \pm 2.4 pounds, whereas an animal with an accuracy of 80% can expect its BW EPD to change \pm 0.5 pounds.

Accuracy values should be printed in sale catalogues. Without an accuracy level, you have no way to gauge how much that EPD is likely to change as that animal gets older and more information is available on it.

BLACK ANGUS — POSSIBLE CHANGE TABLE

Accuracy %	BW	WW	YW	Milk
100	0	0	0	0
90	0.26	1.16	1.70	0.97
80	0.53	2.32	3.40	1.94
70	0.79	3.48	5.11	2.91
60	1.05	4.64	6.81	3.88
50	1.31	5.80	8.51	4.85
40	1.58	6.96	10.21	5.82
30	1.84	8.12	11.92	6.79
20	2.10	9.27	13.62	7.76
10	2.36	10.43	15.32	8.73

Generally ... accuracies above 50% are available (earned) by having progeny in large numbers (ex: semen sales) or a consistency of pedigree/related matings (ex: line bred programs). Females producing well into their teens will also earn a higher accuracy value.

HOW TO USE EPDS

EPDs can be useful tools when planning breeding programs, however, remember that they are not perfect or absolute. EPD's are a measure of the expected differences in performance of a sire's/dam's progeny when compared to the average progeny of all sires/dams evaluated within the same breed. This prediction is based on actual performance, progeny performance and relatives' performance.

... and correlations of the traits a breeder wants to improve upon within the herd. Some traits are more heritable than others, resulting in swift progress being made in comparison to other less heritable traits.

Attention should be paid to the heritability:

Trait	Heritability Range	Level
reproductive	less than 0.20	low
growth	0.20 – 0.40	moderate
carcass	greater than 0.40	high

Also, many traits are correlated meaning that the expression of one trait is related to the expression of another trait. The correlation between traits can be either positive or negative and close attention should be paid to these relationships, when developing selection criteria in a breeding program.

Understanding the heritability and the effects of correlation between traits will aid in developing a genetic selection program that will optimize improvement on desired traits while minimizing undesirable side effects.

Online Viewing and/or Bidding:

This year's sale will once again offer streaming video from ringside. To pre-register, visit www.agrimart.ca - then tune in to www.agrimart.ca/cowtown/



◀ ▶ BULLS SELL IN CATALOGUE ORDER ▶ ◀

For your convenience the tag #s of recommended *Calving Ease Bulls* are in a 'black background'

TAG #	SIRE	COW FAMILY / DAM #	PAGE
Yearling Black Angus Bulls			
95A	Role Model	Eileen 30X	7
9A	Role Model	Diamond 51N	7
10A	Final Answer	Patsy 987	8
163A	Final Answer	Blackbird 52T	8
90A	Final Answer	Eileen 986	9
25A	Bismarck	Errolline 22R	9
31A	Bismarck	Eileen 42P	10
79A	Thunder	Akita 19S	10
104A	Thunder	Errolline 75T	11
43A	SSA Focus 35U	Pride 41M	11
151A	SSA Focus 35U	Akita 944	12
183A	SSA Focus 35U	Pride 32T	12
20A	SSA Focus 35U	Akita 32P	12
126A	Consensus	Ruby 86X	13
57A	Consensus	Akita 31N	14
84A	Consensus	Dia Mist 29X	14
83A	Consensus	Dyna 114U	15
7A	Final Product	Diamond 53Y	15
120A	Final Product	Eileen 10S	16
106A	Final Product	Diamond 16R	16
80A	Upward	Akita 904	17
136A	Upward	Joyce 115X	17
6A	Upward	Akita 54T	18
72A	Upward	Errolline 908	18
56A	Tom Boy	Errolline 17Y	19
71A	Tom Boy	Errolline 41Y	19
162A	Tom Boy	Diamond 132Y	20
63A	Tom Boy	Eileen 34Y	20
17A	Pioneer	Eileen 111X	20
114A	Pioneer	Joyce 18T	21
15A	Foresight	Patsy 82S	21
8A	Foresight	Akita 76X	22
201A	SSA Freedom 92U	Ruby 63L	22

TAG #	SIRE	COW FAMILY / DAM #	PAGE
Two Year Old Black Angus Bulls			
365Z	Density 26T	Quality 365R	27
15Z	Multiple Copy	Eugenie 15W	28
350Z	Density 26T	Erica 350W	28
02Z	Multiple Copy	Pride 2W	28
796Z	Consensus	Lassie 796W	29
393Z	Consensus	Tibbie 393T	29
75Z	Density 26T	Lavender Lady 756T	29
5Z	Density 26T	Blackbird 5U	30
16Z	Density 26T	Jennifer 16'06	30
26Z	Density 26T	Rosegay 26P	30
Yearling Black Angus Bulls			
37A	IMP 109L	Errolline 31Y	31
119A	Bismarck	Pride 13R	32
73A	Thunder	Joyce 77T	33
34A	Thunder	Eileen 20R	33
112A	Consensus	Ruby 33R	34
101A	Consensus	Joyce 18R	34
88A	Consensus	Ruby 12N	35
139A	Upward	Errolline 10T	35
76A	Upward	Dia Mist 69U	36
53A	Upward	Errolline 921	36
173A	SSA Focus 35U	Eileen 49R	37
165A	SSA Focus 35U	Eileen 992	38
192A	SSA Focus 35U	Diamond 44T	39
64A	Role Model	Diamond 909	39
94A	Role Model	Eileen 879	39
82A	Final Product	Errolline 814	40
38A	Final Product	Errolline 848	40
134A	Foresight	Errolline 7L	40
147A	Foresight	Eileen 932	41
87A	Tom Boy	Blackcap 64Y	41
77A	Tom Boy	Errolline 82Y	42
191A	Tom Boy	Diamond 126Y	42
92A	Tom Boy	Eileen 80Y	42
215A	SSA Freedom 92U	Dia Mist 951	43
212A	SSA Freedom 92U	Blackcap 942	43

Please bring this catalogue with you to the sale.

<http://www.agrimart.ca/cowtown/>
Streaming Video from ring side for online viewing and bidding

Many Thanks To Our Customers in 2013

BULLS

- E. Kolesar
- S. Hird
- L. Sloan
- H. Bakken
- S. Reesor
- D. Elliot *
- K. Sehn
- E. Grosfield *
- PFRA * (x4)
- T. Armstrong *
- R. & C. Weiss *
- W. & L. Rath *
- C. Parsonage *
- JK Ranch Ltd
- G. Greenwald
- J. Whitney * (x2)
- T. & K. Gilchrist
- C. Gordon * (x3)

- L. Berreth * (x2)
- R. & C. Anderson *
- Prairie Cattle Co *
- M. & J. Stodalka *
- C. Richardson * (x2)
- 76 Grazing Co-op *
- T. & C. Leismeister *
- Rocking S Ranch
- Triple L Ranch Ltd *

- Many Island Grazing Assoc
- Prairie Harvest Farms Ltd *
- Hays Stock Grazing (x2)
- Watson Cattle Co * (x3)
- Bitter Lake Ranching *
- Cross C Cattle Co *
- Wilfley Holdings Ltd *
- C. & N. Schock * (x3)
- Arndt Enterprises * (x2)
- Cherry Coulee Farms Ltd
- Sandhills Enterprises * (x2)
- Konosky Ranching Ltd (x3)

HEIFERS

- R. Petek * x20
- West Bench Colony * x39
- J. Redzloff x10
- L. Fowley x14

STEERS

- H. Dolke *
- E. Dolke *
- C. Bowyer / JGL *

BREDS

- L. Koenig x10
- T. Armstrong * x10
- T. & C. Leismeister * x10

HORSES

- S. Crowe *
- B. Schlamp *
- I. Stoker from Switzerland

* repeat customers



Have a safe trip home folks . . . and all the best for the remainder of 2014

RETURN TO
The Delorme's
Box 28, Robsart, SK
S0N 2G0

Your Choice
BLACK ANGUS BULL SALE



*South Shadow Angus
Boundary Angus
Kay Dee Angus
Prairie Pride Angus
Jay En Dee Angus
and guest Bear Creek*

Give us a call or look us up . . .
at the ranch or on the web

www.DelormeAngus.ca

PRINTED IN CANADA FOR FREE DISTRIBUTION