

50 Yearlings

5x2 Year Old Bulls

Your Choice Bull Sale



ANGUS

*Over 45 years of
serving your
herd sire needs*

FRIDAY

April 15 2011

1:00 PM (CST)

Cowtown Livestock, Maple Creek, SK

Your Choice Bull Sale

Welcome from the shortgrass country in SW Saskatchewan. For over 45 years our family has been providing your herd sire needs and we are pleased to invite you to the 7th sale under the Your Choice sale format.

To help you with your selection, we've included performance data; actual and adjusted weights, EPDs & photographs. Don's footnotes recommend the calving-ease bulls, the cow-makers and the beef-makers. Sire groups and cow families are cross-referenced and an index of sale bulls can be found on the last page. If you are looking for some tightly related bulls, don't neglect the bottom side of the pedigrees. Please feel free to stop in anytime to appraise the bulls and view the cowherd with their 2011 calves at side. If a visit isn't possible we invite you to give our web site a tour: www.DelormeAngus.ca Give us a call with any questions, for further information or to shoot the breeze.

Darby and Sarah's Simmental bulls are absent from this year's sale as they will be selling at the Simmental group's Southwest Showcase Bull Sale, Monday April 4th, 2011 at Heartland Livestock, Swift Current, Sk. Their Boundary Angus bulls, as well as Kalee and Benny's Kay Dee herd sire prospects, sell here in the Your Choice sale. We also welcome back our nephew, Chad Weiss with five 2 year old bulls from his program.

On April 14th - the day before our Bull Sale - we are bringing to town our 25th annual offering of 100 home-grown Black Replacement heifers, all sired by home-raised bulls. This special sale features straightbred and crossbred heifers from area producers - please give Cowtown a call about the consignments.

A **Donation Heifer**, from our commercial program, will be auctioned off at this year's bull sale. Check page 2 for the fundraiser details.

Bull Sale Day is Friday, April 15, 2011. Coffee and donuts will be ready early and a complimentary Beef Lunch begins at 11:00 with sale time set for 1:00 (CST). This year's sale offers streaming video from ring side for online viewing and bidding.

To pre-register, visit
www.agrimart.ca
- then tune in to
www.agrimart.ca/cowtown/



We look forward to hearing from you and welcome the opportunity to earn your business and truly offer "Your Choice" of Angus genetics. Hope to see you sale day.

Don and Connie Delorme



*Benny, Kalee, Nevaeh
& Aeverie Hofer*



*Darby, Sarah, Isabella
& Mackayla Delorme*



Our 2010 Customers

Pahl Livestock	Cross C Cattle Co (2)*
C Richardson (2)	Wilfley Holdings *
76 Grazing Co-op *	T-T Ranch *
Watson Cattle Co (3) *	Hanson Ranches (2) *
G Cameron *	J Blakley *
W Hyam *	Townview Farms
A Chavtur *	Cypress Colony (2)*
PFRA (5)	R Furgeson
J Whitney (2) *	W & C Beck
Prairie Harvest Farms (2) *	M Moorhead *
Kruczko Ranches	Anhorn Angus
West Bench Colony *	Arndt Ent *
D Wilk (2) *	Diamond K Cattle *
K Berreth	D & S Elliott *

** repeat customer*

BIDDERS, BUYERS AND SPECTATORS
THANK YOU FOR YOUR SUPPORT
Safe trip home and see ya'll next year.

Add Value to your Angus

Order your Angus Tags
1-866-571-8093
www.cdnangus.ca



Creating Value for Angus Tagged Cattle



www.rancherendorsed.com

SALE INFORMATION

Friday, April 15, 2011 ~ 1:00 PM (CST)

Sale will be held at Cowtown Livestock
1 mile East of Maple Creek, Sask.
Cowtown Office: (306) 662-2648
Wayne Bowyer-Manager: (306) 662-7371

Sight Unseen Purchase Program: If you would like to place a bid on any lot but cannot attend the sale, please contact the Cowtown Office or Wayne Bowyer. They will competently and discretely handle your bidding instructions.

No yearlings are sold before the sale.

Viewing the Bulls: The bulls are available for your appraisal at the ranch until Tuesday, April 12 at which time they will be moved to the Cowtown yards where they will be available for viewing from the time of their arrival until sale time on April 15th. We encourage you to stop in and take a look at this year's offering, as well as the sires, dams and siblings. The bulls and their dams can also be viewed online at:

www.DelormeAngus.ca or www.BoundaryRanch.ca

Buyer Registration: Please register for a buyer number at the office prior to purchasing.

Sale Order: Bulls will sell in catalogue order ~ Index page 48

Bull Evaluation & Health: All bulls will have a complete fertility exam and semen test done prior to sale. Bulls will not be sold on a 'deferred' result. Current weights and scrotal measurements will also be available prior to sale. Bulls have been vaccinated: Trasvax 8, IBR/P13/BVD (StarVac/SomnuStar PH) and pesticide poured.

Bull Guarantee: We guarantee to provide you with a sound, fertile bull capable of servicing a reasonable number of females. In the event that your bull is a non-satisfactory breeder, he will be replaced with a bull of equal value, or a credit will be given towards the purchase of another South Shadow bull. We will not provide replacement or credit for physical injury or mismanagement. Each animal becomes the responsibility of the purchaser as soon as sold. If you have a problem with a bull please notify us immediately.

Terms: All bulls sell under the suggested Terms & Conditions of the Canadian Angus Associations. Terms of sale are cash or cheque payable to Cowtown Livestock. No bulls will be released without satisfactory settlement.

When making settlement for your purchases, please leave specific instructions - name and address - for transferring of registration certificates.

Insurance: Insurance will be available sale day.

Don and Connie Delorme

Box 28, Robsart Saskatchewan, S0N 2G0
(306) 299-4494 • delormeangus@xplornet.com
Don cell: (306) 299-7778 / Connie cell: (306) 295-7978

Darby, Sarah, Isabella & Mackayla Delorme

Box 36, Robsart Saskatchewan, S0N 2G0
(306) 299-2006 • boundaryranch@xplornet.com
Darby cell: (306) 662-7993 / Sarah cell: (360) 299-7779

Kalee, Benny, Nevaeh & Aeverie Hofer

Box 12, Robsart Saskatchewan, S0N 2G0
(403) 548-1427 • kaleedelorme@hotmail.com

Guest Consignor; *Chad Weiss* Maple Creek SK
(306) 662-7060 • wick_weiss35@hotmail.com

www.DelormeAngus.ca

SALE INFORMATION

**Be sure to join us for a
Complimentary Pre-Sale Lunch**

Cattle are available online at the family's ranch web sites:

www.DelormeAngus.ca - www.BoundaryRanch.ca

- **Pages 42:** Herd Management ... the Feeding!
- **Page 43:** Weight/Performance Averages Summary Report
- **Pages 44:** Performance Information / Elite Cow Program
- **Page 45-47:** How to Read and Use EPDs
- **Page 48:** Bull Index with tag#, sire, dam and page number

Average Black EPDs for all Calves born in 2010						
BW	WW	YW	MILK	TM	CE	MCE
+2.9	+41	+72	+17	+37	+1.3	+4.3

Sale Accomodations:

Maple Creek Motor Inn: 306-662-4431

Cypress Park Resort Inn: 306-662-4477

Cypress Hills Motor Inn: 306-662-2639



As you turn the pages in this book you will find pedigrees carrying the family member's prefixes of SSA, DLD, KD, NPP and the foundation IJS. In 2009, the Jay En Dee (IJS) herd name was transferred to Darby and Sarah's daughters; Isabella and Mackayla and the Prairie Pride (NPP) herd name, which was Alfred and Jo's in the 60's & 70's, was registered to Kalee and Benny's daughters; Nevaeh and Aeverie.



COMMERCIAL REPLACEMENT HEIFERS

From the Delorme and Wardberg commercial herds is the 25th Annual offering of 100 Black yearling heifers.

Heifers are consigned to the April 14th

Replacement Female Sale at Cowtown Livestock.

The Black Cow "is" our commercial herd and has been since 1948, when Grandpa (Ole) Wardberg brought the first to this area. Yes, a few colored ones have come and gone but we seem to get along best with the Blacks ~ the type of cattle that are sympathetic to our environmental and industry challenges. On April 14th you'll have the opportunity to purchase from 100 home-grown Black replacement heifers. This will be our 25th annual offering of straight-bred Angus females, all sired by home-raised bulls. This special sale features straightbred and crossbred heifers from area producers - please give Cowtown a call about the consignments. 1-306-662-2648



DONATION HEIFER

From the Delorme's commercial herd.

To be sold by highest bid at the Your Choice Bull Sale. Proceeds to be split 75/25 between the Consul School Playground Fund and the Reno Rascals Day Care (also in Consul).

Both groups would appreciate your support for the needed upgrades and services for the community's children.

Thank you in advance for your support.

REFERENCE SIRES

SSAP RAIN ON 35R

SSA 35R 1260304 January 30, 2005

Cudlobe Rainmaker 39K
SOUTH SHADOW RAIN MAN 2M
 South Shadow Diamond 13K

Stevenson Rainmaker 630G
 Cudlobe Kyma 18H
 Papa Equator 2928
 Jay En Dee Pride 43D
 B/R New Design 036
 Bon View Gammer 85
 Q A S Traveler 23-4
 Jay En Dee Joyce 21-91D

Bon View New Design 878
SOUTH SHADOW JOYCE 28N
 Jay En Dee Joyce 32G

EPDs / Accuracy						
BW	WW	YW	MILK	TM	CE	MCE
-1.0 61%	+25 48%	+54 45%	+26 21%	+39	+9.0 39%	+8.0 15%

WALKING HERD SIRE: 35R is a very stylish, good-footed bull; muscular, lots of nuts and an old style Angus head. His daughters producing now are smaller framed, like his mother, and you can't beat their udder quality.

Sire of Sale Bull:
 136X (pg 41)



SSAP 104 FREEDOM 92U

SSA 92U 1488119 February 19, 2008

Connealy Forefront
TC FREEDOM 104
 TC Ruby 9095

Connealy Frontline
 Eileen Heartland Conanga
 TC Stockman 365
 TC Ruby 4068
 N Bar Emulation EXT
 MB Rachel 2173
 Minerts Fortune 2000
 Jay En Dee Pride 14-89E

Whitestone Widespread MB
SOUTH SHADOW AKITA 21L
 South Shadow Akita 7G

EPDs / Accuracy						
BW	WW	YW	MILK	TM	CE	MCE
+0.3 49%	+46 37%	+85 19%	+21 19%	+44	+10.0 33%	+13.0 18%

WALKING HERD SIRE: 92U has a lot of performance with a big foot and lots of testicle. His sire, TC Freedom has left exceptional females. His dam, 21L was sired by the Widespread bull who expressed a lot of muscle and performance. 21L was sold and flushed with embryos going to the UK.

Sire of Sale Bulls: 120X (pg 14), 77X (pg 14), 128X (pg 15), 132X (pg 35), 161X (pg 36)



REFERENCE SIRES

BIG SKY DLD RIGHT WAY 68S

TGK 68S 1369137 February 6, 2006

Hyline Right Time 338
Hyline Right Way 781
 Hyline Ellen 86

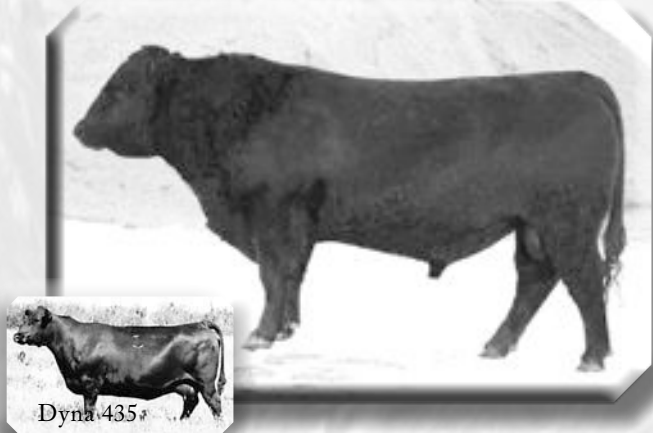
Leachman Right Time
 Hyline Pride 265
 Hyline SVF Rito 1116
 Hyline Ellen 9062
 Nelson Bold Ruler
 Glenmere Barbara 30R
 Premier Independence KN
 Eileenmere Dyna SGY 2M

Acumen Bold Ruler 30X
Big Sky Dyna 435
 Prospect Dyna 27S

EPDs / Accuracy						
BW	WW	YW	MILK	CE	MCE	
+7.4 60%	+69 47%	+104 44%	+18 22%	-11.0 36%	+2.0 18%	

WALKING HERD SIRE: 68S has been siring thick, hairy calves with extra rib. That extra length is sure to add pounds at weaning. The 2010 born calves are his last. He bred a lot of cows, as he was used in our commercial herd also. 68S's first daughters are producing now and have past our expectations; being easy-fleshing, feminine and exceptionally uddered.

Sire of Sale Bulls: 137X (pg 18), 135X (pg 39)



SSA 109L IN FOCUS 8T

SSA 8T 1407793 January 10, 2007

SAF Focus of ER
Mytty In Focus
 Mytty Countess 906

SAF Fame
 GDAR Forever Lady
 Sitz Alliance 6595
 Baldridge Countess 357
 Krugerrand of Donamere 490
 FAR Erianna 286F
 Jay En Dee New Trend 14B
 Jay En Dee Eileen 36D

FAR Krugerrand 410H
SSAP EILEEN 19R
 Jay En Dee Eileen 36D

EPDs / Accuracy						
BW	WW	YW	MILK	TM	CE	MCE
+1.0 39%	+54 29%	+99 28%	+20 21%	+47	+8.0 31%	+10.0 19%

WALKING HERD SIRE: 8T is a big, soggy, thick, easy-fleshing tank! He is very docile and his progeny have a lot of performance and are easy to look at. His dam was a beautiful little cow and fortunately she left us with a 2009 Net Worth sired daughter.

Sire of Sale Bulls: 125X (pg 17), 163X (pg 17), 144X (pg 31), 147X (pg 31), 151X (pg 32)



REFERENCE SIREs

SSA 109 IN FOCUS 35U

SSA 35U 1456393 January 22, 2008

SAF Focus of ER
Mytty In Focus
Mytty Countess 906

Grandview Womack Direct
SSAP EILEEN 42P
South Shadow Eileen 17F

SAF Fame
GDAR Forever Lady
Sitz Alliance 6595
Baldrige Countess 357
B/R New Design 036
Mengs Miss Skymere 78B
Jay En Dee Touchstone 131-32D
Jay En Dee Eileen 36D

EPDs / Accuracy												
BW	WW	YW	MILK	TM	CE	MCE						
-0.7	50%	+48	37%	+83	26%	+18	22%	+42	+11.0	34%	+11.0	19%

WALKING HERD SIRE: 35U was kept to cover our heifers. He sires long, smooth calves with good performance, nice dispositions and big nuts. His dam is a front pasture kind of cow. Some of his calves have been in the eighties but built long and right, never had to assist one.

Sire of Sale Bulls: 42X (pg 11), 67X (pg 11), 146X (pg 12), 43X (pg 32), 63X (pg 33), 12X (pg 33)



EILEEN 42P

S A V NET WORTH 4200

IMP 4200P 1309743 Born: 2004

Sitz Traveler 8180
S A V 8180 TRAVELER 004
Boyd Forever Lady 8003

S A F 598 Bando 5175
S A V MAY 2410
S A V May 6269

G D A R Traveler 71
Sitz Everelda Intense 1137
AAR New Trend
S V F Forever Lady 57D
Bon View Bando 598
S A F Royal Lass 1002
Rito 9FB3 of 5H11 Fullback
S A R Prospector May 9124

EPDs / Accuracy												
BW	WW	YW	MILK	TM	CE	MCE						
+4.7	97%	+59	96%	+113	93%	+29	81%	+59	+0.0	75%	+6.0	75%

REA: +0.48
CAR WT: +34
MRB: +0.48
FAT: +0.054

Is leaving thick, muscular calves with volume and eye-appeal. His daughters, in production here, are easy-fleshing and good uddered. Net Worth shares the same bottom cow family as Density. The (Prospector) May cow family goes back to Jay En Dee Mandy, a cow bred by Don's parents in the early 1980's.

Act BW	ADJ. 205	ADJ. 365
90	995	1573

Sire of Sale Bulls: 17X (pg 16), 41X (pg 37)



REFERENCE SIREs

S A V 004 DENSITY 4336

IMP 4336P 1266311 Born: 2004

Sitz Traveler 8180
S A V 8180 TRAVELER 004
Boyd Forever Lady 8003

Leachman Right Time EXT
S A V MAY 7238
SAR Prospector May 9124

GDAR Traveler 71
Sitz Everelda Entence
AAR New Trend
SVF Forever Lady 57D
Emulation N Bar 5522
Leachman Erica 0025
R&J Prospector 341
SAR Classic May 7278

EPDs / Accuracy												
BW	WW	YW	MILK	TM	CE	MCE						
+4.3	93%	+53	90%	+95	85%	+26	71%	+83	+3.0	62%	+3.0	62%

REA: +0.32
CAR WT: +23
MRB: +0.26
FAT: +0.052

Admired for his consistent ability to improve structural integrity, phenotype, body depth and maternal function. His daughters have been touted by top cattlemen to have EXT-like udders.

Sire of Sale Bulls: 108X (pg 12), 65X (pg 13), 101X (pg 13), 9X (pg 34), 74X (pg 34), 23X (pg 35)

Act BW	ADJ. 205	ADJ. 365
84	910	1486



S A V FINAL ANSWER 0035

IMP 035K 1061938 Born: 2000

GDAR Traveler 71
SITZ TRAVELER 8180
Sitz Everelda Entence

Bon View Bando 598
SAV EMULOUS 8145
SAV Sky Emulous 2124

Traveler 1148
GDAR Miss Blackcap 567
GDAR Rainmaker 340
Sitz Everelda Entence 2335
Tehama Bando 155
Bon View Dora 56
Ellanin Sky Diver
Tail N 0383

EPDs / Accuracy												
BW	WW	YW	MILK	TM	CE	MCE						
-1.0	97%	+61	96%	+104	94%	+19	81%	+50	+12.0	94%	+9.0	72%

REA: +0.31
CAR WT: +5
MRB: +0.39
FAT: +0.036

At over 10 years of age, Final Answer's popularity continues due to his ability to sire consistent, low birth weights in commercial and registered herds. His daughters are remarkable producers with excellent udder structure, longevity and fleshing ability, enabling them to survive the harshest environments.

Sire of Sale Bulls: 52X (pg 15), 54X (pg 16)

Act BW	ADJ. 205	ADJ. 365
69	843	1360



REFERENCE SIREs

DUFF NEW ATTRACTION 6110

IMP 6110S 1426175 Born: 2006

O C C Doctor 940D
O C C Genesis 8726
 Blackbird of R R 1204

O C C Anchor 771A
O C C Dixie Erica 764C
 O C C Dixie Erica 764C

Rito 9FB3 of 5H11 Fullback
 Dixie Erica of C H
 PBC 707 1M F0203
 Blackbird Of RR 7023
 DHD Traveler 6807
 O C C Juanada 709V
 N Bar Emulation EXT
 O C C Dixie Erica 739A

EPDs / Accuracy							REA: +0.25
BW	WW	YW	MILK	TM	CE	MCE	CAR WT: +14
+5.08%	+34.71%	+73.50%	+17.17%	+34	+2.047%	-3.014%	MRB: -0.18
							FAT: -0.004

We selected Attraction to moderate frame & add muscle. His sons show a lot of masculinity with a super look, balance and shape.... and they pattern their sire.

Act BW	ADJ. 205	ADJ. 365
87	771	1224

Sire of Sale Bulls:

33X (pg 21), 21X (pg 21), 10X (pg 30), 84X (pg 30)



DUFF ENCORE 702

IMP 6110S 1426175 Born: 2006

Q A S Traveler 23-4
D H D TRAVELER 6807
 Bemindful Maid D H D 0807

O C C Anchor 771A
O C C Dixie Erica 764C
 O C C Dixie Erica 764C

Band 234 of Ideal 3163
 Q A S Blackbird Eve 601 1
 PBC 707 1M F0203
 Bemindful Maid of R R 1079
 DHD Traveler 6807
 O C C Juanada 709V
 N Bar Emulation EXT
 O C C Dixie Erica 739A

EPDs / Accuracy							REA: +0.32
BW	WW	YW	MILK	TM	CE	MCE	CAR WT: +7
+4.283%	+45.75%	+74.63%	+16.23%	+39	+3.053%	+2.022%	MRB: +0.28
							FAT: -0.007

Bred similar to the Attraction bull directly above, Encore is a moderate framed bull designed for today's efficiency oriented producer. His dam is a well recognized producer of headliners with a nursing ratio of 104 for 6 calves.

Act BW	ADJ. 205	ADJ. 365
84	752	1213

Sire of Sale Bulls: 79X (pg 19), 85X (pg 19), 92X (pg 20), 51X (pg 39), 113X (pg 40)



REFERENCE SIREs

BC LOOKOUT 7024

IMP 4168P 1359327 Born: 2004

O C C Emblazon 854E
O C C LEGEND 616L
 O C C Blackbird 632J

Papa Equator 2928
GIBBET HULL MIGNONNE E37
 Gibbet Hill Mignonne TR 29

DHD Traveler 6807
 Dixie Erica of C H
 OCC Gladiator 612G
 OCC Blackbird 824G
 Papa Power 096
 Papa Envious Blackbird 8849
 QAS Traveler 23-4
 Gibbet Hill Mignonne S24

EPDs / Accuracy							REA: +0.57
BW	WW	YW	MILK	TM	CE	MCE	CAR WT: +29
+2.592%	+51.88%	+82.78%	+11.48%	+37	+6.078%	-0.038%	MRB: +0.24
							FAT: +0.017

A proven sire for moderation of frame score, flawless phenotype and body composition.

Act BW	ADJ. 205	ADJ. 365
74	765	1370

Sire of Sale Bulls: 34X (pg 36), 66X (pg 37)



ANKONIAN WERNER WILD FIRE 96

IMP 132N 1244520 Born: 2003

Sitz Traveler 8180
S A V 8180 TRAVELER 004
 Boyd Forever Lady 8003

WCC Special Design L309
FSR ELBA SPECIAL DESIGN S406
 WCC Elba M82

GDAR Traveler 71
 Sitz Everelda Entence
 AAR New Trend
 SVF Forever Lady 57D
 Bon View New Design 878
 N Bar Primrose 2424
 Twin Valley Precision E161
 Forsythe Elba 2055

EPDs / Accuracy							REA: +0.42
BW	WW	YW	MILK	TM	CE	MCE	CAR WT: +23
+2.783%	+51.75%	+98.62%	+25.27%	+51	+7.053%	+9.024%	MRB: +0.31
							FAT: +0.051

This mid 6 frame bull is exceptional in terms of structure and phenotype. Early calves are showing excellent growth and muscle.

Act BW	ADJ. 205	ADJ. 365
80	952	1522

Sire of Sale Bulls: 112X (pg 20), 91X (pg 40)



REFERENCE SIRES

F V 20K KING 308M

FV 308M 1117753 Born: 2002

Ronan Tex 10X
RAFTER S RONAN TEX 20K
Glennie Pride 69E

Angus Acres Tex 16S
Ronan Matilda 30R
Banner Concord 34X
Glennie Pride 24Y
KBJ Round Mr Angus 2P
Everblack Barbara Rose 18W
King L4 849P
Queen L4 697S

Taraus Jazman 59Y
QUEEN 362E
Queen L4 587U

EPDs / Accuracy							REA: -0.11
BW	WW	YW	MILK	TM	CE	MCE	CAR WT: +6
+2.593%	+48.90%	+84.85%	+30.65%	+54	+7.081%	+4.057%	MRB: +0.12
							FAT: +0.004

His progeny possess tremendous rib and muscle shape in a moderate and efficient package. Look for KING progeny to have tremendous value around the country as breeders focus on cattle possessing the traits that made Angus the dominate beef breed - fertility, longevity, structural soundness and efficiency.

Act BW	ADJ. 205	ADJ. 365
75	671	n/a

Sire of Sale Bulls:

81X (pg 10), 13X (pg 10), 57X (pg 38), 95X (pg 38)



DUNLOUISE COMMANDER BOND F176

IMP 176S 1486721 Born: 2006

Newhouse Edwin Echo
WEDDERLIE EVICTOR
Evista Of Wedderlie

GDAR Traveler 71
Sitz Everelda Entence
AAR New Trend
SVF Forever Lady 57D
Bon View New Design 878
N Bar Primrose 2424
Twin Valley Precision E161
Forsythe Elba 2055

Ashley Elmighty
FSR ELBA SPECIAL DESIGN S406
Cherry Bee W9 of Champagne

EPDs / Accuracy							REA: -0.10
BW	WW	YW	MILK	TM	CE	MCE	CAR WT: -11
-0.782%	+2.72%	-12.22%	+2.5%	+3	+5.039%	+3.05%	MRB: +0.12
							FAT: +0.002

Commander Bond is a young Scottish prospect sire from the same dam as Cortachy Boy. He displays a great deal of eye appeal, structural integrity, base width and breed character.

Act BW	200 WT	ADJ. 365
66	635	n/a

Sire of Sale Bulls: 83X (pg 22)



YEARLING ANGUS BULLS



13X

SSA KING 13X

SSA 13X 1583768 January 8, 2010

RAFTER S RONAN TEX 20K
F V 20K KING 308M
QUEEN 362E

RONAN TEX 10X
GLENNIE PRIDE 69E
TARAUS JAZMAN 59Y
QUEEN L4 587U
S A V 004 DENSITY 4336
SSA EILEEN 35T
SOUTH SHADOW EILEEN 20N

136 DAY TEST	
Feb 13	1105
Oct 2	670
ADG	3.25
RATIO	
WW	82
YW	114

EPDs / Accuracy							AOD
BW	WW	YW	MILK	TM	CE	MCE	
+3.935%	+38.26%	+71.20%	+26.18%	+45	+3.028%	+1.015%	3

A cow-maker. Very well balanced. May be one of the best King sons for sale this year. Dam is an impressive Density daughter.

Actual BW	ADJ. 205	ADJ. 365
95	574	1094



81X

SSA KING 81X

SSA 81X 1583770 January 31, 2010

RAFTER S RONAN TEX 20K
F V 20K KING 308M
QUEEN 362E

RONAN TEX 10X
GLENNIE PRIDE 69E
TARAUS JAZMAN 59Y
QUEEN L4 587U
S A F FOCUS OF E R
MYTTY COUNTESS 906
F A R KRUGERRAND 410H
SOUTH SHADOW ERROLLINE 11F

136 DAY TEST	
Feb 13	1050
Oct 2	725
ADG	2.43
RATIO	
WW	107
YW	85

EPDs / Accuracy							AOD
BW	WW	YW	MILK	TM	CE	MCE	
-0.635%	+51.26%	+91.20%	+24.18%	+50	+12.028%	+9.016%	2

Recommended for Heifers. A long and smooth bull out of a deep, broody cow bred for low BW.

His Grand Dam, 1R has an Encore bull calf: 51X (pg 39)

Actual BW	ADJ. 205	ADJ. 365
71	694	1083





42X **KD 35U FOCUS 42X** **DIAMOND 823U**

KD 42X 1567742 January 18, 2010

MYTTY IN FOCUS
SSA 109 IN FOCUS 35U
 SSAP EILEEN 42P

WOODHILL COMMANDER 143L-132N
KD DIAMOND 823U
 SSAP DIAMOND 25R

S A F FOCUS OF E R
 MYTTY COUNTESS 906
 GRANDVIEW WOMACK DIRECT
 SOUTH SHADOW EILEEN 17F
 WOODHILL ADMIRAL 77K
 WOODHILL ERICA 1167-143L
 B/R NEW FRONTIER 095
 SOUTH SHADOW DIAMOND 9J

136 DAY TEST	
Feb 13	1160
Oct 2	760
ADG	2.99
RATIO	
WW	106
YW	105

EPDs / Accuracy							AOD
BW	WW	YW	MILK	TM	CE	MCE	
+0.6 32%	+45 21%	+78 12%	+20 10%	+43	+9.0 22%	+11.0 8%	2

Recommended for heifers
 Long and smooth made - moves like a cat. The Dam; 823U has a Density sired brother, tag 108X (pg 12).

Actual BW	ADJ. 205	ADJ. 365
80	696	1174



146X **DLD 35U FOCUS 146X** **BEAUTY 889U**

DLD 146X 1583764 MARCH 10, 2010

MYTTY IN FOCUS
SSA 109 IN FOCUS 35U
 SSAP EILEEN 42P

SSAP NEW ELIXIR 4R
DLD BEAUTY 889U
 BIG SKY DLD BEAUTY 1S

S A F FOCUS OF E R
 MYTTY COUNTESS 906
 GRANDVIEW WOMACK DIRECT
 SOUTH SHADOW EILEEN 17F
 B/R NEW FRONTIER 095
 SOUTH SHADOW EILEEN 5M
 RITO 2V1 OF 2536 1407
 BIG SKY BEAUTY 474P

136 DAY TEST	
Feb 13	1020
Oct 2	635
ADG	2.87
RATIO	
WW	106
YW	121

EPDs / Accuracy							AOD
BW	WW	YW	MILK	TM	CE	MCE	
+1.2 32%	+45 20%	+81 11%	+19 9%	+42	+7.0 22%	+8.0 7%	2

There isn't much we'd change about this fella. He's near flawless in his make-up, has a great disposition and comes from a long line of absolutely beautiful, productive cows. Here's a March baby that will definitely catch your eye sale day.

Actual BW	ADJ. 205	ADJ. 365
87	706	1166



67X **SSA 35U FOCUS 67X**

SSA 67X 1567695 January 25, 2010

MYTTY IN FOCUS
SSA 109 IN FOCUS 35U
 SSAP EILEEN 42P

WOODHILL COMMANDER 143L-132N
SSA RUBY 859U
 SSAP RUBY 33R

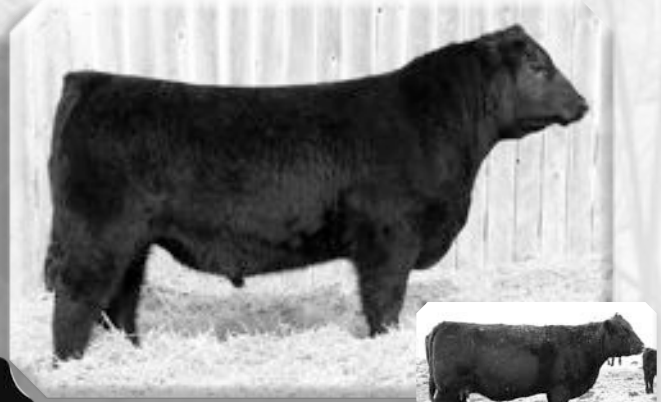
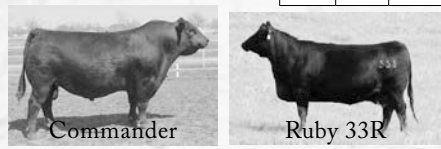
S A F FOCUS OF E R
 MYTTY COUNTESS 906
 GRANDVIEW WOMACK DIRECT
 SOUTH SHADOW EILEEN 17F
 WOODHILL ADMIRAL 77K
 WOODHILL ERICA 1167-143L
 B/R NEW FRONTIER 095
 SOUTH SHADOW RUBY 63L

136 DAY TEST	
Feb 13	1055
Oct 2	700
ADG	2.65
RATIO	
WW	101
YW	93

EPDs / Accuracy							AOD
BW	WW	YW	MILK	TM	CE	MCE	
-0.6 32%	+44 21%	+79 12%	+19 10%	+41	+11.0 22%	+12.0 8%	2

Recommended for heifers.
 Very docile, correct and tons of hair.

Actual BW	ADJ. 205	ADJ. 365
74	661	1085



108X **KD DENSITY 108X** **DIAMOND 25R**

KD 108X 1567743 February 15, 2010

S A V 8180 TRAVELER 004
S A V 004 DENSITY 4336
 S A V MAY 7238

B/R NEW FRONTIER 095
SSAP DIAMOND 25R
 SOUTH SHADOW DIAMOND 9J

SITZ TRAVELER 8180
 BOYD FOREVER LADY 8003
 LEACHMAN RIGHT TIME
 S A R PROSPECTOR MAY 9124
 B/R NEW DESIGN 036
 WHITE FENCE PRIDE H1
 Q A S TRAVELER 23-4
 JAY EN DEE PRIDE 55G

136 DAY TEST	
Feb 13	1080
Oct 2	740
ADG	2.50
RATIO	
WW	102
YW	90

EPDs / Accuracy							AOD
BW	WW	YW	MILK	TM	CE	MCE	
+3.1 36%	+42 26%	+78 21%	+21 20%	+42	+4.0 28%	+7.0 17%	5

Long smooth bull with a moderate birth weight, performance and a strong maternal pedigree.

Actual BW	ADJ. 205	ADJ. 365
88	677	1077





65X SSA DENSITY 65X ERROLINE 57R

SSA 65X 1567693 January 23, 2010

S A V 8180 TRAVELER 004
S A V 004 DENSITY 4336
 S A V MAY 7238

SOUTH SHADOW PINE DRIVE 10K
SSAP ERROLLINE 57R
 SOUTH SHADOW ERROLLINE 7L

SITZ TRAVELER 8180
 BOYD FOREVER LADY 8003
 LEACHMAN RIGHT TIME
 S A R PROSPECTOR MAY 9124
 PINE DRIVE BIG SKY
 JAY EN DEE EILEEN 36D
 BON VIEW NEW DESIGN 878
 SOUTH SHADOW ERROLLINE 42J

136 DAY TEST	
Feb 13	1190
Oct 2	795
ADG	2.95
RATIO	
WW	98
YW	103

EPDs / Accuracy							AOD						
BW	WW	YW	MILK	TM	CE	MCE							
+3.6	35%	+45	26%	+73	20%	+22	19%	+45	+3.0	26%	+4.0	15%	5

Balanced, structurally sound with eye-appeal. Out of a tremendous cow family.

Actual BW	ADJ. 205	ADJ. 365
91	664	1135



Erroline 7L



101X SSA DENSITY 101X DIAMOND 33T

SSA 101X 1567714 February 13, 2010

S A V 8180 TRAVELER 004
S A V 004 DENSITY 4336
 S A V MAY 7238

ABERAN DMM DECISION 26H
SSA DIAMOND 33T
 SOUTH SHADOW DIAMOND 26N

SITZ TRAVELER 8180
 BOYD FOREVER LADY 8003
 LEACHMAN RIGHT TIME
 S A R PROSPECTOR MAY 9124
 ROBN MAKIN' WAVES 9F
 DMM MISS ESSENCE 21F
 C A FUTURE DIRECTION 5321
 SOUTH SHADOW DIAMOND 3K

136 DAY TEST	
Feb 13	1100
Oct 2	710
ADG	2.91
RATIO	
WW	100
YW	102

EPDs / Accuracy							AOD						
BW	WW	YW	MILK	TM	CE	MCE							
+5.0	35%	+46	25%	+87	19%	+21	18%	+44	-1.0	26%	+3.0	15%	3

Moderate framed and thick-made. The first bull calf for 33T - very quiet, always looking for a scratch.

Actual BW	ADJ. 205	ADJ. 365
94	679	1144



120X DLD 92U FREEDOM 120X AKITA 69T

DLD 120X 1583766 February 22, 2010

TC FREEDOM 104
SSA 104 FREEDOM 92U
 SOUTH SHADOW AKITA 21L

SSAP FUTURE ELIXIR 31R
DLD AKITA 69T
 DLD AKITA 25P

CONNEALY FOREFRONT
 T C RUBY 9095
 WHITESTONE WIDESPREAD MB
 SOUTH SHADOW AKITA 7G
 C A FUTURE DIRECTION 5321
 SOUTH SHADOW GEORGINA 20L
 GARDENS EXT 4137 S2
 SOUTH SHADOW AKITA 3H

136 DAY TEST	
Feb 13	1080
Oct 2	732
ADG	3.17
RATIO	
WW	TWIN
YW	-

EPDs / Accuracy							AOD				
BW	WW	YW	MILK	TM	CE	MCE					
+0.7	P	+45	P	+79	P	+20	9	+	TWIN	TWIN	3

TWIN A very well put together grandson to Akita 25P; a cow that always has top-end calves and has an udder that can't be beat. His dam also has an excellent Final Answer 2 year old in production.

Actual BW	ADJ. 205	ADJ. 365
63	648	1155



Akita 25P



77X SSA 92U FREEDOM 77X

SSA 77X 1567700 January 29, 2010

TC FREEDOM 104
SSA 104 FREEDOM 92U
 SOUTH SHADOW AKITA 21L

B/R NEW FRONTIER 095
SSA DIAMOND 44T
 SSAP DIAMOND 38P

CONNEALY FOREFRONT
 T C RUBY 9095
 WHITESTONE WIDESPREAD MB
 SOUTH SHADOW AKITA 7G
 B/R NEW DESIGN 036
 WHITE FENCE PRIDE H1
 F A R KRUGERRAND 410H
 JAY EN DEE PRIDE 29-7G

136 DAY TEST	
Feb 13	1155
Oct 2	700
ADG	3.40
RATIO	
WW	95
YW	119

EPDs / Accuracy							AOD						
BW	WW	YW	MILK	TM	CE	MCE							
+1.4	32%	+46	21%	+87	11%	+18	10%	+41	+7.0	22%	+10.0	9%	3

Our highest gaining bull through the winter. Out of a very feminine cow.

Actual BW	ADJ. 205	ADJ. 365
79	635	1178



Diamond 38P



128X SSA 92U FREEDOM 128X

SSA 128X 1567727 February 25, 2010

136 DAY TEST						
Feb 13	1100					
Oct 2	725					
ADG	2.80					
RATIO						
WW	110					
YW	98					

TC FREEDOM 104
SSA 104 FREEDOM 92U
 SOUTH SHADOW AKITA 21L

SSAP RAIN ON 35R
SSA RUBY 29T
 SSAP RUBY 33R

CONNEALY FOREFRONT
 T C RUBY 9095
 WHITESTONE WIDESPREAD MB
 SOUTH SHADOW AKITA 7G
 SOUTH SHADOW RAIN MAN 2M
 SOUTH SHADOW JOYCE 28N
 B/R NEW FRONTIER 095
 SOUTH SHADOW RUBY 63L

EPDs / Accuracy							AOD
BW	WW	YW	MILK	TM	CE	MCE	
+0.1	31%	+41	19%	+76	9%	+44	+9.0 21%
							+11.0 7%
							3

Eye-appealing, deep and thick. Dam is sired by the reference sire 35R (pg 3). Ruby family sons below. 29T's first son to Townview Farms.

Actual BW	ADJ. 205	ADJ. 365
83	722	1170



52X DLD FINAL ANSWER 52X AKITA 51U

DLD 52X 1566576 January 20, 2010

136 DAY TEST						
Feb 13	1160					
Oct 2	760					
ADG	2.99					
RATIO						
WW	106					
YW	105					

SITZ TRAVELER 8180
S A V FINAL ANSWER 0035
 S A V EMULOUS 8145

B C LOOKOUT 7024
DLD AKITA 851U
 RISING STORM AKITA 13M

G D A R TRAVELER 71
 SITZ EVERELDA ENTENSE 1137
 BON VIEW BANDO 598
 S A V SKY EMULOUS 2124
 O C C LEGEND 616L
 GIBBET HILL MIGNONNE E37
 CUDLOBE RAINMAKER 39K
 RISING STORM AKITA 24K

EPDs / Accuracy							AOD
BW	WW	YW	MILK	TM	CE	MCE	
+2.1	35%	+54	26%	+90	20%	+46	+4.0 28%
							+3.0 16%
							2

Stout made bull - thick deep and full of that good AAA red meat. Dam is a very fancy Lookout daughter with a nice tight udder.

Actual BW	ADJ. 205	ADJ. 365
87	702	1180



54X SSA FINAL ANSWER 54X ERROLLINE 807

SSA 54X 1567688 January 21, 2010

136 DAY TEST						
Feb 13	1135					
Oct 2	725					
ADG	3.06					
RATIO						
WW	100					
YW	100					

SITZ TRAVELER 8180
S A V FINAL ANSWER 0035
 S A V EMULOUS 8145

MYTTY IN FOCUS
SSA ERROLLINE 807U
 SSAP ERROLLINE 54P

G D A R TRAVELER 71
 SITZ EVERELDA ENTENSE 1137
 BON VIEW BANDO 598
 S A V SKY EMULOUS 2124
 S A F FOCUS OF E R
 MYTTY COUNTESS 906
 SOUTH SHADOW MACHO 25L
 SOUTH SHADOW ERROLLINE 7H

EPDs / Accuracy							AOD
BW	WW	YW	MILK	TM	CE	MCE	
-0.6	P	+53	P	+96	P	+21	P
							+
							2

Recommended for Heifers. Focus topped by Final Answer should equal low BW with great performance.

Actual BW	ADJ. 205	ADJ. 365
72	673	1163



17X SSA NETWORK 17X EILEEN 36L

SSA 17X 1567674 January 9, 2010

136 DAY TEST						
Feb 13	1250					
Oct 2	840					
ADG	3.01					
RATIO						
WW	100					
YW	108					

S A V 8180 TRAVELER 004
S A V NET WORTH 4200
 S A V MAY 2410

EBON HILL DIVIDEND 14'99
SOUTH SHADOW EILEEN 36L
 SOUTH SHADOW EILEEN 5G

SITZ TRAVELER 8180
 BOYD FOREVER LADY 8003
 S A F 598 BANDO 5175
 S A V MAY 6269
 EBON HILL MAGIC MAN 41'97
 EBON HILL BRIDE 4'95
 JAY EN DEE TRAVELER 23-29C
 JAY EN DEE EILEEN 36D

EPDs / Accuracy							AOD
BW	WW	YW	MILK	TM	CE	MCE	
+4.1	36%	+48	27%	+83	21%	+18	21%
							+42
							+10.0 26%
							+6.0 17%
							9

You won't have to look twice at this thick, long and balanced power house. He should sire performance and maternal traits.

Actual BW	ADJ. 205	ADJ. 365
100	675	1157

36L sons to Derek Moorhead, Cavan Ranch and Hillestad/Bircham Ranch, with one covering our commercial herd. Both daughters producing.



125X SSA 8T IN FOCUS 125X EILEEN 60S

SSA 125X 1567724 February 23, 2010

MYTTY IN FOCUS
SSA 109L IN FOCUS 8T
 SSAP EILEEN 19R

SOUTH SHADOW BANDO 24M
SSA EILEEN 60S
 SOUTH SHADOW EILEEN 20N

S A F FOCUS OF E R
 MYTTY COUNTESS 906
 F A R KRUGERRAND 410H
 JAY EN DEE EILEEN 36D
 S A F 598 BANDO 517S
 JAY EN DEE GEORGINA 27G
 CUDLOBE RAINMAKER 39K
 SOUTH SHADOW EILEEN 16L

136 DAY TEST	
Feb 13	1240
Oct 2	800
ADG	3.24
RATIO	
WW	116
YW	117

EPDs / Accuracy							AOD						
BW	WW	YW	MILK	TM	CE	MCE							
+4.3	32%	+51	19%	+88	12%	+24	10%	+50	-1.0	21%	+4.0	8%	4

Free-moving, smooth, heavy-boned performance bull with great ratios: ADG at 3.24 through the winter.

Actual BW	ADJ. 205	ADJ. 365
103	771	1289



137X SSA 68S RIGHT WAY 137X JOYCE 2P

SSA 137X 1598268 MARCH 3, 2010

HYLINE RIGHT WAY 781
BIG SKY DLD RIGHT WAY 68S
 BIG SKY DYNA 435

SOUTH SHADOW RAIN MAN 2M
SSAP JOYCE 2P
 SOUTH SHADOW JOYCE 17M

HYLINE RIGHT TIME 338
 HYLINE ELLEN 86
 ACUMEN BOLD LEADER 30X
 PROSPECT DYNA 27S
 CUDLOBE RAINMAKER 39K
 SOUTH SHADOW DIAMOND 13K
 S A F 598 BANDO 517S
 SOUTH SHADOW JOYCE 9F

136 DAY TEST	
Feb 13	1150
Oct 2	710
ADG	3.28
RATIO	
WW	101
YW	115

EPDs / Accuracy							AOD					
BW	WW	YW	MILK	TM	CE	MCE						
+3.6	P	+53	P	+96	P	+19	P	+	+	+	+	6

Attractive, long, smooth bull with good performance. Out of a beautiful made mama.

Actual BW	ADJ. 205	ADJ. 365
100	687	1212

2P sons to Cavan Ranch and PFRA. A daughter producing for our Granddaughters, Nevaeh and Aeerie.



Average Black EPDs for all Calves born in 2010						
BW	WW	YW	MILK	TM	CE	MCE
+2.9	+41	+72	+17	+37	+1.3	+4.3



163X SSA 8T IN FOCUS 163X EILEEN 6P

SSA 163X 1598272 APRIL 5, 2010

MYTTY IN FOCUS
SSA 109L IN FOCUS 8T
 SSAP EILEEN 19R

SITZ ALLIANCE 659S
SSAP EILEEN 6P
 JAY EN DEE EILEEN 36D

S A F FOCUS OF E R
 MYTTY COUNTESS 906
 F A R KRUGERRAND 410H
 JAY EN DEE EILEEN 36D
 SITZ TRAVELER 8180
 SITZ BARBARAMERE JET 2698
 JAY EN DEE NEW TREND 14B
 JAY EN DEE EILEEN 73P

136 DAY TEST	
Feb 13	980
Oct 2	605
ADG	2.06
RATIO	
WW	105
YW	99

EPDs / Accuracy							AOD				
BW	WW	YW	MILK	TM	CE	MCE					
-0.1	P	+39	P	+71	P	+23	P	+	-	-	6

Youngest bull in the sale but a very good one with a lower BW. Dam is a tank out of the great Eileen cow family.

Actual BW	ADJ. 205	ADJ. 365
80	685	1126

6P first son to Cody & Nora Schock.



<http://www.agrimart.ca/cowtown/>
 Streaming Video from ring side for online viewing and bidding





79X **SSA ENCORE 79X** **DIAMOND 38P**

SSA 79X 1567701 January 30, 2010

136 DAY TEST					
Feb 13	1200				
Oct 2	760				
ADG	3.24				
RATIO					
WW	98				
YW	117				

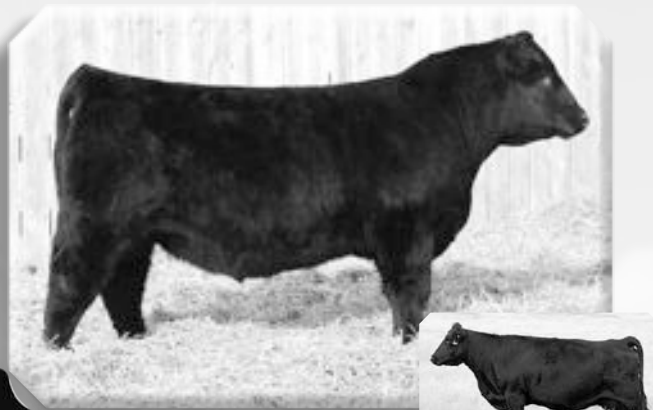
D H D TRAVELER 6807
DUFF ENCORE 702
 O C C DIXIE ERICA 814G

Q A S TRAVELER 23-4
 BEMINDFUL MAID D H D 0807
 O C C ANCHOR 771A
 O C C DIXIE ERICA 764C
 KRUGERRAND OF DONAMERE 490
 F A R ERIANNA 286F
 JAY EN DEE TRAVELER 23-29C
 JAY EN DEE PRIDE 86D

EPDs / Accuracy							AOD
BW	WW	YW	MILK	TM	CE	MCE	
+3.9 35%	+42 26%	+77 19%	+13 12%	+34	+2.0 25%	+3.0 10%	6

Bigger framed than his half siblings. The Dam has some size, substance and is good uddered. 38P son to Cavan Ranch.

Actual BW	ADJ. 205	ADJ. 365
94	656	1174



92X **SSA ENCORE 92X** **DIAMOND 13K**

SSA 92X 1567708 February 7, 2010

136 DAY TEST					
Feb 13	1050				
Oct 2	725				
ADG	2.39				
RATIO					
WW	94				
YW	86				

D H D TRAVELER 6807
DUFF ENCORE 702
 O C C DIXIE ERICA 814G

Q A S TRAVELER 23-4
 BEMINDFUL MAID D H D 0807
 O C C ANCHOR 771A
 O C C DIXIE ERICA 764C
 PAPA POWER 096
 PAPA ENVIUOUS BLACKBIRD 8849
 JAY EN DEE NEW TREND 14B
 ELLANIN PRIDE 9R

EPDs / Accuracy							AOD
BW	WW	YW	MILK	TM	CE	MCE	
+4.8 36%	+33 27%	+67 20%	+17 14%	+34	-1.0 26%	+0.0 11%	10

A moderate framed, wide-based, free-moving sire prospect. His Dam, 13K, is mother to the Rain Man 2M bull that worked so well in both our purebred & commercial herds.

13K sons to Sheidaghan Angus, Glagau Enterprises, Cavan Ranch, and two sons kept for ourselves.

Actual BW	ADJ. 205	ADJ. 365
102	645	1028



85X **SSA ENCORE 85X** **EILEEN 16L**

SSA 85X 1567704 February 2, 2010

136 DAY TEST					
Feb 13	1055				
Oct 2	685				
ADG	2.72				
RATIO					
WW	88				
YW	98				

D H D TRAVELER 6807
DUFF ENCORE 702
 O C C DIXIE ERICA 814G

PINE DRIVE BIG SKY
SOUTH SHADOW EILEEN 16L
 SOUTH SHADOW EILEEN 17F

Q A S TRAVELER 23-4
 BEMINDFUL MAID D H D 0807
 O C C ANCHOR 771A
 O C C DIXIE ERICA 764C
 LE MAR EILEENMERE LAD 549
 BENLOCK BLACKCAP 108K
 JAY EN DEE TOUCHSTONE 131-32D
 JAY EN DEE EILEEN 36D

EPDs / Accuracy							AOD
BW	WW	YW	MILK	TM	CE	MCE	
+3.8 36%	+30 26%	+49 20%	+12 13%	+27	+2.0 26%	+2.0 11%	9

A well balanced bull with a great profile and that old style Angus head. 16L sons to Bill Wig and Don Wilk.

Actual BW	ADJ. 205	ADJ. 365
89	598	1033



112X **SSA WILD FIRE 112X** **AKITA 17R**

SSA 112X 1567718 February 16, 2010

136 DAY TEST					
Feb 13	1155				
Oct 2	780				
ADG	2.76				
RATIO					
WW	108				
YW	99				

S A V 8180 TRAVELER 004
ANKONIAN WERNER WILD FIRE 96
 FSR ELBA SPECIAL DESIGN S406

B/R NEW FRONTIER 095
SSAP AKITA 17R
 JAY EN DEE PRIDE 13D

SITZ TRAVELER 8180
 BOYD FOREVER LADY 8003
 W C C SPECIAL DESIGN L309
 W C C ELBA M82
 B/R NEW DESIGN 036
 WHITE FENCE PRIDE H1
 JAY EN DEE RITO 7A
 JAY EN DEE PRIDE 79S

EPDs / Accuracy							AOD
BW	WW	YW	MILK	TM	CE	MCE	
+3.7 35%	+46 25%	+81 19%	+21 13%	+44	+3.0 25%	+6.0 10%	5

Maternal with a touch of performance here in this deep-sided, hairy and bigger framed Wild Fire son. 17R sons to Paul Demars, James Hanson and Cypress Colony.

Actual BW	ADJ. 205	ADJ. 365
96	716	1158



33X SSA NEW ATTRACTION 33X JOYCE 18R

SSA 33X 1567681 January 13, 2010

O C C GENESIS 872G
DUFF NEW ATTRACTION 6110
 O C C DIXIE ERICA 814G

B/R NEW FRONTIER 095
SSAP JOYCE 18R
 SOUTH SHADOW JOYCE 25K

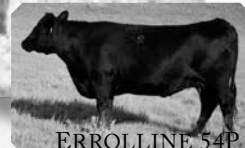
O C C DOCTOR 940D
 BLACKBIRD OF R R 1204
 O C C ANCHOR 771A
 O C C DIXIE ERICA 764C
 B/R NEW DESIGN 036
 WHITE FENCE PRIDE H1
 E&B 1483 SCOTCHMAN 543
 SOUTH SHADOW JOYCE 9F

136 DAY TEST	
Feb 13	1180
Oct 2	785
ADG	2.90
RATIO	
WW	97
YW	104

EPDs / Accuracy							AOD
BW	WW	YW	MILK	TM	CE	MCE	
+1.0 35%	+37 25%	+75 17%	+19 11%	+38	+9.0 24%	+7.0 8%	5

A very correct made bull with great length of body. 18R's 2009 Bull Calf covered cleanup in our 2010 breeding season. 18R is out of an Elite Dam and is designated Elite herself with an Average Ratio of 108.

Actual BW	ADJ. 205	ADJ. 365
76	635	1100



83X SSA BOND 83X ERROLLINE 54P

SSA 83X 1567702 February 1, 2010

WEDDERLIE EVICTOR
DUNLOUISE COMMANDER BOND
 CHAMPAGNE CHERRY BEE B117

SOUTH SHADOW MACHO 25L
SSAP ERROLLINE 54P
 SOUTH SHADOW ERROLLINE 7H

NEWHOUSE EDWIN ELKO
 EVISTA OF WEDDERLIE
 ASHLEY ELMIGHTY
 CHERRY BEE W9 OF CHAMPAGNE
 ANKONIAN ELIXIR 100
 SOUTH SHADOW DIAMOND 33G
 JAY EN DEE TRAVELER 23-29C
 JAY EN DEE ERROLLINE 86E

136 DAY TEST	
Feb 13	1090
Oct 2	730
ADG	2.65
RATIO	
WW	94
YW	95

EPDs / Accuracy							AOD
BW	WW	YW	MILK	TM	CE	MCE	
+2.2 35%	+18 25%	+31 11%	+11 6%	+20	+0.0 21%	+2.0 5%	6

Long framed, smooth and with a different pedigree, Scottish bred. 54P sons to Hanson Ranches and Whitney Ranch with a Focus daughter in herd.

Actual BW	ADJ. 205	ADJ. 365
91	635	1058

NEXT YEAR'S SALE
2011 CALF CROP SIRED BY

- SSA 109 In Focus 35U ~ SSA 104 Freedom 92U
- SSA 4200 Networth 73W ~ SSAP Rain On 35R
- Ankonian Werner Wild Fire 96
- Synden Mandate 6079 ~ Sitz Upward 307R
- Connealy Thunder ~ SAV Net Worth 4200
- SAV 004 Density 4336 ~ SAV Heritage 6295
- Salt Creek Bob 7003 ~ Dunlouse Commander Bond
- FV 20K King 308M ~ Duff New Attraction 6110
- BC Eagle Eye 110-7 ~ BC Lookout 7024 ~ BC Matrix 4132

Kept for our 2011 Breeding Season

SSA 68S RIGHT WAY 134X

Sire: Right Way 68S



Dam: Eileen 2N



This guy was easy to keep; thickness, volume, great scrotal development, a WW ratio of 108, YW ratio of 120 and out of a beautiful Eileen cow. Did we mention eye-appeal and disposition!



21X SSA NEW ATTRACTION 21X ERROLLINE 42N

SSA 21X 1567675 January 10, 2010

O C C GENESIS 872G
DUFF NEW ATTRACTION 6110
 O C C DIXIE ERICA 814G

SOUTH SHADOW PINE DRIVE 10K
SOUTH SHADOW ERROLLINE 42N
 SOUTH SHADOW ERROLLINE 11F

O C C DOCTOR 940D
 BLACKBIRD OF R R 1204
 O C C ANCHOR 771A
 O C C DIXIE ERICA 764C
 PINE DRIVE BIG SKY
 SOUTH SHADOW EILEEN 36D
 JAY EN DEE TOUCHSTONE 131-32D
 JAY EN DEE ERROLLINE 12D

136 DAY TEST	
Feb 13	1225
Oct 2	825
ADG	2.94
RATIO	
WW	98
YW	106

EPDs / Accuracy							AOD
BW	WW	YW	MILK	TM	CE	MCE	
+5.4 35%	+36 25%	+63 17%	+15 11%	+33	-2.0 23%	-2.0 7%	7

A thick clean calf with a little more frame and growth than his sire. Grand Dam 11F raised 10 calves. SOD: 10K, has 10 daughters working in our herd. 42N sons to Cobrett Farms & Derek Moorhead.

Actual BW	ADJ. 205	ADJ. 365
98	665	1135



Yearling Angus bulls continue on page 30





Guest Consigner

BEAR CREEK ANGUS

As a show of consistency, I would like to draw attention to the fact that every registered bull calf born from 26T in 2009 is at the sale today. As a group they represent what their sire has to offer.

I bought 26T from Delormes in '07 as the high seller at the sale and he hasn't disappointed me. His numbers are incredible, while his soundness as a herd sire is even more. I cannot fault him, he has thickness top to bottom, style, perfect feet, his mother is an incredible cow, and his calves are awesome, especially the heifers. In my mind, he is as good as most AI sires out there. And in my opinion, anyone who is raising black cattle should have a son from him. The genetic performance from Traveler 004 son's combined with the easy fleshing, low birth weight, Rainmaker cows is a winning combination.

Chad Weiss:
Cell: (306) 662-7060
House: (306) 558-4401



56W

WBA DENSITY 56W

WBA 56W 1504520 April 19, 2009

Actual BW	ADJ. 205
96	632

S A V 004 DENSITY 4336
SSA 4336 DENSITY 26T
SOUTH SHADOW RUBY 12N

S A V 8180 TRAVELER 004
S A V MAY 7238
CUDLOBE RAINMAKER 39K
SOUTH SHADOW RUBY 63L
S A NEUTRON 377
KENOSEE PARK BLACKBIRD 2K
EBON HILL BLACK POWER 41'99
EBON HILL LAVENDER LADY 256'97

NEW FORCE THUNDER 02N
BEAR CREEK LAVENDER LADY 56'05
EBON HILL LAVENDER LADY 356'03

EPDs / Accuracy							AOD						
BW	WW	YW	MILK	TM	CE	MCE							
+5.0	30%	+46	19%	+85	17%	+18	10%	+41	-1.0	20%	-1.0	20%	5

66W

WBA NEW DENSITY 66W

WBA 66W 1504522 April 16, 2009

Actual BW	ADJ. 205
84	636

S A V 004 DENSITY 4336
SSA 4336 DENSITY 26T
SOUTH SHADOW RUBY 12N

S A V 8180 TRAVELER 004
S A V MAY 7238
CUDLOBE RAINMAKER 39K
SOUTH SHADOW RUBY 63L
A A R NEW TREND
S V F FOREVER LADY 57D
SUMMITCREST HI FLYER 3B18
BAR DOUBLE M BLACKCAP 61J

BOYD NEW DAY 8005
OTA BOYD NEW DAY 66S
OTA BLACKCAP 37L

EPDs / Accuracy							AOD						
BW	WW	YW	MILK	TM	CE	MCE							
+2.3	30%	+40	20%	+76	18%	+20	11%	+40	+6.0	21%	+6.0	9%	4

22W

CBW DENSITY 22W

CBW 22W 1504524 April 18, 2009

Actual BW	ADJ. 205
83	646

S A V 004 DENSITY 4336
SSA 4336 DENSITY 26T
SOUTH SHADOW RUBY 12N

STANDARD HILL NEXT STEP 8M
ISLA BANK PRIDISTA 22R
ISLA BANK PRIDISTA 40N

S A V 8180 TRAVELER 004
S A V MAY 7238
CUDLOBE RAINMAKER 39K
SOUTH SHADOW RUBY 63L
C A FUTURE DIRECTION 5321
STANDARD HILL ELBA 9K
CHICO HANNIBAL 43H
BLACK RIDGE PRIDISTA 815G

EPDs / Accuracy							AOD						
BW	WW	YW	MILK	TM	CE	MCE							
+2.0	30%	+38	19%	+73	18%	+23	10%	+42	+7.0	21%	+9.0	21%	5

50W

CBW DENSITY 50W

CBW 50W 1504526 May 1, 2009

Actual BW	ADJ. 205
83	672

S A V 004 DENSITY 4336
SSA 4336 DENSITY 26T
SOUTH SHADOW RUBY 12N

BELL 2164 STOCKMAN 9K
CALLAMERE BLACKBIRD 56R
CALLAMERE BLACKBIRD 35K

S A V 8180 TRAVELER 004
S A V MAY 7238
CUDLOBE RAINMAKER 39K
SOUTH SHADOW RUBY 63L
TC STOCKMAN 365
BELL BLACKBIRD 22E
DOUBLE AA BLACKMAN 267'98
CALLAMERE BLACKBIRD 3F

EPDs / Accuracy							AOD						
BW	WW	YW	MILK	TM	CE	MCE							
+0.6	30%	+37	19%	+67	19%	+19	9%	+38	+6.0	20%	+6.0	6%	5

71W

CBW AUGUST RAIN 71W

CBW 71W 1504523 April 28, 2009

Actual BW	ADJ. 205
71	651

S A V 004 DENSITY 4336
SSA 4336 DENSITY 26T
SOUTH SHADOW RUBY 12N

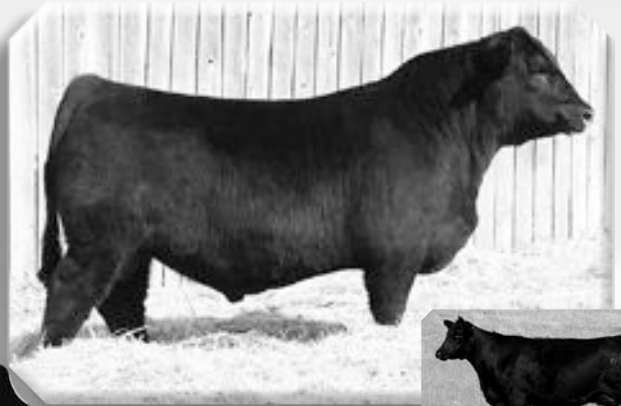
CHICO HANNIBAL 43H
ISLA BANK AUGUSTA 71P
ISLA BANK AUGUSTA 21A

S A V 8180 TRAVELER 004
S A V MAY 7238
CUDLOBE RAINMAKER 39K
SOUTH SHADOW RUBY 63L
TC STOCKMAN 365
CHICO ROSEBUD 2E
G V CORNHUSKER 584
ISLA BANK AUGUSTA 45U

EPDs / Accuracy							AOD						
BW	WW	YW	MILK	TM	CE	MCE							
+0.1	31%	+34	20%	+62	19%	+19	11%	+36	+9.0	21%	+10.0	9%	6

71W's mother always delivers small calves, no matter the sire. Combined with her tidy head, which she leaves on every calf she's ever raised me, and 26T's moderate birth weight, I recommend this bull for heifers.





10X

SSA NEW ATTRACTION 10X

AKITA 19S

SSA 10X 1567672

January 5, 2010

O C C GENESIS 872G
DUFF NEW ATTRACTION 6110
 O C C DIXIE ERICA 814G

SSA DATELINE 18P
SSA AKITA 19S
 SSAP AKITA 14P

O C C DOCTOR 940D
 BLACKBIRD OF R R 1204
 O C C ANCHOR 771A
 O C C DIXIE ERICA 764C
 VERMILION DATELINE 7078
 SOUTH SHADOW EILEEN 5G
 SOUTH SHADOW RAIN MAN 2M
 SOUTH SHADOW AKITA 8M

136 DAY TEST
Feb 13 1225
Oct 2 810
ADG 3.10
RATIO
WW 96
YW 109

EPDs / Accuracy							AOD
BW	WW	YW	MILK	TM	CE	MCE	
+3.4 35%	+36 24%	+73 16%	+18 9%	+36	+3.0 23%	+2.0 7%	4

A tank; long, thick and wide-based. A photocopy of his sire with exceptional muscle and eye-appeal. 19S's first son to Gordie Cameron

Actual BW	ADJ. 205	ADJ. 365
91	653	1148



84X

SSA NEW ATTRACTION 84X

PRIDE 41M

SSA 84X 1567703

February 2, 2010

O C C GENESIS 872G
DUFF NEW ATTRACTION 6110
 O C C DIXIE ERICA 814G

SOUTH SHADOW PINE DRIVE 10K
SOUTH SHADOW PRIDE 41M
 JAY EN DEE PRIDE 62G

O C C DOCTOR 940D
 BLACKBIRD OF R R 1204
 O C C ANCHOR 771A
 O C C DIXIE ERICA 764C
 PINE DRIVE BIG SKY
 JAY EN DEE EILEEN 36D
 JAY EN DEE RIGHT TIME 1E
 JAY EN DEE PRIDE 2A

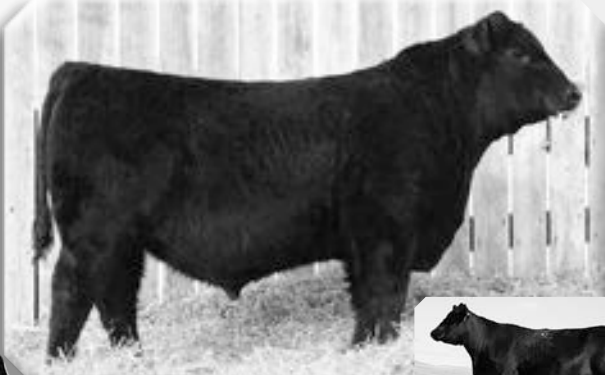
136 DAY TEST
Feb 13 1080
Oct 2 760
ADG 2.35
RATIO
WW 97
YW 85

EPDs / Accuracy							AOD
BW	WW	YW	MILK	TM	CE	MCE	
+5.8 35%	+33 25%	+59 17%	+15 11%	+32	-3.0 23%	-2.0 7%	8

A beautiful uddered mama with a good solid foot. 41M sons to Jason Allemand, Merle Darling, Todd & Rosanne Farnsworth, Walter Hyam and Rex Furgeson.

Actual BW	ADJ. 205	ADJ. 365
106	665	1041





144X SSA 8T IN FOCUS 144X EILEEN 30N

SSA 144X 1598269 MARCH 9, 2010

MYTTY IN FOCUS
SSA 109L IN FOCUS 8T
 SSAP EILEEN 19R

CUDLOBE RAINMAKER 39K
SOUTH SHADOW EILEEN 30N
 SOUTH SHADOW EILEEN 36L

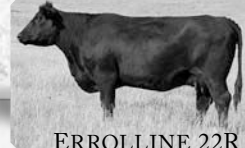
S A F FOCUS OF E R
 MYTTY COUNTESS 906
 F A R KRUGERRAND 410H
 JAY EN DEE EILEEN 36D
 STEVENSON RAINMAKER 630G
 CUDLOBE KYMA 18H
 EBON HILL DIVIDEND 14'99
 SOUTH SHADOW EILEEN 5G

136 DAY TEST	
Feb 13	1140
Oct 2	746
ADG	2.90
RATIO	
WW	114
YW	104

EPDs / Accuracy							AOD
BW	WW	YW	MILK	TM	CE	MCE	
+0.6 P	+48 P	+87 P	+21 P	+	-	-	7

A younger, thick, well put together bull with good performance and ratio numbers. Grand Dam 36L brings for your appraisal 17X (pg 16) 30N - three producing daughters.

Actual BW	ADJ. 205	ADJ. 365
87	746	1210



151X SSA 8T IN FOCUS 151X ERROLLINE 22R

SSA 151X 1567736 MARCH 12, 2010

MYTTY IN FOCUS
SSA 109L IN FOCUS 8T
 SSAP EILEEN 19R

SOUTH SHADOW RAIN MAN 2M
SSAP ERROLLINE 22R
 SOUTH SHADOW ERROLLINE 1N

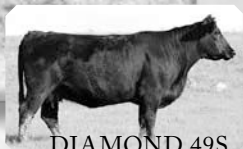
S A F FOCUS OF E R
 MYTTY COUNTESS 906
 F A R KRUGERRAND 410H
 JAY EN DEE EILEEN 36D
 CUDLOBE RAINMAKER 39K
 SOUTH SHADOW DIAMOND 13K
 CUDLOBE RAINMAKER 39K
 SOUTH SHADOW ERROLLINE 7L

136 DAY TEST	
Feb 13	1150
Oct 2	710
ADG	3.28
RATIO	
WW	105
YW	115

EPDs / Accuracy							AOD
BW	WW	YW	MILK	TM	CE	MCE	
+1.2 33%	+39 21%	+81 11%	+27 10%	+47	+5.0 22%	+6.0 7%	5

Larger framed, big performance. Double-bred Rainmaker on the bottom. 22R sons to Travis Armstrong and Wilfley Holding.

Actual BW	ADJ. 205	ADJ. 365
102	713	1238



147X SSA 8T IN FOCUS 147X DIAMOND 49S

SSA 147X 1598985 MARCH 10, 2010

MYTTY IN FOCUS
SSA 109L IN FOCUS 8T
 SSAP EILEEN 19R

SOUTH SHADOW BANDO 24M
SSA DIAMOND 49S
 SOUTH SHADOW DIAMOND 4N

S A F FOCUS OF E R
 MYTTY COUNTESS 906
 F A R KRUGERRAND 410H
 JAY EN DEE EILEEN 36D
 S A F 598 BANDO 5175
 JAY EN DEE GEORGINA 27G
 ROCKN D AMBUSH 1531
 JAY EN DEE PRIDE 43D

136 DAY TEST	
Feb 13	1025
Oct 2	620
ADG	2.98
RATIO	
WW	95
YW	107

EPDs / Accuracy							AOD
BW	WW	YW	MILK	TM	CE	MCE	
+2.3 P	+44 P	+82 P	+18 P	+	-	-	4

Moderate framed in a stylish package. 49S - first son to PFRA

Actual BW	ADJ. 205	ADJ. 365
91	639	1115



43X SSA 35U FOCUS 43X

SSA 43X 1567685 January 18, 2010

MYTTY IN FOCUS
SSA 109 IN FOCUS 35U
 SSAP EILEEN 42P

SSAP NEW ELIXIR 4R
SSA RUBY 883U
 SSA RUBY 54S

S A F FOCUS OF E R
 MYTTY COUNTESS 906
 GRANDVIEW WOMACK DIRECT
 SOUTH SHADOW EILEEN 17F
 B/R NEW FRONTIER 095
 SOUTH SHADOW EILEEN 5M
 ABERAN DMM DECISION 26H
 SOUTH SHADOW RUBY 63L

136 DAY TEST	
Feb 13	1120
Oct 2	785
ADG	2.50
RATIO	
WW	109
YW	88

EPDs / Accuracy							AOD
BW	WW	YW	MILK	TM	CE	MCE	
+0.1 32%	+46 20%	+80 11%	+20 9%	+43	+8.0 22%	+9.0 7%	2

Recommended for Heifers. Long spined, deep, hairy and standing on a good foundation. Great Grand Dams pictured below.

Actual BW	ADJ. 205	ADJ. 365
82	717	1117





63X

SSA 35U FOCUS 63X

SSA 63X 1598164 January 22, 2010

MYTTY IN FOCUS
SSA 109 IN FOCUS 35U
 SSAP EILEEN 42P

B C LOOKOUT 7024
SSA ERROLLINE 878U
 SOUTH SHADOW ERROLLINE 21N

S A F FOCUS OF E R
 MYTTY COUNTESS 906
 GRANDVIEW WOMACK DIRECT
 SOUTH SHADOW EILEEN 17F
 O C C LEGEND 616L
 GIBBET HILL MIGNONNE E37
 SITZ ALLIANCE 6595
 SOUTH SHADOW ERROLLINE 7H

136 DAY TEST	
Feb 13	1035
Oct 2	700
ADG	2.50
RATIO	
WW	101
YW	88

EPDs / Accuracy						AOD
BW	WW	YW	MILK	TM	CE	MCE
-2.0 P	+37 P	+66 P	+18 P	+	+	+
						2

Recommended for Heifers.
 Long spined, smooth shoulders; really nice conformation on this low BW calving ease prospect.

Actual BW	ADJ. 205	ADJ. 365
62	653	1053



9X

SSA DENSITY 9X

AKITA 32P

SSA 9X 1567673 January 5, 2010

S A V 8180 TRAVELER 004
S A V 004 DENSITY 4336
 S A V MAY 7238

GARDENS EXT 4137 S2
SSAP AKITA 32P
 JAY EN DEE PRIDE 30D

SITZ TRAVELER 8180
 BOYD FOREVER LADY 8003
 LEACHMAN RIGHT TIME
 S A R PROSPECTOR MAY 9124
 N BAR EMULATION EXT
 GREEN GARDEN BONNIE 1134 S1
 JAY EN DEE NEW TREND 14B
 JAY EN DEE PRIDE 31A

136 DAY TEST	
Feb 13	1170
Oct 2	810
ADG	2.65
RATIO	
WW	97
YW	95

EPDs / Accuracy						AOD
BW	WW	YW	MILK	TM	CE	MCE
+1.0 36%	+37 26%	+72 21%	+22 20%	+41	+8.0 27%	+8.0 17%
						6

Long, muscular bull. Dam is long and feminine with a perfect udder and exceptional foot.
 32P sons to Daniel Eremenko, Chavturs Bros. and Walter Hyam.

Actual BW	ADJ. 205	ADJ. 365
84	639	1063



12X

SSA 35U FOCUS 12X

SSA 12X 1583759 January 6, 2010

MYTTY IN FOCUS
SSA 109 IN FOCUS 35U
 SSAP EILEEN 42P

SSA CENTURY TRAVELER 44S
SANDSTONE CATTLE NEONIA 13U
 REMITALL GRAND NEONIA 134G

S A F FOCUS OF E R
 MYTTY COUNTESS 906
 GRANDVIEW WOMACK DIRECT
 SOUTH SHADOW EILEEN 17F
 CENTURY TOUCHSTONE 131
 SOUTH SHADOW AKITA 13H
 DESSA TRAVELER 4E
 HAPPYVALE JRP NEONIA 48A

136 DAY TEST	
Feb 13	1065
Oct 2	675
ADG	2.91
RATIO	
WW	93
YW	102

EPDs / Accuracy						AOD
BW	WW	YW	MILK	TM	CE	MCE
-2.3 31%	+37 19%	+65 9%	+14 9%	+33	+12.0 20%	+11.0 7%
						2

Recommended for Heifers.
 This fella is smooth and packs some big nuts.
 Sandstone purchased the sire of the Dam in our 2007 sale. 44S pictured below

Actual BW	ADJ. 205	ADJ. 365
58	602	1068



74X

SSA DENSITY 74X

EILEEN 36D

SSA 74X 1567698 January 27, 2010

S A V 8180 TRAVELER 004
S A V 004 DENSITY 4336
 S A V MAY 7238

JAY EN DEE NEW TREND 14B
JAY EN DEE EILEEN 36D
 JAY EN DEE EILEEN 73P

SITZ TRAVELER 8180
 BOYD FOREVER LADY 8003
 LEACHMAN RIGHT TIME
 S A R PROSPECTOR MAY 9124
 V D A R NEW TREND 315
 JAY EN DEE PATSY 41T
 DAKOTA POUNDMAKER 128M
 JAY EN DEE EILEEN 47L

136 DAY TEST	
Feb 13	1040
Oct 2	700
ADG	2.50
RATIO	
WW	94
YW	90

EPDs / Accuracy						AOD
BW	WW	YW	MILK	TM	CE	MCE
+2.1 37%	+30 28%	+54 23%	+19 23%	+34	+4.0 27%	+5.0 18%
						16

The old girl still has it! A real show off son for you in a moderate frame and very well put together. He will sire awesome females.
 36D sons to N Gray, McKelvey Farms, Bircham Ranch, Cody & Nora Schock and two sons kept for use in our Purebred and Commercial herds

Actual BW	ADJ. 205	ADJ. 365
86	625	1025



23X SSA DENSITY 23X

SSA 23X 1567676 January 11, 2010

S A V 8180 TRAVELER 004
S A V 004 DENSITY 4336
 S A V MAY 7238

ROCKN D AMBUSH 1531
SSAP DIAMOND 10P
 JAY EN DEE PRIDE 43D

SITZ TRAVELER 8180
 BOYD FOREVER LADY 8003
 LEACHMAN RIGHT TIME
 S A R PROSPECTOR MAY 9124
 PARAMONT AMBUSH 2172
 MS BLACKCAP BAND OF R D 1301
 JAY EN DEE NEW TREND 14B
 ELLANIN PRIDE 9R

136 DAY TEST	
Feb 13	1030
Oct 2	610
ADG	3.09
RATIO	
WW	71
YW	111

EPDs / Accuracy							AOD						
BW	WW	YW	MILK	TM	CE	MCE							
+2.7	35%	+27	26%	+57	20%	+14	21%	+28	+5.0	27%	+7.0	18%	6

10P sons to Tony & Carolyn Leismeister and Alex Chavtur.

Actual	ADJ.	ADJ.
BW	205	365
90	497	991



161X DLD 92U FREEDOM 161X AKITA 55S

DLD 161X 1583762 MARCH 28, 2010

TC FREEDOM 104
SSA 104 FREEDOM 92U
 SOUTH SHADOW AKITA 21L

ABERAN DMM DECISION 26H
DLD AKITA 55S
 RISING STORM AKITA 12M

CONNEALY FOREFRONT
 T C RUBY 9095
 WHITESTONE WIDESPREAD MB
 SOUTH SHADOW AKITA 7G
 ROBN MAKIN' WAVES 9F
 DMM MISS ESSENCE 21F
 S A F 598 BANDO 5175
 SOUTH SHADOW AKITA 3H

136 DAY TEST	
Feb 13	1000
Oct 2	670
ADG	2.46
RATIO	
WW	111
YW	86

EPDs / Accuracy							AOD						
BW	WW	YW	MILK	TM	CE	MCE							
+3.2	32%	+50	21%	+92	11%	+19	10%	+44	+3.0	21%	+8.0	8%	4

Wow does this guy have hair! 161X is a young, deep sided bull that did well on his mama.

Actual	ADJ.	ADJ.
BW	205	365
91	738	1132



132X SSA 92U FREEDOM 132X ERROLLINE 10T

SSA 132X 1567728 February 28, 2010

TC FREEDOM 104
SSA 104 FREEDOM 92U
 SOUTH SHADOW AKITA 21L

B/R NEW FRONTIER 095
SSA ERROLLINE 10T
 SOUTH SHADOW ERROLLINE 19H

CONNEALY FOREFRONT
 T C RUBY 9095
 WHITESTONE WIDESPREAD MB
 SOUTH SHADOW AKITA 7G
 B/R NEW DESIGN 036
 WHITE FENCE PRIDE H1
 SOUTH SHADOW FORTUNE 7F
 SOUTH SHADOW ERROLLINE 14F

136 DAY TEST	
Feb 13	1060
Oct 2	690
ADG	2.76
RATIO	
WW	105
YW	97

EPDs / Accuracy							AOD						
BW	WW	YW	MILK	TM	CE	MCE							
+1.4	31%	+44	20%	+78	10%	+19	11%	+41	+7.0	22%	+10.0	9%	3

Thick, soggy made calf with tons of hair; wide-based and correct.

Actual	ADJ.	ADJ.
BW	205	365
86	697	1139



34X SSA LOOKOUT 34X ERROLLINE 14N

SSA 34X 1567682 January 14, 2010

O C C LEGEND 616L
B C LOOKOUT 7024
 GIBBET HILL MIGNONNE E37

DMM DYNASTY 03G
SOUTH SHADOW ERROLLINE 14N
 JAY EN DEE ERROLLINE 14D

O C C EMBLAZON 854E
 O C C BLACKBIRD 632J
 PAPA EQUATOR 2928
 GIBBET HILL MIGNONNE TR 29
 WANDERING CRK DYNASTY JRM 2F
 DMM MISS ESSENCE 22B
 JAY EN DEE NEW TREND 14B
 JAY EN DEE ERROLLINE 5Z

136 DAY TEST	
Feb 13	1115
Oct 2	745
ADG	2.72
RATIO	
WW	92
YW	98

EPDs / Accuracy							AOD						
BW	WW	YW	MILK	TM	CE	MCE							
+0.7	35%	+35	26%	+63	20%	+10	16%	+28	+9.0	27%	+3.0	12%	7

14N son to Sunny Slope Cattle

Actual	ADJ.	ADJ.
BW	205	365
79	606	1041



66X

SSA LOOKOUT 66X

SSA 66X 1567694 January 23, 2010

136 DAY TEST	
Feb 13	1090
Oct 2	720
ADG	2.72
RATIO	
WW	98
YW	98

O C C LEGEND 616L
B C LOOKOUT 7024
 GIBBET HILL MIGNONNE E37

O C C EMBLAZON 854E
 O C C BLACKBIRD 632J
 PAPA EQUATOR 2928
 GIBBET HILL MIGNONNE TR 29
 B/R NEW FRONTIER 095
 SOUTH SHADOW EILEEN 5M
 SOUTH SHADOW RAIN MAN 2M
 SOUTH SHADOW DIAMOND 26N

SSAP NEW ELIXIR 4R
SSA DIAMOND 4T
 SSAP DIAMOND 51R

EPDs / Accuracy							AOD						
BW	WW	YW	MILK	TM	CE	MCE							
-0.9	33%	+36	24%	+69	18%	+18	14%	+36	+11.0	27%	+7.0	11%	3

Nice temperament on this calf with a moderate BW. 4T's daughter (by walking sire 8T) is a keeper heifer.

Actual BW	ADJ. 205	ADJ. 365
80	643	1078



New Elixir 4R



57X

SSA KING 57X

SSA 57X 1583772 January 21, 2010

136 DAY TEST	
Feb 13	1120
Oct 2	750
ADG	2.76
RATIO	
WW	95
YW	97

RAFTER S RONAN TEX 20K
F V 20K KING 308M
 QUEEN 362E

RONAN TEX 10X
 GLENNIE PRIDE 69E
 TARAUS JAZMAN 59Y
 QUEEN L4 587U
 CUDLOBE RAINMAKER 39K
 SOUTH SHADOW DIAMOND 13K
 VERMILION DATELINE 7078
 SOUTH SHADOW DIAMOND 3K

SOUTH SHADOW RAIN MAN 2M
SSA DIAMOND 2S
 SSAP DIAMOND 12P

EPDs / Accuracy							AOD						
BW	WW	YW	MILK	TM	CE	MCE							
+0.2	35%	+36	26%	+75	20%	+29	18%	+47	+10.0	29%	+7.0	15%	4

A lower birthweight bull with great length. Dam is a daughter of our homeraised 2M herd sire who held the lowest birthweight EPD in the breed.

Actual BW	ADJ. 205	ADJ. 365
83	637	1079

2S son to Arndt Enterprises with her 68S sired heifer in the replacement pen.



41X

SSA NETWORK 41X

SSA 41X 1567684 January 18, 2010

136 DAY TEST	
Feb 13	1210
Oct 2	815
ADG	2.90
RATIO	
WW	101
YW	104

S A V 8180 TRAVELER 004
S A V NET WORTH 4200
 S A V MAY 2410

SITZ TRAVELER 8180
 BOYD FOREVER LADY 8003
 S A F 598 BANDO 5175
 S A V MAY 6269
 ANKONIAN ELIXIR 100
 SOUTH SHADOW DIAMOND 33G
 JAY EN DEE RITO 49A
 JAY EN DEE BLACKCAP 18A

SOUTH SHADOW MACHO 25L
SSAP BLACKCAP 55P
 JAY EN DEE BLACKCAP 23F

EPDs / Accuracy							AOD						
BW	WW	YW	MILK	TM	CE	MCE							
+3.9	36%	+46	26%	+87	20%	+21	20%	+44	+0.0	26%	+6.0	17%	6

Out of a flawless dam bred for maternal and performance. The Net Worth daughters in our herd are moderate, thick, easy-fleshing with beautiful udders. First son for 55P

Actual BW	ADJ. 205	ADJ. 365
94	674	1138



95X

SSA KING 95X

SSA 95X 1583769 February 9, 2010

136 DAY TEST	
Feb 13	1160
Oct 2	747
ADG	3.04
RATIO	
WW	103
YW	110

RAFTER S RONAN TEX 20K
F V 20K KING 308M
 QUEEN 362E

RONAN TEX 10X
 GLENNIE PRIDE 69E
 TARAUS JAZMAN 59Y
 QUEEN L4 587U
 LEACHMAN RIGHT TIME
 SITZ EVERELDA ENTENSE 1905
 JAY EN DEE NEW TREND 14B
 ELLANIN PRIDE 9R

BT RIGHT TIME 24J
SSA DIAMOND 53S
 JAY EN DEE PRIDE 43D

EPDs / Accuracy							AOD						
BW	WW	YW	MILK	TM	CE	MCE							
+2.2	34%	+37	25%	+67	19%	+24	19%	+43	+5.0	28%	+4.0	17%	4

Deepest - sided bull in the sale. Dam is sired by the good bull, Right Time 24J.

Actual BW	ADJ. 205	ADJ. 365
93	684	1170



135X SSA 68S RIGHT WAY 135X DONALEEN 29R

SSA 135X 1567731 March 1, 2010

136 DAY TEST	
Feb 13	1045
Oct 2	690
ADG	2.65
RATIO	
WW	98
YW	93

HYLINE RIGHT WAY 781
BIG SKY DLD RIGHT WAY 68S
 BIG SKY DYNA 435

SOUTH SHADOW RAIN MAN 2M
SSAP DONALEEN 29R
 SOUTH SHADOW DONALEEN 18N

HYLINE RIGHT TIME 338
 HYLINE ELLEN 86
 ACUMEN BOLD LEADER 30X
 PROSPECT DYNA 27S
 CUDLOBE RAINMAKER 39K
 SOUTH SHADOW DIAMOND 13K
 DMM DYNASTY 03G
 JAY EN DEE DONALEEN 71G

EPDs / Accuracy							AOD						
BW	WW	YW	MILK	TM	CE	MCE							
+3.1	33%	+45	22%	+79	15%	+19	10%	+42	+1.0	22%	+5.0	7%	5

Thick and hairy. His dam is one of the best daughters sired by our home-raised Rainmaker 2M bull. The 68S daughters in our herd have udders that are second to none. 29R's first son Wallas Good

Actual BW	ADJ. 205	ADJ. 365
91	662	1086



113X SSA ENCORE 113X RUBY 70S

SSA 113X February 17, 2010

136 DAY TEST	
Feb 13	1025
Oct 2	695
ADG	2.43
RATIO	
WW	
YW	

D H D TRAVELER 6807
DUFF ENCORE 702
 O C C DIXIE ERICA 814G

C A FUTURE DIRECTION 5321
SSA RUBY 70S
 EARLY SUNSET RUBY 54G

Q A S TRAVELER 23-4
 BEMINDFUL MAID D H D 0807
 O C C ANCHOR 771A
 O C C DIXIE ERICA 764C
 G A R PRECISION 1680
 C A MISS POWER FIX 308
 EARLY SUNSET HIGHTIME 113D
 EARLY SUNSET RUBY 44D

EPDs / Accuracy							AOD
BW	WW	YW	MILK	TM	CE	MCE	
							4

Long, deep quartered bull - CAA data not available at press time. Grand Dam, 54G had her 13th calf, a Density son in 2011. 70S's first son to James Blakley.

Actual BW	ADJ. 205	ADJ. 365
94		



51X SSA ENCORE 51X ERROLLINE 1R

SSA 51X 1582733 January 20, 2010

136 DAY TEST	
Feb 13	1170
Oct 2	740
ADG	3.16
RATIO	
WW	92
YW	114

D H D TRAVELER 6807
DUFF ENCORE 702
 O C C DIXIE ERICA 814G

F A R KRUGERRAND 410H
SSAP ERROLLINE 1R
 SOUTH SHADOW ERROLLINE 11F

Q A S TRAVELER 23-4
 BEMINDFUL MAID D H D 0807
 O C C ANCHOR 771A
 O C C DIXIE ERICA 764C
 KRUGERRAND OF DONAMERE 490
 F A R ERIANNA 286F
 JAY EN DEE TOUCHSTONE 131-32D
 JAY EN DEE ERROLLINE 12D

EPDs / Accuracy							AOD						
BW	WW	YW	MILK	TM	CE	MCE							
+2.7	35%	+40	26%	+73	19%	+13	12%	+33	+5.0	25%	+6.0	10%	5

First bull calf for 1R. Clean made, long hip and good structured. Out of a very productive cow family, his mother is a half sister to the Dam of 21X (page 21).

Actual BW	ADJ. 205	ADJ. 365
89	616	1122



91X SSA WILD FIRE 91X ERROLLINE 7L

SSA 91X 1567707 February 7, 2010

136 DAY TEST	
Feb 13	1065
Oct 2	710
ADG	2.65
RATIO	
WW	93
YW	93

S A V 8180 TRAVELER 004
ANKONIAN WERNER WILD FIRE 96
 FSR ELBA SPECIAL DESIGN S406

BON VIEW NEW DESIGN 878
SOUTH SHADOW ERROLLINE 7L
 SOUTH SHADOW ERROLLINE 42J

SITZ TRAVELER 8180
 BOYD FOREVER LADY 8003
 W C C SPECIAL DESIGN L309
 W C C ELBA M82
 B/R NEW DESIGN 036
 BON VIEW GAMMER 85
 FREYBURN MONSOON OVERDRIVE 17G
 SOUTH SHADOW ERROLLINE 14F

EPDs / Accuracy							AOD						
BW	WW	YW	MILK	TM	CE	MCE							
+1.6	36%	+40	26%	+76	19%	+20	14%	+40	+8.0	26%	+9.0	12%	9

Very long sided and smooth with muscle expression. 7L produces good uddered females who have all been keepers. 7L is Designated Elite with an average Ratio 105. First 7L son to Donelda Wilson

Actual BW	ADJ. 205	ADJ. 365
84	625	1049



136X

DLD 35R RAIN ON 136X

AKITA 13M

DLD 136X	1566584	March 1, 2010	136 DAY TEST	
SOUTH SHADOW RAIN MAN 2M			Feb 13	1085
SSAP RAIN ON 35R			Oct 2	660
SOUTH SHADOW JOYCE 28N			ADG	3.17
CUDLOBE RAINMAKER 39K			RATIO	
RISING STORM AKITA 13M			WW	93
RISING STORM AKITA 24K			YW	111

EPDs / Accuracy							AOD
BW	WW	YW	MILK	TM	CE	MCE	
+0.8 34%	+26 22%	+52 15%	+24 11%	+37	+5.0 22%	+3.0 7%	8

A balanced Rain On 35R son that should calve easy. This calf is paternal half brother to the Dam of 128X (pg 15)
13M sons to: Jack & Cindy Ziegler & Leonard Dokken

Actual BW	ADJ. 205	ADJ. 365
92	634	1141



Herd Management the feeding

'Ranch-raised' is a relative term - Normally the papered herd is running with the grade cattle from July 1 to mid-November. The timing of the two different production cycles, in relation to the seasonal conditions (temperature and wind!) dictate the rations. If we calved-out our commercial herd, in the same, less than elaborate conditions (the calving barn is a wee bit drafty) we'd likely manage those grade cattle the same way as the papered herd. Both herds get the same vaccinations and mineral, neither see creep and the rations, when not grazing, come from the same piles of home-grown feed.

The feed program for this year's Angus sale bulls:

- OCT/NOV: Free choice long hay
- LATE NOV: 15#s TGR, 16#s Silage, 3#s Rolled Barley, 2#s Cereal Chaff
- DEC: 15#s TGR, 17#s Silage, 4#s Rolled Barley, 2#s Cereal Chaff
- JAN: 15#s TGR, 18#s Silage, 6#s Rolled Barley, 2#s Cereal Chaff,
- FEB: 14#s TGR, 18#s Silage, 6.25#s Rolled Barley, 2#s Cereal Chaff
1# of Pellets with Rumensin and a Mineral Package
- MAR/APR: 14#s TGR, 17#s Silage, 6.5#s Rolled Barley, 2#s Cereal Chaff
1# of Pellets with Rumensin and a Mineral Package

The cereal silage (50% moisture) is an oats/barley/trit mix as is the baled greenfeed part of the tub ground ration (TGR). The silage was chopped when the oats and barley were between the milk and soft dough stages, with empty triticale heads. The greenfeed was cut and wrapped 2 - 3 weeks later.

The baled *dryland* grass/hay is 55% crested wheatgrass/45% alfalfa. The ratio of the tubground ration; weaning to Jan was a 50/50 mix of greenfeed and dryland grass/hay. Since early Jan the mix has been 1/3 dryland grass/hay and 2/3 greenfeed. Wintered in a 10 acre lot with a hike into the barnyard for water.



Done taking pictures for another year



SIRE GROUP PERFORMANCE AVERAGES

In the chart below you will find the 2010 born performance per Sire Group; actual and adjusted weights with the ADGs

Average Performance for our Calves born in 2010								
Sire Group	BW	ACTUAL WW	205 Adjusted WW	WW ADG	ACTUAL YW	365 Adjusted YW	YW ADG	LIFE ADG
68S- M	93	700	711	3.02	1119	1201	2.88	3.01
68S- F	86	570	603	2.52	773	841	1.49	2.07
ATT- M	90	793	661	2.78	1178	1106	2.82	2.74
ATT- F	93	685	651	2.54	930	903	1.80	2.17
DEN- M	91	732	650	2.72	1097	1075	2.73	2.70
DEN- F	81	713	604	2.55	951	883	1.71	2.20
WF- M	90	745	671	2.84	1110	1103	2.71	2.78
WF- F	98	780	651	2.70	1050	971	2.00	2.39
NW- M	95	787	650	2.71	1160	1089	2.74	2.72
NW- F	89	695	605	2.52	1005	970	2.29	2.42
8T- M	93	697	711	3.01	1107	1196	3.03	3.02
8T- F	80	660	628	2.67	850	853	1.41	2.12
35U- M	76	724	670	2.90	1101	1122	2.82	2.87
35U- F	71	608	621	2.68	873	935	1.96	2.37
35R- M	80	593	601	2.52	1043	1098	2.97	2.77
35R- F	81	584	585	2.46	810	846	1.40	2.09
92U- M	81	624	676	2.90	1026	1125	2.79	2.86
92U- F	73	587	615	2.64	786	852	1.48	2.13
KING- M	86	723	647	2.74	1109	1106	2.87	2.80
KING- F	78	632	577	2.44	908	863	1.78	2.15
ENC- M	94	732	653	2.72	1100	1095	2.77	2.74
ENC- F	94	712	630	2.61	928	884	1.59	2.17
LO- M	85	728	630	2.66	1103	1060	2.72	2.69
LO- F	79	694	591	2.50	925	862	1.69	2.15
CB- M	91	730	635	2.65	1090	1058	2.65	2.65
CB- F	72	618	518	2.18	810	742	1.40	1.84
FA- M	80	743	688	2.97	1148	1171	3.03	2.99
FA- F	62	660	595	2.60	871	845	1.57	2.14

Reference Sires:

- 68S - Big Sky DLD Right Way 68S (walking sire)
- ATT - Duff New Attraction 6110 (A.I.)
- DEN - S A V 004 Density 4336 (A.I.)
- WF - Ankonian Werner Wild Fire 96 (A.I.)
- NW - SAV Net Worth 4200P (A.I.)
- 8T - SSA 109L In Focus 8T (walking sire)
- 35U - SSA 109 IN Focus 35U (walking sire)
- 35R - SSAP Rain On 35R (walking sire)
- 92U - SSA 104 Freedom 92U (walking sire)
- KING - F V 20K King 308M (A.I.)
- ENC - Duff Encore 702 (A.I.)
- LO - B C Lookout 7024 (A.I.)
- CB - Dunlouse Commander Bond F176 (A.I.)
- FA - S A V Final Answer 0035 (A.I.)

(M) Bulls: Actual Weaning WT taken Oct 2, 2010
Actual Yearling WT taken Feb 13, 2011

(F) Heifers: Actual Weaning WT taken Oct 2, 2010
Actual Yearling WT taken Feb 14, 2011



PERFORMANCE / ELITE COW INFORMATION

The Performance Information

As a further means to improve our herd we have submitted animal data to the Canadian Angus Performance, CAP program. The first data was submitted with the program's initiation and along with EPD data offers another tool for our customer's bull selection.

BW: Actual Birthweight and Adjusted Weights

Adjusted 205 WT
Weanling weights adjusted to 205 days of age-Dam's age considered in formula

Actual BW	ADJ. 205	ADJ. 365
88	666	1111

Adjusted 365 WT
Yearling weights adjusted to 365 days of age

205/WW and 365/YW (GAIN) RATIO

Comparison of one calf to all other contemporaries in the group.

RATIO	
WW	100
YW	100

Average being 100.
205 Index: 100
365 Index: 100

Days On Test / Actual Weights / ADG

- The test weights are for performance comparison WITHIN OUR HERD only.
- Consider and keep in mind that feed management differs with each breeder.

136 DAY TEST	
Feb 13	1043
Oct 2	599
ADG	3.00

Age of Dam at Calf's birth

AOD
5

Based on Spring 2011 EPDs BLACK ANGUS

Average Black EPDs for all Calves born in 2010						
BW	WW	YW	MILK	TM	CE	MCE
+2.9	+41	+72	+17	+37	+1.3	+4.3



The Elite Program

Canadian Angus Elite Cow: has a minimum of five calves, four of which must be registered, to determine her regularity of calving and ability to consistently produce calves with a superior weaning weight year after year, display early puberty, breeding and early calving, followed by regularity of calving and high performance offspring. The Canadian Angus Elite Cow Report identifies superior cows in the Canadian Angus herdbook.

Canadian Elite Cow Criteria

- The cow must be enrolled in the Canadian Angus Performance Program.
- The cow must have a calf with a 205-day weight recorded within the past 18 months.
- The cow's first calf must be born and weaned within 1,000 days.
- The cow must maintain a regular calving interval. (regular is considered to be 365 + 30 days/number of calving intervals)
- The cow must have at least 5 progeny, of which at least 4 must be registered.
- The cow must have an above average weaning weight EPD with an accuracy of at least 25.
- The cow's progeny must all have an above average weaning weight EPD with an accuracy of over 25.

How To Read EPDs and Performance Data

EPD's are a measure of the expected differences in performance of a sire's/dam's progeny when compared to the average progeny of all sires/dams evaluated within the same breed. This prediction is based on actual performance, progeny performance and relatives' performance.

- ~ EPDs can be used to compare bulls/cows from different herds.
- ~ EPDs cannot be used to compare bulls/cows of different breeds.
- ~ EPDs allow breeders to estimate a young animal's breeding value that animal's value as a parent
- ~ EPDs allow a fair comparison of breeding value by removing environmental bias such as climate, feed and special management
- ~ EPDs the best tool available to compare animals between herds, countries and year of birth
- ~ EPDs help breeders make informed decisions regarding breeding stock selection by evaluating numerous traits, such as growth related traits (BW, WW, YW, Milk)

Interim EPDs - are indicated by an "I" preceding the EPD value. Interim EPDs are available for animals that were not included in the National Cattle Evaluation. The accuracy of Interim EPDs is generally indicated by a 5% percentile, as there is less data used to produce these estimates. A pedigree estimated EPD (PE) is the average of two parental EPD values (½ sire, ½ dam).

- **BIRTH WEIGHT (BW):** The birth weights of a bull's/cow's progeny when compared to the breed average, in pounds. Negative values indicate lighter BW while positive numbers indicate heavier.
- **WEANING WEIGHT (WW):** The adjusted weaning weights of a bull's/cow's progeny when compared to the breed average, in pounds.
- **YEARLING WEIGHT (YW):** The adjusted yearling weights of a bull's/cow's progeny when compared to the breed average, in pounds.
- **MILK:** A measure of the amount of pre-weaning performance gained by calves which can be attributed to the milking ability of a bull's/cow's daughters. The EPD is expressed in pounds of calf.
- **TOTAL MATERNAL [TM]:** Indicates the performance based on the calf's inherent genes for growth (WW EPD) and the influence of his mother's milk EPD. It is an indication of the weight of calf a bull's daughter will wean.
- **CALVING EASE DIRECT (CE) EPD** - the average difference in ease with which a sire's calves will be born when he is bred to first calf heifers.
- **MATERNAL CALVING EASE (MCE)** - is expressed as a difference in percentage of unassisted births with a higher value indicating greater calving ease in first-calf daughters. It predicts the average ease with which a sire's daughters will calve as first-calf heifers when compared to daughters of other sires.
- **ACCURACY (%):** the reliability that can be placed on the EPDs. An accuracy of close to 100 indicates higher reliability. Accuracy is impacted by the number of progeny and ancestral records included in the analysis.
 - Low accuracy = less than 40
 - Low to medium accuracy = 40 - 60
 - Medium to High accuracy = 60 - 80
 - High accuracy = greater than 80

continued...

EPDs / Accuracy							AOD
BW	WW	YW	MILK	TM	CE	MCE	
-1.0 61%	+25 48%	+54 45%	+26 21%	+39	+9.0 39%	+8.0 15%	6

Accuracy is the measure of reliability of an EPD. Higher percentiles, indicate larger amounts of available information and greater certainty that a bull's EPD will not change significantly as more progeny information becomes available.



The Possible Change table, can help a producer determine the involved risk associated with an EPD by considering the possible change value for each trait at various accuracy levels.

For example, an animal with an accuracy of 10% can expect its BW EPD to change ± 2.4 pounds, whereas an animal with an accuracy of 80% can expect its BW EPD to change ± 0.5 pounds.

Accuracy values should be printed in sale catalogues. Without an accuracy level, you have no way to gauge how much that EPD is likely to change as that animal gets older and more information is available on it. Generally ... accuracies above 50% are available (earned) by having progeny in large numbers (ex: semen sales) or a consistency of pedigree/related matings (ex: line bred programs). Females producing well into their teens will also earn a higher accuracy value.

BLACK ANGUS — POSSIBLE CHANGE TABLE

Accuracy %	BW	WW	YW	Milk
100	0	0	0	0
90	0.26	1.16	1.70	0.97
80	0.53	2.32	3.40	1.94
70	0.79	3.48	5.11	2.91
60	1.05	4.64	6.81	3.88
50	1.31	5.80	8.51	4.85
40	1.58	6.96	10.21	5.82
30	1.84	8.12	11.92	6.79
20	2.10	9.27	13.62	7.76
10	2.36	10.43	15.32	8.73

HOW TO USE EPDS

EPDs can be useful tools when planning breeding programs, however, remember that they are not perfect or absolute. EPD's are a measure of the expected differences in performance of a sire's/dam's progeny when compared to the average progeny of all sires/dams evaluated within the same breed. This prediction is based on actual performance, progeny performance and relatives' performance.

Attention should be paid to the heritability:

Trait	Heritability Range	Level
reproductive	less than 0.20	low
growth	0.20 - 0.40	moderate
carcass	greater than 0.40	high

... and correlations of the traits a breeder wants to improve upon within the herd. Some traits are more heritable than others, resulting in swift progress being made in comparison to other less heritable traits. Also, many traits are correlated meaning that the expression of one trait is related to the expression of another trait. The correlation between traits can be either positive or negative and close attention should be paid to these relationships, when developing selection criteria in a breeding program.

Understanding the heritability and the effects of correlation between traits will aid in developing a genetic selection program that will optimize improvement on desired traits while minimizing undesirable side effects.

HOW TO USE EPDS IN SIRE SELECTION

Each individual breeder must set his own selection goals, based on the needs of his operation, the situation for that trait in his herd, and his production environment.

It would be easier if we could assume that the highest EPDs are the best. Unfortunately, it isn't that simple. Like most decisions, using EPDs for sire selection involves tradeoffs. For example, bulls with high growth EPDs may sire calves with a higher birth weight as well. And there may be other impacts on your operation to consider.

For example, when breeding heifers it is desirable to produce calves with lower birth weights, so a breeder may want to pay special attention to birth weight EPDs of prospective bulls. If all calves were sold as feeders, the milk EPD would generally not rate much attention. Yearling weight will be important if you want to ensure finished steers in the appropriate weight range.

It should also be kept in mind that reaction to selection can differ from trait to trait. This is because some traits have higher heritability than others, and are more easily passed to offspring. For instance growth traits such as weaning weight respond faster to selection, than reproductive traits such as age at first calving.

A balance of traits is required, and the perfect balance for you will depend on your climatic, nutritional and economic environment, as well as the management goals you have set for your herd.

One way to select for several traits are to set minimum and maximum acceptable levels for each trait, and then choose sires that meet criteria. Another method would be rank all sires, on each trait, then develop a weighted index which ranks each bull from one (most desirable) to five for each trait. The bull with the lowest total score would be your first choice.

A SAMPLE SIRE SUMMARY EVALUATION

Bull	BW		WW		YW		Milk	
	EPD	Acc.	EPD	Acc.	EPD	Acc.	EPD	Acc.
A	6.6	0.75	31.3	0.75	39.5	0.68	-5.6	0.58
B	0.1	0.82	14.6	0.83	24.6	0.80	6.0	0.73
C	0.0	0.89	0.3	0.89	11.1	0.88	18.9	0.87
D	-5.9	0.87	-3.8	0.87	-14.4	0.86	10.3	0.85

Producer 1 is looking for a sire that can be used on heifers; he wants a bull that will produce low birth weights and he wants to keep some heifer calves as replacements. Growth performance is not his first priority. The sire that fits his needs is sire D. He has a low birth weight EPD and above-average milk EPD.

Producer 2 has a sound-breeding program; he is looking for a sire that will maintain performance and milking ability. He will select a bull that will increase growth performance and milk while maintaining calving ease. Sire B is his choice.

Producer 3 has a herd of above-average-frame cows and is not planning on keeping heifers as replacements. She is looking for a bull that will give her the most profit at weaning. Sire A will give her the best result in weaning weight. If heifers are kept as replacements, they will, on average, be inferior for maternal milk.

Producer 4 wants to maintain his calving performance and growth performance but would like to increase the milking ability in his females. Sire C is his choice.

◀ ▶ **Bulls sell in catalogue order** ▶ ▶

The tag #s of recommended *Calving Ease Bulls* are marked with a 'black background' for your convenience

TAG #	SIRE	COW FAMILY / DAM #	PAGE
Yearling Black Angus Bulls			
13X	King	Eileen 35T	10
81X	King	Errolline 814	10
42X	Focus 35U	Diamond 823	11
67X	Focus 35U	Ruby 859	11
146X	Focus 35U	Beauty 89U	12
108X	Density	Diamond 25R	12
65X	Density	Errolline 57R	13
101X	Density	Diamond 33T	13
120X	Freedom 92U	Akita 69T	14
77X	Freedom 92U	Diamond 44T	14
128X	Freedom 92U	Ruby 29T	15
52X	Final Answer	Akita 51U	15
54X	Final Answer	Errolline 807	16
17X	Net Worth	Eileen 36L	16
125X	Focus 8T	Eileen 60S	17
163X	Focus 8T	Eileen 6P	17
137X	Right Way 68S	Joyce 2P	18
79X	Encore	Diamond 38P	19
85X	Encore	Eileen 16L	19
92X	Encore	Diamond 13K	20
112X	Wild Fire	Akita 17R	20
33X	Attraction	Joyce 18R	21
21X	Attraction	Errolline 42N	21
83X	Bond	Errolline 54P	22
Two Year Old Black Angus Bulls			
56w	Density 26T	Lavender Lady 56'05	27
66w	Density 26T	New Day 66S	27
22w	Density 26T	Prisdista 22R	28
50w	Density 26T	Blackbird 56R	28
71w	Density 26T	Augusta 71P	28
Yearling Black Angus Bulls			
10X	Attraction	Akita 19S	30
84X	Attraction	Pride 41M	30
144X	Focus 8T	Eileen 30N	31
147X	Focus 8T	Diamond 49S	31
151X	Focus 8T	Errolline 22R	32
43X	Focus 35U	Ruby 883	32
63X	Focus 35U	Errolline 878	33
12X	Focus 35U	Neonia 13U	33
9X	Density	Akita 32P	34
74X	Density	Eileen 36D	34
23X	Density	Diamond 10P	35
132X	Freedom 92U	Errolline 10T	35
161X	Freedom 92U	Akita 55S	36
34X	Lookout	Errolline 14N	36
66X	Lookout	Diamond 4T	37
41X	Net Worth	Blackcap 55P	37
57X	King	Diamond 2S	38
95X	King	Diamond 53S	38
135X	Right Way 68S	Donaleen 29R	39
51X	Encore	Errolline 1R	39
113X	Encore	Ruby 70S	40
91X	Wild Fire	Errolline 7L	40
136X	Rain On 35R	Akita 13M	41

Please bring this catalogue with you to the sale.

RETURN TO
The Delorme's
Box 28, Robsart, SK
S0N 2G0

Your Choice
ANGUS BULL SALE

*Visitors and Inquiries
Always Welcome*

Give us a call or look us up . . .
at the ranch or on the web

www.DelormeAngus.ca

South Shadow Angus:

Don & Connie Delorme

Boundary Angus & Simmental:

Darby & Sarah Delorme

Jay En Dee Angus:

Isabella & Mackayla Delorme

Kay Dee Angus:

Benny & Kalee Hofer

Prairie Pride Angus:

Nevaeh & Aeverie Hofer

Bear Creek Angus: Chad Weiss