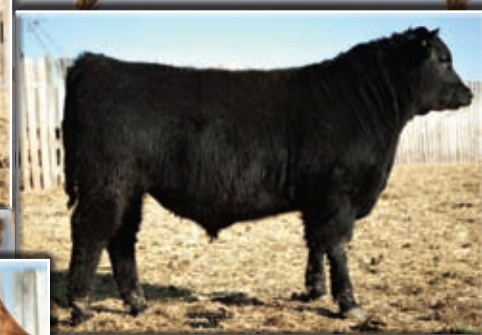


Acquire the Angus Advantage



at the
15th Annual

Triple 'A' Bull & Heifer Sale

Monday, April 2, 2012 - 1:00 PM CST
Johnstone Auction Mart, Moose Jaw, Saskatchewan

Welcome ...

Welcome to the 15th Annual Triple A Bull and Heifer Sale. 15 years, over 1100 bulls fed and 900 plus bulls offered for sale. The Triple A Group invites you to participate Monday, April 2 in this years offering of 46 Black and 17 Red Angus bulls plus 12 open heifers. To our valued customers, some who have been with us since 1998, let me say thanks for your support. For those who may not be familiar with the Triple A, here are the **who, what, where** and **why** of the program.

Who is the Triple A? We are a group of passionate Angus cattlemen who calve between 30 and 100 cows each. The size of our individual herds limits our ability to host a sale of our own. Collectively we are able to market our bulls to you as the Triple A, which stands for Acquire the Angus Advantage.

What is the program about? Bulls from the consigners are brought together every fall and developed as one group throughout the winter. Data, including average daily gain, weight per day of age, carcass information and breeding soundness is collected. You, the buyer can now have the confidence to access the group of bulls knowing that the management of the bulls has been consistent.

Where can you find the bulls? Bulls can be viewed prior to March 30 at Hagerty Livestock, 6.5 miles north of the Trans Canada Highway on Kalium Road which is mid-way between Moose Jaw and Regina. Larry, Fay and crew have developed these bulls from mid October to April. The bulls are fed for a 3 to 3.5 lb/day gain and undergo a comprehensive vaccination protocol. Bulls can be viewed after March 30 at Johnstone Auction Mart which is located 4 miles west of Moose Jaw along the Trans Canada Highway. Scott, Wayne & Dorothy Johnstone and staff have facilitated the sale every year.

Why do we hope you choose to support the Triple A? By collectively marketing our bulls we are able to offer our best bulls in a diverse, quality group. These bulls represent progeny of some 600 to 700 Angus cows. After all is said maybe the most important information is that last year, 90% of the bulls sold to repeat buyers. Triple A bulls have worked, are working and will continue to work.

We would prefer you come to the sale, but if you are unable, call Laird or Joyce, the sales staff or one of the consignors to discuss your bull requirements. We would be happy to help you with your selection.

Dan Howell
On Behalf of the Triple 'A' Consignors

Catalogue on-line at
www.johnstoneauction.ca or
www.sasklivestock.com

Triple 'A' Consignors:

Arm River Red Angus

Doug & Dan McIvor 306-567-4702

Bell Angus

Ken Bell 306-345-2052 Cell: 591-7792

Cottonwood Angus

Brent Gaube 306-537-4710

CSI Angus

Roger Reynolds 306-536-6112

Glendor Acres

Glen, Dorothy & Brent Gunningham 306-638-6277

Glen Gabel Angus

Glen Gabel 306-536-1927

Hi Low Angus

Dan Howell 306-731-2940 Cell: 581-7606

Irving Angus

John M. & Keri Irving 306-587-2523

John W. & Linda Irving 306-345-2528

Ivanhoe Angus

Ron & Marilyn Mountenay 306-345-2560

Nu-Horizon Angus

Kieran & Deb Doetzel 306-336-2245

Triple H Red Angus

Perry & Dawn Hart & family 306-723-4832

Valley Lodge Cattle Co.

Gordon C. Roger 306-771-2305

Willowview Angus

Ken & Sandy Harle 306-359-6100

Wilmo Angus Ranch

John & Marg Willmott 306-345-2046

XLB Farms

Dan Exelby 306-734-2741

Sale Day Phone -- 306-693-4715

Auctioneer

Scott Johnstone - 306-631-0767

Ringman

Mike Fleury - 306-222-9526

Hagerty Livestock

Larry & Fay Hagerty - 306-345-2523

Stockman's Livestock Insurance

Quentin Wiebe - Cell: 306-631-5165

New Force Consulting

Laird Senft - Cell: 306-331-7587 Joyce Senft - 306-332-8706

Acquire the Angus Advantage

at the 15th Annual Triple 'A' Bull Sale

63 Performance Tested Yearling Bulls on Offer

46 Black Angus • 17 Red Angus

Plus 12 Open Heifers

AAA

AAA

Lunch at 12:00 Noon • Sale at 1:00 pm • Monday, April 2, 2012
Johnstone Auction Mart, Moose Jaw, Saskatchewan

Definitions

BW - Birth weight - all weights are measured in pounds.

SOT - Start of test weight

EOT - End of test weight

Proj Wt - Estimate of Sale Day weight

205 - Adjusted weaning weight

ADG - Average daily gain - gain in pounds per day during the Test Period

WPDA - Weight per day of age - gain in lbs. per day from birth to weigh date

AOD - Age of Dam

Ultrasound Carcass Data

The importance of carcass trait information will be increased as value based marketing and quality assurance programs become more recognized and commonplace in the beef industry. Cattle should be scanned as close as possible in age at which their progeny will likely go to slaughter. A range from 12 months to 14 months is probably optimal. Ultra Sound Measurements in a Breeding Program: As with all genetic traits, ultrasound measurements should only be compared among animals of similar age and similar management. Only then is it of any measured value to use the ultrasound measurement for selection.

Back Fat: Fat measurement is important for several reasons. First fat depth influences lean meat yields; fat bulls have less lean meat in the carcass. Secondly fat measurements give indications of a bull's fleshing ability. Extremes in either too lean or too fat a bull are undesirable. Moderation is key.

IMF/Marbling: may be the most important attribute to be measured with ultrasound. This trait can convert into as much as \$80 difference in a carcass from a AA to a AAA grade. The values are numerical and indicate the estimate of carcass marbling if the animal was slaughtered immediately following the evaluation. The scale is as follows:

Quality Grade

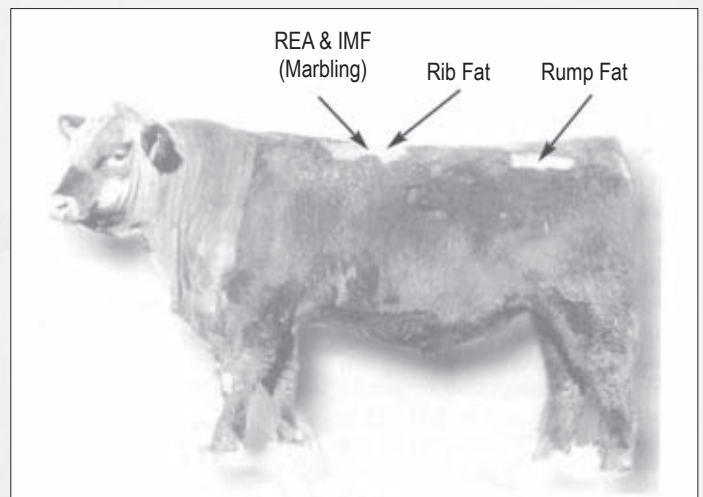
%IMF	US	CAN	Marbling Score
2.3 - 3.0	Select -	AA -	4.0 - 4.4
3.1 - 3.9	Select +	AA +	4.5 - 4.9
4.0 - 5.7	Choice -	AAA -	5.0 - 5.9
5.8 - 7.6	Choice o	AAA o	6.0 - 6.9
7.7 - 9.7	Choice +	AAA +	7.0 - 7.9
9.8 - 12.1	Prime -	Prime -	8.0 - 8.9
12.2 +	Prime +	Prime o	9.0 +

Bulls will register at least a full degree less marbling and 30% less backfat thickness than steers of the same age and feeding history. The marbling estimates are best utilized by grouping the bulls into high, medium and low marbling groups rather than to compare individuals that differ by only a few tenths of a score.

Ribeye Area Adjusted to 100 lbs. Body Weight (REA in/100 lbs.): The largest ribeye area may belong to the largest bull therefore adjusting the REA to 100 lbs body weight helps determine which bulls are more muscular and which bulls are simply heavier.

Lean Meat Yield (LMY%): is the percentage of lean meat in a carcass. Yield grade is an economically important factor in marketing carcasses. With a high genetic potential, this trait can be an important objective in a breeding program.

All bulls have been ultrasounded by
Rod Wendorff (AUP - CUP Certified)



EPD Breed Averages:

Trait	BW	WW	YW	Milk	TM	SC	CED	CEM	
Black	+2.8	+42	+74	+17	+38	+0.42	+1.8	+5.0	
Trait	BW	WW	YW	Milk	TM	CED	CEM	Stay	HPG
Red	+0.5	+26	+50	+14	+27	+3.4	+3.5	+9	+9

Once again, Irving Angus would like to welcome everyone to the Triple 'A' Bull Sale! This year we are offering 3 sons of Crescent Creek Ideal 105U and 3 sons of Isla Bank Widespread 12S. The mothers of these six lots are all strong, established cows in our herd. We believe that you will find these bulls to be very good-footed, mobile and capable of working under a variety of conditions. Be good to your pasture, try Irving Angus!

IRVING ANGUS

1 **IRV NATIONWIDE 37Y**
Male IRV 37Y April 06 2011 1609835

WHITESTONE WIDESPREAD MB AMF NHF
BLACK RIDGE W WIDESPREAD 2K
BLACK RIDGE BRITTA 9F CAF
Sire: ISLA BANK WIDESPREAD 12S
BIG BEAR WALKER 37E
ISLA BANK HEROINE 12N
ISLA BANK HEROINE 11J

NEW FORCE ULTRAVOX 34L
LAMB'S QUARTERS ULTRA 61N
LAMB'S QUARTERS PRIDE 25F
Dam: IRV ULTRA BLACKBIRD 9S
ISLA BANK MOHAMED 23L
IRV BLACKBIRD 4N
IVANHOE BLACKBIRD 4J

BW: 79 205: ---

SOT: 745 EOT: 1045 Proj Wt: 1195 ADG: 3.16 WPDA: 3.37 AOD: 5

The youngest bull that we are offering, but he has exceptional length and lots of capacity. His mother, Blackbird 9S, is an eye-catching cow. A full brother sold to Vale Country Ranch of Theodore, SK.

2 **IRV NATIONWIDE 29Y**
Male IRV 29Y March 18 2011 1609849

WHITESTONE WIDESPREAD MB AMF NHF
BLACK RIDGE W WIDESPREAD 2K
BLACK RIDGE BRITTA 9F CAF
Sire: ISLA BANK WIDESPREAD 12S
BIG BEAR WALKER 37E
ISLA BANK HEROINE 12N
ISLA BANK HEROINE 11J

NEW FORCE ULTRAVOX 34L
LAMB'S QUARTERS ULTRA 61N
LAMB'S QUARTERS PRIDE 25F
Dam: IRV ULTRA LADY MCHENRY 20S
ISLA BANK MOHAMED 23L
IRV LADY MCHENRY 16P
HILOW LADY MCHENRY 38K

BW: 82 205: ---

SOT: 740 EOT: 1020 Proj Wt: 1170 ADG: 2.95 WPDA: 3.10 AOD: 5

A young Widespread son out of a solid Ultra female. His dam, Lady McHenry 20S, is a thick, easy-keeping cow with excellent udder conformation.

3 **IRV 105 IDEAL 9Y**
Male IRV 9Y February 28 2011 1609829

C A R IDEAL 650
CAR IDEAL 061
C A R MISS VIKING 601
Sire: CRESCENT CREEK IDEAL 105U
CRESCENT CREEK THUNDER 51L
CRESCENT CREEK DUCHESS 27P
CRESCENT CREEK DUCHESS 6E

CHICO HANNIBAL 43H
ISLA BANK MOHAMED 23L
ISLA BANK ERROLINE 22D
Dam: IRV LADY LEE 3R
WIWA CREEK STOCKMAN 26'95
WWF STOCKMAN LADY LEE 100J
WWF JETSTREAM LADY LEE 29Z

BW: 90 205: --

SOT: 895 EOT: 1205 Proj Wt: 1355 ADG: 3.26 WPDA: 3.47 AOD: 6

A powerful son of Crescent Creek Ideal 105U. We selected 105U for his maternal strength; his dam, Duchess 27P, has been designated an Elite Cow by the Canadian Angus Association.

4 **IRV NATIONWIDE 4Y**
Male IRV 4Y February 24 2011 1609816

WHITESTONE WIDESPREAD MB AMF NHF
BLACK RIDGE W WIDESPREAD 2K
BLACK RIDGE BRITTA 9F CAF
Sire: ISLA BANK WIDESPREAD 12S
BIG BEAR WALKER 37E
ISLA BANK HEROINE 12N
ISLA BANK HEROINE 11J

HF HURRICANE 10E
BENLOCK HURRICANE 52H
LLB BLACKCAP 145F
Dam: CARONHILL SUSIE 11,2002
CARONHILL MR BIG
CARONHILL SUSIE 21'90
CARONHILL SUSIE 3H

BW: 88 205: ---

SOT: 950 EOT: 1230 Proj Wt: 1380 ADG: 2.95 WPDA: 3.50 AOD: 9

A wide top on this bull and proven genetics in the pedigree. Be sure to take a look at this guy.

*Join us for
lunch prior
to the sale!*



5

IRV 105 IDEAL 1Y

Male IRV 1Y February 19 2011 1609828

C A R IDEAL 650
CAR IDEAL 061
C A R MISS VIKING 601
Sire: CRESCENT CREEK IDEAL 105U
CRESCENT CREEK THUNDER 51L
CRESCENT CREEK DUCHESS 27P
CRESCENT CREEK DUCHESS 6E

CHICO HANNIBAL 43H
ISLA BANK MOHAMED 23L
ISLA BANK ERROLINE 22D
Dam: IRV LADY MCHENRY 16P
ISLA BANK TRAVELER 14'97
HILOW LADY MCHENRY 38K
HILOW LADY MCHENRY 34X

SOT: 795 EOT: 975 Proj Wt: 1125 ADG: 1.89 WPDA: 2.74 AOD: 7 BW: 82 205: --

A well proportioned 105U son with moderate frame. His dam, Lady McHenry 16P, has two daughters working in our herd. Lots of maternal strength in these genetics.

6

IRV 105 IDEAL 13Y

Male IRV 13Y March 06 2011 1609832

C A R IDEAL 650
CAR IDEAL 061
C A R MISS VIKING 601
Sire: CRESCENT CREEK IDEAL 105U
CRESCENT CREEK THUNDER 51L
CRESCENT CREEK DUCHESS 27P
CRESCENT CREEK DUCHESS 6E

TC STOCKMAN 2164 AMF CAF NHF
BELL 2164 STOCKMAN 9K
BELL BLACKBIRD 22E
Dam: CALLAMERE ELINE 17R
DOUBLE AA BLACKMAN 267'98
CALLAMERE ELINE 6K
CALLAMERE ELINE 30W

BW: 84 205: --



SOT: 772 EOT: 1175 Proj Wt: 1325 ADG: 4.24 WPDA: 3.45 AOD: 6

Another Ideal son with thickness and style, from one of two Callamere females working in our herd.

LOT 7 -10 - GLEN GABEL ANGUS - Glen Gabel - 306.536.1927

7

GGA QUANTUM 3Y

Male RC GGA 3Y January 28 2011 1616621

BEPD	-0.2
WEPD	+17
YEPD	+41
Milk	+22
TM	+30
CED	+5.0
CEM	+6.0
Stay	+10
HPG	+9

GDAR QUANTUM 963
NORTHERN VIEW QUANTUM 86P
CRESCENT CREEK BLACKBIRD 21J
Sire: BELL QUANTUM 26T
BELL 561G BRUNO 11L
BELL BLACK LUCY 5R
BELL BLACK LUCY 29H

RED PREMIER PATRIOT 16
RED LINE FLAME 11N
RED VLYV SADIE 160
Dam: RED SMW FLAME 11K
RED RIVERDALE 91C
RED L-DEE FINESSE 17E
RED ROCKING A DESIGN CLARISA

BW: 82 205: 757

SOT: 965 EOT: 1185 Proj Wt: 1335 ADG: 2.32 WPDA: 3.13 AOD: 11

Adj. Carcass Values LMY: 61.5 REA: 11.72 %LMF: 3.59 Rib Fat: 0.26 Rump Fat: 0.22

Here is a Black/Red carrier bull that will work in any herd. His dam is a "K" cow making her the oldest in our herd - she has been a top producer for us and is probably also the oldest producing cow in the entire sale offering. Commercial ranchers, if you are looking for a bull packed full of red meat that will put a little extra into his calves - and you don't mind if they're black or red, here's the bull for you.

RED CARRIER



Dam of Lot 7

IRVING ANGUS

GLEN GABEL ANGUS



8

GGA NET WORTH 8Y

Male GGA 8Y February 16 2011 1616625

BEPD	+4.0
WEPD	+36
YEPD	+74
Milk	+17
TM	+35
CED	+1.0
CEM	+6.0
Stay	+6.0

S A V 8180 TRAVELER 004 AMF CAF NHF
S A V NET WORTH 4200 AMF CAF NHF
S A V MAY 2410
Sire: MVF NET WORTH 98U
MINERTS FORTUNE 2000 AMF CAF NHF
MVF DAISY 17E
MVF DAISY 38C

SITZ ALLIANCE 6595 AMF NHF
MVF ALLIANCE 670N
BROCKHILL JAMOCA 14H
Dam: MIDNITE OIL TIBBIE 67W
DURLOWE MAGIC 62K
NEW FORCE TIBBIE 16M
MVF TIBBIE 16Z

BW: 84 205: 722

SOT: 820 EOT: 1065 Proj Wt: 1215 ADG: 2.58 WPDA: 2.97 AOD: 2

Adj. Carcass Values LMY: 63.8 REA: 12.61 %IMF: 5.42 Rib Fat: 0.2 Rump Fat: 0.32

This exciting bull is out of a first calf heifer and she did quite a job!! His genetics go back to the who's who in the Angus industry tracing to Schaff Angus (SAV Net Worth) and Mountain View Farms (MVF Alliance and MFV Tibbie). Here is a bull that will work in anyone's program. Take a look on sale day!

9

GGA QUANTUM 1Y

Male GGA 1Y January 02 2011 1616619

BEPD	+0.5
WEPD	+28
YEPD	+47
Milk	+16
TM	+30
CED	+6.0
CEM	+8.0

GDAR QUANTUM 963
NORTHERN VIEW QUANTUM 86P
CRESCENT CREEK BLACKBIRD 21J
Sire: BELL QUANTUM 26T
BELL 561G BRUNO 11L
BELL BLACK LUCY 5R
BELL BLACK LUCY 29H

SANDY BAR TONTO 61E
A-LINE TONTO 3L
SANDY BAR ANNIE K 89H
Dam: IVANHOE B BLACK LUCY 4T
WIWA CREEK STOCKMAN 12'98
IVANHOE B BLACK LUCY 27L
BELL BLACK LUCY 22Y

BW: 68 205: 630

SOT: 885 EOT: 1125 Proj Wt: 1275 ADG: 2.53 WPDA: 2.78 AOD: 4

Adj. Carcass Values LMY: 66.7 REA: 14.2 %IMF: 4.35 Rib Fat: 0.14 Rump Fat: 0.31

If you're looking for a calving easy bull with some performance in the calves once they hit the ground, here he is. We used a full brother to him a year ago on our heifers with 100% unassisted births. A full sister was high selling heifer at the 2010 Gateway Angus Sale, selling to Bell Angus.

10

GGA TITAN 15Y

Male GGA 15Y April 21 2011 1616631

BEPD	+3.0
WEPD	+42
YEPD	+68
Milk	+21
TM	+42
CED	+2.0
CEM	+8.0

CHICO HANNIBAL 43H
ISLA BANK TITAN 148
ISLA BANK PRIDE 11G
Sire: HILOW TITAN 13P
PEAK DOT PROFIT 11C
HILOW HEATHER 23E
HILOW HEATHER 25W

S A R NEW TREND 4100 2080
PEAK DOT NEW TREND 74M
MAYFLOWER OF PEAK DOT 504K
Dam: HILOW QUEEN MOTHER 30S
C A FUTURE DIRECTION 5321 AMC CAF NHC
HILOW QUEEN MOTHER 1N AMF NHF
HILOW QUEEN MOTHER 2L

BW: 80 205: 751

SOT: 750 EOT: 1015 Proj Wt: 1165 ADG: 2.79 WPDA: 3.44 AOD: 5

This showy looking rascal has the look of a herd bull. His dam is a front pasture cow with perfect feet and udder development while his sire is the legendary "Hi Low Titan", one of the top producing bulls throughout Western Canada. If you're looking for one that has the "LOOK" and performance all put together in one package, here he is. Check him out sale day!!

LOTS 12 - 14 - WILLOWVIEW ANGUS - Ken & Sandy Harle - 306.359.6100

12

WILLOWVIEW FREE SPIRIT 8Y

Male KSH 8Y January 24 2011 1645135

BEPD	+2.3
WEPD	+42
YEPD	+80
Milk	+22
TM	+43
CED	+0.0
CEM	+3.0

S A V 8180 TRAVELER 004 AMF CAF NHF
S A V NET WORTH 4200 AMF CAF NHF
S A V MAY 2410
Sire: S A V FREE SPIRIT 8164 CAF
G A R INTEGRITY AMF CAF NHC
S A V EMBLYNETTE 5463 CAF NHF
S A V EMBLYNETTE 0429

BON VIEW EMULATION EXT 473 AMF CAF NHF
KENOSEE PARK 473 29G
KENOSEE PARK QUEEN 20E
Dam: COTTONWOOD BARBARA 17L
CRESCENT CREEK SAMURAI 48B
COTTONWOOD BARBARA 65J
WWF REVERE BARBARA 58U

SOT: 905 EOT: 1245 Proj Wt: 1395 ADG: 3.58 WPDA: 3.26 AOD: 10

Adj. Carcass Values LMY: 61.1 REA: 12.75 %IMF: 4.52 Rib Fat: 0.31 Rump Fat: 0.22 BW: 87 205: 644

13 WILLOWVIEW FREE SPIRIT 5Y

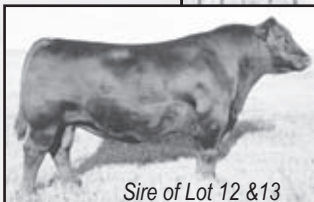
Male KSH 5Y January 19 2011 1645141



13

BEPD	+3.3
WEPD	+48
YEPD	+86
Milk	+28
TM	+52
CED	-1.0
CEM	+4.0

S A V 8180 TRAVELER 004 AMF CAF NHF
 S A V NET WORTH 4200 AMF CAF NHF
 S A V MAY 2410
Sire: S A V FREE SPIRIT 8164 CAF
 G A R INTEGRITY AMF CAF NHC
 S A V EMBLYNETTE 5463 CAF NHF
 S A V EMBLYNETTE 0429



Sire of Lot 12 & 13

BROOKS DAKOTA 636
 YOUNG DALE MARQUIS 46M
 WINDOVER ERICA 27J
Dam: WILLOWVIEW PEARL 52P
 HXL STOCKMAN 2K
 WILLOWVIEW PEARL 117M
 COTTONWOOD PEARL 62K

BW: 94 205: 699

SOT:	970	EOT:	1390	Proj Wt:	1540	ADG:	4.42	WPDA:	3.59	AOD:	6
Adj. Carcass Values	LMY:	61.8	REA:	14.63	%IMF:	6.09	Rib Fat:	0.34	Rump Fat:	0.36	

14 WILLOWVIEW HERITAGE 4Y

Male KSH 4Y January 18 2011 1645140

BEPD	+3.8
WEPD	+57
YEPD	+101
Milk	+25
TM	+54
CED	-1.0
CEM	+3.0

CAR TRACKER 904
 CAR DUKE 104
 C A R MISS RAINDANCER 421
Sire: S A V HERITAGE 6295 AMF CAF NHF
 S A V 8180 TRAVELER 004 AMF CAF NHF
 S A V BLACKCAP MAY 4136 CAF
 S A V MAY 2397 CAF

HXL STOCKMAN 2K
 COTTONWOOD STOCKMAN 60M
 HILOW ESTON ANNE 37D
Dam: WILLOWVIEW PEARL 43P
 KENOSEE PARK 473 29G
 COTTONWOOD PEARL 62K
 ROY MAC PEARL 2D

BW: 92 205: 723

SOT:	1025	EOT:	1370	Proj Wt:	1520	ADG:	3.63	WPDA:	3.53	AOD:	6
Adj. Carcass Values	LMY:	63.7	REA:	13.72	%IMF:	3.62	Rib Fat:	0.24	Rump Fat:	0.3	

LOTS 15 - 16 - COTTONWOOD ANGUS - Brett Gaube - 306.537.4710

15 COTTONWOOD NET WORTH 82Y

Male RTBG 82Y February 02 2011 1648659

BEPD	+4.2
WEPD	+39
YEPD	+67
Milk	+15

S A V 8180 TRAVELER 004 AMF CAF NHF
 S A V NET WORTH 4200 AMF CAF NHF
 S A V MAY 2410
Sire: WILLOWVIEW NET WORTH 12W
 KENOSEE PARK 473 29G
 COTTONWOOD TIPTOP 3L
 COTTONWOOD TIPTOP 63Z

APEX STOCKMAN 061
 HXL STOCKMAN 2K
 CRAVEN MISS SANDRA 27F
Dam: WILLOWVIEW BELLE 82N
 YOUNG DALE MARSHALL 202T
 COTTONWOOD BELLE 11A
 2J BELLE 3S

BW: 95 205: ---

SOT:	890	EOT:	1155	Proj Wt:	1305	ADG:	2.79	WPDA:	3.10	AOD:	8
Adj. Carcass Values	LMY:	64.6	REA:	12.6	%IMF:	2.61	Rib Fat:	0.17	Rump Fat:	0.17	



A combination of moderate birth weight and performance.

16 RED COTTONWOOD PRIME CUT 1Y

Male RTBG 1Y February 06 2011 1651413

BASIN PRIME CUT 354K
 PEAK DOT PRIME CUT 433M
 BARDOLIA OF PEAK DOT 572E
Sire: PEAK DOT PRIME CUT 218S
 PEAK DOT RANSOM 152H
 PANSY OF PEAK DOT 805L
 PANSY OF PEAK DOT 668Z

APEX STOCKMAN 061
 HXL STOCKMAN 2K
 CRAVEN MISS SANDRA 27F
Dam: COTTONWOOD BELLE 1M
 CRESCENT CREEK SAMURAI 48B
 COTTONWOOD BELLE 28H
 COTTONWOOD BELLE 11A

An opportunity to purchase a Red bull off of two top Black parents. A great cross on your purebred or commercial cows.

SOT:	875	EOT:	1095	Proj Wt:	1245	ADG:	2.32	WPDA:	2.97	AOD:	9
Adj. Carcass Values	LMY:	64.7	REA:	12.47	%IMF:	2.67	Rib Fat:	0.16	Rump Fat:	0.18	
BW:	88	205:	---								

BEPD	+2.8
WEPD	+36
YEPD	+66
Milk	+12
TM	--
CED	--
CEM	--
Stay	+9
HPG	---



Owned by Kath & Cliff Folk. Lot 19 is a direct son of Howe Magic 28R. A number of paternal brothers have been sold through the Triple A sales in the past four years.

19

HILOW MAGIC 49Y

Male CKF 49Y March 25 2011 1615498

BEPD	+1.9
WEPD	+44
YEPD	+78
Milk	+9

YOUNG DALE REAL DEAL 18K
 YOUNG DALE TOUCH DOWN 36M
 PAT LADY SANDRA 2C
Sire: HOWE MAGIC 28R
 MERIT DIESEL 8041
 HOWE MS ERICA 132K
 ROYAL ERICA 2F

S A R NEW TREND 4100 2080
 PEAK DOT NEW TREND 74M
 MAYFLOWER OF PEAK DOT 504K
Dam: HILOW HEATHER 30U
 HAPPYVALE TOUCH UP 29H
 HILOW HEATHER 19L
 HILOW HEATHER 23E

BW:	84	205:	707
-----	----	------	-----

SOT:	735	EOT:	1025	Proj Wt:	1175	ADG:	3.05	WPDA:	3.18	AOD:	3
Adj. Carcass Values	LMY:	61.8	REA:	14.99	%IMF:	3.4	Rib Fat:	0.35	Rump Fat:	0.4	

H
I
L
O
W

A
N
G
U
S



A maternal brother had the 3rd highest ADG of the 2011 Triple A bull group. Lot 20 is a stout, lower framed bull that combines birth weight, calving ease and powerful performance.

20

HILOW TIGER 12Y

Male HTD 12Y March 09 2011 1653032

BEPD	-1.8
WEPD	+50
YEPD	+97
Milk	+23
SC	+0.31

SANDY BAR ADVANTAGE 43M
 HF KODIAK 5R AMF CAF NHF MAF
 WILBAR RUBY 955N
Sire: HF TIGER 5T AMF CAF NHF
 TC FREEDOM 104 AMF CAF NHF
 HF ECHO 84R
 HFDF ECHO 6N

S A V 8180 TRAVELER 004 AMF CAF NHF
 S A V NET WORTH 4200 AMF CAF NHF
 S A V MAY 2410
Dam: BAR-E-L MARG 55U
 S A V FINAL ANSWER 0035 AMF CAF NHF
 BAR J P MARG 77N
 HAPPYVALE JSP MARG 66E

BW:	71	205:	670
-----	----	------	-----

SOT:	790	EOT:	1140	Proj Wt:	1290	ADG:	3.68	WPDA:	3.37	AOD:	3
Adj. Carcass Values	LMY:	58.5	REA:	14.66	%IMF:	3.88	Rib Fat:	0.47	Rump Fat:	0.4	

21

HILOW STOUT 20Y

Male HTD 20Y March 05 2011 1655528

BEPD	+3.3
WEPD	+46
YEPD	+100
Milk	+22
SC	-0.35

NICHOLS COMMITMENT K111
 NICHOLS COMMITMENT M380
 NICHOLS BLACK HEIRESS H295
Sire: NICHOLS STOUT T152 AMF NHF CAF
 NICHOLS BUSHWACKER K161 AMF
 NICHOLS LULA N77 AMF NHF
 NICHOLS LULA K387

S A F 598 BANDO 5175 AMF CAC
 S A V SUCCESSOR 1175 AMF NHF CAC
 S A V ABIGALE 6062
Dam: HILOW ESTON ANNE 23S CAF
 TLA POKEMON 31J
 HILOW ESTON ANNE 39L
 HILOW ESTON ANNE 44D

BW:	110	205:	680
-----	-----	------	-----

SOT:	805	EOT:	1120	Proj Wt:	1270	ADG:	3.32	WPDA:	3.27	AOD:	5
Adj. Carcass Values	LMY:	62.7	REA:	12.49	%IMF:	4.1	Rib Fat:	0.24	Rump Fat:	0.24	



Nichols Stout T152 - Sire of Lot 21

Lot 21 is a direct son of Nichols Stout T152 from Nichols Angus. A bull that will add stretch and performance to your calves. Maternal sisters have sold to Ivanhoe Angus and Sharon Wagner. Hi Low Eston Anne 23S was also the dam to the last bull Cliff & Nora Watkins purchased from us. Hi Low Righttime 5U was one of the service sires to the Watkin's bred heifers which were dispersed in their very successful sale this past December.

22

HILOW NEW ELIXIR 7Y

Male HTD 7Y March 02 2011 1653044

BEPD	+1.0
WEPD	+37
YEPD	+71
Milk	+18

B/R NEW FRONTIER 095 AMF CAF NHF
 SSAP NEW ELIXIR 4R
 SOUTH SHADOW EILEEN 5M
Sire: DLD 4R NEW ELIXIR 66U
 SOUTH SHADOW RAIN MAN 2M
 DLD AKITA 8S
 DLD AKITA 25P

HOFF FIRST EDITION 058 242 AMF NHF
 BLACK RIDGE EDITION 2S
 LADY OF PEAK DOT 748L
Dam: HILOW PRIDE 8W
 PEAK DOT NEW TREND 74M
 HILOW PRIDE 20R
 HILOW PRIDE 24H

BW: 72 205: 652

SOT:	725	EOT:	950	Proj Wt:	1100	ADG:	2.37	WPDA:	2.75	AOD:	2
Adj. Carcass Values	LMY:	64.9	REA:	13.9	%IMF:	4.52	Rib Fat:	0.2	Rump Fat:	0.2	

A low birth weight bull from our calving-ease specialist
DLD New Elixir 66U.

24

HILOW FREIGHTLINER 19Y

Male HTD 19Y March 13 2011 1653002

BEPD	+1.9
WEPD	+39
YEPD	+65
Milk	+16
SC	+0.68

BON VIEW BANDO 598 AMF CAC
 CONNEALY FREIGHTLINER AMF CAF NHF
 JOANA ERICA OF CONANGA
Sire: ISLA BANK FREIGHTLINER 22T
 STANDARD HILL NEXT STEP 8M
 ISLA BANK PRIDISTA 22R
 ISLA BANK PRIDISTA 40N

S A R NEW TREND 4100 2080
 PEAK DOT NEW TREND 74M
 MAYFLOWER OF PEAK DOT 504K
Dam: HILOW ESTON ANNE 41T
 EARLY SUNSET TEX 51E
 HILOW ESTON ANNE 18J
 HILOW ESTON ANNE 54A

BW: 92 205: 659

SOT:	740	EOT:	1060	Proj Wt:	1210	ADG:	3.37	WPDA:	3.17	AOD:	4
Adj. Carcass Values	LMY:	63.2	REA:	13.5	%IMF:	5.08	Rib Fat:	0.25	Rump Fat:	0.27	

25

HILOW FREIGHTLINER 52Y

Male HTD 52Y March 25 2011 1652913

BEPD	+4.3
WEPD	+43
YEPD	+76
Milk	+14
SC	+0.68

BON VIEW BANDO 598 AMF CAC
 CONNEALY FREIGHTLINER AMF CAF NHF
 JOANA ERICA OF CONANGA
Sire: ISLA BANK FREIGHTLINER 22T
 STANDARD HILL NEXT STEP 8M
 ISLA BANK PRIDISTA 22R
 ISLA BANK PRIDISTA 40N

CHICO HANNIBAL 43H
 ISLA BANK TITAN 148
 ISLA BANK PRIDE 11G
Dam: HILOW ESTON ANNE 50N
 HILOW RIGHT TIME 38F
 HILOW ESTON ANNE 50H
 HILOW ESTON ANNE 44D

BW: 96 205: 692

SOT:	765	EOT:	1055	Proj Wt:	1205	ADG:	3.05	WPDA:	3.28	AOD:	8
Adj. Carcass Values	LMY:	58	REA:	12.21	%IMF:	5.76	Rib Fat:	0.41	Rump Fat:	0.45	

23

HILOW NEW ELIXIR 9Y

Male HTD 9Y March 08 2011 1653047

BEPD	+1.6
WEPD	+34
YEPD	+66
Milk	+18

B/R NEW FRONTIER 095 AMF CAF NHF
 SSAP NEW ELIXIR 4R
 SOUTH SHADOW EILEEN 5M
Sire: DLD 4R NEW ELIXIR 66U
 SOUTH SHADOW RAIN MAN 2M
 DLD AKITA 8S
 DLD AKITA 25P

HOFF FIRST EDITION 058 242 AMF NHF
 BLACK RIDGE EDITION 2S
 LADY OF PEAK DOT 748L
Dam: HILOW ESTON ANNE 64W
 HILOW SUPER X 37N
 HILOW ESTON ANNE 54R
 HILOW ESTON ANNE 50H

BW: 77 205: 642

SOT:	740	EOT:	1115	Proj Wt:	1265	ADG:	3.95	WPDA:	3.29	AOD:	2
Adj. Carcass Values	LMY:	63.9	REA:	15.24	%IMF:	3.93	Rib Fat:	0.28	Rump Fat:	0.4	



A heifer's first calf with a low birth weight and exceptional performance at 3.95 lbs ADG. We are expecting 30+ 66U calves this spring and hope to have a number of bulls like this guy to offer next year.

26

HILOW WIDESPREAD 36Y

Male HTD 36Y March 18 2011 1653001

BEPD	+5.1
WEPD	+44
YEPD	+74
Milk	+16

WHITESTONE WIDESPREAD MB AMF NHF
 BLACK RIDGE W WIDESPREAD 2K
 BLACK RIDGE BRITTA 9F CAF
Sire: ISLA BANK WIDESPREAD 48T
 CHICO HANNIBAL 43H
 ISLA BANK LUCY 48P
 ISLA BANK LUCY 20H

MC BEE WMR SUPER X 745
 HILOW SUPER X 37N
 HILOW ESTON ANNE 44D
Dam: HILOW ESTON ANNE 23T
 PEAK DOT NEW TREND 74M
 HILOW ESTON ANNE 36P
 HILOW ESTON ANNE 33F

BW: 105 205: 705

SOT:	800	EOT:	1030	Proj Wt:	1180	ADG:	2.42	WPDA:	3.13	AOD:	4
Adj. Carcass Values	LMY:	63.2	REA:	12.47	%IMF:	3.8	Rib Fat:	0.22	Rump Fat:	0.26	

Last year a full brother sold to PFRA and a maternal brother also sold to PFRA in 2010.

H
I
L
O
W

A
N
G
U
S



A larger framed bull with above average performance. His dam has had eight calves - one heifer retained in herd, females sold to Gord Roger, Ron Schropp and George Patterson and bulls sold to PF and Russell Dean.

29 **HILOW MAGIC 46Y**
Male HTD 46Y March 21 2011 1655532

BEPD	+4.3
WEPD	+43
YEPD	+79
Milk	+15
SC	+0.14

YOUNG DALE REAL DEAL 18K
YOUNG DALE TOUCH DOWN 36M
PAT LADY SANDRA 2C
Sire: HILOW MAGIC 28R
MERIT DIESEL 8041
HOWE MS ERICA 132K
ROYAL ERICA 2F

C A FUTURE DIRECTION 5321 CAF NHC AMC
BOYD BEEF MAKER 3069 NHF CAF AMC
BOYD FOREVER LADY 7120
Dam: HILOW PRIDE 6U AMC
BON VIEW BALANCE 834 AMF NHF CAF
HILOW PRIDE 5G
HILOW PRIDE 2A

BW:	93	205:	719								
SOT:	760	EOT:	1115	Proj Wt:	1265	ADG:	3.74	WPDA:	3.68	AOD:	3
Adj. Carcass Values	LMY:	63.6	REA:	14.27	%IMF:	4.17	Rib Fat:	0.26	Rump Fat:	0.37	

A 1/2 brother to Lot 28 with moderate birth weight and well above performance ADG 3.74, WPDA 3.68.

LOTS 31 - 36 - WILMO ANGUS RANCH - John & Marg Willmott - 306.345.2046



S A V Final Answer 0035 - Grandsire of Lot 31, 32 & 33

28 **HILOW MAGIC 43Y**
Male HTD 43Y March 21 2011 1652900

BEPD	+4.8
WEPD	+48
YEPD	+82
Milk	+11

YOUNG DALE REAL DEAL 18K
YOUNG DALE TOUCH DOWN 36M
PAT LADY SANDRA 2C
Sire: HILOW MAGIC 28R
MERIT DIESEL 8041
HOWE MS ERICA 132K
ROYAL ERICA 2F

A A R NEW TREND
V D A R NEW TREND 315 AMF CAF NHF
V D A R LUCY 704
Dam: HILOW ESTON ANNE 26M
HILOW ROCKET 41B
HILOW ESTON ANNE 40G
HILOW ESTON ANNE 38X

BW:	98	205:	754								
SOT:	770	EOT:	1090	Proj Wt:	1240	ADG:	3.37	WPDA:	3.34	AOD:	9
Adj. Carcass Values	LMY:	63	REA:	12.85	%IMF:	4.17	Rib Fat:	0.24	Rump Fat:	0.32	

30 **HILOW MAGIC 72Y**
Male HTD 72Y April 13 2011 1652895

BEPD	+4.8
WEPD	+55
YEPD	+89
Milk	+14

YOUNG DALE TOUCH DOWN 36M
HOWE MAGIC 28R
HOWE MS ERICA 132K
Sire: HILOW MAGIC 68W (1532341)
PAPA UNIVERSE 515 AMF NHF
BLACK RIDGE LUCY 66R
BLACK RIDGE LYNN 866D

PAPA EQUATOR 2928 AMF NHF
PAPA UNIVERSE 515 AMF NHF
PLD ERISKAY PAPA 011
Dam: HAPPYVALE NP LASSIE 17K (1022593)
N BAR EMULATION EXT AMF CAF NHF
HAPPYVALE NP LASSIE 17G
HAPPYVALE LASSIE 8D

BW:	96	205:	820								
SOT:	770	EOT:	1050	Proj Wt:	1200	ADG:	2.95	WPDA:	3.27	AOD:	11

Lot 30 still has not reached his 1st birthday. Ranked #1 of our bull calves at weaning with an index of 123. His mother is a hard working 11 year old cow.

31 **WILMO PRINCE ROB 5Y**
Male RC FCW 5Y March 26 2011 1615630

BEPD	+1.6
WEPD	+30
YEPD	+60
Milk	+18
TM	+33
CED	+4.0
CEM	+7.0
Stay	+8
HPG	+11

SITZ TRAVELER 8180 AMF CAF NHF
S A V FINAL ANSWER 0035 AMF CAF NHF
S A V EMULOUS 8145 CAF
Sire: WILMO QUESTION 19W
EAGLEVIEW MAGICIAN 5L
WILMO PRIDE 15S
ISLA BANK PRIDE 57M

RED FLYING K DYNAMO 6Y
RED KENRAY DYNAMO 9C
RED MOOSE CREEK 58W
Dam: RED LAMBS ROSELLA 49G
RED CUTARM CV 81U
RED LAMBS ROSELLA 75E
RED GIRVINMERE ROSELLA 68A

BW:	90	205:	752								
SOT:	790	EOT:	1050	Proj Wt:	1200	ADG:	2.74	WPDA:	3.27	AOD:	14
Adj. Carcass Values	LMY:	62.4	REA:	12.52	%IMF:	3.75	Rib Fat:	0.25	Rump Fat:	0.41	

32

WILMO RIGHT ANSWER 10Y

Male FCW 10Y April 05 2011 1615686

BEPD	+1.7
WEPD	+46
YEPD	+82
Milk	+16
TM	+39.0
CED	+8.0
CEM	+11.0

SITZ TRAVELER 8180 AMF CAF NHF
S A V FINAL ANSWER 0035 AMF CAF NHF
S A V EMULOUS 8145 CAF
Sire: WILMO QUESTION 19W
EAGLEVIEW MAGICIAN 5L
WILMO PRIDE 15S
ISLA BANK PRIDE 57M

TC FREEDOM 104 AMF CAF NHF
TC STOUT 407 AMF NHF
TC PRIDE 2053

Dam: WILMO MAXIE LADY 7T
NEW FORCE G T AWESOME 27D
NEW FORCE MAXIE LADY 35F
NEW FORCE MAXIE 56D

BW: 81 205: 669

SOT: 660 EOT: 1030 Proj Wt: 1180 ADG: 3.89 WPDA: 3.31 AOD: 4



Sire: S A V Net Worth 4200



Sire: Red Six Mile Sakic 832

34

WILMO RIGHT ANSWER 15Y

Male FCW 15Y April 16 2011 1615641

BEPD	+1.8
WEPD	+48
YEPD	+79
Milk	+14
TM	+38
CED	+6.0
CEM	+8.0

SITZ TRAVELER 8180 AMF CAF NHF
S A V FINAL ANSWER 0035 AMF CAF NHF
S A V EMULOUS 8145 CAF
Sire: WILMO QUESTION 19W
EAGLEVIEW MAGICIAN 5L
WILMO PRIDE 15S
ISLA BANK PRIDE 57M

ROTHS MILLCREEK UNIQUE AMC NHC
WILMO UNIQUE 18N
WILMO EDELLA 17H

Dam: WILMO MAXIE LADY 6R
NEW FORCE G T AWESOME 27D
NEW FORCE MAXIE LADY 35F
NEW FORCE MAXIE 56D

BW: 83 205: 708

SOT: 720 EOT: 995 Proj Wt: 1145 ADG: 2.89 WPDA: 3.32 AOD: 6

35

WILMO NET PROFIT 12Y

Male FCW 12Y April 10 2011 1632893

BEPD	+3.3
WEPD	+50
YEPD	+92
Milk	+24
TM	+49
SC	+0.32
CED	+5.0
CEM	+7.0

SITZ TRAVELER 8180 AMF CAF NHF
S A V 8180 TRAVELER 004 AMF CAF NHF
BOYD FOREVER LADY 8003
Sire: S A V NET WORTH 4200 AMF CAF NHF
S A F 598 BANDO 5175 AMF CAC
S A V MAY 2410
S A V MAY 6269

Q A S TRAVELER 23-4 AMF CAF NHF
WILMO TRAVELER 7G
WILMO PRIDE 10E

Dam: WILMO MAXIE LADY 8R
LEACHMAN RIGHT TIME AMF
WILMO MAXIE LADY 14M
NEW FORCE MAXIE LADY 35F

BW: 89 205: 756

SOT: 815 EOT: 1155 Proj Wt: 1305 ADG: 3.58 WPDA: 3.77 AOD: 6

12Y's dam was the dam of our high selling bull in 2011. 12Y is sired by SAV Net Worth 4200.

36

RED WILMO SAKIC 3Y

Male FCW 3Y March 21 2011 1615699

BEPD	+1.4
WEPD	+25
YEPD	+46
Milk	+19
TM	+31
CED	+0.0
CEM	+7.0
Stay	+8
HPG	*11

RED WILDMAN DENALI 19L
RED SIX MILE AVIATOR 217P OSF
RED RSL SUE 400F OSF
Sire: RED SIX MILE SAKIC 832S OSF
RED SIX MILE CUJO 800M
RED SIX MILE SIERA 257P OSF
RED BOUNTY B MISS SIERA BAR

RED WILMO PRINCE ROB 11N
RED WILMO PRINCE ROB 18R
RED LAMBS ROSELLA 49G
Dam: RED WILMO ROSELLA 15T
RED KENRAY DYNAMO 9C
RED LAMBS ROSELLA 49G
RED LAMBS ROSELLA 75E

BW: 84 205: 653

SOT: 790 EOT: 1080 Proj Wt: 1230 ADG: 3.05 WPDA: 3.31 AOD: 4

Adj. Carcass Values LMY: 59.4 REA: 14.55 %IMF: 3.83 Rib Fat: 0.43 Rump Fat: 0.35

W
I
L
M
O

A
N
G
U
S



A growthy, long bodied, thick Titan son. He weighed 1070 lbs on November 7. His dam is an angular, good milking Triple Threat daughter. He should add performance to his calves.

37

BELL TITAN 1Y

Male NBK 1Y January 02 2011 1607013

BEPD	+4.5
WEPD	+48
YEPD	+74
Milk	+18
TM	+42
CED	-4.0
CEM	+2.0

CHICO HANNIBAL 43H
ISLA BANK TITAN 148
ISLA BANK PRIDE 11G
Sire: HILOW TITAN 13P
PEAK DOT PROFIT 11C
HILOW HEATHER 23E
HILOW HEATHER 25W

ANKONIAN CORNHUSKER
WOODHILL TRIPLE THREAT AMF CAF
GT MISS TRAVELER 58
Dam: BELL TT QUEEN 17S
STEVENSON FORTUNE 425C AMF CAF NHF
BELL QUEEN 13M
HILOW QUEEN 43G

BW: 95 205: 672

SOT: 1070 EOT: 1390 Proj Wt: 1540 ADG: 3.37 WPDA: 3.44 AOD: 5

Adj. Carcass Values LMY: 58.5 REA: 13.06 %IMF: 5.95 Rib Fat: 0.42 Rump Fat: 0.32

38

BELL NET PROFIT 3Y

Male NBK 3Y January 26 2011 1607277

BEPD	+4.1
WEPD	+39
YEPD	+73
Milk	+16
TM	+36
CED	-1.0
CEM	+4.0

S A V 8180 TRAVELER 004 AMF CAF NHF
S A V NET WORTH 4200 AMF CAF NHF
S A V MAY 2410
Sire: BELL NET RETURN 3U
LONE STAR ONLY PROFIT 1J
BELL MS PRIDE 16L
HOWE MS PRIDE 76J

GDAR QUANTUM 963
NORTHERN VIEW QUANTUM 86P
CRESCENT CREEK BLACKBIRD 21J
Dam: BELL BEAUTY LASS 54U
BELL STOCKADE 7G
BELL BEAUTY LASS 20K
BELL BEAUTY LASS 12D

BW: 90 205: 663

SOT: 880 EOT: 1280 Proj Wt: 1430 ADG: 4.21 WPDA: 3.37 AOD: 2

Adj. Carcass Values LMY: 62.4 REA: 14.07 %IMF: 4.16 Rib Fat: 0.3 Rump Fat: 0.38

Gained 4.21 lbs per day. A very well made bull with an excellent coat of hair. His mother is a hard working Quantum 86P daughter. 86P sired excellent females.



S A V Net Worth 4200 - Sire of Lot 39 and Grandsire of Lots 38, 40, 41, 43 & 44

B
E
L
L

A
N
G
U
S

39

BELL NET PROFIT 5Y

Male NBK 5Y January 28 2011 1607258

BEPD	+4.7
WEPD	+57
YEPD	+100
Milk	+23
TM	+52
CED	+0.0
CEM	+7.0

SITZ TRAVELER 8180 AMF CAF NHF
S A V 8180 TRAVELER 004 AMF CAF NHF
BOYD FOREVER LADY 8003
Sire: S A V NET WORTH 4200 AMF CAF NHF
S A F 598 BANDO 5175 AMF CAC
S A V MAY 2410
S A V MAY 6269

HYLINE RIGHT TIME 338 AMF CAF NHF
HYLINE RIGHT WAY 781 AMF CAF NHF
HYLINE ELLEN 86
Dam: BELL PRIDE 11T
LONE STAR ONLY PROFIT 1J
BELL MS PRIDE 16L
HOWE MS PRIDE 76J

BW: 92 205: 714

SOT: 970 EOT: 1415 Proj Wt: 1565 ADG: 4.68 WPDA: 3.74 AOD: 4

Adj. Carcass Values LMY: 64.1 REA: 15.57 %IMF: 4.24 Rib Fat: 0.28 Rump Fat: 0.29



An own son of the performance sire SAV Net Worth 4200 and 5Y is following his sire's lead. 5Y's average daily gain was 4.68 lbs/day. He's a long, deep bodied bull with good hair and soundness.

40

BELL NET PROFIT 8Y

Male NBK 8Y February 01 2011 1607271

BEPD	+5.8
WEPD	+50
YEPD	+84
Milk	+19
TM	+44
CED	-6.0
CEM	+2.0

S A V 8180 TRAVELER 004 AMF CAF NHF
 S A V NET WORTH 4200 AMF CAF NHF
 S A V MAY 2410
Sire: BELL NET RETURN 3U
 LONE STAR ONLY PROFIT 1J
 BELL MS PRIDE 16L
 HOWE MS PRIDE 76J

ISLA BANK TITAN 148
 HILOW TITAN 13P
 HILOW HEATHER 23E
Dam: BELL BLACKCAP 55T
 LONE STAR ONLY PROFIT 1J
 BELL BLACKCAP 2L
 BELL BLACKCAP 13F

BW: 97 205: 750

SOT:	1030	EOT:	1385	Proj Wt:	1535	ADG:	3.74	WPDA:	3.70	AOD:	3
Adj. Carcass Values	LMY:	60.6	REA:	14.45	%IMF:	3.39	Rib Fat:	0.38	Rump Fat:	0.35	



A son of our home raised herd sire Bell Net Return 3U whose calves show good muscle shape and growth. He sired the Reserve Junior Bull Calf Champion at Canadian Western Agribition for Northern View Angus last fall. 8Y weighed 1030 lbs November 7 at just past 9 months of age with no creep feed. He's a very long, stylish bull with a projected sale day weight of over 1500 lbs.

41

BELL NET PROFIT 12Y

Male NBK 12Y February 04 2011 1606970

BEPD	+5.4
WEPD	+44
YEPD	+76
Milk	+12
TM	+34
CED	-5.0
CEM	+2.0

S A V 8180 TRAVELER 004 AMF CAF NHF
 S A V NET WORTH 4200 AMF CAF NHF
 S A V MAY 2410
Sire: BELL NET RETURN 3U
 LONE STAR ONLY PROFIT 1J
 BELL MS PRIDE 16L
 HOWE MS PRIDE 76J

APEX STOCKMAN 061
 BELL STOCKADE 7G
 BELL BLACK LASS 25C
Dam: BELL EUGENIE ERICA 19J
 BELL TOP CHOICE 7B
 BELL EUGENIE ERICA 20F
 BELL EUGENIE ERICA 9U

BW: 92 205: 655

SOT:	895	EOT:	1252	Proj Wt:	1402	ADG:	3.76	WPDA:	3.37	AOD:	12
Adj. Carcass Values	LMY:	65.3	REA:	14.82	%IMF:	4.15	Rib Fat:	0.21	Rump Fat:	0.25	

Another good gaining Net Return 3U son out of a 13 year old Stockade daughter. Longevity and soundness bred into this bull.

43

BELL NET PROFIT 19Y

Male NBK 19Y February 16 2011 1607274

BEPD	+2.3
WEPD	+45
YEPD	+78
Milk	+19
TM	+42
CED	+4.0
CEM	+8.0

S A V 8180 TRAVELER 004 AMF CAF NHF
 S A V NET WORTH 4200 AMF CAF NHF
 S A V MAY 2410
Sire: BELL NET RETURN 3U
 LONE STAR ONLY PROFIT 1J
 BELL MS PRIDE 16L
 HOWE MS PRIDE 76J

ISLA BANK TITAN 148
 HILOW TITAN 13P
 HILOW HEATHER 23E
Dam: BELL BLACKLASS 24U
 BELL 561G BRUNO 11L
 BELL BLACKLASS 17P
 BELL BLACKLASS 9L

BW: 72 205: 666

SOT:	870	EOT:	1160	Proj Wt:	1310	ADG:	3.05	WPDA:	3.23	AOD:	3
Adj. Carcass Values	LMY:	61.2	REA:	13.82	%IMF:	4.03	Rib Fat:	0.34	Rump Fat:	0.42	

An attractive Net Return son with just a 72 lb birth weight - should work well on heifers.

42

BELL TITAN 18Y

Male NBK 18Y February 14 2011 1606999

BEPD	+5.3
WEPD	+42
YEPD	+68
Milk	+19
TM	+40
CED	-6.0
CEM	+5.0

CHICO HANNIBAL 43H
 ISLA BANK TITAN 148
 ISLA BANK PRIDE 11G
Sire: HILOW TITAN 13P
 PEAK DOT PROFIT 11C
 HILOW HEATHER 23E
 HILOW HEATHER 25W

R R 9440 SCOTCH CAP 1483 AMF CAF NHF
 E&B 1483 SCOTCHMAN 543
 LADY SKYLAR B121
Dam: BELL EUGENIE ERICA 15M
 BELL STOCKADE 7G
 BELL EUGENIE ERICA 19J
 BELL EUGENIE ERICA 20F

BW: 93 205: 663

SOT:	910	EOT:	1240	Proj Wt:	1390	ADG:	3.47	WPDA:	3.43	AOD:	9
Adj. Carcass Values	LMY:	60.2	REA:	12.28	%IMF:	2.48	Rib Fat:	0.33	Rump Fat:	0.44	

A smooth made Titan son. We used Titan for seven breeding seasons with excellent results. His sons have been well accepted and he has many daughters in the herd. A full brother to 18Y sold to Kevin Gorvich in the 2010 sale.

44

BELL NET PROFIT 20Y

Male NBK 20Y February 16 2011 1607009

BEPD	+3.9
WEPD	+49
YEPD	+82
Milk	+17
TM	+42
CED	+2.0
CEM	+6.0

S A V 8180 TRAVELER 004 AMF CAF NHF
 S A V NET WORTH 4200 AMF CAF NHF
 S A V MAY 2410
Sire: BELL NET RETURN 3U
 LONE STAR ONLY PROFIT 1J
 BELL MS PRIDE 16L
 HOWE MS PRIDE 76J

BON VIEW NEW DESIGN 1407 AMF CAF NHF
 BUSHS GRAND DESIGN AMF CAF NHF
 BUSHS LADY DIVIDEND 872
Dam: BELL EUGENIE ERICA 15R
 BAR DDJ 9440 FORECAST 7K
 BELL EUGENIE ERICA 25M
 BELL EUGENIE ERICA 5K

BW: 94 205: 721

SOT:	940	EOT:	1245	Proj Wt:	1395	ADG:	3.21	WPDA:	3.47	AOD:	6
Adj. Carcass Values	LMY:	60	REA:	13.42	%IMF:	2.71	Rib Fat:	0.37	Rump Fat:	0.39	

Moderate framed bull from a very good Grand Design daughter. He has good muscle shape and lots of capacity. A maternal brother sold in last years sale to Larry Good of Walsh, AB.

B
E
L
L

A
N
G
U
S

X
L
B

F
A
R
M
S



45

RED XLB HOT ROD 10Y

Male XLB 10Y February 23 2011 1652851

RED WILDMAN DENALI 19L
RED SIX MILE AVIATOR 217P OSF
RED RSL SUE 400F OSF
Sire: RED SIX MILE V8 577U
RED CR RISER 95K
RED SIX MILE LARKISA 925M
RED SIX MILE LARKISA 46G

RED LJC LANCER 806 OSF
RED LJC MISSION STATEMENT P27 OSF MAF
RED LJC HANNAH 106 OSF
Dam: RED XLB MISSION PATHY 1U OSF
RED BUF CRK CHF 824-1658 OSC MAF
RED XLB SMOOTH PATHY 18S OSC
RED STEWART 803 MISS PATHY 217

BW: 89 205: ---

SOT: 775 EOT: 1110 Proj Wt: 1260 ADG: 3.53 WPDA: 3.15 AOD: 3

Sired by our easy calving Six Mile bull, out of one of our Pathy cows that traces back to some embryos we bought from Stewart Cattle Co. in Alberta.

46

RED XLB TURBO 5Y

Male XLB 5Y March 24 2011 1652850

RED WILDMAN DENALI 19L
RED SIX MILE AVIATOR 217P OSF
RED RSL SUE 400F OSF
Sire: RED SIX MILE V8 577U
RED CR RISER 95K
RED SIX MILE LARKISA 925M
RED SIX MILE LARKISA 46G

RED BUF CRK HOBO 1413 OSF
RED BUF CRK HOBO 1961 OSF MAF
BUF CR CARRIE VC1174 OSF
Dam: RED EXEL-B HOBO GOLDETTE 31J
RED HF STARBUCK 14Z
RED RSL GOLDETTE 256D
RED C Y GOLDETTE 448Z

Sired by our easy calving Six Mile Bull, out of one of the oldest cows in our herd. 31J has been a never fail cow with a herd bull or replacement heifer prospect every year.

BW: 86 205: ---

SOT: 715 EOT: 1000 Proj Wt: 1150 ADG: 3.00 WPDA: 3.10 AOD: 12

A
R
M

R
I
V
E
R

R
E
D

A
N
G
U
S

47

RED ARM RIVER PATRIOT 727 147Y

Male ARRA 147Y March 09 2011 1612198

BEPD	+3.6
WEPD	+32
YEPD	+57
Milk	+9
TM	+24
CED	+1.0
CEM	+3.0
Stay	+10
HPG	+9

RED FLYING K PATRIOT 16B
RED T-S PATRIOT 84K
RED CFRA BEEFSTEAK 5F
Sire: RED COCKBURN PATRIOT 12R
RED HOWE MR MAT DDH 19F
RED HOWE MS LICORICE DDH 41H
RED MS LICORICE DDH 13Z

RED L-DEE SANDSTONE 512J
RED ARM RIVER SANDSTRYKE 727L
RED ARM RIVER COPPER LADY 350E
Dam: RED ARMRIVER ROSE 974S
RED M DOUBLE B CHIEF 3K
RED ARM RIVER CC ROSE 789M
RED ARM RIVER EC ROSE 703K

Sired by our Patriot Bull, this guy comes out of a cow sired by a Blacklock Bull, MBBX 3K who ultrasounded in the AAA grade. If you're looking for quality carcass this fellow should deliver.

BW: 98 205: 588

SOT: 740 EOT: 1050 Proj Wt: 1200 ADG: 3.26 WPDA: 3.11 AOD: 5
Adj. Carcass Values LMY: 64.8 REA: 12.83 %IMF: 3.57 Rib Fat: 0.17 Rump Fat: ---

48 RED ARM RIVER PATRIOT 139Y

Male ARRA 139Y March 04 2011 1612199

BEPD	+1.6
WEPD	+23
YEPD	+44
Milk	+7
TM	+19
CED	+5.0
CEM	+4.0
Stay	+8
HPG	+9

RED FLYING K PATRIOT 16B
 RED T-S PATRIOT 84K
 RED CFRA BEEFSTEAK 5F
Sire: RED COCKBURN PATRIOT 12R
 RED HOWE MR MAT DDH 19F
 RED HOWE MS LICORICE DDH 41H
 RED MS LICORICE DDH 13Z

RED BJR C-CHIEF 811 OSF MAF
 RED M DOUBLE B CHIEF 3K
 RED FLAT LAKE 6Z
Dam: RED ARM RIVER COPPER LADY 979S
 RED L-DEE SANDSTONE 512J
 RED ARM RIVER COPPER LADY 790M
 RED ARM RIVER COPPER LADY 350E

BW: 85 205: 620

SOT: 810	EOT: 1075	Proj Wt: 1225	ADG: 2.79	WPDA: 3.13	AOD: 5
Adj. Carcass Values	LMY: 62.8	REA: 14.56	%IMF: 4.02	Rib Fat: 0.3	Rump Fat: 0.21



Another deep red, Patriot sired son out of a Legend grand daughter. He's got a great disposition and an 85 lb birth weight - should sire some growthy calves.

49 RED ARM RIVER ROMEO 154Y

Male ARRA 154Y March 14 2011 1612195

BEPD	-1.1
WEPD	+21
YEPD	+38
Milk	+12
TM	+22
CED	+8.0
CEM	+7.0
Stay	+7
HPG	+10

RED BECKTON JULIAN GG B571 OSF
 RED BUF CRK ROMEO L081 OSC MAF
 RED BUF CRK PRIMROSE 5679 OSC
Sire: RED XLB ROMAN 14T OSF
 RED KCP KING ELBA 03K
 RED XLB MISS BETTER GOLD 87P
 RED EXEL-B BETTER GOLDETTE 55L

RED BJR C-CHIEF 811 OSF MAF
 RED M DOUBLE B CHIEF 3K
 RED FLAT LAKE 6Z
Dam: RED ARM RIVER ELITE 970S
 RED WILMO PATRIOT 18L
 RED ARM RIVER ROSE OF PATRIOT
 RED ARM RIVER ROSE 48L

BW: 80 205: 585

SOT: 740	EOT: 1005	Proj Wt: 1155	ADG: 2.79	WPDA: 3.02	AOD: 5
Adj. Carcass Values	LMY: 63	REA: 13.8	%IMF: 5.49	Rib Fat: 0.27	Rump Fat: 0.29

This bull has Patriot on the bottom of his pedigree and is sired by a bull we bought out of a Triple A Sale. Buffalo Creek Romeo is very consistent with his birth weights. 80 lbs almost guaranteed.

51 RED ARM RIVER PATRIOT 142Y

Male ARRA 142Y March 09 2011 1612190

BEPD	-0.5
WEPD	+18
YEPD	+35
Milk	+9
TM	+18
CED	+7.0
CEM	+2.0
Stay	+10
HPG	+9

RED FLYING K PATRIOT 16B
 RED T-S PATRIOT 84K
 RED CFRA BEEFSTEAK 5F
Sire: RED COCKBURN PATRIOT 12R
 RED HOWE MR MAT DDH 19F
 RED HOWE MS LICORICE DDH 41H
 RED MS LICORICE DDH 13Z

RED BJR C-CHIEF 811 OSF MAF
 RED M DOUBLE B CHIEF 3K
 RED FLAT LAKE 6Z
Dam: RED ARM RIVER DUCHESS 952S
 RED WILMO PATRIOT 18L
 RED AR DUCHESS OF PATRIOT
 RED ARM RIVER DUCHESS 734L

BW: 80 205: 572

SOT: 735	EOT: 1030	Proj Wt: 1180	ADG: 3.11	WPDA: 3.05	AOD: 5
Adj. Carcass Values	LMY: 62.4	REA: 13.13	%IMF: 1.81	Rib Fat: 0.27	Rump Fat: 0.31

50 RED ARM RIVER ROMEO 170Y

Male ARRA 170Y May 04 2011 1635284 OSF

BEPD	-0.6
WEPD	+31
YEPD	+62
Milk	+20
TM	+35
CED	+3.0
CEM	+6.0
Stay	+4
HPG	+12

RED BECKTON JULIAN GG B571 OSF
 RED BUF CRK ROMEO L081 OSC MAF
 RED BUF CRK PRIMROSE 5679 OSC
Sire: RED XLB ROMAN 14T OSF
 RED KCP KING ELBA 03K
 RED XLB MISS BETTER GOLD 87P
 RED EXEL-B BETTER GOLDETTE 55L

RED BUF CRK CHF 824-1658 OSC MAF
 RED LCHMN GRND CANYON 1244G OSC MAF
 RED KRN REBA'S ROBIN OSF
Dam: RED XLB GRAND MISS CHARITY 11U OSC
 RED LOG EL CAPONE 515 MAF
 RED BRYLOR CHARITY 5G
 RED HF CHARITY 2B

BW: 84 205: 686

SOT: 630	EOT: 935	Proj Wt: 1085	ADG: 3.21	WPDA: 3.32	AOD: 3
----------	----------	---------------	-----------	------------	--------

Check out his birth date. He's too young to ultrasound, his numbers are good and coming out of the daughter of a \$10,000 cow we thought we'd take a chance and see how he'd grow.



His sire is our Patriot Bull and his dam's great grandsire was a Patriot sired bull. He's got the deep cherry colour and a good birth weight for using on heifers.

A R M R I V E R R E D A N G U S



Sire: S A V Iron Mountain 8066

52

CSI IRON MOUNTAIN 27Y

Male (ET) CSI 27Y February 14 2011 1639911

BEPD	+3.9
WEPD	+53
YEPD	+100
Milk	+21
SC	+0.34

G A R GRID MAKER AMF CAF NHF
TC GRIDIRON 258 AMF CAF NHF
TC BLACKBIRD 7049
Sire: **S A V IRON MOUNTAIN 8066 AMF CAF NHF MAF**
S A V 8180 TRAVELER 004 AMF CAF NHF
S A V MADAME PRIDE 3249 CAF
S A V MADAME PRIDE 8264

RIVERBEND POWERLINE 0050
HF POWER-UP 72N
HF ROSEBUD 23G

Dam: **LADY OF PEAK DOT 476S**
S A V SAUGHATCHEE 9374
LADY OF PEAK DOT 566N
LADY OF PEAK DOT 387J

BW:	100	205:	811
-----	-----	------	-----

SOT:	1080	EOT:	1380	Proj Wt:	1530	ADG:	3.16	WPDA:	3.82	AOD:	5
------	------	------	------	----------	------	------	------	-------	------	------	---

Adj. Carcass Values	LMY:	60.8	REA:	14.08	%IMF:	3.71	Rib Fat:	0.36	Rump Fat:	0.53
---------------------	------	------	------	-------	-------	------	----------	------	-----------	------

27Y has definite herd sire potential, his true thickness and exceptional length will add to any program. The dam, Lady of Peak Dot 476S, is jointly owned with Peak Dot Ranch where Iron Mountain 8066 sons and daughters have been top sellers including the \$44,500 Peak Dot Mountain Top 940X at the 2011 Spring Sale and a flush sister, Lady of Peak Dot 546Y at \$10,000.

53

CSICR TITAN 48Y

Male CSI 48Y April 04 2011 1652883

BEPD	+4.2
WEPD	+47
YEPD	+75
Milk	+15
SC	+0.65

ISLA BANK TITAN 148
HILOW TITAN 13P
HILOW HEATHER 23E
Sire: **BELL TITAN 11W**
BELL STOCKADE 1L
BELL ANNIE K 54N
BELL ANNIE K 14G

S A F NEUTRON AMF CAF NHF
S A NEUTRON 377 AMF CAF NHF
S A QUEEN SUSAN 102
Dam: **NEW FORCE QUEEN SUSAN 248R**
SANDY BAR BARDOLIER 60B
HAPPYVALE EFFIE 48G
HAPPYVALE EFFIE 91D

48Y is a bull that will help you put pounds on the scale. With an adjusted weaning weight of 840 lbs., this thick, "April 4" bull will bring muscle and easy fleshing to your program. The grand dam is an Elite Dam in Ken Bell's program. Take a good look at this good young bull.

BW:	92	205:	840	SOT:	910	EOT:	1190	Proj Wt:	1340	ADG:	2.95	WPDA:	3.81	AOD:	6
-----	----	------	-----	------	-----	------	------	----------	------	------	------	-------	------	------	---

LOT 54 - VALLEY LODGE CATTLE CO. - Gordon C. Roger - 306.771.2305



54

LODGE PIONEER 37Y

Male VLC 37Y February 07 2011 1601650

BEPD	+3.7
WEPD	+46
YEPD	+85
Milk	+25
TM	+48
CED	-2.0
CEM	+1.0

SITZ TRAVELER 8180 AMF CAF NHF
S A V FINAL ANSWER 0035 AMF CAF NHF
S A V EMULOUS 8145 CAF
Sire: **S A V PIONEER 7301 AMF CAF NHF**
BOYD NEW DAY 8005 AMF CAF NHF
S A V BLACKBIRD 5297
S A V BLACKBIRD 1082

ARSF EXTRA 18D
EASTONDALE EXTRA 19G
EASTONDALE COUNTESS 9D
Dam: **LODGE COUNTESS 2J**
LEACHMAN RIGHT TIME AMF
EASTONDALE COUNTESS 3G
EASTONDALE COUNTESS 91E

BW:	101	205:	752
-----	-----	------	-----

SOT:	1030	EOT:	1275	Proj Wt:	1425	ADG:	2.58	WPDA:	3.46	AOD:	12
------	------	------	------	----------	------	------	------	-------	------	------	----

Adj. Carcass Values	LMY:	64.1	REA:	18.06	%IMF:	2.6	Rib Fat:	0.36	Rump Fat:	0.26
---------------------	------	------	------	-------	-------	-----	----------	------	-----------	------

A nice growthy Pioneer son with the frame and performance to make a strong cow bull in his first year. The Countess cow line has always been our strongest cow family. This fellow comes out of our original Leachman Righttime cow that we bought from Dale Easton in 1996. Lots of maternal power here plus the performance and calving ease you can expect from a Pioneer son. Great temperament on this bull as well.

LOTS 55 - 66 - NU-HORIZON ANGUS - Kieran & Deb Doetzel - 306.336.2245

Hello again! This year we have quite a variety of sires for you to choose from. They have been doing very well on test. Whether you are looking for a heifer or a cow bull; black or red; we have a very strong group of bulls that will get the job done for you from top AI sires and our own Pasquale and Replica herd bulls. With the future looking great for the beef producers we are confident our bulls will perform and work for you. Hope to see you at the sale. ...The Doetzel's.

55 RED NU-HORIZON SAKIC 113Y
Male TK 113Y February 09 2011 1641234

BEPD	-0.6
WEPD	+34
YEPD	+59
Milk	+22
TM	+39
CED	+7.0
CEM	+9.
Stay	+12
HPG	+11

Sire: **RED MRLA 116U**
RED VGW RAMBLER 1000 OSF
RED BRYLOR SDL PASQUALE 213P
RED XXX LAKME 70M OSF MAF
RED GEIS KNIGHT 26'02
RED GARA QUEEN 160S
RED GARA QUEEN 32N

Dam: **RED SIX MILE LARKISA 766W**
RED SIX MILE AVIATOR 217P OSF
RED SIX MILE SAKIC 832S OSF
RED SIX MILE SIERA 257P OSF
RED TOWAW INDEED 104H OSF
RED SIX MILE LARKISA 232T
RED SIX MILE LARKISA 46G

BW: 74 205: 687

SOT: 825 EOT: 1145 Proj Wt: 1295 ADG: 3.37 WPDA: 3.13 AOD: 2

Adj. Carcass Values LMY: 64.3 REA: 14.21 %IMF: 3.79 Rib Fat: 0.23 Rump Fat: 0.26

We are really excited about this bull. We bought 113Y's dam from Six Mile as a calf. He is a darker bull with width, length, and depth. This bull's dam has the most amazing udder, picture perfect. He is a very long, deep bodied bull with a good hip. He has smooth shoulders and a small head. This bull also would work well on both cows and heifers. February 10 weight 1145 lbs, ADG 3.37. BW 74 lbs.



Red MRLA 116U
Sire of Lots 55, 59 & 61

All of our red bulls are sired by our Pasquale herd sire that we purchased from McMillen Ranch's. His 2012 calf crop will be his last one for us as we have kept many replacements over the four years we owned him. Since we can no longer use him he is moving on to a commercial farm. His body structure, length, depth, awesome feet and legs, along with a quiet disposition made his new home an easy choice for his new owners.

56 NU-HORIZON REPLICIA 116Y
Male TK 116Y February 10 2011 1641235

BEPD	+2.0
WEPD	+42
YEPD	+74
Milk	+22
TM	+43
CED	+5.0
CEM	+8.0

Sire: **S A V REPLICIA 9484**
G D A R TRAVELER 71 AMF CAF NHF
SITZ TRAVELER 8180 AMF CAF NHF
SITZ EVERELDA ENTENSE 1137
A A R NEW TREND
SUNSET VALLEY FRVR LADY 6313
S V F FOREVER LADY 57D

Dam: **BLUESTONE QUEEN ROSIE II**
RIVERCREST GUARANTEE CSP 2K
SANDY BAR GUARANTEE 20P
SANDY BAR LADY 17J
BENLOCK HURRICANE 52H
CARONHILL QUEEN 17,2001
CARONHILL QUEEN 13'94

BW: 82 205: 589

SOT: 795 EOT: 1115 Proj Wt: 1265 ADG: 3.37 WPDA: 3.05 AOD: 3

Adj. Carcass Values LMY: 61.3 REA: 13.03 %IMF: 3.33 Rib Fat: 0.31 Rump Fat: 0.4

This bull will work well on heifers or cows. Very clean fronted, small head, thick and meaty, great hair coat. We purchased the dam from Bluestone Stock Farms Mortlach, SK. Her calves have consistently performed well for us. February 10 weight 1115 lbs, ADG 3.37. BW 82 lbs.



S A V Replica 9484 - Sire of Lots 56, 60, 63 & 66

SAV Replica 9484 is the sire of Lots 56, 60, 63, & 66. He is a full brother in blood to SAV 8180 Traveler 004. This is our first calf crop from him and they are phenomenal with EPD's well above breed average. His calves all have lots of hair and depth, are big butted and with moderate frame size. You will also like their quiet dispositions. Our heifer and bull calves at home and on test sired by Replica have all performed at the top of the group for average daily gain. They are very easy doing cattle with plenty of style. These bulls on offer in the Triple 'A' sale will put pounds on your calves in the fall and will do very well in a feedlot. Be sure to have a look at them.

N
U
H
O
R
I
Z
O
N
A
N
G
U
S

59

RED NU-HORIZON PASQUALE 126Y

Male TK 126Y February 21 2011 1641241

BEPD	-1.0
WEPD	+18
YEPD	+36
Milk	+16
TM	+25
CED	+8.0
CEM	+8.0
Stay	+11
HPG	+9

RED VGW RAMBLER 1000 OSF
RED BRYLOR SDL PASQUALE 213P
RED XXX LAKME 70M OSF MAF

Sire: RED MRLA 116U

RED GEIS KNIGHT 26'02
RED GARA QUEEN 160S
RED GARA QUEEN 32N

Dam: RED NU-HORIZON EILEEN 955W

RED UBAR SEQUOIA 202
RED RICOSHAE SEQUOIA 35R
RED RAFTER IR FIREFLY 3H
RED LPC FEELIN LUCKY 29J
RED T BAR K EILEEN 538R
RED T BAR K MISS 27G

BW: 78 205: 568

SOT: 635 EOT: 900 Proj Wt: 1050 ADG: 2.79 WPDA: 2.54 AOD: 2

Adj. Carcass Values LMY: 63.7 REA: 13.07 %IMF: 5.17 Rib Fat: 0.22 Rump Fat: 0.17

This bull has a very good topline. He is dark in color with very good feet and legs. His dam is a moderate framed cow with an excellent, tight udder with small teats. Definitely a heifer bull. February 10 weight 900 lbs, ADG 2.79.



Another smooth shouldered bull, with an excellent top, hair coat, feet and legs. We purchased the dam from Eastondale and you want to talk about a cow with a perfect udder with lots of milk. This dam's bull last year was sold to Murray McGillivray Radville, SK. February 10 weight 972 lbs, ADG 2.76.

60

NU-HORIZON REPLICA 155Y

Male TK 155Y March 20 2011 1641700

BEPD	+2.1
WEPD	+47
YEPD	+85
Milk	+23
TM	+47
CED	+5.0
CEM	+9.0

G D A R TRAVELER 71 AMF CAF NHF
SITZ TRAVELER 8180 AMF CAF NHF
SITZ EVERELDA ENTENSE 1137

Sire: S A V REPLICA 9484

A A R NEW TREND
SUNSET VALLEY FRVR LADY 6313
S V F FOREVER LADY 57D

LEACHMAN RIGHT TIME AMF
B HILLS FRL DURATION 606
H A BELETTA 0219

Dam: EASTONDALE ANNIE K 42'08

L T 598 BANDO 9074 AMF CAF NHF
EASTONDALE ANNIE K 07'04
EASTONDALE ANNIE K 75'02

BW: 82 205: 589

SOT: 710 EOT: 972 Proj Wt: 1122 ADG: 2.76 WPDA: 2.97 AOD: 3

Adj. Carcass Values LMY: 59.9 REA: 10.98 %IMF: 7.96 Rib Fat: 0.3 Rump Fat: 0.4

61 RED NU-HORIZON PASQUALE 105Y

Male TK 105Y January 30 2011 1601447

BEPD	-1.0
WEPD	+25
YEPD	+46
Milk	+20
TM	+32
CED	+8.0
CEM	+6.0
Stay	+8
HPG	+10

RED VGW RAMBLER 1000 OSF
RED BRYLOR SDL PASQUALE 213P
RED XXX LAKME 70M OSF MAF

Sire: RED MRLA 116U

RED GEIS KNIGHT 26'02
RED GARA QUEEN 160S
RED GARA QUEEN 32N

Dam: RED NU-HORIZON ELLIE 901W

RED BUF CRK ROMEO L081 OSC MAF
RED CHAMPLAIN SERENADE 2513P OSF MAF
RED CHAMPLAIN MARIAS ECHETA 08
RED 5L NORSEMAN KING 2291 OSF MAF
RED NU-HORIZON ELBINA 715T
RED CROWFOOT ELBINA 2114M

BW: 76 205: 620

SOT: 765 EOT: 1040 Proj Wt: 1190 ADG: 2.89 WPDA: 2.77 AOD: 2

Adj. Carcass Values LMY: 64.2 REA: 13.38 %IMF: 3.71 Rib Fat: 0.21 Rump Fat: 0.17

This is a long, cherry red bull with capacity and lots of rib and a wide top. He comes with a clean front and sheath. His dam has a beautiful udder and lots of milk. Your heifers will calve problem free with this guy. February 10 weight 1040, ADG 2.89. BW 76 lbs.

63

NU-HORIZON REPLICA 150Y

Male TK 150Y March 15 2011 1641699

BEPD	+0.9
WEPD	+48
YEPD	+88
Milk	+27
TM	+51
CED	+8.0
CEM	+12.0

G D A R TRAVELER 71 AMF CAF NHF
SITZ TRAVELER 8180 AMF CAF NHF
SITZ EVERELDA ENTENSE 1137

Sire: S A V REPLICA 9484

A A R NEW TREND
SUNSET VALLEY FRVR LADY 6313
S V F FOREVER LADY 57D

D B NEW FLY DESIGN 730
K G POWER DESIGN
POWER FIX K G 3

Dam: NU-HORIZON QUEEN MOTHER 43U

WHITESTONE WIDESPREAD MB AMF NHF
NEW FORCE QUEEN MOTHER 43M
JELMAR QUEEN MOTHER 52F

BW: 84 205: 653

SOT: 765 EOT: 1120 Proj Wt: 1270 ADG: 3.74 WPDA: 3.37 AOD: 3

Adj. Carcass Values LMY: 61.1 REA: 13.16 %IMF: 4.34 Rib Fat: 0.32 Rump Fat: 0.25

This bull has an awesome butt end, where the muscle goes right to the hock, excellent hair coat, lots of length, and great feet and legs. February 10 weight 1120 lbs, ADG 3.74. BW 84 lbs.

64 NU-HORIZON GAME DAY 103Y

Male TK 103Y January 18 2011 1601446

BEPD	+2.0
WEPD	+58
YEPD	+104
Milk	+22
TM	+51
CED	+5.0
CEM	+11.0

A A R NEW TREND
BOYD NEW DAY 8005 AMF CAF NHF
S V F FOREVER LADY 57D
Sire: GDAR GAME DAY 449 AMF CAF NHF
TEHAMA BAND 207
G D A R MISS WIX 474
G D A R MISS WIX 749

G A R GRID MAKER AMF CAF NHF
MVF GRID MAKER 122R
MVF BLACKBIRD 148L
Dam: MVF RUBY 211W
WESTERN WIDESPREAD 1L
MVF RUBY 326R
CAYMEN RUBY 16'02

BW: 77 205: 678

SOT: 860 EOT: 1125 Proj Wt: 1275 ADG: 2.79 WPDA: 2.90 AOD: 2

Adj. Carcass Values LMY: 62.7 REA: 14.5 %IMF: 7.41 Rib Fat: 0.3 Rump Fat: 0.33



We bought 103Y's dam out of the Mountain View Dispersal Sale. All we can say is she has put everything into this bull calf. He stood out all summer in the pasture. He is a long, smooth shouldered bull with lots of depth and mass. With a 77 lb birth weight you can be sure your heifers will be problem free. February 10 weight 1125, ADG 2.79.

65 NU-HORIZON TRACKER 125Y

Male TK 125Y February 20 2011 1648677

BEPD	+2.8
WEPD	+44
YEPD	+86
Milk	+21

BON VIEW BANDO 598 AMF CAC
CONNEALY FREIGHTLINER AMF CAF NHF
JOANA ERICA OF CONANGA
Sire: MVF FREIGHTLINER 38U
WESTERN WIDESPREAD 1L
MVF MAY 170S
CAYMEN MAY 55'00

TC FREEDOM 104 AMF CAF NHF
TC STOUT 407 AMF NHF
TC PRIDE 2053
Dam: MVF TIBBIE 104W
MVF NEW FRONTIER 14N
MVF TIBBIE 147S
MVF TIBBIE 025L

BW: 81 205: 590

SOT: 715 EOT: 1045 Proj Wt: 1195 ADG: 3.47 WPDA: 2.94 AOD: 2

Adj. Carcass Values LMY: 57.7 REA: 11.77 %IMF: 5.3 Rib Fat: 0.41 Rump Fat: 0.36

This bull will work well on heifers or cows. With his dam being a Tibbie you can be sure you will have strong maternal traits. He has excellent feet and legs and a wide top. He will put the pounds on your calves next fall. February 10 weigh 1045 lbs, ADG 3.47.

66 NU-HORIZON REPLICIA 106Y

Male TK 106Y January 31 2011 1636765

BEPD	+0.2
WEPD	+41
YEPD	+75
Milk	+21
TM	+42
CED	+8.0
CEM	+10.0

G D A R TRAVELER 71 AMF CAF NHF
SITZ TRAVELER 8180 AMF CAF NHF
SITZ EVERELDA ENTENSE 1137
Sire: S A V REPLICIA 9484
A A R NEW TREND
SUNSET VALLEY FRVR LADY 6313
S V F FOREVER LADY 57D

RITO 9FB3 OF 5H11 FULLBACK AMF CAF NHF
FGAF RIBEYE 401P
HOFF MISS FAME S C 595
Dam: NU-HORIZON RIBEYE 904W
RED CROWFOOT 2068M
RED NU-HORIZON ROCA 730T
RED T BAR K HIGH ROCKY 7K

BW: 77 205: 590

SOT: 770 EOT: 1145 Proj Wt: 1295 ADG: 3.95 WPDA: 3.05 AOD: 2

Adj. Carcass Values LMY: 62.1 REA: 13.38 %IMF: 2.33 Rib Fat: 0.29 Rump Fat: 0.32



Our favorite! This is a meat machine. He is as thick as they come with a great hair coat and very clean fronted. Everything about him makes him stand out. Make sure you take a look at this guy on sale day or before. Would work well on both heifers and cows. February 10 weight 1145, ADG 3.95.

67

RED TRIPLE H RAMSAY 21Y

Male HRA 21Y March 18 2011 1623388

BEPD	+0.4
WEPD	+33
YEPD	+55
Milk	+11
TM	+28
CED	+3.0
CEM	+4.0
Stay	+6
HPG	+9

RED SOUTH VIEW NO EQUAL 28H
 RED SVR EQUALIZE 134N
 RED SVR REBELLO 55J
Sire: RED RJ MITCHELL EQUALIZE 123S
 RED BJR JR 107 OSF MAF
 RED YEO LANA 2N
 RED YEO LANA 1J

RED EAGLE ACRES BO 3J
 RED BRETON BO 112L
 RED BRETON BARMAID 11H
Dam: RED YEO LANA 14P
 RED TOWAW ZAMA 39C
 RED YEO'S LANA 32G
 RED YEO LANA 31A

BW: 87 205: 719

SOT: 800 EOT: 1085 Proj Wt: 1235 ADG: 3.00 WPDA: 3.30 AOD: 7

Adj. Carcass Values LMY: 64.4 REA: 14 %IMF: 3.58 Rib Fat: 0.22 Rump Fat: 0.32

This bulls sire RJML 123S goes back to JR 107 and SVR No Equal 28H, both Elite sires. You will want to keep the replacement heifers from this bull. Birth weight 87 lbs.

68

RED TRIPLE H EBERLE 52Y

Male HRA 52Y March 25 2011 1623398

BEPD	-0.1
WEPD	+25
YEPD	+47
Milk	+15
TM	+27
CED	+2.0
CEM	+3.0
Stay	+11
HPG	+11

RED GLACIER DIVIDE 310
 RED TOWAW INDEED 104H OSF
 RED TOWAW MOLLY 67C
Sire: RED EKW GOLDEN DEED 10U
 RED 5L NORSEMAN KING 2291 OSF MAF
 RED EKW GOLDIE 601S
 RED PRIME TIME'S YY GOLDIE 306

RED SOUTH VIEW NO EQUAL 28H
 RED SVR EQUALIZE 134N
 RED SVR REBELLO 55J
Dam: RED YEO PINE MARIE 7S
 RED SSS HIGH MARK 272D
 RED YEO PINE MARIE 10L
 RED YEO PINE MARIE 9C

BW: 80 205: 693

SOT: 780 EOT: 1005 Proj Wt: 1155 ADG: 2.37 WPDA: 3.12 AOD: 5

Adj. Carcass Values LMY: 64.4 REA: 13.98 %IMF: 4.68 Rib Fat: 0.22 Rump Fat: 0.28

Four Elite sires, Divide 310, Indeed 104H, No Equal 28H, High Mark 272D and Norseman King 2291 show up in this bulls pedigree. Lots of maternal strength. With an 80 lb birth weight he could be used on heifers.

T
R
I
P
L
E

H

A
N
G
U
S



69

RED TRIPLE H DODGE CITY 69Y

Male HRA 69Y March 29 2011 1623415

BEPD	+1.4
WEPD	+32
YEPD	+62
Milk	+12
TM	+28
CED	+0.0
CEM	+1.0
Stay	+9
HPG	+9

RED PIE ATLANTIC 2204 OSF MAF
 RED NORTHLINE ATLANTIC CITY
 RED NORTHLINE QUEEN 240H
Sire: RED WHEEL DODGE CITY 3U
 RED HANDFORD TREK 279H
 RED HANDFORD MISS CHIEF 7K
 RED HANDFORD MISS CHIEF 655H

RED SOUTH VIEW NO EQUAL 28H
 RED SVR EQUALIZE 134N
 RED SVR REBELLO 55J
Dam: RED HHH LANA 24S
 RED BRETON BO 112L
 RED YEO LANA 14P
 RED YEO'S LANA 32G

BW: 92 205: 719

SOT: 750 EOT: 1035 Proj Wt: 1185 ADG: 3.00 WPDA: 3.25 AOD: 5

Adj. Carcass Values LMY: 65.8 REA: 15.37 %IMF: 2.97 Rib Fat: 0.21 Rump Fat: 0.24

This bulls sire Dodge City 3U was shown by the Wheelers in 2009. He goes back to Northline Atlantic City. Lots of performance in this bull.



Red Wheel Dodge City 3U
Sire of Lot 69

70

GLENDOR FORTE 37Y

Male OGG 37Y February 14 2011 1606312

BEPD	+2.1
WEPD	+36
YEPD	+64
Milk	+20
TM	+38
CED	+3.0
CEM	+8.0

PAPA FORTE 1921
 ROYAL FORTE DRCC 5138R
 ROYAL PERSEPHONE DRC 3110N
Sire: MERIT 8808
 DWAJO DUTCH 65P
 MERIT COUNTESS 6087
 MERIT COUNTESS 1017

HARMON KAHUNA L047
 WINDOVER KAHUNA 13P
 WINDOVER BLACK LADY 10J
Dam: GLENDOR JESSTRESS 37T
 PERRYVILLE LANCER 56P
 GLENDOR JESTRESS 13J
 GLENDOR JESTRESS 37E

BW: 82 205: 615

37Y is sired by Merit 8808 who is putting his mark on the Angus breed. His females are sought after as is evident in "Females of Merit" and the "Gateway" sales. His dam is moderate in frame, with a very good udder and lots of milk. Good herd bull prospect here.

SOT:	805	EOT:	1140	Proj Wt:	1290	ADG:	3.53	WPDA:	3.16	AOD:	4
Adj. Carcass Values	LMY: 60.9	REA:	12.18	%IMF:	4.86	Rib Fat:	0.3	Rump Fat:	0.27		

71

GLENDOR FORTE 2Y

Male OGG 2Y January 18 2011 1606327

BEPD	+2.2
WEPD	+45
YEPD	+76
Milk	+22
TM	+45
CED	+4.0
CEM	+5.0

PAPA FORTE 1921
 ROYAL FORTE DRCC 5138R
 ROYAL PERSEPHONE DRC 3110N
Sire: MERIT 8808
 DWAJO DUTCH 65P
 MERIT COUNTESS 6087
 MERIT COUNTESS 1017

HARMON MATRIX 4051
 WINDOVER MATRIX 35N
 HARMON BLACK LADY 7222
Dam: GLENDOR JENNIFER 21U
 YOUNG DALE TOUCH DOWN 36M
 HOWE MS JENNIFER 72P
 GLENDOR JENNIFER 16H

BW: 85 205: 649

SOT:	895	EOT:	1295	Proj Wt:	1445	ADG:	4.21	WPDA:	3.34	AOD:	3
Adj. Carcass Values	LMY: 62.8	REA:	13.94	%IMF:	2.74	Rib Fat:	0.28	Rump Fat:	0.24		



2Y is a bull that puts it all together, moderate frame, high milk with lots of power. After all, Royal Forte, Dwajo Dutch 65P, Matrix and Young Dale Touchdown 36M all appear close up in his pedigree. A great opportunity here.

G
L
E
N
D
O
R

A
C
R
E
S

Triple 'A' bulls have been performance and carcass evaluated and will be semen tested prior to the sale. Scrotal measurements and current weights will be posted at the sale.

Ivanhoe Angus & Brooke's Edge Angus would like to thank the Triple A Sales Group for asking us to consign heifers to their sale. These six heifers are all long spined, moderate framed, attractive, feminine females. They are structurally sound with great feet and legs.

OPEN HEIFER CONSIGNMENTS



Isla Bank Widespread 67T - Sire of Lots 100, 103 & 105

100 BROOKE'S EDGE HEROINE 1Y

Female BEBS 1Y March 17 2011 1641846

BEPD	+3.5
WEPD	+32
YEPD	+56
Milk	+12
TM	+28
CED	-3.0
CEM	+3.0

WHITESTONE WIDESPREAD MB AMF NHF
 BLACK RIDGE W WIDESPREAD 2K
 BLACK RIDGE BRITTA 9F CAF
Sire: ISLA BANK WIDESPREAD 67T
 CHICO HANNIBAL 43H
 ISLA BANK ERROLINE 67P
 ISLA BANK ERROLINE 22D

DOUBLE J BAND 2F
 DOUBLE J BAND 151J
 DOUBLE J POLLYANNA 253G
Dam: IVANHOE HEROINE 23M
 YOUNG DALE HOGAN 19E
 IVANHOE HEROINE 33K
 IVANHOE HEROINE 5A

BW: 92 205: 605



Sandy Bar Innovator 46R - Sire of Lots 101 & 103

101 BROOKE'S EDGE ROSEGAY 2Y

Female BEBS 2Y March 17 2011 1641847

BEPD	-0.4
WEPD	+24
YEPD	+50
Milk	+5
TM	+17
CED	+6.0
CEM	+4.0

MVHF INNOVATOR 49B
 LAMBS INNOVATOR 86J
 LAMBS BAR LASS 19D
Sire: SANDY BAR INNOVATOR 46R
 SANDY BAR CHIEF 21F
 KORNFELD DUCHESS 802H
 KORNFELD DUCHESS 609F

YOUNG DALE KRUGERRAND 2H
 YOUNG DALE CHALLENGER 4K
 YOUNG DALE ANGELINA 15H
Dam: IVANHOE ROSEGAY 8N
 YOUNG DALE HOGAN 19E
 IVANHOE ROSEGAY 14H
 CALLAMERE ROSEGAY 32Z

BW: 60 205: 486

102 BROOKE'S EDGE ROYAL 3Y

Female BEA 3Y March 18 2011 1641842

BEPD	+3.0
WEPD	+35
YEPD	+63
Milk	+16
TM	+34
SC	+0.57
CED	-1.0
CEM	+1.0

YOUNG DALE REAL DEAL 18K
 YOUNG DALE TOUCH DOWN 36M
 PAT LADY SANDRA 2C
Sire: YOUNG DALE T D 58R
 RONAN TEX 56A
 DOUBLE J BLUE LASS 88D
 DOUBLE J BLUE LASS 534A

YOUNG DALE KRUGERRAND 2H
 YOUNG DALE CHALLENGER 4K
 YOUNG DALE ANGELINA 15H
Dam: IVANHOE ROYAL 23N
 WIWA CREEK STOCKMAN 48'93
 IVANHOE ROYAL 15H
 IVANHOE ROYAL PRIDE 4D

BW: 79 205: 540

103 IVANHOE HEROINE 2Y

Female ASJ 2Y March 05 2011 1641804

BEPD	+0.8
WEPD	+40
YEPD	+76
Milk	+14
TM	+34
CED	+7.0
CEM	+10.0

WHITESTONE WIDESPREAD MB AMF NHF
 BLACK RIDGE W WIDESPREAD 2K
 BLACK RIDGE BRITTA 9F CAF
Sire: ISLA BANK WIDESPREAD 67T
 CHICO HANNIBAL 43H
 ISLA BANK ERROLINE 67P
 ISLA BANK ERROLINE 22D

TC ADVANTAGE AMF CAF NHF
 VALLEY BLOSSOM ADVANTAGE 732M
 SANDY BAR TILDA 742K
Dam: IVANHOE HEROINE 2T
 WIWA CREEK TEX 86'97
 IVANHOE HEROINE 13M
 CRESCENT CREEK HEROINE 1J

BW: 73 205: 602

104

IVANHOE HEROINE 21Y

Female ASJ 21Y March 19 2011 1641795

BEPD	+4.1
WEPD	+29
YEPD	+54
Milk	+8
TM	+23
CED	-5.0
CEM	-3.0

MVHF INNOVATOR 49B
 LAMBS INNOVATOR 86J
 LAMBS BAR LASS 19D
Sire: SANDY BAR INNOVATOR 46R
 SANDY BAR CHIEF 21F
 KORNFELD DUCHESS 802H
 KORNFELD DUCHESS 609F

YOUNG DALE KRUGERRAND 2H
 YOUNG DALE CHALLENGER 4K
 YOUNG DALE ANGELINA 15H
Dam: IVANHOE HEROINE 18R
 WIWA CREEK STOCKMAN 48'93
 IVANHOE S HEROINE 18H
 IVANHOE HEROINE 5B

BW: 89 205: 579

105

IVANHOE TAF HEROINE 27Y

Female ASJ 27Y March 20 2011 1641820

BEPD	+1.5
WEPD	+32
YEPD	+56
Milk	+11
TM	+27
CED	+3.0
CEM	+8.0

WHITESTONE WIDESPREAD MB AMF NHF
 BLACK RIDGE W WIDESPREAD 2K
 BLACK RIDGE BRITTA 9F CAF
Sire: ISLA BANK WIDESPREAD 67T
 CHICO HANNIBAL 43H
 ISLA BANK ERROLINE 67P
 ISLA BANK ERROLINE 22D

SANDY BAR TONTO 61E
 A-LINE TONTO 3L
 SANDY BAR ANNIE K 89H
Dam: IVANHOE TAF HEROINE 29T
 LLB RITO 206K
 TAF HEROINE 107N
 IVANHOE HEROINE 8J

BW: 80 205: 598

LOTS 106 - 109 - BELL ANGUS - Ken Bell - 306.345.2052 Cell: 306.591.7792

106

BELL QUEEN 41Y

Female NBK 41Y March 06 2011 1614243

BEPD	+0.0
WEPD	+34
YEPD	+60
Milk	+14
TM	+31
CED	+5.0
CEM	+5.0

RCL RIBSTONE SPECIAL LINK 15M
 GH RIBSTONE 81P
 GH DELIA INA 73M
Sire: BELL RIBSTONE 53U
 ISLA BANK WIDESPREAD 107N
 IVANHOE ROYAL PRIDE 7S
 IVANHOE ROYAL PRIDE 25M

GDAR QUANTUM 963
 NORTHERN VIEW QUANTUM 86P
 CRESCENT CREEK BLACKBIRD 21J
Dam: BELL QUEEN 30U
 WOODHILL TRIPLE THREAT AMF CAF
 BELL TT QUEEN 17S
 BELL QUEEN 13M

BW: 74 205: 599

107

BELL EUGENIE ERICA 43Y

Female NBK 43Y March 06 2011 1607269

BEPD	+3.5
WEPD	+39
YEPD	+74
Milk	+18
TM	+38
CED	+1.0
CEM	+6.0

S A V 8180 TRAVELER 004 AMF CAF NHF
 S A V NET WORTH 4200 AMF CAF NHF
 S A V MAY 2410
Sire: BELL NET RETURN 3U
 LONE STAR ONLY PROFIT 1J
 BELL MS PRIDE 16L
 HOWE MS PRIDE 76J

GDAR QUANTUM 963
 NORTHERN VIEW QUANTUM 86P
 CRESCENT CREEK BLACKBIRD 21J
Dam: BELL EUGENIE ERICA 54T
 BELL 561G BRUNO 11L
 BELL EUGENIE ERICA 34R
 BELL EUGENIE ERICA 5K

BW: 84 205: 651

108

BELL BLACK LUCY 45Y

Female NBK 45Y March 09 2011 1614245

BEPD	+3.3
WEPD	+41
YEPD	+66
Milk	+15
TM	+36
CED	-2.0
CEM	+4.0

RCL RIBSTONE SPECIAL LINK 15M
 GH RIBSTONE 81P
 GH DELIA INA 73M
Sire: BELL RIBSTONE 53U
 ISLA BANK WIDESPREAD 107N
 IVANHOE ROYAL PRIDE 7S
 IVANHOE ROYAL PRIDE 25M

ISLA BANK TITAN 148
 HILOW TITAN 13P
 HILOW HEATHER 23E
Dam: BELL BLACK LUCY 8W
 BELL STOCKADE 1L
 BELL BLACK LUCY 36N
 BELL BLACK LUCY 14D

BW: 82 205: 668

109

BELL QUEEN 46Y

Female NBK 46Y March 12 2011 1606998

BEPD	+5.4
WEPD	+40
YEPD	+61
Milk	+16
TM	+36
SC	+0.63
CED	-7.0
CEM	+3.0

CHICO HANNIBAL 43H
 ISLA BANK TITAN 148
 ISLA BANK PRIDE 11G
Sire: HILOW TITAN 13P
 PEAK DOT PROFIT 11C
 HILOW HEATHER 23E
 HILOW HEATHER 25W

GARDENS FORTUNE 9213 S3 AMF NHF
 STEVENSON FORTUNE 425C AMF CAF NHF
 J R S ENCHANTRESS 235Z
Dam: BELL QUEEN 13M
 HILOW ROCKET 41B
 HILOW QUEEN 43G
 PRWL QUEEN 25B

BW: 92 205: 600

O
P
E
N
H
E
I
F
E
R
C
O
N
S
I
G
N
M
E
N
T
S

110

HILOW LADY ANN 53Y

Female HTD 53Y March 25 2011 1653003

BEPD	+2.7
WEPD	+47
YEPD	+80
Milk	+16
SC	+0.68

Sire: ISLA BANK FREIGHTLINER 22T
 BON VIEW BANDO 598 AMF CAC
 CONNEALY FREIGHTLINER AMF CAF NHF
 JOANA ERICA OF CONANGA
 STANDARD HILL NEXT STEP 8M
 ISLA BANK PRIDISTA 22R
 ISLA BANK PRIDISTA 40N

Dam: HILOW LADY ANN 43T
 S A R NEW TREND 4100 2080
 PEAK DOT NEW TREND 74M
 MAYFLOWER OF PEAK DOT 504K

HAPPYVALE TOUCH UP 29H
 HILOW LADY ANN 20M
 HILOW LADY ANN 9J

BW:	85	205:	614
-----	----	------	-----

111

HILOW MISSIE 58Y

Female HTD 58Y March 28 2011 1653424

BEPD	+4.1
WEPD	+42
YEPD	+75
Milk	+9
SC	+0.23

Sire: HILOW MAGIC 68W
 YOUNG DALE TOUCH DOWN 36M
 HOWE MAGIC 28R
 HOWE MS ERICA 132K
 PAPA UNIVERSE 515 AMF NHF
 BLACK RIDGE LUCY 66R
 BLACK RIDGE LYNN 866D

Dam: VALLEYHILLS MISSIE 62L
 O S U 6T6 ULTRA
 B T ULTRAVOX 297E AMF CAF NHF
 FINKS VIXON 788

NICHOLS TRADEMARK S1
 VALLEYHILLS MISSIE 43B
 VALLEYHILLS MISSIE 43Y

BW:	83	205:	520
-----	----	------	-----



Terms & Conditions

Bidding: Each animal will be sold to the highest bidder.

Bidding Disputes: The auctioneer will settle any disputes as to bids, and his decision on such matters shall be final.

Terms: The terms of the sale are cash. The right of property shall not pass until after settlement is made. All settlements will be made with the clerks of the sale immediately following the conclusion of the sale and before any cattle will be released from the sale facility.

Purchaser's Risk: Each animal becomes the risk of the purchaser as soon as sold. Animals will be fed, watered and cared for at the purchaser's risk for a reasonable time.

Insurance: A representative of a major livestock insurance company will be present to care for insuring cattle.

Certificate of Registry: A certificate of registry and transfer will be furnished for each animal.

Health: All cattle will be in excellent health.

Announcements: Changes of information contained in this catalogue relating to the animals offered for sale will be announced from the auction box and such announcements shall take precedence.

Breeder's Guarantee: All animals sold are guaranteed breeders by the owner. Any animal that has not proven itself a breeder within six months after date of sale, if in healthy condition, may be returned to the seller at buyer's expense. The seller reserves the privilege of trying for a period of six months to prove the animal a breeder. The seller at his option may either return the purchase price to the buyer or replace the animal with another of equal quality in full settlement of ALL claims. All complaints regarding breeding difficulties must be reported in writing by the buyer to the seller within the specified time above and any animal returned must be free from disease and in good health.

Liability: Neither owners, sale manager, clerks, nor anyone connected with the sale assumes any responsibility, legal or otherwise for damage of any kind.

Contract: The above terms and conditions shall constitute a contract between the buyer and seller of each animal sold.

Delivery: You can receive a \$50.00 discount if you haul your own bull. Delivery will be available at \$50.00 per bull within 300 km of Moose Jaw. Purchases of 5 or more bulls will be delivered free of charge. Other deliveries can be arranged at cost.

Notes...



South Country Equipment has 8 locations to help producers receive the products, parts and service they need to get the job done efficiently!

Assiniboia
Hwy #2 North
306-642-3366

Moose Jaw
1731 Main St. N
306-692-2371

Raymore
Hwy #6 North
306-746-2110

Southey
Hwy #22 & Hwy #6
306-726-2155

Montmartre
Hwy #48
306-424-2212

Mosbank
609 Main St. N
306-354-2411

Regina
#8 South Plains Rd W.
Emerald Park
306-721-5050

Weyburn
1510 New City Gardens
Hwy #39 East
306-842-4686

www.southcountry.ca



JOHN DEERE



Dr. Jess Mountenay
Flying R Veterinary Services

Large Animal Ambulatory Services
Phone: 306-540-2122
www.flyingrvet.com



Improving
Farm Profitability

Barb Gabruch
Member Service Associate
Farmers of North America
318 - 111 Research Dr.
Saskatoon, SK S7N 3R2
Direct Line - [306]299-5733
Facsimile - [306]299-4895
Email - bgabruch@fna.ca
www.fna.ca



P. 1.306.662.2901
F. 1.306.662.4450
E. sunnyslopecattleltd@sasktel.net

• yeast • enzymes • chelates • low cost-to-feed

LICKED BUT NEVER BEATEN!



MANUFACTURING LTD.
DYSART, SASK.

Scott & Shannon Macknak
Ph. (306) 432-2003
Fax. (306) 432-2004

"Custom Built Mobile Grain Cleaners and Equipment"
www.smsmanufacturing.com

HAGERTY LIVESTOCK
H Larry Hagerty

Specializing in custom:
• Bull Tests • Backgrounding
• Finishing

General Delivery, Stony Beach, SK S0G 4S0
Ph: (306) 345-2523 Fax: (306) 345-2085

Auntie Sheila's
Kitchen & Catering

"Catering for all occasions"

Sheila Bell

Ph: 731-2609 Cell: 731-7107
105 2nd Avenue, Lumsden, SK S0G 3C0

Triple H Red Angus

Dawn & Perry Hart & family
306-723-4832
Box 531, Cupar, SK S0G 0Y0

pdhart@imagewireless.ca



320 Great Plains Road
Emerald Park, SK S4L 0B8

Allen B. Kilback Office: 306.781.2645
President & CEO Fax: 306.781.2646
Cell: 306.541.7838
Email: allen@kilback.com



SHERWOOD ANIMAL CLINIC

Hwy #1 East, North of CTV
Box 3330, Regina, SK S4P 3H1

DR. LARRY HANSON
B.Sc, D.V.M

BUS: 525-3763 FAX: 569-3490

PRAIRIE AG PETROLEUM LTD.

210 McDonald St. N.
Regina, SK S4N 5W3
Tel: (306) 721-6880
Fax: (306) 721-3748
Cell: (306) 536-1332



Bulk Fuel, Cardlock, Lubes, Baler Twine
PERRY KELLN



www.youngsequipment.com **Mark Van Luven**
Sales Representative
Box 3117 Highway #1 East Phone: 306-564-5171
Regina, SK Fax: 306-565-2420
S4P 3G7 Cell: 306-535-9884
Toll Free: 1-800-803-8346
mvanluven@youngsequipment.com



JACK DUBOIS

Since 1953

PHONE: 306.586.7666
FAX: 306.585.0887
EMAIL: jack.oktireregina@sasktel.net

4525 Albert Street
Regina, SK S4S 6B6

Robertson Implements (1988) Ltd.



EVAN POLLEY
Sales

"Serving the farming community
for over 80 years"

SWIFT CURRENT, SK Bus. 773-4948
MOOSE JAW, SK Bus. 692-7844
SHAUNAVON, SK Bus. 297-4131
Fax: 778-6433 Fax: 694-0454 Fax: 297-3058

Email: evan@robertsonimplements.com Website: www.robertsonimplements.com

GOODWATER MACHINE SHOP (1986) LTD.

OILFIELD & AG Repairs, Fabrication & Pressure Welding
25 Minutes South of Weyburn on Hwy #35

(306) 456-2560

LIONEL WANNER (306) 861-5465 C.

P.O. Box 28, Goodwater, SK S4H 2L6
Fax: (306) 456-2896 goodwatermachine@sasktel.net
Authorized Stampede Steel Dealer



McCormick Tractors

PAT J. FUCHS



Arctic Cat ATV & Snowmachines



Morris Seeding Equip.
Knight TMR Wagons

NICK'S SERVICE LTD.

#2 South Plain Dr. Emerald Park, SK S4L 1C6

Bus. 781-1077
Fax 781-0355
Res. 781-2564
Cellular 533-4003

Clayton Curtis
Assistant General Manager
Regina Location



745 Park Street
Regina, SK S4N 4Y4
Direct line: (306) 790-5557
Fax: (306) 721-3141
E-mail: cc Curtis@masterfeeds.com
Cell: 306-539-9486



www.cowtownonline.com



Mark Sinclair

By-Pro Feeds Ltd.

Liquid Feed Distributors

1-888-333-7033
Ph. 306-435-2505
Cell: 306-435-9323

Box 842
Moosomin, SK
S0G 3N0

City Side
Insurance

Roger Reynolds

64 Great Plains Rd.
Emerald Park, SK
S4L 1C3

Bus: (306) 781-2244
Cell: (306) 530-0112
city.side.insurance@sasktel.net

"The Dealer Who Cares For Their Customers"



See us for all your
Agriculture, Construction
and Consumer
New & Used Sales,
Parts and Service needs!



26 Great Plains Rd. Emerald Park, SK.
(306) 781-2828
Toll Free **1-800-819-2583**

Order Parts, and view our complete line of Used
Inventory on our web site: www.markusson.com



Simply improving your position.™

Westway Terminal and Feed Products Canada ULC
Box 365
Hartney, MB R0M 0X0
www.westwayfeed.com
Res. Tel: (204) 769-2220
Toll Free: (800) 563-6371
Res. Fax: (204) 769-2272
Cell: (306) 861-0516
ronman@westway.com

RON MANNES
District Manager



"Your Liquid Feed Specialists"



WESTERN LITHO
PRINTERS LTD.

For all your printing needs

(306) 525-8796

New Force Consultants

Specializing in **BLACK ANGUS** genetics
Consulting and order buying

Laird & Joyce Senft

Box 2655
Fort Qu'Appelle, SK Canada S0G 1S0
Laird Cell: (306) 331-7587
Joyce Cell: (306) 332-8706
Email: newforce@basktel.net Ph/Fax: (306) 332-4823



GLEN GABEL ANGUS
Registered Quarter Horses
Purebred Angus Cattle

Box 3726 REGINA, SASKATCHEWAN S4P 3N8
Cell: (306) 536-1927
Home: (306) 775-0155
glengabel@sasktel.net

EMERALD PARK
HOMES LTD.

General Contractor
Commercial - Residential

"New homes built
to suit your lifestyle"

OWNER:
GARRY SAWCHYN - 781-3383

www.emeraldparkhomes.ca



*See You
on
Sale Day!*

IS INDUSTRIAL SCALE Multiple Animal Scale.
Capacity of up to 20,000lbs.

306-949-1322 (Regina)
306-934-7522 (Saskatoon)
Toll Free: 1-800-661-1588

Sales * Service * Rentals * Installations
& Custom Applications
Accredited to perform scale inspections
on Behalf of Measurement Canada.

Triple 'A' Bull Sale
Box 3771
Regina, SK S4P 3N8

CANADA	POSTES
POST	CANADA
Postage paid	Port payé
Addressed Admail	Médiaposte avec adresse
03070247	

Deliver by March 19, 2012



Acquire the Angus Advantage

AAA

Directions to Johnstone Auction Mart
4 Miles West of Moose Jaw on Trans Canada Highway