

Acquire the Angus Advantage



At the 19th Annual

Triple 'A'

Performance Tested Bull Sale

Monday, **April 4, 2016**

1:00 pm CST

Johnstone Auction Mart, Moose Jaw, SK

4 Miles West of Moose Jaw on Trans Canada Highway

Welcome ...

On behalf of the Triple A Group we want to welcome you to the 19th annual Triple A "Performance Tested" Bull Sale. As you look through our catalogue I am sure you will recognize a number of the sires used, as well as the maternal genetics developed among our contributors. We are very confident we have a bull that can perform well in your program. The beef business is as good as it has ever been and if you plan to breed a larger inventory of females to take advantage of these prices then you will need the extra bull power to do that. We will also be selling pens of 3 and 5 commercial heifers to help you build your inventory.

Our sale schedule will see our bulls being delivered to Johnstone Auction at Moose Jaw, SK on April 1 and they can be viewed there on April 2 & 3. Prior to that the bulls are available for viewing at Hagerty Livestock, 6.5 miles north of Highway #1 on Kalium Road near Belle Plaine, where the bulls have been on a performance program since mid October. Join us for lunch prior to our 1:00 pm sale on Monday the 4th.

All of our bulls can be seen on video at the DVAuction web site (www.DVAuction.com) and our sale will be broadcast live on that same site. As a pre-registered buyer you will be able to participate on line if you are unable to attend the sale in person.

Please feel free to call our consignors to discuss your program needs. We look forward to seeing you on sale day!

Sincerely
The Triple A Sales Group

Catalogue on-line at

www.johnstoneauction.ca
www.sasklivestock.com
www.DVAuction.com

Triple A Consignors ...

Bell Angus - Ken Bell	306-591-7792	Lot 34 - 43
Cottonwood Angus - Brett Gaube.....	306-537-4710	Lot 15 - 21
Glen Gabel Angus - Glen Gabel	306-536-1927	Lot 22 - 33
Hi Low Angus - Dan Howell	306-731-2940 Cell: 306-581-7606	Lot 56 - 64
Nu-Horizon Angus - Kieran & Deb Doetzel.....	306-336-2245 Cell: 403-357-7648	Lot 44 - 55
Triple H Angus - Perry, Dawn & Cory Hart.....	306-723-4832	Lot 65 - 71
Valley Lodge Cattle Co. - Gordon C. Roger.....	306-570-8454	Lot 5 - 14
Willowview Angus - Ken & Sandy Harle.....	306-359-6100	Lot 72 - 82
Wilmo Angus - John & Marg Willmott.....	306-345-2046	Lot 1 - 4

Sale Day Phone - 306-693-4715

Auctioneer - Scott Johnstone - 306-631-0767

Blockman - Glen Gabel - 306-536-1927

Ringmen - Ben Wright - 519-374-3335 & Mark Stock 403-357-8104

Hagerty Livestock - Larry & Fay Hagerty - 306-345-2523

Livestock Insurance - Dave Jones, Long Lake Insurance - 306-638-3063

DVAuction

Broadcasting Real-Time Auctions
www.DVAuction.com

Acquire the Angus Advantage

at the 19th Annual Triple 'A' Bull Sale
78 Performance Tested Yearling Bulls on Offer
69 Black Angus • **9** Red Angus
 Plus a Select Group of Commercial Heifers

Lunch at 12:00 Noon • **Sale** at 1:00 pm • **Monday, April 4, 2016**

Johnstone Auction Mart, Moose Jaw, Saskatchewan

Definitions

- BW - Birth weight - all weights are measured in pounds.
- SOT - Start of test weight
- EOT - End of test weight
- Proj Wt - Estimate of Sale Day weight
- 205 - Adjusted weaning weight
- ADG - Average daily gain - gain in pounds per day during the Test Period
- WPDA - Weight per day of age - gain in lbs. per day from birth to weigh date
- AOD - Age of Dam

Ultrasound Carcass Data

The importance of carcass trait information will be increased as value based marketing and quality assurance programs become more recognized and commonplace in the beef industry. Cattle should be scanned as close as possible in age at which their progeny will likely go to slaughter. A range from 12 months to 14 months is probably optimal. Ultra Sound Measurements in a Breeding Program: As with all genetic traits, ultrasound measurements should only be compared among animals of similar age and similar management. Only then is it of any measured value to use the ultrasound measurement for selection.

Back Fat: Fat measurement is important for several reasons. First fat depth influences lean meat yields; fat bulls have less lean meat in the carcass. Secondly fat measurements give indications of a bull's fleshing ability. Extremes in either too lean or too fat a bull are undesirable. Moderation is key.

IMF/Marbling: may be the most important attribute to be measured with ultrasound. This trait can convert into as much as \$80 difference

%IMF	US	CAN	Marbling Score
2.3 - 3.0	Select -	AA -	4.0 - 4.4
3.1 - 3.9	Select +	AA +	4.5 - 4.9
4.0 - 5.7	Choice -	AAA -	5.0 - 5.9
5.8 - 7.6	Choice o	AAA o	6.0 - 6.9
7.7 - 9.7	Choice +	AAA +	7.0 - 7.9
9.8 - 12.1	Prime -	Prime -	8.0 - 8.9
12.2 +	Prime +	Prime o	9.0 +

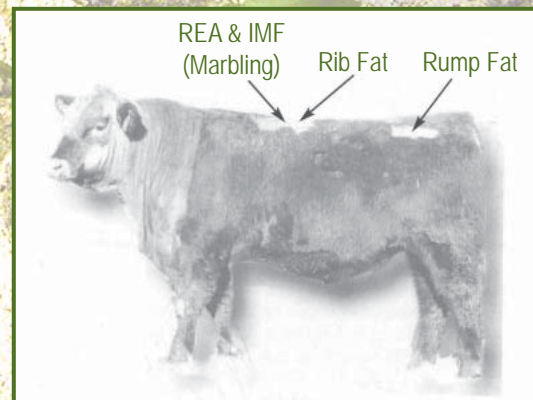
in a carcass from a AA to a AAA grade. The values are numerical and indicate the estimate of carcass marbling if the animal was slaughtered immediately following the evaluation. The scale is as follows:

Bulls will register at least a full degree less marbling and 30% less backfat thickness than steers of the same age and feeding history. The marbling estimates are best utilized by grouping the bulls into high, medium and low marbling groups rather than to compare individuals that differ by only a few tenths of a score.

Ribeye Area Adjusted to 100 lbs. Body Weight (REA in/100 lbs.): The largest ribeye area may belong to the largest bull therefore adjusting the REA to 100 lbs body weight helps determine which bulls are more muscular and which bulls are simply heavier.

Lean Meat Yield (LMY%): is the percentage of lean meat in a carcass. Yield grade is an economically important factor in marketing carcasses. With a high genetic potential, this trait can be an important objective in a breeding program.

All bulls have been ultrasounded by Rod Wendorff (AUO - CUP Certified)



2015 EPD Breed Averages

Trait	BW	WW	YW	Milk	TM	SC	CED	CEM	
Black	+2.3	+45	+81	+19	+42	+0.74	+3.1	+6.1	
Trait	BW	WW	YW	Milk	TM	CED	CEM	Stay	HPG
Red	-0.1	+52	+78	+17	+43	+3.6	+3.6	+12	+9

Wilmo Angus - Lots 1 - 4

John & Marg Willmott - 306-345-2046

Lot **1**

Wilmo Pioneer 1C

Male TW FCW 1C March 03 2015 1845517

S A V PIONEER 7301 AMF CAF NHF DDF
WILLOWVIEW PIONEER 6X

WILLOWVIEW GRAND JUNE 36P

Sire: **NORTHERN VIEW PIONEER 103Z**

A A R REALLY WINDY 1205 AMF CAF NHF DDF

NORTHERN VIEW RUTH 81S

NORTHERN VIEW RUTH 85P

S A V FINAL ANSWER 0035 AMF CAF NHF DDF

S A V PIONEER 7301 AMF CAF NHF DDF

S A V BLACKBIRD 5297 CAC

Dam: **WILMO DUCHESS 2Y**

WILMO TRAVELER 7G

WILMO DUCHESS 15P

WILMO DUCHESS 6J

EPD's	
BW	+0.4
WW	+46
YW	+84
Milk	+21
TM	+44
Scotal	---
CED	+6.0
CEM	+7.5



BW: 72	Adj WW: 670				
SOT: 800	EOT: 1134	Proj Wt: 1284	ADG: 3.31	WPDA: 3.22	AOD: 4
Adj. Carcass Values	LMY: 62.5	REA: 12.66	%IMF: 4.04	Rib Fat: 0.25	Rump Fat: 0.34

A line bred Pioneer grandson with a 72 lb birth weight. The sire of 1C had a weaning weight of 891 lbs, yearling weight of 1455 lbs and a rib eye of 15.78 square inches.

Lot **2**

Wilmo Pioneer 2C

Male TW FCW 2C March 03 2015 1845521

S A V PIONEER 7301 AMF CAF NHF DDF
WILLOWVIEW PIONEER 6X

WILLOWVIEW GRAND JUNE 36P

Sire: **NORTHERN VIEW PIONEER 103Z**

A A R REALLY WINDY 1205 AMF CAF NHF DDF

NORTHERN VIEW RUTH 81S

NORTHERN VIEW RUTH 85P

S A V FINAL ANSWER 0035 AMF CAF NHF DDF

S A V PIONEER 7301 AMF CAF NHF DDF

S A V BLACKBIRD 5297 CAC

Dam: **WILMO DUCHESS 2Y**

WILMO TRAVELER 7G

WILMO DUCHESS 15P

WILMO DUCHESS 6J

EPD's	
BW	+0.4
WW	+46
YW	+84
Milk	+21
TM	+44
Scotal	---
CED	+6.0
CEM	+7.5



S A V Pioneer 7301 - Grandsire of Lots 1 - 4

BW: 70	Adj WW: 638				
SOT: 750	EOT: 1026	Proj Wt: 1176	ADG: 2.73	WPDA: 2.91	AOD: 4
Adj. Carcass Values	LMY: 64.3	REA: 13.54	%IMF: 3.41	Rib Fat: 0.21	Rump Fat: 0.28

A 70 lb birth weight out of one of my best Pioneer daughters. The sire, 103Z, was a top seller in the 2013 Blue Collar Bull Sale and his yearling weight was 1455 lbs.



Lot 2

Lot **3**

Wilmo Pioneer 5C

Male FCW 5C March 10 2015 1845514

S A V PIONEER 7301 AMF CAF NHF DDF
WILLOWVIEW PIONEER 6X

WILLOWVIEW GRAND JUNE 36P

Sire: **NORTHERN VIEW PIONEER 103Z**

A A R REALLY WINDY 1205 AMF CAF NHF DDF

NORTHERN VIEW RUTH 81S

NORTHERN VIEW RUTH 85P

EAGLEVIEW MAGICIAN 5L

WILMO WIZARD 6S

WILMO DUCHESS 6J

Dam: **WILMO GRACE 13W**

YOUNG DALE MONARCH 12E

YOUNG DALE GRACE 24G

YOUNG DALE GRACE 8E

EPD's	
BW	+0.4
WW	+46
YW	+84
Milk	+21
TM	+44
Scotal	---
CED	+6.0
CEM	+7.5



Lot **3**

BW: 85	Adj WW: 778					
SOT: 910	EOT: 1242	Proj Wt: 1392	ADG: 3.29	WPDA: 3.60	AOD: 6	
Adj. Carcass Values	LMY: 63.9	REA: 13.10	%IMF: 3.04	Rib Fat: 0.21	Rump Fat: 0.33	

A full brother to our high selling bull in last years sale to Bullrush Blacks at Imperial, SK. 5C's weaning weight was 778 lbs and he had a birth weight of 85 lbs.

Lot **4**

Wilmo Pioneer 3C

Male TW FCW 3C March 05 2015 1845520

S A V PIONEER 7301 AMF CAF NHF DDF
WILLOWVIEW PIONEER 6X

WILLOWVIEW GRAND JUNE 36P

Sire: **NORTHERN VIEW PIONEER 103Z**

A A R REALLY WINDY 1205 AMF CAF NHF DDF

NORTHERN VIEW RUTH 81S

NORTHERN VIEW RUTH 85P

S A V FINAL ANSWER 0035 AMF CAF NHF DDF

WILMO QUESTION 19W

WILMO PRIDE 15S

Dam: **WILMO MAXIE LADY 6Z**

WILMO TRAVELER 7G

WILMO MAXIE LADY 8R

WILMO MAXIE LADY 14M

EPD's	
BW	+0.0
WW	+47
YW	+81
Milk	+21
TM	+44
Scotal	---
CED	+8.0
CEM	+9.5



Lot **4**

BW: 70	Adj WW: 632					
SOT: 720	EOT: 1050	Proj Wt: 1200	ADG: 3.27	WPDA: 3.00	AOD: 3	
Adj. Carcass Values	LMY: 61.8	REA: 10.78	%IMF: 2.97	Rib Fat: 0.22	Rump Fat: 0.29	

Final Answer, Pioneer and Traveler breeding and just a 70 lb birth weight. The sire, Northern View Pioneer 103Z had a yearling weight of 1455 lbs.



S A V Final Answer 0035 - Grandsire of Lots 1, 2, & 4

Valley Lodge Cattle Co. - Lots 5 - 14

Gordon C. Roger - 306-570-8454

Lot **5**

Lodge Upward 4C

Male (ET) VLC 4C February 05 2015 1840393

CONNEALY LEAD ON DMF AMF CAF NHF DDF
CONNEALY ONWARD DMF AMF CAF NHF DDF
ALTUNE OF CONANGA 6104

Sire: **SITZ UPWARD 307R** DMF AMF CAF NHF DDF
SITZ VALUE 7097 AMF CAF NHF DDF

SITZ HENRIETTA PRIDE 81M
SITZ HENRIETTA PRIDE 1370
STEVENSON RAINMAKER 630G

CUDLOBE RAINMAKER 49L
CUDLOBE ROSEBUD 53J

Dam: **LODGE DUCHESS 90S**

TC STOCKMAN 2164 AMF CAF NHF DDF
LODGE DUCHESS 1J
WILMO DUCHESS 14E

EPD's	
BW	+1.2
WW	+53
YW	+99
Milk	+29
TM	+55
Scotal	---
CED	+4.5
CEM	+7.5
REA	+0.34
Marb	+0.33
Fat	+0.041
Carcass	+32

BW: 86 Adj WW: 792

SOT: 1030 EOT: 1334 Proj Wt: 1484 ADG: 3.01 WPDA: 3.53 AOD: 9

Adj. Carcass Values LMY: 68.0 REA: 14.92 %IMF: 2.80 Rib Fat: 0.11 Rump Fat: 0.22

An ET calf out of one of our favorite Cudlobe Rainmaker daughters. A nice, long bodied Upward son with an excellent disposition and a nice set of maternal numbers. These Upward sons will work on heifers or cows. Full brothers sold to Randy and Sheena Keep and Gerald Prefontaine at the 2015 AAA sale.



Lot **5**

Lot **6**

Lodge Fortitude 3C

Male VLC 3C February 04 2015 1835968

RITO 112 OF 2536 RITO 616 AMF CAF NHF DDF
GAR-EGL PROTEGE AMF CAF NHF DDF
L B 6807 ISABEL 339

Sire: **PA FORTITUDE 2500** AMF CAF NHF DDF
SYDGEN C C & 7 AMF CAF NHF DDF

G G CLARA 0171 DDF

G G CLARA 7192 DDF

BALDRIDGE KABOOM K243 KCF CAF

CONNEALY THUNDER AMF CAF NHF DDF

PARKA OF CONANGA 241 AMF CAC NHF

Dam: **LODGE DUCHESS 7Y**

CUDLOBE RAINMAKER 49L
LODGE DUCHESS 90S
LODGE DUCHESS 1J

EPD's	
BW	-0.9
WW	+57
YW	+107
Milk	+26
TM	+55
Scotal	---
CED	+9.0
CEM	+9.0

BW: 84 Adj WW: 842

SOT: 1060 EOT: 1422 Proj Wt: 1572 ADG: 3.58 WPDA: 3.75 AOD: 4

Adj. Carcass Values LMY: 68.2 REA: 15.79 %IMF: 3.56 Rib Fat: 0.13 Rump Fat: 0.29

This is our first set of Fortitude calves. We chose Fortitude for his outcross pedigree, strong calving ease EPD's and length of spine which he consistently delivered on in this set of bull calves. Many breeders chose to use him directly on heifers but we mated him to cows to ensure higher calving ease predictability. This fellow is out of a beautiful Thunder daughter with a picture perfect udder and extreme depth of rib. This bull would be highly recommended for the heifer field.



Mark Sneed

Sitz Upward 307R - Sire of Lot 5



Lot **6**

Lot **7**

Lodge Fortitude 13C

Male VLC 13C February 09 2015 1835970

RITO 112 OF 2536 RITO 616 AMF CAF NHF DDF
GAR-EGL PROTEGE AMF CAF NHF DDF
L B 6807 ISABEL 339

Sire: **PA FORTITUDE 2500** AMF CAF NHF DDF
SYDGEN C C & 7 AMF CAF NHF DDF
G G CLARA 0171 DDF

G G CLARA 7192 DDF
BALDRIDGE KABOOM K243 KCF CAF
MOHNEN DYNAMITE 1356 AMF CAF NHF DDF
MOHNEN JILT 910 AMF CAF DDF

Dam: **LODGE QUALITY LASS 31Y**

BON VIEW NEW DESIGN 208 AMF CAC NHF DDF
LODGE QUALITY LASS 32T CAF
LODGE QUALITY LASS 65P

EPD's	
BW	+1.6
WW	+53
YW	+103
Milk	+19
TM	+46
Scotal	---
CED	+4.0
CEM	+7.0



Lot 7

BW: 91	Adj WW: 754				
SOT: 945	EOT: 1252	Proj Wt: 1402	ADG: 3.04	WPDA: 3.45	AOD: 4
Adj. Carcass Values	LMY: 65.1	REA: 13.90	%IMF: 3.28	Rib Fat: 0.19	Rump Fat: 0.33

A slightly higher birth weight on this Fortitude son but still an excellent set of calving ease EPD's and strong performance. If you saw the dam of this bull you would love her - another perfect uddered cow with lots of length of body and depth of rib. Don't let the birth weight scare you on this fellow, he will work on heifers or cows.



PA Fortitude 2500 - Sire of Lots 6 - 10

Lot **9**

Lodge Fortitude 5C

Male TW VLC 5C February 05 2015 1835969

RITO 112 OF 2536 RITO 616 AMF CAF NHF DDF
GAR-EGL PROTEGE AMF CAF NHF DDF
L B 6807 ISABEL 339

Sire: **PA FORTITUDE 2500** AMF CAF NHF DDF
SYDGEN C C & 7 AMF CAF NHF DDF
G G CLARA 0171 DDF

G G CLARA 7192 DDF
S A V FINAL ANSWER 0035 AMF CAF NHF DDF
S A V PIONEER 7301 AMF CAF NHF DDF
S A V BLACKBIRD 5297 CAC

Dam: **LODGE COUNTESS 15Y**

H A IMAGE MAKER 0415 AMF CAF NHF DDF
LODGE COUNTESS 9U
LODGE COUNTESS 57P

EPD's	
BW	+0.1
WW	+55
YW	+102
Milk	+28
TM	+55
Scotal	---
CED	+7.0
CEM	+7.0

BW: 71	Adj WW: 746				
SOT: 950	EOT: 1290	Proj Wt: 1440	ADG: 3.37	WPDA: 3.41	AOD: 4
Adj. Carcass Values	LMY: 67.0	REA: 15.23	%IMF: 3.59	Rib Fat: 0.16	Rump Fat: 0.20

Check out the pedigree on this fellow. A Fortitude son out of a Pioneer cow with Image Maker and Final Answer on the bottom side. I don't think you could build a better combination of maternal and calving ease genetics and combine that with an excellent disposition and conformation. Another higher rated heifer bull here.

Lot **8**

Lodge Fortitude 21C

Male VLC 21C February 08 2015 1835971

RITO 112 OF 2536 RITO 616 AMF CAF NHF DDF
GAR-EGL PROTEGE AMF CAF NHF DDF
L B 6807 ISABEL 339

Sire: **PA FORTITUDE 2500** AMF CAF NHF DDF
SYDGEN C C & 7 AMF CAF NHF DDF
G G CLARA 0171 DDF

G G CLARA 7192 DDF
FIGURE 8 ANGUS TOM BOY 509R
LOOKOUT HUCK 53T
LOOKOUT EDNA 145L

Dam: **CRESCENT CREEK QUEEN RUTH 55Y**

GDAR QUANTUM 963
CRESCENT CREEK QUEEN RUTH 159P
CRESCENT CREEK QUEEN RUTH 59B

EPD's	
BW	-0.4
WW	+46
YW	+85
Milk	+23
TM	+46
Scotal	---
CED	+9.0
CEM	+9.0

BW: 82	Adj WW: 770				
SOT: 915	EOT: 1196	Proj Wt: 1346	ADG: 2.78	WPDA: 3.19	AOD: 4
Adj. Carcass Values	LMY: 68.0	REA: 13.90	%IMF: 3.34	Rib Fat: 0.08	Rump Fat: 0.16

Another calving ease king here with a nice, clean front and lots of stretch. A Fortitude son out of a long bodied Crescent Creek cow with a nice disposition and excellent feet, legs and udder. These Fortitude sons were very consistent for us and will make excellent heifer bulls but have the frame and capacity to move into the cow program if need be.



Lot 9

Lot **10**

Lodge Fortitude 23C

Male SFR 23C February 22 2015 1835988

RITO 112 OF 2536 RITO 616 AMF CAF NHF DDF
GAR-EGL PROTEGE AMF CAF NHF DDF
L B 6807 ISABEL 339

Sire: **PA FORTITUDE 2500** AMF CAF NHF DDF
SYDGEN C C & 7 AMF CAF NHF DDF
G G CLARA 0171 DDF
G G CLARA 7192 DDF
CONNEALY ONWARD DMF AMF CAF NHF DDF
SITZ UPWARD 307R DMF AMF CAF NHF DDF
SITZ HENRIETTA PRIDE 81M

Dam: **NRA ROSEBUD 49Y**
MVF FRONTIER 25P
MVF ROSEBUD 303T
LENLOOK ROSEBUD 8M

EPD's	
BW	+0.2
WW	+59
YW	+108
Milk	+27
TM	+57
Scotal	---
CED	+8.0
CEM	+10.0



Lot 10

BW: 85	Adj WW: 827				
SOT: 920	EOT: 1244	Proj Wt: 1394	ADG: 3.21	WPDA: 3.45	AOD: 4
Adj. Carcass Values	LMY: 64.9	REA: 13.02	%IMF: 4.54	Rib Fat: 0.17	Rump Fat: 0.28

Wow, power, power, and more power. This bull comes from Shane's top show female that goes back to the Mountain View Farms program. Fortitude 23C is long spined, deep ribbed and smooth fronted. With his weaning and yearling weight EPD's being in the top 10%, this bull will pack a punch in your herd. Will work for heifers or cows.



Lot 11

Lot **11**

Lodge Significant 20C

Male SFR 20C February 17 2015 1835987

CONNEALY CONSENSUS DDF
CONNEALY CONSENSUS 7229 AMF CAF NHF DDF
BLUE LILLY OF CONANGA 16 CAF
Sire: **EXAR SIGNIFICANT 1769B** AMF CAF DDF
CONNEALY ONWARD DMF AMF CAF NHF DDF
SITZ HENRIETTA PRIDE 643T
SITZ HENRIETTA PRIDE 81M
FREYBURN YELLOWSTONE 2R
FREYBURN YELLOWSTONE 33T
FREYBURN GEORGINA 40R

Dam: **FREYBURN DAWN 97X**
FREYBURN BRUNO 39N
FREYBURN DAWN 30S
FREYBURN DAWN 150P

EPD's	
BW	+1.8
WW	+43
YW	+80
Milk	+20
TM	+42
Scotal	---
CED	+6.0
CEM	+6.0
REA	+0.42
Marb	+0.55
Fat	+0.031
Carcass	+21

BW: 89	Adj WW: 754				
SOT: 940	EOT: 1200	Proj Wt: 1350	ADG: 2.57	WPDA: 3.28	AOD: 5
Adj. Carcass Values	LMY: 67.0	REA: 14.34	%IMF: 4.16	Rib Fat: 0.13	Rump Fat: 0.18

This is our second year using EXAR Significant and we are again pleased with what he has brought into our herd. This bull's dam was the high selling female out of the 2011 Gateway Angus sale from the Freyburn program, and gave this bull the added muscling and length of spine we wanted. This bull would be best suited to a cow program.



Lot 12

Lot **12**

Valley Lodge Significant 8C

Male VLCC 8C February 07 2015 1865325

CONNEALY CONSENSUS DDF
CONNEALY CONSENSUS 7229 AMF CAF NHF DDF
BLUE LILLY OF CONANGA 16 CAF
Sire: **EXAR SIGNIFICANT 1769B** AMF CAF DDF
CONNEALY ONWARD DMF AMF CAF NHF DDF
SITZ HENRIETTA PRIDE 643T
SITZ HENRIETTA PRIDE 81M
BOYD NEW DAY 8005 AMF CAF NHF DDF
GDAR GAME DAY 449 AMF CAF NHF DDF
G D A R MISS WIX 474

Dam: **VALLEY LODGE DUCHESS 16Y**
CUDLOBE MIDLAND 21R
LODGE DUCHESS 42T
LODGE DUCHESS 60P

EPD's	
BW	-1.0
WW	+45
YW	+83
Milk	+19
TM	+42
Scotal	---
CED	+11.0
CEM	+9.0

BW: 75	Adj WW: 705				
SOT: 920	EOT: 1202	Proj Wt: 1352	ADG: 2.79	WPDA: 3.20	AOD: 4
Adj. Carcass Values	LMY: 64.0	REA: 14.48	%IMF: 4.32	Rib Fat: 0.25	Rump Fat: 0.21

We cannot express how well the GDAR Game Day females in our herd have produced. This bull is very stout and deep sided. With a birth weight EPD in the top 2%, as well as the power and structure this bull has, he will most definitely give your herd an edge. Will work for heifers or cows.

Lot 13 Valley Lodge Wildfire 19C

Male VLCC 19C February 15 2015 1838421

SITZ TRAVELER 8180 AMF CAF NHF DDF
S A V 8180 TRAVELER 004 DMF DWF AMF CAF NHF OSF DDF
BOYD FOREVER LADY 8003

Sire: **ANKONIAN WERNER WILD FIRE 96** AMF CAF NHF DDF
W C C SPECIAL DESIGN L309 AMF CAF NHF DDF

FSR ELBA SPECIAL DESIGN S406

W C C ELBA M82

BON VIEW NEW DESIGN 1407 AMF CAF NHF DDC

BUSHES GRAND DESIGN AMF CAF NHF DDF

BUSHES LADY DIVIDEND 872

Dam: **LODGE COUNTESS 65S**

CUDLOBE RAINMAKER 49L

LODGE COUNTESS 27N

EASTONDALE COUNTESS 3G

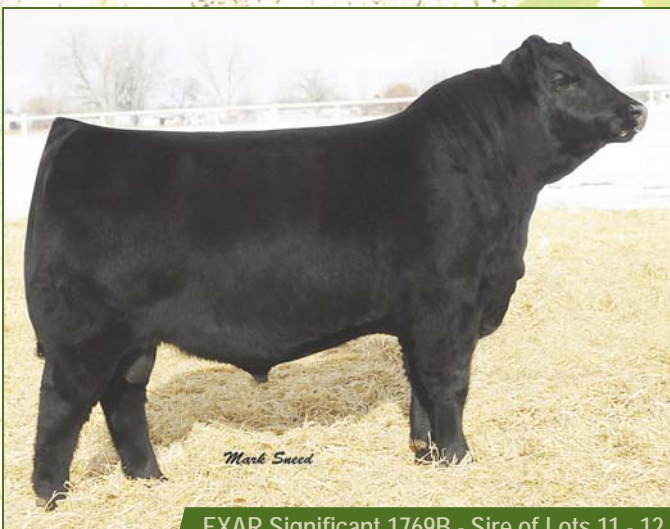
EPD's	
BW	+2.9
WW	+39
YW	+72
Milk	+22
TM	+42
Scotal	---
CEM	+6.0
REA	-0.11
Marb	+0.15
Fat	-0.020
Carcass	+20

BW: 98 Adj WW: 728

SOT: 840 EOT: 1166 Proj Wt: 1316 ADG: 3.23 WPDA: 3.17 AOD: 9

Adj. Carcass Values LMY: 65.4 REA: 14.61 %IMF: 3.69 Rib Fat: 0.20 Rump Fat: 0.20

We were quite excited when Megan's Grand Design female produced an Ankonian Werner Wild Fire bull. Many of the top females within our herd have come from this line, including Megan's top show female which is a full sibling. With a moderate frame, wide top and great structure, as well as the maternal numbers to back him up, this bull will work in anyone's cow herd.



EXAR Significant 1769B - Sire of Lots 11 - 12

Lot 14 Lodge Double Vision 2C

Male VLC 2C February 03 2015 1835965

BON VIEW NEW DESIGN 878 AMF CAF NHF DDF

CONNELY REFLECTION AMF CAF NHF DDF

HAPPY GRILL OF CONANGA 6260

Sire: **JINDRA DOUBLE VISION** AMF CAF NHF DDF

HOFF LIMITED EDITION SC 594 AMF CAF NHF DDF

HOFF RACHEL 8312 405

HOFF MISS EXPO S C 4223

HERO 6267 OF R R 2418

H A IMAGE MAKER 0415 AMF CAF NHF DDF

H A RITO BLACKCAP 9038

Dam: **LODGE COUNTESS 6X**

CUDLOBE MIDLAND 21R

LODGE COUNTESS 40T

LODGE COUNTESS 27N

EPD's	
BW	-1.1
WW	+57
YW	+105
Milk	+29
TM	+58
Scotal	---
CEM	+13.0
REA	+0.27
Marb	+0.42
Fat	-0.004
Carcass	+32

BW: 79 Adj WW: 790

SOT: 980 EOT: 1284 Proj Wt: 1434 ADG: 3.01 WPDA: 3.38 AOD: 5

Adj. Carcass Values LMY: 65.7 REA: 14.00 %IMF: 3.60 Rib Fat: 0.17 Rump Fat: 0.20

Another unique combination of calving ease genetics with excellent performance potential. Double Vision is a highly touted Genex calving ease sire that has been used extensively in heifer breeding programs. We mated him to a smaller frame Image Maker cow with lots of milk and a very kind disposition. The numbers on this bull tell the tale and this fellow boasts an outstanding set of calving ease and performance EPD's, plus the frame to work for heifers or cows. A nice outcross pedigree for most breeders as well.



Lot 14

DVAuction

Broadcasting Real-Time Auctions

www.DVAuction.com

The Triple A sale will be broadcast live at www.DVAuction.com.

To view the sale live, simply log on to www.DVAuction.com

Cottonwood Angus - Lots 15 - 21

Brett Gaube - 306-537-4710

Lot 15 Cottonwood Kodiak 32C

Male RTBG 32C February 04 2015 1883525

TC ADVANTAGE AMF CAF NHF DDC
SANDY BAR ADVANTAGE 43M DDF
SANDY BAR JEMINA 44K

Sire: **HF KODIAK 5R** AMF CAF NHF MAF DDF
VERMILION YELLOWSTONE AMF CAF NHF DDF
WILBAR RUBY 955N
WILBAR RUBY 161J
S A V NET WORTH 4200 AMF CAF NHF DDF
WILLOWVIEW NET WORTH 12W
COTTONWOOD TIPTOP 3L

Dam: **COTTONWOOD TIPTOP 32A**
HXL STOCKMAN 2K
WILLOWVIEW TIPTOP 11N
COTTONWOOD TIPTOP 3L

EPD's	
BW	+2.1
WW	+48
YW	+86
Milk	+16
TM	+40
Scotal	---
CED	+6.0
CEM	+6.0



Lot 15

BW: 75	Adj WW: 666				
SOT: 820	EOT: 1116	Proj Wt: 1266	ADG: 2.93	WPDA: 2.94	AOD: 2
Adj. Carcass Values	LMY: 64.9	REA: 12.35	%IMF: 2.71	Rib Fat: 0.15	Rump Fat: 0.25

A good, low birth weight Kodiak calf out of a first calf heifer.

Lot 16 Cottonwood Grizzley 164C

Male RTBG 164C February 06 2015 1883526

TC ADVANTAGE AMF CAF NHF DDC
SANDY BAR ADVANTAGE 43M DDF
SANDY BAR JEMINA 44K

Sire: **HF KODIAK 5R** AMF CAF NHF MAF DDF
VERMILION YELLOWSTONE AMF CAF NHF DDF
WILBAR RUBY 955N
WILBAR RUBY 161J
S A V PROVIDENCE 6922 AMF CAF NHF DDF
S A V PREFERENCE 9184 CAF
S A V BESSIE HEIRESS 4149 CAF

Dam: **SIX MILE DELLA 246Y**
A-LINE BRAVE HEART 1N
JACK CREEK DELLA 5R
JACK CREEK DELLA 37M

EPD's	
BW	+2.3
WW	+52
YW	+85
Milk	+15
TM	+41
Scotal	---
CED	+5.0
CEM	+6.0

BW: 84	Adj WW: 643				
SOT: 870	EOT: 1172	Proj Wt: 1322	ADG: 2.99	WPDA: 3.11	AOD: 4
Adj. Carcass Values	LMY: 63.1	REA: 11.37	%IMF: 3.24	Rib Fat: 0.19	Rump Fat: 0.26

Real performance in this Kodiak bull calf. Kodiak has a reputation for great performance and maternal traits.



Lot 17

Lot 17 Cottonwood Kodiak 1C

Male RTBG 1C February 03 2015 1883524

TC ADVANTAGE AMF CAF NHF DDC
SANDY BAR ADVANTAGE 43M DDF
SANDY BAR JEMINA 44K

Sire: **HF KODIAK 5R** AMF CAF NHF MAF DDF
VERMILION YELLOWSTONE AMF CAF NHF DDF
WILBAR RUBY 955N
WILBAR RUBY 161J
BON VIEW NEW DESIGN 878 AMF CAF NHF DDF
ISLA BANK DESIGNATION 14N
MVF TIBBIE 706L

Dam: **COTTONWOOD TIPTOP 11U**
HXL STOCKMAN 2K
WILLOWVIEW TIPTOP 11N
COTTONWOOD TIPTOP 3L

EPD's	
BW	+1.4
WW	+45
YW	+79
Milk	+17
TM	+40
Scotal	---
CED	+7.0
CEM	+8.0
REA	+0.13
Marb	+0.35
Fat	-0.014
Carcass	+20

BW: 82	Adj WW: 615				
SOT: 830	EOT: 1122	Proj Wt: 1272	ADG: 2.89	WPDA: 2.95	AOD: 7
Adj. Carcass Values	LMY: 66.5	REA: 12.44	%IMF: 2.24	Rib Fat: 0.09	Rump Fat: 0.14

An opportunity to purchase a son of a proven sire.

Lot **18**

Cottonwood Motive 231C

Male RTBG 231C February 01 2015 1883523

SANDY BAR ADVANTAGE 43M DDF
 HF KODIAK 5R AMF CAF NHF MAF DDF
 WILBAR RUBY 955N

Sire: **SOO LINE MOTIVE 9016**

RR 7407 RAINMAKER 2154
 TLA BEAUTY 5R
 TERRLENE BEAUTY 35F
 SITZ TRADITION RLS 8702

SOO LINE TRADITION 6097
 H A BELETTA 0219

Dam: **SOO LINE LADY SANDY 8202**

CAR TANK 226
 SOO LINE LADY SANDY 61P
 KBJ LADY SANDY 341H

EPD's	
BW	+1.3
WW	+41
YW	+76
Milk	+18
TM	+39
Scotal	---
CED	+8.0
CEM	+5.0
REA	+0.35
Marb	+0.33
Fat	+0.019
Carcass	+18



Lot 18

BW: 78	Adj WW: 553						
SOT: 795	EOT: 1036	Proj Wt: 1186	ADG: 2.39	WPDA: 2.71	AOD: 7		
Adj. Carcass Values	LMY: 65.9	REA: 12.01	%IMF: 2.19	Rib Fat: 0.10	Rump Fat: 0.20		

A low birth weight son of Motive that will work well on heifers.



HF Kodiak 5R - Sire of Lots 15 - 17



Soo Line Motive 9016 - Sire of Lot 18

Lot **19**

Cottonwood New Generation 14C

Male RTBG 14C February 22 2015 1883529

O C C GENESIS 872G
 DUFF NEW GENERATION 6107
 O C C DIXIE ERICA 814G

Sire: **BLAIRS NEW GENERATION 303Z**

VERMILION DATELINE 7078 AMF CAF NHF DDF
 MVF TIBBIE 60M
 MVHF TIBBIE 39B

SANDY BAR ADVANTAGE 43M DDF
 HF KODIAK 5R AMF CAF NHF MAF DDF
 WILBAR RUBY 955N

Dam: **SOO LINE ERELITE 0014**

SOO LINE YELLOWSTONE 6344
 SOO LINE ERELITE 8207
 NORTHERN VIEW ERELITE 27N

EPD's	
BW	+1.8
WW	+51
YW	+87
Milk	+16
TM	+42
Scotal	---
CED	+6.0
CEM	+6.0
REA	+0.24
Marb	+0.21
Fat	-0.024
Carcass	+25



Lot 19

BW: 82	Adj WW: 700						
SOT: 845	EOT: 1220	Proj Wt: 1370	ADG: 3.71	WPDA: 3.38	AOD: 5		
Adj. Carcass Values	LMY: 64.4	REA: 12.42	%IMF: 3.04	Rib Fat: 0.17	Rump Fat: 0.19		

Lot 20 Cottonwood New Generation 180C

Male RTBG 180C March 02 2015 1883531

O C C GENESIS 872G
 DUFF NEW GENERATION 6107
 O C C DIXIE ERICA 814G
 Sire: **BLAIRS NEW GENERATION 303Z**
 VERMILION DATELINE 7078 AMF CAF NHF DDF
 MVF TIBBIE 60M
 MVHF TIBBIE 39B
 HF KODIAK 5R AMF CAF NHF MAF DDF
 SOO LINE LEGACY 7019
 GEIS PRIDE 114 99 MAF
 Dam: **SOO LINE ERICA 0190**
 BROCKHILL PROPHECY 4P
 SOO LINE ERICA 8334
 GEIS ERICA 117 93

EPD's	
BW	+1.6
WW	+45
YW	+79
Milk	+17
TM	+40
Scotal	---
CED	+6.0
CEM	+8.0



Lot 20

BW: 75	Adj WW: 661						
SOT: 780	EOT: 1086	Proj Wt: 1236	ADG: 3.03	WPDA: 3.08	AOD: 5		
Adj. Carcass Values	LMY: 64.8	REA: 14.44	%IMF: 3.72	Rib Fat: 0.22	Rump Fat: 0.22		

Blairs New Generation 303Z sires very consistent, moderate birth weight calves with excellent performance. The bulls and females produced work real well.



Duff New Generation 6107
 Grandsire of Lots 19 - 21

Lot 21 Cottonwood Generation 35C

Male RTBG 35C March 10 2015 1883533

O C C GENESIS 872G
 DUFF NEW GENERATION 6107
 O C C DIXIE ERICA 814G
 Sire: **BLAIRS NEW GENERATION 303Z**
 VERMILION DATELINE 7078 AMF CAF NHF DDF
 MVF TIBBIE 60M
 MVHF TIBBIE 39B
 SANDY BAR DEW 105F
 A-LINE DEW 1M
 DAY BY DAY FLORA 9G
 Dam: **ROSS RIVER CHRIS 35T**
 DOUBLE J JIM 303C
 ROSS RIVER CHRIS 2G
 CARONHILL CHRIS 1 94

EPD's	
BW	+3.5
WW	+41
YW	+67
Milk	+15
TM	+36
Scotal	---
CED	+0.0
CEM	+4.0
REA	+0.15
Marb	+0.12
Fat	-0.020
Carcass	+16



Lot 21

BW: 83	Adj WW: 717						
SOT: 820	EOT: 1120	Proj Wt: 1270	ADG: 2.97	WPDA: 3.25	AOD: 8		
Adj. Carcass Values	LMY: 65.6	REA: 14.47	%IMF: 2.49	Rib Fat: 0.19	Rump Fat: 0.15		

Glen Gabel Angus - Lots 22 - 33

Glen Gabel - 306-536-1927

Lot 22 GGA Roughrider 21C

Male GGA 21C February 03 2015 1835328

HF KODIAK 5R AMF CAF NHF MAF DDF
GEIS BALOO 13'08
KBJ QUEEN 461L

Sire: **SCC BALOO 31A**

YOUNG DALE TOUCH DOWN 36M
SCC PRIDE 02T
SCC 65M PRIDE 45M 73P
CONNELLY ONWARD DMF AMF CAF NHF DDF
SITZ UPWARD 307R DMF AMF CAF NHF DDF
SITZ HENRIETTA PRIDE 81M

Dam: **PREMIER UPWARD MAGIC 1017**

BON VIEW NEW DESIGN 878 AMF CAF NHF DDF
ROSTOCK MAGIC 8R
ROSTOCK MAGIC WRS 11M

EPD's	
BW	+1.7
WW	+47
YW	+78
Milk	+25
TM	+49
Scotal	---
CED	+7.0
CEM	+9.0



Lot 22

BW: 84	Adj WW: 765	Adj YW: 1197
SOT: 980	EOT: 1272	Proj Wt: 1422
ADG: 2.89	WPDA: 3.35	AOD: 5
Adj. Carcass Values	LMY: 64.8	REA: 13.50
%IMF: 2.80	Rib Fat: 0.19	Rump Fat: 0.39

Unique cross of genetics on this bull who is by our walking bull and out of a top producing Upward daughter that repeats herself in production year after year. Her daughter has the Lot 33 bull.



Lot 23

Lot 23 GGA Whatta Answer 18C

Male GGA 18C January 28 2015 1835325

SITZ TRAVELER 8180 AMF CAF NHF DDF
S A V FINAL ANSWER 0035 AMF CAF NHF DDF
S A V EMULOUS 8145 CAF

Sire: **JL ALL ANSWERS 1009**

LEACHMAN RIGHT TIME DMF AMF
ROYAL PERSEPHONE DRCC 8078U
CANE RIDGE PERSEPHONE 6531F
S A R NEW TREND 4100 2080
PEAK DOT NEW TREND 74M
MAYFLOWER OF PEAK DOT 504K

Dam: **HILOW QUEEN MOTHER 30S**

C A FUTURE DIRECTION 5321 AMC CAF NHC DDF
HILOW QUEEN MOTHER 1N AMF NHF
HILOW QUEEN MOTHER 2L

EPD's	
BW	-0.1
WW	+36
YW	+61
Milk	+19
TM	+37
Scotal	---
CED	+7.0
CEM	+10.0

BW: 79	Adj WW: 728	Adj YW: 1176
SOT: 970	EOT: 1214	Proj Wt: 1364
ADG: 2.42	WPDA: 3.15	AOD: 9
Adj. Carcass Values	LMY: 65.9	REA: 14.23
%IMF: 4.12	Rib Fat: 0.17	Rump Fat: 0.24

Calving ease and performance put together in this package, being a son of our calving specialist All Answers and out of a front pasture cow that I purchased from Hi Low Angus a number of years ago. He will work in either pasture.

Lot 24 GGA Winning Combination 10C

Male GGA 10C January 19 2015 1835318

SITZ TRAVELER 8180 AMF CAF NHF DDF
S A V 8180 TRAVELER 004 DMF DWF AMF CAF NHF OSF DDF
BOYD FOREVER LADY 8003

Sire: **S A V 004 DENSITY 4336** AMF CAF NHF DDF

LEACHMAN RIGHT TIME DMF AMF
S A V MAY 7238 CAF DDF
S A R PROSPECTOR MAY 9124 DDF
SITZ UPWARD 307R DMF AMF CAF NHF DDF
MVF UPWARD 70X
MVF TIBBIE 74P

Dam: **NRA MISS TIBBIE 117Z**

HF TIGER 5T AMF CAF NHF OSF DDF
NRA TIBBIE 95X
MVF TIBBIE 18U

EPD's	
BW	+2.3
WW	+56
YW	+104
Milk	+22
TM	+50
Scotal	---
CED	+6.0
CEM	+6.0



Lot 24

BW: 83	Adj WW: 842	Adj YW: 1352
SOT: 1090	EOT: 1394	Proj Wt: 1544
ADG: 3.01	WPDA: 3.53	AOD: 3
Adj. Carcass Values	LMY: 63.9	REA: 13.73
%IMF: 3.88	Rib Fat: 0.23	Rump Fat: 0.30

If your looking for a female maker, here he is. A Density son out of a Tiger granddaughter who should produce heifers with impeccable udders and steer calves that will push down the scales.

Lot **25**

GGA Double Double 28C

Male GGA 28C March 02 2015 1835335

HF KODIAK 5R AMF CAF NHF MAF DDF
 GEIS BALOO 13'08
 KBJ QUEEN 461L

Sire: **SCC BALOO 31A**

YOUNG DALE TOUCH DOWN 36M
 SCC PRIDE 02T
 SCC 65M PRIDE 45M 73P
 SANDY BAR ADVANTAGE 43M DDF
 HF KODIAK 5R AMF CAF NHF MAF DDF
 WILBAR RUBY 955N

Dam: **WIL-DORR 405X HEROINE 14Z**

SOO LINE YELLOWSTONE 6344
 SOO LINE HEROINE 0405
 CRESCENT CREEK HEROINE 106P

EPD's	
BW	+1.5
WW	+50
YW	+76
Milk	+20
TM	+76
Scotal	---
CED	+7.0
CEM	+7.0



Lot 25

BW: 82 Adj WW: 881 Adj WW: 1322

SOT: 995 EOT: 1234 Proj Wt: 1384 ADG: 2.37 WPDA: 3.50 AOD: 3

Adj. Carcass Values LMY: 65.9 REA: 13.95 %IMF: 3.45 Rib Fat: 0.16 Rump Fat: 0.22

Double Double as we call him; Kodiak on Kodiak brings out the best of calving and performance. A soggy, deep sided bull.

Lot **26**

GGA Final Point 25C

Male GGA 25C February 19 2015 1835332

HF KODIAK 5R AMF CAF NHF MAF DDF
 GEIS BALOO 13'08
 KBJ QUEEN 461L

Sire: **SCC BALOO 31A**

YOUNG DALE TOUCH DOWN 36M
 SCC PRIDE 02T
 SCC 65M PRIDE 45M 73P
 SITZ TRAVELER 8180 AMF CAF NHF DDF
 S A V FINAL ANSWER 0035 AMF CAF NHF DDF
 S A V EMULOUS 8145 CAF

Dam: **SMW MISTRESS 106W**

TC FREEDOM 104 AMF CAF NHF DDF
 SMW MISTRESS 82T
 HOMESTEADER MISTRESS 23F

EPD's	
BW	+2.7
WW	+51
YW	+78
Milk	+21
TM	+47
Scotal	---
CED	+5.0
CEM	+8.0



Lot 26

BW: 85 Adj WW: 830 Adj WW: 1283

SOT: 1000 EOT: 1262 Proj Wt: 1412 ADG: 2.59 WPDA: 3.47 AOD: 6

Adj. Carcass Values LMY: 64.6 REA: 15.17 %IMF: 3.11 Rib Fat: 0.25 Rump Fat: 0.35

Another Baloo son out a great Final Answer daughter. Nice set of calving numbers and performance. Again, a bull that could work in either pasture.

Lot **28**

GGA Baloo 8C

Male GGA 8C January 15 2015 1835316

HF KODIAK 5R AMF CAF NHF MAF DDF
 GEIS BALOO 13'08
 KBJ QUEEN 461L

Sire: **SCC BALOO 31A**

YOUNG DALE TOUCH DOWN 36M
 SCC PRIDE 02T
 SCC 65M PRIDE 45M 73P
 CONNEALY CONSENSUS DDF
 CONNEALY CONSENSUS 7229 AMF CAF NHF DDF
 BLUE LILLY OF CONANGA 16 CAF

Dam: **HF ROSEBUD 15Z**

RIVERBEND POWERLINE 0050
 HF ROSEBUD 98P
 HF ROSEBUD 138J

EPD's	
BW	+1.2
WW	+50
YW	+70
Milk	+19
TM	+44
Scotal	---
CED	+7.0
CEM	+8.0



Lot 28

BW: 82 Adj WW: 793 Adj WW: 1186

SOT: 1030 EOT: 1232 Proj Wt: 1382 ADG: 2.00 WPDA: 3.09 AOD: 3

Adj. Carcass Values LMY: 64.3 REA: 13.84 %IMF: 3.67 Rib Fat: 0.22 Rump Fat: 0.18

Out of a Consensus daughter that was a class winner at Canadian Western Agribition. A bull that has the look and style of a top producer. Great maternal side.

Lot **29**

GGA Stampeder 23C

Male GGA 23C February 16 2015 1835330



Lot **29**

HF KODIAK 5R AMF CAF NHF MAF DDF
 GEIS BALOO 13'08
 KBJ QUEEN 461L
 Sire: **SCC BALOO 31A**
 YOUNG DALE TOUCH DOWN 36M
 SCC PRIDE 02T
 SCC 65M PRIDE 45M 73P
 SITZ ALLIANCE 6595 DMF AMF CAF NHF DDF
 MVF ALLIANCE 670N
 BROCKHILL JAMOCA 14H
 Dam: **MIDNITE OIL TIBBIE 67W**
 DURLOWE MAGIC 62K
 NEW FORCE TIBBIE 16M
 MVF TIBBIE 16Z

EPD's	
BW	+2.7
WW	+37
YW	+55
Milk	+22
TM	+41
Scotal	---
CED	+3.0
CEM	+7.0

BW: 85	Adj WW: 755	Adj WW: 1161
SOT: 880	EOT: 1178	Proj Wt: 1328
ADG: 2.95	WPDA: 3.21	AOD: 6
Adj. Carcass Values	LMY: 66.2	REA: 14.22
%IMF: 2.64	Rib Fat: 0.16	Rump Fat: 0.22

Lots of look and style on this Baloo son and out of a good Tibbie bred cow, who is perfect uddered. One of the younger bulls in my offering.

Lot **30**

GGA Its Game Day 3C

Male GGA 3C January 04 2015 1835311

A A R NEW TREND
 BOYD NEW DAY 8005 AMF CAF NHF DDF
 S V F FOREVER LADY 57D
 Sire: **GDAR GAME DAY 449** AMF CAF NHF DDF
 TEHAMA BAND 207
 G D A R MISS WIX 474
 G D A R MISS WIX 749
 SITZ UPWARD 307R DMF AMF CAF NHF DDF
 NORTHERN VIEW UPWARD 93Y
 SOO LINE DUCHESS 7266
 Dam: **GGA BUXOM FANCY 5A**
 WOODHILL FORESIGHT AMF CAF NHF DDF
 LOOKOUT BUXOM FANCY 11U
 LOOKOUT BUXOM FANCY 232M

EPD's	
BW	+2.3
WW	+58
YW	+104
Milk	+26
TM	+55
Scotal	---
CED	+3.0
CEM	+5.0

BW: 85	Adj WW: 855	Adj WW: 1397
SOT: 1120	EOT: 1442	Proj Wt: 1592
ADG: 3.19	WPDA: 3.52	AOD: 2
Adj. Carcass Values	LMY: 63.5	REA: 14.17
%IMF: 4.64	Rib Fat: 0.26	Rump Fat: 0.33

I'm really happy with what this two year old heifer did on her first calf. Sired by Game Day; one of the leading performance calving ease sires in the Genex catalogue, this bull has the look of a herd sire. Stop by and take a look on sale day.



Lot **30**



GDAR Game Day 449 - Sire of Lot 30

Lot **31**

GGA Cancun 22C

Male GGA 22C February 08 2015 1835329

HF KODIAK 5R AMF CAF NHF MAF DDF
 GEIS BALOO 13'08
 KBJ QUEEN 461L
 Sire: **SCC BALOO 31A**
 YOUNG DALE TOUCH DOWN 36M
 SCC PRIDE 02T
 SCC 65M PRIDE 45M 73P
 SOUTHLAND FULL THROTTLE 15R
 SOUTHLAND FX 60T
 SOUTHLAND ANNIE 155P
 Dam: **SOUTHLAND FUTURE MARKER 196X**
 S A V FINAL ANSWER 0035 AMF CAF NHF DDF
 SOUTHLAND FUTURE MARKER 137U
 ALSTEIN FUTURE MARKER 42S

EPD's	
BW	+0.9
WW	+41
YW	+57
Milk	+20
TM	+41
Scotal	---
CED	+8.0
CEM	+10.0

BW: 84	Adj WW: 775	Adj WW: 1227
SOT: 950	EOT: 1208	Proj Wt: 1358
ADG: 2.55	WPDA: 3.22	AOD: 5
Adj. Carcass Values	LMY: 63.5	REA: 12.89
%IMF: 4.44	Rib Fat: 0.22	Rump Fat: 0.26

The dam of this bull is a cow that just plain works in our herd. She is moderate framed with an impeccable udder. Every year she brings in a good one.



Lot **31**

Lot **32**

GGA Dakota 9C

Male GGA 9C January 15 2015 1835317

TC GRIDIRON 258 AMF CAF NHF DDF
 S A V IRON MOUNTAIN 8066 AMF CAF NHF MAF DDF
 S A V MADAME PRIDE 3249 CAF DDF
 Sire: **S A V ANGUS VALLEY 1867** AMF CAF NHF DDF
 S A F 598 BANDO 5175 AMF CAC DDF
 S A V MAY 2397 CAF
 S A V MAY 7238 CAF DDF
 S A V 004 PREDOMINANT 4438 AMF CAF NHF DDF
 S A V PROVIDENCE 6922 AMF CAF NHF DDF
 S A V MAY 7238 CAF DDF

Dam: **TSN ERELITE 49A**
 TSN LUCY'S BOY 2M
 TSN ERELITE 42X
 TSN ERELITE 3S

EPD's	
BW	+2.3
WW	+61
YW	+109
Milk	+23
TM	+54
Scotal	---
CED	+5.0
CEM	+8.0



Lot 32

BW: 80 Adj WW: 886 Adj YW: 1408

SOT: 1110 EOT: 1502 Proj Wt: 1652 ADG: 3.88 WPDA: 3.76 AOD: 2

Adj. Carcass Values LMY: 63.5 REA: 12.92 %IMF: 3.76 Rib Fat: 0.22 Rump Fat: 0.25

Another two year olds first calf and wow, what a job by the great Angus Valley, one of the lead off high selling bulls at Schaff's. This bull will bring calving ease and performance to your program. His mother is moderate in makeup and has one of the nicest udders in our entire herd.



S A V Angus Valley 1867 - Sire of Lot 32

Lot **33**

GGA Best Answer 4C

Male GGA 4C January 05 2015 1835312

G D A R TRAVELER 71 AMF CAF NHF DDF
 SITZ TRAVELER 8180 AMF CAF NHF DDF
 SITZ EVERELDA ENTENSE 1137
 Sire: **S A V FINAL ANSWER 0035** AMF CAF NHF DDF
 BON VIEW BANDO 598 AMF CAC DDF
 S A V EMULOUS 8145 CAF
 S A V SKY EMULOUS 2124
 S A V BISMARCK 5682 AMF CAF NHF DDF
 S A V BEST INTEREST 0136 AMF CAF NHF DDF
 S A V EMBLYNETTE 8172 CAF

Dam: **GGA MAGIC 20A**
 SITZ UPWARD 307R DMF AMF CAF NHF DDF
 PREMIER UPWARD MAGIC 1017
 ROSTOCK MAGIC 8R

EPD's	
BW	+2.4
WW	+72
YW	+125
Milk	+30
TM	+66
Scotal	---
CED	+5.0
CEM	+9.0



Lot 33

BW: 86 Adj WW: 942 Adj YW: 1468

SOT: 1255 EOT: 1554 Proj Wt: 1704 ADG: 2.96 WPDA: 3.80 AOD: 2

Adj. Carcass Values LMY: 67.0 REA: 13.72 %IMF: 2.89 Rib Fat: 0.11 Rump Fat: 0.17

This is the heaviest bull in our group out of a first calver. He is exceptionally long with a big top and lots of depth and hair. A direct son of the most widely accepted calving sire in the industry, Final Answer. This guy will have a lot of friends on sale day.



S A V Final Answer 0035 - Sire of Lot 33

Bell Angus - Lots 34 - 43

Ken Bell - 306-591-7792

Lot **34**

Bell Ideal 1C

Male NBK 1C January 01 2015 1837177

SANDY BAR IDEAL 18S
VALLEY BLOSSOM IDEAL 1W
VALLEY BLOSSOM BLACKCAP 712P
Sire: **CREEKVIEW IDEAL 4Y** NHF
SOO LINE HOOSIER 5033
CREEKVIEW PRIDE 207T
CREEKVIEW PRIDE 203R
ISLA BANK TITAN 148
HILOW TITAN 13P
HILOW HEATHER 23E
Dam: **BELL BLACKLASS 20X**
BELL 561G BRUNO 11L
BELL BLACKLASS 17P
BELL BLACKLASS 9L

EPD's	
BW	+2.8
WW	+47
YW	+72
Milk	+21
TM	+45
Scotal	---
CED	+1.0
CEM	+4.0
REA	+0.10
Marb	+0.12
Fat	-0.023
Carcass	+17



Lot 34

BW: 93	Adj WW: 793				
SOT: 1090	EOT: 1424	Proj Wt: 1574	ADG: 3.31	WPDA: 3.45	AOD: 5
Adj. Carcass Values	LMY: 67.7	REA: 13.93	%IMF: 1.80	Rib Fat: 0.09	Rump Fat: 0.08

A long bodied, correct son of Creekview Ideal 4Y. He has a weaning weight of 972 lbs without creep. His dam is a top producing, good uddered, Hi Low Titan 13P daughter.

Lot **35**

Bell Upgrade 3C

Male NBK 3C January 03 2015 1837185

CONNELLY ONWARD DMF AMF CAF NHF DDF
SITZ UPWARD 307R DMF AMF CAF NHF DDF
SITZ HENRIETTA PRIDE 81M
Sire: **NORTHERN VIEW UPWARD 92Y**
EASTONDALE RIGHT TIME 62'03
NORTHERN VIEW EILEENMERE 89R
EASTONDALE EILEENMERE 12'03
HILOW TITAN 13P
BELL TITAN 29W
NORTHERN VIEW MAXINE 38S
Dam: **BELL BLACKCAP 57Y**
NORTHERN VIEW QUANTUM 86P
BELL BLACKCAP 37T
BELL BLACKCAP 23R

EPD's	
BW	+2.3
WW	+41
YW	+77
Milk	+18
TM	+39
Scotal	---
CED	+2.0
CEM	+6.0

BW: 92	Adj WW: 759				
SOT: 1040	EOT: 1326	Proj Wt: 1476	ADG: 2.83	WPDA: 3.23	AOD: 4
Adj. Carcass Values	LMY: 66.7	REA: 12.72	%IMF: 3.01	Rib Fat: 0.09	Rump Fat: 0.18

A moderate framed, Upward 92Y son out of a sound Hi Low Titan 13P granddaughter. He weaned at 898 lbs and has performed well since on feed.



Lot 35

Lot **36**

Bell Update 4C

Male NBK 4C January 11 2015 1837163

CONNELLY ONWARD DMF AMF CAF NHF DDF
SITZ UPWARD 307R DMF AMF CAF NHF DDF
SITZ HENRIETTA PRIDE 81M
Sire: **NORTHERN VIEW UPWARD 92Y**
EASTONDALE RIGHT TIME 62'03
NORTHERN VIEW EILEENMERE 89R
EASTONDALE EILEENMERE 12'03
R R 9440 SCOTCH CAP 1483 AMF CAF NHF DDF
E&B 1483 SCOTCHMAN 543
LADY SKYLAR B121
Dam: **BELL EUGENIE ERICA 15M**
BELL STOCKADE 7G
BELL EUGENIE ERICA 19J
BELL EUGENIE ERICA 20F

EPD's	
BW	+2.1
WW	+38
YW	+74
Milk	+16
TM	+35
Scotal	---
CED	+2.0
CEM	+7.0
REA	+0.01
Marb	+0.08
Fat	-0.042
Carcass	+19

BW: 84	Adj WW: 737				
SOT: 975	EOT: 1204	Proj Wt: 1354	ADG: 2.27	WPDA: 2.99	AOD: 13
Adj. Carcass Values	LMY: 67.5	REA: 13.00	%IMF: 2.32	Rib Fat: 0.07	Rump Fat: 0.13

The dam is a 13 year old Scotchman 543 daughter. This bull should work well on heifers or cows.

Lot **37**

Bell Upward 5C

Male NBK 5C January 12 2015 1868192

CONNELLY ONWARD DMF AMF CAF NHF DDF
SITZ UPWARD 307R DMF AMF CAF NHF DDF
SITZ HENRIETTA PRIDE 81M

Sire: **NORTHERN VIEW UPWARD 92Y**

EASTONDALE RIGHT TIME 62'03
NORTHERN VIEW EILEENMERE 89R
EASTONDALE EILEENMERE 12'03
GDAR QUANTUM 963

NORTHERN VIEW QUANTUM 86P
CRESCENT CREEK BLACKBIRD 21J

Dam: **BELL EUGENIE ERICA 62W**

BELL 561G BRUNO 11L
BELL EUGENIE ERICA 38R
BELL EUGENIE ERICA 19J

EPD's	
BW	+0.5
WW	+37
YW	+71
Milk	+19
TM	+38
Scotal	---
CED	+6.0
CEM	+8.0
REA	+0.15
Marb	+0.23
Fat	+0.013
Carcass	+14

BW: 82 Adj WW: 748

SOT: 1060 EOT: 1368 Proj Wt: 1518 ADG: 3.05 WPDA: 3.40 AOD: 6

Adj. Carcass Values LMY: 65.3 REA: 13.23 %IMF: 3.35 Rib Fat: 0.16 Rump Fat: 0.24

Very showy, thick made Northern View Upward 92Y son. Just an 82 lb birth weight that grew into a 877 lb weaning weight. His dam is a good, strong cow by Quantum 86P.



Lot **37**

Lot **38**

Bell Pioneer 7C

Male NBK 7C January 17 2015 1837169

S A V FINAL ANSWER 0035 AMF CAF NHF DDF
S A V PIONEER 7301 AMF CAF NHF DDF
S A V BLACKBIRD 5297 CAC

Sire: **WILLOWVIEW PIONEER 6X**

KENOSEE PARK 473 29G
WILLOWVIEW GRAND JUNE 36P
WILLOWVIEW GRAND JUNE 4H
HYLINE RIGHT TIME 338 AMF CAF NHF DDF
HYLINE RIGHT WAY 781 AMF CAF NHF DDF
HYLINE ELLEN 86

Dam: **BELL BLACKCAP 17T**

BELL STOCKADE 1L
BELL BLACKCAP 30N
BELL BLACKCAP 13F

EPD's	
BW	+0.7
WW	+44
YW	61
Milk	+17
TM	+39
Scotal	---
CED	+5.0
CEM	+7.0
REA	+0.47
Marb	+0.34
Fat	+0.032
Carcass	+17

BW: 83 Adj WW: 739

SOT: 990 EOT: 1258 Proj Wt: 1408 ADG: 2.65 WPDA: 3.17 AOD: 8

Adj. Carcass Values LMY: 67.3 REA: 13.05 %IMF: 3.17 Rib Fat: 0.08 Rump Fat: 0.09

A framer, clean fronted bull by Willow View Pioneer 6X, who has been an excellent breeding bull here and at Northern View Angus. His dam goes back to Leachman Right Time. He should have some excellent replacement heifers.



Lot **38**



Lot **39**

Lot **39**

Bell Pioneer 14C

Male NBK 14C January 30 2015 1837182

S A V FINAL ANSWER 0035 AMF CAF NHF DDF
S A V PIONEER 7301 AMF CAF NHF DDF
S A V BLACKBIRD 5297 CAC

Sire: **WILLOWVIEW PIONEER 6X**

KENOSEE PARK 473 29G
WILLOWVIEW GRAND JUNE 36P
WILLOWVIEW GRAND JUNE 4H
GH RIBSTONE 81P
BELL RIBSTONE 53U
IVANHOE ROYAL PRIDE 7S

Dam: **BELL QUEEN 30Y**

CONNELLY LEAD ON DMF AMF CAF NHF DDF
BELL C L QUEEN 2U
BELL QUEEN 15N

EPD's	
BW	+1.7
WW	+44
YW	+76
Milk	+20
TM	+42
Scotal	---
CED	-1.0
CEM	+2.0

BW: 94 Adj WW: 800

SOT: 960 EOT: 1340 Proj Wt: 1490 ADG: 3.76 WPDA: 3.49 AOD: 4

Adj. Carcass Values LMY: 68.6 REA: 15.32 %IMF: 2.63 Rib Fat: 0.10 Rump Fat: 0.10

A long bodied Pioneer 6X son with a 858 lb weaning weight on grass and mother's milk. His dam is a good uddered Ribstone 53U daughter.

Lot 40**Bell Pioneer 15C**

Male NBK 15C January 30 2015 1837178

S A V FINAL ANSWER 0035 AMF CAF NHF DDF
S A V PIONEER 7301 AMF CAF NHF DDF
S A V BLACKBIRD 5297 CACSire: **WILLOWVIEW PIONEER 6X**KENOSEE PARK 473 29G
WILLOWVIEW GRAND JUNE 36P
WILLOWVIEW GRAND JUNE 4H
ISLA BANK TITAN 148HILOW TITAN 13P
HILOW HEATHER 23EDam: **BELL BLACKCLASS 21X**BELL 561G BRUNO 11L
BELL BLACKCLASS 17P
BELL BLACKCLASS 9L

EPD's	
BW	+2.6
WW	+51
YW	+84
Milk	+21
TM	+47
Scotal	---
CED	-2.0
CEM	+2.0

**Lot 40**

BW: 95	Adj WW: 926				
SOT: 1180	EOT: 1618	Proj Wt: 1468	ADG: 4.34	WPDA: 4.21	AOD: 5
Adj. Carcass Values	LMY: 64.4	REA: 14.04	%IMF: 2.91	Rib Fat: 0.22	Rump Fat: 0.24

Big bodied, top performing Pioneer 6X son. He weaned at 1019 lbs with no creep. He has a quiet disposition, lots of depth of rib and good length of body.

Lot 41**Bell Pioneer 16C**

Male NBK 16C January 30 2015 1837167

S A V FINAL ANSWER 0035 AMF CAF NHF DDF
S A V PIONEER 7301 AMF CAF NHF DDF
S A V BLACKBIRD 5297 CACSire: **WILLOWVIEW PIONEER 6X**KENOSEE PARK 473 29G
WILLOWVIEW GRAND JUNE 36P
WILLOWVIEW GRAND JUNE 4H
ISLA BANK TITAN 148HILOW TITAN 13P
HILOW HEATHER 23EDam: **BELL EUGENIE ERICA 57S**BELL TOP CHOICE 7B
BELL EUGENIE ERICA 20F
BELL EUGENIE ERICA 9U

EPD's	
BW	+0.9
WW	+32
YW	+58
Milk	+15
TM	+31
Scotal	---
CED	+3.0
CEM	+7.0
REA	+0.24
Marb	+0.20
Fat	+0.014
Carcass	+7

**Lot 41**

BW: 80	Adj WW: 673				
SOT: 850	EOT: 1148	Proj Wt: 1298	ADG: 2.95	WPDA: 2.99	AOD: 9
Adj. Carcass Values	LMY: 67.5	REA: 13.98	%IMF: 1.89	Rib Fat: 0.10	Rump Fat: 0.10

A smooth made, stretchy Pioneer 6X son that should work well on heifers as he had just an 80 lb birth weight. His dam is a good uddered, very functional Quantum 86P daughter.



S A V Pioneer 7301 - Grandsire of Lots 38 - 42

Auntie Sheila's Kitchen & Catering

"Catering for all occasions"

Sheila Bell

Ph: 306-731-2609 Cell: 306-731-7107
105 2nd Avenue, Lumsden, SK S0G 3C0



Leroy Steinhubl
Area Beef Representative

Nitrogen, Supplies & A.I. Breeding Service

Box 157, Balgonie, SK S0G 0E0
Home: 306-781-2842
Fax: 306-781-2855
Cell: 306-536-1784

Genex Cooperative, Inc.

A Subsidiary of Cooperative Resources International

PRAIRIE AG PETROLEUM LTD.

210 McDonald St. N.
Regina, SK S4N 5W3
Tel: (306) 721-6880
Fax: (306) 721-3748
Cell: (306) 536-1332



Bulk Fuel, Cardlock, Lubes, Baler Twine

Lot **42**

Bell Pioneer 22C

Male NBK 22C February 08 2015 1837195

S A V FINAL ANSWER 0035 AMF CAF NHF DDF
S A V PIONEER 7301 AMF CAF NHF DDF
S A V BLACKBIRD 5297 CAC

Sire: **WILLOWVIEW PIONEER 6X**
KENOSEE PARK 473 29G
WILLOWVIEW GRAND JUNE 36P
WILLOWVIEW GRAND JUNE 4H
ISLA BANK TITAN 148
HILOW TITAN 13P
HILOW HEATHER 23E
Dam: **BELL BLACKBIRD 37Z**
NORTHERN VIEW QUANTUM 86P
BELL BLACKBIRD 27T
BELL BLACKBIRD 4R

EPD's	
BW	+1.4
WW	+41
YW	+73
Milk	+17
TM	+38
Scotal	---
CED	+2.0
CEM	+6.0



Lot **42**

BW: 83 Adj WW: 791

SOT: 900 EOT: 1242 Proj Wt: 1392 ADG: 3.39 WPDA: 3.31 AOD: 3

Adj. Carcass Values LMY: 65.3 REA: 14.49 %IMF: 4.25 Rib Fat: 0.20 Rump Fat: 0.30

A light birth weight bull showing good conformation and style. His dam is a moderate, good uddered Titan daughter.

Lot **43**

Bell Reward 31C

Male NBK 31C February 18 2015 1837183

CONNELY ONWARD DMF AMF CAF NHF DDF
SITZ UPWARD 307R DMF AMF CAF NHF DDF
SITZ HENRIETTA PRIDE 81M

Sire: **NORTHERN VIEW UPWARD 92Y**
EASTONDALE RIGHT TIME 62'03
NORTHERN VIEW EILEENMERE 89R
EASTONDALE EILEENMERE 12'03
ISLA BANK TITAN 148
HILOW TITAN 13P
HILOW HEATHER 23E

Dam: **BELL BLACKCAP 31Y**
HYLINE RIGHT WAY 781 AMF CAF NHF DDF
BELL BLACKCAP 17T
BELL BLACKCAP 30N

EPD's	
BW	+2.7
WW	+40
YW	+75
Milk	+21
TM	+41
Scotal	---
CED	+2.0
CEM	+7.0
REA	+0.23
Marb	+0.27
Fat	+0.019
Carcass	+20



Lot **43**

BW: 90 Adj WW: 795

SOT: 935 EOT: 1248 Proj Wt: 1398 ADG: 3.10 WPDA: 3.42 AOD: 4

Adj. Carcass Values LMY: 66.8 REA: 13.75 %IMF: 3.45 Rib Fat: 0.12 Rump Fat: 0.21

This is a solid, good performing Upward 92Y son. He has a square hip and an excellent hair coat. He weaned off at 789 lbs. His dam is a feminine, hard working Titan 13P daughter.



Sitz Upward 307R - Grandsire of Lots 35, 36, 37 & 43

Clayton Curtis

Assistant General Manager
Regina Location

745 Park Street
Regina, SK S4N 4Y4
Direct Line: (306) 790-5557
Fax: (306) 721-3141
E-mail: ccurtis@masterfeeds.com
Cell: (306) 539-9486



www.cowtownonline.com

**Dr. Terry Goslin
Dr. Ashley Shannon**

790A Lillooet St W
Moose Jaw, SK S6H 8B4
Office: 306.692.4800
Fax: 306.692.4810
Email: westernvet@sasktel.net
Large Animal Veterinarians



**WESTERN
VETERINARY
SERVICES**



SHERWOOD ANIMAL CLINIC

Hwy #1 East, North of CTV
Box 3330, Regina, SK S4P 3H1

DR. LARRY HANSON
B.Sc, D.V.M

Bus: 306-525-3763 Fax: 306-569-3490

Nu-Horizon Angus - Lots 44 - 55

Kieran & Deb Doetzel - 306-336-2245 or 403-357-7648 Cell

Lot **44**

Nu-Horizon Alaska 510C

Male TK 510C February 02 2015 1871371

TC ADVANTAGE AMF CAF NHF DDC
SANDY BAR ADVANTAGE 43M DDF
SANDY BAR JEMINA 44K
Sire: **HF KODIAK 5R** AMF CAF NHF MAF DDF
VERMILION YELLOWSTONE AMF CAF NHF DDF
WILBAR RUBY 955N
WILBAR RUBY 161J
G A R GRID MAKER AMF CAF NHF DDF
S A V BISMARCK 5682 AMF CAF NHF DDF
S A V ABIGALE 0451
Dam: **NU-HORIZON TIBBIE 101Y**
MVF WIDESPREAD 273P
MVF TIBBIE 421U
MVF TIBBIE 222R

EPD's	
BW	+0.9
WW	+52
YW	+89
Milk	+16
TM	+45
Scotal	---
CED	+10.0
CEM	+11.0



Lot 44

BW: 83	Adj WW: 607				
SOT: 840	EOT: 1096	Proj Wt: 1398	ADG: 3.10	WPDA: 3.42	AOD: 4
Adj. Carcass Values					
LMY: 65.1	REA: 13.23	%IMF: 2.41	Rib Fat: 0.17	Rump Fat: 0.18	

This is the third outstanding bull calf out of Kodie's 4-H show heifer. Sure wish she would throw us a heifer calf as she has another ripper bull calf for 2016. With his moderate birth weight of 82 lbs he can be used on heifers or cows. He is a maternal bull with plenty of spring of rib and is structurally sound.



Lot 46

Lot **46**

Nu-Horizon Upward 562C

Male DTK 562C March 18 2015 1872088

CONNEALY ONWARD DMF AMF CAF NHF DDF
SITZ UPWARD 307R DMF AMF CAF NHF DDF
SITZ HENRIETTA PRIDE 81M
Sire: **JL UPWARD 1196**
S A V FOUR SEASONS 5231
JL SUSIE 8289
DOUBLE AA SUSIE 7540'96
T J ELDORADO W708
PRIME TIME'S 15J ELDORADO 5100
PSF PRIDE 15J
Dam: **PRIME TIME'S 381N RUBY 40'10**
T J DURANGO T517
PRIME TIME'S RUBY 381'03
PRIME TIME'S DAZZLING RUBY 2F

EPD's	
BW	+2.9
WW	+48
YW	+80
Milk	+21
TM	+45
Scotal	---
CED	+2.0
CEM	+6.0

BW: 84	Adj WW: 670				
SOT: 760	EOT: 1058	Proj Wt: 1208	ADG: 2.95	WPDA: 3.14	AOD: 5
Adj. Carcass Values					
LMY: 60.9	REA: 12.19	%IMF: 4.05	Rib Fat: 0.30	Rump Fat: 0.31	

Another Upward son out of a female Kodie showed. He was an eye catcher in the pasture this past summer. He is a heifer bull with lots of bone, good footed, structurally correct and sound. He also has a very quiet disposition and a birth weight of 84 lbs.

Lot **45**

Nu-Horizon Deputy 518C

Male TK 518C February 17 2015 1871378

S A V BISMARCK 5682 AMF CAF NHF DDF
S A V BEST INTEREST 0136 AMF CAF NHF DDF
S A V EMBLYNETTE 8172 CAF
Sire: **BROOKING RANSOM 228**
RR 7407 RAINMAKER 2154
TLA BEAUTY 6R
TERRLENE BEAUTY 35F
HF KODIAK 5R AMF CAF NHF MAF DDF
SOO LINE MOTIVE 9016
TLA BEAUTY 5R
Dam: **NU-HORIZON LASS 307A**
BAR-E-L THOR 6T
SOO LINE LASS 1210
SOO LINE LASS 6122

EPD's	
BW	+0.8
WW	+45
YW	+83
Milk	+29
TM	+52
Scotal	---
CED	+9.0
CEM	+10.0

BW: 80	Adj WW: 671				
SOT: 800	EOT: 1088	Proj Wt: 1238	ADG: 2.85	WPDA: 2.97	AOD: 2
Adj. Carcass Values					
LMY: 65.8	REA: 12.14	%IMF: 2.40	Rib Fat: 0.11	Rump Fat: 0.22	

This bull's dam was shown and did very well in the ring. She has done a great job on her calf with a super udder and lots of milk. This heifer bull is very maternal with style and if you are wanting to retain heifers with style and fantastic udders don't pass him up. His pedigree stands for itself with a birth weight of 80 lbs.



Lot 45



Brooking Ransom 228 - Sire of Lot 45

Lot **47**

Nu-Horizon Upward 563C

Male TK 563C March 18 2015 1871550



Lot **47**

CONNEALY ONWARD DMF AMF CAF NHF DDF
SITZ UPWARD 307R DMF AMF CAF NHF DDF
SITZ HENRIETTA PRIDE 81M
Sire: **JL UPWARD 1196**
S A V FOUR SEASONS 5231
JL SUSIE 8289
DOUBLE AA SUSIE 7540'96
RITO 9FB3 OF 5H11 FULLBACK AMF CAF NHF DDF
FGAF RIBEYE 401P
HOFF MISS FAME S C 595
Dam: **NU-HORIZON RIBEYE 904W**
RED CROWFOOT 2068M
RED NU-HORIZON ROCA 730T
RED T BAR K HIGH ROCKY 7K

EPD's	
BW	+2.1
WW	+53
YW	+92
Milk	+21
TM	+48
Scotal	---
CED	+3.0
CEM	+7.0

BW: 86	Adj WW: 685					
SOT: 790	EOT: 1082	Proj Wt: 1232	ADG: 2.89	WPDA: 3.21	AOD: 6	
Adj. Carcass Values LMY: 63.8 REA: 13.89 %IMF: 3.81 Rib Fat: 0.24 Rump Fat: 0.18						

A thick, soggy, well balanced bull out of a never miss moderate cow. She is a consistent top producer in our herd. Kieran always says "He wishes he had 100 cows like her." Presently, three of her bull calves are working well for L&M, Nameth's, McNutt's and Triple L. This is a cow bull with a birth weight of 86 lbs.

Lot **48**

Nu-Horizon Jock 568C

Male TK 568C March 20 2015 1871551

CAR DUKE 104
S A V YOUNG JOCK 6457 CAF
S A V EMBLYNETTE 1182
Sire: **JL JOCK 9002 CAF**
S A V 8180 TRAVELER 004 DMF DMF AMF CAF NHF OSF DDF
S A V MADAME PRIDE 7798 CAF
S A V MADAME PRIDE 1151
TC STOUT 407 AMF NHF
BAR-E-L THOR 6T
BAR-E-L 365 ENCHANTRES 36J
Dam: **SOO LINE LASS 1210**
CAR TANK 226
SOO LINE LASS 6122
SOO LINE LASS 3199

EPD's	
BW	+1.5
WW	+48
YW	+81
Milk	+29
TM	+53
Scotal	---
CED	+5.0
CEM	+9.0

BW: 79	Adj WW: 653					
SOT: 750	EOT: 1066	Proj Wt: 1216	ADG: 3.13	WPDA: 3.18	AOD: 4	
Adj. Carcass Values LMY: 62.9 REA: 11.22 %IMF: 3.43 Rib Fat: 0.19 Rump Fat: 0.25						

This is our first calf crop from JL Jock and he worked extremely well with our herd, as we retained many of his bulls and heifer calves this year. This is a calving ease extraordinaire that we are confident will work on your heifers. He has lots of eye appeal and substance for our youngest bull with a birth weight of 79 lbs.



Lot **49**

Lot **49**

Nu-Horizon Upward 91C

Male DTK 91C March 06 2015 1872087

CONNEALY ONWARD DMF AMF CAF NHF DDF
SITZ UPWARD 307R DMF AMF CAF NHF DDF
SITZ HENRIETTA PRIDE 81M
Sire: **JL UPWARD 1196**
S A V FOUR SEASONS 5231
JL SUSIE 8289
DOUBLE AA SUSIE 7540'96
B C C-J C L EMBLAZON 038-287
BRONYX EMBLAZON 58T
CRESCENT CREEK ROSEBUD 25R
Dam: **CRESCENT CREEK ERROLLINE 91W**
RR SCOTCHMAN 2999
CRESCENT CREEK ERROLLINE 52S
CRESCENT CREEK ERROLLINE 56L

EPD's	
BW	+4.4
WW	+59
YW	+99
Milk	+19
TM	+49
Scotal	---
CED	-2.0
CEM	+6.0

BW: 87	Adj WW: 671					
SOT: 800	EOT: 1132	Proj Wt: 1282	ADG: 3.29	WPDA: 3.24	AOD: 6	
Adj. Carcass Values LMY: 63.0 REA: 13.51 %IMF: 3.32 Rib Fat: 0.26 Rump Fat: 0.23						

This is Kodie's bull and he is presently our top performing bull. His dam has produced five calves and all were retained and sold. This bull is a traveler so he will be able to cover ground. He has great muscle shape and hair coat. He is a cow bull that can put pounds on your calves in the fall with a birth weight of 87 lbs.

Lot **50**

Red Nu-Horizon Illicit 513C

Male TK 513C February 12 2015 1871374

RED BLAZE V415 OSF
 RED U-2 ICON 223M
 RED U-2 ANEXA 5F
 Sire: **RED U-2 ILLICIT 423P** OSF MAF
 RED THAT'LL DO DIADEM 7D
 RED U-2 DUCHESS 2G
 RED U-2 DUCHESS 08E
 RED T-K AVALANCHE 8S OSF
 RED T-K AVALANCHE 15X
 RED T-K TROPHY 32U
 Dam: **RED NU-HORIZON BABE 378A**
 RED K F BARNEY 53M
 RED K F BABE 98W
 RED K F BABE 21N

EPD's	
BW	-1.8
WW	+44
YW	+69
Milk	+18
TM	+40
Scotal	---
CED	-2.0
CEM	+6.0
REA	-0.21
Marb	+0.18
Fat	+0.027
Carcass	+9

BW: 77	Adj WW: 612				
SOT: 725	EOT: 1006	Proj Wt: 1156	ADG: 2.78	WPDA: 2.71	AOD: 2
Adj. Carcass Values	LMY: 64.4	REA: 12.38	%IMF: 2.63	Rib Fat: 0.17	Rump Fat: 0.24

A dark red heifer bull prospect out of a first time calver. He is moderate in size, has a smooth shoulder with a good hair coat and an excellent disposition. He is structurally sound with a good set of feet and legs and a birth weight of 77 lbs.



Lot **51** **Red Nu-Horizon Barnabas 530C**

Male TK 530C March 03 2015 1871386

RED SVR GANGSTER 14S AMF OSF MAF
 RED NORTHLINE FAT TONY 605U AMF OSF MAF DDF
 RED NORTHLINE RUBY 0305N
 Sire: **RED OWNG BARNABAS 1209**
 RED LMN BANDITO OUTRO 1178H
 RED DUNN 0521
 RED DUNN 9832
 RED TOWAW INDEED 104H OSF
 RED GORK INDEED 711T
 RED SHAWNEE OF TAG-A-LONG 12J
 Dam: **RED RILEY'S ROGA 54X**
 RED KINARED BOARDWALK 881K
 RED RILEY'S ROGA 44R
 RED RILEY'S ROGA 52L

EPD's	
BW	+1.3
WW	+51
YW	+75
Milk	+21
TM	+46
Scotal	---
CED	+0.3
CEM	+4.9
REA	+0.58
Marb	+0.25
Fat	-0.081
Carcass	+17

BW: 92	Adj WW: 621				
SOT: 770	EOT: 1058	Proj Wt: 1208	ADG: 2.85	WPDA: 3.01	AOD: 5
Adj. Carcass Values	LMY: 66.8	REA: 14.35	%IMF: 2.89	Rib Fat: 0.14	Rump Fat: 0.10

This is our first offering out of our Barnabas bull that we bought out of Oregon. Unfortunately there won't be many as he got injured in pasture this summer and we had to put him down. He was a meat machine! The Fat Tony genetics are proven to put pounds on your calves. 530C is a dark, soggy made, maternal bull with performance all packed into one. A cow bull with a birth weight of 92 lbs.



Lot **52** **Red Nu-Horizon Baracuda 532C**

Male TW TK 532C March 04 2015 1880811

RED FLYING K AMBUSH 6T
 RED U-2 MAMA'S BOY 167X
 RED FLYING K LAKOTA 104U
 Sire: **RED U-2 MAMA'S BOY 110A**
 RED U2 MISSION 61W
 RED U-2 EMILY 248Y
 RED U-2 EMILY 232M
 RED BUF CRK ROMELO L081 OSC MAF
 RED GOLD-BAR PANDEMONIUM 113P OSF
 RED GOLD-BAR KURUBA J 213M
 Dam: **RED GOLD-BAR DUCHESS PAN 306T**
 RED D-BAR TREND 1M
 RED CRESCENT CREEK DUCHESS 32P
 RED CRESCENT CREEK DUCHESS 155 OSF

EPD's	
BW	+1.8
WW	+53
YW	+76
Milk	+23
TM	+49
Scotal	---
CED	+1.7
CEM	+2.4
REA	+0.58
Marb	+0.25
Fat	-0.081
Carcass	+18

BW: 79	Adj WW: 711				
SOT: 840	EOT: 1092	Proj Wt: 1242	ADG: 2.50	WPDA: 3.11	AOD: 8
Adj. Carcass Values	LMY: 67.7	REA: 15.47	%IMF: 3.76	Rib Fat: 0.14	Rump Fat: 0.14

Our first calf crop from U-2 Mama Boy. (We switched him into our heifer breeding program as his calves were so consistent for heifers.) This bull is a twin and was a favorite by visitors in the pasture. He is very dark, smooth shouldered and strong topped with depth of rib. He is our highest weaning bull. His dam is a consistent producer with her progeny sold into various herds and us retaining her females. He can be a heifer or cow bull with a birth weight of 79 lbs.



Lot 53 Red Nu-Horizon Barnabas 575C

Male TK 575C March 21 2015 1876065

RED SVR GANGSTER 14S AMF OSF MAF
 RED NORTHLINE FAT TONY 605U AMF OSF MAF DDF
 RED NORTHLINE RUBY 0305N
 Sire: **RED OWNG BARNABAS 1209**
 RED LMN BANDITO QUTRO 1178H
 RED DUNN 0521
 RED DUNN 9832
 RED FINE LINE MULBERRY 26P AMF OSF MAF DDF
 RED BRYLOR BIG ROCK 85T OSF MAF
 RED CYT CHARITY 10P MAF
 Dam: **RED WRAZ SERABELLA 30X**
 RED GET-A-LONG GRUB STEAK 754
 RED PRETTY VIEW SERABELLA 13M
 RED SYMBRAE SERABELLE 181C

EPD's	
BW	+0.3
WW	+46
YW	+65
Milk	+15
TM	+38
Scotal	---
CED	+4.4
CEM	+7.5
REA	+0.58
Marb	+0.25
Fat	-0.081
Carcass	+9



Lot 53

BW: 83	Adj WW: 628					
SOT: 685	EOT: 956	Proj Wt: 1106	ADG: 2.68	WPDA: 2.86	AOD: 5	
Adj. Carcass Values						
LMY: 64.3	REA: 11.99	%IMF: 3.81	Rib Fat: 0.16	Rump Fat: 0.18		

Another Barnabas bull to catch your eye. Fat Tony genetics are not easy to find. His dam has an awesome udder. He is a very stout, dark, well patterned bull that moves out well. We have been impressed with him as he developed over the summer, being an end of March calf. This is a heifer bull with a birth weight of 83 lbs.

Lot 55 Red Nu-Horizon Barnabas 585C

Male TK 585C March 24 2015 1876068

RED SVR GANGSTER 14S AMF OSF MAF
 RED NORTHLINE FAT TONY 605U AMF OSF MAF DDF
 RED NORTHLINE RUBY 0305N
 Sire: **RED OWNG BARNABAS 1209**
 RED LMN BANDITO QUTRO 1178H
 RED DUNN 0521
 RED DUNN 9832
 RED UBAR SEQUOIA 202 OSF
 RED RICOSHAE SEQUOIA 35R
 RED RAFTER IR FIREFLY 3H
 Dam: **RED NU-HORIZON LUKA 959W**
 RED CROWFOOT 2055M
 RED NU-HORIZON LAKOTA 441P
 RED T BAR K DYNA-STAR 109L

EPD's	
BW	-0.3
WW	+45
YW	+62
Milk	+21
TM	+44
Scotal	---
CED	+5.3
CEM	+5.5
REA	+0.54
Marb	-0.11
Fat	-0.071
Carcass	+6



Lot 55

BW: 78	Adj WW: 657					
SOT: 710	EOT: 962	Proj Wt: 1112	ADG: 2.50	WPDA: 2.91	AOD: 6	
Adj. Carcass Values						
LMY: 62.7	REA: 12.24	%IMF: 3.26	Rib Fat: 0.23	Rump Fat: 0.23		

Our youngest calf in the offering out of Barnabas and you will not want to miss him. He is a high growth young bull out of a moderate, easy doing cow. Performance and calving ease all rolled into one. In 2014 Mike Howe bought a maternal female and is very happy with his purchase. With his maternal traits we feel he would be a good prospect for retaining heifers. Heifer bull with a birth weight of 78 lbs.

Nu-Horizon Angus & Triple H Angus are members of the Canadian Red Angus Promotion Society (CRAPS). Any registered Red Angus Bull purchased from a member of CRAPS in 2016 will get the purchasers name entered to win a one year lease on a 20' EBY stock trailer.



Red Owng Barnabas 1209 - Sire of Lots 51, 53 & 55

Hi Low Angus - Lots 56 - 64

Dan Howell - 306-731-2940 Cell: 306-581-7606

Lot 56 Hilow Eliminator 56C

Male HTD 56C February 23 2015 1887156

RITO 707 OF IDEAL 3407 7075
S A V ELIMINATOR 9105 AMF CAF NHF OSF
S A V ABIGALE 5646

Sire: **PEAK DOT ELIMINATOR 396Z**

MOHNEN DYNAMITE 1356 AMF CAF NHF DDF
LADY OF PEAK DOT 459U
LADY OF PEAK DOT 400J
YOUNG DALE TOUCH DOWN 36M

HOWE MAGIC 28R

HOWE MS ERICA 132K

Dam: **HILOW LADY MCHENRY 15U**

TLA POKEMON 31J
HILOW LADY MCHENRY 73M
HILOW LADY MCHENRY 53F

EPD's	
BW	+2.0
WW	+41
YW	+80
Milk	+14
TM	+35
Scotal	---
CED	+2.0
CEM	+4.0



Lot 56

BW: 90	Adj WW: 663				
SOT: 860	EOT: 1200	Proj Wt: 1350	ADG: 3.37	WPDA: 3.33	AOD: 7
Adj. Carcass Values					
LMY: 64.1	REA: 13.33	%IMF: 3.36	Rib Fat: 0.21	Rump Fat: 0.34	

Sired by Peak Dot Eliminator 396Z, which we selected from Peak Dot Ranch's lead off pen of bulls in 2013. 396Z has a birth weight EPD +2.4 and above average weaning EPD +50 and yearling EPD +105.



Lot 57

Lot 57 Hilow Role Model 24C

Male HTD 24C February 06 2015 1862402

FELTONS MEAT PACKER 62 AMF CAF NHF DDF
CONNELLY PACKER 547 DMF AMF CAF DDF
BESTRELLE OF CONANGA 539

Sire: **WILL ROLE MODEL** AMF CAF NHF DDF

V D A R LUCYS BOY AMF CAF NHF DDF

WILL HENRIETTA PRIDE 113A

SITZ HENRIETTA PRIDE 1209

TC STOCKMAN 365 DDF

MVF STOCKMAN 33J

MVKD MISS ESSENCE 11G

Dam: **HILOW PRIDE 33R**

BON VIEW BALANCE 834 AMF CAF NHF DDF

HILOW PRIDE 3G

HILOW PRIDE 9W

EPD's	
BW	-1.3
WW	+34
YW	+70
Milk	+16
TM	+33
Scotal	---
CED	+13
CEM	+15
REA	+0.16
Marb	+0.51
Fat	+0.022
Carcass	+11

BW: 72	Adj WW: 615				
SOT: 865	EOT: 1078	Proj Wt: 1228	ADG: 2.11	WPDA: 2.86	AOD: 10
Adj. Carcass Values					
LMY: 66.2	REA: 11.69	%IMF: 2.87	Rib Fat: 0.08	Rump Fat: 0.19	

Recommended for heifers. Sired by Will Role Model who has a birth weight EPD of 1.0 above average weaning EPD of +51 and above average yearling EPD of +105. Lot 57 had a gestation of 270 days which is 12 days short of the breed average. His dam, 33R consistently calves early. Lots of maternal longevity as 33R has 10 progeny as did her mother and her grand dam raised 12 calves for us.



Lot 58

Lot 58 Hilow Dakota 39C

Male HTD 39C February 13 2015 1866126

S A V 004 DENSITY 4336 AMF CAF NHF DDF
MOHNEN DENSITY 730 AMF CAF NHF DDF
MOHNEN JILT 910 AMF CAF DDF

Sire: **MOHNEN SOUTH DAKOTA 402** AMF CAF NHF OSF DDF

TC ABERDEEN 759 AMF CAF NHF DDF

MOHNEN JILT 539 DDF

MOHNEN JILT 787 DDF

YOUNG DALE TOUCH DOWN 36M

HOWE MAGIC 28R

HOWE MS ERICA 132K

Dam: **HILOW LADY MCHENRY 118X**

HAPPYVALE TOUCH UP 29H

HILOW LADY MCHENRY 36N

HILOW LADY MCHENRY 33J

EPD's	
BW	+2.6
WW	+54
YW	+88
Milk	+20
TM	+47
Scotal	---
CED	-2.0
CEM	+2.0

BW: 92	Adj WW: 737				
SOT: 940	EOT: 1252	Proj Wt: 1402	ADG: 3.09	WPDA: 3.38	AOD: 10
Adj. Carcass Values					
LMY: 64.7	REA: 14.07	%IMF: 3.43	Rib Fat: 0.21	Rump Fat: 0.18	

The first of the South Dakota sons for sale in Canada will be this spring. Mohnen South Dakota weaning and yearling EPD's are in the top 1% of the breed +72 WW and +118 YW.



Mohnen South Dakota 402 - Sire of Lot 58 & 59

Lot **59**

Hilow Dakota 31C

Male HTD 31C February 09 2015 1862405

S A V 004 DENSITY 4336 AMF CAF NHF DDF
 MOHNEN DENSITY 730 AMF CAF NHF DDF
 MOHNEN JILT 910 AMF CAF DDF
 Sire: **MOHNEN SOUTH DAKOTA 402** AMF CAF NHF OSF DDF
 TC ABERDEEN 759 AMF CAF NHF DDF
 MOHNEN JILT 539 DDF
 MOHNEN JILT 787 DDF
 YOUNG DALE TOUCH DOWN 36M
 HOWE MAGIC 28R
 HOWE MS ERICA 132K
 Dam: **HILOW ERICA 29X**
 HILOW DYNASTY 26P
 HILOW ERICA 79S
 HILOW ERICA 21G

EPD's	
BW	+3.3
WW	+54
YW	+89
Milk	+13
TM	+40
Scotal	---
CED	-3.0
CEM	+2.0



Lot **59**

BW: 96	Adj WW: 689				
SOT: 900	EOT: 1200	Proj Wt: 1350	ADG: 2.97	WPDA: 3.21	AOD: 5
Adj. Carcass Values	LMY: 66.3	REA: 13.81	%IMF: 3.60	Rib Fat: 0.14	Rump Fat: 0.21

A very similar bull to his paternal brother, Lot 58. His grand dam, Hi Low Erica 79S, was sold to Jim Grant in our 2010 Celebration Sale and his great grand dam Hi Low Erica 21G weaned her 18th calf this past October. She has amazing feet and udder.



Lot **60**

Lot **60**

Hilow Download 46C

Male HTD 46C February 16 2015 1866128

GAR-EGL PROTEGE AMF CAF NHF DDF
 BALDRIDGE WAYLON W34 AMF CAF NHF DDF
 BALDRIDGE BLACKCAP T163
 Sire: **BALDRIDGE DOWNLOAD 2013** AMF CAF NHF DDF
 S S OBJECTIVE T510 OT26 DMF AMF CAF NHF DDF
 BALDRIDGE BLOSSOM U51 NHF DDF
 BALDRIDGE BLOSSOM S325
 YOUNG DALE TOUCH DOWN 36M
 HOWE MAGIC 28R
 HOWE MS ERICA 132K
 Dam: **HI LOW QUEEN MOTHER 67X**
 CUDLOBE RAINMAKER 49L
 LODGE QUEEN MOTHER 92S
 LODGE QUEEN MOTHER 7J

EPD's	
BW	+0.6
WW	+49
YW	+83
Milk	+23
TM	+48
Scotal	---
CED	+6
CEM	+7
REA	+0.24
Marb	+0.84
Fat	-0.004
Carcass	+21

BW: 90	Adj WW: 725				
SOT: 925	EOT: 1234	Proj Wt: 1384	ADG: 3.06	WPDA: 3.36	AOD: 5
Adj. Carcass Values	LMY: 63.5	REA: 13.22	%IMF: 4.73	Rib Fat: 0.23	Rump Fat: 0.24

An exciting outcross bull to so many of the current pedigrees. There are only 20 sons of Baldrige Download registered in Canada this year. We are retaining one to use ourselves. If you are needing to switch from some SAV breeding consider this bull. Baldrige Download has impressive EPD's BW +0.6 WW +55 YW +102 Milk +32. Last year a maternal brother sold to D5 Ranch in Ceylon.



Lot **61**

Lot **61**

Hilow Armando 12C

Male HTD 12C February 02 2015 1862393

S A V BISMARCK 5682 AMF CAF NHF DDF
 S A V BRAND NAME 9115 AMF CAF NHF DDF
 S A V BLACKCAP MAY 5530 CAF
 Sire: **WHITSTONE ARMANDO A074** AMF CAF DDF
 G A R PREDESTINED AMF CAF NHF DDC
 RAYBAR RITA 60-935 NHF DDF
 TOEBBEN RITA 3151 AMF NHC
 CRESCENT CREEK IDEAL 32U
 CRESCENT CREEK IDEAL 28X
 CRESCENT CREEK PRIDE 106M
 Dam: **HILOW PRIDE 49Z**
 BUSHS GRAND DESIGN AMF CAF NHF DDF
 HILOW PRIDE 37P
 HILOW PRIDE 23M

EPD's	
BW	+3.7
WW	+54
YW	+85
Milk	+23
TM	+40
Scotal	---
CED	-3.0
CEM	+4.0

BW: 99	Adj WW: 761				
SOT: 970	EOT: 1286	Proj Wt: 1436	ADG: 3.13	WPDA: 3.38	AOD: 3
Adj. Carcass Values	LMY: 65.6	REA: 13.28	%IMF: 4.12	Rib Fat: 0.15	Rump Fat: 0.18

In the past couple of years we have expanded our A.I. program and have tried to use some bulls with pedigrees outside the norm. Whitestone Armando would be just that kind of bull as we have the only calves registered in Canada. Lot 61 had an actual weaning weight of 845 lbs on October 5th and a weaning ratio ranking of 2/23. Hi Low Armando 12C is a deep bodied performance bull.

Lot **62**

Hilow Excitement 9C

Male HTD 9C February 01 2015 1862391

GARDENS EXPEDITION AMF CAF NHF DDF

BASIN EXPEDITION R156 AMF CAF DDF

BASIN PRIMROSE LADY 5287

Sire: **BASIN EXCITEMENT** AMF CAF NHF DDF

VERMILION PAYWEIGHT J847 AMF CAF NHF DDF

BASIN LADY S532 AK

BASIN LADY 306E

BLACK RIDGE W WIDESPREAD 2K

ISLA BANK WIDESPREAD 48T

ISLA BANK LUCY 48P

Dam: **HILOW BLOSSOM 20X**

BASIN MAX 602C AMF CAF NHF DDF

HILOW BLOSSOM 35L

G B T BLOSSOM 16J

EPD's	
BW	+2.5
WW	+60
YW	+106
Milk	+17
TM	+47
Scotal	---
CED	+4.0
CEM	+10.0



Lot **62**



Basin Excitement - Sire of Lot 62 & 64

BW: 92	Adj WW: 745				
SOT: 1090	EOT: 1408	Proj Wt: 1558	ADG: 3.15	WPDA: 3.69	AOD: 5
Adj. Carcass Values	LMY: 63.8	REA: 13.94	%IMF: 2.34	Rib Fat: 0.24	Rump Fat: 0.22

I am definitely excited about the potential of Hi Low Excitement 9C. He will be our lead off bull. Moderate birth weight, an impressive actual weaning weight of 875 lbs on October 5th with a weaning weight ratio ranking 4/23. Basin Excitement EPD's are hard to beat BW - 0.1 top 8% WW +73 top 1% YW +128 top 1%.



Lot **63**

Lot **63**

Hilow Eliminator 63C

Male HTD 63C February 26 2015 1862415

RITO 707 OF IDEAL 3407 7075

S A V ELIMINATOR 9105 AMF CAF NHF OSF

S A V ABIGALE 5646

Sire: **PEAK DOT ELIMINATOR 396Z**

MOHNEN DYNAMITE 1356 AMF CAF NHF DDF

LADY OF PEAK DOT 459U

LADY OF PEAK DOT 400J

SITZ ALLIANCE 6595 DMF AMF CAF NHF DDF

SITZ ALLIANCE 83K

SITZ RACHEL 2156

Dam: **B.B.A.R MISS MORRISON 5118**

G T MAXIMUM AMF CAF NHF DDF

MISS MORRISON 18/94

MISS MORRISON MO 18'81

EPD's	
BW	+2.2
WW	+45
YW	+86
Milk	+22
TM	+45
Scotal	---
CED	+2.0
CEM	+4.0

BW: 90	Adj WW: 721				
SOT: 890	EOT: 1176	Proj Wt: 1326	ADG: 2.83	WPDA: 3.29	AOD: 10
Adj. Carcass Values	LMY: 63.4	REA: 13.38	%IMF: 4.09	Rib Fat: 0.24	Rump Fat: 0.20

A paternal brother to Lot 56. These paternal brothers are very similar. Clean fronted enough to work on most heifers, tight sheathed to avoid injury in low brush pastures and enough performance to yield some calves with very good weaning weights.



Lot **64**

Lot **64**

Hilow Excitement 26C

Male HTD 26C February 07 2015 1862404

GARDENS EXPEDITION AMF CAF NHF DDF

BASIN EXPEDITION R156 AMF CAF DDF

BASIN PRIMROSE LADY 5287

Sire: **BASIN EXCITEMENT** AMF CAF NHF DDF

VERMILION PAYWEIGHT J847 AMF CAF NHF DDF

BASIN LADY S532 AK

BASIN LADY 306E

S A V 004 DENSITY 4336 AMF CAF NHF DDF

STUART DESTINATION 32S

KBJ MISS ROSE 802G

Dam: **GERLEI VIOLET 3Y**

YOUNG DALE TOUCH DOWN 36M

GERLEI E VIOLET 13R

LENLOOK EILEEN VIOLET 72K

EPD's	
BW	+2.2
WW	+57
YW	+99
Milk	+16
TM	+45
Scotal	---
CED	+4.0
CEM	+8.0

BW: 98	Adj WW: 732				
SOT: 950	EOT: 1316	Proj Wt: 1466	ADG: 3.62	WPDA: 3.50	AOD: 4
Adj. Carcass Values	LMY: 63.4	REA: 12.46	%IMF: 4.61	Rib Fat: 0.21	Rump Fat: 0.32

A paternal brother to our lead off bull. His mother was a high selling bred heifer in Gerald Kary's 2012 sale. She has raised a couple of 800+ bull calves and has a daughter retained in the herd.

Triple H Angus - Lots 65 - 71

Perry, Dawn & Cory Hart - 306-723-4832

Lot **65**

Triple H Upward 13C

Male HRA 13C February 19 2015 1872512

CONNEALY ONWARD DMF AMF CAF NHF DDF
SITZ UPWARD 307R DMF AMF CAF NHF DDF
SITZ HENRIETTA PRIDE 81M

Sire: **GTA BLACK UP 93A**

S A V BISMARCK 5682 AMF CAF NHF DDF
BLACK GTA 54X
BLACK GTA 5U
BALDRIDGE KABOOM K243 KCF CAF
CONNEALY THUNDER AMF CAF NHF DDF
PARKA OF CONANGA 241 AMF CAC NHF

Dam: **ROJANS LARK 34A**

N BAR EMULATION EXT AMF CAF NHF DDF
ROJAN LARK 83U
ROJANS LARK 60S

EPD's	
BW	+3.2
WW	+46
YW	+93
Milk	+24
TM	+47
Scotal	---
CED	+2.0
CEM	+8.0



Lot 65

BW: 93	Adj WW: 701					
SOT: 770	EOT: 1192	Proj Wt: 1342	ADG: 4.18	WPDA: 3.27	AOD: 2	
Adj. Carcass Values						
LMY: 65.9	REA: 12.67	%IMF: 3.26	Rib Fat: 0.12	Rump Fat: 0.11		

13C is our first son out of GTA Black Up 93A (Sitz Upward 307R x SAV Bismark) a bull we purchased from Lazy S Ranch. 13C ranks in the top 15% for milk and top 25% for total maternal and carcass weight. He has a smooth front and a very long spine. Check him out on Sale Day!

Lot **66**

Triple H Upward 94C

Male HRA 94C April 03 2015 1872501

CONNEALY ONWARD DMF AMF CAF NHF DDF
SITZ UPWARD 307R DMF AMF CAF NHF DDF
SITZ HENRIETTA PRIDE 81M

Sire: **GTA BLACK UP 93A**

S A V BISMARCK 5682 AMF CAF NHF DDF
BLACK GTA 54X
BLACK GTA 5U
SYDGEN C C & 7 AMF CAF NHF DDF
HOOVER DAM AMF CAF NHF DDF
ERICA OF ELLSTON C124

Dam: **F V LADY PRIDE HD 351Z**

H A IMAGE MAKER 0415 AMF CAF NHF DDF
F V LADY PRIDE 572X
F V 5175 LADY PRIDE 171N CAF

EPD's	
BW	+2.9
WW	+53
YW	+100
Milk	+26
TM	+53
Scotal	---
CED	+3.0
CEM	+7.0



Sitz Upward 307R - Grandsire of Lot 65 - 67

BW: 99	Adj WW: 763					
SOT: 795	EOT: 1118	Proj Wt: 1268	ADG: 3.20	WPDA: 3.48	AOD: 3	
Adj. Carcass Values						
LMY: 61.3	REA: 13.00	%IMF: 3.64	Rib Fat: 0.31	Rump Fat: 0.26		

This bull has a very interesting pedigree going back to Sitz Upward 307R and SAV Bismark. His dam, FV Lady Pride HD goes back to Hoover Dam and HA Image Maker. 94C is a wide topped, deep sided, smooth made bull. He has 4 traits that rank in the top 10% of the breed, milk, total maternal, yearling weight and carcass weight. This early April bull has good performance with a 205 weight of 763 lbs.



Lot 66

Lot **67**

Triple H Upstang 52C
Male HRA 52C March 20 2015 1872504

CONNEALY ONWARD DMF AMF CAF NHF DDF
SITZ UPWARD 307R DMF AMF CAF NHF DDF
SITZ HENRIETTA PRIDE 81M

Sire: **GTA BLACK UP 93A**

S A V BISMARCK 5682 AMF CAF NHF DDF
BLACK GTA 54X
BLACK GTA 5U
S A V FINAL ANSWER 0035 AMF CAF NHF DDF
S A V MUSTANG 9134 AMF CAF NHF DDF
S A V EMBLYNETTE 7415 CAF

Dam: **F V MUSTANG'S FANCY 566Z**

SASKALTA RITO 133H
F V 133H FANCY 134N
FV 249B FANCY 24F

EPD's	
BW	+1.1
WW	+42
YW	+86
Milk	+23
TM	+44
Scotal	---
CED	+8.0
CEM	+10.0



Lot **67**

BW: 83	Adj WW: 680					
SOT: 730	EOT: 1098	Proj Wt: 1248	ADG: 3.64	WPDA: 3.28	AOD: 3	
Adj. Carcass Values LMY: 61.0 REA: 12.73 %IMF: 3.79 Rib Fat: 0.31 Rump Fat: 0.32						

Another GTA Black Up 93A son going back to SAV Final Answer on the dam side. He ranks in the top 15% for calving ease and maternal calving ease and the top 20% for birth weight and milk. He is a moderate framed, smooth fronted bull with great style and a good butt. This bull could be used on your heifers with an 83 lb birth weight.



Lot **68**

Lot **68**

Red Triple H Gold 84C

Male HRA 84C March 31 2015 1872513

RED TOWAW INDEED 104H OSF
RED EKW GOLDEN DEED 10U
RED EKW GOLDIE 601S
Sire: **RED HHH GOLDEN INDEED 7Z**
RED DKF FIRST CLASS 65N
RED HHH LAKINA 44T
RED YEO LAKINA 1P
RED SOUTH VIEW NO EQUAL 28H
RED SVR EQUALIZE 134N
RED SVR REBELLO 55J

Dam: **RED YEO CHRISTA 82T**

RED DKF FIRST CLASS 65N
RED YEO CRISTY 24R
RED YEO CRISTY 22H

EPD's	
BW	-0.6
WW	+46
YW	+65
Milk	+16
TM	+39
Scotal	---
CED	+3.2
CEM	+3.1
REA	-0.08
Marb	+0.25
Fat	-0.020
Carcass	+8

BW: 89	Adj WW: 668					
SOT: 730	EOT: 972	Proj Wt: 1122	ADG: 2.40	WPDA: 3.00	AOD: 8	
Adj. Carcass Values LMY: 64.1 REA: 12.36 %IMF: 3.66 Rib Fat: 0.18 Rump Fat: 0.26						

Red Triple H Gold 84C is a moderate framed bull with plenty of eye appeal. His birth weight EPD ranks him in the top 35% of the Red Angus breed. He could work on larger heifers.



Lot **69**

Lot **69**

Red Triple H Rider 64C

Male HRA 64C March 23 2015 1865586

RED HEARTLAND KNIGHT CHARM 11L
RED TER-RON FULLY LOADED 540R AMF OSF
RED TER-RON GOLDIE 240L
Sire: **RED VIKSE DA FULLY LOADED 88X**
RED GOLD-BAR PROGRAM K 1041P
RED VIKSE DYN 536T
RED VIKSE TA DYN 536R
RED BUF CRK BARON 2678
RED BUF CRK BARNEY 3474 OSF MAF
RED OLE SUNFLOWER 359 PB08 OSF

Dam: **RED VALLEYHILLS MISSIE 10W**

RED GLACIER LOGAN OSF MAF
RED VALLEYHILLS MISSIE 66H
RED VALLEYHILLS MISSIE 97Z

EPD's	
BW	+0.4
WW	+58
YW	+84
Milk	+13
TM	+41
Scotal	---
CED	+0.1
CEM	+4.5
REA	-0.07
Marb	+0.34
Fat	-0.016
Carcass	+20

BW: 92	Adj WW: 696					
SOT: 765	EOT: 1114	Proj Wt: 1264	ADG: 3.46	WPDA: 3.36	AOD: 6	
Adj. Carcass Values LMY: 64.8 REA: 13.49 %IMF: 2.77 Rib Fat: 0.19 Rump Fat: 0.16						

Here is a Vikse Da Fully Loaded 88X son which goes back to Red-Ter-Ron Fully Loaded 540R and Smash 41N. 64C is a wide topped, deep sided, long, dark red, bubble butted bull. These Fully Loaded Bulls sure do add pounds to your calf crop.



Red Vikse DA Fully Loaded 88X - Sire of Lot 69 & 71

Lot **70**

Red Triple H Surefire 50C

Male HRA 50C March 19 2015 1865576

RED BAR-E-L RIBEYE 103R OSF
 RED BAR-E-L WARDEN 144W
 RED BAR-E-L LARKABA 72N
 Sire: **RED T-K GOVERNOR 75Z**
 RED FINE LINE MULBERRY 26P AMF OSF MAF DDF
 RED T-K SUE 5T
 RED T-K SUE 3P
 RED SPUR HOOD 60G
 RED VALLEYHILLS HOOD 36S
 RED VALLEYHILLS LARKABELLE 46J
 Dam: **RED VALLEYHILLS WYE 117U**
 RED MLK CRK CUB 722 OSF MAF
 RED VALLEYHILLS WYE 79M
 RED VALLEYHILLS WYE 38G

EPD's	
BW	-0.6
WW	+57
YW	+85
Milk	+20
TM	+48
Scotal	---
CED	+1.1
CEM	+2.3
REA	+0.09
Marb	+0.28
Fat	-0.013
Carcass	+20

BW: 84	Adj WW: 669	SOT: 775	EOT: 940	Proj Wt: 1090	ADG: 1.63	WPDA: 2.80	AOD: 7
Adj. Carcass Values LMY: 64.0 REA: 11.56 %IMF: 3.65 Rib Fat: 0.16 Rump Fat: 0.12							

HRA 50C, son of Red T-K Governor 75Z (Warden 144W X Mulberry). Balanced EPD's: ranks in the top 15% for total maternal and 20% for milk. Lots of maternal strength here. With an 84 lb birth weight he is a moderate framed bull that could be used on your heifers.



Lot **71**

Red Triple H Overload 36C

Male HRA 36C March 13 2015 1865573

RED HEARTLAND KNIGHT CHARM 11L
 RED TER-RON FULLY LOADED 540R AMF OSF
 RED TER-RON GOLDIE 240L
 Sire: **RED VIKSE DA FULLY LOADED 88X**
 RED GOLD-BAR PROGRAM K 1041P
 RED VIKSE DYN 536T
 RED VIKSE TA DYN 536R
 RED U-2 ILLICIT 423P OSF MAF
 RED DKF ILLICIT 17S
 RED DKF MISS DURANGO M.D. 201P
 Dam: **RED TRIPLE H CHEROKEE 114X**
 RED BADLANDS BONUS 70Z
 RED DEER RANGE CHEROKEE 458K
 RED SOUTHOLM CHEROKEE 42H

EPD's	
BW	+1.3
WW	+58
YW	+88
Milk	+12
TM	+41
Scotal	---
CED	+0.4
CEM	+1.4
REA	-0.07
Marb	+0.21
Fat	-0.010
Carcass	+24

BW: 90	Adj WW: 667	SOT: 800	EOT: 1070	Proj Wt: 1220	ADG: 2.67	WPDA: 3.13	AOD: 5
Adj. Carcass Values LMY: 63.2 REA: 11.21 %IMF: 2.76 Rib Fat: 0.18 Rump Fat: 0.24							

Another Vikse Da Fully Loaded 88X meat machine. His Dam goes back to U-2 Illicit 423P. EPD's: ranks top 20% carcass weight and 25% for weaning weight and yearling weight. These Fully Loaded bulls are well built and show their thickness through to the back end.



CANADIAN **RED Angus**
WIN AN EBY TRAILER

When you purchase* a Red Angus bull or female from a current Canadian Red Angus Promotion Society member, you will be entered to win a one year lease on a 20' Eby Stock Trailer.

*registration transfer must be completed with Canadian Angus between now and June 30, 2016

THE TRAILER IS SPONSORED BY EBY AND T-DOWN TRAILERS. EBY IS THE OFFICIAL TRAILER OF THE CANADIAN RED ANGUS PROMOTION SOCIETY.

Triple H Angus & Nu-Horizon Angus are members of the Canadian Red Angus Promotion Society (CRAPS). Any registered Red Angus Bull purchased from a member of CRAPS in 2016 will get the purchasers name entered to win a one year lease on a 20' EBY stock trailer.



Canadian Red Angus Promotion Society
www.redangus.ca office@redangus.ca



ROSS ANNETT & T-DOWN TRAILERS p.(403) 362-5252 f.(403) 362-5254 ross@tdown.ca Brooks, AB www.tdown.ca

Willowview Angus - Lots 72 - 82

Ken & Sandy Harle - 306-359-6100

Lot 72 Willowview Angus Valley 9C

Male KSH 9C January 20 2015 1857086

TC GRIDIRON 258 AMF CAF NHF DDF
 S A V IRON MOUNTAIN 8066 AMF CAF NHF MAF DDF
 S A V MADAME PRIDE 3249 CAF DDF
 Sire: **S A V ANGUS VALLEY 1867** AMF CAF NHF DDF
 S A F 598 BANDO 5175 AMF CAC DDF
 S A V MAY 2397 CAF
 S A V MAY 7238 CAF DDF
 S A V 8180 TRAVELER 004 DMF DMF AMF CAF NHF OSF DDF
 S A V NET WORTH 4200 AMF CAF NHF DDF
 S A V MAY 2410

Dam: **WILLOWVIEW TIPTOP 11W**

KENOSEE PARK 473 29G
 COTTONWOOD TIPTOP 3L
 COTTONWOOD TIPTOP 63Z

EPD's	
BW	+2.4
WW	+53
YW	+99
Milk	+16
TM	+43
Scotal	---
CED	+6.0
CEM	+8.0

BW: 93	Adj WW: 769					
SOT: 1010	EOT: 1276	Proj Wt: 1426	ADG: 2.63	WPDA: 3.24	AOD: 6	
Adj. Carcass Values	LMY: 64.5	REA: 12.79	%IMF: 2.86	Rib Fat: 0.18	Rump Fat: 0.18	

This year we are offering bulls in 4 sire groups. These bulls share one common thread. They were bred to our cows and heifers with performance in mind however, calving ease is a must. No two operations are managed exactly the same. Every cattle person searches for what fits best in their operation.

We do the best we can to provide as much data on each individual bull in the sale. Each person will sift through it differently and decide what information is beneficial and what is trivial. Whether you will be breeding cows or heifers this year, Sandy and I would certainly like to be part of your herd management decision. Hope to see you sale day!

Ken and Sandy Harle



S A V Angus Valley 1867 - Sire of Lot 72



Lot 72

Lot 73 Willowview Significant 5C

Male KSH 5C January 18 2015 1857081

CONNEALY CONSENSUS DDF
 CONNEALY CONSENSUS 7229 AMF CAF NHF DDF
 BLUE LILLY OF CONANGA 16 CAF
 Sire: **EXAR SIGNIFICANT 1769B** AMF CAF DDF
 CONNEALY ONWARD DMF AMF CAF NHF DDF
 SITZ HENRIETTA PRIDE 643T
 SITZ HENRIETTA PRIDE 81M
 BROOKS DAKOTA 636
 YOUNG DALE MARQUIS 46M
 WINDOVER ERICA 27J

Dam: **WILLOWVIEW PEARL 52P**

HXL STOCKMAN 2K
 WILLOWVIEW PEARL 117M
 COTTONWOOD PEARL 62K

EPD's	
BW	+1.5
WW	+50
YW	+81
Milk	+21
TM	+46
Scotal	---
CED	+5.0
CEM	+5.0
REA	+0.46
Marb	+0.46
Fat	+0.032
Carcass	+21

BW: 88	Adj WW: 749					
SOT: 965	EOT: 1264	Proj Wt: 1414	ADG: 2.96	WPDA: 3.19	AOD: 11	
Adj. Carcass Values	LMY: 67.9	REA: 14.77	%IMF: 3.77	Rib Fat: 0.11	Rump Fat: 0.14	



Lot 73

Lot 74 Willowview Significant 12C
Male KSH 12C January 23 2015 1857087

CONNEALY CONSENSUS DDF
CONNEALY CONSENSUS 7229 AMF CAF NHF DDF
BLUE LILLY OF CONANGA 16 CAF
Sire: **EXAR SIGNIFICANT 1769B** AMF CAF DDF
CONNEALY ONWARD DMF AMF CAF NHF DDF
SITZ HENRIETTA PRIDE 643T
SITZ HENRIETTA PRIDE 81M
S A V NET WORTH 4200 AMF CAF NHF DDF
S A V FREE SPIRIT 8164 AMF CAF NHF DDC
S A V EMBLYNETTE 5463 CAF NHF
Dam: **WILLOWVIEW GEORGINA 2Y**
KENOSEE PARK 473 29G
COTTONWOOD GEORGINA 79K
COTTONWOOD GEORGINA 79B

EPD's	
BW	+2.8
WW	+53
YW	+94
Milk	+19
TM	+46
Scotal	---
CED	+3.0
CEM	+4.0



Lot 74

BW: 94	Adj WW: 738					
SOT: 940	EOT: 1344	Proj Wt: 1494	ADG: 4.00	WPDA: 3.44	AOD: 4	
Adj. Carcass Values	LMY: 68.9	REA: 14.41	%IMF: 2.91	Rib Fat: 0.06	Rump Fat: 0.13	

Lot 75 Willowview Significant 15C
Male KSH 15C January 29 2015 1857089

CONNEALY CONSENSUS DDF
CONNEALY CONSENSUS 7229 AMF CAF NHF DDF
BLUE LILLY OF CONANGA 16 CAF
Sire: **EXAR SIGNIFICANT 1769B** AMF CAF DDF
CONNEALY ONWARD DMF AMF CAF NHF DDF
SITZ HENRIETTA PRIDE 643T
SITZ HENRIETTA PRIDE 81M
S A V FINAL ANSWER 0035 AMF CAF NHF DDF
S A V PIONEER 7301 AMF CAF NHF DDF
S A V BLACKBIRD 5297 CAC
Dam: **WILLOWVIEW TIPTOP 4X**
KENOSEE PARK 473 29G
COTTONWOOD TIPTOP 12K
COTTONWOOD TIPTOP 93C

EPD's	
BW	+2.0
WW	+50
YW	+90
Milk	+19
TM	+44
Scotal	---
CED	+5.0
CEM	+5.0
REA	+0.72
Marb	+0.55
Fat	+0.059
Carcass	+28



EXAR Significant 1769B - Sire of Lot 73 - 75

BW: 87	Adj WW: 735					
SOT: 930	EOT: 1212	Proj Wt: 1362	ADG: 2.79	WPDA: 3.15	AOD: 5	
Adj. Carcass Values	LMY: 68.1	REA: 14.44	%IMF: 2.68	Rib Fat: 0.09	Rump Fat: 0.11	

Lot 76 Willowview Eliminator 22C
Male KSH 22C February 10 2015 1881250

RITO 707 OF IDEAL 3407 7075
S A V ELIMINATOR 9105 AMF CAF NHF OSF
S A V ABIGALE 5646
Sire: **PEAK DOT ELIMINATOR 819Y**
S A R NEW TREND 4100 2080
ANNIE K OF PEAK DOT 930P
ANNIE K OF PEAK DOT 723L
S A V 004 PREDOMINANT 4438 AMF CAF NHF DDF
PEAK DOT RESOLUTE 37W AMF CAF NHF
MIA OF PEAK DOT 406R
Dam: **BLACK RIDGE GAMMER 23Y**
PEAK DOT POWER UP 37S
BLACK RIDGE GAMMER 23W
BLACK RIDGE GAMMER 23R

EPD's	
BW	+3.8
WW	+49
YW	+96
Milk	+23
TM	+48
Scotal	---
CED	+1.0
CEM	+5.0



Lot 75

BW: 91	Adj WW: 774					
SOT: 915	EOT: 1230	Proj Wt: 1380	ADG: 3.12	WPDA: 3.30	AOD: 4	
Adj. Carcass Values	LMY: 63.4	REA: 13.42	%IMF: 2.21	Rib Fat: 0.24	Rump Fat: 0.30	



Lot 76

Lot **77**

Willowview Eliminator 27C

Male KSH 27C February 13 2015 1881248

RITO 707 OF IDEAL 3407 7075
 S A V ELIMINATOR 9105 AMF CAF NHF OSF
 S A V ABIGALE 5646
 Sire: **PEAK DOT ELIMINATOR 819Y**
 S A R NEW TREND 4100 2080
 ANNIE K OF PEAK DOT 930P
 ANNIE K OF PEAK DOT 723L
 S A V 8180 TRAVELER 004 DMF DWF AMF CAF NHF OSF DDF
 S A V 004 DENSITY 4336 AMF CAF NHF DDF
 S A V MAY 7238 CAF DDF
 Dam: **WILLOWVIEW PEARL 2T**
 KENOSSE PARK 473 29G
 COTTONWOOD PEARL 62K
 ROY MAC PEARL 2D

EPD's	
BW	+2.5
WW	+41
YW	+83
Milk	+21
TM	+42
Scotal	---
CED	+3.0
CEM	+3.0
REA	+0.24
Marb	+0.19
Fat	+0.016
Carcass	+25

BW: 93	Adj WW: 665					
SOT: 840	EOT: 1106	Proj Wt: 1256	ADG: 2.63	WPDA: 2.99	AOD: 8	
Adj. Carcass Values	LMY: 64.2	REA: 12.08	%IMF: 2.62	Rib Fat: 0.17	Rump Fat: 0.27	



Lot 77

Lot **78**

Willowview Big Split 10C

Male KSH 10C January 20 2015 1857084

HF TIGER 5T AMF CAF NHF OSF DDF
 RING CREEK BIG SPLIT 11Y
 MIA OF PEAK DOT 463S
 Sire: **WILLOWVIEW BIG SPLIT 19A**
 PEAK DOT RESOLUTE 37W AMF CAF NHF
 BLACK RIDGE GAMMER 23Y
 BLACK RIDGE GAMMER 23W
 S A V FINAL ANSWER 0035 AMF CAF NHF DDF
 S A V PIONEER 7301 AMF CAF NHF DDF
 S A V BLACKBIRD 5297 CAC
 Dam: **WILLOWVIEW PEARL 2Z**
 COTTONWOOD STOCKMAN 60M
 WILLOWVIEW PEARL 43P
 COTTONWOOD PEARL 62K

EPD's	
BW	+2.9
WW	+44
YW	+86
Milk	+23
TM	+45
Scotal	---
CED	+2.0
CEM	+5.0

BW: 92	Adj WW: 673					
SOT: 865	EOT: 1242	Proj Wt: 1392	ADG: 3.73	WPDA: 3.15	AOD: 3	
Adj. Carcass Values	LMY: 67.3	REA: 13.10	%IMF: 1.75	Rib Fat: 0.08	Rump Fat: 0.22	



S A V Eliminator 9105 - Paternal Grand sire of Lot 76 & 77

Lot **80**

Willowview Big Split 14C

Male KSH 14C January 24 2015 1857088

HF TIGER 5T AMF CAF NHF OSF DDF
 RING CREEK BIG SPLIT 11Y
 MIA OF PEAK DOT 463S
 Sire: **WILLOWVIEW BIG SPLIT 19A**
 PEAK DOT RESOLUTE 37W AMF CAF NHF
 BLACK RIDGE GAMMER 23Y
 BLACK RIDGE GAMMER 23W
 RITO 707 OF IDEAL 3407 7075
 S A V ELIMINATOR 9105 AMF CAF NHF OSF
 S A V ABIGALE 5646
 Dam: **ERICA OF PEAK DOT 751Z**
 S A V 004 PREDOMINANT 4438 AMF CAF NHF DDF
 ERICA OF PEAK DOT 478U AMF CAF NHF OSF
 ERICA OF PEAK DOT 326R

EPD's	
BW	+2.8
WW	+53
YW	+102
Milk	+24
TM	+51
Scotal	---
CED	+4.0
CEM	+6.0

BW: 90	Adj WW: 760					
SOT: 925	EOT: 1270	Proj Wt: 1420	ADG: 3.42	WPDA: 3.26	AOD: 3	
Adj. Carcass Values	LMY: 65.9	REA: 13.65	%IMF: 2.33	Rib Fat: 0.15	Rump Fat: 0.19	



Lot 78



Lot 80

Lot **82**

Willowview Big Split 23C

Male KSH 23C February 10 2015 1881252

HF TIGER 5T AMF CAF NHF OSF DDF
RING CREEK BIG SPLIT 11Y
MIA OF PEAK DOT 463S

Sire: **WILLOWVIEW BIG SPLIT 19A**

PEAK DOT RESOLUTE 37W AMF CAF NHF
BLACK RIDGE GAMMER 23Y
BLACK RIDGE GAMMER 23W
DUFF ENCORE 702 AMF CAF NHF OSF DDF

PEAK DOT ENCORE 884X
LADY OF PEAK DOT 351T

Dam: **WILLOWVIEW TIBBIE 12Z**

S A V PIONEER 7301 AMF CAF NHF DDF
MVF TIBBIE 106X
MVF TIBBIE 030L

EPD's	
BW	+3.1
WW	+47
YW	+87
Milk	+21
TM	+45
Scotal	---
CED	+4.0
CEM	+6.0



BW: 88	Adj WW: 716					
SOT: 850	EOT: 1114	Proj Wt: 1264	ADG: 2.61	WPDA: 2.99	AOD: 3	
Adj. Carcass Values	LMY: 67.3	REA: 13.44	%IMF: 3.04	Rib Fat: 0.09	Rump Fat: 0.19	

Open Heifers ...

Lot **100** Pen of 5 Black Angus Open Heifers

Consigned by: Steve & Judy Kyrilchuk (Krazy K's Angus) – Francis, SK – 306-245-3308 or 306-861-1702 cell
Born February & March.

Lot **101** Pen of 5 Black Angus/Simmental Heifers

Lot **102** Pen of 5 Black Angus/Simmental Heifers

Consigned by: Wade King (Creek Side Ranch) – Central Butte, SK – 306-796-7929 cell
Born April.

Lot **103** Pen of 3 Black Angus Heifers

Lot **104** Pen of 3 Black Angus Heifers

Consigned by: Dan Howell (Hi Low Angus) – Lumsden, SK – 306-731-2940 or 306-581-7606 cell
Born February & March.

Terms & Conditions ...

Bidding: Each animal will be sold to the highest bidder.

Bidding Disputes: The auctioneer will settle any disputes as to bids and his decision on such matters shall be final.

Terms: The terms of the sale are cash. The right of property shall not pass until after settlement is made. All settlements will be made with the clerks of the sale immediately following the conclusion of the sale and before any cattle will be released from the sale facility.

Purchaser's Risk: Each animal becomes the risk of the purchaser as soon as sold. Animals will be fed, watered and cared for at the purchaser's risk for a reasonable time.

Insurance: A representative of a major livestock insurance company will be present to care for insuring cattle.

Certificate of Registry: A certificate of registry and transfer will be furnished for each animal.

Health: All cattle will be in excellent health.

Announcements: Changes of information contained in this catalogue relating to the animals offered for sale will be announced from the auction box and such announcements shall take precedence.

Breeder's Guarantee: All animals sold are guaranteed breeders by the owner. Any animal that has not proven itself a breeder within six months after date of sale, if in healthy condition, may be returned to the seller at buyer's expense. The seller reserves the privilege of trying for a period of six months to prove the animal a breeder. The seller at his option may either return the purchase price to the buyer or replace the animal with another of equal quality in full settlement of ALL claims. All complaints regarding breeding difficulties must be reported in writing by the buyer to the seller within the specified time above and any animal returned must be free from disease and in good health.

Liability: Neither owners, sale manager, clerks, nor anyone connected with the sale assumes any responsibility, legal or otherwise for damage of any kind.

Contract: The above terms and conditions shall constitute a contract between the buyer and seller of each animal sold.

Delivery/Transportation: Delivery can be arranged at a cost of \$100 per bull within 300 km of Moose Jaw. If you are over 300 km we can assist you in making travel arrangements at cost.

NICK'S SERVICE LTD.

Phone: 306.781-1077

nicksserviceltd@sasktel.net • www.nickservice.com • #2 South Plains Rd W • Emerald Park, SK

A baler so advanced,
it can almost bale without you.



Triple A Bull Sale
Box 3771
Regina, SK S4P 3N8

CANADA POSTES
POST CANADA

Postage paid
Addressed
Admail
03070247

Port payé
Médiaposte
avec adresse



Acquire the
Angus
Advantage

