

Acquire the Angus Advantage



At the 18th Annual

Triple 'A'

Performance Tested
Bull Sale

Monday, April 6, 2015 1:00 pm CST

Johnstone Auction Mart, Moose Jaw, Saskatchewan
4 Miles West of Moose Jaw on Trans Canada Highway

Welcome ...

On behalf of the Triple A Group we want to welcome you to the 18th annual Triple A "Performance Tested" Bull Sale. As you look through our catalogue I am sure you will recognize a number of the sires used, as well as the maternal genetics developed among our contributors. We are very confident we have a bull that can perform well in your program. The beef business is as good as it has ever been and if you plan to breed a larger inventory of females to take advantage of these prices then you will need the extra bull power to do that. We will also be selling pens of 3 and 5 commercial heifers to help you build your inventory.

Our sale schedule will see our bulls being delivered to Johnstone Auctions at Moose Jaw, SK on April 3 and they can be viewed there on April 4 & 5. Prior to that the bulls are available for viewing at Hagerty Livestock, 6.5 miles north of Highway #1 on Kalium Road near Belle Plaine, where the bulls have been on a performance program since mid October. Join us for lunch prior to our 1:00 pm sale on Monday the 6th.

All of our bulls can be seen on video at the Cattle in Motion web site (www.cattleinmotion.com) and our sale will be broadcast live on that same site. As a pre-registered buyer you will be able to participate on line if you are unable to attend the sale in person.

Please feel free to call our consignors to discuss your program needs or new for this year we are very pleased to welcome Jim Nugent to our sale staff. He has purchased Triple A bulls from the beginning (for 18 years) for the PFRA. When we asked him what he liked about our bulls, this was his response, "Larry Hagerty does a terrific job feeding the bulls ready for breeding condition. I always found good value in these bulls." Call Jim at 204-841-0113 and he would be happy to help you out. We look forward to seeing you on sale day!

Sincerely
The Triple A Sales Group

Catalogue on-line at
www.johnstoneauction.ca or
www.sasklivestock.com
www.cattleinmotion.com

Triple A Consignors ...

Bell Angus - Ken Bell	306-345-2052	Lot 10 - 19
Black Pearl Angus - Matt Bedard & Katelyn Jeffrey.....	306-690-7194 or 306-737-1571	Lot 71 - 75
Cottonwood Angus - Brett Gaube.....	306-537-4710	Lot 41 - 45
Glen Gabel Angus - Glen Gabel	306-536-1927	Lot 21 - 33
Hi Low Angus - Dan Howell.....	306-731-2940 Cell: 581-7606	Lot 52 - 58
Nu-Horizon Angus - Kieran & Deb Doetzel.....	306-336-2245	Lot 59 - 70
Triple H Angus - Perry & Dawn Hart & family.....	306-723-4832	Lot 46 - 51
Valley Lodge Cattle Co. - Gordon C. Roger	306-771-2305	Lot 1 - 8
Willowview Angus - Ken & Sandy Harle.....	306-359-6100	Lot 34 - 40
Wilmo Angus - John & Marg Willmott.....	306-345-2046	Lot 9

Sale Day Phone - 306-693-4715

Auctioneer - Scott Johnstone - 306-631-0767

Blockman - Glen Gabel - 306-536-1927

Ringman - Ben Wright - 519-374-3335 & Corey Mantell 306-631-1888

Hagerty Livestock - Larry & Fay Hagerty - 306-345-2523

Livestock Insurance - Dave Jones, Long Lake Insurance - 306-638-3063

Sale Representative - Jim Nugent - 204-841-0113



Acquire the Angus Advantage

at the 18th Annual Triple A Bull Sale

75 Performance Tested Yearling Bulls on Offer

65 Black Angus • **10** Red Angus

Plus a Select Group of Commercial Heifers

Lunch at 12:00 Noon • **Sale** at 1:00 pm • **Monday, April 6, 2015**

Johnstone Auction Mart, Moose Jaw, Saskatchewan

Definitions

- BW - Birth weight - all weights are measured in pounds.
- SOT - Start of test weight
- EOT - End of test weight
- Proj Wt - Estimate of Sale Day weight
- 205 - Adjusted weaning weight
- ADG - Average daily gain - gain in pounds per day during the Test Period
- WPDA - Weight per day of age - gain in lbs. per day from birth to weigh date
- AOD - Age of Dam

Ultrasound Carcass Data

The importance of carcass trait information will be increased as value based marketing and quality assurance programs become more recognized and commonplace in the beef industry. Cattle should be scanned as close as possible in age at which their progeny will likely go to slaughter. A range from 12 months to 14 months is probably optimal. Ultra Sound Measurements in a Breeding Program: As with all genetic traits, ultrasound measurements should only be compared among animals of similar age and similar management. Only then is it of any measured value to use the ultrasound measurement for selection.

Back Fat: Fat measurement is important for several reasons. First fat depth influences lean meat yields; fat bulls have less lean meat in the carcass. Secondly fat measurements give indications of a bull's fleshing ability. Extremes in either too lean or too fat a bull are undesirable. Moderation is key.

IMF/Marbling: may be the most important attribute to be measured with ultrasound. This trait can convert into as much as \$80 difference

%IMF	US	CAN	Marbling Score
2.3 - 3.0	Select -	AA -	4.0 - 4.4
3.1 - 3.9	Select +	AA +	4.5 - 4.9
4.0 - 5.7	Choice -	AAA -	5.0 - 5.9
5.8 - 7.6	Choice o	AAA o	6.0 - 6.9
7.7 - 9.7	Choice +	AAA +	7.0 - 7.9
9.8 - 12.1	Prime -	Prime -	8.0 - 8.9
12.2 +	Prime +	Prime o	9.0 +

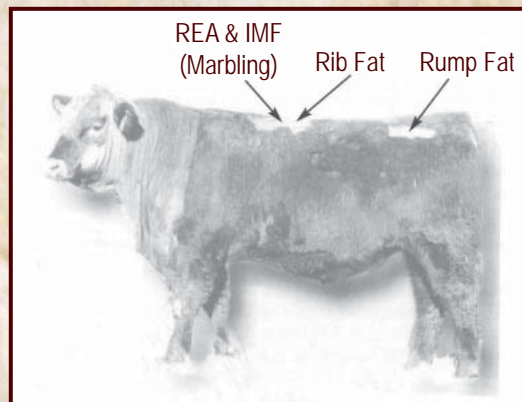
in a carcass from a AA to a AAA grade. The values are numerical and indicate the estimate of carcass marbling if the animal was slaughtered immediately following the evaluation. The scale is as follows:

Bulls will register at least a full degree less marbling and 30% less backfat thickness than steers of the same age and feeding history. The marbling estimates are best utilized by grouping the bulls into high, medium and low marbling groups rather than to compare individuals that differ by only a few tenths of a score.

Ribeye Area Adjusted to 100 lbs. Body Weight (REA in/100 lbs.): The largest ribeye area may belong to the largest bull therefore adjusting the REA to 100 lbs body weight helps determine which bulls are more muscular and which bulls are simply heavier.

Lean Meat Yield (LMY%): is the percentage of lean meat in a carcass. Yield grade is an economically important factor in marketing carcasses. With a high genetic potential, this trait can be an important objective in a breeding program.

All bulls have been ultrasounded by Rod Wendorff (AUO - CUP Certified)



2014 EPD Breed Averages

Trait	BW	WW	YW	Milk	TM	SC	CED	CEM	
Black	+2.7	+45	+79	+19	+41	+0.69	+2.3	+6.3	
Trait	BW	WW	YW	Milk	TM	CED	CEM	Stay	HPG
Red	-0.6	+49	+75	+16	+41	+2.7	+4.6	+11	+10

Valley Lodge Cattle Company - Lots 1 - 8

Gordon C. Roger - 306-771-2305

Lot **1**

Lodge Upward 1B

Male (ET) VLC 1B January 18 2014 1788660

CONNELY LEAD ON DMF AMF CAF NHF DDF
CONNELY ONWARD DMF AMF CAF NHF DDF
ALTUNE OF CONANGA 6104

Sires: **SITZ UPWARD 307B** DMF AMF CAF NHF DDF (1385926)

SITZ VALUE 7097 AMF CAF NHF DDF
SITZ HENRIETTA PRIDE 81M
SITZ HENRIETTA PRIDE 1370
STEVENSON RAINMAKER 630G
CUDLOBE RAINMAKER 49L
CUDLOBE ROSEBUD 53J

Dams: **LODGE DUCHESS 90S** (1319309)

TC STOCKMAN 2164 AMF CAF NHF DDF
LODGE DUCHESS 1J
WILMO DUCHESS 14E

EPD's	
BW	+0.4
WW	+54
YW	+100
Milk	+30
TM	+57
Scotal	---
CED	+4.0
CEM	+7.5

BW: 82	Adj WW: 718					
SOT: 988	EOT: 1296	Proj Wt: 1446	ADG: 103	WPDA: 3.29	AOD: 8	
Adj. Carcass Values						
LMY: 66.4	REA: 15.21	%IMF: 2.80	Rib Fat: 0.18	Rump Fat: 0.27		

The first in our pair of ET Upward bull calves out of a Cudlobe Rainmaker cow we think very highly of. She is a long bodied, moderate framed cow with a nice udder, lots of natural muscling and a wonderful temperament which she passes on to all of her calves. The Upward mating has provided some additional power and an excellent set of EPD's with emphasis on maternal strength, calving ease and the performance traits Upward is known for. This will be the more moderate framed bull of the pair.



Lot **2**

Lodge Upward 9B

Male (ET) VLC 9B January 24 2014 1788655

CONNELY LEAD ON DMF AMF CAF NHF DDF
CONNELY ONWARD DMF AMF CAF NHF DDF
ALTUNE OF CONANGA 6104

Sires: **SITZ UPWARD 307B** DMF AMF CAF NHF DDF (1385926)

SITZ VALUE 7097 AMF CAF NHF DDF
SITZ HENRIETTA PRIDE 81M
SITZ HENRIETTA PRIDE 1370
STEVENSON RAINMAKER 630G
CUDLOBE RAINMAKER 49L
CUDLOBE ROSEBUD 53J

Dams: **LODGE DUCHESS 90S** (1319309)

TC STOCKMAN 2164 AMF CAF NHF DDF
LODGE DUCHESS 1J
WILMO DUCHESS 14E

EPD's	
BW	+1.5
WW	+55
YW	+101
Milk	+30
TM	+58
Scotal	---
CED	+4.0
CEM	+7.5

BW: 98	Adj WW: 754					
SOT: 1040	EOT: 1394	Proj Wt: 1544	ADG: 4.02	WPDA: 3.59	AOD: 8	
Adj. Carcass Values						
LMY: 66.1	REA: 14.47	%IMF: 2.55	Rib Fat: 0.17	Rump Fat: 0.21		

A full brother to Lot #1 but with a little more frame and perhaps a touch more length of body. Both of these bulls are extremely quiet and you will be able to scratch them in the pen. If temperament is important to you, either of these Upward sons would be great choices, but why choose - take them both home and have a very uniform set of high performance Upward sons!



EXAR Significant 1769B - Sire of Lot 5 & 6



Lot **3**

Lodge Final Answer 2B

Male (ET) VLC 2B January 19 2014 1788657

G D A R TRAVELER 71 AMF CAF NHF DDF
SITZ TRAVELER 8180 AMF CAF NHF DDF
SITZ EVERELDA ENTENSE 1137

Sire: **S A V FINAL ANSWER 0035** AMF CAF NHF DDF (1061938)

BON VIEW BANDO 598 AMF CAC DDF
S A V EMULOUS 8145 CAF
S A V SKY EMULOUS 2124
STEVENSON RAINMAKER 630G
CUDLOBE RAINMAKER 49L
CUDLOBE ROSEBUD 53J

Dam: **LODGE DUCHESS 90S** (1319309)

TC STOCKMAN 2164 AMF CAF NHF DDF
LODGE DUCHESS 1J
WILMO DUCHESS 14E

EPD's	
BW	+0.9
WW	+51
YW	+86
Milk	+23
TM	+49
Scotal	---
CED	+7.5
CEM	+10.0



BW: 92	Adj WW: 717				
SOT: 1012	EOT: 1334	Proj Wt: 1484	ADG: 3.66	WPDA: 3.39	AOD: 8
Adj. Carcass Values	LMY: 63.9	REA: 15.91	%IMF: 2.68	Rib Fat: 0.30	Rump Fat: 0.27

An ET son out of the Duchess 90S cow which reminds me a lot of the first Upward bull in our offering. Another very quiet bull with some exceptional calving ease numbers that come from the Final Answer mating. With Final Answer sons expected to dwindle as his semen is used up, this may be one of your last chances to acquire one. Don't let the birth weight on this bull concern you, we would recommend him on heifers or cows with confidence.



Lot **5**

Lodge Significant 14B

Male VLC 14B January 27 2014 1776827

CONNELLY CONSENSUS DDF
CONNELLY CONSENSUS 7229 AMF CAF NHF DDF
BLUE LILLY OF CONANGA 16 CAF

Sire: **EXAR SIGNIFICANT 1769B** AMF CAF DDF (1707960)

CONNELLY ONWARD DMF AMF CAF NHF DDF
SITZ HENRIETTA PRIDE 643T
SITZ HENRIETTA PRIDE 81M
HERO 6267 OF R R 2418
H A IMAGE MAKER 0415 AMF CAF NHF DDF
H A RITO BLACKCAP 9038

Dam: **LODGE COUNTESS 6X** (1557071)

CUDLOBE MIDLAND 21R
LODGE COUNTESS 40T
LODGE COUNTESS 27N

EPD's	
BW	+0.2
WW	+55
YW	+89
Milk	+31
TM	+59
Scotal	---
CED	+9.0
CEM	+9.0
REA	+0.60
Marb	+0.43
Fat	-0.017
Carcass	+24

BW: 86	Adj WW: 781				
SOT: 1118	EOT: 1394	Proj Wt: 1544	ADG: 3.14	WPDA: 3.62	AOD: 4
Adj. Carcass Values	LMY: 66.2	REA: 14.62	%IMF: 2.84	Rib Fat: 0.17	Rump Fat: 0.21

These are our first set of EXAR Significant sons who we selected for his obvious performance traits while still maintaining some excellent calving ease and maternal numbers. This bull has really exploded since weaning and will be our lead off bull in our offering. His dam is a heavy milking, small to moderate framed Image Maker daughter with an excellent disposition. A half brother went to Perry and Marcie Windjack, Maple Creek last year at the AAA Sale. This bull is a real eye catcher and we encourage you to check him out on sale day. An outcross pedigree, which should also be of interest to some.

Lot **4**

Lodge Final Answer 6B

Male VLCC 6B January 23 2014 1776841

G D A R TRAVELER 71 AMF CAF NHF DDF
SITZ TRAVELER 8180 AMF CAF NHF DDF
SITZ EVERELDA ENTENSE 1137

Sire: **S A V FINAL ANSWER 0035** AMF CAF NHF DDF (1061938)

BON VIEW BANDO 598 AMF CAC DDF
S A V EMULOUS 8145 CAF
S A V SKY EMULOUS 2124
KRUGERRAND OF DONAMERE 490 AMF NHF
TC ADVANTAGE AMF CAF NHF DDC
TC PRIDE 2010

Dam: **VALLEY LODGE COUNTESS 5Z** (1668767)

CUDLOBE RAINMAKER 49L
LODGE COUNTESS 83S
LODGE COUNTESS 8L

EPD's	
BW	-1.2
WW	+51
YW	+89
Milk	+24
TM	+50
Scotal	---
CED	+10.0
CEM	+11.0

BW: 73	Adj WW: 738				
SOT: 968	EOT: 1278	Proj Wt: 1428	ADG: 3.52	WPDA: 3.29	AOD: 2
Adj. Carcass Values	LMY: 64.0	REA: 14.19	%IMF: 2.62	Rib Fat: 0.24	Rump Fat: 0.30

This would be our number one heifer bull in our offering, out of one of Megan's favorite cows. A maternally stacked pedigree, with very strong calving ease EPD's and a birth weight to match. The dam is a very moderate framed, TC Advantage cow with an excellent udder and small teats. If you're looking for a "bet the ranch" calving ease bull this would be our pick.



Lot 6**Lodge Significant 18B**
Male VLCC 18B February 1 2014 1776838

CONNEALY CONSENSUS DDF
 CONNEALY CONSENSUS 7229 AMF CAF NHF DDF
 BLUE LILLY OF CONANGA 16 CAF

Sire: EXAR SIGNIFICANT 1769B AMF CAF DDF (1707960)

CONNEALY ONWARD DMF AMF CAF NHF DDF
 SITZ HENRIETTA PRIDE 643T
 SITZ HENRIETTA PRIDE 81M

S A V 8180 TRAVELER 004 DMF DMF AMF CAF NHF OSF DDF
 ANKONIAN WERNER WILD FIRE 96 AMF CAF NHF DDF
 FSR ELBA SPECIAL DESIGN S406

Dam: LODGE COUNTESS AOW (1489834)

BUSHS GRAND DESIGN AMF CAF NHF DDF
 LODGE COUNTESS 65S
 LODGE COUNTESS 27N

EPD's	
BW	+1.7
WW	+50
YW	+85
Milk	+27
TM	+52
Scotal	---
CED	+7.0
CEM	+8.0



BW: 90	Adj WW: 735				
SOT: 1060	EOT: 1360	Proj Wt: 1510	ADG: 3.41	WPDA: 3.58	AOD: 5
Adj. Carcass Values	LMY: 66.3	REA: 15.42	%IMF: 3.14	Rib Fat: 0.19	Rump Fat: 0.20

Another Significant son out of Megan's show cow that offers a bit more performance and frame and if you saw the cow you would want to own this bull. She is one of the deepest bodied cows at Valley Lodge and has passed on her deep bodied, well muscled conformation to this bull. This will probably be our largest framed bull in our offering and is probably better suited for cows than heifers.

Lot 7**Lodge Front Range 16B**
Male SFR 16B January 31 2014 1776831

CONNEALY FRONT PAGE 0228 CAF DDF
 KESSLERS FRONTMAN R001 AMF CAF NHF DDF
 KESSLERS BELL 0024

Sire: KESSLERS FRONT RANGE 1520 AMF CAF NHF DDF (1561371)

MYTTY IN FOCUS AMF CAF NHF DDF
 KESSLERS BELL R230
 KESSLERS BELL TOLL 7165

BOYD NEW DAY 8005 AMF CAF NHF DDF
 GDAR GAME DAY 449 AMF CAF NHF DDF
 G D A R MISS WIX 474

Dam: LODGE DUCHESS IX (1549993)

H A IMAGE MAKER 0415 AMF CAF NHF DDF
 LODGE DUCHESS 4U
 LODGE DUCHESS 49P

EPD's	
BW	+1.6
WW	+50
YW	+82
Milk	+29
TM	+54
Scotal	---
CED	+3.0
CEM	+6.0



BW: 90	Adj WW: 753				
SOT: 1028	EOT: 1354	Proj Wt: 1504	ADG: 3.70	WPDA: 3.55	AOD: 4
Adj. Carcass Values	LMY: 62.8	REA: 15.50	%IMF: 4.06	Rib Fat: 0.33	Rump Fat: 0.39

A full brother to the high selling AAA bull who went to Roy and Heather Klindt at Crane Valley. We selected Front Range as an outcrossing calving ease bull who we have used on both heifers and cows. If you are looking for a calving ease bull with a bit more punch, this one is worth a look. He is a very eye catching bull with lots of natural muscling and out of a very moderate framed Game Day cow with loads of milk that Shane used in 4-H. Another outstanding pedigree with excellent EPD's and a great option for cows or heifers.

**Lot 8****Lodge Jock 25B**
Male VLC 25B February 16 2014 1776829

CAR DUKE 104
 S A V YOUNG JOCK 6457 CAF
 S A V EMBLYNETTE 1182

Sire: JL JOCK 2002 CAF (1501008)

S A V 8180 TRAVELER 004 DMF DMF AMF CAF NHF OSF DDF
 S A V MADAME PRIDE 7798 CAF
 S A V MADAME PRIDE 1151
 S S TRAVELER 6807 T510 DMF AMF CAF NHF DDF
 S S OBJECTIVE T510 OT26 DMF AMF CAF NHF DDF
 S S MISS RITA R011 7R8 AMF NHF

Dam: LODGE DUCHESS 15X (1549986)

CUDLOBE RAINMAKER 49L
 LODGE DUCHESS 90S
 LODGE DUCHESS 1J

EPD's	
BW	-2.4
WW	+59
YW	+101
Milk	+28
TM	+58
Scotal	---
CED	+10.3
CEM	+6.2

BW: 89	Adj WW: 719				
SOT: 930	EOT: 1208	Proj Wt: 1358	ADG: 3.16	WPDA: 3.31	AOD: 4
Adj. Carcass Values	LMY: 63.2	REA: 12.88	%IMF: 4.20	Rib Fat: 0.23	Rump Fat: 0.28

The last of the Jock sons to be born at Valley Lodge as he has moved on to work for Doetzel's at Nu-Horizon. We have been extremely happy with our Jock calves as they delivered on everything we were looking for when we sourced him from Johnson's. He has great calving ease, loads of natural muscling, and excellent growth performance. If you are looking to maintain some maternal strength and calving ease and introduce a bit more muscle and performance, this is the bull for you. One of the best muscled Angus bulls we have ever offered was a Jock son that also went to Windjack's in Maple Creek at the 2014 AAA Sale.

Wilmo Angus - Lots 9

John & Marg Willmott - 306-345-2046

Lot **9**

Wilmo Pioneer 3B

Male FCW 3B March 15 2014 1802787

S A V PIONEER 7301 AMF CAF NHF DDF
WILLOWVIEW PIONEER 6X
WILLOWVIEW GRAND JUNE 36P

Sire: **NORTHERN VIEW PIONEER 103Z** (1675556)
A A R REALLY WINDY 1205 AMF CAF NHF DDF
NORTHERN VIEW RUTH 81S
NORTHERN VIEW RUTH 85P
EAGLEVIEW MAGICIAN 5L
WILMO WIZARD 6S
WILMO DUCHESS 6J

Dam: **WILMO GRACE 13W** (1498591)
YOUNG DALE MONARCH 12E
YOUNG DALE GRACE 24G
YOUNG DALE GRACE 8E

EPD's	
BW	+1.5
WW	+44
YW	+75
Milk	+16
TM	+38
Scotal	---
CED	+3.5
CEM	+4.5



BW: 70	Adj WW: 725				
SOT: 814	EOT: 1180	Proj Wt: 1330	ADG: 4.16	WPDA: 3.49	AOD: 5
Adj. Carcass Values	LMY: 59.4	REA: 13.95	%IMF: 3.15	Rib Fat: 0.41	Rump Fat: 0.52

The sire of 3B, Northern View Pioneer 103Z had a WW of 891 lbs, YW of 1455 lbs and a rib eye of 15.78 square inches.

NICK'S SERVICE LTD.

Phone: 306.781-1077

nicksserviceltd@sasktel.net • www.nickservice.com • #2 South Plains Rd W • Emerald Park, SK

A baler so advanced,
it can almost bale without you.



Bell Angus - Lots 10 - 19

Ken Bell - 306-345-2052

Lot **10**

Bell Ideal 7B

Male NBK 7B January 18 2014 1781306

SANDY BAR IDEAL 18S
VALLEY BLOSSOM IDEAL 1W
VALLEY BLOSSOM BLACKCAP 712P
Sire: CREEKVIEW IDEAL 4Y NHF (1604060)
SOO LINE HOOSIER 5033
CREEKVIEW PRIDE 207T
CREEKVIEW PRIDE 203R
ISLA BANK TITAN 148
HILOW TITAN 13P
HILOW HEATHER 23E
Dam: BELL EUGENIE ERICA 5YS (1365591)
BELL TOP CHOICE 7B
BELL EUGENIE ERICA 20F
BELL EUGENIE ERICA 9U

EPD's	
BW	+2.7
WW	+48
YW	+68
Milk	+14
TM	+38
Scotal	---
CED	+2.0
CEM	+6.0
REA	-0.01
Marb	+0.06
Fat	-0.027
Carcass	+15



Lot 10

BW: 89	Adj WW: 700				
SOT: 1059	EOT: 1358	Proj Wt: 1508	ADG: 3.40	WPDA: 3.45	AOD: 8
Adj. Carcass Values	LMY: 64.7	REA: 12.49	%IMF: 3.44	Rib Fat: 0.16	Rump Fat: 0.25

A very correct, attractive bull by Creekview Ideal 4Y. He has lots of hip and depth of body and just an 88 lb birth weight. His dam is a very productive Hilow Titan 13P daughter.



Lot 11

Lot **12**

Bell Pioneer 15B

Male NBK 15B January 31 2014 1781360

S A V FINAL ANSWER 0035 AMF CAF NHF DDF
S A V PIONEER 7301 AMF CAF NHF DDF
S A V BLACKBIRD 5297 CAC
Sire: WILLOWVIEW PIONEER 6X (1584575)
KENOSEE PARK 473 29G
WILLOWVIEW GRAND JUNE 36P
WILLOWVIEW GRAND JUNE 4H
GH RIBSTONE 81P
BELL RIBSTONE 53U
IVANHOE ROYAL PRIDE 7S
Dam: BELL BLACK LUCY 2TY (1607278)
MOHNEN DYNAMITE 1356 AMF CAF NHF DDF
BELL BLACK LUCY 16W
BELL BLACK LUCY 5R

EPD's	
BW	+0.7
WW	+48
YW	+83
Milk	+19
TM	+43
Scotal	---
CED	+2.0
CEM	+4.0
REA	+0.26
Marb	+0.22
Fat	+0.023
Carcass	+21

BW: 82	Adj WW: 684				
SOT: 940	EOT: 1276	Proj Wt: 1426	ADG: 3.82	WPDA: 3.35	AOD: 3
Adj. Carcass Values	LMY: 64.3	REA: 13.92	%IMF: 3.05	Rib Fat: 0.22	Rump Fat: 0.25

A wide topped, deep sided Pioneer 6X son entering the world with an 82 lb birth weight. He should work well on heifers or cows. The dam's second calf to go to the Triple A Sale. Last year's bull sold to Sandra Jeffrey of Moose Jaw.



Lot 12

Lot **11**

Bell Reward 11B

Male NBK 11B January 28 2014 1781309

CONNELLY ONWARD DMF AMF CAF NHF DDF
SITZ UPWARD 307R DMF AMF CAF NHF DDF
SITZ HENRIETTA PRIDE 81M
Sire: NORTHERN VIEW UPWARD 92Y (1623548)
EASTONDALE RIGHT TIME 62'03
NORTHERN VIEW EILEENMERE 89R
EASTONDALE EILEENMERE 12'03
HYLINE RIGHT TIME 338 AMF CAF NHF DDF
HYLINE RIGHT WAY 781 AMF CAF NHF DDF
HYLINE ELLEN 86
Dam: BELL PRIDE III (1381171)
LONE STAR ONLY PROFIT 1J
BELL MS PRIDE 16L
HOWE MS PRIDE 76J

EPD's	
BW	+2.3
WW	+46
YW	+80
Milk	+20
TM	+43
Scotal	---
CED	+3.0
CEM	+7.0
REA	+0.24
Marb	+0.19
Fat	-0.011
Carcass	+22

BW: 85	Adj WW: 685				
SOT: 984	EOT: 1246	Proj Wt: 1396	ADG: 2.98	WPDA: 3.24	AOD: 7
Adj. Carcass Values	LMY: 66.0	REA: 13.08	%IMF: 2.61	Rib Fat: 0.13	Rump Fat: 0.20

A moderate framed bull from an easy keeping Hyline Right Way 781 cow. This bull is her third calf to go through the Triple A Sale. Maternal brothers have sold to Dan Exelby and the PFRA.

Lot **13**

Bull Upward 18B

Male SJB 18B February 1 2014 1781374

CONNELLY ONWARD DMF AMF CAF NHF DDF
SITZ UPWARD 307R DMF AMF CAF NHF DDF
SITZ HENRIETTA PRIDE 81M

Sire: NORTHERN VIEW UPWARD 92Y (1623548)

EASTONDALE RIGHT TIME 62'03
NORTHERN VIEW EILEENMERE 89R
EASTONDALE EILEENMERE 12'03
NORTHERN VIEW QUANTUM 86P
BELL QUANTUM 26T
BELL BLACK LUCY 5R

Dam: GGA LUCY IX (1578229)

A-LINE TONTO 3L
IVANHOE B BLACK LUCY 4T
IVANHOE B BLACK LUCY 27L

EPD's	
BW	---
WW	---
YW	---
Milk	---
TM	---
Scotal	---
CED	---
CEM	---



Lot 13

BW: 84	Adj WW: 709				
SOT: 1050	EOT: 1402	Proj Wt: 1552	ADG: 4.00	WPDA: 3.69	AOD: 4
Adj. Carcass Values	LMY: 62.1	REA: 14.01	%IMF: 3.17	Rib Fat: 0.31	Rump Fat: 0.57

This is a bigger framed, good performing Northern View Upward 924 son. The dam was purchased from Glen Gabel as a calf and she has produced very well. 18B has gained well, over 4 lbs per day on feed and had a 709 lb, 205 day weight with no creep.



Lot 14

Lot **14**

Bull Pioneer 20B

Male NBK 20B February 05 2014 1781344

S A V FINAL ANSWER 0035 AMF CAF NHF DDF
S A V PIONEER 7301 AMF CAF NHF DDF
S A V BLACKBIRD 5297 CAC

Sire: WILLOWVIEW PIONEER 6X (1584575)

KENOSEE PARK 473 29G
WILLOWVIEW GRAND JUNE 36P
WILLOWVIEW GRAND JUNE 4H
ISLA BANK TITAN 148
HILOW TITAN 13P
HILOW HEATHER 23E

Dam: BELL BLACKCLASS 20X (1548920)

BELL 561G BRUNO 11L
BELL BLACKCLASS 17P
BELL BLACKCLASS 9L

EPD's	
BW	+2.1
WW	+42
YW	+72
Milk	+21
TM	+42
Scotal	---
CED	+0.0
CEM	+4.0

BW: 89	Adj WW: 702				
SOT: 994	EOT: 1374	Proj Wt: 1524	ADG: 4.32	WPDA: 3.65	AOD: 4
Adj. Carcass Values	LMY: 64.1	REA: 15.18	%IMF: 3.71	Rib Fat: 0.27	Rump Fat: 0.23

Another sound, eye appealing Pioneer 6X son. He had a 205 day weight of 702 lbs without creep and has a very acceptable ADG on feed. His dam is an excellent Hilow Titan 13P daughter with a nice udder and super disposition.



Lot 15

Lot **15**

Bull Upgrade 25B

Male NBK 25B February 7 2014 1781364

CONNELLY ONWARD DMF AMF CAF NHF DDF
SITZ UPWARD 307R DMF AMF CAF NHF DDF
SITZ HENRIETTA PRIDE 81M

Sire: NORTHERN VIEW UPWARD 92Y (1623548)

EASTONDALE RIGHT TIME 62'03
NORTHERN VIEW EILEENMERE 89R
EASTONDALE EILEENMERE 12'03
ISLA BANK TITAN 148
HILOW TITAN 13P
HILOW HEATHER 23E

Dam: BELL BLACKCAP 31Y (1607262)

HYLINE RIGHT WAY 781 AMF CAF NHF DDF
BELL BLACKCAP 17T
BELL BLACKCAP 30N

EPD's	
BW	+2.8
WW	+45
YW	+78
Milk	+22
TM	+45
Scotal	---
CED	+1.0
CEM	+6.0

BW: 88	Adj WW: 726				
SOT: 950	EOT: 1346	Proj Wt: 1496	ADG: 4.50	WPDA: 3.60	AOD: 3
Adj. Carcass Values	LMY: 62.3	REA: 13.92	%IMF: 2.79	Rib Fat: 0.30	Rump Fat: 0.42

This is a deep bodied, good performing son out of our Northern View Upward 92Y herdsire. He has an excellent hair coat, good thickness and is out of a productive Hilow Titan 13P mother. He is one of the top gaining bulls with a 726 lb, 205 day weight and no creep.

Lot **16**

Ball Upgrade 27B

Male NBK 27B February 9 2014 1781284

CONNELLY ONWARD DMF AMF CAF NHF DDF
SITZ UPWARD 307R DMF AMF CAF NHF DDF
SITZ HENRIETTA PRIDE 81M

Sire: NORTHERN VIEW UPWARD 92Y (1623548)

EASTONDALE RIGHT TIME 62'03
NORTHERN VIEW EILEENMERE 89R
EASTONDALE EILEENMERE 12'03
R R SCOTCHCAP 9440 AMF NHF
BAR DDJ 9440 FORECAST 7K
ROSEGLLEN ROYAL LADY 1C

Dam: BELL EUGENIE ERICA 25M (1115598)

BELL STOCKADE 7G
BELL EUGENIE ERICA 5K
BELL EUGENIE ERICA 20F

BW: 84 Adj WW: 701

SOT: 942 EOT: 1246 Proj Wt: 1396 ADG: 3.45 WPDA: 3.35 AOD: 12

Adj. Carcass Values LMY: 62.2 REA: 12.57 %IMF: 4.09 Rib Fat: 0.26 Rump Fat: 0.27

A Northern View Upward 92Y son out of a very productive 13 year old dam. He is a very smooth made, long bodied bull that should add longevity and milk to his daughters. A 205 day weight of 701 lbs without creep.

EPD's	
BW	+1.9
WW	+40
YW	+72
Milk	+17
TM	+37
Scotal	---
CED	+4.0
CEM	+8.0
REA	-0.02
Marb	+0.17
Fat	+0.011
Carcass	+17



Lot 16

Lot **17**

Ball Pioneer 28B

Male SJB 28B February 8 2014 1781375

S A V FINAL ANSWER 0035 AMF CAF NHF DDF
S A V PIONEER 7301 AMF CAF NHF DDF
S A V BLACKBIRD 5297 CAC

Sire: WILLOWVIEW PIONEER 6X (1584575)

KENOSEE PARK 473 29G
WILLOWVIEW GRAND JUNE 36P
WILLOWVIEW GRAND JUNE 4H
S A V NET WORTH 4200 AMF CAF NHF DDF
BELL NET RETURN 3U
BELL MS PRIDE 16L

Dam: GGA EUGENIE ERICA 7Y (1616624)

NORTHERN VIEW ELIXIR 70P
BELL EUGENIE ERICA 2S
BELL EUGENIE ERICA 15M

BW: 86 Adj WW: 682

SOT: 914 EOT: 1260 Proj Wt: 1410 ADG: 3.93 WPDA: 3.38 AOD: 3

Adj. Carcass Values LMY: 61.5 REA: 14.25 %IMF: 4.49 Rib Fat: 0.34 Rump Fat: 0.50

A good, stout, wide topped Pioneer 6X son from a moderate framed SAV Net Worth 4200 granddaughter. He gained very well on feed - should add thickness and performance to his calves.

EPD's	
BW	---
WW	---
YW	---
Milk	---
TM	---
Scotal	---
CED	---
CEM	---



S A V Pioneer 7301 - Grandsire of Lots 12, 14, 17 & 19



Lot 17

Lot **18**

Ball Upgrade 31B

Male NBK 31B February 9 2014 1781315

CONNELLY ONWARD DMF AMF CAF NHF DDF
SITZ UPWARD 307R DMF AMF CAF NHF DDF
SITZ HENRIETTA PRIDE 81M

Sire: NORTHERN VIEW UPWARD 92Y (1623548)

EASTONDALE RIGHT TIME 62'03
NORTHERN VIEW EILEENMERE 89R
EASTONDALE EILEENMERE 12'03
GDAR QUANTUM 963
NORTHERN VIEW QUANTUM 86P
CRESCENT CREEK BLACKBIRD 21J

Dam: BELL BLACKBIRD 27T (1381185)

BELL 561G BRUNO 11L
BELL BLACKBIRD 4R
BELL BLACKBIRD 22H

BW: 89 Adj WW: 615

SOT: 932 EOT: 1232 Proj Wt: 1382 ADG: 3.41 WPDA: 3.31 AOD: 7

Adj. Carcass Values LMY: 62.6 REA: 12.37 %IMF: 3.87 Rib Fat: 0.24 Rump Fat: 0.27

A good stout bull by Upward 92Y and out of a functional, good milking Quantum 86P dam. A maternal brother sold to Larry Good at last year's sale.

EPD's	
BW	+1.8
WW	+30
YW	+61
Milk	+18
TM	+33
Scotal	---
CED	+4.0
CEM	+6.0
REA	+0.20
Marb	+0.25
Fat	-0.007
Carcass	+11



Lot 18

Lot **19**

Bell Pioneer 39B

Male NBK 39B February 16 2014 1826525

S A V FINAL ANSWER 0035 AMF CAF NHF DDF
S A V PIONEER 7301 AMF CAF NHF DDF
S A V BLACKBIRD 5297 CAC

Sire: WILLOWVIEW PIONEER 6X (1584575)

KENOSEE PARK 473 29G
WILLOWVIEW GRAND JUNE 36P
WILLOWVIEW GRAND JUNE 4H
HYLINE RIGHT TIME 338 AMF CAF NHF DDF
HYLINE RIGHT WAY 781 AMF CAF NHF DDF
HYLINE ELLEN 86

Dam: BELL EUGENIE ERICA 23T (1381173)

JSF JERIMI 39J
BELL EUGENIE ERICA 30L
BELL EUGENIE ERICA 19J

EPD's	
BW	+2.4
WW	+49
YW	+78
Milk	+15
TM	+40
Scotal	---
CED	+0.0
CEM	+4.0
REA	+0.40
Marb	+0.21
Fat	+0.013
Carcass	+20

BW: 91 Adj WW: 689

SOT: 960 EOT: 1312 Proj Wt: 1462 ADG: 4.00 WPDA: 3.59 AOD: 7

Adj. Carcass Values LMY: 61.7 REA: 13.88 %IMF: 4.31 Rib Fat: 0.32 Rump Fat: 0.39

Lots of performance and growth in this Pioneer 6X son. He has a quiet disposition with good depth and body length. His dam is a very maternal, good milking Hyline Right Way 781 cow that always brings in a good one at weaning time.



Glen Gabel Angus - Lots 21 - 33

Glen Gabel - 306-536-1927

Lot **21**

GGA Kodiak 6B

Male GGA 6B January 10 2014 1775112



TC ADVANTAGE AMF CAF NHF DDC
SANDY BAR ADVANTAGE 43M DDF
SANDY BAR JEMINA 44K

Sire: HFI KODIAK 5R AMF CAF NHF MAF DDF (1274305)

VERMILION YELLOWSTONE AMF CAF NHF DDF
WILBAR RUBY 955N
WILBAR RUBY 161J

C R A BEXTOR 872 5205 608 AMF CAF NHF DDF
CONNELLY POWER ONE AMF CAF NHF DDF
BRITNEY OF CONANGA AMF

Dam: ANGUS GLEN BLACKCAP 4U (1465424)

HFI DOMINATOR 12H
ANGUS GLEN BLACKCAP 15M
J P D BLACKCAP 25J

EPD's	
BW	+1.0
WW	+50
YW	+82
Milk	+19
TM	+44
Scotal	+0.68
CED	+8.0
CEM	+8.0
REA	+0.19
Marb	+0.45
Fat	-0.023
Carcass	+21

BW: 82 Adj WW: 789 Adj WW: 1338

SOT: 1170 EOT: 1440 Proj Wt: 1590 ADG: 3.07 WPDA: 3.58 AOD: 6

Adj. Carcass Values LMY: 63.6 REA: 13.33 %IMF: 3.84 Rib Fat: 0.23 Rump Fat: 0.31

Sired by one of the most influential sires in history, this calf deserves a second look. One of the heavier bulls on test. Calving ease and performance put together in the same package. Exciting individual.

Lot **22**

GGA Payday 12B

Male GGA 12B January 19 2014 1775118

S A V 8180 TRAVELER 004 DMF DWF AMF CAF NHF OSF DDF
S A V PAYROLL 5281 AMF CAC NHF
S A V BESSIE HEIRESS 1184 CAC

Sire: PVF ALL PAYDAY 12A AMF CAF NHF DDC (1481375)

P V F NEW HORIZON 001 AMF NHF DDC
P V F BLACKBIRD 201
P V F BLACKBIRD 020 CAF DDF
CHICO HANNIBAL 43H
ISLA BANK TONKA 20N
ISLA BANK PRINCESS ANNE 10G

Dam: FREYBORN ERICA 12W (1507824)

YOUNG DALE FORMULA 71K
FREYBORN ERICA 144R
FREYBORN ERICA 87L

EPD's	
BW	+6.2
WW	+55
YW	+97
Milk	+20
TM	+48
Scotal	-0.30
CED	-9.0
CEM	+1.0
REA	+0.38
Marb	+0.07
Fat	+0.010
Carcass	+38

BW: 92 Adj WW: 744 Adj WW: 1356

SOT: 1090 EOT: 1430 Proj Wt: 1580 ADG: 3.86 WPDA: 3.64 AOD: 5

Adj. Carcass Values LMY: 65.9 REA: 15.78 %IMF: 3.05 Rib Fat: 0.22 Rump Fat: 0.30

Power and performance best describe this guy. Deep gutted, long spined with a lot of look. Maternal brother sold to Brian Martin at last year's sale.



Lot **23**

GGA Upward 23B

Male GGA 23B February 11 2014 1775129

CONNEALY ONWARD DMF AMF CAF NHF DDF
SITZ UPWARD 307R DMF AMF CAF NHF DDF
SITZ HENRIETTA PRIDE 81M

Sire: **NORTHERN VIEW UPWARD 93Y** (1623550)

CUDLOBE YELLOWSTONE 80M
SOO LINE DUCHESS 7266
SANDY BAR DUCHESS 96J
ISLA BANK TITAN 148
HILOW TITAN 13P
HILOW HEATHER 23E

Dam: **BELL EUGENIE ERICA 22W** (1493338)

BAR DDJ 9440 FORECAST 7K
BELL EUGENIE ERICA 25M
BELL EUGENIE ERICA 5K

BW: 86 Adj WW: 754 Adj WW: 1222

SOT: 1002 EOT: 1230 Proj Wt: 1380 ADG: 2.59 WPDA: 3.32 AOD: 5

Adj. Carcass Values LMY: 60.5 REA: 14.00 %IMF: 4.26 Rib Fat: 0.37 Rump Fat: 0.40

Nice calf out of our new walking bull (a son of Sitz Upward) that produced some great calves - four of his offspring are in the sale this year and out of a well balanced, good milking, great disposition cow family.

EPD's	
BW	+3.9
WW	+48
YW	+87
Milk	+21
TM	+45
Scotal	+0.32
CED	-1.0
CEM	+7.0
REA	+0.11
Marb	+0.30
Fat	+0.001
Carcass	+29



Lot 23

Lot **24**

GGA All Answers 20B

Male GGA 20B February 3 2014 1775126

SITZ TRAVELER 8180 AMF CAF NHF DDF
S A V FINAL ANSWER 0035 AMF CAF NHF DDF
S A V EMULOUS 8145 CAF

Sire: **JL ALL ANSWERS 1009** (1610609)

LEACHMAN RIGHT TIME DMF AMF
ROYAL PERSEPHONE DRCC 8078U
CANE RIDGE PERSEPHONE 6531F
B C MARATHON 7022 AMF CAF NHF DDF
BC 7022 RAVEN 7965 DMF DWF AMF CAF NHF DDF
O C C BLACKBIRD 796F

Dam: **JUSTAMERE 1965 BLACKBERRY 4230** (1472967)

GDAR SVF ROYCE 176G
ERICA LASSIE OF RR 0751
ERICA LASSIE OF RR 6451

BW: 78 Adj WW: 735 Adj WW: 1293

SOT: 1026 EOT: 1280 Proj Wt: 1430 ADG: 2.89 WPDA: 3.39 AOD: 6

Adj. Carcass Values LMY: 62.3 REA: 16.17 %IMF: 3.01 Rib Fat: 0.37 Rump Fat: 0.42

Once again our calving sensation, All Answers has done it again. Awesome calving numbers, with the added dimension of performance. Out of a cow we purchased from Justamere Farms that is now in our flush program.

EPD's	
BW	-0.7
WW	+41
YW	+71
Milk	+16
TM	+37
Scotal	+0.08
CED	+6.5
CEM	+9.5
REA	+0.35
Marb	+0.39
Fat	+0.036
Carcass	+12



See line

HF Kodiak 5R - Sire of Lot 21 & 28 and Maternal Grand sire of Lot 25



Lot 24



Mark Sued

S A V Final Answer 0035 - Paternal Grand sire of Lot 24

Lot 25

GGA Density 25B

Male GGA 25B February 16 2014 1775131

S A V 8180 TRAVELER 004 DMF DWF AMF CAF NHF OSF DDF
S A V 004 DENSITY 4336 AMF CAF NHF DDF
S A V MAY 7238 CAF DDF

Sire: WIL-DORB 4336 28T DEN-ERIC 21Z (1704830)

GLEN ISLAY PAWPA 21N
GLEN ISLAY ERICA 28T
GLEN ISLAY ERICA 5R
SANDY BAR ADVANTAGE 43M DDF
HF KODIAK 5R AMF CAF NHF MAF DDF
WILBAR RUBY 955N

Dam: WIL-DORB 405X HEROINE 14Z (1657357)

SOO LINE YELLOWSTONE 6344
SOO LINE HEROINE 0405
CRESCENT CREEK HEROINE 106P

EPD's	
BW	+3.1
WW	+42
YW	+77
Milk	+18
TM	+39
Scotal	---
CED	+3.0
CEM	+3.0

BW: 83 Adj WW: 809 Adj YW: 1295

SOT: 922 EOT: 1176 Proj Wt: 1326 ADG: 2.89 WPDA: 3.22 AOD: 2

Adj. Carcass Values LMY: 61.8 REA: 13.38 %IMF: 2.87 Rib Fat: 0.30 Rump Fat: 0.23

By a son of Density out of a great uddered own daughter of Kodiak. What a genetic package. A big topped bull that will work in either pasture.

Lot 25



Lot 25

Lot 26

GGA Upward 17B

Male GGA 17B January 28 2014 1775123

CONNELLY ONWARD DMF AMF CAF NHF DDF
SITZ UPWARD 307R DMF AMF CAF NHF DDF
SITZ HENRIETTA PRIDE 81M

Sire: NORTHERN VIEW UPWARD 93Y (1623550)

CUDLOBE YELLOWSTONE 80M
SOO LINE DUCHESS 7266
SANDY BAR DUCHESS 96J
SITZ ALLIANCE 6595 DMF AMF CAF NHF DDF
MVF ALLIANCE 670N
BROCKHILL JAMOCA 14H

Dam: MIDNITE OIL TIBBIE 67W (1546549)

DURLOWE MAGIC 62K
NEW FORCE TIBBIE 16M
MVF TIBBIE 16Z

EPD's	
BW	+3.4
WW	+56
YW	+96
Milk	+25
TM	+53
Scotal	---
CED	+0.0
CEM	+5.0
REA	+0.20
Marb	+0.38
Fat	+0.014
Carcass	+33

BW: 88 Adj WW: 841 Adj YW: 1371

SOT: 1152 EOT: 1438 Proj Wt: 1588 ADG: 3.25 WPDA: 3.74 AOD: 5

Adj. Carcass Values LMY: 63.6 REA: 15.83 %IMF: 3.28 Rib Fat: 0.31 Rump Fat: 0.26

Another one of these Upward grandsons that continue to impress, out of a top producing cow in our herd, that is a never miss female. A maternal brother was the heaviest bull on test last year and sold to Rod Williams.



Lot 26

Lot 27

GGA Payday 4B

Male GGA 4B January 8 2014 1775110 DDF

S A V 8180 TRAVELER 004 DMF DWF AMF CAF NHF OSF DDF
S A V PAYROLL 5281 AMF CAC NHF
S A V BESSIE HEIRESS 1184 CAC

Sire: PVE ALL PAYDAY 729 AMF CAF NHF DDC (1481375)

P V F NEW HORIZON 001 AMF NHF DDC
P V F BLACKBIRD 201
P V F BLACKBIRD 020 CAF DDF
PAPA FORTE 1921 DMF
WOODHILL FORESIGHT AMF CAF NHF DDF
BON VIEW GAMMER 85 CAC

Dam: LOOKOUT BUXOM FANCY 110 (1457186)

PRIME TIME'S DIRECT DEPOSIT
LOOKOUT BUXOM FANCY 232M
LOOKOUT BUXOM FANCY 5K

EPD's	
BW	+4.0
WW	+56
YW	+97
Milk	+24
TM	+52
Scotal	-0.30
CED	-4.0
CEM	+3.0
REA	+0.52
Marb	+0.21
Fat	+0.018
Carcass	+34

BW: 89 Adj WW: 790 Adj YW: 1348

SOT: 1178 EOT: 1486 Proj Wt: 1636 ADG: 3.50 WPDA: 3.68 AOD: 6

Adj. Carcass Values LMY: 64.6 REA: 13.87 %IMF: 3.40 Rib Fat: 0.21 Rump Fat: 0.13

Quite a bull in this package, combining power and performance and out of one of the lead off cows from the Lookout Stock Farms Dispersal a number of years ago. He's got the look and style to be a big time cow bull that will add the pounds to calves in the fall.



Lot 27

Lot **28**

GGA Kodiak 3B

Male GGA 3B January 7 2014 1775109

TC ADVANTAGE AMF CAF NHF DDC
SANDY BAR ADVANTAGE 43M DDF
SANDY BAR JEMINA 44K

Sire: **HF KODIAK 5R** AMF CAF NHF MAF DDF (1274305)

VERMILION YELLOWSTONE AMF CAF NHF DDF
WILBAR RUBY 955N
WILBAR RUBY 161J

CONNELY ONWARD DMF AMF CAF NHF DDF
SITZ UPWARD 307R DMF AMF CAF NHF DDF
SITZ HENRIETTA PRIDE 81M

Dam: **PREMIER UPWARD MAGIC 101Z** (1574549)

BON VIEW NEW DESIGN 878 AMF CAF NHF DDF
ROSTOCK MAGIC 8R
ROSTOCK MAGIC WRS 11M

BW: 77 Adj WW: 774 Adj WW: 1307

SOT: 1122 EOT: 1390 Proj Wt: 1540 ADG: 3.05 WPDA: 3.55 AOD: 4

Adj. Carcass Values LMY: 64.6 REA: 14.90 %IMF: 4.86 Rib Fat: 0.24 Rump Fat: 0.21

EPD's	
BW	+0.2
WW	+55
YW	+99
Milk	+23
TM	+51
Scotal	+0.68
CED	+10.0
CEM	+10.0
REA	+0.03
Marb	+0.29
Fat	-0.012
Carcass	+30



Lot 28

Another one of the Kodiak sons that we have in the sale offering this year, out of a top Upward daughter that produced our show heifer that we had at CWA last fall. This calf has it all: hair, depth, length and a lot of presence. Mark him down as one to take a second look at.



Lot 29

Lot **29**

GGA Upward 14B

Male GGA 14B January 21 2014 1775120

CONNELY ONWARD DMF AMF CAF NHF DDF
SITZ UPWARD 307R DMF AMF CAF NHF DDF
SITZ HENRIETTA PRIDE 81M

Sire: **NORTHERN VIEW UPWARD 93Y** (1623550)

CUDLOBE YELLOWSTONE 80M
SOO LINE DUCHESS 7266
SANDY BAR DUCHESS 96J
STEVENSON BRUNO 561G CAF NHF DDF
BELL 561G BRUNO 11L
BELL BLACKBIRD 2C

Dam: **BELL BLACK LUCY 5R** (1259407)

BELL TOUCHSTONE 2D
BELL BLACK LUCY 29H
BELL BLACK LUCY 4A

BW: 80 Adj WW: 811 Adj WW: 1342

SOT: 1130 EOT: 1434 Proj Wt: 1584 ADG: 3.45 WPDA: 3.64 AOD: 9

Adj. Carcass Values LMY: 61.1 REA: 13.41 %IMF: 2.50 Rib Fat: 0.33 Rump Fat: 0.34

EPD's	
BW	+1.4
WW	+56
YW	+95
Milk	+24
TM	+52
Scotal	+0.34
CED	+4.0
CEM	+6.0
REA	+0.10
Marb	+0.34
Fat	+0.003
Carcass	+29

Another one of these Upward grandsons that continue to impress, out of our Elite cow that produces the good ones year after year. Lots of performance in this calf that will help push the scale down next fall with his calves.



Lot 30

Lot **30**

GGA Game Day 11B

Male GGA 11B January 18 2014 1775117

A A R NEW TREND
BOYD NEW DAY 8005 AMF CAF NHF DDF
S V F FOREVER LADY 57D

Sire: **GDAR GAME DAY 449** AMF CAF NHF DDF (1385923)

TEHAMA BAND 207
G D A R MISS WIX 474
G D A R MISS WIX 749
NORTHERN VIEW QUANTUM 86P
BELL QUANTUM 26T

BELL BLACK LUCY 5R

Dam: **GGA TIBBIE 8Z** (1653350)

MVF ALLIANCE 670N
MIDNITE OIL TIBBIE 67W
NEW FORCE TIBBIE 16M

BW: 86 Adj WW: 825 Adj WW: 1295

SOT: 1082 EOT: 1344 Proj Wt: 1494 ADG: 2.98 WPDA: 3.41 AOD: 2

Adj. Carcass Values LMY: 63.2 REA: 12.79 %IMF: 3.15 Rib Fat: 0.23 Rump Fat: 0.36

EPD's	
BW	+2.9
WW	+49
YW	+85
Milk	+27
TM	+52
Scotal	+0.35
CED	-1.0
CEM	+3.0
REA	+0.47
Marb	+0.36
Fat	+0.051
Carcass	+26

We are really happy with what our first calvers did, producing three exceptional bulls in our sale offering; this one sired by the calving ease/performance Genex sire: Game Day. Exceptional cow family here as the dam is a maternal sister to Lot 26 in this year's sale.

Lot **31**

GGA Kodiak 5B

Male GGA 5B January 9 2014 1775111



TC ADVANTAGE AMF CAF NHF DDC
 SANDY BAR ADVANTAGE 43M DDF
 SANDY BAR JEMINA 44K
Sire: **HF KODIAK 5B** AMF CAF NHF MAF DDF (1274305)
 VERMILION YELLOWSTONE AMF CAF NHF DDF
 WILBAR RUBY 955N
 WILBAR RUBY 161J
 SITZ TRAVELER 8180 AMF CAF NHF DDF
 S A V FINAL ANSWER 0035 AMF CAF NHF DDF
 S A V EMULOUS 8145 CAF

Dam: **SMW MISTRESS 106W** (1526100)
 TC FREEDOM 104 AMF CAF NHF DDF
 SMW MISTRESS 82T
 HOMESTEADER MISTRESS 23F

BW: 83 Adj WW: 757 Adj WW: 1259

SOT: 1126 EOT: 1372 Proj Wt: 1522 ADG: 2.80 WPDA: 3.40 AOD: 5

Adj. Carcass Values LMY: 65.2 REA: 15.64 %IMF: 2.79 Rib Fat: 0.24 Rump Fat: 0.28

EPD's	
BW	+1.9
WW	+54
YW	+90
Milk	+20
TM	+47
Scotal	+0.68
CED	+7.0
CEM	+8.0
REA	+0.17
Marb	+0.40
Fat	-0.008
Carcass	+27

Again the Kodiak calves continue to impress, this time out a great producing, Final Answer daughter. A maternal brother was the second heaviest bull on test last year and sold to Rod Williams.



Lot **32**

GGA Density 9B

Male GGA 9B January 12 2014 1775115

SITZ TRAVELER 8180 AMF CAF NHF DDF
 S A V 8180 TRAVELER 004 DMF DWF AMF CAF NHF OSF DDF
 BOYD FOREVER LADY 8003
Sire: **S A V 004 DENSITY 4336** AMF CAF NHF DDF (1266311)
 LEACHMAN RIGHT TIME DMF AMF
 S A V MAY 7238 CAF DDF
 S A R PROSPECTOR MAY 9124 DDF
 G A R GRID MAKER AMF CAF NHF DDF
 S A V BISMARCK 5682 AMF CAF NHF DDF
 S A V ABIGALE 0451

Dam: **SIX MILE QUEEN MOTHER IIX** (1573401)
 BOYD NEW DAY 8005 AMF CAF NHF DDF
 SIX MILE QUEEN MOTHER 849U
 WWF F KRUGER QUEEN MOTHER 114P

BW: 82 Adj WW: 769 Adj WW: 1193

SOT: 1080 EOT: 1292 Proj Wt: 1442 ADG: 2.41 WPDA: 3.23 AOD: 4

Adj. Carcass Values LMY: 62.2 REA: 14.83 %IMF: 3.58 Rib Fat: 0.33 Rump Fat: 0.39

EPD's	
BW	+1.9
WW	+51
YW	+90
Milk	+21
TM	+47
Scotal	+0.31
CED	+8.0
CEM	+9.0
REA	+0.31
Marb	+0.25
Fat	+0.025
Carcass	+27

Rarely do you find a son of Density being offered at public auction but here he is. Moderate framed, he will add maternal strength to the replacement heifer pen. His dam is by Bismarck and has a picture perfect udder. Certainly one to give consideration too.

Lot **33**

GGA Upward 22B

Male GGA 22B February 6 2014 1775128

CONNELLY ONWARD DMF AMF CAF NHF DDF
 SITZ UPWARD 307R DMF AMF CAF NHF DDF
 SITZ HENRIETTA PRIDE 81M
Sire: **NORTHERN VIEW UPWARD 95Y** (1623550)
 CUDLOBE YELLOWSTONE 80M
 SOO LINE DUCHESS 7266
 SANDY BAR DUCHESS 96J
 SOUTHLAND FULL THROTTLE 15R
 SOUTHLAND FX 60T
 SOUTHLAND ANNIE 155P

Dam: **SOUTHLAND FUTURE MARKER 196X** (1577873)
 S A V FINAL ANSWER 0035 AMF CAF NHF DDF
 SOUTHLAND FUTURE MARKER 137U
 ALSTEIN FUTURE MARKER 42S

BW: 85 Adj WW: 809 Adj WW: 1274

SOT: 1020 EOT: 1350 Proj Wt: 1500 ADG: 3.75 WPDA: 3.60 AOD: 4

Adj. Carcass Values LMY: 59.0 REA: 15.70 %IMF: 4.00 Rib Fat: 0.48 Rump Fat: 0.35

EPD's	
BW	+1.5
WW	+53
YW	+89
Milk	+22
TM	+49
Scotal	---
CED	+5.0
CEM	+9.0
REA	+0.30
Marb	+0.44
Fat	+0.009
Carcass	+26

The last of our Upward grandsons in the catalogue. Nice bull out of a cow that continues to produce for us. She is impeccably uddered with an awesome disposition. All of the Upward grandsons bring a little more length and performance which will add up in the fall with their calves.



Willowview Angus - Lots 34 - 40

Ken & Sandy Harle - 306-359-6100

Lot **34**

Willowview Angus Valley 3B
Male KSH 3B January 20 2014 1812437

TC GRIDIRON 258 AMF CAF NHF DDF
S A V IRON MOUNTAIN 8066 AMF CAF NHF MAF DDF
S A V MADAME PRIDE 3249 CAF DDF

Sire: **S A V ANGUS VALLEY 1867** AMF CAF NHF DDF (1719214)

S A F 598 BANDO 5175 AMF CAC DDF
S A V MAY 2397 CAF
S A V MAY 7238 CAF DDF
APEX STOCKMAN 061
HXL STOCKMAN 2K
CRAVEN MISS SANDRA 27F

Dam: **WILLOWVIEW PRIDE 3N** (1197903)

KENOSEE PARK 473 29G
COTTONWOOD PRIDE 4L
COTTONWOOD PRIDE 30J

EPD's	
BW	+2.3
WW	+48
YW	+87
Milk	+20
TM	+44
Scotal	---
CED	+7.0
CEM	+7.0

BW: 95	Adj WW: 668				
SOT: 996	EOT: 1402	Proj Wt: 1552	ADG: 4.61	WPDA: 3.58	AOD: 11
Adj. Carcass Values	LMY: 56.8	REA: 12.31	%IMF: 6.34	Rib Fat: 0.46	Rump Fat: 0.34

If you are a fan of SAV Iron Mountain, we invite you to check out these two SAV Angus Valley sired bulls. He is promoted as adding style and calving ease as well as superior growth. These two are no exception. The bulls had their final test weight February 16 and these two bulls ranked number one and number two for average daily gain.



Lot 34

Lot **35**

Willowview Angus Valley 10B
Male KSH 10B January 25 2014 1812444

TC GRIDIRON 258 AMF CAF NHF DDF
S A V IRON MOUNTAIN 8066 AMF CAF NHF MAF DDF
S A V MADAME PRIDE 3249 CAF DDF

Sire: **S A V ANGUS VALLEY 1867** AMF CAF NHF DDF (1719214)

S A F 598 BANDO 5175 AMF CAC DDF
S A V MAY 2397 CAF
S A V MAY 7238 CAF DDF
HXL STOCKMAN 2K
COTTONWOOD STOCKMAN 60M
HILOW ESTON ANNE 37D

Dam: **WILLOWVIEW PEARL 43P** (1243475)

KENOSEE PARK 473 29G
COTTONWOOD PEARL 62K
ROY MAC PEARL 2D

EPD's	
BW	+2.0
WW	+45
YW	+82
Milk	+21
TM	+44
Scotal	---
CED	+7.0
CEM	+7.0

BW: 93	Adj WW: 631				
SOT: 904	EOT: 1316	Proj Wt: 1466	ADG: 4.68	WPDA: 3.40	AOD: 10
Adj. Carcass Values	LMY: 61.1	REA: 12.71	%IMF: 2.96	Rib Fat: 0.19	Rump Fat: 0.40

REA	+0.20
Marb	+0.33
Fat	+0.040
Carcass	+23



Lot 35



S A V Iron Mountain 8066 - Paternal Grandsire of Lots 34 & 35



S A V Angus Valley 1867 - Sire of Lot 34 & 35

Lot **36**

Willowview Significant 11B
Male KSH 11B January 26 2014 1812445

CONNEALY CONSENSUS DDF
CONNEALY CONSENSUS 7229 AMF CAF NHF DDF
BLUE LILLY OF CONANGA 16 CAF

Sire: EXAR SIGNIFICANT 1769B AMF CAF DDF (1707960)

CONNEALY ONWARD DMF AMF CAF NHF DDF
SITZ HENRIETTA PRIDE 643T
SITZ HENRIETTA PRIDE 81M

S A V 8180 TRAVELER 004 DMF DWF AMF CAF NHF OSF DDF

S A V 004 DENSITY 4336 AMF CAF NHF DDF
S A V MAY 7238 CAF DDF

Dam: WILLOWVIEW PEARL 21' (1411912)

KENOSEE PARK 473 29G
COTTONWOOD PEARL 62K
ROY MAC PEARL 2D

EPD's	
BW	+2.2
WW	+50
YW	+83
Milk	+26
TM	+51
Scotal	---
CED	+5.0
CEM	+5.0
REA	+0.64
Marb	+0.46
Fat	-0.003
Carcass	+23

BW: 94	Adj WW: 668					
SOT: 932	EOT: 1276	Proj Wt: 1426	ADG: 3.91	WPDA: 3.31	AOD: 7	
Adj. Carcass Values						
LMY: 66.3	REA: 12.44	%IMF: 3.57	Rib Fat: 0.10	Rump Fat: 0.22		



Lot **37**

Willowview Significant 21B
Male KSH 21B February 3 2014 1812449

CONNEALY CONSENSUS DDF
CONNEALY CONSENSUS 7229 AMF CAF NHF DDF
BLUE LILLY OF CONANGA 16 CAF

Sire: EXAR SIGNIFICANT 1769B AMF CAF DDF (1707960)

CONNEALY ONWARD DMF AMF CAF NHF DDF
SITZ HENRIETTA PRIDE 643T
SITZ HENRIETTA PRIDE 81M

S A V 8180 TRAVELER 004 DMF DWF AMF CAF NHF OSF DDF

S A V 004 DENSITY 4336 AMF CAF NHF DDF
S A V MAY 7238 CAF DDF

Dam: WILLOWVIEW PEARL 21' (1411931)

COTTONWOOD STOCKMAN 60M
WILLOWVIEW PEARL 14R
COTTONWOOD PEARL 62K

EPD's	
BW	+1.7
WW	+56
YW	+91
Milk	+26
TM	+54
Scotal	---
CED	+6.0
CEM	+5.0

BW: 90	Adj WW: 730					
SOT: 1038	EOT: 1356	Proj Wt: 1506	ADG: 3.61	WPDA: 3.59	AOD: 7	
Adj. Carcass Values						
LMY: 62.4	REA: 15.05	%IMF: 3.54	Rib Fat: 0.33	Rump Fat: 0.26		



S A V 004 Density 4336 - Maternal Grand sire of Lot 36 & 37

EXAR Significant 1769B - Sire of Lot 36 & 37

We started using EXAR Significant in our program because of his no fault pedigree. He is sired by Connealy Consensus 7229 with his dam being a full sister to Sitz Upward. His calves have proven to live up to our expectations. These two as a pair or on their own are the complete package. Their dams are sired by SAV Density and both go back to our 62K Pearl cow.

Lot **38**

Willowview Eliminator 12B

Male KSH 12B January 28 2014 1812446

RITO 707 OF IDEAL 3407 7075
S A V ELIMINATOR 9105 AMF CAF NHF OSF
S A V ABIGALE 5646

Sire: **PEAK DOT ELIMINATOR 819Y** (1650986)

S A R NEW TREND 4100 2080
ANNIE K OF PEAK DOT 930P
ANNIE K OF PEAK DOT 723L
CONNEALY FREIGHTLINER AMF CAF NHF DDF
MVF FREIGHTLINER 38U
MVF MAY 170S

Dam: **MVF ANNIE K 283X** (1550780)

KMK ALLIANCE 6595 I87 AMF CAF NHF DDF
MVF ANNIE K 4U
MVF ANNIE K 364R

EPD's	
BW	+2.9
WW	+48
YW	+94
Milk	+20
TM	+44
Scotal	---
CED	+2.0
CEM	+5.0



Lot 38

These Peak Dot Eliminator 819Y sired sons make up our third sire group. They offer consistent calving weights, smooth shoulders, nice tops and hips with above average gains. Two of the three dams were purchased from the Mountain View Dispersal Sale. They come from the proven Annie K and Tibbie cow families with the third being from our Pearl cow family.

Lot **39**

Willowview Eliminator 15B

Male KSH 15B January 31 2014 1812448

RITO 707 OF IDEAL 3407 7075
S A V ELIMINATOR 9105 AMF CAF NHF OSF
S A V ABIGALE 5646

Sire: **PEAK DOT ELIMINATOR 819Y** (1650986)

S A R NEW TREND 4100 2080
ANNIE K OF PEAK DOT 930P
ANNIE K OF PEAK DOT 723L
BON VIEW NEW DESIGN 878 AMF CAF NHF DDF
ISLA BANK DESIGNATION 14N
MVF TIBBIE 706L

Dam: **WILLOWVIEW PEARL 22X** (1590468)

YOUNG DALE MARQUIS 46M
WILLOWVIEW PEARL 52P
WILLOWVIEW PEARL 117M

EPD's	
BW	+2.1
WW	+53
YW	+92
Milk	+25
TM	+52
Scotal	---
CED	+2.0
CEM	+5.0



Lot 39

Lot **40**

Willowview Eliminator 27B

Male KSH 27B February 11 2014 1812465

RITO 707 OF IDEAL 3407 7075
S A V ELIMINATOR 9105 AMF CAF NHF OSF
S A V ABIGALE 5646

Sire: **PEAK DOT ELIMINATOR 819Y** (1650986)

S A R NEW TREND 4100 2080
ANNIE K OF PEAK DOT 930P
ANNIE K OF PEAK DOT 723L
VERMILION DATELINE 7078 AMF CAF NHF DDF
MVF VRD DATELINE 34P
MVF TIBBIE 012L

Dam: **MVF TIBBIE 44W** (1596872)

CONNEALY KINCAID
MVF TIBBIE 025L
RRD TIBBIE 12E

EPD's	
BW	+2.6
WW	+48
YW	+90
Milk	+19
TM	+43
Scotal	---
CED	+3.0
CEM	+6.0



Lot 40

BW: 92	Adj WW: 666				
SOT: 920	EOT: 1258	Proj Wt: 1408	ADG: 3.84	WPDA: 3.28	AOD: 4
Adj. Carcass Values	LMY: 63.5	REA: 13.48	%IMF: 4.62	Rib Fat: 0.24	Rump Fat: 0.32

BW: 92	Adj WW: 713				
SOT: 952	EOT: 1236	Proj Wt: 1386	ADG: 3.23	WPDA: 3.24	AOD: 4
Adj. Carcass Values	LMY: 63.3	REA: 13.33	%IMF: 3.23	Rib Fat: 0.24	Rump Fat: 0.34

Cottonwood Angus - Lots 41 - 45

Brent Gaube - 306-537-4710

Lot **41**

Cottonwood Generation 14B

Male RTBG 14B February 6 2014 1826766

O C C GENESIS 872G
DUFF NEW GENERATION 6107
O C C DIXIE ERICA 814G

Sire: BLAIR'S NEW GENERATION 303Z (1695420)

VERMILION DATELINE 7078 AMF CAF NHF DDF
MVF TIBBIE 60M
MVHF TIBBIE 39B

SANDY BAR ADVANTAGE 43M DDF
HF KODIAK 5R AMF CAF NHF MAF DDF
WILBAR RUBY 955N

Dams: SOO LINE ERELITE 00M (1590493)

SOO LINE YELLOWSTONE 6344
SOO LINE ERELITE 8207
NORTHERN VIEW ERELITE 27N

EPD's	
BW	+2.7
WW	+47
YW	+82
Milk	+16
TM	+39
Scotal	---
CED	+4.0
CEM	+5.5



Duff New Generation 6107
Paternal Grandsire of Lot 41

BW: 82	Adj WW: 686				
SOT: 930	EOT: 1146	Proj Wt: 1296	ADG: 2.45	WPDA: 3.06	AOD: 4
Adj. Carcass Values	LMY: 65.0	REA: 11.53	%IMF: 3.30	Rib Fat: 0.12	Rump Fat: 0.14

Here is a stylish, powerful bull out of Blair's New Generation 303Z. His mother was the great MVF Tibbie 60M and on the dams side, back to HF Kodiak 5R.



Lot 41



Soo Line
HF Kodiak 5R - Maternal Grandsire of Lot 41
and Sire of Lot 44 & 45



SCE is now a dealer for JCB equipment!



SOUTH COUNTRY
EQUIPMENT



JOHN DEERE

Moose Jaw - 306.692.2371
Emerald Park - 306.721.5050
Weyburn - 306.842.4686
Assiniboia - 306.642.3366
Mossbank - 306.354.2411
Raymore - 306.746.2110
Southey - 306.726.2155
Montmartre - 306.424.2212

www.southcountry.ca



See us for ALL your ranching and farming needs!



Lot **43**

Cottonwood Motive 231B

Male RTBG 231B January 13 2014 1821388

SANDY BAR ADVANTAGE 43M DDF
HF KODIAK 5R AMF CAF NHF MAF DDF
WILBAR RUBY 955N

Sire: **SOO LINE MOTIVE 9016** (1504907)

RR 7407 RAINMAKER 2154

TLA BEAUTY 5R

TERRLENE BEAUTY 35F

SITZ TRADITION RLS 8702

SOO LINE TRADITION 6097

H A BELETTA 0219

Dam: **SOO LINE LADY SANDY 8202** (1442875)

CAR TANK 226

SOO LINE LADY SANDY 61P

KBJ LADY SANDY 341H

BW: 85 Adj WW: 593

SOT: 832 EOT: 1160 Proj Wt: 1310 ADG: 3.73 WPDA: 2.91 AOD: 6

Adj. Carcass Values LMY: 66.6 REA: 13.20 %IMF: 3.76 Rib Fat: 0.11 Rump Fat: 0.22

Here is a direct son of Soo Line Motive 0916. Gaining over 3.50 lb on test.

EPD's	
BW	+2.1
WW	+47
YW	+83
Milk	+21
TM	+45
Scotal	---
CE	+6.0
CEM	+6.0
REA	+0.33
Marb	+0.36
Fat	+0.025
Carcass	+23



Lot **44**

Cottonwood Kodiak 82B

Male RTBG 82B January 21 2014 1820774

TC ADVANTAGE AMF CAF NHF DDC

SANDY BAR ADVANTAGE 43M DDF

SANDY BAR JEMINA 44K

Sire: **HF KODIAK 5R** AMF CAF NHF MAF DDF (1274305)

VERMILION YELLOWSTONE AMF CAF NHF DDF

WILBAR RUBY 955N

WILBAR RUBY 161J

APEX STOCKMAN 061

HXL STOCKMAN 2K

CRAVEN MISS SANDRA 27F

Dam: **WILLOWVIEW BELLE 82N** (1197904)

YOUNG DALE MARSHALL 202T

COTTONWOOD BELLE 11A

2J BELLE 3S

BW: 86 Adj WW: 645

SOT: 930 EOT: 1166 Proj Wt: 1316 ADG: 2.68 WPDA: 2.98 AOD: 11

Adj. Carcass Values LMY: 65.5 REA: 12.20 %IMF: 3.04 Rib Fat: 0.12 Rump Fat: 0.21

Here is an opportunity to buy a Kodiak son. Kodiaks are earning a reputation as being highly maternal and the females have great udders. Half brother to Lot 45.

EPD's	
BW	+1.6
WW	+41
YW	+68
Milk	+14
TM	+35
Scotal	---
CE	+5.0
CEM	+4.0
REA	-0.09
Marb	+0.29
Fat	-0.008
Carcass	+14



Soo Line Motive 9016 - Sire of Lot 43

Lot **45**

Cottonwood Kodiak 6B

Male RTBG 6B January 20 2014 1820773

TC ADVANTAGE AMF CAF NHF DDC

SANDY BAR ADVANTAGE 43M DDF

SANDY BAR JEMINA 44K

Sire: **HF KODIAK 5R** AMF CAF NHF MAF DDF (1274305)

VERMILION YELLOWSTONE AMF CAF NHF DDF

WILBAR RUBY 955N

WILBAR RUBY 161J

BON VIEW NEW DESIGN 878 AMF CAF NHF DDF

ISLA BANK DESIGNATION 14N

MVF TIBBIE 706L

Dam: **COTTONWOOD BELLE 26U** (1481845)

HXL STOCKMAN 2K

WILLOWVIEW BELLE 26N

COTTONWOOD BELLE 26C

BW: 83 Adj WW: 681

SOT: 934 EOT: 1184 Proj Wt: 1334 ADG: 2.84 WPDA: 3.02 AOD: 6

Adj. Carcass Values LMY: 61.9 REA: 11.28 %IMF: 2.71 Rib Fat: 0.23 Rump Fat: 0.31

Lot 44 and 45 are half-brothers out of great cows. Here is an opportunity to buy a Kodiak son.

EPD's	
BW	+1.1
WW	+49
YW	+79
Milk	+20
TM	+45
Scotal	---
CE	+7.0
CEM	+8.0
REA	+0.07
Marb	+0.36
Fat	-0.012
Carcass	+19



Triple H Angus - Lots 46 - 51

Perry & Dawn Hart - 306-723-4832

Lot **46**

Triple H Intuition 14B

Male HRA 14B March 3 2014 1796784

G A R GRID MAKER AMF CAF NHF DDF
S A V BISMARCK 5682 AMF CAF NHF DDF
S A V ABIGALE 0451

Sires: S A V BRILLIANCE 8077 AMF CAF NHF DDF (1582480)

S A V 8180 TRAVELER 004 DMF DWF AMF CAF NHF OSF DDF
S A V BLACKCAP MAY 5270 CAC
S A V MAY 2420 CAC

SYDGEN C C & 7 AMF CAF NHF DDF
HOOVER DAM AMF CAF NHF DDF
ERICA OF ELLSTON C124

Dams: F V HD QUEEN 302Z (1691738)

S A V NET WORTH 4200 AMF CAF NHF DDF
F V QUEEN NW 19X
F V 12U QUEEN 320S

BW: 80 Adj WW: 778

SOT: 890 EOT: 1202 Proj Wt: 1352 ADG: 3.55 WPDA: 3.43 AOD: 2

Adj. Carcass Values LMY: 63.0 REA: 15.14 %IMF: 3.78 Rib Fat: 0.31 Rump Fat: 0.36

Last year we decided to start up a Black Angus program and it started with a trip to Johnson/Fertile Valley's bred female sale. The females we purchased there not only have great EPD's but they are also very sound looking, good milking cows, coming from a wide variety of top sires in the Black Angus breed. HRA 14B is a SAV Brilliance 8077 son out of a Hoover Dam daughter. He is packed full of top genetics and has very strong EPD's. He ranks in the top 2% for milk and total maternal, top 8% for weaning, top 10% for birth, yearling and maternal calving ease. He also ranks in the top 15% for calving ease and carcass weight. The numbers are just part of this bull's package. With a 205 day weight of 778 lbs and an average daily gain right around 4 pounds, he also has the performance to back the numbers. His birth weight is 80 lbs, making him a solid choice for your heifer pen. He has been a standout calf right from the day he was born. **Retaining 1/3 semen interest for in herd use at your convenience and our expense.**

EPD's	
BW	+0.9
WW	+58
YW	+99
Milk	+29
TM	+58
Scotal	---
CED	+7.0
CEM	+10.0
REA	---
Marb	---
Fat	---
Carcass	+31



Lot **47**

Triple H Brilliance 17B

Male HRA 17B March 4 2014 1796786

G A R GRID MAKER AMF CAF NHF DDF
S A V BISMARCK 5682 AMF CAF NHF DDF
S A V ABIGALE 0451

Sires: S A V BRILLIANCE 8077 AMF CAF NHF DDF (1582480)

S A V 8180 TRAVELER 004 DMF DWF AMF CAF NHF OSF DDF
S A V BLACKCAP MAY 5270 CAC
S A V MAY 2420 CAC

S A V FINAL ANSWER 0035 AMF CAF NHF DDF
F V FINAL ANSWER 127W
F V 184K ROSEBUD 935T

Dams: F V LADY FA 95Z (1699882)

S A V 004 DENSITY 4336 AMF CAF NHF DDF
F V 4336 LADY IDA 511T
F V 304H LADY IDA 103M

BW: 85 Adj WW: 767

SOT: 894 EOT: 1118 Proj Wt: 1268 ADG: 2.55 WPDA: 3.20 AOD: 2

Adj. Carcass Values LMY: 63.2 REA: 12.84 %IMF: 3.90 Rib Fat: 0.23 Rump Fat: 0.43

Another SAV Brilliance 8077 son. 17B's pedigree is jam packed with some of the top sires in the breed. His dam is a Final Answer 127W daughter. 17B is a smooth made, meat machine. He is long bodied with nice muscle shape and a strong top. He has a very impressive set of EPD's; top 3% for Milk and TM, top 10% WW, top 15% carcass weight and top 20% CE and MCE. With an 85 lb birth weight, he could be used on your heifers. Check him out on sale day.

EPD's	
BW	+1.9
WW	+56
YW	+97
Milk	+28
TM	+56
Scotal	---
CED	+6.0
CEM	+9.0
REA	---
Marb	---
Fat	---
Carcass	+31



S A V Brilliance 8077 - Sire of Lots 46 & 47

Lot **48**

Red Triple H Wardo 77B
Male HRA 77B March 29 2014 1811635

RED BAR-E-L RIBEYE 103R OSF
RED BAR-E-L WARDEN 144W
RED BAR-E-L LARKABA 72N
Sire: **RED T-K GOVERNOR 75Z** (1683723)
RED FINE LINE MULBERRY 26P AMF OSF MAF DDF
RED T-K SUE 5T
RED T-K SUE 3P
RED SPUR HOOD 60G
RED VALLEYHILLS HOOD 36S
RED VALLEYHILLS LARKABELLE 46J

Dam: **RED VALLEYHILLS WYE 17U** (1463495)
RED MLK CRK CUB 722 OSF MAF
RED VALLEYHILLS WYE 79M
RED VALLEYHILLS WYE 38G

BW: 88	Adj WW: 735					
SOT: 804	EOT: 1036	Proj Wt: 1186	ADG: 2.64	WPDA: 3.20	AOD: 6	
Adj. Carcass Values		LMY: 64.0	REA: 13.83	%IMF: 3.36	Rib Fat: 0.23	Rump Fat: 0.29

EPD's	
BW	-1.0
WW	+59
YW	+91
Milk	+19
TM	+48
Scotal	---
CED	+0.7
CEM	+4.3
REA	+0.09
Marb	+0.30
Fat	-0.010
Carcass	+0.04



Lot 48

Red Triple H Wardo 77B is sired by T-K Governor 75Z who is a Warden 144W son out of a Mulberry dam - TK Sue 5T, a Premier Dam 2015. Not surprising that his EPD's rank him in the top 10% of the breed for total maternal, top 15% for weaning and yearling and top 20% for carcass weight. 77B will add pounds to your calves, feeders or finished steers. You will want to keep his females.

Lot **49**

Red Triple H Fulton 92B
Male HRA 92B April 7 2014 1810426

RED HEARTLAND KNIGHT CHARM 11L
RED TER-RON FULLY LOADED 540R AMF OSF
RED TER-RON GOLDIE 240L
Sire: **RED VIKSE DA FULLY LOADED 88X** (1594347)
RED GOLD-BAR PROGRAM K 1041P
RED VIKSE DYN 536T
RED VIKSE TA DYN 536R
RED DKF HIGH CLASS 77K
RED DKF FIRST CLASS 65N
RED DKF MISS RAB-STAR 40H

Dam: **RED BEE KRISTY 165U** (1453496)
RED LCC HEAVEN OR BUST1000B OSF MAF
RED YEO'S CRISTY 6F
RED YEO'S CRISTY 7D

BW: 89	Adj WW: 821					
SOT: 888	EOT: 1198	Proj Wt: 1348	ADG: 3.52	WPDA: 3.80	AOD: 6	
Adj. Carcass Values		LMY: n/a	REA: n/a	%IMF: n/a	Rib Fat: n/a	Rump Fat: n/a

EPD's	
BW	+0.0
WW	+59
YW	+85
Milk	+11
TM	+40
Scotal	---
CED	+0.2
CEM	+5.0
REA	-0.09
Marb	+0.28
Fat	-0.010
Carcass	+20



Lot 49

Red Triple H Fulton 92B is sired by Fully Loaded 88X. Born on April 7th, Fulton has a 205 day weight of 821 lbs. His January 22 weight was 1114 lbs, if he continues with his 3.65/lb ADG he should weigh just under 1400 lbs by sale day and he will only be 12 months old. Incredible performance in this bull. He is long bodied, deep sided and wide topped with a good hair coat. Check him out on sale day!



Red Vikse DA Fully Loaded 88X - Sire of Lots 49 - 51

Lot **50**

Red Triple H Full Packard 54B

Male HRA 54B March 23 2014 1807371

RED HEARTLAND KNIGHT CHARM 11L
RED TER-RON FULLY LOADED 540R AMF OSF
RED TER-RON GOLDIE 240L

Sire: RED VIKSE DA FULLY LOADED 88X (1594347)

RED GOLD-BAR PROGRAM K 1041P
RED VIKSE DYN 536T
RED VIKSE TA DYN 536R
RED SVR EQUALIZE 134N

RED RJ MITCHELL EQUALIZE 123S
RED YEO LANA 2N

Dam: RED HEE CHEROKEE 57W (1511519)

RED SVR PRIME CHOICE 13K
RED DEER RANGE CHOEROKEE 96N
RED SOUTHOLM CHEROKEE 31F

EPD's	
BW	-0.4
WW	+59
YW	+90
Milk	+8
TM	+37
Scotal	---
CED	-0.8
CEM	+2.1
REA	-0.06
Marb	+0.24
Fat	-0.010
Carcass	+23

BW: 90 Adj WW: 726

SOT: 812 EOT: 1132 Proj Wt: 1282 ADG: 3.64 WPDA: 3.43 AOD: 5

Adj. Carcass Values LMY: 64.4 REA: 13.68 %IMF: 3.49 Rib Fat: 0.21 Rump Fat: 0.32

Red Triple H Full Packard 54B is wide topped, deep ribbed and good haired. This dark red bull has been a standout all summer. His sire, Fully Loaded 88X and Dam, HRA 57W produced a top notch heifer calf that sold at Red Roundup in 2013. 54B ranks in the top 15% for WW and YW and top 20% for Carcass Weight. This bull will definitely pack some pounds on to his calves.



Lot **51**

Red Triple H Axial 78B

Male HRA 78B March 30 2014 1807378

RED HEARTLAND KNIGHT CHARM 11L
RED TER-RON FULLY LOADED 540R AMF OSF
RED TER-RON GOLDIE 240L

Sire: RED VIKSE DA FULLY LOADED 88X (1594347)

RED GOLD-BAR PROGRAM K 1041P
RED VIKSE DYN 536T
RED VIKSE TA DYN 536R
RED SVR EQUALIZE 134N

RED RJ MITCHELL EQUALIZE 123S
RED YEO LANA 2N

Dam: RED TRIPLE H LANA 26X (1564156)

RED BRETON BO 112L
RED YEO LANA 14P
RED YEO'S LANA 32G

EPD's	
BW	-0.3
WW	+61
YW	+90
Milk	+9
TM	+37
Scotal	---
CED	-0.7
CEM	+1.8
REA	-0.09
Marb	+0.27
Fat	-0.020
Carcass	+23

BW: 88 Adj WW: 754

SOT: 780 EOT: 1056 Proj Wt: 1206 ADG: 3.14 WPDA: 3.27 AOD: 4

Adj. Carcass Values LMY: 64.6 REA: 12.66 %IMF: 3.03 Rib Fat: 0.17 Rump Fat: 0.20

Red Triple H Axial 78B is another Fully Loaded 88X son. 11 out of 14 Loaded 88X's sons are being developed out as bulls. This has become the norm with 88X. He is the most consistent bull we have ever had on the farm. Aside from being a great bull producer, his females are easy keeping, well uddered and good milkers. Axial is another bull with strong EPD's: top 10% WW, top 15% YW and top 20% carcass weight. His WW EPD's puts him 16 pounds heavier than the average Red Angus calf born in 2014. At today's prices he has the potential to add 50 dollars per calf to your bottom line.



SALE WILL BE ONLINE WITH:



WWW.CATTLEINMOTION.COM

The Triple A sale will be broadcast live at www.cattleinmotion.com.

To view the sale live, simply log on to www.cattleinmotion.com and click on the sale, which will be listed on the right hand side of the screen. If you have never been to the Cattle In Motion site, you must first create an account to view a sale, then pay your \$1 lifetime verification so you may be able to bid.

Be sure to view the videos prior to the sale at www.cattleinmotion.com

**LIVE AUDIO, LIVE BIDDING
LIVE BROADCAST**

Hi Low Angus - Lots 52 - 58

Dan Howell - 306-731-2940 • 306-581-7606 Cell

Lot **52**

Hilow Role Model 6B

Male HTD 6B January 23 2014 1827209

FELTONS MEAT PACKER 62 AMF CAF NHF DDF
CONNEALY PACKER 547 DMF AMF CAF DDF
BESTRELLE OF CONANGA 539

Sire: **WILL ROLE MODEL** AMF CAF NHF DDF (1659103)

V D A R LUCYS BOY AMF CAF NHF DDF
WILL HENRIETTA PRIDE 113A
SITZ HENRIETTA PRIDE 1209
YOUNG DALE TOUCH DOWN 36M
HOWE MAGIC 28R
HOWE MS ERICA 132K

Dam: **HI LOW QUEEN MOTHER 67X** (1593237)

CUDLOBE RAINMAKER 49L
LODGE QUEEN MOTHER 92S
LODGE QUEEN MOTHER 7J

EPD's	
BW	-0.8
WW	+37
YW	+71
Milk	+16
TM	+40
Scotal	+0.15
CED	+3.5
CEM	+6.5
REA	+0.14
Marb	+0.48
Fat	+0.036
Carcass	+12

BW: 78 Adj WW: 571

SOT: 820 EOT: 1114 Proj Wt: 1264 ADG: 3.34 WPDA: 2.86 AOD: 4

Adj. Carcass Values LMY: 65.2 REA: 12.15 %IMF: 4.60 Rib Fat: 0.13 Rump Fat: 0.25

Recommended for heifers. Lot 52 is sired by Will Role Model who has a below average birth weight EPD (+1.1) and above average weaning (+55) and yearling (+103). An outcross pedigree, this bull could cover most any group of siblings. A full brother sold to Reid McLeod.



Lot **53**

Hilow Tiger 107B

Male HTD 107B March 30 2014 1827215

HF KODIAK 5R AMF CAF NHF MAF DDF
HF TIGER 5T AMF CAF NHF OSF DDF
HF ECHO 84R

Sire: **HILLOW TIGER 1X** (1578692)

S A V NET WORTH 4200 AMF CAF NHF DDF
MVF TIBBIE 108U
MVRB TIBBIE 123F
BLACK RIDGE W WIDESPREAD 2K
ISLA BANK WIDESPREAD 12S
ISLA BANK HEROINE 12N

Dam: **IRV LADY MCHENRY 20Y** (1609855)

LAMB'S QUARTERS ULTRA 61N
IRV ULTRA LADY MCHENRY 8U
IRV LADY MCHENRY 16P

EPD's	
BW	+1.0
WW	+42
YW	+82
Milk	+22
TM	+42
Scotal	+0.15
CED	+4.5
CEM	+7.0
REA	+0.11
Marb	+0.08
Fat	+0.015
Carcass	+21

BW: 75 Adj WW: 734

SOT: 758 EOT: 1066 Proj Wt: 1216 ADG: 3.50 WPDA: 3.30 AOD: 3

Adj. Carcass Values LMY: 59.3 REA: 12.77 %IMF: 3.34 Rib Fat: 0.38 Rump Fat: 0.38

Recommended for heifers, a son out of our senior herdsire, Hi Low Tiger 1X. Lot 53 is a clean fronted, eye-appealing bull. He is our youngest bull at only 12 months of age, but has performed well.



HF Tiger 5T - Paternal Grand sire of Lots 53, 54 & 56



Hilow Tiger 1X - Sire of Lots 53, 54 & 56

Lot **54**

HiLow Tiger 4B

Male HTD 4B January 23 2014 1827147

HF KODIAK 5R AMF CAF NHF MAF DDF
HF TIGER 5T AMF CAF NHF OSF DDF
HF ECHO 84R

Sire: **HILOW TIGER IX** (1578692)

S A V NET WORTH 4200 AMF CAF NHF DDF
MVF TIBBIE 108U
MVRB TIBBIE 123F
PERRYVILLE 10D RAINMAN 48H
PERRYVILLE VENTURE 38K
PERRYVILLE SILKY 41H

Dam: **HILOW BLOSSOM 5BN** (1169678)

BASIN MAX 602C AMF CAF NHF DDF
HILOW BLOSSOM 35L
G B T BLOSSOM 16J

BW: 88 Adj WW: 736

SOT: 1018 EOT: 1352 Proj Wt: 1502 ADG: 3.80 WPDA: 3.48 AOD: 11

Adj. Carcass Values LMY: 61.6 REA: 13.07 %IMF: 2.65 Rib Fat: 0.30 Rump Fat: 0.42

Lot 54 is a larger framed, square hipped bull. He has lots of bone and excellent testicular development. Lot 54's dam is an easy doing 11 year old working mama. Her sire was purchased from Ron and Ruth Perry, Perryville Angus. Maternal brothers have sold to Ken Drysdale, Murray McGillivray and Doug Wyatt.



Lot 54

Lot 54

Lot 54

Lot **56**

HiLow Tiger 83B

Male HTD 83B March 14 2014 1827210

HF KODIAK 5R AMF CAF NHF MAF DDF
HF TIGER 5T AMF CAF NHF OSF DDF
HF ECHO 84R

Sire: **HILOW TIGER IX** (1578692)

S A V NET WORTH 4200 AMF CAF NHF DDF
MVF TIBBIE 108U
MVRB TIBBIE 123F
BLACK RIDGE W WIDESPREAD 2K
ISLA BANK WIDESPREAD 48T
ISLA BANK LUCY 48P

Dam: **HILOW PRIDE 19X** (1578676)

ISLA BANK TITAN 148
HILOW PRIDE 12N
HILOW PRIDE 24H

BW: 88 Adj WW: 718

SOT: 784 EOT: 1054 Proj Wt: 1204 ADG: 3.07 WPDA: 3.11 AOD: 4

Adj. Carcass Values LMY: 59.4 REA: 12.98 %IMF: 4.53 Rib Fat: 0.38 Rump Fat: 0.43

Recommended for heifers. Lot 56 is a deep bull with excellent testicular development. We used a maternal brother last year to cover a group of Tiger sired heifers.

Monday, April 6, 2015 - 1:00 pm

EPD's	
BW	+3.8
WW	+44
YW	+83
Milk	+22
TM	+43
Scotal	---
CED	+1.0
CEM	+6.5
REA	+0.08
Marb	+0.26
Fat	+0.010
Carcass	+26



Lot 54

Lot **55**

HiLow All Answers 29B

Male HTD 29B February 12 2014 1827434

SITZ TRAVELER 8180 AMF CAF NHF DDF
S A V FINAL ANSWER 0035 AMF CAF NHF DDF
S A V EMULOUS 8145 CAF

Sire: **JL ALL ANSWERS 1009** (1610609)

LEACHMAN RIGHT TIME DMF AMF
ROYAL PERSEPHONE DRCC 8078U
CANE RIDGE PERSEPHONE 6531F
MVF ALLIANCE 156T
FREYBURN ALLIANCE 46X
FREYBURN RUBY 173R

Dam: **GGA QUEEN MOTHER 21Z** (1695983)

PEAK DOT NEW TREND 74M
HILOW QUEEN MOTHER 30S
HILOW QUEEN MOTHER 1N AMF NHF

BW: 95 Adj WW: 642

SOT: 780 EOT: 1142 Proj Wt: 1292 ADG: 4.11 WPDA: 3.09 AOD: 2

Adj. Carcass Values LMY: 65.6 REA: 13.22 %IMF: 4.54 Rib Fat: 0.15 Rump Fat: 0.20

Lot 55 is out of a first calf heifer which I bought from Glen Gabel. He is gaining over 4 lbs/day. He is as long and clean fronted as his mother.



Lot 55

Lot 55

Lot 55

Lot 55

Lot **57**

HiLow Excitement 15B

Male HTD 15B January 30 2014 1827160

GARDENS EXPEDITION AMF CAF NHF DDF
BASIN EXPEDITION R156 AMF CAF DDF
BASIN PRIMROSE LADY 5287

Sire: BASIN EXCITEMENT AMF CAF NHF DDF (1688134)

VERMILION PAYWEIGHT J847 AMF CAF NHF DDF

BASIN LADY S532 AK

BASIN LADY 306E

ISLA BANK TITAN 148

HILOW TITAN 13P

HILOW HEATHER 23E

Dam: HILOW ROSEGAY 1001 (1408935)

V D A R NEW TREND 315 AMF CAF NHF DDF

HILOW ROSEGAY 21M

CALLAMERE ROSEGAY 9D

EPD's	
BW	+4.2
WW	+51
YW	+85
Milk	+21
TM	+48
Scotal	+0.39
CED	+4.0
CEM	+8.5
REA	+0.32
Marb	+0.29
Fat	+0.028
Carcass	+28

BW: 98 Adj WW: 609

SOT: 840 EOT: 1180 Proj Wt: 1330 ADG: 3.86 WPDA: 3.09 AOD: 7

Adj. Carcass Values LMY: 63.5 REA: 12.83 %IMF: 3.58 Rib Fat: 0.22 Rump Fat: 0.29



Lot 57

Lot 57 is sired by Basin Excitement, a complete outcross pedigree bull. Basin Excitement has amazing EPD's - BW 0.0, WW +75, YW +131.

Lot **58**

HiLow Ideal 89B

Male HTD 89B March 16 2014 1827145

CAR IDEAL 061
CRESCENT CREEK IDEAL 32U
CRESCENT CREEK ROSEBUD 10R

Sire: CRESCENT CREEK IDEAL 28X (1549100)

GDAR QUANTUM 963

CRESCENT CREEK PRIDE 106M

CRESCENT CREEK PRIDE 40K

PAPA EQUATOR 2928 AMF NHF

PAPA UNIVERSE 515 AMF NHF

PLD ERISKAY PAPA 011

Dam: HAPPYVALE NP LASSIE 17K (1022593)

N BAR EMULATION EXT AMF CAF NHF DDF

HAPPYVALE NP LASSIE 17G

HAPPYVALE LASSIE 8D

EPD's	
BW	+4.4
WW	+48
YW	+75
Milk	+20
TM	+42
Scotal	---
CED	-3.0
CEM	+2.0
REA	+0.11
Marb	+0.31
Fat	-0.006
Carcass	+22

BW: 95 Adj WW: 735

SOT: 792 EOT: 1152 Proj Wt: 1302 ADG: 4.09 WPDA: 3.42 AOD: 14

Adj. Carcass Values LMY: 59.9 REA: 12.56 %IMF: 3.97 Rib Fat: 0.35 Rump Fat: 0.46



Mark Sneed

Basin Excitement - Sire of Lot 57



Lot 58

Lot 58 is a larger framed performance bull gaining well over 4 lbs/day at the January weigh interval. Yes, his mother is a 14 year old Happyvale bred cow.



Nu-Horizon Angus - Lots 59 - 70

Kieran & Deb Doetzel - 306-336-2245

Hello Everyone, In our write-ups this year we tried to give you some information about the dam as she makes up half the bull. We have been striving for strong maternal, high fertility females with good temperament that will work in our program and produce us good, sound, solid bulls and replacement heifers that will perform for us and you. It is showing as our replacement pen has been approximately 40 females for the last two years. We are very excited about our new herd sires we have purchased recently, Mohnen South Dakota 2144, RRAR Detour 37A, Blair's West Power Eye 1B and Owng Barnabas 1209. We would also like to thank our previous bidders and buyers from past sales.

Lot **59**

Nu-Horizon Pure Product 401B

Male TW TK 401B January 10 2014 1813507

CONNEALY PRODUCT 568
CONNEALY FINAL PRODUCT DMF AMF CAF NHF DDF
EBONISTA OF CONANGA 471 DDF

Sire: MCATT, PURE PRODUCT 903-55 AMF CAF NHF DDF (1596945)

WAR ALLIANCE 9126 6006 AMF CAF NHF DDF

M A ESTA 55-252 CAF

R A ESTA R243

G A R GRID MAKER AMF CAF NHF DDF

S A V BISMARCK 5682 AMF CAF NHF DDF

S A V ABIGALE 0451

Dam: NU-HORIZON TIBBIE 101Y (1601444)

MVF WIDESPREAD 273P

MVF TIBBIE 421U

MVF TIBBIE 222R

EPD's	
BW	+2.7
WW	+61
YW	+107
Milk	+26
TM	+57
Scotal	+0.37
CED	+1.0
CEM	+8.0
REA	+0.08
Marb	+0.23
Fat	+0.044
Carcass	+38

BW: 60 Adj WW: 502

SOT: 754 EOT: 1112 Proj Wt: 1262 ADG: 4.07 WPDA: 2.77 AOD: 3

Adj. Carcass Values LMY: 62.7 REA: 12.88 %IMF: 3.38 Rib Fat: 0.25 Rump Fat: 0.22

A deep ribbed bull that has an awesome top line. His dam was shown as our son's 4-H heifer. She is a never miss cow that has stuck her AI every time and produced a top end animal. A quiet disposition and is recommended for heifers. He is a twin.



Lot **60**

Nu-Horizon X-Factor 404B

Male TK 404B January 18 2014 1813509

SITZ TRAVELER 8180 AMF CAF NHF DDF
S A V FINAL ANSWER 0035 AMF CAF NHF DDF
S A V EMULOUS 8145 CAF

Sire: VIN-MAR O'REILLY FACTOR (1662833)

CIRCLE A 216 LTD 9374

VIN-MAR EDELLA 2827

R R EDELLA PURSUIT 5827

SOUTHLAND TWO FITTY 250T

SOUTHLAND THRILLER 83X

SOUTHLAND BELLE 89R

Dam: HARPREY BARBARA MCHENRY 10Z (1664139)

G D A R ROLLS ROYCE 203

HARPREY BARBARA MCHENRY 16P

HARPREY BARBARA MCHENRY 62K

EPD's	
BW	+4.0
WW	+60
YW	+102
Milk	+22
TM	+52
Scotal	+0.44
CED	+3.0
CEM	+7.0
REA	+0.23
Marb	+0.12
Fat	+0.010
Carcass	+37

BW: 85 Adj WW: 680

SOT: 906 EOT: 1206 Proj Wt: 1356 ADG: 3.41 WPDA: 3.06 AOD: 2

Adj. Carcass Values LMY: 65.5 REA: 13.05 %IMF: 1.64 Rib Fat: 0.15 Rump Fat: 0.21

This bull has lots of hair and bone, a good hip, and is a meat machine. We bought his dam from Harprey Farm in Ontario. She has a great temperament and a good udder with small teats. He is recommended for heifers.



S A V Final Answer 0035 - Paternal Grand sire of Lot 60

Lot **61**

No-Horizon Bismarck 415B
Male TK 415B February 14 2014 1813515

G D A R TRAVELER 044 AMF CAF NHF DDF
G A R GRID MAKER AMF CAF NHF DDF
G A R PRECISION 2536 AMC NHF

Sire: S A V BISMARCK 5682 AMF CAF NHF DDF (1369591)

SCHOENES FIX IT 826 AMF CAF NHF DDF
S A V ABIGALE 0451
S A V ABIGALE 6062
S A V PIONEER 7301 AMF CAF NHF DDF
MVF PIONEER 104X
MVF ANNIE K 317U

Dam: NU-HORIZON TIBBIE 254Z (1706607)

MVF WIDESPREAD 273P
MVF TIBBIE 421U
MVF TIBBIE 222R

EPD's	
BW	+3.6
WW	+54
YW	+92
Milk	+23
TM	+50
Scotal	+0.60
CED	+4.0
CEM	+11.0
REA	+0.48
Marb	+0.28
Fat	-0.010
Carcass	+31



S A V Pioneer 7301
Maternal Grandsire of Lot 61

BW: 83	Adj WW: 641				
SOT: 794	EOT: 1030	Proj Wt: 1180	ADG: 2.68	WPDA: 2.81	AOD: 2
Adj. Carcass Values	LMY: 64.6	REA: 12.96	%IMF: 3.81	Rib Fat: 0.18	Rump Fat: 0.25

You can never go wrong with Bismarck in your herd. A heifer bull that will put depth and style in your replacement pen with strong maternal traits. He is a long bodied bull with good testicle development, a square top and lots of hair to boot.

Lot **62**

No-Horizon Upward 418B
Male TK 418B February 17 2014 1813517

CONNELLY ONWARD DMF AMF CAF NHF DDF
SITZ UPWARD 307R DMF AMF CAF NHF DDF
SITZ HENRIETTA PRIDE 81M

Sire: JL UPWARD 1196 (1610779)

S A V FOUR SEASONS 5231
JL SUSIE 8289
DOUBLE AA SUSIE 7540'96
SITZ TRAVELER 8180 AMF CAF NHF DDF
S A V REPLICIA 9484
SUNSET VALLEY FRVR LADY 6313

Dam: NU-HORIZON ELBA 132Y (1641694)

CUDLOBE MIDLAND 21R
LODGE ELBA 39U
LODGE ELBA 13K

EPD's	
BW	+2.7
WW	+50
YW	+86
Milk	+26
TM	+51
Scotal	---
CED	+3.0
CEM	+9.0



Lot 61



S A V Bismarck 5682 - Sire of Lot 61 and
Maternal Grandsire of Lot 59

BW: 82	Adj WW: 647				
SOT: 830	EOT: 1100	Proj Wt: 1250	ADG: 3.07	WPDA: 3.02	AOD: 3
Adj. Carcass Values	LMY: 63.9	REA: 12.70	%IMF: 3.65	Rib Fat: 0.20	Rump Fat: 0.27

418B's sire stamps his calves consistently year after year. We are calving his third calf crop this year. Upward 1196 moved onto a commercial herd last August after he serviced our herd. Lot 62 is a clean fronted bull with a good foot under him, as well as a long body and small head. He is a bull with balanced EPD's stacked with both maternal and performance. He should stamp out good replacement heifers due to his strong maternal traits. Cow or heifer bull.



S A V Replica 9484 - Maternal Grandsire of Lot 62



Lot 62

Lot **63**

Nu-Horizon Pioneer 454B
Male TK 454B March 12 2014 1822466

S A V FINAL ANSWER 0035 AMF CAF NHF DDF
S A V PIONEER 7301 AMF CAF NHF DDF
S A V BLACKBIRD 5297 CAC

Sire: MVF PIONEER 104X (1552041)

BXB VENTURE SON 9P
MVF ANNIE K 317U
MVF ANNIE K 232S
RITO 9FB3 OF 5H11 FULLBACK AMF CAF NHF DDF
FGAF RIBEYE 401P
HOFF MISS FAME S C 595

Dam: NU-HORIZON RIBEYE 904W (1487448)

RED CROWFOOT 2068M
RED NU-HORIZON ROCA 730T
RED T BAR K HIGH ROCKY 7K

EPD's	
BW	+1.8
WW	+49
YW	+88
Milk	+23
TM	+47
Scotal	---
CED	+4.0
CEM	+6.5
REA	+0.33
Marb	-0.06
Fat	+0.011
Carcass	+26



BW: 82	Adj WW: ---				
SOT: 770	EOT: 1070	Proj Wt: 1220	ADG: 3.41	WPDA: 3.14	AOD: 5
Adj. Carcass Values	LMY: 63.8	REA: 13.56	%IMF: 3.54	Rib Fat: 0.23	Rump Fat: 0.22

This bull is out of one of the most consistent and best producing cows we have. She is moderate framed. Three years ago her bull calf sold to Robert McNutt, Moose Jaw, SK. 454B is clean fronted and wide topped with a good hair coat. He is recommended for heifers or cows.



Lot **64**

Nu-Horizon Pioneer 461B
Male TK 461B March 15 2014 1817261

S A V FINAL ANSWER 0035 AMF CAF NHF DDF
S A V PIONEER 7301 AMF CAF NHF DDF
S A V BLACKBIRD 5297 CAC

Sire: MVF PIONEER 104X (1552041)

BXB VENTURE SON 9P
MVF ANNIE K 317U
MVF ANNIE K 232S
S A F FOCUS OF E R AMF CAF NHF DDF
MYTTY IN FOCUS AMF CAF NHF DDF
MYTTY COUNTESS 906

Dam: T-BAR MOLLIE IN FOCUS 12W (1514648)

JLC KAYO 36D
4C'S MOLLIE 139K
4C'S BLACK MOLLIE 16C

EPD's	
BW	+3.2
WW	+55
YW	+92
Milk	+27
TM	+47
Scotal	+0.50
CED	+2.0
CEM	+4.0
REA	+0.18
Marb	+0.28
Fat	+0.017
Carcass	+30

BW: 88	Adj WW: 662				
SOT: 824	EOT: 1060	Proj Wt: 1210	ADG: 2.68	WPDA: 3.14	AOD: 5
Adj. Carcass Values	LMY: 60.5	REA: 15.60	%IMF: 3.50	Rib Fat: 0.42	Rump Fat: 0.45

Last year his maternal brother sold to John Bessey in the Triple A Sale. 461B is a well muscled, clean fronted, hairy bull with large testicles. He stood out in the pasture this summer. He is recommended for cows or larger framed heifers.



Lot **65**

Red Nu-Horizon Loaded 425B
Male TK 425B February 27 2014 1813523

RED TER-RON FULLY LOADED 540R AMF OSF
RED PFFR LOCKED AND LOADED 918 OSF MAF
RED PFFR CEDAR 3015 OSF

Sire: RED PFFR LOADED 41Y (1721850)

RED BJR RAMBLER 5162 OSF
RED RRM RAMBLER'S DESIGN L2
RED SCC-COF DSIGN 44
RED BJR AH BRANDED BEEF L107 OSF MAF
RED BRYLOR IMLT BUSINESS 61P
RED BONNY 7468

Dam: RED NU-HORIZON REBECCA 003X (1549458)

RED FINE LINE MULBERRY 26P AMF OSF MAF DDF
RED MCRAE'S REBECCA 16U*
RED VVV REBECCA 24F 19C 43H

EPD's	
BW	-1.1
WW	+61
YW	+95
Milk	+15
TM	+45
Scotal	---
CED	+1.0
CEM	+4.1
REA	+0.07
Marb	+0.27
Fat	+0.000
Carcass	+25

BW: 78	Adj WW: 617				
SOT: 724	EOT: 1014	Proj Wt: 1164	ADG: 3.30	WPDA: 2.86	AOD: 4
Adj. Carcass Values	LMY: 64.6	REA: 12.64	%IMF: 3.23	Rib Fat: 0.17	Rump Fat: 0.29

425B's dam has a very quiet disposition with a picture perfect udder. Her bred heifer was selected and sold this fall in the Frontline Sale to Katherine Laycraft. This bull gives calving ease along with adding some pounds to your calves. He has length, good sized testicles and a muscular hip. Heifer bull.

Lot **66**

Red Nu-Horizon Mission 431B

Male TK 431B March 3 2014 1813529

RED LJC MISSION STATEMENT P27 OSF MAF
RED U2 MISSION 61W
RED U-2 STORMY 205M

Sire: **RED U-2 MISSION 366Z** (1679913)

RED FLYING K HERCULES 165P
RED U-2 MISS 8043U
RED U-2 1591R
RED RIVERDALE KAPTON 4S
RED JLCC ROB 8U
RED RIVERDALE KIT 30P

Dam: **RED NU-HORIZON INA 130Y** (1644907)

RED RICOSHAE SEQUOIA 35R
RED NU-HORIZON NATALIE 865U
RED T BAR K DAY INA 537R

EPD's	
BW	+2.3
WW	+58
YW	+88
Milk	+13
TM	+42
Scotal	+0.50
CED	-0.9
CEM	+4.0
REA	+0.18
Marb	+0.38
Fat	+0.020
Carcass	+26

BW: 87 Adj WW: 624

SOT: 726 EOT: 1020 Proj Wt: 1170 ADG: 3.34 WPDA: 2.91 AOD: 3

Adj. Carcass Values LMY: 65.3 REA: 14.50 %IMF: 3.76 Rib Fat: 0.20 Rump Fat: 0.25

This is a dark cherry, solid footed, good performing bull. His dam is also that dark cherry red that everyone seeks out. He has a tremendous top line and stride that is sure to cover the cows in your pasture. Cow bull.



Lot **67**

Red Nu-Horizon Avalanche 438B

Male TK 438B March 6 2014 1813534

RED BJR MONU 4X-303 OSF MAF
RED T-K AVALANCHE 8S OSF
RED BWB TROPHY 4'02 OF CANYON OSF

Sire: **RED T-K AVALANCHE 15X** (1580541)

RED TER-RON HUSTLER 216P
RED T-K TROPHY 32U
RED BWB TROPHY 4'02 OF CANYON OSF
RED BASIN SENSATION 702E OSF
RED MEM SENSATION 220R
RED MAC MISS GOLDIE 12L

Dam: **RED NU-HORIZON MISSY 069X** (1592429)

RED T BAR K ICON 10H
RED T BAR K BARBIE 225M
RED E LAZY T MS BARBIE 75H

EPD's	
BW	+0.3
WW	+50
YW	+83
Milk	+17
TM	+42
Scotal	---
CED	+0.8
CEM	+2.5
REA	-0.11
Marb	+0.15
Fat	-0.020
Carcass	+20

BW: 84 Adj WW: 671

SOT: 880 EOT: 1156 Proj Wt: 1306 ADG: 3.14 WPDA: 3.33 AOD: 4

Adj. Carcass Values LMY: 62.0 REA: 13.58 %IMF: 2.80 Rib Fat: 0.30 Rump Fat: 0.37

This bull was a standout in the pasture this summer. He had that masculine look at a very young age. Strong maternal traits, this bull should pattern nice uddered replacement heifers. He is clean fronted, with a solid top and lots of hair. He could be used on either cows or heifers.



Lot **68**

Red Nu-Horizon Packer 447B

Male TK 447B March 9 2014 1813542

RED MESSMER JOSHUA 019P OSF
 RED MESSMER PACKER S008 OSF MAF
 RED MESSMER MILLIE 124P OSF

Sire: **RED HAMCO PACKER 133Y** (1625763)

RED SSS EQUAL 508N
 RED HAMCO MIMI 520W
 RED HAMCO MIMI INDEED 98R
 RED TOWAW INDEED 104H OSF
 RED SIX MILE TROY 243T
 RED RSL SUE 400F OSF

Dam: **RED T-K LANA 54Z** (1683714)

RED T-K AVALANCHE 8S OSF
 RED T-K LANA 61W
 RED BWB LANA 32N

EPD's	
BW	-1.3
WW	+67
YW	+100
Milk	+16
TM	+49
Scotal	---
CED	+3.6
CEM	+6.0
REA	+0.13
Marb	+0.46
Fat	-0.010
Carcass	+27

BW: 78 Adj WW: 638

SOT: 674 EOT: 998 Proj Wt: 1148 ADG: 3.68 WPDA: 2.90 AOD: 2

Adj. Carcass Values LMY: 64.2 REA: 14.39 %IMF: 2.59 Rib Fat: 0.24 Rump Fat: 0.19

We bought 447B's dam from T-K Ranch at the Keystone Classic Female Sale. He is dark red with a clean sheath and deep heart girth. He has a very good hair coat and is recommended for heifers.



Lot **69**

Red Nu-Horizon Loaded 455B

Male TK 455B March 12 2014 1817255

RED TER-RON FULLY LOADED 540R AMF OSF
 RED PFFR LOCKED AND LOADED 918 OSF MAF
 RED PFFR CEDAR 3015 OSF

Sire: **RED PFFR LOADED 41Y** (1721850)

RED BJR RAMBLER 5162 OSF
 RED RRM RAMBLER'S DESIGN L2
 RED SCC-COF DSIGN 44
 RED MLK CRK CUB 722 OSF MAF
 RED CROWFOOT 2055M
 RED OMEGA 7456'

Dam: **RED NU-HORIZON SIENA 821U** (1484920)

RED E LAZY T FIRST BLOOD 33F
 RED E LAZY T SIENA STAR 68H
 RED M DOUBLE B RS SIENA 218F

EPD's	
BW	+0.5
WW	+58
YW	+87
Milk	+15
TM	+44
Scotal	---
CED	-1.8
CEM	+2.0
REA	+0.02
Marb	+0.19
Fat	+0.000
Carcass	+23

BW: 84 Adj WW: 668

SOT: 846 EOT: 1128 Proj Wt: 1278 ADG: 3.20 WPDA: 3.31 AOD: 6

Adj. Carcass Values LMY: 61.0 REA: 11.98 %IMF: 5.19 Rib Fat: 0.29 Rump Fat: 0.38

455B's dam is a moderate framed, hardworking cow that is one of our favorite females in our herd. Kodie showed her and this bull in the pen show at Swift Current. He has been a favorite of many visitors when he was in pasture. He is a no fault bull, that is balanced through and through. He would work on heifers or cows.



Lot **70**

Red Nu-Horizon Avalanche 481B

Male TK 481B March 22 2014 1819134

RED BJR MONU 4X-303 OSF MAF
 RED T-K AVALANCHE 8S OSF
 RED BWB TROPHY 4'02 OF CANYON OSF

Sire: **RED T-K AVALANCHE 15X** (1580541)

RED TER-RON HUSTLER 216P
 RED T-K TROPHY 32U
 RED BWB TROPHY 4'02 OF CANYON OSF
 RED BJR AH BRANDED BEEF L107 OSF MAF
 RED MEM BRANDED BEEF 241S
 RED L4 GOLDIE 755L

Dam: **RED NU-HORIZON STARLITE 050X** (1642916)

RED CROWFOOT 2055M
 RED NU HORIZON LUCKY STAR 414P
 RED T BAR K LUCKY STAR 102L

EPD's	
BW	-1.8
WW	+50
YW	+83
Milk	+14
TM	+39
Scotal	---
CED	+1.9
CEM	+4.8
REA	-0.08
Marb	+0.26
Fat	+0.010
Carcass	+17

BW: 76 Adj WW: 657

SOT: 680 EOT: 984 Proj Wt: 1134 ADG: 3.45 WPDA: 2.97 AOD: 4

Adj. Carcass Values LMY: 57.3 REA: 11.28 %IMF: 5.02 Rib Fat: 0.41 Rump Fat: 0.56

Two years ago a maternal brother sold in this sale to Brian Aschenbrener, Cupar, SK and last year's went to Paul and John Huber of Bruno, SK. A younger, deep barreled bull, with a straight top and clean front. He is a heifer bull.

Black Pearl Angus - Lots 71 - 75

Matt Bedard & Katelyn Jeffrey - 306-690-7194 or 306-737-1571

Lot **71**

Black Pearl Sitka 01B

Male KMJ 01B March 4 2014 1818827

C H QUANTUM 6247
 COLE CREEK BLACK CEDAR 46P
 COLE CREEK CLOVA JUANADA 67
Sire: NU-HORIZON BLK CEDAR 208Z (1665411)
 MERIT MATADOR 4190
 MERIT BEAUTY 192X
 MERIT BEAUTY 6272
 EMULATION N BAR 5522
 N BAR EMULATION EXT AMF CAF NHF DDF
 N BAR PRIMROSE 2424
Dam: NEW FORCE HYMENA 1Y (1601548)
 GAMBLES HOT ROD
 SUNNY GROVE HYMENA 8U
 SUNNY GROVE HYMENA 31L

EPD's	
BW	+2.0
WW	+27
YW	+44
Milk	+11
TM	---
Scotal	---
CED	---
CEM	---
REA	+0.24
Marb	+0.11
Fat	+0.015
Carcass	+0



Lot 71

BW: 85	Adj WW: 702				
SOT: 810	EOT: 1084	Proj Wt: 1234	ADG: 3.11	WPDA: 3.11	AOD: 3
Adj. Carcass Values	LMY: 58.8	REA: 12.23	%IMF: 3.48	Rib Fat: 0.38	Rump Fat: 0.46

Looking for a heifer bull? Our first bull on offer is well suited for heifers with a moderate birth weight of 85 lbs, smooth head and shoulders and good length of spine. Sired by Nu-Horizon Blk Cedar 208Z, a son of Cole Creek Black Cedar 46P, that we purchased from the 2013 Triple A Bull Sale. The dam, a direct daughter of N Bar Emulation EXT, is an easy fleshing, good footed, strong milking cow.



Lot 72

Lot **73**

Black Pearl Rush 8B

Male KMJ 8B March 15 2014 1814979

B C LOOKOUT 7024 AMF CAF NHF DDF
 COTTAGE CREEK "RUSH" 902W DDF
 COTTAGE CRK 911J TYRA 7005'07
Sire: BLACK PEARL HANK (1716572)
 GAMBLES HOT ROD
 SUNNY GROVE HYMENA 8U
 SUNNY GROVE HYMENA 31L
 WHITSTONE WIDESPREAD MB AMF NHF
 NEW FORCE WIDESPREAD 94T CAF
 NEW FORCE MISS LARK LEE 94N CAC
Dam: BRIMAR ELBA 8W (1497184)
 PEAK DOT HOBSON 122P
 NEW FORCE EBLA 52T
 SKY HIGH ELBA 3J

EPD's	
BW	+2.9
WW	+42
YW	+67
Milk	+16
TM	+37
Scotal	---
CED	+4.0
CEM	+7.0



Lot 73

BW: 89	Adj WW: 767				
SOT: 940	EOT: 1258	Proj Wt: 1408	ADG: 3.61	WPDA: 3.72	AOD: 5
Adj. Carcass Values	LMY: 64.5	REA: 14.38	%IMF: 3.50	Rib Fat: 0.23	Rump Fat: 0.26

Lot **72**

Black Pearl Spartan 10B

Male KMJ 10B March 22 2014 1814985

B C LOOKOUT 7024 AMF CAF NHF DDF
 COTTAGE CREEK "RUSH" 902W DDF
 COTTAGE CRK 911J TYRA 7005'07
Sire: BLACK PEARL HANK (1716572)
 GAMBLES HOT ROD
 SUNNY GROVE HYMENA 8U
 SUNNY GROVE HYMENA 31L
 WHITSTONE WIDESPREAD MB AMF NHF
 NEW FORCE WIDESPREAD 94T CAF
 NEW FORCE MISS LARK LEE 94N CAC
Dam: BRIMAR ROSEBUD 10W (1497187)
 CONNEALY ONWARD DMF AMF CAF NHF DDF
 NEW FORCE RUBY 305T
 NEW FORCE ROSEBUD 71N

EPD's	
BW	+4.2
WW	+51
YW	+81
Milk	+19
TM	+45
Scotal	---
CED	+1.0
CEM	+5.0

BW: 97	Adj WW: 840				
SOT: 994	EOT: 1336	Proj Wt: 1486	ADG: 3.89	WPDA: 4.04	AOD: 5
Adj. Carcass Values	LMY: 61.8	REA: 14.96	%IMF: 3.14	Rib Fat: 0.35	Rump Fat: 0.43

Check out this dude! This bull is the total package, with a strong set of EPD's and exceptional performance. At the mid January weigh in this bull had an average daily gain of 4.00 and the highest weight per day of age of the entire group of bulls at 4.06! A well put together bull with superior conformation, powerful hindquarters, and good depth in the body.

One of three sons of Black Pearl Hank 8Z that we have on offer here. Hank is a direct son of Cottage Creek Rush 902W. A chance to bring in some fresh genetics. Another strong performing bull with excellent gains. He is a nice and deep bull with a smooth shoulder and good length of spine. He could go any way you want, let him cover the cows or heifers with confidence.

Lot **74**

Black Pearl Yellowstone 1B
Male KMJ 1B February 26 2014 1814971

VERMILION YELLOWSTONE AMF CAF NHF DDF
CUDBLOBE YELLOWSTONE 80M
STEVENSON ENCHANTRESS 425F

Sire: SOO LINE YELLOWSTONE 6344 (1326308)

BT RIGHT TIME 24J AMF CAF NHF DDF
ANGUS GLEN FAVORITE 9N MAF
ANGUS GLEN FAVORITE 6G
S A V FINAL ANSWER 0035 AMF CAF NHF DDF
NORTHERN VIEW FINAL ANSWER 74X
NORTHERN VIEW BELLE 79U

Dam: BLACK PEARL ROSEBUD (1673256)

NEW FORCE WIDESPREAD 94T CAF
BRIMAR ROSEBUD 11W
NEW FORCE ROSEBUD 71N

BW: 86 Adj WW: 701

SOT: 852 EOT: 1118 Proj Wt: 1268 ADG: 3.02 WPDA: 3.15 AOD: 2

Adj. Carcass Values LMY: 65.0 REA: 14.04 %IMF: 1.55 Rib Fat: 0.20 Rump Fat: 0.28

Another good heifer bull here. A direct son of Soo Line Yellowstone 6344 and out of a first calf heifer. She did a good job as he had a moderate birth weight of 86 lbs and adjusted weaning weight of 701 lbs. He also comes with a nice spread of EPD's.

EPD's	
BW	+3.0
WW	+43
YW	+80
Milk	+21
TM	+43
Scotal	+0.41
CED	+2.0
CEM	+4.0
REA	+0.29
Marb	+0.18
Fat	+0.006
Carcass	+23



Soo Line Yellowstone 6344 - Sire of Lot 74 and Maternal Grandsire of Lot 75

Lot **75**

Black Pearl Capital 20B
Male KMJ 20B March 20 2014 1814984

B C LOOKOUT 7024 AMF CAF NHF DDF
COTTAGE CREEK "RUSH" 902W DDF
COTTAGE CRK 911J TYRA 7005'07

Sire: BLACK PEARL HANK (1716572)

GAMBLES HOT ROD
SUNNY GROVE HYMENA 8U
SUNNY GROVE HYMENA 31L
SOO LINE YELLOWSTONE 6344
SOO LINE ENTOURAGE 8419
GEIS PRIDE 114'99 MAF

Dam: SOO LINE PRINCESS 0020 (1590499)

CAR TANK 226
SOO LINE PRINCESS 8206
SOO LINE PRINCESS 6169

BW: 95 Adj WW: 684

SOT: 770 EOT: 1056 Proj Wt: 1206 ADG: 3.25 WPDA: 3.17 AOD: 4

Adj. Carcass Values LMY: 64.1 REA: 11.09 %IMF: 4.33 Rib Fat: 0.14 Rump Fat: 0.16

A long and free moving bull. His mother, a Soo Line Entourage 8419 daughter, is a good milking cow with excellent feet, a quality udder and a kind temperament. A moderately framed bull with a good top line and smooth front end. Don't let his birth weight scare you, he would work well with heifers.

EPD's	
BW	+5.0
WW	+40
YW	+65
Milk	+17
TM	+37
Scotal	+0.37
CED	-2.0
CEM	+0.0
REA	+0.02
Marb	+0.02
Fat	+0.001
Carcass	+17



Cottage Creek Rush 902W - Grandsire of Lots 72, 73 & 75

Auntie Sheila's
Kitchen & Catering
"Catering for all occasions"
Sheila Bell
Ph: 731-2609 Cell: 731-7107
105 2nd Avenue, Lumsden, SK S0G 3C0

Open Heifers ...

Lot **100** Pen of 3 Red Angus Open Heifers

Consigned by: Steve & Judy Kyrilchuk (Krazy K's Angus) – Francis, SK – 306-245-3308 or 306-861-1702 cell
Born February & March, Red Angus x Red Angus. Heifers have received Blackleg, Ivomec, Pfizer & Bovi-Shield Gold.

Lot **101** Pen of 5 Black Angus X Open Heifers

Lot **102** Pen of 5 Black Angus X Open Heifers

Consigned by: Wade King (Creek Side Ranch) – Central Butte, SK – 306-796-7929 cell
Born April, Simmental x Black Angus. Heifers have 8 Way/Express 3.

Lot **103** Pen of 10 Red Angus X Open Heifers

Lot **104** Pen of 10 Red Angus X Open Heifers

Lot **105** Pen of 10 Red Angus X Open Heifers

Lot **106** Pen of 10 Red Angus X Open Heifers

Consigned by: Chad & Brian Ross (Ross L-Seven Ranch) – Estevan, SK – 306-634-7301 or 306-421-6346 cell
Born April & May, Red Angus x Simmental. Heifers have Bovishield Gold One Shot/Ultrachoice 8.

Lot **107** Pen of 10 Red Angus X Open Heifers

Lot **108** Pen of 10 Red Angus X Open Heifers

Lot **109** Pen of 10 Red Angus X Open Heifers

Lot **110** Pen of 10 Red Angus X Open Heifers

Consigned by: Chad & Brian Ross (Ross L-Seven Ranch) – Estevan, SK – 306-634-7301 or 306-421-6346 cell
Born May & June, Red Angus x Simmental. Heifers have Bovishield Gold One Shot/Ultrachoice 8.



1-800-819-BLUE (2583)
Bus: (306) 781-2828
Fax: (306) 781-3332

Markusson New Holland
26 Great Plains Rd.
Emerald Park, SK S4L 1B6
www.markusson.com



Mark Sinclair
By-Pro Feeds Ltd.
Liquid Feed Distributors

1-888-333-7033
Ph. 306-435-2505
Cell: 306-435-9323

Box 842
Moosomin, SK
S0G 3N0

**COTTONWOOD
CONSTRUCTION LTD.**

**Brett Gaube
Owner**

Cell Phone 306-537-4710
gaubeb@outlook.ca

Box 1587
Weyburn, SK
S4H 0T1

306-537-4710

Terms & Conditions ...

Bidding. Each animal will be sold to the highest bidder.

Bidding Disputes. The auctioneer will settle any disputes as to bids and his decision on such matters shall be final.

Terms. The terms of the sale are cash. The right of property shall not pass until after settlement is made. All settlements will be made with the clerks of the sale immediately following the conclusion of the sale and before any cattle will be released from the sale facility.

Purchaser's Risk. Each animal becomes the risk of the purchaser as soon as sold. Animals will be fed, watered and cared for at the purchaser's risk for a reasonable time.

Insurance. A representative of a major livestock insurance company will be present to care for insuring cattle.

Certificate of Registry: A certificate of registry and transfer will be furnished for each animal.

Health: All cattle will be in excellent health.

Announcements. Changes of information contained in this catalogue relating to the animals offered for sale will be announced from the auction box and such announcements shall take precedence.

Breeder's Guarantee: All animals sold are guaranteed breeders by the owner. Any animal that has not proven itself a breeder within

six months after date of sale, if in healthy condition, may be returned to the seller at buyer's expense. The seller reserves the privilege of trying for a period of six months to prove the animal a breeder. The seller at his option may either return the purchase price to the buyer or replace the animal with another of equal quality in full settlement of ALL claims. All complaints regarding breeding difficulties must be reported in writing by the buyer to the seller within the specified time above and any animal returned must be free from disease and in good health.

Liability. Neither owners, sale manager, clerks, nor anyone connected with the sale assumes any responsibility, legal or otherwise for damage of any kind.

Contract. The above terms and conditions shall constitute a contract between the buyer and seller of each animal sold.

Delivery/Transportation: You can receive a \$50 discount if you haul your own bull. Delivery can be arranged at a cost of \$50 per bull within 300 km of Moose Jaw. With purchases of 5 or more bulls we can arrange to deliver them free of charge within that 300 km range. If you are over 300 km we can assist you in making travel arrangements at cost.




Dr. Jess Mountenay
Flying R Veterinary Services


Large Animal Ambulatory Services
Phone: 306-540-2122
www.flyingrvet.com

PRAIRIE AG PETROLEUM LTD.

210 McDonald St. N.
Regina, SK S4N 5W3
Tel: (306) 721-6880
Fax: (306) 721-3748
Cell: (306) 536-1332



Bulk Fuel, Cardlock, Lubes, Baler Twine



Leroy Steinhubl
Area Beef Representative

Nitrogen, Supplies & A.I. Breeding Service

Box 157, Balgonie, SK S0G 0E0
Home: 306-781-2842
Fax: 306-781-2855
Cell: 306-536-1784

Genex Cooperative, Inc.
A Subsidiary of Cooperative Resources International

Clayton Curtis
Assistant General Manager
Regina Location



745 Park Street
Regina, SK S4N 4Y4
Direct line: (306) 790-5557
Fax: (306) 721-3141
E-mail: ccurtis@masterfeeds.com
Cell: 306-539-9486



www.cowtownonline.com




JACK DUBOIS

Honestly driven.

Since 1953 Phone: 306.586.7666
Fax: 306.585.0887
Email: jack@okconnect.ca

4525 Albert Street, Regina, SK S4S 6B6



SHERWOOD ANIMAL CLINIC
Hwy #1 East, North of CTV
Box 3330, Regina, SK S4P 3H1

DR. LARRY HANSON
B.Sc, D.V.M

BUS: 525-3763 FAX: 569-3490



MANUFACTURING LTD.
DYSART, SASK.

Scott & Shannon Macknak
Ph. (306) 432-2003
Fax. (306) 432-2004

"Custom Built Mobile Grain Cleaners and Equipment"
www.smsmanufacturing.com

Dr. Terry Goslin
Dr. Ashley Shannon



790A Lillooet St W
Moose Jaw, SK S6H 8B4
Office: 306.692.4800
Fax: 306.692.4810
Email: westernvet@sasktel.net

Large Animal Veterinarians

Westway Terminal and Feed Products Canada ULC
Box 365
Hartney, MB R0M 0X0
www.westwayfeed.com

Res. Tel: 204-769-2220
Toll Free: 800-563-6371
Res. Fax: 204-769-2272
Cell: 306-861-0516
ronman@westway.com



RON MANNES
District Manager
Westway
FEED PRODUCTS
"Your Liquid Feed Specialists"

Triple A Bull Sale
Box 3771
Regina, SK S4P 3N8

CANADA		POSTES
POST		CANADA
Postage paid		Port payé
Addressed Admail		Médiaposte avec adresse
03070247		

Deliver by March 15, 2015

