

# *Acquire the Angus Advantage*



*At the 16th Annual  
Triple A  
Bull Sale*

*Monday, April 1, 2013 1:00 pm CST  
Johnstone Auction Mart, Moose Jaw, Saskatchewan*



## Welcome ...

2013 brings us to our 16th Annual Triple A Bull & Heifer Sale. This year's consignor group has grown to 15 members and by joining together we are able to assemble a larger number of bulls for you the buyer.

The bulls are assembled in the fall at Hagerty Livestock (6.5 miles north of the #1 Highway on Kalium Road between Regina & Moose Jaw, SK) and developed with a feed program targeting 3 to 3.5 lbs per day gain. As you look through our catalogue you will find the Angus Advantage performance data, we feel this data will help you select a bull that best suits your herd needs. We are able to offer a very diverse group of bulls and the genetics offer something for every type of program, from the purebred breeder to the commercial cattleman, from heifer bulls to strong performance bulls. The bulls will be moved to Johnstone Auction Mart prior to our April 1st sale day and can be viewed there on March 30 and 31.

If you can not attend our sale you can still be a buyer, and to make that process even easier this year's sale will be broadcast on-line at [www.cattleinmotion.com](http://www.cattleinmotion.com) and open to "pre-registered" buyers online. Even if you plan to attend you may want to pre register as our Saskatchewan weather can change your plans!

It is an optimistic time in the cattle business and rightly so. Prices continue to be strong in all facets of the industry, right from the feeder market to the purebred sales and the future looks good!!

Please feel free to call any of our consignors, the sales staff or Laird or Joyce Senft to discuss your bull requirements.

We look forward to seeing you on sale day.  
Roger Reynolds  
On behalf of the Triple A Consignors

*Catalogue on-line at*  
[www.johnstoneauction.ca](http://www.johnstoneauction.ca) or  
[www.sasklivestock.com](http://www.sasklivestock.com)  
[www.cattleinmotion.com](http://www.cattleinmotion.com)

## Triple A Consignors ...

Arm River Red Angus - Doug & Dan McIvor .....	306-567-4702 .....	Lot 77-82
Bell Angus - Ken Bell .....	306-345-2052 .....	Lot 63-70
Black Pearl Angus - Matt Bedard .....	306-737-1571 .....	Lot 36-40
Cottonwood Angus - Brent Gaube.....	306-537-4710 .....	Lot 33-35
CSI Angus - Roger Reynolds.....	306-536-6112 .....	Lot 59-62
Glendor Acres - Glen, Dorothy & Brent Gunningham.....	306-638-6277 .....	Lot 57-58
Glen Gabel Angus - Glen Gabel .....	306-536-1927 .....	Lot 9-13
Hi Low Angus - Dan Howell .....	306-731-2940 Cell: 581-7606 .....	Lot 41-52
Irving Angus - John M. & Keri Irving.....	306-587-2523 .....	Lot 18-24
Nu-Horizon Angus - Kieran & Deb Doetzel.....	306-336-2245 .....	Lot 84-96
Triple H Angus - Perry & Dawn Hart & family.....	306-723-4832 .....	Lot 71-76
Valley Lodge Cattle Co. - Gordon C. Roger.....	306-771-2305 .....	Lot 1-8
Willowview Angus - Ken & Sandy Harle .....	306-359-6100 .....	Lot 14-17
Wilmo Angus Ranch - John & Marg Willmott.....	306-345-2046 .....	Lot 53-56
XLB Farms - Dan Exelby .....	306-734-2741 .....	Lot 25-32

## Sale Day Phone - 306-693-4715

*Auctioneer* - Scott Johnstone - 306-631-0767

*Ringmen* - Mike Fleury - 306-222-9526

*Hagerty Livestock* - Larry & Fay Hagerty - 306-345-2523

*Livestock Insurance* - Roger Reynolds - 306-536-6112

*New Force Consulting* - Laird Senft - Cell: 306-331-7587 Joyce Senft - 306-332-8706



# Acquire the Angus Advantage

at the 16th Annual **Triple A** Bull Sale  
**96** Performance Tested Yearling Bulls on Offer  
**77** Black Angus • **25** Red Angus  
 Plus a Select Group of Commercial Heifers

*Lunch* at 12:00 Noon • *Sale* at 1:00 pm • *Monday, April 1, 2013*

Johnstone Auction Mart, Moose Jaw, Saskatchewan

## Definitions

BW - Birth weight - all weights are measured in pounds.

SOT - Start of test weight

EOT - End of test weight

Proj Wt - Estimate of Sale Day weight

205 - Adjusted weaning weight

ADG - Average daily gain - gain in pounds per day during the Test Period

WPDA - Weight per day of age - gain in lbs. per day from birth to weigh date

AOD - Age of Dam

## Ultrasound Carcass Data

The importance of carcass trait information will be increased as value based marketing and quality assurance programs become more recognized and commonplace in the beef industry. Cattle should be scanned as close as possible in age at which their progeny will likely go to slaughter. A range from 12 months to 14 months is probably optimal. Ultra Sound Measurements in a Breeding Program: As with all genetic traits, ultrasound measurements should only be compared among animals of similar age and similar management. Only then is it of any measured value to use the ultrasound measurement for selection.

**Back Fat:** Fat measurement is important for several reasons. First fat depth influences lean meat yields; fat bulls have less lean meat in the carcass. Secondly fat measurements give indications of a bull's fleshing ability. Extremes in either too lean or too fat a bull are undesirable. Moderation is key.

**IMF/Marbling:** may be the most important attribute to be measured with ultrasound. This trait can convert into as much as \$80 difference in a carcass from a AA to a AAA grade. The values are numerical and indicate the estimate of carcass marbling if the animal was slaughtered immediately following the evaluation. The scale is as follows:

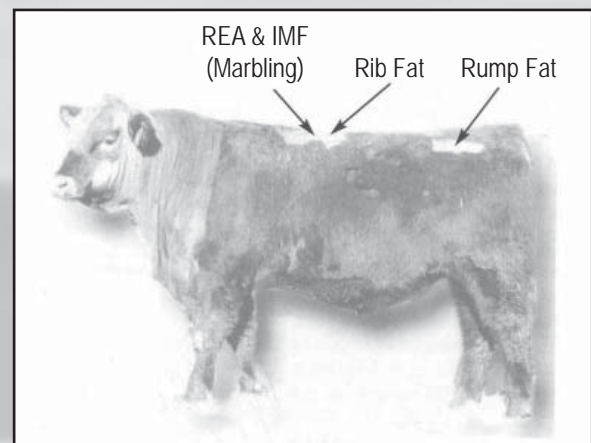
%IMF	US	CAN	Marbling Score
2.3 - 3.0	Select -	AA -	4.0 - 4.4
3.1 - 3.9	Select +	AA +	4.5 - 4.9
4.0 - 5.7	Choice -	AAA -	5.0 - 5.9
5.8 - 7.6	Choice o	AAA o	6.0 - 6.9
7.7 - 9.7	Choice +	AAA +	7.0 - 7.9
9.8 - 12.1	Prime -	Prime -	8.0 - 8.9
12.2 +	Prime +	Prime o	9.0 +

Bulls will register at least a full degree less marbling and 30% less backfat thickness than steers of the same age and feeding history. The marbling estimates are best utilized by grouping the bulls into high, medium and low marbling groups rather than to compare individuals that differ by only a few tenths of a score.

**Ribeye Area Adjusted to 100 lbs. Body Weight (REA in/100 lbs.):** The largest ribeye area may belong to the largest bull therefore adjusting the REA to 100 lbs body weight helps determine which bulls are more muscular and which bulls are simply heavier.

**Lean Meat Yield (LMY%):** is the percentage of lean meat in a carcass. Yield grade is an economically important factor in marketing carcasses. With a high genetic potential, this trait can be an important objective in a breeding program.

All bulls have been ultrasounded by  
Rod Wendorff (AUO - CUP Certified)



## EPD Breed Averages

Trait	BW	WW	YW	Milk	TM	SC	CED	CEM	
Black	+2.8	+42	+76	+18	+39	+0.54	+2.2	+5.4	
Trait	BW	WW	YW	Milk	TM	CED	CEM	Stay	HPG
Red	+0.2	+48	+71	+17	+41	+2.6	+4.0	+10	+10



# Lots 1 - 8 - Valley Lodge Cattle Company

Gordon C. Roger - 306-771-2305

## Lot 1 **LODGE ADVANTAGE 4Z**

Male VLC 4Z January 21 2012 1668754

CAVALIER OF DONAMERE 978  
KRUGERRAND OF DONAMERE 490 AMF NHF  
DONAMERE BACHEL BEAUTY 288

Sire: TC ADVANTAGE AMF CAF NHF

Q A S TRAVELER 23-4 AMF CAF NHF  
TC PRIDE 2010  
TC PRIDE 0011

HERO 6267 OF R R 2418  
H A IMAGE MAKER 0415 AMF CAF NHF  
H A RITO BLACKCAP 9038

Dam: LODGE COUNTESS 90

CUDLOBE RAINMAKER 49L  
LODGE COUNTESS 57P  
EASTONDALE COUNTESS 3G

EPD's	
BW	+0.4
WW	+47
YW	+82
Milk	+30
TM	+54
Scotal	---
CED	+7.0
CEM	+7.0

BW: 95	Adj WW: 779					
SOT: 1050	EOT: 1330	Proj Wt: 1480	ADG: 2.89	WPDA: 3.39	AOD: 4	
Adj. Carcass Values		LMY: 64.5	REA: 12.80	%IMF: 3.33	Rib Fat: 0.18	Rump Fat: 0.22

Born January 21, 2012 BW 95 lbs. EPD's: BW +0.4 WW +47 YW +82 M +30 TM +54 CE +7.0 MAT +7.0. A real genetic opportunity here as direct sons of TC Advantage are very hard to find. With an Image Maker dam on the bottom side this is also a nice outcross maternal pedigree for most herds. A very long spined bull with lots of frame would make him very suitable for breeding larger framed cows but when you see his length and how he is put together, you will see why he would work on heifers as well. The dam is a very strong milking cow with a picture perfect udder and kind temperament which she has passed on to this bull.

## Lot 2 **LODGE FRONT RANGE 10Z**

Male VLC 10Z January 27 2012 1668761

CONNELLY FRONT PAGE 0228 CAF  
KESSLERS FRONTMAN R001 AMF CAF NHF  
KESSLERS BELL 0024

Sire: KESSLERS FRONT RANGE 750 AMF CAF NHF

MYTTY IN FOCUS AMF CAF NHF  
KESSLERS BELL R230  
KESSLERS BELL TOLL 7165

BOYD NEW DAY 8005 AMF CAF NHF  
GDAR GAME DAY 449 AMF CAF NHF  
G D A R MISS WIX 474

Dam: LODGE LADY MCHENRY 35X

CUDLOBE MIDLAND 21R  
LODGE LADY MCHENRY 55U  
LODGE LADY MCHENRY 67R

EPD's	
BW	+3.0
WW	+54
YW	+92
Milk	+28
TM	+55
Scotal	---
CED	-2.0
CEM	+3.0

BW: 93	Adj WW: 796					
SOT: 950	EOT: 1220	Proj Wt: 1370	ADG: 2.78	WPDA: 3.16	AOD: 2	
Adj. Carcass Values		LMY: 58.1	REA: 12.03	%IMF: 5.38	Rib Fat: 0.40	Rump Fat: 0.56

Born January 27, 2012 BW 93 lbs. EPD's: BW +3.0 WW +54 YW +92 M +28 TM +55 CE -2.0 MAT +3.0. A Front Range son out of a Game Day cow which would pair up nicely with our 14Z bull if you are looking for a pair of brothers. A bit thicker and heavier muscled than the 14Z bull with moderate frame size and lots of performance. These Front Range sons are very eye appealing and free moving and will cover some ground for you. Lots of maternal strength in this pedigree as well and a great temperament to go along.

Valley Lodge Cattle Company is pleased to consign another very strong set of bulls to this year's sale. We continue to utilize an intensive AI program and sires with strong maternal and calving ease traits. We are also injecting more performance and muscle expression than we have in the past which really narrows the number of AI bulls that fit our program. We are very pleased with how this set of bulls have developed and trust you will be as well. Looking forward to seeing you on sale day!

## Lot 3 **VALLEY LODGE THUNDER 2Z**

Male VLCC 2Z January 20 2012 1668769

JAUER 353 TRAVELER 589 27  
BALDRIDGE KABOOM K243 KCF CAF  
PLEASANTA OF CONANGA 736

Sire: CONNEALY THUNDER AMF CAF NHF

BON VIEW BANDO 598 AMF CAC  
PARKA OF CONANGA 241 AMF CAC NHF  
PARTINA OF CONANGA 6237

S S TRAVELER 6807 T510 AMF CAF NHF  
S S OBJECTIVE T510 OT26 AMF CAF NHF  
S S MISS RITA R011 7R8 AMF NHF

Dam: LODGE COUNTESS 22X

BUSHES GRAND DESIGN AMF CAF NHF  
LODGE COUNTESS 65S  
LODGE COUNTESS 27N

EPD's	
BW	-1.3
WW	+55
YW	+98
Milk	+31
TM	+59
Scotal	---
CED	+12.0
CEM	+11.0

BW: 74	Adj WW: 784					
SOT: 980	EOT: 1250	Proj Wt: 1400	ADG: 2.78	WPDA: 3.18	AOD: 2	
Adj. Carcass Values		LMY: 65.4	REA: 14.22	%IMF: 2.41	Rib Fat: 0.19	Rump Fat: 0.16

Born Jan 20, 2012 BW 74 lbs. EPD's: BW -1.3 WW +55 YW +98 M +31 TM +59 CE +12 MAT +11. Check out the numbers on this bull - wow! A calving ease king with outstanding performance and conformation to match. He is a very deep and well-muscled bull with great hair and a very kind disposition. He is the bull calf out of Megan's high selling cow from the 2012 Gateway Sale who probably would have traded even higher if we had displayed this fellow by her side at the sale. Another bull who will work in either the cow or heifer field and one you will want to check out. Thunder calves continue to trade well throughout the industry so don't miss this chance to pick up a direct son.



Lot  
**4**

## LODGE JOCK 21Z

Male VLC 21Z March 01 2012 1689270 CAF

CAR DUKE 104  
S A V YOUNG JOCK 6457 CAF  
S A V EMBLYNETTE 1182  
Sire: JL JOCK 900Z CAF  
SAV 8180 TRAVELER 004 DMF DWF AMF CAF NHF  
S A V MADAME PRIDE 7798 CAF  
S A V MADAME PRIDE 1151  
B/R NEW DESIGN 036 AMF CAF NHF  
BON VIEW NEW DESIGN 208 AMF CAC NHF  
BON VIEW ERICA 443  
Dam: LODGE QUEEN MOTHER 20 CAC  
CUDLOBE RAINMAKER 49L  
LODGE QUEEN MOTHER 94S  
EASTONDALE QUEEN MOTHER 31E

EPD's	
BW	+0.0
WW	+52
YW	+91
Milk	+32
TM	+58
Scotal	---
CED	+5.0
CEM	+6.0
REA	+0.12
Marb	+0.32
Fat	+0.008
Carcass	+13

BW: 87	Adj WW: 810					
SOT: 960	EOT: 1305	Proj Wt: 1455	ADG: 3.56	WPDA: 3.71	AOD: 2	
Adj. Carcass Values LMY: 60.2 REA: 14.58 %IMF: 5.35 Rib Fat: 0.40 Rump Fat: 0.36						

Born March 1, 2012 BW 87 lbs. EPD's: BW 0.0 WW +52 YW +91 M +32 TM +58 CE +5.0 MAT +6.0. Our youngest entry this year but you will never guess it when you see him. He was our #1 indexing bull at 205 days and has not looked back. We purchased his sire from Johnson's and were looking for a moderate framed calving ease/maternal bull with strong muscle expression and have gotten more than we asked for here. We have yet to assist a Jock calf and continue to use him on both cows and heifers and the performance is incredible with a Jock heifer calf also indexing #1 over all of our AI influence calves in 2012. A very well-muscled bull with excellent calving ease and maternal numbers which is a hard package to find. You will not go wrong on this one.

Lot  
**6**

## LODGE FRONT RANGE 14Z

Male SFR 14Z January 30 2012 1668764

CONNEALY FRONT PAGE 0228 CAF  
KESSLERS FRONTMAN R001 AMF CAF NHF  
KESSLERS BELL 0024  
Sire: KESSLERS FRONT RANGE 7520 AMF CAF NHF  
MYTTY IN FOCUS AMF CAF NHF  
KESSLERS BELL R230  
KESSLERS BELL TOLL 7165  
BOYD NEW DAY 8005 AMF CAF NHF  
GDAR GAME DAY 449 AMF CAF NHF  
G D A R MISS WIX 474

EPD's	
BW	+1.3
WW	+53
YW	+89
Milk	+31
TM	+58
Scotal	---
CED	+5.0
CEM	+7.0

<u>Dam: LODGE DUCHESS 1X</u>						
H A IMAGE MAKER 0415 AMF CAF NHF						
LODGE DUCHESS 4U						
LODGE DUCHESS 49P						
BW: 84	Adj WW: 790					
SOT: 945	EOT: 1270	Proj Wt: 1420	ADG: 3.35	WPDA: 3.32	AOD: 2	
Adj. Carcass Values LMY: 63.4 REA: 13.36 %IMF: 3.76 Rib Fat: 0.24 Rump Fat: 0.25						

Born January 30, 2012 BW 84 lbs. EPD's: BW +1.3 WW +53 YW +89 M +31 TM +58 CE +5 MCE +7. Another one of Shane's bull's we had considered taking to Agribition due to his style and eye appeal. These are our first set of Kessler's Front Range calves, who is an outcross calving ease sire, and we are extremely pleased with them. Another great prospect for the heifer field as he is very clean fronted yet still offers enough muscle expression from his Game Day dam to provide the performance you will be looking for from his calves. A maternal and calving ease stacked pedigree with a powerful set of EPD's. You will have no trouble finding this one in the pen on sale day.

Lot  
**5**

## LODGE GAME DAY 13Z

Male VLC 13Z January 28 2012 1668760

A A R NEW TREND  
BOYD NEW DAY 8005 AMF CAF NHF  
S V F FOREVER LADY 57D  
Sire: GDAR GAME DAY 449 AMF CAF NHF  
TEHAMA BAND 207  
G D A R MISS WIX 474  
G D A R MISS WIX 749  
NORTHERN IMPROVEMENT 4480 GF AMF CAF NHF  
HF PROGRESS 20K  
DURALTA 14C ECHO 32E

EPD's	
BW	+0.0
WW	+40
YW	+75
Milk	+27
TM	+47
Scotal	---
CED	+6.0
CEM	+7.0

Dam: LODGE BARESS 30X  
B A R EXT TRAVELER 205 AMF CAF NHF  
LODGE BARESS 72R  
EASTONDALE BARESS 65F

BW: 82	Adj WW: 727					
SOT: 900	EOT: 1160	Proj Wt: 1310	ADG: 2.68	WPDA: 3.01	AOD: 2	
Adj. Carcass Values LMY: 63.0 REA: 13.16 %IMF: 3.88 Rib Fat: 0.25 Rump Fat: 0.31						

Born January 28, 2012 BW 82 lbs. EPD's: BW 0.0 WW +40 YW +75 M +27 TM +47 CE +6 MAT +7. This could be the heifer bull of your dreams. A calving ease bred bull out of a smaller framed HF Progress daughter who brings the muscling and eye appeal of his Game Day sire. This bull will be moderately framed and I predict will have the potential to stay in your heifer field for many seasons without getting too big to use. These Game Day sons have done extremely well for us and continue to be highly sought out for their combination of calving ease and performance. Don't miss this one.



SFR 14Z - Lot 6



Lot **7** **VALLEY LODGE FREIGHTLINER 11Z**  
Male VLCC 11Z January 28 2012 1668766

TEHAMA BANDO 155 AMF CAF NHF  
BON VIEW BANDO 598 AMF CAC  
BON VIEW DORA 56

Sire: CONNEALY FREIGHTLINER AMF CAF NHF

NICHOLS HEAVY DUTY X100  
JOANA ERICA OF CONANGA  
JARNE ERICA OF CONANGA

BON VIEW NEW DESIGN 1407 AMF CAF NHF  
BUSHS GRAND DESIGN AMF CAF NHF  
BUSHS LADY DIVIDEND 872

Dam: LODGE COUNTESS 65S

CUDLOBE RAINMAKER 49L  
LODGE COUNTESS 27N  
EASTONDALE COUNTESS 3G

EPD's	
BW	+2.4
WW	+44
YW	+78
Milk	+24
TM	+46
Scotal	---
CED	+3.0
CEM	+6.0

BW: 99	Adj WW: 761					
SOT: 1070	EOT: 1330	Proj Wt: 1480	ADG: 2.68	WPDA: 3.45	AOD: 6	
Adj. Carcass Values	LMY: 65.7	REA: 15.61	%IMF: 3.37	Rib Fat: 0.22	Rump Fat: 0.19	

Born January 28, 2012 BW 99 lbs. EPD's: BW +2.4 WW +44 YW +78 M +24 TM +46 CE +3 MCE +6. Our daughter Megan's bull out of what we feel is the best cow at Valley Lodge right now. The dam is probably the deepest bodied cow we have ever produced and the current matron of our Countess cow family, which originated from Eastondale's, and is now in our flushing program. A daughter of this cow was the high selling female at the 2012 Gateway Sale to Nielsen Land and Cattle in Craik. This bull is a powerhouse and will make an outstanding herdsire. A direct Freightliner son with lots of frame and muscle who will undoubtedly live up to the "Cowmaker" reputation of his sire.



Lot **8** **LODGE GAME DAY 6Z**  
Male SFR 6Z January 24 2012 1668762

AA R NEW TREND  
BOYD NEW DAY 8005 AMF CAF NHF  
S V F FOREVER LADY 57D

Sire: GDAR GAME DAY 449 AMF CAF NHF

TEHAMA BAND 207  
G D A R MISS WIX 474  
G D A R MISS WIX 749

B/R NEW DESIGN 036 AMF CAF NHF  
BON VIEW NEW DESIGN 208 AMF CAC NHF  
BON VIEW ERICA 443

Dam: LODGE QUALITY LASS 32T CAF

CUDLOBE RAINMAKER 49L  
LODGE QUALITY LASS 65P  
THOMASON QUALITY LASS 18H

EPD's	
BW	-0.9
WW	+46
YW	+88
Milk	+28
TM	+51
Scotal	---
CED	+9.0
CEM	+7.0
REA	+0.61
Marb	+0.46
Fat	+0.015
Carcass	-4

BW: 81	Adj WW: 730					
SOT: 1050	EOT: 1315	Proj Wt: 1465	ADG: 2.73	WPDA: 3.38	AOD: 5	
Adj. Carcass Values	LMY: 61.3	REA: 13.05	%IMF: 2.17	Rib Fat: 0.31	Rump Fat: 0.31	

Born January 24, 2012 BW 81 lbs. EPD's : BW -0.9 WW +46 YW +88 M +28 TM +51 CE +9 MCE +7. Our son Shane's top bull and will most likely be our lead off entry in the sale. An outstanding calf since birth and the first one to catch your eye in the pen. This bull has it all - a great pedigree and EPD's, lots of natural muscle expression, long and deep bodied, and a great disposition. A Game Day son who brings all of the style and performance he is known for out of a heavy milking cow that continues to deliver one of our strongest bull calves each year. This fellow will work on cows or heifers which will make him a great addition to anyone's bull battery.



*Please Join us  
for Lunch prior to  
the Sale.*

# *Lots 9 - 13 - Glen Gabel Angus*

Glen Gabel - 306-536-1927

Lot  
**9**

**GGA TIGER 2Z**

Male GGA 2Z January 04 2012 1695969

SANDY BAR ADVANTAGE 43M  
HF KODIAK 5R AMF CAF NHF MAF  
WILBAR RUBY 955N

Sire: HF TIGER 5T AMF CAF NHF

TC FREEDOM 104 AMF CAF NHF  
HF ECHO 84R  
HFDF ECHO 6N

C R A BEXTOR 872 5205 608 AMF CAF NHF  
CONNEALY POWER ONE AMF CAF NHF  
BRITNEY OF CONANGA AMF

Dam: ANGUS GLEN BLACKCAP 40

HFI DOMINATOR 12H  
ANGUS GLEN BLACKCAP 15M  
J P D BLACKCAP 25J

EPD's	
BW	+1.3
WW	+49
YW	+97
Milk	+24
TM	+49
Scotal	---
CED	+6.0
CEM	+7.0



BW: 79	SOT: 970	EOT: 1230	Proj Wt: 1380	ADG: 2.68	WPDA: 3.01	AOD: 4
Adj. Carcass Values LMY: 65.8 REA: 13.80 %IMF: 2.73 Rib Fat: 0.16 Rump Fat: 0.20						

An own son of the World Champion HF Tiger 5T out of a moderate frame Connealy Power One daughter. Here's a bull that brings calving ease and performance in the same package. Certainly works in the heifer pen with enough performance and style to work with the cows as well.



Lot  
**10**

**GGA ALLIANCE 26Z**

Male GGA 26Z April 14 2012 1699433

KMK ALLIANCE 6595 I87 AMF CAF NHF  
MVF ALLIANCE 156T  
MVF TIBBIE 60M

Sire: FREYBURN ALLIANCE 46X

CUDLOBE YELLOWSTONE 18M  
FREYBURN RUBY 173R  
FREYBURN RUBY 34M

REMITALL NIGHTHAWK 37N  
REMITALL H RACHIS 21R AMF NHF OSF  
HENDERSON MISSIE 32'02

Dam: NORTHERN VIEW QUEEN 14X

HILOW RIGHT TIME 1J  
SKYE-VIEW QUEEN 4M  
BAR KAY CEE ERICA 36B

EPD's	
BW	+4.8
WW	+56
YW	+101
Milk	+21
TM	+49
Scotal	---
CED	-7.0
CEM	+2.0

BW: 89	SOT: 780	EOT: 1115	Proj Wt: 1265	ADG: 3.45	WPDA: 3.62	AOD: 2
--------	----------	-----------	---------------	-----------	------------	--------

Our youngest bull in the sale offering by our Alliance bull that is putting a lot of growth and performance in his calves. Out of a first calf heifer who did an excellent job. An exciting cross that will certainly put pounds on the calves next fall for you.

Lot  
**11**

**GGA MASTER PIECE 13Z**

Male GGA 13Z February 14 2012 1695971

S A V 8180 TRAVELER 004 DMF DWF AMF CAF NHF  
S A V MASTERPIECE 5289  
S A V QUEEN 8301

Sire: BANDURA MASTER PIECE 9X

PEAK DOT FAME 2N  
HF TIBBIE 193S  
HF TIBBIE 193L

SAV 8180 TRAVELER 004 DMF DWF AMF CAF NHF  
ANKONIAN WERNER WILD FIRE 96 AMF CAF NHF  
FSR ELBA SPECIAL DESIGN S406

Dam: SOUTHLAND MADGE 1X

SCA TONTO 6A  
HAPPYVALE MADGE 97G  
HAPPYVALE MADGE 54D

EPD's	
BW	+2.1
WW	+47
YW	+80
Milk	+16
TM	+40
Scotal	---
CED	+3.0
CEM	+6.0

BW: 79	SOT: 820	EOT: 1010	Proj Wt: 1160	ADG: 1.96	WPDA: 2.74	AOD: 2
Adj. Carcass Values LMY: 63.9 REA: 11.72 %IMF: 3.34 Rib Fat: 0.17 Rump Fat: 0.31						

Sired by the calving ease bull from Bandura and out of a daughter of the Reserve Champion bull at the National Western Stock Show in Denver. This calf brings some interesting genetics to the table as there are very few Wild Fire 96 daughters in Canada. Once again a bull that can be used with the heifers but will work in whatever pasture you choose.



Lot **12**

**GGA ALLIANCE 5Z**

Male GGA 5Z January 14 2012 1695970

KMK ALLIANCE 6595 I87 AMF CAF NHF  
MVF ALLIANCE 156T  
MVF TIBBIE 60M

Sire: FREYBURN ALLIANCE 46X

CUDLOBE YELLOWSTONE 18M  
FREYBURN RUBY 173R  
FREYBURN RUBY 34M

STEVENSON BRUNO 561G CAF NHF  
BELL 561G BRUNO 11L  
BELL BLACKBIRD 2C

Dam: BELL BLACK LUCY 5R

BELL TOUCHSTONE 2D  
BELL BLACK LUCY 29H  
BELL BLACK LUCY 4A

EPD's	
BW	+3.7
WW	+54
YW	+89
Milk	+21
TM	+48
Scotal	---
CED	-1.0
CEM	+5.0



GGA 5Z - Lot 12

BW: 90

SOT: 1080 EOT: 1390 Proj Wt: 1540 ADG: 3.20 WPDA: 3.48 AOD: 7

Adj. Carcass Values LMY: 65.7 REA: 13.97 %IMF: 2.72 Rib Fat: 0.17 Rump Fat: 0.22

Another one of our Alliance bulls that brings a ton of performance with him. Heaviest bull going on test last fall that never looked back. Out of our Elite cow Lucy 5R that continues to produce the good ones. A bull that will definitely add pounds and dollars to your calf crop next fall.

Lot **13**

**GGA ZORZAL 15Z**

Male GGA 15Z February 28 2012 1695973

TRES MARIAS 5887 HORNERO  
TRES MARIAS 6301 ZORZAL  
TRES MARIAS 4850 WIND EXT

Sire: WAF ZORZAL 3210 AMF CAF NHF

TRES MARIAS 5837 CUMELLEN  
TRES MARIAS 6582 CUMELLEN 5632  
TRES MARIAS 5632 CHAPAR 5026

PAPA FORTE 1921  
WOODHILL FORESIGHT AMF CAF NHF  
BON VIEW GAMMER 85 CAC

Dam: LOOKOUT BUXOM FANCY 110

PRIME TIME'S DIRECT DEPOSIT  
LOOKOUT BUXOM FANCY 232M  
LOOKOUT BUXOM FANCY 5K

EPD's	
BW	+2.9
WW	+38
YW	+62
Milk	+14
TM	+33
Scotal	---
CED	-1.0
CEM	+3.0

Stay

BW: 82

SOT: 890 EOT: 1090 Proj Wt: 1240 ADG: 2.06 WPDA: 3.08 AOD: 4

Adj. Carcass Values LMY: 63.6 REA: 12.02 %IMF: 3.66 Rib Fat: 0.19 Rump Fat: 0.35

Sired by "Zorzal" the Argentina sensation, the \$75,000 bull at Remington's dispersal and out of an own daughter of Woodhill Foresight. What an exciting outcross to almost every purebred and commercial herd. If your looking for a change in your breeding program here he is. Worth a second look ...

## Lots 14 - 17 - Willowview Angus

Ken & Sandy Harle - 306-359-6100

Lot **14**

**WILLOWVIEW ENCORE 10Z**

Male KSH 10Z January 30 2012 1683493

D H D TRAVELER 6807 AMF NHF  
DUFF ENCORE 702 AMF CAF NHF  
O C C DIXIE ERICA 814G

Sire: PEAK DOT ENCORE 884X

SAV 004 PREDOMINANT 4438 AMF CAF NHF  
LADY OF PEAK DOT 351T  
LADY OF PEAK DOT 218H

SAV 8180 TRAVELER 004 DMF DWF AMF CAF NHF  
SAV NET WORTH 4200 AMF CAF NHF  
SAV MAY 2410

Dam: WILLOWVIEW TIPTOP 11W

KENOSEE PARK 473 29G  
COTTONWOOD TIPTOP 3L  
COTTONWOOD TIPTOP 63Z

EPD's	
BW	+4.1
WW	+46
YW	+85
Milk	+16
TM	+39
Scotal	---
CED	+4.0
CEM	+6.0

BW: 88 Adj WW: 622

SOT: 775 EOT: 1090 Proj Wt: 1240 ADG: 3.25 WPDA: 2.85 AOD: 3

Adj. Carcass Values LMY: 63.7 REA: 11.81 %IMF: 2.57 Rib Fat: 0.18 Rump Fat: 0.29

This is our second year for Encore. You will be able to use him with confidence for calving ease. Net Worth on the dam's side is an added bonus. Some brothers have been sold to PFRA.



# ***Lots 14 - 17 - Willowview Angus***

Ken & Sandy Harle - 306-359-6100

## *Lot* **15** ***WILLOWVIEW PIONEER 7Z*** Male KSH 7Z January 27 2012 1683490

SITZ TRAVELER 8180 AMF CAF NHF  
S A V FINAL ANSWER 0035 AMF CAF NHF  
S A V EMULOUS 8145 CAF

*Sire: S A V PIONEER 7301 AMF CAF NHF*

BOYD NEW DAY 8005 AMF CAF NHF  
S A V BLACKBIRD 5297 CAC  
S A V BLACKBIRD 1082 CAC  
BON VIEW NEW DESIGN 878 AMF CAF NHF  
ISLA BANK DESIGNATION 14N  
MVF TIBBIE 706L

*Dam: WILLOWVIEW BELLE 38R*

CRESCENT CREEK SAMURAI 48B  
COTTONWOOD BELLE 28H  
COTTONWOOD BELLE 11A

EPD's	
BW	+1.7
WW	+46
YW	+83
Milk	+23
TM	+46
Scotal	---
CED	+3.0
CEM	+4.0



*KSH 7Z - Lot 15*

BW: 91	Adj WW: 708					
SOT: 960	EOT: 1370	Proj Wt: 1520	ADG: 4.23	WPDA: 3.55	AOD: 7	
Adj. Carcass Values LMY: 64.6 REA: 13.88 %IMF: 3.15 Rib Fat: 0.21 Rump Fat: 0.15						

Check out this son of SAV Pioneer. We think he is a great bull and hopefully you will agree.

## *Lot* **16** ***WILLOWVIEW PIONEER 3Z*** Male KSH 3Z January 19 2012 1683486

SITZ TRAVELER 8180 AMF CAF NHF  
S A V FINAL ANSWER 0035 AMF CAF NHF  
S A V EMULOUS 8145 CAF

*Sire: S A V PIONEER 7301 AMF CAF NHF*

BOYD NEW DAY 8005 AMF CAF NHF  
S A V BLACKBIRD 5297 CAC  
S A V BLACKBIRD 1082 CAC  
BON VIEW NEW DESIGN 878 AMF CAF NHF  
ISLA BANK DESIGNATION 14N  
MVF TIBBIE 706L

*Dam: WILLOWVIEW GRAND JUNE 33R*

KENOSEE PARK 473 29G  
WILLOWVIEW GRAND JUNE 2K  
WILLOWVIEW GRAND JUNE 4H

EPD's	
BW	+1.4
WW	+41
YW	+80
Milk	+23
TM	+44
Scotal	---
CED	+5.0
CEM	+6.0



*KSH 3Z - Lot 16*

BW: 88	Adj WW: 611					
SOT: 830	EOT: 1250	Proj Wt: 1400	ADG: 4.33	WPDA: 3.17	AOD: 7	
Adj. Carcass Values LMY: 64.1 REA: 13.90 %IMF: 2.23 Rib Fat: 0.23 Rump Fat: 0.32						

Here is another great SAV Pioneer son. His paternal brother was the high selling bull from the 2011 Triple A Sale. This guy is out of the same fantastic Grand June cow family.



*S A V PIONEER 7301 - Sire of Lot 15 & 16*

## *Lot* **17** ***WILLOWVIEW PRIME CUT 14Z*** Male KSH 14Z February 03 2012 1707391

BASIN PRIME CUT 354K  
PEAK DOT PRIME CUT 433M  
BARDOLIA OF PEAK DOT 572E  
*Sire: PEAK DOT PRIME CUT 218S*  
PEAK DOT RANSOM 152H  
PANSY OF PEAK DOT 805L  
PANSY OF PEAK DOT 668Z  
HXL STOCKMAN 2K  
COTTONWOOD STOCKMAN 60M  
HILOW ESTON ANNE 37D

*Dam: WILLOWVIEW PEARL 14R*

KENOSEE PARK 473 29G  
COTTONWOOD PEARL 62K  
ROY MAC PEARL 2D

EPD's	
BW	+2.8
WW	+50
YW	+81
Milk	+10
TM	+35
Scotal	---
CED	-2.0
CEM	+0.0

BW: 94	Adj WW: 765					
SOT: 1040	EOT: 1440	Proj Wt: 1590	ADG: 4.12	WPDA: 3.80	AOD: 7	
Adj. Carcass Values LMY: 64.6 REA: 13.28 %IMF: 4.33 Rib Fat: 0.19 Rump Fat: 0.26						

## Lots 18 - 24 - Irving Angus

John & Keri Irving - 306-587-2523

### Lot 18 IRVING ANGUS NATIONWIDE 9Z

Male IRV 9Z February 27 2012 1668981

WHITSTONE WIDESPREAD MB AMF NHF  
BLACK RIDGE W WIDESPREAD 2K  
BLACK RIDGE BRITTA 9F CAF

Sire: ISLA BANK WIDESPREAD 12S

BIG BEAR WALKER 37E  
ISLA BANK HEROINE 12N  
ISLA BANK HEROINE 11J  
ISLA BANK MOHAMED 23L  
IRV ALI 8P  
ROCKING FOUR QUEEN MOTHER 2J

Dam: IRV ULTRA PRIDE 4S

PEAK DOT WALK ON 52F  
LAMB'S QUARTERS PRIDE 81L  
LAMB'S QUARTERS PRIDE 23F

BW: 87					
SOT: 790	EOT: 1110	Proj Wt: 1260	ADG: 3.30	WPDA: 3.13	AOD: 6

Widespread 12S has perhaps saved some of his best work for last. 9Z is a nice mix of functionality and performance. His dam, Pride 4S, is a quiet, easy-keeping cow.



IRV 9Z - Lot 18

### Lot 19 IRVING ANGUS 105 IDEAL 15Z

Male IRV 15Z March 07 2012 1669007

C A R IDEAL 650  
CAR IDEAL 061  
C A R MISS VIKING 601

Sire: CRESCENT CREEK IDEAL 105U

CRESCENT CREEK THUNDER 51L  
CRESCENT CREEK DUCHESS 27P  
CRESCENT CREEK DUCHESS 6E  
NEW FORCE ULTRAVOX 34L  
LAMB'S QUARTERS ULTRA 61N  
LAMB'S QUARTERS PRIDE 25F

Dam: IRV ULTRA ELINE 5W

BELL 2164 STOCKMAN 9K  
CALLAMERE ELINE 17R  
CALLAMERE ELINE 6K

BW: 84					
SOT: 730	EOT: 1015	Proj Wt: 1165	ADG: 2.94	WPDA: 2.93	AOD: 3

15Z is an Ideal son with a great top and sturdy build. His dam is a young Eline cow who brings in as good a calf as any.



IRV 15Z - Lot 19

### Lot 20 IRVING ANGUS 105 IDEAL 17Z

Male IRV 17Z March 07 2012 1668980

C A R IDEAL 650  
CAR IDEAL 061  
C A R MISS VIKING 601

Sire: CRESCENT CREEK IDEAL 105U

CRESCENT CREEK THUNDER 51L  
CRESCENT CREEK DUCHESS 27P  
CRESCENT CREEK DUCHESS 6E  
TC STOCKMAN 2164 AMF CAF NHF  
BELL 2164 STOCKMAN 9K  
BELL BLACKBIRD 22E

Dam: CALLAMERE ELINE 17R

DOUBLE AA BLACKMAN 267'98  
CALLAMERE ELINE 6K  
CALLAMERE ELINE 30W

BW: 87					
SOT: 725	EOT: 1050	Proj Wt: 1200	ADG: 3.35	WPDA: 3.03	AOD: 7

A strong bull out of an excellent Callamere cow. This bull has the makings to be a good one. A full brother sold last year to Kelly & Lynn Howe of Glentworth, SK.

AAA



Irving Angus would like to welcome you to the annual Triple "A" Bull and Heifer Sale! Well, Old Man Winter was certainly in a nasty mood this time around. Snow, ice, sleet, extreme wind chills, -40C temperatures - we have certainly had a bit of everything thrown at us for the last few months. Thank goodness these Angus bulls are bred to take on the best that the Prairies can throw at them and to continue to go to work for their new owners. This year we are offering six sons out of our herd sire Crescent Creek Ideal 105U. He carries a strong maternal background - his dam, Crescent Creek Duchess 27P, has been designated a Canadian Angus Elite Cow. This is also the final opportunity to purchase a son of Isla Bank Widespread 12S. This bull has had a significant influence on our herd and the son on offering is a strong representation of what 12S brings forward. Thank you, once again, for taking the time to join us. If we can be of any assistance, please do not hesitate to call John at (306) 587-2229 home or (306) 587-7997 cell.

**Lot 21 IRVING ANGUS 105 IDEAL 21Z**  
Male IRV 21Z March 10 2012 1668992

C A R IDEAL 650  
CAR IDEAL 061  
C A R MISS VIKING 601  
Sire: CRESCENT CREEK IDEAL 105U  
CRESCENT CREEK THUNDER 51L  
CRESCENT CREEK DUCHESS 27P  
CRESCENT CREEK DUCHESS 6E  
NEW FORCE ULTRAVOX 34L  
LAMB'S QUARTERS ULTRA 61N  
LAMB'S QUARTERS PRIDE 25F

Dam: IRV ULTRA ROSEBUD 24S

ISLA BANK MOHAMED 23L  
IRV ROSEBUD 15P  
LAMB'S QUARTERS ROSEBUD 128L

BW: 86					
SOT: 775	EOT: 1050	Proj Wt: 1200	ADG: 2.84	WPDA: 3.06	AOD: 6

Another well-built Ideal son, who shows his thickness through to the back end. A maternal brother was purchased through the Triple "A" Sale by McGillvray Cattle Company of Radville, SK.

**Lot 22 IRVING ANGUS 105 IDEAL 24Z**  
Male IRV 24Z March 11 2012 1669006

C A R IDEAL 650  
CAR IDEAL 061  
C A R MISS VIKING 601  
Sire: CRESCENT CREEK IDEAL 105U  
CRESCENT CREEK THUNDER 51L  
CRESCENT CREEK DUCHESS 27P  
CRESCENT CREEK DUCHESS 6E  
NEW FORCE ULTRAVOX 34L  
LAMB'S QUARTERS ULTRA 61N  
LAMB'S QUARTERS PRIDE 25F

Dam: IRV ULTRA PRIDE 4W

IRV ALI 8P  
IRV ULTRA PRIDE 4S  
LAMB'S QUARTERS PRIDE 81L

BW: 80					
SOT: 665	EOT: 940	Proj Wt: 1090	ADG: 2.84	WPDA: 2.75	AOD: 3

A moderate framed bull with the same strength and thickness of all the Ideals. His mother is a young eye-appealing cow with a fine udder. With a modest birth weight, 24Z is a great choice for heifers.

**Lot 23 IRVING ANGUS 105 IDEAL 25Z**  
Male IRV 25Z March 12 2012 1669010

C A R IDEAL 650  
CAR IDEAL 061  
C A R MISS VIKING 601  
Sire: CRESCENT CREEK IDEAL 105U  
CRESCENT CREEK THUNDER 51L  
CRESCENT CREEK DUCHESS 27P  
CRESCENT CREEK DUCHESS 6E  
NEW FORCE ULTRAVOX 34L  
LAMB'S QUARTERS ULTRA 61N  
LAMB'S QUARTERS PRIDE 25F

Dam: IRV ULTRA BLACKBIRD 12W

BON VIEW NEW DESIGN 878 AMF CAF NHF  
IRV BLACKBIRD 2P  
BELL BLACKBIRD 23M

BW: 84					
SOT: 765	EOT: 1040	Proj Wt: 1190	ADG: 2.84	WPDA: 3.05	AOD: 3

A high quality Ideal son with excellent length of body. His dam is a sweet Blackbird cow that is beginning to make a big impact in our herd.

**Lot 24 IRVING ANGUS 105 IDEAL 30Z**  
Male IRV 30Z March 16 2012 1668963

C A R IDEAL 650  
CAR IDEAL 061  
C A R MISS VIKING 601  
Sire: CRESCENT CREEK IDEAL 105U  
CRESCENT CREEK THUNDER 51L  
CRESCENT CREEK DUCHESS 27P  
CRESCENT CREEK DUCHESS 6E  
EMULATION N BAR 5522  
N BAR EMULATION EXT AMF CAF NHF  
N BAR PRIMROSE 2424

Dam: IRV EXT ROSEBUD 1N

VBR BRAVE HEART 235J  
LAMB'S QUARTERS ROSEBUD 128L  
LAMB'S QUARTERS ROSEBUD 55E

BW: 86					
SOT: 775	EOT: 1120	Proj Wt: 1270	ADG: 3.56	WPDA: 3.32	AOD: 9

A March 16 birth date, but this guy has performed very well in the pen. This bull really strides out well and will certainly cover some ground for you. A full brother is working for Lyle Hughes in Abbey, SK.



IRV 30Z - Lot 24

# ***Lots 25 - 32 - XLB Farms***

Dan Exelby - 306-734-2741

## ***Lot 25 XLB RIGHT ANSWER 63Z*** Male XLB 63Z February 18 2012 1681496

SITZ TRAVELER 8180 AMF CAF NHF  
S A V FINAL ANSWER 0035 AMF CAF NHF  
S A V EMULOUS 8145 CAF

***Sire: CONNEALY RIGHT ANSWER 746 AMF CAF NHF***

HYLINE RIGHT TIME 338 AMF CAF NHF  
HAPPY DELL OF CONANGA 262  
HAPPY DAZE OF CONANGA 6260

SITZ TRAVELER 8180 AMF CAF NHF  
SITZ ALLIANCE 6595 DMF AMF CAF NHF  
SITZ BARBARAMERE JET 2698

***Dam: ROSSO MS DAKOTA 16N***

HOWE MR PRIDE 65H  
ROSSO MS PAGE 13L  
ROSSO FALCON 9J

BW: 90

SOT: 825 EOT: 1130 Proj Wt: 1280 ADG: 3.14 WPDA: 3.10 AOD: 9

An own son of Connealy Right Answer, a calving ease sire with performance. His mother is a hard working Sitz Alliance 6595 cow.

## ***Lot 26 RED XLB MR. COMBINATION 75Z*** Male XLB 75Z March 20 2012 1681504

RED WOODHILL TOP BRASS  
RED LCHMN TOP BRASS 1049H  
RED LEACHMAN MATTIE F1274

***Sire: RED LSF COMBINATION A301M OSF MAF***

RED GLACIER LOGAN OSF MAF  
RED WHF LASS 27G-29J OSF  
RED WF LASS 27G OSC

RED BFCK CHEROKEE CNYN 4912 OSF MAF  
RED LCC MAJOR LEAGUE A502M OSF MAF  
RED KRN REBA'S ROBIN OSF

***Dam: RED XLB LACE 75W***

RED LEACHMAN MONU 2X OSF  
RED EAGLE ACRES LACE 492C  
RED EAGLE ACRES MARTA 26Y

BW: 87

SOT: 695 EOT: 1030 Proj Wt: 1180 ADG: 3.45 WPDA: 3.09 AOD: 10

We purchased 75's dam, 75W as an embryo at Agribition one year. His sire is one of ABS's Curve Benders LSF Combination.



***XLB 10Z - Lot 27***



***XLB 63Z - Lot 25***

## ***Lot 27 RED XLB MR. BEEF 10Z*** Male XLB 10Z March 14 2012 1681502

RED LCC HEAVEN OR BUST1000B OSF MAF  
RED HLH BUSTER 406 603 OSF MAF  
RED HLH MS ARROW 908 406

***Sire: RED BADLANDS MR BEEF 805 OSF MAF***

RED BJR JR 107 OSF MAF  
RED BADLANDS KEEPSAKE 632  
RED IDARED KEEPSAKE 8125

RED LJC LANCER 806 OSF  
RED LJC MISSION STATEMENT P27 OSF MAF  
RED LJC HANNAH 106 OSF

***Dam: RED XLB MISSION PATHY 10 OSF***

RED BUF CRK CHF 824-1658 OSC MAF  
RED XLB SMOOTH PATHY 18S OSC  
RED STEWART 803 MISS PATHY 217

BW: 87

SOT: 795 EOT: 1115 Proj Wt: 1265 ADG: 3.30 WPDA: 3.29 AOD: 4

I had been saving some Mr. Beef 805 semen but decided to match it up with one of our good Mission Statement P27 cows. 10Z has gained well. Take a look at him.

## ***Lot 28 RED XLB MR. SAKIC 76Z*** Male XLB 76Z March 16 2012 1681503

RED WILDMAN DENALI 19L OSF  
RED SIX MILE AVIATOR 217P OSF  
RED RSL SUE 400F OSF

***Sire: RED SIX MILE SAKIC 832S OSF MAF***

RED SIX MILE CUJO 800M  
RED SIX MILE SIERA 257P OSF  
RED BOUNTY B MISS SIERA BAR

RED BFCK CHEROKEE CNYN 4912 OSF MAF  
RED LCC MAJOR LEAGUE A502M OSF MAF  
RED KRN REBA'S ROBIN OSF

***Dam: RED XLB LACE 76W***

RED LEACHMAN MONU 2X OSF  
RED EAGLE ACRES LACE 492C  
RED EAGLE ACRES MARTA 26Y

BW: 84

SOT: 735 EOT: 950 Proj Wt: 1100 ADG: 2.22 WPDA: 2.82 AOD: 3

A son of the popular sire Six Mile Sakic 832S. His dam is out of Stewart Cattle Company's Eagle Acres Lace cow.



**Lot 29 RED XLB COMBINATION 28Z**  
Male XLB 28Z February 10 2012 1681494

RED WOODHILL TOP BRASS  
RED LCHMN TOP BRASS 1049H  
RED LEACHMAN MATTIE F1274  
Sire: RED LSF COMBINATION 430IM OSF MAF  
RED GLACIER LOGAN OSF MAF  
RED WHF LASS 27G-29J OSF  
RED WF LASS 27G OSC  
RED BUF CRK CHF 824-1658 OSC MAF  
RED LCHMN GRND CANYON 1244G OSC MAF  
RED KRN REBA'S ROBIN OSF  
Dam: RED XLB GRAND CHARITY III OSF  
RED LOG EL CAPONE 515 MAF  
RED BRYLOR CHARITY 5G  
RED HF CHARITY 2B

BW: 88					
SOT: 890	EOT: 1245	Proj Wt: 1395	ADG: 3.66	WPDA: 3.38	AOD: 5

28Z's dam is one of our top cows. We sold a nice half brother at this sale two years ago to PFRA. This Red fellow held his own at Hagerty's this winter. Check out his performance.

**Lot 30 RED XLB CHEYENNE 9Z**  
Male XLB 9Z February 14 2012 1681495

RED BUF CRK CHF 824-1658 OSC MAF  
RED BFCK CHEROKEE CNYN 4912 OSF MAF  
RED MRM 1431 8611 9109 OSF  
Sire: RED LCC CHEYENNE 822IL OSF MAF  
RED LMAN ROBIN HOOD 1174B OSF  
RED HXC 701G  
RED HXC 555E  
RED LMAN KING ROB 8621 OSF MAF  
RED LCHMN GOLD ROBBER 1909E OSF MAF  
RED LACHMAN LARKABA 6384  
Dam: RED EXEL-B ROBBER GOLDETTE 75N  
RED BUF CRK HOBO 1961 OSF MAF  
RED EXEL-B HOBO GOLDETTE 31J  
RED RSL GOLDETTE 256D

BW: 88					
SOT: 815	EOT: 1080	Proj Wt: 1230	ADG: 2.73	WPDA: 2.98	AOD: 9

9Z is out of our heavy milking Gold Robber 1909E cow. His sire is LCC Cheyenne, an ABS performance bull.



GRP

**RED SIX MILE SAKIC 832S**  
Sire of Lot 28 & 32



**XLB 28Z - Lot 29**

**Lot 31 RED XLB NETWORTH 65Z**  
Male XLB 65Z February 20 2012 1695385

SITZ TRAVELER 8180 AMF CAF NHF  
S A V 8180 TRAVELER 004 DMF DWF AMF CAF NHF  
BOYD FOREVER LADY 8003  
Sire: S A V NET WORTH 4200 AMF CAF NHF  
S A F 598 BANDO 5175 AMF CAC  
S A V MAY 2410  
S A V MAY 6269  
G A R PRECISION 1680 AMC NHC  
C A FUTURE DIRECTION 5321 AMC CAF NHC  
C A MISS POWER FIX 308 AMF  
Dam: XLB MS FUTURE 23R AMC NHF  
SITZ ALLIANCE 6595 DMF AMF CAF NHF  
ROSSO MS DAKOTA 16N  
ROSSO MS PAGE 13L

BW: 92					
SOT: 850	EOT: 1160	Proj Wt: 1310	ADG: 3.20	WPDA: 3.20	AOD: 7

An own son of the popular Network 4200. This bull will add pounds to your weaning weights.

**Lot 32 RED XLB SAKIC 22Z**  
Male XLB 22Z March 12 2012 1681501

RED WILDMAN DENALI 19L OSF  
RED SIX MILE AVIATOR 217P OSF  
RED RSL SUE 400F OSF  
Sire: RED SIX MILE SAKIC 832S OSF MAF  
RED SIX MILE CUJO 800M  
RED SIX MILE SIERA 257P OSF  
RED BOUNTY B MISS SIERA BAR  
RED BADLANDS MR BEEF 805 OSF MAF  
RED BJR AH BRANDED BEEF L107 OSF MAF  
RED HR ROBIN HOOD 80J ET  
Dam: RED XLB CHEROKEE BEEF 13W  
RED BFCK CHEROKEE CNYN 4912 OSF MAF  
RED XLB CHEROKEE DIVIDE 88P  
RED FLYING K MS DIVIDE 92M

BW: 84					
SOT: 675	EOT: 950	Proj Wt: 1100	ADG: 2.84	WPDA: 2.79	AOD: 3

Another Sakic 832S son. This fellow should work on heifers. Sakic 832S was the second highest used sire in Red Angus registrations last year.

# *Lots 33 - 35 - Cottonwood Angus*

Brent Gaube - 306-537-4710

## *Lot 33 COTTONWOOD NET WORTH 1Z*

Male RTBG 1Z February 01 2012 1703450

S A V 8180 TRAVELER 004 DMF DWF AMF CAF NHF  
S A V NET WORTH 4200 AMF CAF NHF  
S A V MAY 2410

Sire: *WILLOWVIEW NET WORTH 12W*

KENOSEE PARK 473 29G  
COTTONWOOD TIPTOP 3L  
COTTONWOOD TIPTOP 63Z

BON VIEW NEW DESIGN 878 AMF CAF NHF  
ISLA BANK DESIGNATION 14N  
MVF TIBBIE 706L

Dam: *COTTONWOOD TIPTOP 110*

HXL STOCKMAN 2K  
WILLOWVIEW TIPTOP 11N  
COTTONWOOD TIPTOP 3L

EPD's	
BW	+3.5
WW	+42
YW	+80
Milk	+19
TM	+40
Scotal	---
CED	+1.0
CEM	+6.0



*RTBG 1Z - Lot 33*

BW: 89	Adj WW: 562	SOT: 745	EOT: 1050	Proj Wt: 1200	ADG: 3.14	WPDA: 2.76	AOD: 4
Adj. Carcass Values LMY: 65.6 REA: 11.64 %IMF: 2.81 Rib Fat: 0.10 Rump Fat: 0.10							

The dam is a heavy milker, a moderate birth weight and the opportunity to buy an SAV Net Worth 4200 grandson.

## *Lot 34 COTTONWOOD WORTH 2Z*

Male RTBG 2Z February 03 2012 1703451

S A V 8180 TRAVELER 004 DMF DWF AMF CAF NHF  
S A V NET WORTH 4200 AMF CAF NHF  
S A V MAY 2410

Sire: *WILLOWVIEW NET WORTH 12W*

KENOSEE PARK 473 29G  
COTTONWOOD TIPTOP 3L  
COTTONWOOD TIPTOP 63Z

APEX STOCKMAN 061  
HXL STOCKMAN 2K  
CRAVEN MISS SANDRA 27F

Dam: *COTTONWOOD BELLE 1M*

CRESCENT CREEK SAMURAI 48B  
COTTONWOOD BELLE 28H  
COTTONWOOD BELLE 11A

EPD's	
BW	+3.0
WW	+32
YW	+64
Milk	+15
TM	+31
Scotal	---
CED	+1.0
CEM	+3.0

BW: 87	Adj WW: 525	SOT: 715	EOT: 910	Proj Wt: 1060	ADG: 2.01	WPDA: 2.40	AOD: 10
Adj. Carcass Values LMY: 64.2 REA: 10.60 %IMF: 3.14 Rib Fat: 0.12 Rump Fat: 0.16							

A combination of moderate birth weight and performance. The dam is a red gene carrier.

## *Lot 35 COTTONWOOD LEGACY 3Z*

Male RTBG 3Z February 09 2012 1706339

SANDY BAR ADVANTAGE 43M  
HF KODIAK 5R AMF CAF NHF MAF  
WILBAR RUBY 955N

Sire: *SOO LINE LEGACY 7019*

G D A R ROGUE 6322  
GEIS PRIDE 114'99 MAF  
GEIS PRIDE 195'96

B/R NEW DESIGN 036 AMF CAF NHF  
EARLY SUNSET DESIGN 51M  
EARLY SUNSET ELBA 117D

Dam: *SOO LINE K PRIDE 403P*

WOODHILL TRIPLE THREAT AMF CAF  
GEIS K PRIDE 95'99  
GEIS K PRIDE 7'94

EPD's	
BW	+1.5
WW	+37
YW	+70
Milk	+14
TM	+33
Scotal	---
CED	+6.0
CEM	+3.0
REA	-0.14
Marb	+0.15
Fat	-0.012
Carcass	+8

BW: 86	Adj WW: 508	SOT: 690	EOT: 935	Proj Wt: 1085	ADG: 2.53	WPDA: 2.51	AOD: 8
Adj. Carcass Values LMY: 62.4 REA: 8.36 %IMF: 3.27 Rib Fat: 0.12 Rump Fat: 0.11							

Here is an opportunity to buy a son of Soo Line Legacy 7019.



*SOO LINE LEGACY 7019*  
Sire of Lot 35



# Lots 36 - 40 - Black Pearl Angus

Matt Bedard - 306-737-1571

## Lot 36 BLACK PEARL FINAL ANSWER 305Z

Male KMJ 305Z February 07 2012 1708598

SITZ TRAVELER 8180 AMF CAF NHF  
S A V FINAL ANSWER 0035 AMF CAF NHF  
S A V EMULOUS 8145 CAF

Sire: NORTHERN VIEW FINAL ANSWER 74X

NORTHERN VIEW FLYING ELIXIR70M  
NORTHERN VIEW BELLE 79U  
WWF AMBUSH BELLE 166P

CONNEALY LEAD ON AMF CAF NHF  
CONNEALY ONWARD AMF CAF NHF  
ALTUNE OF CONANGA 6104

Dam: NEW FORCE RUBY 305T

ISLA BANK TITAN 128  
NEW FORCE ROSEBUD 71N  
SKY HIGH ELBA 3J

EPD's	
BW	+3.5
WW	+51
YW	+97
Milk	+22
TM	+48
Scotal	---
CED	+4.0
CEM	+6.0

BW: 88	Adj WW: 710					
SOT: 905	EOT: 1215	Proj Wt: 1365	ADG: 3.20	WPDA: 3.24	AOD: 5	
Adj. Carcass Values LMY: 63.6 REA: 12.69 %IMF: 3.91 Rib Fat: 0.21 Rump Fat: 0.17						

An extremely powerful and correct bull. This guy topped the charts for weaning weights this year. His dam, New Force Ruby 305T is an exceptional producer, with two of her daughters working in our herd. With a moderate birth weight and impressive spread of EPD's he would be a great addition to any herd.



## Lot 37 BLACK PEARL JACK SPARROW

Male KMJ 74Z February 13 2012 1673254

SITZ TRAVELER 8180 AMF CAF NHF  
S A V FINAL ANSWER 0035 AMF CAF NHF  
S A V EMULOUS 8145 CAF

Sire: NORTHERN VIEW FINAL ANSWER 74X

NORTHERN VIEW FLYING ELIXIR70M  
NORTHERN VIEW BELLE 79U  
WWF AMBUSH BELLE 166P

YOUNG DALE BONUS 82P  
NEW FORCE DUDLEY 26S  
NEW FORCE ROSEBUD 26K

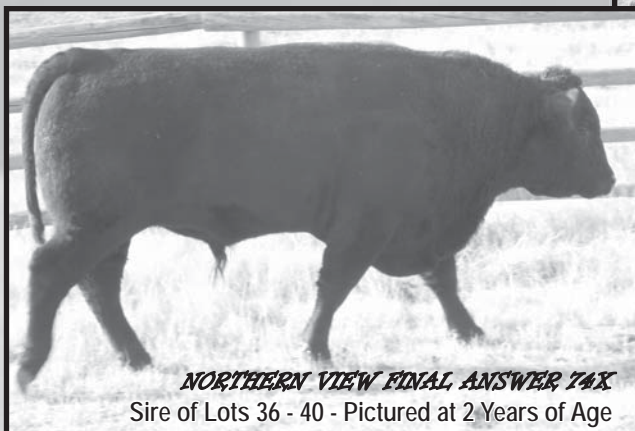
Dam: NEW FORCE RUBY 740

NEW FORCE BATTLE CRY 39M  
NEW FORCE RUBY 74P  
SKY HIGH RUBY 2J

EPD's	
BW	+1.6
WW	+45
YW	+81
Milk	+19
TM	+42
Scotal	---
CED	+5.0
CEM	+9.0

BW: 76	Adj WW: 657					
SOT: 840	EOT: 1130	Proj Wt: 1280	ADG: 2.99	WPDA: 3.06	AOD: 4	
Adj. Carcass Values LMY: 62.5 REA: 11.99 %IMF: 3.51 Rib Fat: 0.23 Rump Fat: 0.27						

Another son of Northern View Final Answer 74X. A nice low birth weight with rapid growth, he would work well as a heifer bull. A maternal sister sold here in December at the Gateway Sale to Coulee Crossing Cattle Co. A thick and stout bull, ready to go to work!



## Lot 38 BLACK PEARL FINAL ANSWER 3Z

Male KMJ 3Z February 12 2012 1708599

SITZ TRAVELER 8180 AMF CAF NHF  
S A V FINAL ANSWER 0035 AMF CAF NHF  
S A V EMULOUS 8145 CAF

Sire: NORTHERN VIEW FINAL ANSWER 74X

NORTHERN VIEW FLYING ELIXIR70M  
NORTHERN VIEW BELLE 79U  
WWF AMBUSH BELLE 166P

WHITESTONE WIDESPREAD MB AMF NHF  
NEW FORCE WIDESPREAD 94T CAF  
NEW FORCE MISS LARK LEE 94N CAC

Dam: BRIMAR SUE QUEEN 3X

YOUNG DALE BONUS 82P  
NEW FORCE SUE QUEEN 37T  
NEW FORCE QUEEN SUSAN 7N

EPD's	
BW	+3.0
WW	+52
YW	+94
Milk	+19
TM	+45
Scotal	---
CED	+3.0
CEM	+8.0

BW: 73 Adj WW: ---

SOT: 820 EOT: 1080 Proj Wt: 1230 ADG: 2.68 WPDA: 2.92 AOD: 2

Adj. Carcass Values LMY: 63.8 REA: 12.59 %IMF: 3.89 Rib Fat: 0.20 Rump Fat: 0.24

A low birth weight again with this boy. Out of a first calf heifer and what a great job she did! With superior maternal traits and fast gains he has calving ease written all over him. A flashy looking bull with a quiet temperament to boot!

## Lot 39 BLACK PEARL GRIZZLY

Male KMJ 97Z March 09 2012 1673241

SITZ TRAVELER 8180 AMF CAF NHF  
S A V FINAL ANSWER 0035 AMF CAF NHF  
S A V EMULOUS 8145 CAF

Sire: NORTHERN VIEW FINAL ANSWER 74X

NORTHERN VIEW FLYING ELIXIR70M  
NORTHERN VIEW BELLE 79U  
WWF AMBUSH BELLE 166P

YOUNG DALE DUDLEY 26M  
YOUNG DALE BONUS 82P  
DOUBLE J BLACKBIRD 53H

Dam: NEW FORCE ELBA ROSEBUD 97S

ISLA BANK TITAN 128  
NEW FORCE ROSEBUD 71N  
SKY HIGH ELBA 3J

EPD's	
BW	+2.4
WW	+45
YW	+80
Milk	+17
TM	+40
Scotal	---
CED	+4.0
CEM	+8.0

BW: 79 Adj WW: 649

SOT: 765 EOT: 1095 Proj Wt: 1245 ADG: 3.40 WPDA: 3.18 AOD: 6

Adj. Carcass Values LMY: 61.3 REA: 12.08 %IMF: 3.88 Rib Fat: 0.28 Rump Fat: 0.30

Calving ease and maternal strength with this young bull. Moderate framed, compact and deep. Take a look at his pedigree. A maternal brother sold last spring to Patterson Angus as a heifer bull.

## Lot 40 BLACK PEARL HENRIK

Male TW KMJ 75Z February 23 2012 1673257

SITZ TRAVELER 8180 AMF CAF NHF  
S A V FINAL ANSWER 0035 AMF CAF NHF  
S A V EMULOUS 8145 CAF

Sire: NORTHERN VIEW FINAL ANSWER 74X

NORTHERN VIEW FLYING ELIXIR70M  
NORTHERN VIEW BELLE 79U  
WWF AMBUSH BELLE 166P

YOUNG DALE DUDLEY 26M  
YOUNG DALE BONUS 82P  
DOUBLE J BLACKBIRD 53H

Dam: NEW FORCE AMANDA 76S

WOODHILL TRIPLE THREAT AMF CAF  
NEW FORCE AMANDA 34E  
NEW FORCE AMANDA 58A

EPD's	
BW	+4.0
WW	+51
YW	+88
Milk	+21
TM	+47
Scotal	---
CED	-1.0
CEM	+2.0

BW: 100 Adj WW: 713

SOT: 875 EOT: 1260 Proj Wt: 1410 ADG: 3.97 WPDA: 3.51 AOD: 6

Adj. Carcass Values LMY: 63.7 REA: 12.45 %IMF: 3.83 Rib Fat: 0.20 Rump Fat: 0.32

A big and powerful show stopping bull. If you are looking for a bull to pack pounds on to your calves, this is the man for you!

SALE WILL BE ONLINE WITH:



The Triple A sale will be broadcast live at  
[www.cattleinmotion.com](http://www.cattleinmotion.com).

To view the sale live, simply log on to [www.cattleinmotion.com](http://www.cattleinmotion.com) and click on the sale, which will be listed on the right hand side of the screen. If you have never been to the Cattle In Motion site, you must first create an account to view a sale, then pay your \$1 lifetime verification so you may be able to bid.

Be sure to view the videos prior to the sale at  
[www.cattleinmotion.com](http://www.cattleinmotion.com)

**LIVE AUDIO, LIVE BIDDING  
LIVE BROADCAST**

## I H HAGERTY LIVESTOCK

Larry Hagerty

Specializing in custom:  
• Bull Tests • Backgrounding  
• Finishing

General Delivery, Stony Beach, SK S0G 4S0  
Ph: (306) 345-2523 Fax: (306) 345-2085

## New Force Consultants

Specializing in BLACK ANGUS genetics  
Consulting and order buying

Laird & Joyce Senft

Box 2655  
Fort Qu'Appelle, SK Canada S0G 1S0  
Laird Cell: (306) 331.7587  
Joyce Cell: (306) 332.8706  
Email: newforce@sasktel.net Ph/Fax: (306) 332.4823



**WESTERN LITHO**  
PRINTERS LTD.

For all your printing needs

**(306) 525-8796**



# *Lots 41 - 52 - Hi Low Angus*

Dan Howell - 306-731-2940 Cell 306-581-7606

Lot **41**

## **HILOW DYNAMITE 9Z**

Male HTD 9Z February 28 2012 1709233

JAUER 353 TRAVELER 589 27  
BALDRIDGE KABOOM K243 KCF CAF  
PLEASANTA OF CONANGA 736

Sire: **MOHNEN DYNAMITE 1356** AMF CAF NHF

CLEARWATER PAF SEVILLA 1977  
MOHNEN JILT 910 CAF  
MOHNEN JILT 143

S A R NEW TREND 4100 2080  
PEAK DOT NEW TREND 74M  
MAYFLOWER OF PEAK DOT 504K

Dam: **HILOW LADY ANN 43T**

HAPPYVALE TOUCH UP 29H  
HILOW LADY ANN 20M  
HILOW LADY ANN 9J

EPD's	
BW	+4.5
WW	+57
YW	+101
Milk	+15
TM	---
Scotal	+0.63
CED	---
CEM	---
REA	+0.25
Marb	+0.16
Fat	+0.010
Carcass	+24

BW: 105	Adj WW: 745	SOT: 915	EOT: 1225	Proj Wt: 1375	ADG: 3.20	WPDA: 3.46	AOD: 5
Adj. Carcass Values		LMY: 64.6	REA: 13.24	%IMF: 3.23	Rib Fat: 0.19	Rump Fat: 0.22	



*Lots 41 - 52 - Hi Low Angus*

Lot **43**

## **HILOW DYNAMITE 5Z**

Male TW HTD 5Z February 26 2012 1713245

JAUER 353 TRAVELER 589 27  
BALDRIDGE KABOOM K243 KCF CAF  
PLEASANTA OF CONANGA 736

Sire: **MOHNEN DYNAMITE 1356** AMF CAF NHF

CLEARWATER PAF SEVILLA 1977  
MOHNEN JILT 910 CAF  
MOHNEN JILT 143

DMM DYNASTY 03G  
HILOW DYNASTY 45M  
HILOW ELBA 45F

Dam: **HILOW BLOSSOM 63P**

BASIN MAX 602C AMF CAF NHF  
HILOW BLOSSOM 35L  
G B T BLOSSOM 16J

EPD's	
BW	+3.3
WW	+48
YW	+91
Milk	+15
TM	---
Scotal	+0.63
CED	---
CEM	---
REA	+0.24
Marb	+0.22
Fat	+0.016
Carcass	+32

BW: 68	Adj WW: 589	SOT: 730	EOT: 1020	Proj Wt: 1170	ADG: 2.99	WPDA: 2.87	AOD: 8
Adj. Carcass Values		LMY: 62.7	REA: 11.88	%IMF: 3.28	Rib Fat: 0.22	Rump Fat: 0.31	

Lot **42**

## **HILOW DYNAMITE 17Z**

Male HTD 17Z March 05 2012 1709237

JAUER 353 TRAVELER 589 27  
BALDRIDGE KABOOM K243 KCF CAF  
PLEASANTA OF CONANGA 736

Sire: **MOHNEN DYNAMITE 1356** AMF CAF NHF

CLEARWATER PAF SEVILLA 1977  
MOHNEN JILT 910 CAF  
MOHNEN JILT 143

S A R NEW TREND 4100 2080  
PEAK DOT NEW TREND 74M  
MAYFLOWER OF PEAK DOT 504K

Dam: **HILOW ESTON ANNE 29S**

PEAK DOT NEW TREND 74M  
HILOW ESTON ANNE 36P  
HILOW ESTON ANNE 33F

EPD's	
BW	+5.3
WW	+53
YW	+96
Milk	+17
TM	---
Scotal	+0.63
CED	---
CEM	---
REA	+0.29
Marb	+0.10
Fat	-0.004
Carcass	+25

BW: 105	Adj WW: 731	SOT: 830	EOT: 1200	Proj Wt: 1350	ADG: 3.81	WPDA: 3.45	AOD: 6
Adj. Carcass Values		LMY: 66.4	REA: 14.54	%IMF: 3.46	Rib Fat: 0.16	Rump Fat: 0.20	



Lot **44**

## **HILOW TIGER 1 35Z**

Male HTD 35Z March 12 2012 1711682

HF KODIAK 5R AMF CAF NHF MAF  
HF TIGER 5T AMF CAF NHF  
HF ECHO 84R

Sire: **HILOW TIGER 1X**

S A V NET WORTH 4200 AMF CAF NHF  
MVF TIBBIE 108U  
MVRB TIBBIE 123F

YOUNG DALE TOUCH DOWN 36M  
HOWE MAGIC 28R  
HOWE MS ERICA 132K

Dam: **HILOW MISS VONDA 14W**

MVF STOCKMAN 33J  
MIDNITE OIL MISS VONDA 17M  
MIDNITE OIL MISS VONDA 21J

EPD's	
BW	+3.4
WW	+45
YW	+84
Milk	+20
TM	---
Scotal	---
CED	---
CEM	---

BW: 78	Adj WW: 640	SOT: 720	EOT: 1050	Proj Wt: 1205	ADG: 3.45	WPDA: 3.09	AOD: 3
Adj. Carcass Values		LMY: 61.5	REA: 13.02	%IMF: 2.83	Rib Fat: 0.30	Rump Fat: 0.35	

Lot  
**45**

## HILOW TIGER 36Z

Male HTD 36Z March 12 2012 1711681

HF KODIAK 5R AMF CAF NHF MAF  
HF TIGER 5T AMF CAF NHF  
HF ECHO 84R

### Sire: HILOW TIGER 1X

S A V NET WORTH 4200 AMF CAF NHF  
MVF TIBBIE 108U  
MVRB TIBBIE 123F

SAV 8180 TRAVELER 004 DMF DWF AMF CAF NHF  
S A V NET WORTH 4200 AMF CAF NHF  
S A V MAY 2410

### Dam: BAR-E-L MARG 550

S A V FINAL ANSWER 0035 AMF CAF NHF  
BAR J P MARG 77N  
HAPPYVALE JSP MARG 66E

BW: 94 Adj WW: 695

SOT: 785 EOT: 1115 Proj Wt: 1265 ADG: 3.40 WPDA: 3.27 AOD: 4

Adj. Carcass Values LMY: 61.7 REA: 12.84 %IMF: 3.48 Rib Fat: 0.29 Rump Fat: 0.35

EPD's	
BW	+3.4
WW	+53
YW	+99
Milk	+24
TM	---
Scotal	---
CED	---
CEM	---
REA	+0.12
Marb	+0.20
Fat	+0.024
Carcass	+14



HTD 36Z - Lot 45

¾ brother to the 2012 Triple A high selling bull.

Lot  
**46**

## HILOW TIGER 55Z

Male HTD 55Z March 18 2012 1713246

HF KODIAK 5R AMF CAF NHF MAF  
HF TIGER 5T AMF CAF NHF  
HF ECHO 84R

### Sire: HILOW TIGER 1X

S A V NET WORTH 4200 AMF CAF NHF  
MVF TIBBIE 108U  
MVRB TIBBIE 123F

S A V SUCCESSOR 1175 AMF CAC NHF  
HILOW SUCCESSOR 18S CAF  
HILOW ESTON ANNE 46D

### Dam: HILOW HEATHER 39W

HAPPYVALE TOUCH UP 29H  
HILOW HEATHER 19L  
HILOW HEATHER 23E

BW: 84 Adj WW: 631

SOT: 675 EOT: 1010 Proj Wt: 1160 ADG: 3.45 WPDA: 3.01 AOD: 3

Adj. Carcass Values LMY: 63.1 REA: 11.80 %IMF: 4.71 Rib Fat: 0.20 Rump Fat: 0.32

EPD's	
BW	+3.9
WW	+40
YW	+80
Milk	+22
TM	---
Scotal	---
CED	---
CEM	---

Lot  
**48**

## HI LOW ELIXIR 31Z

Male HTD 31Z March 11 2012 1709242

B/R NEW FRONTIER 095 AMF CAF NHF  
SSAP NEW ELIXIR 4R  
SOUTH SHADOW EILEEN 5M

### Sire: DLD 4R NEW ELIXIR 660

SOUTH SHADOW RAIN MAN 2M  
DLD AKITA 8S  
DLD AKITA 25P

PAPA EQUATOR 2928 AMF NHF  
PAPA UNIVERSE 515 AMF NHF  
PLD ERISKAY PAPA 011

### Dam: HAPPYVALE NP LASSIE 17K

N BAR EMULATION EXT AMF CAF NHF  
HAPPYVALE NP LASSIE 17G  
HAPPYVALE LASSIE 8D

BW: 94 Adj WW: 756

SOT: 835 EOT: 1180 Proj Wt: 1330 ADG: 3.56 WPDA: 3.45 AOD: 12

Adj. Carcass Values LMY: 60.7 REA: 12.64 %IMF: 5.40 Rib Fat: 0.32 Rump Fat: 0.35

EPD's	
BW	+1.6
WW	+45
YW	+79
Milk	+21
TM	---
Scotal	+0.22
CED	---
CEM	---
REA	+0.19
Marb	+0.22
Fat	-0.019
Carcass	+21

Lot  
**47**

## HI LOW ELIXIR 19Z

Male HTD 19Z March 05 2012 1709238

B/R NEW FRONTIER 095 AMF CAF NHF  
SSAP NEW ELIXIR 4R  
SOUTH SHADOW EILEEN 5M

### Sire: DLD 4R NEW ELIXIR 660

SOUTH SHADOW RAIN MAN 2M  
DLD AKITA 8S  
DLD AKITA 25P

TC STOCKMAN 365  
MVF STOCKMAN 33J  
MVKD MISS ESSENCE 11G

### Dam: HILOW PRIDE 33R

BON VIEW BALANCE 834 AMF CAF NHF  
HILOW PRIDE 3G  
HILOW PRIDE 9W

BW: 78 Adj WW: 640

SOT: 785 EOT: 1080 Proj Wt: 1230 ADG: 3.04 WPDA: 3.10 AOD: 7

Adj. Carcass Values LMY: 63.4 REA: 12.81 %IMF: 1.95 Rib Fat: 0.22 Rump Fat: 0.20

EPD's	
BW	-3.1
WW	+24
YW	+54
Milk	+18
TM	---
Scotal	+0.22
CED	---
CEM	---
REA	-0.12
Marb	+0.21
Fat	-0.009
Carcass	+14

Lot  
**49**

## HI LOW ELIXIR 52Z

Male HTD 52Z March 18 2012 1709253

B/R NEW FRONTIER 095 AMF CAF NHF  
SSAP NEW ELIXIR 4R  
SOUTH SHADOW EILEEN 5M

### Sire: DLD 4R NEW ELIXIR 660

SOUTH SHADOW RAIN MAN 2M  
DLD AKITA 8S  
DLD AKITA 25P

HYLINE S V F RITO 1116 AMF CAF NHF  
NORTH FORK 1116 RITO 9011  
FINKS FORMERA 289 614 8E8

### Dam: MINBURN BUXOM ANN 101L AMF

MINBURN LANCER 11B  
MINBURN BUXOM ANN 20G  
BUXOM ANN OF DWW 69U

BW: 86 Adj WW: 703

SOT: 740 EOT: 1125 Proj Wt: 1275 ADG: 3.97 WPDA: 3.36 AOD: 11

Adj. Carcass Values LMY: 61.7 REA: 11.95 %IMF: 4.42 Rib Fat: 0.26 Rump Fat: 0.25

EPD's	
BW	-0.9
WW	+34
YW	+68
Milk	+19
TM	---
Scotal	+0.12
CED	---
CEM	---
REA	+0.04
Marb	+0.13
Fat	-0.005
Carcass	+6



Lot  
**50**

# **HI LOW ELIXIR 64Z**

Male HTD 64Z March 21 2012 1709257

B/R NEW FRONTIER 095 AMF CAF NHF  
SSAP NEW ELIXIR 4R  
SOUTH SHADOW EILEEN 5M

Sire: DLD 4R NEW ELIXIR 66U

SOUTH SHADOW RAIN MAN 2M  
DLD AKITA 8S  
DLD AKITA 25P

O S U 6T6 ULTRA  
B T ULTRAVOX 297E AMF CAF NHF  
FINKS VIXON 788

Dam: VALLEYHILLS MISSIE 62L

NICHOLS TRADEMARK S1  
VALLEYHILLS MISSIE 43B  
VALLEYHILLS MISSIE 43Y

BW: 78 Adj WW: 687

SOT: 705 EOT: 1030 Proj Wt: 1180 ADG: 3.35 WPDA: 3.10 AOD: 11

Adj. Carcass Values LMY: 62.5 REA: 13.86 %IMF: 5.26 Rib Fat: 0.29 Rump Fat: 0.31

EPD's	
BW	-0.2
WW	+40
YW	+79
Milk	+15
TM	---
Scotal	+0.34
CED	---
CEM	---
REA	+0.11
Marb	+0.22
Fat	+0.004
Carcass	+12

Lot  
**52**

# **HI LOW IDEAL 29Z**

Male HTD 29Z March 09 2012 1709240

CAR IDEAL 061  
CRESCENT CREEK IDEAL 32U  
CRESCENT CREEK ROSEBUD 10R

Sire: CRESCENT CREEK IDEAL 28X

GDAR QUANTUM 963  
CRESCENT CREEK PRIDE 106M  
CRESCENT CREEK PRIDE 40K  
YOUNG DALE TOUCH DOWN 36M

HOWE MAGIC 28R  
HOWE MS ERICA 132K

Dam: HILOW LADY MCHENRY 15U

TLA POKEMON 31J  
HILOW LADY MCHENRY 73M  
HILOW LADY MCHENRY 53F

BW: 76 Adj WW: 653

SOT: 710 EOT: 1040 Proj Wt: 1190 ADG: 3.40 WPDA: 3.02 AOD: 4

Adj. Carcass Values LMY: 61.4 REA: 12.27 %IMF: 3.26 Rib Fat: 0.28 Rump Fat: 0.31

EPD's	
BW	+0.6
WW	+34
YW	+65
Milk	+15
TM	---
Scotal	---
CED	---
CEM	---
REA	+0.01
Marb	+0.19
Fat	+0.001
Carcass	+5

Lot  
**51**

# **HI LOW IDEAL 46Z**

Male HTD 46Z March 17 2012 1709249

CAR IDEAL 061  
CRESCENT CREEK IDEAL 32U  
CRESCENT CREEK ROSEBUD 10R

Sire: CRESCENT CREEK IDEAL 28X

GDAR QUANTUM 963  
CRESCENT CREEK PRIDE 106M  
CRESCENT CREEK PRIDE 40K

S A R NEW TREND 4100 2080  
PEAK DOT NEW TREND 74M  
MAYFLOWER OF PEAK DOT 504K

Dam: HILOW ESTON ANNE 41T

EARLY SUNSET TEX 51E  
HILOW ESTON ANNE 18J  
HILOW ESTON ANNE 54A

BW: 102 Adj WW: 707

SOT: 800 EOT: 1150 Proj Wt: 1300 ADG: 3.61 WPDA: 3.42 AOD: 5

Adj. Carcass Values LMY: 61.4 REA: 13.14 %IMF: 3.81 Rib Fat: 0.31 Rump Fat: 0.31

EPD's	
BW	+4.4
WW	+42
YW	+69
Milk	+15
TM	---
Scotal	+0.12
CED	---
CEM	---
REA	+0.01
Marb	+0.16
Fat	-0.006
Carcass	+4



Thank you for the interest in our bulls. A few years ago we made the decision to back up calving to reduce the frequent night checks. I am very pleased with the performance of our young bulls. We have four sire groups to offer this year.

- Mohnen Dynamite was selected to use AI for added performance. I am always impressed by the Dynamite progeny Peak Dot Ranch has to offer.
- Hi Low Tiger 1X sires shorter gestation calves with lots of stretch. Tiger 1Z has a super quiet disposition.
- DLD 4R New Elixir 66U was purchased from the Delorme's. He is a proven calving ease bull that gives up nothing on performance.
- Crescent Creek Ideal 28X was selected from the front pen of the Olynk's 2011 offering. A 40 cm yearling bull with carcass data in the top 10% in every category.

Give us a call, we would be happy to discuss your upcoming breeding season needs.

Dan Howell

# *Lots 53 - 56 - Wilmo Angus Ranch*

John & Marg Willmott - 306-345-2046

## **Lot 53 RED WILMO ACCELERATOR 2Z** Male FCW 2Z March 13 2012 1668702

RED HEARTLAND KNIGHT CHARM 11L  
RED TER-RON FULLY LOADED 540R  
RED TER-RON GOLDIE 240L

Sire: RED 6 MILE FULL THROTTLE 11T OSF

RED PASQUIA ARAB 28E  
RED SIX MILE WITZEL 360J OSF  
RED C Y WITZEL 392Z

RED LEACHMAN ROBUST 722Z  
RED LMAN KING ROB 8621 OSF MAF  
RED LEACHMAN ELEANOR

Dam: RED WILMO ROSELLA 8W

RED WILMO PRINCE ROB 18R  
RED WILMO ROSELLA 15T  
RED LAMBS ROSELLA 49G

EPD's	
BW	+2.7
WW	+62
YW	+104
Milk	+16
TM	+48
Scotal	---
CED	-4.0
CEM	+1.0
REA	+0.01
Marb	+0.21
Fat	+0.010
Carcass	+36

BW: 85 Adj WW: 766

SOT: 845 EOT: 1205 Proj Wt: 1355 ADG: 3.71 WPDA: 3.54 AOD: 3

Adj. Carcass Values LMY: 62.9 REA: 13.38 %IMF: 2.92 Rib Fat: 0.26 Rump Fat: 0.34



## **Lot 54 WILMO ANYTIME 3Z** Male FCW 3Z March 23 2012 1668699

SITZ TRAVELER 8180 AMF CAF NHF  
S A V FINAL ANSWER 0035 AMF CAF NHF  
S A V EMULOUS 8145 CAF

Sire: WILMO QUESTION 19W

EAGLEVIEW MAGICIAN 5L  
WILMO PRIDE 15S  
ISLA BANK PRIDE 57M

Q A S TRAVELER 23-4 AMF CAF NHF  
WILMO TRAVELER 7G  
WILMO PRIDE 10E

Dam: WILMO DUCHESS 15P

SOUTHERN OX ENFORCER 19Z  
WILMO DUCHESS 6J  
WILMO DUCHESS 10W

EPD's	
BW	+2.2
WW	+47
YW	+80
Milk	+16
TM	+40
Scotal	+0.15
CED	+5.0
CEM	+8.0
REA	+0.00
Marb	+0.34
Fat	+0.011
Carcass	+4

BW: 80 Adj WW: 741

SOT: 810 EOT: 1170 Proj Wt: 1320 ADG: 3.71 WPDA: 3.55 AOD: 8

Adj. Carcass Values LMY: 62.4 REA: 13.16 %IMF: 2.06 Rib Fat: 0.27 Rump Fat: 0.26



## **Lot 55 WILMO GOOD ANSWER 5Z** Male FCW 5Z March 26 2012 1691720

G D A R TRAVELER 71 AMF CAF NHF  
SITZ TRAVELER 8180 AMF CAF NHF  
SITZ EVERELDA ENTENSE 1137

Sire: S A V FINAL ANSWER 0035 AMF CAF NHF

BON VIEW BANDO 598 AMF CAC  
S A V EMULOUS 8145 CAF  
S A V SKY EMULOUS 2124

WILMO TRAVELER 7G  
EAGLEVIEW MAGICIAN 5L  
WILMO MAGIC LADY 8J

Dam: WILMO PRIDE 15S

CHICO HANNIBAL 43H  
ISLA BANK PRIDE 57M  
ISLA BANK PRIDE 2J

EPD's	
BW	+0.6
WW	+51
YW	+87
Milk	+21
TM	+47
Scotal	+0.59
CED	+10.0
CEM	+12.0
REA	+0.24
Marb	+0.36
Fat	+0.023
Carcass	+11

BW: 75 Adj WW: 730

SOT: 740 EOT: 1020 Proj Wt: 1170 ADG: 2.89 WPDA: 3.12 AOD: 6

Adj. Carcass Values LMY: 62.2 REA: 12.24 %IMF: 3.43 Rib Fat: 0.25 Rump Fat: 0.33

## **Lot 56 WILMO RIGHT ANSWER 7Z** Male FCW 7Z April 03 2012 1668698

SITZ TRAVELER 8180 AMF CAF NHF  
S A V FINAL ANSWER 0035 AMF CAF NHF  
S A V EMULOUS 8145 CAF

Sire: WILMO QUESTION 19W

EAGLEVIEW MAGICIAN 5L  
WILMO PRIDE 15S  
ISLA BANK PRIDE 57M

N BAR EMULATION EXT AMF CAF NHF  
LEACHMAN RIGHT TIME AMF  
LEACHMAN ERICA 0025

Dam: WILMO EDELLA 17H

SOUTHERN OX ENFORCER 19Z  
WILMO EDELLA 32F  
WILMO EDELLA 12D

EPD's	
BW	+3.4
WW	+42
YW	+76
Milk	+18
TM	+39
Scotal	+0.13
CED	+2.0
CEM	+8.0
REA	+0.02
Marb	+0.22
Fat	+0.015
Carcass	+12

BW: 86 Adj WW: 712

SOT: 670 EOT: 965 Proj Wt: 1115 ADG: 3.04 WPDA: 3.03 AOD: 14

Adj. Carcass Values LMY: 64.2 REA: 13.14 %IMF: 3.58 Rib Fat: 0.20 Rump Fat: 0.25



# *Lots 57 - 58 - Glendor Acres*

Glen, Dorothy & Brent Gunningham - 306-638-6277

Lot **57**

**GLENDOR FORTE 30Z**

Male OGG 30Z February 13 2012 1669080

PAPA FORTE 1921  
ROYAL FORTE DRCC 5138R  
ROYAL PERSEPHONE DRC 3110N

Sire: MERIT 8808

DWAJO DUTCH 65P  
MERIT COUNTESS 6087  
MERIT COUNTESS 1017  
HARMON KAHUNA L047  
WINDOVER KAHUNA 13P  
WINDOVER BLACK LADY 10J

Dam: GLENDOR FLORA 30U

HOFF GREAT WESTERN S C 456  
GLENDOR FLORA 27L  
GLENDOR FLORA 48G

EPD's	
BW	+3.1
WW	+39
YW	+72
Milk	+21
TM	+41
Scotal	---
CED	+4.0
CEM	+9.0

BW: 78	SOT: 770	EOT: 1110	Proj Wt: 1260	ADG: 3.51	WPDA: 3.01	AOD: 4
Adj. Carcass Values LMY: 61.1 REA: 11.20 %IMF: 3.89 Rib Fat: 0.26 Rump Fat: 0.24						

30Z is a low birth weight bull with lots of grow. His dam is sired by Kahuna 13P and out of a Great Western cow. This bull should work on heifers.



GRP

**RED 6 MILE FULL THROTTLE 11T**  
Sire of Lot 53



FK

**S A V FINAL ANSWER 0035**  
Sire of Lot 55 and Grandsire of Lot 54 & 56



Suzanne

**OGG 11Z - Lot 58**

Lot **58**

**GLENDOR FORTE 11Z**

Male OGG 11Z February 02 2012 1669060

PAPA FORTE 1921  
ROYAL FORTE DRCC 5138R  
ROYAL PERSEPHONE DRC 3110N

Sire: MERIT 8808

DWAJO DUTCH 65P  
MERIT COUNTESS 6087  
MERIT COUNTESS 1017  
HARMON KAHUNA L047  
WINDOVER KAHUNA 13P  
WINDOVER BLACK LADY 10J

Dam: GLENDOR ALICE 1T

SPRUCE VIEW BARDOLINE 5D  
GLENDOR ALICE 12H  
SENSATION BLISS 80'87

EPD's	
BW	+4.8
WW	+36
YW	+65
Milk	+17
TM	+35
Scotal	---
CED	-2.0
CEM	+5.0

BW: 93	SOT: 830	EOT: 1150	Proj Wt: 1300	ADG: 3.30	WPDA: 3.03	AOD: 5
Adj. Carcass Values LMY: 63.2 REA: 12.13 %IMF: 3.15 Rib Fat: 0.21 Rump Fat: 0.27						

11Z is sired by 8808, out of a Kahuna 13P dam and going back to Glendor Alice 12H, long life in this powerful bull.

*Triple A bulls have been  
performance and carcass evaluated  
and will be semen tested  
prior to the sale.  
Scrotal measurements and current  
weights will be posted at the sale.*

# Lots 59 - 62 - CSI Angus

Roger Reynolds - 306-536-6112

Lot **59**

**CSI BULLET 76Z**

Male CSI 76Z January 28 2012 1677083

G A R GRID MAKER AMF CAF NHF  
S A V BISMARCK 5682 AMF CAF NHF  
S A V ABIGALE 0451

Sire: S A V BULLET 0473

S A V NET WORTH 4200 AMF CAF NHF  
S A V EMBLYNETTE 7566 CAF  
S A V EMBLYNETTE 7261

BALDRIDGE KABOOM K243 KCF CAF  
MOHNEN DYNAMITE 1356 AMF CAF NHF  
MOHNEN JILT 910 CAF

Dam: ANN OF PEAK DOT 726W

S A V 004 CAPACITY 5234 CAF  
ANN OF PEAK DOT 824T  
ANN OF PEAK DOT 861L

EPD's	
BW	+4.1
WW	+57
YW	+104
Milk	+22
TM	+51
Scotal	---
CED	-1.0
CEM	+8.0



CSI 76Z - Lot 59

BW: 88	Adj WW: 729	SOT: 885	EOT: 1100	Proj Wt: 1250	ADG: 2.22	WPDA: 2.86	AOD: 3
Adj. Carcass Values LMY: 64.1 REA: 13.58 %IMF: 4.19 Rib Fat: 0.22 Rump Fat: 0.22							

76Z is a thick, well muscled, moderate framed bull. A first calf out of a Dynamite 1356 heifer. SAV Bullet 0473 is a sire you will see a lot of in the upcoming Peak Dot Ranch sales. Bullet 0473 was the highest weaning weight bull at the SAV 2010 sale. This is your chance to put strong performance genetics to work in your herd!

Lot **60**

**CSI TROY 90Z**

Male CSI 90Z March 26 2012 1674741

ISLA BANK TITAN 148  
HILOW TITAN 13P  
HILOW HEATHER 23E

Sire: BELL TITAN 11W

BELL STOCKADE 1L  
BELL ANNIE K 54N  
BELL ANNIE K 14G

B/R NEW DESIGN 036 AMF CAF NHF  
BON VIEW NEW DESIGN 878 AMF CAF NHF  
BON VIEW GAMMER 85 CAC

Dam: NEW FORCE MISS QUALITY 90S

SANDY BAR BARDOLIER 82C  
VALLEY BLOSSOM MS QUALITY 820L  
SANDY BAR MISS QUALITY 70G

EPD's	
BW	+2.9
WW	+35
YW	+61
Milk	+21
TM	+39
Scotal	---
CED	+1.0
CEM	+5.0

BW: 94	Adj WW: 696	SOT: 765	EOT: 1065	Proj Wt: 1215	ADG: 3.09	WPDA: 3.26	AOD: 6
Adj. Carcass Values LMY: 64.4 REA: 14.96 %IMF: 2.01 Rib Fat: 0.25 Rump Fat: 0.28							

Lots 60, 61 & 62 are half brothers. 90Z is an end of March bull from a very powerful New Force Miss Quality cow. This is a case where the EPD's do not do justice to this cow. A consistent producer that delivers quality in her progeny.

Lot **61**

**CSI TRACER 9Z**

Male CSI 9Z March 11 2012 1702439

ISLA BANK TITAN 148  
HILOW TITAN 13P  
HILOW HEATHER 23E

Sire: BELL TITAN 11W

BELL STOCKADE 1L  
BELL ANNIE K 54N  
BELL ANNIE K 14G

BOYD NEW DAY 8005 AMF CAF NHF  
GDAR GAME DAY 449 AMF CAF NHF  
G D A R MISS WIX 474

Dam: MVF TIP TOP 9X

MVF WIDESPREAD 273P  
MVF TIP TOP 319T  
MVF TIP TOP 130R

EPD's	
BW	+3.2
WW	+42
YW	+76
Milk	+22
TM	+43
Scotal	---
CED	+1.0
CEM	+7.0

BW: 90	Adj WW: 758	SOT: 780	EOT: 1075	Proj Wt: 1225	ADG: 3.04	WPDA: 3.14	AOD: 2
Adj. Carcass Values LMY: 62.7 REA: 14.41 %IMF: 3.20 Rib Fat: 0.30 Rump Fat: 0.40							

First calf from a very efficient Game Day heifer brought from Mountain View Dispersal. If you look for easy keeping, well tempered cattle that will bring pounds to the scale you might want to take more than one of these half brothers home.



CSI 9Z - Lot 61



Lot **62**

**CSI TITAN 8Z**

Male CSI 8Z April 19 2012 1674743

ISLA BANK TITAN 148  
HILOW TITAN 13P  
HILOW HEATHER 23E

Sire: **BELL TITAN IIW**

BELL STOCKADE 1L  
BELL ANNIE K 54N  
BELL ANNIE K 14G

S A F NEUTRON AMF CAF NHF  
S A NEUTRON 377 AMF CAF NHF  
S A QUEEN SUSAN 102


Dam: **NEW FORCE QUEEN SUSAN 248R**

SANDY BAR BARDOLIER 60B  
HAPPYVALE EFFIE 48G  
HAPPYVALE EFFIE 91D

EPD's	
BW	+2.9
WW	+43
YW	+72
Milk	+15
TM	+37
Scotal	---
CED	+0.0
CEM	+5.0


BW: 87	Adj WW: 711					
SOT: 695	EOT: 970	Proj Wt: 1120	ADG: 2.84	WPDA: 3.20	AOD: 7	

A full brother sold last year to Kool Spring Ranch. This is a mid April bull, which may hurt him sale day, but check his WPDA and make sure to give him a good look. He brings muscle and easy fleshing.




# Angus Tags ...



Be a part of the Endorsement!



- Marketing Opportunities
- Free Third Party Age Verification
- Delivery Right to Your Door



Canadian Angus Association  
142, 6715 - 8 Street NE • Calgary, AB T2E 7H7  
1-888-571-3580 • cdnangus@cdnangus.ca  
www.cdnangus.ca

Grant Dakton

Lot 59 - 62 - CSI Angus

**"The Dealer Who Cares For Their Customers"**



See us for all your  
Agriculture, Construction  
and Consumer  
New & Used Sales,  
Parts and Service needs!



26 Great Plains Rd. Emerald Park, SK.  
**(306) 781-2828**  
Toll Free **1-800-819-2583**

Order Parts, and view our complete line of Used  
Inventory on our web site: [www.markusson.com](http://www.markusson.com)



Simply improving your position.™



# *Lots 63 - 70 - Bell Angus*

Ken Bell - 306-345-2052

Lot **63**

**BELL PIONEER 1Z**

Male NBK 1Z January 22 2012 1666757

S A V FINAL ANSWER 0035 AMF CAF NHF  
S A V PIONEER 7301 AMF CAF NHF  
S A V BLACKBIRD 5297 CAC

Sire: WILLOWVIEW PIONEER 6X

KENOSEE PARK 473 29G  
WILLOWVIEW GRAND JUNE 36P  
WILLOWVIEW GRAND JUNE 4H  
ISLA BANK TITAN 148  
HILOW TITAN 13P  
HILOW HEATHER 23E

Dam: BELL N V BLACKCAP 400

DOUBLE D 2164 STOCKMAN 32L  
NORTHERN VIEW BLACKCAP 85N  
NORTHERN VIEW TESSIE 3H

EPD's	
BW	+1.3
WW	+41
YW	+74
Milk	+21
TM	+42
Scotal	---
CED	+2.0
CEM	+4.0

BW: 82	Adj WW: 654					
SOT: 910	EOT: 1300	Proj Wt: 1450	ADG: 4.02	WPDA: 3.32	AOD: 4	
Adj. Carcass Values LMY: 64.4 REA: 12.03 %IMF: 4.57 Rib Fat: 0.16 Rump Fat: 0.23						

A bigger framed, easy moving bull from one of our favorite Titan daughters. He has a great hair coat and lots of performance, Pioneer sons should add maternal strength to your herd.



NBK 1Z - Lot 63

Lot **65**

**BELL PIONEER 4Z**

Male NBK 4Z February 01 2012 1666736

S A V FINAL ANSWER 0035 AMF CAF NHF  
S A V PIONEER 7301 AMF CAF NHF  
S A V BLACKBIRD 5297 CAC

Sire: WILLOWVIEW PIONEER 6X

KENOSEE PARK 473 29G  
WILLOWVIEW GRAND JUNE 36P  
WILLOWVIEW GRAND JUNE 4H  
ISLA BANK TITAN 148  
HILOW TITAN 13P  
HILOW HEATHER 23E

Dam: BELL BLACKCAP 55T

LONE STAR ONLY PROFIT 1J  
BELL BLACKCAP 2L  
BELL BLACKCAP 13F

EPD's	
BW	+2.6
WW	+35
YW	+67
Milk	+22
TM	+42
Scotal	---
CED	+0.0
CEM	+2.0
REA	+0.28
Marb	+0.14
Fat	-0.009
Carcass	+9

BW: 86	Adj WW: 640					
SOT: 815	EOT: 1180	Proj Wt: 1330	ADG: 3.76	WPDA: 3.10	AOD: 5	
Adj. Carcass Values LMY: 64.5 REA: 13.41 %IMF: 4.11 Rib Fat: 0.20 Rump Fat: 0.24						

A stylish Pioneer son from a hard working Titan daughter. Lots of body depth, hip and just an 86 lb birth weight. A maternal brother sold to David Marsh in last year's sale.

Lot **64**

**BELL PIONEER 3Z**

Male NBK 3Z January 29 2012 1666728

S A V FINAL ANSWER 0035 AMF CAF NHF  
S A V PIONEER 7301 AMF CAF NHF  
S A V BLACKBIRD 5297 CAC

Sire: WILLOWVIEW PIONEER 6X

KENOSEE PARK 473 29G  
WILLOWVIEW GRAND JUNE 36P  
WILLOWVIEW GRAND JUNE 4H  
STEVENSON BRUNO 561G CAF NHF  
BELL 561G BRUNO 11L  
BELL BLACKBIRD 2C

Dam: BELL BLACKCAP 31P

LONE STAR ONLY PROFIT 1J  
BELL BLACKCAP 2L  
BELL BLACKCAP 13F

EPD's	
BW	-0.7
WW	+33
YW	+63
Milk	+17
TM	+34
Scotal	---
CED	+7.0
CEM	+6.0

BW: 75	Adj WW: 627					
SOT: 835	EOT: 1140	Proj Wt: 1290	ADG: 3.14	WPDA: 2.97	AOD: 8	
Adj. Carcass Values LMY: 65.6 REA: 14.18 %IMF: 2.76 Rib Fat: 0.18 Rump Fat: 0.16						

A wide topped, deep sided bull boasting a 75 lb birth weight. He should work well on heifers. The sire Willowview Pioneer 6X was the high selling bull from the 2011 Triple A Sale.

Lot **66**

**BELL PIONEER 6Z**

Male NBK 6Z February 02 2012 1666717

S A V FINAL ANSWER 0035 AMF CAF NHF  
S A V PIONEER 7301 AMF CAF NHF  
S A V BLACKBIRD 5297 CAC

Sire: WILLOWVIEW PIONEER 6X

KENOSEE PARK 473 29G  
WILLOWVIEW GRAND JUNE 36P  
WILLOWVIEW GRAND JUNE 4H  
GARDENS FORTUNE 9213 S3 AMF NHF  
STEVENSON FORTUNE 425C AMF CAF NHF  
J R S ENCHANTRESS 235Z

Dam: BELL QUEEN 13M

HILOW ROCKET 41B  
HILOW QUEEN 43G  
PRWL QUEEN 25B

EPD's	
BW	+2.3
WW	+42
YW	+73
Milk	+16
TM	+37
Scotal	---
CED	-1.0
CEM	+2.0
REA	+0.25
Marb	+0.19
Fat	+0.013
Carcass	+9

BW: 86	Adj WW: 657					
SOT: 870	EOT: 1225	Proj Wt: 1375	ADG: 3.66	WPDA: 3.22	AOD: 10	
Adj. Carcass Values LMY: 64.4 REA: 14.01 %IMF: 3.23 Rib Fat: 0.22 Rump Fat: 0.27						

Well balanced and stylish with great length of body describes this bull. His dam is a solid producing 10 year old Fortune 425C daughter.



NBK 4Z - Lot 65



Lot **67** **BELL QUARTERBACK 12Z**  
Male NBK 12Z February 08 2012 1666768

LLB FULLBACK 141M  
SANDY BAR QUARTERBACK 101U  
SANDY BAR FLORA 100L

Sire: CREEKVIEW QUARTERBACK 6X

SOO LINE HOOSIER 5033  
CREEKVIEW BELLE 176T  
CREEKVIEW BELLE 166R  
GDAR QUANTUM 963  
NORTHERN VIEW QUANTUM 86P  
CRESCENT CREEK BLACKBIRD 21J

Dam: BELL BLACKCAP 2TW

HYLINE RIGHT WAY 781 AMF CAF NHF  
BELL BLACKCAP 17T  
BELL BLACKCAP 30N

EPD's	
BW	+2.6
WW	+40
YW	+76
Milk	+18
TM	+38
Scotal	---
CED	+3.0
CEM	+7.0

BW: 83	Adj WW: 663					
SOT: 810	EOT: 1150	Proj Wt: 1300	ADG: 3.51	WPDA: 3.07	AOD: 3	
Adj. Carcass Values LMY: 65.3 REA: 14.12 %IMF: 2.81 Rib Fat: 0.19 Rump Fat: 0.21						

Stoutly made Quarterback son from a highly maternal Quantum 86P daughter. The 86P daughters make excellent cows with great udders and high fertility.



Lot **69** **BELL TITAN 29Z**  
Male NBK 29Z February 23 2012 1666723

CHICO HANNIBAL 43H  
ISLA BANK TITAN 148  
ISLA BANK PRIDE 11G

Sire: HILOW TITAN 13P

PEAK DOT PROFIT 11C  
HILOW HEATHER 23E  
HILOW HEATHER 25W  
BELL STOCKADE 7G  
BELL STOCKADE 1L  
BELL BLACKLASS 17H

Dam: BELL QUEEN 15N

HILOW RIGHT TIME 38F  
BELL RT QUEEN 10J  
HILOW QUEEN 43G

EPD's	
BW	+4.1
WW	+35
YW	+58
Milk	+16
TM	+34
Scotal	+0.49
CED	-3.0
CEM	+5.0
REA	+0.07
Marb	+0.09
Fat	-0.007
Carcass	+6

BW: 90	Adj WW: 654					
SOT: 790	EOT: 1125	Proj Wt: 1275	ADG: 3.45	WPDA: 3.13	AOD: 9	
Adj. Carcass Values LMY: 61.5 REA: 11.75 %IMF: 3.81 Rib Fat: 0.26 Rump Fat: 0.21						

Bigger framed bull with lots of body length and a great hair coat. His dam is a 9 year old Stockade daughter with an excellent udder.

Lot **68** **BELL QUARTERBACK 22Z**  
Male NBK 22Z February 17 2012 1666719

LLB FULLBACK 141M  
SANDY BAR QUARTERBACK 101U  
SANDY BAR FLORA 100L

Sire: CREEKVIEW QUARTERBACK 6X

SOO LINE HOOSIER 5033  
CREEKVIEW BELLE 176T  
CREEKVIEW BELLE 166R  
R R 9440 SCOTCH CAP 1483 AMF CAF NHF  
E&B 1483 SCOTCHMAN 543  
LADY SKYLAR B121

Dam: BELL EUGENIE ERICA 15M

BELL STOCKADE 7G  
BELL EUGENIE ERICA 19J  
BELL EUGENIE ERICA 20F

EPD's	
BW	+5.7
WW	+40
YW	+75
Milk	+15
TM	+35
Scotal	---
CED	-6.0
CEM	+3.0

BW: 96	Adj WW: 658					
SOT: 815	EOT: 1170	Proj Wt: 1320	ADG: 3.66	WPDA: 3.21	AOD: 10	
Adj. Carcass Values LMY: 65.3 REA: 14.15 %IMF: 1.59 Rib Fat: 0.19 Rump Fat: 0.25						

Good performing bull from a very consistent dam. He has a very nicely made front end and a good top and hip.

Lot **70** **BELL NEW FRONTIER 32Z**  
Male NBK 32Z February 25 2012 1666782

SSAP NEW ELIXIR 4R  
DLD 4R NEW ELIXIR 66U  
DLD AKITA 8S

Sire: HILOW NEW ELIXIR 6X

PEAK DOT NEW TREND 74M  
HILOW PRIDE 62U  
HILOW PRIDE 16K  
GDAR QUANTUM 963  
NORTHERN VIEW QUANTUM 86P  
CRESCENT CREEK BLACKBIRD 21J

Dam: BELL EUGENIE ERICA 62W

BELL 561G BRUNO 11L  
BELL EUGENIE ERICA 38R  
BELL EUGENIE ERICA 19J

EPD's	
BW	+1.7
WW	+39
YW	+70
Milk	+19
TM	+39
Scotal	---
CED	+4.0
CEM	+6.0

BW: 80	Adj WW: 706					
SOT: 790	EOT: 1070	Proj Wt: 1220	ADG: 2.89	WPDA: 3.00	AOD: 3	
Adj. Carcass Values LMY: 62.5 REA: 12.97 %IMF: 3.97 Rib Fat: 0.26 Rump Fat: 0.24						

Heifer bull prospect. One of our top weaning bulls from a very feminine Quantum 86P daughter. His sire was a high selling bull through Triple A 2011 that we purchased for use on heifers. He consistently puts muscle and shape into his calves.

# *Lots 71 - 76 - Triple H Angus*

Perry & Dawn Hart and Family 306-723-4832

## *Lot 71 RED HHH FULL TORQUE 74Z*

Male HRA 74Z April 10 2012 1706932

RED HEARTLAND KNIGHT CHARM 11L  
RED TER-RON FULLY LOADED 540R  
RED TER-RON GOLDIE 240L

Sire: RED VIKSE DA FULLY LOADED 88X

RED GOLD-BAR PROGRAM K 1041P  
RED VIKSE DYN 536T  
RED VIKSE TADYN 536R  
RED SOUTH VIEW NO EQUAL 28H  
RED SVR EQUALIZE 134N  
RED SVR REBELLO 55J

Dam: RED YEO ROXIE 41S

RED GLACIER MARIAS 548 OSF MAF  
RED YEO ROXIE 30K  
RED YEO'S ROXIE 16G

EPD's	
BW	+0.2
WW	+55
YW	+78
Milk	+12
TM	+39
Scotal	---
CED	-1.0
CEM	+2.0
REA	+0.04
Marb	+0.24
Fat	-0.022
Carcass	+16

BW: 85	Adj WW: 704	Carca			
SOT: 720	EOT: 1000	Proj Wt: 1150	ADG: 2.89	WPDA: 3.21	AOD: 6

This April 10th bull is one of the youngest in the sale. He is sired by Fully Loaded 88X a son of the legendary Fully Loaded 540R. His dam traces back to South View No Equal 28H and Red Glacier Marais 548. This bull will sire easy keeping calves with the Fully Loaded square butt ends.



*RED VIKSE DA FULLY LOADED 88X - Sire of Lot 71*

## *Lot 72 RED TRIPLE H SMOKIN ACE 20Z*

Male HRA 20Z March 26 2012 1714884

RED TOWAW INDEED 104H  
RED SIXMILE SMOKIN JO 810S  
RED SIX MILE WITZEL 360J

Sire: RED VIKSE SMOKING JO 136X

RED EGGEN LODI 1N  
RED EGGEN LODI 1N MISS 25R  
RED RED EGGEN GRAVITY 28J MISS 3L  
RED MOOSE CREEK ADMIRAL 9M  
RED BBK RUSHMORE 585R  
RED BAR-E-L MEG 85N

Dam: RED DEER RANGE CHEROKEE 456T

RED BADLANDS BONUS 702  
RED DEER RANGE CHEROKEE 458K  
RED SOUTHHOLM CHEROKEE 42H

EPD's	
BW	+1.8
WW	+54
YW	+80
Milk	+18
TM	---
Scotal	---
CED	---
CEM	---
REA	+0.02
Marb	+0.22
Fat	-0.015
Carcass	+13

BW: 93		Adj WW: 668		Carcass		+13							
SOT: 775		EOT: 1090		Proj Wt: 1240		ADG: 3.25		WPDA: 3.33		AOD: 5			
Adj. Carcass Values				LMY: 61.9		REA: 11.27		%IMF: 3.69		Rib Fat: 0.23		Rump Fat: 0.26	

This end of March Bull is sired by Smokin Jo 136X, a son of Six Mile Smokin Jo 810S, (an Indeed 104H son). His dam traces back to Moose Creek Admiral 9M and Red Badlands Bonus 702. Two elite dams (Six Mile Witzel 360J, mother of the 2009 Champion World Angus Bull and DRF Cherokee 458K) show up in this bull pedigree. You'll want to keep the heifers from this bull.





**Lot 73 RED HHH GOLDEN HERCULES' 70Z**  
Male HRA 70Z April 08 2012 1707353

RED CC EXPANSION 5E  
RED TOWAW INDEED 104H OSF  
RED TOWAW MOLLY 67C

Sire: RED EKW GOLDEN DEED 10U

RED 5L NORSEMAN KING 2291 OSF MAF  
RED EKW GOLDIE 601S  
RED PRIME TIME'S YY GOLDIE 306  
RED EAGLE ACRES BO 3J  
RED BRETON BO 112L  
RED BRETON BARMAID 11H

Dam: RED YEO LANA 14P

RED TOWAW ZAMA 39C  
RED YEO'S LANA 32G  
RED YEO LANA 31A

BW: 100 Adj WW: 707

SOT: 730 EOT: 965 Proj Wt: 1115 ADG: 2.42 WPDA: 3.07 AOD: 8

This end of March Bull is sired by EKW Golden Indeed 10U, a son of Indeed 104H. We were fortunate enough to lease this bull from Elmer Wiebe for three years. This bull will add some frame size to his offspring.

EPD's	
BW	+2.5
WW	+50
YW	+70
Milk	+17
TM	+42
Scotal	---
CED	-3.0
CEM	+1.5
REA	-0.05
Marb	+0.30
Fat	-0.025
Carcass	+15

**Lot 75 HHH NET ONYXX 21Z**  
Male RC HRA 21Z March 26 2012 1688357

S A V 8180 TRAVELER 004 DMF DWF AMF CAF NHF  
S A V NET WORTH 4200 AMF CAF NHF  
S A V MAY 2410

Sire: SVR NET WORTH 143X

RED GET-A-LONG ARAB 159  
RED PASQUIA FANCY LADY 6F  
RED PASQUIA FANCY LADY 6D  
RED SOUTH VIEW NO EQUAL 28H  
RED SVR EQUALIZE 134N  
RED SVR REBELLO 55J

Dam: RED YEO PINE MARIE 7S

RED SSS HIGH MARK 272D  
RED YEO PINE MARIE 10L  
RED YEO PINE MARIE 9C

BW: 87 Adj WW: 658

SOT: 705 EOT: 970 Proj Wt: 1120 ADG: 2.73 WPDA: 2.97 AOD: 6

Adj. Carcass Values LMY: 63.7 REA: 12.81 %IMF: 3.64 Rib Fat: 0.21 Rump Fat: 0.24

This Black/Red Carrier bull has an interesting pedigree. His sire South View Net Worth 143X was sired by SAV Net Worth 4200 and his dam Red Pasqua Lady 6F is the mother of South View No Equal 28H. HRA 21Z's dam Pine Marie 7S raised a bull in 2011 that sold in this sale to Darren Schindle. Above breed average EPD's.

EPD's	
BW	-0.8
WW	+54
YW	+85
Milk	+17
TM	+44
Scotal	---
CED	+3.0
CEM	+5.0
REA	+0.20
Marb	+0.27
Fat	-0.010
Carcass	+19

**Lot 74 RED HHH COLT 48Z**  
Male HRA 48Z April 02 2012 1706925

RED HEARTLAND KNIGHT CHARM 11L  
RED TER-RON FULLY LOADED 540R  
RED TER-RON GOLDIE 240L

Sire: RED VIKSE DA FULLY LOADED 88X

RED GOLD-BAR PROGRAM K 1041P  
RED VIKSE DYN 536T  
RED VIKSE TA DYN 536R  
RED SOUTH VIEW NO EQUAL 28H  
RED SVR EQUALIZE 134N  
RED SVR REBELLO 55J

Dam: RED HHH HANNA 32T

RED DKF FIRST CLASS 65N  
RED YEO'S LANA 12R  
RED YEO'S LANA 32G

BW: 84 Adj WW: 637

SOT: 670 EOT: 950 Proj Wt: 1100 ADG: 2.89 WPDA: 2.97 AOD: 5

Adj. Carcass Values LMY: 62.3 REA: 13.01 %IMF: 3.50 Rib Fat: 0.27 Rump Fat: 0.25

Another Fully Loaded 88X son. This April 2nd, dark red bull has been one of favorites all summer. I like his colour and body shape. His dam traces back to South View No Equal 28H and DKF First Class 65N (High Mark 272D).

EPD's	
BW	-0.1
WW	+44
YW	+60
Milk	+14
TM	+36
Scotal	---
CED	+0.0
CEM	+2.0
REA	+0.02
Marb	+0.17
Fat	-0.020
Carcass	+5

**Lot 76 RED HHH FULL CHARGE 55Z**  
Male HRA 55Z April 05 2012 1706930

RED HEARTLAND KNIGHT CHARM 11L  
RED TER-RON FULLY LOADED 540R  
RED TER-RON GOLDIE 240L

Sire: RED VIKSE DA FULLY LOADED 88X

RED GOLD-BAR PROGRAM K 1041P  
RED VIKSE DYN 536T  
RED VIKSE TA DYN 536R  
RED SOUTH VIEW NO EQUAL 28H  
RED SVR EQUALIZE 134N  
RED SVR REBELLO 55J

Dam: RED YEO LANA 16S

RED GLACIER LOGAN OSF MAF  
RED YEO LANA 7H  
RED SIX MILE LANA 903T

BW: 71 Adj WW: 646

SOT: 660 EOT: 935 Proj Wt: 1085 ADG: 2.84 WPDA: 2.95 AOD: 6

Adj. Carcass Values LMY: 61.4 REA: 11.85 %IMF: 4.42 Rib Fat: 0.27 Rump Fat: 0.36

Another Full Loaded 88X son. This April 5th bull has a 71 lb birth weight. His dam traces back to South View No Equal 28H, Red Glacier Logan and the Six Mile Lana cow family. Lots of maternal strength here. Could be used on heifers.

EPD's	
BW	-3.1
WW	+39
YW	+51
Milk	+17
TM	+36
Scotal	---
CED	+3.0
CEM	+4.0
REA	+0.02
Marb	+0.25
Fat	-0.020
Carcass	+5

**AAA**

# *Lots 77 - 82 - Arm River Red Angus*

Doug & Dan McIvor - 306-567-4702

## *Lot 77 RED ARM RIVER SMASH 174Z*

Male ARRA 174Z February 20 2012 1711668

RED SSS BOOMER 803B  
RED LAZY MC SMASH 41N OSF  
RED LAURON YB ROSA 11G  
Sire: RED WILBAR SMASH 300X  
RED TOWAW BOOM 73D  
RED HEAD LANA 278J  
RED CUMNOCK LANA 526C  
RED BUF CRK ROMEO L081 OSC MAF  
RED XLB ROMAN 14T OSF  
RED XLB MISS BETTER GOLD 87P  
Dam: RED ARM RIVER PYA XL 50W  
RED M DOUBLE B CHIEF 3K  
RED ARM RIVER PYA 965S  
RED DKF MISS PRIME RIB 10L

EPD's	
BW	-4.1
WW	+35
YW	+51
Milk	+21
TM	+39
Scotal	---
CED	+9.5
CEM	+6.0
REA	-0.04
Marb	+0.21
Fat	-0.015
Carcass	-6

BW: 70 Adj WW: 552

SOT: 685 EOT: 925 Proj Wt: 1075 ADG: 2.47 WPDA: 2.56 AOD: 3

Adj. Carcass Values LMY: 62.8 REA: 11.70 %IMF: 3.18 Rib Fat: 0.21 Rump Fat: 0.25

If you were at the World Angus Forum you should remember the Smash bull. This calving ease bull came out of our "Pick Your Angus" heifer's daughter. I should have named him "Pick Your Smash!"

## *Lot 79 RED ARM RIVER SANDHILL CN 191Z*

Male ARRA 191Z March 19 2012 1706260

RED ARM RIVER SANDSTRYKE 727L  
RED ARM RIVER SANDJET 859P  
RED ARM RIVER STORMY 715K  
Sire: RED ARM RIVER SANDJET SON 4T  
RED NORLITE CHIEF 8Z  
RED ARM RIVER RUBY 468F  
RED ARM RIVER RUBY 42X  
RED BHC SANDSTONE AMF OSF  
RED L-DEE SANDSTONE 512J  
RED L-DEE FINESSE 512G  
Dam: RED ARM RIVER DAISY 733L  
RED BUCK VALLEY BOOTES 75D  
RED ARM RIVER DAISY 651J  
RED ARM RIVER SONOCLIPSE DAISY

EPD's	
BW	+0.0
WW	+33
YW	+40
Milk	+6
TM	+22
Scotal	---
CED	+4.0
CEM	+9.0
REA	+0.11
Marb	+0.18
Fat	-0.020
Carcass	-6

BW: 90 Adj WW: 580

SOT: 660 EOT: 880 Proj Wt: 1030 ADG: 2.27 WPDA: 2.63 AOD: 11

Adj. Carcass Values LMY: 63.7 REA: 13.46 %IMF: 2.56 Rib Fat: 0.23 Rump Fat: 0.28

Our 4T bull by Sandstone out of a RCN Sandhill Chief 482 granddaughter isn't as long as some but look at that butt. He's got a hind quarter like not to many Red bulls.

## *Lot 78 RED ARM RIVER PATRIOT 196Z*

Male ARRA 196Z March 26 2012 1706262

RED FLYING K PATRIOT 16B  
RED T-S PATRIOT 84K  
RED CFRA BEEFSTEAK 5F  
Sire: RED COCKBURN PATRIOT 12R  
RED HOWE MR MAT DDH 19F  
RED HOWE MS LICORICE DDH 41H  
RED MS LICORICE DDH 13Z  
RED BJR C-CHIEF 811 OSF MAF  
RED M DOUBLE B CHIEF 3K  
RED FLAT LAKE 6Z  
Dam: RED ARM RIVER MARIO 969S  
RED L-DEE SANDSTONE 512J  
RED ARM RIVER SANDIBOOT 732L  
RED ARM RIVER JUNE 612J

EPD's	
BW	-0.9
WW	+41
YW	+56
Milk	+14
TM	+34
Scotal	---
CED	+7.0
CEM	+4.0
REA	+0.10
Marb	+0.02
Fat	-0.010
Carcass	+2

BW: 79 Adj WW: 555

SOT: 630 EOT: 880 Proj Wt: 1030 ADG: 2.58 WPDA: 2.69 AOD: 6

Adj. Carcass Values LMY: 63.0 REA: 14.16 %IMF: 4.48 Rib Fat: 0.28 Rump Fat: 0.25

This Patriot son is out of a Sandstone cow - dark red, long and lively - that should describe his calves.

## *Lot 80 RED ARM RIVER CHOCTAW 8Z*

Male DANM 8Z March 05 2012 1706264

CHOCTAW CHIEF  
CHOCTAW CHF 373 OSF  
KC ELIZ O A 130  
Sire: RED MAC CHOCTAW 110T  
RED MEM ICEBERG 4W  
RED MEM ICECAP ANNIE 22Z  
RED MEM CHINNA 26S  
RED CUMNOCK STAR 139Z  
RED BUCK VALLEY BOOTES 75D  
RED TAL STAR 80T  
Dam: RED ARM RIVER QT 91P  
RED L-DEE SANDSTONE 512J  
RED ARM RIVER QT 53L  
RED ARM RIVER QT 105J

EPD's	
BW	-1.3
WW	+34
YW	+38
Milk	+8
TM	+25
Scotal	---
CED	+5.0
CEM	+9.0
REA	+0.04
Marb	+0.17
Fat	-0.020
Carcass	-10

BW: 82 Adj WW: 562

SOT: 670 EOT: 945 Proj Wt: 1095 ADG: 2.84 WPDA: 2.72 AOD: 8

Adj. Carcass Values LMY: 59.9 REA: 10.99 %IMF: 3.01 Rib Fat: 0.30 Rump Fat: 0.29

For all you football fans who remember George Chiga - here's a bull sired by one of the greats out of his Oklahoma State Program. A son of Choctaw 373 sired this calf. He leaves really beautiful daughters. I hope this 82 lb calving ease bull can do the same.



Lot **81** **RED ARM RIVER PATRIOT 176Z**  
Male ARRA 176Z March 03 2012 1706261

RED FLYING K PATRIOT 16B  
RED T-S PATRIOT 84K  
RED CFRA BEEFSTEAK 5F

Sire: **RED COCKBURN PATRIOT 12R**

RED HOWE MR MAT DDH 19F  
RED HOWE MS LICORICE DDH 41H  
RED MS LICORICE DDH 13Z

WILMO TRAVELER 7G  
WILMO R TRAVELER 24P  
RED WILLOWVIEW ERICA 3J

Dam: **RED ARM RIVER SHUHISTA 938S**

RED ARM RIVER SANDSTRYKE 727L  
RED ARM RIVER SHUHISTA 879P  
RED ARM RIVER SHUHISTA 767L

EPD's	
BW	+0.7
WW	+43
YW	+64
Milk	+14
TM	+36
Scotal	---
CED	+3.0
CEM	+3.0
REA	+0.08
Marb	+0.06
Fat	-0.010
Carcass	+9

BW: 100 Adj WW: 662

SOT: 820 EOT: 1120 Proj Wt: 1270 ADG: 3.09 WPDA: 3.20 AOD: 6

Adj. Carcass Values LMY: 63.4 REA: 11.79 %IMF: 3.79 Rib Fat: 0.19 Rump Fat: 0.22

Starting life at 100 lbs, this bull is one of the few we can't recommend for heifers. 938S is the kind of cow you wish you had a lot more of. Her udder is perfect, her feet are good and she's very good natured. Her last three calves were heifers - all are "keepers".



Lots 17 - 82 - Arma River Red Angus

Lot **82** **RED ARM RIVER PATRIOT 178Z**  
Male ARRA 178Z March 05 2012 1706263

RED FLYING K PATRIOT 16B  
RED T-S PATRIOT 84K  
RED CFRA BEEFSTEAK 5F

Sire: **RED COCKBURN PATRIOT 12R**

RED HOWE MR MAT DDH 19F  
RED HOWE MS LICORICE DDH 41H  
RED MS LICORICE DDH 13Z  
RED L-DEE SANDSTONE 512J  
RED ARM RIVER SANDSTRYKE 727L  
RED ARM RIVER COPPER LADY 350E

Dam: **RED ARM RIVER ROSE 974S**

RED M DOUBLE B CHIEF 3K  
RED ARM RIVER CC ROSE 789M  
RED ARM RIVER EC ROSE 703K

EPD's	
BW	+1.7
WW	+49
YW	+70
Milk	+12
TM	+37
Scotal	---
CED	+2.0
CEM	+3.0
REA	+0.15
Marb	+0.04
Fat	-0.020
Carcass	+14

BW: 88 Adj WW: 595

SOT: 740 EOT: 995 Proj Wt: 1145 ADG: 2.63 WPDA: 2.86 AOD: 6

Adj. Carcass Values LMY: 62.3 REA: 11.40 %IMF: 3.12 Rib Fat: 0.22 Rump Fat: 0.32

His dam is probably one of our biggest cows - she's wide across her top with lots of volume. His calves will not disappoint. Don't pass this Licorice powered Beefsteak son.



**South Country Equipment has 8 locations to help producers receive the products, parts and service they need to get the job done efficiently!**

**Assiniboia**  
Hwy #2 North  
306-642-3366

**Moose Jaw**  
1731 Main St. N  
306-692-2371

**Raymore**  
Hwy #6 North  
306-746-2110

**Southey**  
Hwy #22 & Hwy #6  
306-726-2155

**Montmarte**  
Hwy #48  
306-424-2212

**Mossbank**  
609 Main St. N  
306-354-2411

**Regina**  
#8 South Plains Rd W.  
Emerald Park  
306-721-5050

**Weyburn**  
1510 New City Gardens  
Hwy #39 East  
306-842-4686

**www.southcountry.ca**



**JOHN DEERE**



# Lots 83 - 96 - Nu-Horizon Angus

Kieran & Deb Doetzel - 306-336-2245 - 403-357-7648 cell

Hello Everyone! We are pleased to be offering a strong set of Red and Black Angus bulls in the sale this year. Since being in Saskatchewan we have dedicated the last four years to purchasing quality females and bulls to build our Black purebred herd and continue improving our Red purebred herd. We select our AI and herd sires very carefully. We encourage you to look up the data on the AI bulls we have chosen and our herd sires. We focus on strong maternal traits with a balance of performance. Our cattle are not pampered so our goal is to raise functional, performance cattle that do the work. If you would like to see the bulls before they are at Johnstone's Auction Mart we would be willing to meet with you at Larry Hagerty's or come by the farm for a visit and see our herd. Hope to see you sale day!

The Doetzel's

## Lot 83 NU-HORIZON RIBEYE 203Z

Male DTK 203Z January 26 2012 1703475

LEACHMAN FULLBACK  
RITO 9FB3 OF 5H11 FULLBACK AMF CAF NHF  
RITA 5H11 OF 1B14 RITO 9J9

Sire: FGAF RIBEYE 401P

S A F FAME AMF CAF NHF  
HOFF MISS FAME S C 595  
HOFF ULTRESS S C 6029

CONNALLY ONWARD AMF CAF NHF  
SITZ UPWARD 307R DMF AMF CAF NHF  
SITZ HENRIETTA PRIDE 81M

Dam: TVA LADY DI 40X

MVBL LANCER 9F  
MVF LADY DI 60K  
DOUBLE AA LADY DI 744'94

EPD's	
BW	+0.4
WW	+48
YW	+85
Milk	+26
TM	+50
Scotal	---
CED	+8.0
CEM	+9.0

BW: 71	Adj WW: 691					
SOT: 870	EOT: 1215	Proj Wt: 1365	ADG: 3.56	WPDA: 3.14	AOD: 2	
Adj. Carcass Values		LMY: 64.9	REA: 13.91	%IMF: 2.66	Rib Fat: 0.20	Rump Fat: 0.21

Adj. Carcass Values LMY: 64.9 REA: 13.91 %IMF: 2.66 Rib Fat: 0.20 Rump Fat: 0.21

Heifer or Cow Bull! This bull's dam was purchased from the Keystone Sale in Brandon two years ago from Kent Topham. She was the second highest seller in the sale. She is a milk producing heifer with a perfect udder and a great disposition. This calf is deep bodied, has a great hair coat and an excellent hip. A high performing bull on test to date. He will make a perfect heifer bull with a 71 lb birth weight.



## Lot 84 NU-HORIZON BLK CEDAR 208Z

Male TK 208Z February 01 2012 1665411

C H QUANTUM 3330  
C H QUANTUM 6247  
C H BLACKBIRD 0136

Sire: COLE CREEK BLACK CEDAR 46P

AA R WINDY RIDGE 523  
COLE CREEK CLOVA JUANADA 67  
COLE CREEK CLOVA JUANADA 811  
MINBURN MAIN EVENT 82K

MERIT MATADOR 4190  
MERIT SOCIALITE 122K

Dam: MERIT BEAUTY 192X

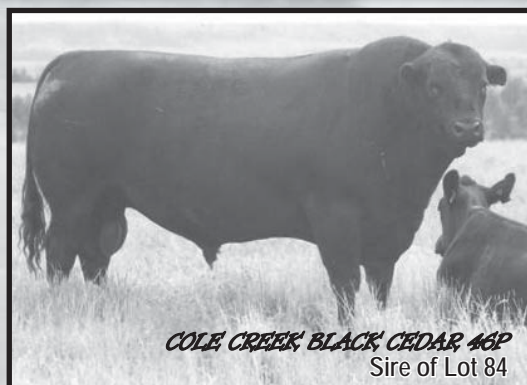
LOOKOUT VIKING 392N  
MERIT BEAUTY 6272  
PR BEAUTY 12B

EPD's	
BW	+2.7
WW	+44
YW	+82
Milk	+22
TM	+44
Scotal	---
CED	+4.0
CEM	+7.0

BW: 80	Adj WW: 635					
SOT: 730	EOT: 1030	Proj Wt: 1180	ADG: 3.09	WPDA: 2.70	AOD: 2	
Adj. Carcass Values		LMY: 63.5	REA: 12.55	%IMF: 3.92	Rib Fat: 0.21	Rump Fat: 0.30

Adj. Carcass Values LMY: 63.5 REA: 12.55 %IMF: 3.92 Rib Fat: 0.21 Rump Fat: 0.30

Heifer or Cow Bull! The dam of this bull was purchased from Merit Cattle Co. We are so pleased with all of the heifers we bought from them. They are easy doing cattle and have been a great addition to our program. This calf is very well put together with lots of length, a small head, and good feet and leg structure. He has an excellent rear quarter.



COLE CREEK BLACK CEDAR 46P  
Sire of Lot 84



Lot **85** **NU-HORIZON THE ANSWER 209Z**  
Male TK 209Z February 01 2012 1665412

G D A R TRAVELER 71 AMF CAF NHF  
SITZ TRAVELER 8180 AMF CAF NHF  
SITZ EVERELDA ENTENSE 1137

Sire: S A V FINAL ANSWER 0035 AMF CAF NHF

BON VIEW BANDO 598 AMF CAC  
S A V EMULOUS 8145 CAF  
S A V SKY EMULOUS 2124

FREYBURN YELLOWSTONE 2R  
FREYBURN YELLOWSTONE 33T  
FREYBURN GEORGINA 40R

Dam: FREYBURN FLORA 22X

FREYBURN EQUALIZER 12K  
FREYBURN FLORA 161N  
FREYBURN FLORA 1K

EPD's	
BW	+2.9
WW	+54
YW	+95
Milk	+22
TM	+49
Scotal	---
CED	+4.0
CEM	+7.0



*S A V FINAL ANSWER 0035*  
Sire of Lot 85

BW: 84	Adj WW: 673					
SOT: 830	EOT: 1170	Proj Wt: 1320	ADG: 3.51	WPDA: 3.07	AOD: 2	
Adj. Carcass Values LMY: 64.2 REA: 12.41 %IMF: 3.26 Rib Fat: 0.18 Rump Fat: 0.15						

Heifer Bull! This bull has lots of hair, large testicles and capacity. His dam is a Freybourn heifer out of the Gateway Sale that is a slightly larger framed cow. She is an excellent milk producer with a very good disposition. Crossed with Final Answer you are sure to get some very nice females for replacements from his offspring.

Lot **86** **NU-HORIZON HOOVER DAM 225Z**  
Male TK 225Z February 11 2012 1665423

S A F CONNECTION AMF CAF NHF  
SYDGEN C C & 7 AMF CAF NHF  
SYDGEN FOREVER LADY 4087 AMF

Sire: HOOVER DAM AMF CAF NHF

TC GRIDIRON 258 AMF CAF NHF  
ERICA OF ELLSTON C124  
ERICA OF ELLSTON V65

PRAIRIELANE IDEAL 7451-2014  
SANDY BAR IDEAL 28S  
KORNFELD QUENETTE 807H

Dam: MERIT HEROINE 205X

MINBURN MAIN EVENT 82K  
MERIT HEROINE 5043  
MERIT HEROINE 9037

EPD's	
BW	+2.7
WW	+49
YW	+93
Milk	+27
TM	+52
Scotal	---
CED	+4.0
CEM	+6.0

BW: 81	Adj WW: 621					
SOT: 705	EOT: 1060	Proj Wt: 1210	ADG: 3.66	WPDA: 2.86	AOD: 2	
Adj. Carcass Values LMY: 63.4 REA: 11.17 %IMF: 4.11 Rib Fat: 0.17 Rump Fat: 0.27						

Heifer or Cow Bull! We really like the conformation of these Hoover Dam calves. Here is an opportunity to buy a Hoover Dam sired calf as there are few in Canada. His dam is from a heifer we purchased from Merit Cattle Co. She has great maternal EPD's. This bull is smooth shouldered with an excellent hair coat and hip. If you want a nice straight, wide, level top line you have it here.



ORigen  
*HOOVER DAM*  
Sire of Lot 86 & 87

Lot **87** **NU-HORIZON HOOVER DAM 236Z**  
Male TK 236Z February 24 2012 1665428

S A F CONNECTION AMF CAF NHF  
SYDGEN C C & 7 AMF CAF NHF  
SYDGEN FOREVER LADY 4087 AMF

Sire: HOOVER DAM AMF CAF NHF

TC GRIDIRON 258 AMF CAF NHF  
ERICA OF ELLSTON C124  
ERICA OF ELLSTON V65

A A R REALLY WINDY 1205 AMF CAF NHF  
EASTONDALE WINDY 43'05  
EASTONDALE HEROINE 38'03

Dam: MERIT JILT 196X

CROWFOOT EQUATION 5793R  
MERIT JILT 7254  
MERIT JILT 3210

EPD's	
BW	+3.1
WW	+43
YW	+87
Milk	+32
TM	+54
Scotal	---
CED	+4.0
CEM	+5.0

BW: 83	Adj WW: 609					
SOT: 670	EOT: 1040	Proj Wt: 1190	ADG: 3.81	WPDA: 2.91	AOD: 2	
Adj. Carcass Values LMY: 59.8 REA: 10.86 %IMF: 6.10 Rib Fat: 0.30 Rump Fat: 0.35						

Heifer or Cow Bull! Another Hoover Dam bull out of a Merit Cattle Co. heifer. Like his half-brother above, he is also smooth shouldered with no shortage of hair. This bull is very deep sided with tons of capacity. He also has an angular head for ease of calving. Both these Hoover Dam bulls are performing well on test.



TK 236Z - Lot #87

Lots 88, 89, and 90 are all sired by our herd bull that we bought two years ago from the Mountain View dispersal. He has it all! Great disposition, excellent conformation and is easy fleshing.

We have two commercial cattlemen knocking at the door, wondering when we will be finished with him, he is that good. A very high producer with excellent numbers.

## Lot 88 NU-HORIZON PIONEER 249Z

Male TK 249Z March 11 2012 1702173

S A V FINAL ANSWER 0035 AMF CAF NHF  
S A V PIONEER 7301 AMF CAF NHF  
S A V BLACKBIRD 5297 CAC

Sire: MVF PIONEER 104X

BXB VENTURE SON 9P  
MVF ANNIE K 317U  
MVF ANNIE K 232S

B/R NEW DESIGN 036 AMF CAF NHF  
B/R NEW FRONTIER 095 AMF CAF NHF  
WHITE FENCE PRIDE H1

Dam: NEW FORCE ROSEBUD PRIDE 56T

WHITESTONE WIDESPREAD MB AMF NHF  
NU WAVE ROSEBUD RACHEL 2M  
NU WAVE ROSEBUD 3J

BW: 84 Adj WW: 657

SOT: 815 EOT: 1065 Proj Wt: 1215 ADG: 2.58 WPDA: 3.11 AOD: 5

Adj. Carcass Values LMY: 62.9 REA: 12.81 %IMF: 5.37 Rib Fat: 0.24 Rump Fat: 0.24

Heifer or Cow Bull! We bought this bull's dam from the New Force Angus Dispersal. 56T is one of our favorites at our place. Every year she produces a whale of a calf. Her heifer calves are held back as replacements and the bull calves always make it to the bull pen for sale in the spring. He has very good testicular development for a young bull. He has plenty of volume and length, a good hair coat and an excellent hip. Check him out!

## Lot 90 NU-HORIZON PIONEER 282Z

Male TK 282Z March 31 2012 1706106

S A V FINAL ANSWER 0035 AMF CAF NHF  
S A V PIONEER 7301 AMF CAF NHF  
S A V BLACKBIRD 5297 CAC

Sire: MVF PIONEER 104X

BXB VENTURE SON 9P  
MVF ANNIE K 317U  
MVF ANNIE K 232S

CONNEALY FOREFRONT AMF CAF NHF  
FOREFRONT POWER K D 227  
9FB3 POWER QUEEN K D 722

Dam: NEW FORCE POWER QUEEN SIR

MBB CRUZ 7B  
NEW FORCE BLACKBIRD 60E  
E & W BLACKBIRD N17

BW: 89 Adj WW: 669

SOT: 755 EOT: 1000 Proj Wt: 1150 ADG: 2.53 WPDA: 3.11 AOD: 7

Adj. Carcass Values LMY: 63.1 REA: 12.41 %IMF: 2.27 Rib Fat: 0.22 Rump Fat: 0.25

Cow and Heifer bull! He is moderate framed with a good top line, lots of length, and a great hair coat. His dam 51R was purchased from the New Force Dispersal sale and she is also one of our consistent cows who raises an excellent calf every year. She has a very moderate frame. He is the youngest of all our bulls but a good one.

## Lot 89 NU-HORIZON PIONEER 255Z

Male TK 255Z March 17 2012 1702177

S A V FINAL ANSWER 0035 AMF CAF NHF  
S A V PIONEER 7301 AMF CAF NHF  
S A V BLACKBIRD 5297 CAC

Sire: MVF PIONEER 104X

BXB VENTURE SON 9P  
MVF ANNIE K 317U  
MVF ANNIE K 232S

B/R NEW DESIGN 036 AMF CAF NHF  
BON VIEW NEW DESIGN 878 AMF CAF NHF  
BON VIEW GAMMER 85 CAC

Dam: T-BAR MOLLIE 878 DESIGN 19T

JLC KAYO 36D  
4C'S MOLLIE 139K  
4C'S BLACK MOLLIE 16C

BW: 91 Adj WW: 700

SOT: 815 EOT: 1100 Proj Wt: 1250 ADG: 2.94 WPDA: 3.27 AOD: 5

Adj. Carcass Values LMY: 63.4 REA: 14.02 %IMF: 2.53 Rib Fat: 0.26 Rump Fat: 0.34

Cow Bull! This Pioneer bull, just like his sire, has a ton of performance. Doing very well on test for one of the younger bulls we are offering. He has a great hair coat and a very good length of spine. He is very free moving so will cover the pasture with no problem. His dam 19T produces functional cattle and her offspring have made it every year in the replacement or bull pen.

## Lot 91 RED NU-HORIZON ILLICIT 220Z

Male TK 220Z February 07 2012 1665418

RED BLAZE V415 OSF  
RED U-2 ICON 223M  
RED U-2 ANEXA 5F

Sire: RED U-2 ILLICIT 423P OSF MAF

RED THAT'LL DO DIADEM 7D  
RED U-2 DUCHESS 2G  
RED U-2 DUCHESS 08E

RED BASIN SENSATION 702E OSF  
RED MEM SENSATION 220R  
RED MAC MISS GOLDIE 12L

Dam: RED NU-HORIZON SEXYSOX 103X

RED LPC FEELIN LUCKY 29J  
RED T BAR K SOXRODAY 517R  
RED M DOUBLE B RS SOXRO 227H

BW: 74 Adj WW: 666

SOT: 745 EOT: 1040 Proj Wt: 1190 ADG: 3.04 WPDA: 2.77 AOD: 2

Adj. Carcass Values LMY: 62.9 REA: 11.52 %IMF: 4.04 Rib Fat: 0.20 Rump Fat: 0.23

Heifer bull! A dark, cherry red bull out of one of our own heifers. His dam is the youngest heifer we retained but a good producer. Tons of milk here with excellent udder attachment. He has a small head, good hip and testicle size. No shortage of hair and a nice straight top line. This bull's sire is an AI bull we have used for the last three years and never assisted a calf from him. CALVING EASE here.



EPD's	
BW	+4.9
WW	+48
YW	+84
Milk	+29
TM	+53
Scotal	---
CED	-1.0
CEM	+2.0

EPD's	
BW	-2.2
WW	+50
YW	+80
Milk	+18
TM	+43
Scotal	---
CED	+10.0
CEM	+7.0
REA	-0.14
Marb	+0.18
Fat	+0.010
Carcass	+14



## Lot 92 RED NO HORIZON ARSON 221Z

Male TK 221Z February 07 2012 1665419

RED 5L NORSEMAN KING 2291 OSF MAF  
RED SSS ARSENAL 271S OSF MAF  
RED SSS DYLAN'S VALENTINE 103C

Sire: RED SSS ARSON 850 OSF MAF

SSS TRAVELER 362J  
RED SSS SCAARA 951L  
RED SSS SCAARA 16H

RED FABULOUS HIGH TREND 130N  
RED RILEY'S SAMBO 93S  
RED RILEY'S TINA 48P

Dam: RED RILEY'S VELVET 540

RED KINARED BOARDWALK 881K  
RED RILEY'S VELVET 85M  
RED RILEY'S VELVET 10K

BW: 84 Adj WW: 635

SOT: 760 EOT: 1095 Proj Wt: 1245 ADG: 3.45 WPDA: 2.92 AOD: 4

Adj. Carcass Values LMY: 66.4 REA: 13.31 %IMF: 2.38 Rib Fat: 0.12 Rump Fat: 0.14

Cow and Heifer bull! An Arson son. He was also a favorite in the pasture this summer. We went to a sale which had primarily Arson calves last fall. They were so consistent with their conformation, we bought three females bred to him. Take a look at them. A very deep sided bull with a lot of capacity. Has a great top line and a beautiful, dark red coat.

## Lot 93 RED NO HORIZON SERENADE 222Z

Male TK 222Z February 07 2012 1665420

RED BECKTON JULIAN GG B571 OSF  
RED BUF CRK ROMEO L081 OSC MAF  
RED BUF CRK PRIMROSE 5679 OSC

Sire: RED CHAMPLAIN SERENADE 253P OSF MAF

RED GLACIER MARIAS 548 OSF MAF  
RED CHAMPLAIN MARIAS ECHETA 08  
RED BUF CRK ECHETA 3071

RED BASIN SENSATION 702E OSF  
RED MEM SENSATION 220R  
RED MAC MISS GOLDIE 12L

Dam: RED NU-HORIZON PATSEY 101X

RED LPC FEELIN LUCKY 29J  
RED T BAR K PATSY 205M  
RED T BAR K PATSY 6K

BW: 77 Adj WW: 603

SOT: 710 EOT: 1005 Proj Wt: 1155 ADG: 3.04 WPDA: 2.68 AOD: 2

Adj. Carcass Values LMY: 65.5 REA: 14.33 %IMF: 2.68 Rib Fat: 0.19 Rump Fat: 0.12

Heifer Bull! Here was a calf that was lighter at weaning because of being on a heifer but he is pushing the scale down now. An excellent performing bull on test with lots of depth, butt and nuts. He has an awesome dark red hair coat. He is a bull with lots of length and natural thickness. His dam has excellent maternal EPD's with a milk number of 21 and total maternal 43. Calving ease here.



## Lot 94 RED NO HORIZON SERENADE 226Z

Male TK 226Z February 10 2012 1665422

RED BECKTON JULIAN GG B571 OSF  
RED BUF CRK ROMEO L081 OSC MAF  
RED BUF CRK PRIMROSE 5679 OSC

Sire: RED CHAMPLAIN SERENADE 253P OSF MAF

RED GLACIER MARIAS 548 OSF MAF  
RED CHAMPLAIN MARIAS ECHETA 08  
RED BUF CRK ECHETA 3071

RED BJR AH BRANDED BEEF L107 OSF MAF  
RED MEM BRANDED BEEF 241S  
RED L4 GOLDIE 755L

Dam: RED NU-HORIZON STARLITE 050X

RED CROWFOOT 2055M  
RED NU HORIZON LUCKY STAR 414P  
RED T BAR K LUCKY STAR 102L

BW: 78 Adj WW: 607

SOT: 680 EOT: 980 Proj Wt: 1130 ADG: 3.09 WPDA: 2.63 AOD: 2

Adj. Carcass Values LMY: 62.0 REA: 12.57 %IMF: 4.22 Rib Fat: 0.27 Rump Fat: 0.20

Heifer Bull! Like bull #93 a Champlaine Serenade son, this bull carries plenty of volume, good top line and is structurally sound. A very free flowing animal with a good, clean front shoulder. His dam is moderate framed but an excellent cow. One of my favorites with a beautiful udder. He will let you have worry free calving.

## Lot 95 RED NO HORIZON MARN WAVES 227Z

Male TK 227Z February 11 2012 1706148

RED BIEBER MAKE MIMI 7249 OSF MAF  
RED BIEBER MAKIN HAY 9913 OSF MAF  
RED BIEBER ADELLE 8958 OSF

Sire: RED BRYLOR WRAP MARN WAVES 39X OSF MAF

RED FINE LINE MULBERRY 26P AMF OSF MAF  
RED BRYLOR CHEROK 19U OSF MAF  
RED BRYLOR CHEROK 22L

RED TOWAW INDEED 104H OSF  
RED GORK INDEED 711T  
RED SHAWNEE OF TAG-A-LONG 12J

Dam: RED RILEY'S ROGA 54X

RED KINARED BOARDWALK 881K  
RED RILEY'S ROGA 44R  
RED RILEY'S ROGA 52L

BW: 83 Adj WW: 671

SOT: 740 EOT: 1020 Proj Wt: 1170 ADG: 2.89 WPDA: 2.75 AOD: 2

Adj. Carcass Values LMY: 64.5 REA: 11.58 %IMF: 4.13 Rib Fat: 0.14 Rump Fat: 0.13

Heifer or Cow Bull! Be sure to check him out. His sire Makin' Waves sold for \$50,000 to the States and semen is no longer available in Canada. This bull is long and has lots of capacity with good feet and legs. He has a very good temperament. Makin' Waves offspring are born with vigor, and perform. We bought a few heifers with Waves service and liked the calves so much we managed to buy 30 straws of semen from Phil Birnie. This is a rare opportunity.

## Lot 96 RED NU HORIZON ARSON 228Z

Male TK 228Z February 11 2012 1665424

RED 5L NORSEMAN KING 2291 OSF MAF  
RED SSS ARSENAL 271S OSF MAF  
RED SSS DYLAN'S VALENTINE 103C

Sire: RED SSS ARSON 850 OSF MAF

SSS TRAVELER 362J  
RED SSS SCAARA 951L  
RED SSS SCAARA 16H

RED SOUTH BORDER COPPER 23P  
RED SOUTH BORDER COPPER 660S  
RED SOUTH BORDER SOREL 28P

Dam: RED SBR MS COPPER 8660

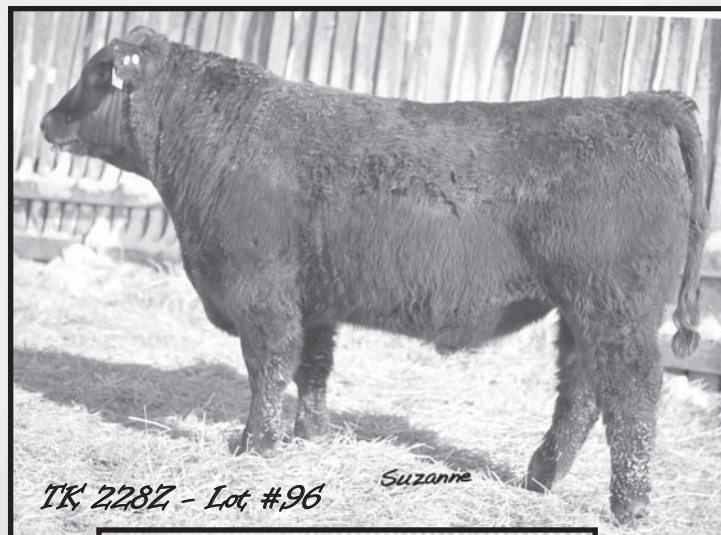
RED LCC MAJOR LEAGUE A502M OSF MAF  
RED SOUTH BORDER MS CUB 642S  
RED SOUTH BORDER COMMANDER 9N

EPD's	
BW	+3.6
WW	+70
YW	+105
Milk	+11
TM	+46
Scotal	---
CED	-4.0
CEM	+1.0
REA	+0.22
Marb	+0.38
Fat	-0.030
Carcass	+37

BW: 101	Adj WW: 680					
SOT: 840	EOT: 1130	Proj Wt: 1280	ADG: 2.99	WPDA: 3.05	AOD: 4	
Adj. Carcass Values LMY: 64.6 REA: 12.37 %IMF: 2.04 Rib Fat: 0.16 Rump Fat: 0.22						

Cow Bull! OUR FAVORITE. Another Arson son. Anyone who came to the pasture this summer admired this bull for his wide and straight top line, smooth shoulder and deep body with good feet and legs. He was all muscle in the pasture this summer and talk about a good temperament. He was always the first to greet you in the field. If you want performance here you go.

## Open Heifers



TK 228Z - Lot #96

Suzanne



RED SSS ARSON 850  
Sire of Lot 92 & 96

## Lot 100 Pen of 5 Black Angus X Open Heifers

Consigned by: Difley/Knight Cattle - Darren Dixon, Buffalo Pound, SK - 306-681-4439  
Born May sired by Valley Lodge bulls. Heifers have received Bov. Gold.

## Lot 101 Pen of 5 Black Angus Open Heifers

Consigned by: Dilly Dally Acres - Blaine Ward, Box 3 Colgate, SK - 306-456-2638 or 306-456-2594 fax 306-861-4308 cell  
Full herd health available includes Gold, blackleg and Ivomec.

## Lot 102 Pen of 5 Black Angus Open Heifers

Consigned by: Dilly Dally Acres - Blaine Ward, Box 3 Colgate, SK - 306-456-2638 or 306-456-2594 fax 306-861-4308 cell  
Full herd health available includes Gold, blackleg and Ivomec.

## Lot 103 Pen of 3 Black Angus X Open Heifers

Consigned by: Ian Struthers, Bethune, SK - 306-638-7977  
Born April sired by Hi Low Angus bull. Heifers are Black or Black white-faced.

## Lot 104 Pen of 5 Black Angus X Open Heifers

Consigned by: Tom and Tracy Harrison, Craven, SK - 306-731-2041  
Dams of heifers are Angus/Maine. Sires are Angus selected from Triple A. Heifers have been Ivomeced.

## Lot 105 Pen of 3 Red Angus X Open Heifers

Consigned by: James and Lorraine Slywka, Lipton, SK - 306-336-2576 or 306-331-8604 cell j.l.slywka@sasktel.net  
Heifers are sired by Red Angus bulls, out of Simmental dams. Born in March and April. Tasvax 8, Bovishield Gold and Ivomeced.



## Auntie Sheila's Kitchen & Catering

"Catering for all occasions"

### Sheila Bell

Ph: 731-2609 Cell: 731-7107  
105 2nd Avenue, Lumsden, SK S0G 3C0

CANDACE IPPOLITO, BSAg.  
Livestock Solutions Specialist



PO Box 131  
McLean, Sask S0G 3E0

Office: (306) 699-2822  
Fax: (306) 699-2823  
Cell: (306) 360-7662  
candace@blairs.ag



## Mark Sinclair

### By-Pro Feeds Ltd.

Liquid Feed Distributors

1-888-333-7033  
Ph. 306-435-2505  
Cell: 306-435-9323

Box 842  
Moosomin, SK  
S0G 3N0



Dr. Jess Mountenay  
Flying R Veterinary Services

Large Animal Ambulatory Services  
Phone: 306-540-2122  
www.flyingrvet.com



General Contractor  
Commercial - Residential

"New homes built to suit your lifestyle"

Owner: Garry Sawchyn - 781-3383

www.emeraldparkhomes.ca



Leroy Steinhubl  
Area Beef Representative

Nitrogen, Supplies & A.I. Breeding Service

Box 157, Balgonie, SK S0G 0E0  
Home: 306-781-2842  
Fax: 306-781-2855  
Cell: 306-536-1784

### Genex Cooperative, Inc.

A Subsidiary of Cooperative Resources International

GLEN GABEL ANGUS

Registered Quarter Horses  
Purebred Angus Cattle

Box 3726 REGINA, SASKATCHEWAN S4P 3N8  
Cell: (306) 536-1927  
Home: (306) 775-0155  
glengabel@sasktel.net

Clayton Curtis  
Assistant General Manager  
Regina Location



745 Park Street  
Regina, SK S4N 4Y4  
Direct line: (306) 790-5557  
Fax: (306) 721-3141  
E-mail: ccurtis@masterfeeds.com  
Cell: 306-539-9486



## PRAIRIE AG PETROLEUM LTD.

210 McDonald St. N.  
Regina, SK S4N 5W3  
Tel: (306) 721-6880  
Fax: (306) 721-3748  
Cell: (306) 536-1332



Bulk Fuel, Cardlock, Lubes, Baler Twine



## SHERWOOD ANIMAL CLINIC

Hwy #1 East, North of CTV  
Box 3330, Regina, SK S4P 3H1

DR. LARRY HANSON  
B.Sc, D.V.M

BUS: 525-3763 FAX: 569-3490



## MANUFACTURING LTD.

DYSART, SASK.

Scott & Shannon Macknah  
Ph. (306) 432-2003  
Fax. (306) 432-2004

"Custom Built Mobile Grain Cleaners and Equipment"  
www.smsmanufacturing.com

Westway Terminal and Feed Products Canada ULC  
Box 365  
Hartney, MB R0M 0X0  
www.westwayfeed.com

Res. Tel: (204) 769-2220  
Toll Free: (800) 563-6371  
Res. Fax: (204) 769-2272  
Cell: (306) 861-0516  
ronman@westway.com



RON MANNESS  
District Manager

## Westway

"Your Liquid Feed Specialists"

## Terms & Conditions ...

**Bidding:** Each animal will be sold to the highest bidder.

**Bidding Disputes:** The auctioneer will settle any disputes as to bids and his decision on such matters shall be final.

**Terms:** The terms of the sale are cash. The right of property shall not pass until after settlement is made. All settlements will be made with the clerks of the sale immediately following the conclusion of the sale and before any cattle will be released from the sale facility.

**Purchaser's Risk:** Each animal becomes the risk of the purchaser as soon as sold. Animals will be fed, watered and cared for at the purchaser's risk for a reasonable time.

**Insurance:** A representative of a major livestock insurance company will be present to care for insuring cattle.

**Certificate of Registry:** A certificate of registry and transfer will be furnished for each animal.

**Health:** All cattle will be in excellent health.

**Announcements:** Changes of information contained in this catalogue relating to the animals offered for sale will be announced from the auction box and such announcements shall take precedence.

Monday, April 1, 2013 - 1:00 pm

**Breeder's Guarantee:** All animals sold are guaranteed breeders by the owner. Any animal that has not proven itself a breeder within six months after date of sale, if in healthy condition, may be returned to the seller at buyer's expense. The seller reserves the privilege of trying for a period of six months to prove the animal a breeder. The seller at his option may either return the purchase price to the buyer or replace the animal with another of equal quality in full settlement of ALL claims. All complaints regarding breeding difficulties must be reported in writing by the buyer to the seller within the specified time above and any animal returned must be free from disease and in good health.

**Liability:** Neither owners, sale manager, clerks, nor anyone connected with the sale assumes any responsibility, legal or otherwise for damage of any kind.

**Contract:** The above terms and conditions shall constitute a contract between the buyer and seller of each animal sold.

**Delivery/Transportation:** You can receive a \$50 discount if you haul your own bull. Delivery can be arranged at a cost of \$50 per bull within 300 km of Moose Jaw. With purchases of 5 or more bulls we can arrange to deliver them free of charge within that 300 km range. If you are over 300 km we can assist you in making travel arrangements at your cost.

# AAA



*Triple A Bull Sale*  
*Box 3771*  
*Regina, SK S4P 3N8*



Deliver by March 15, 2013



**AAA**

*Acquire the Angus Advantage*

Directions to Johnstone Auction Mart  
4 Miles West of Moose Jaw on Trans Canada Highway