

The BC Angus Association's
**THANKSGIVING
HOLIDAY**

SELECT ANGUS FEMALE SALE

Saturday, October 10th, 2009

1 PM at Valley Auction, Armstrong, BC

OFFERING 78 HEAD OF BLACK & RED ANGUS

22 Bred Yearlings - 29 Heifer Calves - 3 Bull Calves
4 Young Cows - 6 Cows with Heifer Calves - 4 Cows with Bull Calves

Sale Headquarters

BEST WESTERN VERNON LODGE

Vernon, BC Ph: (250) 454-3755 Toll Free 1-800-663-4422

**BC ANGUS
2009 THANKSGIVING
WEEKEND SCHEDULE**

FRIDAY, OCTOBER 9

Best Western Vernon Lodge

5:00 PM - BC ANGUS ASSOCIATION AGM

6:30 PM - SOCIAL

7:00 PM - DINNER

SATURDAY, OCTOBER 10

Valley Auction, Armstrong, BC

1:00 PM - THANKSGIVING HOLIDAY SALE

Sale Committee & Contacts:

Tanya Belsham - (250) 845-3050

Jim Moon - (250) 567-9762

Lance Savage - (250) 546-2813

Sale Sponsored by:

THE BC ANGUS ASSOCIATION

Lance Savage, President - (250) 546-2813

Jill Savage, Sec.-Treas. - (250) 546-2813

Jack Brown, Assoc. Fieldman

(604) 888-0862 (604) 888-7669

Sale Conducted by:

VALLEY AUCTION LTD.

Auctioneers: DON & PETER RAFFAN

903 Highway 97A

Armstrong, BC V0E 1B7

(250) 546-9420

Marketing Agent:

DjH

**Douglas J. Henderson
& Associates Ltd.**

P.O. Box 5900, Lacombe, Alberta T4L 1X4

Doug & Linda Henderson

Phone: (403) 782-3888 Fax: (403) 782-3849 Cel: 403-350-8541

email: djhenderson@platinum.ca website: www.hendersoncattle.com

THANKSGIVING HOLIDAY SELECT ANGUS SALE

The BC Angus Association 2009 Donation Heifer

Donated by
Tanya, Monty & Taylor Belsham
Poplar Meadows Angus
Houston, BC

Our thanks to the Belsham Family



Monty, Taylor & Tanya

Tanya, Monty & Taylor Belsham

POPLAR MEADOWS ANGUS

Box 1025 Houston BC V0J 1Z0
PH: 250-845-3050 Cell: 250-845-8474

We are pleased to offer these top females. We are well aware that no one needs more cows so that's why we are parting with ones you will want and need to own. We are offering a 10% discount to junior members who purchase an animal from us. The animal must be registered in the junior's name. Don't forget to check out our website, www.poplarmeadowsangus.ca. We plan to have pictures of the sale animals up soon. We are proud of our sale cattle and stand behind them 100%. We look forward to visiting with everyone at the sale.



HF Tiger 5T - Service Sire to Lot 3

1 POPLAR MEADOWS BARBARA 10'09

FEMALE FIRE 10W 1489540 JANUARY 26 2009

G A R RETAIL PRODUCT AMF NHF
MVF RETAIL PRODUCT 54S 1346624
MVF TIBBIE 123L

G A R PRECISION 1680
G A R EXT 4927
TC STOCKMAN 365
MVF TIBBIE 179G

BENCHMARK PARADIGM 4176
POPLAR MEADOWS BARBARA 3'06 1301447
ATLASTA BARBY 12P

B/R PRECISE 242 AMF
TIBBIE D OF ALCAN 145
GRANDVIEW WOMACK DIRECT
ATLASTA BARBY 58H

BW: 90 lbs.
EPDs: BW: +5.7 5% WW: +48 5% YW: +85 5%
Milk: +23 5% TM: +47 YG: +37 5%

We are pleased to offer this beautiful heifer calf as the 2009 donation heifer. Barbara 10'09 is a maternal sister to the high selling heifer calf at the last years Northern Highlights Sale, selling to Gary & Rosine Ryan-Lewis. Barbara 10'09 will make a great asset wherever she goes. She will be shown in Vanderhoof and Smithers.



MVF Retail Product 54S - Sire Lots 1 & 4

2 POPLAR MEADOWS BLOSSOM 6'07

FEMALE FIRE 6T 1367653 JANUARY 27 2007

BELVIN MERCEDES 32'02
BELVIN PATRIOT 34'04 1207071
BELVIN LADY BLOSSOM 37'01

O G L BATTLE CRY 427 128
BELVIN LADY BLOSSOM 47'97
LEACHMAN RIGHT TIME
BELVIN LADY BLOSSOM 66'94

REMITALL MONSOON 37M
REMITALL BLOSSOM 253P 1227291
REMITALL BLOSSOM 5M

S A F FOCUS OF E R
WHITE LAKE ERICA 19G
CUDLOBE RAINMAKER 19K
BELVIN LADY BLOSSOM 56'00

BW: 108 lbs. Adj. 205D: 757 lbs. Adj. 365D: 1138 lbs.
EPDs: BW: +7.4 31% WW: +46 18% YW: +84 15%
Milk: +21 9% TM: +44 YG: +38 15%

Blossom 6'07 was my WAF Futurity heifer. She was shown this summer in Calgary. Her 82 lb birth weight, February 4th heifer calf placed 3rd in her split. Blossom 6'07 is a powerhouse two year old and was named Supreme Champion Female at the 2009 Bulkley Valley Exhibition. Her dam, Remital Blossom 253P and her Sitz Tradition heifer calf were high selling cow-calf pair at the 2006 Remital Production Sale. I am retaining the heifer calf but will bring her to the sale to show you what she can produce.

Exposed: April 15 to August 7, 2009 to Poplar Meadows Freedom 2'08 -1428706-. Observed bred May 8, 2009. Freedom was Grand Champion Bull at the 2009 Vanderhoof Gold Show & Reserve Grand Champion Bull at the Bulkley Valley Exhibition.

THANKSGIVING HOLIDAY SELECT ANGUS SALE



Lot 4 - Poplar Meadows Tibbie 2'09

3 POPLAR MEADOWS QUEEN 4'08

FEMALE FIRE 4U 1428708 JANUARY 17 2008

HOFF HI FLYER S C 7134
SUMMITCREST HI FLYER 3B18 925250
 SUMMITCREST LASS 229Y

SCOTCH CAP
 HOFF MISS SPADE OF S C 147
 Q A S TRAVELER 23-4
 SUMMITCREST LASS 044W

G D A R ROGUE 6322
KBJ QUEEN 203J 954185
 KBJ QUEEN 69X

DOUBLE BAR ROGUE
 G D A R BLACKCAP LADY 1266
 KBJ ROUND MR MAJOR 129T
 KBJ ROUND QUEEN 126S

BW: 87 lbs. Adj. 205D: 629 lbs. Adj. 365D: 1031 lbs.
 EPDs: BW: +2.3 36% WW: +36 27% YW: +67 24%
 Milk: +19 22% TM: +37 YG: +32 24%

Queen 4'08 is sired by the popular, curve bender sire "Pfred". He has sold over 1.5 million dollars of semen world wide. KBJ Queen 203J was purchased at the Hayshaker as one of the days high selling cows. I sold one daughter through this sale for \$2,500 as a calf to Bill Vernon. KBJ Queen 203J is a model Angus cow, perfect feet, beautiful udder, moderate size and catches first breeding every year. Queen 4'08 is bred to HF Tiger 5T, the Grand Champion Bull at the World Angus Forum. After seeing Tiger and lots of his calves this summer at the WAF I am most excited to get my own Tiger calves. This coupon could very easily be your next herd sire.

Bred A.I.: April 13, 2009 to HF Tiger 5T -1402252-. Exposed: April 15 to May 25, 2009 to Poplar Meadows Freedom 2'08 -1428706-. Exposed: May 25 to August 7, 2009 to MVF Retail Product 54S -1346624-.

4 POPLAR MEADOWS TIBBIE 2'09

FEMALE FIRE 2W 1489536 JANUARY 10 2009

G A R RETAIL PRODUCT AMF NHF
MVF RETAIL PRODUCT 54S 1346624
 MVF TIBBIE 123L

G A R PRECISION 1680
 G A R EXT 4927
 TC STOCKMAN 365
 MVF TIBBIE 179G

F A R KRUGERRAND 410H
MVF TIBBIE 55R 1290565
 MVF TIBBIE 115K

KRUGERRAND OF DONAMERE 490
 F A R ERIANNA 286F
 TC STOCKMAN 365
 RRD TIBBIE 12E

BW: 96 lbs.
 EPDs: BW: I +5.2 5% WW: I +49 5% YW: I +92 5%
 Milk: I +19 5% TM: I +43 YG: I +43 5%

Tibbie 2'09 has been a standout since birth. Her mother, MVF Tibbie 55R was purchased for \$6100 at the 10th Annual MVF Production Sale. She was also Intermediate Calf Champion at the Canadian Western Agribition, Regina in 2005. MVF Retail Product 54S was purchased at the 2007 Cattleman's Connection Bull Sale for \$11,000 by ourselves and Northern Black Angus. 54S is very structurally correct, moderate in size with great feet and legs. She would make a great junior prospect and we are offering a 10% discount to juniors. 2W was Reserve Junior Champion Female at the Bulkley Valley Exhibition.

Michael & Donna Mills

ARDGOWAN BLACK ANGUS

1517 - 248 St Aldergrove BC
 PH: 604-857-2195



Gardale Blackbird 16M - Dam of Lot 5

5 ARDGOWAN BLACKBIRD 32W

FEMALE BDM 32W 1491579 MARCH 16 2009

K C F BENNETT TOTAL
ARDGOWAN TRAVELER 13T 1396707
 EUSTON BLACKBIRD 13G

SITZ ALLIANCE 6595
 EXT OF CONANGA 6790
 BIG BEAR WALKER 37E
 LOCHNESS BLACKBIRD 2B

GARDALE EUSTON WALKER 11K
GARDALE BLACKBIRD 16M 1093360
 BRAMBLEBROOK BLACKBIRD 20C

BIG BEAR WALKER 37E
 BRAMBLEBROOK MISS BURGESS 10C
 G T MAXIMUM
 BRAMBLEBROOK BLACKBIRD 5U

BW: 69 lbs.
 EPDs: BW: I +3.8 5% WW: I +36 5% YW: I +65 5%
 Milk: I +16 5% TM: I +33 YG: I +29 5%

Ardgowan Blackbird 32W is a granddaughter of the maternal and calving ease sire, KCF Bennett Total, out of a Gardale female that traces to Bramblebrook Blackbird 20C. Note this brood cow prospect is line bred to the famous Big Bear Walker 37E.



Ardgowan Traveler 13T - Sire of Lot 5

THANKSGIVING HOLIDAY SELECT ANGUS SALE

John & Barb Urquhart

BRAMBLEBROOK ANGUS

6865 Evans Rd Chilliwack BC V2R 4B9

PH: 604-858-6865



John & Barb

We have been in the Angus business for over 43 years. After that length of time we feel our animals are predictable and will go on to be productive for their new owners. We have always tried to keep birth weights moderate with good growth rates, fertility and maternal traits while keeping to our aim of low maintenance. Our cattle are raised in a ranch type environment running in bush pastures in the summer and being wintered on a hay diet. Our current senior sire, Benchmark Paradigm 4176, is certainly living up to his EPDs as he is leaving moderate birth weight with lots of growth. All three heifers are sired by Paradigm 4176.

We are very proud of our offering, and would like to thank past customers at both the Northern Highlights sale and the Thanksgiving Sale.



Lot 6 - Bramblebrook Net Worth 13W

6

BRAMBLEBROOK NET WORTH 13W

MALE JSI 13W 1501863 FEBRUARY 06 2009

S A V 8180 TRAVELER 004
S A V NET WORTH 4200 1309743
S A V MAY 2410

SITZ TRAVELER 8180
BOYD FOREVER LADY 8003
S A F 598 BANDO 5175
S A V MAY 6269

SITZ ALLIANCE 6595
BRAMBLEBROOK MISS MORRISON 22L 1090371
BRAMBLEBROOK MISS MORRISON 44H

SITZ TRAVELER 8180
SITZ BARBARAMERE JET 2698
N BAR EMULATION EXT
BRAMBLEBROOK MISS MORRISON 7A

BW: 84 lbs.
EPDs: N/A

An own son of the dominant sire, SAV Net Worth, who is transmitting unprecedented thickness, muscle and volume. 13W is less than 6 months of age and now weighs 735 lbs. Note the dam is a Sitz Alliance out of an EXT female, the same combination as KCF Bennett Total and KMK Alliance. This female consistently produces John's top calf in his herd. Check out this great herd sire candidate that blends the best of Angus bloodlines.



Lot 7 - Bramblebrook Lucey's Queen 8W

7

BRAMBLEBROOK LUCEY'S QUEEN 8W

FEMALE JSI 8W 1520331 JANUARY 28 2009

VERMILION DATELINE 7078
MVF VRD DATELINE 913P 1232661
MVF LADY DI 60K

CONNELLY DATELINE
VERMILION BLACKBIRD 5044
MVBL LANCER 9F
DOUBLE AA LADY DI 744'94

CRESCENT CREEK QUANTUM 79M
BRAMBLEBROOK QUEEN'S LUEY 7R 1265615
BRAMBLEBROOK QUEEN LUCY 24L

GDAR QUANTUM 963
CRESCENT CREEK HEROINE 158K
V D A R LUCYS BOY
KLUZAK QUEEN 128E

BW: 76 lbs.
EPDs: N/A

A most attractive late January heifer sired by MVF Dateline 913P and out of a very attractive and productive cow, JSI 7R sired by Crescent Creek Quantum. The heifer is fleshy with a deep body and good length and will develop into a productive type cow.

THANKSGIVING HOLIDAY SELECT ANGUS SALE

8

RED BRAMBLEBROOK SHARMAYNE 29U

FEMALE JSI 29U 1501852 OCTOBER 01 2008

RED BADLANDS MR BEEF 805
RED BADLANDS ALL BEEF 114J 1142713
 RED RBRTS BELGA 5126

RED HLH BUSTER 406 603
 RED BADLANDS KEPSAKE 632
 RED GLACIER LOGAN
 RED RBRTS YNK BELGA 69A

RED MESSMER RED OPTION 9902
RED BRAMBLEBROOK SHARMAYNE 23N 1244129
 RED BAR-X CHEROK 17H

RED BUF CRK CHF 824-1658
 RED MESSMER ABIGALE 7925
 MVHF INNOVATOR 49B
 RED MEM ICECAP CHEROK 50A

EPDs: N/A

A daughter of the Genex sire, Red Badlands All Beef 114J, a bull that transmits average birth weight and extreme growth and performance. The dam of this heifer is sired by Red Messmer Red Option 9902 and is a productive cow. A well bred heifer with a great future.

9

RED BRAMBLEBROOK RAMBLER 35U

FEMALE JSI 35U 1501857 NOVEMBER 06 2008

RED BADLANDS ALL BEEF 114J
RED BRAMBLEBROOK BADLAND 6T 1416802
 RED BRAMBLEBROOK ANNIE 28J

RED BADLANDS MR BEEF 805
 RED RBRTS BELGA 5126
 RED GLACIER MARIAS 548
 RED BRAMBLEBROOK ANNIE 1

BRAMBLEBROOK NEW TREND 31G
BRAMBLEBROOK LADY EILEENMERE17 1036855
 BRAMBLEBROOK LADY EILEENMERE19

V D A R NEW TREND 933
 HAPPYVALE IDELETTE 5Z
 BJ BLACK STAR 8'91
 GARDALE EILEENMERE 5T

EPDs: N/A

This is a most attractive beautifully proportioned November 2008 heifer, with an actual 200 day weight of 805 lbs. A granddaughter of Red Badlands All Beef 114J and Red Glacier Marias 548 out of a Black Angus cow giving this Red Angus heifer great outcross genetics.

10

RED BRAMBLEBROOK RAMBLING ANNE

FEMALE JSI 20U 1448375 MARCH 07 2008

RED BJR RAMBLER 5162
RED VGW RAMBLER 1000 970204
 RED VGW UMPIRE YUMA 9266

RED FCC RAMBO 502
 BJR GOLDI 355-1122
 RED LMB UMPIRE 1000-Z22
 RED VGW KING YUMA 9045

RED GLACIER MARIAS 548
RED BRAMBLEBROOK ANNIE 28J 1034986
 RED BRAMBLEBROOK ANNIE 1

RED LCC HEAVEN OR BUST1000B
 RED GLACIER REBALAS
 RED BJR RAM 5214
 RED VIEW CREST ALEXANDRA 10B

EPDs: N/A

JSI 20U is a March 2008 heifer, sired by Red Rambler 1000 and out of our best red cow sired by the renowned Red Glacier Marias.

Bred: May 9, 2009 to Red U-2 Illicit 423P -1208735- Preg checked safe

11

RED BRAMBLEBROOK ANNIE 5S

FEMALE JSI 5S 1328343 FEBRUARY 18 2006

RED G A GRAND CANYON 691L
RED ALEDEN GRAND CANYON 4N 1191985
 RED ALEDEN MAID 7D

RED LCHMN GRND CANYON 1244G
 RED G.A. DEWDROP 459F
 RED OAK RIDGE ALEXANDER
 RED ALEDEN MAID 6Y

RED GLACIER MARIAS 548
RED BRAMBLEBROOK ANNIE 28J 1034986
 RED BRAMBLEBROOK ANNIE 1

RED LCC HEAVEN OR BUST1000B
 RED GLACIER REBALAS
 RED BJR RAM 5214
 RED VIEW CREST ALEXANDRA 10B

BW: 77 lbs.

EPDs: N/A

A unique pedigree combining Grand Canyon, Oak Ridge Alexander, Marias and Ram. 5S's first calf in 2008 was a growthy, thick type bull calf and we had the misfortune of losing her heifer calf at birth this year. A young cow with loads of production ahead of her.

Bred: May 7, 2009 to Red U-2 Illicit 423P -1208735- Preg checked safe

Terms & Conditions

TERMS: Cheque at par or cash, unless other arrangements have been made with the seller. U.S. funds will be accepted at current rate of exchange. All payments must be made to the clerk of the sale, and no release will be given until satisfactory settlement has been made.

BIDS: In case of a dispute, the animal will again be put up for advance bids, and should there be no advance bid, the buyer will be the party from whom the auctioneer accepted the last bid.

RISK: If errors are noted, corrections will be made from the auction stand, and will take precedence over the printed matter in the catalog.

CERTIFICATES: Each animal is recorded or will be recorded in the herd book of the Association. Transfers will be processed when payment in full has been received, with transferred registry certificate duly furnished to the purchaser of each lot.

FEMALES: Females determined as being safe with calf by examination, or with calves at side are considered breeders without further guarantee. Any female not pregnant when sold, or that on having reached the age of 18 months should fail to conceive after being bred regularly for four months to a bull known to be a breeder, shall be reported in writing to the seller. The seller will be granted the privilege of a further period of four months to prove the female a breeder on his own premises. Satisfactory adjustment shall be deemed to be replacement with another in-calf female of equal value or full purchase price with the seller having the choice.

CALVES: There will be no warranty on calves sold under 8 months of age, male or female, as the manner in which they are cared for will largely determine their breeding ability. Full adjustment will be made, however, in the event that a heifer calf under 12 months of age when sold should later prove to be a freemartin.

The seller is not responsible for damage caused by foreign bodies after the animal is sold inclusive of mummified calves, nor for sickness shown at sale time.

Transportation charges on all animals, subject to adjustment for account of the shipper's incidental expenses such as feed, care, veterinary charges, etc., will not be charged by either party when making settlement.

All warranties will cease when the animal has been disposed of by the original owner.

It shall be clearly understood that the Sale Management acts only as an agent between buyer and seller, and shall not in any way be responsible for failure by any party to live up to their obligations. Any legal action that may, in exceptional cases be taken must be taken between the buyer and the seller themselves.

All persons who attend the sale do so at their own risk, and the owners, management and sales staff assume no liability, legal or otherwise, for any accident or damages that may occur.

The above terms and conditions shall be a contract between the buyer and seller of each lot, and all those otherwise in attendance.

EPDs are from the Canadian Angus Association as of Aug. 15, 2008. Canadian Red and Black Angus EPDs are two distinct and separate sets of EPDs, and are NOT comparable to each other. EPDs are generated from whole-herd reporting.

EPD Averages for 2008-born Angus Calves

EPDs	BW	WW	YW	MILK	YG	CE	MCE
Black	+3.1	+39	+70	+16	+31	N/A	N/A
Red	+0.7	+28	+50	+14	N/A	+4.6	+3.2

THANKSGIVING HOLIDAY SELECT ANGUS SALE



Wayne Fipke

BUCK LAKE RANCH LTD.

Wayne Fipke
#10 4524 Eldorado Crt Kelowna BC
PH: 250-764-8789

Mike & Anita Hofer, Mgrs.
585 Beaver Creek Road Beaverdell BC V0H 1A0
PH: 250-484-5470



Mike & Anita Hofer

Buck Lake Ranch, in Beaverdell, B.C., is managed by Mike and Anita Hofer. It has been a commercial cow/calf operation but is switching to becoming a seed stock purebred Black Angus breeder. Wayne Fipke, owner, has spearheaded this changeover. Buck Lake Ranch aims at having Canada's highest average EPDs in its calf crop for the best weaning weight, yearling weight, milk, meat marbling and largest rib eye numbers. Careful selection of cows entering the breeding herd and bulls used have been the direction taken. A sale is scheduled for March 2010 in Southern Alberta.

12

JOHANNA OF BUCK LAKE 20U

FEMALE BKLK 20U 1429653 FEBRUARY 26 2008

K G POWER DESIGN
TAFIKA POWER DESIGN 57S 1318067
TAFIKA EQ NEONIA 130P

S A V 004 PREDOMINANT 4438
BARDOLIA OF PEAK DOT 530S 1337657
BARDOLIA OF PEAK DOT 442N

D B NEW FLY DESIGN 730
POWER FIX K G 3
EBON HILL EQUALIZER 55'96
TAFIKA 34G NEONIA 87K

S A V 8180 TRAVELER 004
S A V EMBLYNETTE 1182
STEVENSON BRUNO 6371
BARBARA OF PEAK DOT 344C

BW: 82 lbs. Adj. 205D: 563 lbs. Adj. 365D: 817 lbs.
EPDs: BW: +3.9 31% WW: +38 20% YW: +79 19%
Milk: +23 9% TM: +42 YG: +41 19%

Johanna of Buck Lake 20U, is out of one of the cows purchased from Saskatchewan's Peak Dot, a daughter of S A V 004 Predominant 4438, with a maternal grandam out of Stevenson Bruno 6371. These two bulls are the foundation of many of the best at Peak Dot Ranch. The sire of 20U is Tafika Power Design 57S, a bull Buck Lake purchased from Tafika noted for his calving ease, high milk and good marbling. Johanna has excellent phenotype. She was Al'd on May 26 and again on May 27 to HARB Pendleton 765 JH, the breed leading high spread sire, with a birth weight EPD of -3.6 and a weaning weight of +94 and spectacular yearling weight EPD of +139. She was pasture exposed to Buck Lake Ace 01T (sired by Boyd on Target 1083 maternal grandsire of Connealy Lead On) from June 5, 2009 and additionally to Sitz Onward 298S from July 7. Buck Lake Ace is the best bull of the 2008 calf crop with a test gain of over 5 lbs./day, large scrotum and high EPD spread of +0.8 BW to +99 YW. Bred AI: May 26, 2009 to HARB Pendleton 765 JH -1471747-. Exposed: June 5 to July 6, 2009 to Buck Lake Ace 01T -1428007-. Exposed: July 7 onward to Sitz Onward 298S.



Lot 12 - Johanna of Buck Lake 20U



PLAN YOUR THANKSGIVING WEEKEND

- Friday, October 9
 - BC Angus Annual General Meeting at 5 pm
 - Social at 6:30 pm followed by Dinner at 7
- Saturday, October 10
 - BC Thanksgiving Holiday Select Angus Sale at 1 pm

www.bcangus.ca

THANKSGIVING HOLIDAY SELECT ANGUS SALE

Harry & Lynn, Jackson, Harrison Jackson
CANYON TREE FARMS INC.
 Box 2148 Fort St James BC V0J 1P0
 PH: 250-996-8180



Jackson, Lynn, Harrison & Harry

2009 has been a great year for Angus cattle. The World Angus Forum showcased the best that Canadian breeders have to offer. The cattle representing BC made our province look good and showed the world that some of the best Angus genetics can be found here.

Since 2000, Harry and I have been buying our seed stock from the Northern Highlights Sale, as a result of these purchases, we have been able to take advantage of the years of careful breeding and genetic selection that these established breeders have worked so hard to create. These females and their offspring now form the heart of our purebred herd.

Our bull genetics come from the offspring of the legendary TC Stockman 2164, MVBL Asset, Benchmark 007, TC Freedom 104, MVF Triumph 13L, and Gumbo Gulch Wham 32L. We have carried on this tradition and have carefully selected our bulls to ensure calving ease, excellent maternal traits, high gain and top quality carcasses.

Our goal is to raise moderate frame cattle that produce calves with moderate birth weights, exceptional gain and all round quality performance. The two bred heifers we have brought to the sale will meet these requirements and continue to do so for many years to come. Both heifers have been bred to C-Bar Predominant 788T, a son of SAV 004 Predominant 4438 from C-Bar Livestock's program. If you are interested in viewing the herd or have any questions, please don't hesitate to call we look forward to seeing you at the sale.

13 CTF ERICA FREEDOM 49U

FEMALE CTFA 49U 1432718 FEBRUARY 04 2008

TC FREEDOM 104
GUMBO GULCH FREEDOM 44S 1327855
 LUCY OF GUMBO GULCH 99G

CONNELLY FOREFRONT
 T C RUBY 9095
 BICKFORD EXTRA 54E
 LUCY OF GUMBO GULCH 51B

MVBL ASSET 42H
C.W. ERICA OF N.B.A. 49K 1011701
 POPLAR MEADOWS ERICA 20G

TC STOCKMAN 365
 MVRB TIBBIE 18D
 RAINMAKER OF GUMBO GULCH 5D
 POPLAR MEADOWS ERICA 1A

BW: 70 lbs. Adj. 205D: 592 lbs. Adj. 365D: 837 lbs.
 EPDs: BW: +1.4 30% WW: +40 18% YW: +67 17%
 Milk: +19 10% TM: +39 YG: +27 17%

CTF Erica Freedom 49U is a granddaughter of Freedom 104 and has the great TC Stockman 365 on the dam's side. The best of Gumbo Gulch and Poplar Meadows breeding here, two of the great BC foundation herds
 Exposed: April 15 to August 15, 2009 to C-Bar Predominant 788T -1427963-.



Lot 13 - CTF Erica Freedom 49U

14 CTF MORAG ASSET FREEDOM 472U

FEMALE CTFA 472U 1432725 FEBRUARY 17 2008

TC FREEDOM 104
GUMBO GULCH FREEDOM 44S 1327855
 LUCY OF GUMBO GULCH 99G

CONNELLY FOREFRONT
 T C RUBY 9095
 BICKFORD EXTRA 54E
 LUCY OF GUMBO GULCH 51B

CTF ASSET 1M
CTF MORAG ASSET 72P 1229054
 N.B.A. MAX MORAG 72L

MVBL ASSET 42H
 SMYTH EILEENMERE 10G
 GLENCROFT MAXIMUM 2J
 GLENCROFT ARGYLL MORAG 12H

BW: 86 lbs. Adj. 205D: 642 lbs. Adj. 365D: 946 lbs.
 EPDs: BW: +3.9 29% WW: +44 17% YW: +78 16%
 Milk: +14 8% TM: +36 YG: +34 16%

The second good Freedom granddaughter from Canyon Tree Farms. This female also goes back to Asset 42H, note the grandam was bred in the good Glencroft herd.
 Exposed: April 15 to August 15, 2009 to C-Bar Predominant 788T-1427963-.



Lot 14 - CRF Morag Asset Freedom 472U

THANKSGIVING HOLIDAY SELECT ANGUS SALE

Willie & Bonnie & Amanda Zaretski

COPPERHEAD RED ANGUS

4803 Lansdown Road, Armstrong, BC V0E 1B4
PH: 250-546-8841

15 PICK OF 2009 HEIFER CALVES AT COPPERHEAD ANGUS

At Copperhead Red Angus, we believe in trying to offer something new. So this year we are going to offer pick of our entire 2009 Heifer Calf crop. This will enable you to decide which one is the best of the bunch. The following are some of the genetic combinations that will be available for your pick: Boomer X Travlin Express, Smash X Bomber, V415 X Fully Loaded. Any one of these calves would be a great addition to your breeding program and it's up to you which one of our fancy females fits the best! Please feel free to give us a call or stop by for a coffee and a tour!



Willie & Bonnie Zaretski



Ron & Lois Crosby



Ron & Lois Crosby

CROSBY ANGUS

14948 Braeside Rd Vanderhoof BC V0J 3A2
PH: 250-567-4127 Cell: 250-567-0521

This will be our second year participating in this very elite event. We really enjoyed the whole weekend in Prince George last year and are looking forward to Armstrong. We hope you can join us.

16 CROSBY TOVI 77W

FEMALE XBE 77W 1510263 JANUARY 31 2009

WOODHILL FORESIGHT
RRAR FORSIGHT 5S 1310099
WWF BRUNO BELLE 53N

NORTHLINE JEDI 27J
CROSBY TOVI 92M 1107580
SILVER STAR TOVI 23E

PAPA FORTE 1921
BON VIEW GAMMER 85
STEVENSON BRUNO 561G
HOLLBROOK TRENDY 16B

ALLEN CROFT JCT ANDY 02 1E
NORTHLINE JENTRY 27G
BJ MR MACHO 30'91
DOUBLE U TOVI 2Z

BW: 90 lbs.
EPDs: BW: 1+3.3 5% WW: 1+44 5% YW: 1+75 5%
Milk: 1+16 5% TM: 1+38 YG: 1+31 5%

Our single entry is a calf out of our show string. Lois and I feel 77W (RRAR Forsight X Northline Jedi) will be the most competitive heifer we will have out this year. We will be showing three daughters of our RRAR Forsight 5S herd sire. If you like 94W (RRAR Forsight x Northline Jedi) or 101W (RRAR Forsight x Northline Jedi) better we will trade you. We are also showing three sons of RRAR Forsight so those of you attending fairs in the northwest will have a good preview of these calves. The Forsight calves, both male and female, are outstanding at this time. We were very short of heifer calves this spring, so there will not be many for sale. This is a great opportunity to buy one of the best.



Lot 16 - Crosby Tovi 77W

THANKSGIVING HOLIDAY SELECT ANGUS SALE

Brad & Aleta Chappell

HEART OF THE VALLEY FARMS LTD

6409 Tsolum River Road, Courtenay BC V9J 1P1

PH: 250-337-8097



Aleta & Brad Chappell

We are a fully integrated purebred breeding farm situated here in the beautiful Comox Valley of Vancouver Island. Between my wife Aleta and myself, our families have over 250 years living here on the Island, in the agriculture industry and we have family ranching in the east Kootenays and the east Cariboo. A few years ago we decided to change from running a commercial Cow/calf operation and move back home. We run both a Red Angus and Quarter Horse breeding farm on the rich soil of the Tsolum River Valley. In normal years we have the ability to pasture from St Patricks day thru to Christmas allowing us to get a head start with the calves on pasture earlier and limiting our winter feeding period.

We have researched our genetics thoroughly and in particular are always focusing on raising our herd to the highest maternal standards. Our intentions are to raise impeccable udders, strong forage abilities, excellent feet and legs allowing the animals to work for our clients as well as they have for us.

Our goal in our breeding is to provide excellent quality progeny of the highest pedigree that we can purchase and breed with the intent to pass on to our customers.

It is with great pleasure that we bring these heifers to the BC Angus Female Sale this fall.

Anytime you are on the North Island, please stop by for a visit.

Brad & Aleta Chappell

17 RED PACIFIC EMILY

FEMALE PFC 90W 1521196 JANUARY 14 2009

RED BECKTON JULIAN GG B571
RED MESSMER JUDGE 36N 1253637
RED MESSMER ESTHER 2254

RED BKT JULIAN 7526G
RED BKT MARTA 9A13 JL
RED GLACIER MARIAS 548
RED MESSMER ESTHER A900

RED U-2 ALL STAR 1513R
RED U-2 EMILY 7069T 1372989
RED U-2 EMILY 232M

RED LCC MAJOR LEAGUE A502M
RED STEWART 502 MISS PATHY 208
RED FLY AWAY RAMBO 143K
RED U-2 EMILY 932J

BW: 83 lbs.
EPDs: N/A

This young beauty was the first calf this year, and she is already possessing that extra depth of body and fleshing ability strong in the Emily cow family. The Emilys all go back to the famous LPC Emily 24U. We have a strong Emily presence in our herd and 090W is one of only two heifers this year, the other one born in late April and being kept for breeding next year.



Lot 17 - Red Pacific Emily

18 RED PACIFIC LASSIE

FEMALE PFC 91W APPLIED JANUARY 15, 2009

RED SVR AMBUSH 59P 1216765
RED FLYING K AMBUSH 6T 1390691
RED FLYING K MANDY 120N 1165295

RED YY RED KNIGHT 640F 845572
RED SOUTH VIEW JINNY 26C 761383
RED REVERE 1786 1126315
RED FLYING K MS LOGAN 11H 918104

RED BBCC PRESIDIO 5Z 694283
RED FLYING K LASSIE 35T 1413630
RED FLYING K MS ROBO 57H 918082

RED DEKAP RED DALLE 345 652446
RED KBJ LASSIE 133X 655970
RED TROPHY ROBOBULL 28D 803371
RED FLYING K MS CHIEF 71B 742353

BW: 84 lbs.
EPDs: N/A

We already had an exceptional Lassie cow in our herd, and last fall added another, Lassie 35T. Her daughter is an outstanding product of the strong maternal pedigree that you won't see very often. Lassie comes bred from the Ambush 6T bull which also carries superior udders and tremendous maternal cows on both sides. She is an outstanding example of a future strong brood female.



Lot 18 - Red Pacific Lassie

THANKSGIVING HOLIDAY SELECT ANGUS SALE



Lot 19 - Red Pacific Stormy

19

RED PACIFIC STORMY

FEMALE PFC 97W 1493486 JANUARY 27 2009

RED U-2 ILLICIT 423P
RED U-2 IMPLICIT 653S 1351700
 RED U-2 ENVIOUS 216M

RED TER-RON CARLTON 810H
RED U-2 STORMY 7303T 1373048
 RED U-2 STORMY 340N

RED U-2 ICON 223M
 RED U-2 DUCHESS 2G
 ACN DMM DYNASTY 15J
 RED ENVIOUS 19U OF EAST FORK

RED SSS BOOM TOWN 260D
 RED BRA HAWAMBA 10B
 RED U-2 WANTED: 917J
 RED U-2 STORMY 38G

BW: 84 lbs.

EPDs: BW: -1.7 5% WW: +18 5% YW: +32 5%

Milk: +12 5% TM: +21 CE: +9.0 5% MCE: +4.0 5% Stay: +9 5%

Strong breeding on both sides of this moderate heifer add another element of the kind of hard working Carlton breeding that is what we have been striving to achieve. One of our favourite new mothers, Red U2 Stormy 7303T has proven in her first calf that she is all mother and more. Again we purchased her in the fall to further our strong and existing Stormy family line. 097W is straight out of a line of two very famous cows, making for a low birth weight/high performance maternal dream!

20

RED PACIFIC SKY ZAMA

FEMALE PFC 98W 1521194 FEBRUARY 03 2009

RED NORTHLINE PACIFIC 101P
RED U-2 PACIFICO 7300T 1372781
 RED U-2 ANEXA 916J

RED TER-RON CARLTON 810H
RED U-2 ZAMA 1628S 1351824
 RED U-2 ZAMA 1372N

RED PIE ATLANTIC 2204
 RED NORTHLINE MY MARIA 101M
 RED U-2 DUKE 6G
 RED U-2 ANEXA 4G

RED SSS BOOM TOWN 260D
 RED BRA HAWAMBA 10B
 RED HOWE MR MATRIX 7L
 RED U-2 ZAMA LEAH 962J

BW: 85 lbs.

EPDs: N/A

Gorgeously dark rich red colour emanating from this heifer, is a direct relation to her outstanding moderate framed mother Red U2 Zama 1628S and the awesomely eye catching favourite of the 2007 herd bulls from U2 Ranch, Red U2 Pacifico 7300T that we purchased as one of our herd sires in the spring of 2008 from the Ungers in Coaldale, Alberta. You can note that her half sister Red Pacific Sky Zama 085U is offered in the sale this year as an example of the beautiful powerhouse progeny of their mother. This heifer calf with her cross the board average birth weight, perfect teat placements and excellent leg and hoof structure is sure to bring in calves with the same strength her dam and sire carry in our herd.



Red Pacific Admiral 80U - Service sire to Lots 21, 22 & 23

21

RED PACIFIC ANEXA 81U

FEMALE PFC 81U 1441527 JANUARY 13 2008

RED TER-RON CARLTON 810H
RED U-2 CONCLUSIVE 639S 1351651
 RED U-2 STARFIRE 118L

RED U-2 ICON 223M
RED U-2 ANEXA 1631S 1352159
 RED U-2 ANEXA 1415P

RED SSS BOOM TOWN 260D
 RED BRA HAWAMBA 10B
 RED U-2 WANTED: 917J
 RED T-S STARFIRE 10J

RED BLAZE V415
 RED U-2 ANEXA 5F
 RED HOWE MR MATRIX 7L
 RED U-2 ANEXA 36G

BW: 86 lbs. Adj. 205D: 652 lbs. Adj. 365D: 966 lbs.

EPDs: BW: +0.7 31% WW: +20 22% YW: +34 23%

Milk: +12 13% TM: +22 CE: +6.0 13% MCE: +3.0 11% Stay: +9 0%

What can you say about this line of cow family but exceptional! This heifer comes out of one of the finest strand lines of breeding in the Angus world and she is no exception to that rule. She has powerhouse mother written all over her and her own dam is one of the strong leaders in our herd. 81U has been bred to our outstanding Vancouver Island raised Red Pacific Admiral 80U, a deep barreled, massive rump, rich cherry coated herd sire who comes out of Lazy MC Smash 41N, a bull which itself is no longer available in the Canadian market place. The daughters in this line are known for throwing gorgeous udders, intelligent dispositions and huge production ability. 81U will be an excellent addition to any herd looking for these traits.

Exposed: April 19 to July 30, 2009 to Red Pacific Admiral 80U -1432013-



Lot 21 - Red Pacific Anexa 81U

THANKSGIVING HOLIDAY SELECT ANGUS SALE

22

RED PACIFIC BRANDINA 82U

FEMALE PFC 82U 1441529 JANUARY 14 2008

RED TER-RON CARLTON 810H
RED U-2 CONCLUSIVE 639S 1351651
 RED U-2 STARFIRE 118L

RED SSS BOOM TOWN 260D
 RED BRA HAWAMBA 10B
 RED U-2 WANTED: 917J
 RED T-S STARFIRE 10J

RED U-2 MVP 386N
RED U-2 BRANDINA 663S 1351581
 RED PRESCOTT BRANDINA 56K

RED HOWE MR MATRIX 7L
 RED U-2 ANEXA 4G
 RED BUF CRK CHF 824-1658
 RED HILL SPRINGS BRANDINA

BW: 80 lbs. Adj. 205D: 622 lbs. Adj. 365D: 930 lbs.
 EPDs: BW: -0.3 31% WW: +18 22% YW: +30 23%
 Milk: +11 14% TM: +20 CE: +5.0 13% MCE: +0.0 12% Stay: +9 0%

You couldn't get a bred heifer to look more like her mother at the same age than this one. This docile and strongly confirmed specimen is bred from Brandina 663S and the power bull, Red U2 Conclusive 639S. With wonderful legs and hoof structure, mirroring her mothers fabulous udder, her breeding to Red Pacific Admiral 080U will go to adding even further strength to a wonderful cow line. Sorry to see her go.

Exposed: April 19 to July 30, 2009 to Red Pacific Admiral 80U -1432013-



Lot 22 - Red Pacific Brandina 82U

23

RED PACIFIC SKY ZAMA 85U

FEMALE PFC 85U 1432020 JANUARY 26 2008

RED U-2 ILLICIT 423P
RED U-2 IDEAL 1600S 1346090
 RED U-2 ANEXA 09E

RED U-2 ICON 223M
 RED U-2 DUCHESS 2G
 RED THAT'LL DO AMERIGO 73C
 RED THAT'LL DO ANEXA 48B

RED TER-RON CARLTON 810H
RED U-2 ZAMA 1628S 1351824
 RED U-2 ZAMA 1372N

RED SSS BOOM TOWN 260D
 RED BRA HAWAMBA 10B
 RED HOWE MR MATRIX 7L
 RED U-2 ZAMA LEAH 962J

BW: 85 lbs. Adj. 205D: 655 lbs. Adj. 365D: 1008 lbs.
 EPDs: BW: +0.2 33% WW: +25 23% YW: +45 24%
 Milk: +13 14% TM: +26 CE: +6.0 13% MCE: +2.0 12% Stay: +9 0%

This stunning heifer is a true example of excellent breeding, which bring a high caliber of power and broodiness with sound femininity to the ring. Her flawless pedigree resonates from her moderately stacked hard working mother Zama 1628S and top seller in U2's 2007 Sale to Get-A-Long and Ringstead. She is already establishing as a leader in the herd.

Exposed: April 19 to July 30, 2009 to Red Pacific Admiral 80U -1432013-



Lot 23 - Red Pacific Sky Zama 85U

Welcome to the Thanksgiving Holiday Select Angus Sale

Our involvement with the B.C. Angus Association and the Thanksgiving Angus Sale has been since 1992, for 17 years we have very much enjoyed working with the B.C. Angus Association, the B.C. Breeders and the management and staff at Valley Auction.

The B.C. Angus breeders are a diverse group whose operations range from valley pastures to mountain tops, saying much for the adaptability of the Angus breed. The important part is the cattle from this sale have a great reputation of doing well for their new owners.

This is always a fun event and a very beautiful time of the year. We hardily endorse participation in this Association sponsored event.

We value our long-term relationship with the breeders of B.C. and staff at Valley Auction. We look forward to the Thanksgiving Angus Sale, and if we can be of assistance in anyway regarding this B.C. event please give us a call.

Yours truly,
 Doug & Linda Henderson

DOUGLAS J. HENDERSON & ASSOCIATES LTD. P.O. Box 5900, LACOMBE, AB T4L 1X4 PHONE (403) 782-3888 FAX (403) 782-3849

THANKSGIVING HOLIDAY SELECT ANGUS SALE

KFC FARMS LTD.

Ken & Judy Friesen – Darryl, Scott & Cameron
30125 Spallin Ave. Abbotsford BC V4X 2A5
PH: 604-856-3900

Mgr. Scott & Karyn Brady
Box 196, Cache Creek, BC V0K 1H0
Office: 250-457-9315 Home: 250-457-9319



Ken, Judy, Darryl, Scott & Cameron



Scott & Karyn Brady & Family

We would like to welcome you to the 2009 Annual Thanksgiving Select Female Sale. We hope everyone can enjoy the camaraderie with fellow Angus breeders both new and old at this holiday weekend sale. This is an exciting time to be an Angus breeder in Canada; customer demand for our beef product is better than ever before. Most of you know the Angus association has introduced the "Canadian Angus Rancher Endorsed" program that will lead to even stronger brand awareness both abroad and within Canada. As Angus breeders we enjoy the use of many tools to improve our cattle, such as the National Cattle Evaluations. At KFC we believe that the use of these tools and the selection of replacements from the data, which they create, is what has propelled the Angus breed to where it is today. That's why we are very serious about the collection and use of data to improve our herd productivity. We have selected two bred females for offer from deep within our replacement program. These heifers are phenotypically correct and feminine in appearance. Both heifers have excelled with above average performance and carcass data, as well both heifers are backed by highly proven AI sires. We feel these females on offer have the genetics and performance record to become a strong addition to any herd.



Bar EXT Traveler 205

24

KFC 205 TIBBIE 8504U

FEMALE KFC 8504U 1437675 JANUARY 01 2008

N BAR EMULATION EXT
B A R EXT TRAVELER 205 979739
B A R QUEEN TRAVELER 3015

N.B.A. TRIUMPH 30P
KFC 30P TIBBIE 6105 1320789
N.B.A. TIBBIE 41M

EMULATION N BAR 5522
N BAR PRIMROSE 2424
D H D TRAVELER 6807
MAGIC QUEEN 963

MVF TRIUMPH 13L
NBA 9FB3 TIBBIE 33L
REMITALL INDICATOR 115K
MVRB TIBBIE 137G

BW: 71 lbs. Adj. 205D: 519 lbs. Adj. 365D: 801 lbs.
EPDs: BW: +2.6 34% WW: +35 24% YW: +76 23%
Milk: +24 17% TM: +42 YG: +41 23%

This bred heifer is a daughter of the Select Sires roster member, BAR EXT Traveler 205 and backed by the highly maternal Tibbie cow family. BAR EXT ranks in the top 1% of the breed for milk and the top 10% for BW. He produces highly sought after females and has been heavily used on heifer mating for several years, he is considered to be the "King of Calving Ease" 8504U ranked 2nd in her contemporary group of 44 heifers for yearling weight and 7th at IMF scanning. She scanned a 5.31% Adj IMF. Bred A.I.: April 9, 2009 to Connealy Freightliner -964749-. Exposed: April 24 to August 30, 2009 to KFC Krugerrand 7448T -1388052-

25

KFC 6595 TITANIA 8583U

FEMALE KFC 8583U 1437725 FEBRUARY 09 2008

SITZ TRAVELER 8180
SITZ ALLIANCE 6595 1036949
SITZ BARBARAMERE JET 2698

GREENS CARHARTT
JUSTAMERE 9946 TITANIA 372N 1181335
BRANDEIS TINA 18H

G D A R TRAVELER 71
SITZ EVERELDA ENTENSE 1137
3 BAR SPIKE 1766
SITZ BARAMERE JET 155

A & B YUKON 7150
G&L BARBARA ANN 9303
CAJUN FORTUNE 11F
BRANDEIS TINA 18A

BW: 73 lbs. Adj. 205D: 664 lbs. Adj. 365D: 767 lbs.
EPDs: BW: +1.6 35% WW: +39 26% YW: +71 25%
Milk: +25 20% TM: +45 YG: +32 25%

This is a low birth weight, high performance daughter of established Pathfinder sire, Sitz Alliance 6595. 8583U was born at just 77 lbs. and posted ratios of 109 WW, 115 REA and 121 IMF. She scanned a 7.36 IMF ranking her 5th out of 47! This Alliance daughter carries service to CRA Bextor 872 5205 608, otherwise known as "MR Balance", a grandson of N Bar Emulation EXT. Bred A.I.: April 9, 2009 to C R A Bextor 872 5205 608 -1167526-. Exposed: April 24 to August 30, 2009 to KFC Krugerrand 7448T -1388052-

THANKSGIVING HOLIDAY SELECT ANGUS SALE

Larry Ward

L & E RANCHES

Box 1235, Prince George, BC V2L 4V3

PH: (250) 614-9598

L & E Ranches is located on McBride Timber Road northwest of Prince George. The ranch is owned and operated by Larry Ward. Mr. Ward bought these three lots at last years Northern Highlights sale. These females were to be the foundation of a small Black Angus herd to compliment his Red Angus and Specked Park herds. Unfortunately for health reasons he must scale down what he had planned. These females are young, functional, honest cattle with a lifetime of production ahead of them.



Crosby Tom Boy 115R - Service Sire to Lot 26



Lot 27 - Crosby Enchantress 83U



Lot 28 - Crosby Debutante 100U

26

CROSBY ENCHANTRESS 90T

FEMALE MCRA 90T 1409069 FEBRUARY 10 2007

ALBERDA TRAVELER 416
ATLASTA TRAVELER 8K 1026299
ATLASTA ELLEN 2H

D H D TRAVELER 6807
ALBERDA QUEEN KIMBERLY 222
ALSIKE ACRES EX NITRO BLAST 3F
ATLASTA REBA 6'96

NORTHLINE JEDI 27J
CROSBY ENCHANTRESS 89N 1153788
HAPPYVALE ENCHANTRESS 75H

ALLEN CROFT JCT ANDY 02 1E
NORTHLINE JENTRY 27G
SANDY BAR BARDOLIER 60B
HAPPYVALE ENCHANTRESS 23S

BW: 85 lbs. Adj. 205D: 562 lbs. Adj. 365D: 821 lbs.
EPDs: BW: +5.3 34% WW: +39 23% YW: +64 21%
Milk: +8 11% TM: +28 YG: +24 21%

90T was the high selling bred heifer for Michelle Crosby last year. She calved to her A.I. date and is raising a pretty darn good Basin Rainmaker 747L heifer calf. The Traveller x Northline Jedi daughters are not large cattle, they do however have a good spring of rib and excellent dispositions.
Exposed: April 24 - June 27, 2009 to Crosby Tom Boy 115R -1291537-

27

CROSBY ENCHANTRESS 83U

FEMALE MCRA 83U 1442843 FEBRUARY 07 2008

SEALIN CREEK TOM BOY 51N
CROSBY TOM BOY 115R 1291537
REICH BETTY 25K

ANGUS ACRES TOM BOY 64D
ANGUS ACRES STARTELL 4Z
BELVIN GRAPHITE 15'97
REICH BETTY 28G

SANDY BAR BARDOLIER 60B
HAPPYVALE ENCHANTRESS 75H 935424
HAPPYVALE ENCHANTRESS 23S

BJ BARDOLIER 24'90
SANDY BAR MISS QUALITY 11Y
CRACKER JACK BAROS 147M
HAPPYVALE ENCHANTRESS 43N

BW: 84 lbs. Adj. 205D: 576 lbs.
EPDs: BW: +3.8 34% WW: +35 22% YW: +44 14%
Milk: +5 10% TM: +23 YG: +9 14%

83U is a sweetheart of a heifer. She is the one out on pasture that will walk up to be scratched. She was not raised in the barnyard, she just genuinely likes people. She would make a great project for a junior member. Besides her disposition she has a pedigree very unique in it's blend of Canadian and American pedigrees both top and bottom. The sire of 83U, Tomboy is a very deep chested, good-footed bull, with tremendous middle capacity. This bull is very easy keeping. This year he was exposed to 60 cows and came in off pasture in great shape. The dam, 75H, is very sound. She is a female with extra capacity, although not tall. 75H is a no problem cow that just does her job.
Bred A.I.: May 10, 2009 Basin Rainmaker 747L -1335495-
Exposed: May 16 - July 7, 2009 to Gumbo Gulch Legacy 5U -1447147-

28

CROSBY DEBUTANTE 100U

FEMALE XBE 100U 1431243 FEBRUARY 13 2008

WOODHILL FORESIGHT
RRAR FORSIGHT 5S 1310099
WWF BRUNO BELLE 53N

PAPA FORTE 1921
BON VIEW GAMMER 85
STEVENSON BRUNO 561G
HOLLBROOK TRENDY 16B

SUMMITCREST OUTLOOK
CROSBY DEBUTANTE 83N 1153808
CROSBY DEBUTANTE 84L

SUMMITCREST HI FLYER 3B18
SUMMITCREST BLACKBIRD 0G88
POPLAR MEADOWS EQUALIZER 7J
MOLYVIEW DEBUTANTE 10B

BW: 90 lbs. Adj. 205D: 704 lbs.
EPDs: BW: +2.9 32% WW: +45 20% YW: +80 12%
Milk: +23 11% TM: +46 YG: +35 12%

100U is a very easy doing female. She also has a good disposition. She is good footed and correct in her structure. Her early udder development looks promising. Her pedigree would tell you that she should be a stout made individual.
Bred A.I.: April 25, 2009 Basin Rainmaker 747L -1335495-
Exposed: May 10 - July 7, 2009 to Gumbo Gulch Legacy 5U -1447147-

THANKSGIVING HOLIDAY SELECT ANGUS SALE

Dave & Shirley Laye

LEGACY RANCH

Box 175 Clinton BC V0K 1K0
PH: 250-459-7963



Shirley



Dave & Family

In 1998 Dave and Shirley Laye purchased raw undeveloped land north-west of Clinton, BC. This parcel featured a lake, stream and spectacular mountain views and is now known as the "Legacy Ranch". Since then, Dave and Shirley with the help of their two boys Alan and Shane, their twin girls, Tiffany and Crystal and their son-in law Mike, have fenced, cross fenced, cleared and planted a hay field, built cattle pens, hay barns and the log ranch house. Shirley was a city girl turned country and the rest of the family has grown to appreciate the wonders of country life. Although Dave and Shirley are the mainstay of the ranch, the kids are always there for haying or those times their support is needed. We have a small herd of 16 Red Angus cows with a good bull, Donar accentuating a good head, long body and deep red color, producing some great calves. In developing our herd and name, Shirley devotes time to taming and halter breaking the yearling bull calves, her boys, as she calls them.

As well as producing Red Angus cattle, the Legacy Ranch is soon to open as a guest ranch accommodation for two couples. The ranch experience we offer includes cattle penning and gymkhanas to the city slicker. We currently have a black paint stallion with 17 horses, some to ride and some to breed. Come visit us online at our website: legacyranch.ca or better yet in person.



29 RED LEGACY ROSEBUD 1W

FEMALE LRDL 1W 1517291 JANUARY 22 2009

RED G A EASY RIDER 614J
RED GLY DONAR 26P 1224743
RED TG REGAL 26L

RED LAZY MC NEW RELEASE 29F
RED GA GOLDETTE 433F
RED BLUE SPRUCE ZORRO 62J
RED T G REGAL SKY 16G

RED G A EASY RIDER 673K
RED SPALL VALLEY ROSEBUD 4P 1276577
RED SPA HILLS JACKLYN 36J

RED LAZY MC NEW RELEASE 29F
RED GA DUCHESS 444F
RED BAR-X NORMAN 29E
RED GIRVINMERE ROSALEE 40E

BW: 80 lbs.
EPDs: N/A

Combining the breeding of Lazy MC, Blue Spruce, Bar X and Girvinmere.



Lot 29 - Red Legacy Rosebud 1W

30 RED LEGACY SODAK 2W

FEMALE LRDL 2W 1517289 JANUARY 28 2009

RED G A EASY RIDER 614J
RED GLY DONAR 26P 1224743
RED TG REGAL 26L

RED LAZY MC NEW RELEASE 29F
RED GA GOLDETTE 433F
RED BLUE SPRUCE ZORRO 62J
RED T G REGAL SKY 16G

RED SODAK PIONEER J9517
RED BAR-X SODAK MIST 168N 1176836
RED BAR-X TIBBIE 1000 40K

SODAK PIONEER 5303
RED SODAK OSC 3061
RED VGW RAMBLER 1000
RED BAR-X TIBBIE 227H

BW: 88 lbs.
EPDs: N/A

A Donar 26P daughter out of a well bred Bar X female who combines the blood to two great sires, Sodak Pioneer and Red VGW Rambler.



Lot 30 - Red Legacy Sodak 2W

THANKSGIVING HOLIDAY SELECT ANGUS SALE

31

RED LEGACY ROSALEE 7W

FEMALE LRDL 7W 1517292 APRIL 18 2009

RED G A EASY RIDER 614J
RED GLY DONAR 26P 1224743
 RED TG REGAL 26L

RED G A EASY RIDER 673K
RED LEGACY ROSALEE 2S 1321995
 RED SPA HILLS ROSALEE 14K

RED LAZY MC NEW RELEASE 29F
 RED GA GOLDETTE 433F
 RED BLUE SPRUCE ZORRO 62J
 RED T G REGAL SKY 16G

RED LAZY MC NEW RELEASE 29F
 RED GA DUCHESS 444F
 RED BAR-X RANGER 40F
 RED SPA HILLS MEADOW LARK 35G

BW: 94 lbs.
 EPDs: N/A

The youngest of the Donar daughters. A line bred Easy Rider female.



An old-fashioned barn raising at Legacy Ranch



Kim Beaudette

MARBERLY ANGUS

4668 Omineca Way Houston BC V0J 1Z2
 PH: 250-845-7483 Work PH: 780-536-2342

Hello and welcome to the 2009 Thanksgiving Select sale. I purchased my first purebred Angus heifer 17 years ago when I was in 4-H. The herd has grown from there, and so has my enthusiasm for the cattle. I am proud to offer a select group of females at this year's sale. I have one bred heifer that, I think, is complete and good enough to go on and produce successfully for today's purebred market. She is A l'd to Bennett Total a breed leading sire of low birth weight calves that grow and perform well. The heifer calves are very good as well. They are stylish, correct and feminine, and should grow into beautiful productive cows. The heifer calves are sired by my smaller framed Sitz Alliance 6595 son. He did a great job with the heifers and second calvers siring low birth weight calves that grew well. I strive to produce sound, productive bulls and females who will just plain work. I hope you enjoy the rest of your summer, and I look forward to discussing the cattle with you on sale day.



32

MARBERLY ERELITE 13U

FEMALE NXS 13U 1425050 FEBRUARY 10 2008

B/R NEW FRONTIER 095
GET-A-LONG PURLIEUS 465 1221503
 GET-A-LONG DUCHESS 6118

TC ADVANTAGE
BOW RIDGE ERELITE 5P 1225386
 LSD ERELITE 5M

B/R NEW DESIGN 036
 WHITE FENCE PRIDE H1
 BALDRIDGE ALFALFA 951
 GET-A-LONG DUCHESS 236

KRUGERRAND OF DONAMERE 490
 TC PRIDE 2010
 BATTLE DUSTIN 2G
 ERELITE OF DALRENE 13Z

BW: 84 lbs. Adj. 205D: 624 lbs. Adj. 365D: 996 lbs.
 EPDs: BW: +2.2 31% WW: +38 20% YW: +64 18%
 Milk: +15 10% TM: +34 YG: +27 18%

Erelite 13U is a good bred heifer sired by Get-A-Long Purlieus 465. This is a bull I purchased from Dennis and Shelly Ericson when they were still raising Black Angus. He is a son of BR New Frontier 095 and he did a tremendous job for us. His females are excellent; they have good tight bags with small teats, and their feet are beautiful. The calves these females are raising are growthy and just plain good. Have a look at 4W; her dam is a 465 daughter. The dam of 13U was sired by the popular bull TC Advantage, and she is very complete. 5P is currently raising a set of twin heifers that are doing well. 13U was Al'd for an early KCF Bennett Total calf, and is believed to be safe to this breeding. Total is known for siring both performance and carcass excellence as well as feminine productive females. I think Total will compliment this heifer very well, and the calf should be excellent.

Bred A.I.: March 30, 2009 to KCF Bennett Total -1083033-

33

MARBERLY BLACKCAP 3W

FEMALE NXS 3W 1485399 JANUARY 05 2009

SITZ ALLIANCE 6595
MARBERLY CHIEF ALLIANCE 2T 1368012
 GET-A-LONG DUCHESS 4159

A C REMINGTON
ATLASTA ANNA 93S 1342072
 ATLASTA BLACKCAP 27J

SITZ TRAVELER 8180
 SITZ BARBARAMERE JET 2698
 CRESCENT CREEK CHIEF 94H
 GET-A-LONG DUCHESS 785

GDAR SVF RUSS 184B
 CHARTERED EMULOUS LADY D319
 ALSIKE ACRES EX NITRO BLAST 3F
 MLA BLACKCAP 20'91

BW: 72 lbs.
 EPDs: BW: +1.4 5% WW: +40 5% YW: +65 5%
 Milk: +17 5% TM: +37 YG: +25 5%

I really think this heifer has got a bright future ahead of her, whether she is in your front pasture or in the show ring, she will be great. I purchased her dam as a calf through the Black Magic sale and have not been disappointed. She is a model Angus cow, moderate, and easy doing. 93S has a wonderful disposition, and brought home one of the best heifer calves this year; not bad for her second try. Both 3W and 4W are sired by a low birth weight son of the all round sire Sitz Alliance 6595. His calves hit the ground running this spring, and they just grew and grew. Blackcap 3W is a growthy, long, feminine calf. Take a good look at her on sale day, she is the right kind.

THANKSGIVING HOLIDAY SELECT ANGUS SALE

34 MARBERLY MISS BURGESS 4W

FEMALE NXS 4W 1485400 JANUARY 06 2009

SITZ ALLIANCE 6595
MARBERLY CHIEF ALLIANCE 2T 1368012
 GET-A-LONG DUCHESS 4159

GET-A-LONG PURLIEUS 465
MARBERLY MISS BURGESS 1368019
 KDF ERICA 41N

SITZ TRAVELER 8180
 SITZ BARBARAMERE JET 2698
 CRESCENT CREEK CHIEF 94H
 GET-A-LONG DUCHESS 785

B/R NEW FRONTIER 095
 GET-A-LONG DUCHESS 6118
 RIVERBEND POWERLINE 0050
 RONAN R MISS BURGESS 300F

BW: 79 lbs.

EPDs: BW: I+1.7 5% WW: I+41 5% YW: I+68 5%

Milk: I+20 5% TM: I+40 YG: I+27 5%

Burgess 4W is a fancy, feminine heifer calf. Her dam was sired by Purlieu 465, a bull who sires strong, stylish and correct females. 11T is a classic 465 daughter who is moderate and easy doing. She is a beautiful front pasture cow with strong feet and a wonderful udder. I expect 4W to grow into a moderate framed productive female who should work in any environment. I also think she would make a good junior or 4-H project with her good looks and excellent disposition. 4W will be in our show string this fall.



Lot 34 - Marberly Miss Burgess 4W



Diane & Chuck



Charles Dwinnell & Diane Fletcher

MOUNTAIN ASH ANGUS

2856 Nazko Rd Quesnel BC V2J 7E5

PH: 250-249-5203

We calve out about 40 cows, 2/3 red and 1/3 black. Each year we A.I. a few cows to bring in new genetics and keep our herd in a progressive mode. We aim to raise cattle with a quiet temperament and good udders. Our cow herd doesn't get grain so they must be easy keepers as well. We show at local fairs, showing the cattle we raise, not raising Show Cattle! We enjoy the cattle and the great people in this industry.

35 RED MOUNTAIN ASH REBELLA 3W

FEMALE DF 3W 1489892 JANUARY 21 2009

RED COMPASS KARGO 83K
RED LAKEFORD KAPTON 7M 1100517
 RED CHOPPER K MISS CHIEF 7K

RED STELLAR PEPPER 10Z
RED MOUNTAIN ASH FELICIA 2F 859326
 RED STELLAR REBELLA 19D

RED BADLANDS BONUS 702
 BLACK SSS MISS NEW QUICK 208E
 RED SSS RED HANDED 19H
 RED KENRAY MISS CHIEF 138F

RED CM DOCTOR PEPPER 101S
 RED BURKES GEM OF BB 25T
 RED STELLAR ALEXANDER 63A
 RED STELLAR REBELLA 82A

BW: 75 lbs.

EPDs: BW: I-2.3 5% WW: I+10 5% YW: I+21 5%

Milk: I+13 5% TM: I+18 CE: I+10.0 5% MCE: I+2.0 5% Stay: I+10 5%

This is a heifer that we would really like to have kept in our herd as she is from the very first heifer born here when we started our breeding program. Felicia 2F is now a 13 year old cow who has always done a great job on her calves. There is some excellent old breeding from the dam's side and also top bloodlines through the sire. We have found the calves from the Kapton 7M bull to be easy fleshing, early maturing cattle. Rebella 3W is a deep, thick calf who will mature into a moderate sized cow.

36 MOUNTAIN ASH ROSEBUD LASS 32W

FEMALE DF 32W 1502170 MARCH 01 2009

ROTHS MILLCREEK UNIQUE
MOUNTAIN ASH BLACK PANTHER 36P AMF 1213400
 BICKFORD MAGIC 33L

ALBERDA TRAVELER 416
MOUNTAIN ASH ROSEBUD LASS 6R 1256306
 HAMBLIN ROSEBUD LASS 306M

WHITE OAK PRECISE 6002
 MILL CREEK KAREN
 STEVENSON BRUNO 561G
 BICKFORD MAGIC 8E

D H D TRAVELER 6807
 ALBERDA QUEEN KIMBERLY 222
 GARDALE WALKER 5G
 ROSEBUD LASS BUFFALO IU 14F

BW: 91 lbs.

EPDs: BW: I+3.1 5% WW: I+37 5% YW: I+62 5%

Milk: I+17 5% TM: I+35 YG: I+26 5%

A real square calf from an Alberda Traveler 416 daughter. Sired by our Panther 36P bull whose calves were very consistent in type, lots of length and thickness, very well received by commercial bull buyers and purebred female buyers alike. This young lady will fit into today's type of maternal female with no problem.

THANKSGIVING HOLIDAY SELECT ANGUS SALE

Frank & Dianne Strimbold

POPLAR MEADOWS RANCH

Box 111 Topley BC V0J 2Y0

PH: 250-696-3672



Frank & John Tilson at the
2009 World Angus Forum



Frank & Dianne

37 POPLAR MDWS LADY HEATHER 3W

FEMALE HXT 3W 1488085 JANUARY 12 2009

SITZ TRAVELER 8180
S A V FINAL ANSWER 0035 1061938
S A V EMULOUS 8145

G D A R TRAVELER 71
SITZ EVERELDA ENTENSE 1137
BON VIEW BANDO 598
S A V SKY EMULOUS 2124

BENCHMARK PARADIGM 4176
POPLAR MDWS LADY HEATHER 28S 1307303
POPLAR MDWS LADY HEATHER 12M

B/R PRECISE 242 AMF
TIBBIE D OF ALCAN 145
Y-NOT BATTLE CRY 5J
POPLAR MDWS LADY HEATHER 16K

BW: 66 lbs.
EPDs: BW: I-0.2 5% WW: I+51 5% YW: I+89 5%
Milk: I+23 5% TM: I+48 YG: I+39 5%

From the Final Answer 0035 sire that is so popular lately and out of a real good Paradigm daughter. Her dam 28S is from an elite cow that produced our high seller a few years ago. The Paradigm daughters are moderate cows with great udders and feet and all milk heavily. This calf has all the attributes to be an excellent cow. We are only parting with one of our Final Answer calves to showcase what they can do.

38 POPLAR MEADOWS ERICA 11W

FEMALE HXT 11W 1488093 FEBRUARY 05 2009

TC FREEDOM 104
POPLAR MDWS FREE LANCER 4T 1371305
POPLAR MEADOWS ERICA 25K

CONNELLY FOREFRONT
T C RUBY 9095
EBON HILL EQUALIZER 55'96
POPLAR MEADOWS ERICA 25T

Y-NOT BATTLE CRY 5J
POPLAR MEADOWS ERICA 20M 1103965
POPLAR MEADOWS ERICA 26J

O G L BATTLE CRY 427 128
GET-A-LONG PEBBLES 475
EBON HILL EQUALIZER 55'96
POPLAR MEADOWS ERICA 19F

BW: 84 lbs.
EPDs: BW: I+1.9 5% WW: I+34 5% YW: I+57 5%
Milk: I+19 5% TM: I+36 YG: I+23 5%

Her sire has left us the best set of calves we have ever had. They are all long deep with great width. 4T was the Reserve Champ last year in the BC Futurity but we liked his calves so well we bred him to all our cows this spring hence he was not in show shape for this year. The dam 20M is the dam of the heifer we donated last year. She is a well put together female that has done a good job on all her calves. It certainly doesn't hurt 11W to be double bred to Ebon Hill Equalizer 55'96 and also to our Erica cows that we have had for over forty years. This may be the best heifer we have ever offered for sale.

39 POPLAR MEADOWS ERICA 20W

FEMALE HXT 20W 1488100 FEBRUARY 27 2009

TC FREEDOM 104
POPLAR MDWS FREE LANCER 4T 1371305
POPLAR MEADOWS ERICA 25K

CONNELLY FOREFRONT
T C RUBY 9095
EBON HILL EQUALIZER 55'96
POPLAR MEADOWS ERICA 25T

LEADTIME OF ALCAN 150
POPLAR MEADOWS ERICA 31R 1260272
POPLAR MEADOWS ERICA 9B

CONNELLY LEADTIME
ALCAN BLACKCAP 906
POPLAR MEADOWS IGNITION 6Z
POPLAR MEADOWS ERICA 52N

BW: 84 lbs.
EPDs: BW: I+1.3 5% WW: I+36 5% YW: I+65 5%
Milk: I+20 5% TM: I+38 YG: I+29 5%

Another 4T daughter and from a Leadtime dam that gives a lot of performance. A full sister to the dam is in the Remington herd in Alberta. Again this calf traces back to our original Erica that we purchased in 1965. The grandam 9B produced until she was 16 so a lot of longevity in this cow family. Her dam is probably one of our best Leadtime daughters with a picture perfect udder. I would like to keep her but we have her dam bred back the same way so hope we get another heifer.

We have been in the Angus business for over 44 years. After that length of time we feel our animals are predictable and will go on to be productive for their new owners. We have always tried to keep birth weights moderate with good growth rates, fertility and maternal traits while keeping to our aim of low maintenance. Our cattle are raised in a ranch type environment running in bush pastures in the summer and being wintered on a hay diet.

We are very proud of our offering and would like to thank past customers at both the northern Highlights Sales and the Thanksgiving Sales.



Lot 37 -
Poplar
Mdws Lady
Heather 3W



Lot 38 -
Poplar
Meadows
Erica 11W



Lot 39 -
Poplar
Meadows
Erica 20W

THANKSGIVING HOLIDAY SELECT ANGUS SALE



Rita Simpson & Rodger Parton

RRJ RED ANGUS

Box 231 2908 Wetaskiwin Rd, Falkland BC

PH: 250-379-2744

Rodger and I moved to Falkland in the spring of 2006 and purchased our first cattle in Kamloops at the Hamming Dispersal Sale and from there we started raising our Red Angus cattle. We have kept our herd small and they have become members of the family. We have had lots of fun and great experiences. We hope that where ever our cattle go that you will enjoy them as much as we have.

40

RED PR BAR STAR ET 39N

FEMALE PRH 39N 1198104 (ET) MARCH 18 2003

RED GLACIER LOGAN
RED TKP BODACIOUS 693 875126
 RED TKP LASA MADONNA

RED BUFFALO CREEK VC CHIEF 105
 RED GLACIER REBALAS
 RED NA RED BARON 019
 RED ROCK CREEK LASA 7019

RED BRYLOR STAR 47A
RED MEADOW CK BRY STAR 51C 768085
 RED MEADOW CK COPPER 35A

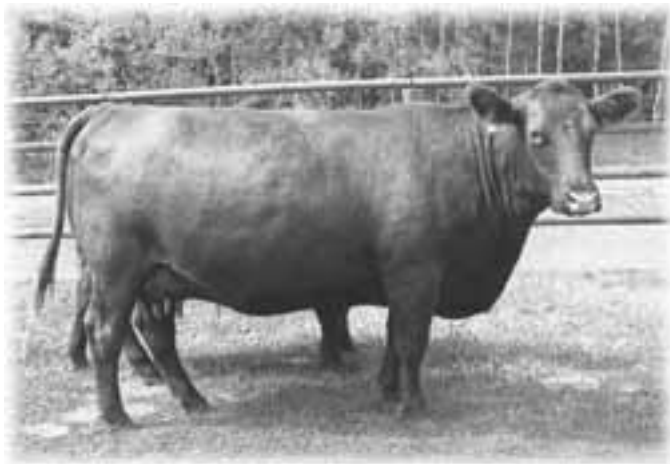
RED BRYLOR DYNASTAR 19S
 RED BRYLOR LEAH 60P
 RED CREEK SIDE COPPER
 RED BRYLOR REPTONA 29X

BW: 86 lbs. Adj. 205D: 549 lbs.

EPDs: BW: +4.5 38% WW: +35 36% YW: +57 34%

Milk: +9 31% TM: +26 CE: -5.0 30% MCE: +1.0 31% Stay: +9 27%

This top cow is an own daughter of the great Bodacious 693. Note Dynastar and Copper breeding on the dam's side, proven Red Angus genetics. Bred A.I.: June 21, 2009 to Red Brylor SDL Redwood 217S -1350610-.



Lot 40 - Red PR Bar Star ET 39N

40A

RED RRJ STAR DUST 03W

FEMALE RRJ 03W 1504490 APRIL 21 2009

RED U-2 ICON 223M
RED U-2 INFINITE 408P 1208758
 RED SVR FIREFLY 37J

RED BLAZE V415
 RED U-2 ANEXA 5F
 RED SSS BOOMER 803B
 RED BROX FIREFLY 24F

RED TKP BODACIOUS 693
RED PR BAR STAR ET 39N 1198104
 RED MEADOW CK BRY STAR 51C

RED GLACIER LOGAN
 RED TKP LASA MADONNA
 RED BRYLOR STAR 47A
 RED MEADOW CK COPPER 35A

BW: 100 lbs.

EPDs: BW: +1+0.8 5% WW: +1+27 5% YW: +1+50 5%

Milk: +1+13 5% TM: +1+26 CE: +1+3.0 5% MCE: +1+3.0 5% Stay: +1+9 5%



Lot 40A - Red RRJ Star Dust 03W



Lot 42 - Red RRJ Star Josie 01S

THANKSGIVING HOLIDAY SELECT ANGUS SALE

41 RED PR BAR KURUBA 57P

FEMALE PRH 57P 1301968 APRIL 10 2004

RED BUF CRK DYNAMICS 3820
RED PR BAR DYNAMO 8L 1041571
 RED RUTHE MINOLA 342

RED RCN DYNAMO 732
 RED BUF CRK PRIMROSE 3150
 RED RUTHE ELEVATION 153A
 RED RUTHE MINOLA 39Y

RED NORTHLINE DANNY-BOY 242C
RED RUTHE KURUBA 564 820667
 RED RUTHE KURUBA 306

WK LIMMERICK
 BLACKBIRD OF G G 42X
 RED KBJ SAM'S PROSPECTOR 133Z
 RED RUTHE FST LADY KURUBA 46T

BW: 100 lbs. Adj. 205D: 590 lbs.
 EPDs: BW: +2.5 43% WW: +35 32% YW: +51 28%
 Milk: +13 24% TM: +31 CE: +4.0 23% MCE: +2.0 21% Stay: +6 8%

Red PR Bar Kuruba 57P was bred and raised in the Peter Hamming PR Bar herd. She combines Dynamo, Danny Boy and Sam's Prospector breeding. Note the impressive Branded Beef son at foot as Lot 41A.
 Exposed: June 15 to August 15, 2009 to Red RRJ Mulberry 02U -1461969-.



Lots 41 & 41A - Red PR Bar Kuruba 57P with Red RRJ Branded Beef 02W

41A RED RRJ BRANDED BEEF 02W

MALE RRJ 02W 1504491 MARCH 27 2009

RED BADLANDS MR BEEF 805
RED BJR AH BRANDED BEEF L107 1103099
 RED HR ROBIN HOOD 80J ET

RED HLH BUSTER 406 603
 RED BADLANDS KEEPSAKE 63Z
 RED LMAN ROBIN HOOD 1174B
 RED HR MISS PROSPECTOR 26B

RED PR BAR DYNAMO 8L
RED PR BAR KURUBA 57P 1301968
 RED RUTHE KURUBA 564

RED BUF CRK DYNAMICS 3820
 RED RUTHE MINOLA 342
 RED NORTHLINE DANNY-BOY 242C
 RED RUTHE KURUBA 306

BW: 90 lbs.
 EPDs: BW: I+0.8 5% WW: I+35 5% YW: I+64 5%
 Milk: I+15 5% TM: I+32 CE: I+8.5 5% MCE: I+5.5 5% Stay: I+8 5%



42 RED RRJ STAR JOSIE 01S

FEMALE RRJ 01S 1371135 NOVEMBER 05 2006

RED BFCK CHEROKEE CNYN 4912
RED SODER CANYON 126M 1134764
 RED SODER MS ZEUS 0217K

RED BUF CRK CHF 824-1658
 RED MRM 1431 8611 9109
 RED SODERGLEN ZEUS 6042F
 RED SODERGLEN FREYJA 5107E

RED TKP BODACIOUS 693
RED PR BAR STAR ET 02P 1226552
 RED MEADOW CK BRY STAR 51C

RED GLACIER LOGAN
 RED TKP LASA MADONNA
 RED BRYLOR STAR 47A
 RED MEADOW CK COPPER 35A

BW: 73 lbs.
 EPDs: BW: I+1.2 5% WW: I+34 5% YW: I+64 5%
 Milk: I+14 5% TM: I+30 CE: I+2.5 5% MCE: I-1.0 5% Stay: I+9 5%

This young female possesses a very impressive pedigree containing Hi Ho, EBV, Easy Rider and Bodacious. Note the great old embryo donor, Red Meadow CK BRY Star 51C.
 Bred: July 1, 2009 to Red RRJ Mulberry 02U -1461969-.

43 RED RRJ STAR BARBIE 01W

FEMALE RRJ 01W 1496406 FEBRUARY 22 2009

RED BUF CRK ROMEO L081
RED CHAMPLAIN SERENADE 2513P 1327631
 RED CHAMPLAIN MARIAS ECHETA 08

RED BECKTON JULIAN GG B571
 RED BUF CRK PRIMROSE 5679
 RED GLACIER MARIAS 548
 RED BUF CRK ECHETA 3071

RED SODER CANYON 126M
RED RRJ STAR JOSIE 01S 1371135
 RED PR BAR STAR ET 02P

RED BFCK CHEROKEE CNYN 4912
 RED SODER MS ZEUS 0217K
 RED TKP BODACIOUS 693
 RED MEADOW CK BRY STAR 51C

BW: 73 lbs.
 EPDs: BW: I-1.4 5% WW: I+30 5% YW: I+58 5%
 Milk: I+18 5% TM: I+33 CE: I+7.0 5% MCE: I+2.5 5% Stay: I+12 5%

This tremendous prospect is sired by the popular AI sire, Champlain Serenade 2513P, a Romeo out of an outstanding Marias daughter. Note this female goes back to the great donor cow, Red Meadow CK Bry Star 51C.



Lot 43 - Red RRJ Star Barbie 01W

THANKSGIVING HOLIDAY SELECT ANGUS SALE

Jim & Shirley Moon

RED MOON ANGUS

10114 Shell Rd Vanderhoof BC
PH: 250-567-9762

The Moon Family is once again happy to welcome you to the BC Angus Associations Thanksgiving Select Sale. We have just started our summer show season in BC at the time of writing and have just finished up at the Vanderhoof Gold Show. It is with great pleasure we have elected to consign three animals from our show string of 2009. These females were part of our string helping Red Moon win the Premier Exhibitor and Premier Breeders Awards. We were very proud to see three of the four animals in the Junior Female Champion class were Red Moon Females. Two of our yearling heifers also finished first and third in the Ranchers Choice Class, we think this is the best class of the fair. The class is judged by commercial cattlemen, They know what works!

We are on to the show in Smithers this coming weekend, please don't hesitate to call if you would like a show update on the females or more information on our herd.



Jim, Shirley & Tom Moon



Red Moon Angus heifers at the World Angus Forum



Lot 45 - Red Moon Reba 31U

44

RED MOON DYNASTORM 38U

FEMALE MOON 38U 1442235 JANUARY 30 2008

RED GLACIER CHATEAU 744
RED PERKS CHATEAU 309R 1291732
RED PERKS MISS RAMBO 8105

RED LMAN KING ROB 8621
RED GLACIER REBALA
RED 4L RAMBO R621
RED PJMC MS GOLDEN BOY 305

RED KBJ KNIGHT 17J
RED BROX DYNASTORM 28L 1060513
RED BROX DYNASTORM 11J

RED YY RED KNIGHT 640F
KBJ ROUND LASSIE 18T
RED BRYLOR NEW TREND 22D
RED SSS DYNASTORM 280W

BW: 88 lbs. Adj. 205D: 683 lbs.

EPDs: BW: +1.1 37% WW: +32 28% YW: +56 22%

Milk: +16 22% TM: +32 CE: +3.0 20% MCE: +5.0 19% Stay: +12 2%

This Dynastorm heifer is going to be a great producer for her new owner. She has been one of our favorites since birth and has all the traits of a good female and comes from a great dam we purchased from Brox Stock Farms of Wetaskiwin. The dam of this heifer Red Brox Dynastorm 28L has now been designated as an elite female. Her sire Red Perks Chateau 309R has produced some great calves and also stood as National US Reserve Champion Bull in 2004. Exposed: March 31 to May 10, 2009 to Red Get-A-Long Ten 710 -1421655-

45

RED MOON REBA 31U

FEMALE MOON 31U 1442248 JANUARY 20 2008

RED NORTHLINE ROB ROY 122K
RED NORTHLINE REV 341R 1334173
RED NORTHLINE GEM 341N

RED WILD ROSE ROBIN HOOD 11F
RED BAR EL SYBIL 122E
RED NORTHLINE KING 305J
RED NORTHLINE QUEEN 240H

RED GET-A-LONG MEGA FORCE 285
RED MOON REBA 14P 1222523
RED BRYLOR ALEXIS 67B

RED COMPASS KARGO 83K
RED PRIDETA OF NEW LODGE 34Y
RED OAK RIDGE ALEXANDER
RED MEM SHAWNEE 224U

BW: 98 lbs. Adj. 205D: 676 lbs.

EPDs: BW: +2.6 34% WW: +31 23% YW: +59 17%

Milk: +17 14% TM: +33 CE: +0.0 13% MCE: +3.0 12% Stay: +10 0%

We believe in promoting our sale females. Here is one you can carry on with. She has already been halter broke and shows herself off in the ring. A very broody heifer from the Canadian Red Angus Champion Bull, Red Northline Rev 341R. Her dam is a daughter from one of our originals purchased from Get-A-Long Stock Farms. Our old 2067 cow was one of the best we ever bought. This heifer stood at the front of the line of bred heifers in Vanderhoof, placing second to her herd mate, 20 in class.

The service sire, Red Get-A-Long Ten 710, a great son from Red Bell Rock Jester 316N, was purchased from Get-A-Long Stock Farms, Wetaskiwin, Alberta. Thanks Dennis for another good bull.

Exposed: March 31 to May 10, 2009 to Red Get-A-Long Ten 710 -1421655-

THANKSGIVING HOLIDAY SELECT ANGUS SALE

46 RED MOON STAR 17W

FEMALE MOON 17W 1496139 JANUARY 15 2009

RED PIE ATLANTIC 2204
RED NORTHLINE CRUSH 59R 1287508
 RED NORTHLINE PRINCESS 59L

RED COLE MISTER "E" 9J
 RED PIE BOTEET 899
 RED NORTHLINE KING 305J
 RED KWS ROCKY PRINCESS 59J

RED BAKERS CENTURY
RED PR BAR CENTURY STAR 7M 1120827
 RED MEADOW CK BRY STAR 51C

RED TOWAW MATRIX 19D
 RED MEM MINOLA 71E
 RED BRYLOR STAR 47A
 RED MEADOW CK COPPER 35A

BW: 95 lbs.
 EPDs: BW: I+1.5 5% WW: I+31 5% YW: I+49 5%
 Milk: I+13 5% TM: I+28 CE: I+3.0 5% MCE: I-0.5 5% Stay: I+8 5%

Another member of our show string. This heifer stood second in a group of 18 heifer calves at the gold show in Vanderhoof. She would make a great 4H or Junior Angus project. Her sire, Red Northline Crush 59R is a welcome addition to the bull battery at Red Moon Angus. His calves are showing length and lots of natural muscle. Your cow herd is based on good females; here is a female that will return your investment every year.



Lot 46 - Red Moon Star 17W

47 RED MOON SOAPY 23W

FEMALE MOON 23W 1496146 JANUARY 20 2009

RED PIE ATLANTIC 2204
RED NORTHLINE CRUSH 59R 1287508
 RED NORTHLINE PRINCESS 59L

RED COLE MISTER "E" 9J
 RED PIE BOTEET 899
 RED NORTHLINE KING 305J
 RED KWS ROCKY PRINCESS 59J

RED BAKERS CENTURY
RED GET-A-LONG SOAPY 2109 1133187
 RED GET-A-LONG SOAPY 851

RED TOWAW MATRIX 19D
 RED MEM MINOLA 71E
 RED GET-A-LONG WELTERWEIGHT722
 RED GET-A-LONG SOAPY 043

BW: 97 lbs.
 EPDs: BW: I+1.6 5% WW: I+31 5% YW: I+46 5%
 Milk: I+14 5% TM: I+29 CE: I+2.5 5% MCE: I+0.5 5% Stay: I+9 5%

From the great Soapy female line. She is also sired by Red Northline Crush 59R. Her dam is one of our favorites, Red Get-A-Long Soapy 2109; she is a great producer and comes from our good friends and elite breeders, Dennis and Shelly Ericson of Get-A-Long Stock Farms. This heifer will not be the biggest one on sale day, but we feel she will be a great addition to your breeding program.



Red Northline Rev 341R

THANKSGIVING HOLIDAY SELECT ANGUS SALE

Dan & Jeanette, Allison, Gregory Speller

SEALIN CREEK RANCH

Box 59 Monte Lake BC V0E 2N0

PH: 403-375-2268

Welcome to the BC Angus Association's Annual Thanksgiving Select Angus Female Sale. At Sealin Creek Ranch, we run a herd of 150 registered Black Angus cows and 30 commercial Angus cows. The registered herd is made up of mainly Canadian pedigrees. Our cattle are raised under ranch conditions, mostly for the commercial cattleman. All cows and calves go to mountain ranges for the summer and receive no creep feed. We believe the bull calves should be raised under the same conditions that they will go to work in.

We hope you like what we have to offer today and thank you for your continued support at this sale.



Gregory, Dan, Janette & Allison



Lot 48 - Sealin Creek Big Deal 1W

48 SEALIN CREEK BIG DEAL 1W

MALE PAK 1W 1495547 FEBRUARY 03 2009

SEALIN CREEK BIG DEAL 88R
SEALIN CREEK BIG DEAL 117T 1384339
ADELPHI BLACKBIRD 88J

ANGUS ACRES HEADS UP 188L
SEALIN CREEK ROSEBUD LASS 82T 1384309
ADELPHI ROSEBUD LASS 60E

FIGURE 8 ANGUS BIG DEAL 109M
ADELPHI ELINE 10Z
ANGUS ACRES TOM BOY 64D
ADELPHI BLACKBIRD 60X

ANGUS ACRES HEADS UP 124G
ANGUS ACRES KARAMA 98H
DOUBLE AA RETO 41'93
ADELPHI W ROSEBUD LASS 11Y

BW: 79 lbs.
EPDs: N/A

A real herd sire prospect out of a first calf heifer with a great straight Canadian pedigree.



Sealin Creek Eline 6N - Dam of Lot 50

49 SEALIN CREEK ELINE 33U

FEMALE PAK 33U 1434604 FEBRUARY 05 2008

TORRO NEGRO TRADITION 55H
SILVER DOME TRADITION 37L 1076677
VEGANA BLACKCAP 38E

ANGUS ACRES HEADS UP 188L
SEALIN CREEK ELINE 64N 1162024
SEALIN CREEK ELINE 90L

ED RENE ESTON 22D
STONEHURST LUCY 8E
SPRUCE VIEW LANCER 4B
KEWETIN BLACKCAP 13A

ANGUS ACRES HEADS UP 124G
ANGUS ACRES KARAMA 98H
ANGUS ACRES TOM BOY 23D
ADELPHI ELINE 61A

BW: 95 lbs.
EPDs: N/A

This bred heifer is out of real old Canadian breeding.
Exposed: April 24 to May 30, 2009 to Figure 8 Angus Pacesetter 252T - 1395680-.

THANKSGIVING HOLIDAY SELECT ANGUS SALE

50 SEALIN CREEK ELINE 10W

FEMALE PAK 10W 1495504 FEBRUARY 09 2009

ANGUS ACRES HEADS UP 124G
ANGUS ACRES HEADS UP 188L 1059996
 ANGUS ACRES KARAMA 98H

N.B.A. BLACK MAGIC 48KK
SEALIN CREEK ELINE 6N 1161979
 SEALIN CREEK ELINE 106J

ANGUS ACRES HEADS UP 31D
 DV KARAMA ESTON 3C
 ANGUS ACRES TAYLOR MADE 53E
 ANGUS ACRES KARAMA 38E

VIKING BLACK MAGIC LAD 113H
 VIKING 36A TIBBIE 132F
 ANGUS ACRES PRANCER 259E
 SEALIN CREEK ELINE 70E

BW: 92 lbs.
 EPDs: N/A

A full sister to the 6T bull that sold to Remington Land & Cattle two years ago at the Thanksgiving Sale.



Lot 50 - Sealin Creek Eline 10W

51 SEALIN CREEK ROSEBUD 28W

FEMALE PAK 28W 1495465 FEBRUARY 16 2009

FIGURE 8 ANGUS BIG DEAL 109M
SEALIN CREEK BIG DEAL 88R 1266288
 ADELPHI ELINE 10Z

ANGUS ACRES TOM BOY 64D
ADELPHI ROSEBUD 2J 973095
 ADELPHI ROSEBUD 30B

FIGURE 8 ANGUS BIG DEAL
 ANGUS ACRES COUNTESS 278B
 WIWA CREEK ATLAS 1'87
 ELINE OF SKEENA 16H

ANGUS ACRES TOM BOY 196Z
 ANGUS ACRES VELVET 65U
 RONAN TEX 69Y
 LITTLE BUFFALO D ROSEBUD 15M

BW: 85 lbs.
 EPDs: N/A

This heifer has a real good Canadian pedigree. The Rosebud cow family originated from the Little Buffalo herd. There have been very few Rosebud females offered for sale from the Sealin Creek herd as they have been retained in the herd. She is out of a Tom Boy daughter.



Lot 51 - Sealin Creek Rosebud 28W

52 SEALIN CREEK BURGESS 73W

FEMALE PAK 73W 1495458 MARCH 01 2009

ANGUS ACRES HEADS UP 124G
ANGUS ACRES HEADS UP 188L 1059996
 ANGUS ACRES KARAMA 98H

RONAN TEX 17A
SEALIN CREEK BURGESS 78G 950456
 ADELPHI BURGESS 84A

ANGUS ACRES HEADS UP 31D
 DV KARAMA ESTON 3C
 ANGUS ACRES TAYLOR MADE 53E
 ANGUS ACRES KARAMA 38E

ANGUS ACRES BANDOLIER 78K
 ELKWATER BLACKCAP 27P
 RONAN TEX 69Y
 ADELPHI BONNIE 26W

BW: 94 lbs.
 EPDs: N/A

This heifer is out of a good deep bodied cow. Straight Canadian pedigree.



Lot 52 - Sealin Creek Burgess 73W

THANKSGIVING HOLIDAY SELECT ANGUS SALE

Frank & Miriam Ludwig

SKARA BRAE ANGUS

6984 Carmen Hill Rd, Vanderhoof BC V0J 3A1

PH: 250-567-9466



Frank & Miriam Ludwig

Skara Brae Angus is pleased to participate in another Thanksgiving Select Angus Female Sale. We have been raising Angus cattle for 5 years, with our first purebred heifers purchased in 2005 from Crosby Angus. We have enjoyed this and it brings us closer to our roots. Frank was raised on a small farm in the lower mainland and participated in 4-H for most of his youth. Miriam's grandparents homesteaded in the Vanderhoof area many years ago and then farmed in the southern interior. Those times on their farm left lasting memories.

We wish to thank all our buyers from last year for making our first sale a success!

The two yearlings and heifer calf we bring to sell this year are all sired by Justamere Midland 308N; bringing genetics from top-selling BR Midland and elite bull Twin Valley Precision E101. We sold several of his heifer calves last year at the Northern Highlights Sale, and two bull calves this spring at the Vanderhoof All-Breed bull sale, bringing the top-seller for Black Angus. His calves are fast growing, early maturing and known to have good maternal traits.

Both heifers are bred to our herd sire Skara Brae Tom Boy 12S, out of a Sealin Creek bull. His dam we purchased from Ron and Lois Crosby- she was a 'must have' for me. Crosby Blackcap 81M is a Northline Jedi daughter out of Silver Star Erica 36F. We sadly lost 81M this year but see a lot of potential with Tom Boy's offspring. His heifer calves are thick in the middle with feminine heads.



Justamere Midland 308N - Sire of Lots 53, 54 & 55

53 HEARTLAND D L 3U

FEMALE HDL 3U 1440049 JANUARY 09 2008

BR MIDLAND AMF NHF
JUSTAMERE MIDLAND 308N 1181371
BLACKBIRE OF RR 832

WILP/HAR SUPREME 16K
WILP/HAR BLACKCAP 38P 1299101
WILP/HAR BLACKCAP 71K

TWIN VALLEY PRECISION E161
BR ROYAL LASS 7036-19
HERO 6267 OF R R 2418
BLACKBIRD OF R R 8253

SCHURRTOP SUPREME
WILP/HAR ELBA 76D
WILP/HAR AMBUSH 20F
WILP/HAR BLACKCAP 70G

BW: 78 lbs.
EPDs: N/A

This is a Midland daughter out of a good Wilp/Har cow. We purchased Blackcap 38P last year and look forward to more of her calves. This is a long, straight heifer that has a lot of potential being bred to our Tom Boy bull. She is being shown at the Dawson Creek Fair early in August.

Exposed: April 25 to July 12, 2009 to Skara Brae Tom Boy 12S -1364436-



Skara Brae Tom Boy 12S - Service Sire to Lots 53 & 54

54 HEARTLAND D L 6U

FEMALE HDL 6U 1440051 JANUARY 15 2008

BR MIDLAND AMF NHF
JUSTAMERE MIDLAND 308N 1181371
BLACKBIRE OF RR 832

YOUNG DALE MONARCH 12E
MVF DAISY 46H 926192
MVF DAISY 3E

TWIN VALLEY PRECISION E161
BR ROYAL LASS 7036-19
HERO 6267 OF R R 2418
BLACKBIRD OF R R 8253

DALRENE EXTRA 36A
YOUNG DALE GRACE 16C
CENTURY TOUCHSTONE 131
MVF DAISY 38C

BW: 68 lbs.
EPDs: BW: I+3.5 5% WW: I+36 5% YW: I+68 5%
Milk: I+11 5% TM: I+29 YG: I+33 5%

Another Midland daughter, this one is really our favourite. She is very well bred out of the MVF Daisy family. This heifer really looks great! She is stylish and straight, with a little larger frame. We are excited to see the calf she will produce with Tom Boy who tends to a thick body with a feminine head. She will sure to add to your herd. 6U will be shown at the Bulkley Valley Exhibition this summer.

Exposed: April 25 to July 12, 2009 to Skara Brae Tom Boy 12S -1364436-

THANKSGIVING HOLIDAY SELECT ANGUS SALE

55

SKARA BRAE BLACKCAP 1W

FEMALE SBX 1W 1503000 JANUARY 05 2009

BR MIDLAND AMF NHF
JUSTAMERE MIDLAND 308N 1181371
BLACKBIRE OF RR 832

TWIN VALLEY PRECISION E161
BR ROYAL LASS 7036-19
HERO 6267 OF R R 2418
BLACKBIRD OF R R 8253

EXAR BIG TIMBER 1118
JUSTAMERE 1118 BLACKCAP 610P 1222957
KFC BLACKCAP 2L

NORTHERN IMPROVEMENT 4480 GF
WK TILLIE 7277
KFC OSCAR 6H
THOMAS BLACKCAP 4418

BW: 96 lbs.

EPDs: BW: +2.6 5% WW: +40 5% YW: +69 5%

Milk: +19 5% TM: +39 YG: +29 5%

One look says it all with this Midland daughter from a great Justamere cow. Her dam, Blackcap 610P, is a full package deal when it comes to cows. 1W is very similar to her mother with a lot of volume and balance. And a real charmer! She will be shown at several exhibitions this summer. Her sisters have sold at the Thanksgiving & Northern Highlight Select Angus Female Sales in the past two years.



Lot 55 - Skara Brae Blackcap 1W

Rosine & Gary Ryan-Lewis

VALLEY VIEW FARM

4799 McLeery Road, Armstrong, BC V0E 1B3

PH: 250-546-9519 Email: gary@airspeedwireless.ca

Valley View Farm is pleased to be offering an outstanding selection of registered Black Angus cow-calf pairs, bred heifers and one bull calf in the sale. Bulls of high quality and a good range of excellent females that were acquired from top breeders across Canada were used to develop this herd. We would like to extend our sincere thanks to Trevor and Debbie White of Northern Black Angus in assisting us with their expertise in the selection of our initial herd base. We would also like to thank our past customers and we look forward to seeing you at the sale.



Valley View cows

56

VVF TIBBIE 01U

FEMALE RGRL 01U 1453214 JANUARY 21 2008

S A F FOCUS OF E R
MYTTY IN FOCUS 1251205
MYTTY COUNTESS 906

S A F FAME
G D A R FOREVER LADY 246
SITZ ALLIANCE 6595
BALDRIDGE COUNTESS 357

G A R GRID MAKER AMF NHF
MVF TIBBIE 16S 1346776
MVF TIBBIE 115K

G D A R TRAVELER 044
G A R PRECISION 2536
TC STOCKMAN 365
RRD TIBBIE 12E

BW: 77 lbs. Adj. 205D: 718 lbs.

EPDs: BW: +2.1 32% WW: +51 24% YW: +94 19%

Milk: +18 20% TM: +44 YG: +43 19%

VVF Tibbie 01U, a tremendous opportunity to select a top daughter of the ABS headline sire Mytty In Focus. Note this high EPD female is a daughter of NBA Tibbie 13S, Lot 63.

Bred A.I.: April 9, 2009 to Bon View New Design 208 -1088254-

Exposed: May 6 to June 6, 2009 to VVF In Focus 02U -1453215-



Lot 56 - VVF Tibbie 01U

THANKSGIVING HOLIDAY SELECT ANGUS SALE



Lot 57 - VVF Tibbie 04U



Lot 60 - VVF 5050 New Design 7W

57 VVF TIBBIE 04U

FEMALE RGRL 04U 1466497 FEBRUARY 07 2008

G A R RETAIL PRODUCT AMF NHF
MVF RETAIL PRODUCT 54S 1346624
 MVF TIBBIE 123L

G A R PRECISION 1680
 G A R EXT 4927
 TC STOCKMAN 365
 MVF TIBBIE 179G

VERMILION DATELINE 7078
SCC TIBBIE 27S 1350027
 MVF TIBBIE 52F

CONNELLY DATELINE
 VERMILION BLACKBIRD 5044
 BON VIEW EMULATION EXT 473
 MVF TIBBIE 21D

BW: 84 lbs. Adj. 205D: 740 lbs.
 EPDs: BW: +5.5 28% WW: +51 19% YW: +94 10%
 Milk: +21 11% TM: +47 YG: +43 10%

This great young female possesses a superb pedigree. Every sire on the second generation of this tabulation is a nationally recognized AI sire, excellent EPDs here and a great future brood cow and a daughter of SCC Tibbie 27S, Lot 64.

Bred A.I.: April 1, 2009 to Bon View New Design 208 -1088254-
 Exposed: May 6 to June 6, 2009 to VVF In Focus 02U -1453215-

59 POPLAR MEADOWS BARBARA 3'08

FEMALE FIRE 3U 1428707 JANUARY 12 2008

CONNELLY FOREFRONT
TC FREEDOM 104 1169224
 T C RUBY 9095

CONNELLY FRONTLINE
 EILEEN HEARTLAND CONANGA6443
 TC STOCKMAN 365
 TC RUBY 4068

BENCHMARK PARADIGM 4176
POPLAR MEADOWS BARBARA 3'06 1301447
 ATLASTA BARBY 12P

B/R PRECISE 242 AMF
 TIBBIE D OF ALCAN 145
 GRANDVIEW WOMACK DIRECT
 ATLASTA BARBY 58H

BW: 95 lbs. Adj. 205D: 789 lbs.
 EPDs: BW: +5.6 30% WW: +52 23% YW: +91 18%
 Milk: +26 17% TM: +52 YG: +39 18%

Poplar Meadows Barbara 3'08 is an own daughter of the breed legend TC Freedom She was selected from the 2008 B C Northern Highlights Sale as a select heifer from Tanya and Monty Belsham and is a maternal sister to the donation heifer, Lot 1.

Bred A.I.: April 17, 2009 to Bon View New Design 208 -1088254-
 Exposed: May 6 to June 6, 2009 to VVF In Focus 02U -1453215-

58 VVF LASS 05U

FEMALE RGRL 05U 1466499 FEBRUARY 12 2008

G A R RETAIL PRODUCT AMF NHF
MVF RETAIL PRODUCT 54S 1346624
 MVF TIBBIE 123L

G A R PRECISION 1680
 G A R EXT 4927
 TC STOCKMAN 365
 MVF TIBBIE 179G

G A R GRID MAKER AMF NHF
MVF LASS 99S 1346799
 BXB MISS VENTURE 118L

G D A R TRAVELER 044
 G A R PRECISION 2536
 V F VENTURE FORWARD
 BXB MISS EXT 100J

BW: 83 lbs. Adj. 205D: 711 lbs.
 EPDs: BW: +5.8 29% WW: +50 19% YW: +94 10%
 Milk: +19 10% TM: +44 YG: +44 10%

A paternal sister to VVF Tibbie 01U, Lot 56 out of SCC Tibbie 27S, Lot 64, the powerful Grid Maker daughter from Mountain View Farms.

Bred A.I.: April 17, 2009 to Bon View New Design 208 -1088254-
 Exposed: May 6 to June 6, 2009 to VVF In Focus 02U -1453215-

60 VVF 5050 NEW DESIGN 7W

MALE RGRL 7W 1497176 JANUARY 02 2009

B/R NEW DESIGN 036
G A R NEW DESIGN 5050 AMF NHF 1492338
 G A R PRECISION 706 AMF

V D A R NEW TREND 315
 B/R BLACKCAP EMPRESS 76
 G A R PRECISION 1680
 G A R EXT 2114

ROYAL NEW DESIGN DRCC 5104R
ROYAL LUCY DRCC 7047T 1367863
 ROYAL LUCY DRCC 3007N

BON VIEW NEW DESIGN 878
 ROYAL PERSEPHONE DRCC 1043L
 ALBERDA TRAVELER 416
 THOMAS LUCY 0732

BW: 73 lbs.
 EPDs: BW: I+1.3 5% WW: I+50 5% YW: I+97 5%
 Milk: I+31 5% TM: I+56 YG: I+48 5%

VVF 5050 New Design 7W is the first son of GAR New Design 5050 to be registered in Canada and to our knowledge the first one to sell. His sire is the featured and lead off sire in Select Sires 2009 program. He is one of the best "Value Added" bulls in the business. He excels for low birth weight and high growth, ranks #3 for \$B and #2 for docility.

GAR New Design 5050, GAR Predestined and TC Total meet or exceed the marbling and \$Grid EPD recommendations of the CAB Best Practices Manual.

THANKSGIVING HOLIDAY SELECT ANGUS SALE



Lot 61 - N.B.A Burgess 28T



Lot 64 - SCC Tibbie 27S

61 N.B.A. BURGESS 28T
FEMALE NBA 28T 1391060 FEBRUARY 06 2007

G A R PRECISION 1680
G A R RETAIL PRODUCT AMF NHF 1238634
G A R EXT 4927

TEHAMA BANDO 155
9J9 G A R 856
N BAR EMULATION EXT
G A R TRAVELER 641

F A R KRUGERRAND 410H
MVF BURGESS 93R 1290360
BICKFORD BURGESS 22A

KRUGERRAND OF DONAMERE 490
F A R ERIANNA 286F
Q A S TRAVELER 23-4
BICKFORD BURGESS 38Y

BW: 73 lbs. Adj. 205D: 715 lbs.
EPDs: BW: +2.3 33% WW: +48 25% YW: +89 19%
Milk: +18 20% TM: +42 YG: +42 19%

This outstanding young cow came in dam from the 2006 MVF 10th Annual Production Sale. Bickford Burgess 22A produced a \$10,000 son in the 2001 Cattlemen's Connection Bull Sale, Manitoba.
Exposed: May 6 to June 6, 2009 to VVF In Focus 02U -1453215-

61A VVF MISS BURGESS 8W
FEMALE RGRL 8W 1490806 JANUARY 19 2009

SIRE: BON VIEW NEW DESIGN 208 1088254

BW: 69 lbs.
EPDs: BW: +1+0.8 5% WW: +1+49 5% YW: +1+89 5%
Milk: +1+31 5% TM: +1+55 YG: +1+41 5%

62 MVF FAVORITE 67S
FEMALE ABA 67S 1346863 FEBRUARY 22 2006

BON VIEW BANDO 598
CONNELLY FREIGHTLINER 964749
JOANA ERICA OF CONANGA

TEHAMA BANDO 155
BON VIEW DORA 56
NICHOLS HEAVY DUTY X100
JARNE ERICA OF CONANGA

NICHOLS EXTRA H6
MVF FAVORITE 9P 1222531
MVF FAVORITE 98M

N BAR EMULATION EXT
NICHOLS EILEEN MAY F261
BON VIEW NEW DESIGN 878
MADSENS FAVORITE 16K

BW: 90 lbs. Adj. 205D: 812 lbs.
EPDs: BW: +2.8 34% WW: +50 26% YW: +89 19%
Milk: +24 21% TM: +49 YG: +39 19%

MVF Favorite 67S was selected as a heifer calf from the 2006 MVF Production Sale. She is from a top cow family at MVF, not only is she extremely well bred, she also possesses great EPDs.
Exposed: May 6 to June 6, 2009 to VVF In Focus 02U -1453215-

62A VVF FAVORITE 9W
FEMALE RGRL 9W 1490807 JANUARY 30 2009

SIRE: ROYAL NEW DESIGN DRCC 7016T 1367846

BW: 63 lbs.
EPDs: BW: +1+2.3 5% WW: +1+46 5% YW: +1+86 5%
Milk: +1+25 5% TM: +1+48 YG: +1+40 5%

63 N.B.A. TIBBIE 13S
FEMALE NBA 13S 1348436 JANUARY 19 2006

MVF TRIUMPH 13L
N.B.A. TRIUMPH 30P 1202331
NBA 9FB3 TIBBIE 33L

YOUNKIN TRIUMPH 4966
MVF ELLEN 111J
RITO 9FB3 OF 5H11 FULLBACK
MVRB TIBBIE 63H

MVF TRIUMPH 13L
N.B.A. TIBBIE 9N 1179784
NBA 9FB3 TIBBIE 32L

YOUNKIN TRIUMPH 4966
MVF ELLEN 111J
RITO 9FB3 OF 5H11 FULLBACK
MVRB TIBBIE 63H

BW: 85 lbs.
EPDs: BW: +4.8 19% WW: +51 13% YW: +89 6%
Milk: +15 14% TM: +41 YG: +38 6%

NBA Tibbie 13S is from one of the most prolific cow families in the Angus world.
Bred A.I.: July 11, 2009 to GAR Presdestined -1162499-

63A VVF TIBBIE 10W
FEMALE RGRL 10W 1490808 FEBRUARY 08 2009

SIRE: ROYAL NEW DESIGN DRCC 7016T 1367846

BW: 77 lbs.
EPDs: BW: +1+3.3 5% WW: +1+47 5% YW: +1+86 5%
Milk: +1+21 5% TM: +1+44 YG: +1+40 5%

64 SCC TIBBIE 27S
FEMALE BDS 27S 1350027 (ET) FEBRUARY 03 2006

CONNELLY DATELINE
VERMILION DATELINE 7078 1018284
VERMILION BLACKBIRD 5044

D H D TRAVELER 6807
EILA EILA OF CONANGA
LEACHMAN RIGHT TIME
VERMILION BLACKBIRD 3525

BON VIEW EMULATION EXT 473
MVF TIBBIE 52F 849198
MVF TIBBIE 21D

N BAR EMULATION EXT
BON VIEW RUTH 808
RITO 2100 G D A R
MVF TIBBIE 20W

BW: 90 lbs. Adj. 205D: 609 lbs.
EPDs: BW: +4.0 29% WW: +49 25% YW: +93 22%
Milk: +20 27% TM: +45 YG: +44 22%

SCC Tibbie 27S was selected from the 2006 Agribition where she was very competitive. She has grown into a powerful cow and is from a great cow family.
Exposed: May 6 to June 6, 2009 to VVF In Focus 02U -1453215-

64A VVF 7016T NEW DESIGN 11W
MALE RGRL 11W 1490809 FEBRUARY 13 2009

SIRE: ROYAL NEW DESIGN DRCC 7016T 1367846

BW: 83 lbs.
EPDs: BW: +1+2.9 5% WW: +1+46 5% YW: +1+88 5%
Milk: +1+23 5% TM: +1+46 YG: +1+43 5%

THANKSGIVING HOLIDAY SELECT ANGUS SALE



Lot 66 - MVF Tibbie 16S



Lot 67 - Atlasta Miss Wendy 56S

65 MVF LASS 99S

FEMALE ABA 99S 1346799 MARCH 06 2006

G D A R TRAVELER 044
G A R GRID MAKER AMF NHF 1129870
 G A R PRECISION 2536

D H D TRAVELER 6807
 G D A R BLACKCAP LADY 840
 G A R PRECISION 1680
 G A R EXT 2104

V F VENTURE FORWARD
BXB MISS VENTURE 118L 1124114
 BXB MISS EXT 100J

V D A R TRAVELER 722
 LANDMARK FRED A 911
 N BAR EMULATION EXT
 TRAILVIEW LASS 41'97

BW: 96 lbs. Adj. 205D: 762 lbs.
 EPDs: BW: +4.2 35% WW: +51 26% YW: +98 19%
 Milk: +16 24% TM: +42 YG: +46 19%

MVF Lass 99S, a daughter of the powerful Grid Maker and out of the perfect uddered 118L. This female has a great pedigree and great EPDs.
 Bred A.I.: July 22, 2009 to T C Total 410 -1485449-

65A VVF 7016T NEW DESIGN 12W

MALE RGRL 12W 1490810 FEBRUARY 28 2009

SIRE: ROYAL NEW DESIGN DRCC 7016T 1367846

BW: 81 lbs.
 EPDs: BW: I+3.0 5% WW: I+47 5% YW: I+91 5%
 Milk: I+21 5% TM: I+44 YG: I+44 5%

66 MVF TIBBIE 16S

FEMALE ABA 16S 1346776 JANUARY 31 2006

G D A R TRAVELER 044
G A R GRID MAKER AMF NHF 1129870
 G A R PRECISION 2536

D H D TRAVELER 6807
 G D A R BLACKCAP LADY 840
 G A R PRECISION 1680
 G A R EXT 2104

TC STOCKMAN 365
MVF TIBBIE 115K 1011788
 RRD TIBBIE 12E

TC STOCKMAN
 TC PRIDE 0014
 RITO 2100 G D A R
 MVF TIBBIE 16C

BW: 92 lbs. Adj. 205D: 653 lbs.
 EPDs: BW: +4.8 36% WW: +48 27% YW: +89 20%
 Milk: +12 25% TM: +36 YG: +41 20%

MVF Tibbie 16S is a granddaughter of the \$26,000 RRD Tibbie 12E. A maternal sister to 16S was Intermediate Heifer Calf Champion at the 2005 CWA and sold to Tanya Belsham, Houston.
 Bred A.I.: April 17, 2009 to GAR New Design 5050 -1492338-
 Exposed: May 6 to June 6, 2009 to VVF In Focus 02U -1453215-

66A VVF TIBBIE 13W

FEMALE RGRL 13W 1490811 MARCH 07 2009

SIRE: ROYAL NEW DESIGN DRCC 7016T 1367846

BW: 77 lbs.
 EPDs: BW: I+3.3 5% WW: I+45 5% YW: I+86 5%
 Milk: I+19 5% TM: I+42 YG: I+41 5%

67 ATLASTA MISS WENDY 56S

FEMALE JBS 56S 1341999 JANUARY 18 2006

B/R NEW DESIGN 036
B/R NEW FRONTIER 095 1115831
 WHITE FENCE PRIDE H1

V D A R NEW TREND 315
 B/R BLACKCAP EMPRESS 76
 CONNEALY DATELINE
 PLEASANT PILL OF CONANGA

WINDOVER MATRIX 14F
ATLASTA ERICA 57H 918590
 ATLASTA GIDGET 5'96

HARMON MATRIX 4051
 FLASH BLACK DOLLY 9W
 WHS PLAYBOY 5B
 MLA ERICA 7'90

BW: 90 lbs. Adj. 205D: 772 lbs.
 EPDs: BW: +1.7 37% WW: +39 27% YW: +69 15%
 Milk: +14 23% TM: +34 YG: +30 15%

Atlasta Miss Wendy 56S is a daughter of the popular New Frontier 095, she was selected from the Black Magic 9 Sale. She was the pick of Brian Sutter's 2006 heifer calf crop, Atlasta Erica 57H was one of the top cows at Atlasta Farms, Red Deer.
 Bred A.I.: July 2, 2009 to T C Total 410 -1485449-

67A VVF 7016T NEW DESIGN 14W

MALE RGRL 14W 1490812 APRIL 07 2009

SIRE: ROYAL NEW DESIGN DRCC 7016T 1367846

BW: 75 lbs.
 EPDs: BW: I+1.7 5% WW: I+41 5% YW: I+76 5%
 Milk: I+20 5% TM: I+40 YG: I+36 5%

68 SOUTHLAND LADY BELLE 147T

FEMALE CADS 147T 1399873 FEBRUARY 01 2007

G A R GRID MAKER AMF NHF
TC GRID TOPPER 355 AMF 1302213
 TC PRIDE 8067

G D A R TRAVELER 044
 G A R PRECISION 2536
 TC DIVIDEND 963
 TC PRIDE 6093

RONAN BANDOLIER ESTON 34E
BRIMAR LADY BELLE 979318
 RONAN BELLE 97D

ABANGOMERE ESTON
 RONAN EVENING TINGE 128A
 ADELPHI JIMBO 52A
 RONAN BELLE 126B

BW: 87 lbs. Adj. 205D: 726 lbs.
 EPDs: BW: +3.6 35% WW: +45 25% YW: +81 18%
 Milk: +12 19% TM: +35 YG: +35 18%

Southland Lady Belle 147T was a stand out show heifer prospect at Southland and a feature in their 2007 sale held during the Saskatoon Fall Fair.
 Bred A.I. June 5, 2009 to T C Total 410 -1485449-

68A VVF BELLE 15W

FEMALE RGRL 15W 1490813 APRIL 22 2009

SIRE: ROYAL NEW DESIGN DRCC 7016T 1367846

BW: 67 lbs.
 EPDs: BW: I+2.7 5% WW: I+44 5% YW: I+82 5%
 Milk: I+19 5% TM: I+41 YG: I+38 5%