

CANADA'S PIONEER RED ANGUS BREEDER  
**BRYLOR**  
 **RANCH**



**We've Never  
Dug Deeper!**

42nd annual  
**TRADITION**  
With **A VISION**  
**RED ANGUS SALE**

SUNDAY • 1:00 pm

**OCTOBER 27 2013**

**HIGHWOOD LIVESTOCK MARKET  
HIGH RIVER, ALBERTA**





# "TRADITION WITH A VISION"

1:00 p.m. • OCTOBER 27, 2013 • Sunday

Stay after for our famous Hospitality & Steaks following "Tradition" Sale

**SALE DAY PHONE: (403) 652-3343**

**or Bryan's Cell: (403) 627-8266 / Sherry's Cell: (403) 627-8356**

## - SALE STAFF -

Selling **78** Lots of Red & Black Angus

(includes 64 Live Animals)

- 16 Breed Leading Heifer Calves
- 10 Foundation Bred Cows
- 28 Bred Heifers
- 8 "3 in 1" May/June Calving Pairs with Heifer Calves at Side
- 1 Bull Calf
- 1 Mature Bull
- 5 Embryo Lots
- 9 Semen Lots

### AUCTIONEER:

Brent Carey - 403-549-2478 / Cell: 403-650-9028

### RING STAFF:

Dennis Ericson - 780-352-7630 / Cell: 780-361-9347

Nate Marin - Cell: 306-869-7130

### MSM PARTNER & CANADIAN BUYER REP:

Jack Fenwick - 306-672-3906 / Cell: 306-672-8130

### CANADIAN BUYER REP:

Shane Castle - 306-741-7485

### US BUYER REPS:

Seth Leachman - 406-561-5951

Paul Haugen - 406-366-2855

DV Auction - 785-633-5512

### SALE HEADQUARTERS -

Ramada Inn - (403) 603-3183 . . . . .1512 13 Ave S, High River

### ALSO AVAILABLE -

Heritage Inn - (403) 652-3834 . . . . .1104 11 St W, High River

Super 8 - 1(800) 800-8000 . . . . .1601 13th Ave, High River

**DVAuction**  
Broadcasting Real-Time Auctions

DV Auction specializes in the real-time internet broadcasting of sales and special events and provides a unique online viewing experience that is free to the public.

Interested in watching our events live as they happen? Simply go to [www.dvauction.com](http://www.dvauction.com) and fill out a free and easy registration process and you can watch and listen today!

If you are interested in bidding at one of our events, just complete our quick and easy approval process. DVAuction staff will then contact you once you have been approved and you can begin bidding at any of our auctions just as if you were ringside!

Brent Spader - 785-633-5512  
[www.dvauction.com](http://www.dvauction.com)

## MAKE IT AN "ANGUS" WEEKEND!

### Saturday - October 26, 2013 -

- Be sure to attend the SSS/Lazy MC "Cowgirls" Sale 2:00 pm at SSS Ranch
- 6 pm - 9pm - Highwood Auction - Brylor Hospitality

### Sunday - October 27, 2013 -

- Come early for pre-sale viewing and coffee & donuts
- 1:00 p.m. - 42nd Annual Brylor "Tradition With a Vision Sale"
- Join us for Steaks & Hospitality after the sale

- For More Information Please Contact -

- CATALOGUE ONLINE -  
[www.brylor.com](http://www.brylor.com)

**BRYLOR**  
**RANCH**  
Canada's Pioneer Red Angus Breeder

**Bryan, Sherry, Deloy, Erica, Rowan & Isabella Mackenzie**

Ph: (403) 627-5676 / Cell: 627-8266 / Fax: 627-5080

Box 122, Pincher Creek, Alberta TOK 1W0

E-Mail: [brylor@platinum.ca](mailto:brylor@platinum.ca) Website: [www.brylor.com](http://www.brylor.com)

**Mark & Edna Mackenzie**  
**Lorne & Robin Mackenzie**

Phone (403) 627-2214

Fax (403) 627-4653



**Welcome to our 42nd Annual...  
Brylor Ranch "TRADITION WITH A VISION"  
Fall Production Sale!!**



**Bryan & Sherry Mackenzie  
Deloy, Erica, Rowan & Isabella**



**Back to School 2013  
Erica (Gr 6), Rowan (K), Deloy (Gr 9)**



**"Bella"**



**Kids with Nova, the new pup**



**"Bella"**



**Deloy**



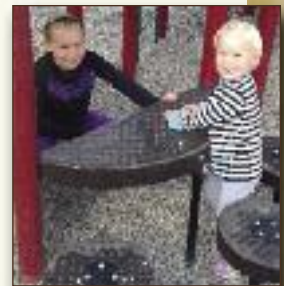
**Erica**



**Rowan**



**Mark & Edna Mackenzie**



**Erica & "Bella"**



**"Bella"**



**Bryan & Kids in Waterton**

This year our theme has been chosen as a way of trying to describe the kind of cattle from our herd that you will find in the next 40 pages. Looking back over our last 41 years of catalogues that we have put out as a family, I realized pretty quickly that our 2013 edition was easily the highest concentrated effort of top cut, high ranking, "hurt to sell" kind of females. Very honestly we, at Brylor Ranch, have **"Never Dug Deeper"** into our program in our history to offer a set of sale cattle.

We are coming up to 51 years of breeding these Red Angus cattle and I am **very satisfied** with where our herd is today. Last spring, with the acquisition of the Get-A-Long cowherd, our numbers of mouths here on our land base jumped up dramatically! We fed just over 300 breeding females and their calves as well as our pen of "Specifically Held Over" coming two year old bulls. Plain and simply, I had to reduce some bodies around here. As Brent eludes to in his letter on page #11, I have always started at the top of our divisions of females to put together the "Tradition With A Vision" sale offering. The bottom end has always gone to the same venue to sell as our "Tradition With A Vision" females... just on a different day!

Something new for 2013 is the addition of a rockin' good outcross bull, Red Kodiak 3A, being marketed exactly as his sire, Kodiak 204Y, was two years ago. We have 15 "unbelievable until you see 'em" calendar year heifer calves – 5 of which were hand picked by my Auctioneer and dear friend, Brent Carey. The hole really filled up with water when he picked those ones! I've always wanted to let someone pick 5 from a division and 2013 seemed like a great year to do it. The pairs were already selected when Brent came the end of August and I believe them to be "all kinds of good"! The breeds are a very good cross section of our replacement pen with lots of the E.T. heifers hitting this book too. And, as usual, there is also a section of "frozen goodies" at the end.

Things are changing around Brylor Ranch! We don't show anymore, ourselves, but 3 of our bulls – Curve, Wheeler and Ghost Rider – are being readied by our partners for Agribition right now. We are, however, involved in the 4-H movement with our kids and will have 2 steers this fall as Deloy and Erica will each have a project. We love to camp in the summertime so we have split our cowherd into two groups – January/February calving and May/June calving – to lessen the workload at

both calving time and A.I. breeding time. Our E.T. program is being eliminated at Pittmans' as our last 17 E.T. calves were picked up in September.

Now you may wonder, "How can they dig so deep for their 2013 'Tradition With A Vision' Sale?" Don't worry – we will still have over 65 heifer calves on feed at Stauffers' and over 100 bulls for our March 2014 Brylor Bull Sale!

In 2013 we have "Dug Deep" and moved our sale date back a month to Sunday, October 27th, and have also put it a day behind the SSS/Lazy MC "Cowgirls" Sale which is on Saturday, October 26th. We hope you like the convenience of this move making it easier to attend **TWO exceptional Red Angus events!** We have even moved the "Tradition With A Vision" back to Highwood to be even closer to the mainstream than Fort Macleod was. It's only about an hour's drive from the Saturday sale site at Sibbalds' to ours at High River.

Please join us to see how "deep we have dug" for 2013! We also invite you to join us Saturday night, 6 - 9 p.m., for hospitality at the Highwood Auction Market and after the sale on Sunday when we will, like always, have great steaks grilled by Stacey Stauffer.

Brylor Ranch will not be consigning to any other sales this fall. This is the only venue to acquire Brylor Red Angus Genetics in Canada this fall.

Thanks again!

Bryan & Sherry Mackenzie & family  
Mark & Edna Mackenzie





REF SIRE A - RED BRYLOR SKOR 221X



**RED BRYLOR SKOR 221X**

Male (ET) LMP 221X January 07 2010 #1596367 MAF  
 BW: 113 lbs. Adj 205D Wt: 741 lbs. WI: 100  
 Adj 365D Wt: 1466 lbs. YI: 100

- RED BRYLOR SDL PASQUALE 213P
- RED BRYLOR SDL SQUALL 230S OSF MAC (1367321)
- RED CYT FANNY 15P MAC
- RED VGW RAMBLER 1000 OSF
- RED XXX LAKME 70M OSF MAF
- RED BRYLOR STALLION 46M
- RED PRIME TIME'S FANNY 5'00
- RED BRYLOR NEW TREND 22D OSF MAF
- RED PTTV COUNTESS 13'97 (897310)
- RED HEATHAN'S COUNTESS 1E
- SSS BLACK TREND 13B
- RED MEADOW CK MISS SEAMAN 31A
- RED TOWAW EDITOR 44C
- TRAILVIEW COUNTESS 154'89

'13 EPD's
BW +0.1
WW +64
YW +107
Milk +20
TM +52

Think back to the 2011 Brylor Bull Sale... and Lot #22 that day – he was a monster performance bull that weighed in at 1745 lbs. on Sale Day. He was also the bull you'll remember as the one I didn't want to sell very badly! We had to have three parties willing to start him at \$10,000 – we had two raise their hands, so we got to keep this powerhouse for ourselves. He is the chosen one to carry on for his sire, Squall. His dam, 13G, also raised Stallion and the 211T cow found in this book.

**Selling 1 Daughter & Service**



REF SIRE B - RED WHEEL DODGE CITY 61Y



**RED WHEEL DODGE CITY 61Y (aka "WHEELER")**

Male MFW 61Y February 21 2011 #1626480  
 BW: 104 lbs. Adj 205D Wt: 872 lbs. WI: 119  
 Adj 365D Wt: 1447 lbs. YI: 130

- RED NORTHLINE ATLANTIC CITY
- RED WHEEL DODGE CITY 3U (1452126)
- RED HANDFORD MISS CHIEF 7K
- RED PIE ATLANTIC 2204 OSF MAF
- RED NORTHLINE QUEEN 240H
- RED HANDFORD TREK 279H
- RED HANDFORD MISS CHIEF 655H
- RED BRYLOR STALLION 19J MAF
- RED WHEEL PRIDE 29N (1154465)
- RED FLY AWAY PRIDE 161K
- RED BHC SANDSTONE AMF OSF
- RED PTTV COUNTESS 13'97
- RED FLY AWAY RAMBO'S ARNOLD
- RED TRAILVIEW PRIDE 28'96

'13 EPD's
BW +3.3
WW +70
YW +126
Milk +13
TM +48

"Wheeler" is our newest Junior herd sire at Brylor and he's proving to be the next one destined for heavy usage! His first calf crop is nothing short of remarkable – they all have muscle, eye appeal and shape to them. 61Y is a very easy fleshing bull and has been used on four different groups of cows in his first two breeding seasons here at Brylor and now he's back at Wheelers' in Saskatoon being readied for Agribition. Wheeler's dam is a beautiful Stallion daughter from Wheelers' old Flyaway cow, 161K.

**Selling 3 Daughters & Service**



REF SIRE C - RED BRYLOR JKC BOULEVARD 124X



**RED BRYLOR JKC BOULEVARD 124X**

Male IMP 124X October 08 2010 #1661451  
 BW: 85 lbs. Adj 205D Wt: 801 lbs. Adj 365D Wt: 1288 lbs.

- RED COMPASS MULBERRY 449M
- RED FINE LINE MULBERRY 26P AMF OSF MAF (1237972)
- RED DUS FAYETTE 8G
- RED HR RAMBO ET 91K
- RED BRYLOR MISS ROC 20H
- RED SILVEIRAS REDFORD OSF
- RED MC DOUGALL FAYETTE 59A
- RED BRYLOR NEW TREND 22D OSF MAF
- RED BRYLOR CHEROK 22L (1069271)
- BLACK BRYLOR EILEEN 35A
- SSS BLACK TREND 13B
- RED MEADOW CK MISS SEAMAN 31A
- RED COULEE CREST EXALIBUR 806
- BLACK BRYLOR EILEEN 62S

'13 EPD's
BW +0.5
WW +58
YW +95
Milk +19
TM +49

Boulevard was an \$11,000 1/2 interest bull to Van Gaalens' in our 2012 bull sale. Nick used him last year and now we have him back in 2013. He is a full E.T. brother to 19U, Mercedes and Ghost Rider. Seven full E.T. sisters sold in the recent JK Dispersal for a \$5193 average. His dam, at 11 years old, sold for \$17,000 and is one of New Trend's most prized daughters.

**Selling Service**





**RED BRYLOR ICEMAN 1Z**

Male LMP 1Z January 25 2012 #1694358  
 BW: 82 lbs. Adj 205D Wt: 768 lbs. WI: 101  
 Adj 365D Wt: 1289 lbs. YI: 112

JUSTAMERE 253 LADDIE 436S  
 RED NORTHERN ICE MAN 8U CAF OSF (1539223)  
 MDN MYSTERY PRIDE

EXAR MASTER 253  
 EARLY SUNSET LASSIE 102L  
 ROSE HILL BIG TIME 7F  
 ROSE HILL MISS THOR 5C

RED BRYLOR NEW TREND 22D OSF MAF  
 RED BRYLOR ZAMIE 32X (1591829)  
 RED WILLOW CREEK ZAMIE 91L

SSS BLACK TREND 13B  
 RED MEADOW CK MISS SEAMAN 31A  
 RED GET-A-LONG EVERLAST 586  
 RED SANROSE ZAMIE 35A

'13 EPD's
BW +0.9
WW +47
YW +85
Milk +20
TM +43

Iceman was our high seller this spring at \$29,500 to Hazel Bluff in Westlock. He was always a standout right from "Day #1" at birth. His New Trend sired two year old dam is a top cow here already at Brylor. Outcross blood, great disposition, loads of hair and eye appeal. We used him big time in our heifer pen in 2013. He will calve very easily!

**Selling Service**



REF SIRE D - RED BRYLOR ICEMAN 1Z



**RED SSS TRAVERSE 387Z**

Male SBB 387Z February 26 2012 #1713764  
 BW: 90 lbs. Adj 205D Wt: 727 lbs. WI: 100  
 Adj 365D Wt: 1283 lbs. YI: 115

RED FLYING K AMBUSH 121U OSF MAF  
 RED SSS TRAPPER 683X OSF MAF (1597140)  
 RED SSS KURUBA 344S

RED SVR AMBUSH 59P  
 RED FLYING K BEAUTY 40R  
 RED 5L TRAVELING GRAND 5113 OSF MAF  
 RED SSS KURUBA 815G

RED CROWFOOT OLE'S OSCAR 2042M AMF CAF OSF MAF  
 RED SSS EISA 122R (1311523)  
 RED SSS EISA 448N

RED MLK CRK CUB 722 OSF MAF  
 RED CROWFOOT OMEGA 9179J  
 RED SSS BOOMER 803B  
 RED SSS EISA 681F

'13 EPD's
BW +0.5
WW +63
YW +98
Milk +15
TM +46

Traverse was Sibbalds' high seller in 2013 at \$31,000 to Windy Hill Livestock in Moose Jaw. I thought he was the best calving ease prospect in the SSS offering this year. I also thought his sire, Trapper, was their best bull on offer in 2011 selling for \$23,000 to Piepers.

I wanted to use something a little different so I purchased a semen package on Traverse – he'll work well!

**Selling Service**



REF SIRE E - RED SSS TRAVERSE 387Z



**RED BRYLOR ARSON 84Z**

Male LMP 84Z March 02 2012 #1702445  
 BW: 87 lbs. Adj 205D Wt: 847 lbs. WI: 117  
 Adj 365D Wt: 1361 lbs. YI: 106

RED SSS ARSENAL 271S OSF MAF  
 RED SSS ARSON 85U OSF MAF (1467111)  
 RED SSS SCAARA 951L

RED 5L NORSEMAN KING 2291 OSF MAF  
 RED SSS DYLAN'S VALENTINE 103C  
 SSS TRAVELER 362J  
 RED SSS SCAARA 16H

RED BRYLOR SDL SQUALL 230S OSF MAC  
 RED RILEY'S ROGA 22U MAF (1445458)  
 RED RILEY'S ROGA 81S

RED BRYLOR SDL PASQUALE 213P  
 RED CYT FANNY 15P MAC  
 RED FABULOUS HIGH TREND 130N  
 RED RILEY'S ROGA 14M

'13 EPD's
BW +0.3
WW +67
YW +109
Milk +15
TM +48

One of our top Arson sons that we have ever sold – profile, strong pedigree and lots of hair were a big part of why we collected and A.I.'ed to 84Z this spring. He was the third high seller at \$25,000 to EKW in Hague, Saskatchewan.

84Z's little sister, 14A, is selling today as Lot #5. His dam is one of my favorite Squall daughters and will be a donor cow here some day.

**Selling Service**



REF SIRE F - RED BRYLOR ARSON 84Z





RED FINE LINE MULBERRY 26P - REF SIRE G & DONOR OF SEMEN PACKAGE SPECIAL



**RED FINE LINE MULBERRY 26P**

Male NVG 26P January 31 2004 #1237972 AMF OSF MAF  
 BW: 103 lbs. Adj 205D Wt: 737 lbs. WI: 104  
 Adj 365D Wt: 1261 lbs. YI: 119

RED HR RAMBO ET 91K  
 RED COMPASS MULBERRY 449M (1128419)  
 RED BRYLOR MISS ROC 20H

RED SILVEIRAS REDFORD OSF  
 RED DUS FAYETTE 8G (949458)  
 RED MC DOUGALL FAYETTE 59A

RED FCC RAMBO 502 OSF  
 RED HR MISS PROSPECTOR 26B  
 RED LARSON RED LIGHTNING OSF  
 RED CRCC MISS ROC 368D

SILVEIRAS PRESLEY  
 RICKS JUANADABURY 3000  
 RED MC DOUGALL CLASS OF 85 32X  
 RED MC DOUGALL FAYETTE 79W

'13 EPD's	
BW	+0.2
WW	+75
YW	+127
Milk	+15
TM	+53

- Selling 50 units of semen - 5 packages of 10 straws each
- All proceeds will go to the very worthwhile charitable organization in Pincher Creek called "Angels Within Us".

Sherry is one of the founders of that cause and is currently the chairperson. We have a dinner, dance and fund raising auction on November 23rd, 2013, in which we will present a check to the "Angels" that night on behalf of the buyers of this Mulberry semen.

**The slogan for the "Angels" is to  
 "Provide help in a family's time of exceptional need".**

In honor of Mulberry's passing on May 24, 2013, we are donating these 50 straws of semen for the "Angels" fundraiser in Pincher Creek.  
 Mulberry is laid to rest on a hill on the Brylor Ranch overlooking his daughters doing their spectacular jobs in his herd! That was an extremely difficult thing to do to put him down this spring, but it was time.

He will be severely missed here but his legacy will be carried on through many daughters and several sons we still use.  
 This semen will sell right after his best daughter ever to sell, 72A in Lot #8.



MULBERRY DTR - 2T



MULBERRY DTR - 109W



MULBERRY DTR - 19U





RED SSS ARSON 85U - REF SIRE G & DONOR OF SPECIAL SEMEN PACKAGE



**RED SSS ARSON 85U**

Male SBB 85U February 10 2008 #1467111 OSF MAF  
 BW: 92 lbs. Adj 205D Wt: 757 lbs. WI: 113  
 Adj 365D Wt: 1272 lbs. YI: 107

RED 5L NORSEMAN KING 2291 OSF MAF  
 RED SSS ARSENAL 271S OSF MAF (1377779)  
 RED SSS DYLAN'S VALENTINE 103C

RED VGW KING OF THE WEST OSF MAF  
 RED NORSEMAN 1312 PJM  
 RED LEACHMAN MONU 2X OSF  
 RED MK VALENTINE 6L

SSS TRAVELER 362J  
 RED SSS SCAARA 951L (1077679)  
 RED SSS SCAARA 16H

D H D TRAVELER 6807 AMF NHF  
 RED SSS MISS VALENTINE 344X  
 RED SSS BOOMER 803B  
 RED SCAARA 102C

'13 EPD's	
BW	+2.1
WW	+72
YW	+122
Milk	+9
TM	+45

- Selling 50 units of semen in packages of 10 Straws
- All proceeds will go towards a worthy cause in High River for the victims of this spring's massive floods.

These straws are being donated by Brylor & Lloyd Cavers. We are getting very low on Arson semen so, as of now, he's officially off the open market. We will sell this semen by Dutch Auction method except for one change:

**\$50/ticket in the draw barrel – for every \$50 bid increment, you get one chance at five (5) packages of ten (10) straws of Arson as the prize.**

Arson 85U was a bull that I very much under appreciated for several years... except for now... He has done an exemplary job here with his calves we have sold and the daughters we have retained. His sons rise to the top in our bull sales and his females are some of our best young workhorses.

85U was the \$17,000 high seller at the SSS Bull Sale in 2009 and his last U.S. qualified semen to sell went for \$225/straw for 100 units.

**Some of his most noteworthy sons are ....**

- Arson 55Y – \$25,000 to Red Top; resold for \$30,000 in the Red Top Dispersal
- Arson 84Z – \$25,000 to EKW
- Arson 54Z – \$16,000 to Gonzalez in Mexico
- Arson 60Z – \$10,250 to Kody Kropius
- Arson 40X – \$6,500 to VanGaalens'



ARSON SON - 40X



ARSON SON - 54Z



ARSON SON - 60Z





REF SIRE I - BLACK BRYLOR KODIAK 204Y



**BLACK BRYLOR KODIAK 204Y**

Male RC (ET) LMP 204Y January 01 2011 #1647397  
 BW: 94 lbs. Adj 205D Wt: 633 lbs. WI: 104  
 Adj 365D Wt: 1202 lbs. YI: 102

SANDY BAR ADVANTAGE 43M DDF  
**HF KODIAK 5R AMF CAF NHF MAF (1274305)**  
 WILBAR RUBY 955N

TC ADVANTAGE AMF CAF NHF DDC  
 SANDY BAR JEMINA 44K  
 VERMILION YELLOWSTONE AMF CAF NHF DDF  
 WILBAR RUBY 161J

<b>'13 EPD's</b>	
<b>BW</b>	<b>-1.6</b>
<b>WW</b>	<b>+59</b>
<b>YW</b>	<b>+102</b>
<b>Milk</b>	<b>+19</b>
<b>TM</b>	<b>+49</b>

RED BRYLOR NEW TREND 22D OSF MAF  
**RED XXX LAKME 70M OSF MAF (1133628)**  
 RED FINE LINE LAKME 21J

SSS BLACK TREND 13B  
 RED MEADOW CK MISS SEAMAN 31A  
 RED BUF CRK HOB0 1961 OSF MAF  
 RED FINE LINE LAKME 44E

I often go back over my old catalogues and re-read the footnotes I wrote years ago – sometimes those written statements are bang-on... some are way beyond left field! Interesting to note about Kodiak 204Y are the footnotes I wrote about him back in our 2012 Bull Sale Catalogue so I am including that entire page from that catalogue, again, on page 40 in today's book. I especially like the part about "... a looking back and reflecting moment..." because it will sure apply to his son in Lot #3 here today.

The reports I have received back from the 204Y shareowners have been super positive. I loved what Charlie Lewis said in the spring of 2012 when he viewed 204Y at Hawkeye West in Billings, Montana. He said, "Mackenzie... this bull actually looks as good as he does in his photo, maybe even better! And his feet – you were right about that, they are fantastic!"



KODIAK'S DAM - 70M



KODIAK'S SISTER - 204S



KODIAK'S SIRE - 5R





LOT #1 - RED BRYLOR 41Y FAYETTE 19A



**RED BRYLOR 41Y FAYETTE 19A**

Female LMP 19A January 24 2013 #1736036  
BW: 74 lbs.

- HF KODIAK 5R AMF CAF NHF MAF
- BLACK BRYLOR KODIAK 204Y (1647397)**
- RED XXX LAKME 70M OSF MAF
- RED BRYLOR SDL PASQUALE 213P
- RED BRYLOR FAYETTE 41Y (1654366)**
- RED FL FAYETTE 33M
- SANDY BAR ADVANTAGE 43M
- WILBAR RUBY 955N
- RED BRYLOR NEW TREND 22D OSF MAF
- RED FINE LINE LAKME 21J
- RED VGW RAMBLER 1000 OSF
- RED XXX LAKME 70M OSF MAF
- RED TED HI HO 35K
- RED DUS FAYETTE 8G

(PROJ)
'13 EPD's
BW -2.5
WW +54
YW +90
Milk +20
TM +47

Many folks will wonder why the bull calf in Lot #3 wasn't here in Lot #1, the "Pole Position" for "Tradition With A Vision" 2013. "Cause & Effect" is the deal we're going for. Fayette 19A is the first Red Kodiak daughter to sell in Canada and then you will turn the page to see her "full" brother in Lot #3 and then turn it again to see yet another "full" sister in Lot #4!

Our good friend, past fitter and newest hired ringman, Nate Marin, was here this summer and this one hit him hard. He said I told him that Lot #1 and Lot #4 were all about promoting their brother, 3A! In fact, I thought about bringing all 7 of the full sister dams back (the Pasquale's out of 33M) because they all had Kodiak 204Y calves in 2013. 47Y, though, ended up at Garth Griffins in Iowa and had a Red Kodiak bull calf too.



**RED BRYLOR FAYETTE 41Y**

Female (ET) LMP 41Y February 09 2011 #1654366  
BW: 73 lbs.

- RED VGW RAMBLER 1000 OSF
- RED BRYLOR SDL PASQUALE 213P (1242867)**
- RED XXX LAKME 70M OSF MAF
- RED BJR RAMBLER 5162 OSF
- RED VGW UMPIRE YUMA 9266
- RED BRYLOR NEW TREND 22D OSF MAF
- RED FINE LINE LAKME 21J
- RED TED HI HO 35K
- RED FL FAYETTE 33M (1094837)**
- RED DUS FAYETTE 8G
- RED HOLDEN HI HO 753
- RED TED BEAU 14G
- RED SILVEIRAS REDFORD OSF
- RED MC DOUGALL FAYETTE 59A

(PROJ)
'13 EPD's
BW -1.2
WW +52
YW +82
Milk +21
TM +46

**Exposed:** April 17 - June 5 - Red Wheel Dodge City 61Y (aka "Wheeler")

In last year's "Tradition With A Vision" we had a group of 7 E.T. sisters and sold a choice in them. 41Y was one of those 7 (see their picture as a group on page 10)

Against all better judgement of keeping these remaining sisters together we will offer one as a bred 2 year old cow. Besides that, I wanted to sell one two year old bred to our new bull, "Wheeler".

Check out her beautiful Red Kodiak daughter, as well, 19A in Lot #1.



LOT #2 - RED BRYLOR FAYETTE 41Y - DAM OF LOT #1



# BRYLOR FEATURE BULL CALF



*It's been 22 years since we offered a bull calf in our female sale and back in 1991 that calf was also 3A... back in 1972 another 3A bull for Mackenzie Bros. really got us on the map in Canada as a "color of Angus to be dealt with" when he won the famous Calgary Bull sale and topped it, too, for my Uncle Rod. Now in "Tradition With A Vision" 2013 we're offering a "3A" that we believe to be the next generational leap... How many of you plan to be in this business in 2035?*



"The Talk" started back in 2005 when a black bull calf sold for an astounding \$45,000 at Agribition. That bull was HF Kodiak 5R...

"The Talk" has now moved on to a Black / Red Carrier son named Kodiak 204Y, a \$37,500 half interest bull at Brylors' 2012 Bull Sale to Marcers' in B.C. He is getting the complete job done all over the U.S.A. and at Brylor & Marcers' BLM Ranching. 10 semen packages & shares were sold in the U.S. A. in 2012 and all owners are very happy with the results – calving ease, style, muscle shape, hair, lots of weaning weight and lots of Red ones out of him!

They are predictable from 204Y as he has two outstanding parents – Kodiak 5R traded as an aged bull in Denver for \$150,000 and Lakme 70M just keeps charging on as a donor cow with progeny popping up all over the world out of her! She has been stated to be New Trend 22D's best daughter ever and plans are underway to make the genetic replica of her at Bovigen in the U.S.A.

Now, since the inner front cover of the Angus World magazine came out in early August with a picture of a Red bull calf named Kodiak 3A, "The Talk" has shifted once again.

In fact, there are two Red Kodiak bull calves being offered this fall sale season – this one today and one in the "Under The Influence" Sale in Emporia, Kansas, on October 5th that is a "full" Red brother to 3A.

Garth & Nancy Griffin from Iowa purchased the Fayette 47Y heifer last fall and she had a red bull calf, too – he is highlighted in the sale in Kansas.

Garth asked me which one is better when I saw his son of 204Y in late August. I told him it's not necessarily which calf is better that's most important, it's the fact that they both confirm how good each other are!!! And when you see his two sisters (full in blood) today in Lots #1 & #4, you'll see what I mean!



## RED BRYLOR RED KODIAK 3A

Male LMP 3A January 11 2013 #1736024  
BW: 75 lbs.

HF KODIAK 5R AMF CAF NHF MAF  
BLACK BRYLOR KODIAK 204Y (1647397)  
RED XXX LAKME 70M OSF MAF

SANDY BAR ADVANTAGE 43M  
WILBAR RUBY 955N  
RED BRYLOR NEW TREND 22D OSF MAF  
RED FINE LINE LAKME 21J

RED BRYLOR SDL PASQUALE 213P  
RED BRYLOR FAYETTE 40Y (1654365)  
RED FL FAYETTE 33M

RED VGW RAMBLER 1000 OSF  
RED XXX LAKME 70M OSF MAF  
RED TED HI HO 35K  
RED DUS FAYETTE 8G

(PROJ)

'13 EPD's
BW -3.1
WW +53
YW +90
Milk +20
TM +47

75 lb. birth weight, a huge 205 weight, an outcross pedigree, a very predictable family behind him from the 33M x Pasquale flush (40Y, 47Y, etc. are also full E.T. sisters to the Eberle 50Y bull) and EPD's that are amazing! Now throw in super big early maturing testicle size and a calf that will be kept IBR negative and put in stud in mid-December.... spells profitability to the max! He will be marketed exactly like his sire was in 2012.

## TERMS FOR LOT #3

- Brylor will retain 50% of this great young calf
- Brylor is offering five (5) equal 10% shares in Red Kodiak 3A to be sold by live auction on Sunday, October 27, 2013, at the 42nd "Tradition With A Vision".
- We will sell each share one at a time until all are gone.
- Brylor will put him in stud at Alta Genetics ASAP after the sale and buyers of each 10% share will receive at least 100 straws of in-herd use semen over the next two years – guaranteed!
- If it should happen that the first buyer sweeps the ring and takes all 5 shares at 5 X the bid price, then he will receive 1/2 possession of the bull, 3A.
- Possession dates for natural use to be negotiated with Brylor (if that does happen, we'll be pretty easy to get along with, rest assured!).

**COME TO HIGH RIVER AND LET'S TALK ABOUT IT!!**



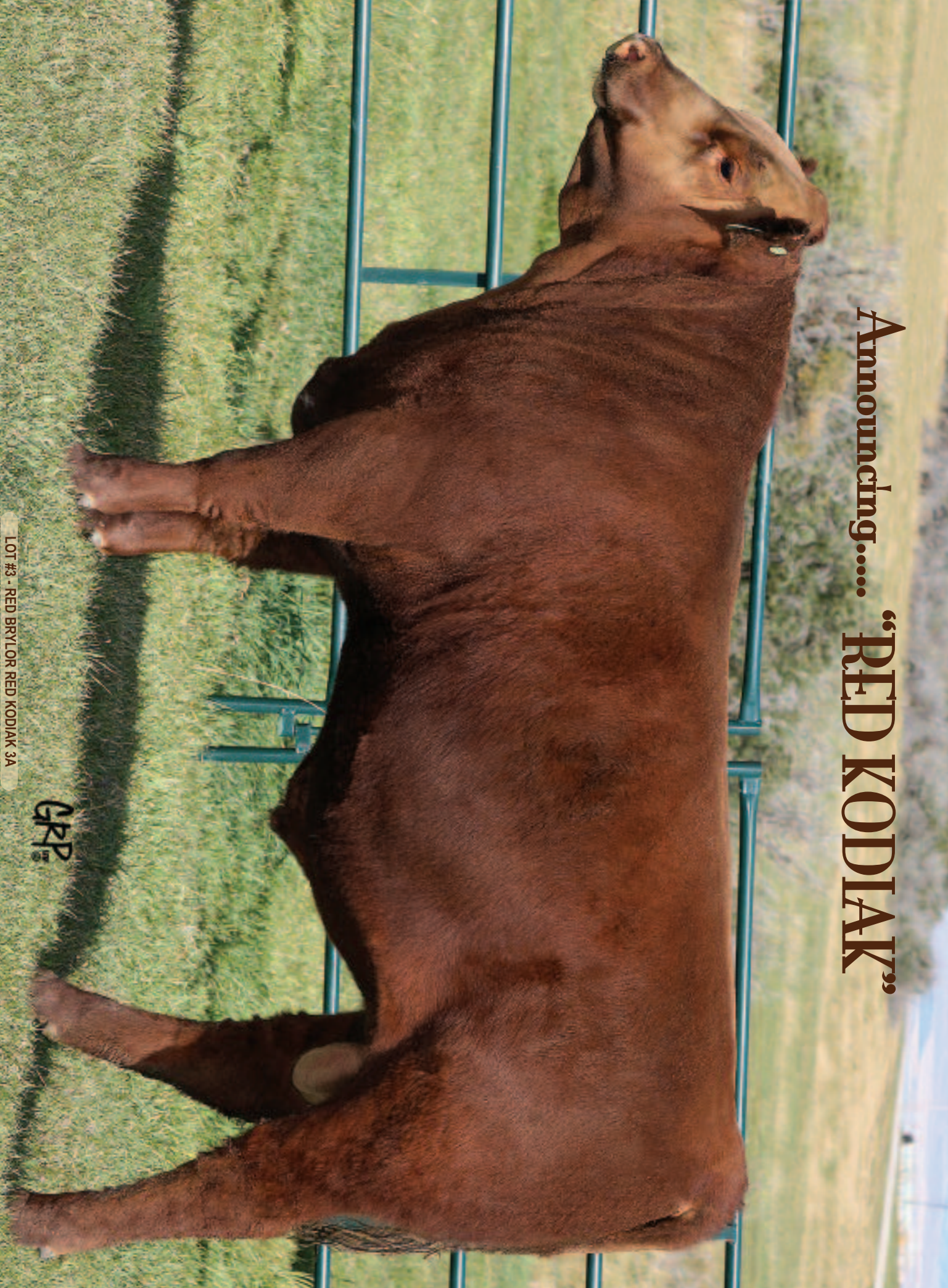
3A'S DAM - FAYETTE 40Y AS A BRED HEIFER



3A'S DAM - FAYETTE 40Y AS A 2 YEAR OLD



Announcing.... **“RED KODIAK”**



LOT #3 - RED BRYLOR RED KODIAK 3A







LOT #4 - BRYLOR BLACK 53Y FAYETTE 50A



**BRYLOR BLACK 53Y FAYETTE 50A**

Female RC LMP 50A February 02 2013 #1736171  
BW: 78 lbs.

HF KODIAK 5R AMF CAF NHF MAF  
**BLACK BRYLOR KODIAK 204Y (1647397)**  
RED XXX LAKME 70M OSF MAF

SANDY BAR ADVANTAGE 43M DDF  
WILBAR RUBY 955N  
RED BRYLOR NEW TREND 22D OSF MAF  
RED FINE LINE LAKME 21J

RED BRYLOR SDL PASQUALE 213P  
**RED BRYLOR FAYETTE 53Y (1654360)**  
RED FL FAYETTE 33M

RED VGW RAMBLER 1000 OSF  
RED XXX LAKME 70M OSF MAF  
RED TED HI HO 35K  
RED DUS FAYETTE 8G

(PROJ)

'13 EPD's
BW -1.7
WW +56
YW +90
Milk +20
TM +48

*As if you needed any more convincing about how good the Red bull calf "full brother" is... just how absolutely gorgeous this heifer is... come to High River on October 27th and see her in real life!*  
She and her two full sibs catalogued just ahead of her will amaze you!



33M - MATERNAL GRANDAM TO LOT #1, #3 & #4



FAYETTE 53Y - "LEADER OF THE PACK"!



# THE NEXT FIVE LOTS HAS *NEVER* BEEN DONE BEFORE!!



BRENT CAREY - GOOD FRIEND &  
DARNED GOOD AUCTIONEER!

Imagine your surprise as an auctioneer making a herd visit and being tasked with selecting 5 heifer calves out of a field pasture filled with calendar year beauties! The allure of “**Tradition With A Vision**” has always been an offering full of feature lots that are sure and have been proven to have a positive impact within the Red Angus breed. It is indeed an honour to be asked to go into a man’s herd and take your pick, more especially the Brylor herd.

I have had the good fortune to have sold many great individuals in the Red Angus breed and, in large part, the reason any of us succeed in our cattle endeavours is the fact that our peers have confidence in each other. I know that I have all the confidence in the world that the Brylor program has much to offer the industry.

This is, was, and will be a humbling task until the hammer falls. Thank you Bryan, Sherry, and family.

The following five females, I feel have some intrigue about them in the fact that they, in my terms, are real world cattle – Heifers with femininity, structural correctness, style, but with enough substance that you can be confident that they have the power within themselves to someday raise your next herd bull. Genetically speaking, the Brylor program insures the fact that you will get cutting edge genetics.

Once again, Bryan, you have come up with a new spin on selecting some really cool sale lots. I just hope your old friend hasn’t let you down. Thanks again, Buddy.

I hope to see all of the Red Angus Fraternity on sale day.

Brent W Carey  
Professional Auctioneer &  
Part Time Sale Cattle Selector





LOT #5 - RED BRYLOR ROGA 14A



**RED BRYLOR ROGA 14A**

Female LMP 14A January 22 2013 #1736033  
BW: 80 lbs.

RED SSS ARSON 85U OSF MAF  
**RED BRYLOR ARSON 3Y (1623695)**  
RED BRYLOR LAKME 426U

RED SSS ARSENAL 271S OSF MAF  
RED SSS SCAARA 951L  
RED SSS ZAMA PINE 37S  
RED XXX LAKME 70M OSF MAF

RED BRYLOR SDL SQUALL 230S OSF MAC  
**RED RILEY'S ROGA 22U MAF (1445458)**  
RED RILEY'S ROGA 81S

RED BRYLOR SDL PASQUALE 213P  
RED CYT FANNY 15P MAC  
RED FABULOUS HIGH TREND 130N  
RED RILEY'S ROGA 14M

(PROJ)

'13 EPD's

BW -1.3

WW +57

YW +95

Milk +20

TM +49

I've always wanted to let someone walk in and take their pick of my heifer calves for our "Tradition With A Vision" Sale. So, like the saying says, "Go Big or Go Home", we elected the "Big" side! Brent came down in August and wrote down five numbers of heifer calves and 14A was on his list!

She is very good in her own right but let me mention her older brother who just happens to be an A.I. Service Sire in this sale, too! Arson 84Z sold for \$25,000 to EKW in Saskatchewan this spring – both 84Z and 14A are both out of the cow, 22U. She's a beautiful MAF daughter of Squall 230X and will be a future donor cow at Brylor.

I do believe 14A was the "push" that Elmer needed when he saw her the end of March all ready to buy the Arson 84Z bull.

14A's sire, Arson 3Y, was an \$11,500 bull to Blue Ridge.



ARSON 3Y - SIRE OF LOT #5



84Z - BROTHER TO LOT #5





LOT #6 - RED BRYLOR LANA 15A



**RED BRYLOR LANA 15A**

Female LMP 15A January 22 2013 #1736034  
BW: 84 lbs.

RED WHEEL DODGE CITY 3U  
RED WHEEL DODGE CITY 61Y (1626480)  
RED WHEEL PRIDE 29N

RED NORTHLINE ATLANTIC CITY  
RED HANDFORD MISS CHIEF 7K  
RED BRYLOR STALLION 19J MAF  
RED FLY AWAY PRIDE 161K

RED BAR-E-L UPSTATE 146U  
RED EKW STALEY LANA 3X (1577795)  
RED HOWE LANA 161P

RED YY RED KNIGHT 640F OSF  
RED BAR-E-L BARLEE 36R  
RED EGGEN ARAB 23K 26M  
RED HOWE LANA 111M

(PROJ)

'13 EPD's
BW +1.4
WW +61
YW +100
Milk +17
TM +48

The first "Wheeler" heifer calf to sell in Canada and she is first class! Seeing these calves by that bull sure makes me glad I got him bought now. I believe Josh Rust at North Dakota was runner-up on him that day... not too many ranches outgun him (thanks, Josh, for stopping on this bull, though!).

15A has a pattern that I've admired since she was born. Her dam is a very good young cow that was originally slated for the sale as a "Choice Lot" between her and 15A. 3X came from the Red Round-up Sale the year Elmer Wiebe of EKW had two unreal for strong heifer calves there that day. I got 3X and SSS got the other one.

15A's straight ahead style will take her and her new owner places you will want to go!



3X - DAM OF LOT #6



"WHEELER" 61Y - SIRE OF LOT #6



**CHOICE LOT!! Choose between Lot #7 (24A Heifer Calf ) OR Future Flush on 211T (Dam of 24A)**



**LOT #7 - RED BRYLOR COUNTESS 24A**



**RED BRYLOR 211T COUNTESS 24A**

Female LMP 24A January 26 2013 #1736041  
 BW: 85 lbs.

- RED BRYLOR SDL SQUALL 230S OSF MAC
- RED BRYLOR SKOR 221X MAF (1596367)
- RED PTTV COUNTESS 13'97
- RED BRYLOR SDL PASQUALE 213P
- RED CYT FANNY 15P MAC
- RED BRYLOR NEW TREND 22D OSF MAF
- RED HEATHAN'S COUNTESS 1E
- RED COMPASS MULBERRY 449M
- RED DUS FAYETTE 8G
- RED BRYLOR NEW TREND 22D OSF MAF
- RED HEATHAN'S COUNTESS 1E

(PROJ)

<b>'13 EPD's</b>
<b>BW +1.1</b>
<b>WW +68</b>
<b>YW +118</b>
<b>Milk +23</b>
<b>TM +82</b>

Here's the **"Performance Powerhouse"** of the whole deal right here! And yet when you look at her great GRP photo and see her in real life, you will see how extra sweet and feminine she is!

What a calf 24A is and she has quite the story behind her. Her sire, Skor, was the massive 1700+ lb. Sale Day weight bull in 2011. He is doing a marvelous job for us and wait 'til you see his sons next spring! 24A's dam, 211T, is killer good! Now, she's not the most photogenic cow as we tried for an hour to get her head up for her photo shoot... but noooooo! Anyhow, she can make one and she can make embryos - two flushes thus far have averaged 21.5 #1's. Her first son was the \$8000 Big Wind bull at Alta. Next was a \$5000 Arson daughter to RACK. She also had a \$16,000 Arson son this spring to Victor Gonzales in Mexico. 211T was the high selling cow at Red Round-up 2012 at \$22,5000 as the "Pick of Brylor's Mulberry Daughters" to Star G (Iowa), Scott Graham (Ontario) and Ben Fraser (Australia).

24A is *"the kind to keep and the kind to buy and the kind to sell!"*



**COUNTESS 13G - GRANDAM TO LOT #7**



**211T - DAM TO LOT #7 & FUTURE FLUSH CHOICE LOT**



**CHOICE LOT!!**

**BRENT'S FEATURE HEIFER CALF PICKS!**

**CHOICE LOT!! Choose between Lot #8 (72A Heifer Calf ) OR Already Frozen Flush of 9 Full Sibs to 72A**



**LOT #8 - RED BRYLOR 230U ESSENCE 72A**



**RED BRYLOR 230U ESSENCE 72A**

Female LMP 72A February 08 2013 #1736062  
BW: 91 lbs.

- RED COMPASS MULBERRY 449M
- RED FINE LINE MULBERRY 26P AMF OSF MAF (1237972)
- RED DUS FAYETTE 8G
- RED HR RAMBO ET 91K
- RED BRYLOR MISS ROC 20H
- RED SILVEIRAS REDFORD OSF
- RED MC DOUGALL FAYETTE 59A
- SSS BLACK TREND 13B
- RED MEADOW CK MISS SEAMAN 31A
- DMM FLEX 24E
- KBJ FRAN 76A

(PROJ)

'13 EPD's
BW +2.0
WW +67
YW +105
Milk +18
TM +52

Pretty hard to have slipped this one past the goalie in Brent Carey! Ronnie Milsap, Stevie Wonder and Ray Charles just called, too, and said they even found her! If we were *still* showing at Brylor, 72A and her gorgeous New Trend dam, 230U, would have been heading to Farmfair and Agribition to try and win a truck just like her daddy did in 2006 and be in the RBC Supreme Challenge in Regina. Remember how good the Mulberry heifer calf we had in 2007 named Olivia 2T was... 72A is *even better* in my mind! I truly believe this could be the best female we have ever sold!

Her dam is an E.T. daughter of New Trend and the \$50,000 1/2 interest old Essence cow, 42G (dam of Thump 2T). 230U was the Reserve Senior Yearling Heifer Champion behind 19U (dam of Makin' Waves) at the World Angus Forum Show in 2009.

Special Terms will be announced at the sale on Essence 72A. I will reveal this now, though – the buyer will get 100% possession of her and all her natural born calves.



**ESSENCE 42G - GRANDAM TO LOT #8**



**230U - DAM TO LOT #8 & ALREADY FROZEN FLUSH CHOICE LOT**





**RED BRYLOR OTM OLIVIA 127A**

Female LMP 127A February 21 2013  
 BW: 91 lbs.

RED BIEBER MAKIN HAY 9913 OSF MAF  
 RED BRYLOR WRAZ MAKN WAVES 39X MAF OSF (1595863)  
 RED BRYLOR CHEROK 19U MAF OSF

RED BIEBER MAKE MIMI 7249 OSF MAF  
 RED BIEBER ADELLE 8958 OSF  
 RED FINE LINE MULBERRY 26P OSF AMF MAF  
 RED BRYLOR CHEROK 22LRED

RED BRYLOR BODASIUS 79K MAC  
 RED T-S OLIVIA 706P MAF OSF (1222003)  
 RED T-S OLIVIA 256L

RED TKP BODACIOUS 693 OSF  
 RED BRYLOR CHEROK 40X  
 RED BRYLOR NEW TREND 22D OSF MAF  
 RED BRYLOR OLIVIA 3G

(PROJ)

'13 EPD's
BW 0.0
WW +61
YW +99
Milk +30
TM +60

**LOT #9 - RED BRYLOR OTM OLIVIA 127A**

She may be fifth on the list, but – on paper and on past records from her dam – she may be first!! Let me ask you this question... when Usain Bolt blew the field away in the last two Olympic 100M finals for the Gold medals, do you remember who was in 5th hole that day (or 6th, 7th or 8th in the heat for that matter)? "No", I am sure is the answer, but they will always remember it. Being 8th (or last) that day doesn't make him slow by any means just as Olivia 127A will get overshadowed on October 27th in High River at "Tradition With A Vision" by these other heifer calves, but I'll say it again – Not On Paper! Olivia 706P's numbers are +0.7, +54, +96, unbelievable +43 Milk and breeding leading +70 for Total Maternal!

Olivia 706P was a \$24,000 half interest cow to Mark Chriss, a very good family friend of ours in Oregon, and Mak'n Waves 39X was a \$47,500 bull.

You need to come to see the full E.T. brother to 127A on test this winter... he's very good!!



OLIVIA 706P - DAM TO LOT #9



MAKN WAVES 39X - SIRE OF LOT #9





**10**

**RED BRYLOR JUANITA 46T**

Female LMP 46T February 11 2007 #1395537

BW: 77 lbs. Adj 205D Wt: 637 lbs. WI: 97 Adj 365D Wt: 1107 lbs YI: 110

RED COMPASS MULBERRY 449M  
RED FINE LINE MULBERRY 26P AMF OSF MAF (1237972)  
RED DUS FAYETTE 8G

RED HR RAMBO ET 91K  
RED BRYLOR MISS ROC 20H  
RED SILVEIRAS REDFORD OSF  
RED MC DOUGALL FAYETTE 59A

RED MEM PRINCE 208H  
RED BRYLOR JUANITA 18P (1242858)  
RED BRYLOR CHEROK 54Y

CHOCTAW CHF 373 OSF  
RED MEM PRO 217E  
RED BRYLOR DYNASTAR 19S  
BLACK BRYLOR EILEEN 62S

'13 EPD's
BW -1.9
WW +46
YW +73
Milk +19
TM +43

LOT #10 - RED BRYLOR JUANITA 46T

**A.I.'ed:** April 20 – Red SSS Arson 85U

**Exposed:** May 10 - June 5 – Red Brylor Skor 221X

We are including a couple of mature Mulberry daughters this year in "Tradition With A Vision" to show how strong they are as a group. These Mulberry sired cows just get better the older they get!

46T has raised an \$8000 EXT son to Tophams' and a beautiful Anson daughter in our herd. Her dam, 18P, is an E.T. daughter of the old Choctaw Chief 373 son named Prince 208H of MEM fame. The grandam was 54Y, full sister to our signature cow, Cherok 40X.

**11**

**RED BRYLOR 46T JUANITA 55A**

Female LMP 55A February 03 2013 #1736173

BW: 87 lbs.

BRYLOR FORT ROCK 68W  
RED BRYLOR JKC FORT KNOX 100Y (1702023)  
RED BRYLOR BONITA 66K

SAR FORT ROCK 151R  
RED BRYLOR LASSIE 5P  
RED RD DIVIDEND 7F  
RED BRYLOR CHEROK 40X

RED FINE LINE MULBERRY 26P AMF OSF MAF  
RED BRYLOR JUANITA 46T (1395537)  
RED BRYLOR JUANITA 18P

RED COMPASS MULBERRY 449M  
RED DUS FAYETTE 8G  
RED MEM PRINCE 208H  
RED BRYLOR CHEROK 54Y

(PROJ)

'13 EPD's
BW +0.7
WW +55
YW +87
Milk +20
TM +48

Fort Knox really clicked well with our Mulberry daughters. We will have a tremendous set of his sons in our 43rd Brylor Bull Sale next spring.

A maternal sister to the \$8000 EXT bull of Tophams'. An EXT 83 daughter recently topped the sale at \$8000 in Missouri for Brylor & JK.



FORT KNOX 100Y  
SIRE OF LOT #11



LOT #11 - RED BRYLOR 46T JUANITA 55A





**LOT #12 - RED KBJ ARDATH 1056T**

**12**

**RED KBJ ARDATH 1056T**

Female KBJ 1056T February 11 2007 #1379378

BW: 92 lbs. Adj 205D Wt: 574 lbs. WI: 89 Adj 365D Wt: 863 lbs YI: 108

RED SIX MILE ARAB 435J  
**RED SIX MILE MATADOR 817M (1127458)**  
 RED RSL LIBRA 391F

RED PASQUIA ARAB 28E  
 RED GEIS SYRINGA 4594  
 RED FLYING K CHIEF 36Y  
 RED SIX MILE LIBRA 331S

RED CUDLOBE RAINMAKER 32L  
**RED KBJ ARDATH 972P (1201353)**  
 RED DIAMOND RIVER ARDATH 59J

STEVENSON RAINMAKER 630G  
 CUDLOBE DELIA 25J  
 RED PIRO RAMBO 710G  
 RED HILL TOP ARDATH 59G

'13 EPD's	
BW	+4.5
WW	+44
YW	+70
Milk	+20
TM	+42

**A.I.'ed:** April 26 – Red Badlands Opportunity 53Y

**Exposed:** May 15 - June 5 – Red Brylor JKC Boulevard 1241X

I hope that Dennis isn't too upset about selling some of these great cows we got in the acquisition of the Get-A-Long herd! This super Matador daughter is going to be fantastic for her new buyer. She is absolutely dripping with phenotype and udder quality and the evidence of production is at her side with 83A by Fort Knox.

A.I.'ed to the \$35,000 Jackhammer son called "Opportunity". Reports are in on the first calves by him and all who have some talk a great story! See for yourself next February for one of the first ones to be born in Canada.



**LOT #13 - RED BRYLOR ARDATH 83A**

**13**

**RED BRYLOR ARDATH 83A**

Female LMP 83A February 10 2013 #1736177

BW: 81 lbs.

(PROJ)

BRYLOR FORT ROCK 68W  
**RED BRYLOR JKC FORT KNOX 100Y (1702023)**  
 RED BRYLOR BONITA 66K

SAR FORT ROCK 151R  
 RED BRYLOR LASSIE 5P  
 RED RD DIVIDEND 7F  
 RED BRYLOR CHEROK 40X

RED SIX MILE MATADOR 817M  
**RED KBJ ARDATH 1056T (1379378)**  
 RED KBJ ARDATH 972P

RED SIX MILE ARAB 435J  
 RED RSL LIBRA 391F  
 RED CUDLOBE RAINMAKER 32L  
 RED DIAMOND RIVER ARDATH 59J

'13 EPD's	
BW	+1.3
WW	+48
YW	+85
Milk	+21
TM	+45

Two Fort Knox daughters to sell this year as his first calves were only here in the winter of 2013 at Brylor and JAS. Doug & Jason McLaren of JAS Red Angus in Manitoba gave us \$14,000 to own him two years ago.

Fort Knox is the Red grandson of Fort Rock 151R, our Black Agribition Grand Champion Bull, we were looking for. I remember Brent Carey and Grant Rolston really liking him when he sold.

Gorgeous blood red color on 83A!





LOT #15 - RED BRYLOR SUE 107A - DTR OF LOT #14

14

**RED BRYLOR SUE 95X**

Female TW LMP 95X February 26 2010 #1577426  
 BW: 69 lbs. Adj 205D Wt: 590 lbs. WI: 100

RED SSS ARSENAL 271S OSF MAF  
**RED SSS ARSON 85U OSF MAF (1467111)**  
 RED SSS SCAARA 951L

RED 5L NORSEMAN KING 2291 OSF MAF  
 RED SSS DYLAN'S VALENTINE 103C  
 SSS TRAVELER 362J  
 RED SSS SCAARA 16H

RED BLADES LEAD-PINE 71N  
**RED LAMBS SUE 56T (1390091)**  
 RED LAMBS SUE 24P

RED BRYLOR LEAD-PINE 83L MAF  
 RED BLADES MISS CANYON 110L  
 RED LAMB'S CURNT VALUE MANN 4L  
 RED LAMBS SUE 7G

'13 EPD's
BW +1.3
WW +59
YW +96
Milk +10
TM +39

**A.I.'ed:** May 6 – Red RRS Ideal Berry 912  
**Exposed:** May 20 - June 5 – Red Brylor JKC Boulevard 124X

95X is the chosen Arson daughter to represent all of her sisters at home. These Arson cows are good – beautifully uddered and solid, fertile producing fools! 95X had a \$6000 Waves son sell to Strawberry Fields this spring. She's A.I.'ed back to the full E.T. brother to Mulberry. Check out her awesome "Wheeler" calf and look back at the cover's theme for this sale – this pair "digs pretty deep"!

15

**RED BRYLOR SUE 107A**

Female LMP 107A February 16 2013 #1736078  
 BW: 85 lbs.

RED WHEEL DODGE CITY 3U  
**RED WHEEL DODGE CITY 61Y (1626480)**  
 RED WHEEL PRIDE 29N

RED NORTHLINE ATLANTIC CITY  
 RED HANDFORD MISS CHIEF 7K  
 RED BRYLOR STALLION 19J MAF  
 RED FLY AWAY PRIDE 161K

RED SSS ARSON 85U OSF MAF  
**RED BRYLOR SUE 95X (1577426)**  
 RED LAMBS SUE 56T

RED SSS ARSENAL 271S OSF MAF  
 RED SSS SCAARA 951L  
 RED BLADES LEAD-PINE 71N  
 RED LAMBS SUE 24P

(PROJ)

'13 EPD's
BW +2.3
WW +64
YW +111
Milk +12
TM +44

This super show prospect "Wheeler" daughter has all the right stuff! She has a beautiful front end and a hind leg and stifle muscle to make any judge anywhere anytime stop and stare! She's good!!



IDEAL BERRY 912 - SERVICE SIRE TO LOT #14



# BRYLOR COW/HEIFER CALF PAIRS

**16**

## MINBURN BUXOM 18S

Female Ee DWW 18S January 26 2006 #1363141  
BW: 91 lbs. Adj 205D Wt: 571 lbs. WI: 98

AA R REALLY WINDY 1205 AMF CAF NHF DDF  
KBJ WINDY 680M (1111158)  
KBJ BLACKBIRD 512K

AA R WINDY RIDGE 362  
AA R LADY KELTON 2170  
LOMA LANES CRACKER JACK 51H  
KBJ BLACKBIRD 325G

CRESCENT CREEK MAIN EVENT 6H  
MINBURN BUXOM 95M (1115905)  
MINBURN BUXOM A. 33G

STEVENSON FORTUNE 425C AMF CAF NHF  
CRESCENT CREEK ROSEBUD 115F  
MINBURN LANCER 11B  
DWW MINBURN BUXOM 21Y

'13 EPD's
BW +0.9
WW +56
YW +94
Milk +12
TM +40

**Exposed:** May 6 - June 5 - Red Brylor JKC Boulevard 1214X

A Black / Red Carrier cow who had a couple of Red daughters now. See her Rough Rider daughter, 84A, in Lot #17 and one sold last year to Corey Andrusiwh (Jade farms) for \$4900.

When you see this cow in real life, you'll wonder why we didn't picture her!

**17**

## RED BRYLOR BUXOM 84A

Female LMP 84A February 10 2013 #1736067  
BW: 86 lbs.

RED BASIN TRENDSETTER 6074 OSF MAF  
RED BIEBER ROUGH RIDER 10712 OSF (1594761)  
RED BIEBER ADELLE 8958 OSF

RED BRYLOR NEW TREND 22D OSF MAF  
RED BASIN ROSE F521 OSF  
RED BIEBER TITAN 6894  
RED BIEBER ADELLE 7226 DMF OSF

KBJ WINDY 680M  
MINBURN BUXOM 18S (1363141)  
MINBURN BUXOM 95M

AA R REALLY WINDY 1205 AMF CAF NHF DDF  
KBJ BLACKBIRD 512K  
CRESCENT CREEK MAIN EVENT 6H  
MINBURN BUXOM A. 33G

(PROJ)
'13 EPD's
BW +0.9
WW +58
YW +90
Milk +15
TM +44

The young two year old Rough Rider daughters we have in production at Brylor are future breed leaders. The Hereafter Cattle Co. picked up two Rough Rider daughters at \$5750 each. Jeff Fraser has a \$14,500 son roaming his pastures and WRAZ has a \$15,000 bull by him, as well.

**18**

## RED GET-A-LONG COUNTESS 912

Female GAL 12W January 30 2009 #1529128  
BW: 65 lbs. Adj 205D Wt: 516 lbs. WI: 90

RED YY HITCH 514R  
RED ANCHOR 1 HITCH 38T CAF OSF (1414410)  
RED CROWFOOT STRETCH 4320P

RED CROWFOOT OLE'S OSCAR 2042M AMF CAF OSF MAF  
RED YY GOLDIE 140L  
RIDGE BANDO 598-282ET  
RED CROWFOOT STRETCH 1328L

RED GET-A-LONG LAST CALL 1171  
RED GET-A-LONG COUNTESS 7019 (1421666)  
RED GET-A-LONG COUNTESS 4192

RED GET-A-LONG GRUB STEAK 754  
RED GET-A-LONG MRS YOUNG 4213  
RED BAR M RAINMAKER 82M  
RED GET-A-LONG COUNTESS 648

'13 EPD's
BW -3.8
WW +33
YW +52
Milk +18
TM +34

**Exposed:** May 6 - June 5th - Red Brylor JKC Boulevard 124X  
**Observed Bred:** May 9

I will readily admit I don't know what I have here yet in this good young Hitch cow from the Countess cow family ... but you sure will find out as her new owner! Growing up with Dennis doing our sales in Mountain View (with the Mackenzie Brothers back then) was a great learning experience for me. Dennis always said, "Buy 'em for the way they produce," so ... look at her really good Rough Rider daughter selling with her.

**19**

## RED BRYLOR 912 COUNTESS 57A

Female LMP 57A February 03 2013 #1736057  
BW: 78 lbs.

RED BASIN TRENDSETTER 6074 OSF MAF  
RED BIEBER ROUGH RIDER 10712 OSF (1594761)  
RED BIEBER ADELLE 8958 OSF

RED BRYLOR NEW TREND 22D OSF MAF  
RED BASIN ROSE F521 OSF  
RED BIEBER TITAN 6894  
RED BIEBER ADELLE 7226 DMF OSF

RED ANCHOR 1 HITCH 38T CAF OSF  
RED GET-A-LONG COUNTESS 912 (1529128)  
RED GET-A-LONG COUNTESS 7019

RED YY HITCH 514R  
RED CROWFOOT STRETCH 4320P  
RED GET-A-LONG LAST CALL 1171  
RED GET-A-LONG COUNTESS 4192

(PROJ)
'13 EPD's
BW -1.9
WW +45
YW +69
Milk +18
TM +46

Do you believe me yet about "diggin' deep" for this sale offering? Here is as deep and thick and stout a heifer calf as we have on the whole ranch. These Rough Rider's are for real... too bad we're about out of semen on him - I've maybe got 4 or 5 straws left.



LOT #19 - RED BRYLOR 912 COUNTESS 57A

ROUGH RIDER - SIRE OF LOT #17 & LOT #19





LOT #20 - RED GET-A-LONG FIREFLY 6182

20

**RED GET-A-LONG FIREFLY 6182**

Female GAL 182S March 06 2006 #1361065  
BW: 74 lbs.

- RED GOLD-BAR KING V415 107K
- RED GOLD-BAR MERCEDES K 116M (1088352)
- RED LPC BIRDIE DYNAMICS 2K
- RED SSS MAVERICK 249W
- RED WCF MAVERICK'S FIREFLY 11L (1084878)
- RED SSS FIREFLY 685A
- RED BLAZE V415 OSF
- RED KENRAY MISS DAWN 114F
- RED BUF CRK DYNAMICS 3820 AMF OSF MAF
- RED LPC BIRDIE JULIA 11H
- RED BRA FIRST-CLASS 13R
- RED SSS SOAPY 899S
- RED SSS ELEVATION 467Y
- RED SSS FIREFLY 481Y

'13 EPD's
BW -0.8
WW +42
YW +63
Milk +5
TM +26

Exposed: April 12 - June 5 - Red Brylor Skor 221X

Here is the proverbial "brick shithouse" of a cow in this year's offering! She's a tank, a Mack Truck or just plain old "stout" will describe her, too!

She is sired by the Bar 5 bull called Mercedes that Dennis and Shelley owned at one time. All of his daughters look similar to 6182

21

**BRYLOR BLACK FIREFLY 144A**

Female RC LMP 144A March 08 2013 #1736192  
BW: 80 lbs.

- HF KODIAK 5R AMF CAF NHF MAF
- BLACK BRYLOR KODIAK 204Y (1647397)
- RED XXX LAKME 70M OSF MAF
- RED GOLD-BAR MERCEDES K 116M
- RED GET-A-LONG FIREFLY 6182 (1361065)
- RED WCF MAVERICK'S FIREFLY 11L
- SANDY BAR ADVANTAGE 43M
- WILBAR RUBY 955N
- RED BRYLOR NEW TREND 22D OSF MAF
- RED FINE LINE LAKME 21J
- RED GOLD-BAR KING V415 107K
- RED LPC BIRDIE DYNAMICS 2K
- RED SSS MAVERICK 249W
- RED SSS FIREFLY 685A

(PROJ)

'13 EPD's
BW -1.4
WW +50
YW +83
Milk +12
TM +47

A Black / Red Carrier HF Kodiak 5R granddaughter. She's built just like her big, voluminous dam, 6182! I do firmly believe the industry is going to find a lot of reasons to get behind this Kodiak 204Y deal!



LOT #21 - BRYLOR BLACK FIREFLY 144A





**22**

**RED BRYLOR CRESTA 96U**

Female LMP 96U March 05 2008 #1465461

BW: 80 lbs. Adj 205D Wt: 721 lbs. WI: 106 Adj 365D Wt: 1022 lbs YI: 100

RED COMPASS MULBERRY 449M  
RED FINE LINE MULBERRY 26P AMF OSF MAF (1237972)  
RED DUS FAYETTE 8G

RED HR RAMBO ET 91K  
RED BRYLOR MISS ROC 20H  
RED SILVEIRAS REDFORD OSF  
RED MC DOUGALL FAYETTE 59A

RED BRYLOR NEW TREND 22D OSF MAF  
RED BROX CRESTA 21H (946815)  
RED BROX CRESTA 2B

SSS BLACK TREND 13B  
RED MEADOW CK MISS SEAMAN 31A  
RED GET-A-LONG WELTERWEIGHT72  
RED BRYLOR CRESTA 35U

'13 EPD's	
BW	-0.6
WW	+58
YW	+101
Milk	+20
TM	+49

**Exposed:** April 12 - June 5 – Red Brylor Skor 221X

Here's a young Mulberry daughter who could rival any cow in our herd as far as body mass and volume goes. She's not for the faint of heart programs who live and die by the 1250 lb. mature cow belief!

96U is a proven E.T. donor cow as she was taken out of production for a year and flushed for Russia. She also has a Black / Red Carrier Fort Rock daughter at Larry Nielsen's in Saskatchewan. She is a maternal sister to the Semex bull called "Redwood" (Red Brylor SDL Redwood 217S). Get geared up for next year's calf – she's mated to Skor.... our "#1 Man" around here now!

**23**

**RED BRYLOR CRESTA 138A**

Female LMP 138A February 26 2013 #1736094

BW: 98 lbs.

RED J.JL PAYCHECK 15W AMF  
RED MCTAVISH PAYCHECK 24Y (1603171)  
RED MCTAVISH SCAARA 2W

RED SOO LINE NORTHERN 5291  
RED RIVERDALE TEWSOX 564N  
RED CHOPPER K OZZI 109T  
RED MCTAVISH SANDY 7T

RED FINE LINE MULBERRY 26P AMF OSF MAF  
RED BRYLOR CRESTA 96U (1465461)  
RED BROX CRESTA 21H

RED COMPASS MULBERRY 449M  
RED DUS FAYETTE 8G  
RED BRYLOR NEW TREND 22D OSF MAF  
RED BROX CRESTA 2B

(PROJ)

'13 EPD's	
BW	+3.1
WW	+60
YW	+90
Milk	+17
TM	+47

An end of February Paycheck heifer calf. Her sire was the high seller at the McTavish bull sale in Yorkton, Saskatchewan, at \$6000. He had big nuts, big muscle and tons of hair.

LOT #22 - RED BRYLOR CRESTA 96U

**24**

**RED BRYLOR LASSIE 247X**

Female (ET) LMP 247X January 15 2010 #1596891

BW: 80 lbs. Adj 205D Wt: 559 lbs. WI: 100

RED FCC RAMBO 502 OSF  
RED SSS BOOMER 803B (738248)  
RED SSS MISS HIGH LASS 352X

RED CV FOUR TIMES  
COPPER LASS 2392  
RED SSS HIGH LINE 402M  
RED SSS FIRST-CLASS LASS 46T

RED LEACHMAN CHIEFDOM 2X  
RED BRYLOR LASSIE 8P (1250982)  
RED KBJ LASSIE 133X

RED LEACHMAN KINGDOM 8251  
LEACHMAN RD REV 5901  
TLA NORTHERN SAMURAI  
KBJ ROUND LASSIE 18T

'13 EPD's	
BW	+3.6
WW	+60
YW	+91
Milk	+19
TM	+49

**A.I.'ed:** May 3 – Red SSS Traverse 387Z

**Exposed:** May 23 - June 5 – Red Brylor JKC Boulevard 124X

An E.T.Boomer cow just starting out her career ... and from the look of her two daughters selling with her today as Lots #25 & #34, I'd say she's already a pretty successful business cow!

Her dam, 8P, sold to Erik Faulk and is in transplant at DRI. Get all over this one!!

**25**

**RED BRYLOR 247X LASSIE 78A**

Female LMP 78A February 09 2013 #1736064

BW: 86 lbs.

RED WHEEL DODGE CITY 3U  
RED WHEEL DODGE CITY 61Y (1626480)  
RED WHEEL PRIDE 29N

RED NORTHLINE ATLANTIC CITY  
RED HANDFORD MISS CHIEF 7K  
RED BRYLOR STALLION 19J MAF  
RED FLY AWAY PRIDE 161K

RED SSS BOOMER 803B  
RED BRYLOR LASSIE 247X (1596891)  
RED BRYLOR LASSIE 8P

RED FCC RAMBO 502 OSF  
RED SSS MISS HIGH LASS 352X  
RED LEACHMAN CHIEFDOM 2X  
RED KBJ LASSIE 133X

(PROJ)

'13 EPD's	
BW	+3.2
WW	+64
YW	+109
Milk	+16
TM	+48

You'll want to see this young "Wheeler" daughter's mother and sister in Lots #24 & #34.

Also her sire, 61Y, is back at Saskatoon at Michael & Rhea's place getting ready for Agribition. That's after he serviced cows until the first week in September.





LOT #27 - RED BRYLOR QUEEN 53A - DTR OF LOT #26

26

**COME-BY 4R QUEEN 5R**

Female RC GHR 5R January 14 2005 #1247393  
 BW: 98 lbs. Adj 205D Wt: 544 lbs. WI: 87

WALDECK SKY TRAVELER  
**ASPELUND'S WILDCAT 27'95 (824345)**  
 REMINGTON'S TIBBIE 116C

R&J MAXIMA AMF CAF NHF DDF  
 MENGS MISS SKYMERE 62X  
 BURTHLENE STING 57N  
 RIDGE LANE TIBBIE 34N

RED GEIS PRIME RIB 411 OSF  
**GET-A-LONG QUEEN 781 (902727)**  
 GET-A-LONG QUEEN 552

RED PREMIER PATRIOT 16  
 RED GEIS KURUBA 5'92  
 GET-A-LONG CLAY 324  
 GET-A-LONG QUEEN 337

'13 EPD's
BW +0.4
WW +31
YW +51
Milk +17
TM +32

**A.I.'ed:** May 8 – Red SSS Traverse 387Z  
**Exposed:** May 23 - June 5 – Red Brylor JKC Boulevard 124X

A Black / Red Carrier cow from the Get-A-Long group of cows we purchased last year. She can make a Red one and make it very well, too! Look at her two Red daughters selling today as Lot #27 & #50. She's an outcross cow and is bred to a \$31,000 high seller at Sibbalds' sale.

When you have a production sale for 42 straight years, you have to part with good ones to keep people coming back.

27

**RED BRYLOR QUEEN 53A**

Female LMP 53A February 3 2013  
 BW: 80 lbs.

RED FINE LINE MULBERRY 26P OSF AMF MAF  
**RED BRYLOR JKC GHOST RIDER 108Y (1669691)**  
 RED BRYLOR CHEROK 22L

RED COMPASS MULBERRY 449M  
 RED DUS FAYETTE 8G  
 RED BRYLOR NEW TREND 22D OSF MAF  
 BLACK BRYLOR EILEEN 35A (RC)

ASPELUND'S WILDCAT 27'95  
**COME-BY 4R QUEEN 5R (RC) (1247393)**  
 GET-A-LONG QUEEN 781 (RC)

WALDECK SKY TRAVELER  
 REMINGTON'S TIBBIE 116C  
 RED GEIS PRIME RIB 411  
 GET-A-LONG QUEEN 552

(PROJ)

'13 EPD's
BW +0.4
WW +45
YW +73
Milk +18
TM +37



GHOST RIDER 108Y - SIRE OF LOT #27

The first "Ghost Rider" to sell in Canada... but that's only because our partner and friend, Phil Birnie, isn't taking his "talk of the ranch" Ghost Rider heifer to Red Round-up! Phil gave us \$11,000 for half of him back in 2012.

Phil also owns half of Ghost Rider's full sister, 19U – dam of Makin' Waves, for \$7500 in "Tradition With A Vision" 2008.

Phil told me the bull was very well received on the tour this summer as were his calves.





## RED BRYLOR DMG KARMA 5Z

Female LMP 5Z January 28 2012 #1681785  
BW: 71 lbs. Adj 205D Wt: 687 lbs. WI: 104

RED FINE LINE MULBERRY 26P AMF OSF MAF  
RED BRYLOR TOAST 30T MAF (1395554)  
RED BRYLOR SDL MISS LUMIE 214P OSF MAF

BLACK BRYLOR FORT ROCK 42U  
RED BRYLOR DMG KARMA 6X (1577445)  
RED BRYLOR KARMA 12K OSF

RED COMPASS MULBERRY 449M  
RED DUS FAYETTE 8G  
RED BRYLOR NEW TREND 22D OSF MAF  
RED LUMONT GOLD STAR 8J

SAR FORT ROCK 151R  
RED DWAJO PRIDE 40P  
RED BRYLOR NEW TREND 22D OSF MAF  
RED SHODEREE RAMBA 2F

'13 EPD's
BW -2.3
WW +55
YW +83
Milk +25
TM +52

**A.I.'ed:** April 18 – Red Brylor Arson 84Z  
**Exposed:** May 15 - July 20 – Black Brylor Kodiak 204Y

Exceptional pedigree on this heifer by Toast and our Karma cow family. The dam, 6X, is a beautiful young cow with a big future ahead of her. She was a \$5100 bred heifer in our "Tradition With A Vision" Sale two years ago to one of our partners and we have since bought her back. She is worth it!



## RED BRYLOR TINSEL 12Z

Female LMP 12Z February 04 2012 #1681789  
BW: 78 lbs. Adj 205D Wt: 631 lbs. WI: 96

RED FLYING K AMBUSH 6T  
RED BRYLOR WEST JET 69W (1523544)  
RED FLYING K LASSIE 3T

RED PREMIER PATRIOT 16  
RED BRYLANN TINSEL 8N (1194034)  
RED BRYLOR TINSEL 7C

RED SVR AMBUSH 59P  
RED FLYING K MANDY 120N  
RED BBCC PRESIDIO 5Z AMF OSF  
RED FLYING K BEAUTY 6N

SAYRE PATRIOT  
CAMILLA BELLE 54D  
RED BRYLOR DYNASTAR 19S  
RED JKR TINSEL 14Z

'13 EPD's
BW +0.1
WW +54
YW +80
Milk +10
TM +37

**A.I.'ed:** April 18 – Red SSS Traverse 287Z  
**Exposed:** May 15 - July 20 – Black Brylor Kodiak 204Y

West Jet was a big part of our A.I. program a few years back and we really like his daughters. Couple him up with a Patriot 16 cow from the Tinsel family and 12Z has "Future Brood Cow" written all over her!



## RED BRYLOR 2E BONITA 31Z

Female LMP 31Z February 10 2012 #1681810  
BW: 81 lbs. Adj 205D Wt: 666 lbs. WI: 101

RED BASIN TRENDSETTER 6074 OSF MAF  
RED BIEBER ROUGH RIDER 10712 OSF (1594761)  
RED BIEBER ADELLE 8958 OSF

RED BUF CRK HOB0 1961 OSF MAF  
RED BRYLOR 2E BONITA 249U MAF (1510386)  
RED BRYLOR BONITA 2E

RED BRYLOR NEW TREND 22D OSF MAF  
RED BASIN ROSE F521 OSF  
RED BIEBER TITAN 6894  
RED BIEBER ADELLE 7226 DMF OSF

RED BUF CRK HOB0 1413 OSF  
BUF CR CARRIE VC1174 OSF  
RED BBCC PRESIDIO 5Z AMF OSF  
RED BRYLOR CHEROK 40X

'13 EPD's
BW -0.8
WW +49
YW +74
Milk +17
TM +42

**A.I.'ed:** April 27 – Red Brylor Iceman 1Z  
**Exposed:** May 15 - July 20 – Black Brylor Kodiak 204Y

Powerful Rough Rider daughter here! Her dam, 249U, is a very maternal E.T. daughter of 2E and Hobo 1961. Coming from the Bonita family, 31Z will have an udder to be proud of!



## RED BRYLOR 58J BONITA 35Z

Female LMP 35Z February 11 2012 #1681814  
BW: 85 lbs. Adj 205D Wt: 713 lbs. WI: 108

RED UBAR SEQUOIA 202 OSF  
RED BCC CRIMSON JEWELS 102U (1472852)  
RED RAVEN RIVER GOLDIE 47N

RED BRYLOR NEW TREND 22D OSF MAF  
RED BRYLOR 58J BONITA 53W MAF (1540304)  
RED BRYLOR BONITA 58J

RED BJR HIGH CAPACITY 008 OSF MAF  
RED FORSTER COPRQUEEN 7168 OSF  
RED WILD ROSE LIGHTNING 183J  
RED WILD ROSE GOLDIE 47H

SSS BLACK TREND 13B  
RED MEADOW CK MISS SEAMAN 31A  
RED TKP BODACIOUS 693 OSF  
RED BRYLOR CHEROK 40X

'13 EPD's
BW -1.0
WW +49
YW +76
Milk +24
TM +48

**Exposed:** May 6 - July 20 – Black Brylor Kodiak 204Y

The only daughter of the \$12,000 Crimson Jewels bull in our sale this fall. We had two sons of Crimson sell this spring at \$14,000 to Y Coulee and \$9500 to Brian Zoratti.

The dam is another E.T. daughter of our Bonita family and by the extraordinary bull, New Trend 22D.



## RED BRYLOR SKIJA 36Z

LMP 36Z February 11 2012 #1681815  
BW: 73 lbs. Adj 205D Wt: 700 lbs. WI: 106

RED FINE LINE MULBERRY 26P AMF OSF MAF  
RED BRYLOR TOAST 30T MAF (1395554)  
RED BRYLOR SDL MISS LUMIE 214P OSF MAF

RED DIMLER INDEED 105R  
RED WRAZ SKIJA 77X (1568092)  
RED RIVERDALE SKIJA 329K

RED COMPASS MULBERRY 449M  
RED DUS FAYETTE 8G  
RED BRYLOR NEW TREND 22D OSF MAF  
RED LUMONT GOLD STAR 8J

RED SIX MILE INDEED 810M  
RED FLAT LAKE ISTAS 35M  
RED SSS BOOM 51H  
RED RIVERDALE SKIJA 62B

'13 EPD's
BW -0.4
WW +55
YW +86
Milk +21
TM +48

**A.I.'ed:** May 4 – Red Brylor Arson 84Z  
**Exposed:** May 20 - July 20 – Black Brylor Kodiak 204Y

We are finding our young Toast daughters to be well on their way to being some of our best!

36Z's dam, 77X, came from WRAZ in the Keystone Sale a few years back. We bought her because of her dam, Skija 329K, one of Riverdale's best.



## RED BRYLOR TOPAZ 37Z

Female LMP 37Z February 12 2012 #1694365  
BW: 76 lbs. Adj 205D Wt: 597 lbs. WI: 88

RED BJR RAMBLER 5162 OSF  
RED VGW RAMBLER 1000 OSF (970204)  
RED VGW UMPIRE YUMA 9266

RED JKC HUCKLEBERRY 701 OSF MAF  
RED RILEY'S TOPAZ 14X OSF (1597476)  
RED RILEY'S TOPAZ 29P OSC

RED FCC RAMBO 502 OSF  
BJR GOLDI 355-1122  
RED LMB UMPIRE 1000-Z22  
RED VGW KING YUMA 9045

RED FINE LINE MULBERRY 26P AMF OSF MAF  
RED LJRA MISS NONE BET F647  
RED LCHMN GRND CANYON 1244G OSC MAF  
RED TCR TOPAZ 83H

'13 EPD's
BW -3.3
WW +39
YW +63
Milk +16
TM +36

**A.I.'ed:** May 4 – Red Brylor Arson 84Z  
**Exposed:** May 20 - July 20 – Black Brylor Kodiak 204Y

An in-dam purchase from the Lloyd Cavers Dispersal. Her dam, 14X, was my pick of the breds that day. My pick of the cows was a little framed cow, 12S... she too was a daughter of Rambler 1000 just as 37Z is! They say dynamite comes in small packages!





LOT #34 - RED BRYLOR LASSIE 61Z

**34**

**RED BRYLOR LASSIE 61Z**

Female LMP 61Z February 22 2012 #1681830  
 BW: 83 lbs. Adj 205D Wt: 750 lbs. WI: 112

RED BIEBER MAKIN HAY 9913 OSF MAF  
 RED BRYLOR WRAZ MAKN WAVES 39X OSF MAF (1595863)  
 RED BRYLOR CHEROK 19U OSF MAF

RED BIEBER MAKE MIMI 7249 OSF MAF  
 RED BIEBER ADELLE 8958 OSF  
 RED FINE LINE MULBERRY 26P AMF OSF MAF  
 RED BRYLOR CHEROK 22L

RED SSS BOOMER 803B  
 RED BRYLOR LASSIE 247X (1596891)  
 RED BRYLOR LASSIE 8P

RED FCC RAMBO 502 OSF  
 RED SSS MISS HIGH LASS 352X  
 RED LEACHMAN CHIEFDOM 2X  
 RED KBJ LASSIE 133X

'13 EPD's
BW +1.9
WW +68
YW +103
Milk +17
TM +51

**A.I.'ed:** May 3 – Red SSS Traverse 387Z  
**Exposed:** May 20 - July 20 – Black Brylor Kodiak 204Y

The whole family is here today... the dam, 247X, sells as Lot #24 and sister, 78A, sells as Lot #25. Now, by no means, is that an indication of us not liking these three... in fact, just the contrary – this family is really good! The grandam, Lassie 8P, is now in transplant for Erik Faulk and her daughter, 109W, is a big part of Katie Deeg's herd. These all trace back to Lassie 133X, dam of Presidio 5Z. Note, 61Z is A.I.'ed to a \$31,000 bull, as well!

**35**

**RED BRYLOR COUNTESS 58Z**

Female LMP 58Z February 21 2012 #1681827  
 BW: 72 lbs. Adj 205D Wt: 662 lbs. WI: 100

RED BIEBER MAKIN HAY 9913 OSF MAF  
 RED BRYLOR WRAZ MAKN WAVES 39X OSF MAF (1595863)  
 RED BRYLOR CHEROK 19U OSF MAF

RED BIEBER MAKE MIMI 7249 OSF MAF  
 RED BIEBER ADELLE 8958 OSF  
 RED FINE LINE MULBERRY 26P AMF OSF MAF  
 RED BRYLOR CHEROK 22L

RED SSS ZAMA PINE 37S  
 RED BRYLOR COUNTESS 244X (1591831)  
 RED PTTV COUNTESS 13'97

RED PINE MEADOW 14P  
 RED SSS DYAMA 503M  
 RED BRYLOR NEW TREND 22D OSF MAF  
 RED HEATHAN'S COUNTESS 1E

'13 EPD's
BW -0.3
WW +55
YW +87
Milk +19
TM +46

**A.I.'ed:** May 5 – Red Brylor Iceman 1Z  
**Exposed:** May 20 - July 20 – Black Brylor Kodiak 204Y

One of only two Mak'n Waves bred heifers in today's sale. Her dam was an E.T. daughter of Countess 13G and Zama Pine. That makes 244X a maternal sister to Stallion, Skor, Red Carpet and 211T (Lot #7).



MAK'N WAVES 39X (pictured as a Yearling) - SIRE OF LOT #34 & LOT #35





**RED BRYLOR TINSEL 40Z**

Female LMP 40Z February 14 2012 #1681817  
 BW: 81 lbs. Adj 205D Wt: 708 lbs. WI: 106

RED FINE LINE MULBERRY 26P AMF OSF MAF  
**RED BRYLOR TOAST 30T MAF (1395554)**  
 RED BRYLOR SDL MISS LUMIE 214P OSF MAF

RED COMPASS MULBERRY 449M  
 RED DUS FAYETTE 8G  
 RED BRYLOR NEW TREND 22D OSF MAF  
 RED LUMONT GOLD STAR 8J

BLACK BRYLOR FORT ROCK 42U  
**RED BRYLOR TINSEL 15X (1577381)**  
 RED BRYLANN TINSEL 6R

SAR FORT ROCK 151R  
 RED DWAJO PRIDE 40P  
 RED UBAR SEQUOIA 202 OSF  
 RED BRYLOR TINSEL 7C

'13 EPD's
BW -2.3
WW +55
YW +82
Milk +21
TM +49

**A.I.'ed:** May 3 – Red Brylor Arson 84Z  
**Exposed:** May 20 - July 20 – Black Brylor Kodiak 204Y

A 3/4 sister to 5Z in Lot #28 – both are A.I. sired by Toast and out of daughters of Black brylor Fort Rock 42U, one of two Black/Red Carrier sons we kept out of our Agribition Grand Champion Black Bull, SAR Fort Rock 151R.



**RED BRYLOR KT ROBIN 90Z**

Female LMP 90Z March 06 2012 #1681850  
 BW: 87 lbs. Adj 205D Wt: 677 lbs. WI: 102

RED SSS ARSENAL 271S OSF MAF  
**RED SSS ARSON 85U OSF MAF (1467111)**  
 RED SSS SCAARA 951L

RED 5L NORSEMAN KING 2291 OSF MAF  
 RED SSS DYLAN'S VALENTINE 103C  
 SSS TRAVELER 362J  
 RED SSS SCAARA 16H

RED FINE LINE MULBERRY 26P AMF OSF MAF  
**RED BRYLOR ROBIN 66U (1443148)**  
 RED ROBIN OF TAG-A-LONG 14L

RED COMPASS MULBERRY 449M  
 RED DUS FAYETTE 8G  
 RED TAG-A-LONG KING JOHN 6G  
 RED ROBIN OF TAG-A-LONG 54A

'13 EPD's
BW +1.2
WW +68
YW +115
Milk +14
TM +48

**A.I.'ed:** May 6 – Red Brylor Iceman 1Z  
**Exposed:** May 20 - July 20 – Black Brylor Kodiak 204Y

A full sister sold last year for \$4500 to SDL. A brother by Makin Hay 9913 sold for \$15,500 to RACK & Granum Colony in 2011 and 66U has a Red Kodiak bull calf on the ground in 2013 that has huge potential as well. I guess I am proclaiming 90Z to be the sleeper in the offering at "Tradition With A Vision" 2013.



**RED HOWE DESIGNER 63X - SIRE OF LOT #38 & #39**



**RED BRYLOR KT ROBIN 25Y - FULL SISTER TO LOT #37**



**RED BRYLOR ACUTE 70Z**

Female LMP 70Z February 25 2012 #1681835  
 BW: 88 lbs. Adj 205D Wt: 704 lbs. WI: 106

RED LAZY MC HUSTLE 18T  
**RED HOWE DESIGNER 63X (1559039)**  
 HOWE MS BIRDIE 91T

LAZY MC BOOM 44R  
 RED LAZY MC LARKABA 70R  
 WILBAR ADVANTAGE 580R  
 RED WILBAR BIRDIE 526R

RED FINE LINE MULBERRY 26P AMF OSF MAF  
**RED WILLOW CREEK ACUTE 348W (1489438)**  
 RED WILLOW CREEK ACUTE 150P

RED COMPASS MULBERRY 449M  
 RED DUS FAYETTE 8G  
 RED BUF CRK CHF 824-1658 OSC MAF  
 RED WILLOW CREEK ACUTE

'13 EPD's
BW -0.4
WW +58
YW +100
Milk +19
TM +48

**A.I.'ed:** May 4 – Red SSS Traverse 387Z  
**Exposed:** May 20 - July 20 – Black Brylor Kodiak 204Y

Lot #38 and Lot #39 are a pair of 3/4 sisters by the \$12,500 Designer bull, #63X. He was the feature bull in Riley's Dispersal and these two heifers are a result of an in-dam purchase in that sale.



**RED BRYLOR ACUTE 88Z**

Female LMP 88Z March 05 2012 #1681848  
 BW: 84 lbs. Adj 205D Wt: 721 lbs. WI: 110

RED LAZY MC HUSTLE 18T  
**RED HOWE DESIGNER 63X (1559039)**  
 HOWE MS BIRDIE 91T

LAZY MC BOOM 44R  
 RED LAZY MC LARKABA 70R  
 WILBAR ADVANTAGE 580R  
 RED WILBAR BIRDIE 526R

RED FINE LINE MULBERRY 26P AMF OSF MAF  
**RED WILLOW CREEK ACUTE 340W (1489424)**  
 RED WILLOW CREEK ACUTE

RED COMPASS MULBERRY 449M  
 RED DUS FAYETTE 8G  
 RED GET-A-LONG EVERLAST 586  
 RED SANROSE ACUTE 12A

'13 EPD's
BW -0.5
WW +57
YW +97
Milk +17
TM +46

**A.I.'ed:** May 6 – Red Brylor Iceman 1Z  
**Exposed:** May 20 - July 20 – Black Brylor Kodiak 204Y

We bought back four out of the five Willow Creek Mulberry heifers that day. 340W may be my favorite cow in the group of 23 head we bought from Lloyd Cavers also on that day.



40

**RED BRYLOR KARMA 12K 235Z**

Female (ET) LMP 235Z January 02 2012 #1715567  
 BW: 85 lbs. Adj 205D Wt: 548 lbs. WI: 95

5L TRADITION 203-6145 OSF MAF  
 RED 5L TRADESMAN 1715-6237 OSF MAF (1696426)  
 5L LAKOTA 41C-1715 OSF

O C C LEGEND 616L AMF CAF NHF OSF DDF  
 RED 5L HAZEL 1821-203 OSF  
 RED 5L TRAVELING GRAND 5113 OSF MAF  
 RED BASIN LAKOTA C999 OSF

'13 EPD's
BW -1.2
WW +52
YW +87
Milk +21
TM +47

RED BRYLOR NEW TREND 22D OSF MAF  
 RED BRYLOR KARMA 12K OSF (1014937)  
 RED SHODEREE RAMBA 2F

SSS BLACK TREND 13B  
 RED MEADOW CK MISS SEAMAN 31A  
 RED LANDMARK 3008  
 RED SHODEREE RAMBO 201D

**A.I.'ed:** May 2 – Red Brylor Iceman 1Z  
**Exposed:** May 20 - July 20 – Black Brylor Kodiak 204Y

An E.T. daughter of Karma 12K and an outcross phenom from 5-L in Montana called Tradesman. Karma 12K sold for \$17,000 to D'Arcy McGhan in the 2007 "Tradition With A Vision" and produced the \$17,000 Strong bull at WSP & Damar, the \$8500 Karma 20T heifer calf and several E.T. calves for Biershenks' in Iowa. A full sister to 12K is at WCC in Kansas at \$13,000.  
 This is one fantastic heifer!!



LOT #40 - RED BRYLOR KARMA 12K 235Z

41

**RED BRYLOR LAKME 70M 224Z**

Female (ET) LMP 224Z January 01 2012 #1702695  
 BW: 86 lbs. Adj 205D Wt: 575 lbs. WI: 100

RED COMPASS MULBERRY 449M  
 RED FINE LINE MULBERRY 26P AMF OSF MAF (1237972)  
 RED DUS FAYETTE 8G

RED HR RAMBO ET 91K  
 RED BRYLOR MISS ROC 20H  
 RED SILVEIRAS REDFORD OSF  
 RED MC DOUGALL FAYETTE 59A

'13 EPD's
BW +0.1
WW +66
YW +114
Milk +23
TM +56

RED BRYLOR NEW TREND 22D OSF MAF  
 RED XXX LAKME 70M OSF MAF (1133628)  
 RED FINE LINE LAKME 21J

SSS BLACK TREND 13B  
 RED MEADOW CK MISS SEAMAN 31A  
 RED BUF CRK HOBO 1961 OSF MAF  
 RED FINE LINE LAKME 44E

**A.I.'ed:** April 28 – Red Brylor Iceman 1Z  
**Exposed:** May 15 - July 20 – Black Brylor Kodiak 204Y

An E.T. heifer from two of the most famed and fabled Red Angus cattle in the entire country – 70M and Mulberry... WOW!!  
 A full sister sells in Emporia on October 4th at the "More Mulberry Mayhem II" event.  
 Bred A.I. to Iceman 1Z, the 3/4 brother to Iceman 8Z that went to Red Rock. 1Z went to the Clausens' at Hazel Bluff.



LOT #41 - RED BRYLOR LAKME 70M 224Z

42

**BLACK BRYLOR LAKME 70M 225Z**

Female RC (ET) LMP 225Z January 01 2012 #1702697  
 BW: 98 lbs. Adj 205D Wt: 618 lbs. WI: 107

SANDY BAR ADVANTAGE 43M  
 HF KODIAK 5R AMF CAF NHF MAF (1274305)  
 WILBAR RUBY 955N

TC ADVANTAGE AMF CAF NHF DDC  
 SANDY BAR JEMINA 44K  
 VERMILION YELLOWSTONE AMF CAF NHF DDF  
 WILBAR RUBY 161J

'13 EPD's
BW -1.6
WW +59
YW +102
Milk +19
TM +49

RED BRYLOR NEW TREND 22D OSF MAF  
 RED XXX LAKME 70M OSF MAF (1133628)  
 RED FINE LINE LAKME 21J

SSS BLACK TREND 13B  
 RED MEADOW CK MISS SEAMAN 31A  
 RED BUF CRK HOBO 1961 OSF MAF  
 RED FINE LINE LAKME 44E

**Hand Bred:** April 30 – Red Brylor Iceman 8Z  
**Exposed:** June 8 - June 15 – Andras In Focus R240

The only heifer at Brylor that was mated very intentionally to the \$29,500 Iceman 8Z bull before he went to Red Rock Red Angus, the Brigens' in Airdrie, Alberta. She only sells because of a partnership termination with JK, 5L and Fairhaven.  
 225Z is a full E.T. sister to the crazy popular Kodiak 204Y bull!



KODIAK 204Y (PICTURED AS A YEARLING) - SIRE TO LOT #42





**LOT #43 - RED BRYLOR ANNIE 240U 219Z**



**RED BRYLOR ANNIE 240U 219Z**

Female (ET) LMP 219Z January 09 2012 #1702427  
 BW: 104 lbs.

SSS BLACK TREND 13B  
 RED BRYLOR NEW TREND 22D OSF MAF (788836)  
 RED MEADOW CK MISS SEAMAN 31A

V D A R NEW TREND 315 AMF CAF NHF DDF  
 RED SSS MISS DYNAMO 3W  
 RED SEAMAN CHIEF 47Y  
 RED MEADOW CK PRINCESS 10W

'13 EPD's
BW +2.4
WW +53
YW +85
Milk +26
TM +53

RED BRYLOR BODASIUS 79K MAC  
 RED BRYLOR ANNIE 240U MAF (1510388)  
 RED CRESCENT CREEK ANNIE 1G

RED TKP BODACIOUS 693 OSF  
 RED BRYLOR CHEROK 40X  
 RED ANGUS ACRES JURASSIC 105E  
 RED CRESCENT CREEK ANNIE 61E

**A.I.'ed:** April 18 – Red Northern Iceman 8U  
**Exposed:** May 15 - July 20 – Black Brylor Kodiak 204Y

After almost 20 years use, these New Trend 22D daughters still to this day get me all fired up! They are unreal as to how good they produce! 219Z is an E.T. heifer by him and our donor cow, Annie 240U, a feature back in "Tradition With A Vision" 2009 and now her four daughters here today are Lots #43 - #46.

Iceman 8U was the bull that worked so well on our two year old New Trend daughters this spring in our bull sale. Two sons out of New Trend cows sold for \$29,500 apiece!



**WEST JET - SIRE OF LOT #44 & LOT #45**



**RED BRYLOR ANNIE 240U 220Z**

Female (ET) LMP 220Z January 03 2012 #1706564  
 BW: 84 lbs. Adj 205D Wt: 566 lbs. WI: 99

RED FLYING K AMBUSH 6T  
 RED BRYLOR WEST JET 69W (1523544)  
 RED FLYING K LASSIE 3T

RED SVR AMBUSH 59P  
 RED FLYING K MANDY 120N  
 RED BBCC PRESIDIO 5Z AMF OSF  
 RED FLYING K BEAUTY 6N

'13 EPD's
BW +0.8
WW +51
YW +77
Milk +17
TM +43

RED BRYLOR BODASIUS 79K MAC  
 RED BRYLOR ANNIE 240U MAF (1510388)  
 RED CRESCENT CREEK ANNIE 1G

RED TKP BODACIOUS 693 OSF  
 RED BRYLOR CHEROK 40X  
 RED ANGUS ACRES JURASSIC 105E  
 RED CRESCENT CREEK ANNIE 61E

**A.I.'ed:** April 18 – Red SSS Traverse 387Z  
**Exposed:** May 15 - July 20 – Black Brylor Kodiak 204Y

Get in on the very first service in the entire country to the \$31,000 high seller from SSS.



**LOT #45 - RED BRYLOR ANNIE 240U 234Z**



**RED BRYLOR ANNIE 240U 234Z**

Female (ET) LMP 234Z January 01 2012 #1719725  
 BW: 86 lbs. Adj 205D Wt: 612 lbs. WI: 108

RED FLYING K AMBUSH 6T  
 RED BRYLOR WEST JET 69W (1523544)  
 RED FLYING K LASSIE 3T

RED SVR AMBUSH 59P  
 RED FLYING K MANDY 120N  
 RED BBCC PRESIDIO 5Z AMF OSF  
 RED FLYING K BEAUTY 6N

'13 EPD's
BW -0.1
WW +55
YW +89
Milk +28
TM +55

RED BRYLOR BODASIUS 79K MAC  
 RED BRYLOR ANNIE 240U MAF (1510388)  
 RED CRESCENT CREEK ANNIE 1G

RED TKP BODACIOUS 693 OSF  
 RED BRYLOR CHEROK 40X  
 RED ANGUS ACRES JURASSIC 105E  
 RED CRESCENT CREEK ANNIE 61E

**A.I.'ed:** April 22 – Red Brylor SDL Pasquale 213P  
**Exposed:** May 15 - July 20 – Black Brylor Kodiak 204Y

Lot #44 & #45 are two super made and oh so feminine E.T. daughters of West Jet 69W and Annie 240U. West Jet was our syndicate bull in 2010 to Sooline at \$28,000 and then sold in their dispersal to Clay Enterprises at \$15,000. His dam, 3T, also has a son, 40X, at Nick Vangaalen's. She is my favorite Presidio cow that we own.





LOT #46 - RED BRYLOR LLJ ANNIE 95Z

**46**

**RED BRYLOR LLJ ANNIE 95Z**

Female LMP 95Z March 10 2012 #1681854

BW: 91 lbs. Adj 205D Wt: 683 lbs. WI: 102

RED SSS ARSENAL 271S OSF MAF  
**RED SSS ARSON 85U OSF MAF (1467111)**  
 RED SSS SCAARA 951L

RED 5L NORSEMAN KING 2291 OSF MAF  
 RED SSS DYLAN'S VALENTINE 103C  
 SSS TRAVELER 362J  
 RED SSS SCAARA 16H

'13 EPD's	
BW	+2.2
WW	+59
YW	+96
Milk	+16
TM	+45

RED BRYLOR BODASIUS 79K MAC  
**RED BRYLOR ANNIE 240U MAF (1510388)**  
 RED CRESCENT CREEK ANNIE 1G

RED TKP BODACIOUS 693 OSF  
 RED BRYLOR CHEROK 40X  
 RED ANGUS ACRES JURASSIC 105E  
 RED CRESCENT CREEK ANNIE 61E

**A.I.'ed:** May 6 – Red Brylor Iceman 1Z  
**Exposed:** May 20 - July 20 – Black Brylor Kodiak 204Y

The natural calf off our partnership donor cow, Annie 240U. Lloyd Cavers & Jeff Fraser of Manitoba teamed up and got Annie 240U from us in "Tradition With A Vision" 2009 at \$15,500 for 1/2 interest. She had a \$6250 Toast bull calf in our 2011 bull sale and now 95Z is her 2nd natural calf. She's been in the E.T. donor pen as can be seen in her three E.T. daughters selling in Lots #43 - #45. 240U is due again in January 2014 to Arson 55Y.

95Z's sire, the original Arson bull, is now gone and what an amazing job he did for us here at Brylor. This particular Arson daughter is smokin'!!



ANNIE 240U - DAM OF LOTS #43 - #46





**RED BRYLOR ROSE DORA 125Z**

Female LMP 125Z February 16 2012 #1694267  
 BW: 89 lbs. Adj 205D Wt: 615 lbs. WI: 91

JUSTAMERE 253 LADDIE 436S  
 RED NORTHERN ICE MAN 8U CAF OSF (1539223)  
 MDN MYSTERY PRIDE

EXAR MASTER 253  
 EARLY SUNSET LASSIE 102L  
 ROSE HILL BIG TIME 7F  
 ROSE HILL MISS THOR 5C

RED BJR RAMBLER 516Z OSF  
 RED GET-A-LONG ROSE 377 (1227351)  
 RED TOWAW ROSE DORA 16Z

RED FCC RAMBO 502 OSF  
 BJR GOLDI 355-1122  
 RED SSS ZAMA PINE 37S  
 RED TOWAW ROSE DORA 71X

'13 EPD's
BW -0.7
WW +32
YW +59
Milk +21
TM +37

**A.I.'ed:** May 4 – Red Brylor Arson 84Z  
**Exposed:** May 20 - July 20 – Black Brylor Kodiak 204Y

One of only two Icemen daughters to sell! In last year's "Tradition With A Vision" one sold for \$9500 to Leuwenburghs' in Lethbridge. Two sons sold this spring for \$29,500... each!

The dam, the #377 cow from Dennis & Shelley Ericson's herd we bought, is a beauty little Rambler 516Z cow.



**RED BRYLOR LEADING LADY 156Z**

Female LMP 156Z February 27 2012 #1694286  
 BW: 82 lbs. Adj 205D Wt: 623 lbs. WI: 84

RED YY HITCH 514R  
 RED ANCHOR 1 HITCH 38T CAF OSF (1414410)  
 RED CROWFOOT STRETCH 4320P

RED CROWFOOT OLE'S OSCAR 2042M AMF CAF OSF MAF  
 RED YY GOLDIE 140L  
 RIDGE BANDO 598-282ET  
 RED CROWFOOT STRETCH 1328L

RED GEIS KNIGHT HAWK 14'02  
 RED LLB LEADING LADY 383P (1242457)  
 RED TOP LEADING LADY 32C

RED KBJ KNIGHT 17J  
 RED GEIS SAMARIE 234'96  
 RED ROYAL WRANGLER 30Y  
 RED TOP LEADING LADY 31A

'13 EPD's
BW -1.4
WW +41
YW +66
Milk +14
TM +35

**A.I.'ed:** April 28 – Red Brylor Arson 84Z  
**Exposed:** May 20 - July 20 – Black Brylor Kodiak 204Y

The only bred heifer in the sale by Hitch, the outcross herd bull that worked so well for Get-A-Long. We will have a pile of Hitch May/June born bulls in our sale two years from now and they are a very strong set of bull calves.

Note 156Z is A.I.'ed to the \$25,000 Arson son at Elmer Weibe's house.



**RED BRYLOR ROSETTE 135Z**

Female LMP 135Z February 25 2012 #1694283  
 BW: 96 lbs. Adj 205D Wt: 755 lbs. WI: 114

JUSTAMERE 253 LADDIE 436S  
 RED NORTHERN ICE MAN 8U CAF OSF (1539223)  
 MDN MYSTERY PRIDE

EXAR MASTER 253  
 EARLY SUNSET LASSIE 102L  
 ROSE HILL BIG TIME 7F  
 ROSE HILL MISS THOR 5C

RED GET-A-LONG LAST CALL 1171  
 RED TODD'S ROSSALYN 4R (1267481)  
 RED BROX LADY ROSETTE 4L

RED GET-A-LONG GRUB STEAK 754  
 RED GET-A-LONG MRS YOUNG 4213  
 RED GET-A-LONG GOLD MEDAL 7106  
 RED BROX LADY ROSETTE 35G

'13 EPD's
BW +3.2
WW +59
YW +100
Milk +13
TM +42

**A.I.'ed:** May 1 – Red SSS Traverse 387Z  
**Exposed:** May 15 - July 25 – Black Brylor Kodiak 204Y

A big fluffy eared Iceman daughter. Anyone attending last year's sale will remember Dennis's speech about the best cows all have fluffy ears!

Iceman 8U will leave behind a legacy of great cows. The dam to this heifer sells today as Lot #63.



**RED BRYLOR QUEEN 137Z**

Female LMP 137Z February 27 2012 #1694285  
 BW: 80 lbs. Adj 205D Wt: 613 lbs. WI: 92

RED U-2 ILLICIT 423P OSF MAF  
 RED U-2 IDEAL 1600S (1346090)  
 RED U-2 ANETA 09E

RED U-2 ICON 223M  
 RED U-2 DUCHESS 2G  
 RED THAT'LL DO AMERIGO 73C  
 RED THAT'LL DO ANETA 48B

ASPELUND'S WILDCAT 27'95  
 COME-BY 4R QUEEN 5R (1247393)  
 GET-A-LONG QUEEN 781

WALDECK SKY TRAVELER  
 REMINGTON'S TIBBIE 116C  
 RED GEIS PRIME RIB 411 OSF  
 GET-A-LONG QUEEN 552

'13 EPD's
BW -1.2
WW +33
YW +51
Milk +17
TM +33

**A.I.'ed:** May 3 – Red Brylor Iceman 1Z  
**Exposed:** May 20 - July 20 – Black Brylor Kodiak 204Y

A red daughter of Ideal 1600S and the Lot #26 cow who is a Black/Red Carrier. I remember the day when Dennis, along with Ringsted, picked up the Ideal bull for a long dollar. He has several very good calves on these Get-A-Long cows for us.



**RED BRYLOR SHAWNEE 132Z**

Female LMP 132Z February 21 2012 #1694280  
 BW: 103 lbs. Adj 205D Wt: 772 lbs. WI: 116

RED FCC RAMBO 502 OSF  
 RED GET-A-LONG LINE BACKER 109 (1076650)  
 RED GEIS KURUBA 5'92

RED CV FOUR TIMES  
 COPPER LASS 2392  
 RED KBJ SAM'S PROSPECTOR 133Z OSF MAF  
 THREE D KURUBA 36'86

RED BELL ROCK JESTER 316N  
 RED GET-A-LONG CHEROK 735 (1421677)  
 RED MEM CHEROK 15M

DURLOWE JESTER 34L  
 KBJ DUCHESS 316G  
 RED MEM PRINCE 208H  
 RED MEM CHEROK PATRIOT 18X

'13 EPD's
BW +3.2
WW +58
YW +89
Milk +6
TM +35

**Exposed:** May 6 - July 20 – Black Brylor Kodiak 204Y

An own, lone daughter of the \$60,000 Rambo 502 son named Line Backer. The dam, 735, is a daughter of the outcross bull named Jester that Dennis gave \$25,000 for at the Regina Bull Sale.



**RED BRYLOR MISS SWEET 138Z**

Female LMP 138Z February 27 2012 #1694287  
 BW: 90 lbs. Adj 205D Wt: 669 lbs. WI: 101

RED U-2 ILLICIT 423P OSF MAF  
 RED U-2 IDEAL 1600S (1346090)  
 RED U-2 ANEXA 09E

RED U-2 ICON 223M  
 RED U-2 DUCHESS 2G  
 RED THAT'LL DO AMERIGO 73C  
 RED THAT'LL DO ANEXA 48B

RED GET-A-LONG RAM TOUGH 56Z  
 RED DAY-LITE RAM TUFF 4T (1424331)  
 RED DAY-LITE GENESIS 13M

RED CHOPPER K RESURRECTION 229  
 RED GOLDEN DAWN KARUBA 26M  
 RED K-C GENESIS 92G  
 RED GET-A-LONG MISS SWEET 96T

'13 EPD's
BW +0.8
WW +45
YW +66
Milk +13
TM +36

**Exposed:** May 6 - July 20 – Black Brylor Kodiak 204Y

Another excellent Ideal 1600S sired female. I really like this heifer's dam in my herd. She's by a maternal giant in Ram Tough.

Imagine a Red one from the amazing Black/Red Carrier bull, Kodiak 204Y, next year at your house!





LOT #53 - RED BRYLOR BARMAID 136Z

**53**

**RED BRYLOR BARMAID 136Z**

Female LMP 136Z February 25 2012 #1694284  
 BW: 107 lbs. Adj 205D Wt: 678 lbs. WI: 99

OK TRAFALGAR 31M  
**RED OK IDEAL 29R (1327118)**  
 ROYAL ERICA 52F

PEAK DOT TRAFKAGAR 20K  
 OK FORTUNE RANCHERS SUE 4K  
 ROYAL STOCKMAN 23B  
 ROYAL ERICA 6X

RED UBAR SEQUOIA 202 OSF  
**RED BRYLOR SEQ BARMAID 112P (1226716)**  
 RED BROX BARMAID 7K

RED BJR HIGH CAPACITY 008 OSF MAF  
 RED FORSTER COPRQUEEN 7168 OSF  
 RED BROX HUSTLE 2H  
 RED BROX BARMAID 29F

'13 EPD's
BW +5.4
WW +58
YW +88
Milk +18
TM +47

**A.I.'ed:** April 29 – Red Brylor SDL Pasquale 213P  
**Exposed:** May 15 - July 20 – Black Brylor Kodiak 204Y

A definite feature heifer here! "Powerful" doesn't even come close to describing this female!! Her dam was lost to a grizzly last fall and not because as a Sequoia daughter she was weak or small at any time! That bear was hungry and he picked out the biggest, most beautiful cow that came off the Get-A-Long liner.

The Sequoia line-up of cows has been good to us, such as Lakme 204S. This heifer in Lot #53 will be overwhelming on Sale Day.

**54**

**RED BRYLOR BURGESS 123Z**

Female LMP 123Z February 14 2012 #1694257  
 BW: 95 lbs. Adj 205D Wt: 778 lbs. WI: 118

OK TRAFALGAR 31M  
**RED OK IDEAL 29R (1327118)**  
 ROYAL ERICA 52F

PEAK DOT TRAFKAGAR 20K  
 OK FORTUNE RANCHERS SUE 4K  
 ROYAL STOCKMAN 23B  
 ROYAL ERICA 6X

RED GET-A-LONG LINE BACKER 109  
**RED GET-A-LONG BURGESS 450 (1218221)**  
 RED MAC MISS ATLAS 47Y

RED FCC RAMBO 502 OSF  
 RED GEIS KURUBA 5'92  
 Y D ATLAS OF PAT 502W  
 RED BAR DOUBLE M BURGESS 60N

'13 EPD's
BW +2.7
WW +53
YW +84
Milk +24
TM +51

**A.I.'ed:** April 28 – Red Brylor Iceman 1Z  
**Exposed:** May 15 - July 20 – Black Brylor Kodiak 204Y

When we bought the Get-A-Long herd all the cow / calf heifer pairs came to us in May 2012. When this #450 outcross heifer calf by the OK Ideal sire jumped off the truck with her dam, I was really happy!

There are three of these by OK 29R selling in today's sale.

**55**

**RED BRYLOR CRESTA 139Z**

Female LMP 139Z March 01 2012 #1757245  
 BW: 92 lbs. Adj 205D Wt: 756 lbs. WI: 115

OK TRAFALGAR 31M  
**RED OK IDEAL 29R (1327118)**  
 ROYAL ERICA 52F

PEAK DOT TRAFKAGAR 20K  
 OK FORTUNE RANCHERS SUE 4K  
 ROYAL STOCKMAN 23B  
 ROYAL ERICA 6X

RED CANYON CREEK SENSATION  
**RED BROX CRESTA 13R (1278715)**  
 RED BROX CRESTA 27N

RED BASIN SENSATION 702E OSF  
 RED PRESCOTT LASS 63K  
 RED COMPASS KARGO 83K  
 RED BROX CRESTA 20L

'13 EPD's
BW +2.7
WW +59
YW +87
Milk +20
TM +50

**A.I.'ed:** April 29 – Red Brylor SDL Pasquale 213P  
**Exposed:** May 15 - July 20 – Black Brylor Kodiak 204Y

513's dam is one of the best cows to come in the Get-A-Long herd. This heifer is an outcross all the way in which Dennis was famous for!

Note the rare and exciting service to Pasquale.





LOT #56 - RED BRYLOR SPICY 67Z



**RED BRYLOR SPICY 67Z**

Female LMP 67Z February 23 2012 #1681833  
 BW: 77 lbs. Adj 205D Wt: 673 lbs. WI: 103

- RED COMPASS MULBERRY 449M
- RED FINE LINE MULBERRY 26P AMF OSF MAF (1237972)
- RED DUS FAYETTE 8G
- RED HR RAMBO ET 91K
- RED BRYLOR MISS ROC 20H
- RED SILVEIRAS REDFORD OSF
- RED MC DOUGALL FAYETTE 59A
- RED LOG EL CAPONE 515 MAF
- RED BRYLOR SPICY 24M (1112975)
- RED 77 SPICY 50H
- RED PIE LONE BARON
- RED EEA 9008
- RED TOWAW MATRIX 19D
- RED MEM PATTY 16B

<b>'13 EPD's</b>	
<b>BW</b>	<b>+0.0</b>
<b>WW</b>	<b>+58</b>
<b>YW</b>	<b>+100</b>
<b>Milk</b>	<b>+13</b>
<b>TM</b>	<b>+42</b>

**A.I.'ed:** May 5 – Red Brylor Arson 84Z  
**Exposed:** May 20 - July 20 – Black Brylor Kodiak 204Y

With the passing of Mulberry this spring, our daughters we are going to offer for sale are going to become very limited! A full sister to 67Z, 42X, sold to Hugh Atkin at Bar 4A in LaGlance, Alberta, in the 2011 "Tradition With A Vision" at \$5300.

The dam, 24M, has another huge heifer calf, 11A, at side in 2013 by Skor. 24M is our last standing daughter of the old El Capone bull. Her dam, 50H, was a \$14,000 cow to JD Lann in the 2006 "Tradition With A Vision" and she produced the \$14,000 Affirmed bull to Brandls'.

**BRYLOR "3 IN 1" PAIRS (Heifer Calves @ Side) – MAY/JUNE CALVING**



LOT #57 - RED IVOMA SOAPY 10R & HEIFER CALF #157A



LOT #58 - BLACK BRYLOR MISS LUMIE 166Y & HEIFER CALF #170A



In this "3 in 1" Pairs Section, all the cows have heifer calves at side and are bred back to Red Brylor Skor 221X for a May/June 2014 calving period



RED BRYLOR SKOR 221X - SERVICE SIRE TO LOTS #57 - #64



**RED IVOMA SOAPY 10R**

Female I1W 10R January 13 2005 #1295595  
 BW: 84 lbs. Adj 205D Wt: 570 lbs. WI: 100

- RED BJR RAMBLER 5162 OSF
- RED SSS YUKON 440K (1026377)
- RED SSS PRINCESS 15H
- RED FCC RAMBO 502 OSF
- BJR GOLDI 355-1122
- RED LARSON RED LIGHTNING OSF
- RED SSS CASHMERE 558Z
- RED GET-A-LONG ZAR 0104
- RED GET-A-LONG SOAPY 270 (740963)
- GET-A-LONG SOAPY 231
- RED FAIRDALES FREE TRADE
- RED GET-A-LONG CARMELLA 544
- CONTINENTAL
- RED MISS VALLEY SOAPY 18H

'13 EPD's	
BW	-0.6
WW	+46
YW	+78
Milk	+18
TM	+41

Sired by the SSS high seller in 2001 to Ringstead, Yukon 440K, and from the original Soapy cow at Get-A-Long, 18H, that started at all back in the 1976 Red Round-up Sale.

**Exposed:** Aug 1 - Sept 20 - Red Brylor Skor 221X

**Heifer Calf at Side:** Tag #167A **Sired By:** RED ANCHOR 1 HITCH 38  
 LMP 167A April 30 2013 BW: 80 lbs.



**BLACK BRYLOR MISS LUMIE 166Y**

Female RC (ET) LMP 166Y January 02 2011 #1647386  
 BW: 90 lbs.

- SFL FORT ROCK 11F
- SAR FORT ROCK 151R (1280375)
- SAR QUEEN MOTHER 24J
- BELVIN BOARDWALK 11'92
- WICKLOW MISS ROSEBUD 22C
- TC STOCKMAN 365
- SFL QUEENMOTHER 14G
- SSS BLACK TREND 13B
- RED MEADOW CK MISS SEAMAN 31A
- RED BRYLOR CHIEFDOM 53E
- RED LUMONT GOLDEN BELLE 107E
- RED BRYLOR NEW TREND 22D OSF MAF
- RED BRYLOR SDL MISS LUMIE 214P OSF MAF (1233621)
- RED LUMONT GOLD STAR 8J

'13 EPD's	
BW	+0.3
WW	+57
YW	+90
Milk	+30
TM	+58

One of the pairs that should not be getting on the bus to go to Highwood! An E.T. daughter of our Black Agribition Grand Champion Bull in 2007 called SAR Fort Rock 151R and 214P who is the dam to Toast and Ghost, the \$10,000 Mulberry son to East Cardston & Kaye Wynder.

What a fabulous Red Kodiak heifer calf at side of this black beauty of a two year old cow!

**Exposed:** Aug 1 - Sept 20 - Red Brylor Skor 221X

**Heifer Calf at Side:** Tag #170A **Sired By:** BLACK BRYLOR KODIAK 204Y  
 LMP 170A May 2 2013 BW: 66 lbs.





**59 RED HIPS FANCY GIRL 93U**

Female HIP 93U February 20 2008 #1440875

BW: 86 lbs. Adj 205D Wt: 773 lbs. WI: 114 Adj 365D Wt: 969 lbs. YI: 100

RED BCAR WILD CARD  
RED KBJ WILD CARD 1024S OSF MAF (1320351)  
RED DWAJO LASSIE 74N

BCAR RANCHER 8'00  
BREED CREEK PRIDE 33F 21'98  
RED SVR BAR CODE 2K  
RED KBJ LASSIE 956K

'13 EPD's
BW +2.1
WW +62
YW +96
Milk +21
TM +52

KBJ ROGUES BOY 511M  
HIPS FANCY GIRL 10P (1199400)  
KBJ ELOQUENT LADY 644M

KBJ ROGUE II 203H  
KBJ ELOQUENT LADY 311G  
EARLY SUNSET DAKOTA 50K  
KBJ ELOQUENT LADY 511J

Remember the Hipkin Dispersal in 2009 and all those big, stout and very well presented Wild Card heifer calves? Also Wild Card 1024S, himself, sold for \$30,000 that day.

**Exposed:** Aug 1 - Sept 20 – Red Brylor Skor 221X

**Heifer Calf at Side:** Tag #181A **Sired By:** RED WHEEL DODGE CITY 61Y  
LMP 181A May 6 2013 BW: 83 lbs



**60 RED BLADES MISS SMASH 125T**

Female GBB 125T February 08 2007 #1396677

BW: 76 lbs. Adj 205D Wt: 601 lbs. WI: 100

RED SSS BOOMER 803B  
RED LAZY MC SMASH 41N OSF (1183959)  
RED LAURON YB ROSA 11G

RED FCC RAMBO 502 OSF  
RED SSS MISS HIGH LASS 352X  
RED BRYLOR YOUNGBLOOD 22Y  
RED ALALTA ACRES ROSALINDA 25Y

'13 EPD's
BW -0.3
WW +48
YW +81
Milk +16
TM +40

RED BRYLOR DIVIDEND 6K MAF  
RED BLADES MISS DIVIDEND 172R (1273193)  
RED BLADES MISS SPARKY 82K

RED RD DIVIDEND 7F  
RED BRYLOR TINSEL 7C  
RED WILD ROSE SPARKY 64H  
RED SSS FIREFLY 704F

An own daughter of Smash 41N. Two of Brylor's previous high selling bulls – Young blood 22Y (1990) and Dividend 6K (2001) – are in her pedigree.

**Exposed:** Aug 1 - Sept 20 – Red Brylor Skor 221X

**Heifer Calf at Side:** Tag #194A **Sired By:** RED WHEEL DODGE CITY 61Y  
LMP 194A May 13 2013 BW: 73 lbs



**61 RED GET-A-LONG MISS ENVY 033**

Female GAL 33X February 06 2010 #1593851

BW: 98 lbs. Adj 205D Wt: 627 lbs. WI: 100 Adj 365D Wt: 990 lbs YI: 128

VVV TEX 30K  
RED VVV ADRENALINE 67M (1101398)  
VVV EMILY 24J

DOUBLE J TEX 27D  
RED TCR MS CURRENT 32C  
WOODHILL TRIPLE THREAT AMF CAF  
VVV EMILY 315X 25C 14G

'13 EPD's
BW +3.4
WW +68
YW +110
Milk +8
TM +42

RED CRESCENT CREEK HI HO 102M  
RED CRESCENT CRK MS ENVY 181 (1224823)  
RED SUN VALLEY PROSPECT 206

RED HOLDEN HI HO 7151 OSF MAF  
RED MEM ICECAP ANNIE 22Z  
RED KBJ SAM'S PROSPECTOR 133Z OSF MAF  
C A R 2100 MISS ENVY 206

There is a pretty good group of Adrenaline daughters remaining behind at Brylor.

**Exposed:** Aug 1 - Sept 20 – Red Brylor Skor 221X

**Heifer Calf at Side:** Tag #205A **Sired By:** RED WHEEL DODGE CITY 61Y  
LMP 205A May 20 2013 BW: 80 lbs



**62 RED GET-A-LONG MISS SWEET 088**

Female GAL 88X February 19 2010 #1596017

BW: 85 lbs. Adj 205D Wt: 620 lbs. WI: 101 Adj 365D Wt: 912 lbs YI: 102

RED LINE FLAME 11N  
RED GET-A-LONG WELTERWEIGHT722 (642528)  
RED W P COUNTESS 26S

RED PREMIER PATRIOT 16  
RED VLYV SADIE 160  
RED GET-A-LONG LICORICE OSF MAF  
RED TRIPLE J COUNTESS 22M

'13 EPD's
BW -0.1
WW +44
YW +63
Milk +0
TM +22

RED GET-A-LONG LINE BACKER 109  
RED GET-A-LONG MISS SWEET 417 (1211358)  
RED GET-A-LONG MISS SWEET 166

RED FCC RAMBO 502 OSF  
RED GEIS KURUBA 5'92  
RED BROX HUSTLE 2H  
RED GET-A-LONG MISS SWEET 790

An own daughter of the exported to South America bull called "Welter Weight". The grandam, the 166 cow, is still her at Brylor.

**Exposed:** Aug 1 - Sept 20 – Red Brylor Skor 221X

**Heifer Calf at Side:** Tag #192A **Sired By:** RED WHEEL DODGE CITY 61Y  
LMP 192A May 12 2013 BW: 85 lbs



**63 RED TODD'S ROSSALYN 4R**

Female TTDD 4R January 17 2005 #1267481

BW: 100 lbs. Adj 205D Wt: 608 lbs. WI: 100 Adj 365D Wt: 919 lbs YI: 112

RED GET-A-LONG GRUB STEAK 754  
RED GET-A-LONG LAST CALL 1171 (1080018)  
RED GET-A-LONG MRS YOUNG 4213

RED GEIS PRIME RIB 411 OSF  
RED GET-A-LONG COUNTESS 535  
RED KBJ SAM'S PROSPECTOR 133Z OSF MAF  
RED MRS YOUNG

'13 EPD's
BW +3.3
WW +54
YW +82
Milk +6
TM +33

RED GET-A-LONG GOLD MEDAL 7106  
RED BROX LADY ROSETTE 4L (1070017)  
RED BROX LADY ROSETTE 35G

RED ROYAL BRAVEHEART  
RED GET-A-LONG SOAPY 043  
RED MYALTA HANDYMAN 8C  
RED BROX LADY ROSETTE 26B

One of the bigger Get-A-Long cows to come to Brylor. See her daughter selling today as Lot #49 and note the beauty "Wheeler" calf at side

**Exposed:** Aug 1 - Sept 20 – Red Brylor Skor 221X

**Heifer Calf at Side:** Tag #197A **Sired By:** RED WHEEL DODGE CITY 61Y  
LMP 197A May 15 2013 BW: 84 lbs



**64 RED CRESCENT CREEK ANNIE 64S**

Female (ET) WOS 64S February 04 2006 #1337997

BW: 93 lbs. Adj 205D Wt: 644 lbs. WI: 100 Adj 365D Wt: 885 lbs YI: 100

CHOCTAW CHIEF  
CHOCTAW CHF 373 OSF (13072)  
KC ELIZ O A 130

SUPER CHIEF 6  
CHGA R PRIDE  
KANSAS CHIEF  
ELIZABETH OF AYR

'13 EPD's
BW -2.0
WW +25
YW +28
Milk +12
TM +25

RED MEM ICEBERG 4W  
RED MEM ICECAP ANNIE 22Z (691909)  
RED MEM CHINNA 26S

RED SIX MILE ICEBERG 569S  
RED MEM DANA STORM 15S  
LEACHMAN CHINOOK 605  
RED MEM SHAWNEE 126L

An E.T. daughter of the "original" Annie cow, Annie 22Z and the breed's grandfather, Choctaw Chief 373! She was the high seller at the Crescent Creek Dispersal.

**Exposed:** Aug 1 - Sept 20 – Red Brylor Skor 221X

**Heifer Calf at Side:** Tag #199A **Sired By:** RED FINE LINE MULBERRY 26P  
LMP 199A May 15 2013 BW: 73 lbs





COUNTESS 211T - DONOR DAM OF LOT #65 EMBRYOS



**RED BRYLOR COUNTESS 211T**

Female (ET) LMP 211T January 04 2007 #1422678  
 BW: 104 lbs. Adj 205D Wt: 579 lbs. WI: 100

RED COMPASS MULBERRY 449M  
 RED FINE LINE MULBERRY 26P AMF OSF MAF (1237972)  
 RED DUS FAYETTE 8G

RED HR RAMBO ET 91K  
 RED BRYLOR MISS ROC 20H  
 RED SILVEIRAS REDFORD OSF  
 RED MC DOUGALL FAYETTE 59A

'13 EPD's
BW +2.6
WW +73
YW +129
Milk +25
TM +61

RED BRYLOR NEW TREND 22D OSF MAF  
 RED PTTV COUNTESS 13'97 (897310)  
 RED HEATHAN'S COUNTESS 1E

SSS BLACK TREND 13B  
 RED MEADOW CK MISS SEAMAN 31A  
 RED TOWAW EDITOR 44C  
 TRAILVIEW COUNTESS 154'89

**Selling One Package of 4 #1 Frozen Embryos**

**• Mating: 211T x Curve 207Z**

- Guarantee two pregnancies if implanted by a certified technician all on the same implantation day, in separate recips
- Embryos will be FOB Alta Genetics (Cdn delivery) or Hawkeye East or West (US delivery)

Leading off this great cutting edge Frozen Genetic Section is a package from a brilliant young cow named Countess 211T. She is sired by Mulberry, the "King of the World", and her dam is no stranger to Red Angus circles either. 13G left us Red Carpet, Skor, Littlestone and the 2001 Agribition Supreme Champion Bull, Stallion 19J!

Curve was the "young gun" at side of his two year old dam at Agribition last fall when they were Grand Champions in the Red Show. Exactly 10 years earlier his great-grandam and great-great-grandam (Miss Stocky 82K & 2M) were also Agribition Grand Champions in 2002.

Now... if that wasn't enough knowledge and trivia – Detour's dam won the same title in 2008. See more on 211T on her daughter's page in Lot #7.



RED WILDMAN CURVE 207Z - SIRE OF LOT #65 EMBRYOS



ANNIE 240U - DONOR DAM OF LOT #66 EMBRYOS



**RED BRYLOR ANNIE 240U**

Female (ET) LMP 240U January 16 2008 #1510388 MAF  
 BW: 102 lbs.

RED TKP BODACIOUS 693 OSF  
 RED BRYLOR BODASIOUS 79K MAC (1026705)  
 RED BRYLOR CHEROK 40X

RED GLACIER LOGAN OSF MAF  
 RED TKP LASA MADONNA  
 RED BRYLOR DYNASTAR 19S  
 BLACK BRYLOR EILEEN 62S

'13 EPD's
BW +2.4
WW +48
YW +71
Milk +22
TM +46

RED ANGUS ACRES JURASSIC 105E  
 RED CRESCENT CREEK ANNIE 1G (880902)  
 RED CRESCENT CREEK ANNIE 61E

RED TOWAW CRIMSON TIDE 67A  
 RED FRNDLY MEDOS PRINCESS 50Y  
 RED HR CHEROKEE 53C  
 RED CRESCENT CREEK ANNIE 68C

**Selling One Package of 6 #1 Frozen Embryos**

- Mating: 240U x Mulberry - two (2) embryos
- 240U x Mak'n Waves - two (2) embryos
- 240U x Opportunity - two (2) embryos

- Guarantee three pregnancies if implanted by a certified technician all on the same implantation day, in separate recips
- Embryos will be FOB Alta Genetics (Cdn delivery) or Hawkeye East or West (US delivery)

From the famous Canadian cow family, the Annie's!! 240U's dam was 1G, a former "Fabulous Female" and Canadian National Reserve grand Champion Female. She was also dam to Front Line 35N, a \$27,000 bull in his day.

240U sold for \$15,500 for 1/2 interest in 2009's "Tradition With A Vision". See her four daughters selling today in Lots #43 - #46.

The sires are awesome on this unique package deal of eggs.



RED BADLANDS OPPORTUNITY 53Y - ONE OF THE SIRES IN LOT #66





**NIKITA 90U - DONOR DAM OF LOT #67 EMBRYOS**



## BLACK BRYLOR NIKITA 90U

Female RC LMP 90U March 01 2008 #1443162

BW: 84 lbs. Adj 205D Wt: 653 lbs. WI: 94 Adj 365D Wt: 957 lbs YI: 101

SFL FORT ROCK 11F  
**SAR FORT ROCK 151R (1280375)**  
 SAR QUEEN MOTHER 24J

RED BHC SANDSTONE AMF OSF  
**RED FAN NIKITA 2N (1152465)**  
 RED MPV NIKITA 60L

BELVIN BOARDWALK 11'92  
 WICKLOW MISS ROSEBUD 22C  
 TC STOCKMAN 365  
 SFL QUEENMOTHER 14G

RED BHC STRYKER AMF OSF  
 RED RN-AMBER-083  
 RED BRYLOR NEW TREND 22D OSF MAF  
 RED MPV ISLAND GAIL 5E

### '13 EPD's

<b>BW</b>	<b>+1.5</b>
<b>WW</b>	<b>+51</b>
<b>YW</b>	<b>+82</b>
<b>Milk</b>	<b>+22</b>
<b>TM</b>	<b>+48</b>

## Selling One Package of 4 #1 Frozen Embryos

### • Mating: 90U x Mulberry 26P

- Guarantee two pregnancies if implanted by a certified technician all on the same implantation day, in separate recips
- Embryos will be FOB Alta Genetics (Cdn delivery) or Hawkeye East or West (US delivery)

Our Black / Red Carrier Nikita cow that we own with Griffins in Iowa. She was an \$11,000 bred heifer in "Tradition With A Vision" 2009. Her dam, 2N, sold the same day to Marcers' in B.C. at \$11,000, as well.

A full sib to these embryos, Nikberry 206Z, was a feature in our bull sale this spring but he was injured and pulled from the sale. He was a magnificent Mulberry son from 90U.

Just like the Kodiak thing... good results come from being patient with these Black / Red Carriers.)



**RED FINELINE MULBERRY 26P - SIRE OF LOT #67 EMBRYOS**



**CHEROK 19U - DONOR DAM OF LOT #68 EMBRYOS**



## RED BRYLOR CHEROK 19U

Female LMP 19U January 25 2008 #1443123 OSF MAF

BW: 91 lbs. Adj 205D Wt: 755 lbs. WI: 110 Adj 365D Wt: 1063 lbs YI: 102

RED COMPASS MULBERRY 449M  
**RED FINE LINE MULBERRY 26P AMF OSF MAF (1237972)**  
 RED DUS FAYETTE 8G

RED BRYLOR NEW TREND 22D OSF MAF  
**RED BRYLOR CHEROK 22L (1069271)**  
 BLACK BRYLOR EILEEN 35A

RED HR RAMBO ET 91K  
 RED BRYLOR MISS ROC 20H  
 RED SILVEIRAS REDFORD OSF  
 RED MC DOUGALL FAYETTE 59A

SSS BLACK TREND 13B  
 RED MEADOW CK MISS SEAMAN 31A  
 RED COULEE CREST EXALIBUR 806  
 BLACK BRYLOR EILEEN 62S

### '13 EPD's

<b>BW</b>	<b>+1.3</b>
<b>WW</b>	<b>+62</b>
<b>YW</b>	<b>+94</b>
<b>Milk</b>	<b>+18</b>
<b>TM</b>	<b>+49</b>

## Selling One Package of 1 Package of Four (4) #1 Frozen Embryos

### • Mating: 19U x Kodiak 204Y

- Guarantee two pregnancies if implanted by a certified technician all on the same implantation day, in separate recips
- Embryos will be FOB Alta Genetics (Cdn delivery) or Hawkeye East or West (US delivery)

19U is:

- ✓ Dam to Mak'n Waves 39X
- ✓ Full sister to Denver Reserve Grand Champion Female in 2010, Mercedes
- ✓ Full sister to Boulevard and Ghost Rider
- ✓ Full sister (122X) topped the Mayhem Event in 2011 at \$15,000
- ✓ 10 other full sisters have sold for an average of \$7000
- ✓ Daughter of 22L who sold last year in the "Under The Influence" Sale at \$17,000
- ✓ A perfect match for Kodiak 204Y



**RED BRYLOR KODIAK 204Y - SIRE OF LOT #68 EMBRYOS**





ESSENCE 42G - DONOR DAM OF LOT #69 EMBRYOS



**RED STEN ESSENCE 42G**

Female STEN 42G March 22 1997 #903849

BW: n/a

DOUBLE A BLACK ICE  
DMM FLEX 24E (821369)  
DMM MISS ESSENCE 22B

ACUMEN BOLD LEADER 30X  
DOUBLE A ZARA 39X  
DMM ESSOTERIC 67R  
HEATHERDOWN MISSIE 26S

**'13 EPD's**

BW +0.6

WW +47

YW +65

Milk +11

TM +34

KBJ ESSOTERIC 18X  
KBJ FRAN 76A (722553)  
SOUTHOLM DUCHESS 54R

DMM ESSOTERIC 67R  
EARLY SUNSET LASSIE 29N  
SOUTHOLM GENERAL 79N  
SOUTHOLM DUCHESS 65H

**Selling One Package of 3 #1 Frozen Embryos**

- Mating: 42G x Barndance - two (2) embryos  
42G x Branded Beef - one (1) embryos

• Guarantee one pregnancy if implanted by a certified technician all on the same implantation day, in separate recipis

• Embryos will be FOB Alta Genetics (Cdn delivery) or Hawkeye East or West (US delivery)

One of Canada's most famous cows ... ever! Dad and I gave \$50,000 for half of her in 2003 at the "All A.I.'ed" Sale in Olds. She has won every show known to man, I think, in Canada including the Supreme deal at Agribition. She raised Thump 2T and a \$20,000 Bodacious heifer calf to Swan Creek. She's also grandam to the 72A heifer calf today in Lot #8.

Barndance was Canadian Show Bull of the Year in 2012 winning Farmfair and Agribition and Branded Beef did it in 2003.



RED BJR AH BRANDED BEEF L107 - SIRE OF LOT #69 EMBRYOS



**SEMEN STRAWS**

	SIRE NAME	#
A	NORSEMAN KING	10
B	RED KNIGHT 640F	5
C	PATRIOT 16	5
D	RAMBLER 5162	4
E	DWAJO GLADIATOR	5
F	COCKBURN RIBEYE 308U	5
G	COWBOY CUT 26U	5

Semen is being sold FOB place of storage



PATRIOT 16



RAMBLER 5162



**RED BRYLOR ARSON 55Y - HE SELLS!!**



**LOT #55Y - RED BRYLOR ARSON 55Y**

Consigned by Carmen Morris - Ontario - 705.760.4804

**RED BRYLOR ARSON 55Y**

Male LMP 55Y February 13 2011 #1623811

BW: 87 lbs. Adj 205D Wt: 792 lbs. Adj 365D Wt: 1321 lbs



RED SSS ARSENAL 271S OSF MAF  
**RED SSS ARSON 85U OSF MAF (1467111)**  
 RED SSS SCAARA 951L

RED 5L NORSEMAN KING 2291 OSF MAF  
 RED SSS DYLAN'S VALENTINE 103C  
 SSS TRAVELER 362J (RC)  
 RED SSS SCAARA 16H

'13 EPD's	
BW	+1.3
WW	+66
YW	+110
Milk	+17
TM	+49

RED FINE LINE MULBERRY 26P OSF AMF MAF  
**RED FRASER POTEET 803U (1455278)**  
 RED FRASER POTEET 612S

RED COMPASS MULBERRY 449M  
 RED DUS FAYETTE 8G  
 RED BRYLOR/WSP KARWEIK 1P MAF  
 RED FRASER POTEET 444P

- Selling 1/2 Interest & Full Possession
- Brylor to retain their 1/2 semen interest
- Check for this bull must be made payable to Mackenzie Sales Mgt.
- Comes with 50 Straws of in-herd use semen (semen - FOB Alta)

Here is one of the original Arson's sons for sale... again! Due to a partnership dissolution, Arson 55Y comes under the gavel once again. He originally sold last spring 2012 for \$25,000 to Red Top to breed their dispersal cows. He sold later in the fall of 2012 for \$30,000 this time to the Morris's of Ontario. Now in "Tradition With A Vision" 2013 he will sell to a new home so someone can take advantage of this great genetic package. His dam, 803U, was the 2012 "Tradition With A Vision" high seller at \$13,600 and his older brother, Makin' Hay 31X, is at Brandl's doing a phenomenal job. Look at his three photos here as to how he's developed over the last 18 months.



**ARSON 55Y AS A YEARLING**



**ARSON 55Y AS A LONG YEARLING**





**DELOY & "ELI" - RES. GRAND CHAMPION  
1ST YEAR IN 4-H      4-H ACHIEVEMENT DAY 2013**



**BELLA & "KITTY" (HAPPY KITTY?)**



**ROWAN & "NOVA"**



**ERICA & "MERRY LEGS" - 2ND YEAR IN 4-H  
4-H ACHIEVEMENT DAY 2013 - SHOWMANSHIP**





**5 BLACK BRYLOR KODIAK 204Y**

Male RC (ET) LMP 204Y January 01 2011 #1647397

SANDY BAR ADVANTAGE 43M TC ADVANTAGE AMF CAF NHF  
 HF KODIAK 5R AMF CAF NHF MAF (1274305) SANDY BAR JEMINA 44K  
 WILBAR RUBY 955N VERMILION YELLOWSTONE AMF CAF NHF  
 WILBAR RUBY 161J  
 RED BRYLOR NEW TREND 22D OSF MAF SSS BLACK TREND 13B  
 RED XXX LAKME 70M OSF MAF (1133628) RED MEADOW CK MISS SEAMAN 31A  
 RED FINE LINE LAKME 21J RED BUF CRK HOBO 1961 OSF MAF  
 RED FINE LINE LAKME 44E

AOD	BW	205D	Oct 26	Feb 15	ADG	365D
ET	94	633	960	1305	3.25	1202

He will be tested and ready to go to Alta. Genetics immediately following the sale.

We have been extremely patient for this kind of a calf to come along (50 years in fact) and now the day has arrived! Kodiak 204Y will be one of the most talked about bulls in the entire country this bull sale season. Not only does he have one of the most sought after pedigrees to ever come along from the blacks through his amazing sire Kodiak 5R, his dam is truly one of the great cows of the breed as well. So we have to be a little more patient being as he is a Black/Red Carrier ... the wait will be worth it when we get red calves from him in 2013. We have big, big plans for Kodiak 204Y in our program.

Kodiak 5R was the WAF Premiere sire award winner in 2009 at Spruce Meadows on the black side. He originally sold at Agribition for \$45,000 to Sooline and Geis. He then traded in Denver last year at \$150,000. His son Tiger, was the Grand Champion Bull at WAF, Farmfair and Agribition in 2009. Kodiak is the best breeding black bull in Canada right now.

A full sister to Kodiak 204Y was chosen as the 2011 pick of the Brylor ET heifer calves by Garth Griffin in Iowa for \$11,500. We have two more full ET sisters in the replacement pen that are both very good too. The dam, Lakme 70M, has been remarkable to say the least! Kind of cool that he has the same tattoo as his sister, 204S.

I believe the overall impact this bull will create in the industry will be left forever. Buying a share in this calf could be one of those "looking back and reflecting moments" you talk about 10 - 20 - 30 years from now. Everyone needs to come to Fort Macleod on March 29th to see this bull.

Proj 2012
EPD's
BW
-0.7
WW
+39
YW
+76
Milk
+21
TM
+41

Lot #5 - Black Brylor Kodiak 204Y

- SELLING 1/2 INTEREST OF 5 EQUAL SHARES OF 10% EACH BY LIVE AUCTION
- GUARANTEED AT LEAST 100 STRAWS IN THE NEXT 2 YEARS

*If it should so happen that the 1st buyer takes all 5 shares at 5 times the bid price then 1/2 possession would come with the bull.*

5A - 10% share      5B - 10% share      5C - 10% share  
 5D - 10% share      5E - 10% share



HF Kodiak 5R - Sire of Lot #5



## OUR "3A" BULLS



1972 - STORM-A-LONG 3A



1991 - THUNDERSTRUCK 3A



2013 - RED BRYLOR RED KODIAK 3A

## TERMS & CONDITIONS

- TERMS:** The terms of the sale are cash or cheque at par, payable to the sale clerk on sale day unless otherwise previously arranged with the seller prior to the sale. No releases will be given until satisfactory settlement has been made. All monies are in Canadian Funds, other funds will be accepted at the current rate or exchange.
- BIDS:** Every animal entering the ring will be sold to the highest bidder.
- DISPUTES:** In case of disputes, bidding will be reopened between the parties involved. If no further bid is made, the buyer will be the person from whom the auctioneer accepted the last bid. The auctioneer's decision in such matter will be final.
- ANNOUNCEMENTS:** Any changes from information in this catalogue will be announced from the auction block, such changes will take precedence over the printed matter in the catalogue. Buyers are therefore cautioned to pay close attention to any such announcements.
- PURCHASER'S RISK:** Each animal becomes the risk of the purchaser as soon as sold.
- CERTIFICATE OF REGISTRATION:** Each animal in the sale will carry registration papers issued by the Canadian Angus Association. A certificate duly transferred will be furnished to the buyer for each animal after full total payment has been made.
- BREEDERS GUARANTEE:**
  - All animals sold are guaranteed breeders.
  - All bred females have been declared safe in calf by a qualified veterinarian and carry no further breeder guarantee.
  - All calendar year heifer calves are guaranteed open at time of sale.
  - Any animal that has not proven itself a breeder within six months after date of sale, if in healthy condition, may be returned to seller at buyer's expense. The seller reserves the privilege of trying for a six month period to prove the animal a breeder. The seller, at his option, may either return the purchase price to the buyer or credit or replace the animal with another of equal value in full settlement and satisfaction of all claims. All complaints regarding breeding difficulties must be reported in writing by the buyer to the seller within time specified above and any animal returned must be free from disease and in good health. Any calendar year heifer calf flushed, shown or exhibited by purchaser is no longer guaranteed a breeder under this paragraph #7.
  - Although we do our best to accurately identify the A.I. Services, *IT DOES NOT*, in any way, guarantee an A.I. sired calf.
- WE RESERVE THE RIGHT:** Brylor Ranch reserves the right to one successful flush on any female in the sale at Buyer's convenience / Brylor Ranch's expense. *Exception:* does not apply to any of the females denoted as 1/2 interest lots.
- ACCIDENTS:** Every precaution will be exercised to protect the safety and comfort of those attending the sale. Neither the owners, auctioneer, or any sale staff assume any responsibility in this matter and disclaim any liability, legal or otherwise, in the event of accident or loss of property.
- LIABILITY:** All persons attending the sale do so at their own risk and sellers assume no liability legal or otherwise for any accidents occurring in, on, or about the premises.
- INSURANCE:** Livestock insurance and/or transit insurance will be available.
- EXPORT TESTING:** In the case of animals purchased for export, the necessary custom, health, and export certificates will be supplied.

### GENERAL INFORMATION

**SALE LOCATION:** Highwood Auction Market located 50 km (31 miles) south of Calgary on Highway #2

**SALE HEADQUARTERS:** Ramada Inn, 13 Ave. S, High River - Ph: (403) 603-3183  
Also available: Super 8 Motel, 13th Ave., High River - Ph: 1(800) 800-8000  
Heritage Inn, 11 St W, High River - Ph: (403) 652-3834

\*Please book rooms ASAP or, if you would like assistance in making reservations, please phone Bryan or Sherry Mackenzie at (403) 627-5676.

**HEALTH:** All cattle will be supplied with proper health papers for shipment anywhere in Canada or for export to the USA. Cattle requiring Brucellosis and TB tests (U.S. purchases) will be tested following the sale and will be ready for shipment in approximately one week.

**INSURANCE:** There will be an insurance representative present sale day.

**TRANSPORTATION:** Calgary is served by all the major airlines. Pick-up at the airport will be available if prior arrangements have been made.

**MAIL BIDS:** May be entrusted in complete confidence to any of the sale staff or representatives listed or to Brylor Ranch.

**DISCLAIMER:** As responsible Angus breeders, we have done everything possible to insure these cattle are free from genetic defects at the present time. This in no way guarantees they will be free from future genetic defects that may be discovered by any association, party, or persons.

### VIEWING OF SALE CATTLE

The cattle can be viewed any time prior to Thursday, October 24th, 2013, at Brylor Ranch - after that, at Highwood Auction from arrival time Thursday, the 24th, right up until sale time.



9 km south of Pincher Creek on Highway #6,  
1.6 km. west of cemetery

## THANK YOU FOR ATTENDING

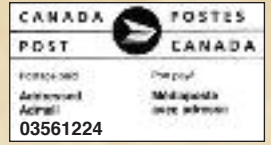
Please join us for refreshments and steaks after the sale





Bryan & Sherry Mackenzie  
 P.O. Box 122,  
 Pincher Creek, AB T0K 1W0

Canada's Pioneer Red Angus Breeder



**We've Never  
 Dug Deeper!**



42nd annual

**TRADITION  
 With A VISION  
 RED ANGUS SALE**

SUNDAY • 1:00 pm

**OCTOBER 27 2013**

**HIGHWOOD LIVESTOCK MARKET  
 HIGH RIVER, ALBERTA**