

Rivercrest - Valleymore
7TH ANNUAL
SPADY BULL SALE
BLACK ANGUS

*Thursday - April 15th - 2010
Rivercrest Angus Ranch - 1:30pm*



SALE WILL BE HELD AT

RIVERCREST ANGUS RANCH

FEATURING RANCH GELDING

Rivercrest-Valleymere are pleased to welcome you to our 7th Annual Spady Bull Sale with this year's sale being held out at the Rivercrest homestead of Tom and Marg Spady.

There is a proud heritage built into the Rivercrest and Valleymere Angus cattle, built on integrity & high principles by our customers. The Spady's have spanned over 4 generations of raising Angus bulls, under ranch raised conditions. Fertility, good hair, easy doing, soundness and longevity are among some of the traits we have bred on since the 1930's and still do today.

The Battle River hills provide a true test to our ranch raised cattle.

You can buy with confidence, that the Spady bulls will get the job done, and we stand by them all the way!



MARG & TOM



JAMIE-LEE, CRAIG, CAYDEN & JODY



CODY



HAROLD & VERLEEN



HALLEY, TRAVIS, TY & TANNER



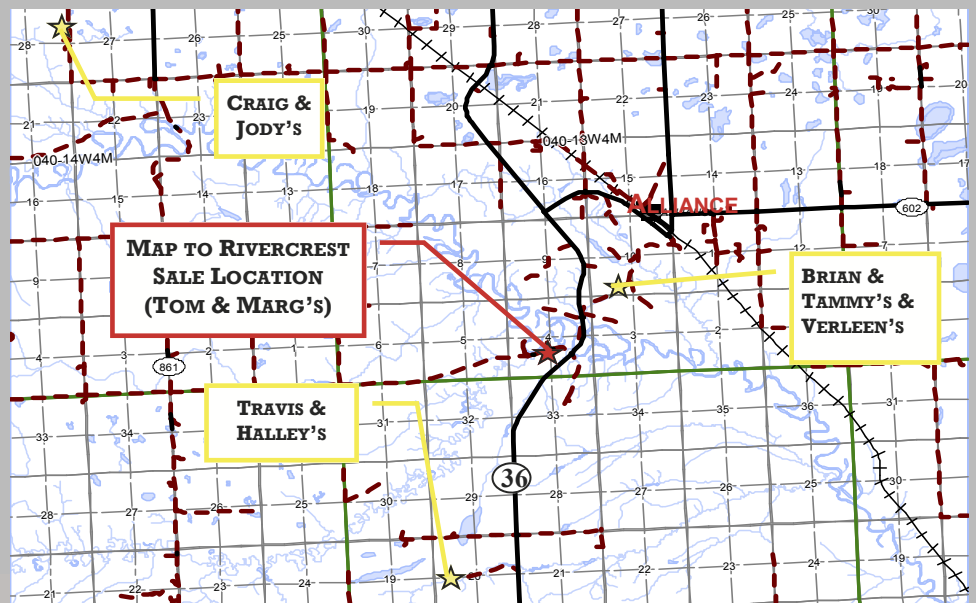
**EVAN, BRIAN, TAMMY,
KARA & LOGAN**



JACK & MEL



CLAYE & COLE



Rivercrest/Valleymere Black Angus Bull Sale

THURSDAY, APRIL 15TH, 2010 • RIVERCREST RANCH • 1:30PM

Featuring: 75 YEARLINGS • RANCH GELDING

Terms & Conditions

BREEDER'S GUARANTEE: All cattle sell with the responsible Breeder's Guarantee of Satisfaction. All Bulls are guaranteed breeders. The seller will not, under any circumstances, be responsible for more than the original selling price of any bull sold in this sale. All animals sell under the Terms & Conditions set forth by the Canadian Angus Association.

CATTLE INSPECTION: All carry permanent identity tags. All shall be available for inspection prior to the sale.

ANNOUNCEMENTS: Errors discovered in the catalogue will be corrected by announcements from the auction stand at sale time and such corrections will take precedence over the printed matter in the catalogue.

INSURANCE: Ownership risk to purchaser commences when the Auctioneer's hammer falls. Livestock coverage will be available at the clerk's desk from the appointed representatives on Sale Day.

TERMS OF SALE: Unless otherwise previously arranged with Rivercrest Angus or Valleymere Angus, terms of this sale are cash or cheque, payable in Canadian funds. We reserve the right to withhold animals from shipment for whom payments have not been received prior to departure.

EVERY ANIMAL sells to the highest bidder and in cases of disputes, the auctioneer's decision will be final.

ALL PERSON'S who attend the Sale do so at their own risk, and the owners, Management and Sale Staff assume no liability, legal or otherwise, for property loss or for any accidents that may occur.

DELIVERY: We will arrange delivery of the bulls within a 500 km radius, free of charge, or we offer a \$50 discount for those who take their bulls home sale day. We recommend all purchases, that are to be delivered, be insured.

BUYER INCENTIVE: We offer a volume buyer discount. For each additional bull purchased we offer a 1% percent discount. For example, 2 bulls = 2% discount, 3 bulls = 3% discount, 4 bulls = 4%...to a maximum discount of 10%.

SIGHT UNSEEN PLAN: If you're unable to attend the sale, we'll gladly discuss your bull power needs. Any purchases made in this manner will be 100% guaranteed for customer satisfaction.

CALVING EASE LEGEND:

- * Not recommended for heifers.
- ** Use on well-grown heifers – may assist a few births
- *** Highly recommended on heifers—little to no assistance expected

AUCTIONEER

Steve Dorran 403-226-2985

RING SERVICE/BUYER'S CONTACT

Kevin Girletz 403-326-2219 403-664-0312

Justin Gattey 403-963-1334

INSURANCE AGENT

Larry Toner 306-932-3486

SALE DAY PHONE:

780-879-2180

or contact Craig 403-740-4978



Lunch at
12:00pm
Compliments of
Alliance Seed
Cleaning Plant

Rivercrest cattle will be available for viewing at Tom & Marg Spady's (15 miles N of Hwy12 on Hwy36, 1/4 mile West on Twp 400).

Valleymere cattle available for viewing at Travis Spady's and Brian Spady's (call for directions).

Rivercrest Angus
Tom & Margaret Spady
RR#2, Alliance, AB
TOB OAO

780-879-2180

Craig & Jody Spady
Box 1017, Castor, AB
TOC OXO

780-583-2420

Cell: 403-740-4978

Valleymere Angus
Travis & Halley Spady
RR#2, Alliance, AB
TOB OAO

780-879-2298

Brian & Tammy Spady
RR#2, Alliance, AB
TOB OAO

780-879-2110

Website: www.rivercrestangus.com
Email: rivercrest@wildroseinternet.ca



Welcome from Rivercrest Ranches

Rivercrest ranches welcomes you to our 7th Annual Bull Sale. We are very pleased with our bulls we selected for the 2010 sale. We feel these bulls will pass on the traits needed to succeed in today's market. Thickness, easy fleshing, good hair, longevity and a touch of style will take you to where you need to be in today's cattle business.

The cows of Rivercrest have been culled hard; only the top performers are kept. Our cows must be good-footed, able to travel, rustle and thrive in ranch conditions. They need to be good milkers, give birth without assistance and raise that calf until fall. Dad & I have had cows as old as 17 raise calves all on their own. These cows breed that longevity into their offspring, and that is important to today's ranching. Every year the cows are expected to rustle until after Christmas or New Years. No cow is pampered on the Rivercrest Ranch.

With a cow herd that can perform under these conditions, we feel our bulls will breed on that same hardiness and quality into your herd. These bulls are bred to travel and get the job done. Stop in any time, have a coffee and check out our bulls or cows.

We look forward to seeing you on sale day.

Craig & Tom



Jamie-Lee & Cayden



Marg & Tom

Jody & Craig

A RIVERCREST GRID MAKER 29P

TJS 29P 1232948 MARCH 02 2004

G D A R TRAVELER 044
G A R GRID MAKER 1129870
G A R PRECISION 2536

D H D TRAVELER 6807
G D A R BLACKCAP LADY 840
G A R PRECISION 1680
G A R EXT 2104

CUDLOBE BLACK STAR 44C
RIVERCREST MARGARET 26F 869431
RIVERCREST MARGARET 26Z

CUDLOBE BLACK STAR 92X
CUDLOBE BLACKCAP 25Y
ANNSDALE PANDAMONIAM 2W
RIVERCREST LADY MARGARET 31W

BW: 84 lbs. Adj. 205D: 845 lbs. 930Adj. 365D: 1338 lbs.
BW: +4.1 WW: +60 YW: +98 Milk: +14 Mat: +44 YG: +38

Grid 29P—29P is one of those sires that throws little babies who turn into big, thick bulls. They seem to have lots of style and hair. His daughters are excellent mothers and good milkers.



REF. SIRE A—RIVERCREST GRID MAKER 29P



G A R GRID MAKER—GRANDSIRE OF RIVERCREST GRID IRON 15S

B RIVERCREST GRID IRON 15S

CSP 15S 1359231 FEBRUARY 06 2006

G A R GRID MAKER 1129870
RIVERCREST GRID MAKER 15P 1245513
CAYMEN ERICA 16'98 925084

G D A R TRAVELER 044 838617
G A R PRECISION 2536 US12716656
V D A R NEW TREND 366 879610
CAYMEN ERICA 16'94 783677

SPRUCE VIEW LANCER 4F 853253
RIVERCREST BLACKCAP CSP 9J 988674
RIVERCREST BLACKCAP CSP 2C 777485

SPRUCE VIEW LANCER 3C 763660
SPRUCE VIEW JESTRESS 96X 670347
BEVALEN ULTIMATE 3'91 724416
RIVERCREST BLACKCAP CSP 16X

BW: lbs. Adj. 205D: lbs. Scotol: 41 cm
BW: +5.0 WW: +47 YW: +77 Milk: +16 Mat: +40 YG: +30

Grid 15S—15S is another stout, stylish, easy fleshing Grid Maker Grandson. The dam 9J was one of the top producing cows for Craig. 15S's offspring are thick and have lots of hair. They'll catch your eye





← Cayden's 2009 4-H Heifer—Rivercrest Black-cap CSP 34U
 Grand Chamion Female Paintearth Club— Reserve Champion Hfr Multi-club.
 Sired by Grid Maker 29P



Cayden's 2008 4-H Heifer—Rivercrest Duchess 3T
 Grand Chamion Female Paintearth Club and Reserve Breeding Female Multi-club
 Sired by MGA Dateline 4P →



REF. SIRE C—MGA DATELINE 4P

C **MGA DATELINE 4P**
 MGA 40P 124106 JANUARY 20 2004

CONNEALY DATELINE	D H D TRAVELER 6807
VERMILION DATELINE 7078 1018284	EILA EILA OF CONANGA
VERMILION BLACKBIRD 5044	LEACHMAN RIGHT TIME
	VERMILION BLACKBIRD 3525
G D A R TRAVELER 71	TRAVELER 1148 G D A R
MGA TRAVELING CRYSTAL 021G 892955	G D A R MISS BLACKCAP 567
EVERBLACK CRYSTAL 1E	BLACKT OF MARSHALL 70B
	WOODHILL CRYSTAL 5Y

BW: 88 lbs. Adj. 205D: 711 lbs. Adj. 365D: 1410 lbs.
 BW: +3.1 WW: +44 YW: +88 Milk: +23 Mat: +45 YG: +45

Dateline 4P—4P came out of Sjogren's dispersal sale for \$8,000. He was a thick, long and excellent coat of hair. His offspring show those same traits. A daughter of 4P was interclub 4-H Female Champion and Mult-club 4-H Yearling Hfr Champion and Reserve Champion Female 2008.

D **BANNER RANGER 11S**

RBJ 11S 1358645 FEBRUARY 17 2006

RANGER G 1720 1090511	G A R PRECISION 1680
RAINBOW HILLS RANGER 106P 1218323	SITZ EVERELDA ENTENSE 1137
BLACKBIRD OF RAINBOW HILLS 6M 1119991	BACK ROADS 1418 LEGEND 1582
	BLACKBIRD OF RAINBOW HILLS107J
VERMILION YELLOWSTONE 1019171	VERMILION DATELINE 7078
BANNER MATILDA 19P 1244089	VERMILION B JESTRESS 3912
BANNER MATILDA 61J 1008869	BANNER BLACKMAN 43A
	BANNER MATILDA 35D

BW: 80 lbs. Adj. 205D: 754 lbs. Adj. 365D: 1349 lbs
 BW: +3.3 WW: +47 YW: +81 Milk: +21 Mat: +45 YG: +33

Ranger 11S—11S was purchased from Banner Angus. We needed an outcross for our heifers and he was what we were looking for. With moderate birth weights, his calves came in with impressive weaning weights.



1 RIVERCREST GRID IRON 3W**

CSP 3W 1529176 February 13 2009

RIVERCREST GRID MAKER 15P	G A R GRID MAKER NHF AMF
RIVERCREST GRID IRON CSP 15S (1359231)	CAYMEN ERICA 16'98
RIVERCREST BLACKCAP CSP 9J	SPRUCE VIEW LANCER 4F
	RIVERCREST BLACKCAP CSP 2C
HF SHOW DOWN 28K	WHITESTONE WIDESPREAD MB NHF AMF
RIVERCREST BLACKCAP CSP 88P (1241234)	HF BLACKBIRD 27C
RIVERCREST BLACKCAP CSP 29L	STEVENSON BRUNO 561G NHF
	RIVERCREST BLACKCAP CSP 16X

Actual BW: 78lbs. Adj 205 day wt: 594 lbs 205 Index: 78
BW:+2.6 WW:+43 YW:+74 Milk:+12 TM:+34 YG:+31 CED:+3.0 CEM:+5.0

This Grid 15S bull is a low birth weight bull. He should be fine on bigger hfrs. If you need a bull for cows that you don't want to babysit, here's your bull.



2 RIVERCREST DATELINE CSP 4W**

CSP 4W 1529177 February 13 2009

VERMILION DATELINE 7078 NHF AMF	CONNEALY DATELINE
MGA DATELINE 4P (1243106)	VERMILION BLACKBIRD 5044
MGA TRAVELING CRYSTAL 021G	G D A R TRAVELER 71 NHF AMF
	EVERBLACK CRYSTAL 1E
HF SHOW DOWN 28K	WHITESTONE WIDESPREAD MB NHF AMF
RIVERCREST BLACKBIRD CSP 60R (1292275)	HF BLACKBIRD 27C
RIVERCREST BLACKBIRD 29E	MASTERPIECE 12A
	RIV ERCREST BLACKBIRD 34Z

Actual BW: 76lbs. Adj 205 day wt: 665 lbs. 205 Index: 100
BW: +4.5 WW: +56 YW:+94 Milk:+15 TM:+43 YG:+39 CED:-2.0 CEM:+4.5

This bull is a twin to Lot 3. His mother raised both calves on her own. She was turned out to pasture, same time as rest of cows. Weaned off of cow at 800 lbs October 30th.



3 RIVERCREST DATELINE CSP 5W**

CSP 5W 1529145 February 13 2009

VERMILION DATELINE 7078 NHF AMF	CONNEALY DATELINE
MGA DATELINE 4P (1243106)	VERMILION BLACKBIRD 5044
MGA TRAVELING CRYSTAL 021G	G D A R TRAVELER 71 NHF AMF
	VERBLACK CRYSTAL 1E
HF SHOW DOWN 28K	WHITESTONE WIDESPREAD MB NHF AMF
RIVERCREST BLACKBIRD CSP 60R (1292275)	HF BLACKBIRD 27C
RIVERCREST BLACKBIRD 29E	MASTERPIECE 12A
	RIVERCREST BLACKBIRD

Actual BW: 74lbs. Adj 205 day wt: 708 lbs. 205 Index: 100
BW:+4.5 WW:+56 YW:+94 Milk:+15 TM:+43 YG:+39 CED:-2.0 CEM:+4.5

This full brother to Lot 2 is quite a bull. Just 74 lbs at birth and weaned out at 855 lbs. This cow weaned two calves by herself, averaging 825 lbs.



4 RIVERCREST GRID IRON CSP 7W*

CSP 7W 1529178 February 19 2009

RIVERCREST GRID MAKER 15P	G A R GRID MAKER NHF AMF
RIVERCREST GRID IRON CSP 15S (1359231)	CAYMEN ERICA 16'98
RIVERCREST BLACKCAP CSP 9J	SPRUCE VIEW LANCER 4F
	RIVERCREST BLACKCAP CSP 2C
HF STOCKMAN'S GUARANTEE 49H	TC STOCKMAN 365
RIVERCREST BLACKCAP CSP 3K (1035770)	HF TIBBIE 57C
RIVERCREST BLACKCAP CSP 21A	ANNSDALE PANDAMONIAM 2W
	RIVERCREST BLACKCAP CSP 7

Actual BW: 89lbs. Adj 205 day wt: 714 lbs. 205 Index: 95
BW:+4.0 WW:+41 YW:+69 Milk:+18 TM:+39 YG:+28 CED:-1.0 CEM:+3.0

The mother of this Grid son has done an awesome job over the years. This moderate birth weight bull weaned off the cow October 30th at 860 lbs.





5 RIVERCREST DATELINE CSP 10W**

CSP 10W 1529180 March 09 2009

VERMILION DATELINE 7078 NHF AMF
MGA DATELINE 4P (1243106)
 MGA TRAVELING CRYSTAL 021G

CONNEALY DATELINE
 VERMILION BLACKBIRD 5044
 G D A R TRAVELER 71 NHF AMF
 EVERBLACK CRYSTAL 1E

HF STOCKMAN'S GUARANTEE 49H
RIVERCREST DAISY CSP 97N (1154961)
 2J DAISY 31G

TC STOCKMAN 365
 HF TIBBIE 57C
 COLE CREEK 407 TRAVEL 1222
 2J DAISY 15E

Actual BW: 80lbs. Adj 205 day wt: 726 lbs. 205 Index: 100
 BW:I +4.2 WW:I +53 YW:I +89 Milk:I +21 TM:I +47
 YG:I +37 CED:I +2.0 CEM:I +3.5

Here is a low birth weight Dateline son. Just 80 lbs at birth, weaning out at 820 lbs. Full brother sold last year in our sale for \$2600 to Wood River Ranching.

6 RIVERCREST DATELINE 12W*

TJS 12W 1529074 March 04 2009

VERMILION DATELINE 7078
MGA DATELINE 4P (1243106)
 MGA TRAVELING CRYSTAL 021G

CONNEALY DATELINE
 VERMILION BLACKBIRD 5044
 G D A R TRAVELER 71
 EVERBLACK CRYSTAL 1E

W C C SPECIAL DESIGN L309
RIVERCREST MARGARET 26R
 RIVERCREST MARGARET 26F

BON VIEW NEW DESIGN 878
 N BAR PRIMROSE 2424
 CUDLOBE BLACK STAR 44C
 RIVERCREST MARGARET 26Z

Actual BW: 93lbs. Adj 205 day wt: 828 lbs. 205 Index: 111 BW:+4.3
 WW:+58 YW:+98 Milk:+21 TM:+50 YG:+40 CED:-1.0 CEM:+3.0

This could be the best Dateline sone on Rivercrest soil to date. This March bull calf weaned off the cow at 935 lbs. He has super numbers and a whole lot of eye appeal to go with it. If you're looking for a herd sire for purebred or commercial, this bull has it all. Check out his pedigree top and bottom.



7 RIVERCREST DATELINE 13W*

TJS 13W 1529075 March 04 2009

VERMILION DATELINE 7078 NHF AMF
MGA DATELINE 4P (1243106)
 MGA TRAVELING CRYSTAL 021G

CONNEALY DATELINE
 VERMILION BLACKBIRD 5044
 G D A R TRAVELER 71 NHF
 AMF
 EVERBLACK CRYSTAL 1E

BASIN MAX 602C NHF AMF
RIVERCREST FLORA 1S (1352995)
 NOBLE ACRES FLORA 27L

G T MAXIMUM NHF AMF
 BASIN ELINE ERICA 315U
 TC STOCKMAN 365

Actual BW: 89lbs. Adj 205 day wt: 781 lbs. 205 Index: 105
 BW:+4.5 WW:+53 YW:+98 Milk:+18 TM:+45 YG:+45 CED:+0.0
 CEM:+4.0

Another top end Dateline son. This eye catcher also is a heavy weaning calf at 855 lbs.



8

RIVERCREST GRID CSP 13W*

CSP 13W 1529181 March 10 2009

G A R GRID MAKER NHF AMF
RIVERCREST GRID MAKER 29P (1232948)
RIVERCREST MARGARET 26F

G D A R TRAVELER 044 NHF AMF
G A R PRECISION 2536 NHF AMC
CUDLOBE BLACK STAR 44C
RIVERCREST MARGARET 26Z

HI DIAMOND BLACKSTONE 4L
RIVERCREST BLACKBIRD CSP 49R (1292279)
HILL TOP BLACKBIRD 61G

LEACHMAN SAUGAHATCHEE 3000C
LOMA LANES BLACKBIRD 24A
HILL TOP JUMBO LAD 50D
GET-A-LONG BLACKBIRD 45Z

Actual BW: 99lbs. Adj 205 day wt: 685 lbs. 205 Index: 89
BW:+5.3 WW:+43 YW:+74 Milk:+14 TM:+36 YG:+32 CED:-4.0 CEM:+1.0

13W is out of the great Grid 29P bull. This will be the last calf crop from this power breeding bull. This March calf weaned out at 750 lbs off the cow.



9

RIVERCREST DATELINE 14W*

TJS 14W 1529076 March 13 2009

VERMILION DATELINE 7078 NHF AMF
MGA DATELINE 4P (1243106)
MGA TRAVELING CRYSTAL 021G

CONNELLY DATELINE
VERMILION BLACKBIRD 5044
G D A R TRAVELER 71 NHF AMF
EVERBLACK CRYSTAL 1E

HF SHOW DOWN 28K
RIVERCREST EUGENIE 36R (1288504)
RIVERCREST EUGENIE 35J

WHITESTONE WIDESPREAD MB NHF AMF
HF BLACKBIRD 27C
HF WALKER 107E
RIVERCREST EUGENIE 11B

Actual BW: 89lbs. Adj 205 day wt: 745 lbs. 205 Index: 99
BW:+3.5 WW:+52 YW:+90 Milk:+15 TM:+41 YG:+37 CED:+0.0 CEM:+4.0

Yet another power house Dateline son. The natural thickness and easy fleshing ability is bred into these Dateline calves. Middle of March calf weaning out at 810 lbs.

10

RIVERCREST DATELINE CSP 15W*

CSP 15W 1529183 March 12 2009

VERMILION DATELINE 7078 NHF AMF
MGA DATELINE 4P (1243106)
MGA TRAVELING CRYSTAL 021G

CONNELLY DATELINE
VERMILION BLACKBIRD 5044
G D A R TRAVELER 71 NHF AMF
EVERBLACK CRYSTAL 1E

CCL STOCKMAN 26L
RIVERCREST ELINE CSP 42P (1241211)
RIVERCREST ELINE 23J

MVF STOCKMAN 45H
CCL PREMIER LASSIE 17'97
BCC EILEENMERE LAD 215
RIVERCREST ELINE 35D

Actual BW: 103lbs. Adj 205 day wt: 803 lbs. 205 Index: 106
BW:+6.1 WW:+54 YW:+89 Milk:+21 TM:+48 YG:+34 CED:-6.0 CEM:+0.0

Here is a performance bull. This Dateline son will put the pounds on his calves. Every Rancher wants a pen full of calves with big weaning weights and this bull will deliver. Using a full brother to this this bull for my own cows. His actual weaning weight was 895 lbs and just a March calf.



11

RIVERCREST DATELINE 15W*

TJS 15W 1529078 March 16 2009

VERMILION DATELINE 7078 NHF AMF
MGA DATELINE 4P (1243106)
MGA TRAVELING CRYSTAL 021G

CONNELLY DATELINE
VERMILION BLACKBIRD 5044
G D A R TRAVELER 71 NHF AMF
EVERBLACK CRYSTAL 1E

TC FREEDOM 104 NHF AMF
RIVERCREST PRINCESS 5R (1288501)
RIVERCREST PRINCESS 24J

CONNELLY FOREFRONT NHF AMF
T C RUBY 9095
HF WALKER 107E
RIVERCREST PRINCESS 1Y

Actual BW: 90lbs. Adj 205 day wt: 736 lbs. 205 Index: 98
BW:+3.9 WW:+49 YW:+89 Milk:+20 TM:+45 YG:+40 CED:+1.0 CEM:+4.0

Rivercrest Dateline 15W has loads of style, good hair and weaned out at 791 lbs. His full brother sold in our sale last year for \$3000 to YT Bar Ranch. Also a maternal brother sold last year for \$3100 to Allan Sutter as a 2-yr-old. This young cow hasn't missed yet.





Cody & Grandpa Tom

12 RIVER VALLEY DYNAMIC 1W*

CLI 1W 1522633 March 12 2009

K G POWER DESIGN
RIVER VALLEY POWER DYNAMIC 2S
 RIVER VALLEY CLASSY LADY 3P

D B NEW FLY DESIGN 730
 POWER FIX K G 3
 DA ES RO TWISTER 0627
 PME CLASSY LADY 18E

PAPA FORTE 1921
RIVER VALLEY PRIDE 4R (1338582)
 RIVER VALLEY PRIDE 2N

PAPA OPTIMA 9818
 PAPA ENVIOUS BLACKBIRD 8832
 VERMILION YELLOWSTONE NHF
 RIVERCREST LADY 3H

Actual BW: 89lbs. Adj 205 day wt: 764 lbs. 205 Index: 100
 BW:+3.9 WW:+41 YW:+73 Milk:+19 TM:+40 YG:+32 CED:+1.0 CEM:+4.0

Cody brought two good bulls for sale this year. This Power Design grandson is a long, thick dude. This bull's great, great grandmother was top pick out of Grandpa's herd.



13 RIVER VALLEY POWERPLAY 6W*

CLI 6W 1522631 March 21 2009

K G POWER DESIGN
RIVER VALLEY POWER DYNAMIC 2S
 RIVER VALLEY CLASSY LADY 3P

D B NEW FLY DESIGN 730
 POWER FIX K G 3
 DA ES RO TWISTER 0627
 PME CLASSY LADY 18E

VERMILION YELLOWSTONE NHF AMF
RIVER VALLEY PRIDE 2N (1198549)
 RIVERCREST LADY 3H

VERMILION DATELINE 7078
 VERMILION B JESTRESS 3912
 BCC EILEENMERE LAD 215
 RIVERCREST LADY PRIDE 41Y

Actual BW: 89lbs. Adj 205 day wt: 737 lbs. 205 Index: 96 BW:+4.3 WW:+43
 YW:+75 Milk:+17 TM:+39 YG:+33 CED:-2.0 CEM:+4.0

This bull should grab your attention. Loads of style, thick as a bus and lots of hair. His great grandmother, Rivercrest Lady 3H, comes from some of the best cow families Grandpa ever raised.

14 RIVERCREST MAID 17W*

TJS 17W 1529079 March 23 2009

RIVERCREST GRID MAKER 15P
RIVERCREST GRID IRON CSP 15S
 RIVERCREST BLACKCAP CSP 9J

G A R GRID MAKER NHF AMF
 CAYMEN ERICA 16'98
 SPRUCE VIEW LANCER 4F
 RIVERCREST BLACKCAP CSP 2C
 WHITESTONE WIDESPREAD MB
 HF BLACKBIRD 27C
 ALBERDA TRAVELER 416 NHF AMF
 LINDON MAIDEN 48H

HF SHOW DOWN 28K
RIVERCREST MAID 34R (1288516)
 RIVERCREST MAIDEN 1K

Actual BW: 94lbs. Adj 205 day wt: 765 lbs. 205 Index: 102
 BW:+4.5 WW:+47 YW:+79 Milk:+17 TM:+41 YG:+32 CED:-2.0 CEM:+1.0

17W is a big, stout calf with good hair. His maternal brother sold last year for \$2600 to Wood River Ranching. His actual weaning weight was 800 lbs for this end of March calf.



15

RIVERCREST DATELINE 18W*

TJS 18W 1529080 March 27 2009

VERMILION DATELINE 7078 NHF AMF
MGA DATELINE 4P (1243106)
MGA TRAVELING CRYSTAL 021G

CONNEALY DATELINE
VERMILION BLACKBIRD 5044
G D A R TRAVELER 71 NHF AMF
EVERBLACK CRYSTAL 1E

REMITALL PRESIDENT 336P
RIVERCREST MARGARET 36S (1352979)
RIVERCREST MARGARET 11F

REMITALL LUTHER 71L
REMITALL EILEEN 76J
CUDLOBE BLACK STAR 44C
RIVERCREST LADY MARGARET 31W

Actual BW: 90lbs. Adj 205 day wt: 770 lbs. 205 Index: 103
BW:+4.8 WW:+49 YW:+86 Milk:+20 TM:+45 YG:+37 CED:-2.0 CEM:+4.0

!8W is a moderate framed Dateline bull. His mother comes from one of Dad's top cow families. This end of March calf weaned out at 770 lbs.



Ty, Cayden & Evan after winning the Wild Pony Race



16

RIVERCREST GRID IRON 20W*

TJS 20W 1529082 March 30 2009

RIVERCREST GRID MAKER 15P
RIVERCREST GRID IRON CSP 15S (1359231)
RIVERCREST BLACKCAP CSP 9J

G A R GRID MAKER NHF AMF
CAYMEN ERICA 16'98
SPRUCE VIEW LANCER 4F
RIVERCREST BLACKCAP CSP 2C

HF SHOW DOWN 28K
RIVERCREST EVENING TINGE 41M (1124854)
DOUBLE FOUR EVENING TINGE 51D

WHITESTONE WIDESPREAD MB NHF AMF
HF BLACKBIRD 27C
BONNYMERE LEADER 12A
DOUBLE FOUR EVENING TINGE 123B

Actual BW: 104lbs. Adj 205 day wt: 761 lbs. 205 Index: 100
BW:+6.8 WW:+47 YW:+79 Milk:+14 TM:+38 YG:+31 CED:-10.0 CEM:-3.0

The dam to this big boy has been one of Dad's favorite cows. She has 2 top replacement hfrs held back in his herd. 20W will put performance in his calves. Born March 30th and weaning at 790 lbs. Shows just what this bull will offer to his offspring.

17

RIVERCREST DATELINE CSP 21W*

CSP 21W 1529189 March 22 2009

VERMILION DATELINE 7078 NHF AMF
MGA DATELINE 4P (1243106)
MGA TRAVELING CRYSTAL 021G

CONNEALY DATELINE
VERMILION BLACKBIRD 5044
G D A R TRAVELER 71 NHF AMF
EVERBLACK CRYSTAL 1E

RIVERCREST GRID MAKER 29P
RIVERCREST BLACKBIRD CSP 26S (1359271)
RIVERCREST BLACKBIRD CSP 19N

G A R GRID MAKER NHF AMF
RIVERCREST MARGARET 26F
CCL STOCKMAN 26L
HILL TOP BLACKBIRD 61G

Actual BW: 93lbs. Adj 205 day wt: 830 lbs. 205 Index: 112
BW:+4.5 WW:+61 YW:+101 Milk:+19 TM:+50 YG:+40 CED:-2.0 CEM:+3.0

21W is another awesome Dateline son, out of one of my top young cows. Rivercrest Blackbird 26S is the best looking cow I have, with a perfect udder, lots of milk and backing it up with her 1st calf being retained in my cow herd and then this big boy. Actual weaning weight is 850 lbs; quite a bull!



It's a Wild One



Craig & the power of Diesel



18

RIVERCREST GRID CSP 22W*

CSP 22W 1529188 March 22 2009

G A R GRID MAKER NHF AMF
RIVERCREST GRID MAKER 29P (1232948)
RIVERCREST MARGARET 26F

G D A R TRAVELER 044 NHF AMF
G A R PRECISION 2536 NHF AMC
CUDLOBE BLACK STAR 44C
RIVERCREST MARGARET 26Z

DALRENE EXCALIBUR 65L
RIVERCREST BLACKCAP CSP 78R (1348491)
RIVERCREST BLACKCAP CSP 5L

JLWF FAME H11
DALRENE ANNIE K G4
STEVENSON BRUNO 561G NHF
RIVERCREST BLACKBIRD CSP 11C

Actual BW: 93lbs. Adj 205 day wt: 766 lbs. 205 Index: 102
BW:+5.1 WW:+49 YW:+83 Milk:+17 TM:+42 YG:+34 CED:-4.0 CEM:+2.0

22W had a full brother in our 2009 sale who sold for \$2800 to Wood River Ranching. He weaned at 805 lbs. A good performance bull that will work in any cow herd.



19

RIVERCREST DATELINE 22W*

TJS 22W 1529084 April 01 2009

VERMILION DATELINE 7078 NHF AMF
MGA DATELINE 4P (1243106)
MGA TRAVELING CRYSTAL 021G

CONNELLY DATELINE
VERMILION BLACKBIRD 5044
G D A R TRAVELER 71 NHF AMF
EVERBLACK CRYSTAL 1E

TC FREEDOM 104 NHF AMF
RIVERCREST BLOSSOM 2R (1288494)
BELVIN LADY BLOSSOM 83'98

CONNELLY FOREFRONT NHF AMF
T C RUBY 9095
BELVIN FRONT RUNNER 42'96
BELVIN LADY BLOSSOM 58'95

Actual BW: 92lbs. Adj 205 day wt: 846 lbs. 205 Index: 114
BW:+5.1 WW:+57 YW:+99 Milk:+22 TM:+51 YG:+42 CED:-2.0 CEM:+3.0
The dam to this calf continues to impress. Last year's full brother topped the sale at \$3500 going to Rainbow Hills Angus. This April calf weighed 855 lbs off the cow in October 30th. He has the 2nd highest 205 index in the sale. Check him out on sale day.



2 RIVERCREST GRID IRON CSP 23W**

CSP 23W 1529190 March 24 2009

RIVERCREST GRID MAKER 15P
RIVERCREST GRID IRON CSP 15S
RIVERCREST BLACKCAP CSP 9J

G A R GRID MAKER NHF AMF
CAYMEN ERICA 16'98
SPRUCE VIEW LANCER 4F
RIVERCREST BLACKCAP CSP 2C

GRANDVIEW WOMACK DIRECT
RIVERCREST FLORA CSP 3R (1292300)
MVF FLORA 80K

B/R NEW DESIGN 036 NHF AMF
MENGS MISS SKYMERE 78B
MVF STOCKMAN 122H
MVF FLORA 110F

Actual BW: 84lbs. Adj 205 day wt: 716 lbs. 205 Index: 96
BW:+3.7 WW:+40 YW:+68 Milk:+20 TM:+40 YG:+28 CED:+3.0 CEM:+5.0

Another good solid Grid 15 calf. This moderate birth weight bull could be used on hfrs or cows. Small birth weight, big weaning weight at 745 lbs, for an end of March calf. This kind does all the work for you.



Jamie-Lee & Cayden out at Ya-HaTinda last year.



Cayden's Art work



21

RIVERCREST DATELINE 25W*

TJS 25W 1529087 April 11 2009

VERMILION DATELINE 7078 NHF AMF
MGA DATELINE 4P (1243106)
 MGA TRAVELING CRYSTAL 021G

CONNELLY DATELINE
 VERMILION BLACKBIRD 5044
 G D A R TRAVELER 71 NHF AMF
 EVERBLACK CRYSTAL 1E

RIVERCREST DIRECT 8P
RIVERCREST MAIDEN 9S (1353003)
 RIVERCREST MAIDEN 46M

GRANDVIEW WOMACK DIRECT
 RIVERCREST PRINCESS 24J
 HF SHOW DOWN 28K
 LINDON MAIDEN 48H

Actual BW: 89lbs. Adj 205 day wt: 778 lbs. 205 Index: 104
 BW:+4.3 WW:+55 YW:+93 Milk:+17 TM:+45 YG:+38 CED:-2.0 CEM:+3.0

Fancy, that describes this stylish Dateline son. This April calf weaned at 730 lbs.



Cayden &
 Spade—Spade
 sold at last year's
 sale for \$8,500

22

RIVERCREST RANGER 26W**

TJS 26W 1529086 April 11 2009

RAINBOW HILLS RANGER 106P
BANNER RANGER 11S (1358645)
 BANNER MATILDA 19P

RANGER G 1720 NHC AMF
 BLACKBIRD OF RAINBOW HILLS 6M
 VERMILION YELLOWSTONE NHF AMF
 BANNER MATILDA 61J

RIVERCREST GRID MAKER 29P
RIVERCREST BLOSSOM 15T (1459464)
 RIVERCREST BLOSSOM 2R

G A R GRID MAKER NHF AMF
 RIVERCREST MARGARET 26F
 TC FREEDOM 104 NHF AMF
 BELVIN LADY BLOSSOM 83'98

Actual BW: 81lbs. Adj 205 day wt: 758 lbs. 205 Index: 102
 BW:+3.2 WW:+40 YW:+74 Milk:+22 TM:+42 YG:+34 CED:+0.0 CEM:+5.0

Banner Ranger 11S was purchased to use on our hfrs. He has accomplished all we could ask of him; easy nights in the spring and great gains in the fall. This hfr bull prospect born on April 11th has a 205 Adj weight of 758lbs.

23

RIVERCREST POWERDRIVE 28W*

TJS 28W 1529088 April 18 2009

SITZ ALLIANCE 6595 NHF AMF
REMITALL POWER DRIVE 275P (1227346)
 HF TIBBIE 118J

SITZ TRAVELER 8180 NHF AMF
 SITZ BARBARAMERE JET 2698
 GLENCROFT WALK-ON ARGYLL 16F
 HF TIBBIE 31C

STEVENSON EXPEDITION 859K
CUDLOBE ERELITE 83N (1183634)
 CUDLOBE ERELITE 44L

GARDENS EXPEDITION NHF AMF
 STEVENSON QUEEN 4058
 STEVENSON RAINMAKER 630G
 CUDLOBE ERELITE 23J

Actual BW: 85lbs. Adj 205 day wt: 768 lbs. 205 Index: 103
 BW:+2.2 WW:+46 YW:+82 Milk:+22 TM:+45 YG:+36 CED:+2.0 CEM:+6.0

The dam was purchased at Remingtall's dispersal. This PowerDrive son is one of the youngest bulls in the sale. He will be a larger frame bull when he grows up. Good calf, good number. He weaned at 735 lbs off the cow.



24

RIVERCREST GRID CSP 29W*

CSP 29W 1529195 March 30 2009

RIVERCREST GRID MAKER 15P
RIVERCREST GRID IRON CSP 15S (1359231)
 RIVERCREST BLACKCAP CSP 9J

G A R GRID MAKER NHF AMF
 CAYMEN ERICA 16'98
 SPRUCE VIEW LANCER 4F
 RIVERCREST BLACKCAP CSP 2C

TC STOCKMAN 365
MVF GEORGINA 11K (1017475)
 WAVY GEORGINA 2C

TC STOCKMAN
 TC PRIDE 0014
 RITO 2100 G D A R
 WAVY GEORGINA 1S

Actual BW: 93lbs. Adj 205 day wt: 703 lbs. 205 Index: 93
 BW:+4.7 WW:+34 YW:+58 Milk:+17 TM:+34 YG:+23 CED:+0.0 CEM:+4.0

MVF Georgina 11K has been a solid cow in the Rivercrest herd. She has many daughters in the purebred circuit, including here at Rivercrest. Every bull has made our bull sales, including her half brother who sold last year to Dwight Downey for \$2300. His actual weaning weight was 730 lbs.



25 RIVERCREST DATELINE CSP 30W*

CSP 30W 1529196 April 01 2009

VERMILION DATELINE 7078 NHF AMF
MGA DATELINE 4P (1243106)
MGA TRAVELING CRYSTAL 021G

CONNEALY DATELINE
VERMILION BLACKBIRD 5044
G D A R TRAVELER 71 NHF AMF
EVERBLACK CRYSTAL 1E

BCC EILEENMERE LAD 215
RIVERCREST BLACKCAP CSP 31K (1032308)
RIVERCREST BLACKCAP CSP 29D

BJ JACK DANIELS 25'92
BJ LADY WREN 9'91
MASTERPIECE 12A
RIVERCREST BLACKCAP CSP 1P

Actual BW: 94lbs. Adj 205 day wt: 782 lbs. 205 Index: 104
BW:+5.2 WW:+50 YW:+81 Milk:+20 TM:+45 YG:+32 CED:-5.0 CEM:+1.0

Another very impressive Dateline son with good numbers. This April calf weaned at 805 lbs off the cow. He's a thick, soggy calf. Be sure to look him up. His mother has left numerous daughters in the replacement pen.



26 RIVERCREST DATELINE CSP 33W*

CSP 33W 1529197 April 02 2009

VERMILION DATELINE 7078 NHF AMF
MGA DATELINE 4P (1243106)
MGA TRAVELING CRYSTAL 021G

CONNEALY DATELINE
VERMILION BLACKBIRD 5044
G D A R TRAVELER 71 NHF AMF
EVERBLACK CRYSTAL 1E

RIVERCREST BLACKSTONE 7N
RIVERCREST BLACKCAP CSP 100R (1348493)
RIVERCREST BLACKCAP CSP 31K

HI DIAMOND BLACKSTONE 4L
RIVERCREST RUTH 40J
BCC EILEENMERE LAD 215
RIVERCREST BLACKCAP CSP 29D

Actual BW: 88lbs. Adj 205 day wt: 679 lbs. 205 Index: 89
BW:+4.1 WW:+50 YW:+86 Milk:+15 TM:+40 YG:+35 CED:-2.0 CEM:+2.0

Here is a stylish young calf out of Dateline. His dam is one of the bigger framed cows in Craig's herd. His half brother sold in the 2009 sale to Charles Horn for \$2300.



27 RIVERCREST RANGER CSP 36W***

CSP 36W 1529199 April 06 2009

RAINBOW HILLS RANGER 106P
BANNER RANGER 11S (1358645)
BANNER MATILDA 19P

BELVIN EXTRA YARDS 85'00
RIVERCREST DAISY CSP 31T (1460418)
RIVERCREST DAISY CSP 33R

Actual BW: 78lbs. Adj 205 day wt: 793 lbs. 205 Index: 108
BW:+2.6 WW:+41 YW:+70 Milk:+20 TM:+41 YG:+29 CED:+1.0 CEM:+3.0

Another Hfr bull prospect out of the good Ranger bull; 78lb birth weight and weaned at 725 lbs on October 30th. Plus he has a lot of style to throw to his calves.



28 RIVERCREST RANGER 39W**

CSP 39W 1529202 April 14 2009

RAINBOW HILLS RANGER 106P
BANNER RANGER 11S (1358645)
BANNER MATILDA 19P

RANGER G 1720 NHC AMF
BLACKBIRD OF RAINBOW HILLS 6M
VERMILION YELLOWSTONE NHF AMF
BANNER MATILDA 61J

RIVERCREST GRID MAKER 29P
RIVERCREST BLACKCAP CSP 16T (1407097)
RIVERCREST BLACKCAP CSP 78R

G A R GRID MAKER NHF AMF
RIVERCREST MARGARET 26F
DALRENE EXCALIBUR 65L
RIVERCREST BLACKCAP CSP 5L

Actual BW: 92lbs. Adj 205 day wt: 839 lbs. 205 Index: 113
BW:+5.5 WW:+46 YW:+79 Milk:+22 TM:+45 YG:+33 CED:-7.0 CEM:+1.0

This is one of the very few Ranger calves that had a higher birth weight. This bull will probably throw moderate birth weights, with great weaning weights. He was born in mid-April, weaned off a 1st calf hrf at 745 lbs.



29

RIVERCREST RANGER CSP 40W***

CSP 40W 1529201 April 14 2009

RAINBOW HILLS RANGER 106P
BANNER RANGER 11S (1358645)
BANNER MATILDA 19P

REMITALL PRESIDENT 336P
RIVERCREST DAISY CSP 66S (1359272)
RIVERCREST MISS DAISY CSP 27N

RANGER G 1720 NHC AMF
BLACKBIRD OF RAINBOW HILLS 6M
VERMILION YELLOWSTONE NHF AMF
BANNER MATILDA 61J

REMITALL LUTHER 71L
REMITALL EILEEN 76J
MILLCREEK DIVERSITY NHF AMF
HI DIAMOND MISS DAISY 7K

Actual BW: 78lbs. Adj 205 day wt: 690 lbs. 205 Index: 93
BW:+2.7 WW:+38 YW:+74 Milk:+19 TM:+38 YG:+36 CED:+1.0 CEM:+5.0

This is the last Ranger bull calf for sale. He will work on hfrs. He is moderate framed and should not get too big for any hfrs for years to com. He will give you plenty of sleep next calving season.



30

RIVERCREST GRID IRON 29W*

TJS 29W 1529089 APRIL 18 2009

RIVERCREST GRID MAKER 15P 1245513
RIVERCREST GRID IRON CSP 15S 1359231
RIVERCREST BLACKCAP CSP 9J

G A R GRID MAKER 1129870
CAYMEN ERICA 16'98
SPRUCE VIEW LANCER 4F 853253
RIVERCREST BLACK CAP CSP 2C 777485

RIVERCREST GRID MAKER 29P 1232948
RIVERCREST ANNE 5T 1423572
RIVERCREST ANNE 38R 1288505

G A R GRID MAKER 1129870
RIVERCREST MARGARET 26F 869431
HI DIAMOND BLACK SOTNE 4L 1044111
CCL KINCHTRY ANN 38'99 984683

Actual BW: 91 lbs. Adj 205 day wt: 810 lbs. 205 Index: 109
BW: +5.0 WW: +47 YW: +79 Milk: +18 TM: +42 YG: +32 CED: -3.0 CEM: +1.0

This also will be the last Grid 15S calf for sale, as he is deceased. This is a very smooth, correct calf. Born mid-April he has an incredible Adj 205 of 810 lbs. You will like the look of this bull.



Spady Gang 4-H InterClub



Cayden Steer



Kara Pen of 5



Cayden Reserve Champion Yearling Heifer



Ty, Cayden and Logan 2008 Tier 4 Champions



Evan, Ty, Cayden and Logan 2009 Tier 4 Champions



AGRICULTURAL PRODUCTS



Livestock Feeders



Loading Chutes



Gates, Panels, Fencing



Greenhouses *

- Call for availability
- Stock or custom design
- Our material or yours
- Quantity pricing available
- Farm repairs welcome
- Finished or unfinished
- Steel or Aluminum
- Benches, Carts, Tables
- Materials for sale
- Bring in your sketch

* Some products may vary in design

Dura Bull Projects Inc.

Halkirk, Alberta
(403) 884 - 2233

CUSTOM SERVICES



Barrel Docks



Custom Decking



Stairways & Safety Rails



Aluminum shaping/welding



13' - 185 Ton Hydraulic Brake for custom forming



10' - 1/2" Hydraulic Shear

Call 403-884-2233 for your free estimate TODAY!

DISTRIBUTORS WELCOME

DURA BULL PROJECTS INC.

Box 40
Halkirk, AB T0C 1M0
Phone: 403.884.2233
Cell: 403.741.5056
Fax: 403.884.2211
info@durabull.ca
www.durabull.ca

COMMERCIAL PRODUCTS



Crossovers



Cattle Guards



Pig Receivers



Fire Pits

- Industry approved designs
- Some stock available
- Fast friendly service
- Engineering available
- Local pickup & delivery
- Brake & Shear services
- Solar Panel stands
- Chemical containment
- Free estimates
- Oilfield knowledge

CALL TODAY!

Spade Septic Solutions

- Portable Toilet Rentals
 - Septic Tank Cleaning
 - Potable Water
- 24 Hr. Service**

403-741-7422

ES Waste

BIN RENTAL AND WASTE REMOVAL
Let us remove your waste for you.
Craig Spady (403) 740-4978



Cactus – consigned by Rivercrest Ranch



6 yr old
Ranch
Gelding with
chrome. Keen
eye for cattle.



Cactus – Registered, 6 yr old, AQHA Gelding. Cactus is a well put together, well bred, eye catching gelding with chrome and stands just over 14.3 hands. He has drug calves to the branding pen, he's been used for trail-riding in the mountains and hunting trips, and gathering/sorting cattle in the pasture. He's easy going and has no qualms riding out by himself. Cactus is athletic and has keen eye for cattle. Willing and could go a number of directions.





A Warriors Prophecy 4601231 2004 sorrel gelding

SIRE side of pedigree

	Smart Little Lena 1979 1565822 sorrel	Doc O'Lena 1967 0493297 bay
Smart Little Uno 1988 2688633 bay		Smart Peppy 1966 0439891 sorrel
	Doc's Marmoset 1970 0700903 bay	Doc Bar 1956 0076136 chestnut
Docs Smart Uno 1998 3841949 bay		Susie's Bay 1955 0050162 bay
	Peppy San Badger 1974 1089924 sorrel	Mr San Peppy 1968 0548845 sorrel
Little Angel Lena 1991 3050667 sorrel		Sugar Badger 1959 0183512 sorrel
	The Ornerly Angel 1977 1343225 bay	Dry Doc 1968 0549191 bay
		Lizalita 1966 0479769 chestnut

DAM side of pedigree

	Doc A'Lock 1974 1001473 bay	Doc Bar 1956 0076136 chestnut
Docs Pacer 1980 1572851 sorrel		Black Wasp 1954 0047000 black
	Ima Star Too 1963 0257102 sorrel	Aledo Bar 1957 0086000 sorrel
My Classical Rose 1987 2688024 sorrel		Miss Red Ant 1948 0022129 sorrel
	Casa War Bond 1968 0645702 palomino	War Bond Leo 1963 0278587 sorrel
Pretty Annie Rose 1980 1662828 palomino		Casaloma 1962 0216839 palomino
	Annie Tag 1960 0144778 sorrel	Leo Tag 1949 0028432 sorrel
		Anna Plaudit 1943 0009979 sorrel



Welcome from Valleymere Ranches

Welcome from Valleymere Angus Ranches. To say it's been another challenging year in the cattle business is a definite understatement. Drought in many areas and low prices in all areas of our business has caused hardships for all of us. On the positive side we do hold the reins of power over our operations and the tough decisions are in our control. Unlike the many people over the last year that have lost their jobs, we still have ours. As far as I'm concerned ranching is the best job in the world. We "work" (if you call spring brandings and fall round-ups work) with the best of all people. Raising our families in such an environment is a perk that has no dollar figure.

We were short of feed and pasture right from the get go last spring resulting in some pretty thin cows. They were still able to do a pretty good job on their calves. At my operation, the bottom 40% of the bulls were steered October 10 and the sold off the cows December 8 at Stettler Auction Mart where the entire group of 35 averaged 680 lbs. No calves at Valleymere receive creep, it's up to their mamas to raise 'em right! I feel that the auction mart is the true test of purebred and commercial herds. This is the real world, where they don't post adjusted 205 day weaning weights or EPD's. The cattle are sold over 1 weigh scale and judged solely on what the buyer's see.

As was the case last spring, cull bulls are bringing good prices so it won't cost much to trade up to a good young herd sire. Brian and I feel we have put together a very strong set of functional bulls for your evaluation. These bulls will not have their feet or livers fed out of them and whether you are looking for a heifer bull, cow bull or a combination of the two, we have a bull that will work for you. We try to give as much information on each bull, but if you have any questions, please call. We know our cattle and we want you to be totally satisfied.

We are proud of our hard-working mama cows culled to perform in the rugged conditions of the Battle River Valley. We have every confidence that their sons will work for you. In the event you do have problems, we will look after you. Stop by any time and good luck calving!

Sincerely, Travis & Brian



PEAK DOT PRIME CUT 42N

PDAR 42N 1165426 January 17 2003

REF. SIRE E-42N

SUMMITCREST PRIME CUT 1G42
BASIN PRIME CUT 354K 1039873
BASIN HEIRESS 353

FINKS 5522-6148
SUMMITCREST BARBARA 0874
BASIN E Z
BASIN HEIRESS 7240

TURBULENCE 167 A O
CEDAR CREEK 123F 908135
CEDAR CREEK QUEEN 123Z

R&J TURBO 2148
BLACKBIRD P D 1 A O
MR IMPRESSIVE HK 891
QUEEN MOTHER OLE SASKALTA

Prime Cut 42N was our pick at Peak Dots 2004 Spring sale. He bred 35 heifers and cows as a yearling and 40-50 cows a year after that with an 80% first cycle conception rate. Exceptionally correct feet and legs with a very quiet disposition, calving ease and excellent performance are his trademarks. His daughters at Valleymere are quietly making their way to the top of the cow-herd. The 2nd top weaning weight for bull calves and 3rd top weaning weight for heifers were off his daughters. I have used 4 different sons of his, all with excellent results. His positive impact on our herd will be felt for some time. Now that the old bull is gone this will be the last chance to buy direct sons.

BW: 84 lbs. Adj. 205D: 812 lbs. Adj. 365D: 1201 lbs. Mature Weight: 2800 lbs
BW: +2.0 WW: +47 YW: +78





REF. SIRE F-31T

F

VALLEYMERE TTT PRIMECUT 31T

TTTS 31T 1389638 February 22 2007

BASIN PRIME CUT 354K 1039873
PEAK DOT PRIME CUT 42N 1165426
 CEDAR CREEK 123F 908135

SUMMITCREST PRIME CUT 1G42
 BASIN HEIRESS 353
 TURBEULANCE 167 A 0
 CEDAR CREEK QUEEN 123Z

ASPELUND GOLD EYE 78F 896286
VALLEYMERE TTT BLACK QUEEN 6K 1040292
 BLACK QUEEN SHJ 56G 908823

KRUGERRAND OF DONAMERE 490
 CORVALLIS ANNE 74'81
 RONAN EX 41C
 BLACK QUEEN SHK 9P

31T was a stand out from the day he was born. His dam is listed as an Elite dam with the CAA. Her sire Aspelund Gold Eye 78F is also listed as an Elite sire with 8 daughters listed Elite out of 32 analysed. Gold Eye was the Calgary Bull Sale Grand Champion in 1998, and his lineage is in many top Valleymere cows. 31T is a moderate-framed, thick son of Prime Cut 42N, his 1st crop of calves were born easy and have shown excellent performance. 31T will carry on his parent's outstanding qualities.

BW: 76 lbs Actual Weaning Weight: 750 lbs (6-Oct-2007)
 BW: -1.4 WW: +34 YW: +57 MILK: +15 MAT: +32 SCROTAL: +0.08 YG: +23 CED: +10



2009 Group of Sale Bulls



REF. SIRE G-27S

G

DURALTA 8005 SOONER 27S

ANKN 27S 1347199 January 31 2006

A A R NEW TREND
BOYD NEW DAY 8005 994200
 S V F FOREVER LADY 57D

V D A R SHOSHONE 548
 DONNA A A R 74
 LEACHMEAN RIGHT TIME
 S V F FOREVER LADY 1128

SITZ ALLIANCE 6595
DURALTA 6595 LADY 41N 1183541
 FREYBURN LADY 7L

SITZ TRAVELER 8180
 SITZ BARBARAMERE JET 2698
 EBON HILL EQUALIZER 117'97
 LADY OF BAR 20 479E

Purchased in 2007, Sooner is a moderate framed bull with extra thickness, length and depth. He is double bred to be a cow maker with breed legend Sitz Alliance on the dam's side and Boyd New Day for a sire. Sooner's first daughters have calved and exceeded all expectations. They are moderate framed and broody with small-teated, wide, full udders. His offspring are early maturing and grow into moderate framed efficient cattle. Select his sons for calving ease, performance, ease of fleshing and maternal strength.

BW: 92 lbs. BW: +3.9 WW: +46 YW: +89





REF. SIRE H—20S



Valleymere calves



VALLEYMERE TTT BANDO 20S

TTTS20S 1365232 February 17 2006

S A F 598 BANDO 5175
S A F 598 BANDO 5175 994198
 RIDEAU BLACKCAP JUDY 4L

BON VIEW BANDO 598
 S A F ROYAL LASSS 1002
 RIDEAU FAME 15H
 RIDEAU BLACKCAP JUDY 3J

MINBURN MAIN EVENT 105M
VALLEYMERE TTT ERROLINE 2P 1240307
 VALLEYMERE TTT ERROLINE 14M

CRESCENT CREEK MAIN EVENT 6H
 MERIT LADY FANNY 4070
 BAR B ROGUE 14J
 VALLEYMERE TTT 78F ERROLINE 4J

The Bando line of cattle have worked extremely well here at Valleymere. They are very easy-fleshing cattle, deep-sided, thick and easy calving with that extra eye appeal. 20S's first daughters have calved and are moderate framed with excellent udders. This bull's maternal line is very powerful. His dam 2P has a weaning index on 4 calves of 112 and 14M and 4J are listed as Elite dams with the Canadian Angus Association. 20S himself had a weaning ratio of 110 and a yearling ratio of 132.

Actual BW: 93 lbs. Adj. 205D: 708 lbs. Adj. 365D: 1256 lbs.
 BW: +4.5 WW: +43 YW: +82



Travis— Gathering for Branding



Halley & Lilly



Ty & Jingle—Jingles sold in the 2008 sale



Travis—4-H President duties



Ty's 4-H calf



Ty's 1st White-tail w/ spot-ter/bush-wacker Logan



I VALLEYMERE HPS GOLDEYE 15N

HPS 15N 1190119 February 16 2003

ASPELUND GOLD EYE 78F
VALLEYMERE HPS GOLD EYE 15L 1083307
 VALLEYMERE HPS KYMA 61C

SECTION ONE LANCER 51B
VALLEYMERE HPS KYMA 58E 842575
 VALLEYMERE HPS KYMA 21B

KRUGERRAND OF DONAMERE 490
 CORVALLIS ANNE 74'81
 KNIGHTS HOTSHOT 18Y
 VALLEYMERE HPS KYMA 5Z

ANGUS ACRES LANCER 153X
 BLACK BROWE LADY ANN 18U
 KNIGHTS HOTSHOT 18Y
 VALLEYMERE HPS KYMA 48X

Actual BW: 99 lbs.



REF. SIRE I—15N

J

REMITALL PHASE I 177P

AGN 177P 1227197 February 27 2004

B/R NEW DESIGN 036
GRANDVIEW WOMACK DIRECT 1142715
 MENGES MISS SKYMERE 78B

V D A R NEW TREND 315
 B/R BLACKCAP EMPRESS 76
 LEACHMAN PROMPTER
 RITO 139 IDEAL 4167

MOUNTAIN SIDE EXTRA CLASSY
REMITALL LADY 231H 941489
 REMITALL LADY YORK 86Y

DALRENE EXTRA 36A
 BLACKLASS OF GUMBO GULCH 50T
 S C R LONE STAR 411
 ELA WINFREY 24W

BW: 84 lbs. Adj. 205D: 779 lbs Adj. 365D: 1225 lbs.
 BW: +5.0 WW: +46 YW: +74



REF. SIRE J—177P

K SANDY BAR EQUATOR 222R

IJP 222R 1258107 February 17, 2005

BASIN EQUATOR 276G
VALLEY BLOSSOM EQUATOR 729M 1114789
 WIWA CREEK TILDA 33'87

SANDY BAR BRAVE HEART 75H
SANDY BAR PRIDE LADY 78L 1042083
 SANDY BAR PRIDE LADY 81C

BW: 79 lbs. Adj. 205D: 736 lbs
 BW: +1.8 WW: +35 YW: +74

HILLTOP EQUATOR F302
 BASIN JUANADALEEN 8092
 ROYAL NORTH STAR 35W
 WIWA CREEKTILDA 33'87

CRESCENT CREEK BRAVE HEART 35F
 SANDY BAR MISS QUALITY 12E
 TRAVELER OF WLA 1Z
 PAT PRIDE LADY 837X

Equator was purchased from Sandy Bar Ranches in Aneroid Sask. He was used successfully on heifers and sires easy fleshing cattle with a lot of capacity. His calves do very well on feed. His 1st daughters calved out last spring and are feminine cows with good udders. They are built to last. He has crossed exceptionally well with our Prime Cut daughters.



REF. SIRE K—222R



Brian, Tammy, Kara, Logan & Evan





**LOT 34—
TTTS 1W**

31

VALLEYMERE TTT BANDO 1W***

TTTS 1W 1514208 February 12 2009

MOONMIST 5175 BLUE 1P
VALLEYMERE TTT BANDO 20S (1365232)
VALLEYMERE TTT ERROLINE 2P

VALLEYMERE HPS GOLD EYE 26K
VALLEYMERE TTT QUEEN 16N (1186337)
BLACK QUEEN SHJ 51G

S A F 598 BANDO 5175 AMF
RIDEAU BLACKCAP JUDY 4L
MINBURN MAIN EVENT 105M
VALLEYMERE TTT ERROLINE 14M

ASPELUND GOLD EYE 78F
VALLEYMERE HPS PRIDE 28X
RONAN TEX 41C
BLACK QUEEN SHJ 44X

Actual BW: 79lbs. Adj 205 day wt: 659 lbs. 205 Index: 96
BW:0.7 WW:28 YW:55 Milk:16 TM:30 SC: +0.10 YG:27 CED:4 CEM:6

1W is moderate framed, long thick, and stylish. Excellent choice for heifers but has plenty of performance for cows as well. Full brother sold in the 2009 sale going to Wood River Ranching. WI 96

32

VALLEYMERE TTT PRIME CUT 3W*

TTTS 3W 1514210 February 16 2009

BASIN PRIME CUT 354K
PEAK DOT PRIME CUT 42N (1165426)
CEDAR CREEK 123F

VALLEYMERE TTT GOLDMINE 5J
VALLEYMERE TTT ELLEN ERICA 30M (1143636)
VALLEYMERE TTT ELLEN ERICA 14K

SUMMITCREST PRIME CUT 1G42 NHF AMF
BASIN HEIRESS 353
TURBULENCE 167 A O
CEDAR CREEK QUEEN 123Z

DCC GOLD DUST 1G
VALLEYMERE HPS DUCHESS 30G
ASPELUND ONE 6H
VALLEYMERE HPS ELLEN ERICA 20H

Actual BW: 91lbs. Adj 205 day wt: 734 lbs. 205 Index: 107
BW:3.2 WW:44 YW:66 Milk:15 TM:37 SC:I +0.37 YG:22 CED:0 CEM:6

3W is a big, gentle Prime Cut son that will add pounds to your calf crop. WI 107

33

VALLEYMERE TTT GOLDEYE 5W*

TTTS 5W 1514211 February 16 2009

VALLEYMERE HPS GOLD EYE 15L
VALLEYMERE HPS GOLDEYE 15N (1190119)
VALLEYMERE HPS KYMA 58E

BCC GUARANTEE 134
VALLEYMERE HPS DUCHESS 30G (908920)
VALLEYMERE HPS DUCHESS 10D

ASPELUND GOLD EYE 78F
VALLEYMERE HPS KYMA 61C
SECTION ONE LANCER 51B
VALLEYMERE HPS KYMA 21B

ACUMEN BOLD LEADER 30X
BJ LADY WREN 20'90
GNS NORTH FLIGHT 81B
TRAV DUCHESS S 28T

Actual BW: 89lbs. Adj 205 day wt: 676 lbs. 205 Index: 97
BW:4.4 WW:34 YW:53 Milk:1 TM:18 SC:I -0.30 YG:19 CED:-5 CEM:0

5W is a larger framed bull that is off one of my oldest cows. At 12 years old 30G exemplifies all the traits that make Angus cows so popular. WI 97

34

VALLEYMERE TTT BANDO 12W**

TTTS 12W 1514215 February 20 2009

MOONMIST 5175 BLUE 1P
VALLEYMERE TTT BANDO 20S (1365232)
VALLEYMERE TTT ERROLINE 2P

DCC GOLD DUST 1G
VALLEYMERE TTT ERICA 19K (1040302)
VALLEYMERE HPS ERICA 40G

S A F 598 BANDO 5175 AMF
RIDEAU BLACKCAP JUDY 4L
MINBURN MAIN EVENT 105M
VALLEYMERE TTT ERROLINE 14M

MVRB ULTRA 103D
TAF QUEEN MOTHER 69B
RONAN TEX 41C
VALLEYMERE HPS ERICA 17Y

Actual BW: 88lbs. Adj 205 day wt: 630 lbs. 205 Index: 90
BW:3.8 WW:29 YW:62 Milk:14 TM:29 SC: YG:33 CED:-3 CEM:1

12W is a moderate framed 20S son that could be used on heifers or cows.





**LOT 38—
TTTS 13W**

35 VALLEYMERE TTT NEW DAY 13W***

TTTS 13W 1514220 February 22 2009

BOYD NEW DAY 8005 NHF AMF
DURALTA 8005 SOONER 27S (1347199)
DURALTA 6595 LADY 41N

A A R NEW TREND
S V F FOREVER LADY 57D
SITZ ALLIANCE 6595 NHF AMF
FREYBURN LADY 7L

ASPELUND GOLD EYE 78F
VALLEYMERE HPS BLACK QUEEN 5K (1032465)
VALLEYMERE HPS BLACK QUEEN 7G

KRUGERRAND OF DONAMERE 490 NHF AMF
CORVALLIS ANNE 74*81
RONAN TEX 41C
VALLEYMERE HPS BLACK QUEEN 27X

Actual BW: 84lbs. Adj 205 day wt: 761 lbs. 205 Index: 112
BW:2.1 WW:37 YW:65 Milk:20 TM:39 SC:1 +0.30 YG:28 CED:4 CEM:2

13W is an excellent son of the Sooner Bull. Extra length, extra width, loaded with red meat in a moderate frame. 13W has the herd bull look and would work on heifers or cows.

37 VALLEYMERE TTT EQUATOR 15W*

TTTS 15W 1514218 February 22 2009

VALLEY BLOSSOM EQUATOR 729M
SANDY BAR EQUATOR 222R (1258107)
SANDY BAR PRIDE LADY 78L

BASIN EQUATOR 276G
WIWA CREEK TILDA 33 54*90
SANDY BAR BRAVE HEART 75H
SANDY BAR PRIDE LADY 81C

MINBURN MAIN EVENT 105M
VALLEYMERE TTT ERICA 19R (1309201)
VALLEYMERE TTT ERICA 4M

CRESCENT CREEK MAIN EVENT 6H
MERIT LADY FANNY 4070
ASPELUND GOLD EYE 78F
VALLEYMERE HPS ERICA 40G

Actual BW: 91lbs. Adj 205 day wt: 718 lbs. 205 Index: 104
BW:4.4 WW:40 YW:67 Milk:12 TM:32 SC:1 +0.55 YG:27 CED:4 CEM:0

A large capacity Equator son that's all about performance. He will be easy to pick out on sale day.

36 VALLEYMERE TTT EQUATOR 14W***

TTTS 14W 1514219 February 22 2009

VALLEY BLOSSOM EQUATOR 729M
SANDY BAR EQUATOR 222R (1258107)
SANDY BAR PRIDE LADY 78L

BASIN EQUATOR 276G
WIWA CREEK TILDA 33 54*90
SANDY BAR BRAVE HEART 75H
SANDY BAR PRIDE LADY 81C

DCC GOLD DUST 1G
VALLEYMERE TTT ERROLINE 17K (1040301)
VALLEYMERE HPS ERROLINE 1F

MVRB ULTRA 103D
TAF QUEEN MOTHER 69B
SECTION ONE LANCER 51B
VALLEYMERE HPS ERROLINE 9D

Actual BW: 81lbs. Adj 205 day wt: 658 lbs. 205 Index: 96
BW:2.4 WW:33 YW:60 Milk:8 TM:25 SC:1 +0.52 YG:27 CED:0 CEM:3

14W is a low birth weight Equator son that would work well on heifers or cows.

38 VALLEYMERE TTT NEW DAY 37W***

TTTS 37W 1514234 March 01 2009

BOYD NEW DAY 8005 NHF AMF
DURALTA 8005 SOONER 27S (1347199)
DURALTA 6595 LADY 41N

A A R NEW TREND
S V F FOREVER LADY 57D
SITZ ALLIANCE 6595 NHF AMF
FREYBURN LADY 7L

PEAK DOT PRIME CUT 42N
VALLEYMERE TTT KYMA 57T (1389530)
VALLEYMERE HPS KYMA 18K

BASIN PRIME CUT 354K
CEDAR CREEK 123F
ASPELUND GOLD EYE 78F
VALLEYMERE HPS KYMA 61C

Actual BW: 84lbs. Adj 205 day wt: 740 lbs. 205 Index: 109
BW:2.9 WW:41 YW:72 Milk:20 TM:41 SC:1 YG:31 CED:4 CEM:4

37W is deep bodied son off a 1st calf Prime Cut daughter that did an excellent job on this calf. Another bull that would work real well on heifers.





**LOT 42—
TTTS 39W**

39 VALLEYMERE TTT PRIME CUT 39W***

TTTS 39W 1514237 March 02 2009

PEAK DOT PRIME CUT 42N
VALLEYMERE TTT PRIME CUT 31T (1389638)
 VALLEYMERE TTT BLACK QUEEN 6K

VALLEYMERE HPS GOLDEYE 2M
VALLEYMERE TTT ERROLINE 7P (1309170)
 VALLEYMERE TTT ERROLINE 27M

Actual BW: 86lbs. Adj 205 day wt: 728 lbs. 205 Index: 107
 BW:1.8 WW:35 YW:68 Milk:14 TM:32 SC:I +0.15 YG:33 CED:3 CEM:4

39W is a terrific son off the calving ease specialist 31T. His maternal brother was one of my best bulls in the 2008 sale going to Rick Housch. This bull is linebred to Aspelund Gold Eye 78F, the 1998 Calgary Bull Sale Grand Champion Angus bull that Valleymere purchased and used for many years. Gold Eye is a son of breed legend Krugerrand of Donnamere 490. Gold Eye is listed as an elite sire and his influence in the Valleymere herd is very predominant with his lineage in many of our top females.

41 VALLEYMERE TTT PRIME CUT 50W***

TTTS 50W 1514243 March 05 2009

BASIN PRIME CUT 354K
PEAK DOT PRIME CUT 42N (1165426)
 CEDAR CREEK 123F

ASPELUND GOLD EYE 78F
VALLEYMERE TTT ERROLINE 28L (1082386)
 VALLEYMERE RSE ERROLINE 24H

Actual BW: 84lbs. Adj 205 day wt: 683 lbs. 205 Index: 99
 BW:1.6 WW:33 YW:56 Milk:16 TM:33 SC:I +0.25 YG:23 CED:4 CEM:4

50W is a typical Prime Cut son. Long, thick, easy-going with excellent feet and legs. His dam is listed as an elite cow with the CAA. Another bull to us on heifers or cows.

40 VALLEYMERE TTT EQUATOR 47W***

TTTS 47W 1514240 March 04 2009

VALLEY BLOSSOM EQUATOR 729M
SANDY BAR EQUATOR 222R (1258107)
 SANDY BAR PRIDE LADY 78L

TZ LINCOLN 7L
VALLEYMERE TTT ERROLINE 8R (1309186)
 VALLEYMERE TTT ERROLINE 17K

Actual BW: 83lbs. Adj 205 day wt: 655 lbs. 205 Index: 95
 BW:3.2 WW:33 YW:64 Milk:10 TM:27 SC: YG:30 CED:0 CEM:2

47W is a clean fronted stylish son of the Equator bull that would work on heifers or cows.

42 VALLEYMERE TTT PRIME CUT 51W**

TTTS 51W 1514245 March 05 2009

BASIN PRIME CUT 354K
PEAK DOT PRIME CUT 42N (1165426)
 CEDAR CREEK 123F

DCC GOLD DUST 1G
VALLEYMERE TTT ERROLINE 7K (1040304)
 VALLEYMERE HPS ERROLINE 28G

Actual BW: 86lbs. Adj 205 day wt: 698 lbs. 205 Index: 102
 BW:2.9 WW:39 YW:66 Milk:11 TM:31 SC:I +0.24 YG:27 CED:0 CEM:4

Another good solid Prime Cut son off of an elite dam. Use him on heifers with confidence or turn him out with your cows and add pounds to your next calf crop.



**LOT 48—
TTTS 63W**



43 VALLEYMERE TTT PRIME CUT 53W***

TTTS 53W 1514248 March 06 2009

BASIN PRIME CUT 354K
PEAK DOT PRIME CUT 42N (1165426)
CEDAR CREEK 123F

SUMMITCREST PRIME CUT 1G42 NHF AMF
BASIN HEIRESS 353
TURBULENCE 167 A O
CEDAR CREEK QUEEN 123Z

BAR B ROGUE 14J
VALLEYMERE HPS ELLEN ERICA 25M (1137242)
VALLEYMERE HPS ELLEN ERICA 22D

DOUBLE BAR ROGUE
LADY BEN OF ANGUS RIDGE 15Z
SECTION ONE LANCER 51B
ELLEN ERICA HPS 68M

Actual BW: 86lbs. Adj 205 day wt: 701 lbs. 205 Index: 102
BW:2.4 WW:37 YW:63 Milk:14 TM:33 SC: YG:26 CED:1 CEM:5

This calf has been a favorite since birth. A bull with that extra eye appeal that will make him easy to find on Sale day.

44 VALLEYMERE TTT BANDO 56W**

TTTS 56W 1514254 March 07 2009

MOONMIST 5175 BLUE 1P
VALLEYMERE TTT BANDO 20S (1365232)
VALLEYMERE TTT ERROLINE 2P

S A F 598 BANDO 5175 AMF
RIDEAU BLACKCAP JUDY 4L
MINBURN MAIN EVENT 105M
VALLEYMERE TTT ERROLINE 14M

SECTION ONE TEX 214F
VALLEYMERE RSE ERROLINE 54H (943214)
VALLEYMERE RSE ERROLINE 24C

SECTION ONE TEX 141D
LOR WIN BARBARA 14N
SECTION ONE REVOLUTION 92Z
VALLEYMERE ERROLINE 22R

Actual BW: 89lbs. Adj 205 day wt: 664 lbs. 205 Index: 96
BW:2.8 WW:21 YW:46 Milk:14 TM:25 SC:1 +0.34 YG:25 CED:-2 CEM:-1

A long-bodied son off the Bando bull. His dam is a straight Canadian bred cow that always raises a good calf.

45 VALLEYMERE TTT BANDO 63W**

TTTS 63W 1514257 March 08 2009

MOONMIST 5175 BLUE 1P
VALLEYMERE TTT BANDO 20S (1365232)
VALLEYMERE TTT ERROLINE 2P

S A F 598 BANDO 5175 AMF
RIDEAU BLACKCAP JUDY 4L
MINBURN MAIN EVENT 105M
VALLEYMERE TTT ERROLINE 14M

BAR B ROGUE 14J
VALLEYMERE TTT DUCHESS 24M (1143241)
VALLEYMERE HPS DUCHESS 25K

DOUBLE BAR ROGUE
LADY BEN OF ANGUS RIDGE 15Z
ASPELUND GOLD EYE 78F
VALLEYMERE HPS DUCHESS 3C

Actual BW: 84lbs. Adj 205 day wt: 743 lbs. 205 Index: 109
BW:1.9 WW:37 YW:69 Milk:20 TM:39 SC:1 -0.02 YG:32 CED:3 CEM:5

63W is one of the really good ones to sell in 2010. Long, thick, deep, correct with a nice quiet disposition. He combines tow of the best cow families at Valleymere TTT. His dam is a very moderate framed Main Event daughter with a perfect udder.

46 VALLEYMERE TTT PRIME CUT 75W***

TTTS 75W 1514262 March 09 2009

PEAK DOT PRIME CUT 42N
VALLEYMERE TTT PRIME CUT 44S (1365163)
THOUSAND HILLS MINA 58J

BASIN PRIME CUT 354K
CEDAR CREEK 123F
COLDSTREAM ACADEMY 28D
ROBAN KASTLE MINA 14B

MINBURN MAIN EVENT 105M
VALLEYMERE TTT KYMA 53T (1389575)
VALLEYMERE HPS KYMA 24M

CRESCENT CREEK MAIN EVENT 6H
MERIT LADY FANNY 4070
BAR B ROGUE 14J
VALLEYMERE HPS KYMA 10G

Actual BW: 80lbs. Adj 205 day wt: 713 lbs. 205 Index: 105
BW:3.3 WW:34 YW:58 Milk:13 TM:30 SC: YG:23 CED:1 CEM:6

A long bodied, clean fronted Prime Cut descendant with a great hair coat. An excellent choice for heifers.





Tanner



**LOT 52—
TANS 94W**

47 VALLEYMERE TTT NEW DAY 76W**
TTTS 76W 1514263 March 09 2009

BOYD NEW DAY 8005 NHF AMF
DURALTA 8005 SOONER 27S (1347199)
DURALTA 6595 LADY 41N

HF ARROW 3L
VALLEYMERE TTT FERNETTA 25P (1240258)
VALLEYMERE TTT FERNETTA 10L

A A R NEW TREND
S V F FOREVER LADY 57D
SITZ ALLIANCE 6595 NHF AMF
FREYBURN LADY 7L

DEAHS CUPIDS ARROW
HF TIBBIE 63D
ASPELUND GOLD EYE 78F
VALLEYMERE HPS FERNETTA 28H

Actual BW: 90lbs. Adj 205 day wt: 690 lbs. 205 Index: 100
BW:4.6 WW:36 YW:67 Milk:16 TM:34 SC:1 +0.33 YG:31 CED:0 CEM:3

A moderate framed Sooner son that is about as stout as you can make them.

49 VALLEYMERE TANS NEW DAY 94W***
TANS 94W 1532967 March 15 2009

BOYD NEW DAY 8005 NHF AMF
DURALTA 8005 SOONER 27S (1347199)
DURALTA 6595 LADY 41N

ASPELUND GOLD EYE 78F
VALLEYMERE HPS KYMA 19K (1032463)
VALLEYMERE HPS KYMA 58E

A A R NEW TREND
S V F FOREVER LADY 57D
SITZ ALLIANCE 6595 NHF AMF
FREYBURN LADY 7L

KRUGERRAND OF DONAMERE 490 NHF AMF
CORVALLIS ANNE 74'81
SECTION ONE LANCER 51B
VALLEYMERE HPS KYMA 21B

Actual BW: 84lbs. Adj 205 day wt: 744 lbs. 205 Index: 110
BW:2.6 WW:35 YW:66 Milk:22 TM:40 SC:1 +0.26 YG:31 CED:4 CEM:2

Another moderate framed super stout son of the Sooner bull that really presses down the scale. His elite dam has had 8 bull calves in a row that have all been sold as bulls.

48 VALLEYMERE TTT PRIME CUT 88W***
TTTS 88W 1514277 March 13 2009

PEAK DOT PRIME CUT 42N
VALLEYMERE TTT PRIME CUT 31T (1389638)
VALLEYMERE TTT BLACK QUEEN 6K

MOONMIST 5175 BLUE 1P
VALLEYMERE TTT FERNETTA 34S (1365245)
VALLEYMERE TTT FERNETTA 54P

BASIN PRIME CUT 354K
CEDAR CREEK 123F
ASPELUND GOLD EYE 78F
BLACK QUEEN SHJ 56G

S A F 598 BANDO 5175 AMF
RIDEAU BLACKCAP JUDY 4L
HF ARROW 3L
VALLEYMERE HPS FERNETTA 28H

Actual BW: 74lbs. Adj 205 day wt: 744 lbs. 205 Index: 111
BW:0.4 WW:38 YW:64 Milk:17 TM:36 SC:1 +0.02 YG:25 CED:7 CEM:8

This bull is all about red meat. A moderate framed calving ease bull that really pressed the scale down.

50 VALLEYMERE TTT GOLDEYE 97W*
TTTS 97W 1514281 March 15 2009

VALLEYMERE HPS GOLD EYE 15L
VALLEYMERE HPS GOLDEYE 15N (1190119)
VALLEYMERE HPS KYMA 58E

TZ LINCOLN 7L
VALLEYMERE TTT ELLEN ERICA 11P (1252487)
VALLEYMERE TTT ELLEN ERICA 27L

ASPELUND GOLD EYE 78F
VALLEYMERE HPS KYMA 61C
SECTION ONE LANCER 51B
VALLEYMERE HPS KYMA 21B

STEVENSON ROYCE 741C NHF
TZ FOXY 9F
BAR B ROGUE 14J
VALLEYMERE TTT 1G ELLEN ERICA

Actual BW: 96lbs. Adj 205 day wt: 749 lbs. 205 Index: 109
BW:5.8 WW:36 YW:67 Milk:6 TM:24 SC:1 YG:31 CED:-7 CEM:-2

A larger framed bull that is all about performance.



**LOT 53—
TTTS 99W**



51 VALLEYMERE TTT EQUATOR 99W*
TTTS 99W 1514283 March 16 2009

VALLEY BLOSSOM EQUATOR 729M
SANDY BAR EQUATOR 222R (1258107)
SANDY BAR PRIDE LADY 78L

BASIN EQUATOR 276G
WIWA CREEK TILDA 33 54'90
SANDY BAR BRAVE HEART 75H
SANDY BAR PRIDE LADY 81C

PEAK DOT PRIME CUT 42N
VALLEYMERE TTT MINA 6R (1309211)
VALLEYMERE TTT MINA 11N

BASIN PRIME CUT 354K
CEDAR CREEK 123F
VALLEYMERE HPS GOLD EYE 26K
THOUSAND HILLS MINA 58J

Actual BW: 94lbs. Adj 205 day wt: 812 lbs. 205 Index: 119
BW:3.6 WW:49 YW:76 Milk:14 TM:39 SC: YG:28 CED:-2 CEM:2

A tremendous individual that posted the 2nd highest weaning weight of the entire Valleymere TTT calf crop. Long, deep, thick with a great hair coat.

53 VALLEYMERE TTT EQUATOR 111W***
TTTS 111W 1514296 March 21 2009

VALLEY BLOSSOM EQUATOR 729M
SANDY BAR EQUATOR 222R (1258107)
SANDY BAR PRIDE LADY 78L

BASIN EQUATOR 276G
WIWA CREEK TILDA 33 54'90
SANDY BAR BRAVE HEART 75H
SANDY BAR PRIDE LADY 81C

PEAK DOT PRIME CUT 42N
VALLEYMERE TTT ERROLINE 57R (1309214)
VALLEYMERE TTT ERROLINE 25N

BASIN PRIME CUT 354K
CEDAR CREEK 123F
VALLEYMERE HPS GOLD EYE 26K
VALLEYMERE RSE ERROLINE 24H

Actual BW: 84lbs. Adj 205 day wt: 687 lbs. 205 Index: 100
BW:1.9 WW:38 YW:65 Milk:12 TM:31 SC:I +0.40 YG:27 CED:1 CEM:3

The Equator bull stamps all his calves with extra capacity in the heart girth and rib. This allows them to be very easy keepers and this bull is no exception. Recommended for heifers or cows.

52 VALLEYMERE TTT PRIME CUT 109W***
TTTS 109W 1514293 March 20 2009

PEAK DOT PRIME CUT 42N
VALLEYMERE TTT PRIME CUT 31T (1389638)
VALLEYMERE TTT BLACK QUEEN 6K

BASIN PRIME CUT 354K
CEDAR CREEK 123F
ASPELUND GOLD EYE 78F
BLACK QUEEN SHJ 56G

MOONMIST 5175 BLUE 1P
VALLEYMERE TTT MINA 19S (1389647)
VALLEYMERE TTT MINA 9P

S A F 598 BANDO 5175 AMF
RIDEAU BLACKCAP JUDY 4L
MINBURN MAIN EVENT 105M
THOUSAND HILLS MINA 58J

Actual BW: 81lbs. Adj 205 day wt: 714 lbs. 205 Index: 105
BW:1.7 WW:34 YW:60 Milk:16 TM:33 SC: YG:25 CED:4 CEM:6

A moderate framed stylish 31T son that would be an excellent choice for heifers.

54 VALLEYMERE TTT HOT SPUR 119W*
TTTS 119W 1514300 March 24 2009

GRANDVIEW WOMACK DIRECT
REMITALL PHASE I 177P (1227197)
REMITALL LADY 231H

B/R NEW DESIGN 036 NHF AMF
MENG'S MISS SKYMER 78B
MOUNTAIN SIDE EXTRA CLASSY
REMITALL LADY YORK 86Y

BAR B ROGUE 14J
VALLEYMERE TTT FERNETTA 13L (1082373)
VALLEYMERE HPS FERNETTA 14J

DOUBLE BAR ROGUE
LADY BEN OF ANGUS RIDGE 15Z
BCC GUARANTEE 134
VALLEYMERE HPS FERNETTA 22C

Actual BW: 89lbs. Adj 205 day wt: 770 lbs. 205 Index: 113
BW:4.5 WW:45 YW:73 Milk:10 TM:33 SC: YG:28 CED:-3 CEM:2

The first of three really good Phase 1 calves in my offering. They are all long-bodied, stylish calves with thick, full rumps. His dam has raised two herd bulls that I have used on my cows. I recommend this bulls for cow.



55

VALLEYMERE TTT BANDO 129W***

TTTS 129W 1514305 March 29 2009

MOONMIST 5175 BLUE 1P
VALLEYMERE TTT BANDO 20S (1365232)
VALLEYMERE TTT ERROLINE 2P

S A F 598 BANDO 5175 AMF
RIDEAU BLACKCAP JUDY 4L
MINBURN MAIN EVENT 105M
VALLEYMERE TTT ERROLINE 14M

TZ LINCOLN 7L
VALLEYMERE TTT ERICA 68R (1309210)
VALLEYMERE TTT ERICA 9N

STEVENSON ROYCE 741C NHF
TZ FOXY 9F
HF ARROW 3L
VALLEYMERE TTT ERICA 20K

Actual BW: 80lbs. Adj 205 day wt: 713 lbs. 205 Index: 105
BW:2.6 WW:37 YW:73 Milk:19 TM:38 SC:1 +0.09 YG:36 CED:3 CEM:5

A long-bodied bull with an excellent hip and rump that would work well on heifers.



56

VALLEYMERE HPS PRIME CUT 240W*

PS 240W 1540290 March 02 2009

BASIN PRIME CUT 354K
PEAK DOT PRIME CUT 42N (1165426)
CEDAR CREEK 123F

SUMMITCREST PRIME CUT 1G42 NHF AMF
BASIN HEIRESS 353
TURBULENCE 167 A O
CEDAR CREEK QUEEN 123Z

MINBURN MAIN EVENT 105M
VALLEYMERE HPS BLACK ANGEL 48P (1240633)
SHJ BLACK ANGEL 53M

CRESCENT CREEK MAIN EVENT 6H
MERIT LADY FANNY 4070
ASPELUND GOLD EYE 78F
LLB BLACK ANGEL 5H

Actual BW: 96lbs. Adj. 205 day wt. 771 lbs

A larger framed bull that would really add pounds to your next calf crop.



57

VALLEYMERE HPS PHASE I 259W*

HPS 259W 1540279 March 07 2009

GRANDVIEW WOMACK DIRECT
REMITALL PHASE I 177P (1227197)
REMITALL LADY 231H

B/R NEW DESIGN 036 NHF AMF
MENGS MISS SKYMERE 78B
MOUNTAIN SIDE EXTRA CLASSY
REMITALL LADY YORK 86Y

BAR B ROGUE 14J
VALLEYMERE HPS PRIDE 41L (1083329)
VALLEYMERE HPS PRIDE 13H

DOUBLE BAR ROGUE
LADY BEN OF ANGUS RIDGE 15Z
RONAN TEX 41C
VALLEYMERE HPS PRIDE 11S

Actual BW: 98lbs. Adj. 205 day wt. 753 lbs

This will be one of my heaviest bulls in the sale. A performance bull recommended for cows. He will be easy to find on sale day.



The Evan, Carter & Jamie-Lee Gang. Evan got the job done!





58 VALLEYMERE HPS PHASE I 272W**

HPS 272W 1540281 March 08 2009

GRANDVIEW WOMACK DIRECT
REMITALL PHASE I 177P (1227197)
 REMITALL LADY 231H

B/R NEW DESIGN 036 NHF AMF
 MENG'S MISS SKYMERE 78B
 MOUNTAIN SIDE EXTRA CLASSY
 REMITALL LADY YORK 86Y

ASPELUND GOLD EYE 78F
VALLEYMERE HPS ERROLLINE 12M (1137231)
 VALLEYMERE HPS ERROLLINE 50C

KRUGERRAND OF DONAMERE 490 NHF AMF
 CORVALLIS ANNE 74'81
 KNIGHTS HOTSHOT 18Y
 VALLEYMERE HPS ERROLLINE 13X

Actual BW: 87lbs. Adj. 205 day wt. 680 lbs

A clean-fronted, long-bodied bull with a ton of style. A pen of steers off this guy would be market toppers.

59 VALLEYMERE BPPS EQUATOR 5W*

BPPS 5W 1540267 February 19 2009

VALLEY BLOSSOM EQUATOR 729M
SANDY BAR EQUATOR 222R (1258107)
 SANDY BAR PRIDE LADY 78L

BASIN EQUATOR 276G
 WIWA CREEK TILDA 33 54'90
 SANDY BAR BRAVE HEART 75H
 SANDY BAR PRIDE LADY 81C

ASPELUND GOLD EYE 78F
VALLEYMERE HPS ERROLLINE 52K (1032467)
 VALLEYMERE HPS ERROLLINE 34G

KRUGERRAND OF DONAMERE 490
 CORVALLIS ANNE 74'81
 BCC GUARANTEE 134
 BPPS ERROLLINE 13D

Actual BW: 92lbs. Actual WW: 752 lbs (15-Nov)



Kara's Grand
 Champion
 Steer -
 Paintearth
 Club '06



60 VALLEYMERE HPS EQUATOR 8W***

HPS 8W 1540280 February 21 2009

VALLEY BLOSSOM EQUATOR 729M
SANDY BAR EQUATOR 222R (1258107)
 SANDY BAR PRIDE LADY 78L

BASIN EQUATOR 276G
 WIWA CREEK TILDA 33 54'90
 SANDY BAR BRAVE HEART 75H
 SANDY BAR PRIDE LADY 81C

DCC GOLD DUST 1G
VALLEYMERE HPS GEORGINA 42L (1083297)
 VALLEYMERE HPS GEORGINA 31Z

MVRB ULTRA 103D
 TAF QUEEN MOTHER 69B
 SUNMOUND WARDEN 27W
 VALLEYMERE GEORGINA 6R

Actual BW: 74lbs. Actual WW: 837 (15-Nov)



Evan's 4-H Judging at Multi-Club



Kara's Steer



Logan's 4-H Steer being judged Paintearth Club



61 VALLEYMERE HPS GOLD EYE 17W*

HPS 17W 1540289 February 26 2009

VALLEYMERE HPS GOLD EYE 15L
VALLEYMERE HPS GOLDEYE 15N (1190119)
 VALLEYMERE HPS KYMA 58E

ASPELUND GOLD EYE 78F
 VALLEYMERE HPS KYMA 61C
 SECTION ONE LANCER 51B
 VALLEYMERE HPS KYMA 21B

VALLEYMERE HPS GOLDEYE 2M
VALLEYMERE HPS ELBA 36P (1240635)
 VALLEYMERE HPS ELBA 60M

ASPELUND GOLD EYE 78F
 BIEVER'S CINDY 96G
 BAR B ROGUE 14J
 DOUBLE FOUR ELBA 66F

Actual BW: 98lbs. Actual WW: 812 lbs (15-Nov)



62 VALLEYMERE HPS PHASE I 24W**

HPS 24W 1540274 March 01 2009

GRANDVIEW WOMACK DIRECT
REMITALL PHASE I 177P (1227197)
 REMITALL LADY 231H

B/R NEW DESIGN 036 NHF AMF
 MENGS MISS SKYMERE 78B
 MOUNTAIN SIDE EXTRA CLASSY
 REMITALL LADY YORK 86Y

ASPELUND GOLD EYE 78F
BLACK QUEEN SHJ 11K (1033935)
 BLACK QUEEN SHJ 1E

KRUGERRAND OF DONAMERE 490 NHF AMF
 CORVALLIS ANNE 74'81
 VALLEYMERE HPS HOTSHOT 11A
 BLACK QUEEN SHJ 19Y

Actual BW: 85lbs. Actual WW: 800 lbs (15-Nov)

63 VALLEYMERE HPS PHASE I 26W*

HPS 26W 1540283 March 01 2009

GRANDVIEW WOMACK DIRECT
REMITALL PHASE I 177P (1227197)
 REMITALL LADY 231H

B/R NEW DESIGN 036 NHF AMF
 MENGS MISS SKYMERE 78B
 MOUNTAIN SIDE EXTRA CLASSY
 REMITALL LADY YORK 86Y

ASPELUND GOLD EYE 78F
SHJ BLACK ANGEL 53M (1137211)
 LLB BLACK ANGEL 5H

KRUGERRAND OF DONAMERE 490 NHF AMF
 CORVALLIS ANNE 74'81
 PAT TEX 118F
 DOUBLE FOUR ANGEL 139Z

Actual BW: 105lbs. Actual WW: 820 lbs (14-Nov)



Logan & Joker bringing a calf to the branding fire



Future ropers—
 Court
 James and
 Trey Erion
 taking
 after their
 Dads





64 VALLEYMERE BPPS PHASE I 30W*

BPPS 30W 1540268 March 04 2009

GRANDVIEW WOMACK DIRECT
 REMITALL PHASE I 177P (1227197)
 REMITALL LADY 231H

B/R NEW DESIGN 036 NHF AMF
 MENG'S MISS SKYMERE 78B
 MOUNTAIN SIDE EXTRA CLASSY
 REMITALL LADY YORK 86Y

BAR B ROGUE 14J
 VALLEYMERE HPS DUCHESS 6L (1083301)
 VALLEYMERE HPS DUCHESS 3C

DOUBLE BAR ROGUE
 LADY BEN OF ANGUS RIDGE 15Z
 VALLEYMERE HPS HOTSHOT 11A
 DUCHESS HPS 9M

Actual BW: 96lbs. Actual WW: 800 lbs (15-Nov)

65 VALLEYMERE BPPS PRIME CUT 32W***

BPPS 32W 1540272 March 04 2009

BASIN PRIME CUT 354K
 PEAK DOT PRIME CUT 42N (1165426)
 CEDAR CREEK 123F

SUMMITCREST PRIME CUT 1G42 NHF AMF
 BASIN HEIRESS 353
 TURBULENCE 167 A O
 CEDAR CREEK QUEEN 123Z

REMITALL PHASE I 177P
 VALLEYMERE BPPS KYMA 8S (1365997)
 VALLEYMERE HPS KYMA 17L

GRANDVIEW WOMACK DIRECT
 REMITALL LADY 231H
 ASPELUND GOLD EYE 78F
 VALLEYMERE HPS KYMA 58E

Actual BW: 78lbs. Actual WW: 716 lbs (15-Nov)



66 VALLEYMERE HPS GOLD EYE 33W*

HPS 33W 1540278 March 05 2009

VALLEYMERE HPS GOLD EYE 15L
 VALLEYMERE HPS GOLDEYE 15N (1190119)
 VALLEYMERE HPS KYMA 58E

ASPELUND GOLD EYE 78F
 VALLEYMERE HPS KYMA 61C
 SECTION ONE LANCER 51B
 VALLEYMERE HPS KYMA 21B

ASPELUND GOLD EYE 78F
 VALLEYMERE HPS KYMA 32L (1083317)
 VALLEYMERE HPS KYMA 45E

KRUGGERAND OF DONAMERE 490 NHF AMF
 CORVALLIS ANNE 74'81
 SECTION ONE LANCER 51B
 VALLEYMERE HPS KYMA 73T

Actual BW: 91lbs. Actual WW: 681 lbs (15-Nov)



67 VALLEYMERE HPS PRIME CUT 41W*

HPS 41W 1540277 March 09 2009

BASIN PRIME CUT 354K
PEAK DOT PRIME CUT 42N (1165426)
CEDAR CREEK 123F

ASPELUND GOLD EYE 78F
VALLEYMERE HPS QUEEN 25L (1083326)
VALLEYMERE HPS QUEEN 10H

SUMMITCREST PRIME CUT 1G42 NHF AMF
BASIN HEIRESS 353
TURBULENCE 167 A O
CEDAR CREEK QUEEN 123Z

KRUGERRAND OF DONAMERE 490 NHF AMF
CORVALLIS ANNE 74'81
RONAN TEX 41C
BLACK QUEEN SHJ 43W

Actual BW: 88lbs. Actual WW: 880 lbs (15-Nov)



68 VALLEYMERE HPS PHASE I 42W*

HPS 42W 1540287 March 10 2009

GRANDVIEW WOMACK DIRECT
REMITALL PHASE I 177P (1227197)
REMITALL LADY 231H

B/R NEW DESIGN 036 NHF AMF
MENGS MISS SKYMERE 78B
MOUNTAIN SIDE EXTRA CLASSY
REMITALL LADY YORK 86Y

TZ LINCOLN 7L
VALLEYMERE HPS BLACK JILT 19P (1240624)
SHJ BLACK QUEEN JILT 44L

STEVENSON ROYCE 741C NHF
TZ FOXY 9F
BAR B ROGUE 14J
BLACK QUEEN SHJ 32H

Actual BW: 93lbs. Actual WW: 735 (15-Nov)

69 VALLEYMERE BPPS PRIME CUT 46W**

BPPS 46W 1540270 March 14 2009

BASIN PRIME CUT 354K
PEAK DOT PRIME CUT 42N (1165426)
CEDAR CREEK 123F

TZ LINCOLN 7L
VALLEYMERE BPPS JESTRESS 17P (1244262)
VALLEYMERE HPS JESTRESS 49K

SUMMITCREST PRIME CUT 1G42 NHF AMF
BASIN HEIRESS 353
TURBULENCE 167 A O
CEDAR CREEK QUEEN 123Z

STEVENSON ROYCE 741C NHF
TZ FOXY 9F
DCC GOLD DUST 1G
VALLEYMERE HPS JESTRESS 30E

Actual BW: 86lbs. Actual WW: 763 (15-Nov)



70 VALLEYMERE HPS PRIME CUT 56W*

HPS 56W 1540276 March 25 2009

BASIN PRIME CUT 354K
PEAK DOT PRIME CUT 42N (1165426)
CEDAR CREEK 123F

SUMMITCREST PRIME CUT 1G42 NHF AMF
BASIN HEIRESS 353
TURBULENCE 167 A O
CEDAR CREEK QUEEN 123Z

ASPELUND GOLD EYE 78F
VALLEYMERE HPS DUCHESS 20L (1083309)
VALLEYMERE HPS DUCHESS 10D

KRUGERRAND OF DONAMERE 490 NHF AMF
CORVALLIS ANNE 74'81
GNS NORTH FLIGHT 81B
TRAV DUCHESS S 28T

Actual BW: 92lbs. Actual WW: 705 (15-Nov)



71 VALLEYMERE HPS PHASE I 62W*

HPS 62W 1540288 March 31 2009

GRANDVIEW WOMACK DIRECT
REMITALL PHASE I 177P (1227197)
REMITALL LADY 231H

B/R NEW DESIGN 036 NHF AMF
MENG'S MISS SKYMERE 78B
MOUNTAIN SIDE EXTRA CLASSY
REMITALL LADY YORK 86Y

HF ARROW 3L
VALLEYMERE HPS ERROLLINE 30P (1240621)
VALLEYMERE HPS ERROLLINE 39L

DEAHS CUPIDS ARROW
HF TIBBIE 63D
ASPELUND GOLD EYE 78F
VALLEYMERE HPS DUCHESS 19C

Actual BW: 94lbs. Actual WW: 776 (15-Nov)



Kara-
Rodeo

72 VALLEYMERE HPS PHASE I 63W*

HPS 63W 1540284 March 31 2009

GRANDVIEW WOMACK DIRECT
REMITALL PHASE I 177P (1227197)
REMITALL LADY 231H

B/R NEW DESIGN 036 NHF AMF
MENG'S MISS SKYMERE 78B
MOUNTAIN SIDE EXTRA CLASSY
REMITALL LADY YORK 86Y

TZ LINCOLN 7L
VALLEYMERE HPS PRIDE 16N (1190123)
VALLEYMERE HPS PRIDE 3L

STEVENSON ROYCE 741C NHF
TZ FOXY 9F
ASPELUND ONE 6H
VALLEYMERE HPS PRIDE 9C

Actual BW: 87lbs. Actual WW: 724 lbs (15-Nov)



73 VALLEYMERE BPPS PRIME CUT 73W**

BPPS 73W 1540269 April 08 2009

BASIN PRIME CUT 354K
PEAK DOT PRIME CUT 42N (1165426)
CEDAR CREEK 123F

SUMMITCREST PRIME CUT 1G42 NHF AMF
BASIN HEIRESS 353
TURBULENCE 167 A O
CEDAR CREEK QUEEN 123Z

BAR B ROGUE 14J
VALLEYMERE HPS FERNETTA 16M (1137236)
VALLEYMERE HPS FERNETTA 22C

DOUBLE BAR ROGUE
LADY BEN OF ANGUS RIDGE 15Z
KNIGHTS HOTSHOT 18Y
VALLEYMERE HPS FERNETTA S 32T

Actual BW: 85lbs. Actual WW: 716 lbs (15-Nov)





74 VALLEYMERE HPS EQUATOR 84W*

HPS 84W 1540285 April 23 2009

VALLEY BLOSSOM EQUATOR 729M
SANDY BAR EQUATOR 222R (1258107)
 SANDY BAR PRIDE LADY 78L

BASIN EQUATOR 276G
 WIWA CREEK TILDA 33 54'90
 SANDY BAR BRAVE HEART 75H
 SANDY BAR PRIDE LADY 81C

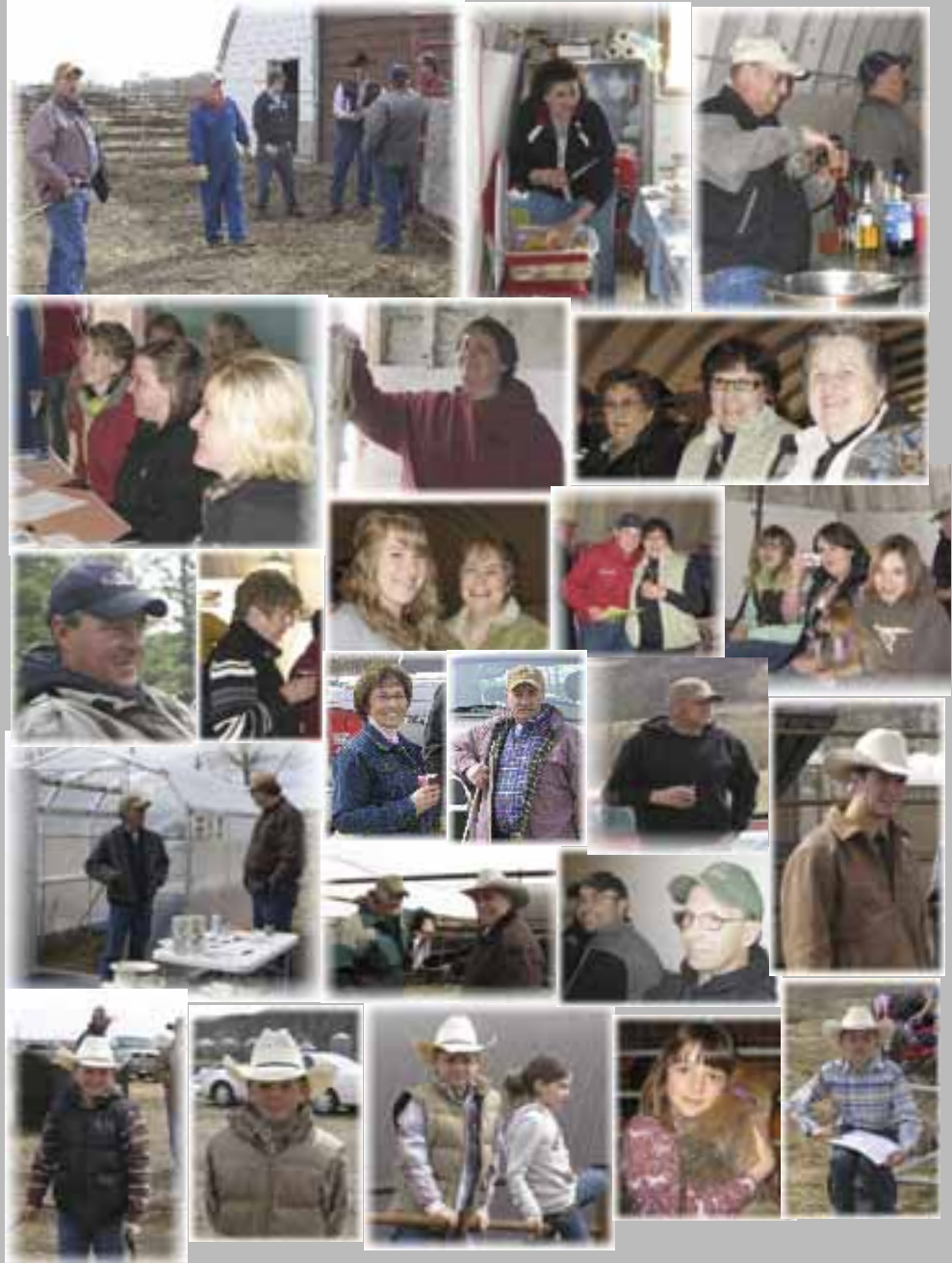
BAR B ROGUE 14J
VALLEYMERE HPS PRIDE 21N (1190117)
 VALLEYMERE HPS PRIDE LASS 30X

DOUBLE BAR ROGUE
 LADY BEN OF ANGUS RIDGE 15Z
 GENEL DESPERADO 19U
 TRAV PRIDE LASS 38P

Actual BW: 89lbs. Actual WW: 710 (15-Nov)

Special Thanks to our 2009 Supporters, Helpers and Cattle Bosses

- Dura Bull Projects Inc. – supply-
 ing panels
- Alliance Seed Cleaning Plant –
 supplying the beef for lunch
- Michelle Breum – catering
- Gord Breum – set up
- Bill Alcorn – mowing service
- Max Christie, Country Town –
 supplying the skid steer
- Cliff Jordahl, VCD Holdings –
 supplying flat-deck trailer
- Dale Wold/Bryce Cooke – bar
 service
- Cattle Bosses & Sorters - Tan-
 ner Spady, Clay Spady, Jack
 Spady, Lorne Spady, Tom Cop-
 pock, Dave Towers, Sherri Inno-
 cent, Cody Innocent, Larry
 Strandquist, Wade Meyers, Max
 Christie, Megan (Australian ex-
 change student), Brant Stenlund
- Ladies for Dessert Squares –
 Marg Spady, Verleen Spady,
 Helen Brigley, Gwen Coppock,
 Betty Spady, Joanne Jackson,
 Carol Hagen, Tammy Spady,
 Halley Spady
- Office – Halley Spady, Tammy
 Spady, Sharri Hagstrom
- Sale Helpers – Kara Spady,
 Tess Breum, Jamie-Lee Spady
- Fence Builders—Bryce Cooke,
 Jeff Ensign, Travis Spady, Tan-
 ner Spady, Brian Spady
- Sale Seating/Bleachers – Town
 of Castor, Castor Rodeo Club,
 Valley Ski Club, Blume Ranches



*Thank you for taking the time to preview our catalogue and we hope
 you enjoy yourself at the sale. If there's anything we can do to be of
 assistance, let us know.*



*Thank you to our
2009 bidders
and buyers!*

Wood River Ranching
 Rainbow Hills Angus
 Dwight Downey
 Weber Farms
 Aron James
 Bill Brown
 Bill & May Lyle
 Dwight Quance
 Buxton Ranches
 YT Bar Ranch
 Scott Knull
 Keith Erion
 Dewey Hoopfer
 Mike Reis
 Lazy E Bar Ranching
 Leon Laye
 Reany Laye
 Robin Gilbertson
 Charles Horn
 Rick Housch
 Stacey Renschler
 Doug Dunkle
 Gary Dunkle
 Ross Skori
 Eddy Stewart
 Dwayne McCracken
 Allan Sutter
 Dale Ventnor
 Stacy Fuller



**Rivercrest
Angus Ranch**

Box 1017
Castor, Alberta
T0C 0X0

Rivercrest - Valleymere

SPADY BULL SALE 7th ANNUAL BLACK ANGUS



**Thursday - April 15th - 2010
Rivercrest Angus Ranch - 1:30pm**

