



SOUTH VIEW RANCH

Your Herd Bull Factory



**11th ANNUAL
RED & BLACK ANGUS
BULL SALE**

THURSDAY, APRIL 14, 2011 ~1:30 PM
at South View Ranch, Croyton, SK



SVR312X



SVR346X



SVR376X



SVR422X



SVR47X



SVR180X



SVR277X



SVR50X

South View Ranch

11th Annual Angus Bull Sale

Thursday, April 14, 2011

at South View Ranch, Ceylon, SK

9 km S of Ceylon on Hwy #6 - 6 km W, 3 km S

SALE TIME - 1:30 Complimentary Lunch - 12:00 Noon

104 Bulls Sell

- 56 Red Angus Yearling BullsPages 10-23
- 40 Black Angus Yearling BullsPages 26-36
- 6 Black-Red Gene Carrier Yearling Bulls.....Pages 24-25
- 2 Simm/Angus Yearling Bulls.....Page 36

Calving Ease Score

- *** Recommended for use on heifers.
- ** Recommended for 2nd calvers or moderate cows
- * Recommended for use on cows.

These are our recommendations based on the information we have available. Other factors that can influence birth weight are the birth weight, frame score and bone size of dam, management, nutrition and gestation. All this needs to be taken into consideration.



Your Herd Bull Factory

Auctioneer:

Chris Poley 306-220-5006

Ringmen:

Nathan Marin 306-869-7130

Craig Flewelling 403-556-0515

Consultants:

Shane Castle, Castlerock Marketing 306-741-7485

Kris Petersen 701-339-0305

Geoff Anderson, Bouchard Livestock 306-731-7921

Special Representatives:

Kirk Wildman - President CAA

Doug Fee - CEO CAA

Brian Good - Commercial Field Rep CAA

Clint Smith - President SAA

Belinda Wagner - General Manager SAA

Accommodations:

Perfect Inn, Weyburn, SK - Toll free 1-866-435-5555

Ramada Inn & Suites, Weyburn, SK - 306-842-4994

Canalta Hotel, Weyburn, SK - 306-842-8000

Insurance: Insurance will be available Sale Day.

Current Weights,

Scrotal Measurements & Carcass Evaluations by CUP Ultrasound will be available Sale Day

FREE DELIVERY up to 1000 km on purchases of \$2500 or more - other deliveries at cost.



View the Catalogue on-line at

www.southviewranch.com

Sight Unseen Purchase Program

If you are unable to attend the sale we would be happy to assist you with your purchase. You can call Shane or Keith so they can help find the bull that will suit your needs. On sale day you can either be on the phone bidding yourself or have Shane, Keith or any of our capable staff look after it for you. 100% satisfaction is guaranteed.

Sale Day Phones - 306-454-2730 * 306-454-2688
Keith Cell 306-869-8071 * Shane Cell 306-869-8074
Linda Cell 306-869-8072 * Alexis Cell 306-869-8073

Welcome ...from South View Ranch

Welcome to our 11th Annual Bull Sale.

WOW! What a winter this has been!! Mother Nature is definitely showing us who is boss. We hope everyone is surviving well and that spring is just around the corner. 2010 was a trying year but resulted in excellent pasture and hay conditions in our area and 2011 looks to be very promising. The steady climb in the cattle market is more than welcome and long overdue.

We have another very strong set of bulls for your appraisal. Throughout the pen you will find a very uniform group of Red and Black Angus bulls. These boys are not fat, just in excellent working condition, fed for longevity and soundness. Prior to the 205 day weights the bulls were raised naturally on mother's milk and grass. After weaning they received a balanced ration of pro pellets, silage and chopped hay. They are housed in a large area for optimum exercise. All the bulls on offer will be semen tested, vet inspected and scrotal measured with performance records and carcass data available.

Please consider this your personal invitation to join us on April 14th for lunch, refreshments and an excellent selection of ranch-raised bulls.

If you are unable to attend the sale, please feel free to come anytime to have a look as sale day phones will be available. Or, consider our sight unseen purchase program. Rest assured; you can buy with confidence as the culling has been done. If you have any questions or need any assistance, give us a call or stop in anytime.

We sincerely thank our many customers for your interest and support of our program. We appreciate the opportunity to work with you.

We look forward to visiting with you on April 14th. Hope to see you there!

Keith, Linda & Stacey
Box 130, Ceylon, SK S0C 0T0
306-454-2730 Cell: 306-869-8071
svr@sasktel.net
Fax 306-454-2643

"The Kaufmann's"

Shane & Alexis and family
Box 40, Ceylon, SK S0C 0T0
306-454-2688 Cell: 306-869-8074
sakaufmann.svr@sasktel.net

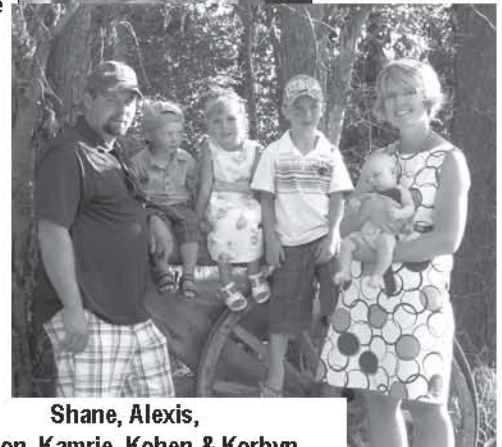
www.southviewranch.com



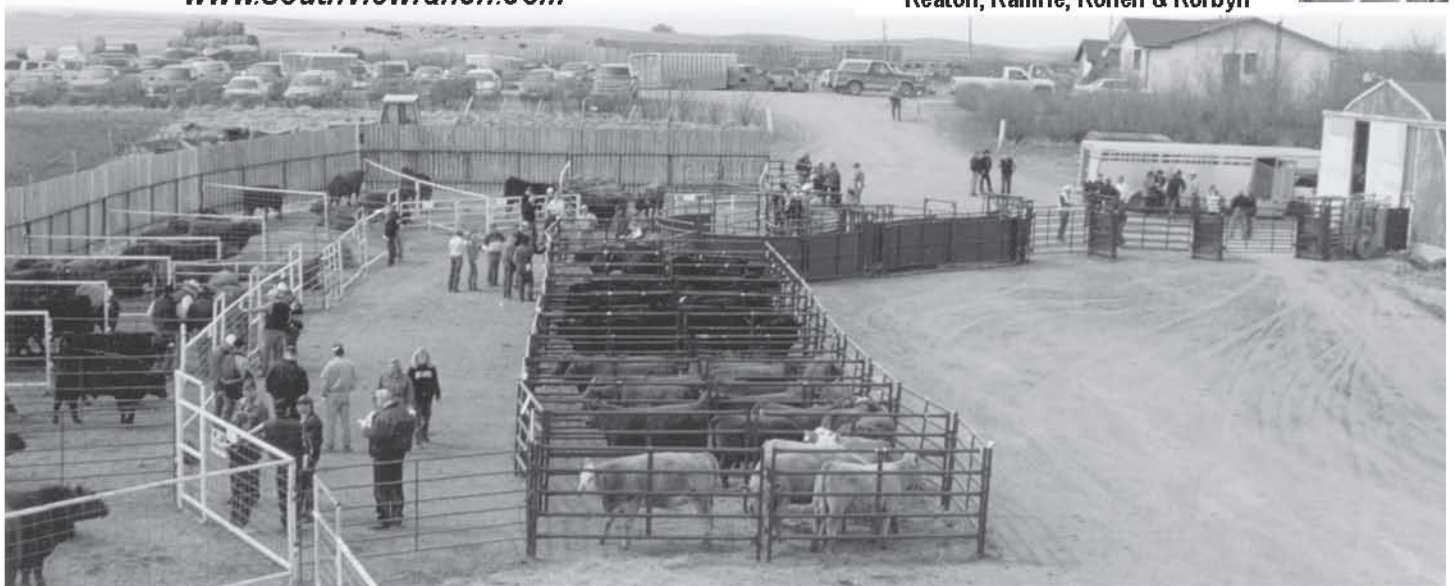
Keith & Linda



Stacey



**Shane, Alexis,
Keaton, Kamrie, Kohen & Korbyn**



Carcass Data

What is Ultrasound?

Ultrasound has become an everyday use of "frequencies" to detect those things that we can not normally see with our naked eye. Example: (*Medical World* - it is used for a host of functions from detecting bodily problems to detecting the sex of a young couples first new born). In the outside world it is used to detect cracks or possible structural flaws in all types of equipment from bridges to engines. In beef cattle it is used to detect three major components of a live animals carcass composition; that being muscle (meat), fat thickness and IMF (Intra Muscular Fat or Marbling). As well, it is quite commonly used to detect the sex of embryos being carried with an amazingly high degree of accuracy.

When is it used?

For any meaningful information it is best done during some relative time period similar to what slaughter ages are to be. The CUP system adjusts the carcass information to one year of age (similar to adjusted yearling weights). This then gives us at least a simple level playing field for making choices or decisions within common groups.

How are the Measurements Expressed?

Rib Fat - either in inches .3 inches or in cm's 8 mm

AREA - usually in square inches

IMF or MB - as a % of that area (eg. 4.2 = 4.2%)

RP = Retail Product - is a % of saleable carcass

Why ultrasound, or better yet should we pay attention to this information?

Within the seedstock industry it seems like a distant or vague result that holds little real value. But in the commercial cattle world this tool of using ultrasound has become a well documented practice that when used has resulted in a clean, positive, decision making management choice resulting in extra profits of \$30 per head and higher. The ultrasound carcass evaluation when used a short time (7 - 10 days) prior to slaughter simply allowed the seller to market on a grid system or not at an optimal time. This live presort has resulted in an 80% - 95% degree of accuracy following slaughter. The pre slaughter carcass data corresponded to slaughter data with measuring IMF and Fat to this degree of accuracy). As well reportedly we find major players in the North American slaughter industry securing software programs to in fact use this technology for a much more economic decision on their front. "Apparently the information is not as vague as we may believe."

What is good or what is bad?

None of the figures or information is bad – the information should help us identify which animals or groups of animals are superior for different traits, ie the high IMF bulls could be sourced to use on Continental cows who may well have lower IMF tendencies, or, large AREA bulls or sire groups could be used on low yield, easy fleshing British cows whose IMF genetic makeup could already be abundant. Remember Retail Product (RP) takes a combination of this information into account. So is there a right answer?? Not at all, but there certainly is an advantage to you the buyer using this information if the bulls or sires are identified.

The first thing producers want to know about ultrasound is: How accurate is it? The answer to the questions depends on who does the actual scanning of the animals and who interprets the images. Ultrasound data on these bulls was collected and

analyzed by a technician that is certified by AUP and CUP. This means that this technician has met the standards set by many breed associations. The accuracy, although not perfect, is high enough that bulls selected based on ultrasound, results in positive genetic change in progeny carcass traits. Heritability for carcass traits are moderate to high, which is slightly higher than birth weights, weaning weights, and yearling weights.

IMF (Inter muscular Fat or Marbling)

IMF is the best indication that we have to tell us what kind of eating experience we will have when eating beef. Extensive research shows that average AAA and above marbling produces the most satisfied consumers. As marbling increases so does the juiciness, the flavorfulness, and the tenderness. This may not always be true but for the most part AAA marbling produces more satisfied customers than does A or AA marbling carcasses. The values are numerical that indicate the estimate of carcass marbling if the animal was slaughtered immediately following the evaluation. The scale is as follows:

3.0 - 3.9 - traces marbling A USDA Standard

4.0 - 4.9 - slight marbling AA USDA Select

5.0 +- small amount AAA USDA Choice

Back Fat (BF mm)

Fat depth influences lean meat yield. Fat bulls have less lean meat/muscle in the carcass. The fat measurement also gives an indication of the bulls fleshing ability. Calves from a bull with very little fat may finish too slowly in the feedlot. Body condition score (fat depth) in females is related to their ability to reach puberty at an early age, produce milk, rebreed and maintain a short calving interval. On the other hand, bulls carrying excessive fat may suffer reduced fertility.

Adjusted Ribeye Area (AREA in²)

The AREA is the largest muscle in the body at birth so AREA gives an indication of overall carcass muscling (measured in inches) and adjusted to one year of age.

RP (Retail Product/Cutability)% LMY

RP is the percentage lean meat yield in the carcass. Yield grade is an important factor in both Canada and the US. Producing calves with a high genetic potential for this trait can be an important objective of a breeding program. Back fat will reduce yield by 7 to 8 times what REA will increase yield.

Summary

Like all traits we should avoid the extremes. Moderation is the key. As producers we need to evaluate our own females and then decide what kind of progeny we

The Angus Associations, both AAA and CAA have adopted the CUP (Centralized Ultrasound Processing) program for Ultrasound Carcass Data and are using this information for formulating Carcass EPD's.

*Remember ...
Look for the Clipper Marks ...
If they are clipped - then they are
CUP'ed!*



Carcass data is to be compared within herd only.

Terms & Conditions of Sale

Bidding: Each animal will be sold to the highest bidder. Bidding Disputes: The auctioneer will settle any disputes as to bids, and his decision on such matters shall be final.

Terms: The terms of the sale are cash. The right of property shall not pass until after settlement is made. All settlements will be made with the clerks of the sale immediately following the conclusion of the sale and before any cattle will be released from the sale facility.

Purchaser's Risk: Each animal becomes the risk of the purchaser as soon as sold. Animals will be fed, watered and cared for at the purchaser's risk for a reasonable time. If leaving your bull in our care we strongly encourage you as the new owner to insure him.

Insurance: A representative of a major insurance company will be present to care for insuring cattle.

Certificate of Registry: A certificate of registry and transfer will be furnished for each animal.

Announcements: Changes of information contained in this catalogue relating to the animals offered for sale will be announced from the auction box and such announcements shall take precedence.

Health: All cattle will be in excellent health.

Breeder's Guarantee: All animals sold are guaranteed breeders by the owner. Any animal that has not proven itself a breeder within six months after date of sale, if in healthy condition, may be returned to the seller at buyer's expense. The seller reserves the privilege of trying for a period of six months to prove the animal a breeder. The seller at his option may either return the purchase price to the buyer or replace the animal with another of equal quality in full settlement of ALL claims. All complaints regarding breeding difficulties must be reported in writing by the buyer to the seller within the specified time above and any animal returned must be free from disease and in good health.

Retained Interest: SVR reserves the right to collect semen on any of our bulls selling in this sale for within herd use at buyers convenience and our expense.

Liability: Neither owners, sale manager, clerks, nor anyone connected with the sale assumes any responsibility, legal or otherwise for damage of any kind.

Contract: The above terms and conditions shall constitute a contract between the buyer and seller of each animal sold.



RED GEIS HI HO 180'04



RED GEIS HI HO 180'04

Male TW GEIS 180P February 15 2004 1206287

RED HOLDEN HI HO 7151 OSF MAF
 RED SPRING CREEK HI HO 8K
 RED SPRINGCREEK ROCKETGIRL 56F
Sire: RED ROYAL HI HO 30M (1113005)
 RED ROYAL CHIEF 118C
 RED ROYAL BEULA 1164G
 RED ROYAL SAM'S BEULA 46D

RED LEACHMAN HEAVENLY 8141 OSF
 RED GARA HEAVENLY 65C
 RED MARTA 46U OF EAST FORK
Dam: RED GEIS BAYBERRY 151'96 (873657)
 RED ROYAL MAGNUM 21X
 RED GEIS BAYBERRY 66'92
 RED CUMNOCK BAYBERRY 952Y

BW: 60 Adj 205:841 Adj 365: 1233

CED	+4.0
CEM	+4.0
BW	+2.0
WW	+50
YW	+79
Milk	-3
TM	+21
Stay	+6
HPG	+9

REA	-0.02
%IMF	-0.01
Fat	+0.000

Hi Ho was the high selling red bull in Geis's 2005 sale. A very sound, thick bull with excellent feet, legs and scrotal. His dam is a picture perfect cow with a beautiful head, neck and shoulder built into an angular, deep sided body. We have used him on heifers and cows with great success.

Semen Available



RED SVR GANGSTER 14S



RED SVR GANGSTER 14S

Male SVR 14S February 10 2006 1328810

RED SPRING CREEK HI HO 8K
 RED ROYAL HI HO 30M
 RED ROYAL BEULA 1164G
Sire: RED GEIS HI HO 180'04 (1206287)
 RED GARA HEAVENLY 65C
 RED GEIS BAYBERRY 151'96
 RED GEIS BAYBERRY 66'92

RED HR CHEROKEE 53C
 RED CRESCENT CREEK CHEROKEE 79
 RED CRESCENT CREEK LARKABA 08F
Dam: RED DWAJO DUCHESS 75M (1108687)
 RED BJR THE DUKE 502-5176
 RED WBR DUCHESS 16'96
 RED BAR THREE H DUCHESS 66X

BW: 95 Adj 205:788 Adj 365: 1265

CED	+3.0
CEM	+2.0
BW	+2.2
WW	+42
YW	+65
Milk	-1
TM	+20
Stay	+6
HPG	+10

REA	+0.33
%IMF	+0.37
Fat	+0.000

Gangster was a standout in the pen since birth. He has matured into a very stout, unique individual with lots of top, hip and an excellent hair-coat. He had a very successful show career for three years standing Grand or Reserve in the shows he participated in. The finale was taking part in the Royal Bank Supreme Challenge at Agribition. Gangster sold in our 2007 Bull Sale to Northline Angus and Wheeler Stock Farm for \$15,000 for 2/3 interest and full possession. Gangster's progeny exhibit many of his qualities - dark red with eye appeal and stout right from birth.



RED SVR GANGSTER 89U



RED SVR GANGSTER 89U

Male SVR 89U February 14 2008 1451944

RED ROYAL HI HO 30M
 RED GEIS HI HO 180'04
 RED GEIS BAYBERRY 151'96
Sire: RED SVR GANGSTER 14S (1328810)
 RED CRESCENT CREEK CHEROKEE 79
 RED DWAJO DUCHESS 75M
 RED WBR DUCHESS 16'96

RED LCHMN NO EQUAL 1174D OSF MAF
 RED SOUTH VIEW NO EQUAL 28H
 RED PASQUIA FANCY LADY 6F
Dam: RED SVR MS CHIEF 55P (1216884)
 RED SSS BOOMER 803B
 RED SVR MS CHIEF 17J
 RED MS CHIEF DDH 4Z

BW: 105 Adj 205:675 Adj 365: 1235

CED	-3.0
CEM	+1.0
BW	+5.5
WW	+60
YW	+101
Milk	+1
TM	+31
Stay	+8
HPG	+10

REA	+0.41
%IMF	-0.11
Fat	+0.010

A Gangster 14S son with length of body - he is structurally correct and has lots of performance. 89U sold to Ward Cockburn in our 2009 bull sale. His dam 55P has good dark feet and an excellent udder. His sire 14S is proving to be an outstanding bull. 14S sired the Grand Champion Bull as well as four Division Champion Bulls at the 2011 National Western Stock Show in Denver. Congratulations to Northline Angus on a successful show.



RED SVR KNIGHT 73P

Male SVR 73P February 11 2004 1216924 OSF

RED BJR TOPPER AGAIN 23L
RED YY 23L TOPPER 408D
RED DEVOLANE ROZINE 8B

Sire: RED YY RED KNIGHT 640F OSF (845572)

RED LINE FLAME 11N
RED TOP GOLDIE 40U
RED LINE GOLDIE 40K

RED FCC RAMBO 502 OSF
RED SSS BOOMER 803B
RED SSS MISS HIGH LASS 352X

Dam: RED SVR JINNY 19K (1007575)

RED P-BAR BOSS MAN 12Z
RED SOUTH VIEW CLASSY LADY 26B
RED BJ JINNY 26Z

BW: 79 Adj 205:787 Adj 365:1217

REA	+0.23
%IMF	+0.06
Fat	+0.030

CED	+6.0
CEM	+7.0
BW	-1.5
WW	+35
YW	+55
Milk	+0
TM	+17
Stay	+10
HPG	+5



RED SVR KNIGHT 73P

73P is dark red, deep sided and thick butted, with large testicles. He has excellent feet and legs and a quiet disposition. His daughters are proving to be very good mamas with beautiful udders, and sons are working in both purebred and commercial herds. We have used him on heifers and cows with great calving ease and excellent growth.



RED SVR KNIGHT 236T

Male SVR 236T March 17 2007 1388672

RED YY 23L TOPPER 408D
RED YY RED KNIGHT 640F OSF
RED TOP GOLDIE 40U

Sire: RED SVR KNIGHT 73P OSF (1216924)

RED SSS BOOMER 803B
RED SVR JINNY 19K
RED SOUTH VIEW CLASSY LADY 26B

RED TASSEL PINNACLE 203C
RED COCKBURN PINNACLE 17E
RED CIRCLE R LASIE 92A

Dam: RED SOUTH VIEW MISS MAXI 45H (917944)

RED TRIPLE H LICORICE 4Z
RED CC MISS MAXI 128D
RED CC MISS MAXI 128B

BW: 98 Adj 205:715 Adj 365:1244

REA	+0.30
%IMF	+0.28
Fat	-0.030

CED	+3.0
CEM	+3.0
BW	+0.7
WW	+32
YW	+54
Milk	+9
TM	+25
Stay	+11
HPG	+6



RED SVR KNIGHT 236T

236T is a well balanced 73P son. He had great carcass data with a 64.8 LMY, 12.56 REA with a ratio of 107 and 4.95 IMF with a ratio of 140. His dam 45H is a CAA Elite Dam. He sold in our 2008 bull sale to Triple S Red Angus. We retained semen for in-herd use. Check out his sons.



RED SVR KNIGHT 149S

Male SVR 149S February 28 2006 1328976

RED YY 23L TOPPER 408D
RED YY RED KNIGHT 640F OSF
RED TOP GOLDIE 40U

Sire: RED SVR KNIGHT 73P OSF (1216924)

RED SSS BOOMER 803B
RED SVR JINNY 19K
RED SOUTH VIEW CLASSY LADY 26B

RED FLYING K PATRIOT 16B
RED T-S PATRIOT 84K
RED CFRA BEEFSTEAK 5F

Dam: RED COCKBURN QUEEN 162M (1134496)

RED TASSEL PINNACLE 203C
RED COCKBURN MS QUEEN 78G
RED CIRCLE R QUEEN 94A

BW: 90 Adj 205:772 Adj 365:1253

REA	+0.28
%IMF	-0.11
Fat	+0.010

CED	+1.0
CEM	+2.0
BW	+1.6
WW	+40
YW	+70
Milk	+6
TM	+26
Stay	+10
HPG	+6



RED SVR KNIGHT 149S

Another very complete son of 73P. 149S is consistent on low birth weight and calving ease. His dam 162M is a Patriot daughter who is one of our top producing cows.



RED SVR JACK 65S

Male SVR 65S February 18 2006 1353623 AMF NH

SODAK PRECISION 4358 AMF
 RED SODAK PRECISION 7408-97 AMF NHC OSF
 RED SODAK OSCAR 9359

Sire: RED DRYFORK K-C PRECISELY JACK NHC (1174901)

RED PIE LO CANYON 912
 RED K-C MISS AUSSIE 45L
 RED K-C MISS AUSSIE 45J

RED LCHMN NO EQUAL 1174D OSF MAF
 RED SOUTH VIEW NO EQUAL 28H
 RED PASQUIA FANCY LADY 6F

Dam: RED SVR CHRISTY 101M (1109836)

RED LEGARE'S FL TOPPER 6W
 RED LEGARE'S FL CHRISTY 13Y
 RED LEGARE'S FL CHRISTY

BW: 88 Adj 205:698 Adj 365: 1178

REA	-0.10
%IMF	-0.04
Fat	-0.010

CED	-2.0
CEM	+1.0
BW	+1.1
WW	+33
YW	+63
Milk	+2
TM	+18
Stay	+6
HPG	+12

Jack has exceeded all expectations. He is moderate framed, easy fleshing with lots of muscle shape standing on perfect feet. He has excellent testicle development, measuring 40 cm at 13 months of age. His daughters are calving now and are making good mommas with very nice udders. His progeny are very correct with eye appeal and excellent hair coats. His dam is definitely one of our best No Equal 28H daughters. Co-owned with Bar-E-L Angus.



MFA FINAL ANSWER 31T

Male MF 31T February 06 2007 1397689

G D A R TRAVELER 71 AMF CAF NHF
 SITZ TRAVELER 8180 AMF CAF NHF
 SITZ EVERELDA ENTENSE 1137

Sire: S A V FINAL ANSWER 0035 AMF CAF NHF (1061938)

BON VIEW BANDO 598 AMF CAC
 S A V EMULOUS 8145
 S A V SKY EMULOUS 2124

CONNELLY TIMELINE CAF
 MFA TIMELINE 69M
 MFA PRIDE 42K

Dam: MFA BARDOLENE 97R (1262936)

EVERBLACK ESTON 4J
 MFA BARDOLENE 148M
 MFA BARDOLENE 52J

BW: 82 Adj 205:814 Adj 365: 1402

REA	+0.25
%IMF	+0.15
Fat	+0.007

CED	+13.0
CEM	+9.0
BW	-3.1
WW	+54
YW	+108
Milk	+21
TM	+48

31T was the high selling bull purchased from the 2008 Black Harvest Bull Sale. He is a stout, well muscled, easy fleshing individual we selected for a calving ease sire on our heifers but now use him on cows as well. We were impressed with his performance numbers and excellent carcass data.



S A V NET WORTH 4200

Male IMP 4200P March 06 2004 1309743 AMF CAF NH

G D A R TRAVELER 71 AMF CAF NHF
 SITZ TRAVELER 8180 AMF CAF NHF
 SITZ EVERELDA ENTENSE 1137

Sire: S A V 8180 TRAVELER 004 AMF CAF NHF (1421804)

A A R NEW TREND
 BOYD FOREVER LADY 8003
 S V F FOREVER LADY 57D

BON VIEW BANDO 598 AMF CAC
 S A F 598 BANDO 5175 AMF CAC
 S A F ROYAL LASS 1002

Dam: S A V MAY 2410 (14140883)

RITO 9FB3 OF 5H11 FULLBACK AMF CAF NHF
 S A V MAY 6269
 S A R PROSPECTOR MAY 9124

REA	+0.48
%IMF	+0.48
Fat	+0.054

BW	+4.7
WW	+59
YW	+113
Milk	+29
TM	+59
CED	+0.0
CEM	+6.0

Net Worth is an A.I. sire who has gained popularity as a performance powerhouse. We were impressed with his individual performance as well as his carcass data. His sons are masculine meat machines.



SVR NETWORK 335U

Male SVR 335U February 16 2008 1451958

SITZ TRAVELER 8180 AMF CAF NHF
S A V 8180 TRAVELER 004 AMF CAF NHF
BOYD FOREVER LADY 8003

Sire: S A V NET WORTH 4200 AMF CAF NHF (1309743)

S A F 598 BANDO 5175 AMF CAC
S A V MAY 2410
S A V MAY 6269

CONNEALY DATELINE
VERMILION DATELINE 7078 AMF CAF NHF
VERMILION BLACKBIRD 5044

Dam: SVR QUEEN 213M (1133029)

KING L4 338T
QUEEN 506Z
QUEEN L3 297R

BW: 96 Adj 205:711 Adj 365:1193

REA	+0.32
%IMF	+0.26
Fat	+0.031

BW	+0.3
WW	+45
YW	+84
Milk	+21
TM	+44
CED	+7.0
CEM	+8.0



SVR NETWORK 335U

335U is a herd bull who is putting it all together. He is very deep bodied with loads of style and excellent feet. Maternally his dam 213M is a top producer with an excellent udder. We look forward to his daughters producing.



S A V PIONEER 7301

Male IMP 7301T February 27 2007 1481377 AMF CAF NH

G D A R TRAVELER 71 AMF CAF NHF
SITZ TRAVELER 8180 AMF CAF NHF
SITZ EVERELDA ENTENSE 1137

Sire: S A V FINAL ANSWER 0035 AMF CAF NHF (1061938)

BON VIEW BANDO 598 AMF CAC
S A V EMULOUS 8145
S A V SKY EMULOUS 2124

A A R NEW TREND
BOYD NEW DAY 8005 AMF CAF NHF
S V F FOREVER LADY 57D

Dam: S A V BLACKBIRD 5297 (15108071)

S A F 598 BANDO 5175 AMF CAC
S A V BLACKBIRD 1082
S A V BLACKBID 4036

REA	+0.46
%IMF	+0.40
Fat	+0.027

BW	+1.9
WW	+62
YW	+104
Milk	+28
TM	+59
CED	+4.0
CEM	+7.0



S A V PIONEER 7301

Pioneer is an A.I. sire we used mostly on heifers. Modest birth weights combined with thickness, muscle and performance. He comes from a very strong cow family. If you are looking to build a herd check out the Pioneer sons.



LAMB'S QUARTERS FULLBACK 45U

Male DAV 45U February 16 2008 1432500

MT VALLEY FULLBACK 810
LLB FULLBACK 141M
PAT PANSY 461D

Sire: VALLEY BLOSSOM WEATHERBY 7325 (1315063)

SANDY BAR BARDOLIER 82C
M BAR SIX QUEENETTE 232K
GFR QUEENETTE 3X

BW: 70 Adj 205:579 Adj 365:1226

BW	+23
WW	+22
YW	+57
Milk	+16
TM	+27
CED	+3.0
CEM	+3.0

ALBERDA TRAVELER 416 AMF CAF NHF
NAF WANDERER 7L
NIGHTSHADE BELLE 17F

Dam: LAMB'S QUARTERS BLACKBIRD 41N (1151385)

DOUBLE J RITO 333E
LAMB'S QUARTERS BLACKBIRD 78K
BELL BLACKBIRD 30F

EPD Breed Averages:

Trait	BW	WW	YW	Milk	TM	SC	CED	CEM	
Black	+2.9	+41	+72	+17	+37	+0.37	+1.3	+4.3	
Trait	BW	WW	YW	Milk	TM	CED	CEM	Stay	HPG
Red	+0.5	+25	+49	+15	+27	+4.2	+3.1	+9	+10



LOT
4x

RED SVR KNIGHT 4X

Male SVR 4X January 30 2010 1593014

RED YY RED KNIGHT 640F OSF
RED SVR KNIGHT 73P OSF
RED SVR JINNY 19K

Sire: RED SVR KNIGHT 236T (1388672)

RED COCKBURN PINNACLE 17E
RED SOUTH VIEW MISS MAXI 45H
RED CC MISS MAXI 128D

RED BRYLOR STALLION 19J MAF
RED WILLOW CREEK STALLION
RED WILLOW CREEK ACUTE 112M

Dam: RED SVR CHRISTINA 46S (1328764)

RED SVR BOOMERANG 47J
RED SVR CHRISTINA 50L
RED SOUTH VIEW CHRISTINA 45G

BW	+1.5
WW	+18
YW	+37
Milk	+11
TM	-
Stay	+11

REA	+0.05
%IMF	+0.20
Fat	-0.025

BW: 94 Adj 205: 557 Adj 365: 1046 Calving Ease: ** AOD: 4



LOT
15x

RED SVR JACK 15X

Male SVR 15X February 04 2010 1569844

RED SODAK PRECISION 7408-97 AMF NHC OSF
RED DRYFORK K-C PRECISELY JACK NHC
RED K-C MISS AUSSIE 45L

Sire: RED SVR JACK 65S AMF NHF (1353623)

RED SOUTH VIEW NO EQUAL 28H
RED SVR CHRISTY 101M
RED LEGARE'S FL CHRISTY 13Y

RED ROYAL HI HO 30M
RED GEIS HI HO 180'04
RED GEIS BAYBERRY 151'96

Dam: RED SVR LANA 42U (1451889)

RED SVR BOOMERANG 47J
RED SVR LANA 115M
RED MOOSE CREEK LANA 14E

CED	+3.0
CEM	+3.0
BW	+0.4
WW	+38
YW	+68
Milk	+5
TM	+24
Stay	+7
HPG	+10

REA	-0.05
%IMF	+0.01
Fat	-0.010

BW: 78 Adj 205: 666 Adj 365: 1165 Calving Ease: ** AOD: 2



LOT
10x

RED SVR GANGSTER 10X

Male SVR 10X February 04 2010 1579027

RED GEIS HI HO 180'04
RED SVR GANGSTER 14S
RED DWAJO DUCHESS 75M

Sire: RED SVR GANGSTER 89U (1451944)

RED SOUTH VIEW NO EQUAL 28H
RED SVR MS CHIEF 55P
RED SVR MS CHIEF 17J

RED BRYLOR STALLION 19J MAF
RED WILLOW CREEK STALLION
RED WILLOW CREEK ACUTE 112M

Dam: RED SVR COCA 134S (1328657)

RED SIX MILE STARBUCK 608C
RED SOUTH VIEW COCA 26F
RED SOUTH VIEW COCA 52D

CED	-1.0
CEM	+1.0
BW	+3.4
WW	+36
YW	+67
Milk	+5
TM	+23
Stay	+9
HPG	+10

REA	+0.04
%IMF	-0.06
Fat	-0.030

BW: 90 Adj 205: 599 Adj 365: 1074 Calving Ease: * AOD: 4



Judy Cheetham of Redstone, MT took home two Red Geis HI HO 180'04 sons in our 2010 sale.



LOT
16x

RED SVR JACK 16X

Male SVR 16X February 04 2010 1569845

RED SODAK PRECISION 7408-97 AMF NHC OSF
RED DRYFORK K-C PRECISELY JACK NHC
RED K-C MISS AUSSIE 45L

Sire: RED SVR JACK 65S AMF NHF (1353623)

RED SOUTH VIEW NO EQUAL 28H
RED SVR CHRISTY 101M
RED LEGARE'S FL CHRISTY 13Y

RED ROYAL HI HO 30M
RED GEIS HI HO 180'04
RED GEIS BAYBERRY 151'96

Dam: RED SVR CHRISTINA 153U (1452006)

RED SVR BOOMERANG 47J
RED SVR CHRISTINA 50L
RED SOUTH VIEW CHRISTINA 45G

CED	+3.0
CEM	+3.0
BW	+0.6
WW	+32
YW	+57
Milk	+4
TM	+20
Stay	+8
HPG	+10

REA	-0.04
%IMF	+0.01
Fat	+0.000

BW: 75 Adj 205: 614 Adj 365: 1197 Calving Ease: *** AOD: 2

RED ANGLUS BULLS



LOT
17x

RED SVR MAFIA 17X

Male SVR 17X February 04 2010 1579028

RED GEIS HI HO 180'04
RED SVR GANGSTER 14S
RED DWAJO DUCHESS 75M
Sire: RED SVR GANGSTER 89U (1451944)
RED SOUTH VIEW NO EQUAL 28H
RED SVR MS CHIEF 55P
RED SVR MS CHIEF 17J

RED BUF CRK HOBO 1413 OSF
RED BUF CRK HOBO 1961 OSF MAF
BUF CR CARRIE VC1174 OSF
Dam: RED SVR MISS MAXI 34J (956886)
RED COCKBURN PINNACLE 17E
RED SOUTH VIEW MISS MAXI 30G
RED CC MISS MAXI 128D

REA	+0.19
%IMF	-0.13
Fat	+0.000

CED	+5.0
CEM	+4.0
BW	+0.7
WW	+39
YW	+69
Milk	+10
TM	+29
Stay	+10
HPG	+9

BW: 85 Adj 205: 738 Adj 365: 1329 Calving Ease: ** AOD: 11



LOT
25x

RED SVR JACK 25X

Male SVR 25X February 08 2010 1569850

RED SODAK PRECISION 7408-97 AMF NHC OSF
RED DRYFORK K-C PRECISELY JACK NHC
RED K-C MISS AUSSIE 45L
Sire: RED SVR JACK 65S AMF NHF (1353623)
RED SOUTH VIEW NO EQUAL 28H
RED SVR CHRISTY 101M
RED LEGARE'S FL CHRISTY 13Y

RED LCC MAJOR LEAGUE A502M OSF MAF
RED SVR WORLD SERIES 153S
RED PASQUIA FANCY LADY 6F
Dam: RED SVR JINNY 21U (1451867)
RED SSS BOOMER 803B
RED SVR JINNY 2L
RED SOUTH VIEW CLASSY LADY 26B

REA	+0.06
%IMF	-0.08
Fat	-0.020

CED	+2.0
CEM	+3.0
BW	-0.2
WW	+40
YW	+71
Milk	+5
TM	+25
Stay	+8
HPG	+10

BW: 84 Adj 205: 672 Adj 365: 1233 Calving Ease: ** AOD: 2



LOT
18x

RED SVR KNIGHT 18X

Male SVR 18X February 05 2010 1593016

RED YY RED KNIGHT 640F OSF
RED SVR KNIGHT 73P OSF
RED SVR JINNY 19K
Sire: RED SVR KNIGHT 236T (1388672)
RED COCKBURN PINNACLE 17E
RED SOUTH VIEW MISS MAXI 45H
RED CC MISS MAXI 128D

RED BRYLOR STALLION 19J MAF
RED WILLOW CREEK STALLION
RED WILLOW CREEK ACUTE 112M
Dam: RED SVR BITTERSWEET 138S (1328784)
RED SVR BOOMERANG 47J
RED SVR BITTERSWEET 135L
RED SVR BITTERSWEET 65J

BW	+2.1
WW	+24
YW	+46
Milk	+13
TM	-
Stay	+10
REA	+0.02
%IMF	+0.14
Fat	-0.030

BW: 94 Adj 205: 595 Adj 365: 1063 Calving Ease: * AOD: 4



LOT
26x

RED SVR DYNAMO 26X

Male SVR 26X February 08 2010 1569851

RED RCN DYNAMO 614
RED LEACHMAN DYN614-3902
LCHMN MOONBEAM 2839
Sire: RED FLYING K DYNAMO 6Y (677212)
CHOCTAW CHF 373 OSF
RED FLYING K CHIEFTESS 4N
RED FLYING K LARKABELLE 18K

RED ROYAL HI HO 30M
RED GEIS HI HO 180'04
RED GEIS BAYBERRY 151'96
Dam: RED SVR REBA 101T (1388725)
RED SOUTH VIEW NO EQUAL 28H
RED SVR REBA 107M
RED MOOSE CREEK REBA 97F

REA	-0.08
%IMF	+0.04
Fat	-0.020

CED	+1.0
CEM	+3.0
BW	+3.6
WW	+39
YW	+60
Milk	-3
TM	+16
Stay	+6
HPG	+9

BW: 88 Adj 205: 609 Adj 365: 1128 Calving Ease: ** AOD: 3



LOT
27x

RED SVR HI HO 27X

Male SVR 27X February 09 2010 1569853

RED SPRING CREEK HI HO 8K
RED ROYAL HI HO 30M
RED ROYAL BEULA 1164G
Sire: RED GEIS HI HO 180'04 (1206287)
RED GARA HEAVENLY 65C
RED GEIS BAYBERRY 151'96
RED GEIS BAYBERRY 66'92

RED LCHMN NO EQUAL 1174D OSF MAF
RED SOUTH VIEW NO EQUAL 28H
RED PASQUIA FANCY LADY 6F
Dam: RED SVR FIREFLY 92L (1049035)
RED CIRCLE R MAX 26Z
RED CC FIREFLY 148D
RED CIRCLE R FIREFLY 148

REA	+0.00
%IMF	-0.21
Fat	-0.010

CED	+4.0
CEM	-2.0
BW	+0.1
WW	+31
YW	+57
Milk	+1
TM	+16
Stay	+8
HPG	+10

BW:	82	Adj 205:	595	Adj 365:	1134	Calving Ease:	**	AOD:	9
-----	----	----------	-----	----------	------	---------------	----	------	---



LOT
33x

RED SVR GANGSTER 33X

Male SVR 33X February 10 2010 1595401

RED ROYAL HI HO 30M
RED GEIS HI HO 180'04
RED GEIS BAYBERRY 151'96
Sire: RED SVR GANGSTER 14S (1328810)
RED CRESCENT CREEK CHEROKEE 79
RED DWAJO DUCHESS 75M
RED WBR DUCHESS 16'96

RED SOUTH VIEW NO EQUAL 28H
RED SVR NO EQUAL 34R
RED SVR MS CHIEF 28L
Dam: RED SVR MISS LARK 269U (1452118)
RED SODAK PRECISION 7408-97 AMF NHC OSF
RED SVR MISS LARK 59N
LAMBS MISS LARK 36E

REA	+0.21
%IMF	+0.05
Fat	-0.010

CED	-3.0
CEM	-2.0
BW	+3.4
WW	+45
YW	+77
Milk	+3
TM	+25
Stay	+7
HPG	+10

BW:	95	Adj 205:	695	Adj 365:	1255	Calving Ease:	**	AOD:	2
-----	----	----------	-----	----------	------	---------------	----	------	---



LOT
31x

RED SVR PRIME RIB 31X

Male SVR 31X February 09 2010 1569860

SAYRE PATRIOT
RED PREMIER PATRIOT 16
CAMILLA BELLE 54D
Sire: RED GEIS PRIME RIB 411 (785239)
RED KBJ SAM'S PROSPECTOR 133Z MAF
RED GEIS KURUBA 5'92
THREE D KURUBA 36'86

RED ROYAL HI HO 30M
RED GEIS HI HO 180'04
RED GEIS BAYBERRY 151'96
Dam: RED SVR FREYJA 137U (1452096)
RED SOUTH VIEW NO EQUAL 28H
RED SVR FREYJA 11N
RED SOUTH VIEW FREYJA 3H

REA	-0.04
%IMF	+0.06
Fat	+0.000

CED	+4.0
CEM	+5.0
BW	+1.1
WW	+38
YW	+69
Milk	+6
TM	+25
Stay	+12
HPG	+11

BW:	85	Adj 205:	628	Adj 365:	1116	Calving Ease:	***	AOD:	2
-----	----	----------	-----	----------	------	---------------	-----	------	---



LOT
35x

RED SVR GANGSTER 35X

Male SVR 35X February 10 2010 1593006

RED ROYAL HI HO 30M
RED GEIS HI HO 180'04
RED GEIS BAYBERRY 151'96
Sire: RED SVR GANGSTER 14S (1328810)
RED CRESCENT CREEK CHEROKEE 79
RED DWAJO DUCHESS 75M
RED WBR DUCHESS 16'96

RED DRYFORK K-C PRECISELY JACK NHC
RED SVR JACK 65S AMF NHF
RED SVR CHRISTY 101M
Dam: RED SVR RUBY 4U (1451849)
RED BAR-E-L COPPERTOP 147M
RED SVR RUBY 27S
RED SVR RUBY 45L

REA	+0.12
%IMF	+0.11
Fat	-0.015

BW	+4.6
WW	+38
YW	+65
Milk	+1
TM	-
Stay	+8

BW:	94	Adj 205:	618	Adj 365:	1158	Calving Ease:	**	AOD:	2
-----	----	----------	-----	----------	------	---------------	----	------	---



LOT
36x

RED SVR HI HO 36X

Male SVR 36X February 10 2010 1569865

RED SPRING CREEK HI HO 8K
RED ROYAL HI HO 30M
RED ROYAL BEULA 1164G
Sire: RED GEIS HI HO 180'04 (1206287)
RED GARA HEAVENLY 65C
RED GEIS BAYBERRY 151'96
RED GEIS BAYBERRY 66'92

RED SSS HIGH MARK 272D
RED SVR HIGH OCTANE 54K
RED BL SPRUCE LARKABA 53G
Dam: RED SVR CHRISTY 11M (1110061)
RED SOUTH VIEW NO EQUAL 28H
RED SVR CHRISTY 76K
RED SOUTH VIEW CHRISTY 12B

REA	+0.01
%IMF	-0.06
Fat	-0.020

CED	+8.0
CEM	+7.0
BW	-1.3
WW	+33
YW	+53
Milk	+4
TM	+21
Stay	+5
HPG	+9

BW: 77 Adj 205: 615 Adj 365: 1004 Calving Ease: *** AOD: 8



Elite Dam



LOT
39x

RED SVR KNIGHT 39X

Male SVR 39X February 11 2010 1593018

RED YY RED KNIGHT 640F OSF
RED SVR KNIGHT 73P OSF
RED SVR JINNY 19K
Sire: RED SVR KNIGHT 236T (1388672)
RED COCKBURN PINNACLE 17E
RED SOUTH VIEW MISS MAXI 45H
RED CC MISS MAXI 128D

RED ROYAL HI HO 30M
RED GEIS HI HO 180'04
RED GEIS BAYBERRY 151'96
Dam: RED SVR COCA 264U (1472280)
RED SOUTH VIEW NO EQUAL 28H
RED SVR COCA 76P
RED SVR MISS VIKING 29K

REA	+0.21
%IMF	+0.07
Fat	-0.015

BW	+0.8
WW	+34
YW	+61
Milk	+6
TM	--
Stay	

BW: 84 Adj 205: 647 Adj 365: 1165 Calving Ease: * AOD: 2



LOT
40x

RED SVR KNIGHT 40X

Male SVR 40X February 11 2010 1569868

RED YY 23L TOPPER 408D
RED YY RED KNIGHT 640F OSF
RED TOP GOLDIE 40U
Sire: RED SVR KNIGHT 73P OSF (1216924)
RED SSS BOOMER 803B
RED SVR JINNY 19K
RED SOUTH VIEW CLASSY LADY 26B

RED SSS HIGH MARK 272D
RED SVR HIGH OCTANE 54K
RED BL SPRUCE LARKABA 53G
Dam: RED OK LADY BUG 5N (1148278)
RED SOUTH VIEW NO EQUAL 28H
RED SVR FIREFLY 15L
RED SOUTH VIEW LADY RAB 10G

REA	+0.20
%IMF	-0.10
Fat	-0.030

CED	+7.0
CEM	+8.0
BW	-1.7
WW	+33
YW	+56
Milk	+6
TM	+22
Stay	+8
HPG	+7

BW: 82 Adj 205: 631 Adj 365: 1189 Calving Ease: *** AOD: 7



LOT
44x

RED SVR GANGSTER 44X

Male SVR 44X February 12 2010 1579035

RED GEIS HI HO 180'04
RED SVR GANGSTER 14S
RED DWAJO DUCHESS 75M
Sire: RED SVR GANGSTER 89U (1451944)
RED SOUTH VIEW NO EQUAL 28H
RED SVR MS CHIEF 55P
RED SVR MS CHIEF 17J

G D A R TRAVELER 71 AMF CAF NHF
SVR TOURIST 82N
RED BJ JINNY 26Z
Dam: RED SVR MISS LARK 221S (1328866)
RED GOLD-BAR KING V415 107K
SVR MISS LARK 57N
SVR MISS LARK 74K

REA	+0.21
%IMF	-0.08
Fat	+0.000

CED	+6.0
CEM	+3.0
BW	+0.8
WW	+33
YW	+62
Milk	+8
TM	+25
Stay	+11
HPG	+9

BW: 78 Adj 205: 608 Adj 365: 1170 Calving Ease: ** AOD: 4



LOT
47x

RED SVR KNIGHT 47X

Male SVR 47X February 12 2010 1569872

RED YY 23L TOPPER 408D
RED YY RED KNIGHT 640F OSF
RED TOP GOLDIE 40U
Sire: RED SVR KNIGHT 73P OSF (1216924)
RED SSS BOOMER 803B
RED SVR JINNY 19K
RED SOUTH VIEW CLASSY LADY 26B

RED SSS HIGH MARK 272D
RED SVR HIGH OCTANE 54K
RED BL SPRUCE LARKABA 53G
Dam: RED SVR FANCY LADY 24M (1110070)
RED P O VIKING 51G
RED SVR FANCY LADY 100K
RED PASQUIA FANCY LADY 6F

REA	+0.21
%IMF	+0.01
Fat	-0.020

CED	+11.0
CEM	+10.
BW	-3.7
WW	+26
YW	+44
Milk	+9
TM	+22
Stay	+7
HPG	+7

BW:	78	Adj 205:	690	Adj 365:	1171	Calving Ease:	***	AOD:	8
-----	----	----------	-----	----------	------	---------------	-----	------	---



LOT
50x

RED SVR LOGAN 50X

Male SVR 50X February 13 2010 1595403

OK DOUBLE CHIEF 4430
RED BUFFALO CREEK VC CHIEF 105 OSF MAF
MD MADCAP RC 237
Sire: RED GLACIER LOGAN OSF MAF (777315)
RED CREEK SIDE COPPER OSF MAF
RED GLACIER REBALAS
GLACIER HI-RB-LS

RED ROYAL HI HO 30M
RED GEIS HI HO 180'04
RED GEIS BAYBERRY 151'96
Dam: RED SVR JINNY 257U (1452112)
RED GOLD-BAR KING V415 107K
RED SVR JINNY 68P
RED BJ JINNY 26Z

REA	+0.03
%IMF	+0.29
Fat	-0.020

CED	+1.0
CEM	+9.0
BW	+0.5
WW	+29
YW	+52
Milk	+12
TM	+27
Stay	+13
HPG	+10

BW:	76	Adj 205:	538	Adj 365:	1161	Calving Ease:	***	AOD:	2
-----	----	----------	-----	----------	------	---------------	-----	------	---



LOT
58x

RED SVR BIG AL 58X

Male SVR 58X February 15 2010 1579040

RED GEIS HI HO 180'04
RED SVR GANGSTER 14S
RED DWAJO DUCHESS 75M
Sire: RED SVR GANGSTER 89U (1451944)
RED SOUTH VIEW NO EQUAL 28H
RED SVR MS CHIEF 55P
RED SVR MS CHIEF 17J

RED SSS BOOMER 803B
RED SVR BOOMERANG 47J
RED SOUTH VIEW CHRISTY 12B
Dam: RED SVR CHRISTY 89M (1109998)
RED LMAN KING ROB 8621 OSF MAF
RED SVR CHRISTY 49J
RED SOUTH VIEW TCB CHRISTY 12D

REA	+0.26
%IMF	-0.04
Fat	+0.000

CED	+0.0
CEM	+3.0
BW	+3.4
WW	+40
YW	+75
Milk	+10
TM	+30
Stay	+9
HPG	+9

BW:	92	Adj 205:	606	Adj 365:	1064	Calving Ease:	**	AOD:	8
-----	----	----------	-----	----------	------	---------------	----	------	---



LOT
59x

RED SVR HI HO 59X

Male SVR 59X February 15 2010 1569888

RED SPRING CREEK HI HO 8K
RED ROYAL HI HO 30M
RED ROYAL BEULA 1164G
Sire: RED GEIS HI HO 180'04 (1206287)
RED GARA HEAVENLY 65C
RED GEIS BAYBERRY 151'96
RED GEIS BAYBERRY 66'92

RED LCHMN NO EQUAL 1174D OSF MAF
RED SOUTH VIEW NO EQUAL 28H
RED PASQUIA FANCY LADY 6F
Dam: RED SVR MISS MAXI 83M (1109929)
RED COCKBURN PINNACLE 17E
RED SOUTH VIEW MISS MAXI 30G
RED CC MISS MAXI 128D

REA	+0.10
%IMF	-0.18
Fat	-0.020

CED	+4.0
CEM	+2.0
BW	+0.8
WW	+36
YW	+61
Milk	+7
TM	+25
Stay	+8
HPG	+10

BW:	85	Adj 205:	584	Adj 365:	1002	Calving Ease:	**	AOD:	8
-----	----	----------	-----	----------	------	---------------	----	------	---



LOT
69x

RED SVR JACK 69X

Male SVR 69X February 17 2010 1569898

RED SODAK PRECISION 7408-97 AMF NHC OSF
RED DRYFORK K-C PRECISELY JACK NHC
RED K-C MISS AUSSIE 45L
Sire: RED SVR JACK 65S AMF NHF (1353623)
RED SOUTH VIEW NO EQUAL 28H
RED SVR CHRISTY 101M
RED LEGARE'S FL CHRISTY 13Y

RED YY RED KNIGHT 640F OSF
RED SVR KNIGHT 73P OSF
RED SVR JINNY 19K
Dam: RED SVR LANA 79U (1451936)
RED GEIS HI HO 180'04
RED SVR LANA 38S
RED SVR LANA 90P

REA	+0.02
%IMF	-0.05
Fat	-0.010

CED	+2.0
CEM	+3.0
BW	+0.3
WW	+36
YW	+62
Milk	+2
TM	+20
Stay	+7
HPG	+9

BW: 78 Adj 205: 632 Adj 365: 1151 Calving Ease: *** AOD: 2



LOT
71x

RED SVR GANGSTER 71X

Male SVR 71X February 17 2010 1585648

RED ROYAL HI HO 30M
RED GEIS HI HO 180'04
RED GEIS BAYBERRY 151'96
Sire: RED SVR GANGSTER 14S (1328810)
RED CRESCENT CREEK CHEROKEE 79
RED DWAJO DUCHESS 75M
RED WBR DUCHESS 16'96

RED LCHMN NO EQUAL 1174D OSF MAF
RED SOUTH VIEW NO EQUAL 28H
RED PASQUIA FANCY LADY 6F
Dam: RED SVR BONNIE 3N (1154791)
RED BRYLOR BO JACKSON 7H
RED KENRAY BONNIE 026K
RED KENRAY MISS DYNAMO 24B

REA	+0.22
%IMF	+0.07
Fat	-0.010

CED	+1.0
CEM	+2.0
BW	+1.7
WW	+41
YW	+68
Milk	+3
TM	+24
Stay	+8
HPG	+11

BW: 95 Adj 205: 648 Adj 365: 1244 Calving Ease: ** AOD: 7



Elite Dam



Elite Dam



LOT
78x

RED SVR HI HO 78X

Male SVR 78X February 18 2010 1569903

RED SPRING CREEK HI HO 8K
RED ROYAL HI HO 30M
RED ROYAL BEULA 1164G
Sire: RED GEIS HI HO 180'04 (1206287)
RED GARA HEAVENLY 65C
RED GEIS BAYBERRY 151'96
RED GEIS BAYBERRY 66'92

KBJ CONQUOR ALL 447J
SVR SLEDGE 219N
FV 249B MADONNA 28F
Dam: SVR BONNIE 147R (1267938)
RED SOUTH VIEW NO EQUAL 28H
RED SVR BONNIE 3N
RED KENRAY BONNIE 026K

REA	+0.07
%IMF	-0.13
Fat	-0.010

CED	+4.0
CEM	+4.0
BW	+1.1
WW	+44
YW	+76
Milk	+0
TM	+22
Stay	+10
HPG	+10

BW: 80 Adj 205: 614 Adj 365: 1147 Calving Ease: ** AOD: 5



LOT
80x

RED SVR GANGSTER 80X

Male SVR 80X February 18 2010 1579044

RED GEIS HI HO 180'04
RED SVR GANGSTER 14S
RED DWAJO DUCHESS 75M
Sire: RED SVR GANGSTER 89U (1451944)
RED SOUTH VIEW NO EQUAL 28H
RED SVR MS CHIEF 55P
RED SVR MS CHIEF 17J

RED YY RED KNIGHT 640F OSF
RED BAR-E-L COPPERTOP 147M
RED BAR-E-L GLORIA 59H
Dam: RED SVR FREYJA 6P (1216790)
RED KBJ SAM'S PROSPECTOR 133Z MAF
RED SOUTH VIEW FREYJA ET 1F
RED SQUIRREL FREYJA 1P

REA	+0.05
%IMF	-0.02
Fat	-0.020

CED	+4.0
CEM	+3.0
BW	+1.6
WW	+30
YW	+50
Milk	+8
TM	+23
Stay	+9
HPG	+9

BW: 85 Adj 205: 637 Adj 365: 1164 Calving Ease: *** AOD: 6



RED SVR JACK 86X

Male SVR 86X February 19 2010 1569909

RED SODAK PRECISION 7408-97 AMF NHC OSF
 RED DRYFORK K-C PRECISELY JACK NHC
 RED K-C MISS AUSSIE 45L
Sire: RED SVR JACK 65S AMF NHF (1353623)
 RED SOUTH VIEW NO EQUAL 28H
 RED SVR CHRISTY 101M
 RED LEGARE'S FL CHRISTY 13Y

RED ROYAL HI HO 30M
 RED GEIS HI HO 180'04
 RED GEIS BAYBERRY 151'96
Dam: RED SVR LADYBIRD 135U (1451988)
 RED KBJ COLONEL 33J
 RED KBJ LADYBIRD 952M
 RED DREAM MAKERS LADYBIRD 790H

REA	-0.10
%IMF	+0.00
Fat	-0.010

CED	+1.0
CEM	+3.0
BW	+1.4
WW	+33
YW	+58
Milk	+2
TM	+19
Stay	+7
HPG	+10

BW: 82 Adj 205: 599 Adj 365: 980 Calving Ease: *** AOD: 2



RED SVR GANGSTER 96X

Male SVR 96X February 20 2010 1569921

RED ROYAL HI HO 30M
 RED GEIS HI HO 180'04
 RED GEIS BAYBERRY 151'96
Sire: RED SVR GANGSTER 14S (1328810)
 RED CRESCENT CREEK CHEROKEE 79
 RED DWAJO DUCHESS 75M
 RED WBR DUCHESS 16'96

RED LCC MAJOR LEAGUE A502M OSF MAF
 RED SVR WORLD SERIES 153S
 RED PASQUIA FANCY LADY 6F
Dam: RED SVR LARKABELLE 7U (1474981)
 RED BAR-E-L COPPERTOP 147M
 RED SVR LARKABELLE 9R
 RED VALLEYHILLS LARKABELLE 19B

REA	+0.19
%IMF	+0.16
Fat	-0.010

CED	+2.0
CEM	+2.0
BW	+2.0
WW	+43
YW	+68
Milk	+3
TM	+25
Stay	+8
HPG	+9

BW: 88 Adj 205: 699 Adj 365: 1152 Calving Ease: ** AOD: 2



RED SVR WARRIOR 99X

Male SVR 99X February 21 2010 1593020

RED YY RED KNIGHT 640F OSF
 RED SVR KNIGHT 73P OSF
 RED SVR JINNY 19K
Sire: RED SVR KNIGHT 236T (1388672)
 RED COCKBURN PINNACLE 17E
 RED SOUTH VIEW MISS MAXI 45H
 RED CC MISS MAXI 128D

RED HR CHEROKEE 53C
 RED CRESCENT CREEK CHEROKEE 79
 RED CRESCENT CREEK LARKABA 08F
Dam: RED DWAJO DUCHESS 75M (1108687)
 RED BJR THE DUKE 502-5176
 RED WBR DUCHESS 16'96
 RED BAR THREE H DUCHESS 66X

BW	+2.1
WW	+30
YW	+53
Milk	+12
TM	-
Stay	+9

REA	+0.24
%IMF	+0.25
Fat	-0.010

BW: 95 Adj 205: 670 Adj 365: 1210 Calving Ease: ** AOD: 8



RED SVR NO EQUAL 103X

Male SVR 103X February 22 2010 1569925

RED LMAN NONE BETTER 9604 OSF MAF
 RED LCHMN NO EQUAL 1174D OSF MAF
 RED LMAN PRAIRIE Q 9308
Sire: RED SOUTH VIEW NO EQUAL 28H (917962)
 RED GET-A-LONG ARAB 159
 RED PASQUIA FANCY LADY 6F
 RED PASQUIA FANCY LADY 6D

RED ROYAL HI HO 30M
 RED GEIS HI HO 180'04
 RED GEIS BAYBERRY 151'96
Dam: RED SVR JINNY 161T (1388774)
 RED BAR-E-L COPPERTOP 147M
 RED SVR JINNY 19P
 RED BJ JINNY 26Z

REA	+0.15
%IMF	-0.30
Fat	-0.030

CED	+4.0
CEM	+2.0
BW	+1.1
WW	+43
YW	+75
Milk	+6
TM	+28
Stay	+8
HPG	+11

BW: 80 Adj 205: 679 Adj 365: 1144 Calving Ease: ** AOD: 3





LOT 104x

RED SVR SYNDICATE 104X

Male SVR 104X February 22 2010 1579046

RED GEIS HI HO 180'04
RED SVR GANGSTER 14S
RED DWAJO DUCHESS 75M
Sire: RED SVR GANGSTER 89U (1451944)
RED SOUTH VIEW NO EQUAL 28H
RED SVR MS CHIEF 55P
RED SVR MS CHIEF 17J

RED SSS BOOMER 803B
RED SVR BOOMERANG 47J
RED SOUTH VIEW CHRISTY 12B
Dam: RED SVR JINNY 37L (1049037)
RED BUF CRK HOB0 1961 OSF MAF
RED SOUTH VIEW LADY HOB0 8E
RED SOUTH VIEW CLASSY LADY 26B

REA	+0.31
%IMF	-0.11
Fat	-0.010

CED	+0.0
CEM	+3.0
BW	+4.0
WW	+44
YW	+74
Milk	+7
TM	+29
Stay	+8
HPG	+9

BW: 90 Adj 205: 672 Adj 365: 1223 Calving Ease: * AOD: 9



LOT 108x

RED SVR KNIGHT 108X

Male SVR 108X February 23 2010 1593021

RED YY RED KNIGHT 640F OSF
RED SVR KNIGHT 73P OSF
RED SVR JINNY 19K
Sire: RED SVR KNIGHT 236T (1388672)
RED COCKBURN PINNACLE 17E
RED SOUTH VIEW MISS MAXI 45H
RED CC MISS MAXI 128D

RED ROYAL HI HO 30M
RED GEIS HI HO 180'04
RED GEIS BAYBERRY 151'96
Dam: RED SVR MISS VIKING 173U (1452036)
RED P O VIKING 51G
RED SVR MISS VIKING 29K
RED CIRCLE R COCA 52A

BW	+4.2
WW	+42
YW	+75
Milk	+8
TM	-
Stay	+9

REA	+0.22
%IMF	+0.13
Fat	-0.005

BW: 97 Adj 205: 709 Adj 365: 1278 Calving Ease: * AOD: 2



LOT 109x

RED SVR PRIME CHOICE 109X

Male SVR 109X February 23 2010 1569933

RED PREMIER PATRIOT 16
RED GEIS PRIME RIB 411
RED GEIS KURUBA 5'92
Sire: RED SOUTH VIEW PRIME CHOICE 1H (917959)
RED BVR RAB-STAR 56C OSF MAF
RED SOUTH VIEW FAYE 5F
RED MOOSE CREEK FAYE 42D

RED YY RED KNIGHT 640F OSF
RED SVR KNIGHT 73P OSF
RED SVR JINNY 19K
Dam: RED SVR BITTERSWEET 192U (1452249)
RED LAZY MC THIRTY X 22L
RED SVR BITTERSWEET 19N
RED SVR BITTERSWEET 98K

REA	+0.04
%IMF	+0.00
Fat	-0.010

CED	+2.0
CEM	+5.0
BW	+1.7
WW	+32
YW	+58
Milk	+5
TM	+21
Stay	+11
HPG	+9

BW: 84 Adj 205: 649 Adj 365: 1214 Calving Ease: ** AOD: 2



LOT 110x

RED SVR KNIGHT 110X

Male SVR 110X February 23 2010 1593022

RED YY RED KNIGHT 640F OSF
RED SVR KNIGHT 73P OSF
RED SVR JINNY 19K
Sire: RED SVR KNIGHT 236T (1388672)
RED COCKBURN PINNACLE 17E
RED SOUTH VIEW MISS MAXI 45H
RED CC MISS MAXI 128D

RED ROYAL HI HO 30M
RED GEIS HI HO 180'04
RED GEIS BAYBERRY 151'96
Dam: RED SVR RUBY 85S (1328925)
RED SOUTH VIEW NO EQUAL 28H
RED SVR RUBY 36P
RED SOUTH VIEW RUBY 8G

BW	+0.9
WW	+28
YW	+63
Milk	+9
TM	-
Stay	+9

REA	+0.15
%IMF	+0.10
Fat	-0.010

BW: 92 Adj 205: 522 Adj 365: 1126 Calving Ease: ** AOD: 4





LOT 119x

RED SVR KNIGHT 119X

Male SVR 119X February 24 2010 1593023

RED YY RED KNIGHT 640F OSF
RED SVR KNIGHT 73P OSF
RED SVR JINNY 19K

Sire: **RED SVR KNIGHT 236T (1388672)**

RED COCKBURN PINNACLE 17E
RED SOUTH VIEW MISS MAXI 45H
RED CC MISS MAXI 128D

RED ROYAL HI HO 30M
RED GEIS HI HO 180'04
RED GEIS BAYBERRY 151'96

Dam: **RED SVR NETTIE 81U (1451939)**

RED FLYING K DYNAMO 6Y
RED SVR NETTIE 34M
RED MOOSE CREEK NETTIE 96D

BW	+2.1
WW	+41
YW	+62
Milk	+6
TM	-
Stay	+9

REA	+0.11
%IMF	+0.15
Fat	-0.020

BW: 84 Adj 205: 704 Adj 365: 1156 Calving Ease: ** AOD: 2



LOT 120x

RED SVR GANGSTER 120X

Male SVR 120X February 24 2010 1595409

RED ROYAL HI HO 30M
RED GEIS HI HO 180'04
RED GEIS BAYBERRY 151'96

Sire: **RED SVR GANGSTER 14S (1328810)**

RED CRESCENT CREEK CHEROKEE 79
RED DWAJO DUCHESS 75M
RED WBR DUCHESS 16'96

RED TER-RON DIGGER 11L
RED BAR-E-L RIBEYE 103R OSF
RED BAR-E-L MARCIE 50N

Dam: **RED COCKBURN MS CHIEF 303U (1461430)**

RED HOWE MR LEADER 138F
RED COCKBURN MS CHIEF 36K
RED COCKBURN MS CHIEF 38E

CED	+4.0
CEM	+3.0
BW	+2.1
WW	+41
YW	+65
Milk	+4
TM	+25
Stay	+9
HPG	+9

REA	+0.19
%IMF	+0.12
Fat	-0.010

BW: 80 Adj 205: 645 Adj 365: 1160 Calving Ease: ** AOD: 2



Elite Dam



LOT 121x

RED SVR HI HO 121X

Male SVR 121X February 25 2010 1595411

RED ROYAL HI HO 30M
RED GEIS HI HO 180'04
RED GEIS BAYBERRY 151'96

Sire: **RED SVR HI HO 32U (1451880)**

RED SOUTH VIEW NO EQUAL 28H
RED SVR RUBY 25M
RED LAMBS RUBY 85C

RED YY RED KNIGHT 640F OSF
RED SVR KNIGHT 73P OSF
RED SVR JINNY 19K

Dam: **RED SVR FANCY LADY 22T (1386125)**

RED SVR HIGH OCTANE 54K
RED SVR FANCY LADY 24M
RED SVR FANCY LADY 100K

CED	+4.0
CEM	+6.0
BW	+0.6
WW	+33
YW	+59
Milk	+5
TM	+22
Stay	+8
HPG	+8

REA	+0.13
%IMF	-0.09
Fat	-0.010

BW: 89 Adj 205: 584 Adj 365: 1039 Calving Ease: *** AOD: 3



LOT 129x

RED SVR GANGSTER 129X

Male TW SVR 129X February 26 2010 1579049

RED GEIS HI HO 180'04
RED SVR GANGSTER 14S
RED DWAJO DUCHESS 75M

Sire: **RED SVR GANGSTER 89U (1451944)**

RED SOUTH VIEW NO EQUAL 28H
RED SVR MS CHIEF 55P
RED SVR MS CHIEF 17J

RED YY RED KNIGHT 640F OSF
RED KBJ COLONEL 33J
KBJ ROUND LASSIE 18T

Dam: **RED SVR JINNY 72N (1154789)**

RED SSS BOOMER 803B
RED SVR JINNY 19K
RED SOUTH VIEW CLASSY LADY 26B

CED	+1.0
CEM	+3.0
BW	+2.9
WW	+46
YW	+73
Milk	+8
TM	+30
Stay	+9
HPG	+8

REA	+0.15
%IMF	+0.01
Fat	-0.010

BW: 74 Adj 205: 561 Adj 365: 1026 Calving Ease: ** AOD: 7



Dean Clawson selected SVR 369W at our 2010 Sale and won our buyer's draw.



LOT
130x

RED SVR HI HO 130X

Male SVR 130X February 26 2010 1569946

RED SPRING CREEK HI HO 8K
RED ROYAL HI HO 30M
RED ROYAL BEULA 1164G
Sire: RED GEIS HI HO 180'04 (1206287)
RED GARA HEAVENLY 65C
RED GEIS BAYBERRY 151'96
RED GEIS BAYBERRY 66'92

Dam: RED SVR CHRISTINA 142P (1216988)

RED LCHMN NO EQUAL 1174D OSF MAF
RED SOUTH VIEW NO EQUAL 28H
RED PASQUIA FANCY LADY 6F
RED SVR BOOMERANG 47J
RED SVR CHRISTINA 50L
RED SOUTH VIEW CHRISTINA 45G

REA	+0.04
%IMF	-0.12
Fat	-0.010

BW: 87 Adj 205: 578 Adj 365: 1040 Calving Ease: *** AOD: 6

CED	+3.0
CEM	+3.0
BW	+1.9
WW	+38
YW	+62
Milk	+1
TM	+20
Stay	+8
HPG	+10



Dave Raymond of Mankota, SK selected one of the high selling Red Angus bulls in our 2010 sale.



Ed Pretty of Weyburn, SK bought Red SVR No Equal 15W in our 2010 sale.



LOT
134x

RED SVR JACK 134X

Male SVR 134X February 27 2010 1595414

RED SODAK PRECISION 7408-97 AMF NHC OSF
RED DRYFORK K-C PRECISELY JACK NHC
RED K-C MISS AUSSIE 45L
Sire: RED SVR JACK 65S AMF NHF (1353623)
RED SOUTH VIEW NO EQUAL 28H
RED SVR CHRISTY 101M
RED LEGARE'S FL CHRISTY 13Y

Dam: RED SVR CHRISTY 278U (1452123)

RED ROYAL HI HO 30M
RED GEIS HI HO 180'04
RED GEIS BAYBERRY 151'96
RED SVR HIGH OCTANE 54K
RED SVR CHRISTY 104P
RED SVR CHRISTY 13L

REA	-0.04
%IMF	-0.10
Fat	-0.010

BW: 72 Adj 205: 563 Adj 365: 980 Calving Ease: *** AOD: 2

CED	+5.0
CEM	+5.0
BW	-1.0
WW	+31
YW	+58
Milk	+2
TM	+18
Stay	+5
HPG	+10



LOT
133x

RED SVR GANGSTER 133X

Male SVR 133X February 27 2010 1579050

RED GEIS HI HO 180'04
RED SVR GANGSTER 14S
RED DWAJO DUCHESS 75M
Sire: RED SVR GANGSTER 89U (1451944)
RED SOUTH VIEW NO EQUAL 28H
RED SVR MS CHIEF 55P
RED SVR MS CHIEF 17J

Dam: RED SOUTH VIEW MISS MAXI 45H (917944)

RED TASSEL PINNACLE 203C
RED COCKBURN PINNACLE 17E
RED CIRCLE R LASIE 92A
RED TRIPLE H LICORICE 4Z
RED CC MISS MAXI 128D
RED CC MISS MAXI 128B

REA	+0.34
%IMF	+0.03
Fat	+0.000

CED	-1.0
CEM	+0.0
BW	+4.2
WW	+36
YW	+63
Milk	+11
TM	+29
Stay	+10
HPG	+8

BW: 93 Adj 205: 608 Adj 365: 1087 Calving Ease: * AOD: 12



Elite Dam



LOT
136x

RED SVR JACK 136X

Male SVR 136X February 27 2010 1595433

RED SODAK PRECISION 7408-97 AMF NHC OSF
RED DRYFORK K-C PRECISELY JACK NHC
RED K-C MISS AUSSIE 45L
Sire: RED SVR JACK 65S AMF NHF (1353623)
RED SOUTH VIEW NO EQUAL 28H
RED SVR CHRISTY 101M
RED LEGARE'S FL CHRISTY 13Y

Dam: RED SVR CLARA 102U (1451954)

RED ROYAL HI HO 30M
RED GEIS HI HO 180'04
RED GEIS BAYBERRY 151'96
RED SOUTH VIEW NO EQUAL 28H
SVR CLARA 31N
THOMA D CLARA ESTON 14J

REA	-0.03
%IMF	-0.09
Fat	-0.010

BW: 88 Adj 205: 636 Adj 365: 1115 Calving Ease: ** AOD: 2

CED	+0.0
CEM	+2.0
BW	+2.1
WW	+39
YW	+71
Milk	+1
TM	+21
Stay	
HPG	



LOT
140x

RED SVR GANGSTER 1260X

Male SVR 1260X February 27 2010 1595417

RED ROYAL HI HO 30M
RED GEIS HI HO 180'04
RED GEIS BAYBERRY 151'96
Sire: RED SVR GANGSTER 145 (1328810)
RED CRESCENT CREEK CHEROKEE 79
RED DWAJO DUCHESS 75M
RED WBR DUCHESS 16'96

Dam: RED SVR RUBY 158U (1452015)

RED SOUTH VIEW NO EQUAL 28H
RED SVR NO EQUAL 34R
RED SVR MS CHIEF 28L
RED BAR-E-L COPPERTOP 147M
RED SVR RUBY 54P
RED SOUTH VIEW TCB RUBY 101D

REA	+0.12
%IMF	+0.02
Fat	-0.010

CED	+5.0
CEM	+4.0
BW	+0.8
WW	+40
YW	+61
Milk	+3
TM	+23
Stay	+9
HPG	+9

BW: 73 Adj 205: 674 Adj 365: 1001 Calving Ease: *** AOD: 2



LOT
147x

RED SVR JACK 147X

Male SVR 147X March 01 2010 1595422

RED SODAK PRECISION 7408-97 AMF NHC OSF
RED DRYFORK K-C PRECISELY JACK NHC
RED K-C MISS AUSSIE 45L
Sire: RED SVR JACK 655 AMF NHF (1353623)
RED SOUTH VIEW NO EQUAL 28H
RED SVR CHRISTY 101M
RED LEGARE'S FL CHRISTY 13Y

Dam: RED SVR CHRISTY 87U (1451943)

RED ROYAL HI HO 30M
RED GEIS HI HO 180'04
RED GEIS BAYBERRY 151'96
RED SVR BOOMERANG 47J
RED SVR CHRISTY 89M
RED SVR CHRISTY 49J

REA	-0.03
%IMF	-0.02
Fat	-0.010

CED	+0.0
CEM	+3.0
BW	+2.1
WW	+37
YW	+69
Milk	+4
TM	+22
Stay	+7
HPG	+10

BW: 88 Adj 205: 597 Adj 365: 1074 Calving Ease: ** AOD: 2



LOT
142x

RED SVR HIGHER CAPAC 142X

Male SVR 142X February 27 2010 1595420

RED BJR HIGH CAPACITY 008 OSF MAF
RED UBAR HIGH CAPACITY 224 OSF
RED BJR BONNEBELL 7G
Sire: RED GEFB HIGHER CAPACITY 2733 (1480457)
RED TKP BODACIOUS 693 OSF
RED GEF SWEET BABY 9814 OSF
RED GEF LADY 3556 TALLY 9606

Dam: RED SVR JINNY 251U (1452107)

RED ROYAL HI HO 30M
RED GEIS HI HO 180'04
RED GEIS BAYBERRY 151'96
RED SVR HIGH OCTANE 54K
RED SVR JINNY 107P
RED SVR JINNY 58J

REA	+0.05
%IMF	+0.06
Fat	-0.030

CED	+5.0
CEM	+4.0
BW	-0.2
WW	+19
YW	+40
Milk	+14
TM	+24
Stay	+6
HPG	+8

BW: 73 Adj 205: 545 Adj 365: 1047 Calving Ease: *** AOD: 2



LOT
151x

RED SVR KNIGHT 151X

Male SVR 151X March 02 2010 1593026

RED YY RED KNIGHT 640F OSF
RED SVR KNIGHT 73P OSF
RED SVR JINNY 19K
Sire: RED SVR KNIGHT 236T (1388672)
RED COCKBURN PINNACLE 17E
RED SOUTH VIEW MISS MAXI 45H
RED CC MISS MAXI 128D

Dam: RED COCKBURN QUEEN 162M (1134496)

RED FLYING K PATRIOT 16B
RED T-S PATRIOT 84K
RED CFRA BEEFSTEAK 5F
RED TASSEL PINNACLE 203C
RED COCKBURN MS QUEEN 78G
RED CIRCLE R QUEEN 94A

BW	+0.3
WW	+32
YW	+61
Milk	+13
TM	-
Stay	+11

REA	+0.27
%IMF	+0.04
Fat	-0.015

BW: 84 Adj 205: 701 Adj 365: 1201 Calving Ease: ** AOD: 8



LOT 155x

RED SVR HI HO 155X

Male SVR 155X March 03 2010 1569963

RED ROYAL HI HO 30M
RED GEIS HI HO 180'04
RED GEIS BAYBERRY 151'96
Sire: **RED SVR HI HO 32U (1451880)**
RED SOUTH VIEW NO EQUAL 28H
RED SVR RUBY 25M
RED LAMBS RUBY 85C

RED BRYLOR STALLION 19J MAF
RED WILLOW CREEK STALLION
RED WILLOW CREEK ACUTE 112M
Dam: **RED SVR MS FREYJA 131S (1328746)**
RED SVR BOOMERANG 47J
RED SVR MS FREYJA 3L
RED MOOSE CREEK MS FREYJA 80D

REA	-0.11
%IMF	-0.07
Fat	-0.010

CED	+1.0
CEM	+5.0
BW	+2.3
WW	+32
YW	+62
Milk	+8
TM	+24
Stay	+9
HPG	+9

BW: 95 Adj 205: 617 Adj 365: 1116 Calving Ease: ** AOD: 4



LOT 161x

RED SVR GANGSTER 161X

Male SVR 161X March 04 2010 1579053

RED GEIS HI HO 180'04
RED SVR GANGSTER 14S
RED DWAJO DUCHESS 75M
Sire: **RED SVR GANGSTER 89U (1451944)**
RED SOUTH VIEW NO EQUAL 28H
RED SVR MS CHIEF 55P
RED SVR MS CHIEF 17J

RED YY RED KNIGHT 640F OSF
RED KBJ COLONEL 33J
KBJ ROUND LASSIE 18T
Dam: **RED SVR VERNICE 94N (1154798)**
RED BADLANDS BONUS 702
RED PRESCOTT VERNICE 49K
RED BLUE SPRUCE VERNICE 99U

REA	+0.11
%IMF	-0.03
Fat	-0.010

Elite Dam

CED	-3.0
CEM	+1.0
BW	+5.6
WW	+48
YW	+81
Milk	+8
TM	+31
Stay	+9
HPG	+9

BW: 102 Adj 205: 706 Adj 365: 1112 Calving Ease: * AOD: 7



Shawn & Allison Bartel & Family selected SVR 304W in our 2010 Sale and won our buyer's draw.



LOT 163x

RED SVR GANGSTER 163X

Male SVR 163X March 05 2010 1595425

RED ROYAL HI HO 30M
RED GEIS HI HO 180'04
RED GEIS BAYBERRY 151'96
Sire: **RED SVR GANGSTER 14S (1328810)**
RED CRESCENT CREEK CHEROKEE 79
RED DWAJO DUCHESS 75M
RED WBR DUCHESS 16'96

RED LCC MAJOR LEAGUE A502M OSF MAF
RED SVR WORLD SERIES 153S
RED PASQUIA FANCY LADY 6F
Dam: **RED SVR CHRISTINA 104U (1451956)**
RED P O VIKING 51G
RED SVR CHRISTINA 10K
RED SOUTH VIEW CHRISTINA 45G

REA	+0.22
%IMF	+0.13
Fat	+0.000

CED	+6.0
CEM	+4.0
BW	+0.2
WW	+40
YW	+65
Milk	+6
TM	+26
Stay	+8
HPG	+10

BW: 70 Adj 205: 659 Adj 365: 1124 Calving Ease: *** AOD: 2



LOT 170x

RED SVR NO EQUAL 170X

Male SVR 170X March 07 2010 1595427

RED SOUTH VIEW NO EQUAL 28H
RED SVR NO EQUAL 34R
RED SVR MS CHIEF 28L
Sire: **RED SVR NO EQUAL 224U (1452078)**
RED SSS BOOMER 803B
RED SVR JINNY 31J
RED SOUTH VIEW CLASSY LADY 26B

RED ROYAL HI HO 30M
RED GEIS HI HO 180'04
RED GEIS BAYBERRY 151'96
Dam: **RED SVR REBELLO 103T (1388704)**
RED LAZY MC THIRTY X 22L
RED SVR REBELLO 13N
RED SVR REBELLO 17K

REA	+0.08
%IMF	-0.34
Fat	-0.020

CED	+2.0
CEM	+3.0
BW	+2.8
WW	+49
YW	+74
Milk	+5
TM	+29
Stay	+10
HPG	+9

BW: 83 Adj 205: 693 Adj 365: 1130 Calving Ease: * AOD: 3



LOT
180x

RED SVR HI HO 180X

Male SVR 180X March 10 2010 1569980

RED SPRING CREEK HI HO 8K
RED ROYAL HI HO 30M
RED ROYAL BEULA 1164G

Sire: **RED GEIS HI HO 180'04 (1206287)**

RED GARA HEAVENLY 65C
RED GEIS BAYBERRY 151'96
RED GEIS BAYBERRY 66'92

RED LCHMN NO EQUAL 1174D OSF MAF
RED SOUTH VIEW NO EQUAL 28H
RED PASQUIA FANCY LADY 6F

Dam: **RED SVR MS FREYJA 123P (1216968)**

RED SVR BOOMERANG 47J
RED SVR FAYE 5L
RED MOOSE CREEK FAYE 13F

REA	+0.08
%IMF	-0.12
Fat	-0.010

CED	+5.0
CEM	+4.0
BW	+0.7
WW	+35
YW	+61
Milk	+5
TM	+22
Stay	+7
HPG	+10

BW: 84 Adj 205: 575 Adj 365: 1045 Calving Ease: ** AOD: 6



LOT
187x

RED SVR GANGSTER 187X

Male SVR 187X March 12 2010 1579055

RED GEIS HI HO 180'04
RED SVR GANGSTER 14S
RED DWAJO DUCHESS 75M

Sire: **RED SVR GANGSTER 89U (1451944)**

RED SOUTH VIEW NO EQUAL 28H
RED SVR MS CHIEF 55P
RED SVR MS CHIEF 17J

RED BLAZE V415 OSF
RED GOLD-BAR KING V415 107K
RED KENRAY MISS DAWN 114F

Dam: **RED SVR JINNY 68P (1216761)**

RED LEACHMAN CURNT VALUE
RED BJ JINNY 26Z
RED CUTARM COUNTESS 903T

REA	+0.35
%IMF	-0.07
Fat	+0.000

CED	+0.0
CEM	+1.0
BW	+3.5
WW	+42
YW	+75
Milk	+5
TM	+26
Stay	+12
HPG	+9

BW: 96 Adj 205: 622 Adj 365: 1098 Calving Ease: * AOD: 6



LOT
184x

RED SVR HEAVY LOAD 184X

Male SVR 184X March 10 2010 1595429

RED SVR NUMERO 37N
RED SVR WIDE LOAD 23R
RED SVR BITTERSWEET 98K

Sire: **RED SVR HEAVY LOAD 10T (1385313)**

RED BAR-E-L COPPERTOP 147M
RED SVR RAINBOW 87R
RED SVR RAINBOW 64M

RED GEIS HI HO 180'04
RED SVR GANGSTER 14S
RED DWAJO DUCHESS 75M

Dam: **RED SVR MS CHIEF 3U (1451847)**

RED SOUTH VIEW NO EQUAL 28H
RED SVR MS CHIEF 40S
RED SVR MS CHIEF 28L

BW	-1.9
WW	+23
YW	+42
Milk	+9
TM	-
Stay	+8

REA	+0.18
%IMF	-0.11
Fat	-0.010

BW: 72 Adj 205: 596 Adj 365: 1038 Calving Ease: *** AOD: 2



LOT
195x

RED SVR HI HO 195X

Male SVR 195X March 15 2010 1595399

RED ROYAL HI HO 30M
RED GEIS HI HO 180'04
RED GEIS BAYBERRY 151'96

Sire: **RED SVR HI HO 32U (1451880)**

RED SOUTH VIEW NO EQUAL 28H
RED SVR RUBY 25M
RED LAMBS RUBY 85C

RED YY RED KNIGHT 640F OSF
RED SVR KNIGHT 73P OSF
RED SVR JINNY 19K

Dam: **RED SVR COCA 152S (1328759)**

RED SSS HIGH MARK 272D
RED SVR COCA 32L
RED SOUTH VIEW LADY RAB 6G

REA	
%IMF	
Fat	

CED	+6.0
CEM	+7.0
BW	+0.2
WW	+29
YW	+50
Milk	+4
TM	+18
Stay	+9
HPG	+8

BW: 80 Adj 205: 579 Adj 365: 985 Calving Ease: *** AOD: 4



LOT
240x

RED SVR KNIGHT 240X

Male SVR 240X March 28 2010 1570029

RED YY RED KNIGHT 640F OSF
RED SVR KNIGHT 73P OSF
RED SVR JINNY 19K

Sire: RED SVR KNIGHT 149S (1328976)

RED T-S PATRIOT 84K
RED COCKBURN QUEEN 162M
RED COCKBURN MS QUEEN 78G

RED LCHMN GRND CANYON 1244G OSC MAF
RED WILDMAN EL GRANDE 5M OSF
RED WILDMAN SARA 52K

Dam: RED SVR MISS MAXI 79R (1267750)

RED RIVERDALE 133Z
RED RSL MISS MAXI 108C
RED MISS RTR 50Z

REA	+0.10
%IMF	-0.11
Fat	+0.010

CED	+4.0
CEM	+4.0
BW	-0.9
WW	+31
YW	+58
Milk	+15
TM	+30
Stay	+9
HPG	+6

BW: 80 Adj 205: 642 Adj 365: 1087 Calving Ease: *** AOD: 5



LOT
276x

RED SVR HI HO 276X

Male SVR 276X April 16 2010 1595415

RED SPRING CREEK HI HO 8K
RED ROYAL HI HO 30M
RED ROYAL BEULA 1164G

Sire: RED GEIS HI HO 180'04 (1206287)

RED GARA HEAVENLY 65C
RED GEIS BAYBERRY 151'96
RED GEIS BAYBERRY 66'92

RED BFCK CHEROKEE CNYN 4912 OSF MAF
RED LCC MAJOR LEAGUE A502M OSF MAF
RED KRN REBA'S ROBIN OSF

Dam: RED SVR JINNY 92S (1328808)

RED SSS BOOMER 803B
RED SVR JINNY 59M
RED BJ JINNY 26Z

REA	+0.17
%IMF	-0.02
Fat	-0.010

CED	+2.0
CEM	+2.0
BW	+0.9
WW	+46
YW	+73
Milk	+6
TM	+29
Stay	+8
HPG	+8

BW: 85 Adj 205: 689 Adj 365: 1093 Calving Ease: *** AOD: 4



LOT
267x

RED SVR HI HO 267X

Male SVR 267X April 08 2010 1595410

RED SPRING CREEK HI HO 8K
RED ROYAL HI HO 30M
RED ROYAL BEULA 1164G

Sire: RED GEIS HI HO 180'04 (1206287)

RED GARA HEAVENLY 65C
RED GEIS BAYBERRY 151'96
RED GEIS BAYBERRY 66'92

RED KBJ COLONEL 33J
RED SVR COLONEL 89N
RED CC MISS MAXI 128D

Dam: RED OKC CRISTY 4R (1258035)

RED SOUTH VIEW NO EQUAL 28H
RED SVR CHRISTY 78N
RED SOUTH VIEW CHRISTY 17E

REA	+0.00
%IMF	+0.10
Fat	-0.030

CED	+1.0
CEM	+3.0
BW	+3.4
WW	+43
YW	+69
Milk	+2
TM	+23
Stay	+7
HPG	+10

BW: 97 Adj 205: 675 Adj 365: 1174 Calving Ease: * AOD: 5



LOT
277x

RED SVR KNIGHT 277X

Male SVR 277X April 17 2010 1595418

RED YY RED KNIGHT 640F OSF
RED SVR KNIGHT 73P OSF
RED SVR JINNY 19K

Sire: RED SVR KNIGHT 149S (1328976)

RED T-S PATRIOT 84K
RED COCKBURN QUEEN 162M
RED COCKBURN MS QUEEN 78G

RED PO LEACHMAN 88E
RED P O VIKING 51G
RED VALLEYHILLS LARKABELLE 19B

Dam: RED SVR CHRISTINA 10K (1007666)

RED COCKBURN PINNACLE 17E
RED SOUTH VIEW CHRISTINA 45G
RED SOUTH VIEW CHRISTINA 7E

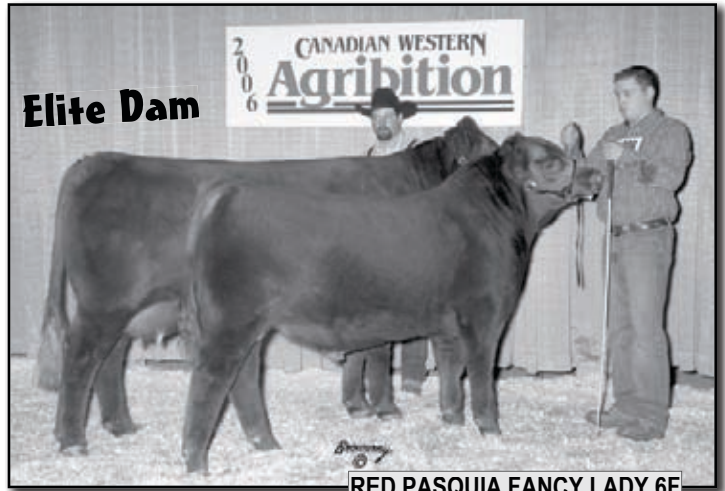
REA	+0.13
%IMF	-0.15
Fat	+0.010

CED	+6.0
CEM	+4.0
BW	+0.9
WW	+31
YW	+57
Milk	+13
TM	+28
Stay	+10
HPG	+7

BW: 79 Adj 205: 579 Adj 365: 1035 Calving Ease: *** AOD: 10



S A V NET WORTH 4200



Elite Dam

RED PASQUIA FANCY LADY 6F

15 years old and still producing herd bulls. 6F is a cow you can't appreciate enough and wish you had a herd of. Her udder is picture perfect, her feet are excellent, she has a quiet disposition and looks fresh for her age. She was flushed for a year and then bred back immediately. She is a CAA Elite Dam. Combine this with Net Worth 4200, a sire who has great performance and carcass data and the result is impressive. If you are looking for consistency, fertility, maternal traits and performance in your herd then take a look at these ET brothers.

**FULL ET BROTHERS
116X, 124X, 138X, 143X & 173x**

SITZ TRAVELER 8180 AMF CAF NHF
S A V 8180 TRAVELER 004 AMF CAF NHF
BOYD FOREVER LADY 8003
Sire: S A V NET WORTH 4200 AMF CAF NHF (1309743)
S A F 598 BANDO 5175 AMF CAC
S A V MAY 2410
S A V MAY 6269

RED RCN SANDHILL CHF 482
RED GET-A-LONG ARAB 159
RED SEAMAN UMPIRETTE 18M
Dam: RED PASQUIA FANCY LADY 6F (851971)
RED KBJ SAM'S PROSPECTOR 133Z MAF
RED PASQUIA FANCY LADY 6D
RED PASQUIA FANCY LADY 3A

BW	+2.1
WW	+46
YW	+87
Milk	+18
TM	—
SC	+0.31
REA	+0.32
%IMF	+0.18
Fat	+0.020

SVR LOT 116x **SVR NETWORK 116X**
Male RC (ET) SVR 116X February 24 2010 1589842

BW:	100	Adj 205:	630	Adj 365:	1146	Calving Ease:	**	AOD:	14
-----	-----	----------	-----	----------	------	---------------	----	------	----

SVR LOT 124x **SVR NET WORTH 124X**
Male RC (ET) SVR 124X February 26 2010 1589846

BW:	99	Adj 205:	595	Adj 365:	1156	Calving Ease:	**	AOD:	14
-----	----	----------	-----	----------	------	---------------	----	------	----

SVR LOT 138x **SVR NET WORTH 138X**
Male RC (ET) SVR 138X February 27 2010 1589855

BW:	89	Adj 205:	536	Adj 365:	1077	Calving Ease:	**	AOD:	14
-----	----	----------	-----	----------	------	---------------	----	------	----

SVR LOT 143x **SVR NET WORTH 143X**
Male RC (ET) SVR 143X February 28 2010 1589844

BW:	79	Adj 205:	655	Adj 365:	1234	Calving Ease:	**	AOD:	14
-----	----	----------	-----	----------	------	---------------	----	------	----

SVR LOT 173x **SVR NET WORTH 173X**
Male RC (ET) SVR 173X March 08 2010 1589847

BW:	95	Adj 205:	618	Adj 365:	1065	Calving Ease:	**	AOD:	14
-----	----	----------	-----	----------	------	---------------	----	------	----



LOT
307x

SVR PIONEER 307X

Male SVR 307X February 07 2010 1593007

SITZ TRAVELER 8180 AMF CAF NHF
S A V FINAL ANSWER 0035 AMF CAF NHF
S A V EMULOUS 8145
Sire: **S A V PIONEER 7301 AMF CAF NHF (1481377)**
BOYD NEW DAY 8005 AMF CAF NHF
S A V BLACKBIRD 5297
S A V BLACKBIRD 1082

SVR CONNECTION 221P
SVR CONNECT 307S
MERIT JILT 9002
Dam: **SVR BLACKCAP 246U (1451984)**
STEVENS ON ROYCE 741C CAF NHF
SVR BLACKCAP 237R
G D A R BLACKCAP LADY 3134

BW	+0.1
WW	+40
YW	+91
Milk	+23
TM	+—
SC	+0.62
REA	+0.23
%IMF	+0.20
Fat	+0.014

BW: 76 Adj 205: 580 Adj 365: 1223 Calving Ease: *** AOD: 2



LOT
309x

SVR FULLBACK 309X

Male SVR 309X February 09 2010 1569855

LLB FULLBACK 141M
VALLEY BLOSSOM WEATHERBY 732S
M BAR SIX QUEENETTE 232K
Sire: **LAMB'S QUARTERS FULLBACK 45U (1432500)**
NAF WANDERER 7L
LAMB'S QUARTERS BLACKBIRD 41N
LAMB'S QUARTERS BLACKBIRD 78K

SVR CONNECTION 221P
SVR CONNECT 307S
MERIT JILT 9002
Dam: **SVR GINGER 382U (1452053)**
RANGER G 1720 AMF CAF NHC
SVR GINGER 228P
SVR GINGER 51K

BW	+2.3
WW	+37
YW	+72
Milk	+17
TM	+36
CED	+2.0
CEM	+5.0

BW: 79 Adj 205: 637 Adj 365: 1168 Calving Ease: *** AOD: 2



Elite Dam



LOT
312x

SVR NET WORTH 312X

Male SVR 312X February 09 2010 1569858

S A V 8180 TRAVELER 004 AMF CAF NHF
S A V NET WORTH 4200 AMF CAF NHF
S A V MAY 2410
Sire: **SVR NET WORTH 335U (1451958)**
VERMILION DATELINE 7078 AMF CAF NHF
SVR QUEEN 213M
QUEEN 506Z

YOUNG DALE MONARCH 12E
NORTHLINE GRANITE 95G
KBJ EDNA 95A
Dam: **SVR GINGER 51K (1029738)**
TC STOCKMAN 2164 AMF
BBSF 2164 RSE GINGER 301G
VALLEYMERE RSE BRIDE 25X

REA	+0.18
%IMF	+0.07
FAT	+0.010

BW	+0.4
WW	+44
YW	+74
Milk	+13
TM	+35
CED	+6.0
CEM	+7.0

BW: 77 Adj 205: 680 Adj 365: 1323 Calving Ease: ** AOD: 10



LOT
315x

SVR NET WORTH 315X

Male SVR 315X February 10 2010 1569862

SITZ TRAVELER 8180 AMF CAF NHF
S A V 8180 TRAVELER 004 AMF CAF NHF
BOYD FOREVER LADY 8003
Sire: **S A V NET WORTH 4200 AMF CAF NHF (1309743)**
S A F 598 BANDO 5175 AMF CAC
S A V MAY 2410
S A V MAY 6269

SITZ ALLIANCE 6595 AMF NHF
SVR CONNECTION 221P
BBSF 131 MADONNA 304H
Dam: **SVR ERICA 331T (1385995)**
GEIS BLACKMAN 36'03
SVR ERICA 258R
SVR ERICA 257N

BW	+1.2
WW	+50
YW	+89
Milk	+21
TM	+46
CED	+7.0
CEM	+9.0

BW: 80 Adj 205: 630 Adj 365: 1096 Calving Ease: ** AOD: 3



LOT
321x

SVR PIONEER 321X

Male SVR 321X February 13 2010 1569873

SITZ TRAVELER 8180 AMF CAF NHF
S A V FINAL ANSWER 0035 AMF CAF NHF
S A V EMULOUS 8145

Sire: S A V PIONEER 7301 AMF CAF NHF (1481377)

BOYD NEW DAY 8005 AMF CAF NHF
S A V BLACKBIRD 5297
S A V BLACKBIRD 1082

O C C LEGEND 616L CAF
B C LOOKOUT 7024 AMF CAF NHF
GIBBET HILL MIGNONNE E37

Dam: SVR ANNIE 306U (1451848)

GEIS BLACKMAN 36'03
SVR ANNIE 312S
SVR ANNIE 244P

BW	+1.1
WW	+54
YW	+86
Milk	+20
TM	+47
CED	+7.0
CEM	+6.0

BW: 83 Adj 205: 686 Adj 365: 1355 Calving Ease: *** AOD: 2



LOT
323x

SVR FINAL ANSWER 323X

Male SVR 323X February 14 2010 1569877

SITZ TRAVELER 8180 AMF CAF NHF
S A V FINAL ANSWER 0035 AMF CAF NHF
S A V EMULOUS 8145

Sire: MFA FINAL ANSWER 31T (1397689)

MFA TIMELINE 69M
MFA BARDOLENE 97R
MFA BARDOLENE 148M

YOUNG DALE REAL DEAL 18K
YOUNG DALE TOUCH DOWN 36M
PAT LADY SANDRA 2C

Dam: SVR JESTRESS 327T (1386149)

NORTHLINE TUFF 619H
SVR JESTRESS 260N
BEAR HILLS JESTRESS 84D

BW	-0.4
WW	+48
YW	+91
Milk	+16
TM	+40
CED	+9.0
CEM	+7.0

REA	+0.21
%IMF	+0.17
Fat	+0.013

BW: 75 Adj 205: 563 Adj 365: 1118 Calving Ease: *** AOD: 3



LOT
326x

SVR PIONEER 326X

Male SVR 326X February 15 2010 1593005

SITZ TRAVELER 8180 AMF CAF NHF
S A V FINAL ANSWER 0035 AMF CAF NHF
S A V EMULOUS 8145

Sire: S A V PIONEER 7301 AMF CAF NHF (1481377)

BOYD NEW DAY 8005 AMF CAF NHF
S A V BLACKBIRD 5297
S A V BLACKBIRD 1082

YOUNG DALE TOUCH DOWN 36M
SVR LINE BACKER 303S
THOMA D CLARA ESTON 14J

Dam: SVR FAVORITE 401U (1452090)

L T 598 BANDO 9074 AMF CAF NHF
SOO LINE FAVORITE 5139
ANGUS GLEN FAVORITE 9N

BW	+3.2
WW	+52
YW	+93
Milk	+23
TM	—
SC	+0.62
REA	+0.29
%IMF	+0.36
Fat	+0.019

BW: 81 Adj 205: 610 Adj 365: 1188 Calving Ease: *** AOD: 2



LOT
329x

SVR NET WORTH 329X

Male SVR 329X February 15 2010 1595423

S A V 8180 TRAVELER 004 AMF CAF NHF
S A V NET WORTH 4200 AMF CAF NHF
S A V MAY 2410

Sire: SVR NETWORTH 335U (1451958)

VERMILION DATELINE 7078 AMF CAF NHF
SVR QUEEN 213M
QUEEN 506Z

RITO 616 OF 4B20 6807 AMF CAF NHF
CRESCENT CREEK 616 RITO 3L
CRESCENT CREEK PRIDE LADY 78G

Dam: SVR ATALANTA 255N (1154840)

NORTHLINE TUFF 619H
SVR ATALANTA 204L
TAF ATALANTA 39D

BW	-0.8
WW	+34
YW	+68
Milk	+12
TM	+29
CED	+10.0
CEM	+9.0

REA	+0.14
%IMF	+0.20
Fat	+0.020

BW: 73 Adj 205: 518 Adj 365: 1050 Calving Ease: *** AOD: 7



LOT
333x

SVR NET WORTH 333X

Male SVR 333X February 16 2010 1569889

SITZ TRAVELER 8180 AMF CAF NHF
S A V 8180 TRAVELER 004 AMF CAF NHF
BOYD FOREVER LADY 8003
Sire: **S A V NET WORTH 4200 AMF CAF NHF (1309743)**
S A F 598 BANDO 5175 AMF CAC
S A V MAY 2410
S A V MAY 6269

Dam: **SVR DUCH TORO 238R (1267828)**

ANGUS RIDGE SPECIALIZER 6F
THOMA D DUCH TORO 12K
THOMA D DUCH TORO 8D

REA	+0.24
%IMF	+0.38
Fat	+0.033

BW	+4.5
WW	+47
YW	+85
Milk	+21
TM	+45
CED	-2.0
CEM	+2.0

BW: 103 Adj 205: 710 Adj 365: 1364 Calving Ease: * AOD: 5



LOT
334x

SVR NET WORTH 334X

Male SVR 334X February 16 2010 1595424

S A V 8180 TRAVELER 004 AMF CAF NHF
S A V NET WORTH 4200 AMF CAF NHF
S A V MAY 2410
Sire: **SVR NETWORTH 335U (1451958)**
VERMILION DATELINE 7078 AMF CAF NHF
SVR QUEEN 213M
QUEEN 506Z

Dam: **SVR ATALANTA 227N (1154724)**

RITO 616 OF 4B20 6807 AMF CAF NHF
CRESCENT CREEK 616 RITO 3L
CRESCENT CREEK PRIDE LADY 78G
S A R BOLD PLAYBOY 6914
TAF ATALANTA 69E
TAF ATALANTA 56W

REA	+0.16
%IMF	+0.20
Fat	+0.017

BW	+3.8
WW	+40
YW	+72
Milk	+14
TM	+34
CED	-2.0
CEM	+2.0

BW: 103 Adj 205: 669 Adj 365: 1150 Calving Ease: * AOD: 7



Elite Dam



LOT
335x

SVR SETTLER 335X

Male SVR 335X February 16 2010 1569890

SITZ TRAVELER 8180 AMF CAF NHF
S A V FINAL ANSWER 0035 AMF CAF NHF
S A V EMULOUS 8145
Sire: **S A V PIONEER 7301 AMF CAF NHF (1481377)**
BOYD NEW DAY 8005 AMF CAF NHF
S A V BLACKBIRD 5297
S A V BLACKBIRD 1082

Dam: **SVR FOREVER LADY 248M (1130592)**

L R A ROSEBUD ROPE 390
B BAR POWER ROPE 0869
MISS POWER L R A 869
C H QUANTUM 3330
GDAR FOREVER LADY 0354
G D A R FOREVER LADY 5401

REA	+0.15
%IMF	+0.32
Fat	+0.000

BW	+1.7
WW	+46
YW	+83
Milk	+27
TM	+50
CED	+5.0
CEM	+7.0

BW: 85 Adj 205: 648 Adj 365: 1126 Calving Ease: *** AOD: 8



LOT
337x

SVR NETWORTH 337X

Male SVR 337X February 17 2010 1569896

S A V 8180 TRAVELER 004 AMF CAF NHF
S A V NET WORTH 4200 AMF CAF NHF
S A V MAY 2410
Sire: **SVR NETWORTH 335U (1451958)**
VERMILION DATELINE 7078 AMF CAF NHF
SVR QUEEN 213M
QUEEN 506Z

Dam: **SVR QUEEN 249M (1109955)**

SANDY BAR CHIEF 21F
DAY BY DAY CHIEF 304K
SANDY BAR LINDA 301E
G D A R EXECUTIVE 727 AMF NHF
SOUTH VIEW QUEEN EXECUTIVE 25H
Q A S QUEEN 3173 142 81D

REA	+0.14
%IMF	+0.22
Fat	+0.018

BW	+0.7
WW	+41
YW	+66
Milk	+22
TM	+43
CED	+5.0
CEM	+3.0

BW: 86 Adj 205: 649 Adj 365: 1168 Calving Ease: * AOD: 8



LOT
342x

SVR PIONEER 342X

Male SVR 342X February 19 2010 1569907

SITZ TRAVELER 8180 AMF CAF NHF
S A V FINAL ANSWER 0035 AMF CAF NHF
S A V EMULOUS 8145

Sire: S A V PIONEER 7301 AMF CAF NHF (1481377)

BOYD NEW DAY 8005 AMF CAF NHF
S A V BLACKBIRD 5297
S A V BLACKBIRD 1082

CONNEALY DATELINE
VERMILION DATELINE 7078 AMF CAF NHF
VERMILION BLACKBIRD 5044

Dam: SVR QUEEN 213M (1133029)

KING L4 338T
QUEEN 506Z
QUEEN L3 297R

REA	+0.30
%IMF	+0.23
Fat	+0.014

BW	+0.7
WW	+50
YW	+84
Milk	+21
TM	+46
CED	+6.0
CEM	+6.0

BW: 85 Adj 205: 658 Adj 365: 1143 Calving Ease: *** AOD: 8



LOT
346x

SVR NET WORTH 346X

Male SVR 346X February 20 2010 1590636

S A V 8180 TRAVELER 004 AMF CAF NHF
S A V NET WORTH 4200 AMF CAF NHF
S A V MAY 2410

Sire: SVR NETWORK 335U (1451958)

VERMILION DATELINE 7078 AMF CAF NHF
SVR QUEEN 213M
QUEEN 506Z

KBJ CONQOUR ALL 447J
SVR SLEDGE 219N
FV 249B MADONNA 28F

Dam: SVR ANNIE 213R (1267923)

NORTHLINE TUFF 619H
SVR ANNIE 216M
VS-PAT ANNIE K 831B

REA	+0.20
%IMF	+0.09
Fat	+0.014

BW	+3.7
WW	+44
YW	+79
Milk	+13
TM	+35
CED	-2.0
CEM	+3.0

BW: 104 Adj 205: 702 Adj 365: 1369 Calving Ease: * AOD: 5



LOT
344x

SVR PIONEER 344X

Male SVR 344X February 20 2010 1569913

SITZ TRAVELER 8180 AMF CAF NHF
S A V FINAL ANSWER 0035 AMF CAF NHF
S A V EMULOUS 8145

Sire: S A V PIONEER 7301 AMF CAF NHF (1481377)

BOYD NEW DAY 8005 AMF CAF NHF
S A V BLACKBIRD 5297
S A V BLACKBIRD 1082

D H D TRAVELER 6807 AMF NHF
ALBERDA TRAVELER 416 AMF CAF NHF
ALBERDA QUEEN KIMBERLY 222

Dam: SVR GINNY 215L (1049185)

SASKALTA RITO 10F
SVR GINNY 6J
BBSF 2000 GINNY 306G

REA	+0.21
%IMF	+0.31
Fat	+0.012

BW	+4.6
WW	+51
YW	+91
Milk	+25
TM	+51
CED	-2.0
CEM	+0.0

BW: 108 Adj 205: 754 Adj 365: 1399 Calving Ease: * AOD: 9



LOT
349x

SVR NET WORTH 349X

Male SVR 349X February 21 2010 1595426

S A V 8180 TRAVELER 004 AMF CAF NHF
S A V NET WORTH 4200 AMF CAF NHF
S A V MAY 2410

Sire: SVR NETWORK 335U (1451958)

VERMILION DATELINE 7078 AMF CAF NHF
SVR QUEEN 213M
QUEEN 506Z

KBJ ROGUES BAY 543K
SVR ROGUES BOY 221N
KBJ BIENE 515L

Dam: SVR BLACK NORMA 246R (1267990)

CRESCENT CREEK 616 RITO 3L
SVR BLACK NORMA 250N
SVR BLACK NORMA 208L

REA	+0.09
%IMF	+0.27
Fat	+0.020

BW	+0.7
WW	+39
YW	+69
Milk	+18
TM	+38
CED	+6.0
CEM	+6.0

BW: 87 Adj 205: 618 Adj 365: 1162 Calving Ease: ** AOD: 5



LOT
352x

SVR FULLBACK 352X

Male SVR 352X February 22 2010 1569927

LLB FULLBACK 141M
VALLEY BLOSSOM WEATHERBY 732S
M BAR SIX QUEENETTE 232K
Sire: LAMB'S QUARTERS FULLBACK 45U (1432500)
NAF WANDERER 7L
LAMB'S QUARTERS BLACKBIRD 41N
LAMB'S QUARTERS BLACKBIRD 78K

GDAR TRAVELER 235
CRESCENT CREEK 235 TRAV 65R
CRESCENT CREEK LAWN 109H
Dam: SVR ANNIE 319U (1451894)
NORTHLINE TUFF 619H
SVR ANNIE 223M
DOUBLE AA ANNIE K 585'96

BW	+1.1
WW	+28
YW	+59
Milk	+12
TM	+26
CED	+5.0
CEM	+6.0

BW: 72 Adj 205: 524 Adj 365: 997 Calving Ease: *** AOD: 2



LOT
364x

SVR FINAL ANSWER 364X

Male SVR 364X February 24 2010 1569940

SITZ TRAVELER 8180 AMF CAF NHF
S A V FINAL ANSWER 0035 AMF CAF NHF
S A V EMULOUS 8145
Sire: MFA FINAL ANSWER 31T (1397689)
MFA TIMELINE 69M
MFA BARDOLENE 97R
MFA BARDOLENE 148M

GDAR TRAVELER 235
CRESCENT CREEK 235 TRAV 65R
CRESCENT CREEK LAWN 109H
Dam: SVR ANNIE 322T (1388818)
NORTHLINE TUFF 619H
SVR ANNIE 223M
DOUBLE AA ANNIE K 585'96

BW	+0.9
WW	+44
YW	+86
Milk	+14
TM	+36
CED	+5.0
CEM	+6.0

BW: 83 Adj 205: 580 Adj 365: 1060 Calving Ease: ** AOD: 3



LOT
354x

SVR NET WORTH 354X

Male SVR 354X February 22 2010 1569929

SITZ TRAVELER 8180 AMF CAF NHF
S A V 8180 TRAVELER 004 AMF CAF NHF
BOYD FOREVER LADY 8003
Sire: S A V NET WORTH 4200 AMF CAF NHF (1309743)
S A F 598 BANDO 5175 AMF CAC
S A V MAY 2410
S A V MAY 6269

CONNEALY DATELINE
VERMILION DATELINE 7078 AMF CAF NHF
VERMILION BLACKBIRD 5044
Dam: SVR QUEEN 209M (1133027)
KING L4 338T
QUEEN 506Z
QUEEN L3 297R

BW	+2.8
WW	+45
YW	+83
Milk	+21
TM	+44
CED	+3.0
CEM	+7.0

REA	+0.33
%IMF	+0.29
Fat	+0.025

BW: 88 Adj 205: 610 Adj 365: 1184 Calving Ease: ** AOD: 8



LOT
366x

SVR NET WORTH 366X

Male SVR 366X February 25 2010 1569943

S A V 8180 TRAVELER 004 AMF CAF NHF
S A V NET WORTH 4200 AMF CAF NHF
S A V MAY 2410
Sire: SVR NETWORTH 335U (1451958)
VERMILION DATELINE 7078 AMF CAF NHF
SVR QUEEN 213M
QUEEN 506Z

CONNEALY FOREFRONT AMF CAF NHF
TC MOONSHINE 001
TC MOONSHINE 7002
Dam: SVR CLARA 225P (1216883)
ANGUS RIDGE SPECIALIZER 6F
THOMA D CLARA ESTON 14J
THOMA D CLARA BELL 9Z

BW	-0.5
WW	+37
YW	+67
Milk	+18
TM	+37
CED	+9.0
CEM	+9.0

REA	+0.14
%IMF	+0.19
Fat	+0.015

BW: 84 Adj 205: 636 Adj 365: 1160 Calving Ease: ** AOD: 6



LOT
368x

SVR FINAL ANSWER 368X

Male SVR 368X February 26 2010 1569948

SITZ TRAVELER 8180 AMF CAF NHF
S A V FINAL ANSWER 0035 AMF CAF NHF
S A V EMULOUS 8145

Sire: MFA FINAL ANSWER 31T (1397689)

MFA TIMELINE 69M
MFA BARDOLENE 97R
MFA BARDOLENE 148M

SITZ ALLIANCE 6595 AMF NHF
SVR CONNECTION 221P

Dam: SVR ANNIE 337S (1328902)

BBSF 131 MADONNA 304H
CRESCENT CREEK 616 RITO 3L
SVR ANNIE 247N
DOUBLE AA ANNIE K 585'96

BW	+1.9
WW	+48
YW	+89
Milk	+20
TM	+44
CED	+3.0
CEM	+4.0

REA	+0.16
%IMF	+0.06
Fat	+0.010

BW: 96 Adj 205: 695 Adj 365: 1137 Calving Ease: ** AOD: 4



LOT
373x

SVR TRAVELER 373X

Male SVR 373X February 27 2010 1595428

O C C TRAVELER 723Z
GDAR TRAVELER 235
GDAR PRIMROSE 0251

Sire: CRESCENT CREEK 235 TRAV 65R (1260406)

BOTANY ANGUS MAX 5A
CRESCENT CREEK LAWN 109H
ANGUS ACRES LAWN 85Z

G D A R QUANTUM 1245
C H QUANTUM 3330

Dam: GDAR FOREVER LADY 0354 (1089405)

DIXIE ERICA OF C H 6180
H S F HISTORIAN 04
G D A R FOREVER LADY 5401
G D A R FOREVER LADY 1214

BW	+4.9
WW	+32
YW	+67
Milk	+11
TM	+27
CED	+2.0
CEM	+5.5

REA	-0.30
%IMF	+0.09
Fat	-0.009

BW: 105 Adj 205: 577 Adj 365: 1165 Calving Ease: * AOD: 10



LOT
374x

SVR FINAL ANSWER 374X

Male SVR 374X February 27 2010 1569954

SITZ TRAVELER 8180 AMF CAF NHF
S A V FINAL ANSWER 0035 AMF CAF NHF
S A V EMULOUS 8145

Sire: MFA FINAL ANSWER 31T (1397689)

MFA TIMELINE 69M
MFA BARDOLENE 97R
MFA BARDOLENE 148M

KB J CONQOUR ALL 447J
SVR SLEDGE 219N
FV 249B MADONNA 28F

Dam: SVR ATALANTA 357S (1328895)

CRESCENT CREEK 616 RITO 3L
SVR ATALANTA 227N
TAF ATALANTA 69E

BW	-2.2
WW	+46
YW	+86
Milk	+11
TM	+34
CED	+11.0
CEM	+9.0

REA	+0.17
%IMF	+0.05
Fat	+0.005

BW: 70 Adj 205: 616 Adj 365: 1141 Calving Ease: *** AOD: 4



LOT
378x

SVR FINAL ANSWER 378X

Male SVR 378X February 28 2010 1595430

SITZ TRAVELER 8180 AMF CAF NHF
S A V FINAL ANSWER 0035 AMF CAF NHF
S A V EMULOUS 8145

Sire: MFA FINAL ANSWER 31T (1397689)

MFA TIMELINE 69M
MFA BARDOLENE 97R
MFA BARDOLENE 148M

GDAR TRAVELER 235
CRESCENT CREEK 235 TRAV 65R
CRESCENT CREEK LAWN 109H

Dam: SVR GINGER 359T (1388689)

NORTHLINE GRANITE 95G
SVR GINGER 51K
BBSF 2164 RSE GINGER 301G

BW	+0.2
WW	+40
YW	+80
Milk	+13
TM	+33
CED	+7.0
CEM	+7.0

BW: 79 Adj 205: 551 Adj 365: 1060 Calving Ease: *** AOD: 3



LOT
379x

SVR FINAL ANSWER 379X

Male SVR 379X March 01 2010 1569957

SITZ TRAVELER 8180 AMF CAF NHF
S A V FINAL ANSWER 0035 AMF CAF NHF
S A V EMULOUS 8145

Sire: MFA FINAL ANSWER 31T (1397689)

MFA TIMELINE 69M
MFA BARDOLENE 97R
MFA BARDOLENE 148M

KBJ CONQOUR ALL 447J
SVR SLEDGE 219N
FV 249B MADONNA 28F

Dam: SVR BLACKBIRD 321S (1328793)

CONNEALY DATELINE
SVR BLACKBIRD 216L
BBSF 2000 BLACKBIRD 310H

BW	+0.5
WW	+49
YW	+87
Milk	+10
TM	+35
CED	+7.0
CEM	+8.0

BW: 86 Adj 205: 619 Adj 365: 1120 Calving Ease: ** AOD: 4



LOT
382x

SVR FINAL ANSWER 382X

Male SVR 382X March 01 2010 1569959

SITZ TRAVELER 8180 AMF CAF NHF
S A V FINAL ANSWER 0035 AMF CAF NHF
S A V EMULOUS 8145

Sire: MFA FINAL ANSWER 31T (1397689)

MFA TIMELINE 69M
MFA BARDOLENE 97R
MFA BARDOLENE 148M

GEIS BLACKMAN 186'00
GEIS BLACKMAN 36'03
GEIS EVENING TINGE 201'01

Dam: SVR ANNIE 312S (1328971)

CRESCENT CREEK 616 RITO 3L
SVR ANNIE 244P
SVR ANNIE 223M

BW	-3.1
WW	+44
YW	+77
Milk	+16
TM	+38
CED	+13.0
CEM	+11.0

BW: 70 Adj 205: 588 Adj 365: 1126 Calving Ease: *** AOD: 4



LOT
384x

SVR NET WORTH 384X

Male SVR 384X March 02 2010 1569961

S A V 8180 TRAVELER 004 AMF CAF NHF
S A V NET WORTH 4200 AMF CAF NHF
S A V MAY 2410

Sire: SVR NETWORTH 335U (1451958)

VERMILION DATELINE 7078 AMF CAF NHF
SVR QUEEN 213M
QUEEN 506Z

SANDY BAR CHIEF 21F
DAY BY DAY CHIEF 304K
SANDY BAR LINDA 301E

Dam: SVR ERICA 257N (1154780)

SASKALTA RITO 10F
SVR ELLEN ERICA 90J
BBSF 2164 ELLEN 300G

BW	+2.4
WW	+38
YW	+68
Milk	+17
TM	+36
CED	+1.0
CEM	+2.0

REA	+0.11
%IMF	+0.27
Fat	+0.020

BW: 91 Adj 205: 594 Adj 365: 1110 Calving Ease: ** AOD: 7



LOT
386x

SVR NET WORTH 386X

Male SVR 386X March 03 2010 1597455

S A V 8180 TRAVELER 004 AMF CAF NHF
S A V NET WORTH 4200 AMF CAF NHF
S A V MAY 2410

Sire: SVR NETWORTH 335U (1451958)

VERMILION DATELINE 7078 AMF CAF NHF
SVR QUEEN 213M
QUEEN 506Z

G A R PRECISION 1680 AMC NHC
RANGER G 1720 AMF CAF NHC
SITZ EVERELDA ENTENSE 1137

Dam: SVR GINGER 242N NHF (1166678)

TC STOCKMAN 2164 AMF
BBSF 2164 RSE GINGER 301G
VALLEYMERE RSE BRIDE 25X

BW	+0.1
WW	+34
YW	+60
Milk	+20
REA	+0.35
%IMF	+0.30
Fat	+0.018

BW: 80 Adj 205: 612 Adj 365: 1050 Calving Ease: *** AOD: 7



SVR FINAL ANSWER 400X

Male SVR 400X March 08 2010 1595432

SITZ TRAVELER 8180 AMF CAF NHF
S A V FINAL ANSWER 0035 AMF CAF NHF
S A V EMULOUS 8145

Sire: MFA FINAL ANSWER 31T (1397689)

MFA TIMELINE 69M
MFA BARDOLENE 97R
MFA BARDOLENE 148M

KBJ CONQOUR ALL 447J
SVR SLEDGE 219N
FV 249B MADONNA 28F

Dam: SVR GINGER 341S (1328789)

CONNEALY DATELINE
SVR GINGER 207L
SVR GINGER 7J

BW	-1.2
WW	+46
YW	+86
Milk	+9
TM	+32
CED	+10.0
CEM	+10.0

REA	+0.22
%IMF	+0.13
Fat	+0.004

BW: 76 Adj 205: 556 Adj 365: 1062 Calving Ease: *** AOD: 4



SVR NET WORTH 405X

Male SVR 405X March 12 2010 1569989

S A V 8180 TRAVELER 004 AMF CAF NHF
S A V NET WORTH 4200 AMF CAF NHF
S A V MAY 2410

Sire: SVR NETWORTH 335U (1451958)

VERMILION DATELINE 7078 AMF CAF NHF
SVR QUEEN 213M
QUEEN 506Z

CRESCENT CREEK MAXIMUM 37C
KBJ CONQOUR ALL 447J
LLB KINCHTRY BEAUTY 403E

Dam: SVR BLACKBIRD 244N (1159222)

ROYAL STOCKMAN 6F
SVR BLACKBIRD 73K
TAF BLACKBIRD 18F

BW	+3.7
WW	+43
YW	+75
Milk	+14
TM	+36
CED	-1.0
CEM	+3.0

REA	+0.16
%IMF	+0.19
Fat	+0.017

BW: 91 Adj 205: 606 Adj 365: 1101 Calving Ease: ** AOD: 7



SVR FINAL ANSWER 421X

Male SVR 421X March 25 2010 1595400

SITZ TRAVELER 8180 AMF CAF NHF
S A V FINAL ANSWER 0035 AMF CAF NHF
S A V EMULOUS 8145

Sire: MFA FINAL ANSWER 31T (1397689)

MFA TIMELINE 69M
MFA BARDOLENE 97R
MFA BARDOLENE 148M

YOUNG DALE REAL DEAL 18K
YOUNG DALE TOUCH DOWN 36M
PAT LADY SANDRA 2C

Dam: SVR MADONNA 366T (1386063)

ANGUS ACRES WINSTON 249B
FV 249B MADONNA 28F
F V MADONNA MAX 22D

BW	+0.5
WW	+49
YW	+92
Milk	+20
TM	+45
CED	+7.0
CEM	+4.0

REA	+0.20
%IMF	+0.18
Fat	+0.012

BW: 76 Adj 205: 655 Adj 365: 1181 Calving Ease: *** AOD: 3



SVR NETWORTH 422X

Male SVR 422X March 25 2010 1595402

S A V 8180 TRAVELER 004 AMF CAF NHF
S A V NET WORTH 4200 AMF CAF NHF
S A V MAY 2410

Sire: SVR NETWORTH 335U (1451958)

VERMILION DATELINE 7078 AMF CAF NHF
SVR QUEEN 213M
QUEEN 506Z

RITO 616 OF 4B20 6807 AMF CAF NHF
CRESCENT CREEK 616 RITO 3L
CRESCENT CREEK PRIDE LADY 78G

Dam: SVR ANNIE 210N (1154848)

NORTHLINE TUFF 619H
SVR ANNIE 222L
DOUBLE AA ANNIE K 585'96

BW	+1.6
WW	+35
YW	+68
Milk	+12
TM	+30
CED	+4.0
CEM	+4.0

REA	+0.17
%IMF	+0.17
Fat	+0.017

BW: 89 Adj 205: 575 Adj 365: 1091 Calving Ease: ** AOD: 7



SVR FINAL ANSWER 426X

Male SVR 426X March 28 2010 1570030

SITZ TRAVELER 8180 AMF CAF NHF
S A V FINAL ANSWER 0035 AMF CAF NHF
S A V EMULOUS 8145

Sire: MFA FINAL ANSWER 31T (1397689)

MFA TIMELINE 69M
MFA BARDOLENE 97R
MFA BARDOLENE 148M

KBJ CONQOUR ALL 447J
SVR SLEDGE 219N
FV 249B MADONNA 28F

Dam: SVR GINNY 348S (1328823)

NORTHLINE TUFF 619H
SVR GINNY 217M
SVR GINNY 6J

BW	+0.8
WW	+57
YW	+102
Milk	+13
TM	+42
CED	+5.0
CEM	+6.0

BW: 88 Adj 205: 713 Adj 365: 1301 Calving Ease: ** AOD: 4



SVR NET WORTH 429X

Male SVR 429X March 29 2010 1570033

S A V 8180 TRAVELER 004 AMF CAF NHF
S A V NET WORTH 4200 AMF CAF NHF
S A V MAY 2410

Sire: SVR NETWORK 335U (1451958)

VERMILION DATELINE 7078 AMF CAF NHF
SVR QUEEN 213M
QUEEN 506Z

YOUNG DALE REAL DEAL 18K
YOUNG DALE TOUCH DOWN 36M
PAT LADY SANDRA 2C

Dam: SVR EVENING TINGE 341T (1385940)

WIWA CREEK STOCKMAN 25'95
DOUBLE FOUR EVENING TINGE 54J
DOUBLE FOUR EVENING TINGE 60F

BW	+2.0
WW	+45
YW	+78
Milk	+20
TM	+43
CED	+4.0
CEM	+6.0

BW: 80 Adj 205: 662 Adj 365: 1141 Calving Ease: *** AOD: 3



SVR NET WORTH 427X

Male SVR 427X March 28 2010 1570031

S A V 8180 TRAVELER 004 AMF CAF NHF
S A V NET WORTH 4200 AMF CAF NHF
S A V MAY 2410

Sire: SVR NETWORK 335U (1451958)

VERMILION DATELINE 7078 AMF CAF NHF
SVR QUEEN 213M
QUEEN 506Z

GARDENS FORTUNE 9213 S3 AMF
STEVENSON FORTUNE 425C AMF CAF NHF
J R S ENCHANTRESS 235Z

Dam: SVR BLACKBIRD 206L (1072524)

TC STOCKMAN 365
KLT BLACKBIRD'S JOY 3J
KLT BLACKBIRD 4E

REA	+0.21
%IMF	+0.27
Fat	+0.017

BW	+3.3
WW	+42
YW	+76
Milk	+18
TM	+39
CED	+10.
CEM	+4.0

BW: 102 Adj 205: 705 Adj 365: 1238 Calving Ease: * AOD: 9



SVR FINAL ANSWER 433X

Male SVR 433X April 02 2010 1595408

SITZ TRAVELER 8180 AMF CAF NHF
S A V FINAL ANSWER 0035 AMF CAF NHF
S A V EMULOUS 8145

Sire: MFA FINAL ANSWER 31T (1397689)

MFA TIMELINE 69M
MFA BARDOLENE 97R
MFA BARDOLENE 148M

GDAR TRAVELER 235
CRESCENT CREEK 235 TRAV 65R
CRESCENT CREEK LAWN 109H

Dam: SVR BLACKBIRD 364T (1388673)

TC STOCKMAN 365
KLT BLACKBIRD'S JOY 3J
KLT BLACKBIRD 4E

REA	+0.10
%IMF	+0.18
Fat	+0.005

BW	-2.2
WW	+47
YW	+91
Milk	+17
TM	+41
CED	+12.0
CEM	+11.0

BW: 68 Adj 205: 661 Adj 365: 1176 Calving Ease: *** AOD: 3



LOT
439x

SVR FINAL ANSWER 439X

Male SVR 439X April 16 2010 1595413

SITZ TRAVELER 8180 AMF CAF NHF
S A V FINAL ANSWER 0035 AMF CAF NHF
S A V EMULOUS 8145

Sire: MFA FINAL ANSWER 31T (1397689)

MFA TIMELINE 69M
MFA BARDOLENE 97R
MFA BARDOLENE 148M

SITZ ALLIANCE 6595 AMF NHF
SVR CONNECTION 221P
BBSF 131 MADONNA 304H

Dam: BREED CREEK ELECTRA 690 (1354385)

KR TOPCUT QUARTERBACK 101H
BREED CREEK ELECTRA 468
BREED CREEK ELECTRA 1E

BW	-1.1
WW	+43
YW	+82
Milk	+16
TM	+38
CED	+9.
CEM	+9.0

BW: 80 Adj 205: 628 Adj 365: 1105 Calving Ease: *** AOD: 4



LOT
441x

SVR NETWORK 441X

Male SVR 441X April 19 2010 1599464

S A V 8180 TRAVELER 004 AMF CAF NHF
S A V NET WORTH 4200 AMF CAF NHF
S A V MAY 2410

Sire: SVR NETWORK 335U (1451958)

VERMILION DATELINE 7078 AMF CAF NHF
SVR QUEEN 213M
QUEEN 506Z

SANDY BAR CHIEF 21F
DAY BY DAY CHIEF 304K
SANDY BAR LINDA 301E

Dam: SVR MADONNA 219M (1110039)

S A F FAME AMF CAF NHF
SVR MADONNA 21K
BBSF 131 MADONNA 304H

BW	-1.0
WW	+35
YW	+63
Milk	+14
REA	+0.17
%IMF	+0.20
Fat	+0.016

BW: 78 Adj 205: -- Adj 365: -- Calving Ease: *** AOD: 8



S
I
M
M
/
A
N
G
U
S

B
U
L
L
S



LOT
801x

SVR 801X

Male SVR 801X February 12 2010 Simm/Angus

RED ROYAL HI HO 30M
RED GEIS HI HO 180'04
RED GEIS BAYBERRY 151'96

Sire: RED SVR GANGSTER 14S (1328810)

RED CRESCENT CREEK CHEROKEE 79
RED DWAJO DUCHESS 75M
RED WBR DUCHESS 16'96

Dam: SIMM/ANGUS 1/2 BLOOD

BW: 71 Oct 14 wt: 642 Mar 3 wt: 990 Calving Ease: *** AOD: 2



LOT
805x

SVR 805X

Male SVR 805X February 12 2010 Simm/Angus

CNS DREAM ON L186
REMINGTON RED LABEL HR
HSREFLECTIONS J34

Sire: REMINGTON ON TARGET 2S

G & L AVALANCHE 149F
DRAKE SOFT TOUCH 15M
DRAKE MISS P36D

RED PO LEACHMAN 88E
RED PO VIKING 51G
RED VALLEYHILLS LARKABELLE 19B

Dam: RED SVR MISS VIKING 29K

RED CUTARM DALLES 664Y
RED CIRCLE R COCA 52R
RED BXT XIMO COCA 4581

BW: 88 Oct 14 wt: 740 Mar 3 wt: 1190 Calving Ease: ** AOD: 10

NOTES



Creating Value for Angus Tagged Cattle
www.rancherendorsed.com

Increase the value of your Angus Calves - Tag 'Em Green.

- CCIA tag for national ID and verifies 50% Angus
- Eligible for Angus branded beef programs
- Eligible for more than 160 CACP feeder sales
- Free listing of sale animals on CAA website
- Free age verification
- Competitive pricing - no enrollment fee
- CALL 1-888-571-3580



**The future of South View
Ranch...
Keaton, Kamrie, Kohen &
Korbyn Kaufmann**





SVR386X



SVR 321X



SVR 354X



SVR 405X



SVR 27X



SVR 36X



SVR 71X



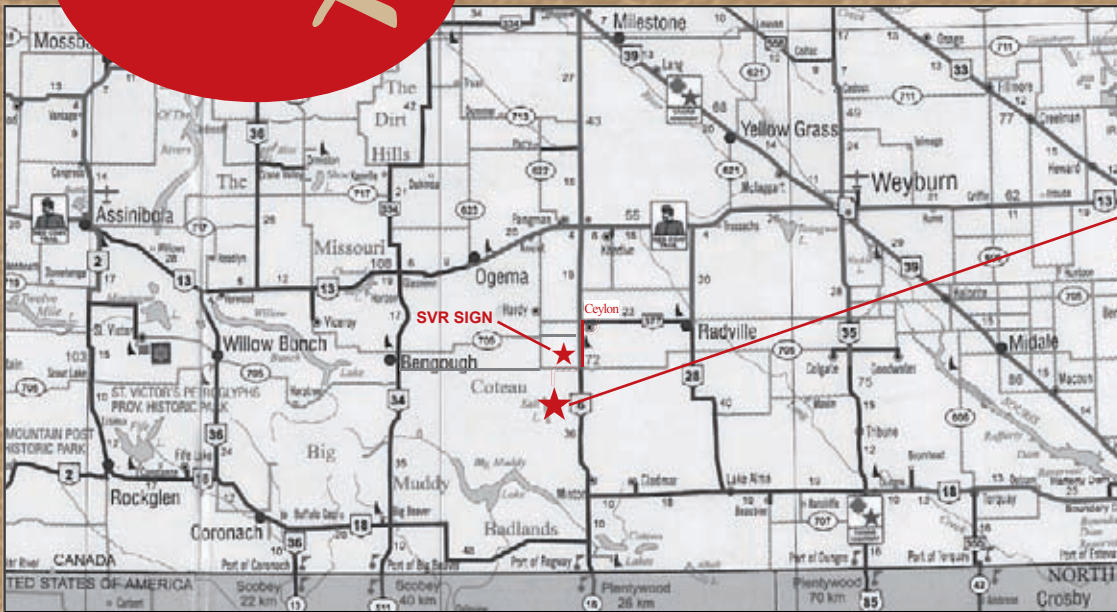
SVR136X

South View Ranch



Box 130
Ceylon, SK
S0C 0T0

CANADA POST	POSTES CANADA
Postage paid	Port payé
Addressed Admail	Médiaposte avec adresse
03070247	



Directions to the Ranch

From Ceylon:

- 9 km South on Hwy #6
- 6 km West on Twp Road #52
- 3 km South on Rge Road #210

From Port of Regway:

- 40 km North on Hwy #6
- 6 km West on Twp Road #52
- 3 km South on Rge Road #210



SVR 357X



SVR 441X



SVR 104X



SVR 267X

Please bring this catalog with you to the sale!
Printed in Canada

Catalog prepared by Saskatchewan
Livestock Association. 306-757-6133