



SOUTH VIEW RANCH



Your Herd Bull Factory



**10th ANNUAL
RED & BLACK ANGUS
BULL SALE**

THURSDAY, APRIL 15, 2010 ~1:30 PM
at South View Ranch, Ceylon, SK

South View Ranch

10th Annual Angus Bull Sale

Thursday, April 15, 2010
at South View Ranch, Ceylon, SK

9 km S of Ceylon on Hwy #6 - 6 km W, 3 km S

SALE TIME - 1:30 Complimentary Lunch - 12:00 Noon

90 Bulls Sell

52.... Red Angus Yearling Bulls..... Pages 8 - 20

36.... Black Angus Yearling Bulls..... Pages 21 - 30

2.... Simm/Angus Yearling Bulls..... Page 31

No Bulls sold prior to the Sale



Your Herd Bull Factory

Auctioneer:

Chris Poley 306-220-5006

Ringmen:

Mark Stock 306-678-4811

Craig Flewelling 403-556-0515

Consultants:

Shane Castle 306-741-7485

Kris Petersen 701-339-0305

Zane Anderson 306-267-4518 C: 306-869-7920

Special Representatives:

John Donaldson - President CAA

Doug Fee - CEO CAA

Brian Good - Commercial Field Rep CAA

Clint Smith - President SAA

Belinda Wagner - General Manager SAA

Accommodations:

Perfect Inn, Weyburn, SK - Toll free 1-866-435-5555

Ramada Inn & Suites, Weyburn, SK - 306-842-4994

Canalta Hotel, Weyburn, SK - 306-842-8000

Insurance: Insurance will be available Sale Day.

Calving Ease Score

- *** Recommended for use on heifers.
- ** Recommended for 2nd calvers or moderate cows
- * Recommended for use on cows.

These are our recommendations based on the information we have available. Other factors that can influence birth weight are the birth weight, frame score and bone size of dam, management, nutrition and gestation. All this needs to be taken into consideration.

**Current Weights,
Scrotal Measurements & Carcass Evaluations by
CUP Ultrasound will be available Sale Day
FREE DELIVERY up to 1000 km on purchases of
\$2500 or more - other deliveries at cost.**



View the Catalogue on-line at

www.southviewranch.com

Sight Unseen Purchase Program

If you are unable to attend the sale we would be happy to assist you with your purchase. You can call Shane or Keith so they can help find the bull that will suit your needs. On sale day you can either be on the phone bidding yourself or have Shane, Keith or any of our capable staff look after it for you. 100% satisfaction is guaranteed.

Sale Day Phones - 306-454-2730 * 306-454-2688 *
Keith Cell 306-869-8071 * Shane Cell 306-869-8074

Welcome ...from South View Ranch

Another year has sped by in front of us. It is hard to believe 2010 marks our 10th annual Bull Sale. It seems like just the other day we were throwing the idea around about hosting our own sale. Please consider this your personal invitation to join us on April 15th for lunch, refreshments, and of course, to view some good ranch raised bulls.

During these last 10 years of bull sales and the 35 plus years before that of making a living in the cattle industry, we have met and worked with many great people. This is our lifestyle and we sincerely thank our many customers for your interest and support of our program. We look forward to working with you for many more years and look forward to meeting many more new cattle producers.

The bull pen is as strong as ever. From top to bottom we have a very uniform set of Red and Black Angus bulls that will work in many herds. These boys are not fat, just in excellent working condition. They were raised naturally on mother's milk and grass, weaned on October 18th... 3 weeks later than normal thanks to a very late harvest!!! They were then started on a balanced ration of pro-pellets, silage and chopped hay. They are managed in a large area for optimum exercise. All the bulls on offer will be semen tested, vet inspected and scrotal measured with performance records and carcass data available.

If you are unable to attend the sale, please feel free to come anytime to have a look, as sale day phones will be available, or consider our sight unseen purchase program. Rest assured you can buy with confidence as the culling has been done. If you have any questions or need any assistance, give us a call or stop in anytime.

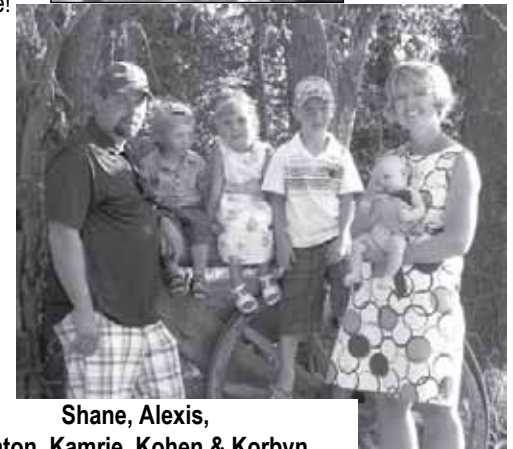
We look forward to visiting with you on April 15th. Hope to see you at our 10th anniversary sale!



Keith & Linda



Stacey



Shane, Alexis,
Keaton, Kamrie, Kohen & Korbyn

"The Kaufmann's"

Keith, Linda & Stacey
Box 130, Ceylon, SK S0C 0T0
306-454-2730 Cell: 306-869-8071
svr@sasktel.net

Fax 306-454-2643

Shane & Alexis and family
Box 40, Ceylon, SK S0C 0T0
306-454-2688 Cell: 306-869-8074
sakaufmann.svr@sasktel.net

www.southviewranch.com





RED GEIS HI HO 180'04

Male TW 1206287 GEIS 180P February 15 2004

RED HOLDEN HI HO 7151
RED SPRING CREEK HI HO 8K
RED SPRINGCREEK ROCKETGIRL 56F

Sire: RED ROYAL HI HO 30M

RED ROYAL CHIEF 118C
RED ROYAL BEULA 1164G
RED ROYAL SAM'S BEULA 46D
RED LEACHMAN HEAVENLY 8141
RED GARA HEAVENLY 65C
RED MARTA 46U OF EAST FORK

Dam: RED GEIS BAYBERRY 151'96

RED ROYAL MAGNUM 21X
RED GEIS BAYBERRY 66'92
RED CUMNOCK BAYBERRY 952Y

BW: 60 lbs. Adj 205: 841 lbs. Adj 365: 1233 lbs.

EPD'S	
CED:	+4.0
CEM:	+3.0
BW:	+2.3
WW:	+45
YW:	+73
Milk:	+4
TM:	+27
Stay:	+7
HPG:	+9
REA:	+0.04
Marb:	+0.02
Back Fat:	+0.00



RED GEIS HI HO 180'04



Dam - RED GEIS BAYBERRY 151'96

Hi Ho was the high selling red bull in Geis's 2005 sale. A very sound, thick bull with excellent feet, legs and scrotal. His dam is a picture perfect cow with a beautiful head, neck and shoulder built into an angular, deep sided body. We have used him on heifers and cows with great success.

Red Reference Sires



RED SVR GANGSTER 14S

Male 1328810 SVR 14S February 10 2006

RED SPRING CREEK HI HO 8K
RED ROYAL HI HO 30M
RED ROYAL BEULA 1164G

Sire: RED GEIS HI HO 180'04

RED GARA HEAVENLY 65C
RED GEIS BAYBERRY 151'96
RED GEIS BAYBERRY 66'92

RED HR CHEROKEE 53C
RED CRESCENT CREEK CHEROKEE 79
RED CRESCENT CREEK LARKABA 08F

Dam: RED DWAJO DUCHESS 75M

RED BJR THE DUKE 502-5176
RED WBR DUCHESS 16'96
RED BAR THREE H DUCHESS 66X

BW: 95 lbs. Adj 205: 788 lbs. Adj 365: 1265 lbs.

EPD'S	
CEDD:	+1.0
CEM:	+0.0
BW:	+3.7
WW:	+38
YW:	+62
Milk:	+9
TM:	+28
Stay:	+6
HPG:	+10
REA:	+0.35
Marb:	+0.14
Back Fat:	-0.01



RED SVR GANGSTER 14S

Gangster was a standout in the pen since birth. He has matured into a very stout, unique individual with lots of top, hip and an excellent hair-coat. He had a very successful show career for three years standing Grand or Reserve in the shows he participated in. The finale was taking part in the Royal Bank Supreme Challenge at Agribition. Gangster sold in our 2007 Bull Sale to Northline Angus and Wheeler Stock Farm for \$15,000 for 2/3 interest and full possession. Gangster's progeny exhibit many of his qualities - dark red with eye appeal and stout right from birth.



RED SVR KNIGHT 73P

Male 1216924 SVR 73P February 11 2004

RED BJR TOPPER AGAIN 23L
RED YY 23L TOPPER 408D
RED DEVOLANE ROZINE 8B

Sire: RED YY RED KNIGHT 640F

RED LINE FLAME 11N
RED TOP GOLDIE 40U
RED LINE GOLDIE 40K

RED FCC RAMBO 502
RED SSS BOOMER 803B
RED SSS MISS HIGH LASS 352X

Dam: RED SVR JINNY 19K

RED P-BAR BOSS MAN 12Z
RED SOUTH VIEW CLASSY LADY 26B
RED BJ JINNY 26Z

BW: 79 lbs. Adj 205: 787 lbs. Adj 365: 1217 lbs.

EPD'S	
CED:	+6.0
CEM:	+5.0
BW:	-1.4
WW:	+36
YW:	+56
Milk:	+11
TM:	+29
Stay:	+10
HPG:	+5
REA:	+0.16
Marb:	+0.06
Back Fat:	-0.01



RED SVR KNIGHT 73P

73P is dark red, deep sided and thick butted, with large testicles. He has excellent feet and legs and a quiet disposition. His daughters are proving to be very good mamas with beautiful udders, and sons are working in both purebred and commercial herds. We have used him on heifers and cows with great calving ease and excellent growth.



RED SVR JACK 65S

Male 1353623 SVR 65S February 18 2006

SODAK PRECISION 4358
 RED SODAK PRECISION 7408-97
 RED SODAK OSCAR 9359
Sire: RED DRYFORK K-C PRECISELY JACK
 RED PIE LO CANYON 912
 RED K-C MISS AUSSIE 45L
 RED K-C MISS AUSSIE 45J
 RED LCHMN NO EQUAL 1174D
 RED SOUTH VIEW NO EQUAL 28H
 RED PASQUIA FANCY LADY 6F
Dam: RED SVR CHRISTY 101M
 RED LEGARE'S FL TOPPER 6W
 RED LEGARE'S FL CHRISTY 13Y
 RED LEGARE'S FL CHRISTY

EPD'S	
CED:	+2.0
CEM:	+0.0
BW:	+1.7
WW:	+37
YW:	+66
Milk:	+11
TM:	+29
Stay:	+10
HPG:	+11
REA:	-0.04
Marb:	+0.12
Back Fat:	+0.00



RED SVR JACK 65S

BW: 88 lbs. Adj 205: 698 lbs. Adj 365: 1178 lbs.

Jack has exceeded all expectations. He is moderate framed, easy fleshing with lots of muscle shape standing on perfect feet. He has excellent testicle development, measuring 40 cm at 13 months of age. His daughters are calving now and are making good mommas with very nice udders. His progeny are very correct with eye appeal and excellent hair coats. His dam is definitely one of our best No Equal 28H daughters. Co-owned with Bar-E-L Angus.



RED GEFB HIGHER CAPACITY 2733

Male IMP 2733T 1480457 February 12 2007

RED BJR HI HO 916
 RED BJR HIGH CAPACITY 008 OSF
 RED JRA JAMES 904
Sire: RED UBAR HIGH CAPACITY 224 OSF
 RED LARSON RED LIGHTNING OSF
 RED BJR BONNEBELL 7G
 RED RD BONNEBELL 5E
 RED GLACIER LOGAN OSF
 RED TKP BODACIOUS 693 OSF
 RED TKP LASA MADONNA
Dam: RED GEF SWEET BABY 9814
 RED BTH MR TALLYMAN 4235
 RED GEF LADY 3556 TALLY 9606
 RED BUF CRK LASS 3656

EPD'S	
CED:	+0.0
CEM:	-1.0
BW:	+0.3
WW:	+33
YW:	+55
Milk:	+18
TM:	+34
Stay:	+8
HPG:	+7
REA:	---
Marb:	---
Back Fat:	---



RED GEFB HIGHER CAPACITY 2733

BW: 76 lbs. Adj 205: 736 lbs. Adj 365: ---

This herdsire was purchased from Geffert Red Angus in Wisconsin. He is a calving ease bull used mainly on heifers. His sire 224 is a very popular outcross bull throughout the United States and his dam, 9814 is also the dam to Beefmaker 2101.



RED SOUTH VIEW NO EQUAL 28H

Male SVR 28H 917962 February 19 1998

RED LEACHMAN BETTER HVY 8041
 RED LMAN NONE BETTER 9604 OSF
 RED LEACHMAN ELEANOR
Sire: RED LCHMN NO EQUAL 1174D OSF
 RED BITTERROOT GOLD 25XA
 RED LMAN PRAIRIE Q 9308
 RED PRF PRAIRIE Q P322
 RED RCN SANDHILL CHF 482
 RED GET-A-LONG ARAB 159
 RED SEAMAN UMPIRETTE 18M
Dam: RED PASQUIA FANCY LADY 6F
 RED KBJ SAM'S PROSPECTOR 133Z
 RED PASQUIA FANCY LADY 6D
 RED PASQUIA FANCY LADY 3A

EPD'S	
CED:	+3.0
CEM:	+3.0
BW:	+1.7
WW:	+51
YW:	+87
Milk:	+11
TM:	+37
Stay:	+11
HPG:	+13
REA:	+0.20
Marb:	-0.13
Back Fat:	-0.01

BW: 97 lbs. Adj 205: 853 lbs. Adj 365: 1218 lbs.

This herdsire has left a strong impact on our cowherd. He sires good footed cattle with solid bone, extra muscle, unbeatable style and excellent temperament. His females are moderate framed, excellent milkers with nice udders. His dam 6F is in our embryo program and at 14 years of age has a udder like a three year old.



RED GEFB LANDSLIDE 2616

Male IMP 2616S 1481777 February 04 2006

RED RBJR ADVANCE A709 OSF
 RED PERKS ADVANCE 121R
 RED PERKS MISS RAMBO 8105 OSF
Sire: RED PIE AVALANCHE 381 OSF
 RED LCHMN GRND CANYON 1244G OSC
 RED PIE MS GRAND C 036
 RED PIE DUCHYO 474
 RED HLH BUSTER 406 603 OSF
 RED BADLANDS MR BEEF 805
 RED BADLANDS KEEPSAKE 632
Dam: RED GEFB BEEFY QUEEN 2191
 RED XXX MONARCH 214 MU
 RED MOLLY X504
 RED RACHEL R207

EPD'S	
CED:	+9.0
CEM:	+8.0
BW:	-0.8
WW:	+18
YW:	+49
Milk:	+15
TM:	+24
Stay:	+6
HPG:	+11
REA:	+0.14
Marb:	+0.01
Back Fat:	-0.01

BW: 78 lbs. Adj 205: 734 lbs. Adj 365: ---

2616 is wide based with lots of top and thickness. Used mainly on cows, his calves are moderate in birth weight with style and thickness.

Red Sires

Black Reference Sires



CRESCENT CREEK 235 TRAV 65R

Male DTZ 65R 1260406 February 02 2005

Q A S TRAVELER 23-4 NHF AMF
O C C TRAVELER 723Z
JUANADA OF ROLLIN ROCK 0355

Sire: **GDAR TRAVELER 235**

G D A R SCOTCHCAP 6005
GDAR PRIMROSE 0251
GDAR PRIMROSE 7226

G T MAXIMUM NHF AMF
BOTANY ANGUS MAX 5A
BOTANY ANGUS LADY ANN 19T

Dam: **CRESCENT CREEK LAWN 109H**

TOMIL VON ERIC GR 39W
ANGUS ACRES LAWN 85Z
ANGUS ACRES LAWN 85W

BW: 98 lbs. Adj 205: 709 lbs. Adj 365: 1283 lbs.

EPD'S	
SC:	+0.44
YG:	+35
BW:	+1.9
WW:	+25
YW:	+60
Milk:	+21
TM:	+34
REA:	-0.24
%IMF:	+0.01
Fat:	+0.023



CRESCENT CREEK 235 TRAV 65R

65R is a tremendous breeding bull that we admire for his masculinity, muscle mass and overall volume. He is very structurally correct. His offspring are very easy fleshing with great hair coats. His first daughters have nice tidy udders and are making good momma cows.



MFA FINAL ANSWER 31T

Male MF 31T 1397689 February 06 2007

G D A R TRAVELER 71 NHF AMF
SITZ TRAVELER 8180 NHF AMF
SITZ EVERELDA ENTENSE 1137

Sire: **S A V FINAL ANSWER 0035 NHF AMF**

BON VIEW BANDO 598 AMF
S A V EMULOUS 8145
S A V SKY EMULOUS 2124

CONNELLY TIMELINE
MFA TIMELINE 69M
MFA PRIDE 42K

Dam: **MFA BARDOLENE 97R**

EVERBLACK ESTON 4J
MFA BARDOLENE 148M
MFA BARDOLENE 52J

BW: 82 lbs. Adj 205: 814 lbs. Adj 365: 1402 lbs.

EPD'S	
SC:	---
YG:	+43
BW:	-2.4
WW:	+48
YW:	+91
Milk:	+22
TM:	+46
REA:	+0.28
%IMF:	+0.07
Fat:	+0.012



MFA FINAL ANSWER 31T

31T was the high selling bull purchased from the 2008 Black Harvest Bull Sale. He is a stout, well muscled, easy fleshing individual we selected for a calving ease sire on our heifers but now use him on cows as well. We were impressed with his performance numbers and excellent carcass data.



S A V NET WORTH 4200

Male 1309743 IMP 4200P March 06 2004

G D A R TRAVELER 71
SITZ TRAVELER 8180
SITZ EVERELDA ENTENSE 1137

Sire: **S A V 8180 TRAVELER 004**

A A R NEW TREND
BOYD FOREVER LADY 8003
S V F FOREVER LADY 57D

BON VIEW BANDO 598
S A F 598 BANDO 5175
S A F ROYAL LASS 1002

Dam: **S A V MAY 2410**

RITO 9FB3 OF 5H11 FULLBACK
S A V MAY 6269
S A R PROSPECTOR MAY 9124

BW: 90 lbs. Adj 205: 995 lbs. Adj 365: 1573 lbs.

EPD'S	
SC:	+0.77
YG:	+53
BW:	+4.8
WW:	+59
YW:	+112
Milk:	+32
TM:	+62
REA:	+0.39
%IMF:	+0.41
Fat:	+0.065



S A V NET WORTH 4200

Net Worth is an A.I. sire who has gained popularity as a performance powerhouse. We were impressed with his individual performance as well as his carcass data. His sons are masculine meat machines.



SVR CONNECT 307S

Male 1328707 SVR 307S February 07 2006

SITZ TRAVELER 8180
 SITZ ALLIANCE 6595
 SITZ BARBARAMERE JET 2698
Sire: SVR CONNECTION 221P
 CENTURY TOUCHSTONE 131
 BBSF 131 MADONNA 304H
 FV 249B MADONNA 28F
 BELVIN BLACK MAGIC 42'92
 EBON HILL EQUALIZER 117'97
 EBON HILL PRIDE 17'88
Dam: MERIT JILT 9002
 S A F FAME
 MERIT JILT 7008
 MERIT JILT 5002

EPD'S	
SC:	---
YG:	+43
BW:	+0.1
WW:	+34
YW:	+78
Milk:	+18
TM:	+35
REA:	+0.18
%IMF:	-0.17
Fat:	+0.32



SVR CONNECT 307S

BW: 93 lbs. Adj 205: 715 lbs. Adj 365: 1203 lbs.

307S is an extremely deep-bodied, easy fleshing sire with tremendous calving ease. His dam is a CAA elite dam with a ratio of 108 on 6 calves.



SVR HUSSLER 320T

Male SVR 320T 1385974 February 13 2007

O C C TRAVELER 723Z
 GDAR TRAVELER 235
 GDAR PRIMROSE 0251
Sire: CRESCENT CREEK 235 TRAV 65R
 BOTANY ANGUS MAX 5A
 CRESCENT CREEK LAWN 109H
 ANGUS ACRES LAWN 85Z
 L R A ROSEBUD ROPE 390
 B BAR POWER ROPE 0869
 MISS POWER L R A 869
Dam: SVR FOREVER LADY 248M
 C H QUANTUM 3330
 GDAR FOREVER LADY 0354
 G D A R FOREVER LADY 5401

EPD'S	
SC:	---
YG:	+36
BW:	+2.9
WW:	+29
YW:	+65
Milk:	+22
TM:	+37
REA:	-0.14
%IMF:	+0.06
Fat:	+0.04



SVR HUSSLER 320T

BW: 92 lbs. Adj 205: 725 lbs. Adj 365: 1263 lbs.

This bull sold in our 2008 sale to Sandy Bar Ranch. He had lots of butt, guts, nuts and an excellent hair coat, so we used him through A.I. His dam 248M is a CAA Elite dam with a weaning ratio of 108 on five calves.



GEIS BLACKMAN 36'03

Male GEIS 36N 1184521 January 27 2003

DOUBLE AA BLACKMAN 24'93
 DOUBLE AA BLACKMAN 252'96
 DOUBLE AA ANNIE K 620'91
Sire: GEIS BLACKMAN 186'00
 RITO 8094 PRAIRIELANE 2060
 CRESCENT CREEK QUEEN RUTH 27F
 CRESCENT CREEK QUEEN RUTH 32U
 BARDOLENE OLE SASKALTA 118B
 SASKALTA BARDOLENE 109F
 CRESCENT CREEK HEROINE 109W
Dam: GEIS EVENING TINGE 201'01
 G D A R ROGUE 640
 GEIS EVENING TINGE 289'98
 GEIS EVENING TINGE 257'95

EPD'S	
SC:	---
YG:	-2
BW:	+2.3
WW:	+40
YW:	+38
Milk:	+17
TM:	+37
REA:	+0.09
%IMF:	+0.29
Fat:	+0.03

BW: 90 lbs. Adj 205: 870 lbs. Adj 365: 1273 lbs.

Increase the value of your Angus Calves - Tag 'Em Green.

- CCIA tag for national ID and verifies 50% Angus
- Eligible for Angus branded beef programs
- Eligible for more than 160 CACP feeder sales
- Free listing of sale animals on CAA website
- Free age verification
- Competitive pricing - no enrollment fee
- CALL 1-888-571-3580



Black Reference Sires

Red Yearling Bulls

SVR LOT 1W

RED SVR JACK 1W

Male SVR 1W 1513409 February 01 2009

RED SODAK PRECISION 7408-97 OSF NHC AMF
 RED DRYFORK K-C PRECISELY JACK NHC
 RED K-C MISS AUSSIE 45L
Sire: RED SVR JACK 65S NHF AMF
 RED SOUTH VIEW NO EQUAL 28H
 RED SVR CHRISTY 101M
 RED LEGARE'S FL CHRISTY 13Y

CED	+4.0
CEM	+3.0
BW	-0.5
WW	+37
YW	+64
Milk	+13
TM	+32
Stay	+10
HPG	+10

RED SOUTH VIEW NO EQUAL 28H
 RED SVR NO EQUAL 118P
 RED SVR MISS BOOMER 50J
Dam: RED SVR MISS MAXI 121T
 RED RIVERDALE 133Z
 RED RSL MISS MAXI 108C
 RED MISS RTR 50Z

BW:	70	Adj 205:	699	Adj 365:	1224	Calving Ease:	***	AOD:	2
-----	----	----------	-----	----------	------	---------------	-----	------	---



SVR LOT 3W

RED SVR HIGHER CAPAC 3W

Male SVR 3W 1513412 February 06 2009

RED BJR HIGH CAPACITY 008 OSF
 RED UBAR HIGH CAPACITY 224 OSF
 RED BJR BONNEBELL 7G
Sire: RED GEFB HIGHER CAPACITY 2733
 RED TKP BODACIOUS 693 OSF
 RED GEF SWEET BABY 9814
 RED GEF LADY 3556 TALLY 9606

CED	+2.0
CEM	+1.0
BW	+1.0
WW	+32
YW	+51
Milk	+13
TM	+29
Stay	+8
HPG	+9

RED ROYAL HI HO 30M
 RED GEIS HI HO 180'04
 RED GEIS BAYBERRY 151'96
Dam: RED SVR REBELLO 103T
 RED LAZY MC THIRTY X 22L
 RED SVR REBELLO 13N
 RED SVR REBELLO 17K

BW:	82	Adj 205:	613	Adj 365:	1037	Calving Ease:	***	AOD:	2
-----	----	----------	-----	----------	------	---------------	-----	------	---



SVR LOT 4W

RED SVR GANGSTER 4W

Male TW SVR 4W 1513413 February 06 2009

RED ROYAL HI HO 30M
 RED GEIS HI HO 180'04
 RED GEIS BAYBERRY 151'96
Sire: RED SVR GANGSTER 14S
 RED CRESCENT CREEK CHEROKEE 79
 RED DWAJO DUCHESS 75M
 RED WBR DUCHESS 16'96

CED	+1.0
CEM	+0.0
BW	+3.1
WW	+39
YW	+63
Milk	+11
TM	+31
Stay	+9
HPG	+9

RED LCHMN NO EQUAL 1174D OSF
 RED SOUTH VIEW NO EQUAL 28H
 RED PASQUIA FANCY LADY 6F
Dam: RED SVR CHRISTY 131P
 RED SSS BOOMER 803B
 RED SVR CHRISTY 35J
 RED SOUTH VIEW CHRISTY 12C

REA	+0.29
%IMF	+0.01
Back Fat	-0.01

BW:	70	Adj 205:	634	Adj 365:	1108	Calving Ease:	**	AOD:	5
-----	----	----------	-----	----------	------	---------------	----	------	---

SVR LOT 6W

RED SVR HI HO 6W

Male SVR 6W 1513417 February 08 2009

RED SPRING CREEK HI HO 8K
 RED ROYAL HI HO 30M
 RED ROYAL BEULA 1164G
Sire: RED GEIS HI HO 180'04
 RED GARA HEAVENLY 65C
 RED GEIS BAYBERRY 151'96
 RED GEIS BAYBERRY 66'92

CED	+7.0
CEM	+5.0
BW	-1.4
WW	+31
YW	+55
Milk	+11
TM	+26
Stay	+9
HPG	+9

RED BRYLOR STALLION 19J
 RED WILLOW CREEK STALLION
 RED WILLOW CREEK ACUTE 112M
Dam: RED SVR MS FREYJA 130S
 RED SVR BOOMERANG 47J
 RED SVR MS FREYJA 3L
 RED MOOSE CREEK MS FREYJA 80D

BW:	76	Adj 205:	645	Adj 365:	1053	Calving Ease:	**	AOD:	3
-----	----	----------	-----	----------	------	---------------	----	------	---



LOT 15W

RED SVR NO EQUAL 15W

Male SVR 15W 1513427 February 10 2009

RED LMAN NONE BETTER 9604 OSF
RED LCHMN NO EQUAL 1174D OSF
RED LMAN PRAIRIE Q 9308
Sire: **RED SOUTH VIEW NO EQUAL 28H**
RED GET-A-LONG ARAB 159
RED PASQUIA FANCY LADY 6F
RED PASQUIA FANCY LADY 6D

CED	+5.0
CEM	+5.0
BW	-0.3
WW	+36
YW	+64
Milk	+14
TM	+32
Stay	+10
HPG	+11

RED BRYLOR STALLION 19J
RED WILLOW CREEK STALLION
RED WILLOW CREEK ACUTE 112M
Dam: **RED SVR MS FREYJA 131S**
RED SVR BOOMERANG 47J
RED SVR MS FREYJA 3L
RED MOOSE CREEK MS FREYJA 80D

BW:	83	Adj 205:	659	Adj 365:	1146	Calving Ease:	**	AOD:	3
-----	----	----------	-----	----------	------	---------------	----	------	---



LOT 19W

RED SVR KNIGHT 19W

Male SVR 19W 1513439 February 12 2009

RED YY RED KNIGHT 640F OSF
RED SVR KNIGHT 73P OSF
RED SVR JINNY 19K
Sire: **RED SVR KNIGHT 236T**
RED COCKBURN PINNACLE 17E
RED SOUTH VIEW MISS MAXI 45H
RED CC MISS MAXI 128D

CED	+4.0
CEM	+4.0
BW	+1.0
WW	+31
YW	+50
Milk	+13
TM	+29
Stay	+12
HPG	+7

RED BRYLOR STALLION 19J
RED WILLOW CREEK STALLION
RED WILLOW CREEK ACUTE 112M
Dam: **RED SVR CHRISTINA 46S**
RED SVR BOOMERANG 47J
RED SVR CHRISTINA 50L
RED SOUTH VIEW CHRISTINA 45G

BW:	86	Adj 205:	656	Adj 365:	1115	Calving Ease:	**	AOD:	3
-----	----	----------	-----	----------	------	---------------	----	------	---



LOT 20W

RED SVR LANDSLIDE 20W

Male SVR 20W 1513440 February 12 2009

RED PERKS ADVANCE 121R
RED PIE AVALANCHE 381 OSF
RED PIE MS GRAND C 036
Sire: **RED GEFB LANDSLIDE 2616**
RED BADLANDS MR BEEF 805
RED GEFB BEEFY QUEEN 2191
RED MOLLY X504

CED	+5.0
CEM	+6.0
BW	+1.9
WW	+29
YW	+54
Milk	+10
TM	+25
Stay	+9
HPG	+11

RED LCHMN NO EQUAL 1174D OSF
RED SOUTH VIEW NO EQUAL 28H
RED PASQUIA FANCY LADY 6F
Dam: **RED SVR CHRISTY 15R**
RED FLYING K DYNAMO 6Y
RED SVR CHRISTY 47M
RED SOUTH VIEW TCB CHRISTY 12D

BW:	95	Adj 205:	613	Adj 365:	1073	Calving Ease:	**	AOD:	4
-----	----	----------	-----	----------	------	---------------	----	------	---



LOT 21W

RED SVR PRECISE 21W

Male SVR 21W 1513441 February 12 2009

SODAK PRECISION 4358 AMF
RED SODAK PRECISION 7408-97 OSF NHC AMF
RED SODAK OSCAR 9359
Sire: **RED DRYFORK K-C PRECISELY JACK NHC**
RED PIE LO CANYON 912
RED K-C MISS AUSSIE 45L
RED K-C MISS AUSSIE 45J

CED	+5.0
CEM	+7.0
BW	+0.6
WW	+29
YW	+58
Milk	+18
TM	+32
Stay	+12
HPG	+8

RED BJR RAMBLER 5162 OSF
RED VGW RAMBLER 1000 OSF
RED VGW UMPIRE YUMA 9266
Dam: **RED SVR FANCY LADY 16L**
RED BVR RAB-STAR 56C
RED SVR FANCY LADY 19J
RED PASQUIA FANCY LADY 6F

REA	-0.02
%IMF	+0.03
Back Fat	-0.01

BW:	89	Adj 205:	672	Adj 365:	1119	Calving Ease:	**	AOD:	8
-----	----	----------	-----	----------	------	---------------	----	------	---

SVR **LOT 22W**

RED SVR GANGSTER 22W

Male SVR 22W 1513444 February 13 2009

RED ROYAL HI HO 30M
 RED GEIS HI HO 180'04
 RED GEIS BAYBERRY 151'96
Sire: RED SVR GANGSTER 14S
 RED CRESCENT CREEK CHEROKEE 79
 RED DWAJO DUCHESS 75M
 RED WBR DUCHESS 16'96

RED LCHMN NO EQUAL 1174D OSF
 RED SOUTH VIEW NO EQUAL 28H
 RED PASQUIA FANCY LADY 6F
Dam: RED SVR VALENTINE 67K
 RED BAAC DESIGN 9C
 RED SOUTH VIEW VALENTINE 11E
 RED ANDERSON'S VALENTINE 70C

REA	+0.20
%IMF	+0.07
Back Fat	-0.01

CED	+1.0
CEM	+2.0
BW	+3.0
WW	+39
YW	+61
Milk	+10
TM	+30
Stay	+8
HPG	+10

BW: 98 Adj 205: 633 Adj 365: 1067 Calving Ease: ** AOD: 9



SVR **LOT 26W**

RED SVR HI HO 26W

Male SVR 26W 1513454 February 14 2009

RED SPRING CREEK HI HO 8K
 RED ROYAL HI HO 30M
 RED ROYAL BEULA 1164G
Sire: RED GEIS HI HO 180'04
 RED GARA HEAVENLY 65C
 RED GEIS BAYBERRY 151'96
 RED GEIS BAYBERRY 66'92

RED CUMNOCK STAR 139Z
 RED BVR RAB-STAR 56C
 RED TIARA OF TAG-A-LONG 57T
Dam: RED SOUTH VIEW FREYJA 3H
 RED KBJ SAM'S PROSPECTOR 133Z
 RED SOUTH VIEW FREYJA ET 1F
 RED SQUIRREL FREYJA 1P

REA	-0.14
%IMF	+0.03
Back Fat	-0.01

CED	+8.0
CEM	+5.0
BW	-0.8
WW	+27
YW	+47
Milk	+6
TM	+19
Stay	+10
HPG	+10

BW: 76 Adj 205: 648 Adj 365: 988 Calving Ease: *** AOD: 11



SVR **LOT 27W**

RED SVR HIGHER CAPAC 27W

Male SVR 27W 1513455 February 14 2009

RED BJR HIGH CAPACITY 008 OSF
 RED UBAR HIGH CAPACITY 224 OSF
 RED BJR BONNEBELL 7G
Sire: RED GEFB HIGHER CAPACITY 2733
 RED TKP BODACIOUS 693 OSF
 RED GEF SWEET BABY 9814
 RED GEF LADY 3556 TALLY 9606

RED BRYLOR STALLION 19J
 RED WILLOW CREEK STALLION
 RED WILLOW CREEK ACUTE 112M
Dam: RED SVR JINNY 210S
 RED KBJ COLONEL 33J
 RED SVR JINNY 72N
 RED SVR JINNY 19K

CED	+3.0
CEM	+3.0
BW	-0.3
WW	+26
YW	+42
Milk	+15
TM	+28
Stay	+10
HPG	+8

BW: 82 Adj 205: 589 Adj 365: 1016 Calving Ease: *** AOD: 3

SVR **LOT 31W**

RED SVR KNIGHT 31W

Male SVR 31W 1513460 February 15 2009

RED YY 23L TOPPER 408D
 RED YY RED KNIGHT 640F OSF
 RED TOP GOLDIE 40U
Sire: RED SVR KNIGHT 73P OSF
 RED SSS BOOMER 803B
 RED SVR JINNY 19K
 RED SOUTH VIEW CLASSY LADY 26B

RED LCHMN NO EQUAL 1174D OSF
 RED SOUTH VIEW NO EQUAL 28H
 RED PASQUIA FANCY LADY 6F
Dam: RED SVR BONNIE 3N
 RED BRYLOR BO JACKSON 7H
 RED KENRAY BONNIE 026K
 RED KENRAY MISS DYNAMO 24B

REA	+0.11
%IMF	-0.02
Back Fat	-0.01

CED	+5.0
CEM	+4.0
BW	-1.0
WW	+39
YW	+64
Milk	+13
TM	+32
Stay	+11
HPG	+8

BW: 82 Adj 205: 682 Adj 365: 1104 Calving Ease: *** AOD: 6

SVR **LOT 34W**

RED SVR LANDSLIDE 34W

Male SVR 34W 1513465 February 16 2009

RED PERKS ADVANCE 121R
 RED PIE AVALANCHE 381 OSF
 RED PIE MS GRAND C 036
Sire: RED GEFB LANDSLIDE 2616
 RED BADLANDS MR BEEF 805
 RED GEFB BEEFY QUEEN 2191
 RED MOLLY X504

RED YY RED KNIGHT 640F OSF
 RED BAR-E-L COPPERTOP 147M
 RED BAR-E-L GLORIA 59H
Dam: RED SVR LARKABELLE 9R
 RED W P CURRENT VALUE 98S
 RED VALLEYHILLS LARKABELLE 19B
 RED VALLEYHILLS LARKABELLE 41T

CED	+9.0
CEM	+5.0
BW	-1.6
WW	+15
YW	+32
Milk	+12
TM	+19
Stay	+9
HPG	+9

BW: 78 Adj 205: 573 Adj 365: 986 Calving Ease: *** AOD: 4



SVR **LOT 37W**

RED SVR JACK 37W

Male SVR 37W 1513468 February 16 2009

RED SODAK PRECISION 7408-97 OSF NHC AMF
 RED DRYFORK K-C PRECISELY JACK NHC
 RED K-C MISS AUSSIE 45L
Sire: RED SVR JACK 65S NHF AMF
 RED SOUTH VIEW NO EQUAL 28H
 RED SVR CHRISTY 101M
 RED LEGARE'S FL CHRISTY 13Y

G D A R TRAVELER 71 NHF AMF
 SVR TOURIST 82N
 RED BJ JINNY 26Z
Dam: RED SVR CHRISTINA 198R
 RED KBJ COLONEL 33J
 RED SVR CHRISTINA 32N
 RED SVR CHRISTINA 10K

REA	-0.02
%IMF	+0.07
Back Fat	+0.00

CED	+3.0
CEM	+4.0
BW	+1.0
WW	+35
YW	+63
Milk	+16
TM	+33
Stay	+11
HPG	+10

BW: 88 Adj 205: 678 Adj 365: 1089 Calving Ease: *** AOD: 4



SVR **LOT 43W**

RED SVR HI HO 43W

Male SVR 43W 1513476 February 17 2009

RED SPRING CREEK HI HO 8K
 RED ROYAL HI HO 30M
 RED ROYAL BEULA 1164G
Sire: RED GEIS HI HO 180'04
 RED GARA HEAVENLY 65C
 RED GEIS BAYBERRY 151'96
 RED GEIS BAYBERRY 66'92

RED SSS BOOMER 803B
 RED SVR BOOMERANG 47J
 RED SOUTH VIEW CHRISTY 12B
Dam: RED SVR CHRISTY 89M
 RED LMAN KING ROB 8621 OSF
 RED SVR CHRISTY 49J
 RED SOUTH VIEW TCB CHRISTY 12D

CED	+4.0
CEM	+4.0
BW	+1.5
WW	+36
YW	+65
Milk	+11
TM	+29
Stay	+8
HPG	+9

REA	+0.06
%IMF	-0.01
Back Fat	+0.01

BW: 88 Adj 205: 679 Adj 365: 1181 Calving Ease: ** AOD: 7

SVR **LOT 45W**

RED SVR WORLD SERIES 45W

Male SVR 45W 1513478 February 17 2009

RED BFCK CHEROKEE CNYN 4912 OSF
 RED LCC MAJOR LEAGUE A502M OSF
 RED KRN REBA'S ROBIN OSF
Sire: RED SVR WORLD SERIES 153S
 RED GET-A-LONG ARAB 159
 RED PASQUIA FANCY LADY 6F
 RED PASQUIA FANCY LADY 6D

RED YY RED KNIGHT 640F OSF
 RED BAR-E-L COPPERTOP 147M
 RED BAR-E-L GLORIA 59H
Dam: RED SVR FREYJA 6P
 RED KBJ SAM'S PROSPECTOR 133Z
 RED SOUTH VIEW FREYJA ET 1F
 RED SQUIRREL FREYJA 1P

REA	+0.01
%IMF	+0.00
Back Fat	-0.01

CED	+8.0
CEM	+2.0
BW	-1.2
WW	+28
YW	+49
Milk	+12
TM	+26
Stay	+11
HPG	+10

BW: 74 Adj 205: 638 Adj 365: 1042 Calving Ease: *** AOD: 5

SVR **LOT 49W**

RED SVR JACK 49W

Male SVR 49W 1513481 February 17 2009

RED SODAK PRECISION 7408-97 OSF NHC AMF
 RED DRYFORK K-C PRECISELY JACK NHC
 RED K-C MISS AUSSIE 45L
Sire: RED SVR JACK 65S NHF AMF
 RED SOUTH VIEW NO EQUAL 28H
 RED SVR CHRISTY 101M
 RED LEGARE'S FL CHRISTY 13Y

CED	+0.0
CEM	+2.0
BW	+2.7
WW	+37
YW	+63
Milk	+11
TM	+29
Stay	+10
HPG	+9

RED YY RED KNIGHT 640F OSF
 RED SVR KNIGHT 73P OSF
 RED SVR JINNY 19K
Dam: RED SVR RUBY 76T
 RED COCKBURN PINNACLE 17E
 RED SOUTH VIEW RUBY 8G
 RED SOUTH VIEW TCB RUBY 101D

BW:	90	Adj 205:	652	Adj 365:	1104	Calving Ease:	**	AOD:	2
-----	----	----------	-----	----------	------	---------------	----	------	---



SVR **LOT 50W**

RED SVR HO HO 50W

Male SVR 50W 1513483 February 18 2009

RED SPRING CREEK HI HO 8K
 RED ROYAL HI HO 30M
 RED ROYAL BEULA 1164G
Sire: RED GEIS HI HO 180'04
 RED GARA HEAVENLY 65C
 RED GEIS BAYBERRY 151'96
 RED GEIS BAYBERRY 66'92

CED	+4.0
CEM	+1.0
BW	+2.3
WW	+37
YW	+54
Milk	+6
TM	+24
Stay	+9
HPG	+8

RED YY RED KNIGHT 640F OSF
 RED BAR-E-L COPPERTOP 147M
 RED BAR-E-L GLORIA 59H
Dam: RED SVR CHRISTY 97P
 RED COCKBURN PINNACLE 17E
 RED SOUTH VIEW CHRISTY 46G
 RED LEGARE'S FL CHRISTY 13Y

REA	-0.04
%IMF	-0.04
Back Fat	+0.00

BW:	85	Adj 205:	641	Adj 365:	1059	Calving Ease:	**	AOD:	5
-----	----	----------	-----	----------	------	---------------	----	------	---



SVR **LOT 58W**

SVR HIGHER CAPAC 58W

Male RC SVR 58W 1529714 February 20 2009

RED BJR HIGH CAPACITY 008 OSF
 RED UBAR HIGH CAPACITY 224 OSF
 RED BJR BONNEBELL 7G
Sire: RED GEFB HIGHER CAPACITY 2733
 RED TKP BODACIOUS 693 OSF
 RED GEF SWEET BABY 9814
 RED GEF LADY 3556 TALLY 9606

CED	+5.0
CEM	+1.0
BW	+0.1
WW	+27
YW	+49
Milk	+13
TM	+26
Stay	+11
HPG	+7

RITO 616 OF 4B20 6807 NHF AMF
 CRESCENT CREEK 616 RITO 3L
 CRESCENT CREEK PRIDE LADY 78G
Dam: SVR SUSIE 87N
 RED SVR BOOMERANG 47J
 SVR OLE SUSIE 89L
 LAMBS OLE SUSIE 108J

BW:	88	Adj 205:	636	Adj 365:	1058	Calving Ease:	**	AOD:	6
-----	----	----------	-----	----------	------	---------------	----	------	---

SVR **LOT 60W**

RED SVR HI HO 60W

Male SVR 60W 1513497 February 20 2009

RED SPRING CREEK HI HO 8K
 RED ROYAL HI HO 30M
 RED ROYAL BEULA 1164G
Sire: RED GEIS HI HO 180'04
 RED GARA HEAVENLY 65C
 RED GEIS BAYBERRY 151'96
 RED GEIS BAYBERRY 66'92

CED	+3.0
CEM	+2.0
BW	+3.9
WW	+37
YW	+59
Milk	+5
TM	+23
Stay	+11
HPG	+8

RED YY RED KNIGHT 640F OSF
 RED BAR-E-L COPPERTOP 147M
 RED BAR-E-L GLORIA 59H
Dam: RED SVR FIREFLY 75P
 RED BVR RAB-STAR 56C
 RED SOUTH VIEW LADY RAB 10G
 RED CC FIREFLY 148D

REA	-0.14
%IMF	-0.03
Back Fat	+0.00

BW:	93	Adj 205:	673	Adj 365:	1068	Calving Ease:	**	AOD:	5
-----	----	----------	-----	----------	------	---------------	----	------	---

SVR **LOT 63W**

RED SVR HIGHER CAPAC 63W

Male SVR 63W 1513499 February 20 2009

RED BJR HIGH CAPACITY 008 OSF
 RED UBAR HIGH CAPACITY 224 OSF
 RED BJR BONNEBELL 7G
Sire: RED GEFB HIGHER CAPACITY 2733
 RED TKP BODACIOUS 693 OSF
 RED GEF SWEET BABY 9814
 RED GEF LADY 3556 TALLY 9606

BCAR RANCHER 8'00
 RED BCAR WILD CARD
 BREED CREEK PRIDE 33F 21'98
Dam: RED SVR BONNIE 166T
 SVR SLEDGE 219N
 SVR BONNIE 147R
 RED SVR BONNIE 3N

CED	+3.0
CEM	+0.0
BW	+0.1
WW	+35
YW	+66
Milk	+15
TM	+32
Stay	+10
HPG	+8

BW: 74 Adj 205: 683 Adj 365: 1164 Calving Ease: *** AOD: 2



SVR **LOT 64W**

RED SVR HI HO 64W

Male SVR 64W 1513500 February 21 2009

RED SPRING CREEK HI HO 8K
 RED ROYAL HI HO 30M
 RED ROYAL BEULA 1164G
Sire: RED GEIS HI HO 180'04
 RED GARA HEAVENLY 65C
 RED GEIS BAYBERRY 151'96
 RED GEIS BAYBERRY 66'92

RED LAZY MC DIVIDE 8J
 RED LAZY MC THIRTY X 22L
 RED LAZY MC WATCH ME 26F
Dam: RED SVR REBELLO 13N
 RED P O VIKING 51G
 RED SVR REBELLO 17K
 RED JCC REBELLO 11F

REA	+0.04
%IMF	-0.02
Back Fat	+0.00

CED	+1.0
CEM	+3.0
BW	+3.2
WW	+34
YW	+53
Milk	+8
TM	+25
Stay	+7
HPG	+10

BW: 99 Adj 205: 622 Adj 365: 1058 Calving Ease: * AOD: 6



SVR **LOT 65W**

SVR PRECISE 65W

Male RC SVR 65W 1513501 February 21 2009

SODAK PRECISION 4358 AMF
 RED SODAK PRECISION 7408-97 OSF NHC AMF
 RED SODAK OSCAR 9359
Sire: RED DRYFORK K-C PRECISELY JACK NHC
 RED PIE LO CANYON 912
 RED K-C MISS AUSSIE 45L
 RED K-C MISS AUSSIE 45J

G D A R TRAVELER 71 NHF AMF
 SVR TOURIST 82N
 RED BJ JINNY 26Z
Dam: SVR RAINBOW 89S
 NORTHLINE TUFF 619H
 SVR RAINBOW 104N
 RED PASQUIA RAINBOW 26F

CED	+1.0
CEM	+4.0
BW	+4.0
WW	+39
YW	+70
Milk	+16
TM	+35
Stay	+11
HPG	+10

BW: 100 Adj 205: 697 Adj 365: 1195 Calving Ease: * AOD: 3

SVR **LOT 67W**

RED SVR HIGHER CAPAC 67W

Male SVR 67W 1513504 February 21 2009

RED BJR HIGH CAPACITY 008 OSF
 RED UBAR HIGH CAPACITY 224 OSF
 RED BJR BONNEBELL 7G
Sire: RED GEFB HIGHER CAPACITY 2733
 RED TKP BODACIOUS 693 OSF
 RED GEF SWEET BABY 9814
 RED GEF LADY 3556 TALLY 9606

RED LCHMN NO EQUAL 1174D OSF
 RED SOUTH VIEW NO EQUAL 28H
 RED PASQUIA FANCY LADY 6F
Dam: RED SVR CHRISTY 109S
 RED BVR RAB-STAR 56C
 RED SVR CHRISTY 3K
 RED LEGARE'S FL CHRISTY 13Y

CED	-4.0
CEM	+1.0
BW	+6.1
WW	+42
YW	+63
Milk	+10
TM	32
Stay	+10
HPG	+9

BW: 108 Adj 205: 629 Adj 365: 1116 Calving Ease: * AOD: 3



LOT 71W

RED SVR HI HO 71W

Male SVR 71W 1513513 February 22 2009

RED SPRING CREEK HI HO 8K
RED ROYAL HI HO 30M
RED ROYAL BEULA 1164G
Sire: **RED GEIS HI HO 180'04**
RED GARA HEAVENLY 65C
RED GEIS BAYBERRY 151'96
RED GEIS BAYBERRY 66'92

CED	+7.0
CEM	+5.0
BW	-0.6
WW	+31
YW	+51
Milk	+10
TM	+26
Stay	+9
HPG	+9

RED YY RED KNIGHT 640F OSF
RED KBJ COLONEL 33J
KBJ ROUND LASSIE 18T
Dam: **RED SVR LADY HOB0 62P**
RED SVR BOOMERANG 47J
RED SVR LADY HOB0 105M
RED SOUTH VIEW LADY HOB0 8E

REA	-0.01
%IMF	+0.06
Back Fat	-0.01

BW: 78 Adj 205: 607 Adj 365: 1042 Calving Ease: *** AOD: 5



LOT 73W

RED SVR HIGHER CAPAC 73W

Male SVR 73W 1513515 February 22 2009

RED BJR HIGH CAPACITY 008 OSF
RED UBAR HIGH CAPACITY 224 OSF
RED BJR BONNEBELL 7G
Sire: **RED GEFB HIGHER CAPACITY 2733**
RED TKP BODACIOUS 693 OSF
RED GEF SWEET BABY 9814
RED GEF LADY 3556 TALLY 9606

CED	+5.0
CEM	+2.0
BW	-1.4
WW	+29
YW	+50
Milk	+12
TM	+26
Stay	+10
HPG	+9

RED BRYLOR STALLION 19J
RED WILLOW CREEK STALLION
RED WILLOW CREEK ACUTE 112M
Dam: **RED SVR COCA 168S**
RED SOUTH VIEW NO EQUAL 28H
RED SVR COCA 76P
RED SVR MISS VIKING 29K

BW: 81 Adj 205: 643 Adj 365: 1055 Calving Ease: *** AOD: 3



LOT 76W

RED SVR JACK 76W

Male SVR 76W 1513519 February 23 2009

RED SODAK PRECISION 7408-97 OSF NHC AMF
RED DRYFORK K-C PRECISELY JACK NHC
RED K-C MISS AUSSIE 45L
Sire: **RED SVR JACK 65S NHF AMF**
RED SOUTH VIEW NO EQUAL 28H
RED SVR CHRISTY 101M
RED LEGARE'S FL CHRISTY 13Y

CED	+5.0
CEM	+6.0
BW	+0.4
WW	+30
YW	+52
Milk	+13
TM	+28
Stay	+8
HPG	+8

RED SSS HIGH MARK 272D
RED SVR HIGH OCTANE 54K
RED BL SPRUCE LARKABA 53G
Dam: **RED SVR COCA 79N**
RED VGW RAMBLER 1000 OSF
RED SVR COCA 54L
RED SVR MISS BOOMER 50J

REA	+0.00
%IMF	+0.06
Back Fat	-0.01

BW: 87 Adj 205: 619 Adj 365: 1065 Calving Ease: ** AOD: 6



LOT 86W

RED SVR HI HO 86W

Male SVR 86W 1513543 February 27 2009

RED SPRING CREEK HI HO 8K
RED ROYAL HI HO 30M
RED ROYAL BEULA 1164G
Sire: **RED GEIS HI HO 180'04**
RED GARA HEAVENLY 65C
RED GEIS BAYBERRY 151'96
RED GEIS BAYBERRY 66'92

CED	+4.0
CEM	+5.0
BW	+1.9
WW	+38
YW	+55
Milk	+5
TM	+24
Stay	+7
HPG	+9

RED LEACHMAN ENDURE 2435B
RED PO LEACHMAN 88E
VALLEYHILLS BLACKCAP WYE 122Y
Dam: **RED P O WYE 61G**
RED VALLEYHILLS VALUE 99Y
RED VALLEYHILLS WYE 61B
RED VALLEYHILLS WYE 177Z

REA	+0.11
%IMF	-0.06
Back Fat	+0.00

BW: 91 Adj 205: 637 Adj 365: 1059 Calving Ease: ** AOD: 12



LOT 92W

RED SVR HI HO 92W

Male SVR 92W 1513548 February 27 2009

RED SPRING CREEK HI HO 8K
RED ROYAL HI HO 30M
RED ROYAL BEULA 1164G
Sire: **RED GEIS HI HO 180'04**
RED GARA HEAVENLY 65C
RED GEIS BAYBERRY 151'96
RED GEIS BAYBERRY 66'92

RED SSS BOOMER 803B
RED SVR BOOMERANG 47J
RED SOUTH VIEW CHRISTY 12B
Dam: **RED SVR JINNY 37L**
RED BUF CRK HOBO 1961 OSF
RED SOUTH VIEW LADY HOBO 8E
RED SOUTH VIEW CLASSY LADY 26B

REA	+0.09
%IMF	+0.02
Back Fat	+0.00

CED	+3.0
CEM	+4.0
BW	+2.1
WW	+41
YW	+65
Milk	+10
TM	+31
Stay	+7
HPG	+9

BW: 88 Adj 205: 709 Adj 365: 1129 Calving Ease: ** AOD: 8



LOT 95W

RED SVR HIGH CAPACITY 95W

Male SVR 95W 1529722 February 27 2009

RED BJR HIGH CAPACITY 008 OSF
RED UBAR HIGH CAPACITY 224 OSF
RED BJR BONNEBELL 7G
Sire: **RED GEFB HIGHER CAPACITY 2733**
RED TKP BODACIOUS 693 OSF
RED GEF SWEET BABY 9814
RED GEF LADY 3556 TALLY 9606

RED SOUTH VIEW NO EQUAL 28H
RED SVR NO EQUAL 118P
RED SVR MISS BOOMER 50J
Dam: **RED SVR WYE 57T**
RED PO LEACHMAN 88E
RED P O WYE 61G
RED VALLEYHILLS WYE 61B

CED	+4.0
CEM	+2.0
BW	-0.6
WW	+32
YW	+48
Milk	+14
TM	+30
Stay	+8
HPG	+8

BW: 74 Adj 205: 627 Adj 365: 1117 Calving Ease: *** AOD: 2



LOT 99W

RED SVR PRECISE 99W

Male SVR 99W 1513557 February 28 2009

SODAK PRECISION 4358 AMF
RED SODAK PRECISION 7408-97 OSF NHC AMF
RED SODAK OSCAR 9359
Sire: **RED DRYFORK K-C PRECISELY JACK NHC**
RED PIE LO CANYON 912
RED K-C MISS AUSSIE 45L
RED K-C MISS AUSSIE 45J

RED BJR RAMBLER 5162 OSF
RED VGW RAMBLER 1000 OSF
RED VGW UMPIRE YUMA 9266
Dam: **RED SVR MS CHIEF 28L**
RED SSS BOOMER 803B
RED SVR MS CHIEF 17J
RED MS CHIEF DDH 4Z

REA	-0.09
%IMF	+0.05
Back Fat	-0.01

CED	+7.0
CEM	+7.0
BW	-1.2
WW	+25
YW	+48
Milk	+18
TM	+30
Stay	+12
HPG	+7

BW: 78 Adj 205: 625 Adj 365: 1165 Calving Ease: ** AOD: 8



LOT 111W

RED SVR LANDSLIDE 111W

Male SVR 111W 1513567 March 03 2009

RED PERKS ADVANCE 121R
RED PIE AVALANCHE 381 OSF
RED PIE MS GRAND C 036
Sire: **RED GEFB LANDSLIDE 2616**
RED BADLANDS MR BEEF 805
RED GEFB BEEFY QUEEN 2191
RED MOLLY X504

BCAR RANCHER 8'00
RED BCAR WILD CARD
BREED CREEK PRIDE 33F 21'98
Dam: **RED SVR REBELLO 66S**
RED P O VIKING 51G
RED SVR REBELLO 17K
RED JCC REBELLO 11F

CED	+7.0
CEM	+5.0
BW	-0.8
WW	+21
YW	+51
Milk	+16
TM	+26
Stay	+7
HPG	+10

BW: 79 Adj 205: 620 Adj 365: 1077 Calving Ease: *** AOD: 3

SVR **LOT 114W**

RED SVR HI HO 114W

Male SVR 114W 1513569 March 03 2009

RED SPRING CREEK HI HO 8K
 RED ROYAL HI HO 30M
 RED ROYAL BEULA 1164G
 Sire: **RED GEIS HI HO 180'04**
 RED GARA HEAVENLY 65C
 RED GEIS BAYBERRY 151'96
 RED GEIS BAYBERRY 66'92

RED CUMNOCK STAR 139Z
 RED BVR RAB-STAR 56C
 RED TIARA OF TAG-A-LONG 57T
 Dam: **RED SVR MISS MAXI 35K**
 RED TRIPLE H LICORICE 4Z
 RED CC MISS MAXI 128D
 RED CC MISS MAXI 128B

CED	-1.0
CEM	+4.0
BW	+5.1
WW	+39
YW	+58
Milk	+6
TM	+26
Stay	+10
HPG	+9

REA	-0.05
%IMF	+0.02
Back Fat	+0.00

BW: 104 Adj 205: 676 Adj 365: 1088 Calving Ease: * AOD: 9



SVR **LOT 115W**

RED SVR NO EQUAL 115W

Male SVR 115W 1513570 March 03 2009

RED LMAN NONE BETTER 9604 OSF
 RED LCHMN NO EQUAL 1174D OSF
 RED LMAN PRAIRIE Q 9308
 Sire: **RED SOUTH VIEW NO EQUAL 28H**
 RED GET-A-LONG ARAB 159
 RED PASQUIA FANCY LADY 6F
 RED PASQUIA FANCY LADY 6D

RED PO LEACHMAN 88E
 RED P O VIKING 51G
 RED VALLEYHILLS LARKABELLE 19B
 Dam: **RED SVR MISS VIKING 29K**
 RED CUTARM DALLES 664Y
 RED CIRCLE R COCA 52A
 RED CIRCLE R COCA 126

CED	+5.0
CEM	+4.0
BW	+1.0
WW	+38
YW	+66
Milk	+12
TM	31
Stay	+9
HPG	+11

REA	+0.24
%IMF	+0.05
Back Fat	-0.01

BW: 89 Adj 205: 684 Adj 365: 1172 Calving Ease: ** AOD: 9



SVR **LOT 118W**

SVR LANDSLIDE 118W

Male RC SVR 118W 1513572 March 03 2009

RED PERKS ADVANCE 121R
 RED PIE AVALANCHE 381 OSF
 RED PIE MS GRAND C 036
 Sire: **RED GEFB LANDSLIDE 2616**
 RED BADLANDS MR BEEF 805
 RED GEFB BEEFY QUEEN 2191
 RED MOLLY X504

KBJ CONQOUR ALL 447J
 SVR SLEDGE 219N
 FV 249B MADONNA 28F
 Dam: **SVR BONNIE 147R**
 RED SOUTH VIEW NO EQUAL 28H
 RED SVR BONNIE 3N
 RED KENRAY BONNIE 026K

CED	+6.0
CEM	+6.0
BW	+0.2
WW	+29
YW	+61
Milk	+9
TM	+24
Stay	+11
HPG	+11

BW: 82 Adj 205: 623 Adj 365: 1070 Calving Ease: ** AOD: 4

SVR **LOT 125W**

RED SVR HI HO 125W

Male SVR 125W 1513585 March 05 2009

RED SPRING CREEK HI HO 8K
 RED ROYAL HI HO 30M
 RED ROYAL BEULA 1164G
 Sire: **RED GEIS HI HO 180'04**
 RED GARA HEAVENLY 65C
 RED GEIS BAYBERRY 151'96
 RED GEIS BAYBERRY 66'92

RED LAZY MC DIVIDE 8J
 RED LAZY MC THIRTY X 22L
 RED LAZY MC WATCH ME 26F
 Dam: **RED SVR THELMA 14N**
 RED SOUTH VIEW NO EQUAL 28H
 RED SVR THELMA 9K
 RED SOUTH VIEW THELMA 1F

CED	+2.0
CEM	+3.0
BW	+2.5
WW	+40
YW	+60
Milk	+11
TM	+31
Stay	+8
HPG	+11

REA	+0.03
%IMF	-0.03
Back Fat	+0.00

BW: 97 Adj 205: 695 Adj 365: 1138 Calving Ease: ** AOD: 6



LOT 134W RED SVR HIGHER CAPAC 134W

Male SVR 134W 1513597 March 07 2009

RED BJR HIGH CAPACITY 008 OSF
RED UBAR HIGH CAPACITY 224 OSF
RED BJR BONNEBELL 7G
Sire: RED GEFB HIGHER CAPACITY 2733
RED TKP BODACIOUS 693 OSF
RED GEF SWEET BABY 9814
RED GEF LADY 3556 TALLY 9606

CED	+6.0
CEM	+6.0
BW	-0.7
WW	+32
YW	+53
Milk	+19
TM	+35
Stay	+8
HPG	+7

RED SSS HIGH MARK 272D
RED SVR HIGH OCTANE 54K
RED BL SPRUCE LARKABA 53G
Dam: RED SVR RUBY 102N
RED VGW RAMBLER 1000 OSF
RED SVR RUBY 19L
RED SOUTH VIEW RUBY 8G

BW: 85 Adj 205: 695 Adj 365: 1090 Calving Ease: *** AOD: 6



LOT 139W RED SVR KNIGHT 139W

Male SVR 139W 1513608 March 09 2009

RED YY 23L TOPPER 408D
RED YY RED KNIGHT 640F OSF
RED TOP GOLDIE 40U
Sire: RED SVR KNIGHT 73P OSF
RED SSS BOOMER 803B
RED SVR JINNY 19K
RED SOUTH VIEW CLASSY LADY 26B

CED	+4.0
CEM	+6.0
BW	+1.5
WW	+39
YW	+63
Milk	+12
TM	+32
Stay	+9
HPG	+6

RED PRESCOTT THUNDER 234H
RED SVR THUNDERSTRUCK 95M
RED BLUE SPRUCE GOLDIE 65C
Dam: RED SVR FANCY LADY 29R
RED SVR HIGH OCTANE 54K
RED SVR FANCY LADY 24M
RED SVR FANCY LADY 100K

BW: 99 Adj 205: 710 Adj 365: 1145 Calving Ease: ** AOD: 4



LOT 144W RED SVR HI HO 144W

Male SVR 144W 1513613 March 10 2009

RED SPRING CREEK HI HO 8K
RED ROYAL HI HO 30M
RED ROYAL BEULA 1164G
Sire: RED GEIS HI HO 180'04
RED GARA HEAVENLY 65C
RED GEIS BAYBERRY 151'96
RED GEIS BAYBERRY 66'92

CED	+8.0
CEM	+3.0
BW	-0.2
WW	+29
YW	+46
Milk	+5
TM	+20
Stay	+11
HPG	+8

RED YY RED KNIGHT 640F OSF
RED BAR-E-L COPPERTOP 147M
RED BAR-E-L GLORIA 59H
Dam: RED SVR LEAH 146S
RED GOLD-BAR KING V415 107K
RED BH LEAH 26M
RED M DOUBLE B LEAH 510J

BW: 70 Adj 205: 574 Adj 365: 1028 Calving Ease: *** AOD: 3



LOT 150W RED SVR KNIGHT 150W

Male SVR 150W 1513620 March 12 2009

RED YY 23L TOPPER 408D
RED YY RED KNIGHT 640F OSF
RED TOP GOLDIE 40U
Sire: RED SVR KNIGHT 73P OSF
RED SSS BOOMER 803B
RED SVR JINNY 19K
RED SOUTH VIEW CLASSY LADY 26B

CED	+5.0
CEM	+4.0
BW	-0.6
WW	+32
YW	+51
Milk	+15
TM	+32
Stay	+10
HPG	+7

RED LEACHMAN DYN614-3902
RED FLYING K DYNAMO 6Y
RED FLYING K CHIEFTESS 4N
Dam: RED SVR JINNY 49M
RED CIRCLE R DALLES 68A
RED SOUTH VIEW JINNY 26C
RED BJ JINNY 26Z

REA	+0.02
%IMF	+0.02
Back Fat	-0.01

BW: 84 Adj 205: 707 Adj 365: 1083 Calving Ease: ** AOD: 7

SVR LOT 159W

RED SVR KNIGHT 159W

Male SVR 159W 1513631 March 15 2009

RED YY 23L TOPPER 408D
 RED YY RED KNIGHT 640F OSF
 RED TOP GOLDIE 40U
 Sire: **RED SVR KNIGHT 73P OSF**
 RED SSS BOOMER 803B
 RED SVR JINNY 19K
 RED SOUTH VIEW CLASSY LADY 26B

RED SSS HIGH MARK 272D
 RED SVR HIGH OCTANE 54K
 RED BL SPRUCE LARKABA 53G
 Dam: **RED OK LADY BUG 5N**
 RED SOUTH VIEW NO EQUAL 28H
 RED SVR FIREFLY 15L
 RED SOUTH VIEW LADY RAB 10G

CED	+7.0
CEM	+7.0
BW	-0.4
WW	+39
YW	+65
Milk	+12
TM	+31
Stay	+9
HPG	+7

REA	+0.09
%IMF	+0.01
Back Fat	-0.01

BW: 86 Adj 205: 718 Adj 365: 1180 Calving Ease: *** AOD: 6



SVR LOT 163W

RED SVR HI HO 163W

Male SVR 163W 1513634 March 16 2009

RED SPRING CREEK HI HO 8K
 RED ROYAL HI HO 30M
 RED ROYAL BEULA 1164G
 Sire: **RED GEIS HI HO 180'04**
 RED GARA HEAVENLY 65C
 RED GEIS BAYBERRY 151'96
 RED GEIS BAYBERRY 66'92

RED LAZY MC DIVIDE 8J
 RED LAZY MC THIRTY X 22L
 RED LAZY MC WATCH ME 26F
 Dam: **RED SVR CHRISTY 25N**
 RED LMAN KING ROB 8621 OSF
 RED SVR CHRISTY 49J
 RED SOUTH VIEW TCB CHRISTY 12D

CED	+2.0
CEM	+4.0
BW	+2.5
WW	+38
YW	+65
Milk	+10
TM	+29
Stay	+7
HPG	+10

REA	+0.05
%IMF	-0.06
Back Fat	+0.01

BW: 89 Adj 205: 662 Adj 365: 1023 Calving Ease: ** AOD: 6



SVR LOT 164W

RED SVR KNIGHT 164W

Male SVR 164W 1513637 March 18 2009

RED YY 23L TOPPER 408D
 RED YY RED KNIGHT 640F OSF
 RED TOP GOLDIE 40U
 Sire: **RED SVR KNIGHT 73P OSF**
 RED SSS BOOMER 803B
 RED SVR JINNY 19K
 RED SOUTH VIEW CLASSY LADY 26B

RED LCHMN NO EQUAL 1174D OSF
 RED SOUTH VIEW NO EQUAL 28H
 RED PASQUIA FANCY LADY 6F
 Dam: **RED SVR THELMA 9K**
 RED BUF CRK HOBO 1961 OSF
 RED SOUTH VIEW THELMA 1F
 RED CIRCLE R THELMA 46A

CED	+4.0
CEM	+5.0
BW	+0.4
WW	+38
YW	+57
Milk	+13
TM	+32
Stay	+11
HPG	+8

REA	+0.12
%IMF	+0.02
Back Fat	-0.01

BW: 96 Adj 205: 684 Adj 365: 1029 Calving Ease: ** AOD: 9

SVR LOT 170W

RED SVR HI HO 170W

Male SVR 170W 1513645 March 20 2009

RED SPRING CREEK HI HO 8K
 RED ROYAL HI HO 30M
 RED ROYAL BEULA 1164G
 Sire: **RED GEIS HI HO 180'04**
 RED GARA HEAVENLY 65C
 RED GEIS BAYBERRY 151'96
 RED GEIS BAYBERRY 66'92

RED PREMIER PATRIOT 16
 RED GEIS PRIME RIB 411
 RED GEIS KURUBA 5'92
 Dam: **RED SVR FREYJA 1P**
 RED SOUTH VIEW NO EQUAL 28H
 RED SVR FREYJA 33M
 RED SOUTH VIEW FREYJA 9F

CED	+5.0
CEM	+4.0
BW	+1.2
WW	+39
YW	+67
Milk	+7
TM	+27
Stay	+11
HPG	+10

REA	-0.04
%IMF	+0.00
Back Fat	-0.01

BW: 92 Adj 205: 688 Adj 365: 1081 Calving Ease: ** AOD: 5



LOT 176W

RED SVR HI HO 176W

Male SVR 176W 1513650 March 21 2009

RED SPRING CREEK HI HO 8K
RED ROYAL HI HO 30M
RED ROYAL BEULA 1164G
Sire: **RED GEIS HI HO 180'04**
RED GARA HEAVENLY 65C
RED GEIS BAYBERRY 151'96
RED GEIS BAYBERRY 66'92

RED LCHMN NO EQUAL 1174D OSF
RED SOUTH VIEW NO EQUAL 28H
RED PASQUIA FANCY LADY 6F
Dam: **RED SVR FREYJA 11N**
RED BVR RAB-STAR 56C
RED SOUTH VIEW FREYJA 3H
RED SOUTH VIEW FREYJA ET 1F

REA	-0.02
%IMF	-0.01
Back Fat	-0.01

CED	+6.0
CEM	+4.0
BW	+0.0
WW	+39
YW	+66
Milk	+9
TM	+29
Stay	+10
HPG	+11

BW: 86 Adj 205: 699 Adj 365: 1058 Calving Ease: *** AOD: 6



LOT 177W

RED SVR HI HO 177W

Male SVR 177W 1542283 March 21 2009

RED SPRING CREEK HI HO 8K
RED ROYAL HI HO 30M
RED ROYAL BEULA 1164G
Sire: **RED GEIS HI HO 180'04**
RED GARA HEAVENLY 65C
RED GEIS BAYBERRY 151'96
RED GEIS BAYBERRY 66'92

RED LCHMN NO EQUAL 1174D OSF
RED SOUTH VIEW NO EQUAL 28H
RED PASQUIA FANCY LADY 6F
Dam: **RED SVR JINNY 149P**
RED SSS HIGH MARK 272D
RED SVR JINNY 63L
RED SVR JINNY 31J

REA	+0.10
%IMF	-0.04
Back Fat	+0.00

CED	+1.0
CEM	+5.0
BW	+4.3
WW	+56
YW	+92
Milk	+11
TM	+39
Stay	+9
HPG	+10

BW: 103 Adj 205: 757 Adj 365: 1241 Calving Ease: * AOD: 5



LOT 178W

RED SVR HI HO 178W

Male SVR 178W 1513651 March 21 2009

RED SPRING CREEK HI HO 8K
RED ROYAL HI HO 30M
RED ROYAL BEULA 1164G
Sire: **RED GEIS HI HO 180'04**
RED GARA HEAVENLY 65C
RED GEIS BAYBERRY 151'96
RED GEIS BAYBERRY 66'92

RED LCHMN NO EQUAL 1174D OSF
RED SOUTH VIEW NO EQUAL 28H
RED PASQUIA FANCY LADY 6F
Dam: **RED SVR FIREFLY 92L**
RED CIRCLE R MAX 26Z
RED CC FIREFLY 148D
RED CIRCLE R FIREFLY 148

REA	+0.05
%IMF	-0.04
Back Fat	+0.00

CED	+4.0
CEM	-1.0
BW	+0.0
WW	+38
YW	+66
Milk	+6
TM	+25
Stay	+9
HPG	+10

BW: 85 Adj 205: 676 Adj 365: 1054 Calving Ease: *** AOD: 8



LOT 179W

RED SVR KNIGHT 179W

Male SVR 179W 1513652 March 21 2009

RED YY 23L TOPPER 408D
RED YY RED KNIGHT 640F OSF
RED TOP GOLDIE 40U
Sire: **RED SVR KNIGHT 73P OSF**
RED SSS BOOMER 803B
RED SVR JINNY 19K
RED SOUTH VIEW CLASSY LADY 26B

RED SSS HIGH MARK 272D
RED SVR HIGH OCTANE 54K
RED BL SPRUCE LARKABA 53G
Dam: **RED SVR FANCY LADY 29P**
RED VGW RAMBLER 1000 OSF
RED SVR FANCY LADY 16L
RED SVR FANCY LADY 19J

CED	+8.0
CEM	+10.0
BW	-0.2
WW	+37
YW	+60
Milk	+15
TM	+33
Stay	+9
HPG	+6

BW: 90 Adj 205: 725 Adj 365: 1167 Calving Ease: *** AOD: 5

SVR LOT
182W

RED SVR HI HO 182W

Male SVR 182W 1513657 March 22 2009

RED SPRING CREEK HI HO 8K
RED ROYAL HI HO 30M
RED ROYAL BEULA 1164G
Sire: **RED GEIS HI HO 180'04**
RED GARA HEAVENLY 65C
RED GEIS BAYBERRY 151'96
RED GEIS BAYBERRY 66'92

RED YY RED KNIGHT 640F OSF
RED BAR-E-L COPPERTOP 147M
RED BAR-E-L GLORIA 59H
Dam: **RED SVR JINNY 19P**
RED LEACHMAN CURNT VALUE
RED BJ JINNY 26Z
RED CUTARM COUNTESS 903T

CED	+4.0
CEM	+2.0
BW	+2.1
WW	+38
YW	+61
Milk	+8
TM	+27
Stay	+10
HPG	+8

BW: 88 Adj 205: 689 Adj 365: 1117 Calving Ease: ** AOD: 5



SVR LOT
184W

RED SVR KNIGHT 184W

Male SVR 184W 1513659 March 22 2009

RED YY 23L TOPPER 408D
RED YY RED KNIGHT 640F OSF
RED TOP GOLDIE 40U
Sire: **RED SVR KNIGHT 73P OSF**
RED SSS BOOMER 803B
RED SVR JINNY 19K
RED SOUTH VIEW CLASSY LADY 26B

RED PO LEACHMAN 88E
RED P O VIKING 51G
RED VALLEYHILLS LARKABELLE 19B
Dam: **RED SVR ROXIE 12L**
RED BVR RAB-STAR 56C
RED SOUTH VIEW RAB'S ROXIE 34H
RED SOUTH VIEW ROXIE 10E

REA	+0.11
%IMF	-0.01
Back Fat	-0.01

CED	+6.0
CEM	+7.0
BW	-0.5
WW	+34
YW	+57
Milk	+15
TM	+32
Stay	+10
HPG	+7

BW: 89 Adj 205: 717 Adj 365: 1121 Calving Ease: *** AOD: 8



SVR LOT
189W

RED SVR HI HO 189W

Male SVR 189W 1513667 March 24 2009

RED SPRING CREEK HI HO 8K
RED ROYAL HI HO 30M
RED ROYAL BEULA 1164G
Sire: **RED GEIS HI HO 180'04**
RED GARA HEAVENLY 65C
RED GEIS BAYBERRY 151'96
RED GEIS BAYBERRY 66'92

RED LCHMN NO EQUAL 1174D OSF
RED SOUTH VIEW NO EQUAL 28H
RED PASQUIA FANCY LADY 6F
Dam: **RED SVR RUBY 36P**
RED COCKBURN PINNACLE 17E
RED SOUTH VIEW RUBY 8G
RED SOUTH VIEW TCB RUBY 101D

CED	+2.0
CEM	+3.0
BW	+3.8
WW	+49
YW	+80
Milk	+9
TM	+33
Stay	+9
HPG	+10

REA	+0.01
%IMF	+0.00
Back Fat	+0.00

BW: 98 Adj 205: 728 Adj 365: 1200 Calving Ease: * AOD: 5

SVR LOT
198W

RED SVR JACK 198W

Male SVR 198W 1542284 March 26 2009

RED SODAK PRECISION 7408-97 OSF NHC AMF
RED DRYFORK K-C PRECISELY JACK NHC
RED K-C MISS AUSSIE 45L
Sire: **RED SVR JACK 65S NHF AMF**
RED SOUTH VIEW NO EQUAL 28H
RED SVR CHRISTY 101M
RED LEGARE'S FL CHRISTY 13Y

RED SSS CACHE 780L
RED DEER RANGE QUEEN 590P
RED M DOUBLE B QUEEN 412J
Dam: **RED SVR CHRISTY 158T**
RED SOUTH VIEW NO EQUAL 28H
RED SVR CHRISTY 88L
RED SOUTH VIEW CHRISTY 12B

CED	-2.0
CEM	+1.0
BW	+3.2
WW	+45
YW	+83
Milk	+14
TM	+36
Stay	+10
HPG	+10

BW: 90 Adj 205: 756 Adj 365: 1221 Calving Ease: ** AOD: 2

Black Yearling Bulls

SVR LOT
301W

SVR RANGE RIDER 301W

Male SVR 301W 1513414 February 07 2009

O C C TRAVELER 723Z
GDAR TRAVELER 235
GDAR PRIMROSE 0251
Sire: **CRESCENT CREEK 235 TRAV 65R**
BOTANY ANGUS MAX 5A
CRESCENT CREEK LAWN 109H
ANGUS ACRES LAWN 85Z

CRESCENT CREEK MAXIMUM 37C
GEIS MAXIMUM 26'95
GEIS GEORGINA 160'93
Dam: **GEIS ERICA 110'98**
DOUBLE J RITO 617A
DOUBLE J ERICA 252E
DOUBLE J ERICA 335Z

YG	+27
BW	+1.9
WW	+33
YW	+59
Milk	+13
TM	+30
REA	-0.16
%IMF	+0.01
Fat	+0.05

BW: 86 | Adj 205: 684 | Adj 365: 1137 | Calving Ease: ** | AOD: 11



SVR LOT
302W

SVR FINAL ANSWER 302W

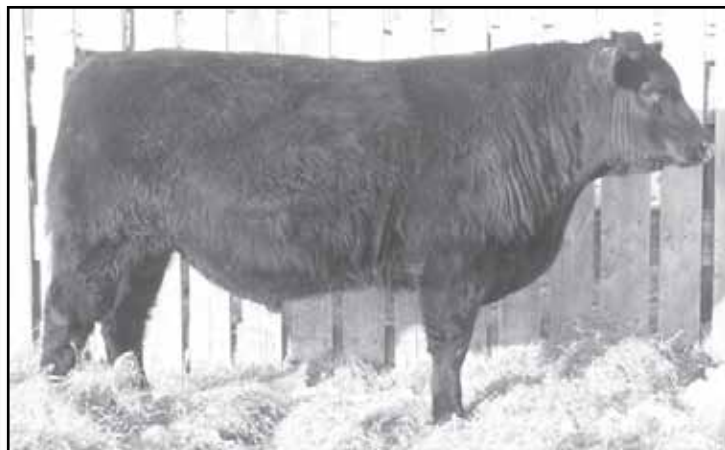
Male SVR 302W 1513415 February 08 2009

SITZ TRAVELER 8180 NHF AMF
S A V FINAL ANSWER 0035 NHF AMF
S A V EMULOUS 8145
Sire: **MFA FINAL ANSWER 31T**
MFA TIMELINE 69M
MFA BARDOLENE 97R
MFA BARDOLENE 148M

YOUNG DALE REAL DEAL 18K
YOUNG DALE TOUCH DOWN 36M
PAT LADY SANDRA 2C
Dam: **SVR JESTRESS 327T**
NORTHLINE TUFF 619H
SVR JESTRESS 260N
BEAR HILLS JESTRESS 84D

YG	+38
BW	+1.2
WW	+48
YW	+86
Milk	+17
TM	+41
REA	-
%IMF	-
Fat	-

BW: 82 | Adj 205: 636 | Adj 365: 1116 | Calving Ease: *** | AOD: 2



SVR LOT
304W

SVR FINAL ANSWER 304W

Male SVR 304W 1513424 February 09 2009

SITZ TRAVELER 8180 NHF AMF
S A V FINAL ANSWER 0035 NHF AMF
S A V EMULOUS 8145
Sire: **MFA FINAL ANSWER 31T**
MFA TIMELINE 69M
MFA BARDOLENE 97R
MFA BARDOLENE 148M

S A F 598 BANDO 5175 AMF
L T 598 BANDO 9074 NHF AMF
MILL COULEE BARBARA K 323
Dam: **SVR ANNIE 318T**
SVR SLEDGE 219N
SVR ANNIE 213R
SVR ANNIE 216M

YG	+39
BW	+0.0
WW	+49
YW	+88
Milk	+19
TM	+44
REA	-
%IMF	-
Fat	-

BW: 79 | Adj 205: 683 | Adj 365: 1184 | Calving Ease: *** | AOD: 2

SVR LOT
309W

SVR HUSSLER 309W

Male SVR 309W 1513433 February 11 2009

GDAR TRAVELER 235
CRESCENT CREEK 235 TRAV 65R
CRESCENT CREEK LAWN 109H
Sire: **SVR HUSSLER 320T**
B BAR POWER ROPE 0869
SVR FOREVER LADY 248M
GDAR FOREVER LADY 0354

RITO 616 OF 4B20 6807 NHF AMF
CRESCENT CREEK 616 RITO 3L
CRESCENT CREEK PRIDE LADY 78G
Dam: **SVR GINGER 258N**
CONNEALY DATELINE
SVR GINGER 207L
SVR GINGER 7J

YG	+32
BW	+2.8
WW	+28
YW	+61
Milk	+15
TM	+29
REA	-0.06
%IMF	+0.16
Fat	+0.07

BW: 97 | Adj 205: 601 | Adj 365: 1037 | Calving Ease: ** | AOD: 6



LOT 311W

SVR FINAL ANSWER 311W

Male SVR 311W 1513435 February 11 2009

SITZ TRAVELER 8180 NHF AMF
S A V FINAL ANSWER 0035 NHF AMF
S A V EMULOUS 8145

Sire: **MFA FINAL ANSWER 31T**

MFA TIMELINE 69M
MFA BARDOLENE 97R
MFA BARDOLENE 148M

Dam: **SVR ANNIE 216R**

GEIS BLACKMAN 186'00
GEIS BLACKMAN 36'03
GEIS EVENING TINGE 201'01
CRESCENT CREEK 616 RITO 3L
SVR ANNIE 210N
SVR ANNIE 222L

YG	+27
BW	-0.7
WW	+42
YW	+68
Milk	+16
TM	+37
REA	+0.16
%IMF	+0.14
Fat	+0.09

BW: 80 Adj 205: 640 Adj 365: 1149 Calving Ease: *** AOD: 4



LOT 313W

SVR FINAL ANSWER 313W

Male SVR 313W 1513437 February 11 2009

SITZ TRAVELER 8180 NHF AMF
S A V FINAL ANSWER 0035 NHF AMF
S A V EMULOUS 8145

Sire: **MFA FINAL ANSWER 31T**

MFA TIMELINE 69M
MFA BARDOLENE 97R
MFA BARDOLENE 148M

Dam: **SVR ROYAL QUEEN 368T**

GDAR TRAVELER 235
CRESCENT CREEK 235 TRAV 65R
CRESCENT CREEK LAWN 109H
CRESCENT CREEK 616 RITO 3L
SVR ROYAL QUEEN 252P
BLACKSTONE ROYAL QUEEN 7G

YG	+35
BW	-1.6
WW	+43
YW	+78
Milk	+20
TM	+42
REA	-
%IMF	-
Fat	-

BW: 73 Adj 205: 693 Adj 365: 1198 Calving Ease: *** AOD: 2



LOT 318W

SVR OBAMA 318W

Male SVR 318W 1513449 February 13 2009

SITZ TRAVELER 8180 NHF AMF
S A V 8180 TRAVELER 004 NHF AMF
BOYD FOREVER LADY 8003

Sire: **S A V NET WORTH 4200 NHF AMF**

S A F 598 BANDO 5175 AMF
S A V MAY 2410
S A V MAY 6269

Dam: **AITKEN ACRES RUBY 5M**

CONNEALY DATELINE
CONNEALY LEADTIME NHF AMF
RUTHS RONA OF CONANGA
G D A R WHAM 021 NHF AMF
AITKEN ACRES RUBY 5E
LINWOOD RUBY 39B

YG	+36
BW	+2.2
WW	+44
YW	+80
Milk	+25
TM	+47
REA	+0.27
%IMF	+0.32
Fat	+0.18

BW: 97 Adj 205: 771 Adj 365: 1253 Calving Ease: ** AOD: 7



LOT 319W

SVR TRAVELER 319W

Male TW SVR 319W 1513450 February 13 2009

O C C TRAVELER 723Z
GDAR TRAVELER 235
GDAR PRIMROSE 0251

Sire: **CRESCENT CREEK 235 TRAV 65R**

BOTANY ANGUS MAX 5A
CRESCENT CREEK LAWN 109H
ANGUS ACRES LAWN 85Z

Dam: **KLT BLACKBIRD'S JOY 3J**

TC STOCKMAN
TC STOCKMAN 365
TC PRIDE 0014
G D A R OSCAR 711 NHF AMF
KLT BLACKBIRD 4E
SCHEARBROOK BLACKBIRD 04A7

YG	+31
BW	+2.5
WW	+31
YW	+62
Milk	+19
TM	+34
REA	-0.04
%IMF	+0.15
Fat	+0.03

BW: 73 Adj 205: 595 Adj 365: 1011 Calving Ease: *** AOD: 10



LOT 320W

SVR TRAVELER 320W

Male SVR 320W 1513451 February 13 2009

O C C TRAVELER 723Z
GDAR TRAVELER 235
GDAR PRIMROSE 0251
Sire: **CRESCENT CREEK 235 TRAV 65R**
BOTANY ANGUS MAX 5A
CRESCENT CREEK LAWN 109H
ANGUS ACRES LAWN 85Z

YG	+31
BW	+0.5
WW	+30
YW	+62
Milk	+15
TM	+30
REA	-0.13
%IMF	+0.07
Fat	+0.13

RITO 616 OF 4B20 6807 NHF AMF
CRESCENT CREEK 616 RITO 3L
CRESCENT CREEK PRIDE LADY 78G
Dam: **SVR ANNIE 244P**
NORTHLINE TUFF 619H
SVR ANNIE 223M
DOUBLE AA ANNIE K 585'96

BW: 85 Adj 205: 613 Adj 365: 1043 Calving Ease: *** AOD: 5



LOT 322W

SVR FINAL ANSWER 322W

Male SVR 322W 1513458 February 14 2009

SITZ TRAVELER 8180 NHF AMF
S A V FINAL ANSWER 0035 NHF AMF
S A V EMULOUS 8145
Sire: **MFA FINAL ANSWER 31T**
MFA TIMELINE 69M
MFA BARDOLENE 97R
MFA BARDOLENE 148M

YG	+39
BW	+1.9
WW	+52
YW	+90
Milk	+20
TM	+46
REA	-
%IMF	-
Fat	-

YOUNG DALE REAL DEAL 18K
YOUNG DALE TOUCH DOWN 36M
PAT LADY SANDRA 2C
Dam: **SVR MADONNA 366T**
ANGUS ACRES WINSTON 249B
FV 249B MADONNA 28F
F V MADONNA MAX 22D

BW: 82 Adj 205: 733 Adj 365: 1178 Calving Ease: ** AOD: 2



LOT 327W

SVR NET WORTH 327W

Male SVR 327W 1513464 February 16 2009

SITZ TRAVELER 8180 NHF AMF
S A V 8180 TRAVELER 004 NHF AMF
BOYD FOREVER LADY 8003
Sire: **S A V NET WORTH 4200 NHF AMF**
S A F 598 BANDO 5175 AMF
S A V MAY 2410
S A V MAY 6269

YG	+39
BW	+6.2
WW	+50
YW	+88
Milk	+19
TM	+44
REA	+0.20
%IMF	+0.21
Fat	+0.33

CRESCENT CREEK MAXIMUM 37C
KBJ CONQUOR ALL 447J
LLB KINCHTRY BEAUTY 403E
Dam: **SVR BLACKBIRD 244N**
ROYAL STOCKMAN 6F
SVR BLACKBIRD 73K
TAF BLACKBIRD 18F

BW: 100 Adj 205: 638 Adj 365: 1141 Calving Ease: * AOD: 6



LOT 329W

SVR TRAVELER 329W

Male SVR 329W 1513474 February 17 2009

O C C TRAVELER 723Z
GDAR TRAVELER 235
GDAR PRIMROSE 0251
Sire: **CRESCENT CREEK 235 TRAV 65R**
BOTANY ANGUS MAX 5A
CRESCENT CREEK LAWN 109H
ANGUS ACRES LAWN 85Z

YG	+37
BW	+5.1
WW	+30
YW	+67
Milk	+15
TM	+30
REA	-0.13
%IMF	-0.03
Fat	+0.07

NORTHLINE BLACK INC. 89F
NORTHLINE TUFF 619H
NORTHLINE QUEEN 619F
Dam: **SVR MISS ELLEN ERICA 251M**
SASKALTA RITO 10F
SVR MISS ELLEN ERICA 75J
WICKLOW MISS ELLEN ERICA 63A

BW: 105 Adj 205: 604 Adj 365: 1136 Calving Ease: * AOD: 7

SVR LOT
341W

SVR HUSSLER 341W
Male SVR 341W 1513506 February 22 2009

GDAR TRAVELER 235
CRESCENT CREEK 235 TRAV 65R
CRESCENT CREEK LAWN 109H
Sire: **SVR HUSSLER 320T**
B BAR POWER ROPE 0869
SVR FOREVER LADY 248M
GDAR FOREVER LADY 0354

TC ADVANTAGE NHF AMF
CREEKVIEW ADVANTAGE 183P
WWF QUANTUM KEEPSAKE 83M
Dam: **SVR ATALANTA 318S**
KBJ CONQOUR ALL 447J
SVR ATALANTA 220N
BBSF 2164 ATALANTA 306H

YG	+32
BW	+2.5
WW	+34
YW	+66
Milk	+18
TM	+35
REA	-
%IMF	-
Fat	-

BW: 85 Adj 205: 625 Adj 365: 1128 Calving Ease: ** AOD: 3



SVR LOT
342W

SVR FINAL ANSWER 342W
Male SVR 342W 1513507 February 22 2009

SITZ TRAVELER 8180 NHF AMF
S A V FINAL ANSWER 0035 NHF AMF
S A V EMULOUS 8145
Sire: **MFA FINAL ANSWER 31T**
MFA TIMELINE 69M
MFA BARDOLENE 97R
MFA BARDOLENE 148M

KBJ CONQOUR ALL 447J
SVR SLEDGE 219N
FV 249B MADONNA 28F
Dam: **SVR FOREVER LADY 261R**
B BAR POWER ROPE 0869
SVR FOREVER LADY 248M
GDAR FOREVER LADY 0354

YG	+36
BW	+1.5
WW	+45
YW	+81
Milk	+15
TM	+38
REA	+0.14
%IMF	+0.04
Fat	+0.03

BW: 92 Adj 205: 658 Adj 365: 1220 Calving Ease: ** AOD: 4



SVR LOT
347W

SVR TRAVELER 347W
Male SVR 347W 1513517 February 23 2009

O C C TRAVELER 723Z
GDAR TRAVELER 235
GDAR PRIMROSE 0251
Sire: **CRESCENT CREEK 235 TRAV 65R**
BOTANY ANGUS MAX 5A
CRESCENT CREEK LAWN 109H
ANGUS ACRES LAWN 85Z

RITO 616 OF 4B20 6807 NHF AMF
CRESCENT CREEK 616 RITO 3L
CRESCENT CREEK PRIDE LADY 78G
Dam: **SVR ANNIE 210N**
NORTHLINE TUFF 619H
SVR ANNIE 222L
DOUBLE AA ANNIE K 585'96

YG	+31
BW	+1.9
WW	+27
YW	+58
Milk	+12
TM	+26
REA	-0.13
%IMF	+0.06
Fat	+0.13

BW: 89 Adj 205: 604 Adj 365: 1068 Calving Ease: ** AOD: 6

SVR LOT
348W

SVR BLACKMAN 348W
Male TW SVR 348W 1513518 February 23 2009

DOUBLE AA BLACKMAN 252'96
GEIS BLACKMAN 186'00
CRESCENT CREEK QUEEN RUTH 27F
Sire: **GEIS BLACKMAN 36'03**
SASKALTA BARDOLENE 109F
GEIS EVENING TINGE 201'01
GEIS EVENING TINGE 289'98

NORTHLINE BLACK INC. 89F
NORTHLINE TUFF 619H
NORTHLINE QUEEN 619F
Dam: **SVR JESTRESS 239M**
TC STOCKMAN 2164
SVR JESTRESS 28J
BEAR HILLS JESTRESS 84D

YG	+14
BW	+3.4
WW	+45
YW	+59
Milk	+17
TM	+39
REA	+0.16
%IMF	+0.24
Fat	+0.09

BW: 79 Adj 205: 693 Adj 365: 1127 Calving Ease: ** AOD: 7

SVR **LOT 350W**

SVR TRAVELER 350W

Male SVR 350W 1513523 February 24 2009

O C C TRAVELER 723Z
GDAR TRAVELER 235
GDAR PRIMROSE 0251

Sire: **CRESCENT CREEK 235 TRAV 65R**
BOTANY ANGUS MAX 5A
CRESCENT CREEK LAWN 109H
ANGUS ACRES LAWN 85Z

CRESCENT CREEK MAXIMUM 37C
KBJ CONQOUR ALL 447J
LLB KINCHTRY BEAUTY 403E

Dam: **SVR ATALANTA 220N**
TC STOCKMAN 2164
BBSF 2164 ATALANTA 306H
TAF ATALANTA 69E

YG	+32
BW	+4.3
WW	+34
YW	+66
Milk	+13
TM	+30
REA	-0.12
%IMF	+0.09
Fat	+0.12

BW: 90 Adj 205: 633 Adj 365: 1148 Calving Ease: ** AOD: 6



SVR **LOT 353W**

SVR TRAVELER 353W

Male SVR 353W 1513526 February 24 2009

O C C TRAVELER 723Z
GDAR TRAVELER 235
GDAR PRIMROSE 0251

Sire: **CRESCENT CREEK 235 TRAV 65R**
BOTANY ANGUS MAX 5A
CRESCENT CREEK LAWN 109H
ANGUS ACRES LAWN 85Z

R R SCOTCHCAP 9440 NHF AMF
LUKENS 9440 SCOTCH CAP L463
G D A R FOREVER LADY 9163

Dam: **SVR JILT 201L**
EBON HILL EQUALIZER 117'97
MERIT JILT 9002
MERIT JILT 7008

YG	+36
BW	+1.4
WW	+36
YW	+72
Milk	+21
TM	+39
REA	-0.18
%IMF	+0.09
Fat	+0.29

BW: 92 Adj 205: 699 Adj 365: 1119 Calving Ease: ** AOD: 8



SVR **LOT 357W**

SVR FINAL ANSWER 357W

Male SVR 357W 1513531 February 25 2009

SITZ TRAVELER 8180 NHF AMF
S A V FINAL ANSWER 0035 NHF AMF
S A V EMULOUS 8145

Sire: **MFA FINAL ANSWER 31T**
MFA TIMELINE 69M
MFA BARDOLENE 97R
MFA BARDOLENE 148M

GDAR TRAVELER 235
CRESCENT CREEK 235 TRAV 65R
CRESCENT CREEK LAWN 109H

Dam: **SVR MISS ELLEN ERICA 360T**
NORTHLINE TUFF 619H
SVR MISS ELLEN ERICA 251M
SVR MISS ELLEN ERICA 75J

YG	+41
BW	+0.8
WW	+48
YW	+90
Milk	+21
TM	+45
REA	-
%IMF	-
Fat	-

BW: 84 Adj 205: 762 Adj 365: 1286 Calving Ease: ** AOD: 2

SVR **LOT 358W**

SVR TRAVELER 358W

Male SVR 358W 1513532 February 25 2009

O C C TRAVELER 723Z
GDAR TRAVELER 235
GDAR PRIMROSE 0251

Sire: **CRESCENT CREEK 235 TRAV 65R**
BOTANY ANGUS MAX 5A
CRESCENT CREEK LAWN 109H
ANGUS ACRES LAWN 85Z

D H D TRAVELER 6807 NHF AMF
ALBERDA TRAVELER 416 NHF AMF
ALBERDA QUEEN KIMBERLY 222

Dam: **SVR GINNY 215L**
SASKALTA RITO 10F
SVR GINNY 6J
BBSF 2000 GINNY 306G

YG	+36
BW	+5.1
WW	+31
YW	+67
Milk	+21
TM	+37
REA	-0.14
%IMF	+0.11
Fat	+0.11

BW: 105 Adj 205: 666 Adj 365: 1151 Calving Ease: * AOD: 8

SVR LOT
360W

SVR TRAVELER 360W

Male SVR 360W 1513534 February 25 2009

O C C TRAVELER 723Z
GDAR TRAVELER 235
GDAR PRIMROSE 0251
Sire: **CRESCENT CREEK 235 TRAV 65R**
BOTANY ANGUS MAX 5A
CRESCENT CREEK LAWN 109H
ANGUS ACRES LAWN 85Z

YOUNG DALE MONARCH 12E
NORTHLINE GRANITE 95G
KBJ EDNA 95A
Dam: **SVR GINGER 51K**
TC STOCKMAN 2164
BBSF 2164 RSE GINGER 301G
VALLEYMERE RSE BRIDE 25X

YG	+28
BW	+3.5
WW	+32
YW	+60
Milk	+13
TM	+29
REA	-0.12
%IMF	-0.06
Fat	+0.06

BW: 88 Adj 205: 630 Adj 365: 1036 Calving Ease: ** AOD: 9



SVR LOT
364W

SVR FINAL ANSWER 364W

Male SVR 364W 1513539 February 26 2009

SITZ TRAVELER 8180 NHF AMF
S A V FINAL ANSWER 0035 NHF AMF
S A V EMULOUS 8145
Sire: **MFA FINAL ANSWER 31T**
MFA TIMELINE 69M
MFA BARDOLENE 97R
MFA BARDOLENE 148M

GDAR TRAVELER 235
CRESCENT CREEK 235 TRAV 65R
CRESCENT CREEK LAWN 109H
Dam: **SVR BLACKBIRD 364T**
TC STOCKMAN 365
KLT BLACKBIRD'S JOY 3J
KLT BLACKBIRD 4E

YG	+36
BW	+0.0
WW	+36
YW	+72
Milk	+19
TM	+37
REA	-
%IMF	-
Fat	-

BW: 77 Adj 205: 604 Adj 365: 1134 Calving Ease: *** AOD: 2



SVR LOT
365W

SVR BLACKMAN 365W

Male SVR 365W 1513542 February 27 2009

DOUBLE AA BLACKMAN 252'96
GEIS BLACKMAN 186'00
CRESCENT CREEK QUEEN RUTH 27F
Sire: **GEIS BLACKMAN 36'03**
SASKALTA BARDOLENE 109F
GEIS EVENING TINGE 201'01
GEIS EVENING TINGE 289'98

RITO 616 OF 4B20 6807 NHF AMF
CRESCENT CREEK 616 RITO 3L
CRESCENT CREEK PRIDE LADY 78G
Dam: **SVR ATALANTA 255N**
NORTHLINE TUFF 619H
SVR ATALANTA 204L
TAF ATALANTA 39D

YG	+15
BW	+0.8
WW	+36
YW	+51
Milk	+11
TM	+29
REA	+0.02
%IMF	+0.20
Fat	+0.06

BW: 82 Adj 205: 630 Adj 365: 1008 Calving Ease: ** AOD: 6

SVR LOT
367W

SVR TRAVELER 367W

Male SVR 367W 1513553 February 28 2009

O C C TRAVELER 723Z
GDAR TRAVELER 235
GDAR PRIMROSE 0251
Sire: **CRESCENT CREEK 235 TRAV 65R**
BOTANY ANGUS MAX 5A
CRESCENT CREEK LAWN 109H
ANGUS ACRES LAWN 85Z

CONNELLY DATELINE
VERMILION DATELINE 7078 NHF AMF
VERMILION BLACKBIRD 5044
Dam: **SVR QUEEN 209M**
KING L4 338T
QUEEN 506Z
QUEEN L3 297R

YG	+29
BW	+2.3
WW	+29
YW	+58
Milk	+17
TM	+32
REA	-0.04
%IMF	+0.02
Fat	+0.01

BW: 91 Adj 205: 636 Adj 365: 1049 Calving Ease: ** AOD: 7

SVR LOT
368W

SVR BLACKMAN 368W

Male SVR 368W 1542285 March 01 2009

DOUBLE AA BLACKMAN 252'96
GEIS BLACKMAN 186'00
CRESCENT CREEK QUEEN RUTH 27F
Sire: **GEIS BLACKMAN 36'03**
SASKALTA BARDOLINE 109F
GEIS EVENING TINGE 201'01
GEIS EVENING TINGE 289'98

SANDY BAR CHIEF 21F
DAY BY DAY CHIEF 304K
SANDY BAR LINDA 301E
Dam: **SVR EVENING TINGE 230M**
WIWA CREEK STOCKMAN 25'95
DOUBLE FOUR EVENING TINGE 54J
DOUBLE FOUR EVENING TINGE 60F

YG	+7
BW	+4.1
WW	+43
YW	+50
Milk	+17
TM	+39
REA	+0.01
%IMF	+0.21
Fat	+0.01

BW: 101 Adj 205: 736 Adj 365: 1158 Calving Ease: * AOD: 7



SVR LOT
369W

SVR TRAVELER 369W

Male SVR 369W 1513562 March 02 2009

O C C TRAVELER 723Z
GDAR TRAVELER 235
GDAR PRIMROSE 0251
Sire: **CRESCENT CREEK 235 TRAV 65R**
BOTANY ANGUS MAX 5A
CRESCENT CREEK LAWN 109H
ANGUS ACRES LAWN 85Z

CANADIAN SPECIAL 2Z
ANGUS RIDGE SPECIALIZER 6F
ERMA OF ANGUS RIDGE 9Z
Dam: **THOMA D CLARA ESTON 14J**
TOWN N COUNTRY PINE DRIVE 2W
THOMA D CLARA BELL 9Z
THOMA D CLARA 14S

YG	+26
BW	+1.5
WW	+27
YW	+53
Milk	+13
TM	+27
REA	-0.12
%IMF	+0.04
Fat	+0.06

BW: 89 Adj 205: 672 Adj 365: 1137 Calving Ease: *** AOD: 10



SVR LOT
373W

SVR TRAVELER 373W

Male SVR 373W 1513575 March 03 2009

O C C TRAVELER 723Z
GDAR TRAVELER 235
GDAR PRIMROSE 0251
Sire: **CRESCENT CREEK 235 TRAV 65R**
BOTANY ANGUS MAX 5A
CRESCENT CREEK LAWN 109H
ANGUS ACRES LAWN 85Z

CRESCENT CREEK MAXIMUM 37C
KBJ CONQUOR ALL 447J
LLB KINCHTRY BEAUTY 403E
Dam: **SVR QUEEN 246N**
DALRENE EXTRA 36A
BLACKSTONE ROYAL QUEEN 7G
Q A S QUEEN 3173 142 81D

YG	+28
BW	+3.5
WW	+34
YW	+62
Milk	+13
TM	+30
REA	-0.07
%IMF	-0.07
Fat	+0.04

BW: 85 Adj 205: 606 Adj 365: 1053 Calving Ease: ** AOD: 6

SVR LOT
378W

SVR TRAVELER 378W

Male SVR 378W 1513584 March 04 2009

O C C TRAVELER 723Z
GDAR TRAVELER 235
GDAR PRIMROSE 0251
Sire: **CRESCENT CREEK 235 TRAV 65R**
BOTANY ANGUS MAX 5A
CRESCENT CREEK LAWN 109H
ANGUS ACRES LAWN 85Z

SANDY BAR CHIEF 21F
DAY BY DAY CHIEF 304K
SANDY BAR LINDA 301E
Dam: **SVR ERICA 257N**
SASKALTA RITO 10F
SVR ELLEN ERICA 90J
BBSF 2164 ELLEN 300G

YG	+27
BW	+3.7
WW	+30
YW	+58
Milk	+17
TM	+32
REA	-0.16
%IMF	+0.11
Fat	+0.14

BW: 98 Adj 205: 658 Adj 365: 1174 Calving Ease: * AOD: 6

SVR LOT
385W

SVR CONNECTION 385W

Male SVR 385W 1513602 March 08 2009

SITZ ALLIANCE 6595 NHF AMF
SVR CONNECTION 221P
BBSF 131 MADONNA 304H
Sire: **SVR CONNECT 307S**
EBON HILL EQUALIZER 117'97
MERIT JILT 9002
MERIT JILT 7008

KBJ CONQOUR ALL 447J
SVR SLEDGE 219N
FV 249B MADONNA 28F
Dam: **SVR ANNIE 311S**
NORTHLINE TUFF 619H
SVR ANNIE 223M
DOUBLE AA ANNIE K 585'96

YG	+38
BW	+1.4
WW	+41
YW	+79
Milk	+12
TM	+33
REA	+0.13
%IMF	-0.08
Fat	+0.17

BW: 77 Adj 205: 652 Adj 365: 1146 Calving Ease: *** AOD: 3



SVR LOT
389W

SVR CONNECT 389W

Male SVR 389W 1542286 March 08 2009

SITZ ALLIANCE 6595 NHF AMF
SVR CONNECTION 221P
BBSF 131 MADONNA 304H
Sire: **SVR CONNECT 307S**
EBON HILL EQUALIZER 117'97
MERIT JILT 9002
MERIT JILT 7008

KBJ CONQOUR ALL 447J
SVR SLEDGE 219N
FV 249B MADONNA 28F
Dam: **SVR ATALANTA 357S**
CRESCENT CREEK 616 RITO 3L
SVR ATALANTA 227N
TAF ATALANTA 69E

YG	+35
BW	+0.9
WW	+33
YW	+68
Milk	+8
TM	+25
REA	+0.10
%IMF	-0.10
Fat	+0.18

BW: 82 Adj 205: 604 Adj 365: 1036 Calving Ease: *** AOD: 3



SVR LOT
390W

SVR TRAVELER 390W

Male SVR 390W 1513606 March 08 2009

O C C TRAVELER 723Z
GDAR TRAVELER 235
GDAR PRIMROSE 0251
Sire: **CRESCENT CREEK 235 TRAV 65R**
BOTANY ANGUS MAX 5A
CRESCENT CREEK LAWN 109H
ANGUS ACRES LAWN 85Z

D H D TRAVELER 6807 NHF AMF
CONNEALY DATELINE
EILA EILA OF CONANGA AMF
Dam: **SVR MADONNA 201M**
NORTHLINE BLACK INC. 89F
SVR MADONNA 55K
FV 249B MADONNA 28F

YG	+33
BW	+4.6
WW	+40
YW	+73
Milk	+19
TM	+39
REA	-0.10
%IMF	+0.05
Fat	+0.03

BW: 97 Adj 205: 723 Adj 365: 1210 Calving Ease: * AOD: 7

SVR LOT
393W

SVR CONNECTOR 393W

Male SVR 393W 1513616 March 10 2009

SITZ ALLIANCE 6595 NHF AMF
SVR CONNECTION 221P
BBSF 131 MADONNA 304H
Sire: **SVR CONNECT 307S**
EBON HILL EQUALIZER 117'97
MERIT JILT 9002
MERIT JILT 7008

YOUNG DALE REAL DEAL 18K
YOUNG DALE TOUCH DOWN 36M
PAT LADY SANDRA 2C
Dam: **SVR DUCH TORO 238R**
ANGUS RIDGE SPECIALIZER 6F
THOMA D DUCH TORO 12K
THOMA D DUCH TORO 8D

YG	+34
BW	+2.3
WW	+35
YW	+69
Milk	+15
TM	+33
REA	+0.10
%IMF	+0.04
Fat	+0.022

BW: 92 Adj 205: 672 Adj 365: 1131 Calving Ease: ** AOD: 4

SVR LOT
400W

SVR CONNECTOR 400W

Male SVR 400W 1513626 March 13 2009

SITZ ALLIANCE 6595 NHF AMF
SVR CONNECTION 221P
BBSF 131 MADONNA 304H
Sire: **SVR CONNECT 307S**
EBON HILL EQUALIZER 117'97
MERIT JILT 9002
MERIT JILT 7008

TC ADVANTAGE NHF AMF
CREEKVIEW ADVANTAGE 183P
WWF QUANTUM KEEPSAKE 83M
Dam: **SVR GINGER 333S**
NORTHLINE GRANITE 95G
SVR GINGER 51K
BBSF 2164 RSE GINGER 301G

YG	+34
BW	+0.9
WW	+36
YW	+69
Milk	+17
TM	+35
REA	-
%IMF	-
Fat	-

BW: 82 Adj 205: 635 Adj 365: 1108 Calving Ease: *** AOD: 3



SVR LOT
403W

SVR CONNECTOR 403W

Male SVR 403W 1513636 March 16 2009

SITZ ALLIANCE 6595 NHF AMF
SVR CONNECTION 221P
BBSF 131 MADONNA 304H
Sire: **SVR CONNECT 307S**
EBON HILL EQUALIZER 117'97
MERIT JILT 9002
MERIT JILT 7008

GEIS BLACKMAN 186'00
GEIS BLACKMAN 36'03
GEIS EVENING TINGE 201'01
Dam: **SVR ELLEN 243R**
KBJ CONQUOR ALL 447J
SVR ELLEN 233N
BBSF 2164 ELLEN 300G

YG	+30
BW	+2.2
WW	+42
YW	+71
Milk	+17
TM	+38
REA	-
%IMF	-
Fat	-

BW: 86 Adj 205: 690 Adj 365: 1186 Calving Ease: ** AOD: 4

SVR LOT
402W

SVR CONNECTOR 402W

Male SVR 402W 1513635 March 16 2009

SITZ ALLIANCE 6595 NHF AMF
SVR CONNECTION 221P
BBSF 131 MADONNA 304H
Sire: **SVR CONNECT 307S**
EBON HILL EQUALIZER 117'97
MERIT JILT 9002
MERIT JILT 7008

YOUNG DALE REAL DEAL 18K
YOUNG DALE TOUCH DOWN 36M
PAT LADY SANDRA 2C
Dam: **SVR JESTRESS 304S**
NORTHLINE TUFF 619H
SVR JESTRESS 239M
SVR JESTRESS 28J

YG	+38
BW	+0.7
WW	+42
YW	+82
Milk	+16
TM	+37
REA	+0.17
%IMF	+0.07
Fat	+0.28

BW: 74 Adj 205: 648 Adj 365: 1109 Calving Ease: *** AOD: 3



SVR LOT
408W

SVR TRAVELER 408W

Male SVR 408W 1513648 March 20 2009

O C C TRAVELER 723Z
GDAR TRAVELER 235
GDAR PRIMROSE 0251
Sire: **CRESCENT CREEK 235 TRAV 65R**
BOTANY ANGUS MAX 5A
CRESCENT CREEK LAWN 109H
ANGUS ACRES LAWN 85Z

GARDENS FORTUNE 9213 S3
STEVENSON FORTUNE 425C NHF AMF
J R S ENCHANTRESS 235Z
Dam: **SVR BLACKBIRD 206L**
TC STOCKMAN 365
KLT BLACKBIRD'S JOY 3J
KLT BLACKBIRD 4E

YG	+33
BW	+3.6
WW	+40
YW	+73
Milk	+18
TM	+38
REA	-0.08
%IMF	+0.13
Fat	+0.01

BW: 96 Adj 205: 738 Adj 365: 1184 Calving Ease: ** AOD: 8

SVR **LOT 412W**

SVR TRAVELER 412W

Male SVR 412W 1513661 March 22 2009

O C C TRAVELER 723Z
GDAR TRAVELER 235
GDAR PRIMROSE 0251
Sire: **CRESCENT CREEK 235 TRAV 65R**
BOTANY ANGUS MAX 5A
CRESCENT CREEK LAWN 109H
ANGUS ACRES LAWN 85Z

D H D TRAVELER 6807 NHF AMF
CONNEALY DATELINE
EILA EILA OF CONANGA AMF
Dam: **SVR BLACKBIRD 216L**
MINERTS FORTUNE 2000 NHF AMF
BBSF 2000 BLACKBIRD 310H
TAF BLACKBIRD 18F

YG	+31
BW	+2.1
WW	+28
YW	+59
Milk	+15
TM	+29
REA	-
%IMF	-
Fat	-

BW: 92 Adj 205: 639 Adj 365: 1042 Calving Ease: ** AOD: 8



SVR **LOT 413W**

SVR CONNECTOR 413W

Male SVR 413W 1513662 March 22 2009

SITZ ALLIANCE 6595 NHF AMF
SVR CONNECTION 221P
BBSF 131 MADONNA 304H
Sire: **SVR CONNECT 307S**
EBON HILL EQUALIZER 117'97
MERIT JILT 9002
MERIT JILT 7008

KBJ CONQOUR ALL 447J
SVR SLEDGE 219N
FV 249B MADONNA 28F
Dam: **SVR ANNIE 213R**
NORTHLINE TUFF 619H
SVR ANNIE 216M
VS-PAT ANNIE K 831B

YG	+36
BW	+1.3
WW	+38
YW	+75
Milk	+11
TM	+30
REA	-
%IMF	-
Fat	-

BW: 82 Adj 205: 657 Adj 365: 1126 Calving Ease: *** AOD: 4



SVR **LOT 418W**

SVR FINAL ANSWER 418W

Male SVR 418W 1542287 April 01 2009

SITZ TRAVELER 8180 NHF AMF
S A V FINAL ANSWER 0035 NHF AMF
S A V EMULOUS 8145
Sire: **MFA FINAL ANSWER 31T**
MFA TIMELINE 69M
MFA BARDOLENE 97R
MFA BARDOLENE 148M

GDAR TRAVELER 235
CRESCENT CREEK 235 TRAV 65R
CRESCENT CREEK LAWN 109H
Dam: **SVR FOXIE 375T**
GRAND ISLAND ELMO
SVR FOXIE 11K
FOXIE OF CROSSMOUNT 11C

YG	+34
BW	-0.1
WW	+41
YW	+75
Milk	+21
TM	+42
REA	-
%IMF	-
Fat	-

BW: 78 Adj 205: 694 Adj 365: 1086 Calving Ease: *** AOD: 2

SVR **LOT 420W**

SVR TRAVELER 420W

Male SVR 420W 1513686 April 06 2009

O C C TRAVELER 723Z
GDAR TRAVELER 235
GDAR PRIMROSE 0251
Sire: **CRESCENT CREEK 235 TRAV 65R**
BOTANY ANGUS MAX 5A
CRESCENT CREEK LAWN 109H
ANGUS ACRES LAWN 85Z

CRESCENT CREEK MAXIMUM 37C
KBJ CONQOUR ALL 447J
LLB KINCHTRY BEAUTY 403E
Dam: **SVR BELLEMERE 234N**
WIWA CREEK STOCKMAN 48'95
WIWA CREEK BELLEMERE 8C 3'99
WIWA CREEK BELLEMERE 8'93

YG	+32
BW	+1.7
WW	+28
YW	+60
Milk	+12
TM	+26
REA	-0.14
%IMF	+0.10
Fat	+0.015

BW: 80 Adj 205: 598 Adj 365: 1058 Calving Ease: ** AOD: 6

Simmental Angus Cross Bulls

SVR LOT
800W

SVR 800W
Male Twin SVR 800W February 27 2009

SVR LOT
801W

SVR 801W
Male Twin SVR 801W February 27 2009

CNS DREAM ON L186
REMINGTON RED LABEL HR
HS REFLECTIONS J34
Sire: **REMINGTON ON TARGET 2S (Simmental)**
G&L AVALANCHE 149F
DRAKE SOFT TOUCH 15M
DRAKE MISS P36D

TC ADVANTAGE AMF NHF
CREEKVIEW ADVANTAGE 183P
WWF QUANTUM KEEPSAKE 83M
Dam: **SVR GINNY 353S (Black Angus)**
MINERTS FORTUNE 2000 AMF NHF
BBSF 2000 GINNY 306G
TAF ATALANTA 69E



BW:	75	Oct 3 wt:	696	Feb 26 wt:	1165	Calving Ease:	*	AOD:	3
-----	----	-----------	-----	------------	------	---------------	---	------	---



BW:	75	Oct 3 wt:	666	Feb 26 wt:	1120	Calving Ease:	*	AOD:	3
-----	----	-----------	-----	------------	------	---------------	---	------	---

Notes...

**Summary Statistics
Candian Angus
Association
Black Angus Average
EPD's on 2009 calves**

BW:	+3.0
WW:	+40
YW:	+71
Milk:	+17
TM:	+37
YG:	+31
Scrotal:	+0.38

**Summary Statistics
Candian Angus
Association
Red Angus Average
EPD's on 2009 calves**

CED:	+4.8
CEM:	+3.2
BW:	+0.7
WW:	+29
YW:	+52
Milk:	+15
TM:	+29
Stay:	+9
HPG:	+9



CEYLON PULSES PLUS LTD.
 "Your Total Crop Input Dealer"
BRENT BLACKMORE
 Managing Partner
 P.O. Box 143, Ceylon, SK S0C 0T0
 bblackmore@pulsesplus.com
 www.pulsesplus.com
 Bus: 306-454-2245 Fax: 306-454-2285
 Cell: 306-442-7797

Oasis Service Station
 • Bulk Fuel • Service Station
 • Restaurant • Lounge
 Junction of Highways 6 and 13
 Open Monday - Saturday
Lynn Krauss, Owner - 306-442-2030



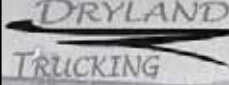
Bourassa & Sons Ltd.
 New/Used Equipment • Sales • Service
www.ebourassa.com
306-869-2277
 Radville • Pangman • Assiniboia • Weyburn • Estevan







www.nelsonmotors.com
AVONLEA • ESTEVAN • RADVILLE
• REDVERS • OXBOW


Avonlea, SK Ph: 868-2022 Fx: 868-4840	Estevan, SK Ph: 634-6422 Fx: 634-6699	Radville, SK Ph: 869-3000 Fx: 869-2440
Oxbow, SK Ph: 483-5115	Redvers, SK Ph: 452-3418 Fx: 452-3277	



Trevor DeBruyne: 869-6948
 Allen Reidy: 869-7863



Radville, SK
 Custom Grain Hauling • Tri-axle Trailer



DEEP SOUTH ANIMAL CLINIC LTD.
 P. O. Box 387
 Ogema, Saskatchewan
 S0C 1Y0
Dr. Andrew C. Acton
Dr. Tiffany Pomarenski
 Phone (306) 459-2422
 Fax (306) 459-2880




Aaron Bohn
 Pro-Pellet Division
Weyburn Inland Terminal Ltd.
 Box 698, Weyburn, Saskatchewan, Canada S4H 2K8
 Sask. Toll Free 1-800-552-8808
 Tel: (306) 842-7436
 Fax: (306) 842-0303
 Cell: (306) 861-1757 Email: propellets@wit.ca



Schindel Ironworks
 Welding Shop & Mobile
 Manufacturing and Repair
 Dan cell 306-861-2616 King Street - Radville, SK
 Mel cell 306-861-3203 306-869-2897

SORENSEN'S CORRAL CLEANING
YOU BED IT, WE SPREAD IT!
 2 New Holland Truck Mount Spreaders ~
 Case 455 Crawler ~ 621 Payloader
 Payloader available for snow removal
 Available immediately for bookings
CALL ERNIE - 306-454-2725
Cell: 306-891-9015 Ceylon, SK



MNP
 MEYERS NORRIS PENNY
Dale R. Dreis
 B. Comm., C.A.
 ASSURANCE SERVICES
 301, 117-3rd Street N.E.
 WEYBURN, SK S4H 0W3
 TEL (306) 842-8915
 FAX (306) 842-1966
 CELL (306) 891-8711
 E-MAIL dale.dreis@mnp.ca

B.E. VERMEULEN INSURANCE LTD.
 * Insurance
 Box 158
 Ceylon, Sask.
 S0C 0T0
 Phone & Fax (306) 454-2411
 Home Phone (306) 454-2401

Jerry Glab, P.Ag.
 Territory Manager - Southern Saskatchewan

Masterfeeds INC.
 745 Park Street
 Regina, SK S4N 4Y4
 Bus: (306) 721-2727
 Cell: (306) 891-8914 Fax: (306) 504-0122
 E-mail: jglab@masterfeeds.com
 www.masterfeeds.com





2009 Breeder of the Year
Thank you to the
Saskatchewan Angus Association
for the honor!



2009 Masterfeeds Buyer's Draw Winner...
The Goodsman Family

Carcass Data

What is Ultrasound?

Ultrasound has become an everyday use of "frequencies" to detect those things that we can not normally see with our naked eye. Example: (*Medical World* - it is used for a host of functions from detecting bodily problems to detecting the sex of a young couples first new born). In the outside world it is used to detect cracks or possible structural flaws in all types of equipment from bridges to engines. In beef cattle it is used to detect three major components of a live animals carcass composition; that being muscle (meat), fat thickness and IMF (Intra Muscular Fat or Marbling). As well, it is quite commonly used to detect the sex of embryos being carried with an amazingly high degree of accuracy.

When is it used?

For any meaningful information it is best done during some relative time period similar to what slaughter ages are to be. The CUP system adjusts the carcass information to one year of age (similar to adjusted yearling weights). This then gives us at least a simple level playing field for making choices or decisions within common groups.

How are the Measurements Expressed?

Rib Fat - either in inches .3 inches or in cm's 8 mm

AREA - usually in square inches

IMF or MB - as a % of that area (eg. 4.2 = 4.2%)

RP = Retail Product - is a % of saleable carcass

Why ultrasound, or better yet should we pay attention to this information?

Within the seedstock industry it seems like a distant or vague result that holds little real value. But in the commercial cattle world this tool of using ultrasound has become a well documented practice that when used has resulted in a clean, positive, decision making management choice resulting in extra profits of \$30 per head and higher. The ultrasound carcass evaluation when used a short time (7 - 10 days) prior to slaughter simply allowed the seller to market on a grid system or not at an optimal time. This live presort has resulted in an 80% - 95% degree of accuracy following slaughter. The pre slaughter carcass data corresponded to slaughter data with measuring IMF and Fat to this degree of accuracy. As well reportedly we find major players in the North American slaughter industry securing software programs to in fact use this technology for a much more economic decision on their front. "Apparently the information is not as vague as we may believe."

What is good or what is bad?

None of the figures or information is bad - the information should help us identify which animals or groups of animals are superior for different traits, ie the high IMF bulls could be sourced to use on Continental cows who may well have lower IMF tendencies, or, large AREA bulls or sire groups could be used on low yield, easy fleshing British cows whose IMF genetic makeup could already be abundant. Remember Retail Product (RP) takes a combination of this information into account. So is there a right answer?? Not at all, but there certainly is an advantage to you the buyer using this information if the bulls or sires are identified.

The first thing producers want to know about ultrasound is: How accurate is it? The answer to the questions depends on who does the actual scanning of the animals and who interprets the images. Ultrasound data on these bulls was collected and analyzed by a technician that is certified by AUP and CUP. This means that this

technician has met the standards set by many breed associations. The accuracy, although not perfect, is high enough that bulls selected based on ultrasound, results in positive genetic change in progeny carcass traits. Heritability for carcass traits are moderate to high, which is slightly higher than birth weights, weaning weights, and yearling weights.

IMF (Inter muscular Fat or Marbling)

IMF is the best indication that we have to tell us what kind of eating experience we will have when eating beef. Extensive research shows that average AAA and above marbling produces the most satisfied consumers. As marbling increases so does the juiciness, the flavorfulness, and the tenderness. This may not always be true but for the most part AAA marbling producers more satisfied customers than does A or AA marbling carcasses. The values are numerical that indicate the estimate of carcass marbling if the animal was slaughtered immediately following the evaluation. The scale is as follows:

3.0 - 3.9 - traces marbling A USDA Standard

4.0 - 4.9 - slight marbling AA USDA Select

5.0 + - small amount AAA USDA Choice

Back Fat (BF mm)

Fat depth influences lean meat yield. Fat bulls have less lean meat/muscle in the carcass. The fat measurement also gives an indication of the bulls fleshing ability. Calves from a bull with very little fat may finish too slowly in the feedlot. Body condition score (fat depth) in females is related to their ability to reach puberty at an early age, produce milk, rebreed and maintain a short calving interval. On the other hand, bulls carrying excessive fat may suffer reduced fertility.

Adjusted Ribeye Area (AREA in²)

The AREA is the largest muscle in the body at birth so AREA gives an indication of overall carcass muscling (measured in inches) and adjusted to one year of age.

RP (Retail Product/Cutability)% LMY

RP is the percentage lean meat yield in the carcass. Yield grade is an important factor in both Canada and the US. Producing calves with a high genetic potential for this trait can be an important objective of a breeding program. Back fat will reduce yield by 7 to 8 times what REA will increase yield.

Summary

Like all traits we should avoid the extremes. Moderation is the key. As producers we need to evaluate our own females and then decide what kind of progeny we want to produce and this should dictate what kind of sire we want to purchase.

The Angus Associations, both AAA and CAA have adopted the CUP (Centralized Ultrasound Processing) program for Ultrasound Carcass Data and are using this information for formulating Carcass EPD's.

*Remember ...
Look for the Clipper Marks ...
If they are clipped - then they are
CUP'ed!*



Carcass data is to be compared within herd only.

Terms & Conditions of Sale

Bidding: Each animal will be sold to the highest bidder. Bidding Disputes: The auctioneer will settle any disputes as to bids, and his decision on such matters shall be final.

Terms: The terms of the sale are cash. The right of property shall not pass until after settlement is made. All settlements will be made with the clerks of the sale immediately following the conclusion of the sale and before any cattle will be released from the sale facility.

Purchaser's Risk: Each animal becomes the risk of the purchaser as soon as sold. Animals will be fed, watered and cared for at the purchaser's risk for a reasonable time. If leaving your bull in our care we strongly encourage you as the new owner to insure him.

Insurance: A representative of a major insurance company will be present to care for insuring cattle.

Certificate of Registry: A certificate of registry and transfer will be furnished for each animal.

Announcements: Changes of information contained in this catalogue relating to the animals offered for sale will be announced from the auction box and such announcements shall take precedence.

Page 34

Health: All cattle will be in excellent health.

Breeder's Guarantee: All animals sold are guaranteed breeders by the owner. Any animal that has not proven itself a breeder within six months after date of sale, if in healthy condition, may be returned to the seller at buyer's expense. The seller reserves the privilege of trying for a period of six months to prove the animal a breeder. The seller at his option may either return the purchase price to the buyer or replace the animal with another of equal quality in full settlement of ALL claims. All complaints regarding breeding difficulties must be reported in writing by the buyer to the seller within the specified time above and any animal returned must be free from disease and in good health.

Retained Interest: SVR reserves the right to collect semen on any of our bulls selling in this sale for within herd use at buyers convenience and our expense.

Liability: Neither owners, sale manager, clerks, nor anyone connected with the sale assumes any responsibility, legal or otherwise for damage of any kind.

Contract: The above terms and conditions shall constitute a contract between the buyer and seller of each animal sold.



SVR 6W



SVR 21W



SVR 22W



SVR 60W



SVR 367W



SVR 390W



SVR 408W



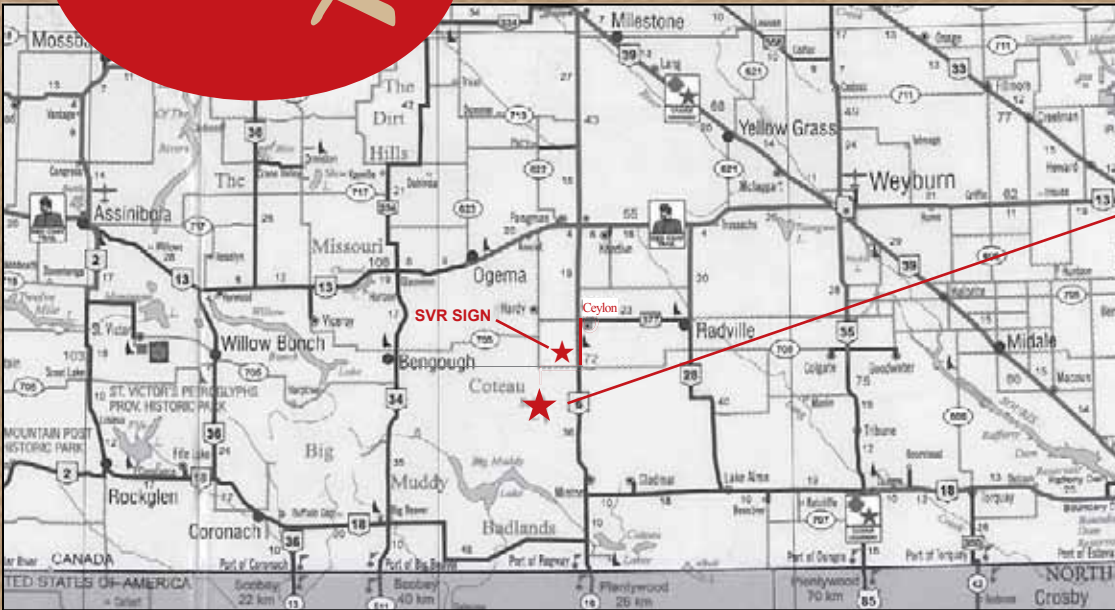
SVR 420W

South View Ranch



Box 130
Ceylon, SK
S0C 0T0

CANADA	POSTES
POST	CANADA
Postage paid	Port payé
Addressed Admail	Médiaposte avec adresse
03070247	



Directions to the Ranch

- From Ceylon:
 - 9 km South on Hwy #6
 - 6 km West on Twp Road #52
 - 3 km South on Rge Road #210
- From Port of Regway:
 - 40 km North on Hwy #6
 - 6 km West on Twp Road #52
 - 3 km South on Rge Road #210



SVR 1W



SVR 4W



SVR 350W



SVR 364W

Please bring this catalog with you to the sale!
Printed in Canada

Catalog prepared by Saskatchewan Livestock Association. 306-757-6133