

Signature XIV Series

RED & BLACK ANGUS BULL SALE

Silver Sage Community Corral - Brooks, Alberta, Canada March 20/10 1:00 p.m.



Signature Series

March 20, 2010 - 1 p.m.
Silver Sage Community Corral
Brooks, Alberta, Canada

SALE DAY PHONES

Clint.....403/793-1656
Nathan.....403/331-7395
Joe.....403/363-8774
Sebastien.....403/803-0730
Silver Sage.....403/362-2262

SALE STAFF

Cliff Pahl, Auctioneer.....403/854-1900 (H) 403/854-1900
Grant Ellefson, Ringman....403/362-4992 (C) 403/501-9707
Nathan Marin, Ringman....306/869-2519 (C) 306/869-7130
Robert Peltzer, Buyer Rep..403/378-2360 (C) 403/793-0217
Cassie Johnson, US Buyer Rep.....(C) 712/490-5397

ACCOMMODATIONS

Heritage Inn & Suites.....403/368-8688

SCHEDULE

Friday, March 19

Bulls can be viewed all day at the Silver Sage
Please join us for a pre-sale get together at 7 p.m.

Saturday, March 20

Beef lunch served at Noon
Signature Series Bull Sale 1 p.m.

PREVIEW THE BULLS

Bulls can also be viewed prior to the sale at Lazy MC Angus and Bandura Ranches. Visitors always welcome!

INSURANCE

If you plan to leave your bull with us we ask that you insure him. Insurance representative will be available sale day.

Stockmen's Insurance -

Larry Toner (306)932/4866 office (306)931/0088

*Receive \$100 off the
purchase price for taking
your bull home on sale day!*

VIDEO SALE

All bulls will be video'd ahead of the sale. Please call us for a DVD. All of the bulls will be penned in the Silver Sage for viewing prior to the sale. Rather than stressing the bulls and the crew, the auction will be conducted using large screen video of each bull. This will also give bidders the opportunity to view reference animals at the same time.

Video production by : **Morton Molyneux**
Lethbridge, Alberta (403) 327-2612
www.k2com.com

ONLINE PURCHASING

We invite those of you who are unable to attend the sale to be part of the action! With the help of LiveAuctions.TV, we are now able to give you a live connection to the event. Real-time bidding will be available via the internet for this sale. Live audio and video will allow buyers to bid on animals as if they were present at the sale. Buyers must create an account at least 2 days prior to the sale. Please visit **<http://LiveAuctions.tv>** to walk you through the set-up process. For further assistance you can also contact:

Christine Boake (403) 850-6993 or
Brad Fahrmeier (816) 392-9241.

LiveAuctions.TV

TERMS

Payment due at time of purchase. All cattle sell under the standard terms and conditions of the Canadian Angus Association. EPD's in this catalogue are the most recent available at press time. Any announcements made sale day supersede information printed in this catalogue. **The bulls will be semen tested, kept after the sale, delivered and fully guaranteed. Scrotal circumferences and current weights available sale day. The sellers reserve the right to collect semen on any bull for in-herd use only at the seller's expense and buyers convenience.**

Catalogue online at www.lazymcangus.com

Welcome to our 14th Annual Bull Sale

Thank You
to our 2009 buyers

Benj Anderson
OH Ranch *
Three Coulee Farms
Barry Schlenker *
Box Elder Colony
Papa Jack Red Angus
Jason Martin
Cam Morris *
Scott Stewart *
Gloria Blades *
Stammers Ranch *
Russ & Anita Webb
Redrich Farms *
Joe & Linda Milne
Gerald Trembecki
Crow Butte Ranch Ltd.
David Ockerman
West Gem Ranches *
Carey Kopp *
JW Cattle Co. *
Ian Mitchell
Reid Ranch *
Speargrass Cattle Co. *
Gary Richert
Andy Andrus *
Becker Ranching Co. *
Brand Farms *
Charles Job
Randy & Betty Landis *
Wallace Fraser *
Rick Volek *
Roen Ranch *

High Selling Bull
Bullis Creek Ranch

Volume Buyer
Jenner Colony *

*Repeat Buyers

It is our pleasure to be hosting this event along with the Jensen, Stewart and Bandura families. The bulls offer some exciting genetics that are at the top of our breed.

We are very excited to be working with such a great group of consignors! Our families are all committed to the same goals and have combined forces to bring quality Red & Black Angus genetics, backed by excellent cow herds, together in one marketing program.

It is a first class offering of top end two year old bulls and moderate, thick-made calving ease yearlings. This sale represents the 'Cream of the Crop', in one location, backed by reputable people who are committed to the cattle business. We respect our customers needs and strive to produce genetics that help to advance with the ever changing demands of the beef industry. By carefully selecting genetics with both phenotype and solid data, we hope to satisfy the most discriminating producer!

Again this year, we are having a video sale. We are looking forward to housing all the bulls inside for viewing! We would also like to invite you to be our guest on Friday evening for a pre-sale social to view the bulls.

Join us March 20th at the 'Silver Sage' for lunch and some hospitality. For any questions about the sale offering, or to view the bulls and cow herds please give us a call. If you are unable to make the sale we will have internet viewing and bidding. Contact Livefluctions.tv or Christine Boake for assistance.

Remember to take advantage of the many options our sale offers including a purchase deduction of one hundred dollars for taking your bull home sale day. Bulls coming back home will be wintered free of charge but we ask that you please insure them. Insurance will be available sale day. All the bulls selling have passed a semen test and are BVD PI negative. Examinations were performed by Bow Valley Vet Clinic, Dr. Rob Stables. The bulls are fully guaranteed!

We appreciate the confidence and trust many of you have given our programs and look forward to seeing you sale day.

*Kind Regards,
Clint & Angela Morasch*



UNDERSTANDING ULTRASOUND

Ultrasound data was scanned by Jamie Jensen, a certified UGC and CUP technician, meeting standards set by many breed associations. The accuracy is high enough that bulls selected based upon ultrasound, result in positive genetic change in progeny carcass traits. Heritability for carcass traits are moderate to high which is slightly higher than birth weights, weaning weights and yearling weights.



Marbling

Marbling is the best indicator we have to tell us what kind of beef eating experience we will have! Research shows that average AAA and above marbling produces the most satisfied customers. As marbling increases, so does the juiciness, the flavour fullness, and the tenderness.

3.00-3.99.....Single A.....Standard
4.00-4.99.....Double AA.....Select
Above 5.0.....Triple AAA.....Choice

Back Fat (mm)

Fat depth decreases lean meat yield. Fat bulls have less lean meat/muscle in the carcass. The fat measurement also gives an indication of the bulls fleshing ability. Calves from a bull with very little fat may finish too slowly in the feedlot. Body condition score (fat depth) in females is related to their ability to reach puberty at an early age, produce milk, and rebreed and maintain a short calving interval. On the other hand, bulls carrying excessive fat may suffer reduced fertility.

Ribeye Area (in²)

The ribeye is the largest muscle in the body at birth so REA gives an indication of overall carcass muscling.

Cutability (%LMY)

Cutability is the percentage lean meat yield in the carcass. Yield grade is an important factor in both Canada and the USA. Producing calves with a high genetic potential for this trait can be an important objective of a breeding program. Back fat will reduce yield by 7 to 8 times what REA will increase yield.

Summary

Like all traits, we should avoid the extremes. Moderation is the key. As producers we need to evaluate our own females and then decide what kind of progeny we want to produce. This should dictate what kind of sire we want to purchase.



Ultrasound by Jamie Jensen
Taber, AB 403/892-3486
www.jentechultrasound.com

RANCHERS' GUIDE TO EPDS

The bull is merely a delivery system for the genetics he passes on. Performing this job requires them to be sound, fertile and athletic. However, it is the reliability of their genetic predictions that ultimately bear out their true value to producers' bottom line.

Know the markets you wish to hit - feeder calves, yearling, replacement females. Have a true appraisal of how close your cow herd is to that target, understanding your cows have to continue to live and reproduce in your environment. Identify bulls whose EPDs predict the ability to move your cowherd in the right direction for the traits required to hit your market end point.



EPD BREED AVERAGES - 2009 CALF CROP

Red Angus - BW:**0.7** WW:**29** YW:**52** Milk:**15** TM:**29**
Black Angus - BW:**3** WW:**40** YW:**71** Milk:**17** TM:**37**

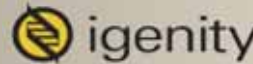
DNA TESTING

Genomics (DNA testing) is cutting edge technology for identifying genetics that contribute to beef quality. Producers can use this information to add value to their herd and enable a positive impact to your bottom line.

By combining DNA tests with other information it is possible to make breeding decisions based on more precise information regarding each individual animal's genetics and to ultimately shorten the time and number of generations necessary to see practical results.

Igenity meat trait results report the scores obtained from analysis of multiple markers in genes related to carcass composition. This analysis associates the genotype result with the magnitude, or size of the trait identified. In general, animals with low scores for fat thickness and yield grade will have high scores for hot carcass weight and ribeye area.

Buy L-tt bulls to improve your herd's potential for marbling. Retain cows and select replacement heifers with desired leptin genotype, along with other genetic traits.



CALVING EASE SCORE

- *** Recommended for use on moderate framed first calf heifers for minimal or no calving trouble.
- ** Recommended for use on large framed first calf heifers for minimal or no calving trouble.
- * Recommended for use on cows for minimal or no calving trouble.

OTHER CATALOGUE TERMS

AOD: Age of Dam
BW: Actual weight at birth
AWW: Adjusted 205-day weaning weight
AYW: Adjusted 365-day yearling weight
WPDA: Weight Per Day of Age

Reference Sires

Red Lazy MC Smash 41N

February 6, 2003

BW:**86** AWW:**815** AYW:**1276** Mat.SC:**43cm** CE*** Igenity:L-tt

RED FCC RAMBO 502
 RED SSS BOOMER 803B
 RED SSS MISS HIGH LASS 352X

RED BRYLOR YOUNGBLOOD 22Y
 RED LAURON YB ROSA 11G
 RED ALALTA ACRES ROSALINDA 25Y

Smash's resume continues to build! He was the No. 1 Red Angus bull for registrations in '08 and sired the '08 CAA Show Female of the Year and CDN Western Agribition RBC Supreme Champion female! 41N is a consistent sire with curve bending genetics. His true legacy will be his sons who continue to gain commercial appreciation. His daughters consistently bring in top calves. 'Smash' produces stout made, well structured, complete, high performing cattle with great hair coats. CDN & US Semen available.

EPDS

BW	-0.7
WW	25
YW	53
Milk	22
TM	34
CE	5.0
MCE	-1.0
REA	-0.03
Marb	-0.25
Fat	0.00
Stay	8
HPG	6



Red RMJ Redman 1T

January 30, 2007

BW:**84** AWW:**864** AYW:**1146** Mat.SC:**44cm** CE*** Igenity:L-tt

RED VGW KING OF THE WEST
 RED 5L NORSEMAN KING 2291
 RED NORSEMAN 1312 PJM

OCC HUNTER 928H
 CROWFOOT KURUBA 4033P
 RED CROWFOOT KURUBA 2030M

'Redman' has an exciting group of calves here at Lazy MC! He was an excellent choice for heifers and he has worked very well on our 'Smash' daughters. He is moderate framed with great muscle shape, good feet and structure. We feel his sons are what we have been working towards producing. He will help secure Lazy MC as your leading Outcross Genetics Source. CDN Semen available.

EPDS

BW	-1.2
WW	21
YW	45
Milk	20
TM	31
CE	4.0
MCE	-5.0
REA	0.26
Marb	0.01
Fat	0.00
Stay	11
HPG	8



Red Lazy MC Elixir 54S

February 9, 2006

BW:**87** AWW:**687** AYW:**1258** Mat.SC:**40cm** CE** Igenity:L-ct

CV ELIXIR 2000-7K
 RED RINGSTEAD ELIXIR 179P
 RED CV COPPER QUEEN 501K

CONNELLY DATELINE
 LAZY MC BESS 4K
 RED LAZY MC AM'S BEST 11H

'Elixir' is a maternal brother to both our Boom bulls 100N & 118N and Splash 14T. 54S looks to be siring as strong as his maternal brothers. His sons are long sided, smooth made with excellent feet. They are a good outcross choice. Genetics include, Ankonian Elixir 100, Connealy dateline and Sam's Prospector!

EPDS

BW	0.9
WW	31
YW	50
Milk	16
TM	31
CE	6.0
MCE	8
REA	-0.06
MARB	-0.03
FAT	0.00
STAY	10
HPG	12



Lazy MC Reference Dams



44L
Dam of Lot 1 & 43



185M
Dam of Lot 2



59L
Dam of Lot 3



67R
Dam of Lot 6



47R
Dam of Lot 11



701T
Dam of Lot 12



4K
Dam of Lot 13



16H
Grand Dam of Lot 14



40R
Dam of Lot 29



3789N
Dam of Lot 42



308N
Dam of Lot 44



74L
Dam of Lot 45

1

Red Lazy MC Gridiron 66S

February 17, 2006

BW:88 AWW:767 AYW:1350 Mat.SC:43cm CE** AOD:5

RED SSS BOOM TOWN 260D
CRCC BOOM 118N
LAZY MC BESS 4K

DA ES RO TWISTER 0627
LAZY MC CRISTY 44L
RED LAZY MC CRISTY 47G

'Gridiron' is an exciting mix of red and black genetics. 66S is a powerfully built bull with good feet and bone. He is moderate framed, square hipped and can get out and move. His dam, 44L, is a model Angus female. She is extremely deep made and wedge shaped with a good udder and feet. The Boom 118N genetics offer the performance and quality structure of Boomtown along with the calving ease and maternal excellence of our 4K cow. 'Gridiron's' progeny are providing eye appeal, length of spine and volume. Daughter, Red Lazy MC Sparkle 2U, was at foot of the 2008 RBC Supreme Champion Female. Another daughter, Red Lazy MC Miss 1U has won numerous shows including Senior Champion - 2009 National Show, Agribition. 'Gridiron' is in the top 5% of the breed for weaning weight, yearling weight and ribeye. Also note his carcass EPD's on the positive side for both ribeye and marbling.

EPDS

BW	2.4
WW	44
YW	89
Milk	16
TM	38
CE	3.0
MCE	6.0
REA	0.26
FAT	0.00
MARB	0.01
HPG	11



Red Lazy MC Miss 1U - daughter



Red Lazy MC Sparkle 2U - daughter



Red Lazy MC Gridiron 4U - son



Red Corner Creek Durabull 850U - son

SELLING FULL POSSESSION ON THIS EXCITING SEMEX AI SIRE!

2

Red Lazy MC Stout 139U

April 20, 2008

BW:83 AWW:744 AYW:1207 Mat.SC:41cm CE*** AOD:6

RED LAZY MC SMASH 41N
RED LAZY MC STOUT 30S
RED LAZY MC SCYTHIA 78N

LAZY MC WORLDWIDE 5K
RED LAZY MC STAR 185M
RED LAZY MC STAR 100J

OFFERING THE FULL BROTHER TO RED LAZY MC COWBOY CUT 26U!

'Stout' has started a quality track record as well, including Reserve Junior Champion Bull - World Angus Forum; as well as Intermediate Champion Bull - Denver 2010! 185M is one of our premier cows! She is an incredibly big, roomy cow with a couple of twists in her pedigree. 185M has produced four top herd bulls thus far including, Red Lazy MC Cowboy Cut 26U, Lazy MC Lookout 37U and Red Lazy MC Smash 34S working for Doerkson Farms.

EPDS

BW	-0.2
WW	30
YW	60
Milk	23
TM	38
MARB	-0.02
REA	-0.05
BF	-0.01



Red Lazy MC Cowboy Cut 26U
Full Brother to 'Stout'



'Stout' - Int. Champion Bull Denver '10

SELLING 1/2 INTEREST AND FULL POSSESSION IN THIS TOP NOTCH CALVING EASE SIRE!

3 Red Lazy MC Tidal Wave 14W

February 1, 2009

BW:87 AWW:680 AYW:1294 CE** AOD:8

RED LAZY MC SMASH 41N
 RED LAZY MC SPLASH 14T
 LAZY MC BESS 4K
 RED CR MONU VALUE 117J
 RED LAZY MC DOLL 59L
 RED SSS DOLL 476E

EPDS	
BW	0.8
WW	25
YW	51
Milk	14
TM	27

CARCASS

MARB:**A+** REA in²:**15.68** BF in:**0.267** %LMY:**67.1**

Tidal Wave is one of our top herdsire prospects. Reserve Intermediate Champion Bull calf at World Angus Forum, class winner at Red Roundup Bull Futurity as well as Intermediate Champion Bull Calf at the National Show - Agribition 2009. His sire, Splash 14T, has worked very well for Eye Hill Stock Farm and his dam, 59L, has been a top producing cow. 14W is a strong genetic package!



Red Lazy MC Splash 14T - sire



World Angus Forum 2009
Reserve Int. Champion Bull Calf



2009 National Show - Agribition
Int. Champion Bull Calf

4 Red Lazy MC Grizzly 20W

February 11, 2009

BW:92 AWW:694 AYW:1221 CE** AOD:8

RED SSS BOOMER 803B
 RED LAZY MC SMASH 41N
 RED LAURON YB ROSA 11G
 RED BROX JIGSAW 35J
 RED MS BILTRITE PRIME RIB 16L
 RED SASKAIRIE LORIN 36F

EPDS	
BW	0.2
WW	22
YW	40
Milk	13
TM	25

CARCASS

MARB:**AA** REA in²:**12.84** BF in:**0.30** %LMY:**63.7**

- one of the top 'Smash' sons on offer
- 3/4 brothers sell as lots 21 & 22



5 Red Lazy MC Smash 45W

February 23, 2009

BW:87 AWW:737 AYW:1226 CE** AOD:8

RED SSS BOOMER 803B
 RED LAZY MC SMASH 41N
 RED LAURON YB ROSA 11G
 RED CR MONU VALUE 117J
 RED LAZY MC MINERVA 57L
 RED ANDORO MINERVA 48F

EPDS	
BW	0.0
WW	28
YW	54
Milk	18
TM	32

CARCASS

MARB:**AA** REA in²:**11.54** BF in:**0.29** %LMY:**60.1**

- very similar genetic package to lot 3
- long spined, smooth made bull



6 Red Lazy MC Kingman 16W

February 6, 2009

BW:88 AWW:750 AYW:1329 CE** AOD:4

5L NORSEMAN KING 2291
 RED RMJ REDMAN 1T
 CROWFOOT KURUBA 4033P
 RED LAZY MC SMASH 41N
 RED LAZY MC MISS 67R
 RED LAZY MC MISS WORLD 70N

EPDS	
BW	-0.5
WW	27
YW	53
Milk	20
TM	33

CARCASS

MARB:AA REA in²:14.6 BF in:0.34 %LMY:63.5

If you like thick, wide based, good footed herd bulls don't miss Kingman! He has incredible herd bull potential. Excellent phenotype, structure and scrotal circumference, backed by a cow family second to none. 67R is a beautiful uddered Smash daughter and has hit a home run with every calf she has raised! 16W's maternal sister was Senior Champion yearling at the National Show - Agribition 2009. 3/4 brother to Red Lazy MC CC Detour 2W, another top 'Redman' son and 'Semex' herdsire!



'Kingman'



Red Lazy MC Miss World 70N
 Maternal Grand Dam of 16W

Red Lazy MC Miss 1U
 Maternal Sister to 16W

7 Red Lazy MC Redman 11W

January 28, 2009

BW:82 AWW:671 AYW:1359 CE*** AOD:2

5L NORSEMAN KING 2291
 RED RMJ REDMAN 1T
 CROWFOOT KURUBA 4033P
 RED LAZY MC SMASH 41N
 RED LAZY MC DUCHESS 27T
 RED LAZY MC DUCHESS 13E

EPDS	
BW	-1.4
WW	18
YW	37
Milk	16
TM	26

CARCASS

MARB:AA+ REA in²:14.63 BF in:0.43 %LMY:62.8

- moderate; tremendously thick and strong topped
- the Redman/Smash cross really hit the mark!



8 Red Lazy MC Redman 56W

February 26, 2009

BW:83 AWW:762 AYW:1280 CE*** AOD:3

5L NORSEMAN KING 2291
 RED RMJ REDMAN 1T
 CROWFOOT KURUBA 4033P
 RED LAZY MC SMASH 41N
 RED LAZY MC CASSIE 70S
 RED LAZY MC CASSIE 16L

EPDS	
BW	-1.1
WW	26
YW	53
Milk	21
TM	34

CARCASS

MARB:AA REA in²:12.59 BF in:0.33 %LMY:62.0

- calving ease & performance
- dam is a full sister to our top show heifer Cassie 3R owned by Nathan Jensen.



9

Red Lazy MC Wrangler 3W

January 16, 2009

BW:82 AWW:736 AYW:1317 CE*** AOD:2

5L NORSEMAN KING 2291
RED RMJ REDMAN 1T
CROWFOOT KURUBA 4033P

LAZY MC BOOM 44R
RED LAZY MC DUCHESS 39T
RED LAZY MC DUCHESS 79R

EPDS

BW **-0.7**
WW **26**
YW **51**
Milk **20**
TM **33**

CARCASS

MARB:**AA** REA in²:**12.92** BF in:**0.39** %LMY:**62.8**

Wrangler is a very complete individual. Silver medalist at the World Angus Forum, his only time shown. His dam 39T, is a 3/4 sister to our powerful herdsire, Red Lazy MC Hustle 18T. Strong overall package when you look at performance, EPD's and phenotype!

**SELLING 1/2 INTEREST AND
FULL POSSESSION IN THIS WELL BALANCED
MATERNAL SIRE.**



Boom 44R - Maternal Grand Sire



4033P - Paternal Grand Dam

10 Red Lazy MC Redman 40W

February 19, 2009

BW:80 AWW:688 AYW:1191 CE*** AOD:4

5L NORSEMAN KING 2291
RED RMJ REDMAN 1T
CROWFOOT KURUBA 4033P

RED LAZY MC GLOBAL 130M
RED LAZY MC DIONA 11R
RED LAZY MC DIONA 53K

EPDS

BW **-0.5**
WW **23**
YW **47**
Milk **17**
TM **28**

CARCASS

MARB:**AA** REA in²:**13.75** BF in:**0.26** %LMY:**65.0**

- one of our favourite 'Redman' sons
- dark red, dark footed - stylish bull

11 Red Lazy MC Redman 42W

February 20, 2009

BW:78 AWW:673 AYW:1171 CE*** AOD:4

5L NORSEMAN KING 2291
RED RMJ REDMAN 1T
CROWFOOT KURUBA 4033P

LAZY MC WORLDWIDE 5K
RED FLOTRE GOLD 47R
RED LAZY MC GOLD EDGE 47J

EPDS

BW **-1.2**
WW **23**
YW **47**
Milk **19**
TM **31**

CARCASS

MARB:**AAA** REA in²:**13.76** BF in:**0.38** %LMY:**62.7**

- calving ease bull with a top producing dam
- strong maternal genetics
- top marbling bull of entire offering



'Wrangler' - World Angus Forum 2009 Silver Medalist



12 Red Lazy MC Destination 8W

January 23, 2009

BW:76 AWW:742 AYW:1320 CE*** AOD:2

LAZY MC BOOM 44R
RED LAZY MC HUSTLE 18T
RED LAZY MC LARKABA 70R

CROWFOOT 4130P
RED YY PATTY 701T
RED BWA PATTY 10R

EPDS

BW **-0.2**
WW **34**
YW **62**
Milk **21**
TM **37**

CARCASS

MARB:**AA** REA in²:**13.75** BF in:**0.35** %LMY:**63.4**

Destination is an interesting bull with a strong outcross pedigree! His genetic background includes OCC Legacy, Da Es Ro Twister, Whitestone Widespread and Connealy Dateline. Shown at side of his two year old dam, they were Reserve Champions at Drayton Valley 2009 as well as WAF Futurity class winners and bronze medalists in the open show. He was named Reserve Bull Calf Champion at the 2009 Olds Fair. His dam, 701T, came to us as the high selling heifer calf in the 2007 Red Roundup. She will enter our embryo program this year.



'Destination' - summer '09



Hustle 18T - Sire



70R - Paternal Grand Dam

13 Lazy MC Blackman 65W

March 3, 2009

BW:85 AWW:708 AYW:1290 CE*** AOD:9

5L NORSEMAN KING 2291
RED RMJ REDMAN 1T
CROWFOOT KURUBA 4033P

CONNEALY DATELINE
LAZY MC BESS 4K
RED LAZY MC AM'S BEST 11H

EPDS

BW **-1.0**
WW **26**
YW **53**
Milk **14**
TM **27**

CARCASS

MARB:**AA** REA in²:**13.89** BF in:**0.31** %LMY:**62.2**

- Bess 4K is our 'Signature' female with 7 of her sons working in purebred herds
- 65W is one of our very best Redman sons



14 Red Lazy MC Redman 63W

March 2, 2009

BW:85 AWW:678 AYW:1125 CE*** AOD:3

5L NORSEMAN KING 2291
RED RMJ REDMAN 1T
CROWFOOT KURUBA 4033P

RED LAZY MC SMASH 41N
RED LAZY MC FIREFLY 13S
RED LAZY MC FIREFLY 16H

EPDS

BW **-1.6**
WW **18**
YW **36**
Milk **20**
TM **29**

CARCASS

MARB:**AA+** REA in²:**14.68** BF in:**0.35** %LMY:**62.9**

- calving ease bull backed by a strong cow family



15 Red Lazy MC Smash 29W

February 15, 2009

BW:**85** AWW:**643** AYW:**1216** CE** AOD:**8**

RED SSS BOOMER 803B
 RED LAZY MC SMASH 41N
 RED LAURON YB ROSA 11G

 RED LAZY MC DIVIDE 8J
 RED LAZY MC DUCHESS 17L
 RED LAZY MC DUCHESS 13E

EPDS
 BW **0.8**
 WW **22**
 YW **38**
 Milk **12**
 TM **23**

CARCASS

MARB:**AA** REA in²:**12.5** BF in:**0.24** %LMY:**63.2**

- very complete 'Smash' son
- ¾ brothers sell as lots 16 & 20



16 Red Lazy MC Smash 30W

February 15, 2009

BW:**97** AWW:**657** AYW:**1168** CE* AOD:**7**

RED SSS BOOMER 803B
 RED LAZY MC SMASH 41N
 RED LAURON YB ROSA 11G

 RED LAZY MC DIVIDE 8J
 RED LAZY MC LARKABA 146M
 RED SSS SUPER LARKABA 693A

EPDS
 BW **2.1**
 WW **25**
 YW **41**
 Milk **16**
 TM **28**

CARCASS

MARB:**A** REA in²:**11.59** BF in:**0.26** %LMY:**63.2**

- full brother sold to Cunningham's in our '08 sale
- long sided, good haired bull
- ¾ brothers sell as lots 15 & 20



17 Red Lazy MC Smash 31W

February 15, 2009

BW:**89** AWW:**678** AYW:**1149** CE** AOD:**10**

RED SSS BOOMER 803B
 RED LAZY MC SMASH 41N
 RED LAURON YB ROSA 11G

 RED SSS MARKSMAN 562F
 RED LAZY MC VANNA 58J
 RED LAZY MC VANNA 23E

EPDS
 BW **-0.1**
 WW **22**
 YW **40**
 Milk **19**
 TM **30**

CARCASS

MARB:**AA+** REA in²:**12.19** BF in:**0.26** %LMY:**63.2**

- full brother has done a great job for Larry Delver
- Vanna cow family is one of our best



18 Red Lazy MC Redman 33W

February 16, 2009

BW:**73** AWW:**635** AYW:**1144** CE*** AOD:**2**

5L NORSEMAN KING 2291
 RED RMJ REDMAN 1T
 CROWFOOT KURUBA 4033P

 RED LAZY MC SMASH 41N
 RED LAZY MC MELODY 55T
 RED OCC MELODY 908J

EPDS
 BW **-1.8**
 WW **17**
 YW **36**
 Milk **16**
 TM **24**

CARCASS

MARB:**AA** REA in²:**12.78** BF in:**0.33** %LMY:**62.4**

- calving ease bull
- moderate and stylish



19 Red Lazy MC Landmark 36W

February 18, 2009

BW:89 AWW:831 AYW:1367 CE* AOD:11

RED RINGSTEAD ELIXIR 179P
RED LAZY MC ELIXIR 54S
LAZY MC BESS 4K

RED LAZY MC FORTUNE 20E
RED LAZY MC SCYTHIA 57H
RED BRYLOR SCYTHIA 27W

EPDS

BW **1.2**
WW **32**
YW **53**
Milk **15**
TM **31**

CARCASS

MARB:**AA+** REA in²:**13.19** BF in:**0.32** %LMY:**63.5**

- long sided, dark red Elixir son
- one of our top performing bulls on test



20 Red Lazy MC Smash 44W

February 22, 2009

BW:97 AWW:729 AYW:1210 CE* AOD:5

RED SSS BOOMER 803B
RED LAZY MC SMASH 41N
RED LAURON YB ROSA 11G

RED LAZY MC DIVIDE 8J
RED LAZY MC VANNA 15P
RED LAZY MC VANNA 58J

EPDS

BW **2.6**
WW **33**
YW **55**
Milk **17**
TM **33**

CARCASS

MARB:**AA** REA in²:**12.31** BF in:**0.22** %LMY:**63.6**

- larger framed bull with solid performance
- ¾ brothers sell as lots 15 & 16



21 Red Lazy MC Smash 53W

February 25, 2009

BW:97 AWW:683 AYW:1219 CE** AOD:8

RED SSS BOOMER 803B
RED LAZY MC SMASH 41N
RED LAURON YB ROSA 11G

RED BROX JIGSAW 35J
RED MS BILTRITE PRIME RIB 7L
RED BELLE GOLDEN 21F

EPDS

BW **1.5**
WW **26**
YW **49**
Milk **15**
TM **28**

CARCASS

MARB:**AA** REA in²:**13.66** BF in:**0.31** %LMY:**62.3**

- strong topped, smooth fronted bull with added dimension
- ¾ brothers sell as lots 4 & 22



22 Red Lazy MC Smash 55W

February 26, 2009

BW:82 AWW:696 AYW:1241 CE*** AOD:8

RED SSS BOOMER 803B
RED LAZY MC SMASH 41N
RED LAURON YB ROSA 11G

RED BROX JIGSAW 35J
RED MS BILTRITE PRIME RIB 5L
RED SASKAIRIE SOPHIA 76F

EPDS

BW **-1.3**
WW **20**
YW **41**
Milk **15**
TM **25**

CARCASS

MARB:**A** REA in²:**11.54** BF in:**0.22** %LMY:**63.4**

- lots 4, 21 & 22 truly represent 'Smash's' consistent type



23

Red Lazy MC Design 6W

January 21, 2009

BW:**87** AWW:**685** AYW:**1194** CE*** AOD:**10**

5L DIRECT FIRE 1641-6443
RED 5L DIRECT DESIGN 893-6315
RED 5L ADINA 525-893

FCC RAMBO 502
RED OCC MELODY 908J
BJR MELODY 002-Y715

EPDS	
BW	2.0
WW	35
YW	61
Milk	23
TM	40

CARCASS

MARB:**AA** REA in²:**11.6** BF in:**0.28** %LMY:**63.5**

- paternal brothers were top sellers in last years bull sale
- paternal brother to Lot 49



24

Red Lazy MC Redman 54W

February 25, 2009

BW:**82** AWW:**676** AYW:**1215** CE*** AOD:**2**

5L NORSEMAN KING 2291
RED RMJ REDMAN 1T
CROWFOOT KURUBA 4033P

RED SSS MARKSMAN 562F
RED LAZY MC MISS ESSENCE 3T
LAZY MC MISS ESSENCE 84R

EPDS	
BW	-0.1
WW	27
YW	49
Milk	18
TM	31

CARCASS

MARB:**AA+** REA in²:**14.52** BF in:**0.35** %LMY:**63.0**

- one of our top 'Redman' sons on offer with calving ease and stylish herd bull potential



25

Red Lazy MC Smash 28W

February 15, 2009

BW:**84** AWW:**647** AYW:**1185** CE*** AOD:**3**

RED SSS BOOMER 803B
RED LAZY MC SMASH 41N
RED LAURON YB ROSA 11G

RED BILTRITE CARPENTER 14M
RED BILTRITE MS SAM'S SUN 4S
RED SASKAIRIE THELMA 5F

EPDS	
BW	-0.2
WW	27
YW	55
Milk	20
TM	34

CARCASS

MARB:**AA** REA in²:**12.4** BF in:**0.23** %LMY:**62.1**

- calving ease bull



26

Red Lazy MC Smash 35W

February 17, 2009

BW:**75** AWW:**619** AYW:**1191** CE*** AOD:**5**

RED SSS BOOMER 803B
RED LAZY MC SMASH 41N
RED LAURON YB ROSA 11G

RED TER-RON MCGWIRE 011L
RED LAZY MC LARKABA 105P
RED SSS LARKABA 539E

EPDS	
BW	-1.1
WW	20
YW	39
Milk	12
TM	22

CARCASS

MARB:**AA** REA in²:**9.5** BF in:**0.17** %LMY:**62.0**

- calving ease bull

27

Red Lazy MC Smash 46W

February 23, 2009

BW:**82** AWW:**750** AYW:**1188** CE*** AOD:**10**

RED SSS BOOMER 803B
RED LAZY MC SMASH 41N
RED LAURON YB ROSA 11G

RED LAZY MC FORTUNE 20E
RED LAZY MC DIONA 53H
RED T G DIONA 6B

EPDS	
BW	-0.8
WW	27
YW	47
Milk	18
TM	31

CARCASS

MARB:**AA** REA in²:**12.1** BF in:**0.26** %LMY:**63.4**

- calving ease bull

28

Red Lazy MC Smash 47W

February 24, 2009

BW:78 AWW:695 AYW:1136 CE*** AOD:9

RED SSS BOOMER 803B
RED LAZY MC SMASH 41N
RED LAURON YB ROSA 11G

RED CRCC BLAZE'N THROUGH 888G
RED LAZY MC OLENA 21K
RED T G CASSIE 33E

EPDS
BW **-1.7**
WW **24**
YW **46**
Milk **22**
TM **34**

CARCASS

MARB:**AA** REA in²:**11.01** BF in:**0.20** %LMY:**62.0**

- full brother working for Prairie Feeders
- calving ease bull

29

Red Lazy MC Redman 58W

February 28, 2009

BW:84 AWW:738 AYW:1224 CE*** AOD:4

5L NORSEMAN KING 2291
RED RMJ REDMAN 1T
CROWFOOT KURUBA 4033P

RED CRCC BOOM 100N
RED LAZY MC OLENA 40R
RED LAZY MC OLENA 105M

EPDS
BW **-0.1**
WW **26**
YW **49**
Milk **21**
TM **34**

CARCASS

MARB:**AA+** REA in²:**12.8** BF in:**0.24** %LMY:**64.5**

- maternal brother to last years high selling bull at \$7700 to Bullis Creek Ranch, Nebraska
- long sided, calving ease bull

30

Red Lazy MC Redman 68W

March 8, 2009

BW:76 AWW:787 AYW:1238 CE*** AOD:2

5L NORSEMAN KING 2291
RED RMJ REDMAN 1T
CROWFOOT KURUBA 4033P

RED LAZY MC CRUSH 29R
RED LAZY MC DUCHESS 35T
RED LAZY MC DUCHESS 17L

EPDS
BW **1.5**
WW **31**
YW **56**
Milk **18**
TM **33**

CARCASS

MARB:**AA** REA in²:**10.61** BF in:**0.25** %LMY:**63.2**

- another strong 'Redman' son out of a first calf Smash daughter

31

Red Lazy MC Redman 71W

March 9, 2009

BW:89 AWW:661 AYW:1185 CE** AOD:4

5L NORSEMAN KING 2291
RED RMJ REDMAN 1T
CROWFOOT KURUBA 4033P

RED TER-RON MCGWIRE 011L
LAZY MC MISS ESSENCE 84R
MVKD MISS ESSENCE 7G

EPDS
BW **0.1**
WW **23**
YW **42**
Milk **12**
TM **24**

CARCASS

MARB:**AA+** REA in²:**12.34** BF in:**0.38** %LMY:**60.2**

- maternal brother sold in '09 sale to Cam Morris
- dam is a very nice black-red carrier cow and maternal grand dam to Lot 28

32

Red Lazy MC Redman 73W

March 11, 2009

BW:78 AWW:732 AYW:1198 CE*** AOD:2

5L NORSEMAN KING 2291
RED RMJ REDMAN 1T
CROWFOOT KURUBA 4033P

LAZY MC BOOM 44R
LAZY MC HOLLY 11T
RED LAZY MC HOLLY 37N

EPDS
BW **0.5**
WW **28**
YW **53**
Milk **19**
TM **33**

CARCASS

MARB:**AA** REA in²:**11.43** BF in:**0.31** %LMY:**60.0**

- calving ease bull out of a terrific 2 year old

33

Red Lazy MC Elixir 78W

March 14, 2009

BW:84 AWW:813 AYW:1316 CE*** AOD:3

RED RINGSTEAD ELIXIR 179P
RED LAZY MC ELIXIR 54S
LAZY MC BESS 4K

RED BILTRITE CARPENTER 14M
RED BILTRITE MS SAM'S SUN 25S
RED LAZY MC MISS DYN 74L

EPDS
BW **0.0**
WW **32**
YW **54**
Milk **17**
TM **33**

CARCASS

MARB:**AA** REA in²:**12.4** BF in:**0.23** %LMY:**63.2**

- calving ease bull - very complete package
- 25S is a very good young cow

34

Red Lazy MC Redman 95W

March 26, 2009

BW:80 AWW:825 AYW:1273 CE*** AOD:3

5L NORSEMAN KING 2291
RED RMJ REDMAN 1T
CROWFOOT KURUBA 4033P

RED LAZY MC SMASH 41N
RED LAZY MC MISS FIREFLY 31S
RED LAZY MC MISS FIREFLY 61L

EPDS
BW **0.1**
WW **27**
YW **54**
Milk **21**
TM **34**

CARCASS

MARB:**AA+** REA in²:**13.3** BF in:**0.29** %LMY:**62.4**

- calving ease bull backed by a strong cow family

35

Red Lazy MC Elixir 84W

March 17, 2009

BW:80 AWW:725 AYW:1276 CE*** AOD:8

RED RINGSTEAD ELIXIR 179P
RED LAZY MC ELIXIR 54S
LAZY MC BESS 4K

RED LAZY MC NEW RELEASE 29F
RED LAZY MC MISTRESS 5L
RED LAZY MC MISTRESS 44J

EPDS
BW **0.8**
WW **28**
YW **49**
Milk **15**
TM **29**

CARCASS

MARB:**AA** REA in²:**11.3** BF in:**0.19** %LMY:**63.0**

- calving ease bull



36 Red Lazy MC MH Alliance 24W

February 20, 2009

BW:76 AWW:710 AYW:1225 CE** AOD:2

REMITALL LOGAN 11L
 RED BFL ALLIANCE 14R
 BFL BANG 10L
 RED SHODEREE STORM 44P
 RED BROX KRUBA 91T
 RED BROX KRUBA 103R

EPDS
 BW **-1.7**
 WW **21**
 YW **45**
 Milk **17**
 TM **27**

CARCASS

MARB:**AA** REA in²:**12.2** BF in:**0.18** %LMY:**62.5**

- one of the longer sided, larger framed bulls in the offering
- good performance making 24W a very complete individual



37 Red Lazy MC MH Rainmaker 54W

February 10, 2009

BW:74 AWW:665 AYW:1200 CE** AOD:2

STEVENSON RAINMAKER 630G
 RED RAINMAKER OF CUDLOBE 2K
 CUDLOBE LADY VELVET 17B
 RED SHODEREE STORM 44P
 RED BROX OAKLEAF 62T
 RED BROX OAKLEAF 22R

EPDS
 BW **-0.7**
 WW **30**
 YW **55**
 Milk **21**
 TM **39**

CARCASS

MARB:**AA+** REA in²:**10.7** BF in:**0.21** %LMY:**62.1**

- very smooth made bull with outcross pedigree

38 Red Lazy MC MH Jester 28W

February 22, 2009

BW:101 AWW:657 AYW:1215 CE* AOD:4

DURLOWE JESTER 34L
 RED BELL ROCK JESTER 316N
 KBJ DUCHESS 316G

RED MAC LANCER 135L
 RED BROX LADY ROSETTE 23R
 RED BROX LADY ROSETTE 35G

EPDS
 BW **1.7**
 WW **27**
 YW **49**
 Milk **12**
 TM **25**

CARCASS

MARB:**AA** REA in²:**12.9** BF in:**0.28** %LMY:**63.2**

- long sided power bull

39 Red Lazy MC MH Mercedes 10W

February 5, 2009

BW:103 AWW:685 AYW:1221 CE* AOD:4

RED GOLD-BAR KING V415 107K
 RED GOLD-BAR MERCEDES K 116M
 RED LPC BIRDIE DYNAMICS 2K

RED CC SENSATION
 RED BROX OAKLEAF 22R
 RED BROX OAKLEAF 50N

EPDS
 BW **2.7**
 WW **36**
 YW **58**
 Milk **8**
 TM **25**

CARCASS

MARB:**A** REA in²:**13.8** BF in:**0.25** %LMY:**63.4**

- stylish performance bull

40 Red Lazy MC MH Alliance 19W

February 18, 2009

BW:81 AWW:660 AYW:1208 CE** AOD:2

REMITALL LOGAN 11L
 RED BFL ALLIANCE 14R
 BFL BANG 10L

RED SHODEREE STORM 44P
 RED BROX SCYTHIA 21T
 RED BROX SCYTHIA 24R

EPDS
 BW **-1.1**
 WW **26**
 YW **50**
 Milk **17**
 TM **29**

CARCASS

MARB:**AA** REA in²:**12.0** BF in:**0.25** %LMY:**62.6**

- moderate framed and thick made
- dark red, dark footed bull

41 Red Lazy MC MH Ideal 35W

March 15, 2009

BW:104 AWW:660 AYW:1205 CE* AOD:4

RED U-2 ILLICIT 423P
 RED U-2 IDEAL 1600S
 RED U-2 ANEXA 09E

RED GEIS PRIME RIB 411
 RED BROX SCYTHIA 24R
 RED TRAILVIEW SCYTHIA 60'96

EPDS
 BW **1.4**
 WW **29**
 YW **53**
 Milk **13**
 TM **32**

CARCASS

MARB:**AA** REA in²:**12.2** BF in:**0.25** %LMY:**63.1**

- solid performance bull

42

Lazy MC Blackman 13W

January 29, 2009

BW:82 AWW:647 AYW:1206 CE*** AOD:6

SAF 598 BANDO 5175
SAV 5175 BANDO 1024
CHAMPION HILL SLEEPY MISS

OCC JOKER 620J
CROWFOOT ROSE 3789N
GLADWALL ROSE OF L 7310

EPDS

BW **2.1**
WW **35**
YW **60**
Milk **17**
TM **34**

CARCASS

MARB:**AA+** REA in²:**13.3** BF in:**0.29** %LMY:**63.4**

- excellent herd sire prospect
- both sire and dam offer superb phenotype and structure



43

Lazy MC Elixir 100U

March 20, 2008

BW:85 AWW:704 AYW:1216 CE** AOD: 7

RED RINGSTEAD ELIXIR 179P
RED LAZY MC ELIXIR 54S
LAZY MC BESS 4K

DA ES RO TWISTER 0627
LAZY MC CRISTY 44L
RED LAZY MC CRISTY 47G

EPDS

BW **-0.1**
WW **29**
YW **59**
Milk **18**
TM **32**

- maternal brother to Lot 1, Red Lazy MC Gridiron 66S
- deep sided, sound made bull



44

Stewarts Heavy 5U

January 6, 2008

BW:70 AWW:706 AYW:1300 CE** AOD: 5

RED SSS BOOMER 803B
RED LAZY MC SMASH 41N
RED LAURON YB ROSA 11G

TC STOCKMAN 365
STEWART MISS PATHY 308N
RED JEWEL PISS PATHY 62A

EPDS

BW **1.6**
WW **32**
YW **58**
Milk **22**
TM **37**

- soft made, good haired 'Smash' two year old



45

Red Lazy MC Smash 67U

March 2, 2008

BW:84 AWW:671 AYW:1044 CE*** AOD: 7

RED SSS BOOMER 803B
RED LAZY MC SMASH 41N
RED LAURON YB ROSA 11G

RED LAZY MC BLAZE'N 37J
RED LAZY MC MISS DYN 74L
RED LAZY MC MISS DYN 36H

EPDS

BW **-1.2**
WW **22**
YW **37**
Milk **20**
TM **31**

- one of our strongest two year olds on offer
- moderate framed, easy fleshing
- out of one of our top donor cows





Nathan Jensen & Family
 Box 4278 Taber, Alberta T1G 2C7
 Phone: (403) 223-3284 Cell: (403) 331-7395
 Email: enjay11@hotmail.com

NCJ Reference Dams



194F
 Dam of Lot 53 & 56



308N
 Grand Dam of Lots 50, 54 & 55



910J
 Dam of Lot 56 & 46



59M
 Dam of Lot 51



70N
 Dam of Lot 57



Shoderee Destiny - Sire

46

Red NCJ 6 Digits 34W

February 16, 2009

BW:**94** AWW:**621** AYW:**1108** CE* AOD:**10**

RED SSS STORM 87M
 RED SHODEREE DESTINY 114P
 RED SHODEREE LEADING LADY 96K

RED YY 408D TOP GUN 614F
 RED TER-RON MISS MAC 910J
 RED DEVOLANE MISS MAC 10G

EPDS

BW	2.4
WW	34
YW	57
Milk	12
TM	29

CARCASS

MARB:**A** REA in²:**12.50** BF in:**0.21** %LMY:**62.5**

34W has had the look of a great one since he was born and hasn't looked back.

A powerful, well muscled bull in a complete and moderate frame. He is an ET calf from a fabulous donor cow owned by Ter-Ron Farms and Corner Creek Angus.

Another bull with fresh genetics to offer in the Signature Series sale! A total outcross from any of the sale offering.



47

Red LJ Full Auto 10W

January 26, 2009

BW:105 AWW:674 AYW:1236 CE* AOD:10

RED HEARTLAND KNIGHT CHARM 11L
RED TER-RON FULLY LOADED 540R
RED TER-RON GOLDIE 240L

RED BAR THREE H RAMBO 1D
RED EGGEN GRAVITY MISS 29J
RED EGGEN 1445C MISS 15E

EPDS

BW **4.1**
WW **35**
YW **54**
Milk **6**
TM **24**

CARCASS

MARB:**A** REA in²:**14.78** BF in:**0.34** %LMY:**65.3**

- sire was Supreme Champion at Agribition in 2007
- dam is the original matriarch of the Miss Matt cow family at NCJ and will enter our flush program this year along with 2 of her daughters



48

NCJ Freedom 9W

January 25, 2009

BW:98 AWW:695 AYW:1200 CE* AOD:7

CONNEALY FOREFRONT
TC FREEDOM 104
TC RUBY 9095

RED DURALTA 89H
RED STEWART KURUBA 240M
RED EAGLE ACRES KURUBA 24F

EPDS

BW **2.3**
WW **38**
YW **66**
Milk **20**
TM **39**

CARCASS

MARB:**AA+** REA in²:**12.07** BF in:**0.27** %LMY:**62.6**

- larger framed bull with above average carcass numbers



49

Red NCJ Destination 14W

January 29, 2009

BW:92 AWW:711 AYW:1206 CE* AOD:5

5L DIRECT FIRE 1641-6443
RED 5L DIRECT DESIGN 893-6315
RED 5L ADINA 525-893

RED LAZY MC DIVIDE 8J
RED LAZY MC STAR'S LASS 18P
RED BBCC STAR'S LASS 68D

EPDS

BW **3.3**
WW **40**
YW **65**
Milk **17**
TM **36**

CARCASS

MARB:**A** REA in²:**13.63** BF in:**0.34** %LMY:**62.2**

14w represents a strong combination of some of the industries most dependable and trusted genetics as well as a new and exciting outcross.

His dam is a powerful ET daughter sired by Lazy MC Divide 8J - the amazing female maker.

14w will increase pounds in the pasture and in the feedlot while bringing a fresh and exciting pedigree to the Red Angus industry.



Direct Design
Sire of Lot 27 & 49



Divide 8J - Maternal Grand Sire to...
Lots 19, 20, 24, 30, 35 & 49



50

Red NCJ Tazz 19W

February 4, 2009

BW:**94** AWW:**599** AYW:**1074** CE* AOD:**4**

RED LAZY MC SMASH 41N
 RED NCJ TAZER 10T
 STEWART MISS PATHY 308N

RED PERKS ADVANCE 121R
 RED MEM BAYBERRY 10R
 RED MEM BAYBERRY 41J

EPDS

BW **2.3**
 WW **32**
 YW **55**
 Milk **15**
 TM **31**

CARCASS

MARB:**A+** REA in²:**12.42** BF in:**0.28** %LMY:**62.6**

- one of Tazer's best
- excellent shape and overall balance



51

Red NCJ Tazer 25W

February 6, 2009

BW:**94** AWW:**651** AYW:**1060** CE* AOD:**7**

RED LAZY MC SMASH 41N
 RED NCJ TAZER 10T
 STEWART MISS PATHY 308N

RED SSS BOMBER 907G
 RED JCC YONSOTTU 59M
 RED JCC YONSOTTU 38F

EPDS

BW **2.6**
 WW **32**
 YW **52**
 Milk **14**
 TM **30**

CARCASS

MARB:**AA** REA in²:**12.45** BF in:**0.19** %LMY:**65.5**

- solid bull with good disposition



52

Red NCJ Blazer 30W

February 11, 2009

BW:**80** AWW:**618** AYW:**997** CE** AOD:**3**

RED LAZY MC SMASH 41N
 RED NCJ TAZER 10T
 STEWART MISS PATHY 308N

RED GEIS HI HO 180'94
 RED SVR FANCY LADY 129S
 RED SVR FANCY LADY 43L

EPDS

BW **0.3**
 WW **30**
 YW **57**
 Milk **15**
 TM **31**

CARCASS

MARB:**AA** REA in²:**9.8** BF in:**0.21** %LMY:**63.3**

- dam is from one of SVR's strongest cow families
- moderate and correct

53

Red NCJ Mulberry 41W

February 23, 2009

BW:**88** AWW:**658** AYW:**1143** CE** AOD:**13**

RED COMPASS MULBERRY 449M
 RED FINE LINE MULBERRY 26P
 RED DUS FAYETTE 8G

RED LAZY M SUPER BOWL 19C
 RED EAGLE ACRES LINDO 194F
 RED EAGLE ACRES LACE 193C

EPDS

BW **1.8**
 WW **42**
 YW **74**
 Milk **14**
 TM **30**

CARCASS

MARB:**A** REA in²:**11.0** BF in:**0.28** %LMY:**63.0**

- E.T. calf and full brother to LOT 58
- result of a flush from 194F who has been a super producer and is still going strong at 14 years.

54

Red NCJ Mulberry 33W

February 14, 2009

BW:**88** AWW:**596** AYW:**1054** CE** AOD:**4**

RED COMPASS MULBERRY 449M
 RED FINE LINE MULBERRY 26P
 RED DUS FAYETTE 8G

RED PERKS ADVANCE 121R
 RED SCSC MISS PATHY 4R
 STEWART MISS PATHY 308N

EPDS

BW
 WW
 YW
 Milk
 TM

CARCASS

MARB:**AA** REA in²:**11.66** BF in:**0.29** %LMY:**62.8**

- good Mulberry son from one of our strongest cow families

55

NCJ Hot Shot 31W

February 13, 2009

BW:98 AWW:663 AYW:1101 CE* AOD:4

RED LAZY MC SMASH 41N
RED NCJ TAZER 10T
STEWART MISS PATHY 308N

SITZ ALLIANCE 9160
CROWFOOT VERNICE 5139R
CROWFOOT VERNICE 907J

EPDS	
BW	2.4
WW	33
YW	55
Milk	20
TM	36

CARCASS

MARB:AA REA in²:12.05 BF in:0.27 %LMY:63.1

- above average performance
- excellent phenotype



56

Red NCJ Buckshot 39W

February 20, 2009

BW:86 AWW:628 AYW:1067 CE** AOD:10

RED HEARTLAND KNIGHT CHARM 11L
RED TER-RON FULLY LOADED 540R
RED TER-RON GOLDIE 240L

RED YY 408D TOP GUN 614F
RED TER-RON MISS MAC 910J
RED DEVOLANE MISS MAC 10G

EPDS	
BW	2.6
WW	26
YW	50
Milk	9
TM	23

CARCASS

MARB:A REA in²:12.05 BF in:0.31 %LMY:62.6

- maternal brother to Lot 46
- full sister in the replacement pen looks good



57

Red NCJ Red Cloud 26W

February 8, 2009

BW:83 AWW:632 AYW:1076 CE*** AOD:6

RED 5L NORSEMAN KING 2291
RED RMJ REDMAN 1T
CROWFOOT KURUBA 4033P

LAZY MC WORLDWIDE 5K
RED LAZY MC MISS WORLD 70N
RED CR MISS DYN 17B

EPDS	
BW	-2.2
WW	21
YW	41
Milk	18
TM	29

CARCASS

MARB:AA REA in²:11.78 BF in:0.35 %LMY:62.6

- outcross genetics galore
- 70N is the grand dam to Lot 6



58

Red NCJ Mulberry 40W

February 23, 2009

BW:92 AWW:589 AYW:1072 CE** AOD:13

RED COMPASS MULBERRY 449M
RED FINE LINE MULBERRY 26P
RED DUS FAYETTE 8G

RED LAZY M SUPER BOWL 19C
RED EAGLE ACRES LINDO 194F
RED EAGLE ACRES LACE 193C

EPDS	
BW	1.8
WW	42
YW	74
Milk	14
TM	30

CARCASS

MARB:AA REA in²:11.5 BF in:0.35 %LMY:63.0

- Mulberry 26P has sired top cattle all over the world and won premier sire at the World Angus Forum in July.
- flush mate to Lot 53

59

Red NCJ Copenhagen 49W

March 9, 2009

BW:88 AWW:685 AYW:1169 CE** AOD:3

RED 5L NORSEMAN KING 2291
RED RMJ REDMAN 1T
CROWFOOT KURUBA 4033P

CRCC BOOM 118N
LAZY MC IONA 89S
LAZY MC IONA 140M

EPDS	
BW	0.7
WW	31
YW	57
Milk	17
TM	33

CARCASS

MARB:AA REA in²:13.76 BF in:0.29 %LMY:62.9

- has a beautiful dam

Bandura RANCHES

Joe & Sandy Bandura
 Box 566 Duchess, Alberta ToJ oZo
 Phone: (403) 378-3043 Cell: (403) 363-8774
 Email: bandura@eidnet.org

Reference Sires

Young Dale Worth Alot 49T

February 24, 2007

BW:88 AWW:929

SAV 8180 TRAVELER 004
 SAV NET WORTH 4200
 SAV MAY 2410

YOUNG DALE REAL DEAL
 YOUNG DALE BRIDE 537M
 DOUBLE J BRIDE 70H

This powerful herd sire came to Bandura Ranches as the high selling Angus bull through the Angus Pride sale. He was recently named the World Angus Forum Futurity Grand Champion Bull. Customers can access the siring power of Net Worth through sons of this high performance, sound made herd bull.

EPDS

BW	4.1
WW	57
YW	91
Milk	25
TM	54
YG	34
CE	1.0
MCE	5
REA	0.23
MARB	0.26
FAT	0.04



LLB Luther 201P

March 16, 2004

BW:72 AWW:743

SITZ ALLIANCE 6595
 REMITALL LUTHER 71L
 REMITALL GLACER LILY 117J

KILMAURS DAQUANTAE 1H
 GEIS DEWDROP 69'01
 MJLC DEWDROP 50J

You will have a hard time finding a deeper sided, smoother made herd sire. 'Luther' is a very sound made, eye appealing herd sire that will excel maternally. The sons in this sale offer solid performance, style and the '6595' influence.

EPDS

BW	2.7
WW	39
YW	71
Milk	26
TM	46
YG	31
CE	1.0
MCE	4.0
REA	0.18
MARB	-0.14
FAT	0.013



Red Brylor SDL Redwood 217S

January 30, 2006

BW:88 AWW:758 AYW:1280

RED BJR HIGH CAPACITY 008
 RED UBAR SEQUOIA 202
 RED FORSTER COPPRQUEEN

RED BRYLOR NEW TREND 22D
 RED BROX CRESTA 21H
 RED BROX CRESTA 2B

'Redwood's' dam is listed as an Elite dam with the CAA and her strengths can be seen in his ability to provide exceptional maternal strength. He will moderate frame, add muscle and improve scrotal and depth of flank. His pedigree combines Sequoia with the maternal strength of New Trend.

EPDS

BW	0.5
WW	32
YW	63
Milk	20
TM	36
CE	2.0
MCE	3.0
REA	0.11
MARB	-0.02
FAT	0.0
STAY	+10
HPG	+11



Bangura Reference Dams



101R

Dam of Lot 62



4058P

Dam of Lot 63



10T

Dam of Lot 69



205N

Dam of Lot 70

60

BAN Reliabull 52W

February 17, 2009

BW:72 AWW:796 AYW:1320 CE*** AOD:2

HF PROGRESS 20K
HF RELIABULL 41S
HF ANNIE 112P

SAV 004 PREDOMINANT 4438
ELLIOT BLACKCAP 4T
BIEVERS BLACKCAP 15H

EPDS

BW **0.3**
WW **52**
YW **87**
Milk **21**
TM **47**

CARCASS

MARB:**AA** REA in²:**14.04** BF in:**0.37** %LMY:**62.4**



61

BAN Rachis 71W

February 23, 2009

BW:97 AWW:694 AYW:1211 CE* AOD:4

REMITALL NIGHTHAWK 37N
REMITALL H RACHIS 21R
HENDERSON MISSIE 32'02

REMITALL LUTHER 71L
REMITALL QUEEN 712R
REMITALL QUEEN 58K

EPDS

BW **5.1**
WW **45**
YW **97**
Milk **23**
TM **46**

CARCASS

MARB:**AA** REA in²:**12.43** BF in:**0.41** %LMY:**61.8**



62

BAN Luther 39W

February 10, 2009

BW:87 AWW:784 AYW:1238 CE* AOD:4

REMITALL LUTHER 71L
LLB LUTHER 201P
GEIS DEWDROP 69'01

TC FOREFRONT 1213
4DJ REVLOM GEORGINA 101R
4DJ LOVE ALOT GEORGINA

EPDS

BW **2.1**
WW **45**
YW **76**
Milk **22**
TM **45**

CARCASS

MARB:**AA** REA in²:**12.22** BF in:**0.37** %LMY:**61.7**



63

BAN Predestined 4W

January 6, 2009

BW:102 AWW:777 AYW:1261 CE* AOD:5

B/R NEW DESIGN 036
GAR PREDESTINED
GAR EXT 4206

ALBERDA TRAVELER 416
ROYAL LUCY DRCC 4058P
THOMAS LUCY 0705

EPDS

BW **4.3**
WW **53**
YW **95**
Milk **26**
TM **53**

CARCASS

MARB:**AA** REA in²:**13.92** BF in:**0.35** %LMY:**62.8**



64

Red BAN Turbopan 77W

February 24, 2009

BW:100 AWW:784 AYW:1300 CE* AOD:3

RED GOLD BAR PANDEMONIUM 113P
RED GOLD BAR TURBO PAN 204T
RED MCRAES KERI LEE 43N

RED STEWART PATHFINDER 5L
RED D-BAR STARLETT 45S
RED FULLERTONS STARLET 14H

EPDS

BW **3.6**
WW **41**
YW **71**
Milk **20**
TM **40**

CARCASS

MARB:**AA** REA in²:**14.85** BF in:**0.29** %LMY:**65.9**



65

BAN Free Wheeler 22W

January 24, 2009

BW:81 AWW:678 AYW:1118 CE** AOD:6

HF FREE WHEELER 191N
LLB ALL IN 387T
ABEL ERICA 28L

HF NO SURRENDER 37J
HARRON JULIANA 10N
BIEVERS JULIANA 43G

EPDS

BW
WW
YW
Milk
TM

CARCASS

MARB:**AA** REA in²:**12.87** BF in:**0.33** %LMY:**63.0**

66

BAN Advantage 47W

February 15, 2009

BW:82 AWW:636 AYW:1101 CE** AOD:5

TC ADVANTAGE
BOW RIDGE ADVANTAGE 24S
GET-A-LONG ELBA 324

DRYLAND ICEBERG 231
EASTONDALE TOSPY 128'05
TOSPY OF PLEASANT VISTA 3C

EPDS

BW **-0.7**
WW **30**
YW **54**
Milk **12**
TM **27**

CARCASS

MARB:**AA** REA in²:**11.09** BF in:**0.31** %LMY:**58.7**

67

Red JORD Redwood 97W

March 7, 2009

BW:87 AWW:763 AYW:1145 CE* AOD:4

RED UBAR SEQUOIA 202
RED BRYLOR SDL REDWOOD 217S
RED BROX CRESTA 21H

RED CR HEAVY 100L
RED TG ELLIE 72R
RED TG ELLIE 135M

EPDS

BW **0.3**
WW **33**
YW **57**
Milk **17**
TM **34**

CARCASS

MARB:**A** REA in²:**13.16** BF in:**0.31** %LMY:**63.0**

68

BAN Luther 149W

April 7, 2009

BW:91 AWW:769 AYW:1193 CE*** AOD:5

REMITALL LUTHER 71L
LLB LUTHER 201P
GEIS DEWDROP 69'01

HF PREMIUM PLUS 74K
HF TIBBIE 126P
HF TIBBIE 133H

EPDS

BW **3.3**
WW **44**
YW **73**
Milk **23**
TM **45**

CARCASS

MARB:**N/A** REA in²:**N/A** BF in:**N/A** %LMY:**N/A**

69

Red JORD Pasquale 21W

January 23, 2009

BW:99 AWW:895 AYW:1535 CE* AOD:2

RED VGW RAMBLER 1000
RED BRYLOR PASQUALE 213P
RED XXX LAKME 70M

RED CROWFOOT OLE'S OSCAR 2042M
RED JORD IONA
RED TG IONA 154R

CARCASS

MARB:N/A REA in²:N/A BF in:N/A %LMY:N/A

EPDS

BW -3.1
WW 27
YW 53
Milk 24
TM 37



70

Red JORD Sakic 19W

January 20, 2009

BW:93 AWW:819 AYW:1356 CE* AOD:6

RED SIX MILE AVIATOR 217P
RED SIX MILE SAKIC 832S
RED SIX MILE SIERA 257P

RED LCC MR. MARBLING 13091C
RED SWAN CREEK DEB 303 MM 205N
RED GOLD BAR DEBBIE 755G 303J

CARCASS

MARB:AA REA in²:14.03 BF in:0.37 %LMY:65.7

EPDS

BW 2.5
WW 30
YW 49
Milk 20
TM 35



71

BAN ST Anthony 3W

January 4, 2009

BW:94 AWW:690 AYW:1187 CE* AOD:5

CA FUTURE DIRECTION 5321
SAV SAINT ANTHONY 5670
SAV MADAME PRIDE 0075

SAF 598 BANDO 5175
LBR ANGUS BARB 4P
HAPPYVALE RUTH 43J

CARCASS

MARB:AA+ REA in²:10.33 BF in:0.27 %LMY:61.9

EPDS

BW 2.3
WW 43
YW 79
Milk 25
TM 47

72

BAN Worth Alot 48W

February 15, 2009

BW:101 AWW:684 AYW:1129 CE* AOD:3

SAV NET WORTH 4200
YOUNGDALE WORTH ALOT 49T
YOUNGDALE BRIDE 537M

SANDY BAR ADVANTAGE
WILBAR LUCY 483S
WILBAR LUCY 607L

CARCASS

MARB:AA REA in²:12.19 BF in:0.22 %LMY:63.5

EPDS

BW 5.6
WW 46
YW 77
Milk 20
TM 43

73

BAN Worth Alot 104W

March 11, 2009

BW:104 AWW:742 AYW:1197 CE* AOD:3

SAV NET WORTH 4200
YOUNG DALE WORTH ALOT 49T
YOUNG DALE BRIDE 537M

LLB DAQUANTAE 134P
HF ERICA 101S
HF ERICA 17P

CARCASS

MARB:AA+ REA in²:12.68 BF in:0.30 %LMY:61.0

EPDS

BW 6.5
WW 52
YW 85
Milk 24
TM 50

74

BAN Luther 114W

March 17, 2009

BW:90 AWW:704 AYW:1158 CE* AOD:4

REMITALL LUTHER 71L
LLB LUTHER 201P
GEIS DEWDROP 69'01

TC FOREFRONT 1213
4DJ RACHEL BLACKLASS 10R
4DJ JESSICA BLACKLSS 37J

CARCASS

MARB:AA+ REA in²:12.67 BF in:0.33 %LMY:63.6

EPDS

BW 2.8
WW 40
YW 75
Milk 19
TM 39



75

BAN Rachis Jr. 30W

February 3, 2009

BW:95 AWW:735 AYW:1218 CE* AOD:10

REMITALL NIGHTHAWK 37N
REMITALL H RACHIS 21R
HENDERSON MISSIE 32'02

WIWA CREEK HOGAN 21'96
REMITALL EILEEN 133J
HAPPYVALE EILEEN 36C

EPDS

BW **2.9**
WW **49**
YW **102**
Milk **17**
TM **42**

CARCASS

MARB:**AA** REA in²:**11.0** BF in:**0.34** %LMY:**57.6**



76

BAN Worth Alot 13W

January 19, 2009

BW:88 AWW:749 AYW:1273 CE* AOD:4

SAV NET WORTH 4200
YOUNGDALE WORTH ALOT 49T
YOUNGDALE BRIDE 537M

HF POWER SOURCE 94M
HF MISS LUCY 108R
HF MISS LUCY 8D

EPDS

BW **2.5**
WW **49**
YW **82**
Milk **23**
TM **48**

CARCASS

MARB:**AA** REA in²:**13.14** BF in:**0.25** %LMY:**63.7**

77

BAN ST Anthony 28W

February 1, 2009

BW:92 AWW:651 AYW:1140 CE* AOD:8

CA FUTURE DIRECTION 5321
SAV SAINT ANTHONY 5670
SAV MADAME PRIDE 0075

WINDRUSH RAINMAKER 28J
WINDRUSH MISS BURGESS 19L
BRAMBLEBROOK MISS BURGESS 19C

EPDS

BW **2.2**
WW **32**
YW **58**
Milk **21**
TM **37**

CARCASS

MARB:**AA+** REA in²:**13.78** BF in:**0.38** %LMY:**64.5**

78

BAN Kodiak 7W

January 15, 2009

BW:91 AWW:724 AYW:1156 CE* AOD:2

SANDY BAR ADVANTAGE 43M
HF KODIAK 5R
WILBAR RUBY 5R

JUSTAMERE TIME REGULATOR 333N
JUSTAMERE 333N SAPPHIRE 943T
SMC SAPPHIRE 59M

EPDS

BW **3**
WW **50**
YW **77**
Milk **17**
TM **42**

CARCASS

MARB:**AA+** REA in²:**11.82** BF in:**0.17** %LMY:**62.9**

79

BAN Alot 95W

March 7, 2009

BW:84 AWW:651 AYW:1104 CE** AOD:6

SAV NET WORTH 4200
YOUNGDALE WORTH ALOT 49T
YOUNGDALE BRIDE 537M

TRIPLE E MATRIX 908
CCL BLACKCAP SC5N
EBON HILL BLACKCAP 390'01

EPDS

BW **2.5**
WW **43**
YW **75**
Milk **17**
TM **39**

CARCASS

MARB:**AA** REA in²:**12.61** BF in:**0.29** %LMY:**60.7**

80

BAN Worth Alot 45W

February 14, 2009

BW:90 AWW:708 AYW:1260 CE* AOD:3

SAV NET WORTH 4200
YOUNGDALE WORTH ALOT 49T
YOUNGDALE BRIDE 537M

HF POWER SOURCE 94M
HF BLACKBIRD 52S
HF BLACKBIRD 199P

EPDS

BW **3.9**
WW **46**
YW **76**
Milk **22**
TM **45**

CARCASS

MARB:**AA** REA in²:**10.68** BF in:**0.26** %LMY:**61.2**

81

BAN Echo 49W

February 15, 2009

BW:97 AWW:699 AYW:1187 CE* AOD:3

REMITALL LUTHER 71L
LLB LUTHER 201P
GEIS DEWDROP 69'01
JWK SLEEPY BOY 8134
EARLY SUNSET TILDA 38S
EARLY SUNSET TILDA 44P

EPDS

BW **3.6**
WW **39**
YW **70**
Milk **21**
TM **41**

CARCASS

MARB:**A** REA in²:**13.19** BF in:**0.19** %LMY:**65.1**



82

LBR Angus Edward 20U

September 19, 2008

BW:73 AWW:723 CE** AOD:8

SAV 5175 BANDO 1024
LBR LUIS 3S
DIAMOND CREEK MATILDA 9M
TLA PRIDES REVIVAL
GET-A-LONG BONNIE 211
GEIS BONNIE 52'97

EPDS

BW
WW
YW
Milk
TM

CARCASS

MARB:**N/A** REA in²:**N/A** BF in:**N/A** %LMY:**N/A**



83

BAN Resistor 129W

March 24, 2009

BW:88 AWW:667 AYW:1098 CE** AOD:4

REMITALL NETWORK 1N
REMITALL RESISTOR 602R
CAYMEN ROSE 57'01
GRANDVIEW WOMACK DIRECT
REMITALL NEONIA 733R
HAPPYVALE NEONIA 27E

EPDS

BW **3.8**
WW **33**
YW **59**
Milk **18**
TM **35**

CARCASS

MARB:**AA** REA in²:**12.45** BF in:**0.31** %LMY:**61.1**

84

BAN Worth Alot 79W

February 25, 2009

BW:80 AWW:676 AYW:1125 CE* AOD:3

SAV NET WORTH 4200
YOUNGDALE WORTH ALOT 49T
YOUNGDALE BRIDE 537M
ENNS KRUGGERANDS TONTO 27P
JUSTAMERE 27P BARANDA 562S
W B BLACK CAP 2122

EPDS

BW **20**
WW **48**
YW **82**
Milk **18**
TM **42**

CARCASS

MARB:**AA** REA in²:**12.14** BF in:**0.32** %LMY:**61.3**

85

Cottage Creek Billy Bob 909W

March 7, 2009

BW:85 CE:*** AOD:3

OCC LEGEND 616L
BC LOOKOUT 7024
GIBBET HILL MIGNONNE E37
JWK SLEEPY BOY 8134
DUDSWELL HILL TAMARA
DUDSWELL HILL RAWHIDE 67R

EPDS

BW **3.0**
WW **46**
YW **85**
Milk **15**
TM **38**

CARCASS

MARB:**N/A** REA in²:**N/A** BF in:**N/A** %LMY:**N/A**

86

BAN Playboy 32W

February 7, 2009

BW:94 AWW:756 AYW:1149 CE* AOD:2

LLB NIGHT TRAIN 106M
REMITALL PLAYBOY 4P
BELVIN LADY BLOSSOM 28'02
SAV FINAL ANSWER 0035
REMITALL QUEEN 536T
REMITALL QUEEN 559R

EPDS

BW **4.5**
WW **49**
YW **93**
Milk **22**
TM **47**

CARCASS

MARB:**AA** REA in²:**10.77** BF in:**0.14** %LMY:**64.1**

Stewart

Cattle Co.

Sebastien & Sarah Stewart
 Box 10, Site 15, RR2 Cochrane, Alberta
 Phone: (403) 932-5590 Cell: (403) 803-0730
 Email: stewartcattle@xplornet.com
 Web: www.stewartcattlecompany.com

Reference Sire

Red Leachman End Cut 1383G

March 1, 1997



BW:98 AWW:793 AYW:1247

RED LMAN NONE BETTER 9604
 RED LCHMN NONE HEAVIER 1127D
 RED LEACHMAN PRILARK

RED BUF CRK DYNAMO 2108
 RED PARK VICTORIA C233
 RED BUF CRK MINOLA 2330

End Cut is a powerful sire who passes on exceptional phenotype and muscle expression in a moderate package with above average scrotal development. His daughters have beautiful udders and with strong dark feet. End Cut ranks in the top 10% for WW and top 15% for YW. His milk is in the top 10% of the breed. To date his calves have shown extra power and dimension without compromising calving ease. They have dark red coats, excellent vigor and are consistent in type.

EPDS

BW	4.3
WW	38
YW	63
Milk	21
TM	40
CE	2.0
MCE	5.0
REA	-0.17
MARB	-0.05
FAT	0.01
STAY	5
HPG	8

Stewart Reference Dams



15M

Grand Dam of Lot 87



306N

Dam of Lots 88 & 89



62A

Dam of Lots 90 & 91

87 Red Stewart End Cut 11W

January 19, 2009

88

Stewarts Punch 29W

February 20, 2009

BW:82 AWW:725 AYW:1040 CE*** AOD:4

RED LCHMN NONE HEAVIER 1127D
 RED LEACHMAN END CUT 1383G
 RED PARK VICTORIA C233

RED YY CHIEFLINE 314N
 RED SBS MAE KKL 503R
 RED BAR-E-L MAE 15M

EPDS

BW	-0.3
WW	24
YW	43
Milk	19
TM	31

CARCASS

MARB:N/A REA in²:N/A BF in:N/A %LMY:N/A

• This +9 calving ease bull will be great on heifers. Dam is a gorgeous female with an excellent udder. Grand dam was Champion at both Farmfair and Agribition in '04.

BW:92 AWW:759 AYW:1043 CE** AOD:6

TC FREEDOM 104
 STEWARTS PRIMUS 52R
 RED STEWART 803 MISS PATHY 217

RED STEWART PATHFINDER 5L
 RED STEWART PATRICIA 306N
 RED STEWART MS PATRIOT 52H

EPDS

BW	1.3
WW	32
YW	58
Milk	22
TM	38

CARCASS

MARB:AA REA in²:12.3 BF in:0.19 %LMY:63.1

• Dam is the best in our herd. Punch has excellent structure, hair coat, feet and testicles with extra length of spine. Recommended for larger heifers and cows.

89

Red Stewart Babine 8W

January 17, 2009

BW:98 AWW:761 AYW:1107 CE* AOD:6

RED LCHMN NONE HEAVIER 1127D
RED LEACHMAN END CUT 1383G
RED PARK VICTORIA C233

RED STEWART PATHFINDER 5L
RED STEWART PATRICIA 306N
RED STEWART MS PATRIOT 52H

EPDS

BW **3.4**
WW **34**
YW **57**
Milk **20**
TM **37**

CARCASS

MARB:**AA** REA in²:**10.0** BF in:**0.21** %LMY:**64.0**

• This is a deep bodied bull with great feet, hair and eye appeal in a moderate package. Expect soggy replacements with excellent udders. He is a maternal brother to our new Herd Sire 'Master 14U'.



90

Red Stewart Smash 9W

January 17, 2009

BW:80 AWW:629 AYW:1000 CE*** AOD:ET

RED SSS BOOMER 803B
RED LAZY MC SMASH 41N
RED LAURON YB ROSA 11G

RED THREE D PATHFINDER 22'86
RED JEWEL MISS PATHY 62A
RED JEWEL MISS CHEROKEE 58W

EPDS

BW **-0.2**
WW **30**
YW **60**
Milk **23**
TM **38**

CARCASS

MARB:**A+** REA in²:**11.2** BF in:**0.16** %LMY:**62.7**

• Full brother to Lot 91 and the high seller in 2007 to Shoderee Ranch.



91

Red Stewart Skagit 6W

January 16, 2009

BW:78 AWW:758 AYW:1044 CE*** AOD:ET

RED SSS BOOMER 803B
RED LAZY MC SMASH 41N
RED LAURON YB ROSA 11G

RED THREE D PATHFINDER 22'86
RED JEWEL MISS PATHY 62A
RED JEWEL MISS CHEROKEE 58W

EPDS

BW **1.3**
WW **27**
YW **54**
Milk **22**
TM **35**

CARCASS

MARB:**AA** REA in²:**10.3** BF in:**0.14** %LMY:**63.1**

• Thick, moderate, calving ease bull. His dam is one of Canada's great matrons with 58 registered progeny and two more born this year. Safe for use on both heifers and cows.



92

Red Stewart 36U

February 27, 2008

BW:78 CE: *** AOD:3

RED LAZY MC SMASH 41N
RED STEWART MOCCASIN 29S
RED STEWART TUBEE 413P

UNKNOWN
RED STEWART TRIXIE 622S
RED BIRCHLAWN TRIXIE 2J

EPDS

BW
WW
YW
Milk
TM

CARCASS

MARB:**N/A** REA in²:**N/A** BF in:**N/A** %LMY:**N/A**

• Excellent bull to cover a large group of heifers. Although the sire of the dam is unknown she is a model cow with an excellent udder and strong feet.



**TAKE
THE
HIGH
ROAD**

Red Lazy MC CC

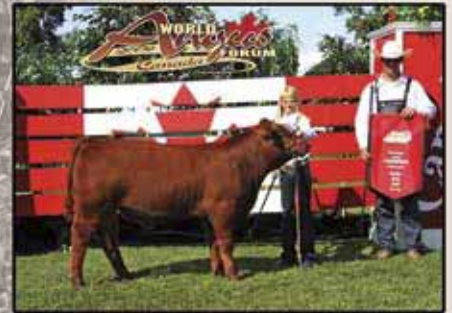
DETOUR^{2W}

**SEMEX
Beef**

One of the most decorated bull calves in 2009 including WAF Champion Bull Calf in the Junior Show and Reserve Senior Bull Calf Champ in the Open. He is backed by a tremendous dam that was 2008 RBC Supreme Champion Female and the 2008 CDN Angus Show Female of the Year.

'Detour' is going to play an integral part in our program and the Bandura operation. We were extremely excited to have Semex select him for their genetic team.

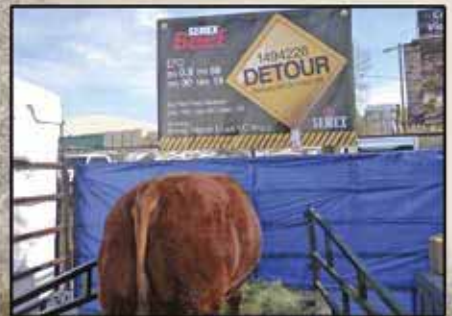
Canadian & US Semen Available



World Angus Forum - Ch. Jr. Bull & Res. Sr. Ch. Bull Calf



Strathmore Heritage Days - Champion Jr. Bull Calf



'In the Yards' - Denver 2010



Angela

Sire:
Red SL Norseman King 2291
Red RMJ Redman 1T
Crewfoot Kuruba 4033P

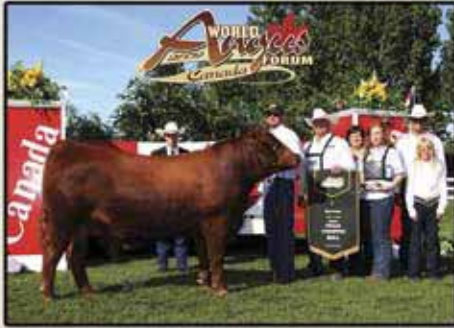


Dam:
Red Lazy MC Smash 41N
Red Lazy MC Bess 12S
Red Lazy MC Boss 73N



Owned with Bandura Ranches & Corner Creek Angus

LONG.
LIVE.
COWBOYS.



World Angus Forum '09 Champion Yearling Bull



Nile - Billings, Montana, Grand Champion Red Angus Bull



Denver '10 - Reserve Grand Champion Bull

Red Lazy MC

Cowboy^{26U} Cut

'Cowboy Cut' is one of 185M's best efforts. An excellent cow family and numerous bull sale high sellers in his background! The sire, 'Stout' 30S, is one of our strongest young sires. Moderate at birth with unequalled phenotype and muscle shape, our #2 ribeye bull at 16.15 and a solid Igenity profile just add to this bulls value.

Not only has 'Cowboy's' show record continued to build, his siring ability has really impressed! Watch for his sons and daughters this fall. A big thank you to everyone that has invested in this exciting young sire.



Sire:
Red Lazy MC Smash 41N
Red Lazy MC Stout 30S
Red Lazy MC Scythia 78N



Dam:
Lazy MC Worldwide 5K
Red Lazy MC Star 185M
Red Lazy MC Star 100J

Owned with Bar-E-L Angus, Mile High Land & Cattle & Solution Genetics

Canadian Semen Available This Fall

Lazy MC Angus
Box 474
Bassano, AB
T0J 0B0

Signature Series

RED & BLACK ANGUS BULL SALE

Lazy MC Angus NCJ Cattle Co. Bandura Ranches Stewart Cattle Co.

Catalogue produced by Angela