

32nd Annual

# Short Grass

**Angus Bull & Female Sale**

**April 17th, 2010**

**12:00 Noon CST**

*Sandy Bar Ranch, Aneroid, Sk*



**Sandy Bar  
Ranch**

*Valley  
Blossom  
Ranch*



*A very special welcome to the*

## **32nd Anniversary of the Short Grass Black Angus Sale**

*From the Short Grass Crew*

### **Welcome to the 32nd Annual Short Grass Bull & Female Sale.**



*2009 has come and gone and it was not without challenges and successes! I'm still very active with the Canadian Angus Association. The world Angus Forum will go down in history as a "Successful" event. Congratulations to John Lee & Crew for a tremendous job!*

*On the home front, the year started out great with moisture and then the tap turned to OFF again. Grasshoppers came and ate everything in their path. Lightening struck a stack of bales and they all burned to the ground. Thanks to great neighbors, they saved the rest of the yard.*

*This year we will be offering 150+ top end bulls from our program. All Bulls will be semen tested, vet inspected & tested negative for BVD and carry the Short Grass guarantee.*

*One of the advantages of buying "Short Grass Bulls" is they are never pushed. We grow and develop them slowly resulting in a good bang for your buck.*

*Once again we will be selling 200 "One Iron" Commercial Yearling Heifers consigned by our customers. All heifers are in a complete Health Program and will be palpated. They sell at 12:00 sharp.*

*Please join us at anytime and enjoy our hospitality.*

*Bob & Gail*



**Bob & Gail**

**Kyle & Tara**

**Beau, Ashley & Tate**



### **Guest Consigners**

**Sheidaghan Angus**

Tom & Vicki Flanagan 306-662-2272

**Day by Day Angus**

Stan & Sherry Day 306-298-4417

**Deer Hill Ridge Angus Farm**

Leon & Sharon White 306-377-4603

**Diamond B Ranches**

Robert & Sharon Ballantyne 306-845-2481

**Lockie Angus**

Walt & Lisa Lockie 306-771-2580

**Rocking H Ranch**

Tyler & Kathy Huber 306-588-2200

**Sandy Bar Ranch & Valley Blossom Ranch have been recognized under the Verified Beef Production - Quality Starts Here Program.**



32nd Annual

# Short Grass

## Angus Bull and Female Sale

**Saturday, April 17th, 2010 - 12:00 Noon, CST**

*At Sandy Bar Ranch, Aneroid, Sk*

### Our Sales Team...



**Bruce Switzer**  
Auctioneer  
306-773-4200



**Don Raffan**  
Auctioneer  
250-588-6789



**Doris Kornfeld**  
Sales Clerk



**Jeff Thomas**  
Ringman  
406-581-8859



**Kevin Goruick**  
Ringman  
306-266-4369



**Mark Stock**  
Ringman  
306-678-4811



**Gail Switzer**  
Sales Clerk



**Joyce Switzer**  
Sales Clerk



**Kathy Rieder**  
Sales Clerk

### Sight Unseen Purchase Program

Buyers unable to attend the sale may call Jim Wilson or Sandy Bar Ranch to discuss the type of bull or heifer you are looking for, as well as the price range you are comfortable in. Jim will do his best to fulfill the order on your behalf. We guarantee full satisfaction for cattle purchased in this manner.

Jim Wilson - Cowtown Livestock

Work: 306-662-2648 Home: 306-588-4410



**Sandy Bar Ranch**

**Valley Blossom Ranch**

### Offering:

- 150+** Naturally Ranch Raised Bulls
- 20** "Fancy" Purebred Yearling Heifers
- 200+** "One Iron" Commercial Yearling Heifers
- 3** Ranch Horses

### Schedule Of Events:

**Friday, April 16th, 2010**

1:00 - 7:00 Preview of Cattle

5:00 - 7:00 Supper

7:00 - 9:00 Music By: Recording Artist, Clayton Linthicum

**Saturday, April 17th, 2010**

11:00 Complimentary Beef Dinner

12:00 Short Grass Angus Sale Begins

**Sale Day Phone: 306-588-2545**

### Sales Representatives:

John Donaldson - President, Canadian Angus

Bill Davis - President, American Angus

Brian Good - Commercial Fieldman, Canadian Angus

Clint Smith - President, Saskatchewan Angus

Belinda Wagner - Secretary, Saskatchewan Angus

Dick Turner - Photographer

**Bob and Gail Switzer, Box 193, Aneroid, SK S0N 0C0**

**Tel: 306-588-2545 FX: 306-588-2321**

**Bob's Cell: 306-741-7706 Gail's Cell: 306-741-6520**

**E-mail: sandybarangus@gmail.com**

**Kyle & Tara Switzer, Tel: 403-876-2533**

**Kyle's Cell: 403-741-4203**

**Beau Switzer & Ashley Loverin**

**Lac Pelletier, SK**

**Tel: 306-627-3444**

**Cell: 306-741-6605**



# General Sale Information

**Location:** The sale is at the Sandy Bar Ranch

**From Aneroid:**

3 miles (4.8 kms) east of Aneroid on Hwy 13; turn south at Sandy Bar Ranch sign and go 9 miles (14.5 kms).

**From Hazenmore:**

9 miles (14.5 kms) south and 5 miles (8.1 kms) west.

**From Mankota:**

13 miles (21 kms) north and 5 miles (8.1 kms) west.

**Sandy Bar Ranch** is 70 miles (112 kms) south and east of Swift Current, Saskatchewan. Please see map for additional information on directions.

**United States Border Crossing:**

Port of Monchy/Morgan crossing. Ranch is 60 miles from the United States border and 110 miles from Malta, Montana.

**Trucking & Delivery:**

Short Grass will guarantee free delivery of all cattle to all central sale barns and stockyard locations in Canada and the United States - up to 300 miles (483 kms) of sale location - on purchases totaling \$2500 or more. Purchases of less than \$2500 will be delivered at cost. The Short Grass sellers will be able to assist buyers with trucking arrangements on sale day. Please contact any of the contributors.

Commercial heifers will be delivered at cost.

**Insurance Program**

We at Short Grass are very pleased to continue with this program which started many years ago. Short Grass will pay 2% on the level of coverage you wish to insure your bull at. This program is optional. This year we will be dealing with insurance services provided by:



Gull Agencies - Mike Valley  
P.O. Box 28, Gull Lake, Sask., S0N 1A0  
Ph: 306-672-4200 FX: 306-672-3602

**Please bring this catalogue with you to the sale.**

**Accommodations:**

- Grasslands Inn, Mankota, SK .....306-478-2909
- Parkside Inn, Ponteix, SK.....306-625-3553
- Flying Goose Inn, LaFleche, SK.....306-472-5288

**Air Transportation:**

Commercial airlines serve Havre, Montana, as well as Swift Current, Sk.

**Risk:**

Owners and Management are not responsible for accidents.

**Sandy Bar Ranch Reserves the Right** to collect 200 straws of semen off any bull in the sale at their expense and the buyers convenience.

**Terms & Conditions:**

All cattle sell under the standard terms and conditions set forth by the Canadian Angus Association.

**Announcements:**

Any errors discovered in this catalogue will be corrected by announcements from the auction stand at sale time and such corrections will take precedence over the printed material contained in this catalogue.

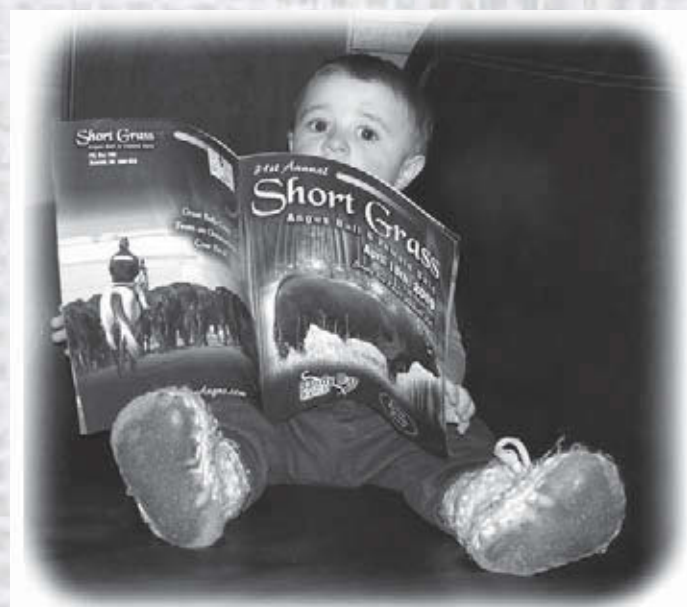
**Weaning, Yearling Weights:**

Weaning Weight Date - October 5, 2009

Yearling Weight Date - April 2010

**EPD Breed Averages - Spring 2009**

Black Angus...	BW	WW	YW	MILK	TM
Sires:	3.0	40	71	16	37



*Proof reading Grandpa's Catalogue*

General Sale Information



# A

## SANDY BAR IDEAL 18S

**IJP 18S 1310363 February 11, 2006**

IDEAL 7451 OF 8103 4465 NHF AMF  
Sire: PRAIRIELANE IDEAL 7451-2014  
PRAIRIELANE MAX DUCHESS 3050

IDEAL 8103 OF ELDO 5110 5213  
IDEAL 4465 OF 6807 4286 NHF AMF  
G T MAXIMUM NHF AMF  
PRAIRIELANE L56 DUCHESS 5004  
TOP TONTO B10  
SANDY BAR ANNIE K 12U  
CRESCENT CREEK BRAVE HEART 35F  
SANDY BAR PRIDE 27E

SANDY BAR TONTO 61E  
Dam: SANDY BAR PRIDE 89L  
SANDY BAR PRIDE 6H (Elite)

Owned with Hamilton Farms. Top selling bull in our 2007 sale. Ideal 2014 son out of Brave Heart X Tonto female. Mother, Grandmother, and Great Grandmother are all "Elite" females. Not too many herds have bulls like that. 2nd Top selling bull at Hamilton Farms was and Ideal 18S son selling to Ring Creek Farm for \$10,500.

BW	Adj. WW	BW	WW	YW	MILK	TM
91	762	1.1	56	93	19	47



Sandy Bar Ideal 18S - Yearling



Sandy Bar Ideal 18S - 2 Year Old



Sandy Bar Ideal 18S - 3 Year Old

**More Than Just a Tag**

**It's a Program**

Only Angus tags

- guarantee minimum 50% Angus genetics
- qualify your cattle for participating Canadian Angus Rancher Endorsed beef programs
- are supported by our commercial field staff
- are delivered to you

Canadian Angus Association  
142, 6715 - 8 Street NE, Calgary, Alberta T2E 7H7  
www.cdnangus.ca • cdnangus@cdnangus.ca  
1-866-571-8093

# B

## SANDY BAR P'FRED 41M

**IJP 41M 1118942 February 12, 2002**

HOFF HI FLYER S C 7134 NHF AMF  
Sire: SUMMITCREST HI FLYER 3B18 NHF AMF  
SUMMITCREST LASS 229Y

SCOTCH CAP NHF AMF  
HOFF MISS SPADE OF S C 147  
Q A S TRAVELER 23-4 NHF AMF  
SUMMITCREST LASS 044W  
RITO 8094 PRAIRIELANE 2060  
CRESCENT CREEK BLACKCAP 112A  
WIWA CREEK ATLAS 7S  
SOUTHERN LANE SUSIE 18L

CRESCENT CREEK BRAVE HEART 35F (Elite)  
Dam: SANDY BAR MISS QUALITY 1K (Elite)  
PAT MISS QUALITY 29U

Owned with Deer Hill Ridge Angus Farms. We purchased a 1/2 interest back in this bull to use on our heifers. We have never touched one heifer bred to this bull. Out of Hi Flyer 3B18 and out of Brave Heart X Atlas cow it is almost the perfect combination. The mother of 41M is an "Elite" dam.

BW	Adj. WW	BW	WW	YW	MILK	TM
70	773	1.8	28	45	19	33



Sandy Bar P'Fred 41M

Reference Sires



**C****LLB FULLBACK 141M****LLB 41M 1118942 May 9, 2002**

RITO 9FB3 OF 5H11 FULLBACK NHF AMF  
 Sire: **MT VALLEY FULLBACK 810**  
 KRUEGERS MIRABELLE

LEACHMAN FULLBACK  
 RITA 5H11 OF 1B14 RITO 9J9  
 V D A R NEW TREND 315 NHF AMF  
 KRUEGERS MC BELLE  
 RITO 2100 G D A R  
 DOUBLE J ROSEBUD 13P  
 HOLLBROOK DOCTOR ZEB 6U  
 DOUBLE J PANSY 68S

DOUBLE J RITO 617A  
 Dam: **PAT PANSY 461D**  
 PAT PANSY 619A

A unique pedigree. His progeny were very well received at last year's bull sale. Cattle with lots of depth and thickness, hair, and excellent feet and legs. If you want more performance look at his sons.

BW	Adj. WW	BW	WW	YW	MILK	TM
95	772	6.1	43	77	13	35



LLB Fullback 141M

**D****SANDY BAR GRASSLANDS 94T****IJP 94T 1371807 March 1, 2007**

SANDY BAR ADVANTAGE 43M  
 Sire: **WILBAR ADVANTAGE 202R**  
 WILBAR KEEPSAKE 929N

TC ADVANTAGE NHF AMF  
 SANDY BAR JEMINA 44K  
 S A F 598 BANDO 5175 AMF  
 WILBAR KEEPSAKE 508L  
 MVHF INNOVATOR 49B  
 LAMBS BAR LASS 19D  
 TRAVELER OF WLA 1Z  
 SANDY BAR JEMINA 44A

LAMBS INNOVATOR 86J  
 Dam: **SANDY BAR JEMINA 22N (Elite)**  
 SANDY BAR JEMINA 54D

Top selling Bull at the 2008 Short Grass Bull & Female Sale to Peak Dot Ranch, Wood Mountain, Sask.

BW	Adj. WW	BW	WW	YW	MILK	TM
82	761	3.9	40	71	18	38



Sandy Bar Grasslands 94T

**E****VALLEY BLOSSOM LIGHTENING 706P****BEAU 706P 1209966 February 6, 2004**

SITZ ALLIANCE 6595 NHF AMF (Elite)  
 Sire: **REMITALL LIGHTENING 2L (Elite)**  
 LLB BONNIE PRIDE 816H (Elite)

SITZ TRAVELER 8180 NHF AMF  
 SITZ BARBARAMERE JET 2698  
 MVFA OBVIOUS TREND 17F  
 COLDSTREAM MISS BONNIE 40B  
 BJ BARDOLIER 24'90  
 SANDY BAR MISS QUALITY 11Y  
 DOUBLE J TRAVELER 44U  
 TAF QUEENETTE 67N

SANDY BAR BARDOLIER 82C (Elite)  
 Dam: **M BAR SIX QUEENETTE 232K (Elite)**  
 GFR QUEENETTE 3X

This bull was retained for use at the Valley Blossom Ranch. With Sitz Alliance 6595, Obvious Trend, Bardolier 82C and Traveler 44U. This bull will not disappoint the most discriminating. The mother, 232K is an "Elite" dam. Maternal + calving ease at its best.

BW	Adj. WW	BW	WW	YW	MILK	TM
88	695	2.1	26	42	27	40



Valley Blossom Lightening 706P

**F****EARLY GRID POWER 52P****CO 52P 1281860 March 8, 2008**

G D A R TRAVELER 044 NHF AMF (Elite)  
 Sire: **G A R GRID MAKER NHF AMF**  
 G A R PRECISION 2536 NHF AMC

D H D TRAVELER 6807 NHF AMF  
 G D A R BLACKCAP LADY 840  
 G A R PRECISION 1680 NHC AMC  
 G A R EXT 2104  
 LEACHMAN FULLBACK  
 RITA 5H11 OF 1B14 RITO 9J9  
 HOFF GREAT WESTERN S C 456  
 DOUBLE G JESS 02Y

RITO 9FB3 OF 5H11 FULLBACK NHF AMF  
 Dam: **BROCKHILL BLACK DIAMOND 9G**  
 BOOT STRAP JAMOCA 10D

Grid Powers Grandsire is Traveler 044 out of Fullback daughter. We selected him from Early Brothers in Ontario. A bull with tremendous volume.

BW	Adj. WW	BW	WW	YW	MILK	TM
87	768	4.0	65	41	11	44



Early Grid Power 52P



# G VALLEY BLOSSOM FULLBACK 763R

**BEAU 763R 1274042 February 23, 2005**

MT VALLEY FULLBACK 810  
Sire: **LLB FULLBACK 141M**  
PAT PANSY 461D

RITO 9FB3 OF 5H11 FULLBACK NHF AMF  
KRUEGERS MIRABELLE  
DOUBLE J RITO 617A  
PAT PANSY 619A  
TOP TONTO B10  
SANDY BAR ANNIE K 12U  
CRESCENT CREEK BRAVE HEART 35F  
SANDY BAR LINDA 33E

SANDY BAR TONTO 61E  
Dam: **SANDY BAR LINDA 62L (Elite)**  
SANDY BAR LINDA 76H (Elite)

Beau retained 1/2 interest in this Bull. He was the pick of the crop. He is out of a tremendous cow which she is also an "Elite" Dam.

BW	Adj. WW	BW	WW	YW	MILK	TM
88	840	6.9	46	76	18	41



Valley Blossom Fullback 763R

# H WILBAR ADVANTAGE 202R

**WJD 202R 1265635 January 22, 2005**

TC ADVANTAGE NHF AMF  
Sire: **SANDY BAR ADVANTAGE 43M**  
SANDY BAR JEMINA 44K (Elite)

KRUGERRAND OF DONAMERE 490 NHF AMF  
TC PRIDE 2010  
DCC HIGH RISE 67H  
SANDY BAR JEMINA 54D  
BON VIEW BANDO 598 AMF  
S A F ROYAL LASS 1002  
SASKALTA BARDOLENE 93H  
MARTENS KEEPSAKE

S A F 598 BANDO 5175 AMF (Elite)  
Dam: **WILBAR KEEPSAKE 929N**  
WILBAR KEEPSAKE 508L

Owned with Diamond B Ranches. Top selling bull out of the Wilbar Bull Sale. A direct son of Sandy Bar Advantage 43M out of Bando 517S daughter. His calves are simply outstanding. To the right is a picture of his Sire.

BW	Adj. WW	BW	WW	YW	MILK	TM
92	738	2.4	56	97	16	44



Sandy Bar Advantage 43M

# I SVR HUSSLER 320T

**SVR 320T 1385974 February 13, 2007**

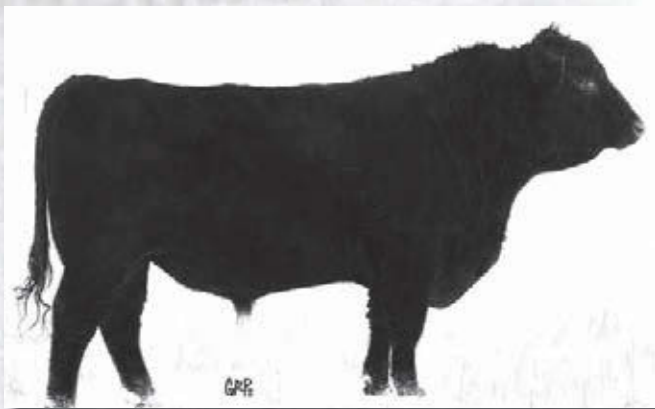
GDAR TRAVELER 235  
Sire: **CRESCENT CREEK 235 TRAV 65R**  
CRESCENT CREEK LAWN 109H

O C C TRAVELER 723Z  
GDAR PRIMROSE 0251  
BOTANY ANGUS MAX 5A  
ANGUS ACRES LAWN 85Z  
L R A ROSEBUD ROPE 390  
MISS POWER L R A 869  
C H QUANTUM 3330  
G D A R FOREVER LADY 5401

B BAR POWER ROPE 0869  
Dam: **SVR FOREVER LADY 248M**  
GDAR FOREVER LADY 0354

We selected this Bull at SVR Bull Sale. We used him on the Ideal 2 & 3 year olds. Excellent cross.

BW	Adj. WW	BW	WW	YW	MILK	TM
92	725	2.9	29	65	22	37



SVR Hussler 320T

# J SANDY BAR IDEAL 71S

**IJP 71S 1310315 February 24, 2006**

IDEAL 7451 OF 8103 4465 NHF AMF  
Sire: **PRAIRIELANE IDEAL 7451-2014**  
PRAIRIELANE MAX DUCHESS 3050

IDEAL 8103 OF ELDO 5110 5213  
IDEAL 4465 OF 6807 4286 NHF AMF  
G T MAXIMUM NHF AMF  
PRAIRIELANE L56 DUCHESS 5004  
RITO 8094 PRAIRIELANE 2060  
CRESCENT CREEK BLACKCAP 112A  
WIWA CREEK ATLAS 7S  
SOUTHERN LANE SUSIE 18L

CRESCENT CREEK BRAVE HEART 35F (Elite)  
Dam: **SANDY BAR MISS QUALITY 1K (Elite)**  
PAT MISS QUALITY 29U

Owned by WL Ranch & Breed Creek. Used this bull on heifers with excellent results. Ideal x Brave Heart. Dam is an "Elite Dam" and maternal sister to Sandy Bar Pfred 41M.

BW	Adj. WW	BW	WW	YW	MILK	TM
79	656	0.5	40	68	17	37



Sandy Bar Miss Quality 1K - "Elite" Dam of 71S

Top Choice Sires



# K SANDY BAR IDEAL 28S

IJP 28S 1310302 February 13, 2006

IDEAL 7451 OF 8103 4465 NHF AMF  
Sire: PRAIRIELANE IDEAL 7451-2014  
PRAIRIELANE MAX DUCHESS 3050

IDEAL 8103 OF ELDO 5110 5213  
IDEAL 4465 OF 6807 4286 NHF AMF  
G T MAXIMUM NHF AMF  
PRAIRIELANE L56 DUCHESS 5004  
TAYLOR OF TROJAN A384  
LAMBS LASS 53B  
SANDY BAR MATLOCK 46Z  
GFR QUEENETTE 3X

LAMBS TROJAN 58F  
Dam: KORNFIELD QUENETTE 807H  
KORNFIELD QUENETTE 3D

Owned by Ringstead Ranch. Used this bull in our AI program. What a great set of calves. Dam is an "Elite Dam".

BW	Adj. WW	BW	WW	YW	MILK	TM
91	714	3.4	51	94	15	41



Kornfield Queenette 807H - "Elite" Dam of 28S

# L SANDY BAR IDEAL 19S

IJP 19S 1310282 February 11, 2006

IDEAL 7451 OF 8103 4465 NHF AMF  
Sire: PRAIRIELANE IDEAL 7451-2014  
PRAIRIELANE MAX DUCHESS 3050

IDEAL 7451 OF 8103 4465 NHF AMF  
Sire: PRAIRIELANE IDEAL 7451-2014  
PRAIRIELANE MAX DUCHESS 3050

SANDY BAR RAINMAKER 58F  
Dam: RON'S DELIA 22H (Elite)  
RON'S DELEGATE DELIA 32W

SANDY BAR RAINMAKER 58F  
Dam: RON'S DELIA 22H (Elite)  
RON'S DELEGATE DELIA 32W

Owned by Bateman Ranch. Used this bull in our AI program. Another great set of calves. Dam is also an "Elite Dam". 22H is in the top 5% of the Sandy Bar herd in dollars per cow.

BW	Adj. WW	BW	WW	YW	MILK	TM
89	647	2.8	48	84	15	39



Prairiellane Ideal 7451-2014 - Sire of 19S

★★★★★

## Grandsons of "Sandy Bar Advantage 43M"

★★★★★



HF Tiger

*Grand Champion at World Angus Forum, Canadian Western Agribition & Edmonton Farm Fair.  
Supreme Champion At Agribition.*



*Grand Champion Pen of 3 at Denver's 2010 National Stock Show.*

**Congratulations to "Hamilton Farms" & "Soo Line Cattle Co."!!**



# Elite Sires

## CRESCENT CREEK BRAVE HEART 35F

**WOS 35F 849484**

**February 1, 1996**

RITO 549 PRAIRIELANE 8094  
Sire: RITO 8094 PRAIRIELANE 2060 (Elite)  
PRAIRIELANE 6003 ROSEBUD 9045

RITO 549 OF IDEAL 154 9J9 AMC  
PRAIRIELANE X01 ROSEBUD 5040  
BAND 4003 PRAIRIELANE 6003  
PRAIRIELANE 3026 ROSEBUD 6030  
SHADMERE FREEDOM 3JS  
J R S GREYSTONE JANNET 384K  
CRESCENT CREEK CREATOR 20T  
ANAKA ACRES BLACKCAP 8P

FREEWAY 276T OF J R S  
Dam: CRESCENT CREEK BLACKCAP 112A  
CRESCENT CREEK BLACKCAP 66W

A bull that has left a lot of influence at Sandy Bar and Valley Blossom Ranch. 35F sired moderate framed cattle with tremendous muscle expression. An "Elite Sire" many bulls and heifers in the sale are out of Brave Heart daughters or granddaughters. If you want shorter gestation cattle or if your udders need to be straightened up with smaller teats on them - then look at offspring out of this bull.

BW	Adj. WW	BW	WW	YW	MILK	TM
99	761	2.3	42	68	21	42



Crescent Creek Brave Heart 35F

## BASIN EQUATOR 276G

**IMP 029G 974251**

**March 2, 1997**

PAPA EQUATOR 2928 NHF AMF (Elite)  
Sire: HILLTOP EQUATOR F302  
K S P ERISKAY 936

PAPA POWER 096  
PAPA ENVIUOUS BLACKBIRD 8849  
HILLTOP SKYLAR 524  
ERISKAY OF ROLLIN ROCK 3302  
Q A S TRAVELER 23-4 NHF AMF  
MED ROCK SASQUATCH BETH 524  
COLE CREEK Q BAR 103T  
COLE CREEK JUANADALEEN 120T

MED ROCK ROSCOE 731  
Dam: BASIN JUANADALEEN 8092  
COLE CREEK JUANADALEEN 117V

We selected this bull from Stevenson's in Montana. A big powerfull bull that sired cows with lots of rib & volume. His daughters have come right to the top. To the right is a picture of his son.

BW	Adj. WW	BW	WW	YW	MILK	TM
		5.4	44	87	15	37



Valley Blossom Equator 729M - Son of 276G

## BELVIN CHIEF

**GDH 19C 758424**

**February 2, 1993**

GDAR EQUALIZER 6148 NHF AMF  
Sire: S A F BATMAN (728500)  
S A F QUEEN LASS 8003

RITO 2100 G D A R  
LT MARSHALL LADY 254 G D A R  
S A F POWER SHAFT 6021  
LEACHMAN ROYAL LASS 614L  
PINE DRIVE BIG SKY NHF AMF  
TORRO NEGRO TRANS LADY DI 736P  
TORRO NEGRO TRADEMARK 80M  
BLACKFACE BLOSSOM 104J

COLDSTREAM SKYHAWK 16'85  
Dam: BELVIN LADY BLOSSOM 37'88 (669741)  
BELVIN LADY BLOSSOM 71'85

We bought this bull from the Bircham Ranch after they used him. Chief females are really feminine with lots of milk.

BW	Adj. WW	BW	WW	YW	MILK	TM
		4.3	37	66	19	38



Sandy Bar Chief 21F - Son of Belvin Chief

## SANDY BAR BORDOLIER 82C

**IJP 82C 116720**

**March 23, 1993**

BJ BARDOLIER 29X  
Sire: BJ BARDOLIER 24'90 (699069)  
BJ LADY WREN 2'87

TOMIL GNEMERN GR 189T  
TOMIL GEORGINA GR 96M  
WALDECK SHOCKER  
BJ LADY WREN 81'85  
KEN CARYL MR ANGUS 8017  
SOUTHOLM LADY 181J  
SIR WMS WARRANT HIC  
SANDY BAR MISS QUALITY 1M

R&J ATLAS 3201  
Dam: SANDY BAR MISS QUALITY 11Y (675687)  
SANDY BAR MISS QUALITY 8R

A Blue Jay son we retained out of an "Elite Dam". Straight Canadian with some added performance. His females are truly outstanding.

BW	Adj. WW	BW	WW	YW	MILK	TM
		4.8	31	55	15	31



Sandy Bar Bardolier 82C

Elite Sires



# Short Grass Bulls

All Photos taken February 7, 2010

★  
**Three Star Program**  
 ★ ★ ★ Heifer Bull  
 ★ ★ Lg Heifer/Cow Bull  
 ★ Cow Bull



**1 VALLEY BLOSSOM IDEAL 15W** ★

**BEAU 15W** 1515100 February 15, 2009

PRAIRIELANE IDEAL 7451-2014  
 Sire: **SANDY BAR IDEAL 18S** (1310363)  
 SANDY BAR PRIDE 89L (Elite)

IDEAL 7451 OF 8103 4465 NHF AMF  
 PRAIRIELANE MAX DUCHESS 3050  
 SANDY BAR TONTO 61E  
 SANDY BAR PRIDE 6H  
 HILLTOP EQUATOR F302  
 BASIN JUANADALEEN 8092  
 BELVIN CHIEF  
 SANDY BAR PRIDE 10B

BASIN EQUATOR 276G (Elite)  
 Dam: **M BAR SIX PRIDE 203K** (1003632)  
 SANDY BAR PRIDE 80F

BW	WW	AOD	BW	WW	YW	MILK	TM
91	755	9	2.9	44	79	16	46

*Opportunity Knocks!*  
 Lot #1 is an outcross pedigree combining the popular Ideal 18S with a never miss 10 year old Equator daughter, 2 "Elite Sires" in the Canadian Angus Sire Summary.

*With lots of hair, exceptional length, thickness and correctness, this is a bull that will fit in anyones program!*

**2 VALLEY BLOSSOM IDEAL 4W** ★

**BEAU 4W** 1515087 February, 06 2009

PRAIRIELANE IDEAL 7451-2014  
 Sire: **SANDY BAR IDEAL 18S** (1310363)  
 SANDY BAR PRIDE 89L (Elite)

IDEAL 7451 OF 8103 4465 NHF AMF  
 PRAIRIELANE MAX DUCHESS 3050  
 SANDY BAR TONTO 61E  
 SANDY BAR PRIDE 6H  
 N BAR TRANSITION A583  
 GLADWALL LADY ERICA 736  
 SANDY BAR CHIEF 21F  
 KORNFELD DUCHESS 609F

CROWFOOT FORKS 701K  
 Dam: **SANDY BAR DUCHESS 49M** (1115213) (Elite)  
 KORNFELD DUCHESS 802H

BW	WW	AOD	BW	WW	YW	MILK	TM
86	780	7	0.7	44	71	16	38

**3 VALLEY BLOSSOM IDEAL 1W** ★★

**BEAU 1W** 1515086 February 04 2009

PRAIRIELANE IDEAL 7451-2014  
 Sire: **SANDY BAR IDEAL 18S** (1310363)  
 SANDY BAR PRIDE 89L (Elite)

IDEAL 7451 OF 8103 4465 NHF AMF  
 PRAIRIELANE MAX DUCHESS 3050  
 SANDY BAR TONTO 61E  
 SANDY BAR PRIDE 6H  
 CRESCENT CREEK BRAVE HEART 35F  
 SANDY BAR LADY 69E  
 BAR 20 RAINMAKER 344D  
 SANDY BAR BLACKCAP 404D

SANDY BAR TWO FEATHERS 91H  
 Dam: **VALLEY BLOSSOM BLACKCAP 712P** (1209941)  
 SANDY BAR BLACKCAP 704G

BW	WW	AOD	BW	WW	YW	MILK	TM
80	785	5	0.9	43	72	17	39



4

**SANDY BAR IMAGE MAKER 267W**

★★

IJP 267W 1496640 February 24, 2009



H A IMAGE MAKER 0419

Sire: **SCA IMAGE MAKER 08N** (1188888)  
SCA BEAUTY 77'00

SANDY BAR BRAVE HEART 75H

Dam: **SANDY BAR PRIDE LADY 78L** (1042083)  
SANDY BAR PRIDE LADY 81C

HERO 6267 OF R R 2418

H A RITO BLACKCAP 9038  
SCA RITO 11H OF 2100 2424  
SCA 56F OF IDEAL 7258

CRESCENT CREEK BRAVE HEART 35F

SANDY BAR MISS QUALITY 12E  
TRAVELER OF WLA 1Z  
PAT PRIDE LADY 837X

BW	WW	AOD	BW	WW	YW	MILK	TM
88	825	8	2.6	39	65	18	38

5

**SANDY BAR ADVANTAGE 85W**

★★

IJP 85W 1497840 March 05, 2009



SANDY BAR ADVANTAGE 43M

Sire: **WILBAR ADVANTAGE 202R** (1265635)  
WILBAR KEEPSAKE 929N

DOUBLE D BARDOLENE 15L

Dam: **SANDY BAR LASS 122P** (1205008)  
LAMBS BAR LASS 19D

TC ADVANTAGE NHF AMF

SANDY BAR JEMINA 44K  
S A F 598 BANDO 5175 AMF  
WILBAR KEEPSAKE 508L

CRESCENT CREEK BARDOLENE 105H

CRESCENT CREEK JESTRESS 46B  
WIWA CREEK OVERDRIVE 5'88  
DOUBLE J BAR LASS 178X

BW	WW	AOD	BW	WW	YW	MILK	TM
80	775	5	1.9	48	81	10	34



6

**SANDY BAR ADVANTAGE 65W**

★★

IJP 65W 1496642 February 25, 2009

SANDY BAR ADVANTAGE 43M  
Sire: **WILBAR ADVANTAGE 202R** (1265635)  
WILBAR KEEPSAKE 929NCRESCENT CREEK BRAVE HEART 35F (Elite)  
Dam: **SANDY BAR ANNIE K 78K** (1000882)(Elite)  
SANDY BAR ANNIE K 20YTC ADVANTAGE NHF AMF  
SANDY BAR JEMINA 44K  
S A F 598 BANDO 5175 AMF  
WILBAR KEEPSAKE 508L  
RITO 8094 PRAIRIELANE 2060  
CRESCENT CREEK BLACKCAP 112A  
YOUNG DALE GOLIATH 71W  
DOUBLE AA ANNIE K 596'78

BW	WW	AOD	BW	WW	YW	MILK	TM
88	790	9	3.4	48	79	14	38

7

**SHEIDAGHAN ADVANTAGE 29W**

★

VMF 29W 1523710 February 21 2009

VALLEY BLOSSOM ADVANTAGE 732M  
Sire: **SANDY BAR ADVANTAGE 33T** (1371744)  
SANDY BAR DELIA 508M (Elite)REATA WIDESPREAD 2L  
Dam: **SANDY BAR MISS QUALITY 2R** (1258246)  
SANDY BAR MISS QUALITY 111ETC ADVANTAGE NHF AMF  
SANDY BAR TILDA 742K  
SQUAW COULEE PRIME TIME 8K  
SANDY BAR DELIA 140K  
WHITSTONE WIDESPREAD MB NHF AMF  
FAIRMAC PRIDE 16C  
MACKIE'S BRUTE 4B  
SANDY BAR MISS QUALITY 4C

BW	WW	AOD	BW	WW	YW	MILK	TM
97	780	4	1.9	35	63	17	35

8

**VALLEY BLOSSOM IDEAL 28S 907W**

★

IJP 907W 1499000 February 14, 2009

PRAIRIELANE IDEAL 7451-2014  
Sire: **SANDY BAR IDEAL 28S** (1310302)  
KORNFELD QUENETTE 807HWILMO TRAVELER 7G  
Dam: **WILMO PRIDE 8M** (1119501)  
WILMO PRIDE 17DIDEAL 7451 OF 8103 4465 NHF AMF  
PRAIRIELANE MAX DUCHESS 3050  
LAMBS TROJAN 58F  
KORNFELD QUENETTE 3D  
Q A S TRAVELER 23-4 NHF AMF  
WILMO PRIDE 10E  
WILMO PETRO CANADA 16T  
WILMO PRIDE 19T

BW	WW	AOD	BW	WW	YW	MILK	TM
90	765	7	3.9	41	77	16	37

9

**SANDY BAR ADVANTAGE 14W**

★★

IJP 14W 1496616 February 14, 2009

SANDY BAR ADVANTAGE 43M  
Sire: **WILBAR ADVANTAGE 202R** (1265635)  
WILBAR KEEPSAKE 929NCRESCENT CREEK BRAVE HEART 35F (Elite)  
Dam: **SANDY BAR DUCHESS 29J** (954635)  
SANDY BAR DUCHESS 58ETC ADVANTAGE NHF AMF  
SANDY BAR JEMINA 44K  
S A F 598 BANDO 5175 AMF  
WILBAR KEEPSAKE 508L  
RITO 8094 PRAIRIELANE 2060  
CRESCENT CREEK BLACKCAP 112A  
TOP TONTO B10  
PAT DUCHESS 855X

BW	WW	AOD	BW	WW	YW	MILK	TM
87	805	10	2.7	45	71	19	42

9



10

**SHEIDAGHAN EQUATOR 41W** ★

VMF 41W 1523713 February 23, 2009



VALLEY BLOSSOM EQUATOR 729M  
Sire: **SANDY BAR EQUATOR 150S** (1310252)  
SANDY BAR DUCHESS 114E (Elite)

REMITALL LIGHTENING 2L (Elite)  
Dam: **SANDY BAR MISS QUALITY 11R** (1251891)  
SANDY BAR MISS QUALITY 69J

BASIN EQUATOR 276G  
WIWA CREEK TILDA 33 54'90  
MACKIE'S BRUTE 4B  
SANDY BAR DUCHESS 17B  
SITZ ALLIANCE 6595 NHF AMF  
LLB BONNIE PRIDE 816H  
SANDY BAR BARDOLIER 82C  
SANDY BAR MISS QUALITY 50E

BW	WW	AOD	BW	WW	YW	MILK	TM
104	820	4	6.2	50	80	15	40

11

**VALLEY BLOSSOM IDEAL 18S 901W** ★

IJP 901W 1497139 February 08, 2009

PRAIRIELANE IDEAL 7451-2014  
Sire: **SANDY BAR IDEAL 18S** (1310363)  
SANDY BAR PRIDE 89L (Elite)

MERIT DIESEL 8041  
Dam: **HOWE MS ERICA 90M** (1112470)  
CUDLOBE ERICA 62H

IDEAL 7451 OF 8103 4465 NHF AMF  
PRAIRIELANE MAX DUCHESS 3050  
SANDY BAR TONTO 61E  
SANDY BAR PRIDE 6H  
SUNNY GROVE EXTRA 2E  
HILOW LADY MCHENRY 15A  
STEVENSON FORTUNE 415C  
CUDLOBE ERICA 49Z

BW	WW	AOD	BW	WW	YW	MILK	TM
89	770	7	4.0	48	87	12	36

12

**SANDY BAR IRON MAN 81W** ★

IJP 81W 1496650 March 03, 2009

G A R GRID MAKER NHF AMF  
Sire: **EARLEY GRID POWER 52P** (1281860)  
BROCKHILL BLACK DIAMOND 9G

CRESCENT CREEK BRAVE HEART 35F (Elite)  
Dam: **SANDY BAR ERICA 123K** (1000980)  
SANDY BAR ERICA 14E

G D A R TRAVELER 044 NHF AMF  
G A R PRECISION 2536 NHF AMC  
RITO 9FB3 OF 5H11 FULLBACK NHF AMF  
BOOT STRAP JAMOCA 10D  
RITO 8094 PRAIRIELANE 2060  
CRESCENT CREEK BLACKCAP 112A  
PAT GOLIATH 904Z  
DOUBLE J ERICA 23T

BW	WW	AOD	BW	WW	YW	MILK	TM
81	760	9	2.2	50	88	14	39

13

**SANDY BAR ADVANTAGE 93W** ★★★

IJP 93W 1497873 March 10, 2009

SANDY BAR ADVANTAGE 43M  
Sire: **WILBAR ADVANTAGE 202R** (1265635)  
WILBAR KEEPSAKE 929N

ARDA BATTLE CRY 96M  
Dam: **SANDY BAR LINDA 1P** (1204693)  
SANDY BAR LINDA 76H (Elite)

TC ADVANTAGE NHF AMF  
SANDY BAR JEMINA 44K  
S A F 598 BANDO 5175 AMF  
WILBAR KEEPSAKE 508L  
O G L BATTLE CRY 427 128  
ARDA BLACKBIRD 90G  
CRESCENT CREEK BRAVE HEART 35F  
SANDY BAR LINDA 33E

BW	WW	AOD	BW	WW	YW	MILK	TM
76	795	5	1.8	51	86	18	86

14

**SANDY BAR IMAGE MAKER 262W** ★★

IJP 262W 1497145 February 16, 2009



H A IMAGE MAKER 0419  
Sire: **SCA IMAGE MAKER 08N** (1188888)  
SCA BEAUTY 77'00

SANDY BAR BARDOLIER 82C (Elite)  
Dam: **VALLEY BLOSSOM QUEENETTE 808L** (1042568)  
GFR QUEENETTE 3X

HERO 6267 OF R R 2418  
H A RITO BLACKCAP 9038  
SCA RITO 11H OF 2100 2424  
SCA 56F OF IDEAL 7258  
BJ BARDOLIER 24'90  
SANDY BAR MISS QUALITY 11Y  
DOUBLE J TRAVELER 44U  
TAF QUEENETTE 67N

BW	WW	AOD	BW	WW	YW	MILK	TM
83	810	8	1.9	34	59	19	36

15

**SANDY BAR IDEAL 19S 195W** ★★★

IJP 195W 1504351 February 21, 2009



PRAIRIELANE IDEAL 7451-2014  
Sire: **SANDY BAR IDEAL 19S** (1310282)  
RON'S DELIA 22H (Elite)

WILBAR ADVANTAGE 202R  
Dam: **SANDY BAR ANNIE K 54T** (1371767)  
SANDY BAR ANNIE K 65N

IDEAL 7451 OF 8103 4465 NHF AMF  
PRAIRIELANE MAX DUCHESS 3050  
SANDY BAR RAINMAKER 58F  
RON'S DELEGATE DELIA 32W  
SANDY BAR ADVANTAGE 43M  
WILBAR KEEPSAKE 929N  
REMITALL LIGHTENING 2L  
SANDY BAR ANNIE K 101L

BW	WW	AOD	BW	WW	YW	MILK	TM
80	745	2	2.6	51	84	17	43





16

**VALLEY BLOSSOM IDEAL 7W** ★

BEAU 7W 1515090 February 08, 2009



PRAIRIELANE IDEAL 7451-2014  
Sire: **SANDY BAR IDEAL 18S** (1310363)  
SANDY BAR PRIDE 89L (Elite)  
  
CROWFOOT FORKS 701K  
Dam: **SANDY BAR QUEENETTE 4M** (1115217)  
KORNFELD QUENETTE 807H

IDEAL 7451 OF 8103 4465 NHF AMF  
PRAIRIELANE MAX DUCHESS 3050  
SANDY BAR TONTO 61E  
SANDY BAR PRIDE 6H  
N BAR TRANSITION A583  
GLADWALL LADY ERICA 736  
LAMBS TROJAN 58F  
KORNFELD QUENETTE 3D

BW	WW	AOD	BW	WW	YW	MILK	TM
89	785	7	1.8	42	72	17	38

18

**DEER HILL RIDGE FULLBACK 25W** ★

JEV 25W 1490491 February 27, 2009



LLB FULLBACK 141M  
Sire: **VALLEY BLOSSOM FULLBACK 760R** (1274007)  
VALLEY BLOSSOM ANNIE K 721M  
  
REMITALL LIGHTENING 2L (Elite)  
Dam: **SANDY BAR ANNIE K 19R** (1251904)  
VBR ANNIE K 210H (Elite)

MT VALLEY FULLBACK 810  
PAT PANSY 461D  
SANDY BAR EQUALIZER 50G  
F V 249B ANNIE K 135H  
SITZ ALLIANCE 6595 NHF AMF  
LLB BONNIE PRIDE 816H  
LAMB'S QUARTERS TARGET 8E  
SANDY BAR ANNIE K 79F

BW	WW	AOD	BW	WW	YW	MILK	TM
87	720	4					

17

**SHEIDAGHAN IDEAL 13W** ★★★

VMF 13W 1525660 February 18, 2009



PRAIRIELANE IDEAL 7451-2014  
Sire: **SANDY BAR IDEAL 19S** (1310282)  
RON'S DELIA 22H (Elite)  
  
VALLEY BLOSSOM ADVANTAGE 732M  
Dam: **SANDY BAR DELIA 28T** (1371737)  
SANDY BAR DELIA 140K

IDEAL 7451 OF 8103 4465 NHF AMF  
PRAIRIELANE MAX DUCHESS 3050  
SANDY BAR RAINMAKER 58F  
RON'S DELEGATE DELIA 32W  
TC ADVANTAGE NHF AMF  
SANDY BAR TILDA 742K  
RON'S BARDOLINE 78H  
RON'S DELIA 22H

BW	WW	AOD	BW	WW	YW	MILK	TM
82	725	2	2.8	50	85	17	42

19

**SANDY BAR IRON MAN 8W** ★★

IJP 8W 1497142 February 09, 2009

G A R GRID MAKER NHF AMF  
Sire: **EARLY GRID POWER 52P** (1281860)  
BROCKHILL BLACK DIAMOND 9G  
  
SQUAW COULEE PRIME TIME 8K  
Dam: **SANDY BAR DELIA 508M** (1115030) (Elite)  
SANDY BAR DELIA 140K

G D A R TRAVELER 044 NHF AMF  
G A R PRECISION 2536 NHF AMC  
RITO 9FB3 OF 5H11 FULLBACK NHF AMF  
BOOT STRAP JAMOCA 10D  
GARDENS PRIME TIME NHF AMF  
VBR KYMA 120H  
RON'S BARDOLINE 78H  
RON'S DELIA 22H

BW	WW	AOD	BW	WW	YW	MILK	TM
78	835	7	2.4	51	93	16	42

20

**SANDY BAR IRON MAN 1W** ★★

IJP 1W 1497860 February 05, 2009



G A R GRID MAKER NHF AMF  
Sire: **EARLY GRID POWER 52P** (1281860)  
BROCKHILL BLACK DIAMOND 9G

G D A R TRAVELER 044 NHF AMF  
G A R PRECISION 2536 NHF AMC  
RITO 9FB3 OF 5H11 FULLBACK NHF AMF  
BOOT STRAP JAMOCA 10D  
O G L BATTLE CRY 427 128  
ARDA BLACKBIRD 90G  
CRESCENT CREEK BRAVE HEART 35F  
SANDY BAR LINDA 33E

BW	WW	AOD	BW	WW	YW	MILK	TM
78	740	5	3.5	48	90	13	37



SOUTHWEST BUILDS



21

**SANDY BAR IRON MAN 56W**

IJP 56W 1497830 February 22, 2009



G A R GRID MAKER NHF AMF  
Sire: **EARLEY GRID POWER 52P** (1281860)  
BROCKHILL BLACK DIAMOND 9G

SANDY BAR INNOVATOR 7M  
Dam: **TAF TILDA 174P** (1238802)  
VALROSE TILDA 25E

G D A R TRAVELER 044 NHF AMF  
G A R PRECISION 2536 NHF AMC  
RITO 9FB3 OF 5H11 FULLBACK NHF AMF  
BOOT STRAP JAMOCA 10D  
LAMBS INNOVATOR 86J  
SANDY BAR PRIDE 6H  
G D A R TRAVELER 71 NHF AMF  
SB TILDA 13C

BW	WW	AOD	BW	WW	YW	MILK	TM
95	865	5	4.9	54	97	17	44

22

**SANDY BAR IRON MAN 83W**

IJP 83W 1497869 March 03, 2009



G A R GRID MAKER NHF AMF  
Sire: **EARLEY GRID POWER 52P** (1281860)  
BROCKHILL BLACK DIAMOND 9G

REMITALL LIGHTENING 2L (Elite)  
Dam: **SANDY BAR ANNIE K 24N** (1149571) (Elite)  
SANDY BAR ANNIE K 60L

G D A R TRAVELER 044 NHF AMF  
G A R PRECISION 2536 NHF AMC  
RITO 9FB3 OF 5H11 FULLBACK NHF AMF  
BOOT STRAP JAMOCA 10D  
SITZ ALLIANCE 6595 NHF AMF  
LLB BONNIE PRIDE 816H  
SANDY BAR BRAVE HEART 75H  
SANDY BAR ANNIE K 20Y

BW	WW	AOD	BW	WW	YW	MILK	TM
82	840	6	2.6	55	94	17	45

23

**SANDY BAR IRON MAN 17W**

KYL 17W 1498215 February 15, 2009

G A R GRID MAKER NHF AMF  
Sire: **EARLEY GRID POWER 52P** (1281860)  
BROCKHILL BLACK DIAMOND 9G

SASKALTA OVERDRIVE 23K  
Dam: **SANDY BAR LINDA 607N** (1149709)  
SANDY BAR LINDA 906J

G D A R TRAVELER 044 NHF AMF  
G A R PRECISION 2536 NHF AMC  
RITO 9FB3 OF 5H11 FULLBACK NHF AMF  
BOOT STRAP JAMOCA 10D  
LAMBS MDL WHAM 14F  
LAMBS LASSIE 18D  
SANDY BAR WONDERER 7G  
DAY BY DAY LINDA 305F

BW	WW	AOD	BW	WW	YW	MILK	TM
83	845	6	3.0	46	79	12	35

24

**SANDY BAR IRON MAN 78W**

IJP 78W 1497153 March 01, 2009



G A R GRID MAKER NHF AMF  
Sire: **EARLEY GRID POWER 52P** (1281860)  
BROCKHILL BLACK DIAMOND 9G

BASIN EQUATOR 276G (Elite)  
Dam: **VALLEY BLOSSOM ANNIE K 723M** (1114909)  
SANDY BAR ANNIE 76G

G D A R TRAVELER 044 NHF AMF  
G A R PRECISION 2536 NHF AMC  
RITO 9FB3 OF 5H11 FULLBACK NHF AMF  
BOOT STRAP JAMOCA 10D  
HILLTOP EQUATOR F302  
BASIN JUANADALEEN 8092  
BELVIN CHIEF  
SANDY BAR ANNIE K 12U

BW	WW	AOD	BW	WW	YW	MILK	TM
86	745	7	4.4	49	91	15	40

25

**SANDY BAR HUSSLER 18W**

IJP 18W 1496618 February 15, 2009

CRESCENT CREEK 235 TRAV 65R  
Sire: **SVR HUSSLER 320T** (1385974)  
SVR FOREVER LADY 248M

LAMBS TROJAN 58F  
Dam: **KORNFELD QUENETTE 807H** (947162)  
KORNFELD QUENETTE 3D

GDAR TRAVELER 235  
CRESCENT CREEK LAWN 109H  
B BAR POWER ROPE 0869  
GDAR FOREVER LADY 0354  
TAYLOR OF TROJAN A384  
LAMBS LASS 53B  
SANDY BAR MATLOCK 46Z  
GFR QUEENETTE 3X

BW	WW	AOD	BW	WW	YW	MILK	TM
81	720	11	2.8	27	57	17	31

26

**SANDY BAR ADVANTAGE 9W**

IJP 9W 1497141 February 09, 2009

SANDY BAR ADVANTAGE 43M  
Sire: **WILBAR ADVANTAGE 202R** (1265635)  
WILBAR KEEPSAKE 929N

SANDY BAR EQUALIZER 50G  
Dam: **VALLEY BLOSSOM ROSEGAY 719L** (1042174)  
SANDY BAR ROSEGAY 579E

TC ADVANTAGE NHF AMF  
SANDY BAR JEMINA 44K  
S A F 598 BANDO 5175 AMF  
WILBAR KEEPSAKE 508L  
BELVIN CHIEF  
LADY OF PEAK DOT 144M  
PAT BRUTE 331C  
SANDY BAR ROSEGAY 79C

BW	WW	AOD	BW	WW	YW	MILK	TM
73	780	8	0.6	39	65	13	33

27

**SANDY BAR ADVANTAGE 4W**

IJP 4W 1496611 February 08, 2009

SANDY BAR ADVANTAGE 43M  
Sire: **WILBAR ADVANTAGE 202R** (1265635)  
WILBAR KEEPSAKE 929N

CRESCENT CREEK BRAVE HEART 35F (Elite)  
Dam: **SANDY BAR ANNIE K 11K** (1000996) (Elite)  
SANDY BAR ANNIE K 101E

TC ADVANTAGE NHF AMF  
SANDY BAR JEMINA 44K  
S A F 598 BANDO 5175 AMF  
WILBAR KEEPSAKE 508L  
RITO 8094 PRAIRIELANE 2060  
CRESCENT CREEK BLACKCAP 112A  
TOP TONTO B10  
SANDY BAR ANNIE K 52A

BW	WW	AOD	BW	WW	YW	MILK	TM
83	765	9	2.8	42	71	16	37



28

## SANDY BAR PANARAMA 95W

★

IJP 95W 1541003 March 12, 2009



S A V NET WORTH 4200 NHF AMF  
Sire: **YOUNG DALE PANARAMA 66T** (1404669)  
YOUNG DALE POLLYANNA 22P

MILL COULEE SUPREME 753  
Dam: **YOUNG DALE KRISTINA 24M** (1119533)  
YOUNG DALE KRISTINA 8K

S A V 8180 TRAVELER 004 NHF AMF  
S A V MAY 2410  
YOUNG DALE CASINO 67M  
YOUNG DALE POLLYANNA 18M  
WOODHILL SUPREME NHF AMF  
MILL COULEE BARBARA N T 217  
YOUNG DALE KRUGERRAND 2H  
YOUNG DALE KRISTINA 8H

BW	WW	AOD	BW	WW	YW	MILK	TM
80	710	7	3.4	45	84	20	43

29

## VALLEY BLOSSOM FULLBACK 932W

★

IJP 932W 1497872 March 09, 2009

MT VALLEY FULLBACK 810  
Sire: **LLB FULLBACK 141M** (1150225)  
PAT PANSY 461D

SAR STOCKMAN 81K  
Dam: **VALLEY BLOSSOM LADY 732N** (1149486)  
SASKALTA LADY 883H

RITO 9FB3 OF 5H11 FULLBACK NHF AMF  
KRUEGERS MIRABELLE  
DOUBLE J RITO 617A  
PAT PANSY 619A  
WIWA CREEK STOCKMAN 48'95  
SFL BEAUTY 17G  
JOHNSTON 2100 TRADITION 485Y  
OLE SASKALTA HEROINE 518E

BW	WW	AOD	BW	WW	YW	MILK	TM
90	735	6	4.6	40	73	17	37

30

## SANDY BAR IRON MAN 41W

★★

IJP 41W 1496630 February 19, 2009

G A R GRID MAKER NHF AMF  
Sire: **EARLEY GRID POWER 52P** (1281860)  
BROCKHILL BLACK DIAMOND 9G

BAR 20 RAINMAKER 344D  
Dam: **SANDY BAR DUCHESS 59H** (922925)  
SANDY BAR DUCHESS 88D

G D A R TRAVELER 044 NHF AMF  
G A R PRECISION 2536 NHF AMC  
RITO 9FB3 OF 5H11 FULLBACK NHF AMF  
BOOT STRAP JAMOCA 10D  
BAR 20 RAINMAKER 0100A  
BAR 20 QUEEN 208B  
TRAVELER OF WLA 1Z  
PAT DUCHESS EVA 908Y

BW	WW	AOD	BW	WW	YW	MILK	TM
85	755	11	4.0	48	81	11	35



31

## SANDY BAR IMAGE MAKER 263W

★★★

IJP 263W 1497144 February 16, 2009



H A IMAGE MAKER 0419  
Sire: **SCA IMAGE MAKER 08N** (1188888)  
SCA BEAUTY 77'00

SANDY BAR BARDOLIER 82C (Elite)  
Dam: **VALLEY BLOSSOM BLACKCAP 725L** (1042577)  
ANCHOR R ANNEBEE BLACKCAP 24D

HERO 6267 OF R R 2418  
H A RITO BLACKCAP 9038  
SCA RITO 11H OF 2100 2424  
SCA 56F OF IDEAL 7258  
B J BARDOLIER 24'90  
SANDY BAR MISS QUALITY 11Y  
SANDY BAR MATLOCK 18Z  
ANCHOR R BLACK CRYSTAL 12S

BW	WW	AOD	BW	WW	YW	MILK	TM
78	815	8	1.6	32	56	18	34

32

## DAY BY DAY FULLBACK 307W

★

SLD 307W 1489942 February 15, 2009

LLB FULLBACK 141M  
Sire: **VALLEY BLOSSOM FULLBACK 730S** (1315058)  
M BAR SIX ANNIE K 201K

SANDY BAR INNOVATOR 38L  
Dam: **DAY BY DAY LINDA 62N** (1150579)  
DAY BY DAY LINDA 11L

MT VALLEY FULLBACK 810  
PAT PANSY 461D  
SANDY BAR DEW 105F  
SANDY BAR ANNIE K 555E  
LAMBS INNOVATOR 86J  
VBR ANNIE K 163J  
SANDY BAR CHIEF 21F  
SANDY BAR LINDA 304E

BW	WW	AOD	BW	WW	YW	MILK	TM
95	740	6	4.2	30	50	12	26

33

## SANDY BAR ADVANTAGE 82W

★★

IJP 82W 1497870 March 03, 2009



SANDY BAR ADVANTAGE 43M  
Sire: **WILBAR ADVANTAGE 202R** (1265635)  
WILBAR KEEPSAKE 929N

REMITALL LIGHTENING 2L (Elite)  
Dam: **SANDY BAR ANNIE K 65N** (1149574)  
SANDY BAR ANNIE K 101L (Elite)

TC ADVANTAGE NHF AMF  
SANDY BAR JEMINA 44K  
S A F 598 BANDO 5175 AMF  
WILBAR KEEPSAKE 508L  
SITZ ALLIANCE 6595 NHF AMF  
LLB BONNIE PRIDE 816H  
SANDY BAR BRAVE HEART 75H  
SANDY BAR ANNIE K 101E

BW	WW	AOD	BW	WW	YW	MILK	TM
86	740	6	3.1	47	76	18	42



34

**VALLEY BLOSSOM ADVANTAGE 13W** ★★★

BEAU 13W 1515097 February 14, 2009



WILBAR ADVANTAGE 202R  
Sire: **SANDY BAR GRASSLANDS 94T** (1371807)  
SANDY BAR JEMINA 22N  
  
SANDY BAR BARDOLIER 82C (Elite)  
Dam: **M BAR SIX QUEENETTE 232K** (1003683) (Elite)  
GFR QUEENETTE 3X

SANDY BAR ADVANTAGE 43M  
WILBAR KEEPSAKE 929N  
LAMBS INNOVATOR 86J  
SANDY BAR JEMINA 54D  
BJ BARDOLIER 24'90  
SANDY BAR MISS QUALITY 11Y  
DOUBLE J TRAVELER 44U  
TAF QUEENETTE 67N

BW	WW	AOD	BW	WW	YW	MILK	TM
79	765	9	1.8	33	59	20	37

35

**SHEIDAGHAN IDEAL 42W** ★★

VMF 42W 1525656 February 23, 2009

PRAIRIELANE IDEAL 7451-2014  
Sire: **SANDY BAR IDEAL 19S** (1310282)  
RON'S DELIA 22H (Elite)

VALLEY BLOSSOM LIGHTENING 706P  
Dam: **SANDY BAR MISS JUDY 70T** (1376336)  
SANDY BAR MISS JUDY 142M

IDEAL 7451 OF 8103 4465 NHF AMF  
PRAIRIELANE MAX DUCHESS 3050  
SANDY BAR RAINMAKER 58F  
RON'S DELEGATE DELIA 32W  
REMITALL LIGHTENING 2L  
M BAR SIX QUEENETTE 232K  
LAMBS INNOVATOR 86J  
CFS MISS JUDY 59H

BW	WW	AOD	BW	WW	YW	MILK	TM
86	705	2	3.0	44	72	20	42

36

**SHEIDAGHAN IDEAL 69W** ★

VMF 69W 1523739 March 04, 2009

PRAIRIELANE IDEAL 7451-2014  
Sire: **SANDY BAR IDEAL 72S** (1310276)  
SANDY BAR BLACKCLASS 5H

SANDY BAR PFRED 41M  
Dam: **SANDY BAR LINDA 176R** (1258231)  
SANDY BAR LINDA 73N (Elite)

IDEAL 7451 OF 8103 4465 NHF AMF  
PRAIRIELANE MAX DUCHESS 3050  
APEX STOCKMAN 061  
MERIT BLACKCLASS 6059  
SUMMITCREST HI FLYER 3B18 NHF AMF  
SANDY BAR MISS QUALITY 1K  
CROWFOOT FORKS 701K  
SANDY BAR LINDA 48K

BW	WW	AOD	BW	WW	YW	MILK	TM
93	715	4	3.6	43	73	20	42



37

**SANDY BAR IRON MAN 106W** ★

IJP 106W 1496659 March 18, 2009



G A R GRID MAKER NHF AMF  
Sire: **EARLEY GRID POWER 52P** (1281860)  
BROCKHILL BLACK DIAMOND 9G

SANDY BAR SHARPLINE 28D  
Dam: **CFS BELLE 10H** (945693) (Elite)  
BELLE OF CFS 24X

G D A R TRAVELER 044 NHF AMF  
G A R PRECISION 2536 NHF AMC  
RITO 9FB3 OF 5H11 FULLBACK NHF AMF  
BOOT STRAP JAMOCA 10D  
TOP TONTO B10  
SANDY BAR LADY 10Y  
DOUBLE J ZEB 184  
BELLE OF CFS 6S

BW	WW	AOD	BW	WW	YW	MILK	TM
79	735	11	3.0	43	72	13	35

38

**VALLEY BLOSSOM IDEAL 18S 908W** ★★

IJP 908W 1497865 February 15, 2009



PRAIRIELANE IDEAL 7451-2014  
Sire: **SANDY BAR IDEAL 18S** (1310363)  
SANDY BAR PRIDE 89L (Elite)

SAR STOCKMAN 81K  
Dam: **VALLEY BLOSSOM MS QUALITY 757N** (1149443)  
SANDY BAR MISS QUALITY 544E

IDEAL 7451 OF 8103 4465 NHF AMF  
PRAIRIELANE MAX DUCHESS 3050  
SANDY BAR TONTO 61E  
SANDY BAR PRIDE 6H  
WIWA CREEK STOCKMAN 48'95  
SFL BEAUTY 17G  
PAT BRUTE 331C  
SANDY BAR MISS QUALITY 44B

BW	WW	AOD	BW	WW	YW	MILK	TM
82	780	6	0.8	43	75	15	37

39

**SANDY BAR ADVANTAGE 13W** ★★

IJP 13W 1497819 February 13, 2009

SANDY BAR ADVANTAGE 43M  
Sire: **WILBAR ADVANTAGE 202R** (1265635)  
WILBAR KEEPSAKE 929N

LAMBS INNOVATOR 86J  
Dam: **SANDY BAR PRIDE 112P** (1204595)  
SANDY BAR PRIDE 36E (Elite)

TC ADVANTAGE NHF AMF  
SANDY BAR JEMINA 44K  
S A F 598 BANDO 5175 AMF  
WILBAR KEEPSAKE 508L  
MVHF INNOVATOR 49B  
LAMBS BAR LASS 19D  
TOP TONTO B10  
SANDY BAR PRIDE 34X

BW	WW	AOD	BW	WW	YW	MILK	TM
78	810	5	1.2	42	68	17	38



40

**SANDY BAR ADVANTAGE 22W**

★★

IJP 22W 1497867 February 16, 2009



SANDY BAR ADVANTAGE 43M  
Sire: **WILBAR ADVANTAGE 202R** (1265635)  
WILBAR KEEPSAKE 929N

CROWFOOT FORKS 701K  
Dam: **SANDY BAR JEMINA 134N** (1149525) (Elite)  
SANDY BAR JEMINA 44K (Elite)

TC ADVANTAGE NHF AMF  
SANDY BAR JEMINA 44K  
S A F 598 BANDO 5175 AMF  
WILBAR KEEPSAKE 508L  
N BAR TRANSITION A583  
GLADWALL LADY ERICA 736  
DCC HIGH RISE 67H  
SANDY BAR JEMINA 54D

BW	WW	AOD	BW	WW	YW	MILK	TM
82	855	6	2.7	50	81	21	46

43

**SANDY BAR ADVANTAGE 91W**

★★

IJP 91W 1497871 March 09, 2009



SANDY BAR ADVANTAGE 43M  
Sire: **WILBAR ADVANTAGE 202R** (1265635)  
WILBAR KEEPSAKE 929N

LAMBS INNOVATOR 86J  
Dam: **SANDY BAR ANNIE K 12N** (1149436)  
SANDY BAR ANNIE K 101E

TC ADVANTAGE NHF AMF  
SANDY BAR JEMINA 44K  
S A F 598 BANDO 5175 AMF  
WILBAR KEEPSAKE 508L  
MVHF INNOVATOR 49B  
LAMBS BAR LASS 19D  
TOP TONTO B10  
SANDY BAR ANNIE K 52A

BW	WW	AOD	BW	WW	YW	MILK	TM
87	815	6	2.5	49	80	15	40

41

**DAY BY DAY BARDOLIER 310W**

★

SLD 310W 1489930 February 23, 2009

SANDY BAR BARDOLIER 82C (Elite)  
Sire: **VALLEY BLOSSOM BARDOLIER 703L** (1042090)  
SANDY BAR PRIDE LADY 29D

SANDY BAR EQUALIZER 50G  
Dam: **A-LINE FLORA 3J** (987886)  
DAY BY DAY FLORA 9G

BJ BARDOLIER 2490  
SANDY BAR MISS QUALITY 11Y  
TRAVELER OF WLA 1Z  
SANDY BAR PRIDE LADY 42A  
BELVIN CHIEF  
LADY OF PEAK DOT 144M  
SANDY BAR BARDOLIER 39E  
PAT FLORA 850X

BW	WW	AOD	BW	WW	YW	MILK	TM
94	810	10	2.0	18	34	13	21

44

**SANDY BAR ADVANTAGE 34W**

★★

IJP 34W 1496626 February 18, 2009

SANDY BAR ADVANTAGE 43M  
Sire: **WILBAR ADVANTAGE 202R** (1265635)  
WILBAR KEEPSAKE 929N

CRESCENT CREEK BRAVE HEART 35F (Elite)  
Dam: **SANDY BAR ANNIE K 18K** (1000986)  
SANDY BAR ANNIE K 32E

TC ADVANTAGE NHF AMF  
SANDY BAR JEMINA 44K  
S A F 598 BANDO 5175 AMF  
WILBAR KEEPSAKE 508L  
RITO 8094 PRAIRIELANE 2060  
CRESCENT CREEK BLACKCAP 112A  
TRAVELER OF WLA 1Z  
SANDY BAR ANNIE K 20Y

BW	WW	AOD	BW	WW	YW	MILK	TM
89	755	9	3.6	44	70	15	37

42

**SANDY BAR ADVANTAGE 101W**

★

IJP 101W 1497878 March 17, 2009

SANDY BAR ADVANTAGE 43M  
Sire: **WILBAR ADVANTAGE 202R** (1265635)  
WILBAR KEEPSAKE 929N

LAMBS INNOVATOR 86J  
Dam: **SANDY BAR MISS QUALITY 20N** (1149426)  
SANDY BAR MISS QUALITY 12E

TC ADVANTAGE NHF AMF  
SANDY BAR JEMINA 44K  
S A F 598 BANDO 5175 AMF  
WILBAR KEEPSAKE 508L  
MVHF INNOVATOR 49B  
LAMBS BAR LASS 19D  
G D A R TRAVELER 71 NHF AMF  
SV MISS QUALITY 12C

BW	WW	AOD	BW	WW	YW	MILK	TM
92	740	6	3.4	41	72	17	38

45

**DAY BY DAY FULLBACK 305W**

★

SLD 305W 1489943 February 12, 2009

LLB FULLBACK 141M  
Sire: **VALLEY BLOSSOM FULLBACK 730S** (1315058)  
M BAR SIX ANNIE K 201K

VBR BRAVE HEART 160J  
Dam: **DAY BY DAY KEEPSAKE 31P** (1217748)  
DAY BY DAY KEEPSAKE 14L

MT VALLEY FULLBACK 810  
PAT PANSY 461D  
SANDY BAR DEW 105F  
SANDY BAR ANNIE K 555E  
CRESCENT CREEK BRAVE HEART 35F  
CRESCENT CREEK DUCHESS 73F  
SANDY BAR CHIEF 21F  
SAMHOF KEEPSAKE 32D

BW	WW	AOD	BW	WW	YW	MILK	TM
102	765	5	4.7	37	59	15	33



46

**VALLEY BLOSSOM IDEAL 18S 903W**

★

IJP 903W 1497863 February 09, 2009

PRAIRIELANE IDEAL 7451-2014  
Sire: **SANDY BAR IDEAL 18S** (1310363)  
SANDY BAR PRIDE 89L (Elite)

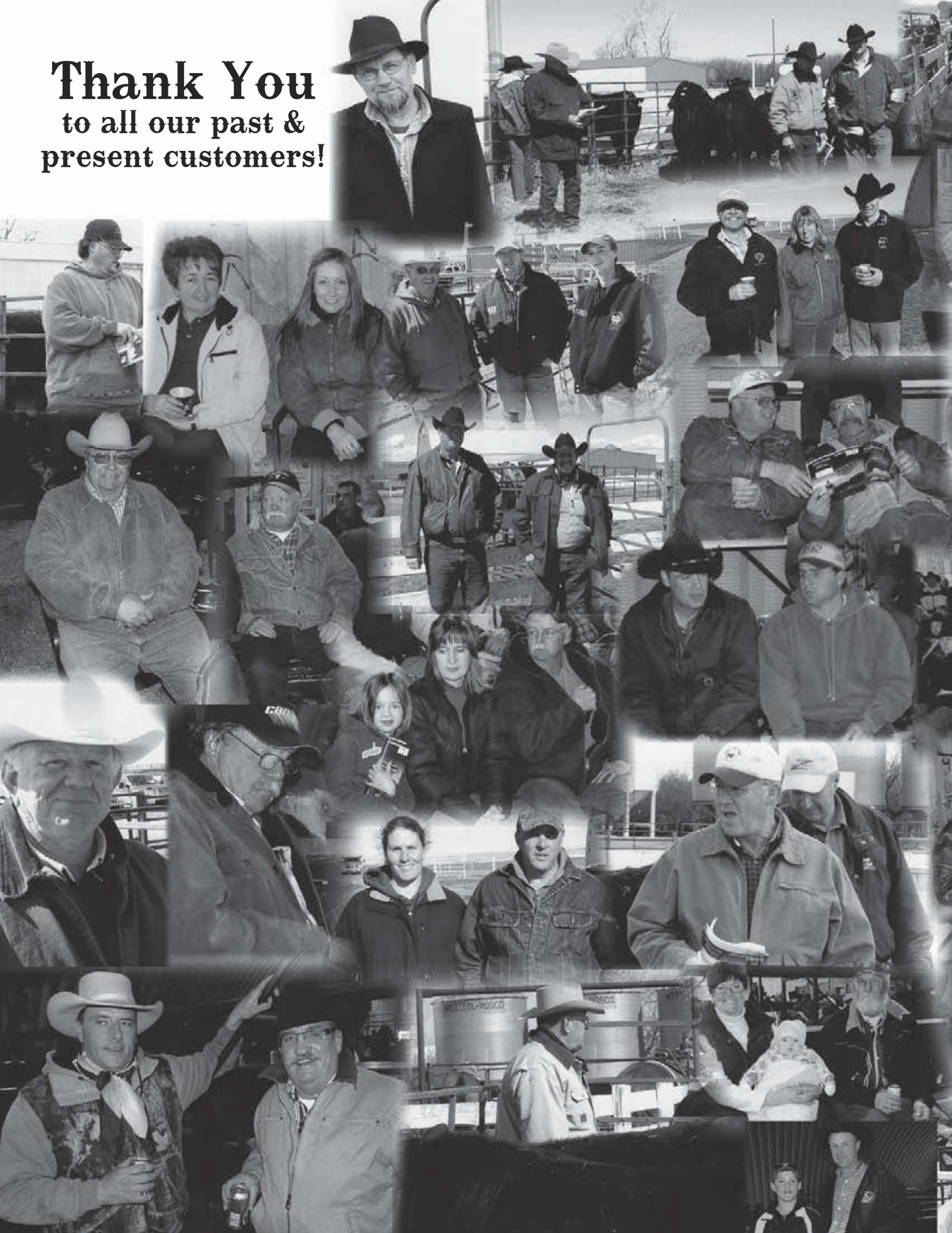
DOUBLE AA RITO 563'01  
Dam: **JACK CREEK DUCHESS 43N** (1151544)  
CFS DUCHESS 1K

IDEAL 7451 OF 8103 4465 NHF AMF  
PRAIRIELANE MAX DUCHESS 3050  
SANDY BAR TONTO 61E  
SANDY BAR PRIDE 6H  
DOUBLE AA RETO 554'93  
DOUBLE AA ANNIE K 274'94  
CFS BOBBY 68H  
SANDY BAR DUCHESS 44H

BW	WW	AOD	BW	WW	YW	MILK	TM
93	720	6	3.8	40	77	11	31



**Thank You**  
to all our past &  
present customers!









47

**SANDY BAR ADVANTAGE 38W**

★★

IJP 38W 1496671 February 18, 2009

SANDY BAR ADVANTAGE 43M  
Sire: **WILBAR ADVANTAGE 202R** (1265635)  
WILBAR KEEPSAKE 929N

C&D 455 ROCKETT  
Dam: **CROWFOOT ELINE ERICA 1645L** (1051660)  
CROWFOOT ELINE ERICA 9203

TC ADVANTAGE NHF AMF  
SANDY BAR JEMINA 44K  
S A F 598 BANDO 5175 AMF  
WILBAR KEEPSAKE 508L  
D H D TRAVELER 6807 NHF AMF  
V F 722 LANDMARK FRED A 5127  
WESTWIND FINESSE 1113  
GLADWALL ELINE ERICA 3294

BW	WW	AOD	BW	WW	YW	MILK	TM
87	740	8	3.0	41	72	19	40

48

**SANDY BAR ADVANTAGE 109W**

★★★

IJP 109W 1497162 March 21, 2009

SANDY BAR ADVANTAGE 43M  
Sire: **WILBAR ADVANTAGE 202R** (1265635)  
WILBAR KEEPSAKE 929N

LAMBS INNOVATOR 86J  
Dam: **SANDY BAR LADY 50M** (1114980) (Elite)  
SANDY BAR LADY 51J (Elite)

TC ADVANTAGE NHF AMF  
SANDY BAR JEMINA 44K  
S A F 598 BANDO 5175 AMF  
WILBAR KEEPSAKE 508L  
MVHF INNOVATOR 49B  
LAMBS BAR LASS 19D  
CRESCENT CREEK BRAVE HEART 35F  
SV LADY 3C

BW	WW	AOD	BW	WW	YW	MILK	TM
81	710	7	1.6	44	78	18	40

49

**VALLEY BLOSSOM IDEAL 19S 914W**

★★

IJP 914W 1497826 February 19, 2009



PRAIRIELANE IDEAL 7451-2014  
Sire: **SANDY BAR IDEAL 19S** (1310282)  
RON'S DELIA 22H (Elite)

SAR STOCKMAN 81K  
Dam: **VALLEY BLOSSOM PRIDE 700P** (1204610)  
SANDY BAR PRIDE 22F

IDEAL 7451 OF 8103 4465 NHF AMF  
PRAIRIELANE MAX DUCHESS 3050  
SANDY BAR RAINMAKER 58F  
RON'S DELEGATE DELIA 32W  
WIWA CREEK STOCKMAN 48'95  
SFL BEAUTY 17G  
BELVIN CHIEF  
SANDY BAR PRIDE 34X

BW	WW	AOD	BW	WW	YW	MILK	TM
85	760	5	2.6	39	71	16	36



50

**SANDY BAR HUSSLER 63W**

★★★

IJP 63W 1497833 February 25, 2009



CRESCENT CREEK 235 TRAV 65R  
Sire: **SVR HUSSLER 320T** (1385974)  
SVR FOREVER LADY 248M

THOUSAND HILLS CREDENCE 5N  
Dam: **SANDY BAR ANNIE K 27S** (1310398)  
VALLEY BLOSSOM ANNIE K 723M (Elite)

GDAR TRAVELER 235  
CRESCENT CREEK LAWN 109H  
B BAR POWER ROPE 0869  
GDAR FOREVER LADY 0354  
CRESCENT CREEK ROGUE 4K  
THOUSAND HILLS KIM 49J  
BASIN EQUATOR 276G  
SANDY BAR ANNIE 76G

BW	WW	AOD	BW	WW	YW	MILK	TM
82	780	3	2.8	37	68	26	45

51

**VALLEY BLOSSOM LIGHTENING 27W**

★

BEAU 27W 1532960 February 26, 2009

REMITALL LIGHTENING 2L (Elite)  
Sire: **VALLEY BLOSSOM LIGHTENING 706P** (1209966)  
M BAR SIX QUEENETTE 232K

CRESCENT CREEK BRAVE HEART 35F (Elite)  
Dam: **SANDY BAR ERROLINE 29L** (1042430) (Elite)  
SANDY BAR ERROLINE 26F

SITZ ALLIANCE 6595 NHF AMF  
LLB BONNIE PRIDE 816H  
SANDY BAR BARDOLIER 82C  
GFR QUEENETTE 3X  
RITO 8094 PRAIRIELANE 2060  
CRESCENT CREEK BLACKCAP 112A  
SANDY BAR MATLOCK 302C  
SANDY BAR MISS QUALITY 20D

BW	WW	AOD	BW	WW	YW	MILK	TM
90	790	8	2.3	33	50	22	39

52

**DAY BY DAY FULLBACK 308W**

★

SLD 308W 1489945 February 19, 2009

LLB FULLBACK 141M  
Sire: **VALLEY BLOSSOM FULLBACK 730S** (1315058)  
M BAR SIX ANNIE K 201K

VALLEY BLOSSOM BARDOLIER 703L  
Dam: **DAY BY DAY LINDA 65P** (1217747)  
DAY BY DAY LINDA 11L

MT VALLEY FULLBACK 810  
PAT PANSY 461D  
SANDY BAR DEW 105F  
SANDY BAR ANNIE K 555E  
SANDY BAR BARDOLIER 82C  
SANDY BAR PRIDE LADY 29D  
SANDY BAR CHIEF 21F  
SANDY BAR LINDA 304E

BW	WW	AOD	BW	WW	YW	MILK	TM
99	725	5	3.7	25	43	10	22

53

**DAY BY DAY FULLBACK 300W**

★

SLD 300W 1489948 February 03, 2009

LLB FULLBACK 141M  
Sire: **VALLEY BLOSSOM FULLBACK 730S** (1315058)  
M BAR SIX ANNIE K 201K

VALLEY BLOSSOM BARDOLIER 703L  
Dam: **DAY BY DAY LINDA 38R** (1262038)  
SANDY BAR LINDA 301E (Elite)

MT VALLEY FULLBACK 810  
PAT PANSY 461D  
SANDY BAR DEW 105F  
SANDY BAR ANNIE K 555E  
SANDY BAR BARDOLIER 82C  
SANDY BAR PRIDE LADY 29D  
SANDY BAR MATLOCK 46Z  
LLB MISS LINDA 61P

BW	WW	AOD	BW	WW	YW	MILK	TM
91	785	4	3.5	24	42	11	23



54

## VALLEY BLOSSOM ADVANTAGE 18W ★

BEAU 18W 1515101 February 17, 2009

WILBAR ADVANTAGE 202R  
Sire: SANDY BAR GRASSLANDS 94T (1371807)  
SANDY BAR JEMINA 22N (Elite)

SANDY BAR BARDOLIER 82C (Elite)  
Dam: VALLEY BLOSSOM SUNNY RAE 779L (1042574)  
ANCHOR R SUNNY RAE 9D

SANDY BAR ADVANTAGE 43M  
WILBAR KEEPSAKE 929N  
LAMBS INNOVATOR 86J  
SANDY BAR JEMINA 54D  
BJ BARDOLIER 24'90  
SANDY BAR MISS QUALITY 11Y  
SANDY BAR MATLOCK 18Z  
ANCHOR R STORMY 15Z'90

BW	WW	AOD	BW	WW	YW	MILK	TM
90	710	8	4.4	28	50	16	30

55

## VALLEY BLOSSOM IDEAL 34W ★

BEAU 34W 1515114 March 02, 2009



PRAIRIELANE IDEAL 7451-2014  
Sire: SANDY BAR IDEAL 19S (1310282)  
RON'S DELIA 22H (Elite)

REMITALL LIGHTENING 2L (Elite)  
Dam: VALLEY BLOSSOM BLACKCLASS 713P (1209968)  
SANDY BAR BLACKCLASS 5L

IDEAL 7451 OF 8103 4465 NHF AMF  
PRAIRIELANE MAX DUCHESS 3050  
SANDY BAR RAINMAKER 58F  
RON'S DELEGATE DELIA 32W  
SITZ ALLIANCE 6595 NHF AMF  
LLB BONNIE PRIDE 816H  
CRESCENT CREEK BRAVE HEART 35F  
SANDY BAR BLACKCLASS 5H

BW	WW	AOD	BW	WW	YW	MILK	TM
90	740	5	3.3	43	74	17	39

56

## SHEIDAGHAN IDEAL 34W ★

VMF 31W 1525654 February 21, 2009



PRAIRIELANE IDEAL 7451-2014  
Sire: SANDY BAR IDEAL 19S (1310282)  
RON'S DELIA 22H (Elite)

WILBAR ADVANTAGE 202R  
Dam: SANDY BAR PRIDE 47T (1371759)  
SANDY BAR PRIDE 85P

IDEAL 7451 OF 8103 4465 NHF AMF  
PRAIRIELANE MAX DUCHESS 3050  
SANDY BAR RAINMAKER 58F  
RON'S DELEGATE DELIA 32W  
SANDY BAR ADVANTAGE 43M  
WILBAR KEEPSAKE 929N  
LAMBS INNOVATOR 86J  
LAMBS PRIDE 22D

BW	WW	AOD	BW	WW	YW	MILK	TM
106	705	2	5.5	50	82	15	40

57

## SANDY BAR ADVANTAGE 6W ★★★

IJP 6W 1496613 February 09, 2009

SANDY BAR ADVANTAGE 43M  
Sire: WILBAR ADVANTAGE 202R (1265635)  
WILBAR KEEPSAKE 929N

CRESCENT CREEK BRAVE HEART 35F (Elite)  
Dam: SANDY BAR LADY 51J (954524) (Elite)  
SV LADY 3C

TC ADVANTAGE NHF AMF  
SANDY BAR JEMINA 44K  
S A F 598 BANDO 5175 AMF  
WILBAR KEEPSAKE 508L  
RITO 8094 PRAIRIELANE 2060  
CRESCENT CREEK BLACKCAP 112A  
SANDY BAR MATLOCK 18Z  
LADY OF CFS 3R

BW	WW	AOD	BW	WW	YW	MILK	TM
74	735	10	0.8	36	67	17	35

58

## SANDY BAR IRON MAN 70W ★★

IJP 70W 1497151 February 26, 2009

G A R GRID MAKER NHF AMF  
Sire: EARLEY GRID POWER 52P (1281860)  
BROCKHILL BLACK DIAMOND 9G

CRESCENT CREEK BRAVE HEART 35F (Elite)  
Dam: SANDY BAR DUCHESS EVA 124M (1114787)  
PAT DUCHESS EVA 908Y

G D A R TRAVELER 044 NHF AMF  
G A R PRECISION 2536 NHF AMC  
RITO 9FB3 OF 5H11 FULLBACK NHF AMF  
BOOT STRAP JAMOCA 10D  
RITO 8094 PRAIRIELANE 2060  
CRESCENT CREEK BLACKCAP 112A  
YOUNG DALE GOLIATH 71W  
DUCHESS OF PAT 701W

BW	WW	AOD	BW	WW	YW	MILK	TM
83	765	7	3.7	48	87	12	36

59

## VALLEY BLOSSOM TRAVELER 8W ★★★

BEAU 8W 1515092 February 09, 2009

NAF WANDERER 7L  
Sire: LAMB'S QUARTERS TRAVELER 80S (1321230)  
LAMB'S QUARTERS ESTHER 57M

SANDY BAR WONDERER 24D  
Dam: VBR ANNIE K 228H (922939)  
SANDY BAR ANNIE K 872D

ALBERDA TRAVELER 416 NHF AMF  
NIGHTSHADE BELLE 17F  
VBR BRAVE HEART 235J  
LAMB'S QUARTERS ESTHER 1E  
TRAVELER OF WLA 1Z  
SANDY BAR ANNIE K 26Y  
REMINGTON'S STOCKMAN 11B  
SANDY BAR ANNIE K 72B

BW	WW	AOD	BW	WW	YW	MILK	TM
77	720	11	1.2	32	57	16	32

60

## DAY BY DAY NEBRASKA 306W ★★

SLD 306W 1489959 February 13, 2009

BALDRIDGE NEBRASKA 901 NHF AMF  
Sire: BCAR NEBRASKA 608 (1354376)  
BEVERLY HILLS DANA 403

SANDY BAR BATTLE CRY 111P  
Dam: DAY BY DAY LADY 92T (1406860)  
DAY BY DAY LADY 37R

S A F FOCUS OF E R NHF AMF  
BALDRIDGE FLOSSIE 367  
JUSTAMERE 7704 COWBOY 902M  
JUST-ROCK 963 DANA 910M  
ARDA BATTLE CRY 96M  
SANDY BAR ERICA 15H  
VALLEY BLOSSOM BARDOLIER 703L  
SANDY BAR LADY 73F

BW	WW	AOD	BW	WW	YW	MILK	TM
88	845	2	1.9	34	66	13	30

61

## ROCKING H FULLBACK 1W ★

TDH 1W 1526262 February 28, 2009

VALLEY BLOSSOM FULLBACK 763R  
Sire: SANDY BAR FULLBACK 16T (1371730)  
SANDY BAR PRIDE 7L

SANDY BAR FAME 24K  
Dam: L 6 ANNIE K 7M (1095897)  
L 6 ANNIE K 31J

LLB FULLBACK 141M  
SANDY BAR LINDA 62L  
CRESCENT CREEK BRAVE HEART 35F  
SANDY BAR PRIDE 31X  
S A F FAME NHF AMF  
BENLOCK EVENING TINGE 43H  
SANDY BAR RAINMAKER 717G  
SANDY BAR ANNIE K 9E

BW	WW	AOD	BW	WW	YW	MILK	TM
95	720	7	4.3	58	9	9	26



62

**SANDY BAR ADVANTAGE 49W**

★★★

IJP 49W 1496635 February 21, 2009



SANDY BAR ADVANTAGE 43M  
Sire: **WILBAR ADVANTAGE 202R** (1265635)  
WILBAR KEEPSAKE 929N

TOP TONTO B10  
Dam: **SV MISS QUALITY 593E** (827694)  
PAT MISS QUALITY 29U

TC ADVANTAGE NHF AMF  
SANDY BAR JEMINA 44K  
S A F 598 BANDO 5175 AMF  
WILBAR KEEPSAKE 508L  
LEACHMAN TONTO NHF AMF  
TOP BLACK ERICA 426  
WVA CREEK ATLAS 7  
SOUTHERN LANE SUSIE 18L

BW	WW	AOD	BW	WW	YW	MILK	TM
86	745	14	2.8	33	53	13	30

63

**SANDY BAR ADVANTAGE 62W**

★★★

IJP 62W 1496638 February 24, 2009

SANDY BAR ADVANTAGE 43M  
Sire: **WILBAR ADVANTAGE 202R** (1265635)  
WILBAR KEEPSAKE 929N

CRESCENT CREEK BRAVE HEART 35F (Elite)  
Dam: **SANDY BAR PRIDE 23H** (922944) (Elite)  
SANDY BAR PRIDE 36E (Elite)

TC ADVANTAGE NHF AMF  
SANDY BAR JEMINA 44K  
S A F 598 BANDO 5175 AMF  
WILBAR KEEPSAKE 508L  
RITO 8094 PRAIRIELANE 2060  
CRESCENT CREEK BLACKCAP 112A  
TOP TONTO B10  
SANDY BAR PRIDE 34X

BW	WW	AOD	BW	WW	YW	MILK	TM
79	720	11	1.9	40	63	19	39

64

**SANDY BAR IRON MAN 123W**

★★★

IJP 123W 1497883 April 08, 2009

G A R GRID MAKER NHF AMF  
Sire: **EARLEY GRID POWER 52P** (1281860)  
BROCKHILL BLACK DIAMOND 9G

SANDY BAR BRAVE HEART 45L  
Dam: **BREED CREEK M'BROOK LASS 347** (1186757)  
BREED CREEK M'BROOK LASS 118

G D A R TRAVELER 044 NHF AMF  
G A R PRECISION 2536 NHF AMC  
RITO 9FB3 OF 5H11 FULLBACK NHF AMF  
BOOT STRAP JAMOCA 10D  
CRESCENT CREEK BRAVE HEART 35F  
SANDY BAR MIA 67E  
KR TOPCUT QUARTERBACK 101H  
GLENNIE M'BROOK LASS 8F

BW	WW	AOD	BW	WW	YW	MILK	TM
80	725	6	2.2	53	95	13	40

65

**SANDY BAR IRON MAN 98W**

★

IJP 98W 1496655 March 15, 2009

G A R GRID MAKER NHF AMF  
Sire: **EARLEY GRID POWER 52P** (1281860)  
BROCKHILL BLACK DIAMOND 9G

CRESCENT CREEK BRAVE HEART 35F (Elite)  
Dam: **SANDY BAR BLACKLASS 83K** (1001036)  
MERIT BLACKLASS 6059

G D A R TRAVELER 044 NHF AMF  
G A R PRECISION 2536 NHF AMC  
RITO 9FB3 OF 5H11 FULLBACK NHF AMF  
BOOT STRAP JAMOCA 10D  
RITO 8094 PRAIRIELANE 2060  
CRESCENT CREEK BLACKCAP 112A  
SANDY BAR WONDERER 24D  
BELL BLACKLASS 14C

BW	WW	AOD	BW	WW	YW	MILK	TM
85	730	9	3.9	48	84	12	36

66

**SHEIDAGHAN GRASSLANDS 10W**

★

VMF 10W 1525652 February 16, 2009

WILBAR ADVANTAGE 202R  
Sire: **SANDY BAR GRASSLANDS 94T** (1371807)  
SANDY BAR JEMINA 22N (Elite)

THOUSAND HILLS CREDCENCE 5N  
Dam: **L 6 PRIDE 10T** (1401736)  
L 6 PRIDE 2P

SANDY BAR ADVANTAGE 43M  
WILBAR KEEPSAKE 929N  
LAMBS INNOVATOR 86J  
SANDY BAR JEMINA 54D  
CRESCENT CREEK ROGUE 4K  
THOUSAND HILLS KIM 49J  
SANDY BAR FAME 24K  
SANDY BAR BRIDE 1J

BW	WW	AOD	BW	WW	YW	MILK	TM
96	705	2	4.3	44	71	22	44

67

**SHEIDAGHAN ICEBERG 6W**

★★

VMF 6W 1523765 February 14, 2009

EASTONDALE ICEBERG 05'04  
Sire: **SOO LINE ICEBERG 6136** (1349511)  
DWAJO JESTRESS 3P

THOUSAND HILLS CREDCENCE 5N  
Dam: **SANDY BAR MISS QUALITY 4T** (1412335)  
L 6 MISS QUALITY 20L

DRYLAND ICEBERG 231  
EASTONDALE COUNTESS 10'01  
H A R B CINCHA 829 AMF  
DWAJO JESTRESS 59M  
CRESCENT CREEK ROGUE 4K  
THOUSAND HILLS KIM 49J  
VBR WONDERER 116J  
SANDY BAR MISS QUALITY 41E

BW	WW	AOD	BW	WW	YW	MILK	TM
87	715	2	3.6	43	68	19	41

68

**SANDY BAR ADVANTAGE 58W**

★★★

IJP 58W 1496637 February 23, 2009



SANDY BAR ADVANTAGE 43M  
Sire: **WILBAR ADVANTAGE 202R** (1265635)  
WILBAR KEEPSAKE 929N

CRESCENT CREEK BRAVE HEART 35F (Elite)  
Dam: **SANDY BAR LADY 21K** (1000923) (Elite)  
SANDY BAR LADY 54C

TC ADVANTAGE NHF AMF  
SANDY BAR JEMINA 44K  
S A F 598 BANDO 5175 AMF  
WILBAR KEEPSAKE 508L  
RITO 8094 PRAIRIELANE 2060  
CRESCENT CREEK BLACKCAP 112A  
SANDY BAR MATLOCK 46Z  
LADY OF PEAK DOT 144M

BW	WW	AOD	BW	WW	YW	MILK	TM
81	765	9	1.8	39	66	16	36



Tattooing Crew



69

## DAY BY DAY FULLBACK 301W



SLD 301W 1489950 February 09, 2009



LLB FULLBACK 141M  
Sire: VALLEY BLOSSOM FULLBACK 730S (1315058)  
M BAR SIX ANNIE K 201K

VBR BRAVE HEART 160J  
Dam: DAY BY DAY LINDA 72R (1262063)  
DAY BY DAY LINDA 62N

MT VALLEY FULLBACK 810  
PAT PANSY 461D  
SANDY BAR DEW 105F  
SANDY BAR ANNIE K 555E  
CRESCENT CREEK BRAVE HEART 35F  
CRESCENT CREEK DUCHESS 73F  
SANDY BAR INNOVATOR 38L  
DAY BY DAY LINDA 11L

BW	WW	AOD	BW	WW	YW	MILK	TM
95	780	4	4.7	32	55	12	28

70

## DEER HILL RIDGE FULLBACK 12W



JEV 12W 1490486 February 16, 2009



LLB FULLBACK 141M  
Sire: VALLEY BLOSSOM FULLBACK 760R (1274007)  
VALLEY BLOSSOM ANNIE K 721M

IDEAL 1418 OF 8103 4286 NHF AMF  
Dam: TAF SUSAN 88M (1113328)  
TAF SUSAN 30D

MT VALLEY FULLBACK 810  
PAT PANSY 461D  
SANDY BAR EQUALIZER 50G  
F V 249B ANNIE K 135H  
IDEAL 8103 OF ELDO 5110 5213  
E E 4286 OF IDEAL 2240 1254  
GEIS BIG TIME 19992  
TAF SUSAN 15S

BW	WW	AOD	BW	WW	YW	MILK	TM
94	780	7					

71

## SANDY BAR ICEBERG 269W



KYL 269W 1498219 February 28, 2009

EASTONDALE ICEBERG 05'04  
Sire: SOO LINE ICEBERG 6136 (1349511)  
DWAJO JESTRESS 3P

THOUSAND HILLS CREDENCE 5N  
Dam: SANDY BAR LASS 11T (1412339)  
L 6 CHERYL LASS 17M

DRYLAND ICEBERG 231  
EASTONDALE COUNTESS 10'01  
H A R B CINCHA 829 AMF  
DWAJO JESTRESS 59M  
CRESCENT CREEK ROGUE 4K  
THOUSAND HILLS KIM 49J  
VBR WONDERER 116J  
L 6 LASS 26H

BW	WW	AOD	BW	WW	YW	MILK	TM
77	715	2	2.5	39	64	19	39

72

## DAY BY DAY FULLBACK 311W



SLD 311W 1489952 February 27, 2009

LLB FULLBACK 141M  
Sire: VALLEY BLOSSOM FULLBACK 730S (1315058)  
M BAR SIX ANNIE K 201K

VBR BRAVE HEART 160J  
Dam: DAY BY DAY MIA 74R (1262047)  
DAY BY DAY MIA 312H

MT VALLEY FULLBACK 810  
PAT PANSY 461D  
SANDY BAR DEW 105F  
SANDY BAR ANNIE K 555E  
CRESCENT CREEK BRAVE HEART 35F  
CRESCENT CREEK DUCHESS 73F  
SANDY BAR CHIEF 21F  
PAT MIA 808X

BW	WW	AOD	BW	WW	YW	MILK	TM
100	725	4	5.2	29	49	11	26

73

## VALLEY BLOSSOM LIGHTENING 49W



BEAU 49W 1515124 March 19, 2009

REMITALL LIGHTENING 2L (Elite)  
Sire: VALLEY BLOSSOM LIGHTENING 706P (1209966)  
M BAR SIX QUEENETTE 232K (Elite)

REMITALL MONARCH 66M  
Dam: VALLEY BLOSSOM ANNIE K 819P (1221888)  
VALLEY BLOSSOM ANNIE K 722M (Elite)

SITZ ALLIANCE 6595 NHF AMF  
LLB BONNIE PRIDE 816H  
SANDY BAR BARDOLIER 82C  
GFR QUEENETTE 3X  
S A F FOCUS OF E R NHF AMF  
REMITALL ERICA 227K  
SANDY BAR BARDOLIER 82C  
SANDY BAR ANNIE K 109F

BW	WW	AOD	BW	WW	YW	MILK	TM
89	720	5	3.1	40	62	23	43

74

## DEER HILL RIDGE FULLBACK 16W



JEV 16W 1490493 February 20, 2009

LLB FULLBACK 141M  
Sire: VALLEY BLOSSOM FULLBACK 760R (1274007)  
VALLEY BLOSSOM ANNIE K 721M

REMITALL LIGHTENING 2L (Elite)  
Dam: SANDY BAR IDELINE 81R (1251929)  
WLA IDELINE 15H

MT VALLEY FULLBACK 810  
PAT PANSY 461D  
SANDY BAR EQUALIZER 50G  
F V 249B ANNIE K 135H  
SITZ ALLIANCE 6595 NHF AMF  
LLB BONNIE PRIDE 816H  
PAT BANJO 10F  
PAT IDELINE 136E

BW	WW	AOD	BW	WW	YW	MILK	TM
95	750	4					

75

## SANDY BAR IRON MAN 110W



IJP 110W 1497847 March 21, 2009

G A R GRID MAKER NHF AMF  
Sire: EARLEY GRID POWER 52P (1281860)  
BROCKHILL BLACK DIAMOND 9G

TC ADVANTAGE NHF AMF  
Dam: SANDY BAR ANNIE K 174P (1204930)  
VALLEY BLOSSOM ANNIE K 723M (Elite)

G D A R TRAVELER 044 NHF AMF  
G A R PRECISION 2536 NHF AMC  
RITO 9FB3 OF 5H11 FULLBACK NHF AMF  
BOOT STRAP JAMOCA 10D  
KRUGERRAND OF DONAMERE 490 NHF AMF  
TC PRIDE 2010  
BASIN EQUATOR 276G  
SANDY BAR ANNIE 76G

BW	WW	AOD	BW	WW	YW	MILK	TM
86	705	5	4.0	51	94	19	45

76

## SANDY BAR IRON MAN 7W



IJP 7W 1496614 February 09, 2009

G A R GRID MAKER NHF AMF  
Sire: EARLEY GRID POWER 52P (1281860)  
BROCKHILL BLACK DIAMOND 9G

CRESCENT CREEK BRAVE HEART 35F (Elite)  
Dam: SANDY BAR PRIDE 7L (1042047)  
SANDY BAR PRIDE 31X

G D A R TRAVELER 044 NHF AMF  
G A R PRECISION 2536 NHF AMC  
RITO 9FB3 OF 5H11 FULLBACK NHF AMF  
BOOT STRAP JAMOCA 10D  
RITO 8094 PRAIRIELANE 2060  
CRESCENT CREEK BLACKCAP 112A  
WIWA CREEK ATLAS 7S  
SANDY BAR PRIDE 17T

BW	WW	AOD	BW	WW	YW	MILK	TM
72	775	8	0.6	47	81	12	36



77

**VALLEY BLOSSOM FULLBACK 906W** ★

IJP 906W 1518286 March 13, 2009



MT VALLEY FULLBACK 810  
Sire: **LLB FULLBACK 141M** (1150225)  
PAT PANSY 461D

DCC HIGH RISE 67H  
Dam: **SANDY BAR BELLA 133K** (1001042)  
SANDY BAR BELLA 21G (Elite)

RITO 9FB3 OF 5H11 FULLBACK NHF AMF  
KRUEGERS MIRABELLE  
DOUBLE J RITO 617A  
PAT PANSY 619A  
TC STOCKMAN 365  
TAF ATALANTA 26E  
MVS LIMITED EDITION 10E  
ANCHOR R DUSKY BELLA 4D

BW	WW	AOD	BW	WW	YW	MILK	TM
92	710	9	4.7	40	69	15	35

79

**VALLEY BLOSSOM IDEAL 29W** ★

BEAU 29W 1515110 February 27, 2009



PRAIRIELANE IDEAL 7451-2014  
Sire: **SANDY BAR IDEAL 28S** (1310302)  
KORNFELD QUENETTE 807H

SAR STOCKMAN 81K  
Dam: **VALLEY BLOSSOM BRIDE 701R** (1258525)  
LLB BRIDE 337F

DEAL 7451 OF 8103 4465 NHF AMF  
PRAIRIELANE MAX DUCHESS 3050  
LAMBS TROJAN 58F  
KORNFELD QUENETTE 3D  
WIWA CREEK STOCKMAN 48'95  
SFL BEAUTY 17G  
CRACKER JACK BAROS 68M  
DOUBLE J BRIDE 337A

BW	WW	AOD	BW	WW	YW	MILK	TM
89	700	4	4.3	41	77	12	33

78

**SANDY BAR GRASSLANDS 189W** ★

IJP 189W 1504365 February 17, 2009



WILBAR ADVANTAGE 202R  
Sire: **SANDY BAR GRASSLANDS 94T** (1371807)  
SANDY BAR JEMINA 22N (Elite)

SPRUCE VIEW GENERAL 67R  
Dam: **SANDY BAR LINDA 38T** (1371751)  
SANDY BAR LINDA 1P

SANDY BAR ADVANTAGE 43M  
WILBAR KEEPSAKE 929N  
LAMBS INNOVATOR 86J  
SANDY BAR JEMINA 54D  
CRESCENT CREEK CHIEF 45L  
SPRUCE VIEW BLACKCAP MISSIE 10  
ARDA BATTLE CRY 96M  
SANDY BAR LINDA 76H

BW	WW	AOD	BW	WW	YW	MILK	TM
90	690	2	4.9	38	69	17	36

80

**VALLEY BLOSSOM GRASSLANDS 909W** ★★

IJP 909W 1504368 February 15, 2009



WILBAR ADVANTAGE 202R  
Sire: **SANDY BAR GRASSLANDS 94T** (1371807)  
SANDY BAR JEMINA 22N (Elite)

SANDY BAR TWO FEATHERS 91H  
Dam: **VALLEY BLOSSOM ANNIE K 757P** (1204638)  
SANDY BAR ANNIE 76G

SANDY BAR ADVANTAGE 43M  
WILBAR KEEPSAKE 929N  
LAMBS INNOVATOR 86J  
SANDY BAR JEMINA 54D  
CRESCENT CREEK BRAVE HEART 35F  
SANDY BAR LADY 69E  
BELVIN CHIEF  
SANDY BAR ANNIE K 12U

BW	WW	AOD	BW	WW	YW	MILK	TM
88	700	5	3.5	31	58	19	35





**81****VALLEY BLOSSOM IDEAL 31W****BEAU 31W 1515112 March 01, 2009**

PRAIRIELANE IDEAL 7451-2014  
 Sire: **SANDY BAR IDEAL 28S** (1310302)  
 KORNFELD QUENETTE 807H

SANDY BAR BARDOLIER 82C (Elite)  
 Dam: **VALLEY BLOSSOM LAURA 772M** (1115255)  
 GEIS RUBY LAURA 144'94

IDEAL 7451 OF 8103 4465 NHF AMF  
 PRAIRIELANE MAX DUCHESS 3050  
 LAMBS TROJAN 58F  
 KORNFELD QUENETTE 3D  
 BJ BARDOLIER 24'90  
 SANDY BAR MISS QUALITY 11Y  
 KBJ SAM'S BIG TIME 126Z  
 ED RENE RUBY LAURA 3L

BW	WW	AOD	BW	WW	YW	MILK	TM
84	640	7	2.5	37	67	10	29

**82****DEER HILL RIDGE FULLBACK 19W****JEV 19W 1490492 February 22, 2009**

LLB FULLBACK 141M  
 Sire: **VALLEY BLOSSOM FULLBACK 760R** (1274007)  
 VALLEY BLOSSOM ANNIE K 721M

REMITALL LIGHTENING 2L (Elite)  
 Dam: **SANDY BAR ERROLINE 41R** (1251900)  
 KORNFELD ERROLINE 805H (Elite)

MT VALLEY FULLBACK 810  
 PAT PANSY 461D  
 SANDY BAR EQUALIZER 50G  
 F V 249B ANNIE K 135H  
 SITZ ALLIANCE 6595 NHF AMF  
 LLB BONNIE PRIDE 816H  
 SANDY BAR CHIEF 21F  
 SANDY BAR ERROLINE 26F

BW	WW	AOD	BW	WW	YW	MILK	TM
90	695	4					

**83****SHEIDAGHAN EQUATOR 61W****VMF 61W 1523738 March 01, 2009**

VALLEY BLOSSOM EQUATOR 729M  
 Sire: **SANDY BAR EQUATOR 150S** (1310252)  
 SANDY BAR DUCHESS 114E (Elite)

DOUBLE D BARDOLENE 15L  
 Dam: **SANDY BAR MIA 150R** (1258108)  
 SANDY BAR MIA 86L

BASIN EQUATOR 276G  
 WIWA CREEK TILDA 33 54'90  
 MACKIE'S BRUTE 4B  
 SANDY BAR DUCHESS 17B  
 CRESCENT CREEK BARDOLENE 105H  
 CRESCENT CREEK JESTRESS 46B  
 CRESCENT CREEK BRAVE HEART 35F  
 SANDY BAR MIA 24F

BW	WW	AOD	BW	WW	YW	MILK	TM
94	690	4	4.7	42	72	10	31

**84****SANDY BAR GRASSLANDS 187W****IJP 187W 1504366 February 17, 2009**

WILBAR ADVANTAGE 202R  
 Sire: **SANDY BAR GRASSLANDS 94T** (1371807)  
 SANDY BAR JEMINA 22N (Elite)

SANDY BAR TRANSITION 27P  
 Dam: **SANDY BAR MISS QUALITY 8T** (1371722)  
 VALLEY BLOSSOM MS QUALITY 755R

SANDY BAR ADVANTAGE 43M  
 WILBAR KEEPSAKE 929N  
 LAMBS INNOVATOR 86J  
 SANDY BAR JEMINA 54D  
 CROWFOOT FORKS 701K  
 SANDY BAR DUCHESS 46L  
 LLB FULLBACK 141M  
 VALLEY BLOSSOM MS QUALITY 785L

BW	WW	AOD	BW	WW	YW	MILK	TM
89	715	2	4.3	42	71	18	39

**85****SANDY BAR IRON MAN 126W****IJP 126W 1497858 April 17, 2009**

G A R GRID MAKER NHF AMF  
 Sire: **EARLEY GRID POWER 52P** (1281860)  
 BROCKHILL BLACK DIAMOND 9G

REATA WIDESPREAD 2L  
 Dam: **SANDY BAR JEMINA 129R** (1251873)  
 SANDY BAR JEMINA 44K (Elite)

G D A R TRAVELER 044 NHF AMF  
 G A R PRECISION 2536 NHF AMC  
 RITO 9FB3 OF 5H11 FULLBACK NHF AMF  
 BOOT STRAP JAMOCA 10D  
 WHITESTONE WIDESPREAD MB NHF AMF  
 FAIRMAC PRIDE 16C  
 DCC HIGH RISE 67H  
 SANDY BAR JEMINA 54D

BW	WW	AOD	BW	WW	YW	MILK	TM
90	660	4	3.9	51	89	15	41

**86****DAY BY DAY FULLBACK 312W****SLD 312W 1489953 February 28, 2009**

LLB FULLBACK 141M  
 Sire: **VALLEY BLOSSOM FULLBACK 730S** (1315058)  
 M BAR SIX ANNIE K 201K

SANDY BAR INNOVATOR 38L  
 Dam: **DAY BY DAY MIA 75R** (1262058)  
 DAY BY DAY MIA 55L

MT VALLEY FULLBACK 810  
 PAT PANSY 461D  
 SANDY BAR DEW 105F  
 SANDY BAR ANNIE K 555E  
 LAMBS INNOVATOR 86J  
 VBR ANNIE K 163J  
 VBR BRAVE HEART 160J  
 DAY BY DAY MIA 312H

BW	WW	AOD	BW	WW	YW	MILK	TM
93	700	4	5.4	31	53	12	27



*Congratulations to the Harbor Ranch for  
 being selected:*

*2009 Commercial Breeder of the Year!*

*They have purchased bulls from the  
 Switzer family for 55 years.*



87

## VALLEY BLOSSOM IDEAL 18S 900W ★★

IJP 900W 1497815 February 06, 2009



PRAIRIELANE IDEAL 7451-2014  
Sire: **SANDY BAR IDEAL 18S (1310363)**  
SANDY BAR PRIDE 89L (Elite)

SANDY BAR TWO FEATHERS 91H  
Dam: **VALLEY BLOSSOM BELLA 723P (1204635)**  
SANDY BAR BELLA 21G (Elite)

IDEAL 7451 OF 8103 4465 NHF AMF  
PRAIRIELANE MAX DUCHESS 3050  
SANDY BAR TONTO 61E  
SANDY BAR PRIDE 6H  
CRESCENT CREEK BRAVE HEART 35F  
SANDY BAR LADY 69E  
MYSB LIMITED EDITION 10E  
ANCHOR R DUSKY BELLA 4D

BW	WW	AOD	BW	WW	YW	MILK	TM
83	630	5	2.8	33	61	14	31

88

## SANDY BAR IDEAL 19S 181W ★★★

IJP 181W 1498671 February 12, 2009



PRAIRIELANE IDEAL 7451-2014  
Sire: **SANDY BAR IDEAL 19S (1310282)**  
RON'S DELIA 22H (Elite)

WILBAR ADVANTAGE 202R  
Dam: **SANDY BAR NEONIA 119T (1371824)**  
SANDY BAR NEONIA 183P

IDEAL 7451 OF 8103 4465 NHF AMF  
PRAIRIELANE MAX DUCHESS 3050  
SANDY BAR RAINMAKER 58F  
RON'S DELEGATE DELIA 32W  
SANDY BAR ADVANTAGE 43M  
WILBAR KEEPSAKE 929N  
WINDOVER KENTUCKY 6M  
SANDY BAR NEONIA 15M

BW	WW	AOD	BW	WW	YW	MILK	TM
75	700	2	2.2	43	74	17	39

89

## DEER HILL RIDGE FULLBACK 10W ★

JEV 10W 1490473 February 14, 2009

LLB FULLBACK 141M  
Sire: **VALLEY BLOSSOM FULLBACK 760R (1274007)**  
VALLEY BLOSSOM ANNIE K 721M

SANDY BAR WONDERER 24D  
Dam: **VBR LADY 154J (954606)**  
VS LADY 712D

MT VALLEY FULLBACK 810  
PAT PANSY 461D  
SANDY BAR EQUALIZER 50G  
F V 249B ANNIE K 135H  
TRAVELER OF WLA 1Z  
SANDY BAR ANNIE K 26Y  
TRAVELER OF WLA 1Z  
PAT MIA 9U

BW	WW	AOD	BW	WW	YW	MILK	TM
80	660	10					

90

## SHEIDAGHAN EQUATOR 96W ★

VMF 96W 1523727 March 14, 2009



VALLEY BLOSSOM EQUATOR 729M  
Sire: **SANDY BAR EQUATOR 150S (1310252)**  
SANDY BAR DUCHESS 114E (Elite)

LAMBS INNOVATOR 86J  
Dam: **SANDY BAR LADY 91R (1251876)**  
SANDY BAR LADY 21K (Elite)

BASIN EQUATOR 276G  
WIWA CREEK TILDA 33 54 90  
MACKIE'S BRUTE 4B  
SANDY BAR DUCHESS 17B  
MVHF INNOVATOR 49B  
LAMBS BAR LASS 19D  
CRESCENT CREEK BRAVE HEART 35F  
SANDY BAR LADY 54C

BW	WW	AOD	BW	WW	YW	MILK	TM
96	675	4	4.0	39	67	14	34

91

## VALLEY BLOSSOM IDEAL 18S 926W ★

IJP 926W 1496646 February 28, 2009

PRAIRIELANE IDEAL 7451-2014  
Sire: **SANDY BAR IDEAL 18S (1310363)**  
SANDY BAR PRIDE 89L (Elite)

SANDY BAR DEW 105F  
Dam: **SANDY BAR DUCHESS 723K (1001030)**  
CRESCENT CREEK DUCHESS 73F

IDEAL 7451 OF 8103 4465 NHF AMF  
PRAIRIELANE MAX DUCHESS 3050  
SANDY BAR TONTO 61E  
SANDY BAR PRIDE 6H  
BAR 20 RAINMAKER 344D  
SANDY BAR ANNIE K 16C  
CRESCENT CREEK MAXIMUM 54C  
CRESCENT CREEK DUCHESS 77D

BW	WW	AOD	BW	WW	YW	MILK	TM
90	670	9	4.1	39	67	11	31

92

## SANDY BAR IRON MAN 43W ★★

IJP 43W 1496629 February 19, 2009

G A R GRID MAKER NHF AMF  
Sire: **EARLEY GRID POWER 52P (1281860)**  
BROCKHILL BLACK DIAMOND 9G

CRESCENT CREEK BRAVE HEART 35F (Elite)  
Dam: **SANDY BAR ANNIE K 43H (922952)**  
SANDY BAR ANNIE K 106E (Elite)

G D A R TRAVELER 044 NHF AMF  
G A R PRECISION 2536 NHF AMC  
RITO 9FB3 OF 5H11 FULLBACK NHF AMF  
BOOT STRAP JAMOCA 10D  
RITO 8094 PRAIRIELANE 2060  
CRESCENT CREEK BLACKCAP 112A  
SANDY BAR MATLOCK 46Z  
SANDY BAR ANNIE K 26Y

BW	WW	AOD	BW	WW	YW	MILK	TM
84	700	11	3.5	44	82	12	34





93

**SANDY BAR ADVANTAGE 59W** ★★

IJP 59W 1497868 February 23, 2009



SANDY BAR ADVANTAGE 43M  
Sire: **WILBAR ADVANTAGE 202R** (1265635)  
WILBAR KEEPSAKE 929N

REMITALL LIGHTENING 2L (Elite)  
Dam: **SANDY BAR MISS QUALITY 1N** (1149580)  
VALLEY BLOSSOM MS QUALITY 819L

TC ADVANTAGE NHF AMF  
SANDY BAR JEMINA 44K  
S A F 598 BANDO 5175 AMF  
WILBAR KEEPSAKE 508L  
SITZ ALLIANCE 6595 NHF AMF  
LLB BONNIE PRIDE 816H  
SANDY BAR TWO FEATHERS 91H  
SANDY BAR MISS QUALITY 33H

BW	WW	AOD	BW	WW	YW	MILK	TM
76	695	6	2.0	42	73	16	37

94

**SHEIDAGAN IDEAL 65W** ★★

VMF 65W 1523722 March 03, 2009



PRAIRIELANE IDEAL 7451-2014  
Sire: **SANDY BAR IDEAL 72S** (1310276)  
SANDY BAR BLACKLASS 5H (Elite)

DOUBLE D BARDOLENE 15L  
Dam: **SANDY BAR ROSEGAY 59R** (1258114)  
VALLEY BLOSSOM ROSEGAY 719L (Elite)

IDEAL 7451 OF 8103 4465 NHF AMF  
PRAIRIELANE MAX DUCHESS 3050  
APEX STOCKMAN 061  
MERIT BLACKLASS 6059  
CRESCENT CREEK BARDOLENE 105H  
CRESCENT CREEK JESTRESS 46B  
SANDY BAR EQUALIZER 50G  
SANDY BAR ROSEGAY 579E

BW	WW	AOD	BW	WW	YW	MILK	TM
78	680	4	0.5	43	75	11	33

95

**DAY BY DAY BARDOLIER 302W** ★

SLD 302W 1489931 February 11, 2009

SANDY BAR BARDOLIER 82C (Elite)  
Sire: **VALLEY BLOSSOM BARDOLIER 703L** (1042090)  
SANDY BAR PRIDE LADY 29D

SANDY BAR CHIEF 21F  
Dam: **DAY BY DAY LINDA 8K** (995738)  
SANDY BAR LINDA 304E

BJ BARDOLIER 24'90  
SANDY BAR MISS QUALITY 11Y  
TRAVELER OF WLA 1Z  
SANDY BAR PRIDE LADY 42A  
BELVIN CHIEF  
SANDY BAR COUNTESS 11W  
MACKIE'S BRUTE 4B  
SANDY BAR LINDA 303C

BW	WW	AOD	BW	WW	YW	MILK	TM
86	700	9	1.8	21	34	8	18

96

**VALLEY BLOSSOM IDEAL 35W** ★

BEAU 35W 1515115 March 03, 2009

PRAIRIELANE IDEAL 7451-2014  
Sire: **SANDY BAR IDEAL 19S** (1310282)  
RON'S DELIA 22H (Elite)

SANDY BAR TWO FEATHERS 91H  
Dam: **SANDY BAR BESSIE 33L** (1042488)  
WLA BESSIE 21H

IDEAL 7451 OF 8103 4465 NHF AMF  
PRAIRIELANE MAX DUCHESS 3050  
SANDY BAR RAINMAKER 58F  
RON'S DELEGATE DELIA 32W  
CRESCENT CREEK BRAVE HEART 35F  
SANDY BAR LADY 69E  
PAT BANJO 10F  
PAT LADY BESS 131E

BW	WW	AOD	BW	WW	YW	MILK	TM
87	660	8	2.9	37	64	14	33

97

**VALLEY BLOSSOM IDEAL 44W** ★★

BEAU 44W 1532298 March 15, 2009

PRAIRIELANE IDEAL 7451-2014  
Sire: **SANDY BAR IDEAL 71S** (1310315)  
SANDY BAR MISS QUALITY 1K (Elite)

LLB FULLBACK 141M  
Dam: **VALLEY BLOSSOM LINDA 727T** (1371960)  
SANDY BAR LINDA 62L (Elite)

IDEAL 7451 OF 8103 4465 NHF AMF  
PRAIRIELANE MAX DUCHESS 3050  
CRESCENT CREEK BRAVE HEART 35F  
PAT MISS QUALITY 29U  
MT VALLEY FULLBACK 810  
PAT PANSY 461D  
SANDY BAR TONTO 61E  
SANDY BAR LINDA 76H

BW	WW	AOD	BW	WW	YW	MILK	TM
80	655	2	2.8	43	74	19	41

98

**SANDY BAR HUSSLER 44W** ★★

IJP 44W 1497827 February 19, 2009

CRESCENT CREEK 235 TRAV 65R  
Sire: **SVR HUSSLER 320T** (1385974)  
SVR FOREVER LADY 248M

PRAIRIELANE IDEAL 7451-2014  
Dam: **SANDY BAR DUCHESS 7S** (1310360)  
SANDY BAR DUCHESS 46L (Elite)

GDAR TRAVELER 235  
CRESCENT CREEK LAWN 109H  
B BAR POWER ROPE 0869  
GDAR FOREVER LADY 0354  
IDEAL 7451 OF 8103 4465 NHF AMF  
PRAIRIELANE MAX DUCHESS 3050  
SANDY BAR BRAVE HEART 75H  
SANDY BAR DUCHESS 49G

BW	WW	AOD	BW	WW	YW	MILK	TM
73	700	3	1.4	36	70	20	38

99

**SANDY BAR IRON MAN 114W** ★

IJP 114W 1496676 March 24, 2009

G A R GRID MAKER NHF AMF  
Sire: **EARLEY GRID POWER 52P** (1281860)  
BROCKHILL BLACK DIAMOND 9G

LUKENS 9440 SCOTCH CAP L463  
Dam: **BRYMOR MISS 3L** (1077134)  
BRY MISS TREND 180H

G D A R TRAVELER 044 NHF AMF  
G A R PRECISION 2536 NHF AMC  
RITO 9FB3 OF 5H11 FULLBACK NHF AMF  
BOOT STRAP JAMOCA 10D  
R R SCOTCHCAP 9440 NHF AMF  
G D A R FOREVER LADY 9163  
V D A R NEW TREND 315 NHF AMF  
NEWPARK JESTRESS 18Y

BW	WW	AOD	BW	WW	YW	MILK	TM
84	660	8	3.8	48	90	13	37

100

**VALLEY BLOSSOM LIGHTENING 937W** ★

IJP 937W 1497876 March 14, 2009

REMITALL LIGHTENING 2L (Elite)  
Sire: **VALLEY BLOSSOM LIGHTENING 706P** (1209966)  
M BAR SIX QUEENETTE 232K (Elite)

BASIN EQUATOR 276G (Elite)  
Dam: **VALLEY BLOSSOM FAVORITE 784N** (1149474)  
(Elite)  
SANDY BAR FAVORITE 20H

SITZ ALLIANCE 6595 NHF AMF  
LLB BONNIE PRIDE 816H  
SANDY BAR BARDOLIER 82C  
GFR QUEENETTE 3X  
HILLTOP EQUATOR F302  
BASIN JUANADALEEN 8092  
MVSB LIMITED EDITION 10E  
SANDY BAR FAVORITE 103D

BW	WW	AOD	BW	WW	YW	MILK	TM
91	650	6	4.8	33	57	16	33



# 101 SANDY BAR GRASSLANDS 192W ★★

IJP 192W 1504360 February 19, 2009



WILBAR ADVANTAGE 202R  
Sire: **SANDY BAR GRASSLANDS 94T** (1371807)  
SANDY BAR JEMINA 22N (Elite)

LLB 5175 BANDO 190P  
Dam: **SANDY BAR QUEENETTE 91T** (1371804)  
KORNFELD QUENETTE 807H

SANDY BAR ADVANTAGE 43M  
WILBAR KEEPSAKE 929N  
LAMBS INNOVATOR 86J  
SANDY BAR JEMINA 54D  
S A F 598 BANDO 5175 AMF  
LLB LADY ERROLLINE 324L  
LAMBS TROJAN 58F  
KORNFELD QUENETTE 3D

BW	WW	AOD	BW	WW	YW	MILK	TM
81	690	2	3.1	41	71	16	37

# 102 SANDY BAR HUSSLER 21W ★★★

IJP 21W 1497824 February 16, 2009

CRESCENT CREEK 235 TRAV 65R  
Sire: **SVR HUSSLER 320T** (1385974)  
SVR FOREVER LADY 248M

PRAIRIELANE IDEAL 7451-2014  
Dam: **SANDY BAR MISS QUALITY 84S** (1310356)  
SANDY BAR MISS QUALITY 8L

GDAR TRAVELER 235  
CRESCENT CREEK LAWN 109H  
B BAR POWER ROPE 0869  
GDAR FOREVER LADY 0354  
IDEAL 7451 OF 8103 4465 NHF AMF  
PRAIRIELANE MAX DUCHESS 3050  
SANDY BAR BRAVE HEART 75H  
PAT MISS QUALITY 29U

BW	WW	AOD	BW	WW	YW	MILK	TM
71	675	3	0.7	35	65	18	36

# 103 ROCKING H FULLBACK 13W ★

TDH 13W 1526272 March 18, 2009

VALLEY BLOSSOM FULLBACK 763R  
Sire: **SANDY BAR FULLBACK 16T** (1371730)  
SANDY BAR PRIDE 7L

SANDY BAR FAME 24K  
Dam: **L 6 MISS QUALITY 5M** (1095892)  
SANDY BAR MISS QUALITY 22H

LLB FULLBACK 141M  
SANDY BAR LINDA 62L  
CRESCENT CREEK BRAVE HEART 35F  
SANDY BAR PRIDE 31X  
S A F FAME NHF AMF  
BENLOCK EVENING TINGE 43H  
SANDY BAR M302C 39F  
SANDY BAR MISS QUALITY 41E

BW	WW	AOD	BW	WW	YW	MILK	TM
81	675	7	1.9	35	60	10	28

# 104 SANDY BAR ICEBERG 190W ★★★

IJP 190W 1498677 February 18, 2009

EASTONDALE ICEBERG 05'04  
Sire: **SOO LINE ICEBERG 6136** (1349511)  
DWAJO JESTRESS 3P

WILBAR ADVANTAGE 202R  
Dam: **SANDY BAR MISS QUALITY 157T** (1371863)  
SANDY BAR MISS QUALITY 132N

DRYLAND ICEBERG 231  
EASTONDALE COUNTESS 10'01  
H A R B CINCHA 829 AMF  
DWAJO JESTRESS 59M  
SANDY BAR ADVANTAGE 43M  
WILBAR KEEPSAKE 929N  
DOUBLE D BARDOLENE 15L  
SANDY BAR MISS QUALITY 69J

BW	WW	AOD	BW	WW	YW	MILK	TM
80	695	2	2.7	48	81	14	38

# 105 SHEIDAGHAN IDEAL 106W ★

VMF 106W 1523744 March 22, 2009

PRAIRIELANE IDEAL 7451-2014  
Sire: **SANDY BAR IDEAL 72S** (1310276)  
SANDY BAR BLACKLASS 5H (Elite)

SANDY BAR TWO FEATHERS 91H  
Dam: **VALLEY BLOSSOM ANNIE K 707R** (1251940)  
SANDY BAR ANNIE 76G

IDEAL 7451 OF 8103 4465 NHF AMF  
PRAIRIELANE MAX DUCHESS 3050  
APEX STOCKMAN 061  
MERIT BLACKLASS 6059  
CRESCENT CREEK BRAVE HEART 35F  
SANDY BAR LADY 69E  
BELVIN CHIEF  
SANDY BAR ANNIE K 12U

BW	WW	AOD	BW	WW	YW	MILK	TM
103	665	4	5.5	43	75	17	39

# 106 SANDY BAR IRON MAN 28W ★★

IJP 28W 1496621 February 17, 2009

G A R GRID MAKER NHF AMF  
Sire: **EARLY GRID POWER 52P** (1281860)  
BROCKHILL BLACK DIAMOND 9G

KLUZAK EXTRA 70F  
Dam: **VBR EILEEN 129J** (983136)  
KLUZAK EILEEN 48F

G D A R TRAVELER 044 NHF AMF  
G A R PRECISION 2536 NHF AMF  
RITO 9FB3 OF 5H11 FULLBACK NHF AMF  
BOOT STRAP JAMOCA 10D  
DALRENE EXTRA 36A  
REMINGTON'S TIBBIE 35D  
ANKONIAN ELIXIR DB  
ANKONY EILEEN T292E

BW	WW	AOD	BW	WW	YW	MILK	TM
84	690	10	4.0	45	88	9	32

# 107 SANDY BAR IRON MAN 122W ★★

IJP 122W 1496668 April 06, 2009



G A R GRID MAKER NHF AMF  
Sire: **EARLY GRID POWER 52P** (1281860)  
BROCKHILL BLACK DIAMOND 9G

SANDY BAR TONTO 61E  
Dam: **SANDY BAR PRIDE 89L** (1042271) (Elite)  
SANDY BAR PRIDE 6H (Elite)

G D A R TRAVELER 044 NHF AMF  
G A R PRECISION 2536 NHF AMF  
RITO 9FB3 OF 5H11 FULLBACK NHF AMF  
BOOT STRAP JAMOCA 10D  
TOP TONTO B10  
SANDY BAR ANNIE K 12U  
CRESCENT CREEK BRAVE HEART 35F  
SANDY BAR PRIDE 27E

BW	WW	AOD	BW	WW	YW	MILK	TM
85	690	8	2.8	48	82	17	41





108

## VALLEY BLOSSOM FULLBACK 46W ★

BEAU 46W 1515122 March 17, 2009



MT VALLEY FULLBACK 810  
 Sire: **LLB FULLBACK 141M** (1150225)  
 PAT PANSY 461D

BASIN EQUATOR 276G (Elite)  
 Dam: **VALLEY BLOSSOM BRIDE 723N** (1149592)  
 LLB BRIDE 337F

RITO 9FB3 OF 5H11 FULLBACK NHF AMF  
 KRUEGERS MIRABELLE  
 DOUBLE J RITO 617A  
 PAT PANSY 619A  
 HILLTOP EQUATOR F302  
 BASIN JUANADALEEN 8092  
 CRACKER JACK BAROS 68M  
 DOUBLE J BRIDE 337A

BW	WW	AOD	BW	WW	YW	MILK	TM
88	650	7	4.7	40	73	13	33

109

## SANDY BAR HUSSLER 119W ★

IJP 119W 1497854 March 30, 2009

CRESCENT CREEK 235 TRAV 65R  
 Sire: **SVR HUSSLER 320T** (1385974)  
 SVR FOREVER LADY 248M

PRAIRIELANE IDEAL 7451-2014  
 Dam: **SANDY BAR NEONIA 59S** (1310283)  
 HAPPYVALE NEONIA 22H

GDAR TRAVELER 235  
 CRESCENT CREEK LAWN 109H  
 B BAR POWER ROPE 0869  
 GDAR FOREVER LADY 0354  
 IDEAL 7451 OF 8103 4465 NHF AMF  
 PRAIRIELANE MAX DUCHESS 3050  
 SANDY BAR BARDOLIER 60B  
 HAPPYVALE GRAND NEONIA 8Y

BW	WW	AOD	BW	WW	YW	MILK	TM
94	645	3	5.3	42	76	20	41

110

## SANDY BAR HUSSLER 64W ★★

IJP 64W 1497834 February 25, 2009

CRESCENT CREEK 235 TRAV 65R  
 Sire: **SVR HUSSLER 320T** (1385974)  
 SVR FOREVER LADY 248M

PRAIRIELANE IDEAL 7451-2014  
 Dam: **SANDY BAR ANNIE 123S** (1310263)  
 KORNFELD ANNIE 607F

GDAR TRAVELER 235  
 CRESCENT CREEK LAWN 109H  
 B BAR POWER ROPE 0869  
 GDAR FOREVER LADY 0354  
 IDEAL 7451 OF 8103 4465 NHF AMF  
 PRAIRIELANE MAX DUCHESS 3050  
 SANDY BAR ATLAS 51X  
 SANDY BAR ANNIE 41C

BW	WW	AOD	BW	WW	YW	MILK	TM
84	660	3	3.4	35	71	14	32

111

## SANDY BAR IRON MAN 40W ★

IJP 40W 1496631 February 19, 2009

G A R GRID MAKER NHF AMF  
 Sire: **EARLEY GRID POWER 52P** (1281860)  
 BROCKHILL BLACK DIAMOND 9G

SANDY BAR BARDOLIER 82C (Elite)  
 Dam: **SANDY BAR MISS QUALITY 83J** (954433)  
 SANDY BAR MISS QUALITY 21Y

G D A R TRAVELER 044 NHF AMF  
 G A R PRECISION 2536 NHF AMC  
 RITO 9FB3 OF 5H11 FULLBACK NHF AMF  
 BOOT STRAP JAMOCA 10D  
 B J BARDOLIER 2490  
 SANDY BAR MISS QUALITY 11Y  
 R&I ATLAS 3201  
 SANDY BAR MISS QUALITY 20S

BW	WW	AOD	BW	WW	YW	MILK	TM
81	660	10	4.5	39	74	9	29

112

## SHEIDAGHAN IDEAL 76W ★

VMF 76W 1523700 March 07, 2009



PRAIRIELANE IDEAL 7451-2014  
 Sire: **SANDY BAR IDEAL 72S** (1310276)  
 SANDY BAR BLACKLASS 5H (Elite)

DOUBLE BAR ROGUE  
 Dam: **CRESCENT CREEK ROSEBUD 38K** (1001768)  
 CRESCENT CREEK ROSEBUD 115F

IDEAL 7451 OF 8103 4465 NHF AMF  
 PRAIRIELANE MAX DUCHESS 3050  
 APEX STOCKMAN 061  
 MERIT BLACKLASS 6059  
 CH 054 RITO 0100  
 K M R WENDY 508  
 RITO 8094 PRAIRIELANE 2060  
 CRESCENT CREEK ROSEBUD 4C

BW	WW	AOD	BW	WW	YW	MILK	TM
99	670	9	4.7	41	77	17	38

113

## ROCKING H FULLBACK 2W ★

TDH 2W 1526263 March 02, 2009

VALLEY BLOSSOM FULLBACK 763R  
 Sire: **SANDY BAR FULLBACK 16T** (1371730)  
 SANDY BAR PRIDE 7L

SANDY BAR RAINMAKER 717G  
 Dam: **L 6 ANNIE K 31J** (956104)  
 SANDY BAR ANNIE K 9E

LLB FULLBACK 141M  
 SANDY BAR LINDA 62L  
 CRESCENT CREEK BRAVE HEART 35F  
 SANDY BAR PRIDE 31X  
 BAR 20 RAINMAKER 344D  
 ANCHOR R ANNEBEE BLACKCAP 24D  
 PAT GOLIATH 904Z  
 SANDY BAR ANNIE K 38S

BW	WW	AOD	BW	WW	YW	MILK	TM
91	685	10	4.4	31	51	6	22

114

## VALLEY BLOSSOM FULLBACK 41W ★

BEAU 41W 1515118 March 11, 2009

MT VALLEY FULLBACK 810  
 Sire: **LLB FULLBACK 141M** (1150225)  
 PAT PANSY 461D

VALLEY BLOSSOM LIGHTENING 706P  
 Dam: **VALLEY BLOSSOM BELLE 711S** (1315075)  
 SANDY BAR BELLE 45M

RITO 9FB3 OF 5H11 FULLBACK NHF AMF  
 KRUEGERS MIRABELLE  
 DOUBLE J RITO 617A  
 PAT PANSY 619A  
 REMITALL LIGHTENING 2L  
 M BAR SIX QUEENETTE 232K  
 LAMBS INNOVATOR 86J  
 CFS BELLE 10H

BW	WW	AOD	BW	WW	YW	MILK	TM
89	660	3	4.4	32	58	19	35

115

## SHEIDAGHAN IDEAL 103W ★

VMF 103W 1523761 March 20, 2009

PRAIRIELANE IDEAL 7451-2014  
 Sire: **SANDY BAR IDEAL 72S** (1310276)  
 SANDY BAR BLACKLASS 5H (Elite)

ARDA BATTLE CRY 96M  
 Dam: **VALLEY BLOSSOM QUEENETTE 816R** (1258558)  
 VBR QUEENETTE 249H

IDEAL 7451 OF 8103 4465 NHF AMF  
 PRAIRIELANE MAX DUCHESS 3050  
 APEX STOCKMAN 061  
 MERIT BLACKLASS 6059  
 O G L BATTLE CRY 427 128  
 ARDA BLACKBIRD 90G  
 SANDY BAR WONDERER 24D  
 GFR QUEENETTE 3X

BW	WW	AOD	BW	WW	YW	MILK	TM
94	670	4	3.4	41	76	15	36



116

**SANDY BAR IRON MAN 31W**

IJP 31W 1496622 (TW) February 17, 2009



G A R GRID MAKER NHF AMF  
Sire: **EARLEY GRID POWER 52P** (1281860)  
BROCKHILL BLACK DIAMOND 9G

CRESCENT CREEK BRAVE HEART 35F (Elite)  
Dam: **VBR ANNIE K 163J** (973196)  
SV ANNIE K 32C

G D A R TRAVELER 044 NHF AMF  
G A R PRECISION 2536 NHF AMC  
RITO 9FB3 OF 5H11 FULLBACK NHF AMF  
BOOT STRAP JAMOCA 10D  
RITO 8094 PRAIRIELANE 2060  
CRESCENT CREEK BLACKCAP 112A  
SANDY BAR MATLOCK 18Z  
PAT ANNIE K 30U

BW	WW	AOD	BW	WW	YW	MILK	TM
50	705	10	2.9	45	81	14	37

117

**VALLEY BLOSSOM IDEAL 37W**

BEAU 37W 1532135 March 06, 2009

PRAIRIELANE IDEAL 7451-2014  
Sire: **SANDY BAR IDEAL 28S** (1310302)  
KORNFELD QUENETTE 807H

SANDY BAR BARDOLIER 82C (Elite)  
Dam: **VALLEY BLOSSOM KARAMA 801L** (1042583)  
GLENNIE KARAMA 61D

IDEAL 7451 OF 8103 4465 NHF AMF  
PRAIRIELANE MAX DUCHESS 3050  
LAMBS TROJAN 58F  
KORNFELD QUENETTE 3D  
BJ BARDOLIER 2490  
SANDY BAR MISS QUALITY 11Y  
BANNER CONCORD 34X  
GLENNIE'S KARAMA 34Z

BW	WW	AOD	BW	WW	YW	MILK	TM
97	700	8	5.5	37	69	14	33

118

**VALLEY BLOSSOM FULLBACK 948W**

IJP 948W 1497165 April 01, 2009



MT VALLEY FULLBACK 810  
Sire: **LLB FULLBACK 141M** (1150225)  
PAT PANSY 461D

BASIN EQUATOR 276G (Elite)  
Dam: **VALLEY BLOSSOM ERICA 757M** (1114824)  
KORNFELD EUGENIE ERICA 34D (Elite)

RITO 9FB3 OF 5H11 FULLBACK NHF AMF  
KRUEGERS MIRABELLE  
DOUBLE J RITO 617A  
PAT PANSY 619A  
HILLTOP EQUATOR F302  
BASIN JUANADALEEN 8092  
APEX STOCKMAN 061  
BELL EUGENIE ERICA 34B

BW	WW	AOD	BW	WW	YW	MILK	TM
99	680	7	6.5	45	82	16	39

119

**ROCKING H FULLBACK 16W**

TDH 16W 1526275 March 23, 2009

VALLEY BLOSSOM FULLBACK 763R  
Sire: **SANDY BAR FULLBACK 16T** (1371730)  
SANDY BAR PRIDE 7L

SANDY BAR FAME 24K  
Dam: **L 6 TILDA 11P** (1237826)  
SB TILDA 28E

LLB FULLBACK 141M  
SANDY BAR LINDA 62L  
CRESCENT CREEK BRAVE HEART 35F  
SANDY BAR PRIDE 31X  
S A F FAME NHF AMF  
BENLOCK EVENING TINGE 43H  
TRAVELER OF WLA 1Z  
WIWA CREEK TILDA 33 54 90

BW	WW	AOD	BW	WW	YW	MILK	TM
80	685	5	2.0	38	62	12	31

120

**SANDY BAR IRON MAN 55W**

IJP 55W 1497148 February 22, 2009

G A R GRID MAKER NHF AMF  
Sire: **EARLEY GRID POWER 52P** (1281860)  
BROCKHILL BLACK DIAMOND 9G

BASIN EQUATOR 276G (Elite)  
Dam: **VALLEY BLOSSOM MS QUALITY 815L** (1042192)  
SANDY BAR MISS QUALITY 37F

G D A R TRAVELER 044 NHF AMF  
G A R PRECISION 2536 NHF AMC  
RITO 9FB3 OF 5H11 FULLBACK NHF AMF  
BOOT STRAP JAMOCA 10D  
HILLTOP EQUATOR F302  
BASIN JUANADALEEN 8092  
BELVIN CHIEF  
SANDY BAR MISS QUALITY 21Y

BW	WW	AOD	BW	WW	YW	MILK	TM
79	660	8	2.4	43	87	11	33

121

**VALLEY BLOSSOM IDEAL 911W**

IJP 911W 1499008 February 16, 2009

PRAIRIELANE IDEAL 7451-2014  
Sire: **SANDY BAR IDEAL 28S** (1310302)  
KORNFELD QUENETTE 807H

DOUBLE D BARDOLENE 15L  
Dam: **SANDY BAR ANNIE K 7P** (1204877)  
SANDY BAR ANNIE K 60L

IDEAL 7451 OF 8103 4465 NHF AMF  
PRAIRIELANE MAX DUCHESS 3050  
LAMBS TROJAN 58F  
KORNFELD QUENETTE 3D  
CRESCENT CREEK BARDOLENE 105H  
CRESCENT CREEK JESTRESS 46B  
SANDY BAR BRAVE HEART 75H  
SANDY BAR ANNIE K 20Y

BW	WW	AOD	BW	WW	YW	MILK	TM
110	690	5	6.1	40	75	10	30

122

**VALLEY BLOSSOM IDEAL 26W**

BEAU 26W 1515108 February 25, 2009

PRAIRIELANE IDEAL 7451-2014  
Sire: **SANDY BAR IDEAL 28S** (1310302)  
KORNFELD QUENETTE 807H

SANDY BAR TWO FEATHERS 91H  
Dam: **VALLEY BLOSSOM LADY 722P** (1209950)  
VBR LADY 232H

IDEAL 7451 OF 8103 4465 NHF AMF  
PRAIRIELANE MAX DUCHESS 3050  
LAMBS TROJAN 58F  
KORNFELD QUENETTE 3D  
CRESCENT CREEK BRAVE HEART 35F  
SANDY BAR LADY 69E  
SANDY BAR WONDERER 24D  
SANDY BAR LADY 407D

BW	WW	AOD	BW	WW	YW	MILK	TM
87	710	5	4.0	39	71	16	36

123

**VALLEY BLOSSOM LINEBACKER 75W**

BEAU 75W 1515136 April 08, 2009

REMITALL LINEBACKER 204L  
Sire: **REMINGTON LINEBACKER 13S** (1315586)  
WILLABAR ANNIE 111J

SANDY BAR LIGHTENING 2N  
Dam: **JOINT CREEK LIGHTENING LASS 9R** (1405089)  
JOINT CREEK 727L LASS 14N

SITZ ALLIANCE 6595 NHF AMF  
REMITALL EILEEN 170H  
WILLABAR RIGHT TIME 34E  
WILLABAR ANNIE 218G  
REMITALL LIGHTENING 2L  
SANDY BAR MISS QUALITY 8L  
VALLEY BLOSSOM EQUATOR 727L  
NAF LADY 30H

BW	WW	AOD	BW	WW	YW	MILK	TM
86	655	4	2.0	41	69	16	37



# 124 SANDY BAR ADVANTAGE 99W ★★★

IJP 99W 1496658 March 17, 2009

SANDY BAR ADVANTAGE 43M  
Sire: **WILBAR ADVANTAGE 202R** (1265635)  
WILBAR KEEPSAKE 929N

ALBERDA TRAVELER 416 NHF AMF  
Dam: **SANDY BAR DUCHESS EVA 22L** (1042743)  
SANDY BAR DUCHESS EVA 11J (Elite)

TC ADVANTAGE NHF AMF  
SANDY BAR JEMINA 44K  
S A F 598 BANDO 5175 AMF  
WILBAR KEEPSAKE 508L  
D H D TRAVELER 6807 NHF AMF  
ALBERDA QUEEN KIMBERLY 222  
CRESCENT CREEK BRAVE HEART 35F  
PAT DUCHESS EVA 908Y

BW	WW	AOD	BW	WW	YW	MILK	TM
82	655	8	3.9	43	77	15	37

# 125 SANDY BAR ADVANTAGE 116W ★★

IJP 116W 1496664 March 27, 2009



SANDY BAR ADVANTAGE 43M  
Sire: **WILBAR ADVANTAGE 202R** (1265635)  
WILBAR KEEPSAKE 929N

SANDY BAR BRAVE HEART 75H  
Dam: **SANDY BAR ANNIE K 60L** (1042052)  
SANDY BAR ANNIE K 20Y

TC ADVANTAGE NHF AMF  
SANDY BAR JEMINA 44K  
S A F 598 BANDO 5175 AMF  
WILBAR KEEPSAKE 508L  
CRESCENT CREEK BRAVE HEART 35F  
SANDY BAR MISS QUALITY 12E  
YOUNG DALE GOLIATH 71W  
DOUBLE AA ANNIE K 59678

BW	WW	AOD	BW	WW	YW	MILK	TM
89	690	8	3.4	45	77	15	38

# 126 VALLEY BLOSSOM LIGHTENING 944W ★★

IJP 944W 1497849 March 22, 2009



REMITALL LIGHTENING 2L (Elite)  
Sire: **VALLEY BLOSSOM LIGHTENING 706P** (1209966)  
M BAR SIX QUEENETTE 232K (Elite)

CRESCENT CREEK BRAVE HEART 35F (Elite)  
Dam: **SANDY BAR PRIDE LADY 71P** (1204643)  
SANDY BAR PRIDE LADY 99G (Elite)

SITZ ALLIANCE 6595 NHF AMF  
LLB BONNIE PRIDE 816H  
SANDY BAR BARDOLIER 82C  
GFR QUEENETTE 3X  
RITO 8094 PRAIRIELANE 2060  
CRESCENT CREEK BLACKCAP 112A  
BELVIN CHIEF  
SANDY BAR PRIDE LADY 42A

BW	WW	AOD	BW	WW	YW	MILK	TM
90	685	5	2.7	36	56	22	40

# 127 VALLEY BLOSSOM FULLBACK 940W ★

IJP 940W 1497848 March 21, 2009

MT VALLEY FULLBACK 810  
Sire: **LLB FULLBACK 141M** (1150225)  
PAT PANSY 461D

REMITALL LIGHTENING 2L (Elite)  
Dam: **VALLEY BLOSSOM EILEEN 787P** (1204862)  
SANDY BAR EILEEN 730K

RITO 9FB3 OF 5H11 FULLBACK NHF AMF  
KRUEGERS MIRABELLE  
DOUBLE J RITO 617A  
PAT PANSY 619A  
SITZ ALLIANCE 6595 NHF AMF  
LLB BONNIE PRIDE 816H  
BASIN EQUATOR 276G  
KLUZAK EILEEN 48F

BW	WW	AOD	BW	WW	YW	MILK	TM
92	640	5	4.2	36	68	16	34

# 128 VALLEY BLOSSOM IDEAL 21W ★

BEAU 21W 1515103 February 21, 2009

PRAIRIELANE IDEAL 7451-2014  
Sire: **SANDY BAR IDEAL 28S** (1310302)  
KORNFELD QUENETTE 807H

LAMBS INNOVATOR 86J  
Dam: **SANDY BAR MISS QUALITY 101M** (1115187)  
SANDY BAR MISS QUALITY 46H

IDEAL 7451 OF 8103 4465 NHF AMF  
PRAIRIELANE MAX DUCHESS 3050  
LAMBS TROJAN 58F  
KORNFELD QUENETTE 3D  
MVHF INNOVATOR 49B  
LAMBS BAR LASS 19D  
CRESCENT CREEK BRAVE HEART 35F  
SV MISS QUALITY 593E

BW	WW	AOD	BW	WW	YW	MILK	TM
90	650	7	3.0	34	66	12	29

# 129 VALLEY BLOSSOM LIGHTENING 939W ★

IJP 939W 1497158 March 16, 2009

REMITALL LIGHTENING 2L (Elite)  
Sire: **VALLEY BLOSSOM LIGHTENING 706P** (1209966)  
M BAR SIX QUEENETTE 232K (Elite)

DURLOWE MAGIC 62K  
Dam: **NORTHERN VIEW BLACKCAP 12M** (1130489)  
NORTHERN VIEW BLACKCAP 10J

SITZ ALLIANCE 6595 NHF AMF  
LLB BONNIE PRIDE 816H  
SANDY BAR BARDOLIER 82C  
GFR QUEENETTE 3X  
EBON HILL EQUALIZER 34'94  
DURLOWE ESSO EILEEN 537E  
CRESCENT CREEK OSCAR 4G  
CALLAMERE BLACKCAP 10G

BW	WW	AOD	BW	WW	YW	MILK	TM
93	650	7	3.5	27	38	21	35

# 130 VALLEY BLOSSOM FULLBACK 51W ★

BEAU 51W 1515126 March 20, 2009



MT VALLEY FULLBACK 810  
Sire: **LLB FULLBACK 141M** (1150225)  
PAT PANSY 461D

BASIN EQUATOR 276G (Elite)  
Dam: **VALLEY BLOSSOM PRIDE 712M** (1115277)  
SANDY BAR PRIDE 80F

RITO 9FB3 OF 5H11 FULLBACK NHF AMF  
KRUEGERS MIRABELLE  
DOUBLE J RITO 617A  
PAT PANSY 619A  
HILLTOP EQUATOR F302  
BASIN JUANADALEEN 809Z  
BELVIN CHIEF  
SANDY BAR PRIDE 10B

BW	WW	AOD	BW	WW	YW	MILK	TM
93	670	7	52	30	63	14	29



# 131 VALLEY BLOSSOM LIGHTENING 28W ★★★

BEAU 28W 1515109 February 26, 2009

REMITALL LIGHTENING 2L (Elite)  
Sire: VALLEY BLOSSOM LIGHTENING 706P (1209966)  
M BAR SIX QUEENETTE 232K (Elite)

SITZ ALLIANCE 6595 NHF AMF  
LLB BONNIE PRIDE 816H  
SANDY BAR BARDOLIER 82C  
GFR QUEENETTE 3X  
SUMMITCREST HI FLYER 3B18 NHF AMF  
SANDY BAR MISS QUALITY 1K  
CROWFOOT FORKS 712K  
SANDY BAR LINDA 62L

SANDY BAR PFRED 41M  
Dam: VALLEY BLOSSOM LINDA 700R (1258669)  
VALLEY BLOSSOM LINDA 703N

BW	WW	AOD	BW	WW	YW	MILK	TM
75	670	4	1.4	26	43	23	36

# 132 SHEIDAGHAN PACESETTER 105W ★

VMF 105W 1523753 March 22, 2009

LOOKOUT PACESETTER 258M  
Sire: CRESCENT CREEK PACESETTER 20T (1425693)  
CRESCENT CREEK BLACKBIRD 138N

WILLABAR AMBUSH 45G  
GRASSY LANES MILLY 29U  
GDAR QUANTUM 963  
CRESCENT CREEK BLACKBIRD 126J  
MT VALLEY FULLBACK 810  
PAT PANSY 461D  
SANDY BAR EQUALIZER 50G  
SASKALTA LADY 883H

LLB FULLBACK 141M  
Dam: VALLEY BLOSSOM LADY 778R (1274013)  
VALLEY BLOSSOM LADY 803M

BW	WW	AOD	BW	WW	YW	MILK	TM
104	670	4	4.5	38	64	16	35

# 133 VALLEY BLOSSOM LIGHTENING 50W ★★★

BEAU 50W 1515125 March 20, 2009

REMITALL LIGHTENING 2L (Elite)  
Sire: VALLEY BLOSSOM LIGHTENING 706P (1209966)  
M BAR SIX QUEENETTE 232K (Elite)

SITZ ALLIANCE 6595 NHF AMF  
LLB BONNIE PRIDE 816H  
SANDY BAR BARDOLIER 82C  
GFR QUEENETTE 3X  
BELVIN CHIEF  
GFR BLACKBIRD 8X  
SANDY BAR MATLOCK 18Z  
ERIN OF ANCHOR R 7S

SANDY BAR CHIEF 65F  
Dam: VBR ERIN ERROLLINE 210J (954571)  
ANCHOR R ERIN ERROLLINE 23D

BW	WW	AOD	BW	WW	YW	MILK	TM
81	650	10	1.2	22	37	19	30

# 134 SHEIDAGHAN PACESETTER 27W ★

VMF 27W 1523734 February 21, 2009

LOOKOUT PACESETTER 258M  
Sire: CRESCENT CREEK PACESETTER 20T (1425693)  
CRESCENT CREEK BLACKBIRD 138N

WILLABAR AMBUSH 45G  
GRASSY LANES MILLY 29U  
GDAR QUANTUM 963  
CRESCENT CREEK BLACKBIRD 126J  
MVHF INNOVATOR 49B  
LAMBS BAR LASS 19D  
CRESCENT CREEK BRAVE HEART 35F  
SANDY BAR LINDA 33E

LAMBS INNOVATOR 86J  
Dam: SANDY BAR LINDA 123R (1251907)  
SANDY BAR LINDA 76H (Elite)

BW	WW	AOD	BW	WW	YW	MILK	TM
92	680	4	1.5	35	57	16	34

# 135 SHEIDAGHAN GRASSLANDS 12W ★

VMF 12W 1525671 February 17, 2009

WILBAR ADVANTAGE 202R  
Sire: SANDY BAR GRASSLANDS 94T (1371807)  
SANDY BAR JEMINA 22N (Elite)

SANDY BAR ADVANTAGE 43M  
WILBAR KEEPSAKE 929N  
LAMBS INNOVATOR 86J  
SANDY BAR JEMINA 54D  
S A F 598 BANDO 5175 AMF  
LLB LADY ERROLLINE 324L  
CRESCENT CREEK BRAVE HEART 35F  
SANDY BAR ANNIE K 32E

LLB 5175 BANDO 190P  
Dam: SANDY BAR ANNIE K 153T (1371857)  
SANDY BAR ANNIE K 99M (Elite)

BW	WW	AOD	BW	WW	YW	MILK	TM
96	675	2	5.0	46	74	19	42

# 136 SANDY BAR BANDO 614W ★★★

IJP 614W 1497881 March 22, 2009

S A F 598 BANDO 5175 AMF  
Sire: LLB 5175 BANDO 190P (1242664)  
LLB LADY ERROLLINE 324L

BON VIEW BANDO 598 AMF  
S A F ROYAL LASS 1002  
ROYLE-HEAD RIGHT TIME 27E  
DOUBLE J ERROLLINE 244Y  
MVHF INNOVATOR 49B  
LAMBS BAR LASS 19D  
MACKIE'S BRUTE 4B  
VS-PAT MIA 813B

LAMBS INNOVATOR 86J  
Dam: SANDY BAR MIA 85N (1149435)  
SANDY BAR MIA 67E (Elite)

BW	WW	AOD	BW	WW	YW	MILK	TM
93	650	6	2.3	33	58	15	32

# 137 ROCKING H FULLBACK 3W ★

TDH 3W 1526264 March 08, 2009

VALLEY BLOSSOM FULLBACK 763R  
Sire: SANDY BAR FULLBACK 16T (1371730)  
SANDY BAR PRIDE 7L

LLB FULLBACK 141M  
SANDY BAR LINDA 62L  
CRESCENT CREEK BRAVE HEART 35F  
SANDY BAR PRIDE 31X  
SANDY BAR WONDERER 24D  
SANDY BAR ESTONIA 72C  
SANDY BAR RAINMAKER 717G  
SANDY BAR MISS QUALITY 41E

VBR WONDERER 116J  
Dam: L 6 MISS QUALITY 2L (1048556)  
L 6 MISS QUALITY 32J

BW	WW	AOD	BW	WW	YW	MILK	TM
80	695	8	2.6	33	54	8	25

# 138 SANDY BAR HUSSLER 96W ★★★

IJP 96W 1496674 March 12, 2009

CRESCENT CREEK 235 TRAV 65R  
Sire: SVR HUSSLER 320T (1385974)  
SVR FOREVER LADY 248M

GDAR TRAVELER 235  
CRESCENT CREEK LAWN 109H  
B BAR POWER ROPE 0869  
GDAR FOREVER LADY 0354  
CUDLOBE OVERDRIVE 1R  
WIWA CREEK MATILDA 5'86  
WIWA CREEK ATLAS 38'85  
BELMORAL PRIDE 2'80

WIWA CREEK OVERDRIVE 5'88  
Dam: LAMBS PRIDE 22D (799114)  
LAMB'S QUARTERS PRIDE 9A

BW	WW	AOD	BW	WW	YW	MILK	TM
78	670	15	2.3	25	49	18	31

# 139 SANDY BAR IRON MAN 90W ★

IJP 90W 1497842 March 09, 2009

G A R GRID MAKER NHF AMF  
Sire: EARLEY GRID POWER 52P (1281860)  
BROCKHILL BLACK DIAMOND 9G

G D A R TRAVELER 044 NHF AMF  
G A R PRECISION 2536 NHF AMC  
RITO 9FB3 OF 5H11 FULLBACK NHF AMF  
BOOT STRAP JAMOCCA 10D  
MVHF INNOVATOR 49B  
LAMBS BAR LASS 19D  
BELVIN CHIEF  
SANDY BAR MISS QUALITY 11Y

LAMBS INNOVATOR 86J  
Dam: SANDY BAR MISS QUALITY 118P (1204641)  
SANDY BAR MISS QUALITY 91G (Elite)

BW	WW	AOD	BW	WW	YW	MILK	TM
94	680	5	5.1	43	81	15	37





# 140 VALLEY BLOSSOM FULLBACK 42W ★

BEAU 42W 1515119 March 12, 2009



MT VALLEY FULLBACK 810  
**Sire:** LLB FULLBACK 141M (1150225)  
 PAT PANSY 461D  
 VALLEY BLOSSOM LIGHTENING 706P  
**Dam:** VALLEY BLOSSOM BRIDE 761S (1315089)  
 VALLEY BLOSSOM BRIDE 723N

RITO 9FB3 OF 5H11 FULLBACK NHF AMF  
 KRUEGERS MIRABELLE  
 DOUBLE J RITO 617A  
 PAT PANSY 619A  
 REMITALL LIGHTENING 2L  
 M BAR SIX QUEENETTE 232K  
 BASIN EQUATOR 276G  
 LLB BRIDE 337F

BW	WW	AOD	BW	WW	YW	MILK	TM
81	660	3	3.9	40	69	18	38

# 141 VALLEY BLOSSOM LINEBACKER 65W ★★

BEAU 65W 1515130 April 01, 2009

REMITALL LINEBACKER 204L  
**Sire:** REMINGTON LINEBACKER 13S (1315586)  
 WILLABAR ANNIE 111J  
 VALLEY BLOSSOM EQUATOR 727L  
**Dam:** JOINT CREEK 727L LASS 4N (1204029)  
 JOINT CREEK 38G LASS 7L

SITZ ALLIANCE 6595 NHF AMF  
 REMITALL EILEEN 170H  
 WILLABAR RIGHT TIME 34E  
 WILLABAR ANNIE 218G  
 BASIN EQUATOR 276G  
 SANDY BAR ANNIE K 64A  
 CUDLOBE FORTUNE 3897  
 THOMASON QUEEN 16F

BW	WW	AOD	BW	WW	YW	MILK	TM
84	635	6	2.6	37	65	11	30

# 142 SANDY BAR IRON MAN 53W ★★

IJP 53W 1496672 February 22, 2009

G A R GRID MAKER NHF AMF  
**Sire:** EARLEY GRID POWER 52P (1281860)  
 BROCKHILL BLACK DIAMOND 9G  
 CRESCENT CREEK BRAVE HEART 35F (Elite)  
**Dam:** SANDY BAR BRIDE 51K (999956) (Elite)  
 LLB BRIDE 337F

G D A R TRAVELER 044 NHF AMF  
 G A R PRECISION 2536 NHF AMC  
 RITO 9FB3 OF 5H11 FULLBACK NHF AMF  
 BOOT STRAP JAMOCA 10D  
 RITO 8094 PRAIRIELANE 2060  
 CRESCENT CREEK BLACKCAP 112A  
 CRACKER JACK BAROS 68M  
 DOUBLE J BRIDE 337A

BW	WW	AOD	BW	WW	YW	MILK	TM
77	655	9	2.9	43	81	11	33

# 143 SANDY BAR HUSSLER 16W ★★

IJP 16W 1496617 February 14, 2009

CRESCENT CREEK 235 TRAV 65R  
**Sire:** SVR HUSSLER 320T (1385974)  
 SVR FOREVER LADY 248M

GDAR TRAVELER 235  
 CRESCENT CREEK LAWN 109H  
 B BAR POWER ROPE 0869  
 GDAR FOREVER LADY 0354  
 RITO 8094 PRAIRIELANE 2060  
 CRESCENT CREEK BLACKCAP 112A  
 WIWA CREEK ATLAS 7S  
 SOUTHERN LANE SUSIE 18L

BW	WW	AOD	BW	WW	YW	MILK	TM
84	615	9	2.8	12	33	19	25

# 144 SANDY BAR GRASSLANDS 188W ★★

IJP 188W 1504364 February 17, 2009

WILBAR ADVANTAGE 202R  
**Sire:** SANDY BAR GRASSLANDS 94T (1371807)  
 SANDY BAR JEMINA 22N (Elite)  
 LLB 5175 BANDO 190P  
**Dam:** SANDY BAR PRIDE 78T (1371789)  
 SANDY BAR PRIDE 12J

SANDY BAR ADVANTAGE 43M  
 WILBAR KEEPSAKE 929N  
 LAMBS INNOVATOR 86J  
 SANDY BAR JEMINA 54D  
 S A F 598 BANDO 5175 AMF  
 LLB LADY ERROLLINE 324L  
 CRESCENT CREEK BRAVE HEART 35F  
 SANDY BAR PRIDE 36E

BW	WW	AOD	BW	WW	YW	MILK	TM
90	640	2	4.8	34	59	17	34

# 145 SANDY BAR IRON MAN 104W ★★

IJP 104W 1496657 March 17, 2009

G A R GRID MAKER NHF AMF  
**Sire:** EARLEY GRID POWER 52P (1281860)  
 BROCKHILL BLACK DIAMOND 9G

G D A R TRAVELER 044 NHF AMF  
 G A R PRECISION 2536 NHF AMC  
 RITO 9FB3 OF 5H11 FULLBACK NHF AMF  
 BOOT STRAP JAMOCA 10D  
 BAR 20 RAINMAKER 0100A  
 BAR 20 QUEEN 208B  
 CUDLOBE OVERDRIVE 1R  
 SANDY BAR MISS QUALITY 49Y

BW	WW	AOD	BW	WW	YW	MILK	TM
79	645	11	3.1	47	85	7	31

# 146 VALLEY BLOSSOM FULLBACK 61W ★

BEAU 61W 1515139 April 14, 2009

MT VALLEY FULLBACK 810  
**Sire:** LLB FULLBACK 141M (1150225)  
 PAT PANSY 461D  
 SANDY BAR PFRED 41M  
**Dam:** VALLEY BLOSSOM ERROLINE 729S (1315095)  
 VALLEY BLOSSOM ERROLINE 797P

RITO 9FB3 OF 5H11 FULLBACK NHF AMF  
 KRUEGERS MIRABELLE  
 DOUBLE J RITO 617A  
 PAT PANSY 619A  
 SUMMITOREST HI FLYER 3B18 NHF AMF  
 SANDY BAR MISS QUALITY 1K  
 SANDY BAR TWO FEATHERS 91H  
 SANDY BAR ERROLINE 507F

BW	WW	AOD	BW	WW	YW	MILK	TM
88	620	3	3.8	39	66	21	41

# 147 VALLEY BLOSSOM LIGHTENING 53W ★★

BEAU 53W 1515127 March 25, 2009

REMITALL LIGHTENING 2L (Elite)  
**Sire:** VALLEY BLOSSOM LIGHTENING 706P (1209966)  
 M BAR SIX QUEENETTE 232K (Elite)

SITZ ALLIANCE 6595 NHF AMF  
 LLB BONNIE PRIDE 816H  
 SANDY BAR BARDOLIER 82C  
 GFR QUEENETTE 3X  
 WHITESTONE WIDESPREAD MB NHF AMF  
 FAIRMAC PRIDE 16C  
 DAY BY DAY CHIEF 305H  
 KORNFELD M'BROOK LASS 616F

BW	WW	AOD	BW	WW	YW	MILK	TM
85	635	3	1.9	29	44	17	32

# 148 VALLEY BLOSSOM LIGHTENING 945W ★★

IJP 945W 1497164 March 25, 2009

REMITALL LIGHTENING 2L (Elite)  
**Sire:** VALLEY BLOSSOM LIGHTENING 706P (1209966)  
 M BAR SIX QUEENETTE 232K (Elite)

SITZ ALLIANCE 6595 NHF AMF  
 LLB BONNIE PRIDE 816H  
 SANDY BAR BARDOLIER 82C  
 GFR QUEENETTE 3X  
 BELVIN CHIEF  
 LADY OF PEAK DOT 144M  
 JOHNSTON 2100 TRADITION 485Y  
 OLE SASKALTA HEROINE 518E

BW	WW	AOD	BW	WW	YW	MILK	TM
81	635	7	1.2	28	46	19	33



# 149 SANDY BAR ADVANTAGE 112W ★★★

IJP 112W 1496675 March 21, 2009

SANDY BAR ADVANTAGE 43M  
Sire: WILBAR ADVANTAGE 202R (1265635)  
WILBAR KEEPSAKE 929N

BATTLE CREEK ATLAS 69F  
Dam: BATTLE CREEK BLOSINA 35J (990990)  
BATTLE CREEK BLOSINA 3G

TC ADVANTAGE NHF AMF  
SANDY BAR JEMINA 44K  
S A F 598 BANDO 5175 AMF  
WILBAR KEEPSAKE 508L  
BATTLE CREEK ATLAS 28A  
BATTLE CREEK LADY 29C  
WIWA CREEK HOGAN 13'95  
BATTLE CREEK BLOSINA 47B

BW	WW	AOD	BW	WW	YW	MILK	TM
80	645	10	1.4	34	60	15	32

# 153 SANDY BAR HUSSLER 97W ★★★

KYL 97W 1498222 March 13, 2009

CRESCENT CREEK 235 TRAV 65R  
Sire: SVR HUSSLER 320T (1385974)  
SVR FOREVER LADY 248M

PRAIRIELANE IDEAL 7451-2014  
Dam: SANDY BAR ERELITE 2S (1320746)  
SANDY BAR ERELITE 909J

GDAR TRAVELER 235  
CRESCENT CREEK LAWN 109H  
B BAR POWER ROPE 0869  
GDAR FOREVER LADY 0354  
IDEAL 7451 OF 8103 4465 NHF AMF  
PRAIRIELANE MAX DUCHESS 3050  
SANDY BAR WONDERER 7G  
ANCHOR R ERELITE 32E'95

BW	WW	AOD	BW	WW	YW	MILK	TM
83	645	3	2.7	32	65	19	35

# 150 VALLEY BLOSSOM TRAVELER 938W ★★

IJP 938W 1496654 March 15, 2009

NAF WANDERER 7L  
Sire: LAMB'S QUARTERS TRAVELER 80S (1321230)  
LAMB'S QUARTERS ESTHER 57M

PAT TREND 125E  
Dam: CFS MISS JUDY 59H (945742)  
CFS MISS JUDY 27F

ALBERDA TRAVELER 416 NHF AMF  
NIGHTSHADE BELLE 17F  
VBR BRAVE HEART 235J  
LAMB'S QUARTERS ESTHER 1E  
DOUBLE FOUR TREND 108B  
BESS OF CFS 12W  
SANDY BAR SHARPLINE 28D  
MISS JUDY OF CFS 22A

BW	WW	AOD	BW	WW	YW	MILK	TM
86	620	11	2.6	33	54	19	36

# 154 ROCKING H FULLBACK 10W ★

TDH 10W 1526270 March 15, 2009

VALLEY BLOSSOM FULLBACK 763R  
Sire: SANDY BAR FULLBACK 16T (1371730)  
SANDY BAR PRIDE 7L

SANDY BAR FAME 24K  
Dam: L 6 PRIDE 21N (1180790)  
L 6 PRIDE 29H

LLB FULLBACK 141M  
SANDY BAR LINDA 62L  
CRESCENT CREEK BRAVE HEART 35F  
SANDY BAR PRIDE 31X  
S A F FAME NHF AMF  
BENLOCK EVENING TINGE 43H  
SANDY BAR M302C 39F  
PAT PRIDE 72F

BW	WW	AOD	BW	WW	YW	MILK	TM
88	630	6	3.3	31	55	11	27

# 151 VALLEY BLOSSOM PFRED 85W ★★★

BEAU 85W 1532128 April 05, 2009

SANDY BAR PFRED 41M  
Sire: SANDY BAR PFRED 172S (1311774)  
SANDY BAR LINDA 2P

SANDY BAR LIGHTENING 2N  
Dam: JOINT CREEK 2N LASS 726T (1410434)  
THOMASON ERICA 31J

SUMMITCREST HI FLYER 3B18 NHF AMF  
SANDY BAR MISS QUALITY 1K  
ARDA BATTLE CRY 96M  
SANDY BAR LINDA 76H  
REMITALL LIGHTENING 2L  
SANDY BAR MISS QUALITY 8L  
WIWA CREEK STOCKMAN 32'95  
WIWA CREEK ERICA 16'92

BW	WW	AOD	BW	WW	YW	MILK	TM
82	590	2	3.3	39	60	19	39

# 155 ROCKING H FULLBACK 14W ★

TDH 14W 1526273 March 21, 2009

VALLEY BLOSSOM FULLBACK 763R  
Sire: SANDY BAR FULLBACK 16T (1371730)  
SANDY BAR PRIDE 7L

VBR WONDERER 116J  
Dam: L 6 TILDA 9N (1180783)  
SB TILDA 28E

LLB FULLBACK 141M  
SANDY BAR LINDA 62L  
CRESCENT CREEK BRAVE HEART 35F  
SANDY BAR PRIDE 31X  
SANDY BAR WONDERER 24D  
SANDY BAR ESTONIA 72C  
TRAVELER OF WLA 1Z  
WIWA CREEK TILDA 33 54'90

BW	WW	AOD	BW	WW	YW	MILK	TM
89	625	6	3.9	29	50	9	24

# 152 DAY BY DAY FULLBACK 315W ★

SLD 315W 1489954 March 19, 2009

LLB FULLBACK 141M  
Sire: VALLEY BLOSSOM FULLBACK 730S (1315058)  
M BAR SIX ANNIE K 201K

VALLEY BLOSSOM BARDOLIER 703L  
Dam: DAY BY DAY LINDA 80S (1411552)  
DAY BY DAY LINDA 8K

MT VALLEY FULLBACK 810  
PAT PANSY 461D  
SANDY BAR DEW 105F  
SANDY BAR ANNIE K 555E  
SANDY BAR BARDOLIER 82C  
SANDY BAR PRIDE LADY 29D  
SANDY BAR CHIEF 21F  
SANDY BAR LINDA 304E

BW	WW	AOD	BW	WW	YW	MILK	TM
90	645	3	3.8	27	46	9	22

# 156 VALLEY BLOSSOM GRASSLANDS 32W ★★

BEAU 32W March 1, 2009

WILBAR ADVANTAGE 202R  
Sire: SANDY BAR GRASSLANDS 94T (1371807)  
SANDY BAR JEMINA 22N (Elite)

A-LINE TONTO 3L  
Dam: IVANHOE BF 24P  
IVANHOE BF34M

SANDY BAR ADVANTAGE 43M  
WILBAR KEEPSAKE 929N  
LAMBS INNOVATOR 86J  
SANDY BAR JEMINA 54D  
SANDY BAR TONTO 61E  
SANDY BAR ANNIE K 89H  
WIWA CREEK TEX 86'97  
IVANHOE BLACK LUCY 21D

BW	WW	AOD	BW	WW	YW	MILK	TM
90	625	5					





**157****SANDY BAR PFRED 201W**

★★★

IJP 201W

1498683

March 12, 2009

SUMMITCREST HI FLYER 3B18 NHF AMF  
Sire: **SANDY BAR PFRED 41M** (1118942)  
SANDY BAR MISS QUALITY 1K

WILBAR ADVANTAGE 202R  
Dam: **SANDY BAR MISS QUALITY 86T** (1371793)  
SANDY BAR MISS QUALITY 118P

HOFF HI FLYER S C 7134 NHF AMF  
SUMMITCREST LASS 229Y  
CRESCENT CREEK BRAVE HEART 35F  
PAT MISS QUALITY 29U  
SANDY BAR ADVANTAGE 43M  
WILBAR KEEPSAKE 929N  
LAMBS INNOVATOR 86J  
SANDY BAR MISS QUALITY 91G

BW	WW	AOD	BW	WW	YW	MILK	TM
78	590	2	2.1	31	53	20	36

**159****SANDY BAR BANDO 625W**

★★

IJP 625W

1496663

March 27, 2009

S A F 598 BANDO 5175 AMF  
Sire: **LLB 5175 BANDO 190P** (1242664)  
LLB LADY ERROLLINE 324L

SANDY BAR DEW 105F  
Dam: **SANDY BAR MIA 719K** (1001091)  
PAT MIA 14S

BON VIEW BANDO 598 AMF  
S A F ROYAL LASS 1002  
ROYLE-HEAD RIGHT TIME 27E  
DOUBLE J ERROLLINE 244Y  
BAR 20 RAINMAKER 344D  
SANDY BAR ANNIE K 16C  
CRACKER JACK BAROS 68M  
MIA OF PEAK DOT 50L

BW	WW	AOD	BW	WW	YW	MILK	TM
93	620	9	2.6	30	53	7	22

**158****VALLEY BLOSSOM 71S 910W**

★★★

IJP 910W

1498675

February 15, 2009

PRAIRIELANE IDEAL 7451-2014  
Sire: **SANDY BAR IDEAL 71S** (1310315)  
SANDY BAR MISS QUALITY 1K (Elite)

LLB FULLBACK 141M  
Dam: **VALLEY BLOSSOM FAVORITE 850T** (1401693)  
VALLEY BLOSSOM FAVORITE 784N

IDEAL 7451 OF 8103 4465 NHF AMF  
PRAIRIELANE MAX DUCHESS 3050  
CRESCENT CREEK BRAVE HEART 35F  
PAT MISS QUALITY 29U  
MT VALLEY FULLBACK 810  
PAT PANSY 461D  
BASIN EQUATOR 276G  
SANDY BAR FAVORITE 20H

BW	WW	AOD	BW	WW	YW	MILK	TM
77	585	2	2.9	36	67	13	31

**160****DAY BY DAY FULLBACK 314W**

★

SLD 314W

1489940

March 18, 2009

LLB FULLBACK 141M  
Sire: **VALLEY BLOSSOM FULLBACK 730S** (1315058)  
M BAR SIX ANNIE K 201K

VBR BRAVE HEART 160J  
Dam: **DAY BY DAY LADY 27N** (1150555)  
SANDY BAR LADY 73F

MT VALLEY FULLBACK 810  
PAT PANSY 461D  
SANDY BAR DEW 105F  
SANDY BAR ANNIE K 555E  
CRESCENT CREEK BRAVE HEART 35F  
CRESCENT CREEK DUCHESS 73F  
SANDY BAR WONDERER 24D  
SANDY BAR LADY 10Y

BW	WW	AOD	BW	WW	YW	MILK	TM
96	640	6	4.4	27	47	12	25



**Kornfeld Queenette 807H**  
Dam of Lot #25



**M Bar Six Queenette 232k**  
Dam of Lot # 34



**Sandy Bar Erroline 29L**  
Dam of Lot #51



**Valley Blossom Linda 727T**  
Dam of Lot #97



**Sandy Bar Pride 89L**  
Dam of Lot #107



**Valley Blossom Linda 700R**  
Dam of Lot #131



**Valley Blossom Bride 761S**  
Dam of Lot #140



**Sandy Bar Miss Quality 1K**  
Dam of Lot #143



**Sandy Bar Lass 95K**  
Dam of Heifer 54W



# 20 "Hand Picked" Registered Heifers

*from the heart of Sandy Bar & Valley Blossom programs. Many females have either an "elite" on the sire or dam side.*

**1**

## SANDY BAR ERELITE 5W

KYL 5W 1498214 February 08, 2009

G A R GRID MAKER NHF AMF  
Sire: EARLEY GRID POWER 52P (1281860)  
BROCKHILL BLACK DIAMOND 9G

G D A R TRAVELER 044 NHF AMF  
G A R PRECISION 2536 NHF AMC  
RITO 9FB3 OF 5H11 FULLBACK NHF AMF  
BOOT STRAP JAMOCA 10D  
LAMBS MDL WHAM 14F  
LAMBS LASSIE 18D  
SANDY BAR WONDERER 7G  
ANCHOR R ERELITE 32E'95

SASKALTA OVERDRIVE 23K  
Dam: SANDY BAR ERELITE 615N (1149710) (Elite)  
SANDY BAR ERELITE 909J

BW	WW	AOD	BW	WW	YW	MILK	TM
71	730	6	2.3	39	70	15	35

**2**

## SANDY BAR PRIDE LADY 19W

IJP 19W 1497143 February 15, 2009

SANDY BAR ADVANTAGE 43M  
Sire: WILBAR ADVANTAGE 202R (1265635)  
WILBAR KEEPSAKE 929N

TC ADVANTAGE NHF AMF  
SANDY BAR JEMINA 44K  
S A F 598 BANDO 5175 AMF  
WILBAR KEEPSAKE 508L  
CRESCENT CREEK BRAVE HEART 35F  
SANDY BAR MISS QUALITY 12E  
TRAVELER OF WLA 1Z  
PAT PRIDE LADY 837X

SANDY BAR BRAVE HEART 75H  
Dam: SANDY BAR PRIDE LADY 16M (1114815)  
SANDY BAR PRIDE LADY 81C

BW	WW	AOD	BW	WW	YW	MILK	TM
82	770	7	2.7	49	78	16	41

**3**

## VALLEY BLOSSOM PRIDE LADY 25W

BEAU 25W 1515107 February 22, 2009



PRAIRIELANE IDEAL 7451-2014  
Sire: SANDY BAR IDEAL 28S (1310302)  
KORNFELD QUENETTE 807H

IIDEAL 7451 OF 8103 4465 NHF AMF  
PRAIRIELANE MAX DUCHESS 3050  
LAMBS TROJAN 58F  
KORNFELD QUENETTE 3D  
CRESCENT CREEK BRAVE HEART 35F  
SANDY BAR LADY 69E  
SANDY BAR MATLOCK 302C  
SANDY BAR PRIDE LADY 29D

SANDY BAR TWO FEATHERS 91H  
Dam: VALLEY BLOSSOM PRIDE LADY 705P (1209835)  
SANDY BAR PRIDE LADY 41F

BW	WW	AOD	BW	WW	YW	MILK	TM
80	685	5	2.8	42	73	15	36

**4**

## SANDY BAR ANNIE K 27W

IJP 27W 1497823 February 16, 2009

CRESCENT CREEK 235 TRAV 65R  
Sire: SVR HUSSLER 320T (1385974)  
SVR FOREVER LADY 248M

GDAR TRAVELER 235  
CRESCENT CREEK LAWN 109H  
B BAR POWER ROPE 0869  
GDAR FOREVER LADY 0354  
BASIN EQUATOR 276G  
WIWA CREEK TILDA 33 54'90  
LAMB'S QUARTERS TARGET 8E  
SANDY BAR ANNIE K 79F

VALLEY BLOSSOM EQUATOR 729M  
Dam: SANDY BAR ANNIE K 48S (1310300)  
VBR ANNIE K 210H (Elite)

BW	WW	AOD	BW	WW	YW	MILK	TM
77	625	3	3.0	31	64	19	35

**5**

## SANDY BAR DUCHESS EVA 39W

IJP 39W 1496627 February 18, 2009



G A R GRID MAKER NHF AMF  
Sire: EARLEY GRID POWER 52P (1281860)  
BROCKHILL BLACK DIAMOND 9G

G D A R TRAVELER 044 NHF AMF  
G A R PRECISION 2536 NHF AMC  
RITO 9FB3 OF 5H11 FULLBACK NHF AMF  
BOOT STRAP JAMOCA 10D  
RITO 8094 PRAIRIELANE 2060  
CRESCENT CREEK BLACKCAP 112A  
YOUNG DALE GOLIATH 71W  
DUCHESS OF PAT 701W

CRESCENT CREEK BRAVE HEART 35F (Elite)  
Dam: SANDY BAR DUCHESS EVA 30K (1000896)  
PAT DUCHESS EVA 908Y

BW	WW	AOD	BW	WW	YW	MILK	TM
89	725	9	5.0	46	83	13	36

**6**

## VALLEY BLOSSOM LADY 39W

BEAU 39W 1515117 March 10, 2009

MT VALLEY FULLBACK 810  
Sire: LLB FULLBACK 141M (1150225)  
PAT PANSY 461D

RITO 9FB3 OF 5H11 FULLBACK NHF AMF  
KRUEGERS MIRABELLE  
DOUBLE J RITO 617A  
PAT PANSY 619A  
HILLTOP EQUATOR F302  
BASIN JUANADALEEN 809Z  
BELVIN CHIEF  
PAT LADY 063A

BASIN EQUATOR 276G (Elite)  
Dam: VALLEY BLOSSOM LADY 813M (1115281)  
SANDY BAR LADY 98F (Elite)

BW	WW	AOD	BW	WW	YW	MILK	TM
88	660	7	6.1	43	78	15	37





*"Tiny"  
Waiting  
patiently to  
close the gate.  
Trail Ride at  
Valley Blossom  
Ranch.*

**10 SANDY BAR LADY 66W**  
IJP 66W 1497832 February 25, 2009



G A R GRID MAKER NHF AMF  
Sire: **EARLEY GRID POWER 52P (1281860)**  
BROCKHILL BLACK DIAMOND 9G

ARDA BATTLE CRY 96M  
Dam: **SANDY BAR LADY 30P (1204728)**  
SANDY BAR LADY 51J (Elite)

G D A R TRAVELER 044 NHF AMF  
G A R PRECISION 2536 NHF AMC  
RITO 9FB3 OF 5H11 FULLBACK NHF AMF  
BOOT STRAP JAMOCA 10D  
O G L BATTLE CRY 427 128  
ARDA BLACKBIRD 90G  
CRESCENT CREEK BRAVE HEART 35F  
SV LADY 3C

BW	WW	AOD	BW	WW	YW	MILK	TM
79	770	5	2.8	50	90	14	39

**11 SANDY BAR MIA 71W**  
IJP 71W 1496644 February 26, 2009

SANDY BAR ADVANTAGE 43M  
Sire: **WILBAR ADVANTAGE 202R (1265635)**  
WILBAR KEEPSAKE 929N

SANDY BAR WONDERER 24D  
Dam: **VBR MIA 127J (954387) (Elite)**  
PAT MIA 14S

TC ADVANTAGE NHF AMF  
SANDY BAR JEMINA 44K  
S A F 598 BANDO 5175 AMF  
WILBAR KEEPSAKE 508L  
TRAVELER OF WLA 12  
SANDY BAR ANNIE K 26Y  
CRACKER JACK BAROS 68M  
MIA OF PEAK DOT 50L

BW	WW	AOD	BW	WW	YW	MILK	TM
79	710	10	2.8	38	63	12	31

**7 SANDY BAR ANNIE K 52W**  
IJP 52W 1497147 February 21, 2009



SANDY BAR ADVANTAGE 43M  
Sire: **WILBAR ADVANTAGE 202R (1265635)**  
WILBAR KEEPSAKE 929N

SUMMITCREST HI FLYER 3B18 NHF AMF  
Dam: **SANDY BAR ANNIE K 62M (1118953)**  
SANDY BAR ANNIE K 78K (Elite)

TC ADVANTAGE NHF AMF  
SANDY BAR JEMINA 44K  
S A F 598 BANDO 5175 AMF  
WILBAR KEEPSAKE 508L  
HOFF HI FLYER S C 7134 NHF AMF  
SUMMITCREST LASS 229Y  
CRESCENT CREEK BRAVE HEART 35F  
SANDY BAR ANNIE K 20Y

BW	WW	AOD	BW	WW	YW	MILK	TM
80	758	7	2.3	53	89	15	42

**8 VALLEY BLOSSOM LASS 54W**  
BEAU 54W 1515128 March 28, 2009

NAF WANDERER 7L  
Sire: **LAMB'S QUARTERS TRAVELER 80S (1321230)**  
LAMB'S QUARTERS ESTHER 57M

DAY BY DAY CHIEF 305H  
Dam: **SANDY BAR LASS 95K (999976)**  
KORNFELD M'BROOK LASS 616F

ALBERDA TRAVELER 416 NHF AMF  
NIGHTSHADE BELLE 17F  
VBR BRAVE HEART 235J  
LAMB'S QUARTERS ESTHER 1E  
SANDY BAR CHIEF 21F  
SANDY BAR LINDA 301E  
PAT GOLIATH 952Z  
GLENNIE M'BROOK LASS 6B

BW	WW	AOD	BW	WW	YW	MILK	TM
77	570	9	0.9	31	52	15	31

**9 SANDY BAR FAVORITE 61W**  
IJP 61W 1496639 February 24, 2009

SANDY BAR ADVANTAGE 43M  
Sire: **WILBAR ADVANTAGE 202R (1265635)**  
WILBAR KEEPSAKE 929N

CRESCENT CREEK BRAVE HEART 35F (Elite)  
Dam: **SANDY BAR FAVORITE 31J (954443)**  
SANDY BAR FAVORITE 59Y

TC ADVANTAGE NHF AMF  
SANDY BAR JEMINA 44K  
S A F 598 BANDO 5175 AMF  
WILBAR KEEPSAKE 508L  
RITO 8094 PRAIRIELANE 2060  
CRESCENT CREEK BLACKCAP 112A  
YOUNG DALE GOLIATH 71W  
SANDY BAR FAVORITE 9S

BW	WW	AOD	BW	WW	YW	MILK	TM
70	640	10	1.0	42	71	11	32

**12 SANDY BAR PRIDE 118W**  
IJP 71W 1496644 February 26, 2009



SANDY BAR ADVANTAGE 43M  
Sire: **WILBAR ADVANTAGE 202R (1265635)**  
WILBAR KEEPSAKE 929N

CRESCENT CREEK BRAVE HEART 35F (Elite)  
Dam: **SANDY BAR PRIDE 13J (954542)**  
SANDY BAR PRIDE 42C

TC ADVANTAGE NHF AMF  
SANDY BAR JEMINA 44K  
S A F 598 BANDO 5175 AMF  
WILBAR KEEPSAKE 508L  
RITO 8094 PRAIRIELANE 2060  
CRESCENT CREEK BLACKCAP 112A  
SANDY BAR MATLOCK 18Z  
SANDY BAR PRIDE 34X

BW	WW	AOD	BW	WW	YW	MILK	TM
81	650	10	2.3	40	68	16	36

SANDY BAR PRIDE 118W



**13****SANDY BAR ERICA 184W**

IJP 84W 1498673 February 14, 2009

PRAIRIELANE IDEAL 7451-2014  
Sire: **SANDY BAR IDEAL 19S** (1310282)  
RON'S DELIA 22H (*Elite*)

VALLEY BLOSSOM LIGHTENING 706P  
Dam: **SANDY BAR ERICA 79T** (1371791)  
ATLASTA ERICA 41H

IDEAL 7451 OF 8103 4465 NHF AMF  
PRAIRIELANE MAX DUCHESS 3050  
SANDY BAR RAINMAKER 58F  
RON'S DELEGATE DELIA 32W  
REMITALL LIGHTENING 2L  
M BAR SIX QUEENETTE 232K  
HILL TOP DYNASTY 146F  
MLA ELLEN ERICA 36'93

BW	WW	AOD	BW	WW	YW	MILK	TM
70	560	2	3.4	31	56	15	31

**14****SANDY BAR MISS QUALITY 186W**

IJP 186W 1498676 February 17, 2009

PRAIRIELANE IDEAL 7451-2014  
Sire: **SANDY BAR IDEAL 19S** (1310282)  
RON'S DELIA 22H (*Elite*)

WILBAR ADVANTAGE 202R  
Dam: **SANDY BAR MISS QUALITY 34T** (1371742)  
SANDY BAR MISS QUALITY 182P

IDEAL 7451 OF 8103 4465 NHF AMF  
PRAIRIELANE MAX DUCHESS 3050  
SANDY BAR RAINMAKER 58F  
RON'S DELEGATE DELIA 32W  
SANDY BAR ADVANTAGE 43M  
WILBAR KEEPSAKE 929N  
SANDY BAR TWO FEATHERS 91H  
SANDY BAR MISS QUALITY 131L

BW	WW	AOD	BW	WW	YW	MILK	TM
77	605	2	3.5	42	75	13	34

**15****VALLEY BLOSSOM LADY 905W**

IJP 905W 1497814 February 12, 2009



PRAIRIELANE IDEAL 7451-2014  
Sire: **SANDY BAR IDEAL 18S** (1310363)  
SANDY BAR PRIDE 89L (*Elite*)

DOUBLE D BARDOLENE 15L  
Dam: **SANDY BAR LADY 74P** (1204759)  
SANDY BAR LADY 21K (*Elite*)

IDEAL 7451 OF 8103 4465 NHF AMF  
PRAIRIELANE MAX DUCHESS 3050  
SANDY BAR TONTO 61E  
SANDY BAR PRIDE 6H  
CRESCENT CREEK BARDOLENE 105H  
CRESCENT CREEK JESTRESS 46B  
CRESCENT CREEK BRAVE HEART 35F  
SANDY BAR LADY 54C

BW	WW	AOD	BW	WW	YW	MILK	TM
88	646	5	2.2	41	72	14	35

**16****VALLEY BLOSSOM EILEEN 912W**

IJP 912W 1499001 February 17, 2009

PRAIRIELANE IDEAL 7451-2014  
Sire: **SANDY BAR IDEAL 28S** (1310302)  
KORNFELD QUENETTE 807H

BASIN EQUATOR 276G (*Elite*)  
Dam: **VALLEY BLOSSOM EILEEN 782M** (1114899) (*Elite*)  
KLUZAK EILEEN 48F (*Elite*)

IDEAL 7451 OF 8103 4465 NHF AMF  
PRAIRIELANE MAX DUCHESS 3050  
LAMBS TROJAN 58F  
KORNFELD QUENETTE 3D  
HILLTOP EQUATOR F302  
BASIN JUANADALEEN 809Z  
ANKONIAN ELIXIR DB  
ANKONY EILEEN T2926

BW	WW	AOD	BW	WW	YW	MILK	TM
86	690	7	3.9	46	82	17	40

**17****VALLEY BLOSSOM JENNIFER 913W**

IJP 913W 1499005 February 19, 2009

PRAIRIELANE IDEAL 7451-2014  
Sire: **SANDY BAR IDEAL 28S** (1310302)  
KORNFELD QUENETTE 807H

BON VIEW NEW DESIGN 878 NHF AMF  
Dam: **WWF DESIGNER JENNIFER 62R** (1271969)  
WWF BRUNO JENNIFER 55N

IDEAL 7451 OF 8103 4465 NHF AMF  
PRAIRIELANE MAX DUCHESS 3050  
LAMBS TROJAN 58F  
KORNFELD QUENETTE 3D  
B/R NEW DESIGN 036 NHF AMF  
BON VIEW GAMMER 85  
STEVENS BRUNO 561G NHF  
WWF STOCKMAN JENNIFER 104H

BW	WW	AOD	BW	WW	YW	MILK	TM
77	650	4	2.8	46	88	19	42

**18****VALLEY BLOSSOM RUBY 922W**

IJP 922W 1499004 February 25, 2009



PRAIRIELANE IDEAL 7451-2014  
Sire: **SANDY BAR IDEAL 28S** (1310302)  
KORNFELD QUENETTE 807H

CRESCENT CREEK FORTUNE 100K  
Dam: **KENBERT 100K RUBY 47M** (1134548)  
KENBERT GILDA 37K

IDEAL 7451 OF 8103 4465 NHF AMF  
PRAIRIELANE MAX DUCHESS 3050  
LAMBS TROJAN 58F  
KORNFELD QUENETTE 3D  
CRESCENT CREEK FORTUNE 16H  
DWAJO MISS LUCY 33H  
LUKENS 9440 SCOTCH CAP L463  
KENBERT NEW TREND GILDA 1G

BW	WW	AOD	BW	WW	YW	MILK	TM
79	650	7	3.5	44	80	13	35

**19****VALLEY BLOSSOM EUTHALIA 930W**

IJP 930W 1518285 March 07, 2009

REMITALL LIGHTENING 2L (*Elite*)  
Sire: **VALLEY BLOSSOM LIGHTENING 706P** (1209966)  
M BAR SIX QUEENETTE 232K (*Elite*)

SOUTHERN KRUGGERAND 16H  
Dam: **WWF KRUGGERAND EUTHALLA 90R** (1271991)  
WWF TRENDY EUTHALLA 7F

SITZ ALLIANCE 6595 NHF AMF  
LLB BONNIE PRIDE 816H  
SANDY BAR BARDOLIER 82C  
GFR QUEENETTE 3X  
KRUGGERAND OF DONAMERE 490 NHF AMF  
SOUTHERN TALL PRIDE 72W  
V D A R NEW TREND 933  
WINDY BROOK EUTHALLA 75C

BW	WW	AOD	BW	WW	YW	MILK	TM
75	550	4	2.4	30	51	21	36

**20****VALLEY BLOSSOM PRIDE 936W**

IJP 936W 1497875 March 13, 2009

MT VALLEY FULLBACK 810  
Sire: **LLB FULLBACK 141M** (1150225)  
PAT PANSY 461D

REMITALL LIGHTENING 2L (*Elite*)  
Dam: **SANDY BAR PRIDE 3N** (1149556)  
SANDY BAR PRIDE 7L

RITO 9FB3 OF 5H11 FULLBACK NHF AMF  
KRUEGERS MIRABELLE  
DOUBLE J RITO 617A  
PAT PANSY 619A  
SITZ ALLIANCE 6595 NHF AMF  
LLB BONNIE PRIDE 816H  
CRESCENT CREEK BRAVE HEART 35F  
SANDY BAR PRIDE 31X

BW	WW	AOD	BW	WW	YW	MILK	TM
81	615	6	3.0	36	63	19	37



# SHORT GRASS FEMALES

*Sandy Bar & Valley Blossom are very proud to have bred or owned 100+ "elite cows" in their breeding program. Many sons & grandsons will be on offer.*

## 100+ Elite Cows! & Counting

Battle Creek Blossina 35J	Sandy Bar Annie K 126M	Sandy Bar Flora 100L	Sandy Bar Mia 67E	Sandy Bar Rosegay 20E
Brymor Miss 3L	Sandy Bar Annie K 24N	Sandy Bar Flora 304D	Sandy Bar Miss Quality 1K	Sandy Bar Rosegay 33C
CFS Belle 10H	Sandy Bar Annie K 78K	Sandy Bar Flora 80G	Sandy Bar Miss Quality 37K	Sandy Bar Rosegay 35C
CFS Lady 63H	Sandy Bar Annie K 99M	Sandy Bar Gemina 22N	Sandy Bar Miss Quality 65K	Sandy Bar Tilda 7F
Crowfoot Eline Erica 1645L	Sandy Bar Bella 21G	Sandy Bar Gemina 44K	Sandy Bar Miss Quality 91G	Valley Blossom Annie K 722M
FV 249B Annie K 135H	Sandy Bar Blacklass 5H	Sandy Bar Gemina 46E	Sandy Bar Neonia 15M	Valley Blossom Annie K 723M
Glennie M'Brook Lass 40B	Sandy Bar Bride 51K	Sandy Bar Gemina 85M	Sandy Bar Penny 906L	Valley Blossom Annie K 784M
Happyvale Neonia 22H	Sandy Bar Countess 71J	Sandy Bar Gemina 134N	Sandy Bar Pride 23H	Valley Blossom Duchess 799M
Happyvale Queen Lass 77H	Sandy Bar Delia 508M	Sandy Bar Lady 17J	Sandy Bar Pride 27E	Valley Blossom Eileen 782M
Kornfeld bosta Blackbird 519E	Sandy Bar Duchess 114E	Sandy Bar Lady 21K	Sandy Bar Pride 36E	Valley Blossom Erica 757M
Kornfeld Erroline 805H	Sandy Bar Duchess 46L	Sandy Bar Lady 120L	Sandy Bar Pride 6H	Valley Blossom Favorite 784N
Kornfeld Eugenie Erica 34D	Sandy Bar Duchess 49M	Sandy Bar Lady 50M	Sandy Bar Pride 82F	Valley Blossom Gene 741M
Kuzak Eileen 48F	Sandy Bar Duchess 92L	Sandy Bar Lady 51J	Sandy Bar Pride 84M	Valley Blossom Ms Quality 785L
Lambs Bar Lass 19D	Sandy Bar Duchess Eva 11J	Sandy Bar Lady 96F	Sandy Bar Pride 89L	Valley Blossom Ms Quality 820L
Lambs Lass 94G	Sandy Bar Duchess Eva 89G	Sandy Bar Lady 98F	Sandy Bar Pride 89L	Valley Blossom Ms Quality 763N
M Bar Six Pride 228K	Sandy Bar Erelite 615N	Sandy Bar Lass 119K	Sandy Bar Pride 91M	Valley Blossom Rosegay 719L
M Bar Six Queenette 232K	Sandy Bar Erica 15H	Sandy Bar Lass 29M	Sandy Bar Pride 133N	Valley Blossom Rosegay 730L
Ron's Delia 22H	Sandy Bar Erroline 29L	Sandy Bar Linda 301E	Sandy Bar Pride Lady 77L	VBR Annie K 210H
Sandy Bar Annie K 101L	Sandy Bar Erroline 507F	Sandy Bar Linda 62L	Sandy Bar Pride Lady 99G	VBR Mia 127J
Sandy Bar Annie K 106E	Sandy Bar Eva 904H	Sandy Bar Linda 73N	Sandy Bar Queenette 108E	Wilmo Pride 7H
Sandy Bar Annie K 11K	Sandy Bar Favorite 907H	Sandy Bar Linda 76H	Sandy Bar Queenette 761G	WLA Ideline 15H



## The Canadian Elite Cow Criteria:

- The cow must be enrolled in the Canadian Angus Performance Program.*
- The cow must have a calf with a 205-day weight recorded within the past 18 months.*
- The cow's first calf must be born and weaned within 1,000 days.*
- The cow must maintain a regular calving interval. Regular is considered to be  $365 + (30 \text{ days} / \text{number of calving intervals})$ .*
- The average of the cow's first four calves' weaning weight ratio must be at least 105. If she fails to do this with her first four calves, she can qualify later providing the average progeny weaning weight ratio is 105, and she meets the other requirements.*
- All of the cow's calves must be in contemporary groups with no less than 10 herds mates to determine the weaning weight ratio.*
- The cow's progeny must be sired by a registered Angus bull.*

*If a cow fails to meet these requirements with her first four calves, she can qualify later providing the average progeny weaning weight ratio is 105 and she meets all the other requirements.*

*Once a cow is designated an Elite Cow, she is always an Elite Cow, however she will not be published in a year where her index average drops below 105. For this reason, the list available to authorized users through Animal Inquiry may be different than the online report. The list available to online users is for your entire herd and will include cows that may not have made the most recent list.*

SHORT GRASS FEMALES



★ 50 Black Angus Heifers from Don & Jim Harbor, Val Marie, SK., 306-298-4729

# Commercial Heifers

★ 50 Black Angus Heifers from Hawkins Family Farm, Hodgeville, SK, 306-648-3578

*All Heifers are "One Iron" and part of complete herd health programs. Heifers will be sold in groups of 5 or more.*

★ 30 Black Angus Heifers from the Kornfeld Ranches, Doris, Glenn & Greg Kornfeld, Val Marie, SK., 306-298-4609

★ 25 Black Angus Heifers from Joe & Donna Waldner, Swift Current, SK 306-778-2558

★ 25 Black Angus Heifers from Wayne & Caroline Crawford, Willow Bunch, SK., 306-473-2766

★ 20 BWF Heifers from Brian & Debbie Highsaw, Mankota, SK., 306-478-2613

★ 20 Black Angus Heifers from Boyd Dunham, Admiral, SK 306-297-6200



★ 10 Black Angus Heifers from Ponteix Colony(Scotty, straw boss) Ponteix, SK, 306-625-7041

★ 10 Black Angus Heifers from Someday Ranch, Andre & Coralee Bouvier, Willow Bunch, SK., 306-473-2467

★ 7 BWF Heifers from Earview Colony, Larry (Beef Mgr) Gull Lake, Sk., 306-671-7133

★ 5 BWF Heifers from WL Ranch, Frank & Murray Linthicum, Glentworth, SK 306-266-4377

★ 5 Black Angus Heifers from WL Ranch, Frank & Murray Linthicum, Glentworth, SK 306-266-4377

★ 25 Black Angus Heifers from Paul LeBel, Val Marie, SK., 306-298-2239

★ 8 Black Angus Heifers from Spring Lake Colony, Neville, SK., Contact Sam: 306-627-3346

★ 20 Black Angus Heifers from Jody & Shelly Larson, Val Marie, SK., 306-298-4412.

*Valley Blossoms*  
Ashley's "Valley Blossom" Miniature Pet Pigs and Micro Blossoms!  
*Grow and Blossom Together*

My Piglets originated from Hidden Valley Rabbitry and Farm in West Liberty, Kentucky, which was featured on the *Tyra Show* on Nov. 9/09! Join the stars with their mini pet pigs including David and Victoria Beckham, Paris Hilton, and Harry Potter star Rupert Grin!

**Piglets coming this spring! 2010**

*My Valley Blossoms and Micro Blossoms are very tiny with unique colors. They are all carriers of blue and green eyes, pintos, polka dots, blues, reds, red silvers, chocolates, blacks and pinks. Their physical characteristics include short wrinkled noses, perky little ears, sway backs, straight tails (that wag like a dogs), and pot bellies. They will be your loyal companion for around 15 years with proper care. They are docile, laid back, have strong human bonding traits, and have almost no body odour. Their intelligence is compared to primates and dolphins, thus making them litter and harness trainable. They are easier to transport on outings and vet visits, are non-allergenic, prefer a clean environment, and aren't prone to fleas and ticks.*

**H: 306-627-3444**



# Selling: 3 Working Ranch Horses!



**Bo** is a home raised colt who stands 16 $\frac{1}{2}$ H. He has never offered to buck and has always been a pleasure to ride. Bo is very gentle and quiet and the kids enjoy riding him. He has been used for all ranch work including pulling calves to the fire, feedlot work, or just trailing cows. Bo is eager to go in any direction you like. Grandson of Mr Freckles O Lena out of Colonel Freckles on top side and Lucky Lynx Bar on the bottom..

Phone Sam: 403-332-0937 or Justin: 403-593-8161



**Mac** is a very smooth riding 5 year old gelding with a fast walk. He has done all types of ranch work. He handles all rope work very easily. He has been started heeling and will make a great head horse. Mac is 15.1 $\frac{1}{2}$ H and 1200lbs. He is a very good looking horse with excellent feet and legs. Come try him out before the sale! Grandson of Sonny Sugar out of Sugar Bars on top side, and Hard Tack Cola on the bottom.

Phone WFD Cattle Company: 306-295-4154



**Tiny** is a solid but gentle 12 year old gelding. He has been rode many miles in the PTRA, and on our ranch moving cows, doctoring, or just out for a pleasure ride. Anyone can ride this horse! Kids and beginner riders have borrowed him for trail rides and got along very well with him. He is sound at 16.2 $\frac{1}{2}$ H with good feet and good bone. Tiny stands perfectly for a farrier, is easy to catch, and loads with ease. He was the only horse I rode while I was pregnant! Anyone is welcome to come try him out.

Phone Ashley: 306-627-3444



## Bob's - Most frequent asked questions:

- No – We don't single trait select
- No – We don't chase the "Numbers Game"
- No – We don't weigh our cattle before 205 day and adjust them upwards.
- No – We don't weigh our cattle in small contemporaries

- No – We don't use a bull because he won a ribbon.
- No – They don't have an EPD for "Common Sense" nor "Eye Appeal"
- No – We haven't had an Order Buyer ask for EPD's
- No – There's no service charge!
- No – There is no Upset Bid at our Sale.
- Yes – We believe in EPD's within herd use.
- Yes – We weigh our calves the first Monday in October
- Yes – All Bull & Heifer calves are weighed in one contemporary group.
- Yes – We have different groups from different ranches
- Yes – We have a strict culling process. If a cow dry after a 60-day breeding period it is shipped.**
- Yes – We have an udder score on all females.
- Yes – We have a dollar figure per cow retained.
- Yes – We have many "Elite Dams" & "Elite Sires" in our herd

- Yes – We creep feed our calves for three weeks prior to weaning as a management tool.
- Yes – We feed our bottom end calves at Red Coat Cattle Feeders (our locally owned community feedlot).
- Yes – We know what carcass quality is all about. Feed a pen & you will learn the good & the bad!
- Yes – We run our cows like a commercial ranch. We wean the 1<sup>st</sup> Monday in October and cows graze either grass or swaths until January.
- Yes – We don't sell all our bulls in the Sale.
- Yes – All Bulls are fed at Sandy Bar Ranch in 3 groups. They are fed 14% pellets plus free choice hay in 3 to 5 acre lots. There is lots of room to rumble!
- Yes – We pay 2% towards coverage of insurance on our Bulls (Optional).
- Yes – We "Service Our Customers." Maybe "Short Grass" invented this practice

**Yes - This is our 32nd Annual Sale!**

# Directions

### From Aneroid:

3 miles east of Aneroid on highway 13 & then turn at the "Sandy Bar Ranch Sign" & go 9 miles south

### From Hazenmore:

9 miles (14.5 km) south and 5 miles (8.1 km) west

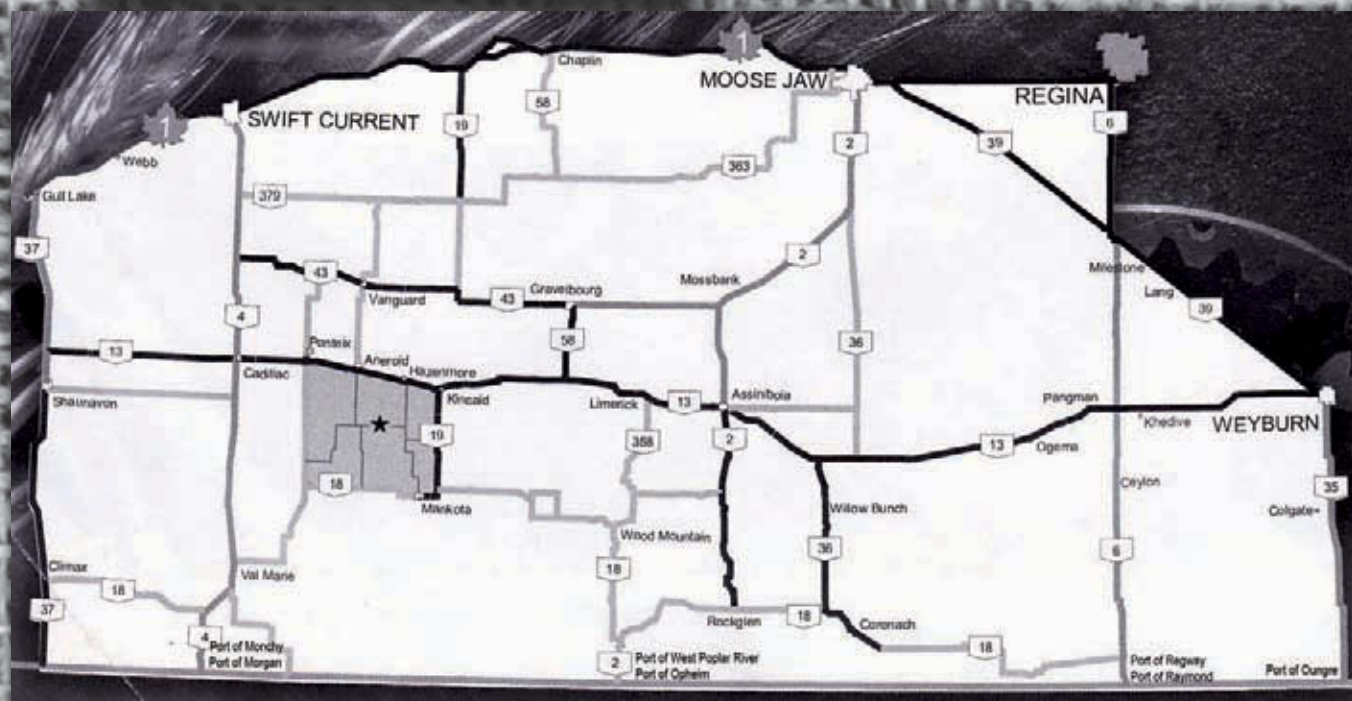
### From Mankota:

13 miles (21 km) north & 5 miles (8.1 km) west

*Sandy Bar Ranch is 70 miles (112 km) south & east of Swift Current, Saskatchewan*

### Port of Monchy/Morgan Crossing:

*Ranch is 60 miles from the United States border & 110 miles from Malta, Montana.*





# The 2010 Short Grass Bull & Female Sale is dedicated to the memory of

*Larry Gross*



**Co-Founder of the Short Grass Bull and Female Sale.  
Picture taken at the 2009 Sale at 96 years of age.**

*1913 - 2009*





# Short Grass

**Angus Bull & Female Sale**

**P.O. Box 193**

**Aneroid, SK SON OCO**

CANADA POSTES  
POST CANADA

Postage paid  
Addressed  
Admail

Port payé  
Médiaposte  
avec adresse

5469929



*www.SandyBarAngus.com*