

3rd Annual



PRODUCTION SALE

Registered Black Angus Bulls

Cowtown Livestock Exchange

Maple Creek, SK

Friday

APRIL

25th

2014

1pm CST



Welcome

to the Sheidaghan Anghus Spring Bull Sale - our 3rd

It is a pleasure to have Larry and Debbie Sushelnitski- Delar Cattle as consignors this year and as usual they have brought some great cattle. Our focus is to provide sound functional bulls that will benefit the buyers' programs. We feel that the bull pen is deeper and more consistent this year than ever before. It is difficult but we aim for constant improvement and have explored all the possibilities we can come up with to achieve our goal.

My Dad always said "Surround yourself with people who are good at what they do". This strategy has served me well in business and in life for a long time. Since starting in this industry I have attempted to continue to follow his advice, finding very competent Angus breeders that I admire with whom to collaborate. Bob and Gail Switzer - Sandy Bar Ranch, Larry and Debbie Sushelnitski - Delar Cattle and Wes and Kim Olynyk - Crescent Creek Angus have provided us with such partnership experiences. They have been good sounding boards and have offered dependable and valued advice over and over again.

Their assistance has helped us improve our herd and is greatly appreciated. Lots 1 through 6 were chosen in recognition of these valued business relationships and personal friendships. The balance of the bulls will be sold in order of DOB in each pen. This year we are offering a few yearling heifers along with the bulls. The heifers will be sold after the bulls. They will be offered in pairs with the successful buyer taking his choice, we will keep the other one.

We are continuing with the video sale concept - services by Sarah Buchanan - CATTLE IN MOTION. Live bulls will NOT enter the ring.

Thanks to our Sheidaghan Team, another collaborative group which is invaluable at the ranch - Bushy and Wendy, Monty and Della, Neil and Ross.

Tom & Vicki

Tom & Vicki Flanagan

Box 627

Maple Creek, Sk

S0N 1N0

306-662-2272

C:306-662-8120

info@sheidaghananhgus.
com



www.SheidaghanAnghus.com



PRODUCTION BULL SALE

Friday, April 25th, 2014 - 1:00PM CST

SALE STAFF:

Auctioneers:

Brent Wiess.....306-662-7229
Gordie Cameron Cell...306-741-7077
Jim Wilson.....306-558-4410

Ringman/Fieldman:

Rocky Houff.....403-548-9829
Nate Marin.....306-869-7130
Mark Stock.....306 678-4811

OFFERING:

- **64** yearling Black Angus Bulls.
- **6** yearling Black Angus Open Heifers - to be offered by choice in 6 pairs where the successful bidder has his choice of the 2 and we keep the other one.

Schedule of Events:

Thursday, April 24th:
Bulls Available for viewing.

Friday April 25th:
Complimentary Lunch -
11:00am

Sale - 1:00pm

Special Representative

Laird Senft,
Canadian Angus Association

Sale Day Contact Information

Tom's Cell.....306-662-8120
Bushy's Cell.....306-661-7791
Monty's Cell.....306-662-7902
Larry's Cell.....403-635-0280

Sale Location

At Scheidaghan Ranch,
Maple Creek, Sk. West
4 miles of Junction 1 &
21 on No. 1 turn South
1 1/2 miles at Royal
Edward Road.

A Special Thank you to our Staff at
SHEIDAGHAN ANGHUS



Monty & Della Bowyer
Valuable Consultants &
great help!



Laverne (Bushy) & Wendy Lund - Ranch Managers

Not Pictured - Neil Burton & Ross Kruetzer
Our 'go to' guys.

Cattle in Motion will be broadcasting the sale live. To register for bidding and to view videos of the cattle previous to sale day, please visit www.cattleinmotion.com



For More Information Contact:

Sarah Buchanan
519-546-3352
sarah@cattleinmotion.com

GENERAL SALE INFORMATION

• **Location:** 1 1/2 miles South of Trans Canada at Royal Edward Road road 4 miles west of Junction 1:21.

• **Sale Order:** Bulls will sell in catalogue order. Lot numbers correspond with Bulls' tag numbers.

• **No bulls** sold prior to sale.

• **Semen Testing** all bulls in the sale will be semen tested prior to Sale Day and are FULLY GUARANTEED

• **Scrotal Circumferences & Current Weights** will be available Sale Day.

• **Lunch** will be provided by Sheila Fry - served at 11:00 am on Friday at the sale location. Refreshments after the sale will be served by the MC Elks Club.

Weaning, Yearling Weights:

Weaning weight date - Oct. 1, 2013

Yearling weight date - Apr. 15, 2014

CALVING EASE – we have rated each bull (in our opinion) based on all the information we have.

*** Heifer Bull should produce minimal problems when bred to moderate size first calf heifers,

** LG Heifer/Cow Bull recommended for second calvers or smaller framed cows 1100 lbs to 1300 lbs,

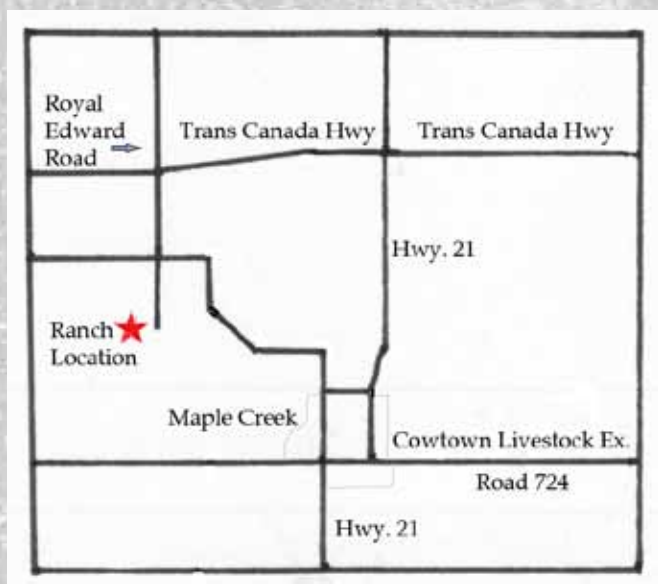
*Cow Bull recommended for mature cows 1400 lbs plus

RIGHT TO SEMEN– Sheidaghan Angus reserves the right to draw semen from any bull sold in this sale for in-herd use only - at our expense and the buyers convenience

VETERINARIAN'S ENDORSEMENT

Since its inception, Sheidaghan Angus has worked with Grasslands Animal Health Services to adopt a comprehensive approach to animal health and disease prevention. In part this means a complete vaccination program. All cows are vaccinated with a pre-breeding vaccine which includes IBR, BVD, Type I & II, P13 and BRSV to ensure fertility, prevent abortions and permit healthy calves at birth. All calves are vaccinated spring and fall to prevent clostridial diseases, sleepers, viral and bacterial pneumonias. Yearling bulls have been given a vaccine to prevent foot rot. The purpose of a comprehensive vaccination program, coupled with appropriate nutrition and environmental management is firstly to prevent disease, but secondly to be able to sell cattle from a herd with high health status. Rest assured that any purchases from Sheidaghan Angus are healthy cattle. All bulls presented at the sale have passed breeding soundness evaluation with focus on health, fertility and structural soundness.

Dr.
Lawrence Heinrich DVM,
Grasslands Animal Health Services - 515 2nd Ave N, Maple Creek,
SK S0N 1N0
Phone 306 662-4969



EPD BREED AVERAGES - SPRING 2013

Black Angus...	BW	WW	YW	MILK	TM
Sires...	+2.7	+42	+76	+1	+40

Please bring this Catalogue with you to the Sale!
You can view our catalogue online at www.sheidaghanangus.com, www.everythingangus.com, www.cattleinmotion.com and on the Canadian Angus Association website.



SHEIDAGHAN

REFERENCE SIRES

REF
A RR *Scotchman* 2999

IMP 2999M March 30 2002 1174224

Performance Data BW WW

R R SCOTHCAP 9440 SCOTCH CAP
Sire: E X A R SCOTCH CAP 816 BLACKCAP OF R R 5367
LEACHMAN BLACKCAP 2202 N BAR EMULATION EXT
LEACHMAN BLACKCAP 0201
R R 9440 SCOTCH CAP 1483
R R FERDINAND 758D BLACKCAP OF R R 5367
Dam: ERICA LASSIE OF R R 8464 LOST LAKE HOME RUN
ERICA LASSIE OF R R 4580 ERICA LASSIE OF R R 8268

EPD's BW WW YW MILK TM
+2.0 +51 +92 +22 +48



REF
B Schurr77-801-7029 *Sure Thing*

IMP 7029Y February 22 2011 1690195

Performance Data BW WW

EPD's BW WW YW MILK TM
+3.2 +49 +94 +26 +51

CONNEALY DANNY BOY
Sire: SCHURRTOP RTA BUSINESS
CHERRY KNOLL HAILEY

CONNEALY TIMELINE
ENERGY OF CONANGA 4851
S A V 8180 TRAVELER 004
HAYLEY OF CONANGA 574
SCHURRTOP M C
SCHURRTOP R S 1413 2153
Dam: SCHURR 77 ERISKAY 2500 5894
SCHURR ERISKAY 4112 1255
DEEP CREEK CARSON D C 363
SCHURR 77 ERISKAY 1103 1027

REF
C s *Chisum* 6175

IMP 6175S March 31 2006 1539796

Performance Data BW WW

Sire: PAWS UP ALLIANCE 9561 SITZ ALLIANCE 6595
S ALLIANCE 3313 SITA EVERELDA ENTENSE 023
PAWS UP 9048 EMULATION EXT N BAR EMULATION EXT U2023
M H R MISS RAINMAKER 1034
S S TRAVELER 6807 T510
S ECLIPSE 169 H L LADY TRAVELER 416
Dam: S GLORIA 464 LEACHMAN RIGHT TIME
S GLORIA 209 S GLORIA 0118

EPD's BW WW YW MILK TM
+3.0 +70 +117 +32 +67



REF
D CRESCENT CREEK *Fortune* 67X

WOS 67X February 03 2010 1549251

Performance Data BW WW
72 740

EPD's BW WW YW MILK TM
+2.5 +38 +58 +15 +34

GARDENS FORTUNE 9213 S3
Sire: STEVENSON FORTUNE 425C
J R S ENCHANTRESS 235Z

SCHURRTOP FORTUNE 3261
GREEN GARDEN JILT 612C
BASIN EMULATION 5653
J R S ENCHANTRESS 850X
WILLABAR AMBUSH 45G
GRASSY LANES MILLY 29U
SITZ HERITAGE 10709
CRESCENT CREEK ROSEBUD 115F

LOOKOUT PACESETTER 258M
Dam: CRESCENT CREEK ROSEBUD 15U
CRESCENT CREEK ROSEBUD 6R

REF**E****SOO LINE** *Motive* 9016

SOO 16W January 07 2009 1504907

Performance Data

BW	WW
71	781

SANDY BAR ADVANTAGE 43M
 Sire: HF KODIAK 5R
 WILBAR RUBY 955N

TC ADVANTAGE
 SANDY BAR JEMINA 44K
 VERMILION YELLOWSTONE
 WILBAR RUBY 161J
 A A R RAINMAKER 7407
 H A CONCEPCIONA 0224
 TERRLENE EXECUTIVE PRIDE 10D
 KBJ BEAUTY 257B

RR 7407 RAINMAKER 2154
 Dam: TLA BEAUTY 5R
 TERRLENE BEAUTY 35F

EPD's	BW	WW	YW	MILK	TM
	+0.2	+53	+93	+28	+55

**REF****F****SAV** *Final Answer* 0035

IMP 035K February 22 2000 1061938

Performance Data

BW	WW
86	744

G D A R TRAVELER 71
 Sire: SITZ TRAVELER 8180
 SITZ EVERELDA ENTENSE 1137

TRAVELER 1148 G D A R
 G D A R MISS BLACKCAP 567
 G D A R RAINMAKER 340
 SITZ EVERELDA ENTENSE 2335
 TEHAMA BANDO 155
 BON VIEW DORA 56
 ELLANIN SKY DIVER
 TAIL N 0383

BON VIEW BANDO 598
 Dam: S A V EMULOUS 8145
 S A V SKY EMULOUS 2124

EPD's	BW	WW	YW	MILK	TM
	-1.0	+61	+103	+25	+56

**REF****G****HA** *Image Maker* 0415

IMP 0415K January 23 2000 1195032

Performance Data

BW	WW

RR HERO 6267
 Sire: HERO 6267 OF R R 2418
 R R EVERELDA ENTENSE 0413

HIGHWOOD HERO L C H
 BLACKBIRD OF R R 1204
 Q A S TRAVELER 23-4
 RR EVERELDA ENTENSE 8320 TPB
 RITO 2100 G D A R
 RITO EILEENMERE 378 OF 96
 BAND 105 OF HYLINE 2380
 H96 BLACKCAP EILEEN 380

H 96 RITO 2100 7371
 Dam: H A RITO BLACKCAP 9038
 H 96 BLACKCAP 3835

EPD's	BW	WW	YW	MILK	TM
	+0.5	+65	+105	+37	+70



REF**H****SOO LINE** *Motive* 1034

SOO 34Y January 09 2011 1605810

Performance Data

BW	WW
75	755

HF KODIAK 5R
Sire: SOO LINE MOTIVE 9016
TLA BEAUTY 5R

SANDY BAR ADVANTAGE 43M
WILBAR RUBY 955N
RR 7407 RAINMAKER 2154
TERRLENE BEAUTY 35F
TC STOUT 407

BAR-E-L THOR 6T
Dam: SOO LINE BLACKBIRD 9224
MINBURN BLACKBIRD 144P

BAR-E-L 365 ENCHANTRES 36J
KBJ WINDY 680M
MINBURN BLACKBIRD 117M

EPD's	BW	WW	YW	MILK	TM
+0.6	+49	+95	+26	+51	

**REF****I****CUDLOBE** *In Focus* 5S

UF 5S January 05 2006 1333991

Performance Data

BW	WW
68	772

S A F FOCUS OF E R
Sire: MYTTY IN FOCUS
MYTTY COUNTESS 906

S A F FAME
G D A R FOREVER LADY 246
SITZ ALLIANCE 6595
BALDRIDGE COUNTESS 357
B/R NEW DESIGN 036
BON VIEW PRIDE 664
PUKETUTU ROBIN 933
STEVENSON ENCHANTRESS 425F

BON VIEW NEW DESIGN 1407
Dam: CUDLOBE ENCHANTRESS 55M
CUDLOBE ENCHANTRESS 47H

EPD's	BW	WW	YW	MILK	TM
-1.6	+59	+123	+27	+57	

**REF****J****DBRL** *Alaskan* 57X

DBRL 57X February 19 2010 1556046

Performance Data

BW	WW
78	847

HF KODIAK 5R
Sire: HF ALASKAN 94T
HF ECHO 112R

SANDY BAR ADVANTAGE 43M
WILBAR RUBY 955N
BT RIGHT TIME 24J
HF ECHO 187N
HIGH VALLEY 4C6 AMBUSH
DMM MISS ESSENCE 108J
LEACHMAN RIGHT TIME
ELLIOTT PATRICIA 26M

DMM AMBUSH 03M
Dam: DBRL 03M PATRICIA 21U
DBRL RT PATRICIA 9R

EPD's	BW	WW	YW	MILK	TM
+1.0	+51	+81	+24	+50	



REF**K****DBRL Titan 4T**

DBRL 4T January 25 2007 1392285

Performance Data

BW	WW
90	831

Sire: HIGH VALLEY 4C6 AMBUSH
DMM AMBUSH 03M
DMM MISS ESSENCE 108J

PARAMONT AMBUSH 2172
HIGH VALLEY GLORIA 1Q2
TC STOCKMAN 365
DMM MISS ESSENCE 22B
COLDSTREAM BONNIE DOON 29H
COLDSTREAM BLACKBIRD 9G
STEVENSON ROYCE 741C
COLDSTREAM BLACKBIRD 27D

Dam: COLDSTREAM BLACKBURN 10L
DBRL BLACKBIRD 2N
COLDSTREAM BLACKBIRD 7K

EPD's

BW	WW	YW	MILK	TM
+3.1	+47	+95	+6	+30

**REF****L****DRCC Royal Repetition 9097W**

DRCC 9097W September 18 2009 1534550

Performance Data

BW	WW
87	755

Sire: G A R PREDESTINED
ROYAL PREDESTINED DRCC 6036S
THOMAS ELBINA 0183

B/R NEW DESIGN 036
G A R EXT 4206
PAPA FORTE 1921
THOMAS ELBINA 7519
PAPA OPTIMA 9818
PAPA ENVIUS BLACKBIRD 8832
B/R NEW DESIGN 036
THOMAS KARAMA 6359

Dam: PAPA FORTE 1921
ROYAL KARAMA DRCC 5113R
THOMAS KARAMA 0259

EPD's

BW	WW	YW	MILK	TM
+3.4	+28	+59	+30	+44

**REF****M****SANDY BAR Ideal 18S 2X**

IJP 2X February 10 2010 1546771

Performance Data

BW	WW
77	614

Sire: PRAIRIELANE IDEAL 7451-2014
SANDY BAR IDEAL 18S
SANDY BAR PRIDE 89L

IDEAL 7451 OF 8103 4465
PRAIRIELANE MAX DUCHESS 3050
SANDY BAR TONTO 61E
SANDY BAR PRIDE 6H
RITO 8094 PRAIRIELANE 2060
CRESCENT CREEK BLACKCAP 112A
WIWA CREEK ATLAS 7S
SOUTHERN LANE SUSIE 18L

Dam: CRESCENT CREEK BRAVE HEART 35F
SANDY BAR MISS QUALITY 1K
PAT MISS QUALITY 29U

EPD's

BW	WW	YW	MILK	TM
+0.8	+32	+61	+16	+32



SA

SHEIDAGHANI

SALE BULLS

Bulls will sell in catalogue order.

3 STAR PROGRAM



Heifer Bull



LG Heifer/Cow Bull



Cow Bull

1

MAPLE SPRINGS *Motive* 4A

 MSC 4A January 26 2013 1727877

Performance Data	BW	WW
	76	742

HF KODIAK 5R
 Sire: **SOO LINE MOTIVE 9016**
TLA BEAUTY 5R

SANDY BAR ADVANTAGE 43M
WILBAR RUBY 955N
RR 7407 RAINMAKER 2154
TERRLENE BEAUTY 35F
E X A R SCOTCH CAP 816
ERICA LASSIE OF R R 8464
BEVERLY HILLS FANDANGO 404
CRESCENT CREEK MARGARET 21M

RR SCOTCHMAN 2999
 Dam: **SHEIDAGHAN MARGARET 004X**
CRESCENT CREEK MARGARET 25U

EPD's	BW	WW	YW	MILK	TM
	+0.7	+53	+90	+26	+53



MSC 4A is an example of what Scotchman daughters can do. Larry and I partnered on this bull's dam, Margaret 004X, who is an outstanding female out of a Crescent Creek cow, one of Wes' finest. We feel that this mating with Motive is a good one, with a fantastic EPD graph and the potential to be an outstanding herd sire. He could be the best one we've raised!

2

MAPLE SPRINGS *Focus* 78A

 MSC 78A January 11 2013 1727883

Performance Data	BW	WW
	82	713

MYTTY IN FOCUS
 Sire: **CUDLOBE IN FOCUS 5S**
CUDLOBE ENCHANTRESS 55M

S A F FOCUS OF E R
MYTTY COUNTESS 906
BON VIEW NEW DESIGN 1407
CUDLOBE ENCHANTRESS 47H
C R A BEXTOR 872 5205 608
TC BLACKBIRD 4034
CUDLOBE YELLOWSTONE 1'03
CUDLOBE BLACKCLASS 63M

TC ABERDEEN 759
 Dam: **CUDLOBE BLACKCLASS 78Y**
CUDLOBE BLACKCLASS 123U

EPD's	BW	WW	YW	MILK	TM
	+0.4	+54	+107	+29	+56



Larry and I purchased Blackclass 78Y from Dyce Bolduc at the Taber Sale. She was bred to their Origen sire Cudlobe In Focus 5S. Focus 78A has performance written all over him and he has been a great favourite in the pen all winter. He has great EPDs, will cover your cows and produce valuable calves.

★
3
SHEIDAGHAN *Sure Thing* 57A
VMF 57A February 11 2013 1727945

Performance Data	BW	WW
	98	681

SCHURRTOP RTA BUSINESS
Sire: SCHURR 77 801 7029
SCHURR 77 ERISKAY 2500 5894

SANDY BAR IDEAL 19S
Dam: SHEIDAGHAN MISS LILY 5W
SANDY BAR MISS 120T

CONNEALY DANNY BOY
CHERRY KNOLL HAILEY
SCHURRTOP MC 2500
SCHURR ERISKAY 4112 1255
PRAIRIELANE IDEAL 7451-2014
RON'S DELIA 22H
LLB 5175 BANDO 190P
BRYMOR MISS 3L

EPD's	BW	WW	YW	MILK	TM
	+2.7	+49	+91	+22	+47



This bull's pedigree is loaded with the best females in the Sandy Bar herd combined with genetics from Schurr ranches in Nebraska. We purchased, with Bob, Sure Shot and Sure Thing who are breed leaders in feed efficiency. Their calves are outstanding. This is another example of a partnership that really worked. VMF 57A will do nothing but good for the buyer's herd.

★★★
4
SHEIDAGHAN *Alaskan* 165A
VMF 165A February 11 2013 1727925

Performance Data	BW	WW

HF ALASKAN 94T
Sire: DBRL ALASKAN 57X
DBRL 03M PATRICIA 21U

REMINGTON COPENHAGEN 188R
Dam: LOOKOUT ERICA 40U
LAZY RC C H ERICA 341N

HF KODIAK 5R
HF ECHO 112R
DMM AMBUSH 03M
DBRL RT PATRICIA 9R
SCA 3299 OF IDEAL 1418
DRYLAND LADY BATE 275
SCA FORTE 02J
C H ERICA 9526

EPD's	BW	WW	YW	MILK	TM
	+0.5	+45	+76	+27	+50



Bob, Bushy and I travelled to Robert Ballantyne's place and found this calf's sire, Alaskan 57X in his bull pen. We purchased 57X at Robert's dispersal sale. His calves have low birth weights and explosive yearling weights. VMF 165A is no exception with great EPDs. A herd bull in the making.





5

SHEIDAGHAN *Answer* 50A

VMF 50A February 05 2013 1728154

Performance Data

BW	WW
77	743

SITZ TRAVELER 8180
 Sire: S A V FINAL ANSWER 0035
 S A V EMULOUS 8145

G D A R TRAVELER 71
 SITZ EVERELDA ENTENSE 1137
 BON VIEW BANDO 598
 S A V SKY EMULOUS 2124
 E X A R SCOTCH CAP 816
 ERICA LASSIE OF R R 8464
 SANDY BAR IDEAL 72S
 EBON HILL MAYFLOWER 279'03

RR SCOTCHMAN 2999
 Dam: SHEIDAGHAN MAYFLOWER 27Y
 SHEIDAGHAN MAYFLOWER 86W

EPD's	BW	WW	YW	MILK	TM
	+0.5	+60	+101	+22	+52



This is another great combination of Final Answer with a Scotchman daughter. One of the best decisions we made was to partner with Wes Olynyk on Scotchman 2999, a bull with a perfect foot, calving ease, easy doing, maternal and best of all longevity. We lost him this fall in his twelfth year after he bred eighteen cows. His progeny are valuable assets.



6

SHEIDAGHAN *Great Scot* 55A

VMF 55A February 09 2013 1754594

Performance Data

BW	WW
76	742

E X A R SCOTCH CAP 816
 Sire: RR SCOTCHMAN 2999
 ERICA LASSIE OF R R 8464

R R SCOTCHCAP 9440
 LEACHMAN BLACKCAP 2202
 R R FERDINAND 758D
 ERICA LASSIE OF R R 4580
 STEVENSON BRUNO 561G
 H A RITO LADY 1262
 RRD FAME 1K
 CRESCENT CREEK MARGARET 37

BEVERLY HILLS FANDANGO 404
 Dam: CRESCENT CREEK MARGARET 25U
 CRESCENT CREEK MARGARET 21M

EPD's	BW	WW	YW	MILK	TM
	+2.2	+44	+77	+21	+43



This bull is a full brother to the dam of LOT # 1 - MSC 4A and exhibits all of the traits of his sire Scotchman 2999. He's out of a great Crescent Creek cow Margaret 25U. To date we have registered 101 Scotchman calves and this guy is for sure one of the best. It will be interesting to see him a year from now. I'm betting the verdict will be WOW!



7 *DELAR Papatop* 36A
 LNS 36A January 14 2013 1719236

Performance Data	BW	WW
	86	684

HF KODIAK 5R
 Sire: SOO LINE MOTIVE 9016
 TLA BEAUTY 5R

S A V 004 DENSITY 4336
 Dam: MEADOW RIDGE MAY 38T
 MEADOW RIDGE JENNY 878

SANDY BAR ADVANTAGE 43M
 WILBAR RUBY 955N
 RR 7407 RAINMAKER 2154
 TERRLENE BEAUTY 35F
 S A V 8180 TRAVELER 004
 S A V MAY 7238
 BON VIEW NEW DESIGN 878
 TAF V8 JENNIFER 117M

EPD's	BW	WW	YW	MILK	TM
	+2.1	+48	+85	+26	+49



8 *SHEIDAGHAN Answer* 2A
 VMF 2A January 22 2013 1761142

Performance Data	BW	WW
	86	744

SITZ TRAVELER 8180
 Sire: S A V FINAL ANSWER 0035
 S A V EMULOUS 8145

SHEIDAGHAN PFRED 98W
 Dam: SHEIDAGHAN LASS 46Y
 SANDY BAR LASS 642W

G D A R TRAVELER 71
 SITZ EVERELDA ENTENSE 1137
 BON VIEW BANDO 598
 S A V SKY EMULOUS 2124
 SANDY BAR PFRED 41M
 SANDY BAR PRIDE 22T
 LLB 5175 BANDO 190P
 M BAR SIX LIMITED EDITION 21

EPD's	BW	WW	YW	MILK	TM
	+2.0	+56	+90	+24	+52



9 *SHEIDAGHAN Image Maker* 3A
 VMF 3A January 24 2013 1728393

Performance Data	BW	WW
	79	731

HERO 6267 OF R R 2418
 Sire: H A IMAGE MAKER 0415
 H A RITO BLACKCAP 9038

S A F 598 BANDO 5175
 Dam: SHEIDAGHAN LADY 95Y
 SANDY BAR LADY 63R

RR HERO 6267
 R R EVERELDA ENTENSE 0413
 H 96 RITO 2100 7371
 H 96 BLACKCAP 3835
 BON VIEW BANDO 598
 S A F ROYAL LASS 1002
 DOUBLE D BARDOLENE 15L
 SANDY BAR LADY 15L

EPD's	BW	WW	YW	MILK	TM
	+2.6	+60	+98	+29	+59





10

SHEIDAGHAN *Chisum* 5A

VMF 5A January 24 2013 1728055

Performance Data

BW WW

81 643

S ALLIANCE 3313
Sire: S CHISUM 6175
S GLORIA 464

PAWS UP ALLIANCE 9561
PAWS UP 9048 EMULATION EXT
S ECLIPSE 169
S GLORIA 209
FIGURE 8 ANGUS TOM BOY 509R
LOOKOUT COUNTESS 283M
MYTTY IN FOCUS
FAIRMAC IDOL 48S

LOOKOUT CANUCK 26U
Dam: LOOKOUT IDOL 64X
LOOKOUT IDOL 3U

EPD's

BW	WW	YW	MILK	TM
+1.1	+52	+84	+22	+48



11

SHEIDAGHAN *Image Maker* 9A

VMF 9A January 24 2013 1728358

Performance Data

BW WW

78 670

HERO 6267 OF R R 2418
Sire: H A IMAGE MAKER 0415
H A RITO BLACKCAP 9038

RR HERO 6267
R R EVERELDA ENTENSE 0413
H 96 RITO 2100 7371
H 96 BLACKCAP 3835
TC STOCKMAN
TC PRIDE 0014
DOUBLE BAR ROGUE
CRESCENT CREEK ROSEBUD 115F

TC STOCKMAN 365
Dam: SHEIDAGHAN ROSEBUD 69Y
CRESCENT CREEK ROSEBUD 38K

EPD's

BW	WW	YW	MILK	TM
+1.8	+52	+86	+30	+56



12

SHEIDAGHA *Answer* 12A

VMF 12A January 26 2013 1728415

Performance Data

BW WW

69 665

SITZ TRAVELER 8180
Sire: S A V FINAL ANSWER 0035
S A V EMULOUS 8145

G D A R TRAVELER 71
SITZ EVERELDA ENTENSE 1137
BON VIEW BANDO 598
S A V SKY EMULOUS 2124
VALLEY BLOSSOM EQUATOR 729M
SANDY BAR DUCHESS 114E
SAND BAR BRAVE HEART 75L
SANDY BAR ANNIE K 154K

SANDY BAR EQUATOR 150S
Dam: SHEIDAGHAN ANNIE K 201Y
SANDY BAR ANNIE K 509R

EPD's

BW	WW	YW	MILK	TM
-0.8	+48	+81	+23	+47





13

SHEIDAGHAN Answer 15A

VMF 15A January 27 2013 1728396

Performance Data

BW	WW
76	668

EPD's

BW	WW	YW	MILK	TM
+1.6	+59	+94	+21	+51

SITZ TRAVELER 8180
Sire: S A V FINAL ANSWER 0035
S A V EMULOUS 8145

G D A R TRAVELER 71
SITZ EVERELDA ENTENSE 1137
BON VIEW BANDO 598
S A V SKY EMULOUS 2124
JSF MILK MAN 37S
SANDY BAR MIA 82R
LLB 5175 BANDO 190P
SANDY BAR MISS QUALITY 67H

SHEIDAGHAN MILK MAN 835U
Dam: SHEIDAGHAN MS QUALITY 107Y
SANDY BAR MISS QUALITY 09T



14

SHEIDAGHAN Chisum 18A

VMF 18A January 27 2013 1728051

Performance Data

BW	WW
77	595

S ALLIANCE 3313 F

Sire: S CHISUM 6175
S GLORIA 464

PAWS UP ALLIANCE 9561

PAWS UP 9048 EMULATION EXT

S ECLIPSE 169

S GLORIA 209

TC STOCKMAN 365

HOFF EBONY S C 660 2131

SANDY BAR PFRED 41M

VALLEY BLOSSOM PRIDE 702N

BJ'S FORT WALSH 823

Dam: SHEIDAGHAN PRIDE 037X

VALLEY BLOSSOM PRIDE 790R

EPD's

BW	WW	YW	MILK	TM
+1.0	+44	+79	+24	+46



15

SHEIDAGHAN Answer 21A

VMF 21A January 28 2013 1728412

Performance Data

BW	WW
80	766

SITZ TRAVELER 8180

Sire: S A V FINAL ANSWER 0035
S A V EMULOUS 8145

G D A R TRAVELER 71

SITZ EVERELDA ENTENSE 1137

BON VIEW BANDO 598

S A V SKY EMULOUS 2124

VALLEY BLOSSOM EQUATOR 729M

SANDY BAR DUCHESS 114E

DOUBLE D BARDOLENE 15L

SANDY BAR PRIDE 84M

SANDY BAR EQUATOR 150S

Dam: SHEIDAGHAN PRIDE 194Y

SANDY BAR PRIDE 6R

EPD's

BW	WW	YW	MILK	TM
+1.5	+57	+93	+23	+52



SHEIDAGHAN



SHEIDAGHAN Answer 24A

16

VMF 24A January 28 2013 1728349

Performance Data

BW	WW
64	643

Sire: S A V FINAL ANSWER 0035
S A V EMULOUS 8145

G D A R TRAVELER 71
SITZ EVERELDA ENTENSE 1137
BON VIEW BANDO 598
S A V SKY EMULOUS 2124
JSF MILK MAN 37S
SANDY BAR MIA 82R
SAR STOCKMAN 81K
SANDY BAR MISS QUALITY 44B

Dam: SHEIDAGHAN MILK MAN 835U
SHEIDAGHAN MS QUALITY 45Y
VALLEY BLOSSOM MS QUALITY 703R

EPD's	BW	WW	YW	MILK	TM
	-0.8	+54	+87	+19	+46



MAPLE SPRINGS Chisum 27A

17

VMF 27A January 29 2013 1728148

Performance Data

BW	WW
85	683

Sire: S ALLIANCE 3313
S CHISUM 6175
S GLORIA 464

PAWS UP ALLIANCE 9561
PAWS UP 9048 EMULATION EXT
S ECLIPSE 169
S GLORIA 209
DOUBLE AA BLACKMAN 252'96
DOUBLE AA ANNIE K 548'99
DOUBLE AA BARDOLENE 587'98
DOUBLE AA ANNIE K 280'97

Dam: DOUBLE AA OLD POST BANDOLIER
SANDY BAR ANNIE 177X
DOUBLE AA ANNIE K 608'01

EPD's	BW	WW	YW	MILK	TM
	+3.0	+56	+94	+25	+53



SHEIDAGHAN Answer 32A

18

VMF 32A January 30 2013 1728354

Performance Data

BW	WW
84	755

Sire: S A V FINAL ANSWER 0035
S A V EMULOUS 8145

G D A R TRAVELER 71
SITZ EVERELDA ENTENSE 1137
BON VIEW BANDO 598
S A V SKY EMULOUS 2124
TC STOCKMAN 365
HOFF EBONY S C 660 2131
LLB 5175 BANDO 190P
SANDY BAR MISS QUALITY 17M

Dam: B J'S FORT WALSH 823
SHEIDAGHAN MS QUALITY 60Y
SANDY BAR MISS QUALITY 116T

EPD's	BW	WW	YW	MILK	TM
	+1.9	+53	+88	+27	+54

Sire: SITZ TRAVELER 8180
S A V FINAL ANSWER 0035
S A V EMULOUS 8145

G D A R TRAVELER 71
SITZ EVERELDA ENTENSE 1137
BON VIEW BANDO 598
S A V SKY EMULOUS 2124
TC STOCKMAN 365
HOFF EBONY S C 660 2131
LLB 5175 BANDO 190P
SANDY BAR MISS QUALITY 17M





SHEIDAGHAN *Image Maker* 34A

19

VMF 34A January 31 2013 1728149

Performance Data

BW	WW
67	696

HERO 6267 OF R R 2418
Sire: H A IMAGE MAKER 0415
H A RITO BLACKCAP 9038

RR HERO 6267
R R EVERELDA ENTENSE 0413
H 96 RITO 2100 7371
H 96 BLACKCAP 3835
STEVENSON MONEYMAKER R185
WK FOREVER LADY KEM 1009
BLACK WHEEL HICK HOP 49R
DOUBLE AA ANNIE K 625'05

EXAR MONEYMAKER 9711B
Dam: SHEIDAGHAN ANNIE K 1Y
DOUBLE AA ANNIE K 69'09

EPD's	BW	WW	YW	MILK	TM
-0.4	+60	+97	+28	+58	



SHEIDAGHAN *Image Maker* 35A

20

VMF 35A February 01 2013 1728357

Performance Data

BW	WW
84	680

HERO 6267 OF R R 2418
Sire: H A IMAGE MAKER 0415
H A RITO BLACKCAP 9038

RR HERO 6267
R R EVERELDA ENTENSE 0413
H 96 RITO 2100 7371
H 96 BLACKCAP 3835
N BAR EMULATION EXT
LEACHMAN ERICA 0025
DOUBLE BAR ROGUE
CRESCENT CREEK ROSEBUD 115F

LEACHMAN RIGHT TIME
Dam: SHEIDAGHAN ROSEBUD 68Y
CRESCENT CREEK ROSEBUD 38K

EPD's	BW	WW	YW	MILK	TM
+2.0	+53	+88	+29	+56	



DELAR *Motivated* 37A

21

LNS 37A January 14 2013 1719237

Performance Data

BW	WW
70	627

HF KODIAK 5R
Sire: SOO LINE MOTIVE 9016
TLA BEAUTY 5R

SANDY BAR ADVANTAGE 43M
WILBAR RUBY 955N
RR 7407 RAINMAKER 2154
TERRLENE BEAUTY 35F
S A V 8180 TRAVELER 004
S A V MAY 7238 CAF
BON VIEW NEW DESIGN 878
TAF V8 JENNIFER 117M

S A V 004 DENSITY 4336
Dam: MEADOW RIDGE MAY 38T
MEADOW RIDGE JENNY 878

EPD's	BW	WW	YW	MILK	TM
+2.1	+48	+85	+26	+49	



★★★
22 SHEIDAGHAN *Answer* 38A
 VMF 38A January 25 2013 1728402

Performance Data	BW	WW
	78	680

SITZ TRAVELER 8180
 Sire: S A V FINAL ANSWER 0035
 S A V EMULOUS 8145

RR SCOTCHMAN 2999
 Dam: SHEIDAGHAN ANNIE K 143Y
 VALLEY BLOSSOM ANNIE K 707R

G D A R TRAVELER 71
 SITZ EVERELDA ENTENSE 1137
 BON VIEW BANDO 598
 S A V SKY EMULOUS 2124
 E X A R SCOTCH CAP 816
 ERICA LASSIE OF R R 8464
 SANDY BAR TWO FEATHERS 91H
 SANDY BAR ANNIE 76G

EPD's	BW	WW	YW	MILK	TM
	+1.3	+52	+88	+23	+49



★★
23 SHEIDAGHAN *Answer* 39A
 VMF 39A February 01 2013 1728411

Performance Data	BW	WW
	80	688

EPD's	BW	WW	YW	MILK	TM
	+2.3	+51	+85	+23	+49

SITZ TRAVELER 8180
 Sire: S A V FINAL ANSWER 0035
 S A V EMULOUS 8145

G D A R TRAVELER 71
 SITZ EVERELDA ENTENSE 1137
 BON VIEW BANDO 598
 S A V SKY EMULOUS 2124
 VALLEY BLOSSOM EQUATOR 729M

SANDY BAR EQUATOR 150S
 Dam: SHEIDAGHAN ELBA 191Y
 CRESCENT CREEK ELBA 103J

S A V SKY EMULOUS 2124
 VALLEY BLOSSOM EQUATOR 729M
 SANDY BAR DUCHESS 114E
 DWAJO CHIEF 92E
 CRESCENT CREEK ELBA 12Y

★
24 SHEIDAGHAN *Chisum* 42A
 VMF 42A February 02 2013 1728046

Performance Data	BW	WW
	82	722

EPD's	BW	WW	YW	MILK	TM
	+3.6	+58	+100	+26	+54

S ALLIANCE 3313
 Sire: S CHISUM 6175
 S GLORIA 464

PAWS UP ALLIANCE 9561
 PAWS UP 9048 EMULATION EXT
 S ECLIPSE 169
 S GLORIA 209
 PAPA POWER 096
 PAPA ENVIOS BLACKBIRD 8849
 LEACHMAN RIGHT TIME DMF
 HARPREY MISS MIDDLEBROOK 21F

PAPA EQUATOR 2928
 Dam: GLEN ISLAY MISSMIDDLEBROOK 29X
 SBCC MISS MIDDLEBROOK 124M





Last year's Sale...



★
25

SHEIDAGHAN *Chisum* 45A

VMF 45A February 02 2013 1728009

Performance Data

BW 88
WW 684

S ALLIANCE 3313
Sire: S CHISUM 6175
S GLORIA 464

PAWS UP ALLIANCE 9561
PAWS UP 9048 EMULATION EXT
S ECLIPSE 169
S GLORIA 209
VALLEY BLOSSOM ADVANTAGE 732M
SANDY BAR MIA 719K
SANDY BAR EQUATOR 150S
SANDY BAR PRIDE 96R

SANDY BAR ADVANTAGE 506S
Dam: SHEIDAGHAN PRIDE 011X
SHEIDAGHAN PRIDE 840U

EPD's BW WW YW MILK TM
+2.4 +56 +94 +24 +52



★
26

SHEIDAGHAN *Pioneer* 56A

VMF 56A February 10 2013 1728426

Performance Data

BW 95
WW 722

S A V FINAL ANSWER 0035
Sire: S A V PIONEER 7301
S A V BLACKBIRD 5297

SITZ TRAVELER 8180
S A V EMULOUS 8145
BOYD NEW DAY 8005
S A V BLACKBIRD 1082
MINBURN MAIN EVENT 82K
HOLLBROOK SOCIALITE 19B
EBON HILL LIBERTY 13'01
GERLEI MAYFLOWER 5N

MERIT SUGAR RAY 7051
Dam: GERLEI MAY 33W
GERLEI MAY 66T

EPD's BW WW YW MILK TM
+3.3 +51 +92 +27 +53



★
27

SHEIDAGHAN *Motive* 64A

VMF 64A February 12 2013 1717291

Performance Data

BW 91
WW 736

SOO LINE MOTIVE 9016
Sire: SOO LINE MOTIVE 1034
SOO LINE BLACKBIRD 9224

HF KODIAK 5R
TLA BEAUTY 5R
BAR-E-L THOR 6T
MINBURN BLACKBIRD 144P
VALLEY BLOSSOM EQUATOR 729M
SANDY BAR DUCHESS 114E
DOUBLE D BARDOLENE 15L
SANDY BAR ANNIE K 101L

SANDY BAR EQUATOR 150S
Dam: SHEIDAGHAN ANNIE K 148Y
SANDY BAR ANNIE K 120R

EPD's BW WW YW MILK TM
+3.3 +48 +86 +24 +48



SHEIDAGHAN

★
28

SHEIDAGHAN *Motive* 66A

VMF 66A February 14 2013 1717290

Performance Data

BW WW

84 696

SOO LINE MOTIVE 9016
Sire: SOO LINE MOTIVE 1034
SOO LINE BLACKBIRD 9224

HF KODIAK 5R
TLA BEAUTY 5R
BAR-E-L THOR 6T
MINBURN BLACKBIRD 144P
VALLEY BLOSSOM EQUATOR 729M
SANDY BAR DUCHESS 114E
SANDY BAR CASTLEROCK 173P
SANDY BAR DUCHESS EVA 124M

SANDY BAR EQUATOR 150S
Dam: SHEIDAGHAN DUCHESS 198Y
SANDY BAR DUCHESS EVA 9T

EPD's

BW WW YW MILK TM
+2.4 +45 +84 +24 +47

★★
29

SHEIDAGHAN *Repetition* 67A

VMF 67A February 15 2013 1727912

Performance Data

BW WW

83 611

ROYAL PREDESTINED DRCC 6036S
Sire: ROYAL REPETITION DRCC 9097W
ROYAL KARAMA DRCC 5113R

G A R PREDESTINED
THOMAS ELBINA 0183
PAPA FORTE 1921
THOMAS KARAMA 0259
WILLABAR RIGHT TIME 282G
WILLABAR EBA 45D
CRESCENT CREEK MAIN EVENT 6H
MINBURN BLACKBIRD 80F

LOOKOUT RIGHT TIME 23K
Dam: MINBURN BLACKBIRD 205S
MINBURN BLACKBIRD 144K

EPD's

BW WW YW MILK TM
+2.0 +34 +65 +23 +40

★
30

SHEIDAGHAN *Great Scot* 78A

VMF 78A February 18 2013 1727911

Performance Data

BW WW

91 659

E X A R SCOTCH CAP 816
Sire: RR SCOTCHMAN 2999
ERICA LASSIE OF R R 8464

R R SCOTCHCAP 9440
LEACHMAN BLACKCAP 2202
R R FERDINAND 758D
ERICA LASSIE OF R R 4580
O G L BATTLE CRY 427 128
ARDA BLACKBIRD 90G
SANDY BAR WONDERER 24D
GFR QUEENETTE 3X

ARDA BATTLE CRY 96M
Dam: VALLEY BLOSSOM QUEENETTE 816R
VBR QUEENETTE 249H

EPD's

BW WW YW MILK TM
+2.6 +38 +72 +19 +38



★
31

SHEIDAGHAN *Thriller* 84A

VMF 84A February 20 2013 1728433

Performance Data

BW	WW
112	680

Sire: SOUTHLAND TWO FIFTY 250T
SOUTHLAND THRILLER 83X
SOUTHLAND BELLE 89R

TC FREEDOM 104
SOUTHLAND LADY 201M
VAR DATELINE 2674
GER-RIS BELLE 26J
TC STOCKMAN 365
DMM MISS ESSENCE 22B
LAMBS OVERDRIVE 45E
GNS ERICA LASS 34Z

Dam: DMM TRACTION 109J
SOUTHLAND ERICA 40N
SOUTHLAND ERICA 75K

EPD's	BW	WW	YW	MILK	TM
	+8.1	+42	+66	+17	+38



★
32

SHEIDAGHAN *Fortune* 85A

VMF 85A February 20 2013 1727932

Performance Data

BW	WW
96	628

Sire: STEVENSON FORTUNE 425C
CRESCENT CREEK FORTUNE 67X
CRESCENT CREEK ROSEBUD 15U

GARDENS FORTUNE 9213 S3
J R S ENCHANTRESS 235Z
LOOKOUT PACESETTER 258M
CRESCENT CREEK ROSEBUD 6R
STEVENSON BRUNO 561G
H A RITO LADY 1262
DOUBLE BAR ROGUE
CRESCENT CREEK ROSEBUD 115F

Dam: BEVERLY HILLS FANDANGO 404
SHEIDAGHAN ROSEBUD 807U
CRESCENT CREEK ROSEBUD 38K

EPD's	BW	WW	YW	MILK	TM
	+5.1	+35	+57	+20	+38



★★
33

SHEIDAGHAN *Alaskan* 91A

VMF 91A February 23 2013 1728045

Performance Data

BW	WW
84	742

EPD's	BW	WW	YW	MILK	TM
	+2.1	+51	+82	+22	+48

Sire: HF ALASKAN 94T
DBRL ALASKAN 57X
DBRL 03M PATRICIA 21U

HF KODIAK 5R
HF ECHO 112R
DMM AMBUSH 03M
DBRL RT PATRICIA 9R
HEATHERLEA EXTRA 12S
GLEN ISLAY LADY M 20F
GLEN ISLAY BATTLE CRY 27L
GLEN ISLAY MAGGIE 13L

Dam: HEATHERLEA EXTRA 31U
HEATHERLEA MAGGIE 20X
HEATHERLEA MAGGIE 21T



SHEIDAGHAN

★
34

SHEIDAGHAN *Repetition* 98A

VMF 98A February 23 2013 1728079

Performance Data

BW WW
94 719

EPD's

BW WW YW MILK TM
+3.9 +27 +56 +27 +41

ROYAL PREDESTINED DRCC 6036S
Sire: ROYAL REPETITION DRCC 9097W
ROYAL KARAMA DRCC 5113R

G A R PREDESTINED
THOMAS ELBINA 0183
PAPA FORTE 1921
THOMAS KARAMA 0259
TC STOCKMAN 365
HOFF EBONY S C 660 2131
LAMBS INNOVATOR 86J
VBR ANNIE K 163J

BJ'S FORT WALSH 823
Dam: SHEIDAGHAN ANNIE K 118X
SANDY BAR ANNIE K 68R

★★
35

SHEIDAGHAN *Great Scot* 103A

VMF 103A February 25 2013 1727990

Performance Data

BW WW
91 651

E X A R SCOTCH CAP 816
Sire: RR SCOTCHMAN 2999
ERICA LASSIE OF R R 8464

R R SCOTCHCAP 9440
LEACHMAN BLACKCAP 2202
R R FERDINAND 758D
ERICA LASSIE OF R R 4580
S A F 598 BANDO 5175
LLB LADY ERROLLINE 324L
CROWFOOT FORKS 701K
SANDY BAR MISS QUALITY 1K

LLB 5175 BANDO 190P
Dam: SANDY BAR MISS QUALITY 606W
SANDY BAR MISS QUALITY 11N

EPD's

BW WW YW MILK TM
+2.8 +40 +70 +23 +43



★
36

SHEIDAGHAN *Titan* 105A

VMF 105A February 25 2013 1727979

Performance Data

BW WW
90 660

DBRL 03M TITAN 4T
Sire: LNS TITAN 4Y
DBRL JENNIFER 1N

DMM AMBUSH 03M
DBRL BLACKBIRD 2N
HF ROOKIE 16L
FCR JENNIFER 42L
VALLEY BLOSSOM EQUATOR 729M
SANDY BAR DUCHESS 114E
SANDY BAR PFRED 41M
VALLEY BLOSSOM PRIDE 785N

SANDY BAR EQUATOR 150S
Dam: SHEIDAGHAN PRIDE 90W
VALLEY BLOSSOM PRIDE 743R

EPD's

BW WW YW MILK TM
+3.6 +36 +67 +19 +37



37 *SHEIDAGHAN Titan* 116A
 VMF 116A February 28 2013 1727980

Performance Data	BW	WW
	91	692

Sire: DBRL 03M TITAN 4T
 LNS TITAN 4Y
 DBRL JENNIFER 1N

Dam: SANDY BAR ADVANTAGE 506S
 SHEIDAGHAN MIA 94W
 SANDY BAR MIA 82R

EPD's	BW	WW	YW	MILK	TM
	+2.8	+43	+73	+18	+40



38 *SHEIDAGHAN Repetition* 118A
 VMF 118A February 28 2013 1727984

Performance Data	BW	WW
	97	711

Sire: ROYAL PREDESTINED DRCC 6036S
 ROYAL REPETITION DRCC 9097W
 ROYAL KARAMA DRCC 5113R

Dam: SANDY BAR ADVANTAGE 506S
 SHEIDAGHAN PRIDE 110W
 SANDY BAR PRIDE 506R

EPD's	BW	WW	YW	MILK	TM
	+4.1	+38	+66	+25	+44

G A R PREDESTINED
 THOMAS ELBINA 0183
 PAPA FORTE 1921
 THOMAS KARAMA 0259
 VALLEY BLOSSOM ADVANTAGE 732M
 SANDY BAR MIA 719K
 VALLEY BLOSSOM ADVANTAGE 732M
 WILMO PRIDE 8M

39 *SHEIDAGHAN Titan* 119A
 VMF 119A March 01 2013 1727955

Performance Data	BW	WW
	93	657

Sire: DBRL 03M TITAN 4T
 LNS TITAN 4Y
 DBRL JENNIFER 1N

Dam: SOO LINE ICEBERG 6136
 SHEIDAGHAN TILDA 39W
 SANDY BAR TILDA 16T

EPD's	BW	WW	YW	MILK	TM
	+3.4	+40	+68	+17	+37

DMM AMBUSH 03M
 DBRL BLACKBIRD 2N
 HF ROOKIE 16L
 FCR JENNIFER 42L
 EASTONDALE ICEBERG 05'04
 DWAJO JESTRESS 3P
 THOUSAND HILLS CREDECE 5N
 L 6 TILDA 9N





40

SHEIDAGHAN Titan 125A

VMF 125A March 01 2013 1727896

Performance Data

BW WW

91 650

Sire: DBRL 03M TITAN 4T
LNS TITAN 4Y
DBRL JENNIFER 1N

DMM AMBUSH 03M
DBRL BLACKBIRD 2N
HF ROOKIE 16L
FCR JENNIFER 42L
MVHF INNOVATOR 49B
LAMBS BAR LASS 19D
CRESCENT CREEK BRAVE HEART 35F
SANDY BAR ANNIE K 20Y

Dam: LAMBS INNOVATOR 86J
SANDY BAR ANNIE K 111R
SANDY BAR ANNIE K 78K

EPD's

BW WW YW MILK TM
+1.9 +39 +69 +13 +33



41

SHEIDAGHAN Titan 157A

VMF 157A March 10 2013 1727894

Performance Data

BW WW

93 674

Sire: DBRL 03M TITAN 4T
LNS TITAN 4Y
DBRL JENNIFER 1N

DMM AMBUSH 03M
DBRL BLACKBIRD 2N
HF ROOKIE 16L
FCR JENNIFER 42L
MVHF INNOVATOR 49B
LAMBS BAR LASS 19D
CRESCENT CREEK BRAVE HEART 35F
SANDY BAR LADY 54C

Dam: LAMBS INNOVATOR 86J
SANDY BAR LADY 91R
SANDY BAR LADY 21K

EPD's

BW WW YW MILK TM
+1.5 +36 +63 +15 +33



42

SHEIDAGHAN Alaskan 160A

VMF 160A March 10 2013 1727956

Performance Data

BW WW

82 705

Sire: HF ALASKAN 94T
DBRL ALASKAN 57X
DBRL 03M PATRICIA 21U

HF KODIAK 5R
HF ECHO 112R
DMM AMBUSH 03M
DBRL RT PATRICIA 9R
VALLEY BLOSSOM EQUATOR 729M
SANDY BAR DUCHESS 114E
REATA WIDESPREAD 2L
ANKONY BLACKBIRD T721

Dam: SANDY BAR EQUATOR 150S
SHEIDAGHAN BLACKBIRD 56W
SANDY BAR BLACKBIRD 1R

EPD's

BW WW YW MILK TM
+1.9 +46 +73 +22 +45



★
43 SHEIDAGHAN *Ideal* 143A
VMF 143A March 07 2013 1728353

Performance Data	BW	WW
	82	759

Sire: SANDY BAR IDEAL 18S
SANDY BAR MISS QUALITY 1K

Dam: SHEIDAGHAN MILK MAN 835U
SHEIDAGHAN GENE 58Y
VALLEY BLOSSOM GENE 732R

PRAIRIELANE IDEAL 7451-2014
SANDY BAR PRIDE 89L
CRESCENT CREEK BRAVE HEART 35F
PAT MISS QUALITY 29U
JSF MILK MAN 37S
SANDY BAR MIA 82R
LLB FULLBACK 141M
GFR GENE 17B

EPD's	BW	WW	YW	MILK	TM
	+3.0	+50	+81	+16	+41



★★
44 SHEIDAGHAN *Repetition* 58A
VMF 58A February 12 2013 1727952

Performance Data	BW	WW
	81	620

Sire: ROYAL PREDESTINED DRCC 6036S
ROYAL REPETITION DRCC 9097W
ROYAL KARAMA DRCC 5113R

Dam: SANDY BAR ADVANTAGE 33T
SHEIDAGHAN DUCHESS 22W
SANDY BAR DUCHESS 37R

G A R PREDESTINED
THOMAS ELBINA 0183
PAPA FORTE 1921
THOMAS KARAMA 0259
VALLEY BLOSSOM ADVANTAGE 732M
SANDY BAR DELIA 508M
REMITALL LIGHTENING 2L
SANDY BAR DUCHESS 49G

EPD's	BW	WW	YW	MILK	TM
	+2.2	+31	+59	+25	+41



★★★
45 SHEIDAGHAN *Baloo* 181A
VMF 181A March 23 2013 1761143

Performance Data	BW	WW
	71	652

Sire: HF KODIAK 5R
GEIS BALOO 13'08
KBJ QUEEN 461L

Dam: GEIS BLACKMAN 224'05
GEIS OAKLEAF 253'10
GEIS OAKLEAF 60'07

SANDY BAR ADVANTAGE 43M
WILBAR RUBY 955N
NORTH FORK ADVISOR 9163
KBJ QUEEN 203F
GEIS BLACKMAN 186'00
GEIS PRIDE 139'01
MINBURN MASTERPLAN 26P
GEIS OAKLEAF 126'99

EPD's	BW	WW	YW	MILK	TM
	-0.2	+45	+69	+16	+39





SHEIDAGHAN Answer 11A

46

VMF 11A January 26 2013 1728416

Performance Data

BW	WW
65	684

Sire: S A V FINAL ANSWER 0035
S A V EMULOUS 8145

G D A R TRAVELER 71
SITZ EVERELDA ENTENSE 1137
BON VIEW BANDO 598
S A V SKY EMULOUS 2124
VALLEY BLOSSOM EQUATOR 729M
SANDY BAR DUCHESS 114E
SAR STOCKMAN 81K
VBR BLACKCAP 211H

Dam: SANDY BAR EQUATOR 150S
SHEIDAGHAN BLACKBIRD 202Y
VALLEY BLOSSOM BLACKCAP 729R

EPD's	BW	WW	YW	MILK	TM
	-0.6	+52	+87	+23	+49



SHEIDAGHAN Alaskan 20A

47

VMF 20A January 28 2013 1761141

Performance Data

BW	WW
83	560

Sire: HF ALASKAN 94T
DBRL ALASKAN 57X
DBRL 03M PATRICIA 21U

HF KODIAK 5R
HF ECHO 112R
DMM AMBUSH 03M
DBRL RT PATRICIA 9R
CRESCENT CREEK BARDOLENE 105H
CRESCENT CREEK JESTRESS 46B
LAMBS INNOVATOR 86J
SANDY BAR LADY 51J

Dam: DOUBLE D BARDOLENE 15L
SANDY BAR LADY 63R
SANDY BAR LADY 15L

EPD's	BW	WW	YW	MILK	TM
	+1.8	+35	+62	+16	+34



48

SHEIDAGHAN Exchanger 69A

VMF 69A February 16 2013 1728434

Performance Data

BW	WW
90	596

Sire: S A V MASTERPIECE 5289
BANDURA EXCHANGER 23Y
REMITALL QUEEN 536T

S A V 8180 TRAVELER 004
S A V QUEEN 8301
S A V FINAL ANSWER 0035
REMITALL QUEEN 559R
CRESCENT CREEK BRAVE HEART 35F
SANDY BAR QUEENETTE 108E
LAMBS OVERDRIVE 45E
OMEGA FLIRT 6

Dam: SANDY BAR BRAVE HEART 86K
SOUTHLAND LADY VENOM 73N
SOUTHLAND RACHEL 60J

EPD's	BW	WW	YW	MILK	TM
	+2.6	+39	+71	+14	+34



49

SHEIDAGHAN *Ideal* 71A

VMF 71A February 16 2013 1728398

Performance Data

BW	WW
80	597

Sire: SANDY BAR IDEAL 18S
SANDY BAR IDEAL 18S 2X
SANDY BAR MISS QUALITY 1K

PRAIRIELANE IDEAL 7451-2014
SANDY BAR PRIDE 89L
CRESCENT CREEK BRAVE HEART 35F
PAT MISS QUALITY 29U
JSF MILK MAN 37S

Dam: SHEIDAGHAN MILK MAN 835U
SHEIDAGHAN LINDA 124Y
SANDY BAR LINDA 176R

SANDY BAR MIA 82R
SANDY BAR PFRED 41M
SANDY BAR LINDA 73N

EPD's

BW	WW	YW	MILK	TM
+2.9	+34	+60	+16	+33



50

SHEIDAGHAN *Preference* 83A

VMF 83A February 20 2013 1728461

Performance Data

BW	WW
91	666

EPD's

BW	WW	YW	MILK	TM
+4.0	+44	+73	+22	+44

Sire: S A V PREFERENCE 9184
BCAR PREFERENCE 1122
BREED CREEK PAT PRIDE 339

S A V PROVIDENCE 6922
S A V BESSIE HEIRESS 4149
KR TOPCUT QUARTERBACK 101H
BREED CREEK PAT PRIDE 8F 19'98
NORTHLINE LANDSLIDE 787N
SOUTHLAND DR FEELGOOD 194S
SOUTHLAND ON TIME 21M

Dam: SOUTHLAND GEORGINA 104X
SOUTHLAND GEORGINA 247U

SOUTHLINE LANDSLIDE 787N
SOUTHLAND FREE RIDE 68R
SOUTHLAND GEORGINA 149P



51

SHEIDAGHAN *Ideal* 86A

VMF 86A February 20 2013 1728348

Performance Data

BW	WW
83	660

EPD's

BW	WW	YW	MILK	TM
+2.3	+42	+72	+17	+38

Sire: SANDY BAR IDEAL 18S
SANDY BAR IDEAL 18S 2X
SANDY BAR MISS QUALITY 1K

PRAIRIELANE IDEAL 7451-2014
SANDY BAR PRIDE 89L
CRESCENT CREEK BRAVE HEART 35F
PAT MISS QUALITY 29U
SANDY BAR IDEAL 19S
SANDY BAR DELIA 28T
HF BEAMER 125S
HEATHERLEA MAGGIE 13S

Dam: SHEIDAGHAN IDEAL 13W
SHEIDAGHAN MAGGIE 31Y
HEATHERLEA MAGGIE 21W



SHEIDAGHAN



52

SHEIDAGHAN *Alaskan* 88A

VMF 88A February 21 2013 1727907

Performance Data

BW	WW
83	588

HF ALASKAN 94T
Sire: DBRL ALASKAN 57X
DBRL 03M PATRICIA 21U

HF KODIAK 5R
HF ECHO 112R
DMM AMBUSH 03M
DBRL RT PATRICIA 9R
SUMMITCREST HI FLYER 3B18
SANDY BAR MISS QUALITY 1K
BASIN EQUATOR 276G
VBR PRIDE 221H

SANDY BAR PFRED 41M
Dam: VALLEY BLOSSOM PRIDE 790R
VALLEY BLOSSOM PRIDE 702N

EPD's	BW	WW	YW	MILK	TM
	+1.3	+33	+59	+17	+34



53

SHEIDAGHAN *Titan* 95A

VMF 95A February 23 2013 1727946

Performance Data

BW	WW
89	605

DBRL 03M TITAN 4T
Sire: LNS TITAN 4Y
DBRL JENNIFER 1N

DMM AMBUSH 03M
DBRL BLACKBIRD 2N
HF ROOKIE 16L
FCR JENNIFER 42L
WILBAR ADVANTAGE 202R
SANDY BAR JEMINA 22N
VALLEY BLOSSOM LIGHTENING 706P
KORNFELD BOSTA BLACKBIRD 611F

SANDY BAR GRASSLANDS 94T
Dam: SHEIDAGHAN BLACKBIRD 7W
SANDY BAR BLACKBIRD 87T

EPD's	BW	WW	YW	MILK	TM
	+2.5	+33	+62	+14	+31



54

SHEIDAGHAN *Ideal* 101A

VMF 101A February 24 2013 1728351

Performance Data

BW	WW
79	687

SANDY BAR IDEAL 18S
Sire: SANDY BAR IDEAL 18S 2X
SANDY BAR MISS QUALITY 1K

PRAIRIELANE IDEAL 7451-2014
SANDY BAR PRIDE 89L
CRESCENT CREEK BRAVE HEART 35F
PAT MISS QUALITY 29U
RITO 8094 PRAIRIELANE 2060 F
CRESCENT CREEK BLACKCAP 112A
DOUBLE BAR ROGUE
CRESCENT CREEK ROSEBUD 115F

CRESCENT CREEK BRAVE HEART 35F
Dam: SHEIDAGHAN ROSEBUD 48Y
CRESCENT CREEK ROSEBUD 38K

EPD's	BW	WW	YW	MILK	TM
	+1.3	+38	+66	+19	+38



55 *SHEIDAGHAN Alaskan* 113A
 VMF 113A February 27 2013 1727909

Performance Data	BW	WW
	84	626

EPD's	BW	WW	YW	MILK	TM
	+1.5	+39	+66	+19	+39

HF ALASKAN 94T
 Sire: DBRL ALASKAN 57X
 DBRL 03M PATRICIA 21U

HF KODIAK 5R
 HF ECHO 112R
 DMM AMBUSH 03M
 DBRL RT PATRICIA 9R
 O G L BATTLE CRY 427 128
 ARDA BLACKBIRD 90G
 BELVIN CHIEF
 PAT LADY 063A

ARDA BATTLE CRY 96M
 Dam: VALLEY BLOSSOM LADY 797R
 SANDY BAR LADY 98F

56 *SHEIDAGHAN Ideal* 127A
 VMF 127A March 02 2013 1728395

Performance Data	BW	WW
	98	651

EPD's	BW	WW	YW	MILK	TM
	+4.4	+34	+64	+17	+34

SANDY BAR IDEAL 18S
 Sire: SANDY BAR IDEAL 18S 2X
 SANDY BAR MISS QUALITY 1K

PRAIRIELANE IDEAL 7451-2014
 SANDY BAR PRIDE 89L
 CRESCENT CREEK BRAVE HEART 35F
 PAT MISS QUALITY 29U
 N BAR EMULATION EXT
 LEACHMAN ERICA 0025
 DOUBLE BAR ROGUE
 CRESCENT CREEK ROSEBUD 115F

LEACHMAN RIGHT TIME
 Dam: SHEIDAGHAN ROSEBUD 101Y
 CRESCENT CREEK ROSEBUD 38K

57 *SHEIDAGHAN Ideal* 132A
 VMF 132A March 03 2013 1728409

Performance Data	BW	WW
	80	657

SANDY BAR IDEAL 18S
 Sire: SANDY BAR IDEAL 18S 2X
 SANDY BAR MISS QUALITY 1K

PRAIRIELANE IDEAL 7451-2014
 SANDY BAR PRIDE 89L
 CRESCENT CREEK BRAVE HEART 35F
 PAT MISS QUALITY 29U
 E X A R SCOTCH CAP 816
 ERICA LASSIE OF R R 8464
 VALLEY BLOSSOM FULLBACK 763R
 SANDY BAR PRIDE 6H

RR SCOTCHMAN 2999
 Dam: SHEIDAGHAN PRIDE 188Y
 SANDY BAR PRIDE 22T

EPD's	BW	WW	YW	MILK	TM
	+2.3	+38	+69	+17	+36



58 *SHEIDAGHAN Titan* 133A
 VMF 133A March 03 2013 1727949

Performance Data	BW	WW
	81	661

DBRL 03M TITAN 4T
 Sire: LNS TITAN 4Y
 DBRL JENNIFER 1N

PRAIRIELANE IDEAL 7451-2014
 SANDY BAR PRIDE 89L
 CRESCENT CREEK BRAVE HEART 35F
 PAT MISS QUALITY 29U
 E X A R SCOTCH CAP 816
 ERICA LASSIE OF R R 8464
 VALLEY BLOSSOM FULLBACK 763R
 SANDY BAR PRIDE 6H

SANDY BAR IDEAL 72S
 Dam: SHEIDAGHAN MISS QUALITY 19W
 SANDY BAR MISS QUALITY 85R

EPD's	BW	WW	YW	MILK	TM
	+2.3	+38	+69	+17	+36



★
59

SHEIDAGHAN *Fortune* 135A

VMF 135A March 03 2013 1727933

Performance Data

BW WW
98 641

Sire: STEVENSON FORTUNE 425C
CRESCENT CREEK FORTUNE 67X
CRESCENT CREEK ROSEBUD 15U

GARDENS FORTUNE 9213 S3
J R S ENCHANTRESS 235Z
LOOKOUT PACESETTER 258M
CRESCENT CREEK ROSEBUD 6R
VERMILION DATELINE 7078

Dam: EBON HILL 7080 DATELINE 68'06
SHEIDAGHAN QUEEN 823U
EBON HILL QUEEN 148'05

EBON HILL LAVENDER LADY 453'97
EBON HILL BLACK POWER 41'99
EBON HILL QUEEN 48'98

EPD's BW WW YW MILK TM
+4.7 +41 +69 +15 +36



★
60

SHEIDAGHAN *Alaskan* 142A

VMF 142A March 07 2013 1727895

Performance Data

BW WW
91 603

Sire: HF ALASKAN 94T
DBRL ALASKAN 57X
DBRL 03M PATRICIA 21U

HF KODIAK 5R
HF ECHO 112R
DMM AMBUSH 03M
DBRL RT PATRICIA 9R
SITZ ALLIANCE 6595
LLB BONNIE PRIDE 816H
CRESCENT CREEK BRAVE HEART 35F
SANDY BAR PRIDE 27E

Dam: REMITALL LIGHTENING 2L
SANDY BAR PRIDE 96R
SANDY BAR PRIDE 6H

EPD's BW WW YW MILK TM
+1.6 +31 +56 +21 +37



★
61

SHEIDAGHAN *Fortune* 144A

VMF 144A March 07 2013 1727929

Performance Data

BW WW
93 627

Sire: STEVENSON FORTUNE 425C
CRESCENT CREEK FORTUNE 67X
CRESCENT CREEK ROSEBUD 15U

GARDENS FORTUNE 9213 S3
J R S ENCHANTRESS 235Z
LOOKOUT PACESETTER 258M
CRESCENT CREEK ROSEBUD 6R
WILLABAR AMBUSH 45G
GRASSY LANES MILLY 29U
DWAJO CHIEF 92E
CRESCENT CREEK ELBA 12Y

Dam: LOOKOUT PACESETTER 258M
SHEIDAGHAN ELBA 801U
CRESCENT CREEK ELBA 103J

EPD's BW WW YW MILK TM
+3.4 +37 +53 +12 +31





62

SHEIDAGHAN *Fortune* 148A

VMF 148A March 07 2013 1727913

Performance Data

BW	WW
83	695

Sire: STEVENSON FORTUNE 425C
CRESCENT CREEK FORTUNE 67X
CRESCENT CREEK ROSEBUD 15U

GARDENS FORTUNE 9213 S3
J R S ENCHANTRESS 235Z
LOOKOUT PACESETTER 258M
CRESCENT CREEK ROSEBUD 6R
CRESCENT CREEK ROGUE 4K
THOUSAND HILLS KIM 49J
D D A FAHREN 51
PAT PRIDE 385D

Dam: THOUSAND HILLS CREDECE 5N
L 6 PRIDE 17T
PAT PRIDE 72F

EPD's	BW	WW	YW	MILK	TM
	+1.2	+39	+58	+16	+36



63

SHEIDAGHAN *Ideal* 149A

VMF 149A March 08 2013 1728394

Performance Data

BW	WW
76	649

Sire: SANDY BAR IDEAL 18S
SANDY BAR IDEAL 18S 2X
SANDY BAR MISS QUALITY 1K

PRAIRIELANE IDEAL 7451-2014
SANDY BAR PRIDE 89L
CRESCENT CREEK BRAVE HEART 35F
PAT MISS QUALITY 29U
TC STOCKMAN 365
HOFF EBONY S C 660 2131
CRESCENT CREEK ALLIANCE 29N
CRESCENT CREEK PRIDE LADY 83H

Dam: BJ'S FORT WALSH 823
SHEIDAGHAN PRIDE LADY 96Y
CRESCENT CREEK PRIDE LADY 58U

EPD's	BW	WW	YW	MILK	TM
	+2.0	+33	+63	+20	+37



64

SHEIDAGHAN *Fortune* 150A

VMF 150A March 08 2013 1727903

Performance Data

BW	WW
86	595

Sire: STEVENSON FORTUNE 425C
CRESCENT CREEK FORTUNE 67X
CRESCENT CREEK ROSEBUD 15U

GARDENS FORTUNE 9213 S3
J R S ENCHANTRESS 235Z
LOOKOUT PACESETTER 258M
CRESCENT CREEK ROSEBUD 6R
SUMMITCREST HI FLYER 3B18
SANDY BAR MISS QUALITY 1K
BASIN EQUATOR 276G
LLB BRIDE 337F

Dam: SANDY BAR PFRED 41M
VALLEY BLOSSOM BRIDE 712R
VALLEY BLOSSOM BRIDE 723N

EPD's	BW	WW	YW	MILK	TM
	+2.5	+33	+55	+10	+27



SHEIDAGHAN

SIGHT UNSEEN PURCHASE PROGRAM



Monty Bowyer

306-662-7902



Rocky Houff

403 548-9829

Buyers unable to attend the sale may call to discuss the type of bull you are interested in and a price range. Monty or Rocky will do their best to fulfill your order. We guarantee complete satisfaction for bulls purchased in this manner.

PLEASE REMEMBER...

The bulls will be selling on **VIDEO** sale day. A video clip of the bulls will be shown while they are auctioned. Live bulls will not enter the sale ring. They will be stalled outside for your inspection before, during, and after the sale. To be well prepared allow yourself time to study the bulls before the sale & make a list of potential selections.

Videos of the bulls will be posted to our website www.sheidaghananghus.com. Please stop out at the ranch any time before the sale to view the bulls. We'll be happy to show you around.

PUREBRED YEARLING HEIFERS

101

SHEIDAGHAN *Eileen* 4A

VMF 4A January 24 2013 1728408

Performance Data

BW	WW
70	721

EPD's

BW	WW	YW	MILK	TM
+0.2	+58	+98	+23	+52

SITZ TRAVELER 8180
Sire: S A V FINAL ANSWER 0035
S A V EMULOUS 8145

G D A R TRAVELER 71
SITZ EVERELDA ENTENSE 1137
BON VIEW BANDO 598
S A V SKY EMULOUS 2124
E X A R SCOTCH CAP 816
ERICA LASSIE OF R R 8464
LAMBS INNOVATOR 86J
VBR EILEEN 129J

RR SCOTCHMAN 2999
Dam: SHEIDAGHAN EILEEN 183Y
SANDY BAR EILEEN 132R

**101
A**

SHEIDAGHAN *Barbara* 23A

VMF 23A January 28 2013 1728397

Performance Data

BW	WW
60	684

SITZ TRAVELER 8180
Sire: S A V FINAL ANSWER 0035
S A V EMULOUS 8145

G D A R TRAVELER 71
SITZ EVERELDA ENTENSE 1137
BON VIEW BANDO 598
S A V SKY EMULOUS 2124
E X A R SCOTCH CAP 816
ERICA LASSIE OF R R 8464
REATA WIDESPREAD 2L
SANDY BAR BARBARA 14H

RR SCOTCHMAN 2999
Dam: SHEIDAGHAN BARBARA 109Y
SANDY BAR BARBARA 94R

EPD's

BW	WW	YW	MILK	TM
-1.8	+54	+90	+21	+48



102

SHEIDAGHAN *Belle* 10A

VMF 10A January 25 2013 1728401

Performance Data

BW	WW
81	701

SITZ TRAVELER 8180
Sire: S A V FINAL ANSWER 0035
S A V EMULOUS 8145

G D A R TRAVELER 71
SITZ EVERELDA ENTENSE 1137
BON VIEW BANDO 598
S A V SKY EMULOUS 2124
EXAR SUDDEN IMPACT 1537
PAF 8571 AT 1013
EXAR MASTER 253
SMC BELLE 34M

EXARPAF 422
Dam: SHEIDAGHAN BELLE 138Y
JUSTAMERE 253 BELLE 517U

EPD's

BW	WW	YW	MILK	TM
+2.1	+53	+89	+25	+52



SHEIDAGHAN

102
A

SHEIDAGHAN Belle 13A

VMF 13A January 25 2013 1728400

Performance Data

BW WW
72 668

SITZ TRAVELER 8180
Sire: S A V FINAL ANSWER 0035
S A V EMULOUS 8145

G D A R TRAVELER 71
SITZ EVERELDA ENTENSE 1137
BON VIEW BANDO 598
S A V SKY EMULOUS 2124
EXAR SUDDEN IMPACT 1537
PAF 8571 AT 1013
EXAR MASTER 253
SMC BELLE 34M

EXARPAF 422
Dam: SHEIDAGHAN BELLE 137Y
JUSTAMERE 253 BELLE 517U

EPD's BW WW YW MILK TM
+0.7 +51 +86 +25 +51



103

SHEIDAGHAN Bride 28A

VMF 28A January 29 2013 1728057

Performance Data

BW WW
82 649

S ALLIANCE 3313
Sire: S CHISUM 6175
S GLORIA 464

PAWS UP ALLIANCE 9561
PAWS UP 9048 EMULATION EXT
S ECLIPSE 169
S GLORIA 209

SANDY BAR EQUATOR 150S
Dam: SHEIDAGHAN BRIDE 084X
VALLEY BLOSSOM BRIDE 712R

VALLEY BLOSSOM EQUATOR 729M
SANDY BAR DUCHESS 114E
SANDY BAR PFRED 41M
VALLEY BLOSSOM BRIDE 723N

EPD's BW WW YW MILK TM
+2.9 +52 +90 +24 +50

103
A

SHEIDAGHAN Annie K 49A

VMF 49A February 05 2013 1728078

Performance Data

BW WW
92 642

S A V 8180 TRAVELER 004
Sire: S A V 004 DENSITY 4336
S A V MAY 7238

SITZ TRAVELER 8180
BOYD FOREVER LADY 8003
LEACHMAN RIGHT TIME
S A R PROSPECTOR MAY 9124
VALLEY BLOSSOM EQUATOR 729M
SANDY BAR DUCHESS 114E
SANDY BAR TWO FEATHERS 91H
M BAR SIX ANNIE K 201K

SANDY BAR EQUATOR 150S
Dam: SHEIDAGHAN ANNIE K 115X
VALLEY BLOSSOM ANNIE K 723R

EPD's BW WW YW MILK TM
+6.1 +43 +77 +19 +41



104**SHEIDAGHAN *Pride* 114A**

VMF 114A February 28 2013 1727994

Performance Data

BW	WW
86	698

EPD's

BW	WW	YW	MILK	TM
+2.7	+48	+79	+21	+45

E X A R SCOTCH CAP 816
Sire: RR SCOTCHMAN 2999
ERICA LASSIE OF R R 8464

R R SCOTCHCAP 9440
LEACHMAN BLACKCAP 2202
R R FERDINAND 758D
ERICA LASSIE OF R R 4580
S A F 598 BANDO 5175
LLB LADY ERROLLINE 324L
WIWA CREEK STOCKMAN 48'93
ROYAL PRIDE 25X

LLB 5175 BANDO 190P
Dam: SANDY BAR ROYAL PRIDE 631W
IVANHOE ROYAL PRIDE 9H

104**A****SHEIDAGHAN *Pride* 188A**

VMF 188A April 02 2013 1727901

Performance Data

BW	WW
89	663

E X A R SCOTCH CAP 816

Sire: RR SCOTCHMAN 2999

ERICA LASSIE OF R R 8464

R R SCOTCHCAP 9440

LEACHMAN BLACKCAP 2202

R R FERDINAND 758D

ERICA LASSIE OF R R 4580

TC ADVANTAGE

VALLEY BLOSSOM ADVANTAGE 732M

Dam: SANDY BAR PRIDE 506R

WILMO PRIDE 8M

SANDY BAR TILDA 742K

WILMO TRAVELER 7G

WILMO PRIDE 17D

EPD's

BW	WW	YW	MILK	TM
+3.8	+44	+79	+23	+45

105**SHEIDAGHAN *Blackcap* 87A**

VMF 87A February 21 2013 1728425

Performance Data

BW	WW
84	666

SITZ UPWARD 307R

Sire: STUART YOUNGMAN 37Y

STUART LASS 56M

CONNEALY ONWARD

SITZ HENRIETTA PRIDE 81M

B/R NEW DIMENSION 7127

STUART EXCALIBUR 11J

S A V 004 DENSITY 4336

STUART DESTINATION 32S

Dam: GERLEI BLACKCAP 79U

WINDOVER BLACKCAP 5H

KBJ MISS ROSE 802G

WD MATADOR 10F

WINDOVER BLACKCAP 15F

EPD's

BW	WW	YW	MILK	TM
+1.4	+47	+82	+23	+47



105**A****SHEIDAGHAN *Mia* 115A**

VMF 115A February 28 2013 1727893

Performance Data

BW	WW
86	732

DBRL 03M TITAN 4T
Sire: LNS TITAN 4Y
DBRL JENNIFER 1N

DMM AMBUSH 03M
DBRL BLACKBIRD 2N
HF ROOKIE 16L
FCR JENNIFER 42L
CRESCENT CREEK ROGUE 4K
THOUSAND HILLS KIM 49J
CRESCENT CREEK BRAVE HEART 35F
SANDY BAR MIA 67E

THOUSAND HILLS CREDENCE 5N
Dam: SANDY BAR MIA 82R
SANDY BAR MIA 10M

EPD's	BW	WW	YW	MILK	TM
	+2.4	+51	+80	+18	+44

**106****SHEIDAGHAN *Bessie* 109A**

VMF 109A February 26 2013 1727941

Performance Data

BW	WW
73	731

STEVENSON FORTUNE 425C
Sire: CRESCENT CREEK FORTUNE 67X
CRESCENT CREEK ROSEBUD 15U

GARDENS FORTUNE 9213 S3
J R S ENCHANTRESS 235Z
LOOKOUT PACESETTER 258M
CRESCENT CREEK ROSEBUD 6R
LRL WS 101N
JSF LASSIE 2N
LAMBS INNOVATOR 86J
WLA BESSIE 21H

JSF MILK MAN 37S
Dam: SHEIDAGHAN BESSIE 846U
SANDY BAR BESSIE 43R

EPD's	BW	WW	YW	MILK	TM
	+1.1	+50	+74	+15	+40

**106****A****SHEIDAGHAN *Queenette* 123A**

VMF 123A March 01 2013 1727940

Performance Data

BW	WW
80	725

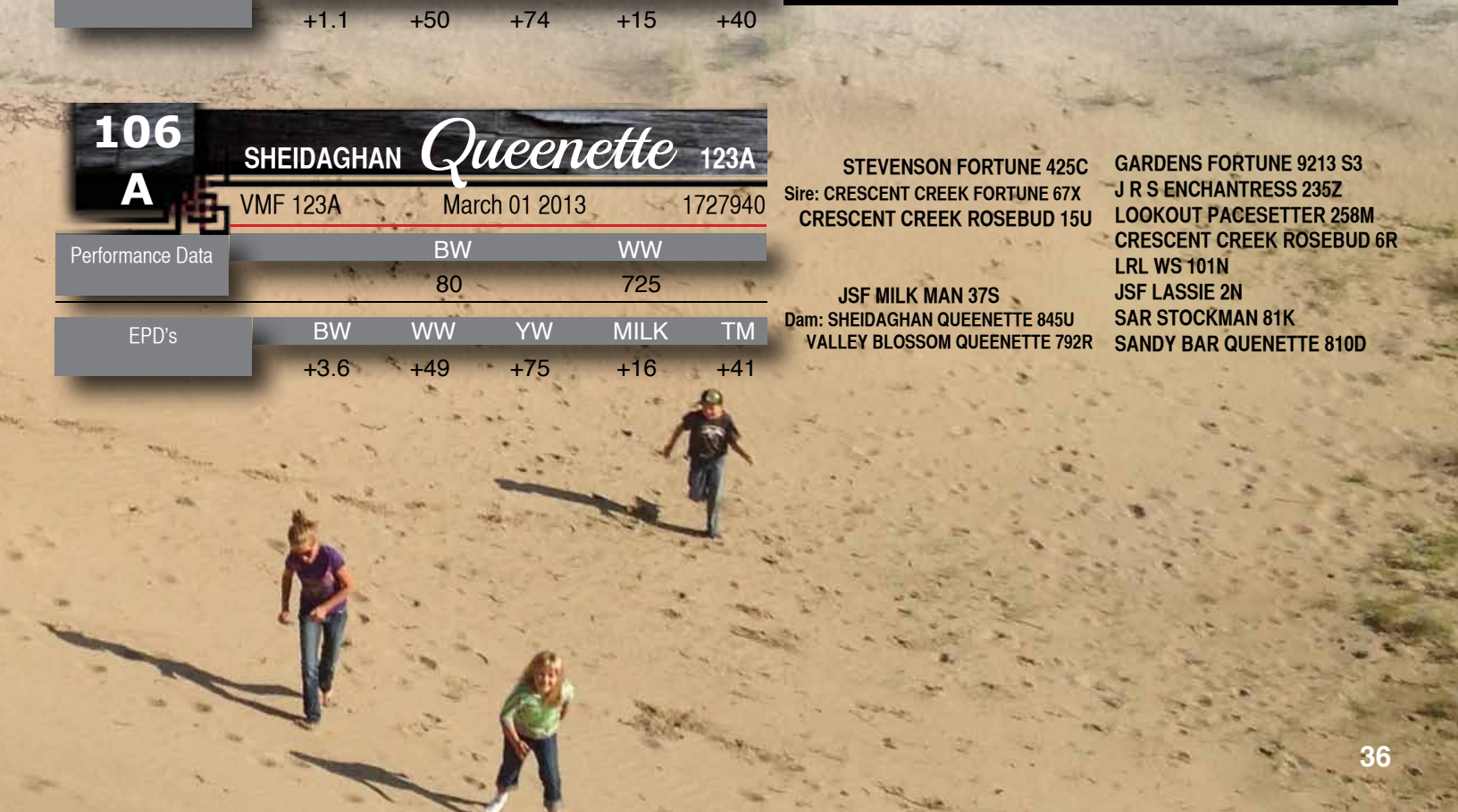
EPD's	BW	WW	YW	MILK	TM
	+3.6	+49	+75	+16	+41

STEVENSON FORTUNE 425C
Sire: CRESCENT CREEK FORTUNE 67X
CRESCENT CREEK ROSEBUD 15U

GARDENS FORTUNE 9213 S3
J R S ENCHANTRESS 235Z
LOOKOUT PACESETTER 258M
CRESCENT CREEK ROSEBUD 6R
LRL WS 101N

JSF MILK MAN 37S
Dam: SHEIDAGHAN QUEENETTE 845U
VALLEY BLOSSOM QUEENETTE 792R

JSF LASSIE 2N
SAR STOCKMAN 81K
SANDY BAR QUENETTE 810D



TERMS & CONDITIONS

TERMS: The terms of the sale are cash or cheque payable at the sale location. The right of property shall not pass until after settlement has been made. Current exchange rates will be announced sale day. All monies are in Canadian Funds.

BIDDING: Each animal will sell to the highest bidder. Disputes-bidding will be reopened between the parties involved in a dispute. If no further bidding is made, the buyer will be the person from whom the auctioneer accepted the last bid. The auctioneer's decision is final.

ANNOUNCEMENTS: All announcements made from the auction block will take precedence over the printed matter in the catalogue.

BREEDERS GAURANTEE: All guarantees fall under the provisions outlined by the Canadian Angus Association.

HEALTH: All animals in the sale have met all necessary health requirements.

LIABILITIES: All persons attend the sale at their own risk. The seller and facility owners assume no liability or otherwise for any accidents that occur.

RIGHTS & OBLIGATIONS: The above terms and conditions of the sale shall constitute as a contract between the buyer and the seller and be equally binding to both. Resale of animals following purchase in this sale shall constitute a separate transaction and the right and obligations of the two parties connected thereto are not covered by the terms and conditions of the sale.

PHONE BIDS: Bidders unable to attend the sale, may phone, their bids and instructions to the sellers, auctioneer or special reps. Bids must be received in sufficient time prior to the sale.

DELIVERY: We will assist you in arranging transportation where possible. Each animal becomes the risk of the purchaser as soon as sold.

INSURANCE: Ownership risk to the purchaser commences when the auctioneer's hammer falls. Insurance in recommended. Insurance representatives from Blythman Insurance will be present on Sale Day.



THANK YOU

to all of our bull customers over the Past 2 years.

We appreciate your support.

*West Bench Colony

*PFRA

7H Ranch – Aaron Horton

*Ross Kruetzer

Cross C Cattle Co. – Trevor Murphy

*76 Grazing Coop

*Marvin Grant

*Dordu Ranch – Mario & Franz Dordu

*Monty & Della Bowyer

S&E Farms – Shawn & Elizabeth Kramer

*C&V Holdings – Chuch & Von Yarshenko

*Keith Winzer

*Murray & Janice Stodalka

*Derek Dean

Glen Rieger

Keith Berreth

*Melvin & Laurie Moorhead

*Horton Land & Cattle – Garth Horton

*Deer Hill Ridge Angus – Leon White

*Cortland White

*Christian & Ann Marie Brost

*Merle Darling

Smith Ranch – Terry Smith

Harvey Peters

Clayton Yarshenko

Triple L Ranch – Ryan Lehr

Sandy Bar Ranch – Bob & Gail Switzer

Majestic Cattle Co. – Jim Henderson

Cypress Colony

Diamond B Ranches – Robert Ballantyne

Grant Lodge Farms – John Grant

Crescent Creek Angus – Wes & Kim Olynyk

Cypress Cattle Co. – Joe, Brenda, Tyler & Adam

Gilchrist

*11 Bar Cattle Co. – Howard & Jill Eiserman

*Spring Creek Colony

Monty Stokke

*Brian Pridmore

*Leslie Flaig

Peake Ranching inc. - Regan & Whitney Curry

*Shane Reesor

Cactus Coulee Ranch – Shane Hok

*Randy Flaig

Gold Ridge Farming – Turin Colony

Neil Schattle

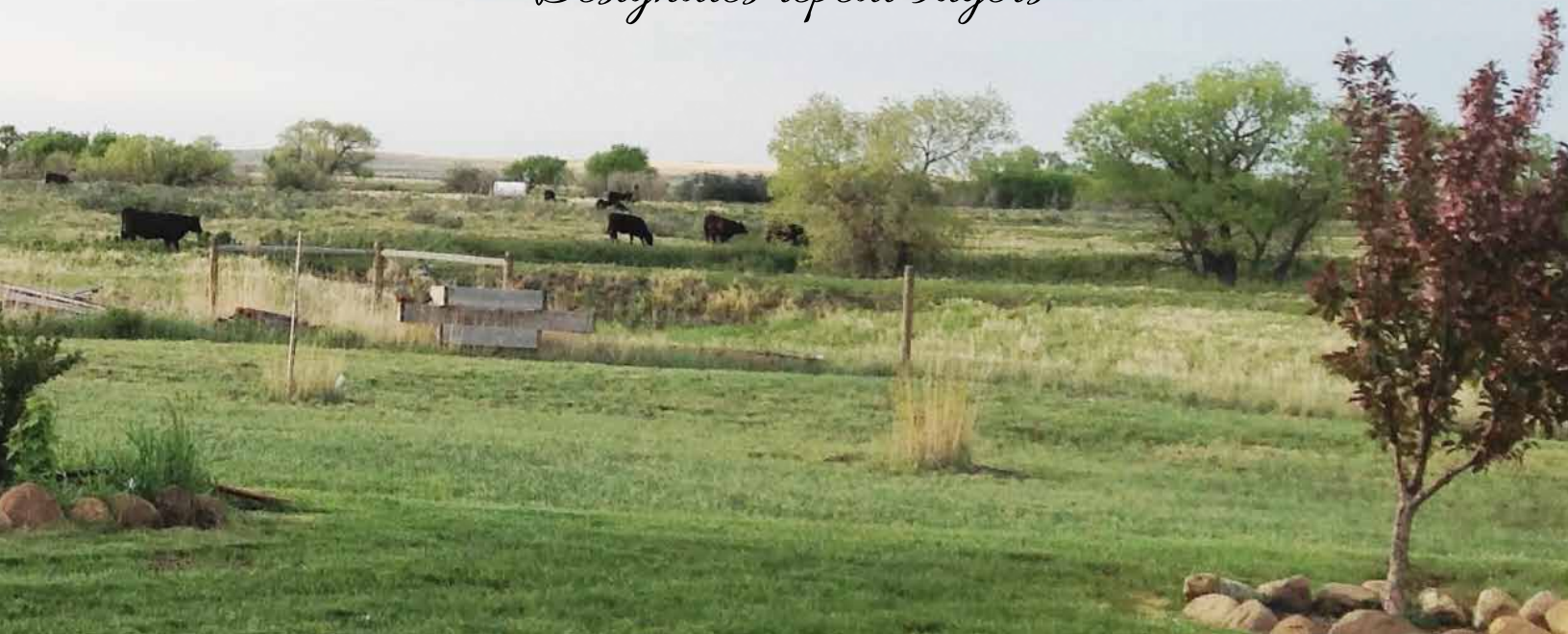
Watson Cattle Co. – John & Willie Watson

*Leonard Koenig

Dan Chabot

McCuaig Ranch – Tyler McCuaig

**Designates repeat buyers*



SHEIDAGHAN ANGHUS
P.O. BOX 627
MAPLE CREEK, SK
S0N 1N0

CANADA POSTES
POST CANADA



Postage paid
Addressed
Admail

Port payé
Métaposte
avec adresse

8243527



www.SheidaghanAnghus.com