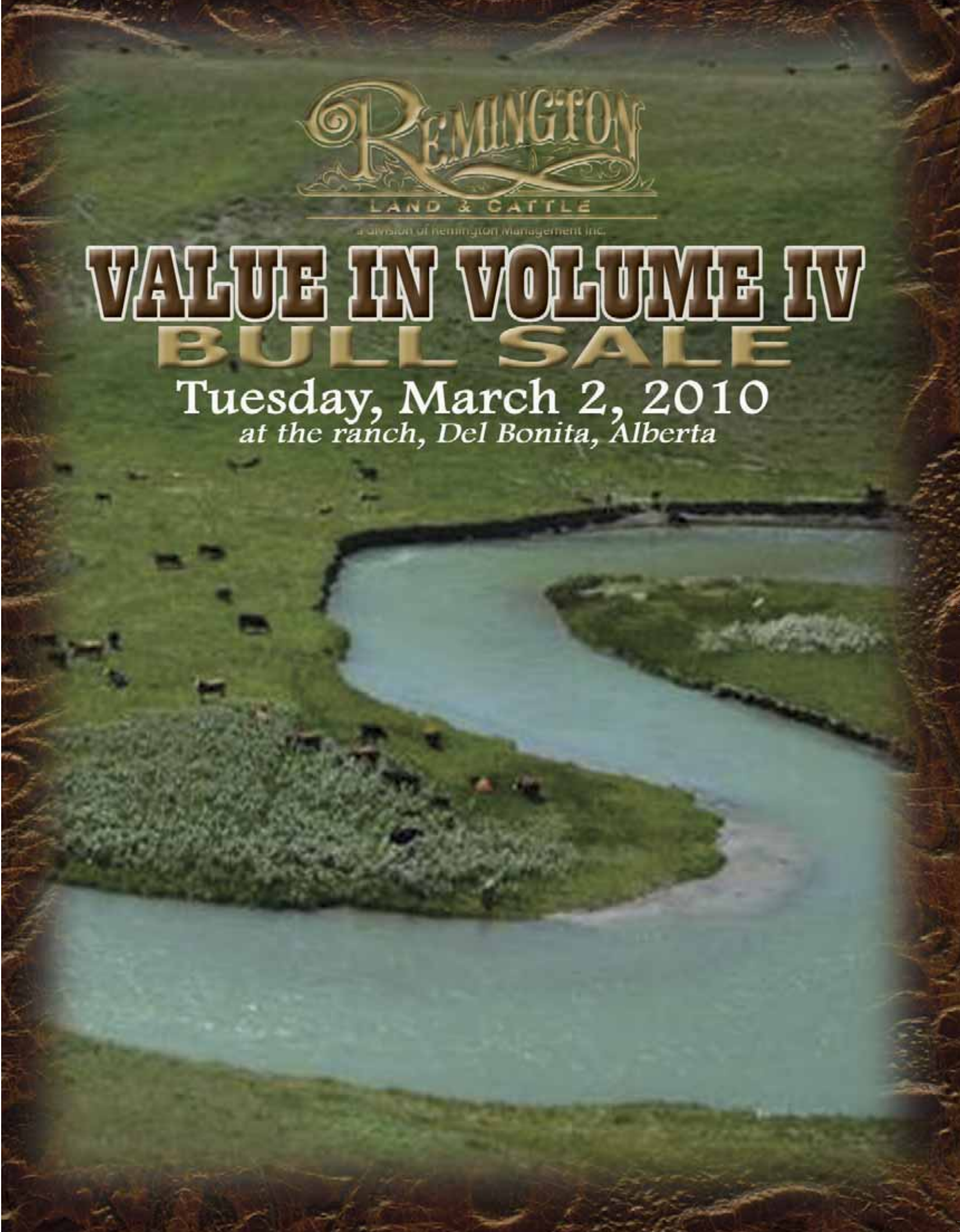




a division of Remington Management Inc.

# VALUE IN VOLUME IV BULL SALE

Tuesday, March 2, 2010  
*at the ranch, Del Bonita, Alberta*



# Welcome

Another very busy year at Remington has us wondering where the time goes. 2009 was a very good year for us as we received timely rains, a good feed supply, and were able to market our cattle quite successfully. This will be our second March bull sale, but the first one where only bulls sell. The strains of calving, sale preparation and staff management pointed us in the direction of one annual bull sale. These bulls are from all three of our calving groups; a set of bulls we are very proud of.



Our Angus program is one of the largest in Canada. These Angus bulls represent our strongest group yet. Our first sire group by Old Post sells. He was our high seller in the March 2009 sale with 1/2 interest to LLB at \$41000. He has since been leased to Genex and will be a major force in the Angus business for some time to come. There are also large groups of sons from our herd bulls - Triple E Matrix, Cudlobe Yellowstone 80M, SAV Final Answer, Remittal Linebacker, GAR Predestined, and Sitz Alliance 9160. There are high performers, high maternal and super calving ease bulls throughout the offering.

Our Simmental program is really catching fire as well. Although we normally don't show our cattle, it was decided to make the effort and hit the road a bit this past fall. Remington General Lee was shown at the Olds Fair and was named Supreme Champion bull. He also was the Canadian Western Agribition Grand Champion Simmental bull and RBC top ten finalist. His flush brother that sold to Sun Star Simmentals and David Mohr in our Value in Volume III sale was Reserve Grand Champion. We also had both Junior Champion Simmental bulls with a pair of On Target sons. We exhibited a Simmental Pen of Three bulls sired by Red Label, and they were crowned as the Supreme Champion Pen of Bulls. The bulls by Red Label and On Target are a powerful set; well worth the drive to Del Bonita to evaluate!

We are also selling our largest group of Yieldmaster bulls to date. These bulls are primarily sired by Red Label and On Target. A large portion of these half blood bulls are ET calves out of some of our very elite Angus donor cows. This set of bulls has been well admired by visitors all year long.

The staff has really done a great job of getting the day to day work done around this ranch. We have a lot of cattle around and these people do a superb job. We would also like to thank all the sale staff and neighbours that pitch in and help make these events happen.

Many thanks to all those who have purchased bulls in the past, and a warm welcome to those of you who may be planning on attending for the first time. We will make every effort to help ensure that your new bull or bulls are a great investment in the future of your cow herd.



*Randy Remington*



**GARY & LEIGH RAIRDAN**  
Manager - Alberta  
Cell: (403) 634-8012  
Res: (403) 758-3754  
grairdan@remingtoncattle.com



**DARRELL & DARLA RAIRDAN**  
Manager - Saskatchewan  
Cell: (403) 382-1714  
Res: (306) 629-3238  
drairdan@remingtoncattle.com



**BRYON WOLTERS**  
Marketing - Customer Service  
Cell: (403) 715-9599  
Res: (403) 758-6112  
bwolters@remingtoncattle.com



**JODI ROBERTSON**  
Calgary Office Manager  
Office: (403) 255-7003  
Cell: (403) 701-7844  
jrobertson@remingtoncorp.com



# WELCOME TO REMINGTON LAND & CATTLE

## VALUE IN VOLUME IV *Bull Sale*

TUESDAY MARCH 2, 2010 - AT THE RANCH - DEL BONITA, AB  
SALE TIME - 1PM

### 215 BULLS SELL!

Please join us for lunch prior to the sale.

Sale Day Number (403) 758-6105

Please note cell phone reception is very limited.

#### Auctioneer

Steve Dorran 403.540.9498  
Ryan Dorran 403.507.6483

#### Sale Staff

Mark Stock 403.357.8104  
Jeff Thomas 406.581.8859  
Doug Pahl 405.820.3982  
Alan K. Sears 970.396.7521  
Mike Daychief 403.737.3313  
Shane Castle 306.741.7485

#### Special Guests

Dave Callaway Angus World  
Darryl Snider Simmental Country  
John Donaldson CAA President  
Brian Good CAA Liason  
Doug Fee CAA CEO  
Darren Hipkin AAA President  
Everett Hall CSA President  
Bruce Holmquist CSA Liason  
Maureen Mappin ASA President  
Hoss Hammer KG 95.5

#### Accommodations

South Country Inn  
Cardston, AB 403.653.8000  
Ramada Inn  
Lethbridge, AB 403.380.5050

#### Directions

##### FROM CARDSTON:

South on Hwy 2, then 35 km East on Hwy 501, watch for signs on the South side. Turn South on Range Road 230.

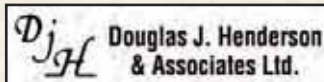
##### FROM LETHBRIDGE:

South on Hwy 5 to Magrath, then South on Hwy 62 to Del Bonita. Turn West on Hwy 501, watch for the sign 11 km West from 501 x 62 junction. South on Range Road 230.

#### Semen Reserve

Robb & Hoegl reserves the right to collect 100 straws of semen for in herd use on any bull in the sale. Semen would be collected at Robb & Hoegl expenses and buyers convenience.

#### Sale Consultants



Doug & Linda Henderson 403.350.8541  
Jay Wildman 587.777.9004



Brian Bouchard 403.813.7999  
Scott Bohrsen 403.370.3010  
Tyler Libke 306.544.7633



Rob Holowaychuk 780.916.2628  
Bob Toner 306.834.7385



Darren Shaw, S.A.L.E. 403.601.5165  
Frank Jenkins, S.A.L.E. 403.627.6700  
Allan Lively, S.A.L.E. 403.627.7776  
Justin Keeley, S.A.L.E. 403.627.6534  
Bill Perlich, S.A.L.E. 403.540.1884

#### Catalogue Production

Cover was designed by Afton Person. Catalogue production was done by Bouchard Livestock International. Full color catalogue can be viewed at [www.bouchardlivestock.com](http://www.bouchardlivestock.com)

*Sale Information*



Dawn Lasby  
Cattle Records, Office



Duane Heather  
Head of Maintenance



Vincent Tyssen  
Maintenance Assistant



Cody Selke  
Cowboy



Jordan Bircham  
Ranch Crew



Rob, Susan, Melissa, Rachel Selke  
Cow Boss



Gordon & Denise Algate  
Crops & Feeding



John & Enid Marlatt  
Mechanic



Ken, Suzanne & Taylor Anderson  
Sale Cattle



Tom Allsop & Stacy McNish & Shaylynn  
Ranch Crew



Braeden & Keely Hillmer  
Groundskeepers



Bill & Vicki Hampton  
SASK- Field Operations



John Clelland & Amber Hallborg  
SASK- Ranch Crew



Dustan, Lisa, Cash & Pistol  
Marks  
SASK- Herdsman



Marcel, Lisa, Dillon, Lloyd &  
Courtney Packet  
SASK- Trucking

*Remington Land & Cattle Staff*



## Livestock Veterinary Services

Box 1189  
Picture Butte, AB, T0K 1V0  
403-732-5322, Fax:732-5344  
Email: [livestockvet@shaw.ca](mailto:livestockvet@shaw.ca)

Arie Koppe D.V.M.  
Bruce Hill D.V.M.  
Andrew Bronson D.V.M.  
Betty-Jo Bradley D.V.M.  
Melissa Wallace D.V.M.  
Heather Fenton D.V.M.

Remington Land & Cattle  
Del Bonita, AB

Re: Ranch Vaccination Program

This is a note to let the purchasers of Remington Cattle Company's purebred and commercial cattle understand your vaccination program:

### Ranch Born Calves:

Branding: Bovishield Gold 5	- 5 way viral vaccine with Type I and II BVD
Ultrachoice 8	- clostridial 8 way
One Shot	- M. hemolytica vaccine

Weaning: repeat above

### Purchased Calves:

Bovishield Gold 5	- 5 way viral vaccine with Type I and II BVD
Ultrachoice 8 Somnubac-	clostridial 8 way with H. somnus bacterin
One Shot	- M. hemolytica vaccine

### Pre-breeding for replacement heifers:

Bovishield Gold 5	- 5 way viral vaccine with Type I and II BVD
Ultrachoice 8	- clostridial 8 way

Main Cow Herd: - cow herd has been given MLV BVD for several years

- initially given while cows are open (pre-breeding)

- once program is established, then vaccinated pre-calving

Bovishield Gold 5	- 5 way viral vaccine with Type I and II BVD
Ultrachoice 8	- clostridial 8 way

The net result of this program has been a healthy herd of cattle. All the best with this year's sale.

Yours truly,  
LIVESTOCK VETERINARY SERVICES

Andrew Bronson D.V.M.

*Herb Healy's Information*

# REMINGTON LAND & CATTLE

## Customer Service Program

### Insurance

Insurance will be available from Douglas J. Henderson & Associates on sale day.

### Delivery

We will provide free delivery to Western Canada and to ports of entry in the western states. We will happily coordinate delivery at cost to all other areas at cost. Delivery will be arranged in loads to areas at our convenience. We will try to get the bulls out in a fairly expedient manner after the sale. If bulls are left at the ranch after the sale we do ask that they are insured.

### Terms

Terms may be available. Please contact Gary or Bryon for more information prior to sale day.

### The Remington Land & Cattle Guarantee

Each bull will sell with a veterinarian issued semen certificate and a breeding soundness examination. Should any bull fail to be a satisfactory breeder, please contact our office immediately. All bulls are sold under the Standard Terms & Conditions of the Canadian Angus & Canadian Simmental Associations.

### Calving Ease Bulls

A good percentage of the bulls on offer have been bred for calving ease with a majority of them actually mothered by two year old females. They will be identified by a "CE" on the photo of the bull or by his lot.

### Sight Unseen Purchases

We hope that you will be able to attend the sale, but we also know that everyone has a busy schedule and that you may not be able to attend on sale day.

Of course you will still be able to send your bids with any of our very competent sales staff with the utmost confidence that your business will be tended to in a most professional manner.

We do ask that for either of the absentee bidding programs that you give us a call first so that we may suggest bulls and females that would best suit your needs and your budget as we have complete knowledge of the offering presented.

**100% satisfaction is guaranteed when using this program. If the animal is not as described to you on purchase, you don't own him - no questions asked!**

### Expected Progeny Differences (EPDs)

#### Black Angus Breed Averages

BW	WW	YW	Milk	TM	YG	REA	Marb	Fat
3.0	46	72	13	36	26	-0.06	-0.05	0.014

#### Simmental Breed Averages

CE	BW	WW	YW	MCE	MWW	Milk	SC	Marb
7.2	2.8	36.1	60.3	5.5	25.1	7.0	0.13	0.04

### In Herd Breeding Interest

Remington Land & Cattle reserves the right to collect semen, for in herd use only, on any bull in the sale. Semen will be collected at RLC's expense and will be done at the new owner's convenience.

Customer Service Program



# AND & CATTLE

## Understanding Ultrasound & EPD's

### Understanding Ultrasound

The first thing producers want to know about ultrasound is: How accurate is it? The answer to the question depends on who does the actual scanning of the animals and who interprets the images. Ultrasound data in this catalogue was collected and analyzed by a technician that is certified by AUP and CUP. This means that this technician has met the standards set by many breed associations. The accuracy, although not perfect, is high enough that bulls selected based on ultrasound, results in positive genetic change in progeny carcass traits. Heritability for carcass traits are moderate to high, which is slightly higher than birth weights, weaning weights, and yearling weights.

### % Lean Meat Yield (Cutability)

Cutability is the percentage lean meat yield in the carcass. Yield grade is an important factor in both Canada and the U.S.A. Producing calves with a high genetic potential for this trait can be an important objective of a breeding program. Back fat will reduce yield by 7 to 8 times what REA will increase yield.

### Ribeye Area (REA in<sup>2</sup>)

The REA is the largest muscle in the body at birth, so REA gives an indication of overall carcass muscling (measured in inches)

### %IMF (Marbling)

Marbling is the best indicator that we have to tell us what kind of eating experience we will have when eating beef. Extensive research shows that average AAA and above marbling produces the most satisfied consumers. As marbling increases so does the juiciness, the flavorfulness, and the tenderness. This may not always be true but for the most part AAA marbling produces more satisfied customers than does A or AA marbling carcasses.

Meaning of the values:

less than 2.3 = Single A  
2.30 - 3.99 = Double AA  
4.00 - 9.89 = Triple AAA  
9.00 and above = Prime

### Rib Fat (in inches)

Fat depth influences lean meat yield. Fat bulls have less lean meat/muscle in the carcass. The fat measurement also gives an indication of the bulls fleshing ability. Calves from a bull with very little fat may finish too slowly in the feedlot.

Body condition score (fat depth) in females is related to their ability to reach puberty at an early age, produce milk, rebreed, and maintain a short calving interval. On the other hand, bulls carrying excessive fat may suffer reduced fertility.

### Summary

Like all traits we should avoid the extremes. Moderation is the key. As producers we need to evaluate our own females and then decide what kind of progeny we want to produce and this should dictate what kind of sire we want to purchase.

### Understanding Ultrasound Expected Progeny Differences

Statistics generated for individual cattle through national genetic evaluations

### EPDs:

- allow breeders to estimate a young animal's breeding value - that animal's value as a parent
- allow a fair comparison of breeding value by removing environmental bias such as climate, feed and special management
- are the best tool available to compare animals between herds, countries and year of birth
- help breeders make informed decisions regarding breeding stock selection by evaluating numerous traits such as growth-related traits, carcass traits and reproductive
- estimate the group performance of one parent compared to the group performance of another parent, assuming similar mates

EPDS EVALUATE GROUP AVERAGES AND OFFSPRING'S PERFORMANCE. THEY CAN NOT PREDICT INDIVIDUAL PERFORMANCE OR WEIGHTS.

To evaluate seedstock, use EPDs, pedigree and visual assessment. With EPDs the concept of "intermediate optimums" works best. Selection for one trait or for extremes generally results in unexpected consequences due to genetic correlations - for example, intense selection for high yearling weight will also increase birth weight. Successful cattle breeding requires a thoughtful and balanced approach to optimize fertility, growth and carcass merit while improving profitability and efficiency.

Understanding Ultrasound & EPD's

**R 1** REMINGTON MAX 149U  
16 APR 08 - RCC 149U - 1483098



G T MAXIMUM  
Sire: **BASIN MAX 602C**  
BASIN ELINE ERICA 315U

O C C JOKER 620J  
Dam: **CROWFOOT LADY ERICA 3785N**  
PAT LADY ERICA 8984

SCOTCH CAP  
GT MISS TRAVELER  
G D A R RAINMAKER 340  
BASIN ELINE ERICA  
O C C EMBLAZON 854E  
O C C JUANADA 709V  
N BAR IMPACT U1253  
PAT PIED PIPER 921

ADJ	ADJ	EPD's									
BW	WW	YW	BW	WW	YW	Milk	TM	YG	REA	Marb	Fat
80	613	1174	1.2	36	69	17	35	34	0.02	0.19	0.013

Agribition & Denver Angus Pen of Bulls Member

**R 2** REMINGTON LEGACY 198U  
27 APR 08 - RCC 198U - 1483062

O C C ECHELON 857E  
Sire: **O C C LEGACY 839L**  
O C C DIXIE ERICA 960E

LEACHMAN RIGHT TIME  
Dam: **SCA LADY ANN 56G**  
SCA LADY ANN 12X

D H D TRAVELER 6807  
DIXIE ERICA OF C H 1019  
O C C ANCHOR 771A  
DIXIE ERICA OF R R 4345  
N BAR EMULATION EXT  
LEACHMAN ERICA 0025  
SOUTHOLM ELEVATION 48P  
EARLY SUNSET LADYANN 15T

ADJ	ADJ	EPD's									
BW	WW	YW	BW	WW	YW	Milk	TM	YG	REA	Marb	Fat
89	594	1134	2.1	35	67	14	32	0.19	-0.06	-0.10	0.031

Agribition & Denver Angus Pen of Bulls Spare

REMINGTON'S DENVER CLASS W



**CROWFOOT LADY ERICA 3785N**  
Dam of Lot 1, 102, 103, 104 & 105



**SCA LADY ANN 56G**  
Dam of Lot 2 & 90





# WINNING ANGUS PEN OF BULLS



## R<sup>3</sup> REMINGTON LEGACY 206U

29 APR 08 - RCC 206U - 1483054

Sire: **O C C LEGACY 839L**  
 O C C ECHELON 857E  
 O C C DIXIE ERICA 960E

Dam: **THOMAS BLACKCAP 9133**  
 SITZ TRAVELER 8180  
 THOMAS BLACKCAP 4155

D H D TRAVELER 6807  
 DIXIE ERICA OF C H 1019  
 O C C ANCHOR 771A  
 DIXIE ERICA OF R R 4345  
 G D A R TRAVELER 71  
 SITZ EVERELDA ENTENSE 1137  
 EMULATION N BAR 5522  
 THOMAS BLACKCAP 2227

ADI		ADI		EPD's							
BW	WW	YW	BW	WW	YW	Milk	TM	YG	REA	Marb	Fat
90	572	1205	0.5	35	73	16	35	36	-0.11	0.02	0.058

Agribition & Denver Angus Pen of Bulls Member

## R<sup>4</sup> REMINGTON FINAL ANSWER 219U

5 MAY 08 - RCC 219U - 1498476

Sire: **S A V FINAL ANSWER 0035**  
 SITZ TRAVELER 8180  
 S A V EMULOUS 8145

Dam: **REMINGTON BLACKCAP 120S**  
 F A R KRUGERRAND 185L  
 CRESCENT CREEK BLACKCAP 84E

G D A R TRAVELER 71  
 SITZ EVERELDA ENTENSE 1137  
 BON VIEW BANDO 598  
 S A V SKY EMULOUS 2124  
 F A R KRUGERRAND 410H  
 F A R ROSEBUD 113F  
 RITO 8094 PRAIRIELANE 2060  
 CRESCENT CREEK BLACKCAP 112A

ADI		ADI		EPD's							
BW	WW	YW	BW	WW	YW	Milk	TM	YG	REA	Marb	Fat
78	742	1302	1.6	48	91	18	42	43	0.43	-0.04	0.012

Agribition & Denver Angus Pen of Bulls Member



**THOMAS BLACKCAP 9133**  
 Dam of Lot 3



**S A V FINAL ANSWER 0035**  
 Dam of Lot 2 & 90



ANGUS BULLS

Pen of Bulls



These are our first bulls to sell by this awesome sire. Old Post is an outstanding individual - incredible length of body, muscle, scrotal and feet. He will be a breed changer! Co-owned with LLB, Peak Dot and leased by Genex.

*Ref. Sire*  
**R 5** DOUBLE AA OLD POST BANDOLIER  
 15 FEB 03 - RCE 367N - 1162392

Sire: **DOUBLE AA BLACKMAN 252'96**  
 DOUBLE AA ANNIEK 620'91  
 JOHNSTON BANDOLIER 849E  
 Dam: **DOUBLE AA ANNIE K 548'99**  
 DOUBLE AA ANNIEK 280'96  
 SPRUCEVIEW ESSOTERIC 31A  
 DOUBLE AA PRINCESS 70'88  
 JOHNSTON 2100 BARDOLINE 554Y  
 DOUBLE AA ANNIEK 528'89  
 BROOKSIDE BANDOLIER 12U  
 BLACKCAP OF RAINBOW HILLS 49X  
 ANGUS ACRES WINSTON 249B  
 DOUBLE AA ANNIEK 218'92

ADJ	ADJ	EPD's									
BW	WW	YW	BW	WW	YW	Milk	TM	YG	REA	Marb	Fat
89	617	N/A	3.1	42	64	10	31	23	N/A	N/A	N/A

**R 5** REMINGTON OLD POST 9W  
 4 JAN 09 - RCC 9W - 1535078

Sire: DOUBLE AA OLD POST BANDOLIER

Dam: **WILP/HAR BLACKCAP 31C**  
 WILP/HAR BLACKCAP 1X  
 DELTA TTR 29D  
 WILP/HAR BLACKCAP 1X  
 ANGUS ACRES CHANCE 19A  
 PRIDE MCB 204V  
 R&J ATLAS 3201  
 WILP/HAR BLACKCAP 13N

ADJ	ADJ	EPD's									
BW	WW	YW	BW	WW	YW	Milk	TM	YG	REA	Marb	Fat
86	673	1095	2.4	28	44	8	22	16	N/A	N/A	N/A

**R 6** REMINGTON OLD POST 22W  
 10 JAN 09 - RCC 22W - 1535075

Sire: DOUBLE AA OLD POST BANDOLIER

Dam: **LLB BARDAL 341L**  
 DOUBLE J BARDAL 5A  
 KILMAURS DAQUANTAE 1H  
 DOUBLE J BARDAL 5A  
 R R DAQUANTAE 789E  
 KILMAURS MISS KELLY  
 RAMBO 55U  
 DOUBLE J BARDAL 159Y

ADJ	ADJ	EPD's									
BW	WW	YW	BW	WW	YW	Milk	TM	YG	REA	Marb	Fat
88	610	1092	2.5	36	57	9	27	21	N/A	N/A	N/A



**R 7** REMINGTON OLD POST 10W  
 1 JAN 09 - RCC 10W - 1535077

Sire: DOUBLE AA OLD POST BANDOLIER

Dam: **WIWA CREEK TILDA 47'96**  
 WIWA CREEK TILDA 25'87  
 WIWA CREEK STOCKMAN 53'94  
 WIWA CREEK TILDA 25'87  
 APEX STOCKMAN 061  
 WIWA CREEK BARDETTA 42.53'90  
 R&J ATLAS 3201 571350  
 WIWA CREEK TILDA 10'82

ADJ	ADJ	EPD's									
BW	WW	YW	BW	WW	YW	Milk	TM	YG	REA	Marb	Fat
84	714	1161	N/A	N/A	N/A	N/A	N/A	N/A	N/A	N/A	N/A

# R 8 REMINGTON OLD POST 26W

11 JAN 09 - RCC 26W - 1535074

Sire: DOUBLE AA OLD POST BANDOLIER

Dam: **LLB BARDAL 341L**  
 KILMAURS DAQUANTAE 1H  
 DOUBLE J BARDAL 5A

R R DAQUANTAE 789E  
 KILMAURS MISS KELLY  
 RAMBO 55U 624553  
 DOUBLE J BARDAL 159Y

ADJ			EPD's								
BW	WW	YW	BW	WW	YW	Milk	TM	YG	REA	Marb	Fat
86	724	1205	2.5	36	57	9	27	21	N/A	N/A	N/A



# R 9 REMINGTON OLD POST 27W

12 JAN 09 - RCC 27W - 1535081

Sire: DOUBLE AA OLD POST BANDOLIER

Dam: **REMINGTON LADY LAWN 144R**  
 HAPPYVALE BLACK JUMBO 1B  
 ANGUS ACRES LADY LAWN 15B

HAPPYVALE BLACK BARD 34X  
 BLACKCAP BOTHA  
 GEIS BARDOLENE 30'90  
 ANGUSACRES LADY LAWN 5X

ADJ			EPD's								
BW	WW	YW	BW	WW	YW	Milk	TM	YG	REA	Marb	Fat
88	702	1175	3.1	32	53	9	24	22	N/A	N/A	N/A



# R 10 REMINGTON OLD POST 30W

12 JAN 09 - RCC 30W - 1535080

Sire: DOUBLE AA OLD POST BANDOLIER

Dam: **LLB BARDAL 341L**  
 KILMAURS DAQUANTAE 1H  
 DOUBLE J BARDAL 5A

R R DAQUANTAE 789E  
 KILMAURS MISS KELLY  
 RAMBO 55U  
 DOUBLE J BARDAL 159Y

ADJ			EPD's								
BW	WW	YW	BW	WW	YW	Milk	TM	YG	REA	Marb	Fat
94	760	1203	2.5	36	57	9	27	21	N/A	N/A	N/A

# R 11 REMINGTON OLD POST 31W

12 JAN 09 - RCC 31W - 1535079

Sire: DOUBLE AA OLD POST BANDOLIER

Dam: **LLB BARDAL 341L**  
 KILMAURS DAQUANTAE 1H  
 DOUBLE J BARDAL 5A

R R DAQUANTAE 789E  
 KILMAURS MISS KELLY  
 RAMBO 55U  
 DOUBLE J BARDAL 159Y

ADJ			EPD's								
BW	WW	YW	BW	WW	YW	Milk	TM	YG	REA	Marb	Fat
98	699	1152	2.5	36	57	9	27	21	N/A	N/A	N/A

# R 12 REMINGTON OLD POST 34W

12 JAN 09 - RCC 34W - 1535071

Sire: DOUBLE AA OLD POST BANDOLIER

Dam: **SCA ERROLLINE 39G**  
 KRUGERRAND OF DONAMERE 490  
 STRETTON CREEK ERROLLINE 133A

C H STACKER 7040  
 DONAMERE BACHEL BEAUTY 288  
 SOUTHOLM ELEVATION 48P  
 SOUTHOLM ERROLLINE 133S

ADJ			EPD's								
BW	WW	YW	BW	WW	YW	Milk	TM	YG	REA	Marb	Fat
86	581	1109	3.8	41	71	10	30	31	N/A	N/A	N/A

# R 13 REMINGTON OLD POST 36W

13 JAN 09 - RCC 36W - 1530495

Sire: DOUBLE AA OLD POST BANDOLIER

Dam: **SCA ERROLLINE 39G**  
 KRUGERRAND OF DONAMERE 490  
 STRETTON CREEK ERROLLINE 133A

C H STACKER 7040  
 DONAMERE BACHEL BEAUTY 288  
 SOUTHOLM ELEVATION 48P  
 SOUTHOLM ERROLLINE 133S

ADJ			EPD's								
BW	WW	YW	BW	WW	YW	Milk	TM	YG	REA	Marb	Fat
92	724	1183	3.8	41	71	10	30	31	N/A	N/A	N/A

ANGUS BULLS

*Old Post Angus*



**R 14** REMINGTON OLD POST 40W  
13 JAN 09 - RCC 40W - 1535069

Sire: **DOUBLE AA OLD POST BANDOLIER**

Dam: **SCA ERROLLINE 39G**  
 KRUGERRAND OF DONAMERE 490 C H STACKER 7040  
 STRETTON CREEK ERROLLINE 133A DONAMERE BACHEL BEAUTY 288  
 SOUTHOLM ELEVATION 48P  
 SOUTHOLM ERROLLINE 133S

ADJ			ADJ			EPD's					
BW	WW	YW	BW	WW	YW	Milk	TM	YG	REA	Marb	Fat
88	729	1153	3.8	41	71	10	30	31	N/A	N/A	N/A



**R 15** REMINGTON OLD POST 43W  
14 JAN 09 - RCC 43W - 1535068

Sire: **DOUBLE AA OLD POST BANDOLIER**

Dam: **LLB BARDAL 341L**  
 KILMAURS DAQUANTAE 1H R R DAQUANTAE 789E  
 DOUBLE J BARDAL 5A KILMAURS MISS KELLY  
 RAMBO 55U  
 DOUBLE J BARDAL 159Y

ADJ			ADJ			EPD's					
BW	WW	YW	BW	WW	YW	Milk	TM	YG	REA	Marb	Fat
96	793	1223	2.5	36	57	9	27	21	N/A	N/A	N/A



**R 16** REMINGTON OLD POST 71W  
17 JAN 09 - RCC 71W - 1535072

Sire: **DOUBLE AA OLD POST BANDOLIER**

Dam: **WIWA CREEK TILDA 47'96**  
 WIWA CREEK STOCKMAN 53'94 APEX STOCKMAN 061  
 WIWA CREEK TILDA 25'87 WWA CREEK BARDETTA 42.53'90  
 R&J ATLAS 3201  
 WIWA CREEK TILDA 10'82

ADJ			ADJ			EPD's					
BW	WW	YW	BW	WW	YW	Milk	TM	YG	REA	Marb	Fat
90	774	1204	N/A	N/A	N/A	N/A	N/A	N/A	N/A	N/A	N/A

**R 17** REMINGTON OLD POST 72W  
16 JAN 09 - RCC 72W - 1528760

Sire: **DOUBLE AA OLD POST BANDOLIER**

Dam: **VIKING BANDY LADY 157F**  
 ANGUS ACRES BANDY 96X ANGUSACRES BANDOLIER 75T  
 DOUBLE AA ANNIEK 66'93 ANGUS ACRES LADY 90R  
 SPRUCEVIEW ESSOTERIC 31A  
 DOUBLE AA ANNIEK 543'90

ADJ			ADJ			EPD's					
BW	WW	YW	BW	WW	YW	Milk	TM	YG	REA	Marb	Fat
80	708	1213	2.3	39	61	13	33	21	N/A	N/A	N/A

**R 18** REMINGTON OLD POST 89W  
22 JAN 09 - RCC 89W - 1528778

Sire: **DOUBLE AA OLD POST BANDOLIER I 162392**

Dam: **DKF MISS NEW DEAL 205P**  
 BOYD NEW DAY 8005 A A R NEW TREND  
 CRESCENT CREEK QUEEN RUTH 136J SV F FOREVER LADY 57D  
 GEIS ACHIEVER 239'96  
 CRESCENT CREEK QUEEN RUTH

ADJ			ADJ			EPD's					
BW	WW	YW	BW	WW	YW	Milk	TM	YG	REA	Marb	Fat
88	735	1251	2.6	45	78	11	34	32	N/A	N/A	N/A

**R 19** REMINGTON OLD POST 108W  
26 JAN 09 - RCC 108W - 1528795

**R 20** REMINGTON OLD POST 198W  
13 FEB 09 - RCC 198W - 1528771

Sire: DOUBLE AA OLD POST BANDOLIER

Sire: DOUBLE AA OLD POST BANDOLIER

Dam: WILLABAR ELBA 101N  
WILLABAR SANTANA 33L  
WILLABAR ELBA 168K

Dam: EVERBLACK EUGENIE 67M  
SUNMOUND ESTON 27F  
EVERBLACK EUGENIE 104H

SUNMOUNDESTON OF YORK 26Y  
SUNMOUND DUCHESS 1Z  
DOUBLE AA BARDOLENE 8091  
CUDLOBE EUGENIE 35E

BW	ADJ WW	ADJ YW	BW	WW	YW	Milk	TM	YG	REA	Marb	Fat
88	553	1271	2.2	26	48	2	15	23	N/A	N/A	N/A

BW	ADJ WW	ADJ YW	BW	WW	YW	Milk	TM	YG	REA	Marb	Fat
94	808	1171	3.5	44	72	12	34	28	N/A	N/A	N/A

**Ref. Sire**

**TRIPLE E MATRIX 908**

17 JAN 99 - IMP 9908J - 1041787

Sire: N BAR EMULATION EXT  
EMULATION N BAR 5522  
N BAR PRIMROSE 2424

Dam: JAYNBEE WENDY 728B  
GLORY B RAINMAKER 810Y  
JAYNBEE WENDY 469

EMULATION 31  
ANKONY 8F78 LASS 8F275  
EMULATION 31  
PRIMROSE N BAR 9962  
G D A R RAINMAKER 340  
GLORY B ROSENA 810  
SITZ TRAVELER 8444  
JAYNBEE WENDY 143



BW	WW	YW	Milk	TM	YG	REA	Marb	Fat
2.6	49	80	19	44	31	0.02	0.03	0.027

This great breeding bull was added to our herd bull battery through the Ebon Hill dispersal. His daughters are fabulous cows. These yearling bulls by Matrix are a great set; they are moderate birth cattle with excellent performance. Matrix is gone now and this may be the last large set of sons we have to offer.

**R 21** REMINGTON MATRIX 6W  
2 JAN 09 - RCC 6W - 1528752

**R 22** REMINGTON MATRIX 17W  
8 JAN 09 - RCC 17W - 1528781

Sire: TRIPLE E MATRIX 908

Sire: TRIPLE E MATRIX 908

Dam: REMINGTON BLACKCAP 18R  
SITZ ALLIANCE 6595  
REMINGTON BLACKCAP 6N

Dam: B.B.A.R. BLACKCAP ANN 53K  
JOHNSTON NUGGET 370E  
BLACKCAP ANN 53/94

NUGGET 801X OF J R S  
NBARKINOCITRY BEAUTY 7393  
G D A R RAINMAKER 340  
VALLEY HILLS BLACKCAP ANN 53B

BW	ADJ WW	ADJ YW	BW	WW	YW	Milk	TM	YG	REA	Marb	Fat
86	640	1302	2.5	42	76	20	41	34	0.07	0.04	0.031

BW	ADJ WW	ADJ YW	BW	WW	YW	Milk	TM	YG	REA	Marb	Fat
90	655	1134	1.5	39	61	12	32	22	-0.09	0.06	0.014

**R 23** REMINGTON MATRIX 25W  
11 JAN 09 - RCC 25W - 1528805

**R 24** REMINGTON MATRIX 60W  
16 JAN 09 - RCC 60W - 1528774

Sire: TRIPLE E MATRIX 908

Sire: TRIPLE E MATRIX 908

Dam: REMINGTON KEEPSAKE 15R  
VERMILION DATELINE 7078  
WILP/HAR KEEPSAKE 72K

Dam: REMINGTON LASSIE 51S  
SITZ ALLIANCE 6595  
REMINGTON LASSIE 4P

SITZ TRAVELER 8180  
SITZ BARBARAMERE JET 2698  
F A R KRUGERRAND 185L  
MVF LASSIE 154M

BW	ADJ WW	ADJ YW	BW	WW	YW	Milk	TM	YG	REA	Marb	Fat
86	724	1423	2.6	49	85	18	43	35	0.12	0.04	0.015

BW	ADJ WW	ADJ YW	BW	WW	YW	Milk	TM	YG	REA	Marb	Fat
94	636	1228	4.3	41	80	19	40	39	0.07	0.15	0.023

ANGUS BULLS

Old Post to Matrix Sons

**R 25** REMINGTON MATRIX 102W  
26 JAN 102W - RCC 102W - 1528798

Sire: TRIPLE E MATRIX 908

Dam: SCA TONTO 57E  
SCA BEAUTY 5999  
SCA 28G 490 OF IDEAL 2424

LEACHMAN TONTO  
EARLY SUNSET JUNO 49S  
KRUGERRAND OF DONAMERE 490  
IDEAL 2424 OF 0153 5115

BW	ADJ WW	ADJ YW	BW	WW	YW	Milk	EPD's TM	YG	REA	Marb	Fat
92	770	N/A	3.0	46	72	13	36	26	-0.06	-0.05	0.014

**R 26** REMINGTON MATRIX 109W  
26 JAN 109W - RCC 109W - 1528792

Sire: TRIPLE E MATRIX 908 1041787

Dam: SCA 3299 OF IDEAL 1418  
REMINGTON BLACKCAP 43S  
WILP/HAR BLACKCAP 54K

IDEAL 1418 OF 8103 4286  
SCA 16E OF IDEAL 033 7258  
GUMBO GULCH-WHAM 114H  
WILP/HAR BLACKCAP 4D

BW	ADJ WW	ADJ YW	BW	WW	YW	Milk	EPD's TM	YG	REA	Marb	Fat
86	912	1397	3.0	64	98	26	58	34	0.01	0.01	0.025

**R 27** REMINGTON MATRIX 158W  
7 FEB 09 - RCC 158W - REG - 1528804

Sire: TRIPLE E MATRIX 908

Dam: K G POWER DESIGN  
REMINGTON DEWDROP 60R  
LLB DEWDROP 226N

D B NEW FLY DESIGN 730  
POWER FIX K G 3  
GEIS BLACKMAN 111'01  
GEIS DEWDROP 69'01

BW	ADJ WW	ADJ YW	BW	WW	YW	Milk	EPD's TM	YG	REA	Marb	Fat
90	844	1211	2.6	54	86	23	50	32	0.10	0.08	0.000

**R 28** REMINGTON MATRIX 196W  
13 FEB 09 - RCC 196W - REG - 1528772

Sire: TRIPLE E MATRIX 908 1041787

Dam: CHICO HANNIBAL 43H  
ISLA BANK PRIDE 117N  
HILOW PRIDE 17G

TC STOCKMAN 365  
CHICO ROSEBUD 2E  
EARLY SUNSET TEX 51E  
HILOW PRIDE 5D

BW	ADJ WW	ADJ YW	BW	WW	YW	Milk	EPD's TM	YG	REA	Marb	Fat
92	575	1237	4.4	28	53	15	29	25	0.05	-0.04	0.000

**R 29** REMINGTON MATRIX 203W  
13 FEB 09 - RCC 203W - 1528767

Sire: TRIPLE E MATRIX 908

Dam: MVF TRIUMPH 13L  
N.B.A. 4G HI LITE 30R  
N.B.A. 4G HI-LITE 16L

YOUNKIN TRIUMPH 4966  
MVF ELLEN 111J  
MVBL ASSET 42H  
KLUZAK EILEENMERE 22H

BW	ADJ WW	ADJ YW	BW	WW	YW	Milk	EPD's TM	YG	REA	Marb	Fat
86	779	1150	2.6	50	82	17	42	32	0.01	0.12	0.017

**R 30** REMINGTON MATRIX 206W  
14 FEB 09 - RCC 206W - 1528764

Sire: TRIPLE E MATRIX 908

Dam: VERMILION DATELINE 7078  
REMINGTON LADY BATE 67R  
DRYLAND LADY BATE 275

CONNELLY DATELINE  
VERMILION BLACKBIRD 5044  
MINBURN ROGUE 37H  
CRESCENT CREEK LADY BATE 4E

BW	ADJ WW	ADJ YW	BW	WW	YW	Milk	EPD's TM	YG	REA	Marb	Fat
96	794	1279	4.8	53	92	19	46	39	0.01	0.02	0.020

**R 31** REMINGTON MATRIX 214W  
15 FEB 09 - RCC 214W - 1528751

Sire: TRIPLE E MATRIX 908

Dam: REMITALL LEGIONAIRE 8L  
REMITALL NEONIA 128N  
HAPPYVALE JRP NEONIA 18E

SITZ ALLIANCE 6595  
REMITALL NEONIA 42J  
BALDRIDGE ALFALFA 95I  
HAPPYVALE G NEONIA 59R

BW	ADJ WW	ADJ YW	BW	WW	YW	Milk	EPD's TM	YG	REA	Marb	Fat
92	743	1176	3.3	39	63	17	37	24	-0.05	0.03	0.021

**R 32** REMINGTON MATRIX 234W  
19 FEB 09 - RCC 234W - 1536732

Sire: TRIPLE E MATRIX 908

Dam: H A R B HIGH PLAINS 975 JH  
REMINGTON DESIRE 55R  
JUSTAMERE 23-4 DESIRE 994M

SITZ ALLIANCE 6595  
JUANADA ERICA 9024 H A R  
Q A S TRAVELER 23-4  
JUSTA SOURCE DESIRE 634X

BW	ADJ WW	ADJ YW	BW	WW	YW	Milk	EPD's TM	YG	REA	Marb	Fat
89	N/A	N/A	2.5	43	75	24	45	32	-0.05	0.10	0.023





This bull was purchased from the Wintering Hills dispersal and has done a great job here. He has been a feet and leg improver and is out of a wonderful cow. Linebacker is gone now, and this will be the last chance to buy some sons in volume.

**Ref. Sire** REMITALL LINEBACKER 204L  
3 MAR 01 - AGN 204L - 1073466

EPD's								
BW	WW	YW	Milk	TM	YG	REA	Marb	Fat
3.5	55	93	19	47	38	0.24	-0.05	0.023

Sire: SITZ TRAVELER 8180  
SITZ ALLIANCE 6595  
SITZ BARBARAMERE JET 2698

Dam: MOUNTAIN SIDE EXTRA CLASSY  
REMITALL EILEEN 170H  
HAPPYVALE EILEEN 36C

G D A R TRAVELER 71  
SITZ EVERELDA ENTENSE 1137  
3 BAR SPIKE 1766  
SITZ BARAMERE JET 155  
DALRENE EXTRA 36A  
BLACKLASS OF GUMBO GULCH 50T  
HAPPYVALE HI SPADE 45Z  
HAPPYVALE EILEEN 58V

**R 33** REMINGTON LINEBACKER 469U  
9 APR 08 - RCC 469U - 1497285

**R 34** REMINGTON LINEBACKER 471U  
9 MAY 08 - RCC 471U - 1497286

Sire: REMITALL LINEBACKER 204L

Sire: REMITALL LINEBACKER 204L

Dam: PAHL CROSSFIRE ET 132L  
REMITALL MISS BETTY 95R  
PAHL MISS BETTY 89N

GREENS PREMIUM 7578  
DOUBLE J MISSIE 79W  
PAHL CROSSFIRE ET 132L  
PAHL MISS BETTY 1J

EPD's											
BW	WW	YW	Milk	TM	YG	REA	Marb	Fat			
78	528	1152	2.2	47	78	14	38	31	0.15	0.13	0.007

Dam: E&B 1483 SCOTCHMAN 543  
CROWFOOT WJ JEANNE 1440L  
GLADWALL JEANNET 7400

R R 9440 SCOTCH CAP 1483  
LADY SKYLAR B121  
AMITIE ACRES L EXT 1376  
GLADWALL JEANNET 5114

EPD's											
BW	WW	YW	Milk	TM	YG	REA	Marb	Fat			
86	723	1378	2.3	58	95	18	47	37	0.14	-0.11	0.032

**R 35** REMINGTON LINEBACKER 479U  
8 SEP 08 - RCC 479U - 1497289

**R 36** REMINGTON LINEBACKER 486U  
8 SEP 08 - RCC 486U - 1528930

Sire: REMITALL LINEBACKER 204L

Sire: REMITALL LINEBACKER 204L

Dam: LEELA WIDESPREAD 4K  
REMITALL LADY BATE 206R  
DRYLAND LADY BATE 275

WHITESTONE WIDESPREAD  
WESTROLAND PAULINE 20D  
MINBURN ROGUE 37H  
CRESCENT CREEK LADY BATE 44E

EPD's											
BW	WW	YW	Milk	TM	YG	REA	Marb	Fat			
82	628	1257	3.7	50	85	18	43	35	-0.12	0.14	0.044

Dam: LEACHMAN RIGHT TIME  
REMITALL BLACKCAP 207R  
CRESCENT CREEK BLACKCAP 84E

N BAR EMULATION EXT  
LEACHMAN ERICA 0025  
RITO 8094 PRAIRIELANE 2060  
CRESCENT CREEK BLACKCAP 112A

EPD's											
BW	WW	YW	Milk	TM	YG	REA	Marb	Fat			
85	540	1279	3.7	44	84	16	38	41	0.11	0.05	0.011

Linebacker Sons



**R 37 REMINGTON LINEBACKER 483U**  
8 SEP 08 - RCC 483U - 1497290

Sire: REMITALL LINEBACKER 204L 1073466

Dam: REMINGTON UNIVERSE 12N  
SCA 26J UNIVERSE 1418  
IDEAL 1418 OF IDEAL 8103 4286  
SCA 16E OF IDEAL 033 7258  
SCA KRUGERRAND 69G  
SCA 24E OF IDEAL 1418

BW	ADJ WW	ADJ YW	BW	WW	YW	Milk	EPD's TM	YG	REA	Marb	Fat
86	616	1155	3.3	55	82	19	47	27	0.18	-0.08	0.10

**R 38 REMINGTON LINEBACKER 494U**  
11 SEP 08 - RCC 494U - 1528345

Sire: REMITALL LINEBACKER 204L

Dam: CROWFOOT FORKS 780K  
V D A R NEW TREND 2458  
GLADWALL L PEARL 7222  
V D A R NEW TREND 47  
V D A R BEAUTY 5154  
SHOSHONE LANCE 2315  
GLADWALL L PEARL 008

BW	ADJ WW	ADJ YW	BW	WW	YW	Milk	EPD's TM	YG	REA	Marb	Fat
88	558	1124	3.4	40	60	16	36	21	0.12	0.33	0.018

**R 39 REMINGTON LINEBACKER 513U**  
23 SEP 08 - RCC 513U - 1497306

Sire: REMITALL LINEBACKER 204L

Dam: ISLA BANK PRIDE 11G  
MINERTS FORTUNE 2000  
ISLA BANK PRIDE 20E  
SCHURRTOP FORTUNE 3261  
MINERTS EDELLA 951  
LEACHMAN RIGHT TIME  
ISLA BANK PRIDE 41Z

BW	ADJ WW	ADJ YW	BW	WW	YW	Milk	EPD's TM	YG	REA	Marb	Fat
84	712	1414	3.6	56	94	19	47	38	0.09	0.10	0.020



**R 40 REMINGTON LINEBACKER 274U**  
19 MAY 08 - RCC 274U - 1497345

Sire: REMITALL LINEBACKER 204L

Dam: REMINGTON UNIVERSE 53P  
SAV 5175 BANDO 2166  
SCA UNIVERSE 2100 22H  
SA F 598 BANDO 5175  
SAV QUEEN 6171  
RITO 2100 G D A R  
SCA 24E OF IDEAL 1418 7394

BW	ADJ WW	ADJ YW	BW	WW	YW	Milk	EPD's TM	YG	REA	Marb	Fat
92	788	1339	5.3	50	86	20	45	37	0.23	0.04	-0.005

**R 41 REMINGTON LINEBACKER 348U**  
28 MAY 08 - RCC 348U - 1527656

Sire: REMITALL LINEBACKER 204L

Dam: REMINGTON BEAUTY 71R  
BROOKSIDE BANDOLIER 12U  
FV LT BEAUTY 479N  
ANGUSACRES BANDOLIER 76N  
BROOKSIDE ROSEBUD 25L  
CONNEALY LEADTIME  
FV 011J MISS TRADITION 206L

BW	ADJ WW	ADJ YW	BW	WW	YW	Milk	EPD's TM	YG	REA	Marb	Fat
90	736	1235	1.9	46	79	14	37	34	0.20	0.05	0.007

**R 42 REMITALL PROWLER 821U**  
19 MAY 08 - AGN 821U - 1435373

Sire: REMINGTON LINEBACKER 253R  
REMITALL LINEBACKER 204L  
REMITALL BLACKCAP36N

Dam: REMITALL BLOSSOM 759R  
REMITALL LUTHER 71L  
REMITALL BLOSSOM 169L

SITZ ALLIANCE 6595  
REMITALL EILEEN 170H  
VERMILION DATELINE 7078  
CRESCENT CREEK BLACKCAP 84E  
SITZ ALLIANCE 6595  
REMITALL GLACER LILY 117J  
SITZ ALLIANCE 6595  
BAR J P BLOSSOM 32J

BW	ADJ WW	ADJ YW	BW	WW	YW	Milk	EPD's TM	YG	REA	Marb	Fat
83	871	1464	N/A	N/A	N/A	N/A	N/A	N/A	N/A	N/A	N/A



**R** *Ref. Sire* SAV FINAL ANSWER 0035  
22 FEB 00 - IMP 035K - 1061938

Sire: **SITZ TRAVELER 8180**  
G D A R TRAVELER 71  
SITZ EVERELDA ENTENSE 1137  
TRAVELER 1148 G D A R  
G D A R MISS BLACKCAP 567  
G D A R RAINMAKER 340  
SITZ EVERELDA ENTENSE 2335

Dam: **SAV EMULOUS 8145**  
BON VIEW BANDO 598  
SAV SKY EMULOUS 2124  
TEHAMA BANDO 155  
BON VIEW DORA 56  
ELLANIN SKY DIVER  
TAIL N 0383



EPD's										
BW	WW	YW	Milk	TM	YG	REA	Marb	Fat		
-1.0	61	105	20	51	45	0.42	0.18	0.041		

Final Answer is a really well rounded sire. We love his daughters that we have in production, and his sons are very easy to sell. His calving ease is awesome and his calves grow into saleable cattle. His spread from birth to yearling is incredible. This is a great sire group. Buy these guys with confidence.

**R43** REMINGTON FINAL ANSWER 64W  
16 JAN 09 - RCC 64W - 1528769

Sire: SAV FINAL ANSWER 0035

Dam: **ROYAL LUCY DRCC 6113S**  
ROYAL RIGHT TIME DRCC 3005N  
ROYAL LUCY DRCC 3094N  
LEACHMAN RIGHT TIME  
THOMAS IDOLDEE 0408  
SITZ TRAVELER 8180  
THOMAS LUCY 9651

EPD's											
ADJ	ADJ	ADJ	BW	WW	YW	Milk	TM	YG	REA	Marb	Fat
75	783	1289	-0.5	52	92	24	50	40	0.11	0.14	0.034



**R44** REMINGTON FINAL ANSWER 55W  
15 JAN 09 - RCC 55W - 1528779

Sire: SAV FINAL ANSWER 0035

Dam: **REMINGTON QUEEN 186T**  
TC STOUT 407  
EARLY SUNSET QUEEN 64R  
TC FREEDOM 104  
TC PRIDE 2053  
JW K SLEEPY BOY 8134  
EARLY SUNSET QUEEN 73N

EPD's											
ADJ	ADJ	ADJ	BW	WW	YW	Milk	TM	YG	REA	Marb	Fat
76	754	1263	0.3	58	96	22	51	37	0.44	0.22	0.017

**R45** REMINGTON FINAL ANSWER 75W  
19 JAN 09 - RCC 75W - 1528756

Sire: SAV FINAL ANSWER 0035

Dam: **REMINGTON IDEAL 398S**  
WESTERN FRONTIER 419  
REMINGTON IDEAL 107P  
B/R NEW FRONTIER 095  
WESTERN 9440 SC MISSIE 900J  
SITZ ALLIANCE 6595  
SCA 24E OF IDEAL 1418

EPD's											
ADJ	ADJ	ADJ	BW	WW	YW	Milk	TM	YG	REA	Marb	Fat
82	717	1263	1.5	52	93	19	45	41	0.23	0.35	0.025

**R46** REMINGTON FINAL ANSWER 130W  
2 FEB 09 - RCC 130W - 1528768

Sire: SAV FINAL ANSWER 0035

Dam: **REMINGTON ANNIE K 150T**  
WESTERN FRONTIER 419  
BAR A ANNIE K 235P  
B/R NEW FRONTIER 095  
WESTERN 9440 SC MISSIE 900J  
GA R GRID MAKER  
BAR A 9440 ANNIE K 556J

EPD's											
ADJ	ADJ	ADJ	BW	WW	YW	Milk	TM	YG	REA	Marb	Fat
80	707	1184	1.3	53	94	14	41	41	0.29	0.24	0.022



**R47 REMINGTON FINAL ANSWER 149W**  
5 FEB 09 - RCC 149W - 1528784

Sire: SAV FINAL ANSWER 0035

Dam: **FCR ANNIE K 24T**  
SAV 004 DENSITY 4336  
FCR ANNIE K 25N 1

SAV 8180 TRAVELER 004  
SAV MAY 7238  
FCR MAGNUM 02L  
DOUBLEAAANNIE K 66'00

			EPD's								
BW	WW	YW	BW	WW	YW	Milk	TM	YG	REA	Marb	Fat
89	854	1259	3.0	62	103	21	52	41	N/A	N/A	N/A

**R48 REMINGTON FINAL ANSWER 168U**  
21 APR 08 - RCC 168U - 1483082

Sire: SAV FINAL ANSWER 0035

Dam: **DRYLAND LADY BATE 275**  
MINBURN ROGUE 37H  
CRESCENT CREEK LADY BATE 44E

G D A R ROGUE 6322  
MINBURN BLACKBIRD 17E  
RITO 8094 PRAIRIELANE 2060  
CRESCENT CREEK LADY BATE 110B

			EPD's								
BW	WW	YW	BW	WW	YW	Milk	TM	YG	REA	Marb	Fat
82	632	1252	2.1	47	88	21	44	41	0.13	0.13	0.035

**R49 REMINGTON FINAL ANSWER 215U**  
1 MAY 08 - RCC 215U - 1528342

Sire: SAV FINAL ANSWER 0035

Dam: **REMINGTON BLACKCAP 122S**  
FA R KRUGERRAND 185L  
CRESCENT CREEK BLACKCAP 84E

FA R KRUGERRAND 410H  
FA R ROSEBUD 113F  
RITO 8094 PRAIRIELANE 2060  
CRESCENT CREEK BLACKCAP

			EPD's								
BW	ADJ	ADJ	BW	WW	YW	Milk	TM	YG	REA	Marb	Fat
76	714	1162	1.3	46	81	17	40	35	0.40	-0.09	0.002

**R50 REMINGTON FINAL ANSWER 302U**  
23 MAY 08 - RCC 302U - 1528343

Sire: SAV FINAL ANSWER 0035

Dam: **SCA LADY ANN 07P**  
SCA 03H OF IDEAL 1418  
SCA LADY ANN 88M

IDEAL 1418 OF 8103 4286  
SCA 20E OF IDEAL 033 7258  
H A IMAGE MAKER 0419  
SCA LADY ANN 45K

			EPD's								
BW	ADJ	ADJ	BW	WW	YW	Milk	TM	YG	REA	Marb	Fat
86	854	1436	2.3	62	106	21	52	44	0.15	0.13	0.020

Final Answer to Yellowstone 80M Sires



**Ref. Sire CUDLOBE YELLOWSTONE 80M**  
9 FEB 02 - UF 80M - 1130994

Sire: **VERMILION YELLOWSTONE**  
VERMILION DATELINE 7078  
VERMILION B JESTRESS 3912

Dam: **STEVENSON ENCHANTRESS 425F**  
CONNEALYS DIVIDEND 730  
J R S ENCHANTRESS 235Z

CONNEALY DATELINE  
VERMILION BLACKBIRD 5044  
VERMILION GEORGE 7337  
VERMILION C B JESTRESS 0229  
TC DIVIDEND 963  
EFFI LEA OF CONANGA  
BASIN EMULATION 5653  
J R S ENCHANTRESS 850X

			EPD's						
BW	WW	YW	Milk	TM	YG	REA	Marb	Fat	
6.0	47	84	17	41	37	-0.26	0.20	0.034	

This grand herd bull is the sire of some of the most decorated show cattle in the land. He sired both Grand Champion female and bull at the 2008 Agribition and the \$100,000 Grand Champion female at the World Angus Forum. We love the muscle and body length he sires. We lost him this last summer and this will be some of his last sons to sell.

**R51 REMINGTON YELLOWSTONE 90W**  
22 JAN 09 - RCC 90W - 1528777

Sire: CUDLOBE YELLOWSTONE 80M

Dam: **ROYAL ELBINA DRCC 5118R**  
ALBERDA TRAVELER 416  
ROYAL ELBINA DRCC 2043M

D H D TRAVELER 6807  
ALBERDA QUEEN KIMBERLY 222  
TWIN VALLEY PRECISION E161  
THOMAS ELBINA 0183

			EPD's								
BW	ADJ	ADJ	BW	WW	YW	Milk	TM	YG	REA	Marb	Fat
88	754	1298	4.0	46	85	21	44	39	-0.08	0.29	0.022

**R52 REMINGTON YELLOWSTONE 140W**  
3 FEB 09 - RCC 140W - 1528754

Sire: CUDLOBE YELLOWSTONE 80M

Dam: **REMINGTON DEWDROP 52S**  
REMITALL LINEBACKER 204L  
LLB DEWDROP 226N

SITZ ALLIANCE 6595  
REMITALL EILEEN 170H  
GEIS BLACKMAN 111'01  
GEIS DEWDROP 69'01

			EPD's								
BW	ADJ	ADJ	BW	WW	YW	Milk	TM	YG	REA	Marb	Fat
93	775	1200	5.2	52	87	20	46	35	0.03	0.08	0.016



**R53** REMINGTON YELLOWSTONE 159W  
7 FEB 09 - RCC 159W - 1528803

Sire: CUDLOBEYELLOWSTONE 80M

Dam: **WILBAR LUCY 934N**  
SITZ ALLIANCE 6595  
WILBAR LUCY 557L  
SITZ TRAVELER 8180  
SITZ BARBARAMERE JET 2698  
GLENNIE TEX 7J  
WILBAR LUCY 130G

ADJ			EPD's								
BW	WW	YW	BW	WW	YW	Milk	TM	YG	REA	Marb	Fat
92	841	1415	3.6	56	94	22	50	39	-0.13	0.24	0.035



**R54** REMINGTON YELLOWSTONE 216W  
14 FEB 09 - RCC 216W - 1528759

Sire: CUDLOBEYELLOWSTONE 80M

Dam: **JUSTAMERE 8005 JO 535S**  
BOYD NEW DAY 8005  
W B BARBARA JO 2364  
A A R NEW TREND  
SV F FOREVER LADY 57D  
B/R NEW DESIGN 323-879  
W B BARBARA JO

ADJ			EPD's								
BW	WW	YW	BW	WW	YW	Milk	TM	YG	REA	Marb	Fat
94	932	1367	4.5	58	97	23	52	39	-0.01	0.15	0.021



**R55** REMINGTON YELLOWSTONE 179W  
9 FEB 09 - RCC 179W - 1536730

Sire: CUDLOBEYELLOWSTONE 80M

Dam: **BOTANY ANGUS ELLEN 6G**  
N BAR EMULATION EXT NHF AMF  
BOTANY ANGUS ELLEN 51C  
EMULATION N BAR 5522  
N BAR PRIMROSE 2424  
GT MAXIMUM NHF AMF  
BOTANY ANGUS ELLEN 11U

ADJ			EPD's								
BW	WW	YW	BW	WW	YW	Milk	TM	YG	REA	Marb	Fat
85	N/A	N/A	3.7	42	82	15	36	40	-0.12	0.21	.026



Soo Line Annie K 6271 - Typical Cudlobe Yellowstone Daughter

**R56** REMINGTON YELLOWSTONE 447U  
1 JULY 08 - RCC 447U - 1497331

Sire: CUDLOBEYELLOWSTONE 80M

Dam: **REMINGTON ERICA 120P**  
SITZ ALLIANCE 6595 NHF AMF  
WIWA CREEK ERICA 27B 150D  
SITZ TRAVELER 8180 NHF  
SITZ BARBARAMERE JET 2698  
APEX STOCKMAN 061  
WIWA CREEK ERICA 13Y 279Z

ADJ			EPD's								
BW	WW	YW	BW	WW	YW	Milk	TM	YG	REA	Marb	Fat
94	785	1410	5.5	46	81	21	43	36	-0.18	0.19	.042





*Ref. Sire*

**WESTERN FRONTIER 419**

22 JAN 04 - MWU 19P - 1221393

Sire: **B/R NEW FRONTIER 095 I**  
WHITE FENCE PRIDE HI

Dam: **WESTERN 9440 SC MISSIE 900J**  
LOR WIN MISSIE 17X

V D A R NEW TREND 315  
B/R BLACKCAP EMPRESS 76  
CONNELLY DATELINE  
PLEASANT HILL OF CONANGA  
SCOTCH CAP  
BLACKCAP OF R R 5367  
EARLY SUNSET COALITION 31U  
LOR WIN MISSIE 26U

ADJ			ADJ			EPD's						
BW	WW	YW	BW	WW	YW	Milk	TM	YG	REA	Marb	Fat	
72	723	1375	2.4	48	80	15	39	32	0.18	0.76	-0.13	

19P is a sire that has surely proven himself here at Remington. He was purchased for his carcass merit and his IMF number has sky rocketed. He is much more than a carcass bull though and is siring a great group here. His sons have muscle, eye appeal and depth. His daughters are super young cows. He will see more service here for sure.

**R 57 REMINGTON FRONTIER 460U**

27 AUG 08 - RCC 460U - 1528347

Sire: **WESTERN FRONTIER 419**

Dam: **REMINGTON IDEAL 107P**  
SITZ ALLIANCE 6595 NHF AMF  
SCA 24E OF IDEAL 1418 7394  
SITZ TRAVELER 8180 NHF  
SITZ BARBARAMERE JET 2698  
IDEAL 1418 OF 8103 4286  
IDEAL 7394 SUPER X 5189 5275

ADJ			ADJ			EPD's						
BW	WW	YW	BW	WW	YW	Milk	TM	YG	REA	Marb	Fat	
86	619	1364	3.3	48	93	19	43	44	-0.07	0.48	+0.22	

**R 58 REMINGTON FRONTIER 465U**

4 SEP 08 - RCC 465U - 1497282

Sire: **WESTERN FRONTIER 419**

Dam: **REMINGTON BLACKCAP 97R**  
LEACHMAN RIGHT TIME  
CRESCENT CREEK BLACKCAP 84E  
N BAR EMULATION EXT  
LEACHMAN ERICA 0025  
RITO 8094 PRAIRIELANE 2060  
CRESCENT CREEK BLACKCAP 112A

ADJ			ADJ			EPD's						
BW	WW	YW	BW	WW	YW	Milk	TM	YG	REA	Marb	Fat	
82	604	1307	2.7	46	83	17	40	37	-0.08	0.11	-0.08	

**R 59 REMINGTON FRONTIER 472U**

5 SEP 08 - RCC 472U - 1497287

Sire: **WESTERN FRONTIER 419**

Dam: **REMINGTON VELVET 25N**  
O G L BATTLE CRY 427 128  
ANGUS ACRES VELVET 65U  
NICHOLS EUREKA W57  
O G L DUSTY ROSE 128 902  
ANGUS ACRES TEXAS TEA19M  
ANGUS ACRES VELVET 65P

ADJ			ADJ			EPD's						
BW	WW	YW	BW	WW	YW	Milk	TM	YG	REA	Marb	Fat	
90	546	1165	4.2	38	66	10	29	28	-0.01	0.41	-0.03	

**R 60 REMINGTON FRONTIER 474U**

6 SEP 08 - RCC 474U - 1497288

Sire: **WESTERN FRONTIER 419**

Dam: **REMINGTON TIPTOP 8N**  
C A FUTURE DIRECTION 5321  
MVF TIPTOP 117L  
G A R PRECISION 1680  
C A MISS POWER FIX 308  
SITZ ALLIANCE 6595 NHF  
MVF TIPTOP 164J

ADJ			ADJ			EPD's						
BW	WW	YW	BW	WW	YW	Milk	TM	YG	REA	Marb	Fat	
78	605	1214	1.2	43	71	18	40	28	0.30	0.54	-0.09	

**R 61 REMINGTON FRONTIER 502U**

17 SEP 08 - RCC 502U - 1497298

Sire: **WESTERN FRONTIER 419**

Dam: **REMINGTON TIPTOP 104P**  
BELVIN LINCOLN 82'01  
MVF TIPTOP 117L  
G D A R ROLLS ROYCE 203  
BELVIN LADY BLOSSOM 4797  
SITZ ALLIANCE 6595  
MVF TIPTOP 164J

ADJ			ADJ			EPD's						
BW	WW	YW	BW	WW	YW	Milk	TM	YG	REA	Marb	Fat	
93	557	1102	4.8	42	67	14	35	26	0.14	0.40	-0.04	

**R 62 REMINGTON FRONTIER 515U**

27 SEP 08 - RCC 515U - 1497308

Sire: **WESTERN FRONTIER 419**

Dam: **WILP/HAR BLACKCAP 22N**  
SITZ ALLIANCE 6595 NHF AMF  
WILP/HAR BLACKCAP 31C  
SITZ TRAVELER 8180  
SITZ BARBARAMERE JET 2698  
DELTA TTR 29D  
WILP/HAR BLACKCAP 1X

ADJ			ADJ			EPD's						
BW	WW	YW	BW	WW	YW	Milk	TM	YG	REA	Marb	Fat	
86	609	1218	2.4	43	71	16	38	28	0.00	0.47	.021	

**R 63 REMINGTON FRONTIER 522U**

8 OCT 08 - RCC 522U - 1497312

Sire: **WESTERN FRONTIER 419**

Dam: **CROWFOOT FORKS 658K**  
TOMWALL PIED PIPER 413  
GLADWALL B ZARA BAND 6355  
SHOSHONE P P 7105  
GLADWALL ROSE OF L 282  
TOMWALL B EMULATION 070  
BAR B ZARA BAND 1987

ADJ			ADJ			EPD's						
BW	WW	YW	BW	WW	YW	Milk	TM	YG	REA	Marb	Fat	
80	647	1240	0.7	44	64	15	37	20	0.13	0.42	.006	

**R 64 REMINGTON FRONTIER 526U**

20 OCT 08 - RCC 526U - 1497314

Sire: **WESTERN FRONTIER 419**

Dam: **REMINGTON HOLLOW QUEEN 256R**  
REMITALL LINEBACKER 204L  
BB DHQ T421  
SITZ ALLIANCE 6595  
REMITALL EILEEN 170H  
B B 4008 KRUGERRAND 7158  
BB DHQ T165

ADJ			ADJ			EPD's						
BW	WW	YW	BW	WW	YW	Milk	TM	YG	REA	Marb	Fat	
86	519	1204	3.0	41	74	14	35	33	0.14	0.38	.006	

Frontier 419 Sons



**R** *Ref. Sire*

**G A R PREDESTINED**

16 AUG 99 - IMP 5899J - IMP 5899J

Sire: **B/R NEW DESIGN 036**  
B/R BLACKCAP EMPRESS 76

Dam: **G A R EXT 4206**  
G A R 6807 TRAVELER 1432

A A R NEW TREND  
V D A R LUCY 704  
K&K TOP GUN  
QLCA70 BLKCP EMPRESS E43T  
EMULATION N BAR 5522  
N BAR PRIMROSE 2424  
D H D TRAVELER 6807  
G A R 9J9 57



EPD's									
BW	WW	YW	Milk	TM	YG	REA	Marb	Fat	
4.1	53	99	28	55	47	0.58	1.08	0.045	

Predestined was used as an AI sire and we had great results. He has sired calves with eye appeal, volume and fleshing ability. His sons will add carcass merit to your calf crop.

**R65 REMINGTON PREDESTINED 459U**

27 AUG 08 - RCC 459U - 1510474

Sire: **G A R PREDESTINED**

Dam: **THOMAS LUCY 1826**  
THOMAS LUCY 2104

EMULATION 31  
ANKONY 8F78 LASS 8F275  
RITO 8E8 OF 5HI I TRAVELER  
THOMAS LUCY 9083

EPD's											
ADJ	ADJ	ADJ	BW	WW	YW	Milk	TM	YG	REA	Marb	Fat
88	563	1137	2.7	44	80	26	48	37	0.31	0.66	.039



**R66 REMINGTON PREDESTINED 466U**

4 SEP 08 - RCC 466U - 1510488

Sire: **G A R PREDESTINED**

Dam: **THOMAS LUCY 1826**  
THOMAS LUCY 2104

EMULATION 31  
ANKONY 8F78 LASS 8F275  
RITO 8E8 OF 5HI I TRAVELER  
THOMAS LUCY 9083

EPD's											
ADJ	ADJ	ADJ	BW	WW	YW	Milk	TM	YG	REA	Marb	Fat
84	400	1051	2.7	44	80	26	48	37	0.31	0.66	.039

**R67 REMINGTON PREDESTINED 170U**

22 APR 08 - RCC 170U - 1483078

Sire: **G A R PREDESTINED**

Dam: **CROWFOOT G EILEEN 1762L**  
GLADWALL G EILEEN 8993

BASIN MAX 602C  
BASIN ESSA 946A  
N BAR IMPACT UI253  
GLADWALL G EILEEN 9185

EPD's											
ADJ	ADJ	ADJ	BW	WW	YW	Milk	TM	YG	REA	Marb	Fat
84	614	1187	1.8	49	84	28	52	36	0.33	0.59	.028

**R68 REMINGTON PREDESTINED 189U**

25 APR 08 - RCC 189U - 1483069

Sire: **G A R PREDESTINED**

Dam: **AAF PRIDE 135B**  
FAIRFIELD PRIDE 803

LEACHMAN RIGHT TIME  
SITZ EVERELDA ENTENSE 1905  
SITZ TRAVELER 8180  
FAIRFIELD PRIDE 561

EPD's											
ADJ	ADJ	ADJ	BW	WW	YW	Milk	TM	YG	REA	Marb	Fat
88	611	1174	3.5	48	87	23	47	39	0.30	0.53	.026

**R69 REMINGTON PREDESTINED 194U**

26 APR 08 - RCC 194U - 1483064

Sire: **G A R PREDESTINED**

Dam: **CROWFOOT G EILEEN 1762L**  
GLADWALL G EILEEN 8993

BASIN MAX 602C  
BASIN ESSA 946A  
N BAR IMPACT UI253  
GLADWALL G EILEEN 9185

EPD's											
ADJ	ADJ	ADJ	BW	WW	YW	Milk	TM	YG	REA	Marb	Fat
92	668	1283	1.8	49	84	28	52	36	0.33	0.59	.028



Crowfoot G Eileen 1762L- Dam of Lot 67, 69 & 70

**R70 REMINGTON PREDESTINED 200U**  
28 APR 08 - RCC 200U - 1483057

Sire: **G A R PREDESTINED**

Dam: **CROWFOOT G EILEEN 1762L**  
GLADWALL G EILEEN 8993

BASIN MAX 104J  
BASIN MAX 602C  
BASIN ESSA 946A  
N BAR IMPACT U1253  
GLADWALL G EILEEN 9185

BW	WW	YW	BW	WW	YW	Milk	TM	YG	REA	Marb	Fat
89	652	1260	1.8	49	84	28	52	36	0.33	0.59	.028



Lot 71

**R71 REMINGTON PREDESTINED 357U**  
28 MAY 08 - RCC 357U - 1497346

Sire: **G A R PREDESTINED**

Dam: **WILP/HAR ELBA 16N**  
WILP/HAR ELBA 76D

SITZ TRAVELER 8180  
SITZ BARBARAMERE JET 2698  
WILP/HAR TRAIL '92' 75B  
WILP/HAR ELBA 6T

BW	WW	YW	BW	WW	YW	Milk	TM	YG	REA	Marb	Fat
94	795	1364	3.3	43	78	24	45	35	0.27	0.70	.045



**Ref. Sire SITZ ALLIANCE 9160**  
20 FRB 00 - IMP 9160K - 1090021

Sire: **SITZ ALLIANCE 6595**  
SITZ BARBARAMERE JET 2698

Dam: **SITZ BLACKCAP EFFIE 4088**  
SITZ BLACKCAP EFFIE 1963

G D A R TRAVELER 71  
SITZ EVERELDA ENTENSE 1137  
3 BAR SPIKE 1766  
SITZ BARBARAMERE JET 155  
LEACHMAN RIGHT TIME  
SITZ BARBARAMERE NELL 620  
G D A R TRAVELER 71  
SITZ BLACKCAP EFFIE 1146

ADJ	ADJ	BW	WW	YW	Milk	TM	YG	REA	Marb	Fat	
N/A	N/A	N/A	2.0	51	77	25	51	26	0.00	0.16	0.056

*This son of 6595 has seen a lot of service here. He is one of those bulls that does nothing wrong and just about everything right. These cattle have balanced performance and maternal built right in.*



Lot 72

**R72 REMINGTON ALLIANCE 35W**  
12 JAN 09 - RCC 35W - 1528797

Sire: **SITZ ALLIANCE 9160**

Dam: **OTA 7J SUSAN**  
BMB COYOTE PINES JODIE 4797

V D A R TRAVELER 722  
LANDMARK FRED A 91 I  
RRD 8E8 37E  
KEP BLACK ROSETATJANA 081893

BW	ADJ	ADJ	BW	WW	YW	Milk	TM	YG	REA	Marb	Fat
84	828	1284	-0.1	51	80	25	51	29	-0.23	0.12	.026

Predestined & Alliance 9160 Sons

**R 73** REMINGTON ALLIANCE 81W  
19 JAN 09 - RCC 81W - 1528749

**R 74** REMINGTON ALLIANCE 84W  
21 JAN 09 - RCC 84W - 1528783

Sire: SITZ ALLIANCE 9160

Sire: SITZ ALLIANCE 9160

Dam: REMINGTON NEONIA 49R  
REMITALL MONSOON 37M  
REMITALL NEONIA 128N

SA F FOCUS OF E R  
WHITE LAKE ERICA 19G  
REMITALL LEGIONAIRE 8L  
HAPPYVALE JRP NEONIA 18E

Dam: BAR 5 AN MORE OF EILEEN 3406S  
LCC FEW DOLLARS MORE H013N  
PRIME TIME'S EILEEN 307'03

CA FUTURE DIRECTION 532I  
LCC LAKINA K3218  
HF JUSTICE 52L  
PRIME TIME'S EILEEN 29'99

BW	ADJ WW	ADJ YW	BW	WW	YW	Milk	EPD's TM	YG	REA	Marb	Fat
90	759	1282	2.6	46	75	22	45	29	0.00	0.17	.035

BW	ADJ WW	ADJ YW	BW	WW	YW	Milk	EPD's TM	YG	REA	Marb	Fat
85	684	1254	2.0	42	69	22	43	27	N/A	N/A	N/A

**R 75** REMINGTON ALLIANCE 95W  
24 JAN 09 - RCC 95W - 1528801

**R 76** REMINGTON ALLIANCE 110W  
26 JAN 09 - RCC 110W - 1528790

Sire: SITZ ALLIANCE 9160

Sire: SITZ ALLIANCE 9160

Dam: PAHL ROSEBUD 104R  
MC BEE WMR SUPER X 74S  
VIKING PAHL MS 182H

HYLINE WMR SUPER X 50Z  
HYLINE PRIDE 833  
EBON HILL EQUALIZER 117%  
PAHL MISS ROSEBUD 7E

Dam: EBON HILL COUNTESS 581'06  
TRIPLE E MATRIX 908  
EBON HILL COUNTESS 481'00

N BAR EMULATION EXT  
JAYNBEE WENDY 728B  
WVVA CREEK STOCKMAN 4393  
EBON HILL COUNTESS 281'97

BW	ADJ WW	ADJ YW	BW	WW	YW	Milk	EPD's TM	YG	REA	Marb	Fat
83	776	1248	2.0	52	77	21	47	25	-0.02	0.15	.024

BW	ADJ WW	ADJ YW	BW	WW	YW	Milk	EPD's TM	YG	REA	Marb	Fat
80	906	1338	1.1	61	88	24	55	27	-0.01	0.04	.034

**R 77** REMINGTON ALLIANCE 239W  
20 FEB 09 - RCC 239W - 1528799

Sire: SITZ ALLIANCE 9160

Dam: REMINGTON LADY BATE 371S  
H.C.C NAVIGATOR 20P  
DRYLAND LADY BATE 27S

VERMILION DATELINE 7078  
H.C.C. MERCEDES 6L  
MINBURN ROGUE 37H  
CRESCENT CREEK LADY BATE 44E

BW	ADJ WW	ADJ YW	BW	WW	YW	Milk	EPD's TM	YG	REA	Marb	Fat
90	831	1379	4.4	51	84	27	53	34	-0.03	0.09	.033

ANGUS BULLS

Angus 9160 Sires





*Ref. Sire*

**S A V TRUE GRIT 6303**

2 MAR 06 - IMP 6303S - 1373548

Sire: **CAR DUKE 104**  
 CAR TRACKER 904  
 C A R MISS RAINDANCER 421

Dam: **S A V BLACKBIRD 4347**  
 C A FUTURE DIRECTION 5321  
 S A V BLACKBIRD 1082

C A R TRACKER 614  
 L A D Y N E W T R E N D 027 C A R  
 G D A R R A I N M A K E R 340  
 C A R L A D Y 011 R I T O 245  
 G A R P R E C I S I O N 1680  
 C A M I S S P O W E R F I X 308  
 S A F 598 B A N D O 5175  
 S A V B L A C K B I D 4036

ADJ		ADJ		EPD's									
BW	WW	YW	YW	BW	WW	YW	Milk	TM	YG	REA	Marb	Fat	
79	902	1496	3.4	54	93	32	59	39	0.29	0.38	-0.04		

*This bull is a bet the farm calving ease specialist. If you have heifers to breed, these are the bulls that will keep you sleeping at night.*

**R78 REMINGTON TRUE GRIT 4W**  
 1 JAN 09 - RCC 4W - 1528757

Sire: S A V TRUE GRIT 6303

Dam: **REMINGTON IDEAL 129T**  
 S I T Z A L L I A N C E 9160  
 R E M I N G T O N I D E A L 71P

S I T Z A L L I A N C E 6595  
 S I T Z B L A C K C A P E F F I E 4088  
 F A R K R U G E R R A N D 410H  
 S C A 24E O F I D E A L 1418 7394

ADJ		ADJ		EPD's									
BW	WW	YW	YW	BW	WW	YW	Milk	TM	YG	REA	Marb	Fat	
76	757	1315	2.2	53	96	26	53	43	0.17	0.26	.018		

**R79 REMINGTON TRUE GRIT 42W**  
 14 JAN 09 - RCC 42W - 1528791

Sire: S A V TRUE GRIT 6303

Dam: **REMINGTON PEARL 23T**  
 C R O W F O O T M A C H O 4549P  
 C R O W F O O T L P E A R L 1637L

O C C M A G N U M 749M  
 C R O W F O O T B L A C K B I R D 2537M  
 C & D 455 R O C K E T T  
 C R O W F O O T L P E A R L 9142

ADJ		ADJ		EPD's									
BW	WW	YW	YW	BW	WW	YW	Milk	TM	YG	REA	Marb	Fat	
76	752	1245	1.9	48	77	27	51	30	0.19	0.21	-0.05		

**R80 REMINGTON TRUE GRIT 63W**  
 16 JAN 09 - RCC 63W - 1528770

Sire: S A V TRUE GRIT 6303

Dam: **REMINGTON CHLOE 72T**  
 C R O W F O O T M A C H O 4549P  
 C R O W F O O T C H L O E 2722M

O C C M A G N U M 749M  
 C R O W F O O T B L A C K B I R D 2537M  
 L E A C H M A N R I G H T T I M E  
 G L A D W A L L B C H L O E 7197

ADJ		ADJ		EPD's									
BW	WW	YW	YW	BW	WW	YW	Milk	TM	YG	REA	Marb	Fat	
84	746	1397	3.1	52	84	26	52	32	0.27	0.21	.011		

**R81 REMINGTON TRUE GRIT 145W**  
 5 FEB 09 - RCC 145W - 1528747

Sire: S A V TRUE GRIT 6303

Dam: **PHP ELBA 75T**  
 G A M B L E S H O T R O D  
 E A R L Y S U N S E T E L B A 5R

F A M O U S 7001  
 C H A M P I O N H I L L L A D Y 703  
 J W K S L E E P Y B O Y 8134  
 E A R L Y S U N S E T E L B A 63N

ADJ		ADJ		EPD's									
BW	WW	YW	YW	BW	WW	YW	Milk	TM	YG	REA	Marb	Fat	
87	742	1249	4.2	51	89	25	51	38	N/A	N/A	N/A		

**R82 REMINGTON TRUE GRIT 468U**  
 4 SEP 08 - RCC 468U - 1497284

Sire: S A V TRUE GRIT 6303

Dam: **REMINGTON BLACKCAP 215S**  
 C O N N E A L Y L E A D O N  
 W I L P / H A R B L A C K C A P 14K

C O N N E A L Y L E A D T I M E  
 E L I G E N C E P L U S O F C O N A N G A  
 S C H U R R T O P S U P R E M E  
 W I L P / H A R B L A C K C A P 14C

ADJ		ADJ		EPD's									
BW	WW	YW	YW	BW	WW	YW	Milk	TM	YG	REA	Marb	Fat	
80	654	1329	3.1	54	96	28	55	42	0.27	0.24	-0.015		



*True Grit Sons*



*Spartan 93R Sires*



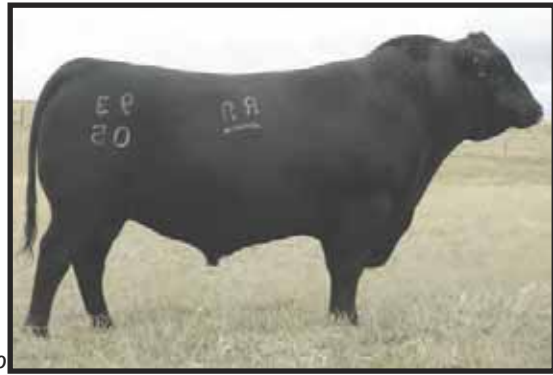
## REMINGTON SPARTAN 93R

24 MAR 05 - RCC 93R - 1250646

**Sire:** ANGUS ACRES SPARTAN 160L  
 GLENNIE SPARTAN 20R  
 ANGUS ACRES ROYAL VELVET 6J

**Dam:** LAZY J ROYAL LADY 60G  
 LAZY J JACK 8D  
 ANGUS ACRES DANDY 42D 7

PERRYVILLE SPARTAN 54N  
 GLENNIEMBROOK BEULAH 2N  
 ANGUS ACRES JURASSIC 6F  
 ANGUS ACRES ROYAL VELVET 6E  
 DURNESS JACK 92A  
 LAZY J LADY 19R  
 ANGUS ACRES BANDY 214Y  
 ANGUS ACRES ROYAL LADY 42B



ADJ		ADJ		EPD's							
BW	WW	YW	BW	WW	YW	Milk	TM	YG	REA	Marb	Fat
95	646	1304	2.1	37	86	7	26	49	0.02	-0.08	-0.07

This straight Canadian power house was our high seller in the 2006 sale to LLB. He was admired by all as a display bull at the World Forum. He is now leased to Genex and will be a cornerstone sire in our Canadian program - volume, muscle and character.



## REMINGTON SPARTAN 286U

21 MAY 08 - RCC 286U - 1497335

**Sire:** REMINGTON SPARTAN 93R

**Dam:** SILVER DOME BONNIE 414R  
 DURNESS WINTON 14H  
 SILVER DOME BONNIE 114H

DURNESS WINTON 43D  
 DURNESS BEA 14C  
 SPRUCEVIEW LANCER 4B  
 SILVER DOME BONNIE 14B

ADJ		ADJ		EPD's							
BW	WW	YW	BW	WW	YW	Milk	TM	YG	REA	Marb	Fat
88	581	1239	2.9	25	75	4	17	51	-0.11	-0.04	-0.09



## REMINGTON SPARTAN 217U

3 MAY 08 - RCC 217U - 1497324

**Sire:** REMINGTON SPARTAN 93R

**Dam:** ISLA BANK PRIMROSE 10P  
 K C F BENNETT TOTAL  
 ISLA BANK PRIMROSE 17M

SITZ ALLIANCE 6595  
 EXT OF CONANGA 6790  
 CHICO HANNIBAL 43H  
 ISLA BANK PRIMROSE 2G

ADJ		ADJ		EPD's							
BW	WW	YW	BW	WW	YW	Milk	TM	YG	REA	Marb	Fat
82	630	1236	2.7	32	76	13	29	44	0.11	0.10	.012



## REMINGTON SPARTAN 292U

21 MAY 08 - RCC 292U - 1497329

**Sire:** REMINGTON SPARTAN 93R

**Dam:** REMINGTON BARBARA 142P  
 SAV 5175 BANDO 2166  
 RONAN R BARBARA 2F

SA F 598 BANDO 5175  
 SAV QUEEN 6171  
 CAMILLA BANDOLIER 84G  
 RONAN R BARBARA 154T

ADJ		ADJ		EPD's							
BW	WW	YW	BW	WW	YW	Milk	TM	YG	REA	Marb	Fat
88	647	1141	3.0	30	62	11	26	32	-0.01	-0.06	-0.04



## REMINGTON SPARTAN 401U

11 JUN 08 - RCC 401U - 1497320

**Sire:** REMINGTON SPARTAN 93R

**Dam:** REMINGTON ANNIE K 146R  
 RONAN TEX 56A  
 DOUBLE AA ANNIEK 533'98

ANGUS ACRES TEX 16S  
 RONAN BLACK IDA 57U  
 DOUBLE AA WINSTON 623'96  
 DOUBLE AA ANNIEK 218'95

ADJ		ADJ		EPD's							
BW	WW	YW	BW	WW	YW	Milk	TM	YG	REA	Marb	Fat
88	667	1197	N/A	N/A	N/A	N/A	N/A	N/A	0.03	0.01	-0.09





*Ref. Sire*

**H.C.C NAVIGATOR 20P**

17 MAR 04 - HCCC 20P - 1228608

Sire: **VERMILION DATELINE 7078**  
VERMILION BLACKBIRD 5044

Dam: **H.C.C. MERCEDES 6L**  
LAUREL LEA ERICA 4G

D H D TRAVELER 6807  
EILA EILA OF CONANGA  
LEACHMAN RIGHT TIME  
VERMILION BLACKBIRD 3525  
ANKONIAN ELIXIR DB  
ANKONY LASS 206T  
MINERTS FORTUNE 2000  
LAUREL LEA ERICA 7W

EPD's												
BW	WW	YW	BW	WW	YW	Milk	TM	YG	REA	Marb	Fat	
85	N/A	N/A	2.9	36	78	24	42	N/A	0.10	-0.06	0.010	

This is a powerful VRD son that was a \$20,000 purchase from LLB. He sires them stout and long. Lots of guts and performance in these bulls.

**R87 REMINGTON NAVIGATOR 248U**

15 MAY 08 - RCC 248U - 1497342

Sire: H.C.C NAVIGATOR 20P

Dam: **REMINGTON TIBBIE 211R**  
REMINGTON'S TIBBIE 116C

TC STOCKMAN 365  
TC PRIDE 0014  
BURTHLENE STING 57N  
RIDGE LANE TIBBIE 34N

EPD's												
BW	WW	YW	BW	WW	YW	Milk	TM	YG	REA	Marb	Fat	
86	652	1189	4.0	32	67	22	38	35	0.09	0.40	-0.008	

**R88 REMINGTON NAVIGATOR 256U**

17 MAY 08 - RCC 256U - 1497333

Sire: H.C.C NAVIGATOR 20P

Dam: **REMINGTON ERROLLINE 144P**  
SCA ERROLLINE 39G

SITZ TRAVELER 8180  
SITZ BARBARAMERE JET  
KRUGERRAND OF DONAMERE 490  
STRETTON CREEK ERROLLINE 133A

EPD's												
BW	WW	YW	BW	WW	YW	Milk	TM	YG	REA	Marb	Fat	
92	721	1274	4.7	44	89	24	46	45	0.07	0.30	.018	

**R89 REMINGTON NAVIGATOR 276U**

19 MAY 08 - RCC 276U - 1497344

Sire: H.C.C NAVIGATOR 20P

Dam: **REMINGTON ERROLLINE 217R**  
SCA ERROLLINE 39G

SITZ TRAVELER 8180  
SITZ BARBARAMERE JET 2698  
KRUGERRAND OF DONAMERE 490  
STRETTON CREEK ERROLLINE 133A

EPD's												
BW	WW	YW	BW	WW	YW	Milk	TM	YG	REA	Marb	Fat	
86	798	1352	3.7	51	95	23	49	44	-0.02	0.27	.023	



*Ref. Sire*

**OCC LEGACY 839L**

9 SEP 09 - IMP 839L - 1193688

Sire: **O C C ECHELON 857E**  
DIXIE ERICA OF C H 1019

Dam: **O C C DIXIE ERICA 960E**  
DIXIE ERICA OF R R 4345

Q A S TRAVELER 23-4  
BEMINDFUL MAID D H D 0807  
PBC 707 1M F0203 U  
DIXIE ERICA OF C H 615  
D H D TRAVELER 6807  
O C C JUANADA 709V  
SHOSHONE VANTAGE JB23  
DIXIE ERICA OF R R 9275

EPD's												
BW	WW	YW	Milk	TM	YG	REA	Marb	Fat				
1.4	35	70	12	30	35	-0.09	-0.31	0.048				

Dallas Jensen from Crowfoot Angus claims that this bull does more things right than any bull he has used. We love the muscle pattern and frame size of these cattle. These bulls are always at the top of the pen and will be easy to find sale day.

**R90 REMINGTON LEGACY 178U**

23 APR 08 - RCC 178U - 1483075

Sire: O C C LEGACY 839L

Dam: **SCA LADY ANN 56G**  
SCA LADY ANN 12X

N BAR EMULATION EXT  
LEACHMAN ERICA 0025  
SOUTHOLM ELEVATION 48P  
EARLY SUNSET LADY ANN 15T

EPD's												
BW	WW	YW	BW	WW	YW	Milk	TM	YG	REA	Marb	Fat	
82	557	1159	2.1	35	67	14	32	32	-0.10	-0.06	.031	

**R91 REMINGTON LEGACY 195U**

27 APR 08 - RCC 195U - 1483059

Sire: O C C LEGACY 839L

Dam: **THOMAS BLACKCAP 9133**  
THOMAS BLACKCAP 4155

G D A R TRAVELER 71  
SITZ EVERELDA ENTENSE 1137  
EMULATION N BAR 5522  
THOMAS BLACKCAP 2227

EPD's												
BW	WW	YW	BW	WW	YW	Milk	TM	YG	REA	Marb	Fat	
94	528	1129	0.5	38	73	16	35	36	-0.11	0.02	.058	

Navigator to Legacy Sons



R92

REMINGTON LEGACY 709U  
10 MAY 08 - RCC 709U - 1510480

R93

REMINGTON LEGACY 715U  
13 MAY 08 - RCC 715U - 1510481

Sire: O C C LEGACY 839L

Sire: O C C LEGACY 839L

K C F BENNETT TOTAL  
Dam: ISLA BANK PRIMROSE 10P  
ISLA BANK PRIMROSE 17M

SITZ ALLIANCE 6595  
EXT OF CONANGA 6790  
CHICO HANNIBAL 43H  
ISLA BANK PRIMROSE 2G

K C F BENNETT TOTAL  
Dam: ISLA BANK PRIMROSE 10P  
ISLA BANK PRIMROSE 17M

SITZ ALLIANCE 6595  
EXT OF CONANGA 6790  
CHICO HANNIBAL 43H  
ISLA BANK PRIMROSE 2G

BW	ADJ	ADJ	EPD's								
90	WW	YW	BW	WW	YW	Milk	TM	YG	REA	Marb	Fat
691	1302	2.3	40	75	16	35	35	-0.02	-0.08	.039	

BW	ADJ	ADJ	EPD's								
95	WW	YW	BW	WW	YW	Milk	TM	YG	REA	Marb	Fat
622	1200	2.3	40	75	16	35	35	-0.02	-0.08	.039	

Ref. Sire

B C MARATHON 7022

14 JUL 02 - IMP 7022M - 1535089

O C C EMBLAZON 854E  
Sire: O C C KIRBY 633K  
O C C BLACKBIRD 785H

PAPA EQUATOR 2928  
Dam: GIBBET HILL MIGNONNE E37  
GIBBET HILL MIGNONNE TR 29

D H D TRAVELER 6807  
DIXIE ERICA OF C H 1019  
HIGH VALLEY 4C6 AMBUSH  
O C C BLACKBIRD 714C  
PAPA POWER 096  
PAPA ENVIUS BLACKBIRD 8849  
Q A STRAVELER 23-4  
GIBBET HILL MIGNONNE S 24



EPD's										
BW	WW	YW	Milk	TM	YG	REA	Marb	Fat		
5.8	58	93	16	45	35	0.43	0.04	0.005		

Lots of muscle and eye appeal in these Marathon calves. He is a moderate framed bull with excellent growth and REA numbers.

R94 REMINGTON MARATHON 457U  
25 AUG 08 - RCC 457U - 1535090

Sire: B C MARATHON 7022

SITZ TRAVELER 8180  
Dam: EA LUCY 141  
THOMAS LUCY 1041

G D A R TRAVELER 71  
SITZ EVERELDA ENTENSE 1137  
EMULATION N BAR 5522  
THOMAS LUCY 9083

BW	ADJ	ADJ	EPD's								
86	WW	YW	BW	WW	YW	Milk	TM	YG	REA	Marb	Fat
693	1396	N/A	N/A	N/A	N/A	N/A	N/A	N/A	N/A	N/A	N/A



R95 REMINGTON MARATHON 458U  
27 AUG 08 - RCC 458U - 1535091

R96 REMINGTON MARATHON 475U  
6 SEP 08 - RCC 475U - 1535093

Sire: B C MARATHON 7022

Sire: B C MARATHON 7022

BASIN MAX 602C  
Dam: SAV BLACKCLASS 124 EA  
S A V BLACKCLASS 8077

G T MAXIMUM  
BASIN ELINE ERICA 315U  
G A R SLEEP EASY 1009  
G A R SCOTCH CAP 109

BASIN MAX 602C  
Dam: SAV BLACKCLASS 124 EA  
S A V BLACKCLASS 8077

G T MAXIMUM  
BASIN ELINE ERICA 315U  
G A R SLEEP EASY 1009  
G A R SCOTCH CAP 109

BW	ADJ	ADJ	EPD's								
84	WW	YW	BW	WW	YW	Milk	TM	YG	REA	Marb	Fat
504	1201	N/A	N/A	N/A	N/A	N/A	N/A	N/A	N/A	N/A	N/A

BW	ADJ	ADJ	EPD's								
88	WW	YW	BW	WW	YW	Milk	TM	YG	REA	Marb	Fat
564	1271	N/A	N/A	N/A	N/A	N/A	N/A	N/A	N/A	N/A	N/A

ANGUS BULLS

Legacy of Marathon Sires



**R97 REMINGTON MARATHON 480U**  
8 SEP 08 - RCC 480U - 1535094

Sire: **B C MARATHON 7022**

Dam: **SAV BLACKCLASS 124 EA**  
SAV BLACKCLASS 8077

G T MAXIMUM  
BASIN ELINE ERICA 315U  
G A R SLEEP EASY 1009  
G A R SCOTCH CAP 109

											EPD's			
BW	WW	YW	BW	WW	YW	Milk	TM	YG	REA	Marb	Fat			
94	543	1256	N/A	N/A	N/A	N/A	N/A	N/A	N/A	N/A	N/A			



**R Ref. Sire REMINGTON ALLIANCE 130P**  
10 MAY 04 - RCC 130P - 1239457

Sire: **SITZ ALLIANCE 6595**  
SITZ BARBARAMERE JET 2698

Dam: **SCA 24E OF IDEAL 1418 7394**  
IDEAL 7394 SUPER X 5189 5275

G D A R TRAVELER 71  
SITZ EVERELDA ENTENSE 1137  
3 BAR SPIKE 1766  
SITZ BARAMERE JET 155  
IDEAL 8103 OF ELDO 5110 5213  
E E 4286 OF IDEAL 2240 1254  
SUPER X 5189 OF IDEAL 3134  
UNIVERSE 5275 OF IDEAL 2203

											EPD's			
BW	WW	YW	Milk	TM	YG	REA	Marb	Fat						
5.4	41	88	21	42	47	-0.27	0.09	0.039						

Home raised son of 6595 that will calve with the best of them.

**R98 REMINGTON ALLIANCE 464U**  
3 SEP 08 - RCC 464U - 1497281

Sire: **REMINGTON ALLIANCE 130P**

Dam: **REMINGTON LADY 245R**  
SAV 5175 BANDO 2166  
MVF LADY 138M

SA F 598 BANDO 5175  
SAV QUEEN 6171  
G D A UNIVERSE 726G  
MVF LADY 112F

											EPD's			
BW	ADJ	ADJ	WW	YW	BW	WW	YW	Milk	TM	YG	REA	Marb	Fat	
86	571	1335	5.3	44	92	18	40	48	0.10	0.01	.010			

**R99 REMINGTON ALLIANCE 467U**  
4 SEP 08 - RCC 467U - 1497283

Sire: **REMINGTON ALLIANCE 130P**

Dam: **REMINGTON BLACKCAP 118R**  
LEACHMAN RIGHT TIME  
CRESCENT CREEK BLACKCAP 84E

N BAR EMULATION EXT  
LEACHMAN ERICA 0025  
RITO 8094 PRAIRIELANE 2060  
CRESCENT CREEK BLACKCAP 112A

											EPD's			
BW	ADJ	ADJ	WW	YW	BW	WW	YW	Milk	TM	YG	REA	Marb	Fat	
90	634	1306	4.9	44	86	20	42	41	0.01	-0.16	.017			

**R100 REMINGTON ALLIANCE 484U**  
8 SEP 08 - RCC 484U - 1497291

Sire: **REMINGTON ALLIANCE 130P**

Dam: **MVF LASSIE 154M**  
GDAR SVF TRAVELER 234D  
CRESCENT CREEK LASSIE 110E

TRAVELER 124 G D A R  
G D A R FOREVER LADY 718  
RITO 8094 PRAIRIELANE 2060  
CRESCENT CREEK PROUD LASSIE 60

											EPD's			
BW	ADJ	ADJ	WW	YW	BW	WW	YW	Milk	TM	YG	REA	Marb	Fat	
84	532	1183	4.7	40	79	17	37	39	0.14	0.05	-0.10			

**R101 REMINGTON ALLIANCE 529U**  
14 SEP 08 - RCC 529U - 1497316

Sire: **REMINGTON ALLIANCE 130P**

Dam: **REMINGTON BLACKBIRD 102R**  
LEELA WIDESPREAD 4K  
CRESCENT CREEK BLACKBIRD 65F

WHITESTONE WIDESPREAD MB  
WESTROLAND PAULINE 20D  
RITO 8094 PRAIRIELANE 2060  
OLE SASKALTA BLACKBIRD 348C

											EPD's			
BW	ADJ	ADJ	WW	YW	BW	WW	YW	Milk	TM	YG	REA	Marb	Fat	
88	548	1226	5.1	41	83	16	37	42	-0.37	0.01	.031			



Remington & Alliance 130P Sons

# 2009 AGRIBITION

*Remington Land & Cattle & our customers enjoyed success in both the Commercial Barn and the Simmental Show Ring*



## **Remington General Lee 106T**

2009 Agribition Grand Champion Simmental Bull. Sold 1/2 interest & 1/2 possession to LaBatte Simmentals & Bouchard Livestock for \$20,000



## **Remington Prowler 111T**

2009 Agribition Reserve Grand Champion Simmental Bull. Sold in our '08 Value in Volume sale to Sun Star Simmentals & David Mohr for \$12,000



## **Remington Range Finder 82U**

2009 Agribition Junior Champion Simmental Bull. Sold 2/3 interest & possession in Agribition Sale to Diamond M Ranch for \$16,000



## **Remington Lock N Load 54U**

2009 Agribition Reserve Junior Champion Simmental Bull. Sold 1/2 interest & 1/2 possession in our '09 Cream of the Crop sale to Lundago/Gardner/Werning for \$36,000



## **Lots 122-124**

2009 Agribition Supreme Champion Pen of Bulls



## **Lots 1-4**

2009 Agribition Pen of Angus Bulls



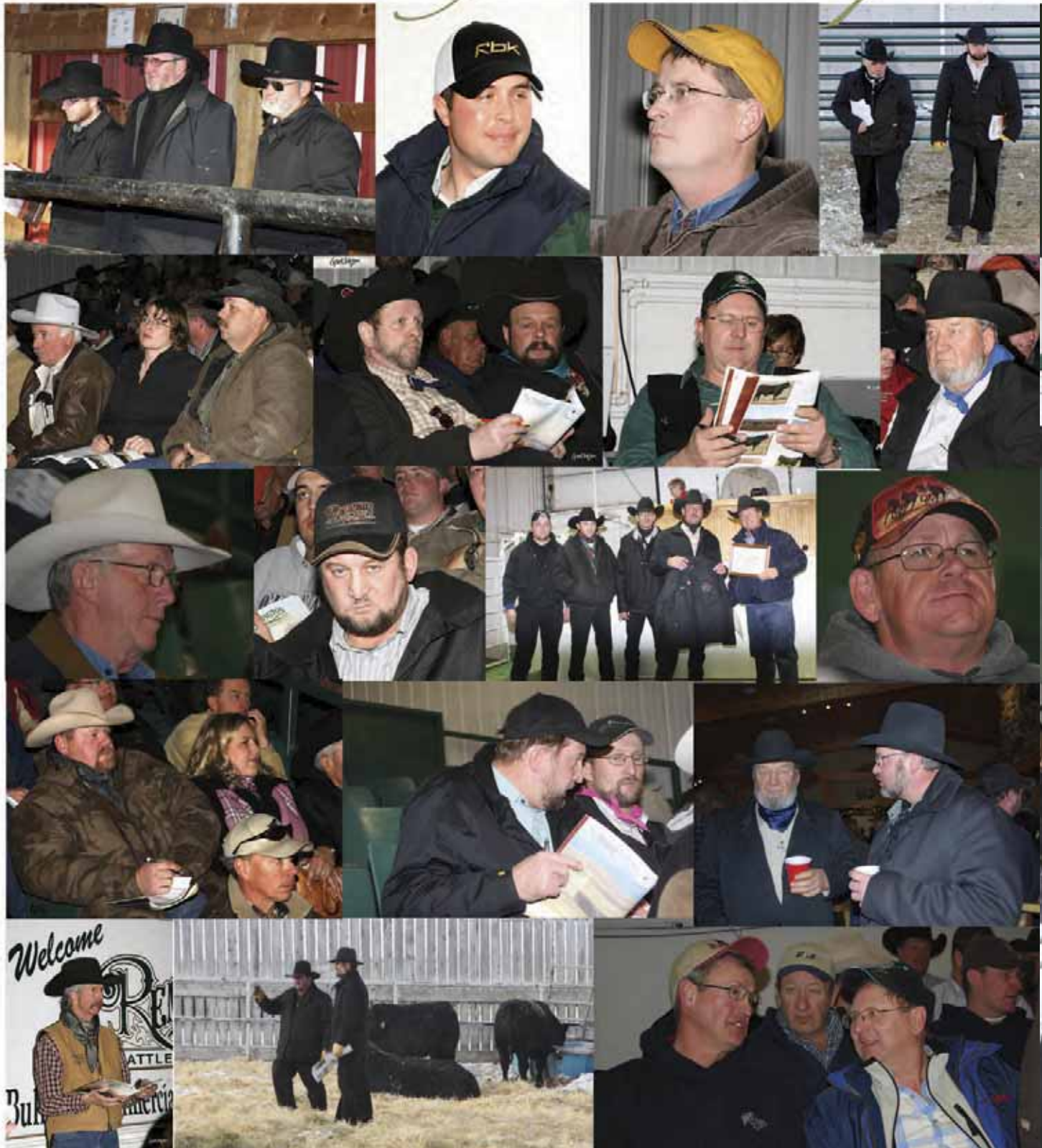
## **Remington General Lee 106T**

2009 Agribition RBC Top Ten Finalist

*2009 Agribition*

# REMINGTON LAND

*Thank you to all past*



# ND & CATTLE

*bull buyers and bidders!*



# REMINGTON COW HERD

*We pride ourselves on a strong cow herd and here are a few females that produced bulls in the sale offering!!!*



Dam of Lot 5

Dam of Lot 6, 8, 10, 11 & 15

Dam of Lot 7 & 16

Dam of Lot 9 & 106



Dam of Lot 48

Dam of Lot 62

Dam of Lot 67, 69 & 70

Dam of Lot 90



Dam of Lot 92 & 93

Dam of Lot 94

Dam of Lot 109 & 111

Dam of Lot 123, 150, 154, 203, 204 & 205



Dam of Lot 126, 206, 210 & 211

Dam of Lot 137 & 145

Dam of Lot 148, 153 & 163

Dam of Lot 152, 155, 164 & 165



Dam of Lot 157

Dam of Lot 160

Dam of Lot 170

Dam of Lot 207

Remington Cow Herd



*Ref. Sire*  
**R**

**BASIN MAX 602C**

6 FEB 93 - IMP 654C - 942987

Sire: **GT MAXIMUM**  
SCOTCH CAP  
GT MISS TRAVELER 58

Dam: **BASIN ELINE ERICA 315U**  
G D A R RAINMAKER 340  
BASIN ELINE ERICA 1313

P S POWER PLAY  
HOFF BAND 07 OF S C 509  
Q A S TRAVELER 23-4  
GT EVERGREEN 312  
LOVANA US98  
LADY BLACKBIRD 987 G D A R  
BASIN Q BAR 163  
RICH ERICA 768 US9273061



EPD's										
BW	WW	YW	Milk	TM	YG	REA	Marb	Fat		
2.2	44	94	14	36	50	-0.04	0.34	0.032		

602C sires tons of middle and muscle. He gets the performance job done big time.

*Ref. Sire*  
**R** 102

**REMINGTON MAX 176U**

23 APR 08 - RCC 176U - 1483077

Sire: **BASIN MAX 602C**  
GT MAXIMUM  
BASIN ELINE ERICA 315U

Dam: **CROWFOOT LADY ERICA 3785N**  
O C C JOKER 620J  
PAT LADY ERICA 8984

SCOTCH CAP  
GT MISS TRAVELER 58  
G D A R RAINMAKER 340  
BASIN ELINE ERICA 1313  
O C C EMBLAZON 854E  
O C C JUANADA 709V  
N BAR IMPACT U1253  
PAT PIED PIPER 921



EPD's											
BW	WW	ADJ	YW	Milk	TM	YG	REA	Marb	Fat		
87	616	1170	1.2	36	69	17	35	34	0.02	0.19	0.013

*Ref. Sire*  
**R** 103

**REMINGTON MAX 172U**

22 APR 08 - RCC 172U - 1483081

Sire: **BASIN MAX 602C**

Dam: **CROWFOOT LADY ERICA 3785N**  
O C C JOKER 620J  
PAT LADY ERICA 8984

O C C EMBLAZON 854E  
O C C JUANADA 709V  
N BAR IMPACT U1253  
PAT PIED PIPER 921

EPD's											
BW	WW	ADJ	YW	Milk	TM	YG	REA	Marb	Fat		
84	592	1094	1.2	36	69	17	35	34	0.02	0.19	.013

*Ref. Sire*  
**R**

**ANKONIAN WERNER WILD FIRE 96**

8 JAN 06 - IMP 96S - 1424039

Sire: **SAV 8180 TRAVELER 004**  
SITZ TRAVELER 8180  
BOYD FOREVER LADY 8003

Dam: **FSR ELBA SPECIAL DESIGN S406**  
W C C SPECIAL DESIGN L309  
W C C ELBA M82 US14125588

G D A R TRAVELER 71  
SITZ EVERELDA ENTENSE 1137  
A A R NEW TREND  
SV F FOREVER LADY 57D  
BONVIEW NEW DESIGN 878  
N BAR PRIMROSE 2424  
TWIN VALLEY PRECISION EI61  
FORSYTHE ELBA 2055



EPD's										
BW	WW	YW	Milk	TM	YG	REA	Marb	Fat		
3.6	54	96	29	56	0.60	0.19	0.10	0.074		

A Denver Reserve Champion and high seller. This bull is impressive with his body length, depth and muscle. Only a few sons but they are good ones.

*Ref. Sire*  
**R** 104

**REMINGTON WILD FIRE 700U**

25 APR 08 - RCC 700U - 1483067

Sire: **ANKONIAN WERNER WILDFIRE 96**

Dam: **CROWFOOT LADY ERICA 3785N**  
O C C JOKER 620J  
PAT LADY ERICA 8984

O C C EMBLAZON 854E  
O C C JUANADA 709V  
N BAR IMPACT U1253  
PAT PIED PIPER 921

EPD's											
BW	WW	ADJ	YW	Milk	TM	YG	REA	Marb	Fat		
83	703	1223	1.9	41	70	25	45	30	0.13	0.07	.034



**R105** REMINGTON WILD FIRE 152U  
17 APR 08 - RCC 152U - 1462978



Sire: ANKONIAN WERNER WILDFIRE 96

Dam: CROWFOOT LADY ERICA 3785N  
PAT LADY ERICA 8984

O C C JOKER 620  
O C C EMBLAZON 854E  
O C C JUANADA 709V  
N BAR IMPACT U1253  
PAT PIED PIPER 921

BW	ADJ WW	ADJ YW	BW	WW	YW	Milk	EPD's TM	YG	REA	Marb	Fat
84	631	1152	1.9	41	70	25	45	30	0.07	0.19	.034

**SONS OF PROVEN SIREs**

The next group of bulls are from proven herdsires that were used through AI or natural service. This group is a great set of bulls from some of the strongest bloodlines throughout North America.



**ANGUS ACRES TOMBOY 141K**  
Sire of Lot 106



**SCA 3299 OF IDEAL 1418**  
Sire of Lot 107 & 108



**SAV 004 PREDOMINANT 4438**  
Sire of Lot 109

**R106** REMINGTON TOMBOY 485U  
8 SEP 08 - RCC 485U - 1510490

Sire: ANGUS ACRES TOMBOY 166D  
ANGUS ACRES JESTRESS 66Y  
MOUNTAIN SPRINGS JUSTICE 41Y  
RONAN R ELLEN ERICA 37Y

Dam: REMINGTON LADY LAWN 144R  
HAPPYVALE BLACK JUMBO 1B  
ANGUS ACRES LADY LAWN 15B

ANGUS ACRES TOMBOY 196Z  
ANGUS ACRES JESTRESS 66Y  
MOUNTAIN SPRINGS JUSTICE 41Y  
RONAN R ELLEN ERICA 37Y  
HAPPYVALE BLACK BARD 34X  
BLACKCAP BOTHA  
GEIS BARDOLINE 30'90  
ANGUS ACRES LADY LAWN 5X

BW	ADJ WW	ADJ YW	BW	WW	YW	Milk	EPD's TM	YG	REA	Marb	Fat
86	626	1195	2.6	17	37	14	22	20	N/A	N/A	N/A

**R107** REMINGTON COPENHAGAN 196U  
27 APR 08 - RCC 196U - 1483060

Sire: SCA 3299 OF IDEAL 1418  
IDEAL 1418 OF 8103 4286  
SCA 16E OF IDEAL 033 7258

Dam: THOMAS LUCY 0787  
SITZ TRAVELER 9929  
THOMAS LUCY 3109

IDEAL 8103 OF ELDO 5110 5213  
E E 4286 OF IDEAL 2240 1254  
IDEAL 033 OF 7365 8263  
IDEAL 7258 OF 5215 6173  
D H D TRAVELER 6807  
SITZ EVERELDA ENTENSE 1137  
RR TRAVELER 5204  
THOMAS LUCY 1041

BW	ADJ WW	ADJ YW	BW	WW	YW	Milk	EPD's TM	YG	REA	Marb	Fat
86	622	1238	3.6	51	90	24	50	39	-0.07	0.02	.026



**R108** REMINGTON COPENHAGAN 268U  
19 MAY 08 - RCC 268U - 1497322



Sire: SCA 3299 OF IDEAL 1418  
IDEAL 1418 OF 8103 4286  
SCA 16E OF IDEAL 033 7258

Dam: EBON HILL BARDELLA 751'02  
TRIPLE E MATRIX 908  
EBON HILL BARDELLA 750'2000

IDEAL 8103 OF ELDO 5110  
E E 4286 OF IDEAL 2240 1254  
IDEAL 033 OF 7365 8263  
IDEAL 7258 OF 5215 6173  
N BAR EMULATION EXT  
JAYN BEE WENDY 728B  
VWVA CREEK STOCKMAN 4393  
EBON HILL BARDELLA 75'95

BW	ADJ WW	ADJ YW	BW	WW	YW	Milk	EPD's TM	YG	REA	Marb	Fat
80	685	1244	2.9	46	85	18	41	40	-0.13	-0.19	.008

Wild Fire Son to Sons of Proven Sires

**R109** REMINGTON PREDOMINANT 148U  
1 APR 08 - RCC 148U - 1462977

Sire: SAV 8180 TRAVELER 004  
SAV 004 PREDOMINANT 4438  
SAV EMBLYNETTE 1182

Dam: SCA POWER PLAY 164  
SCA BEMINDFUL MAID 67G  
PAPA BEMINDFUL MAID 409

SITZ TRAVELER 8180  
BOYD FOREVER LADY 8003  
SA F 598 BANDO 5175  
SAV EMBLYNETTE 7319  
P S POWER PLAY  
STRETTON CREEK BLACKCLASS 7Y  
PAPA FORTE 1921  
PAPA BEMINDFUL MAID PLD 220

BW	ADJ	ADJ	EPD's							Fat	
90	WW	YW	BW	WW	YW	Milk	TM	YG	REA	Marb	.023

**R110** REMINGTON SPECIALIST 414U  
14 JUN 08 - RCC 414U - 1497328

Sire: JUSTAMERE BLACK TIMBER 721P  
SOUTHLAND SPECIALIST 58S  
SOUTHLAND NANCY 70N

Dam: CONNEALY DATELINE  
REMINGTON DUTCHESS 107R  
SANDY BAR DUTCHESS 135M

EXAR BIGTIMBER 1118  
JUSTAMERE 088 BLACKBIRD 558F  
SANDY BAR BRAVEHEART 86K  
SOUTHLAND NANCY 12L  
D H D TRAVELER 6807  
EILA EILA OF CONANGA  
LAMBS INNOVATOR 86J  
SANDY BAR DUTCHESS 78H

BW	ADJ	ADJ	EPD's							Fat	
84	WW	YW	BW	WW	YW	Milk	TM	YG	REA	Marb	-.015

**R111** REMINGTON GRID MAKER 710U  
10 MAY 08 - RCC 710U - 1526528

Sire: G A R GRID MAKER  
MV F GRID MAKER 12R  
MV F TIBBIE 8L

Dam: SCA POWER PLAY 164  
SCA BEMINDFUL MAID 67G  
PAPA BEMINDFUL MAID 409

G D A R TRAVELER 044  
G A R PRECISION 2536  
O G L BATTLE CRY 427 128  
MV F TIBBIE 52F  
P S POWER PLAY  
STRETTON CREEK BLACKCLASS 7Y  
PAPA FORTE 1921  
PAPA BEMINDFUL MAID PLD 220

BW	ADJ	ADJ	EPD's							Fat	
88	WW	YW	BW	WW	YW	Milk	TM	YG	REA	Marb	-.007

**R112** REMINGTON GREENSTONE 224W  
17 FEB 09 - RCC 224W - 1528748

Sire: GREENS PREMIUM 7578  
HI DIAMOND GREENSTONE 504  
HI DIAMOND GEORGINA 18L

Dam: CONNEALY LEAD ON NHF AMF  
BB EMMA E 49S  
SITZ EMMA E 1082

WK ULTIMATUM  
GREENS LORI 5078  
WHITESTONE 9FB3 G228  
VICWIN GEORGINA 426D  
CONNEALY LEADTIME  
ELIGENCE PLUS OF CONANGA  
K M A HIGHROLLER 5025  
SITZ EMMA E 3448

BW	ADJ	ADJ	EPD's							Fat	
100	WW	YW	BW	WW	YW	Milk	TM	YG	REA	Marb	-.021

**R113** REMINGTON MAGNIFY 85W  
21 JAN 09 - RCC 85W - 1528782

Sire: HOFF FIRST EDITION 058  
HOFF MAGNIFY SC 1321 315  
HOFF FLOWER S C 216 1321

Dam: SITZ ALLIANCE 6595  
REMITALL PEARL 185P  
REMITALL PEARL 227M

HOFF HEAD OF THE CLASS  
HOFF WITCH OF S C 7131  
SV F BANDOLIER  
HOFF LADY ACE S C 884  
SITZ TRAVELER 8180  
SITZ BARBARAMERE JET 2698  
DURALTA 111A CHANCE 11H  
REMITALL PEARL 93J

BW	ADJ	ADJ	EPD's							Fat	
100	WW	YW	BW	WW	YW	Milk	TM	YG	REA	Marb	N/A



**R114** REMINGTON NET WORTH 164W  
7 FEB 09 - RCC 164W - 1528800

Sire: SAV 8180 TRAVELER 004  
SAV NET WORTH 4200  
SAV MAY 2410

Dam: LEACHMAN EXPLORER  
FISHER ENCHANTING ELAINE  
DAVIS ELAINE 6235

SITZ TRAVELER 8180  
BOYD FOREVER LADY 8003  
SA F 598 BANDO 5175  
SAV MAY 6269  
N BAR EMULATION EXT  
LEACHMAN BLACKCAP 9006  
RITO 9FB3 OF 5H11 FULLBACK  
SWAN ELAINE 212

BW	ADJ	ADJ	EPD's							Fat	
80	WW	YW	BW	WW	YW	Milk	TM	YG	REA	Marb	N/A



*Sons of Premier Sires*

**R115** WAF CACHAFAZ 279U  
19 MAY 08 - WAF 279U - 1487934

Sire: TRES MARIAS 6301 ZORZAL  
TRES MARIAS 7031 CACHAFAZ  
RED TRES MARIAS 6556 QUEBRA 5494  
TRES MARIAS 5887 HORNERO  
TRES MARIAS 4850 WIND EXT  
RED TRES MARIAS 5839 QUEBRACHO  
RED TRES MARIAS 5494 SECRETARIA  
RED AGROMELU 1126 DANIEL BOONE  
RED AGROMELU 735 CHOCTAVCTATI  
RED BHC STRYKER  
RED MODELOCENTENIALAGROMELU164

EPD's		EPD's		EPD's		EPD's		EPD's		EPD's	
BW	WW	YW	BW	WW	YW	Milk	TM	YG	REA	Marb	Fat
84	713	1227	1.3	24	38	8	20	N/A	N/A	N/A	N/A

Embryo Calf from Uruguay

**R116** WAF PERFORMA 316U  
25 MAY 08 - WAF 316U - 1485901

Sire: LA GANADERA 1482 PERFORMA  
LA GANADERA 998 REVOLUTION  
NICHOLS PERFORMA D162  
NICHOLS FORMULA U193  
NICHOLS LULA B87  
TLA NORTHERN SAMURAI  
LA GANADERA 799 PINE DRIVE  
N BAR EMULATION EXT  
LEACHMAN EXPLORER  
LA GANADERA 1237 PARAGON  
LA GANADERA 657  
LEACHMAN BLACKCAP 9006  
BAYUCLJA 4869 WARRANT STARDOM  
LA GANADERA 434 9SB

EPD's		EPD's		EPD's		EPD's		EPD's		EPD's	
BW	WW	YW	BW	WW	YW	Milk	TM	YG	REA	Marb	Fat
78	674	1129	N/A	N/A	N/A	N/A	N/A	N/A	N/A	N/A	N/A

Embryo Calf from Uruguay

REMINGTON'S WORLD ANGU  
The World Angus Forum was an event that we  
were witness to the greatest display of Angus ca  
Land and Cattle was proud to be involved with  
received from around the world and implanted,  
to 121 are embryos from this project and sell t



World Angus Forum Bulls



Lot 115  
Pictured Summer 2009



Lot 116  
Pictured Summer 2009

**US FORUM EMBRYO PROJECT**  
 will hold as a great memory. All that attended  
 cattle the world has ever seen. Remington  
 in the World Embryo Project. The embryos were  
 d, born and developed at Remington. Lots 115  
 to you with the full Remington Guarantee.



**R117**

**WAF TABACO 339U**

27 MAY 08 - WAF 339U - 1485952

Sire: **BAYUCUA TRAVELER BAYUCUA BBBOY**  
 BAYUCUA 06082 B. B. BOY  
 O C C DISCOVERY 918D  
 Dam: **BAYUCUA DISCOVERY TOMILBAYBBOY**  
 BAYUCUA 5317 TOMIL B. BELL BOY

G D A R TRAVELER 71  
 SITZ EVERELDA ENTENSE 1137  
 BAYUCUA 4964 BBOY MARSHALL  
 BAYUCUA 4950 MARSHALL BELL BOY  
 RITO 9FB3 OF 5H11 FULLBACK  
 ERICA LASSIE OF R R 766B  
 TOMIL GNEMERN GR 137N  
 BAYUCUA 4585 B BELLBOY

EPD's											
BW	WW	YW	BW	WW	YW	Milk	TM	YG	REA	Marb	Fat
84	679	1175	N/A	N/A	N/A	N/A	N/A	N/A	N/A	N/A	N/A

Embryo Calf from Uruguay

**R118**

**WAF FARADAY 320U**

25 MAY 08 - WAF 320U - 1485896

Sire: **JERUSALEM FARADAY C071**  
 NETHERTON FRANCES S30  
 RANUI W IMPACT 762  
 Dam: **NETHERTON FLORA B162**  
 NETHERTON FLORA Y284

TC STOCKMAN  
 ROYAL PRIDE 4S  
 TLA NORTHERN SAMURAI  
 NETHERTON FRANCES M47  
 TC STOCKMAN 365  
 RANUI W 319  
 DALRENE CRUZ 11F  
 NETHERTON FLORA T23

EPD's											
BW	WW	YW	BW	WW	YW	Milk	TM	YG	REA	Marb	Fat
88	787	1372	3.6	31	49	11	26	N/A	N/A	N/A	N/A

Embryo Calf from Scotland

**R119**

**WAF VALDEMAR 322U**

26 MAY 08 - WAF 322U - 1485891

Sire: **HUMLEGARDEN VALDEMAR 27**  
 BOGEHOJ SYMFONI  
 HUMLEGARDEN UNO 443  
 Dam: **HUMLEGARDEN A 525**  
 HUMLEGARDEN LINE-SHINE

BON VIEW BANDO 598  
 S A F ROYAL LASS 1002  
 ANKONIAN ELIXIR 100  
 BOGEHOJ LADYHAWK  
 NAKKEG WESTPOINT 797  
 HOGSGARD CALICO  
 HOGSGARD MAXIMUM  
 HOGSGARD MIE SHINE

EPD's											
BW	WW	YW	BW	WW	YW	Milk	TM	YG	REA	Marb	Fat
82	676	1267	N/A	N/A	N/A	N/A	N/A	N/A	N/A	N/A	N/A

Embryo Calf from Denmark

**R120**

**WAF BLACK INC 358U**

30 MAY 08 - WAF 358U - 1485889

Sire: **NORTHLINE BLACK INC. 89F**  
 GEIS MARY 89Y  
 ANKELBO EGO  
 Dam: **FANEFJORD JASMIN**  
 240 ERYTERPE

MFHF DREAMWALKER 29A  
 KNIGHTS BLACKBIRD 9Y  
 TLA NORTHERN SAMURAI  
 GEIS MARY 36W  
 BURTHLENE PATRIOT 47M  
 BASTRUP BLACK BEAUTY  
 185 ROCK RIVER IDEAL  
 141 ERYTERPE

EPD's											
BW	WW	YW	BW	WW	YW	Milk	TM	YG	REA	Marb	Fat
98	744	1259	N/A	N/A	N/A	N/A	N/A	N/A	N/A	N/A	N/A

Embryo Calf from Denmark

**R121**

**WAF ERIC 353U**

24 MAY 08 - WAF 353U - 1485893

Sire: **JEREMY ERIC OF BRIDGEFOOT**  
 FAIROAKS JEMIMA ERICA T7  
 KILMORE FARLO UKIGK.FI  
 Dam: **BALLINWING KITTY 2ND**  
 BALLINWING VINE 91ST

EDEN OF PAKEROA  
 ERAMA 4TH OF BANKHEAD  
 YOUNG DALE HOGAN 3Y  
 FAIROAKS JACKIES ERICA  
 DOONALLY GV JUMBO 17N  
 KILMORE ANGIE UKIGK  
 SWINDEE OF RAKANE  
 BALLINWING VINE 60TH

EPD's											
BW	WW	YW	BW	WW	YW	Milk	TM	YG	REA	Marb	Fat
89	641	1122	N/A	N/A	N/A	N/A	N/A	N/A	N/A	N/A	N/A

Embryo Calf from Ireland



Let 121  
 Pictured Summer 2009

ANGUS BULLS

World Angus Forum Bulls

## R122 REMINGTON RED LABEL 118U

17 JUN 08 - RCCI 118U - 712096 - POLLED - RED

Sire: **REMINGTON RED LABEL HR**  
HS REFLECTIONS J34

CNS DREAM ON L186

Dam: **SUNNY VALLEY RAVEN 17R**  
MISS GJR KAREFREE 31K

LCHMN BODYBUILDER 7303F

NICHOLS BLK DESTINY G151  
CNS SHEEZA DREAM K107W  
BS MR ARAPAHOE 811A  
HF/GFI RUBY RED 33E  
3C WALLY C240 BLK  
LSF MOMENTO D8  
ER RED DASH 649D  
MISS GJR RED IMPACT 62H

ADJ		ADJ		EPD's							
BW	WW	YW	CE	BW	WW	YW	MCE	MWW	Milk	SC	Marb
96	748	1327	4.4	3.6	33.2	54.5	6.1	21.5	4.9	0.50	-0.22

Agribition & Denver Red Pen of Bulls Member

## R123 REMINGTON RED LABEL 229U

24 MAY 08 - RCCI 229U - 711967 - POLLED - RED

Sire: **REMINGTON RED LABEL HR**  
HS REFLECTIONS J34

CNS DREAM ON L186

Dam: **BAR 15 SP REWARD 93M**  
BAR 15 MISS SP 117-160G

TNT BULLSEYE K104

NICHOLS BLK DESTINY G151  
CNS SHEEZA DREAM K107W  
BS MR ARAPAHOE 811A  
HF/GFI RUBY RED 33E  
SRS FORTUNE 500  
TNT MISS SHEILA H209  
SIR BAF KNIGHT REWARD 16D  
BAR 15 MISS SP 117-100D

ADJ		ADJ		EPD's							
BW	WW	YW	CE	BW	WW	YW	MCE	MWW	Milk	SC	Marb
102	785	1243	8.0	2.8	40.5	64.1	6.4	26.1	5.8	0.50	-0.15

Agribition & Denver Red Pen of Bulls Member

## LOTS 122, 123 & 124-AGRIBITION SUP



*Lot 122*



*Lot 123*

PREMIER CHAMPION PEN OF BULLS



**R124** REMINGTON RED LABEL 263U  
1 JUN 08 - RCCI 263U - 709058 - POLLED - RED

Sire: **REMINGTON RED LABEL HR**  
CNS DREAM ON L186  
HS REFLECTIONS J34

Dam: **BAR 15 MISS KNIGHT78E-51G**  
SV CHARLIES APPLAUSE  
BAR 15 MISS KNIGHT83Y-78E

NICHOLS BLK DESTINY G151  
CNS SHEEZA DREAM K107W  
BS MR ARAPAHOE 811A  
HF/GFI RUBY RED 33E  
CHARLES PRIDE  
SPRING VALLEY Z402  
IRISH BLACK KNIGHT  
BAR 15 MISS U 110-83Y

ADJ	ADJ	EPD's									
BW	WW	YW	CE	BW	WW	YW	MCE	MWW	Milk	SC	Marb
105	732	1276	6.9	2.9	31.4	55.4	5.2	19.4	3.7	0.40	0.05

Agribition & Denver Red Pen of Bulls Member

**R125** REMINGTON THE DUKE 43U  
2 MAY 08 - RCCI 43U - 709083 - POLLED - BLACK

Sire: **KSTHE DUKE S30**  
ELLINGSON BLACK PERFECTOR  
STF REBECA

Dam: **HPF MS HONEY R007**  
SHS NAVIGATOR N2B  
LBS PASSION MAID 4F

LRS PREFERRED STOCK 370C  
ELLINGSON BLACKTOP F672  
CIRCLE S LEACHMAN 600U  
LSS BLACK PEARL  
TCF/RCC TEMPTATION GJ640  
ROCKY HILLS JO  
GW TAILOR MADE 515A  
LBS MS BLACK PASSION 34D

ADJ	ADJ	EPD's									
BW	WW	YW	CE	BW	WW	YW	MCE	MWW	Milk	SC	Marb
88	705	1212	8.0	1.0	34.9	60.9	3.9	19.4	1.9	N/A	-0.04

Denver Black Pen of Bulls Member



**R126** REMINGTON POWER TRIP 81U  
25 MAY 08 - RCCI 81U - 709093 - POLLED - BLACK

Sire: **KENCO/MF POWERLINE 204L**  
HC POWER DRIVE 88H  
SAFN GLAMOUR 11J

Dam: **DRAKE SOFT TOUCH 15M**  
G&L AVALANCHE 149F  
DRAKE MISS P36D

WLE POWER STROKE  
KAPPES LADY IRISH F88  
SAC MR MT 73G  
SAC MISS JET TOP 29G  
G&L BLACKFOOT 716D  
G&L MISS 600U 709D  
MEYERS RED TOP  
DRAKE MISS P36

ADJ	ADJ	EPD's									
BW	WW	YW	CE	BW	WW	YW	MCE	MWW	Milk	SC	Marb
92	721	1294	6.3	2.3	34.9	68.5	5.0	22.4	4.9	N/A	-0.35

Denver Black Pen of Bulls Member



Pen of Bulls



**R127 REMINGTON YIELDMASTER 33U**  
25 APR 08 - RCCI 33U - 708323 - POLLED - BLACK

**Sire: TRIPLE C SINGLETARY S3H**  
HOOKS SHEAR FORCE 38K  
LUCAS JOSIE 19K

NICHOLS BLK DESTINY G151  
C&D TRACY  
ELLINGSON BLACK PERFECTOR  
RIV BLK JOSIE 43B 755G  
SHOSHONE P P 7105  
GLADWALL ROSE OF L282  
TOMWALL B EMULATION 070  
BAR B ZARA BAND 1987

**Dam: CROWFOOT FORKS 658K**  
TOMWALL PIED PIPER 413  
GLADWALL B ZARA BAND 6355

ADJ		ADJ		EPD's		EPD's		EPD's		EPD's		EPD's	
BW	WW	YW	CE	BW	WW	YW	MCE	MWW	Milk	SC	Marb		
90	689	1274	N/A	-2.2	21.3	31.9	N/A	8.4	-2.3	N/A	0.61		

Denver Pen of Bulls Member  
**Half Blood**



**R128 REMINGTON YIELDMASTER 219U**  
21 MAY 08 - RCCI 219U - 705984 - POLLED - BLACK

**Sire: REMINGTON ON TARGET HR**  
CNS DREAM ON L186  
HS REFLECTIONS J34

NICHOLS BLK DESTINY G151  
CNS SHEEZA DREAM K107W  
BS MR ARAPAHOE 811A  
HF/GFI RUBY RED 33E  
BON VIEW BANDO 598  
SCOTCH WHISKEY 120H  
STEVENSON ROYCE 741C  
HILL FIRE ROSE 17F

**Dam: CROWFOOT FIRE ROSE 3918N**  
BANDO 598 SCOTCH 120K  
HILL FIRE ROSE 172L

ADJ		ADJ		EPD's		EPD's		EPD's		EPD's		EPD's	
BW	WW	YW	CE	BW	WW	YW	MCE	MWW	Milk	SC	Marb		
89	739	1260	N/A	-0.2	29.2	52.5	N/A	13.9	-0.7	N/A	0.10		

Denver Pen of Bulls Member  
**Half Blood**



**R129 REMINGTON YIELDMASTER 221U**  
22 MAY 08 - RCCI 221U - 711957 - POLLED - BLACK

**Sire: REMINGTON ON TARGET HR**  
CNS DREAM ON L186  
HS REFLECTIONS J34

NICHOLS BLK DESTINY G151  
CNS SHEEZA DREAM K107W  
BS MR ARAPAHOE 811A  
HF/GFI RUBY RED 33E  
N BAR EMULATION EXT  
LEACHMAN ERICA 0025  
WESTWIND FINESSE 1113  
GLADWALL B CHLOE 3334

**Dam: CROWFOOT CHLOE 2722M**  
LEACHMAN RIGHT TIME  
GLADWALL B CHLOE 7197

ADJ		ADJ		EPD's		EPD's		EPD's		EPD's		EPD's	
BW	WW	YW	CE	BW	WW	YW	MCE	MWW	Milk	SC	Marb		
108	764	1348	N/A	2.4	36.3	61.5	N/A	17.5	-0.7	N/A	-0.19		

Denver Pen of Bulls Member  
**Half Blood**



**R130 REMINGTON YIELDMASTER 233U**  
24 MAY 08 - RCCI 233U - 711972 - POLLED - BLACK

**Sire: REMINGTON ON TARGET 2S**  
REMINGTON RED LABEL HR  
DRAKE SOFT TOUCH 15M

CNS DREAM ON L186  
HS REFLECTIONS J34  
G&L AVALANCHE 149F  
DRAKE MISS P36D  
RED LEACHMAN HEAVENLY 814  
RED CR LASIE 1A  
RED CROWFOOT CHIEFTON 462  
RED CROWFOOT BRANDINA 367

**Dam: RED CROWFOOT CJ BRNDINA 9**  
RED CR HEAVENLY 11F  
RED CROWFOOT BRANDINA 613

ADJ		ADJ		EPD's		EPD's		EPD's		EPD's		EPD's	
BW	WW	YW	CE	BW	WW	YW	MCE	MWW	Milk	SC	Marb		
94	833	1370	N/A	0.7	29.7	49.6	N/A	11.3	-3.6	N/A	-0.10		

Denver Pen of Bulls Member  
**Half Blood**



*Red Label Sons*



Red Label has been the cornerstone of our Simmental Program. He has made a large impact on the Simmental breed throughout North America and is breeding to be a true legend. His females are now in production and have beautiful udders. His bulls are big nuted, sound and extremely complete. At the 2009 Agribition, 5 of the 8 bulls in the championship drive were descendants of Red Label. Buy a Red Label son to add consistency and production to your calf crop.

*Ref. Sire*  
**R**

**REMINGTON RED LABEL HR**

9 FEB 04 - FGN 737P - 634702 - POLLED - RED

Sire: **CNS DREAM ON L186**  
NICHOLS BLK DESTINY G151  
CNS SHEEZA DREAM K107W  
NICHOLS BLK DESTINY D12  
NICHOLS DEBRA D81  
SRS FRANCHISE F601  
NICHOLS JOLIETTE 107W  
CHERITHBROOK MR ABE  
BS MR ARAPAHOE 811A  
Dam: **HS REFLECTIONS J34**  
HF/GFI RUBY RED 33E  
BS MS HIGH INTEREST 811T  
BURNS BULL X339U  
ER MISS J891X 9A

			EPD's									
BW	ADJ WW	ADJ YW	CE	BW	WW	YW	MCE	MWW	Milk	SC	Marb	
78	760	1350	6.1	2.7	37.7	59.0	5.9	21.7	2.8	0.83	-0.22	

**R131 REMINGTON RED LABEL 53W**

25 FEB 09 - RCCI 53W - 718281 - POLLED - RED

**R132 REMINGTON YIELDMASTER 168U**

17 SEP 08 - RCCI 168U - APP FOR - POLLED - RED

Sire: REMINGTON RED LABEL HR

Sire: REMINGTON RED LABEL HR

Dam: **REMINGTON LARA CROFT 13S**  
RAB GREEN LIGHT GO J2746  
CMS LARA CROFT 04L  
MV RED LIGHT 406  
RAB MS RED BROTHER F1547  
LCHMN BODYBUILDER 7303F  
WSR DANIELLE 39D

Dam: **RED TOWAW LAKTA 116N**  
RED TOWAW INDEED 104H  
RED SHODEREE LAKTA 219B  
RED GLACIER DIVIDE 310  
RED TOWAW MOLLY 67C  
RED LUK COPPER 122Y  
RED MC LAKOTA 19Y

			EPD's									
BW	ADJ WW	ADJ YW	CE	BW	WW	YW	MCE	MWW	Milk	SC	Marb	
98	717	1195	6.9	3.1	32.8	53.4	6.0	23.6	7.2	0.40	-0.12	

			EPD's									
BW	ADJ WW	ADJ YW	CE	BW	WW	YW	MCE	MWW	Milk	SC	Marb	
90	647	1253	N/A	N/A	N/A	N/A	N/A	N/A	N/A	N/A	N/A	

Half Blood

**R133 REMINGTON RED LABEL 164U**

8 SEP 08 - RCCI 164U - 708358 - POLLED - RED

Sire: REMINGTON RED LABEL HR

Dam: **BAR 15 BEEBA 59P**  
TNT BULLSEYE K104  
BAR 15 BEEBA 82K  
SRS FORTUNE 500  
TNT MISS SHEILA H209  
ER RED DASH 649D  
BAR 15 BEEBA 22B-102E

			EPD's									
BW	ADJ WW	ADJ YW	CE	BW	WW	YW	MCE	MWW	Milk	SC	Marb	
92	657	1255	7.7	2.8	40.9	67.6	5.0	24.0	3.5	0.40	-0.20	



399

*Set 133*

# R134 REMINGTON YIELDMASTER 171U

24 SEP 08 - RCCI 171U - 708383 - POLLED - BLACK



Sire: REMINGTON RED LABEL HR

Dam: ANGUS/ANGUS

BW	ADJ	ADJ	CE	BW	WW	YW	EPD's				SC	Marb
84	631	1236	N/A	0.7	30.7	47.7	MCE	MWW	Milk	N/A	0.23	

Half Blood

# R135 REMINGTON BLACK LABEL 173U

14 OCT 08 - RCCI 173U - 708359 - POLLED - BLACK

Sire: REMINGTON RED LABEL HR

Dam: TCCO FULL INTENTIONS 4651P  
WFL FULLY CHARGED 201M  
LFE 75% 651L

HC POWER DRIVE 88H  
LFE DAKOTA 89K  
TNT BLACKOUT D99  
LFE 50% 742K

BW	ADJ	ADJ	CE	BW	WW	YW	EPD's				SC	Marb
88	648	1157	8.4	1.1	29.7	50.1	4.4	19.8	4.9	0.50	0.04	

# R136 REMINGTON RED LABEL 174U

24 OCT 08 - RCCI 174U - 708360 - POLLED - RED



Sire: REMINGTON RED LABEL HR

Dam: BAR 15 JET BLACK 19J  
LRS PREFERRED STOCK 370C  
BAR 15 JET BLACK 89A

CIRCLE S LEACHMAN 600U  
LAS MISS PRINCESS 020Z  
LANDRIDGE JET BLACK  
BAR 15 MISS U 110-83Y

BW	ADJ	ADJ	CE	BW	WW	YW	EPD's				SC	Marb
84	661	1240	8.8	1.7	36.1	59.2	5.3	16.7	-1.4	0.40	0.15	

# R137 REMINGTON RED LABEL 56U

8 MAY 08 - RCCI 56U - 709044 - POLLED - RED

Sire: REMINGTON RED LABEL HR

Dam: LRX REBA 13R  
HOOK'S RED QUORUM 55H  
LRX 67N

MV RED LIGHT 406  
HOOK'S APPLAUSE 59F  
ANCHOR "T" YUKON 35K  
LRX MS RED 32G

BW	ADJ	ADJ	CE	BW	WW	YW	EPD's				SC	Marb
86	703	1207	7.9	0.4	34.3	65.2	5.9	24.6	7.4	0.40	-0.26	



# R138 REMINGTON YIELDMASTER 66U

15 MAY 08 - RCCI 66U - 712306 - POLLED - RED

Sire: REMINGTON RED LABEL HR

Dam: RED CROWFOOT WJ FLAME 1496L  
RED MABES RAMBO TUO  
RED MS FORSTER FLAME 8047

RED FCC RAMBO 502  
RED MABES TUO TUO  
RED BLAZE V415  
RED MS FORSTER PATRIOT

BW	ADJ	ADJ	CE	BW	WW	YW	EPD's				SC	Marb
86	631	1209	N/A	0.1	26.3	40.0	N/A	10.3	-2.9	N/A	0.16	

Half Blood



# R139 REMINGTON YIELDMASTER 96U

30 MAY 08 - RCCI 96U - 716507 - POLLED - RED

Sire: REMINGTON RED LABEL HR

Dam: RED CROWFOOT TARA 5079R  
RED LAZY RC AUTHENTIC 326  
RED CROWFOOT TARA 2171M

RED BADLANDS BONAFIDE 114  
RED SSS DUCHESS 542K  
RED CROWFOOT PM 757G  
RED CROWFOOT TARA 41W

BW	ADJ	ADJ	CE	BW	WW	YW	EPD's				SC	Marb
98	711	1213	N/A	2.3	34.5	50.7	N/A	15.3	-2.0	N/A	0.13	

Half Blood



# R140 REMINGTON YIELDMASTER105U

3 JUN 08 - RCCI 105U - 711935 - POLLED - RED

# R141 REMINGTON YIELDMASTER107U

6 JUN 08 - RCCI 107U - 711936 - POLLED - RED

Sire: REMINGTON RED LABEL HR

Sire: REMINGTON RED LABEL HR

Dam: RED CROWFOOT DYNA LADY 1123L  
 RED FORSTER CHIEF 8155ET  
 RED CROWFOOT DYNA LADY 896H  
 RED PBC D0202 6M H0904  
 RED MS FORSTER PAY DAY  
 RED BJR FANCY PANTS 355-71L  
 RED SSS DYNA LADY 408X

Dam: RED CROWFOOT GREEN 1169L  
 RED CROWFOOT PM 757G  
 RED TOM GREEN GTG 32D  
 RED TK POUNDMAKER 69Z  
 RED CROWFOOT BIRD 12Z  
 RED CROWFOOT BIEBER 9A  
 RED ALAITA ACRES DAVNA 63Z

BW	ADJ	ADJ	ADJ	CE	BW	WW	YW	EPD's			SC	Marb
88	736	1099	N/A	0.7	30.6	45.5	N/A	13.3	-2.0	N/A	-0.19	

Half Blood

BW	ADJ	ADJ	ADJ	CE	BW	WW	YW	EPD's			SC	Marb
95	743	1228	N/A	1.8	33.3	49.1	N/A	14.7	-2.0	N/A	-0.03	

Half Blood

# R142 REMINGTON YIELDMASTER108U

6 JUN 08 - RCCI 108U - 711937 - POLLED - RED

Sire: REMINGTON RED LABEL HR

Dam: RED CROWFOOT GINGER 9184J  
 RED CROWFOOT DYNAMO 616F  
 RED BAR-X GINGER 100G  
 RED RCN DYNAMO 732  
 RED TOM GREEN GTG 25D  
 MVHF INNOVATOR 49B  
 RED SHODEREE DUCHESS 71C

BW	ADJ	ADJ	ADJ	CE	BW	WW	YW	EPD's			SC	Marb
98	580	1094	N/A	2.3	34.5	50.7	N/A	15.3	-2.0	N/A	0.10	

Half Blood



# R143 REMINGTON YIELDMASTER112U

9 JUN 08 - RCCI 112U - 711946 - POLLED - RED

Sire: REMINGTON RED LABEL HR

Dam: RED CROWFOOT Y2K LUC 5025R  
 RED VGW RAMBLER 1000  
 RED CROWFOOT LUC 3101N  
 RED BJR RAMBLER 5162  
 RED VGW UMPIRE YUMA 9266  
 RED FORSTER CHIEF 7182ET  
 RED CFCC Y2K

BW	ADJ	ADJ	ADJ	CE	BW	WW	YW	EPD's			SC	Marb
90	678	1206	N/A	1.0	31.3	46.5	N/A	13.7	-2.0	N/A	-0.08	

Half Blood



# R144 REMINGTON YIELDMASTER109U

8 JUN 08 - RCCI 109U - 711938 - POLLED - RED

# R145 REMINGTON RED LABEL 113U

9 JUN 08 - RCCI 113U - 711948 - POLLED - RED

Sire: REMINGTON RED LABEL HR

Sire: REMINGTON RED LABEL HR

DAM: RED CROWFOOT DOLL 5011R  
 RED CROWFOOT OLES OSCAR 202M  
 RED CROWFOOT DOLL 3105N  
 RED MLK CRK CUB 722  
 RED CROWFOOT OMEGA 917J  
 RED PAT 3207  
 RED CROWFOOT DOLL 594E

Dam: LRX REBA 13R  
 LRX 67N  
 HOOK'S RED QUORUM 55H  
 MV RED LIGHT 406  
 HOOK'S APPLAUSE 59F  
 ANCHOR "T" YUKON 35K  
 LRX MS RED 32G

BW	ADJ	ADJ	ADJ	CE	BW	WW	YW	EPD's			SC	Marb
84	724	1210	N/A	0.1	29.0	43.4	N/A	12.5	-2.0	N/A	0.08	

Half Blood

BW	ADJ	ADJ	ADJ	CE	BW	WW	YW	EPD's			SC	Marb
96	785	1243	6.7	2.6	38.6	70.1	5.6	26.7	7.4	0.40	0.17	

SIMMENTAL BULLS

Red Label Sons



**R146 REMINGTON YELDMASTER115U**  
10 JUN 08 - RCCI 115U - 708536 - POLLED - RED

Sire: REMINGTON RED LABEL HR

DAM: RED CROWFOOT WJ FLAME 1496L  
RED MABES RAMBO TUO  
RED MS FORSTER FLAME 8047  
RED FCC RAMBO 502  
RED MABES TUO TUO  
RED BLAZE V415  
RED MS FORSTER PATRIOT

BW	ADJ	ADJ	CE	BW	WW	YW	EPD's				
88	736	1264	N/A	N/A	N/A	N/A	MCE	MWW	Milk	SC	Marb

Half Blood



**R147 REMINGTON RED LABEL 124U**  
21 JUN 08 - RCCI 124U - 712097 - POLLED - RED

Sire: REMINGTON RED LABEL HR

Dam: SUN STAR TOP SHELF 33P  
PATT FIRST BASE 30F  
SUN STAR MS 31M  
ER BIG SKY 545B  
PATT POL BLUE JAY 45B  
GW LUCKY STRIKE 147G  
SUN STAR MISS 75K

BW	ADJ	ADJ	CE	BW	WW	YW	EPD's				
82	761	1307	9.4	0.4	29.0	49.5	5.6	20.1	5.6	0.40	-0.05

**R148 REMINGTON RED LABEL 267U**  
2 JUN 08 - RCCI 267U - 709057 - POLLED - RED

Sire: REMINGTON RED LABEL HR

Dam: BAR 15 MISS KNIGHT78E-51G  
SV CHARLIES APPLAUSE  
BAR 15 MISS KNIGHT83Y-78E  
CHARLES PRIDE  
SPRING VALLEY Z402  
IRISH BLACK KNIGHT  
BAR 15 MISS U 110-83Y

BW	ADJ	ADJ	CE	BW	WW	YW	EPD's				
102	682	1184	6.9	2.5	30.6	54.3	5.2	19.0	3.7	0.40	-0.22

**R149 REMINGTON YELDMASTER125U**  
21 JUN 08 - RCCI 125U - 712098 - POLLED - RED

Sire: REMINGTON RED LABEL HR

DAM: RED CROWFOOT BIRD 1094L  
RED CROWFOOT PM 757G  
RED CROWFOOT BIRD 74B  
RED TK POUNDMAKER 69Z  
RED CROWFOOT BIRD 12Z  
RED BLUE SPRUCE CHARGE 15Z  
RED CROWFOOT BIRD 108Y

BW	ADJ	ADJ	CE	BW	WW	YW	EPD's				
84	740	1322	N/A	0.1	29.0	43.4	N/A	12.5	-2.0	N/A	0.28

Half Blood

**R150 REMINGTON RED LABEL 126U**  
26 JUN 08 - RCCI 126U - 712099 - POLLED - RED

Sire: REMINGTON RED LABEL HR

Dam: BAR 15 SP REWARD 93M  
TNT BULLSEYE K104  
BAR 15 MISS SP 117-160G  
SRS FORTUNE 500  
TNT MISS SHEILA H209  
SIR BAFKNIGHT REWARD 16D  
BAR 15 MISS SP 117-100D

BW	ADJ	ADJ	CE	BW	WW	YW	EPD's				
80	687	1161	9.4	0.4	31.7	53.8	6.7	22.4	6.5	0.50	-0.19

**R151 REMINGTON BLACK LABEL127U**  
27 JUN 08 - RCCI 127U - 712100 - POLLED - BLACK

Sire: REMINGTON RED LABEL HR

Dam: HPF MS HONEY R007  
SHS NAVIGATOR N2B  
LBS PASSION MAID 4F  
TCF/RCC TEMPTATION GJ640  
ROCKY HILLS JO  
GW TAILOR MADE 515A  
LBS MS BLACK PASSION 34D

BW	ADJ	ADJ	CE	BW	WW	YW	EPD's				
86	780	1248	7.7	1.8	33.0	54.6	5.0	20.4	3.9	N/A	0.09



**R152** REMINGTON RED LABEL 132U  
9 JUL 08 - RCCI 132U - 712101 - POLLED - RED

**R153** REMINGTON RED LABEL 237U  
25 MAY 08 - RCCI 237U - 709056 - POLLED - RED

Sire: REMINGTON RED LABEL HR

Sire: REMINGTON RED LABEL HR

Dam: **MRL MISS 495N**  
HOOK'S RED QUORUM 55H  
MISS MRL 491G

MV RED LIGHT 406  
HOOK'S APPLAUSE 59F  
ER RED DECK 639D  
MISS MRL 178D

Dam: **BAR 15 MISS KNIGHT78E-51G**  
SV CHARLIES APPLAUSE  
BAR 15 MISS KNIGHT83Y-78E

CHARLES PRIDE  
SPRING VALLEY Z402  
IRISH BLACK KNIGHT  
BAR 15 MISS U 110-83Y

BW	ADJ WW	ADJ YW	CE	BW	WW	YW	EPD's			SC	Marb
92	806	1295	7.2	2.0	41.9	74.2	MCE	MWW	Milk	0.40	-0.19

BW	ADJ WW	ADJ YW	CE	BW	WW	YW	EPD's			SC	Marb
99	642	1098	6.9	2.3	30.0	53.6	MCE	MWW	Milk	0.40	-0.12

**R154** REMINGTON RED LABEL 242U  
26 MAY 08 - RCCI 242U - 709094 - POLLED - RED

**R155** REMINGTON RED LABEL 247U  
27 MAY 08 - RCCI 247U - 711977 - POLLED - RED

Sire: REMINGTON RED LABEL HR

Sire: REMINGTON RED LABEL HR

Dam: **BAR 15 SP REWARD 93M**  
TNT BULLSEYE K104  
BAR 15 MISS SP 117-160G

SRS FORTUNE 500  
TNT MISS SHEILA H209  
SIR BAF KNIGHT REWARD 16D  
BAR 15 MISS SP 117-100D

Dam: **MRL MISS 495N**  
HOOK'S RED QUORUM 55H  
MISS MRL 491G

MV RED LIGHT 406  
HOOK'S APPLAUSE 59F  
ER RED DECK 639D  
MISS MRL 178D

BW	ADJ WW	ADJ YW	CE	BW	WW	YW	EPD's			SC	Marb
98	717	1203	8.0	2.1	35.4	58.7	MCE	MWW	Milk	0.50	-0.22

BW	ADJ WW	ADJ YW	CE	BW	WW	YW	EPD's			SC	Marb
90	769	1201	6.9	1.5	40.9	72.8	MCE	MWW	Milk	0.40	-0.23



**HPF MS HONEY R007**  
Dam of Lots 125, 151, 166 & 180

SIMMENTAL BULLS

*Red Label Sons*



*On Target has been a breeding sensation and has sired the top show and sale cattle in 2008 & 2009. Look to On Target to add performance through extra capacity and muscle shape. His daughters are now in production with lots of milk flow and good udders.*

**Ref. Sire** REMINGTON ON TARGET 2S  
10 JAN 06 - RCCI 2S - 658801 - POLLED - BLACK

Sire: CNS DREAM ON L186  
REMINGTON RED LABEL HR  
HS REFLECTIONS J34

NICHOLS BLK DESTINY G151  
CNS SHEEZA DREAM K107W  
BS MR ARAPAHOE 811A  
HF/GFI RUBY RED 33E  
G&L BLACKFOOT 716D  
G&L MISS 600U 709D  
MEYERS RED TOP  
DRAKE MISS P36

ADJ	ADJ	ADJ	EPD's								
BW	WW	YW	CE	BW	WW	YW	MCE	MWW	Milk	SC	Marb
94	746	1178	7.7	4.6	46.7	83.5	4.4	26.0	2.6	N/A	-0.50

Dam: G&L AVALANCHE 149F  
DRAKE SOFT TOUCH 15M  
DRAKE MISS P36D

On Target Sons

**R156** REMINGTON YIELDMASTER 11W  
23 JAN 09 - RCCI 11W - 718256 - POLLED - BLACK

Sire: REMINGTON ON TARGET 2S

Dam: RED VGW RAMBLER 1000  
RED CROWFOOT CJ TARA 1304L  
RED CROWFOOT CJ TARA 9216J

ADJ	ADJ	ADJ	EPD's								
BW	WW	YW	CE	BW	WW	YW	MCE	MWW	Milk	SC	Marb
88	609	1337	N/A	N/A	N/A	N/A	N/A	N/A	N/A	N/A	N/A

Half Blood

**R157** REMINGTON YIELDMASTER 29W  
3 FEB 09 - RCCI 29W - 718267 - POLLED - RED

Sire: REMINGTON ON TARGET 2S

Dam: RED FLYING CHIEF 41C  
RED FLYING K MS CHIEF 75F  
RED FLYING K DESIGN 24B

ADJ	ADJ	ADJ	EPD's								
BW	WW	YW	CE	BW	WW	YW	MCE	MWW	Milk	SC	Marb
87	544	1243	N/A	N/A	N/A	N/A	N/A	N/A	N/A	N/A	N/A

Half Blood



*Dam of  
Lot 158, 169, 173*

**R158** REMINGTON YIELDMASTER 137U  
27 AUG 08 - RCCI 137U - 710398 - POLLED - RED

Sire: REMINGTON ON TARGET 2S

Dam: RED CROWFOOT PM 757G  
RED CROWFOOT LESLIE 1202L  
RED BAR-X GINGER 100G

ADJ	ADJ	ADJ	EPD's								
BW	WW	YW	CE	BW	WW	YW	MCE	MWW	Milk	SC	Marb
86	681	1318	N/A	1.8	36.4	59.0	N/A	13.0	-5.2	N/A	-0.39

Half Blood

**R160** REMINGTON ON TARGET 159U  
5 SEP 08 - RCCI 159U - APP FOR - POLLED - BLACK

Sire: REMINGTON ON TARGET 2S

Dam: **NORTHLAND MISS 036K**  
CIRCLE S LEACHMAN 600U  
NORTHLAND MISS 634F

LANDRIDGE JET BLACK  
BDV R52 MS BLACK KNIGHT  
LEACHMAN RED BALDY 438V  
NORTHLAND MISS 310C

BW	ADJ	ADJ	EPD's										
			WW	YW	CE	BW	WW	YW	MCE	MWW	Milk	SC	Marb
90	701	1407	N/A	N/A	N/A	N/A	N/A	N/A	N/A	N/A	N/A	N/A	N/A



**R161** REMINGTON ON TARGET 160U  
6 SEP 08 - RCCI 160U - 712430 - POLLED - BLACK

Sire: REMINGTON ON TARGET 2S

Dam: **HPF MS MELODY M011**  
HC POWER DRIVE 88H  
DEEP CREEK MS 600U H807

WLE POWER STROKE  
KAPPE LADY IRISH F88  
CIRCLE S LEACHMAN 600U  
HIGH RIDGE MS. C127

BW	ADJ	ADJ	EPD's									
			WW	YW	CE	BW	WW	YW	MCE	MWW	Milk	SC
92	730	1437	6.3	3.9	50.4	89.0	3.4	27.9	2.7	N/A	N/A	-0.52



**R163** REMINGTON ON TARGET 64U  
13 MAY 08 - RCCI 64U - 709088 - HORNED - RED

Sire: REMINGTON ON TARGET 2S

Dam: **BAR 15 MISS KNIGHT78E-51G**  
SV CHARLIES APPLAUSE  
BAR 15 MISS KNIGHT83Y-78E

CHARLES PRIDE  
SPRING VALLEY Z402  
IRISH BLACK KNIGHT  
BAR 15 MISS U 110-83Y

BW	ADJ	ADJ	EPD's									
			WW	YW	CE	BW	WW	YW	MCE	MWW	Milk	SC
88	545	999	7.7	0.9	21.7	47.9	4.4	15.9	5.0	N/A	N/A	-0.22

**R164** REMINGTON ON TARGET 202U  
13 MAY 08 - RCCI 202U - 709073 - POLLED - BLACK

Sire: REMINGTON ON TARGET 2S

Dam: **MRL MISS 495N**  
HOOK'S RED QUORUM 55H  
MISS MRL 491G

MV RED LIGHT 406  
HOOK'S APPLAUSE 59F  
ER RED DECK 639D  
MISS MRL 178D

BW	ADJ	ADJ	EPD's									
			WW	YW	CE	BW	WW	YW	MCE	MWW	Milk	SC
90	719	1237	7.7	2.4	46.4	86.8	5.6	26.9	3.7	N/A	N/A	-0.36



SIMMENTAL BULLS  
*On Target Since*



**R165 REMINGTON ON TARGET 207U**  
15 MAY 08 - RCCI 207U - 709090 - POLLED - BLACK

Sire: REMINGTON ON TARGET 2S

Dam: **MRL MISS 495N**  
HOOK'S RED QUORUM 55H  
MISS MRL 491G  
MV RED LIGHT 406  
HOOK'S APPLAUSE 59F  
ER RED DECK 639D  
MISS MRL 178D

BW	ADJ WW	ADJ YW	CE	BW	WW	YW	EPD's				
100	760	1288	7.7	3.6	50.0	91.8	MCE	MWW	Milk	SC	Marb
							5.6	28.6	3.6	N/A	-0.40

**R166 REMINGTON ON TARGET 216U**  
19 MAY 08 - RCCI 216U - 709081 - POLLED - BLACK

Sire: REMINGTON ON TARGET 2S

Dam: **HPF MS HONEY R007**  
SHS NAVIGATOR N2B  
LBS PASSION MAID 4F  
TCF/RCC TEMPTATION GJ640  
ROCKY HILLS JO  
GW TAILOR MADE 515A  
LBS MS BLACK PASSION 34D

BW	ADJ WW	ADJ YW	CE	BW	WW	YW	EPD's				
109	775	1266	7.5	5.2	46.3	78.1	MCE	MWW	Milk	SC	Marb
							4.3	26.3	3.1	N/A	-0.34

**R167 REMINGTON YIELDMASTER 217U**  
20 MAY 08 - RCCI 217U - 711950 - POLLED - BLACK

Sire: REMINGTON ON TARGET 2S

Dam: **RED CROWFOOT GINGER 9184J**  
RED CROWFOOT DYNAMO 616F  
RED BAR-X GINGER 100G  
RED RCN DYNAMO 732  
RED TOM GREEN GTG 25D  
MVHF INNOVATOR 49B  
RED SHODEREE DUCHESS 71C

BW	ADJ WW	ADJ YW	CE	BW	WW	YW	EPD's				
95	611	1174	N/A	0.5	25.4	44.0	MCE	MWW	Milk	SC	Marb
							N/A	6.2	-6.5	N/A	-0.35

Half Blood



**R168 REMINGTON YIELDMASTER 225U**  
22 MAY 08 - RCCI 225U - 711951 - POLLED - RED

Sire: REMINGTON ON TARGET 2S

Dam: **RED CROWFOOT GINGER 9184J**  
RED CROWFOOT DYNAMO 616F  
RED BAR-X GINGER 100G  
RED RCN DYNAMO 732  
RED TOM GREEN GTG 25D  
MVHF INNOVATOR 49B  
RED SHODEREE DUCHESS 71C

BW	ADJ WW	ADJ YW	CE	BW	WW	YW	EPD's				
98	756	1316	N/A	1.0	26.5	45.5	MCE	MWW	Milk	SC	Marb
							N/A	6.8	-6.5	N/A	-0.27

Half Blood



**R169 REMINGTON YIELDMASTER 226U**  
23 MAY 08 - RCCI 226U - 706577 - POLLED - BLACK

Sire: **REMINGTON ON TARGET 2S**  
REMINGTON RED LABEL HR  
DRAKE SOFT TOUCH 15M

Dam: **RED CROWFOOT LESLIE 1202L**  
RED CROWFOOT PM 757G  
RED BAR-X GINGER 100G  
CNS DREAM ON L186  
HS REFLECTIONS J34  
G&L AVALANCHE 149F  
DRAKE MISS P36D  
RED TK POUNDMAKER 69Z  
RED CROWFOOT BIRD 12Z  
MVHF INNOVATOR 49B  
RED SHODEREE DUCHESS 71C

BW	ADJ WW	ADJ YW	CE	BW	WW	YW	EPD's				
100	842	1461	N/A	2.6	33.6	56.8	MCE	MWW	Milk	SC	Marb
							N/A	12.5	-4.3	N/A	-0.34

Half Blood



**R170** REMINGTON YIELDMASTER 222U  
22 MAY 08 - RCCI 222U - 711958 - POLLED - RED

**R171** REMINGTON YIELDMASTER 228U  
23 MAY 08 - RCCI 228U - 712312 - POLLED - BLACK

Sire: REMINGTON ON TARGET 2S

Sire: REMINGTON ON TARGET 2S

Dam: RED CROWFOOT GREEN 1169L  
RED CROWFOOT PM 757G  
RED TOM GREEN GTG 32D

RED TK POUNDMAKER 69Z  
RED CROWFOOT BIRD 12Z  
RED CROWFOOT BIEBER 9A  
RED ALAJA ACRES DAVNA 63

Dam: RED CROWFOOT CJ BRNDINA 9  
RED CR HEAVENLY 11F  
RED CROWFOOT BRANDINA 6

RED LEACHMAN HEAVENLY 814  
RED CR LASIE 1A  
RED CROWFOOT CHIEFTON 462  
RED CROWFOOT BRANDINA 367

BW	ADJ	ADJ	CE	BW	WW	YW	EPD's			SC	Marb
102	732	1331	N/A	1.8	29.9	50.1	MCE	MWW	Milk	N/A	-0.29

Half Blood

BW	ADJ	ADJ	CE	BW	WW	YW	EPD's			SC	Marb
102	745	1250	N/A	1.7	31.9	52.5	MCE	MWW	Milk	N/A	0.14

Half Blood

**R172** REMINGTON YIELDMASTER 239U  
26 MAY 08 - RCCI 239U - 711952 - POLLED - RED

**R173** REMINGTON YIELDMASTER 266U  
1 JUN 08 - RCCI 266U - 706579 - POLLED - BLACK

Sire: REMINGTON ON TARGET 2S

Sire: REMINGTON ON TARGET 2S

Dam: RED CROWFOOT GINGER 9184J  
RED CROWFOOT DYNAMO 616F  
RED BAR-X GINGER 100G

RED RCN DYNAMO 73Z  
RED TOM GREEN GTG 25D  
MVHF INNOVATOR 49B  
RED SHODEREE DUCHESS 71C

Dam: RED CROWFOOT LESLIE 1202L  
RED CROWFOOT PM 757G  
RED BAR-X GINGER 100G

RED TK POUNDMAKER 69Z  
RED CROWFOOT BIRD 12Z  
MVHF INNOVATOR 49B  
RED SHODEREE DUCHESS 71C

BW	ADJ	ADJ	CE	BW	WW	YW	EPD's			SC	Marb
89	729	1348	N/A	-0.2	23.7	41.8	MCE	MWW	Milk	N/A	-0.10

Half Blood

BW	ADJ	ADJ	CE	BW	WW	YW	EPD's			SC	Marb
110	829	1473	N/A	4.3	41.2	65.9	MCE	MWW	Milk	N/A	0.04

Half Blood

**R174** REMINGTON YIELDMASTER 255U  
29 MAY 08 - RCCI 255U - 711979 - POLLED - BLACK

Sire: REMINGTON ON TARGET 2S

Dam: RED CROWFOOT KURUBA 1021L  
RED VGW RAMBLER 1000  
RED CROWFOOT KURUBA 9301J

RED BJR RAMBLER 516Z  
RED VGW UMPIRE YUMA 9266  
RED CROWFOOT DYNAMO 616F  
RED CROWFOOT KARUBA 317C

BW	ADJ	ADJ	CE	BW	WW	YW	EPD's			SC	Marb
106	870	1405	N/A	-0.4	25.2	44.1	MCE	MWW	Milk	N/A	-0.19

Half Blood



SIMMENTAL BULLS

On Target Sons



Duke has been a solid producer with curve bending EPDs. Duke's CE, BW, WW & YW are all in the top 35% of the breed. Duke has an outcross pedigree to Canada and will add style and maternal strengths to his calves.

**Ref. Sire** **KS THE DUKE S30**  
 19 FEB 06 - RCCI 9305 - 669304 - POLLED - BLACK

Sire: **ELLINGSON BLACK PERFECTOR**  
 ELLINGSON BLACKTOP F672  
 CIRCLE S LEACHMAN 600U  
 LAS MISS PRINCESS 020Z  
 MEYERS BLACKTOP 206Y  
 RITZ B90  
 LANDRIDGE JET BLACK  
 BDV R52 MS BLACK KNIGHT  
 3C FULL FIGURES C288 BLK  
 NLC C52 CEARL

ADJ	ADJ	EPD's									
BW	WW	YW	CE	BW	WW	YW	MCE	MWW	Milk	SC	Marb
N/A	N/A	N/A	8.8	1.1	39.7	66.8	3.6	19.0	-0.9	0.20	0.09

Dam: **STF REBECA**  
 LSS BLACK PEARL

Duke Sons

**R175** **REMINGTON DUKE 14W**  
 24 JAN 09 - RCCI 14W - 718257 - POLLED - BLACK

**R176** **REMINGTON YIELDMASTER 16W**  
 25 JAN 09 - RCCI 16W - 718258 - POLLED - BLACK

Sire: **KS THE DUKE S30**

Sire: **KS THE DUKE S30**

Dam: **REMINGTON LEGACY 10S**  
 REMINGTON RED LABEL HR  
 DANNER LETHAL LEGACY  
 CNS DREAM ON L186  
 HS REFLECTIONS J34  
 G&L AVALANCHE 149F  
 DRAKE LETHAL LADY

DAM: **REMINGTON SUSAN 222R**  
 SAV 5175 BANDO 2166  
 LLB SUSAN 277M  
 SA F 598 BANDO 5175  
 SAV QUEEN 6171  
 SITZ ALLIANCE 6595  
 DOUBLE J SUSAN 1610

ADJ	ADJ	EPD's									
BW	WW	YW	CE	BW	WW	YW	MCE	MWW	Milk	SC	Marb
84	757	1261	7.8	2.5	41.0	68.6	4.6	21.5	1.0	N/A	-0.16

ADJ	ADJ	EPD's									
BW	WW	YW	CE	BW	WW	YW	MCE	MWW	Milk	SC	Marb
91	837	1317	N/A	N/A	N/A	N/A	N/A	N/A	N/A	N/A	N/A

Half Blood



**R177** **REMINGTON DUKE 19W**  
 27 JAN 09 - RCCI 19W - 718261 - POLLED - BLACK

Sire: **KS THE DUKE S30**

Dam: **DCC MELODY IN**  
 HC POWER DRIVE 88H  
 TRIPLE C SHINING POWER  
 WLE POWER STROKE  
 KAPPES LADY IRISH F88  
 SAC MR MT 73G  
 SUNSHINE 628F

ADJ	ADJ	EPD's									
BW	WW	YW	CE	BW	WW	YW	MCE	MWW	Milk	SC	Marb
99	773	1319	9.1	1.1	35.4	60.6	4.5	19.8	2.0	N/A	-0.07

**R178** REMINGTON YIELDMASTER 23W  
30 JAN 09 - RCCI 23W - 718264 - POLLED - BLACK

Sire: **KS THE DUKE S30**

Dam: **REMINGTON TIBBIE 29S**  
REMINGTON TEX 64P  
HF TIBBIE 2N

**RONAN TEX 56A**  
RONAN R BARBARA 2F  
RIVERBEND POWERLINE 0050  
HF TIBBIE 12D

ADJ		EPD's									
BW	WW	YW	CE	BW	WW	YW	MCE	MWW	Milk	SC	Marb
90	637	1235	N/A	N/A	N/A	N/A	N/A	N/A	N/A	N/A	N/A

Half Blood



**R179** REMINGTON DUKE 17W  
25 JAN 09 - RCCI 17W - 718259 - POLLED - BLACK

Sire: **KS THE DUKE S30**

Dam: **REMINGTON LEGACY 5S**  
LCHMN BODYBUILDER 7303F  
DANNER LETHAL LEGACY

**3C WALLY C240 BLK**  
LSF MOMENTO D8  
G&L AVALANCHE 149F  
DRAKE LETHAL LADY

ADJ		EPD's									
BW	WW	YW	CE	BW	WW	YW	MCE	MWW	Milk	SC	Marb
98	691	1286	7.8	2.5	35.9	64.2	4.9	21.7	3.7	N/A	0.10

**R180** REMINGTON THE DUKE 47U  
4 MAY 08 - RCCI 47U - 709084 - POLLED - BLACK

Sire: **KS THE DUKE S30**

Dam: **HPF MS HONEY R007**  
SHS NAVIGATOR N2B  
LBS PASSION MAID 4F

**TCF/RCC TEMPTATION GJ640**  
ROCKY HILLS JO  
GW TAILOR MADE 515A  
LBS MS BLACK PASSION 34D

ADJ		EPD's									
BW	WW	YW	CE	BW	WW	YW	MCE	MWW	Milk	SC	Marb
88	703	1162	8.0	0.9	33.9	57.4	3.9	18.9	1.9	N/A	-0.03

**R181** REMINGTON YIELDMASTER104U  
2 JUN 08 - RCCI 104U - 711934 - POLLED - BLACK

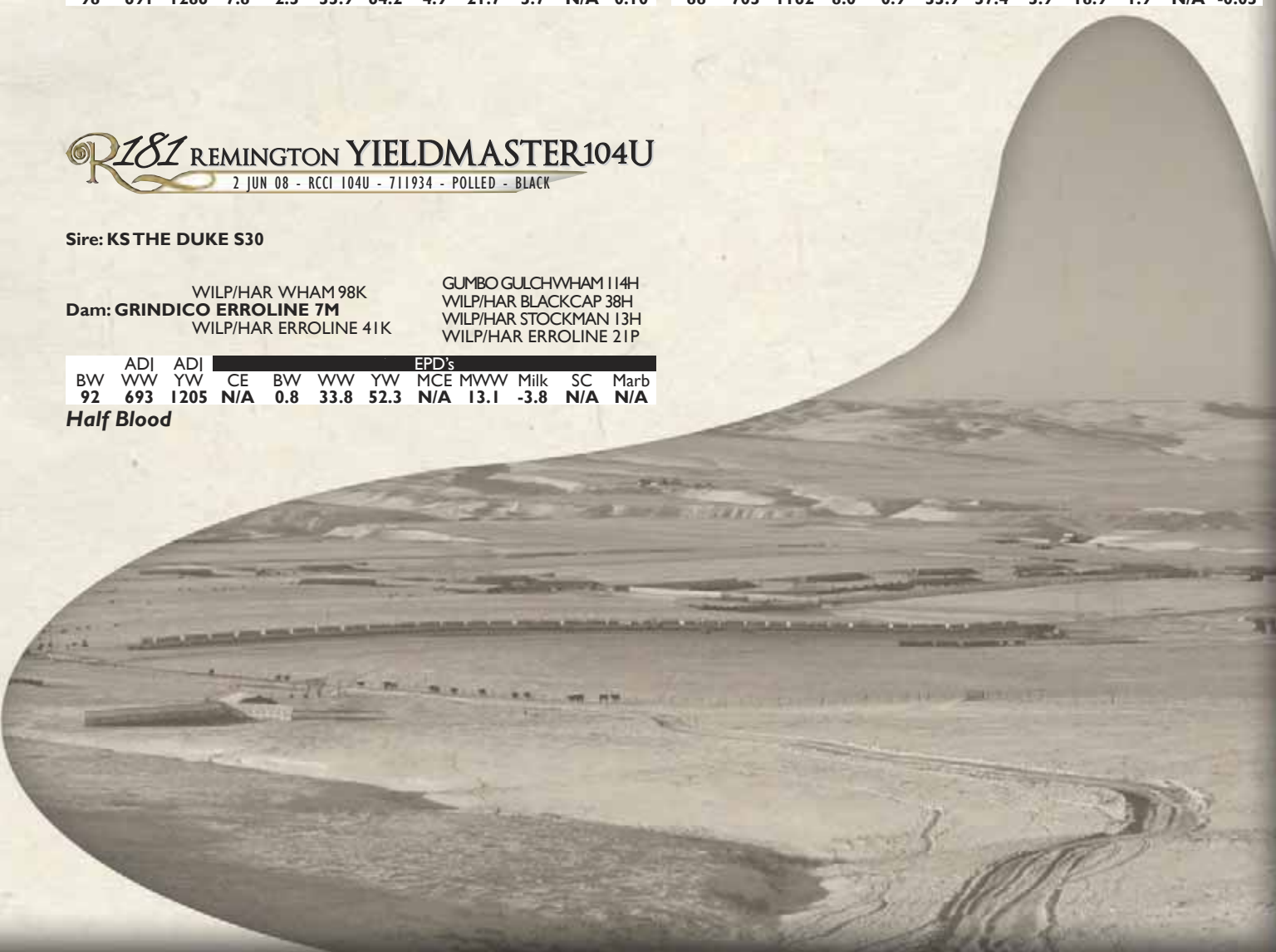
Sire: **KS THE DUKE S30**

Dam: **GRINDICO ERROLINE 7M**  
WILP/HAR WHAM 98K  
WILP/HAR ERROLINE 41K

**GUMBO GULCHWHAM 114H**  
WILP/HAR BLACKCAP 38H  
WILP/HAR STOCKMAN 13H  
WILP/HAR ERROLINE 21P

ADJ		EPD's									
BW	WW	YW	CE	BW	WW	YW	MCE	MWW	Milk	SC	Marb
92	693	1205	N/A	0.8	33.8	52.3	N/A	13.1	-3.8	N/A	N/A

Half Blood



SIMMENTAL BULLS

Duke Sons



Specialist was purchased from LaBatte Simmentals to use exclusively in our heifer pen. He has proven to be sleep easy & no worries calving ease bull. Specialist is in the top 3% for CE and 4% for BW in the Simmental breed.

**Ref. Sire** IPU RED SPECIALIST 70T  
21 JAN 07 - IPU 70T - 682864 - POLLED - RED

BW	ADJ WW	ADJ YW	CE	BW	WW	YW	EPD's			SC	Marb
70	756	N/A	9.9	-2.0	24.5	48.9	8.1	21.9	9.6	N/A	-0.01

Sire: WHEATLAND BULL 131L  
WHEATLAND RED TEDDY 457P  
WHEATLAND LADY 902J  
NICHOLS BLK DESTINY D12  
WHEATLAND LADY 908J  
ER RED DECK 639D  
WHEATLAND LADY 702G  
IPU BLACK STEAKHOUSE 34H  
SOUTHOLDEN MISSRED 2H  
NLC 64Y TOMCAT  
LBR 873

Dam: IPU MS RED RIBEYE 201R  
LBR D-430  
R PLUS RED RIBEYE 1134L

Specialist Sons

**R182** REMINGTON SPECIALIST 7W  
21 JAN 09 - RCCI 7W - 718254 - POLLED - RED

Sire: IPU RED SPECIALIST 70T

Dam: REMINGTON MS REWARD 15T  
HART EXTRA EFFORT G289  
BAR 15 SP REWARD 93M

BS MR ARAPAHOE 811A  
MISS T BIRD CH X189  
TNT BULLSEYE K104  
BAR 15 MISS SP 117-160G

BW	ADJ WW	ADJ YW	CE	BW	WW	YW	EPD's			SC	Marb
93	757	1338	9.0	0.2	26.7	50.7	7.5	21.5	8.2	N/A	N/A

**R183** REMINGTON SPECIALIST 21W  
30 JAN 09 - RCCI 21W - 718262 - POLLED - RED

Sire: IPU RED SPECIALIST 70T

Dam: ROLLING JN TANYA 12T  
REMINGTON RED LABEL HR  
ROLLING JN ROSEY 2R

CNS DREAM ON L186  
HS REFLECTIONS J34  
LRS RED REALITY 33J  
ROLLING JN LEE 64L

BW	ADJ WW	ADJ YW	CE	BW	WW	YW	EPD's			SC	Marb
95	724	1273	9.2	-0.3	30.1	54.2	6.0	20.1	5.0	N/A	N/A



**R184** REMINGTON SPECIALIST 18W  
25 JAN 09 - RCCI 18W - 718260 - POLLED - RED

Sire: IPU RED SPECIALIST 70T

Dam: ULTRA LABEL CHLOE 5T  
REMINGTON RED LABEL HR  
DRAKE CHLOE 14P

CNS DREAM ON L186  
HS REFLECTIONS J34  
TCF/RCC TEMPTATION GJ640  
RRL ANNA 110H

BW	ADJ WW	ADJ YW	CE	BW	WW	YW	EPD's			SC	Marb
88	770	1333	8.6	0.2	29.2	53.3	6.7	20.1	5.5	N/A	N/A



**R185** REMINGTON SPECIALIST 32W  
5 FEBRUARY 2009 - RCCI 32W - 718269 - POLLED - RED

Sire: IPU RED SPECIALIST 70T

Dam: REMINGTON SOFT TOUCH 4S  
LCHMN BODYBUILDER 7303F  
DRAKE SOFT TOUCH 15M

3C WALLY C240 BLK  
LSF MOMENTO D8  
G&L AVALANCHE 149F  
DRAKE MISS P36D

BW	ADJ WW	ADJ YW	CE	BW	WW	YW	EPD's MCE	MWW	Milk	SC	Marb
99	757	1373	8.8	-0.2	24.1	49.5	7.1	20.6	8.5	N/A	N/A



**R186** REMINGTON YIELDMASTER 44W  
14 FEB 09 - RCCI 44W - 718277 - POLLED - RED

Sire: IPU RED SPECIALIST 70T

Dam: RED CROWFOOT CHRISSY 2306M  
RED VGW RAMBLER 1000  
RED CFCC 312K

RED BJR RAMBLER 5162  
RED VGW UMPIRE YUMA 9266  
RED CROWFOOT PM 757G  
RED CROWFOOT CHRISSY 6138F

BW	ADJ WW	ADJ YW	CE	BW	WW	YW	EPD's MCE	MWW	Milk	SC	Marb
94	656	1238	N/A	N/A	N/A	N/A	N/A	N/A	N/A	N/A	N/A

Half Blood



**R187** REMINGTON SPECIALIST 45W  
16 FEB 09 - RCCI 45W - 718278 - POLLED - RED

Sire: IPU RED SPECIALIST 70T

Dam: LRX RED SHIRAZ 73T  
ANKONIAN RED CAESAR  
DUSTY ROSE CHAMPAGNE IN

BOZ REDCOAT  
GFI CANDACE G51  
HOOK'S RED QUORUM 55H  
3D MISS LANA 74L

BW	ADJ WW	ADJ YW	CE	BW	WW	YW	EPD's MCE	MWW	Milk	SC	Marb
96	768	1427	9.2	0.0	33.8	63.2	6.6	27.0	10.0	N/A	N/A



**R188** REMINGTON SPECIALIST 35W  
8 FEB 09 - RCCI 35W - 718272 - POLLED - RED

Sire: IPU RED SPECIALIST 70T

Dam: REMINGTON BEEBA 22T  
REMINGTON BODY BUILDER 5R  
BAR 15 BEEBA JACK 47M

LCHMN BODYBUILDER 7303F  
BAR 15 MISS KNIGHT 78E-51G  
LCHMN REDEYED JACK 7006D  
BAR 15 BEEBA 83K

BW	ADJ WW	ADJ YW	CE	BW	WW	YW	EPD's MCE	MWW	Milk	SC	Marb
92	778	1477	9.9	-2.2	20.0	44.8	6.0	19.6	9.6	N/A	N/A





*Ref. Sire*  
**TRIPLE C SINGLETARY S3H**  
 4 MAR 06 - RCCI 9335 - 669514 - POLLED - BLACK

**Sire:** NICHOLS BLK DESTINY G151 NICHOLS BLK DESTINY D12  
 HOOKS SHEAR FORCE 38K NICHOLS DEBRA D81  
 C&D TRACY CIRCLE S LEACHMAN 600U  
 BETSY  
**Dam:** ELLINGSON BLACK PERFECTOR LRS PREFERRED STOCK 370C  
 LUCAS JOSIE 19K ELLINGSON BLACKTOP F672  
 RIV BLK JOSIE 43B 755G LCHMN BLACKKEYED JOE7000D  
 ER MISS MK79 43B

ADJ		ADJ		EPD's		EPD's		EPD's		EPD's		EPD's	
BW	WW	YW	CE	BW	WW	YW	MCE	MWW	Milk	SC	Marb		
91	753	1326	9.9	-0.2	34.4	60.8	6.1	21.0	3.8	N/A	0.45		

*Singletary was purchased as a high seller out of the NWSS "The One" Sale. He is very maternally bred with Shear Force on the top side out of the great Josie 19K on the bottom.*

**R190 REMINGTON YELDMASTER 4W**  
 8 JAN 09 - RCCI 4W - 718251 - POLLED - BLACK

**Sire:** TRIPLE C SINGLETARY S3H

**Dam:** ANGUS/ANGUS

ADJ		ADJ		EPD's		EPD's		EPD's		EPD's		EPD's	
BW	WW	YW	CE	BW	WW	YW	MCE	MWW	Milk	SC	Marb		
86	627	1291	N/A	N/A	N/A	N/A	N/A	N/A	N/A	N/A	N/A		

Half Blood

**R191 REMINGTON SINGLETARY 22W**  
 30 JAN 09 - RCCI 22W - 718263 - POLLED - BLACK

**Sire:** TRIPLE C SINGLETARY S3H

**Dam:** GCF FIRST DREAM P13 CNS DREAM ON L186  
 REMINGTON FI EMPRESS 985 BH FIRST GLANCE 88H  
 LAGRAND EMPRESS 2586 BONVIEW NEW DESIGN 1407  
 D F EMPRESS 4286

ADJ		ADJ		EPD's		EPD's		EPD's		EPD's		EPD's	
BW	WW	YW	CE	BW	WW	YW	MCE	MWW	Milk	SC	Marb		
91	817	1414	7.5	-1.0	32.4	58.2	4.9	18.6	2.4	N/A	0.40		

3/4 Blood

**R192 REMINGTON SINGLETARY 39W**  
 12 FEB 09 - RCCI 39W - 718273 - POLLED - BLACK

**Sire:** TRIPLE C SINGLETARY S3H

**Dam:** GCF FIRST DREAM P13 CNS DREAM ON L186  
 REMINGTON FI EMPRESS 795 BH FIRST GLANCE 88H  
 LAGRAND EMPRESS 2586 BONVIEW NEW DESIGN 1407  
 D F EMPRESS 4286

ADJ		ADJ		EPD's		EPD's		EPD's		EPD's		EPD's	
BW	WW	YW	CE	BW	WW	YW	MCE	MWW	Milk	SC	Marb		
96	806	1435	6.5	-0.2	33.1	55.9	4.5	19.1	2.6	N/A	0.31		

3/4 Blood

**R193 REMINGTON YELDMASTER 34U**  
 26 APR 08 - RCCI 34U - 708324 - POLLED - BLACK

**Sire:** TRIPLE C SINGLETARY S3H

**Dam:** TOMWALL PIED PIPER 413 SHOSHONE P P 7105  
 CROWFOOT FORKS 658K GLADWALL ROSE OF L282  
 GLADWALL B ZARA BAND 6355 TOMWALL B EMULATION 070  
 BAR B ZARA BAND 1987

ADJ		ADJ		EPD's		EPD's		EPD's		EPD's		EPD's	
BW	WW	YW	CE	BW	WW	YW	MCE	MWW	Milk	SC	Marb		
86	622	1191	N/A	-2.7	20.2	30.5	N/A	7.8	-2.3	N/A	0.61		

Half Blood

**R194 REMINGTON YELDMASTER139U**  
 28 AUG 08 - RCCI 139U - 710399 - POLLED - BLACK

**Sire:** TRIPLE C SINGLETARY S3H

**Dam:** TOMWALL PIED PIPER 413 SHOSHONE P P 7105  
 CROWFOOT FORKS 658K GLADWALL ROSE OF L282  
 GLADWALL B ZARA BAND 6355 TOMWALL B EMULATION 070  
 BAR B ZARA BAND 1987

ADJ		ADJ		EPD's		EPD's		EPD's		EPD's		EPD's	
BW	WW	YW	CE	BW	WW	YW	MCE	MWW	Milk	SC	Marb		
88	568	1214	N/A	-2.0	20.0	31.1	N/A	8.1	-1.9	N/A	0.33		

Half Blood



*Ref. Sire*

## STF DOMINANCE T171

4 JAN 07 - FGN 171T - 697832 - POLLED - RED

Sire: **STF DOMINIQUE R170**  
DLS BLACK BALDIE L170

Dam: **MMP KISS THIS 37L**  
STF RED RANSOM  
NUH MS HORIZON 7H

PPSR MONTANA IRISH I07D  
STF DESA RAE  
STF MR MOMENTUM H508  
RUSS MACK I70B  
MV RED LIGHT 406  
ER MISS REDLINE 42B  
LGW BLACK PREMINITION 5D  
NUH MS CHAIRMAN 25F



ADJ		ADJ		EPD's							
BW	WW	YW	CE	BW	WW	YW	MCE	MWW	Milk	SC	Marb
N/A	N/A	N/A	8.8	2.6	34.5	61.4	6.0	16.6	-0.7	N/A	N/A

Dominance was the talk at the 2010 NWSS in Denver, winning Grand Champion Simmental Bull with his impressive phenotype and extremely strong set of calves. He is proving to be a powerful herdsire; one to be reckoned with for many years to come.

## R195 REMINGTON DOMINANCE 31W

5 FEB 09 - RCCI 31W - 718268 - POLLED - RED

## R196 REMINGTON DOMINANCE 42W

13 FEB 09 - RCCI 42W - 718275 - POLLED - RED

Sire: **STF DOMINANCE T171**

Dam: **REMINGTON MISS MONTANA 41S**  
CNS DREAM ON L186  
TNT MISS MONTANA F135

NICHOLS BLK DESTINY G151  
CNS SHEEZA DREAM K107V  
HILLS DAKOTA 3M D3  
TNT MISS RED BEAR D24

Sire: **STF DOMINANCE T171**

Dam: **3D MISS RED PEARL 456S**  
KSR MR RED POWER 71P  
LFE PEARL 49M

KENCO/MF POWERLINE 204L  
MCC TRUE BLACK 105G  
NLC GOOD A NUFF 33G  
LFE PEARL 10K

ADJ		ADJ		EPD's							
BW	WW	YW	CE	BW	WW	YW	MCE	MWW	Milk	SC	Marb
91	680	1346	8.4	1.4	31.1	54.6	6.0	19.2	3.6	N/A	N/A

7/8

ADJ		ADJ		EPD's							
BW	WW	YW	CE	BW	WW	YW	MCE	MWW	Milk	SC	Marb
92	699	1224	7.7	2.8	35.3	60.9	6.4	19.2	1.5	N/A	N/A

7/8

## SONS OF PROVEN SIRES

The next group of bulls are from proven herdsires that were used through AI or natural service. There are Simmental sires as well as Angus sires for our Yield Master Program.



**ANKONIAN RED CAESAR**

Sire of Lots 203, 204 & 205



**KENCO/MF POWERLINE 204L**

Sire of Lot 197



**JDJ INTIMIDATOR 080K**

Sire of Lots 201 & 202

## R197 REMINGTON POWERLINE 72U

20 MAY 08 - RCCI 72U - 709091 - POLLED - BLACK

## R198 REMINGTON BODYBUILDER 110U

8 JUN 08 - RCCI 110U - 709065 - POLLED - BLACK

Sire: **KENCO/MF POWERLINE 204L**  
HC POWER DRIVE 88H  
SAFN GLAMOUR 11J

Dam: **DRAKE SOFT TOUCH 15M**  
G&L AVALANCHE 149F  
DRAKE MISS P36D

WLE POWER STROKE  
KAPPES LADY IRISH F88  
SAC MR MT 73G  
SAC MISS JET TOP 29G  
G&L BLACKFOOT 716D  
G&L MISS 600U 709D  
MEYERS RED TOP  
DRAKE MISS P36

Sire: **LCHMN BODYBUILDER 7303F**  
3C WALLY C240 BLK  
LSF MOMENTO D8

Dam: **GGL 313K**  
TNT BLACK DAKOTA MADE E72  
GGL 412G

EMMONS BLACK HERCULES  
3C CROCUS 9278 BL  
LEACHMAN RED BALDY 438V  
LBR B-248  
BLACK POLLED DAKOTA  
TNT MISS TIZZY C57  
SPRING VALLEY E878  
ELTON MISS WRANGLER 9Y

ADJ		ADJ		EPD's							
BW	WW	YW	CE	BW	WW	YW	MCE	MWW	Milk	SC	Marb
92	715	1174	6.3	2.4	36.1	68.1	5.0	22.7	4.6	N/A	-0.26

ADJ		ADJ		EPD's							
BW	WW	YW	CE	BW	WW	YW	MCE	MWW	Milk	SC	Marb
104	643	1168	5.9	5.3	29.9	49.3	6.0	26.0	11.0	0.30	0.32



**R199 REMINGTON GUNNER 133U**  
25 AUG 08 - RCCI 133U - 710395 - POLLED - RED

**Sire: TNT GUNNER N208** RC STINGER 072K  
TNT MISS HONEY L9

**Dam: OPPS WIS GM2** LRS PREFERRED STOCK 370C  
OPPS EXTRABLK BLAZEY024

CCR GRIFFEY  
MISS RC 600U 501F  
JF NEW DIMENSION 903J  
TNT MISS ALLIE J1  
CIRCLE S LEACHMAN 600U  
LAS MISS PRINCESS 020Z  
EXTRA BLACK  
MO STEELMAN W024

ADJ		ADJ		EPD's							
BW	WW	YW	CE	BW	WW	YW	MCE	MWW	Milk	SC	Marb
84	551	1181	7.4	0.1	26.7	50.9	2.9	18.5	5.1	N/A	-0.22



**R200 REMINGTON GUNNER 88U**  
27 MAY 08 - RCCI 88U - 709070 - POLLED - RED

**Sire: TNT GUNNER N208** RC STINGER 072K  
TNT MISS HONEY L9

**Dam: TNT MISS MONTANA F135** HILLS DAKOTA 3M D3  
TNT MISS RED BEAR D24

CCR GRIFFEY  
MISS RC 600U 501F  
JF NEW DIMENSION 903J  
TNT MISS ALLIE J1  
MEYERS BLACK DAKOTA  
HILL'S 3M HERO 274B  
CHIEF RED BEAR  
TNT MISS W87I

ADJ		ADJ		EPD's							
BW	WW	YW	CE	BW	WW	YW	MCE	MWW	Milk	SC	Marb
92	643	1109	7.3	1.6	28.6	56.5	4.7	20.6	6.3	N/A	-0.14

**R201 REMINGTON INTIMIDATOR 238U**  
26 MAY 08 - RCCI 238U - 709048 - POLLED - BLACK

**Sire: JDJ INTIMIDATOR 080K** GW LUCKY BREAK 047G  
WSS BELLE 615F

**Dam: GGL 313K** TNT BLACK DAKOTA MADE E72  
GGL 412G

LCHMAN LUCKYBUCK 7049C  
GW MISS 600U 1351C  
GW TAILOR MADE 515A  
RB MAXINE 106A  
BLACK POLLED DAKOTA  
TNT MISS TIZZY C57  
SPRING VALLEY E878  
ELTON MISSWRANGLER 9Y

ADJ		ADJ		EPD's							
BW	WW	YW	CE	BW	WW	YW	MCE	MWW	Milk	SC	Marb
110	778	1228	5.5	5.0	33.4	55.7	5.4	22.4	5.7	N/A	0.01

**R202 REMINGTON IN TIMDATOR 270U**  
5 JUN 08 - RCCI 270U - 709052 - POLLED - BLACK

**Sire: JDJ INTIMIDATOR 080K** GW LUCKY BREAK 047G  
WSS BELLE 615F

**Dam: GGL 313K** TNT BLACK DAKOTA MADE E72  
GGL 412G

LCHMAN LUCKYBUCK 7049C  
GW MISS 600U 1351C  
GW TAILOR MADE 515A  
RB MAXINE 106A  
BLACK POLLED DAKOTA  
TNT MISS TIZZY C57  
SPRING VALLEY E878  
ELTON MISSWRANGLER 9Y

ADJ		ADJ		EPD's							
BW	WW	YW	CE	BW	WW	YW	MCE	MWW	Milk	SC	Marb
94	765	1278	5.5	3.1	29.3	50.2	5.4	20.4	5.7	N/A	-0.11

**R203 REMINGTON CAESAR 149U**  
1 SEP 08 - RCCI 149U - 710392 - POLLED - RED

**Sire: ANKONIAN RED CAESAR** BOZ REDCOAT  
GFI CANDACE G51

**Dam: BAR 15 SP REWARD 93M** TNT BULLSEYE K104  
BAR 15 MISS SP 117-160G

HERCULES 538P  
BOZ RED LADY  
GW SOLID FLECK  
GFI DELTA DAWN D123  
SRS FORTUNE 500  
TNT MISS SHEILA H209  
SIR BAFKNIGHT REWARD 16D  
BAR 15 MISS SP 117-100D

ADJ		ADJ		EPD's							
BW	WW	YW	CE	BW	WW	YW	MCE	MWW	Milk	SC	Marb
92	619	1285	9.0	1.8	37.7	67.1	6.4	28.7	9.8	N/A	-0.07

**R204 REMINGTON CAESAR 158U**  
5 SEP 08 - RCCI 158U - 710393 - POLLED - RED

**Sire: ANKONIAN RED CAESAR** BOZ REDCOAT  
GFI CANDACE G51

**Dam: BAR 15 SP REWARD 93M** TNT BULLSEYE K104  
BAR 15 MISS SP 117-160G

HERCULES 538P  
BOZ RED LADY  
GW SOLID FLECK  
GFI DELTA DAWN D123  
SRS FORTUNE 500  
TNT MISS SHEILA H209  
SIR BAFKNIGHT REWARD 16D  
BAR 15 MISS SP 117-100D

ADJ		ADJ		EPD's							
BW	WW	YW	CE	BW	WW	YW	MCE	MWW	Milk	SC	Marb
92	629	1311	9.0	2.0	39.6	70.3	6.4	29.4	9.6	N/A	0.07



## R205 REMINGTON CAESAR 166U

12 SEP 08 - RCCI 166U - 710394 - POLLED - RED

**Sire:** ANKONIAN RED CAESAR  
BOZ RED COAT  
GFI CANDACE G51

**Dam:** BAR 15 SP REWARD 93M  
TNT BULLSEYE K104  
BAR 15 MISS SP 117-160G

HERCULES 538P  
BOZ RED LADY  
GW SOLID FLECK  
GFI DELTA DAWN D123  
SRS FORTUNE 500  
TNT MISS SHEILA H209  
SIR BAF KNIGHT REWARD 16D  
BAR 15 MISS SP 117-100D

BW	ADJ WW	ADJ YW	CE	BW	WW	YW	EPD's			SC	Marb
96	617	1252	9.0	2.2	37.8	65.9	MCE	MWW	Milk	N/A	0.09

## R206 REMINGTON GREEN LIGHT 243U

26 MAY 08 - RCCI 243U - 713832 - HORNED - RED

**Sire:** RAB GREEN LIGHT GO J2746  
MV RED LIGHT 406  
RAB MS RED BROTHER F1547

**Dam:** DRAKE SOFT TOUCH 15M  
G&L AVALANCHE 149F  
DRAKE MISS P36D

GW-CPL RED ALERT  
LEACHMAN RED BALDY Z279  
RED BROTHER  
RAB MS.Y1789  
G&L BLACKFOOT 716D  
G&L MISS 600U 709D  
MEYERS RED TOP  
DRAKE MISS P36

BW	ADJ WW	ADJ YW	CE	BW	WW	YW	EPD's			SC	Marb
96	768	1203	7.8	1.4	31.2	59.8	MCE	MWW	Milk	N/A	-0.20

## R207 REMINGTON GREEN LIGHT 261U

30 MAY 08 - RCCI 261U - 709040 - POLLED - RED

**Sire:** RAB GREEN LIGHT GO J2746  
MV RED LIGHT 406  
RAB MS RED BROTHER F1547

**Dam:** CMS LARA CROFT 04L  
LCHMN BODYBUILDER 7303F  
WSR DANIELLE 39D

GW-CPL RED ALERT  
LEACHMAN RED BALDY Z279  
RED BROTHER  
RAB MS.Y1789  
3C WALLY C240 BLK  
LSF MOMENTO D8  
WSR 50A  
WSR 4L

BW	ADJ WW	ADJ YW	CE	BW	WW	YW	EPD's			SC	Marb
86	611	1073	7.0	0.8	23.0	41.5	MCE	MWW	Milk	0.00	-0.31

## R208 REMINGTON YIELDMASTER 245U

27 MAY 08 - RCCI 245U - 704254 - POLLED - RED

**Sire:** RED 5L NORSEMAN KING 2291  
RED VGW KING OF THE WEST  
RED NORSEMAN 1312 PJM

**Dam:** TNT MISS MONTANA F135  
HILLS DAKOTA 3M D3  
TNT MISS RED BEAR D24

RED VGW ACE 613  
RED VGW MT TABITHA 9633  
P J M 141  
P J M POWERPOINT 2009  
MEYERS BLACK DAKOTA  
HILL'S 3M HERO 274B  
CHIEF RED BEAR  
TNT MISS W871

BW	ADJ WW	ADJ YW	CE	BW	WW	YW	EPD's			SC	Marb
91	655	1233	N/A	0.0	21.5	45.1	MCE	MWW	Milk	N/A	-0.06

Half Blood

## R209 REMINGTON YIELDMASTER 260U

30 MAY 08 - RCCI 260U - 704257 - POLLED - RED

**Sire:** RED 5L NORSEMAN KING 2291  
RED VGW KING OF THE WEST  
RED NORSEMAN 1312 PJM

**Dam:** TNT MISS MONTANA F135  
HILLS DAKOTA 3M D3  
TNT MISS RED BEAR D24

RED VGW ACE 613  
RED VGW MT TABITHA 9633  
P J M 141  
P J M POWERPOINT 2009  
MEYERS BLACK DAKOTA  
HILL'S 3M HERO 274B  
CHIEF RED BEAR  
TNT MISS W871

BW	ADJ WW	ADJ YW	CE	BW	WW	YW	EPD's			SC	Marb
103	829	1384	N/A	0.3	22.2	46.0	MCE	MWW	Milk	N/A	-0.05

Half Blood

## R210 REMINGTON MAGNUM 92U

28 MAY 08 - RCCI 92U - 713829 - POLLED - BLACK

**Sire:** GFI MAGNUM K52  
ELLINGSON BLACK PERFECTOR  
RIV BLK JOSIE 43B 755G

**Dam:** DRAKE SOFT TOUCH 15M  
G&L AVALANCHE 149F  
DRAKE MISS P36D

LRS PREFERRED STOCK 370C  
ELLINGSON BLACKTOP F672  
LCHMN BLACK EYED JOE 7000D  
ER MISS MK79 43B  
G&L BLACKFOOT 716D  
G&L MISS 600U 709D  
MEYERS RED TOP  
DRAKE MISS P36

BW	ADJ WW	ADJ YW	CE	BW	WW	YW	EPD's			SC	Marb
86	662	1169	6.8	1.7	34.9	64.6	MCE	MWW	Milk	N/A	-0.06

## R211 REMINGTON MAGNUM 223U

22 MAY 08 - RCCI 223U - 713830 - POLLED - BLACK

**Sire:** GFI MAGNUM K52  
ELLINGSON BLACK PERFECTOR  
RIV BLK JOSIE 43B 755G

**Dam:** DRAKE SOFT TOUCH 15M  
G&L AVALANCHE 149F  
DRAKE MISS P36D

LRS PREFERRED STOCK 370C  
ELLINGSON BLACKTOP F672  
LCHMN BLACK EYED JOE 7000D  
ER MISS MK79 43B  
G&L BLACKFOOT 716D  
G&L MISS 600U 709D  
MEYERS RED TOP  
DRAKE MISS P36

BW	ADJ WW	ADJ YW	CE	BW	WW	YW	EPD's			SC	Marb
96	797	1352	6.8	3.3	44.1	79.3	MCE	MWW	Milk	N/A	-0.17



## R212 REMINGTON ABOVE PAR 152U

4 SEP 08 - RCCI 152U - 710404 - POLLED - BLACK

Sire: **BROOKS ABOVE PAR**  
STF REBECA

Dam: **DANNER LETHAL LEGACY**  
DRAKE LETHAL LADY

LRS PREFERRED STOCK 370C  
ELLINGSON BLACKTOP F672  
CIRCLE S LEACHMAN 600U  
LSS BLACK PEARL  
G&L BLACKFOOT 716D  
G&L MISS 600U 709D  
MEYERS RED TOP  
DRAKE LADY ADVANTAGE

BW	ADJ WW	ADJ YW	CE	BW	WW	YW	EPD's				SC	Marb
92	486	1272	7.9	3.5	35.7	76.5	4.5	20.0	2.1	N/A	-0.27	

## R213 REMINGTON BEEF MAKER 1W

2 JAN 09 - RCCI 1W - 718249 - POLLED - RED

Sire: **WS BEEF MAKER R13**  
DCR MS RIBEYE N72

Dam: **ERIXON LADY 72T**  
ERIXON LADY 31P

NICHOLS BLK DESTINY G151  
C&D TRACY  
R PLUS RED RIBEYE I134L  
DCR MISS ZINGER  
BOZ REDCOAT  
BBS MISS RED BEAUTY J109  
HOOK'S RED QUORUM 55H  
ERIKON LADY 22M

BW	ADJ WW	ADJ YW	CE	BW	WW	YW	EPD's				SC	Marb
86	789	1320	9.7	-0.8	37.6	74.3	6.3	25.8	7.0	N/A	0.24	



## R214 REMINGTON RED BEAR 34W

7 FEB 09 - RCCI 34W - 718271 - POLLED - RED

Sire: **MRL BLACK BEAR 79S**  
MRL MISS 302M

Dam: **HAAS RANCH K74**  
HAAS RANCH H38

NICHOLS BLK DESTINY D12  
WHEATLAND LADY 908J  
HC POWER DRIVE 88H  
WFL BLACK LADY 505H  
LANDRIDGE JET BLACK  
BDV R52 MS BLACK KNIGHT  
TNT BLACKAMERICAN EI27  
DCC SIGNATURE C73

BW	ADJ WW	ADJ YW	CE	BW	WW	YW	EPD's				SC	Marb
96	747	1437	6.7	1.9	36.5	68.2	4.4	19.1	0.8	N/A	N/A	



## R215 REMINGTON STAR POWER 2W

2 JAN 09 - RCCI 2W - 718250 - POLLED - BLACK

Sire: **SVF STAR POWER S802**  
SVF SHEZA START N902

Dam: **HPF MS INDY ANGEL T25**  
JDJ INDENIABLE ANGEL 144

NICHOLS BLK DESTINY G151  
CNS SHEEZA DREAM K107W  
HC POWER DRIVE 88H  
SVF SHEZA LADY J900  
BH TRACKER 998J  
SAFN MISS ZING 02H  
JDJ 9AS UNDENIABLE 088J  
JDJ CASINOS MS BLACKANGEL

BW	ADJ WW	ADJ YW	CE	BW	WW	YW	EPD's				SC	Marb
89	736	1254	7.2	-0.4	25.0	47.1	5.0	12.3	-0.2	N/A	N/A	

## R216 HPF DOMINIQUE W557

17 JAN 09 - W557 - ASA2496177 - POLLED - RED

Sire: **STF DOMINIQUE R170**  
DLS BLACK BALDIE L170

Dam: **ANKONY MISS TOO MUCH R86**  
MCS TOO MUCH

PPSR MONTANA IRISH I07D  
STF DESA RAE  
STF MR MOMENTUM H508  
RUSS MACK 170B  
HERCULES 538P  
BOZ RED LADY  
STF TOO RED G64  
MCS MISS MAPLE

BW	ADJ WW	ADJ YW	CE	BW	WW	YW	EPD's				SC	Marb
N/A	N/A	N/A	5.6	1.5	29.0	56.8	4.1	13.5	-1.0	N/A	-0.23	

## R217 HPF DOMINIQUE W566

17 JAN 09 - W566 - ASA2496182 - POLLED - RED

Sire: **STF DOMINIQUE R170**  
DLS BLACK BALDIE L170

Dam: **ANKONY MISS TOO MUCH R86**  
MCS TOO MUCH

PPSR MONTANA IRISH I07D  
STF DESA RAE  
STF MR MOMENTUM H508  
HERCULES 538P  
BOZ RED LADY  
STF TOO RED G64  
MCS MISS MAPLE

BW	ADJ WW	ADJ YW	CE	BW	WW	YW	EPD's				SC	Marb
N/A	N/A	N/A	5.6	1.5	29.0	56.8	4.1	13.5	-1.0	N/A	0.23	

# BULL BREEDING GUIDELINES

## CANADIAN ANGUS ASSOCIATION ANGUS BULL BREEDING GUIDELINES:

If you purchase a bull that fails to prove a natural breeder:

Should any bull fifteen months of age or over fail to prove a natural breeder after being used on cows known to be breeders and free of venereal disease, the buyer shall report in writing to the seller and provide a report of complete examination by a qualified veterinarian. This notification shall be provided by the purchaser to the seller no later than four months following the date of purchase, or six months after the bull has reached 15 months of age, whichever is the later. The buyer shall return the bull to the seller who shall have the opportunity to have the bull examined by a veterinarian of choice. In the instance of a fertility re-test by the seller the bull must be in acceptable condition as agreed upon by the buyer and seller, and if non-agreement, then as declared by a licensed veterinarian. Once the bull has been declared reconditioned, the seller will then have 45 days to prove this bull a breeder. If this bull proves to be a satisfactory breeder the bull shall be returned to the buyer. Any guarantees with respect to ability to freeze semen shall be by separate agreement between buyer and seller.

## CANADIAN SIMMENTAL ASSOCIATION BULL BREEDING GUIDELINES:

All bulls offered for sale as breeding bulls, except calves at side, must be guaranteed breeders. At the time of sale all bulls must attain or exceed the minimum scrotal circumference measurements for their respective age as outlined here:

12 months of age: 32 cm

14 months: 34 cm

15-20 months: 35 cm

21-30 months: 36 cm

All bulls sold after weaning and prior to 12 months of age must meet the minimum scrotal measurement of 32 cm when they reach 12 months of age. Should any bull fifteen months of age or over fail to prove a natural breeder after being used on cows known to be breeders and free of any venereal disease, the buyer shall report in writing to the seller and provide a report of a complete examination by a qualified veterinarian. This notification shall be provided to the seller no later than four (4) months following the date of purchase or six (6) months after the bull has reached fifteen (15) months of age, whichever is later. The buyer shall return the bull to the seller at the buyer's expense. The seller shall have the opportunity to have the bull examined by a veterinarian of his choice. In the instance of a fertility re-test by the seller the bull must weigh the same or more than his posted adjusted 365-day weight. If the bull falls short of this weight then he must be reconditioned to meet the weight and then be re-tested. The seller will then have 45 days to prove this bull a breeder. If this bull proves to be a satisfactory breeder the bull shall be returned to the buyer. In the event the seller fails to prove the bull a satisfactory breeder the buyer has the option to either accept a replacement F.O.B. the seller's ranch or a refund of the actual purchase price. No incidental expenses such as feed, veterinary charges, interest, etc. will be charged by either party. In no event shall the seller be responsible for reimbursing more than the purchase price.

**UNDER NO CIRCUMSTANCES SHALL THE SELLER BE RESPONSIBLE FOR MORE THAN THE PURCHASE PRICE PAID FOR SAID ANIMAL.**





Box 1 Del Bonita, AB T0K 0S0  
Office: 403.758.6105  
Fax: 403.758.6142  
Email: [admin@remingtoncattle.com](mailto:admin@remingtoncattle.com)  
[www.remingtoncattle.com](http://www.remingtoncattle.com)

Catalogue produced by Boucharde Livestock Ltd. Printed in Canada for free distribution.  
Photos taken by Grant Rolston.

R  
P  
G  
/  
P  
R  
G

CANADA		POSTES
POST		CANADA
Postage paid		Port payé
Addressed		Médiaposte
Admail		avec adresse
<b>03683273</b>		

RETURN POSTAGE GUARANTEED  
PORT DE RETOUR GARANTI

