

*The  
Royal*

AGRICULTURAL  
WINTER FAIR

“THE ROYAL”  
Angus Sale

NOVEMBER 7th - 7:30 p.m.

EXHIBITION PLACE - TORONTO, ON



SELLING REGISTERED BLACK ANGUS CATTLE, SEMEN & EMBRYOS

2009



# "THE ROYAL" Angus Sale

NOVEMBER 7th - 7:30 p.m.

## *Welcome*

Welcome Angus friends to this exciting Angus sale, held at the prestigious Royal Winter Fair.

The Angus industry is on the top of the world and we all witnessed it, this past summer at the greatest Angus event ever held, the World Angus Forum. It was simply breath taking, great country, great cattle, and great Angus enthusiasts, the breed is strong and the cattle and people make it that way!

The sale offerings are outstanding, we have top show cattle, world renowned donor cows, and frozen genetics backed by some of Canada's greatest Angus breeder's! Rest assured you can make your Angus dreams come true at this sale!

I look forward to visiting, and seeing you sale night! If myself or any of the sale staff can help please feel free to call on us.

*Hugh M. Ross*

## *Consignor's Contact information*

BRANTNOR ANGUS - Ron & Linda Bryant	705-374-4853
CRAIGMORE FARMS - Wayne & Judith Kreklewich	905-939-9627
Currie, Ryan	450-525-1742
COTTAGE CREEK ANGUS	403-501-0660
DUNFORD ROYAL CATTLE CO. Stan Dunford & Casey Fanta	519-467-5757
ENRIGHT FARMS - Jane & Barry Enright & Family	613-649-2313
GILCHRIST FARMS - Brad Gilchrist	519-440-6720
HASSON CATTLE CO. - Jim Hasson	519-942-3391
LLB ANGUS - Lee & Laura Brown	403-742-4226
LOCUST GROVE ANGUS - Tom & Judy McDonald	905-877-2001
NOSDADT STOCK FARMS - John Nostadt	519-796-3390
SUNSET ACRES - Rob & Sandy Foubert	613-258-1062
UPPER GLEN ANGUS - Rick Stull	905-877-8145
WORTH-MOR CATTLE CO.	705-653-4597



“THE ROYAL”  
Angus Sale  
NOVEMBER 7th - 7:30 p.m.



Hugh Ross



**SALE MANAGEMENT:**  
CANADIAN ANGUS HALL OF FAME  
Box 6301, Innisfail, AB  
Phone: 403-318-2196 (Hugh's Cell)  
e-mail: [hugh@canadianangushalloffame.com](mailto:hugh@canadianangushalloffame.com)  
[www.canadianangushalloffame.com](http://www.canadianangushalloffame.com)

**SALE DAY PHONE:**  
HUGH ROSS  
403-318-2196

**AUCTIONEER:**  
Col. Brent Carey 403-650-9028

**RINGMEN:**  
Cory Lawrance 780-940-6301  
Ryan Dorran 403-507-6483  
Carl Wright 519-369-7489

**SCHEDULE:**  
6:30 Refreshments Served  
Viewing of Cattle  
7:30 Sale Commences

**CONSULTANTS:**  
Ross Bailey 905-242-1615  
Glen Copeland 705-607-4317  
Ben Wright 519-374-3335

**CATALOGUE DESIGN:**  
**whatever**  
design and advertising  
[www.whateverdesign.ca](http://www.whateverdesign.ca)

### *Special Representatives*

John Donaldson, Canadian Angus Association President  
Richard Tanner, Ontario Angus Association President  
Tom McDonald, Ontario Angus Association Director  
Brian Good, Canadian Angus Association Field Representative  
Dave Callaway, Angus World Magazine



[www.canadianangushalloffame.com](http://www.canadianangushalloffame.com)  
Check often for sale updates!



**SELLING A HEIFER  
PREGNANCY FROM A FULL  
SISTER TO FINAL ANSWER**

CED	REPD	WTFD	YFPD	YH	SC
+7	03	+1.4	03	+40	03
CEM	MILK	MKB	MW	MH	SEN
+9	03	+20	03	+38	03
CW	MAER	REA	FAT		
+18	03	+1.7	03	+0.02	03

**1**

**CHAMPION HILL LUCY 3053**

Birth Date: 07-03-02 • Reg: +14290099 • Tattoo: 3053

GDAR TRAVELER 71  
S: SITZ TRAVELER 8180  
SITZ EVERELDA ENTENSE 1137

TRAVELER 1148 GDAR  
GDAR MISS BLACKCAP 567  
GDAR RAINMAKER 340  
SITZ EVERELDA ENTENSE 2335

BON VIEW BANDO 598  
D: SAV EMULOUS 8145  
SAV SKY EMULOUS 2124

TEHAMA BANDO 155  
BON VIEW DORA 56  
ELLANIN SKY DRIVER  
TAIL N 0383

WEANING	+6.45
WEANING	+26.83
FEETLOT	+18.96
DOC	+12.89
BYG	+8.22
BGRID	+13.88
BREED	+30.86

The \$190,000 valued Craigmore Farm Champion Hill Lucy 3053 donor cow is one of only two living full sisters to SAV Final Answer 0035 - the #1 semen sales volume bull for the Genex/CRI AI Stud for three consecutive years running. SAV Lucy 2002, a maternal sister to Lucy 3053 was the lead-off female of the 2008 SAV Sale and went on to sell one-half interest for \$75,000 for a \$150,000 valuation at the 2008 Boyd Sale. A heifer pregnancy out of Lucy 3053 by B.C. Raven sold at the Denim & Diamonds Sale in Denver, January 2009 for \$26,000. A second pregnancy by EXT sold at the same Sale to Pollard Farms for \$10,000. SELLING HEIFER PREGNANCY (WITH RECIPIENT COW) DUE JANUARY 15, 2010 OUT OF CHAMPION HILL LUCY 3053 BY BREED LEGEND N BAR EMULATION EXT (INSURANCE GUARANTEEING A LIVE CALF IS AVAILABLE ON THIS PREGNANCY). THIS IS THE ONLY LUCY 3053 HEIFER PREGNANCY IN CANADA.



	BW	WW	YW	Milk	TM	YG
EPDs	+3.4	+41	+77	+23	+43	+37

**2**

**GF MERCEDES WISDOM 2W**

01-10-2009 • Cow • Black • 1492056 • GFA 2W

N BAR EMULATION EXT  
S: LEACHMAN SAUGAHATCHEE 3000C  
LEACHMAN B C 7100

C A FUTURE DIRECTION 5321  
D: GF BLACK MERCEDES 2S  
HCC BLACK MERCEDES 13N

EMULATION N BAR 5522  
N BAR PRIMROSE 2424  
RITO 2100 G D A R  
CANYON COLOSSAL QUEEN 0727

G A R PRECISION 1680  
C A MISS POWER FIX 308  
B/R NEW FRONTIER 095  
H.C.C. MERCEDES 6L

Gilchrist Farms is proud to offer a female that combines once again the legendary Leachman Saugahatchee 3000C and our foundation corner stone cow family Mercedes into a unique attractive package. Last year through this same great sale we sold a 3/4 sib to this heifer to the Wade family from Port Perry, and what a wonderful job they have done with her winning most classes and ending up either Grand or Res. Grand throughout the 2009 show season. On top of her pedigree's great success in the show ring this heifer also boast's above average EPD's and is in the top 20% of the breed for TM, and YG and in the top 10% for milk. If you're not yet convinced that Saugahatchee mated to Mercedes is going to work, drop by our stall and you will see that over half the string is that same mating!

# BRANTNOR ANGUS



**3A**

## BRANTNOR'S FLORA 19W

02-14-2009 • Cow • Black • 1495629 • RON 19W • BW: 67 lbs.

	BV	VVW	YW	Milk	TM	SC	YG
EPDs	+3.0	+48	+89	+22	+45	+0.89	+42

S A V 8180 TRAVELELER 004  
S: S A V MANDAN 5664  
S A V ABIGALE 0451

SITZ TRAVELER 8180  
BOYD FOREVER LADY 8003  
SCHOENES FIX IT 826  
S A V ABIGALE 6062

PAPA UNIVERSE 515  
D: BRANTNOR'S FLORA 11R  
BRANTNOR'S FLORA 10J

PAPA EQUATOR 2928  
PLD ERISKAY PAPA 011  
TC STOCKMAN 365  
BRANTNOR'S FLORA 3E

19W is very complete in her make-up and one of our most outstanding heifer calves. Flora won her class at the 2009 Ontario Preview Gold Show. Her maternal sister was the high selling bred heifer at the 2008 Royal National Sale. Flora's sire, SAV Mandan has proven exceptional in all areas of performance, phenotype, maternal strength and carcass quality adding extension, muscle and natural good looks to his progeny.

Sells open.



**CHAMPION FEMALE**  
Ontario Preview Gold Show



**3B**

**BRANTNOR'S DELIA 3W**

01-11-2009 • Cow • Black • 1495620 • RON 3W • BW: 91lbs.

	BW	WW	YW	Milk	TM	SC	YG
EPDs	+5.1	+47	+80	+22	+45	-	+34

FAMOUS 7001  
S: GAMBLES HOT ROD  
CHAMPION HILL LADY 703

C A FUTURE DIRECTION 5321  
D: BRANTNOR'S DELIA 3S  
BRANTNOR DELIA 16F

S A F FAME  
T K KAREN 1369  
LEACHMAN SAUGAHATCHEE 3000C  
CHAMPION HILL LADY STONE 731

G A R PRECISION 1680  
C A MISS POWER FIX 308  
G D A R OSCAR 711  
NOBLEDEEN DELIA 24D

Grand Champion Female at the Ontario Preview Gold Show, this calf has performance plus. She has extra length, rib & thickness, all put together in a very attractive package. Her Dam, an excellent Future Direction daughter has tested A.M.F. Delia's sire, Gambles Hot Rod, has worked extremely well in our herd producing high sellers at both the Royal National and Ontario Futurity 2008 sales. Take note of her well-balanced E.P.D.'s.

# COTTAGE CREEK ANGUS



**4A**

## COTTAGE CREEK TIGER LILY 906W

03-17-2009 • Cow • Black • 1506287 • BRCS 906W

HF FREE WHEELER 191N  
S: LLB ALL IN 387T  
ABEL ERICA 28L

F A R KRUGERRAND 410H  
D: PRIME TIME'S 104G TINGE 552  
BACK ROADS TINGE 104G

TC FREEDOM 104  
DURALTA 14C ECHO 32E  
V D A R LUCYS BOY  
LLB ERICA 322J

KRUGERRAND OF DONAMERE 490  
F A R ERIANNA 286F  
SCA TONTO 6A  
BACK ROADS TINGS 5D

You want style, class, and show prospect here she is! Get your new shirt out for the photo's! Out of the LLB All In bull, 2008 high selling bull at LLB sale and a Cottage Creek donor dam on the bottom, this is the one!





**4B**

**COTTAGE CREEK PERFECT 905W**

03-10-2009 • Cow • Black • 1506288 • BRCS 905W

HF FREE WHEELER 191N  
S: LLB ALL IN 387T  
ABEL ERICA 28L

BOYD NEW DAY 8005  
D: PTC BMM 29J SEXY EILEEN 510  
PRIME TIME'S EILEEN 29'99

TC FREEDOM 104  
DURALTA 14C ECHO 32E  
V D A R LUCYS BOY  
LLB ERICA 322J

A A R NEW TREND  
S V F FOREVER LADY 57D  
BUSHS COPYRIGHT  
WINDOVER EILEEN 29F

She's a fancy show prospect division finalist at the prestigious World Angus Forum. Her sire, the high selling 2008 yearling bull at the LLB Spring Bull Sale, and a half brother to the reigning WAF Mature Bull Champion, and add that to the 2004 RBC Champion Female Eileen 29J on the bottom side, Wow! Here is your next prospect, donor cow!



**5**

**J D ANNIE 3W**

01-02-2009 • Cow • Black • 1488120 • ESG 3W

	BW	WW	YW	Milk	TM	SC	YG
EPDs	+3.3	+49	+98	+25	+49	-	+49

S A V 8180 TRAVELER 004  
S: S A V NET WORTH 4200  
S A V MAY 2410

BOYD NEW DAY 8005  
D: PRIME TIME'S 76F ANNIE 623'06  
ASPELUND ANNIE 76F

SITZ TRAVELER 8180  
BOYD FOREVER LADY 8003  
S A F 598 BANDO 5175  
S A V MAY 6269

A A R NEW TREND  
S V F FOREVER LADY 57D  
KRUGERRAND OF DONAMERE 490  
CORVALLIS ANNE 74'81

Here's a fancy show prospect from Ryan's program - a great young Angus enthusiast! These Net Worth's have been ringing the bell from coast to coast, border to border and they are flat out good! This calf goes back to one of PTC's lead donor cows. Here's your next show prospect and future donor cow!



**LEACHMAN SAUGAHATCHEE 3000C**  
Sire of lot # 6

**6**

**UPPER GLEN EILEENMERE 14W**

02-12-2009 • Cow • Black • 1497639 • UG 14W

**N BAR EMULATION EXT**  
S: **LEACHMAN SAUGAHATCHEE 3000C**  
**LEACHMAN B C 7100**

**W C C SPECIAL DESIGN L309**  
D: **LLR MISS STOCKMAN DESIGN 2S**  
**LLR HI LITE MISS STOCKMAN 4K**

**EMULATION N BAR 5522**  
**N BAR PRIMROSE 2424**  
**RITO 2100 G D A R**  
**CANYON COLOSSAL QUEEN 0727**

**BON VIEW NEW DESIGN 878**  
**N BAR PRIMROSE 2424**  
**TC STOCKMAN 365**  
**BAILEY ACRES HI LITE 92Y**

Here's a great junior prospect out of the All American 9 time sire of the year, Saugahatchee and a powerful Special Design daughter.

Help yourself on sale day - here she is!

CONSIGN BY:

## CROSBY ANGUS

"THE ROYAL" ANGUS SALE  
November 7th @ 7:30 p.m.



7

### CROSBY'S FLORA 918W

01-01-2009 • Cow • Black • Reg. Pending • 918W

S A V 8180 TRAVELER 004  
S: S A V 004 PREDOMINANT 4438  
S A V EMBLYNETTE 1182

GAMBLES HOT ROD  
D: BRANTNOR'S FLORA 21T  
BRANTNOR'S FLORA 10J

SITZ TRAVELER 8180  
BOYD FOREVER LADY 8003  
S A F 598 BANDO 5175  
S A V EMBLYNETTE 7319

FAMOUS 7001  
CHAMPION HILL LADY STONE 731  
TC STOCKMAN 365  
BRANTNOR'S FLORA 3E

Here's a clubby show prospect out of the legend sire Predominant and your 2008 division winning, high selling Hot Rod daughter at the 2008 Royal Winter Fair!

Don't overlook this one!



8

**ESKER VIEW POLLY**

01-15-2008 • Cow • Black • 1458071 • JRD 1U

S A F FOCUS OF E R  
S: MYTTY IN FOCUS  
MYTTY COUNTESS 906

CJCA RUSS 11N  
D: BURNBRAE MISSIE 22S  
ELMGROVE MISSIE 19K

S A F FAME  
G D A R FOREVER LADY 246  
SITZ ALLIANCE 6595  
BALDRIDGE COUNTESS 357

SVF SIEBRINGS FOREVER RUSS  
DWAJO COUNTESS 16F  
RITO 4M9 OF 9FB2 GT MAXIMUM  
BROCKENBURN BONNIE 2F

Polly and her dam Burnbrae Missie 225 were named Senior Champion female at last years Royal Winter.

Bred to Xcel Maximum Capacity, Grand Champion Bull in Victoria Quebec 2009 and also the Reserve Champion Bull in 2007 at the RAWF.



**9A**

**ROYAL BLUEBIRD LASS DRCC 7023T**

01-07-2007 • Cow • Black • 1367895 • DRCC 7023T

	BW	VVW	YW	Milk	TM	SC	YG
EPDs	+1.9	+46	+88	+19	+42	+0.40	+42

S: G A R PRECISION 1680  
G A R RETAIL PRODUCT  
G A R EXT 4927

D: THOMAS BLUEBIRD LASS 8306  
THOMAS BLUEBIRD 2009

TEHAMA BANDO 155  
9J9 G A R 856  
N BAR EMULATION EXT  
G A R TRAVELER 641

G D A R TRAVELER 71  
SITZ EVERELDA ENTENSE 1137  
EMULATION N BAR 5522  
THOMAS BLUEBIRD 0056

This is a tremendous Retail Product daughter. If you want style, moderate frame, milk, production, and eye appeal, then go no further. With maternal matrons on the bottom side, like Thomas Bluebird Lass 8306, here is your next donor cow.

Bred on April 9, 2009 to LLB All-In 387T. Exposed from April 1-August 15, 2009 to LLB All-In 387T.



**9B**

**COTTAGE CREEK RAISING CANE 901W**

01-02-2009 • Bull • Black • 1506497 • BRCS 901W

O C C EMBLAZON 854E  
S: B C MATRIX 4132  
CAF PURE PRIDE EXT 99

G A R RETAIL PRODUCT  
D: ROYAL BLUEBIRD LASS DRCC 7023T  
THOMAS BLUEBIRD LASS 8306

D H D TRAVELER 6807  
DIXIE ERICA OF C H 1019  
N BAR EMULATION EXT  
GIBBET HILL PURE PRIDE CF 90

G A R PRECISION 1680  
G A R EXT 4927  
SITZ TRAVELER 8180  
THOMAS BLUEBIRD 2009

This big stout bull has performance and style all wrapped up in one. Out of the genetic leading AI sires, this Matrix son is sure to do the job!

Selling full possession, full interest.

**10A****RRR FOREVER LADY 0604**

02-14-2006 • Cow • Black • 1393587 • IMP 0604S

BON VIEW NEW DESIGN 1407  
S: EXAR NEW LOOK 2971  
N BAR PRIMROSE 2424

TWIN VALLEY PRECISION E161  
D: MAPLE LANE FOREVER LADY 9280  
T R A FOREVER LADY 737

B/R NEW DESIGN 036  
BON VIEW PRIDE 664  
EMULATION 31  
PRIMROSE N BAR 9962

G A R PRECISION 1680  
W C C BLACKCAP C9  
G A R SLEEP EASY 1009  
T R A FOREVER LADY 405

RRR Forever Lady 0604 is sired by EXAR New Look 2971 an impressive 1407 son out of the dam of EXT, she was the 2007 Supreme Champion Female at the Royal Winter Fair Junior Show, 2008 Grand Champion Angus Female and Reserve Champion at Expo Boeuf, Victoriaville Quebec. RRR Forever Lady 0604's dam and full sister were the top selling female pair at the Express Big Event in 2005. A true breed leading donor female!

Selling 1 flush guaranteed 6 #1 embryo's at the buyer's expense, and bull of their choice.





**10B**

**HF ECHO 53T**

01-07-2007 • Cow • Black • 1404853 • HAM 53T

TC ADVANTAGE

S: SANDY BAR ADVANTAGE 43M  
SANDY BAR JEMINA 44K

RTC FREEDOM 104

D: HF ECHO 187N  
DURALTA 14C ECHO 32E

KRUGERRAND OF DONAMERE 490  
TC PRIDE 2010

DCC HIGH RISE 67H  
SANDY BAR JEMINA 54D

CONNELY FOREFRONT  
T C RUBY 9095

HF WALK-ON 14C  
STONEHAVEN MISS PONDEROSA 9U

Wow! Here is a chance in a lifetime to work with some enthusiastic new Angus breeders, and what an opportunity, a flush on HF 53T. The Enwright's look high and low for the next great one, and here she is! This heifer was the 2007 Sr Heifer Calf Champion and Reserve Champion Female at the Olds Gold Show and WAF Futurity. She is a paternal sister to HF Kodiak, and her dam 187N was CWA RBC Supreme Female 2005, 2005 Calgary Stampede Champion Female, and also a flush mate to the WAF Mature Bull Champion LLB Free Wheeler 191N and 53T was just named Expo Boeuf Champion Female, not to mention she raised a \$28,000 dollar valued heifer calf that sold to LLB Angus at Enwright's 1st production sale.

Selling 1 flush guaranteed 6 #1 embryo's at the buyer's expense, and bull of their choice.



WMC Favourite 25U (pictured above)  
Daughter of Brockhill Favourite 5L

**10C**

**BROCK HILL FAVOURITE 5L**

02-10-2001 • Cow • Black • 1076847 • RNR 5L

TRAVELER 124 G D A R  
S: GDAR SVF TRAVELER 234D  
G D A R FOREVER LADY 718

Q A S TRAVELER 23-4  
RACHEL RITO 813 G D A R  
BALDRIDGE OSCAR  
L T FOREVER LADY 395

RITO 9FB3 OF 5H11 FULLBACK  
D: BROCKHILL FAVOURITE 7F  
MTM FAVORITE 3C

LEACHMAN FULLBACK  
RITA 5H11 OF 1B14 RITO 9J9  
FAIRFIELD DARK STAR P57  
TED'S FAVORITE 1R

Brockhill Favorite 5L is our #1 foundation cow that has produced many great one's here at Worth-Mor! 5L's progeny has included YCC Roxy 4R who in 2005 won her class at the Junior Beef heifer show at the RAWF and then carried on and won Grand Champion heifer calf at the 2005 Ontario Angus Futurity later that fall. In 2006 she returned to the RAWF and won her class as a bred yearling. WMC Favorite 25U is another exceptional female out of 5L that has done very well in the show ring, in 2008 she was reserve heifer calf champion at the Ontario Angus Preview show and this year as a yearling she was named Supreme Champion four times! Look for 25U at our stall at this year's RAWF! 5L has been flushed twice with great success both times! Don't miss this opportunity for your next great show prospect or exceptional brood cow!

Terms: Guaranteeing 5 viable, freezable embryo's the bull of your choice. Flush to be performed at Worth-Mor with purchaser being responsible for all semen and flush costs. After 5 embryo's the remainder will be split 50/50 between the purchaser and Worth-Mor! Payment: 1/2 down sale day with the remaining 1/2 due at time of the flush.



**10D**

**LLB DUCHESS 567U**

03-08-2008 • Cow • Black • 1455503 • LLB 567U

	BW	WW	YW	Milk	TM	SC	YG
EPDs	+4.5	+50	+93	+24	+49	--	+43

S A V 8180 TRAVELER 004  
S: S A V NET WORTH 4200  
S A V MAY 2410

HF CONTROLLER 35L  
D: LLB DUCHESS 265P  
PAT DUCHESS 92E

SITZ TRAVELER 8180  
BOYD FOREVER LADY 8003  
S A F 598 BANDO 5175  
S A V MAY 6269

HF MOST WANTED 46H  
HF LUCY 84J  
D D A FAHREN 51  
PAT DUCHESS 385C

Oh boy, here is the high selling lead off heifer at the 2009 LLB Spring Spectacular Sale. Out of the world famous Net Worth - one of Genex's #1 high dollar selling semen sires, and the famous Duchess 265P cow family! This heifer has the potential to raise your next great one!

Selling 1 flush guaranteed 6 #1 embryo's at the buyer's expense, and bull of their choice.

CONSIGNED BY:

# COTTAGE CREEK ANGUS

"THE ROYAL" ANGUS SALE  
November 7th @ 7:30 p.m.



10E

## PRIME TIME'S GRACE 911'99

02-25-1999 • Cow • Black • 984350 • PTC 911J

N BAR EMULATION EXT  
S: LEACHMAN SAUGAHATCHEE 3000C  
LEACHMAN B C 7100

WSF GRAND SLAM  
D: YOUNG DALE GRACE 37C  
YOUNG DALE GRACE 3R

EMULATION N BAR 5522  
N BAR PRIMROSE 2424  
RITO 2100 G D A R  
CANYON COLOSSAL QUEEN 0727

HOFF HI SPADE S C 491  
CEDARCREST MARSHA 821  
YOUNG DALE HIGH TOWER 3N  
GRACE OF YOUNG DALE IM

Here is Cottage Creek's lead off donor cow! The dam of the \$21,000 dollar value Tyra 7005T that tore up the show ring in 2008 & 2009 for the Nostadt and Cottage Creek programs. She won the 2008 Royal Winter Fair Jr Show and is the dam of the 2009 high selling Rush bull.

Selling 1 flush guaranteed 6 #1 embryo's at the buyer's expense, and bull of their choice.



IRCC

**10F**

**BRANTNOR'S FLORA 21T**

03-06-2007 • Cow • Black • 1377300 • RON 21T

	BW	WW	YW	Milk	TM	SC	YG
EPDs	+3.0	+45	+82	+17	+40	+0.17	+37

FAMOUS 7001  
S: GAMBLES HOT ROD  
CHAMPION HILL LADY 703

TC STOCKMAN 365  
D: BRANTNOR'S FLORA 10J  
BRANTNOR'S FLORA 3E

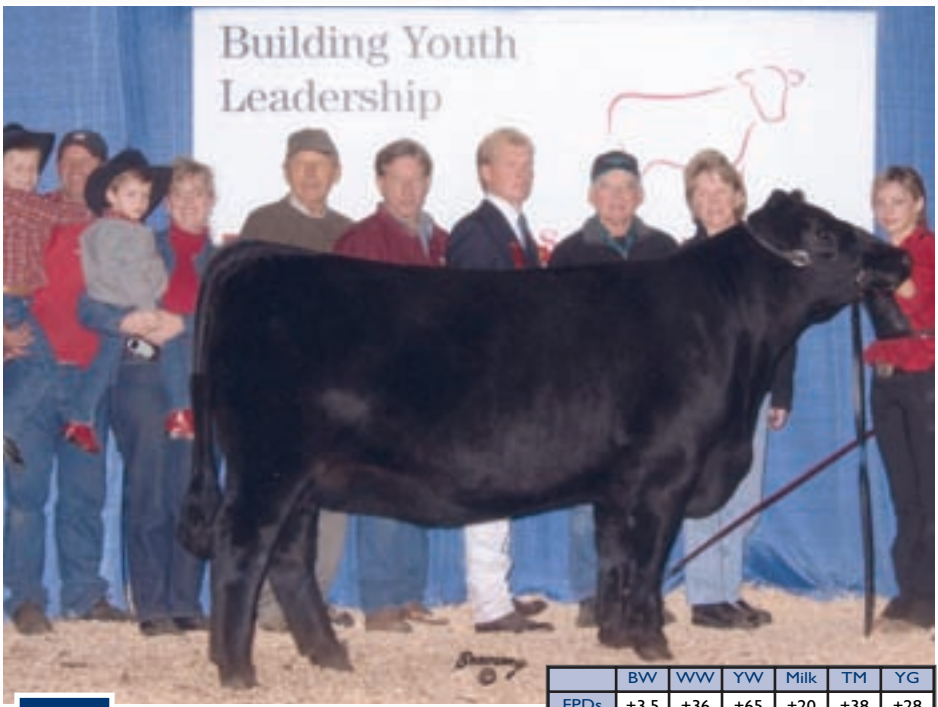
S A F FAME  
T K KAREN 1369  
LEACHMAN SAUGAHATCHEE 3000C  
CHAMPION HILL LADY STONE 731

TC STOCKMAN  
TC PRIDE 0014  
WK THUNDER  
FLORA OF BRANTNOR 12R

The Hot Rod that stopped us all in our tracks last year. One of the high selling females in the 2008 National Sale, Division winner at the 2008 National Show and a crowd favourite! Here is your opportunity to get a flush on a great one!

Selling 1 flush guaranteed 6 #1 embryo's at the buyer's expense, and bull of their choice.

**HASSON/LOCUST GROVE**



	BW	WW	YW	Milk	TM	YG
EPDs	+3.5	+36	+65	+20	+38	+28

**11A**

**LOCUST GROVE BLACKBIRD 8P X NET WORTH 4200**

01-25-2004 • Cow • Black • 1199845 • WTM 8P

S: RITO 9FB3 OF 5H11 FULLBACK D: LOCUST GROVE CT BLACKBIRD 2F

Locust Grove Blackbird 8P x S A V Network 4200 - Selling 3 Embryos

We are offering 3 embryos from Blackbird 8P by Network 4200 Here is your chance to buy 3 embryos from the Locust Grove Blackbird family.

Blackbird 8P was the Supreme Champion Female at 4 Major Shows in 2005. Those included London Jr. Beef Expo, Youth Forum, Ontario Jr. Angus Show and the prestigious Scotia Bank Jr. Beef Heifer Show at the Royal Agricultural Winter Fair.

Her 2008 female calf (full sibling to embryos) was shown with her dam to acquire Grand Champion at Schomberg Fair and Uxbridge Highland Games. The pair was Reserve Sr. Champion at Barrie Fair and Reserve Grand Champion at the Ontario Angus Point Show in Brampton. Locust Grove Blackbird 8P and her Network Heifer Calf captured 2nd place at the 2008 Royal Agricultural Winter Fair in Toronto. At the 2008 RAWF National Angus Sale, Blackbird's Network heifer calf topped the sale and sold for \$11,250.00 to Nostadt Stock Farms and Rob Garner. A full sister to 8P also sold for \$6500.00 in the same sale to Paradise Farms. Both of these females that sold in the 2008 sale will be making their return to the ring to compete at the 2009 Royal Agricultural Winter Fair.

Guaranteed 3 #1 Embryos and one pregnancy, if implanted by an accredited veterinarian.



N BAR EMULATION EXT

**11B**

**HCC BLACK MERCEDES 13N X N BAR EMULATION EXT**

02-22-2003 • Cow • Black • 1179028 • HCCC 13N

	BV	WW	YW	Milk	TM	YG	%IMF	REA	FAT
EPDs	+3.5	+38	+78	+20	+39	+41	+0.49	+0.17	-0.13

B/R NEW DESIGN 036  
S: B/R NEW FRONTIER 095  
WHITE FENCE PRIDE H1

ANKONIAN ELIXIR 100  
D: H.C.C. MERCEDES 6L  
LAUREL LEA ERICA 4G

V D A R NEW TREND 315  
B/R BLACKCAP EMPRESS 76  
CONNELLY DATELINE  
PLEASANT PILL OF CONANGA

ANKONIAN ELIXIR DB  
ANKONY LASS 206T  
MINERTS FORTUNE 2000  
LAUREL LEA ERICA 7W

Once again here is an opportunity to get your hands on genetics out of the cow who has put Gilchrist Farms on the map in the Angus industry. When we started in the purebred angus we wanted a cow we could build a herd around, 13N did just that and surpassed our expectations both in the show ring and back home in the pasture. Take a look at her son Lot # 112B and granddaughter Lot # 2 along with the 4 other direct daughters being exhibited at the 2009 Royal. Take this cow bred to the maternal legend N BAR EMULATION EXT and you have what could be the next show champion and what WILL be sought after genetics for years to come.

Selling two #1 frozen exportable embryo's by N BAR EMULATION EXT

CONSIGNED BY:

# COTTAGE CREEK ANGUS

"THE ROYAL" ANGUS SALE  
November 7th @ 7:30 p.m.



CJ PRESTIGE 25T

11C

## PRIME TIME'S GRACE 911'99 x CJ PRESTIGE 25T

02-25-1999 • Cow • Black • 984350 • PTC 911J

N BAR EMULATION EXT  
S: LEACHMAN SAUGAHATCHEE 3000C  
LEACHMAN B C 7100

EMULATION N BAR 5522  
N BAR PRIMROSE 2424  
RITO 2100 G D A R  
CANYON COLOSSAL QUEEN 0727

WSF GRAND SLAM  
D: YOUNG DALE GRACE 37C  
YOUNG DALE GRACE 3R

HOFF HI SPADE S C 491  
CEDARCREST MARSHA 821  
YOUNG DALE HIGH TOWER 3N  
GRACE OF YOUNG DALE IM

Here is an embryo package that's got the potential to be explosive. The Cottage Creek Donor 911J out of the 9 time All American sire of the year Saugahatchee, dam of the Tyra show heifer that won the 2008 Royal Winter Fair Jr Show and mated to an outstanding show bull - 2009 US Reserve Champion Bull with an outstanding show career and one to watch for this fall.

Selling 3 #1 embryos.





BC MATRIX 4132

**11D**

**ROYAL BLUEBIRD LASS DRCC 7023T X BC MATRIX 4132**

01-07-2007 • Cow • Black • 1367895 • DRCC 7023T

	BW	WW	YW	Milk	TM	SC	YG
EPDs	+1.9	+46	+88	+19	+42	+0.40	+42

G A R PRECISION 1680  
S: G A R RETAIL PRODUCT  
G A R EXT 4927

SITZ TRAVELER 8180  
D: THOMAS BLUEBIRD LASS 8306  
THOMAS BLUEBIRD 2009

TEHAMA BANDO 155  
9J9 G A R 856  
N BAR EMULATION EXT  
G A R TRAVELER 641

G D A R TRAVELER 71  
SITZ EVERELDA ENTENSE 1137  
EMULATION N BAR 5522  
THOMAS BLUEBIRD 0056

This powerful two year old out of the Retail Product bull is sure to please with muscle, body and udder and mated to Genex Sire BC Matrix, you want performance here they are.

Selling 3 #1 embryos.



**12A**

**SUNSET BIG CITY 3U**

01-13-2008 • Bull • Black • 1472397 • SUF 3U

S A V 8180 TRAVELER 004  
S: S A V NET WORTH 4200  
S A V MAY 2410

SITZ TRAVELER 8180  
BOYD FOREVER LADY 8003  
S A F 598 BANDO 5175  
S A V MAY 6269

BON VIEW BALANCE 834  
D: RIDEAU ROSEBUD 21G  
RIDEAU ROSEBUD 20E

TC DIVIDEND 963  
BON VIEW PRINCESS 169  
RIDEAU STOCKMAN  
RIDEAU ROSEBUD 53A

Here is a very well made bull by the almighty SAV Network. Network has changed the angus industry by adding overall mass of muscle and structure to his calves. Big City's dam, Rideau Rosebud 21G produced many champions of us in the past including the Grand Champion Bull at the Royal Winter Fair in 2002. Sunset Big City 3U was this years Reserve Grand Champion at the Ontario Preview in Brampton 2009. Big City is extremely thick, deep bodied and great legged and will improve your herd like his sire has accomplished throughout North America.



**12B**

**GF MERCEDES ULTIMATUM 6U**

01-03-2008 • Bull • Black • 1461193 • GFA 6U

	BW	VWV	YW	Milk	TM	YG
EPDs	+4.1	+41	+80	+20	+40	+39

N BAR EMULATION EXT  
S: LEACHMAN SAUGAHATCHEE 3000C  
LEACHMAN B C 7100

B/R NEW FRONTIER 095  
D: HCC BLACK MERCEDES 13N  
H.C.C. MERCEDES 6L

EMULATION N BAR 5522  
N BAR PRIMROSE 2424  
RITO 2100 G D A R  
CANYON COLOSSAL QUEEN 0727

B/R NEW DESIGN 036  
WHITE FENCE PRIDE H1  
ANKONIAN ELIXIR 100  
LAUREL LEA ERICA 4G

This moderate framed, stylish bull is sure to please! With the 9 time All American sire of the year "Saugahatchee", that's a no miss in the showing and breeding fields across North America!

The donor cow "Mercedes 13N" that has generated over \$40,000 in calf sales in her lifetime, this New Frontier 095 daughter is simply powerful - she's the type to make tremendous herd bulls.

Terms: Retaining in herd semen use. Selling 1/2 interest with the option to double and take all.

## COTTAGE CREEK/NOSTADT



12C

### COTTAGE CREEK RUSH 902W

02-08-2009 • Bull • Black • 1494221 • BRCS 902W

O C C LEGEND 616L  
S: B C LOOKOUT 7024  
GIBBET HILL MIGNONNE E37

HF JUSTICE 52L  
D: COTTAGE CRK 911J TYRA 7005'07  
PRIME TIME'S GRACE 911'99

O C C EMBLAZON 854E  
O C C BLACKBIRD 632J  
PAPA EQUATOR 2928  
GIBBET HILL MIGNONNE TR 29

GREENS PREMIUM 7578  
HF ERICA 61F  
LEACHMAN SAUGAHATCHEE 3000C  
YOUNG DALE GRACE 37C

He is a meat machine! The powerful son of BC Lookout has the performance, style and breeding to be the next great one!

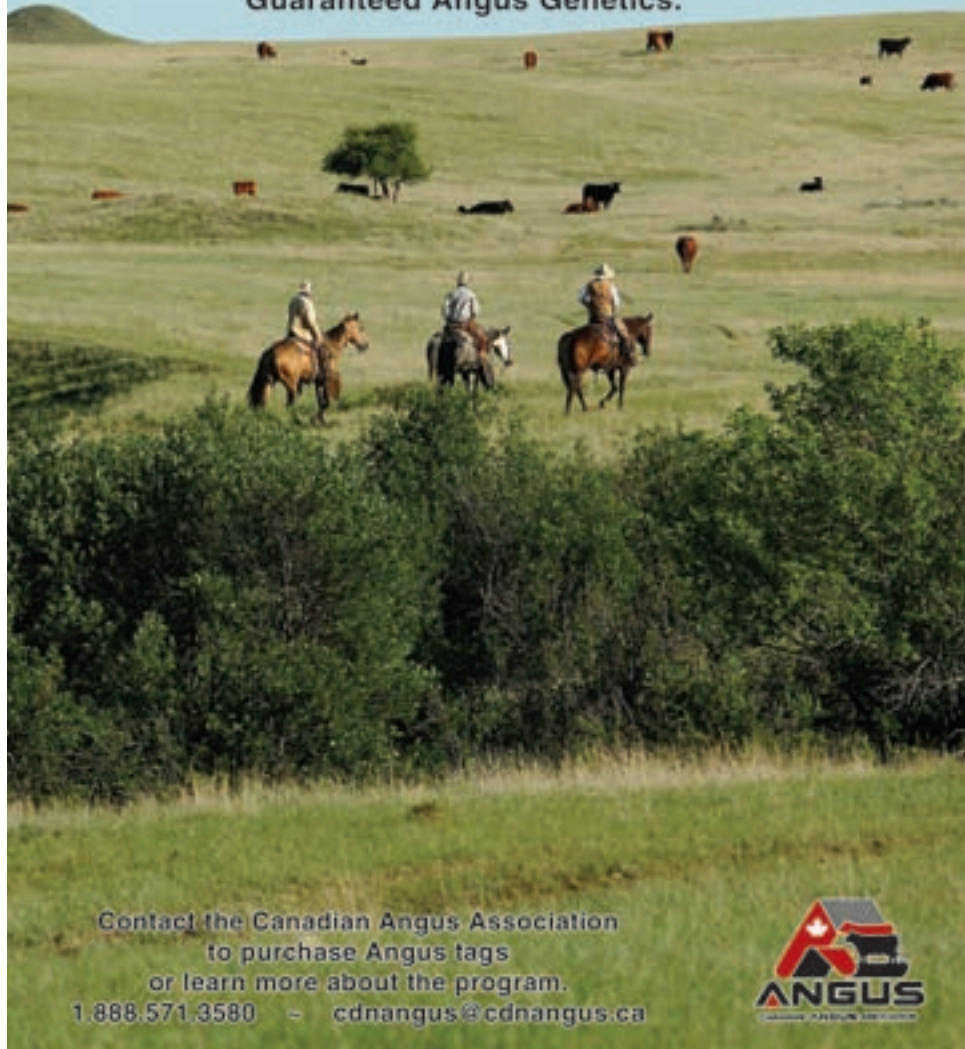
With a great Genex bull like BC Lookout, one of their leading AI sires and then the powerful "Tyra" show female - the \$21,000 valued female that Nostadt's added to their show program and won them the 2008 Royal Winter Fair Jr Show All Breeds Champion, he's bound to be a superstar.

Selling one breeder pack share

\*5% ownership, unlimited in herd semen and 5% of all semen sales



Age Verified. Source Verified. Premise Identified.  
Guaranteed Angus Genetics.



Contact the Canadian Angus Association  
to purchase Angus tags  
or learn more about the program.

1.888.571.3580 - [cdnangus@cdnangus.ca](mailto:cdnangus@cdnangus.ca)



**HERO  
CERTIFIED  
BURGERS**



## HERO CERTIFIED BURGERS

All our burgers are made 100% Canadian, range-fed, hormone and antibiotic free Angus beef with full traceability. We are the only franchise to be endorsed by the Canadian Angus Ranchers.

Try one of our burgers today and taste the Hero difference.

Our partners



## HERO BURGERS BBQ CATERING

For corporate and private events and functions.

Contact us today for more details!

For more information, visit our website:

[www.heroburgers.com](http://www.heroburgers.com)





THE ROYAL\* ANGUS SALE  
November 7th @ 7:30 p.m.

## TERMS & CONDITIONS

### TERMS

The terms of the sale are cash or cheque payable at Par. Cheques to be made payable to sale clerks on sale day **UNLESS PRIOR ARRANGEMENTS HAVE BEEN MADE**. The right of property shall not pass until settlement is made. All settlement is made with the clerks of the sale before any cattle will be released. US funds will be accepted at current rate of exchange announced sale day. Visa, Mastercard and Debit will be available.

### FINANCING

If terms or financing is needed or we can be of assistance at the Canadian Angus Hall of Fame please call Hugh Ross prior to sale day, we will gladly assist your needs.

### BIDS & DISPUTES

Every animal will be sold to the highest bidder. In the case of disputes, bidding will re-open between the parties involved. If no further bid is made the buyer will be the persons from whom the auctioneer accepted the last bid. The auctioneer's decision in such a matter will be final.

### ANNOUNCEMENTS

Any corrections or announcements made from the block sale day will take precedence over the catalogue. \*CHECK WEBSITE FOR SALE UPDATES\*

### PURCHASERS RISK

Each animal becomes the risk of the purchaser as soon as it's sold or as soon as the auctioneers gavel falls.

### CERTIFICATE OF REGISTRY

A certificate of Canadian registry duly transferred will be furnished to the buyer of each animal sold as a registered animal after settlement is made in a timely manner.

### BREEDERS GUARANTEE

All cattle are sold sound and right with a responsible breeder guarantee of satisfaction. In the event of an unlikely dispute the terms and conditions standard with the Canadian Aberdeen Angus Association shall apply.

### LIABILITY

Although every precaution will be taken to protect the safety and comfort of the buyers, the auctioneer, sale management, sale staff, the auction mart and owners assume no responsibility in this matter and disclaim any liability, legal or otherwise in the event of an accident or loss of property.

### INSURANCE

An insurance representative will be present.

### DELIVERY

Consignors will assist with delivery.

### MAIL OR PHONE BIDS

Mail or phone bids may be entrusted in complete confidence to any of the sale staff or to the Canadian Angus Hall of Fame.



CANADIAN ANGUS HALL OF FAME

Phone: 403-318-2196 (Cell)

e-mail: [hugh@canadianangushalloffame.com](mailto:hugh@canadianangushalloffame.com)

[www.canadianangushalloffame.com](http://www.canadianangushalloffame.com)