

PEAKE RANCHING

1st Annual

Bull Sale

Ranch Raised... Ranch Ready

Monday
MARCH 9
2015



1 pm at the Homestead Coulee Hall - 55.7 km East of Drumheller on Hwy. 570



PEAKE RANCHING



1st Annual

Bull Sale

Ranch Raised... Ranch Ready

Monday **MARCH 9** 2015

1 pm at the Homestead Coulee Hall

Auctioneer:

Cliff Pahl 403-854-1900

Sale Staff:

Colin McNiven H: 403-566-2550 C: 403-793-1699

Grant Ellefson H: 403-362-4992 C: 403-501-9707

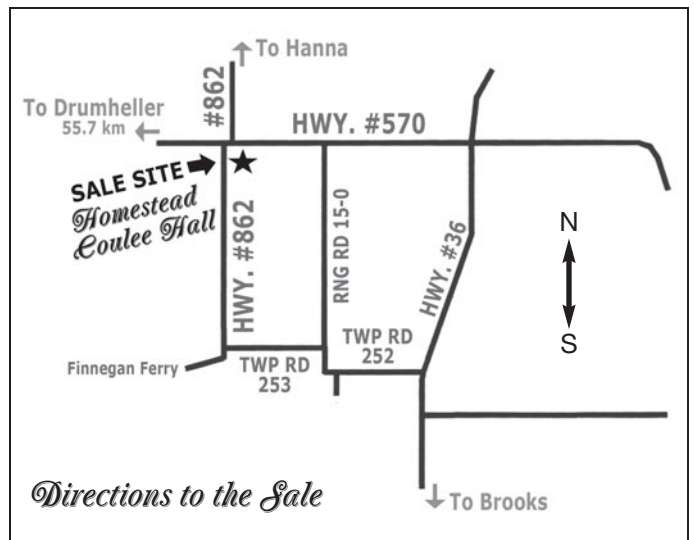
Special Representatives:

Rob Smith, CEO, Canadian Angus Association

Brian Good - Director, Canadian Angus Association Field Services

Corinne Gibson, President, Canadian Angus Association

Dave Callaway, Angus World 403-549-2234



55.7 km East of Drumheller on Hwy. #570 or
South of Hanna to junction of Hwy. #570 & #862, south side of road

★ **VIDEO SALE - the bulls will be on display at the Hall & sell on video**

★ **You can LEAVE YOUR TRAILER AT HOME! Bulls will be DELIVERED FREE OF CHARGE within a 500 km radius after passing a breeding soundness evaluation in the Spring**

★ **At buyer's request the purchased bulls can be VACCINATED WITH FUSOGARD foot rot vaccine.**

DjH

SALE MANAGED BY

Douglas J. Henderson & Associates Ltd.

Doug & Linda Henderson

P.O. Box 5900, Lacombe, Alberta T4L 1X4

Phone: (403) 782-3888 Fax: (403) 782-3849 Cell: (403) 350-8541

Brody Gardner 403-994-0552

email: djhenderson@platinum.ca website: www.hendersoncattle.com

Join us for beef on a bun prior to the Sale & refreshments after

PEAKE RANCHING



Stratton & Adrienne Peake
Peake Ranching Inc.

Box 3158

Drumheller, AB T0J 0Y0

H: 403-823-7338

C: 403-633-0815

Michelle Peake
Peake Ranching Inc.

RR 3

Hanna, AB T0J 1P0

C: 403-820-1443

Martina & Steve Wade
Peake Ranching Inc.

410 9th St. E

Drumheller, AB T0J 0Y5

C: 403-820-1715

Regan & Whitney Curry
R&W Cattle Co.

Box1, Site 2

Finnegan, AB T0J 1L0

H: 403-566-2287

C: 403-363-3563

PEAKE RANCHING

Welcome to our 1st Annual Sale

Peake Ranching Inc. and R&W Cattle Co. would like to invite you to our first annual bull sale. We would like to take the opportunity to thank our previous customers for their support these past years.

If you are new to our program Peake Ranching Inc. is a family based operation that has been ranching in the short grass prairie of eastern Alberta for the last 100+ years. Stratton and Adrienne began their venture into purebred Angus in 2003, and the cattle have since been split to be managed alongside the existing cowherds owned by Martina and Steve Wade, Whitney and Regan Curry of R&W Cattle Co. and Michelle Peake. These 3 herds are run as separate individual units, yet we have similar visions and strive to achieve the same goals. With this partnership we feel that we can to the best of our ability's provide our customers with highly functional bulls that suit the needs of the conditions we live in. This requires a moderate framed, easy fleshing cow that is balanced with both maternal and performance traits. We continually strive to produce hard working efficient cattle that meet the needs of our ranching customers.

We have chosen to put the bulls on test at Cattleland Feedyards in Strathmore, AB, they are on a low barley and silage ration, and we have been monitoring the bulls all throughout the test and we are confident they are being properly developed, and not being pushed. It is safe to say that we are all very happy with the current market for cattle in all sections of the industry, and we know that makes all of us excited and optimistic about the future. We look forward to seeing you sale day, feel free to contact us anytime for more information.



Stratton & Adrienne



*Michelle & Rosie
on Tonto*



Martina & Steve



Regan, Whitney & Mason

We are excited to talk about a relatively new selection tool that is available to Angus breeders. The Pfizer HD 50K test, this DNA test looks for genes along the DNA sequence that are



used to predict an animal's production and maternal merit. The Pfizer HD 50K test gives us a percentile ranked marker panel for multiple traits. This is extremely useful on traits that are hard to test for such as docility, residual feed intake and dry matter intake. The genomic marker panel is blended with an animal's current EPDs to create genomically enhanced EPDs or GE-EPDs. This increases the accuracy of young animals that have little or no progeny on the ground, and allows us as a breeder to make more informed selections at younger age.

As well as being harder to test for there are currently no Canadian EPDs for traits such as RFI, DMI and docility. As we have an intensive AI program we are able to use these genomic marker panels to help us select sires that meet our criteria. Aside from trying to maintain a balanced trait profile one area we are concentrating on is residual feed intake and dry matter intake, an animal that is higher ranked for these traits will sire progeny that are more feed efficient.

We feel that moving toward a more efficient animal is of great importance not only for our area but the industry as a whole. Having an animal eat less and gain the same as an animal that eats more is no small thing, this not only benefits the backgrounder/feedlot operator but is of high priority for the cow calf producer. Allowing your mother cows to maintain or gain body condition while eating less. Thus lowering your winter feed bill while maintaining a healthy body condition score through the colder months which should then in turn allow for quicker post calving recovery.

A good article comparing RFI and probability can be found at the Noble Foundations website at <https://www.noble.org/Ag/Livestock/RFI/>.

DjH

Welcome to the Peake Ranching and R&W Cattle Co. 1st Annual Bull Sale

This is a highly functional group of young Angus bulls sired by many of the breeds leading herd sires. The Peake's and Regan Curry are very aware of the progress made through A.I. and are very serious about the bulls they use.

As you see Peake Ranching and R & W Cattle Co. have initiated a unique Breeder's Guarantee which should be welcomed by the cattle industry, these people plan on being in business a long time and are willing to stand behind their bulls.

The dams of these bulls are moderate framed easy fleshing, efficient cows with maternal performance and stayability, the traits that have made the Angus cow famous.

With over 100+ years in the cattle business and a dozen years in the purebred business, they plan on supplying bulls that will work well in the short grass prairie of eastern Alberta as well as anyplace else quality Angus are appreciated.

If Stratton, Adrienne, Regan, Whitney, Michelle, Martina, Steve, any of the sale staff, Linda or myself can be of assistance in anyway regarding this sale please feel free to contact us.

*Yours truly,
Doug Henderson*

Douglas J. Henderson & Associates Ltd.

**P.O. Box 5900, Lacombe, Alberta T4L 1X4 Doug & Linda Henderson
Phone: (403) 782-3888 Fax: (403) 782-3849 Cell: (403) 350-8541**

★ **PEAKE RANCHING INC. & R&W CATTLE CO.** ★ **3 YEAR BULL GUARANTEE**

All bulls offered for sale by Peake Ranching Inc. and R&W Cattle Co. are fertile and sound of hoof!

We have always strived for the highest customer satisfaction possible and, as a mark of our stringent selection process, we are proud to guarantee our bulls with respect to breeding soundness, good temperament, and sound feet.

Accordingly, each bull which sells for \$3,500.00 or more comes with a three (3) year guarantee starting the first day of turnout, which depreciates by 33% for each year the bull is in use. Our refunds are issued in the form of credit for upcoming sales or satisfactory replacement, if available. Sale credit is calculated as purchase price minus salvage value up to an \$8500 sale price, and must be used in the following calendar year.

Our bulls selling for \$3500.00 and over will be guaranteed against injury that renders them incapable of breeding. This Guarantee only applies to the original Purchaser and shall not apply to any bull that has not been maintained by the original purchaser at all times using good animal husbandry and management practices.

We will not guarantee against injuries or inability to breed arising out of the following causes:

1. Injury or loss caused by vehicles or equipment;
2. Injury or loss caused by act of God;
3. Injury or loss caused by failure to maintain good animal husbandry;
4. Injury or loss caused by predation;
5. Injury or loss caused from disease, feed intake, or poisoning.

To resolve a claim, the Purchaser must submit a claim to Peake Ranching Inc. and/or R&W Cattle Co. within fourteen (14) days of discovery of the injury or loss, which claim must be accompanied by a licensed veterinarian's verification of the injury or loss. Peake Ranching Inc. and/or R&W Cattle Co. reserves the right to semen check or verify the injury or loss claimed.



GDAR GAME DAY 449

BW: -0.3 WW: +51 YW: +94 Milk: +26 TM: +52
SCR: +0.70 CE: +9.0 MCE: +10.0

A highly proven pedigree with calving ease and maternal strength.
A very consistent sire.



R&W GAME DAY 85B

Male WP 85B 1807783 April 21 2014

BOYD NEW DAY 8005 AMF CAF NHF DDF
GDAR GAME DAY 449 AMF CAF NHF DDF 1385923
G D A R MISS WIX 474

HARB PENDLETON 765 J H AMF CAF NHF DDF
PEAKE BLACKCAP 3Y 1604551
SQUAW COULEE BLACKCAP 69U

A A R NEW TREND
S V F FOREVER LADY 57D
TEHAMA BAND 207
G D A R MISS WIX 749

S A V FINAL ANSWER 0035 AMF CAF NHF DDF
H A R B BLACK LADY 375 J H
PEAK DOT HOLLYWOOD 106L
SQUAW COULEE BLACK CAP 54K

BW: 99 lbs. Adj. 205D: 737 Jan. 2/15: 835 lbs.

EPDs: BW: +3.0 37% WW: +52 28% YW: +90 22% Milk: +25 21% TM: +51

CE: +3.0 30% MCE: +7.0 18%



PEAKE DENSITY 437B

Male XZ 437B 1813304 April 18 2014

S A V 8180 TRAVELER 004 DMF DWF AMF CAF NHF OSF DDF
S A V 004 DENSITY 4336 AMF CAF NHF DDF 1266311
S A V MAY 7238 CAF DDF

WINTERING HILLS PERRY 18P
SQUAW COULEE BLACKCAP 81U 1430123
SQUAW COULEE BLACK CAP 32R

SITZ TRAVELER 8180 AMF CAF NHF DDF
BOYD FOREVER LADY 8003
LEACHMAN RIGHT TIME DMF AMF
S A R PROSPECTOR MAY 9124 DDF

REMITALL LINEBACKER 204L
WHS MADAME 26M
CRESCENT CREEK BRAVE HEART 35F
SQUAW COULEE BLACK CAP

BW: 91 lbs. Adj. 205D: 779 Jan. 2/15: 892 lbs.

EPDs: BW: +3.0 43% WW: +35 33% YW: +68 27% Milk: +20 24% TM: +45

CE: +3.7 35% MCE: +3.2 30%

This bull was a standout all summer and has been Pfizer 50K tested.



R&W ALLIANCE 12B

Male WP 12B 1807725 April 03 2014

SITZ TRAVELER 8180 AMF CAF NHF DDF
SITZ ALLIANCE 6595 DMF AMF CAF NHF DDF 1036949
SITZ BARBARAMERE JET 2698

BAD LANDS AMBUSH 37N
SANDY CREEK ERROLINE 62'08 1433697
ASPELUND ERROLINE 34H

G D A R TRAVELER 71 AMF CAF NHF DDF
SITZ EVERELDA ENTENSE 1137
3 BAR SPIKE 1766
SITZ BARBARAMERE JET 155

HIGH VALLEY 4C6 AMBUSH AMF CAF
BAD LANDS LADY 805H
BILLY BOB TEX RPWM 5C
ERROLINE OF DALRENE 32F

BW: 87 lbs. Adj. 205D: 686 Jan. 2/15: 930 lbs.

EPDs: BW: +1.8 37% WW: +42 28% YW: +72 22% Milk: +20 21% TM: +41

CE: +4.0 27% MCE: +9.0 16%



PEAKE GAME DAY 416B

Male XZ 416B 1813286 April 09 2014

BOYD NEW DAY 8005 AMF CAF NHF DDF
GDAR GAME DAY 449 AMF CAF NHF DDF 1385923
G D A R MISS WIX 474

CROWFOOT 6228S
PEAKE 6228S 6262S 17U 1480909
CROWFOOT LOVEMERE 6262S

A A R NEW TREND
S V F FOREVER LADY 57D
TEHAMA BAND 207
G D A R MISS WIX 749

O C C JOKER 620J DDF
CROWFOOT BARDOLINE 1040L
CONNEALY FREIGHTLINER AMF CAF NHF DDF
CROWFOOT LOVEMERE R 9101

BW: 84 lbs. Adj. 205D: 738 Jan. 2/15: 900 lbs.

EPDs: BW: -0.5 36% WW: +43 27% YW: +75 22% Milk: +24 21% TM: +46

CE: +8.0 28% MCE: +9.0 17%



PEAKE GAME DAY 422B

Male XZ 422B 1813287 April 10 2014

BOYD NEW DAY 8005 AMF CAF NHF DDF
GDAR GAME DAY 449 AMF CAF NHF DDF 1385923
G D A R MISS WIX 474

Q A S TRAVELER 23-4 AMF CAF NHF DDF
PEAKE RUBY 33Y 1609980
SQUAW COULEE RUBY 38K

A A R NEW TREND
S V F FOREVER LADY 57D
TEHAMA BAND 207
G D A R MISS WIX 749

BAND 234 OF IDEAL 3163
Q A S BLACKBIRD EVE 601 I
RON'S BARDOLINE 77F
BATSCOL RUBY 100E

BW: 78 lbs. Adj. 205D: 684 Jan. 2/15: 770 lbs.

EPDs: BW: +0.3 37% WW: +39 28% YW: +71 24% Milk: +20 22% TM: +40

CE: +7.0 29% MCE: +8.0 18%



PEAKE GAME DAY 427B

Male XZ 427B 1813297 April 12 2014

BOYD NEW DAY 8005 AMF CAF NHF DDF
GDAR GAME DAY 449 AMF CAF NHF DDF 1385923
G D A R MISS WIX 474

TRIPLE E MATRIX 908
REMINGTON TIPTOP 195W 1536704
MVF TIPTOP 117L

A A R NEW TREND
S V F FOREVER LADY 57D
TEHAMA BAND 207
G D A R MISS WIX 749

N BAR EMULATION EXT AMF CAF NHF DDF
JAYN BEE WENDY 728B
SITZ ALLIANCE 6595 DMF AMF CAF NHF DDF
MVF TIPTOP 164J

BW: 84 lbs. Adj. 205D: 719 Jan. 2/15: 883 lbs.

EPDs: BW: +1.2 36% WW: +47 27% YW: +80 22% Milk: +20 21% TM: +44

CE: +6.0 29% MCE: +10.0 17%





SINCLAIR ENTREPRENEUR BR101

BW: +4.3 WW: +51 YW: +83 Milk: +7 TM: +33
SCR: +1.04 CE: +3.0 MCE: -1.0

A very wide based thick bull with expressive muscle, good feet and legs and a famous Sinclair, N Bar pedigree.



PEAKE ENTREPRENEUR 330B

Male MP 330B 1820417 April 23 2014

R R RITO 707 AMF CAF NHF DDF
SINCLAIR ENTREPRENEUR 8R101 CAF NHF DDF 1820382
N BAR KINCHTRY BEAUTY Z1925

RITO N BAR
ERISKAY OF ROLLIN ROCK 3
N BAR EMULATION EXT AMF CAF NHF DDF
N BAR KINCHTRY BEAUTY 4310

HF WALKER 107E
RIVERCREST RUTH 40J 987326
RIVERCREST RUTH 13A

HF WALK-ON 14C
R F ROSEBUD 116Y
BAR DOUBLE M RAMBO 12
RIVERCREST RUTH 76P

BW: 100 lbs. Adj. 205D: 726 Jan. 2/15: 862 lbs.

EPDs: BW: +4.8 37% WW: +46 28% YW: +69 20% Milk: +10 18% TM: +33

CE: -3.0 22% MCE: -2.0 12%



PEAKE ENTREPRENEUR 340B

Male MP 340B 1820422 April 27 2014

R R RITO 707 AMF CAF NHF DDF
SINCLAIR ENTREPRENEUR 8R101 CAF NHF DDF 1820382
N BAR KINCHTRY BEAUTY Z1925

RITO N BAR
ERISKAY OF ROLLIN ROCK 3
N BAR EMULATION EXT AMF CAF NHF DDF
N BAR KINCHTRY BEAUTY 4310

SITZ ALLIANCE 6595 DMF AMF CAF NHF DDF
CCL ROSEBUD 40R 1279928
WILLABAR ROSEBUD 119L

SITZ TRAVELER 8180 AMF CAF NHF DDF
SITZ BARBARAMERE JET 2698
WILLABAR PIPELINE 89H
WILLABAR ROSEBUD 56E

BW: 96 lbs. Adj. 205D: 672 Jan. 2/15: 770 lbs.

EPDs: BW: +4.5 37% WW: +45 28% YW: +75 23% Milk: +15 18% TM: +38

CE: -2.0 24% MCE: +2.0 13%

This has always been a very fancy bull, his mother is a top cow in the program backed by an excellent udder.



PEAKE ENTREPRENEUR 257B

Male MP 257B 1820410 April 05 2014

R R RITO 707 AMF CAF NHF DDF
SINCLAIR ENTREPRENEUR 8R101 CAF NHF DDF 1820382
N BAR KINCHTRY BEAUTY Z1925

RITO N BAR
ERISKAY OF ROLLIN ROCK 3
N BAR EMULATION EXT AMF CAF NHF DDF
N BAR KINCHTRY BEAUTY 4310

REMINGTON RIGHT TIME 156R
CCL ELIZABETH 59U 1445960
CCL ELIZABETH 59R

LEACHMAN RIGHT TIME DMF AMF
CRESCENT CREEK LASSIE 110E
CROWFOOT 3770N
SMC ELIZABETH 51N

BW: 98 lbs. Adj. 205D: 705 Jan. 2/15: 878 lbs.

EPDs: BW: +5.9 37% WW: +49 27% YW: +82 20% Milk: +16 17% TM: +41

CE: -6.0 22% MCE: -3.0 12%



PEAKE ENTREPRENEUR 305B

Male MP 305B 1820415 April 18 2014

R R RITO 707 AMF CAF NHF DDF
SINCLAIR ENTREPRENEUR 8R101 CAF NHF DDF 1820382
N BAR KINCHTRY BEAUTY Z1925

RITO N BAR
ERISKAY OF ROLLIN ROCK 3
N BAR EMULATION EXT AMF CAF NHF DDF
N BAR KINCHTRY BEAUTY 4310

CUDLOBE YELLOWSTONE 80M
SOO LINE BLACK LADY 7321 1411351
WINDOVER BLACK LADY 58N

VERMILION YELLOWSTONE AMF CAF NHF DDF
STEVENSON ENCHANTRESS 425F
WINDOVER KENTUCKY 22K
HARMON BLACK LADY K124

BW: 103 lbs. Adj. 205D: 736 Jan. 2/15: 923 lbs.

EPDs: BW: +5.8 37% WW: +52 27% YW: +78 21% Milk: +13 17% TM: +39

CE: -5.0 22% MCE: -3.0 12%



PEAKE ENTREPRENEUR 321B

Male MP 321B 1820416 April 22 2014

R R RITO 707 AMF CAF NHF DDF
SINCLAIR ENTREPRENEUR 8R101 CAF NHF DDF 1820382
N BAR KINCHTRY BEAUTY Z1925

RITO N BAR
ERISKAY OF ROLLIN ROCK 3
N BAR EMULATION EXT AMF CAF NHF DDF
N BAR KINCHTRY BEAUTY 4310

FHCC CLASSIC ROCK AMF CAF DDF
DEER RIVER BLACKBIRD 61R 1273367
DEER RIVER BLACKBIRD 104J

ROCKN D AMBUSH 1531 AMF CAF NHF DDF
P A R LADY 818 DDF
G T MAXIMUM AMF CAF NHF DDF
DEER RIVER BLACKBIRD 16Z

BW: 98 lbs. Adj. 205D: 655 Jan. 2/15: 835 lbs.

EPDs: BW: +5.0 37% WW: +40 28% YW: +67 21% Milk: +10 18% TM: +30

CE: -1.0 23% MCE: +0.0 13%



PEAKE ENTREPRENEUR 305B



PEAKE ENTREPRENEUR 340B



R&W FRONT RANGE 23B



R&W NETWORK 36B

12

R&W FRONT RANGE 23B

Male WP 23B 1807733 April 06 2014

KESSLERS FRONTMAN R001 AMF CAF NHF DDF
KESSLERS FRONT RANGE 7520 AMF CAF NHF DDF **1561371**
 KESSLERS BELL R230

CONNELLY FRONT PAGE 0228 CAF DDF
 KESSLERS BELL 0024
 MYTTY IN FOCUS AMF CAF NHF DDF
 KESSLERS BELL TOLL 7165

SANDY CREEK INITIATIVE 69T
SANDY CREEK ANNIE 9/10 1557815
 SANDY CREEK ANNIE 20T

S A V INITIATIVE 4406 AMF CAF NHF DDF
 SANDY CREEK PRIDE 58'02
 H A IMAGE MAKER 0415 AMF CAF NHF DDF
 SANDY CREEK ANNIE 2'05

BW: 83 lbs.	Adj. 205D: 730	Jan. 2/15: 882 lbs.
EPDs: BW: -0.2	36%	WW: +50 27%
CE: +7.0	26%	MCE: +10.0 12%
YW: +77	19%	Milk: +26 17%
TM: +51		

13

PEAKE IN FOCUS 406B

Male XZ 406B 1813284 April 08 2014

S A F FOCUS OF E R AMF CAF NHF DDF
MYTTY IN FOCUS AMF CAF NHF DDF **1251205**
 MYTTY COUNTESS 906

S A F FAME AMF CAF NHF DDF
 G D A R FOREVER LADY 246
 SITZ ALLIANCE 6595 DMF AMF CAF NHF DDF
 BALDRIDGE COUNTESS 357

LEACHMAN RIGHT TIME DMF AMF
DEER RIVER IDELETTE 132P 1227625
 DEER RIVER IDELETTE 251J

N BAR EMULATION EXT AMF CAF NHF DDF
 LEACHMAN ERICA 0025
 DEER RIVER TRAVELER 132F
 DEER RIVER IDELETTE 135F

BW: 81 lbs.	Adj. 205D: 754	Jan. 2/15: 955 lbs.
EPDs: BW: -0.2	38%	WW: +48 30%
CE: +10.0	30%	MCE: +14.0 20%
YW: +79	24%	Milk: +20 24%
TM: +44		

This bull's mother has always raised a top calf, full brother was retained by Michelle for herdsire use.



Reference

MYTTY IN FOCUS

BW: -1.2 WW: +54 YW: +95 Milk: +24 TM: +51
 SCR: +2.10 CE: +12.0 MCE: +15.0

One of the industry's most popular sires, among the breed's top bulls for calving ease and growth. Mytty In Focus ranks in the top ten for muscle and capacity.

14

PEAKE IN FOCUS 415B

Male XZ 415B 1813285 April 09 2014

S A F FOCUS OF E R AMF CAF NHF DDF
MYTTY IN FOCUS AMF CAF NHF DDF **1251205**
 MYTTY COUNTESS 906

S A F FAME AMF CAF NHF DDF
 G D A R FOREVER LADY 246
 SITZ ALLIANCE 6595 DMF AMF CAF NHF DDF
 BALDRIDGE COUNTESS 357

GDAR GAME DAY 449 AMF CAF NHF DDF
SANDY CREEK TIBBIE 2/10 1557821
 SANDY CREEK TIBBIE 38'08

BOYD NEW DAY 8005 AMF CAF NHF DDF
 G D A R MISS WIX 474
 H A IMAGE MAKER 0415 AMF CAF NHF DDF
 SANDY CREEK TIBBIE 45'00

BW: 74 lbs.	Adj. 205D: 810	Jan. 2/15: 965 lbs.
EPDs: BW: -1.6	37%	WW: +57 28%
CE: +12.0	31%	MCE: +14.0 19%
YW: +98	22%	Milk: +24 22%
TM: +53		

This bull has shown tremendous growth, was one of the heaviest weaned calves last fall.

15

R&W NETWORK 36B

Male WP 36B 1821857 April 08 2014

S A V 8180 TRAVELER 004 DMF DWF AMF CAF NHF OSF DDF
S A V NET WORTH 4200 AMF CAF NHF DDF **1309743**
 S A V MAY 2410

SITZ TRAVELER 8180 AMF CAF NHF DDF
 BOYD FOREVER LADY 8003
 S A F 598 BANDO 5175 AMF CAC DDF
 S A V MAY 6269

DEER RIVER BASIN 317N
DEER RIVER MIDDLEBROOK 538S 1351381
 DEER RIVER MIDDLEBROOK 531P

BASIN MAX 602C AMF CAF NHF DDF
 DEER RIVER ROSEBUD 92H
 DEER RIVER CASHFLOWSD 115M
 DEER RIVER MIDDLEBROOK 227M

BW: 108 lbs.	Adj. 205D: 693	Jan. 2/15: 907 lbs.
EPDs: BW: +4.6	38%	WW: +45 28%
CE: -1.0	29%	MCE: +5.0 18%
YW: +81	22%	Milk: +20 22%
TM: +43		

No trailer required!
Bulls delivered free within a 500 km radius



HF SMOKIN' ACES 105Y

BW: +2.0 WW: +51 YW: +73 Milk: +16 TM: +42
SCR: +0.83 CE: +1.0 MCE: +4.0

Grand Champion Bull at the 2013 Agribition and out of one of the most powerful and prolific cows in the Hamilton Farms herd.



PEAKE SMOKIN' ACES 206B



R&W SMOKIN ACES 1B



PEAKE SMOKIN' ACES 208B

16

PEAKE SMOKIN' ACES 206B

Male MP 206B 1818990 February 11 2014

GREENS PREMIUM 7578 CAF
HF SMOKIN' ACES 105Y 1645422
HF ERICA 26T

WK ULTIMATUM
GREENS LORI 5078 CAF
HF KODIAK 5R AMF CAF NHF MAF DDF
HF ERICA 182R

CROWFOOT 5456R
CROWFOOT BLACKBIRD 9175W 1504773
CROWFOOT BLACKBIRD 6374S

O C C HUNTER 928H
CROWFOOT WJ BLACKLADY 1528L
CROWFOOT 3199N
CROWFOOT BLACKBIRD 2785M

BW: 95 lbs. Adj. 205D: 619 Jan. 2/15: 944 lbs.

EPDs: BW: +3.0 35% WW: +41 24% YW: +66 15% Milk: +14 11% TM: +35

CE: -1.0 20% MCE: +3.0 5%

17

R&W SMOKIN' ACES 1B

Male WP1B Reg. Pending 14 2014

GREENS PREMIUM 7578 CAF
HF SMOKIN' ACES 105Y 1645422
HF ERICA 26T

WK ULTIMATUM
GREENS LORI 5078 CAF
HF KODIAK 5R AMF CAF NHF MAF DDF
HF ERICA 182R

CROWFOOT EQUATION 5793R
CROWFOOT DIXIE ERICA 9072W 1504635
CROWFOOT DIXIE ERICA 1626L

O C C LEGACY 839L
CROWFOOT FORKS 755K
C&D 455 ROCKETT
CH DIXIE ERICA 9410

BW: 105 lbs. Jan. 2/15: 1152 lbs.

This bull's dam is an excellent 1250 lb. cow.



Lot 18
Peake Smokin'
Aces 208B & Dam

18

PEAKE SMOKIN' ACES 208B

Male MP 208B 1824097 February 18 2014

GREENS PREMIUM 7578 CAF
HF SMOKIN' ACES 105Y 1645422
HF ERICA 26T

WK ULTIMATUM
GREENS LORI 5078 CAF
HF KODIAK 5R AMF CAF NHF MAF DDF
HF ERICA 182R

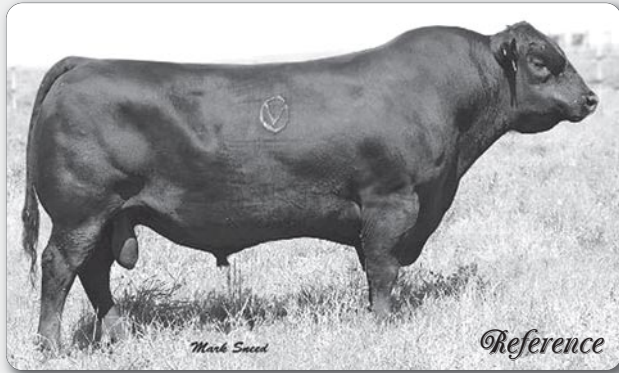
CROWFOOT EQUATION 5793R
XO CROWFOOT ELISEVA 932W 1504584
CROWFOOT ELISEVA 3831N

O C C LEGACY 839L
CROWFOOT FORKS 755K
STEVENS BRUNO 561G CAF NHF DDF
GLADWALL ELISEVA P 7356

BW: 98 lbs. Adj. 205D: 672 Jan. 2/15: 992 lbs.

EPDs: BW: +2.3 P WW: +44 P YW: +70 P Milk: +21 P TM: +43

CE: +0.0 P MCE: +3.5 P



BASIN PAYWEIGHT 107S

BW: +3.0 WW: +80 YW: +126 Milk: +22 TM: +62
SCR: +1.27 CE: -5.0 MCE: +10.0

Basin Pay Weight offers proven performance, among the elite sires of the breed for WW, YW, CW, REA and Docility. His sons have topped 2010 Midland Bull Test for RFI and 3rd high sire group for ADG at the 2012 Midland Test



R&W PAYWEIGHT 92B

Male WP 92B 1807791 April 23 2014

VERMILION PAYWEIGHT J847 AMF CAF NHF DDF
BASIN PAYWEIGHT 107S DDF 1770544
BASIN LUCY 3829 AMF NHF

DEER RIVER 241J BLACK INK 331L
DEER RIVER ZARA 530S 1351382
DEER RIVER ZARA 160K

VERMILION DATELINE 7078 AMF CAF NHF DDF
VERMILION LASS 7969
C A FUTURE DIRECTION 5321 AMF CAF NHF DDF
BASIN LUCY 178E

DEER RIVER BLACK INK 241J
DEER RIVER MINA 86G
G D A R TRAVELER 044 AMF CAF NHF DDF
DEER RIVER ZARA 29G

BW: 95 lbs. Adj. 205D: 671 Jan. 2/15: 824 lbs.

EPDs: BW: +4.0 37% WW: +57 28% YW: +92 20% Milk: +13 21% TM: +42

CE: -4.0 26% MCE: +6.0 15%



PEAKE STOUT 403B

Male XZ 403B 1813275 April 05 2014

NICHOLS COMMITMENT M380
NICHOLS STOUT T152 AMF CAF NHF DDF 1539804
NICHOLS LULA N77 AMF NHF

HARB PENDLETON 765 J H AMF CAF NHF DDF
PEAKE LADY BLOSSOM 15Y 1604651
SQUAW COULEE LADY BLOSSOM 35R

NICHOLS COMMITMENT K111
NICHOLS BLACK HEIRESS H295
NICHOLS BUSHWACKER K161 AMF
NICHOLS LULA K387

S A V FINAL ANSWER 0035 AMF CAF NHF DDF
H A R B BLACK LADY 375 J H
CRESCENT CREEK BRAVE HEART 35F
SQUAW COULEE LADY BLOSSOM 34K

BW: 97 lbs. Adj. 205D: 822 Jan. 2/15: 963 lbs.

EPDs: BW: +3.9 36% WW: +59 27% YW: +108 21% Milk: +18 18% TM: +48

CE: -9.0 23% MCE: -2.0 13%



PEAKE STOUT 403B

*Come early to view the bulls
& join us for a beef on a bun lunch*



PEAKE STOUT 500B

Male PEA 500B 1778200 CAF April 04 2014

NICHOLS COMMITMENT M380
NICHOLS STOUT T152 AMF CAF NHF DDF 1539804
NICHOLS LULA N77 AMF NHF

BON VIEW BANDO 1245
DEER RIVER IDELETTE 360N CAC 1178693
DEER RIVER IDELETTE 276J

NICHOLS COMMITMENT K111
NICHOLS BLACK HEIRESS H295
NICHOLS BUSHWACKER K161 AMF
NICHOLS LULA K387

BON VIEW BANDO 598 AMF CAC DDF
BON VIEW PRIDE 1551
DEER RIVER BLACK INK 22F
DEER RIVER IDELETTE 187F

BW: 95 lbs. Adj. 205D: 753 Jan. 2/15: 900 lbs.

EPDs: BW: +1.9 P WW: +43 P YW: +87 P Milk: +18 P TM: +39

CE: -6.0 P MCE: +2.0 P



R&W PAYWEIGHT 43B

Male WP 43B 1807753 April 10 2014

VERMILION PAYWEIGHT J847 AMF CAF NHF DDF
BASIN PAYWEIGHT 107S DDF 1770544
BASIN LUCY 3829 AMF NHF

F V 20K KING 308M AMF CAF NHF DDF
SQUAW COULEE SUSIE 51K 1489098
SASKALTA SUSIE 779J

VERMILION DATELINE 7078 AMF CAF NHF DDF
VERMILION LASS 7969
C A FUTURE DIRECTION 5321 AMF CAF NHF DDF
BASIN LUCY 178E

RAFTER S RONAN TEX 20K
QUEEN 362E
JOHNSTON 849E BANDOLIER 264G
SASKALTA SUSIE 779G

BW: 81 lbs. Adj. 205D: 698 Jan. 2/15: 909 lbs.

EPDs: BW: +0.9 37% WW: +56 28% YW: +95 23% Milk: +19 20% TM: +47

CE: +6.0 27% MCE: +11.0 15%



R&W PAYWEIGHT 49B

Male WP 49B 1807757 April 11 2014

VERMILION PAYWEIGHT J847 AMF CAF NHF DDF
BASIN PAYWEIGHT 107S DDF 1770544
BASIN LUCY 3829 AMF NHF

G A R EVAS CONVERGENCE 3403 AMF
DEER RIVER BLACKBIRD 95S 1351091
DEER RIVER TRAVELER 47K

VERMILION DATELINE 7078 AMF CAF NHF DDF
VERMILION LASS 7969
C A FUTURE DIRECTION 5321 AMF CAF NHF DDF
BASIN LUCY 178E

EMULATION N BAR 5522
G A R EVAS R R TRAVELER 511
G D A R TRAVELER 011
DEER RIVER BLACKBIRD 260H

BW: 93 lbs. Adj. 205D: 738 Jan. 2/15: 972 lbs.

EPDs: BW: +2.6 38% WW: +63 29% YW: +102 22% Milk: +18 21% TM: +50

CE: -1.0 28% MCE: +7.0 16%



R&W PAYWEIGHT 59B

Male WP 59B 1821858 April 15 2014

VERMILION PAYWEIGHT J847 AMF CAF NHF DDF
BASIN PAYWEIGHT 107S DDF 1770544
BASIN LUCY 3829 AMF NHF

BAD LANDS AMBUSH 37N
SANDY CREEK JANETTE 42'08 1433695
SANDY CREEK JANETTE 2'97

VERMILION DATELINE 7078 AMF CAF NHF DDF
VERMILION LASS 7969
C A FUTURE DIRECTION 5321 AMF CAF NHF DDF
BASIN LUCY 178E

HIGH VALLEY 4C6 AMBUSH AMF CAF
BAD LANDS LADY 805H
NUGGET 801X OF J R S AMF CAF NHF DDF
SANDY CREEK JANETTE 2'95

BW: 102 lbs. Adj. 205D: 719 Jan. 2/15: 920 lbs.

EPDs: BW: +3.9 37% WW: +57 28% YW: +97 22% Milk: +18 20% TM: +47

CE: -3.0 26% MCE: +7.0 15%

NICHOLS COMMITMENT M380
NICHOLS STOUT T152 AMF CAF NHF DDF 1539804
NICHOLS LULA N77 AMF NHF

BON VIEW BANDO 1245
DEER RIVER IDELETTE 360N CAC 1178693
DEER RIVER IDELETTE 276J

NICHOLS COMMITMENT K111
NICHOLS BLACK HEIRESS H295
NICHOLS BUSHWACKER K161 AMF
NICHOLS LULA K387

BON VIEW BANDO 598 AMF CAC DDF
BON VIEW PRIDE 1551
DEER RIVER BLACK INK 22F
DEER RIVER IDELETTE 187F

BW: 95 lbs. Adj. 205D: 753 Jan. 2/15: 900 lbs.

EPDs: BW: +1.9 P WW: +43 P YW: +87 P Milk: +18 P TM: +39

CE: -6.0 P MCE: +2.0 P



SHIPWHEEL CHINOOK

BW: -1.8 WW: +56 YW: +92 Milk: +30 TM: +58
SCR: +1.36 CE: +18.0 MCE: +18.0

Light birth weights, outstanding calving ease and solid growth backed by generations of calving ease and maternal performance.

28

PEAKE CHINOOK 247B

Male MP 247B 1813466 April 03 2014

H A IMAGE MAKER 0415 AMF CAF NHF DDF
SHIPWHEEL CHINOOK AMF NHF DDF 1582467
APEX ERISKAY 5506

DEER RIVER LEADER 109L
DEER RIVER DUCHESS 251P 1227413
DEER RIVER DUCHESS 26F

HERO 6267 OF R R 2418
H A RITO BLACKCAP 9038
MYTTY IN FOCUS AMF CAF NHF DDF
APEXETTE ERISKAY 3032

CONNELY LEADTIME AMF CAF NHF DDF
DEER RIVER ROSEBUD 93F
DEER RIVER MAXIMUM 7C
DEER RIVER DUCHESS 5X

BW: 84 lbs. Adj. 205D: 709 Jan. 2/15: 863 lbs.

EPDs: BW: +1.9 38% WW: +54 29% YW: +89 21% Milk: +22 21% TM: +49

CE: +9.0 27% MCE: +12.0 15%

29

PEAKE CHINOOK 270B

Male MP 270B 1813475 April 09 2014

H A IMAGE MAKER 0415 AMF CAF NHF DDF
SHIPWHEEL CHINOOK AMF NHF DDF 1582467
APEX ERISKAY 5506

CROWFOOT 6098S
PEAKE VERNICE 6W 1522194
CROWFOOT VERNICE 6535S CAF

HERO 6267 OF R R 2418
H A RITO BLACKCAP 9038
MYTTY IN FOCUS AMF CAF NHF DDF
APEXETTE ERISKAY 3032

O C C LEGACY 839L
CROWFOOT ELINE 3710N
RIDGE BANDO 598-282ET
RED CROWFOOT VERNICE 1082L

BW: 90 lbs. Adj. 205D: 729 Jan. 2/15: 948 lbs.

EPDs: BW: +0.2 37% WW: +50 28% YW: +81 21% Milk: +26 19% TM: +51

CE: +11.0 27% MCE: +12.0 15%

This has always been a high indexing calf and is a real standout.

30

PEAKE CHINOOK 271B

Male MP 271B 1813474 April 09 2014

H A IMAGE MAKER 0415 AMF CAF NHF DDF
SHIPWHEEL CHINOOK AMF NHF DDF 1582467
APEX ERISKAY 5506

BROOKMORE SPECIAL DESIGN 178S
CCL BRIDE 8W 1499666
LLB BRIDE 375P DDF

HERO 6267 OF R R 2418
H A RITO BLACKCAP 9038
MYTTY IN FOCUS AMF CAF NHF DDF
APEXETTE ERISKAY 3032

W C C SPECIAL DESIGN L309 AMF CAF NHF DDF
BROOKMORE BELLA 119H
BON VIEW NEW DESIGN 1407 AMF CAF NHF DDF
ABEL BRIDE 38M

BW: 84 lbs. Adj. 205D: 655 Jan. 2/15: 797 lbs.

EPDs: BW: +0.1 37% WW: +49 28% YW: +79 22% Milk: +19 20% TM: +44

CE: +11.0 27% MCE: +13.0 15%



25

PEAKE CHINOOK 229B

Male MP 229B 1814577 March 28 2014

H A IMAGE MAKER 0415 AMF CAF NHF DDF
SHIPWHEEL CHINOOK AMF NHF DDF 1582467
APEX ERISKAY 5506

REMITALL H RACHIS 21R AMF NHF OSF
CCL BRIDE 33U 1445936
LLB BRIDE 375P DDF

HERO 6267 OF R R 2418
H A RITO BLACKCAP 9038
MYTTY IN FOCUS AMF CAF NHF DDF
APEXETTE ERISKAY 3032

REMITALL NIGHTHAWK 37N
HENDERSON MISSIE 32'02
BON VIEW NEW DESIGN 1407 AMF CAF NHF DDF
ABEL BRIDE 38M

BW: 81 lbs. Adj. 205D: 683 Jan. 2/15: 917 lbs.

EPDs: BW: +0.1 37% WW: +57 28% YW: +99 22% Milk: +24 20% TM: +53

CE: +10.0 28% MCE: +13.0 16%

26

PEAKE CHINOOK 233B

Male MP 233B 1813458 March 30 2014

H A IMAGE MAKER 0415 AMF CAF NHF DDF
SHIPWHEEL CHINOOK AMF NHF DDF 1582467
APEX ERISKAY 5506

CONNELY LEAD ON DMF AMF CAF NHF DDF
COLDSTREAM BLACKBIRD 177Y 1632050
COLDSTREAM BLACKBIRD 53G

HERO 6267 OF R R 2418
H A RITO BLACKCAP 9038
MYTTY IN FOCUS AMF CAF NHF DDF
APEXETTE ERISKAY 3032

CONNELY LEADTIME AMF CAF NHF DDF
ELIGENCE PLUS OF CONANGA
ANGUS ACRES TEX 16S
COLDSTREAM BLACKBIRD 63E

BW: 73 lbs. Adj. 205D: 577 Jan. 2/15: 725 lbs.

EPDs: BW: -0.8 36% WW: +45 27% YW: +78 22% Milk: +20 20% TM: +43

CE: +12.0 29% MCE: +13.0 16%

27

PEAKE CHINOOK 244B

Male MP 244B 1813462 April 02 2014

H A IMAGE MAKER 0415 AMF CAF NHF DDF
SHIPWHEEL CHINOOK AMF NHF DDF 1582467
APEX ERISKAY 5506

CROWFOOT 3770N
CCL BELLE 111U 1446000
HENDERSON BELLE 14'02

HERO 6267 OF R R 2418
H A RITO BLACKCAP 9038
MYTTY IN FOCUS AMF CAF NHF DDF
APEXETTE ERISKAY 3032

O C C HUNTER 928H
CROWFOOT BLACKY 1610L
STANDARD HILL SCOTCH 9440 5J
HENDERSON BELLE 6'95

BW: 95 lbs. Adj. 205D: 685 Jan. 2/15: 893 lbs.

EPDs: BW: +2.0 37% WW: +42 28% YW: +71 22% Milk: +26 20% TM: +47

CE: +5.0 27% MCE: +7.0 15%

31

R&W IMPRINT 6B

Male WP 6B 1807720 March 30 2014

CONNELY IMPRESSION AMF CAF NHF DDF
CONNELY IMPRINT 8317 AMF CAF NHF 1659104
ELLINA OF CONANGA 868 7127

CONNELY REFLECTION AMF CAF NHF DDF
PEARL PAMMY OF CONANGA 194 CAF DDF
G A R GRID MAKER AMF CAF NHF DDF
ELIGENCE PLUS OF CONANGA

S A V FINAL ANSWER 0035 AMF CAF NHF DDF
SANDY CREEK GERTIE 57W 1495413
SANDY CREEK MISS GERTIE 74'03

SITZ TRAVELER 8180 AMF CAF NHF DDF
S A V EMULOUS 8145 CAF
TC ADVANTAGE AMF CAF NHF DDF
R M GERTIE 99'91

BW: 81 lbs.	Adj. 205D: 638	Jan. 2/15: 858 lbs.
EPDs: BW: +0.0	37%	WW: +49 28%
		YW: +83 23%
		Milk: +16 15%
		TM: +41
CE: +9.0	28%	MCE: +14.0 11%

32

R&W IMPRINT 11B

Male WP 11B 1807724 April 03 2014

CONNELY IMPRESSION AMF CAF NHF DDF
CONNELY IMPRINT 8317 AMF CAF NHF 1659104
ELLINA OF CONANGA 868 7127

CONNELY REFLECTION AMF CAF NHF DDF
PEARL PAMMY OF CONANGA 194 CAF DDF
G A R GRID MAKER AMF CAF NHF DDF
ELIGENCE PLUS OF CONANGA

PEAK DOT DYNAMITE 34U
SANDY CREEK BLACKCAP 23/10 1557795
SANDY CREEK BLACKCAP 74'04

MOHNER DYNAMITE 1356 AMF CAF NHF DDF
DIVINA OF PEAK DOT 541S
LEACHMAN RIGHT TIME DMF AMF
SANDY CREEK BLACKCAP 74'00

BW: 95 lbs.	Adj. 205D: 757	Jan. 2/15: 950 lbs.
EPDs: BW: +3.3	37%	WW: +63 27%
		YW: +100 20%
		Milk: +16 14%
		TM: +48
CE: +1.0	26%	MCE: +9.0 10%

This has been a standout bull since birth. Gaining and indexing consistently at the top of the group.



R&W IMPRINT 11B



R&W IMPRINT 17B



CONNEALY IMPRINT 8317

BW: +2.7 WW: +65 YW: +107 Milk: +18 TM: +51
SCR: +1.23 CE: +4 MCE: +12.0

A growth and carcass sire with extra muscle, body length and functional feet and legs.

33

R&W IMPRINT 17B

Male WP 17B 1807728 April 05 2014

CONNELY IMPRESSION AMF CAF NHF DDF
CONNELY IMPRINT 8317 AMF CAF NHF 1659104
ELLINA OF CONANGA 868 7127

CONNELY REFLECTION AMF CAF NHF DDF
PEARL PAMMY OF CONANGA 194 CAF DDF
G A R GRID MAKER AMF CAF NHF DDF
ELIGENCE PLUS OF CONANGA

WINTERING HILLS PERRY 18P
SQUAW COULEE LASS 54U 1429963
SQUAW COULEE LASS 53P

REMITALL LINEBACKER 204L
WHS MADAME 26M
SASKALTA OVERDRIVE 23K
SQUAW COULEE LASS 032L

BW: 90 lbs.	Adj. 205D: 662	Jan. 2/15: 871 lbs.
EPDs: BW: +2.7	37%	WW: +45 28%
		YW: +76 21%
		Milk: +17 15%
		TM: +40
CE: +3.0	25%	MCE: +10.0 10%

Another standout in this sire group.

34

R&W IMPRINT 21B

Male WP 21B 1807736 April 06 2014

CONNELY IMPRESSION AMF CAF NHF DDF
CONNELY IMPRINT 8317 AMF CAF NHF 1659104
ELLINA OF CONANGA 868 7127

CONNELY REFLECTION AMF CAF NHF DDF
PEARL PAMMY OF CONANGA 194 CAF DDF
G A R GRID MAKER AMF CAF NHF DDF
ELIGENCE PLUS OF CONANGA

DEER RIVER BLACK INK 241J
DEER RIVER IDELETTE 404N 1174661
DEER RIVER IDELETTE 19Z

DEER RIVER INK 93G
DEER RIVER MISS BURGESS 4Z
DEER RIVER PARAMOUNT 3X
DEER RIVER IDELETTE 4W

BW: 70 lbs.	Adj. 205D: 622	Jan. 2/15: 798 lbs.
EPDs: BW: -1.7	38%	WW: +37 29%
		YW: +63 21%
		Milk: +14 16%
		TM: +33
CE: +12.0	25%	MCE: +15.0 11%

35

R&W IMPRINT 50B

Male WP 50B 1807759 April 12 2014

CONNELY IMPRESSION AMF CAF NHF DDF
CONNELY IMPRINT 8317 AMF CAF NHF 1659104
ELLINA OF CONANGA 868 7127

CONNELY REFLECTION AMF CAF NHF DDF
PEARL PAMMY OF CONANGA 194 CAF DDF
G A R GRID MAKER AMF CAF NHF DDF
ELIGENCE PLUS OF CONANGA

REMITALL RESISTOR 602R
PEAKE ROSE 256Y 1630281
CROWFOOT H.F. ROSE 6429S

REMITALL NETWORK 1N
CAYMEN ROSE 57'01
SITZ ALLIANCE 9160
HILL FIRE ROSE 153L

BW: 85 lbs.	Adj. 205D: 675	Jan. 2/15: 807 lbs.
EPDs: BW: +3.4	36%	WW: +48 27%
		YW: +81 21%
		Milk: +19 14%
		TM: +43
CE: +2.0	26%	MCE: +9.0 10%

36

R&W IMPRINT 58B

Male WP 58B 1807762 April 15 2014

CONNELLY IMPRESSION AMF CAF NHF DDF
CONNELLY IMPRINT 8317 AMF CAF NHF 1659104
ELLINA OF CONANGA 868 7127

CONNELLY REFLECTION AMF CAF NHF DDF
PEARL PAMMY OF CONANGA 194 CAF DDF
G A R GRID MAKER AMF CAF NHF DDF
ELIGENCE PLUS OF CONANGA

K C F BENNETT TOTAL AMF CAF NHF DDF
PEAKE IDELETTE 118Y 1630174
DEER RIVER IDELETTE 132P

SITZ ALLIANCE 6595 DMF AMF CAF NHF DDF
EXT OF CONANGA 6790
LEACHMAN RIGHT TIME DMF AMF
DEER RIVER IDELETTE 251J

BW: 91 lbs. Adj. 205D: 750 Jan. 2/15: 847 lbs.
EPDs: BW: +2.1 37% WW: +54 28% YW: +89 23% Milk: +19 15% TM: +46
CE: +5.0 28% MCE: +12.0 11%

37

R&W IMPRINT 106B

Male WP 106B 1821859 April 27 2014

CONNELLY IMPRESSION AMF CAF NHF DDF
CONNELLY IMPRINT 8317 AMF CAF NHF 1659104
ELLINA OF CONANGA 868 7127

CONNELLY REFLECTION AMF CAF NHF DDF
PEARL PAMMY OF CONANGA 194 CAF DDF
G A R GRID MAKER AMF CAF NHF DDF
ELIGENCE PLUS OF CONANGA

H A IMAGE MAKER 0415 AMF CAF NHF DDF
SANDY CREEK PRIDE 39'08 1433743
SANDY CREEK BIRDIE 71S

HERO 6267 OF R R 2418
H A RITO BLACKCAP 3038
BAD LANDS AMBUSH 37N
SANDY CREEK BIRDIE 75'04

BW: 100 lbs. Adj. 205D: 713 Jan. 2/15: 849 lbs.
EPDs: BW: +3.3 37% WW: +59 28% YW: +98 23% Milk: +22 15% TM: +52
CE: +2.0 28% MCE: +9.0 11%

38

PEAKE RESUME 246B

Male MP 246B 1813464 April 03 2014

S A V FINAL ANSWER 0035 AMF CAF NHF DDF
BOYD RESUME 9008 AMF CAF NHF DDF 1600064
BOYD FOREVER LADY 5125

SITZ TRAVELER 8180 AMF CAF NHF DDF
S A V EMULOUS 8145 CAF
WULFFS EXT 6106
S V F FOREVER LADY 57D

REMINGTON TOTAL 306S
CCL DUCHESS 14W 1499669
CCL DUCHESS 128T

K C F BENNETT TOTAL AMF CAF NHF DDF
REMINGTON LADY 74P
MVF GRID MAKER 12R
HENDERSON DUCHESS 19'00

BW: 87 lbs. Adj. 205D: 693 Jan. 2/15: 887 lbs.
EPDs: BW: +1.3 37% WW: +51 27% YW: +89 21% Milk: +28 15% TM: +54
CE: +10.0 27% MCE: +13.0 11%

Very classy standout bull. His dam is fleshy, moderate with an excellent udder.

Video Sale - come early to view the bulls on display next to the hall



R&W GOOD TIME 28B

BOYD RESUME 9008

BW: +0.7 WW: +54 YW: +98 Milk: +32 TM: +59
SCR: +0.67 CE: +13.0 MCE: +15.0

Resume carries on the calving ease legacy of Final Answer and the maternal traits of the famous Forever Lady cow family.

39

PEAKE RESUME 265B

Male MP 265B 1819832 April 08 2014

S A V FINAL ANSWER 0035 AMF CAF NHF DDF
BOYD RESUME 9008 AMF CAF NHF DDF 1600064
BOYD FOREVER LADY 5125

SITZ TRAVELER 8180 AMF CAF NHF DDF
S A V EMULOUS 8145 CAF
WULFFS EXT 6106
S V F FOREVER LADY 57D

REMINGTON RIGHT TIME 156R
CCL MISS MORRISON 6U 1445916
CCL MISS MORRISON 53R

LEACHMAN RIGHT TIME DMF AMF
CRESCENT CREEK LASSIE 110E
SCC LONG BOW 34L
HENDERSON MISS MORRISON 40'02

BW: 90 lbs. Adj. 205D: 609 Jan. 2/15: 797 lbs.
EPDs: BW: +3.0 36% WW: +44 27% YW: +79 21% Milk: +25 16% TM: +47
CE: +4.0 25% MCE: +9.0 11%

40

PEAKE RESUME 278B

Male MP 278B 1813479 April 12 2014

S A V FINAL ANSWER 0035 AMF CAF NHF DDF
BOYD RESUME 9008 AMF CAF NHF DDF 1600064
BOYD FOREVER LADY 5125

SITZ TRAVELER 8180 AMF CAF NHF DDF
S A V EMULOUS 8145 CAF
WULFFS EXT 6106
S V F FOREVER LADY 57D

REMINGTON TOTAL 306S
CCL BRIDE 6W 1499663
CCL BRIDE 27T

K C F BENNETT TOTAL AMF CAF NHF DDF
REMINGTON LADY 74P
WA SCOTCH FOCUS 405
LLB BRIDE 375P DDF

BW: 86 lbs. Adj. 205D: 731 Jan. 2/15: 910 lbs.
EPDs: BW: +2.0 37% WW: +55 27% YW: +101 22% Milk: +30 15% TM: +58
CE: +8.0 27% MCE: +11.0 11%

41

R&W GOOD TIME 28B

Male WP 28B 1807740 April 07 2014

LEACHMAN RIGHT TIME DMF AMF
SHEIDAGHAN RIGHT TIME 58Z 1673710
CRESCENT CREEK ROSEBUD 38K

N BAR EMULATION EXT AMF CAF NHF DDF
LEACHMAN ERICA 0025
DOUBLE BAR ROGUE CAF
CRESCENT CREEK ROSEBUD 115F

RED 5L NORSEMAN KING 2291 OSF MAF
CROWFOOT CJ PRINCESS 7702T 1379664
CROWFOOT PRINCESS 3036N

RED VGW KING OF THE WEST OSF MAF
RED NORSEMAN 1312 PJM
O C C JOKER 620J DDF
RED CROWFOOT PRINCESS 647F

BW: 86 lbs. Adj. 205D: 690 Jan. 2/15: 879 lbs.
EPDs: BW: +1.1 34% WW: +39 23% YW: +63 12% Milk: +15 13% TM: +35
CE: +5.0 20% MCE: +8.0 10%

A very classy bull, his pedigree is packed with foundation cow making bulls. Possible red carrier, will have test results by sale day.



42

R&W GOOD TIME 69B

Male WP 69B 1807770 April 17 2014

LEACHMAN RIGHT TIME DMF AMF
SHEDAGHAN RIGHT TIME 58Z 1673710
 CRESCENT CREEK ROSEBUD 38K

K C F BENNETT TOTAL AMF CAF NHF DDF
PEAKE DUCHESS 189Y 1630216
 DEER RIVER DUCHESS 37P

N BAR EMULATION EXT AMF CAF NHF DDF
 LEACHMAN ERICA 0025
 DOUBLE BAR ROGUE CAF
 CRESCENT CREEK ROSEBUD 115F
 SITZ ALLIANCE 6595 DMF AMF CAF NHF DDF
 EXT OF CONANGA 6790
 LEACHMAN RIGHT TIME DMF AMF
 DEER RIVER DUCHESS 20L

BW: 82 lbs.	Adj. 205D: 641	Jan. 2/15: 709 lbs.
EPDs: BW: +1.1	34%	WW: +37 23%
YW: +68 13%	Milk: +16 13%	TM: +35
CE: +6.0 21%	MCE: +11.0 10%	

43

R&W GOOD TIME 78B

Male WP 78B 1807775 April 19 2014

LEACHMAN RIGHT TIME DMF AMF
SHEDAGHAN RIGHT TIME 58Z 1673710
 CRESCENT CREEK ROSEBUD 38K

S A V NET WORTH 4200 AMF CAF NHF DDF
PEAKE ANNIE K 09X 1571222
 6S ANNIE K 11J

N BAR EMULATION EXT AMF CAF NHF DDF
 LEACHMAN ERICA 0025
 DOUBLE BAR ROGUE CAF
 CRESCENT CREEK ROSEBUD 115F
 S A V 8180 TRAVELER 004 DMF DWF AMF CAF NHF OSF DDF
 S A V MAY 2410
 6S KING PIN 4G
 6S ANNIE K 19F

BW: 84 lbs.	Adj. 205D: 680	Jan. 2/15: 817 lbs.
EPDs: BW: +1.3	34%	WW: +39 23%
YW: +68 12%	Milk: +19 13%	TM: +39
CE: +5.0 20%	MCE: +9.0 10%	

44

R&W GOOD TIME 103B

Male WP 103B 1807800 April 26 2014

LEACHMAN RIGHT TIME DMF AMF
SHEDAGHAN RIGHT TIME 58Z 1673710
 CRESCENT CREEK ROSEBUD 38K

DEER RIVER DANDY 244N
PEAKE DANDY 19F 24T 1417067
 6S ANNIE K 19F

N BAR EMULATION EXT AMF CAF NHF DDF
 LEACHMAN ERICA 0025
 DOUBLE BAR ROGUE CAF
 CRESCENT CREEK ROSEBUD 115F
 DEER RIVER TRAVELER 132F
 DEER RIVER BARBARA 58B
 JOHNSTON VALOR 415D
 DOUBLE AA ANNIE K 522'93

BW: 99 lbs.	Adj. 205D: 697	Jan. 2/15: 808 lbs.
EPDs: BW: +3.4	33%	WW: +35 22%
YW: +55 10%	Milk: +14 13%	TM: +32
CE: -1.0 18%	MCE: +7.0 9%	

45

PEAKE HONESTY 203B

Male MP 203B 1806367 February 07 2014

CROWFOOT 9052W
XO CROWFOOT HONESTY 1490Y 1651149
 XO CROWFOOT ERICA 827U

XO CROWFOOT JOKER 8814U
XO CROWFOOT LASS 279Z 1689427
 CROWFOOT GV LASS 6383S

CROWFOOT EQUATION 5793R
 CROWFOOT KELTON 4790P
 H A IMAGE MAKER 0415 AMF CAF NHF DDF
 CROWFOOT ERICA 6313S
 CROWFOOT JOKER 6172S
 CROWFOOT FORKS 699K
 CROWFOOT 2711M
 CROWFOOT FORKS 657K

BW: 78 lbs.	Adj. 205D: 654	Jan. 2/15: 903 lbs.
EPDs: BW: +1.0	34%	WW: +42 22%
YW: +67 10%	Milk: +24 8%	TM: +45
CE: +4.0 23%	MCE: +7.0 7%	

46

PEAKE HONESTY 214B

Male MP 214B 1819831 March 10 2014

CROWFOOT 9052W
XO CROWFOOT HONESTY 1490Y 1651149
 XO CROWFOOT ERICA 827U

REMITALL RESISTOR 602R
XO CROWFOOT PRIDEMERE 2448Z 1702785
 CROWFOOT CJ PRIDEMERE 7720T

CROWFOOT EQUATION 5793R
 CROWFOOT KELTON 4790P
 H A IMAGE MAKER 0415 AMF CAF NHF DDF
 CROWFOOT ERICA 6313S
 REMITALL NETWORK 1N
 CAYMEN ROSE 57'01
 CROWFOOT EQUATION 5793R
 CROWFOOT PRIDEMERE 2609M

BW: 92 lbs.	Adj. 205D: 663	Jan. 2/15: 830 lbs.
EPDs: BW: +2.7	34%	WW: +37 22%
YW: +66 10%	Milk: +23 8%	TM: +42
CE: -3.0 24%	MCE: +1.0 6%	

Bulls will pass a semen breeding soundness evaluation before delivery

47

PEAKE GOLDMERE 201B

Male MP 201B 1806365 Twin February 02 2014

COLE CREEK GOLDMERE 70V
COLE CREEK GOLDMERE 581 1715235
 COLE CREEK JUANADA 92T

CROWFOOT 6758S
XO CROWFOOT MERLE 294Z 1689463
 XO CROWFOOT MERLE 966W

COLE CREEK GOLDMERE 31N
 COLE CREEK CLOVA JUANADA 16N
 COLE CREEK GOLDMERE 31N
 COLE CREEK JUANADA 32P

S A V 004 PREDOMINANT 4438 AMF CAF NHF DDF
 CROWFOOT FORKS 456K
 CROWFOOT JOKER 6172S
 CROWFOOT MERLE 6002S

BW: 65 lbs.	Adj. 205D: 635	Jan. 2/15: 936 lbs.
EPDs: BW: +0.5	P	WW: +38 P
YW: +67 P	Milk: +23 P	TM: +42
CE: +6.0 P	MCE: +6.0 P	

48

PEAKE GOLDMERE 202B

Male MP 202B 1806366 February 05 2014

COLE CREEK GOLDMERE 70V
COLE CREEK GOLDMERE 581 1715235
 COLE CREEK JUANADA 92T

CROWFOOT 6758S
CROWFOOT KAWICH 2083Z 1689418
 CROWFOOT KAWICH 6170S

COLE CREEK GOLDMERE 31N
 COLE CREEK CLOVA JUANADA 16N
 COLE CREEK GOLDMERE 31N
 COLE CREEK JUANADA 32P

S A V 004 PREDOMINANT 4438 AMF CAF NHF DDF
 CROWFOOT FORKS 456K
 O C C LEGACY 839L
 CROWFOOT KAWICH 1758L

BW: 73 lbs.	Adj. 205D: 635	Jan. 2/15: 904 lbs.
EPDs: BW: -1.6	34%	WW: +39 22%
YW: +67 11%	Milk: +23 8%	TM: +43
CE: +10.0 24%	MCE: +8.0 6%	



PEAKE MOMENTO 401B

Male XZ 401B 1806364 February 06 2014

SINCLAIR MEMENTO 8RL5
CHAPMAN MEMENTO 0505X 1571495
CROWFOOT REV ERICA 5752R

SINCLAIR RITO LEGACY 3R9 AMF CAF DDF
SINCLAIR LADY 06S3 4465
O C C JOKER 620J DDF
CROWFOOT ERICA 3906N

H A IMAGE MAKER 0415 AMF CAF NHF DDF
CROWFOOT KAWICH 8118U 1456156
CROWFOOT KAWICH 6170S

HERO 6267 OF RR 2418
H A RITO BLACKCAP 9038
O C C LEGACY 839L
CROWFOOT KAWICH 1758L

BW: 90 lbs.	Adj. 205D: 686	Jan. 2/15: 1030 lbs.
EPDs: BW: +1.1	35% WW: +42	25% YW: +75
		14% Milk: +24
		11% TM: +45
CE: +4.0	20%	MCE: +6.0
		8%

Bulls fed on a low barley & silage ration for proper development



PEAKE CEDAR RIDGE 215B

Male MP 215B 1806371 March 11 2014

COLE CREEK CEDAR RIDGE 1V DMF DWF AMF CAF NHF DDF
COLE CREEK CEDAR RIDGE 181 1715228
COLE CREEK JUANADACAP 42P

COLE CREEK BLACK CEDAR 46P
COLE CREEK CLOVANADA 49S
HBR ENCORE 0544
COLE CREEK JUANADA CAP 882

CROWFOOT EQUATION 5793R
CROWFOOT BLACKY 1140Y 1646291
CROWFOOT BLACKY 6275S

O C C LEGACY 839L
CROWFOOT FORKS 755K
O C C LEGACY 839L
CROWFOOT BLACKY 1610L

BW: 80 lbs.	Adj. 205D: 634	Jan. 2/15: 839 lbs.
EPDs: BW: +0.8	35% WW: +30	24% YW: +62
		13% Milk: +26
		11% TM: +41
CE: +5.0	21%	MCE: +4.0
		8%



PEAKE CEDAR RIDGE 181 222B

Male MP 222B 1813453 March 23 2014

COLE CREEK CEDAR RIDGE 1V DMF DWF AMF CAF NHF DDF
COLE CREEK CEDAR RIDGE 181 1715228
COLE CREEK JUANADACAP 42P

COLE CREEK BLACK CEDAR 46P
COLE CREEK CLOVANADA 49S
HBR ENCORE 0544
COLE CREEK JUANADA CAP 882

CROWFOOT 8022U
XO CROWFOOT LOVEMERE PET 061X 1560968
CROWFOOT 3778N

HILLFIRE LEGACY 422 AMF
CROWFOOT BLACKBIRD 1687L
BASIN EXPEDITION K47
CROWFOOT FORKS 774K

BW: 79 lbs.	Adj. 205D: 596	Jan. 2/15: 799 lbs.
EPDs: BW: +1.9	35% WW: +28	24% YW: +55
		11% Milk: +23
		10% TM: +37
CE: +5.0	20%	MCE: +5.0
		7%



PEAKE BLACK CEDAR 216B

Male MP 216B 1824115 March 18 2014

COLE CREEK BLACK CEDAR 46P
COLE CREEK BLACK CEDAR 1251 1716595
COLE CREEK JUANADA SHE 48T

C H QUANTUM 6247
COLE CREEK CLOVA JUANADA 67
COLE CREEK GOLDMERE 31N
COLE CREEK JUANADA RITA 044

O C C LEGACY 839L
CROWFOOT NELLIE JANE 6136S 1316003
CROWFOOT NELLIE 4834P

O C C ECHOLON 857E DDF
O C C DIXIE ERICA 960E
BASIN EXPEDITION K47
CROWFOOT FORKS 745K

BW: 108 lbs.	Adj. 205D: 724	Jan. 2/15: 982 lbs.
EPDs: BW: +2.0	P WW: +41	P YW: +70
		P Milk: +22
		P TM: +42
CE: +4.5	P	MCE: +3.5
		P

SINCLAIR NET PRESENT VALUE

BW: -1.7 WW: +47 YW: +81 Milk: +27 TM: +51
SCR: +0.09 CE: +12.0 MCE: +12.0

Calving ease in top 4% of breed and low birth weights, excellent disposition with very efficient daughters.



PEAKE NET PRESENT VALUE 420B

Male XZ 420B 1813288 April 10 2014

N BAR PRIME TIME D806 AMF CAF NHF DDF
SINCLAIR NET PRESENT VALUE AMF CAF NHF DDF 1477174
IDEAL 4465 OF 6807 4286 AMF NHF

GARDENS PRIME TIME AMF CAF NHF
N BAR MISS EMULOUS A404 CAF
D H D TRAVELER 6807 AMF NHF
E E 4286 OF IDEAL 2240 1254

BAD LANDS AMBUSH 37N
SANDY CREEK EMULOUS 90W 1495414
SANDY CREEK MISS EMULOUS 79'03

HIGH VALLEY 4C6 AMBUSH AMF CAF
BAD LANDS LADY 805H
LEACHMAN RIGHT TIME DMF AMF
STANDTEST MISS EMULOUS 485J

BW: 80 lbs.	Adj. 205D: 670	Jan. 2/15: 796 lbs.
EPDs: BW: -0.3	37% WW: +41	28% YW: +69
		23% Milk: +19
		21% TM: +40
CE: +10.0	28%	MCE: +11.0
		17%



PEAKE NET PRESENT VALUE 426B

Male XZ 426B 1813294 April 11 2014

N BAR PRIME TIME D806 AMF CAF NHF DDF
SINCLAIR NET PRESENT VALUE AMF CAF NHF DDF 1477174
IDEAL 4465 OF 6807 4286 AMF NHF

GARDENS PRIME TIME AMF CAF NHF
N BAR MISS EMULOUS A404 CAF
D H D TRAVELER 6807 AMF NHF
E E 4286 OF IDEAL 2240 1254

G T MAXIMUM AMF CAF NHF DDF
PEAKE LADY LAWN 27Y 1604645
SQUAW COULEE ANNIE 31N

SCOTCH CAP AMF CAF NHF DDF
GT MISS TRAVELER 58
SASKALTA OVERDRIVE 23K
ANGUS ACRES LADY LAWN 15E

BW: 78 lbs.	Adj. 205D: 678	Jan. 2/15: 781 lbs.
EPDs: BW: +0.1	37% WW: +43	28% YW: +74
		23% Milk: +16
		21% TM: +38
CE: +9.0	29%	MCE: +9.0
		18%



PEAKE NET PRESENT VALUE 432B

Male XZ 432B 1813346 EE April 14 2014

N BAR PRIME TIME D806 AMF CAF NHF DDF
SINCLAIR NET PRESENT VALUE AMF CAF NHF DDF 1477174
IDEAL 4465 OF 6807 4286 AMF NHF

GARDENS PRIME TIME AMF CAF NHF
N BAR MISS EMULOUS A404 CAF
D H D TRAVELER 6807 AMF NHF
E E 4286 OF IDEAL 2240 1254

PEAK DOT HOLLYWOOD 106L
SQUAW COULEE ROSEBUD 31U 1430001
SQUAW COULEE ROSEBUD 22N

PEAK DOT TURBULENCE 69F
MIA OF PEAK DOT 917H
ANGUS ACRES HEADS UP 31D
FV 12U ROSEBUD 54G

BW: 79 lbs.	Adj. 205D: 720	Jan. 2/15:
EPDs: BW: +1.4	37% WW: +48	28% YW: +80
		23% Milk: +16
		21% TM: +40
CE: +7.0	27%	MCE: +9.0
		17%

56

R&W VALUES 60B

Male WP 60B 1807767 April 16 2014

N BAR PRIME TIME D806 AMF CAF NHF DDF
SINCLAIR NET PRESENT VALUE AMF CAF NHF DDF 1477174
IDEAL 4465 OF 6807 4286 AMF NHF

GARDENS PRIME TIME AMF CAF NHF
N BAR MISS EMULOUS A404 CAF
D H D TRAVELER 6807 AMF NHF
E E 4286 OF IDEAL 2240 1254

CROWFOOT 2711M
CROWFOOT GAY PRIDE 6451S 1316276
CROWFOOT FORKS 666K

LEACHMAN RIGHT TIME DMF AMF
GLADWALL B CHLOE 7135
AMITIE ACRES L EXT 1376
GLADWALL B GAY PRIDE 5128

BW: 76 lbs. Adj. 205D: 692 Jan. 2/15: 872 lbs.
EPDs: BW: -1.8 38% WW: +43 29% YW: +71 23% Milk: +19 22% TM: +41
CE: +12.0 28% MCE: +14.0 18%

Guaranteed sleep all night heifer bull.

57

R&W MECHANIC 89B

Male WP 89B 1807787 April 23 2014

CROWFOOT MECHANIC 5789R
WJ MECHANIC 257X 1587912
WJ ERICA 7010T

O C C MAGNUM 749M
CROWFOOT BLACKBIRD 1687L
O C C LEGACY 839L
CROWFOOT FORKS 421K

GDAR GAME DAY 449 AMF CAF NHF DDF
PEAKE BARBARA 048X 1571251
DEER RIVER BARBARA 302N

BOYD NEW DAY 8005 AMF CAF NHF DDF
G D A R MISS WIX 474
DEER RIVER LEADER 109L
DEER RIVER BARBARA 109J

BW: 86 lbs. Adj. 205D: 636 Jan. 2/15: 730 lbs.
EPDs: BW: +0.8 35% WW: +30 24% YW: +58 14% Milk: +16 11% TM: +31
CE: +7.0 21% MCE: +10.0 8%

*Bulls can be vaccinated with
foot rot vaccine at the buyer's request*

58

R&W MECHANIC 90B

Male WP 90B 1807786 April 23 2014

CROWFOOT MECHANIC 5789R
WJ MECHANIC 257X 1587912
WJ ERICA 7010T

O C C MAGNUM 749M
CROWFOOT BLACKBIRD 1687L
O C C LEGACY 839L
CROWFOOT FORKS 421K

S A V FINAL ANSWER 0035 AMF CAF NHF DDF
PEAKE ELSA ERICA 135Y 1630275
WILLABAR ELSA ERICA 243K

SITZ TRAVELER 8180 AMF CAF NHF DDF
S A V EMULOUS 8145 CAF
WILLABAR PIPE LINE 2H
WILLABAR ELSA ERICA 133C

BW: 78 lbs. Adj. 205D: 652 Jan. 2/15: 708 lbs.
EPDs: BW: -0.9 35% WW: +31 24% YW: +55 14% Milk: +14 11% TM: +30
CE: +9.0 21% MCE: +10.0 8%

59

R&W MECHANIC 94B

Male WP 94B 1807788 April 23 2014

CROWFOOT MECHANIC 5789R
WJ MECHANIC 257X 1587912
WJ ERICA 7010T

O C C MAGNUM 749M
CROWFOOT BLACKBIRD 1687L
O C C LEGACY 839L
CROWFOOT FORKS 421K

S A V INITIATIVE 4406 AMF CAF NHF DDF
SANDY CREEK ROYAL LADY 53'08 1437403
SANDY CREEK ROYAL LADY 78'03

S A V 8180 TRAVELER 004 DMF DMF AMF CAF NHF OSF DDF
S A V MISS BOBBIE 0405
LEACHMAN RIGHT TIME DMF AMF
SANDY CREEK ROYAL LADY 26'96

BW: 86 lbs. Adj. 205D: 675 Jan. 2/15: 808 lbs.
EPDs: BW: +1.0 35% WW: +37 24% YW: +65 15% Milk: +15 11% TM: +34
CE: +6.0 20% MCE: +9.0 8%

60

R&W MECHANIC 105B

Male WP 105B 1807799 April 26 2014

CROWFOOT MECHANIC 5789R
WJ MECHANIC 257X 1587912
WJ ERICA 7010T

O C C MAGNUM 749M
CROWFOOT BLACKBIRD 1687L
O C C LEGACY 839L
CROWFOOT FORKS 421K

WINTERING HILLS PERRY 18P
SQUAW COULEE TRADITION 76U 1430167
SQUAW COULEE TRADITION 43R

REMITALL LINEBACKER 204L
WHS MADAME 26M
CRESCENT CREEK BRAVE HEART 35F
JOHNSTON 961C TRADITION 371G

BW: 83 lbs. Adj. 205D: 700 Jan. 2/15: 804 lbs.
EPDs: BW: +0.5 35% WW: +35 24% YW: +58 15% Milk: +16 11% TM: +34
CE: +7.0 19% MCE: +8.0 7%



N Bar
Emulation EXT

Grandsire of
Lots 61, 62 & 63

61

PEAKE EMULATION 266B

Male MP 266B 1813977 April 08 2014

N BAR EMULATION EXT AMF CAF NHF DDF
PEAKE EMULATION EXT 121Z 1671431
YY MEADOW 624S

EMULATION N BAR 5522
N BAR PRIMROSE 2424
CROWFOOT LOGIC 4019P
RED YY MEADOW 424P

K C F BENNETT TOTAL AMF CAF NHF DDF
PEAKE BLACKBIRD 126Y 1630179
DEER RIVER BLACKBIRD 96S

SITZ ALLIANCE 6595 DMF AMF CAF NHF DDF
EXT OF CONANGA 6790
G A R EVAS CONVERGENCE 3403 AMF
DEER RIVER TRAVELER 47K

BW: 75 lbs. Adj. 205D: 589 Jan. 2/15: 740 lbs.
EPDs: BW: -0.8 34% WW: +30 23% YW: +55 14% Milk: +16 12% TM: +31
CE: +9.0 20% MCE: +12.0 9% * Possible Red Carrier

62

RED PEAKE EMULATION 301B

Male MP 301B 1813484 April 17 2014

N BAR EMULATION EXT AMF CAF NHF DDF
PEAKE EMULATION EXT 121Z 1671431
YY MEADOW 624S

EMULATION N BAR 5522
N BAR PRIMROSE 2424
CROWFOOT LOGIC 4019P
RED YY MEADOW 424P

TK QUANTUM PHYSICAL 61P
CROWFOOT BRNDINA 143X 1561074
RED CROWFOOT BRNDINA 5042R

BAD LANDS QUANTUM 066K
RED TK THELMA 237G
RED 5L NORSEMAN KING 2291 OSF MAF
RED CROWFOOT BRNDINA 2149M

BW: 73 lbs. Adj. 205D: 589 Jan. 2/15: 662 lbs.
EPDs: BW: -5.0 31% WW: +27 26% YW: +43 25% Milk: +23 17% TM: +36
CE: +11.0 13% MCE: +7.8 12% * RED ANGUS EPDs

63

PEAKE EMULATION 308B

Male MP 308B 1813972 April 18 2014

N BAR EMULATION EXT AMF CAF NHF DDF
PEAKE EMULATION EXT 121Z 1671431
YY MEADOW 624S

EMULATION N BAR 5522
N BAR PRIMROSE 2424
CROWFOOT LOGIC 4019P
RED YY MEADOW 424P

BROOKMORE SPECIAL DESIGN 178S
CCL TIBBIE 123W 1499754
CCL TIBBIE 81S

W C C SPECIAL DESIGN L309 AMF CAF NHF DDF
BROOKMORE BELLA 119H
WA SCOTCH FOCUS 405
CCL TIBBIE 9N

BW: 92 lbs. Adj. 205D: 608 Jan. 2/15: 768 lbs.
EPDs: BW: +1.9 34% WW: +34 22% YW: +58 13% Milk: +12 11% TM: +29
CE: +2.0 19% MCE: +7.0 8% * Possible Red Carrier



PEAKE 0137X RESISTOR 274B

Male MP 274B 1813477 April 10 2014

REMITALL RESISTOR 602R
PEAKE RESISTOR 0137X AMF CAF NHF 1571230
PEAKE 6228S 6540S 2U

REMITALL NETWORK 1N
CAYMEN ROSE 57'01
CROWFOOT 6228S
CROWFOOT LADY ERICA 6540S

K C F BENNETT TOTAL AMF CAF NHF DDF
PEAKE MISS BURGESS 180Z 1671293
DEER RIVER MISS BURGESS 152N

SITZ ALLIANCE 6595 DMF AMF CAF NHF DDF
EXT OF CONANGA 6790
G D A R TRAVELER 044 AMF CAF NHF DDF
DEER RIVER MISS BURGESS 4Z

BW: 72 lbs.	Adj. 205D: 653	Jan. 2/15: 696 lbs.						
EPDs: BW: -1.0	34%	WW: +32	24%	YW: +52	13%	Milk: +19	10%	TM: +35
CE: +10.0	27%	MCE: +11.0	8%					



PEAKE 0137X RESISTOR 274B



R&W RESISTOR 64B

Male WP 64B 1821771 April 17 2014

REMITALL RESISTOR 602R
PEAKE RESISTOR 0137X AMF CAF NHF 1571230
PEAKE 6228S 6540S 2U

REMITALL NETWORK 1N
CAYMEN ROSE 57'01
CROWFOOT 6228S
CROWFOOT LADY ERICA 6540S

K C F BENNETT TOTAL AMF CAF NHF DDF
PEAKE BARBARA 191Z 1671273
DEER RIVER BARBARA 149N

SITZ ALLIANCE 6595 DMF AMF CAF NHF DDF
EXT OF CONANGA 6790
DEER RIVER TRAVELER 132F
DEER RIVER BARBARA 58B

BW: 75 lbs.	Adj. 205D: 767	Jan. 2/15: 809 lbs.						
EPDs: BW: +0.3	34%	WW: +35	23%	YW: +55	12%	Milk: +20	10%	TM: +38
CE: +8.0	26%	MCE: +10.0	7%					



PEAKE 022X RESISTOR 285B

Male MP 285B 1813982 April 13 2014

REMITALL RESISTOR 602R
PEAKE RESISTOR 0137X AMF CAF NHF 1571230
PEAKE 6228S 6540S 2U

REMITALL NETWORK 1N
CAYMEN ROSE 57'01
CROWFOOT 6228S
CROWFOOT LADY ERICA 6540S

CCL SPECIAL DESIGN 10W
PEAKE RUTH 29Z 1712328
CCL RUTH 32W

BROOKMORE SPECIAL DESIGN 178S
HENDERSON LADY EILEEN 4'03
REMINGTON TOTAL 306S
CCL RUTH 102T

BW: 75 lbs.	Adj. 205D: 615	Jan. 2/15: 690 lbs.						
EPDs: BW: -1.0	34%	WW: +30	22%	YW: +49	13%	Milk: +13	8%	TM: +28
CE: +9.0	23%	MCE: +9.0	5%					



PEAKE RESISTOR 0137X 440B

Male XZ 440B 1813307 April 21 2014

REMITALL RESISTOR 602R
PEAKE RESISTOR 0137X AMF CAF NHF 1571230
PEAKE 6228S 6540S 2U

REMITALL NETWORK 1N
CAYMEN ROSE 57'01
CROWFOOT 6228S
CROWFOOT LADY ERICA 6540S

K C F BENNETT TOTAL AMF CAF NHF DDF
PEAKE MIDDLEBROOK 207Z 1671284
DEER RIVER MIDDLEBROOK 538S

SITZ ALLIANCE 6595 DMF AMF CAF NHF DDF
EXT OF CONANGA 6790
DEER RIVER BASIN 317N
DEER RIVER MIDDLEBROOK 531P

BW: 79 lbs.	Adj. 205D: 666	Jan. 2/15: 714 lbs.						
EPDs: BW: +1.3	33%	WW: +33	23%	YW: +54	12%	Milk: +18	10%	TM: +35
CE: +6.0	26%	MCE: +8.0	7%					



PEAKE 022X RESISTOR 312B

Male MP 312B 1813971 April 19 2014

REMITALL RESISTOR 602R
PEAKE RESISTOR 022X AMF CAF NHF 1585151
WILLABAR BARBARA 126M

REMITALL NETWORK 1N
CAYMEN ROSE 57'01
WILLABAR NEW TREND 188K
WILLABAR BARBARA 116K

REMITALL ROY ROGERS 521R
PEAKE BARDELLA 4Z 1677618
CCL BARDELLA 27R

KMK ALLIANCE 6595 I87 AMF CAF NHF DDF
BACK ROADS MADGE 82C
CROWFOOT 3770N
CCL BARDELLA 7N

BW: 82 lbs.	Adj. 205D: 663	Jan. 2/15: 724 lbs.						
EPDs: BW: +1.6	34%	WW: +35	23%	YW: +59	14%	Milk: +16	9%	TM: +34
CE: +2.0	23%	MCE: +4.0	6%					



PEAKE RESISTOR 022X 441B

Male XZ 441B 1813308 April 22 2014

REMITALL RESISTOR 602R
PEAKE RESISTOR 0137X AMF CAF NHF 1571230
PEAKE 6228S 6540S 2U

REMITALL NETWORK 1N
CAYMEN ROSE 57'01
CROWFOOT 6228S
CROWFOOT LADY ERICA 6540S

SANDY CREEK RITO 83/10
PEAKE ERROLINE 261Z 1697968
SANDY CREEK ERROLINE 48'08

SINCLAIR RITO LEGACY 3R9 AMF CAF DDF
SANDY CREEK ANNIE K 80S
H A IMAGE MAKER 0415 AMF CAF NHF DDF
SANDY CREEK ERROLINE 87S

BW: 72 lbs.	Adj. 205D: 663	Jan. 2/15: 721 lbs.						
EPDs: BW: +1.8	32%	WW: +37	22%	YW: +59	11%	Milk: +20	8%	TM: +39
CE: +4.0	24%	MCE: +6.0	6%					



PEAKE RESISTOR 022X 442B

Male XZ 442B 1813309 April 22 2014

REMITALL RESISTOR 602R
PEAKE RESISTOR 022X AMF CAF NHF 1585151
WILLABAR BARBARA 126M

REMITALL NETWORK 1N
CAYMEN ROSE 57'01
WILLABAR NEW TREND 188K
WILLABAR BARBARA 116K

LEMAR DAKOTA GOLD 18T AMF CAF NHF DDF
PEAKE PRIDE 109Z 1671449
CROWFOOT PRIDE 6310S

MYTTY IN FOCUS AMF CAF NHF DDF
LEMAR PEGGY 74R
O C C LEGACY 839L
CROWFOOT PRIDE 3901N

BW: 76 lbs.	Adj. 205D: 646	Jan. 2/15: 675 lbs.						
EPDs: BW: +0.7	33%	WW: +29	23%	YW: +52	14%	Milk: +18	9%	TM: +33
CE: +8.0	24%	MCE: +6.0	6%					



PEAKE PENDLETON 4Y 438B

Male XZ 438B 1813305 April 18 2014

HARB PENDLETON 765 J H AMF CAF NHF DDF
PEAKE PENDLTON 4Y AMF CAF NHF 1604665
SQUAW COULEE ROSEBUD 52U

S A V FINAL ANSWER 0035 AMF CAF NHF DDF
H A R B BLACK LADY 375 J H
PEAK DOT HOLLYWOOD 106L
F V 43G ROSEBUD 129J

CRESCENT CREEK BRAVE HEART 35F
SQUAW COULEE MISS JIMBO 9T 1371141
BRIMAR MISS JIMBO 18F

RITO 8094 PRAIRIELANE 2060 AMF
CRESCENT CREEK BLACKCAP 112A
RONAN GIANT 4C
RONAN R MISS JIMBO 28D

BW: 71 lbs. Adj. 205D: 678 Jan. 2/15: 827 lbs.

EPDs: BW: -0.6 33% WW: +44 22% YW: +70 13% Milk: +18 12% TM: +40

CE: +9.0 18% MCE: +10.0 8%



PEAKE PENDLETON 4Y 461B

Male XZ 461B 1813322 May 08 2014

HARB PENDLETON 765 J H AMF CAF NHF DDF
PEAKE PENDLTON 4Y AMF CAF NHF 1604665
SQUAW COULEE ROSEBUD 52U

S A V FINAL ANSWER 0035 AMF CAF NHF DDF
H A R B BLACK LADY 375 J H
PEAK DOT HOLLYWOOD 106L
F V 43G ROSEBUD 129J

PEAK DOT DYNAMITE 34U
SANDY CREEK JANETTE 19/10 1557823
SANDY CREEK JANETTE 42'08

MOHNNEN DYNAMITE 1356 AMF CAF NHF DDF
DIVINA OF PEAK DOT 541S
BAD LANDS AMBUSH 37N
SANDY CREEK JANETTE 2'97

BW: 94 lbs. Adj. 205D: 743 Jan. 2/15: 771 lbs.

EPDs: BW: +3.4 34% WW: +55 22% YW: +90 12% Milk: +19 11% TM: +47

CE: +2.0 19% MCE: +7.0 8%



PEAKE NET PENDLTON 445B

Male XZ 445B 1821066 April 25 2014

HARB PENDLETON 765 J H AMF CAF NHF DDF
PEAKE PENDLTON 4Y AMF CAF NHF 1604665
SQUAW COULEE ROSEBUD 52U

S A V FINAL ANSWER 0035 AMF CAF NHF DDF
H A R B BLACK LADY 375 J H
PEAK DOT HOLLYWOOD 106L
F V 43G ROSEBUD 129J

N BAR EMULATION EXT AMF CAF NHF DDF
PEAKE EXT 7S 1359634
6S DUCHESS 11H

EMULATION N BAR 5522
N BAR PRIMROSE 2424
IDEAL 1418 OF 8103 4286 AMF CAF NHF DDF
6S DUCHESS 1D

BW: 93 lbs. Adj. 205D: 776 Jan. 2/15: 879 lbs.

EPDs: BW: +3.3 33% WW: +54 23% YW: +85 15% Milk: +21 13% TM: +48

CE: +1.0 20% MCE: +9.0 9%



PEAKE DENSITY 250Z 458B

Male XZ 458B 1813320 May 06 2014

S A V 004 DENSITY 4336 AMF CAF NHF DDF
PEAKE DENSITY 250Z 1671315
DEER RIVER IDELETTE 132P

S A V 8180 TRAVELER 004 DMF DWF AMF CAF NHF OSF DDF
S A V MAY 7238 CAF DDF
LEACHMAN RIGHT TIME DMF AMF
DEER RIVER IDELETTE 251J

MYTTY IN FOCUS AMF CAF NHF DDF
SQUAW COULEE MARYLEE 3W 1489037
SQUAW COULEE BLOSSOM 35T

S A F FOCUS OF E R AMF CAF NHF DDF
MYTTY COUNTNESS 906
CRESCENT CREEK BRAVE HEART 35F
SQUAW COULEE LADY BLOSSOM 34K

BW: 86 lbs. Adj. 205D: 732 Jan. 2/15: 775 lbs.

EPDs: BW: +1.4 33% WW: +48 22% YW: +80 14% Milk: +20 13% TM: +44

CE: +7.0 21% MCE: +9.0 10%



PEAKE PENDLETON 4Y 450B

Male XZ 450B 1813315 May 01 2014

HARB PENDLETON 765 J H AMF CAF NHF DDF
PEAKE PENDLTON 4Y AMF CAF NHF 1604665
SQUAW COULEE ROSEBUD 52U

S A V FINAL ANSWER 0035 AMF CAF NHF DDF
H A R B BLACK LADY 375 J H
PEAK DOT HOLLYWOOD 106L
F V 43G ROSEBUD 129J

PEAK DOT DYNAMITE 34U
SANDY CREEK COUNTNESS 11/10 1557777
SANDY CREEK COUNTNESS 7'01

MOHNNEN DYNAMITE 1356 AMF CAF NHF DDF
DIVINA OF PEAK DOT 541S
N BAR EMULATION EXT AMF CAF NHF DDF
LSC MISS COUNTNESS 14'92

BW: 86 lbs. Adj. 205D: 779 Jan. 2/15: 825 lbs.

EPDs: BW: +1.9 34% WW: +58 22% YW: +88 12% Milk: +20 11% TM: +49

CE: +4.0 19% MCE: +9.0 8%



PEAKE DENSITY 250Z 459B

Male XZ 459B 1813321 May 07 2014

S A V 004 DENSITY 4336 AMF CAF NHF DDF
PEAKE DENSITY 250Z 1671315
DEER RIVER IDELETTE 132P

S A V 8180 TRAVELER 004 DMF DWF AMF CAF NHF OSF DDF
S A V MAY 7238 CAF DDF
LEACHMAN RIGHT TIME DMF AMF
DEER RIVER IDELETTE 251J

CRESCENT CREEK BRAVE HEART 35F
SQUAW COULEE LADY LAWN 7W 1489041
SQUAW COULEE ANNIE 30P

RITO 8094 PRAIRIELANE 2060 AMF
CRESCENT CREEK BLACKCAP 112A
KLUZAK TRAVELER 158E
ANGUS ACRES LADY LAWN 15E

BW: 98 lbs. Adj. 205D: 720 Jan. 2/15: 741 lbs.

EPDs: BW: +3.3 33% WW: +40 22% YW: +59 14% Milk: +19 13% TM: +39

CE: +0.0 19% MCE: +4.0 9%



PEAKE THRILLER 283B

Male MP 283B 1824095 April 12 2014

SOUTHLAND THRILLER 83X
SOUTHLAND THRILLER 15Z 1663058
SOUTHLAND BARBARA 16L

SOUTHLAND TWO FIFTY 250T
SOUTHLAND BELLE 89R
N BAR EMULATION EXT AMF CAF NHF DDF
SOUTHLAND BARBARA 117J

CROWFOOT 3770N
CCL BARDELLA 27R 1279608
CCL BARDELLA 7N

O C C HUNTER 928H
CROWFOOT BLACKY 1610L
S A F FOCUS OF E R AMF CAF NHF DDF
LLB BARDELLA 165L

BW: 70 lbs. Adj. 205D: 548 Jan. 2/15: 723 lbs.

EPDs: BW: +4.0 P WW: +31 P YW: +56 P Milk: +16 P TM: +32

CE: -3.0 P MCE: +3.0 P

*Free delivery up to 500 km
Please bring this catalog with you to the Sale*



78

R&W RITO 4B

Male WP 4B 1807718 March 29 2014

SANDY CREEK RITO 75/10
PEAKE RITO 188Z 1705207
SANDY CREEK PRIDE 51'08

SINCLAIR RITO LEGACY 3R9 AMF CAF DDF
SANDY CREEK JANETTE 4'05
S A V INITIATIVE 4406 AMF CAF NHF DDF
SANDY CREEK PRIDE 5'05

PEAKE FINAL ANSWER 027X
PEAKE PRINCESS 318Z 1694480
CROWFOOT CJ PRINCESS 7702T

S A V FINAL ANSWER 0035 AMF CAF NHF DDF
CROWFOOT LADY 6057S
RED 5L NORSEMAN KING 2291 MAF
CROWFOOT PRINCESS 3036N

BW: 63 lbs. Adj. 205D: 733 Jan. 2/15: 716 lbs.
EPDs: BW: -2.3 32% WW: +46 20% YW: +77 11% Milk: +20 7% TM: +43
CE: +13.0 22% MCE: +12.0 5%

Lot 78 to 82 are sons of Peake Rito 188Z who is a moderate, easy fleshing bull. Half sisters are proving to be feminine, good footed and productive cows.



79

R&W RITOZ 14B

Male WP 14B 1807726 April 5 2014

SANDY CREEK RITO 75/10
PEAKE RITO 188Z 1705207
SANDY CREEK PRIDE 51'08

SINCLAIR RITO LEGACY 3R9 AMF CAF DDF
SANDY CREEK JANETTE 4'05
S A V INITIATIVE 4406 AMF CAF NHF DDF
SANDY CREEK PRIDE 5'05

B P F SPECIAL FOCUS 504 AMF CAF NHF DMF DDF
PEAKE BLOSSOM 184Z 1671482
SQUAW COULEE BLOSSOM 2P

MYTTY IN FOCUS AMF CAF NHF DDF
B P F BLACK CASH 341
CRESCENT CREEK BRAVE HEART 35F
SQUAW COULEE BLOSSOM 5M

BW: 93 lbs. Adj. 205D: 774 Jan. 2/15: 873 lbs.
EPDs: BW: +3.3 33% WW: +55 21% YW: +95 12% Milk: +22 9% TM: +50
CE: +0.0 23% MCE: +3.0 7%



Peake Branding



80

R&W RITOZ 31B

Male WP 31B 1807743 April 8 2014

SANDY CREEK RITO 75/10
PEAKE RITO 188Z 1705207
SANDY CREEK PRIDE 51'08

SINCLAIR RITO LEGACY 3R9 AMF CAF DDF
SANDY CREEK JANETTE 4'05
S A V INITIATIVE 4406 AMF CAF NHF DDF
SANDY CREEK PRIDE 5'05

B P F SPECIAL FOCUS 504 AMF CAF NHF DMF DDF
PEAKE TRADITION 232Z 1671493
SQUAW COULEE TRADITION 61T

MYTTY IN FOCUS AMF CAF NHF DDF
B P F BLACK CASH 341
CRESCENT CREEK BRAVE HEART 35F
SQUAW COULEE TRADITION 1P

BW: 98 lbs. Adj. 205D: 830 Jan. 2/15: 931 lbs.
EPDs: BW: +3.5 33% WW: +55 21% YW: +95 12% Milk: +24 9% TM: +52
CE: +3.0 23% MCE: +59.0 7%



81

R&W RITOZ 32B

Male WP 32B 1807744 April 8 2014

SANDY CREEK RITO 75/10
PEAKE RITO 188Z 1705207
SANDY CREEK PRIDE 51'08

SINCLAIR RITO LEGACY 3R9 AMF CAF DDF
SANDY CREEK JANETTE 4'05
S A V INITIATIVE 4406 AMF CAF NHF DDF
SANDY CREEK PRIDE 5'05

CROWFOOT 9087W
PEAKE PEARL 190Z 1671475
PEAKE PEARL 013X

CROWFOOT 6758S
CROWFOOT ZARA 6508S
S A V FINAL ANSWER 0035 AMF CAF NHF DDF
PEAKE PEARL 6471S

BW: 96 lbs. Adj. 205D: 786 Jan. 2/15: 824 lbs.
EPDs: BW: -0.3 32% WW: +52 20% YW: +89 11% Milk: +22 7% TM: +48
CE: +8.0 23% MCE: +11.0 5%



82

R&W RITOZ 71B

Male WP 71B 1807773 April 19 2014

SANDY CREEK RITO 75/10
PEAKE RITO 188Z 1705207
SANDY CREEK PRIDE 51'08

SINCLAIR RITO LEGACY 3R9 AMF CAF DDF
SANDY CREEK JANETTE 4'05
S A V INITIATIVE 4406 AMF CAF NHF DDF
SANDY CREEK PRIDE 5'05

B P F SPECIAL FOCUS 504 AMF CAF NHF DMF DDF
PEAKE BLACK CAP 314Z 1694476
SQUAW COULEE BLACK CAP 32R

MYTTY IN FOCUS AMF CAF NHF DDF
B P F BLACK CASH 341
CRESCENT CREEK BRAVE HEART 35F
SQUAW COULEE BLACK CAP

BW: 72 lbs. Adj. 205D: 707 Jan. 2/15: 805 lbs.
EPDs: BW: +0.3 33% WW: +51 21% YW: +90 12% Milk: +22 9% TM: +48
CE: +10.0 22% MCE: +10.0 7%

Terms & Conditions

TERMS OF SALE: The terms of the sale are cash or cheque, payable at par at the sale location. The right of property shall not pass until after settlement has been made; no invoicing on buyers in attendance, unless previous arrangements have been made. Every animal sells to the highest bidder and in case of disputes, the auctioneer's decision will be final. We reserve the right to withhold animals from export shipment for whom payments have not been received prior to departure times.

BREEDING GUARANTEE: All purebred cattle are sound and right and sell with a responsible breeder guarantee of satisfaction. In the event of any unlikely dispute, the regular terms and conditions, standard with the Canadian Aberdeen Angus Association, shall apply. The consignors will not, however, provide replacement or adjustment for physical injury or mismanagement. We therefore stress the importance of insurance on bulls. At no time shall the seller's liability exceed the purchase price of any animal.

CATTLE INSPECTION: All carry identity tags, corresponding to Sale Lot Numbers. All shall be available for inspection prior to the sale.

ANNOUNCEMENTS: Errors discovered in the catalogue will be corrected from the auction stand at sale time and will take precedence over the printed matter in the catalogue.

SIGHT UNSEEN BIDS: May be entrusted in complete confidence to any of the consignors, sale staff listed or to Douglas J. Henderson & Associates Ltd.

INSURANCE: Ownership risk to purchaser commences when the Auctioneer's hammer falls. Livestock coverage will be available at the clerks desk from representatives on Sale Day, also from the Sales Management.

ALL PERSONS who attend the Sale do so at their own risk, and the owners, Management and Sale Staff assume no liability, legal or otherwise, for property loss or for any accidents that may occur.

DjH Douglas J. Henderson
& Associates Ltd.

P.O. BOX 5900, LACOMBE, ALBERTA T4L 1X4



RETURN POSTAGE GUARANTEED
PORT DE RETOUR GARANTI

PEAKE RANCHING

1st Annual

Bull Sale

Ranch Raised... Ranch Ready



Monday
MARCH 9
2015

*1 pm at the Homestead Loulee Hall
55.7 km East of Drumheller on Hwy. 570*