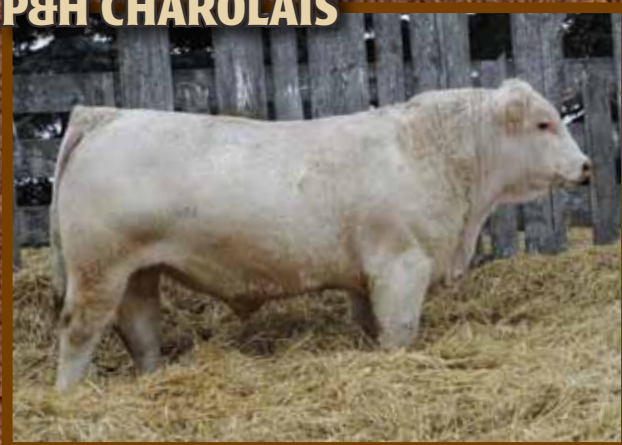


P&H RANCHING CO. LTD.

and Guests

**BULL & RANCH
HORSE
SALE**

P&H CHAROLAIS



CIRCLE G SIMMENTALS & ANGUS



ALKALI LAKE ANGUS



Saturday, February 21, 2015

2:00 PM

Innisfail Auction Market

Welcome Friends and Fellow Cattlemen

We would like to extend a sincere thank you to all who attended our annual bull sale these past years and helping to make them such a success. We truly appreciate your loyalty and the confidence shown in our bull program and look forward to your continued support.

As many of you are aware we were hit with a striking blow this spring; the sudden passing of Duane has left a massive hole in our lives which will never be filled. It was his vision to host a bull and gelding sale each year that would bring together some of the country's best cattlemen and horsemen and offer for sale some of the best genetics available. It's our belief he accomplished that. His philosophy was to create a cowherd that consists of functional low maintenance females that produce the type of bulls that will make the difference for you at weaning time. There is no doubt that Duane's eye for great cattle let us accomplish that as well. This is a tradition of excellence we are determined to carry on. Our family would like to extend a huge thank-you for all the help and support that we've received since Duane's passing. It has been very comforting and appreciated.

Despite our hardships there is not a better time to be in the cattle business and to see everyone rewarded for their efforts is most gratifying. Those crossbred calves are pushing down the scales and pushing up the pay cheques. Last fall we were able to see some of our customers' calves sell and it was evident that our bulls are doing the job they were meant to do.

We have an exceptional set of 2 year old Charolais bulls with some of the same proven genetics as we have offered in the past as well as some new blood lines that we are sure you will want to take advantage of. Our bulls are fed for "long term value". Our feeding program is designed to grow our bulls to accentuate muscle development and performance without adding excessive fat that may jeopardize fertility and soundness. Carcass data is available in the catalogue and the Charolais bulls will be genetically tested for leptin and tenderness. These results will be available by the end of January and posted sale day.

We would like to thank our sale partners Garth Cutler and Adam Schierman for all their help and support this past year. We really believe in their programs and they will be bringing a top notch set of bulls to the sale again this year.

The ranch horses on offer come from some of the finest horsemen in the business; if you are in need of an all-around ranch horse then this is the sale you need to attend.

We look forward to seeing everyone sale day and in true Duane fashion we extend to you an invitation to drop by, have a coffee and view the bulls prior to the sale.

See you Sale day
P&H Ranching (NFAC)



View this catalogue online at ["innisfailauctionmarket.com"](http://innisfailauctionmarket.com)

P&H RANCHING CO. LTD.

BULL & RANCH HORSE SALE

Guest Consignors:
Circle G Simmentals & Angus
Alkali Lake Angus

February 21, 2015 • 2:00 p.m.
Innisfail Auction Market, Innisfail, AB

112 BULLS SELL

- 63 2 Year Old Charolais Bulls**
- 23 Black & Red Simmental Yearlings 1 - 2 Year Old**
- 8 Red Angus Yearlings**
- 18 Black Angus Yearlings**
- 11 Broke Ranch Horses**

Sale Day Phone: 403-227-3166

Corrine: 403-396-9694 Garth: 403-304-0896
Phillip: 403-597-6337 Adam: 403-348-1476

Auctioneer: Valley Auction Ltd.

Don Raffan - 250-546-9420
Cell: 250-558-6789

Special Representatives:

Charolais Banner/Connection
Craig Scott

Canadian Angus Assoc.

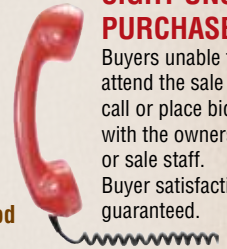
Commercial Fieldman - Maternal Good

Sales Staff/Buyer Representatives:

Jack Daines403-227-3166
Danny Daines.....403-391-0580
Mark Daines403-227-1720
Peter Raffan (BC Rep)250-260-0758
Joe Ferris (BC Rep)250-558-8745
Grant Ellefson403-501-9707
Clayton Cole403-845-8655
Duane Daines403-886-4004
Jim Palmer (Quantum Genetics) ..403-660-0643
Cassie Sullivan (USA Rep)..... 514-519-8074

SIGHT UNSEEN PURCHASES

Buyers unable to attend the sale may call or place bids with the owners or sale staff. Buyer satisfaction guaranteed.



Insurance Available Sale Day

**Canadian Farm
Insurance**
Monica Czech
780-733-7715

A light lunch & refreshments will be served prior to the sale.

"Beef Supper and Social to Follow the Sale"

P&H Ranching Co. Ltd.

Corrine Parsonage Ph: 403-227-2348
Phillip Hofer Ph: 403-597-6337
email: phranch@telus.net Innisfail, AB

Circle G Simmentals & Angus

Garth Cutler Ph: 403-304-0896
email: circleg@telus.net Lacombe, AB

Alkali Lake Angus

Adam Schierman Ph: 403-348-1476
e-mail: alkali_lake_farms@hotmail.com

DUANE PARSONAGE

(1955 - 2014)

"It's not the years in your life that count. It's the life in your years" - Abraham Lincoln

Duane's love of cattle, horses and the cowboy way of life came at a very early age. He had a strong love of animals and raising livestock. It was in his blood.

He always strived for the best, whether it was in 4-H showing cattle, steer riding or bareback riding, judging cattle shows or fitting the bulls for the Calgary Bull Sale. It certainly showed with the ribbons, trophies and banners he brought home.

As far back as one can remember all Duane wanted to do was "raise cattle and sell bulls". The spring bull sale was the highlight of his year and presenting the bulls on sale day was his time to shine. Hard work and dedication was about to pay off.

It was his chance to reconnect with old friends and customers, and shake the hand or have a coffee with new ones. It truly was the social aspect of the business that meant the most to Duane. He could strike up a conversation with anyone, anywhere... meeting people from all over the world on his travels. It would often lead to a new bull customer and a lasting friendship.

Duane would always go out of his way to make everyone feel welcome. As many of you know a stop at the farm could lead to a "quick cup of coffee" that often took more than 2 hours and then another half an hour to say good bye at the truck. He was quite a character and his sense of humor was a bit outlandish at times but he loved being with people and he loved to laugh.

With cattle prices above and beyond our wildest expectations it is heart breaking that he is not here to witness them. This is the big payoff for all of those that persevered through the tough times in the industry. He would be so delighted with the bright future that lies ahead for the cattle industry.

His commitment and dedication to our operation will never be matched. He instilled in all of us the desire to do the very best job possible, stay true to one's beliefs and always look after our customers. And we will. We will continue down the road with his enthusiasm and optimism.

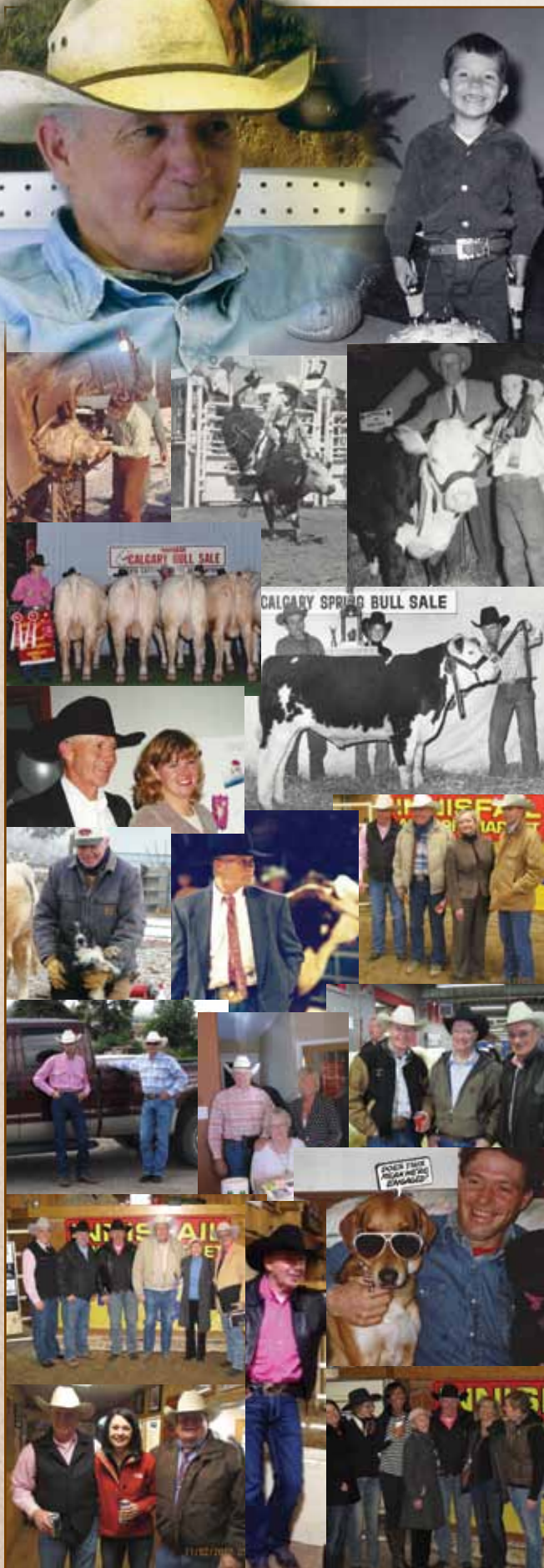
"People will forget what you said, people will forget what you did, but people will never forget how you made them feel"

Thank You

Alkali Lake Angus

For the generous donation of the Angus Heifer being donated in Duane's memory.

See page 48 for details on the Donation Heifer





Lot 1

1

PH TEN-ACIOUS 27A

PMC359507 PH 27A 28-Mar-13

KEYS MCTENDER 279P
KEYS TEN-ACIOUS 166S
 MISS KEY MAYBELL 73N

LT WESTERN SPUR 2061 PLD
PH MS SPUR 22S
 PH DELLA RIO 813H

KEYS MCHENRY 24M
 KEYS ABE 70C
 KEYS HANDYMAN PLD 255H
 LTC MAYBELLINE 539 PLD
 EATONS PREDICTOR 9230
 LT MAIDEN'S BREEZE 8242P
 VISA'S DEL RIO 2X
 PH DELLA RIO 211B

	BW: 90 lbs	Adj 205: 735 lbs	WPDA: 3.15			
2014 EPD's:	BW: 0.3	WW: 46.8	YW: 81.9	Milk: 14.2	TM: 37.6	
2014 Carcass	Marb: 3.3	BF: 3.86	REA in^2: 13.33	REA/100#: 1.19	%LMY: 65.64	

Out cross pedigree with quality and style - AICA ranks his sire in the top 4% for WW and YW and the top 1% for REA - Long, deep and smooth 27A is sure to make changes in anyone's herd

WHITE, SILVER or BUCKSKIN . . .



THE PROOF IS IN THE PAY CHEQUE



Lot 2

2

PH BANNER 98A

PMC354465 PH 98A 15-Apr-13

JSR TROPHY 88T
PH BANNER 107X
 PH COWGIRL 39R

MAUNGAHINA TOWKAY T13
PH MS TOWKAY 54S
 PH CLEO 6L

JSR TRUMP 7N
 JSR KNOCKOUT 93M
 PH COWTOWN PLD 13M
 PH CLEO 22L
 BULLS M07
 MAUNGAHINA PRINCESS 2 L23
 SVC HEZA TARGETPOWER 25E
 RGJ MISS GLENVIEW 65D

	BW: 95 lbs	Adj 205: 507 lbs	WPDA: 2.48			
2014 EPD's:	BW: 3.8	WW: 30.6	YW: 62.2	Milk: 27.9	TM: 43.2	
2014 Carcass	Marb: 4	BF: 2.38	REA in^2: 12.96	REA/100#: 1.18	%LMY: 66.84	

Muscle and marbling - add depth and performance



Lot 3

3

PH KID ROCK 12A

PMC354437 PH 12A 23-Mar-13

SVY FREEDOM PLD 307N
GERRARD KID ROCK 31X
 GERRARD ROXANNE 18P

MAUNGAHINA TOWKAY T13
PH MS TOWKAY 13S
 PH CLEO 918J

HFCC PLD EVOLUTION 5L
 SVY PURRFECT 184L
 RPJ IMPRESSED 121L
 GERRARD ROXANNE 27M
 BULLS M07
 MAUNGAHINA PRINCESS 2 L23
 SVC HEZA TARGETPOWER 25E
 PH DELLA RIO 510E

	BW: 104 lbs	Adj 205: 711 lbs	WPDA: 2.96			
2014 EPD's:	BW: 5	WW: 60.8	YW: 102.7	Milk: 22.7	TM: 53.1	
2014 Carcass	Marb: 3.7	BF: 2	REA in^2: 11.45	REA/100#: 1.11	%LMY: 66.01	

Top 1% in the breed for WW and top 10% for YW



Lot 4

4

PH BANNER 110A

PMC354472 PH 110A 21-Apr-13

JSR TROPHY 88T
PH BANNER 107X
PH COWGIRL 39R

LVV FOCUS 1N
LVV FOCUS 609U
LVV BUCKAROO 619P

JSR TRUMP 7N
JSR KNOCKOUT 93M
PH COWTOWN PLD 13M
PH CLEO 22L
MISTY CREEK FOCUS 5F
HOPE ANNIES GIRL 103L
BKJ BUCKAROO 836H
LVV BRONSON 621K

	BW: 92 lbs	Adj 205: 629 lbs	WPDA: 3.08			
2014 EPD's:	BW: 2.7	WW: 41	YW: 77.6	Milk: 24	TM: 44.5	
2014 Carcass	Marb: 4	BF: 2.38	REA in^2: 11.61	REA/100#: 1.14	%LMY: 65.75	

110A comes from one of our best LVV cows – add extra length of body – moves well he should cover a lot of ground



Lot 5

5

PH KID ROCK 140A

PMC354485 PH 140A 12-May-13

SVY FREEDOM PLD 307N
GERRARD KID ROCK 31X
GERRARD ROXANNE 18P

PH COWTOWN PLD 13M
PH COWGIRL 5T
PH CLEO 63M

HFCC PLD EVOLUTION 5L
SVY PURRFECT 184L
RPJ IMPRESSED 121L
GERRARD ROXANNE 27M
SNAKE VALLEY TRIBUE 5J
PH CLEO 918J
SVC HEZA TARGETPOWER 25E
PH DELLA RIO 215B

	BW: 100 lbs	Adj 205: 713 lbs	WPDA: 3.56			
2014 EPD's:	BW: 3.9	WW: 53.2	YW: 91.5	Milk: 26.8	TM: 53.4	
2014 Carcass	Marb: 4	BF: 2.38	REA in^2: 12.54	REA/100#: 1.25	%LMY: 66.5	

Great carcass data on this youngster - Sits in the top 10% and 15% for WW & YW and top 2% on total maternal



Lot 6

6

PH WISHBONE 129A

PMC354479 PH 129A 01-May-13

KEYS SPECIALIST 18U
KEYS WISHBONE 40Y
MISS KEY BISKIT 108S

JSR TROPHY 88T
PH TATUM 30X
PH CLEO 38L

KEYS TEN-ACIOUS 166S
MISS KEY KRISTEN 63K
CEDER SPRINT 901-Y
MISS KEY BISKIT 177L
JSR TRUMP 7N
JSR KNOCKOUT 93M
SVC HEZA TARGETPOWER 25E
PH DAWNA RIO 415D

	BW: 93 lbs	Adj 205: 694 lbs	WPDA: 3.24			
2014 EPD's:	BW: 2.5	WW: 50.3	YW: 91.6	Milk: 17.5	TM: 42.7	
2014 Carcass	Marb: 3.6	BF: 1.9	REA in^2: 13.42	REA/100#: 1.36	%LMY: 67.7	

Loads of meat and muscle here - 129A has great carcass numbers - sure to make a difference in anyone's calf crop



Lot 7

7

PH PERSONA 153A

PMC354493 PH 153A 04-Jun-13

LT EASY BLEND 5125 PLD
LT PERSONA 0328P
T MAXINE 2365 PLD

JDF BLUE BOY 757
PH TANA BREEZE 43W
PH MS TOWKAY 55S

LT UNLIMITED EASE 9108
LT BRENDA 1014 PLD
EATONS ASSERT 9171
LT MAXINE 9022 PLD
LT BLUEGRASS 4017 P
JDF ICEY IMAGE 015
MAUNGAHINA TOWKAY T13
PH CLEO 31L

	BW: 95 lbs	Adj 205: 757 lbs	WPDA: 3.77			
2014 EPD's:	BW: 3	WW: 48.3	YW: 87.8	Milk: 19.2	TM: 43.4	
2014 Carcass	Marb: 4	BF: 2.38	REA in^2: 11.13	REA/100#: 1.13	%LMY: 65.36	

A real outcross pedigree here - ranked 3rd in our 2013 bull calf crop - meat, muscle and loads of dark red pigment. His mother is soon to be one of our top producers



Lot 8

8

PH WISHBONE 20A

PMC353368 PH 20A 27-Mar-13

KEYS SPECIALIST 18U
KEYS WISHBONE 40Y
MISS KEY BISKIT 108S

PH WYOMING WIND PLD 50P
PH KAYCEE 32S
PH WHITE PEARL 57M

KEYS TEN-ACIOUS 166S
MISS KEY KRISTEN 63K
CEDER SPRINT 901-Y
MISS KEY BISKIT 177L
LT WYOMING WIND 4020 PLD
PH CLEO 817H
SNAKE VALLEY TRIBUE 5J
PH CLEO 858H

	BW: 94 lbs	Adj 205: 656 lbs	WPDA: 3.16			
2014 EPD's:	BW: 1.9	WW: 46	YW: 82.5	Milk: 18.2	TM: 41.2	
2014 Carcass	Marb: 3.55	BF: 2.92	REA in^2: 13.93	REA/100#: 1.38	%LMY: 67.09	

20A is a smooth complete bull with moderate birth weight. His cow family is one of our best



Lot 9

9

PH CHALLENGER 51A

MC354453 PH 51A 01-Apr-13

PH WYOMING WIND 33P
PH CHALLENGER 7X
PH LIBBY 8R

PH COWTOWN PLD 13M
PH COWGIRL 56T
PH CLEO 958J

LKPR CHALLENGER 208M
PH CLEO 41L
HBSF LIBERTY 59N
PH PRIMA DAWNA 723G
SNAKE VALLEY TRIBUE 5J
PH CLEO 918J
SVC HEZA TARGETPOWER 25E
PH DAWNA RIO 433D

	BW: 84 lbs	Adj 205: 697 lbs	WPDA: 3.37			
2014 EPD's:	BW: 0.6	WW: 46.8	YW: 81.2	Milk: 21.4	TM: 44.8	
2014 Carcass	Marb: 4	BF: 1.43	REA in^2: 13.39	REA/100#: 1.34	%LMY: 68.17	

Easy calving and super carcass numbers. Thickness and depth of body will add pounds to your calves - and a great disposition



Lot 10

10

PH WISHBONE 104A

PMC354468 PH 104A 18-Apr-13

KEYS SPECIALIST 18U
KEYS WISHBONE 40Y
MISS KEY BISKIT 108S

HBSF LIBERTY 59N
PH LIBBY 6T
PH KAYCEE 21P

KEYS TEN-ACIOUS 166S
MISS KEY KRISTEN 63K
CEDER SPRINT 901-Y
MISS KEY BISKIT 177L
MVX COUGARHILL HANK 720G
HBSF PRAIRIE WIND 2J
LKPR CHALLENGER 208M
PH CLEO 945J

	BW: 90 lbs	Adj 205: 721 lbs	WPDA: 3.53			
2014 EPD's:	BW: 1.1	WW: 49.5	YW: 86.7	Milk: 19.1	TM: 43.9	
2014 Carcass	Marb: 3.7	BF: 2.46	REA in^2: 12.86	REA/100#: 1.2	%LMY: 66.69	

These Wishbone calves show loads of length and thickness. A strong top line and long loin area - note the great hair coats - has a 115 weaning index



Lot 11

11

PH WISHBONE 99A

PMC354466 PH 99A 15-Apr-13

KEYS SPECIALIST 18U
KEYS WISHBONE 40Y
MISS KEY BISKIT 108S

HBSF LIBERTY 59N
PH LIBBY 45R
PH CLEO 34M

KEYS TEN-ACIOUS 166S
MISS KEY KRISTEN 63K
CEDER SPRINT 901-Y
MISS KEY BISKIT 177L
MVX COUGARHILL HANK 720G
HBSF PRAIRIE WIND 2J
SVC HEZA TARGETPOWER 25E
PH DELLA RIO 509E

	BW: 97 lbs	Adj 205: 704 lbs	WPDA: 3.43			
2014 EPD's:	BW: 2.4	WW: 50.9	YW: 90.8	Milk: 19.9	TM: 45.4	
2014 Carcass	Marb: 3.9	BF: 1.55	REA in^2: 13.61	REA/100#: 1.27	%LMY: 68.23	

Marbling and REA this bull has meat and muscle to add pounds and carcass quality - great disposition from one of our best cows.



Lot 12

12

LVV CHALLENGER 25A

MC359582 LVV 25A 31-Mar-13

LKPR CHALLENGER 208M
PH WYOMING WIND 54W
 PH CLEO 15K

DBAR FULL BORE 202M
LVV BALDRIDGE 8P
 LVV BRONSON 12K

LT WYOMING WIND 4020 PLD
 GPA LUSTY LADY 69H
 SVC HEZA TARGETPOWER 25E
 PH MISS ARROWHEAD 444D
 BALDRIDGE FASTTRACK 82F
 DBAR MS JACKSON 650F
 LGRR BRONSON 14G
 LVV CHAR 26F

	BW: 105 lbs	Adj 205: 700 lbs	WPDA: 3.41		
2014 EPD's:	BW: 2.0	WW: 43	YW: 77	Milk: 23	TM: 45
2014 Carcass	Marb: 3.9	BF: 3.39	REA in^2: 12.31	REA/100#: 1.1	%LMY: 65.29

Long deep bodied and smooth through the shoulders - A brother to Albion Ridge Colony in 2013 sale



Lot 13

13

LVV CHALLENGER 2A

Not Papered LVV 2A March 10, 2013

LKPR CHALLENGER 208M
PH WYOMING WIND 54W
 PH CLEO 15K

LVV FOCUS 1N
LVV 13T - P/B NOT REGISTERED
 LVV 21N

LT WYOMING WIND 4020 PLD
 GPA LUSTY LADY 69H
 SVC HEZA TARGET POWER 25E
 PH MISS ARROWHEAD 444D
 MISTY CREEK FOCUS 5F
 HOPE ANNIE'S GIRL 103L
 LVV 612K
 LVV CHER 16E

	BW: 105 lbs	Adj 205: 710 lbs	WPDA: 3.46		
2014 EPD's:	BW: NA	WW: NA	YW: NA	Milk: NA	TM: NA
2014 Carcass	Marb: 4.55	BF: 3.33	REA in^2: 12.93	REA/100#: 1.07	%LMY: 65.85

Brothers to this bull have sold to High River Colony and Church Ranches in past sales - his mother never lets one down - full of red meat



LT Wyoming Wind 4020PLD

A strong Wind influence can be found throughout the cowherd. Use his genetics to improve disposition, scrotal and vigor at birth.

14

PH WISHBONE 26A

QPMC354443 PH 26A 28-Mar-13

KEYS SPECIALIST 18U
KEYS WISHBONE 40Y
 MISS KEY BISKIT 108S

GOOD ANCHOR PROGRESS606S
LVV PROGRESS 21U
 LVV WHITEHOT 13R

KEYS TEN-ACIOUS 166S
 MISS KEY KRISTEN 63K
 CEDER SPRINT 901-Y
 MISS KEY BISKIT 177L
 HILLVIEW PROGRESS 414P
 GOOD ANCHOR FESTUS 418P
 BERICH PLD HOTSHOT 117L
 LVV BRONSON 17L

	BW: 100 lbs	Adj 205: 664 lbs	WPDA: 3.2		
2014 EPD's:	BW: 2.4	WW: 49.3	YW: 91.7	Milk: 19.7	TM: 44.4
2014 Carcass	Marb: 3.7	BF: 2.62	REA in^2: 12.78	REA/100#: 1.2	%LMY: 66.46

Red factor bull that's long, deep with a super hair coat. His mother weans one of the top calves each year.



Lot 15

15

PH WISHBONE 65A

PMC354457 PH 65A 06-Apr-13

KEYS SPECIALIST 18U
KEYS WISHBONE 40Y
 MISS KEY BISKIT 108S

SVC HEZA TARGETPOWER 25E
PH CLEO 945J
 P&H DELLA RIO 6Z

KEYS TEN-ACIOUS 166S
 MISS KEY KRISTEN 63K
 CEDER SPRINT 901-Y
 MISS KEY BISKIT 177L
 SVC TARGET POWER 18C
 SVC SHEZA MICK 290B
 VISA'S DEL RIO 27X
 KRITTERS COTTONCANDY 706W

	BW: 92 lbs	Adj 205: 586 lbs	WPDA: 2.82		
2014 EPD's:	BW: 1.5	WW: 43.5	YW: 79.5	Milk: 20.9	TM: 42.7
2014 Carcass	Marb: 4.4	BF: 2.86	REA in^2: 13.24	REA/100#: 1.35	%LMY: 66.59

From the same great cow family as lot 10 - long bodied and super marbling - moderate birth weight



Lot 16

16

PH BANNER 45A

MC354448 PH 45A 01-Apr-13

JSR TROPHY 88T
PH BANNER 107X
 PH COWGIRL 39R

 PH TARGET POWER 33K
PH CLEO 3P
 PH DELLA RIO 823H

JSR TRUMP 7N
 JSR KNOCKOUT 93M
 PH COWTOWN PLD 13M
 PH CLEO 22L
 SVC HEZA TARGETPOWER 25E
 PH PRIMA DAWNA 116A
 VISA'S DEL RIO 2X
 PH MISS GOOD TIMES 401D

	BW: 105 lbs	Adj 205: 675 lbs	WPDA: 3.21			
2014 EPD's:	BW: 4.5	WW: 39.2	YW: 77	Milk: 27	TM: 46.6	
2014 Carcass	Marb: 4.05	BF: 3.39	REA in^2: 13.27	REA/100#: 1.23	%LMY: 66.07	

Maternal brother to our '09 Calgary Grand champion to Church Ranches - loads of marbling and big REA - his calves will really push the scale down



Every P&H bull is backed by a quality dam

17

PH WISHBONE 13A

PMC354438 PH 13A 24-Mar-13

KEYS SPECIALIST 18U
KEYS WISHBONE 40Y
 MISS KEY BISKIT 108S

 LKPR CHALLENGER 208M
PH KAYCEE 63T
 PH CLEO 26L

KEYS TEN-ACIOUS 166S
 MISS KEY KRISTEN 63K
 CEDER SPRINT 901-Y
 MISS KEY BISKIT 177L
 LT WYOMING WIND 4020 PLD
 GPA LUSTY LADY 69H
 SVC HEZA TARGETPOWER 25E
 PH DELLA RIO 804H

	BW: 90 lbs	Adj 205: 726 lbs	WPDA: 3.5			
2014 EPD's:	BW: 1.3	WW: 53.5	YW: 93.9	Milk: 16.9	TM: 43.7	
2014 Carcass	Marb: 4.1	BF: 1.86	REA in^2: 12.2	REA/100#: 1.08	%LMY: 66.76	

A strong top and length of body are typical of our Wishbone calves. Great numbers with a moderate birth weight

18

LVV CHALLENGER 17A

MC359601 LVV 17A 23-Mar-13

LKPR CHALLENGER 208M
PH WYOMING WIND 54W
 PH CLEO 15K

 BERICH PLD HOTSHOT 117L
LVV 608S
 LVV CHAPS 622L

LT WYOMING WIND 4020 PLD
 GPA LUSTY LADY 69H
 SVC HEZA TARGETPOWER 25E
 PH MISS ARROWHEAD 444D
 HTA WHITEHOT 105A
 P-3 LADY DESIGNER 6-196F
 EXL FORTRESS 648F
 LVV STING 926D

	BW:109 lbs	Adj 205: 740 lbs	WPDA: 3.61			
2014 EPD's:	BW: 2.9	WW: 46	YW: 88	Milk: 21.1	TM: 44	
2014 Carcass	Marb: 4.1	BF: 2.86	REA in^2: 14.31	REA/100#: 1.05	%LMY: 67.46	

The heaviest bull on weigh day – he is long and smooth - tremendous carcass numbers

19

LVV CHALLENGER 10A

MC359579 LVV 10A 20-Mar-13

LKPR CHALLENGER 208M
PH WYOMING WIND 54W
 PH CLEO 15K

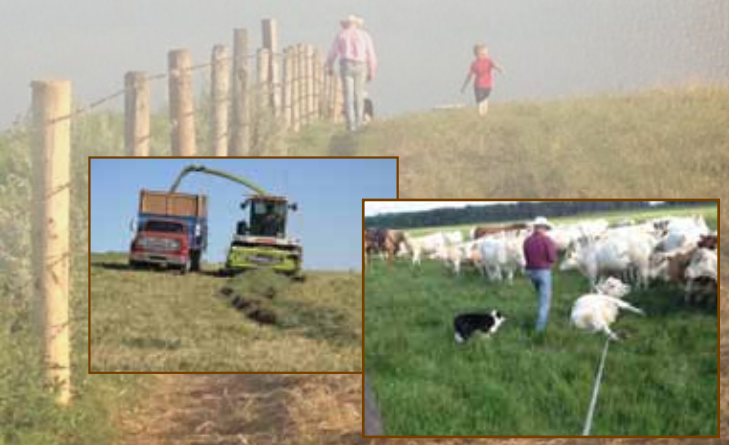
 LVV HAWK 606K
LVV BLACKHAWK 5P
 LVV PEUGEOT 10L

LT WYOMING WIND 4020 PLD
 GPA LUSTY LADY 69H
 SVC HEZA TARGETPOWER 25E
 PH MISS ARROWHEAD 444D
 CHARDEL BLACKHAWK 633F
 LVV CHAIRLADY 616A
 DBAR MAJESTIC 920J
 LVV CHAIRLADY 16G

	BW: 96 lbs	Adj 205: 645 lbs	WPDA: 3.14			
2014 EPD's:	BW: 3.3	WW: 43	YW: 77	Milk: 20.1	TM: 42	
2014 Carcass	Marb: 3.6	BF: 2	REA in^2: 12.23	REA/100#: 1.15	%LMY: 66.64	



The only way to do great work is to love what you do. -Steve Jobs



20

PH CHALLENGER 3A

Not Papered PH 3A March 20, 2013

PH WYOMING WIND 33P
PH CHALLENGER 7X
PH LIBBY 8R

HBSF LIBERTY 59N
PH LIBBY 43U - P/B NOT REGISTERED
PH CLEO 29P

LKPR CHALLENGER 208M
PH CLEO 41L
HBSF LIBERTY 59N
PH PRIMA DAWNA 723G
MVX COUGERHILL HANK 720G
HBSF PRAIRIE WIND 2J
PH TARGET POWER 33K
PH MISS DOOLEY 36K

	BW: 90 lbs		Adj 205: 715 lbs		WPDA: 3.49	
2014 EPD's:	BW: NA	WW: NA	YW: NA	Milk: NA	TM: NA	
2014 Carcass	Marb: 4	BF: 1.55	REA in^2: 11.57	REA/100#: 1.16	%LMY: 66.56	

This non-papered cow has never let us down, son in last years sale to Rey Creek

21

PH CHALLENGER 53A

PMC354447 PH 53A 02-Apr-13

PH WYOMING WIND 33P
PH CHALLENGER 7X
PH LIBBY 8R

PH COWTOWN PLD 13M
PH COWGIRL 50R
PH CLEO 57L

LKPR CHALLENGER 208M
PH CLEO 41L
HBSF LIBERTY 59N
PH PRIMA DAWNA 723G
SNAKE VALLEY TRIBUE 5J
PH CLEO 918J
SVC HEZA TARGETPOWER 25E
PH RIO LADY 712G

	BW: 90 lbs		Adj 205: 656 lbs		WPDA: 3.18	
2014 EPD's:	BW: 2	WW: 47.4	YW: 85.4	Milk: 23.1	TM: 46.8	
2014 Carcass	Marb: 3.75	BF: 1.43	REA in^2: 12.21	REA/100#: 1.27	%LMY: 67.21	

Long and deep with good numbers - Sired by PH 7X the high seller in our 2012 bull sale to White Lake Colony



A GOOD BULL IS THE SMARTEST INVESTMENT A COWMAN CAN MAKE

Bulls have the greatest economic impact on any breeding program. Therefore bull selection is one of the most important decisions that a cowman makes. A bull sires 20 to 40 calves each year while a cow produces a fraction of that total in her lifetime. The old saying "He's at least half of the calf crop if he's good and all of the calf crop if he's bad" applies more than ever now because every pound counts. For years after a herd bull is gone his genetics either work for you or against you. It's been estimated that 80% of herd improvement is directly attributed to bull selection.

22

PH WISHBONE 35A

PMC354441 PH 35A 30-Mar-13

KEYS SPECIALIST 18U
KEYS WISHBONE 40Y
MISS KEY BISKIT 108S

LVV FOCUS 1N
LVV FOCUS 613T
LVV PEUGEOT 618N

KEYS TEN-ACIOUS 166S
MISS KEY KRISTEN 63K
CEDER SPRINT 901-Y
MISS KEY BISKIT 177L
MISTY CREEK FOCUS 5F
HOPE ANNIES GIRL 103L
DBAR MAJESTIC 920J
LVV ICETTE 912D

	BW: 92 lbs		Adj 205: 635 lbs		WPDA: 3.07	
2014 EPD's:	BW: 2.4	WW: 46.7	YW: 83.8	Milk: 14.7	TM: 38.1	
2014 Carcass	Marb: 4.6	BF: 2.46	REA in^2: 11.92	REA/100#: 1.18	%LMY: 65.92	

23

PH WISHBONE 83A

PMC354460 PH 83A 10-Apr-13

KEYS SPECIALIST 18U
KEYS WISHBONE 40Y
MISS KEY BISKIT 108S

LKPR CHALLENGER 208M
PH KAYCEE 14U
PH CLEO 15K

KEYS TEN-ACIOUS 166S
MISS KEY KRISTEN 63K
CEDER SPRINT 901-Y
MISS KEY BISKIT 177L
LT WYOMING WIND 4020 PLD
GPA LUSTY LADY 69H
SVC HEZA TARGETPOWER 25E
PH MISS ARROWHEAD 444D

	BW: 96 lbs		Adj 205: 684 lbs		WPDA: 3.33	
2014 EPD's:	BW: 2.7	WW: 49.7	YW: 89.5	Milk: 19	TM: 43.9	
2014 Carcass	Marb: 4	BF: 2.86	REA in^2: 13.91	REA/100#: 1.27	%LMY: 67.13	

24

PH PERSONA 149A

PMC354487 PH 149A 28-May-13

LT EASY BLEND 5125 PLD
LT PERSONA 0328P
LT MAXINE 2365 PLD

PH WYOMING WIND 33P
PH KAYCEE 49X
PH CLEO 3L

LT UNLIMITED EASE 9108
LT BRENDA 1014 PLD
EATONS ASSERT 9171
LT MAXINE 9022 PLD
LKPR CHALLENGER 208M
PH CLEO 41L
SVC HEZA TARGETPOWER 25E
PH DELLA RIO 616F

	BW: 91 lbs		Adj 205: 694 lbs		WPDA: 3.32	
2014 EPD's:	BW: 2.7	WW: 49.5	YW: 89.8	Milk: 16.9	TM: 41.7	
2014 Carcass	Marb: 3.9	BF: 3.39	REA in^2: 12.77	REA/100#: 1.34	%LMY: 65.66	

25

PH BANNER 105A

MC354469 PH 105A 19-Apr-13

JSR TROPHY 88T
PH BANNER 107X
PH COWGIRL 39R

LKPR CHALLENGER 208M
PH KAYCEE 63U
PH CLEO 38L

JSR TRUMP 7N
JSR KNOCKOUT 93M
PH COWTOWN PLD 13M
PH CLEO 22L
LT WYOMING WIND 4020 PLD
GPA LUSTY LADY 69H
SVC HEZA TARGETPOWER 25E
PH DAWNA RIO 415D

	BW: 100 lbs		Adj 205: 588 lbs		WPDA: 2.88	
2014 EPD's:	BW: 3.6	WW: 36.7	YW: 72.9	Milk: 25.5	TM: 43.9	
2014 Carcass	Marb: 4.45	BF: 2.46	REA in^2: 12.21	REA/100#: 1.21	%LMY: 66.16	

26

PH BANNER 80A

MC354459 PH 80A 09-Apr-13

JSR TROPHY 88T
PH BANNER 107X
PH COWGIRL 39R

PH COWTOWN PLD 13M
PH COWGIRL 16P
PH DELLA RIO 814H

JSR TRUMP 7N
JSR KNOCKOUT 93M
PH COWTOWN PLD 13M
PH CLEO 22L
SNAKE VALLEY TRIBUE 5J
PH CLEO 918J
VISA'S DEL RIO 2X
PH PRIMA DAWNA 116A

	BW: 95 lbs	Adj 205: 685 lbs	WPDA: 3.29		
2014 EPD's:	BW: 1.7	WW: 38.6	YW: 73.4	Milk: 29.4	TM: 48.7
2014 Carcass	Marb: 3.6	BF: 1.43	REA in^2: 11.48	REA/100#: 1.1	%LMY: 66.62

27

PH BANNER 113A

MC354474 PH 113A 23-Apr-13

JSR TROPHY 88T
PH BANNER 107X
PH COWGIRL 39R

LVV FOCUS 1N
FVV FOCUS 603U
LVV PEUGEOT 642P

JSR TRUMP 7N
JSR KNOCKOUT 93M
PH COWTOWN PLD 13M
PH CLEO 22L
MISTY CREEK FOCUS 5F
HOPE ANNIES GIRL 103L
DBAR MAJESTIC 920J
LVV CHER 955E

	BW: 94 lbs	Adj 205: 609 lbs	WPDA: 2.98		
2014 EPD's:	BW: 3.7	WW: 40.4	YW: 76.9	Milk: 23.3	TM: 43.5
2014 Carcass	Marb: 4.4	BF: 1.9	REA in^2: 10.83	REA/100#: 1.1	%LMY: 65.6

28

PH PERSONA 112A

PMC354473 PH 112A 23-Apr-13

LT EASY BLEND 5125 PLD
LT PERSONA 0328P
LT MAXINE 2365 PLD

LKPR CHALLENGER 208M
PH KAYCEE 10W
PH MISS CADETTE 535E

LT UNLIMITED EASE 9108
LT BRENDA 1014 PLD
EATONS ASSERT 9171
LT MAXINE 9022 PLD
LT WYOMING WIND 4020 PLD
GPA LUSTY LADY 69H
VISA'S CADET 6U
MISS ARROWHEAD 18S

	BW: 94 lbs	Adj 205: 659 lbs	WPDA: 3.16		
2014 EPD's:	BW: 2.9	WW: 39.8	YW: 77.7	Milk: 17.2	TM: 37.1
2014 Carcass	Marb: 4.3	BF: 1.43	REA in^2: 10.78	REA/100#: 1.17	%LMY: 66.05

29

PH KAYCEE 10A

PMC354444 PH 10A 23-Mar-13

PH WYOMING WIND 33P
PH CHALLENGER 7X
PH LIBBY 8R

LKPR CHALLENGER 208M
PH KAYCEE 60T
PH CLEO 35K

LKPR CHALLENGER 208M
PH CLEO 41L
HBSF LIBERTY 59N
PH PRIMA DAWNA 723G
LT WYOMING WIND 4020 PLD
GPA LUSTY LADY 69H
SVC HEZA TARGETPOWER 25E
PH PRIMA DAWNA 221B

	BW: 97 lbs	Adj 205: 601 lbs	WPDA: 2.89		
2014 EPD's:	BW: 3.3	WW: 48.2	YW: 85.9	Milk: 18.1	TM: 42.2
2014 Carcass	Marb: 4.1	BF: 2	REA in^2: 9.95	REA/100#: 0.99	%LMY: 64.79

30

PH WISHBONE 96A

PMC354464 PH 96A 15-Apr-13

KEYS SPECIALIST 18U
KEYS WISHBONE 40Y
MISS KEY BISKIT 108S

PH WYOMING WIND 33P
PH KAYCEE 27U
PH MISS CADETTE 535E

KEYS TEN-ACIOUS 166S
MISS KEY KRISTEN 63K
CEDER SPRINT 901-Y
MISS KEY BISKIT 177L
LKPR CHALLENGER 208M
PH CLEO 41L
VISA'S CADET 6U
MISS ARROWHEAD 18S

	BW: 89 lbs	Adj 205: 602 lbs	WPDA: 2.94		
2014 EPD's:	BW: 1	WW: 40.6	YW: 76.9	Milk: 16	TM: 36.3
2014 Carcass	Marb: 4.3	BF: 1.9	REA in^2: 12.25	REA/100#: 1.23	%LMY: 66.76

31

PH CHALLENGER 57A

MC354454 PH 57A 04-Apr-13

PH WYOMING WIND 33P
PH CHALLENGER 7X
PH LIBBY 8R

SVC HEZA TARGETPOWER 25E
PH CLEO 3L
PH DELLA RIO 616F

LKPR CHALLENGER 208M
PH CLEO 41L
HBSF LIBERTY 59N
PH PRIMA DAWNA 723G
SVC TARGET POWER 18C
SVC SHEZA MICK 290B
VISA'S DEL RIO 2X
PH PRIMA DAWNA 127A

	BW: 94 lbs	Adj 205: 588 lbs	WPDA: 2.81		
2014 EPD's:	BW: 2.7	WW: 43.8	YW: 78.1	Milk: 17.9	TM: 39.8
2014 Carcass	Marb: 3.8	BF: 1.43	REA in^2: 12	REA/100#: 1.15	%LMY: 67.04

32

PH PERSONA 156A

MC354494 PH 156A 13-Jun-13

LT EASY BLEND 5125 PLD
LT PERSONA 0328P
LT MAXINE 2365 PLD

HBSF LIBERTY 59N
PH LIBBY 21U
PH CLEO 8N

LT UNLIMITED EASE 9108
LT BRENDA 1014 PLD
EATONS ASSERT 9171
LT MAXINE 9022 PLD
MVX COUGARHILL HANK 720G
HBSF PRAIRIE WIND 2J
SVC HEZA TARGETPOWER 25E
PH DELLA RIO 814H

	BW: 88 lbs	Adj 205: 551 lbs	WPDA: 2.86		
2014 EPD's:	BW: 1.3	WW: 34.5	YW: 66.3	Milk: 21.2	TM: 38.5
2014 Carcass	Marb: 4	BF: 2.86	REA in^2: 13.11	REA/100#: 1.65	%LMY: 66.48

33

LVV CHALLENGER 30A

MC359578 LVV 30A 04-Apr-13

LKPR CHALLENGER 208M
PH WYOMING WIND 54W
PH CLEO 15K

DBAR MAJESTIC 920J
LVV PEUGEOT 618N
LVV ICETTE 912D

LT WYOMING WIND 4020 PLD
GPA LUSTY LADY 69H
SVC HEZA TARGETPOWER 25E
PH MISS ARROWHEAD 444D
2UP PEUGEOT ET
EXL SABRINA 1002A
LCC MIRAGE 58P
LVV CYRANO ECLAIR 120T

	BW: 104 lbs	Adj 205: 615 lbs	WPDA: 3.41		
2014 EPD's:	BW: 3	WW: 41	YW: 74	Milk: 20.1	TM: 40
2014 Carcass	Marb: 4.3	BF: 1.55	REA in^2: 11.53	REA/100#: 1.09	%LMY: 66.53

34

PH KID ROCK 88A

PMC354461 PH 88A 10-Apr-13

SVY FREEDOM PLD 307N
GERRARD KID ROCK 31X
 GERRARD ROXANNE 18P

LKPR CHALLENGER 208M
PH KAYCEE 88W
 PH MISS DOOLEY 48L

HFCC PLD EVOLUTION 5L
 SVY PURRFECT 184L
 RPJ IMPRESSED 121L
 GERRARD ROXANNE 27M
 LT WYOMING WIND 4020 PLD
 GPA LUSTY LADY 69H
 SPRUCEVILLE LAD 68F
 YSD TASHA MAGNUM 9106Y

	BW: 90 lbs	Adj 205: 660 lbs	WPDA: 3.13			
2014 EPD's:	BW: 2.5	WW: 49.4	YW: 84.4	Milk: 21.9	TM: 46.6	
2014 Carcass	Marb: 4.5	BF: 2	REA in^2: 11.79	REA/100#: 1.15	%LMY: 66.29	

35

PH KID ROCK 95A

PMC354463 PH 95A 15-Apr-13

SVY FREEDOM PLD 307N
GERRARD KID ROCK 31X
 GERRARD ROXANNE 18P

LKPR CHALLENGER 208M
PH KAYCEE 26W
 PH CLEO 38L

HFCC PLD EVOLUTION 5L
 SVY PURRFECT 184L
 RPJ IMPRESSED 121L
 GERRARD ROXANNE 27M
 LT WYOMING WIND 4020 PLD
 GPA LUSTY LADY 69H
 SVC HEZA TARGETPOWER 25E
 PH DAWNA RIO 415D

	BW: 100 lbs	Adj 205: 629 lbs	WPDA: 2.99			
2014 EPD's:	BW: 4.2	WW: 52.3	YW: 90.5	Milk: 20.3	TM: 46.5	
2014 Carcass	Marb: 4.55	BF: 1.43	REA in^2: 9.99	REA/100#: 1.05	%LMY: 65.4	

36

PH KID ROCK 102A

PMC354467 PH 102A 17-Apr-13

SVY FREEDOM PLD 307N
GERRARD KID ROCK 31X
 GERRARD ROXANNE 18P

JSR TROPHY 88T
PH TATUM 86X
 PH KAYCEE 60T

HFCC PLD EVOLUTION 5L
 SVY PURRFECT 184L
 RPJ IMPRESSED 121L
 GERRARD ROXANNE 27M
 JSR TRUMP 7N
 JSR KNOCKOUT 93M
 LKPR CHALLENGER 208M
 PH CLEO 35K

	BW: 90 lbs	Adj 205: 640 lbs	WPDA: 2.95			
2014 EPD's:	BW: 3.3	WW: 51.2	YW: 90.1	Milk: 22.1	TM: 47.7	
2014 Carcass	Marb: 4.3	BF: 3.33	REA in^2: 10.79	REA/100#: 1.14	%LMY: 64.11	

37

PH KID ROCK 138A

PMC354484 PH 138A 09-May-13

SVY FREEDOM PLD 307N
GERRARD KID ROCK 31X
 GERRARD ROXANNE 18P

LKPR CHALLENGER 208M
PH KAYCEE 17W
 PH CLEO 817H

HFCC PLD EVOLUTION 5L
 SVY PURRFECT 184L
 RPJ IMPRESSED 121L
 GERRARD ROXANNE 27M
 LT WYOMING WIND 4020 PLD
 GPA LUSTY LADY 69H
 SVC HEZA TARGETPOWER 25E
 VISA'S BLOSSOM 8U

	BW: 89 lbs	Adj 205: 710 lbs	WPDA: 3.44			
2014 EPD's:	BW: 2	WW: 55	YW: 92.7	Milk: 22.2	TM: 49.7	
2014 Carcass	Marb: 4	BF: 1.55	REA in^2: 11.36	REA/100#: 1.21	%LMY: 66.39	

38

PH WISHBONE 91A

PMC354462 PH 91A 14-Apr-13

KEYS SPECIALIST 18U
KEYS WISHBONE 40Y
 MISS KEY BISKIT 108S

LKPR CHALLENGER 208M
PH KAYCEE 28T
 PH CLEO 34M

KEYS TEN-ACIOUS 166S
 MISS KEY KRISTEN 63K
 CEDER SPRINT 901-Y
 MISS KEY BISKIT 177L
 LT WYOMING WIND 4020 PLD
 GPA LUSTY LADY 69H
 SVC HEZA TARGETPOWER 25E
 PH DELLA RIO 509E

	BW: 97 lbs	Adj 205: 470 lbs	WPDA: 2.29			
2014 EPD's:	BW: 2.7	WW: 39.6	YW: 76.2	Milk: 16.9	TM: 36.7	
2014 Carcass	Marb: 4.25	BF: 1.43	REA in^2: 11.33	REA/100#: 1.1	%LMY: 66.5	

39

PH WISHBONE 78A

PMC354458 PH 78A 09-Apr-13

KEYS SPECIALIST 18U
KEYS WISHBONE 40Y
 MISS KEY BISKIT 108S

LKPR CHALLENGER 208M
PH KAYCEE 28X
 PH COWGIRL 50R

KEYS TEN-ACIOUS 166S
 MISS KEY KRISTEN 63K
 CEDER SPRINT 901-Y
 MISS KEY BISKIT 177L
 LT WYOMING WIND 4020 PLD
 GPA LUSTY LADY 69H
 PH COWTOWN PLD 13M
 PH CLEO 57L

	BW: 100 lbs	Adj 205: 615 lbs	WPDA: 2.81			
2014 EPD's:	BW: 4.1	WW: 48.8	YW: 90	Milk: 17.8	TM: 42.2	
2014 Carcass	Marb: 3.45	BF: 1.43	REA in^2: 10.1	REA/100#: 1.04	%LMY: 65.5	

40

PH WISHBONE 46A

PMC354449 PH 46A 01-Apr-13

KEYS SPECIALIST 18U
KEYS WISHBONE 40Y
 MISS KEY BISKIT 108S

LKPR CHALLENGER 208M
PH KAYCEE 29X
 PH COWGIRL 38R

KEYS TEN-ACIOUS 166S
 MISS KEY KRISTEN 63K
 CEDER SPRINT 901-Y
 MISS KEY BISKIT 177L
 LT WYOMING WIND 4020 PLD
 GPA LUSTY LADY 69H
 PH COWTOWN PLD 2M
 ZRG MONTE'S CHRISTINA 8C

	BW: 85 lbs	Adj 205: 645 lbs	WPDA: 2.94			
2014 EPD's:	BW: 1.1	WW: 43	YW: 79.4	Milk: 19.4	TM: 40.9	
2014 Carcass	Marb: 3.45	BF: 1.55	REA in^2: 11.99	REA/100#: 1.19	%LMY: 66.91	

41

PH CHALLENGER 38A

MC354455 PH 38A 30-Mar-13

PH WYOMING WIND 33P
PH CHALLENGER 7X
 PH LIBBY 8R

LKPR CHALLENGER 208M
PH KAYCEE 82T
 PH CLEO 53M

LKPR CHALLENGER 208M
 PH CLEO 41L
 HBSF LIBERTY 59N
 PH PRIMA DAWNA 723G
 LT WYOMING WIND 4020 PLD
 GPA LUSTY LADY 69H
 SVC HEZA TARGETPOWER 25E
 PH MISS CARLA 405D

	BW: 87 lbs	Adj 205: 518 lbs	WPDA: 2.5			
2014 EPD's:	BW: 1.5	WW: 42	YW: 78	Milk: 17.9	TM: 39	
2014 Carcass	Marb: 3.9	BF: 1.55	REA in^2: 11.3	REA/100#: 1.25	%LMY: 66.35	

42

PH BANNER 48A

PMC354451 PH 48A 01-Apr-13

JSR TROPHY 88T
PH BANNER 107X
PH COWGIRL 39R

MSF SKYLARK 617S
LVV CHROME 607X
LVV WIND 611P

JSR TRUMP 7N
JSR KNOCKOUT 93M
PH COWTOWN PLD 13M
PH CLEO 22L
HFCC PLD CHROME 51L
MSF 118L
LT WYOMING WIND 4020 PLD
LVV MS BRONSON 625J

	BW: 88 lbs		Adj 205: 644 lbs		WPDA: 2.94	
2014 EPD's:	BW: 2.4	WW: 41.5	YW: 77	Milk: 25.6	TM: 46.4	
2014 Carcass	Marb: 4.1	BF: 2.46	REA in^2: 12.3	REA/100#: 1.26	%LMY: 66.23	

43

LVV CARACAS 4A

MC359616 LVV 4A 15-Mar-13

SPARROWS CARACAS 230S
SDC CARHARTT 948W
PRAIRIE COVE MISS 212M

LVV FOCUS 1N
LVV FOCUS 601U
LVV BLACK HAWK 625N

SPARROWS DURANGO 585P
SPARROWS SYMPHONY 230L
BKJ BUCKAROO 836H
SPARROWS TEMPEST 174K
MISTY CREEK FOCUS 5F
HOPE ANNIES GIRL 103L
LVV HAWK 606K
LVV BRONSON 625K

	BW: 92 lbs		Adj 205: 600 lbs		WPDA: 2.93	
2014 EPD's:	BW: 3.9	WW: 44	YW: 84	Milk: 22.8	TM: 45	
2014 Carcass	Marb: 3.7	BF: 2.86	REA in^2: 11.21	REA/100#: 1.06	%LMY: 64.94	

44

PH KID ROCK 132A

PMC354481 PH 132A 03-May-13

SVY FREEDOM PLD 307N
GERRARD KID ROCK 31X
GERRARD ROXANNE 18P

SVC HEZA TARGETPOWER 25E
PH CLEO 35M
PH MISS CADETTE 535E

HFCC PLD EVOLUTION 5L
SVY PURRFECT 184L
RPJ IMPRESSED 121L
GERRARD ROXANNE 27M
SVC TARGET POWER 18C
SVC SHEZA MICK 290B
VISA'S CADET 6U
MISS ARROWHEAD 18S

	BW: 91 lbs		Adj 205: 642 lbs		WPDA: 3.15	
2014 EPD's:	BW: 2.8	WW: 47.9	YW: 85.5	Milk: 21.5	TM: 45.5	
2014 Carcass	Marb: 4	BF: 1.9	REA in^2: 10.1	REA/100#: 1.18	%LMY: 65	

45

PH PERSONA 120A

PMC354476 PH 120A 26-Apr-13

LT EASY BLEND 5125 PLD
LT PERSONA 0328P
LT MAXINE 2365 PLD

PH WYOMING WIND 33P
PH KAYCEE 22W
PH CLEO 8N

LT UNLIMITED EASE 9108
LT BRENDA 1014 PLD
EATONS ASSERT 9171
LT MAXINE 9022 PLD
LKPR CHALLENGER 208M
PH CLEO 41L
SVC HEZA TARGETPOWER 25E
PH DELLA RIO 814H

	BW: 97 lbs		Adj 205: 535 lbs		WPDA: 2.56	
2014 EPD's:	BW: 3.2	WW: 42.2	YW: 79.5	Milk: 15.4	TM: 36.5	
2014 Carcass	Marb: 4.3	BF: 1.43	REA in^2: 11.94	REA/100#: 1.34	%LMY: 66.99	

46

PH WISHBONE 33A

PMC354440 PH 33A 30-Mar-13

KEYS SPECIALIST 18U
KEYS WISHBONE 40Y
MISS KEY BISKIT 108S

SVC HEZA TARGETPOWER 25E
PH CLEO 59L
PH PRIMA DAWNA 130A

KEYS TEN-ACIOUS 166S
MISS KEY KRISTEN 63K
CEDER SPRINT 901-Y
MISS KEY BISKIT 177L
SVC TARGET POWER 18C
SVC SHEZA MICK 290B
JSC PRIME TIME 48Y
MISS ARROWHEAD 3S

	BW: 104 lbs		Adj 205: 586 lbs		WPDA: 2.8	
2014 EPD's:	BW: 3.7	WW: 43.5	YW: 80.8	Milk: 20.6	TM: 42.4	
2014 Carcass	Marb: 4.4	BF: 1.9	REA in^2: 11.95	REA/100#: 1.23	%LMY: 66.51	

47

PH WISHBONE 21A

PMC354445 PH 21A 27-Mar-13

KEYS SPECIALIST 18U
KEYS WISHBONE 40Y
MISS KEY BISKIT 108S

PH COWTOWN PLD 13M
PH COWGIRL 20S
PH CALLA 741G

KEYS TEN-ACIOUS 166S
MISS KEY KRISTEN 63K
CEDER SPRINT 901-Y
MISS KEY BISKIT 177L
SNAKE VALLEY TRIBUE 5J
PH CLEO 918J
GTB ROYAL CAID 10E
PH DAWNA RIO 418D

	BW: 96 lbs		Adj 205: 725 lbs		WPDA: 3.5	
2014 EPD's:	BW: 2.5	WW: 48.3	YW: 88.9	Milk: 22.7	TM: 46.9	
2014 Carcass	Marb: 4.6	BF: 2.38	REA in^2: 13.64	REA/100#: 1.22	%LMY: 67.4	

48

PH WISHBONE 32A

PMC354439 PH 32A 29-Mar-13

KEYS SPECIALIST 18U
KEYS WISHBONE 40Y
MISS KEY BISKIT 108S

HBSF LIBERTY 59N
PH LIBBY 19R
PH CLEO 38L

KEYS TEN-ACIOUS 166S
MISS KEY KRISTEN 63K
CEDER SPRINT 901-Y
MISS KEY BISKIT 177L
MVX COUGARHILL HANK 720G
HBSF PRAIRIE WIND 2J
SVC HEZA TARGETPOWER 25E
PH DAWNA RIO 415D

	BW: 87 lbs		Adj 205: 595 lbs		WPDA: 2.87	
2014 EPD's:	BW: 0.7	WW: 40.6	YW: 73.7	Milk: 18.5	TM: 38.8	
2014 Carcass	Marb: 4.05	BF: 1.9	REA in^2: 11.51	REA/100#: 1.19	%LMY: 66.16	

49

LVV BUCK 46A

MC359610 LVV 46A 27-Apr-13

BERICH PLD HOTSHOT 117L
LVV WHITEHOT 27R
LVV CHAR 27F

BERICH PLD HOTSHOT 117L
LVV WHITEHOT 25T
LVV GUARDIAN ANGEL 7M

HTA WHITEHOT 105A
P-3 LADY DESIGNER 6-196F
SODERGLEN MR CONWAY 35X
HRS PRINCESS MIRA 932Y
HTA WHITEHOT 105A
P-3 LADY DESIGNER 6-196F
SVY GUARDIAN PLD 969J
LVV CHAR 26F

	BW: 108 lbs		Adj 205: 655 lbs		WPDA: 3.24	
2014 EPD's:	BW: 4.3	WW: 48	YW: 96	Milk: 20.5	TM: 45	
2014 Carcass	Marb: 4.15	BF: 1.9	REA in^2: 13.99	REA/100#: 1.3	%LMY: 68.17	

50

LVV CARACAS 33A

MC359620 LVV 33A 06-Apr-13

SPARROWS CARACAS 230S
SDC CARHARTT 948W
PRAIRIE COVE MISS 212M

LVV FASTRACK 11T
LVV FOCUS 622X
LVV GENERATOR 634T

SPARROWS DURANGO 585P
SPARROWS SYMPHONY 230L
BKJ BUCKAROO 836H
SPARROWS TEMPEST 174K
LVV FOCUS 1N
SDC OLIVIA 35N
SDC GENERATOR 26N
LVV PEUGEOT 616M

	BW: 103 lbs		Adj 205: 668 lbs		WPDA: 3.25	
2014 EPD's:	BW: 3.3	WW: 43	YW: 81	Milk: 22.9	TM: 45	
2014 Carcass	Marb: 4.1	BF: 1.43	REA in^2: 12.78	REA/100#: 1.12	%LMY: 67.68	

51

LVV CHALLENGER 7A

MC359584 LVV 7A 17-Mar-13

LKPR CHALLENGER 208M
PH WYOMING WIND 54W
PH CLEO 15K

LT WYOMING WIND 4020 PLD
LVV WIND 614P
LVV CHAPS 614H

LT WYOMING WIND 4020 PLD
GPA LUSTY LADY 69H
SVC HEZA TARGETPOWER 25E
PH MISS ARROWHEAD 444D
SCHURRTOP 5627
CHAP'S LADY 2170P
EXL FORTRESS 648F
LVV STING 926D

	BW: 104 lbs		Adj 205: 625 lbs		WPDA: 3.04	
2014 EPD's:	BW: 2.3	WW: 42	YW: 76	Milk: 19.7	TM: 41	
2014 Carcass	Marb: 4.6	BF: 3.86	REA in^2: 11.5	REA/100#: 1.03	%LMY: 64.15	

52

PH KID ROCK 64A

PMC354456 PH 64A 06-Apr-13

SVY FREEDOM PLD 307N
GERRARD KID ROCK 31X
GERRARD ROXANNE 18P

HBSF LIBERTY 59N
PH LIBBY 5R
PH DELLA RIO 211B

HFCC PLD EVOLUTION 5L
SVY PURRFECT 184L
RPJ IMPRESSED 121L
GERRARD ROXANNE 27M
MXV COUGARHILL HANK 720G
HBSF PRAIRIE WIND 2J
JSC DEL RIO 54
VISA'S BLOSSOM 8U

	BW: 96 lbs		Adj 205: 561 lbs		WPDA: 2.72	
2014 EPD's:	BW: 2.8	WW: 41.8	YW: 74.4	Milk: 26.3	TM: 47.2	
2014 Carcass	Marb: 3.95	BF: 2.38	REA in^2: 11.68	REA/100#: 1.19	%LMY: 65.8	

53

LVV CARACAS 27A

MC359619 LVV 27A 02-Apr-13

SPARROWS CARACAS 230S
SDC CARHARTT 948W
PRAIRIE COVE MISS 212M

MSF SKYLARK 617S
LVV CHROME 617X
LVV 608S

SPARROWS DURANGO 585P
SPARROWS SYMPHONY 230L
BKJ BUCKAROO 836H
SPARROWS TEMPEST 174K
HFCC PLD CHROME 51L
MSF 118L
BERICH PLD HOTSHOT 117L
LVV CHAPS 622L

	BW: 107 lbs		Adj 205: 650 lbs		WPDA: 3.17	
2014 EPD's:	BW: 3.7	WW: 47	YW: 90	Milk: 23.7	TM: 47	
2014 Carcass	Marb: 3.85	BF: 2	REA in^2: 12.95	REA/100#: 1.25	%LMY: 67.23	

54

LVV CARACAS 31A

MC359600 LVV 31A 04-Apr-13

SPARROWS CARACAS 230S
SDC CARHARTT 948W
PRAIRIE COVE MISS 212M

SDC GENERATOR 26N
LVV 11S
LVV GUARDIAN ANGEL 7M

SPARROWS DURANGO 585P
SPARROWS SYMPHONY 230L
BKJ BUCKAROO 836H
SPARROWS TEMPEST 174K
HFCC PLD EVOLUTION 5L
RKG BARBIE DOLL 125K
SVY GUARDIAN PLD 969J
LVV CHAR 26F

	BW: 109 lbs		Adj 205: 610 lbs		WPDA: 2.98	
2014 EPD's:	BW: 4	WW: 43	YW: 80	Milk: 24.7	TM: 46	
2014 Carcass	Marb: 3.1	BF: 1.9	REA in^2: 11.64	REA/100#: 1.11	%LMY: 66.26	

55

PH KID ROCK 126A

PMC354478 PH 126A 30-Apr-13

SVY FREEDOM PLD 307N
GERRARD KID ROCK 31X
GERRARD ROXANNE 18P

SVC HEZA TARGETPOWER 25E
H CLEO 16K
PH PRIMA DAWNA 130A

HFCC PLD EVOLUTION 5L
SVY PURRFECT 184L
RPJ IMPRESSED 121L
GERRARD ROXANNE 27M
SVC TARGET POWER 18C
SVC SHEZA MICK 290B
JSC PRIME TIME 48Y
MISS ARROWHEAD 3S

	BW: 88 lbs		Adj 205: 670 lbs		WPDA: 3.28	
2014 EPD's:	BW: 2	WW: 50.5	YW: 88.9	Milk: 26.4	TM: 51.7	
2014 Carcass	Marb: 4.3	BF: 1.43	REA in^2: 12.06	REA/100#: 1.35	%LMY: 67.09	

56

PH WISHBONE 106A

PMC354470 PH 106A 19-Apr-13

KEYS SPECIALIST 18U
KEYS WISHBONE 40Y
MISS KEY BISKIT 108S

LKPR CHALLENGER 208M
PH KAYCEE 63W
PH WHITE PEARL 16M

KEYS TEN-ACIOUS 166S
MISS KEY KRISTEN 63K
CEDER SPRINT 901-Y
MISS KEY BISKIT 177L
LT WYOMING WIND 4020 PLD
GPA LUSTY LADY 69H
SNAKE VALLEY TRIBUE 5J
PH CLEO 810H

	BW: 100 lbs		Adj 205: 553 lbs		WPDA: 2.63	
2014 EPD's:	BW: 3.6	WW: 43.2	YW: 79.1	Milk: 15.6	TM: 37.2	
2014 Carcass	Marb: 4.1	BF: 1.55	REA in^2: 11.52	REA/100#: 1.28	%LMY: 66.52	

57

PH WISHBONE 130A

PMC354480 PH 130A 01-May-13

KEYS SPECIALIST 18U
KEYS WISHBONE 40Y
MISS KEY BISKIT 108S

LKPR CHALLENGER 208M
PH KAYCEE 50X
PH CLEO 15K

KEYS TEN-ACIOUS 166S
MISS KEY KRISTEN 63K
CEDER SPRINT 901-Y
MISS KEY BISKIT 177L
LT WYOMING WIND 4020 PLD
GPA LUSTY LADY 69H
SVC HEZA TARGETPOWER 25E
PH MISS ARROWHEAD 444D

	BW: 90 lbs		Adj 205: 629 lbs		WPDA: 2.93	
2014 EPD's:	BW: 2.4	WW: 46.3	YW: 84.3	Milk: 18.4	TM: 41.6	
2014 Carcass	Marb: 3.85	BF: 1.43	REA in^2: 12.46	REA/100#: 1.44	%LMY: 67.41	

58

PH WYO BANNER 165A

PMC354491 PH 165A 18-Jul-13

JSR TROPHY 88T
PH WYO BANNER 44X
PH KAYCEE 17R

PH WYOMING WIND 33P
PH KAYCEE 121X
PH CLEO 35M

JSR TRUMP 7N
JSR KNOCKOUT 93M
LKPR CHALLENGER 208M
PH CLEO 817H
LKPR CHALLENGER 208M
PH CLEO 41L
SVC HEZA TARGETPOWER 25E
PH MISS CADETTE 535E

	BW: 86 lbs	Adj 205: 765 lbs	WPDA: 3.91		
2014 EPD's:	BW: 2.1	WW: 40.4	YW: 79.1	Milk: 22.2	TM: 42.4
2014 Carcass	Marb: 3.2	BF: 1.55	REA in^2: 10.11	REA/100#: 1.29	%LMY: 65.38

59

PH BANNER 143A

PMC354495 PH 143A 15-May-13

JSR TRUMP 7N
JSR TROPHY 88T
JSR KNOCKOUT 93M

JSR TROPHY 88T
PH TATUM 77X
PH KAYCEE 39P

LHD CIGAR E46
A-JAY'S HEIDI 450C
JSR JUST RIGHT 38J
JSR KNOCKOUT 13K
JSR TRUMP 7N
JSR KNOCKOUT 93M
LKPR CHALLENGER 208M
PH CLEO 10K

	BW: 89 lbs	Adj 205: 645 lbs	WPDA: 3.05		
2014 EPD's:	BW: 2.6	WW: 41.9	YW: 81.6	Milk: 23.1	TM: 44.1
2014 Carcass	Marb: 3.7	BF: 1.55	REA in^2: 9.37	REA/100#: 1.12	%LMY: 64.78

60

LVV CHALLENGER 39A

MC359586 LVV 39A 13-Apr-13

LKPR CHALLENGER 208M
PH WYOMING WIND 54W
PH CLEO 15K

BKJ BUCKAROO 836H
LVV BUCKAROO 619P
LVV BRONSON 621K

LT WYOMING WIND 4020 PLD
GPA LUSTY LADY 69H
SVC HEZA TARGETPOWER 25E
PH MISS ARROWHEAD 444D
SLY EASTWOOD PLD 32F
BKJ PERFECT VISION 6E
LGRR BRONSON 14G
LVV CHAR 908F

	BW: 98 lbs	Adj 205: 585 lbs	WPDA: 2.98		
2014 EPD's:	BW: 1.9	WW: 42	YW: 76	Milk: 20.8	TM: 42
2014 Carcass	Marb: 3.85	BF: 1.9	REA in^2: 8.69	REA/100#: 0.91	%LMY: 63.86

61

PH WYO BANNER 136A

MC354483 PH 136A 07-May-13

JSR TROPHY 88T
PH WYO BANNER 44X
PH KAYCEE 17R

LKPR CHALLENGER 208M
PH KAYCEE 66T
PH CLEO 945J

JSR TRUMP 7N
JSR KNOCKOUT 93M
LKPR CHALLENGER 208M
PH CLEO 817H
LT WYOMING WIND 4020 PLD
GPA LUSTY LADY 69H
SVC HEZA TARGETPOWER 25E
P&H DELLA RIO 6Z

	BW: 78 lbs	Adj 205: 609 lbs	WPDA: 3.02		
2014 EPD's:	BW: -1.4	WW: 37.6	YW: 70.1	Milk: 24.8	TM: 43.6
2014 Carcass	Marb: 4	BF: 2.38	REA in^2: 11.09	REA/100#: 1.26	%LMY: 65.33

62

PH KID ROCK 52A

PMC354446 PH 52A 02-Apr-13

SVY FREEDOM PLD 307N
GERRARD KID ROCK 31X
GERRARD ROXANNE 18P

LKPR CHALLENGER 208M
PH KAYCEE 44W
PH CLEO 63M

HFCC PLD EVOLUTION 5L
SVY PURRFECT 184L
RPJ IMPRESSED 121L
GERRARD ROXANNE 27M
LT WYOMING WIND 4020 PLD
GPA LUSTY LADY 69H
SVC HEZA TARGETPOWER 25E
PH DELLA RIO 215B

	BW: 90 lbs	Adj 205: 526 lbs	WPDA: 2.47		
2014 EPD's:	BW: 3.1	WW: 46.9	YW: 80.7	Milk: 19.3	TM: 42.8
2014 Carcass	Marb: 4.75	BF: 2.46	REA in^2: 9.39	REA/100#: 1.06	%LMY: 63.86

63

PH KID ROCK 49A

PMC354452 PH 49A 01-Apr-13

SVY FREEDOM PLD 307N
GERRARD KID ROCK 31X
GERRARD ROXANNE 18P

SVC HEZA TARGETPOWER 25E
PH CLEO 26L
PH DELLA RIO 804H

HFCC PLD EVOLUTION 5L
SVY PURRFECT 184L
RPJ IMPRESSED 121L
GERRARD ROXANNE 27M
SVC TARGET POWER 18C
SVC SHEZA MICK 290B
VISA'S DEL RIO 2X
PH PRIMA DAWNA 131A

	BW: 95 lbs	Adj 205: 650 lbs	WPDA: 3.12		
2014 EPD's:	BW: 3.5	WW: 50.5	YW: 87.8	Milk: 22.6	TM: 47.9
2014 Carcass	Marb: 3.8	BF: 2.38	REA in^2: 12.89	REA/100#: 1.29	%LMY: 66.79

**BENEFITS OF
P&H RANCHING/CIRCLE G/ALKALI LAKE
BULL SALE**

- One Stop Shopping... Quality Charolais, Red & Blk Simmentals and Red & Blk Angus Bulls plus Broke Ranch Horses sell
- No bulls have been sold prior to this sale
- Bulls will be sold in catalogue order
- Updated weights & scrotal measurements will be available sale day (Circle G bulls will have ultra sound carcass data as well)
- Charolais bulls will be Leptin tested with results available sale day
- All bulls will be double vaccinated with "FUSOG-ARD" for the prevention of footrot
- Bulls are developed on high roughage rations to ensure their future soundness & fertility
- Sale hospitality at its finest...showing customers our appreciation for their continued support
- We strive to provide great customer service...buyer satisfaction guaranteed NFAC



Howe Ranches' calves sold October 2014

CIRCLE G SIMMENTALS & ANGUS



I write the opening remarks for my section of the 2015 catalog with a huge mix of emotions. First and foremost, I greatly miss my friend and sale partner, Duane, in many ways...his phone calls with the latest "news" plus a good joke and a chuckle, his mischievous grin and the many visits with Corrine and him. Duane helped me and many others in so many ways and I'll treasure the memories of him.

Duane could have wrote a book on selling bulls and knew just about everyone. Corrine and Duane were a great team and built a top Charolais herd together. Corrine is well positioned to continue to provide the quality bulls that P&H Ranching is known for.

Duane recruited me for this sale and it's a good fit as I share similar goals with P&H as we strive to produce cattle that work well for others...functional, moderate framed, low maintenance breeding stock that will survive anywhere and most importantly, be profitable for our customers.

In 2010 D Bar C & Circle G dispersed our 450 cows and I have since rebuilt my herd by retaining the older cows and purchasing 30 head out of the dispersal. My Simmental and Angus cow herd numbers have now grown to 160 head.

The Circle G bulls were weaned on September 15 and ran on greenfeed swaths until mid October. The bulls were then started on a silage based TMR ration that is balanced to grow them and allow them to express their genetic performance potential without impairing their future soundness. No creepfeed is used and no feet have been trimmed. I feel that it's important to have the weaning weights totally reflect the dam's milking ability. As this sale takes place before many of the bulls are 12 months old, they will return to the farm after the sale and will be semen tested in March when they have matured more and the weather has warmed up. Delivery to your farm will follow.

Feel free to view the bulls and their mothers at the farm prior to the sale or call if you have any questions. I feel that this is the strongest set of bulls I've ever brought to Innisfail...the quality runs deep. Like P&H Ranching, I aim to offer a quality product with great customer service. I look forward to visiting with you at the sale on February 21.

Sincerely, Garth Cutler
(403) 304-0896



Circle G Simmentals/Angus Headquarters

Circle G Simmentals & Angus Red Simmental

REFERENCE SIRE



WXR REDPATHS OMENSON 38Z

- Moderate framed, thick made sire owned with Ter-Ron Farms
- High seller at the 2013 "Meat & Muscle" sale in MB for Redpath Simmentals
- Curve bender with a 75 lb. BW and very good performance...sired a great set of calves

REFERENCE SIRE



TLSS PILOT 122Z

Inset Flirt 6P
(Grandmother of 122Z)



- Selected to provide the potent "Flirt 6P" genetics that have had such a strong influence on the Rancier Farms herd...also is backed by Wheatland's 902J cow and Rancier's "Hussey" cow family
- Moderate BW with lots of depth and thickness...calved well on heifers and the calves are impressive



Lot 64 Herdsire 50X

64

POLLED PUREBRED CIRCLE G ACTION 95A

789015 KAG 95A 30-Apr-13

D BAR C NEWSMAN 17N
COL D BAR C VEGAS 50X
COL D BAR C GLOW 406P

SPRINGCREEK RED TANK 55S
CG RED DEB 166Y
D BAR C DEB 8118U

TNT CRUZER K265
KAPPES LADY DAKOTA H114
KS GO FIGURE M799
D BAR C BLACK GLOW 253M
SPRINGCREEK TANK 57P
BDV AMANDA L43
WS RED DREAM S49
D BAR C DEB 449P

BW: 80 lbs	Adj 205: 800 lbs	WPDA: 3.71	YW: 1429	WPDA: 3.82
2014 EPD's:	CE: 8	BW: 3.3	WW: 75.1	YW: 107
			Milk: 24.1	MWWT: 62

- A powerful two year old that was too young for last year's sale
- Outstanding dam from the "Deb" cow family...grandmother had a \$6900 son in last year's sale to Stacey Bell
- Great performance numbers...ranks in the top 15% of the breed for WW, top 20% for YW and top 25% for CE epds



65

Lot 65 POLLED PUREBRED
CIRCLE G BULLETIN 17B
 I126349 KAG 17B 23-Jan-14

TH RED OMEN 40P
WXR REDPATHS OMENSON 38Z
 REDPATHS FANCYNFORCEFULL

WS RED DREAM S49
D BAR C DEB 988W
 D BAR C DEB 422P

TH RED KAHUNA 8M
 BBN MS RED OMEN 136K
 HOOKS SHEAR FORCE 38K
 WXR REDPATHS THORA 18T
 CNS DREAM ON L186
 MEYER RANCH 705G
 TNT SURVIVOR K220
 D BAR C DEB 116L

BW: 93 lbs		Adj 205: 774 lbs		WPDA: 3.71	
2014 EPD's:	CE: 9.2	BW: 2.7	WW: 74	YW: 102	Milk: 25
	MWWT: 62				

- Top sire prospect with lots of potential...maternal brother topped the 2014 sale at \$17,500 to Stewart Ranch and Porter Ranch
- Dam is a model cow backed by generations of great uddered, productive females
- Curve bender...ranks in the top 20% of the breed for CE & WW, top 30% for BW & YW and top 10% for MCE epds



66

Lot 66 POLLED PUREBRED
CIRCLE G BOUNDARY 10B
 I126393 KAG 10B 21-Jan-14

TH RED OMEN 40P
WXR REDPATHS OMENSON 38Z
 REDPATHS FANCYNFORCEFULL

IPU RED SPECIALIST 70T
REMINGTON MS DAUMES 311W
 ANKONY MS DAUMES R82

TH RED KAHUNA 8M
 BBN MS RED OMEN 136K
 HOOKS SHEAR FORCE 38K
 WXR REDPATHS THORA 18T
 WHEATLAND RED TEDDY 457P
 IPU MS RED RIBEYE 201R
 BOZ REDCOAT
 DAUMES MS BOLDSTOCK J90

BW: 90 lbs		Adj 205: 733 lbs		WPDA: 3.72	
2014 EPD's:	CE: 11.5	BW: 0.4	WW: 60	YW: 86	Milk: 25
	MWWT: 55				

- A quality son of Omenson...10B closely resembles his sire
- Thick topped with lots of butt end and is very sound on his feet and legs
- Dam is a nicely made, moderate sized cow with a near perfect udder and is backed by the renowned "Daumes" cow family
- Ranks in the top 10% of the breed for CE & BW epds



67

Lot 67 POLLED PUREBRED
CIRCLE G BRILLIANCE 47B
 I126343 KAG 47B 06-Feb-14

TLSS PILOT 106X
TLSS PILOT 122Z
 TLSS FLIRT'S DREAMGIRL 5X

CG PATRIOT 10P
D BAR C BLACK LACE 648S
 MEYERRANCH BLK LACE 836H

WHEATLAND RED ACE 747T
 RF HUSSEY'S DREAMCHILD
 GCF FIRST DREAM P13
 CHUB'S FLIRT 6P
 TNT CRUZER K265
 M R BLACK OPAL 964J
 MEYER'S CLICKER
 MISS LS A121

BW: 87 lbs		Adj 205: 786 lbs		WPDA: 3.81	
2014 EPD's:	CE: 8.9	BW: 2.7	WW: 65	YW: 87	Milk: 18
	MWWT: 51				

- A standout Pilot son that carries the potent genetics of the "Flirt 6P" cow that Rancier Farms have had so much success with
- Dam is a very productive, high volume daughter of Patriot, a former \$20,000 high seller for Circle G/D Bar C
- Ranks in the top 10% of the breed for MCE, top 20% for CE and top 30% for BW epds



68

Lot 68 POLLED PUREBRED
CIRCLE G BRIGADE 24B
 I126389 KAG 24B 28-Jan-14

TH RED OMEN 40P
WXR REDPATHS OMENSON 38Z
 REDPATHS FANCYNFORCEFULL

SPRINGCREEK RED TANK 55S
CG OPAL 945W
 CG OPAL 457P

TH RED KAHUNA 8M
 BBN MS RED OMEN 136K
 HOOKS SHEAR FORCE 38K
 WXR REDPATHS THORA 18T
 SPRINGCREEK TANK 57P
 BDV AMANDA L43
 TNT SURVIVOR K220
 CG OPAL 111L

BW: 92 lbs		Adj 205: 777 lbs		WPDA: 3.74	
2014 EPD's:	CE: 8.3	BW: 2.2	WW: 62	YW: 81	Milk: 24
	MWWT: 55				

- Excellent prospect with ideal structure and shape...ranks in the top 20% of the breed for BW and top 25% for CE & MCE epds
- Dam is a top member of the Opal cow family
- Maternal brother sold to Darren Roemmele in 2013



Lot 69 **POLLED PUREBRED**
CIRCLE G BALTIC 63B
 I126352 KAG 63B 12-Feb-14

69

TH RED OMEN 40P
WXR REDPATHS OMENSON 38Z
 REDPATHS FANCYNFORCEFULL

WS OPTIMAL VISION S28
CG RED DEB 101Y
 D BAR C DEB 988W

TH RED KAHUNA 8M
 BBN MS RED OMEN 136K
 HOOKS SHEAR FORCE 38K
 WXR REDPATHS THORA 18T
 GWS EBONY'S TRADEMARK 6N
 NICHOLS BEAUTY G84
 WS RED DREAM S49
 D BAR C DEB 422P

	BW: 88 lbs	Adj 205: 793 lbs	WPDA: 3.69			
2014 EPD's:	CE: 11.1	BW: 2.2	WW: 74	YW: 99	Milk: 25	MWWT: 62

- Lots of volume, mass and quality with great numbers...ranks in the top 10% of the breed for CE, top 20% for BW, WW & MCE and top 35% for YW epds
- Dam is an excellent daughter of the 988W cow who produced last year's high seller and Lot 65 this year



Lot 70 **POLLED PUREBRED**
CIRCLE G BALLAST 60B
 I126331 KAG 60B 10-Feb-14

70

TH RED OMEN 40P
WXR REDPATHS OMENSON 38Z
 REDPATHS FANCYNFORCEFULL

ROLLING JN WILLY 104W
ROLLING JN YENENE 19Y
 ULTRA POWERLINE PAVIS 10S

TH RED KAHUNA 8M
 BBN MS RED OMEN 136K
 HOOKS SHEAR FORCE 38K
 WXR REDPATHS THORA 18T
 WINCHESTER HR P8315
 ROLLING JN TERESITA 93T
 KENCO/MF POWERLINE 204L
 MISS PRICKLY PEAR 679F

	BW: 77 lbs	Adj 205: 776 lbs	WPDA: 3.6			
2014 EPD's:	CE: 10.7	BW: 0.1	WW: 57	YW: 75	Milk: 26	MWWT: 55

- Here's another thick topped, meaty Omenson son...they're a powerful sire group
- Ranks in the top 5% of the breed for BW, top 10% for CE and top 30% for MCE epds



Lot 71 **POLLED PUREBRED**
CIRCLE G BADGE 80B
 I126359 KAG 80B 20-Feb-14

71

TH RED OMEN 40P
WXR REDPATHS OMENSON 38Z
 REDPATHS FANCYNFORCEFULL

D BAR C NEWSMAN 17N
CG BLK JESSE 145Y
 CG BLACK JESSE 769T

TH RED KAHUNA 8M
 BBN MS RED OMEN 136K
 HOOKS SHEAR FORCE 38K
 WXR REDPATHS THORA 18T
 TNT CRUZER K265
 KAPPES LADY DAKOTA H114
 DOUBLE BAR D DRIFTWOOD 83
 CCC BLACK JESSE 911J

	BW: 90 lbs	Adj 205: 805 lbs	WPDA: 3.77			
2014 EPD's:	CE: 8.7	BW: 1.8	WW: 67	YW: 96	Milk: 27	MWWT: 61

- Very complete package with lots of depth and dimension
- Great set of epds...ranks high in every category
- Grandmother was the dam of last year's high selling black simm bull to Stahlville Ranching...she has another son selling as Lot 81



Lot 72 **POLLED PUREBRED**
CIRCLE G BULLION 111B
 I126345 KAG 111B 14-Mar-14

72

TLSS PILOT 106X
TLSS PILOT 122Z
 TLSS FLIRT'S DREAMGIRL 5X

CG ROCK SOLID 13R
D BAR C BLK SATIN 763T
 D BAR C BLK SATIN 50R

WHEATLAND RED ACE 747T
 RF HUSSEY'S DREAMCHILD
 GCF FIRST DREAM P13
 CHUB'S FLIRT 6P
 SS GOLD MINE L42
 CG BLACK GENIE 371N
 D BAR C NORWAY 12N
 D BAR C BLK SATIN 337N

	BW: 91 lbs	Adj 205: 841 lbs	WPDA: 4.16			
2014 EPD's:	CE: 9.3	BW: 2.7	WW: 59	YW: 84	Milk: 22	MWWT: 52

- Long backed mid March bull out of a standout cow in the Circle G herd
- Ranked #1 for 205 day weight at 841 lbs...no creep
- Top 20% of the breed for CE and top 30% for BW & MCE epds
- Maternal sister to Kale Chessor

73

POLLED PUREBRED
CIRCLE G RED BLAZER 90B

I126379 KAG 90B 26-Feb-14

TLSS PILOT 106X
TLSS PILOT 122Z
TLSS FLIRT'S DREAMGIRL 5X

COL D BAR C VEGAS 50X
CIRCLE G EBONY 271Z
MEYER'S EBONY 944J

WHEATLAND RED ACE 747T
RF HUSSEY'S DREAMCHILD
GCF FIRST DREAM P13
CHUB'S FLIRT 6P
D BAR C NEWSMAN 17N
COL D BAR C GLOW 406P
LRS BIG COUNTRY 37E
MEYERS RED MAGIC

	BW: 80 lbs	Adj 205: 779 lbs	WPDA: 3.48			
2014 EPD's:	CE: 8.7	BW: 3.6	WW: 71	YW: 105	Milk: 20	MWWT: 55



Lot 73

- A popular Pilot son...carries the blaze face "money strip"
- Dam is a nice 50X first calver and stems from a top cow family
- Ranks in the top 20% of the breed for CE, top 25% for YW and top 30% for WW epds

74

POLLED PUREBRED
CIRCLE G BALLOT 61B

I126394 KAG 61B 10-Feb-14

D BAR C NEWSMAN 17N
COL D BAR C VEGAS 50X
COL D BAR C GLOW 406P

KS THE DUKE S30
REMINGTON BLACK CLOUD313W
BAR 15 MS RED CLOUD 32P

TNT CRUZER K265
KAPPES LADY DAKOTA H114
KS GO FIGURE M799
D BAR C BLACK GLOW 253M
ELLINGSON BLACK PERFECTOR
STF REBECA
LCHMN BODYBUILDER 7303F
BAR 15 RED CLOUD 58L

	BW: 94 lbs	Adj 205: 736 lbs	WPDA: 3.56			
2014 EPD's:	CE: 6.8	BW: 4.3	WW: 79	YW: 114	Milk: 16	MWWT: 55



Lot 74

- Cherry red Vegas 50X son with a strong set of numbers
- Ranks in the top 5% of the breed for WW, top 10% for YW, top 15% for all carcass traits and top 35% for CE epds

75

POLLED PUREBRED
CIRCLE G BOLSTER 38B

I126332 KAG 38B 03-Feb-14

TH RED OMEN 40P
WXR REDPATHS OMENSON 38Z
REDPATHS FANCYNFORCEFULL

D BAR C TABASCO 88T
ROLLING JN YONINA 24Y
ROLLING JN UCHEENA 19U

TH RED KAHUNA 8M
BBN MS RED OMEN 136K
HOOKS SHEAR FORCE 38K
WXR REDPATHS THORA 18T
DOUBLE BAR D JAXON 195P
D BAR C CINDER LEE 455P
REMINGTON RED LABEL 36S
ROLLING JN SONG 85S

	BW: 80 lbs	Adj 205: 765 lbs	WPDA: 3.54			
2014 EPD's:	CE: 10	BW: 1.3	WW: 63	YW: 86	Milk: 24	MWWT: 56

- Top end calving ease prospect with the Omenson stamp
- Ranks in the top 10% of the breed for MCE and top 15% for CE & BW epds

76

POLLED PUREBRED
CIRCLE G BOLERO 64B

I126381 KAG 64B 12-Feb-14

WXR REDPATHS OMENSON 38Z

COL D BAR C VEGAS 50X
CIRCLE G RACHEL 278Z
CG RACHEL 876U

D BAR C NEWSMAN 17N
COL D BAR C GLOW 406P
WS RED DREAM S49
CG RACHEL 597R

	BW: 81 lbs	Adj 205: 784 lbs	WPDA: 3.48			
2014 EPD's:	CE: 9	BW: 2.5	WW: 76	YW: 102	Milk: 24	MWWT: 62

- Another curve bending Omenson son that was born easily and ranked #10 for 205 day adj weight
- Dam is a well made Vegas 50X two year old...her full brother sold to Newell Grazing in last year's sale



Lot 77

77

POLLED PUREBRED
CIRCLE G BLACKJACK 27B

I126362 KAG 27B 29-Jan-14

TH RED OMEN 40P
WXR REDPATHS OMENSON 38Z
REDPATHS FANCYNFORCEFULL

D BAR C TRACTION 126T
CG BLK SATIN 160Y
D BAR C BLK SATIN 50R

TH RED KAHUNA 8M
BBN MS RED OMEN 136K
HOOKS SHEAR FORCE 38K
WXR REDPATHS THORA 18T
DOUBLE BAR D DRIFTWOOD 83
D BAR C RUBY 938J
D BAR C NORWAY 12N
D BAR C BLK SATIN 337N

	BW: 88 lbs	Adj 205: 771 lbs	WPDA: 3.55			
2014 EPD's:	CE: 9	BW: 1.9	WW: 64	YW: 89	Milk: 29	MWWT: 61

- A standout black Omenson sire prospect that everyone notices
- Thick, meaty and made right and is out of an impressive Driftwood granddaughter
- Ranks in the top 20% of the breed for CE & BW epds



Lot 78

78

POLLED PUREBRED
CIRCLE G BIG TIME 28B

I126341 KAG 28B 30-Jan-14

TLSS PILOT 106X
TLSS PILOT 122Z
TLSS FLIRT'S DREAMGIRL 5X

HOOK'S/SSR TRUE VALUE 81
D BAR C ZEOLA 256M
D BAR C ZEOLA 050K

WHEATLAND RED ACE 747T
RF HUSSEY'S DREAMCHILD
GCF FIRST DREAM P13
CHUB'S FLIRT 6P
NICHOLS BLK DESTINY G151
SHOESTRING H&E E4
MEYERS MOST WANTED 25H
NLC Z51 ZEOLA

	BW: 94 lbs	Adj 205: 828 lbs	WPDA: 3.96			
2014 EPD's:	CE: 10.2	BW: 1.7	WW: 58	YW: 85	Milk: 21	MWWT: 50

- "Big Time" performance with lots of muscle and body length...ranked #3 at weaning
- Mothered by a 12 year old foundation "Zeola" female that never misses
- Ranks in the top 20% of the breed for CE & BW epds



79

Lot 79 POLLED PUREBRED
CIRCLE G BLITZ 41B
 I126369 KAG 41B 04-Feb-14

SHS ENTICER P1B
SKORS ENTICER 171Z
 SKORS BLACK MAIDEN 91T

COL D BAR C VEGAS 50X
CIRCLE G ZEOLA 233Z
 D BAR C ZEOLA 256M

TCF/RCC TEMPTATION GJ640
 ROCKY HILLS JO
 CNS DREAM ON L186
 SKORS KNIGHTS MAIDEN 78R
 D BAR C NEWSMAN 17N
 COL D BAR C GLOW 406P
 HOOK'S/SSR TRUE VALUE 81
 D BAR C ZEOLA 050K

	BW: 86 lbs	Adj 205: 775 lbs	WPDA: 3.41			
2014 EPD's:	CE: 9.3	BW: 2	WW: 72	YW: 108	Milk: 21	MWWT: 56

- First son to sell from the Skors Enticer bull that I own jointly with Ter-Ron Farms...he led off the black bulls at the '13 Skors sale
- Super thick, moderate and hairy from a nice 50X heifer... grandmother is the dam of Lot 78
- Ranks in the top 20% of the breed for CE, BW & YW and top 30% for WW & MCE epds



Lot 80
 Inset - Skors Enticer 171Z



80

POLLED PUREBRED
CIRCLE G BEYOND 54B
 I126367 KAG 54B 09-Feb-14

SKORS ENTICER 171Z
 OLF ODIN U5
CIRCLE G CARLA 221Z
 CG CARLA 218X

ELLINGSON LEGACY M229
 OLF LADY TRIATHLON S655
 NAC TIM 3T
 CG RED CARLA 237M

	BW: 83 lbs	Adj 205: 770 lbs	WPDA: 3.41			
2014 EPD's:	CE: 11.2	BW: 2	WW: 66	YW: 101	Milk: 21	MWWT: 54

- Another top Enticer son that's from a quality Odin sired two year old dam...low BW genetics stacked here
- Ranks in the top 10% of the breed for CE & MCE and top 20% for BW epds



81

Lot 81 POLLED PUREBRED
CIRCLE G BATTALION 79B
 I126387 KAG 79B 18-Feb-14

D BAR C NEWSMAN 17N
COL D BAR C VEGAS 50X
 COL D BAR C GLOW 406P

DOUBLE BAR D DRIFTWOOD 83
CG BLACK JESSE 769T
 CCC BLACK JESSE 911J

TNT CRUZER K265
 KAPPES LADY DAKOTA H114
 KS GO FIGURE M799
 D BAR C BLACK GLOW 253M
 DRIFTING "M" LP 59L
 DOUBLE BAR D LILI 59M
 BLACK IRISH KANSAS
 CCC BLACK JESSE 608F

	BW: 95 lbs	Adj 205: 794 lbs	WPDA: 3.87			
2014 EPD's:	CE: 8.1	BW: 2	WW: 74	YW: 116	Milk: 25	MWWT: 62

- Very complete package...solid from end to end
- Maternal brother sold in '14 sale to Stahlville Ranching for \$6750
- Dam is an impressive Driftwood daughter with a top production record
- Ranks in the top 10% of the breed for YW, top 15% for WW and top 20% for CE & BW epds

82

POLLED PUREBRED
CIRCLE G BONANZA 112B
 I126347 KAG 112B 18-Mar-14

TH RED OMEN 40P
WXR REDPATHS OMENSON 38Z
 REDPATHS FANCYNFORCEFULL

WS EXPRESSWAY S34
D BAR C BLK MUMBO 894U
 BAR C BLK MUMBO 042K

TH RED KAHUNA 8M
 BBN MS RED OMEN 136K
 HOOKS SHEAR FORCE 38K
 WXR REDPATHS THORA 18T
 HART FOUR LANE M165
 WS MISS ROCK & ROLL M94
 MEYERS MOST WANTED 25H
 MEYER RANCH 119E

	BW: 88 lbs	Adj 205: 834 lbs	WPDA: 4.13			
2014 EPD's:	CE: 8.5	BW: 1.9	WW: 68	YW: 97	Milk: 35	MWWT: 68

- Eye catching mid March calf with great numbers...ranked #2 for 205 day adj weight
- Dam was a high seller in the D Bar C dispersal and is an excellent female with an ideal udder (top 1% of the breed for Milk epd)
- Ranks in the top 5% of the breed for Milk, top 20% for CE, BW & MCE epds



Lot 83

83

POLLED PUREBRED
CIRCLE G BLK BLAZE 16B
 I126382 KAG 16B 23-Jan-14

TLSS PILOT 106X
TLSS PILOT 122Z
 TLSS FLIRT'S DREAMGIRL 5X

COL D BAR C VEGAS 50X
CIRCLE G CORDELIA 279Z
 CCC BLK CORDELIA 024K

WHEATLAND RED ACE 747T
 RF HUSSEY'S DREAMCHILD
 GCF FIRST DREAM P13
 CHUB'S FLIRT 6P
 D BAR C NEWSMAN 17N
 COL D BAR C GLOW 406P
 MEYERS MOST WANTED 25H
 NLC C79 CORDELIA

	BW: 84 lbs	Adj 205: 734 lbs	WPDA: 3.2			
2014 EPD's:	CE: 8.3	BW: 2.7	WW: 68	YW: 97	Milk: 21	MWWT: 55

- A stylish black blaze faced Pilot son
- Dam is a highly fertile black blaze "Cordelia" heifer that calved at 21 months and bred back to calve again early in 2015
- Ranks in the top 25% of the breed for CE and top 30% for BW epds



84

Lot 84 POLLED PUREBRED
CIRCLE G BLUEPRINT 82B

1126348 KAG 82B 21-Feb-14

TH RED OMEN 40P
WXR REDPATHS OMENSON 38Z
REDPATHS FANCYNFORCEFULL

DOUBLE BAR D DRIFTWOOD 83
D BAR C BLK CORDELIA 982W
CCC BLK CORDELIA 024K

TH RED KAHUNA 8M
BBN MS RED OMEN 136K
HOOKS SHEAR FORCE 38K
WXR REDPATHS THORA 18T
DRIFTING "M" LP 59L
DOUBLE BAR D LILI 59M
MEYERS MOST WANTED 25H
NLC C79 CORDELIA

BW: 87 lbs		Adj 205: 805 lbs		WPDA: 3.92	
2014 EPD's:	CE: 7	BW: 2.5	WW: 71	YW: 104	Milk: 29
			MWWT: 64		

- Top calf with an impressive set of stats and epds...ranks in the top 30% of the breed and better for every epd trait
- Dam is one of the top cows at CG...a son was retained for herdsire use and sired the popular blaze faced bulls in the 2014 sale
- Maternal brother sold to Stahlville Ranching in 2013 sale for \$5800 and a maternal sister ranks high in the bred heifer group

85

Lot 85 POLLED PUREBRED
CIRCLE G BOSTON 69B

1126338 KAG 69B 14-Feb-14

D BAR C NEWSMAN 17N
COL D BAR C VEGAS 50X
COL D BAR C GLOW 406P

D BAR C NEWSMAN 17N
D BAR C ZEOLA 62X
D BAR C ZEOLA 256M

TNT CRUZER K265
KAPPES LADY DAKOTA H114
KS GO FIGURE M799
D BAR C BLACK GLOW 253M
TNT CRUZER K265
KAPPES LADY DAKOTA H114
HOOK'S/SSR TRUE VALUE 81
D BAR C ZEOLA 050K

BW: 90 lbs		Adj 205: 768 lbs		WPDA: 3.68	
2014 EPD's:	CE: 7.4	BW: 4.1	WW: 76	YW: 113	Milk: 20
			MWWT: 58		

- Long backed, stout made Vegas son that is another grandson of the foundation Zeola 256M cow (dam of Lot 78)
- Strong performance numbers...ranks in the top 10% of the breed for YW and top 15% for WW epds



86

Lot 86 POLLED PUREBRED
CIRCLE G BUCCANEER 106B

1126385 KAG 106B 09-Mar-14

TH RED OMEN 40P
WXR REDPATHS OMENSON 38Z
REDPATHS FANCYNFORCEFULL

CG BLACK NUGGET 25N
CG BLACK JESSE 566R
CCC BLACK JESSE 911J

TH RED KAHUNA 8M
BBN MS RED OMEN 136K
HOOKS SHEAR FORCE 38K
WXR REDPATHS THORA 18T
TNT CRUZER K265
M R BLACK KATIE 961J
BLACK IRISH KANSAS
CCC BLACK JESSE 608F

BW: 97 lbs		Adj 205: 827 lbs		WPDA: 4.04	
2014 EPD's:	CE: 10.1	BW: 0.8	WW: 64	YW: 86	Milk: 27
			MWWT: 59		

- Solid black Omenson son out of a highly productive cow
- Two maternal brothers working for Ray and Tammy Robinson and another for Darwin Fuller
- Great set of stats and epds...ranks high in every category



87

Lot 87
RED CIRCLE G BRAVADO 13B

1804815 ZKT 13B January 22 2014

XO CROWFOOT 0102X
RED XO CROWFOOT REBEL 2422Z
RED XO CROWFOOT RACHEL 836U

RED BAR-E-L ROCKAFELLER 147R
RED CG ELLIE 903W
RED TVB ELWAY 12K

RED CROWFOOT MOONSHINE 8081U
XO CROWFOOT BLACKBIRD 8810U
RED CROWFOOT 6253S
RED CROWFOOT RACHEL 6075S
RED TER-RON BLITZ 611N
RED BAR-E-L JEWEL 79M
RED TVB SP 147F
RED TVB DOUBLE ELWAY 183G

BW: 82 lbs		Adj 205: 747 lbs			
2014 EPD's:	BW: -1.5	WW: 65	YW: 94	Milk: 17	TM: 48

- First son to sell from \$20,000 Crowfoot Rebel and is probably the best RA bull I've ever sold
- Thick from end to end, hairy and sound with big testicles
- Dam is a nice moderate framed female and is a maternal sister to the "On Target" bull we sold to Soo Line Cattle Co... grandmother is a CAA Elite Cow
- Ranks in the top 5% of the breed for WW and top 10% for YW epds



88

Lot 88
RED CIRCLE G BULL'S EYE 6B

1804818 ZKT 6B January 17 2014

XO CROWFOOT 0102X
RED XO CROWFOOT REBEL 2422Z
RED XO CROWFOOT RACHEL 836U

RED BAR-E-L SOCKEYE 95S
RED CG BANE BERRY 35X
RED CG BANE BERRY 641S

RED CROWFOOT MOONSHINE 8081U
XO CROWFOOT BLACKBIRD 8810U
RED CROWFOOT 6253S
RED CROWFOOT RACHEL 6075S
RED BAR-E-L APPROVAL 4L
RED SSS GLORIA 874G
RED DIMLER INDEED 446P
RED BLUE SPRUCE BANE BERRY 33D

BW: 78 lbs		Adj 205: 721 lbs			
2014 EPD's:	BW: -1.6	WW: 63	YW: 95	Milk: 16	TM: 47

- A top calf from an outstanding dam
- Maternal sister is my best RA bred heifer
- Moderate birth weight with very good performance numbers... ranks in the top 7% of the breed for WW and top 10% for YW epds



Lot 95

Inset - BAR-E-L XCITEMENT 36X

95

CIRCLE G BEACON 58B

1793909 ZKT 58B February 09 2014

HF TIGER 5T
BAR-E-L XCITEMENT 36X
 BAR-E-L ENCHANTRESS 153N

S A V BISMARCK 5682
CIRCLE G ERICA 929W
 CIRCLE G ERICA 743T

HF KODIAK 5R
 HF ECHO 84R
 CRESCENT CREEK 06 RITO 50L
 BAR-E-L 365 ENCHANTRES 36J
 G A R GRID MAKER
 S A V ABIGALE 0451
 K C F BENNETT TOTAL
 CIRCLE G ERICA 323N

BW: 85 lbs		Adj 205: 715 lbs			
2014 EPD's:	BW: 2.2	WW: 50	YW: 87	Milk: 22	TM: 46

- A standout 36X son with style and substance
- Dam is one of my best cows of any breed or color...maternal brothers to Darwin Fuller and Rainton Banks
- Maternal sister is also an excellent cow and produced a \$6200 son to Highway 21 Feeders last year
- Ranks in the top 25% of the breed for WW & YW and top 30% for Milk epds



Lot 96

96

CIRCLE G BALANCER 35B

1793921 ZKT 35B February 02 2014

BAR-E-L XCITEMENT 36X

CROWFOOT 2711M
CROWFOOT VAL BEAUTY 4238P
 RED CROWFOOT VALLEY 1031L

LEACHMAN RIGHT TIME DMF
 GLADWALL B CHLOE 7135
 RED MABES RAMBO TUO
 RED WVA KARUBA 1H

BW: 81 lbs		Adj 205: 757 lbs			
2014 EPD's:	BW: 2.5	WW: 55	YW: 92	Milk: 17	TM: 41

- Long backed and stout with a moderate BW
- Dam never misses bringing in a "good one" and this may be her best ever
- Sons to Jim Hunter, Doug Crawford and Jess Parsonage
- Ranks in the top 10% of the breed for WW and top 15% for YW epds



Lot 97

97

CIRCLE G BRUNO 52B

1793908 ZKT 52B February 08 2014

HF TIGER 5T
BAR-E-L XCITEMENT 36X
 BAR-E-L ENCHANTRESS 153N

RINGSTEAD DATELINE 722S
CIRCLE G ERICA 911W
 CIRCLE G ERICA 532R

HF KODIAK 5R
 HF ECHO 84R
 CRESCENT CREEK 06 RITO 50L
 BAR-E-L 365 ENCHANTRES 36J
 EARLEY DATELINE 2M
 GET-A-LONG DUCHESS 78S
 K G POWER DESIGN
 BAR J P ERICA 61K

BW: 89 lbs		Adj 205: 697 lbs			
2014 EPD's:	BW: 3.6	WW: 44	YW: 79	Milk: 17	TM: 37

- Another top prospect that carries the 36X stamp of quality and consistency with moderate BW's that are influenced by the "Tiger" shorter gestation length
- Dam is a high volume, correct uddered cow with a good record
- Full brother to Larry Nelner and a full sister looks very good in the bred heifer group



Lot 98

98

CIRCLE G BARON 30B

1793903 ZKT 30B January 31 2014

HF TIGER 5T
BAR-E-L XCITEMENT 36X
 BAR-E-L ENCHANTRESS 153N

MVF WIDESPREAD 137S
CIRCLE G LUCY 8126U
 CIRCLE G LUCY 524R

HF KODIAK 5R
 HF ECHO 84R
 CRESCENT CREEK 06 RITO 50L
 BAR-E-L 365 ENCHANTRES 36J
 WESTERN WIDESPREAD 1L
 MVF ELLEN ERICA 73K
 K G POWER DESIGN
 CIRCLE G LUCY 901J

BW: 75 lbs		Adj 205: 713 lbs			
2014 EPD's:	BW: 1.3	WW: 44	YW: 74	Milk: 19	TM: 40

- A popular calf in the pen...low 75 lb. BW with good performance numbers
- Dam is very moderate framed with a picture perfect udder...a daughter produced a \$6700 son to Stewart Ranch & Bell Hills Angus
- Full brothers to Brad & Kate Brenchley and Diamond G Ranch



Lot 99

CIRCLE G BOUNTY 49B

1821007 ZKT 49B February 07 2014

99

CROWFOOT EQUATION 5793R
CROWFOOT 9052W
 CROWFOOT KELTON 4790P
 CROWFOOT EQUATION 5793R
CROWFOOT CJ BLACK MISS 7722T
 CROWFOOT BLACK MISS 2784M

O C C LEGACY 839L
 CROWFOOT FORKS 755K
 O C C HONESTY 962H
 Z O E KELTON 9978
 O C C LEGACY 839L
 CROWFOOT FORKS 755K
 C H ALLIANCE 9339
 C H BLACK MISS 9751

BW: 79 lbs		Adj 205: 664 lbs			
2014 EPD's:	BW: 2.7	WW: 32	YW: 62	Milk: 27	TM: 45

- Take note of this good sire prospect...he's made right and carries top, outcross genetics
- Dam is an absolute tank with super udder structure...a yearling daughter sold to Bar-E-L for \$11,000 in the Crowfoot dispersal
- Low BW and ranks in the top 7% of the breed for Milk epd



Lot 100

CIRCLE G BANDIT 84B

1826089 ZKT 84B February 02 2014

100

O C C MAGNUM 749M
CROWFOOT MACHO 4549P
 CROWFOOT BLACKBIRD 2537M
 CROWFOOT EQUATION 5793R
XO CROWFOOT BLACKBIRD 049X
 CROWFOOT BLACKBIRD 2781M

O C C EUREKA 865E
 O C C JUANADA 818E
 SITZ ALLIANCE 6595
 GLADWALL BLACKBIRD 8237
 O C C LEGACY 839L
 CROWFOOT FORKS 755K
 CROWFOOT INNOVATOR 958J
 C H BLACKBIRD 9594

BW: 84 lbs		Adj 205: 685 lbs			
2014 EPD's:	BW: 3.5	WW: 34	YW: 60	Milk: 18	TM: 34

- Another very good calf that carries the potent Crowfoot genetics
- Moderate framed, full of muscle and has lots of hair
- Dam was one of my top picks out of the 2013 dispersal sale and is out of a CAA Elite Cow



Lot 101

CIRCLE G YIELD 28Y

CIRCLE G BALANCE 2B

1793899 ZKT 2B January 12 2014

101

S A V FINAL ANSWER 0035
CIRCLE G YIELD 28Y
 CIRCLE G ERROLINE 531R
 TIMBER TRAIL GRIDLOCK
LLB LAVENDER LADY 430Z
 LLB LAVENDER LADY 223N

SITZ TRAVELER 8180
 S A V EMULOUS 8145
 K G POWER DESIGN
 SCA ERROLINE 24K
 TC GRID TOPPER 355
 SANE SURV JESTRESS 206P
 G D A UNIVERSE 726G
 PAT LAVENDER LADY 394Z

BW: 74 lbs		Adj 205: 714 lbs			
2014 EPD's:	BW: 3	WW: 46	YW: 83	Milk: 18	TM: 42

- Low BW sire prospect that would work on either cows or heifers...he's got the size and performance for either application
- Sire is a top Final Answer son that was retained to breed heifers...two sons sold very well last year to Highway 21 Feeders and Doug Crawford
- Dam is a good LLB heifer and is backed by one of their best cow families



Lot 102

CIRCLE G BRAVO 62B

1793910 ZKT 62B February 11 2014

102

HF TIGER 5T
BAR-E-L XCITEMENT 36X
 BAR-E-L ENCHANTRESS 153N
 REMITALL SPARTAN 637U
CIRCLE G LUCY 3X
 CIRCLE G LUCY 8126U

HF KODIAK 5R
 HF ECHO 84R
 CRESCENT CREEK 06 RITO 50L
 BAR-E-L 365 ENCHANTRES
 S A V MASTERPIECE 5289
 REMITALL NEONIA 33L
 MVF WIDESPREAD
 CIRCLE G LUCY 524R

BW: 78 lbs		Adj 205: 714 lbs			
2014 EPD's:	BW: 1.3	WW: 47	YW: 80	Milk: 20	TM: 43

- Another top bull that's backed by the Lucy cow family
- Full brother to Stewart Ranch & Bell Hills Angus for \$6700 in 2012
- Low BW and ranks in the top 15% of the breed for BW epd and is in the top 40% for every other epd trait



Lot 103

103

CIRCLE G BRIGADIER 42B

1793906 ZKT 42B February 04 2014

HF TIGER 5T
BAR-E-L XCITEMENT 36X
 BAR-E-L ENCHANTRESS 153N

CIRCLE G UPGRADE 17U
CIRCLE G LUCY 158Y
 CIRCLE G LUCY 8126U

HF KODIAK 5R
 HF ECHO 84R
 CRESCENT CREEK 06 RITO 50L
 BAR-E-L 365 ENCHANTRES 36J
 S A V 004 DENSITY 4336
 ERICA OF RANNOCH 300L
 MVF WIDESPREAD 137S
 CIRCLE G LUCY 524R

BW: 74 lbs		Adj 205: 727 lbs			
2014 EPD's:	BW: 1	WW: 43	YW: 76	Milk: 20	TM: 40

- A curve bending 36X son...low BW (influenced by the shorter gestation length of the "Tiger" genetics) with above average performance
- Backed by the highly productive Lucy cow family... grandmother is the dam of Lot 98
- Ranks in the top 15% of the breed for BW epd



Lot 104

104

CIRCLE G BRYCE 103B

1793916 ZKT 103B March 10 2014

S A V FINAL ANSWER 0035
CIRCLE G YIELD 28Y
 CIRCLE G ERROLLINE 531R

BAR-E-L XCITEMENT 36X
CIRCLE G ERROLLINE 202Z
 CIRCLE G ERROLLINE 13X

SITZ TRAVELER 8180
 S A V EMULOUS 8145
 K G POWER DESIGN
 SCA ERROLLINE 24K
 HF TIGER 5T
 BAR-E-L ENCHANTRESS 153N
 CIRCLE G UPGRADE 17U
 SCA ERROLLINE 24K

BW: 68 lbs		Adj 205: 759 lbs			
2014 EPD's:	BW: 0.6	WW: 47	YW: 85	Milk: 18	TM: 41

- Generations of calving ease and high maternal genetics stacked up here
- Sired by the Final Answer son, 28Y, and is out of a very good 36X heifer
- Ranks in the top 10% of the breed for BW, top 25% for YW and top 35% for WW epds



Lot 105

105

CIRCLE G BRONX 39B

1793922 ZKT 39B February 04 2014

RED RMJ REDMAN 1T
RED LAZY MC REDMAN 94Y
 RED BROX ICECAP 1R

XO CROWFOOT 0102X
XO CROWFOOT GINGER 2431Z
 RED XO CROWFOOT GINGER 801U

RED 5L NORSEMAN KING 2291
 CROWFOOT KURUBA 4033P
 RED CANYON CREEK SENSATION
 RED BROX ICECAP 62N
 RED CROWFOOT MOONSHINE 8081U
 XO CROWFOOT BLACKBIRD 8810U
 RED 5L NORSEMAN KING 2291
 RED CROWFOOT GINGER 6101S

BW: 82 lbs		Adj 205: 727 lbs			
2014 EPD's:	BW: -2.0	WW: 58	YW: 92	Milk: 18	TM: 44

- Eye catching heifer bull prospect that carries top genetics
- Dam is a nice Crowfoot heifer that's sired by the \$42,000 Crowfoot 0102X bull
- Sire is a highly proven "sure fire" heifer bull
- Ranks in the top 10% of the breed for WW & YW epds



The Circle G cowherd is functional, sound and highly productive. Be assured that every Circle G bull is backed by a quality dam.



ALKALI LAKE ANGUS



I would like to start by thanking everybody that came to the sale last year helping make it such a great day. It is with mixed feelings that we are here today. Not only is optimism as high as I can remember but cattle

prices are at near record prices across all of North America and there is no sign of things slowing down. However like so many others this past year we lost not only a close friend but truly a great man and cattle man in the industry with the passing of Duane. In so many ways I owe thanks to both him, Corrine and Garth for giving us the opportunity to be in their sale. Despite the trials of the last year our goals with our cows haven't changed. This fall has shown us that herds with high weaning weights accompanied with easy doing low maintenance momma cows will be rewarded. You will once again see the strong influence of the outcross Koupals MoCo 253 bull that we continually use to add muscle and growth while still enhancing all the maternal qualities that can never be overlooked. Please feel free to call us anytime or stop by at anytime to tour our herd.

Sincerely, Adam Schierman

Donation Heifer

It seems Duane started a tradition last year by auctioning off his "barrel racer jeans" and donating the proceeds to a charity. Hayley and I have decided to follow suit and donate a Purebred Angus heifer to be auctioned off with the proceeds going to charities in Duane's memory. Ronald McDonald House Red Deer was the recipient last year and knowing Duane's love of animals we felt it appropriate to give to the local SPCA as well.

This donation heifer is right from the top of our replacement pen. She is moderate framed, thick, square, deep and soggy; everything that we select for in our herd. Her dam will be fourteen this winter, she has never come in open, she has perfect feet and her udder is picture perfect. She has daughters, granddaughters and soon to be great granddaughters in our herd. She has produced off-spring successfully working in both Bandura ranches and Triple L Angus. Her sire, who is working for Rosebud Colony, is out of the legendary SAV Network and our Remitall Forever Lady cow who is one of our most influential embryo donors. We are willing to take this heifer home and continue to develop her as we do with our bulls and deliver her to her new owner at their convenience. (See picture on page 5)

ALKALI LAKE BARBARA ALF 410B

1815825 AXY 410B February 10, 2014

S A V NET WORTH 4200
HILLS OF HOME EQUITY 201
REMITALL FOREVER LADY 602U

N BAR EMULATION EXT 849773
DRYLAND BARBARA 1176L
LAZY J BARBARA 86A

S A V 8180 TRAVELER 004
S A V MAY 2410
S A V MASTERPIECE 5289
GDAR FOREVER LADY 0100
EMULATION N BAR 5522
N BAR PRIMROSE 2424
ANGUS ACRES BRUTUS 18W
LAZY J BARBARA 40L

BW: 88 lbs					
Est. EPD's:	BW: 3.1	WW: 41	YW: 72	Milk: 15	TM: 35

Alkali Lake Angus

Black Angus



Lot 107

107 ALKALI LAKE BRUTE OF ALF 404B

1815821 AXY 404B January 6, 2014

O C C JUNEAU 807J
KOUPLS MO CO 253
BEEFLAND EBONETTE 835

NOBLE ACRES DATELINE 11R
HILLS OF HOME ROSEBUD 52T
KEWETIN ROSEBUD 8M

O C C EMBLAZON 854E
O C C DIXIE ERICA 903E
E&B 1483 SCOTCHMAN 543
BEEFLAND EBONETTE K089
VERMILION DATELINE 7078
NOBLE ACRES FLORA 1H
VIKING TIBBIE EXTRA 136F
KEWETIN RUBY ROSE 36J

BW: 88 lbs Adj 205: lbs

- Maternal Brother working for Trevor and Glen Christian**A powerful smooth made bull out of a beautiful 7078 granddaughter

108 HILLS OF HOME AMBUSH 404B

1776118 SGY 404B January 6, 2014

HIGH VALLEY 4C6 AMBUSH
DMM AMBUSH 03M
DMM MISS ESSENCE 108J

NOBLE ACRES DATELINE 11R
HILLS OF HOME QUEEN 89X
EARLY SUNSET QUEEN 28R

PARAMONT AMBUSH 2172
HIGH VALLEY GLORIA 102
TC STOCKMAN 365
DMM MISS ESSENCE 22B
VERMILION DATELINE 7078
NOBLE ACRES FLORA 1H
S A F DIVERSITY 9398
EARLY SUNSET QUEEN 17J

BW: 90 lbs Adj 205: lbs

Est. EPD's:	BW: 2.1	WW: 41	YW: 73	Milk: 19	TM: 39
-------------	---------	--------	--------	----------	--------

- Maternal Brother working for Gordon Bradshaw (Aberlynn Angus)**Thick and soggy eye appealing bull out of the many times proven DMM Ambush

109 ALKALI LAKE BRUTUS OF ALF 401B

1815818 AXY 401B January 2, 2014

O C C JUNEAU 807J
KOUPLS MO CO 253
BEEFLAND EBONETTE 835

SYDGEN LIBERTY GA 8627
ALKALI LAKE ELBA 3Z
ELBA OF ALKALI LAKE 31X

O C C EMBLAZON 854E
O C C DIXIE ERICA 903E
E&B 1483 SCOTCHMAN 543
BEEFLAND EBONETTE K089
CONNEALY FORWARD
SYDGEN BLACKBIRD GA 051
NOBLE ACRES DATELINE 11R
EARLY SUNSET ELBA 7U

BW: 82 lbs Adj 205: lbs

Est. EPD's:	BW: 3	WW: 52	YW: 82	Milk: 32	TM: 58
-------------	-------	--------	--------	----------	--------

- A first calf heifer out of one of our most consistent cow families**Low birth weight accompanied with lots of growth and maternal



Lot 110

HILLS OF HOME MOCO 402B

1776120 SGY 402B January 3, 2014

110

O C C JUNEAU 807J
KOUPLS MO CO 253
BEEFLAND EBONETTE 835

HILLS OF HOME FREEDOM 96'08
HILLS OF HOME LADY 92X
HILLS OF HOME LADY 48T

O C C EMBLAZON 854E
O C C DIXIE ERICA 903E
E&B 1483 SCOTCHMAN 543
BEEFLAND EBONETTE K089
TC FREEDOM 104
EARLY SUNSET QUEEN 28R
NOBLE ACRES DATELINE 11R
H OF H LADY 3P

BW: 91 lbs		Adj 205: lbs			
Est. EPD's:	BW: 2.8	WW: 44	YW: 76	Milk: 27	TM: 49

• A long, big hipped, deep bodied MoCo bull, he is hard to miss in the pen



Lot 111

ALKALI LAKE BULLET OF ALF 409B

1815824 AXY 409B February 10, 2014

111

O C C JUNEAU 807J
KOUPLS MO CO 253
BEEFLAND EBONETTE 835

P V F NEW HORIZON 001
EARLY SUNSET ELBA 7U
EARLY SUNSET ELBA 28S

O C C EMBLAZON 854E
O C C DIXIE ERICA 903E
E&B 1483 SCOTCHMAN 543
BEEFLAND EBONETTE K089
B/R NEW DESIGN 323
HYLINE ELLEN 410
EARLY SUNSET LEGEND 44N
EARLY SUNSET ELBA 33L

BW: 81 lbs		Adj 205: lbs			
2014 EPD's:	BW: 3.4	WW: 48	YW: 81	Milk: 31	TM: 55

• Maternal Brothers working for Larry Maxwell (Blackwell Angus), Christian Guenter and Terry Silbernagel**Consistency is her middle name

112 ALKALI LAKE BRAUNY OF ALF 412B

1826051 AXY 412B February 18, 2014

112

CONNEALY THUNDER
20/20 THUNDER 8Z
20/20 PRIDE 18X

C J PRESTIGE 25T
JUSTAMERE 25T KEEPSAKE 221Y
REMITALL KEEPSAKE 143L

BALDRIDGE KABOOM K243 KCF
PARKA OF CONANGA 241
SCC TOUCHDOWN 57T
MERIT PRIDE 7118
H S A F BANDO 1961
C J BLACKBIRD 11P
SITZ ALLIANCE 6595
REMITALL KEEPSAKE 103J

BW: 81 lbs		Adj 205: lbs			
Est. EPD's:	BW: 2.5	WW: 47	YW: 84	Milk: 27	TM: 50

• This bull calf will be only a few days over a year old sale day**This bull is a sleep easy calving ease bull

We would like to invite you to the 2015 edition of the

P&H Ranch Horse Sale

Duane believed there wasn't a better place to sell good working horses than a bull sale so he created this platform to bring together buyers and sellers of good quality horses.

This year another group of well broke ranch horses from reputable horseman are on offer. It takes a huge investment in time, knowledge and work to get a horse ready for the ranch or arena. Having

that "go to" horse makes all the difference in the world. So if you are looking for a new mount come and view this great set of ranch horses. Feel free to give any of the following horse consignors a call prior to the sale.



The ranch horse sale order will be determined by drawing the consignor's name out of a cowboy hat prior to the sale.



Lot 113

RBAR CHOCOLATE CHIP

AQHA # 5315081 BIRTHDATE: June 14, 2010

113

SIRE: MGC SHADOW LEAGUER DAM: JEWELS IN CHOCOLATE BELLE
MG SIRE: CHIPPED IN CHOCOLATE

CONSIGNOR: WILL MACINAW

For more information call: 403-843-1055

Moses is a fancy grullo gelding who has been used for all aspects of ranching from branding to feedlot. If you want to look good ranching or just pleasure riding don't pass up this R Bar Gelding!

Ranch Horses



Lot 114

SQ DOC HENRY

AQHA # 682739 BIRTHDATE: May 20, 2002

114

SIRE: APRILS MEDICINE DR. DAM: CHIEF TOOTSIE
MG SIRE: CHIEF HENRY

CONSIGNOR: CLINT ANDERSON

For more information call: 403-593-4820

Henry is a 12 year old gelding, big and stout standing 15 HH. Used on PFRA pasture checking and treating cattle. Used to rope and treat pasture bulls. An all around ranch horse he has competed at ranch rodeos heading, healing and handles well in the box. Packed and ridden in the mountains he is sure to make anyone a great horse.



Lot 115

GOOD GOLD RANCHER

AQHA # 5004735 BIRTHDATE: July 17, 2007

115

SIRE: SAGE RANCHERO DAM: GOOD GOLD LADY
MG SIRE: GOLD N SKEDADLE

CONSIGNOR: TRAVIS & TRACI SIMPSON

For more information call: 403-687-2594

This year we are offering a 7 year old Palomino gelding 14'2. He is extremely quiet and well mannered and easy to catch; he has done all aspects of ranch work and is willing to do anything he is asked. A great kids horse, he travels well and can work all day. He would be a great asset to anyone's family; you can leave him in a pasture for the winter and hop on and ride him in the spring.

Ranch Horses



Lot 116

PICKS ROAN HANA BAR

AQHA # 5024337 BIRTHDATE: July 28, 2007

116

SIRE: HANABAR TRY DAM: HERE PICKLES PICKLES
MG SIRE: LYNX EAGLE

CONSIGNOR: WALKING O RANCH HORSES, BILL KEWLEY

For more information call: 403-652-6441

"Rooster" has been part of our herd for a number of years. We partnered on a mare with good friends and he came to stay with us the fall he was three. We started him that fall and he went to work packing salt in the mountains as a four year old with limited riding. As a five year old he went on the payroll and a has been a valued ranch horse since. He has lots of mountain and bush experience along with pasture roping and cattle handling. He is quiet, easy to handle, good to load, good with his feet and ideal for someone who wants to go to work with him.



Lot 117

DALLAS QUINCY 10

AQHA # 5321212 BIRTHDATE: May 6, 2010

117

SIRE: BAG SOME WAGES DAM: DIAL QUINCY
MG SIRE: BLUE BOY QUINCY

CONSIGNOR: CHARLES DALLAS

For more information call: 403-227-2610

Dallas Quincy 10 is a good looking gelding standing 15.2 HH. He is well broke to ride and moves very quickly. With lots of cutting in his background It will take a good rider to stay on. This 5 year old travels well and long.

Ranch Horses



Lot 118

NIFTY BUENO PINE

AQHA # 5237199 BIRTHDATE: July 11, 2009

SIRE: NIFTY HOLLYWOOD DUN IT DAM: BUENO SPORTS LADY
MG SIRE: PRETTY POCO BUENO

CONSIGNOR: KEN GUENTHNER

For more information call: 403-577-2448

Frank is a solid built ranch horse that will get the job done for anybody. He has been roped off, sorted pairs and just general ranch work. Drops his head and will walk and trot all day for you.



Lot 119

IM ZEEK THE STREAK

AQHA # 757.886 BIRTHDATE: June 3, 2003

SIRE: IM SKIPS MC CUE DAM: PAULS LUCKY COIN
MG SIRE: PAULS TEMPTATION

CONSIGNOR: KY MARSHALL

For more information call: 403-506-6648

Chet is an 11 year old reg. gelding that stands about 15 HH. I have had him since he was 4 years old and started him shortly after that. He has been through many feedlot pens and checked pastures every summer. While checking pastures I have roped, doctored and gathered many head. Chet has also been used in a few branding pens to drag the calves. He is a solid ranch horse and has put on many miles at the YaHa Tinda hunting. Great with the farrier and loads a trailer well. Used with a hackamore all the time and neck reins well. He should suit any rider.

Ranch Horses



Lot 120

TRU FOXY MAJOR

BIRTHDATE: 2003

SIRE: TRU TETANIC DAM: CHOCOLATES MOON
MG SIRE: CHOCOLATE SAN

CONSIGNOR: ALBION RIDGE COL. (LEVI)

For more information call: 403-892-8690

This powerful bay gelding is a ranch horse deluxe. A true all around gentle horse. We have done everything on him, pasture treating, checked feedlot pens, worked at many brandings with the custom cattle wrangler team. He has loads of cow sense and has been used during the night at calving time. Kid friendly. He will fit into anyone's operation.



Lot 121

SPIRIT

Grade Gelding BIRTHDATE: 2008

CONSIGNOR: JESS PARSONAGE

For more information call: 306-662-5081

"Spirit" is a Grade buckskin gelding with a really nice disposition. He has been ranch and pleasure ridden. Not too tall at 15 HH he would make a great ladies or youth horse. Fun to ride with a smooth, easy lope. Call for more information or come out to the ranch and try him out.



Lot 122

TWO BECOME ONE

AQHA # 5342633 BIRTHDATE: June 3, 2010

122

SIRE: TWO EYED JJ DAM: FREEDOMS RUBY BELLE
MG SIRE: POCO OAK STAR

CONSIGNOR: PETER & JOLENE GROSS

For more information call: Peter Gross - 403-505-4997

Charlie is a 5 year old mare, standing approx 15.1 hands. She has been used to gather cattle and is currently being used a 5500 head feedlot. She is quiet, gentle, and very friendly. She is very athletic and a very easy, smooth mover. Charlie comes from a great line of working horses and rope horses that make great family horses as well. email jolene_kinsley@yahoo.ca

LAME BULL = NO BULL

Getting cows bred on time is pivotal to the success of every cow-calf operation & the most vital animal on the breeding field often gets the least consideration...the bull.

Producers spend a great deal of time and money ensuring that the bulls they purchase have the right genetics for their cow herd. Many producers also recognize the value of an annual breeding soundness examination before the breeding season. But far less attention is paid to protecting these reproductive assets from a common infection that can undermine a successful breeding season.

Footrot is caused by the bacterium *Fusobacterium necrophorum*, an organism commonly found in the digestive tract of cattle. Any surface contaminated with manure may contain this organism. *F. necrophorum* can also escape from the rumen and circulate internally. An animal's environment plays a role in the development of footrot. Wet, muddy conditions or rough, abrasive terrain can cut or bruise the skin between the toes, creating the right conditions for the bacteria to multiply and cause disease.

The first signs of footrot are swelling just above the hoof and lameness in the affected foot. As the swelling increases, the toes spread apart and the animal becomes increasingly lame. Ultimately, the skin between the toes dies and breaks open, releasing infected debris and the foul odour associated with footrot. Decreased appetite and weight loss are secondary effects. Although rarely fatal, the condition can result in tendon sheath infections and arthritis if not treated promptly. Furthermore, footrot is contagious because the infective material released from the feet of affected animals increases the likelihood that other animals will be exposed.

The cost of footrot is much higher than the price of treatment. A lame bull, especially one that is lame on a hind foot, is unlikely to breed many cows. If he quits working, even for part of the breeding season, you may be faced with late and open cows in the fall. That means more culled animals, more late-born calves and shorter calving to breeding intervals for your cows next spring. The good news for producers is that a footrot vaccination is available that can decrease the incidence and severity of this disease in your herd.

Combined with a sound nutrition program and good health management practices, footrot vaccination can help keep the upcoming breeding season on track. Talk to your herd veterinarian about prevention strategies for your herd.

FUSOGARD® POWERFUL ECONOMICAL PROACTIVE

All sale bulls will be double Foot Rot Vaccinated with Fusogard

TERMS & CONDITIONS OF THIS SALE

- TERMS** – The terms of the sale are cash or cheque payable at par in Canadian funds to the sale clerk on sale day unless otherwise previously arranged with the sellers prior to the sale. No releases will be given until satisfactory settlement has been made.
- BIDS** – Each animal will be sold to the highest bidder.
- DISPUTES** – In case of disputes, bidding will be reopened between the parties involved. If no further bid is made, the buyer will be the person from whom the auctioneer accepted the last bid. The auctioneer's decision in such matter will be final.
- ANNOUNCEMENTS** – The information contained in this catalogue is believed to be true and accurate. Announcements at the sale by the owner, auctioneer or sales management will take precedence over the printed matter in this sale catalogue.
- PURCHASERS RISK** – Each animal becomes the risk of the purchasers as soon as sold.
- CERTIFICATE OF REGISTRATION** – The proper registration paper from the CCA, CAA and CSA will be duly transferred and furnished to the buyer for each animal after settlement has been made.
- GUARANTEE** – All bulls carry the standard breeding guarantee as specified by the applicable Canadian breed Associations. Bulls are guaranteed to be structurally sound and will have passed a semen test by a qualified Veterinarian prior to sale day or delivery. In the unlikely event of a dispute, the regular terms and conditions of the standard breed Associations will apply.
- ACCIDENTS/LIABILITY** – Every precaution will be made to protect the safety of those attending the sale. All persons attend the sale at their own risk. The seller, facility, owner & other persons involved with this sale assume no liability, legal or otherwise for any accidents that occur in, on or about the premises.
- INSURANCE** – Ownership risk to purchaser commences when the Auctioneer's hammer falls. Livestock coverage will be available at the clerk's desk from the appointed representative sale day. It is mandatory that all bulls returning to the seller's premises be insured at the buyer's expense.
- DELIVERY** – The sellers will deliver bulls free of charge within a 300 mile radius. Delivery beyond will be at cost. All bulls will be delivered within 30 days after the sale date.
- P&H Ranching, Circle G Simmentals/Angus and Alkali Lake Angus** reserve the right to collect semen on any bull sold for in herd use. This semen will be collected at the buyer's convenience and at the seller's expense.
- SOLICITING** - It is unethical for anyone to promote, advertise or arrange the sale of any cattle, other than those in the sale, on the sale premises.
- REGARDING HORSE SALES:** It is to be clearly understood that the Innisfail Auction Market, P&H Ranching and their affiliates is only acting as a medium between the buyer and the seller. We are not in any way responsible for failure on the part of either party to live up to their obligation. Each animal becomes the risk of the purchaser as soon as the animal is declared sold.

All 2 year old bulls will be semen tested, weighed & veterinary inspected prior to the sale. Yearling bulls will be scrotal measured, weighed & veterinary inspected prior to the sale and semen tested prior to delivery. Information will be available sale day. Horses will be veterinary inspected on arrival.

2014 Buyers List

ALENDAL ANGUS, BC
APPLEYARD LAND & CATTLE, AB
ARROWWOOD COLONY, AB
BAR N GHOST PINE RANCH, AB
BELL HILLS ANGUS, AB
BLAINE WALBURGER, AB
BOB FRASER / M&P RANCHES, AB
BRENT BAMFORD, AB
BRET HOWE, AB
BREWSTER FARMS, AB
C. GORDON & NEAL CHURCH, AB
CAROL DRURY, AB
CARRY RANCHING INC., AB
CASSIE SULLIVAN, USA
CHRISTIAN GUENTHER, AB
COLE WEBB, AB
DALE GLOVER, AB
DIAMOND G RANCH & CATTLE CO., AB
DIAMOND WILLOW RANCH/GERRY ROE, AB
DOUBLE R FARMS, AB
DOUG CRAWFORD, AB
ED COLE, AB
ELKWATER FARMING CO. LTD., AB
ERNIE GODDARD, AB
F. NESTER RANCHING INC., AB
GLEN BALL, AB
GORDON BROWNING, AB
GRANT (BENNY) ELLEFSON
GREG DICKSON, AB
H&H FARM & RANCH, AB
HENRY OPENDRIES, AB
HIGH RIVER COLONY, AB
HIGHWAY 21 FEEDERS, AB
HOWE RANCHING, AB
JACK PHILLIPS, AB
JAFFARY FARMS, AB
JESS PARSONAGE, SK
JOE BECKER, AB
JOE KUBINEC, AB
KATHI PARSONAGE, AB
LACOMBE RESEARCH CENTRE, AB
LARRY NELNER, AB
LITTLE VALLEY VIEW RANCH, AB
LOMOND GRAZING CO-OP, AB
LYNN KELLY, AB
M&R DAMEN FARMS, AB
MARVIN MOLZAN, AB
MCKAY CHAROLAIS, MB
MICHAEL & OLIVER BRENNEIS, AB
NEWELL CATTLE GRAZING, AB
P&H RANCHING CO. LTD., AB
PALVIEW FARMS, AB
PENNY WADDELL, AB
PORTER RANCHES, AB
RAINBOW COLONY, AB
RAINTON BANKS LAND & CATTLE, AB
RAY ROBINSON, AB
REY CREEK RANCH, BC
ROBBIE FARR, AB
RON SCHMIDT, AB
SHANE BUIT, AB
SPRINGVALE COLONY, AB
STACEY BELL, AB
STAHLVILLE FARMING, AB
STEWART RANCHES, AB
SWINGING 7 RANCH, AB
TERRY SILBERNAGEL, AB
TOM & CORINNE SHUCKBURGH, AB
TOM BRAGG, AB
TREVOR CHRISTIAN, AB
JOHN SCOTT MOTION PICTURES, AB

2014 SALE

Thank You . . .



. . . to Last Year's
Buyers & Bidders


P&H RANCHING CO. LTD.
36048 C&E Trail
Red Deer County, AB T4G 0G9



Bulls that Fit!
All Segments of the industry
Seedstock
Commercial
Feeder
In the Box



**WORKING RANCH
HORSES**

CANADA		POSTES
POST		CANADA
Postage paid		Port payé
Addressed		Médiaposte
Admail		avec adresse
		02632578