

OLE



FARMS

Fifth Annual
Family Day Sale



A date not to miss

Monday, February 15, 2010

At the Farm, 10 miles Southwest of Athabasca

OLE FARMS



Fifth Annual Family Day Sale

Monday

February 15, 2010 - 1 pm

At the Farm 10 miles Southwest of Athabasca

Lunch at 11:30 am

SELLING:

135 2-YEAR-OLD BULLS

48 Red Angus - 60 Black Angus

12 Black Angus Red Carriers

5 Simmental x Angus Hybrids

10 Unregistered Angus - 7 Black, 3 Red

Plus: 50 Commercial Angus Bred Females

* All Bulls Semen Tested

* All Bulls Sell as Virgins

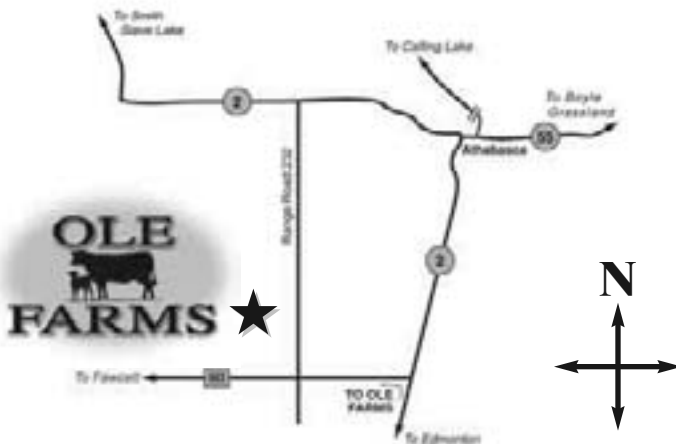
* All Bulls Sell Guaranteed BVD PI Free

* Free Delivery of bulls to Central Points in Canada

* Ole Farms will keep the bulls until April 1 at no cost

(Insurance recommended)

DIRECTIONS TO SALE



AUCTIONEER:

Don Raffan (250) 546-9420 (250) 558-6789

RINGMEN:

Dennis Ericson (780) 352-7630

Ryan Dorrان (403) 507-6483

Corey Lawrence (780) 789-3134; Cel (403) 940-6301

SALE HEADQUARTERS:

ATHABASCA INN

(780) 675-2294 1-800-567-5718

Super 8 Athabasca (780) 675-8888



Kelly & Anna Olson

Phone: 780-675-4664

Fax: 780-675-3333

Cel: 780-689-7822

email: olefarms@mcsnet.ca

www.olefarms.com

Travis: 780-689-8324 Res: 780-675-1113

Graham: 780-675-0112 Res: 780-675-3445



"Sharing in the excitement of Agriculture"

INTERNET BIDDING AVAILABLE

See Page 3 for details



Sale Managed By:

**DjH Douglas J. Henderson
& Associates Ltd.**

P.O. Box 5900, Lacombe, Alberta T4L 1X4

Doug & Linda Henderson

Phone: (403) 782-3888 Fax: (403) 782-3849 Cel: (403) 350-8541

email: djhenderson@platinum.ca www.hendersoncattle.com

WELCOME TO THE 5TH ANNUAL FAMILY DAY SALE AT OLE FARMS

At Ole Farms we continue to work hard to produce cattle that will be profitable in your operation. We have 1600 cows to calve in the spring of 2010, 600 purebred and 1000 commercials. Our large commercial herd has made it easier for us to understand what the commercial cattleman's genetic needs are: moderate, deep bodied, cattle that can look after themselves. Our cattle are gradually becoming smaller, but not lighter, due to depth of body. We calve in sync with nature, in May and June. We do not tolerate calving problems or poor fertility. Feet or udder problems are an immediate cull. We urge you to come and look at our herds any time, and you will find feet and udders that are very pleasing.

This past summer rainfall was only 52% of normal and forage supplies are tight, consequently we may need to stretch our silage out with the addition of some grain. That goes against our general practice but we must do what makes economic sense.

We are swath grazing oats and feeding standing corn and most of our cow herd will be in these fields well into January. Our cows are in the best condition that we have seen for years. We are raising cattle that are easy-fleshing on forage based rations and need a limited amount of mechanical intervention.

I have always been very optimistic about the cattle industry, and some neighbors have been giving me a hard time this fall about my lofty predictions. Well, I'm even more sure than ever that the turn-around is near. The reason that I am so confident is because there have been days when even I am doubting it! That is what it takes to turn a market – when even the most optimistic of us are starting to have doubts, the turnaround is near. In my opinion, the cattle market in Canada will turn in a manner we have not seen for 35 years. The last 2 years remind me very much of the prices in 1975 and '76. 1977 got a little better, and 1978 was unbelievable!

I have mentioned before how great it is to work as a family in this exciting venture, and our two little grandsons Ace and Carl, already "farming" with us, are a constant reminder of our aim to laugh a little with each other every day. 2009 was indeed, a big year for us, and it was with open arms that we welcomed Frazer Andrews to become the husband of Cheryl June 20th and Vanessa Rose the wife of Travis July 31st. The weddings took place on the farm, on glorious summer days – a great omen for the future. The celebrations were joyous occasions. How blessed we are to have the new additions to the family.

Once again, our offering is not PAMPERED. Our purebred herd is raised under exactly the same conditions as the commercials. We do not hide hard doing cattle behind high input costs. Our sale bulls have not been PUSHED. They will not be as fat as bulls in other sales and we are offering you the top of our production. All sale bulls are virgins and have not been PICKED OVER. No bulls are to be sold prior to the sale.

Keep your hopes up; the future is going to be bright! Thanks for your continued confidence in our program. Please call if we can be of any assistance.



"Sharing in the excitement of Agriculture"

Kelly Olson for The "Ole Gang"



*Travis & Vanessa
Married July 31/09*



Graham, Leslie, Carl & Ace



*Cheryl & Frazer
Married June 20/09*



Bill Doroshenko



*Joe & Nicole Clarke,
Karson & Karmelle*



Ace & Carl



*Steve & Nicole Gauthier,
Rachel & Cody*



Mary Olson



Family Day Sale



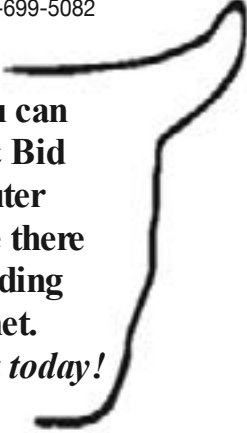
Can't make it to the sale?
Bid Live Online.

Instructions for Viewing and Bidding at the Sale

1. Visit www.dlms.ca
2. Fill out the registration form located under 'Registration'.
3. Click on downloads and follow the four step instructions located on the screen.
4. Click 'Test your Computer'. You will see the Test Video and Bid Control Box.

To be approved as a bidder or any other questions, please email mshologan@dlms.ca or call Sheldon Wilcox 780-349-1680 or Mark Shologan 780-699-5082

With DLMS you can Watch, Listen & Bid on your computer just like you were there with Online Bidding over the Internet. Visit www.dlms.ca today!



Internet Bidding Available

DLMS
www.dlms.ca



A RED CROWFOOT OLE'S OSCAR 2042M

Male CFCC 2042M 1096384 OSF January 16 2002

RED GLACIER CUB 446 OSF
RED MLK CRK CUB 722 OSF 1039064
 RED MLK CRK LAKOTA 152-HOBO OSF

GLACIER GRIZ 146
 GLACIER FRITZ 241
 RED BUF CRK HOBO 1961 OSF
 RED MLK CRK LAKOTA 802-RAMB

RED PRICE 631
RED CROWFOOT OMEGA 9179J 968778
 RED OMEGA 7456'

RED HIGH PRICE
 RED 980-730
 RED OSCAR S315
 RED ST JANICE 405

BW: 71 lbs.
 CDN EPDS: BW: -3.9 92% WW: +27 91% YW: +61 90% Milk: +17 88% TM: +31
 Stay: +9 26% HPG: +2 60% CED: +9.0 88% CEM: +12.0 87%
 CARCASS EPDS: REA: +0.19 46% Marb: +0.10 50% Fat: -0.01 25%

Ole's Oscar 2042M is the foundation of our Red Angus program. No other bull has left a larger imprint on our herd and we are so blessed to have him. In March of 2008 we sold a ¼ interest in this calving ease legend to American Breeders Service (ABS) making him the first Canadian Red Angus bull that ABS had bought in many years. He since then has been one of their best sellers and has been very well promoted, often the lead off bull in advertising campaigns. Oscar sons are born light at birth and yet are muscular and have above average performance. Oscar daughters are the pride of our Red Angus program with their sound structure, fertility and picture perfect udders. Canadian qualified semen is no longer available so don't miss this opportunity to purchase a son of perhaps the world's best Red Angus heifer bull of all time!



Red Crowfoot Ole's Oscar 2042M

B RED OLE OSCAR 104S

Male OLEF 104S 1318528 May 03 2006

RED MLK CRK CUB 722 OSF
RED CROWFOOT OLE'S OSCAR 2042M OSF 1096384
 RED CROWFOOT OMEGA 9179J

RED GLACIER CUB 446 OSF
 RED MLK CRK LAKOTA 152-HOBO OSF
 RED PRICE 631
 RED OMEGA 7456'

RED CROWFOOT CAPTAIN 1B
RED CROWFOOT COVERGIRL 401D 785078
 RED CROWFOOT COVER GIRL 5B

RED BIEBER DSIGN 1325-082
 RED CROWFOOT BRNDINA 4Z
 RED BJR HOBO 800 OSF
 RED CUMNOCK PRIDE 828X

BW: 79 lbs.
 CDN EPDS: BW: -3.5 59% WW: +20 48% YW: +49 42% Milk: +21 30% TM: +31
 Stay: +9 15% HPG: +6 11% CED: +10.0 30% CEM: +8.0 26%
 CARCASS EPDS: REA: +0.40 34% Marb: -0.01 38% Fat: -0.01 20%

This impressive Ole's Oscar son was used as a clean-up bull on our yearling heifers. His calves, like his sires, came light birth weight and weaned off very impressive calves. Note 104S light birth weight EPD and exceptionally high Rib-Eye EPD, as he is our highest Ole's Oscar son ever raised here. His length and muscle pattern for a lightweight birth weight bull is exceptional! Note, no other sire born in Canada in 2006 has a birth weight EPD under -3.0 and Yearling Weight over +48 and a rib eye over .40. Kristina Huisman at 16 years bought this bull in our 3rd annual sale and is off to an excellent start in the cattle business. Congratulations, Kristina, you found a good one!



Red Ole Oscar 104S

C RED CROWFOOT 5103R

Male CFCC 5103R 1254690 February 06 2005

RED BADLANDS BONAFIDE 1145
RED LAZY RC AUTHENTIC 326N 1152563
 RED SSS DUCHESS 542K

RED BADLANDS BONUS 702
 RED SBCC FIREFLY D2832-161
 RED SSS BOOMER 803B
 RED COCKBURN DUCHESS 34E

RED PAT 8207
RED CROWFOOT KURUBA 2186M 1096653
 RED CROWFOOT KURUBA 8117H

RED FLYING K PAT 43C
 RED RACHEL R227
 RED CR HEAVENLY 11F
 RED CROWFOOT KURUBA 6126F

BW: 103 lbs.
 CDN EPDS: BW: +4.6 67% WW: +34 50% YW: +55 45% Milk: +18 26% TM: +35
 Stay: +7 3% HPG: +1.6 5% CED: -2.0 27% CEM: -3.0 22%
 CARCASS EPDS: REA: +0.13 34% Marb: +0.00 37% Fat: +0.00 19%

Authentic as we call him, is showcasing his calves for the first time this year. Authentic himself has an outstanding profile with incredible depth and width of base. Despite Authentic's tremendous phenotype, it is his mother's side of his pedigree that is his largest strength. The Karuba cow line has been a huge strength in our program with both his great and great great grand dams (pictured on page 15) both being donor females in our embryo program. Look for sons of Authentic to add muscle and performance into your calves.



Red Crowfoot 5103R "Authentic"

D SITZ ALLIANCE 6595

Male IMP 6595E 1036949 NHF AMF February 17 1995

G D A R TRAVELER 71 NHF AMF
SITZ TRAVELER 8180 NHF AMF 866597
SITZ EVERELDA ENTENSE 1137

TRAVELER 1148 G D A R
G D A R MISS BLACKCAP 567
G D A R RAINMAKER 340
SITZ EVERELDA ENTENSE 2335

3 BAR SPIKE 1766
SITZ BARBARAMERE JET 2698 11056748
SITZ BARBARAMERE JET 155

SKARSHIP SARATOGA
3 BAR BLACKBIRD 2728
VANCE TOP DAWG
SITZ BARBARAMERE JET 663

BLK EPDS: BW: +2.9 98% WW: +51 97% YW: +95 97% Milk: +30 96% TM: +56
YG: +44 97% SC: +1.74 96% CED: +4.0 94% CEM: +8.0 93%
CARCASS EPDS: REA: -0.19 74% Marb: +0.29 75% Fat: +.075 72%

A bull should be measured by the progeny that he leaves behind. His daughters are extremely productive yet long lasting. His sons are large scrotalled, high growth with incredible capacity. As of the summer of 2009 we have used 490 straws of semen on this Pathfinder sire, with many more to be used in the future.



Sitz Alliance 6595

E SINCLAIR RITO LEGACY 3R9

Male IMP 39N 1436721 ET AMF March 08 2003

RITO N BAR
R R RITO 707 NHF AMF 1195062
ERISKAY OF ROLLIN ROCK 3

ELIMINATOR 302
ELBERTA OF N BAR 2
BANDOMERE OF R R
ERISKAY 17 OF GREEN MEADOW

D H D TRAVELER 6807 NHF AMF
IDEAL 4465 OF 6807 4286 NHF AMF 12211413
E E 4286 OF IDEAL 2240 1254

Q A S TRAVELER 23-4 NHF AMF
BEMINDFUL MAID D H D 0807
EE 30 1254 OF IDEAL 5254 960
EE 30 2240 OF IDEAL 8245 960

BLK EPDS: BW: +2.0 85% WW: +33 79% YW: +66 71% Milk: +15 33% TM: +32
YG: +33 71% SC: -0.46 75% CED: +5.0 62% CEM: -4.0 30%
CARCASS EPDS: REA: -0.05 40% Marb: +0.06 32% Fat: +.009 27%

In the fall of 2007 we heard reports of a bull in Pennsylvania that was very unique. Unique in the fact that his sire was born in 1967 and that he was the type of bull that would do what we wanted – reduce frame, add fleshing ability and add muscle. When we flew down to see him we knew we had not wasted our time. Rito Legacy was the deepest, thickest bull we had ever seen. This is the first crop of Rito Legacy bulls to be offered from Ole Farms and the largest offering in Canada. Note: Sinclair Everlast is a paternal brother.



Sinclair Rito Legacy 3R9

F SINCLAIR EVERLAST 6R107

Male IMP 6107S 1418058 ET January 31 2006

RITO N BAR
R R RITO 707 NHF AMF 1195062
ERISKAY OF ROLLIN ROCK 3

ELIMINATOR 302
ELBERTA OF N BAR 2
BANDOMERE OF R R
ERISKAY 17 OF GREEN MEADOW

N BAR EMULATION EXT NHF AMF
N BAR QUEEN MOTHER 9955F 12383546
N BAR QUEEN MOTHER 6079

EMULATION N BAR 5522
N BAR PRIMROSE 2424
RITO 36 OF IDEAL 5106 746
N BAR QUEEN MOTHER 3096

BLK EPDS: BW: +4.4 57% WW: +28 44% YW: +45 32% Milk: +11 23% TM: +25
YG: +17 32% SC: +0.08 43% CED: -1.0 36% CEM: -5.0 20%
CARCASS EPDS: REA: -0.05 26% Marb: -0.23 23% Fat: +.008 20%

A half brother to Rito Legacy, Everlast will moderate frame, improve feet and udder structure and add middle to just about any offspring. There are only a limited amount of sons in this year's sale as he was only a yearling in 2008 but don't miss his sons in the offering. No other black bull in our operation is breeding cattle thicker, deeper or easier fleshing.



Sinclair Everlast 6R107



Family Day Sale

G CONNEALY FREIGHTLINER

Male IMP 7549G 964749 NHF AMF March 15 1997

TEHAMA BANDO 155 NHF AMF
BON VIEW BANDO 598 AMF 780142
 BON VIEW DORA 56

BAND 234 OF IDEAL 3163
 TEHAMA BLACKCAP G373
 VOLTAGE HK K142
 BON VIEW DORA 254

NICHOLS HEAVY DUTY X100
JOANA ERICA OF CONANGA 12015525
 JARNE ERICA OF CONANGA

NICHOLS SUPER SYSTEMS R43
 NICHOLS MISS BARBARA U238
 SCOTCH CAP NHF AMF
 JARA ERICA OF CONANGA

BLK EPDS: BW: +1.8 97% WW: +47 96% YW: +91 95% Milk: +18 92% TM: +42
 YG: +44 95% SC: +2.22 94% CED: +6.0 90% CEM: +9.0 87%
 CARCASS EPDS: REA: +0.13 65% Marb: +0.08 66% Fat: +.046 60%

A really consistent breeder in our operation. A one-time leader in the breed for registrations for obvious reasons – growth and power without extreme frame. Freightliner is now deceased and with very limited semen available you don't want to miss your opportunity to purchase a son today.



Connealy Freightliner

H STANDARD HILL PAYOFF 20P

Male LES 20P 1240477 NHF AMF January 20 2004

G A R PRECISION 1680 NHC AMC
C A FUTURE DIRECTION 5321 NHC AMC 867594
 C A MISS POWER FIX 308 AMF

TEHAMA BANDO 155 NHF AMF
 9J9 G A R 856 NHF
 S A F POWER FIX NHF AMF
 C A LADY EIGHT 1015

R P 3RD BUSHWACKER
STANDARD HILL QUEEN MOTHER 13M 1104247
 STANDARD HILL QUEEN MOTHER 47J

B C C BUSHWACKER 41-93 NHF AMF
 L B QUEEN OF SPADES
 STANDARD HILL TRAVELER 6G
 EARLY SUNSET QUEEN 10F

BW: 86 lbs.
 BLK EPDS: BW: -1.9 80% WW: +29 71% YW: +48 66% Milk: +27 34% TM: +42
 YG: +19 66% SC: +0.09 52% CED: +13.0 60% CEM: +12.0 29%
 CARCASS EPDS: REA: +0.30 38% Marb: +0.45 31% Fat: +.010 27%

A picture does say a thousand words. Payoff breeds as well as he looks and has left us some very impressive females. A very difficult thing to find when searching for herd bulls are bulls that leave muscle and style while having low birth weights. Payoff does both of these things and adds considerable improvements to carcass quality.



Standard Hill Payoff 20P

Calving Ease

Star ratings are the subjective estimate of these young bulls' calving ease

- ★★★★ Likely to have a high level of calving ease based on dam and sire history, actual birth weight, and EPD of birth weight
- ★★★ Should be comfortable for use on heifers of the same breed
- ★★ Bull should be used on cows with limited assists expected
- ★ Bull should only be used on cows - expect high birth weights



Bovi-Shield GOLD FP
 Protection without compromise.

100% BVD PI-FREE GUARANTEED

OUR BVD PI-FREE GUARANTEE
 BVD PI-FREE GUARANTEE: All cattle vaccinated with Bovi-Shield GOLD FP are guaranteed to be free of BVD PI for life. All cattle sold with Bovi-Shield GOLD FP are guaranteed to be free of BVD PI for life. All cattle sold with Bovi-Shield GOLD FP are guaranteed to be free of BVD PI for life.

Herd Health Program

- Pfizer Gold Program – all cattle have been vaccinated, following the Pfizer Gold program.
- Johne's Disease – in 2007 all of our purebred cows over 3 years old were tested for Johne's. All cows were negative. Johne's is a production limiting disease that producers should be aware of.
- P.I. (Persistently Infected BVD) – all sale bulls are guaranteed BVD/P.I. free. P.I. animals extract huge losses to the cattle industry annually. A thorough vaccination program is essential to prevent P.I. infected animals. All sale bulls are virgins.
- All bulls sell with a certified semen test prior to delivery.



Lot 1 - Ole Alliance 99U



Ole Alliance 196T - Full brother to Lot 1

1 OLE ALLIANCE 99U

Male OLEF 99U 1461720 May 03 2008

SITZ TRAVELER 8180 NHF AMF
SITZ ALLIANCE 6595 NHF AMF 1036949
SITZ BARBARAMERE JET 2698

G D A R TRAVELER 71 NHF AMF
SITZ EVERELDA ENTENSE 1137
3 BAR SPIKE 1766
SITZ BARAMERE JET 155

GDAR DUTCH 1508
DWAJO EVENING TINGE 26P 1220233
DWAJO EVENING TINGE 51K

DUTCH 744 J V
GDAR BLACKCAP LADY 6402
CRESCENT CREEK FORTUNE 16H
DWAJO EVENING TINGE 57H

BW: 89 lbs.
CDN EPDS: BW: +2.7 36% WW: +44 27% YW: +80 29% Milk: +20 22% TM: +42
Stay: +11 18% HPG: +8 12% CED: +5.0 20% CEM: +5.0 19%
CARCASS EPDS: REA: -0.08 26% Marb: +0.03 27% Fat: +0.01 19%

Calving Ease ★★

Just like his full brother, Ole Alliance 196T, that sold in last year's sale to Derek Tallmadge of Meadow Lake, SK for \$4900. 99U has incredible width of base, muscle and capacity. His mother 26P is establishing herself as one of our top cows.

2 OLE ALLIANCE 163U

Male OLEF 163U 1461757 May 12 2008

SITZ TRAVELER 8180 NHF AMF
SITZ ALLIANCE 6595 NHF AMF 1036949
SITZ BARBARAMERE JET 2698

G D A R TRAVELER 71 NHF AMF
SITZ EVERELDA ENTENSE 1137
3 BAR SPIKE 1766
SITZ BARAMERE JET 155

STRATHMORE GOLIATH 1G
RIR S ANNIE 2L 1092985
RAFTER IR S. ANNIE 44H

V D A R NEW TREND 315 NHF AMF
STRATHMORE ARLENE 4A
HF LANCASTER 49D
RAFTER IR ANNIE 5E

BW: 91 lbs.
BLK EPDS: BW: +4.2 34% WW: +39 24% YW: +64 23% Milk: +25 19% TM: +45
YG: +25 23% SC: +1.17 32% CED: -1.0 27% CEM: +1.0 16%
CARCASS EPDS: REA: -0.01 24% Marb: +0.14 21% Fat: +0.04 19%

Calving Ease ★★

One of our most productive old cows raised this bull. 2L has had her son on the cover of the 1st and 2nd Annual Bull Sale Catalog. 163U has depth and mass. He is a great smooth moving bull and is 2L's best calf to date!

3 OLE ALLIANCE 133U

Male OLEF 133U 1461745 May 08 2008

SITZ TRAVELER 8180 NHF AMF
SITZ ALLIANCE 6595 NHF AMF 1036949
SITZ BARBARAMERE JET 2698

G D A R TRAVELER 71 NHF AMF
SITZ EVERELDA ENTENSE 1137
3 BAR SPIKE 1766
SITZ BARAMERE JET 155

O C C HONESTY 962H
CROWFOOT 3433N 1188511
RED CFCC 462K

O C C ANCHOR 771A
O C C DIXIE ERICA 907C
RED WVA YOUNGBLOOD 3H
RED CROWFOOT WJ GREEN 845H

BW: 86 lbs.
BLK EPDS: BW: +2.7 36% WW: +42 26% YW: +76 24% Milk: +24 20% TM: +45
YG: +34 24% SC: +1.36 33% CED: +3.0 27% CEM: +3.0 17%
CARCASS EPDS: REA: -0.04 24% Marb: +0.01 21% Fat: +0.03 19%

Calving Ease ★★

Great footed and very deep and thick!

4 OLE ALLIANCE 91U

Male OLEF 91U 1461711 May 01 2008

SITZ TRAVELER 8180 NHF AMF
SITZ ALLIANCE 6595 NHF AMF 1036949
SITZ BARBARAMERE JET 2698

G D A R TRAVELER 71 NHF AMF
SITZ EVERELDA ENTENSE 1137
3 BAR SPIKE 1766
SITZ BARAMERE JET 155

C&D 455 ROCKETT
CROWFOOT DONNA 1604L 1051345
C H DONNA 9496

D H D TRAVELER 6807 NHF AMF
V F 722 LANDMARK FRED A 5127
C A R FREDERICK 722
C H DONNA 5202

BW: 88 lbs.
BLK EPDS: BW: +2.8 36% WW: +46 27% YW: +87 25% Milk: +28 21% TM: +51
YG: +41 25% SC: +1.41 33% CED: +2.0 29% CEM: +4.0 19%
CARCASS EPDS: REA: -0.18 24% Marb: +0.23 22% Fat: +0.038 20%

Calving Ease ★★

Take a look at the milk numbers on this bull. A little more performance and frame with this bull.

We run our purebreds no differently than our commercials. Purebred cattle that need to be pampered have little use to a commercial cattleman.



Lot 5 - Ole Alliance 118U



Crowfoot 3542N - Dam of Lot 5

5

OLE ALLIANCE 118U

Male OLEF 118U 1461733 May 06 2008

SITZ TRAVELER 8180 NHF AMF
SITZ ALLIANCE 6595 NHF AMF 1036949
SITZ BARBARAMERE JET 2698

G D A R TRAVELER 71 NHF AMF
SITZ EVERELDA ENTENSE 1137
3 BAR SPIKE 1766
SITZ BARAMERE JET 155

O C C JOKER 620J
CROWFOOT 3542N 1182429
GLADWALL G V LASS 6327

O C C EMBLAZON 854E
O C C JUANADA 709V
TOMWALL B EMULATION 070
GLADWALL G V LASS 1270

BW: 79 lbs.
BLK EPDS: BW: +1.6 36% WW: +38 26% YW: +63 25% Milk: +27 21% TM: +46
YG: +25 25% SC: +0.88 34% CED: +5.0 28% CEM: +6.0 18%
CARCASS EPDS: REA: +0.08 24% Marb: +0.12 22% Fat: +.032 20%

Calving Ease ★★★

Well where should we start with this guy? His mother, 3542N is in our opinion, our best cow. She is moderate, thick, good footed and has a sound udder. Despite her small frame she is very high indexing and always leaves sons that are deep and thick. She had the high seller in our 3rd Annual Sale to the McCutcheons and her son, 138T will have sons in next year's sale, as we have been using him ourselves. We have pulled 3542N out of production so that we can flush her for a full year.



Ole Alliance 138T - Full brother to Lot 5

6

OLE ALLIANCE 96U

Male OLEF 96U 1461717 May 02 2008

SITZ TRAVELER 8180 NHF AMF
SITZ ALLIANCE 6595 NHF AMF 1036949
SITZ BARBARAMERE JET 2698

G D A R TRAVELER 71 NHF AMF
SITZ EVERELDA ENTENSE 1137
3 BAR SPIKE 1766
SITZ BARAMERE JET 155

BASIN MAX 730L
OLE BLACKBIRD 153R 1273084
CROWFOOT 3742N

BASIN MAX 602C NHF AMF
BASIN CHLOE 588G
RED BJR JR 105
CROWFOOT BLACKBIRD 1687L

BW: 84 lbs.
BLK EPDS: BW: +3.1 35% WW: +43 25% YW: +76 24% Milk: +25 19% TM: +47
YG: +33 24% SC: +0.94 32% CED: +2.0 29% CEM: +5.0 17%
CARCASS EPDS: REA: -0.07 25% Marb: +0.23 21% Fat: +.046 20%

Calving Ease ★★

7

OLE ALLIANCE 68U

Male OLEF 68U 1461699 April 28 2008

SITZ TRAVELER 8180 NHF AMF
SITZ ALLIANCE 6595 NHF AMF 1036949
SITZ BARBARAMERE JET 2698

G D A R TRAVELER 71 NHF AMF
SITZ EVERELDA ENTENSE 1137
3 BAR SPIKE 1766
SITZ BARAMERE JET 155

BASIN MAX 104J AMF
CROWFOOT PRINCESS 5004R 1254598
CROWFOOT PRINCESS 3036N

BASIN MAX 602C NHF AMF
BASIN ESSA 946A
O C C JOKER 620J
RED CROWFOOT PRINCESS 647F

BW: 63 lbs.
BLK EPDS: BW: -0.9 35% WW: +36 26% YW: +68 26% Milk: +24 20% TM: +42
YG: +31 26% SC: +0.89 33% CED: +10.0 30% CEM: +10.0 18%
CARCASS EPDS: REA: -0.09 24% Marb: +0.19 21% Fat: +.038 19%

Calving Ease ★★★★★

A four star calving ease, well above average performance and three generations of deep bodied easy fleshing bulls. 68U is moderate and very deep!



Family Day Sale

8

OLE ALLIANCE 214U

Male OLEF 214U 1461773 May 24 2008

SITZ TRAVELER 8180 NHF AMF
SITZ ALLIANCE 6595 NHF AMF 1036949
 SITZ BARBARAMERE JET 2698

G D A R TRAVELER 71 NHF AMF
 SITZ EVERELDA ENTENSE 1137
 3 BAR SPIKE 1766
 SITZ BARAMERE JET 155
 O C C JUST RIGHT 619J
 O C C DIXIE ERICA 816B
 STEVENSON ROYCE 741C
 RED BAR-V MISS DESIGN 022B OSF

O C C MOONSHINE 740M
CROWFOOT MISS DESIGN 5121R 1254704
 CFCC 49K

BW: 79 lbs.
 BLK EPDS: BW: +1.5 35% WW: +41 26% YW: +78 26% Milk: +26 20% TM: +47
 YG: +37 26% SC: +0.74 33% CED: +6.0 29% CEM: +6.0 18%
 CARCASS EPDS: REA: -0.07 24% Marb: +0.18 22% Fat: +.032 20%

Calving Ease ★★★

Thick as bugs on a bumper!



Lot 11 - Red Ole 5103 213U

9

OLE ALLIANCE 131U

Male OLEF 131U 1461743 May 08 2008

SITZ TRAVELER 8180 NHF AMF
SITZ ALLIANCE 6595 NHF AMF 1036949
 SITZ BARBARAMERE JET 2698

G D A R TRAVELER 71 NHF AMF
 SITZ EVERELDA ENTENSE 1137
 3 BAR SPIKE 1766
 SITZ BARAMERE JET 155
 STEVENSON ROYCE 741C
 JRS ENCHANTRESS 16A
 A A R OPTIMA 771
 GLADWALL BELEVATE 1168

STEVENS BRUNO 561G
CROWFOOT 3819N 1152036
 GLADWALL BELEVATE 7325

BW: 81 lbs.
 BLK EPDS: BW: +1.5 36% WW: +42 27% YW: +80 26% Milk: +23 21% TM: +44
 YG: +38 26% SC: +1.58 34% CED: +5.0 28% CEM: +6.0 18%
 CARCASS EPDS: REA: -0.08 25% Marb: +0.20 23% Fat: +.041 20%

Calving Ease ★★★

11

RED OLE 5103 213U

Male OLEF 213U 1476621 May 24 2008

RED LAZY RC AUTHENTIC 326N
RED CROWFOOT 5103R 1254690
 RED CROWFOOT KURUBA 2186M

RED BADLANDS BONAFIDE 1145
 RED SSS DUCHESS 542K
 RED PAT 8207
 RED CROWFOOT KURUBA 8117H

RED 5L NORSEMAN KING 2291 OSF
RED CROWFOOT KURUBA 5309R 1254802
 RED CROWFOOT CJ KURUBA 9211J

RED VGW KING OF THE WEST OSF
 RED NORSEMAN 1312 PJM
 RED CR HEAVENLY 11F
 RED CROWFOOT CHRISSEY 6136F

BW: 80 lbs.
 CDN EPDS: BW: +1.1 34% WW: +33 24% YW: +62 25% Milk: +21 13% TM: +37
 Stay: +10 0% HPG: +8 5% CED: +3.0 13% CEM: -3.0 11%
 CARCASS EPDS: REA: +0.25 25% Marb: +0.04 26% Fat: -0.01 20%

Calving Ease ★★

An outstanding individual! 213U has capacity, width through his loin and chest and is very sound on his feet and legs. 213U will add the ability to flesh as well as adding pounds to his calf crop. Breeders take notice of this guy, he is worth the drive to come and look at!

10

OLE ALLIANCE 248U

Male OLEF 248U 1484026 June 02 2008

SITZ TRAVELER 8180 NHF AMF
SITZ ALLIANCE 6595 NHF AMF 1036949
 SITZ BARBARAMERE JET 2698

G D A R TRAVELER 71 NHF AMF
 SITZ EVERELDA ENTENSE 1137
 3 BAR SPIKE 1766
 SITZ BARAMERE JET 155
 EMULATION N BAR 5522
 N BAR PRIMROSE 2424
 SITZ ALLIANCE 9160
 CROWFOOT DIXIE ERICA 1773L

N BAR EMULATION EXT NHF AMF
OLE CORINTHE 102S 1318526
 CROWFOOT 3861N

BW: 62 lbs.
 BLK EPDS: BW: -0.2 35% WW: +43 26% YW: +78 25% Milk: +22 20% TM: +44
 YG: +35 25% SC: +0.33 33% CED: +10.0 31% CEM: +12.0 19%
 CARCASS EPDS: REA: -0.12 27% Marb: +0.36 23% Fat: +.058 22%

Calving Ease ★★★★★

This is the kind of bull a breeder can really start to get excited about. Alliance by EXT then back to Alliance again. This is the kind of consistency we see in the Alliance sons in this year's sale and will be the kind you will see in a calf crop of a line bred Alliance son!



Red Angus momma

We raise our bulls how we would like to buy them.



Family Day Sale

12 RED OLE AUTHENTIC 277U

Male OLEF 277U 1519876 June 10 2008

RED LAZY RC AUTHENTIC 326N
RED CROWFOOT 5103R 1254690
 RED CROWFOOT KURUBA 2186M

RED BADLANDS BONAFIDE 1145
 RED SSS DUCHESS 542K
 RED PAT 8207
 RED CROWFOOT KURUBA 8117H

RED GOLD-BAR KING V415 107K
RED RICOSHAE ROSEBUD 18P 1209628
 RED MEWASSIN ROSEBUD 35F

RED BLAZE V415 OSF
 RED KENRAY MISS DAWN 114F
 RED THAT'LL DO AMERIGO 74C
 RED MEWASSIN NEW BLOOD 89-1Y

BW: 96 lbs.
 CDN EPDS: BW: +4.3 34% WW: +32 23% YW: +52 23% Milk: +15 13% TM: +31
 Stay: +11 0% HPG: I+7 5% CED: +0.0 12% CEM: +0.0 11%
 CARCASS EPDS: REA: +0.14 23% Marb: +0.06 24% Fat: +0.00 18%

Calving Ease ★★

A top-notch cow bull in the making here. His mother 18P is a moderate cow with a very bright future. Fleshing ability is something we aspire to for all of our cows and 277U has a most impressive phenotype!



Lot 12 - Red Ole Authentic 277U

13 RED OLE AUTHENTIC 258U

Male OLEF 258U 1461785 June 04 2008

RED LAZY RC AUTHENTIC 326N
RED CROWFOOT 5103R 1254690
 RED CROWFOOT KURUBA 2186M

RED BADLANDS BONAFIDE 1145
 RED SSS DUCHESS 542K
 RED PAT 8207
 RED CROWFOOT KURUBA 8117H

RED VGW RAMBLER 1000 OSF
RED CROWFOOT 3060N 1151921
 RED CROWFOOT TARA 1176L

RED BJR RAMBLER 5162 OSF
 RED VGW UMPIRE YUMA 9266
 RED FORSTER CHIEF 7182ET
 RED CROWFOOT TARA 331C

BW: 92 lbs.
 CDN EPDS: BW: +3.3 35% WW: +25 24% YW: +38 25% Milk: +15 14% TM: +28
 Stay: +10 0% HPG: I+6 5% CED: +3.0 13% CEM: +4.0 12%
 CARCASS EPDS: REA: -0.12 25% Marb: +0.10 26% Fat: -0.01 20%

Calving Ease ★★

14 RED OLE AUTHENTIC 232U

Male OLEF 232U 1484025 May 27 2008

RED LAZY RC AUTHENTIC 326N
RED CROWFOOT 5103R 1254690
 RED CROWFOOT KURUBA 2186M

RED BADLANDS BONAFIDE 1145
 RED SSS DUCHESS 542K
 RED PAT 8207
 RED CROWFOOT KURUBA 8117H

RED GLACIER MARIAS 548 OSF
RED OLE KARUBA 217R 1363766
 RED CROWFOOT KURUBA 22Z

RED LCC HEAVEN OR BUST1000B OSF
 RED GLACIER REBALAS
 RED SSS DYNAMO 256W
 RED KC MS CHFLNE KURUBA 78U

BW: 94 lbs.
 CDN EPDS: BW: +5.1 33% WW: +39 23% YW: +57 24% Milk: +17 14% TM: +37
 Stay: +10 0% HPG: I+8 5% CED: -3.0 13% CEM: -2.0 12%
 CARCASS EPDS: REA: +0.04 25% Marb: -0.08 26% Fat: +0.00 20%

Calving Ease ★★

An own grandson of the foundation cow in our red program, Karuba 22Z.

15 RED OLE AUTHENTIC 315U

Male OLEF 315U 1461816 June 29 2008

RED LAZY RC AUTHENTIC 326N
RED CROWFOOT 5103R 1254690
 RED CROWFOOT KURUBA 2186M

RED BADLANDS BONAFIDE 1145
 RED SSS DUCHESS 542K
 RED PAT 8207
 RED CROWFOOT KURUBA 8117H

RED VGW RAMBLER 1000 OSF
RED CROWFOOT GINGER 1037L 1051537
 RED CROWFOOT GINGER 9184J

RED BJR RAMBLER 5162 OSF
 RED VGW UMPIRE YUMA 9266
 RED CROWFOOT DYNAMO 616F
 RED BAR-X GINGER 100G

BW: 95 lbs.
 CDN EPDS: BW: +2.8 35% WW: +34 25% YW: +53 26% Milk: +18 16% TM: +35
 Stay: +12 3% HPG: I+5 5% CED: +3.0 15% CEM: +2.0 13%
 CARCASS EPDS: REA: +0.01 25% Marb: +0.01 26% Fat: -0.01 20%

Calving Ease ★★

16 RED OLE AUTHENTIC 266U

Male OLEF 266U 1461791 June 06 2008

RED LAZY RC AUTHENTIC 326N
RED CROWFOOT 5103R 1254690
 RED CROWFOOT KURUBA 2186M

RED BADLANDS BONAFIDE 1145
 RED SSS DUCHESS 542K
 RED PAT 8207
 RED CROWFOOT KURUBA 8117H

RED RCN DYNAMO 732 OSF
RED CROWFOOT VERNICE 611F 844888
 RED CROWFOOT VERNICE 468D

RED RCN DYNAMO 614
 RCN LANA CP 307
 RED BAR-V SPARK 340X
 RED CROWFOOT VERNICE 68A

BW: 90 lbs.
 CDN EPDS: BW: I+0.3 5% WW: I+22 5% YW: I+36 5% Milk: I+16 5% TM: I+27
 Stay: I+9 5% CED: I+3.5 5% CEM: I-4.0 5%
 CARCASS EPDS: REA: I+0.01 5% Marb: I-0.05 5% Fat: I-0.01 5%

Calving Ease ★★

*We are commercial cattlemen
 that also raise purebreds.*



Family Day Sale

17

RED OLE 659 242U

Male OLEF 242U 1471991 May 30 2008

RED H70 QUANTOCK 597N
RED H70 QUANTOCK 659S 1342945
 RED H70 QUANTOCK 100 MS 422M

RED LODI PRINCE 2632 OSF
 RED H70 QUANTOCK 10 MISS 458J
 RED T G IMPRESSIVE ROB 100G
 RED H70 QUANTOCK 61 MISS 120D

RED CR HEAVENLY 11F
RED CROWFOOT KURUBA 8117H 917060
 RED CROWFOOT KURUBA 6126F

RED LEACHMAN HEAVENLY 8141 OSF
 RED CR LASIE 1A
 RED GLACIER DIVIDE 310
 RED CROWFOOT KURUBA 22Z

BW: 91 lbs.
 CDN EPDS: BW: +0.8 36% WW: +25 26% YW: +42 27% Milk: +18 17% TM: +30
 Stay: +10 8% HPG: I+10 5% CED: +3.0 15% CEM: +0.0 14%
 CARCASS EPDS: REA: -0.12 23% Marb: -0.21 24% Fat: +0.00 19%

Calving Ease ★★

18

RED OLE 659 173U

Male OLEF 173U 1482025 May 15 2008

RED H70 QUANTOCK 597N
RED H70 QUANTOCK 659S 1342945
 RED H70 QUANTOCK 100 MS 422M

RED LODI PRINCE 2632 OSF
 RED H70 QUANTOCK 10 MISS 458J
 RED T G IMPRESSIVE ROB 100G
 RED H70 QUANTOCK 61 MISS 120D

RED PAT 8207
RED OLSON KURUBA 32N 1200440
 RED CROWFOOT KURUBA 8117H

RED FLYING K PAT 43C
 RED RACHEL R227
 RED CR HEAVENLY 11F
 RED CROWFOOT KURUBA 6126F

BW: 98 lbs.
 CDN EPDS: BW: +2.9 35% WW: +32 25% YW: +58 26% Milk: +17 14% TM: +33
 Stay: +10 0% HPG: I+8 5% CED: -1.0 13% CEM: -3.0 11%
 CARCASS EPDS: REA: -0.10 23% Marb: +0.04 24% Fat: +0.00 18%

Calving Ease ★★

19

RED OLE 659 211U

Male OLEF 211U 1482026 May 24 2008

RED H70 QUANTOCK 597N
RED H70 QUANTOCK 659S 1342945
 RED H70 QUANTOCK 100 MS 422M

RED LODI PRINCE 2632 OSF
 RED H70 QUANTOCK 10 MISS 458J
 RED T G IMPRESSIVE ROB 100G
 RED H70 QUANTOCK 61 MISS 120D

RED MABES RAMBO TUO
RED CROWFOOT 3067N 1151910
 RED OMEGA 7456'

RED FCC RAMBO 502 OSF
 RED MABES TUO TUO
 RED OSCAR S315
 RED ST JANICE 405

BW: 58 lbs.
 CDN EPDS: BW: -4.2 35% WW: +15 25% YW: +32 26% Milk: +18 14% TM: +25
 Stay: +10 0% HPG: I+7 5% CED: +10.0 13% CEM: +3.0 12%
 CARCASS EPDS: REA: -0.10 23% Marb: -0.04 23% Fat: +0.00 19%

Calving Ease ★★★★★

20

OLE RITO LEGACY 36U

Male OLEF 36U 1461681 April 08 2008

R R RITO 707 NHF AMF
SINCLAIR RITO LEGACY 3R9 AMF 1436721
 IDEAL 4465 OF 6807 4286 NHF AMF

RITO N BAR
 ERISKAY OF ROLLIN ROCK 3
 D H D TRAVELER 6807 NHF AMF
 E E 4286 OF IDEAL 2240 1254

WHITNEY CREEK MAXIMUS 24
OLE PINTOP 33S 1318477
 CROWFOOT PINTOP 4938P

BASIN MAX 602C NHF AMF
 RYGS PAIGES QUEEN 423
 SITZ ALLIANCE 9160
 GLADWALL PINTOP 7105

BW: 75 lbs.
 BLK EPDS: BW: +1.0 33% WW: +35 24% YW: +67 23% Milk: +17 12% TM: +35
 YG: +33 23% SC: +0.10 32% CED: +6.0 27% CEM: +3.0 11%
 CARCASS EPDS: REA: -0.02 17% Marb: +0.00 15% Fat: +0.11 12%

Calving Ease ★★

One of the best bulls in this year's sale. His dam 33S is a moderate easy fleshing cow with great feet and a sound udder. 36U's depth and width of base are unmatched. With Rito Legacy, Max and Alliance all adding depth, muscle and soundness you can expect really great things from this future herd sire.



Lot 20 - Ole Rito Legacy 36U

21

OLE RITO LEGACY 86U

Male OLEF 86U 1466607 April 30 2008

R R RITO 707 NHF AMF
SINCLAIR RITO LEGACY 3R9 AMF 1436721
 IDEAL 4465 OF 6807 4286 NHF AMF

RITO N BAR
 ERISKAY OF ROLLIN ROCK 3
 D H D TRAVELER 6807 NHF AMF
 E E 4286 OF IDEAL 2240 1254

BASIN MAX 602C NHF AMF
RICOSHAE EBONY 4S 1319939
 RICOSHAE OAKLEAF 73P

G T MAXIMUM NHF AMF
 BASIN ELINE ERICA 315U
 S A F 598 BANDO 5175 AMF
 TASD OAKLEAF EBONY 1E

BW: 67 lbs.
 BLK EPDS: BW: +0.9 33% WW: +39 24% YW: +77 23% Milk: +17 13% TM: +37
 YG: +38 23% SC: +0.33 33% CED: +7.0 28% CEM: +3.0 12%
 CARCASS EPDS: REA: -0.03 20% Marb: -0.01 17% Fat: +0.13 14%

Calving Ease ★★★★★

A four star calving ease bull with added depth. One of the deepest bulls in the sale.

22

OLE RITO LEGACY 42U

Male OLEF 42U 1461687 April 17 2008

R R RITO 707 NHF AMF
SINCLAIR RITO LEGACY 3R9 AMF 1436721
 IDEAL 4465 OF 6807 4286 NHF AMF

RITO N BAR
 ERISKAY OF ROLLIN ROCK 3
 D H D TRAVELER 6807 NHF AMF
 E E 4286 OF IDEAL 2240 1254

SITZ ALLIANCE 6595 NHF AMF
OLE PRINCENE 35S 1318478
 GLADWALL PRINCENE 7225

SITZ TRAVELER 8180 NHF AMF
 SITZ BARBARAMERE JET 2698
 WESTWIND FINESSE 1113
 GLADWALL PRINCENE 489

BW: 77 lbs.
 BLK EPDS: BW: +2.9 35% WW: +28 26% YW: +57 24% Milk: +16 13% TM: +30
 YG: +29 24% SC: -0.85 33% CED: +4.0 28% CEM: +1.0 12%
 CARCASS EPDS: REA: -0.27 20% Marb: +0.18 17% Fat: +0.16 14%

Calving Ease ★★

*We don't trim feet or fit our cattle.
 We prefer you to see them as they are.*



Family Day Sale

23

OLE EVERLAST 179U

Male OLEF 179U 1477511 May 15 2008

R R RITO 707 NHF AMF
SINCLAIR EVERLAST 6R107 1418058
 N BAR QUEEN MOTHER 9955F

RITO N BAR
 ERISKAY OF ROLLIN ROCK 3
 N BAR EMULATION EXT NHF AMF
 N BAR QUEEN MOTHER 6079

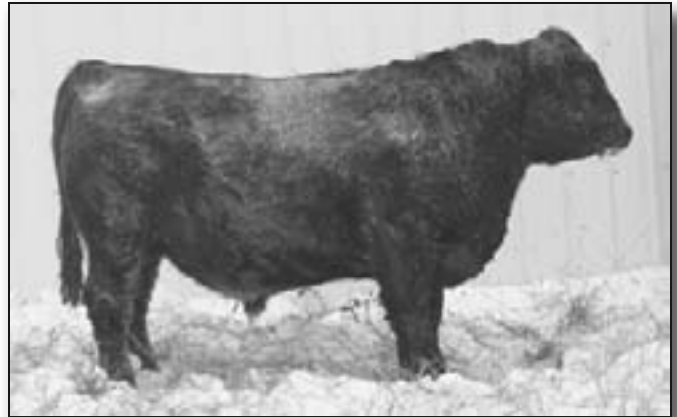
O C C HONESTY 962H
CROWFOOT LOVEMERE 4787P 1207959
 CROWFOOT FORKS 604K

O C C ANCHOR 771A
 O C C DIXIE ERICA 907C
 D V PRIDES COMMODORE
 BARB WALL LOVEMERE R 830

BW: 84 lbs.
 BLK EPDS: BW: +2.1 34% WW: +34 22% YW: +49 19% Milk: +13 11% TM: +30
 YG: +16 19% SC: -0.03 30% CED: +5.0 22% CEM: -1.0 9%
 CARCASS EPDS: REA: +0.02 14% Marb: -0.12 14% Fat: +.004 11%

Calving Ease ★★★

The Everlast son in this year's sale! Capacity, style, muscle and smooth-moving are good descriptions of this great herdsire prospect. 179U's dam 4787P, sold in the Crowfoot Dispersal for \$5700. It looks like we are starting to get a very good return on our investment. 4787P is likely the deepest ribbed cow in our operation!



Lot 23 - Ole Everlast 179U

24

OLE EVERLAST 208U

Male OLEF 208U 1477512 May 21 2008

R R RITO 707 NHF AMF
SINCLAIR EVERLAST 6R107 1418058
 N BAR QUEEN MOTHER 9955F

RITO N BAR
 ERISKAY OF ROLLIN ROCK 3
 N BAR EMULATION EXT NHF AMF
 N BAR QUEEN MOTHER 6079

TOMWALL GDAR ROYCE 916
CROWFOOT WJ MERLE 1438L 1085492
 C H MERLE 8233

G D A R ROYCE 131
 GLADWALL L BL NELLIE 752
 C H STRATH 5564
 C H MERLE 6338

BW: 81 lbs.
 BLK EPDS: BW: +2.4 34% WW: +29 22% YW: +48 19% Milk: +17 12% TM: +32
 YG: +19 19% SC: +0.05 30% CED: +4.0 21% CEM: +0.0 8%
 CARCASS EPDS: REA: +0.04 14% Marb: -0.01 13% Fat: +.013 10%

Calving Ease ★★★

25

OLE EVERLAST 77U

Male OLEF 77U 1476301 April 29 2008

R R RITO 707 NHF AMF
SINCLAIR EVERLAST 6R107 1418058
 N BAR QUEEN MOTHER 9955F

RITO N BAR
 ERISKAY OF ROLLIN ROCK 3
 N BAR EMULATION EXT NHF AMF
 N BAR QUEEN MOTHER 6079

STEVENSON BRUNO 561G
CROWFOOT 3757N 1151924
 GLADWALL G V LASS 8193

STEVENSON ROYCE 741C
 JRS ENCHANTRESS 16A
 LEACHMAN CHECKMATE
 GLADWALL G V LASS 9170

BW: 86 lbs.
 BLK EPDS: BW: +3.0 34% WW: +29 23% YW: +58 21% Milk: +16 12% TM: +31
 YG: +29 21% SC: +0.36 31% CED: +1.0 22% CEM: +0.0 10%
 CARCASS EPDS: REA: +0.06 16% Marb: -0.02 15% Fat: +.015 12%

Calving Ease ★★

26

OLE EVERLAST 273U

Male OLEF 273U 1516077 June 10 2008

R R RITO 707 NHF AMF
SINCLAIR EVERLAST 6R107 1418058
 N BAR QUEEN MOTHER 9955F

RITO N BAR
 ERISKAY OF ROLLIN ROCK 3
 N BAR EMULATION EXT NHF AMF
 N BAR QUEEN MOTHER 6079

CROWFOOT 516K
CROWFOOT 3908N 1152187
 CROWFOOT FORKS 603K

RED CROWFOOT PM 757G
 BAR-X ROSEBUD 35G
 TOMWALL S A F FAME 8312
 GLADWALL B CHLOE 8334

BW: 88 lbs.
 BLK EPDS: BW: +3.5 32% WW: +34 21% YW: +53 19% Milk: +12 11% TM: +29
 YG: +19 19% SC: +0.19 30% CED: +0.0 20% CEM: -1.0 7%
 CARCASS EPDS: REA: -0.05 14% Marb: -0.02 13% Fat: +.012 10%

Calving Ease ★★

27

OLE EVERLAST 321U

Male OLEF 321U 1516083 July 01 2008

R R RITO 707 NHF AMF
SINCLAIR EVERLAST 6R107 1418058
 N BAR QUEEN MOTHER 9955F

RITO N BAR
 ERISKAY OF ROLLIN ROCK 3
 N BAR EMULATION EXT NHF AMF
 N BAR QUEEN MOTHER 6079

CROWFOOT 516K
CROWFOOT 3723N 1151831
 CROWFOOT FORKS 676K

RED CROWFOOT PM 757G
 BAR-X ROSEBUD 35G
 TOMWALL S A F FAME 8312
 GLADWALL PATTIE QUEEN 2232

BW: 106 lbs.
 BLK EPDS: BW: +6.4 34% WW: +41 22% YW: +52 20% Milk: +9 11% TM: +30
 YG: +11 20% SC: +0.04 30% CED: -9.0 22% CEM: -6.0 9%
 CARCASS EPDS: REA: -0.18 13% Marb: -0.04 13% Fat: +.007 10%

Calving Ease ★

28

RED OLE FOREVER GRAND 206U

Male OLEF 206U 1473766 OSF May 23 2008

RED LCHMN GRND CANYON 1244G OSC
RED 5L FOREVER GRAND 5834 OSC 1472012
 RED NORSEMAN 1312 PJM

RED BUF CRK CHF 824-1658 OSC
 RED KRN REBA'S ROBIN OSF
 376 P J M 141
 P J M POWERPOINT 2009

RED WYATT NEW TREND 01L
RED WYATT 230P 1205297
 RED WYATT 30M

RED BRYLOR NEW TREND 22D OSF
 RED HALF DIME GENA ALFRIDA 1G
 RED BROX JEOPARDY 5J
 RED WATERVIEW LEE D 30B

BW: 64 lbs.
 CDN EPDS: BW: -4.0 33% WW: +14 23% YW: +29 24% Milk: +21 15% TM: +29
 Stay: +11 0% HPG: 1+12 5% CED: +8.0 14% CEM: +4.0 13%
 CARCASS EPDS: REA: -0.05 25% Marb: -0.17 26% Fat: +0.01 21%

Calving Ease ★★★★★

29

RED OLE FOREVER GRAND 73U

Male OLEF 73U 1473754 OSF April 29 2008

RED LCHMN GRND CANYON 1244G OSC
RED 5L FOREVER GRAND 5834 OSC 1472012
 RED NORSEMAN 1312 PJM

RED BUF CRK CHF 824-1658 OSC
 RED KRN REBA'S ROBIN OSF
 376 P J M 141
 P J M POWERPOINT 2009

RED CROWFOOT RAMBLER 1038L
RED OLE JESSICA 64R 1273020
 CROWFOOT 3130N

RED VGW RAMBLER 1000 OSF
 CROWFOOT VERNICE 907J
 O C C ECHELON 857E
 RED CFCC 21K

BW: 66 lbs.
 CDN EPDS: BW: -4.0 33% WW: +17 23% YW: +43 24% Milk: +21 14% TM: +29
 Stay: +13 0% HPG: 1+10 5% CED: +11.0 15% CEM: +6.0 13%
 CARCASS EPDS: REA: +0.01 25% Marb: +0.02 26% Fat: +0.01 21%

Calving Ease ★★★★★

Outcross black pedigrees in 3 of the 4 grandparents. Should be a dream @ calving time.



Family Day Sale

30 RED OLE FOREVER GRAND 66U

Male OLEF 66U 1473747 April 28 2008

RED LCHMN GRND CANYON 1244G OSC
RED 5L FOREVER GRAND 5834 OSC 1472012
 RED NORSEMAN 1312 PJM

RED BUF CRK CHF 824-1658 OSC
 RED KRN REBA'S ROBIN OSF
 376 P J M 141
 P J M POWERPOINT 2009

RED BROX JEOPARDY 5J
RED WYATT 30M 1099035
 RED WATERVIEW LEE D 30B

RED GEIS PRIME RIB 411
 RED BROX LEADING LADY 12B
 RED WATERVIEW ERIC G 19Z
 RED WATERVIEW LEE 21U

BW: 73 lbs.
 CDN EPDS: BW: -3.2 34% WW: +12 25% YW: +25 26% Milk: +14 17% TM: +20
 Stay: +11 2% HPG: +11 5% CED: +8.0 15% CEM: +3.0 14%
 CARCASS EPDS: REA: +0.12 25% Marb: -0.29 27% Fat: +0.01 21%

Calving Ease ★★★★★



RR Rito 707 - Grandsire of Everlast & Rito Legacy sons

31 RED OLE FOREVER GRAND 60U

Male OLEF 60U 1479764 OSF April 28 2008

RED LCHMN GRND CANYON 1244G OSC
RED 5L FOREVER GRAND 5834 OSC 1472012
 RED NORSEMAN 1312 PJM

RED BUF CRK CHF 824-1658 OSC
 RED KRN REBA'S ROBIN OSF
 376 P J M 141
 P J M POWERPOINT 2009

RED WYATT NEW TREND 01L
RED WYATT FRAN 4P 1196183
 RED WATERVIEW FRAN 4B

RED BRYLOR NEW TREND 22D OSF
 RED HALF DIME GENA ALFRIDA 1G
 RED MEADOW CK RUSTY 7Y
 RED WATERVIEW FRANCES

BW: 81 lbs.
 CDN EPDS: BW: +0.7 33% WW: +28 23% YW: +45 24% Milk: +21 15% TM: +35
 Stay: +8 0% HPG: +12 5% CED: +3.0 14% CEM: +3.0 13%
 CARCASS EPDS: REA: +0.11 25% Marb: -0.02 26% Fat: +0.01 21%

Calving Ease ★★★

34 OLE ALLIANCE 98U

Male OLEF 98U 1461719 May 02 2008

SITZ TRAVELER 8180 NHF AMF
SITZ ALLIANCE 6595 NHF AMF 1036949
 SITZ BARBARAMERE JET 2698

G D A R TRAVELER 71 NHF AMF
 SITZ EVERELDA ENTENSE 1137
 3 BAR SPIKE 1766
 SITZ BARAMERE JET 155

CROWFOOT FORKS 655K
CROWFOOT 3702N 1151795
 CROWFOOT CLOVA 1766L

G D A R TRAVELER 71 NHF AMF
 GLADWALL ROSE OF L 1173
 BASIN PARTNER 137H
 GLADWALL ROSE OF L 6243

BW: 76 lbs.
 BLK EPDS: BW: +0.8 36% WW: +44 26% YW: +71 25% Milk: +25 20% TM: +47
 YG: +27 25% SC: +1.48 33% CED: +7.0 29% CEM: +9.0 18%
 CARCASS EPDS: REA: -0.07 24% Marb: +0.30 21% Fat: +0.40 19%

Calving Ease ★★★

32 RED OLE BAR-NONE 29U

Male OLEF 29U 1461677 April 05 2008

RED WILD ROSE BAR-NONE 179G
RED SMOKY BAR-NONE 108P 1206938
 RED FAIRMAC KARAMA 15D

RED SSS BAR-NONE 313D
 RED WILD ROSE REBELLO 42E
 RED TOWAW STAMPEDER 89X
 RED FAIRMAC KARAMA

BLUE SPRUCE SABLE 54H
SMOKY ROSE 210S 1352037
 RED BAZE ROSE 7G

G D A R TRAVELER 044 NHF AMF
 RED TASSEL LAKME 117E
 RED BAZE MITCHELL 10E
 RED BAZE ROSE 14E

BW: 52 lbs.
 CDN EPDS: BW: -6.0 32% WW: +19 22% YW: +39 24% Milk: +8 14% TM: +17
 Stay: +8 0% HPG: +9 5% CED: +14.0 13% CEM: +5.0 12%
 CARCASS EPDS: REA: +0.13 20% Marb: -0.03 21% Fat: +0.00 18%

Calving Ease ★★★★★

Smooth made and attractive! Deep cherry red in colour.

35 OLE ALLIANCE 120U

Male OLEF 120U 1470465 May 07 2008

SITZ TRAVELER 8180 NHF AMF
SITZ ALLIANCE 6595 NHF AMF 1036949
 SITZ BARBARAMERE JET 2698

G D A R TRAVELER 71 NHF AMF
 SITZ EVERELDA ENTENSE 1137
 3 BAR SPIKE 1766
 SITZ BARAMERE JET 155

CROWFOOT WJ MAX 1404L
CROWFOOT 3701N 1151792
 CROWFOOT ELINE 1601L

BASIN MAX 104J AMF
 RED CROWFOOT WJ KURUBA 9131J
 C&D 455 ROCKETT
 CROWFOOT ELINE LASS 918

BW: 75 lbs.
 BLK EPDS: BW: -0.2 35% WW: +36 25% YW: +64 25% Milk: +24 19% TM: +42
 YG: +27 25% SC: +1.54 33% CED: +8.0 29% CEM: +8.0 16%
 CARCASS EPDS: REA: -0.05 23% Marb: +0.33 21% Fat: +0.34 19%

Calving Ease ★★★★★

33 RED HOB0 33U

Male OLEF 33U 1461679 April 07 2008

RED BUF CRK HOB0 1413 OSF
RED BUF CRK HOB0 1961 OSF 706951
 BUF CR CARRIE VC1174 OSF

RED BJR HOB0 800 OSF
 BJR LANA 3140-302 OSF
 BUF CRK TOMAHAWK 529 OSC
 BFLO CRK CARRIE VC473

CROWFOOT 4232P
RED OLE TOMA 39S 1318482
 CROWFOOT TOMA 4187P

WHITNEY CREEK MAXIMUS 24
 RED CROWFOOT SHAWNEE 9124J
 O C C MOONSHINE 740M
 RED CROWFOOT TOMA 714G

BW: 82 lbs.
 CDN EPDS: BW: +0.9 36% WW: +30 27% YW: +56 28% Milk: +16 21% TM: +31
 Stay: +9 20% HPG: +9 13% CED: +8.0 21% CEM: +8.0 19%
 CARCASS EPDS: REA: -0.21 30% Marb: +0.10 30% Fat: -0.01 28%

Calving Ease ★★

36 OLE ALLIANCE 139U

Male OLEF 139U 1461748 May 08 2008

SITZ TRAVELER 8180 NHF AMF
SITZ ALLIANCE 6595 NHF AMF 1036949
 SITZ BARBARAMERE JET 2698

G D A R TRAVELER 71 NHF AMF
 SITZ EVERELDA ENTENSE 1137
 3 BAR SPIKE 1766
 SITZ BARAMERE JET 155

BROWN CREEK RITO 414
GLADWALL PRINCENE 7320 990731
 GLADWALL PRICENE 1236

RITO 054 G D A R
 BROWN REVOLUTION ROSE 98
 SHOSHONE P P 7105
 GLADWALL PRINCENE 5236

BW: 74 lbs.
 BLK EPDS: BW: +0.4 36% WW: +36 27% YW: +63 26% Milk: +27 22% TM: +45
 YG: +27 26% SC: +0.76 33% CED: +5.0 5% CEM: +1+6.0 5%
 CARCASS EPDS: REA: -0.03 24% Marb: +0.06 21% Fat: +0.45 19%

Calving Ease ★★★★★



Family Day Sale

37

OLE ALLIANCE 166U

Male OLEF 166U 1461759 May 12 2008

SITZ TRAVELER 8180 NHF AMF
SITZ ALLIANCE 6595 NHF AMF 1036949
 SITZ BARBARAMERE JET 2698

G D A R TRAVELER 71 NHF AMF
 SITZ EVERELDA ENTENSE 1137
 3 BAR SPIKE 1766
 SITZ BARAMERE JET 155

TOMWALL D V COMMODORE 3125
GLADWALL REVOLUTION 740 990852
 BAR REVOLUTION GAY 284

D V PRIDES COMMODORE
 GLADWALL EOLA 061
 RITO 054 G D A R
 BAR R G PRIDE 686

BW: 79 lbs.
 BLK EPDS: BW: +2.2 37% WW: +37 27% YW: +69 27% Milk: +22 22% TM: +41
 YG: +32 27% SC: +1.50 34% CED: I+2.5 5% CEM: I+4.0 5%
 CARCASS EPDS: REA: -0.16 23% Marb: +0.09 21% Fat: +.039 19%

Calving Ease ★★★

38

OLE ALLIANCE 167U

Male OLEF 167U 1461760 May 12 2008

SITZ TRAVELER 8180 NHF AMF
SITZ ALLIANCE 6595 NHF AMF 1036949
 SITZ BARBARAMERE JET 2698

G D A R TRAVELER 71 NHF AMF
 SITZ EVERELDA ENTENSE 1137
 3 BAR SPIKE 1766
 SITZ BARAMERE JET 155

WHITNEY CREEK MAXIMUS 24
CROWFOOT GEISHA GIRL 5487R 1294263
 CROWFOOT WJ GIRL 1459L

BASIN MAX 602C NHF AMF
 RYGS PAIGES QUEEN 423
 E&B 1483 SCOTCHMAN 543
 BAR-X GEISHA GIRL 68G

BW: 60 lbs.
 BLK EPDS: BW: -0.8 35% WW: +38 26% YW: +82 26% Milk: +24 19% TM: +43
 YG: +44 26% SC: +0.73 33% CED: +10.0 29% CEM: +10.0 18%
 CARCASS EPDS: REA: -0.11 24% Marb: +0.24 21% Fat: +.048 19%

Calving Ease ★★★★★

39

OLE ALLIANCE 116U

Male OLEF 116U 1470467 May 06 2008

SITZ TRAVELER 8180 NHF AMF
SITZ ALLIANCE 6595 NHF AMF 1036949
 SITZ BARBARAMERE JET 2698

G D A R TRAVELER 71 NHF AMF
 SITZ EVERELDA ENTENSE 1137
 3 BAR SPIKE 1766
 SITZ BARAMERE JET 155

N BAR EMULATION EXT NHF AMF
OLSN OAKLEAF 55M 1143279
 GEIS OAKLEAF 54'00

EMULATION N BAR 5522
 N BAR PRIMROSE 2424
 TERRLENE PRIDE ACHIEVER 10B
 GEIS OAKLEAF 178'96

BW: 88 lbs.
 BLK EPDS: BW: +3.5 35% WW: +39 26% YW: +67 25% Milk: +16 21% TM: +36
 YG: +28 25% SC: +0.53 34% CED: +1.0 29% CEM: +7.0 19%
 CARCASS EPDS: REA: -0.30 26% Marb: +0.11 23% Fat: +.042 21%

Calving Ease ★★

An Alliance out of an EXT, this is a combination that just really works. Two outstanding three-quarter brothers that are featured by semen companies are KMK Alliance 187 and Bennett Total.

40

OLE ALLIANCE 212U

Male OLEF 212U 1461772 May 24 2008

SITZ TRAVELER 8180 NHF AMF
SITZ ALLIANCE 6595 NHF AMF 1036949
 SITZ BARBARAMERE JET 2698

G D A R TRAVELER 71 NHF AMF
 SITZ EVERELDA ENTENSE 1137
 3 BAR SPIKE 1766
 SITZ BARAMERE JET 155

O C C MOONSHINE 740M
OLE JEANNET 291R 1349469
 GLADWALL JEANNE T 7400

O C C JUST RIGHT 619J
 O C C DIXIE ERICA 816B
 AMITIE ACRES L EXT 1376
 GLADWALL JEANNE T 5114

BW: 76 lbs.
 BLK EPDS: BW: +1.6 35% WW: +34 26% YW: +66 24% Milk: +21 19% TM: +38
 YG: +32 24% SC: +0.70 33% CED: +7.0 28% CEM: +7.0 17%
 CARCASS EPDS: REA: -0.20 24% Marb: +0.16 21% Fat: +.030 19%

Calving Ease ★★★★★



Lot 42 - Red Ole Travelling EXT 146U

41

OLE ALLIANCE 257U

Male OLEF 257U 1471987 June 03 2008

SITZ TRAVELER 8180 NHF AMF
SITZ ALLIANCE 6595 NHF AMF 1036949
 SITZ BARBARAMERE JET 2698

G D A R TRAVELER 71 NHF AMF
 SITZ EVERELDA ENTENSE 1137
 3 BAR SPIKE 1766
 SITZ BARAMERE JET 155

V D A R LUCYS BOY NHF AMF
ROYAL PERSEPHONE DRCC 2101M 1122327
 CANE RIDGE PERSEPHONE 6531F

TRAVELER 1148 G D A R
 V D A R PINE DRIVE LUCY 5
 TEHAMA BANDO 155 NHF AMF
 G J R PERSPHONE 8320

BW: 77 lbs.
 BLK EPDS: BW: I+2.3 5% WW: I+37 5% YW: I+73 5% Milk: I+24 5% TM: I+42
 YG: I+37 5% CED: I+5.0 5% CEM: I+7.0 5%
 CARCASS EPDS: REA: I-0.16 5% Marb: I+0.28 5% Fat: I+.057 5%

Calving Ease ★★★★★

42

RED OLE TRAVELLING EXT 146U

Male OLEF 146U 1478494 May 09 2008

RED 5L HEAVY TRAVELER 5973 OSF
5L TRAVLIN EXT 2334-6556 OSF 1468838
 5L OPAL 0052-2334

D H D TRAVELER 6807 NHF AMF
 RED XXX MATTIE 708 HM
 O C C LEGEND 616L
 RED SODAK OPAL K0052

RED CROWFOOT PM 757G
CROWFOOT 3177N 1152131
 STEVENSON HEATHER 499G

RED TK POUNDBAKER 69Z
 RED CROWFOOT BIRD 12Z
 CONNEALYS DIVIDEND 730
 JRS HEATHER 854Z

BW: 84 lbs.
 CDN EPDS: BW: +0.9 33% WW: +29 22% YW: +55 23% Milk: +15 14% TM: +29
 Stay: +12 0% HPG: I+7 5% CED: +8.0 13% CEM: +5.0 12%
 CARCASS EPDS: REA: +0.11 23% Marb: -0.03 24% Fat: +0.00 19%

Calving Ease ★★★★★





Family Day Sale

43

RED OLE RAMBLER 25U

Male OLEF 25U 1461674 April 04 2008

RED CROWFOOT RAMBLER 1038L
RED OLE RAMBLER 50R 1273008
 RED CROWFOOT 3173N

RED VGW RAMBLER 1000 OSF
 CROWFOOT VERNICE 907J
 SSS TWILIGHT 460K
 CFCC 176K

RED BLUE SPRUCE MERCURY 16M
RED SMOKY LARKABA 236S 1352057
 RED BLUE SPRUCE LARKABA 77L

RED BLUE SPRUCE MERCURY 73H
 RED BLUE SPRUCE RUBY 22A
 RED BRYLOR SANDSTONE 58H
 RED BLUE SPRUCE LARKABA 107J

BW: 66 lbs.
 CDN EPDS: BW: -3.4 34% WW: +23 24% YW: +56 25% Milk: +15 14% TM: +26
 Stay: +10 0% HPG: I+7 5% CED: +11.0 13% CEM: +5.0 12%
 CARCASS EPDS: REA: +0.18 22% Marb: -0.06 22% Fat: +0.00 19%

Calving Ease ★★★



Lot 43 - Red Ole Rambler 25U

44

RED OLE RAMBLER 21U

Male OLEF 21U 1461673 April 03 2008

RED CROWFOOT RAMBLER 1038L
RED OLE RAMBLER 50R 1273008
 RED CROWFOOT 3173N

RED VGW RAMBLER 1000 OSF
 CROWFOOT VERNICE 907J
 SSS TWILIGHT 460K
 CFCC 176K

RED BAZE BAR-NONE 43K
RED SMOKY 217S 1429299
 RED TASSEL CHEROVIANN 142D

RED WILD ROSE BAR-NONE 179G
 RED BAZE ERICA 4E
 RED LMAN ROBIN HOOD 1174B OSF
 RED LINCOLN CR CHEROVIANN 14Z

BW: 67 lbs.
 CDN EPDS: BW: -4.9 32% WW: +17 23% YW: +44 24% Milk: +12 14% TM: +20
 Stay: +8 0% HPG: I+8 5% CED: +14.0 13% CEM: +8.0 12%
 CARCASS EPDS: REA: +0.05 22% Marb: +0.06 22% Fat: +0.00 19%

Calving Ease ★★★★★

Cattlemen pay attention: You will look a very long time until you will find another bull with such a great combination of low birth weight numbers and depth of body. He reminds me of another great Rambler 1038L bred bull, Red Ole Rambler 42R, that sold in our 2nd Annual Sale to Harvey Hagman of Mayerthorpe.



Lot 44 - Red Ole Rambler 21U

45

RED OLE MARIAS 12U

Male OLEF 12U 1461667 March 30 2008

RED TED GLACIER MARIAS 65L
RED FINE LINE MARIAS 43R 1247767
 RED FINE LINE FAYETTE 52K

RED GLACIER MARIAS 548 OSF
 RED TED BIEBER BLOSSOM 1682
 RED FINE LINE PURE PREMIUM 62H
 RED FINE LINE TAMILLA 4H

RED BAZE BAR-NONE 80K
RED SMOKY PRALEE 287S 1352105
 RED TASSEL PRALEE 169G

RED WILD ROSE BAR-NONE 179G
 RED BAZE ERICA 2G
 RED TASSEL LITTLE JOHN 143D
 RED LINCOLN CREEK PRALEE 6X

BW: 66 lbs.
 CDN EPDS: BW: -4.2 34% WW: +20 23% YW: +38 24% Milk: +13 13% TM: +23
 Stay: +7 0% HPG: I+9 5% CED: +12.0 13% CEM: +7.0 11%
 CARCASS EPDS: REA: -0.12 21% Marb: +0.17 22% Fat: +0.00 19%

Calving Ease ★★★★★

46

RED OLE MARIAS 7U

Male OLEF 7U 1461661 March 26 2008

RED TED GLACIER MARIAS 65L
RED FINE LINE MARIAS 43R 1247767
 RED FINE LINE FAYETTE 52K

RED GLACIER MARIAS 548 OSF
 RED TED BIEBER BLOSSOM 1682
 RED FINE LINE PURE PREMIUM 62H
 RED FINE LINE TAMILLA 4H

RED FINE LINE GOLD ROBBER 52N
RED SMOKY RUBY 70S 1351913
 RED SMOKY RUBY 33N

RED TED GOLD ROBBER 76K
 RED FINE LINE LYNN 57K
 RED WILD ROSE BAR-NONE 179G
 RED BAZE RUBY 1E

BW: 89 lbs.
 CDN EPDS: BW: +0.4 33% WW: +31 23% YW: +55 24% Milk: +15 13% TM: +30
 Stay: +6 0% HPG: I+9 5% CED: +5.0 13% CEM: +5.0 10%
 CARCASS EPDS: REA: +0.06 21% Marb: +0.07 22% Fat: +0.00 19%

Calving Ease ★★

47

RED OLE MARIAS 26U

Male OLEF 26U 1461675 April 04 2008

RED TED GLACIER MARIAS 65L
RED FINE LINE MARIAS 43R 1247767
 RED FINE LINE FAYETTE 52K

RED GLACIER MARIAS 548 OSF
 RED TED BIEBER BLOSSOM 1682
 RED FINE LINE PURE PREMIUM 62H
 RED FINE LINE TAMILLA 4H

RED WILD ROSE BAR-NONE 179G
RED SMOKY ANNIE 7S 1351865
 RED BLUE SPRUCE ANNIE 125J

RED SSS BAR-NONE 313D
 RED WILD ROSE REBELLO 42E
 RED TASSEL LITTLE JOHN 143D
 RED LINCOLN CREEK ANNIE 3Y

BW: 65 lbs.
 CDN EPDS: BW: -2.8 34% WW: +28 23% YW: +54 24% Milk: +12 13% TM: +26
 Stay: +6 0% HPG: I+8 5% CED: +12.0 13% CEM: +8.0 11%
 CARCASS EPDS: REA: -0.02 21% Marb: +0.20 22% Fat: +0.00 19%

Calving Ease ★★★★★



At 17 years of age great-great-grandam of Red Crowfoot 5103R, AKA Authentic



Family Day Sale

48

OLE FREIGHTLINER 106U

Male OLEF 106U 1461725 May 04 2008

BON VIEW BANDO 598 AMF
CONNEALY FREIGHTLINER NHF AMF 964749
 JOANA ERICA OF CONANGA

TEHAMA BANDO 155 NHF AMF
 BON VIEW DORA 56
 NICHOLS HEAVY DUTY X100
 JARNE ERICA OF CONANGA

SITZ ALLIANCE 9160
CROWFOOT 3595N 1182476
 CROWFOOT WJ ERINCENE 1445L

SITZ ALLIANCE 6595 NHF AMF
 SITZ BLACKCAP EFFIE 4088
 RED OH BOOMER 552E
 GLADWALL PRINCENE 8320

BW: 102 lbs.
 BLK EPDS: BW: +5.3 36% WW: +51 26% YW: +85 24% Milk: +23 20% TM: +49
 YG: +34 24% SC: +1.80 33% CED: -5.0 29% CEM: +3.0 18%
 CARCASS EPDS: REA: +0.20 23% Marb: +0.06 20% Fat: +.036 18%

Calving Ease ★

An absolute powerhouse! Here we see the result of power from both sides and you can sure see it in this guy. Depth and muscle here, with great feet and a good dam. Note we recommend him only for cows, but this is a bull that will add significantly to the performance of your calves.



Lot 48 - Ole Freightliner 106U

49

OLE FREIGHTLINER 227U

Male OLEF 227U 1461776 May 26 2008

BON VIEW BANDO 598 AMF
CONNEALY FREIGHTLINER NHF AMF 964749
 JOANA ERICA OF CONANGA

TEHAMA BANDO 155 NHF AMF
 BON VIEW DORA 56
 NICHOLS HEAVY DUTY X100
 JARNE ERICA OF CONANGA

BROWN CREEK RITO 414
GLADWALL LOVERMERE R 7213 990806
 GLADWALL LOVERMERE R 0107

RITO O54 G D A R
 BROWN REVOLUTION ROSE 98
 A A R CORNHUSKER 238
 GLADWALL LOVERMERE R 607

BW: 77 lbs.
 BLK EPDS: BW: +1.1 37% WW: +32 27% YW: +59 26% Milk: +19 22% TM: +35
 YG: +27 26% SC: +1.71 34% CED: I+4.5 5% CEM: I+5.5 5%
 CARCASS EPDS: REA: +0.08 22% Marb: +0.03 20% Fat: +.029 18%

Calving Ease ★★★

50

OLE FREIGHTLINER 204U

Male OLEF 204U 1473648 May 23 2008

BON VIEW BANDO 598 AMF
CONNEALY FREIGHTLINER NHF AMF 964749
 JOANA ERICA OF CONANGA

TEHAMA BANDO 155 NHF AMF
 BON VIEW DORA 56
 NICHOLS HEAVY DUTY X100
 JARNE ERICA OF CONANGA

SITZ ALLIANCE 6595 NHF AMF
OLE OAKLEAF 195R 1466602
 OLSN OAKLEAF 55M

SITZ TRAVELER 8180 NHF AMF
 SITZ BARBARAMERE JET 2698
 N BAR EMULATION EXT NHF AMF
 GEIS OAKLEAF 54*00

BW: 77 lbs.
 BLK EPDS: BW: +1.9 34% WW: +44 25% YW: +83 25% Milk: +18 20% TM: +40
 YG: +40 25% SC: +1.46 34% CED: +6.0 29% CEM: +8.0 19%
 CARCASS EPDS: REA: -0.11 25% Marb: -0.08 23% Fat: +.045 21%

Calving Ease ★★★

Don't think we would make a change in this pedigree if we could! Freightliner, Alliance and EXT – these three bulls have had a huge impact on our herd! Muscular! Masculine! Moderate!

51

OLE FREIGHTLINER 92U

Male OLEF 92U 1461712 May 01 2008

BON VIEW BANDO 598 AMF
CONNEALY FREIGHTLINER NHF AMF 964749
 JOANA ERICA OF CONANGA

TEHAMA BANDO 155 NHF AMF
 BON VIEW DORA 56
 NICHOLS HEAVY DUTY X100
 JARNE ERICA OF CONANGA

SITZ ALLIANCE 6595 NHF AMF
OLE BLACKBIRD 205R 1363756
 STRATHMORE BLACKBIRD 3B

SITZ TRAVELER 8180 NHF AMF
 SITZ BARBARAMERE JET 2698
 PINE DRIVE BIG SKY NHF AMF
 STRATHMORE TOMBOY

BW: 84 lbs.
 BLK EPDS: BW: I+2.4 5% WW: I+41 5% YW: I+76 5% Milk: I+18 5% TM: I+38
 YG: I+35 5% CED: I+3.5 5% CEM: I+7.0 5%
 CARCASS EPDS: REA: I+0.02 5% Marb: I+0.09 5% Fat: I+.035 5%

Calving Ease ★★

A Freightliner out of an Alliance daughter, whose dam spent a great deal of her life producing embryos for us and Rafter IR. He should lead to a great combination of power and style.

52

OLE FREIGHTLINER 199U

Male OLEF 199U 1461769 May 19 2008

BON VIEW BANDO 598 AMF
CONNEALY FREIGHTLINER NHF AMF 964749
 JOANA ERICA OF CONANGA

TEHAMA BANDO 155 NHF AMF
 BON VIEW DORA 56
 NICHOLS HEAVY DUTY X100
 JARNE ERICA OF CONANGA

TOMWALL S A F FAME 8312
CROWFOOT FORKS 676K 1011394
 GLADWALL PATTIE QUEEN 2232

S A F FAME NHF AMF
 GLADWELL ZARAMERE 1112
 WARD HIGHROLLER 031
 GLADWALL PATTIE QUEEN 052

BW: 81 lbs.
 BLK EPDS: BW: +1.0 36% WW: +41 27% YW: +70 26% Milk: +10 21% TM: +31
 YG: +28 26% SC: +0.93 33% CED: +6.0 28% CEM: +9.0 18%
 CARCASS EPDS: REA: +0.02 22% Marb: +0.15 20% Fat: +.030 18%

Calving Ease ★★★

53

OLE FREIGHTLINER 135U

Male OLEF 135U 1461747 May 08 2008

BON VIEW BANDO 598 AMF
CONNEALY FREIGHTLINER NHF AMF 964749
 JOANA ERICA OF CONANGA

TEHAMA BANDO 155 NHF AMF
 BON VIEW DORA 56
 NICHOLS HEAVY DUTY X100
 JARNE ERICA OF CONANGA

CROWFOOT 516K
CROWFOOT 3808N 1152033
 CROWFOOT FORKS 770K

RED CROWFOOT PM 757G
 BAR-X ROSEBUD 35G
 TOMWALL EXT 3500 8171
 GLADWALL PRINCENE 6340

BW: 85 lbs.
 BLK EPDS: BW: +1.9 36% WW: +36 26% YW: +67 25% Milk: +15 21% TM: +33
 YG: +31 25% SC: +1.76 33% CED: +3.0 27% CEM: +5.0 18%
 CARCASS EPDS: REA: +0.11 22% Marb: +0.13 20% Fat: +.033 17%

Calving Ease ★★★

54

OLE FREIGHTLINER 400U

Male OLEF 400U 1461715 May 01 2008

BON VIEW BANDO 598 AMF
CONNEALY FREIGHTLINER NHF AMF 964749
JOANA ERICA OF CONANGA

TEHAMA BANDO 155 NHF AMF
BON VIEW DORA 56
NICHOLS HEAVY DUTY X100
JARNE ERICA OF CONANGA

HARMON MATRIX 4051
WINDOVER EDELLA 2G 882466
WINDOVER EDELLA 62E

B J MAGNUM 9740
HARMON BLACK LADY 4301
WINDOVER KENTUCKY 11A
GNS EDELLA 37A

BW: 75 lbs.
BLK EPDS: BW: +0.6 35% WW: +38 26% YW: +67 25% Milk: +18 21% TM: +37
YG: +29 25% SC: +1.69 32% CED: +7.0 28% CEM: +9.0 18%
CARCASS EPDS: REA: +0.22 22% Marb: -0.14 20% Fat: +.026 17%

Calving Ease ★★★

55

RED OLE TOP CROP 275U

Male OLEF 275U 1470462 June 10 2008

RED MLK CRK CUB 722 OSF
RED CROWFOOT OLE'S OSCAR 2042M OSF 1096384
RED CROWFOOT OMEGA 9179J

RED GLACIER CUB 446 OSF
RED MLK CRK LAKOTA 152-HOBO OSF
RED PRICE 631
RED OMEGA 7456'

RED CROWFOOT PM 757G
RED CROWFOOT 3312N 1151927
RED CROWFOOT CJ TARA 9216J

RED TK POUNDMAKER 69Z
RED CROWFOOT BIRD 12Z
RED CR HEAVENLY 11F
RED CROWFOOT CHRISSY 6138F

BW: 94 lbs.
CDN EPDS: BW: +1.6 37% WW: +32 28% YW: +65 30% Milk: +16 23% TM: +32
Stay: +7 8% HPG: +5 11% CED: +4.0 21% CEM: +7.0 20%
CARCASS EPDS: REA: +0.16 26% Marb: +0.01 27% Fat: -0.01 20%

Calving Ease ★★

Top Crop, was appropriately named. His mass and muscle is indicative of his dam and sire, masculine and dark red, really an attractive bull to look at!

56

RED OLE IMPERIAL 140U

Male OLEF 140U 1472031 May 08 2008

RED MLK CRK CUB 722 OSF
RED CROWFOOT OLE'S OSCAR 2042M OSF 1096384
RED CROWFOOT OMEGA 9179J

RED GLACIER CUB 446 OSF
RED MLK CRK LAKOTA 152-HOBO OSF
RED PRICE 631
RED OMEGA 7456'

RED CROWFOOT DYNAMO 616F
RED CROWFOOT GOLDIE 9145J 958139
RED SSS GOLD EDGE 833G

RED RCN DYNAMO 732 OSF
RED TOM GREEN GTG 25D
RED BJR MAKE MY DAY 981 OSF
RED SSS GOLD EDGE 167C

BW: 70 lbs.
CDN EPDS: BW: -4.4 37% WW: +24 29% YW: +54 31% Milk: +16 24% TM: +28
Stay: +8 13% HPG: +3 11% CED: +11.0 22% CEM: +7.0 22%
CARCASS EPDS: REA: +0.13 26% Marb: +0.16 27% Fat: -0.01 21%

Calving Ease ★★★★★

A very good spread from birth to yearling weight! 9145J is a tremendously deep bodied cow. 140U is deep, thick and dark red in color! Truly an elite bull in the offering.

57

RED OLE CHICAGO 186U

Male OLEF 186U 1470931 May 16 2008

RED MLK CRK CUB 722 OSF
RED CROWFOOT OLE'S OSCAR 2042M OSF 1096384
RED CROWFOOT OMEGA 9179J

RED GLACIER CUB 446 OSF
RED MLK CRK LAKOTA 152-HOBO OSF
RED PRICE 631
RED OMEGA 7456'

RED REVERE 0807
RED CROWFOOT KURUBA 3184N 1152143
RED CROWFOOT KURUBA 6126F

RED PATRIOT 629
RED NSR ROCKETS PAN-AM LADY
RED GLACIER DIVIDE 310
RED CROWFOOT KURUBA 22Z

BW: 90 lbs.
CDN EPDS: BW: +1.1 36% WW: +35 27% YW: +62 29% Milk: +15 21% TM: +33
Stay: +8 8% HPG: +6 11% CED: +2.0 20% CEM: +7.0 20%
CARCASS EPDS: REA: +0.07 26% Marb: +0.06 27% Fat: -0.01 20%

Calving Ease ★★



Lot 55 - Red Ole Top Crop 275U



Lot 58 - Red Ole Forester 124U

58

RED OLE FORESTER 124U

Male OLEF 124U 1470446 May 07 2008

RED MLK CRK CUB 722 OSF
RED CROWFOOT OLE'S OSCAR 2042M OSF 1096384
RED CROWFOOT OMEGA 9179J

RED GLACIER CUB 446 OSF
RED MLK CRK LAKOTA 152-HOBO OSF
RED PRICE 631
RED OMEGA 7456'

RED BJR JR 105
RED CROWFOOT 3311N 1151913
RED CFCC 303K

LMB JOHNY REB 091
RED BJR MATTIE 677-6130
RED CROWFOOT PM 757G
RED CROWFOOT CHRISSY 6136F

BW: 84 lbs.
CDN EPDS: BW: +0.0 37% WW: +34 28% YW: +72 29% Milk: +15 21% TM: +32
Stay: +7 8% HPG: +3 11% CED: +5.0 20% CEM: +6.0 20%
CARCASS EPDS: REA: +0.23 26% Marb: +0.05 28% Fat: -0.01 20%

Calving Ease ★★★★★

More frame and performance here! 124U will do great things in regard to improving feet performance and will add a lot of style to his calves. Take a look at his powerhouse dam!



Family Day Sale

59

RED OLE JASPER 104U

Male OLEF 104U 1461724 May 04 2008

RED MLK CRK CUB 722 OSF RED CROWFOOT OLE'S OSCAR 2042M OSF 1096384 RED CROWFOOT OMEGA 9179J	RED GLACIER CUB 446 OSF RED MLK CRK LAKOTA 152-HOBO OSF RED PRICE 631 RED OMEGA 7456'
RED LMAN LADIES MAN 1144B OSF RED CROWFOOT TARA 653F 875824 RED CROWFOOT MS TARA 91Y	RED LEACHMAN RED TOP 8658 LEACHMAN RD RSE 7016 RED BLUE SPRUCE LINCOLN 18W RED CROWFOOT TARA 22U

BW: 75 lbs.
CDN EPDS: BW: -1.5 36% WW: +30 28% YW: +53 30% Milk: +9 24% TM: +24
Stay: +7 8% HPG: +4 11% CED: +7.0 21% CEM: +7.0 20%
CARCASS EPDS: REA: +0.09 27% Marb: +0.12 29% Fat: +0.00 22%

Calving Ease ★★★

One of the best Oscar sons in the sale! His depth and muscle are excellent and considering his light birth weight and the strength of the cow behind him, should leave many of you considering him as your future herd bull.

60

RED OLE RICO 328U

Male OLEF 328U 1519877 July 07 2008

RED MLK CRK CUB 722 OSF RED CROWFOOT OLE'S OSCAR 2042M OSF 1096384 RED CROWFOOT OMEGA 9179J	RED GLACIER CUB 446 OSF RED MLK CRK LAKOTA 152-HOBO OSF RED PRICE 631 RED OMEGA 7456'
RED TASSEL ROBIN HOOD 78E RED RICOSHAE MARION 54M 1125369 RED TVB ELWAY 185G	RED LMAN ROBIN HOOD 1174B OSF RED TASSEL LANA 15A RED LMB ELWAY 938 RED L4 DEBBIE 313B

BW: 83 lbs.
CDN EPDS: BW: +0.2 36% WW: +33 27% YW: +57 29% Milk: +19 21% TM: +35
Stay: +7 8% HPG: +4 11% CED: +5.0 20% CEM: +9.0 20%
CARCASS EPDS: REA: +0.08 27% Marb: -0.01 28% Fat: -0.01 21%

Calving Ease ★★★

61

RED OLE JAXON 28U

Male OLEF 28U 1470479 April 05 2008

RED MLK CRK CUB 722 OSF RED CROWFOOT OLE'S OSCAR 2042M OSF 1096384 RED CROWFOOT OMEGA 9179J	RED GLACIER CUB 446 OSF RED MLK CRK LAKOTA 152-HOBO OSF RED PRICE 631 RED OMEGA 7456'
RED BUF CRK HOBO 1961 OSF RED OLE DOLL 20S 1324248 RED CROWFOOT DOLL 594E	RED BUF CRK HOBO 1413 OSF BUF CR CARRIE VC1174 OSF RED BAR-V SPARK 340X RED CROWFOOT DOLL 31B

BW: 73 lbs.
CDN EPDS: BW: -3.6 36% WW: +28 28% YW: +62 29% Milk: +20 22% TM: +34
Stay: +9 8% HPG: +5 11% CED: +8.0 21% CEM: +9.0 20%
CARCASS EPDS: REA: +0.20 27% Marb: +0.07 28% Fat: -0.01 22%

Calving Ease ★★★★★

A major curve-bending bull here. 28U's birth weight to yearling weight EPDs are comparable with Ole's Oscar himself...pretty good company! He also combines two of the breed's most proven calving ease and female making bulls, Ole's Oscar and Hobo!



Lot 59 - Red Ole Jasper 104U

62

RED OLE PRINCE 188U

Male OLEF 188U 1461766 May 16 2008

RED MLK CRK CUB 722 OSF RED CROWFOOT OLE'S OSCAR 2042M OSF 1096384 RED CROWFOOT OMEGA 9179J	RED GLACIER CUB 446 OSF RED MLK CRK LAKOTA 152-HOBO OSF RED PRICE 631 RED OMEGA 7456'
RED PAT 8207 RED OLSON DIXIE 35N 1200445 RED CROWFOOT DIXIE 379C	RED FLYING K PAT 43C RED RACHEL R227 RED BIEBER TOPPER 2736 RED CROWFOOT SLOWPOKE 2A

BW: 77 lbs.
CDN EPDS: BW: -1.4 37% WW: +29 28% YW: +57 30% Milk: +16 23% TM: +31
Stay: +7 9% HPG: +4 11% CED: +5.0 21% CEM: +5.0 21%
CARCASS EPDS: REA: +0.01 26% Marb: +0.00 27% Fat: -0.01 20%

Calving Ease ★★★

63

RED OLE HELIX 203U

Male OLEF 203U 1461770 May 21 2008

RED MLK CRK CUB 722 OSF RED CROWFOOT OLE'S OSCAR 2042M OSF 1096384 RED CROWFOOT OMEGA 9179J	RED GLACIER CUB 446 OSF RED MLK CRK LAKOTA 152-HOBO OSF RED PRICE 631 RED OMEGA 7456'
MVHF INNOVATOR 49B RED BAR-X GINGER 100G 878228 RED SHODEREE DUCHESS 71C	TC STOCKMAN MVF TIBBIE 15T RED GRL SIR RAMBO 9A RED MC DUCHESS 71Z

BW: 72 lbs.
CDN EPDS: BW: -1.3 38% WW: +26 30% YW: +56 32% Milk: +16 26% TM: +29
Stay: +10 17% HPG: +5 11% CED: +7.0 24% CEM: +8.0 24%
CARCASS EPDS: REA: +0.10 27% Marb: +0.05 28% Fat: -0.01 20%

Calving Ease ★★★★★



*When calving heifers its best to start
with a live calf.*

64

OLE PAYOFF 108U

Male OLEF 108U 1461726 May 04 2008

C A FUTURE DIRECTION 5321 NHC AMC
STANDARD HILL PAYOFF 20P NHF AMF 1240477
STANDARD HILL QUEEN MOTHER 13M

G A R PRECISION 1680 NHC AMC
C A MISS POWER FIX 308 AMF
R P 3RD BUSHWACKER
STANDARD HILL QUEEN MOTHER 47J

SITZ ALLIANCE 6595 NHF AMF
CROWFOOT BLACK MISS 2515M 1126154
C H BLACK MISS 8610

SITZ TRAVELER 8180 NHF AMF
SITZ BARBARAMERE JET 2698
SITZ TRAVELER 7594
BLACK MISS OF C H 102

BW: 79 lbs.
BLK EPDS: BW: +1.2 35% WW: +41 26% YW: +69 25% Milk: +26 15% TM: +47
YG: +28 25% SC: +1.16 32% CED: +9.0 27% CEM: +9.0 12%
CARCASS EPDS: REA: +0.05 20% Marb: +0.46 17% Fat: +.022 15%

Calving Ease ★★★

To us at Ole Farms this is the best PayOff son in the sale. His length, depth and muscle pattern are what we look for at Ole Farms. He will be a significant improver in carcass quality and should leave some outstanding daughters.

65

OLE PAYOFF 144U

Male OLEF 144U 1470444 May 09 2008

C A FUTURE DIRECTION 5321 NHC AMC
STANDARD HILL PAYOFF 20P NHF AMF 1240477
STANDARD HILL QUEEN MOTHER 13M

G A R PRECISION 1680 NHC AMC
C A MISS POWER FIX 308 AMF
R P 3RD BUSHWACKER
STANDARD HILL QUEEN MOTHER 47J

ROYAL PRECISION DRCC 1007L NHF AMF
ROYAL PATRICIA DRCC 5016R 1250256
THOMAS PATRICIA 9644

TWIN VALLEY PRECISION E161 NHC AMF
THOMAS MISS IDOLDEE 8008
IDEAL 1418 OF 8103 4286 NHF AMF
THOMAS PATRICIA 1176

BW: 81 lbs.
BLK EPDS: BW: +1.0 35% WW: +31 25% YW: +58 23% Milk: +22 13% TM: +38
YG: +27 23% SC: +0.59 31% CED: +8.0 26% CEM: +9.0 10%
CARCASS EPDS: REA: +0.22 19% Marb: +0.17 16% Fat: +.012 13%

Calving Ease ★★★

66

OLE PAYOFF 278U

Male OLEF 278U 1461795 June 11 2008

C A FUTURE DIRECTION 5321 NHC AMC
STANDARD HILL PAYOFF 20P NHF AMF 1240477
STANDARD HILL QUEEN MOTHER 13M

G A R PRECISION 1680 NHC AMC
C A MISS POWER FIX 308 AMF
R P 3RD BUSHWACKER
STANDARD HILL QUEEN MOTHER 47J

RANGER G 1720 NHC AMF
OLSON 16P NHC 1228891
RAFTER IR BLACKBIRD 68K

G A R PRECISION 1680 NHC AMC
SITZ EVERELDA ENTENSE 1137
RITO 2100 G D A R
STRATHMORE BLACKBIRD 3B

BW: 77 lbs.
BLK EPDS: BW: +1.1 35% WW: +28 25% YW: +46 24% Milk: +23 14% TM: +37
YG: +19 24% SC: +0.09 32% CED: +8.0 26% CEM: +7.0 12%
CARCASS EPDS: REA: +0.19 19% Marb: +0.40 16% Fat: +.004 14%

Calving Ease ★★★

67

OLE PAYOFF 305U

Male OLEF 305U 1461811 June 25 2008

C A FUTURE DIRECTION 5321 NHC AMC
STANDARD HILL PAYOFF 20P NHF AMF 1240477
STANDARD HILL QUEEN MOTHER 13M

G A R PRECISION 1680 NHC AMC
C A MISS POWER FIX 308 AMF
R P 3RD BUSHWACKER
STANDARD HILL QUEEN MOTHER 47J

O C C JOKER 620J
CROWFOOT 3497N 1182389
CROWFOOT JW BLACK 8167H

O C C EMBLAZON 854E
O C C JUANADA 709V
CORVALLIS BANDIT 1'95
RED WVA ROSE 78F

BW: 96 lbs.
BLK EPDS: BW: +3.0 35% WW: +29 25% YW: +45 23% Milk: +21 13% TM: +36
YG: +16 23% SC: -0.77 31% CED: +1.0 25% CEM: +2.0 10%
CARCASS EPDS: REA: +0.13 17% Marb: +0.17 15% Fat: +.003 12%

Calving Ease ★★



Udder of Ole Oscar daughter

68

OLE PAYOFF 291U

Male OLEF 291U 1461803 June 19 2008

C A FUTURE DIRECTION 5321 NHC AMC
STANDARD HILL PAYOFF 20P NHF AMF 1240477
STANDARD HILL QUEEN MOTHER 13M

G A R PRECISION 1680 NHC AMC
C A MISS POWER FIX 308 AMF
R P 3RD BUSHWACKER
STANDARD HILL QUEEN MOTHER 47J

SITZ ALLIANCE 6595 NHF AMF
OLSON 24P 1228896
CROWFOOT FORKS 732K

SITZ TRAVELER 8180 NHF AMF
SITZ BARBARAMERE JET 2698
TOMWALL PIED PIPER 413
GLADWALL PRINCENE 6320

BW: 79 lbs.
BLK EPDS: BW: +0.0 35% WW: +33 25% YW: +55 25% Milk: +28 14% TM: +45
YG: +23 25% SC: -0.37 32% CED: +9.0 26% CEM: +9.0 12%
CARCASS EPDS: REA: +0.01 20% Marb: +0.34 17% Fat: +.026 14%

Calving Ease ★★★

69

OLE PAYOFF 264U

Male OLEF 264U 1461789 June 06 2008

C A FUTURE DIRECTION 5321 NHC AMC
STANDARD HILL PAYOFF 20P NHF AMF 1240477
STANDARD HILL QUEEN MOTHER 13M

G A R PRECISION 1680 NHC AMC
C A MISS POWER FIX 308 AMF
R P 3RD BUSHWACKER
STANDARD HILL QUEEN MOTHER 47J

CANE RIDGE CHALLENGER 2334
CROWFOOT B CHLOE 4864P 1231588
CROWFOOT CHLOE 2722M

O C C EMBLAZON 854E
BILTMORE ERICA PRIDE 91H
LEACHMAN RIGHT TIME
GLADWALL B CHLOE 7197

BW: 78 lbs.
BLK EPDS: BW: -0.1 35% WW: +29 25% YW: +54 23% Milk: +24 13% TM: +39
YG: +25 23% SC: +0.72 31% CED: +10.0 27% CEM: +9.0 10%
CARCASS EPDS: REA: +0.09 18% Marb: +0.13 15% Fat: +.009 12%

Calving Ease ★★★

70

OLE PAYOFF 220U

Male OLEF 220U 1485482 May 24 2008

C A FUTURE DIRECTION 5321 NHC AMC
STANDARD HILL PAYOFF 20P NHF AMF 1240477
STANDARD HILL QUEEN MOTHER 13M

G A R PRECISION 1680 NHC AMC
C A MISS POWER FIX 308 AMF
R P 3RD BUSHWACKER
STANDARD HILL QUEEN MOTHER 47J

BLACK GEM CDN. TRAVELER 303N
BLACK GEM LADY 44R 1275303
BIEVER'S LADY 44L

D H D TRAVELER 6807 NHF AMF
LANDMARK FREDIA 911
SUPER UNIVERSE 1399 S D G
BIEVER'S LADY 44H

BW: 77 lbs.
BLK EPDS: BW: -0.3 34% WW: +37 24% YW: +67 21% Milk: +21 12% TM: +40
YG: +30 21% SC: +0.11 30% CED: +9.0 25% CEM: +9.0 9%
CARCASS EPDS: REA: +0.11 17% Marb: +0.33 15% Fat: +.003 12%

Calving Ease ★★★

71

OLE PAYOFF 218U

Male OLEF 218U 1470450 May 24 2008

C A FUTURE DIRECTION 5321 NHC AMC
STANDARD HILL PAYOFF 20P NHF AMF 1240477
STANDARD HILL QUEEN MOTHER 13M

G A R PRECISION 1680 NHC AMC
C A MISS POWER FIX 308 AMF
R P 3RD BUSHWACKER
STANDARD HILL QUEEN MOTHER 47J

O C C MAGNUM 749M
OLE GRACIOUS ONE 229R 1273122
GLADWALL KAWICH LADY 7109

O C C EUREKA 865E
O C C JUANADA 818E
LEACHMAN EXT 3500
GLADWALL KAWICH LADY 5186

BW: 67 lbs.
BLK EPDS: BW: -1.6 35% WW: +32 25% YW: +56 23% Milk: +19 13% TM: +35
YG: +24 23% SC: -0.52 31% CED: +12.0 26% CEM: +10.0 10%
CARCASS EPDS: REA: +0.14 18% Marb: +0.25 15% Fat: +.006 12%

Calving Ease ★★★★★

72

RED OLE BAPTISTE 32U

Male OLEF 32U 1473777 April 07 2008

RED MLK CRK CUB 722 OSF
RED CROWFOOT OLE'S OSCAR 2042M OSF 1096384
RED CROWFOOT OMEGA 9179J

RED GLACIER CUB 446 OSF
RED MLK CRK LAKOTA 152-HOBO OSF
RED PRICE 631
RED OMEGA 7456'

RED BUF CRK HOBO 1961 OSF
RED OLE BIRD 118S 1324252
RED OLSON BIRD 30N

RED BUF CRK HOBO 1413 OSF
BUF CR CARRIE VC1174 OSF
RED PAT 8207
RED CROWFOOT BIRD 706G

BW: 75 lbs.
CDN EPDS: BW: -2.1 36% WW: +29 27% YW: +61 29% Milk: +17 21% TM: +32
Stay: +7 8% HPG: +5 11% CED: +7.0 20% CEM: +8.0 20%
CARCASS EPDS: REA: +0.01 28% Marb: +0.04 30% Fat: -0.01 22%

Calving Ease ★★★

Yet another great combination of light birth weight bulls: Hobo and Ole's Oscar! 32U is very masculine with added width and length of spine.

73

RED OLE LEONARDO 83U

Male OLEF 83U 1470470 April 29 2008

RED CROWFOOT OLE'S OSCAR 2042M OSF
RED OLE OSCAR 104S 1318528
RED CROWFOOT COVERGIRL 401D

RED MLK CRK CUB 722 OSF
RED CROWFOOT OMEGA 9179J
RED CROWFOOT CAPTAIN 1B
RED CROWFOOT COVER GIRL 5B

RED CROWFOOT OLE'S OSCAR 2042M OSF
RED OLE MISS LEE 8S 1352549
RED WYATT LEE 30P

RED MLK CRK CUB 722 OSF
RED CROWFOOT OMEGA 9179J
RED WYATT NEW TREND 01L
RED WATERVIEW LEE D 30B

BW: 72 lbs.
CDN EPDS: BW: -2.4 33% WW: +29 22% YW: +59 23% Milk: +21 13% TM: +35
Stay: +10 0% HPG: +6 5% CED: +9.0 14% CEM: +8.0 12%
CARCASS EPDS: REA: +0.49 24% Marb: -0.05 25% Fat: -0.01 19%

Calving Ease ★★★★★

74

RED OLE CHESTER 134U

Male OLEF 134U 1461746 May 08 2008

RED MLK CRK CUB 722 OSF
RED CROWFOOT OLE'S OSCAR 2042M OSF 1096384
RED CROWFOOT OMEGA 9179J

RED GLACIER CUB 446 OSF
RED MLK CRK LAKOTA 152-HOBO OSF
RED PRICE 631
RED OMEGA 7456'

RED CROWFOOT CHIEFTON 462D
RED CROWFOOT LADY 655F 844846
RED CROWFOOT LADY 337C

RED BIEBER CHIEFTON 3080
RED NCG JESSICA 2-36
RED BIEBER TOPPER 2736
RED CROWFOOT LADY 11Z

BW: 90 lbs.
CDN EPDS: BW: +2.0 38% WW: +38 30% YW: +65 32% Milk: +16 26% TM: +35
Stay: +10 17% HPG: +5 11% CED: +2.0 24% CEM: +6.0 23%
CARCASS EPDS: REA: +0.06 27% Marb: +0.10 28% Fat: -0.01 20%

Calving Ease ★★

Note, the dam is 14 years old!



Ole Commercial Cows

75

RED OLE NORTON 112U

Male OLEF 112U 1470469 May 05 2008

RED MLK CRK CUB 722 OSF
RED CROWFOOT OLE'S OSCAR 2042M OSF 1096384
RED CROWFOOT OMEGA 9179J

RED GLACIER CUB 446 OSF
RED MLK CRK LAKOTA 152-HOBO OSF
RED PRICE 631
RED OMEGA 7456'

RED LITTLE DE SAM 115H
RED LITTLE DE MABEL 385K 1011210
RED LITTLE DE MABEL 893E

RED SPRING CREEK SAM'S JOY 6D
RED VIDAL'S BELA 57Z
RED GET-A-LONG BAXTER 299
RED LITTLE DE MABEL 644C

BW: 77 lbs.
CDN EPDS: BW: -1.9 37% WW: +27 28% YW: +41 30% Milk: +9 24% TM: +23
Stay: +8 9% HPG: +6 11% CED: +8.0 22% CEM: +9.0 21%
CARCASS EPDS: REA: -0.06 26% Marb: +0.13 27% Fat: -0.01 20%

Calving Ease ★★★

76

RED OLE CAPACITY 90U

Male OLEF 90U 1484029 May 01 2008

RED MLK CRK CUB 722 OSF
RED CROWFOOT OLE'S OSCAR 2042M OSF 1096384
RED CROWFOOT OMEGA 9179J

RED GLACIER CUB 446 OSF
RED MLK CRK LAKOTA 152-HOBO OSF
RED PRICE 631
RED OMEGA 7456'

RED BJR THE DUKE 502-5176
RED CROWFOOT DIXIE LADY 335C 759387
RED CROWFOOT FIRST DIXIE 82Y

BJR YODLER 3229
BJR FREYJA 2258-288
RED BRA FIRST-CLASS 13R
RED CROWFOOT DIXIE LADY 101W

BW: 78 lbs.
CDN EPDS: BW: -0.2 37% WW: +22 29% YW: +47 31% Milk: +16 25% TM: +27
Stay: +9 9% HPG: +6 11% CED: +4.0 21% CEM: +6.0 21%
CARCASS EPDS: REA: +0.03 27% Marb: +0.04 28% Fat: -0.01 21%

Calving Ease ★★★

77

RED OLE VICTOR 235U

Male OLEF 235U 1461777 May 28 2008

RED MLK CRK CUB 722 OSF
RED CROWFOOT OLE'S OSCAR 2042M OSF 1096384
RED CROWFOOT OMEGA 9179J

RED GLACIER CUB 446 OSF
RED MLK CRK LAKOTA 152-HOBO OSF
RED PRICE 631
RED OMEGA 7456'

RED GLACIER DIVIDE 310
RED CROWFOOT LADY 792G 881615
RED SSS DYNA LADY 408X

RED BUF CRK COPPERTP 1665
RED CROWFOOT LASS
RED SSS DYNAMO 25T
RED CHINIKI LEADING LADY 22T

BW: 63 lbs.
CDN EPDS: BW: -4.8 38% WW: +20 29% YW: +43 31% Milk: +19 25% TM: +29
Stay: +7 9% HPG: +6 11% CED: +9.0 22% CEM: +8.0 22%
CARCASS EPDS: REA: +0.04 27% Marb: +0.02 28% Fat: -0.01 20%

Calving Ease ★★★★★



Family Day Sale

78

RED OLE CAPTAIN 65U

Male OLEF 65U 1470439 April 28 2008

RED MLK CRK CUB 722 OSF
RED CROWFOOT OLE'S OSCAR 2042M OSF 1096384
 RED CROWFOOT OMEGA 9179J

RED GLACIER CUB 446 OSF
 RED MLK CRK LAKOTA 152-HOBO OSF
 RED PRICE 631
 RED OMEGA 7456'

RED CROWFOOT CAPTAIN 1B
RED BAR-X SODAK-CAPT 73F 868835
 RED VIEW CREST SODAK CLASIC 37

RED BIEBER DSIGN 1325-082
 RED CROWFOOT BRNDINA 4Z
 RED MEM FIRST CLASS 82Z
 RED SODAK OF DENVAVO 95Z

BW: 84 lbs.
 CDN EPDS: BW: -0.4 38% WW: +30 30% YW: +63 32% Milk: +18 25% TM: +33
 Stay: +8 16% HPG: +5 11% CED: +6.0 23% CEM: +8.0 23%
 CARCASS EPDS: REA: +0.31 26% Marb: +0.10 28% Fat: -0.01 20%

Calving Ease ★★★

A 3 star calving ease with some added frame. Please note; the dam of this bull is 14.

79

RED OLE MARIO 64U

Male OLEF 64U 1470447 April 28 2008

RED MLK CRK CUB 722 OSF
RED CROWFOOT OLE'S OSCAR 2042M OSF 1096384
 RED CROWFOOT OMEGA 9179J

RED GLACIER CUB 446 OSF
 RED MLK CRK LAKOTA 152-HOBO OSF
 RED PRICE 631
 RED OMEGA 7456'

RED BJR JR 105
RED CROWFOOT ANGEL 3528N 1182416
 RED CROWFOOT WJ 528K

LMB JOHNY REB 091
 RED BJR MATTIE 677-6130
 RED PAT 8207
 RED CROWFOOT ANGEL 711G

BW: 86 lbs.
 CDN EPDS: BW: -0.1 37% WW: +30 28% YW: +65 30% Milk: +13 23% TM: +28
 Stay: +7 8% HPG: +3 11% CED: +6.0 21% CEM: +6.0 21%
 CARCASS EPDS: REA: +0.16 26% Marb: +0.15 28% Fat: -0.01 20%

Calving Ease ★★★

80

RED OLE SOLUTION 17U

Male OLEF 17U 1461670 April 02 2008

RED MLK CRK CUB 722 OSF
RED CROWFOOT OLE'S OSCAR 2042M OSF 1096384
 RED CROWFOOT OMEGA 9179J

RED GLACIER CUB 446 OSF
 RED MLK CRK LAKOTA 152-HOBO OSF
 RED PRICE 631
 RED OMEGA 7456'

RED BUF CRK HOBO 1961 OSF
RED OLEF 191S 1352252
 CROWFOOT 3786N

RED BUF CRK HOBO 1413 OSF
 BUF CR CARRIE VC1174 OSF
 RED PAT 8207
 GLADWALL PEARL ENECHOR 8155

BW: 89 lbs.
 CDN EPDS: BW: +1.2 36% WW: +34 27% YW: +56 29% Milk: +15 21% TM: +32
 Stay: +8 8% HPG: +5 11% CED: +4.0 20% CEM: +8.0 19%
 CARCASS EPDS: REA: +0.01 28% Marb: -0.02 30% Fat: -0.01 22%

Calving Ease ★★

81

RED OLE GENTLEMAN 284U

Male OLEF 284U 1519875 June 18 2008

RED MLK CRK CUB 722 OSF
RED CROWFOOT OLE'S OSCAR 2042M OSF 1096384
 RED CROWFOOT OMEGA 9179J

RED GLACIER CUB 446 OSF
 RED MLK CRK LAKOTA 152-HOBO OSF
 RED PRICE 631
 RED OMEGA 7456'

RED RIC BULLET 40L
RED RICOSHAE LUELLA 70N 1157960
 RED WVA LUELLA 32E

RED LMB ELWAY 938
 RED TVB BUFFALO 200G
 RED BIEBER IMPACT 4399
 RED ALALTA ACRES LUELLA 53Z

BW: 90 lbs.
 CDN EPDS: BW: +2.6 36% WW: +33 27% YW: +61 29% Milk: +11 21% TM: +27
 Stay: +8 8% HPG: +4 11% CED: +2.0 20% CEM: +5.0 20%
 CARCASS EPDS: REA: +0.13 25% Marb: -0.03 27% Fat: -0.01 20%

Calving Ease ★★



Last year's bull sale

82

RED OLE JACKSON 48U

Male OLEF 48U 1470483 April 24 2008

RED MLK CRK CUB 722 OSF
RED CROWFOOT OLE'S OSCAR 2042M OSF 1096384
 RED CROWFOOT OMEGA 9179J

RED GLACIER CUB 446 OSF
 RED MLK CRK LAKOTA 152-HOBO OSF
 RED PRICE 631
 RED OMEGA 7456'

RED CROWFOOT OLE'S OSCAR 2042M OSF
RED OLE BLACKBIRD 13S 1470482
 RED PINE CREEK KARA CARMINE 2H

RED MLK CRK CUB 722 OSF
 RED CROWFOOT OMEGA 9179J
 RED L4 WIZARD 548D
 RED ROYAL ANCHOR CARAMINE 31E

BW: 66 lbs.
 CDN EPDS: BW: -4.1 36% WW: +19 26% YW: +45 28% Milk: +13 21% TM: +23
 Stay: +8 8% HPG: +4 11% CED: +9.0 20% CEM: +9.0 19%
 CARCASS EPDS: REA: +0.09 26% Marb: +0.08 27% Fat: -0.01 20%

Calving Ease ★★★★★

83

OLE EXPLOSION 46U

Male OLEF 46U 1461689 April 24 2008

SITZ ALLIANCE 6595 NHF AMF
OLE ALLIANCE 144S 1318551
 OLSON LOVEMERE PET 10N

SITZ TRAVELER 8180 NHF AMF
 SITZ BARBARAMERE JET 2698
 CROWFOOT AMBUSH 9137J
 BARBWALL LOVEMERE PET 851

CROWFOOT MAX 1743L
OLE EXPLOSION 59S 1318495
 OLSON 31P

BASIN MAX 104J AMF
 GLADWALL LOVEMERE PET 8132
 SITZ ALLIANCE 6595 NHF AMF
 C H EXPLOSION 9262 270

BW: 76 lbs.
 BLK EPDS: BW: +0.3 33% WW: +35 21% YW: +67 19% Milk: +21 9% TM: +39
 YG: +32 19% SC: +0.55 30% CED: +8.0 26% CEM: +7.0 8%
 CARCASS EPDS: REA: -0.20 15% Marb: +0.11 14% Fat: +0.31 11%

Calving Ease ★★★

A little meat machine.

84

OLE 144 158U

Male OLEF 158U 1461741 May 07 2008

SITZ ALLIANCE 6595 NHF AMF
OLE ALLIANCE 144S 1318551
 OLSON LOVEMERE PET 10N

SITZ TRAVELER 8180 NHF AMF
 SITZ BARBARAMERE JET 2698
 CROWFOOT AMBUSH 9137J
 BARBWALL LOVEMERE PET 851

CONNELLY FREIGHTLINER NHF AMF
OLE LASS 123S 1324127
 GLADWALL ELINE LASS 618

BON VIEW BANDO 598 AMF
 JOANA ERICA OF CONANGA
 D V PRIDES COMMODORE
 GLADWALL ELINE LASS 8241

BW: 70 lbs.
 BLK EPDS: BW: -0.8 33% WW: +39 22% YW: +73 20% Milk: +20 11% TM: +40
 YG: +34 20% SC: +2.21 31% CED: +10.0 25% CEM: +9.0 9%
 CARCASS EPDS: REA: -0.20 17% Marb: +0.05 15% Fat: +0.36 13%

Calving Ease ★★★★★

A deep body and he has a large scrotum.



Family Day Sale

85

OLE 144 87U

Male OLEF 87U 1461708 April 30 2008

SITZ ALLIANCE 6595 NHF AMF
OLE ALLIANCE 144S 1318551
 OLSON LOVEMERE PET 10N

SITZ TRAVELER 8180 NHF AMF
 SITZ BARBARAMERE JET 2698
 CROWFOOT AMBUSH 9137J
 BARBWALL LOVEMERE PET 851

RED CROWFOOT OLE'S OSCAR 2042M OSF
OLEF 174S 1352231
 CROWFOOT 3110N

RED MLK CRK CUB 722 OSF
 RED CROWFOOT OMEGA 9179J
 O C C HONESTY 962H
 RED CFCC 0507K

BW: 72 lbs.
 BLK EPDS: BW: +0.0 33% WW: +44 22% YW: +79 20% Milk: +25 10% TM: +47
 YG: +34 20% SC: +0.49 31% CED: +6.0 25% CEM: +6.0 9%
 CARCASS EPDS: REA: -0.09 16% Marb: +0.16 14% Fat: +.025 11%

Calving Ease ★★★

86

OLE 144 159U

Male OLEF 159U 1461755 May 12 2008

SITZ ALLIANCE 6595 NHF AMF
OLE ALLIANCE 144S 1318551
 OLSON LOVEMERE PET 10N

SITZ TRAVELER 8180 NHF AMF
 SITZ BARBARAMERE JET 2698
 CROWFOOT AMBUSH 9137J
 BARBWALL LOVEMERE PET 851

RED CROWFOOT OLE'S OSCAR 2042M OSF
OLE ZARA 91S 1318518
 OLSON ZARA 4N

RED MLK CRK CUB 722 OSF
 RED CROWFOOT OMEGA 9179J
 RED PAT 8207
 CROWFOOT B ZARA 903

BW: 56 lbs.
 BLK EPDS: BW: -3.6 33% WW: +38 21% YW: +75 20% Milk: +24 10% TM: +43
 YG: +37 20% SC: +0.89 31% CED: +13.0 25% CEM: +11.0 8%
 CARCASS EPDS: REA: -0.07 16% Marb: +0.18 13% Fat: +.028 11%

Calving Ease ★★★★★

159U has been one of our favorites since early on because of his moderate frame and depth of chest floor. He has an incredible spread between birth weight and yearling weight. Look for 159U's calves to start small and finish heavy.

87

OLE 144 193U

Male OLEF 193U 1470441 May 17 2008

SITZ ALLIANCE 6595 NHF AMF
OLE ALLIANCE 144S 1318551
 OLSON LOVEMERE PET 10N

SITZ TRAVELER 8180 NHF AMF
 SITZ BARBARAMERE JET 2698
 CROWFOOT AMBUSH 9137J
 BARBWALL LOVEMERE PET 851

CONNEALY FREIGHTLINER NHF AMF
OLE PEARL 87S 1324124
 CROWFOOT 3743N

BON VIEW BANDO 598 AMF
 JOANA ERICA OF CONANGA
 O C C HUNTER 928H
 CROWFOOT PEARL 1760L

BW: 79 lbs.
 BLK EPDS: BW: +0.6 33% WW: +43 21% YW: +79 20% Milk: +23 10% TM: +45
 YG: +37 20% SC: +1.41 31% CED: +7.0 26% CEM: +7.0 9%
 CARCASS EPDS: REA: -0.14 17% Marb: +0.08 15% Fat: +.036 13%

Calving Ease ★★★

Take note breeders, Alliance, Freightliner and OCC Hunter all lined up. Fleshing ability, moderation and performance is what will result!

88

OLE 144 183U

Male OLEF 183U 1470442 May 16 2008

SITZ ALLIANCE 6595 NHF AMF
OLE ALLIANCE 144S 1318551
 OLSON LOVEMERE PET 10N

SITZ TRAVELER 8180 NHF AMF
 SITZ BARBARAMERE JET 2698
 CROWFOOT AMBUSH 9137J
 BARBWALL LOVEMERE PET 851

CONNEALY FREIGHTLINER NHF AMF
OLE ERICA 135S 1324131
 GEIS ERICA 171'99

BON VIEW BANDO 598 AMF
 JOANA ERICA OF CONANGA
 SASKALTA BARDOLENE 109F
 DOUBLE J ERICA 117F

BW: 70 lbs.
 BLK EPDS: BW: -0.1 33% WW: +45 21% YW: +74 20% Milk: +22 10% TM: +45
 YG: +29 20% SC: +1.35 30% CED: +8.0 25% CEM: +8.0 9%
 CARCASS EPDS: REA: -0.14 17% Marb: +0.18 15% Fat: +.032 13%

Calving Ease ★★★



*Spend
 Family Day
 at Ole Farms*

89

OLE PRIME TIME 19U

Male OLEF 19U 1461671 April 02 2008

GARDENS PRIME TIME NHF AMF
N BAR PRIME TIME D806 NHF AMF 981359
 N BAR MISS EMULOUS A404

RR TRAVELER 5204 NHF AMF
 GREEN GARDEN SUSIE 1246 S1
 N BAR EMULATION EXT 252
 N BAR MISS EMULOUS X3091

N BAR EMULATION EXT NHF AMF
OLE ROSEMARY 139S 1318547
 GLADWALL B L ROSEMARY 4121

EMULATION N BAR 5522
 N BAR PRIMROSE 2424
 WESTWIND FINESSE 1113
 PAT B L ROSEMARY 2242

BW: 63 lbs.
 BLK EPDS: BW: -2.1 35% WW: +29 26% YW: +60 25% Milk: +17 20% TM: +32
 YG: +30 25% SC: -0.38 33% CED: +11.0 30% CEM: +10.0 18%
 CARCASS EPDS: REA: +0.00 25% Marb: +0.37 22% Fat: +.053 20%

Calving Ease ★★★★★

An outstanding pedigree in regards to making feminine, fertile, long lasting daughters. With Primetime EXT and the old Westwind Finesse in his pedigree, look for him to make significant improvements to your cow herd.

90

OLE PRIME TIME 51U

Male OLEF 51U 1461694 April 25 2008

GARDENS PRIME TIME NHF AMF
N BAR PRIME TIME D806 NHF AMF 981359
 N BAR MISS EMULOUS A404

RR TRAVELER 5204 NHF AMF
 GREEN GARDEN SUSIE 1246 S1
 N BAR EMULATION EXT 252
 N BAR MISS EMULOUS X3091

ROYAL RIGHT TIME DRCC 3005N
OLE MISS LUCY 67S 1318501
 ROYAL MISS LUCY DRCC 3064N

LEACHMAN RIGHT TIME
 THOMAS IDOLDEE 0408
 THOMAS EMULATION 0892
 THOMAS MISS LUCY 0387

BW: 84 lbs.
 BLK EPDS: BW: +1.1 35% WW: +32 25% YW: +66 23% Milk: +18 18% TM: +34
 YG: +34 23% SC: -0.08 33% CED: +7.0 29% CEM: +7.0 17%
 CARCASS EPDS: REA: -0.05 22% Marb: +0.28 20% Fat: +.055 18%

Calving Ease ★★

A lot of Emulation breeding all over this pedigree. If you're going to be keeping daughters, consider this bull.

91

OLE PRIME TIME 38U

Male OLEF 38U 1461684 April 08 2008

GARDENS PRIME TIME NHF AMF
N BAR PRIME TIME D806 NHF AMF 981359
 N BAR MISS EMULOUS A404

RR TRAVELER 5204 NHF AMF
 GREEN GARDEN SUSIE 1246 S1
 N BAR EMULATION EXT 252
 N BAR MISS EMULOUS X3091

BLACK GEM RAIN AGAIN 340N
OLE ZARA 52S 1318491
 HILL TOP ZARA 28J

G D A R RAINMAKER 340
 LANDMARK FREDIA 911
 DFA RANCHER 1E
 LLB ZARA 65D

BW: 74 lbs.
 BLK EPDS: BW: +1.1 35% WW: +22 25% YW: +49 23% Milk: +18 18% TM: +29
 YG: +27 23% SC: +0.02 33% CED: +6.0 29% CEM: +8.0 17%
 CARCASS EPDS: REA: -0.04 22% Marb: +0.34 20% Fat: +.041 17%

Calving Ease ★★★★★



Family Day Sale

92

OLE EXTREME 334U

Male OLEF 334U 1485369 July 05 2008

N BAR EMULATION EXT A1747 NHF AMF
SINCLAIR EXTREME 5V27 1418082
 SINCLAIR QUEEN 2V90 616

N BAR EMULATION EXT NHF AMF
 N BAR CLOVA PRIDE U3031
 RITO BIG ELBAN
 W 616 ZULU 689-550

FELTON FAME 2118
CROWFOOT FORKS 438K 1013090
 GLADWALL G V EILEEN 8194

S A F FAME NHF AMF
 6362 FAR NICOLE 636
 AMITIE ACRES L EXT 1376
 GLADWALL G V EILEEN 9112

BW: 77 lbs.
 BLK EPDS: BW: I+0.5 5% WW: I+36 5% YW: I+61 5% Milk: I+17 5% TM: I+35
 YG: I+24 5% SC: I+0.34 5% CED: I+6.5 5% CEM: I+8.5 5%
 CARCASS EPDS: REA: I+0.03 5% Marb: I+0.20 5% Fat: I+0.19 5%

Calving Ease ★★★

This is a great looking Extreme son. Look for many more Extremes in our future sales.

93

RED OLE HITCH 101U

Male OLEF 101U 1461722 May 03 2008

RED CROWFOOT OLE'S OSCAR 2042M OSF
RED YY HITCH 514R 1258419
 RED YY GOLDIE 140L

RED MLK CRK CUB 722 OSF
 RED CROWFOOT OMEGA 9179J
 RED TER-RON CARLTON 810H
 RED TOP GOLDIE 40U

RED MLK CRK CUB 722 OSF
RED OLSN JESSIE 20P 1268528
 RED CROWFOOT JESSIE 654F

RED GLACIER CUB 446 OSF
 RED MLK CRK LAKOTA 152-HOBO OSF
 RED RCN DYNAMO 732 OSF
 RED CROWFOOT JESSIE 470D

BW: 81 lbs.
 CDN EPDS: BW: -1.2 36% WW: +29 26% YW: +57 28% Milk: +16 19% TM: +30
 Stay: +14 0% HPG: +1 6% CED: +2.0 18% CEM: +2.0 17%
 CARCASS EPDS: REA: +0.34 26% Marb: -0.02 27% Fat: -0.01 21%

Calving Ease ★★★

Short on ears but not substance. 101U is capacious and thick!

94

RED OLE HITCH 187U

Male OLEF 187U 1470932 May 16 2008

RED CROWFOOT OLE'S OSCAR 2042M OSF
RED YY HITCH 514R 1258419
 RED YY GOLDIE 140L

RED MLK CRK CUB 722 OSF
 RED CROWFOOT OMEGA 9179J
 RED TER-RON CARLTON 810H
 RED TOP GOLDIE 40U

RED RUNNING BAR TOKUN 1A
RED ROYAL ANCHOR TIA TOKUN 50E 824056
 RED ROYAL ANCHOR TIA MS

RED TOKUN 157W
 RED SDC MISS SNNA VAL 1Y
 RED GRL MR BIG 17W
 RED RUTHE MISS SUNRISE 32R

BW: 80 lbs.
 CDN EPDS: BW: -0.4 36% WW: +23 26% YW: +39 28% Milk: +11 20% TM: +22
 Stay: +9 7% HPG: +5 6% CED: +4.0 19% CEM: +3.0 18%
 CARCASS EPDS: REA: +0.04 24% Marb: -0.06 26% Fat: +0.00 18%

Calving Ease ★★★

95

RED OLE 104 311U

Male OLEF 311U 1470457 June 28 2008

RED CROWFOOT OLE'S OSCAR 2042M OSF
RED OLE OSCAR 104S 1318528
 RED CROWFOOT COVERGIRL 401D

RED MLK CRK CUB 722 OSF
 RED CROWFOOT OMEGA 9179J
 RED CROWFOOT CAPTAIN 1B
 RED CROWFOOT COVER GIRL 5B

RED CROWFOOT OLE'S OSCAR 2042M OSF
RED OLEF 210S 1352269
 RED CROWFOOT KURUBA 431D

RED MLK CRK CUB 722 OSF
 RED CROWFOOT OMEGA 9179J
 RED CROWFOOT CAPTAIN 1B
 RED CROWFOOT KURUBA 24B

BW: 92 lbs.
 CDN EPDS: BW: +1.2 33% WW: +29 23% YW: +58 24% Milk: +18 14% TM: +33
 Stay: +9 0% HPG: I+6 5% CED: +5.0 13% CEM: +7.0 12%
 CARCASS EPDS: REA: +0.32 25% Marb: +0.04 26% Fat: -0.01 19%

Calving Ease ★★



*Sinclair Extreme
 - Sire of Lot 92*

96

RED OLE 104 102U

Male OLEF 102U 1466603 May 04 2008

RED CROWFOOT OLE'S OSCAR 2042M OSF
RED OLE OSCAR 104S 1318528
 RED CROWFOOT COVERGIRL 401D

RED MLK CRK CUB 722 OSF
 RED CROWFOOT OMEGA 9179J
 RED CROWFOOT CAPTAIN 1B
 RED CROWFOOT COVER GIRL 5B

RED BRYLOR MASTER PLAN 17M
RED RICOSHAE SHAWNEE 9S 1319932
 RED RAFTER 1R TOGNO 104E

RED BASIN SENSATION 702E OSF
 RED BRYLOR BONITA 66K
 RED PIPESTONE YUKON 250U
 RED DPB BED TOGNO SHAW 21C

BW: 68 lbs.
 CDN EPDS: BW: -1.8 33% WW: +23 23% YW: +48 23% Milk: +14 14% TM: +25
 Stay: +10 0% HPG: I+9 5% CED: +10.0 13% CEM: +5.0 12%
 CARCASS EPDS: REA: +0.04 23% Marb: +0.01 24% Fat: -0.01 19%

Calving Ease ★★★★★

97

RED OLE 104 84U

Male OLEF 84U 1466606 April 29 2008

RED CROWFOOT OLE'S OSCAR 2042M OSF
RED OLE OSCAR 104S 1318528
 RED CROWFOOT COVERGIRL 401D

RED MLK CRK CUB 722 OSF
 RED CROWFOOT OMEGA 9179J
 RED CROWFOOT CAPTAIN 1B
 RED CROWFOOT COVER GIRL 5B

RED BRYLOR BODASIOUS 79K
RED RICOSHAE BEAUTY 3S 1319930
 RED WVA BEAUTY 1E

RED TKP BODACIOUS 693
 RED BRYLOR CHEROK 40X
 RED LEACHMAN HEAVENLY 8141 OSF
 RED NP KARUBA BEAUTY 5A

BW: 75 lbs.
 CDN EPDS: BW: -2.0 33% WW: +16 22% YW: +35 16% Milk: +16 14% TM: +24
 Stay: +9 0% HPG: I+7 5% CED: +9.0 13% CEM: +6.0 12%
 CARCASS EPDS: REA: +0.15 24% Marb: -0.08 25% Fat: -0.01 19%

Calving Ease ★★★

A very moderate, clean made Oscar grandson.



3/4 sister to Lot 94

98

RED OLE 104 59U

Male OLEF 59U 1461697 April 28 2008

RED CROWFOOT OLE'S OSCAR 2042M OSF
RED OLE OSCAR 104S 1318528
RED CROWFOOT COVERGIRL 401D

RED MLK CRK CUB 722 OSF
RED CROWFOOT OMEGA 9179J
RED CROWFOOT CAPTAIN 1B
RED CROWFOOT COVER GIRL 5B

RED CROWFOOT OLE'S OSCAR 2042M OSF
RED OLE BLACKBIRD 12S 1318464
CROWFOOT 3857N

RED MLK CRK CUB 722 OSF
RED CROWFOOT OMEGA 9179J
RED CROWFOOT PM 757G
C H ENV BLACKBIRD 9319

BW: 65 lbs.
CDN EPDS: BW: -3.3 31% WW: +25 22% YW: +57 23% Milk: +19 14% TM: +31
Stay: +8 0% HPG: I +6 5% CED: +10.0 13% CEM: +8.0 11%
CARCASS EPDS: REA: +0.21 24% Marb: +0.10 25% Fat: -0.01 19%

Calving Ease ★★★★★

99

RED OLE 104 54U

Male OLEF 54U 1461696 April 27 2008

RED CROWFOOT OLE'S OSCAR 2042M OSF
RED OLE OSCAR 104S 1318528
RED CROWFOOT COVERGIRL 401D

RED MLK CRK CUB 722 OSF
RED CROWFOOT OMEGA 9179J
RED CROWFOOT CAPTAIN 1B
RED CROWFOOT COVER GIRL 5B

RED CROWFOOT OLE'S OSCAR 2042M OSF
RED OLE ANYA 97S 1318521
RED CROWFOOT 3065N

RED MLK CRK CUB 722 OSF
RED CROWFOOT OMEGA 9179J
RED CROWFOOT PM 757G
RED CROWFOOT DUCHESS 828H

BW: 56 lbs.
CDN EPDS: BW: -4.3 33% WW: +24 23% YW: +54 23% Milk: +20 14% TM: +31
Stay: +8 0% HPG: I +6 5% CED: +12.0 13% CEM: +8.0 12%
CARCASS EPDS: REA: +0.34 25% Marb: -0.06 26% Fat: -0.01 19%

Calving Ease ★★★★★

100

OLE PAYOFF 314U

Male OLEF 314U 1483507 RC June 28 2008

C A FUTURE DIRECTION 5321 NHC AMC
STANDARD HILL PAYOFF 20P NHF AMF 1240477
STANDARD HILL QUEEN MOTHER 13M

G A R PRECISION 1680 NHC AMC
C A MISS POWER FIX 308 AMF
R P 3RD BUSHWACKER
STANDARD HILL QUEEN MOTHER 47J

O C C MAGNUM 749M
OLE PATTIE QUEEN 1464735
GLADWALL PATTIE QUEEN 640

O C C EUREKA 865E
O C C JUANADA 818E
HYLINE GOLD 474
GLADWALL PATTIE QUEEN 6260

BW: 57 lbs.
CDN EPDS: BW: -6.1 36% WW: +12 27% YW: +25 21% Milk: +15 19% TM: +21
Stay: +11 1% CED: +20.0 19% CEM: +7.0 18%
CARCASS EPDS: REA: +0.09 25% Marb: +0.19 26% Fat: +0.00 18%

Calving Ease ★★★★★

101

OLE PAYOFF 286U

Male OLEF 286U 1461800 June 18 2008

C A FUTURE DIRECTION 5321 NHC AMC
STANDARD HILL PAYOFF 20P NHF AMF 1240477
STANDARD HILL QUEEN MOTHER 13M

G A R PRECISION 1680 NHC AMC
C A MISS POWER FIX 308 AMF
R P 3RD BUSHWACKER
STANDARD HILL QUEEN MOTHER 47J

O C C JOKER 620J
CROWFOOT 3122N 1152023
RED BAR-X GINGER 100G

O C C EMBLazon 854E
O C C JUANADA 709V
MVHF INNOVATOR 49B
RED SHODEREE DUCHESS 71C

BW: 94 lbs.
BLK EPDS: BW: +3.1 35% WW: +22 26% YW: +39 25% Milk: +19 15% TM: +30
YG: +17 25% SC: -0.34 32% CED: +2.0 26% CEM: +4.0 12%
CARCASS EPDS: REA: +0.12 18% Marb: +0.14 15% Fat: +.002 12%

Calving Ease ★★



Ole Purebreds grazing on swaths

102

OLE PAYOFF 279U

Male OLEF 279U 1461796 June 12 2008

C A FUTURE DIRECTION 5321 NHC AMC
STANDARD HILL PAYOFF 20P NHF AMF 1240477
STANDARD HILL QUEEN MOTHER 13M

G A R PRECISION 1680 NHC AMC
C A MISS POWER FIX 308 AMF
R P 3RD BUSHWACKER
STANDARD HILL QUEEN MOTHER 47J

NICHOLS EXTRA H6 NHF AMF
OLE EXTRA 170R 1273093
CROWFOOT 3513N

N BAR EMULATION EXT NHF AMF
NICHOLS EILEEN MAY F261
O C C ECHELON 857E
RED CROWFOOT WJ CHER 870H

BW: 76 lbs.
BLK EPDS: BW: -1.2 35% WW: +43 25% YW: +74 23% Milk: +26 14% TM: +48
YG: +31 23% SC: -0.08 32% CED: +11.0 27% CEM: +11.0 12%
CARCASS EPDS: REA: +0.19 20% Marb: +0.19 17% Fat: +.011 14%

Calving Ease ★★

One of the better Pay Off sons in the sale as he is wide of base, thick topped and has loads of eye appeal.

103

OLE PAYOFF 270U

Male OLEF 270U 1461794 June 09 2008

C A FUTURE DIRECTION 5321 NHC AMC
STANDARD HILL PAYOFF 20P NHF AMF 1240477
STANDARD HILL QUEEN MOTHER 13M

G A R PRECISION 1680 NHC AMC
C A MISS POWER FIX 308 AMF
R P 3RD BUSHWACKER
STANDARD HILL QUEEN MOTHER 47J

WESTWIND FINESSE 1113
GLADWALL B CHLOE 7197 991028
GLADWALL B CHLOE 3334

WESTWIND RITO 8503 D J H 019 NHF AMF
VICKI OF WESTWIND 922
BECKER FARMS CHEYENNE 107
GLADWALL B CHLOE 1161

BW: 72 lbs.
BLK EPDS: BW: -1.0 36% WW: +35 26% YW: +56 26% Milk: +25 16% TM: +43
YG: +21 26% SC: +1.00 33% CED: I +6.0 5% CEM: I +6.0 5%
CARCASS EPDS: REA: +0.15 18% Marb: +0.32 16% Fat: +.008 13%

Calving Ease ★★★★★

104

OLE PAYOFF 249U

Male OLEF 249U 1461781 June 02 2008

C A FUTURE DIRECTION 5321 NHC AMC
STANDARD HILL PAYOFF 20P NHF AMF 1240477
STANDARD HILL QUEEN MOTHER 13M

G A R PRECISION 1680 NHC AMC
C A MISS POWER FIX 308 AMF
R P 3RD BUSHWACKER
STANDARD HILL QUEEN MOTHER 47J

SITZ ALLIANCE 9160
CROWFOOT PINTOP 4938P 1208065
GLADWALL PINTOP 7105

SITZ ALLIANCE 6595 NHF AMF
SITZ BLACKCAP EFFIE 4088
D V PRIDES COMMODORE
GLADWALL PINTOP 612

BW: 68 lbs.
BLK EPDS: BW: -1.2 35% WW: +28 25% YW: +46 24% Milk: +21 14% TM: +35
YG: +19 24% SC: +0.10 31% CED: +12.0 26% CEM: +11.0 11%
CARCASS EPDS: REA: +0.11 18% Marb: +0.12 15% Fat: +.018 12%

Calving Ease ★★★★★



Family Day Sale

105

OLE PAYOFF 228U

Male OLEF 228U 1470438 May 26 2008

C A FUTURE DIRECTION 5321 NHC AMC
STANDARD HILL PAYOFF 20P NHF AMF 1240477
 STANDARD HILL QUEEN MOTHER 13M

G A R PRECISION 1680 NHC AMC
 C A MISS POWER FIX 308 AMF
 R P 3RD BUSHWACKER
 STANDARD HILL QUEEN MOTHER 47J

CROWFOOT 516K
CROWFOOT 3769N 1151946
 CROWFOOT FORKS 749K

RED CROWFOOT PM 757G
 BAR-X ROSEBUD 35G
 E 7 AMBUSH 5625
 GLADWALL BELLE L NELLIE 729

BW: 72 lbs.
 BLK EPDS: BW: -1.4 35% WW: +31 25% YW: +48 23% Milk: +19 13% TM: +35
 YG: +16 23% SC: +0.24 30% CED: +10.0 24% CEM: +10.0 10%
 CARCASS EPDS: REA: +0.17 16% Marb: +0.28 14% Fat: +.007 11%

Calving Ease ★★★★★

106

OLE PAYOFF 225U

Male OLEF 225U 1484501 May 25 2008

C A FUTURE DIRECTION 5321 NHC AMC
STANDARD HILL PAYOFF 20P NHF AMF 1240477
 STANDARD HILL QUEEN MOTHER 13M

G A R PRECISION 1680 NHC AMC
 C A MISS POWER FIX 308 AMF
 R P 3RD BUSHWACKER
 STANDARD HILL QUEEN MOTHER 47J

HARMON WEST POINT 7063
WINDOVER BLACK LADY 23J 956045
 HARMON BLACK LADY 7228

KEN CARYL BEST WESTERN 022C
 HARMON BLACK LADY 5040
 QLC RITO W526C AMC
 HARMON BLACK LADY 3769Y

BW: 75 lbs.
 BLK EPDS: BW: +0.1 35% WW: +40 25% YW: +60 23% Milk: +18 15% TM: +38
 YG: +20 23% SC: +0.78 30% CED: +7.0 25% CEM: +8.0 11%
 CARCASS EPDS: REA: +0.30 16% Marb: +0.42 14% Fat: -.004 12%

Calving Ease ★★★★★

107

OLE PAYOFF 207U

Male OLEF 207U 1461771 May 21 2008

C A FUTURE DIRECTION 5321 NHC AMC
STANDARD HILL PAYOFF 20P NHF AMF 1240477
 STANDARD HILL QUEEN MOTHER 13M

G A R PRECISION 1680 NHC AMC
 C A MISS POWER FIX 308 AMF
 R P 3RD BUSHWACKER
 STANDARD HILL QUEEN MOTHER 47J

N BAR TRANSITION A583
BARBWALL P ROSE LEE 747 990855
 BARBWALL P ROSE LEE 4140

GARDENS TRANSITION 7205 S1
 N BAR KINCHTRY BEAUTY X3711
 TOMWALL B EMULATION 070
 BAR PATRIOT ROSE LEE B 2120

BW: 75 lbs.
 BLK EPDS: BW: -1.0 36% WW: +27 26% YW: +47 25% Milk: +20 15% TM: +34
 YG: +20 25% SC: +0.36 31% CED: +10.0 5% CEM: +10.0 5%
 CARCASS EPDS: REA: +0.15 18% Marb: +0.22 15% Fat: +.008 13%

Calving Ease ★★★★★

108

OLE PAYOFF 299U

Male OLEF 299U 1461808 June 23 2008

C A FUTURE DIRECTION 5321 NHC AMC
STANDARD HILL PAYOFF 20P NHF AMF 1240477
 STANDARD HILL QUEEN MOTHER 13M

G A R PRECISION 1680 NHC AMC
 C A MISS POWER FIX 308 AMF
 R P 3RD BUSHWACKER
 STANDARD HILL QUEEN MOTHER 47J

BASIN MAX 730L
OLSON RUBY LAURA 41N 1228953
 GEIS RUBY LAURA 14'00

BASIN MAX 602C NHF AMF
 BASIN CHLOE 588G
 CRESCENT CREEK CHIEF 80G
 GEIS RUBY LAURA 122'98

BW: 72 lbs.
 BLK EPDS: BW: -0.8 34% WW: +26 24% YW: +47 23% Milk: +22 13% TM: +35
 YG: +21 23% SC: -0.18 30% CED: +10.0 25% CEM: +10.0 10%
 CARCASS EPDS: REA: +0.13 17% Marb: +0.29 15% Fat: +.007 12%

Calving Ease ★★★★★



Lot 109 - Ole 4197 128U

109

OLE 4197 128U

Male OLEF 128U 1461738 RC May 07 2008

PINEBANK WAIG 31/95
PINEBANK WAIGROUP 41/97 1304235
 PINEBANK 639/88

PINEBANK WAIG 5/93
 PINEBANK WAIG 58/93
 TUPURUPURU 838/86
 PINEBANK 663/85

CROWFOOT AMBUSH 9137J
OLSON LOVEMERE PET 10N 1200484
 BARBWALL LOVEMERE PET 851

BASIN AMBUSH 3905 NHF AMF
 STEVENSON HEATHER 499G
 N BAR TRANSITION A583
 BARBWALL LOVEMERE PET 525

BW: 72 lbs.
 BLK EPDS: BW: -1.0 34% WW: +26 24% YW: +42 21% Milk: +15 8% TM: +28
 YG: +16 21% SC: +0.71 30% CED: +7.0 20% CEM: +6.0 5%
 CARCASS EPDS: REA: -0.01 10% Marb: +0.04 10% Fat: +.014 7%

Calving Ease ★★★★★

Now here we have something very different. He is a 41/97 son, which is new for our program. His sire is from New Zealand and from what I can see we are really onto something. 41/97's are nearly perfect footed and have tremendous capacity! Lovemere Pet 10N 128U's dam is a very powerful cow that has raised a herd bull for us. Lots 83-88 are all out of her son 144S, that we used and then sold in our 3rd Annual Family Day Sale. 128U is a red carrier!

110

OLE RITO LEGACY 18U

Male OLEF 18U 1521143 RC April 02 2008

R R RITO 707 NHF AMF
SINCLAIR RITO LEGACY 3R9 AMF 1436721
 IDEAL 4465 OF 6807 4286 NHF AMF

RITO N BAR
 ERISKAY OF ROLLIN ROCK 3
 D H D TRAVELER 6807 NHF AMF
 E E 4286 OF IDEAL 2240 1254

RED RICOSHAE SENSATION 1P
RED RICOSHAE FIREFLY 16S 1350352
 RED RICOSHAE FIREFLY 95N

RED BASIN SENSATION 702E OSF
 RED WVA LUELLA 32E
 RED SHODERE MARIAS 91L
 RED RAFTER IR FIREFLY 3H

BW: 76 lbs.
 CDN EPDS: BW: +0.4 35% WW: +33 25% YW: +60 26% Milk: +5 14% TM: +21
 Stay: +11 0% HPG: +9 5% CED: +7.0 14% CEM: +3.0 12%
 CARCASS EPDS: REA: +0.14 22% Marb: +0.06 22% Fat: +0.00 18%

Calving Ease ★★★

Our cattle work for us not the other way around



Family Day Sale

111

OLE RITO LEGACY 39U

Male OLEF 39U 1471989 RC April 09 2008

R R RITO 707 NHF AMF
SINCLAIR RITO LEGACY 3R9 AMF 1436721
IDEAL 4465 OF 6807 4286 NHF AMF

RITO N BAR
ERISKAY OF ROLLIN ROCK 3
D H D TRAVELER 6807 NHF AMF
E E 4286 OF IDEAL 2240 1254

RED LAZY MC SMASH 41N OSF
RED OLEF 217S 1352272
CROWFOOT 3582N

RED SSS BOOMER 803B
RED LAURON YB ROSA 11G
CROWFOOT WJ MAX 1404L
RED CROWFOOT BIRD 749G

BW: 72 lbs.
CDN EPDS: BW: -2.0 35% WW: +21 25% YW: +44 18% Milk: +12 14% TM: +23
Stay: +13 0% HPG: I +8 5% CED: +8.0 14% CEM: +2.0 12%
CARCASS EPDS: N/A

Calving Ease ★★★

112

OLE FOREVER GRAND 171U

Male OLEF 171U 1473762 RC OSF May 14 2008

RED LCHMN GRND CANYON 1244G OSC
RED 5L FOREVER GRAND 5834 OSC 1472012
RED NORSEMAN 1312 PJM

RED BUF CRK CHF 824-1658 OSC
RED KRN REBA'S ROBIN OSF
376 P J M 141
P J M POWERPOINT 2009

O C C HONESTY 962H
CROWFOOT 3110N 1188503
RED CFCC 0507K

O C C ANCHOR 771A
O C C DIXIE ERICA 907C
RED PAT 8207
RED CROWFOOT KURUBA 665F

BW: 75 lbs.
BLK EPDS: BW: +1.6 33% WW: +42 21% YW: +75 20% Milk: +23 11% TM: +44
YG: +33 20% SC: +1.19 30% CED: +4.0 21% CEM: +2.0 9%
CARCASS EPDS: REA: +0.13 13% Marb: +0.12 11% Fat: +0.17 9%

Calving Ease ★★

Massive depth! Should add all kinds of pounds to your calf crop in the fall.

113

OLE FOREVER GRAND 75U

Male OLEF 75U 1473756 RC OSF April 29 2008

RED LCHMN GRND CANYON 1244G OSC
RED 5L FOREVER GRAND 5834 OSC 1472012
RED NORSEMAN 1312 PJM

RED BUF CRK CHF 824-1658 OSC
RED KRN REBA'S ROBIN OSF
376 P J M 141
P J M POWERPOINT 2009

BASIN EXPEDITION K47
CROWFOOT 3132N 1152052
RED CFCC 104K

GARDENS EXPEDITION NHF AMF
BASIN PRIMROSE LADY 296E
RED CROWFOOT CHIEFTON 812H
RED CROWFOOT JESSIE 654F

BW: 91 lbs.
BLK EPDS: BW: +2.7 33% WW: +33 21% YW: +66 20% Milk: +26 11% TM: +43
YG: +33 20% SC: +0.28 30% CED: +0.0 21% CEM: +2.0 8%
CARCASS EPDS: REA: +0.13 12% Marb: +0.12 11% Fat: +0.17 8%

Calving Ease ★★

A maternal brother to Red Ole Smash 115S, a bull being used heavily in our AI program and I know the boys at Smoky River Red Angus are loving him as well. His mother, 3121N, is a donor female in our embryo program. Use this opportunity to buy a son of one of the greatest cows we have ever owned.

114

OLE PAYOFF 170U

Male OLEF 170U 1470443 RC May 14 2008

C A FUTURE DIRECTION 5321 NHC AMC
STANDARD HILL PAYOFF 20P NHF AMF 1240477
STANDARD HILL QUEEN MOTHER 13M

G A R PRECISION 1680 NHC AMC
C A MISS POWER FIX 308 AMF
R P 3RD BUSHWACKER
STANDARD HILL QUEEN MOTHER 47J

BASIN MAX 730L
OLE SPRUCE 155R 1273085
RED CROWFOOT 3022N

BASIN MAX 602C NHF AMF
BASIN CHLOE 588G
RED VGW RAMBLER 1000 OSF
RED CROWFOOT SPRUCE 1180L

BW: 70 lbs.
BLK EPDS: BW: -1.6 34% WW: +28 24% YW: +52 22% Milk: +21 12% TM: +35
YG: +24 22% SC: +0.14 30% CED: +11.0 26% CEM: +11.0 9%
CARCASS EPDS: REA: +0.12 18% Marb: +0.22 15% Fat: +0.10 13%

Calving Ease ★★★★★

115

OLE PAYOFF 297U

Male OLEF 297U 1461807 RC June 23 2008

C A FUTURE DIRECTION 5321 NHC AMC
STANDARD HILL PAYOFF 20P NHF AMF 1240477
STANDARD HILL QUEEN MOTHER 13M

G A R PRECISION 1680 NHC AMC
C A MISS POWER FIX 308 AMF
R P 3RD BUSHWACKER
STANDARD HILL QUEEN MOTHER 47J

RED BIEBER CHIEFTON 3080
RED CROWFOOT DIXIE 618F 844808
RED CROWFOOT FIRST DIXIE 82Y

JKG CHIEFTON L303
RED BIEBER FEATHER 2391
RED BRA FIRST-CLASS 13R
RED CROWFOOT DIXIE LADY 101W

BW: 64 lbs.
CDN EPDS: BW: -3.5 38% WW: +17 29% YW: +37 31% Milk: +15 23% TM: +23
Stay: +13 10% HPG: I +10 5% CED: +16.0 21% CEM: +8.0 20%
CARCASS EPDS: REA: -0.01 26% Marb: +0.18 27% Fat: -0.01 20%

Calving Ease ★★★★★

116

OLE ALLIANCE 192U

Male OLEF 192U 1461767 RC May 17 2008

SITZ TRAVELER 8180 NHF AMF
SITZ ALLIANCE 6595 NHF AMF 1036949
SITZ BARBARAMERE JET 2698

G D A R TRAVELER 71 NHF AMF
SITZ EVERELDA ENTENSE 1137
3 BAR SPIKE 1766
SITZ BARAMERE JET 155

RED BJR FANCY PANTS 355-71L
RED CROWFOOT TOMA 714G 899202
RED TOM GREEN GTG 25D

BJR YOGO 002-104
RED TOWAW BLOCKANA 71L
RED CROWFOOT BIEBER 9A
RED TOM GREEN GTG 37B

BW: 78 lbs.
CDN EPDS: BW: +0.6 38% WW: +26 29% YW: +48 31% Milk: +12 25% TM: +25
Stay: +11 20% HPG: +9 12% CED: +10.0 22% CEM: +6.0 21%
CARCASS EPDS: REA: -0.10 27% Marb: -0.06 28% Fat: +0.00 20%

Calving Ease ★★★

We would much rather have a 1200 lb. cow that's a 5 frame than a 6. That extra bone in the 6 frame cow seems to get her a little too close to heaven to be any good here on earth!



Family Day Sale

117

OLE 144 148U

Male OLEF 148U 1485053 RC May 10 2008

SITZ ALLIANCE 6595 NHF AMF
OLE ALLIANCE 144S 1318551
 OLSON LOVEMERE PET 10N

SITZ TRAVELER 8180 NHF AMF
 SITZ BARBARAMERE JET 2698
 CROWFOOT AMBUSH 9137J
 BARBWALL LOVEMERE PET 851

STANDARD HILL PAYOFF 20P NHF AMF
OLEF VERNICE 250S 1483783
 CROWFOOT 3188N

C A FUTURE DIRECTION 5321 NHC AMC
 STANDARD HILL QUEEN MOTHER 13M
 CROWFOOT WJ MAX 1404L
 RED CROWFOOT VERNICE 1122L

BW: 72 lbs.
 BLK EPDS: BW: -0.8 31% WW: +37 20% YW: +68 19% Milk: +24 9% TM: +43
 YG: +32 19% SC: +0.96 30% CED: +9.0 23% CEM: +9.0 7%
 CARCASS EPDS: REA: -0.07 15% Marb: +0.18 14% Fat: +0.26 11%

Calving Ease ★★★

118

OLE LEVI 164U

Male OLEF 164U 1461758 RC May 12 2008

RED MLK CRK CUB 722 OSF
RED CROWFOOT OLE'S OSCAR 2042M OSF 1096384
 RED CROWFOOT OMEGA 9179J

RED GLACIER CUB 446 OSF
 RED MLK CRK LAKOTA 152-HOBO OSF
 RED PRICE 631
 RED OMEGA 7456'

WHITNEY CREEK MAXIMUS 24
CROWFOOT BARDOLENE 4218P 1207861
 CFCC 100K

BASIN MAX 602C NHF AMF
 RYGS PAIGES QUEEN 423
 RED FORSTER CHIEF 7182ET
 BASIN BARDOLENE 121G

BW: 77 lbs.
 CDN EPDS: BW: -1.9 5% WW: +27 5% YW: +58 5% Milk: +18 5% TM: +32
 Stay: +10 5% CED: +7.5 5% CEM: +7.0 5%
 CARCASS EPDS: REA: +0.06 5% Marb: +0.02 5% Fat: -0.01 5%

Calving Ease ★★★

119

OLE JORDAN 152U

Male OLEF 152U 1461752 RC May 10 2008

RED MLK CRK CUB 722 OSF
RED CROWFOOT OLE'S OSCAR 2042M OSF 1096384
 RED CROWFOOT OMEGA 9179J

RED GLACIER CUB 446 OSF
 RED MLK CRK LAKOTA 152-HOBO OSF
 RED PRICE 631
 RED OMEGA 7456'

RED VGW RAMBLER 1000 OSF
CROWFOOT 3511N 1182402
 CROWFOOT WJ LASS 1467L

RED BJR RAMBLER 5162 OSF
 RED VGW UMPIRE YUMA 9266
 G A R TRAVELER 1489 AMF
 GLADWALL G V LASS 6327

BW: 75 lbs.
 CDN EPDS: BW: -3.9 37% WW: +26 28% YW: +56 29% Milk: +20 23% TM: +33
 Stay: +10 8% HPG: +4 11% CED: +13.0 21% CEM: +12.0 20%
 CARCASS EPDS: REA: +0.06 27% Marb: +0.17 29% Fat: -0.01 21%

Calving Ease ★★★★★

Don't miss this great black red carrier. 3511N is one of our top red carrier cows! A top son of 3511N went to the Athabasca Colony in our 3rd Annual Sale.

120

OLE PRIME TIME 11U

Male OLEF 11U 1461666 RC March 30 2008

GARDENS PRIME TIME NHF AMF
N BAR PRIME TIME D806 NHF AMF 981359
 N BAR MISS EMULOUS A404

RR TRAVELER 5204 NHF AMF
 GREEN GARDEN SUSIE 1246 S1
 N BAR EMULATION EXT 252
 N BAR MISS EMULOUS X3091

WHITNEY CREEK MAXIMUS 24
OLE KARUBA 77S 1318509
 CROWFOOT KARUBA 4650P

BASIN MAX 602C NHF AMF
 RYGS PAIGES QUEEN 423
 O C C MOONSHINE 740M
 RED CROWFOOT WJ KURUBA 9102J

BW: 66 lbs.
 BLK EPDS: BW: -2.0 33% WW: +25 24% YW: +56 23% Milk: +17 18% TM: +30
 YG: +31 23% SC: +0.21 30% CED: +11.0 29% CEM: +9.0 17%
 CARCASS EPDS: REA: +0.03 22% Marb: +0.29 19% Fat: +0.049 17%

Calving Ease ★★★★★



We have always felt that buying an average bull from a great herd is far better than buying the best bull from a poor one.





MFI Jahari 5158



Hybrid Bulls

**Lots 121 to 125
born April-June 2008
sired by
MFI Jahari 5158**

121

401U
Red Simi

122

402U
Red Simi

123

403U
Red Simi

124

404U
Blk Blaze

125

405U
Blk Blaze



Lot 121 - 401U



Lot 124 - 405U



Family Day Sale

Unregistered Angus Bulls

126 105U
Blk Angus May 4 2008

SIRE: SITZ ALLIANCE 6595 DAM: PUREBRED ANGUS FEMALE
BW: 76 lbs.
Calving Ease ★★★

127 136U
Blk Angus May 8 2008

SIRE: BLACK RED GENE CARRIER DAM: CFCC 544R -100223-
BW: 56 lbs.
Calving Ease ★★★

128 230U
Blk Angus

BW: 90 lbs.
Calving Ease ★★

129 300U
Blk Angus June 25 2008

SIRE: STANDARD HILL PAYOFF 20P -1240477-
BW: 90 lbs.
Calving Ease ★★

130 236U
Red Angus May 20 2008

SIRE: RED OLE OSCAR 104S -1318528-
BW: 68 lbs.
Calving Ease ★★★

131 149U
Red Angus May 10 2008

BW: 90 lbs.
Calving Ease ★★

132 126U
Red Angus May 7 2008

DAM: CFCC 931J
BW: 89 lbs.
Calving Ease ★★

133 406U
Blk Angus Born: April to June, 2008

134 407U
Blk Angus Born: April to June, 2008

135 408U
Blk Angus Born: April to June, 2008

Pedigree & EPD Definitions



RC: Black/Red Carrier - an animal whose coat colour is black, but carries the recessive gene for red coat colour.

EPD: Expected Progeny Differences - expressions of the relative genetic merit of beef cattle for various traits. EPDs are used to compare the predicted progeny performance between two bulls (or females) within a breed, regardless of age or herd location.

ACC: Accuracy - the reliability that can be placed on the EPD. An accuracy of close to 100% indicates higher reliability.

I: Parental Average EPD - an average of a calf's sire and dam's National EPDs. These have minimal accuracy as they do not incorporate the calf's own performance.

BW: Birth Weight EPD - expressed in pounds, is a predictor of a sire's ability to transmit birth weight to his progeny compared to that of other sires.

WW: Weaning Weight EPD - expressed in pounds, is a predictor of a sire's ability to transmit weaning growth to his progeny compared to that of other sires. Weaning weight is an indicator of growth from birth to weaning (205 days of age). The calf's growth during this period is influenced by its own ability to grow plus its mother's maternal abilities.

YW: Yearling Weight EPD - expressed in pounds, is a predictor of a sire's ability to transmit yearling growth to his progeny compared to that of other sires.

MILK: Milk EPD - is an indicator of milking ability in daughters. It represents the differences in weaning weights of calves due to the amount of milk produced by their mothers. It is expressed in pounds of calf weaned.

TM: Total Maternal EPD - is a combination of the weaning weight and milk EPDs. It is calculated as: 1/2 Weaning Weight EPD + Milk EPD = Total Maternal. This EPD represents the differences in weaning weights between calves due to mothering and milking ability of their dams.

YG: Yearling Gain EPD - indicates the ability of an individual's progeny to gain between weaning (205 days) and yearling (365 days) age.

SC: Scrotal Circumference EPD - expressed in centimetres, is a predictor of the difference in transmitting ability for scrotal size compared to that of other sires. Scrotal Circumference is an indicator of both growth and male fertility. Larger scrotal size is related to increased sperm production and semen quality.

STAY: Stayability EPD - the percent probability of daughters staying in the herd to at least 6 years of age. Stayability EPDs for bulls are the prediction of the genetic differences between their daughters probability of staying in the herd to at least the age of 6 years. Given the primary emphasis on pregnancy in most herds, stayability is a measure of sustained fertility.

HPG: Heifer Pregnancy EPD - the percent probability in a bull's daughters' ability to conceive and calve as two year olds. Just like the stayability EPD, heifer pregnancy EPDs are expressed in terms of a percentage difference. For example, two heifer pregnancy EPDs, 5 and 10, differ by 5%. Daughters of the bull with the EPD of 10 are 5% more likely to conceive than daughters of the other bull.

CED: Calving Ease Direct EPD - the average difference in ease with which a sire's calves will be born when he is bred to first calf heifers.

CEM: Calving Ease Maternal EPD - the difference in percentage of unassisted births or greater calving ease in first calf daughters of a particular sire compared to the daughters of another sire. The higher the value the greater the calving ease in first calf daughters.

REA: Ribeye Area EPD - expressed in square inches, is a predictor of the difference in ribeye area of a sire's progeny compared to progeny of other sires.

MARB: Marbling EPD - a prediction of future progeny's performance for carcass marbling scores. This EPD incorporates both ultrasound and carcass data.

FAT: Fat/Back Fat EPD - expressed in inches, is a predictor of the differences in external fat thickness at the 12th rib (as measured between the 12th and 13th ribs) of a sire's progeny compared to progeny of other sires.



*It is easy to make bulls flesh with high energy feed.
Having them flesh without is the challenge.*



New Herdsires

Watch for progeny in next year's sale

I RED OLE SMASH 115S Male OLEF 115S 1318535 May 04 2006

RED SSS BOOMER 803B
RED LAZY MC SMASH 41N OSF 1183959
RED LAURON YB ROSA 11G

RED FCC RAMBO 502 OSF
RED SSS MISS HIGH LASS 352X
RED BRYLOR YOUNGBLOOD 22Y
RED ALALTA ACRES ROSALINDA 25Y

BASIN EXPEDITION K47
CROWFOOT 3132N 1152052
RED CFCC 104K

GARDENS EXPEDITION NHF AMF
BASIN PRIMROSE LADY 296E
RED CROWFOOT CHIEFTON 812H
RED CROWFOOT JESSIE 654F

BW: 76 lbs.
CDN EPDS: BW: -1.8 54% WW: +31 44% YW: +66 37% Milk: +23 28% TM: +39
Stay: +10 6% HPG: +7 7% CED: +7.0 30% CEM: +2.0 25%
CARCASS EPDS: REA: +0.10 25% Marb: -0.08 27% Fat: +0.00 19%

A bull that sold in our 3rd Annual Bull Sale to Smoky River Red Angus. Last year we used 115S heavily in our AI program. 115S is one of the deepest bulls we have ever raised. His black EXT influenced dam is currently in our embryo donor program. Look for many sons and maternal siblings in future upcoming sales. Semen packages available.



Red Ole Smash 115S

J RED YY NORSEMAN 791T Male YY 791T 1395728 January 22 2007

RED VGW KING OF THE WEST OSF
RED 5L NORSEMAN KING 2291 OSF 1234936
RED NORSEMAN 1312 PJM

RED VGW ACE 613
RED VGW MT TABITHA 9633
376 P J M 141
P J M POWERPOINT 2009

RED CROWFOOT OLE'S OSCAR 2042M OSF
CROWFOOT MERLE 4721P 1231746
CROWFOOT MERLE 2691M

RED MLK CRK CUB 722 OSF
RED CROWFOOT OMEGA 9179J
SITZ ALLIANCE 6595 NHF AMF
C H MERLE 9440

BW: 81 lbs.
CDN EPDS: BW: -1.6 46% WW: +31 38% YW: +66 33% Milk: +19 27% TM: +34
Stay: +11 15% HPG: +8 11% CED: +8.0 26% CEM: +2.0 24%

A great combination of Norseman King, Ole's Oscar and Sitz Alliance. 791T is deep, thick and sound. There has been lots of interest in 791T with his light birth, high growth and outstanding phenotype.



Red YY Norseman 791T

K RED LARSON HIGH NOON 881 Male IMP 881U 1516138 April 04 2008

5L DIRECT FIRE 1641-6443 OSF NHF AMF
RED 5L FUTURE DESIGN 893-6405 OSF NHF 1047962
RED 5L ADINA 525-893

C A FUTURE DIRECTION 5321 NHC AMC
RED 5L FIREFLY 174-1641 ET
BON VIEW NEW DESIGN 878 NHF AMF
RED 5L ADINA 293-525

RED LCC MAJOR LEAGUE A502M OSF
RED LARSON PRINCESS ANN409-211 964448
RED LARSON PRINCESS ANN 211

RED BFCK CHEROKEE CNYN 4912 OSF
RED KRN REBA'S ROBIN OSF
RED LCHMN HEVN'S SAKE 1002F OSF
RED LARSON PRINCESS ANN 014

CDN EPDS: BW: +1.6 WW: +44 YW: +83 Milk: +20 TM: +42
Stay: +15 CED: +6.0 CEM: +9.0

High Noon – In our opinion probably the best bull to sell in 2009. This bull as we see it has no holes! He is moderate and thick, wide based and very good footed. His pedigree is very unique having so many breed leading black bulls in it along with red bulls that are outstanding as well. High noon's sire is 5L FUTURE DESIGN His full flush brother was the all time record setting bull that sold in the US for \$180,000. High Noon's dam is out of Major League who sold for \$160,000, setting the record at that time. But money aside, look at this bull and his EPD's, there are very few bulls in the breed like him!



Red Larson High Noon 881



New Herdsires

Watch for progeny in next year's sale

L 5L TRAVLIN EXT 2334-6556

Male IMP 6556S 1468838 RC February 19 2006

DHD TRAVELER 6807 NHF AMF
RED 5L HEAVY TRAVELER 5973 OSF 921104
 RED XXX MATTIE 708 HM

Q A S TRAVELER 23-4 NHF AMF
 BEMINDFUL MAID DHD 0807
 RED LEACHMAN BETTER HVY 8041
 RED XXX MATTIE 589 HM

O C C LEGEND 616L
5L OPAL 0052-2334 981624
 RED SODAK OPAL K0052

O C C EMBLAZON 854E
 O C C BLACKBIRD 632J
 RED SODAK EXT 7420-97
 SODAK OPAL H8138

CDN EPDS: BW: +0.0 53% WW: +33 38% YW: +51 35% Milk: +18 27% TM: +34
 CED: +8.0 27% CEM: +5.0 24%
 CARCASS EPDS: REA: +0.01 30% Marb: +0.00 32% Fat: +0.01 21%

A great black red carrier bull that we bought in Montana to use as a clean up bull. This young bull has exceeded expectations and has moved from the clean-up role to a mainstay in our AI program. Travlin EXT will add muscle and substance and is a refreshing change to red pedigrees with 6807 top and bottom. He has a shot of EXT as well! Look for many red and black bulls in upcoming Ole Farms sales.



5L Travlin EXT 2334-6556

M OLE ALLIANCE 138T

Male OLEF 138T 1420409 May 05 2007

SITZ TRAVELER 8180 NHF AMF
SITZ ALLIANCE 6595 NHF AMF 1036949
 SITZ BARBARAMERE JET 2698

G D A R TRAVELER 71 NHF AMF
 SITZ EVERELDA ENTENSE 1137
 3 BAR SPIKE 1766
 SITZ BARBARAMERE JET 155

O C C JOKER 620J
CROWFOOT 3542N 1182429
 GLADWALL G V LASS 6327

O C C EMBLAZON 854E
 O C C JUANADA 709V
 TOMWALL B EMULATION 070
 GLADWALL G V LASS 1270

BW: 80 lbs.
 BLK EPDS: BW: +1.8 36% WW: +50 26% YW: +78 25% Milk: +27 21% TM: +52
 YG: +28 25% SC: +1.28 34% CED: +4.0 28% CEM: +6.0 18%
 CARCASS EPDS: REA: +0.01 24% Marb: +0.15 22% Fat: +.034 20%

The most impressive black bull that we have ever raised. 138T is super thick, deep and has great feet! His mother is our best cow and is currently a donor cow in our embryo program. Take a look at Lot 5 in the sale - a full brother! What a great opportunity for you.



Ole Alliance 138T

N SINCLAIR EXTREME 5V27

Male IMP 527R 1418082 October 04 2005

N BAR EMULATION EXT NHF AMF
N BAR EMULATION EXT A1747 NHF AMF 12811512
 N BAR CLOVA PRIDE U3031

EMULATION N BAR 5522
 N BAR PRIMROSE 2424
 N BAR TRADEMARK 1949
 N BAR CLOVA PRIDE 7356

RITO BIG ELBAN
SINCLAIR QUEEN 2V90 616 14340113
 W 616 ZULU 689-550

RITO 3S3 OF RITA 5H11 1656 AMC
 E E 4286 OF IDEAL 2240 1254
 ZULU 689 OF WAIMATA
 V D A R SHOSHONE QUEEN 550

BLK EPDS: BW: +2.2 30% WW: +37 24% YW: +73 22% Milk: +17 17% TM: +36
 YG: +36 22% SC: +0.26 22% CED: +4.0 20% CEM: +7.0 13%
 CARCASS EPDS: REA: +0.02 19% Marb: +0.21 14% Fat: +0.29 13%

One of the deepest bodied bulls you will find. Extreme has great feet and will add performance to most pedigrees. Look for many more sons of this fellow in the next number of sales.



Sinclair Extreme 5V27

Commercial Females

Lots of 5: Selling 50 commercial Black Angus heifers, bred to calve May 1, to low birth weight Angus bulls. This is a very good set of home raised heifers that will make excellent long term cows.

Like "peas in a pod".

Full vaccination program with Pfizer Gold.



Happy Family Day!

Terms & Conditions

CATTLE INSPECTION: All carry permanent identity tags, corresponding to Sale Lot Numbers. All shall be available for inspection prior to sale.

BREEDING GUARANTEE: All cattle are sound and sold with a responsible breeder guarantee of satisfaction. In the event of any unlikely dispute, the regular terms and conditions, standard with the Canadian Aberdeen Angus Association shall apply.

MAIL BIDS: May be entrusted in complete confidence to any of the Sale Staff listed or to Douglas J. Henderson & Associates Ltd.

INSURANCE: Ownership risk to purchaser commences when the Auctioneer's hammer falls. Livestock coverage will be available at the clerk's desk from the appointed representatives on sale day, also from the sale management at any time.

TERMS OF SALE: Are cash or cheque at par, payable to Clerks of the Sale on Sale Day. No release will be given until satisfactory settlement has been made. We reserve the right to withhold animals from shipment for whom payments have not been received prior to departure times.

ALL PERSONS who attend the Sale do so at their own risk, and the Owners, Sale Management and Sale Staff assume no liability, legal or otherwise, for property loss or for any accidents that may occur.

DjH Douglas J. Henderson
& Associates Ltd.

P.O. BOX 5900, LACOMBE, ALBERTA T4L 1X4

P G P R G	CANADA	POSTES
	POST	CANADA
	Postage paid Addressed Admail 03683273	Port payé Médiaposte avec adresse

RETURN POSTAGE GUARANTEED
PORT DE RETOUR GARANTI

OLE FARMS



Fifth Annual **Family Day Sale**

Monday, February 15, 2010

At the Farm

10 miles Southwest of Athabasca

