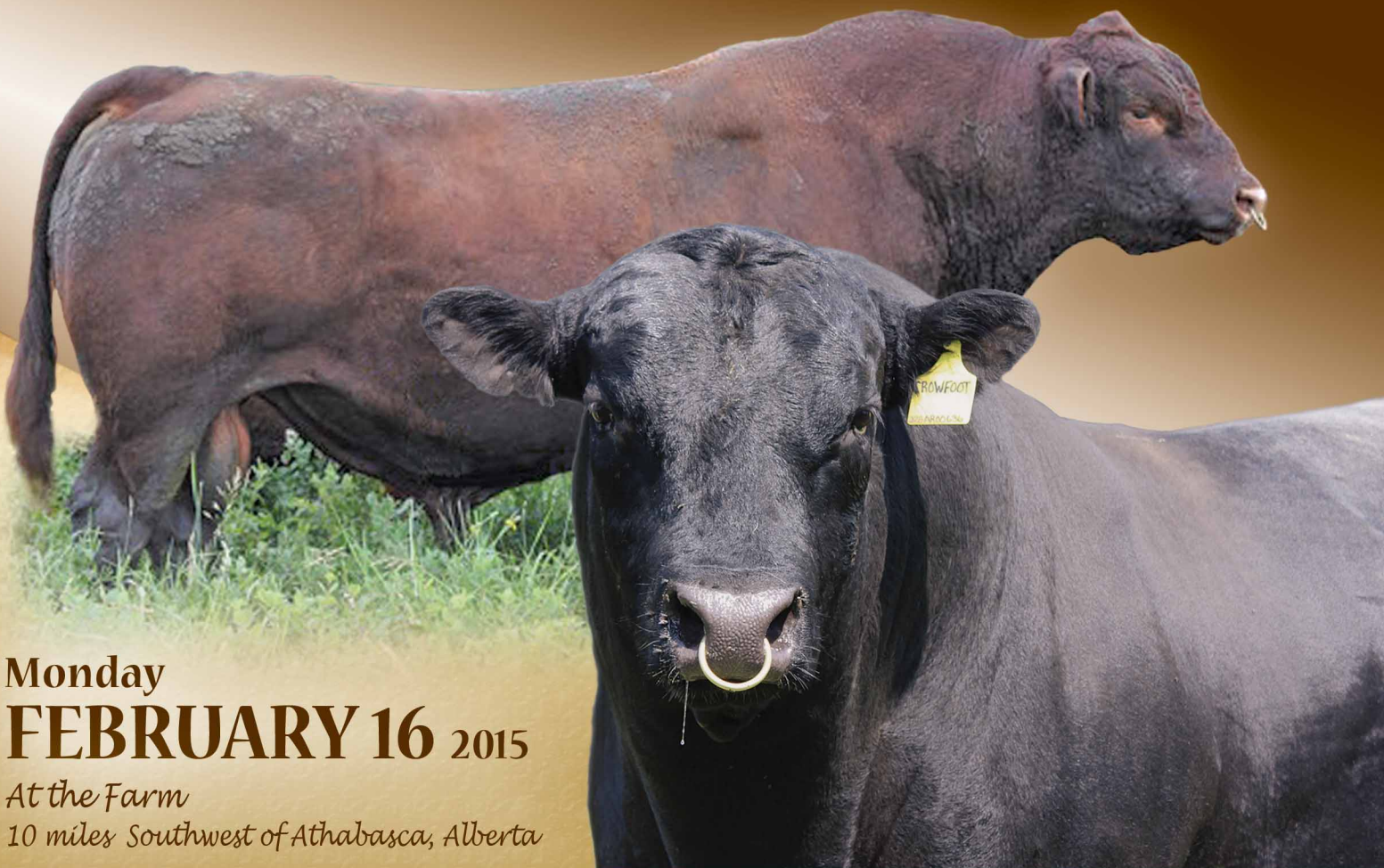


OLE



FARMS

10th Anniversary
Family Day Sale



Monday
FEBRUARY 16 2015

At the Farm
10 miles Southwest of Athabasca, Alberta

Time to Build a Better Cow

As an industry we are awestruck with our good fortune. Profitability is at levels we have longed for and we have been presented with a tremendous opportunity to prosper. It is my belief that we have several great years ahead of us. However we must not forget how we survived the difficult years. The key to greater profitability at Ole Farms is our cow herd. We intend to use these good times to build an even better cow, a cow with a bright future.

It may surprise you that although cattle are very important to us at Ole Farms, they are not our only concern. An equal priority is our land and the protection and enhancement of our soil. Cattle are simply the best way to do that. In order to preserve our soil we need cows that can efficiently harvest energy from the sun without a lot of our help. To do that they must be deep bodied with lots of capacity and have sufficient back fat to handle our cold winters. Our grass is managed to provide a sufficient rest period and we are piping water to most of our cows in an effort to keep our water clean. Swath grazing, rotational grazing and the feeding of cattle in the field are used to evenly distribute manure and urine without the use of machinery. These practices are building our soil, increasing profits, and will benefit future generations.

At Ole Farms we believe that profitability is greatest when we achieve **more pounds of calf per acre, not necessarily per cow**. Moderate framed, fertile cows do wean more pounds per acre. We do not pamper our cows. We minimize mechanical intervention by swath grazing most of the winter, helping to keep costs down. Making the cows work helps us to produce genetics that will work better for our customers.

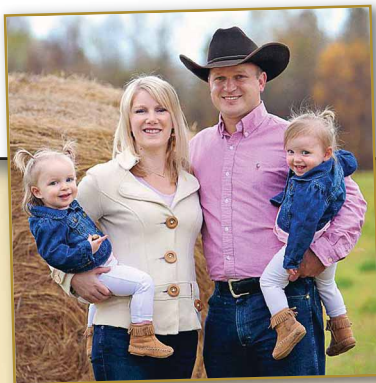
Our bulls have not been overfed. They are wintered for moderate gain and are run on grass as yearlings. In the fall they are brought in and fed a back grounding ration until sale day. We only offer 2 year old bulls because they are ready to go to work for you.

Projected profits in the next few years will be an opportunity to build and improve your production system, resulting in improved genetics in your cow herd. It is not a time to add costs to your program. Rather, it is the time to build a better cow.

Kelly Olson

P.S. Danielle Smith will NOT be at our sale this year.

*View video of the sale bulls
@ www.olefarms.com*



*Travis & Vanessa Olson
Lexi Rose & Claire Montana*



*Graham & Leslie Olson
Ace & Carl*



Frazer & Cheryl Andrews



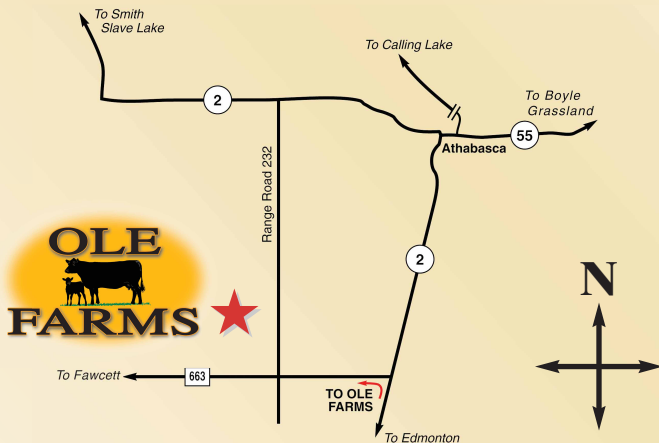
Kelly & Anna Olson



OLE FARMS



DIRECTIONS TO SALE



NEW SALE FORMAT

BULLS WILL SELL BY VIDEO ON SALE DAY

The bulls will be identified by Lot Number and on display in well marked pens by the sale barn. It is strongly recommended that you come early to view the bulls in their pens.

AUCTIONEER:

Don Raffan Ph: (250) 546-9420 Cell: (250) 558-6789

RINGMEN:

Dennis Ericson (780) 352-7630
Ryan Dorran (403) 507-6483
Travis Rogers (780) 307-3144

BUYERS REPS:

Ontario East - Gerry Walter (519) 524-8879
BC - Peter Raffan (250) 260-0758

SALE HEADQUARTERS:

SUPER 8 ATHABASCA (780) 675-8888
DAYS INN ATHABASCA (780) 675-7020

Sale Managed By:
**DjH Douglas J. Henderson
& Associates Ltd.**

P.O. Box 5900, Lacombe, Alberta T4L 1X4
Doug & Linda Henderson

Phone: (403) 782-3888 Fax: (403) 782-3849 Cel: (403) 350-8541
email: djhenderson@platinum.ca www.hendersoncattle.com

10th Anniversary Family Day Sale

Monday

February 16, 2015 - 1 pm

At the Farm 10 miles Southwest of Athabasca

Lunch at 11:30 am

151 TWO-YEAR-OLD BULLS

74 Black Angus - 77 Red Angus
Including 13 Black Angus Red Carriers
& 9 Commercial Angus Bulls

Plus 160 Commercial
Angus Bred Heifers

- * All Bulls Semen Tested * All Bulls Sell as Virgins
 - * All Bulls Sell Guaranteed BVD PI Free
 - * Free Delivery of bulls to Central Points in Canada
- Insurance recommended

INTERNET BIDDING AVAILABLE

See Page 4 for details

D | L | M | S
www.dlms.ca



**OLE
FARMS**

Kelly & Anna Olson
Phone: 780-675-4664
Fax: 780-675-3333
Cell: 780-689-7822

Box 420, Athabasca, AB T9S 2A4

email: info@olefarms.com
www.olefarms.com

Travis: 780-675-1113 Cell: 780-689-8324
Graham: 780-675-3445 Cell: 780-675-0112



"Sharing in the excitement of Agriculture"

Breeding Philosophy

At OLE FARMS our breeding philosophy is simple: breed cattle that give your customers the greatest chance to be profitable. In the North American Cow Calf operation, the largest factors that contribute to profit or loss are winter feeding costs and the % of live calves weaned per cow exposed. These two factors are the two items we spend the most time and effort selecting for. They are, however, antagonistic traits: the less that you feed your cows through the winter the more difficult it is to get them to rebreed the following spring or summer. In order to do our best to accommodate both antagonistic traits we have reduced the frame on our cows and focused on using bulls with exceptional EPDs for Fat which has increased the ability to flesh. This has allowed us to graze pastures into early winter, then move to swath grazing or silage diets, therefore significantly reducing winter feeding costs. The more moderate, easy fleshing cows are able to rebreed under these conditions.

As we all know, having a pregnant cow does not mean she will wean a calf that we can market. The culling of cows that do not wean calves is extremely important as well as culling females that cannot calve on their own or get their calf to suck. Culling cows with poor udders and being very selective when putting herd bulls together helps maintain a great uddered cow herd. Another trait that gets considerable focus is birth weight EPDs. Not only do light birth weights help your live calf percentage, but it also will shorten gestation, leaving just a bit more time for cows to rebreed. The bulls in this year's sale lead the industry in birth weight and calving ease EPDs.

We must always remember what we are selling: BEEF! We spend a great deal of time searching for AI and walking bulls that gain well and that have superior carcass quality. In breeding seed stock cattle we always have our customer in mind and make deliberate decisions related to your profitability. The genetics that we have on offer are sound, fertile, easy fleshing, and are not ruined by over feeding. Ole Farms' philosophy in genetics is not to breed cattle that just look good or that will sell well, but rather, cattle that give YOU, our customer, the building blocks to a very profitable cow herd.

Travis



Mothers of the Sale Bulls

Ole Farms Staff



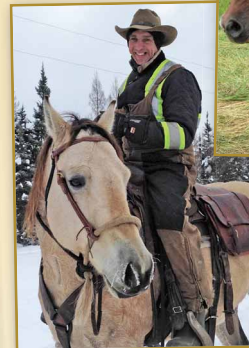
Bill & Margaret Doroshenko



*Mike
Bjornson*



*Donald
McClanaghan*



*Dwaine
Shirliffe*

Seasonal Staff



*David
Shopland*



*Dragan
Lugonja*



Angie Kosinski



*Jeremiah
Bickerstaff*

*Olson Family Pays Tribute to
Anna's Sister & Their Very Dear Friend
Elise Catherine Shopland
April 1, 1963 - December 29, 2014
Whom the Lord has called home*



Many of you will remember Elise as one of the girls working at the Registration table at every single Bull Sale until last year when she was already suffering from cancer. Elise was an energetic, creative individual who loved life, and fought hard to keep it.

Elise, herself the youngest of five, together with her husband David raised 6 children. She was devoted to her community and her family, and leaves to mourn all those who knew her well. Her courage and love for others was an inspiration to many. Elise is fondly remembered and sadly missed.

*Buy your bulls based on science & economics,
not the show ring & the feed bucket.*

- Travis

*2015 is the International Year of Soils. Let us
not forget how important soil is to our welfare.*

- Kelly

« The Cost of a Treadmill »

The other day I was tramping through a foot of snow packing step-in posts, a cordless drill and a spooler. I was moving cows on swath grazing. I was soaked through with exertion. It was -20 and there was a sharp wind. I wasn't really enjoying myself. I began thinking "Why am I doing this?" Well, I can feed 30 cows per minute or 2 seconds per cow with this method. If I use prepared feed I can feed 4 cows per minute with a loader and a feed wagon, and I have to make hay or silage in the summer.

Time per 100 Cows:

	Time to Feed	Time to Put Up Feed In Summer	Total
Swath Grazing	3.3 minutes		3.3
Hay or Silage	25.0 minutes	15 min	40.0

Difference: 36.7 Minutes

Therefore, if we can swath graze for 100 days per year this will save us over ½ hour of labor per cow annually. That may not seem like much when calves are \$800 per head more than last year, but on our operation we also save \$43 per cow in equipment costs. With labor @ \$20/hour, that equates to a total of \$53 per cow. We normally have 1200 cows grazing in the winter for 100 days for a saving of \$63,600 per year. Now even though I don't relish tramping through deep snow to move poly wire I actually enjoy it much more than the treadmill. So if I was to not swath graze I would have to use the treadmill at a cost of \$636 per day! (Think I'll just keep the winter grazing plan.)



Kelly



Top 10 Reasons

To Buy at Ole Farms

- 1. PROFITABILITY:** At Ole Farms we breed cattle so as to maximize long term profitability. By breeding cattle that are profitable for us, we know they will work for you as well.
- 2. PHENOTYPE:** We strive to produce thick, deep-bodied cattle with lots of capacity. The right kind.
- 3. HARSH ENVIRONMENT:** At Ole Farms we raise cattle in volume with minimal mechanical intervention. We swath graze and bale graze. We are in a high rainfall area. A lot of our pasture is on low land. Pasture and forage volume is good but quality is lower and northern Alberta is significantly colder than many areas in North America. Our cattle are developed under tough conditions. If they work here, they should work on your operation.
- 4. MODERATE FRAME:** Research has shown that pounds of calf weaned per acre can be maximized with moderate cows. On our way to optimizing frame size, we find our cows are shorter, but not lighter.
- 5. CALVING EASE:** We emphasize calving ease. We seldom pull a calf. All cows and heifers are calved in May and June with little supervision. Heifers are only checked once or twice per day.
- 6. FEET AND UDDERS:** We stringently cull cattle for feet and udder problems. If they have a problem they are gone. Udders on our cows are very strong. None of our sale bulls have had their feet trimmed.
- 7. MOTHER NATURE:** We believe Mother Nature is the best judge of cattle. We do not clip our sale cattle. They are in their natural state.
- 8. OVER FEEDING:** We do not hide our cattle behind heavy feed. The bulls in our sale will not be as fat as in other sales and will not melt away when you use them.
- 9. VOLUME:** We raise and sell cattle in volume. We run 1600 cows and don't have time for high maintenance. We understand what it takes to raise efficient cattle. We were pleased to learn that we are the largest Purebred Angus breeder in Alberta and have the second largest Purebred Angus herd in Canada.
- 10. SHARING IN THE EXCITEMENT OF AGRICULTURE:** We encourage you to come and visit, exchange ideas, and share refreshments with us. We have started a PROFIT CENTERED PERFORMANCE GROUP of producers. The goal is to share production and expense data in order to help each other become more profitable. If you are interested, let us know.

Best wishes to you all. If we can be of any help, please call.

Did You Know?

We artificially inseminated over 955 head in the summer of 2014?

This extra effort enables us to use some of the best Angus genetics on the planet.



The Olson Family - Sale Day 2013

PLEASE NOTE:

This is a video sale with the bulls on display by the sale barn

Video online @ www.cattlevids.ca or www.olefarms.com

Can't make it to the sale? Watch & Bid Online.

With DLMS you can Watch, Listen & Bid on your computer just like you were there with online bidding over the internet

Instructions for Viewing And Bidding At the Sale

Visit www.dlms.ca, Fill out the registration form located under registration and sign-up for your free user account to select a username and password.

BIDDERS - To be approved as a bidder, Log in and click BUYER APPROVAL tab, select the sale you are interested in bidding at and click sign up.

For more information or for help getting approved
Call: Mark Shologan - 780-699-5082

Direct Livestock Marketing Systems
We're Making the Connection
DLMS
www.dlms.ca

BOUCHARD LIVESTOCK INTERNATIONAL
DLMS Marketing Agent
Mark Shologan
780-699-5082
www.bouchardlivestock.com



Reference Cows

The Heavy Maternal Influence

These four cows have left and will leave a huge imprint on our herd.
These four matriarchs will have sons that over their life
should sire over 1,000 offspring at Ole Farms.



CROWFOOT 3542N

Female CFCC 3542N 1182429 May 26 2003

O C C EMBLAZON 854E
O C C JOKER 620J DDF 1079149
O C C JUANADA 709V

TOMWALL B EMULATION 070
GLADWALL G V LASS 6327 990750
GLADWALL G V LASS 1270

D H D TRAVELER 6807
DIXIE ERICA OF C H 1019
COLE CREEK OSCAR 92R
JUANADA OF ROLLIN ROCK 0355

BASIN EMULATION 5653
GLADWALL CLOVA PRIDE 8180
PAT PIED PIPER 948
GREEN VALLEY LASS 705

BLK EPDs: BW: +1.5 46% WW: +18 37% YW: +23 29% Milk: +25 32% TM: +34

SC: +0.02 31% CE: +4.0 25% MCE: +6.0 20%

CARCASS: REA: +0.35 17% Marb: +0.03 17% Fat: +0.006 14% CW: +3 12%



Dam of:

Ole Alliance 138T
Ole Emulation EXT 630Y
Ole Alliance 626Y
Ole Alliance 619Y

Ole Alliance 138T



OLE PRIME 16S

Female OLEF 16S 1324245 February 02 2006

GARDENS PRIME TIME
N BAR PRIME TIME D806 AMF CAF NHF DDF 981359
N BAR MISS EMULOUS A404

SITZ ALLIANCE 6595
OLSON 24P 1228896
CROWFOOT FORKS 732K

RR TRAVELER 5204
GREEN GARDEN SUSIE 1246 S1
N BAR EMULATION EXT 252
N BAR MISS EMULOUS X3091

SITZ TRAVELER 8180
SITZ BARBARAMERE JET 2698
TOMWALL PIED PIPER 413
GLADWALL PRINCENE 6320

BLK EPDs: BW: -0.6 45% WW: +33 35% YW: +62 27% Milk: +19 31% TM: +36

SC: +0.58 25% CE: +11.0 35% MCE: +11.0 23%

CARCASS: REA: -0.14 24% Marb: +0.81 22% Fat: +0.095 20% CW: +20 19%



Dam of:

Ole Emblazon 656Z
Ole Rito Legacy 9U

Ole Rito Legacy 9U



N BAR QUEEN MOTHER 9955F

Female E008 [US]12383546 March 03 1995

EMULATION N BAR 5522
N BAR EMULATION EXT [US]10776479
N BAR PRIMROSE 2424

RITO 36 OF IDEAL 5106 746
N BAR QUEEN MOTHER 6079 [US]9440659
N BAR QUEEN MOTHER 3096

EMULATION 31
ANKONY 8F78 LASS 8F275
EMULATION 31
PRIMROSE N BAR 9962

RITO 206 OF IDEAL 2218
BAND 234 OF IDEAL 3166
EMULATION 31
QUEEN MOTHER N BAR 1223

BLK EPDs: BW: +2.0 61% WW: +32 52% YW: +58 48% Milk: +17 47%

SC: +0.27 48% CE: +3.0 39% MCE: +6.0 34%

CARCASS: REA: +0.00 33% Marb: +0.00 30% Fat: +0.027 29% CW: +23 25%



Dam of:

Sinclair Everlast 6R107
Sinclair Arsenal 9R104

Sinclair Everlast 6R107



D D A MELISA 824

Female 824 [US]13054587 January 31 1998

SHOSHONE ERIC 1714
SHOSHONE 130-6357 [US]12221656
SHOSHONE FRANCES 6357

BEAR OF WYE UMF 6591
D D A MELISA 545 [US]12320119
D D A MELISA 115

SHOSHONE MUSCLE 329
SHOSHONE ERICA 1714
SHOSHONE BALBOA N1702
SHOSHONE FRANCES 6333

LAMB DIN OF WYE UMF 6278
BLACKBIRD OF WYE UMF 6324
FAHREN OF WYE UMF 5830
MISS DIAMOND CHANCE 779

BLK EPDs: BW: +3.5 61% WW: +20 53% YW: +36 39% Milk: +14 49%

SC: -0.70 48% CE: -2.0 39% MCE: +4.0 30%

CARCASS: REA: -0.26 17% Marb: +0.40 19% Fat: +0.008 17% CW: -10 12%



Dam of:

DDA Emblazon 27C
DDA Emblazon E3I
DDA Emblazon E26K
DDA Lodge E5H

DDA Emblazon 27C

Reference Sires



Red Crowfoot Moonshine 8081U

A **RED CROWFOOT MOONSHINE 8081U** Male CFCC 8081U 1456117 AMF CAF NHF OSF MAF January 12 2008

CROWFOOT MAX 1743L
CROWFOOT 6004S 1315891
CROWFOOT BLACKCAP 4935P

BASIN MAX 104J AMF CAF NHF
GLADWALL LOVEMERE PET 813Z
O C C MOONSHINE 740M
HILL FIRE ROSE 24G

RED CROWFOOT BIG DADDY 2058M
RED CROWFOOT BRNDINA 6359S 1316191
RED CROWFOOT BRNDINA 1065L

RED MLK CRK CUB 722 OSF MAF
RED CROWFOOT BLACKBIRD 9173J
RED MABES RAMBO TUO
RED CROWFOOT BRNDINA 838H

BW: 72 lbs.

RED EPDs: BW: -1.6 88% WW: +83 84% YW: +116 83% Milk: +4 74% TM: +45

Stay: +119 14% HP: +8 P CE: +3.6 76% MCE: +5.1 74%

CARCASS: REA: +0.38 23% Marb: +0.01 26% Fat: +0.010 38% Yield: +0.05 24% CW: +36 25%

The high selling bull from Crowfoot's 2013 Dispersal Sale for \$46,000, this powerhouse of a bull is a true curve bender. Indexing 104 and 105 for weaning with over 500 calves, Moonshine is in the top 1% of the breed for both yearling weight EPD and weaning weight yet is still in the top 30% of the breed for birth weight EPD. Moonshine calves are long and deep. They are very wide based with ample muscle shape and eye appeal. Moonshine has a unique pedigree and is outcross to almost every red herd in the industry. Never before have we been so impressed with a set of sons in our sale offering. Moonshine is deceased and our partner Genex Beef is sold out of semen, so don't miss this opportunity to own a son or two from this industry leading sire.



Red Mustrush Impressive CA U23

B **RED MUSHRUSH IMPRESSIVE CA U23** Male IMP 236U 1639269 OSF MAF September 10 2008

RED BECKTON LANCER F442 T OSF MAF
RED BUF CRK LANCER R017 OSF MAF 1050008
RED BUF CRK JULIET N036 OSC

RED BECKTON LANCER T A664 OSF
RED BKT SUFFEINA A828 DM
RED BECKTON JULIAN GG B571 OSF
RED BUF CRK PRIMROSE 5679 OSC

RED TR JULIAN LT142 OSF
RED MUSHRUSH MADAM LT R265 1085038
RED MUSHRUSH ROBIN M125

RED BECKTON JULIAN GG B571 OSF
RED TR LANA G760 OSF
RED BFCK CHEROKEE CNYN 4912 OSF MAF
RED MUSHRUSH ZENA 0165

RED EPDs: BW: -4.4 90% WW: +56 88% YW: +83 87% Milk: +15 82% TM: +43

Stay: +16 41% HP: +12 56% CE: +5.0 83% MCE: -1.0 82%

CARCASS: REA: +0.26 38% Marb: +0.66 44% Fat: +0.020 47% Yield: +0.02 32% CW: +13 25%

Impressive will moderate both frame and birth weight. Impressive is in the top 4% of the breed for birth weight and in the top 20% of the breed for weaning. Impressive will add carcass merit and longevity to your cow herd.



DDA Emblazon 27C

C **DDA EMBLAZON 27C** Male IMP 27M 1363305 AMF CAF NHF DDF February 01 2002

D H D TRAVELER 6807 AMF NHF
O C C EMBLAZON 854E DMF AMF CAF NHF OSF DDF 1541351
DIXIE ERICA OF C H 1019

Q A S TRAVELER 23-4 AMF CAF NHF DDF
BEMINDFUL MAID D H D 0807
PBC 707 1M F0203
DIXIE ERICA OF C H 615

SHOSHONE 130-6357
D D A MELISA 824 13054587
D D A MELISA 545

SHOSHONE ERIC 1714
SHOSHONE FRANCES 6357
BEAR OF WYE UMF 6591
D D A MELISA 115

BLK EPDs: BW: +2.0 85% WW: +40 85% YW: +59 76% Milk: +18 74% TM: +38

SC: -0.03 73% CE: +4.0 64% MCE: +6.0 55%

CARCASS: REA: +0.12 37% Marb: +0.35 42% Fat: +0.027 39% CW: +9 32%

Our largest ever offering of DDA Emblazon 27C. 27C is our standard bearer for producing moderate maternal cattle. He provides two of the things we strive very hard to achieve: fleshing ability and muscle shape. The sons in this year's sale look the part and will fatten quickly on grass.

D

DDA PINEBANK 50H

Male IMP 50H 1488445 EE April 21 2007

PINEBANK WAIG 31/95
PINEBANK WAIGROUP 41/97 AMF NHF CAF DDF **1304235**
 PINEBANK 639/88

PINEBANK WAIG 5/93
 PINEBANK WAIG 58/93
 TUPURUPURU 838/86
 PINEBANK 663/85
 FAHREN OF WYE UMF 5830
 D D A ZELDA 791
 O C C EMBLAZON 854E DMF AMF CAF NHF OSF DDF
 D D A MELISA 381

DDA FAHREN 5Z
MELISA 206 DDA 14095558
 DDA MELISA 003

BLK EPDs: BW: -1.2 72% WW: +26 61% YW: +39 40% Milk: +9 29% TM: +27
 SC: +0.35 34% CE: +8.1 58% MCE: +4.8 30%
 CARCASS: REA: +0.00 23% Marb: -0.11 21% Fat: +0.069 19% CW: -8 8%

50H was our choice of the bulls on offer in the Deboo Production Sale of 2009. 50H is one of the deepest bodied, smoothest moving bulls to have ever walked at Ole Farms. Use of him will improve feet quality, add fleshing ability, and reduce frame score and birth weight. 50H will leave you some of the most attractive and functional females in the industry.



DDA Pinebank 50H

E

OLE ALLIANCE 138T

Male OLEF 138T 1420409 EE May 05 2007

SITZ TRAVELER 8180 AMF CAF NHF DDF
SITZ ALLIANCE 6595 DMF AMF CAF NHF DDF **1036949**
 SITZ BARBARAMERE JET 2698

G D A R TRAVELER 71 AMF CAF NHF DDF
 SITZ EVERELDA ENTENSE 1137
 3 BAR SPIKE 1766
 SITZ BARAMERE JET 155
 O C C EMBLAZON 854E DMF AMF CAF NHF OSF DDF
 O C C JUANADA 709V
 TOMWALL B EMULATION 070
 GLADWALL G V LASS 1270

O C C JOKER 620J DDF
CROWFOOT 3542N 1182429
 GLADWALL G V LASS 6327

BW: 80 lbs.
 BLK EPDs: BW: +4.1 74% WW: +26 64% YW: +52 51% Milk: +27 37% TM: +42
 SC: +1.36 50% CE: +1.8 46% MCE: +8.3 37%
 CARCASS: REA: -0.30 32% Marb: +0.23 33% Fat: +0.119 29% CW: +9 21%

138T has a great maternal combination of Sitz Alliance and 3542N, and is our very best cow. During her life she has had 26 calves, 8 of them in our herd bull battery. 138T will moderate frame, increase muscle shape, and improve foot quality.



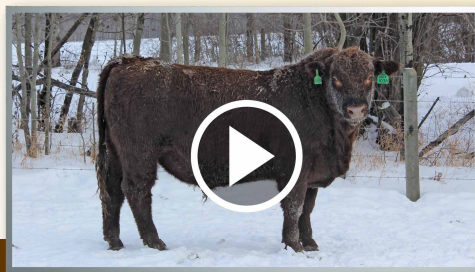
Ole Alliance 138T

CALVING EASE

Star ratings are the subjective estimate of these young bulls' calving ease

- ★★★★ Likely to have a high level of calving ease based on dam and sire history, actual birth weight, and EPD of birth weight
- ★★★ Should be comfortable for use on heifers of the same breed
- ★★ Bull should be used on cows with limited assists expected
- ★ Bull should only be used on cows - expect high birth weights

A 'small eye spot' has been noted on a few bulls - indicated on lots by *ses



Bull videos online @ www.olefarms.com

Herd Health Program

- Pfizer Gold Program – all cattle have been vaccinated, following the Pfizer Gold program.
- P.I. (Persistently Infected BVD) – all sale bulls are guaranteed BVD/P.I. free. P.I. animals extract huge losses to the cattle industry annually. A thorough vaccination program is essential to prevent P.I. infected animals.
- All sale bulls are virgins.
- All bulls sell with a certified semen test prior to delivery.



Bovi-Shield[®] GOLD FP[®]
 Protection without compromise.

**100%
 BVD PI-FREE
 GUARANTEED**

OUR BVD PI-FREE GUARANTEE
 If you vaccinate the dam according to label directions with Bovi-Shield[®] GOLD FP[®] purchased from a Canadian Veterinarian, Pfizer will cover the cost of any BVD PI test born to the vaccinated cow.

1

OLE GRID MAKER 405A

Male OLEF 405A 1726044 May 16 2013

G D A R TRAVELER 044 AMF CAF NHF DDF
G A R GRID MAKER AMF CAF NHF DDF **1129870**
 G A R PRECISION 2536 AMC NHF

D H D TRAVELER 6807 AMF NHF
 G D A R BLACKCAP LADY 840
 G A R PRECISION 1680 AMC NHC
 G A R EXT 2104

O C C MOONSHINE 740M
CROWFOOT MISS DESIGN 5121R 1254704
 CFCC 49K

O C C JUST RIGHT 619J DDF
 O C C DIXIE ERICA 816B
 STEVENSON ROYCE 741C CAF NHF DDF
 RED BAR-V MISS DESIGN 022B CSF

BW: 90 lbs.

BLK EPDs: BW: +3.8 38% WW: +48 29% YW: +89 29% Milk: +11 23% TM: +35

SC: +0.79 36% CE: -1.0 29% MCE: +7.0 18%

CARCASS: REA: +0.70 24% Marb: +0.25 23% Fat: -0.017 21% CW: +30 19%

Calving Ease ★★

405A will add muscle and pounds to your calf crop.

2

OLE GRID MAKER 356A

Male OLEF 356A 1722216 May 12 2013

G D A R TRAVELER 044 AMF CAF NHF DDF
G A R GRID MAKER AMF CAF NHF DDF **1129870**
 G A R PRECISION 2536 AMC NHF

D H D TRAVELER 6807 AMF NHF
 G D A R BLACKCAP LADY 840
 G A R PRECISION 1680 AMC NHC
 G A R EXT 2104

MH MAGUA 27 AMF
OLE KURUBA 112W 1536216
 CROWFOOT 3110N

O C C HOMER 650H DMF CAF DDF
 M H RODA LASS 033
 O C C HONESTY 962H
 RED CFCC 0507K

BW: 79 lbs.

BLK EPDs: BW: +3.1 37% WW: +54 28% YW: +85 27% Milk: +10 21% TM: +37

SC: -0.01 36% CE: +1.0 28% MCE: +7.0 17%

CARCASS: REA: +0.55 24% Marb: +0.28 P Fat: -0.019 21% CW: +26 18%

Calving Ease ★★

356A is thick as bugs on a bumper!

3

OLE GRID MAKER 330A

Male OLEF 330A 1747161 NHF May 07 2013

G D A R TRAVELER 044 AMF CAF NHF DDF
G A R GRID MAKER AMF CAF NHF DDF **1129870**
 G A R PRECISION 2536 AMC NHF

D H D TRAVELER 6807 AMF NHF
 G D A R BLACKCAP LADY 840
 G A R PRECISION 1680 AMC NHC
 G A R EXT 2104

SINCLAIR TIMELESS 7BT15
OLE QUEEN 220W 1533862
 CATFISH QUEEN BANDO 3M 06S NHC

BT RIGHT TIME 24J AMF CAF NHF DDF
 N BAR LADY IDA X2912
 ROYAL BANDO DRCC 2123M
 CATFISH QUEEN T510

BW: 84 lbs.

BLK EPDs: BW: +1.5 37% WW: +50 28% YW: +90 27% Milk: +16 21% TM: +41

SC: +0.75 36% CE: +5.0 28% MCE: +12.0 18%

CARCASS: REA: +0.65 25% Marb: +0.60 23% Fat: -0.020 21% CW: +27 19%

Calving Ease ★★

330A outstanding weaning index of 126 out of a most impressive dam. Queen 220W has a lifetime index of 114 and produces offspring with ample capacity and muscle. 330A is stout and heavy muscled.

4

OLE GRID MAKER 370A

Male OLEF 370A 1722233 May 13 2013

G D A R TRAVELER 044 AMF CAF NHF DDF
G A R GRID MAKER AMF CAF NHF DDF **1129870**
 G A R PRECISION 2536 AMC NHF

D H D TRAVELER 6807 AMF NHF
 G D A R BLACKCAP LADY 840
 G A R PRECISION 1680 AMC NHC
 G A R EXT 2104

SINCLAIR EXTRA 4X13 AMF CAF NHF DDF
OLE EXPLOSION 124W 1492906
 OLE EXPLOSION 59S

N BAR EMULATION EXT AMF CAF NHF DDF
 N BAR LADY IDA S C C 2P37
 CROWFOOT MAX 1743L
 OLSON 31P

BW: 89 lbs.

BLK EPDs: BW: +3.5 38% WW: +47 29% YW: +83 28% Milk: +15 22% TM: +39

SC: +0.06 37% CE: -1.0 30% MCE: +10.0 19%

CARCASS: REA: +0.40 25% Marb: +0.43 P Fat: -0.001 22% CW: +26 20%

Calving Ease ★★

370A dam weaning index is 110 lifetime.



G A R Grid Maker

5

OLE GRID MAKER 371A

Male OLEF 371A 1722242 May 14 2013 *ses

G D A R TRAVELER 044 AMF CAF NHF DDF
G A R GRID MAKER AMF CAF NHF DDF **1129870**
 G A R PRECISION 2536 AMC NHF

D H D TRAVELER 6807 AMF NHF
 G D A R BLACKCAP LADY 840
 G A R PRECISION 1680 AMC NHC
 G A R EXT 2104

O C C MOONSHINE 740M
CROWFOOT ROSE 4930P 1197469
 HILL FIRE ROSE 17F

O C C JUST RIGHT 619J DDF
 O C C DIXIE ERICA 816B
 NUGGET 801X OF J R S AMF CAF NHF DDF
 VALLEYHILLS BLACKCAP WYE 155Y

BW: 92 lbs.

BLK EPDs: BW: +4.9 38% WW: +50 29% YW: +86 28% Milk: +13 23% TM: +38

SC: +0.37 37% CE: -3.0 29% MCE: +7.0 19%

CARCASS: REA: +0.69 24% Marb: +0.28 P Fat: -0.020 21% CW: +29 19%

Calving Ease ★★

371A dam weaning index is 105 lifetime.

6

OLE GRID MAKER 331A

Male OLEF 331A 1722156 May 07 2013

G D A R TRAVELER 044 AMF CAF NHF DDF
G A R GRID MAKER AMF CAF NHF DDF **1129870**
 G A R PRECISION 2536 AMC NHF

D H D TRAVELER 6807 AMF NHF
 G D A R BLACKCAP LADY 840
 G A R PRECISION 1680 AMC NHC
 G A R EXT 2104

SINCLAIR RITO LEGACY 3R9 AMF CAF DDF
OLE EILEEN 14U 1461668
 OLE EILEEN 82S

R R RITO 707 AMF CAF NHF DDF
 IDEAL 4465 OF 6807 4286 AMF NHF
 CONNEALY FREIGHTLINER AMF CAF NHF DDF
 CROWFOOT 3788N

BW: 87 lbs.

BLK EPDs: BW: +3.2 37% WW: +49 28% YW: +87 28% Milk: +14 21% TM: +39

SC: +0.76 37% CE: +0.0 30% MCE: +8.0 18%

CARCASS: REA: +0.55 26% Marb: +0.16 24% Fat: +0.000 22% CW: +28 20%

Calving Ease ★★

331A dam weaning index is 107 lifetime.



Crowfoot Rose 4030P - Dam of Lot 5

7

OLE PREDESTINED 400A

Male OLEF 400A 1726039 DDF May 16 2013

B/R NEW DESIGN 036 AMF CAF NHF DDC
G A R PREDESTINED AMF CAF NHF DDC **1162499**
 G A R EXT 4206

O C C HONESTY 962H
CROWFOOT 3421N 1188508
 RED CROWFOOT WJ KURUBA 9102J

BW: 92 lbs.

BLK EPDs: BW: +3.4 38% WW: +46 29% YW: +79 27% Milk: +18 22% TM: +41
 SC: +0.83 36% CE: -2.0 28% MCE: +4.0 18%

CARCASS: REA: +0.40 25% Marb: +0.49 23% Fat: +0.016 22% CW: +23 19%

Calving Ease ★★

400A has been a favourite from birth. He is deep and very attractive. 400A will leave exceptional daughters.

8

OLE PREDESTINED 406A

Male OLEF 406A 1726045 May 16 2013

B/R NEW DESIGN 036 AMF CAF NHF DDC
G A R PREDESTINED AMF CAF NHF DDC **1162499**
 G A R EXT 4206

O C C TREMENDOUS 619T
MFI RITA 9051 1542084
 MFI RITA 6164 CAF

BW: 77 lbs.

BLK EPDs: BW: +1.1 37% WW: +49 28% YW: +83 27% Milk: +23 21% TM: +48
 SC: +0.09 36% CE: +6.0 29% MCE: +9.0 18%

CARCASS: REA: +0.47 26% Marb: +0.69 24% Fat: +0.018 23% CW: +22 20%

Calving Ease ★★★

9

OLE PREDESTINED 346A

Male OLEF 346A 1722202 DDF May 11 2013

B/R NEW DESIGN 036 AMF CAF NHF DDC
G A R PREDESTINED AMF CAF NHF DDC **1162499**
 G A R EXT 4206

STANDARD HILL PAYOFF 20P AMF NHF
OLE ESSENCE 260U 1461787
 OLSN ESSENCE 197M

BW: 79 lbs.

BLK EPDs: BW: +1.3 37% WW: +40 28% YW: +71 28% Milk: +23 22% TM: +43
 SC: +0.81 36% CE: +7.0 29% MCE: +12.0 18%

CARCASS: REA: +0.28 26% Marb: +0.80 24% Fat: +0.009 22% CW: +15 20%

Calving Ease ★★★

10

OLE PREDESTINED 401A

Male OLEF 401A 1726040 May 16 2013 *ses

B/R NEW DESIGN 036 AMF CAF NHF DDC
G A R PREDESTINED AMF CAF NHF DDC **1162499**
 G A R EXT 4206

STANDARD HILL PAYOFF 20P AMF NHF
OLE ROSEBUD 256U 1491413
 CROWFOOT 3413N

BW: 70 lbs.

BLK EPDs: BW: -0.2 36% WW: +43 22% YW: +73 21% Milk: +28 21% TM: +50
 CE: +9.0 29% MCE: +14.0 17%

CARCASS: REA: +0.33 25% Fat: +0.019 22% CW: +14 20%

Calving Ease ★★★★★

401A is out of our most productive cow, Rosebud 256U. She is indexing 121 on weaning over her lifetime. With the combination of Predestined and Rosebud, 401A has exceptional maternal merit.

V D A R NEW TREND 315 AMF CAF NHF DDF
 B/R BLACKCAP EMPRESS 76
 N BAR EMULATION EXT AMF CAF NHF DDF
 G A R 6807 TRAVELER 1432

O C C ANCHOR 771A DMF CAF DDF
 O C C DIXIE ERICA 907C
 RED CROWFOOT PM 757G
 RED CROWFOOT KURUBA 620F

V D A R NEW TREND 315 AMF CAF NHF DDF
 B/R BLACKCAP EMPRESS 76
 N BAR EMULATION EXT AMF CAF NHF DDF
 G A R 6807 TRAVELER 1432

O C C EMBLAZON 854E DMF AMF CAF NHF OSF DDF
 O C C DIXIE ERICA 960H
 BOYD ON TARGET 1083 AMF CAC NHF DDF
 KMK RITA L85 AMF

V D A R NEW TREND 315 AMF CAF NHF DDF
 B/R BLACKCAP EMPRESS 76
 N BAR EMULATION EXT AMF CAF NHF DDF
 G A R 6807 TRAVELER 1432

C A FUTURE DIRECTION 5321 AMF CAC NHC DDF
 STANDARD HILL QUEEN MOTHER 13M
 DMM FLEX 24E
 DMM LADY ESSENCE 4E

V D A R NEW TREND 315 AMF CAF NHF DDF
 B/R BLACKCAP EMPRESS 76
 N BAR EMULATION EXT AMF CAF NHF DDF
 G A R 6807 TRAVELER 1432

C A FUTURE DIRECTION 5321 AMF CAC NHC DDF
 STANDARD HILL QUEEN MOTHER 13M
 SITZ ALLIANCE 9160
 CROWFOOT WJ ROSEBUD 1556L



G A R Predestined

11

OLE PREDESTINED 368A

Male OLEF 368A 1722232 DDF May 13 2013

B/R NEW DESIGN 036 AMF CAF NHF DDC
G A R PREDESTINED AMF CAF NHF DDC **1162499**
 G A R EXT 4206

CROWFOOT MAX 1743L
OLE MERLE 76S 1318508
 OLSN 14P

BW: 77 lbs.

BLK EPDs: BW: +0.9 37% WW: +44 28% YW: +83 27% Milk: +23 22% TM: +45
 SC: +1.15 36% CE: +5.0 30% MCE: +10.0 18%

CARCASS: REA: +0.18 25% Marb: +0.77 P Fat: +0.027 22% CW: +22 20%

Calving Ease ★★★

Indexed 110 on weaning. Dam weaning index is 107 lifetime.

V D A R NEW TREND 315 AMF CAF NHF DDF
 B/R BLACKCAP EMPRESS 76
 N BAR EMULATION EXT AMF CAF NHF DDF
 G A R 6807 TRAVELER 1432
 BASIN MAX 104J AMF CAF NHF
 GLADWALL LOVEMERE PET 8132
 SITZ ALLIANCE 6595 DMF AMF CAF NHF DDF
 C H MERLE 9440

12

OLE PREDESTINED 385A

Male OLEF 385A 1726018 DDF May 15 2013

B/R NEW DESIGN 036 AMF CAF NHF DDC
G A R PREDESTINED AMF CAF NHF DDC **1162499**
 G A R EXT 4206

SINCLAIR EVERLAST 6R107
OLE NELLIE 161W 1492938
 CROWFOOT 3769N

BW: 83 lbs.

BLK EPDs: BW: +2.9 P WW: +42 P YW: +70 P Milk: +19 P TM: +40
 CE: +1.5 P MCE: +6.5 P

CARCASS: REA: +0.19 P% Marb: +0.62 P Fat: +0.017 P CW: +16 25%

Calving Ease ★★

V D A R NEW TREND 315 AMF CAF NHF DDF
 B/R BLACKCAP EMPRESS 76
 N BAR EMULATION EXT AMF CAF NHF DDF
 G A R 6807 TRAVELER 1432
 R R RITO 707 AMF CAF NHF DDF
 N BAR QUEEN MOTHER 9955F
 CROWFOOT 516K
 CROWFOOT FORKS 749K



13

OLE LEGACY 407A

Male OLEF 407A 1763403 May 16 2013

SINCLAIR RITO LEGACY 3R9 AMF CAF DDF
OLE RITO LEGACY 176W 1492953
OLEF 237S

R R RITO 707 AMF CAF NHF DDF
IDEAL 4465 OF 6807 4286 AMF NHF
CONNEALY FREIGHTLINER AMF CAF NHF DDF
OLSN ESSENCE 197M

OLE ALLIANCE 138T
OLE REVOLUTION 378X 1580057
GLADWALL REVOLUTION 740

SITZ ALLIANCE 6595 DMF AMF CAF NHF DDF
CROWFOOT 3542N
TOMWALL D V COMMODORE 3125
BAR REVOLUTION GAY 284

BW: 65 lbs.

BLK EPDs: BW: +1.4 35% WW: +28 24% YW: +52 21% Milk: +19 11% TM: +33

SC: +0.37 33% CE: +6.0 18% MCE: +8.0 8%

CARCASS: REA: +0.10 13% Fat: +0.032 11% CW: +4 8%

Calving Ease ★★★

407A is exceptionally deep bodied and heavy muscled. 407A has three breed legends in his 4 generation pedigree - Rito 707, Alliance and Freightliner.

14

OLE RITO ESSENCE 378A

Male OLEF 378A 1731875 May 14 2013

SINCLAIR RITO LEGACY 3R9 AMF CAF DDF
OLE RITO LEGACY 176W 1492953
OLEF 237S

R R RITO 707 AMF CAF NHF DDF
IDEAL 4465 OF 6807 4286 AMF NHF
CONNEALY FREIGHTLINER AMF CAF NHF DDF
OLSN ESSENCE 197M

OLE ALLIANCE 138T
OLE PEARL 477X 1580102
GLADWALL L PEARL 7190

SITZ ALLIANCE 6595 DMF AMF CAF NHF DDF
CROWFOOT 3542N
N BAR TRANSITION A583
GLADWALL L PEARL 394

BW: 79 lbs.

BLK EPDs: BW: +1.9 35% WW: +30 24% YW: +60 21% Milk: +17 11% TM: +32

SC: +0.86 33% CE: +2.0 18% MCE: +6.0 8%

CARCASS: REA: +0.02 14% Marb: +0.28 14% Fat: +0.035 11% CW: +10 8%

Calving Ease ★★

15

OLE RITO ESSENCE 365A

Male OLEF 365A 1731873 May 13 2013

SINCLAIR RITO LEGACY 3R9 AMF CAF DDF
OLE RITO LEGACY 176W 1492953
OLEF 237S

R R RITO 707 AMF CAF NHF DDF
IDEAL 4465 OF 6807 4286 AMF NHF
CONNEALY FREIGHTLINER AMF CAF NHF DDF
OLSN ESSENCE 197M

OLE ALLIANCE 138T
OLE EILEEN 467X 1580098
CROWFOOT 3788N

SITZ ALLIANCE 6595 DMF AMF CAF NHF DDF
CROWFOOT 3542N
BASIN EXPEDITION K47
GLADWALL G EILEEN 8993

BW: 77 lbs.

BLK EPDs: BW: +1.3 35% WW: +31 24% YW: +62 21% Milk: +21 11% TM: +37

SC: +0.51 33% CE: +3.0 19% MCE: +6.0 8%

CARCASS: REA: +0.09 13% Fat: +0.031 11% CW: +10 8%

Calving Ease ★★★

16

OLE LEGACY 475A

Male OLEF 475A 1763393 June 01 2013

SINCLAIR RITO LEGACY 3R9 AMF CAF DDF
OLE RITO LEGACY 176W 1492953
OLEF 237S

R R RITO 707 AMF CAF NHF DDF
IDEAL 4465 OF 6807 4286 AMF NHF
CONNEALY FREIGHTLINER AMF CAF NHF DDF
OLSN ESSENCE 197M

OLE RITO LEGACY 9U
OLE MERLE 209X 1604698
OLE PAYOFF 239U

SINCLAIR RITO LEGACY 3R9 AMF CAF DDF
OLE PRIME 16S
STANDARD HILL PAYOFF 20P AMF NHF
OLSON 14P

BW: 85 lbs.

BLK EPDs: BW: +3.4 33% WW: +29 22% YW: +64 19% Milk: +20 9% TM: +35

SC: +0.35 33% CE: +0.0 19% MCE: +4.0 6%

CARCASS: REA: +0.01 14% Fat: +0.029 11% CW: +15 8%

Calving Ease ★★

475A dam's weaning index is 105 lifetime.



Lot 13 - Ole Legacy 407A & Lot 53 - Ole Payoff 646A

17

OLE RITO LEGACY 527A

Male OLEF 527A 1774536 June 22 2013

SINCLAIR RITO LEGACY 3R9 AMF CAF DDF
OLE RITO LEGACY 176W 1492953
OLEF 237S

R R RITO 707 AMF CAF NHF DDF
IDEAL 4465 OF 6807 4286 AMF NHF
CONNEALY FREIGHTLINER AMF CAF NHF DDF
OLSN ESSENCE 197M

ROYAL RIGHT TIME 5103R
OLE JACKIE 331W 1533940
OLE JACKIE 181R

ROYAL RIGHT TIME DRCC 3005N
FAIRFIELD PRIDE 803
N BAR EMULATION EXT AMF CAF NHF DDF
CROWFOOT 3593N

BW: 91 lbs.

BLK EPDs: BW: +3.1 35% WW: +32 24% YW: +67 21% Milk: +18 11% TM: +34

SC: +0.29 33% CE: -1.0 19% MCE: +4.0 8%

CARCASS: REA: +0.06 15% Marb: +0.08 P Fat: +0.028 11% CW: +16 9%

Calving Ease ★★

18

OLE LEGACY 439A

Male OLEF 439A 1763408 May 21 2013

SINCLAIR RITO LEGACY 3R9 AMF CAF DDF
OLE RITO LEGACY 176W 1492953
OLEF 237S

R R RITO 707 AMF CAF NHF DDF
IDEAL 4465 OF 6807 4286 AMF NHF
CONNEALY FREIGHTLINER AMF CAF NHF DDF
OLSN ESSENCE 197M

SINCLAIR RITO LEGACY 3R9 AMF CAF DDF
OLE ESSENCE 193X 1549652
OLEF 237S

R R RITO 707 AMF CAF NHF DDF
IDEAL 4465 OF 6807 4286 AMF NHF
CONNEALY FREIGHTLINER AMF CAF NHF DDF
OLSN ESSENCE 197M

BW: 74 lbs.

BLK EPDs: BW: +1.6 35% WW: +32 25% YW: +66 22% Milk: +14 12% TM: +30

SC: -1.05 34% CE: +3.0 21% MCE: +4.0 9%

CARCASS: REA: -0.01 15% Marb: +0.03 15% Fat: +0.029 13% CW: +13 10%

Calving Ease ★★★

439A weaning Index of 105.



Ole Rito Legacy 176W

19

RED OLE TIMBERLAKE 47A

Male OLEF 47A 1725755 ET May 04 2013

RED TOWAW INDEED 104H OSF
RED SIX MILE TIMBERLAKE 180T AMF OSF 1398763
 RED SHODEREE ECHETA 193N

RED CC EXPANSION 5E
 RED TOWAW MOLLY 67C
 RED SHODEREE MARIAS 64H
 RED SHODEREE ECHETA 6J

RED CROWFOOT OLE'S OSCAR 2042M AMF CAF NHF OSF MAF
RED OLEF 198S 1352258
 RED ROYAL ANCHOR TIA TOKUN 50E

RED MLK CRK CUB 722 OSF MAF
 RED CROWFOOT OMEGA 9179J
 RED RUNNING BAR TOKUN 1A
 RED ROYAL ANCHOR TIA MS

BW: 83 lbs.
 RED EPDs: BW: -2.7 23% WW: +56 22% YW: +79 22% Milk: +9 22% TM: +37
 Stay: +10 9% HP: +8 8% CE: +2.3 22% MCE: +9.2 21%
 CARCASS: REA: +0.02 15% Marb: +0.64 17% Fat: +0.010 29% Yield: +0.07 19% CW: +13 25%

Calving Ease ★★★
 47A is the first of several embryos to sell. 47A is capacious heavy muscled and blood red in color.

20

RED OLE TIMBERLAKE 35A

Male OLEF 35A 1725744 ET April 30 2013

RED TOWAW INDEED 104H OSF
RED SIX MILE TIMBERLAKE 180T AMF OSF 1398763
 RED SHODEREE ECHETA 193N

RED CC EXPANSION 5E
 RED TOWAW MOLLY 67C
 RED SHODEREE MARIAS 64H
 RED SHODEREE ECHETA 6J

RED CROWFOOT OLE'S OSCAR 2042M AMF CAF NHF OSF MAF
RED OLEF 198S 1352258
 RED ROYAL ANCHOR TIA TOKUN 50E

RED MLK CRK CUB 722 OSF MAF
 RED CROWFOOT OMEGA 9179J
 RED RUNNING BAR TOKUN 1A
 RED ROYAL ANCHOR TIA MS

BW: 66 lbs.
 RED EPDs: BW: -2.7 23% WW: +56 22% YW: +79 22% Milk: +9 22% TM: +37
 Stay: +10 9% HP: +8 8% CE: +2.3 22% MCE: +9.2 21%
 CARCASS: REA: -0.07 15% Marb: +0.59 17% Fat: +0.020 29% Yield: +0.13 19% CW: +13 25%

Calving Ease ★★★
 35A closely resembles his sire. A moderate thick bull that should give you outstanding daughters.

21

RED OLE WILD CARD 40A

Male OLEF 40A 1727105 ET May 01 2013

BCAR RANCHER 8'00
RED BCAR WILD CARD 1216235
 BREED CREEK PRIDE 33F 21'98

WINDY WILLOWS RANCHER 62H
 BREED CREEK ERICA 5F 3'98
 BREED CREEK ATLAS 2E
 WIWA CREEK PRIDE 31Z 33'96

RED CROWFOOT BIG DADDY 2058M
RED CROWFOOT KURUBA 4179P 1207839
 RED CROWFOOT KURUBA 1208L

RED MLK CRK CUB 722 OSF MAF
 RED CROWFOOT BLACKBIRD 9173J
 RED PAT 8207
 RED CROWFOOT KURUBA 665F

BW: 91 lbs.
 RED EPDs: BW: +0.9 23% WW: +54 20% YW: +93 20% Milk: +16 20% TM: +43
 Stay: +7 16% HP: +9 8% CE: -2.5 20% MCE: -2.1 19%
 CARCASS: REA: +0.05 14% Marb: +0.46 10% Fat: +0.000 28% Yield: +0.10 18% CW: +27 25%

Calving Ease ★★
 40A is one of the most powerful bulls we have ever sold. A huge hip and added growth!

22

RED OLE CANYON 48A

Male OLEF 48A 1751753 ET April 19 2013

RED PRESCOTT CANYON 34L
RED LLLL CH CANYON T100 OSF 1416422
 RED RUNNING BAR PICTURE 55P

RED BUF CRK CHF 824-1658 OSC MAF
 RED HILL SPRINGS GOLDIE
 RED SSS BLAZE 853L
 RED RUNNING BAR LOREN 10L

RED TER-RON MAMBO 28K
RED JSTN ELORA 12M 1112369
 RED JCC ELORA 29G

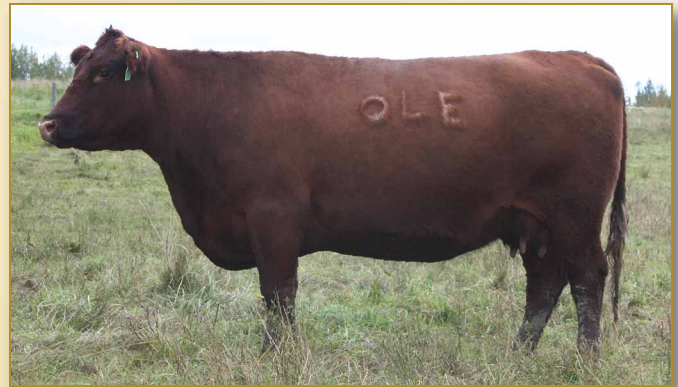
RED YY RED KNIGHT 640F OSF
 RED ALDER ABG STAR DUST 8G
 RED PIPESTONE DRESDEN 3D
 RED CUTARM ELORA 824Z

BW: 88 lbs.
 RED EPDs: BW: +0.0 22% WW: +54 21% YW: +86 21% Milk: +15 20% TM: +42
 Stay: +8 5% HP: +8 P CE: +0.5 20% MCE: +2.4 19%
 CARCASS: REA: -0.12 13% Marb: +0.26 9% Fat: -0.010 27% Yield: +0.10 18% CW: +22 25%

Calving Ease ★★



Red Six Mile Timberlake 180T



Red OLEF 198S - Dam of Lots 19 & 20

23

RED OLE CANYON 1A

Male OLEF 1A 1725716 ET April 19 2013

RED PRESCOTT CANYON 34L
RED LLLL CH CANYON T100 OSF 1416422
 RED RUNNING BAR PICTURE 55P

RED BUF CRK CHF 824-1658 OSC MAF
 RED HILL SPRINGS GOLDIE
 RED SSS BLAZE 853L
 RED RUNNING BAR LOREN 10L

RED TER-RON MAMBO 28K
RED JSTN ELORA 12M 1112369
 RED JCC ELORA 29G

RED YY RED KNIGHT 640F OSF
 RED ALDER ABG STAR DUST 8G
 RED PIPESTONE DRESDEN 3D
 RED CUTARM ELORA 824Z

BW: 73 lbs.
 RED EPDs: BW: +0.0 22% WW: +54 21% YW: +86 21% Milk: +15 20% TM: +42
 Stay: +8 5% HP: +8 P CE: +0.5 20% MCE: +2.4 19%
 CARCASS: REA: -0.27 13% Marb: +0.47 15% Fat: -0.010 27% Yield: +0.15 18% CW: +22 25%

Calving Ease ★★
 Moderately framed and thick.



Red Crowfoot Kuruba 4179P - Dam of Lot 21



Family Day Sale

24

RED OLE CASH 2A

Male OLEF 2A 1725717 ET April 19 2013

RED PIE ATLANTIC 2204 OSF MAF
RED CORNER CREEK CASH 2R OSF MAF 1290528
 RED NORTHLINE PRINCESS 59L

RED COLE MISTER "E" 9J
 RED PIE BOTEET 899 OSF
 RED NORTHLINE KING 305J
 RED KWS ROCKY PRINCESS 59J

RED BUF CRK DYNAMICS 3820 AMF OSF MAF
RED JAS JEAN 2N 1156343
 RED DIAMOND D JEAN 140L

RED RCN DYNAMO 732 OSF MAF
 RED BUF CRK PRIMROSE 3150 OSF
 RED LMAN KING ROB 8621 OSF MAF
 RED ROSS JEAN 40H

BW: 70 lbs.
 RED EPDs: BW: +0.9 24% WW: +72 22% YW: +106 22% Milk: +10 21% TM: +46
 Stay: +11 12% HP: +7 7% CE: -0.9 21% MCE: -0.8 21%
 CARCASS: REA: +0.39 16% Marb: -0.02 12% Fat: +0.020 29% Yield: +0.06 19% CW: +34 25%
 Calving Ease ★★

25

RED OLE CASH 49A

Male OLEF 49A 1755304 ET April 19 2013

RED PIE ATLANTIC 2204 OSF MAF
RED CORNER CREEK CASH 2R OSF MAF 1290528
 RED NORTHLINE PRINCESS 59L

RED COLE MISTER "E" 9J
 RED PIE BOTEET 899 OSF
 RED NORTHLINE KING 305J
 RED KWS ROCKY PRINCESS 59J

RED BUF CRK DYNAMICS 3820 AMF OSF MAF
RED JAS JEAN 2N 1156343
 RED DIAMOND D JEAN 140L

RED RCN DYNAMO 732 OSF MAF
 RED BUF CRK PRIMROSE 3150 OSF
 RED LMAN KING ROB 8621 OSF MAF
 RED ROSS JEAN 40H

BW: 92 lbs.
 RED EPDs: BW: +0.9 24% WW: +72 22% YW: +106 22% Milk: +10 21% TM: +46
 Stay: +11 12% HP: +7 7% CE: -0.9 21% MCE: -0.8 21%
 CARCASS: REA: +0.37 16% Marb: -0.07 17% Fat: +0.020 29% Yield: +0.07 19% CW: +34 25%
 Calving Ease ★★

26

RED OLE CASH 43A

Male OLEF 43A 1725753 ET May 02 2013

RED PIE ATLANTIC 2204 OSF MAF
RED CORNER CREEK CASH 2R OSF MAF 1290528
 RED NORTHLINE PRINCESS 59L

RED COLE MISTER "E" 9J
 RED PIE BOTEET 899 OSF
 RED NORTHLINE KING 305J
 RED KWS ROCKY PRINCESS 59J

RED BUF CRK DYNAMICS 3820 AMF OSF MAF
RED JAS JEAN 2N 1156343
 RED DIAMOND D JEAN 140L

RED RCN DYNAMO 732 OSF MAF
 RED BUF CRK PRIMROSE 3150 OSF
 RED LMAN KING ROB 8621 OSF MAF
 RED ROSS JEAN 40H

BW: 114 lbs.
 RED EPDs: BW: +0.9 24% WW: +72 22% YW: +106 22% Milk: +10 21% TM: +46
 Stay: +11 12% HP: +7 7% CE: -0.9 21% MCE: -0.8 21%
 CARCASS: REA: +0.40 16% Marb: -0.02 12% Fat: +0.020 29% Yield: +0.06 19% CW: +34 25%
 Calving Ease ★

27

RED OLE ZAMA PINE 24A

Male OLEF 24A 1725736 ET April 27 2013

RED SSS ZAMA PINE 37S
RED GEIS ZAMA PINE 190'97 888254
 RED KC LOIS 48S

RED PINE MEADOW 14P
 RED SSS DYAMA 503M
 RED PREMIER PATRIOT 16
 RED LINE LOIS 48P

RED BAR-V DISCOVERER 6Z
RED PINOLA OF CO 3B 754834
 RED TOP PINOLA 21Z

RED MAYBRIDGE SIR AMAZON 19W
 RED MISS ROBERTA 6S
 RED ROYAL CHINOOK 53W
 RED TOP PINOLA 36X

BW: 86 lbs.
 RED EPDs: BW: -0.6 22% WW: +33 21% YW: +38 21% Milk: +10 21% TM: +26
 Stay: +8 23% HP: +9 8% CE: -0.3 21% MCE: +2.5 21%
 CARCASS: REA: -0.07 7% Marb: +0.19 7% Fat: -0.010 9% Yield: -0.04 10% CW: -8 25%
 Calving Ease ★★



Red Corner Creek Cash 2R

28

RED OLE IMAGE 13A

Male OLEF 13A 1725726 ET April 25 2013

RED WIL-SEL NEW TREND 43L
RED TGA NEW TREND 4162P 1308945
 RED TGA MISS CHIEF 608F

RED BRYLOR NEW TREND 22D OSF MAF
 RED WIL-SEL MISS REDFORD 11E
 RED LMAN ROBIN HOOD 1174B OSF
 RED FLYING K MS CHIEF 62D

RED GEIS PRIME RIB 411 OSF
RED DWAJO SUPERIOR 4H OSF 935140
 RED BRETON SUPERIOR 39F

RED PREMIER PATRIOT 16
 RED GEIS KURUBA 5'92
 RED BRETON TOP 12C
 RED MC DOUGALL SUPERIOR 15W

BW: 86 lbs.
 RED EPDs: BW: +0.3 26% WW: +55 25% YW: +95 25% Milk: +18 24% TM: +45
 Stay: +8 22% HP: +11 14% CE: +1.6 25% MCE: +5.0 24%
 CARCASS: REA: +0.16 15% Marb: +0.38 11% Fat: -0.010 29% Yield: +0.04 19% CW: +28 25%
 Calving Ease ★★

29

RED OLE FLYIN DOUBLE 197A

Male OLEF 197A 1739095 May 20 2013

RED 5L DOUBLE BLAZE 1134-8576 OSF MAF
RED 5L FLYIN DOUBLE 185-246X 1616867
 RED 5L FIREFLY X 1513-185

RED 5L BLAZIN TIME 982-5044 OSF MAF
 RED 5L TESS 5166-1134 OSF
 RED 5L NORSEMAN KING 2291 OSF MAF
 RED 5L FIREFLY X874-1513

RED CROWFOOT OLE'S OSCAR 2042M AMF CAF NHF OSF MAF
RED OLE PIEBIRD 154X 1549629
 RED OLE PIEBIRD 95U OSF

RED MLK CRK CUB 722 OSF MAF
 RED CROWFOOT OMEGA 9179J
 RED 5L FOREVER GRAND 5834 OSC MAF
 RED OLSON PIEBIRD 21N

BW: 75 lbs.
 RED EPDs: BW: -2.9 32% WW: +59 28% YW: +92 29% Milk: +24 17% TM: +53
 Stay: +12 0% HP: +7 P CE: +4.9 14% MCE: +5.5 12%
 CARCASS: REA: +0.30 15% Marb: +0.40 5% Fat: +0.020 29% Yield: +0.04 19% CW: +21 25%
 Calving Ease ★★★★★

197A is a favourite with visitors. Long spine and very stylish 197A is every bit as good as his EPDs! 197A indexed 130 at weaning and his dam has a lifetime weaning index of 120.

30

RED OLE FLYIN DOUBLE 174A

Male OLEF 174A 1731869 May 13 2013

RED 5L DOUBLE BLAZE 1134-8576 OSF MAF
RED 5L FLYIN DOUBLE 185-246X 1616867
 RED 5L FIREFLY X 1513-185

RED 5L BLAZIN TIME 982-5044 OSF MAF
 RED 5L TESS 5166-1134 OSF
 RED 5L NORSEMAN KING 2291 OSF MAF
 RED 5L FIREFLY X874-1513

RED CROWFOOT OLE'S OSCAR 2042M AMF CAF NHF OSF MAF
RED OLE FLOWER 67X 1549555
 RED VIKSE FLOWER 221U

RED MLK CRK CUB 722 OSF MAF
 RED CROWFOOT OMEGA 9179J
 RED EGGEN SMASH 110S
 RED EGGEN NEW TREND MISS 142R

BW: 69 lbs.
 RED EPDs: BW: -3.0 32% WW: +62 27% YW: +100 26% Milk: +20 17% TM: +51
 Stay: +13 0% HP: +8 P CE: +6.2 14% MCE: +5.9 12%
 CARCASS: REA: +0.26 14% Marb: +0.47 15% Fat: +0.020 28% Yield: +0.07 18% CW: +25 25%
 Calving Ease ★★★★★

174A is a great curve bender from low birth weight to high growth numbers. 174A himself indexed 121 at weaning and his dam has a lifetime weaning index of 107.

You don't know how much you don't know until you learn it - Kelly



Family Day Sale

31 RED OLE FLYIN DOUBLE 208A

Male OLEF 208A 1739100 May 23 2013

RED 5L DOUBLE BLAZE 1134-8576 OSF MAF
RED 5L FLYIN DOUBLE 185-246X 1616867
 RED 5L FIREFLY Y X 1513-185

RED 5L BLAZIN TIME 982-5044 OSF MAF
 RED 5L TESS 5166-1134 OSF
 RED 5L NORSEMAN KING 2291 OSF MAF
 RED 5L FIREFLY X874-1513

RED OLE SMASH 115S
RED OLE DALLES 133X 1583079
 RED OLEF 194S

RED LAZY MC SMASH 41N OSF
 CROWFOOT 3132N
 RED LAZY MC SMASH 41N OSF
 RED CROWFOOT 3477N

BW: 77 lbs.
 RED EPDs: BW: -2.5 32% WW: +59 28% YW: +90 29% Milk: +23 17% TM: +52
 Stay: +14 0% HP: +7 P CE: +6.1 13% MCE: +2.2 13%
 CARCASS: REA: +0.05 13% Marb: +0.41 5% Fat: +0.000 28% Yield: +0.07 18% CW: +20 25%

Calving Ease ★★★
 208A has weaning index of 119 and dams lifetime weaning index of 109.

32 RED OLE FLYIN DOUBLE 237A

Male OLEF 237A 1739108 May 30 2013 *ses

RED 5L DOUBLE BLAZE 1134-8576 OSF MAF
RED 5L FLYIN DOUBLE 185-246X 1616867
 RED 5L FIREFLY Y X 1513-185

RED 5L BLAZIN TIME 982-5044 OSF MAF
 RED 5L TESS 5166-1134 OSF
 RED 5L NORSEMAN KING 2291 OSF MAF
 RED 5L FIREFLY X874-1513

MH MAGUA 27 AMF
RED OLE VERNICE 26X 1549525
 RED OLE VERNICE 110U

O C C HOMER 650H DMF CAF DDF
 M H RODA LASS 033
 RED YY HITCH 514R
 RED CROWFOOT WJ 493K

BW: 67 lbs.
 RED EPDs: BW: -4.3 32% WW: +51 28% YW: +81 29% Milk: +21 17% TM: +46
 Stay: +14 0% HP: +8 P CE: +8.0 13% MCE: +3.1 12%
 CARCASS: REA: +0.34 14% Marb: +0.38 16% Fat: +0.040 29% Yield: +0.04 19% CW: +12 25%

Calving Ease ★★★★★
 237A weaning index of 109.

33 RED OLE FLYIN DOUBLE 162A

Male OLEF 162A 1732037 May 11 2013

RED 5L DOUBLE BLAZE 1134-8576 OSF MAF
RED 5L FLYIN DOUBLE 185-246X 1616867
 RED 5L FIREFLY Y X 1513-185

RED 5L BLAZIN TIME 982-5044 OSF MAF
 RED 5L TESS 5166-1134 OSF
 RED 5L NORSEMAN KING 2291 OSF MAF
 RED 5L FIREFLY X874-1513

RED 5L CROSSBOW 1173-44V
RED OLE BRNDINA 287X 1580007
 RED OLE BRNDINA 68S

RED 5L CROSSFIRE 1894-5666 OSF MAF
 RED 5L SILKWOOD 9161-1173 OSF
 CROWFOOT 4232P
 RED CROWFOOT BRNDINA 4311P

BW: 70 lbs.
 RED EPDs: BW: -2.9 32% WW: +54 28% YW: +88 29% Milk: +25 17% TM: +52
 Stay: +15 0% HP: +10 P CE: +7.1 14% MCE: +5.7 13%
 CARCASS: REA: +0.32 13% Marb: +0.59 15% Fat: +0.020 28% Yield: +0.02 18% CW: +18 25%

Calving Ease ★★★★★
 162A dam weaning index is 112 lifetime.

34 RED OLE FLYIN DOUBLE 352A

Male OLEF 352A 1826833 May 11 2013

RED 5L DOUBLE BLAZE 1134-8576 OSF MAF
RED 5L FLYIN DOUBLE 185-246X 1616867
 RED 5L FIREFLY Y X 1513-185

RED 5L BLAZIN TIME 982-5044 OSF MAF
 RED 5L TESS 5166-1134 OSF
 RED 5L NORSEMAN KING 2291 OSF MAF
 RED 5L FIREFLY X874-1513

RED YY NORSEMAN 791T
RED OLE STAR 384X 1643189
 RED VIKSE STAR 142U

RED 5L NORSEMAN KING 2291 OSF MAF
 CROWFOOT MERLE 4721P
 RED SIX MILE SMOKIN JO 810S
 RED EGGEN CUB MISS 14N

BW: 87 lbs.
 RED EPDs: BW: -1.4 P WW: +54 P YW: +86 P Milk: +19 P TM: +46
 Stay: +11 P CE: +3.4 P MCE: +3.7 P
 CARCASS: REA: +0.29 P Marb: +0.45 P Fat: +0.010 P Yield: +0.01 P CW: +20 P

Calving Ease ★★★



Lot 35 - Red Ole Marshal 123A

35 RED OLE MARSHAL 123A

Male OLEF 123A 1722150 May 07 2013

RED MLK CRK CUB 722 OSF MAF
RED CROWFOOT OLE'S OSCAR 2042M AMF CAF NHF OSF MAF 1096384
 RED CROWFOOT OMEGA 9179J

RED GLACIER CUB 446 OSF MAF
 RED MLK CRK LAKOTA 152-HOBO OSF
 RED PRICE 631 AMF OSF
 RED OMEGA 7456'

RED WILD ROSE BAR-NONE 179G
RED SMOKY LANA 16S 1351872
 RED BAZE LANA 26J

RED SSS BAR-NONE 313D
 RED WILD ROSE REBELLO 42E
 RED TASSEL NONE BETTER 69F
 RED BAZE LANA 24Z

BW: 81 lbs.
 RED EPDs: BW: -2.9 34% WW: +58 30% YW: +82 32% Milk: +7 24% TM: +36
 Stay: +6 20% HP: +6 12% CE: +4.9 21% MCE: +12.2 20%
 CARCASS: REA: +0.14 20% Marb: +0.72 22% Fat: +0.030 32% Yield: +0.09 22% CW: +14 25%

Calving Ease ★★★★★
 123A is a large framed, heavy muscled son of Ole Oscar. Having indexed 133 at weaning, expect his offspring to push down the scales while maintaining quality females. If you are looking to get some Ole Oscar into your herd here is your chance to get a great one.

36 RED OLE ADMERAL 19A

Male OLEF 19A 1725732 ET April 25 2013

RED MLK CRK CUB 722 OSF MAF
RED CROWFOOT OLE'S OSCAR 2042M AMF CAF NHF OSF MAF 1096384
 RED CROWFOOT OMEGA 9179J

RED GLACIER CUB 446 OSF MAF
 RED MLK CRK LAKOTA 152-HOBO OSF
 RED PRICE 631 AMF OSF
 RED OMEGA 7456'

BASIN EXPEDITION K47
RED CROWFOOT 3132N 1152052
 RED CFCC 104K

GARDENS EXPEDITION AMF CAF NHF DDF
 BASIN PRIMROSE LADY 296E
 RED CROWFOOT CHIEFTON 812H
 RED CROWFOOT JESSIE 654F

BW: 70 lbs.
 RED EPDs: BW: -2.8 25% WW: +50 25% YW: +82 25% Milk: +23 25% TM: +48
 Stay: +9 27% HP: +6 12% CE: +4.1 24% MCE: +9.8 24%
 CARCASS: REA: +0.08 22% Marb: +0.69 16% Fat: +0.020 33% Yield: +0.09 23% CW: +15 25%

Calving Ease ★★★
 19A is out of one of our very best black red carrier dams. A maternal brother to Red Ole Smash 115S and Red Ole Indeed 600Y, both successful herd bulls, 19A is as impressive as his brothers, having similar style and muscle.



Red Crowfoot Ole's Oscar 2042M



Family Day Sale

37

RED OLE THE KRAKEN 470A

Male OLEF 470A 1748984 May 31 2013

SINCLAIR EVERLAST 6R107
OLE EVERLAST 131W 1492913
 RED CROWFOOT BRNDINA 6129F

R R RITO 707 AMF CAF NHF DDF
 N BAR QUEEN MOTHER 9955F
 RED GLACIER LOGAN OSF MAF
 RED SSS BRNDINA 333X

RED CROWFOOT OLE'S OSCAR 2042M AMF CAF NHF OSF MAF
OLE ZARA 91S 1318518
 OLSON ZARA 4N

RED MLK CRK CUB 722 OSF MAF
 RED CROWFOOT OMEGA 9179J
 RED PAT 8207
 CROWFOOT B ZARA 903

BW: 103 lbs.
 RED EPDs: BW: +2.9 32% WW: +52 27% YW: +83 29% Milk: +22 19% TM: +48
 Stay: +12 0% HP: +8 P CE: -4.0 13% MCE: +7.9 12%

CARCASS: REA: +0.01 16% Marb: +0.65 18% Fat: +0.010 30% Yield: +0.12 20% CW: +24 25%

Calving Ease ★

38

OLE EMBLAZON 445A

Male OLEF 445A 1763396 May 22 2013

O C C EMBLAZON 854E DMF AMF CAF NHF OSF DDF
DDA EMBLAZON 27C AMF CAF NHF DDF **1363305**
 D D A MELISA 824

D H D TRAVELER 6807 AMF NHF
 DIXIE ERICA OF C H 1019
 SHOSHONE 130-6357
 D D A MELISA 545

CONNEALY FREIGHTLINER AMF CAF NHF DDF
OLE CHLOE 79U 1461703
 OLE CHLOE 18R

BON VIEW BANDO 598 AMF CAC DDF
 JOANA ERICA OF CONANGA
 O C G MAGNUM 749M
 GLADWALL B CHLOE 7214

BW: 97 lbs.
 BLK EPDs: BW: +3.1 37% WW: +48 28% YW: +77 27% Milk: +17 21% TM: +41
 SC: +1.16 35% CE: -1.0 26% MCE: +4.0 16%

CARCASS: REA: +0.08 19% Marb: +0.52 18% Fat: +0.038 16% CW: +21 13%

Calving Ease ★★

445A with a weaning index of 121, 445A will add a considerable amount of growth. His dam Chloe is an outstanding cow with a lifetime production record of 107 index. 445A has lots of added spine and more growth than most 27C's.

39

OLE EMBLAZON 398A

Male OLEF 398A 1726031 May 15 2013

O C C EMBLAZON 854E DMF AMF CAF NHF OSF DDF
DDA EMBLAZON 27C AMF CAF NHF DDF **1363305**
 D D A MELISA 824

D H D TRAVELER 6807 AMF NHF
 DIXIE ERICA OF C H 1019
 SHOSHONE 130-6357
 D D A MELISA 545

CONNEALY FREIGHTLINER AMF CAF NHF DDF
OLE CH BIRD 90T 1418899
 CROWFOOT CH BIRD 1618L

BON VIEW BANDO 598 AMF CAC DDF
 JOANA ERICA OF CONANGA
 C&D 455 ROCKETT
 C H BLACKBIRD 9777

BW: 83 lbs.
 BLK EPDs: BW: +1.3 P WW: +41 P YW: +64 P Milk: +20 P TM: +40
 CE: +5.5 P MCE: +8.5 P

CARCASS: CW: +11 25%

Calving Ease ★★★

398A dam weaning index is 107 lifetime.

40

OLE EMBLAZON 389A

Male OLEF 389A 1726022 May 15 2013 *ses

O C C EMBLAZON 854E DMF AMF CAF NHF OSF DDF
DDA EMBLAZON 27C AMF CAF NHF DDF **1363305**
 D D A MELISA 824

D H D TRAVELER 6807 AMF NHF
 DIXIE ERICA OF C H 1019
 SHOSHONE 130-6357
 D D A MELISA 545

SITZ ALLIANCE 6595 DMF AMF CAF NHF DDF
OLE ROSE 88S 1318516
 CROWFOOT 3773N

SITZ TRAVELER 8180 AMF CAF NHF DDF
 SITZ BARBARAMERE JET 2698
 BASIN EXPEDITION K47
 CROWFOOT ROSE OF L 9361

BW: 76 lbs.
 BLK EPDs: BW: +1.3 37% WW: +34 28% YW: +61 27% Milk: +20 22% TM: +37
 SC: +0.58 36% CE: +5.0 26% MCE: +8.0 16%

CARCASS: REA: -0.19 19% Marb: +0.37 19% Fat: +0.045 17% CW: +9 13%

Calving Ease ★★★

389A is the result of the mating of 27C and Alliance, which has worked very well. You will see a lot of this combination in our program.



Lot 38 - Ole Emblazon 445A

41

OLE EMBLAZON 468A

Male OLEF 468A 1750066 May 31 2013

O C C EMBLAZON 854E DMF AMF CAF NHF OSF DDF
DDA EMBLAZON 27C AMF CAF NHF DDF **1363305**
 D D A MELISA 824

D H D TRAVELER 6807 AMF NHF
 DIXIE ERICA OF C H 1019
 SHOSHONE 130-6357
 D D A MELISA 545

CROWFOOT MAX 1743L
OLE EXPLOSION 59S 1318495
 OLSON 31P

BASIN MAX 104J AMF CAF NHF
 GLADWALL LOVEMERE PET 8132
 SITZ ALLIANCE 6595 DMF AMF CAF NHF DDF
 C H EXPLOSION 9262 270

BW: 88 lbs.
 BLK EPDs: BW: +2.2 37% WW: +38 28% YW: +62 26% Milk: +17 21% TM: +36
 SC: +0.12 36% CE: +1.0 26% MCE: +6.0 16%

CARCASS: REA: +0.02 17% Marb: +0.35 17% Fat: +0.029 15% CW: +11 11%

Calving Ease ★★

42

OLE EMBLAZON 372A

Male OLEF 372A 1722243 May 14 2013

O C C EMBLAZON 854E DMF AMF CAF NHF OSF DDF
DDA EMBLAZON 27C AMF CAF NHF DDF **1363305**
 D D A MELISA 824

D H D TRAVELER 6807 AMF NHF
 DIXIE ERICA OF C H 1019
 SHOSHONE 130-6357
 D D A MELISA 545

REMITALL PARAMOUNT 150P
KBJ ELOQUENT LADY 443U 1448570
 KBJ ELOQUENT LADY 311E

F A R KRUGERRAND 410H AMF CAF NHF DDF
 REMITALL NEONIA 42J
 CRESCENT CREEK MAXIMUM 37C
 KBJ ELOQUENT LADY 10B

BW: 76 lbs.
 BLK EPDs: BW: +1.5 37% WW: +42 28% YW: +67 25% Milk: +15 20% TM: +36
 SC: +0.43 35% CE: +4.0 24% MCE: +6.0 15%

CARCASS: REA: +0.03 16% Marb: +0.01 17% Fat: +0.018 14% CW: +13 10%

Calving Ease ★★★



Ole Explosion 59S - Dam of Lot 41



Family Day Sale

43

OLE EMBLAZON 452A

Male OLEF 452A 1763415 May 24 2013

O C C EMBLAZON 854E DMF AMF CAF NHF OSF DDF
DDA EMBLAZON 27C AMF CAF NHF DDF **1363305**
 D D A MELISA 824

D H D TRAVELER 6807 AMF NHF
 DIXIE ERICA OF C H 1019
 SHOSHONE 130-6357
 D D A MELISA 545

CROWFOOT EQUATION 5793R
CHAPMAN G PRIDE 8051U 1468650
 CHAPMAN PRIDE 433P

O C C LEGACY 839L
 CROWFOOT FORKS 755K
 O C C GLORY 950G
 BARB WALL G PRIDE 539

BW: 87 lbs.

BLK EPDs: BW: +3.0 37% WW: +36 28% YW: +65 26% Milk: +20 21% TM: +38
 SC: +0.54 35% CE: -1.0 24% MCE: +2.0 16%

CARCASS: REA: +0.24 16% Fat: +0.025 14% CW: +14 10%

Calving Ease ★★

452A dam weaning index is 105 lifetime.

44

OLE EMBLAZON 441A

Male OLEF 441A 1763395 May 21 2013

O C C EMBLAZON 854E DMF AMF CAF NHF OSF DDF
DDA EMBLAZON 27C AMF CAF NHF DDF **1363305**
 D D A MELISA 824

D H D TRAVELER 6807 AMF NHF
 DIXIE ERICA OF C H 1019
 SHOSHONE 130-6357
 D D A MELISA 545

O C C MOONSHINE 740M
CHAPMAN ZARA BAND 8046U 1493471
 GLADWALL B ZARA BAND 6355

O C C JUST RIGHT 619J DDF
 O C C DIXIE ERICA 816B
 TOMWALL B EMULATION 070
 BAR B ZARA BAND 1987

BW: 76 lbs.

BLK EPDs: BW: -0.2 37% WW: +35 28% YW: +56 26% Milk: +17 21% TM: +35
 SC: -0.01 35% CE: +7.0 25% MCE: +7.0 15%

CARCASS: REA: +0.16 17% Fat: +0.010 15% CW: +4 11%

Calving Ease ★★★★★

441A individual weaning index of 114 and dam weaning index is 107 lifetime.

45

OLE EMBLAZON 409A

Male OLEF 409A 1726047 May 16 2013

O C C EMBLAZON 854E DMF AMF CAF NHF OSF DDF
DDA EMBLAZON 27C AMF CAF NHF DDF **1363305**
 D D A MELISA 824

D H D TRAVELER 6807 AMF NHF
 DIXIE ERICA OF C H 1019
 SHOSHONE 130-6357
 D D A MELISA 545

WHITNEY CREEK MAXIMUS 24
OLE KARUBA 77S 1318509
 CROWFOOT KARUBA 4650P

BASIN MAX 602C AMF CAF NHF DDF
 RYGS PAIGES QUEEN 423
 O C C MOONSHINE 740M
 RED CROWFOOT WJ KURUBA 9102J

BW: 80 lbs.

BLK EPDs: BW: +0.2 37% WW: +38 28% YW: +65 26% Milk: +15 21% TM: +34
 SC: -0.04 35% CE: +6.0 25% MCE: +8.0 16%

CARCASS: REA: +0.16 17% Marb: +0.30 17% Fat: +0.021 15% CW: +10 11%

Calving Ease ★★★

409A individual weaning index of 109.

46

OLE EMBLAZON 421A

Male OLEF 421A 1726071 May 18 2013

O C C EMBLAZON 854E DMF AMF CAF NHF OSF DDF
DDA EMBLAZON 27C AMF CAF NHF DDF **1363305**
 D D A MELISA 824

D H D TRAVELER 6807 AMF NHF
 DIXIE ERICA OF C H 1019
 SHOSHONE 130-6357
 D D A MELISA 545

SITZ ALLIANCE 6595 DMF AMF CAF NHF DDF
OLE MERLE 91W 1492881
 CROWFOOT WJ MERLE 1438L

SITZ TRAVELER 8180 AMF CAF NHF DDF
 SITZ BARBARAMERE JET 2698
 TOMWALL GDAR ROYCE 916
 C H MERLE 8233

BW: 88 lbs.

BLK EPDs: BW: +3.4 37% WW: +43 28% YW: +72 27% Milk: +23 20% TM: +45
 SC: +1.01 36% CE: +0.0 25% MCE: +4.0 15%

CARCASS: REA: +0.11 19% Marb: +0.36 19% Fat: +0.047 17% CW: +19 13%

Calving Ease ★★

421A individual weaning index of 116 and dam weaning index is 116 lifetime.



DDA Emblazon 27C

47

OLE EMBLAZON 422A

Male OLEF 422A 1726072 May 18 2013

O C C EMBLAZON 854E DMF AMF CAF NHF OSF DDF
DDA EMBLAZON 27C AMF CAF NHF DDF **1363305**
 D D A MELISA 824

D H D TRAVELER 6807 AMF NHF
 DIXIE ERICA OF C H 1019
 SHOSHONE 130-6357
 D D A MELISA 545

SITZ ALLIANCE 6595 DMF AMF CAF NHF DDF
OLE PINTOP136T 1420407
 CROWFOOT PINTOP 4938P

SITZ TRAVELER 8180 AMF CAF NHF DDF
 SITZ BARBARAMERE JET 2698
 SITZ ALLIANCE 9160
 GLADWALL PINTOP 7105

BW: 75 lbs.

BLK EPDs: BW: +0.9 37% WW: +29 28% YW: +53 27% Milk: +21 21% TM: +36
 SC: +0.43 36% CE: +7.0 26% MCE: +11.0 16%

CARCASS: REA: +0.10 19% Marb: +0.31 P Fat: +0.045 17% CW: +4 13%

Calving Ease ★★★

48

OLE EMBLAZON 363A

Male OLEF 363A 1722222 May 12 2013 *ses

O C C EMBLAZON 854E DMF AMF CAF NHF OSF DDF
DDA EMBLAZON 27C AMF CAF NHF DDF **1363305**
 D D A MELISA 824

D H D TRAVELER 6807 AMF NHF
 DIXIE ERICA OF C H 1019
 SHOSHONE 130-6357
 D D A MELISA 545

SITZ ALLIANCE 6595 DMF AMF CAF NHF DDF
OLEF 216S 1352475
 WINDOVER EDELLA 2G

SITZ TRAVELER 8180 AMF CAF NHF DDF
 SITZ BARBARAMERE JET 2698
 HARMON MATRIX 4051
 WINDOVER EDELLA 62E

BW: 69 lbs.

BLK EPDs: BW: -1.3 37% WW: +43 28% YW: +64 26% Milk: +17 21% TM: +39
 SC: +0.64 36% CE: +10.0 25% MCE: +12.0 15%

CARCASS: REA: +0.13 19% Marb: +0.19 18% Fat: +0.037 16% CW: +7 13%

Calving Ease ★★★★★

49

OLE EMBLAZON 423A

Male OLEF 423A 1726073 May 18 2013

O C C EMBLAZON 854E DMF AMF CAF NHF OSF DDF
DDA EMBLAZON 27C AMF CAF NHF DDF **1363305**
 D D A MELISA 824

D H D TRAVELER 6807 AMF NHF
 DIXIE ERICA OF C H 1019
 SHOSHONE 130-6357
 D D A MELISA 545

SITZ ALLIANCE 9160
CROWFOOT PINTOP 4938P 1208065
 GLADWALL PINTOP 7105

SITZ ALLIANCE 6595 DMF AMF CAF NHF DDF
 SITZ BLACKCAP EFFIE 4088
 D V PRIDES COMMODORE
 GLADWALL PINTOP 612

BW: 79 lbs.

BLK EPDs: BW: +1.4 38% WW: +35 28% YW: +61 27% Milk: +18 22% TM: +36
 SC: +1.07 36% CE: +5.0 25% MCE: +10.0 16%

CARCASS: REA: +0.06 17% Marb: +0.20 17% Fat: +0.029 15% CW: +9 11%

Calving Ease ★★★

50

OLE EMBLAZON 345A

Male OLEF 345A 1722201 May 11 2013

O C C EMBLAZON 854E DMF AMF CAF NHF OSF DDF
DDA EMBLAZON 27C AMF CAF NHF DDF **1363305**
 D D A MELISA 824

D H D TRAVELER 6807 AMF NHF
 DIXIE ERICA OF C H 1019
 SHOSHONE 130-6357
 D D A MELISA 545

OLE LEGACY 180T
OLE ROSETTE 202W 1533858
 CFCC 181K

O C C LEGACY 839L
 CROWFOOT WJ MERLE 1438L
 STEVENSON ROYCE 741C CAF NHF DDF
 RED CROWFOOT ROSETTE 719G

BW: 88 lbs.
 BLK EPDs: BW: +3.5 36% WW: +37 27% YW: +61 26% Milk: +21 19% TM: +40
 SC: +0.60 35% CE: -1.0 24% MCE: +1.0 15%
 CARCASS: REA: +0.00 P% Marb: +0.10 P Fat: +0.020 P CW: +12 25%

Calving Ease ★★
 345A individual weaning index of 105 and dam weaning index is 112 lifetime.

51

OLE EMBLAZON 419A

Male OLEF 419A 1726069 EE May 18 2013

O C C EMBLAZON 854E DMF AMF CAF NHF OSF DDF
DDA EMBLAZON 27C AMF CAF NHF DDF **1363305**
 D D A MELISA 824

D H D TRAVELER 6807 AMF NHF
 DIXIE ERICA OF C H 1019
 SHOSHONE 130-6357
 D D A MELISA 545

BASIN EXT H695 OSF
OLE RC MISSING 290R 1352547
 RED CROWFOOT SCYNTHIA 9139J

N BAR EMULATION EXT AMF CAF NHF DDF
 RED BASIN ROSE F521 OSF
 RED TK POUNDMAKER 69Z
 RED CROWFOOT SCYNTHIA 535E

BW: 85 lbs.
 BLK EPDs: BW: +1.4 36% WW: +40 26% YW: +63 25% Milk: +17 20% TM: +37
 SC: +0.08 34% CE: +3.0 23% MCE: +6.0 14%
 CARCASS: REA: +0.02 16% Marb: +0.16 16% Fat: +0.018 14% CW: +10 10%

Calving Ease ★★
 Dam weaning index is 105 lifetime.

52

OLE PAYOFF 638A

Male OLEF 638A 1726051 May 16 2013

C A FUTURE DIRECTION 5321 AMC CAF NHC DDF
STANDARD HILL PAYOFF 20P AMF NHF **1240477**
 STANDARD HILL QUEEN MOTHER 13M

G A R PRECISION 1680 AMC NHC
 C A MISS POWER FIX 308 AMF
 R P 3RD BUSHWACKER
 STANDARD HILL QUEEN MOTHER 47J

OLE RITO LEGACY 9U
OLE ROSE OF L 749Y 1638528
 OLE ROSE OF L 177W

SINCLAIR RITO LEGACY 3R9 AMF CAF DDF
 OLE PRIME 16S
 SINCLAIR EVERLAST 6R107
 OLE ROSE OF L 61R

BW: 64 lbs.
 BLK EPDs: BW: -1.5 35% WW: +35 26% YW: +60 23% Milk: +26 16% TM: +44
 SC: +0.46 34% CE: +12.0 29% MCE: +13.0 13%
 CARCASS: REA: +0.13 17% Marb: +0.24 16% Fat: +0.014 13% CW: +4 10%

Calving Ease ★★★★★
 638A has an exceptional phenotype with excellent style! 3 generations of calving ease! Individual weaning index of 115.

53

OLE PAYOFF 646A

Male OLEF 646A 1726064 May 17 2013 *ses

C A FUTURE DIRECTION 5321 AMC CAF NHC DDF
STANDARD HILL PAYOFF 20P AMF NHF **1240477**
 STANDARD HILL QUEEN MOTHER 13M

G A R PRECISION 1680 AMC NHC
 C A MISS POWER FIX 308 AMF
 R P 3RD BUSHWACKER
 STANDARD HILL QUEEN MOTHER 47J

SINCLAIR EVERLAST 6R107
OLE EOLA 303Y 1638286
 CHAPMAN EOLA 8073U

R R RITO 707 AMF CAF NHF DDF
 N BAR QUEEN MOTHER 9955F
 CROWFOOT EQUATION 5793R
 GLADWALL EOLA 8125

BW: 68 lbs.
 BLK EPDs: BW: -0.7 35% WW: +38 26% YW: +61 24% Milk: +28 17% TM: +47
 SC: +0.74 34% CE: +10.0 27% MCE: +11.0 13%
 CARCASS: REA: +0.22 17% Fat: +0.014 13% CW: +6 10%

Calving Ease ★★★★★
 Muscle and calving ease here.



Standard Hill Payoff 20P

54

OLE PAYOFF 670A

Male OLEF 670A 1726093 May 21 2013

C A FUTURE DIRECTION 5321 AMC CAF NHC DDF
STANDARD HILL PAYOFF 20P AMF NHF **1240477**
 STANDARD HILL QUEEN MOTHER 13M

G A R PRECISION 1680 AMC NHC
 C A MISS POWER FIX 308 AMF
 R P 3RD BUSHWACKER
 STANDARD HILL QUEEN MOTHER 47J

SINCLAIR EVERLAST 6R107
OLE QUEENETTE 405Y 1638558
 OLE QUEENETTE 43U

R R RITO 707 AMF CAF NHF DDF
 N BAR QUEEN MOTHER 9955F
 K C F BENNETT TOTAL AMF CAF NHF DDF
 CATFISH QUEENETTE BANDO 3M

BW: 66 lbs.
 BLK EPDs: BW: -0.5 36% WW: +36 26% YW: +59 24% Milk: +23 17% TM: +41
 SC: -0.16 34% CE: +11.0 27% MCE: +13.0 14%
 CARCASS: REA: +0.19 18% Fat: +0.013 14% CW: +5 10%

Calving Ease ★★★★★
 670A individual weaning index of 111.

55

OLE PAYOFF 689A

Male OLEF 689A 1726102 May 25 2013

C A FUTURE DIRECTION 5321 AMC CAF NHC DDF
STANDARD HILL PAYOFF 20P AMF NHF **1240477**
 STANDARD HILL QUEEN MOTHER 13M

G A R PRECISION 1680 AMC NHC
 C A MISS POWER FIX 308 AMF
 R P 3RD BUSHWACKER
 STANDARD HILL QUEEN MOTHER 47J

SINCLAIR RITO LEGACY 3R9 AMF CAF DDF
OLE CH BIRD 381Y 1638487
 CROWFOOT CH BIRD 1618L

R R RITO 707 AMF CAF NHF DDF
 IDEAL 4465 OF 6807 4286 AMF NHF
 C&D 455 ROCKETT
 C H BLACKBIRD 9777

BW: 64 lbs.
 BLK EPDs: BW: -1.3 36% WW: +33 27% YW: +56 25% Milk: +27 18% TM: +44
 SC: +0.35 35% CE: +11.0 28% MCE: +12.0 14%
 CARCASS: REA: +0.18 19% Marb: +0.23 17% Fat: +0.005 14% CW: +2 11%

Calving Ease ★★★★★

56

OLE PAYOFF 615A

Male OLEF 615A 1722239 May 13 2013 *ses

C A FUTURE DIRECTION 5321 AMC CAF NHC DDF
STANDARD HILL PAYOFF 20P AMF NHF **1240477**
 STANDARD HILL QUEEN MOTHER 13M

G A R PRECISION 1680 AMC NHC
 C A MISS POWER FIX 308 AMF
 R P 3RD BUSHWACKER
 STANDARD HILL QUEEN MOTHER 47J

CHAPMAN JOKER 8503U
OLE QUEEN BANDO 408Y NHF **1655536**
 CATFISH QUEEN BANDO 3M 06S NHC

CROWFOOT JOKER 6172S
 CROWFOOT REV ERICA 5752R
 ROYAL BANDO DRCC 2123M
 CATFISH QUEEN T510

BW: 81 lbs.
 BLK EPDs: BW: +1.2 35% WW: +31 25% YW: +54 23% Milk: +29 16% TM: +45
 SC: +0.09 33% CE: +7.0 26% MCE: +11.0 12%
 CARCASS: REA: +0.21 16% Fat: +0.002 12% CW: +5 9%

Calving Ease ★★
 615A individual weaning index of 115.

*You can't build a good cow herd by
 buying 1,400 lb. yearling bulls - Kelly*



Family Day Sale

57

RED OLE MOONSHINE 128A

Male OLEF 128A 1722154 May 07 2013

CROWFOOT 6004S
RED CROWFOOT MOONSHINE 8081U AMF CAF NHF OSF MAF 1456117
 RED CROWFOOT BRNDINA 6359S

CROWFOOT MAX 1743L
 CROWFOOT BLACKCAP 4935P
 RED CROWFOOT BIG DADDY 2058M
 RED CROWFOOT BRNDINA 1065L

SHODEREE FORTE 97S
RED SHODEREE SHAWNEE 146U 1443628
 RED SHODEREE SHAWNEE 140N

PAPA FORTE 1921 DMF
 RED BRYLOR ZAMBA 75L
 RED SHODEREE MARIAS 91L
 RED RAFTER IR SHAWNEE 70E

BW: 84 lbs.

RED EPDs: BW: -2.1 34% WW: +57 30% YW: +79 32% Milk: +13 23% TM: +42

Stay: +11 4% HP: +8 P CE: +4.1 19% MCE: +3.9 18%

CARCASS: REA: +0.07 13% Marb: +0.19 6% Fat: +0.00 28% Yield: +0.03 18% CW: +14 25%

Calving Ease ★★★

128A is starting out the Moonshine sons. Stylish, well put together bull. 128A is very deep and growthy.

58

RED OLE MOONSHINE 147A

Male OLEF 147A 1722178 May 09 2013

CROWFOOT 6004S
RED CROWFOOT MOONSHINE 8081U AMF CAF NHF OSF MAF 1456117
 RED CROWFOOT BRNDINA 6359S

CROWFOOT MAX 1743L
 CROWFOOT BLACKCAP 4935P
 RED CROWFOOT BIG DADDY 2058M
 RED CROWFOOT BRNDINA 1065L

RED BRYLOR PKT SENTINEL 88N
RED SMOKY LAKME 297S MAF 1352115
 RED SMOKY LAKME 79M

RED BRYLOR SENSATION 6L
 RED BRYLOR NT BONITA 215L
 RED BLUE SPRUCE PRIME CUT 216J
 RED TASSEL LAKME 117E

BW: 90 lbs.

RED EPDs: BW: -1.0 34% WW: +64 31% YW: +96 32% Milk: +11 24% TM: +43

Stay: +10 5% HP: +10 P CE: +2.6 20% MCE: +4.6 19%

CARCASS: REA: +0.23 14% Marb: +0.10 8% Fat: +0.01 28% Yield: +0.06 18% CW: +25 25%

Calving Ease ★★

147A individual weaning index of 117. Lots of growth with added muscle.

59

RED OLE MOONSHINE 153A

Male OLEF 153A 1722183 May 10 2013

CROWFOOT 6004S
RED CROWFOOT MOONSHINE 8081U AMF CAF NHF OSF MAF 1456117
 RED CROWFOOT BRNDINA 6359S

CROWFOOT MAX 1743L
 CROWFOOT BLACKCAP 4935P
 RED CROWFOOT BIG DADDY 2058M
 RED CROWFOOT BRNDINA 1065L

RED SHOCCO DATA OSF MAF
RED OLE PRINCESS 109W 1492895
 RED OLE PRINCESS 79S

RED SHOCCO SIR ROBIN
 RED VDAR BLACKANA 303
 RED BFCK CHEROKEE CNYN 4912 OSF MAF
 RED CROWFOOT PRINCESS 414D

BW: 86 lbs.

RED EPDs: BW: -1.0 34% WW: +73 30% YW: +104 31% Milk: +7 23% TM: +44

Stay: +14 4% HP: +10 P CE: +2.9 19% MCE: +2.2 19%

CARCASS: REA: +0.62 14% Marb: +0.14 12% Fat: +0.00 29% Yield: -0.08 19% CW: +30 25%

Calving Ease ★★

153A individual weaning index of 106.

60

RED OLE MOONSHINE 155A

Male OLEF 155A 1722185 May 10 2013

CROWFOOT 6004S
RED CROWFOOT MOONSHINE 8081U AMF CAF NHF OSF MAF 1456117
 RED CROWFOOT BRNDINA 6359S

CROWFOOT MAX 1743L
 CROWFOOT BLACKCAP 4935P
 RED CROWFOOT BIG DADDY 2058M
 RED CROWFOOT BRNDINA 1065L

CROWFOOT 4232P
RED OLE BRNDINA 68S 1318502
 RED CROWFOOT BRNDINA 4311P

WHITNEY CREEK MAXIMUS 24
 RED CROWFOOT SHAWNEE 9124J OSF MAF
 RED CROWFOOT OLE'S OSCAR 2042M AMF CAF NHF OSF MAF
 RED CROWFOOT CJ BRNDINA 9213J

BW: 84 lbs.

RED EPDs: BW: -0.7 35% WW: +72 31% YW: +110 33% Milk: +11 25% TM: +47

Stay: +12 6% HP: +8 P CE: +3.0 21% MCE: +6.5 20%

CARCASS: REA: +0.22 14% Marb: +0.19 16% Fat: +0.01 29% Yield: +0.09 19% CW: +34 25%

Calving Ease ★★

There is interesting breeding here with Basin Max 602C, a breed legend on the black side of the ledger and here in a red package. His individual weaning index of 124 and dam weaning index is 109 lifetime.



Lot 57 - Red Ole Moonshine 128A

61

RED OLE MOONSHINE 79A

Male OLEF 79A 1722097 May 01 2013

CROWFOOT 6004S
RED CROWFOOT MOONSHINE 8081U AMF CAF NHF OSF MAF 1456117
 RED CROWFOOT BRNDINA 6359S

CROWFOOT MAX 1743L
 CROWFOOT BLACKCAP 4935P
 RED CROWFOOT BIG DADDY 2058M
 RED CROWFOOT BRNDINA 1065L

RED OLE OSCAR 104S
RED OLE DINA 161U 1461756
 RED OLE DINA 120S

RED CROWFOOT OLE'S OSCAR 2042M AMF CAF NHF OSF MAF
 RED CROWFOOT COVERGIRL 401D
 RED CROWFOOT OLE'S OSCAR 2042M AMF CAF NHF OSF MAF
 RED CROWFOOT BRNDINA 6129F

BW: 73 lbs.

RED EPDs: BW: -4.1 34% WW: +56 30% YW: +83 31% Milk: +12 23% TM: +40

Stay: +11 4% HP: +7 P CE: +5.7 19% MCE: +8.8 18%

CARCASS: REA: +0.38 13% Marb: +0.34 12% Fat: +0.01 29% Yield: -0.04 18% CW: +13 25%

Calving Ease ★★★★★

79A is a light birth weight with a very attractive package.

62

RED OLE MOONSHINE 103A

Male OLEF 103A 1722125 May 05 2013

CROWFOOT 6004S
RED CROWFOOT MOONSHINE 8081U AMF CAF NHF OSF MAF 1456117
 RED CROWFOOT BRNDINA 6359S

CROWFOOT MAX 1743L
 CROWFOOT BLACKCAP 4935P
 RED CROWFOOT BIG DADDY 2058M
 RED CROWFOOT BRNDINA 1065L

RED CROWFOOT OLE'S OSCAR 2042M AMF CAF NHF OSF MAF
RED OLE BIRD 150T 1418939
 RED OLE BIRD 179R

RED MLK CRK CUB 722 OSF MAF
 RED CROWFOOT OMEGA 9179J
 RED BFCK CHEROKEE CNYN 4912 OSF MAF
 RED OLSON 20N

BW: 89 lbs.

RED EPDs: BW: -1.6 34% WW: +71 30% YW: +101 32% Milk: +11 23% TM: +47

Stay: +12 4% HP: +7 P CE: +2.1 21% MCE: +5.0 20%

CARCASS: REA: +0.23 14% Marb: +0.20 16% Fat: +0.00 29% Yield: +0.04 19% CW: +27 25%

Calving Ease ★★

103A individual weaning index of 113 and dam weaning index is 107 lifetime.



Lot 62 - Red Ole Moonshine 103A

Family Day Sale

63

RED OLE MOONSHINE 102A

Male OLEF 102A 1722124 May 05 2013

CROWFOOT 6004S
RED CROWFOOT MOONSHINE 8081U AMF CAF NHF OSF MAF 1456117
RED CROWFOOT BRNDINA 6359S

CROWFOOT MAX 1743L
CROWFOOT BLACKCAP 4935P
RED CROWFOOT BIG DADDY 2058M
RED CROWFOOT BRNDINA 1065L

RED CROWFOOT OLE'S OSCAR 2042M AMF CAF NHF OSF MAF
RED OLE ROSETTE 296U 1461806
RED CROWFOOT 3173N

RED MLK CRK CUB 722 OSF MAF
RED CROWFOOT OMEGA 9179J
SSS TWILIGHT 460K
CFCC 176K

BW: 76 lbs.

RED EPDs: BW: -2.5 34% WW: +64 31% YW: +92 32% Milk: +11 24% TM: +43

Stay: +12 4% HP: +7 P CE: +4.3 20% MCE: +7.6 20%

CARCASS: REA: +0.08 13% Marb: +0.43 16% Fat: +0.010 29% Yield: +0.08 18% CW: +21 25%

Calving Ease ★★★

64

RED OLE MOONSHINE 117A

Male OLEF 117A 1722142 May 06 2013

CROWFOOT 6004S
RED CROWFOOT MOONSHINE 8081U AMF CAF NHF OSF MAF 1456117
RED CROWFOOT BRNDINA 6359S

CROWFOOT MAX 1743L
CROWFOOT BLACKCAP 4935P
RED CROWFOOT BIG DADDY 2058M
RED CROWFOOT BRNDINA 1065L

RED CROWFOOT OLE'S OSCAR 2042M AMF CAF NHF OSF MAF
RED OLE TUBEE 216U 1472027
RED CROWFOOT TUBEE 523E

RED MLK CRK CUB 722 OSF MAF
RED CROWFOOT OMEGA 9179J
RED CROWFOOT CAPTAIN 1B
RED CROWFOOT TUBEE 392C

BW: 73 lbs.

RED EPDs: BW: -4.0 34% WW: +63 30% YW: +93 32% Milk: +13 23% TM: +44

Stay: +11 4% HP: +7 P CE: +5.5 20% MCE: +7.2 20%

CARCASS: REA: +0.43 14% Marb: +0.55 16% Fat: +0.020 29% Yield: -0.01 19% CW: +19 25%

Calving Ease ★★★★★

117A has an incredible spread between birth and yearling. Individual weaning index of 131 and dam weaning index is 107 lifetime.

65

RED OLE MOONSHINE 144A

Male OLEF 144A 1722175 May 09 2013

CROWFOOT 6004S
RED CROWFOOT MOONSHINE 8081U AMF CAF NHF OSF MAF 1456117
RED CROWFOOT BRNDINA 6359S

CROWFOOT MAX 1743L
CROWFOOT BLACKCAP 4935P
RED CROWFOOT BIG DADDY 2058M
RED CROWFOOT BRNDINA 1065L

RED YY HITCH 514R
RED OLE GOLDETTE 244W 1492990
RED CROWFOOT GOLDETTE 3048N

RED CROWFOOT OLE'S OSCAR 2042M AMF CAF NHF OSF MAF
RED YY GOLDIE 140L
RED MABES RAMBO TUO
RED BAR-X GOLDETTE 47G

BW: 79 lbs.

RED EPDs: BW: -2.6 34% WW: +63 30% YW: +82 32% Milk: +10 23% TM: +42

Stay: +13 4% HP: +6 P CE: +4.5 20% MCE: +6.3 20%

CARCASS: REA: +0.12 14% Marb: +0.26 16% Fat: +0.010 29% Yield: +0.04 19% CW: +14 25%

Calving Ease ★★★

144A individual weaning index of 121 and dam weaning index is 107 lifetime.

66

RED OLE MOONSHINE 314A

Male OLEF 314A 1722086 Twin April 28 2013

CROWFOOT 6004S
RED CROWFOOT MOONSHINE 8081U AMF CAF NHF OSF MAF 1456117
RED CROWFOOT BRNDINA 6359S

CROWFOOT MAX 1743L
CROWFOOT BLACKCAP 4935P
RED CROWFOOT BIG DADDY 2058M
RED CROWFOOT BRNDINA 1065L

OLE ALLIANCE 144S
OLE LASS 246U 1472212
OLEF 214S

SITZ ALLIANCE 6595 DMF AMF CAF NHF DDF
OLSON LOVEMERE PET 10N
CONNELLY FREIGHTLINER AMF CAF NHF DDF
CROWFOOT 3757N

BW: 73 lbs.

RED EPDs: BW: -2.9 23% WW: +66 21% YW: +101 21% Milk: +18 19% TM: +51

Stay: +13 4% HP: +9 P CE: +7.8 19% MCE: +8.4 19%

CARCASS: REA: +0.12 10% Marb: +0.05 12% Fat: +0.030 15% Yield: +0.14 13% CW: +26 25%

Calving Ease ★★★

With 3 of 4 of the grandsires being black in color, 314A provides something very unique to any program. Dam weaning index is 116 lifetime.



Red Crowfoot Moonshine 8081U

67

RED OLE MOONSHINE 125A

Male OLEF 125A 1722152 May 07 2013

CROWFOOT 6004S
RED CROWFOOT MOONSHINE 8081U AMF CAF NHF OSF MAF 1456117
RED CROWFOOT BRNDINA 6359S

CROWFOOT MAX 1743L
CROWFOOT BLACKCAP 4935P
RED CROWFOOT BIG DADDY 2058M
RED CROWFOOT BRNDINA 1065L

BASIN EXT H695 OSF
RED OLE PIEBIRD RC 273R 1352538
RED OLSON PIEBIRD 21N

N BAR EMULATION EXT AMF CAF NHF DDF
RED BASIN ROSE F521 OSF
RED PAT 8207
RED CROWFOOT BIEBIRD 16A

BW: 81 lbs.

RED EPDs: BW: -1.9 35% WW: +58 31% YW: +86 32% Milk: +13 25% TM: +42

Stay: +13 10% HP: +10 P CE: +4.4 21% MCE: +5.0 21%

CARCASS: REA: +0.10 14% Marb: +0.29 10% Fat: +0.010 28% Yield: +0.07 18% CW: +18 25%

Calving Ease ★★★

68

RED OLE MOONSHINE 93A

Male OLEF 93A 1722112 May 04 2013

CROWFOOT 6004S
RED CROWFOOT MOONSHINE 8081U AMF CAF NHF OSF MAF 1456117
RED CROWFOOT BRNDINA 6359S

CROWFOOT MAX 1743L
CROWFOOT BLACKCAP 4935P
RED CROWFOOT BIG DADDY 2058M
RED CROWFOOT BRNDINA 1065L

RED H70 QUANTOCK 659S
RED OLE ROSE 318U 1472206
RED CROWFOOT ROSE 547E

RED H70 QUANTOCK 597N
RED H70 QUANTOCK 100 MS 422M
RED CROWFOOT DUKE 332C
RED CROWFOOT ROSE 351C

BW: 90 lbs.

RED EPDs: BW: +0.2 34% WW: +69 31% YW: +96 32% Milk: +7 24% TM: +42

Stay: +9 6% HP: +9 P CE: -0.2 20% MCE: +2.0 20%

CARCASS: REA: +0.24 14% Marb: +0.06 11% Fat: +0.000 29% Yield: +0.03 19% CW: +27 25%

Calving Ease ★★



Red Ole Piebird RC 273R - Dam of Lot 67



Family Day Sale

69

RED OLE MOONSHINE 163A

Male OLEF 163A 1722197 May 11 2013

CROWFOOT 6004S
RED CROWFOOT MOONSHINE 8081U AMF CAF NHF OSF MAF 1456117
 RED CROWFOOT BRNDINA 6359S

CROWFOOT MAX 1743L
 CROWFOOT BLACKCAP 4935P
 RED CROWFOOT BIG DADDY 2058M
 RED CROWFOOT BRNDINA 1065L

RED H70 QUANTOCK 659S
RED SHODEREE LADY 42U 1443559
 RED SHODEREE LEADING LADY 40N

RED H70 QUANTOCK 597N
 RED H70 QUANTOCK 100 MS 422M
 RED MLK CRK CUB 722 OSF MAF
 RED SHODEREE LEADING LADY 8L

BW: 95 lbs.

RED EPDs: BW: -1.2 35% WW: +66 32% YW: +97 33% Milk: +9 25% TM: +42

Stay: +9 6% HP: +8 P CE: -0.4 21% MCE: +2.1 20%

CARCASS: REA: +0.32 13% Marb: +0.05 15% Fat: +0.020 28% Yield: +0.05 18% CW: +26 25%

Calving Ease ★★

70

RED OLE MOONSHINE 130A

Male OLEF 130A 1722162 May 08 2013

CROWFOOT 6004S
RED CROWFOOT MOONSHINE 8081U AMF CAF NHF OSF MAF 1456117
 RED CROWFOOT BRNDINA 6359S

CROWFOOT MAX 1743L
 CROWFOOT BLACKCAP 4935P
 RED CROWFOOT BIG DADDY 2058M
 RED CROWFOOT BRNDINA 1065L

RED GEIS KNIGHT HAWK 14'02
RED OLE PRINCESS 116T 1418916
 RED CROWFOOT PRINCESS 647F

RED KBJ KNIGHT 17J
 RED GEIS SAMARIE 234'96
 RED GLACIER LOGAN OSF MAF
 RED CROWFOOT PRINCESS 158X

BW: 86 lbs.

RED EPDs: BW: -1.0 34% WW: +70 31% YW: +95 32% Milk: +5 24% TM: +40

Stay: +11 5% HP: +9 P CE: +0.4 20% MCE: +4.2 20%

CARCASS: REA: +0.17 14% Marb: +0.27 11% Fat: +0.010 29% Yield: +0.07 19% CW: +24 25%

Calving Ease ★★

130A is very capacious and deep flanked. His dam 116T, out of the Princess cow family who's weaning index is 115 lifetime, is one of our most popular cows. 130A individual weaning index is 126.

71

RED OLE MOONSHINE 154A

Male OLEF 154A 1722184 May 10 2013

CROWFOOT 6004S
RED CROWFOOT MOONSHINE 8081U AMF CAF NHF OSF MAF 1456117
 RED CROWFOOT BRNDINA 6359S

CROWFOOT MAX 1743L
 CROWFOOT BLACKCAP 4935P
 RED CROWFOOT BIG DADDY 2058M
 RED CROWFOOT BRNDINA 1065L

RED NAMAKWA PROSPECT 133S
RED VIKSE TA HAMILEE 216U 1440548
 RED REATA HAMILEE 8M

RED KBJ SAM'S PROSPECTOR 133Z OSF MAF DDF
 RED SSS FAYET 760L
 RED YY RED KNIGHT 640F OSF
 RED TOP HAMILEE 13E

BW: 86 lbs.

RED EPDs: BW: -1.8 34% WW: +62 30% YW: +88 31% Milk: +5 23% TM: +36

Stay: +10 4% HP: +9 P CE: +4.7 19% MCE: +7.1 19%

CARCASS: REA: +0.21 13% Marb: +0.18 6% Fat: -0.010 28% Yield: -0.01 18% CW: +19 25%

Calving Ease ★★

72

RED OLE MOONSHINE 141A

Male OLEF 141A 1722172 May 09 2013 *ses

CROWFOOT 6004S
RED CROWFOOT MOONSHINE 8081U AMF CAF NHF OSF MAF 1456117
 RED CROWFOOT BRNDINA 6359S

CROWFOOT MAX 1743L
 CROWFOOT BLACKCAP 4935P
 RED CROWFOOT BIG DADDY 2058M
 RED CROWFOOT BRNDINA 1065L

RED BAZE BAR-NONE 80K
RED SMOKY PRALEE 287S 1352105
 RED TASSEL PRALEE 169G

RED WILD ROSE BAR-NONE 179G
 RED BAZE ERICA 2G
 RED TASSEL LITTLE JOHN 143D
 RED LINCOLN CREEK PRALEE 6X

BW: 76 lbs.

RED EPDs: BW: -4.4 34% WW: +55 31% YW: +72 32% Milk: +4 24% TM: +31

Stay: +10 4% HP: +9 P CE: +7.6 20% MCE: +6.3 19%

CARCASS: REA: +0.12 14% Marb: -0.04 16% Fat: +0.000 28% Yield: -0.02 18% CW: +6 25%

Calving Ease ★★★★★



Experimenting with corn silage

73

RED OLE MOONSHINE 104A

Male OLEF 104A 1722126 May 05 2013

CROWFOOT 6004S
RED CROWFOOT MOONSHINE 8081U AMF CAF NHF OSF MAF 1456117
 RED CROWFOOT BRNDINA 6359S

CROWFOOT MAX 1743L
 CROWFOOT BLACKCAP 4935P
 RED CROWFOOT BIG DADDY 2058M
 RED CROWFOOT BRNDINA 1065L

RED SMOKY JASPER 86R
RED SMOKY BRANDINA 23U 1486883
 RED BAZE BRANDINA 14J

RED BLUE SPRUCE SABLE 26K
 RED BAZE ROSE 61H
 RED WILD ROSE BAR-NONE 179G
 RED BAZE BRANDINA 16G

BW: 79 lbs.

RED EPDs: BW: -2.5 34% WW: +67 31% YW: +99 32% Milk: +4 24% TM: +37

Stay: +11 4% HP: +9 P CE: +6.1 20% MCE: +5.5 20%

CARCASS: REA: +0.12 13% Marb: +0.08 15% Fat: +0.020 28% Yield: +0.11 18% CW: +25 25%

Calving Ease ★★★★★

74

RED OLE MOONSHINE 91A

Male OLEF 91A 1722108 May 03 2013 *ses

CROWFOOT 6004S
RED CROWFOOT MOONSHINE 8081U AMF CAF NHF OSF MAF 1456117
 RED CROWFOOT BRNDINA 6359S

CROWFOOT MAX 1743L
 CROWFOOT BLACKCAP 4935P
 RED CROWFOOT BIG DADDY 2058M
 RED CROWFOOT BRNDINA 1065L

RED OLE STEELE 333S
RED OLE VERNICE 204W 1492976
 RED OLE VERNICE 292T

RED CROWFOOT OLE'S OSCAR 2042M AMF CAF NHF OSF MAF
 RED CROWFOOT KURUBA 22Z
 RED SSS OLE 746P
 RED CROWFOOT WJ VERNICE 1517L

BW: 84 lbs.

RED EPDs: BW: -1.9 34% WW: +66 31% YW: +94 32% Milk: +9 24% TM: +42

Stay: +10 4% HP: +7 P CE: +3.5 20% MCE: +6.4 19%

CARCASS: REA: +0.22 14% Marb: +0.50 15% Fat: +0.010 29% Yield: +0.05 19% CW: +23 25%

Calving Ease ★★★

91A individual weaning index of 112. Dam weaning index is 105 lifetime.

75

RED OLE MOONSHINE 120A

Male OLEF 120A 1722145 May 06 2013

CROWFOOT 6004S
RED CROWFOOT MOONSHINE 8081U AMF CAF NHF OSF MAF 1456117
 RED CROWFOOT BRNDINA 6359S

CROWFOOT MAX 1743L
 CROWFOOT BLACKCAP 4935P
 RED CROWFOOT BIG DADDY 2058M
 RED CROWFOOT BRNDINA 1065L

RED CROWFOOT OLE'S OSCAR 2042M AMF CAF NHF OSF MAF
RED OLE NATION 265U 1461790
 RED LITTLE DE MS NATION 429L

RED MLK CRK CUB 722 OSF MAF
 RED CROWFOOT OMEGA 9179J
 RED LITTLE DE WILLOW 136H
 RED LITTLE DE MS NATION 990F

BW: 95 lbs.

RED EPDs: BW: +1.2 34% WW: +71 30% YW: +96 32% Milk: +5 23% TM: +41

Stay: +9 4% HP: +7 P CE: -1.8 20% MCE: +6.6 19%

CARCASS: REA: +0.03 14% Marb: +0.31 12% Fat: +0.000 29% Yield: +0.11 19% CW: +28 25%

Calving Ease ★★

120A individual weaning index of 117.



Family Day Sale

76

OLE FREIGHTLINER 373A

Male OLEF 373A 1722244 May 14 2013

BON VIEW BANDO 598 AMF CAC DDF
CONNEALY FREIGHTLINER AMF CAF NHF DDF 964749
 JOANA ERICA OF CONANGA

TEHAMA BANDO 155 AMF CAF NHF DDF
 BON VIEW DORA 56
 NICHOLS HEAVY DUTY X100
 JARNE ERICA OF CONANGA

SITZ ALLIANCE 6595 DMF AMF CAF NHF DDF
OLE OAKLEAF 195R 1466602
 OLSN OAKLEAF 55M

SITZ TRAVELER 8180 AMF CAF NHF DDF
 SITZ BARBARAMERE JET 2698
 N BAR EMULATION EXT AMF CAF NHF DDF
 GEIS OAKLEAF 54'00

BW: 83 lbs.
 BLK EPDs: BW: +1.9 38% WW: +47 29% YW: +80 28% Milk: +19 23% TM: +43
 SC: +1.93 38% CE: +3.0 30% MCE: +10.0 20%
 CARCASS: REA: +0.11 26% Marb: +0.26 25% Fat: +0.070 23% CW: +21 21%

Calving Ease ★★
 373A is possibly the most condensed, muscle packed bull we have ever sold.
 Dam weaning index is 110 lifetime.

77

OLE FAHRENS BLAZE 681A

Male OLEF 681A 1726099 May 23 2013

PINEBANK WAIGROUP 41/97 AMF CAF NHF DDF
DDA PINEBANK 50H 1488445
 MELISA 206 DDA

PINEBANK WAIG 31/95
 PINEBANK 639/88
 DDA FAHREN 5Z
 DDA MELISA 003

OLE ALLIANCE 138T
OLE BLACKBIRD PRIDE 438Y 1638639
 OLE BLACKBIRD PRIDE 67T

SITZ ALLIANCE 6595 DMF AMF CAF NHF DDF
 CROWFOOT 3542N
 N BAR EMULATION EXT AMF CAF NHF DDF
 ROYAL BLKBIRD PRIDE DRCC 5062R

BW: 73 lbs.
 BLK EPDs: BW: +2.1 35% WW: +28 24% YW: +50 20% Milk: +18 11% TM: +32
 SC: +0.74 32% CE: +3.0 25% MCE: +7.0 8%
 CARCASS: REA: +0.11 12% Fat: +0.041 10% CW: +4 7%

Calving Ease ★★
 We love the combination of 50H and Alliance. This pairing is generating high back fat, easy fleshing cattle that produce and always look good.

78

OLE FAHRENS BLAZE 666A

Male OLEF 666A 1726091 May 20 2013

PINEBANK WAIGROUP 41/97 AMF CAF NHF DDF
DDA PINEBANK 50H 1488445
 MELISA 206 DDA

PINEBANK WAIG 31/95
 PINEBANK 639/88
 DDA FAHREN 5Z
 DDA MELISA 003

SITZ ALLIANCE 6595 DMF AMF CAF NHF DDF
OLE DUCHESS 514Y 1638416
 OLE DUCHESS 36T

SITZ TRAVELER 8180 AMF CAF NHF DDF
 SITZ BARBARAMERE JET 2698
 CROWFOOT 3500N
 RED CROWFOOT JJ DUCHESS 9134J

BW: 68 lbs.
 BLK EPDs: BW: +0.0 35% WW: +40 25% YW: +58 21% Milk: +18 12% TM: +38
 SC: +0.35 32% CE: +7.0 27% MCE: +8.0 9%
 CARCASS: CW: +5 25%

Calving Ease ★★★★★
 666A individual weaning index of 116.

79

OLE FAHRENS BLAZE 658A

Male OLEF 658A 1726078 May 18 2013

PINEBANK WAIGROUP 41/97 AMF CAF NHF DDF
DDA PINEBANK 50H 1488445
 MELISA 206 DDA

PINEBANK WAIG 31/95
 PINEBANK 639/88
 DDA FAHREN 5Z
 DDA MELISA 003

SITZ ALLIANCE 6595 DMF AMF CAF NHF DDF
OLE JACKIE 334Y 1638396
 OLE JACKIE 181R

SITZ TRAVELER 8180 AMF CAF NHF DDF
 SITZ BARBARAMERE JET 2698
 N BAR EMULATION EXT AMF CAF NHF DDF
 CROWFOOT 3593N

BW: 76 lbs.
 BLK EPDs: BW: +1.6 35% WW: +40 25% YW: +66 14% Milk: +18 12% TM: +38
 CE: +3.0 27% MCE: +6.0 9%
 CARCASS: REA: +0.05 14% Fat: +0.060 12% CW: +12 9%

Calving Ease ★★
 658A individual weaning index of 111.



Lot 76 - Ole Freightliner 373A

80

OLE FAHRENS BLAZE 663A

Male OLEF 663A 1726090 EE May 20 2013 *ses

PINEBANK WAIGROUP 41/97 AMF CAF NHF DDF
DDA PINEBANK 50H 1488445
 MELISA 206 DDA

PINEBANK WAIG 31/95
 PINEBANK 639/88
 DDA FAHREN 5Z
 DDA MELISA 003

CHAPMAN JOKER 8503U
OLE LASS 545Y 1638583
 CROWFOOT 3511N

CROWFOOT JOKER 6172S
 CROWFOOT REV ERICA 5752R
 RED VGW RAMBLER 1000 OSF
 CROWFOOT WJ LASS 1467L

BW: 78 lbs.
 BLK EPDs: BW: -0.1 34% WW: +30 24% YW: +47 19% Milk: +21 10% TM: +36
 SC: +0.63 31% CE: +6.0 25% MCE: +6.0 7%
 CARCASS: REA: +0.13 10% Fat: +0.030 8% CW: -1 5%

Calving Ease ★★
 663A individual weaning index of 120.

81

OLE FAHRENS BLAZE 620A

Male OLEF 620A 1722251 May 14 2013

PINEBANK WAIGROUP 41/97 AMF CAF NHF DDF
DDA PINEBANK 50H 1488445
 MELISA 206 DDA

PINEBANK WAIG 31/95
 PINEBANK 639/88
 DDA FAHREN 5Z
 DDA MELISA 003

N BAR PRIME TIME D806 AMF CAF NHF DDF
OLE BLACKCAP 687Y 1638283
 OLE BLACKCAP 263W

GARDENS PRIME TIME AMF CAF NHF
 N BAR MISS EMULOUS A404 CAF
 STANDARD HILL PAYOFF 20P AMF NHF
 CATFISH BLACKCAP 7127

BW: 63 lbs.
 BLK EPDs: BW: -2.0 35% WW: +34 25% YW: +57 21% Milk: +19 12% TM: +36
 SC: +0.18 32% CE: +12.0 28% MCE: +11.0 9%
 CARCASS: REA: -0.02 14% Marb: +0.46 13% Fat: +0.057 11% CW: +2 8%

Calving Ease ★★
 620A individual weaning index of 114.



DDA Pinebank 50H



Family Day Sale

82

OLE FAHRENS BLAZE 678A

Male OLEF 678A 1726096 May 22 2013

PINEBANK WAIGROUP 41/97 AMF CAF NHF DDF
DDA PINEBANK 50H 1488445
 MELISA 206 DDA

PINEBANK WAIG 31/95
 PINEBANK 639/88
 DDA FAHREN 5Z
 DDA MELISA 003

SINCLAIR EXTREME 5V27
OLE SODAK 566Y 1652035
 CROWFOOT 3003N

N BAR EMULATION EXT A1747 DMF AMF CAF NHF DDF
 SINCLAIR QUEEN 2V90 616
 O C C JOKER 620J DDF
 RED CROWFOOT SODAK 1133L

BW: 65 lbs.
 BLK EPDs: BW: -1.1 35% WW: +30 24% YW: +51 19% Milk: +18 10% TM: +33
 SC: +0.02 31% CE: +7.0 25% MCE: +8.0 7%
 CARCASS: REA: +0.17 11% Fat: +0.039 9% CW: +0 5%

Calving Ease ★★
 678A individual weaning index of 110.



N Bar Emulation EXT - Sire of Lots 83-86

83

OLE EMULATION EXT 16A

Male OLEF 16A 1725730 ET April 25 2013

EMULATION N BAR 5522
N BAR EMULATION EXT AMF CAF NHF DDF **849773**
 N BAR PRIMROSE 2424

EMULATION 31 DWF
 ANKONY 8F78 LASS 8F275
 EMULATION 31 DWF
 PRIMROSE N BAR 9962

O C C JOKER 620J DDF
CROWFOOT 3542N 1182429
 GLADWALL G V LASS 6327

O C C EMBLAZON 854E DMF AMF CAF NHF OSF DDF
 O C C JUANADA 709V
 TOMWALL B EMULATION 070
 GLADWALL G V LASS 1270

BW: 88 lbs.
 BLK EPDs: BW: +1.8 P WW: +30 P YW: +49 P Milk: +22 P TM: +37
 SC: -0.01 P% CE: +2.5 P MCE: +10.0 P
 CARCASS: REA: +0.22 P% Marb: +0.14 P Fat: +0.023 P CW: +2 25%

Calving Ease ★★
 16A is the best EXT son to sell in years. 16A has 8 maternal brothers (three of which are full brothers to 16A) working in our purebred herd. 16A's dam 3542N is exactly what you want in an Angus cow.



Crowfoot 3542N - Dam of Lots 83 & 86

84

OLE EMULATION 455A

Male OLEF 455A 1763422 May 24 2013

EMULATION N BAR 5522
N BAR EMULATION EXT AMF CAF NHF DDF **849773**
 N BAR PRIMROSE 2424

EMULATION 31 DWF
 ANKONY 8F78 LASS 8F275
 EMULATION 31 DWF
 PRIMROSE N BAR 9962

SITZ ALLIANCE 6595 DMF AMF CAF NHF DDF
OLE ROSE OF L 203T 1419064
 GLADWALL ROSE OF L 7205

SITZ TRAVELER 8180 AMF CAF NHF DDF
 SITZ BARBARAMERE JET 2698
 TOMWALL B EMULATION 070
 GLADWALL ROSE OF L 5336

BW: 88 lbs.
 BLK EPDs: BW: +2.9 38% WW: +44 29% YW: +72 29% Milk: +21 23% TM: +43
 SC: +1.04 37% CE: +1.0 30% MCE: +10.0 19%
 CARCASS: REA: -0.03 28% Marb: +0.18 26% Fat: +0.041 24% CW: +18 23%

Calving Ease ★★

85

OLE EMULATION EXT 433A

Male OLEF 433A 1726086 May 19 2013

EMULATION N BAR 5522
N BAR EMULATION EXT AMF CAF NHF DDF **849773**
 N BAR PRIMROSE 2424

EMULATION 31 DWF
 ANKONY 8F78 LASS 8F275
 EMULATION 31 DWF
 PRIMROSE N BAR 9962

CONNEALY FREIGHTLINER AMF CAF NHF DDF
OLEF 230S 1352293
 CROWFOOT 3919N

BON VIEW BANDO 598 AMF CAC DDF
 JOANA ERICA OF CONANGA
 SITZ ALLIANCE 83K
 HILL FIRE LARKABELLE 29F

BW: 91 lbs.
 BLK EPDs: BW: +4.1 38% WW: +42 29% YW: +72 28% Milk: +19 23% TM: +40
 SC: +1.10 37% CE: -2.0 30% MCE: +9.0 19%
 CARCASS: REA: -0.05 27% Marb: +0.26 P Fat: +0.043 24% CW: +20 22%

Calving Ease ★★

86

OLE EMULATION EXT 45A

Male OLEF 45A 1725754 ET May 03 2013

EMULATION N BAR 5522
N BAR EMULATION EXT AMF CAF NHF DDF **849773**
 N BAR PRIMROSE 2424

EMULATION 31 DWF
 ANKONY 8F78 LASS 8F275
 EMULATION 31 DWF
 PRIMROSE N BAR 9962

O C C JOKER 620J DDF
CROWFOOT 3542N 1182429
 GLADWALL G V LASS 6327

O C C EMBLAZON 854E DMF AMF CAF NHF OSF DDF
 O C C JUANADA 709V
 TOMWALL B EMULATION 070
 GLADWALL G V LASS 1270

BW: 88 lbs.
 BLK EPDs: BW: +1.8 P WW: +30 P YW: +49 P Milk: +22 P TM: +37
 SC: -0.01 P% CE: +2.5 P MCE: +10.0 P
 CARCASS: REA: +0.22 P% Marb: +0.14 P Fat: +0.023 P CW: +2 25%

Calving Ease ★★

Grain farmers generally calculate expenses and profits on a per acre basis. Cow calf producers use a per cow basis but would be better served if they used a per acres basis as well.

- Kelly

87

CROWFOOT MOMENTO 3153A

Male CFCC 3153A 1738502 February 28 2013

SINCLAIR MEMENTO 8RL5
CHAPMAN MEMENTO 0505X 1571495
 CROWFOOT REV ERICA 5752R

O C C LEGACY 839L
CROWFOOT DONNA 8098U 1456122
 CROWFOOT DONNA 6459S

SINCLAIR RITO LEGACY 3R9 AMF CAF DDF
 SINCLAIR LADY 06S3 4465
 O C C JOKER 620J DDF
 CROWFOOT ERICA 3906N
 O C C ECHELON 857E DDF
 O C C DIXIE ERICA 960E
 CROWFOOT 2711M
 CROWFOOT DONNA 1604L

BW: 78 lbs.
 BLK EPDs: BW: +0.8 35% WW: +34 24% YW: +62 13% Milk: +23 10% TM: +40
 CE: +4.0 19% MCE: +5.0 7%

CARCASS: CW: +9 25%

Calving Ease ★★★

88

OLE ALLIANCE 735A

Male OLEF 735A 1811156 June 16 2013

SITZ ALLIANCE 6595 DMF AMF CAF NHF DDF
OLE ALLIANCE 144S 1318551
 OLSON LOVEMERE PET 10N

SITZ ALLIANCE 6595 DMF AMF CAF NHF DDF
OLE PEARL 342Y 1638410
 OLE PEARL 165T

SITZ TRAVELER 8180 AMF CAF NHF DDF
 SITZ BARBARAMERE JET 2698
 CROWFOOT AMBUSH 9137J
 BARBWALL LOVEMERE PET 851

SITZ TRAVELER 8180 AMF CAF NHF DDF
 SITZ BARBARAMERE JET 2698
 N BAR EMULATION EXT AMF CAF NHF DDF
 CROWFOOT 3896N

BW: 66 lbs.
 BLK EPDs: BW: -0.5 35% WW: +38 24% YW: +70 22% Milk: +26 14% TM: +45
 SC: +1.07 34% CE: +9.0 27% MCE: +14.0 11%

CARCASS: REA: -0.09 18% Fat: +0.064 15% CW: +12 12%

Calving Ease ★★★★★

89

OLE ALLIANCE 556A

Male OLEF 556A 1774587 July 05 2013

SITZ ALLIANCE 6595 DMF AMF CAF NHF DDF
OLE ALLIANCE 138T 1420409
 CROWFOOT 3542N

SINCLAIR RITO LEGACY 3R9 AMF CAF DDF
OLE PATRICIA 41U 1461686
 OLE PATRICIA 2S

SITZ TRAVELER 8180 AMF CAF NHF DDF
 SITZ BARBARAMERE JET 2698
 O C C JOKER 620J DDF
 GLADWALL G V LASS 6327

R R RITO 707 AMF CAF NHF DDF
 IDEAL 4465 OF 6807 4286 AMF NHF
 G A R RETAIL PRODUCT AMF CAF NHF DDF
 THOMAS PATRICIA 9644

BW: 105 lbs.
 BLK EPDs: BW: +7.1 36% WW: +28 26% YW: +61 24% Milk: +23 15% TM: +37
 SC: +0.79 34% CE: -10.0 22% MCE: -1.0 11%

CARCASS: REA: +0.09 17% Marb: +0.20 16% Fat: +0.029 14% CW: +19 11%

Calving Ease ★

90

OLE ALLIANCE 584A

Male OLEF 584A 1825729 June 20 2013

SITZ ALLIANCE 6595 DMF AMF CAF NHF DDF
OLE ALLIANCE 138T 1420409
 CROWFOOT 3542N

STANDARD HILL PAYOFF 20P AMF NHF
OLE BLACKCAP 263W 1533882
 CATFISH BLACKCAP 7127

SITZ TRAVELER 8180 AMF CAF NHF DDF
 SITZ BARBARAMERE JET 2698
 O C C JOKER 620J DDF
 GLADWALL G V LASS 6327

C A FUTURE DIRECTION 5321 AMF CAF NHF DDF
 STANDARD HILL QUEEN MOTHER 13M
 B/R NEW DIMENSION 7127 AMF CAF NHF DDF
 LOCUST GROVE BLACKCAP 3L

BW: lbs.
 BLK EPDs: BW: +1.7 P WW: +27 P YW: +51 P Milk: +30 P TM: +44
 SC: +0.87 P% CE: +7.0 P MCE: +12.0 P

CARCASS: REA: +0.16 P% Marb: +0.43 P Fat: +0.028 P CW: +4 25%

Calving Ease ★★

584A dam weaning index is 114 lifetime.



Ole Alliance 138T - maternal brother to Lots 83 & 86

91

OLE ALLIANCE 516A

Male OLEF 516A 1774595 June 11 2013

SITZ ALLIANCE 6595 DMF AMF CAF NHF DDF
OLE ALLIANCE 138T 1420409
 CROWFOOT 3542N

BOW RIDGE ADVANTAGE 24S
VIKSE PRIDE 146U 1487593
 BATTLE T ROY PRIDE 9P

SITZ TRAVELER 8180 AMF CAF NHF DDF
 SITZ BARBARAMERE JET 2698
 O C C JOKER 620J DDF
 GLADWALL G V LASS 6327

TC ADVANTAGE AMF CAF NHF DDF
 GET-A-LONG ELBA 324
 GLEN ISLAY ROB ROY 37J
 KINTYRE PRIDE 425K

BW: 84 lbs.
 BLK EPDs: BW: +2.8 34% WW: +22 24% YW: +43 21% Milk: +22 14% TM: +33
 SC: +0.37 32% CE: +2.0 19% MCE: +9.0 10%

CARCASS: REA: -0.19 14% Marb: +0.45 14% Fat: +0.021 11% CW: +1 9%

Calving Ease ★★

92

OLE JIPSEY KING 505A

Male OLEF 505A 1774556 June 07 2013

DUNLOUISE JIPSEY EARL E161 AMF CAF NHF DDF
SINCLAIR JIPSEY KING 1JP8 1695777
 SINCLAIR ENCHANTRESS 9X3

O C C MOONSHINE 740M
OLE JEANNET 291R 1349469
 GLADWALL JEANNE T 7400

BETRO OF CLASSLOCHIE
 DUNLOUISE JIPSEY CLOVA C095
 SINCLAIR EMULATION XXP AMF CAF NHF
 SINCLAIR ENCHANTRESS 4N11

O C C JUST RIGHT 619J DDF
 O C C DIXIE ERICA 816B
 AMITIE ACRES L EXT 1376
 GLADWALL JEANNE T 5114

BW: 95 lbs.
 BLK EPDs: BW: +3.1 32% WW: +39 21% YW: +64 19% Milk: +20 12% TM: +40
 SC: +0.90 31% CE: +1.0 18% MCE: +4.0 8%

CARCASS: REA: +0.05 14% Marb: +0.34 13% Fat: +0.015 11% CW: +14 8%

Calving Ease ★★

93

OLE EVERLAST 542A

Male OLEF 542A 1763351 EE July 01 2013

SINCLAIR EVERLAST 6R107
OLE EVERLAST 131W 1492913
 RED CROWFOOT BRNDINA 6129F

O C C JOKER 620J DDF
CROWFOOT 3003N 1151797
 RED CROWFOOT SODAK 1133L

R R RITO 707 AMF CAF NHF DDF
 N BAR QUEEN MOTHER 9955F
 RED GLACIER LOGAN OSF MAF
 RED SSS BRNDINA 333X

O C C EMBLazon 854E DMF AMF CAF NHF OSF DDF
 O C C JUANADA 709V
 RED CROWFOOT PM 757G
 RED BAR-X SODAK-CAPT 73F

BW: 98 lbs.
 BLK EPDs: BW: +6.8 34% WW: +24 22% YW: +41 20% Milk: +18 12% TM: +30
 SC: +0.27 32% CE: -9.0 19% MCE: -1.0 9%

CARCASS: REA: +0.16 12% Marb: -0.04 12% Fat: +0.010 9% CW: +6 6%

Calving Ease ★★

542A is a powerful bull - loads of guts and capacity. Dam weaning index is 107 lifetime.



Family Day Sale

94

OLE SHURE SHOT 458A

Male OLEF 458A 1826812 May 25 2013

DDA SURE ENOUGH 6D
DDA SURE SHOT 60H 1550221
 DDA MINA 468

DDA EMBLAZON 28A
 DDA MARY 156
 DDA ALLY 69C
 DDA MINA 287
 R R RITO 707 AMF CAF NHF DDF
 N BAR QUEEN MOTHER 9955F
 O C C MOONSHINE 740M
 CFCC 49K

SINCLAIR EVERLAST 6R107
OLE MISS DESIGN 123W 1492905
 CROWFOOT MISS DEIGN 5121R

BW: N/A
 BLK EPDs: BW: -0.4 P WW: +23 P YW: +38 P Milk: +18 P TM: +30
 CE: +10.0 P MCE: +9.5 P
 CARCASS: CW: -7 25%
 Calving Ease ★★

95

OLE JOKER 474A

Male OLEF 474A 1826774 EE June 01 2013

CROWFOOT JOKER 6172S
CHAPMAN JOKER 8503U 1468612
 CROWFOOT REV ERICA 5752R

O C C JOKER 620J DDF
 CFCC 1801L
 O C C JOKER 620J DDF
 CROWFOOT ERICA 3906N
 R R RITO 707 AMF CAF NHF DDF
 N BAR QUEEN MOTHER 9955F
 ROYAL TRAVELER DRC 5040R
 GLADWALL L PEARL 7190

SINCLAIR EVERLAST 6R107
OLE PEARL 17W 1492827
 OLE PEARL 310T

BW: 86 lbs.
 BLK EPDs: BW: +2.3 P WW: +19 P YW: +40 P Milk: +25 P TM: +35
 CE: +3.0 P MCE: +4.0 P
 CARCASS: REA: -0.04 P Fat: +0.007 P CW: -1 25%
 Calving Ease ★★

96

OLE RITO LEGACY 696A

Male OLEF 696A 1826755 RC May 31 2013

SINCLAIR RITO LEGACY 3R9 AMF CAF DDF
OLE RITO LEGACY 9U
 OLE PRIME 16S

R R RITO 707 AMF CAF NHF DDF
 IDEAL 4465 OF 6807 4286 AMF NHF
 N BAR PRIME TIME D806 AMF NHF CAF DDF
 OLSON 24P
 SITZ ALLIANCE 6595 DMF AMF CAF NHF DDF
 OLSON LOVEMERE PET 10N
 RED CROWFOOT OLE'S OSCAR 2042M AMF CAF NHF OSF MAF
 RED SMOKY ANNI 7S

OLE ALLIANCE 144S
RED OLE ANNIE 751Y 1638541
 RED OLE ANNIE 94W

BW: 65 lbs..
 RED EPDs: BW: -2.8 P WW: +38 P YW: +68 P Milk: +26 P TM: +45
 Stay: +13 P CE: +7.0 P MCE: +8.2 P
 CARCASS: REA: -0.08 P Marb: +0.64 P Fat: +0.045 P Yield: +0.17 P CW: +7 25%
 Calving Ease ★★ Black Red Gene Carrier

97

RED OLE IMPRESSIVE 195A

Male OLEF 195A 1739093 May 20 2013

RED MUSHRUSH IMPRESSIVE CA U23 OSF MAF
RED MLK CRK IMPRESSIVE 1144 OSF 1695774
 RED MLK CRK LAKOTA 910

RED BUF CRK LANCER R017 OSF MAF
 RED MUSHRUSH MADAM LT R265
 RED 5L BLAZIN RED 1354-6166 OSF
 RED MLK CRK LAKOTA 534

RED LARSON HIGH NOON 881 OSF MAF
RED OLE VERNICE 317X 1580028
 RED OLE VERNICE 167T

RED 5L FUTURE DESIGN 893-6405 NHF OSF MAF
 RED LARSON PRINCESS ANN409-211 OSF
 RED CROWFOOT OLE'S OSCAR 2042M AMF CAF NHF OSF MAF
 OLE VERNICE 56R

BW: 65 lbs.
 RED EPDs: BW: -4.5 32% WW: +54 28% YW: +88 29% Milk: +20 17% TM: +47
 Stay: +15 0% HP: +12 P CE: +6.2 14% MCE: +6.1 12%
 CARCASS: REA: +0.26 13% Marb: +0.58 15% Fat: +0.030 28% Yield: +0.06 18% CW: +16 25%
 Calving Ease ★★★★★

195A is a very complete bull with excellent EPDs. With 113 weaning index and very low birth numbers look for 195A to be able to do what few bulls can - calve easily, grow quickly and maintain a reasonable mature size.



Red Mushrush Impressive CA U23

98

RED OLE IMPRESSIVE 146A

Male OLEF 146A 1722177 May 09 2013

RED BUF CRK LANCER R017 OSF MAF
RED MUSHRUSH IMPRESSIVE CA U23 OSF MAF 1639269
 RED MUSHRUSH MADAM LT R265

RED BECKTON LANCER F442 T OSF MAF
 RED BUF CRK JULIET N036 OSC
 RED TR JULIAN LT142 OSF
 RED MUSHRUSH ROBIN M125

RED CROWFOOT OLE'S OSCAR 2042M AMF CAF NHF OSF MAF
RED OLE BLUEBIRD 62U 1469682
 RED CROWFOOT 3455N

RED MLK CRK CUB 722 OSF MAF
 RED CROWFOOT OMEGA 9179J
 RED BJR JR 105
 RED CROWFOOT BLUEBIRD 646F

BW: 81 lbs.
 RED EPDs: BW: -2.6 34% WW: +59 31% YW: +92 32% Milk: +17 24% TM: +46
 Stay: +11 2% HP: +9 10% CE: +4.3 21% MCE: +4.4 20%
 CARCASS: REA: +0.12 18% Marb: +0.58 15% Fat: +0.020 31% Yield: +0.10 21% CW: +21 25%

Calving Ease ★★★★★
 146A is the largest framed impressive son we have raised yet. With a 115 weaning index, 146A will add pounds to your calf crop.

99

RED OLE IMPRESSIVE 142A

Male OLEF 142A 1722173 May 09 2013

RED BUF CRK LANCER R017 OSF MAF
RED MUSHRUSH IMPRESSIVE CA U23 OSF MAF 1639269
 RED MUSHRUSH MADAM LT R265

RED BECKTON LANCER F442 T OSF MAF
 RED BUF CRK JULIET N036 OSC
 RED TR JULIAN LT142 OSF
 RED MUSHRUSH ROBIN M125

RED SHODEREE RED SPREAD 87R
RED SHODEREE TESS 110U 1443215
 RED SHODEREE TESS 107J

RED LCHMN RED SPREAD 1271F OSF MAF
 RED SHODEREE FLOWER 6E
 RED LCHMAN COPPER ROB 1204D OSF
 RED PIPESTONE TESS 21Z

BW: 85 lbs.
 RED EPDs: BW: -2.3 34% WW: +52 30% YW: +81 32% Milk: +21 23% TM: +47
 Stay: +12 2% HP: +12 10% CE: +3.5 20% MCE: +2.6 20%
 CARCASS: REA: +0.11 17% Marb: +0.12 19% Fat: +0.010 30% Yield: +0.05 20% CW: +15 25%

Calving Ease ★★★★★
 142A Dam weaning index is 112 lifetime.

100

RED OLE IMPRESSIVE 206A

Male OLEF 206A 1748965 May 23 2013 *ses

RED BUF CRK LANCER R017 OSF MAF
RED MUSHRUSH IMPRESSIVE CA U23 OSF MAF 1639269
 RED MUSHRUSH MADAM LT R265

RED BECKTON LANCER F442 T OSF MAF
 RED BUF CRK JULIET N036 OSC
 RED TR JULIAN LT142 OSF
 RED MUSHRUSH ROBIN M125

RED FINE LINE GOLD ROBBER 52N
RED SMOKY REBELLO 283S 1352101
 RED SMOKY REBELLO 28N

RED TED GOLD ROBBER 76K
 RED FINE LINE LYNN 57K
 RED WILD ROSE BAR-NONE 179G
 RED BAZE REBELLO 69C

BW: 79 lbs.
 RED EPDs: BW: -2.4 34% WW: +53 29% YW: +82 29% Milk: +16 23% TM: +43
 Stay: +11 2% HP: +12 10% CE: +4.5 20% MCE: +1.3 19%
 CARCASS: REA: +0.22 16% Marb: +0.39 17% Fat: +0.010 28% Yield: +0.02 19% CW: +15 25%

Calving Ease ★★★★★
 206A Dam weaning index is 106 lifetime.



Family Day Sale

101

RED OLE IMPRESSIVE 181A

Male OLEF 181A 1722241 May 14 2013

RED BUF CRK LANCER R017 OSF MAF
RED MUSHRUSH IMPRESSIVE CA U23 OSF MAF 1639269
 RED MUSHRUSH MADAM LT R265

RED BECKTON LANCER F442 T OSF MAF
 RED BUF CRK JULIET N036 OSC
 RED TR JULIAN LT142 OSF
 RED MUSHRUSH ROBIN M125

RED SSS NORSEMAN 412S
RED SHODEREE PATSY 37U 1443540
 RED SHODEREE PATSY 38M

RED 5L NORSEMAN KING 2291 OSF MAF
 RED SSS DUCHESS 606P
 RED FLYING K CHISOLM 28K
 RED PIPESTONE PATSY 56Z

BW: 84 lbs.

RED EPDs: BW: -2.8 34% WW: +45 31% YW: +70 32% Milk: +12 24% TM: +34

Stay: +12 3% HP: +10 10% CE: +4.0 21% MCE: +0.9 20%

CARCASS: REA: +0.12 17% Marb: +0.43 8% Fat: +0.000 30% Yield: -0.01 20% CW: +8 25%

Calving Ease ★★★

102

RED OLE IMPRESSIVE 367A

Male OLEF 367A 1722231 May 13 2013

RED BUF CRK LANCER R017 OSF MAF
RED MUSHRUSH IMPRESSIVE CA U23 OSF MAF 1639269
 RED MUSHRUSH MADAM LT R265

RED BECKTON LANCER F442 T OSF MAF
 RED BUF CRK JULIET N036 OSC
 RED TR JULIAN LT142 OSF
 RED MUSHRUSH ROBIN M125

CROWFOOT 516K
CROWFOOT 3877N 1152137
 CROWFOOT FORKS 635K

RED CROWFOOT PM 757G
 BAR-X ROSEBUD 35G
 TOMWALL S A F FAME 8312
 T A R LASS TRADER 8025

BW: 79 lbs.

RED EPDs: BW: -2.3 35% WW: +60 32% YW: +91 33% Milk: +14 26% TM: +44

Stay: +13 9% HP: +12 10% CE: +6.3 22% MCE: +2.1 22%

CARCASS: REA: +0.33 17% Marb: +0.50 20% Fat: +0.010 30% Yield: +0.00 20% CW: +21 25%

Calving Ease ★★★★★

367A Dam weaning index is 109 lifetime.

103

RED OLE IMPRESSIVE 158A

Male OLEF 158A 1722193 May 11 2013

RED BUF CRK LANCER R017 OSF MAF
RED MUSHRUSH IMPRESSIVE CA U23 OSF MAF 1639269
 RED MUSHRUSH MADAM LT R265

RED BECKTON LANCER F442 T OSF MAF
 RED BUF CRK JULIET N036 OSC
 RED TR JULIAN LT142 OSF
 RED MUSHRUSH ROBIN M125

RED SSS NORSEMAN 412S
RED SHODEREE BERTHA 21U 1443537
 RED SHODEREE BERTHA 116L

RED 5L NORSEMAN KING 2291 OSF MAF
 RED SSS DUCHESS 606P
 RED LAZY MC BLAZE 23J
 RED SHODEREE BERTHA 173H

BW: 87 lbs.

RED EPDs: BW: -1.2 34% WW: +53 30% YW: +88 32% Milk: +14 23% TM: +40

Stay: +12 2% HP: +10 10% CE: +2.3 20% MCE: -0.6 19%

CARCASS: REA: +0.18 17% Marb: +0.30 19% Fat: +0.010 30% Yield: +0.05 20% CW: +21 25%

Calving Ease ★★

104

RED OLE IMPRESSIVE 354A

Male OLEF 354A 1722215 May 12 2013

RED BUF CRK LANCER R017 OSF MAF
RED MUSHRUSH IMPRESSIVE CA U23 OSF MAF 1639269
 RED MUSHRUSH MADAM LT R265

RED BECKTON LANCER F442 T OSF MAF
 RED BUF CRK JULIET N036 OSC
 RED TR JULIAN LT142 OSF
 RED MUSHRUSH ROBIN M125

RED BJR JR 105
CROWFOOT BARDOLENE 3066N 1151916
 CROWFOOT BARDOLENE 1040L

LMB JOHNY REB 091
 RED BJR MATTIE 677-6130
 C&D 455 ROCKETT
 CROWFOOT BARDOLENE 9133J

BW: 73 lbs.

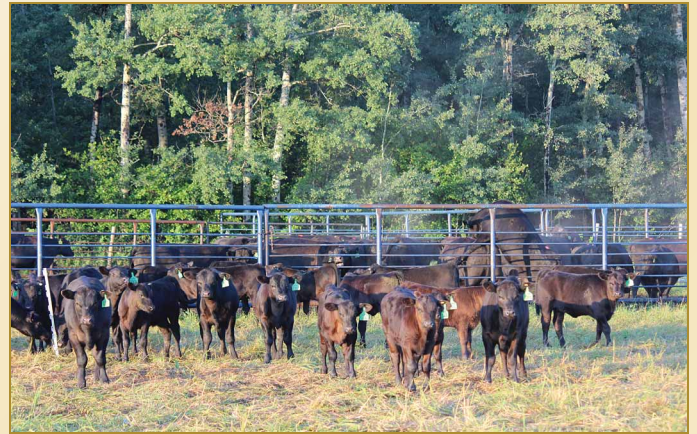
RED EPDs: BW: -4.6 35% WW: +53 32% YW: +80 33% Milk: +18 26% TM: +45

Stay: +14 5% HP: +10 10% CE: +9.3 23% MCE: +4.1 23%

CARCASS: REA: +0.18 17% Marb: +0.38 13% Fat: +0.000 30% Yield: -0.01 20% CW: +11 25%

Calving Ease ★★★★★

354A Dam weaning index is 105 lifetime.



105

RED OLE IMPRESSIVE 82A

Male OLEF 82A 1722100 May 01 2013

RED BUF CRK LANCER R017 OSF MAF
RED MUSHRUSH IMPRESSIVE CA U23 OSF MAF 1639269
 RED MUSHRUSH MADAM LT R265

RED BECKTON LANCER F442 T OSF MAF
 RED BUF CRK JULIET N036 OSC
 RED TR JULIAN LT142 OSF
 RED MUSHRUSH ROBIN M125

RED CROWFOOT OLE'S OSCAR 2042M AMF CAF NHF OSF MAF
RED OLE ANGEL 104T 1418910
 RED CROWFOOT ANGEL 625F

RED MLK CRK CUB 722 OSF MAF
 RED CROWFOOT OMEGA 9179J
 RED RCN DYNAMO 732 OSF MAF
 RED CROWFOOT ANGEL 432D

BW: 76 lbs.

RED EPDs: BW: -4.5 34% WW: +56 31% YW: +79 32% Milk: +18 24% TM: +45

Stay: +11 3% HP: +8 10% CE: +7.3 21% MCE: +4.2 21%

CARCASS: REA: +0.15 19% Marb: +0.47 15% Fat: +0.010 31% Yield: +0.02 21% CW: +10 25%

Calving Ease ★★★★★

82A individual weaning index 117. Dam weaning index is 117 lifetime and is one of our up and coming cows in the Red Program. Her dam 625F, produced until she was 16 years of age.

106

RED OLE IMPRESSIVE 184A

Male OLEF 184A 1726013 May 15 2013

RED BUF CRK LANCER R017 OSF MAF
RED MUSHRUSH IMPRESSIVE CA U23 OSF MAF 1639269
 RED MUSHRUSH MADAM LT R265

RED BECKTON LANCER F442 T OSF MAF
 RED BUF CRK JULIET N036 OSC
 RED TR JULIAN LT142 OSF
 RED MUSHRUSH ROBIN M125

RED BUF CRK HOBO 1961 OSF MAF
RED OLE DOLL 20S 1324248
 RED CROWFOOT DOLL 594E

RED BUF CRK HOBO 1413 OSF
 BUF CR CARRIE VC1174 OSF
 RED BAR-V SPARK 340X
 RED CROWFOOT DOLL 31B

BW: 80 lbs.

RED EPDs: BW: -3.0 34% WW: +50 30% YW: +74 32% Milk: +12 24% TM: +37

Stay: +14 2% HP: +12 10% CE: +5.7 21% MCE: +3.4 20%

CARCASS: REA: +0.27 18% Marb: +0.16 20% Fat: +0.010 31% Yield: -0.02 21% CW: +10 25%

Calving Ease ★★★★★

107

RED OLE IMPRESSIVE 118A

Male OLEF 118A 1722143 May 06 2013

RED BUF CRK LANCER R017 OSF MAF
RED MUSHRUSH IMPRESSIVE CA U23 OSF MAF 1639269
 RED MUSHRUSH MADAM LT R265

RED BECKTON LANCER F442 T OSF MAF
 RED BUF CRK JULIET N036 OSC
 RED TR JULIAN LT142 OSF
 RED MUSHRUSH ROBIN M125

RED FLYING K PATRIOT 11C
RED CROWFOOT VERNICE 707G 883824
 RED CROWFOOT VERNICE 68A

RED PREMIER PATRIOT 16
 RED FLYING K MISS SUJJI 62W
 RED SUMMIT HILL PRIDE 6X
 RED CROWFOOT CREEK VERNICE 63T

BW: 72 lbs.

RED EPDs: BW: -1.6 35% WW: +48 32% YW: +62 33% Milk: +11 25% TM: +35

Stay: +11 13% HP: +11 10% CE: +3.9 22% MCE: -0.3 22%

CARCASS: REA: +0.07 17% Marb: +0.36 12% Fat: +0.010 30% Yield: +0.02 20% CW: +4 25%

Calving Ease ★★★★★

118A offspring of an 18 year old cow.



Family Day Sale

108

RED OLE IMPRESSIVE 105A

Male OLEF 105A 1722127 May 05 2013

RED BUF CRK LANCER R017 OSF MAF
RED MUSHRUSH IMPRESSIVE CA U23 OSF MAF **1639269**
 RED MUSHRUSH MADAM LT R265

RED BECKTON LANCER F442 T OSF MAF
 RED BUF CRK JULIET N036 OSC
 RED TR JULIAN LT142 OSF
 RED MUSHRUSH ROBIN M125

RED CROWFOOT OLE'S OSCAR 2042M AMF CAF NHF OSF MAF
RED OLE ERICA 114W 1492898
 RED SMOKY ERICA 72S MAF

RED MLK CRK CUB 722 OSF MAF
 RED CROWFOOT OMEGA 9179J
 RED BRYLOR PKT SENTINEL 88N
 RED BAZE ERICA 77J

BW: 67 lbs.

RED EPDs: BW: -4.3 34% WW: +56 30% YW: +87 32% Milk: +18 23% TM: +46

Stay: +11 2% HP: +11 10% CE: +6.7 20% MCE: +5.4 20%

CARCASS: REA: +0.24 18% Marb: +0.57 14% Fat: +0.010 31% Yield: +0.01 21% CW: +16 25%

Calving Ease ★★★★★

105A individual weaning index of 123. Dam weaning index is 114 lifetime.

109

RED OLE IMPRESSIVE 139A

Male OLEF 139A 1732033 May 09 2013

RED MUSHRUSH IMPRESSIVE CA U23 OSF MAF
RED MLK CRK IMPRESSIVE 1144 OSF **1695774**
 RED MLK CRK LAKOTA 910

RED BUF CRK LANCER R017 OSF MAF
 RED MUSHRUSH MADAM LT R265
 RED 5L BLAZIN RED 1354-6166 OSF
 RED MLK CRK LAKOTA 534

RED LARSON HIGH NOON 881 OSF MAF
RED OLE BRNDINA 196X 1549655
 RED OLE BRNDINA 321T

RED 5L FUTURE DESIGN 893-6405 NHF OSF MAF
 RED LARSON PRINCESS ANN409-211 OSF
 RED CROWFOOT RAMBLER 1038L
 RED CFCC 465K

BW: 73 lbs.

RED EPDs: BW: -2.4 32% WW: +61 28% YW: +99 29% Milk: +17 17% TM: +48

Stay: +15 0% HP: +13 P CE: +4.1 13% MCE: +5.2 12%

CARCASS: REA: +0.15 13% Marb: +0.40 15% Fat: +0.020 28% Yield: +0.11 18% CW: +26 25%

Calving Ease ★★★★★

139A individual weaning index of 110. Dam weaning index is 109 lifetime.

110

RED OLE IMPRESSIVE 256A

Male OLEF 256A 1774553 June 07 2013

RED MUSHRUSH IMPRESSIVE CA U23 OSF MAF
RED MLK CRK IMPRESSIVE 1144 OSF **1695774**
 RED MLK CRK LAKOTA 910

RED BUF CRK LANCER R017 OSF MAF
 RED MUSHRUSH MADAM LT R265
 RED 5L BLAZIN RED 1354-6166 OSF
 RED MLK CRK LAKOTA 534

RED CROWFOOT 5103R
RED OLE TARA 434X 1580078
 RED CROWFOOT 3312N

RED LAZY RC AUTHENTIC 326N
 RED CROWFOOT KURUBA 2186M
 RED CROWFOOT PM 757G
 RED CROWFOOT CJ TARA 9216J

BW: 83 lbs.

RED EPDs: BW: +0.2 32% WW: +53 28% YW: +92 29% Milk: +20 17% TM: +47

Stay: +12 0% HP: +11 P CE: -0.4 13% MCE: +0.3 11%

CARCASS: REA: -0.04 13% Marb: +0.66 15% Fat: +0.030 28% Yield: +0.19 18% CW: +26 25%

Calving Ease ★★

111

RED OLE IMPRESSIVE 173A

Male OLEF 173A 1722226 May 13 2013

RED BUF CRK LANCER R017 OSF MAF
RED MUSHRUSH IMPRESSIVE CA U23 OSF MAF **1639269**
 RED MUSHRUSH MADAM LT R265

RED BECKTON LANCER F442 T OSF MAF
 RED BUF CRK JULIET N036 OSC
 RED TR JULIAN LT142 OSF
 RED MUSHRUSH ROBIN M125

SSS TWILIGHT 460K
RED CROWFOOT 3173N 1152128
 CFCC 176K

CONNELLY FRONTLINE AMF CAF NHF DDF
 RED RACHEL R414
 STEVENSON ROYCE 741C CAF NHF DDF
 RED CROWFOOT ROSETTE 719G

BW: 77 lbs.

RED EPDs: BW: -3.5 35% WW: +51 32% YW: +81 33% Milk: +13 25% TM: +39

Stay: +12 12% HP: +11 10% CE: +6.3 22% MCE: +0.9 22%

CARCASS: REA: +0.06 17% Marb: +0.18 20% Fat: +0.000 31% Yield: +0.04 20% CW: +13 25%

Calving Ease ★★★★★

112

RED OLE IMPRESSIVE 98A

Male OLEF 98A 1722117 May 04 2013

RED BUF CRK LANCER R017 OSF MAF
RED MUSHRUSH IMPRESSIVE CA U23 OSF MAF **1639269**
 RED MUSHRUSH MADAM LT R265

RED BECKTON LANCER F442 T OSF MAF
 RED BUF CRK JULIET N036 OSC
 RED TR JULIAN LT142 OSF
 RED MUSHRUSH ROBIN M125

RED LAZY MC SMASH 41N OSF
RED OLEF 194S 1352255
 RED CROWFOOT 3477N

RED SSS BOOMER 803B
 RED LAURON YB ROSA 11G
 RED VGW RAMBLER 1000 OSF
 RED CROWFOOT WJ DALLES 1493L

BW: 76 lbs.

RED EPDs: BW: -4.4 34% WW: +45 31% YW: +69 32% Milk: +20 24% TM: +43

Stay: +12 4% HP: +9 10% CE: +7.4 21% MCE: +2.5 20%

CARCASS: REA: -0.08 17% Marb: +0.31 12% Fat: +0.000 30% Yield: +0.05 20% CW: +5 25%

Calving Ease ★★★★★

113

RED OLE IMPRESSIVE 88A

Male OLEF 88A 1722105 May 02 2013

RED BUF CRK LANCER R017 OSF MAF
RED MUSHRUSH IMPRESSIVE CA U23 OSF MAF **1639269**
 RED MUSHRUSH MADAM LT R265

RED BECKTON LANCER F442 T OSF MAF
 RED BUF CRK JULIET N036 OSC
 RED TR JULIAN LT142 OSF
 RED MUSHRUSH ROBIN M125

SHODEREE FORTE 97S
RED SHODEREE POWDER 11U 1443552
 RED SHODEREE POWDER 10N

PAPA FORTE 1921 DMF
 RED BRYLOR ZAMBA 75L
 RED FLYING K CHISOLM 28K
 RED RV POWER TRACK 69B

BW: 73 lbs.

RED EPDs: BW: -4.1 34% WW: +46 30% YW: +67 32% Milk: +17 23% TM: +40

Stay: +12 2% HP: +11 10% CE: +7.0 19% MCE: +0.9 19%

CARCASS: REA: +0.19 17% Marb: +0.44 8% Fat: +0.020 30% Yield: +0.01 20% CW: +4 25%

Calving Ease ★★★★★



Red Mlk Crk Impressive 1144



Red Crowfoot 3173N - Dam of Lot 111



Family Day Sale

114

RED OLE IMPRESSIVE 186A

Male OLEF 186A 1726014 May 15 2013

RED BUF CRK LANCER R017 OSF MAF
RED MUSHRUSH IMPRESSIVE CA U23 OSF MAF 1639269
 RED MUSHRUSH MADAM LT R265

RED BECKTON LANCER F442 T OSF MAF
 RED BUF CRK JULIET N036 OSC
 RED TR JULIAN LT142 OSF
 RED MUSHRUSH ROBIN M125

RED FINE LINE COMBINATION 40R
RED SMOKY RUBY 138U 1475552
 RED SMOKY RUBY 241R

RED LSF COMBINATION A301M OSF MAF
 RED FINE LINE FLAME 47J OSF
 RED FINE LINE GOLD ROBBER 52N
 RED BAZE RUBY 56H

BW: 91 lbs.

RED EPDs: BW: +0.7 34% WW: +59 30% YW: +89 31% Milk: +15 23% TM: +44

Stay: +12 2% HP: +13 10% CE: -1.4 20% MCE: +0.9 19%

CARCASS: REA: +0.24 16% Marb: +0.43 8% Fat: +0.000 30% Yield: +0.02 20% CW: +24 25%

Calving Ease ★★

Dam weaning index is 110 lifetime.

115

OLE IMPRESSIVE 327A

Male OLEF 327A 1722146 RC May 06 2013

RED BUF CRK LANCER R017 OSF MAF
RED MUSHRUSH IMPRESSIVE CA U23 OSF MAF 1639269
 RED MUSHRUSH MADAM LT R265

RED BECKTON LANCER F442 T OSF MAF
 RED BUF CRK JULIET N036 OSC
 RED TR JULIAN LT142 OSF
 RED MUSHRUSH ROBIN M125

BASIN EXT H695 OSF
OLEF 255S 1352563
 RED CROWFOOT 3303N

N BAR EMULATION EXT AMF CAF NHF DDF
 RED BASIN ROSE F521 OSF
 RED VGW RAMBLER 1000 OSF
 RED CROWFOOT CJ TARA 1316L

BW: 81 lbs.

RED EPDs: BW: -2.5 34% WW: +55 31% YW: +88 32% Milk: +20 24% TM: +48

Stay: +13 3% HP: +13 10% CE: +5.7 21% MCE: +4.5 20%

CARCASS: REA: +0.30 18% Marb: +0.57 14% Fat: +0.010 31% Yield: +0.01 21% CW: +19 25%

Calving Ease ★★★

Black Red Gene Carrier

With an individual weaning index of 116 this guy may be the deepest and heaviest muscled bull in this year's sale. His dam is an extremely productive dam with a lifetime weaning index of 118.

116

OLE IMPRESSIVE 384A

Male OLEF 384A 1726017 RC May 15 2013

RED BUF CRK LANCER R017 OSF MAF
RED MUSHRUSH IMPRESSIVE CA U23 OSF MAF 1639269
 RED MUSHRUSH MADAM LT R265

RED BECKTON LANCER F442 T OSF MAF
 RED BUF CRK JULIET N036 OSC
 RED TR JULIAN LT142 OSF
 RED MUSHRUSH ROBIN M125

RED CROWFOOT OLE'S OSCAR 2042M AMF CAF NHF OSF MAF
OLE SODAK 79T 1418892
 OLE SODACK 48R

RED MLK CRK CUB 722 OSF MAF
 RED CROWFOOT OMEGA 9179J
 RED CROWFOOT RAMBLER 1038L
 CROWFOOT 3003N

BW: 75 lbs.

RED EPDs: BW: -4.5 34% WW: +53 31% YW: +83 32% Milk: +17 24% TM: +44

Stay: +12 4% HP: +10 10% CE: +7.1 21% MCE: +6.2 20%

CARCASS: REA: +0.20 18% Marb: +0.58 21% Fat: +0.010 31% Yield: +0.01 21% CW: +13 25%

Calving Ease ★★★★★

Black Red Gene Carrier

An incredible amount of maternal merit. 79T is one of our top producers (weaning index lifetime of 107) and she sure looks the part. She has great feet, a perfect udder and is easy to look at. 384A has an individual weaning index of 112.

117

OLE IMPRESSIVE 355A

Male OLEF 355A 1751750 RC May 12 2013

RED MUSHRUSH IMPRESSIVE CA U23 OSF MAF
RED MLK CRK IMPRESSIVE 1144 OSF 1695774
 RED MLK CRK LAKOTA 910

RED BUF CRK LANCER R017 OSF MAF
 RED MUSHRUSH MADAM LT R265
 RED 5L BLAZIN RED 1354-6166 OSF
 RED MLK CRK LAKOTA 534

RED CROWFOOT OLE'S OSCAR 2042M AMF CAF NHF OSF MAF
OLE PRIDE 82X 1549567
 VIKSE PRIDE 146U

RED MLK CRK CUB 722 OSF MAF
 RED CROWFOOT OMEGA 9179J
 BOW RIDGE ADVANTAGE 24S
 BATTLE T ROY PRIDE 9P

BW: 63 lbs.

RED EPDs: BW: -5.0 32% WW: +46 28% YW: +77 29% Milk: +23 17% TM: +45

Stay: +11 0% HP: +10 P CE: +6.3 14% MCE: +6.4 12%

CARCASS: REA: -0.03 15% Marb: +0.46 5% Fat: +0.020 29% Yield: +0.10 19% CW: +9 25%

Calving Ease ★★★★★

Black Red Gene Carrier

355A individual weaning index of 106.



Red 5L Blazin Mill 0056-130W

118

OLE BLAZIN MILL 489A

Male OLEF 489A 1748978 RC June 03 2013

RED 5L BLAZIN RED 1354-6166 OSF
RED 5L BLAZIN MILL 0056-130W 1608395
 RED VGW MR-VATOR 0056

RED 5L BLAZIN HOB0 404-6564 OSF MAF
 RED 5L REBA 60-1354 OSF
 RED 5L MILLENNIUM RED 816 OSF MAF
 RED VGW REDVATOR 9034

RED GEIS KNIGHT HAWK 14'02
OLE KURUBA 89T 1418898
 CROWFOOT 3421N

RED KBJ KNIGHT 17J
 RED GEIS SAMARIE 234'96
 O C C HONESTY 962H
 RED CROWFOOT WJ KURUBA 9102J

BW: 99 lbs.

RED EPDs: BW: +3.4 32% WW: +52 29% YW: +92 30% Milk: +15 19% TM: +41

Stay: +16 0% HP: +10 P CE: -4.4 14% MCE: +0.4 13%

CARCASS: REA: +0.02 14% Marb: +0.17 17% Fat: +0.020 29% Yield: +0.17 19% CW: +31 25%

Calving Ease ★★

Black Red Gene Carrier

489A is very deep and very thick. He will add performance to your herd.

119

OLE GRASS HOPPER 6A

Male OLEF 6A 1725720 RC ET April 22 2013

RED MLK CRK CUB 722 OSF MAF
RED CROWFOOT OLE'S OSCAR 2042M AMF CAF NHF OSF MAF 1096384
 RED CROWFOOT OMEGA 9179J

RED GLACIER CUB 446 OSF MAF
 RED MLK CRK LAKOTA 152-HOBO OSF
 RED PRICE 631 AMF OSF
 RED OMEGA 7456'

BASIN EXPEDITION K47
CROWFOOT 3132N 1152052
 RED CFCC 104K

GARDENS EXPEDITION AMF CAF NHF DDF
 BASIN PRIMROSE LADY 296E
 RED CROWFOOT CHIEFTON 812H
 RED CROWFOOT JESSIE 654F

BW: 79 lbs.

RED EPDs: BW: -2.8 25% WW: +50 25% YW: +82 25% Milk: +23 25% TM: +48

Stay: +9 27% HP: +6 12% CE: +4.1 24% MCE: +9.8 24%

CARCASS: REA: +0.16 22% Marb: +0.68 24% Fat: +0.020 33% Yield: +0.06 23% CW: +15 25%

Calving Ease ★★★★★

Black Red Gene Carrier

120

OLE GLADIATOR 641A

Male OLEF 641A 1726061 RC May 17 2013

RED BLUE SPRUCE ZOOK 50H
RED DWAJO GLADIATOR 32L 1069003
 RED DWAJO SUPERIOR 4H OSF

RED GLACIER MARIAS 548 OSF MAF
 RED BLUE SPRUCE SIENA 26A
 RED GEIS PRIME RIB 411 OSF
 RED BRETON SUPERIOR 39F

RED CROWFOOT OLE'S OSCAR 2042M AMF CAF NHF OSF MAF
OLE BLACKBIRD 707Y 1702814
 OLE BLACKBIRD 0362W

RED MLK CRK CUB 722 OSF MAF
 RED CROWFOOT OMEGA 9179J
 STANDARD HILL PAYOFF 20P AMF NHF
 OLE BLACKBIRD 247R

BW: 60 lbs.

RED EPDs: BW: -5.3 33% WW: +45 30% YW: +74 31% Milk: +25 23% TM: +48

Stay: +9 17% HP: +10 7% CE: +10.2 20% MCE: +9.2 19%

CARCASS: REA: +0.12 16% Marb: +1.00 18% Fat: +0.020 29% Yield: +0.04 19% CW: +7 25%

Calving Ease ★★★★★

Black Red Gene Carrier

641A individual weaning index of 129.



Family Day Sale

121

OLE LEGACY 435A

Male OLEF 435A 1763406 Ee May 20 2013

SINCLAIR RITO LEGACY 3R9 AMF CAF DDF
OLE RITO LEGACY 176W 1492953
 OLEF 237S

R R RITO 707 AMF CAF NHF DDF
 IDEAL 4465 OF 6807 4286 AMF NHF
 CONNEALY FREIGHTLINER AMF CAF NHF DDF
 OLSN ESSENCE 197M

MH MAGUA 27 AMF
OLE POUNDMAKER 132X 1549608
 RED VIKSE POUNDMAKER 57U

O C C HOMER 650H DMF CAF DDF
 M H RODA LASS 033
 RED EGGEN SMASH 110S
 RED EGGEN JACKPOT MISS 144R

BW: 44 lbs.
 RED EPDs: BW: -5.4 33% WW: +44 29% YW: +80 30% Milk: +19 19% TM: +40
 Stay: +12 0% HP: +10 P CE: +12.2 14% MCE: +2.6 12%
 CARCASS: REA: +0.23 16% Marb: +0.36 6% Fat: +0.010 30% Yield: -0.01 20% CW: +11 25%

Calving Ease ★★ ★★ Black Red Gene Carrier
 435A individual weaning index of 128.

122

OLE MOONSHINE 408A

Male OLEF 408A 1726046 RC May 16 2013 *ses

CROWFOOT 6004S
RED CROWFOOT MOONSHINE 8081U AMF CAF NHF OSF MAF 1456117
 RED CROWFOOT BRNDINA 6359S

CROWFOOT MAX 1743L
 CROWFOOT BLACKCAP 4935P
 RED CROWFOOT BIG DADDY 2058M
 RED CROWFOOT BRNDINA 1065L

BAD LANDS QUANTUM 035K
SHODEREE EXUMA 168M 1101337
 RED SHODEREE EXUMA 128K

C H QUANTUM 3330
 BAD LANDS DUCHESS 408D
 RED SHODEREE HI HO 286H
 RED GINA OF EXUMA 71G

BW: 89 lbs.
 RED EPDs: BW: -1.5 35% WW: +57 32% YW: +92 33% Milk: +16 26% TM: +44
 Stay: +11 13% HP: +9 P CE: +3.1 23% MCE: +6.9 22%
 CARCASS: REA: +0.07 13% Marb: +0.20 6% Fat: +0.000 28% Yield: +0.07 18% CW: +23 25%

Calving Ease ★★ Black Red Gene Carrier
 Dam weaning index is 110 lifetime

123

OLE MOONSHINE 333A

Male OLEF 333A 1722158 RC May 07 2013

CROWFOOT 6004S
RED CROWFOOT MOONSHINE 8081U AMF CAF NHF OSF MAF 1456117
 RED CROWFOOT BRNDINA 6359S

CROWFOOT MAX 1743L
 CROWFOOT BLACKCAP 4935P
 RED CROWFOOT BIG DADDY 2058M
 RED CROWFOOT BRNDINA 1065L

ROYAL SURVIVOR DRCC 4044P
OLEF 263S 1364014
 CROWFOOT 3513N

WHITESTONE SURVIVOR N088 AMF NHF
 E F PRIDE 8155
 O C C ECHELON 857E DDF
 RED CROWFOOT WJ CHER 870H

BW: 79 lbs.
 RED EPDs: BW: -1.6 34% WW: +58 31% YW: +81 32% Milk: +18 24% TM: +47
 Stay: +13 4% HP: +9 P CE: +5.9 20% MCE: +5.9 19%
 CARCASS: REA: +0.25 14% Marb: +0.18 12% Fat: +0.000 29% Yield: -0.02 19% CW: +16 25%

Calving Ease ★★ ★★ Black Red Gene Carrier
 Dam weaning index is 114 lifetime.

124

OLE MOONSHINE 332A

Male OLEF 332A 1722157 RC May 07 2013 *ses

CROWFOOT 6004S
RED CROWFOOT MOONSHINE 8081U AMF CAF NHF OSF MAF 1456117
 RED CROWFOOT BRNDINA 6359S

CROWFOOT MAX 1743L
 CROWFOOT BLACKCAP 4935P
 RED CROWFOOT BIG DADDY 2058M
 RED CROWFOOT BRNDINA 1065L

CROWFOOT MAX 1743L
OLE DIXIE 74S 1456371
 RED OLSN DIXIE 32P

BASIN MAX 104J AMF CAF NHF
 GLADWALL LOVEMERE PET 8132
 RED MLK CRK CUB 722 OSF MAF
 RED CROWFOOT DIXIE 379C

BW: 86 lbs.
 RED EPDs: BW: -1.9 34% WW: +60 30% YW: +84 31% Milk: +10 23% TM: +40
 Stay: +12 4% HP: +8 P CE: +2.2 20% MCE: +6.2 19%
 CARCASS: REA: +0.06 14% Marb: +0.22 16% Fat: +0.010 29% Yield: +0.07 19% CW: +17 25%

Calving Ease ★★ Black Red Gene Carrier



125

OLE LEGACY 669A

Male OLEF 669A 1763416 RC May 21 2013

SINCLAIR RITO LEGACY 3R9 AMF CAF DDF
OLE RITO LEGACY 9U 1461664
 OLE PRIME 16S

R R RITO 707 AMF CAF NHF DDF
 IDEAL 4465 OF 6807 4286 AMF NHF
 N BAR PRIME TIME D806 AMF CAF NHF DDF
 OLSN 24P

RED SHOCO DATA OSF MAF
RED OLE QUEEN 121Y 1638364
 RED CROWFOOT 3450N

RED SHOCO SIR ROBIN
 RED VДАР BLACKANA 303
 RED VGW RAMBLER 1000 OSF
 RED CROWFOOT WJ QUEEN 1469L

BW: 77 lbs.
 RED EPDs: BW: -1.7 33% WW: +43 29% YW: +66 30% Milk: +24 21% TM: +46
 Stay: +16 2% HP: +10 P CE: +6.0 17% MCE: +6.8 16%
 CARCASS: REA: +0.04 15% Marb: +0.49 5% Fat: +0.030 29% Yield: +0.09 19% CW: +7 25%

Calving Ease ★★ ★★ Black Red Gene Carrier
 669A individual weaning index of 116.

126

OLE ALLIANCE 547A

Male OLEF 547A 1763353 Ee July 03 2013

SITZ ALLIANCE 659S DMF AMF CAF NHF DDF
OLE ALLIANCE 138T 1420409
 CROWFOOT 3542N

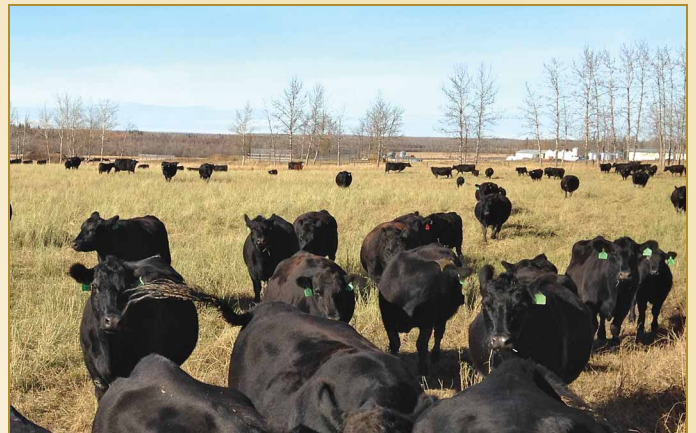
SITZ TRAVELER 8180 AMF CAF NHF DDF
 SITZ BARBARAMERE JET 2698
 O C C JOKER 620J DDF
 GLADWALL G V LASS 6327

SINCLAIR RITO LEGACY 3R9 AMF CAF DDF
OLE ROSE 49U 1461691
 RED OLE ROSE 30S

R R RITO 707 AMF CAF NHF DDF
 IDEAL 4465 OF 6807 4286 AMF NHF
 RED CROWFOOT OLE'S OSCAR 2042M AMF CAF NHF OSF MAF
 RED CROWFOOT ROSE 574E

BW: 91 lbs.
 RED EPDs: BW: +1.1 33% WW: +49 30% YW: +78 31% Milk: +23 22% TM: +47
 Stay: +16 4% HP: +9 P CE: +1.9 19% MCE: +5.8 18%
 CARCASS: REA: +0.05 18% Marb: +0.65 13% Fat: +0.030 31% Yield: +0.14 21% CW: +19 25%

Calving Ease ★★ Black Red Gene Carrier





Family Day Sale

127

RED OLE NET WORTH 222A

Male OLEF 222A 1739120 May 26 2013

RED BADLANDS NET WORTH 23U OSF MAF
RED BENCHMARK NET WORTH 1'11 1618184
 RED BENCHMARK DORY 8127

PFFR SHAQ 607 OSF
 RED BADLANDS MEDORA 406 OSF
 RED CHAMPLAIN SERENADE 2513P OSF MAF
 RED DORY OF BENCHMARK 464

RED CROWFOOT OLE'S OSCAR 2042M AMF CAF NHF OSF MAF
RED OLE VERNICE 3W 1492824
 RED OLE VERNICE 209R

RED MILK CRK CUB 722 OSF MAF
 RED CROWFOOT OMEGA 9179J
 RED CROWFOOT PM 757G
 RED CROWFOOT VERNICE 611F

BW: 60 lbs.

RED EPDs: BW: -4.2 31% WW: +40 26% YW: +68 28% Milk: +21 17% TM: +41

Stay: +12 0% HP: +7 P CE: +6.7 13% MCE: +8.1 12%

CARCASS: REA: +0.27 14% Marb: +0.29 4% Fat: +0.010 29% Yield: -0.04 19% CW: +5 25%

Calving Ease ★★★★★

222A is very deep bodied and easy fleshing. Dam weaning index is 108 lifetime.

128

RED OLE SURESHOT 233A

Male OLEF 233A 1739137 May 28 2013

RED BENCHMARK SURESHOT 8119
RED BENCHMARK SURESHOT 49'11 OSF 1618222
 RED BENCHMARK BURGESS 936

RED CHAMPLAIN SERENADE 2513P OSF MAF
 RED PR BAR STAR 27R
 RED 5L TRAVLIN EXP 1892-6295 OSF MAF
 RED BENCHMARK BURGESS 675

RED REVERE 0807
RED CROWFOOT KURUBA 3184N 1152143
 RED CROWFOOT KURUBA 6126F

RED PATRIOT 629 OSF
 RED NSR ROCKETS PAN-AM LADY
 RED GLACIER DIVIDE 310
 RED CROWFOOT KURUBA 22Z

BW: 101 lbs.

RED EPDs: BW: +1.9 31% WW: +54 27% YW: +95 28% Milk: +21 18% TM: +48

Stay: +9 0% HP: +11 P CE: -1.8 12% MCE: +2.7 11%

CARCASS: REA: +0.07 13% Marb: +0.87 15% Fat: +0.000 28% Yield: +0.10 18% CW: +30 25%

Calving Ease ★

129

RED OLE KNIGHT HAWK 351A

Male OLEF 351A 1722206 May 11 2013

RED KBJ KNIGHT 17J
RED GEIS KNIGHT HAWK 14'02 1115960
 RED GEIS SAMARIE 234'96

RED YY RED KNIGHT 640F OSF
 KBJ ROUND LASSIE 18T
 RED GARA HEAVENLY 65C
 RED GEIS SAMARIE 151'92

RED SHOCO DATA OSF MAF
RED OLE CREEK 155W 1492933
 RED SMOKY CREEK 67S

RED SHOCO SIR ROBIN
 RED VDAR BLACKANA 303
 RED WILD ROSE BAR-NONE 179G
 RED BAZE CREEK 83J

BW: 64 lbs.

RED EPDs: BW: -2.9 34% WW: +57 31% YW: +88 32% Milk: +2 24% TM: +30

Stay: +11 18% HP: +10 8% CE: +6.3 21% MCE: +4.7 21%

CARCASS: REA: +0.17 15% Marb: +0.47 12% Fat: +0.010 29% Yield: +0.05 19% CW: +18 25%

Calving Ease ★★★

351A individual weaning index of 115, Dam weaning index is 105 lifetime.

130

RED OLE KNIGHT HAWK 119A

Male OLEF 119A 1722144 May 06 2013

RED KBJ KNIGHT 17J
RED GEIS KNIGHT HAWK 14'02 1115960
 RED GEIS SAMARIE 234'96

RED YY RED KNIGHT 640F OSF
 KBJ ROUND LASSIE 18T
 RED GARA HEAVENLY 65C
 RED GEIS SAMARIE 151'92

RED BRYLOR PKT SENTINEL 88N
RED SMOKY ERICA 72S MAF 1351915
 RED BAZE ERICA 77J

RED BRYLOR SENSATION 6L
 RED BRYLOR NT BONITA 215L
 RED TASSEL SHERWOOD 113E
 RED BAZE ERICA 4Y

BW: 90 lbs.

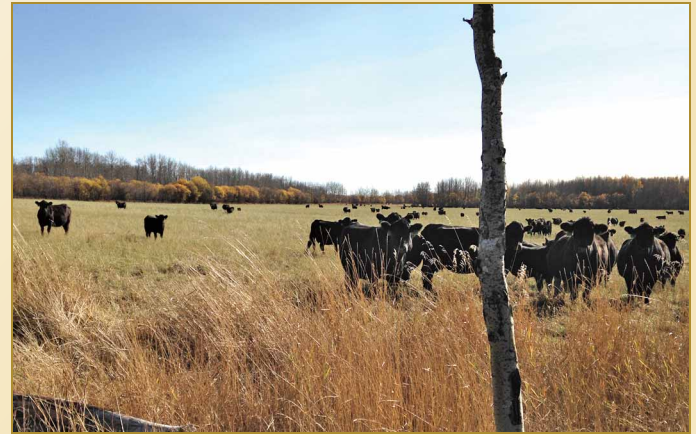
RED EPDs: BW: +1.0 35% WW: +51 32% YW: +81 33% Milk: +8 25% TM: +33

Stay: +10 20% HP: +10 8% CE: -0.9 22% MCE: +2.4 21%

CARCASS: REA: +0.03 14% Marb: +0.45 9% Fat: +0.000 28% Yield: +0.07 18% CW: +20 25%

Calving Ease ★★

119A individual weaning index of 112, dam weaning index is 105 lifetime.



131

RED OLE DESIGNER 247A

Male OLEF 247A 1748993 June 03 2013

RED YY DSGN KING 522R
RED YY DESIGNER 31X 1561568
 RED LPH BESS 131S

RED 5L NORSEMAN KING 2291 OSF MAF
 RED DEVOLANE LINDA 2C
 RED YY RAMBLER 322N
 RED LPH BESS 20P

RED WILD ROSE PREMIER 123P
RED SMOKY ROSE 218U 1475608
 RED SMOKY ROSE 244R

RED SMOKY PRIME 99M
 RED WILD ROSE STAR 92F
 RED BLUE SPRUCE SABLE 26K
 RED BAZE ROSE 24K

BW: 84 lbs.

RED EPDs: BW: -0.9 31% WW: +44 27% YW: +65 28% Milk: +13 18% TM: +34

Stay: +9 0% HP: +8 P CE: +3.2 13% MCE: +3.4 12%

CARCASS: REA: +0.04 12% Marb: +0.36 0% Fat: +0.000 27% Yield: +0.02 17% CW: +8 25%

Calving Ease ★★

132

RED OLE HIGH NOON 686A

Male OLEF 686A 1763411 May 24 2013

RED LARSON HIGH NOON 881 OSF MAF
RED OLE HIGH NOON 151X 1549626
 RED OLE HIDYNA 172T

RED 5L FUTURE DESIGN 893-6405 NHF OSF MAF
 RED LARSON PRINCESS ANN409-211 OSF
 RED YY HITCH 514R
 RED TOM GREEN GTG 16D

RED 5L CROSSBOW 1173-44V
RED OLE PIEBIRD 184Y 1638563
 RED OLE PIEBIRD 95U OSF

RED 5L CROSSFIRE 1894-5666 OSF MAF
 RED 5L SILKWOOD 9161-1173 OSF
 RED 5L FOREVER GRAND 5834 OSC MAF
 RED OLSON PIEBIRD 21N

BW: 62 lbs.

RED EPDs: BW: -4.3 30% WW: +52 26% YW: +79 28% Milk: +22 17% TM: +48

Stay: +13 0% HP: +10 P CE: +6.3 12% MCE: +6.5 11%

CARCASS: REA: +0.11 13% Marb: +0.57 15% Fat: +0.010 27% Yield: +0.03 18% CW: +11 25%

Calving Ease ★★★★★

686A individual weaning index of 123. Performance and light birth weight.

133

RED OLE HIGH NOON 621A

Male OLEF 621A 1731876 May 14 2013

RED LARSON HIGH NOON 881 OSF MAF
RED OLE HIGH NOON 151X 1549626
 RED OLE HIDYNA 172T

RED 5L FUTURE DESIGN 893-6405 NHF OSF MAF
 RED LARSON PRINCESS ANN409-211 OSF
 RED YY HITCH 514R
 RED TOM GREEN GTG 16D

RED SIX MILE SAKIC 832S OSF MAF
RED OLE BIRD 492Y 1638311
 RED CROWFOOT BIRD 706G

RED SIX MILE AVIATOR 217P OSF
 RED SIX MILE SIERRA 257P OSF
 RED BJR MAKE MY DAY 981 OSF MAF
 RED CROWFOOT BIRD 510D

BW: 60 lbs.

RED EPDs: BW: -6.0 30% WW: +56 26% YW: +81 28% Milk: +19 17% TM: +47

Stay: +13 0% HP: +10 P CE: +9.2 13% MCE: +10.6 12%

CARCASS: REA: -0.02 14% Marb: +0.22 15% Fat: +0.010 28% Yield: +0.07 18% CW: +9 25%

Calving Ease ★★★★★

621A individual weaning index of 120.

134

RED OLE BLAZIN MILL 471A

Male OLEF 471A 1748985 May 31 2013

RED 5L BLAZIN RED 1354-6166 OSF
RED 5L BLAZIN MILL 0056-130W 1608395
RED VGW MR-VATOR 0056

RED 5L BLAZIN HOBO 404-5654 OSF MAF
RED 5L REBA 60-1354 OSF
RED 5L MILLENNIUM RED 816 OSF MAF
RED VGW REDVATOR 9034

RED CROWFOOT OLE'S OSCAR 2042M AMF CAF NHF OSF MAF
OLE KURUBA 128T 1418926
CROWFOOT 3110N

RED MLK CRK CUB 722 OSF MAF
RED CROWFOOT OMEGA 9179J
O C C HONESTY 962H
RED CFCC 0507K

BW: 98 lbs.

RED EPDs: BW: +2.6 33% WW: +50 29% YW: +87 30% Milk: +24 19% TM: +48

Stay: +15 3% HP: +9 P CE: -4.6 14% MCE: +3.7 13%

CARCASS: REA: +0.23 16% Marb: +0.40 18% Fat: +0.010 30% Yield: +0.06 20% CW: +27 25%

Calving Ease ★★

135

RED OLE MAX 84A

Male OLEF 84A 1722102 May 02 2013

BASIN MAX 104J AMF CAF NHF
CROWFOOT MAX 1743L 1061449
GLADWALL LOVEMERE PET 8132

BASIN MAX 602C AMF CAF NHF DDF
BASIN ESSA 946A
A A R OPTIMA 771
BAR LOVEMERE PET 225

RED CROWFOOT OLE'S OSCAR 2042M AMF CAF NHF OSF MAF
RED OLE JUPITER 295U 1484027
RED CROWFOOT 3491N

RED MLK CRK CUB 722 OSF MAF
RED CROWFOOT OMEGA 9179J
RED BJR JR 105
RED BAR-X QUINCY 198G

BW: 64 lbs.

RED EPDs: BW: -6.5 33% WW: +33 29% YW: +54 28% Milk: +18 23% TM: +34

Stay: +13 14% HP: +7 P CE: +10.9 20% MCE: +11.1 19%

CARCASS: REA: +0.04 14% Marb: +0.41 12% Fat: +0.010 27% Yield: -0.02 18% CW: -7 25%

Calving Ease ★★★★★

136

RED OLE MALAKI 684A

Male OLEF 684A 1763410 May 24 2013

RED CROWFOOT OLE'S OSCAR 2042M AMF CAF NHF OSF MAF
RED OLE MALAKI 83W 1492873
RED CROWFOOT 3491N

RED MLK CRK CUB 722 OSF MAF
RED CROWFOOT OMEGA 9179J
RED BJR JR 105
RED BAR-X QUINCY 198G

MH MAGUA 27 AMF
RED OLE COVERGIRL 143Y 1638435
RED OLE COVERGIRL 140T

O C C HOMER 650H DMF CAF DDF
M H RODA LASS 033
RED CROWFOOT OLE'S OSCAR 2042M AMF CAF NHF OSF MAF
RED CROWFOOT COVERGIRL 722G

BW: 73 lbs.

RED EPDs: BW: -3.3 32% WW: +37 28% YW: +60 29% Milk: +16 17% TM: +34

Stay: +12 0% HP: +6 P CE: +4.5 14% MCE: +7.9 12%

CARCASS: REA: +0.11 15% Marb: +0.45 5% Fat: +0.010 29% Yield: +0.00 19% CW: +2 25%

Calving Ease ★★★★★

137

RED OLE DATA 628A

Male OLEF 628A 1763424 May 15 2013

RED SHOCO DATA OSF MAF
RED OLE DATA 107W 1492893
RED OLEF 192S

RED SHOCO SIR ROBIN
RED VDAR BLACKANA 303
RED CROWFOOT OLE'S OSCAR 2042M AMF CAF NHF OSF MAF
RED ROYAL ANCHOR R IMAGE 124G

RED 5L CROSSBOW 1173-44V
RED OLE HANNI 146Y 1638438
RED CHAPMAN HANNI 8045U

RED 5L CROSSFIRE 1894-5666 OSF MAF
RED 5L SILKWOOD 9161-1173 OSF
RED CROWFOOT RAMBLER 1038L
RED CHAPMAN HANNI 665S

BW: 53 lbs.

RED EPDs: BW: -4.9 30% WW: +50 26% YW: +71 28% Milk: +20 17% TM: +44

Stay: +13 0% HP: +10 P CE: +9.1 12% MCE: +7.3 11%

CARCASS: REA: +0.00 13% Marb: +0.36 0% Fat: +0.000 28% Yield: +0.02 18% CW: +5 25%

Calving Ease ★★★★★

*Thinking outside the box raises the
eyebrow of your neighbour but they
often will follow your lead - Kelly*



955 head were bred A.I in 2014

138

RED OLE JOHNNY BE GOOD 133A

Male OLEF 133A 1722165 May 08 2013

RED OCC NO DOUBT 622N OSF
RED PCC JOHNNY B GOOD 4003R OSF 1557356
RED PCC SIERRA 539 OSF

RED PCC COLORADO HOBO OSF
RED OCC VANESSA 601L
RED BJR C-CHIEF 811 OSF MAF
RED BECKTON SIERRA ZA30 RV

RED SHODEREE RED SPREAD 87R
RED SHODEREE BANE BERRY 130U 1443211
RED HILL SPRINGS BANE BERRY 203

RED LCHMN RED SPREAD 1271F OSF MAF
RED SHODEREE FLOWER 6E
RED HILL SPRINGS ROBIN HOOD 6F
RED BL SPR BANE BERRY 206C

BW: 85 lbs.

RED EPDs: BW: -2.6 34% WW: +46 32% YW: +71 33% Milk: +21 25% TM: +44

Stay: +9 6% HP: +11 7% CE: +7.2 22% MCE: +5.7 22%

CARCASS: REA: -0.13 14% Marb: +0.43 17% Fat: -0.010 28% Yield: +0.05 18% CW: +9 25%

Calving Ease ★★★

133A is very deep bodied with a 105 weaning index. Dam weaning index is 110 lifetime.

139

RED OLE JOHNNY BE GOOD 126A

Male OLEF 126A 1722153 May 07 2013

RED OCC NO DOUBT 622N OSF
RED PCC JOHNNY B GOOD 4003R OSF 1557356
RED PCC SIERRA 539 OSF

RED PCC COLORADO HOBO OSF
RED OCC VANESSA 601L
RED BJR C-CHIEF 811 OSF MAF
RED BECKTON SIERRA ZA30 RV

RED FLYING K DYNAMITE 66L
RED SHODEREE INTUITION 144N 1154241
RED SHODEREE INTUITION 511B

RED FLYING K DYNAMO 6Y
RED FLYING K LOLA 21J
RED TOGNO 109U
RED DK LADY OF LUCK 211T

BW: 79 lbs.

RED EPDs: BW: -2.2 34% WW: +47 31% YW: +73 32% Milk: +12 24% TM: +36

Stay: +10 13% HP: +10 7% CE: +7.7 21% MCE: +5.0 21%

CARCASS: REA: +0.00 14% Marb: -0.09 16% Fat: +0.000 28% Yield: +0.04 18% CW: +11 25%

Calving Ease ★★★

140

RED OLE JOHNNY BE GOOD 108A

Male OLEF 108A 1722130 May 05 2013

RED OCC NO DOUBT 622N OSF
RED PCC JOHNNY B GOOD 4003R OSF 1557356
RED PCC SIERRA 539 OSF

RED PCC COLORADO HOBO OSF
RED OCC VANESSA 601L
RED BJR C-CHIEF 811 OSF MAF
RED BECKTON SIERRA ZA30 RV

RED CROWFOOT RAMBLER 1038L
RED CHAPMAN JESSIE 8068U 1479761
RED CROWFOOT JESSIE 1090L

RED VGW RAMBLER 1000 OSF
CROWFOOT VERNICE 907J
RED CROWFOOT TAJ MAHAL 410D
RED CROWFOOT JESSIE 654F

BW: 81 lbs.

RED EPDs: BW: -3.5 34% WW: +35 29% YW: +54 28% Milk: +18 23% TM: +35

Stay: +12 6% HP: +9 7% CE: +10.8 20% MCE: +7.0 20%

CARCASS: REA: +0.01 14% Marb: +0.29 5% Fat: +0.010 27% Yield: +0.01 18% CW: -2 25%

Calving Ease ★★★

108A individual weaning index of 105.



Family Day Sale

141 RED OLE JOHNNY BE GOOD 81A

Male OLEF 81A 1722099 May 01 2013

RED OCC NO DOUBT 622N OSF
RED PCC JOHNNY B GOOD 4003R OSF 1557356
 RED PCC SIERRA 539 OSF

RED PCC COLORADO HOBBO OSF
 RED OCC VANESSA 601L
 RED BJR C-CHIEF 811 OSF MAF
 RED BECKTON SIERRA ZA30 RV

RED YY RED KNIGHT 640F OSF
RED OLE LAKOTA 210W OSF 1598203
 RED MLK CRK LAKOTA 152-HOBO OSF

RED YY 23L TOPPER 408D
 RED TOP GOLDIE 40U
 RED BUF CRK HOBBO 1961 OSF MAF
 RED MLK CRK LAKOTA 802-RAMB

BW: 84 lbs.

RED EPDs: BW: -2.0 33% WW: +48 29% YW: +69 31% Milk: +15 23% TM: +38

Stay: +12 6% HP: +8 7% CE: +6.1 21% MCE: +7.0 21%

CARCASS: REA: -0.04 16% Marb: +0.28 11% Fat: +0.000 29% Yield: +0.05 19% CW: +8 25%

Calving Ease ★★★

142 RED OLE JOHNNY BE GOOD 156A

Male OLEF 156A 1722186 May 10 2013

RED OCC NO DOUBT 622N OSF
RED PCC JOHNNY B GOOD 4003R OSF 1557356
 RED PCC SIERRA 539 OSF

RED PCC COLORADO HOBBO OSF
 RED OCC VANESSA 601L
 RED BJR C-CHIEF 811 OSF MAF
 RED BECKTON SIERRA ZA30 RV

RED 5L FOREVER GRAND 5834 OSC MAF
RED OLE SPRUCE 174U OSF 1473764
 RED CROWFOOT 3022N

RED LCHMN GRND CANYON 1244G OSC MAF
 RED NORSEMAN 1312 PJM
 RED VGW RAMBLER 1000 OSF
 RED CROWFOOT SPRUCE 1180L

BW: 83 lbs.

RED EPDs: BW: -2.3 34% WW: +45 29% YW: +69 29% Milk: +19 23% TM: +41

Stay: +9 8% HP: +10 7% CE: +7.3 21% MCE: +7.1 20%

CARCASS: REA: +0.04 16% Marb: +0.10 12% Fat: +0.020 28% Yield: +0.07 19% CW: +8 25%

Calving Ease ★★★

- Ole Farms -

Sharing in the Excitement of Agriculture



143

RED COMMERCIAL BULL

Male OLEF 127A Born: May 7 2013

DAM: YT 163U BW: 94 lbs. unassisted

Calving Ease ★★

144

RED COMMERCIAL BULL

Male OLEF 204A Born: May 22 2013

DAM: 213X BW: 77 lbs. unassisted

Calving Ease ★★

145

RED COMMERCIAL BULL

Male OLEF 246A Born: June 3 2013

DAM: OLEF 168R BW: 77 lbs. unassisted

Calving Ease ★★

146

RED COMMERCIAL BULL

Male OLEF 335A Born: May 7 2013

DAM: OLEF 27X BW: 76 lbs. unassisted

Calving Ease ★★

147

RED COMMERCIAL BULL

Male OLEF 668A Born: May 21 2013

BW: 67 lbs. unassisted

Calving Ease ★★★

148

BLACK COMMERCIAL BULL

Male OLEF 444A Born: 2013

BW: N/A unassisted

Calving Ease ★★

149

BLACK COMMERCIAL BULL

Male OLEF 640A Born: May 17 2013

BW: 68 lbs. unassisted

Calving Ease ★★★

150

BLACK COMMERCIAL BULL

Male OLEF 723A Born: June 1 2014

DAM: OLEF 711Y BW 66 lbs. unassisted

Calving Ease ★★★

151

BLACK COMMERCIAL BULL

Male OLEF 733A Born: June 15 2013

DAM: OLEF 767Y BW: 69 lbs. unassisted

Calving Ease ★★★



Family Day Sale

Thanks to buyers, family & friends





Family Day Sale

Commercial Heifers

160 Commercial Bred Heifers

*Bred to easy calving Angus bulls
to start calving May 1.
Full vaccination program Pfizer Gold*



- 200** 5 BLACK ANGUS COMMERCIAL BRED HEIFERS

- 201** 5 BLACK ANGUS COMMERCIAL BRED HEIFERS

- 202** 5 BLACK ANGUS COMMERCIAL BRED HEIFERS

- 203** 5 BLACK ANGUS COMMERCIAL BRED HEIFERS

- 204** 5 BLACK ANGUS COMMERCIAL BRED HEIFERS

- 205** 5 BLACK ANGUS COMMERCIAL BRED HEIFERS

- 206** 5 BLACK ANGUS COMMERCIAL BRED HEIFERS

- 207** 5 BLACK ANGUS COMMERCIAL BRED HEIFERS

- 208** 5 BLACK ANGUS COMMERCIAL BRED HEIFERS

- 209** 5 BLACK ANGUS COMMERCIAL BRED HEIFERS

- 210** 5 RED ANGUS COMMERCIAL BRED HEIFERS

- 211** 5 RED ANGUS COMMERCIAL BRED HEIFERS

- 212** 5 RED ANGUS COMMERCIAL BRED HEIFERS

- 213** 5 RED ANGUS COMMERCIAL BRED HEIFERS

- 214** 5 BLACK BALDIE COMMERCIAL BRED HEIFERS

- 215** 5 BLACK BALDIE COMMERCIAL BRED HEIFERS

- 216** 5 BLACK ANGUS COMMERCIAL BRED HEIFERS

- 217** 5 BLACK ANGUS COMMERCIAL BRED HEIFERS

- 218** 5 BLACK ANGUS COMMERCIAL BRED HEIFERS

- 219** 5 BLACK ANGUS COMMERCIAL BRED HEIFERS

- 220** 5 BLACK ANGUS COMMERCIAL BRED HEIFERS

- 221** 5 BLACK ANGUS COMMERCIAL BRED HEIFERS

- 222** 5 BLACK ANGUS COMMERCIAL BRED HEIFERS

- 223** 5 BLACK ANGUS COMMERCIAL BRED HEIFERS

- 224** 5 BLACK ANGUS COMMERCIAL BRED HEIFERS

- 225** 5 BLACK ANGUS COMMERCIAL BRED HEIFERS

- 226** 5 BLACK ANGUS COMMERCIAL BRED HEIFERS

- 227** 5 BLACK ANGUS COMMERCIAL BRED HEIFERS

- 228** 5 BLACK ANGUS COMMERCIAL BRED HEIFERS

- 229** 5 BLACK ANGUS COMMERCIAL BRED HEIFERS

- 230** 5 BLACK ANGUS COMMERCIAL BRED HEIFERS

- 231** 5 BLACK ANGUS COMMERCIAL BRED HEIFERS

Top 10 Management Practices « That Work for Us »

1. Calving in sync with nature – May and June
2. Deep bodied, moderate cows
3. Angus cattle
4. Rotational grazing with adequate rest periods
5. Electric fencing
(The biggest improvement we have made)
6. Swath grazing
7. Alfalfa and Red Clover silage
8. Field feeding - as opposed to pens
9. Bale grazing
10. Pipeline watering



EPD Definitions

Expected Progeny Differences

EPDs are an estimation of an animal's breeding value based on its pedigree and performance. EPDs indicate the average performance expected from an animal's progeny in comparison to another animal or to the breed average. They allow for fair comparison of animals' genetics across herds, regardless of environment and management differences.

P = Parental Average EPDs: These are the most basic and least accurate EPDs. They are the best guideline available when calves are first reported and there is no performance data on them yet. Parental Average EPDs are indicated by a P for accuracy and are simply an average of the dam and sire's EPDs. If a calf has only one parent with EPDs, its Parental Average EPDs will be only half of its one parent's EPDs.

P+ = Interim EPDs: These EPDs utilize the Parental Average EPD information on the calf plus any performance data on file and its ratio amongst its contemporary group. Interim EPDs are indicated by a P+ for accuracy and have a higher accuracy than a Parental Average EPD as they also include some performance data.

% = National EPDs: Calculated in the National Cattle Evaluations (NCEs), these EPDs are the most accurate prediction of breeding value or genetic merit that can be determined from pedigree and performance data submitted. National EPDs are published with numerical accuracies that reflect the quantity and quality of data used in its calculation.

Growth EPDs

BW = Birth Weight: Expressed in lbs, predicts on average how much heavier or lighter than the breed average an animal's calves will be. If the breed average is 3 and an Angus animal has a BW EPD of 5 then on average this animal's calves will be 2 lbs heavier than the breed average.

WW = Weaning Weight: Expressed in lbs, predicts comparative progeny weight at 205 days of age. This EPD reflects pre-weaning growth potential that an animal is expected to contribute to its calves.

YW = Yearling Weight: Expressed in lbs, predicts the differences in progeny performance at 365 days. The YW EPD reflects the animal's calves' potential for post-weaning growth.

Fertility Trait EPDs

Milk = Milk: Expressed in lbs. of calf weaned, this is a prediction of an animal's daughter's milking ability.

TM = Total Maternal: A measurement comprised of half of an animal's Milk EPD and half of its additive genetic contribution to its calves' weaning weights.

Stay = Stayability: The probability that a heifer will be retained in a herd past 6 years of age.

HP = Heifer Pregnancy: The probability, in percentage, that an animal's daughters will conceive at 2 years of age.

SC = Scrotal Circumference: This EPD predicts the average scrotal circumference for an animal's sons. Scrotal circumference is used to gauge a bull's fertility.

CE = Calving Ease Direct: Predicts the percentage of unassisted birthings expected from an animal's calves. This EPD reflects a combination of gestational growth and a calf's conformation. The higher the CED EPD, the more likely it is that the animal's calves will be born without assistance.

MCE = Maternal Calving Ease: Predicts the percentage of unassisted births an animal's daughters will have with their first calves. This is a reflection of daughters' pelvic shape and level of hormonal reactions and stamina during labour. The higher the MCE EPD, the more likely it is that the animal's daughters will give birth without assistance.

Carcass Trait EPDs

REA = Rib Eye Area: Expressed in square inches, predicts the size of the rib eye muscle at the 12th rib in the average calf.

Marb = Marbling: A predictor of the level of intramuscular fat in the rib eye muscle, this EPD is calculated using both ultrasound and carcass data.

Fat = Fat: Expressed in inches, predicts the comparative depth of back fat over the 12th rib in the average calf.

YG = Yield Grade: expressed in USDA yield grade score, this EPD predicts differences in carcass yield grade score to be expected from progeny.

CW = Carcass Weight: Expressed in lbs., this EPD predicts differences in the average hot carcass weight in progeny.

Colour Indicators

RC = Red Carrier: a black-hided animal that has inherited the allele that codes for red coat colour but does not display the phenotype as the allele is recessive to the allele that codes for black hide colour

EE – homozygous for black coat color gene

Ee – black hided animal that is a carrier of the red coat color gene

ee – red hided animal

Genetic Evaluation Angus Breed Averages

To evaluate an animal using EPDs it should be compared to the breed average.

This is not zero (0) for any trait, rather, it is an average of all the values for animals of that category in the breed, and changes every evaluation. EPD breed averages are calculated for three categories: non parents under 2 years of age, active dams, and active sires. Below are the current breed averages.

Average Black Angus EPDs for all Calves born in 2014
Average Red Angus EPDs for all Calves born in 2014

	Birth Weight	Weaning Weight	Yearling Weight	Milk	Total Maternal	Scrotal Circ.	Calving Ease Direct	Calving Ease Mat.	Stay	HPG	Marbling	REA	Fat	Yield Grade	Carcass Wt
EPD	+2.7 -0.6	+45 +49	+79 +75	+19 +16	+41 +41	+0.65 n/a	+2.3 +2.7	+6.3 +4.6	n/a n/a	n/a n/a	+0.35 +0.30	+0.27 +0.04	+0.013 -0.012	n/a -0.01	+22 +14

Average Black Angus EPDs for all Dams active in 2014
Average Red Angus EPDs for all Dams active in 2014

	Birth Weight	Weaning Weight	Yearling Weight	Milk	Total Maternal	Scrotal Circ.	Calving Ease Direct	Calving Ease Mat.	Stay	HPG	Marbling	REA	Fat	Yield Grade	Carcass Wt
EPD	+3.0 -0.6	+40 +45	+68 +68	+16 +16	+36 +38	+0.55 n/a	+1.2 +2.7	+5.4 +4.6	n/a +10	n/a +9	+0.22 +0.29	+0.10 +0.01	+0.007 -0.013	n/a -0.02	+16 +10

Average Black Angus EPDs for all Sires active in 2014
Average Red Angus EPDs for all Sires active in 2014

	Birth Weight	Weaning Weight	Yearling Weight	Milk	Total Maternal	Scrotal Circ.	Calving Ease Direct	Calving Ease Mat.	Stay	HPG	Marbling	REA	Fat	Yield Grade	Carcass Wt
EPD	+2.6 -0.7	+43 +51	+80 +79	+19 +17	+42 +42	+0.73 n/a	+2.7 +2.7	+6.6 +4.8	n/a +10	n/a +9	+0.31 0.31	+0.26 +0.05	+0.010 -0.008	n/a -0.00	+23 +16

Happy Family Day!

Terms & Conditions

CATTLE INSPECTION: All carry permanent identity tags, corresponding to Sale Lot Numbers. All shall be available for inspection prior to sale.

BREEDING GUARANTEE: All cattle are sound and sold with a responsible breeder guarantee of satisfaction. In the event of any unlikely dispute, the regular terms and conditions, standard with the Canadian Aberdeen Angus Association shall apply.

MAIL BIDS: May be entrusted in complete confidence to any of the Sale Staff listed or to Douglas J. Henderson & Associates Ltd.

INSURANCE: Ownership risk to purchaser commences when the Auctioneer's hammer falls. Livestock coverage will be available at the clerk's desk from the appointed representatives on sale day, also from the sale management at any time.

TERMS OF SALE: Are cash or cheque at par, payable to Clerks of the Sale on Sale Day. No release will be given until satisfactory settlement has been made. We reserve the right to withhold animals from shipment for whom payments have not been received prior to departure times.

ALL PERSONS who attend the Sale do so at their own risk, and the Owners, Sale Management and Sale Staff assume no liability, legal or otherwise, for property loss or for any accidents that may occur.

DjH

Douglas J. Henderson
& Associates Ltd.

P.O. BOX 5900, LACOMBE, ALBERTA T4L 1X4

R
P
G
/
P
R
G

CANADA	POSTES
POST	CANADA
Postage paid	Port payé
Addressed Admail	Médiaposte avec adresse
03683273	

RETURN POSTAGE GUARANTEED
PORT DE RETOUR GARANTI

OLE



FARMS

10th Anniversary

Family Day Sale



Monday **FEBRUARY 16** 2015

At the Farm

10 miles Southwest of Athabasca, Alberta