

*You're invited to the*  
**MAR MAC**  
*Farms*  
*&*  
*Guests Bull Sale*

March 10, 2010  
1:30 pm  
at Mar Mac Farms  
Brandon, Manitoba



*Welcome* to the 2010 edition of the **Mar Mac & Guests Bull sale.**

Mar Mac Farms is a 4<sup>th</sup> generation family farm where we make our living with our cattle. We dedicate our time year round to producing top quality genetics and have learned the importance of customer service and honest relations with our valued friends in the livestock business. Someone recently asked me how I could stay so enthusiastic about the purebred cattle business or the cattle industry in general. I told them that the answer was easy, it is the people. This industry has introduced us to some of the best people we have ever worked with or had the opportunity to learn from.

Our guest consigners this year are TSN Livestock(Shawn and Tyson Birmingham), Neil and Joan Moffatt and Ken Hayes, and Perkin Land and Cattle(Darryl and Tanya Perkin).

We are Pleased to welcome 2 new members to our sale group this year. The first is Everett Olson. Everett purchased 2 great yearling heifers from us last year and the bulls he has in the sale are out of those good heifers. He is very enthusiastic about the Simmental breed. The second is Magnusville Farms, Shawn and Aaron Magnusson of Riverton. They purchased a package of heifers and young cows from us last fall and the calf they have in the sale is out of one of the first calf heifers.

The only thing constant is change. Our good friends Hugh and Sandy Margetts have retired from the purebred business. We purchased the last of their cows this past summer. We hate to see Hugh and Sandy leave the Purebred industry, and we wish them well in all their future endeavours.

As always our bulls have been raised without creep feed, their weaning weights are produced by their mother's milk. These bulls have been developed on a home grown ration that will enhance longevity. You may find fatter bulls at other sales, but these bulls are fed to last. They have been selected for ease of fleshing, temperament and structural correctness. They are culled heavily, if we could not feel comfortable using any of these bulls ourselves we would not be comfortable selling them to you. Any of the bulls that we cull we castrate and feed to finish at home. This certainly is the best teacher of the right type of cattle that work for our customers.

The mothers of these bulls are sound practical cows. Our cows have to maintain their condition on swath grazing and a roughage ration, they do not get any grain. They also have to calve and nurse with no assistance, and then rebreed or they do not stay here.

Please feel free to come and see the bulls at any time prior to the sale, we would be honoured to have you inspect the bulls and their mothers. If you cannot attend our sale but are interested in our program we would be happy to help you select a sire for your operation through our sight unseen purchase program or talk to any of the sale staff and they would be happy assist you. This year you will also be able to bid on the internet by going to Liveauctions.com.

We look forward to meeting with you on sale day. Although we can't visit with everyone on sale day we would like to say a heartfelt thank you for attending and let you know that your attendance is appreciated.

Sincerely Blair, Lois Brett and Melissa

*PS our sale barn is heated but the bulls are on display outside, so dress accordingly*



# MAR MAC FARMS & GUESTS SPRING BULL SALE

## GUEST CONSIGNORS

Downhill Simmentals, Everett Olson, Rapid City  
Perkin Land & Cattle Co., Darryl & Tanya Perkin, Elgin  
TSN Livestock, Tyson & Shawn Birmingham, Brandon  
Moffatt Stock Farm & Ken Hayes, Douglas  
Magnusville Farm (Shawn & Aaron Magnusson), Riverton

**SALE DATE: MARCH 10, 2010 • 1:30 P.M. @ MAR MAC SALE BARN**



*Long time customers, Tom & Brian Stewart discuss the bulls with Blair at Ag Days 2010.*

## SALE STAFF

### Auctioneer:

Jerry Kanewischer (403) 382-9374

### Ringmen:

Ted Serhienko (306) 933-4200 / cell (306) 221-2711

Helge By (306) 546-3940 / cell (306) 536-4261

Nate Marin (306) 869-2519 / cell (306) 869-7130

### Sale Consultant:

Wilf Davis (204) 834-2479 / cell (204) 841-0211

### Photography:

Grant & Lauralee Rolston cell (403) 593-2217

## SELLING ARE 88 LOTS OF BULLS

- 33 Red Angus
- 19 Black Angus (1 Two-Year Old)
- 36 Simmental

• View the catalogue online at [www.marmacfarms.net](http://www.marmacfarms.net) or view the bulls at the farm anytime.

## SALE DAY PHONES

(204) 728-3058 - Home

(204) 729-5439 - Blair & Lois

(204) 573-5192 - Melissa

(204) 729-1018 - Brett

## MAR MAC FARMS

**Blair, Lois, Brett & Melissa McRae**

RR 1, Box 57 • Brandon, MB R7A 5Y1

Phone (204) 728-3058 • Fax (204) 727-7744

Cell (204) 729-5439

E-mail: [marmac@inetlink.ca](mailto:marmac@inetlink.ca)

Website: [www.marmacfarms.net](http://www.marmacfarms.net)

Cover Photo by Lois & Melissa McRae • Inside Cover & Printing: Leech Printing Ltd., Brandon • Catalogue Design & Layout: Dalysse Robertson, Neepawa

## VALUES WE BELIEVE IN...

- **Commitment** ...We are committed to producing a top quality product with the traits you demand. These bulls are selected for calving ease, fertility, easy fleshing, thickness and milk. These traits will command premiums for your calves in the auction barns or on the rail.
- **Quality** ...**Only the top end of our bulls sell.** We would use any of the bulls in our own program. We have been very strict on our culling this year, so you get only the best.

**At MAR MAC & GUESTS our 50 + years of experience as family run operations means CUSTOMER SERVICE is AN IMPORTANT PART OF OUR BUSINESS.**

**We guarantee our bulls 100%, sight unseen purchase satisfaction, wintering program, personal contact after the sale of the bull and the coffee is always on for you to come and view our program.**

## BUYER SELECTION PROGRAMS...

- **Give Blair, Lois or any of the consignors a call anytime** ...Call us a few days in advance of the sale with your bull needs and we will compile a list of bulls that we feel will work for you. As we are with the bulls everyday, we know the qualities in each bull. If we buy a bull for you sight unseen and you do not like him, you do not own him - no problem!
- **Can't Get Away** ...We know it is harder to get away from home with cows calving, barley to deliver or whatever your busy schedule entails. We are trying to help you out by offering on-line bidding with Live Auctions. Please go online a few days ahead to register. We encourage you to come to the farm ahead of time and check out which bull(s) you are interested in and then bid online if you desire. If you can attend the sale we would love to have you here in person. Any questions please give us a call!



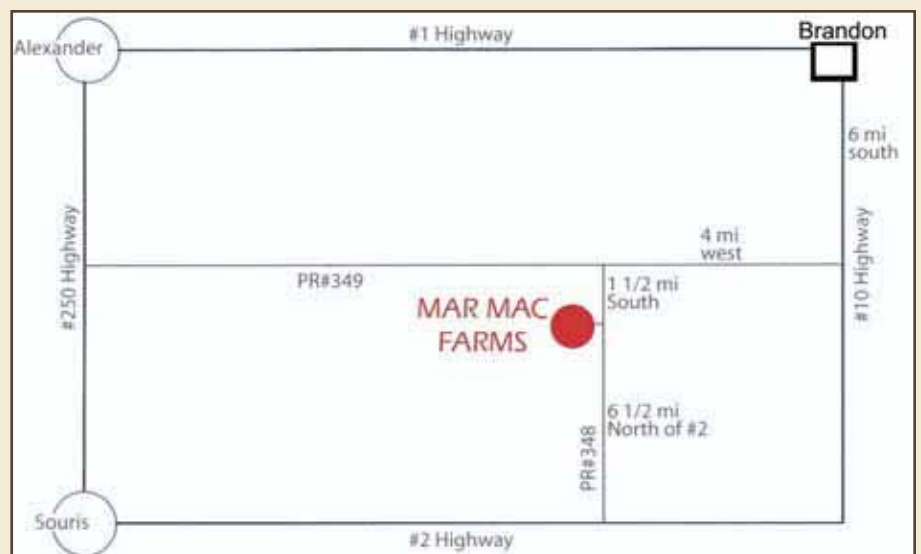
### • On Line Viewing & Bidding Available...

We invite those of you who are unable to attend to be part of the action! We would never want to give someone an excuse not to attend this event, but if the situation arises, we have you covered. With the help of LiveAuctions.tv, we are now able to give you a live connection to the auction. Real-time bidding will be available via the Internet for this sale. Live audio and live video will allow buyers to bid on animals as if they were present at the sale. Buyers must create an account at least 2 days prior to the sale. Please visit <http://LiveAuctions.tv> to walk you through the set-up process.

Contact Jill Mader at (403) 990-9187 for assistance.



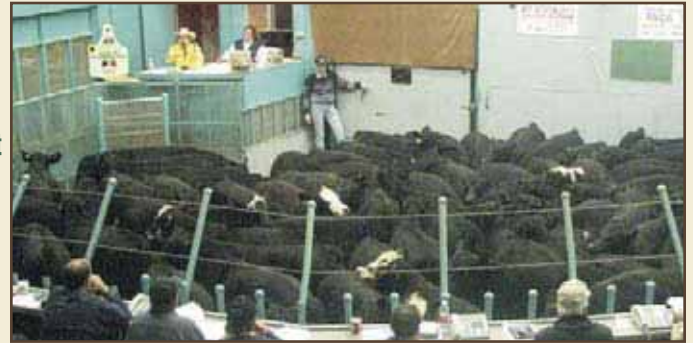
We are now  
Registered Verified  
Beef Producers



# WE CAN SUPPLY YOU WITH QUALITY BULLS AND CUSTOMER SERVICE!

## • BULL GUARANTEE

...All bulls have completed a breeding soundness evaluation. If your bull fails to be a satisfactory breeder, we will replace him with a bull of equal value or give you your money back. We guarantee you will have a sound bull to service your cows. We will not provide a replacement if your bull has been mismanaged. At no time shall the liability exceed the purchase price of your bull. Bulls under 1 year of age on Semen Test Day will be tested after their birthday, before you need them.



*Blair and Lois take time and attend many feeder sales seeing how their customers cattle sell and what the market is demanding.*

## • The Cost of Fuel

...is atrocious, so drive your car! We offer to board your bull free until April 15, after that at cost until you need him. **As well, we will deliver your bull free to central points in Western Canada or the US border.** We will make every effort to get the bull to your farm. Delivery will be as close to the date that you request your bull, but will be at our convenience. If you want to pick up your bull at the farm, you can save \$50 off the purchase price.



## • Peace of Mind

...Your new bull is a valuable asset and we recommend insuring your bull for infertility coverage and all risk mortality. If you are taking advantage of our wintering program, your new bull must be insured so both you and us have peace of mind. Insurance will be available from Stockman's Agencies.

## • Accidents

... Although every precaution will be taken to protect the safety and comfort of buyers, neither the sales staff, auctioneer or consignors assume any responsibility in this matter and disclaim any liability, legal or otherwise, in the event of accident or loss of property.

## • Terms

...The terms of the sale are cash or cheque payable in Canadian Funds. The right of property shall not pass until after settlement is made. All settlements must be made with the clerks of the sale before any cattle will be released.

**• Join us at 12:30 p.m. for a complimentary meal on sale day.** Meat prepared by J & S Meats of Souris. Support the South Brandon Carroll 4-H Beef Club and buy a piece of pie. They appreciate your support in the past!

## J & S Meat Processing

- Custom slaughtering
- Cutting and Wrapping
- Retail Meat Sales




Contact:  
**John Janz, Souris, Manitoba**  
**(204) 483-2234**



*South Brandon Carroll 4-H Beef Club 2009*

*This is the 6<sup>th</sup> year that J & S (John, Pat & Susan Janz) have cooked the beef for our sale, and it is always GREAT! Call them for your beef needs.*

# MAR MAC FARMS RED ANGUS

BREED AVERAGE EPDs:

BW 0.7

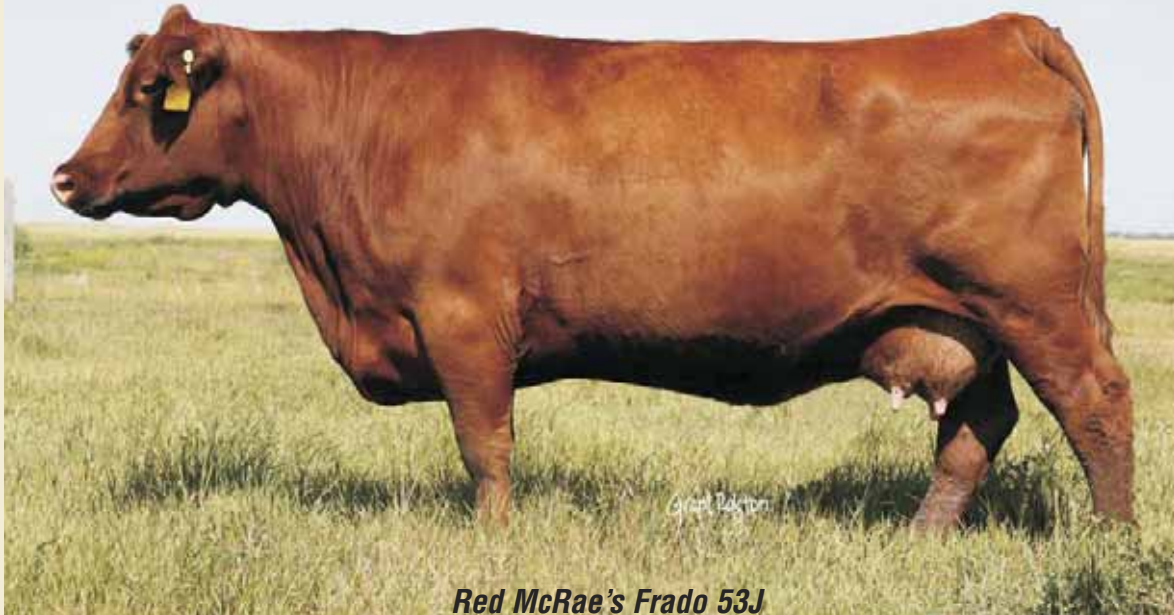
WW 29

YW 52

Milk 15

Behind every good bull

is a top Mother Cow!



**Red McRae's Frado 53J**



**KOF 50T - Mulberry X 53J**  
Sold to Ken Mackenzie and was Silver Medalist at World Angus Forum



**KOF 54T - Top selling bull in 2008 sale to Duralta. They are impressed with the 54T calves.**



**KOF 65T - Mulberry X 53J**  
Vision was used in our program very successfully.

**42W** **RED MCRAE'S STRIKER 42W**  
1526728 KOF 42W 3 Feb 2009

BW: 102 lbs. • WW 822 lbs. • Adj. 365 DW:1268 lbs.  
Jan 22 Wt. 1208 lbs. • Sale Wt. \_\_\_\_\_

RED BRYLOR MASTER PLAN 17M  
SIRE: RED BRYLOR STRINGER 29S OSF 1332983  
RED T-S OLIVIA 706P

RED FCC RAMBO 502 OSF  
RED MCRAE'S BLAZER 336C  
RED VALUE LASS OF WAYLIN 30W  
DAM: RED MCRAE'S FRADO 53J 971299  
RED TROUBADOUR FRADO 4T  
RED WILLIAMETTE FRADO 89W  
RED ROXANNE FRADO 18R

EPDs: BW 0 WW 31 YW 66 M 18 TM 34

When selecting Red Brylor Stringer to use in our program, we were impressed with the Master Plan progeny and the strong cow family in the Olivia's. Flushing 53J to Stringer and the offspring have impressed us both male and female. If you want to add length and depth of quarter check out 42W. Each year 53J has a top bull for the sale.



54W

### RED MCRAE'S STRIDENT 54W

1526729      KOF 54W      4 Feb 2009

BW: 82 lbs. • WW 787 lbs. • Adj. 365 DW: 1133 lbs.  
Jan 22 Wt. 1100 lbs. • Sale Wt. \_\_\_\_\_

EPDs: **BW 0    WW 31    YW 66    M 18    TM 34**

A Stringer son out of our donor cow 53J who never misses. Adding strong maternal traits A low birth weight bull for heifers.

RED BRYLOR MASTER PLAN 17M  
Sire: **RED BRYLOR STRINGER 29S OSF 1332983**  
RED T-S OLIVIA 706P

RED FCC RAMBO 502 OSF  
RED MCRAE'S BLAZER 336C  
RED VALUE LASS OF WAYLIN 30W  
DAM: **RED MCRAE'S FRADO 53J 971299**  
RED TROUBADOUR FRADO 4T  
RED WILLIAMETTE FRADO 89W  
RED ROXANNE FRADO 18R

1W

### RED MCRAE'S STRIDE 1W

1500883      KOF 1W      17 Jan 2009



BW: 90 lbs. • WW 896 lbs. • Adj. 365 DW: 1327 lbs.  
Jan 22 Wt. 1293 lbs. • Sale Wt. \_\_\_\_\_

RED BRYLOR MASTER PLAN 17M  
SIRE: **RED BRYLOR STRINGER 29S 1332983**  
RED T-S OLIVIA 706P

RED FCC RAMBO 502 OSF  
RED MCRAE'S BLAZER 336C  
RED VALUE LASS OF WAYLIN 30W  
DAM: **RED MCRAE'S FRADO 92H 934414**  
RED TROUBADOUR FRADO 4T  
RED WILLIAMETTE FRADO 89W  
RED ROXANNE FRADO 18R

EPDs: **BW -0.5    WW 37    YW 78    M 22    TM 40**

A Stringer son who is out of another top Blazer daughter in our herd. 92H has produced sons that go out and work one of them was a Bodacious sons that did extremely well for Darren and Lisa Beernaert. Add Longevity and broody females to your herd with 1W.

78W

### RED MCRAE'S WATCHMAN 78W

1500912      KOF 78W      7 Feb 2009

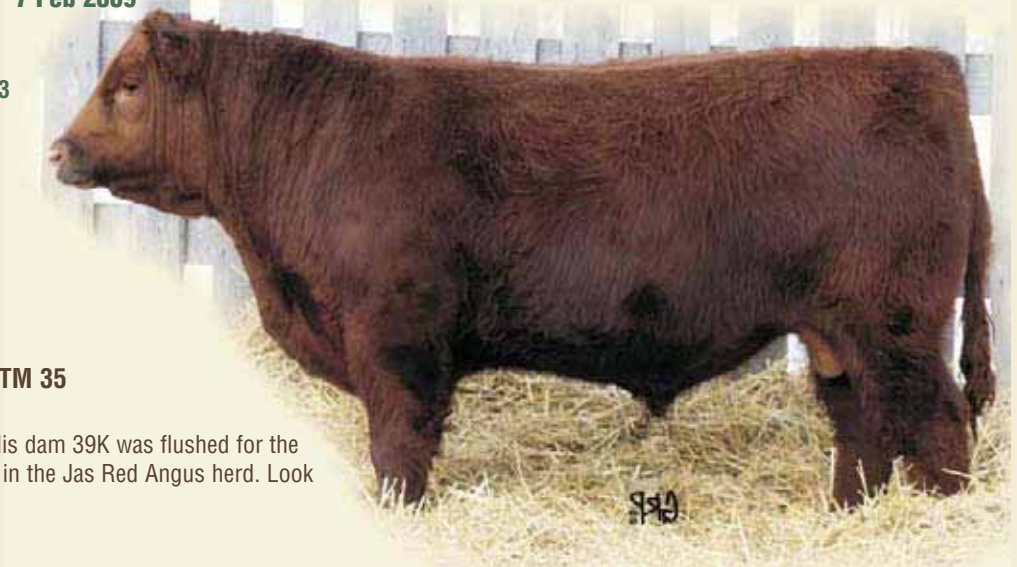
RED BRYLOR MASTER PLAN 17M  
SIRE: **RED BRYLOR STRINGER 29S OSF 1332983**  
RED T-S OLIVIA 706P

RED VVV PATRIOT 16L 25C 14E  
BUCK VALLEY PATRIOT 15H  
NEW FORCE MAXINE 57D  
DAM: **RED BUCK VALLEY HANA 39K 996918**  
RED CUMNOCK CAPTAIN 612C  
RED BUCK VALLEY HANA 114E  
RED BUCK VALLEY HANA 42C

EPDs: **BW 0.8    WW 35    YW 69    M 18    TM 35**

A Stringer that has been a standout since birth. His dam 39K was flushed for the Columbia market this year and has a son working in the Jas Red Angus herd. Look at the length and quarter in this bull.

BW: 94 lbs. • WW 710 lbs. • Adj. 365 DW: 1096 lbs.  
Jan 22 Wt. 1037 lbs. • Sale Wt. \_\_\_\_\_



### REFERENCE SIRE "A" - RED MCRAE'S VISION 65T

KOF 65T      1 Feb 2007      1408589

RED HR RAMBO ET 91K  
RED COMPASS MULBERRY 449M  
RED BRYLOR MISS ROC 20H  
RED FINE LINE MULBERRY 26P  
RED SILVEIRAS REDFORD  
RED DUS FAYETTE 8G  
RED MC DOUGALL FAYETTE 59A

RED FCC RAMBO 502  
RED MCRAE'S BLAZER 336C  
RED VALUE LASS OF WAYLIN 30W  
RED MCRAE'S FRADO 53J  
RED TROUBADOUR FRADO 4T  
RED WILLIAMETTE FRADO 89W  
RED ROXANNE FRADO 18R

We are really impressed with the depth and thickness of quarter and calving ease in the 65T cattle.

58W

### RED MCRAE'S WITNESS 58W

1500906

KOF 58W

4 Feb 2009

BW: 82 lbs. • WW 700 lbs. • Adj. 365 DW: 1181 lbs.  
Jan 22 Wt. 1098 lbs. • Sale Wt. \_\_\_\_\_

RED FINE LINE MULBERRY 26P OSF AMF  
SIRE: RED MCRAES VISION 65T 1408589  
RED MCRAE'S FRADO 53J

F BAR GAZELLA KING 42F  
RED F BAR BULLSEYE 118H  
RED RIVERDALE CHETA 34A  
DAM: RED MCRAE'S MARLIE 67N 1231647  
RED BJR MAKE MY DAY 981 OSF  
RED MCRAE'S MARLENE 18K  
RED MCRAE'S RUBY 38H

EPDs: BW -0.5 WW 26 YW 52 M 19 TM 32

Low Birth Weight, Length and excellent profile describes 58W. Vision 65T was the Mulberry son we kept for our program and we are sure impressed with his first set of calves.



132W

### RED MCRAE'S VISUAL 132W

1500940

KOF 132W

3 Mar 2009

BW 96 lbs. • WW 697 lbs. • Adj. 365 DW: 1257 lbs.  
Jan 22 Wt. 1084 lbs. • Sale Wt. \_\_\_\_\_



RED FINE LINE MULBERRY 26P OSF AMF  
SIRE: RED MCRAES VISION 65T 1408589  
RED MCRAE'S FRADO 53J

SCHULER DYN 027-082  
RED BIEBER DSIGN 1325-082  
RED RAB INDIGO 1073-982  
DAM: RED RDL EASTER 3E 833861  
RED HANDFORD TCB  
RED RDL CASSIE 8C  
RED SHERWOOD PARK LASS 2T

EPDs: BW 1.4 WW 33 YW 56 M 16 TM 32

A 65T son whose Dam has been a donor cow in our program and has a picture perfect udder at 14.

113W

### RED MCRAE'S VISIONARY 113W

1500931

KOF 113W

20 Feb 2009

RED FINE LINE MULBERRY 26P OSF AMF  
SIRE: RED MCRAES VISION 65T 1408589  
RED MCRAE'S FRADO 53J

BW: 95 lbs. • WW 708 lbs. • Adj. 365 DW: 1272 lbs.  
Jan 22 Wt. 1137 lbs. • Sale Wt. \_\_\_\_\_

EPDs: BW 1.3 WW 33 YW 57 M 16 TM 32

A 65T son out of a sound functional cow.

RED VV PATRIOT 16L 25C 14E  
BUCK VALLEY PATRIOT 15H  
NEW FORCE MAXINE 57D  
DAM: RED BUCK VALLEY SIERA 69L 1046269  
RED CUMNOCK STAR 139Z  
RED BVR SIERA-STAR 70D  
RED CUMNOCK SIERA 853X

36W

### RED MCRAE'S WHISTLER 36W

1500899

KOF 36W

2 Feb 2009

RED FINE LINE MULBERRY 26P OSF AMF  
SIRE: RED MCRAES VISION 65T 1408589  
RED MCRAE'S FRADO 53J

BW: 80 lbs. • WW 658 lbs. • Adj. 365 DW: 1161 lbs.  
Jan 22 Wt. 1043 lbs. • Sale Wt. \_\_\_\_\_

EPDs: BW -1.3 WW 24 YW 47 M 14 TM 26

Moderate framed, thick meaty son of Vision 65T. These Royce daughters sure milk well and bring in top calves. Add Calving ease and Thickness with Whistler.

CFCC 30K  
RED CUMNOCK ROYCE 974M  
RED CUMNOCK QUEEN 423J  
DAM: RED BUCK VALLEY PRINCESS 11S 1323346  
RED PRESCOTT CANYON 916J  
RED BUCK VALLEY PRINCESS 25M  
RED BUCK VALLEY PRINCESS 86D



**REFERENCE SIRE "B" - RED FINE LINE MULBERRY 26P**

NVG 26P

31 Jan 2004

1237972



RED FCC RAMBO 502  
 RED HR RAMBO ET 91K  
 RED HR MISS PROSPECTOR 26B  
**RED COMPASS MULBERRY 449M 1128419**  
 RED LARSON RED LIGHTNING  
 RED BRYLOR MISS ROC 20H  
 RED CRCC MISS ROC 368D

SILVEIRAS PRESLEY  
 RED SILVEIRAS REDFORD  
 RICKS JUANADABURY 3000  
**RED DUS FAYETTE 8G 949458**  
 RED MC DOUGALL CLASS OF 85  
 RED MC DOUGALL FAYETTE 59A  
 RED MC DOUGALL FAYETTE 79W

We have never used a bull with so much consistency in calving ease, performance, structural soundness and thick, deep quartered progeny. His sons and daughters are carrying on that tradition. We have Mulberry females and sons walking in our herd. Semen available contact Brylor Semen Sales.

**136W**

**RED MCRAE'S MULBERRY 136W**

1500943

KOF 136W

8 Mar 2009

BW: 84 lbs. • WW 610 lbs. • Adj. 365 DW: 1226 lbs.  
 Jan 22 Wt. 1044 lbs. • Sale Wt. \_\_\_\_\_

RED COMPASS MULBERRY 449M  
**SIRE: RED FINE LINE MULBERRY 26P OSF AMF 1237972**  
 RED DUS FAYETTE 8G

RED BUCK VALLEY FLYER 40H  
 RED BUCK VALLEY TRACKER 16K  
 BUCK VALLEY GLORY 19H  
**DAM: RED BUCK VALLEY DANA 66N 1151709**  
 RED CUMNOCK CAPTAIN 612C  
 RED BUCK VALLEY DANA 57G  
 RED BVR DANA 9A

**EPDs: BW -0.4 WW 29 YW 55 M 17 TM 31**

A direct Mulberry son out of a Top female we selected from Buck Valley. Her son was one of the top sellers last year to Guild Farms. Mulberry could go down in history as one of the best breeding Red Angus Bulls. A younger calf with loads of performance and low birth weight.



**71W**

**RED MCRAE'S MISSION 71W**

1531039

KOF 71W

6 Feb 2009

BW: 78 lbs. • WW 675 lbs. • Adj. 365 DW: 1219 lbs.  
 Jan 22 Wt. 1060 lbs. • Sale Wt. \_\_\_\_\_

RED LJC LANCER 806 OSF  
**SIRE: RED LJC MISSION STATEMENT P27 OSF 1318819**  
 RED LJC HANNAH 106 OSF

RED STEWART MR. MAKER 9M  
 RED JB MOHICAN 5001  
 RED TOWAW SYBIL 135F  
**DAM: RED MCRAE'S RUBY 10T 1467745**  
 RED MCRAE'S BLAZER 336C  
 RED MCRAE'S RUBY 58J  
 RED MISS YOGO 611

**EPDs: BW -1.3 WW 28 YW 60 M 23 TM 38**

An outcross Pedigree Mission Statement out of a Mohican two year old. A bull that would work great on a pen of heifers.



**101W**

**RED MCRAE'S CANYON 101W**

1500927

KOF 101W

16 Feb 2009

BW: 100 lbs. • WW 755 lbs. • Adj. 365 DW: 1292 lbs.  
 Jan 22 Wt. 1171 lbs. • Sale Wt. \_\_\_\_\_

**EPDs: BW 1.3 WW 34 YW 64 M 19 TM 36**

Soder Canyon was used in our herd to moderate frame and add natural thickness and has left us a strong set of bulls and females. A bull with some added performance.

RED BFCK CHEROKEE CNYN 4912 OSF  
**SIRE: RED SODER CANYON 126M 1134764**  
 RED SODER MS ZEUS 0217K

RED BUCK VALLEY FLYER 40H  
 RED BUCK VALLEY TRACKER 16K  
 BUCK VALLEY GLORY 19H  
**DAM: RED BUCK VALLEY TARA 25P 1211487**  
 RED HEAD BOOM 78F  
 RED BUCK VALLEY TARA 77J  
 RED BUCK VALLEY TARA 90D

**105W****RED MCRAE'S CANYON 105W****1500928****KOF 105W****16 Feb 2009**BW: 105 lbs. • WW 759 lbs. • Adj. 365 DW: 1330 lbs.  
Jan 22 Wt. 1203 lbs. • Sale Wt. \_\_\_\_\_RED BFCK CHEROKEE CNYN 4912 OSF  
**SIRE: RED SODER CANYON 126M 1134764**  
RED SODER MS ZEUS 0217KRED PREMIER PATRIOT 16  
RED GEIS PRIME RIB 411  
RED GEIS KURUBA 5'92  
**DAM: RED MCRAE'S LIZA JANE 4K 1022440**  
RED BIEBER CHIEFTON 3080  
RED CROWFOOT TUBEE 517E  
RED CROWFOOT TUBEE 137X**EPDs: BW 3.0 WW 43 YW 81 M 16 TM 37**

If you want a cow bull to add performance in your program here he is a stout made Canyon son out of a foundation Prime Rib female. Look at the scotal and masculinity in 105W.

**REFERENCE SIRE "C" - RED JB MOHICAN 5001**

JBL 1R

1 Jan 2005

1307002

RED GARA HEAVENLY 65C  
RED GEIS POUNDMAKER 22'96  
RED CUMNOCK MINERVA 954Y  
**RED STEWART MR. MAKER 9M**  
RED EAGLE ACRES HONEST 4Z  
RED EAGLE ACRES LACE 085B  
RED EAGLE ACRES LACE 85ZLMAN KING JAMES 8665  
RED LMAN ROYALTY 114B  
LEACHMAN OSCE 5063  
**RED TOWAW SYBIL 135F**  
RED SSS ZAMA PINE 37S  
RED TOWAW SYBIL 24B  
RED TOWAW SYBIL 99Z

Mohican was purchased by the strength of his dam, growth and calving ease. We have used Mohican in our herd and now have daughters out of him. In fall of 2009, we sold Mohican to Robert McRae &amp; Jason Potter of Kelwood.

**4W****RED MCRAE'S WILLY 4W****1500886****KOF 4W****19 Jan 2009**BW: 80 lbs. • WW 716 lbs. • Adj. 365 DW: 1189 lbs.  
Jan 22 Wt. 1114 lbs. • Sale Wt. \_\_\_\_\_**EPDs: BW -2.0 WW 17 YW 32 M 14 TM 23**

Add Longevity and calving ease with this Mohican son. His dam was 16 years old when she had him and weaned him off at 716 lbs.

RED STEWART MR. MAKER 9M  
**SIRE: RED JB MOHICAN 5001 1307002**  
RED TOWAW SYBIL 135FRED FCC RAMBO 502 OSF  
RED HANDFORD TCB  
RED SIX MILE MISTY 625W  
**DAM: RED RDL CASSIE 8C 773472**  
RED S&S FLAIR 1R  
RED SHERWOOD PARK LASS 2T  
RED MAC LASS 57F**7W****RED MCRAE'S MOHICAN 7W****1527964****KOF 7W****21 Jan 2009**BW: 84 lbs. • WW 689 lbs. • Adj. 365 DW: 1264 lbs.  
Jan 22 Wt. 1159 lbs. • Sale Wt. \_\_\_\_\_RED STEWART MR. MAKER 9M  
**SIRE: RED JB MOHICAN 5001 1307002**  
RED TOWAW SYBIL 135FCFCC 30K  
RED CUMNOCK ROYCE 974M  
RED CUMNOCK QUEEN 423J  
**DAM: RED BUCK VALLEY TARA 81R 1252538**  
RED PRESCOTT CANYON 916J  
RED BUCK VALLEY TARA 76L  
RED BUCK VALLEY TARA 77J**EPDs: BW -1.1 WW 24 YW 44 M 19 TM 31**

7W Add some frame, performance and maternal strength with this Mohican son out of another one of those top producing Royce females.



82W

# RED MCRAE'S RAWHIDE 82W

1500916

KOF 82W

9 Feb 2009

BW: 98 lbs. • WW 809 lbs. • Adj. 365 DW: 1402 lbs.  
Jan 22 Wt. 1285 lbs. • Sale Wt. \_\_\_\_\_

5L GUNS BLAZIN 637-5874 OSF  
SIRE: RED 5L GUNFIRE 1173-6966 OSF 1405042  
RED 5L SILKWOOD 9161-1173

RED GLACIER CUB 446 OSF  
RED MLK CRK CUB 722 OSF  
RED MLK CRK LAKOTA 152-HOBO OSF  
DAM: RED MCRAE'S FRADO 96M 1121458  
RED TROUBADOUR FRADO 4T  
RED WILLIAMETTE FRADO 89W  
RED ROXANNE FRADO 18R



EPDs: BW 1.7 WW 40 YW 67 M 18 TM 37

Rawhide is outcross Genetics in the Red industry. Rawhide's dam is one of our top females always bringing in the cream of the crop. He weaned off at 809 lbs. Add some meat and muscle with Rawhide. Pictured here with his dam in the pasture 96M.

91W

# RED MCRAE'S GUNFIRE 91W

1500920

KOF 91W

10 Feb 2009

BW: 70 lbs. • WW 720 lbs. • Adj. 365 DW: 1242 lbs.  
Jan 22 Wt. 1140 lbs. • Sale Wt. \_\_\_\_\_



5L GUNS BLAZIN 637-5874 OSF  
SIRE: RED 5L GUNFIRE 1173-6966 OSF 1405042  
RED 5L SILKWOOD 9161-1173

RED LODI PRINCE 2632 OSF  
RED FLYING K PRINCE 171M  
RED FLYING K BARONNESS 81G  
DAM: RED MCRAE'S FRAN 2P 1225228  
RED MCRAE'S BLAZER 336C  
RED MCRAE'S FRADO 53J  
RED WILLIAMETTE FRADO 89W

EPDs: BW 1.4 WW 32 YW 58 M 18 TM 34

A Set of Twin Bulls (91W & 92W) out of 2P a daughter of our Frado 53J cow. Thick Meaty outcross Genetics with a solid cow family behind them. Pictured is 2P, dam of 91W and 92W.

92W

# RED MCRAE'S GUNSMOKE 92W

1500922

KOF 92W

10 Feb 2009

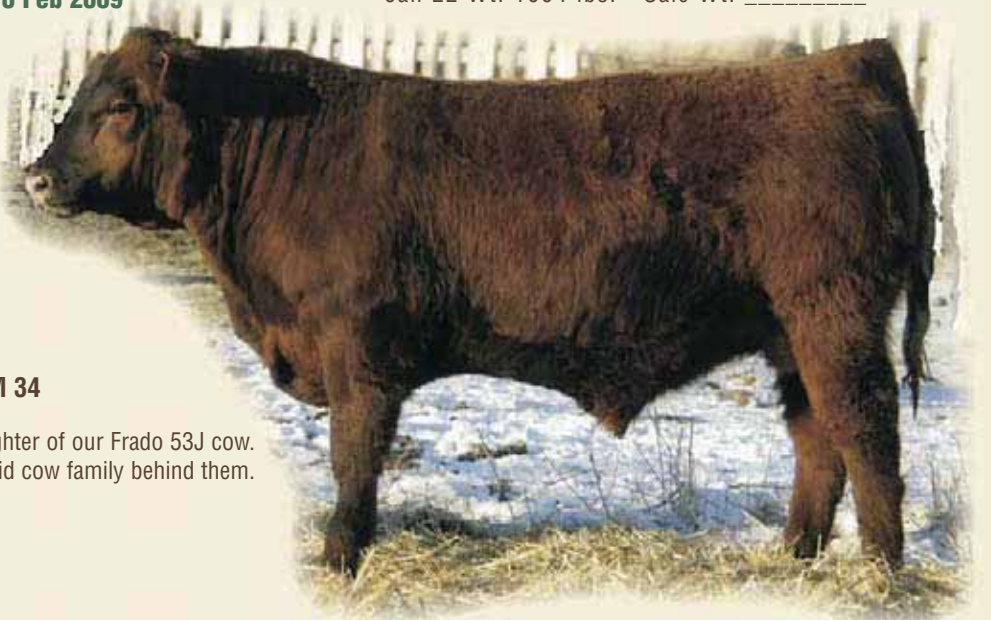
BW: 65 lbs. • WW 672 lbs. • Adj. 365 DW: 1073 lbs.  
Jan 22 Wt. 1004 lbs. • Sale Wt. \_\_\_\_\_

5L GUNS BLAZIN 637-5874 OSF  
SIRE: RED 5L GUNFIRE 1173-6966 OSF 1405042  
RED 5L SILKWOOD 9161-1173

RED LODI PRINCE 2632 OSF  
RED FLYING K PRINCE 171M  
RED FLYING K BARONNESS 81G  
DAM: RED MCRAE'S FRAN 2P 1225228  
RED MCRAE'S BLAZER 336C  
RED MCRAE'S FRADO 53J  
RED WILLIAMETTE FRADO 89W

EPDs: BW 1.4 WW 32 YW 58 M 18 TM 34

A Set of Twin Bulls (91W & 92W) out of 2P a daughter of our Frado 53J cow. Thick Meaty outcross Genetics with a solid cow family behind them.



**106W****RED MCRAE'S GUNSMOKE 106W****1500929****KOF 106W****16 Feb 2009**

5L GUNS BLAZIN 637-5874 OSF

**SIRE: RED 5L GUNFIRE 1173-6966 OSF 1405042**

RED 5L SILKWOOD 9161-1173

RED BUCK VALLEY FLYER 40H

RED BUCK VALLEY TRACKER 16K

BUCK VALLEY GLORY 19H

**DAM: RED BUCK VALLEY ROSE 24M 1130681**

RED HEAD BOOM 78F

RED BUCK VALLEY ROSE 29K

RED KARLEN VALUE ROSE 2G

**EPDs: BW 3.1 WW 38 YW 63 M 15 TM 34**

Gunsmoke is a performance bull out of a sound volumey Red Angus brood cow.  
Pictured is his dam.



BW: 100 lbs. • WW 730 lbs. • Adj. 365 DW: 1203 lbs.  
Jan 22 Wt. 1104 lbs. • Sale Wt. \_\_\_\_\_

**122W****RED MCRAE'S GUNFIRE 122W****1500935****KOF 122W****24 Feb 2009**

5L GUNS BLAZIN 637-5874 OSF

**SIRE: RED 5L GUNFIRE 1173-6966 OSF 1405042**

RED 5L SILKWOOD 9161-1173

RED COMPASS MULBERRY 449M

RED FINE LINE MULBERRY 26P OSF AMF

RED DUS FAYETTE 8G

**DAM: RED MCRAE'S KERRY 136T 1413130**

RED F BAR BULLSEYE 118H

RED MCRAE'S KERI 69K

RED RDL KERI 30B

BW: 90 lbs. • WW 635 lbs. • Adj. 365 DW: 1225 lbs.  
Jan 22 Wt. 1020 lbs. • Sale Wt. \_\_\_\_\_

**EPDs: BW 2.4 WW 44 YW 75 M 20 TM 42**

The last Gunfire son out of a first calf Mulberry female . A February calf  
with some added performance.

**89W****RED MCRAE'S MASTERMIND 89W****1536414****KOF 89W****10 Feb 2009**

RED BASIN SENSATION 702E OSF

**SIRE: RED BRYLOR MASTER PLAN 17M 1113082**

RED BRYLOR BONITA 66K

RED BJR MONU 4X-303 OSF

RED SUNSET RIDGE CONGO 19R

RED DEER RANGE SOXRO 422L

**DAM: RED BENNIE'S VELVET 14T 1416541**

RED SODAK PRECISION 7408-97 OSF NHC AMF

RED VELVET OF CUDLOBE 1P

RED VELVET OF CUDLOBE 2K

BW: 95 lbs. • WW 687 lbs. • Adj. 365 DW: 1225 lbs.  
Jan 22 Wt. 1061 lbs. • Sale Wt. \_\_\_\_\_

**EPDs: BW 0.4 WW 31 YW 61 M 10 TM 25**

A Masterplan son of Melissa's out of the female she purchased at the  
Angus Red Coat Sale. Great job for a first calf.

**94W****RED MCRAE'S BUSINESS 94W****1500923****KOF 94W****13 Feb 2009**

RED BJR AH BRANDED BEEF L107

**SIRE: RED BRYLOR IMLT BUSINESS 61P 1228100**

RED BONNY 7468

CFCC 30K

RED CUMNOCK ROYCE 974M

RED CUMNOCK QUEEN 423J

**DAM: RED BUCK VALLEY REBECCA 34S 1323334**

RED VVV LO-POW 315B 33B 24F

RED VVV REBECCA 24F 19C 43H

RED TRIPLE V REBECCA 19C

BW: 85 lbs. • WW 610 lbs. • Adj. 365 DW: 1114 lbs.  
Jan 22 Wt. 976 lbs. • Sale Wt. \_\_\_\_\_

**EPDs: BW 0.6 WW 33 YW 60 M 12 TM 28**

A calving ease son of Business Again out of a Royce female.

**115W****RED MCRAE'S BUSINESS 115W****1500932****KOF 115W****20 Feb 2009**

RED BJR AH BRANDED BEEF L107

**SIRE: RED BRYLOR IMLT BUSINESS 61P 1228100**

RED BONNY 7468

RED CALIFORNIA SUPREME 2087

RED LODI PRINCE 2632 OSF

RED JIL 2560

**DAM: RED MCRAE'S LIZA JANE 17L 1060116**

RED BIEBER CHIEFTON 3080

RED CROWFOOT TUBEE 517E

RED CROWFOOT TUBEE 137X

BW: 106 lbs. • WW 685 lbs. • Adj. 365 DW: 1252 lbs.  
Jan 22 Wt. 1114 lbs. • Sale Wt. \_\_\_\_\_

**EPDs: BW 4.2 WW 40 YW 74 M 12 TM 32**

Business was used in our program for some new genetics. We were  
always impressed with the Branded Beef progeny. This long bodied son is  
out of a real performance female 17L.

22W

# RED BVR WEATHERMAN 22W

1498573

SAH 22W

10 Jan 2009

BW: 82 lbs. • WW 820 lbs. • Adj. 365 DW: 1254 lbs.  
Jan 22 Wt. 1218 lbs. • Sale Wt. \_\_\_\_\_

RED VVV EL NINO 13N  
SIRE: RED VVV NINO 207R 1285546  
VVV BLACK ROZA 315X 27Z 57G

CFCC 30K  
RED CUMNOCK ROYCE 974M  
RED CUMNOCK QUEEN 423J  
DAM: RED BUCK VALLEY CLARA 38S 1323340  
BUCK VALLEY PATRIOT 15H  
RED BUCK VALLEY CLARA 58L  
RED BUCK VALLEY CLARA 10F

EPDs: BW -0.5 WW 26 YW 49 M 15 TM 28

A Nino out of another strong feminine Royce female. Look at his depth of body and calving ease.



20W

# RED BVR WEATHERMAN 20W

1498566

SAH 20W

6 Jan 2009

26W

# RED BUCKVALLEY BANDO 26W

1498575

SAH 26W

16 Jan 2009

RED VVV EL NINO 13N  
SIRE: RED VVV NINO 207R 1285546  
VVV BLACK ROZA 315X 27Z 57G

RED BUCK VALLEY FLYER 40H  
RED BUCK VALLEY TRACKER 16K  
BUCK VALLEY GLORY 19H  
DAM: RED BUCK VALLEY CLARA 11M 1098129  
RED CRESCENT CREEK CHEROKEE 59  
RED BUCK VALLEY CLARA 34K  
RED BUCK VALLEY CLARA 12H

BW: 80 lbs. • WW 830 lbs. • Adj. 365 DW: 1188 lbs.  
Jan 22 Wt. 1209 lbs. • Sale Wt. \_\_\_\_\_

EPDs: BW -1.5 WW 19 YW 38 M 16 TM 26

A son of the Nino bull that Buck Valley purchased from Triple VVV Ranch and has worked very well. 11M always has a performance bull in the bull sale and Weatherman is no exception.

RED CROWFOOT BANDO 4180P  
SIRE: RED BUCK VALLEY BANDO 15T 1373746  
RED BUCK VALLEY CLARA 34K

BECKTON CLIPPER JM A124  
RED BECKTON CLIPPER D225 JM  
BKT PINEMARIE 9295 JL  
DAM: RED SUNSET RIDGE TROOPER 10T 1372508  
RED LMN PROOF POSITIVE 1305E OSF  
RED SUNSET RIDGE MARSHALL 6R  
RED MCKNIGHT 110J

BW: 82 lbs. • WW 770 lbs. • Adj. 365 DW: 1283 lbs.  
Jan 22 Wt. 1182 lbs. • Sale Wt. \_\_\_\_\_

EPDs: BW -1.2 WW 22 YW 38 M 14 TM 25

10T is one of the top females we selected from Buck Valley and her Bando son will add some natural thickness to your program.

28W

# RED BVR WEATHERMAN 28W

1498568

SAH 28W

18 Jan 2009

BW 80 lbs. • WW 840 lbs. • Adj. 365 DW: 1212 lbs.  
Jan 22 Wt. 1211 lbs. • Sale Wt. \_\_\_\_\_



RED VVV EL NINO 13N  
SIRE: RED VVV NINO 207R 1285546  
VVV BLACK ROZA 315X 27Z 57G

RED BASIN SENSATION 905J  
RED BUCK VALLEY SENSATION 80L  
RED KARLEN BOOT LASS 11J  
DAM: RED BUCK VALLEY SIERA 62N 1151727  
BUCK VALLEY PATRIOT 15H  
RED BUCK VALLEY SIERA 69L  
RED BVR SIERA-STAR 70D

EPDs: BW -0.8 WW 25 YW 50 M 15 TM 27

A thick meaty Nino son low birth weight and lots of performance.

**31W RED BVR WEATHERMAN 31W**

1498565 SAH 31W 24 Jan 2009

BW: 94 lbs. • WW 897 lbs. • Adj. 365 DW: 1371 lbs.  
Jan 22 Wt. 1336 lbs. • Sale Wt. \_\_\_\_\_

RED VVV EL NINO 13N  
SIRE: RED VVV NINO 207R 1285546  
VVV BLACK ROZA 315X 27Z 57G

MVHF INNOVATOR 49B  
RED CROWFOOT INOVATOR 979J  
RED CROWFOOT BIRD 475D  
DAM: RED CUMNOCK LADY 704L 1059420  
RED LCC HEAVEN OR BUST1000B OSF  
RED CUMNOCK LADY 99G  
RED CUMNOCK LADY 824E

EPDs: BW 2.0 WW 39 YW 73 M 18 TM 38

A Bull that would work great on a set of cows to add performance and length of body.



**35W RED BVR WEATHERMAN 35W**

1498570 SAH 35W 30 Jan 2009

BW: 90 lbs. • WW 787 lbs. • Adj. 365 DW: 1391 lbs.  
Jan 22 Wt. 1268 lbs. • Sale Wt. \_\_\_\_\_

RED VVV EL NINO 13N  
SIRE: RED VVV NINO 207R 1285546  
VVV BLACK ROZA 315X 27Z 57G

CFCC 30K  
RED CUMNOCK ROYCE 974M  
RED CUMNOCK QUEEN 423J  
DAM: RED BUCK VALLEY TARA 18S 1323342  
RED PRESCOTT CANYON 916J  
RED BUCK VALLEY TARA 76L  
RED BUCK VALLEY TARA 77J

EPDs: BW 1.5 WW 31 YW 57 M 18 TM 33

Boy did those Royce females ever work well and are going to be top females in our cow herd. Strong performance in 35W



**436W RED BUCK VALLEY BANDO 436W**

1498578 SAH 436W 1 Feb 2009

BW: 81 lbs. • WW 768 lbs. • Adj. 365 DW: 1284 lbs.  
Jan 22 Wt. 1156 lbs. • Sale Wt. \_\_\_\_\_

RED CROWFOOT BANDO 4180P  
SIRE: RED BUCK VALLEY BANDO 15T 1373746  
RED BUCK VALLEY CLARA 34K

RIDGE BANDO 598-282ET  
RED CROWFOOT BANDO 4180P  
RED CROWFOOT 1087L  
DAM: RED BUCK VALLEY DYNAH 23T 1373743  
RED CUMNOCK CAPTAIN 612C  
RED BUCK VALLEY DYNAH 73G  
RED BVR DYNAH STAR 57C

EPDs: BW 0.5 WW 21 YW 33 M 14 TM 25

A low birth weight bull that should work well on heifers.



**37W RED BVR WEATHERMAN 37W**

1498569 SAH 37W 1 Feb 2009

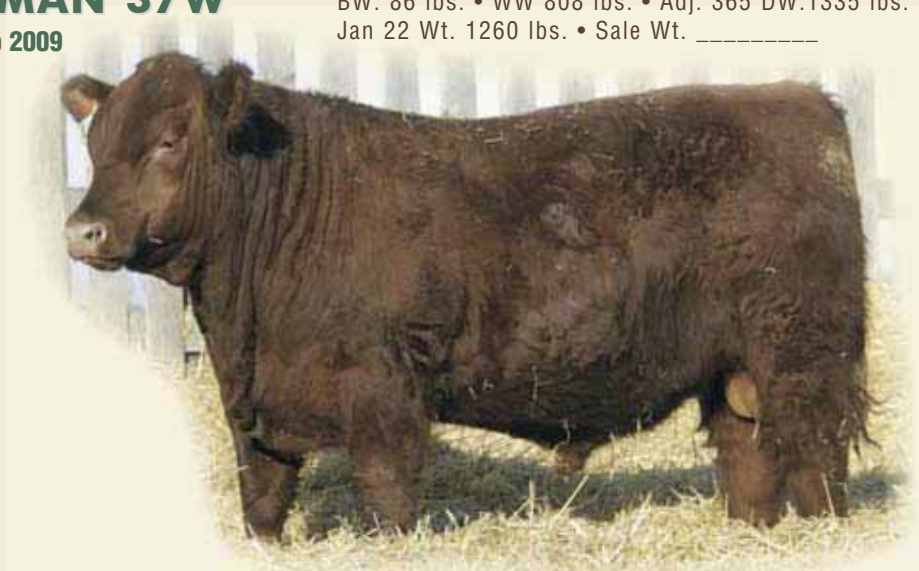
BW: 86 lbs. • WW 808 lbs. • Adj. 365 DW:1335 lbs.  
Jan 22 Wt. 1260 lbs. • Sale Wt. \_\_\_\_\_

RED VVV EL NINO 13N  
SIRE: RED VVV NINO 207R 1285546  
VVV BLACK ROZA 315X 27Z 57G

RED BASIN SENSATION 905J  
RED BUCK VALLEY SENSATION 80L  
RED KARLEN BOOT LASS 11J  
DAM: RED BUCK VALLEY PRINCESS 91N 1151724  
BUCK VALLEY PATRIOT 15H  
BUCK VALLEY PRINCESS 51L  
RED BUCK VALLEY PRINCESS 86D

EPDs: BW -0.4 WW 25 YW 51 M 17 TM 29

A low birth weight Nino son with performance.  
Look at weaning weight of 808 lbs.



**40U RED MCRAE'S SHIFTER 40U**

1439137 KOF 40U 3 Feb 2008

**186U RED MCRAE'S POKER KING 186U**

1438644 KOF 186 16 Apr 2008

RED PERKS ADVANCE 121R  
SIRE: RED MCRAE'S SPLIT SHIFT 87R 1278273  
RED MCRAE'S KERRY 79H

RED STEWART MR. MAKER 9M  
SIRE: RED JB MOHICAN 5001 1307002  
RED TOWAW SYBIL 135F

RED LODI PRINCE 2632 OSF  
RED FLYING K PRINCE 171M  
RED FLYING K BARONNESS 81G  
DAM: RED MCRAE'S FRAN 152R 1300681  
RED MLK CRK CUB 722 OSF  
RED MCRAE'S FRADO 96M  
RED WILLIAMETTE FRADO 89W

RED RBJR ADVANCE A709 OSF  
RED PERKS ADVANCE 121R  
RED PERKS MISS RAMBO 8105 OSF  
DAM: RED MCRAE'S KERRY 61R 1278269  
RED MCRAE'S BLAZER 336C  
RED MCRAE'S KERRY 79H  
RED RDL KERI 30B

BW: 88 lbs. • WW 626 lbs. • Sale Wt. \_\_\_\_\_

BW: 84 lbs. • WW 736 lbs. • Sale Wt. \_\_\_\_\_

EPDs: BW 1.1 WW 25 YW 48 M 16 TM 29

EPDs: BW -0.5 WW 32 YW 61 M 19 TM 35

We have to have some spare bulls around in case an accident or something happens to our customers bulls. These two two year olds have been grown out and not pushed so will be ready to go out and breed a number of cows.



**REFERENCE SIRE "D" - RED COCKBURN RIBEYE 346U**

CWJ 346U 12 Feb 2008 1481970

RED LAZY MC DIVIDE 8J  
RED TER-RON DIGGER 11L  
RED BRYLOR BRANDY 11C  
RED BAR-E-L RIBEYE 103R  
RED YY RED KNIGHT 640F  
RED BAR-E-L MARCIE 50N  
RED RIBLONG SHAWNEE 37E

RED LCC HEAVEN OR BUST 1000B  
RED SSS BUST'N 596F  
RED SSS MISS VALENTINE 344X  
RED COCKBURN MS BOOT JACK 27N  
RED BVR RAB-STAR 56C  
RED COCKBURN MS BOOT JACK 86L  
RED COCKBURN MS BOOT JACK10H

Our new herdsire! Watch for his progeny in our 2011 sale!



*We are awaiting your approval!*

*This year we have invited Magnusson's in our bull sale. They selected a group of bred Red Angus females from us to start their purebred herd and we are feeding their bull for our bull sale. We take pride in our customers success and try to help them get a start in the business.*

## MAGNUSSVILLE FARMS - Red Angus



**Shawn Magnusson ~ Aaron Magnusson**

**Box 449 ~ Riverton, MB R0C 2R0 ~ Phone (204) 378-5225**

Hello and welcome to this years annual bull sale at Mar Mac Farms. This is our first sale as a consignor and we would like to thank Blair and Lois for all their help in the past year. Last year we purchased animals from Mar Mac Farms and quickly learnt that they back up their animals and take pride in the quality of animals they sell. A little back ground on us; our farm is located near Riverton, MB where we have 70 commercial cows along with our purebreds. A lot of hard work has gone in to today's sale. We go to great lengths to ensure that our animals meet the highest standards and we take pride in knowing that our Bulls will work for you. We look forward to meeting you at the sale and welcome you to stop by our farm for a visit when you are in the area.

### 10W RED MAGNUSSVILLE BIG GUN 10W

1539507

MAGN 10W

3 Feb 2009

BW: 88 lbs. • WW 562 lbs. • Adj. 365 DW: lbs.  
Jan 22 Wt. 920 lbs. • Sale Wt. \_\_\_\_\_

RED BFCK CHEROKEE CNYN 4912  
SIRE: RED SODER CANYON 126M 1134764  
RED SODER MS ZEUS 0217K

RED COMPASS MULBERRY 449M  
RED FINE LINE MULBERRY 26P  
RED DUS FAYETTE 8G  
DAM: RED MCRAES FRAN 57T 1408587  
RED MCRAE'S BLAZER 336C  
RED MCRAE'S FRADO 53J  
RED WILLIAMETTE FRADO 89W

EPDs: BW -0.5 WW 36 YW 73 M 19 TM 37

10W's dam was one of the top females purchased from Mar Mac as was a full sister to all the Mulberry sons and out of Frado 53J. With being so wet this summer, our calves took longer to get going but here is a Soder Canyon son that would work great on a group of heifers.



## MORE THAN JUST A TAG... IT'S A PROGRAM

### ONLY ANGUS TAGS

- guarantee minimum 50% Angus genetics
- qualify your cattle for participating Canadian Angus Rancher Endorsed beef programs
- are supported by our commercial field staff
- are delivered to you



**Canadian Angus Association**

142, 6715 - 8 Street NE, Calgary, AB T2E 7H7

www.cdnangus.ca • cdnangus@cdnangus.ca

1-866-571-8093





# MAR MAC FARMS BLACK ANGUS

BREED AVERAGE EPDs: BW 3.0 WW 40 YW 71 M 17

39W

## MCRAE'S ATTRACTOR 39W

1527959 KOF 39W 3 Feb 2009



BW: 100 lbs. • WW 808 lbs. • Adj. 365 DW: 1371 bs.  
Jan 22 Wt. 1282 lbs. • Sale Wt. \_\_\_\_\_

O C C GENESIS 872G  
**SIRE: DUFF NEW ATTRACTION 6110 1426175**  
O C C DIXIE ERICA 814G

GARDENS FORTUNE 9213 S3  
STEVENSON FORTUNE 425C NHF AMF  
J R S ENCHANTRESS 235Z  
**DAM: MCRAE'S BRIDGET 19F 855101**  
V D A R NEW TREND 315 NHF AMF  
MCRAE'S BRANDI 81C  
MCRAE'S BRITTANY 58Z

EPDs: BW 4.7 WW 34 YW 62 M 15 TM 32

What a Legacy 19F has made in our herd and in herds around the world. Thanks to Davis Rairdan for marketing embryos in Finland, and other countries. We had the misfortune of having to let her go this spring but the bulls and heifers she has left will be strong individuals in the Angus Breed. Attractor has always been a favorite here this year. His length, depth and performance will be an asset for many herds. Duffs New Attraction is an exciting sire we used in 2008 and what a thick made, excellent profile set of calves we got and calving ease was great.

33W

## MCRAE'S ATTRACTION 33W

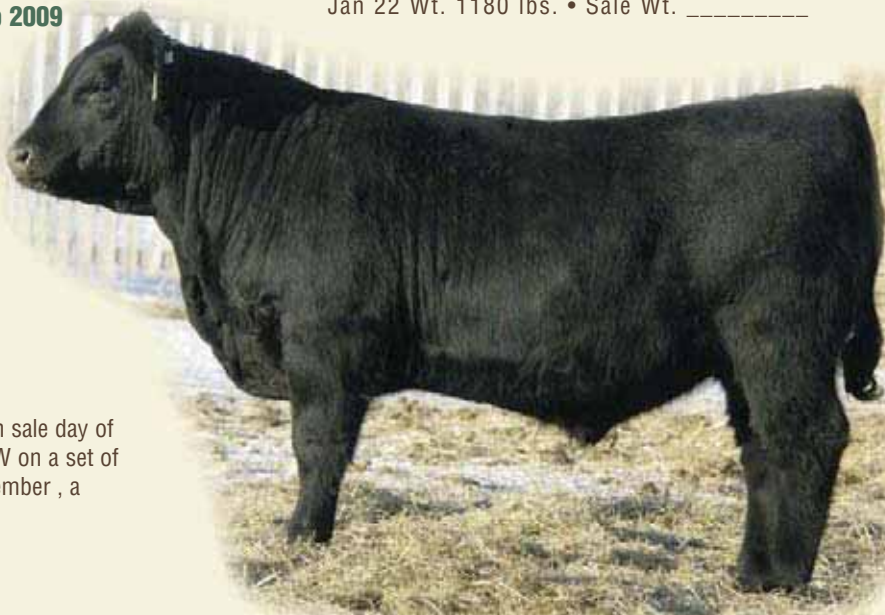
1527958 KOF 33W 1 Feb 2009

O C C GENESIS 872G  
**SIRE: DUFF NEW ATTRACTION 6110 1426175**  
O C C DIXIE ERICA 814G

GARDENS FORTUNE 9213 S3  
STEVENSON FORTUNE 425C NHF AMF  
J R S ENCHANTRESS 235Z  
**DAM: MCRAE'S BRIDGET 19F 855101**  
V D A R NEW TREND 315 NHF AMF  
MCRAE'S BRANDI 81C  
MCRAE'S BRITTANY 58Z

EPDs: BW 4.7 WW 34 YW 62 M 15 TM 32

The other flush Attraction and 19F. You make your pick on sale day of which one of these individuals will work for you. Use 33W on a set of females to add performance and maternal strength. Remember , a powerful herdbull always comes from a powerful dam .



BW: 105 lbs. • WW 822 lbs. • Adj. 365 DW: 1223 lbs.  
Jan 22 Wt. 1180 lbs. • Sale Wt. \_\_\_\_\_

*Dam of 39W & 33W We were saddened that this year we had to let 19F go. What an asset to our herd she has been! Not only in our program, but embryo's have been sold to Finland and around the world. A broody Angus female who left volume, natural thickness and fertility in her progeny.*

*Mar Mac  
is on the  
Canadian Angus  
Performance  
Program*



**McRae's Bridget 19F**

**REFERENCE SIRE "E" - JUSTAMERE 2466 TEMPO 192R**

CWJ 346U

12 Feb 2008

1481970



SAF FOCUS OF ER  
ER DENTON K240  
BLACKCAP OF RR 5367  
**EXAR MANNA 2466**  
CONNEALY FRONTLINE  
BLACKJACK'S BLACKCAP 005  
BLACKJACK'S BLACKCAP 365

GDAR RAINMAKER 340  
BRANDEIS RAIN 6G  
BRANDEIS JESTRESS 21E  
**BRANDEIS ROSEBUD 6J**  
CUDLOBE BLACKSTAR 8C  
ROSEBUD OF BRANDEIS 4G  
ROSEBUD OF BRANDEIS 3X

Tempo was used in our herd for a number of years and was selected by Kent & Colleen Dalrymple in the fall of 2009. Tempo worked well adding volume and performance to his calves.

**40W**

**MCRAE'S TEMPTATION 40W**

1500901

KOF 40W

3 Feb 2009

BW: 100 lbs. • WW 733 lbs. • Adj. 365 DW: 1345 lbs.  
Jan 22 Wt. 1225 lbs. • Sale Wt. \_\_\_\_\_

EXAR MANNA 2466

**SIRE: JUSTAMERE 2466 TEMPO 192R 1281504**  
BRANDEIS ROSEBUD 6J

TEHAMA BANDO 155 NHF AMF  
CONNEALY KINCAID  
CONNEALY 6807 647 NHF AMF

**DAM: MCRAE'S CASSIDY 16M 1124963**  
STEVENSON FORTUNE 425C NHF AMF  
MCRAE'S BRIDGET 19F  
MCRAE'S BRANDI 81C

**EPDs: BW 4.0 WW 40 YW 74 M 16 TM 36**

40W Justamere Tempo was used in our herd for 3 years and is now working at Kent and Colleen Dalrymple's . What a job he has done adding volume, and thick topped offspring. Temptations dam is a Kincaid out of 19F .



**97W**

**MCRAE'S TEMPO 97W**

1500924

KOF 97W

14 Feb 2009

BW: 104 lbs. • WW 672 lbs. • Adj. 365 DW: 1314 lbs.  
Jan 22 Wt. 1162 lbs. • Sale Wt. \_\_\_\_\_



EXAR MANNA 2466

**SIRE: JUSTAMERE 2466 TEMPO 192R 1281504**  
BRANDEIS ROSEBUD 6J

CONNEALY KINCAID  
MCRAE'S DIRECT IMPACT 37K  
MCRAE'S BRIDGET 19F

**DAM: MCRAE'S TAFFY 59P 1285374**  
MCRAE'S GAME PLAN 61J  
MCRAE'S TAFFI 120M  
MCRAE'S TAFFY 81K

**EPDs: BW 5.9 WW 35 YW 71 M 16 TM 34**

Justamere Tempo son with some growth and power. Tempos dam is an Elite cow in the Canadian Angus Association and the depth of his progeny is coming from the dam .

**100W**

**MCRAE'S TEMPO 100W**

1500925

KOF 100W

15 Feb 2009

EXAR MANNA 2466

**SIRE: JUSTAMERE 2466 TEMPO 192R 1281504**  
BRANDEIS ROSEBUD 6J

BW: 93lbs. • WW 678 lbs. • Adj. 365 DW: 1327 lbs.  
Jan 22 Wt. 1146 lbs. • Sale Wt. \_\_\_\_\_

**EPDs: BW 2.9 WW 37 YW 73 M 15 TM 34**

A Tempo son our of a heavy milking young Freightliner daughter .

BON VIEW BANDO 598 AMF  
CONNEALY FREIGHTLINER NHF AMF  
JOANA ERICA OF CONANGA  
**DAM: MCRAES BRANDI 15S 1394963**  
STEVENSON ROYCE 741C NHF  
MCRAE'S BRANDI 51K  
MCRAE'S BRANDI 81C

**6W****MCRAE'S ANSWER 6W****1500888 KOF 6W 20 Jan 2009**

SITZ TRAVELER 8180 NHF AMF  
**SIRE: S A V FINAL ANSWER 0035 NHF AMF 1061938**  
 S A V EMULOUS 8145

STEVENSON BRUNO 561G NHF  
 MCRAE'S POWER POINT 48M  
 MCRAE'S BRIDGET 19F  
**DAM: MCRAES BRIDGET 125T 1403873**  
 F A R KRUGERRAND 410H NHF AMF  
 MCRAE'S BRIDGET 51N  
 MCRAE'S BRANDI 81C

BW: 85 lbs. • WW 766 lbs. • Adj. 365 DW: 1288 lbs.  
 Jan 22 Wt. 1171 lbs. • Sale Wt. \_\_\_\_\_

**EPDs: BW 1.1 WW 54 YW 96 M 20 TM 47**

When you think of an Angus bull, you think of ease of calving, natural thickness and performance, you think of Final Answer. This picture perfect individual has done a tremendous job of his progeny. 6W is a Low Birth weight son that would work great on a group of heifers.

**11W****MCRAE'S ANSWER 11W****1500890 KOF 11W 25 Jan 2009**

SITZ TRAVELER 8180 NHF AMF  
**SIRE: S A V FINAL ANSWER 0035 NHF AMF 1061938**  
 S A V EMULOUS 8145

RED BUCK VALLEY FLYER 40H  
 RED BUCK VALLEY TRACKER 16K  
 BUCK VALLEY GLORY 19H  
**DAM: RED BUCK VALLEY SIERA 12P 1211491**  
 RED DKF RYEBURN 15H  
 RED BUCK VALLEY SIERA 37K  
 RED BUCK VALLEY SIERA 42H

BW: 94 lbs. • WW 780 lbs. • Adj. 365 DW: 1440 lbs.  
 Jan 22 Wt. 1325 lbs. • Sale Wt. \_\_\_\_\_

**Red EPDs: BW -0.1 WW 33 YW 61 M 15 TM 31**

Another Final Answer son with lots of Growth out of a top Red Angus Cow. We are trying to get some outcross Genetics in our program and here are the results.

**177U****MCRAE'S 177U****KOF 177U 30 Mar 2008 Commercial**

SIRE: MCRAE'S POWERPOINT 48M

DAM: RED ANGUS COW

BW: 88 lbs. • WW 579 lbs. • Sale Wt. \_\_\_\_\_

A Thick meaty Black 2 year old that will go out and breed a big group of females.



**SAV Final Answer - sire of 6W & 11W**

**19W****MCRAE'S CANYON 19W****1527962 KOF 19W 27 Jan 2009**

RED BUCK CHEROKEE CNYN 4912 OSF  
**SIRE: RED SODER CANYON 126M 1134764**  
 RED SODER MS ZEUS 0217K

RIDGE BANDO 598-282ET  
 RED CROWFOOT BANDO 4180P  
 RED CROWFOOT 1087L  
**DAM: MCRAES FANNY 11T 1403855**  
 BUCK VALLEY PATRIOT 15H  
 BUCK VALLEY FANNDORA 53L  
 RED BVR FANNDORA 7A

**Red EPDs: BW -1.4 WW 28 YW 55 M 18 TM 32**

A Soder Canyon Son out of a Black Bando Two year old. Good candidate for heifers.

BW: 80 lbs. • WW 666 lbs. • Adj. 365 DW: 1229 lbs.  
 Jan 22 Wt. 1077 lbs. • Sale Wt. \_\_\_\_\_



# MAR MAC FARMS RED SIMMENTAL

BREED AVERAGE EPDs: CE 7.2 BW 2.8 WW 36 YW 60.3 M 7.0

## RED BARON HR P101



## REFERENCE SIRE "F" - RED BARON HR P101

FGN 101P 671038 9 Feb 2004 Polled

BOZ REDCOAT  
CCR GRIFFEY  
CCR BLACK CAT  
**RC STINGER 072K**  
CIRCLE S LEACHMAN 600U  
ISS RC 600U 501F  
MS RC BLK START 504D

CHERITHBROOK MR ABE  
BS MR ARAPAHOE 811A  
BS MS HIGH INTEREST 811T  
**HS REFLECTIONS J34**  
BURNS BULL X339U  
HF/GFI RUBY RED 33E  
ER MISS JB91X 9A

We are extremely pleased with the set of sons that Red Baron has left us and have recently purchased a Baron son for our herd... Reference Sire "G"

## 44W MAR MAC STRICTLYBUSINESS 44W

KOB 44W 708728 3 Feb 2009 Red, Polled

BW 95 lbs. • WW 833 lbs. • Adj 365 YW 1308 lbs.  
Jan 22 Wt. 1235 lbs. • Sale Wt. \_\_\_\_\_

RC STINGER 072K  
SIRE: RED BARON HR P101 671038  
HS REFLECTIONS J34

R PLUS RED RIBEYE 1134L  
IPU RED NUGGET 132N  
HAAS RANCH C22  
DAM: MAR MAC REBECCA 30R 635263  
DAY TWELVE OCLOCK HIGH  
MAR MAC NIKE 73H  
MAR MAC KITTY 16E

EPDs: CE 8.8 BW 2.2 WW 49.5 YW 81.4 M 4.1

Strictly Business is a powerful Red Baron son out of a Nugget Female who has been very productive of Melissa's. You may remember Triton last year the two year old who sold to Parkvale Farms. His dam was 30R too. A moderate Birth Weight bull who will add some volume and thickness to your calf crop.



## 110W MAR MAC TROUBADOUR 110W

KOB 110W 708739 17 Feb 2009 Red, Polled

BW 108 lbs. • WW 804 lbs. • Adj 365 YW 1319 lbs.  
Jan 22 Wt. 1210 lbs. • Sale Wt. \_\_\_\_\_



RC STINGER 072K  
SIRE: RED BARON HR P101 671038  
HS REFLECTIONS J34

3C WALLY C240 BLK  
LCHMN BODYBUILDER 7303F  
LSF MOMENTO D8  
DAM: MAR MAC ZOEY 60L 559069  
DAY TWELVE OCLOCK HIGH  
MAR MAC ROSIE 68J  
MAR MAC KITTY 16E

EPDs: CE 6.1 BW 3.6 WW 40.9 YW 66.7 M 7.7

Troubadour is a Red Baron out of Melissa's Bodybuilder Foundation cow 60L. Add Length to your cowherd with Troubadour. Pictured below is Zoey 60L.



**73W MAR MAC BONA FIDE 73W**  
**KOB 73W 708733 7 Feb 2009 Red, Polled**

RC STINGER 072K  
**SIRE: RED BARON HR P101 671038**  
 HS REFLECTIONS J34

3C WALLY C240 BLK  
 LCHMN BODYBUILDER 7303F  
 LSF MOMENTO D8  
**MAR MAC BRANDY 58L 559067**  
 WOODSONG ALL-STAR 630B  
 MAR MAC BRANDI 17E  
 MAR MAC BRIDGET 93Y

BW 98 lbs. • WW 827 lbs. • Adj 365 YW 1223 lbs.  
 Jan 22 Wt. 1172 lbs. • Sale Wt. \_\_\_\_\_

**EPDs: CE 8.8 BW 1.7 WW 39.5 YW 67.4 M 6.3**

Bona Fide is a Red Baron Son out of a Top Producing Bodybuilder female. This volumey Solid Red Bull will add some performance to your calf crop.

Notes: \_\_\_\_\_  
 \_\_\_\_\_  
 \_\_\_\_\_  
 \_\_\_\_\_  
 \_\_\_\_\_  
 \_\_\_\_\_  
 \_\_\_\_\_  
 \_\_\_\_\_  
 \_\_\_\_\_

**108W MAR MAC RYAN 108W**  
**718911 KOB 108W 17 Feb 2009 Red, Polled**

MEYER'S RED LINE  
**SIRE: ANKONIAN RYAN 687428**  
 BBS MISS LEVI K76

CNS DREAM ON L186  
 REMINGTON RED LABEL HR  
 HS REFLECTIONS J34  
**DAM: PWK MS LABEL 84P 96T 677270**  
 LRS RED REALITY 33J  
 PWK LITTLE MIDGE 84P  
 PWK MS MIDGE 10M

BW 105 lbs. • WW829 lbs. • Adj 365 YW 1332 lbs.  
 Jan 22 Wt. 1174 lbs. • Sale Wt. \_\_\_\_\_

**EPDs: CE 6.9 BW 2.9 WW 42.4 YW 66.4 M 3.5**

A Ryan Son of out of a Bodybuilder, we selected out of the Keystone Sale from Workman's and what a job she has done on her first calf.

**118W MAR MAC TRITON 118W**  
**718913 KOB 118W 21 Feb 2009 Red, Polled**

REMINGTON RED LABEL HR  
**SIRE: MAR MAC TRITON 45T 676295**  
 MAR MAC REBECCA 30R

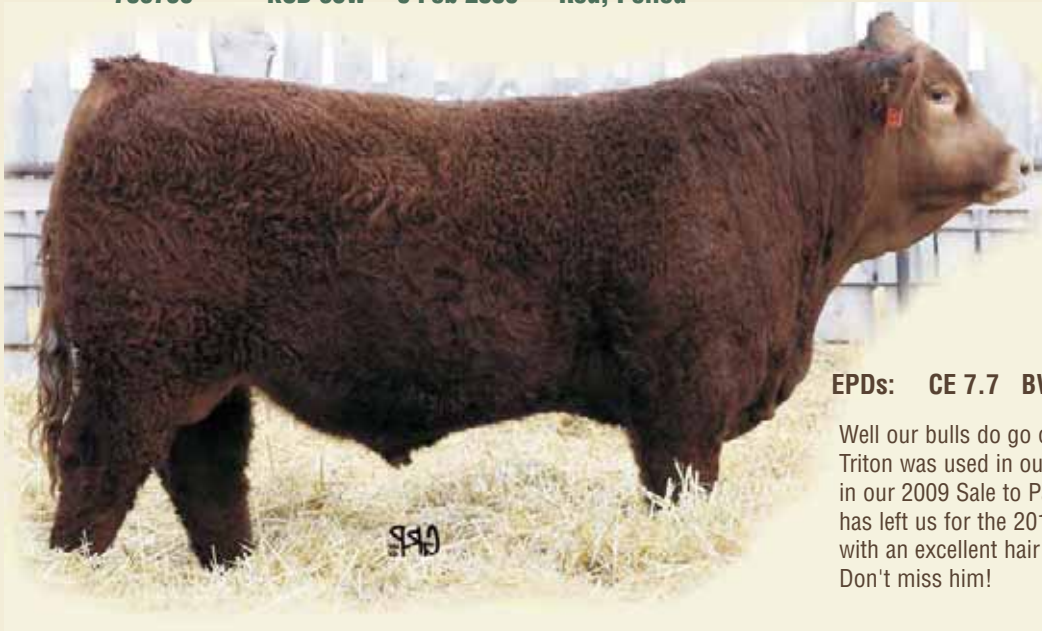
BBS ZIMA D55  
 GLS MR LAREDO 7L  
 ELTON MS UNIVERSE 52D  
**DAM: NOR-WEST GINGER 55N 613623**  
 RICHMOND MR ACE 44E  
 BAR-L MISS ACE HIGH 26G  
 BAR-L TRUST LADY 46B

BW 108 lbs. • WW 827 lbs. • Adj YW 1254 lbs.  
 Jan 22 Wt. 1165 lbs. • Sale Wt. \_\_\_\_\_

**EPDs: CE 5.6 BW 4.7 WW 45 YW 72 M 4.1**

A Triton son of Brett's out of a heavy milking cow Brett selected from the Keystone Sale. Sire, Triton pictured on Back cover.

**83W MAR MAC TITLEST 83W**  
**708736 KOB 83W 9 Feb 2009 Red, Polled**



BW 96 lbs. • WW 758 lbs. • Adj 365 YW 1359 lbs.  
 Jan 22 Wt. 1214 lbs. • Sale Wt. \_\_\_\_\_

REMINGTON RED LABEL HR  
**SIRE: MAR MAC TRITON 45T 676295**  
 MAR MAC REBECCA 30R

CG HOMEBUILDER 803H  
 TWIN-CHIEF PANAMA 588P  
 TWIN-CHIEF JAZZY 588J  
**DAM: MAR MAC SHEENA 6S 652978**  
 JB DETROIT 462D  
 MAR MAC MISS 77H  
 RED ANGUS/RED ANGUS

**EPDs: CE 7.7 BW 2.8 WW 36.2 YW 62 M 2.7**

Well our bulls do go out and work and here is a prime example. Triton was used in our program as a yearling and then we sold him in our 2009 Sale to Parkvale Farms, Virden. What a set of bulls he has left us for the 2010 Bull Sale. 83W is a Blaze faced Triton son with an excellent hair coat, length of body and natural thickness. Don't miss him!

# 120W MAR MAC RAWHIDE 120W

708742 KOB 120W 23 Feb 2009 Red, Horned

BW 106 lbs. • WW 835 lbs. • Adj 365 YW 1405 lbs.  
Jan 22 Wt. 1270 lbs. • Sale Wt. \_\_\_\_\_

REMINGTON RED LABEL HR  
SIRE: MAR MAC TRITON 45T 676295  
MAR MAC REBECCA 30R

SSR RED GOLD D42  
RWCF REDSKY 27L  
BROKEN OAK SHANIA 108F  
DAM: MAR MAC JANICE 88P 619180  
ANCHOR "T" METRO 4E  
MAR MAC JANET 6K  
MAR MAC MISS 77H

EPDs: CE 6.7 BW 3.2 WW 43.7 YW 74.3 M 8.7

Solid Red Color, Volume and Natural Thickness Best describe this Triton son. Look at his profile won't you like to have a pen of steers like that. Pictured is Mar Mac Triton 45T.



# 114W MAR MAC FREEDOM 114W

718910 KOB 114W 20 Feb 2009 Red, Polled

BW 100 lbs. • WW 847 lbs. • Adj 365 YW 1434 lbs.  
Jan 22 Wt 1296 lbs. • Sale Wt. \_\_\_\_\_



BH TRACKER 998J  
SIRE: THSF FREEDOM 300N 634923  
SAFN MISS ZING 02H

3C WALLY G240 BLK  
LCHMN BODYBUILDER 7303F  
LSF MOMENTO D8  
DAM: MAR MAC PATTY 2K 536652  
BAR 5 ADMINISTRATOR  
MAR MAC MISS 22H  
RED ANGUS/RED ANGUS

EPDs: CE 6.4 BW 2.4 WW 34.9 YW 67.6 M 6.4

A Freedom son who will be a feature sale Day, His dam is one of our oldest Bodybuilders that never lets us down. Moderate birth weight and lots of performance. You can not find these kind every day.

## REFERENCE SIRE "G" - TWIN BRAE TENNASEE 883T

BGD 883T 3 Nov 2007 700427

CCR GRIFFEY  
RC STINGER 072K  
MISS RC 600U 501F  
RED BARON HR P101  
BS MR ARAPAHOE 811A  
HS REFLECTIONS J34  
HF/GFI RUBY RED 33E

CHERITHBROOK MR ABE  
NLC 64Y TOMCAT  
KS BM N713  
CZAR MS LADY KAT 83H  
TT RED DELIGHT  
SPRING VALLEY D508  
SPRING VALLEY W414

We selected Tennessee as Red Baron worked extremely well in our program.  
We are excited to see his progeny.



# Add Simmental to your program for added performance and milking ability!

# MAR MAC FARMS BLACK SIMMENTAL

43W, 76W and 87W are all out of our Simmental Donor Female Carli 14N. Carli is one of the stoutest, volumey, heavy milking Black Simmental Cows you will find. Her Hustler calves have been standouts since birth and continue to do well. Art Jonasson selected a Hustler son in last year bull sale and her Hustler daughter sold to Bonchuk Farms at National Trust. Black Diamond and Black Jack are stout, very quiet, thick meaty sons of the outcross sire Hustler. This is an extremely strong set of Black Simmental bulls backed up by some of the Top Black Simmental Genetics.

## 43W MAR MAC BLACK DIAMOND 43W

711099 KOB 43W 3 Feb 2009 Black, Polled

BW 100 lbs. • WW 886 lbs. • Adj YW 1435 lbs.  
Jan 22 Wt. 1350 lbs. • Sale Wt. \_\_\_\_\_



SS GOLD MINE L42  
SIRE: ACC1 HUSTLER 2N 666672  
CPR KORONA

LCHMN BLACK ASPHALT 7068  
PPSR NOPHALT 20H  
MISS PRICKLY PEAR 615F  
DAM: MAR MAC CARLI 14N 598027  
LCHMN BODYBUILDER 7303F  
MAR MAC ZOEY 60L  
MAR MAC ROSIE 68J

EPDs: CE 9.6 BW 1.1 WW 31.9 YW 60.4 M 8.7

Homozygous Polled - Heterozygous Black

## 76W MAR MAC BLACK JACK 76W

711097 KOB 76W 7 Feb 2009 Red, Polled

BW 104 lbs. • WW 926 lbs. • Adj 365 YW 1429 lbs.  
Jan 22 Wt. 1355 lbs. • Sale Wt. \_\_\_\_\_

SS GOLD MINE L42  
SIRE: ACC1 HUSTLER 2N 666672  
CPR KORONA

LCHMN BLACK ASPHALT 7068  
PPSR NOPHALT 20H  
MISS PRICKLY PEAR 615F  
DAM: MAR MAC CARLI 14N 598027  
LCHMN BODYBUILDER 7303F  
MAR MAC ZOEY 60L  
MAR MAC ROSIE 68J



EPDs: CE 9.6 BW 1.4 WW 32.9 YW 61.6 M 8.6

## 87W MAR MAC BLACK HAWK 87W

711101 KOB 87W 10 Feb 2009 Black, Scurred

BW 100 lbs. • WW 782 lbs. • Adj 365 YW 1409 lbs.  
Jan 22 Wt. 1277 lbs. • Sale Wt. \_\_\_\_\_

SS GOLD MINE L42  
SIRE: ACC1 HUSTLER 2N 666672  
CPR KORONA

LCHMN BLACK ASPHALT 7068  
PPSR NOPHALT 20H  
MISS PRICKLY PEAR 615F  
DAM: MAR MAC CARLI 14N 598027  
LCHMN BODYBUILDER 7303F  
MAR MAC ZOEY 60L  
MAR MAC ROSIE 68J



EPDs: CE 9.6 BW 1.0 WW 28.9 YW 56.5 M 9.3

*Pictured above is Mar Mac Carli 14N, dam of 43W, 76W and 87W. At Mar Mac we have built our cowherd around females like Missy, Rebecca and more. Carli is our Black Simmental herd builder. Her daughters have sold to Downhill Simmentals and Bonchuk farms and the rest are in the herd.*

**66W MAR MAC STAR POWER 66W**

718912 KOB 66W 5 Feb 2009 Black, Scurred

BW 95 lbs. • WW 846 lbs. • Adj 365 YW 1096 lbs.  
Jan 22 Wt. 1075 lbs. • Sale Wt. \_\_\_\_\_

EPDs: CE 9.0 BW 1.3 WW 39.9 YW 71.3 M 3.6

Melissa used some outcross Genetics on her Powerline female. Sierra was shown very successfully.

CNS DREAM ON L186  
SIRE: SVF STAR POWER S802 703485  
SVF SHEZA START N902 2198683

HC POWER DRIVE 88H  
KENCO/MF POWERLINE 204L  
SAFN GLAMOUR 11J  
DAM: MAR MAC SIERRA 53S 653197  
PPSR NOPHALT 20H  
MAR MAC CARLI 14N  
MAR MAC ZOEY 60L

**128W MAR MAC HUSTLER 128W**

708743 KOB 128W 28 Feb 2009 Black, Polled

BW 100 lbs. • WW 874 lbs. • Adj 365 YW 1435 lbs.  
Jan 22 Wt. 1286 lbs. • Sale Wt. \_\_\_\_\_



SS GOLD MINE L42  
SIRE: ACC1 HUSTLER 2N 666672  
CPR KORONA

ELLINGSON BLACK PERFECTOR  
GFI MAGNUM K52  
RIV BLK JOSIE 43B 755G  
DAM: MAR MAC BRANDINE 63R 676322  
LRS BIG COUNTRY 37E  
MAR MAC BANSHEE 106N  
MAR MAC MAXY 22E

EPDs: CE 6.4 BW 2.4 WW 34.9 YW 67.6 M 6.4

Another Hustler son of Brett's out of a Magnum female. Don't overlook this Feb 28 bull with lots of performance and volume. Should add some Pounds to your calf crop.  
Homozygous Polled - HOMOZYGOUS BLACK

*Everett Olson purchased two bred, Black females from us in 2008 and here are their first calves. We are proud of what they have done and are excited to have Everett in the sale with his enthusiasm for the Simmental Breed.*

**DOWNHILL SIMMENTALS**



Everett Olson

RR 1 ~ Rapid City, MB ROK 1W0 ~ Phone (204) 826-2643

Hello, first I would like to thank Blair and Lois for inviting me into the sale. I run around 1200 acres of grain and purebred Simmental and Saller cattle in the Rapid City Valley. We have been in the bull business for over 20 years and enjoy every bit of it. If you have any questions, don't hesitate to call.

**7W DOWNHILL BLACKJACK 7W**

711919 DHS 7W 23 Jan 2009 Black, Polled

BW 85 lbs. • WW 716 lbs. • Adj 365 YW.1359 lbs.  
Jan 22 Wt 1256 lbs. • Sale Wt. \_\_\_\_\_

SVJ POWER SURGE  
SIRE: WESTFALL VOYAGER 721P 687148  
DRAKE SUMMER SISTER

LRS PREFERRED STOCK 370C  
SRS J914 PREFERRED BEEF  
SRS G733 GLIMMER  
DAM: MAR MAC BLACK LADY 122T 676310  
PPSR NOPHALT 20H  
MAR MAC SHEANA 1N  
MAR MAC MISS 77H



EPDs: CE 10 BW -3.3 WW 23.9 YW 50.0 M 5.0

Black Jack's dam was selected out of the Keystone Connection Sale from Mar Mac and 7W is her first calf. Low Birth weight and performance best describes 7W. Check him out. HOMOZYGOUS Polled - HETEROZYGOUS BLACK



11W

# DOWNHILL BLACK MAC 11W

711918

DHS 11W

3 Feb 2009

Black, Polled

BW 85 lbs. • WW 720 lbs. • Adj YW 1339 lbs.  
Jan 22 Wt. 1211 lbs. • Sale Wt. \_\_\_\_\_

SVJ POWER SURGE

**SIRE: WESTFALL VOYAGER 721P 687148**

DRAKE SUMMER SISTER

CNS DREAM ON L186

WINCHESTER HR P8315

HS REFLECTIONS J34

**DAM: MAR MAC TIARRA 160T 676314**

PPSR NOPHALT 20H

MAR MAC CARLI 14N

MAR MAC ZOEY 60L



EPDs: CE 9.9 BW -1.2 WW 28.5 YW 54 M 5.6

Black Mac 's dam is the Mar Mar Tiarra that Melissa showed in 2009 very successfully and she has gone on to produce this strong hiped, smooth made Voyageur son who is sure to draw your attention. With the maternal strength of Carli and the growth in Voyageur and some new Genetics, Black Mac is one to take a second look at. **Heterozygous Black**

## NEIL & JOAN MOFFATT / KEN HAYES

1W

# MR LEAF WAZ UP 1W

714294

LEAF 1W

3 Jan 2009

Red, Polled

BOZ REDCOAT

**SIRE: ANKONIAN RED CAESAR 670682**

GFI CANDACE G51

NLC 64Y TOMCAT

NLC GOOD A NUFF 33G

NLC A03 AVALINE

**DAM: BAR 5 MS GOOD 263K 531970**

BAR 5 CROWN ROYAL 419W

FGAF POLLED ELVIRA 6C

FGAF MISS BERMUDE 707Z

A solid red Red Caesar son of our Good N Nuff Cow whose full brother sold to Playgreen Farms in 2009. 253K has a track record second to none , always having a marketable calf no matter how she is mated.



Neil & Joan Moffatt & Ken Hayes  
Box 314, Douglas, MB R0K 0R0  
Phone (204) 763-8841  
Cell (204) 724-2249

BW 82 lbs. • WW 900 lbs.

Jan 22 Wt 1151 lbs. • Sale Wt. \_\_\_\_\_

EPDs: CE 8.3 BW 3.0 WW 40.5 YW 73.6 M 7.4

NOTES:

\_\_\_\_\_  
\_\_\_\_\_  
\_\_\_\_\_  
\_\_\_\_\_



**TOTAL FARM SUPPLY LTD.**

**JOHN HOFER**  
Dealer For:  
Landmark Feeds

1530 - 18th Street North  
Brandon, Manitoba R7C 1A5  
Phone (204) 727-3276  
Toll Free 1-877-797-3276  
Fax (204) 726-8631  
Home (204) 725-1704 or Cell. 724-0560  
Email totalfarm@westman.wave.ca

*Thank you to John Hofer at Total Farm Supply Ltd. for supplying coffee & donuts.*



***Our cows work out in the pasture!***

# TSN LIVESTOCK - Black Angus



**Tyson, Nathan and Kylie & Shawn & Teresa Birmingham**  
**Box 46, RR 5 • Brandon, MB • R7A 5Y5 • Phone (204) 763-4738**  
**Shawn cell (204) 573-6377 • Tyson cell (204) 724-2004**

Welcome to the Mar Mac and Guest bull sale! This will be our 4th year in the bull sale. We are very proud of the bulls we have in this offering. You will notice some new genetics in both the Angus and Simmental bulls this year. We strive to produce functional cattle for today's commercial and purebred markets. We stand behind our bulls 100% so buy with confidence. Our bulls are wintered at Mar Mac so stop in and take a look. Mark your calendar and plan to attend the sale. Any questions about the offering give us a call. Happy Calving!

## 2W TSN LEGACY 2W

1538484 TSN 2W 1 Jan 2009

S A V PATHFINDER 3134  
**SIRE: S A V LEGACY 5216 NHC 1369528**  
 S A V ROSETTA 3350 AMF

V D A R LUCYS BOY NHF AMF  
 TSN LUCY'S BOY 2M  
 GREENBUSH PRIDE LADY 19K  
**DAM: TSN MISS SHAUN 16T 1392809**  
 MVF FULLBACK 127J  
 TSN MISS SHAUN 4M  
 MVF MISS SHAUN 160J

TSN Legacy 2W is one of the thickest, stoutest, most powerful bull we have ever raised. He has tremendous depth, and one thick hind quarter. His dam is a moderate framed cow with a perfect udder. This was her first calf and she did an outstanding job. 2W would be a bull that would do an excellent job in any heifer pen. Don't miss the chance to own a bull that will improve thickness and be easy on your heifers.



BW: 87 lbs. • WW 776 lbs. • Adj. 365 DW: 1402 lbs.  
 Jan 22 Wt. 1290 lbs. • Sale Wt. \_\_\_\_\_

## 5W TSN FINAL ANSWER 5W

1528410 TSN 5W 12 Jan 2009



BW: 91 lbs. • WW 716 lbs. • Adj. 365 DW: 1271 lbs.  
 Jan 22 Wt. 1154 lbs. • Sale Wt. \_\_\_\_\_

SITZ TRAVELER 8180 NHF AMF  
**SIRE: S A V FINAL ANSWER 0035 1061938**  
 S A V EMULOUS 8145

DMM FLEX 3M  
 BONSHAW MEGATRON 50R  
 BRANTNOR'S MISS DAISY 4M  
**DAM: SCC ERICA 130T 1429459**  
 SCC LAURENTIAN 45L  
 SCC ERICA 84P  
 DOUBLE J ERICA 9H

**EPDs: BW 1.9 WW 44 YW 79 M 19 TM 41**

Here is a bull that is sired by the great SAV Final Answer. This bull is one that will moderate you cow herd but will not give up any thickness. He is smooth shoulder and should work well on heifers. Keep your eye on this bull on sale day.

**13W****TSN LUCY'S BOY 13W****1528416****TSN 13W****27 Jan 2009**BW: 92 lbs. • WW 708 lbs. • Adj. 365 DW:1282 lbs.  
Jan 22 Wt. 1190 lbs. • Sale Wt. \_\_\_\_\_V D A R LUCYS BOY NHF AMF  
**SIRE: TSN LUCY'S BOY 2M 1099233**  
GREENBUSH PRIDE LADY 19KSTEVENSON ROYCE 741C NHF  
STEVENSON BRUNO 561G NHF  
JRS ENCHANTRESS 16A  
**DAM: MCRAE'S CASSIDY 61P 1232543**  
STEVENSON FORTUNE 425C NHF AMF  
MCRAE'S BRIDGET 19F  
MCRAE'S BRANDI 81C**EPDs: BW 3.2 WW 31 YW 68 M 19 TM 35**

This bull is out of a cow that I selected from Mcrae's a few years ago. She is a solid producer with a picture perfect udder and she always works hard to bring home a good calf in the fall. This bull is moderate framed, thick and has a strong pedigree.

**14W****TSN LUCY'S BOY 14W****1528418****TSN 14W****27 Jan 2009**BW: 96 lbs. • WW 770 lbs. • Adj. 365 DW: 1368 lbs.  
Jan 22 Wt. 1276 lbs. • Sale Wt. \_\_\_\_\_V D A R LUCYS BOY NHF AMF  
**SIRE: TSN LUCY'S BOY 2M 1099233**  
GREENBUSH PRIDE LADY 19KRITO 9FB3 OF 5H11 FULLBACK NHF AMF  
MVF FULLBACK 100J  
MVHF TIBBIE 39B  
**DAM: BATTLE LAKE 10E IDA SUE 3M 1096025**  
BABA SUCCEED 15C  
BATTLE LAKE IDA SUE 10E  
BATTLE LAKE IDA SUE 3C**EPDs: BW 3.8 WW 34 YW 67 M 18 TM 35**

TSN Lucy's Boy 14W will add thickness, length, and growth to any calf crop. 14W dam is one of the thickest cows on the farm. She brings home big calves every fall and still is in perfect condition. 14W's calves will be top gainers and be very thick and stylish.

**9W****TSN LUCY'S BOY 9W****1528414****TSN 9W****24 Jan 2009**V D A R LUCYS BOY NHF AMF  
**SIRE: TSN LUCY'S BOY 2M 1099233**  
GREENBUSH PRIDE LADY 19KBRUSETT SPECTRUM 62  
YOUNKIN TRIUMPH 4966 NHF AMF  
YOUNKIN ROSE 4952  
**DAM: TSN ERELITE 1M 1114742**  
MVF FOCUS 5H  
MVF ERELITE 159K  
HEATHERBROOK ERELITE 3'83BW: 98 lbs. • WW 723 lbs. • Adj. 365 DW:1227 lbs.  
Jan 22 Wt. 1161 lbs. • Sale Wt. \_\_\_\_\_**EPDs: BW 3.7 WW 29 YW 58 M 11 TM 26**

Here is another son out of our Lucy's boy bull. This bull is thick, very stylish, and has good feet and legs. His dam has a perfect udder, good temperament, and has made a big impact on our herd. If 9W's heifers are anything like his mother they will be wonderful females to have.

**16W****TSN LUCY'S BOY 16W****1528420****TSN 16W****3 Feb 2009**V D A R LUCYS BOY NHF AMF  
**SIRE: TSN LUCY'S BOY 2M 1099233**  
GREENBUSH PRIDE LADY 19KSITZ TRAVELER 8180 NHF AMF  
SITZ ALLIANCE 6595 NHF AMF  
SITZ BARBARAMERE JET 2698  
**DAM: MVF ELLEN ERICA 84L 1056599**  
BROOKMORE EXTRA 145D  
ERICA 5J  
BELMORAL ELLEN ERICA 41'91BW: 98 lbs. • WW 781 lbs. • Adj. 365 DW: 1367 lbs.  
Jan 22 Wt. 1268 lbs. • Sale Wt. \_\_\_\_\_**EPDs: BW 3.6 WW 38 YW 72 M 21 TM 40**

This guy is thick topped, long body, clean shouldered and carries a lot of muscle in his hind quarter. His sire is our herd bull TSN Lucy's Boy 2M. We have been using this bull for many years and for good reason. He has always given us amazing calves every year ever since he was a yearling. 16W dam goes back to the great SITZ Alliance 6595.

**22W TSN LUCY'S BOY 22W**

1528423 TSN 22W 15 Feb 2009

BW 96 lbs. • WW 621 lbs. • Adj 365 YW. 1189 lbs.  
Jan 22 Wt 1062 lbs. • Sale Wt. \_\_\_\_\_

EPDs: BW 4.6 WW 26 YW 57 M 12 TM 25

This is the youngest bull we have on offer. Since birth he has always caught my eye. He has tremendous length and carries good thickness over his top and into his hind quarters. He will make a wonderful herd bull.

V D A R LUCYS BOY NHF AMF  
SIRE: TSN LUCY'S BOY 2M 1099233  
GREENBUSH PRIDE LADY 19K

DALRENE EXTRA 36A  
EBON HILL EXTRA GOLD 31'95  
BLACK ANCHOR BLACKBIRD B 27U  
DAM: BROOKMORE ALETA 59J 976615  
CHAMPION HILL GENERAL STONE  
BROOKMORE GENERAL STONE 35G  
BROOKMORE ALETA 121D

**TSN LIVESTOCK - Simmental**

**54W TSN BLACK DREAM 54W**

719687 TSN 54W 22 Jan 2009 Black, Polled

BW 98 lbs. • WW 805 lbs. • Adj 365 YW 1405 lbs.  
Jan 22 Wt. 1255 lbs. • Sale Wt. \_\_\_\_\_

NICHOLS BLK DESTINY G151  
SIRE: CNS DREAM ON L186 632589  
CNS SHEEZA DREAM K107W 2058400

TNT DYNAMITE BLACK L137  
MARK'S MR SENATOR 151R  
TCCO CENTERFOLD 06K  
DAM: KIMLAKE MONOLISA 763T 676010  
LAZY S RED 241N  
MISS TEE 58R  
MISS TEE 141J

EPDs: CE 9.2 BW 0.6 WW 41.1 YW 65.1 M 0.9

One of my favourite calves all year, awesome pedigree with Dream On, a calving ease specialist. His Dam is out of a Dynamite BLK son with the famous Center Fold cow in the background. If you want to add some calving ease but keep the performance he will work. This dynamite females are industry leaders!!  
Homozygous Polled - Heterozygous Black



**57W TSN SURGE 57W**

719686 TSN 57W 31 Jan 2009 Black, Polled

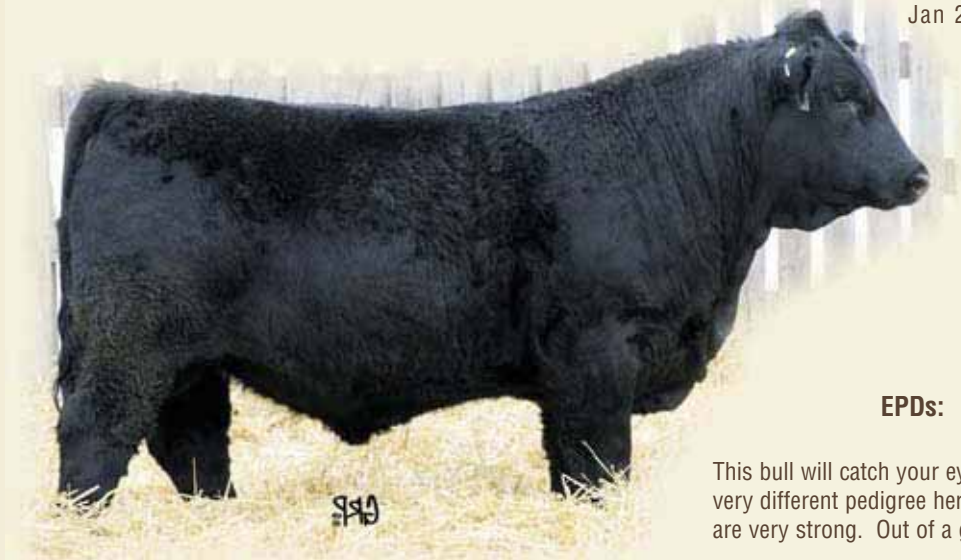
BW 99 lbs. • WW 667 lbs. • Adj 365 YW 1434 lbs.  
Jan 22 Wt 1242 lbs. • Sale Wt. \_\_\_\_\_

TNT GUNNER N208  
SIRE: TNT POWER SURGE T404 703123  
GSR MS JOKER 113L

ELLINGSON BLACK PERFECTOR  
BROOKS ABOVE PAR  
STF REBECA  
DAM: MRL MISS 356T 693091  
WLE OVERLOAD  
SHR BLK KALLY 39R  
BDS CALLI 104K

EPDs: CE 6.7 BW 4.3 WW 42.4 YW 77.9 M 2.4

This bull will catch your eye on sale day! Very stylish with lots of stoutness. A very different pedigree here Power Surge is McMillen's new herdsire, his calves are very strong. Out of a great three-year-old we purchased from Shades.



**52W TSN CROCKET 52W**

719688 TSN 52W 17 Jan 2009 Red, Polled

BW 101 lbs. • WW 882 lbs. • Adj 365 YW.  
Jan 22 Wt lbs. • Sale Wt. \_\_\_\_\_

EPDs: CE 6.9 BW 4.1 WW 45.3 YW 77.3 M 5.2

If your looking for a bull to add some growth and performance to your herd this bull will work. The Crockett calves are doing well for us at TSN and they always have the highest weaning weights at our farm. This calf has a bit of fleck genetics in this pedigree. His dam is a dark solid red with a awesome udder. He will leave you females you will want to keep.

KENCO/MF POWERLINE 204L  
SIRE: LBR CROCKET R81 671306  
LBR NIGHT DREAM M22

DORA LEE NATIVE SON  
ANCHOR D AZTEC 34N  
ANCHOR D CHELSIE 34J  
DAM: GLS MISS REVELATION 25R 649617  
MV RED LIGHT 406  
GLS MISS NAOMI 4N  
LAZY BAR-B ROCKPOINT 37K

# PERKIN LAND & CATTLE CO. - Simmental



Darryl, Tanya, Liam & Ivy • Scott, Meagan, Foster & Nyah • Brian & Leona  
 Box 138 • Elgin, MB R0K 0T0 • Phone (204) 769-2159  
 dperkin@wcgwave.ca • www.perkinlandandcattle.com

Welcome again to the Mar Mac & Guests Bull Sale. We have brought an excellent set of bulls for you to evaluate, right from the top cows of our 100+ herd of red and black Simmentals. You will see there is a group of bulls from our "go to" herdsire WLB Mr Nugget, who is still the #1 bull in Canada for weaning weight - the sons are long sided and full of meat. The other sire group is from our Jr herdsire, Ankonian Colossal. We could not be happier with these calves, they have big, round muscle, are loose hided with lots of hair. People often ask us, "what are the females like?", be assured when we buy a herd bull, one of the most important attributes is maternal strength and a strong cow family behind him. On sale day, you will notice shaved patches on our bulls - we have done CUP ultrasound, which is a more accurate scan and gives us carcass EPDs. We will also be using this on our heifer pen to help select our replacement females. Please come by the farm anytime or give us a call, we would be happy to recommend a bull to fit your needs.

## 58W PERKS WAKEFIELD 58W

719400 PLCC 58W 8 Feb 2009 Red, Polled

BW 98 lbs. • WW 892 lbs. • Adj 365 YW 1309 lbs.  
 Jan 10 Wt. 1230 lbs. • Sale Wt. \_\_\_\_\_

CNS DREAM ON L186  
**SIRE: ANKONIAN COLOSSAL S064 687739**  
 ANKONY MISS CANDACE P6

TNT SHOCKER J46  
 LAZY S RED SHOCKER 226L  
 MS LAZY S BLACK P 217J  
**DAM: TESS MS SHOCKER 357P 620594**  
 RED WRANGLER D136  
 TESS MS RED WRANGLER 57H  
 MJ MAXINE 35E

EPDs: CE 8.1 BW 2.8 WW 48.3 YW 77.3 M 1.7

%IMF 2.59 Back Fat 6.60 Ribeye 16.78 %LMY 65.8  
**DNA tested Homozygous Polled.** Colossal has surpassed our expectations. He has stamped his bulls with awesome muscle shape, big ribs and tops and lots of hair. This deep red calf has breeder potential. The Shocker cow adds that extra power that puts this bull over the top.



## 243W PERKS WISEMAN 243W

719419 PLCC 243W 14 Feb 2009 Red, Polled

BW 88 lbs. • WW 758 lbs. • Adj 365 YW 1233 lbs.  
 Jan 10 Wt. 1105 lbs. • Sale Wt. \_\_\_\_\_



CNS DREAM ON L186  
**SIRE: ANKONIAN COLOSSAL S064 687739**  
 ANKONY MISS CANDACE P6

WFL MR WESTWAY 247M  
 PERKS RED BLOCK 56P  
 TFED CONRAY MAURA 156M  
**DAM: PERKS MIRA 43S 673326**  
 WHF RED ROOKIE 160E  
 ROLLING JN MIRA 43M  
 TWIN-CHIEF DAWN 594D

EPDs: CE 8.8 BW 1.9 WW 40.8 YW 65.4 M 3.2

%IMF 3.12 Back Fat 5.3 Ribeye 16.08 %LMY 66.5  
**DNA tested Heterozygous Polled.** This Colossal calf has really caught our eye since birth. A little more fancy, but still that big round butt, loose hide and soggy middle. One of our favourites in the pen, he has just a super temperament. A low birth weight bull that we feel will work on heifers or cows.

## 885W PERKS WOODSTOCK 885W

719427

PLCC 885W

5 FEB 2009

Red, Polled/S

BW 99 lbs. • WW 819 lbs. • Adj 365 YW 1410 lbs.  
Jan 10 Wt. 1275 lbs. • Sale Wt. \_\_\_\_\_

CNS DREAM ON L186

SIRE: ANKONIAN COLOSSAL S064 687739

ANKONY MISS CANDACE P6

CG HOMEBUILDER 803H

TWIN CHIEF MIDAS 248M

TWIN-CHIEF HELEN 248H

DAM: PERKS CARLA 4885S 673305

ABC MR MAINSTREAM 520F

TFED CONRAY CARLA 2785M

CONRAY JADE 1385F

EPDs: CE 6.1 BW 3.8 WW 45.9 YW 72.8 M 4.3

%IMF 2.89 Back Fat 5.30 Ribeye 18.63 %LMY 68.3

What a tank! This rascal has the potential to change a herd. Big top and hip, with tons of hair, he has gained close to 4lbs/day on test.

His Midas dam is one of our top young cows and as a group, the Midas daughters are really producing. Look at his Ribeye of 18.63 - monster.

Could be one of the best bulls in the pen.



## 135W PERKS WARSAW 135W

719414

PLCC 135W

13 FEB 2009

Red, Polled

BW 104 lbs. • WW 805 lbs. • Adj 365 YW 1358 lbs.  
Jan 10 Wt. 1235 lbs. • Sale Wt. \_\_\_\_\_

CNS DREAM ON L186

SIRE: ANKONIAN COLOSSAL S064 687739

ANKONY MISS CANDACE P6

ER RED DASH 649D

DOUBLE KL 203J

DOUBLE K L LILY

DAM: TFED CONRAY DANDY 1135M 600744

ABC REDSTREAM 615G

TFED REBECCA 935J

TFED RACHEL 835G

EPDs: CE 3.9 BW 4.5 WW 37.6 YW 65.3 M 8.0

%IMF 3.02 Back Fat 5.60 Ribeye 17.47 %LMY 67.2

A real Colossal powerhouse, this hairy, deep sided calf will no doubt turn out to be a great herd bull. His dam produced one of our top heifers the last 2 years and they milk just like her.

Cattlemen will love the look of this bull, take him home and let him prove his worth to you.



## 25W PERKS WIBAUX 25W

719396

PLCC 25W

9 Feb 2009

Red, Polled/S

CNS DREAM ON L186

SIRE: ANKONIAN COLOSSAL S064 687739

ANKONY MISS CANDACE P6

ER RED DASH 649D

DOUBLE KL 203J

DOUBLE K L LILY

DAM: CONRAY RICOLA 1625M 600763

IPU RED EDITION 2D

CONRAY WHISPER 625H

CONRAY SUGAR 225B

BW 106 lbs. • WW 792 lbs. • Adj 365 YW 1310 lbs.

Jan 10 Wt. 1205 lbs. • Sale Wt. \_\_\_\_\_

EPDs: CE 6.1 BW 3.7 WW 35.2 YW 59.3 M 7.1

%IMF 3.0 Back Fat 6.10 Ribeye 16.80 %LMY 66.6

A good Colossal son. His mother has a perfect udder and has produced some excellent daughters. This guy should give you that Colossal shape and performance.



**WLB MR. NUGGET 132N 355R**

*Sire of PLCC 78W, 285W, 293W, 185W, 46W, 12W, 114W, 38W and 26W.*

## 78W PERKS WINSTON 78W

719401

PLCC 78W

5 Feb 2009

Polled, Red

BW 104 lbs. • WW 970 lbs. • Adj 365 YW 1428 lbs.  
Jan 10 Wt. 1355 lbs. • Sale Wt. \_\_\_\_\_

IPU RED NUGGET 132N  
SIRE: WLB MR. NUGGET 132N 355R 639081  
DCR MS 299 DEST L205

NLC TOM TOM 3F  
LCC RED HEAT 7462J  
NLC F21 FILLY  
DAM: TFEED CONRAY LAURIE 378M 600738  
ABC MR MAINSTREAM 520F  
TFED LAURA 178K  
TNY CHILLIE 78F

EPDs: CE 3.3 BW 4.4 WW 60.0 YW 95.5 M 14.6

%IMF 3.13 Back Fat 6.60 Ribeye 17.93 %LMY 66.6  
DNA tested Homozygous Polled. The king of the bull calves, he was a man among boys this summer on pasture and an easy standout. His Red Heat dam has produced several top selling bulls for us and is one powerful cow. Nugget has stamped him with his extra length and explosive growth. An actual weaning weight of 970 lbs, he has gained 4 lbs/day every day of his life; and check out his Ribeye of 17.93! If you are looking to wean heavy calves, then buy this guy.



## 285W PERKS WHIPPER 285W

719421

PLCC 285W

12 Feb 2009

Black, Polled

BW 105 lbs. • WW 785 lbs. • Adj 365 YW 1384 lbs.  
Jan 10 Wt 1250 lbs. • Sale Wt. \_\_\_\_\_



IPU RED NUGGET 132N  
SIRE: WLB MR. NUGGET 132N 355R 639081  
DCR MS 299 DEST L205

NLC TOM TOM 3F  
LCC RED HEAT 7462J  
NLC F21 FILLY  
DAM: TFEED CONRAY KRISTY 4285M 600752  
ABC MR MAINSTREAM 520F  
TFED CARLA 2485K  
CONRAY FANCY 485F

EPDs: CE 5.0 BW 3.2 WW 47.9 YW 79.1 M 13.3

%IMF 2.99 Back Fat 8.40 Ribeye 18.85 %LMY 65.6  
DNA tested Homozygous Polled. We have been waiting for this cow to have a bull as we have several good daughters in the herd. She has awesome milk production in a very moderate frame. This bull will be super maternal with that Nugget performance. A well balanced bull with the biggest Ribeye of 18.85.

## 293W PERKS WARRIER 293W

719422

PLCC 293W

10 Feb 2009

Red, Polled

IPU RED NUGGET 132N  
SIRE: WLB MR. NUGGET 132N 355R 639081  
DCR MS 299 DEST L205

CG HOMEBUILDER 803H  
TWIN CHIEF MIDAS 248M  
TWIN-CHIEF HELEN 248H  
DAM: CONRAY CLINIQUE 1893S 676088  
LEACHMAN PERFECTION 7520  
CONRAY CLINIQUE 693G  
CONRAY TERESA 295Y

BW 110 lbs. • WW 760 lbs. • Adj 365 YW 1375 lbs.  
Jan 10 Wt. 1220 lbs. • Sale Wt. \_\_\_\_\_

EPDs: CE 0.6 BW 7.3 WW 58.2 YW 92.0 M 7.0

%IMF 2.25 Back Fat 6.10 Ribeye 16.80 %LMY 67.9  
DNA tested Homozygous Polled. He could be one of the beefiest Nugget sons we have raised. These young Midas cows seem to be putting it all together for us. If you want performance, this is your bull.  
Mar Mac Farms & Guests Spring Bull Sale

## 185W PERKS WINGATE 185W

719415

PLCC 185W

2 Feb 2009

Red, Polled

IPU RED NUGGET 132N  
SIRE: WLB MR. NUGGET 132N 355R 639081  
DCR MS 299 DEST L205

MV RED LIGHT 406  
ELLINGSON THE ROCK J928  
ELLINGSON MSAMERICA F708  
DAM: CONRAY FIONA 3685M 600764  
LEACHMAN PERFECTION 7520  
CONRAY CLASSY 1685J  
CONRAY GINGER 685C

BW 95 lbs. • WW 755 lbs. • Adj 365 YW 1230 lbs.  
Jan 10 Wt. 1150 lbs. • Sale Wt. \_\_\_\_\_

EPDs: CE 8.4 BW 0.9 WW 40.6 YW 63.6 M 6.9

%IMF 2.40 Back Fat 4.80 Ribeye 17.08 %LMY 67.7  
A soggy, blaze faced Nugget son that should have low birth weight calves. His dam is a very moderate, efficient cow that produces year after year.

## 46W PERKS WILDCAT 46W

719399

PLCC 46W

13 Feb 2009

Black, Polled

IPU RED NUGGET 132N

SIRE: WLB MR. NUGGET 132N 355R 639081

DCR MS 299 DEST L205

NLC 64Y TOMCAT  
PARKHILL CALL ME TOM  
SPRING VALLEY B593

DAM: MS NORTHSKY RED JEM 46L 561944

MR PRL FORRESTER 032F

MS NORTHSKY 65H  
MS BAR NONE 548B

EPDs: CE 6.1 BW 4.1 WW 52.8 YW 82.3 M 7.4

%IMF 2.57 Back Fat 6.90 Ribeye 17.67 %LMY 66.2

A good Nugget son with a little chrome on the hood. He is a solid bodied, black ras cal that will sure cross well with the British based cows. Barry Labatte bought a full sister out of the PTSA 2 years ago. Hetero Black.



BW 100 lbs. • WW 798 lbs. • Adj 365 YW 1336 lbs.  
Jan 10 Wt. 1215 lbs. • Sale Wt. \_\_\_\_\_

## 12W PERKS WIGWAM 12W

719395

PLCC 12W

17 Feb 2009

Red, Polled



BW 113 lbs. • WW 890 lbs. • Adj 365 YW 1495 lbs.  
Jan 10 Wt 1350 lbs. • Sale Wt. \_\_\_\_\_

IPU RED NUGGET 132N

SIRE: WLB MR. NUGGET 132N 355R 639081

DCR MS 299 DEST L205

MUTIG  
GRINALTA'S EXTRAORDINAIRE  
EDC POLL MAGNUM 1B

DAM: FTS EXTRAORDINARY LADY 589750

WHF RED ROOKIE 160E

FTS MISS JAQUE 60H

SLEEPY HOLLOW 4F

EPDs: CE 1.6 BW 7.3 WW 63.5 YW 99 M 13.3

%IMF 2.68 Back Fat 5.30 Ribeye 17.93 %LMY 67.8

DNA tested Inconclusive Polled. Lady has done it again. This is a full brother to the black bull she had in the sale last year that sold to Dylan Thomas of Lenore for \$3900. A power house that will give you big weaning weights in a long, stylish Nugget package, he has gained 4lbs/day since birth.

## 114W PERKS WHOPPER 114W

719404

PLCC 114W

13 Feb 2009

Black, Polled

IPU RED NUGGET 132N

SIRE: WLB MR. NUGGET 132N 355R 639081

DCR MS 299 DEST L205

TNT SURVIVOR K220  
D BAR C NORTHSTAR 40N  
D BAR C RUBY 938J

DAM: PERKS MAY 14R 651342

TSS BOZ BOLD CAT

ROLLING JN MAY 14M

WILD-WEST MS JEOPARDY

BW 98 lbs. • WW 835 lbs. • Adj 365 YW 1372 lbs.

Jan 10 Wt. 1235 lbs. • Sale Wt. \_\_\_\_\_

EPDs: CE 5.6 BW 3.9 WW 53.2 YW 86.3 M 10.6

%IMF 2.59 Back Fat 4.80 Ribeye 17.07 %LMY 67.7

This moderate, cherry red Northstar cow has put it all together with this bull - deep sided, long as a freight train and lots of hair. May 14R is a super milking cow that works hard every year and has put a few daughters back in the herd as well as through our association sale. Hetero Black.

30

## 38W PERKS WILLMAR 38W

719398

PLCC 38W

5 Feb 2009

Red, Polled

IPU RED NUGGET 132N

SIRE: WLB MR. NUGGET 132N 355R 639081

DCR MS 299 DEST L205

ER BLACK MACK 568Y

ER BIG SKY 545B

JKE 38W

DAM: BIG SKY'S MIMI 38L 561337

AWL HIGH FIVE 20A

FM MS HIGH FIVE 76D

CREST'S-VIEW MONICA 76B

BW 94 lbs. • WW 760 lbs. • Adj 365 YW 1149 lbs.

Jan 10 Wt. 1075 lbs. • Sale Wt. \_\_\_\_\_

EPDs: CE 7.2 BW 2.4 WW 43.1 YW 70.9 M 11.5

%IMF 2.80 Back Fat 5.30 Ribeye 16.43 %LMY 68.4

A good Nugget calf out of a tremendous Big Sky cow. Lots of milk and maternal here as Mimi is one of our most fertile cows.



**26W PERKS WOODWARD 26W**  
719397 PLCC 26W 7 Mar 2009 Red, Polled

IPU RED NUGGET 132N  
SIRE: WLB MR. NUGGET 132N 355R 639081  
DCR MS 299 DEST L205

GW STOP LIGHT 024F  
GFI BRANDO H02  
MISS 600U CH D037  
DAM: ROLLING JN MERCY 26M 579242  
DAY MR DS POLLFLECK A604D  
ROLLING JN GIZI 27G  
ROLLING JN DONI 10D

BW 96 lbs. • WW 760 lbs. • Adj 365 YW 1302 lbs.  
Jan 10 Wt. 1125 lbs. • Sale Wt. \_\_\_\_\_

EPDs: CE 9.0 BW 2.8 WW 54.6 YW 87.9 M 10.8

%IMF 2.51 Back Fat 7.90 Ribeye 14.73 %LMY 63.1  
A long bodied Nugget son that is out of a hard working Brando female. She has 2 daughters in the herd and we have used one of her sons "Tsunami" that we sold to Dennis Weeks of La Riviere. He should work on cows or heifers and make daughters that really milk!

**119W PERKS RALLY DRIVER 119W**  
App For PLCC 119W 8 Feb 2009 Black, Polled

WLE POWER STROKE  
SIRE: HC POWER DRIVE 88H  
KAPPES LADY IRISH F88

IRISH BLACK KNIGHT  
BLACK IRISH KANSAS  
KANSAS BLACK LASS 215X  
DAM: JDN PRAIRIE SIGNATURE 19L  
BURNS BULL X339U  
LFE KATARINA 31F  
LFE KATARINA 66D

EPDs: CE 9.3 BW 1.9 WW 38.5 YW 72.1 M 10.4

%IMF 2.94 Back Fat 6.60 Ribeye 16.78 %LMY 65.8  
DNA tested Homozygous Polled. We are excited about these embryo's that we bought from the Young's of High Country Cattle Services. Power Drive x Black Irish Kansas - could there be much more of a female maker? With his low birth weight, this power house will service heifers or cows but he's also gained over 4 lbs/day on test so he should be a real curve bender. We saw the result of Power Drive at the Triple C dispersal - this bull will cause a stir. Homo Black. Pictured inset is JDN 19L, dam of 119W.



LFE Katarina 604N, dam of 204W

**195W PERKS WOLVERINE 195W**  
719416 PLCC 195W 7 Mar 2009 Red, Polled

CG HOMEBUILDER 803H  
SIRE: TWIN CHIEF MIDAS 248M 593367  
TWIN-CHIEF HELEN 248H

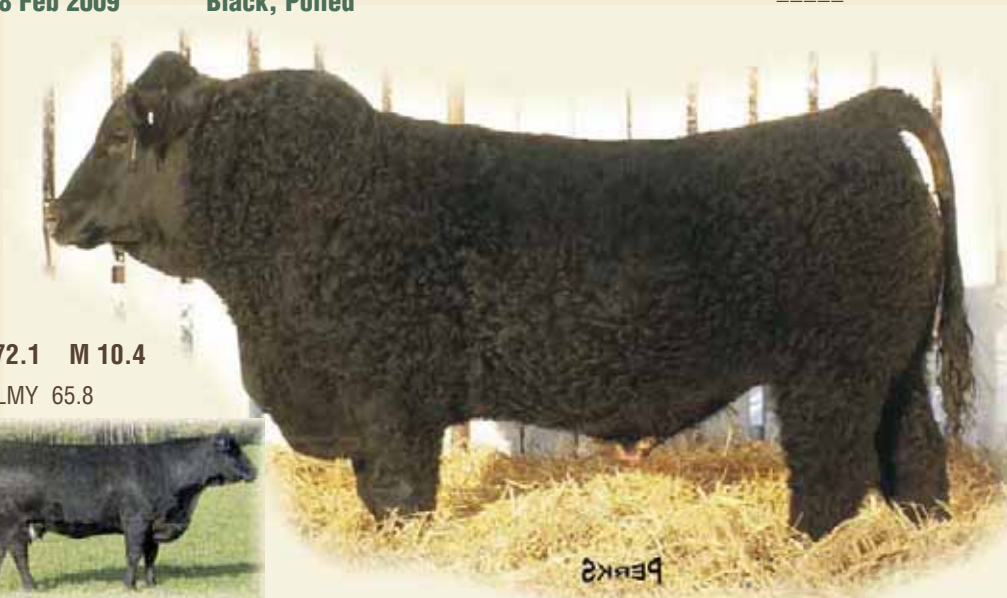
WLE POWER STROKE  
PVF-CW RAPID FIRE 0195K  
KAPPES LADY IRISH F88  
DAM: PRL REPLICA 254R 653995  
BBS RED CANADIAN L24  
PRL NIGHTFALL 390N  
MS PRL FELOITTE 216F

BW 88 lbs. • WW 633 lbs. • Adj 365 YW 1157 lbs.  
Jan 10 Wt. 975 lbs. • Sale Wt. \_\_\_\_\_

EPDs: CE 9.7 BW 0.5 WW 26.7 YW 57.8 M 1.8

%IMF 2.86 Back Fat 7.10 Ribeye 16.53 %LMY 65.1  
This moderate Midas son will work great in your heifer pen but still put meat and muscle on the calves by weaning time. We love our Midas females and know that he will make some good daughters as well

BW 88 lbs. • WW 794 lbs. • Adj 365 YW 1376 lbs.  
Jan 10 Wt. 1240 lbs. • Sale Wt. \_\_\_\_\_



**204W PERKS WESTERNER 204W**  
App. For PLCC 204W 5 Feb 2009 Red, Polled

TNT GUNNER N208  
SIRE: TNT TOP GUN R244  
TNT MISS SADIE M68

RW BOMBER 8H  
TNT DYNAMITE BLACK L137  
OPPS WIS GM2  
DAM: LFE KATARINA 604N  
CCR CADILLAC  
LFE KATARINA 13J  
LFE KATARINA 606D

BW 74 lbs. • WW 604 lbs. • Adj 365 YW 1104 lbs.  
Jan 10 Wt. 1005 lbs. • Sale Wt. \_\_\_\_\_

EPDs: CE: 9.1 BW: -0.3 WW: 29.5 YW: 57.3 M: 4.6

%IMF 3.10 Back Fat 5.80 Ribeye 11.93 %LMY 63.0  
A Top Gun embryo calf out of Bouchard's 604N Dynamite Black cow. This bull will be fool proof in the heifer pen and let you sleep at night next year.

## EPDS: EXPECTED PROGENY DIFFERENCE

The expected difference in performance of a bulls progeny when compared to the average progeny performance of all bulls evaluated. EPD's cannot be compared cross breed. Breed averages are at the start of each breed section.

- CE** **Calving Ease** - percentage of unassisted births with the more positive number indicating greater calving ease.
- BW** **Birth Weight** - the birth weight of a bulls progeny when compared to the breed average, in pounds.
- WW** **Weaning Weight** - the adjusted weaning weights of a bulls progeny when compared to the breed average, in pounds.
- YW** **Yearling Weight** - the adjusted yearling weight of a bulls progeny when compared to the breed average, in pounds.
- Milk** **Milk** - a measure of amount of pre-weaning performance gained by calves which can be attributed to the milking ability of a bulls daughters. The EPD is expressed in pounds of calf.
- TM** **Total Maternal** - each of these terms measures a sires ability to transmit milk production and growth rate through his daughters. It predicts the weaning weight of sires daughters calves. It is equal to the milk EPD plus 1/2 of his weaning weight EPD.

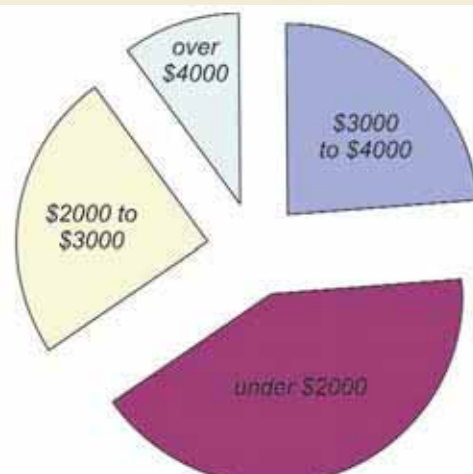
### MAR MAC FACTS:

*Mar Mac bulls are affordable...*

In our past sales:

- 24% of our bulls have sold under \$2000
- 42% of our bulls have sold between \$2000 - \$3000
- 25% of our bulls have sold between \$3000 - \$4000
- 10% of our bulls have sold over \$4000

Over the past 6 years over 70% of our Mar Mac Farms & Guests Bulls have sold to repeat buyers. Customer satisfaction is very important to us!



## THANK YOU TO OUR 2009 BUYERS...

We appreciate your support to our breeding program.

Hugh Atkins  
Bonchuk Farms\*  
Broken Oak Black Simmentals\*  
Brylor Ranch\*  
Alfred Bourrier  
Kent Dalrymple\*  
D&D Farms\*  
Michael Decock\*  
Fairhaven Farms\*  
Rob Fraser  
Mike Gabor  
Golden Valley Farm\*  
Guild Farms\*  
Randy Heide\*  
Drew Hal Parks  
Richard Hewitt  
Art & Jackie Jonasson

Robert Korchak  
Roy Leitch Livestock\*  
Larry Logan\*  
Magnusville Farms\*  
Mappin Simmentals  
Dennis Mauthe\*  
Tyson McRae\*  
Ken Miller\*  
Jim Murray\*  
Nu -Horizon Angus  
Oakvalley Stock Farm  
Oliver Farms\*  
Parkvale Farms\*  
Lorne Penner\*  
Greg and Anna Marie Perrot  
Playgreen Farms\*  
Jason Potter\*

H.B. Rempel  
Murray Richardson\*  
Boyd Richardson\*  
Kevin Routledge  
Rick Senecal  
SimQua Ranch\*  
W Charles Stewart & Sons\*  
Stoney Ridge Ranch  
Nadine Thiry\*  
D.R. Thomas\*  
Albert Tranq  
Neil Troughton\*  
Richard Unrau\*  
Mitchell Wood  
Wes Wytznick

# Our Cattle Go On & Work for Our Customers



**Ken & Rebecca MacKenzie**

## **MACKENZIE RED ANGUS**

Purchased in Red Roundup. He went on to be Grand Champion Bull at Brandon Show, Silver Medalist at World Angus Forum & Supreme Bull of All Breeds in Dawson Creek, B.C.

*Semen available contact  
Mar Mac or The MacKenzie's*



**Ron & Cindy George & Family**

## **PARKVALE FARMS**

Purchased Triton in 2009 Bull Sale. The George's Have been repeat customers for years. We used 45T and look at his sons in this sale.

**Miles & Bonnie Glasman & Family**

## **M&J FARMS, RUSSELL**

M&J Purchased Mar Mac Chivas 111S, Red McRae's King 47S in 2007 Bull Sale. Great to see many sons of these bulls are features in their bull sale.



**Kent & Colleen Dalrymple**

## **LAST STRAW FARMS, OAKVILLE**

**Volume Buyer 2008 & 2009 Sale**

We have been purchasing bulls from Mar Mac Farms & Guests Bull Sale for many years. We have always been very pleased with the bulls. Deep, thick, long bodies, lots of hair & excellent feet are all characteristics we have found in their bulls. The right genetics & Mar Mac's feed management have equalled longevity. Our experience has been trouble free bulls breeding 9 plus seasons producing the type of calves the market wants. Currently 1/3 of our 50 bulls come from the Mar Mac & Guests Sale.

*See you sale day.*

Kent & Colleen Dalrymple

Mar Mac is a family run operation and during the year we require some added help while at shows and events. We could not achieve our goals without the help of our families, very good friends and neighbours in and around the South Brandon - Roseland Community.

Special thanks to Dalyse Robertson who spends hours on our website and catalogues, Andrew Mooney and Rick Potter are great help when needed and our photographers Grant and Lauralee Rolston.

*See you down the road.*

Thank you to our bidders and buyers who attended and supported Mar Mac Farms and Guests Volume 6. Your support to our breeding program is much appreciated.

Blair & Lois McRae  
RR1 Box 57  
Brandon, MB R7A 5Y1

|              |  |              |
|--------------|--|--------------|
| CANADA       |  | POSTES       |
| POST         |  | CANADA       |
| Postage paid |  | Post payé    |
| Addressed    |  | Médiaposte   |
| Admail       |  | avec adresse |
| 0381454899   |  |              |

