

MVF

Mountain View Farms

*13th Annual
Production Sale*

Friday, December 18, 2009

Heartland Livestock, Virden, Manitoba



MVF



*13th Annual
Production Sale*

FRIDAY • DECEMBER 18 • 2009 • 1 PM
HEARTLAND LIVESTOCK YARDS • VIRDEN • MANITOBA

**SELLING
80 HEAD**

**45 Bred Heifers
20 Bred Cows
15 Show Heifer Calves**

SALE DAY PHONE 204-748-2809

Please join us for a beef lunch
courtesy of Mountain View Farms at 11:30 A.M.

TRUCKING
Bruce Stewart Trucking
204-773-3357

PHOTOGRAPHER
Grant Rolston Photography Ltd.
403-593-2217



Please bring this catalogue with you to the sale

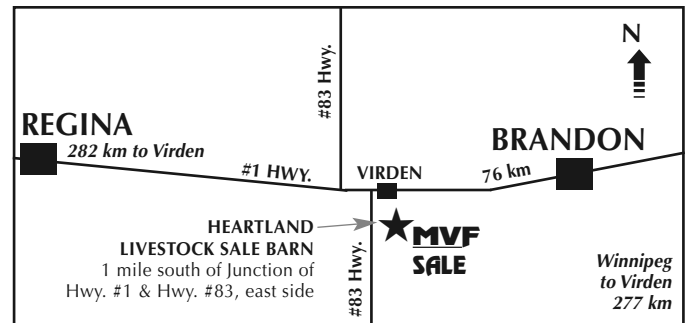
MOUNTAIN VIEW FARMS

- BREEDING REGISTERED ANGUS SINCE 1933 -
Comp 3 RR #2, Swan River, Manitoba ROL 120

**SCOTT & ORYCIA ANDERSON
& SONS AARON & MARK
BO & GLORIA WOHLERS**

Phone: 204-734-2503 Fax: 204-734-5074
Scott's Cell: 204-734-8821

Website: www.mountainviewfarms.ca Email: mtnviewangus@explornet.com



HOTEL RESERVATIONS:

Jays Inn & Suites, Virden - 204-748-2223
Countryside Inn Motel - 204-748-1244

Pre-sale social Friday night at the Jays Inn

SALE STAFF:

Brent Carey, Auctioneer
403-549-2478; Cell 403-650-9028
Dennis Ericson - 780-352-7630
Ryan Dorran - 403-507-6483
Peter Frjiter 519-276-9314

SPECIAL REPRESENTATIVES:

Doug Fee, CEO, Canadian Angus Association
John Donaldson, President, Canadian Angus Association
Shawn Birmingham, President, Manitoba Angus Association
Arlene Kirkpatrick, Secretary, Manitoba Angus Association

SALES MANAGEMENT:

American Angus Hall of Fame

Tom Burke 816-853-2697
Office: 816-532-0811



MARKETING AGENT:

Venture Livestock

Wayne Burgess 403-813-8416





Premier Breeder & Premier Exhibitor
Manitoba Livestock Expo 2008

MOUNTAIN VIEW FARMS

Comp 3 RR #2, Swan River
Manitoba, Canada ROL 120
Scott & Orycia Anderson

Phone: 204-734-2503 Fax: 204-734-5074

email: mtnviewangus@explornet.com
website: www.mountainviewfarms.ca



Mark, Scott, Aaron & Orycia

On behalf of everyone at MVF we would like to invite you to our 13th Annual Production Sale. The summer of 2009 will be never forgotten at MVF with the 2009 World Angus Forum hosted at Spruce Meadows, Alberta. WOW what an event - 1,000 head of Angus cattle, beautiful facilities, banquets for over 1,000 people, people from 20 different countries registered. There are simply no words that can describe this unbelievable event.

The goal of the Forum Committee was to make the 2009 World Angus Forum the best one ever, and they did and will probably not be duplicated again until it comes back to Canada in another 24 years. Thank you goes out to John Lee and all the committee members and volunteers for making this a most memorable event. We as Angus breeders across Canada should be proud of what we accomplished this past summer.

The Angus breed is going to have a lot more people wanting to get into the breed. We need to help these new breeders get started and give them sound advice to advance this great breed to an even higher level.

It was a huge honour to judge the Red Angus cattle at the Forum and will be cherished forever.

The females you will appraise at this year's sale will be angular, deep bodied, good footed cows with the ability to add performance, thickness and hair to their offspring. The MVF female has an impeccable udder with abundance of milk to raise that big calf.

The heifers calves selling are all halter broke and are of show quality, selected from the top of the 2009 calf crop.

The bred heifers were selected from 170 heifers bred at MVF this past year. We had to keep 50 heifers that were calving the first part of January as they would be too heavy in calf to sell and get delivered before calving. We then went in and selected the pick of the rest of the heifers. There are a lot of heifers selling that would not normally be offered for sale. This is an outstanding set, please come and take a look for your self. We would be honoured to have your presence.

The cows selling are all '03 and '04 models, selling in the prime of their life and have been stellar producers at MVF.

The service to the World Angus Forum Champion HF Tiger 5T and the Genex Sires SAV Pioneer, GDAR Game Day and Sitz Upward will most definitely give you a valuable coupon.

I would especially thank my wife, Orycia for all her help and support. Thanks goes out to our two sons, Aaron & Mark and the rest of the crew who are always there when we need them with a 100% effort.

Please join us on December 18, 2009 in Virden MB to view the strongest sale offering ever presented by MVF. Feel free to join us for a social evening the night prior to the sale at Jays Inn and Country Suites. We will start serving lunch at 11:30 on sale day. For more information please feel to call me at (204) 734-8821 or any of our capable sales staff.

Scott Anderson

*They say that a job well done
Is its own reward but still you should
Know how much your hard work means
To those around you.*

Thanks for doing such a good job.

Scott & Orycia,

Thank you just doesn't seem to be adequate enough for the amazing job you have done with MVF Tibbie 108U. You achieved such great results. We are so proud.

Thank you!!

Cliff & Kathie Folk
Hi Low Angus

July 21, 2009

Dear Scott,

When Kurt and Jeremy came back from the World Angus Forum, they said you had one of the very best heifers they ever saw!

She was the female that was Reserve Junior Champion - they thought she was in a class by herself from the standpoint of overall goodness, a classic SAV Net Worth daughter - - congratulations!

Sincerely
Tom Burke
Sale Manager
American Angus Hall of Fame



Lot 1

MVF
Tibbie
179W



1

MVF TIBBIE 179W

FEMALE ABA 179W 1524931 FEBRUARY 25 2009

TC FREEDOM 104 AMF
TC STOUT 407 1302212
TC PRIDE 2053

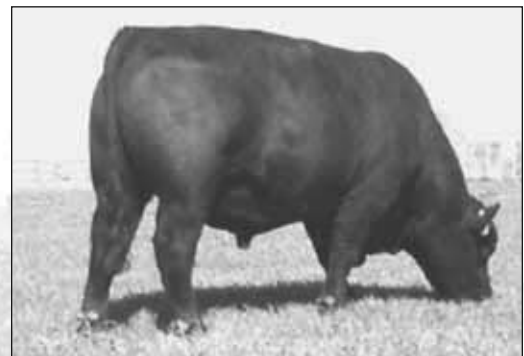
GDAR SVF TRAVELER 234D NHF AMF
MVF TIBBIE 813P 1247205
MVF TIBBIE 52F

CONNELLY FOREFRONT NHF AMF
T C RUBY 9095
VERMILION DATELINE 7078 NHF AMF
TC PRIDE 5045

TRAVELER 124 G D A R
G D A R FOREVER LADY 718
BON VIEW EMULATION EXT 473 NHF AMF
MVF TIBBIE 21D

BW: 89 lbs. Adj. 205D: 768 lbs.
EPDs: BW: +3.6 5% WW: +4.9 5% YW: +91 5% Milk: +25 5% TM: +4.9 YG: +42 5%

- A maternal brother was the top selling yearling bull at the 7th Annual MVF Spring Bull sale to R & B Hamoline Farms, Aberdeen SK for \$4,300.00
- MVF has two maternal sisters in production
- A flush mate to MVF Tibbie 813P was the second top selling bred heifer at the 2005 MVF Production Sale for \$10,000.00 to Sterling Angus, Williams Lake BC
- Three maternal sisters to MVF Tibbie 813P sold at the 1999, 2000, 2001 MVF Production sales for an average of \$6,200.00
- Two maternal brothers to MVF Tibbie 813P sold at the 2001 Cattleman's Connection Bull sale for \$7,250.00 and \$6,500.00 to Botany Angus, Souris, MB and Greenbush Angus, Neepawa, MB
- MVF Tibbie 52F was the Reserve Champion Female at the 1999 National Angus Show and Reserve Champion Female at the 1999 CWA
- MVF Tibbie 179W is a tremendous heifer with excellent EPDs from a cow family that consistently raises cattle that are in demand. If you are looking for a show heifer that could bring in the red ribbon or a future embryo donor take a hard look here.
- MVF Tibbie 179W will be shown at the Manitoba Livestock Expo and CWA.



TC Stout 407

BW: +4.1 WW: +57 YW: +106 Milk: +28 TM: +57 YG: +49



MVF Tibbie 52F - Grandam of Lot 1



Lot 2 - MVF Zara Lisa 55W



Lot 3 - MVF Tibbie 35W



MVF VRD Dateline 913P

BW: +4.9 WW: +50 YW: +90 MILK: +19 TM: +44 YG: +40

2

MVF ZARA LISA 55W

FEMALE ABA 55W 1524911 JANUARY 30 2009

TC FREEDOM 104 AMF
TC STOUT 407 1302212
TC PRIDE 2053

CONNELLY FOREFRONT NHF AMF
T C RUBY 9095
VERMILION DATELINE 7078 NHF AMF
TC PRIDE 5045

WESTERN WIDESPREAD 1L
MVF ZARA LISA 317R 1304757
MVF ZARA LISA 57K

WHITESTONE WIDESPREAD MB NHF AMF
BDM BLUE LADY ERICA 126'95
GRAND ISLAND ELMO
NORTHCOTE ZARA LISA

BW: 80 lbs. Adj. 205D: 702 lbs.

EPDs: BW: I +4.8 5% WW: I +51 5% YW: I +86 5% Milk: I +20 5% TM: I +45 YG: I +36 5%

- A very fancy heifer, tremendous bone and back leg, excellent EPDs
- This Zara Lisa cow family consistently raises the good ones

3

MVF TIBBIE 35W

FEMALE ABA 35W 1530275 JANUARY 18 2009

VERMILION DATELINE 7078 NHF AMF
MVF VRD DATELINE 913P AMF 1232661
MVF LADY DI 60K

CONNELLY DATELINE
VERMILION BLACKBIRD 5044
MVBL LANCER 9F
DOUBLE AA LADY DI 744'94

TC STOCKMAN 365
MVF TIBBIE 014L 1056360
MVF TIBBIE 52F

TC STOCKMAN
TC PRIDE 0014
BON VIEW EMULATION EXT 473 NHF AMF
MVF TIBBIE 21D

BW: 86 lbs. Adj. 205D: 712 lbs.

EPDs: BW: I +4.3 5% WW: I +44 5% YW: I +80 5% Milk: I +20 5% TM: I +42 YG: I +37 5%

- A very powerful 913P daughter; tremendous depth of body and thickness in a very attractive package
- Very well balanced EPDs



MVF Tibbie 014L - Dam of Lot 3



Lot 4

MVF
Favorite
112W

4

MVF FAVORITE 112W

FEMALE ABA 112W 1524925 FEBRUARY 11 2009

VERMILION DATELINE 7078 NHF AMF
MVF VRD DATELINE 913P AMF 1232661
MVF LADY DI 60K

CONNELLY DATELINE
VERMILION BLACKBIRD 5044
MVBL LANCER 9F
DOUBLE AA LADY DI 744'94

MVF NEW FRONTIER 14N
MVF FAVORITE 23S 1346721
CAN AM FAVORITE 12G

B/R NEW FRONTIER 095 NHF AMF
MVF TIBBIE 39E
RITO 9FB3 OF 5H11 FULLBACK NHF AMF
CAN AM FAVORITE 32B

BW: 91 lbs. Adj. 205D: 818 lbs.
EPDs: BW: +3.9 5% WW: +45 5% YW: +82 5% Milk: +19 5% TM: +41 YG: +38 5%

- Another excellent 913P daughter; extremely long spined, sweet fronted and a ton of capacity
- This Favorite cow family have been very prolific producers at MVF



S A V Final Answer 0035

BW: -0.9 WW: +59 YW: +113 Milk: +25 TM: +55 YG: +45

5

MVF BEAUTY 44W

FEMALE ABA 44W 1525018 JANUARY 22 2009

SITZ TRAVELER 8180 NHF AMF
S A V FINAL ANSWER 0035 NHF AMF 1061938
S A V EMULOUS 8145

G D A R TRAVELER 71 NHF AMF
SITZ EVERELDA ENTENSE 1137
BON VIEW BANDO 598 AMF
S A V SKY EMULOUS 2124

WESTERN WIDESPREAD 1L
MVF BEAUTY 43T 1419774
BEAUTY MCB 57'91

WHITESTONE WIDESPREAD MB NHF AMF
BDM BLUE LADY ERICA 126'95
CANADIAN BIG PROMISE D G
BEAUTY MCB 72'82

BW: 70 lbs. Adj. 205D: 746 lbs.
EPDs: BW: +0.4 5% WW: +47 5% YW: +75 5% Milk: +18 5% TM: +41 YG: +29 5%

- A very fancy Final Answer daughter that would show



Lot 5 - MVF Beauty 44W



Lot 6

MVF
Daisy
13W



MVF DAISY 13W

FEMALE ABA 13W 1524818 JANUARY 06 2009

S A V 8180 TRAVELER 004 NHF AMF
S A V NET WORTH 4200 NHF AMF 1309743
S A V MAY 2410

SITZ TRAVELER 8180 NHF AMF
BOYD FOREVER LADY 8003
S A F 598 BANDO 5175 AMF
S A V MAY 6269

MINERTS FORTUNE 2000 NHF AMF
MVF DAISY 17E 833561
MVF DAISY 38C

SCHURRTOP FORTUNE 3261
MINERTS EDELLA 951
RITO 2100 G D A R
MVB F DAISY 3A

BW: 77 lbs. Adj. 205D: 749 lbs.

EPDs: BW: I+3.1 5% WW: I+43 5% YW: I+84 5% Milk: I+21 5% TM: I+43 YG: I+41 5%

- MVF Daisy 13W is possibly the best female ever raised at MVF. She combines an abundance of thickness and shape in a very angular package
- A full brother MVF Net Worth 98U was selected at the 2009 Cattleman's Connection Bull Sale by Midnite Oil Cattle Company, Craik, SK for \$7,000.00 and was used through AI at MVF on heifers and cows this past spring.
- Dam is a 14 year old cow who has consistently produced calves with low B.W.'s and short gestation
- If you want to be purple take a good look here this heifer will show
- You will see MVF Daisy 13W at the Manitoba Livestock Expo and CWA



S A V Net Worth 4200

BW: +4.7 WW: +59 YW: +113 Milk: +33 TM: +63 YG: +54



MVF Net Worth 98U - full brother to Lot 6



Lot 8

MVF
Hi Lite
146W

7

MVF BEAUTY 122W

FEMALE ABA 122W 1524981 FEBRUARY 14 2009

S A V 8180 TRAVELER 004 NHF AMF
S A V NET WORTH 4200 NHF AMF 1309743
S A V MAY 2410

SITZ TRAVELER 8180 NHF AMF
BOYD FOREVER LADY 8003
S A F 598 BANDO 5175 AMF
S A V MAY 6269

MVF VRD DATELINE 913P AMF
MVF BEAUTY 198S 1346858
MVF BEAUTY 276N

VERMILION DATELINE 7078 NHF AMF
MVF LADY DI 60K
MVF TRAVELER 4L
MVF BEAUTY 172H

BW: 91 lbs. Adj. 205D: 728 lbs.
EPDs: BW: I+4.8 5% WW: I+49 5% YW: I+92 5% Milk: I+26 5% TM: I+51 YG: I+43 5%

- A maternal sister sells as Lot 32
- Fabulous EPDs with this heifer

8

MVF HI LITE 146W

FEMALE ABA 146W 1530309 FEBRUARY 19 2009

V F VENTURE FORWARD NHF AMF
BXB VENTURE SON 9P 1280124
BXB DATELINE 50M

V D A R TRAVELER 722 NHF AMF
LANDMARK FRED A 911
VERMILION DATELINE 7078 NHF AMF
MVF EVENING TINGE 70F

MVF NEW FRONTIER 14N
MVF HI LITE 200T 1424473
MVF HI LITE 16N

B/R NEW FRONTIER 095 NHF AMF
MVF TIBBIE 39E
MVF TRIUMPH 13L
N.B.A. HI LITE 58L

BW: 76 lbs. Adj. 205D: 783 lbs.
EPDs: BW: I+2.3 5% WW: I+43 5% YW: I+79 5% Milk: I+22 5% TM: I+43 YG: I+37 5%

- Very well balanced EPDs
- This Hi Lite cow family has been very consistent in raising the right kind of cattle that are always in demand

9

MVF ZARA LISA 6W

FEMALE ABA 6W 1524887 JANUARY 01 2009

BON VIEW NEW DESIGN 1407 NHF AMF
BUSHES GRAND DESIGN NHF AMF 1112697
BUSHES LADY DIVIDEND 872

B/R NEW DESIGN 036 NHF AMF
BON VIEW PRIDE 664
TC DIVIDEND 963 NHF AMF
B A 714 LADY 619

WESTERN WIDESPREAD 1L
MVF ZARA LISA 363R 1304712
MVF ZARA LISA 55K

WHITESTONE WIDESPREAD MB NHF AMF
BDM BLUE LADY ERICA 126'95
MVF STOCKMAN 122H
MVF ZARA LISA 24F

BW: 83 lbs. Adj. 205D: 707 lbs.
EPDs: BW: I+4.6 5% WW: I+50 5% YW: I+82 5% Milk: I+23 5% TM: I+47 YG: I+32 5%

- This Grand Design daughter is very easy fleshing with tremendous shape and thickness
- A paternal brother MVF Grand Design 2S sold at the 2007 Cattleman's Connection Bull sale to LLB Angus, Erskine, AB for \$12,500.00 and is one of their feature herd sires. The first progeny of this great young herd sire were the top selling sire group at their spring sale and included the \$70,000.00 LLB 2S Grand Design 113U and the \$24,000.00 LLB 2S Grand Design 273U.
- MVF bred 50 cows to Bush Grand Design this past spring
- This Zara Lisa cow family is the same cow family that produced the great breeding bull MVF VRD Dateline 13M senior herd sire for Circle 7 Angus Shaunovan Sk and Soderglen Farms, Airdrie, AB



Lot 10

MVF
Hi Lite
9W

10

MVF HI LITE 9W

FEMALE ABA 9W 1533407 TWIN JANUARY 02 2009

HYLINE RIGHT TIME 338 AMF NHF
RITO 4D7 OF 2536 338 1305947 NHF AMF
G A R PRECISION 2536 AMC NHF

LEACHMAN RIGHT TIME
HYLINE PRIDE 265
G A R PRECISION 1680 AMC NHC
G A R EXT 2104

WESTERN WIDESPREAD 1L
MVF HI LITE 161S 1346841
MVF HI LITE 23N

WHITESTONE WIDESPREAD MB AMF NHF
BDM BLUE LADY ERICA 126'95
VERMILION DATELINE 7078 AMF NHF
MVF HIGHLIGHT 69E

BW: 75lbs. Adj. 205D: 685lbs.
EPDs: BW: +4.6 5% WW: +49 5% YW: +86 5% Milk: +22 5% TM: +46 YG: +37 5%

- These Rito 4D7 daughters make tremendous cows. This heifer is very good.



Rito 4D7 of 2538 338

BW: +2.7 WW: +48 YW: +85 Milk: +27 TM: +51 YG: +36

Junior Incentive Program

10% discount to all cattle purchased by a Junior member of the Canadian Angus Association.

ANIMALS SHOWN IN ANY CANADIAN JUNIOR NATIONAL ANGUS SHOW QUALIFY

Division	Credit on your next purchase from MVF	
Pee Wee	Grand Champion	- \$1,000.00
	Reserve Champion	- \$ 500.00
Junior	Grand Champion	- \$1,000.00
	Reserve Champion	- \$ 500.00
4-H	Grand Champion	- \$1,000.00
	Reserve Champion	- \$ 500.00

We at Mountain View Farms realize that the youth are the future of our industry. This is why we have offered the discount to all Junior Angus members. Please forward a photo of your Grand or Reserve Champion to MVF to receive your credit.

**ALL 2009 HEIFER CALVES
WILL BE HALTER BROKE**



Lot 11

MVF
Tibbie
71U



MVF TIBBIE 71U

FEMALE ABA 71U 1452802 FEBRUARY 05 2008

S A V 8180 TRAVELER 004 NHF AMF
S A V NET WORTH 4200 NHF AMF 1309743
S A V MAY 2410

SITZ TRAVELER 8180 NHF AMF
BOYD FOREVER LADY 8003
S A F 598 BANDO 5175 AMF
S A V MAY 6269

GDAR SVF TRAVELER 234D NHF AMF
MVF TIBBIE 12M 1101674
MVF TIBBIE 2E

TRAVELER 124 G D A R
G D A R FOREVER LADY 718
G D A R OSCAR 711 NHF AMF
MVF TIBBIE 14C

BW: 79 lbs. Adj. 205D: 738 lbs. Adj. 365D: 947 lbs.
EPDs: BW: +2.9 35% WW: +51 26% YW: +92 25% Milk: +25 13% TM: +51 YG: +41 25%

- Tibbie 71U is a real tank, very easy fleshing and very easy to look at
- Very well balanced EPDs
- Dam consistently produces low BW, short gestation progeny with explosive growth
- MVF Tibbie 14C was the 1996 CWA Reserve Champion Female
- Tibbie 71U will make a tremendous cow and is safe in calf to the World Angus Forum Champion Bull

A.I.: April 7/09 and May 1/09 to HF Tiger 5T. Exposed June 2/09 - July 21/09 to MVF Freightliner 38U. Preg checked due to calve February 7, 2010 to HF Tiger 5T



**HF Tiger 5T - Grand Champion World Angus Forum 2009
& Supreme Champion Farmfair International 2009**

HF TIGER 5T NHF AMF

BW: +1.4 WW: +53 YW: +92 MILK: +27 TM: +54 YG: +38

SANDY BAR ADVANTAGE 43M
HF KODIAK 5R 1274305
WILBAR RUBY 955N

TC ADVANTAGE NHF AMF
SANDY BAR JEMINA 44K
VERMILION YELLOWSTONE NHF AMF
WILBAR RUBY 161J

TC FREEDOM 104 AMF
HF ECHO 84R 1274314
HFDF ECHO 6N

CONNELLY FOREFRONT NHF AMF
T C RUBY 9095
RIVERBEND POWERLINE 0050
HF ECHO 83J



Lot 12

MVF
Tibbie
106U



GDAR GAME DAY 449 NHF AMF

BW: -0.9 WW: +46 YW: +92 MILK: +25 TM: +48 YG: +38

A A R NEW TREND
BOYD NEW DAY 8005 NHF AMF 994200
S V F FOREVER LADY 57D

TEHAMA BAND 207
G D A R MISS WIX 474 US12190986
G D A R MISS WIX 749

V D A R SHOSHONE 548
DONNA A A R 74
LEACHMAN RIGHT TIME
S V F FOREVER LADY 1128

BAND 116 OF IDEAL 2118 7174
TEHAMA BAND 208
TRAVELER 1148 G D A R
L T MISS WIX 2221 G D A R

12

MVF TIBBIE 106U

FEMALE ABA 106U 1452814 FEBRUARY 12 2008

S A V 8180 TRAVELER 004 NHF AMF
S A V NET WORTH 4200 NHF AMF 1309743
S A V MAY 2410

SITZ TRAVELER 8180 NHF AMF
BOYD FOREVER LADY 8003
S A F 598 BANDO 5175 AMF
S A V MAY 6269

O G L BATTLE CRY 427 128
MVF TIBBIE 003L 1066507
MVF TIBBIE 52F

NICHOLS EUREKA W57
O G L DUSTY ROSE 128 902
BON VIEW EMULATION EXT 473 NHF AMF
MVF TIBBIE 21D

BW: 92 lbs. Adj. 205D: 582 lbs. Adj. 365D: 927 lbs.
EPDs: BW: +4.6 35% WW: +46 26% YW: +91 24% Milk: +29 13% TM: +52 YG: +45 24%

- Another Tibbie daughter sired the Genex Sire destined to be a breed changer
- Tibbie 106U is a very angular fronted female with an outstanding set of numbers

A.I.: April 30/09 to GDAR Game Day 449. Exposed June 2/09 - July 21/09 to MVF Freightliner 38U. Preg checked due to calve February 6, 2010 to GDAR Game Day 449

MVF Herd Health Calendar

- January - Scour guard all bred females
- April - All cows and heifers are vaccinated with Bova-Shield 4 (modified live) & 8-way Blackleg
- May - Calves are vaccinated with Pfizer Gold Program
- Cows, yearling heifers and calves are treated with Ivomec

- October - Calves are vaccinated with Pfizer Gold Program
- November - All bred females receive initial vaccination of Scour Guard
- All bred females treated with Ivomec
- All calves treated with Ivomec



Lot 13 - MVF Rosebud 118U



Lot 14 - MVF Tibbie 131U

13

MVF ROSEBUD 118U

FEMALE ABA 118U 1469392 (ET) FEBRU55ARY 13 2008

S A V 8180 TRAVELER 004 NHF AMF
S A V NET WORTH 4200 NHF AMF 1309743
 S A V MAY 2410

SITZ TRAVELER 8180 NHF AMF
 BOYD FOREVER LADY 8003
 S A F 598 BANDO 5175 AMF
 S A V MAY 6269

GDAR SVF TRAVELER 234D NHF AMF
MVF ROSEBUD 100M 1101770
 LENLOOK ROSEBUD 30G

TRAVELER 124 G D A R
 G D A R FOREVER LADY 718
 WHITSTONE FLY TRAVELER 3006 NHF AMF
 LENLOOK ROSEBUD 6A

BW: 82 lbs. Adj. 205D: 672 lbs.
 EPDs: BW: +3.1 5% WW: +4.7 5% YW: +8.9 5% Milk: +2.5 5% TM: +1.49 YG: +1.42 5%

- Rosebud 118U comes from the MVF embryo program
 - A maternal sister was the Intermediate Heifer Calf Champion at the 2006 CWA and sold at the 2006 MVF Production sale to Barry Enright Ont for \$4,200.00
 - A full sister to MVF Rosebud 100M sold at the 2003 MVF Production sale for \$11,750.00 to Botany Angus, Souris, MB. A maternal sister was the 2009 Little Lady Classic Champion at the Manitoba Livestock Expo
 - Jonathon Thomason had another maternal sister; her first daughter was the 2004 Spring Heifer Calf Champion at CWA and was the Res. Champion at the 2005 Junior Beef Extreme Show Over all Breeds at CWA
 - No guess work here - Rosebud 118U will be a great cow
- A.I.: April 5/09 and April 24/09 to HF Tiger 5T. Exposed June 2/09 - July 21/09 to MVF Freightliner 38U. Preg checked due to calve January 31, 2010 to HF Tiger 5T



'Cover Girl' MVF Rosebud 23W - Maternal sister to the dam of Lot 13
 2009 Manitoba Livestock Expo Little Lady Classic Champion

14

MVF TIBBIE 131U

FEMALE ABA 131U 1452486 FEBRUARY 15 2008

S A V 8180 TRAVELER 004 NHF AMF
S A V NET WORTH 4200 NHF AMF 1309743
 S A V MAY 2410

SITZ TRAVELER 8180 NHF AMF
 BOYD FOREVER LADY 8003
 S A F 598 BANDO 5175 AMF
 S A V MAY 6269

WESTERN WIDESPREAD 1L
MVF TIBBIE 216P 1222310
 MVF TIBBIE 192H

WHITSTONE WIDESPREAD MB NHF AMF
 BDM BLUE LADY ERICA 126'95
 BROOKMORE LANCER 32F
 RRD TIBBIE 12E

BW: 81 lbs. Adj. 205D: 702 lbs. Adj. 365D: 950 lbs.
 EPDs: BW: +4.3 35% WW: +4.8 26% YW: +9.0 23% Milk: +2.3 11% TM: +4.7 YG: +4.3 23%

- This heifer is going to make an easy fleshing stout made brood cow
 - Dam raised one of the heaviest bull calves weaned this fall
- A.I.: April 6/09 and April 27/09 to HF Tiger 5T. Exposed June 2/09 - July 21/09 to MVF Freightliner 38U. Preg checked due to calve February 3, 2010 to HF Tiger 5T



MVF Rosebud 72U
 Maternal sister to the dam of Lot 13

Grand Champion over all breeds
 2009 Agribition Spring Steer & Heifer Show for Chance Jackson



MVF Rosebud 222P

Spring Heifer Calf Champion
 CWA 2004



Lot 15

MVF
Tibbie
145U

15

MVF TIBBIE 145U

FEMALE A5BA 145U 1452823 TWIN FEBRUARY 18 2008

S A V 8180 TRAVELER 004 NHF AMF
S A V NET WORTH 4200 NHF AMF 1309743
S A V MAY 2410

SITZ TRAVELER 8180 NHF AMF
BOYD FOREVER LADY 8003
S A F 598 BANDO 5175 AMF
S A V MAY 6269

GDAR SVF TRAVELER 234D NHF AMF
MVF TIBBIE 857P 1247208
MVF TIBBIE 52F

TRAVELER 124 G D A R
G D A R FOREVER LADY 718
BON VIEW EMULATION EXT 473 NHF AMF
MVF TIBBIE 21D

BW: 72 lbs. Adj. 205D: 604 lbs. Adj. 365D: 917 lbs.
Estimated EPDs: BW: +3.9 PE WW: +50 PE YW: +94 PE Milk: +27 PE TM: +53 YG: +44 PE

- A flush mate to MVF Tibbie 857P was the second top selling bred heifer at the 2005 MVF Production sale for \$10,000.00 to Sterling Angus, Williams Lake BC
- Three maternal sisters to MVF Tibbie 857P sold at the 1999, 2000, 2001 MVF Production Sale for an average of \$6,200.00
- MVF Tibbie 52F was the Reserve Grand Champion Female at the 1999 CWA
- MVF is retaining a twin sister to MVF Tibbie 145U
- Tibbie 145U is carrying the exciting service to the World Forum Champion Bull

A.I.: April 10/09 to May 1/09 to HF Tiger 5T. Exposed June 2/09 - July 21/09 to MVF Freightliner 38U. Preg checked due to calve February 7, 2010 to HF Tiger 5T

16

MVF MISS EVA 149U

FEMALE ABA 149U 1452825 FEBRUARY 19 2008

S A V 8180 TRAVELER 004 NHF AMF
S A V NET WORTH 4200 NHF AMF 1309743
S A V MAY 2410

SITZ TRAVELER 8180 NHF AMF
BOYD FOREVER LADY 8003
S A F 598 BANDO 5175 AMF
S A V MAY 6269

CONNEALY DATELINE
BROOKMORE MISS EVA 35J 976627
BROOKMORE MISS EVA 111G

D H D TRAVELER 6807 NHF AMF
EILA EILA OF CONANGA AMF
EARLY SUNSET EXTRA 56B
BROOKMORE MISS EVA 91D

BW: 89 lbs. Adj. 205D: 498 lbs.
EPDs: BW: +4.2 36% WW: +43 27% YW: +85 21% Milk: +24 13% TM: +46 YG: +41 21%

- Tremendous EPDs with this heifer
 - Dam has been a never miss cow at MVF
- Observed bred May 26/09 to MVF Freightliner 38U. Exposed June 2/09 - July 21/09 to MVF Freightliner 38U. Preg checked due to calve March 4/2010 to MVF Freightliner 38U

MVF FREIGHTLINER 38U

BW: +3.9 WW: +49 YW: +95 MILK: +18 TM: +43 YG: +46

BON VIEW BANDO 598 AMF
CONNEALY FREIGHTLINER NHF AMF 964749
JOANA ERICA OF CONANGA

TEHAMA BANDO 155 NHF AMF
BON VIEW DORA 56
NICHOLS HEAVY DUTY X100
JARNE ERICA OF CONANGA

WESTERN WIDESPREAD 1L
MVF MAY 170S 1346769
CAYMEN MAY 55'00

WHITESTONE WIDESPREAD MB NHF AMF
BDM BLUE LADY ERICA 126'95
CONNEALY DATELINE
MVF MAY 80H



Lot 17

MVF
Heroine
163U

17

MVF HEROINE 163U

FEMALE ABA 163U 1452420 FEBRUARY 25 2008

S A V 8180 TRAVELER 004 NHF AMF
S A V NET WORTH 4200 NHF AMF 1309743
S A V MAY 2410

SITZ TRAVELER 8180 NHF AMF
BOYD FOREVER LADY 8003
S A F 598 BANDO 5175 AMF
S A V MAY 6269

NICHOLS EXTRA H6 NHF AMF
MVF HEROINE 19P 1222514
LENLOOK HEROINE 36M

N BAR EMULATION EXT NHF AMF
NICHOLS EILEEN MAY F261
LENLOOK TRAVELER 9G
LENLOOK HEROINE 63J

BW: 92 lbs. Adj. 205D: 716 lbs. Adj. 365D: 1005 lbs.
EPDs: BW: +4.3 32% WW: +49 24% YW: +96 23% Milk: +28 12% TM: +53 YG: +47 23%

- Dam sell as Lot 61 and has been a fabulous producer at MVF
- This heifer is a real tank, tremendous capacity, volume and thickness and carries the highly anticipated service to the Genex Sire SAV Pioneer 7301

A.I.: March 29/09 and April 20/09 to SAV Pioneer 7301. Exposed June 2/09 - July 21/09 to MVF Freightliner 38U. Preg checked due to calve January 27, 2010 to SAV Pioneer 7301



18

MVF FAVORITE 164U

FEMALE ABA 164U 1452421 FEBRUARY 25 2008

S A V 8180 TRAVELER 004 NHF AMF
S A V NET WORTH 4200 NHF AMF 1309743
S A V MAY 2410

SITZ TRAVELER 8180 NHF AMF
BOYD FOREVER LADY 8003
S A F 598 BANDO 5175 AMF
S A V MAY 6269

NICHOLS EXTRA H6 NHF AMF
MVF FAVORITE 9P 1222531
MVF FAVORITE 98M

N BAR EMULATION EXT NHF AMF
NICHOLS EILEEN MAY F261
BON VIEW NEW DESIGN 878 NHF AMF
MADSENS FAVORITE 16K

BW: 87 lbs. Adj. 205D: 676 lbs. Adj. 365D: 897 lbs.
EPDs: BW: +3.3 32% WW: +51 24% YW: +92 23% Milk: +31 12% TM: +57 YG: +41 23%

- Full brother sold at the 2009 Cattleman's Connection Bull sale for 4,800.00 to Larry Slepicka, Minitonas, MB
- MVF Favorite 98M sold at the 75th Anniversary sale to SandScott Farms, Minitonas, MB for \$4,000.00
- Dam is a gorgeous Nichols Extra daughter
- Check out the EPDs

A.I.: April 1/09 and May 4/09 to GDAR Game Day 449. Exposed June 2/09 - July 21/09 to MVF Freightliner 38U. Preg checked due to calve February 10, 2010 to GDAR Game Day 449

Lot 18

MVF Favorite 164U



MVF Favorite 98M - Grandam of Lot 18



Lot 20

MVF
Ellen
802U

19

MVF LADY ANN 172U

FEMALE ABA 172U 1452832 FEBRUARY 26 2008

S A V 8180 TRAVELER 004 NHF AMF
S A V NET WORTH 4200 NHF AMF 1309743
S A V MAY 2410

SITZ TRAVELER 8180 NHF AMF
BOYD FOREVER LADY 8003
S A F 598 BANDO 5175 AMF
S A V MAY 6269

MERIT 6105
LADY ANN OF PEAK DOT 965H 943617
LADY ANN OF PEAK DOT 408D

SANDY BAR WONDERER 24D
MERIT PRIDE 4077
TURBULENCE 167 A O
WINDOVER LADY ANN 48X

BW: 97 lbs. Adj. 205D: 551 lbs. Adj. 365D: 906 lbs.
EPDs: BW: +6.2 36% WW: +43 27% YW: +84 25% Milk: +24 12% TM: +46 YG: +41 25%

A.I.: March 29/09 and May 8/09 GDAR Game Day 449. Exposed June 2/09 - July 21/09 to MVF Freightliner 38U. Preg checked due to calve February 14, 2010 to GDAR Game Day 449



SAV PIONEER 7301 NHF AMF

BW: +0.6 WW: +66 YW: +114 MILK: +30

SITZ TRAVELER 8180 NHF AMF
S A V FINAL ANSWER 0035 NHF AMF 1061938
S A V EMULOUS 8145

G D A R TRAVELER 71 NHF AMF
SITZ EVERELDA ENTENSE 1137
BON VIEW BANDO 598 AMF
S A V SKY EMULOUS 2124

BOYD NEW DAY 8005 NHF AMF
S A V BLACKBIRD 5297 15108071
S A V BLACKBIRD 1082

A A R NEW TREND
S V F FOREVER LADY 57D
S A F 598 BANDO 5175 AMF
S A V BLACKBIRD 4036

20

MVF ELLEN 802U

FEMALE ABA 802U 1476155 (ET) FEBRUARY 01 2008

BON VIEW BANDO 598 AMF
CONNEALY FREIGHTLINER NHF AMF 964749
JOANA ERICA OF CONANGA

TEHAMA BANDO 155 NHF AMF
BON VIEW DORA 56
NICHOLS HEAVY DUTY X100
JARNE ERICA OF CONANGA

GDAR SVF TRAVELER 234D NHF AMF
MVF ELLEN 26N 1184659
MVF ELLEN 111J

TRAVELER 124 G D A R
G D A R FOREVER LADY 718
MVMM WESTERN RITO 47F
BOTANY ANGUS ELLEN 14G

BW: 60 lbs. Adj. 205D: 509 lbs. Adj. 365D: 860 lbs.
EPDs: BW: +2.9 5% WW: +45 5% YW: +84 5% Milk: +19 5% TM: +42 YG: +39 5%

- MVF Ellen 802U comes from the top of the MVF embryo program
 - A maternal sister was the Champion Intermediate Heifer Calf Champion at the 1998 CWA and sold to Jessi-D Farms BC at the MVF 75th Anniversary Sale
 - A full brother to MVF Ellen 802U is a senior herd sire for Wagner Angus Moose Jaw SK and MVF
 - MVF has four flush mates in production at MVF
- A.I.: May 5/09 to SAV Pioneer 7301. Exposed June 2/09 - July 21/09 to MVF Freightliner 38U. Preg checked due to calve February 11, 2010 to SAV Pioneer 7301



MVF Ellen 26N - Dam of Lot 20



Lot 21

MVF
Errolline
835U



S A V Peacemaker 3179

BW: +3.4 WW: +60 YW: +100 Milk: +34 TM: +64 YG: +41

22

MVF PRINCESS 198U

FEMALE ABA 198U 1472752 TWIN MARCH 01 2008

BON VIEW NEW DESIGN 878 NHF AMF
S A V PEACEMAKER 3179 NHF AMF 1298343
S A V ELBA 1094

B/R NEW DESIGN 036 NHF AMF
BON VIEW GAMMER 85
S A F 598 BANDO 5175 AMF
S A V ELBA 7099

NETHERLEA LAD 17J
NETHERLEA SUSY 30R 1256800
FREYBURN PRINCESS 85M

TC STOCKMAN 365
NETHERLEA LASSIE 6D
YOUNG DALE MONSOON 8D
FREYBURN PRINCESS 61J

BW: 72 lbs. Adj. 205D: 505 lbs. Adj. 365D: 751 lbs.
EPDs: BW: +4.0 5% WW: +50 5% YW: +83 5% Milk: +28 5% TM: +52 YG: +34 5%

A.I.: May 7/09 and May 19/09 to MVF Net Worth 98U. Exposed June 2/09 - July 21/09 to MVF Freightliner 38U. Preg checked due to calve February 25, 2010 to MVF Net Worth 98U



MVF NET WORTH 98U

BW: +2.5 WW: +43 YW: +92 MILK: +21 TM: +43 YG: +49

S A V 8180 TRAVELER 004 NHF AMF
S A V NET WORTH 4200 NHF AMF 1309743
S A V MAY 2410

SITZ TRAVELER 8180 NHF AMF
BOYD FOREVER LADY 8003
S A F 598 BANDO 5175 AMF
S A V MAY 6269

MINERTS FORTUNE 2000 NHF AMF
MVF DAISY 17E 833561
MVF DAISY 38C

SCHURRTOP FORTUNE 3261
MINERTS EDELLA 951
RITO 2100 G D A R
MVBFB DAISY 3A

21

MVF ERROLLINE 835U

FEMALE ABA 835U 1476151 (ET) APRIL 03 2008

BON VIEW NEW DESIGN 878 NHF AMF
S A V PEACEMAKER 3179 NHF AMF 1298343
S A V ELBA 1094

B/R NEW DESIGN 036 NHF AMF
BON VIEW GAMMER 85
S A F 598 BANDO 5175 AMF
S A V ELBA 7099

NICHOLS EXTRA H6 NHF AMF
MVF ERROLLINE 110R 1290463
MVF ERROLLINE 129J

N BAR EMULATION EXT NHF AMF
NICHOLS EILEEN MAY F261
MVSB LIMITED EDITION 10E
MVF ERROLLINE 10F

BW: 72 lbs. Adj. 205D: 650 lbs. Adj. 365D: 926 lbs.
EPDs: BW: +3.7 5% WW: +51 5% YW: +91 5% Milk: +26 5% TM: +51 YG: +40 5%

- Another top heifer from the embryo program
- Tremendous EPDs come with this heifer
- Dam is an easy fleshing, perfect uddered Nichols Extra Daughter from the Errolline tribe

A.I.: May 15/09 to HF Tiger 5T. Exposed June 2/09 - July 21/09 to MVF Freightliner 38U. Preg checked due to calve February 21, 2010 to HF Tiger 5T



Lot 25 - MVF Tibbie 48U

23

MVF SAPHIRE 221U

FEMALE ABA 221U 1472726 MARCH 07 2008

S A V PATHFINDER 3134
S A V LEGACY 5216 AMF 1369528
 S A V ROSETTA 3350 AMF

S A F 598 BANDO 5175 AMF
 S A V EMBLYNETTE 8214
 C A FUTURE DIRECTION 5321 NHC AMC
 S A V ROSETTA 8262

BROOKMORE LUCYS BOY 68M
SAPHIRE OF SANDY SLOPE 29S 1352191
 RED STAR ROXIE 0F S S 22C

V D A R LUCYS BOY NHF AMF
 BROOKMORE LADY JANE 198K
 RED CONTINENTAL ALLSTAR
 RED CUTARM ROXIE 860T

BW: 89 lbs. Adj. 205D: 659 lbs. Adj. 365D: 912 lbs.
 EPDs: BW: +2.8 34% WW: +46 25% YW: +74 23% Milk: +22 8% TM: +45 YG: +28 23%

A.I.: April 8/09 and May 3/09 to GDAR Game Day 449. Exposed June 2/09 - July 21/09 to MVF Freightliner 38U. Preg checked due to calve February 9, 2010 to GDAR Game Day 449



S A V Legacy 5216

BW: -1.0 WW: +65 YW: +102 Milk: +28 TM: +61 YG: +37



KMK Alliance 6595 187

BW: +2.1 WW: +63 YW: +106 Milk: +23 TM: +55 YG: +43

24

MVF ZARA LISA 35U

FEMALE ABA 35U 1452468 JANUARY 20 2008

SITZ ALLIANCE 6595 NHF AMF
KMK ALLIANCE 6595 187 NHF AMF 1191922
 G A R EXT 916 AMF

SITZ TRAVELER 8180 NHF AMF
 SITZ BARBARAMERE JET 2698
 N BAR EMULATION EXT NHF AMF
 G A R BANDO 338

MVF VRD DATELINE 13M
MVF ZARA LISA 327R 1304742
 MVF ZARA LISA 54H

VERMILION DATELINE 7078 NHF AMF
 MVF ZARA LISA 24F
 BROOKMORE LANCER 32F
 NORTHCOTE ZARA LISA

BW: 75 lbs. Adj. 205D: 560 lbs. Adj. 365D: 887 lbs.
 EPDs: BW: +2.9 32% WW: +47 24% YW: +82 21% Milk: +16 17% TM: +40 YG: +35 21%

A.I.: April 2/09 and April 22/09 to SAV Pioneer 7301. Exposed June 2/09 - July 21/09 to MVF Freightliner 38U. Preg checked due to calve January 29, 2010 to SAV Pioneer 7301

25

MVF TIBBIE 48U

FEMALE ABA 48U 1452527 JANUARY 26 2008

SITZ ALLIANCE 6595 NHF AMF
KMK ALLIANCE 6595 187 NHF AMF 1191922
 G A R EXT 916 AMF

SITZ TRAVELER 8180 NHF AMF
 SITZ BARBARAMERE JET 2698
 N BAR EMULATION EXT NHF AMF
 G A R BANDO 338

MVF VRD DATELINE 913P AMF
MVF TIBBIE 121S 1346774
 MVRB TIBBIE 98K

VERMILION DATELINE 7078 NHF AMF
 MVF LADY DI 60K
 TC STOCKMAN 365
 MVRB TIBBIE 77E

BW: 79 lbs. Adj. 205D: 796 lbs. Adj. 365D: 978 lbs.
 EPDs: BW: +3.0 31% WW: +52 24% YW: +89 21% Milk: +18 17% TM: +44 YG: +37 21%

• Dam is a gorgeous MVF VRD Dateline 913P daughter
 A.I.: May 17/09 to SAV Pioneer 7301. Exposed June 2/09 - July 21/09 to MVF Freightliner 38U. Preg checked due to calve March 23, 2010 to MVF Freightliner 38U

26

MVF BEAUTY 103U

FEMALE ABA 103U 1452483 FEBRUARY 12 2008

SITZ ALLIANCE 6595 NHF AMF
KMK ALLIANCE 6595 187 NHF AMF 1191922
 G A R EXT 916 AMF

SITZ TRAVELER 8180 NHF AMF
 SITZ BARBARAMERE JET 2698
 N BAR EMULATION EXT NHF AMF
 G A R BANDO 338

G A R GRID MAKER NHF AMF
MVF BEAUTY 17S 1346745
 MVF BEAUTY 10J

G D A R TRAVELER 044 NHF AMF
 G A R PRECISION 2536 NHF AMC
 MVS LIMITED EDITION 10E
 BEAUTY MCB 57'91

BW: 80 lbs. Adj. 205D: 512 lbs. Adj. 365D: 915 lbs.
 EPDs: BW: +3.6 35% WW: +49 26% YW: +88 24% Milk: +12 19% TM: +37 YG: +38 24%

• Dam is an easy fleshing perfect uddered GAR Grid Maker daughter
 Observed bred May 24/09 to MVF Freightliner 38U. Exposed June 2/09 - July 21/09 to MVF Freightliner 38U. Preg checked due to calve March 2, 2010 to MVF Freightliner 38U

27

MVF LADY 69U

FEMALE ABA 69U 1452803 FEBRUARY 05 2008

HYLINE RIGHT TIME 338 NHF AMF
RITO 407 OF 2536 338 NHF AMF 1305947
 G A R PRECISION 2536 NHF AMC

LEACHMAN RIGHT TIME
 HYLINE PRIDE 265
 G A R PRECISION 1680 NHC AMC
 G A R EXT 2104

YOUNKIN TRIUMPH 4966 NHF AMF
BXB MISS TRIUMPH 126L 1124124
 MVF LADY 72J

BRUSETT SPECTRUM 62
 YOUNKIN ROSE 4952
 MVS LIMITED EDITION 10E
 LADY BATSCHOL 105T

BW: 83 lbs. Adj. 205D: 636 lbs. Adj. 365D: 790 lbs.
 EPDs: BW: +5.0 34% WW: +39 24% YW: +68 22% Milk: +18 13% TM: +38 YG: +29 22%

• A maternal brother sold at the 2008 Cattleman's Connection Bull sale for \$4,500.00 to Vachon Farms, Oak Lake, MB
 A.I.: May 5/09 to SAV Pioneer 7301. Observed bred May 23/09 to MVF Freightliner 38U. Exposed June 2/09 - July 21/09 to MVF Freightliner 38U. Preg checked due to calve March 1, 2010 to MVF Freightliner 38U

28

MVF GEORGINA 80U

FEMALE ABA 80U 1476201 (ET) FEBRUARY 08 2008

HYLINE RIGHT TIME 338 NHF AMF
RITO 4D7 OF 2536 338 NHF AMF 1305947
 G A R PRECISION 2536 NHF AMC

LEACHMAN RIGHT TIME
 HYLINE PRIDE 265
 G A R PRECISION 1680 NHC AMC
 G A R EXT 2104

BON VIEW NEW DESIGN 878 NHF AMF
MVF GEORGINA 14M 1101884
 MVF GEORGINA 10K

B/R NEW DESIGN 036 NHF AMF
 BON VIEW GAMMER 85
 TC STOCKMAN 365
 WAVY GEORGINA 2C

BW: 86 lbs. Adj. 205D: 737 lbs. Adj. 365D: 877 lbs.
 EPDs: BW: I+1.8 5% WW: I+40 5% YW: I+72 5% Milk: I+26 5% TM: I+45 YG: I+32 5%

- Another heifer from the MVF embryo program
- Dam sold at the 2008 MVF 75th Anniversary Sale to Legend Lane Stock Farm Ontario
- This Georgina cow family have been very prolific producers at MVF A.I.: April 2/09 to SAV Pioneer 7301. Exposed June 2/09 - July 2/09 to MVF Freightliner 38U. Preg checked due to calve January 28, 2010 to SAV Pioneer 7301



Lot 28 - MVF Georgina 80U



Lot 29

MVF
 Tibbie
 171U



MVF Tibbie 108U - Maternal sister to the dam of Lot 29
 Reserve Late Intermediate Yearling Heifer 2009 World Angus Forum

29

MVF TIBBIE 171U

FEMALE ABA 171U 1452540 FEBRUARY 25 2008

V F VENTURE FORWARD NHF AMF
BXB VENTURE SON 9P 1280124
 BXB DATELINE 50M

V D A R TRAVELER 722 NHF AMF
 LANDMARK FREDA 911
 VERMILION DATELINE 7078 NHF AMF
 MVF EVENING TINGE 70F

MVF NEW FRONTIER 803N
MVF TIBBIE 113S 1346718
 MVRB TIBBIE 123F

B/R NEW FRONTIER 095 NHF AMF
 GREENBUSH TIBBIE 5H
 CH 054 RITO 0100
 MVF TIBBIE 48W

BW: 83 lbs. Adj. 205D: 645 lbs. Adj. 365D: 968 lbs.
 EPDs: BW: +3.3 33% WW: +40 21% YW: +67 18% Milk: +24 9% TM: +44 YG: +27 18%

- This is a real gorgeous heifer
 A.I.: May 1/09 to SAV Pioneer 7301. Exposed June 2/09 - July 21/09 to MVF Freightliner 38U. Preg checked due to calve February 7, 2010 to SAV Pioneer 7301



Lot 32 - MVF Beauty 269U



Lot 34 - MVF Tibbie 280U

30

MVF PRIDE 200U

FEMALE ABA 200U 1452501 MARCH 01 2008

V F VENTURE FORWARD NHF AMF
BXB VENTURE SON 9P 1280124
 BXB DATELINE 50M

V D A R TRAVELER 722 NHF AMF
 LANDMARK FREDIA 911
 VERMILION DATELINE 7078 NHF AMF
 MVF EVENING TINGE 70F

WESTERN WIDESPREAD 1L
MVF PRIDE 325R 1304714
 MC LADY KANANASKIS PRIDE 10K

WHITESTONE WIDESPREAD MB NHF AMF
 BDM BLUE LADY ERICA 126'95
 ANKONIAN KANANASKIS
 GH LADY PRIDE 52H

BW: 91 lbs. Adj. 205D: 653 lbs. Adj. 365D: 923 lbs.
 EPDs: BW: +5.9 32% WW: +43 21% YW: +74 17% Milk: +19 10% TM: +41 YG: +31 17%
 A.I.: May 4/09 to GDAR Game Day 449. Exposed June 2/09 - July 21/09 to MVF Freightliner 38U. Preg checked due to calve March 21, 2010 to MVF Freightliner 38U

31

MVF MAY 243U

FEMALE ABA 243U 1452545 MARCH 14 2008

V F VENTURE FORWARD NHF AMF
BXB VENTURE SON 9P 1280124
 BXB DATELINE 50M

V D A R TRAVELER 722 NHF AMF
 LANDMARK FREDIA 911
 VERMILION DATELINE 7078 NHF AMF
 MVF EVENING TINGE 70F

MVF STOCKMAN 79K
MVF MAY 253S 1346620
 HENDERSON MAY 34'94

TC STOCKMAN 365
 RRD TIBBIE 12E
 DOUBLE AA BARDOLENE 646'88
 MINBURN MAY 82B

BW: 90 lbs. Adj. 205D: 590 lbs. Adj. 365D: 974 lbs.
 EPDs: BW: +5.0 31% WW: +39 20% YW: +73 18% Milk: +22 10% TM: +42 YG: +34 18%
 Exposed June 2/09 - July 21/09 to MVF Freightliner 38U. Preg checked due to calve March 30, 2010 to MVF Freightliner 38U



MVF Tibbie 69L - Dam of Lot 34

32

MVF BEAUTY 269U

FEMALE ABA 269U 1452548 MARCH 20 2008

V F VENTURE FORWARD NHF AMF
BXB VENTURE SON 9P 1280124
 BXB DATELINE 50M

V D A R TRAVELER 722 NHF AMF
 LANDMARK FREDIA 911
 VERMILION DATELINE 7078 NHF AMF
 MVF EVENING TINGE 70F

MVF VRD DATELINE 913P AMF
MVF BEAUTY 198S 1346858
 MVF BEAUTY 276N

VERMILION DATELINE 7078 NHF AMF
 MVF LADY DI 60K
 MVF TRAVELER 4L
 MVF BEAUTY 172H

BW: 76 lbs. Adj. 205D: 560 lbs. Adj. 365D: 889 lbs.
 EPDs: BW: +3.3 33% WW: +38 21% YW: +72 18% Milk: +23 8% TM: +42 YG: +34 18%
 • Maternal sister sells as Lot 7
 Exposed June 2/09 - July 21/09 to MVF Freightliner 38U. Preg checked due to calve March 24, 2010 to MVF Freightliner 38U

33

MVF ANNIE K 317U

FEMALE ABA 317U 1452550 MARCH 30 2008

V F VENTURE FORWARD NHF AMF
BXB VENTURE SON 9P 1280124
 BXB DATELINE 50M

V D A R TRAVELER 722 NHF AMF
 LANDMARK FREDIA 911
 VERMILION DATELINE 7078 NHF AMF
 MVF EVENING TINGE 70F

MVF NEW FRONTIER 14N
MVF ANNIE K 232S 1346834
 MVF ANNIE K 234M

B/R NEW FRONTIER 095 NHF AMF
 MVF TIBBIE 39E
 MVF FULLBACK 127J
 REMINGTON'S ANNIE K 185D

BW: 81 lbs. Adj. 205D: 720 lbs. Adj. 365D: 1035 lbs.
 EPDs: BW: +3.4 31% WW: +39 20% YW: +72 15% Milk: +22 9% TM: +42 YG: +33 15%
 A.I.: April 22/09 to SAV Pioneer 7301. Exposed June 2/09 - July 21/09 to MVF Freightliner 38U. Preg checked due to calve January 29, 2010 to SAV Pioneer 7301

34

MVF TIBBIE 280U

FEMALE ABA 280U 1452859 MARCH 22 2008

WESTERN WIDESPREAD 1L
MVF WIDESPREAD 273P 1222332
 MVF ELLEN 111J

WHITESTONE WIDESPREAD MB NHF AMF
 BDM BLUE LADY ERICA 126'95
 MVMW WESTERN RITO 47F
 BOTANY ANGUS ELLEN 14G

TC STOCKMAN 365
MVF TIBBIE 69L 1056565
 GREENBUSH TIBBIE 5H

TC STOCKMAN
 TC PRIDE 0014
 MINBURN LANCER 22D
 MVHF TIBBIE 37Z

BW: 93 lbs. Adj. 205D: 652 lbs. Adj. 365D: 857 lbs.
 EPDs: BW: +5.4 34% WW: +46 24% YW: +69 20% Milk: +19 13% TM: +42 YG: +23 20%
 A.I.: May 3/09 to SAV Pioneer 7301. Exposed June 2/09 - July 21/09 to MVF Freightliner 38U. Preg checked due to calve February 9, 2010 to SAV Pioneer 7301

35

MVF TIBBIE 303U

FEMALE ABA 303U 1452864 MARCH 27 2008

WHITESTONE WIDESPREAD MB NHF AMF
WESTERN WIDESPREAD 1L 1041526
 BDM BLUE LADY ERICA 126'95

N BAR EMULATION EXT NHF AMF
 M B RACHEL 2173
 CUDLOBE EXON 35C
 BAR DOUBLE M BLUE LADY ERICA 1

RITO 9FB3 OF 5H11 FULLBACK NHF AMF
MVF TIBBIE 176G 900941
 MVF TIBBIE 14C

LEACHMAN FULLBACK
 RITA 5H11 OF 1B14 RITO 9J9
 GINGER HILL DUSTER 89 NHF AMF
 MVF TIBBIE 20W

BW: 87 lbs. Adj. 205D: 667 lbs. Adj. 365D: 977 lbs.
 EPDs: BW: +5.0 35% WW: +50 26% YW: +80 24% Milk: +21 19% TM: +46 YG: +29 24%

• Dam is a past MVF embryo donor
 A.I.: April 11/09 to GDAR Game Day 449. Exposed June 2/09 - July 21/09 to MVF Freightliner 38U. Preg checked due to calve March 10, 2010 to MVF Freightliner 38U



Western Widespread 1L

BW: +2.1 WW: +63 YW: +106 Milk: +23 TM: +55 YG: +43

38

MVF EILEEN 258U

FEMALE ABA 258U 1452438 MARCH 17 2008

B/R NEW FRONTIER 095 NHF AMF
MVF FRONTIER 25P 1232673
 MVF FAVORITE 58L

B/R NEW DESIGN 036 NHF AMF
 WHITE FENCE PRIDE H1
 TC STOCKMAN 365
 CAN AM FAVORITE 12G

G D A UNIVERSE 726G
MVF EILEEN 118M 1101778
 MVF EILEEN 71G

PAPA UNIVERSE 515 NHF AMF
 G D A BONNY 412D
 MVS LIMITED EDITION 10E
 EARLY SUNSET EILEEN 66U

BW: 90 lbs. Adj. 205D: 500 lbs. Adj. 365D: 806 lbs.
 EPDs: BW: +4.6 34% WW: +36 23% YW: +65 22% Milk: +12 12% TM: +30 YG: +29 22%

A.I.: April 10/09 to GDAR Game Day 449. A.I. May 21/09 to MVF Net Worth 98U. Exposed June 11/09 - July 21/09 to MVF Freightliner 38U. Preg checked due to calve February 27, 2010 to MVF Net Worth 98U

39

MVF MISS BURGESS 318U

FEMALE ABA 318U 1472742 MARCH 31 2008

B/R NEW FRONTIER 095 NHF AMF
MVF FRONTIER 25P 1232673
 MVF FAVORITE 58L

B/R NEW DESIGN 036 NHF AMF
 WHITE FENCE PRIDE H1
 TC STOCKMAN 365
 CAN AM FAVORITE 12G

FCR BANNOCKBURN 05N
CJB BURGESS 58R 1277164
 CJB MISS BURGESS 62M

VERMILION DATELINE 7078 NHF AMF
 RON'S ERICA 1D
 O G L BATTLE CRY 427 128
 DOUBLE FOUR MISS BURGESS 158G

BW: 89 lbs. Adj. 205D: 722 lbs. Adj. 365D: 1013 lbs.
 EPDs: BW: +4.3 32% WW: +34 21% YW: +68 16% Milk: +17 10% TM: +34 YG: +35 16%

A.I.: April 26/09 to SAV Final Answer 0035. Exposed June 2/09 - July 21/09 to MVF Freightliner 38U. Preg checked due to calve February 2, 2010 to SAV Final Answer 0035



Lot 39 - MVF Miss Burgess 318U

36

MVF LUCY 209U

FEMALE ABA 209U 1452842 MARCH 04 2008

B/R NEW FRONTIER 095 NHF AMF
MVF FRONTIER 25P 1232673
 MVF FAVORITE 58L

B/R NEW DESIGN 036 NHF AMF
 WHITE FENCE PRIDE H1
 TC STOCKMAN 365
 CAN AM FAVORITE 12G

MVF DIRECTOR 30A
KENOSEE PARK LUCY 73D 786770
 KENOSEE PARK LUCY 29Z

MVF DIRECTOR 49W
 MVF PRIDE 32T
 ELA REAL POWER 208R
 THE GRANGE LUCY 23T

BW: 90 lbs. Adj. 205D: 553 lbs. Adj. 365D: 779 lbs.
 EPDs: BW: +5.1 35% WW: +35 24% YW: +60 23% Milk: +16 13% TM: +34 YG: +25 23%

A.I.: April 22/09 to SAV Pioneer 7301. A.I. May 15/09 to MVF Net Worth 98U. Exposed June 2/09 - July 21/09 to MVF Freightliner 38U. Preg checked due to calve Feb 21, 2010 to MVF Net Worth 98U

37

MVF MADGE 237U

FEMALE ABA 237U 1452847 MARCH 13 2008

B/R NEW FRONTIER 095 NHF AMF
MVF FRONTIER 25P 1232673
 MVF FAVORITE 58L

B/R NEW DESIGN 036 NHF AMF
 WHITE FENCE PRIDE H1
 TC STOCKMAN 365
 CAN AM FAVORITE 12G

SCA TONTO 6A
LONE STAR MADGE 18H 943748
 BACK ROADS MISS MADGE 9E

LEACHMAN TONTO NHF AMF
 EARLY SUNSET JUNO 49S
 BALDRIDGE ALFALFA 951
 HAPPYVALE C BAR MADGE 75R

BW: 91 lbs. Adj. 205D: 528 lbs. Adj. 365D: 847 lbs.
 EPDs: BW: +2.9 35% WW: +27 24% YW: +45 22% Milk: +16 12% TM: +30 YG: +18 22%

A.I.: April 20/09 to GDAR Game Day 449. Observed bred May 12/09 to BXB Venture Son 9P. Exposed June 2/09 - July 21/09 to MVF Freightliner 38U. Preg checked due to calve February 18, 2010 to BXB Venture Son 9P



MVF VRD Dateline 913P

BW: +4.9 WW: +50 YW: +90 MILK: +19 TM: +44 YG: +40

42

MVF LUCY 204U

FEMALE ABA 204U 1452430 MARCH 02 2008

VERMILION DATELINE 7078 NHF AMF
MVF VRD DATELINE 913P AMF 1232661
 MVF LADY DI 60K

CONNELLY DATELINE
 VERMILION BLACKBIRD 5044
 MVBL LANCER 9F
 DOUBLE AA LADY DI 744'94

MVF DATELINE 50L
MVF LUCY 236N 1175047
 KENOSEE PARK LUCY 73D

CONNELLY DATELINE
 ELLEN ERICA E9
 MVF DIRECTOR 30A
 KENOSEE PARK LUCY 29Z

BW: 84 lbs. Adj. 205D: 633 lbs. Adj. 365D: 905 lbs.
 EPDs: BW: +3.8 34% WW: +45 24% YW: +76 22% Milk: +19 12% TM: +42 YG: +31 22%

A.I.: April 22/09 to GDAR Game Day 449. A.I.: May 11/09 to MVF Net Worth 98U. Exposed June 2/09 - July 21/09 to MVF Freightliner 38U. Preg checked due to calve February 17, 2010 to MVF Net Worth 98U

40

MVF KEEPSAKE 88U

FEMALE ABA 88U 1452809 FEBRUARY 10 2008

VERMILION DATELINE 7078 NHF AMF
MVF VRD DATELINE 913P AMF 1232661
 MVF LADY DI 60K

CONNELLY DATELINE
 VERMILION BLACKBIRD 5044
 MVBL LANCER 9F
 DOUBLE AA LADY DI 744'94

MVSB LIMITED EDITION 10E
MVF KEEPSAKE 88G 894061
 MISS SHAUN OF DOUBLE H 34X

DALRENE EXTRA 36A
 SANDY BAR ANNIE K 16C
 EARLY SUNSET TRANSFORMER 24K
 BATSCHOL KEEPSAKE 86S

BW: 87 lbs. Adj. 205D: 521 lbs. Adj. 365D: 894 lbs.
 EPDs: BW: +4.5 35% WW: +35 25% YW: +69 23% Milk: +10 13% TM: +28 YG: +34 23%

A.I.: April 3/09 and April 24/09 to MVF Net Worth 98U. Exposed June 2/09 - July 21/09 to MVF Freightliner 38U. Preg checked due to calve January 31, 2010 to MVF Net Worth 98U

43

MVF TIBBIE 279U

FEMALE ABA 279U 1452858 MARCH 21 2008

VERMILION DATELINE 7078 NHF AMF
MVF VRD DATELINE 34P 1222377
 MVF TIBBIE 012L

CONNELLY DATELINE
 VERMILION BLACKBIRD 5044
 TC STOCKMAN 365
 MVF TIBBIE 52F

MVF DATELINE 156L
MVF TIBBIE 124N 1229929
 MVF TIBBIE 030L

CONNELLY DATELINE
 BROOKMORE MISS EVA 75J
 ALBERDA TRAVELER 416 NHF AMF
 RRD TIBBIE 12E

BW: 89 lbs. Adj. 205D: 596 lbs. Adj. 365D: 936 lbs.
 EPDs: BW: +4.0 33% WW: +41 21% YW: +74 20% Milk: +20 10% TM: +41 YG: +33 20%

A.I.: April 21/09 GDAR Game Day 449. Exposed June 2/09 - July 21/09 to MVF Freightliner 38U. Preg checked due to calve January 28, 2010 to GDAR Game Day 449.

41

MVF LADY ANN 109U

FEMALE ABA 109U 1452397 FEBRUARY 12 2008

VERMILION DATELINE 7078 NHF AMF
MVF VRD DATELINE 913P AMF 1232661
 MVF LADY DI 60K

CONNELLY DATELINE
 VERMILION BLACKBIRD 5044
 MVBL LANCER 9F
 DOUBLE AA LADY DI 744'94

DESSA TRAVELER 4E
MVF LADY ANNE 203L 1056427
 MVF LADY ANNE 135A

Q A S TRAVELER 23-4 NHF AMF
 DOUBLE FOUR BARBARA 38Z
 GRUBBS MACKENZIE
 MVF LADY ANNE 32U

BW: 89 lbs. Adj. 205D: 611 lbs. Adj. 365D: 1001 lbs.
 EPDs: BW: +4.2 34% WW: +45 24% YW: +80 22% Milk: +15 12% TM: +38 YG: +36 22%

A.I.: April 18/09 to SAV Pioneer 7301. Observed bred May 10/09 to BXB Venture Son 9P. Exposed June 2/09 - July 21/09 to MVF Freightliner 38U. Preg checked due to calve February 16, 2010 to BXB Venture Son 9P

44

MVF ERROLLINE 359U

FEMALE ABA 359U 1452874 APRIL 18 2008

VERMILION DATELINE 7078 NHF AMF
MVF VRD DATELINE 34P 1222377
 MVF TIBBIE 012L

CONNELLY DATELINE
 VERMILION BLACKBIRD 5044
 TC STOCKMAN 365
 MVF TIBBIE 52F

O S U 6T6 ULTRA
MVF ERROLLINE 10F 856328
 WINDOVER ERROLLINE 9C

S S TRAVELER 6T6 NHF AMF
 D F EMPRESS 6079
 P S POWER PLAY
 BANNER ERROLLINE 7S

BW: 81 lbs. Adj. 205D: 701 lbs. Adj. 365D: 962 lbs.
 EPDs: BW: +4.5 33% WW: +44 22% YW: +83 20% Milk: +23 13% TM: +45 YG: +38 20%

A.I.: May 19/09 to MVF Net Wirth 98U. Exposed June 2/09 - July 21/09 to MVF Freightliner 38U. Preg checked due to calve March 18, 2010 to MVF Freightliner 38U

*We welcome your visit to view the sale lots
 at the farm prior to December 16th*



Lot 46 - MVF Lucy 346U

46

MVF LUCY 346U

FEMALE ABA 346U 1472732 APRIL 10 2008

MVF VRD DATELINE 913P AMF
MVF DATELINE 212S 1425357
 MVF HI LITE 16N

VERMILION DATELINE 7078 NHF AMF
 MVF LADY DI 60K
 MVF TRIUMPH 13L
 N.B.A. HI LITE 58L

WILBAR EMULATION 331K
WILBAR LUCY 289R 1265629
 WILBAR LUCY 904N

WILBAR EMULATION 3H
 WILBAR RUBY 36H
 EARLY SUNSET 100 83K
 WILBAR LUCY 13D

BW: 74 lbs. Adj. 205D: 687 lbs. Adj. 365D: 971 lbs.
 EPDs: BW: +1.4 31% WW: +37 19% YW: +73 16% Milk: +14 7% TM: +33 YG: +36 16%

Exposed June 2/09 - July 21/09 to MVF Freightliner 38U. Preg checked due to calve April 14, 2010 to MVF Freightliner 38U

45

MVF ELBA 272U

FEMALE ABA 272U 1472744 MARCH 20 2008

MVF VRD DATELINE 913P AMF
MVF DATELINE 212S 1425357
 MVF HI LITE 16N

VERMILION DATELINE 7078 NHF AMF
 MVF LADY DI 60K
 MVF TRIUMPH 13L
 N.B.A. HI LITE 58L

MINERTS FORTUNE 2000 NHF AMF
M DOUBLE B ELBA 82R 1277148
 M DOUBLE B NEW ELBA 59N

SCHURRTOP FORTUNE 3261
 MINERTS EDELLA 951
 B/R NEW FRONTIER 095 NHF AMF
 M DOUBLE B ELBA 1G

BW: 84 lbs. Adj. 205D: 601 lbs. Adj. 365D: 886 lbs.
 EPDs: BW: +2.5 32% WW: +47 21% YW: +82 19% Milk: +14 9% TM: +38 YG: +35 19%

A.I.: April 22/09 to MVF Net Worth 98U. Exposed June 2/09 - July 21/09 to MVF Freightliner 38U. Preg checked due to calve January 29, 2010 to MVF Net Worth 98U

47

MVF JESTRESS 361U

FEMALE ABA 361U 1472741 APRIL 19 2008

MVF VRD DATELINE 913P AMF
MVF DATELINE 212S 1425357
 MVF HI LITE 16N

VERMILION DATELINE 7078 NHF AMF
 MVF LADY DI 60K
 MVF TRIUMPH 13L
 N.B.A. HI LITE 58L

VERMILION DATELINE 7078 NHF AMF
M DOUBLE B JESTRESS 98R 1277121
 BRYMOR MISS FORTUNE 20K

CONNELLY DATELINE
 VERMILION BLACKBIRD 5044
 M DOUBLE B VALUABLE 7H
 NEWPARK JESTRESS 18Y

BW: 77 lbs. Adj. 205D: 743 lbs. Adj. 365D: 987 lbs.
 EPDs: BW: +2.9 31% WW: +52 20% YW: +90 18% Milk: +17 8% TM: +43 YG: +39 18%

A.I.: May 5/09 to SAV Pioneer 7301. Exposed June 2/09 - July 21/09 to MVF Freightliner 38U. Preg checked due to calve February 11, 2010 to SAV Pioneer 7301



Lot 47

MVF
 Jestress
 361U





Lot 48 - MVF Beauty 345T

49

MVF ELINE 389T

FEMALE ABA 389T 1424906 OCTOBER 21 2007

B/R NEW FRONTIER 095 NHF AMF
MVF FRONTIER 25P 1232673
 MVF FAVORITE 58L

B/R NEW DESIGN 036 NHF AMF
 WHITE FENCE PRIDE H1
 TC STOCKMAN 365
 CAN AM FAVORITE 12G

YOUNKIN TRIUMPH 4966 NHF AMF
MVF ELINE 32N 1175325
 EBON HILL LR ELINE 52'2000

BRUSETT SPECTRUM 62
 YOUNKIN ROSE 4952
 WIWA CREEK STOCKMAN 43'93
 HI DIAMOND LADY ELINE 5F

BW: 77 lbs.

EPDs: BW: I+3.6 5% WW: I+39 5% YW: I+74 5% Milk: I+13 5% TM: I+32 YG: I+35 5%

- Another fabulous granddaughter of Frontier

A.I.: April 30/09 to SAV Pioneer 7301. Observed bred May 23/09 to MVF Freightliner 38U. Preg checked due to calve March 1, 2010 to MVF Freightliner 38U

48

MVF BEAUTY 345T

FEMALE ABA 345T 1424893 SEPTEMBER 25 2007

B/R NEW FRONTIER 095 NHF AMF
MVF FRONTIER 25P 1232673
 MVF FAVORITE 58L

B/R NEW DESIGN 036 NHF AMF
 WHITE FENCE PRIDE H1
 TC STOCKMAN 365
 CAN AM FAVORITE 12G

DRYLAND RITO -953-
BXB DORITO 14L 1124112
 FREYBURN BEAUTY 50J

BENLOCK RITO 59F
 DRYLAND LYRIC 611
 YOUNG DALE MONSOON 8D
 BAR 20 BEAUTY 443E

BW: 79 lbs.

EPDs: BW: I+3.5 5% WW: I+36 5% YW: I+62 5% Milk: I+17 5% TM: I+35 YG: I+26 5%

A.I.: April 30/09 and May 19/09 to SAV Pioneer 7301. Exposed June 2/09 - July 21/09 to MVF Freightliner 38U. Preg checked due to calve February 25, 2010 to SAV Pioneer 7301

50

MVF LADY EILEEN 311T

FEMALE ABA 311T 1424913 SEPTEMBER 12 2007

VERMILION DATELINE 7078 NHF AMF
MVF VRD DATELINE 34P 1222377
 MVF TIBBIE 012L

CONNELLY DATELINE
 VERMILION BLACKBIRD 5044
 TC STOCKMAN 365
 MVF TIBBIE 52F

HENDERSON ROCHER 11'00
MVF LADY EILEEN 257N 1171661
 HENDERSON LADY EILEEN 6'97

GRAND ISLAND ELMO
 TAF PRIDE 50D
 HFI AUGUSTAS
 HENDERSON LADY EILEEN 13'94

BW: 86 lbs.

EPDs: BW: I+5.6 5% WW: I+43 5% YW: I+69 5% Milk: I+19 5% TM: I+40 YG: I+27 5%

A.I.: April 1/09 and April 21/09 to SAV Pioneer 7301. Exposed June 2/09 - July 21/09 to MVF Freightliner 38U. Preg checked due to calve January 28, 2010 to SAV Pioneer 7301



Lot 50

*MVF
 Lady Eileen
 311T*

51

MVF ROSEBUD 313T

FEMALE ABA 313T 1424908 SEPTEMBER 13 2007

VERMILION DATELINE 7078 NHF AMF
MVF VRD DATELINE 34P 1222377
 MVF TIBBIE 012L

CONNELLY DATELINE
 VERMILION BLACKBIRD 5044
 TC STOCKMAN 365
 MVF TIBBIE 52F

GDAR SVF TRAVELER 234D NHF AMF
MVF ROSEBUD 87N 1185699
 LENLOOK ROSEBUD 30G

TRAVELER 124 G D A R
 G D A R FOREVER LADY 718
 WHITSTONE FLY TRAVELER 3006 NHF AMF
 LENLOOK ROSEBUD 6A

BW: 79 lbs.
 EPDs: BW: I+4.2 5% WW: I+45 5% YW: I+78 5% Milk: I+19 5% TM: I+41 YG: I+34 5%

• Stout, powerful, heifer here
 A.I.: April 24/09 to SAV Pioneer 7301. Exposed June 2/09 - July 21/09 to MVF Freightliner 38U. Preg checked due to calve January 31, 2010 to SAV Pioneer 7301



Lot 53 - MVFD Lady Fanny 363T

52

MVF ERICA 316T

FEMALE ABA 316T 1424938 SEPTEMBER 14 2007

VERMILION DATELINE 7078 NHF AMF
MVF VRD DATELINE 34P 1222377
 MVF TIBBIE 012L

CONNELLY DATELINE
 VERMILION BLACKBIRD 5044
 TC STOCKMAN 365
 MVF TIBBIE 52F

WESTERN WIDESPREAD 1L
MVF ERICA 298P 1270531
 ERICA HCA 5F

WHITSTONE WIDESPREAD MB NHF AMF
 BDM BLUE LADY ERICA 126'95
 MVF MACKENZIE 24A
 BELMORAL ELLEN ERICA 41'91

BW: 81 lbs.
 EPDs: BW: I+5.0 5% WW: I+45 5% YW: I+80 5% Milk: I+18 5% TM: I+41 YG: I+35 5%

• Dam sells as Lot 57
 A.I.: May 3/09 to SAV Pioneer 7301. Observed bred May 26/09 to MVF Freightliner 38U. Exposed June 2/09 - July 21/09 to MVF Freightliner 28U. Preg checked due to calve March 4, 2010 to MVF Freightliner 38U

54

MVF LADY DI 340T

FEMALE ABA 340T 1424897 SEPTEMBER 23 2007

WHITSTONE WIDESPREAD MB NHF AMF
WESTERN WIDESPREAD 1L 1041526
 BDM BLUE LADY ERICA 126'95

N BAR EMULATION EXT NHF AMF
 M B RACHEL 2173
 CUDLOBE EXON 35C
 BAR DOUBLE M BLUE LADY ERICA 1

YOUNKIN TRIUMPH 4966 NHF AMF
MVF LADY DI 101L 1056650
 MVF LADY DI 105J

BRUSETT SPECTRUM 62
 YOUNKIN ROSE 4952
 MVSB LIMITED EDITION 10E
 DOUBLE AA LADY DI 744'94

BW: 78 lbs.
 EPDs: BW: I+5.7 5% WW: I+47 5% YW: I+80 5% Milk: I+14 5% TM: I+37 YG: I+33 5%

A.I.: March 28/09 and May 9/09 to SAV Pioneer 7301. Exposed June 2/09 - July 21/09 to MVF Freightliner 38U. Preg checked due to calve February 15, 2010 to SAV Pioneer 7301

53

MVF LADY FANNY 363T

FEMALE ABA 363T 1424907 SEPTEMBER 30 2007

VERMILION DATELINE 7078 NHF AMF
MVF VRD DATELINE 34P 1222377
 MVF TIBBIE 012L

CONNELLY DATELINE
 VERMILION BLACKBIRD 5044
 TC STOCKMAN 365
 MVF TIBBIE 52F

BON VIEW NEW DESIGN 878 NHF AMF
MVF LADY FANNY 68N 1175427
 BXB MISS STOCK 299L

B/R NEW DESIGN 036 NHF AMF
 BON VIEW GAMMER 85
 TC STOCKMAN 365
 PAT LADY FANNY 285B

BW: 74 lbs.
 EPDs: BW: I+3.8 5% WW: I+42 5% YW: I+71 5% Milk: I+21 5% TM: I+42 YG: I+30 5%

A.I.: May 11/09 to MVF Net Worth 98U. Exposed June 2/09 - July 21/09 to MVF Freightliner 38U. Preg checked due to calve March 30, 2010 to MVF Freightliner 38U

55

MVF TRIM LASS 353T

FEMALE ABA 353T 1424882 SEPTEMBER 27 2007

WHITSTONE WIDESPREAD MB NHF AMF
WESTERN WIDESPREAD 1L 1041526
 BDM BLUE LADY ERICA 126'95

N BAR EMULATION EXT NHF AMF
 M B RACHEL 2173
 CUDLOBE EXON 35C
 BAR DOUBLE M BLUE LADY ERICA 1

LLB MAXIMUM 3F
LLB TRIM LASS 316J 1004057
 LLB TRIM LASS 065B

G T MAXIMUM NHF AMF
 DOUBLE J BLACKCAP 3T
 W O GREAT SOUTHERN
 LLB TRIM LASS 6Y

BW: 87 lbs.
 EPDs: BW: I+6.4 5% WW: I+48 5% YW: I+80 5% Milk: I+13 5% TM: I+37 YG: I+32 5%

• Make sure you take a good look at this heifer on sale day. She is hard to miss
 A.I.: April 20/09 to SAV Pioneer 7301. Exposed June 2/09 - July 21/09 to MVF Freightliner 38U. Preg checked due to calve January 27, 2010 to SAV Pioneer 7301

*Check for updates & read about our breeding program
 on the world wide web at www.mountainviewfarms.ca*



Lot 56

MVF Tibbie 320P



Lot 56A

MVF Tibbie 62W



SITZ UPWARD 307R

BW: +2.1 WW: +68 YW: +131 MILK: +27 TM: +61 YG: +63

CONNEALY LEAD ON NHF AMF
CONNEALY ONWARD NHF AMF 1273540
 ALTUNE OF CONANGA 6104

CONNEALY LEADTIME NHF AMF
 ELIGENCE PLUS OF CONANGA
 G A R TRAVELER AMF
 AVALONE 1418 of CONANGA

SITZ VALUE 7097 NHF AMF
SITZ HENRIETTA PRIDE 81M US14087650
 SITZ HENRIETTA PRIDE 1370

SITZ TRAVELER 6802
 SITZ EISA EVERGREEN 791
 OCC GREAT PLAINS 943G NHF AMF
 SITZ HENRIETTA PRIDE 2155



Norseman Frontier 2'07

BW: +3.8 WW: +43 YW: +89 MILK: +16 TM: +38 YG: +46

56

MVF TIBBIE 320P

FEMALE ABA 320P 1270561 SEPTEMBER 18 2004

WHITESTONE WIDESPREAD MB NHF AMF
WESTERN WIDESPREAD 1L 1041526
 BDM BLUE LADY ERICA 126'95

N BAR EMULATION EXT NHF AMF
 M B RACHEL 2173
 CUDLOBE EXON 35C
 BAR DOUBLE M BLUE LADY ERICA 1

TC STOCKMAN 365
MVF TIBBIE 34L 1056595
 MVKD TIBBIE 850H

TC STOCKMAN
 TC PRIDE 0014
 O S U 6T6 ULTRA
 MVRB TIBBIE 24C

BW: 89 lbs. Adj. 205D: 662 lbs. Adj. 365D: 907 lbs.
 EPDs: BW: +5.1 36% WW: +50 26% YW: +87 25% Milk: +18 21% TM: +43 YG: +37 25%

• Very easy fleshing high volume cow
 A.I: May 14/09 to Sitz Upward 307R. Exposed June 7/09 -July 19/09
 to Norseman Frontier 2T. Preg checked due to calve February 20, 2010 to
 Sitz Upward 307R

56A

MVF TIBBIE 62W

FEMALE ABA 62W 1530558 JANUARY 31 2009

LLB NEW FRONTIER 81N
NORSEMAN FRONTIER 2'07 1406726
 MERIT COUNTESS 3211

B/R NEW FRONTIER 095 NHF AMF
 ISLA BANK PRINCESS ANNIE 4L
 CUDLOBE HOGAN 79L
 MERIT COUNTESS 91K

WESTERN WIDESPREAD 1L
MVF TIBBIE 320P 1270561
 MVF TIBBIE 34L

WHITESTONE WIDESPREAD MB NHF AMF
 BDM BLUE LADY ERICA 126'95
 TC STOCKMAN 365
 MVKD TIBBIE 850H

BW: 81 lbs. Adj. 205D: 692 lbs.
 EPDs: BW: +4.5 5% WW: +47 5% YW: +88 5% Milk: +17 5% TM: +40 YG: +42 5%

• Very fancy very good will be shown at CWA

57

MVF ERICA 298P

FEMALE ABA 298P 1270531 AUGUST 29 2004

WHITESTONE WIDESPREAD MB NHF AMF
WESTERN WIDESPREAD 1L 1041526
 BDM BLUE LADY ERICA 126'95

N BAR EMULATION EXT NHF AMF
 M B RACHEL 2173
 CUDLOBE EXON 35C
 BAR DOUBLE M BLUE LADY ERICA 1

MVF MACKENZIE 24A
ERICA HCA 5F 857220
 BELMORAL ELLEN ERICA 41'91

GRUBBS MACKENZIE
 MVF ELBA 30W
 BELMORAL STAR 4'88
 ELLEN ERICA MCB 137'84

BW: 81 lbs. Adj. 205D: 489 lbs. Adj. 365D: 754 lbs.
 EPDs: BW: +5.2 33% WW: +37 23% YW: +69 22% Milk: +14 17% TM: +33 YG: +32 22%

• Daughter sells as Lot 52
 Exposed March 23/09 to April 27/09 to Norseman Frontier 2T. Preg checked due to calve January 22, 2010 to Norseman Frontier 2T



Lot 59A - MVF Bell 86W

58

MVF PRIDE LADY 283P

FEMALE ABA 283P 1222425 APRIL 30 2004

WHITESTONE WIDESPREAD MB NHF AMF
WESTERN WIDESPREAD 1L 1041526
 BDM BLUE LADY ERICA 126'95

N BAR EMULATION EXT NHF AMF
 M B RACHEL 2173
 CUDLOBE EXON 35C
 BAR DOUBLE M BLUE LADY ERICA 1

MVF SIRLOIN 18H
BXB MIGNON 381L 1124115
 CRESCENT CREEK LADY BATE 100J

YOUNG DALE MONARCH 12E
 MVF DAISY 17E
 SASKALTA BARDOLENE 61F
 CRESCENT CREEK PRIDE LADY 34Z

BW: 70 lbs. Adj. 205D: 692 lbs.
 EPDs: BW: +3.3 32% WW: +49 23% YW: +79 16% Milk: +14 16% TM: +39 YG: +30 16%

Exposed June 7/09 - July 21/09 to MVF Net Worth 113T. Preg checked due to calve April 21, 2010 to MVF Net Worth 113T



Herdshire at MVF & Chico Ranches

MVF NET WORTH 113T

BW: +4.1 WW: +48 YW: +92 MILK: +24 TM: +48 YG: +44

S A V 8180 TRAVELER 004 NHF AMF
S A V NET WORTH 4200 NHF AMF 1309743
 S A V MAY 2410

SITZ TRAVELER 8180 NHF AMF
 BOYD FOREVER LADY 8003
 S A F 598 BANDO 5175 AMF
 S A V MAY 6269

GDAR SVF TRAVELER 234D NHF AMF
MVF ROSEBUD 906N 1185701
 LENLOOK ROSEBUD 30G

TRAVELER 124 G D A R
 G D A R FOREVER LADY 718
 WHITESTONE FLY TRAVELER 3006 NHF AMF
 LENLOOK ROSEBUD 6A

59

MVF BELL 212P

FEMALE ABA 212P 1222205 MARCH 21 2004

WHITESTONE WIDESPREAD MB NHF AMF
WESTERN WIDESPREAD 1L 1041526
 BDM BLUE LADY ERICA 126'95

N BAR EMULATION EXT NHF AMF
 M B RACHEL 2173
 CUDLOBE EXON 35C
 BAR DOUBLE M BLUE LADY ERICA 1

MVF DIRECTOR 49W
MVF BELL 118A 718521
 MVF BELL 18W

DIRECTOR
 MVF TIBBIE 15T
 MR EXCITEMENT
 BELLA OF BATSCHOL 12J

BW: 93 lbs. Adj. 205D: 509 lbs.
 EPDs: BW: +5.2 38% WW: +35 27% YW: +62 18% Milk: +9 24% TM: +27 YG: +27 18%

• Maternal sister sells as Lot 70
 A.I.: May 17/09 to MVF VRD Dateline 913P. Exposed June 7/09 - July 19/09 to Norseman Frontier 2T. Preg checked due to calve February 23, 2010 to MVF VRD Dateline 913P

59A

MVF BELL 86W

FEMALE ABA 86W 1524857 FEBRUARY 06 2009

VERMILION DATELINE 7078 NHF AMF
MVF VRD DATELINE 913P AMF 1232661
 MVF LADY DI 60K

CONNELLY DATELINE
 VERMILION BLACKBIRD 5044
 MVBL LANCER 9F
 DOUBLE AA LADY DI 744'94

WESTERN WIDESPREAD 1L
MVF BELL 212P 1222205
 MVF BELL 118A

WHITESTONE WIDESPREAD MB NHF AMF
 BDM BLUE LADY ERICA 126'95
 MVF DIRECTOR 49W
 MVF BELL 18W

BW: 87 lbs. Adj. 205D: 714 lbs.
 EPDs: BW: +5.1 5% WW: +43 5% YW: +14 5% Milk: +14 5% TM: +35 YG: +34 5%

• MVF Bell 86W has a full sister at home

60

MVF PRIDE 194P

FEMALE ABA 194P 1222273 MARCH 16 2004

WHITESTONE WIDESPREAD MB NHF AMF
WESTERN WIDESPREAD 1L 1041526
 BDM BLUE LADY ERICA 126'95

N BAR EMULATION EXT NHF AMF
 M B RACHEL 2173
 CUDLOBE EXON 35C
 BAR DOUBLE M BLUE LADY ERICA 1

HFI AUGUSTAS
HENDERSON PRIDE 30'97 890119
 HENDERSON DESTINE PRIDE 31'93

TC STOCKMAN
 BROST ELBA 833
 CRAVEN PINE TAR 33U
 HENDERSON STAR PRIDE 9'89

BW: 92 lbs. Adj. 205D: 576 lbs.
 EPDs: BW: +5.4 35% WW: +44 26% YW: +72 18% Milk: +16 18% TM: +38 YG: +29 18%

Exposed March 23/09 - April 27/09 to Norseman Frontier 2T. Preg checked due to calve January 8, 2010 to Norseman Frontier 2T



Lot 61 - MVF Heroine 19P

61

MVF HEROINE 19P

FEMALE ABA 19P 1222514 JANUARY 30 2004

N BAR EMULATION EXT NHF AMF
NICHOLS EXTRA H6 NHF AMF 1142711
 NICHOLS EILEEN MAY F261

EMULATION N BAR 5522
 N BAR PRIMROSE 2424
 NICHOLS BLACK INK D220
 NICHOLS EILEEN MAY B241

LENLOOK TRAVELER 9G
LENLOOK HEROINE 36M 1111932
 LENLOOK HEROINE 63J

WHITESTONE FLY TRAVELER 3006 NHF AMF
 LENLOOK EILEEN VIOLET 34B
 BABA OSCAR 3E
 LENLOOK HEROINE 68C

BW: 84 lbs. Adj. 205D: 599 lbs.
 EPDs: BW: +2.9 38% WW: +36 28% YW: +72 20% Milk: +23 28% TM: +41 YG: +37 20%

- Daughter sells as Lot 17
- Two daughters in production at MVF
- This mating to Sitz Upward could be very rewarding for her new owner A.I.: May 5/09 to Sitz Upward 307R. Exposed June 7/09 - July 19/09 to Norseman Frontier 2T. Preg checked due to calve February 11/2010 to Sitz Upward 307R

61A

MVF HEROINE 118W

FEMALE ABA 118W 1524860 FEBRUARY 14 2009

TC FREEDOM 104 AMF
TC STOUT 407 1302212
 TC PRIDE 2053

CONNELLY FOREFRONT NHF AMF
 T C RUBY 9095
 VERMILION DATELINE 7078 NHF AMF
 TC PRIDE 5045

NICHOLS EXTRA H6 NHF AMF
MVF HEROINE 19P 1222514
 LENLOOK HEROINE 36M

N BAR EMULATION EXT NHF AMF
 NICHOLS EILEEN MAY F261
 LENLOOK TRAVELER 9G
 LENLOOK HEROINE 63J

BW: 84 lbs. Adj. 205D: 733 lbs.
 EPDs: BW: +3.5 5% WW: +47 5% YW: +89 5% Milk: +26 5% TM: +49 YG: +43 5%



Lot 62 - Remitall Enchantress 202P

62

REMITALL ENCHANTRESS 202P

FEMALE AGN 202P 1227259 MARCH 02 2004

SITZ ALLIANCE 6595 NHF AMF
REMITALL LEGIONAIRE 8L 1073491
 REMITALL NEONIA 42J

SITZ TRAVELER 8180 NHF AMF
 SITZ BARBARAMERE JET 2698
 TC STOCKMAN 365
 HAPPYVALE NEONIA 27E

REMITALL HANSEN 110H
REMITALL ENCHANTRESS 310K 1026611
 REMITALL ENCHANTRESS 52H

MOUNTAIN SIDE EXTRA CLASSY
 KBJ BIENE 266E
 DESSA TRAVELER 4E
 REMITALL ENCHANTRESS FERN 139F

BW: 85 lbs. Adj. 205D: 740 lbs.
 EPDs: BW: +3.4 36% WW: +32 25% YW: +52 17% Milk: +12 25% TM: +28 YG: +20 17%

- Brian Lattimer purchased this female for us at their fall production sale for \$5,000.00 and she has had no trouble paying her way at MVF A.I.: March 31/09 to HF Tiger 5T. Exposed June 7/09 - July 19/09 to Norseman Frontier 2T. Preg checked due to calve January 6, 2010 to HF Tiger 5T



Lot 62A - MVF Enchantress 41W

62A

MVF ENCHANTRESS 41W

FEMALE ABA 41W 1524847 JANUARY 21 2009

TC FREEDOM 104 AMF
TC STOUT 407 1302212
 TC PRIDE 2053

CONNELLY FOREFRONT NHF AMF
 T C RUBY 9095
 VERMILION DATELINE 7078 NHF AMF
 TC PRIDE 5045

REMITALL LEGIONAIRE 8L
REMITALL ENCHANTRESS 202P 1227259
 REMITALL ENCHANTRESS 310K

SITZ ALLIANCE 6595 NHF AMF
 REMITALL NEONIA 42J
 REMITALL HANSEN 110H
 REMITALL ENCHANTRESS 52H

BW: 83 lbs. Adj. 205D: 651 lbs.
 EPDs: BW: +3.8 5% WW: +45 5% YW: +79 5% Milk: +20 5% TM: +42 YG: +35 5%



Lot 64 - Kenosee Park Belle 24P



Lot 67 - MVF Errolline 249P

63

MVF ERELITE 26P

FEMALE ABA 26P 1222565 FEBRUARY 01 2004

B/R NEW DESIGN 036 NHF AMF
BON VIEW NEW DESIGN 878 NHF AMF 981361
 BON VIEW GAMMER 85

V D A R NEW TREND 315 NHF AMF
 B/R BLACKCAP EMPRESS 76
 BON VIEW BANDO 598 AMF
 BON VIEW GAMMER 233

CONNELLY LEADTIME NHF AMF
BXB MISS LEADER 6M 1176792
 TRAILVIEW ERELITE 10'90

CONNELLY DATELINE
 RUTHS RONA OF CONANGA
 MVF GUNNER 37U
 HEATHERBROOK ERELITE 45'85

BW: 87 lbs. Adj. 205D: 610 lbs.
 EPDs: BW: +2.8 36% WW: +41 26% YW: +76 20% Milk: +25 25% TM: +46 YG: +36 20%

- Dam sold at the 2008 MVF 75th Anniversary sale to LLB Angus, Erskine, AB for \$6,200.00
- A maternal sister sold to Nathan Marin Radville SK Exposed May 27/09 - July 21/09 to MVF Net Worth 113T. Preg checked due to calve April 9, 2010 to MVF Net Worth 113T

64

KENOSEE PARK BELLE 24P

FEMALE WK 24P 1290016 FEBRUARY 05 2004

CONNELLY DATELINE
BELVIN KINGPIN 24'00 1029275
 BELVIN GEORGINA 52'95

D H D TRAVELER 6807 NHF AMF
 EILA EILA OF CONANGA AMF
 BELVIN BOARDWALK 11'92
 BELVIN GEORGINA 30'91

MVF DIRECTOR 30A
KENOSEE PARK BELLE 126D 811060
 KENOSEE PARK BELLE 24Y

MVF DIRECTOR 49W
 MVF PRIDE 32T
 KENOSEE PARK ADJUSTER 12T
 KENOSEE PARK BELLE 1U

BW: 83 lbs.
 EPDs: BW: +4.7 30% WW: +38 23% YW: +63 19% Milk: +23 26% TM: +42 YG: +24 19%

A.I.: June 4/09 to Sitz Upward 307R. Exposed June 15/09 - July 21/09 to MVF Net Worth 113T. Preg checked due to calve March 13, 2010 to Sitz Upward 307R

65

WWF ALLIANCE BARBARA 59P

FEMALE WWV 59P 1217255 FEBRUARY 20 2004

SITZ TRAVELER 8180 NHF AMF
SITZ ALLIANCE 6595 NHF AMF 1036949
 SITZ BARBARAMERE JET 2698

G D A R TRAVELER 71 NHF AMF
 SITZ EVERELDA ENTENSE 1137
 3 BAR SPIKE 1766
 SITZ BARAMERE JET 155

YOUNG DALE HERCULES 810H
WINDY WILLOWS BARBARA 38K 1012293
 WWF STOCKMAN BARBARA 119H

PAPA EQUATOR 2928 NHF AMF
 YOUNG DALE GRACE 16C
 WIWA CREEK STOCKMAN 26'95
 WWF TT BARBARA 33F

BW: 88 lbs. Adj. 205D: 518 lbs. Adj. 365D: 881 lbs.
 EPDs: BW: +4.0 39% WW: +43 28% YW: +89 27% Milk: +20 26% TM: +42 YG: +45 27%

Exposed June 8/09 - July 26/09 to MVF VRD Dateline 23P. Preg checked due to calve March 20, 2010 to MVF VRD Dateline 23P

66

KLT BLACKBIRD PEPPER 13P

FEMALE KLT 13P 1198357 FEBRUARY 16 2004

SITZ TRAVELER 8180 NHF AMF
SITZ ALLIANCE 6595 NHF AMF 1036949
 SITZ BARBARAMERE JET 2698

G D A R TRAVELER 71 NHF AMF
 SITZ EVERELDA ENTENSE 1137
 3 BAR SPIKE 1766
 SITZ BARAMERE JET 155

BON VIEW BANDO 598 AMF
KLT BLACKBIRD 598 5H 915242
 KLT BLACKBIRD 4E

TEHAMA BANDO 155 NHF AMF
 BON VIEW DORA 56
 G D A R OSCAR 711 NHF AMF
 SCHEARBROOK BLACKBIRD 04A7

BW: 82 lbs. Adj. 205D: 614 lbs.
 EPDs: BW: +2.4 39% WW: +41 29% YW: +75 20% Milk: +22 28% TM: +43 YG: +34 20%

A.I.: May 16/09 to Sitz Upward 307R. Exposed June 3/09 - July 19/09 to MVF Net Worth 183U. Preg checked due to calve February 22, 2010 to Sitz Upward 307R

67

MVF ERROLLINE 249P

FEMALE ABA 249P 1222524 APRIL 02 2004

ANGUS ACRES HEADS UP 31D
MVF HEADS UP 029M 1126447
 MVF TIBBIE 10G

ANGUS ACRES HEADS UP 178A
 ANGUS ACRES STARTELL 11S
 BON VIEW EMULATION EXT 473 NHF AMF
 MVHF TIBBIE 39B

S A F FAME NHF AMF
MVF ERROLLINE 48M 1124802
 MVF ERROLLINE 82K

MINERTS FORTUNE 2000 NHF AMF
 S A F ROYAL LASS 1027
 STEVENSON ROYCE 741C
 MVF ERROLLINE 85F

BW: 81 lbs. Adj. 205D: 619 lbs.
 EPDs: BW: +4.5 34% WW: +38 23% YW: +70 15% Milk: +9 13% TM: +28 YG: +32 15%

Exposed April 28/09 - May 27/09 to MVF Net Worth 113T. Preg checked due to calve February 4, 2010 to MVF Net Worth 113T

*We invite you to join us for
 a beef lunch starting at
 11:30 am on Sale Day*



Lot 68

MVF
Ellen
48N



Lot 68A - MVF Ellen 133W

68

MVF ELLEN 48N

FEMALE ABA 48N 1175137 JANUARY 31 2003

TRAVELER 124 G D A R
GDAR SVF TRAVELER 234D NHF AMF 964751
G D A R FOREVER LADY 718

Q A S TRAVELER 23-4 NHF AMF
RACHEL RITO 813 G D A R
BALDRIDGE OSCAR
L T FOREVER LADY 395 G D A R

N BAR EMULATION EXT NHF AMF
BOTANY ANGUS ELLEN 6G 895897
BOTANY ANGUS ELLEN 51C

EMULATION N BAR 5522
N BAR PRIMROSE 2424
G T MAXIMUM NHF AMF
BOTANY ANGUS ELLEN 11U

BW: 90 lbs. Adj. 205D: 590 lbs. Adj. 365D: 742 lbs.
EPDs: BW: +3.6 41% WW: +40 30% YW: +69 29% Milk: +21 30% TM: +41 YG: +29 29%

- Dam sold to Remington Land & Cattle, Del Bonita, AB at the 2005 MVF Production Sale for \$4,200.00
 - She sells bred to the 2009 World Angus Forum Champion & Farmfair International Supreme Champion Bull
- A.I.: May 25/09 to HF Tiger 5T. Exposed June 15/09 - July 19/09 to Norseman Frontier 2T. Preg checked due to calve March 3, 2010 to HF Tiger 5T

68A

MVF ELLEN 133W

FEMALE ABA 133W 1524863 FEBRUARY 17 2009

TC FREEDOM 104 AMF
TC STOUT 407 1302212
TC PRIDE 2053

CONNELLY FOREFRONT NHF AMF
T C RUBY 9095
VERMILION DATELINE 7078 NHF AMF
TC PRIDE 5045

GDAR SVF TRAVELER 234D NHF AMF
MVF ELLEN 48N 1175137
BOTANY ANGUS ELLEN 6G

TRAVELER 124 G D A R
G D A R FOREVER LADY 718
N BAR EMULATION EXT NHF AMF
BOTANY ANGUS ELLEN 51C

BW: 86 lbs. Adj. 205D: 745 lbs.
EPDs: BW: +3.9 5% WW: +149 5% YW: +88 5% Milk: +25 5% TM: +49 YG: +39 5%

Please join us
for a pre-sale social
at the
Jays Inn & Suites
Friday night December 17



Lot 69

MVF
Tibbie
84N



69

MVF TIBBIE 84N

FEMALE ABA 84N 1175034 FEBRUARY 11 2003

KRUGERRAND OF DONAMERE 490
F A R KRUGERRAND 410H NHF AMF 1140680
F A R ERIANNA 286F

C H STACKER 7040
DONAMERE BACHEL BEAUTY 288
G M A R HI SPADE 039
F A R ERIANNA 481D

V D A R NEW TREND 315 NHF AMF
MVF TIBBIE 28C 774334
MVF TIBBIE 48W

A A R NEW TREND
V D A R LUCY 704
DIRECTOR
MVF TIBBIE 15T

BW: 90 lbs. Adj. 205D: 601 lbs. Adj. 365D: 758 lbs.
EPDs: BW: +3.2 43% WW: +42 34% YW: +82 32% Milk: +14 30% TM: +35 YG: +39 32%

- Son sold at the 2009 Cattleman's Connection Bull Sale to Bob Duncan, Cromer, MB for \$7,000.00
- Another son sold at the 2006 Cattleman's Connection Bull sale to Cooke Livestock, Blackie, AB for \$4,400.00
- MVF has two maternal sisters in production
- One of the best 2 year olds at MVF is a daughter
- Two maternal sisters sold at the 2001 and 2002 MVF Production sales to Topview Acres, Grandview, MB for \$11,000.00 and Botany Angus, Souris, MB for \$13,200.00
- MVF Tibbie 84N is a fabulous cow with a perfect udder
Exposed May 27/09 - July 21/09 to MVF Net Worth 113T. Preg checked due to calve March 6/2010 to MVF Net Worth 113T



MVF Net Worth 225U - Son of Lot 69



MVF Tibbie 26T - Daughter of Lot 69



Lot 73 - MVF Tibbie 978N

70

MVF BELL 186N

FEMALE ABA 186N 1175030 MARCH 12 2003

RITO 9FB3 OF 5H11 FULLBACK NHF AMF
MVF FULLBACK 127J 983668
 MVF TIBBIE 14C

LEACHMAN FULLBACK
 RITA 5H11 OF 1B14 RITO 9J9
 GINGER HILL DUSTER 89 NHF AMF
 MVF TIBBIE 20W

MVF DIRECTOR 49W
MVF BELL 118A 718521
 MVF BELL 18W

DIRECTOR
 MVF TIBBIE 15T
 MR EXCITEMENT
 BELLA OF BATSCHOL 12J

BW: 86 lbs. Adj. 205D: 573 lbs. Adj. 365D: 826 lbs.
 EPDs: BW: +3.7 38% WW: +32 27% YW: +56 25% Milk: +16 27% TM: +32 YG: +23 25%

- A maternal sister sells as Lot 59
- Sells bred to the young outcross Scottish herdsire Commander Bond A.I.: May 11/09 to Dunlouis Commander Bond F176. Exposed June 7/09 - July 21/09 to MVF VRD Dateline 34P. Preg checked due to calve February 17, 2010 to Dunlouis Commander Bond F176



DUNLOUISE COMMANDER BOND F176

NHF AMF

NEWHOUSE EDWIN ELKO
WEDDERLIE EVICTOR GB197003
 EVISTA OF WEDDERLIE

JESEDAX ERIC OF DOUNESIDE
 NEWHOUSE EDWINA EMILY
 NEWHOUSE EXCELLENCE
 EVICTRESS OF WEDDERLIE

ASHLEY ELMIGHTY
CHAMPAGNE CHERRY BEE B117 US15726484
 CHERRY BEE W9 OF CHAMPAGNE

EVERSTRIKE OF MILLHOUSE
 ASHLEY ELSARA
 EVAN OF CHAMPAGNE
 CHERRY BEE OF CHAMPAGNE

71

MVF ELLEN ERICA 284N

FEMALE ABA 284N 1183999 AUGUST 12 2003

TC STOCKMAN 365
MVF STOCKMAN 79K 1011790
 RRD TIBBIE 12E

TC STOCKMAN
 TC PRIDE 0014
 RITO 2100 G D A R
 MVF TIBBIE 16C

MVF MACKENZIE 24A
ERICA HCA 5F 857220
 BELMORAL ELLEN ERICA 41'91

GRUBBS MACKENZIE
 MVF ELBA 30W
 BELMORAL STAR 4'88
 ELLEN ERICA MCB 137'84

BW: 89 lbs.
 EPDs: BW: +4.1 25% WW: +34 18% YW: +65 15% Milk: +12 22% TM: +29 YG: +31 15%
 Exposed April 28/09 - May 27/09 to MVF Net Worth 113T. Preg checked due to calve February 5, 2010 to MVF Net Worth 113T

72

MVF TIBBIE 287N

FEMALE ABA 287N 1184012 AUGUST 14 2003

TC STOCKMAN 365
MVF STOCKMAN 79K 1011790
 RRD TIBBIE 12E

TC STOCKMAN
 TC PRIDE 0014
 RITO 2100 G D A R
 MVF TIBBIE 16C

YOUNG DALE MONARCH 12E
MVRB TIBBIE 25J 982446
 MVRB TIBBIE 77E

DALRENE EXTRA 36A
 YOUNG DALE GRACE 16C
 MINERTS FORTUNE 2000 NHF AMF
 MVF TIBBIE 48W

BW: 83 lbs.
 EPDs: BW: +4.9 25% WW: +37 19% YW: +70 17% Milk: +12 20% TM: +31 YG: +32 17%
 Bred May 6/09 to MVF Net Worth 183U. Exposed June 3/09 - July 19/09 to MVF Net Worth 183U. Preg checked due to calve February 12, 2010 to MVF Net Worth 183U.

73

MVF TIBBIE 978N

FEMALE ABA 978N 1185799 MAY 04 2003

MVF STOCKMAN 122H
MVF STOCKMAN 17K 1017485
 MVF ZARA LISA 132G

TC STOCKMAN 365
 MVF TIBBIE 14C
 MVF BACKDRAFT 26D
 NORTHCOTE ZARA LISA

CONNEALY DATELINE
MVF TIBBIE 70L 1056464
 MVF TIBBIE 2E

D H D TRAVELER 6807 NHF AMF
 EILA EILA OF CONANGA AMF
 G D A R OSCAR 711 NHF AMF
 MVF TIBBIE 14C

BW: 65 lbs. Adj. 205D: 668 lbs. Adj. 365D: 931 lbs.
 EPDs: BW: +1.6 22% WW: +36 16% YW: +65 13% Milk: +17 16% TM: +35 YG: +29 13%
 Exposed March 23/09 - April 27/09 to Norseman Frontier 2T. Preg checked due to calve January 23, 2010 to Norseman Frontier 2T



MVF Net Worth 183U

BW: +5.3 WW: +51 YW: +91 MILK: +25 TM: +51 YG: +40

74

MVMM BLOSSOM 272N

FEMALE MVMM 272N 1175399 MAY 01 2003

Q A S TRAVELER 23-4 NHF AMF
DESSA TRAVELER 4E 827058
DOUBLE FOUR BARBARA 38Z

BAND 234 OF IDEAL 3163
Q A S BLACKBIRD EVE 601 1
FAIRFIELD DARK STAR P57
BARBARA OF NEEDMORE 22S

BELVIN BOARDWALK 11'92
BELVIN LADY BLOSSOM 56'95 834284
BELVIN LADY BLOSSOM 9'89

V D A R NEW TREND 315 NHF AMF
BELVIN LADY BLOSSOM 11'88
S C R LONE STAR 411
BELVIN LADY BLOSSOM 23'84

BW: 78 lbs. Adj. 205D: 615 lbs. Adj. 365D: 824 lbs.
EPDs: BW: +3.8 36% WW: +33 26% YW: +58 23% Milk: +18 24% TM: +35 YG: +25 23%

Exposed June 3/09 - July 19/09 to MVF Net Worth 86U. Preg checked due to calve April 9, 2010 to MVF Net Worth 86U



Lot 74 - MVMM Blossom 272N

75

WINDOVER BLACK LADY 98N

FEMALE WAJ 98N 1160185 MARCH 18 2003

WINDOVER KENTUCKY 11A
WINDOVER KENTUCKY 22K 1002999
WINDOVER DELIA 9F

BROST POWER DRIVE
WINDOVER LADY ANN 40R
HARMON MATRIX 4051
HEATHERBROOK DELIA 26'82

QLC RITO W526C AMC
HARMON BLACK LADY 5204 1040341
HARMON BLACK LADY 4197

FINKS 026 OF 745 549
QLC A96 ENCHANTRESS S568W
B C S 2 FLASHPOINT 5270
HARMON BLACK LADY 2613

BW: 86 lbs. Adj. 205D: 633 lbs.
EPDs: BW: +1.7 38% WW: +36 27% YW: +50 13% Milk: +11 23% TM: +29 YG: +14 13%

Exposed June 3/09 - July 19/09 to MVF Net Worth 183U. Preg checked due to calve April 20, 2010 to MVF Net Worth 183U



MVF Net Worth 86U

BW: +4.8 WW: +58 YW: +107 MILK: +24 TM: +53 YG: +49

Season's Greetings

My name is Caryn Upton, I am from Alliston, Ontario. I am in the South Simcoe 4-H beef club.

Last December my father bought me a show heifer from the Mountain View Farms sale. We could not make the sale and bought her over the phone. My father talked to Scott Anderson and told him the type of heifer we were looking for and our price range. We ended up with "Lot 30A, MVF Heather 270U." When she arrived she was everything that Scott said she would be.

I showed at a total of 9 fairs this show season, usually coming in 1st or 2nd at the smaller local fairs, and my final show was at the National Jr. Beef Heifer Show where I was satisfied how she placed in such a strong class.

One thing that my dad asked Scott was she was to be easy to work with, MVF Heather was a great heifer to work with and excellent to take in any showmanship class. She will be a great cow in our herd.

Thank you,
Scott Anderson!

From: Caryn Upton

Terms & Conditions

CATTLE INSPECTION: All carry permanent identity tags, corresponding to Sale Lot Numbers. All shall be available for inspection prior to sale.

ALL CATTLE ARE SOLD: Subject to such tests as required for export under regulations of the Health of Animals Branch, Department of Agriculture for Canada - those corresponding to Bureau of Animal Industry requirements.

BREEDING GUARANTEE: All cattle are sound and right, and all with a responsible breeder guarantee of satisfaction. In the event of any unlikely dispute, the regular terms and conditions, standard with the Canadian Aberdeen Angus Association shall apply.

PREGNANCY: Examinations have been conducted prior to sale on all serviced females.

HOLDING AND SHIPMENTS: Approximately one week is required for export transfers and other documents to be processed. Export animals will be held at no charge and under excellent care. Joint export shipping arrangements to attain minimum shipping cost will gladly be made by the sale management if instructions to that effect are provided to clerk of the sale when settlement is made.

MAIL BIDS: May be entrusted in complete confidence to any of the Sale Staff listed.

INSURANCE: Ownership risk to purchaser commences when the Auctioneer's hammer falls. Livestock coverage will be available at the clerk's desk from the appointed representatives on sale day

TERMS OF SALE: Are cash or cheque at par, payable to Clerks of the Sale on Sale Day. U.S. Funds will be accepted at the current rate of exchange. No release will be given until satisfactory settlement has been made. We reserve the right to withhold animals from export shipment for whom payments have not been received prior to departure times.

ALL PERSONS who attend the Sale do so at their own risk, and the Owners, Sale Consultants and Sale Staff assume no liability, legal or otherwise, for property loss or for any accidents that may occur.

ANNOUNCEMENTS: Errors discovered in the catalogue will be corrected by announcements from the auction stand at sale time and such corrections will take precedence over the printed matter in the catalogue.



Owned by
Wynnyk Farms

MVF Rosebud 23W - Gold Medal Early Sr. Heifer Calf



MVF Blackbird 30W - Champion Late Sr. Heifer Calf



MVF Annie K 220U - Champion Jr. Yearling Heifer



Owned by
Hi Low Angus

MVF Tibbie 108U - Res.Champion Late Int. Yearling Heifer



Owned by
Jessi-D Farm

MVF Ellen 143U - Silver Medal Late Int. Yearling Heifer



MVF Dateline 68U - Res. Champion Int. Yearling Bull



Congratulations to all exhibitors & organizers

Scott was honoured to judge the World Angus Forum 2009 Red Angus Show • Cattlemen from around the globe toured the barns • 5 Medals! Sleep when you can • Bruce's liner was jam-packed full for the trip • The talented MVF crew all cleaned up (for a change) • Our line-up on display

WATCH FOR OUR UPCOMING BULL SALES

15th Annual Cattleman's Connection Bull Sale - March 6, 2010 - Heartland Stock Yards, Brandon, MB
8th Annual Mountain View Farms Spring Bull Sale - April 17, 2010 - Heartland Stock Yards, Virden, MB

MVF

MOUNTAIN VIEW FARMS
COMP 3 RR #2
SWAN RIVER, MANITOBA R0L 1Z0



Mountain View Farms

13th Annual Production Sale

Friday, December 18, 2009

Heartland Livestock, Virden, Manitoba



www.MountainViewFarms.ca