

# LEUWENBURGH LANGUS 26<sup>TH</sup> ANNUAL BULL SALE

TUESDAY, MARCH 14, 2017  
1:00 PM - BALOG AUCTION  
LETHBRIDGE, ALBERTA



PLEASE BRING  
THIS CATALOGUE  
TO THE SALE

TO VIEW OUR CATALOG ONLINE : [www.leeuwenburghangus.com](http://www.leeuwenburghangus.com)



## Friends & Fellow Cattlemen

Welcome to our 26th Annual Bull Sale! We sincerely thank all of our loyal friends and customers for their continued support. It truly means a lot, especially since there are many places to buy bulls, but you continue to come back and support our program. We remain committed to the cattle industry, no matter the year or the time, and we've said it before, but it is worth repeating....the success of our clients' cattle operations is very satisfying and continues to be our top priority even in "down" years, such as the past one. We honestly believe our genetics will drive a program forward and remain focused on providing real world cattle for the true cattlemen. We have a ton of growth in the bull lineup this year, so please do not hesitate to stop by the farm. We again are working with Castlerock Marketing this year and for a honest opinion from someone who isn't the owner of the cattle, contact Shane Castle and Devin Warrilow. Your input and honesty is valued, call anytime with question or comments. We look forward to seeing everyone sale day!

from all of us at Leeuwenburgh Angus



Charles, Jack, Dennis, Johnny & Willard

## **BALOG AUCTION SERVICES LTD**

### Fellow Cattlemen

Welcome to the Leeuwenburgh Angus 26th Annual Bull Sale! What an exiting offering of strong, powerful genetics in the Leeuwenburgh sale. Last year's sale saw record setting prices with buyer's from Canada and the USA participating. The sale offering this year gives the buyer's even more opportunity to buy into a proven program. The Leeuwenburgh program has consistently selected for maternal and growth traits and for cattle that have ease of calving bred into them.

The Leeuwenburgh family is serious about the business!! They offer us the best bulls available in the breed. Come buy from a very successful program and a family who sincerely appreciate their buyers.

Respectfully, Bob Balog



## **CASTLEROCK MARKETING**

On behalf of Castlerock it is again a privilege to work with the Leeuwenburgh family! A family run operation which consists of large numbers, which is based upon simple function of solid feet, udders, and structure that is the backbone of any cow herd. When it comes to the genetic base it's been a constant search for proven genetics that incorporates a genetic twist, offering outcross bloodlines that follow their beliefs.

The most critical eye starts with the owners, and you will get a straight forward opinion on the cattle and how they fit into what you are looking for. Join us Sale day to evaluate these performance tested bulls which offer so many positive attributes to any herd.

Any questions regarding the offering, feel welcome to give us a call regarding the potential of this offering. See you Sale day!

Shane Castle

Castlerock Marketing - 306.741.7485 - [www.castlerockmarketing.com](http://www.castlerockmarketing.com)

### SALE DAY PHONES

BALOG AUCTION - 403.320.1980  
 DENNIS LEEUWENBURGH - 403.308.3003  
 JOHNNY LEEUWENBURGH - 403.382.1794  
 JACK LEEUWENBURGH - 403.330.6123  
 SHANE CASTLE - 306.741.7485  
 DEVIN WARRILOW - 780.581.4329

### SALE STAFF

AUCTIONEER  
 RINGMEN

LOUIS BALOG - 403.331.0611  
 BRAD BALOG - 403.642.7444  
 MARK LENZ - 403.330.7600



DENNIS

JOHNNY

JACK

### ALL BULLS ARE FULLY TESTED AND 100% GUARANTEED NO BULLS SOLD PRIOR TO THE SALE!

Everything possible will be done to assure that every bull in this sale will be a breeder. Dr. Mitch Oviatt, (Ranch Docs, Lethbridge) will scrotal measure and physically evaluate every bull. Any animal that has not proven itself within 6 months of sale, (September 30, 2017) if in healthy condition, may be returned to the seller at the buyer's expense. The seller reserves the privilege of trying for a 6-month period to prove the animal a breeder. The seller at his option may either return the purchase price or replace the animal with another of equal quality in full settlement and satisfaction of all claims. Any complaints regarding any animal in this sale shall be made to the breeder. All complaints must be reported in writing by the buyer to the seller within 6 months and any animal returned must be free of disease and in good health

### CATALOGUE INFORMATION

All information is up to date as of publication date. Pedigree's and EPD's are supplied by the Canadian Angus Association, and all other information has been supplied by the seller. Information in this catalogue is believed to be accurate, but any errors discovered in the catalogue, will be corrected by announcements, from the auction stand at sale time, and such corrections will take precedence over the printed matter in this document.

### IN - HERD SEMEN INTEREST

Leeuwenburgh Angus reserves the right to draw semen on any bull sold at the buyer's convenience and our cost.

### DELIVERY -\$100 CREDIT IF BULL IS TAKEN HOME SALE DAY

Assistance will be given in making delivery after the sale.

### PRESALE LUNCH

Join us for lunch at 11:30 a.m. Sale Day

### INSURANCE

Available at Balog Auction Services

Maureen- 403-320-1980

We strongly suggest you insure your bull purchases.

### ACCOMMODATIONS - in Lethbridge, less than a 10 minute drive

Quality Inn & Suites - 403-331-6440

Hampton Inn & Suites - 403-327-1386

Holiday Inn - 403-380-5050

Premier Inn & Suites - 403-380-6677

Comfort Inn - 403-320-6993

Call 403-327-9618 if you need assistance with accommodations.

### "IN APPRECIATION!"

In order to do this purebred cattle thing properly you need a solid supporting cast that is loyal and easy to work with. So we would like to thank Lorne Parrot for all the work he does throughout the year and BJ Scherlinck for helping us out at different times, especially in the summer and fall with harvest. Thanks to Merlin Huber for helping us out at random times throughout the year! All the other family members who pitch in on their days off, is truly appreciated as well. Mr. Allan Kirt Thompson, thanks for putting up with us again to come clip bulls. Thanks again for your help!

### GRANT ROLSTON PHOTOGRAPHY LTD.

Thank you Grant and Lauralee for taking pictures of our sale bulls on December 30 & 31, 2016!

**BULL SELECTION** is more important now than it has ever been, in order to MAXIMIZE your cowherd's potential. Settling for just any bull, because he is a couple of hundred dollars cheaper, could deprive you of thousands later. Remember, pounds add up! Find the time to evaluate a bull's performance and EPD'S alike and consider if a breeder's program is similar to your ranch environment - your buying a piece of the program!

### HOW MUCH CAN YOU AFFORD TO PAY FOR A TOP BULL?

#### COWMAN FORMULA

Increase in pounds per calf from a top-performance bull

X No. of cows bred to him per year

X No. of years to keep the bull

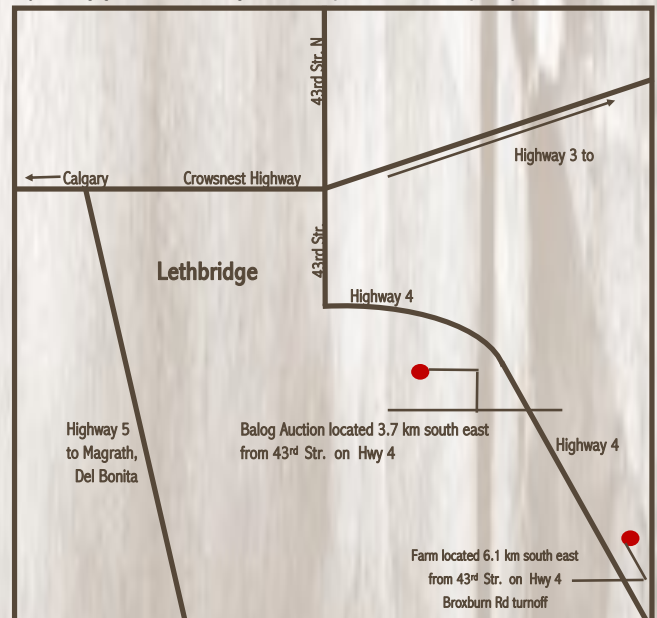
X Expected selling price of calves

= Additional dollars you can pay for a better bull

Example: A bull who will add 30 lbs to the weaning weight of each of his calves mated to 25 cows per year for 4 years and you sell the calves for \$1.50 per pound.

$$30 \times 25 = 750 \times 4 = 3000 \times 1.50 = \$4,500$$

This bull is worth \$4,500 more than the average bull who will keep your weaning weights the same. Take this formula and put your own figures in and see what you can afford to pay. This equation does not consider the increase in value due to calving-ease, higher quality replacement heifers, yearling growth, feedlot gain and improved carcass quality.



## SALE DAY PHONES

DENNIS LEEUWENBURGH - 403.308.3003

JOHNNY LEEUWENBURGH - 403.382.1794

JACK LEEUWENBURGH - 403.330.6123

SHANE CASTLE - 306.741.7485 / DEVIN WARRILOW - 780.581.4329 - CASTLEROCK MARKETING

BALOG AUCTION

403.320.1980

LOUIS BALOG - 403.331.0611

BRAD BALOG - 403.642.7444

MARK LENZ - 403.330.7600





Red Red Chateau 6U

**RED LWNBRG FLEX 79B ~ 2 SONS SELL**

TED 79B ~ 1786259 ~ 1/26/2014 Lots 35, 56

MRLA 53W (RC)  
**Sire: RED MRLA FLEX 49Z**  
 RED GET-A-LONG FIREFLY 363

RED GLACIER CHATEAU 744  
**Dam: RED TED CHATEAU 6U**  
 RED TED RAMBLER 52L

SAV NET WORTH 4200  
 RED BROX MS CHEROKEE 13N  
 RED BJR MAKE MY DAY 981  
 RED WCF MAVERICK'S FIREFLY 11L  
 RED LMAN KING ROB 8621  
 RED GLACIER REBALA  
 RED BJR RAMBLER 5162  
 RED TED BEAU 109G

BW - 94  
 205D - 867  
 365D - 1271

BW +0.6  
 WW +58  
 YW +87  
 Milk +24  
 TM +53

Flex was our high selling Red in 2015 to Hugh and Jo at Bar 4A. At the time it was my belief he would be an outstanding female producer. His dam 6U and elite grandam 52L were very functional and low maintenance. Udders and feet were great on both these cows and 52L produced until she was 14 years of age. Our first set of daughters were exactly what we hoped for, long spined, solid hip and that impressive profile that replicates 79B. Another major asset are his superior foot and leg structure, which is evident in most cattle sired by Flex 49Z.

MARB +.08  
 REA +.47  
 CWT +23



SAV Net Worth 4200

**RED MRLA FLEX ~ 1 SON SELLS**

MRLA 49Z ~ 1685353 ~ 1/15/2012 Lot 12

SAV NET WORTH 4200  
**Sire: MRLA 53W**  
 RED BROX MS CHEROKEE 13N

RED BJR MAKE MY DAY 981  
**Dam: RED GET-A-LONG FIREFLY 363**  
 RED WCR MAVERICK'S FIREFLY 11L

S A V 8180 TRAVELER 004  
 S A V MAY 2410  
 RED RAINMAKER OF CUDLOBE 2K  
 RED BROX MS CHEROKEE 43L  
 RED BJR EASY RIDER 781  
 RED BJR TOW KANA 117-710  
 RED SSS MAVERICK 249W  
 RED SSS FIREFLY 685A

BW - 89  
 89 - 681  
 205D - 1257

BW +4.7  
 WW +63  
 YW +95  
 Milk +17  
 TM +48

- Power producing grandson of SAV Net Worth 4200
- Adds length, expressive muscle, and frame
- Cow maker and foot improver
- Daughters have flawless udders
- Carcass merit REA top 1%, CW top 7%, Marbling top 6%

MARB +.50  
 REA +.68  
 CWT +33



**RED ANDRAS FUSION R236 ~ 12 SONS SELL**

IMP 0236Y ~ 1831533 ~ 9/18/2011 Lots 1, 2, 4, 40, 52, 55, 69, 82, 86, 109, 120, 136

MYTTY IN FOCUS  
**Sire: RED ANDRAS IN FOCUS B175**  
 RED DI ESTONIA 316

RED ANDRAS THUNDER B105  
**Dam: RED ANDRAS BELLE B167**  
 RED ANDRAS BELLE 416

SAF FOCUS OF ER  
 MYTTY COUNTESS 906  
 RED BUF CRK COUNTERCHF 5107  
 RED LGR ESTONIA 8001  
 CONNEALY THUNDER  
 RED DI AMY 244  
 RED COLLIER TOP FLIGHT  
 RED BUF CRK BELLE 4231

BW - 74  
 205D - 648  
 365D - N/A

BW -4.2  
 WW +44  
 YW +86  
 Milk +23  
 TM +45

The Fusion sire has been our go to calving ease bull for 3 breeding seasons. He has done exactly as advertised with moderate birth weights, good calf vigour and solid growth. His sons are consistently stout, deep and easy fleshing. The first set of daughters have proven to be fertile and sound footed. They look to be balanced, real world females with tidy udders.

MARB +.85  
 REA -.08  
 CWT +16

**RED BRYLOR AUTOMATIC 95B ~ 8 SONS SELL**

LMP 95B ~ 1788604 ~ 2/25/2014 Lots 11, 13, 31, 48, 49, 60, 64, 134

RED WHEEL DODGE CITY 3U  
**Sire: RED WHEEL DODGE CITY 61Y**  
 RED WHEEL PRIDE 29N

HF KODIAK 5R  
**Dam: BLACK BRYLOR LAKME 155Y**  
 RED XXX LAKME 70M

RED NORTHLINE ATLANTIC CITY  
 RED HANDFORD MISS CHIEF 7K  
 RED BRYLOR STALLION 19J  
 RED FLY AWAY PRIDE 161K  
 SANDY BAR ADVANTAGE 43M  
 WILBAR RUBY 955N  
 RED BRYLOR NEW TREND 22D  
 RED FINE LINE LAKME 21J

- Canadian pedigree that continues the Kodiak line, but significantly adds bone, depth, and the darker red haircoat
- First calves were the heaviest weaning sire group
- WW, YW, TM and Carcass Weight EPD's all in the top 1%
- Dam is full sister to Kodiak 204Y

BW 88  
 Sept.10/14 705  
 Feb.25/15 1355  
 Scrotal 42 cm  
 REA 15.05  
 LMY 62.7

MARB +.33  
 REA -0.08  
 CWT +62

BW +3.5  
 WW +92  
 YW +147  
 Milk +11  
 TM +57

**LWNBURG CROSSOVER 66B (RC) ~ 12 SONS SELL**

TED 66B ~ 726651 ~ 1/29/2013

**Lots 18, 24, 54, 62, 68, 70, 76, 112, 132, 140, 164**

BW -	79
205D -	915
365D -	1279

RED BIEBER ROOSEVELT W384  
**Sire: RED BIEBER ROLLIN DEEP Y118**  
 RED BIEBER SHEBA 9602

RED BIEBER ROUGH RIDER 10712  
 RED BIEBER SHEBA 9602  
 RED BIEBER BOONE 8000  
 RED BIEBER TILLY 303S  
 G A R GRID MAKER  
 S A V ABIGALE 0451  
 BORDER BUTTE COMMANDER 69'06  
 TED STOCKMAN 157P

BW	-2.3
WW	+66
YW	+105
Milk	+26
TM	+59
MARB	+73
REA	+42
CWT	+29

SAV BISMARK 5682  
**Dam: TED BISMARK 50Y**  
 TED COMMANDER 26W

A true multi trait bull that has the best cow in our herd of 900, as his dam. Ted Bismark 50Y is perfect footed and uddered with a huge hip and tidy front end. Her production record to date has been superb with 4 calves at a 109 ratio. Add the maternal powerhouse Rollin Deep Y118 into the pedigree and Crossover 66B has the credentials to be a true cow maker in every sense of the word. We used 66B extensively in our AI *heifer* program and have over 300 progeny on the ground. His calving ease and docility breed true, even on crossbred females. Balanced EPD profile with WW, YW, Milk, TM, CE, REA, CW, and Marbling all in the top 10%.

He was our high seller in 2015 to Dave Flundra at Cattle Creek Ranch and has since been acquired by Jeff Schneider from Welsh Prairie Red Angus in Wisconsin.

**\*FIRST RED SONS SELL!**



**RED LWNBURG ROLLIN DEEP 90B ~ 11 SONS SELL**

TED 90B ~ 1786269 ~ 1/31/2014

**Lots 85, 90, 91, 94, 108, 135, 143, 157, 160, 166, 169**

BW -	87
205D -	797
365D -	1225

RED BIEBER ROOSEVELT W384  
**Sire: RED BIEBER ROLLIN DEEP Y118**  
 RED BIEBER TILLY 399W

RED BIEBER ROUGH RIDER 10712  
 RED BIEBER SHEBA 9602  
 RED BIEBER BOONE 8000  
 RED BIEBER TILLY 303S  
 RED LARSON MONU'S EMPIRE  
 RED JHK BUELL SWEETS  
 RED GLACIER MARIAS 548  
 RED TED BARNEY 3X

BW	-0.7
WW	+58
YW	+84
Milk	+25
TM	+54

RED KINCHEN SAGEBRUSH 487  
**Dam: RED TED KINCHEN SAGEBRUSH 74R**  
 RED TED GLACIER MARIAS 26L

- Continues our Rollin Deep and Sagebrush lines
- Maternally charged pedigree that will produce functional, moderate progeny
- Top 1% for Marbling

MARB	+70
REA	+25
CWT	+19



**R B TOUR OF DUTY 177 ~ FIVE SONS SELL**

IMP 177Y ~ 1829420 ~ 1/24/2011

**Lots 36, 43, 44, 61, 71**

BW -	86
205D -	798
365D -	1495

CONNELLY ONWARD  
**SIRE: WERNER WAR PARTY 2417**  
 BAAR USA LADY JAYE 489

CONNELLY LEAD ON  
 ALTUNE OF CONANGA 6104  
 B A R EXT TRAVELER 205  
 CRA LADY JAYE 608 498 S EASY  
 CONNEALY DATELINE  
 VERMILLION BLACKBIRD 5044  
 HOFF HI FLYER S C 7134  
 LADY VALICTORIAN 3 A F

BW	+2.4
WW	+67
YW	+122
Milk	+33
TM	+67

VERMILION DATELINE 7078  
**DAM: B A LADY 6897 305**  
 GD LADY VALEDICTORIAN 3S A F

- Consistent length of body and growth from birth to yearling
- Will sire high gaining feeder cattle with superb carcass merit
- Backed by a proven cow family
- WW, YW, TM, and Milk EPD's in top 1%, REA & CW top 1%

MARB	+41
REA	+92
CWT	+47



**VISION UNANIMOUS 1418 ~ FOUR SONS SELL**

IMP 1418Y ~ 1701532 ~ 1/22/2011

**Lots 78, 129, 149, 172**

BW -	84
205D -	902
365D -	1611

GAMBLES ROYAL FLUSH  
**SIRE: VISION TOPLINE ROYAL STOCKMAN**  
 LAGRAND PRIDE 7140

B C MARATHON 7022  
 CHAMPION HILL LADY 703  
 CONNEALY LEAD ON  
 T C PRIDE 8002  
 S A F 598 BANDO 5175  
 BOYD FOREVER LADY 7095  
 SYDGEN ON THE MARK  
 VISION EDELLA 1045

MARB	+69
REA	+39
CWT	+51

BOYD ON TARGET 1083  
**DAM: VISION EDELLA 665**  
 VISION EDELLA 337

- Structurally sound
- Increased calf vigour and growth from birth to yearling
- Low maintenance daughters with heavy hair
- Flexible pedigree

BW	+2.9
WW	+74
YW	+128
Milk	+17
TM	+54



**REFERENCE SIRES**



1

**RED LWNBRG FUSION 1D**

TED 1D ~ 1901061 ~ January 03 2016 ~ TWIN

RED ANDRAS IN FOCUS B175  
**Sire: RED ANDRAS FUSION R236**  
 RED ANDRAS BELLE B167

MYTTY IN FOCUS  
 RED DI ESTONIA 316  
 RED ANDRAS THUNDER B105  
 RED ANDRAS BELLE 416  
 RED TED CATALYST 107T  
 RED TED HOLDEN HI HO 52N  
 RED BJR MAKE MY DAY 981  
 RED TED SPECIAL 25K

'17 EPDS	TOP%
BW -3.3	9
WW +52	50
YW +90	20
Milk+20	25
TM +46	30

AOD	BW	WW	205D	365D	MARB	REA	CWT
2	67	865	801	1321	+0.59	+0.01	+19

**1D & 2D** These Fusion sons come with calving ease from both sides of the pedigree. The dam Catalyst 68B is the exact replica of her Elite dam 161R. Sound footed with beautiful udders. Fusion calves are very vigorous at birth which makes them a sensible choice for heifers.



2

**RED LWNBRG FUSION 2D**

TED 2D ~ 1901063 ~ January 03 2016 ~ TWIN

RED ANDRAS IN FOCUS B175  
**Sire: RED ANDRAS FUSION**  
 RED ANDRAS BELLE B167

MYTTY IN FOCUS  
 RED DI ESTONIA 316  
 RED ANDRAS THUNDER B105  
 RED ANDRAS BELLE 416  
 RED TED CATALYST 107T  
 RED TED HOLDEN HI HO 52N  
 RED BJR MAKE MY DAY 981  
 RED TED SPECIAL 25K

'17 EPDS	TOP%
BW -3.3	9
WW +52	50
YW +90	20
Milk+20	25
TM +46	30

AOD	BW	WW	205D	365D	MARB	REA	CWT
2	67	775	726	1307	+0.59	+0.01	+19

**RED ANDRAS FUSION R236**



4



**4D** Another Fusion son that comes with a massive hip and has a calving ease tabulation. This is Scarlett 62Z's third bull calf and they are all very similar in their shape and build. Electric 4D has balanced EPD's and top end indexes with weaning at 105 and yearling at 125. This curve bender will be used in our program to continue the Fusion line and add natural thickness, volume and raw power while maintain calving ease.

Maternal brothers sold to Fred McGlynn, Bar 2S and Ghost Hills Red Angus



4

### RED LWNBRG ELECTRIC 4D

TED 4D ~ 1901064 ~ January 05 2016

RED ANDRAS IN FOCUS B175  
**Sire: RED ANDRAS FUSION R236**  
 RED ANDRAS BELLE B167  
 RED LAZY MC COWBOY CUT 26U  
**Dam: RED LWNBRG SCARLETT 62Z**  
 RED TED GRAND CANYON 144R OSF

MYTTY IN FOCUS  
 RED DI ESTONIA 316  
 RED ANDRAS THUNDER B105  
 RED ANDRAS BELLE 416  
 RED LAZY MC STOUT 30S  
 RED LAZY MC STAR 185M  
 RED LCHMN GRND CANYON 1244G  
 RED TED INIGA SILVEIRAS 8E

'17 EPDS	TOP%
BW -1.6	25
WW+60	20
YW+106	5
Milk+20	25
TM +50	10

AOD	BW	WW	205D	365D	MARB	REA	CWT
4	77	910	787	1429	+0.44	+0.11	+32

### Red LWNBRG Scarlett 62Z



RED ANGUS

11



**11D** An Automatic son we are excited to mate with some heifers come April. Automatic 95B emerged as a monstrous growth bull for us after one year of breeding and we feel the combination of him and the Dakota Copper 11U dam, who is CAA Elite, has unlimited potential. Extremely long spined with exceptional hair. This cow family also raised the Catalyst 30Y herd sire that sold to Count Ridge Angus in 2012.



11

**RED LWNBRG TRACTION 11D**

TED 11D ~ 1904681 ~ January 09 2016

RED WHEEL DODGE CITY 61Y  
Sire: **RED BRYLOR AUTOMATIC 95B**  
BLACK BRYLOR LAKME 155Y

RED WHEEL DODGE CITY 3U  
RED WHEEL PRIDE 29N  
HF KODIAK 5R  
RED XXX LAKME 70M  
RED LCHMAN COPPER ROB 1204D  
RED MESSMER OPHELIA 9502  
RED HOLDEN HI HO 7151  
RED TED BOOM BOOM 67G

'17 EPDS	TOP%
BW-0.8	40
WW+71	3
YW+113	2
Milk+18	45
TM+53	6

RED OHRR DAKOTA COPPER 29K  
Dam: **RED TED DAKOTA COPPER 11U**  
RED TED HOLDEN HI HO 52N

AOD	BW	WW	205D	365D	MARB	REA	CWT
8	77	875	753	1213	+0.25	+0.10	+36



12

**RED LWNBRG FLEX 12D**

TED 12D ~ 1901072 ~ January 09 2016

MRLA 53W  
Sire: **RED MRLA FLEX 49Z**  
RED GET-A-LONG FIREFLY 363

RED CROWFOOT OLE'S OSCAR 2042M  
Dam: **RED TED OLES'S OSCAR 133W**  
RED TED GLACIER MARIAS 27N

S A V NET WORTH 4200  
RED BROX MS CHEROKEE 13N  
RED BJR MAKE MY DAY 981  
RED WCF MAVERICK'S FIREFLY 11L  
RED MLK CRK CUB 722  
RED CROWFOOT OMEGA 9179J  
RED GLACIER MARIAS 548  
RED TED SOMETHIN SPECIAL 114K

'17 EPDS	TOP%
BW+0.4	65
WW+50	60
YW+74	55
Milk+17	55
TM+42	60

AOD	BW	WW	205D	365D	MARB	REA	CWT
7	88	750	649	1087	+0.53	+0.38	+15



12

**12D** A direct Flex 49Z son with an abundance of thickness and rump. Moderate, well balanced dam in Oscar 133W. With cow makers such as Net Worth 4200, Marias 548, and Make My Day 981 and Oscar 2042 in his bloodlines, his daughters will be long-time producers.

**Red Ted Oles's Oscar 133W**





13

**13D** A very easy mannered Automatic son with exceptional growth numbers and EPD's , these Automatic sons will add payweight demanded by ranchers at weaning time. Top 1% weaning and yearling to go along with a top 1% total maternal. Maternal brother sold to Finstad Ranching.  
**WI: 106**



13

**RED LWNBRG AUTOMATIC 13D**

TED 13D ~ 1904682 ~ January 09 2016

RED WHEEL DODGE CITY 61Y  
**Sire: RED BRYLOR AUTOMATIC 95B**  
 BLACK BRYLOR LAKME 155Y

RED GLACIER MARIAS 548  
**Dam: RED TED GLACIER MARIAS 40X**  
 RED TED SHOCHO DATA 68T

RED WHEEL DODGE CITY 3U  
 RED WHEEL PRIDE 29N  
 HF KODIAK 5R AMF  
 RED XXX LAKME 70M  
 RED LCC HEAVEN OR BUST 1000B  
 RED GLACIER REBALAS  
 RED SHOCHO DATA  
 RED TED GRAND CANYON 31M

'17 EPDS	TOP%
BW+0.3	60
WW+77	1
YW+117	1
Milk+19	35
TM+57	1

AOD	BW	WW	205D	365D	MARB	REA	CWT
7	85	930	801	1269	+0.49	-0.05	+40



21

**RED LWNBRG AUTOMATIC 21D**

TED 21D ~ CM394978 ~ January 11 2016

RED WHEEL DODGE CITY 61Y  
**Sire: RED BRYLOR AUTOMATIC 95B**  
 BLACK BRYLOR LAKME 155Y

SIX MILE SAKIC 832S  
**Dam: RED TED SAKIC 3Y OSC**  
 RED TED LADY CHEROKEE 14W

RED WHEEL DODGE CITY 3U  
 RED WHEEL PRIDE 29N  
 HF KODIAK 5R  
 RED XXX LAKME 70M  
 RED SIX MILE AVIATOR 217P  
 RED SIX MILE SIERA 2 57P  
 RED SHOCHO DATA  
 RED TED GRAND CANYON 31M

'17 EPDS	TOP%
BW+0.9	
WW+85	
YW+128	
Milk+16	
TM+59	

AOD	BW	WW	205D	365D	MARB	REA	CWT
5	86	980	850	1250	+0.22	-.15	+47

21

**21D** A real performance standout coming home just shy of 1000 lbs, and having a WI of 113 in a group of 66. Huge rib and overall mass. Utilize these Automatic sons to produce high end payweight at both weaning or on the rail.



RED ANGUS



35



31

**RED LWNBRG AUTOMATIC 31D**

TED 31D ~ 1904701 ~ January 13 2016

RED WHEEL DODGE CITY 61Y  
**Sire: RED BRYLOR AUTOMATIC 95B**  
 BLACK BRYLOR LAKME 155Y

RED WHEEL DODGE CITY 3U  
 RED WHEEL PRIDE 29N  
 HF KODIAK 5R  
 RED XXX LAKME 70M  
 RED SIX MILE AVIATOR 217P  
 RED SIX MILE SIERA 257P  
 RED BJR MAKE MY DAY 981  
 RED TED FED'S BO 45I

RED SIX MILE SAKIC 832S  
**Dam: RED TED SAKIC 40Y**  
 RED TED MAKE MY DAY 57L

'17 EPDS	TOP%
BW+1.7	85
WW+76	2
YW+115	2
Milk+16	61
TM+54	5

AOD	BW	WW	205D	365D	MARB	REA	CWT
5	94	905	793	1291	+0.26	-0.09	+41



40

**RED LWNBRG FUSION 40D**

TED 40D ~ 1901088 ~ January 15 2016 TWIN

RED ANDRAS IN FOCUS B175  
**Sire: RED ANDRAS FUSION R236**  
 RED ANDRAS BELLE B167

MYTTY IN FOCUS  
 RED DI ESTONIA 316  
 RED ANDRAS THUNDER B105  
 RED ANDRAS BELLE 416  
 RED FRITZ JUSTICE 8013  
 RED GMRA THELMA 930  
 RED BRYLOR NEW TREND 22D  
 RED TED BOOM BOOM 55H

RED GMRA PEACEMAKER 1216  
**Dam: RED LWNBRG PEACEMAKER 92B**  
 RED TED NEW TREND 108P

'17 EPDS	TOP%
BW -1.6	25
WW+53	45
YW+93	15
Milk+24	5
TM+51	10

AOD	BW	WW	205D	365D	MARB	REA	CWT
2	66	735	721	1234	+0.78	+0.05	+24



35

**RED LWNBRG FLEX 35D**

TED 35D ~ 1901082 ~ January 13 2016

RED MRLA FLEX 49Z  
**Sire: RED LWNBRG FLEX 79B**  
 RED TED CHATEAU 6U

MRLA 53W  
 RED GET-A-LONG FIREFLY 363  
 RED GLACIER CHATEAU 744  
 RED TED RAMBLER 52L  
 RED GP CATALYST 025  
 RED TED GOLD ROBBER 23L  
 RED LCHMN GRND CANYON 1244G  
 RED TED HOLDEN HI HO 77K

RED TED CATALYST 107T  
**Dam: RED TED CATALYST 113A**  
 RED TED GRAND CANYON 53R

'17 EPDS	TOP%
BW+0.0	55
WW+60	20
YW+94	15
Milk+22	10
TM+52	8

AOD	BW	WW	205D	365D	MARB	REA	CWT
3	84	685	640	1176	+0.28	+0.25	+26

**40D** A typical Fusion son out of a first calf heifer. Calving ease pedigree with growth and natural fleshing ability. Wolf Creek Colony, Rooke Ranching, Schuld Farms and North Fork Farms all acquired Fusion genetics in 2016.



40

RED ANGUS

**48D** A power house by Automatic that is thick, deep and fully equipped to add pounds to a calf crop. Out of a first calf heifer in Rollin Deep 85B who has a flawless udder. The Shoco Data 18W grandam is CAA Elite. Predictable cow family and exceptional growth in a unique pedigree.

**WI: 116**

**48**



**Maternal Grand sire - Rollin Deep Y118**



**48**

**RED LWNBRG AUTOMATIC 48D**

TED 48D ~ 1904702 ~ January 17 2016

RED WHEEL DODGE CITY 61Y  
**Sire: RED BRYLOR AUTOMATIC 95B**  
 BLACK BRYLOR LAKME 155Y

RED BIEBER ROLLIN DEEP Y118  
**Dam: RED LWNBRG ROLLIN DEEP 85B**  
 RED TED OLES OSCAR 74Z

RED WHEEL DODGE CITY 3U  
 RED WHEEL PRIDE 29N  
 HF KODIAK 5R  
 RED XXX LAKME 70M  
 RED BIEBER ROOSEVELT W384  
 RED BIEBER TILLY 399W  
 RED GROWFOOT OLES OSCAR 2042M  
 RED TED SHOCCO DATA 18W

17 EPDS	TOP%
BW+1.5	80
WW +86	1
YW +136	1
Milk+17	55
TM +59	1

AOD	BW	WW	205D	365D	MARB	REA	CWT
2	86	895	869	1420	+0.54	+0.07	+53



**49**

**RED LWNBRG AUTOMATIC 49D**

TED 49D ~ 1904703 ~ January 18 2016

RED WHEEL DODGE CITY 61Y  
**Sire: RED BRYLOR AUTOMATIC 95B**  
 BLACK BRYLOR LAKME 155Y

RED SIX MILE SAKIC 832S  
**Dam: RED TED SAKIC 27Z**  
 RED TED DAKOTA COPPER 66T

RED WHEEL DODGE CITY 3U  
 RED WHEEL PRIDE 29N  
 HF KODIAK 5R  
 RED XXX LAKME 70M  
 RED SIX MILE AVIATOR 217P  
 RED SIX MILE SIERA 257P  
 RED OHRR DAKOTA COPPER 29K  
 RED TED GRAND CANYON 73M

17 EPDS	TOP%
BW+1.7	85
WW +87	1
YW +135	1
Milk+17	55
TM +61	1

AOD	BW	WW	205D	365D	MARB	REA	CWT
4	92	985	894	1347	+0.22	-0.01	+52

**49D** Scale crushing Automatic son that is extra thick and long, loaded with muscle from front to back. Breed leading growth EPD's that is backed by his actual data. He has been a standout since birth for his massive volume and rib shape. His Sakic dam records a weaning ratio of 109 on three calves.

**WI: 119**

**49**



**RED ANGUS**



52



52

**RED LWNBRG FUSION 52D**

TED 52D ~ 1901096 ~ January 19 2016

RED ANDRAS IN FOCUS B175  
**Sire: RED ANDRAS FUSION R236**  
 RED ANDRAS BELLE B167

RED BRYLOR SDL PASQUALE 213P  
**Dam: RED TED PASQUALE 8Z**  
 RED TED BARNEY 152K

MYTTY IN FOCUS  
 RED DI ESTONIA 316  
 RED ANDRAS THUNDER B105  
 RED ANDRAS BELLE 416  
 RED VGW RAMBLER 1000  
 RED XXX LAKME 70M  
 RED TED BARNEY 24H  
 RED TED SARGENT SILVEIRAS 42F

17 EPDS	TOP%
BW -3.0	10
WW +51	55
YW +89	25
Milk +21	20
TM +46	30

AOD	BW	WW	205D	365D	MARB	REA	CWT
4	87	865	790	1273	+0.64	-0.05	+19

**52D** Thick beef bull with a moderate birth weight. He will make a lasting contribution to any herd whether selling payweight or retaining daughters. The Fusion females are beautiful to look at and set up to be functional producers.  
**WI: 104**



54

**RED LWNBRG CROSSOVER 54D**

TED 54D ~ 1901095 ~ January 19 2016

RED BIEBER ROLLIN DEEP Y118  
**Sire: LWNBRG CROSS OVER 66B**  
 TED BISMARCK 50Y

RED BJR MAKE MY DAY 981  
**Dam: RED TED MAKE MY DAY 161R**  
 RED TED SPECIAL 25K

RED BIEBER ROOSEVELT W384  
 RED BIEBER TILLY 399W  
 S A V BISMARCK 5682  
 TED COMMANDER 26W  
 RED BJR EASY RIDER 781  
 RED BJR TOW KANA 117-710  
 RED KIM SOMETHIN SPECIAL  
 RED TED BJR ASTRID 8C

17 EPDS	TOP%
BW -2.0	20
WW +61	15
YW +96	10
Milk +21	20
TM +52	8

AOD	BW	WW	205D	365D	MARB	REA	CWT
11	83	815	757	1240	+0.59	+0.25	+24



54



55

**RED LWNBRG FUSION 55D**

TED 55D ~ 1894534 ~ January 20 2016

RED ANDRAS IN FOCUS B175  
**Sire: RED ANDRAS FUSION R236**  
 RED ANDRAS BELLE B167

RED BLADES NATURAL 11W  
**Dam: RED TED MAGNUM 93Z**  
 RED TED DAKOTA COPPER 103T

MYTTY IN FOCUS  
 RED DI ESTONIA 316  
 RED ANDRAS THUNDER B105  
 RED ANDRAS BELLE 416  
 RED BAR-E-L NATURAL 44N  
 RED QW HEVN'S CASSIE 38K  
 RED TED DAKOTA COPPER 29K  
 RED TED MAKE MY DAY 67L

17 EPDS	TOP%
BW -1.1	35
WW +62	15
YW +106	5
Milk +18	45
TM +49	15

AOD	BW	WW	205D	365D	MARB	REA	CWT
4	84	840	771	1314	+0.62	+0.05	+32

**54D** An outcross calving ease bull with a pedigree that would be unique for most programs. CAA Elite dam in 161R has a tidy udder and is the model of efficiency. Real world ranch cow that never missed. She has four daughters working in our herd.

Red Ted Make My Day 161R - dam of 54D



Ted Bismark 50Y - paternal grandam of 54D



56

**56D** This attractive Flex 79B son combines modest birth, length and muscle. A true heifer bull both numerically and phenotypically. Half brother sold to Ken Gruninger in 2015.



56

**RED LWNBRG FLEX 56D**

TED 56D ~ 1901098 ~ January 20 2016

RED MRLA FLEX 49Z  
Sire: **RED LWNBRG FLEX 79B**  
RED TED CHATEAU 6U

RED FABULOUS FRONT LINE 315N  
Dam: **RED TED FRONTLINE 92W**  
RED TED GLACIER MARIAS 26L

MRLA 53W  
RED GET-A-LONG FIREFLY 363  
RED GLACIER CHATEAU 744  
RED TED RAMBLER 52L  
RED MEADOW CK 904 52K  
RED CRESCENT CREEK ANNIE 1G  
RED GLACIER MARIAS 548  
RED TED BARNEY 3X

17 EPDS	TOP%
BW -1.9	20
WW +43	80
YW +59	85
Milk +24	5
TM +45	40

AOD	BW	WW	205D	365D	MARB	REA	CWT
7	78	695	626	1146	+0.09	+0.30	+2



58

**RED LWNBRG WALK OFF 58D**

TED 58D ~ 1901102 ~ January 22 2016 ~ TWIN

RED SIX MILE GRAND SLAM 130Z  
Sire: **RED SIX MILE WALK OFF 177B**  
RED SIX MILE CHETA 381Z

RED GLACIER CHATEAU 744  
Dam: **RED TED CHATEAU 25W**  
RED TED KARWEIK 74T

RED VGW GAME PLAN 816  
RED SIX MILE REBECCA 216X  
RED BENCHMARK BETTER BEEF  
RED SIX MILE CHETA 355J  
RED LMAN KING ROB 8621  
RED GLACIER REBALA  
RED BRYLOR/WSP KARWEIK 1P  
RED TED NEW TREND 53N

17 EPDS	TOP%
BW -2.5	15
WW +54	40
YW +87	35
Milk +23	9
TM +50	10

AOD	BW	WW	205D	365D	MARB	REA	CWT
7	80	830	751	1310	+0.38	+0.04	+18

58

**58D** We purchased Walk Off in 2015 from Six Mile to clean up a group of commercial heifers. We bred a few purebred cows and this is one of his six sons in the sale offering. All were low birth weight exactly what we acquired him for. This son represents his sire well with length, muscle and natural thickness.



RED ANGUS



**60**

**60D** This 95B son is superb in his structure with a powerful rump and great length and muscle. A moderate well uddered dam in 119Y who always weans a high percentage of her body weight. Last year she sold a SAV Harvester grandson to Hengerer Farms.  
**WI: 104 YI: 110**



**Red Ted Golden Boy 119Y**

**LX 60 RED LWNBRG AUTOMATIC 60D**  
 TED 60D ~ 1904706 ~ January 22 2016

RED WHEEL DODGE CITY 61Y  
**Sire: RED BRYLOR AUTOMATIC 95B**  
 BLACK BRYLOR LAKME 155Y

RED BHR GOLDEN BOY 453B  
**Dam: RED TED GOLDEN BOY 119Y**  
 RED TED GLACIER MARIAS 101L

RED WHEEL DODGE CITY 3U  
 RED WHEEL PRIDE 29N  
 HF KODIAK 5R  
 RED XXX LAKME 70M  
 RED LMB GOLDEN BOY 719  
 RED MISS BHR LOGAN 017  
 RED GLACIER MARIAS 548  
 RED TED LA ROUX DESIGN

17 EPDS	TOP%
BW+0.9	70
WW+75	1
YW+117	1
Milk+16	60
TM+54	4

AOD	BW	WW	205D	365D	MARB	REA	CWT
5	89	875	793	1359	+0.43	+0.00	+40

**LX 62 RED LWNBRG CROSSOVER 62D**  
 TED 62D ~ 1901101 ~ January 22 2016

RED BIEBER ROLLIN DEEP Y118  
**Sire: LWNBRG CROSS OVER 66B**  
 TED BISMARCK 50Y

RED FABULOUS FRONT LINE 315N  
**Dam: RED TED FRONTLINE 43W**  
 RED TED MASTER PLAN 42T

RED BIEBER ROOSEVELT W384  
 RED BIEBER TILLY 399W  
 S A V BISMARCK 5682  
 TED COMMANDER 26W  
 RED MEADOW CK 904 52K  
 RED CRESCENT CREEK ANNIE 1G  
 RED BRYLOR MASTER PLAN 17M  
 RED TED GLACIER MARIAS 26L

17 EPDS	TOP%
BW-1.7	25
WW+58	15
YW+90	15
Milk+20	20
TM+49	10

AOD	BW	WW	205D	365D	MARB	REA	CWT
7	83	785	711	1285	+0.33	+0.23	+21



**62**

**62D** A calving ease herd sire prospect by Cross Over with all the credentials to be a total herd improver. Unique pedigree with well balanced numbers across the board. His bloodlines are stacked with incredible cows like Tilly 399W, Bismark 50Y, Annie 1G and Marias 26L, it's hard to imagine anything but foundation females.  
**YI: 111**



64

**RED LWNBRG AUTOMATIC 64D**

TED 64D ~ 1904707 ~ January 23 2016

RED WHEEL DODGE CITY 61Y  
Sire: **RED BRYLOR AUTOMATIC 95B**  
BLACK BRYLOR LAKME 155Y  
  
RED BADLANDS NET WORTH 23U  
Dam: **RED TED NETWORTH 53A**  
RED TED KINCHEN SAGEBRUSH 16R

RED WHEEL DODGE CITY 3U  
RED WHEEL PRIDE 29N  
HF KODIAK 5R  
RED XXX LAKME 70M  
PFFR SHAQ 607  
RED BADLANDS MEDORA 406  
RED KINCHEN SAGEBRUSH 487  
RED TED FED'S BO 22J

'17 EPDS	TOP%
BW+5.2	99
WW+91	1
YW+139	1
Milk+15	70
TM+61	1

AOD	BW	WW	205D	365D	MARB	REA	CWT
3	102	935	889	1425	+0.57	-0.11	+59



68

**RED LWNBRG BROXBURN 68D**

TED 68D ~ 1901107 ~ January 24 2016

RED BIEBER ROLLIN DEEP Y118  
Sire: **LWNBRG CROSS OVER 66B**  
TED BISMARK 50Y  
  
RED SHOCO DATA  
Dam: **RED TED SHOCO DATA 18W**  
RED TED COMBINATION 40R

RED BIEBER ROOSEVELT W384  
RED BIEBER TILLY 399W  
S A V BISMARCK 5682  
TED COMMANDER 26W  
RED SHOCO SIR ROBIN  
RED VДАР BLACKANA 303  
RED LSF COMBINATION A301M  
RED TED LODI PRINCE 118N

'17 EPDS	TOP%
BW-0.6	45
WW+66	8
YW+98	10
Milk+21	20
TM+53	6

AOD	BW	WW	205D	365D	MARB	REA	CWT
7	90	830	758	1309	+0.64	+0.22	+27

**64D** A raw power bull that will sire pounds and gain ability. Top of the breed growth data that will add to your bottom line. Maternal brother at Bar 2S and Ghost Hills Red Angus.



**68D** One of the most complete cow makers we have ever offered. He really puts it all together with phenotype, profile and exceptional cow family. Elite dam in 18W that earned a ratio of 106 on 6 calves and the maternal grandam 118N earned a 106 on 8 calves and also was designated CAA Elite. She still is producing at 14 years of age. His maternal sister Ted 157C was a favorite of everybody who toured the bred heifers. She looks to continue the great udders of the cow family. Outcross genetics from the calving ease Cross Over 66B that will no doubt add to his versatility.



**TED BISMARK 50Y**



**LWNBRG CROSSOVER 66B**



**ROLLIN DEEP Y118**

**RED ANGUS**



69



69

**RED LWNBRG FUSION 69D**

TED 69D ~ 1901106 ~ January 24 2016

RED ANDRAS IN FOCUS B175  
**Sire: RED ANDRAS FUSION R236**  
 RED ANDRAS BELLE B167

RED GMRA PEACEMAKER 1216  
**Dam: RED LWNBRG PEACEMAKER 70B**  
 RED TED RED SPREAD 174R

MYTTY IN FOCUS  
 RED DI ESTONIA 316  
 RED ANDRAS THUNDER B105  
 RED ANDRAS BELLE 416  
 RED FRITZ JUSTICE 8013  
 RED GMRA THELMA 930  
 RED LCHMN RED SPREAD 1271F  
 RED TED FARGO 33L

17 EPDS	TOP%
BW -0.4	45
WW+64	10
YW+111	2
Milk+24	5
TM +56	2

AOD	BW	WW	205D	365D	MARB	REA	CWT
2	86	805	809	1353	+0.78	+0.09	+36

**69D** A Fusion son you won't miss in the pen. His dam 70B was my favorite bred heifer to calve last year. She has undoubted potential to raise herd bulls and her first calf didn't disappoint. Balanced EPD's and actual data.



73

**RED LWNBRG WALK OFF 73D**

TED 73D ~ 1901111 ~ January 24 2016

RED SIX MILE GRAND SLAM 130Z  
**Sire: RED SIX MILE WALK OFF 177B**  
 RED SIX MILE CHETA 381Z

RED TED MAKE MY DAY 31R  
**Dam: RED TED SPITFIRE 12A**  
 RED TED FRONTLINE 92W

RED VGW GAME PLAN 816  
 RED SIX MILE REBECCA 216X  
 RED BENCHMARK BETTER BEEF  
 RED SIX MILE CHETA 355J  
 RED BJR MAKE MY DAY 981  
 RED TED ABOVE & BEYOND 107N  
 RED FABULOUS FRONT LINE 315N  
 RED TED GLACIER MARIAS 26L

17 EPDS	TOP%
BW -1.4	25
WW +53	45
YW +78	50
Milk+22	10
TM +48	20

AOD	BW	WW	205D	365D	MARB	REA	CWT
3	81	735	710	1132	+0.48	+0.03	+14

Red Sixmile Walk Off 177B - Sire to 73D & 83D



82

**RED LWNBRG FUSION 82D**

TED 82D ~ 1901117 ~ January 27 2016

RED ANDRAS IN FOCUS B175  
**Sire: RED ANDRAS FUSION R236**  
 RED ANDRAS BELLE B167

RED FABULOUS FRONT LINE 315N  
**Dam: RED TED FRONTLINE 45W OSF**  
 RED TED ROMEO 46P OSC

MYTTY IN FOCUS  
 RED DI ESTONIA 316  
 RED ANDRAS THUNDER B105  
 RED ANDRAS BELLE 416  
 RED MEADOW CK 904 52K  
 RED CRESCENT CREEK ANNIE 1G  
 RED BUF CRK ROMEO L081  
 RED TED GLACIER LOGAN 126M

17 EPDS	TOP%
BW+0.6	65
WW +55	40
YW +90	20
Milk+20	25
TM +47	25

AOD	BW	WW	205D	365D	MARB	REA	CWT
7	97	790	731	1282	+0.55	-0.09	+25



83

**RED LWNBRG WALK OFF 83D**

TED 83D ~ 1901120 ~ January 27 2016

RED SIX MILE GRAND SLAM 130Z  
**Sire: RED SIX MILE WALK OFF 177B**  
 RED SIX MILE CHETA 381Z

S A V NET WORTH 4200  
**Dam: TED NETWORTH 68A**  
 RED TED CATALYST 20W

RED VGW GAME PLAN 816  
 RED SIX MILE REBECCA 216X  
 RED BENCHMARK BETTER BEEF  
 RED SIX MILE CHETA 355J  
 S A V 8180 TRAVELER 004  
 S A V MAY 2410  
 RED TED CATALYST 107T  
 RED TED HOB0 76H

17 EPDS	TOP%
BW -4.2	4
WW +45	75
YW +79	45
Milk+24	5
TM +47	25

AOD	BW	WW	205D	365D	MARB	REA	CWT
3	74	655	644	1164	+0.68	+0.14	+12

85



85

**RED LWNBRG ROLLIN DEEP 85D**

TED 85D ~ CM394975 ~ January 28 2016

RED BEIBER ROLLIN DEEP Y118  
**Sire: RED LWNBRG ROLLIN DEEP 90B**  
 RED TED KINCHEN SAGEBRUSH 74R

RED FINE LINE MULBERRY 26P  
**Dam: RED TED MULBERRY 114X OSC**  
 RED TED ROMEO 59T OSC

RED BIEBER ROOSEVELT W384  
 RED BIEBER TILLY 399W  
 RED KINCHEN SAGEBRUSH 487  
 RED TED GLACIER MARIAS 26L  
 RED COMPASS MULBERRY 449M  
 RED DUS FAYETTE 8G  
 RED BUF CRK ROMEO L081  
 RED TED KINCHEN SAGEBRUSH 196R

17 EPDS	TOP%
BW+0.6	
WW+64	
YW +95	
Milk+22	
TM +53	

AOD	BW	WW	205D	365D	MARB	REA	CWT
6	88	795	738	1274	+0.56	+0.14	+27





86



86

**RED LWNBRG FUSION 86D**

TED 86D ~ 1901123 ~ January 28 2016

RED ANDRAS IN FOCUS B175  
**Sire: RED ANDRAS FUSION R236**  
 RED ANDRAS BELLE B167

RED BRYLOR MASTER PLAN 17M  
**Dam: RED LWNBRG ANISTON 137S**  
 RED TED FARGO 33L

MYTTY IN FOCUS  
 RED DI ESTONIA 316  
 RED ANDRAS THUNDER B105  
 RED ANDRAS BELLE 416  
 RED BASIN SENSATION 702E  
 RED BRYLOR BONITA 66K  
 RED BADLANDS BONUS 702  
 RED TED MAJESTA REDFORD 57D

'17 EPDS	TOP%
BW -1.1	35
WW +53	45
YW +94	15
Milk +13	80
TM +39	75

AOD	BW	WW	205D	365D	MARB	REA	CWT
10	84	790	733	1292	+0.44	-0.18	+25

**86D** Aniston 137S is a solid, easy keeping cow that has done nothing but raise powerful ranch bulls. She is also the maternal grand-dam to Red LWNBRG Harvestor 103C

**Herdsire Harvestor 154A - maternal brother to 86D**



89

**RED LWNBRG WALK OFF 89D**

TED 89D ~ 1901122 ~ January 28 2016

RED SIX MILE GRAND SLAM 130Z  
**Sire: RED SIX MILE WALK OFF 177B**  
 RED SIX MILE CHETA 381Z

RED TED CATALYST30Y  
**Dam: RED TED CATALYST 40A**  
 RED TED KINCHEN SAGEBRUSH 163R

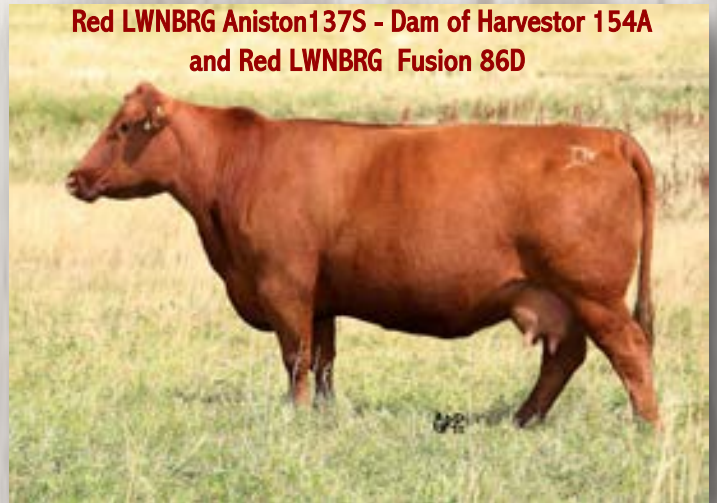
RED VGW GAME PLAN 816  
 RED SIX MILE REBECCA 216X  
 RED BENCHMARK BETTER BEEF  
 RED SIX MILE CHETA 355J  
 RED TED CATALYST 107T  
 RED TED HOLDEN HI HO 52N  
 RED KINCHEN SAGEBRUSH 487  
 RED TED BASIN DRIFTER 95M

'17 EPDS	TOP%
BW -3.5	7
WW +48	65
YW +74	55
Milk +20	25
TM +44	45

AOD	BW	WW	205D	365D	MARB	REA	CWT
3	67	660	650	1020	+0.31	+0.01	+9

**89D** Sure fire calving ease son of Walk Off 177B. His first calves had good calf vigor with adequate growth.

**Red LWNBRG Aniston137S - Dam of Harvestor 154A and Red LWNBRG Fusion 86D**





**90D & 91D** This is Shoco Data 68T's third set of twins in 8 years. She had 11 natural calves in that same time span. Fertility was not an issue for maternal Grandam 31M either, as she had 11 natural calves as well and was designated Premier in 2012 by the CAA. Moderate cows that wean a high percentage of their body weight each year. These cow families are the kind who will thrive under real range conditions and produce daughters that will do the same.



**RED LWNBRG ROLLIN DEEP 90D**

TED 90D ~ 1915426 ~ January 28 2016 ~ TWIN

'17 EPDS	TOP%
BW+0.0	55
WW+60	20
YW +86	30
Milk+21	20
TM +51	10

RED BIEBER ROLLIN DEEP Y118  
**Sire: RED LWNBRG ROLLIN DEEP 90B**  
 RED TED KINCHEN SAGEBRUSH 74R

RED BIEBER ROOSEVELT W384  
 RED BIEBER TILLY 399W  
 RED KINCHEN SAGEBRUSH 487  
 RED TED GLACIER MARIAS 26L  
 RED SHOCO SIR ROBIN  
 RED VDAR BLACKANA 303  
 RED LCHMN GRND CANYON 1244G  
 RED TED BJR CLEMENTIA 28A

RED SHOCO DATA OSF  
**Dam: RED TED SHOCO DATA 68T OSC**  
 RED TED GRAND CANYON 31M OSC

AOD	BW	WW	205D	365D	MARB	REA	CWT
9	71	770	714	1197	+0.59	+0.05	+21



**RED LWNBRG ROLLIN DEEP 91D**

TED 91D ~ 1914190 ~ January 28 2016 ~ TWIN

'17 EPDS	TOP%
BW+0.0	55
WW+60	20
YW +86	30
Milk+21	20
TM +51	10

RED BIEBER ROLLIN DEEP Y118  
**Sire: RED LWNBRG ROLLIN DEEP 90B**  
 RED TED KINCHEN SAGEBRUSH 74R

RED BIEBER ROOSEVELT W384  
 RED BIEBER TILLY 399W  
 RED KINCHEN SAGEBRUSH 487  
 RED TED GLACIER MARIAS 26L  
 RED SHOCO SIR ROBIN  
 RED VDAR BLACKANA 303  
 RED LCHMN GRND CANYON 1244G  
 RED TED BJR CLEMENTIA 28A

RED SHOCO DATA OSF MAF  
**Dam: RED TED SHOCO DATA 68T OSC**  
 RED TED GRAND CANYON 31M OSC

AOD	BW	WW	205D	365D	MARB	REA	CWT
9	82	775	719	1134	+0.59	+0.05	+21

**RED LWNBRG ROLLIN DEEP 90B - Sire of 90D & 91D**



94

**94D** Another Rollin Deep 90B son with superb structure, powerful rump with good length and muscle. As the years go by the Dakota Copper cows are becoming must have ranch cows. Fertile, efficient and a touch more frame.



**94 RED LWNBRG ROLLIN DEEP 94D**

TED 94D ~ 1901127 ~ January 29 2016

RED BIEBER ROLLIN DEEP Y118  
**Sire: RED LWNBRG ROLLIN DEEP 90B**  
 RED TED KINCHEN SAGEBRUSH 74R

RED OHRR DAKOTA COPPER 29K  
**Dam: RED TED DAKOTA COPPER 103T**  
 RED TED MAKE MY DAY 67L

RED BIEBER ROOSEVELT W384  
 RED BIEBER TILLY 399W  
 RED KINCHEN SAGEBRUSH 487  
 RED TED GLACIER MARIAS 26L  
 RED LCHMAN COPPER ROB 1204D  
 RED MESSMER OPHELIA 9502  
 RED BJR MAKE MY DAY 981  
 RED TED BLAZE CHARLOTTE 2B

17 EPDS	TOP%
BW -0.9	40
WW+61	15
YW +89	25
Milk+22	10
TM +53	6

AOD	BW	WW	205D	365D	MARB	REA	CWT
9	84	795	741	1141	+0.54	+0.11	+22



**108 RED LWNBRG ROLLIN DEEP 108D**

TED 108D ~ 1901138 ~ February 01 2016

RED BIEBER ROLLIN DEEP Y118  
**Sire: RED LWNBRG ROLLIN DEEP 90B**  
 RED TED KINCHEN SAGEBRUSH 74R

RED 6 MILE FULL THROTTLE 171T  
**Dam: RED TED FULL THROTTLE 17A**  
 RED TED OLES'S OSCAR 11W

RED BIEBER ROOSEVELT W384  
 RED BIEBER TILLY 399W  
 RED KINCHEN SAGEBRUSH 487  
 RED TED GLACIER MARIAS 26L  
 RED TER-RON FULLY LOADED 540R  
 RED SIX MILE WITZEL 360J  
 RED CROWFOOT OLES OSCAR 2042M  
 RED TED MAJOR LEAGUE 9T

17 EPDS	TOP%
BW -1.0	35
WW+64	10
YW +99	10
Milk+21	20
TM +54	4

AOD	BW	WW	205D	365D	MARB	REA	CWT
3	82	800	792	1336	+0.86	+0.08	+27

**108D** A valuable, low birth weight bull that will add capacity and rib while still maintaining good length of spine. Balanced EPD profile and actual data weaning ratio of 105 from a 4 year old dam. Maternal brother Wander 5C sold to Wolf Creek Colony in 2016.

108



Red LWNBRG Wander 5C - maternal brother to 108D

RED ANGUS

**Ted Net Worth14X - Maternal Grandam of 109D**



**109**

**RED LWNBRG FUSION 109D**

TED 109D ~ 1901136 ~ February 01 2016

RED ANDRAS IN FOCUS B175  
**Sire: RED ANDRAS FUSION R236**  
 RED ANDRAS BELLE B167

RED TED PACKER 107Z  
**Dam: LWNBRG PACKER 98B**  
 TED NET WORTH 14X

MYTTY IN FOCUS  
 RED DI ESTONIA 316  
 RED ANDRAS THUNDER B105  
 RED ANDRAS BELLE 416  
 RED MESSMER PACKER S008  
 RED TED FRONTLINE 151W  
 S A V NET WORTH 4200  
 TED REVIVAL 113P

'17 EPDS	TOP%
BW -0.3	50
WW+56	35
YW +98	10
Milk+19	35
TM +47	25

AOD	BW	WW	205D	365D	MARB	REA	CWT
2	84	695	730	1251	+0.71	+0.18	+29

**109D** Calving ease bull with a versatile pedigree that includes great black bulls Mytty In Focus and Network 4200



**LWNBRG Cross Over - Sire of 112D**



**112**

**RED LWNBRG CROSS OVER 112D**

TED 112D ~ 1901143 ~ February 03 2016

RED BIEBER ROLLIN DEEP Y118  
**Sire: LWNBRG CROSS OVER 66B**  
 TED BISMARCK 50Y

RED KINCHEN SAGEBRUSH 487  
**Dam: RED TED KINCHEN SAGEBRUSH 163R**  
 RED TED BASIN DRIFTER 95M

RED BIEBER ROOSEVELT W384  
 RED BIEBER TILLY 399W  
 S A V BISMARCK 5682  
 TED COMMANDER 26W  
 RED LARSON MONU'S EMPIRE  
 RED JHK BUELL SWEETS  
 RED BASIN DRIFTER 430H  
 RED TED TCB 74G

'17 EPDS	TOP%
BW -0.9	40
WW+63	10
YW +93	15
Milk+22	10
TM +53	6

AOD	BW	WW	205D	365D	MARB	REA	CWT
11	88	790	778	1254	+0.55	+0.14	+24

**112D** Consistent numbered Crossover son from a very heavy milking Sagebrush dam who has 5 daughters retained in our herd. Smooth shouldered with ample rib and docility from both sides of the pedigree. Moderate framed, with real world fleshing ability.



**RED ANGUS**

120



**120D** This son is loaded with muscle, thickness and volume. His Master Plan dam is moderate framed and easy doing with a perfect udder. Last year she had a Flex son in our sale that sold to Pelleboer Farms. Maternal grandam 26L is CAA Elite and has 5 daughters working in our herd.



120

**RED LWNBRG FUSION 120D**

TED 120D ~ 1904711 ~ February 04 2016

RED ANDRAS IN FOCUS B175  
**Sire: RED ANDRAS FUSION R236**  
RED ANDRAS BELLE B167  
  
RED BRYLOR MASTER PLAN 17M MAC  
**Dam: RED TED MASTER PLAN 42T MAF**  
RED TED GLACIER MARIAS 26L

MYTTY IN FOCUS  
RED DI ESTONIA 316  
RED ANDRAS THUNDER B105  
RED ANDRAS BELLE 416  
RED BASIN SENSATION 702E  
RED BRYLOR BONITA 66K  
RED GLACIER MARIAS 548  
RED TED BARNEY 3X

'17 EPDS	TOP%
BW -2.0	20
WW+53	45
YW +84	35
Milk+18	45
TM +41	65

AOD	BW	WW	205D	365D	MARB	REA	CWT
9	89	785	750	1226	+0.37	-0.07	+18



124

**RED LWNBRG GUNNER 124D**

TED 124D ~ 1902854 ~ February 07 2016

RED LAZY MC TROOPER 21Y  
**Sire: RED LAZY MC GUNNER 144B**  
RED LAZY MC STAR 185M  
  
RED SHOCO DATA  
**Dam: RED TED SHOCO DATA 116Z**  
RED TED BRANDED BEEF 83T

RED SSS SOLDIER 365W  
LAZY MC EXPRESS 60W  
LAZY MC WORLDWIDE 5K  
RED LAZY MC STAR 100J  
RED SHOCO SIR ROBIN  
RED VDAR BLACKANA 303  
RED BIR AH BRANDED BEEF L107  
RED TED GLACIER MARIAS 101L

'17 EPDS	TOP%
BW+2.3	91
WW+75	1
YW+114	1
Milk+20	25
TM +58	1

AOD	BW	WW	205D	365D	MARB	REA	CWT
4	98	860	847	1504	+0.49	+0.15	+41

**124D** High performance Gunner son with loads of muscle and length. He's bred to put pounds on the scale. Top of the breed growth EPD's, and high maternal from a powerful Shoco Data daughter who has a 107 ratio on 3 calves. **WI: 111 YI: 128** Maternal brother sold to Ashbacher Angus in 2016.

124



RED ANGUS



### RED LWNBRG GUNNER 126D

TED 126D ~ 1902855 ~ February 07 2016

17 EPDS	TOP%
BW -1.1	35
WW+56	35
YW +85	30
Milk+25	3
TM +53	6

RED LAZY MC TROOPER 21Y  
**Sire: RED LAZY MC GUNNER 144B**  
 RED LAZY MC STAR 185M

RED SSS SOLDIER 365W  
 LAZY MC EXPRESS 60W  
 LAZY MC WORLDWIDE 5K  
 RED LAZY MC STAR 100J  
 RED SIX MILE AVIATOR 217P  
 RED SIX MILE SIERA 257P  
 RED LODI PRINCE 263Z  
 RED TED GLACIER MARIAS 26L

RED SIX MILE SAKIC 832S  
**Dam: RED TED SAKIC 16Y**  
 RED TED LODI PRINCE 155P

AOD	BW	WW	205D	365D	MARB	REA	CWT
5	78	730	706	1211	+0.20	+0.25	+19

**126D** - Calving ease bull with a heavy milking pedigree  
 - Grandam Lodi Prince 155P is Elite as is her great Grandam Glacier Marias 26L  
 - Very long bodied and correct



134



### RED LWNBRG CROSSOVER 132D

TED 132D ~ 1901151 ~ February 11 2016

17 EPDS	TOP%
BW -0.4	45
WW+65	10
YW +99	10
Milk+21	20
TM +54	4

RED BIEBER ROLLIN DEEP Y118  
**Sire: LWNBRG CROSS OVER 66B**  
 TED BISMARCK 50Y

RED BIEBER ROOSEVELT W384  
 RED BIEBER TILLY 399W  
 S A V BISMARCK 568Z  
 TED COMMANDER 26W  
 RED MEADOW CK 904 52K  
 RED CRESCENT CREEK ANNIE 1G  
 RED GP CATALYST 02S  
 RED TED ROBIN HOOD 15L

RED FABULOUS FRONT LINE 315M  
**Dam: RED TED FRONT LINE 50W**  
 RED TED CATALYST 139T

AOD	BW	WW	205D	365D	MARB	REA	CWT
7	82	770	757	1247	+0.54	+0.27	+28

**132D** - Moderate birth weight bull from the calving ease Cross Over 66B  
 - Dam and Grandam are always noticed for their massive rib and capacity



### RED LWNBRG AUTOMATIC 134D

TED 134D ~ 1952002 ~ February 11 2016

17 EPDS	TOP%
BW+4.6	99
WW+85	1
YW +146	1
Milk+13	80
TM +54	4

RED WHEEL DODGE CITY 61Y  
**Sire: RED BRYLOR AUTOMATIC 95B**  
 BLACK BRYLOR LAKME 155Y

RED WHEEL DODGE CITY 3U  
 RED WHEEL PRIDE 29N  
 HF KODIAK 5R  
 RED XXX LAKME 70M  
 RED MESSMER JOXHUA 019P  
 RED MESSMER MILLIE 124P  
 RED LCMN RED SPREAD 1271F  
 RED TED FARGO 33L

RED MESSMER PACKER S008  
**Dam: RED TED PACKER 134A**  
 RED TED RED SPREAD 174R

AOD	BW	WW	205D	365D	MARB	REA	CWT
3	103	740	766	1438	+0.31	+0.10	+64

**134D** Automatic 134D has massive volume, rib shape and fleshing ability with great performance. #1 ranked bull at yearling with a ratio of 130. He will have unparoled ability to sire payweight and gainability. His dam is a big topped, huge ribbed tank that had a 127 YI. A pound producing machine from both sides of the pedigree.



135



### RED LWNBRG 135D

TED 135D ~ CM394534 ~ February 11 2016

17 EPDS	TOP%
BW+1.7	
WW+63	
YW +97	
Milk+27	
TM +58	

RED BEIBER ROLLIN DEEP Y118  
**Sire: RED LWNBRG ROLLIN DEEP 90B**  
 RED TED KINCHEN SAGEBRUSH 74R

RED BIEBER ROOSEVELT W384  
 RED BIEBER TILLY 399W  
 RED KINCHEN SAGEBRUSH 487  
 RED TED GLACIER MARIAS 26L  
 BRMJ 171  
 RED BRMJ 155  
 RED LCHMN GRND CANYON 1244G  
 RED TED NEW TREND 85P

RED HG GRIDMAKER  
**Dam: RED TED 15Y OSC**  
 RED TED GRAND CANYON 124T OSC

AOD	BW	WW	205D	365D	MARB	REA	CWT
5	97	800	787	1345	+55	+17	+30

**135D** A smooth shouldered Rollin Deep 90B son with extra length. He blends performance with cow family strength. His dam is a proven CAA Elite dam with a flawless udder, and a 108 ratio on 4 calves. We retained a son for natural breeding on commercial heifers in 2015 and last year she had a Kodiak son sell to Moens Farms.



136



### RED LWNBRG FUSION 136D

TED 136D ~ 1901150 ~ February 11 2016

17 EPDS	TOP%
BW -1.6	25
WW+53	45
YW +90	20
Milk+19	35
TM +46	30

RED ANDRAS IN FOCUS B175  
**Sire: RED ANDRAS FUSION R236**  
 RED ANDRAS BELLE B167

MYTTY IN FOCUS  
 RED DI ESTONIA 316  
 RED ANDRAS THUNDER B105  
 RED ANDRAS BELLE 416  
 RED TED CATALYST 107T  
 RED TED HOLDEN HI HO 52N  
 RED BADLANDS BONUS 70Z  
 RED TED CREEK CLEO 2Z

RED TED CATALYST 30Y  
**Dam: RED LWNBRG CATALYST 19B**  
 RED TED FARGO 28L

AOD	BW	WW	205D	365D	MARB	REA	CWT
2	82	675	738	1274	+0.49	-0.02	+22

**136D** This attractive Fusion son continues modest birth, length and sterling calving ease pedigree. Very well balanced bull that will have added value with the ability to breed heifers for a couple years because of his moderate frame.

**LX 140 RED LWNBRG CROSSOVER 140D**  
 TED 140D ~ 1901155 ~ February 15 2016

RED BIEBER ROLLIN DEEP Y118  
**Sire: LWNBRG CROSS OVER 66B**  
 TED BISMARCK 50Y

RED BIEBER ROOSEVELT W384  
 RED BIEBER TILLY 399W  
 S A V BISMARCK 5682  
 TED COMMANDER 26W  
 RED GLACIER CHATEAU 744  
 RED TED RAMBLER 52L  
 RED TED MAKE MY DAY 31R  
 RED TED BECTON LANCER 127N

17 EPDS	TOP%
BW -1.3	30
WW+58	25
YW +91	20
Milk+23	9
TM +52	8

RED TED CHATEAU 142Y  
**Dam: RED LWNBRG CHATEAU 69B**  
 RED TED SPITFIRE 96Y

AOD	BW	WW	205D	365D	MARB	REA	CWT
2	83	625	699	1227	+0.41	+0.29	+23



**LX 143 RED LWNBRG RIPTIDE 143D**  
 TED 143D ~ 1901154 ~ February 15 2016

RED BIEBER ROLLIN DEEP Y118  
**Sire: RED LWNBRG ROLLIN DEEP 90B**  
 RED TED KINCHEN SAGEBRUSH 74R

RED BIEBER ROOSEVELT W384  
 RED BIEBER TILLY 399W  
 RED KINCHEN SAGEBRUSH 487  
 RED TED GLACIER MARIAS 26L  
 RED LCHMAN COPPER ROB 1204D  
 RED MESSMER OPHELIA 9502  
 RED BRYLOR NEW TREND 22D  
 RED TED BOOM BOOM 55H

17 EPDS	TOP%
BW -0.7	40
WW+58	25
YW +82	40
Milk+22	10
TM +51	10

RED OHRR DAKOTA COPPER 29K  
**Dam: RED TED DAKOTA COPPER 7W**  
 RED TED NEW TREND 108P

AOD	BW	WW	205D	365D	MARB	REA	CWT
7	84	770	770	1313	+0.43	+0.14	+18

**143D** This Rollin Deep 90B son instantly grabs your attention with his flawless phenotype and herd bull profile and style. He is extra long, thick and loaded with muscle. His Dakota Copper dam requires zero maintenance and is in top shape no matter the time of the year. She has two daughters in our herd both are flawless in udder and teat size. **WI: 102 YI: 106**  
 Retaining 1/2 Interest



**RED ANGUS**



**154 RED LWNBRG WALK OFF 154D**

TED 154D ~ 1901160 ~ February 2016

RED SIX MILE GRAND SLAM 130Z  
Sire: **RED SIX MILE WALK OFF 177B**  
RED SIX MILE CHETA 381Z

RED 6 MILE FULL THROTTLE 171T  
Dam: **RED TED FULL THROTTLE 16A**  
RED TED DAKOTA COPPER 7W

RED VGW GAME PLAN 816  
RED SIX MILE REBECCA 216X  
RED BENCHMARK BETTER BEEF  
RED SIX MILE CHETA 355J  
RED TER-RON FULLY LOADED 540R  
RED SIXMILE WITZEL 360J  
RED OHRR DAKOTA COPPER 29K  
RED TED NEW TREND 108P

'17 EPDS	TOP%
BW -3.5	7
WW+44	80
YW +70	65
Milk+20	25
TM +42	60

AOD	BW	WW	205D	365D	MARB	REA	CWT
3	69	620	660	1127	+0.34	-0.05	+7



**157 RED LWNBRG CROSS OVER 157D**

TED 157D ~ 1944362 ~ February 19 2016

RED BIEBER ROLLIN DEEP Y118  
Sire: **LWNBRG CROSS OVER 66B**  
TED TED BISMARCK 50Y

RED WEBR DOC HOLLIDAY 2N  
Dam: **RED TED HOLLIDAY 47Y OSC**  
RED TED ROMEO 124S OSC

RED BIEBER ROOSEVELT W384  
RED BIEBER TILLY 399W  
S A V BISMARCK 5682  
TED COMMANDER 26W  
RED MLK CRK CUB 722  
RED WEBR MS DOLLY 1L  
RED BUF CRK ROMEO L081  
RED TED NEW TREND 85P

'17 EPDS	TOP%
BW+3.8	97
WW+79	1
YW +130	1
Milk+24	5
TM +61	1

AOD	BW	WW	205D	365D	MARB	REA	CWT
5	106	775	788	1377	+0.55	+0.21	+53

**157D** An absolute tank of a bull from cow that makes a habit of producing thick, huge middled calves. She produced a herd bull, Red Ted Wander 43A to George and Laura Baxter in 2014. How often can you add top 1% growth EPD's while maintaining high milk and top 1% TM!

••••• Thank You to all of our valued Customers who have supported our program to date!

- Ashbacher Angus
- John Balderson\*
- Bar 2 S\*
- Ghost Hills Red Angus\*
- Count Ridge Angus\*
- Don Carlson\*
- CCRA Ranching\*
- Jim Clarke
- Jeff Cope
- Doug Greidanas
- Ken Gruning\*
- John Haarman\*
- Hays Stock Grazing Co-op\*
- Jack Hening\*
- Wayne Passey
- Martin & Sheila Hilmer\*
- Keho Lake Colony\*
- D & C Matsugi
- John & Sheila Mazutinec\*
- Fred McGlynn
- Moens Farms\*
- North Fork Farms\*
- Park Livestock\*
- Tyler Pasiciel
- Pelleboer Farms
- Greg Romeril\*
- C. Rook Ranching
- Rohrich's Cutting Edge Ranch
- Hicken Ranch\*
- Sandhills Red Angus
- Schuld Farms\*
- Monique Slingerland\*
- David Slingerland\*
- Spring Valley Holdings
- Trautman Cattle Co.\*
- Wolf Creek Farming\*
- Matthew Beckman\*
- Kendall Bevans
- Brylor Ranch
- Bar 4A
- Cattle Creek Ranching\*
- Chin Valley Ranch
- Crescent Hills Farms
- Rod Dixon\*
- East Raymond Farming\*
- Ewelme Farming Co. Ltd.\*
- Fairhaven Farms\*
- Finstead Ranch
- Gogolinski Farms Ltd.
- Nevin Heidinger\*
- Peter Heins & Sons\*
- Lakeside Colony\*
- Lost River Ranches
- M.C. Quantock L/S Corp.
- L & J Murray Ranches\*
- K. Palmer Farms Ltd.\*
- Whitelake Colony\*

*\*Repeat Buyers*





**160D, 166D, & 169D**

These Rollin Deep 90B sons have calving ease built in numerically and structurally. They will add calf vigor and drop birth weight. The Sackic 3W dam has produced sons going to Greg Romeril, John Hofer and Albion Ridge Colony.

**LX 160 RED LWNBRG ROLLIN DEEP 160D**

TED 160D ~ 1901124 ~ January 28 2016

RED BIEBER ROLLIN DEEP Y118  
**Sire: RED LWNBRG ROLLIN DEEP 90B**  
 RED TED KINCHEN SAGEBRUSH 74R

RED GLACIER LOGAN  
**Dam: RED TED GLACIER LOGAN 22M**  
 RED TED MAKE MY DAY 37K

RED BIEBER ROOSEVELT W384  
 RED BIEBER TILLY 399W  
 RED KINCHEN SAGEBRUSH 487  
 RED TED GLACIER MARIAS 26L  
 RED BUFFALO CREEK VC CHIEF 105  
 RED GLACIER REBALAS  
 RED BJR MAKE MY DAY 981  
 RED TED JUNO SILVEIRAS 59E

'17 EPDS	TOP%
BW -0.8	40
WW +49	60
YW +72	60
Milk +22	10
TM +46	30

AOD	BW	WW	205D	365D	MARB	REA	CWT
14	80	665	645	1090	+0.71	+0.03	+12

**LX 169 RED LWNBRG ROLLIN DEEP 169D**

TED 169D ~ 1901167 ~ February 27 2016

RED BIEBER ROLLIN DEEP Y118  
**Sire: RED LWNBRG ROLLIN DEEP 90B**  
 RED TED KINCHEN SAGEBRUSH 74R

RED SIX MILE SAKIC 832S  
**Dam: RED TED SAKIC 3W**  
 RED TED CHATEAU 15T

RED BIEBER ROOSEVELT W384  
 RED BIEBER TILLY 399W  
 RED KINCHEN SAGEBRUSH 487  
 RED TED GLACIER MARIAS 26L  
 RED SIX MILE AVIATOR 217P  
 RED SIX MILE SIERA 257P  
 RED GLACIER CHATEAU 744  
 RED TED NEOMA THE DUKE

'17 EPDS	TOP%
BW -2.6	15
WW +47	72
YW +63	82
Milk +25	4
TM +49	20

AOD	BW	WW	205D	365D	MARB	REA	CWT
7	76	620	654	1092	+0.30	+0.10	+4

**LX 166 RED LWNBRG ROLLIN DEEP 166D**

TED 166D ~ 1901165 ~ February 25 2016

RED BIEBER ROLLIN DEEP Y118  
**Sire: RED LWNBRG ROLLIN DEEP 90B**  
 RED TED KINCHEN SAGEBRUSH 74R

RED SIX MILE SAKIC 832S  
**Dam: RED TED SAKIC 29Y**  
 RED TED NEW TREND 11L

RED BIEBER ROOSEVELT W384  
 RED BIEBER TILLY 399W  
 RED KINCHEN SAGEBRUSH 487  
 RED TED GLACIER MARIAS 26L  
 RED SIX MILE AVIATOR 217P  
 RED SIX MILE SIERA 257P  
 RED BRYLOR NEW TREND 22D  
 RED TED ANGELICA IOWA

'17 EPDS	TOP%
BW -1.3	30
WW +54	40
YW +80	45
Milk +26	2
TM +53	6

AOD	BW	WW	205D	365D	MARB	REA	CWT
5	79	665	695	1171	+0.26	+0.08	+16

**LX 174 RED LWNBRG GUNNER 174D**

TED 174D ~ 1902848 ~ February 28 2016

RED LAZY MC TROOPER 21Y  
**Sire: RED LAZY MC GUNNER 144B**  
 RED LAZY MC STAR 185M

RED KINCHEN SAGEBRUSH 487  
**Dam: RED TED KINCHEN SAGEBRUSH 74R**  
 RED TED GLACIER MARIAS 26L

RED SSS SOLDIER 365W  
 LAZY MC EXPRESS 60W  
 LAZY MC WORLDWIDE 5K  
 RED LAZY MC STAR 100J  
 RED LARSON MONU'S EMPIRE  
 RED JHK BUELL SWEETS  
 RED GLACIER MARIAS 548  
 RED TED BARNEY 3X

'17 EPDS	TOP%
BW +0.7	70
WW +58	25
YW +84	35
Milk +22	10
TM +51	10

AOD	BW	WW	205D	365D	MARB	REA	CWT
11	94	685	752	1190	+0.42	+0.18	+21



178



175

**RED LWNBRG FLEX 175C**

TED 175C ~ 1886481 ~ July 24 2015

MRLA 53W  
**Sire: RED MRLA FLEX 49Z**  
 RED GET-A-LONG FIREFLY 363  
 SIX MILE SAKIC 832S  
**Dam: RED TED SAKIC 34Y**  
 RED TED CATALYST 20W

S A V NET WORTH 4200  
 RED BROX MS CHEROKEE 13N  
 RED BJR MAKE MY DAY 981  
 RED WCF MAVERICK'S FIREFLY 11L  
 RED SIX MILE AVIATOR 217P  
 RED SIX MILE SIERA 2 57P  
 RED TED CATALYST 107T  
 RED TED HOBO 76H

'17 EPDS	TOP%
BW+0.4	65
WW+63	10
YW +92	20
Milk+17	55
TM +49	15

AOD	BW	WW	205D	Dec.22/16	MARB	REA	CWT
4	86	910	764	1665	+0.31	+0.23	+25

**175C & 178C** Big, long athletic Flex sons. These Flex sons consistently crunch down the scale and excel on feed. The added age in these yearlings will be valuable for breeding mature cows and having an increased workload in their first year.



178

**RED LWNBRG FLEX 178C**

TED 178C ~ 1886483 ~ July 31 2015

MRLA 53W  
**Sire: RED MRLA FLEX 49Z**  
 RED GET-A-LONG FIREFLY 363  
 RED FABULOUS FRONT LINE 315N  
**Dam: RED TED FRONTLINE 151W**  
 RED TED GOLD ROBBER 23L

S A V NET WORTH 4200  
 RED BROX MS CHEROKEE 13N  
 RED BJR MAKE MY DAY 981  
 RED WCF MAVERICK'S FIREFLY 11L  
 RED MEADOW CK 904  
 RED CRESCENT CREEK ANNIE 1G  
 RED LCHMN GOLD ROBBER 1909E  
 RED TED FED'S BO 36J

'17 EPDS	TOP%
BW+3.1	96
WW+62	15
YW +96	10
Milk+19	35
TM +50	10

AOD	BW	WW	205D	Dec22/16	MARB	REA	CWT
6	95	830	703	1420	+0.44	+0.38	+32



180

**RED LWNBRG HARVESTOR 180C**

TED 180C ~ 1886486 ~ August 1 2015

S A V HARVESTOR 0338  
**Sire: TED HARVESTOR 154A**  
 RED LWNBRG ANISTON 137S  
 SIX MILE SAKIC 832S  
**Dam: RED LWNBRG IVY 9Z**  
 RED TED MAKE MY DAY 215P

S A V HERITAGE 6295  
 S A V EMBLYNETTE 7749  
 RED BRYLOR MASTER PLAN 17M  
 RED TED FARGO 33L  
 RED SIX MILE AVIATOR 217P  
 RED SIX MILE SIERA 2 57P  
 RED TED MAKE MY DAY 74J  
 RED TED NONE BETTER 25J

'17 EPDS	TOP%
BW+0.7	70
WW+63	10
YW+102	8
Milk+19	35
TM +52	10

AOD	BW	WW	205D	Dec22/16	MARB	REA	CWT
3	80	810	724	1490	+0.40	-0.03	+32

**180C** A red hided SAV Harvestor 0338 grandson that has a lot of the right tools to positively change a cowherd. Very similar in structure and design to his paternal brother Harvestor brother 103C, who ended up being our high seller in 2016 to Andrew and Makenzie Johnson of Sandhills Red Angus. He displays exceptional thickness and muscle shape. His sire 154A consistently stamps his calves with these traits. Unique pedigree combining powerhouse Harvestor and the proven moderate framed, heavy milking Sakic and Make My Day blood lines. The Ivy 9Z dam will be admired for her fleshing ability, wide pin set, and heavy milk. She has an 82 lb birth weight Harvestor 103C son on her side this year. Harvestor 180C has all the positive attributes to have a lasting impact on a cowherd. **Selling Full Interest and Half Possession**



180



LWNBRG HARVESTOR 103C - Paternal brother to 180C



HARVESTOR 154A  
Sire of 180C & 182C



182

**LWNBRG HARVESTOR 182C (RC)**

TED 182C ~ 1886488 ~ August 5 2015

S A V HARVESTOR 0338  
**Sire: TED HARVESTOR 154A**  
 RED LWNBRG ANISTON 137S  
 RED GLACIER MARIAS 548  
**Dam: RED TED PATRIOT 41Z**  
 RED TED OLE'S OSCAR 83W

S A V HERITAGE 6295  
 S A V EMBLYNETTE 7749  
 RED BRYLOR MASTER PLAN 17M  
 RED TED FARGO 33L  
 RED LCC HEAVEN OR BUST 1000B  
 RED GLACIER REBALAS  
 RED CROWFOOT OLES'S OSCAR 2042M  
 RED TED BASIN DRIFTER 114L

'17 EPDS	TOP%
BW +1.2	75
WW +70	4
YW +113	2
Milk +21	20
TM +56	2

AOD	BW	WW	205D	Dec22/16	MARB	REA	CWT
3	87	855	773	1485	+0.50	+0.10	+39

RED & BLACK LONG YEARLINGS

19

**19D** Deep ribbed and well muscled Cross Over son that has outstanding numbers in all traits. He brings a predictable maternal pedigree and has the ability to sire pounds very efficiently. Well attached udder on this first calf Product dam.

**WI: 105 YI: 109**



19

**LWNBGR CROSSOVER 19D**

TED 19D ~ 1901077 ~ January 11 2016

RED BIEBER ROLLIN DEEP Y118  
**Sire: LWNBGR CROSS OVER 66B**  
 TED BISMARCK 50Y

CONNEALY FINAL PRODUCT  
**Dam: LWNBGR FINAL PRODUCT 1B**  
 TED IN FOCUS 135W

RED BIEBER ROOSEVELT W384  
 RED BIEBER TILLY 399W  
 S A V BISMARCK 5682  
 TED COMMANDER 26W  
 CONNEALY PRODUCT 568  
 EBONISTA OF CONANGA 471  
 MYTTY IN FOCUS  
 BORDER BUTTE DP BEAUTY 37'03

'17 EPDS	TOP%
BW+1.1	20
WW+55	10
YW +96	10
Milk+23	30
TM +51	10

AOD	BW	WW	205D	365D	MARB	REA	CWT
2	86	830	796	1354	+0.37	+0.39	+30



24

**LWNBGR CROSSOVER 24D**

TED 24D ~ 1901078 ~ January 11 2016

RED BIEBER ROLLIN DEEP Y118  
**Sire: LWNBGR CROSS OVER 66B**  
 TED BISMARCK 50Y

S A V NET WORTH 4200  
**Dam: TED NET WORTH 14X**  
 TED REVIVAL 113P

RED BIEBER ROOSEVELT W384  
 RED BIEBER TILLY 399W  
 S A V BISMARCK 5682  
 TED COMMANDER 26W  
 S A V 8180 TRAVELER 004  
 S A V MAY 2410  
 BAD LANDS REVIVAL 5G  
 SANDUNE'S ERROLLINE 101M

'17 EPDS	TOP%
BW+2.8	65
WW+56	10
YW +97	10
Milk+23	30
TM +51	10

AOD	BW	WW	205D	365D	MARB	REA	CWT
6	96	975	847	1420	+0.37	+0.31	+33

**24D** A powerful growth bull with length, muscle and docility. All kinds of potential to sire pounds and performance. His front pasture dam is a phenotypical standout that has three daughters retained in the herd.

**WI: 111 YI: 111**

24



**Ted Network 14X**



**Ted 29Z— maternal sister to 24D**



**BLACK ANGUS**

36



36D These Tour of Duty sons are as long in the spine as I've ever seen. Explosive growth and gain ability. Elite dam in 83Y who is the model ranch cow. Efficient, fertile and consistent. She has an earned ratio of 105 on 4 calves.



TED Network 83Y



LWNBORG Powershot 15B maternal brother sold to Martin & Sheila Hilmar in 2015



**LWNBORG TOUR OF DUTY 36D**

TED 36D ~ 1901083 ~ January 13 2016

WERNER WAR PARTY 2417  
Sire: **R B TOUR OF DUTY 177**  
B A LADY 6807 305

S A V NET WORTH 4200  
Dam: **TED NETWORK 83Y**  
TED OBJECTIVE 83U

CONNEALY ONWARD  
BAAR USA LADY JAYE 489  
VERMILION DATELINE 7078  
G D LADY HI FLYER 302  
S A V 8180 TRAVELER 004  
S A V MAY 2410  
S S OBJECTIVE T510 OT26  
TED GRID MAKER 63S

'17 EPDS	TOP%
BW+2.4	50
WW+64	2
YW+113	1
Milk+28	5
TM +60	1

AOD	BW	WW	205D	365D	MARB	REA	CWT
5	93	955	835	1500	+0.69	+0.63	+42



**LWNBORG TOUR OF DUTY 43D**

TED 43D ~ 1901091 ~ January 16 2016

WERNER WAR PARTY 2417  
Sire: **R B TOUR OF DUTY 177**  
B A LADY 6807 305

TED NEW STANDARD 92Z  
Dam: **LWNBORG NEW STANDARD 119B**  
TED FINAL ANSWER 116X

CONNEALY ONWARD  
BAAR USA LADY JAYE 489  
VERMILION DATELINE 7078  
G D LADY HI FLYER 302  
LCC NEW STANDARD  
TED SITZ ALLIANCE 31S  
S A V FINAL ANSWER 0035  
TED EXTRA H6 95P

'17 EPDS	TOP%
BW+2.0	43
WW+67	1
YW+115	1
Milk+34	1
TM+68	1

AOD	BW	WW	205D	365D	MARB	REA	CWT
2	87	935	901	1399	+0.49	+0.49	+42

43



43D If you're an EPD person this bull is must have. Top1% in Weaning, Yearling, Milk, TM, and Carcass Weight. To back up the numbers he is the #1 ranked bull at weaning with a 205D of 901 lbs and a index of 121. This all out of a first calf heifer. Real world beef bull with moderate birth and top of the class performance.

44



**44D** Another Tour of Duty that has unlimited performance. He's thick, big boned with loads of muscle. The length of the Tour of Duty calves added some actual birth weight, but with there extreme length and clean front end, their calving ease was not compromised. His dam 16W was designated Premier and has two daughters in our herd. She has earned a ratio of 104 on 6 calves. **WI: 109 YI: 104**



44

**LWNBGR TOUR OF DUTY 44D**

TED 44D ~ 1901093 ~ January 16 2016

WERNER WAR PARTY 2417  
**Sire: R B TOUR OF DUTY 177**  
 B A LADY 6807 305

CONNELLY ONWARD  
 BAAR USA LADY JAYE 489  
 VERMILION DATELINE 7078  
 G D LADY HI FLYER 302  
 S A F FOCUS OF E R  
 MYTTY COUNTESS 906  
 RAINBOW HILLS PRIME CUT 114P  
 PRIDE LADY OF RAINBOW HILLS

MYTTY IN FOCUS  
**Dam: TED IN FOCUS 16W**  
 VWB PRIDE LADY 124T

'17 EPDS	TOP%
BW+3.4	75
WW+64	2
YW+109	3
Milk+31	1
TM+63	1

AOD	BW	WW	205D	365D	MARB	REA	CWT
7	105	950	842	1378	+0.46	+0.47	+40

**Ted In Focus16W - dam of 44D**



**LWNBGR RESOURCE163C - maternal brother of 44D**  
 Owned by Martin & Sheila Hiilmer/Leeuwenburgh Angus



**BLACK ANGUS**



**61D** A moderate birth bull with good growth and that Tour of Duty length. A consistent producing dam in Erica 18S, that earned a ratio of 103 on 9 natural calves. The kind of cow that drives ranch profitability in the right direction.



**LWNBGR TOUR OF DUTY 61D**

TED 61D ~ 1901103 ~ January 22 2016

'17 EPDS	TOP%
BW+1.2	25
WW+54	15
YW +94	15
Milk+24	15
TM +51	10

WERNER WAR PARTY 2417  
**Sire: R B TOUR OF DUTY 177**  
 B A LADY 6807 305

LONE STAR GRID MAKER 29P  
**Dam: LONE STAR ERICA 18S**  
 LONE STAR ERICA 19L

CONNEALY ONWARD  
 BAAR USA LADY JAYE 489  
 VERMILION DATELINE 7078  
 G D LADY HI FLYER 302  
 G A R GRID MAKER  
 ANNIE K MCB 88'94  
 MVFA NET PROFIT 6F  
 KLUZAK ERICA 11F

AOD	BW	WW	205D	365D	MARB	REA	CWT
10	78	825	747	1200	+0.26	+0.51	+29



**LWNBGR CROSSOVER 70D**

TED 70D ~ 1901108 ~ January 24 2016

'17 EPDS	TOP%
BW-1.1	35
WW+61	15
YW +93	15
Milk+26	2
TM +56	2

RED BIEBER ROLLIN DEEP Y118  
**Sire: LWNBGR CROSS OVER 66B**  
 TED BISMARCK 50Y

RED ROY ROGERS 5604  
**Dam: RED WOOD COULEE SOPIE 401B**  
 RED RC SOPIE 35Y

RED BIEBER ROOSEVELT W384  
 RED BIEBER TILLY 399W  
 S A V BISMARCK 5682  
 TED COMMANDER 26W  
 RED NORTHLINE ROB ROY 122K  
 RED PIE PATTI ANNE 9221  
 RED BAR-E-L BULL WILLIE 3W  
 RED SPAERMAN SOPIE 606N

AOD	BW	WW	205D	365D	MARB	REA	CWT
2	75	725	736	1189	+0.56	+0.11	+24





### LWNBURG TOUR OF DUTY 71D

TED 71D ~ 1901110 ~ January 24 2016

WERNER WAR PARTY 2417  
Sire: **R B TOUR OF DUTY 177**  
B A LADY 6807 305

SITZ TRADITION RLS 8702  
Dam: **BIRDIE OF RAINBOW HILLS 103T**  
BIRDIE OF RAINBOW HILLS 87N

CONNELLY ONWARD  
BAAR USA LADY JAYE 489  
VERMILION DATELINE 7078  
G D LADY HI FLYER 302  
VERMILION DATELINE 7078  
R L S EISA EVERGREEN 5018  
BACK ROADS 1418 LEGEND 1582  
BIRDIE OF RAINBOW HILLS 44H

17 EPDS	TOP%
BW+3.7	80
WW+59	6
YW+105	4
Milk+27	8
TM +57	3

AOD	BW	WW	205D	365D	MARB	REA	CWT
9	100	880	804	1416	+0.26	+0.61	+39

**71D** - Heavy milking dam with earned average of 106 on 4 calves  
- High end EPD profile with solid actual data  
- will sire impressive real world performance.  
WI:104 YI:119



71



### LWNBURG CROSSOVER 76D

TED 76D ~ 1901114 ~ January 25 2016

RED BIEBER ROLLIN DEEP Y118  
Sire: **LWNBURG CROSS OVER 66B**  
TED BISMARCK 50Y

RED BRYLOR NEW TREND 22D  
Dam: **RED TED NEW TREND 78R**  
RED TED SOMETHIN 99G

RED BIEBER ROOSEVELT W384  
RED BIEBER TILLY 399W  
S A V BISMARCK 5682 AMF  
TED COMMANDER 26W  
SSS BLACK TREND 13B  
RED MEADOWCKMESSSEAMAN 31A  
RED KJM SOMETHIN SPECIAL  
RED TED CHIEF FARICA 8A

17 EPDS	TOP%
BW -0.3	50
WW+67	7
YW+100	9
Milk+23	9
TM +56	2

AOD	BW	WW	205D	365D	MARB	REA	CWT
11	86	850	806	1321	+0.41	+0.24	+29

**76D** This dam has raised quality sons before, with maternal brothers at Keho Lake Colony and Lakeside Colony. Keep every female, they will be the profitable kind that require low input.



76



### LWNBURG UNANIMOUS 78D

TED 78D ~ 1901116 ~ January 26 2016

VISIONTOPLINE ROYAL STOCKMAN  
Sire: **VISION UNANIMOUS 1418**  
VISION EDELLA 665

S A V FINAL ANSWER 0035  
Dam: **TED FINAL ANSWER 116X**  
TED EXTRA H6 95P

GAMBLES ROYAL FLUSH  
LAGRAND PRIDE 7140  
BOYD ON TARGET 1083  
VISION EDELLA 337  
SITZ TRAVELER 8180  
S A V EMULOUS 8145  
NICHOLS EXTRA H6  
MVF HI LITE 32M

17 EPDS	TOP%
BW+1.9	40
WW+55	10
YW +98	10
Milk+23	30
TM +51	10

AOD	BW	WW	205D	365D	MARB	REA	CWT
6	86	775	714	1280	+0.48	+0.25	+32

S A V Harvestor 0338 - paternal grandsire of 87D



### LWNBURG HARVESTOR 87D

TED 87D ~ 1902874 ~ January 28 2016 ~ TWIN

S A V HARVESTOR 0338  
Sire: **TED HARVESTOR 108A**  
RED LWNBURG BOXCAR 139X

RAINBOW HILLS PRIME CUT 114P  
Dam: **BLACKBIRD OF RAINBOW HILLS 50S**  
BLACKBIRD RAINBOW HILLS 145C

S A V HERITAGE 6295  
S A V EMBLYNETTE 7749  
RED CROWFOOT OLES OSCAR 2042M  
RED TED KINCHEN SAGEBRUSH 164P  
BASIN PRIME CUT 354K  
MISSIE OF RAINBOW HILLS 97L  
LOR WIN COALITION 7Z  
BLACKBIRD OF RAINBOW HILLS

17 EPDS	TOP%
BW -0.5	45
WW+50	60
YW +80	45
Milk+26	2
TM +51	10

AOD	BW	WW	205D	365D	MARB	REA	CWT
10	85	770	715	1213	+0.59	+0.20	+17

BLACK ANGUS

129



**129D** An attractive moderate framed bull with good length. He started with a modest birth weight and earned a 205D of 850. The New Standard females consistently have moderate birth weights but always wean a high percentage of their body weight. **WI: 114 YI: 110**



**129**

**LWNBURG UNANIMOUS 129D**

TED 129D ~ 1901148 ~ February 08 2016

VISIONTOPLINE ROYAL STOCKMAN  
**Sire: VISION UNANIMOUS 1418**  
VISION EDELLA 665

TED NEW STANDARD 92Z  
**Dam: LWNBURG NEW STANDARD 130B**  
TED MILK CREEK DIVERSITY 85R

GAMBLES ROYAL FLUSH  
LAGRAND PRIDE 7140  
BOYD ON TARGET 1083  
VISION EDELLA 337  
LCC NEW STANDARD  
TED SITZ ALLIANCE 31S  
MILLCREEK DIVERSITY  
MVF FAVORITE 209M

'17 EPDS	TOP%
BW+2.9	65
WW+66	1
YW+113	1
Milk+20	50
TM +53	9

AOD	BW	WW	205D	365D	MARB	REA	CWT
2	84	800	850	1416	+0.51	+0.29	+42



**149**

**LWNBURG UNANIMOUS 149D**

TED 149D ~ 1901157 ~ February 16 2016

VISIONTOPLINE ROYAL STOCKMAN  
**Sire: VISION UNANIMOUS 1418**  
VISION EDELLA 665

LCC NEW STANDARD  
**Dam: TED NEW STANDARD 29Z**  
TED NET WORTH 14X

GAMBLES ROYAL FLUSH  
LAGRAND PRIDE 7140  
BOYD ON TARGET 1083  
VISION EDELLA 337  
BON VIEW NEW DESIGN 1407  
LCC SUNSET K3118  
S A V NET WORTH 4200  
TED REVIVAL 113P

'17 EPDS	TOP%
BW+1.6	30
WW+63	2
YW+114	1
Milk+25	15
TM +57	3

AOD	BW	WW	205D	365D	MARB	REA	CWT
4	87	860	880	1431	+0.64	+0.44	+41

149



**149D** The 3rd ranked bull at weaning with a 880 lb 205 day. The cow family behind this bull is outstanding. They are long easy doing cattle with super dispositions and produce exceptional payweight.

**TED New Standard 29Z - dam of 149D**



**Ted Networth 14X - grandam of 149D**





172



164

**LWNBGR CROSS OVER 164D**

TED 164D ~ 1901163 ~ February 24 2016

RED BIEBER ROLLIN DEEP Y118  
**Sire: LWNBGR CROSS OVER 66B**  
 TED BISMARCK 50Y

RED LSF COMBINATION A301M  
**Dam: RED TED COMBINATION 40T**  
 RED TED NONE BETTER 24J

RED BIEBER ROOSEVELT W384  
 RED BIEBER TILLY 399W  
 S A V BISMARCK 5682  
 TED COMMANDER 26W  
 RED LCHMN TOP BRASS 1049H  
 RED WHF LASS 27G-29J  
 RED LMAN NONE BETTER 9604  
 RED TED CREEK CLEO 2Z

'17 EPDS	TOP%
BW-0.7	40
WW+59	25
YW +93	15
Milk+19	35
TM +49	15

AOD	BW	WW	205D	365D	MARB	REA	CWT
9	85	700	728	1257	+0.55	+0.16	+25

- 164D** - CAA Elite dam with perfect feet  
 - Modest BW son from the calving ease Cross Over 66B  
 - Maternal brother sold to Ken Gruninger in 2015  
 - 3 maternal sisters retained in our herd



172

**LWNBGR UNANIMOUS 172D**

TED 172D ~ 1901168 ~ February 28 2016

VISIONTOPLINE ROYAL STOCKMAN  
**Sire: VISION UNANIMOUS 1418**  
 VISION EDELLA 665

RED LAZY MC CC DETOUR 2W  
**Dam: RED TED DETOUR 102A**  
 RED TED OLES OSCAR 25X

GAMBLES ROYAL FLUSH  
 LAGRAND PRIDE 7140  
 BOYD ON TARGET 1083  
 VISION EDELLA 337  
 RED RMJ REDMAN 1T  
 RED LAZY MC BESS 12S  
 RED CROWFOOT OLE'S OSCAR 2042M  
 RED TED KINCHEN SAGEBRUSH 70R

'17 EPDS	TOP%
BW-2.2	15
WW+67	7
YW+109	3
Milk+21	20
TM +55	3

AOD	BW	WW	205D	365D	MARB	REA	CWT
3	84	750	833	1354	+0.53	+0.30	+32

- 172D** - Calving ease bull  
 - Outcross pedigree  
 - Balanced EPD's



BLACK ANGUS

# SIMMENTAL

In 2010 we were able to skim four heifers off the top of the renowned Mader Simmental herd. These cows proved to be a great base to build a herd around. We have been using our own Simmental bulls for the commercial herd six years now, with great success. The Angus/Simmental cross female has been very productive and profitable for us. We've tried to mold our Simmental herd with the same focus on real world, easy fleshing and functional attributes as our Angus herd. Udder quality is evident in throughout the herd and will remain of utmost importance. The herd growth has been slow but we feel we are finally at the point we can market high end Simmental bulls that will improve a cowherd's bottom line.



**LX 33 LBG PRIME BEEF 33D SIMMENTAL**  
 LBG 33D ~ 1170455 ~ 13/1/2016

	17 EPDS	TOP%
BW	-1.2	2
WW	+65	55
YW	+94	55
Milk	+18	90
TM	+51	85

WS BEEF KING W107  
**Sire: WS PRIME BEEF Z8**  
 MISS SKY 87U

WS BEEF MAKER R13  
 MISS DREAMBOAT T17  
 ER BIG SKY 545B  
 HSF FORTUNATAS QUO 59S  
 THSF FREEDOM 300N  
 MISS TRAX U850  
 W512HR  
 MS CANDACE HR/RR W938

TRAX RUSHMORE X103  
**Dam: LBG RUSHMORE 81B**  
 REMINGTON MS CANDACE 91Y

AOD	BW	WW	205D	365D	MARB	REA	CWT
2	79	825	789	1325	+.26	+1.15	+23.9



**LX 100 LBG PRIME BEEF 100D SIMMENTAL**  
 LBG 100D ~ 1170459 ~ 30/1/2016

	17 EPDS	TOP%
BW	-1.4	2
WW	+68	40
YW	+102	30
Milk	+19	90
TM	+53	75

WS BEEF KING W107  
**Sire: WS PRIME BEEF Z8**  
 MISS SKY 87U

WS BEEF MAKER R13  
 MISS DREAMBOAT T17  
 ER BIG SKY 545B  
 HSF FORTUNATAS QUO 59S  
 THSF FREEDOM 300N  
 MISS TRAX U850  
 ACS RED BOOMER 659S  
 MAKER P BARONESS 38W

TRAX RUSHMORE X103  
**Dam: LBG RUSHMORE 43B**  
 LBG BOOMER 105Y

AOD	BW	WW	205D	365D	MARB	REA	CWT
2	81	775	793	1260	+.23	+1.19	+28.3

These three paternal brothers are a unique group of bulls with their low birth weight, overall growth and maternal strength. All three have a very sound hoof. The dams featured have heavy milk and sound udder and teat placement. We are confident these brothers will sire performance, and females that will earn their keep for a long time.



**LX 103 LBG PRIME BEEF 103D SIMMENTAL**  
 LBG 103D ~ 1170462 ~ 31/1/2016

	17 EPDS	TOP%
BW	-0	3
WW	+63	65
YW	+88	70
Milk	+24	55
TM	+55	60

WS BEEF KING W107  
**Sire: WS PRIME BEEF Z8**  
 MISS SKY 87U

WS BEEF MAKER R13  
 MISS DREAMBOAT T17  
 ER BIG SKY 545B  
 HSF FORTUNATAS QUO 59S  
 RED BARON HR P101  
 MCS TOO MUCH  
 TNT GUNNER N208  
 GFI CANDACE G51

W512 HR  
**Dam: REMINGTON MS CANDACE 91Y**  
 MS CANDACE HR/RR W938

AOD	BW	WW	205D	365D	MARB	REA	CWT
5	80	890	834	1309	+.24	+.95	+20.6

# PERFORMANCE DATA

## Average EPD's for all Red Calves born in 2016

BW	WW	YW	Milk	Total Maternal	MARB	REA	CW
-0.4	+53	+78	+17	+44	+0.29	+0.05	+16

## Average EPD's for all Black Calves born in 2016

BW	WW	YW	Milk	Total Maternal	MARB	REA	CW
+2.1	+45	+80	+21	+43	+0.77	+0.69	+43

**EPD:** Expected Progeny Difference is the prediction of how progeny of each animal are expected to perform relative to the progeny of other animals in the Angus breed. As data continues to accumulate, accuracy levels rise and EPD's can shift accordingly.

**BW:** Birth weight is related to calving ease. Lower birth weights tend to reduce the incidence of calving difficulties. Lower birth weight EPD is more desirable for heifers.

**WW:** Weaning Weight is an indicator of growth from birth to weaning (205 days of age). During this period, the calf's growth is influenced by its mother's ability to produce milk and its own ability to grow.

**YW:** Yearling Weight is an indicator of growth from birth to yearling (365 days of age). The calf's growth during this period is influenced by its own ability to grow plus its mother's maternal abilities. It is the best estimate for total growth.

**Milk:** Milk EPD reflects the milking ability of a sire's daughters expressed in pounds of calf weaned.

**TM:** The Total Maternal EPD predicts the difference in weaning weight of the sire's daughter's progeny due to the combination of growth genetics and milking ability. It is equal to one-half of the weaning weight EPD plus the milk EPD.

### CARCASS EPD

**MARB:** (%IMF) Marbling EPD is a predictor of the level of intramuscular fat and is derived using CUP ultrasound data and actual carcass data. Marbling determines quality grade.

**REA:** (Ribeye Area) Ribeye area is expressed in inches<sup>2</sup> and is a predictor of the area of ribeye muscle at the 12th/13th rib.

**CWT:** Is a predictor of transmitting ability for hot carcass weight.

### ACTUAL WEIGHTS

Actual weights to be taken March 14, 2017. These will be available, along with scrotal measurements and carcass data, as a supplementary sheet on sale day.

# TERMS & CONDITIONS

**TERMS**-The terms of the sale are cash or cheque payable at par to Balog Auction Services Ltd., Lethbridge, Alta. The right of property shall not pass until settlement is made. All settlements must be made with the clerks of the sale before any cattle will be released.

**BIDS**- Every animal entering the sale ring will be sold to the highest bidder. A floor price will apply to each animal consigned.

**DISPUTES**- In case of disputes, bidding will be reopened between parties involved. If no further bid is made, the buyer will be the person from whom the auctioneer accepted the last bid. The auctioneer's decision in such matters will be final.

**PURCHASER'S RISK**- Each animal becomes the risk of the purchaser as soon as sold.

**ANNOUNCEMENTS**- Errors discovered in the catalogue will be corrected by announcements from the Auction Stand at sale time and such corrections will take precedence over the printed matter in the catalogue.

**CERTIFICATE OF REGISTRY**- A certificate of registry duly transferred will be furnished to the buyer for each animal after the settlement is made.

**SHIPPING**- Assistance will be given in making shipment after the sale, but Balog Auction Services Ltd., or the seller assumes no risk. Expenses incurred are the responsibility of the purchaser. Purchasers are requested to furnish shipping instructions when making settlement. Any additional expenses are the responsibility of the buyer, including duty, brokerage fees, etc.

**ACCIDENTS**- Although every precaution will be taken to protect the safety and comfort of buyers, neither the sales manager, auctioneer nor the owner assumes any responsibility in this matter and disclaims any liability, legal or otherwise, in the event of accident or loss of property.

**LIABILITY**- Balog Auction Services Ltd. are acting as agents only and assume no responsibility for representations by the seller. Purchasers must look to the seller for fulfillment of all guarantees and representations made hereunder.

### FUSOGARD VACCINE

All sale bulls have been vaccinated with Fusogard as an aid in the reduction of footrot, on January 24, 2017 and given an oral dewormer. Fusogard is an alternative for natural and organic beef producers because it's not an antibiotic. It is recommended to revaccinate annually as a preventative against signs of footrot. All bulls are on the Pfizer Gold Program.

Thanks to all our 2017 Sale Sponsors



### ROBERTS VETERINARY SERVICE

"OWNER'S USE ONLY"

COLLECTION & FREEZING BULL SEMEN  
403-849-2444 robert.gordonray@gmail.com



Co-operative Limited  
Brad & Michelle Williams  
Bulk Fuel Agents



# MILLENNIUM GENETICS

Leeuwenburgh Angus  
Box 25  
Lethbridge, AB  
T1J 3Y3

## UPCOMING SIRS FOR 2018



Red LWNBRG Harvester 103C



Red SSS Contender 121B



Red Six Mile High Caliber 177C

CANADA POST		POSTES CANADA
	Postage paid Personalized Mail	Port payé Country personalisé
8044554		

26<sup>TH</sup> ANNUAL BULL SALE  
TUESDAY, MARCH 14, 2017  
1:00 PM - BALOG AUCTION  
LETHBRIDGE, ALBERTA  
CANADA

PLEASE BRING THIS CATALOGUE TO THE SALE