

# LEEUWENBURGH LANGUS 27<sup>TH</sup> ANNUAL BULL SALE

TUESDAY, MARCH 13, 2018  
1:00 PM - BALOG AUCTION  
LETHBRIDGE, ALBERTA



PLEASE BRING  
THIS CATALOGUE  
TO THE SALE

TO VIEW OUR CATALOG ONLINE : [www.leeuwenburghangus.com](http://www.leeuwenburghangus.com)





## Friends & Fellow Cattlemen

On behalf of the entire crew we welcome you to our 27th Annual Bull Sale. We would like to first of all thank our many loyal customers and friends that continue to show confidence in our program and commit to our product. We are still very committed in our quest to provide multi trait genetics that will push forward any cattle program. We believe in real world cattle that grow efficiently and provide wider profitability whether it be producing hard working , low maintenance females or better gaining end product in the feedlot. It's without a doubt our 2018 lineup of bulls can do this better than any other we've offered. More growth, frame size and more outcross genetics than ever before, with a lot of our young cows lending the change. We encourage you to study the offering and compare. We are confident the consistency and quality will satisfy the most discriminating rancher. We look forward to discussing the offering and the details of your breeding needs. Please do not hesitate to call anytime to discuss your bull requirements. We invite you to stop in and view the cow herd and the bulls and we value your input in regards as to what we can improve on in the future. We understand that your herd bull purchases are a huge part of your operation's bottom line and we aim to give you all the information and honesty available to make your selections as easy as they could possibly be. We look forward to seeing everyone soon, and on the 13th of March!

from all of us at Leeuwenburgh Angus



Johnny, Charles, Willard, Jack, Dennis

## **BALOG AUCTION SERVICES LTD**

### Fellow Cattlemen

It is with a great deal of pleasure and excitement, we welcome all cattlemen to the Leeuwenburgh Angus 27th Annual Bull Sale! In the past few years, the Leeuwenburgh family have continued to be leaders in the Angus breed! New exciting powerful genetics, backed up by tremendous performance and consistency, make this sale the ONE TO ATTEND!

Bulls that go out and work, both in the Purebred and Commercial Industry, are the reason so many repeat customers believe and use Leeuwenburgh Bulls! Come buy from a very successful program and a family who sincerely appreciate their buyers!

Respectfully, Bob Balog



## **CASTLEROCK MARKETING**

Every year it's exciting to tour through the pen at Leeuwenburgh Angus, you just never know what kind of exciting genetic combinations you will find. As per usual, this year is no different with the first set of Red descendants of none other than the S A V Resource and they are exciting with their big bodied, sound structure and overall eye appeal. This is just a tip of the iceberg so to speak as the bull pen is chock full of sound, outcross genetics backed by one of the most functional set of red cows you will come across. This ranch raised bull pen that summers on the Milk river Ridge will undoubtedly impress the most discriminating eyes. Years of success can only be accomplished through a strong repeat customer base, there's only one reason to keep coming back.

If we can be of service to you in regards to the offering feel welcome to give us a call. See you sale day!

Shane Castle

Castlerock Marketing - 306.741.7485 - [www.castlerockmarketing.com](http://www.castlerockmarketing.com)



### SALE DAY PHONES

BALOG AUCTION - 403.320.1980  
 DENNIS LEEUWENBURGH - 403.308.3003  
 JOHNNY LEEUWENBURGH - 403.382.1794  
 JACK LEEUWENBURGH - 403.330.6123

### SALE STAFF

#### AUCTIONEER

BOB BALOG

#### RINGMEN

LOUIS BALOG - 403.331.0611

BRAD BALOG - 403.642.7444

MARK LENZ - 403.330.7600

### CASTLEROCK MARKETING

SHANE CASTLE - 306.741.7485

DEVIN WARRILOW - 780.581.4329

MARK FORSYTH - 306.784.7844

DENNIS



JOHNNY



JACK



Internet Bidding Available

**DLMS**

www.dlms.ca

For more information Call DLMS Reps:  
 Mark Shologan 780.699.5082  
 Whitney Bosovich 780.991-3025

**ALL BULLS ARE FULLY TESTED AND 100% GUARANTEED**  
**NO BULLS SOLD PRIOR TO THE SALE!**

Everything possible will be done to assure that every bull in this sale will be a breeder. Dr. Mitch Oviatt, (Ranch Docs, Lethbridge) will scrotal measure and physically evaluate every bull. Any animal that has not proven itself **within 6 months** of sale, (**September 30, 2018**) if in healthy condition, may be returned to the seller at the buyer's expense. The seller reserves the privilege of trying for a 6-month period to prove the animal a breeder. The seller at his option may either return the purchase price or replace the animal with another of equal quality in full settlement and satisfaction of all claims. Any complaints regarding any animal in this sale shall be made to the breeder. All complaints must be reported in writing by the buyer to the seller **within 6 months** and any animal returned must be free of disease and in good health.

### CATALOGUE INFORMATION

All information is up to date as of publication date. Pedigree's and EPD's are supplied by the Canadian Angus Association, and all other information has been supplied by the seller. Information in this catalogue is believed to be accurate, but any errors discovered in the catalogue, will be corrected by announcements, from the auction stand at sale time, and such corrections will take precedence over the printed matter in this document.

### IN - HERD SEMEN INTEREST

Leeuwenburgh Angus reserves the right to draw semen on any bull sold at the buyer's convenience and our cost.

### DELIVERY -\$100 CREDIT IF BULL IS TAKEN HOME SALE DAY

Assistance will be given in making delivery after the sale.

### PRESALE LUNCH

Join us for lunch at 11:30 a.m. Sale Day

### INSURANCE

Available at Balog Auction Services

Maureen- 403-320-1980

We strongly suggest you insure your bull purchases.

### ACCOMMODATIONS - in Lethbridge, less than a 10 minute drive

Quality Inn & Suites - 403-331-6440

Hampton Inn & Suites - 403-327-1386

Holiday Inn - 403-380-5050

Premier Inn & Suites - 403-380-6677

Comfort Inn - 403-320-6993


Call 403-327-9618 if you need assistance with accommodations.

TO VIEW OUR CATALOG ONLINE : [www.leeuwenburghangus.com](http://www.leeuwenburghangus.com)


## "IN APPRECIATION"

Thanks BJ Scherlinck for helping us out at different times, especially in the summer and fall with harvest. Also Josh Pickett who just recently joined our team, we really appreciate your dedication and commend you for work well done!

Thanks to our family members who help out whenever needed.



Josh



BJ

Buck Thompson, thanks for putting up with us again to come clip bulls. Thanks again for your help!

### GRANT ROLSTON PHOTOGRAPHY LTD.

Once again we would like to thank Grant & Lauralee Rolston for their effort! We aim to picture as many bulls as possible. We appreciate them powering through the -40 temperature to get this done on the last week of December. These bulls will change a lot in two and a half months, so if it is possible we invite you to the farm to view them as the sale nears.

**BULL SELECTION** is more important now than it has ever been, in order to MAXIMIZE your cowherd's potential. Settling for just any bull, because he is a couple of hundred dollars cheaper, could deprive you of thousands later. Remember, pounds add up! Find the time to evaluate a bull's performance and EPD'S alike and consider if a breeder's program is similar to your ranch environment - your buying a piece of the program!

### HOW MUCH CAN YOU AFFORD TO PAY FOR A TOP BULL?

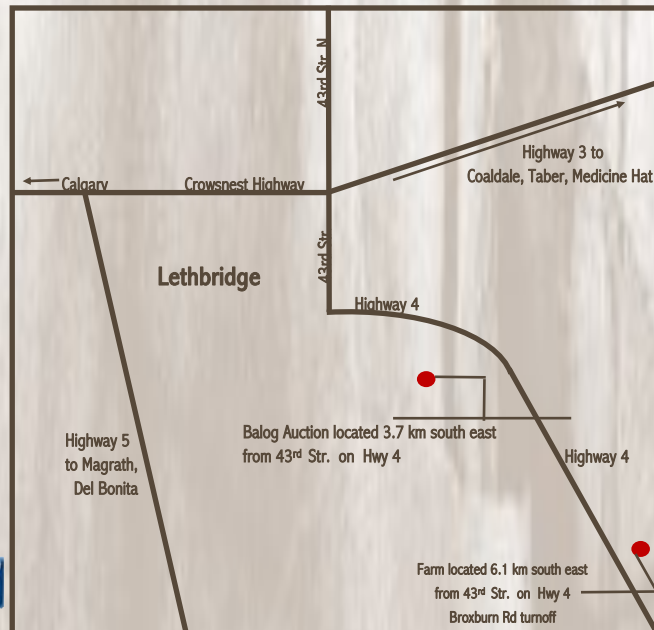
#### COWMAN FORMULA

Increase in pounds per calf from a top-performance bull  
 X No. of cows bred to him per year  
 X No. of years to keep the bull  
 X Expected selling price of calves  
 = Additional dollars you can pay for a better bull

Example: A bull who will add 30 lbs to the weaning weight of each of his calves mated to 25 cows per year for 4 years and you sell the calves for \$1.50 per pound.

$$30 \times 25 = 750 \times 4 = 3000 \times 1.50 = \$4,500$$

This bull is worth \$4,500 more than the average bull who will keep your weaning weights the same. Take this formula and put your own figures in and see what you can afford to pay. This equation does not consider the increase in value due to calving-ease, higher quality replacement heifers, yearling growth, feedlot gain and improved carcass quality.





## RED LWNBRG HARVESTOR 103C ~ 15 SONS SELL

TED 103C ~ 1846338 ~ 1/24/2015

Lots 36,44,46,55,57, 74, 98,106(bl),114,115,126,132,137,146,148

S A V HARVESTOR 0338  
Sire: **TED HARVESTOR 154A (RC)**  
RED LWNBRG ANISTON 1375 MAF

RED BLADES MAGNUM 11W  
Dam: **RED LWNBRG CADENCE 141Y**  
RED LWNBRG OPTIMA 100W

S A V HERITAGE 6295  
S A V EMBLYNETTE 7749  
RED BRYLOR MASTER PLAN 17M  
RED TED FARGO 33L  
RED BAR-E-L NATURAL 44N  
RED QW HEVN'S CASSIE 38K  
RED CROWFOOT OLES'S OSCAR 2042M  
RED LWNBRG PEARL 18N

BW - 85  
205D - 810  
365D - 1386

BW +0.4  
WW +80  
YW +131  
Milk +10  
TM +50

MARB+.76  
REA +.07  
CWT +48



LWNBRG HARVESTOR 154A

RED LWNBRG CADENCE



- High selling \$57,500 bull in 2016 to Sandhill Red Angus, Jacobson Red Angus, Crump Land & Livestock, Rohrich Cutting Edge Ranch
- Powerful phenotype, easy fleshing & herd bull profile
- Outcross pedigree featuring S A V Harvestor 0338
- Best multi trait bull we've raised
- Excellent footed and added calf vigor
- Top 1% of the breed in WW, YW, top 10% in TM, MCE, and top 1% in CW, & Marbling

## RED LWNBRG FRONTIER 28C ~ 8 SONS SELL

TED 28C ~ 1850597 ~ 1/9/2015

Lots 13, 22, 39, 40, 78, 128(bl), 136, 144

BLACK BRYLOR KODIAK 204Y  
Sire: **RED BRYLOR RED KODIAK 3A**  
RED BRYLOR FAYETTE 40Y

RED GLACIER MARIAS 548  
Dam: **RED TED PATRIOT 66Z**  
RED TED BRANDED BEEF 22T

HF KODIAK 5R  
RED XXX LAKME 70M  
RED BRYLOR SDL PASQUALE 213P  
RED FL FAYETTE 33M  
RED LCC HEAVEN OR BUST 1000B  
RED GLACIER REBALAS  
RED BJR AH BRANDED BEEF L107  
RED TED SPECIAL 25K

BW - 83  
205D - 828  
365D - 1381

BW -1.5  
WW +69  
YW +93  
Milk +20  
TM +54

MARB+.03  
REA +.04  
CWT +22



RED TED PATRIOT 66Z



- High seller in 2016 to Rohrich's Cutting Edge Ranch, ND
- Added maternal value and length
- Power producing dam with a weaning ratio of 107 on 4 calves
- Outcross pedigree featuring HF Kodiak

## RED ANDRAS FUSION R236 ~ 10 SONS SELL

IMP 0236Y ~ 1831533 ~ 9/18/2011

Lots 14, 21, 34, 45, 54, 58, 60, 75, 118, 154

MYTTY IN FOCUS  
Sire: **RED ANDRAS IN FOCUS B175**  
RED DI ESTONIA 316

RED ANDRAS THUNDER B105  
Dam: **RED ANDRAS BELLE B167**  
RED ANDRAS BELLE 416

SAF FOCUS OF ER  
MYTTY COUNTESS 906  
RED BUF CRK COUNTERCHF 5107  
RED LGR ESTONIA 8001  
CONNEALY THUNDER  
RED DI AMY 244  
RED COLLIER TOP FLIGHT  
RED BUF CRK BELLE 4231

BW - 74  
205D - 648  
365D - N/A

BW -4.0  
WW +44  
YW +84  
Milk +25  
TM +47

MARB+.88  
REA .12  
CWT +15



- Sure fire calving ease and calf vigor
- Progeny have been stout, deep ribbed, with consistent growth
- First daughters have impressed with tidy udders and sound structure
- Proven outcross genetics

## RED SSS CONTENDER 121B ~ 3 SONS SELL

DBB 121B ~ 1792675 ~ 2/0/2014

Lots 1, 10, 16

RED SSS SOLDIER 365W  
Sire: **RED SSS SOLUTION 329Z**  
RED SSS DUCHESS 428S

RED BRYLOR BIG ROCK 85T  
Dam: **RED SSS DYNA 688X**  
RED SSS DYNA 652P

RED SVR KNIGHT 236T  
RED SSS BELLE 342S  
RED 5L TRAVELING GRAND 5113  
RED BAR THREE H DUCHESS 33H  
RED FINELINE MULBERRY 26P  
RED CYT CHARITY 10P  
RED LAZY MC THIRTY X 22L  
RED SSS BO-LINE 6H

BW - 93  
205D - 881  
365D - 1393

BW +2.6  
WW +84  
YW +112  
Milk +9  
TM +51

MARB+.23  
REA -.01  
CWT +39



- High selling bull at Triple S 2015 sale
- Top 5% of the breed in WW, YW, TM, MCE, and CW
- Sires exceptional length and adds frame
- Dam has weaning ratio of 106 on 6 calves

## REFERENCE SIREs



## RED SIXMILE OUTSIDER 387C ~ 4 SONS SELL

SIXM 387C ~ 1872666 ~ 3/14/2015

Lots 61, 81, 116, 124

S A V ELIMINATOR 9105  
Sire: **PEAK DOT ELIMANTOR 100Z**  
ERICA PEAK DOT 730T

RED YY RAMBLER 322N  
Dam: **RED STEWART INA 611S**  
RED YY INA 348N

RITO 707 OF IDEAL 3407  
S A V ABIGAIL 5646  
S A V 004 PREDOMINANT 4438  
PEAK DOT TRAFALGAR 518K  
RED CROWFOOT RAMBLER 1038L  
RED YY OWYHEE 122L  
RED TER-RON CARLTON 810H  
RED THRE D INA 19'90

- \$30,000 calving ease sire owned with Y Coulee Land & Cattle
- Outcross genetics
- Moderate framed and stout
- High end maternal value and carcass

## RED SIX MILE HIGH CALIBER 177C ~ 3 SONS SELL

SIXM 177C ~ 1869543 ~ 2/22/2015

Lots 84, 91, 94

RED SIX MILE GAME FACE 164Y  
Sire: **RED SIX MILE TAURUS 519A**  
RED SIX MILE SHAWNEE 116T

BLACK WHEEL ODYSSEY 117U  
Dam: **RED U6 ALANA 13X**  
RED U6 ALANA 165T

RED VGW GAME PLAN 816  
RED SIXMILE LAKOTO 35W  
RED 5L NORSEMAN KING 2291  
RED CROWFOOT SHAWNEE 9124J  
BLACK WHEEL ODYSSEY 2M  
RED WHEEL BRIDGET 7P  
RED U6 TWENTY X 29P  
RED U6 ALANA 12K

- \$115,000 High Seller at the 2016 Six Mile sale
- Superior cow family strength
- Elite dam with a ratio of 108 on 5 calves
- Adds muscle, substance and frame in a fault free package

## RED BRYLOR AUTOMATIC 95B ~ 2 SONS SELL

LMP 95B ~ 1788604 ~ 2/25/2014

Lot 143, 157

RED WHEEL DODGE CITY 3U  
Sire: **RED WHEEL DODGE CITY 61Y**  
RED WHEEL PRIDE 29N

HF KODIAK 5R  
Dam: **BLACK BRYLOR LAKME 155Y**  
RED XXX LAKME 70M

RED NORTHLINE ATLANTIC CITY  
RED HANDFORD MISS CHIEF 7K  
RED BRYLOR STALLION 19J  
RED FLY AWAY PRIDE161K  
SANDY BAR ADVANTAGE 43M  
WILBAR RUBY 955N  
RED BRYLOR NEW TREND 22D  
RED FINE LINE LAKME 21J

- All Canadian pedigree that continues the Kodiak line
- Significantly adds bone and substance
- Daughters are powerfully built with exceptional udder quality
- Top 1% of the breed in WW, YW, TM and Carcass Weight
- Grandam is the Elite Donor XXX Lakme 70M, who has an average ratio of 113

## MRLA RELOAD 56C ~ RC ~ 12 SONS SELL

MRLA 56C ~ 1881524 ~ 1/13/2015 Lots 49,51,52,72,121,152,155,159,160,162,166,168

RITO 707 OF IDEAL 3407  
SIRE: **S A V RESOURCE 1441**  
S A V BLACKCAP MAY 4136

RED BAR-E-EL WARDEN 144W  
DAM: **RED MRLA MISS 641Y**  
RED MRLA 793R

R R RITO 707  
IDEAL 3407 OF 1418  
S A V 8180 TRAVELER 004  
S A V MAY 2397  
RED BAR-E-EL RIBEYE 103R  
RED BAR-E-EL LARKABA 72N  
RED CHOPPER K RESURRECTION 229  
RED GET-A-LONG PENNY 376

- Red Carrier Son from S A V Resource 1441
- Heavy muscled and stout
- Sound footed and easy moving
- Top 4 % of the breed in WW, YW, REA, & CW

## LWNBURG RESERVE 163C ~ 7 SONS SELL

TED 163C ~ 1846391 ~ 3/07/2015

Lots 9, 35, 48, 50, 80, 90, 140

RITO 707 OF IDEAL 3407  
Sire: **S A V RESOURCE 1441**  
W A V BLACKCAP MAY 4136

MYTTY IN FOCUS  
Dam: **TED IN FOCUS 16W**  
VWB PRIDE LADY 124T

R R RITO 707  
IDEAL 3407 OF 1418 076  
S A V 8180 TRAVELER 004  
S A V MAY 2397  
S A F FOCUS OF E R  
MYTTY COUNTESS 906  
RAINBOW HILLS PRIME CUT 114P  
PRIDE LADY OF RAINBOW HILLS 1N

- High Selling black bull in 2016 to Hillmers and resold to Scott Stock Farm in the fall of 2017
- Multi trait sire with cow family strength
- Elite Dam with a ratio of 104 on 6 calves and 2 natural daughters walking in our herd

BW - 80  
205D - 791  
365D - 1387

BW -1.2  
WW +56  
YW +98  
Milk +21  
TM +49

MARB+.52  
REA +.08  
CWT +27



BW - 90  
205D - 877  
365D - 1430

BW -0.4  
WW +73  
YW +111  
Milk +16  
TM +53

MARB+.36  
REA +.09  
CWT +36



BW 88  
Sept.10/14 705  
Feb.25/15 1355  
Scrotal 42 cm  
REA 15.05  
LMY 6.27

BW +4.1  
WW +95  
YW +149  
Milk +9  
TM +56

MARB +.34  
REA +0.12  
CWT +64

BW - 92  
205D - 648  
365D - 1302

BW +2.4  
WW +68  
YW +121  
Milk +14  
TM +48

MARB+.17  
REA +.51  
CWT +46



BW +0.9  
WW +54  
YW +101  
Milk +24  
TM +51

BW - 83  
205D - 748  
365D - 1410

MARB+.56  
REA +.63  
CWT +44

TED IN FOCUS 16W



## REFERENCE SIREs

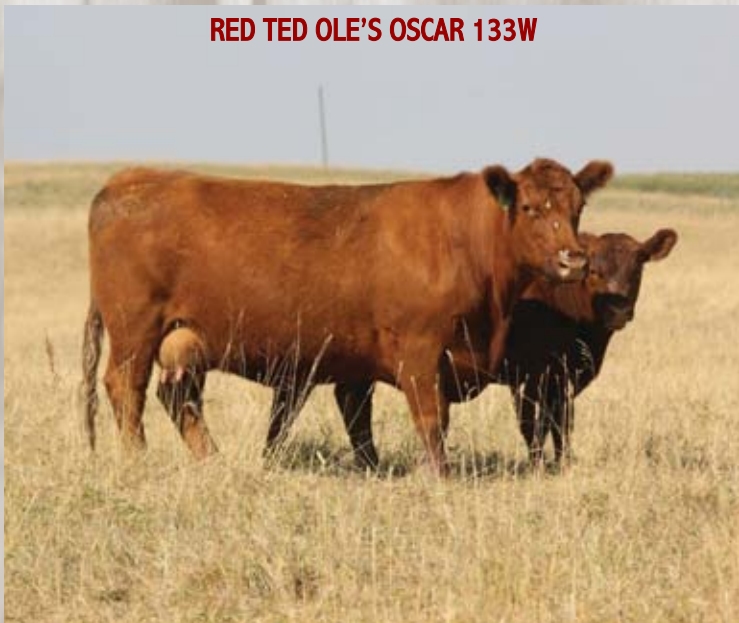




**1E** -Contender son with exceptional length, smooth shoulder and eye catching design

- Dam is thick and moderate with a flawless udder and abundant milk
- Grandam was in our program for 13 years, with a herd bull in 2015 that was a sale highlight going to David Slingerland
- Cow maker that can improve and construct a high quality cowherd
- Yearling index of 112

**RED TED OLE'S OSCAR 133W**



**RED LWNBRG CONTENDER 1E**

TED 1E ~ 2007878 ~ January 07 2017

RED SSS SOLUTION 329Z  
**Sire: RED SSS CONTENDER 121B**  
 RED SSS DYNA 688X

RED CROWFOOT OLE'S OSCAR 2042M  
**Dam: RED TED OLE'S OSCAR 133W**  
 RED TED GLACIER MARIAS 27N

RED SSS SOLDIER 365W  
 RED SSS DUCHESS 428S  
 RED BRYLOR BIG ROCK 85T  
 RED SSS DYNA 652P  
 RED MLK CRK CUB 722  
 RED CROWFOOT OMEGA 9179J  
 RED GLACIER MARIAS 548  
 RED TED SOMETHIN SPECIAL

'18 EPDS	TOP%
BW -0.9	40
WW +54	35
YW +80	40
Milk +10	91
TM +41	50

AOD	BW	WW	205D	365D	MARB	REA	CWT
8	89	770	715	1342	+0.38	-0.01	+16



10

**10E** - Long spined bull with calving ease coming from the maternal side of the pedigree  
 - Sound uddered Sagebrush cow has a son working at Wolfcreek and two daughters retained in our herd.  
 - Dam has had 4 calves with an average birthweight of 77 lbs



**RED TED CATALYST 20Z**



**LX 10**

**RED LWNBRG CONTENDER 10E**

TED 10E ~ 2007880 ~ January 09 2017

RED SSS SOLUTION 329Z  
**Sire: RED SSS CONTENDER 121B**  
 RED SSS DYNA 688X

RED TED CATALYST 107T  
**Dam: RED TED CATALYST 20Z**  
 RED TED KINCHEN SAGEBRUSH 163R

RED SSS SOLDIER 365W  
 RED SSS DUCHESS 428S  
 RED BRYLOR BIG ROCK 85T  
 RED SSS DYNA 652P  
 RED GP CATALYST 025  
 RED TED GOLD ROBBER 23L  
 RED KINCHEN SAGEBRUSH 487  
 RED TED BASIN DRIFTER 95M

'18 EPDS	TOP%
BW -3.1	10
WW +62	10
YW +85	30
Milk +14	65
TM +49	10

AOD	BW	WW	205D	365D	MARB	REA	CWT
5	75	870	812	1363	+0.40	-0.02	+16

**LX 13**

**RED LWNBRG FRONTIER 13E**

TED 13E ~ 1968316 ~ January 10 2017

RED BRYLOR RED KODIAK 3A  
**Sire: RED LWNBRG FRONTIER 28C**  
 RED TED RED TED PATRIOT 66Z

RED BIEBER ROLLIN DEEP Y118  
**Dam: RED LWNBRG ROLLIN DEEP 4C**  
 RED TED ROMEO 169S

BLACK BRYLOR KODIAK 204Y  
 RED BRYLOR FAYETTE 40Y  
 RED GLACIER MARIAS 548  
 RED TED BRANDED BEEF 22T  
 RED BIEBER ROOSEVELT W384  
 RED BIEBER TILLY 399W  
 RED BUF CRK ROMEO L081  
 RED TED MOIRA THE DUKE

'18 EPDS	TOP%
BW -2.0	20
WW +59	20
YW +83	35
Milk +23	4
TM +52	3

AOD	BW	WW	205D	365D	MARB	REA	CWT
2	80	755	783	1289	+0.31	+0.05	+16

13

**13E** - Calving ease Frontier son with good length and a smooth shoulder  
 - Maternally charged pedigree designed to produce economic females



**RED BIEBER ROLLIN DEEP Y118**







**14E** - Performance powerhouse, that is thick and rugged with plenty of volume and bone

- Impressive BW to weaning spread with a weaning index of 109 ranking him 10th out of 78
- Dam is a phenotypic standout with a great udder and foot
- Grandam has 2 daughters retained and sons working at Keho Lake, Wolfcreek and Crystal Springs Colony
- Retaining 1/3 Semen Interest



**RED LWNBRG RIPTIDE 143D**  
Maternal brother



**14**

**RED LWNBRG FORCE 14E**

TED 14E ~ 1968315 ~ January 10 2017

RED ANDRAS IN FOCUS B175  
Sire: **RED ANDRAS FUSION R236**  
RED ANDRAS BELLE B167

RED GMRA PEACEMAKER 1216  
Dam: **RED LWNBRG RONA 110C**  
RED TED DAKOTA COPPER 7W

MYTTY IN FOCUS  
RED DI ESTONIA 316  
RED ANDRAS THUNDER B105  
RED ANDRAS BELLE 416  
RED FRITZ JUSTICE 8013  
RED GMRA THELMA 930  
RED OHRR DAKOTA COPPER 29K  
RED TED NEW TREND 108P

'18 EPDS	TOP%
BW -2.3	20
WW+57	25
YW +97	10
Milk+23	4
TM +51	5

AOD	BW	WW	205D	365D	MARB	REA	CWT
2	82	865	886	1442	+0.59	-0.10	+25



**16**

**RED LWNBRG CONTENDER 16E**

TED 16E ~ 2007881 ~ January 11 2017

RED SSS SOLUTION 329Z  
Sire: **RED SSS CONTENDER 121B**  
RED SSS DYNA 688X

RED CROWFOOT OLE'S OSCAR 2042M  
Dam: **RED TED OLES OSCAR 25X**  
RED TED KINCHEN SAGEBRUSH 70R

RED SSS SOLDIER 365W  
RED SSS DUCHESS 428S  
RED BRYLOR BIG ROCK 85T  
RED SSS DYNA 652P  
RED MLK CRK CUB 722  
RED CROWFOOT OMEGA 9179J  
RED KINCHEN SAGEBRUSH 487  
RED TED GLACIER MARIAS 10L

'18 EPDS	TOP%
BW -1.9	25
WW+55	35
YW +76	50
Milk+14	65
TM +46	20

AOD	BW	WW	205D	365D	MARB	REA	CWT
7	84	780	736	1273	+0.38	+0.03	+12



**16E** - Contender has the ability to add length while maintaining superior rib and volume

- Sagebrush dam with an excellent udder and a thick moderate frame
- Cow maker that has real world performance and maternal value
- Two maternal sisters working in the herd





### RED LWNBRG FUSION 21E

TED 21E ~ 2007404 ~ January 13 2017

RED ANDRAS IN FOCUS B175  
Sire: **RED ANDRAS FUSION R236**  
RED ANDRAS BELLE B167

RED MRLA FLEX 49Z  
Dam: **RED LWNBRG FLEX 149C**  
RED TED RAMBLER 52L

MYTTY IN FOCUS  
RED DI ESTONIA 316  
RED ANDRAS THUNDER B105  
RED ANDRAS BELLE 416  
MRLA 53W  
RED GET-A-LONG FIREFLY 363  
RED BJR RAMBLER 5162  
RED TED BEAU 109G

'18 EPDS	TOP%
BW -3.0	10
WW +42	80
YW +78	45
Milk +22	6
TM +43	40

AOD	BW	WW	205D	365D	MARB	REA	CWT
2	76	765	801	1371	+0.56	+0.04	+13

#### 21E - Recommended for heifers

- Valuable low birth weight Fusion son with a smooth shoulder and good length
- Maternal grandam 52L is Elite and was in our program for 14 years with a ratio of 106 on 11 calves



### RED LWNBRG FRONTIER 22E

TED 22E ~ 1968319 ~ January 13 2017

RED BRYLOR RED KODIAK 3A  
Sire: **RED LWNBRG FRONTIER 28C**  
RED TED RED TED PATRIOT 66Z

RED LAZY MC COWBOY CUT 26U  
Dam: **RED TED COWBOY CUT 96A**  
RED TED MAKE MY DAY 57L

BLACK BRYLOR KODIAK 204Y  
RED BRYLOR FAYETTE 40Y  
RED GLACIER MARIAS 548 RED  
TED BRANDED BEEF 22T  
RED LAZY MC STOUT 30S  
RED LAZY MC STAR 185M  
RED BJR MAKE MY DAY 981  
RED TED FED'S BO 45J

'18 EPDS	TOP%
BW +0.1	55
WW +63	10
YW +91	20
Milk +16	50
TM +48	10

AOD	BW	WW	205D	365D	MARB	REA	CWT
4	92	825	800	1383	+0.11	+0.05	+24

#### 22E - A long bodied massive performance bull that moves like a cat

- Will sire market topping pay weight
- Grandam was the model cow in terms of efficiency and fertility with a ratio of 103 in 12 calves



### RED LWNBRG FUSION 34E

TED 34E ~ CM426751 ~ January 17 2017 OSC

RED ANDRAS IN FOCUS B175  
Sire: **RED ANDRAS FUSION R236**  
RED ANDRAS BELLE B167

RED FINELINE MULBERRY 26P  
Dam: **RED TED MULBERRY 114X OSC**  
RED TED ROMEO 59T

MYTTY IN FOCUS  
RED DI ESTONIA 316  
RED ANDRAS THUNDER B105  
RED ANDRAS BELLE 416  
RED COMPASS MULBERRY 449M  
RED DUS FAYETTE 8G  
RED BUF CRK ROMEO LO81  
RED TED KINCHEN SAGEFRUSH 196R

'18 EPDS	TOP%
BW N/A	
WW N/A	
YW N/A	
Milk N/A	
TM N/A	

AOD	BW	WW	12/21/17	MARB	REA	CWT
7	94	1020	1550			

#### 34E - A massive thick built machine with superior growth and size

- A pound producer that weaned at the very top of his group







**36**



**36 RED LWNBRG HARVESTOR 36E**  
TED 36E ~ 1968325 ~ January 17 2017

TED HARVESTOR 154A  
**Sire: RED LWNBRG HARVESTOR 103C**  
RED LWNBRG CADENCE 141Y

RED SIX MILE SAKIC 832S  
**Dam: RED LWNBRG IVY 9Z**  
RED TED MAKE MY DAY 215P

S A V HARVESTOR 0338  
RED LWNBRG ANISTON 137S  
RED BLADES NATURAL 11W  
RED LWNBRG OPTIMA 100W  
RED SIX MILE AVIATOR 217P  
RED SIX MILE SIERA 257P  
RED TED MAKE MY DAY 74I  
RED TED NONE BETTER 25J

'18 EPDS	TOP%
BW -0.4	50
WW+68	4
YW+106	4
Milk+15	55
TM +49	10

AOD	BW	WW	205D	365D	MARB	REA	CWT
5	83	855	826	1453	+0.45	-0.12	+32

**RED LWNBRG HARVESTOR 180C**  
Maternal Brother



**36E** - Very consistent Harvester son with a very balanced Epd profile and natural data  
- A pedigree designed to produce females  
- Maternal brother 180C sold to Count Ridge Angus in 2017



**39**



**39 RED LWNBRG FRONTIER 39E**  
TED 39E ~ 1968326 ~ January 18 2017

RED BRYLOR RED KODIAK 3A  
**Sire: RED LWNBRG FRONTIER 28C**  
RED TED RED TED PATRIOT 66Z

RED TED PACKER 107Z  
**Dam: RED LWNBRG PACKER 19C**  
RED TED SAKIC 16Y

BLACK BRYLOR KODIAK 204Y  
RED BRYLOR FAYETTE 40Y  
RED GLACIER MARIAS 548  
RED TED BRANDED BEEF 22T  
RED MESSMER PACKER S008  
RED TED FRONTLINE 151W  
RED SIX MILE SAKIC 832S  
RED TED LODI PRINCE 155P

'18 EPDS	TOP%
BW -1.6	30
WW+64	10
YW +94	15
Milk+19	20
TM +51	5

AOD	BW	WW	205D	365D	MARB	REA	CWT
2	78	780	831	1292	+0.27	+0.24	+23

**39E** - Calving ease prospect loaded with rib and muscle  
- Maternally charged pedigree fueled by 3 Elite dams in his pedigree  
- Ted 23L was a Premier Dam with a ratio of 109 on 12 calves  
- Ted 26L had a ratio of 103 on 10 calves  
- Ted 155P had a weaning ratio 103 on 13 natural calves



**40**



**40 RED LWNBRG FRONTIER 40E**  
TED 40E ~ 2007406 ~ January 19 2017

RED BRYLOR RED KODIAK 3A  
**Sire: RED LWNBRG FRONTIER 28C**  
RED TED RED TED PATRIOT 66Z

RED OHRR DAKOTA COPPER 29K  
**Dam: RED TED DAKOTA COPPER 103T**  
RED TED MAKE MY DAY 67L

BLACK BRYLOR KODIAK 204Y  
RED BRYLOR FAYETTE 40Y  
RED GLACIER MARIAS 548  
RED TED BRANDED BEEF 22T  
RED LCHMN COPPER ROB 1204D  
RED MESSMER OPHELIA 9502  
RED BJR MAKE MY DAY 981  
TED TED BLAZE CHARLOTTE

'18 EPDS	TOP%
BW -2.8	10
WW+58	25
YW +78	45
Milk+19	20
TM +51	5

AOD	BW	WW	205D	365D	MARB	REA	CWT
10	80	810	789	1288	+0.22	-0.03	+12

**40E** - Long bodied smooth made Frontier son that would work on heifers



**41E** - Half brother to the \$57,750 Harvester 103C that was a highlight in the 2016 sale season

- More powerful than his brother with loads of muscle and volume
- High powered herd sire prospect with strong actual data and balanced Epd profile
- Featured with his dam on the front cover



**HARVESTOR 154A**

**HARVESTOR 103C - paternal brother**



**RED LWNBRG HARVESTOR 41E**

TED 41E ~ 1968328 ~ January 19 2017

18 EPDS	TOP%
BW -0.1	55
VW +63	10
YW +104	6
Milk +17	40
TM +49	10

S A V HARVESTOR 0338  
Sire: **RED HARVESTOR 154A**  
RED LWNBRG ANISTON 137S

RED BRYLOR/WSP KARWEIK 1P  
Dam: **RED TED KARWEIK 74T**  
RED TED NEW TREND 53N

S A V HERITAGE 6295  
S A V EMBLYNETTE 7749  
RED BRYLOR MASTER PLAN 17M  
RED TED FARGO 33L  
RED NORTHLINE ROB ROY 122K  
RED DMM MISS ESSENCE 58M  
RED BRYLOR NEW TREND 22D  
RED TED HORATIA BOOTJACK

AOD	BW	WW	205D	365D	MARB	REA	CWT
10	84	880	857	1446	+0.32	-0.16	+32



**RED LWNBRG HARVESTOR 44E**

TED 44E ~ 1968331 ~ January 20 2017

18 EPDS	TOP%
BW -1.0	40
VW +66	7
YW +107	4
Milk +15	55
TM +49	10

TED HARVESTOR 154A  
Sire: **RED LWNBRG HARVESTOR 103C**  
RED LWNBRG CADENCE 141Y

RED GLACIER CHATEAU 744  
Dam: **RED TED CHATEAU 25W**  
RED TED KARWEIK 74T

S A V HARVESTOR 0338  
RED LWNBRG ANISTON 137S  
RED BLADES NATURAL 11W  
RED LWNBRG OPTIMA 100W  
RED LMAN KING ROB 8621  
RED GLACIER REBALA  
RED BRYLOR/WSP KARWEIK 1P  
RED TED NEW TREND 53N

AOD	BW	WW	205D	365D	MARB	REA	CWT
8	85	830	812	1343	+0.47	+0.04	+32

**44E** - Maternal brother 58D was a sale highlight in 2017 to Powder Creek Farms



**RED LWNBRG FUSION 45E**

TED 45E ~ 1968332 ~ January 20 2017

18 EPDS	TOP%
BW -2.4	15
VW +55	35
YW +89	25
Milk +19	20
TM +46	20

RED ANDRAS IN FOCUS B175  
Sire: **RED ANDRAS FUSION R236**  
RED ANDRAS BELLE B167

RED BRYLOR RED KODIAK  
Dam: **RED LWNBRG KODIAK 51C**  
RED TED PATRIOT 113Y

MYTTY IN FOCUS  
RED DI ESTONIA 316  
RED ANDRAS THUNDER B105  
RED ANDRAS BELLE 416  
BLACK BRYLOR KODIAK 204Y  
RED BRYLOR FAYETTE 40Y  
RED TED GLACIER MARIAS 65L  
RED TED BARNEY 152K

AOD	BW	WW	205D	365D	MARB	REA	CWT
2	80	740	798	1374	+0.58	-0.09	+20

**RED LWNBRG WALK OFF 58D**  
Maternal brother



**45E** - Calving ease Frontier son with a pedigree designed to mate heifers

- Calf vigor from both sides of the pedigree
- Top 1% Calving Ease Epd, YW Index of 103
- Elite Grandam 152K with a ratio of 106 on 8 calves





**46**

**46E** - Herd sire prospect with thickness and volume that is hard to find in a moderate birth weight bull  
 -Excellent cow family strength and performance value  
 - A heavy milking first year dam that is the model cow in terms of efficiency and fertility  
 - Has the ability to fast forward a cow herd

**RED BIEBER ROLLIN DEEP Y118**



**LX 46**

**RED LWNBRG HARVESTOR 46E**

TED 46E ~ 1968330 ~ January 20 2017

TED HARVESTOR 154A  
**Sire: RED LWNBRG HARVESTOR 103C**  
 RED LWNBRG CADENCE 141Y  
  
 RED BIEBER ROLLIN DEEP Y118  
**Dam: RED LWNBRG ROLLIN DEEP 25C**  
 RED TED SAKIC 3W

S A V HARVESTOR 0338  
 RED LWNBRG ANISTON 137S  
 RED BLADES NATURAL 11W  
 RED LWNBRG OPTIMA 100W  
 RED BIEBER ROOSEVELT W384  
 RED BIEBER TILLY 399W  
 RED SIX MILE SAKIC 832S  
 RED TED CHATEAU 15T

'18 EPDS	TOP%
BW -0.8	45
WW+66	7
YW+100	9
Milk+17	40
TM +50	7

AOD	BW	WW	205D	365D	MARB	REA	CWT
2	85	805	862	1406	+0.46	+0.06	+28

**LX 51**

**RED LWNBRG REVENUE 51E**

TED 51E ~ 1968338 ~ January 22 2017

S A V RESOURCE 1441  
**Sire: MRLA RELOAD 56C**  
 RED MRLA MISS 641Y  
  
 RED ROY ROGERS 5604  
**Dam: RED WOOD COULEE SOPIE 401B**  
 RED RC SOPIE 35Y

RITO 707 OF IDEAL 3407  
 S A V BLACKCAP MAY 4136  
 RED BAR-E-L WARDEN 144W  
 RED MRLA 793R  
 RED NORTHLINE ROB ROY 122K  
 RED PIE PATTI ANNE 9221  
 RED BAR-E-L BULL WILLIE 3W  
 RED SPAERMAN SOPIE 606N

'18 EPDS	TOP%
BW+1.2	80
WW+62	10
YW+101	8
Milk+19	20
TM +50	7

AOD	BW	WW	205D	365D	MARB	REA	CWT
3	85	805	833	1345	+0.24	+0.11	+32



**51**

**51E** - Outcross herd sire that would add breeding versatility to most programs  
 - Thick topped, muscular with a stout rump and superior structure and style  
 - Balanced Epd profile and actual data

**S A V RESOURCE 1441**





**54E** - Full brother to the high selling Electric 4D herd sire to Count Ridge Angus

- Complete Fusion Son with thickness, muscle and volume to go along with a great profile.
- Maternal value near the top of the breed
- Cow family with solid udders and natural fleshing ability and thickness
- Dam has a ratio of 103 on 4 calves
- Grandam is Elite with a ratio of 107 on 6 calves



RED LWNBRG ELECTRIC 4D - full brother



RED LWNBRG SCARLETT 62Z



54

**LX 54**

**RED LWNBRG FUSION 54E**

TED 54E ~ 1968340 ~ January 23 2017

RED ANDRAS IN FOCUS B175  
Sire: **RED ANDRAS FUSION R236**  
RED ANDRAS BELLE B167

RED LAZY MC COWBOY CUT 26U  
Dam: **RED LWNBRG SCARLET 62Z**  
RED TED GRAND CANYON 144R

MYTTY IN FOCUS  
RED DI ESTONIA 316  
RED ANDRAS THUNDER B105  
RED ANDRAS BELLE 416  
RED LAZY MC STOUT 30S  
RED LAZY MC STAR 185M  
RED LCHMN GRND CANYON 1244G

'18 EPDS	TOP%
BW -1.1	35
WW+56	30
YW+102	7
Milk+18	30
TM+46	20

AOD	BW	WW	205D	365D	MARB	REA	CWT
5	85	800	793	1279	+0.44	+0.02	+30

**LX 55**

**RED LWNBRG PROLINE 55E**

TED 55E ~ 1968342 ~ January 24 2017

TED HARVESTOR 154A  
Sire: **RED LWNBRG HARVESTOR 103C**  
RED LWNBRG CADENCE 141Y

RED BRYLOR RED KODIAK 3A  
Dam: **RED LWNBRG KODIAK 147C**  
RED LWNBRG GLACIER MARIAS 26A

S A V HARVESTOR 0338  
RED LWNBRG ANISTON 137S  
RED BLADES NATURAL 11W  
RED LWNBRG OPTIMA 100W  
BLACK BRYLOR KODIAK 204Y  
RED BRYLOR FAYETTE 40Y  
RED GET-A-LONG WANDER 90S  
RED TED GLACIER MARIAS 40X

'18 EPDS	TOP%
BW-2.3	20
WW+74	1
YW+113	1
Milk+16	50
TM+54	1

AOD	BW	WW	205D	365D	MARB	REA	CWT
2	71	820	890	1473	+0.53	+0.04	+33

**55E** - Excellent heifer bull prospect from Harvestor 103C

- True curve bender with exceptional growth from birth to yearling
- Breed leading growth Epd's and actual data
- First calf dam has a great udder and perfect feet
- Weaning index of 111 and yearling index of 104
- Retaining 1/3 Semen Interest



55

RED ANGUS





57



57

**RED LWNBRG TRACTION 57E**

TED 57E ~ 1968343 ~ January 24 2017

TED HARVESTOR 154A  
**Sire: RED LWNBRG HARVESTOR 103C**  
 RED LWNBRG CADENCE 141Y

RED TED CHATEAU 142Y  
**Dam: RED LWNBRG CHATEAU 69B**  
 RED TED SPITFIRE 96Y

S A V HARVESTOR 0338  
 RED LWNBRG ANISTON 137S  
 RED BLADES NATURAL 11W  
 RED LWNBRG OPTIMA 100W  
 RED GLACIER CHATEAU 744  
 RED TED RAMBLER 52L  
 RED TED MAKE MY DAY 31R  
 RED TED BECTON LANCER

'18 EPDS	TOP%
BW -0.9	40
WW +69	4
YW +111	2
Milk +14	65
TM +48	10

AOD	BW	WW	205D	365D	MARB	REA	CWT
3	82	835	869	1471	+0.43	+0.07	+35

**57E** - Traction 57E is a premier cow maker that you can improve and construct a cowherd with  
 - Thick powerhouse with tons of muscle and bone  
 - His dam is a phenotypic standout with a flawless udder, structural design and foot quality  
 - Maternal bother sold to Jerry Frey in 2017



RED LWNBRG CHATEAU 69B



RED TED CHATEAU 142Y



58



58

**RED LWNBRG FUSION 58E**

TED 58E ~ 1968344 ~ January 25 2017

RED ANDRAS IN FOCUS B175  
**Sire: RED ANDRAS FUSION R236**  
 RED ANDRAS BELLE B167

RED CROWFOOT OLE'S OSCAR 2042M  
**Dam: RED TED OLES OSCAR 1Z**  
 RED TED COMBINATION 60X

MYTTY IN FOCUS  
 RED DI ESTONIA 316  
 RED ANDRAS THUNDER B105  
 RED ANDRAS BELLE 416  
 RED MLK CRK CUB 722  
 RED CROWFOOT OMEGA 9179J  
 RED LSF COMBINATION A301M  
 RED TED MAKE MY DAY 57L

'18 EPDS	TOP%
BW -1.4	30
WW +60	15
YW +105	5
Milk +16	50
TM +46	20

AOD	BW	WW	205D	365D	MARB	REA	CWT
5	92	865	865	1524	+0.73	+0.03	+31

**58E** - Dominating Fusion son with extra length and loaded with thickness and muscle  
 - Impressive actual growth data and weaning and yearling Epd's near the top of the breed  
 - Dam has a perfect foot and 2 daughters retained, and a son working for Tim Piotrowski at the Lost River Ranch

RED LWNBRG CHATEAU 53B  
 maternal brother



59



59

**RED LWNBRG KODIAK 59E**

TED 59E ~ 2011939 ~ 1/25/2017

BLACK BRYLOR KODIAK 204Y  
**Sire: RED BRYLOR RED KODIAK 3A**  
 RED BRYLOR FAYETTE 40Y

RED BRYLOR FORT ROCK 34A  
**Dam: RED BAR 4A OPHELIA 355C**  
 RED U2 OPHELIA 159Z

HF KODIAK 5R  
 RED XXX LAKME 70M  
 RED BRYLOR SDL PASQUALE 213P  
 RED FL FAYETTE 33M  
 RED BRYLOR JKC FORT KNOX 100Y  
 RED BEA OF KINARED 822W  
 RED HOWE MAGNUM 169W  
 RED U2 OPHELIA 370W

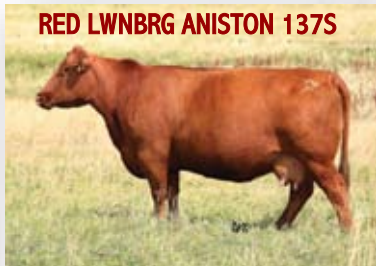
'16 EPDS	TOP%
BW -1.4	30
WW +64	10
YW +95	15
Milk +22	6
TM +54	1

AOD	BW	WW	205	365D	MARB	REA	CWT
2	79	795	869	1439	+0.25	-0.01	+24

**59E** - This low birth weight Kodiak son has all the tools to be a solid calving ease prospect  
 - Dam was purchased at the Bar 4A fall female sale in 2016



**60E** - Fusion son that is loaded with thickness, heavy muscled and built solid from the ground up  
 - Aniston 137S has an impressive resume of producing ranch bulls and the Harvester 154A Red Carrier  
 - This heaving milking dam has four sons sold in the past sales to Wolfcreek Colony, John Mazutinec and Matt Beckman



**MATERNAL BROTHERS**

**TED HARVESTOR 154A**

**RED LWNBRG CHATEAU 59B**

**RED LWNBRG CHATEAU 60B**

**RED LWNBRG FUSION 86D**



**RED LWNBRG FUSION 60E**  
 TED 60E ~ 2003262 ~ January 26 2017

RED ANDRAS IN FOCUS B175  
**Sire: RED ANDRAS FUSION R236**  
 RED ANDRAS BELLE B167  
  
 RED BRYLOR MASTER PLAN 17M  
**Dam: RED LWNBRG ANISTON 137S**  
 RED TED FARGO 33L

MYTTY IN FOCUS  
 RED DI ESTONIA 316  
 RED ANDRAS THUNDER B105  
 RED ANDRAS BELLE 416  
 RED BASIN SENSATION 702E  
 RED BRYLOR BONITA 66K  
 RED BADLANDS BONUS 702  
 RED TED MAJESTA REDFORD

'18 EPDS	TOP%
BW -1.7	25
WW +48	60
YW +86	30
Milk +13	75
TM +37	75

AOD	BW	WW	205D	365D	MARB	REA	CWT
11	80	700	730	1216	+0.42	-0.25	+20



**RED LWNBRG OUTSIDER 61E**  
 TED 61E ~ 1968345 ~ January 27 2017

PEAK DOT ELIMINATOR 100Z  
**Sire: RED SIX MILE OUTSIDER 387C**  
 RED STEWART INA 611S  
  
 RED TED GLACIER MARIAS 65L  
**Dam: RED TED PATRIOT 113Y**  
 RED TED BARNEY 152K

S A V ELIMINATOR 9105  
 ERICA OF PEAK DOT 730T  
 RED YY RAMBLER 322N  
 RED YY INA 348N  
 RED GLACIER MARIAS 548  
 RED TED BIEBER BLOSSOM 1682  
 RED TED BARNEY 24H  
 RED TED SARGENT SILVEIRAS

'18 EPDS	TOP%
BW -0.4	50
WW +56	30
YW +94	15
Milk +18	30
TM +46	20

AOD	BW	WW	205D	365D	MARB	REA	CWT
6	88	765	772	1348	+0.43	+0.03	+26

**61E** - This bull was an early standout  
 - His herd bull profile and gentle nature make him a favorite  
 - Exceptional length, smooth shoulder, and structural balance  
 - New outcross genetics for us featuring S A V Eliminator 9105  
 - Cow making pedigree that will leave high quality daughters  
 - Dam 113Y has three daughters in the herd  
 - Grandam is Elite with a ratio of 106 on 8 calves



**RED ANGUS**





**72E** - Resource is a standout in terms of phenotype, performance EPD's and cow family credentials

- Unique herd bull with length, muscle and soundness
- Growth Epd's right at the top of the breed, as well as Total Maternal and Carcass
- Grandam was a big square hipped cow recording a 148 yearling index and has two daughters in the herd

- Unmatched breeding versatility for many programs
- His Peacemaker dam is one of our favorites with her first son selling in 2017 to Wards Red Angus
- Weaning index of 110 and yearling ratio 113
- **Retaining 50% Possession & Semen Interest**



72

**RED LWNBRG RESOURCE 72E**

TED 72E ~ 1968354 ~ January 30 2017

S A V RESOURCE 1441  
**Sire: MRLA RELOAD 56C**  
 RED MRLA MISS 641Y

RITO 707 OF IDEAL 3407 7075  
 S A V BLACKCAP MAY 4136  
 RED BAR-E-L WARDEN 144W  
 RED MRLA 793R  
 RED FRITZ JUSTICE 8013  
 RED GMRA THELMA 930  
 RED LCHMN RED SPREAD 1271F  
 RED TED FARGO 33L

RED GMRA PEACEMAKER 1216  
**Dam: RED LWNBRG PEACEMAKER 70B**  
 RED TED RED SPREAD 174R

18 EPDS	TOP%
BW+1.4	80
WW+74	1
YW+125	1
Milk+19	20
TM +56	1

AOD	BW	WW	205D	365D	MARB	REA	CWT
3	85	840	897	1530	+0.37	+0.35	+47



75

**RED LWNBRG FUSION 75E**

TED 75E ~ 1968352 ~ January 30 2017

RED ANDRAS IN FOCUS B175  
**Sire: RED ANDRAS FUSION R236**  
 RED ANDRAS BELLE B167

MYTTY IN FOCUS  
 RED DI ESTONIA 316  
 RED ANDRAS THUNDER B105  
 RED ANDRAS BELLE 416  
 RED GP CATALYST 025  
 RED TED GOLD ROBBER 23L  
 RED FABULOUS FRONT LINE 315N  
 RED TED ROMEO 46P

RED TED CATALYST 107T  
**Dam: RED TED CATALYST 27Y**  
 RED TED FRONTLINE 45W OSF

18 EPDS	TOP%
BW-2.3	20
WW+57	25
YW +94	15
Milk+17	40
TM +46	20

AOD	BW	WW	205D	365D	MARB	REA	CWT
6	80	760	777	1295	+0.58	-0.16	+23

**75E** - Long bodied Fusion bull that has calving ease built in from both sides of the pedigree

- Dam has three daughters in herd and was the #1 ranked female at weaning with a ratio of 121



74

**RED LWNBRG HARVESTOR 74E**

TED 74E ~ 1968353 ~ January 30 2017

TED HARVESTOR 154A  
**Sire: RED LWNBRG HARVESTOR 103C**  
 RED LWNBRG CADENCE 141Y

S A V HARVESTOR 0338  
 RED LWNBRG ANISTON 137S  
 RED BLADES NATURAL 11W  
 RED LWNBRG OPTIMA 100W  
 S A V HARVESTOR 0338  
 RED LWNBRG BOXCAR 139X  
 RED BJR MONU 4X-303  
 RED TED BODACIOUS 37L

TED HARVESTOR 108A  
**Dam: LWNBRG HARVESTOR 44C**  
 RED TED MONU 189T

18 EPDS	TOP%
BW -2.9	10
WW+52	45
YW +89	25
Milk+22	6
TM +48	10

AOD	BW	WW	205D	365D	MARB	REA	CWT
2	74	710	800	1344	+0.44	+0.09	+19

**74E** - Attractive heifer bull option

- Linebred pedigree featuring S A V Harvestor 0338
- Cow maker with a sound structure



78

**RED LWNBRG FRONTIER 78E**

TED 78E ~ 1968356 ~ January 31 2017

RED BRYLOR RED KODIAK 3A  
**Sire: RED LWNBRG FRONTIER 28C**  
 RED TED RED TED PATRIOT 66Z

BLACK BRYLOR KODIAK 204Y  
 RED BRYLOR FAYETTE 40Y  
 RED GLACIER MARIAS 548  
 RED TED BRANDED BEEF 22T  
 RED ANDRAS IN FOCUS B175  
 RED ANDRAS BELLE B167  
 RED CROWFOOT OLE'S OSCAR 2042M  
 RED TED COMBINATION 60X

RED ANDRAS FUSION R236  
**Dam: RED LWNBRG FUSION 134C**  
 RED TED OLES OSCAR 1Z

18 EPDS	TOP%
BW+0.6	70
WW+66	7
YW+100	9
Milk+17	40
TM +50	7

AOD	BW	WW	205D	365D	MARB	REA	CWT
2	98	710	802	1250	+0.36	+0.17	+25



- 81E** - Calving ease Outsider son
- Stout, moderate and packed full of muscle
  - Outcross pedigree for most programs
  - Recommended for heifers
  - Predictable consistent genetics that will produce real world ranch replacement females



**S A V HARVESTOR 0338**



**81**



**RED LWNBRG OUTSIDER 81E**

TED 81E ~ 1968359 ~ January 31 2017

PEAK DOT ELIMINATOR 100Z  
**Sire: RED SIX MILE OUTSIDER 387C**  
 RED STEWART INA 611S

TED HARVESTOR 108A  
**Dam: LWNBRG HARVESTOR 92C**  
 RED LWNBRG ANISTON 137S

S A V ELIMINATOR 9105  
 ERICA OF PEAK DOT 730T  
 RED YY RAMBLER 322N  
 RED YY INA 348N  
 S A V HARVESTOR 0338  
 RED LWNBRG BOXCAR 139X  
 RED BRYLOR MASTER PLAN 17M  
 RED TED FARGO 33L

'18 EPDS	TOP%
BW -1.0	40
WW+56	30
YW +94	15
Milk+18	30
TM +46	20

AOD	BW	WW	205D	365D	MARB	REA	CWT
2	74	700	793	1234	+0.42	-0.12	+25



**RED LWNBRG HIGH CALIBER 84E**

TED 84E ~ 1985408 ~ February 02 2017

RED SIX MILE TAURUS 519A  
**Sire: RED SIX MILE HIGH CALIBER 177C**  
 RED U6 ALANA 13X

RED GET-A-LONG WANDER 905  
**Dam: RED TED WANDER 33A**  
 RED TED GOLDEN BOY 56Y

RED SIX MILE GAME FACE 164Y  
 RED SIX MILE SHAWNEE 116T  
 BLACK WHEEL ODYSSEY 117U  
 RED U6 ALANA 65T  
 RED BUF CRK HOBO 1961  
 RED SSFA JOANNA 93T  
 RED BHR GOLDEN BOY 453B  
 RED TED MAKE MY DAY 80M

'18 EPDS	TOP%
BW -1.1	35
WW+66	7
YW+106	4
Milk+14	65
TM +47	15

AOD	BW	WW	205D	365D	MARB	REA	CWT
4	90	745	788	1383	+0.60	+0.22	+32



**84**

- 84E** - Attractive, stylish bull with superior structure
- Remarkable length and clean front end
  - Maternal and cow family strength with three generations of perfect uddered females



**Red Ted Wander 33A with calf 84E**





94

**91 RED LWNBRG HIGH CALIBER 91E**

TED 91E ~ 1985410 ~ February 05 2017

RED SIX MILE TAURUS 519A  
**Sire: RED SIX MILE HIGH CALIBER 177C**  
 RED U6 ALANA 13X

RED WEVR DOC HOLLIDAY 2N  
**Dam: RED TED HOLLIDAY 55Y**  
 RED TED FRONTLINE 151W

RED SIX MILE GAME FACE 164Y  
 RED SIX MILE SHAWNEE 116T  
 BLACK WHEEL ODYSSEY 117U  
 RED U6 ALANA 65T  
 RED MLK CRK CUB 722  
 RED WEBR MS DOLLY 1L  
 RED FABULOUS FRONTLINE 315N  
 RED TED GOLD ROBBER 23L

'18 EPDS	TOP%
BW -0.1	55
WW+65	8
YW+102	7
Milk+16	50
TM +48	10

AOD	BW	WW	205D	365D	MARB	REA	CWT
6	85	810	851	1350	+0.33	+0.08	+17

**91E** - A thick muscled, stout rumped son of the \$115,000 Six Mile High Caliber  
 - Great grandam was an Elite performance leader , recording a ratio of 109 on 12 calves



**94 RED LWNBRG HIGH CALIBER 94E**

TED 94E ~ 1985412 ~ February 06 2017

RED SIX MILE TAURUS 519A  
**Sire: RED SIX MILE HIGH CALIBER 177C**  
 RED U6 ALANA 13X

RED 6 MILE FULL THROTTLE 171T  
**Dam: RED TED FULL THROTTLE 52A**  
 RED TED SAKIC 6W

RED SIX MILE GAME FACE 164Y  
 RED SIX MILE SHAWNEE 116T  
 BLACK WHEEL ODYSSEY 117U  
 RED U6 ALANA 65T  
 RED TER-RON FULLY LOADED 540R  
 RED SIX MILE WITZEL 360J  
 RED SIX MILE SAKIC 832S MAF  
 RED TED CHEYENNE 24T

'18 EPDS	TOP%
BW+1.9	85
WW+77	1
YW+119	1
Milk+17	40
TM +55	1

AOD	BW	WW	205D	365D	MARB	REA	CWT
4	101	860	923	1582	+0.46	-0.09	+43

**94E** - A massive long bodied explosive growth bull with the ability to fast track performance in any herd  
 - Unmatched muscle and bone with a weaning ratio of 112 and yearling index of 118  
 - Growth and maternal data at the top of the breed along with CW  
 - Straight Canadian pedigree  
 - Will sire pounds and pay weight that drive profit in most cattle operations







98

**RED LWNBRG HARVESTOR 98E**

TED 98E ~ 1968370 ~ February 07 2017

TED HARVESTOR 154A  
**Sire: RED LWNBRG HARVESTOR 103C**  
 RED LWNBRG CADENCE 141Y

XO CROWFOOT 0102X  
**Dam: RED CROWFOOT BIEBIRD 3256A**  
 CROWFOOT BIEBIRD 3080N

S A V HARVESTOR 0338  
 RED LWNBRG ANISTON 137S  
 RED BLADES NATURAL 11W  
 RED LWNBRG OPTIMA 100W  
 RED CROWFOOT MOONSHINE 8081U  
 XO CROWFOOT BLACKBIRD 8810U  
 O C C JOKER 620J CAF OHF DDF  
 RED CROWFOOT BIEBIRD 9196J

'18 EPDS	TOP%
BW+0.6	70
WW+71	2
YW+109	3
Milk+14	65
TM +50	7

AOD	BW	WW	205D	365D	MARB	REA	CWT
4	88	810	875	1412	+0.56	+0.16	+35

- 98E** - Well balanced Harvester 103C son with good eye appeal and data  
 -Top of the breed growth and real world efficiency demanded by cattlemen  
 - 103C's progeny have great phenotype and structural soundness

**114E & 115E** - Twin Harvester sons with calving ease and maternal value

- Heavy milking first calf heifer that impressed, with her ability to breed back early  
 - Top 1% in WW & YW, top 3% for TM, and top 1% for CW & Marbling



114

**RED LWNBRG HARVESTOR 114E**

TED 114E ~ 1968382 ~ February 13 2017

TED HARVESTOR 154A  
**Sire: RED LWNBRG HARVESTOR 103C**  
 RED LWNBRG CADENCE 141Y

RED BIEBER ROLLIN DEEP Y118  
**Dam: RED LWNBRG ROLLIN DEEP 103B**  
 RED TED KINCHEN SAGEBRUSH 70R

S A V HARVESTOR 0338  
 RED LWNBRG ANISTON 137S  
 RED BLADES NATURAL 11W  
 RED LWNBRG OPTIMA 100W  
 RED BIEBER ROOSEVELT W384  
 RED BIEBER TILLY 399W  
 RED KINCHEN SAGEBRUSH 487  
 RED TED GLACIER MARIAS 10L

TW

'18 EPDS	TOP%
BW+0.6	70
WW+75	1
YW+118	1
Milk+15	55
TM +52	3

AOD	BW	WW	205D	365D	MARB	REA	CWT
3	68	620	714	1188	+0.63	+0.13	+41



115

**RED LWNBRG HARVESTOR 115E**

TED 115E ~ 1968383 ~ February 13 2017

TED HARVESTOR 154A  
**Sire: RED LWNBRG HARVESTOR 103C**  
 RED LWNBRG CADENCE 141Y

RED BIEBER ROLLIN DEEP  
**Dam: RED LWNBRG ROLLIN DEEP 103B**  
 RED TED KINCHEN SAGEBRUSH 70R

S A V HARVESTOR 0338  
 RED LWNBRG ANISTON 137S  
 RED BLADES NATURAL 11W  
 RED LWNBRG OPTIMA 100W  
 RED BIEBER ROOSEVELT W384  
 RED BIEBER TILLY 399W  
 RED KINCHEN SAGEBRUSH 487  
 RED TED GLACIER MARIAS 10L

TW

'18 EPDS	TOP%
BW+0.5	70
WW+75	1
YW+118	1
Milk+15	55
TM +52	3

AOD	BW	WW	205D	365D	MARB	REA	CWT
3	56	610	705	1178	+0.63	+0.13	+41





### RED LWNBRG OUTSIDER 116E

TED 116E ~ 1968385 ~ February 15 2017

PEAK DOT ELIMINATOR 100Z  
Sire: **RED SIX MILE OUTSIDER 387C**  
RED STEWART INA 611S

RED MRLA FLEX 49Z  
Dam: **RED LWNBRG FLEX 87C**  
RED TED GLACIER MARIAS 27N

S A V ELIMINATOR 910S  
ERICA OF PEAK DOT 730T  
RED YY RAMBLER 322N  
RED YY INA 348N  
MRLA 53W  
RED GET-A-LONG FIREFLY 363  
RED GLACIER MARIAS 548  
RED TED SOMETHIN SPECIAL 114K

18 EPDS	TOP%
BW -1.3	35
WW+46	70
YW+77	50
Milk+17	40
TM+40	60

AOD	BW	WW	205D	365D	MARB	REA	CWT
2	75	600	734	1150	+0.66	+0.06	+14



### RED LWNBRG FUSION 118E

TED 118E ~ 1968384 ~ February 15 2017

RED ANDRAS IN FOCUS B175  
Sire: **RED ANDRAS FUSION R236**  
RED ANDRAS BELLE B167

RED LSF COMBINATION A301M  
Dam: **RED TED COMBINATION 40T**  
RED TED NONE BETTER 24J

MYTTY IN FOCUS  
RED DI ESTONIA 316  
RED ANDRAS THUNDER B105  
RED ANDRAS BELLE 416  
RED LCHMN TOP BRASS 1049H  
RED WHF LASS 27G-29J  
RED LMAN NONE BETTER 9604  
RED TED CREEK CLEO 2Z

18 EPDS	TOP%
BW -2.4	15
WW+40	85
YW+74	55
Milk+17	40
TM+37	75

AOD	BW	WW	205D	365D	MARB	REA	CWT
10	79	620	682	1207	+0.64	-0.16	+12



### RED LWNBRG RELOAD 121E

TED 121E ~ 1968388 ~ February 17 2017

S A V RESOURCE 1441  
Sire: **MRLA RELOAD 56C**  
RED MRLA MISS 641Y

RED BHR GOLDEN BOY 453B  
Dam: **RED TED GOLDEN BOY 56Y**  
RED TED MAKE MY DAY 80M

RITO 707 OF IDEAL 3407 707S  
S A V BLACKCAP MAY 4136  
RED BAR-E-L WARDEN 144W  
RED MRLA 793R  
RED LMB GOLDEN BOY 719  
RED MISS BHR LOGAN 017  
RED BJR MAKE MY DAY 981  
RED TED BOOM BOOM 67G

18 EPDS	TOP%
BW+0.1	60
WW+62	10
YW+107	4
Milk+14	65
TM+44	30

AOD	BW	WW	205D	365D	MARB	REA	CWT
6	90	740	822	1347	+0.48	+0.37	+35

- 116E** - Calving ease from a dam sired by Flex 49Z
- Outcross genetics from both sides of the pedigree
- Top 1% Marbling

- 118E** - Recommended for heifers
- Dam is CAA Elite with exceptional feet
- Top of the breed for Marbling

- 121E** - Outcross cow bull featuring S A V Resource 1441 as his grandsire
- Cow maker supreme with an beautifully uddered dam with two daughters working in our herd
- Top 5% of the breed for REA, Marbling and Carcass





124



**LX** 124

**RED LWNBRG OUTSIDER 124E**

TED 124E ~ 1968390 ~ February 18 2017

PEAK DOT ELIMINATOR 100Z  
Sire: **RED SIX MILE OUTSIDER 387C**  
RED STEWART INA 611S

S A V ELIMINATOR 9105  
ERICA OF PEAK DOT 730T  
RED YY RAMBLER 322N  
RED YY INA 348N  
S A V HARVESTOR 0338  
RED LWNBRG ANISTON 137S  
RED CROWFOOT 83X  
RED XO CROWFOOT PRINCESS 021X

18 EPDS	TOP%
BW -0.6	45
WW +67	5
YW +100	9
Milk +16	16
TM +49	10

TED HARVESTOR 154A  
Dam: **RED LWNBRG HARVESTOR 146C**  
RED XO CROWFOOT PRINCESS 2421Z

AOD	BW	WW	205D	365D	MARB	REA	CWT
2	84	680	833	1345	+0.36	-0.17	+28

**124E** - A thick powerfully built bull with base width and volume first calf Harvester dam that is a maternal sister to the high selling 103C herd sire

- Perfect uddered and built to thrive in real range conditions

124E alongside dam 146C



**LX** 126

**RED LWNBRG HARVESTOR 126E**

TED 126E ~ 1968392 ~ February 19 2017

TED HARVESTOR 154A  
Sire: **RED LWNBRG HARVESTOR 103C**  
RED LWNBRG CADENCE 141Y

S A V HARVESTOR 0338  
RED LWNBRG ANISTON 137S  
RED BLADES NATURAL 11W  
RED LWNBRG OPTIMA 100W  
RED SIX MILE AVIATOR 217P  
RED SIX MILE SIERA 257P  
RED TED CATALYST 107T  
RED TED HOB0 76H

18 EPDS	TOP%
BW -2.3	20
WW +63	10
YW +98	10
Milk +14	65
TM +45	25

RED SIX MILE SAKIC 832S  
Dam: **RED TED SAKIC 34Y**  
RED TED CATALYST 20W

AOD	BW	WW	205D	365D	MARB	REA	CWT
6	84	690	774	1280	+0.44	-0.09	+25

**126E** - Long bodied with a smooth shoulder  
- Maternal brother sold in 2017 to Three T Farms



132



**132E** - A smooth shouldered long bodied herd bull  
 - Top 1% for WW & YW along with top 1% for CW & Marbling  
 -Three maternal sisters retained in the herd  
 - Elite grandam has sons walking at Count Ridge Angus, Ken Gruninger and Blue Ridge Colony



**132 RED LWNBRG HARVESTOR 132E**

TED 132E ~ 1968397 ~ February 21 2017

TED HARVESTOR 154A  
**Sire: RED LWNBRG HARVESTOR 103C**  
 RED LWNBRG CADENCE 141Y

RED TED CATALYST 107T  
**Dam: RED TED CATALYST 63Y**  
 RED TED COMBINATION 40T

S A V HARVESTOR 0338  
 RED LWNBRG ANISTON 137S  
 RED BLADES NATURAL 11W  
 RED LWNBRG OPTIMA 100W  
 RED GP CATALYST 025  
 RED TED GOLD ROBBER 23L  
 RED LSF COMBINATION A301M  
 RED TED NONE BETTER 24J

'18 EPDS	TOP%
BW+0.4	65
WW+76	1
YW+123	1
Milk+13	75
TM +51	5

AOD	BW	WW	205D	365D	MARB	REA	CWT
6	91	770	873	1443	+0.63	-0.03	+44



**133 RED LWNBRG WALK OFF 133E**

TED 133E ~ 1968399 ~ February 22 2017

RED SIX MILE GRAND SLAM 130Z  
**Sire: RED SIX MILE WALK OFF 177B**  
 RED SIX MILE CHETA 381Z OSF

RED MRLA FLEX 49Z  
**Dam: RED LWNBRG FLEX 17C**  
 RED FRONTLINE 92W

RED VGW GAME PLAN 816  
 RED SIX MILE REBECCA 216X  
 RED SIX MILE RAWHIDE 222X  
 RED SIX MILE CHETA 355J  
 MRLA 53W  
 RED GET-A-LONG FIREFLY 363  
 RED FABULOUS FRONTLINE 315N  
 RED GLACIER MARIAS 26L

TW

'18 EPDS	TOP%
BW -1.4	30
WW+49	55
YW +76	50
Milk+20	15
TM +45	25

AOD	BW	WW	205D	365D	MARB	REA	CWT
2	77	620	780	1234	+0.31	+0.28	+14

**133E** - A very correct calving ease bull from the \$20,000 Walk Off sire

- A pedigree with cow family strength and structural integrity

**RED MRLA FLEX 49Z**



Thank You to all of our valued Customers who have supported our program to date

- Rick Arthurs\*
- John Balderson\*
- Count Ridge Angus\*
- Mathew Beckman\*
- Black Acre Farms
- Blue Ridge Colony
- Cameron Farms\*
- CCRA Ranching\*
- Crystal Spring Colony\*
- East Raymond Colony\*
- Jerry Frey
- Melinda French
- Goat River Farms
- John Haarman\*
- Hays Stock Grazing Co-op\*
- Peter Heins & Sons\*
- Martin & Sheila Hilmer\*
- Merlin Huber\*
- Keho Lake Colony\*
- Lakeside Colony\*
- Lomond Grazing Assoc.\*
- D & C Matsugi\*
- John & Sheila Mazutynec\*
- Fred McGlynn\*
- North Fork Farms\*
- Park Livestock\*
- Highline Angus
- Powder Creek Farms
- Soderglen Ranches
- Three T Farms
- Trautman Cattle Co.\*
- Conrad Van Hierden\*
- Wards Red Angus
- Wolf Creek Farming\*
- Ashbacher Angus
- Bar 2 S\*
- Ghost Hills Red Angus\*
- Don Carlson\*
- Jim Clarke
- Jeff Cope
- Doug Greidanas
- Ken Gruninger\*
- Jack Heninger
- Wayne Passey
- Moens Farms\*
- Tyler Pasiciel
- Pelleboer Farms
- Greg Romeril\*
- C. Rook Ranching
- Rohrich's Cutting Edge Ranch
- Hicken Ranch\*
- Sandhills Red Angus
- Schuld Farms\*
- Monique Slingerland\*
- David Slingerland\*
- Spring Valley Holdings

\*Repeat Buyers

RED ANGUS





**LX 136 RED LWNBRG FRONTIER 136E**

TED 136E ~ 1968401 ~ February 22 2017

RED BRYLOR RED KODIAK 3A  
Sire: **RED LWNBRG FRONTIER 28C**  
RED TED RED TED PATRIOT 66Z

BLACK BRYLOR KODIAK 204Y  
RED BRYLOR FAYETTE 40Y  
RED GLACIER MARIAS 548  
RED TED BRANDED BEEF 22T  
RED LJC MISSION STATEMENT P27  
RED NSFM MISS DYNAMICS M14  
RED TED MAKE MY DAY 74J  
RED TED NONE BETTER 25J

'18 EPDS	TOP%
BW -1.4	30
WW+62	10
YW +90	20
Milk+14	65
TM +45	25

RED TNTS BANK STATEMENT T272  
Dam: **RED TED BANK STATEMENT 53Y**  
RED TED MAKE MY DAY 215P

AOD	BW	WW	205D	365D	MARB	REA	CWT
6	85	700	797	1303	+0.15	+0.07	+21

**LX 137 RED LWNBRG HARVESTOR 137E**

TED 137E ~ 1968402 ~ February 23 2017

TED HARVESTOR 154A  
Sire: **RED LWNBRG HARVESTOR 103C**  
RED LWNBRG CADENCE 141Y

S A V HARVESTOR 0338  
RED LWNBRG ANISTON 137S  
RED BLADES NATURAL 11W  
RED LWNBRG OPTIMA 100W  
RED LAZY MC COWBOY CUT 26U  
RED TED OLE'S OSCAR 71W  
RED GMRA LARAMIE 5110  
RED TED COMBINATION 40T

'18 EPDS	TOP%
BW+0.4	65
WW+68	4
YW+112	2
Milk+11	85
TM +45	25

RED TED COWBOY CUT 120Z  
Dam: **RED LWNBRG COWBOY 9B**  
RED TED LARAMIE 21Z

AOD	BW	WW	205D	365D	MARB	REA	CWT
3	89	615	740	1296	+0.62	+0.10	+37

**LX 143 RED LWNBRG AUTOMATIC 143E**

TED 143E ~ 1968408 ~ February 25 2017

RED WHEEL DODGE CITY 61Y  
Sire: **RED BRYLOR AUTOMATIC 95B**  
BLACK BRYLOR LAKME 155Y

RED WHEEL DODGE CITY 3U  
RED WHEEL PRIDE 29N  
HF KODIAK 5R  
RED XXX LAKME 70M  
RED TER-RON FULLY LOADED 540R  
RED SIX MILE WITZEL 360J  
RED FINE LINE MULBERRY 26P  
RED TED KICHEN SAGEBRUSH 109P

'18 EPDS	TOP%
BW+2.2	90
WW+80	1
YW+130	1
Milk+11	75
TM +51	5

RED 6 MILE FULL THROTTLE 171T  
Dam: **RED TED FULL THROTTLE 69A**  
RED TED MULBERRY 95U

AOD	BW	WW	205D	365D	MARB	REA	CWT
4	92	725	854	1430	+0.26	-0.10	+50

**LX 145 RED LWNBRG WALK OFF 145E**

TED 145E ~ 1968410 ~ February 26 2017

RED SIX MILE GRAND SLAM 130Z  
Sire: **RED SIX MILE WALK OFF 177B**  
RED SIX MILE CHETA 381Z OSF

RED VGW GAME PLAN 816  
RED SIX MILE REBECCA 216X  
RED SIX MILE RAWHIDE 222X  
RED SIX MILE CHETA 355J  
MRLA 53W  
RED GET-A-LONG FIREFLY 363  
B.B.A.R. NUGGET 4778  
CROWFOOT RED VIEW 3148N

'18 EPDS	TOP%
BW -2.5	15
WW+43	80
YW +70	65
Milk+22	6
TM +43	40

RED MRLA FLEX 49Z  
Dam: **RED LWNBRG FLEX 131C**  
CROWFOOT CLASSIC 6386S

AOD	BW	WW	205D	365D	MARB	REA	CWT
2	70	620	796	1263	+0.31	+0.16	+9

RED SIXMILE WALK OFF 177B - Sire of 133E,145E, & 147E



**137E** - A thick, deep ribbed 103C son with unmatched hair

- Strong maternal and versatile outcross pedigree
- Top of the breed for WW, YW, Carcass and Marbling

**143E** - An explosive deep bodied performance bull by Automatic

- Canadian pedigree with breed leading growth, maternal and carcass
- Great footed and backed by some of the best cows we own
- Top 1% for WW, YW and Carcass Epd, and top 5% TM
- WI: 104 YI: 103





**146 RED LWNBRG HARVESTOR 146E**

TED 146E ~ 1968411 ~ February 28 2017

TED HARVESTOR 154A  
**Sire: RED LWNBRG HARVESTOR 103C**  
 RED LWNBRG CADENCE 141Y  
 RED SSS ENDORSE 639X  
**Dam: RED TR MISTY 2034Z**  
 RED TR MISS "T" 569U

S A V HARVESTOR 0338  
 RED LWNBRG ANISTON 137S  
 RED BLADES NATURAL 11W  
 RED LWNBRG OPTIMA 100W  
 RED T-K ENERGIZER 13T  
 RED SSS BELLE 612P  
 RED BAR-E-L TAKE NOTICE 57N  
 RED SOO LINE MISS "T" 7M

'18 EPDS	TOP%
BW+2.0	90
WW+73	1
YW+113	1
Milk+12	80
TM +49	10

AOD	BW	WW	205D	365D	MARB	REA	CWT
5	98	740	868	1584	+0.50	+0.12	+40

- 146E** - Performance leader with length and volume  
 - Rugged built, rancher bull that will sire pounds and fill up the replacement pen  
 - Weaning index of 104 and the #1 yearling ratio at 128  
 - Top 1% for WW & YW



**RED TR MISTY 2034Z**



**147 RED LWNBRG WALK OFF 147E**

TED 147E ~ 1968416 ~ March 03 2017

RED SIX MILE GRAND SLAM 130Z  
**Sire: RED SIX MILE WALK OFF 177B**  
 RED SIX MILE CHETA 381Z  
 TED HARVESTOR 154A  
**Dam: RED LWNBRG HARVESTOR 41C**  
 RED TED KINCHEN SAGEBRUSH 163R

RED VGW GAME PLAN 816  
 RED SIX MILE REBECCA 216X  
 RED SIX MILE RAWHIDE 222X  
 RED SIX MILE CHETA 355J  
 S A V HARVESTOR 0338  
 RED LWNBRG ANISTON 137S  
 RED KINCHEN SAGEBRUSH 487  
 RED TED BASIN DRIFTER 95M

'18 EPDS	TOP%
BW -1.8	25
WW+54	35
YW +89	25
Milk+19	20
TM +46	120

AOD	BW	WW	205D	365D	MARB	REA	CWT
2	79	600	789	1282	+0.44	-0.01	+21

- 147E** - Heifer bull from Walk Off and off a first year cow that is a half sister to the Harvestor 103C herd sire  
 - Exceptional fleshing ability with a perfect udder



**RED LWNBRG HARVESTOR 41C**



**LX 148 RED LWNBRG HARVESTOR 148E**  
 TED 148E ~ 1968412 ~ March 03 2017

TED HARVESTOR 154A  
**Sire: RED LWNBRG HARVESTOR 103C**  
 RED LWNBRG CADENCE 141Y

RED LSF COMBINATION A301M  
**Dam: RED TED COMBINATION 51Y**  
 RED TED KINCEN SAGEBRUSH 70R

S A V HARVESTOR 0338  
 RED LWNBRG ANISTON 137S  
 RED BLADES NATURAL 11W  
 RED LWNBRG OPTIMA 100W  
 RED LCHMN TOP BRASS 1049H  
 RED WHF LASS 27G-29J  
 RED KINCEN SAGEBRUSH 487  
 RED TED GLACIER MARIAS 10L

'18 EPDS	TOP%
BW -0.7	45
WW+70	3
YW+108	3
Milk +6	98
TM +41	50

AOD	BW	WW	205D	365D	MARB	REA	CWT
6	86	700	835	1328	+0.63	+0.00	+33

**148E** - Top of the breed for growth and marbling



**LX 154 RED LWNBRG FUSION 154E**  
 TED 154E ~ 1968418 ~ March 05 2017

RED ANDRAS IN FOCUS B17S  
**Sire: RED ANDRAS FUSION R236**  
 RED ANDRAS BELLE B167

RED TED PACKER 107Z  
**Dam: RED LWNBRG PACKER 104C**  
 RED TED SHOCCO DATA 68T

MYTTY IN FOCUS  
 RED DI ESTONIA 316  
 RED ANDRAS THUNDER B105  
 RED ANDRAS BELLE 416  
 RED MESSMER PACKER S008  
 RED TED FRONTLINE 151W  
 RED SHOCCO DATA  
 RED TED GRAND CANYON 31M

'18 EPDS	TOP%
BW -2.2	20
WW+51	50
YW +87	25
Milk+18	30
TM +43	40

AOD	BW	WW	205D	365D	MARB	REA	CWT
2	80	600	796	1334	+0.71	-0.20	+19

**LX 157 RED LWNBRG AUTOMATIC 157E**  
 TED 157E ~ 1968421 ~ March 08 2017

RED WHEEL DODGE CITY 61Y  
**Sire: RED BRYLOR AUTOMATIC 95B**  
 BLACK BRYLOR LAKME 155Y

RED FABULOUS FRONT LINE 315N  
**Dam: RED TED FRONTLINE 92W**  
 RED TED GLACIER MARIAS 26L

RED WHEEL DODGE CITY 3U  
 RED WHEEL PRIDE 29N  
 HF KODIAK 5R  
 RED XXX LAKME 70M  
 RED MEADOW CK 904 52K  
 RED CRESCENT CREEK ANNIE 1G  
 RED GLACIER MARIAS 548  
 RED TED BARNEY 3X

'18 EPDS	TOP%
BW+0.6	70
WW+69	4
YW+101	8
Milk+13	75
TM +47	15

AOD	BW	WW	205D	365D	MARB	REA	CWT
8	90	695	851	1291	+0.21	+0.09	+31

**157E** - The Automatic daughters are highly fertile with easy fleshing ability and added frame with quality udders  
 - Top of the breed for growth and maternal  
 - Powerful muscle and volume







159

**RED LWNBRG RELOAD 159E**

TED 159E ~ 1968424 ~ March 10 2017

S A V RESOURCE 1441  
**Sire: MRLA RELOAD 56C**  
 RED MRLA MISS 641Y

RITO 707 OF IDEAL 3407 7075  
 S A V BLACKCAP MAY 4136  
 RED BAR-E-L WARDEN 144W  
 RED MRLA 793R  
 RED MLK CRK CUB 722  
 RED CROWFOOT OMEGA 9179J  
 RED BJR MAKE MY DAY 981  
 RED TED SPECIAL 25K

RED CROWFOOT OLE'S OSCAR 2042M  
**Dam: RED TED OLE'S OSCAR 71W**  
 RED TED MAKE MY DAY 161R

'18 EPDS	TOP%
BW+0.8	75
WW+62	10
YW+108	3
Milk+16	50
TM +47	15

AOD	BW	WW	205D	365D	MARB	REA	CWT
8	100	670	826	1446	+0.38	+0.37	+36

**159E** - Powerhouse Reload son with added growth and rugged frame  
 - Performance, maternal and carcass at the top of the breed

**160E** - Revive 160E is a thick topped, stout rumped S A V Resource grandson  
 - Outcross genetics with structural soundness and breeding versatility for most programs  
 - Premier cow maker that will improve efficiency and fertility  
 - Attractive herd sire candidate who's gentle natured dam has incredible thickness, fleshing ability and udder quality



160

**RED LWNBRG REVIVE 160E**

TED 160E ~ 1968425 ~ March 12 2017

S A V RESOURCE 1441  
**Sire: MRLA RELOAD 56C**  
 RED MRLA MISS 641Y

RITO 707 OF IDEAL 3407 7075  
 S A V BLACKCAP MAY 4136  
 RED BAR-E-L WARDEN 144W  
 RED MRLA 793R  
 RED TED BARNEY 89H  
 RED TED GRAND CANYON 58K  
 RED KINCHEN SAGEBRUSH 487  
 RED TED BASIN DRIFTER 95M

RED TED BARNEY 41S  
**Dam: RED TED BARNEY 28X**  
 RED TED KINCHEN SAGEBRUSH 163R

'18 EPDS	TOP%
BW -0.9	40
WW+51	50
YW +85	30
Milk+16	50
TM +41	50

AOD	BW	WW	205D	365D	MARB	REA	CWT
7	82	605	756	1295	+0.22	+0.22	+20

**S A V RESOURCE 1441**





166



**166E** - Revolve is an outstanding genetic package with a great outcross pedigree and unmatched Epd profile

- Stout and thick and built to last from the ground up
- Top of the breed growth data along with maternal
- Carcass and Ribeye in the top 4%

- Dam is flawless in her makeup and has top 5% growth numbers and top 1% Milk and Maternal to go along with breed leading Carcass
- Supreme cow family strength with grandam 155P designated Elite, recording a ratio of 105 on 5 calves and has 4 natural daughters working in the herd
- Great Grandam is also Elite with a ratio of 106 on 5 calves and has 4 daughters retained

- Retaining 50% Possession and Interest



166

**RED LWNBRG REVOLVE 166E**

TED 166E ~ 1968429 ~ March 17 2017

S A V RESOURCE 1441  
Sire: **MRLA RELOAD 56C**  
RED MRLA MISS 641Y

RITO 707 OF IDEAL 3407 7075  
S A V BLACKCAP MAY 4136  
RED BAR-E-L WARDEN 144W  
RED MRLA 793R  
RED BIEBER ROOSEVELT W384  
RED BIEBER TILLY 399W  
RED LODI PRINCE 2632  
RED TED GLACIER MARIAS 26L

RED BIEBER ROLLIN DEEP Y118  
Dam: **RED LWNBRG ROLLIN DEEP 36B**  
RED TED LODI PRINCE 155P

'18 EPDS	TOP%
BW+0.5	70
WW+65	8
YW+108	3
Milk+20	15
TM+52	3

AOD	BW	WW	205D	365D	MARB	REA	CWT
3	84	620	836	1322	+0.23	+0.37	+35



168

**RED LWNBRG RELOAD 168E**

TED 168E ~ 1968430 ~ March 19 2017

S A V RESOURCE 1441  
Sire: **MRLA RELOAD 56C**  
RED MRLA MISS 641Y

RITO 707 OF IDEAL 3407 7075  
S A V BLACKCAP MAY 4136  
RED BAR-E-L WARDEN 144W  
RED MRLA 793R  
RED FRITZ JUSTICE 8013  
RED GMRA THELMA 930  
RED TED CATALYST 107T  
RED TED GLACIER LOGAN 126M

RED GMRA PEACEMAKER 1216  
Dam: **RED LWNBRG PEACEMAKER 95B**  
RED TED CATALYST 72Y

'18 EPDS	TOP%
BW+1.3	80
WW+61	15
YW+105	5
Milk+20	15
TM+50	7

AOD	BW	WW	205D	365D	MARB	REA	CWT
3	92	545	741	1367	+0.29	+0.30	+35

168



RED ANGUS



**LWNBGR CROSSOVER 66B****184****RED LWNBGR CROSSOVER 184D**

TED 184D ~ 1950118 ~ July 22 2016

RED BIEBER ROLLIN DEEP Y118  
**Sire: LWNBGR CROSS OVER 66B**  
 TED BISMARCK 50Y

RED CROWFOOT 83X  
**Dam: RED XO CROWFOOT PRINCESS 2421Z**  
 RED XO CROWFOOT PRINCESS 021X

RED BIEBER ROOSEVELT W384  
 RED BIEBER TILLY 399W  
 S A V BISMARCK 5682  
 TED COMMANDER 26W  
 RED CBR RUMBLER 2362-8586  
 RED CROWFOOT LADY ERICA 8080U  
 RED CROWFOOT MOONSHINE 8081U  
 RED XO CROWFOOT PRINCESS8844U

18 EPDS	TOP%
BW -0.8	45
WW+61	15
YW+88	25
Milk+89	30
TM +87	10

AOD	BW	WW	205D	365D	MARB	REA	CWT
4	86	620	606	1105	+0.67	+0.03	+15

**184D** - Extra age Crossover son featuring one of our very best cows in 50Y

- Dam is a moderate, stout, easy fleshing cow with a solid udder and feet

**187****RED LWNBGR CROSSOVER 187D**

TED 187D ~ 1950120 ~ July 30 2016

RED BIEBER ROLLIN DEEP Y118  
**Sire: LWNBGR CROSS OVER 66B**  
 TED BISMARCK 50Y

RED FEDDES BIG SKY R9  
**Dam: RED TED BIG SKY 18A**  
 RED TED RAMBLER 53M

RED BIEBER ROOSEVELT W384  
 RED BIEBER TILLY 399W  
 S A V BISMARCK 5682  
 TED COMMANDER 26W  
 RED BIEBER MAKE MIMI 7249  
 RED FEDDES LAKINA 310  
 RED BJR RAMBLER 5162  
 RED TED MAKE MY DAY 97I

18 EPDS	TOP%
BW -3.4	9
WW+55	35
YW +83	35
Milk+26	1
TM +54	1

AOD	BW	WW	205D	365D	MARB	REA	CWT
3	72	600	628	1149	+0.86	+0.37	+12

**187D**—Very complete sound bull with extra length and smooth front end

- Calving ease bull that will inject calf vigor to go along with high end maternal value and carcass merit

**188****RED LWNBGR CROSSOVER 188D**

TED 188D ~ 1950122 ~ July 30 2016

RED BIEBER ROLLIN DEEP Y118  
**Sire: LWNBGR CROSS OVER 66B**  
 TED BISMARCK 50Y

RED LIC MISSION STATEMENT P27  
**Dam: RED TED MISSION STATEMENT 130A**  
 RED TED FRONTLINE 45W

RED BIEBER ROOSEVELT W384  
 RED BIEBER TILLY 399W  
 S A V BISMARCK 5682  
 TED COMMANDER 26W  
 RED LIC LANCER 806  
 RED LIC HANNA 106  
 RED FABULOUS FRONTLINE 315  
 RED TED ROMEO 46P

18 EPDS	TOP%
BW+0.7	70
WW+64	10
YW +96	10
Milk+22	6
TM +54	1

AOD	BW	WW	205D	365D	MARB	REA	CWT
4	92	670	697	1227	+0.61	+0.31	+32

**188D** - A big strong Crossover son that checks off a lot of boxes

- Top 10% growth, top 6% Milk and top 1% TM along with top 10% Carcass

- Elite Grandam 45W has 3 daughters in the herd

- Balanced outcross genetics





**9E** - Extra thick, stout rumped and loaded with muscle  
 - CAA Elite dam with a ratio of 105 on 4 calves  
 - Two sons have sold in previous sales to the Hillmer's  
 - Cow making genetics



**Ted Network 83Y**



**9**

**LWNBGR RESERVE 9E**

TED 9E ~ 1968310 ~ January 09 2017

'18 EPDS	TOP%
BW+0.8	15
WW+54	20
YW +98	15
Milk+25	15
TM +52	10

S A V RESOURCE 1441  
**Sire: LWNBGR RESERVE 163C**  
 TED IN FOCUS 16W

S A V NET WORTH 4200  
**Dam: TED NETWORK 83Y**  
 TED OBJECTIVE 83U

RITO 707 OF IDEAL 3407 7075  
 S A V BLACKCAP MAY 4136  
 MYTTY IN FOCUS  
 VWB PRIDE LADY 124T  
 S A V 8180 TRAVELER 004  
 S A V MAY 2410  
 S S OBJECTIVE T510 OT26  
 TED GRID MAKER 63S

AOD	BW	WW	205D	365D	MARB	REA	CWT
6	82	905	845	1415	+0.69	+0.44	+40



**35**

**LWNBGR RESERVE 35E**

TED 35E ~ 1968324 ~ January 17 2017

'18 EPDS	TOP%
BW+2.1	45
WW+59	10
YW+107	6
Milk+25	15
TM +55	6

S A V RESOURCE 1441  
**Sire: LWNBGR RESERVE 163C**  
 TED IN FOCUS 16W

S A V NET WORTH 4200  
**Dam: TED NET WORTH 14X**  
 TED REVIVAL 113P

RITO 707 OF IDEAL 3407 7075  
 S A V BLACKCAP MAY 4136  
 MYTTY IN FOCUS AMF  
 VWB PRIDE LADY 124T  
 S A V 8180 TRAVELER 004  
 S A V MAY 2410  
 BAD LANDS REVIVAL 5G  
 SANDUNE'S ERROLLINE 101M

AOD	BW	WW	205D	365D	MARB	REA	CWT
7	86	950	918	1622	+0.52	+0.48	+39

**35E** - A true beef bull with a massive frame and long spine  
 - On of the highest performing cow family's in our herd  
 - Dam has 3 daughters in our herd and a son sold last year to Black Acre Farms



**LWNBGR CROSSOVER 24D**  
 Maternal brother



**TED NETWORK 14X**







**LWA 48**

**LWNBORG RESERVE 48E**

TED 48E ~ 1968334 ~ January 21 2017

S A V RESOURCE 1441  
Sire: **LWNBORG RESERVE 163C**  
TED IN FOCUS 16W

S A V NET WORTH 4200  
Dam: **TED NETWORTH 90X**  
ALLENCROFT TJ BLACKCAP 034N

RITO 707 OF IDEAL 3407 707S  
S A V BLACKCAP MAY 4136  
MYTTY IN FOCUS  
VWB PRIDE LADY 124T  
S A V 8180 TRAVELER 004  
S A V MAY 2410  
ALLENCROFT ILLINI 01 144J  
ALLENCROFT JCT BLACKCAP

18 EPDS	TOP%
BW+1.3	25
WW+49	35
YW +89	25
Milk+24	20
TM +49	20

AOD	BW	WW	205D	365D	MARB	REA	CWT
7	86	875	860	1449	+0.46	+0.54	+35

**48E** - Reserve 48E is stamped with thickness, muscle and volume and has that herd bull presence  
- Both growth indexes at 105

**LWA 50**

**LWNBORG RESERVE 50E**

TED 50E ~ 1968335 ~ January 22 2017

S A V RESOURCE 1441  
Sire: **LWNBORG RESERVE 163C**  
TED IN FOCUS 16W

S A V FINAL ANSWER 0035  
Dam: **TED FINAL ANSWER 60Y**  
MVF PRINCESS 102P

RITO 707 OF IDEAL 3407 707S  
S A V BLACKCAP MAY 4136  
MYTTY IN FOCUS  
VWB PRIDE LADY 124T  
SITZ TRAVELER 8180  
S A V EMULOUS 8145 CAF  
VERMILION DATELINE 7078  
BROOKMORE PRINCESS 55F

18 EPDS	TOP%
BW+1.8	35
WW+57	10
YW+100	10
Milk+21	50
TM +50	15

AOD	BW	WW	205D	365D	MARB	REA	CWT
6	89	875	864	1542	+0.43	+0.48	+35

**50E** - Scale crushing Reserve son with huge volume and muscle  
- Weaning ratio of 105 and the #3 ranked bull at yearling with a ratio of 121



52

**LWA 52**

**LWNBORG RELOAD 52E**

TED 52E ~ 1968336 ~ January 22 2017

S A V RESOURCE 1441  
Sire: **MRLA RELOAD 56C**  
RED MRLA MISS 641Y

MYTTY IN FOCUS  
Dam: **TED IN FOCUS 135W**  
BORDER BUTTE DP BEAUTY 37'03

RITO 707 OF IDEAL 3407 707S  
S A V BLACKCAP MAY 4136  
RED BAR-E-L WARDEN 144W  
RED MRLA 793R  
S A F FOCUS OF E R AMF  
MYTTY COUNTESS 906  
KMA FOURTRAX 5134  
LLB BLACK BEAUTY 701J

18 EPDS	TOP%
BW+2.3	50
WW+46	45
YW +85	35
Milk+19	70
TM +42	55

AOD	BW	WW	205D	365D	MARB	REA	CWT
6	91	835	824	1394			

**52E** - Solid cow bull with extra length and volume  
- Heavy milking dam with sons sold in previous sales to Blades Angus and Don Carlson



80

**80E** A very balanced attractive Reserve son with an excellent Epd profile and actual data

- #4 ranked bull with a weaning index of 112 and yearling of 113
- Dam is a first calving Unanimous daughter with excellent feet and udder
- Cow family strength
- Performance and maternal value



**LWNBGR RESERVE 80E**

TED 80E ~ 1968358 ~ January 31 2017

S A V RESOURCE 1441  
**Sire: LWNBGR RESERVE 163C**  
 TED IN FOCUS 16W

VISION UNANIMOUS 1418  
**Dam: LWNBGR UNANIMOUS 133C**  
 TED NET WORTH 14X

RITO 707 OF IDEAL 3407 7075  
 S A V BLACKCAP MAY 4136  
 MYTTY IN FOCUS  
 VWB PRIDE LADY 124T  
 VISIONTOPLINE ROYAL STOCKMAN  
 VISION EDELLA 665  
 S A V NET WORTH 4200  
 TED REVIVAL 113P

'18 EPDS	TOP%
BW+3.7	80
WW+64	4
YW+113	3
Milk+24	20
TM +56	4

AOD	BW	WW	205D	365D	MARB	REA	CWT
2	86	815	911	1545	+0.61	+0.43	+41



**LWNBGR RESERVE 90E**

TED 90E ~ 1968365 ~ February 05 2017

S A V RESOURCE 1441  
**Sire: LWNBGR RESERVE 163C**  
 TED IN FOCUS 16W

TED NEW STANDARD 92Z  
**Dam: LWNBGR NEW STANDARD 119B**  
 TED FINAL ANSWER 116X

RITO 707 OF IDEAL 3407 7075  
 S A V BLACKCAP MAY 4136  
 MYTTY IN FOCUS  
 VWB PRIDE LADY 124T  
 LCC NEW STANDARD  
 TED SITZ ALLIANCE 31S  
 S A V FINAL ANSWER 0035  
 TED EXTRA H6 95P

'18 EPDS	TOP%
BW+1.8	35
WW+57	10
YW+101	10
Milk+29	2
TM +58	2

AOD	BW	WW	205D	365D	MARB	REA	CWT
3	90	805	884	1466	+0.62	+0.42	+39

90

**90E** - High end cow maker that will leave a long trail of incredible females

- Top of the breed growth and maternal
- Three dams in the maternal side of the pedigree are all larger bodied females with ample milk and ability to produce heavy pay weight



BLACK ANGUS



# LX 106

## LWNBGR HARVESTOR 106E

TED 106E ~ 2007407 ~ February 11 2017

TED HARVESTOR 154A  
**Sire: RED LWNBGR HARVESTOR 103C**  
 RED LWNBGR CADENCE 141Y

S A V BULLETPROOF 0032  
**Dam: LWNBGR BULLET PROOF 163A**  
 RED TED PATRIOT 113Y

S A V HARVESTOR 0338  
 RED LWNBGR ANISTON 137S  
 RED BLADES NATURAL 11W  
 RED LWNBGR OPTIMA 100W  
 S A V BISMARCK 5682  
 S A V EMBLYNETTE 8259  
 RED TED GLACIER MARIAS 65L  
 RED TED BARNEY 152K

'18 EPDS	TOP%
BW+0.3	65
WW+75	1
YW+115	1
Milk+16	50
TM +52	3

AOD	BW	WW	205D	365D	MARB	REA	CWT
4	86	805	908	1439	+0.70	+0.20	+39

**106E** - Harvestor Son with a long body and smooth made front end that puts it all together numerically  
 - High end growth and maternal to go along with top of the breed carcass

**128E** - Calving ease Frontier Son out of a first calf heifer  
 - Wander 905 was a calving ease sire that injected a lot of calf vigor

# LX 140

## LWNBGR RESERVE 140E

TED 140E ~ 1968406 ~ February 24 2017

S A V RESOURCE 1441  
**Sire: LWNBGR RESERVE 163C**  
 TED IN FOCUS 16W

S A V POTENTIAL 0205  
**Dam: LWNBGR POTENTIAL 27B**  
 BLACKBIRD OF RAINBOW HILLS 50S

RITO 707 OF IDEAL 3407 707S  
 S A V BLACKCAP MAY 4136  
 MYTTY IN FOCUS  
 VWB PRIDE LADY 124T  
 S A V PIONEER 7301  
 S A V ELBA 7021  
 RAINBOW HILLS PRIME CUT 114P  
 BLACKBIRD RAINBOW HILLS 145C

'18 EPDS	TOP%
BW+0.5	10
WW+52	25
YW +89	25
Milk+26	10
TM +52	10

AOD	BW	WW	205D	365D	MARB	REA	CWT
3	84	735	885	1480	+0.51	+0.57	+32

**140E** - Thick, stout made bull, loaded with muscle and volume  
 - Awesome Potential dam with a beautiful udder  
 - Weaning index of 108 and Yearling at 107

# LX 162

## LWNBGR RELOAD 162E

TED 162E ~ 1968427 ~ March 14 2017

S A V RESOURCE 1441  
**Sire: MRLA RELOAD 56C**  
 RED MRLA MISS 641Y

LCC NEW STANDARD  
**Dam: TED NEW STANDARD 29Z**  
 TED NET WORTH 14X

RITO 707 OF IDEAL 3407 707S  
 S A V BLACKCAP MAY 4136  
 RED BAR-E-L WARDEN 144W  
 RED MRLA 793R  
 BON VIEW NEW DESIGN 1407  
 LCC SUNSET K3118  
 S A V NET WORTH 4200  
 TED REVIVAL 113P

'18 EPDS	TOP%
BW+3.1	70
WW+38	75
YW +81	45
Milk+24	20
TM +43	50

AOD	BW	WW	205D	365D	MARB	REA	CWT
5	94	605	761	1295			

# LX 128

## LWNBGR FRONTIER 128E

TED 128E ~ 1968394 ~ February 20 2017 RC

RED BRYLOR RED KODIAK  
**Sire: RED LWNBGR FRONTIER 28C**  
 RED TED RED TED PATRIOT 66Z

TED HARVESTOR 108A  
**Dam: LWNBGR WANDER 132C**  
 RED TED WANDER 115A

BLACK BRYLOR KODIAK 204Y  
 RED BRYLOR FAYETTE 40Y  
 RED GLACIER MARIAS 548  
 RED TED BRANDED BEEF 22T  
 S A V HARVESTOR 0338  
 RED LWNBGR BOXCAR 139X  
 RED GET-A-LONG WANDER 90S  
 RED TED BARNEY 28X

'18 EPDS	TOP%
BW -1.6	30
WW+64	10
YW +95	15
Milk+19	20
TM +51	5

AOD	BW	WW	205D	365D	MARB	REA	CWT
2	82	665	824	1342	+0.32	-0.07	+24



BLACK ANGUS



**LX 49****LWNBGR RELOAD 49E**

TED 49E ~ 1968337 ~ January 22 2017 RC

S A V RESOURCE 1441  
Sire: **MRLA RELOAD 56C**  
RED MRLA MISS 641YRED BJR AH BRANDED BEEF L107  
Dam: **RED TED BRANDED BEEF 22T**  
RED TED SPECIAL 25KRITO 707 OF IDEAL 3407 7075  
S A V BLACKCAP MAY 4136  
RED BAR-E-L WARDEN 144W  
RED MRLA 793R  
RED BADLANDS MR BEEF 805  
RED HR ROBIN HOOD 80J ET  
RED KJM SOMETHIN SPECIAL  
RED TED BJR ASTRID

'18 EPDS	TOP%
BW+0.7	70
WW+62	10
YW+104	6
Milk+11	85
TM+42	45

AOD	BW	WW	205D	365D	MARB	REA	CWT
10	89	865	854	1475	+0.35	+0.28	+33

- 49E** - A massive beef bull with a huge hip and thick top  
 - Superior structure and Epd profile  
 - Rancher kind of bull that will sire market topping feeder cattle  
 - Yearling index at 111

**LX 119****LWNBGR RESOURCE 119E**

TED 119E ~ 1968387 ~ February 16 2017 RC

S A V RESOURCE 1441  
Sire: **LWNBGR RESOURCE 63C**  
TED NEW STANDARD 131ARED BHR GOLDEN BOY 453B OSF MAF  
Dam: **RED TED GOLDEN BOY 119Y**  
RED TED GLACIER MARIAS 101LRITO 707 OF IDEAL 3407 7075  
S A V BLACKCAP MAY 4136 CAF  
LCC NEW STANDARD AMF CAF  
OHF NHF DDC  
TED NETWORK 90X  
RED LMB GOLDEN BOY 719 OSF  
RED MISS BHR LOGAN 017  
RED GLACIER MARIAS 058 OSF

'18 EPDS	TOP%
BW -1.8	25
WW+54	35
YW +93	15
Milk+23	4
TM +50	7

AOD	BW	WW	205D	365D	MARB	REA	CWT
6	84	680	752	1270	+0.38	+0.47	+23

- 119E** - Calving ease bull with S A V Resource 1441 headlining the pedigree  
 - Dam has sons working at John Hofer, Hengerer Farms and a herd bull selling in 2017 to Tyler Pasiciel

**LX 155****LWNBGR RELOAD 155E**

TED 155E ~ 1968420 ~ March 06 2017 RC

S A V RESOURCE 1441  
Sire: **MRLA RELOAD 56C**  
RED MRLA MISS 641YRED GMRA PEACEMAKER 1216  
Dam: **RED LWNBGR PEACEMAKER 94B**  
RED TED CATALYST 72YRITO 707 OF IDEAL 3407 7075  
S A V BLACKCAP MAY 4136  
RED BAR-E-L WARDEN 144W  
RED MRLA 793R  
RED FRITZ JUSTICE 8013  
RED GMRA THELMA 930  
RED TED CATALYST 107T  
RED TED GLACIER LOGAN 126M

'18 EPDS	TOP%
BW+1.7	85
WW+68	4
YW+116	1
Milk+19	20
TM +53	2

AOD	BW	WW	205D	365D	MARB	REA	CWT
3	94	670	848	1417	+0.29	+0.30	+42

- 155E** - A younger bull that is one of the best all around prospects in the offering  
 - High end growth along with maternal at the top of the breed

**LX 103****LWNBGR RELOAD 103E**

TED 103E ~ 1968376 ~ February 11 2017 RC

S A V RESOURCE 1441  
Sire: **MRLA RELOAD 56C**  
RED MRLA MISS 641YRED TED CATALYST 107T  
Dam: **RED TED CATALYST 90Y**  
RED TED KINCHEN SAGEBRUSH 163RRITO 707 OF IDEAL 3407 7075  
S A V BLACKCAP MAY 4136  
RED BAR-E-L WARDEN 144W  
RED MRLA 793R  
RED GP CATALYST 025  
RED TED GOLD ROBBER 23L  
RED KINCHEN SAGEBRUSH 487  
RED TED BASIN DRIFTER 95M

'18 EPDS	TOP%
BW -0.3	55
WW+70	3
YW+114	1
Milk+13	75
TM +49	10

AOD	BW	WW	205D	365D	MARB	REA	CWT
6	85	760	821	1384	+0.45	-0.10	+37

- 103E** - Another red Carrier Reload Son with a moderate birth weight and ample growth  
 - The maternal side of his pedigree is one of the premier calving ease cow families on the ranch

**LX 152****LWNBGR RELOAD 152E**

TED 152E ~ 1968417 ~ March 05 2017 RC

S A V RESOURCE 1441  
Sire: **MRLA RELOAD 56C**  
RED MRLA MISS 641YRED TED MAKE MY DAY 31R  
Dam: **RED TED SPITFIRE 39Z**  
RED TED CATALYST 148SRITO 707 OF IDEAL 3407 7075  
S A V BLACKCAP MAY 4136  
RED BAR-E-L WARDEN 144W  
RED MRLA 793R  
RED BJR MAKE MY DAY 981  
RED TED ABOVE & BEYOND 107N  
RED GP CATALYST 025 OSF  
RED TED NONE BETTER 7J

'18 EPDS	TOP%
BW+0.8	75
WW+61	15
YW+103	6
Milk+14	65
TM +44	30

AOD	BW	WW	205D	365D	MARB	REA	CWT
5	94	630	756	1294	+0.49	+0.23	+33

**RED TED GOLDEN BOY 119Y - Dam of 119E****BLACK ANGUS**





**27**

**LX 27 LBG PRIME BEEF 27E SIMMENTAL**  
 LBG 27E ~ 1203649 ~ January 14 2017

WS BEEF KING W107  
**Sire: WS PRIME BEEF Z8**  
 MISS SKY 87U

TRAXS RUSHMORE X103  
**Dam: LBG RUSHMORE 42B**  
 LBG BEEF MAKER 85Z

WS BEEF MAKER R13  
 MISS DREAMBOAT T17  
 ER BIG SKY 545B  
 HSF FORTUNATAS QUO 59S  
 THSF FREEDOM 300N  
 MISS TRAX U850  
 WS BEEF MAKER R13  
 MADER TEMPTRESS 126W

17 EPDS	TOP%
BW 0.2	10
WW+77	15
YW+115	15
Milk+17	95
TM +56	50

AOD	BW	WW	205D	365D	MARB	REA	CWT
3	88	880	873	1411	+0.40	+1.07	+38.7

**27E** - Performance powerhouse that will add a lot of pounds in the fall  
 - Very sound, young dam with exceptional udder and feet



**65**

**LX 65 LBG PRIME BEEF 65E SIMMENTAL**  
 LBG 65E ~ 1203652 ~ January 28 2017

WS BEEF KING W107  
**Sire: WS PRIME BEEF Z8**  
 MISS SKY 87U

TRAX RUSHMORE X103  
**Dam: LBG RUSHMORE 99C**  
 MADER P TEMPTRESS 126W

WS BEEF MAKER R13  
 MISS DREAMBOAT T17  
 ER BIG SKY 545B  
 HSF FORTUNATAS QUO 59S  
 THSF FREEDOM 300N  
 MISS TRAX U850  
 IPU RED BARON 7T  
 JTA SMOKE ON THE WATER 2S

17 EPDS	TOP%
BW -1.3	3
WW+67	50
YW+102	40
Milk+16	95
TM +50	90

AOD	BW	WW	205D	365D	MARB	REA	CWT
2	81	705	782	1249	+0.47	+1.01	+27.7

**65E** - Calving ease Prime Beef son with ample growth  
 - Loaded with muscle and very sound footed



**76**

**LX 76 LBG PRIME BEEF 76E SIMMENTAL**  
 LBG 76E ~ 1203654 ~ January 30 2017

WS BEEF KING W107  
**Sire: WS PRIME BEEF Z8**  
 MISS SKY 87U

TRAXS RUSHMORE X103  
**Dam: LBG RUSHMORE 81B**  
 REMINGTON MS CANDACE 91Y

WS BEEF MAKER R13  
 MISS DREAMBOAT T17  
 ER BIG SKY 545B  
 HSF FORTUNATAS QUO 59S  
 THSF FREEDOM 300N  
 MESS TRAX U850  
 W512 HR  
 MS CANDACE HR/RR W938

17 EPDS	TOP%
BW 0.8	10
WW +75	20
YW+113	20
Milk+17	95
TM +55	60

AOD	BW	WW	205D	365D	MARB	REA	CWT
3	93	820	872	1390	+0.37	+1.00	+28.9

**76E** - Standout at a very early age  
 - Rock solid structure and loaded with performance  
 - Full brother sold in last years sale to John Alton



**83**

**LX 83 LBG PRIME BEEF 83E SIMMENTAL**  
 LBG 83E ~ 1203655 ~ February 01 2017

WS BEEF KING W107  
**Sire: WS PRIME BEEF Z8**  
 MISS SKY 87U

WS BEEF MAKER 74Y  
**Dam: LBG BEEF MAKER 74Y**  
 MADER P ENCHANTRESS 85W

WS BEEF MAKER R13  
 MISS DREAMBOAT T17  
 ER BIG SKY 545B  
 HSF FORTUNATAS QUO 59S  
 HOOKS SHEAR FORCE 38K  
 DCR MS RIBEYE N72  
 TNT TOP GUN R244  
 JDN PRAIRIE PARFAIT 27L

17 EPDS	TOP%
BW -1.3	3
WW +60	80
YW +90	70
Milk+21	75
TM +51	85

AOD	BW	WW	205D	365D	MARB	REA	CWT
5	89	710	733	1309	+0.37	+1.06	+25.3

**83E** - A long bodied bull with a -1.3 on his BW Epd  
 - Beef Maker dam that doesn't miss and has exceptional docility



# PERFORMANCE DATA

# TERMS & CONDITIONS

## Average EPD's for all Red Calves born in 2017

BW	WW	YW	Milk	Total Maternal	MARB	REA	CW
-0.4	+52	+78	+17	+43	+0.30	+0.04	+16

## Average EPD's for all Black Calves born in 2017

BW	WW	YW	Milk	Total Maternal	MARB	REA	CW
+2.3	+43	+76	+20	+42	+0.37	+0.38	+30

**EPD:** Expected Progeny Difference is the prediction of how progeny of each animal are expected to perform relative to the progeny of other animals in the Angus breed. As data continues to accumulate, accuracy levels rise and EPD's can shift accordingly.

**BW:** Birth weight is related to calving ease. Lower birth weights tend to reduce the incidence of calving difficulties. Lower birth weight EPD is more desirable for heifers.

**WW:** Weaning Weight is an indicator of growth from birth to weaning (205 days of age). During this period, the calf's growth is influenced by its mother's ability to produce milk and its own ability to grow.

**YW:** Yearling Weight is an indicator of growth from birth to yearling (365 days of age). The calf's growth during this period is influenced by its own ability to grow plus its mother's maternal abilities. It is the best estimate for total growth.

**Milk:** Milk EPD reflects the milking ability of a sire's daughters expressed in pounds of calf weaned.

**TM:** The Total Maternal EPD predicts the difference in weaning weight of the sire's daughter's progeny due to the combination of growth genetics and milking ability. It is equal to one-half of the weaning weight EPD plus the milk EPD.

### — CARCASS EPD —

**MARB:** (%IMF) Marbling EPD is a predictor of the level of intramuscular fat and is derived using CUP ultrasound data and actual carcass data. Marbling determines quality grade.

**REA:** (Ribeye Area) Ribeye area is expressed in inches<sup>2</sup> and is a predictor of the area of ribeye muscle at the 12th/13th rib.

**CWT:** Is a predictor of transmitting ability for hot carcass weight.

### ACTUAL WEIGHTS

Actual weights to be taken March 13, 2018. These will be available, along with scrotal measurements and carcass data, as a supplementary sheet on sale day.

**TERMS**-The terms of the sale are cash or cheque payable at par to Balog Auction Services Ltd., Lethbridge, Alta. The right of property shall not pass until settlement is made. All settlements must be made with the clerks of the sale before any cattle will be released.

**BIDS** - Every animal entering the sale ring will be sold to the highest bidder. A floor price will apply to each animal consigned.

**DISPUTES** - In case of disputes, bidding will be reopened between parties involved. If no further bid is made, the buyer will be the person from whom the auctioneer accepted the last bid. The auctioneer's decision in such matters will be final.

**PURCHASER'S RISK** - Each animal becomes the risk of the purchaser as soon as sold.

**ANNOUNCEMENTS** - Errors discovered in the catalogue will be corrected by announcements from the Auction Stand at sale time and such corrections will take precedence over the printed matter in the catalogue.

**CERTIFICATE OF REGISTRY** - A certificate of registry duly transferred will be furnished to the buyer for each animal after the settlement is made.

**SHIPPING** - Assistance will be given in making shipment after the sale, but Balog Auction Services Ltd., or the seller assumes no risk. Expenses incurred are the responsibility of the purchaser. Purchasers are requested to furnish shipping instructions when making settlement. Any additional expenses are the responsibility of the buyer, including duty, brokerage fees, etc.

**ACCIDENTS** - Although every precaution will be taken to protect the safety and comfort of buyers, neither the sales manager, auctioneer nor the owner assumes any responsibility in this matter and disclaims any liability, legal or otherwise, in the event of accident or loss of property.

**LIABILITY** - Balog Auction Services Ltd. are acting as agents only and assume no responsibility for representations by the seller. Purchasers must look to the seller for fulfillment of all guarantees and representations made hereunder.

### FUSOGARD VACCINE

All sale bulls have been vaccinated with Fusogard as an aid in the reduction of footrot, on January 23, 2018 and given an oral dewormer. Fusogard is an alternative for natural and organic beef producers because it's not an antibiotic. It is recommended to revaccinate annually as a preventative against signs of footrot. All bulls are on the Pfizer Gold Program.

## Thanks to all our 2018 Sale Sponsors



**ROBERTS VETERINARY SERVICE**

"OWNER'S USE ONLY"

COLLECTION & FREEZING BULL SEMEN  
403-849-2444 robert.gordonray@gmail.com



Co-operative Limited  
Brad & Michelle Williams  
Bulk Fuel Agents



**MILLENNIUM GENETICS**



Leeuwenburgh Angus  
Box 25  
Lethbridge, AB  
T1J 3Y3

## FIRST PROGENY TO SELL IN 2019

Red BAR –E –L First Down 161D



Owned with Dvorka Bros. Ranches

XO CROWFOOT 0102X  
Sire: RED CROWFOOT ACES 2193Z  
RED CROWFOOT MISS STRICH  
Dam: RED BAR-E-L APPROVAL 4L  
RED BAR-E-L GLORIA 87R  
RED BAR-E-L FIRST LADY 95J

Red LWNBRG Broxburn 68D



Owned with Soderglen Ranches

GRP  
RED BIEBER ROLLIN DEEP Y118  
Sire: RED LWNBRG CROSS OVER 66B  
TED BISMARCK 50Y  
Dam: RED SHOCO DATA  
RED TED SHOCO DAT 18W  
RED TED COMBINATION 40R

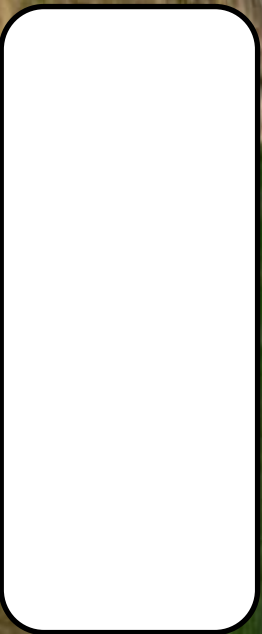
Red Six Mile Crowsnest 313D



RED SIX MILE MASTERMIND 854W  
Sire: RED SIX MILE WILD WEST 0913W  
RED JCC ELORA 45S

Dam: RED VGW GAME PLAN 816  
RED SIX MILE BERRY 373X  
RED SIX MILE BERRY 435U

27<sup>TH</sup> ANNUAL BULL SALE  
TUESDAY, MARCH 13, 2018  
1:00 PM - BALOG AUCTION  
LETHBRIDGE, ALBERTA  
CANADA



PLEASE BRING THIS CATALOGUE TO THE SALE