

 Lazy E Bar Ranching Ltd.



Working Man's Angus Bull Sale

- Angus Two Year Old & Yearling Bulls
- Angus Commercial Heifers
- Ranch Horses

1 pm April 21, 2011 Stettler Auction Market, Stettler, Alberta

DjH

Welcome to the First Annual Lazy E Bar Ranching Bull and Female Sale

Dubbed the "Working Man's Angus Bull Sale" featuring a great group of two year old Angus bulls and some super yearling bulls. No nonsense, fault free, functional Angus bulls ready to go to work. Also featured are outstanding replacement heifers from Lazy E Bar Ranch out of their top herd of commercial cows, as well as heifers from guest consignors, Brimacombe Farms, Purser Farms, Jack & Kathy Lyle and top horses from Roger Suteau and Robyn Bell & Delores Draper.

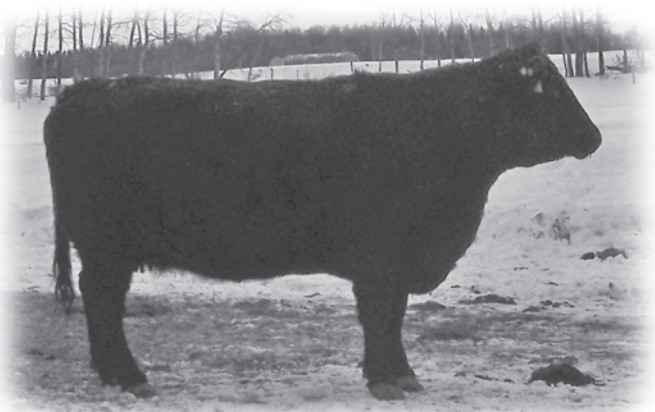
Jim and Wade's common sense approach to the business of breeding and the nutrition of seed stock is most impressive, their selection and purchases of seed stock meets with what the industry is demanding today.

If Jim, Karyl, Wade, Laura, any of the sale crew or Linda and myself can be of assistance in anyway regarding this functional offering, please give us a call.

Yours truly,
Doug Henderson

Douglas J. Henderson & Associates Ltd.

P.O. Box 5900, Lacombe, Alberta T4L 1X4 Doug & Linda Henderson
Phone: (403) 782-3888 Fax: (403) 782-3849 Cel: (403) 350-8541



GOOD MOTHERS MAKE GOOD BULLS

PARTNERSHIP FOR SUCCESS

Viterra Feed Products and James Bleakley with the Lazy E Ranch have been partners working together for the past several years. Over this time, Annette Suominen, a nutritionist with the Feed Products group in the Ponoka area, has been providing local nutritional expertise to ensure that the feedlot, bull and cow calf operation has balanced rations, while optimizing production and profitability for the producer.

Annette Suominen for Viterra Feed Products
feed.viterra.ca

The logo for Viterra, featuring a stylized 'V' with a swoosh above it, followed by the word 'VITERRA' in a bold, sans-serif font.



Lazy E Bar Ranching Ltd.

Working Man's Bull Sale

April 21, 2011 at 1 pm

Stettler Auction Market, Stettler, Alberta

On Offer

- 14 Two Year Old Angus Bulls
- 22 Yearling Angus Bulls
- 71 Commercial Heifers
- 3 Ranch Horses

SALE DAY PHONE: 403-742-2368

Auctioneer:

Greg Johnson 403-934-1082

Stettler Auction Mart (1990) Ltd. Sales Reps:

Greg Hayden 403-742-3154

Jim Abel 403-742-2449

*Be our guests for lunch
& cattle viewing prior to the sale*

**Two Year Old Bulls must be picked up Sale Day
Yearlings can go back to the farm if insured**

Insurance:

Animals become the responsibility of the purchaser after sold

Any bulls returned to Lazy E Bar **MUST BE INSURED**

Insurance available Sale Day

\$50 off the price of yearling bulls if picked up Sale Day

Bulls can be viewed at the farm before the sale

7 km east of Bashaw on the south side of Hwy. #53 - look for the sign

Please feel free to stop by anytime - Coffee is always on!

Marketing Agent

**Douglas J. Henderson
& Associates Ltd.**

P.O. Box 5900, Lacombe, Alberta T4L 1X4

Doug & Linda Henderson

Phone: (403) 782-3888 Fax: (403) 782-3849 Cell: (403) 350-8541

Website: www.hendersoncattle.com Email: djhenderson@platinum.ca

Lazy E Bar Ranching Ltd.

Registered Black Angus

Jim & Karyl Bleakley

Phone: 780-372-4175 Cell: 403-741-9864

Wade & Laura Bleakley

Phone: 780-372-4417 Cell: 403-318-8775

P.O. Box 513, Bashaw, AB T0B 0H0

Fax: 780-372-4340

email: lazyebarranching@msn.com



Welcome from Lazy E Bar Ranching

It is with renewed optimism in the cattle industry that we welcome you to Lazy E Bar Ranchings' 1st Annual Working Man's Bull Sale.

With the outlook for the cattle industry better than it has been for years, we feel it is even more important than ever to produce a well bred animal to be able to carry us forward in the beef business. It is our goal to produce a bull that creates optimal value for our herd as well as your investment.

Although rather new to purebred cattle, we feel that we benefit in bringing years of experience in the feedlot industry to our herd; including the importance of proper nutrition, good feet and legs, and a comprehensive vaccination program. Our bulls offer a strong structural package, fed not for maximum weight gain as yearling but rather for correct development and longevity. As per natural breeding cycles, our calving runs from late March to mid May, allowing us to carry over our strong two-year old selection. At Lazy E Bar Ranching it has always been our goal to continually improve our herd through quality selection of stock from many respected breeders as shown in all of the pedigrees of the bulls offered this year.

We had many great additions to our farm this past year, but our favourite has to be the expanding of Lazy E Bar Ranching into a 3rd generation operation with the birth of Adilane. Although only a few months old, she can already be found riding around in the feed truck offering her help to all of us.

We would like to thank all of our past buyers as well as welcome those new to Lazy E Bar Ranching and we look forward to seeing all of you at the sale.

Jim & Karyl
Wade, Laura & Adilane



Jim & Karyl



Wade, Laura & Adilane

Ponoka Veterinary Clinic

5502 - Hwy 2A Ponoka AB T4J 1M1
Phone - 403-783-4348 Fax - 403-783-5166

Email: info@ponokaveterinaryclinic.ca

Dr. Gary Harbin Dr. Murray Jacobson Dr. Clayton West
Dr. Andrew Ritson-Bennett

The Ponoka Veterinary Clinic has had the pleasure of working with Jim Bleakley and Family at Lazy E Bar for many years.

Jim's commitment to maintaining optimal health and production in his herd has allowed us to work with him to develop a comprehensive vaccination program to meet his goals. This vaccination program provides health protection to calves from conception to weaning and beyond.

The first priority is good herd immunity using Modified Live Virus vaccines, given to the cows prior to breeding. Cows are annually vaccinated for IBR, BVD, BRSV + PI3 as well as Vibrio, Lepto and 8- way.

Immunity begins in the cow but continues in the calves. Calves are vaccinated at 2-3 months of age initially, to provide spring/summer pneumonia protection, and booster vaccines are given at weaning to enhance protection during the stressful period at weaning.





TUNGSTEN 234T - REFERENCE SIRE A

A

BAR-E-L TUNGSTEN 234T

MALE YHB 234T 1401407 MARCH 13 2007

YOUNG DALE TOUCH DOWN 36M
YOUNG DALE ELWAY 56R 1274744
 GLENNIE M'BROOK LASS 2J

DWAJO CHIEF 92E
CRESCENT CREEK PRIDE LADY 81L 1047693
 CRESCENT CREEK PRIDE LADY 34Z

YOUNG DALE REAL DEAL 18K
 PAT LADY SANDRA 2C
 RONAN TEX 10X
 GLENNIE M'BROOK LASS 10Y

GDAR SVF CHIEF
 WICKLOW MISS LUCY 3C
 CRESCENT CREEK CREATOR 20T
 CRESCENT CREEK EXTREM LADY 99T

BW: 86 lbs. Adj. 205D: 636 lbs. Adj. 365D: 1235 lbs.

EPDs: BW: +3.2 34 WW: +34 23 YW: +59 20 Milk: +12 13 TM: +29



BANDO 253U - REFERENCE SIRE B

B

BAR-E-L BANDO 253U

MALE YHB 253U 1484420 ET CAF APRIL 02 2008

BON VIEW BANDO 598 AMF CAC
S A F 598 BANDO 5175 AMF CAC 994198
 S A F ROYAL LASS 1002

EARLY SUNSET HIGH TIME 47G
WILBAR RUBY 161J 958325
 WILBAR RUBY 3F

TEHAMA BANDO 155 AMF CAF NHF
 BON VIEW DORA 56
 V D A R NEW TREND 315 AMF CAF NHF
 S A F ROYAL LASS 6089

EARLY SUNSET HIGHTIME 113D
 EARLY SUNSET LASSIE 34B
 G D A R TRAVELER 71 AMF CAF NHF
 WILBAR RUBY 8D

BW: 96 lbs.

EPDs: BW: +3.9 P WW: +47 P YW: +85 P Milk: +30 P TM: +53 SC: +0.57 P

Co-owned with Bar-E-L





BARDOLENE 14T - REFERENCE SIRE C

C

LAZY E BARDOLENE 14T

MALE LEB 14T 1425967 FEBRUARY 24 2007

SASKALTA BARDOLENE 182H
SASKALTA BARDOLENE 28M 1114223
 SASKALTA EDNA 780G

LOMA LANES CRACKER JACK 51J
DOUBLE AA ANNIE K 463'04 1218602
 DOUBLE AA ANNIE K 593'00

BARDOLENE OLE SASKALTA 2D
 PRINCESS OLE SASKALTA 182B
 DOUBLE AA BANDY 37'95
 OLE SASKALTA EDNA 306C

LOMA LANES CRACKER JACK 4F
 DURNESS KATHLEEN 1W
 DOUBLE AA RETO 554'93
 DOUBLE AA ANNIE K 610'94



LIMITED DESIGN 6U - REFERENCE SIRE D

D

LAZY E LIMITED DESIGN 6U

MALE LEB 6U 1524771 MARCH 06 2008

B S S LIMITED DESIGN
HAPPYVALE NEW DESIGN 36N 1185331
 HAPPYVALE T. NEONIA 131L

MVF STOCKMAN 122H
HAPPYVALE LADY 69P 1224433
 VIKING BANDY LADY 157F

SVF GDAR 216 LTD
 B/R RUBY OF TIFFANY 5113
 BACK ROADS 1418 LEGEND 1582
 TAFIKA 22D NEONIA 96F

TC STOCKMAN 365
 MVF TIBBIE 14C
 ANGUS ACRES BANDY 96X
 DOUBLE AA ANNIE K 66'93



TWO YEAR OLD BULLS



LAZY E TWO YEAR OLDS

1-7W

LAZY E JACK 7W

MALE LEB 7W 1528357 JANUARY 18 2009

SOUTHLAND JACK BLACK 1N
KBJ JACK 114S 1324396
KBJ PRINCESS 550M

KBJ DOC 253F
KBJ PRINCESS 212H 917152
KBJ PRINCESS 105Y

LAMBS OVERDRIVE 45E
OMEGA ERICA LASS 58G
GDAR RUSS 896
KBJ PRINCESS 212H

MINBURN FREE LANCER 79D
KBJ LADY FANNY 169Z
KBJ ROUND MR ANGUS 2P
KBJ PRINCESS 173W

BW: 90 YW Mar 8/10: 1310 Feb. 13/11 Wt: 1940

2-8W

LAZY E TRAVELER 8W

MALE LEB 8W 1524759 JANUARY 18 2009

D H D TRAVELER 6807 AMF NHF
ATLASTA BB TRAVELER 6807 039T 1418057
CIRCLE A PHANTASY 4043

KBJ KAZAM 654N
KBJ PRIDE 106T 1374257
KBJ PRIDE 469M

Q A S TRAVELER 23-4 AMF CAF NHF
BEMINDFUL MAID D H D 0807
G D A R OSCAR 711 AMF NHF
DIXEYLAND PHANTASY 079

KBJ CONQOUR ALL 447J
HILL TOP LADY FANNY 8J
GDAR RUSS 896
KBJ PRIDE 333F

BW: 88 YW Mar 8/10: 1240 Feb. 13/11 Wt: 1960

3-20W

LAZY E SALUTE 20W

MALE LEB 20W 1524741 MARCH 27 2009

CRESCENT CREEK 06 RITO 50L
BAR-E-L SALUTE 110S 1348284
BAR-E-L CORAL 62M

CROWFOOT BRUNO 1670L
CHAPMAN BLACKBIRD 539R 1276036
BEVALEN BLACKBIRD 7K

CRESCENT CREEK REVIVAL 06J
CRESCENT CREEK LASSIE 33H
PLAINVIEW SAUGAHATCHEE 31X
BAR-E-L CORAL 67K

STEVENSON BRUNO 561G CAF NHF
GLADWALL B REV ERICA 7289
CAF SIDEKICK 7784
GRACEDALE BLACKBIRD 3D

BW: 85 YW Mar 8/10: 1050 Feb. 13/11 Wt: 1750

4-21W

LAZY E GABRIEL 21W

MALE LEB 21W 1524702 MARCH 27 2009

YOUNG DALE GABRIEL 7L
BAR-E-L ENMAX 73N 1182252
BAR-E-L MAGNOLIA 143K

DOUBLE AA BLACKMAN 24'93
DOUBLE AA ANNIE K 525'97 887465
DOUBLE AA ANNIE K 582'93

YOUNG DALE KRUGERRAND 2H
PAT LADY SANDRA 2C
BAR-E-L MCC 365 ICON 20H
DOUBLE FOUR DUCHESS 12G

SPRUCE VIEW ESSOTERIC 31A
DOUBLE AA PRINCESS 70'88
DOUBLE AA BARDOLENE 509'88
DOUBLE AA ANNIE K 515'84

BW: 81 YW Mar 8/10: 880 Feb. 13/11 Wt: 1590

Please note - orphaned in mid July 2009



Working Man's Bull Sale 2011



LOT 7-44W

5-30W

LAZY E GABRIEL 30W

MALE LEB 30W 1528979 APRIL 05 2009

YOUNG DALE GABRIEL 7L
BAR-E-L ENMAX 73N 1182252
 BAR-E-L MAGNOLIA 143K

YOUNG DALE KRUGERRAND 2H
 PAT LADY SANDRA 2C
 BAR-E-L MCC 365 ICON 20H
 DOUBLE FOUR DUCHESS 12G

RIDGE VRD 289ET
CROWFOOT G V LASS 4564P 1228434
 GLADWALL G V LASS 6327

VERMILION DATELINE 7078 AMF CAF NHF
 RED AQUILA 366 OSF
 TOMWALL B EMULATION 070
 GLADWALL G V LASS 1270

BW: 83 YW Mar 8/10: 1070 Feb. 13/11 Wt: 1850

6-41W

LAZY E SALUTE 41W

MALE LEB 41W 1524736 APRIL 08 2009

CRESCENT CREEK 06 RITO 50L
BAR-E-L SALUTE 110S 1348284
 BAR-E-L CORAL 62M

CRESCENT CREEK REVIVAL 06J
 CRESCENT CREEK LASSIE 33H
 PLAINVIEW SAUGAHATCHEE 31X
 BAR-E-L CORAL 67K

SILVER DOME BARDOLENE 18L
SILVER DOME BONNIE 814P 1235008
 SILVER DOME BONNIE 714M

BARDOLENE OF PEAK DOT 204R
 SILVER DOME LADY ANN 18D
 DURNESS BANDOLIER 84J
 SILVER DOME BONNIE 514K

BW: 83 YW Mar 8/10: 1090 Feb. 13/11 Wt: 1750

7-44W

LAZY E HEADS UP 44W

MALE LEB 44W 1524749 APRIL 10 2009

GEIS HEADS UP 109'04
EGGEN HEADS UP 31S 1355778
 EGGEN FAME MISS 9P

GEIS HEADS UP 4'02
 GEIS ANNIE K 148'02
 DMM FAME 15M
 EGGEN BIG SKY 16K MISS 79M

TC STOUT 407 AMF NHF
LAZY E TIBBIE 11T 1425947
 RIVERCREST TIBBIE 46K

TC FREEDOM 104 AMF NHF
 TC PRIDE 2053
 HF WALKER 107E
 RIVERCREST TIBBIE 3W

BW: 81 YW Mar 8/10: 1080 Feb. 13/11 Wt: 1890

8-50W

LAZY E HEADS UP 50W

MALE LEB 50W 1524750 APRIL 12 2009

GEIS HEADS UP 109'04
EGGEN HEADS UP 31S 1355778
 EGGEN FAME MISS 9P

GEIS HEADS UP 4'02
 GEIS ANNIE K 148'02
 DMM FAME 15M
 EGGEN BIG SKY 16K MISS 79M

RIVERCREST SHOWDOWN CSP 40M
LAZY E TIBBIE 12T 1425964
 RIVERCREST TIBBIE CSP 72P

HF SHOW DOWN 28K
 RIVERCREST BLACKCAP CSP 9J
 NORTHLINE GIBRALTER 389J
 MVF TIBBIE 100K

BW: 83 YW Mar 8/10: 1110 Feb. 13/11 Wt: 1840



Working Man's Bull Sale 2011



LOT 10-52W

9-51W

LAZY E GABRIEL 51W

MALE LEB 51W 1524721 APRIL 13 2009

YOUNG DALE GABRIEL 7L
BAR-E-L ENMAX 73N 1182252
 BAR-E-L MAGNOLIA 143K

YOUNG DALE KRUGERRAND 2H
 PAT LADY SANDRA 2C
 BAR-E-L MCC 365 ICON 20H
 DOUBLE FOUR DUCHESS 12G

LOMA LANES CRACKER JACK 51J
DOUBLE AA ANNIE K 658'03 1162265
 DOUBLE AA ANNIE K 525'97

LOMA LANES CRACKER JACK 4F
 DURNESS KATHLEEN 1W
 DOUBLE AA BLACKMAN 24'93
 DOUBLE AA ANNIE K 582'93

BW: 85 YW Mar 8/10: 1180 Feb. 13/11 Wt: 1930

10-52W

LAZY E GABRIEL 52W

MALE LEB 52W 1524732 APRIL 13 2009

YOUNG DALE GABRIEL 7L
BAR-E-L ENMAX 73N 1182252
 BAR-E-L MAGNOLIA 143K

YOUNG DALE KRUGERRAND 2H
 PAT LADY SANDRA 2C
 BAR-E-L MCC 365 ICON 20H
 DOUBLE FOUR DUCHESS 12G

SILVER DOME BARDOLENE 18L
SILVER DOME BLKBRD BLOSSOM 221 1230757
 SILVER DOME BLACKBIRD BLOSSOM

BARDOLENE OF PEAK DOT 204R
 SILVER DOME LADY ANN 18D
 SPRUCE VIEW LANCER 4B
 SILVER DOME BLACKBIRD BLOSSOM

BW: 83 YW Mar 8/10: 1090 Feb. 13/11 Wt: 1790

11-53W

LAZY E GABRIEL 53W

MALE LEB 53W 1524734 APRIL 13 2009

YOUNG DALE GABRIEL 7L
BAR-E-L ENMAX 73N 1182252
 BAR-E-L MAGNOLIA 143K

YOUNG DALE KRUGERRAND 2H
 PAT LADY SANDRA 2C
 BAR-E-L MCC 365 ICON 20H
 DOUBLE FOUR DUCHESS 12G

ANGUS RIDGE IRISH WIT 44M
SILVER DOME BARBARA 315P 1230808
 SILVER DOME BARBARA 15M

ANGUS ACRES IRISH WIT 83D
 ANGUS RIDGE BLACK LADY 88F
 RON'S STEMWINDER 89J
 SILVER DOME BARBARA 15K

BW: 82 YW Mar 8/10: 1100 Feb. 13/11 Wt: 1940



LOT 11-53W



Working Man's Bull Sale 2011

12-54W

LAZY E HEADS UP 54W

MALE LEB 54W 1524754 APRIL 13 2009

GEIS HEADS UP 109'04
EGGEN HEADS UP 31S 1355778
EGGEN FAME MISS 9P

GEIS HEADS UP 4'02
GEIS ANNIE K 148'02
DMM FAME 15M
EGGEN BIG SKY 16K MISS 79M

RIVERCREST BLACKSTONE 7N
LAZY E ELINE 33T 1425908
RIVERCREST ELINE 38F

HI DIAMOND BLACKSTONE 4L
RIVERCREST RUTH 40J
CUDLOBE BLACK STAR 44C
RIVERCREST ELINE 49Z

BW: 82 YW Mar 8/10: 940 Feb. 13/11 Wt: 1660

13-55W

LAZY E SALUTE 55W

MALE LEB 55W 1524710 APRIL 14 2009

CRESCENT CREEK 06 RITO 50L
BAR-E-L SALUTE 110S 1348284
BAR-E-L CORAL 62M

CRESCENT CREEK REVIVAL 06J
CRESCENT CREEK LASSIE 33H
PLAINVIEW SAUGAHATCHEE 31X
BAR-E-L CORAL 67K

BAR J P TOUCHDOWN 6E
HAPPYVALE RC ADDIE 182L 1071312
RED MISS PREMIER ADDIE 2D

CENTURY TOUCHSTONE 13I
PENOSKY BLOSSOM 28U
RED PREMIER PATRIOT 16
RED RUTHE ADDIE 102A

BW: 86 YW Mar 8/10: 1160 Feb. 13/11 Wt: 1790

14-69W

LAZY E ELWAY 69W

MALE LEB 69W 1524706 MAY 08 2009

YOUNG DALE ELWAY 56R
BAR-E-L TUNGSTEN 234T 1401407
CRESCENT CREEK PRIDE LADY 81L

YOUNG DALE TOUCH DOWN 36M
GLENNIE M'BROOK LASS 2J
DWAJO CHIEF 92E
CRESCENT CREEK PRIDE LADY 34Z

ANGUS ACRES HI GAIN 138F
SILVER DOME OAKLEAF 119J 985288
SILVER DOME OAKLEAF 19D

ANGUS ACRES HI GAIN 125C
ANGUS ACRES KARAMA 38A
SILVER DOME WINDER SLEAK 21Z
RONAN OAKLEAF 19Z

BW: 84 YW Mar 8/10: 1030 Feb. 13/11 Wt: 1760

GENERAL INFORMATION

TERMS OF SALE: The terms of the sale are cash or cheque, payable at par at the sale location. The right of property shall not pass until after settlement has been made; no invoicing on buyers in attendance, unless previous arrangements have been made. Every animal sells to the highest bidder and in case of disputes, the auctioneer's decision will be final. We reserve the right to withhold animals from export shipment for whom payments have not been received prior to departure times.

BREEDING GUARANTEE: All purebred cattle are sound and right and sell with a responsible breeder guarantee of satisfaction. In the event of any unlikely dispute, the regular terms and conditions, standard with the Canadian Aberdeen Angus Association, shall apply. The consignors will not, however, provide replacement or adjustment for physical injury or mismanagement. We therefore stress the importance of insurance on bulls. At no time shall the seller's liability exceed the purchase price of any animal.

CATTLE INSPECTION: All carry identity tags, corresponding to Sale Lot Numbers. All shall be available for inspection prior to the sale.

ANNOUNCEMENTS: Errors discovered in the catalogue will be corrected from the auction stand at sale time and will take precedence over the printed matter in the catalogue.

SIGHT UNSEEN BIDS: May be entrusted in complete confidence to any of the consignors, sale staff listed or to Douglas J. Henderson & Associates Ltd.

INSURANCE: Ownership risk to purchaser commences when the Auctioneer's hammer falls. Livestock coverage will be available at the clerks desk from representatives on Sale Day, also from the Sales Management.

ALL PERSONS who attend the Sale do so at their own risk, and the owners, Management and Sale Staff assume no liability, legal or otherwise, for property loss or for any accidents that may occur.



Working Man's Bull Sale 2011

YEARLING BULLS



LOT 15-76X

15-76X

LAZY E MAINLINE 76X

MALE LEB 76X 1580489 JANUARY 29 2010

ROTH REGULATOR 0405
JUSTAMERE 0405 MAINLINE 178R 1281483
JUSTAMERE 088 BLACKBIRD 558F

DURLOWE BLACK STOCK 8L
MGA EULA 19N 1181049
MGA REULA 32J

GDAR SVF RUSS 184B
BEAR MTN LADY ERALINE 302
WESTWIND BREAKER 088
JUSTA 41A BLACKBIRD 101D

EBON HILL STOCKAID 119'98
DURLOWE LASS 41J
DOUBLE BAR ROGUE
JLT EULA 101E

BW: 84 Oct. 28/11 WW: 930 Feb. 13/11 Wt: 1260

16-77X

LAZY E NEXT STEP 77X

MALE LEB 77X 1599869 FEBRUARY 09 2010

EXAR MASTER 253
JUSTAMERE 253 NEXT STEP 113R 1281522
JUSTAMERE 66F ROSILLA 645K

T A FIELD TRAVELER 114
SAR STAR 463 1148665
T A STAR DRIVE 580

WK GUNSMOKE
B J BRIDE 909
DOUBLE AA BARDOLIER 66'96
ROSILLA OF PEAK DOT 758G

G D A R TRAVELER 011
T A PRIMROSE 851
J C HI DRIVE
T A LUCKY STAR 458

BW: 77 Oct. 28/11 WW: 910 Feb. 13/11 Wt: 1270

17-87X

LAZY E DATELINE 87X

MALE LEB 87X 1580473 MARCH 29 2010

MGA DATELINE 4P
RIVERCREST DATELINE CSP 22U 1467677
RIVERCREST BLACKBIRD CSP 24N

FRL ALBERDA TRAVELER 9P
KBV VELVET 154U 1448184
EVERBLACK VELVET 83M

VERMILION DATELINE 7078 AMF CAF NHF
MGA TRAVELING CRYSTAL 021G
BELVIN BOARDWALK 11'92
RIVERCREST BLACKCAP CSP 26F

ALBERDA TRAVELER 416 AMF CAF NHF
M&W MISS RITO 643 AMF
SUNMOUND ESTON 27F
EVERBLACK VELVET 118H

BW: 84 Oct. 28/11 WW: 730 Feb. 13/11 Wt: 1020

PLEASE JOIN US
FOR LUNCH
PRIOR TO THE SALE



Working Man's Bull Sale 2011



LOT 18-88X

18-88X

LAZY E BY DESIGN 88X

MALE LEB 88X 1580406 MARCH 29 2010

HAPPYVALE NEW DESIGN 36N
LAZY E LIMITED DESIGN 6U 1524771
 HAPPYVALE LADY 69P

B S S LIMITED DESIGN
 HAPPYVALE T. NEONIA 131L
 MVF STOCKMAN 122H
 VIKING BANDY LADY 157F

CUDLOBE BLACK STAR 44C
RIVERCREST ELINE 38F 879172
 RIVERCREST ELINE 49Z

CUDLOBE BLACK STAR 92X
 CUDLOBE BLACKCAP 25Y
 BAR DOUBLE M RAMBO 12
 RIVERCREST BIG ELINE 48S

BW: 87 Oct. 28/11 WW: 710 Feb. 13/11 Wt: 1030

19-95X

LAZY E FREIGHTLINER 95X

MALE LEB 95X 1580470 APRIL 01 2010

BELL ROCK FREIGHTLINER 605S
DOUBLE AA FREIGHTLINER 89'08 1471818
 DOUBLE AA ANNIE K 431'06

CONNELLY FREIGHTLINER AMF CAF NHF
 F V LADY PRIDE 219K
 DOUBLE AA BARDOLENE 35'04
 DOUBLE AA ANNIE K 360'04

DOUBLE AA BARDOLENE 47'04
DOUBLE AA ANNIE K 30'08 1465183
 DOUBLE AA ANNIE K 74'99

DOUBLE AA BARDOLENE 8'98
 DOUBLE AA ANNIE K 289'02
 JOHNSTON BANDOLIER 849E
 DOUBLE AA ANNIE K 560'87

BW: 83 Oct. 28/11 WW: 660 Feb. 13/11 Wt: 970

20-102X

LAZY E GENERAL 102X

MALE LEB 102X 1580441 APRIL 03 2010

CRESCENT CREEK CHIEF 45L
SPRUCE VIEW GENERAL 35R 1262502
 CL ANGUS DUCHESS 17H

DWAJO CHIEF 92E
 ANGUS ACRES LAWN 85Z
 SPRUCE VIEW LANCER 3C
 SUNMOUND DUCHESS 41B

SILVER DOME BARDOLENE 18L
SILVER DOME BONNIE 814P 1235008
 SILVER DOME BONNIE 714M

BARDOLENE OF PEAK DOT 204R
 SILVER DOME LADY ANN 18D
 DURNESS BANDOLIER 84J
 SILVER DOME BONNIE 514K

BW: 91 Oct. 28/11 WW: 750 Feb. 13/11 Wt: 1090

21-106X

LAZY E GENERAL 106X

MALE LEB 106X 1580459 APRIL 03 2010

CRESCENT CREEK CHIEF 45L
SPRUCE VIEW GENERAL 35R 1262502
 CL ANGUS DUCHESS 17H

DWAJO CHIEF 92E
 ANGUS ACRES LAWN 85Z
 SPRUCE VIEW LANCER 3C
 SUNMOUND DUCHESS 41B

KBJ KAZAM 654N
KBJ BLACKBIRD 189T 1374282
 KBJ BLACKBIRD 556N

KBJ CONQUOR ALL 447J
 HILL TOP LADY FANNY 8J
 KBJ ROGUE II 203H
 KBJ BLACKBIRD 325H

BW: 87 Oct. 28/11 WW: 580 Feb. 13/11 Wt: 880



Working Man's Bull Sale 2011



LOT 23-114X

22-108X LAZY E GENERAL 108X

MALE LEB 108X 1580432 APRIL 04 2010

CRESCENT CREEK CHIEF 45L
SPRUCE VIEW GENERAL 35R 1262502
 CL ANGUS DUCHESS 17H

DWAJO CHIEF 92E
 ANGUS ACRES LAWN 85Z
 SPRUCE VIEW LANCER 3C
 SUNMOUND DUCHESS 41B

HF SHOW DOWN 28K
RIVERCREST MARGARET CSP 69P 1241212
 RIVERCREST MARGARET 42J

WHITESTONE WIDESPREAD MB AMF NHF
 HF BLACKBIRD 27C
 HF WALKER 107E
 RIVERCREST MARGARET 49D

BW: 83 Oct. 28/11 WW: 700 Feb. 13/11 Wt: 980

23-114X LAZY E BARDOLENE 114X

MALE LEB 114X 1580407 APRIL 06 2010

SASKALTA BARDOLENE 28M
LAZY E BARDOLENE 14T 1425967
 DOUBLE AA ANNIE K 463'04

SASKALTA BARDOLENE 182H
 SASKALTA EDNA 780G
 LOMA LANES CRACKER JACK 51J
 DOUBLE AA ANNIE K 593'00

WIWA CREEK TREND 51'93
MINBURN BLACKCAP 109G 912134
 MINBURN BLACKCAP 139C

WHITE LAKE STYLE TREND 1A
 WIWA CREEK ERICA 13X 11'90
 MINBURN TONKA 66Z
 DARKFAULDS BLACKCAP 10P

BW: 94 Oct. 28/11 WW: 770 Feb. 13/11 Wt: 1050

24-118X LAZY E ELWAY 118X

MALE LEB 118X 1580422 APRIL 07 2010

YOUNG DALE ELWAY 56R
BAR-E-L TUNGSTEN 234T 1401407
 CRESCENT CREEK PRIDE LADY 81L

YOUNG DALE TOUCH DOWN 36M
 GLENNIE M'BROOK LASS 2J
 DWAJO CHIEF 92E
 CRESCENT CREEK PRIDE LADY 34Z

DURNESS BANDOLIER 84J
SILVER DOME BLACK VELVET 239N 1158839
 SILVER DOME BLACK VELVET 339K

LAZY J BANDOLIER 7F
 DURNESS KEEPSAKE 84F
 ANGUS ACRES HI GAIN 138F
 SILVER DOME BLACK VELVET 39H

BW: 85 Oct. 28/11 WW: 670 Feb. 13/11 Wt: 880



LOT 24-118X



Working Man's Bull Sale 2011



LOT 28-129X

25-121X

LAZY E BANDO 121X

MALE LEB 121X 1580409 APRIL 08 2010

S A F 598 BANDO 5175 AMF CAC
BAR-E-L BANDO 253U CAF 1484420
 WILBAR RUBY 161J

BON VIEW BANDO 598 AMF CAC
 S A F ROYAL LASS 1002
 EARLY SUNSET HIGH TIME 47G
 WILBAR RUBY 3F

DOUBLE AA BARDOLENE 218'96
DOUBLE AA BONNIE 36'99 964166
 ANGUS ACRES BONNIE 19E

PEAK DOT BARDOLENE 43B
 DOUBLE AA ANNIE K 65'90
 ANGUS ACRES LAWN ESTON 2F
 ANGUS ACRES BONNIE ELCHIES 19C

BW: 83 Oct. 28/11 WW: 660 Feb. 13/11 Wt: 980

26-124X

LAZY E GENERAL 124X

MALE LEB 124X 1580415 APRIL 08 2010

CRESCENT CREEK CHIEF 45L
SPRUCE VIEW GENERAL 35R 1262502
 CL ANGUS DUCHESS 17H

DWAJO CHIEF 92E
 ANGUS ACRES LAWN 85Z
 SPRUCE VIEW LANCER 3C
 SUNMOUND DUCHESS 41B

NORTHLINE GIBRALTER 389J
RIVERCREST EUGENIE 48M 1124836
 RIVERCREST EUGENIE 35J

NORTHLINE GRANITE 95G
 NORTHLINE DELTA 189E
 HF WALKER 107E
 RIVERCREST EUGENIE 11B

BW: 92 Oct. 28/11 WW: 720 Feb. 13/11 Wt: 960

27-128X

LAZY E BANDO 128X

MALE LEB 128X 1580439 APRIL 11 2010

S A F 598 BANDO 5175 AMF CAC
BAR-E-L BANDO 253U CAF 1484420
 WILBAR RUBY 161J

BON VIEW BANDO 598 AMF CAC
 S A F ROYAL LASS 1002
 EARLY SUNSET HIGH TIME 47G
 WILBAR RUBY 3F

LOMA LANES CRACKER JACK 51J
DOUBLE AA ANNIE K 463'04 1218602
 DOUBLE AA ANNIE K 593'00

LOMA LANES CRACKER JACK 4F
 DURNESS KATHLEEN 1W
 DOUBLE AA RETO 554'93
 DOUBLE AA ANNIE K 610'94

BW: 89 Oct. 28/11 WW: 660 Feb. 13/11 Wt: 940

28-129X

LAZY E ELWAY 129X

MALE LEB 129X 1580435 APRIL 11 2010

YOUNG DALE ELWAY 56R
BAR-E-L TUNGSTEN 234T 1401407
 CRESCENT CREEK PRIDE LADY 81L

YOUNG DALE TOUCH DOWN 36M
 GLENNIE M'BROOK LASS 2J
 DWAJO CHIEF 92E
 CRESCENT CREEK PRIDE LADY 34Z

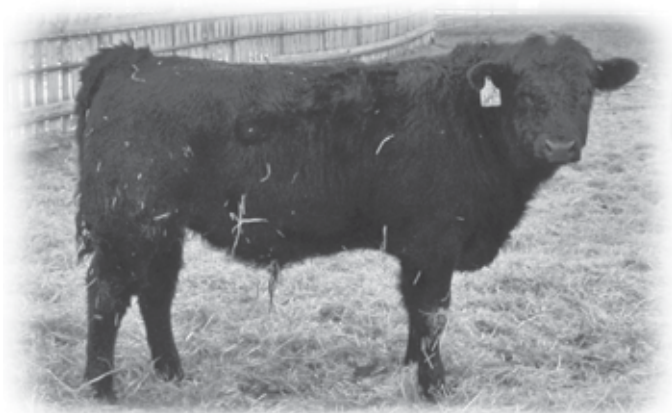
SILVER DOME WINTON 419L
SILVER DOME BLKBRD BLOSSOM 121P 1230754
 SILVER DOME BLKBIRD BLOSSOM 12

DURNESS WINTON 14H
 SILVER DOME OAKLEAF 219J
 SPRUCE VIEW LANCER 4B
 SILVER DOME BLACKBIRD BLOSSOM

BW: 84 Oct. 28/11 WW: 650 Feb. 13/11 Wt: 950



Working Man's Bull Sale 2011



LOT 32-146X

29-134X

LAZY E DATELINE 134X

MALE LEB 134X 1580480 APRIL 13 2010

MGA DATELINE 4P
RIVERCREST DATELINE CSP 22U 1467677
 RIVERCREST BLACKBIRD CSP 24N

VERMILION DATELINE 7078 AMF CAF NHF
 MGA TRAVELING CRYSTAL 021G
 BELVIN BOARDWALK 11'92
 RIVERCREST BLACKCAP CSP 26F

KBJ ROGUE 554N
KBJ LADY 529U 1448620
 KBJ LADY 431G

KBJ ROGUE II 203H
 KBJ TIPTOP 264H
 KBJ GENERAL 105E
 KBJ LADY 369E

BW: 86 Oct. 28/11 WW: 710 Feb. 13/11 Wt: 980

30-136X

LAZY E BY DESIGN 136X

MALE LEB 136X 1580408 APRIL 13 2010

HAPPYVALE NEW DESIGN 36N
LAZY E LIMITED DESIGN 6U 1524771
 HAPPYVALE LADY 69P

B S S LIMITED DESIGN
 HAPPYVALE T. NEONIA 131L
 MVF STOCKMAN 122H
 VIKING BANDY LADY 157F

BCC EILEENMERE LAD 215
RIVERCREST DUCHESS 7J 987322
 RIVERCREST DUCHESS 44Z

BJ JACK DANIELS 25'92
 BJ LADY WREN 9'91
 BAR DOUBLE M RAMBO 12
 RIVERCREST ALTA DUCHESS 32K

BW: 86 Oct. 28/11 WW: 710 Feb. 13/11 Wt: 960

31-142X

LAZY E DATELINE 142X

MALE LEB 142X 1580477 APRIL 15 2010

MGA DATELINE 4P
RIVERCREST DATELINE CSP 22U 1467677
 RIVERCREST BLACKBIRD CSP 24N

VERMILION DATELINE 7078 AMF CAF NHF
 MGA TRAVELING CRYSTAL 021G
 BELVIN BOARDWALK 11'92
 RIVERCREST BLACKCAP CSP 26F

SOO LINE YELLOWSTONE 6267
KBJ DUCHESS 279U 1448541
 KBJ DUCHESS 824P

CUDLOBE YELLOWSTONE 80M
 SOO LINE RACHEL 3139
 W C C ZAF HOOSIER HEARTLAND AMF NHC
 KBJ DUCHESS 382L

BW: 82 Oct. 28/11 WW: 680 Feb. 13/11 Wt: 940

32-146X

LAZY E BARDOLENE 146X

MALE LEB 146X 1580421 APRIL 17 2010

SASKALTA BARDOLENE 28M
LAZY E BARDOLENE 14T 1425967
 DOUBLE AA ANNIE K 463'04

SASKALTA BARDOLENE 182H
 SASKALTA EDNA 780G
 LOMA LANES CRACKER JACK 51J
 DOUBLE AA ANNIE K 593'00

SILVER DOME BARDOLENE 18L
SILVER DOME BLACKCAP 137N 1158826
 SILVER DOME BLACKCAP 37K

BARDOLENE OF PEAK DOT 204R
 SILVER DOME LADY ANN 18D
 ANGUS ACRES TEXAS TEA 19M
 VEGANA BLACKCAP 38E

BW: 87 Oct. 28/11 WW: 690 Feb. 13/11 Wt: 960



Working Man's Bull Sale 2011



LOT 36-163X

33-150X

LAZY E BY DESIGN 150X

MALE LEB 150X 1580438 APRIL 18 2010

HAPPYVALE NEW DESIGN 36N
LAZY E LIMITED DESIGN 6U 1524771
 HAPPYVALE LADY 69P

B S S LIMITED DESIGN
 HAPPYVALE T. NEONIA 131L
 MVF STOCKMAN 122H
 VIKING BANDY LADY 157F

ANGUS RIDGE IRISH WIT 44M
SILVER DOME BARBARA 315P 1230808
 SILVER DOME BARBARA 15M

ANGUS ACRES IRISH WIT 83D
 ANGUS RIDGE BLACK LADY 88F
 RON'S STEMWINDER 89J
 SILVER DOME BARBARA 15K

BW: 84 Oct. 28/11 WW: 760 Feb. 13/11 Wt: 990

34-153X

LAZY E ELWAY 153X

MALE LEB 153X 1580414 APRIL 20 2010

YOUNG DALE ELWAY 56R
BAR-E-L TUNGSTEN 234T 1401407
 CRESCENT CREEK PRIDE LADY 81L

YOUNG DALE TOUCH DOWN 36M
 GLENNIE M'BROOK LASS 2J
 DWAJO CHIEF 92E
 CRESCENT CREEK PRIDE LADY 34Z

BAR J P TOUCHDOWN 6E
HAPPYVALE RC ADDIE 182L 1071312
 RED MISS PREMIER ADDIE 2D

CENTURY TOUCHSTONE 131
 PENOSKY BLOSSOM 28U
 RED PREMIER PATRIOT 16
 RED RUTHE ADDIE 102A

BW: 84 Oct. 28/11 WW: 670 Feb. 13/11 Wt: 920

35-162X

LAZY E GENERAL 162X

MALE LEB 162X 1580433 APRIL 28 2010

CRESCENT CREEK CHIEF 45L
SPRUCE VIEW GENERAL 35R 1262502
 CL ANGUS DUCHESS 17H

DWAO CHIEF 92E
 ANGUS ACRES LAWN 85Z
 SPRUCE VIEW LANCER 3C
 SUNMOUND DUCHESS 41B

NORTHLINE GIBRALTER 389J
RIVERCREST TIBBIE CSP 72P 1241226
 MVF TIBBIE 100K

NORTHLINE GRANITE 95G
 NORTHLINE DELTA 189E
 ALBERDA TRAVELER 416 AMF CAF NHF
 MVF TIBBIE 112H

BW: 85 Oct. 28/11 WW: 700 Feb. 13/11 Wt: 1000

36-163X

LAZY E BANDO 163X

MALE LEB 163X 1580445 APRIL 30 2010

S A F 598 BANDO 5175 AMF CAC
BAR-E-L BANDO 253U CAF 1484420
 WILBAR RUBY 161J

BON VIEW BANDO 598 AMF CAC
 S A F ROYAL LASS 100Z
 EARLY SUNSET HIGH TIME 47G
 WILBAR RUBY 3F

CROWFOOT BRUNO 1670L
CHAPMAN BLACKBIRD 539R 1276036
 BEVALEN BLACKBIRD 7K

STEVENSON BRUNO 561G CAF NHF
 GLADWALL B REV ERICA 728R
 CAF SIDEKICK 7784
 GRACEDALE BLACKBIRD 3D

BW: 88 Oct. 28/11 WW: 640 Feb. 13/11 Wt: 1050



Working Man's Bull Sale 2011

COMMERCIAL HEIFERS



LAZY E BAR HEIFERS

37 40 COMMERCIAL ANGUS HEIFERS

LAZY E BAR RANCHING

We wish to thank you for your interest in not only the bulls we are proudly selling, but our heifers as well.

We are offering 40 Angus cross, April/early May home raised replacement quality heifers. They are all age verified, have been selected for structural correctness, and are fed a 15% grain/ chopped straw/ silage ration.

They have all been vaccinated with Express-5, Covexin-8, and Somustar in the spring as well as Ivomec and the Express-5 and Covexin-8 booster in the fall.

Feel free to contact us anytime with any questions.

GUEST CONSIGNORS

38 20 BLACK HEIFERS

BRIMACOMBE FARMS

Welcome from Brimacombe Farms to the Lazy E Bar Ranching Bull Sale. We have been given the opportunity and the pleasure to offer 20 black open replacement heifers. These home raised April/early May heifers have been selected from our 225 replacement heifer group.

Keeping longevity in mind, these heifers have been fed a nice growing ration of 10% barley/chopped straw/ silage. Our entire herd is on a vaccination program with Pfizer which means they have all had the Gold FP5 8-way, Somustar and the FP5 Booster.

If I can be of any assistance to you, please call (403) 323-2355. Hope to see you sale day.

- Dwight Durie - Manager, Brimacombe Farms

39 6 ANGUS X SIMMENTAL HEIFERS

PURSER FARMS - Paradise Valley

We are located south west of Lloydminster in Paradise Valley, Alberta running 150 Simmental/ Angus Cross cattle. Our family was incredibly proud to have received our Century Farm plaque in the summer of 2010.

We are selling 6 Red Angus heifers that are guaranteed open and come from great family lines to make good mothers. They are all age verified and have received 8 way vaccinations in early summer and Ivomec late fall.

- Neil Purser

40 5 COMMERCIAL ANGUS HEIFERS

JACK & KATHY LYLE

We would like to thank Jim & Karyl and Wade & Laura for inviting us to participate in their Bull & Heifer Sale.

We have been raising cattle for the past 30 years and Black Angus for the past 20 years. In 2001 we purchased 40 head of black cows from Philip Trout and in 2003, when he decided to fully retire, we purchased the rest of his cows. This pen of 5 heifers are descendants of those cattle. We believe you will find them to be good sound heifers that will go to work for you. They are all age verified and have been vaccinated with Pyramid 5 with Presponse, 8-way and Ivomec.



RANCH HORSES

Consigned by: ROGER SUTEAU
Box 88, Sonningdale, SK S0K 4B0
PH: 306-237-4754

41

HEART OF A REBEL

REG. QUARTER HORSE -X0664925- JULY 20 2006

CHARGES SECRET LUCK -3746563-

DUSTINS SECRETCODE
CHARGES LUCKY CAT

MORE THAN TROUBLE -X0563206-

ROMEOS TROUBLE
TONI TEE CHARGE

6 year old Gelding Buckskin 15.0 HH

Heart of a Rebel has been used for ranch work, used in feedlot this winter, checking cows on him this spring. Nice quiet horse, loads and trims well.

42

OTTER BUCK LMN

REG. QUARTER HORSE -4854823- MAY 12 2006

PEPPY ROAN BUCK -4467623-

FINTRY ROAN BUCK
PEPPY BLUE RANCHER

PI BAR OTTER -4426857-

OTTER B BLUE
BLUE BAR PI

5 year old Buckskin Gelding 14.3 HH 1,100 lbs.

Buck has been used on the ranch, moving cows, sorting pairs, checking cattle. Nice quiet gelding a horse anyone can use. Loads and trims well.

Consigned by: KNOBLICK RANCHES LTD.

RR 1, Mirror, AB TOB OHO

PH: 780-372-2142

for Robyn Bell & Delores Draper, Mirror, AB

43

TWISTED D BAILEY

REG. QUARTER HORSE -4983706- MAY 6 2007

MR BLACKBURN PARKER -4099858-

MR BLACKBURN HOLLY
KRISTYS TUCKER

TWISTED ILLYCE (2001) -4092058-

TOUGHY PATTEN
TWISTING WILLOWS (1996)

We are proud to offer for sale this 4 year old Roan Gelding. Twisted D Bailey has foundation blood lines going back to King, Poco Bueno, Blackburn, Teddy Rascal and Driftwood.

He is easy going, has been started on cattle and heeled off of.

Please note - extended pedigree available.

THANKS TO ALL BUYERS & BIDDERS

Please bring this catalog
with you to the sale



Working Man's Bull Sale 2011

HERDSIRES USED AT LAZY E BAR RANCHING

Spruce View General 35R WGO 35R

from Spruceview Angus

Adds frame and carcass

Bar-E-L Tungsten 234T YHB 234T

from Bar E-L

Great structure and maternal qualities

Rivercrest Blackstone CSP 40S CSP 40S

from Spadys

Used on heifers

Very correct and great calf vigor

Rivercrest Dateline CSP 22U CSP 22U

from Spadys

Used on heifers

Correct, vigorous, thick bodied cattle

Bar-E-L Enmax 73N DBR 73N

from Bar E-L

Great all around breeding bull

Strong sons and correct daughters

Lazy E Bardolene 14T LEB 14T

purchased in dam from Double AA

Moderate size and great carcass bull

Very correct daughters

Eggen Heads Up 31S TE 31S

from Eggens at Rivercourse

Dam from a great cow family

Used on heifers

Bar-E-L Salute 110S DBR 110S

from Bar E-L

Great all around bull from one of the top female lines at Bar E-L

Broken leg after one calf crop

Bar-E-L Bando 253U YHB 253U

Co-owned with Bar E-L

NOTES



DjH

Douglas J. Henderson
& Associates Ltd.

P.O. Box 5900
Lacombe, Alberta T4L 1X4




RETURN POSTAGE GUARANTEED
PORT DE RETOUR GARANTI



Lazy E Bar Ranching Ltd.

Working Man's Angus Bull Sale



BULLS FOR SALE
APRIL 21, 2011
Stettler Auction Market

The Bleakley's