

**LAURON  
RED ANGUS  
& GUESTS  
19th Annual  
Bull Sale  
Saturday  
April 3, 2010  
1:00 p.m.**



**At  
Olds Cow Palace  
Olds, AB**

**Sale Day Phone:  
(403) 556-6363**

# Reference Sires



**Red Cinder Smartin' Up 132P**



**Red Six Mile Sakic 832S**



**Red Bar E-L Renegade 202R**



**Red LCC Glance B062M**



**Red Lazy RC Monte Carlo 375N**

**Lauron  
Red Angus  
& Guests  
19th Annual  
Bull Sale**

**SELLING**

**50**

**Yearling Red  
Angus Bulls**

**From**

**Lauron Red Angus  
Ron & Laurie, Jared Ryan Travis  
Hunter  
Didsbury, AB  
(403)335-9112  
lauron@xplornet.com  
Cell 994-1686 994-1623  
Lots 1- 60**

**Ric & Linda Arthurs  
Didsbury, AB  
(403)337-2476  
Lots 69&71**

**Sara Arthurs  
John Thompson  
Didsbury, AB  
(403)335-4452  
Lots 64,67,68 &70**

**Accomodations**

**Best Western  
1 800 528-1234**

**Ramada  
1 800 2Ramada**

**Sale Staff**

**Auctioneer: .....Brent Carey  
(403) 549-2478  
Cell (403) 650-9028  
Ringstaff: .....Rod McLeod  
(403) 932-4622  
Cell (403)540-7986  
Dean Edge  
Cell (403)704-0280**

**SALE DAY (403)556-6363**

## Catalogue Abbreviations

<b>B.W.</b> .....	Birth Weight
<b>205Adj</b> .....	Adjusted Weaning Weight
<b>SoT WT</b> .....	Start of Test Weight (Nov 7/09)
<b>104Wt</b> .....	Actual Wt, End of Test (Feb 19/10)
<b>365Wt</b> .....	365 Day Adjusted Yearling Wt
<b>S.M.</b> .....	Actual Scrotal Measurement (Semen tested Mar 5/09)
<b>A.O.D.</b> .....	Age of Dam
<b>W.ADG</b> .....	Weaning Average Daily Gain
<b>F.ADG</b> .....	Feed Average Daily Gain
<b>F.I.</b> .....	Feed Index
<b>Y.I.</b> .....	Yearling Index
<b>WPDA</b> .....	Weight Per Day of Age

## EPD'S

### (Expected Progeny Differences)

<b>CE</b> .....	expressed in percentage of probability of calving ease
<b>BW</b> .....	predicts the difference in average birth weight compared to breed average (expressed in lbs.)
<b>WW</b> .....	ability of calves to grow from birth to weaning (expressed in lbs.)
<b>YW</b> .....	growth from birth to yearling ( expressed in lbs.)
<b>Milk</b> ....	indicates milking ability of bull's daughters, expressed in lbs. Of calf weaned.
<b>TM</b> ....	calculated by using $\frac{1}{2}$ WW+Milk predicts weaning weights on a bull's daughter's calves.

## Canadian Red Angus

### Average EPD's Calves 2009

<b>CE</b>	<b>BW</b>	<b>WW</b>	<b>YW</b>	<b>Milk</b>	<b>TM</b>
+4.6	+0.7	+29	+52	+15	+29

The Canadian Angus Association's ELITE DAM program is an effort to identify superior cows in the Angus breed based on early puberty, breeding, regularity of calving and above average performance of offspring.

The Breeders reserve the right to collect semen, for in herd use only on any bull in the sale. Semen will be collected at the breeders expense and will be done at the new owner's convenience.

# Welcome Cattlemen.....

.....to our 19th Annual Bull Sale. We have reached a milestone this past summer have celebrated 25 years in the business. This group of bulls represents the cowherd we have built and take pride in, striving for the desirable and profitable traits Angus cattle exemplify.

We are pleased to welcome Ric and Linda Arthurs, their daughter Sara and partner John Thompson as guest consigners. They have previously marketed their bulls with Canadian Reds, adhere to the same principles and cattle breeding practices and appreciate quality cattle.

The bulls are raised in unpampered pasture conditions without creep feed and under strict culling procedures. After weaning they were put on a oat based ration, silage, chopped hay and bull supplement. In addition to regular herd health booster, this group has also received a preventative foot rot vaccine.

They can be viewed here at the farm until Thursday, then Friday afternoon and evening at the Olds Cow Palace. All lots were semen tested March 5/10 and actual weights will be available sale day. All bulls can be kept free of charge until May 1/10 and \$3.00/day board thereafter. Buyers receive \$50 discount if purchases are taken home sale day. If returning to the farm, bulls must be insured.

With a variety of sire groups represented, it's a sure bet to find a bull for everyone's program.

Please join us for lunch sale day and some "hospitality!"

*We would like to extend a big thank you to all bidders & buyers , past customers, sponsors and to anyone who supported our sale in any way.*

*Good luck with your purchases, your success is our success!*

#### Note

Livestock Insurance will be available sale day through

DJ Henderson  
& Associates Ltd  
Linda Henderson

Ph 782-3888 Fax 782-3849



*Ron, Laurie, Jared, Ryan & Travis Hunter*



**Red Cinder Smartin' Up 132P**

**Co-owned with Cinder Angus "Smarty" is our "power" sire.**

**With 5 calf crops on the ground, he consistently produces phenomenal growth, terrific hair coats, tremendous hip, loin, length and testicular development. He is a trait leader for both weaning (EPD's +50) and yearling weights (EPD's +97) in Canadian Angus Association stats!**



**Lot 1**

**1**

**RED LAURON WARHORSE 58W**

**RLH 58W 1506430 Feb 9/09**  
 RED HIDDEN MMD PATRIOT 214M  
 RED CINDER SMARTIN' UP 132P  
 RED HIDDEN MAX'S FREYJA 132M

**EPD'S**

**CE  
-1.0**

**BW  
+5.1**

**WW  
+52**

**YW  
+87**

**Milk  
+16**

**TM  
+42**

RED RUNNING BAR TMD 13E  
 RED LAURON BLACKBIRD 79N  
 RED ALALTA ACRES BLACKBIRD 7F

<b>B.W.</b>	<b>205Adj</b>	<b>SoT WT</b>	<b>104WT</b>	<b>365WT</b>	<b>S.M.</b>
106	760	970	1340	1331	41.5
<b>A.O.D.</b>	<b>W.ADG</b>	<b>F.ADG</b>	<b>F.I.</b>	<b>Y.I.</b>	<b>WPDA</b>
6	3.19	3.56	110	114	3.57

**A powerhouse of performance! Heaviest at weaning and end of test from a never fail ELITE dam. Grand dam 7F has been flushed. Recommended for cows.**



**3**

**RED LAURON WESTWARD 66W**

**RLH 66W 1506437 Feb 11/09**

EPD'S

RED HIDDEN MMD PATRIOT 214M

CE  
+2.0

RED CINDER SMARTIN' UP 132P

RED HIDDEN MAX'S FREYJA 132M

BW  
+4.2

RED ALALTA BODACIOUS 17K

RED ALALTA BLACKBIRD 40N

RED ALALTA ACRES DEBBIE 49G

WW  
+47

B.W.	205Adj	SoT WT	104WT	365WT	S.M.
96	732	865	1200	1199	35
A.O.D.	W.ADG	F.ADG	F.I.	Y.I.	WPDA
6	2.86	3.22	100	103	3.22

YW  
+86

Long spined performance bull. Dam was selected from Alalta Acres, cow family has numerous ELITE cattle both top and bottom of the pedigree.

Milk  
+12

TM  
+36

**4**

**RD LAURON WARP SPEED 108W**

**RLH 108W 1506466 Feb 27/09**

EPD'S

RED HIDDEN MMD PATRIOT 214M

CE  
-2.0

RED CINDER SMARTIN' UP 132P

RED HIDDEN MAX'S FREYJA 132M

BW  
+6.6

ACN DMM DYNASTY 15J

LAURON VERNICE 66N

RED ALALTA ACRES BERNICE 1K

WW  
+49

B.W.	205Adj	SoT WT	104WT	365WT	S.M.
110	736	855	1240	1309	39.5
A.O.D.	W.ADG	F.ADG	F.I.	Y.I.	WPDA
6	2.94	3.70	115	112	3.47

YW  
+91

Another over achiever, cow bull, full brother is gainfully employed at the Bear Canyon Colony. Outcross genetics.

Milk  
+15

TM  
+40

**5**

**RD LRN WEALTHY MAN 128W**

**RLH 128W 1506479 Mar 7/09**

EPD'S

RED HIDDEN MMD PATRIOT 214M

CE  
+2.0

RED CINDER SMARTIN' UP 132P

RED HIDDEN MAX'S FREYJA 132M

BW  
+3.8

RED RUNNING BAR TMD 13E

RED LAURON MOROJOTTI 18R

RED LAURON MOROJITTI 50H

WW  
+48

B.W.	205Adj	SoT WT	104WT	365WT	S.M.
96	744	805	1115	1167	41.5
A.O.D.	W.ADG	F.ADG	F.I.	Y.I.	WPDA
4	2.90	2.98	92	100	3.19

YW  
+83

Great hair coat, his progeny will push down the scales in a big way. Recommended for cows.

Milk  
+13

TM  
+37

**6****RED LAURON WYLIE 112W****RLH 112W 1506469**

Feb 28/09

EPD'S

RED HIDDEN MMD PATRIOT 214M  
 RED CINDER SMARTIN' UP 132P  
 RED HIDDEN MAX'S FREYJA 132M

RED U-2 BODACIOUS 16H

**RED LAURON KARUBA 56K**

RED ALALTA ACRES KORUBA 46F

B.W.	205Adj	SoT WT	104WT	365WT	S.M.
98	719	740	1180	1305	40
A.O.D.	W.ADG	F.ADG	F.I.	Y.I.	WPDA
9	2.55	4.23	131	112	3.31

Our test topper for combined indexes with built in performance from a sweet uddered ELITE dam. The home work is already done for you! Cow Bull with fantastic numbers.

CE  
-2.0BW  
+4.3WW  
+42YW  
+77Milk  
+15TM  
+36**7****RED LAURON WIZARD 43W****RLHA 43W 1506382**

Feb 5/09

EPD'S

RED HIDDEN MMD PATRIOT 214M  
 RED CINDER SMARTIN' UP 132P  
 RED HIDDEN MAX'S FREYJA 132M

ACN DMM DYNASTY 15J

**RED LAURON MISSY 1P**

LAURON BLACK MISSY 24L

B.W.	205Adj	SoT WT	104WT	365WT	S.M.
90	677	850	1225	1238	34
A.O.D.	W.ADG	F.ADG	F.I.	Y.I.	WPDA
5	2.76	3.61	112	107	3.23

Admire Lot 7 for attractive front and length of spine. A unique pedigree twist on the bottom side, dam has 4H experience. Cow bull.

CE  
+3.0BW  
+3.2WW  
+37YW  
+65Milk  
+13TM  
+31**8****RED LAURON WISDOM 94W****RLH 94W 1506453**

Feb 20/09

EPD'S

RED HIDDEN MMD PATRIOT 214M  
 RED CINDER SMARTIN' UP 132P  
 RED HIDDEN MAX'S FREYJA 132M

RED RUNNING BAR TMD 13E

**RED LAURON TMD BLACKBIRD 85M**

RED ALA CURRENT BLACKBIRD 50Z

B.W.	205Adj	SoT WT	104WT	365WT	S.M.
82	660	780	1085	1102	36
A.O.D.	W.ADG	F.ADG	F.I.	Y.I.	WPDA
7	2.68	2.93	92	95	2.98

Another performance oriented "Smarty" from a smaller framed cow. Grand dam was a model Angus cow and produced until she was old enough to vote!

CE  
+7.0BW  
-0.3WW  
+34YW  
+58Milk  
+14TM  
+31



9

**RD LRN WISECRACKER 90W****RLH 90W****1506450****Feb 17/09**

EPD'S

RED HIDDEN MMD PATRIOT 214M

CE

RED CINDER MARTIN' UP 132P

+6.0

RED HIDDEN MAX'S FREYJA 132M

BW

RED RUNNING BAR TMD 13E

+1.8

RED LAURON MARTA 7N

WW

RED ALALTA ACRES MARTA 43B

+39

B.W.	205Adj	SoT WT	104WT	365WT	S.M.
88	652	830	1165	1184	34
A.O.D.	W.ADG	F.ADG	F.I.	Y.I.	WPDA
6	2.82	3.22	100	102	3.17

YW

+69

Milk

+10

His progeny will pack on the pounds from a neat uddered 13E (aka "Scarface") daughter. Scarface was in active duty walking pastures at Alalta Acres for 9 years.

TM

+29

11

**RED LAURON WRANGLER 32W****TAH 32W****1506370****Feb 1/09**

EPD'S

RED HIDDEN MMD PATRIOT 214M

CE

RED CINDER MARTIN' UP 132P

+3.0

RED HIDDEN MAX'S FREYJA 132M

BW

RED LAURON KONRAD 17K

+3.3

RED ALALTA ACRES BLACKBIRD 17N

WW

RED ALALTA ACRES BLACKBIRD 10J

+37

B.W.	205Adj	SoT WT	104WT	365WT	S.M.
100	658	845	1210	1213	40
A.O.D.	W.ADG	F.ADG	F.I.	Y.I.	WPDA
6	2.67	3.51	109	104	3.16

YW

+67

Milk

+9

Attractive and well balanced in every department, his calves should top the market. Dam is picturesque, selected by Travis for his developing herd.

TM

+28

12

**RED LAURON WESLEY 50W****RLH 50W****1506424****Feb 6/09**

EPD'S

RED HIDDEN MMD PATRIOT 214M

CE

RED CINDER MARTIN' UP 132P

-1.0

RED HIDDEN MAX'S FREYJA 132M

BW

RED MLK CRK CUB 722

+2.4

RED LAURON BLACKBIRD 49R

WW

RED LAURON BLACKBIRD 24H

+38

B.W.	205Adj	SoT WT	104WT	365WT	S.M.
92	660	840	1200	1209	40
A.O.D.	W.ADG	F.ADG	F.I.	Y.I.	WPDA
5	2.73	3.46	107	104	3.17

YW

+73

Milk

+16

So typical of the Smarty calves, Lot 12 is no exception with length, hip, loin and "all the right stuff" to impress your cows!

TM

+35

**JIM GOLE**

General Manager

Toll Free: 1-800-661-1555

5420 - 49th Avenue

Innisfail, AB T4G 1R2

Telephone: 403-227-3772

Facsimile: 403-227-3690

E-mail: cow\_lick@telusplanet.net

Premises - Minerals - Protein &amp; Mineral Blocks - Moogoo Tubs - Farms &amp; Vet Supplies



Lot 13

13

**RED LAURON WARSHIP 103W**

RLH 103W 1506461 Feb 23/09

EPD'S

RED HIDDEN MMD PATRIOT 214M  
 RED CINDER SMARTIN' UP 132P  
 RED HIDDEN MAX'S FREYJA 132M  
 RED BASIN SENSATION 3698  
 RED LAURON MORRIJITI 56N  
 RED ALALTA ACRES MOROJITI 16K

CE +5.0  
 BW +3.1  
 WW +38  
 YW +69  
 Milk +7  
 TM +26

B.W.	205Adj	SoT WT	104WT	365WT	S.M.
100	628	765	1160	1245	35.5
A.O.D.	W.ADG	F.ADG	F.I.	Y.I.	WPDA
6	2.59	3.80	118	106	3.21

A stand out in the pen, if his daughters are anything like his mama, keep 'em all for replacements. Cow bull.

15

**RED LAURON WATCH ME 135W**

RLH 135W 1506482 Mar 16/09

EPD'S

RED HIDDEN MMD PATRIOT 214M  
 RED CINDER SMARTIN' UP 132P  
 RED HIDDEN MAX'S FREYJA 132M  
 RED LAURON HURON 53H  
 RED LAURON MISS DYNA 51K  
 RED LAURON MISS DYNAMIC 5Y

CE +5.0  
 BW +1.2  
 WW +31  
 YW +62  
 Milk +11  
 TM +26

B.W.	205Adj	SoT WT	104WT	365WT	S.M.
86	606	685	1060	1189	37
A.O.D.	W.ADG	F.ADG	F.I.	Y.I.	WPDA
9	2.54	3.61	112	103	3.12

A smaller framed Smartin' Up calf that still packs a punch, from a sweet ultra feminine female

16

**RED LAURON WISE UP 118W**

RLH 118W 1506471 Mar 4/09

EPD'S

RED HIDDEN MMD PATRIOT 214M  
 RED CINDER SMARTIN' UP 132P  
 RED HIDDEN MAX'S FREYJA 132M  
 RED LAZY R C MONTE CARLO 375N  
 RED LAURON LASSIE 38S  
 RED LAURON LASSIE 89N

CE +1.0  
 BW +3.6  
 WW +41  
 YW +76  
 Milk +17  
 TM +37

B.W.	205Adj	SoT WT	104WT	365WT	S.M.
86	644	700	1045	1143	34.5
A.O.D.	W.ADG	F.ADG	F.I.	Y.I.	WPDA
3	2.55	3.32	103	98	2.97

Eye appeal and style and performance that will go a long way. His dam is a perfect example of the type of cow that we wish we had more of!

18

**RED LAURON WHISPER 83W**

RLH 83W

1506447

Feb 16/09

EPD'S

RED HIDDEN MMD PATRIOT 214M  
 RED CINDER SMARTIN' UP 132P  
 RED HIDDEN MAX'S FREYJA 132M

CE  
 +8.0

RED BASIN MAX 215G

BW  
 -0.2

LAURON BLACKBIRD 23N

BAYSHORE MISS BLACKBIRD 152H

WW  
 +24

B.W.	205Adj	SoT WT	104WT	365WT	S.M.
80	570	690	1000	1034	40.5
A.O.D.	W.ADG	F.ADG	F.I.	Y.I.	WPDA
6	2.31	2.98	92	89	2.72

YW  
 +48

Milk  
 +8

A clean smooth front end and structurally pleasing, outcross genetics on the bottom side for that extra flair.

TM  
 +20

**Red Six Mile Sakic 32S**

An impressive AI sire from Genex / Six Mile Red Angus. Sakic calves are extra ordinary, they are attractive, deep bodied and should leave phenomenal females.



20

**RED LAURON WONDER 28W**

JRA 28W

1491908

Feb 1/09

EPD'S

RED SIX MILE AVIATOR 217P  
 RED SI X MILE SAKIC 832S OSF  
 RED SIX MILE SIERA 257P

CE  
 +7.0

RED SSS BLAZE 853L

BW  
 +0.9

RED RUNNING BAR PREVIEW 1P

RED RUNNING BAR DEN DES D 6G

WW  
 +33

B.W.	205Adj	SoT WT	104WT	365WT	S.M.
92	703	915	1215	1157	36.5
A.O.D.	W.ADG	F.ADG	F.I.	Y.I.	WPDA
5	2.95	2.88	89	99	3.17

YW  
 +58

Milk  
 +22

A SALE FEATURE from Jared's former 4H Champion cow, maternal brother was high seller in 2008. He was a class winner at the Angus World Forum at Spruce Meadows this summer.

TM  
 +39

**21****RED LAURON WALL STREET 15W****RLH 15W****1506406****Jan 27/09****EPD'S**

RED SIX MILE AVIATOR 217P

**CE**

RED SI X MILE SAKIC 832S OSF

**+8.0**

RED SIX MILE SIERA 257P

**BW**

RED LEACHMAN HEAVENLY 8141 OSF

**+0.9**

RED LAURON HEAVENLY MITZY 2E

**WW**

RED LAURON MITZY 1W

**+34**

B.W.	205Adj	SoT WT	104WT	365WT	S.M.
90	691	810	1175	1176	38
A.O.D.	W.ADG	F.ADG	F.I.	Y.I.	WPDA
14	2.54	3.51	109	101	3.03

**YW****+53****Milk****+17****TM****+34**

Lot 21's mother has been a stellar producer, maternal sisters reside at Randy MacKenzie's and Hahn Cattle Company. Cows of that vintage stay around for a reason.

**Lot 22****22****RED LAURON WESTWARD 41W****JRA 41W****1506377****Feb 4/09****EPD'S**

RED SIX MILE AVIATOR 217P

**CE**

RED SI X MILE SAKIC 832S OSF

**+7.0**

RED SIX MILE SIERA 257P

**BW**

RED GLACIER CHATEAU 744 OSF

**-1.4**

RED LAURON ARDATH 1P

**WW**

RED SILVER DOME ARDATH 161J

**+30**

B.W.	205Adj	SoT WT	104WT	365WT	S.M.
82	655	825	1130	1104	36.5
A.O.D.	W.ADG	F.ADG	F.I.	Y.I.	WPDA
5	2.69	2.93	91	95	2.97

**YW****+60****Milk****+22****TM****+37**

A sample of what we strive for-performance, maternal power and phenotypically correct. Could be used on heifers or cows, daughters should be awesome.

# AndersonSlipp

Chartered Accountants

**Kim Pross**

Office Manager

**Shari Wareman**

C.G.A.

**Ingrid Anderson**

C.A., C.M.A., C.P.A.

Phone: 403.335.9167

Fax: 403.335.2336

Email: [ianderson@andersonslipp.com](mailto:ianderson@andersonslipp.com)Box 59, 123, 1001 - 20<sup>th</sup> Avenue, Didsbury, Alberta T0M 0W0



<b>23</b>	<b>RED LAURON WAMPUM 9W</b>					<b>EPD'S</b>
	<b>RLH 9W</b>	<b>1506401</b>	<b>Jan 25/09</b>		<b>CE</b>	
	RED SIX MILE AVIATOR 217P					<b>+4.0</b>
	RED SI X MILE SAKIC 832S OSF					<b>BW</b>
	RED SIX MILE SIERA 257P					<b>+1.4</b>
	RED RUNNING BAR TMD 13E					<b>WW</b>
	RED LAURON LASS 55L					<b>+39</b>
	RED ALALTA ACRES FERN 51F					<b>YW</b>
<b>B.W.</b>	<b>205Adj</b>	<b>SoT WT</b>	<b>104WT</b>	<b>365WT</b>	<b>S.M.</b>	<b>+59</b>
<b>90</b>	<b>649</b>	<b>885</b>	<b>1210</b>	<b>1162</b>	<b>36.5</b>	<b>Milk</b>
<b>A.O.D.</b>	<b>W.ADG</b>	<b>F.ADG</b>	<b>F.I.</b>	<b>Y.I.</b>	<b>WPDA</b>	<b>+21</b>
<b>8</b>	<b>2.78</b>	<b>3.13</b>	<b>97</b>	<b>100</b>	<b>3.10</b>	<b>TM</b>
Loaded with style, Lot 23 has been one to watch since birth. Dam is hard working and I expect she will soon achieve elite status like her mother 51F.						<b>+40</b>



<b>24</b>	<b>RED LAURON WATCHMEGO 54W</b>					<b>EPD'S</b>
	<b>RLH 54W</b>	<b>1506427</b>	<b>Feb 7/09</b>		<b>CE</b>	
	RED SIX MILE AVIATOR 217P					<b>+4.0</b>
	RED SI X MILE SAKIC 832S OSF					<b>BW</b>
	RED SIX MILE SIERA 257P					<b>+1.2</b>
	RED GLACIER CHATEAU 744 OSF					<b>WW</b>
	RED LAURON BLACKBIRD 6P					<b>+37</b>
	RED ALALTA ACRES BLACKBIRD 32K					<b>YW</b>
<b>B.W.</b>	<b>205Adj</b>	<b>SoT WT</b>	<b>104WT</b>	<b>365WT</b>	<b>S.M.</b>	<b>+64</b>
<b>95</b>	<b>655</b>	<b>860</b>	<b>1240</b>	<b>1258</b>	<b>39.5</b>	<b>Milk</b>
<b>A.O.D.</b>	<b>W.ADG</b>	<b>F.ADG</b>	<b>F.I.</b>	<b>Y.I.</b>	<b>WPDA</b>	<b>+23</b>
<b>5</b>	<b>2.80</b>	<b>3.65</b>	<b>113</b>	<b>108</b>	<b>3.29</b>	<b>TM</b>
HERD SIRE. Massive, deep, square and correct, destined for greatness. Dam displays a tidy udder and great feet. Chateau daughters are a rare find. Grand dam 32K is ELITE.						<b>+42</b>



**25**

**RD LAURON WRANGLER JO 45W**

**RLH 45W      1506421      Feb 5/09**

**EPD'S**

RED SIX MILE AVIATOR 217P  
 RED SI X MILE SAKIC 832S OSF  
 RED SIX MILE SIERA 257P

**CE**  
**+3.0**

RED LAURON JOHN HENRY 42J  
 RED LAURON KORUBA 17P  
 RED LAURON MTX KORUBA 38L

**BW**  
**+2.7**

**WW**  
**+37**

<b>B.W.</b>	<b>205Adj</b>	<b>SoT WT</b>	<b>104WT</b>	<b>365WT</b>	<b>S.M.</b>
104	650	880	1230	1224	38
<b>A.O.D.</b>	<b>W.ADG</b>	<b>F.ADG</b>	<b>F.I.</b>	<b>Y.I.</b>	<b>WPDA</b>
5	2.82	3.37	104	104	3.25

**YW**  
**+60**

**Milk**  
**+24**

**HERD SIRE PROSPECT** Quality in performance and phenotype, Maternal greatness on the bottom side with Matrix 19D(38L) and Prime Rib(42J) coupled with Sakic, what more could you ask?

**TM**  
**+42**



**26**

**RED LAURON WHOOP UP 51W**

**RLH 51W      1506425      Feb 6/09**

**EPD'S**

RED SIX MILE AVIATOR 217P  
 RED SI X MILE SAKIC 832S OSF  
 RED SIX MILE SIERA 257P

**CE**  
**+6.0**

RED LAZY R C MONTE CARLO 375N  
 RED LAURON LIKA 99S  
 RED LAURON LIKA 66P

**BW**  
**+0.1**

**WW**  
**+30**

<b>B.W.</b>	<b>205Adj</b>	<b>SoT WT</b>	<b>104WT</b>	<b>365WT</b>	<b>S.M.</b>
82	628	730	1030	1044	35.5
<b>A.O.D.</b>	<b>W.ADG</b>	<b>F.ADG</b>	<b>F.I.</b>	<b>Y.I.</b>	<b>WPDA</b>
3	2.43	2.88	89	90	2.72

**YW**  
**+54**

**Milk**  
**+23**

Another maternally bred bull with a clean front and pleasing profile. A maternal sister was on the 4H roster last year for Ryan. Use on cows or heifers.

**TM**  
**+37**

**27****RED LAURON WAPITI 13W****RLH 13W****1506404****Jan 27/09****EPD'S**

RED SIX MILE AVIATOR 217P  
 RED SI X MILE SAKIC 832S OSF  
 RED SIX MILE SIERA 257P

**CE  
+6.0**

RED LAZY R C MONTE CARLO 375N

**BW  
-2.0****RED LAURON MOROJITTI 89S**

RED LAURON MOROJITTI 56P

**WW  
+28**

B.W.	205Adj	SoT WT	104WT	365WT	S.M.
82	606	740	1100	1130	37
A.O.D.	W.ADG	F.ADG	F.I.	Y.I.	WPDA
3	2.39	3.46	107	98	2.84

**YW  
+51****Milk  
+21**

A ¾ brother to Lot 26, and cut in much the same fashion.  
 Double dip for cows or heifers and keep the replacement females.

**TM  
+35****Red Lazy RC Monte Carlo 375N**

“Monte”'s calves exhibit moderate but very eye appealing profiles. An outcross sire with calving ease. He is also proving to be a great female producer.

**28****RED LAURON WHY NOT 141W****RLH 141W****1506486****Apr 4/09****EPD'S**

SSS TWILIGHT 460K  
 RED LAZY R C MONTE CARLO 375N  
 RED COCKBURN DUCHESS 34E

**CE  
+4.0**

RED U-2 BODACIOUS 16H

**BW  
+1.0****RED LAURON BO JILL 9K**

RED LAURON SLENDER DESIGN 8C

**WW  
+26**

B.W.	205Adj	SoT WT	104WT	365WT	S.M.
86	673	690	1050	1214	34
A.O.D.	W.ADG	F.ADG	F.I.	Y.I.	WPDA
9	2.78	3.46	107	105	3.27

**YW  
+47****Milk  
+13**

Angular fronted and one of the youngest bulls on offer. Can be used double duty on cows or heifers. ELITE Dam is an added demension, square balanced udder and impecable feet.

**TM  
+26****RBC Royal Bank®**

**Alexander Fuhr**  
 Senior Account Manager, Business & Personal

Royal Bank of Canada  
 Box 220  
 1911-20th Street  
 Didsbury, AB T0M 0W0

Tel: 403-335-7343  
 Fax: 403-335-9368

alexander.fuhr@rbc.com



**29**

**RED LAURON WINK 93W**

**RLH 93W 1506452 Feb 19/09**

SSS TWILIGHT 460K

RED LAZY R C MONTE CARLO 375N  
RED COCKBURN DUCHESS 34E

RED STABURN LEGEND 93L

RED LAURON DYNA 28R  
RED LAURON DYNA 12K

B.W.	205Adj	SoT WT	104WT	365WT	S.M.
88	685	820	1130	1142	38
A.O.D.	W.ADG	F.ADG	F.I.	Y.I.	WPDA
4	2.81	2.98	92	98	3.10

EPD'S
CE
+2.0
BW
+1.2
WW
+32
YW
+56
Milk
+15
TM
+31

A moderate frame with style to burn, his full sister is truly exquisite and a feast for the eyes. Grand dam 12K is a New Trend daughter, a female producing legend.

**31**

**RED LAURON WINDSOR 85W**

**RLH 85W 1506448 Feb 16/09**

SSS TWILIGHT 460K

RED LAZY R C MONTE CARLO 375N  
RED COCKBURN DUCHESS 34E

RED SHODEREE BUSTER 9J

RED LAURON BTR BLACKBIRD 40M  
RED ALALTA ACRES BLACKBIRD 32K

B.W.	205Adj	SoT WT	104WT	365WT	S.M.
80	619	710	1045	1089	37.5
A.O.D.	W.ADG	F.ADG	F.I.	Y.I.	WPDA
7	2.39	3.22	100	94	2.84

EPD'S
CE
+10.0
BW
-3.6
WW
+18
YW
+38
Milk
+15
TM
+24

A sure fire heifer bull, note the calving ease number, 40M traditionally brings low birth weight to the fore. Same cow family as Lot 24.

**32**

**RED LAURON WAYLON 80W**

**RLH 80W 1506445 Feb 15/09**

SSS TWILIGHT 460K

RED LAZY R C MONTE CARLO 375N  
RED COCKBURN DUCHESS 34E

RED LEACHMAN HEAVENLY 8141 OSF

RED LAURON HVN JILL 3G  
RED ALALTA ACRES JILL 43W

B.W.	205Adj	SoT WT	104WT	365WT	S.M.
68	617	770	1085	1098	37
A.O.D.	W.ADG	F.ADG	F.I.	Y.I.	WPDA
12	2.65	3.03	94	96	2.94

EPD'S
CE
+12.0
BW
-3.9
WW
+18
YW
+38
Milk
+15
TM
+23

Another sleep easy heifer bull from a ELITE tried and true matron. Maternal siblings are retained in herd and are 4H alumni.



**33****RED LAURON WILLABY 119W****RLH 119W 1506472****Mar 04/09****EPD'S**

SSS TWILIGHT 460K

**CE**

RED LAZY R C MONTE CARLO 375N

**+5.0**

RED COCKBURN DUCHESS 34E

**BW**

RED ALALTA ACRES HORIZON 30H

**+1.6**

RED LAURON HZNN SUIJI 42K

**WW**

RED LAURON HVN SUIJI 2G

**+29**

B.W.	205Adj	SoT WT	104WT	365WT	S.M.
96	620	750	1110	1194	37.5
A.O.D.	W.ADG	F.ADG	F.I.	Y.I.	WPDA
9	2.64	3.46	107	102	3.15

**YW****+57****Milk****+15****TM****+30**

All the best traits and out cross genetics to boot from an ELITE dam, a maternal brother was selected by Northline Angus. 42K is a true gem.

**34****RED LAURON WHIRLYGIG 53W****RLH 53W 1506426****Feb 6/09****EPD'S**

SSS TWILIGHT 460K

**CE**

RED LAZY R C MONTE CARLO 375N

**+12.0**

RED COCKBURN DUCHESS 34E

**BW**

RED LAURON JOHN HENRY 42J

**-4.0**

RED LAURON LASSIE 78P

**WW**

RED LAURON LASSIE 66J

**+17**

B.W.	205Adj	SoT WT	104WT	365WT	S.M.
66	585	735	1050	1054	36
A.O.D.	W.ADG	F.ADG	F.I.	Y.I.	WPDA
5	2.44	3.03	94	92	2.78

**YW****+31****Milk****+12****TM****+21**

Check out the calving ease and low birthweight EPD's on this calving ease specialist, the heifers won't hardly have to sneeze!

**35****RED LAURON 88W****RLH 88W TWIN 1542121****Feb 16/09****EPD'S**

RED RUNNING BAR PRONTO 26P

**CE**

RED LAURON SIERRA 77S

**+5.0**

RED LAURON MOROJITTI 61P

**BW**

RED COMPASS RIO 40R

**-0.7**

RED ALALTA ACRES TINA 4T

**WW**

RED ALALTA ACRES NINA 19N

**+25**

B.W.	205Adj	SoT WT	104WT	365WT	S.M.
52	615	690	1025	1101	36
A.O.D.	W.ADG	F.ADG	F.I.	Y.I.	WPDA
2	2.59	3.22	100	98	2.79

**YW****+55****Milk****+19****TM****+31**

From a very humble start in life, Lot 35 has excelled to warrant a place in the offering. Sired by Lauron's high selling bull in 2006.



## Red Bar E-L Renegade 202R

**Renegade first saw use in our commercial herd and did himself proud. Calves are thick topped, meaty and daughters are the keeping kind.**

**36**

## RED LAURON WIGWAM 73W

RLH 73W 1506440 Feb 12/09

EPD'S

RED TER-RON DIGGER 11L  
RED BAR-E-L RENEGADE 202R  
RED BAR-E-L MARVEL 59M

CE  
+8.0

RED GLACIER CHATEAU 744 OSF

BW  
-1.0

RED LAURON APRIL 17R

RED ALALTA DYNAMIC APRIL 52B

WW  
+27

B.W.	205Adj	SoT WT	104WT	365WT	S.M.
86	666	790	1120	1135	38
A.O.D.	W.ADG	F.ADG	F.I.	Y.I.	WPDA
4	2.63	3.17	98	98	3.01

YW  
+53

Milk  
+16

Lots of spring of rib, deep and correct with a modest birthweight from a Chateau daughter that's a real treat. Grand dam 52B was an ELITE female and produced 2 herdsires used here at Lauron.

TM  
+29



**37**

## RED LAURON WISHBONE 138W

RLH 138W 1506484 Mar 25/09

EPD'S

RED TER-RON DIGGER 11L  
RED BAR-E-L RENEGADE 202R  
RED BAR-E-L MARVEL 59M

CE  
+10.0

RED RUNNING BAR PRONTO 26P

BW  
-1.1

RED LAURON APRIL 5S

RED ALALTA DYNAMIC APRIL 52B

WW  
+22

B.W.	205Adj	SoT WT	104WT	365WT	S.M.
82	658	700	1080	1243	37
A.O.D.	W.ADG	F.ADG	F.I.	Y.I.	WPDA
3	2.79	3.65	113	108	3.26

YW  
+46

Milk  
+13

Lot 37 can multi task in the heifer pen or cow herd. Same cow family as Lot 36 and maternal grandsire was high selling bull in the Foothills Red Angus Breeders Sale 2005.

TM  
+24

**38****RED LAURON WAR DANCE 120W****RLH 120W 1506473****Mar 4/09****EPD'S**

RED TER-RON DIGGER 11L

**CE**

RED BAR-E-L RENEGADE 202R

**+3.0**

RED BAR-E-L MARVEL 59M

**BW**

RED CINDER MARTIN' UP 132P

**+3.0**

RED LAURON MORROJITTI 116S

**WW**

RED ALALTA ACRES MORROJITI 16K

**+40**

B.W.	205Adj	SoT WT	104WT	365WT	S.M.
98	694	755	1150	1269	37.5
A.O.D.	W.ADG	F.ADG	F.I.	Y.I.	WPDA
3	2.72	3.80	118	109	3.27

**YW****+72****Milk****+13****TM****+33**

A hunka hunka burnin' love for your cows, check out the feed index, a maternal brother was purchased last year by Walako Red Angus.

**39****RED LAURON WHOPPER 104W****RLH 104W 1506462****Feb 23/09****EPD'S**

RED TER-RON DIGGER 11L

**CE**

RED BAR-E-L RENEGADE 202R

**+4.0**

RED BAR-E-L MARVEL 59M

**BW**

RED CINDER MARTIN' UP 132P

**+1.8**

RED LAURON SMART DALMISTU 93S

**WW**

RED LAURON DALMISTU 55P

**+34**

B.W.	205Adj	SoT WT	104WT	365WT	S.M.
92	634	720	1100	1197	37
A.O.D.	W.ADG	F.ADG	F.I.	Y.I.	WPDA
3	2.51	3.65	113	103	3.05

**YW****+60****Milk****+13****TM****+30**

Plenty of muscle to pack on the pounds, the built in doing kind. A full sister has turned out to be a fabulous young female with an udder to die for.

**40****RED LAURON WALKER 38W****RLHA 38W Twin 1506380****Feb 4/09****EPD'S**

RED TER-RON DIGGER 11L

**CE**

RED BAR-E-L RENEGADE 202R

**+6.0**

RED BAR-E-L MARVEL 59M

**BW**

RED BUF CRK BARNEY 3474 OSF

**+0.9**

RED LAURON DALMISTU 9R

**WW**

RED LAURON HM DALMISTU 28L

**+35**

B.W.	205Adj	SoT WT	104WT	365WT	S.M.
78	650	755	1090	1101	37
A.O.D.	W.ADG	F.ADG	F.I.	Y.I.	WPDA
4	2.46	3.22	100	95	2.87

**YW****+63****Milk****+13****TM****+31**

A typical son of Renegde, thickly made and easy doing. Dam was Ryan's past 4H project with which he had plenty of success. Grand dam 28L is ELITE.

41

**RED LAURON WHATSUP 79W**

RLH 74W

1506444

Feb 14/09

EPD'S

RED BJR THE DUKE 502-5176

CE

RED RUNNING BAR TMD 13E

+4.0

RED RUNNING BAR TOKUN MARTA 8B

BW

RED TOWAW MATRIX 19D

+0.7

RED LAURON MTX KORUBA 38L

WW

RED ALALTA ACRES KORUBA 46F

+35

B.W.	205Adj	SoT WT	104WT	365WT	S.M.
96	717	875	1175	1157	33
A.O.D.	W.ADG	F.ADG	F.I.	Y.I.	WPDA
8	2.93	2.88	89	99	3.18

YW

+53

Milk

+20

TM

+37

Occasionally we dip into the semen tank for that special cow. The Running Bar bull sire is "Scarface" a cornerstone at Alalta Acres for many years. Dam 38L is an ELITE dam.



Lot 43

43

**RED LAURON WATERLOO 26W**

RLH 26W

1506414

Feb 1/09

EPD'S

RED BJR THE DUKE 502-5176

CE

RED RUNNING BAR TMD 13E

+3.0

RED RUNNING BAR TOKUN MARTA 8B

BW

RED BUF CRK BARNEY 3474 OSF

+2.4

RED LAURON LASS 62S

WW

RED ALALTA ACRES FERN 51F

+44

B.W.	205Adj	SoT WT	104WT	365WT	S.M.
88	704	835	1160	1154	33
A.O.D.	W.ADG	F.ADG	F.I.	Y.I.	WPDA
3	2.74	3.13	97	99	3.03

YW

+67

Milk

+16

TM

+38

The Scarface sons are a proven and valuable commodity. Same cow family as Lot 23, Grand dam 51F is ELITE.



**DIDSBURY**  
VETERINARY SERVICES



Dr. Andy Mencarelli

VETERINARIAN / OWNER

P: 403-335-3519

E: andy@didsburyvet.ca



**Lot 45**

**45 RED LAURON WAR BONNET 46W**

**RLH 46W 1506422 Feb 6/09**

**EPD'S**

RED LMAN KING ROB 8621 OSF  
 RED GLACIER CHATEAU 744 OSF  
 RED GLACIER REBALA

**CE  
+5.0**

RED LAURON JOHN HENRY 42J

**BW  
-1.1**

RED LAURON LIKA 66P

RED LAURON BARNELLE 1J

**WW  
+32**

B.W.	205Adj	SoT WT	104WT	365WT	S.M.
88	650	900	1260	1252	39
A.O.D.	W.ADG	F.ADG	F.I.	Y.I.	WPDA
5	2.96	3.46	107	108	3.33

**YW  
+64**

**Milk  
+22**

A rare opportunity to purchase a direct Chateau son, the semen is extremely scarce. The dam is a Prime Rib grand daughter that is just getting better and better. Royally Maternally bred.

**TM  
+38**



**Lot 46**

**46 RED LAURON WHAMBAM 34W**

**RLH 34W 1506417 Feb 3/09**

**EPD'S**

RED LMAN KING ROB 8621 OSF  
 RED GLACIER CHATEAU 744 OSF  
 RED GLACIER REBALA

**CE  
+8.0**

RED SSS HIGH MARK 272D

**BW  
-2.7**

RED LAURON HM DALMISTU 52M

RED LAURON HZN DALMISTU 40K

**WW  
+27**

B.W.	205Adj	SoT WT	104WT	365WT	S.M.
76	625	850	1155	1118	33
A.O.D.	W.ADG	F.ADG	F.I.	Y.I.	WPDA
7	2.79	2.93	91	97	3.03

**YW  
+52**

**Milk  
+19**

Top honors go to Lot 46 for thickness, depth of rib and the "Mr. Congeniality" award for disposition. One of everyone's favorites, sure to be a fantastic female producer.

**TM  
+32**



## Red Blades Dividend 24R

A sire selected for great numbers and eye appeal, 24R is a dark pigmented bull whose progeny have reasonable birthweights and excellent performance. 24R shines as a female producer, daughters are proving themselves to be very feminine, great uddered and hard working.

47

## RED LAURON WARLORD 126W

RLH 126W 1506478

Mar 5/09

EPD'S

RED BRYLOR DIVIDEND 6K  
RED BLADES DIVIDEND 24R  
RED BLADES MISS LOGAN 22H

CE  
+5.0

RED TOP DIVIDER 71M

BW  
-0.2

RED LAURON MOROJITTI 56P  
RED LAURON HM MOROJITTI 7M

WW  
+33

B.W.	205Adj	SoT WT	104WT	365WT	S.M.
92	682	715	1040	1113	35.5
A.O.D.	W.ADG	F.ADG	F.I.	Y.I.	WPDA
5	2.52	3.13	97	95	2.96

YW  
+57

Milk  
+12

Use Lot 47 with confidence on the cow herd and be assured of the extra coin in your pocket, the daughters ought to be fine replacements too.

TM  
+28

48

## RED LAURON WACEY 74W

RLH 74W 1506441

Feb 13/09

EPD'S

RED BRYLOR DIVIDEND 6K  
RED BLADES DIVIDEND 24R  
RED BLADES MISS LOGAN 22H

CE  
+8.0

RED LAURON JOHN HENRY 42J

BW  
-2.0

RED LAURON MISS 59P  
RED LAURON MS FABIAN 68J

WW  
+24

B.W.	205Adj	SoT WT	104WT	365WT	S.M.
78	602	735	1045	1062	34
A.O.D.	W.ADG	F.ADG	F.I.	Y.I.	WPDA
5	2.46	2.98	92	92	2.82

YW  
+39

Milk  
+9

Sleek and clean in the front Lot 48 could be used for heifers or cows, mom is smaller framed but never the less more than pulls her weight.

TM  
+21

49

## RED LAURON WILD BILL 92W

RLH 92W 1538127

Feb 18/09

EPD'S

RED BRYLOR DIVIDEND 6K  
RED BLADES DIVIDEND 24R  
RED BLADES MISS LOGAN 22H

CE  
+3.5

RED CINDER SMARTIN' UP 132P

BW  
+1.4

RED LAURON SMART BARONA 90S  
RED LAURON TMD BARONA 46M

WW  
+41

B.W.	205Adj	SoT WT	104WT	365WT	S.M.
78	682	740	1110	1185	36
A.O.D.	W.ADG	F.ADG	F.I.	Y.I.	WPDA
3	2.60	3.56	110	103	3.03

YW  
+66

Milk  
+10

Another good dual purpose calf very similar to Lot 48. The Smarty daughters continue the family tradition of top end performance. Grand dam 46M is ELITE.

TM  
+29



**Lot 50**

**50 RED LAURON WITCHATA 63W**

**RLH 63W 1506435 Feb 10/09**

**EPD'S**

RED BRYLOR DIVIDEND 6K  
 RED BLADES DIVIDEND 24R  
 RED BLADES MISS LOGAN 22H  
 RED ALALTA ACRES FABIAN 16F  
 RED LAURON MOROJITTI 3R  
 RED ALALTA ACRES MOROJITTI 12A

**CE  
+6.0**

**BW  
-0.7**

**WW  
+25**

**YW  
+46**

**Milk  
+11**

**TM  
+25**

<b>B.W.</b>	<b>205Adj</b>	<b>SoT WT</b>	<b>104WT</b>	<b>365WT</b>	<b>S.M.</b>
85	664	810	1130	1131	37
<b>A.O.D.</b>	<b>W.ADG</b>	<b>F.ADG</b>	<b>F.I.</b>	<b>Y.I.</b>	<b>WPDA</b>
4	2.69	3.08	95	97	3.02

Deep chocolate pigmentation in a moderate birth weight package without compromise. Dam is a sweet heart. Use on cows or heifers.



**Lot 52**

**52 RED LAURON WARRIOR 2W**

**RLH 2W 1506397 Jan 16/09**

**EPD'S**

RED SSS RED HAWK 821K  
 RED LAURON SERENADE 14S  
 RED LAURON HVN JILL 3G  
 RED TOWAW MATRIX 19D  
 RED LAURON MTX MOROJITTA 20M  
 RED ALALTA ACRES MOROJITTI 12A

**CE  
+9.0**

**BW  
-2.0**

**WW  
+12**

**YW  
+27**

**Milk  
+16**

**TM  
+22**

<b>B.W.</b>	<b>205Adj</b>	<b>SoT WT</b>	<b>104WT</b>	<b>365WT</b>	<b>S.M.</b>
82	597	810	1165	1138	37.5
<b>A.O.D.</b>	<b>W.ADG</b>	<b>F.ADG</b>	<b>F.I.</b>	<b>Y.I.</b>	<b>WPDA</b>
7	2.47	3.41	106	98	2.92

Lot 52 is full of red meat and yet has a very strongly bred maternal background. Dam is yet another former 4H project, I guess the kids are choosing the right kind. For cows or heifers.

**53****RED LAURON WILLY 125W****RLH 125W 1506477****Mar 5/09****EPD'S**

RED LAZY MC SMASH 41N  
 RED COPPERHEAD THUNDER 157T  
 RED PRESCOTT BLACKBIRD 68L

RED LAURON HURON 53H  
 RED LAURON MISS DYNA 50K  
 RED LAURON MISS DYNAMIC 5Y

**CE****+2.0****BW****+3.2****WW****+28****YW****+46****Milk****+16****TM****+29**

<b>B.W.</b>	<b>205Adj</b>	<b>SoT WT</b>	<b>104WT</b>	<b>365WT</b>	<b>S.M.</b>
<b>100</b>	<b>645</b>	<b>780</b>	<b>1115</b>	<b>1182</b>	<b>40</b>
<b>A.O.D.</b>	<b>W.ADG</b>	<b>F.ADG</b>	<b>F.I.</b>	<b>Y.I.</b>	<b>WPDA</b>
<b>9</b>	<b>2.75</b>	<b>3.22</b>	<b>100</b>	<b>101</b>	<b>3.18</b>

**A cow bull from a super feminine cow.****Lot 54****54****RED LAURON WOODY 97W****RLH 97W 1506456****Feb 21/09****EPD'S**

RED SSS RED HAWK 821K  
 RED LAURON SERENADE 14S  
 RED LAURON HVN JILL 3G

RED CINDER SMARTIN' UP 132P  
 RED LAURON CINDY SUE 29T  
 RED LAURON BO SUELLEN 60K

**CE****+1.0****BW****+5.4****WW****+46****YW****+83****Milk****+13****TM****+36**

<b>B.W.</b>	<b>205Adj</b>	<b>SoT WT</b>	<b>104WT</b>	<b>365WT</b>	<b>S.M.</b>
<b>106</b>	<b>707</b>	<b>760</b>	<b>1105</b>	<b>1193</b>	<b>34</b>
<b>A.O.D.</b>	<b>W.ADG</b>	<b>F.ADG</b>	<b>F.I.</b>	<b>Y.I.</b>	<b>WPDA</b>
<b>2</b>	<b>2.70</b>	<b>3.32</b>	<b>103</b>	<b>101</b>	<b>3.04</b>

**Built in performance from a Smarty daughter.  
 Recommended for cows.**



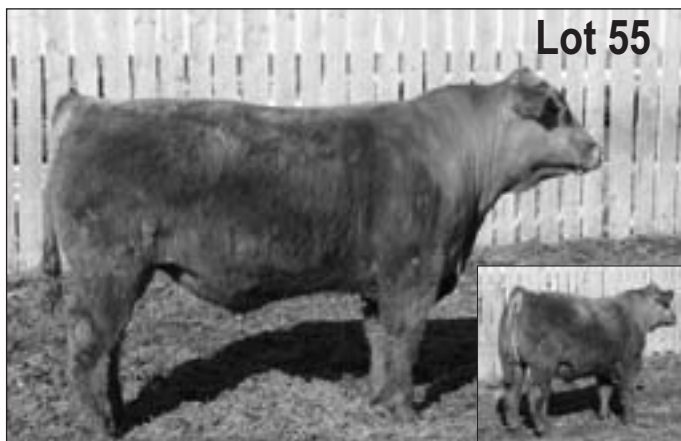
**LONGHORN CUSTOM  
 CORRAL CLEANING LTD.**

**Duncan Milne  
 Didsbury, AB  
 Phone: 403.335.9953**





**Lot 55**



**55 RED LAURON WINCHESTER 78W**

**TAH 78W 1492406 Feb 14/09**

**EPD'S**

RED SSS RED HAWK 821K  
**RED LAURON SERENADE 14S**  
 RED LAURON HVN JILL 3G

**CE**  
 +10.0

RED CINDER SMARTIN' UP 132P  
**RED LAURON BLACKBIRD 12T**  
 RED LAURON BLACKBIRD 24H

**BW**  
 -3.1

**WW**  
 +19

**YW**  
 +45

**Milk**  
 +14

**TM**  
 +24

<b>B.W.</b>	<b>205Adj</b>	<b>SoT WT</b>	<b>104WT</b>	<b>365WT</b>	<b>S.M.</b>
70	664	700	1130	1259	34.5
<b>A.O.D.</b>	<b>W.ADG</b>	<b>F.ADG</b>	<b>F.I.</b>	<b>Y.I.</b>	<b>WPDA</b>
2	2.54	4.13	128	111	3.05

Lot 55 was shown along side of Travis' 2 year old 4H project. A lower birthweight bull with lots of top and junk in the trunk.

**56 RED LAURON WINNING WAY 3W**

**RLH 3W 1506398 Jan 19/09**

**EPD'S**

RED BECKTON LANCER F442 T OSF  
**RED LCC GLANCE B062M**  
 RED LCC ROCKETTE K1105

**CE**  
 +4.0

**BW**  
 +0.9

**WW**  
 +30

**YW**  
 +51

**Milk**  
 +14

**TM**  
 +29

RED LAZY R C MONTE CARLO 375N  
**RED LAURON JILL 27S**  
 RED LAURON JILL 45P

<b>B.W.</b>	<b>205Adj</b>	<b>SoT WT</b>	<b>104WT</b>	<b>365WT</b>	<b>S.M.</b>
84	633	795	1150	1148	38
<b>A.O.D.</b>	<b>W.ADG</b>	<b>F.ADG</b>	<b>F.I.</b>	<b>Y.I.</b>	<b>WPDA</b>
3	2.50	3.41	106	99	2.90

A moderate birthweight and respectable numbers

**Grasse Lumber Sales Ltd.**



3401 - 19TH STREET DIDSBURY

Lowell Grasse  
 email [grassel@telus.net](mailto:grassel@telus.net)

Phone (403) 335-8191  
 Fax (403) 335-8300

[grasselumber.com](http://grasselumber.com)



**57**

**RED LAURON WHIPLASH 6W**

**RLH 6W 1538126 Jan 24/09**

EPD'S

RED BECKTON LANCER F442 T OSF

CE  
+5.5

RED LCC GLANCE B062M

RED LCC ROCKETTE K1105

BW  
+0.7

RED BLADES DIVIDEND 24R

RED LAURON MOROJITTI 65T

RED LAURON MOROJITTI 61P

WW  
+37

B.W.	205Adj	SoT WT	104WT	365WT	S.M.
82	653	755	1125	1172	36.5
A.O.D.	W.ADG	F.ADG	F.I.	Y.I.	WPDA
2	2.51	3.56	110	101	2.88

YW  
+69

Milk  
+13

TM  
+32

Deep chocolate color, this bull should win plenty of friends sale day. The heifers will appreciate your good taste.

**58**

**RED LAURON WITTY 59W**

**RLH 59W 1506431 Feb 9/09**

EPD'S

RED PERKS ADVANCE 121R

CE  
+6.0

RED CINDER PURSUIT 101S

RED HOWE MS HEATHER DDH 101G

BW  
+2.4

RED RUNNING BAR TMD 13E

RED LAURON TMD GENIE 89M

RED ALALTA ACRES DYNA 39B

WW  
+35

B.W.	205Adj	SoT WT	104WT	365WT	S.M.
100	660	860	1150	1121	37.5
A.O.D.	W.ADG	F.ADG	F.I.	Y.I.	WPDA
7	2.80	2.79	86	95	3.07

YW  
+49

Milk  
+9

TM  
+24

Length and lots of grow power, Lot 58 has a first rate mother.

**59**

**RED LAURON WARDEN 12W**

**RLH 12W 1506403 Jan 26/09**

EPD'S

RED CROWFOOT OLE'S OSCAR 2042M

CE  
+13.0

RED TG OSCAR 21S

RED TG LASS 81P

BW  
-5.4

RED LAZY R C MONTE CARLO 375N

RED LAURON LIKA 88T

RED LAURON LIKA 83R

WW  
+18

B.W.	205Adj	SoT WT	104WT	365WT	S.M.
60	598	655	1000	1059	37
A.O.D.	W.ADG	F.ADG	F.I.	Y.I.	WPDA
2	2.26	3.32	103	93	2.57

YW  
+45

Milk  
+17

TM  
+26

The heifers are calling and Lot 59 is the answer. The Oscar sons so popular last year are limited in the offering unfortunately because of an injury.



**60 RD LAURON WORLD SERIES 1W**

**JRA 1W 1506374 Jan 1/09**

EPD'S

RED BFCK CHEROKEE CNYN 4912 OSF  
 RED LCC MAJOR LEAGUE A502M OSF  
 RED KRN REBA'S ROBIN

CE  
 +4.0

BW  
 -1.6

WW  
 +31

YW  
 +55

Milk  
 +19

TM  
 +32

RED GEIS MAKE MY DAY 36'97  
 RED HIDDEN KURUBA 61L  
 RED DIAMOND D KURUBA 449H

B.W.	205Adj	SoT WT	104WT	365WT	S.M.
86	688	960	1330	1248	39
A.O.D.	W.ADG	F.ADG	F.I.	Y.I.	WPDA
8	2.88	3.56	110	108	3.26

This is the coupon Jared clipped from his purchase at Hips Red Angus Dispersal . Powerful and easy fleshing.



**62 RED LAURON 52W**

**RLH 52W 1542120 Feb 6/09**

EPD'S

ACN DYNASTY 15J  
 RED LAURON NOOTKA 14N  
 RED LIKA OFLAURON 28J

CE  
 +2.0

BW  
 +4.5

WW  
 +38

YW  
 +63

Milk  
 +18

TM  
 +37

RED RUNNING BAR PRONTO 26P  
 RED LAURON BLACKBIRD 3S  
 RED LAURON BLACKBIRD 42N

B.W.	205Adj	SoT WT	104WT	365WT	S.M.
100	713	850	1220	1249	36.5
A.O.D.	W.ADG	F.ADG	F.I.	Y.I.	WPDA
3	2.81	3.56	110	107	3.23

A noteworthy power player for the cow herd. Out cross genetics we used on our commercial cattle until we found the daughters irresistible.




*Ric & Linda  
Arthurs*

*Sara Arthurs  
John Thompson  
& Family*



We would like to thank the Lauron crew for including us in their annual bull test and sale. We've enjoyed a super year thus far and look forward to this great partnership in the future. We would be happy to answer any questions on the bulls and are confident they will meet your approval.

	<b>64 RED HIGH SUNRISE SSS 8W</b>					<b>EPD'S</b>
	<b>SSS 8W</b>	<b>1529448</b>	<b>Feb 14/09</b>			<b>CE</b>
	RED SPRING CREEK HI HO 8K					<b>+4.0</b>
<b>RED ROYAL HI HO 403T</b>	RED ROYAL MISS BO 21K					<b>BW</b>
	RED RUNNING BAR NIX 12N					<b>+0.1</b>
<b>RED HOODED SUNRISE DID 20R</b>	RED SUNRISE JOY 1J					<b>WW</b>
						<b>+24</b>
<b>B.W.</b>	<b>205Adj</b>	<b>SoT WT</b>	<b>104WT</b>	<b>365WT</b>	<b>S.M.</b>	<b>YW</b>
<b>76</b>	<b>655</b>	<b>815</b>	<b>1220</b>	<b>1274</b>	<b>43</b>	<b>+47</b>
<b>A.O.D.</b>	<b>W.ADG</b>	<b>F.ADG</b>	<b>F.I.</b>	<b>Y.I.</b>	<b>WPDA</b>	<b>Milk</b>
<b>4</b>	<b>2.78</b>	<b>3.89</b>	<b>120</b>	<b>111</b>	<b>3.30</b>	<b>+17</b>
<b>Bodacious 693 appears on the sire's pedigree, note the high feed index and testicular development, could be used on cows or heifers with great results.</b>						<b>TM</b>
						<b>+29</b>




**Jack Hawkings**  
 Pipeline Inspector  
 Co-ed Pipeline Operations

BP Canada Energy Company  
 10001 - 29 Ave.  
 Edmonton, Alberta T6N 1A5  
 Canada

Bus 403-843-3011  
 Fax 403-748-2670  
 Cell 403-318-1119  
 hawkinjh@bp.com



**67**

**RED HIGH SUNRISE SSS 29W**

**SSS 29W**      **1499603**      **Mar 22/09**

**EPD'S**

RED SPRING CREEK HI HO 8K  
 RED ROYAL HI HO 403T  
 RED ROYAL MISS BO 21K  
 RED LAURON LIMO 39L  
 RED KLASSY SUNRISE SSS 39N  
 RED SUNRISE KLASSY KARISMA 14K

**CE**  
+1.0  
**BW**  
+2.0  
**WW**  
+40  
**YW**  
+69  
**Milk**  
+23  
**TM**  
+43

<b>B.W.</b>	<b>205Adj</b>	<b>SoT WT</b>	<b>104WT</b>	<b>365WT</b>	<b>S.M.</b>
88	850	850	1230	1353	34
<b>A.O.D.</b>	<b>W.ADG</b>	<b>F.ADG</b>	<b>F.I.</b>	<b>Y.I.</b>	<b>WPDA</b>
6	3.31	3.65	113	118	3.68

**HERD SIRE PROSPECT** highest yearling index , great numbers and attractive, backed by deep bodied ELITE dam, perfect udder and good footed



**68**

**RED HIGH SUNRISE SSS 38W**

**SSS 38W**      **1499606**      **Apr 4/09**

**EPD'S**

RED SPRING CREED HI HO 8K  
 RED ROYAL HI HO 403T  
 RED ROYAL MISS BO 21K  
 RED CR CANYON 6K  
 RED DEEP SUNRISE SSS 15R  
 RED SUNRISE KLASSY KARISMA 14K

**CE**  
+3.0  
**BW**  
+1.0  
**WW**  
+33  
**YW**  
+58  
**Milk**  
+17  
**TM**  
+33

<b>B.W.</b>	<b>205Adj</b>	<b>SoT WT</b>	<b>104WT</b>	<b>365WT</b>	<b>S.M.</b>
80	736	755	1060	1187	38.5
<b>A.O.D.</b>	<b>W.ADG</b>	<b>F.ADG</b>	<b>F.I.</b>	<b>Y.I.</b>	<b>WPDA</b>
4	3.12	2.93	91	103	3.30

**Heifer bull prospect**, very similar in make up to half brother Lot 67

**69****GLORIOUS SUNRISE DID 20W****DID 20W 1528867**

Mar 4/09

EPD'S

RED SSS GARNET 133R

CE

RED GLANCING SUNRISE SSS 61T

+4.0

RED KLASSY SUNRISE SSS 39N

BW

RED SHODEREE LANCER 133P

+1.9

TOWAW MINEATA 4S

WW

TOWAW MINEATA 54P

+37

B.W.	205Adj	SoT WT	104WT	365WT	S.M.
77	692	765	1060	1114	34.5
A.O.D.	W.ADG	F.ADG	F.I.	Y.I.	WPDA
3	2.84	2.84	88	97	3.01

YW

+62

Milk

+20

Black Red Carrier

Outcross genetics, appealing head and smooth shoulders, could be used on heifers

TM

+38

**Lot 70****70****RD GLANCING SNRISE SSS 33W****SSS 33W 1497812**

Mar 29/09

EPD'S

RED SSS GARNET 133R

CE

RED GLANCING SUNRISE SSS 61T

+3.0

RED KLASSY SUNRISE SSS 39N

BW

RED CR CANYON 6K

+0.8

RED RISEN SUNRISE SSS 62R

WW

RED UDS ALFRIDA 5A

+37

B.W.	205Adj	SoT WT	104WT	365WT	S.M.
78	714	710	1050	1185	36.5
A.O.D.	W.ADG	F.ADG	F.I.	Y.I.	WPDA
4	2.84	3.27	101	103	3.21

YW

+61

Milk

+20

Sire goes back to Red LCC Glance Bo62M, dam has Crimson Tide on the top side of her pedigree.

TM

+39

**71****RD GLANCING SNRISE SSS 41W****DID 41W 1497805**

Apr 6/09

EPD'S

RED SSS GARNET 133R

CE

RED GLANCING SUNRISE SSS 61T

+3.0

RED KLASSY SUNRISE SSS 39N

BW

RED BRYLOR JUSTICE 132J

+3.6

RED CURRENT SUNRISE 7M

WW

RED SUNRISE COUNTESS 25G

+41

B.W.	205Adj	SoT WT	104WT	365WT	S.M.
87	699	735	1040	1173	35
A.O.D.	W.ADG	F.ADG	F.I.	Y.I.	WPDA
7	3.01	2.93	91	101	3.26

YW

+63

Milk

+17

Sire traces back to Red LCC Glance B062M and on the bottom side of the pedigree is Red RD Dividend 7F.

TM

+37

**C**ENTRAL  
**A**LBERTA  
**H**AY  
**C**ENTRE

6767-67 Ave. Red Deer, AB  
403-340-1000  
1-800-361-8279

**2650 BALEBUSTER**

ROUND BALE PROCESSOR W/RIGHT SIDE DELIVERY



**MAINS LINES OF  
NEW EQUIPMENT FROM**



**KNIGHT** **McHale**

**HAYBUSTER**<sup>®</sup>



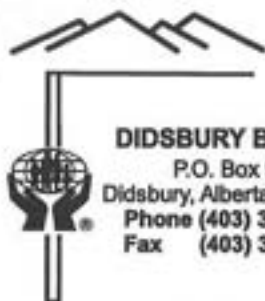
CENTRAL ALBERTA HAY CENTRE  
*Serving Canadians Since 1983*

6767-67St

Red Deer, AB T4P 1K3

Phone 1-403-340-1000 1-800-361-8279

**-www.haycenter.com-**



## Mountain View Credit Union Limited

**DIDSBURY BRANCH**  
P.O. Box 970  
Didsbury, Alberta T0M 0W0  
Phone (403) 335-3335  
Fax (403) 335-9599

**W.G. (Bill) Deederly**  
Branch Manager

bdeederly@alberta-cu.com  
www.mvccu.ca

*"Catch the Hometown Spirit"*

## FARM & TRADE PRODUCTS

- Farm Supplies • Hydraulics
- Swather Parts

**Ph: 335-1992**  
(24 HRS)

Box 328  
Didsbury, AB T0M 0W0

Fax: 335-8124  
Cell: 586-1430



## HILDEBRAND MOTORS LTD.

CHEV GMC PONTIAC BUICK

**KEITH KLINCK**

New Sales Manager

PH: (403) 556-3371 \*  
HOME: (403) 556-1887

Fax: (403) 556-7888 1-800-529-0103

Email: keithk@hildebrandmotors.com

Website: www.oldsGM.com

Highway 27 West, 6401 - 46 St., Olds, AB T4H 1L7

## Best Home Grown Heifer 4H District Heifer Show





# NOTES

---

---

---

---

---

---

---

---

---

---

---

---

---

---

---

---

---

---

---

---

---

---

---

## Reserve Champion Yearling Heifer



# SALE TERMS AND CONDITIONS

1. TERMS: Unless otherwise previously arranged with the individual consigners, terms of the sale are cash, payable in Canadian funds, settlement prior to any cattle released.

2. As soon as an animal is sold, it becomes the responsibility of the purchaser.

3. In the case of illness, a veterinarian will be called by the sales committee if deemed necessary, but any expenses involved will be the responsibility of the consignor until the animal is sold and the purchaser thereafter.

4. CERTIFICATE of REGISTRY: a certificate of registry duly transferred will be furnished to the buyer by the breeder for each registered or recorded animal after settlement is made with the exception of any animal identified as unregistered.

5. All bulls offered have passed a semen test..

6. Breeders Guarantee: All bulls sold are guaranteed breeders. Should any bull fifteen months of age or over fail to prove a natural breeder after being used on cows known to be breeders and free of venereal disease, the buyer shall report in writing to the seller and provide a report of complete examination by a qualified veterinarian. This notification shall be provided by the purchaser to the seller no later than 4 months following the date of the purchase, or 6 months after the bull has reached 15 months of age, whichever is the later. The seller reserves the privilege of testing the animal for a six month period to prove the animal a breeder. The seller at his option may then either return the purchase price to the buyer or replace the animal with another of equal quality in full settlement and satisfaction of all claims. Any complaints regarding fertility of any animal in this sale shall be directed to the breeder. No incidental expenses such as feed, veterinary charges, interest, etc., will be charged by either party. **Under no circumstances shall the seller be responsible for more than the purchase price paid for the bull.**

7. In the event of an infertility claim, the bull must be in acceptable condition agreed on by both parties, and if non-agreement, then as declared by a licensed veterinarian. The bull to be returned at buyers expense.

8. ACCIDENTS: Although every precaution will be taken to protect the safety and comfort of the buyers, neither the sales management, the sponsoring Association nor any owner assumes responsibility in this matter and disclaims any liability legal or otherwise, in the event of accident or loss of property.

9. Liability: Purchasers must look to the seller for fulfilment of all guarantees and representation made hereafter.

10. Disputes: In case of disputes, bidding will be reopened between the parties involved. If no further bid is made, the buyer will be the person from whom the auctioneer accepted the last bid. The auctioneer's decision will be final in such matter.

11. ANNOUNCEMENTS: Errors discovered in the catalogue will be corrected by announcement from the auction stand at sale time and such corrections will take precedence over the printed matter in the catalogue.

## Champion Showmanship



## Ryan's District 4H Champion Herd



## Travis' District 4H Res Champion Herd



**LAURON RED ANGUS**

**C/o Laurie Hunter**

**RR#2**

**Didsbury, AB**

**TOM 0W0**

**PLEASE BRING CATALOGUE TO THE SALE**