

Hamilton

FARMS



OUR BULL\$ MEAN BU\$INE\$\$

15th Annual

BULL &

Select

FEMALE

December 14, 2009
Hamilton Farms • 1pm

Sale

Welcome . . . to Hamilton Farms 15th Annual Bull & Select Female Sale

When times are tough and making a profit is difficult, it is probably a good time to re-visit what traits you are looking for in your new herd bulls. Whether it's the breed, or more performance, or lower maintenance you are looking for, your bull selection has the greatest single impact on your breeding specifics. The way we market our calves may have to change and it is up to each single producer to make sure that they have an advantage when selling calves. The Canadian Angus Association has their Green Tag program that allows you the producer more options when selling your calves, whether you're selling straight off the cow or taking them right through to slaughter, having your calves verified for both age and breed (Angus) is beneficial.

In our operation we have been very fortunate to have herd bulls that excel at calving ease without sacrificing performance. It's very cliché to say this, but the producer still gets paid for his calves by the pound so for obvious reasons, that will still be one of the biggest factors in making money come fall. When you can get those heavy calves in the fall yet not have to deal with calving issues, or vigor issues, and have a product that everyone wants, why choose anything but Angus.

We are excited about the line up of bulls that we are offering in this year's sale and we feel confident that they will provide our customers with calves that are less trouble and more valuable. Again we are also offering a line up of females that are 'the cream of the crop' and we expect that these heifers will go forward being highly productive and adding positively to their owner's bottom line. You will notice that we have some bulls in this year's sale that come from Foxwood Farm. Foxwood purchased approximately 25 females from Hamilton Farms and these bulls are the first coupons clipped from these productive females. Pretty good testament for how these females produce for their owners.

We would also like to remind everyone that the bulls in this sale will be wintered and developed by Hamilton Farms on a high roughage TMR ration, semen tested, and delivered to central points in Western Canada at no charge. If you cannot attend our sale but would like to participate, we have options for you. We will again be using the services of LiveAuctions.TV for Internet bidding and as usual, we have our Sight Unseen Purchase Plan. Contact us directly and we will assist you in filling your order. Terms for our bull sale are 50% down on sale day, 50% on delivery.

Feel free to stop in anytime between now and sale day to preview the sale offering and remember that our 'Open House' is on Sunday, December 13th, 2009. Join us to view the sale cattle and enjoy some good country hospitality.

PLAN TO JOIN US FOR THE SALE, MONDAY, DECEMBER 14TH, 2009 AT HAMILTON FARMS.

Sincerely,

Rob and Gail Hamilton

www.hamiltonfarms.ca



Rob & Gail Hamilton,
Wyatt, Wacey & Joel



Joe Friesen
Cattle & Farm
Operations Manager



Hamilton FARMS

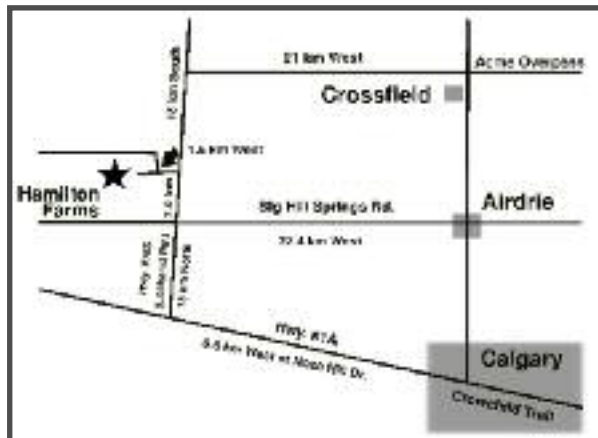
Robert & Gail Hamilton
Box 11, Site 15, RR #2
Cochrane, Alberta T4C 1A2
Phone: 403/932-5980
Cell: 403/540-3186
Email: hfangus@pathcom.ca

15th ANNUAL
BULL & SELECT FEMALE
SALE

DECEMBER 14, 2009
at Hamilton Farms, 1:00 pm

Offering: 128 Angus Bulls
31 Heifer Calves

- Complimentary Meal at 11:00 am
- Cattle Viewing & Open House Sunday,
December 13, 2009



Directions to Sale...

From Calgary: 9.6 km (6 miles) west on Hwy. 1A
18 km (11 1/4 miles) North on Hwy 766
1.6 km (1 mile) West
From Airdrie: 22.4 km (14 miles) West on Big Hill
Springs Rd.
7.4 km (4.5 miles) North on Hwy 766
1.6 km (1 mile) West

Video of sale offering is available!
Please make your request as soon as
possible to ensure it arrives on time.

Hamilton Farms reserves the right to collect semen on any bull sold through this sale. The semen collection will be at Hamilton Farms expense and the buyers convenience. Any semen collected will be for Hamilton Farms in herd use only.

Sale Day Phones.....

403-932-5980 • 403-932-5960

403-540-3186 • 403-540-8291

Rob Cell

Gail Cell

Auctioneer

Steve Dorran, Airdrie, AB (403) 226-2985 • (403) 540-9498

Sale Staff

Mark Stock, Ring Service (306) 678-4811

Ryan Dorran, Ring Service (403) 507-6483

Rod McLeod, Ring Service (403) 540-7986

Sale Consultants

Rob Holowaychuck - O.B. I. (780) 916-2628

Wayne Burgess - Venture Livestock (403) 813-8416

Sale Order

All herdsire prospects sell first to be followed by the select females offering

Special Representatives

John Donaldson - Canadian Angus Association President

Doug Fee - C.E.O. Canadian Angus Association

Darren Hipkin - Alberta Angus Association President

Brian Good - Canadian Angus Association Field Rep.

Sale Accommodations

Ramada Inn, Airdrie (403) 945-1288

Super 8, Airdrie (403) 948-4188

Best Western Country Inn, Cochrane (403) 932-1410

Sale Catalogue

Production & Design - Prime Cut Publishing (403) 556-8836

Photography - Grant Rolston Photography (403) 593-2217

On Line Viewing & Bidding

LiveAuctions.TV

With the help of LiveAuctions.tv, we are now able to give you a live connection to the auction. Real-time bidding will be available via the Internet for this sale. Live audio and live video will allow buyers to bid on animals as if they were present at the sale. Buyers must create an account at least 2 days prior to the sale. Please visit <http://LiveAuctions.tv> to walk you through the set-up process, contact Christine Boake (403) 850-6993 or Brad Fahrmeier (816) 392-9241 if you require any assistance.



WE DELIVER

On Bull Purchases... Free delivery to central points in western Canada after April 1, 2010

Terms: 50% down on December 14, 2009 - 50% upon Delivery

Volume Discounts!

Number of Bulls Purchased	Discount %
3	3%
4	4%
5	5%
6	6%
7	7%
8	8%
9	9%
10 plus	10%

Expected Progeny Differences

Statistics generated for individual cattle through national genetic evaluations

EPDs:

- allow breeders to estimate a young animal's breeding value - that animal's value as a parent
- allow a fair comparison of breeding value by removing environmental bias such as climate, feed and special management
- are the best tool available to compare animals between herds, countries and year of birth
- help breeders make informed decisions regarding breeding stock selection by evaluating numerous traits such as growth-related traits, carcass traits and reproductivity
- Estimate the group performance of one parent compared to the group performance of another parent, assuming similar mates

EPDs Evaluate Group Averages and Offspring's Performance. They can not Predict Individual Performance or Weights

To evaluate seedstock, use EPDs, pedigree and visual assessment. With EPDs the concept of "intermediate optimums" works best. Selection for one trait or for extremes generally results in unexpected consequences due to genetic corrections - for example, intense selection for high yearling weight will also increase birth weight. Successful cattle breeding requires a thoughtful and balanced approach to optimize fertility, growth and carcass merit while improving profitability and efficiency.

AVERAGE EPDS FOR 2008 BORN BLACK ANGUS CALVES

EPDS	BW	WW	YW	MILK	SC	YG
	+3.1	+39	+70	+16	+.37	+31

EPDs are from the Canadian Angus Association
EPDs are generated from whole-herd reporting.

COW/CALF HEALTH AND MANAGEMENT OVERVIEW FOR HAMILTON FARMS



Hamilton Farms have their entire cow herd on an integrated and comprehensive health and production management program. This program is based on the detailed collection of data on each individual animal at all key health and production points. This information is kept in a secure web-enabled database called *TraceBack™* and is continually monitored and audited by the managing veterinarians at Cow/Calf Health Management Services.

Management protocols and programs that are currently being used by Hamilton Farms are:

1. **Vaccination schedules:**

- a) Breeding herd vaccination on a yearly basis to protect against all the important reproductive viruses, including BVD (Type I and Typell).
- b) Spring calf processing (1-4 months of age); all calves are vaccinated against the important viral and bacterial pathogens associated with respiratory and clostridial diseases.
- c) Weaning; all calves are again vaccinated (booster vaccination) with the same products used at spring processing.

2. **Parasite control program:**

- a) All animals being retained over the winter; pregnant cows, breeding bulls and all weaned calves will be treated with a topical endectocide in the fall for internal and external parasite control.

3. **Treatment and management protocols:**

- a) Detailed treatment protocols are used for all the common diseases and ailments affecting beef cattle. These protocols are provided yearly in paper format and are updated monthly on the CCHMS client web site.
- b) All vaccinations and treatments are administered in the neck and given subcutaneously when the label permits.
- c) All treatments are given at label dosage and if required prescriptions are in place for any product being used off label.
- d) Hamilton Farms only use products licensed for use in beef cattle and that are registered for use in Canada.
- e) There is strict adherence to withdrawal times and residue avoidance.
- f) All cattle are handled calmly and humanely with zero tolerance for mistreatment and animal suffering.

4. **Nutrition:**

- a) All forages are tested and analyzed annually at Parkland labs.
- b) Rations are formulated maintaining a minimum of 70% roughage in the entire diet as-fed.
- c) By-product free mineral supplements containing an ionophore are added to the diet to help balance macro mineral, trace mineral and vitamin requirements.
- d) All feed is delivered as a total mixed ration (TMR)

5. **Bull Breeding Soundness:**

- a) All bulls will be evaluated by two qualified veterinarians for breeding soundness in March
- b) An internal and external physical examination is performed on each individual bull
- c) Scrotal circumference, scrotal shape, semen motility (gross motility and individual motility using a phase contrast microscope) and sperm morphology are evaluated in detail.
- d) Only those bulls with a satisfactory classification are allowed to go on to service cows.

Cow/Calf Health Management Services are proud to work with Hamilton Farms and if required will provide documentation and verification of all animal health processes and treatments.

If there are any questions with respect to the health management program at Hamilton Farms, please contact myself at the phone number or address listed below.

Yours truly,

Troy H. Drake BSc.Ag., D.V.M.
Cow/Calf Health Management Services 403-540-8934



Junior Discount Purchase Plan...

10% discount to Juniors under 21 years of age
purchasing heifer calves for the purpose of showing

HF
A

HF Kodiak 5R

HAMI 5R • 1274305 • January 5 2005

TC ADVANTAGE
SANDY BAR ADVANTAGE 43M
SANDY BAR JEMINA 44K

VERMILION YELLOWSTONE
WILBAR RUBY 955N
WILBAR RUBY 161J

KRUGERRAND OF DONAMERE 490
TC PRIDE 2010
DCC HIGH RISE 67H
SANDY BAR JEMINA 54D
VERMILION DATELINE 7078
VERMILION B JESTRESS 3912
EARLY SUNSET HIGH TIME 47G
WILBAR RUBY 3F

BW: 82 ADJ 205 WT: 858 ADJ 365 WT: 1404

SC: +1.24 YG: +36 BW: +0.3 WW: +50 YW: +86 MILK: +22 TM: +47

HF Kodiak 5R was the high selling bull calf in the 2005 Masterpiece Sale selling ½ interest to Soo Line Cattle Co. and Geis Angus Farm for \$45,000.00. Kodiak is a very complete package, his sterling pedigree, moderate Birth Wt. and excellent performance has been admired by many respected cattlemen. Kodiak's dam, Ruby 955N and the entire cow family are very solid building blocks to base a breeding program. Sandy Bar Advantage 43M certainly clicked with Ruby to produce a herd bull with the muscle shape and fleshing abilities of Kodiak. Kodiak was Bull Calf Champion at Calgary Stampede 2005 and Sr. Bull Calf Champion and Champion over All Breeds in the Legends of the Fall at Farmfair 2005. Kodiak was Reserve Senior Yearling at Farmfair and Agribition 2006 and Reserve Grand Champion Bull at Olds Gold Show – Sept 2007. Kodiak progeny were very successful at the World Angus Futurity Show in 2007 and 2008. Kodiak's first 3 calf crops have now been weaned and his progeny have surpassed all expectations, being the true measure of a bull's worth. What a line up of cattle he has created. We have never before had a herdsire that has stamped his progeny with the same consistency that this bull has. The first 40 calves sold, averaged over \$7000.00 with the high seller going to Ring Creek Farm for \$2,000.00 for ½ interest. (HF Tiger 5T). And the high selling heifer calf sold to Walkerbrae/Continental/Atkins/Gordon Atkins for \$20,000.00. Note his impressive EPD's for birth, performance and milk, what a well rounded package! Cows bred to Kodiak consistently calved 5 to 10 days early, had very light birth weights and weaned heavy. We believe



his progeny will be instrumental in taking our cow herd to the next level in the Angus breed. HF Kodiak 5R has established himself as one of the leading sires in the Angus breed today, both commercially and in the purebred industry. The final part of the equation is now complete, as the Kodiak 2 yr olds have calved out with picture perfect udders even to the most discriminating dairy critics (Norm & Marj Atkins). We can truly say that we have never seen a bull that has been capable of breeding true and with such consistency as Kodiak does. Kodiak took it to the next level this summer at the World Angus Forum when he was named "Premier Sire" at such a world class event with the quality of cattle second to none.

HF
B

HF Tiger 5T

HDF 5T • 1402252 • January 01 2007

SANDY BAR ADVANTAGE 43M
HF KODIAK 5R
WILBAR RUBY 955N

TC FREEDOM 104
HF ECHO 84R
HDF ECHO 6N

TC ADVANTAGE
SANDY BAR JEMINA 44K
VERMILION YELLOWSTONE
WILBAR RUBY 161J
CONNEALY FOREFRONT
T C RUBY 9095
RIVERBEND POWERLINE 0050
HF ECHO 83J

BW: 76 ADJ 205 WT: 796 ADJ 365 WT: 1338

SC: + 0.62 YG: +38 BW: +1.4 WW: +53 YW: +92 MILK: +27 TM: +54
Tiger is our feature young herd sire that sold in our 2007 bull sale for a record breaking \$52,000.00 for one half interest, going to Ring Creek Farm, Pat and Karen, and Len Friedel, Fairview, Alberta. This bull represents all the qualities that we are looking for in Angus cattle. First of all he was born unassisted from a 2 year old female with just a 76 pound birth weight. He then performed all summer and weaned off his mom on August 30th with a weight of 830 pounds. He has been admired by many astute cattlemen for his correct structure, appealing muscle shape, and proud character. His dam is a hard working Freedom daughter from the Echo cow family which has contributed so much to our cow herd. In 2008 she again did us proud by weaning her second calf at 880 pounds, a bull calf named HF El Tigre 28U who is a carbon copy of Tiger. El Tigre 28U sold at the CWA Masterpiece Sale 2008 to Ring Creek Farm for \$82,000.00 for ½ interest. El Tigre also posted outstanding birth to yearling numbers: BW - 85, 205 Adj Wt - 795 lbs and 365 Adj Wt - 1425 lbs. Hats off to Echo 84R to repeat that kind of performance on her own, two years in a row.

Tiger is sired by HF Kodiak 5R who has done an impressive job of breeding in our herd as well as Soo Line Cattle Co. and Geis Angus herds. We feel that the value of Kodiak and Tiger's progeny will be appreciated for their early gestation and calving ease, true and reasonable performance, and correct structure. HF Tiger 5T will be an important part of Hamilton Farms and Ring Creek Farms program's going into the future. All indications in his first calf crop is that Tiger will breed true and very similar to Kodiak.



In 2007 Tiger was named Reserve Senior Bull Calf Champion at the Olds Gold Show, Senior Bull Calf Champion at Farmfair, and Supreme Champion Bull in the 'Legends of the Fall' all breeds show at Farmfair, and won Senior Bull Calf Champion at Agribition. In 2008 Tiger was Grand Champion Bull at Spruce Meadows and Year II Angus Futurity in Olds, Reserve Grand Champion Bull at Farmfair and Grand Champion Bull at Saskatoon Fall Fair as well as Supreme Champion Bull over all breeds. Then to top it all off in 2009, Tiger was named Grand Champion Bull at the World Angus Forum 2009 at Spruce Meadows in Calgary, AB. Tiger was also part of the Champion Breeders Herd as well as having a number of his progeny win their classes and go on to be Division Champions. A true sign of his value is when he can breed the type of cattle that he has in his first calf crop.

Supreme Champion Bull
Farmfair International 2009



HF Hemi 151T

HAMI 151T • 1402681 • January 18 2007

S A V 8180 TRAVELER 004
S A V 004 PREDOMINANT 4438
S A V EMBLYNETTE 1182

SITZ TRAVELER 8180
BOYD FOREVER LADY 8003
S A F 598 BANDO 5175
S A V EMBLYNETTE 7319
DURALTA 111A CHANCE 11H
LLB KEEPSAKE 94H
GREENS PREMIUM 7578
HF TIBBIE 2D

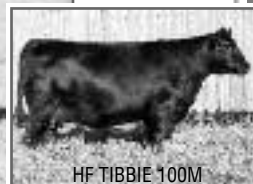
REMITALL ICEMAN 10K
HF TIBBIE 100M
HF TIBBIE 86K

BW: 98 ADJ 205 WT: 855 ADJ 365 WT: 1404

SC: +0.72 YG: +38 BW: +4.7 WW: +62 YW: +99 MILK: +24 TM: +55

Hemi is one of our exciting new young herdsires and we are very excited about his first calves. We sold one half interest in Hemi at the 2007 Masterpiece Sale to Northern Black Angus, Trevor and Debbie White and Family, Smithers, BC, for \$35,000.00. In 2007 he was our heaviest bull at weaning time when he pressed down on the scale at 925 pounds with no creep, just grass and milk. He has a tremendous amount of natural thickness and should sire calves that will mature early.

Hemi's dam is flawless in her make-up with a pedigree that is a little bit different and quite a bit exciting. Tibbie 100M was purchased through our production sale as a calf by Murray Pennell of the 2-Horse Ranch and was then leased back by Hamilton Farms in 2006. She comes from a cow family which is rich in history and it is very fitting that a Tibbie cow is capable of producing



HF TIBBIE 100M

a bull like this. 100M's dam (86K) is no stranger in the Hamilton Farms herd as she is an Elite Dam with the Canadian Angus Association. HF Tibbie 100M is a maternal sister to the high selling bull in our 2005 bull sale, HF High Roller 79R, going to Robin Hoberg, of Langenburg Saskatchewan for \$11000.00. HF Tibbie 100M was awarded Supreme Champion Female at Farmfair and Agribition in 2007 with Hemi at her side. Tibbie 100M's next calf (heifer calf x Kodiak) was sold to Bandura Ranches at the CWA 2008. Hemi has truly bred the way we expected, with phenomenal performance. They are phenotypically very similar in their make-up and could best be described as power houses.



HF Bears Paw 32T

HFDF 32T • 1402282 • JANUARY 04 2007

SANDY BAR ADVANTAGE 43M
HF KODIAK 5R
WILBAR RUBY 955N

TC ADVANTAGE
SANDY BAR JEMINA 44K
VERMILION YELLOWSTONE
WILBAR RUBY 161J
CONNEALY FRONTLINE
LEACHMAN BLACKBIRD 8060
WHITESTONE 9FB3 G228
DURALTA 14C ECHO 32E

RIVERBEND POWERLINE 0050
HFDF ECHO 13N
HF ECHO 83J

BW: 90 ADJ 205 WT: 732 ADJ 365 WT: 1297

SC: + 0.63 YG: +35 BW: +3.2 WW: +47 YW: +82 MILK: +23 TM: +47

Bears Paw is another Kodiak son that will compliment our herd bull battery. One half interest sold to Duralta Farm, the Duries, Lavoy, Alberta for \$13,500.00 in our 2007 bull sale. He is a 7/8 brother to HF Tiger 5T who is also part of our young sire line up. Bears Paw is a very correct and nicely balanced bull that weaned off his mother at 815 pounds. He possesses a great deal of thickness and volume and has that proud stature that we look for in a herd sire. His dam is a deep bodied high volume female from the Echo cow family that continually brings in calves that are at the front of the pack. In 2008 she weaned our heaviest bull calf at



900 pounds, which just happened to be our feature bull in last year's sale, HF Xtreme 117T. Xtreme was our high selling bull for \$14,000.00 going to Southland Angus – Shane Cadieux of Shaunavon, SK.



Sandy Bar Ideal 18S

IJP 18S • 1310363 • February 11 2006

IDEAL 7451 OF 8103 4465
PRAIRIELANE IDEAL 7451-2014
PRAIRIELANE MAX DUCHESS 3050

IDEAL 8103 OF ELDO 5110 5213
IDEAL 4465 OF 6807 4286
G T MAXIMUM
PRAIRIELANE L56 DUCHESS 5004
TOP TONTO B10
SANDY BAR ANNIE K 12U
CRESCENT CREEK BRAVE HEART 35F
SANDY BAR PRIDE 27E

SANDY BAR TONTO 61E
SANDY BAR PRIDE 89L
SANDY BAR PRIDE 6H

BW: 91 ADJ 205 WT: 762 ADJ 365 WT: 1336

SC: -0.37 YG: +41 BW: +1.2 WW: +55 YW: +96 MILK: +20 TM: +48

Ideal was selected from the 2007 Short Grass Sale where he was the high selling bull at \$16,000.00 for ½ interest. Ideal is a long bodied performance bull that provides us with an out-cross pedigree to enhance the depth of our bull and heifer pens in the years to come. His dam Sandy Bar Pride 89L is an Elite dam with the Canadian Angus Association as well, so is his grand dam and great grand dam. We are truly pleased with how this bull has developed and he will provide our customers with a little different pedigree. The second high selling bull in our 2008 Sale was an Ideal son out of a Freedom daughter – going to Ring Creek Farm for \$10,500.00. There are more Ideal lots on offer this year and a number of them have definitely risen to the top of the sale.



"You will never "find" time for anything. If you want time, you must make it"

HF Duff Encore 702

IMP 702T • 1485946 • January 1, 2007

Q A S TRAVELER 23-4
D H D TRAVELER 6807
BEMINDFUL MAID D H D 0807

O C C ANCHOR 771A
O C C DIXIE ERICA 814G
O C C DIXIE ERICA 764C

BAND 234 OF IDEAL 3163
Q A S BLACKBIRD EVE 601 1
PBC 707 1M F0203
BEMINDFUL MAID OF R R 1079
D H D TRAVELER 6807
O C C JUANADA 709V
N BAR EMULATION EXT
O C C DIXIE ERICA 739A

BW: 84 ADJ 205 WT: 752 ADJ 365 WT: 1213
SC: -0.35 BW: +2.6 WW: +39 YW: +73 MILK: +15 TM: +46

Encore has added a little different twist to our program and a totally different pedigree. Encore was the high selling bull in the 2008 Power and Plus Bull Sale (Duff's) recording one of the top values of the 2008 spring sale season. He has been noted to possibly be one of the most impressive sons of the legendary bull "6807", to surface in recent times. His dam has produced many, many notable great herd sires. Encore and his progeny are moderate in frame, easy fleshing, and practical kind of cattle, with plenty of character and eye appeal. Take a close look at the Encore progeny on offer.



HF HF Done Right 125R

HAMI 125R • 1291634 • January 27 2005

LEACHMAN RIGHT TIME
BT RIGHT TIME 24J
SITZ EVERELDA ENTENSE 1905

HF MOST WANTED 46H
HF ROSEBUD 127K
HF ROSEBUD 70H

N BAR EMULATION EXT
LEACHMAN ERICA 0025
TRAVELER 124 G D A R
SITZ EVERELDA ENTENSE 1791
HF WALKER 107E
HFRF ROSEBUD 72F
TC STOCKMAN 365
HF MISS ROSEBUD 15C

BW:86 ADJ 205 WT: 756 ADJ 365 WT: 1205
SC: -0.33 YG: +36 BW: -0.3 WW: +36 YW: +72 MILK: +17 TM: +35

Now deceased, HF Done Right was purchased in the Hamilton Farms Sale by the keen eye of Dave Woywitka, and we later negotiated keeping a semen interest in this calving ease young sire. Done Right is moderate framed but needs to be appreciated for his thickness and correctness with plenty of style and eye appeal.

The Rosebud cow family has been with Hamilton Farms from day one as the Rosebud 32G cow came in the original package of cows from Gothold Reich. The grand dam Rosebud 15C was Grand Champion Female at Calgary Stampede 1995 and her calf at side sold to Willie Robertson in England for \$12,000.00. A heifer calf won the Legends of the Fall in Edmonton 1998 and topped the Hamilton Farms Sale at \$13,000.00. The first 13 calves sold from Rosebud 15C averaged just over \$6,200.00.



The first crop of Done Right females are doing an outstanding job in our herd. Picture perfect udders, great moms and fertility to breed back. We have a number of calving ease bulls and 2 very stylish heifer calves in the offering.

HF HF Free Wheeler 191N

HAMI 191N • 1186212 • February 27 2003

CONNEALY FOREFRONT
TC FREEDOM 104
T C RUBY 9095

HF WALK-ON 14C
DURALTA 14C ECHO 32E
STONEHAVEN MISS PONDEROSA 9U

CONNEALY FRONTLINE
EILEEN HEARTLAND CONANGA6443
TC STOCKMAN 365
TC RUBY 4068
MVHF DREAMWALKER 29A
KNIGHTS BLACKBIRD 9Y
4S PONDEROSA
STONEHAVEN JEAN 5L

BW:98 ADJ 205 WT: 731 ADJ 365 WT: 1335
SC: +0.43 YG: +42 BW: +3.8 WW: +42 YW: +85 MILK: +27 TM: +48

Now deceased, Free Wheeler was the high selling bull in the Hamilton Farms sale 2003 selling to LLB Angus for \$9,000.00 for half interest. Free Wheeler is very deep bodied, strong topped, has super muscle expression with tremendous hair and testicle development, and an unbeatable disposition with a pedigree second to none. Free Wheeler cattle have topped the three previous Hamilton Farms and LLB sales, including the high selling bull calf in 2006 going to Norseman Farms for \$14,250.00. This bull calf (HF Shadow 12S) was at foot to his Power Source dam when she was crowned Supreme Champion Female at Agribition 2006. The 2nd high selling bred heifer in Hamilton Farms 2006 sale went to Continental Angus for \$7,000.00. And yet another Free Wheeler son was the high seller in the Hamilton Farms Sale 2005, HF High Roller going to Robin Hogberg from Langenburg SK.



Free Wheeler is a full sister to Echo 187N who was crowned Supreme Champion Female (like her dam) at Calgary Stampede and Agribition 2005. Also of note is that Free Wheeler progeny were named Grand and Reserve Champions at London 2007. And yet another Free Wheeler daughter was named Champion Yearling heifer at The Summer Sizzler at Spruce Meadows this summer. (owned by Dr. Corey Jones).



HF I **BWB Traveler 110P**
 ATAX 110P • 1244858 • February 17 2004

NORTHERN IMPROVEMENT 4480
 HF PROGRESS 20K
 DURALTA 14C ECHO 32E

HF PREMIUM PLUS 74K
 HF ANNIE 112P
 HF ANNIE 42J

D H D TRAVELER 6807
 G D A R BLACKCAP LADY 840
 WOODHILL TRIPLE THREAT
 BWB DELEGATE LADY 2'93
 G D A R ROYCE 131
 AHLGRENS ESTELLA 2758 E T E
 BWB SPARTAN 7'91
 BWB DELEGATE LADY 10'91

BW:64 ADJ 205 WT: 715 ADJ 365 WT: 1300

SC: +1.02 YG: +25 BW: +0.7 WW: +47 YW: +72 MILK: +8 TM: +32

Rob was very proud of his purchase in the BWB Angus 1st Annual Bull Sale. Traveler 110P is packed full of red meat and muscle and has as wide a top in him as you will find anywhere. The most exciting part was that he came in from breeding season in the same condition he went out in. Traveler 110P's first calf crops are very moderate, they exhibit great muscle shape, feminine front ends in the females and are all very easy fleshing cattle. Traveler himself has great testicles and bone and a nice calving ease type of head in a moderate frame. We are very happy with his first daughters and look forward to another group of easy fleshing, low maintenance type of cattle.

HF J **SAV 004 Predominant 4438**
 IMP 4438P • 1291656 • January 30 2004

SITZ TRAVELER 8180
 S A V 8180 TRAVELER 004
 BOYD FOREVER LADY 8003

S A F 598 BANDO 5175
 S A V EMBLYNETTE 1182
 S A V EMBLYNETTE 7319

G D A R TRAVELER 71
 SITZ EVERELDA INTENSE 1137
 A A R NEW TREND
 S V F FOREVER LADY 57D
 BON VIEW BANDO 598
 S A F ROYAL LASS 1002
 S A V EXT EMULATION 5040
 SAV EMBLYNETTE DIAMOND 5369

BW: 83 ADJ 205 WT: 911 ADJ 365 WT: 1495

SC: +0.58 YG: +40 BW: +1.9 WW: +57 YW: +97 MILK: +19 TM: +48

Predominant as you can see from the picture puts it all together...length, thickness, depth of rib and flank, excellent scrotal development and phenomenal performance to top it all off. Predominant was Lot #2 in the record setting 2005 Schaff Angus Valley Sale where he competed well with a 100 half brothers. Predominant 4438 was used extensively in the 2-Horse Ranch herd and was one of the most heavily used bulls at Schaff's in 2006 and promises a bright future. His dam Emblynette 1182 was the top performing heifer calf in the 2001 crop and out of a top "Pathfinder" dam. The Predominant daughters are exceptionally deep and broody. Emblynette 1182 records a weaning ratio of 113 on 3 calves and owns the eighth highest weaning EPD among all current dams of the Angus breed. We have an extensive number of Predominant cattle on offer in this sale, which we are extremely pleased with, displaying the traits we demand from our herdsires. The progeny have calving ease without giving up performance, and we are anxiously awaiting our first Predominant females to calve next spring.

HF K **JSF Regan 65R**
 JDJ 65R • 1298242 • August 19 2005

WHITESTONE WIDESPREAD MB
 LRL WS 101N
 LRL 101J

ANGUS ACRES DANCER 7Z
 HILL VIEW DUCHESS 13C
 WAVENY DUCHESS 13Z

N BAR EMULATION EXT
 M B RACHEL 2173
 S A F FAME
 CROSSMOUNT ENERGY ERICA 39G
 ANGUS ACRES LANCER 60U
 ANGUS ACRES COUNTESS 70S
 DWW MINBURN TONKA 8X
 WAVENY DUCHESS 113X

BW: 80

BW: +3.5 WW: +42 YW: +78 MILK: +8 TM: +29

Regan was added to our bull battery in 2007 for his good muscle shape and phenotype that we like to see passed on in our calves. Regan's calves have done well for us and we are very pleased with their performance and easy doing style. His pedigree offers a new blood line and it is interesting to note that his dam was 14 years old when she raised Regan. Longevity is an important economic trait that we love to have in our cow herd.

HF L **HF Reliabull 41S**
 HAMI 41S • 1332299 • January 13 2006

NORTHERN IMPROVEMENT 4480
 HF PROGRESS 20K
 DURALTA 14C ECHO 32E

HF PREMIUM PLUS 74K
 HF ANNIE 112P
 HF ANNIE 42J

TC STOCKMAN 365
 BLACKCAP OF R R 5367
 HF WALK-ON 14C
 STONEHAVEN MISS PONDEROSA 9U
 GREENS PREMIUM 7578
 HF EVENING TINGE 20F
 MVHF DREAMWALKER 29A
 HF MISS ANNIE 16G

BW: 82 ADJ 205 WT: 793 ADJ 365 WT: 1318

SC: -0.37 YG: +30 BW: +0.3 WW: +42 YW: +72 MILK: +22 TM: +43

Here is one of our calving ease experts. The Progress sired calves are very 'Reliabull', as the name indicates, in the calving ease department. Reliabull sold through our 2006 bull sale going to Joe Bandura, Duchess, Alberta, for \$9,500.00. We retained a semen interest in Reliable to expand his genetics into our cow herd. He is a low birth weight bull that has performance to boot and exhibits that mellow look with easy fleshing ability. We are really happy with his calves and the bonus in this guy is the strength in the cow family. The Annie cow is very similar in type to the Blackbirds...tons of volume, beautiful udder, and femininity. She goes back to an old Reich cow that we started our herd with. It's all about the power in cow families.

HF M **Sandy Bar Advantage 43M**
 IPJ 43M • 1119001 • February 12 2002

KRUGERRAND OF DONAMERE 490
 TC ADVANTAGE
 TC PRIDE 2010

DCC HIGH RISE 67H
 SANDY BAR JEMINA 44K
 SANDY BAR JEMINA 54D

C H STACKER 7040
 DONAMERE BACHEL BEAUTY 288
 Q A S TRAVELER 23-4
 TC PRIDE 0011
 TC STOCKMAN 365
 TAF ATALANTA 26E
 TRAVELER OF WLA 1Z
 SANDY BAR JEMINA 44A

BW: 82 ADJ 205 WT: 792

SC: +1.65 YG: +85 BW: +4.3 WW: +46 YW: +85 MILK: +15 TM: +38

Advantage is a bull we acquired from Wilbar Farms in 2004. Advantage was Grand Champion Bull in Saskatoon 2004 and while on display at Agribition was the talk of the barn, and we were proud that we had recently become new part owners on the bull. Advantage has both a positive pedigree and his actual weights and his EPD's are a pleasant combination of a low birth weight and very good performance. Sandy Bar Advantage sired HF Kodiak 5R, who was the high selling bull at Agribition 2005 to Soo Line Cattle Co. and Geis Angus for \$45,000.00. Advantage sired the high selling heifer calf in the Hamilton Farms Sale 2006 going to Kevin Nelson for \$6,000.00 who was Senior Heifer Calf Champion at Agribition 2006. Yet another high seller sired by Advantage was HF Excell 21S - sold through the Masterpiece Sale to Ben and Carol Tams of Taber. A Sandy Bar Advantage heifer calf - HF Echo 53T was Reserve Heifer Calf Champion in the World Angus Forum Futurity as well as Reserve Grand Champion Female at the Angus Gold Show in Olds in Sept/07. HF Echo 53T was the high selling heifer calf at the Masterpiece sale bringing \$20,000.00 to the Enright family, Ontario bound. The Sr. heifer calf Champion in Edmonton 2008, out of HF Echo 187N and sired by Sandy Bar Advantage and was also the winner of the Legends of the Fall 2008 and the Cinderella Classic in Saskatoon 2008

Video of sale offering is available!
 Please make your request as soon as possible to ensure it arrives on time.

"Your most unhappy customers are your greatest source of learning."



Future Stars!!

HF
N

HF El Tigre 28U

HAMI 28U • 1469322 • January 5, 2005

SANDY BAR ADVANTAGE 43M
HF KODIAK 5R
WILBAR RUBY 955N

TC FREEDOM 104
HF ECHO 84R
HFDF ECHO 6N

TC ADVANTAGE NHF AMF
SANDY BAR JEMINA 44K
VERMILION YELLOWSTONE NHF AMF
WILBAR RUBY 161J
CONNEALY FOREFRONT
T C RUBY 9095
RIVERBEND POWERLINE 0050
HF ECHO 83J

SC: +1.07 YG: +41 BW: +2.3 WW: +53 YW: +94 MILK: +27 TM: +54

A full brother to Tiger 5T, El Tigre 28U was the high selling bull out of the 2008 Masterpiece Sale going to Ring Creek Farm (Pat, Karen & Len Friedel) of Fairview, AB. Ringing the bell two years in a row with her outstanding production is HF Echo 84R, first as a 2 yr old with Tiger 5T and again as a 3 yr old with El Tigre 28U. She weaned off her first calf (Tiger) at 830 lbs, bred back to calve exactly the same time, and came in on Sept 5th with El Tigre weighing 880 lbs. All of this was accomplished with no special attention and no creep. Quite a feat for this hard working Freedom daughter. El Tigre has a low birth weight (85 lbs) that is bred in by his sire, has a dam that is fertile, feminine, beautifully uddered and structurally correct, he has performance that will run with the best of the best, he has EPD's that couldn't read any better and best of all...he looks like he does. His sire HF Kodiak 5R was named Premier Sire at the WAF 2009, which was a great accomplishment. More details on Kodiak are men-



tioned in previous pages, please refer back. El Tigre was Bull Calf Champion at Farmfair 2009 and the finalist in the Angus Division of Legends of the Fall. He went on to be Senior Yearling Champion to the World Angus Forum 2009 at Spruce Meadows. He has attracted a lot of attention by some very keen cattlemen with semen sales to numerous countries overseas such as England, Scotland, Ireland, Norway, Sweden, Finland, Denmark and some European countries.

HF
O

Southland Exclusive 62U

CADS 62U • 1421885 • January 21, 2008

TC FREEDOM 104
SOUTHLAND FREE RIDE 68R
SOUTHLAND ERROLINE 44L

RONAN R BANDOLIERMERE 108H
SOUTHLAND SUSAN 58L
RONAN SUSAN 36J

CONNEALY FOREFRONT
T C RUBY 9095
SCA 03H OF IDEAL
SCA ERROLINE 16H
KEWETIN BANDOLIERMERE 4A
BLACKTOF ERICA 84B
RONAN GIANT 16C
RONAN BONNIE 46G

YG: +34 BW: +4.1 WW: +51 YW: +85 MILK: +16 TM: +42

We purchased Southland Exclusive 62U for \$17,000.00 in the Southland Bull Sale this spring in Swift Current, SK. We waived on the pedigree only due to the fact that we already had a shot of "Freedom" in many of our pedigrees, but how could we argue the outstanding job Freedom has done for us. Exclusive had so much of what we look for in a bull; he is moderate framed, has a well balanced muscle pattern, very wide topped from front to back, great bone, a nice big foot, large testicles and he truly looks like a BULL...and as Shane described him as a "Super thick, powerful Free Ride son out of a "Straight Canadian cow", and that he is! His full sister sold to LA Land & Cattle for \$7500.00 and a number of maternal sisters have remained in the Southland herd.



Wilbar has purchased 1/2 interest in Exclusive and will have possession of him for the next breeding season, however we certainly used him extensively this year and will have a large representation of his calves in 2010.

Sight Unseen Purchase Plan...

We would like you to attend our sale, but if you cannot, you can have Rob personally handle your purchase. Call him with your specification and discuss the offering, preferably a week before the sale. Rob will gladly assist you with your sale selections and represent you on sale day. We guarantee full satisfaction upon delivery or you don't own them.

"I can accept failure, but I can't accept not trying."



HF Echo 187N

HAMI 187N • 1186215 • March 2 2003

CONNEALY
TC FREEDOM
T C RUBY 9095

HF WALK-ON 14C
DURALTA 14C ECHO 32E
STONEHAVEN MISS PONDEROSA

CONNEALY FRONTLINE
EILEEN HEARTLAND
TC STOCKMAN
TC RUBY 4068
MVHF DREAMWALKER 29A
KNIGHTS BLACKBIRD
4S PONDEROSA
STONEHAVEN JEAN 5L

BW: 89 ADJ 205 WT: 615 ADJ 365 WT: 925

SC: +0.51 YG: +32 BW: +3.4 WW: +43 YW: +75 MILK: +24 TM: +46
We could write a novel on the achievements this Echo cow family has accomplished, but the most important fact to ponder is how the Echo cow family keeps on rising to the top generation after generation. One of our happiest moments was when Echo 32E produced embryos from the flush sired by TC FREEDOM that resulted in the making of HF ECHO 187N and her flushmates. A flush sister to ECHO 187N sold through the 2003 Masterpiece sale to Marlene Douglas Inc. of Langley, BC for 17000.00. A flush brother also sold in the Masterpiece sale 2004 to Ryan and Michelle Hutchison for 7750.00, and yet another flush brother, HF FREE WHEELER sold in our sale for \$9000.00 for 1/2 interest to LLB Angus, and Free Wheeler has gone on to do a great job for ourselves and LLB. HF ECHO 187N has been undefeated in her open show division. She was Jr. Heifer Calf Champion at Agribition 2003, and then, Jr. Champion at Calgary Stampede, Farmfair, and Agribition 2004. She followed up this year with Grand Champion, and Supreme Champion Female at the Calgary Stampede 2005, and Grand Champion Female at Farmfair 2005. But probably more importantly is the fact that we have people from every breed complimenting us on the quality of this female, regardless of what breed or color she might be. Freedom and Echo have put it all together with 187N, as she looks the part whether she's ready to walk in the ring, or out in the pasture at home. Echo 187N (now deceased) due to Lump Jaw, still has a number of calves sired by "Tiger" in the sale as well as a number of pregnancies due next spring. You will see that Echo is in a number of pedigrees, so you can refer to these notes to learn more of the cow family.



HF ECHO 49U - Daughter
Legends of the Fall and Cinderella Classic Champion '08



HF Echo 53T - Daughter
• World Angus forum Res. Champion Female
• Gold Show Res. Champion Female

HF ECHO 53T - Daughter
• Sold in the Masterpiece Sale to Enright Farms for \$20,000



HF Tibbie 100M

HAMI 100M • 1124943 • January 22 2002

DURALTA 111A CHANCE 11H
REMITALL ICEMAN 10K
LLB KEEPSAKE 94H

GREENS PREMIUM 7578
HF TIBBIE 86K
HF TIBBIE 2D

MINERTS FORTUNE 2000
DURALTA 315 AMY 46D
EARLY SUNSET WHAM 20D
KEEPSAKE DAWN OF PAT 94W
WK ULTIMATUM
GREENS LORI 5078
GINGER HILL DUSTER 89
MVF TIBBIE 15T

BW: 90 ADJ 205 WT: 733

SC: +0.17 YG: +36 BW: +5.5 WW: +52 YW: +88 MILK: +23 TM: +49

This young cow represents all that is good in Angus cattle and it is cows like Tibbie 100M that can make such an impact on a breeders program. She exhibits loads of volume and thickness yet possesses the femininity that a good Angus cow should have. Her udder is level with balanced teat placement and size and her feet and legs are almost perfect. Her biggest claim to fame so far is the production of HF Hemi 151T which she weaned at an impressive 925 pounds with no creep, just grass and milk! Hemi sold in the 2007 Masterpiece Sale, going to Northern Black Angus, Smithers, BC, for \$35,000.00 for 1/2 interest. 100M's dam is no stranger in the Hamilton Farms herd as she is an Elite Dam with the Canadian Angus Association. HF Tibbie 100M is a maternal sister to the high selling bull in our 2005 bull sale, HF High Roller 79R, going to Robin Hoberg, of Langenburg, Saskatchewan for \$11,000.00. Tibbie 100M's sire, Remital Iceman 10K was purchased through the Superstar sale and had a fairly short career do to injury but left a small group of females that were very correct and nice uddered. HF Tibbie 100M was the Supreme Champion Female at Farmfair as well as Agribition in 2007. For obvious reasons she is part of our embryo program and we look forward to showcasing her progeny in the future.



Grand Champion Female Saskatoon
2008 with er heifer calf,
HF Tibbie 120U at side
• Heifer calf sold in the 2008
Masterpiece Sale to Bandura
Ranching.

"Accept the challenges so that you can feel the exhilaration of victory."

HF
CC

HF Echo 84R

HDFD 84R • 1274314 • January 21, 2005

CONNEALY FOREFRONT
TC FREEDOM 104
T C RUBY 9095

RIVERBEND POWERLINE 0050
HFDF ECHO 6N
HF ECHO 83J

CONNEALY FRONTLINE
EILEEN HEARTLAND CONANGA6443
TC STOCKMAN 365
TC RUBY 4068
CONNEALY FRONTLINE
LEACHMAN BLACKBIRD 8060
WHITESTONE 9FB3 G228
DURALTA 14C ECHO 32E

SC: +4.48 YG: +41 BW: +3.3 WW: +50 YW: +90 MILK: +31 TM: +56

HF Echo 84R has quickly rose to the top of the list of Hamilton Farms top producing cows. Her first calf was HF Tiger 5T which entered the world with a 76 pound birth weight, weaned off his mom at 830 pounds with no creep, and led off our 2007 bull sale, selling to Ring Creek Farm, Fairview, Alberta for \$52,000.00 for ½ interest. Her second calf was born exactly one year later... HF El Tigre 28U, birth weight of 85 pounds, weaning weight of 880 pounds with no creep, and led off the 2008 Masterpiece Sale, selling to Ring Creek Farm, Fairview, Alberta for \$82,000.00 for ½ interest. Echo 84R is an ultra feminine, perfect footed, beautiful uddered cow that the most discriminating cowboy would want for the dam of their next herd sire. HF Tiger 5T is quickly establishing himself as one of the leading sires in the Angus breed today. His calves are consistently born early by approxi-



mately 5-10 days and ultimately are born small with tremendous growth.

It appears after "Tiger's" first calves that he is following very closely to the same calving and growth pattern as Kodiak and we would assume that the daughters will be blessed with udders similar to Echo 84R.

Echo 84R was kept open this year, and has flushed very well to date. This female is one of the exceptional ones, both phenotypically, and with the birth and growth traits she has to offer.

HF
DD

HF Echo 83J

HAMI 83J • 983875 • January 30 1999

RITO 9FB3 OF 5H11 FULLBACK
WHITESTONE 9FB3 G228
SVF FOREVER LADY 1121

HF WALK-ON 14C
DURALTA 14C ECHO 32E
STONEHAVEN MISS PONDEROSA 9U

LEACHMAN FULLBLACKRITA
5H11 OF 1B14 RITO 9J9
SKARSHIP SARATOGA
FOREVER LADY 163 GDAR
MVHF DEARMWALKER 29A
KNIGHTS BLACKBIRD 9Y
4S PONDEROSA
STONEHAVEN JEAN 5L 7

BW: 85 ADJ 205 WT: 602

SC: -0.37 YG: +28 BW: +4.3 WW: +32 YW: +60 MILK: +21 TM: +37

HF Echo 83J, is one of the top producing females at Hamilton Farms. She was a Canadian Angus Association "Show Female of the Year" in 2002. Echo 83J was Reserve Grand Champion Female at the Calgary Stampede and Farmfair International 2002. She was Grand Champion Female at Saskatoon Fall Fair and Agribition 2002. Her calf that showed along side her that year was the High Selling Female at the 2002 Masterpiece Sale, going to Remington Cattle Co. for \$16,500. Echo 17L was Echo 83J's first calf who has done extremely well for herself. She was Champion Female in the Heifer Calf Jackpot at Farmfair, "Legends of the Fall" 2002. She was also Reserve champion in the Bayer Yearling Jackpot at the Calgary Stampede 2002, and Jr. Champion Female in the Angus Show 2002. Echo 83J shows up in a number of offerings in the sale, which will definitely catch your attention. Echo 83J is the grand dam of



feature Lot 117U- HF Xtreme 117U Bull Calf Champion at Olds and Saskatoon 2008. Echo 83J was the grand dam of the feature and high selling bull, Xtreme 117U, Bull Calf Champion at Olds and Saskatoon 2008, going to Southland Angus, Shaunavon, Sk. Echo 83J is no longer around however her impact in the pedigrees will be present for some time as she is Tiger's great grand dam, and Tiger's influence will be around for some time.

HF
EE

HF Blackbird 99G

WYAT 99G • 901690 • February 11 1997

NICHOLS EUREKA W57
O G L BATTLE CRY 427 128
O G L DUSTY ROSE 128 902

MVHF DEARMWALKER 29A
HF BLACKBIRD 27C
KNIGHTS BLACKBIRD 9Y

NICHOLS LANDMARK L56
NICHOLS LUNA P103
GT MAXIMUM
O G L DUSTY ROSE HV 902-V306
RITO 2100 G D A R
MVF TIBBIE 20W
S A V SKYROCKET 512
KNIGHTS BLACKBIRD 9W

BW: 89 ADJ 205 WT: 609

SC: +0.99 YG: +47 BW: +5.5 WW: +35 YW: +82 MILK: +13 TM: +31

1998 - Grand Champion: 4-H on Parade - Calgary, First Lady Classic Champion - Agribition, Supreme Grand champion at 4-H on Parade and Youth show at Agribition.
1999 - Grand Champion Female: Farmfair, Agribition, jr. Futurity-Farmfair, Reserve Champion Female: 4-H on Parade, Bashaw Junior Show.
2000 - Grand champion Female - Farmfair, Reserve Champion Female - Calgary Stampede
2002 - HF Sale - Had 6 head average \$6,125 including the high selling female to Sandra and Leonard Kesteven. Blackbird 99G is definitely the type of cow that many people fall in love with. She is a very deep bodied, good uddered, thick and easy fleshing female that moves like a cat. You will see Blackbird 99G as the dam, grand-dam of a number of lots in the sale. Blackbird said her final goodbyes this fall



after suffering a stifle injury when she was very heavy in calf with twins. The two last bulls raised by 99G were by Kodiak, and what a job she did with them. One went to M&J Farms (Matt Glasman) from Russell, MB and her last calf to Echo Sands for 5100.00 One notable characteristic of 99G was her outstanding disposition, so as you study the pedigrees and see the Blackbird cow family in numerous places in the pedigree, you will be a little more familiar with their background.

Yearling Bull Lots...

Pages 14 - 56

Our Bulls Mean
BU\$INE\$\$



Hamilton Farms reserves the right to collect semen on any bull sold through this sale. The semen collection will be at Hamilton Farms expense and the buyers convenience. Any semen collected will be for Hamilton Farms in herd use only.

Bid with confidence!



HF 3W *Hamilton Farms* **HF Hunter 3W**
 HAMI 3W 1511180 January 03 2009

HF KODIAK 5R	SANDY BAR ADVANTAGE 43M
HF TIGER 5T	WILBAR RUBY 955N
HF ECHO 84R	TC FREEDOM 104 AMF
	HFDF ECHO 6N
LLB OBVIOUS TREND 21H	MVFA OBVIOUS TREND 17F
KDF DANIELLE 112L	LLB LADY ANN 0116F
MISS DANDY OF WILD CARD 73G	LLB OBSESSION 312D
	DOUBLE DANDY OF WILD CARD 73D

BW: 82 SEP 9/09 WT: 835 WPDA: 3.35

ADJ 205 WT: 702 AGE OF DAM: 8

BW: +3.1 WW: +33 YW: +58 MILK: +19 TM: +35

\$ _____



HF 4W *Hamilton Farms* **FOXW Right On 004W**
 FOXW 4W 1510806 January 16 2009

BT RIGHT TIME 24J NHF AMF	LEACHMAN RIGHT TIME
HF DONE RIGHT 125R	SITZ EVERELDA ENTENSE 1905
HF ROSEBUD 127K	HF MOST WANTED 46H
	HF ROSEBUD 70H
SANDY BAR ADVANTAGE 43M	TC ADVANTAGE NHF AMF
HF ESTHER 345T	SANDY BAR JEMINA 44K
HIDDEN ESTHER 140L	SOUTHERN OX GUNNER 92G
	GNS ESTHER 46H

BW: 80 SEP 9/09 WT 764 WPDA: 3.24

ADJ 205 WT: 746 AGE OF DAM: 2

BW: +3.0 WW: +42 YW: +76 MILK: +16 TM: +36 YG: +35

\$ _____



SANDY BAR ADVANTAGE

HF 5W *Hamilton Farms* **FOXW Focal Point 005W**
 FOXW 5W 1526734 January 19 2009

HF KODIAK 5R	SANDY BAR ADVANTAGE 43M
HF TIGER 5T	WILBAR RUBY 955N
HF ECHO 84R	TC FREEDOM 104 AMF
	HFDF ECHO 6N
DURALTA 429M REALIST 77R	SITZ ALLIANCE 6595 NHF AMF
HF MAYFLOWER 287T	DURALTA GEORGINA 59N
HF MAYFLOWER 56P	RIVERBEND POWERLINE 0050
	HF MAYFLOWER 63J

BW: 81 SEP 9/09 WT 747 WPDA: 3.21

ADJ 205 WT: 739 AGE OF DAM: 2

BW: +1.5 WW: +45 YW: +79 MILK: +25 TM: +47 YG: +34

\$ _____



Hamilton Bulls - Lots 3W, 4W, 5W

"In absence of clearly defined goals, we become strangely loyal to performing daily acts of trivia"



HF Kodiak 6W

HAMI 6W 1511179 January 03 2009

SANDY BAR ADVANTAGE 43M
HF KODIAK 5R
WILBAR RUBY 955N

L T 598 BANDO 9074 NHF AMF
2HR LUCY 42S
2HR LUCY 4P

TC ADVANTAGE NHF AMF
SANDY BAR JEMINA 44K
VERMILION YELLOWSTONE NHF AMF
WILBAR RUBY 161J
S A F 598 BANDO 5175 AMF
MILL COULEE BARBARA K 323
S A F FOCUS OF E R NHF AMF
HF LUCY 106M

BW: 74

SEP 9/09 WT 890

WPDA: 3.57

ADJ 205 WT: 788

AGE OF DAM: 3

BW: +0.4

WW: +51

YW: +89

MILK: +22

TM: +47

YG: +38

\$ _____



FOXW Teekay 006W

FOXW 6W 1510807 January 21 2009

SANDY BAR ADVANTAGE 43M
HF KODIAK 5R
WILBAR RUBY 955N

SAV 004 PREDOMINANT 4438
HF TIBBIE 223T
HF TIBBIE 117L

TC ADVANTAGE NHF AMF
SANDY BAR JEMINA 44K
VERMILION YELLOWSTONE NHF AMF
WILBAR RUBY 161J
S A V 8180 TRAVELER 004
S A V EMBLYNETTE 1182
MVHF INNOVATOR 49B
HF TIBBIE 34E

BW: 73

SEP 9/09 WT 770

WPDA: 3.33

ADJ 205 WT: 763

AGE OF DAM: 2

BW: +2.5

WW: +48

YW: +81

MILK: +20

TM: +44

YG: +33

\$ _____



HF Ideal 7W

HAMI 7W 1511181 January 03 2009

PRAIRIELANE IDEAL 7451-2014
SANDY BAR IDEAL 18S
SANDY BAR PRIDE 89L

HF KODIAK 5R
HF ECHO 47T
HF ECHO 39R

IDEAL 7451 OF 8103 4465 NHF AMF
PRAIRIELANE MAX DUCHESS 3050
SANDY BAR TONTO 61E
SANDY BAR PRIDE 6H
SANDY BAR ADVANTAGE 43M
WILBAR RUBY 955N
BT RIGHT TIME 24J NHF AMF
DURALTA 14C ECHO 32E

BW: 70

SEP 9/09 WT 715

WPDA: 2.87

ADJ 205 WT: 680

AGE OF DAM: 2

BW: +1.0

WW: +49

YW: +85

MILK: +20

TM: +44

YG: +36

\$ _____



"A good exercise for the heart is to bend down and help another up."

Hamilton Bulls - Lots Hami 6W, FOXW 6W, 7W



HF FOXW 8W **FOXW Blackout 008W**
 FOXW 8W 1510809 January 25 2009

SANDY BAR ADVANTAGE 43M	TC ADVANTAGE NHF AMF
HF KODIAK 5R	SANDY BAR JEMINA 44K
WILBAR RUBY 955N	VERMILION YELLOWSTONE NHF AMF
	WILBAR RUBY 161J
HF POWER SOURCE 94M	RIVERBEND POWERLINE 0050
HF BLACKBIRD 127T	DURALTA 14C ECHO 32E
HF BLACKBIRD 83R	TC FREEDOM 104 AMF
	HF BLACKBIRD 120L

BW: 76 SEP 9/09 WT 735 WPDA: 3.24
 ADJ 205 WT: 742 AGE OF DAM: 2
 BW: +1.6 WW: +46 YW: +79 MILK: +23 TM: +46 YG: +32

\$ _____



HF ESA 8W **Evening Shade Tiger 8W**
 ESA 8W 1530067 January 4 2009

HF KODIAK 5R	SANDY BAR ADVANTAGE 43M
HF TIGER 5T	WILBAR RUBY 955N
HF ECHO 84R	TC FREEDOM 104 AMF
	HFDF ECHO 6N
HF FREE WHEELER 191N	TC FREEDOM 104 AMF
HF QUEENIE 128T	DURALTA 14C ECHO 32E
HF QUEENIE 101K	HF MOST WANTED 46H
	BIG BEAR QUEENIE 46X

BW: 73 SEP 9/09 WT 730 WPDA: 2.94
 ADJ 205 WT: 695 AGE OF DAM: 2
 BW: +2.8 WW: +42 YW: +75 MILK: +23 TM: +46 YG: +33

\$ _____



HF 9W **HF Kodiak 9W**
 HAMI 9W 1511184 January 04 2009

SANDY BAR ADVANTAGE 43M	TC ADVANTAGE NHF AMF
HF KODIAK 5R	SANDY BAR JEMINA 44K
WILBAR RUBY 955N	VERMILION YELLOWSTONE NHF AMF
	WILBAR RUBY 161J
HF PROGRESS 20K	NORTHERN IMPROVEMENT 4480
2HR TIBBIE 18R	DURALTA 14C ECHO 32E
2HR TIBBIE 16N	HF MOST WANTED 46H
	HF TIBBIE 181L

BW: 79 SEP 9/09 WT 790 WPDA: 3.19
 ADJ 205 WT: 685 AGE OF DAM: 4
 BW: +0.7 WW: +41 YW: +69 MILK: +22 TM: +43 YG: +28 SC: +0.92

\$ _____



Hamilton Bulls - Lots FOXW 8W, ESA 8W, 9W

“Bad habits are like a comfortable bed, easy to get into, but hard to get out of.”



HF 11W **FOXW Two Tease 011W**
 FOXW 11W 1526735 January 31 2009

HF KODIAK 5R	SANDY BAR ADVANTAGE 43M
HF TIGER 5T	WILBAR RUBY 955N
HF ECHO 84R	TC FREEDOM 104 AMF
	HFDF ECHO 6N
DURALTA 429M REALIST 77R	SITZ ALLIANCE 6595 NHF AMF
HF TIBBIE 213T	DURALTA GEORGINA 59N
HF TIBBIE 38G	EXAR RITO 5072
	HF TIBBIE 9E

BW: 82 SEP 9/09 WT 724 WPDA: 3.28
 ADJ 205 WT: 749 AGE OF DAM: 2
 BW: +2.2 WW: +44 YW: +80 MILK: +24 TM: +46 YG: +35

\$ _____



HF 13W **FOXW Restore 013W**
 FOXW 13W 1534204 February 02 2009

PEAK DOT FAME 2N	A R FAME 2089
HF RECOVERY 347T	BARBARA OF PEAK DOT 642F
HF TIBBIE 214P	HF PREMIUM PLUS 74K
	HF TIBBIE 147K
HYLINE RIGHT WAY 781	HYLINE RIGHT TIME 338
HF FLORA 138T	HYLINE ELLEN 86
HF FLORA 153L	GREENS PREMIUM 7578
	ASPELUND'S FLORA 135'95

BW: 89 SEP 9/09 WT 755 WPDA: 3.45
 ADJ 205 WT: 783 AGE OF DAM: 2
 BW: +3.7 WW: +50 YW: +79 MILK: +19 TM: +44 YG: 29

\$ _____



HF 16W **HF Tiger 16W**
 HAMI 16W 1511187 January 06 2009

HF KODIAK 5R	SANDY BAR ADVANTAGE 43M
HF TIGER 5T	WILBAR RUBY 955N
HF ECHO 84R	TC FREEDOM 104 AMF
	HFDF ECHO 6N
SITZ ALLIANCE 6595 NHF AMF	SITZ TRAVELER 8180 NHF AMF
2HR TIBBIE 209R	SITZ BARBARAMERE JET 2698
HF TIBBIE 109L	GREENS PREMIUM 7578
	MVHF TIBBIE 42A

BW: 76 SEP 9/09 WT 775 WPDA: 3.15
 ADJ 205 WT: 701 AGE OF DAM: 4
 BW: +1.2 WW: +49 YW: +88 MILK: +22 TM: +46 YG: +36

\$ _____



"The secret of staying young is to live honestly, eat slowly, and lie about your age."



Hamilton Farms Bulls

Page 18

HF 18W *Hamilton Farms* **HF Hemi 18W**
 JHF 18W 1511560 January 07 2009

S A V 004 PREDOMINANT 4438 NHF AMF S A V 8180 TRAVELER 004 NHF AMF
 HF HEMI 151T S A V EMBLYNETTE 1182
 HF TIBBIE 100M REMITALL ICEMAN 10K
 HF TIBBIE 86K
 HF FREE WHEELER 191N TC FREEDOM 104 AMF
 HF BLACKBIRD 97S DURALTA 14C ECHO 32E
 HF BLACKBIRD 116N O G L BATTLE CRY 427 128
 HF BLACKBIRD 99H

BW: 90 SEP 9/09 WT 880 WPDA: 3.59

ADJ 205 WT: 793 AGE OF DAM: 3

BW: +4.5 WW: +49 YW: +91 MILK: +25 TM: +49 YG: +43 SC: +0.71

\$ _____



HF 19W *Hamilton Farms* **HF Tiger 19W**
 HAMI 19W 1511189 January 07 2009

HF KODIAK 5R SANDY BAR ADVANTAGE 43M
 HF TIGER 5T WILBAR RUBY 955N
 HF ECHO 84R TC FREEDOM 104 AMF
 HFDF ECHO 6N
 YOUNG DALE HOGAN 8C
 WIWA CREEK HOGAN 14'97 WIWA CREEK ERICA 27B 150D
 2HR TIBBIE 20R O G L BATTLE CRY 427 128
 HF TIBBIE 92L HF TIBBIE 71G

BW: 90 SEP 9/09 WT 760 WPDA: 3.10

ADJ 205 WT: 669 AGE OF DAM: 4

BW: +4.3 WW: +43 YW: +80 MILK: +19 TM: +40 YG: +37

\$ _____



HF 29W *Hamilton Farms* **HF Kodiak 29W**
 HAMI 29W 1511191 January 08 2009

SANDY BAR ADVANTAGE 43M TC ADVANTAGE NHF AMF
 HF KODIAK 5R SANDY BAR JEMINA 44K
 WILBAR RUBY 955N VERMILION YELLOWSTONE NHF AMF
 WILBAR RUBY 161J
 NORTHERN IMPROVEMENT 4480
 HF PROGRESS 20K DURALTA 14C ECHO 32E
 2HR TIBBIE 201M MVHF INNOVATOR 49B
 HF TIBBIE 117L HF TIBBIE 34E

BW: 80 SEP 9/09 WT 805 WPDA: 3.30

ADJ 205 WT: 689 AGE OF DAM: 7

BW: +1.0 WW: +40 YW: +69 MILK: +23 TM: +43 YG: +29

\$ _____



HF PROGRESS 20K

Hamilton Bulls - Lots 18W, 19W, 29W

“Who aims at excellence will be above mediocrity; who aims at mediocrity will be far short of it”



HF 30W *Hamilton Farms* **HF Kodiak 30W**
 HAMI 30W 1511193 January 08 2009

SANDY BAR ADVANTAGE 43M HF KODIAK 5R WILBAR RUBY 955N	TC ADVANTAGE NHF AMF SANDY BAR JEMINA 44K VERMILION YELLOWSTONE NHF AMF WILBAR RUBY 161J S A F FAME NHF AMF G D A R FOREVER LADY 246 W C NORTHERN EDGE 0C04 HF EVENING TINGE 106K
---	--

S A F FOCUS OF E R NHF AMF
2HR EVENING TINGE 14P
HF EVENING TINGE 30M

BW: 81 SEP 9/09 WT 830 WPDA: 3.40

ADJ 205 WT: 710 AGE OF DAM: 5

BW: +1.6 WW: +49 YW:+81 MILK: +21 TM: +45 YG: +33 SC:+ 0.81

\$ _____



HF 31W *Hamilton Farms* **HF Silvertip 31W**
 HAMI 31W 1511196 January 08 2009

SANDY BAR ADVANTAGE 43M HF KODIAK 5R WILBAR RUBY 955N	TC ADVANTAGE NHF AMF SANDY BAR JEMINA 44K VERMILION YELLOWSTONE NHF AMF WILBAR RUBY 161J RITO 3W3 OF OJ2 RITO 9FB3 NHF AMF SUMMITCREST ELSIE 0802 ANGUS ACRES LANCER 60U MVF TIBBIE 15T
---	--

EXAR RITO 5072
HF TIBBIE 59H
HF TIBBIE 50D

BW: 88 SEP 9/09 WT 840 WPDA: 3.44

ADJ 205 WT: 730 AGE OF DAM: 11

BW: +2.0 WW: +39 YW:+69 MILK: +20 TM: +39 YG: +30 SC: +0.54

\$ _____



HF 36W *Hamilton Farms* **HF Kodiak 36W**
 HAMI 36W 1511205 January 09 2009

SANDY BAR ADVANTAGE 43M HF KODIAK 5R WILBAR RUBY 955N	TC ADVANTAGE NHF AMF SANDY BAR JEMINA 44K VERMILION YELLOWSTONE NHF AMF WILBAR RUBY 161J S A F FAME NHF AMF G D A R FOREVER LADY 246 O G L BATTLE CRY 427 128 HF PRIDE 136J
---	--

S A F FOCUS OF E R NHF AMF
2HR PRIDE 12P
HF PRIDE 110M

BW: 83 SEP 9/09 WT 785 WPDA: 3.23

ADJ 205 WT: 675 AGE OF DAM: 5

BW: +0.1 WW: +47 YW:+80 MILK: +21 TM: +44 YG: +33

\$ _____



“The less people speak of their greatness, the more we think of it.”

Hamilton Bulls - Lots 30W, 31W, 36W



HF 37W *Hamilton Farms* **HF Kodiak 37W**
 HAMI 37W 1511200 January 09 2009

SANDY BAR ADVANTAGE 43M HF KODIAK 5R WILBAR RUBY 955N	TC ADVANTAGE NHF AMF SANDY BAR JEMINA 44K VERMILION YELLOWSTONE NHF AMF WILBAR RUBY 161J RIVERBEND POWERLINE 0050 DURALTA 14C ECHO 32E HF DYNA STAR 80J HF EVENING TINGE 20F
---	---

BW: 74 SEP 9/09 WT 835 WPDA: 3.44

ADJ 205 WT: 734 AGE OF DAM: 4

BW: +3.5 WW: +47 YW: +78 MILK: +23 TM: +46 YG: +32

\$ _____



HF 44W *Hamilton Farms* **HF Master Craft 44W**
 HAMI 44W 1511214 January 10 2009

SANDY BAR ADVANTAGE 43M HF KODIAK 5R WILBAR RUBY 955N	TC ADVANTAGE NHF AMF SANDY BAR JEMINA 44K VERMILION YELLOWSTONE NHF AMF WILBAR RUBY 161J CONNEALY FRONTLINE NHF AMF LEACHMAN BLACKBIRD 8060 WHITESTONE 9FB3 G228 DURALTA 14C ECHO 32E
---	--

RIVERBEND POWERLINE 0050
 HFDF ECHO 6N
 HF ECHO 83J

BW: 75 SEP 9/09 WT 830 WPDA: 3.40

ADJ 205 WT: 715 AGE OF DAM: 6

BW: +2.4 WW: +48 YW: +81 MILK: +24 TM: +48 YG: +34 SC: +0.55

\$ _____



HF ECHO 84R - MAT. SISTER

HF 47W *Hamilton Farms* **HF Ideal 47W**
 HAMI 47W 1511218 January 10 2009

PRAIRIELANE IDEAL 7451-2014 SANDY BAR IDEAL 18S SANDY BAR PRIDE 89L	IDEAL 7451 OF 8103 4465 NHF AMF PRAIRIELANE MAX DUCHESS 3050 SANDY BAR TONTO 61E SANDY BAR PRIDE 6H LEACHMAN RIGHT TIME SITZ EVERELDA ENTENSE 1905 HF WALK-ON 14C BLACKWOOD LADY HK 3085
---	---

BT RIGHT TIME 24J NHF AMF
 HF BLACKWOOD LADY 38R
 HF MISS BLACKWOOD LADY 17E

BW: 75 SEP 9/09 WT 755 WPDA: 3.12

ADJ 205 WT: 699 AGE OF DAM: 4

BW: +2.5 WW: +48 YW: +79 MILK: +16 TM: +40 YG: +32 SC: -0.11

\$ _____



Hamilton Bulls - Lots 37W, 44W, 47W

“Do not forget small kindnesses and do not remember small faults.”



HF
49W

HF Kodiak 49W

HAMI 49W 1511204 January 09 2009

SANDY BAR ADVANTAGE 43M
HF KODIAK 5R
WILBAR RUBY 955N

WIWA CREEK HOGAN 14'97
2HR TIBBIE 26R
HF TIBBIE 74L

TC ADVANTAGE NHF AMF
SANDY BAR JEMINA 44K
VERMILION YELLOWSTONE NHF AMF
WILBAR RUBY 161J
YOUNG DALE HOGAN 8C
WIWA CREEK ERICA 27B 150D
PEAK DOT WONDER 13J
HF TIBBIE 127J

BW: 90

SEP 9/09 WT 825

WPDA: 3.40

ADJ 205 WT: 728

AGE OF DAM: 4

BW: +1.8

WW: +46

YW: +81

MILK: +18

TM: +41

YG: +35

SC: +0.96

\$ _____



HF
54W

HF Kodiak 54W

HAMI 54W 1511209 January 10 2009

SANDY BAR ADVANTAGE 43M
HF KODIAK 5R
WILBAR RUBY 955N

HF POWER STROKE 59M
2HR ERICA RANN 56R
ERICA OF RANNOCH 3L

TC ADVANTAGE NHF AMF
SANDY BAR JEMINA 44K
VERMILION YELLOWSTONE NHF AMF
WILBAR RUBY 161J
RIVERBEND POWERLINE 0050
DURALTA 14C ECHO 32E
R F MAXIMIZER 827H
ERICA OF RANNOCH 30G

BW: 91

SEP 9/09 WT 830

WPDA: 3.43

ADJ 205 WT: 735

AGE OF DAM: 4

BW: +3.8

WW: +46

YW: +73

MILK: +22

TM: +45

YG: +27

\$ _____



HF
58W

HF Done Right 58W

HAMI 58W 1511220 January 11 2009

BT RIGHT TIME 24J NHF AMF
HF DONE RIGHT 125R
HF ROSEBUD 127K

HF KODIAK 5R M
HF FLORRESSA 166T
HF FLORRESSA 145M

LEACHMAN RIGHT TIME
SITZ EVERELDA ENTENSE 1905
HF MOST WANTED 46H
HF ROSEBUD 70H
SANDY BAR ADVANTAGE 43M
WILBAR RUBY 955N
HF PROGRESS 20K
HF FLORRESSA 133J

BW: 76

SEP 9/09 WT 705

WPDA: 2.93

ADJ 205 WT: 690

AGE OF DAM: 2

BW: +0.7

WW: +41

YW: +74

MILK: +19

TM: +39

YG: +34

\$ _____



Hamilton Bulls - Lots 49W, 54W, 58W

“Never lose the sight of the fact that the most important yardstick of your success will be how you treat other people.”



Hamilton Farms Bulls

Page 22

HF 61W *Hamilton Farms* **HF Hemi 61W**
 JHF 61W 1511561 January 11 2009 TWIN

S A V 004 PREDOMINANT 4438 NHF AMF S A V 8180 TRAVELER 004 NHF AMF
 HF HEMI 151T S A V EMBLYNETTE 1182
 HF TIBBIE 100M REMITALL ICEMAN 10K
 HF TIBBIE 86K
 G D A R TRAVELER 044 NHF AMF D H D TRAVELER 6807 NHF AMF
 HF MAYFLOWER 7J G D A R BLACKCAP LADY 840
 HF MAYFLOWER 17G HF WALKER 107E
 ASPELUND'S MAYFLOWER 18'95

BW: 64 SEP 9/09 WT 805 WPDA: 3.34
 ADJ 205 WT: 773 AGE OF DAM: 10
 BW: +2.7 WW: +46 YW: +76 MILK: +17 TM: +40 YG: +30 SC: +0.42

\$ _____



HF 65W *Hamilton Farms* **HF Hemi 65W**
 HAMI 65W 1511229 January 12 2009

S A V 004 PREDOMINANT 4438 NHF AMF S A V 8180 TRAVELER 004 NHF AMF
 HF HEMI 151T S A V EMBLYNETTE 1182
 HF TIBBIE 100M REMITALL ICEMAN 10K
 HF TIBBIE 86K
 HF PROGRESS 20K NORTHERN IMPROVEMENT 4480 GF
 HF EVENING TINGE 99R DURALTA 14C ECHO 32E
 HF EVENING TINGE 55N RIVERBEND POWERLINE 0050
 HF EVENING TINGE 106K

BW: 95 SEP 9/09 WT 885 WPDA: 3.69
 ADJ 205 WT: 788 AGE OF DAM: 4
 BW: +2.7 WW: +53 YW: +87 MILK: +27 TM: +53 YG: +35 SC: +0.46

\$ _____



HF EVENING TINGE 55N - Granddam

HF 66W *Hamilton Farms* **HF Ultra 66W**
 HAMI 66W 1511227 January 12 2009

PRAIRIELANE IDEAL 7451-2014 IDEAL 7451 OF 8103 4465 NHF AMF
 SANDY BAR IDEAL 18S PRAIRIELANE MAX DUCHESS 3050
 SANDY BAR PRIDE 89L SANDY BAR TONTO 61E
 SANDY BAR PRIDE 6H
 WHITSTONE 9FB3 G228 RITO 9FB3 OF 5H11 FULLBACK NHF AMF
 HF TIBBIE 148J S V F FOREVER LADY 1121
 MVHF TIBBIE 31Z BROST DAN PATCH
 MVF TIBBIE 15T

BW: 98 SEP 9/09 WT 900 WPDA: 3.75
 ADJ 205 WT: 783 AGE OF DAM: 10
 BW: +4.3 WW: +47 YW: +85 MILK: +22 TM: +46 YG: +38 SC: -0.42

\$ _____



HF TIBBIE 148J

Hamilton Bulls - Lots 61W, 65W, 66W

"The way to gain a good reputation, is to endeavor to be what you desire to appear"



HF ERICA 26T & HF ROCKSTAR 67W



HF ERICA 26T



HF Rockstar 67W

HAMI 67W 1497020 January 12 2009

BW: 81 SEP 9/09 WT 840 WPDA: 3.43

ADJ 205 WT: 808 AGE OF DAM: 2

BW: +1.5 WW: +52 YW: +88 MILK: +21 TM: +47 YG: +36

RockStar certainly has a unique disposition; I guess that's how he got his name, what a character. RockStar's dam HF Erica 26T probably doesn't need a lot of introduction - 26T was the high selling female in 2007 Sale bringing \$20,000.00, purchased by some very astute cattlemen, Continental Angus, Walkerbrae Farms and Dr Gordon Atkins. She was Senior Calf Champion at Agribition 2007 and Senior Yearling Champion at Farmfair the following year. Then Erica went on to be a qualifier for the WAF Futurity and finalist in the Futurity at Spruce Meadows 2009, as well as being named the 2 yr old Cow/Calf Champion in the Black Angus Show at the World Angus Forum 2009. RockStar was 2nd in his class of Early Senior Bull Calves only to be beaten by his pen mate "HF Bengal 26W" (x Tiger). RockStar's grand dam 182R was also the dam of a bull calf "HF Torque 171W" (sired by Hemi) that was 2nd in class to a half brother in the Late Senior Bull Calf Class at the WAF. We could go on about the "good ones" in this pedigree, but see for your self what RockStar has to offer. He has an 81 lb. birth weight and weighed 840 lbs. Sept 9/09 at weaning with a 205 Adj Wt of 808 lbs. Pretty impressive when a 2 yr old that size can wean her first calf ranking 7th out of 154 bulls in his contemporary group. Predominant progeny have excelled over the past couple of years throughout numerous herds under different conditions. We believe that RockStar should be able to take your breeding program to the next level with the consistency in his pedigree and his physical make up.

S A V 8180 TRAVELER 004 NHF AMF
S A V 004 PREDOMINANT 4438 NHF AMF
S A V EMBLYNETTE 1182

HF KODIAK 5R
HF ERICA 26T
HF ERICA 182R

SITZ TRAVELER 8180 NHF AMF
BOYD FOREVER LADY 8003
S A F 598 BANDO 5175 AMF
S A V EMBLYNETTE 7319
SANDY BAR ADVANTAGE 43M
WILBAR RUBY 955N
TC FREEDOM 104 AMF
HF ERICA 61F



HF One-Timer 74W

HAMI 74W 1511239 January 13 2009

HF KODIAK 5R
HF TIGER 5T
HF ECHO 84R

SOUTHERN OX GUNNER 92G
HIDDEN ESTHER 140L
GNS ESTHER 46H

SANDY BAR ADVANTAGE 43M
WILBAR RUBY 955N
TC FREEDOM 104 AMF
HFDF ECHO 6N
DOUBLE BAR ROGUE
SOUTHERN OX ERROLLINE 41D
NORTHLINE MILESTONE 81F
GNS ESTHER 23F

BW: 85 SEP 9/09 WT 880 WPDA: 3.68

ADJ 205 WT: 767 AGE OF DAM: 8

BW: +3.3 WW: +47 YW: +81 MILK: +20 TM: +43 YG: +34 SC: +0.62

\$ _____



Hamilton Bulls - Lots 67W, 74W

"Ability is what you are capable of doing. Motivation determines what you do.
Attitude determines how well you do it."



HF 86W *Hamilton Farms Bulls* **HF Bearspaw 86W**
 HAMI 86W 1511238 January 13 2009

HF KODIAK 5R HF BEARS PAW 32T HFDF ECHO 13N	SANDY BAR ADVANTAGE 43M WILBAR RUBY 955N RIVERBEND POWERLINE 0050 HF ECHO 83J P J M POWER 291 G D A R RACHEL 5115 ALLEN CROFT CHESTER 03 32W ALLEN CROFT MISS MARION 01 42W
---	--

BW: 103 SEP 9/09 WT 825 WPDA: 3.45
 ADJ 205 WT: 732 AGE OF DAM: 10
 BW: +4.2 WW: +37 YW: +66 MILK: +21 TM: +39 YG: +30 SC: +1.06

\$ _____



HF 88W *Hamilton Farms Bulls* **HF Pay Check 88W**
 HAMI 88W 1531641 January 14 2009

HF KODIAK 5R HF TIGER 5T HF ECHO 84R	SANDY BAR ADVANTAGE 43M WILBAR RUBY 955N TC FREEDOM 104 AMF HFDF ECHO 6N CONNELLY FOREFRONT NHF AMF T C RUBY 9095 HF WALK-ON 14C STONEHAVEN MISS PONDEROSA 9U
--	--

TC FREEDOM 104 AMF
 HF ECHO 187N
 DURALTA 14C ECHO 32E

BW: 97 SEP 9/09 WT 900 WPDA: 3.78
 ADJ 205 WT: 789 AGE OF DAM: 8 (RECIPIENT)
 BW: +2.4 WW: +46 YW: +82 MILK: +23 TM: +46 YG: +35 SC: +0.44

\$ _____



HF 90W *Hamilton Farms Bulls* **HF Kodiak 90W**
 HAMI 90W 1511249 January 14 2009

SANDY BAR ADVANTAGE 43M HF KODIAK 5R WILBAR RUBY 955N	TC ADVANTAGE NHF AMF SANDY BAR JEMINA 44K VERMILION YELLOWSTONE NHF AMF WILBAR RUBY 161J RIVERBEND POWERLINE 0050 DURALTA 14C ECHO 32E GREENS PREMIUM 7578 HF MISS LUCY 8D
---	---

HF POWER SOURCE 94M
 HF LUCY 220S
 HF LUCY 84J

BW: 83 SEP 9/09 WT 760 WPDA: 3.19
 ADJ 205 WT: 708 AGE OF DAM: 3
 BW: +1.9 WW: +46 YW: +80 MILK: +22 TM: +45 YG: +34

\$ _____



Hamilton Bulls - Lots 86W, 88W, 90W

"Sometimes your best investments are the ones you don't make."



HF 92W *Hamilton Farms* **HF Tiger 92W**
 HAMI 92W 1511236 January 13 2009

HF KODIAK 5R	SANDY BAR ADVANTAGE 43M
HF TIGER 5T	WILBAR RUBY 955N
HF ECHO 84R	TC FREEDOM 104 AMF
	HFDF ECHO 6N
LEACHMAN RIGHT TIME	N BAR EMULATION EXT NHF AMF
2HR ANNIE 11S	LEACHMAN ERICA 0025
DOUBLE AA ANNIE K 291'98	DOUBLE AA RETO 554'93
	DOUBLE AA ANNIE K 589'92

BW: 75 SEP 9/09 WT 825 WPDA: 3.45

ADJ 205 WT: 760 AGE OF DAM: 3

BW: +1.3 WW: +44 YW: +77 MILK: +20 TM: +41 YG: +33

\$ _____



HF 93W *Hamilton Farms* **HF Kodiak 93W**
 HAMI 93W 1511246 January 14 2009

SANDY BAR ADVANTAGE 43M	TC ADVANTAGE NHF AMF
HF KODIAK 5R	SANDY BAR JEMINA 44K
WILBAR RUBY 955N	VERMILION YELLOWSTONE NHF AMF
	WILBAR RUBY 161J
HF POWER STROKE 59M	RIVERBEND POWERLINE 0050
2HR QUEENIE 67P	DURALTA 14C ECHO 32E
HF QUEENIE 155L	GREENS PREMIUM 7578
	HF QUEENIE 116H

BW: 90 SEP 9/09 WT 830 WPDA: 3.49

ADJ 205 WT: 727 AGE OF DAM: 5

BW: +3.9 WW: +48 YW: +71 MILK: +19 TM: +42 YG: +23 SC: +0.64

\$ _____



HF 95W *Hamilton Farms* **HF Bears Paw 95W**
 HAMI 95W 1511255 January 14 2009

HF KODIAK 5R	SANDY BAR ADVANTAGE 43M
HF BEARS PAW 32T	WILBAR RUBY 955N
HFDF ECHO 13N	RIVERBEND POWERLINE 0050
	HF ECHO 83J
BELVIN WHAM 34'98	JLM WHAM 1F
ERICA OF RANNOCH 220K	BELVIN BLACKBIRD 30'96
ERICA OF RANNOCH 100H	ARGWEN MAXIMIZER 93F
	ERICA OF RANNOCH 10X

BW: 75 SEP 9/09 WT 750 WPDA: 3.15

ADJ 205 WT: 656 AGE OF DAM: 9

BW: +3.2 WW: +42 YW: +73 MILK: +19 TM: +39 YG: +32 SC: +0.66

\$ _____



"A wise man learns by the mistakes of others, a fool by his own"

Hamilton Bulls - Lots 92W, 93W, 95W



Hamilton Farms Bulls

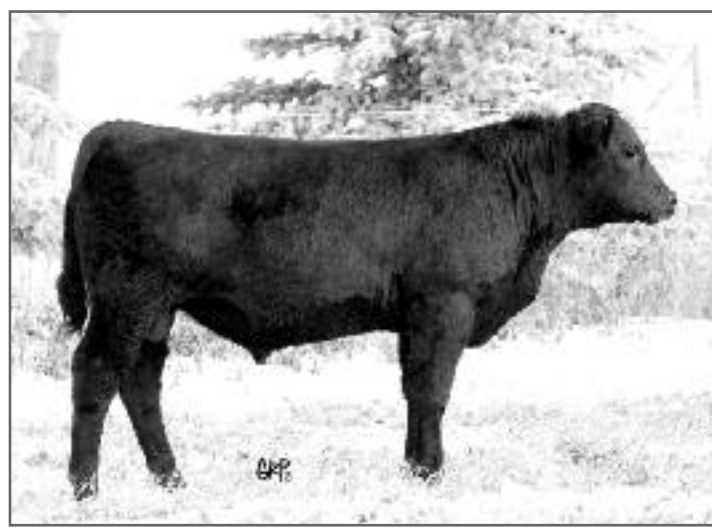
Page 26

HF 98W *Hamilton Farms* **HF Kodiak 98W**
 HAMI 98W 1511252 January 14 2009

SANDY BAR ADVANTAGE 43M HF KODIAK 5R WILBAR RUBY 955N	TC ADVANTAGE NHF AMF SANDY BAR JEMINA 44K VERMILION YELLOWSTONE NHF AMF WILBAR RUBY 161J NICHOLS EUREKA W57 O G L DUSTY ROSE 128 902 GV DUKE 18C MVF TIBBIE 15T
---	--

BW: 88 SEP 9/09 WT 715 WPDA: 3.00
 ADJ 205 WT: 628 AGE OF DAM: 8
 BW: +3.9 WW: +40 YW: +76 MILK: +17 TM: +36 YG: +37

\$ _____



HF 99W *Hamilton Farms* **HF Repeater 99W**
 HAMI 99W 1511250 January 14 2009

SANDY BAR ADVANTAGE 43M HF KODIAK 5R WILBAR RUBY 955N	TC ADVANTAGE NHF AMF SANDY BAR JEMINA 44K VERMILION YELLOWSTONE NHF AMF WILBAR RUBY 161J CONNEALY FOREFRONT NHF AMF T C RUBY 9095 HF WALK-ON 14C STONEHAVEN MISS PONDEROSA 9U
---	--

BW: 82 SEP 9/09 WT 820 WPDA: 3.45
 ADJ 205 WT: 718 AGE OF DAM: 6
 BW: +1.8 WW: +44 YW: +78 MILK: +21 TM: +43 YG: +34 SC: +0.84

\$ _____



HF 103W *Hamilton Farms* **HF Mountaineer 103W**
 HAMI 103W 1497022 January 15 2009

HF KODIAK 5R HF TIGER 5T HF ECHO 84R	SANDY BAR ADVANTAGE 43M WILBAR RUBY 955N TC FREEDOM 104 AMF HFDF ECHO 6N HF WALK-ON 14C GLENCROFT SKY LASS 10E O G L BATTLE CRY 427 128 BIG BEAR BLACKCAP 41Y
--	--

BW: 100 SEP 9/09 WT 885 WPDA: 3.66
 ADJ 205 WT: 789 AGE OF DAM: 10
 BW: +2.4 WW: +42 YW: +70 MILK: +22 TM: +43 YG: +28 SC: +0.29

\$ _____



Hamilton Bulls - Lots 98W, 99W, 103W

"Be careful of your thoughts; they may become words at any moment."

Early Sr. Bull Calf
Res. Champion

HF 104W *Hamilton Farms* **HF Tiger 104W**
 HAMI 104W 1511263 January 15 2009

HF KODIAK 5R	SANDY BAR ADVANTAGE 43M
HF TIGER 5T	WILBAR RUBY 955N
HF ECHO 84R	TC FREEDOM 104 AMF
	HFDF ECHO 6N
CHICO NEBRASKA 13N	MILLCREEK DIVERSITY NHF AMF
HF MISS BLACKCAP 17S	CHICO BEAUTY LASS 46F
HF MISS BLACKCAP 163L	GREENS PREMIUM 7578
	HF MISS BLACKCAP 12C

BW: 90 SEP 9/09 WT 760 WPDA: 3.21

ADJ 205 WT: 712 AGE OF DAM: 3

BW: +2.3 WW: +49 YW: +85 MILK: +22 TM: +46 YG: +36

\$ _____



HF 105W *Hamilton Farms* **HF Tiger 105W**
 HAMI 105W 1511262 January 15 2009

HF KODIAK 5R	SANDY BAR ADVANTAGE 43M
HF TIGER 5T	WILBAR RUBY 955N
HF ECHO 84R	TC FREEDOM 104 AMF
	HFDF ECHO 6N
RITO 2V1 OF 2536 1407 NHF AMF	BON VIEW NEW DESIGN 1407 NHF AMF
HF TIBBIE 41T	G A R PRECISION 2536 NHF AMF
HF TIBBIE 74L	PEAK DOT WONDER 13J
	HF TIBBIE 127J

BW: 77 SEP 9/09 WT 825 WPDA: 3.48

ADJ 205 WT: 803 AGE OF DAM: 2

BW: +3.3 WW: +51 YW: +94 MILK: +24 TM: +49 YG: +42

\$ _____



HF 107W *Hamilton Farms* **HF Precision 107W**
 HAMI 107W 1530069 January 15 2009

S A V 8180 TRAVELER 004 NHF AMF	SITZ TRAVELER 8180 NHF AMF
S A V 004 PREDOMINANT 4438 NHF AMF	BOYD FOREVER LADY 8003
S A V EMBLYNETTE 1182	S A F 598 BANDO 5175 AMF
	S A V EMBLYNETTE 7319
HF KODIAK 5R	SANDY BAR ADVANTAGE 43M
HF TIBBIE 11T	WILBAR RUBY 955N
HF TIBBIE 86K	GREENS PREMIUM 7578
	HF TIBBIE 2D

BW: 87 SEP 9/09 WT 720 WPDA: 3.40

ADJ 205 WT: 714 AGE OF DAM: 2

BW: +2.6 WW: +54 YW: +93 MILK: +22 TM: +49 YG: +39

\$ _____



“Keep high aspirations, moderate expectations and small needs.”

Hamilton Bulls - Lots 104W, 105W, 107W



HF 108W

HF Supreme 108W

HAMI 108W 1521295 January 15 2009

HF KODIAK 5R
HF SUPREME 37T
HF BLACKBIRD 99H

SANDY BAR ADVANTAGE 43M
WILBAR RUBY 955N
EXAR RITO 5072
HF BLACKBIRD 27C
CONNELLY FOREFRONT NHF AMF
T C RUBY 9095
RIVERBEND POWERLINE 0050
HF ECHO 83J

TC FREEDOM 104 AMF
HF ECHO 167R
HFDF ECHO 13N

BW: 101 SEP 9/09 WT 835 WPDA: 3.53

ADJ 205 WT: 754 AGE OF DAM: 4

BW: +4.8 WW: +46 YW: +85 MILK: +24 TM: +47 YG: +40

\$ _____



HF SUPREME 37T

HF 111W

HF Kodiak 111W

HAMI 111W 1511264 January 15 2009

SANDY BAR ADVANTAGE 43M
HF KODIAK 5R
WILBAR RUBY 955N

TC ADVANTAGE NHF AMF
SANDY BAR JEMINA 44K
VERMILION YELLOWSTONE NHF AMF
WILBAR RUBY 161J
RIVERBEND POWERLINE 0050
DURALTA 14C ECHO 32E
HF JUSTICE 52L
C&C ELSIEMERE 0564

HF POWER SOURCE 94M
HF ELSIEMERE 14R
HF ELSIEMERE 12N

BW: 81 SEP 9/09 WT 745 WPDA: 3.14

ADJ 205 WT: 673 AGE OF DAM: 4

BW: +1.6 WW: +44 YW: +75 MILK: +22 TM: +44 YG: +31

\$ _____



Hamilton Bulls - Lots 108W, 111W, 118W

HF 118W

HF Ideal 118W

HAMI 118W 1511274 January 16 2009

PRAIRIELANE IDEAL 7451-2014
SANDY BAR IDEAL 18S
SANDY BAR PRIDE 89L

IDEAL 7451 OF 8103 4465 NHF AMF
PRAIRIELANE MAX DUCHESS 3050
SANDY BAR TONTO 61E
SANDY BAR PRIDE 6H
RIVERBEND POWERLINE 0050
DURALTA 14C ECHO 32E
TC STOCKMAN 365
HF MISS ROSEBUD 15C

HF POWER SOURCE 94M
HF ROSEBUD 97P
HF ROSEBUD 70H

BW: 77 SEP 9/09 WT 720 WPDA: 3.05

ADJ 205 WT: 636 AGE OF DAM: 5

BW: +1.2 WW: +41 YW: +76 MILK: +18 TM: +39 YG: +35

\$ _____



Sight Unseen Purchase Plan!
We guarantee full satisfaction upon delivery
or you don't own them!

"If you think you can, you can. If you think you can't, you're right."

HF 121W *Hamilton Farms* **HF Hershel 121W**
 HAMI 121W 1511271 January 16 2009

S A V 004 PREDOMINANT 4438 NHF AMF	S A V 8180 TRAVELER 004 NHF AMF
HF HEMI 151T	S A V EMBLYNETTE 1182
HF TIBBIE 100M	REMITALL ICEMAN 10K
	HF TIBBIE 86K
HF POWER SOURCE 94M	HF POWER SOURCE 94M
HF ROSEBUD 150P	DURALTA 14C ECHO 32E
HF ROSEBUD 150L	PEAK DOT WONDER 13J
	HF ROSEBUD 59J

BW: 84 SEP 9/09 WT 885 WPDA: 3.75
 ADJ 205 WT: 859 AGE OF DAM: 5
 BW: +3.5 WW: +49 YW: +79 MILK: +20 TM: +44 YG: +31

\$ _____



HF 125W *Hamilton Farms* **HF Kodiak 125W**
 HAMI 125W 1511257 January 15 2009

SANDY BAR ADVANTAGE 43M	TC ADVANTAGE NHF AMF
HF KODIAK 5R	SANDY BAR JEMINA 44K
WILBAR RUBY 955N	VERMILION YELLOWSTONE NHF AMF
	WILBAR RUBY 161J
LEACHMAN RIGHT TIME	N BAR EMULATION EXT NHF AMF
2HR ANNIE 215R	LEACHMAN ERICA 0025
DOUBLE AA ANNIE K 291'98	DOUBLE AA RETO 554'93
	DOUBLE AA ANNIE K 589'92

BW: 84 SEP 9/09 WT 770 WPDA: 3.25
 ADJ 205 WT: 719 AGE OF DAM: 4
 BW: +0.8 WW: +43 YW: +75 MILK: +18 TM: +39 YG: +32

\$ _____



HF 128W *Hamilton Farms* **HF Bearspaw 128W**
 HAMI 128W 1511267 January 16 2009

HF KODIAK 5R	SANDY BAR ADVANTAGE 43M
HF BEARS PAW 32T	WILBAR RUBY 955N
HFDF ECHO 13N	RIVERBEND POWERLINE 0050
	HF ECHO 83J
S A F FOCUS OF E R NHF AMF	S A F FAME NHF AMF
2HR BLACKBIRD 21P	G D A R FOREVER LADY 24E
HF BLACKBIRD 58M	GREENS PREMIUM 7578
	HF BLACKBIRD 99H

BW: 98 SEP 9/09 WT 915 WPDA: 3.88
 ADJ 205 WT: 808 AGE OF DAM: 5
 BW: +3.6 WW: +47 YW: +86 MILK: +21 TM: +45 YG: +40 SC: +0.51

\$ _____



Hamilton Bulls - Lots 121W, 125W, 128W

"One of the secrets in life is to make stepping stones out of stumbling blocks."



Hamilton Farms Bulls

HF 129W *Hamilton Farms* **HF Tiger 129W**
 HAMI 129W 1511266 January 16 2009

HF KODIAK 5R	SANDY BAR ADVANTAGE 43M
HF TIGER 5T	WILBAR RUBY 955N
HF ECHO 84R	TC FREEDOM 104 AMF
	HFDF ECHO 6N
BR MIDLAND NHF AMF	TWIN VALLEY PRECISION E161 NHC AMF
2HR TIBBIE 208R	BR ROYAL LASS 7036-19
HF TIBBIE 66L	WHITESTONE WIDESPREAD MB
	MVHF TIBBIE 31Z

BW: 90 SEP 9/09 WT 815 WPDA: 3.45

ADJ 205 WT: 762 AGE OF DAM: 4

BW: +2.5 WW: +52 YW: +91 MILK: +22 TM: +48 YG: +39

\$ _____



HF 132W *Hamilton Farms* **HF Kodiak 132W**
 HAMI 132W 1511279 January 16 2009

SANDY BAR ADVANTAGE 43M	TC ADVANTAGE NHF AMF
HF KODIAK 5R	SANDY BAR JEMINA 44K
WILBAR RUBY 955N	VERMILION YELLOWSTONE NHF AMF
	WILBAR RUBY 161J
RIVERBEND POWERLINE 0050	CONNELLY FRONTLINE NHF AMF
HF MISS BLACKCAP 50N	LEACHMAN BLACKBIRD 8060
HF MISS BLACKCAP 8G	HF WALK-ON 14C
	HF MISS BLACKCAP 23D

BW: 78 SEP 9/09 WT 880 WPDA: 3.73

ADJ 205 WT: 775 AGE OF DAM: 6

BW: +1.4 WW: +45 YW: +79 MILK: +22 TM: +44 YG: +34 SC: +0.75

\$ _____



HF 134W *Hamilton Farms* **HF Achilles 134W**
 HAMI 134W 1531642 January 17 2009

HF KODIAK 5R	SANDY BAR ADVANTAGE 43M
HF TIGER 5T	WILBAR RUBY 955N
HF ECHO 84R	TC FREEDOM 104 AMF
	HFDF ECHO 6N
REMITALL ICEMAN 10K	DURALTA 111A CHANCE 11H
HF TIBBIE 100M	LLB KEEPSAKE 94H
HF TIBBIE 86K	GREENS PREMIUM 7578
	HF TIBBIE 2D

BW: 85 SEP 9/09 WT 870 WPDA: 3.70

ADJ 205 WT: 770 AGE OF DAM: 12 (RECIPIENT)

BW: +3.5 WW: +54 YW: +90 MILK: +28 TM: +55 YG: +36 SC: +0.46

\$ _____



Hamilton Bulls - Lots 129W, 132W, 134W

"The first step in the acquisition of wisdom is silence, the second listening, the third memory, the fourth practice, the fifth teaching others"



HF 135W *Hamilton Farms* **HF Tiger 135W**
 HAMI 135W 1511282 January 17 2009

HF KODIAK 5R	SANDY BAR ADVANTAGE 43M
HF TIGER 5T	WILBAR RUBY 955N
HF ECHO 84R	TC FREEDOM 104 AMF
	HFDF ECHO 6N
HF PROGRESS 20K	NORTHERN IMPROVEMENT 4480 GF
HF QUEENIE 84M	DURALTA 14C ECHO 32E
BIG BEAR QUEENIE 46X	LLB PROPHET 174S
	QUEENIE OF ARJAY 20L

BW: 89 SEP 9/09 WT 750 WPDA: 3.19

ADJ 205 WT: 679 AGE OF DAM: 7

BW: +2.1 WW: +35 YW: +63 MILK: +21 TM: +38 YG: +28 SC: +0.28

\$ _____



HF 137W *Hamilton Farms* **HF Kodiak 137W**
 HAMI 137W 1511284 January 17 2009

SANDY BAR ADVANTAGE 43M	TC ADVANTAGE NHF AMF
HF KODIAK 5R	SANDY BAR JEMINA 44K
WILBAR RUBY 955N	VERMILION YELLOWSTONE NHF AMF
	WILBAR RUBY 161J
TC FREEDOM 104 AMF	CONNELLY FOREFRONT NHF AMF
HF ERICA 55R	T C RUBY 9095
HF ERICA 61F	HF WALK-ON 14C
	ERICA OF RANNOCH 122C

BW: 87 SEP 9/09 WT 745 WPDA: 3.17

ADJ 205 WT: 679 AGE OF DAM: 4

BW: +2.0 WW: +48 YW: +82 MILK: +23 TM: +46 YG: +35

\$ _____



ERICA 187R - MAT SISTER

HF 139W *Hamilton Farms* **HF Kodiak 139W**
 JHF 139W 1511563 January 17 2009

SANDY BAR ADVANTAGE 43M	TC ADVANTAGE NHF AMF
HF KODIAK 5R	SANDY BAR JEMINA 44K
WILBAR RUBY 955N	VERMILION YELLOWSTONE NHF AMF
	WILBAR RUBY 161J
PEAK DOT WONDER 13J	MERIT 6105
HF MAYFLOWER 201L	CEDAR CREEK 27G
	MVHF INNOVATOR 49B
	ASPELUND'S MAYFLOWER 18'95

BW: 79 SEP 9/09 WT 805 WPDA: 3.43

ADJ 205 WT: 712 AGE OF DAM: 8

BW: +1.9 WW: +43 YW: +76 MILK: +20 TM: +41 YG: +34 SC: +0.52

\$ _____



Hamilton Bulls - Lots 135W, 137W, 139W,

"Age is a question of mind over matter. If you don't mind, it doesn't matter."



HF 147W **HF Influence 147W**
 HAMI 147W 1531643 January 18 2009

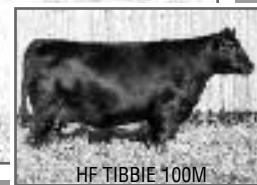
HF KODIAK 5R	SANDY BAR ADVANTAGE 43M
HF TIGER 5T	WILBAR RUBY 955N
HF ECHO 84R	TC FREEDOM 104 AMF
	HFDF ECHO 6N
REMITALL ICEMAN 10K	DURALTA 111A CHANCE 11H
HF TIBBIE 100M	LLB KEEPSAKE 94H
HF TIBBIE 86K	GREENS PREMIUM 7578
	HF TIBBIE 2D

BW: 90 SEP 9/09 WT 815 WPDA: 3.48

ADJ 205 WT: 725 AGE OF DAM: 8 (RECIPIENT)

BW: +3.5 WW: +54 YW: +90 MILK: +28 TM: +55 YG: +36 SC: +0.46

\$ _____



HF 155W **HF Kodiak 155W**
 HAMI 155W 1511289 January 18 2009

SANDY BAR ADVANTAGE 43M	TC ADVANTAGE NHF AMF
HF KODIAK 5R	SANDY BAR JEMINA 44K
WILBAR RUBY 955N	VERMILION YELLOWSTONE NHF AMF
	WILBAR RUBY 161J
WIWA CREEK HOGAN 14'97	YOUNG DALE HOGAN 8C
2HR TIBBIE 12R	WIWA CREEK ERICA 27B 150D
HF TIBBIE 117L	MVHF INNOVATOR 49B
	HF TIBBIE 34E

BW: 92 SEP 9/09 WT 740 WPDA: 3.16

ADJ 205 WT: 678 AGE OF DAM: 4

BW: +3.2 WW: +42 YW: +74 MILK: +18 TM: +39 YG: +32

\$ _____



HF 157W **HF Tiger 157W**
 HAMI 157W 1511294 January 18 2009

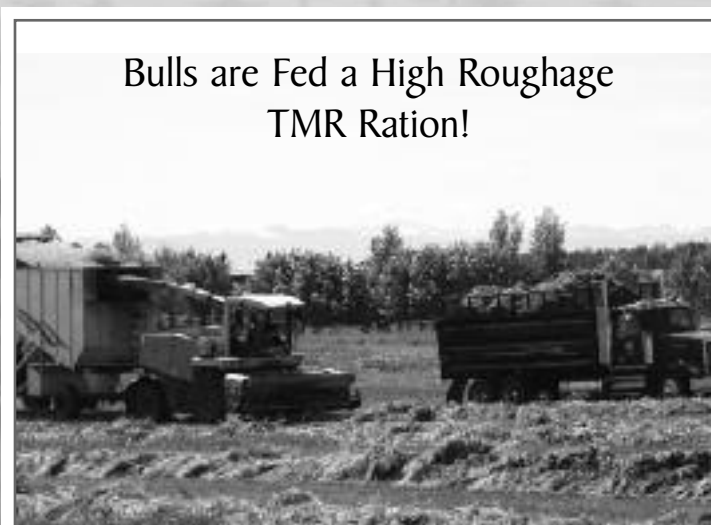
HF KODIAK 5R	SANDY BAR ADVANTAGE 43M
HF TIGER 5T	WILBAR RUBY 955N
HF ECHO 84R	TC FREEDOM 104 AMF
	HFDF ECHO 6N
HF JUSTICE 52L	GREENS PREMIUM 7578
HF SALLY 8N	HF ERICA 61F
GV SALLY 40C	ONEILLS NOBLE KNIGHT
	GV SALLY 35A

BW: 78 SEP 9/09 WT 685 WPDA: 2.93

ADJ 205 WT: 610 AGE OF DAM: 6

BW: +2.4 WW: +44 YW: +76 MILK: +20 TM: +42 YG: +31 SC: +0.73

\$ _____



Bulls are Fed a High Roughage TMR Ration!

“Mincing your words makes it easier if you don't have to eat them later.”

Hamilton Bulls - Lots 147W, 155W, 157W

HF
I 60W

HF Kodiak I 60W
HAMI 160W 1511304 January 19 2009

SANDY BAR ADVANTAGE 43M	TC ADVANTAGE NHF AMF
HF KODIAK 5R	SANDY BAR JEMINA 44K
WILBAR RUBY 955N	VERMILION YELLOWSTONE NHF AMF
	WILBAR RUBY 161J
REMITALL CHOICE MINT 99M	S A F FOCUS OF E R NHF AMF
HF SALLY 28P	REMITALL NEONIA 42J
GV SALLY 40C L	ONEILLS NOBLE KNIGHT
	GV SALLY 35A

BW: 88 SEP 9/09 WT 745 WPDA: 3.20

ADJ 205 WT: 666 AGE OF DAM: 5

BW: +3.1 WW: +46 YW: +80 MILK: +19 TM: +42 YG: +33 SC: +1.45

\$ _____



HF
I 63W

HF Kodiak I 63W
HAMI 163W 1511300 January 19 2009

SANDY BAR ADVANTAGE 43M	TC ADVANTAGE NHF AMF
HF KODIAK 5R	SANDY BAR JEMINA 44K
WILBAR RUBY 955N	VERMILION YELLOWSTONE NHF AMF
	WILBAR RUBY 161J
HF NO SURRENDER 37J	O G L BATTLE CRY 427 128
HF TOP GAL 114L	HF TIBBIE 47D
ULTRA 727 TOP GAL 1J	G D A R EXECUTIVE 727 NHF AMF
	DMM TOP GAL 49T

BW: 95 SEP 9/09 WT 855 WPDA: 3.67

ADJ 205 WT: 764 AGE OF DAM: 8

BW: +4.5 WW: +41 YW: +71 MILK: +23 TM: +43 YG: +30

\$ _____



HF
I 65W

HF Kodiak I 65W
HAMI 165W 1511303 January 19 2009

SANDY BAR ADVANTAGE 43M	TC ADVANTAGE NHF AMF
HF KODIAK 5R	SANDY BAR JEMINA 44K
WILBAR RUBY 955N	VERMILION YELLOWSTONE NHF AMF
	WILBAR RUBY 161J
HF NO SURRENDER 37J	O G L BATTLE CRY 427 128
HF PRIDE 82L	HF TIBBIE 47D
GV PRIDE 20C	GV JAG 12Z
	GV PRIDE 29T

BW: 90 SEP 9/09 WT 800 WPDA: 3.43

ADJ 205 WT: 715 AGE OF DAM: 8

BW: +2.7 WW: +35 YW: +60 MILK: +15 TM: +33 YG: +25

\$ _____



“Live your life so that you would not be ashamed to sell the family parrot to the town gossip.”



Hamilton Farms Bulls



HF PROGRESS 20K



HF Iron Man 167W

HAMI 167W 1511302 January 19 2009

BW: 81 SEP 9/09 WT 915 WPDA: 3.93

ADJ 205 WT: 743 AGE OF DAM: 5

BW: +0.4 WW: +46 YW: +81 MILK: +23 TM: +46 YG: +35 SC: +0.71

This feature lot we believe will become a future herd sire for a purebred operation. He was one of our heaviest calves at weaning with no creep or special attention. HF Kodiak has sired so many quality calves for us in the past three years and that his consistently has proven repeatedly to be where so much of his value lies. It's pretty reassuring to go into a pen of bulls and select one you like and know that he isn't a freak ...but just another one of many. A full brother to Iron Man sold last year to Atlasta Angus, Brian & Judy Sutterand was used extensively by Brian. This deep bodied, heavy muscled, solid bull posted an 81 lb birth weight and weaned off his 5 yr old dam on Sept 9/09 at 915 lbs which resulted in a 205 Adj Wt of 815 lbs and ranked him 4th out of 154 bulls in his contemporary group. Iron Man comes by his numbers honestly - the low birth on both sides with Kodiak, Progress, Northern Improvement and then the performance stemming from Kodiak, Rosebud and Powerline....what a perfect scenario. Rosebud 94P is a maternal sister to a herd bull sold to Foxwood Farms for \$6500.00 and we have numerous show and sale toppers from the Rosebud cow family including a herd bull sold to Willie Robertson years ago in the UK. Don't miss this Kodiak son, he'll do you proud.

SANDY BAR ADVANTAGE 43M
HF KODIAK 5R
WILBAR RUBY 955N

HF PROGRESS 20K
HF ROSEBUD 94P
HF ROSEBUD 198M

TC ADVANTAGE NHF AMF
SANDY BAR JEMINA 44K
VERMILION YELLOWSTONE NHF AMF
WILBAR RUBY 161J
NORTHERN IMPROVEMENT 4480 GF NHF
DURALTA 14C ECHO 32E
RIVERBEND POWERLINE 0050
HF ROSEBUD 23G



HF Hat Trick 170W

HAMI 170W 1530070 January 20 2009

SANDY BAR ADVANTAGE 43M
HF KODIAK 5R
WILBAR RUBY 955N

BT RIGHT TIME 24J NHF AMF
HF ECHO 17R
DURALTA 14C ECHO 32E

TC ADVANTAGE NHF AMF
SANDY BAR JEMINA 44K
VERMILION YELLOWSTONE NHF AMF
WILBAR RUBY 161J
LEACHMAN RIGHT TIME
SITZ EVERELDA ENTENSE 1905
HF WALK-ON 14C
STONEHAVEN MISS PONDEROSA 9U

BW: 81 SEP 9/09 WT 810 WPDA: 3.49

ADJ 205 WT: 743 AGE OF DAM: 4

BW: +1.8 WW: +44 YW: +74 MILK: +20 TM: +42 YG: +31 SC: +0.79

\$ _____



BT RIGHT TIME 24J

"Bite off more than you can chew, then chew it"

HF 171W *Hamilton Farms* **HF Torque 171W**
 HAMI 171W 1497025 January 20 2009

S A V 004 PREDOMINANT 4438 NHF AMF HF HEMI 151T HF TIBBIE 100M	S A V 8180 TRAVELER 004 NHF AMF S A V EMBLYNETTE 1182 REMITALL ICEMAN 10K HF TIBBIE 86K CONNEALY FOREFRONT NHF AMF T C RUBY 9095 HF WALK-ON 14C ERICA OF RANNOCH 122C
--	--

TC FREEDOM 104 AMF
HF ERICA 182R
HF ERICA 61F

BW: 92 SEP 9/09 WT 885 WPDA: 3.73

ADJ 205 WT: 811 AGE OF DAM: 4

BW: +3.7 WW: +53 YW: +87 MILK: +23 TM: +49 YG: +36

\$ _____



HF 174W *Hamilton Farms* **HF Tiger 174W**
 HAMI 174W 1511306 January 20 2009

HF KODIAK 5R HF TIGER 5T HF ECHO 84R	SANDY BAR ADVANTAGE 43M WILBAR RUBY 955N TC FREEDOM 104 AMF HFDF ECHO 6N B/R NEW FRONTIER 095 NHF AMF ISLA BANK PRINCESS ANNIE 4L BAYSHORE DIABLO 09L ELLIOTT RUBY 53 66L
--	--

LLB NEW FRONTIER 81N
NORSEMAN RUBY 22'07
NORSEMAN RUBY 7'04

BW: 81 SEP 9/09 WT 735 WPDA: 3.17

ADJ 205 WT: 738 AGE OF DAM: 2

BW: +2.3 WW: +46 YW: +81 MILK: +21 TM: +44 YG: +34

\$ _____



HF 175W *Hamilton Farms* **HF Tiger 175W**
 HAMI 175W 1511305 January 20 2009

HF KODIAK 5R HF TIGER 5T HF ECHO 84R	SANDY BAR ADVANTAGE 43M WILBAR RUBY 955N TC FREEDOM 104 AMF HFDF ECHO 6N TC STOCKMAN 365 GREEN GARDEN PREMIER 4 HF NO SURRENDER 37J HF JUNE 125H
--	---

T J AMIGO V615
2HR JUNE 32P
HF JUNE 100L

BW: 88 SEP 9/09 WT 855 WPDA: 3.69

ADJ 205 WT: 766 AGE OF DAM: 5

BW: +5.0 WW: +43 YW: +76 MILK: +23 TM: +44 YG: +33 SC: +0.42

\$ _____





HF 176W *Hamilton Farms* **HF Hemi 176W**
 HAMI 176W 1511307 January 20 2009

BW: 95 SEP 9/09 WT 860 WPDA: 3.71

ADJ 205 WT: 813 AGE OF DAM: 3

BW: +4.5 WW: +51 YW: +86 MILK: +18 TM: +43 YG: +36

Not a big surprise to have a "Tibbie/Echo" combination when you browse through a Hamilton Farms catalogue. Hemi has really taken the performance side of the equation to the next level. Hemi 151T weighed 925 lbs. at weaning the end of August 2007 with no assistance from outside sources. He then went on to be a major contributing factor when Tibbie 100M and him went on to be Supreme Champions at both Farmfair and Agribition in 2007. He also got the game star award when he sold at the Masterpiece Sale for \$35,000.00 for half interest going to Northern Black Angus, Trevor White and family of Smithers, BC.

We are very pleased with the success we had using Hemi quite extensively in our program this year. He certainly added pounds to our weaning stats and we plan to retain an interest in a Hemi son to use within our herd.

Tibbie 86K (x Green's Premium) is an "Elite Dam" and Echo 7S is out of a Premium x Echo combination, so the pedigree reads true. Echo adds that eye appeal that certainly finishes the package. Hemi 176W ranked 13th out of 154 bulls in his contemporary group, so you can see, 176W has the potential to add pounds to your program.

S A V 004 PREDOMINANT 4438 NHF AMF
 HF HEMI 151T
 HF TIBBIE 100M

SANDY BAR ADVANTAGE 43M
 HF ECHO 7S
 HF ECHO 97K

S A V 8180 TRAVELER 004 NHF AMF
 S A V EMBLYNETTE 1182
 REMITALL ICEMAN 10K
 HF TIBBIE 86K
 TC ADVANTAGE NHF AMF
 SANDY BAR JEMINA 44K
 GREENS PREMIUM 7578
 DURALTA 14C ECHO 32E

HF 177W *Hamilton Farms* **HF Done Right 177W**
 JHF 177W 1530087 January 21 2009

BT RIGHT TIME 24J NHF AMF
 HF DONE RIGHT 125R
 HF ROSEBUD 127K

HF FORMATION 13K
 ATLASTA PATRICIA 57P
 ATLASTA PATRICIA 36L

LEACHMAN RIGHT TIME
 SITZ EVERELDA ENTENSE 1905
 HF MOST WANTED 46H
 HF ROSEBUD 70H
 CONNEALY KINCAID
 DURALTA 14C ECHO 32E
 DMM STOCKMAN 106J
 ATLASTA PATRICIA 12H

BW: 100 SEP 9/09 WT 785 WPDA: 3.40

ADJ 205 WT: 708 AGE OF DAM: 5

BW: +2.7 WW: +40 YW: +74 MILK: +20 TM: +39 YG: +34 SC: -0.05

\$ _____



"We find comfort among those who agree with us – growth among those who don't."

HF 182W *Hamilton Farms* **HF Safari I 82W**
 WYAT 182W 1511464 January 21 2009

HF KODIAK 5R	SANDY BAR ADVANTAGE 43M
HF TIGER 5T	WILBAR RUBY 955N
HF ECHO 84R	TC FREEDOM 104 AMF
	HFDF ECHO 6N
O G L BATTLE CRY 427 128	NICHOLS EUREKA W57
HF ROSE 20J	O G L DUSTY ROSE 128 902
EXAR ROSE 6171	B & L COMPUTER 2099
	SUN UP ROSE 863

BW: 95 SEP 9/09 WT 790 WPDA: 3.39

ADJ 205 WT: 722 AGE OF DAM: 10

BW: +1.9 WW: +40 YW: +78 MILK: +25 TM: +45 YG: +37 SC: +0.78

\$ _____



HF 184W *Hamilton Farms* **HF Bearspaw I 84W**
 HAMI 184W 1511309 January 21 2009

HF KODIAK 5R	SANDY BAR ADVANTAGE 43M
HF BEARS PAW 32T	WILBAR RUBY 955N
HFDF ECHO 13N	RIVERBEND POWERLINE 0050
	HF ECHO 83J
HF LANCASTER 49D	ANGUS ACRES LANCER 60U
HFRF PRIDE 84F	MVF TIBBIE 15T
GV PRIDE 20C	GV JAG 12Z
	GV PRIDE 29T

BW: 71 SEP 9/09 WT 675 WPDA: 2.92

ADJ 205 WT: 617 AGE OF DAM: 13

BW: +1.9 WW: +31 YW: +52 MILK: +13 TM: +28 YG: +22 SC: -0.07

\$ _____

HF 187W *Hamilton Farms* **HF Hemi I 87W**
 HAMI 187W 1511311 January 21 2009

S A V 004 PREDOMINANT 4438 NHF AMF	S A V 8180 TRAVELER 004 NHF AMF
HF HEMI 151T	S A V EMBLYNETTE 1182
HF TIBBIE 100M	REMITALL ICEMAN 10K
	HF TIBBIE 86K
BWB TRAVELER 110P	BWB TRAVELER 1'01 OF 044
HF DELIA 183S	BWB LASS 52'01 OF ROYCE 741C
SANDY BAR DELIA 528P	VALLEY BLOSSOM ADVANTAGE 732M
	SANDY BAR DELIA 508M

BW: 80 SEP 9/09 WT 765 WPDA: 3.31

ADJ 205 WT: 730 AGE OF DAM: 3

BW: +3.0 WW: +54 YW: +88 MILK: +19 TM: +46 YG: +35 SC: +0.62

\$ _____

HF 190W *Hamilton Farms* **HF Hemi I 90W**
 WYAT 190W 1511463 January 21 2009

S A V 004 PREDOMINANT 4438 NHF AMF	S A V 8180 TRAVELER 004 NHF AMF
HF HEMI 151T	S A V EMBLYNETTE 1182
HF TIBBIE 100M	REMITALL ICEMAN 10K
	HF TIBBIE 86K
GREENS PREMIUM 7578	WK ULTIMATUM
HF BLACKBIRD 120L	GREENS LORI 5078
HF BLACKBIRD 99G	O G L BATTLE CRY 427 128
	HF BLACKBIRD 27C

BW: 95 SEP 9/09 WT 755 WPDA: 3.27

ADJ 205 WT: 681 AGE OF DAM: 8

BW: +4.8 WW: +56 YW: +95 MILK: +20 TM: +48 YG: +41 SC: +0.67

\$ _____



"Your expression is the most important thing you can wear."

Hamilton Bulls - Lots 182W, 184W, 187W, 190W



HF 192W *Hamilton Farms Bulls* **HF Tiger 192W**
 HAMI 192W 1511318 January 22 2009

HF KODIAK 5R	SANDY BAR ADVANTAGE 43M
HF TIGER 5T	WILBAR RUBY 955N
HF ECHO 84R	TC FREEDOM 104 AMF
	HFDF ECHO 6N
RITO 2V1 OF 2536 1407 NHF AMF	BON VIEW NEW DESIGN 1407 NHF AMF
2HR PRINCESS BLACKCAP 35S	G A R PRECISION 2536 NHF AMF
HF PRINCESS BLACKCAP 123L	HF DYNA STAR 80J
	PRINCESS BLACKCAP 4J

BW: 79 SEP 9/09 WT 790 WPDA: 3.43
 ADJ 205 WT: 755 AGE OF DAM: 3
 BW: +2.8 WW: +51 YW: +88 MILK: +24 TM: +49 YG: +37 SC: +0.52

\$ _____



HF 193W *Hamilton Farms Bulls* **HF Play It Again 193W**
 HAMI 193W 1511319 January 22 2009

D H D TRAVELER 6807 NHF AMF	Q A S TRAVELER 23-4 NHF AMF
DUFF ENCORE 702 AMF	BEMINDFUL MAID D H D 0807
O C C DIXIE ERICA 814G	O C C ANCHOR 771A
	O C C DIXIE ERICA 764C
NORTHERN IMPROVEMENT 4480	TC STOCKMAN 365
HF ROSEBUD 110K	BLACKCAP OF R R 5367
HFRF ROSEBUD 91F	BALDRIDGE ALBERT 1391
	HF MISS ROSEBUD 15C

BW: 77 SEP 9/09 WT 790 WPDA: 3.43
 ADJ 205 WT: 713 AGE OF DAM: 9
 BW: -0.3 WW: +34 YW: +68 MILK: +15 TM: +31 YG: +35 SC: -0.51

\$ _____



HF 194W *Hamilton Farms Bulls* **HF Kodiak 194W**
 HAMI 194W 1511322 January 22 2009

SANDY BAR ADVANTAGE 43M	TC ADVANTAGE NHF AMF
HF KODIAK 5R	SANDY BAR JEMINA 44K
WILBAR RUBY 955N	VERMILION YELLOWSTONE NHF AMF
	WILBAR RUBY 161J
BT TOUCHDOWN 14N NHC	TWIN VALLEY PRECISION E161 NHC AMF
HF TIBBIE 3T	BT EVERELDA ENTENSE 65J
2HR TIBBIE 33P	S A F FOCUS OF E R NHF AMF
	HF TIBBIE 100M

BW: 90 SEP 9/09 WT 760 WPDA: 3.30
 ADJ 205 WT: 766 AGE OF DAM: 2
 BW: +0.3 WW: +49 YW: +85 MILK: +25 TM: +49 YG: +37

\$ _____



Hamilton Bulls - Lots 192W, 193W, 194W

"Smart is when you believe only half of what you hear. Brilliant is when you know which half to believe."



HF 196W *Hamilton Farms* **HF Tiger 196W**
 HAMI 196W 1511321 January 22 2009

HF KODIAK 5R	SANDY BAR ADVANTAGE 43M
HF TIGER 5T	WILBAR RUBY 955N
HF ECHO 84R	TC FREEDOM 104 AMF
	HFDF ECHO 6N
HF MOST WANTED 46H	HF WALKER 107E
HF PRIDE LASS 13L	HFRF ROSEBUD 72F
HF PRIDE LASS 53J	GREENS PREMIUM 7578
	LLB PRIDE LASS 59D

BW: 80 SEP 9/09 WT 735 WPDA: 3.20

ADJ 205 WT: 743 AGE OF DAM: 8

BW: +3.2 WW: +47 YW: +79 MILK: +20 TM: +43 YG: +32 SC: +0.65

\$ _____



HF 203W *Hamilton Farms* **HF Kodiak 203W**
 HAMI 203W 1511327 January 23 2009

SANDY BAR ADVANTAGE 43M	TC ADVANTAGE NHF AMF
HF KODIAK 5R	SANDY BAR JEMINA 44K
WILBAR RUBY 955N	VERMILION YELLOWSTONE NHF AMF
	WILBAR RUBY 161J
HF PROGRESS 20K	NORTHERN IMPROVEMENT 4480
HF ESTHER 70N	DURALTA 14C ECHO 32E
HIDDEN ESTHER 140L	SOUTHERN OX GUNNER 92G
	GNS ESTHER 46H

BW: 76 SEP 9/09 WT 760 WPDA: 3.32

ADJ 205 WT: 688 AGE OF DAM: 6

BW: +1.0 WW: +42 YW: +74 MILK: +18 TM: +39 YG: +32 SC: +0.78

\$ _____



HF 204W *Hamilton Farms* **HF Insignia 204W**
 HAMI 204W 1531634 January 23 2009

HF KODIAK 5R	SANDY BAR ADVANTAGE 43M
HF TIGER 5T	WILBAR RUBY 955N
HF ECHO 84R	TC FREEDOM 104 AMF
	HFDF ECHO 6N
TC FREEDOM 104 AMF	CONNELLY FOREFRONT NHF AMF
HF ECHO 187N	T C RUBY 9095
DURALTA 14C ECHO 32E	HF WALK-ON 14C
	STONEHAVEN MISS PONDEROSA 9U

BW: 75 SEP 9/09 WT 790 WPDA: 3.45

ADJ 205 WT: 715 AGE OF DAM: 4

BW: +2.4 WW: +46 YW: +82 MILK: +23 TM: +46 YG: +35 SC: +0.44

\$ _____



Hamilton Bulls - Lots 196W, 203W, 204W

"Skill and confidence are an unconquered army."



HF
207W

HF Sabertooth 207W

HAMI 207W 1497026 January 23 2009

BW: 80 SEP 9/09 WT 805 WPDA: 3.44

ADJ 205 WT: 808 AGE OF DAM: 2

BW: +4.5 WW: +51 YW: +86 MILK: +18 TM: +43 YG: +36

There were a number of outstanding "Tiger" bulls in the 2009 calf crop, but this guy has a story to reveal on the dam's side of the pedigree as well. Sabertooth and his dam Evening Tinge 63T stood 2nd in their class next to her pen mate Erica 26T and her bull calf at the World Angus Forum this summer. Evening Tinge 63T was Yearling Champion at Spruce Meadows in 2008. She had been purchased for \$7000.00 by the keen eye of Corey Jones (CorVet Cattle Co) of Brooks, AB in our sale in 2007. 63T's full sister - Evening Tinge 193U was selected by Continental Angus (Norm & Marj Atkins) and Diamond B Ranching (Robert & Sharon Ballantyne) of Livelong, SK in our sale last year where she topped the female sale at \$10,000. This heifer certainly made an impression on a number of Angus enthusiasts as well as our qualified judge Dave Hasson, as he selected her as his Late Senior Yearling Champion at the WAF 2009.

Sabertooth has an 80 lb birth weight and his actual weight at weaning on Sept 9/09 was 805 lbs, 808 lbs was his Adj 205 weight which ranked him 7th out of 154 bulls in his contemporary weaning group. Sabertooth has continued to excel in his performance, gaining almost 5 lbs/day since the beginning of September.

We could go on about the notables in the pedigree such as Free Wheeler 191N and his full sister Echo 187N and let's not forget about the World Champion Bull, "Tiger". Not only has Tiger been a star, but his first calf crop has definitely risen to the top in every respect.

HF KODIAK 5R
HF TIGER 5T
HF ECHO 84R

HF FREE WHEELER 191N
HF EVENING TINGE 63T
HF EVENING TINGE 184R

SANDY BAR ADVANTAGE 43M
WILBAR RUBY 955N
TC FREEDOM 104 AMF
HFDF ECHO 6N
TC FREEDOM 104 AMF
DURALTA 14C ECHO 32E
PEAK DOT FAME 2N
HF EVENING TINGE 48K

Sabertooth and his dam Evening Tinge 63T stood 2nd in their class next to her pen mate Erica 26T and her bull calf at the World Angus Forum this summer. Evening Tinge 63T was Yearling Champion at Spruce Meadows in 2008. She had been purchased for \$7000.00 by the keen eye of Corey Jones (CorVet Cattle Co) of Brooks, AB in our sale in 2007. 63T's full sister - Evening Tinge 193U was selected by Continental Angus (Norm & Marj Atkins) and Diamond B Ranching (Robert & Sharon Ballantyne) of Livelong, SK in our sale last year where she topped the female sale at \$10,000. This heifer certainly made an impression on a number of Angus enthusiasts as well as our qualified judge Dave Hasson, as he selected her as his Late Senior Yearling Champion at the WAF 2009.

HF
208W

HF Hemi 208W

HAMI 208W 1511324 January 23 2009

S A V 004 PREDOMINANT 4438 NHF AMF
HF HEMI 151T
HF TIBBIE 100M

TC FREEDOM 104 AMF
2HR JUNE 4R
2HR JUNE 7N

S A V 8180 TRAVELER 004 NHF AMF
S A V EMBLYNETTE 1182
REMITALL ICEMAN 10K
HF TIBBIE 86K
CONNEALY FOREFRONT NHF AMF
T C RUBY 9095
HF PROGRESS 20K
HF JUNE 100L

BW: 105 SEP 9/09 WT 900 WPDA: 3.93

ADJ 205 WT: 835 AGE OF DAM: 4

BW: +4.4 WW: +54 YW: +88 MILK: +25 TM: +52 YG: +35 SC: +0.82

\$ _____





HF 209W *Hamilton Farms* **HF Kodiak 209W**
 HAMI 209W 1511323 January 23 2009

SANDY BAR ADVANTAGE 43M HF KODIAK 5R WILBAR RUBY 955N	TC ADVANTAGE NHF AMF SANDY BAR JEMINA 44K VERMILION YELLOWSTONE NHF AMF WILBAR RUBY 161J RIVERBEND POWERLINE 0050 DURALTA 14C ECHO 32E EBON HILL VENTURE 48'2000 DOUBLE J LASS 336D
---	--

HF POWER STROKE 59M
2HR ERICA'S LASS 35R
LLB MISS ERICA 353L

BW: 81 SEP 9/09 WT 785 WPDA: 3.43
 ADJ 205 WT: 729 AGE OF DAM: 4
 BW: +2.6 WW: +44 YW: +73 MILK: +21 TM: +43 YG: +29 SC: +0.71

\$ _____



HF 210W *Hamilton Farms* **HF Done Right 210W**
 HAMI 210W 1511335 January 24 2009

BT RIGHT TIME 24J NHF AMF HF DONE RIGHT 125R HF ROSEBUD 127K	LEACHMAN RIGHT TIME SITZ EVERELDA ENTENSE 1905 HF MOST WANTED 46H HF ROSEBUD 70H SANDY BAR ADVANTAGE 43M WILBAR RUBY 955N RIVERBEND POWERLINE 0050 HF ECHO 83J
--	---

HF KODIAK 5R
HF ECHO 247T
HFDF ECHO 6N

BW: 79 SEP 9/09 WT 725 WPDA: 3.18
 ADJ 205 WT: 739 AGE OF DAM: 2
 BW: +1.1 WW: +44 YW: +79 MILK: +21 TM: +43 YG: +35

\$ _____



HF 211W *Hamilton Farms* **HF Tiger 211W**
 WYAT 211W 1511466 January 24 2009

HF KODIAK 5R HF TIGER 5T HF ECHO 84R	SANDY BAR ADVANTAGE 43M WILBAR RUBY 955N TC FREEDOM 104 AMF HFDF ECHO 6N RITO 3W3 OF OJ2 RITO 9FB3 NHF AMF SUMMITCREST ELSIE 0802 MVHF DREAMWALKER 29A KNIGHTS BLACKBIRD 9Y
--	--

EXAR RITO 5072
HF BLACKBIRD 99H
HF BLACKBIRD 27C

BW: 98 SEP 9/09 WT 925 WPDA: 4.06
 ADJ 205 WT: 852 AGE OF DAM: 11
 BW: +4.3 WW: +45 YW: +85 MILK: +25 TM: +48 YG: +40 SC: +0.56

\$ _____



HF BLACKBIRD 99H

Hamilton Bulls - Lots 209W, 210W, 211W

“Victory belongs to the most persevering.”



Hamilton Farms Bulls

Page 42

HF 213W *Hamilton Farms* **HF Encore 213W**
 HAMI 213W 1511340 January 24 2009

D H D TRAVELER 6807 NHF AMF
 DUFF ENCORE 702 AMF
 O C C DIXIE ERICA 814G

HF PROGRESS 20K
 HF TIBBIE 62R
 HF TIBBIE 178L

Q A S TRAVELER 23-4 NHF AMF
 BEMINDFUL MAID D H D 0807
 O C C ANCHOR 771A
 O C C DIXIE ERICA 764C
 NORTHERN IMPROVEMENT 4480 GF
 DURALTA 14C ECHO 32E
 GNAS CRACKER 33G
 HF TIBBIE 105G

BW: 81 SEP 9/09 WT 800 WPDA: 3.51

ADJ 205 WT: 745 AGE OF DAM: 4

BW: +0.9 WW: +35 YW: +65 MILK: +20 TM: +37 YG: +31

\$ _____



HF 217W *Hamilton Farms* **HF Hemi 217W**
 HAMI 217W 1511333 January 24 2009

S A V 004 PREDOMINANT 4438 NHF AMF
 HF HEMI 151T
 HF TIBBIE 100M

HF MOST WANTED 46H
 2HR BLACKCAP 5N
 HF BLACKCAP 138L

S A V 8180 TRAVELER 004 NHF AMF
 S A V EMBLYNETTE 1182
 REMITTAL ICEMAN 10K
 HF TIBBIE 86K
 HF WALKER 107E
 HFRF ROSEBUD 72F
 WHITESTONE WIDESPREAD MB
 ARDA BLACKCAP 16G

BW: 111 SEP 9/09 WT 850 WPDA: 3.73

ADJ 205 WT: 775 AGE OF DAM: 6

BW: +3.8 WW: +50 YW: +83 MILK: +19 TM: +44 YG: +33 SC: +0.33

\$ _____



HF 221W *Hamilton Farms* **HF Kodiak 221W**
 HAMI 221W 1511336 January 24 2009

SANDY BAR ADVANTAGE 43M
 HF KODIAK 5R
 WILBAR RUBY 955N

HF POWER STROKE 59M
 HF TIBBIE 348T
 HF TIBBIE 110L

TC ADVANTAGE NHF AMF
 SANDY BAR JEMINA 44K
 VERMILION YELLOWSTONE NHF AMF
 WILBAR RUBY 161J
 RIVERBEND POWERLINE 0050
 DURALTA 14C ECHO 32E
 O G L BATTLE CRY 427 128
 HF TIBBIE 71G

BW: 75 SEP 9/09 WT 710 WPDA: 3.11

ADJ 205 WT: 725 AGE OF DAM: 2

BW: +2.5 WW: +43 YW: +74 MILK: +22 TM: +43 YG: +31

\$ _____



Hamilton Bulls - Lots 213W, 217W, 221W

"To win without risk is to triumph without glory."

HF 223W *Hamilton Farms* **HF Magnum 223W**
 HAMI 223W 1511344 January 25 2009

HF KODIAK 5R	SANDY BAR ADVANTAGE 43M
HF TIGER 5T	WILBAR RUBY 955N
HF ECHO 84R	TC FREEDOM 104 AMF
	HFDF ECHO 6N
SANDY BAR ADVANTAGE 43M	TC ADVANTAGE NHF AMF
HF TIBBIE 87S	SANDY BAR JEMINA 44K
HF TIBBIE 56L	O G L BATTLE CRY 427 128
	HF TIBBIE 148J

BW: 90 SEP 9/09 WT 875 WPDA: 3.85

ADJ 205 WT: 841 AGE OF DAM: 3

BW: +2.1 WW: +46 YW: +87 MILK: +24 TM: +47 YG: +42

\$ _____



HF 228W *Hamilton Farms* **HF Hemi 228W**
 HAMI 228W 1511342 January 25 2009

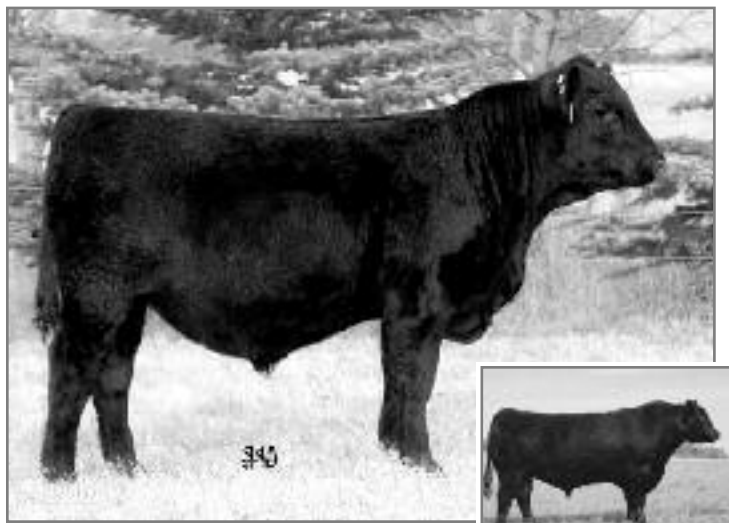
S A V 004 PREDOMINANT 4438 NHF AMF	S A V 8180 TRAVELER 004 NHF AMF
HF HEMI 151T	S A V EMBLYNETTE 1182
HF TIBBIE 100M	REMITALL ICEMAN 10K
	HF TIBBIE 86K
HF PROGRESS 20K	NORTHERN IMPROVEMENT 4480
2HR PRIDE 17N	DURALTA 14C ECHO 32E
HF PRIDE 82L	HF NO SURRENDER 37J
	GV PRIDE 20C

BW: 89 SEP 9/09 WT 805 WPDA: 3.55

ADJ 205 WT: 736 AGE OF DAM: 6

BW: +3.9 WW: +43 YW: +71 MILK: +20 TM: +41 YG: +28

\$ _____



HF 232W *Hamilton Farms* **HF Tiger 232W**
 HAMI 232W 1511346 January 26 2009

HF KODIAK 5R	SANDY BAR ADVANTAGE 43M
HF TIGER 5T	WILBAR RUBY 955N
HF ECHO 84R	TC FREEDOM 104 AMF
	HFDF ECHO 6N
BT TOUCHDOWN 14N NHC	TWIN VALLEY PRECISION E161 NHC AMF
2HR EVENING TINGE 12S	BT EVERELDA ENTENSE 65J
HF EVENING TINGE 188M	HF DYNA STAR 80J
	HF EVENING TINGE 20F

BW: 90 SEP 9/09 WT 810 WPDA: 3.51

ADJ 205 WT: 785 AGE OF DAM: 3

BW: +2.6 WW: +47 YW: +84 MILK: +25 TM: +48 YG: +37

\$ _____



Hamilton Bulls - Lots 223W, 228W, 232W

"You are never a loser until you quit trying."



Hamilton Farms Bulls

Page 44

HF
236W

HF Kodiak 236W

HAMI 236W 1511347 January 26 2009

SANDY BAR ADVANTAGE 43M
HF KODIAK 5R
WILBAR RUBY 955N

TC ADVANTAGE NHF AMF
SANDY BAR JEMINA 44K
VERMILION YELLOWSTONE NHF AMF
WILBAR RUBY 161J
MINBURN FREE LANCER 79D
HF MISS ROSEBUD 11D
O G L BATTLE CRY 427 128
HF TIBBIE 49C

GNAS CRACKER 33G
HF TIBBIE 177L
HF TIBBIE 105G

BW: 88 SEP 9/09 WT 775 WPDA: 3.43

ADJ 205 WT: 711 AGE OF DAM: 8

BW: +1.6 WW: +43 YW: +74 MILK: +21 TM: +42 YG: +32 SC: +1.26

\$ _____



HF
237W

HF All-In 237W

HAMI 237W 1531635 January 27 2009

HF KODIAK 5R
HF TIGER 5T
HF ECHO 84R

SANDY BAR ADVANTAGE 43M
WILBAR RUBY 955N
TC FREEDOM 104 AMF
HFDF ECHO 6N
DURALTA 111A CHANCE 11H
LLB KEEPSAKE 94H
GREENS PREMIUM 7578
HF TIBBIE 2D

REMITALL ICEMAN 10K
HF TIBBIE 100M
HF TIBBIE 86K

BW: 90 SEP 9/09 WT 845 WPDA: 3.76

ADJ 205 WT: 778 AGE OF DAM: 10 (RECIPIENT)

BW: +3.5 WW: +54 YW: +90 MILK: +28 TM: +55 YG: +36 SC: +0.46

\$ _____



HF TIBBIE 100M

HF
238W

HF Hemi 238W

HAMI 238W 1511356 January 27 2009

S A V 004 PREDOMINANT 4438 NHF AMF
HF HEMI 151T
HF TIBBIE 100M

S A V 8180 TRAVELER 004 NHF AMF
S A V EMBLYNETTE 1182
REMITALL ICEMAN 10K
HF TIBBIE 86K
N BAR EMULATION EXT NHF AMF
M B RACHEL 2173
COLDSTREAM FOREST GUMP 62E
ARDA BLACKCAP 110Y

WHITESTONE WIDESPREAD MB
HF BLACKCAP 138L
ARDA BLACKCAP 16G

BW: 107 SEP 9/09 WT 830 WPDA: 3.66

ADJ 205 WT: 766 AGE OF DAM: 8

BW: +4.5 WW: +49 YW: +83 MILK: +17 TM: +42 YG: +35 SC: +0.19

\$ _____



Hamilton Bulls - Lots 236W, 237W, 238W

“You can tell more about a person by what he says about others than you can by what others say about him”



HF 239W *Hamilton Farms* **HF Kodiak 239W**
 HAMI 239W 1511353 January 27 2009

SANDY BAR ADVANTAGE 43M HF KODIAK 5R WILBAR RUBY 955N	TC ADVANTAGE NHF AMF SANDY BAR JEMINA 44K VERMILION YELLOWSTONE NHF AMF WILBAR RUBY 161J RIVERBEND POWERLINE 0050 DURALTA 14C ECHO 32E HF PREMIUM PLUS 74K KBJ JESTRESS 47A
---	--

HF POWER STROKE 59M
2HR JESTRESS 52R
HF JESTRESS 182M

BW: 98 SEP 9/09 WT 755 WPDA: 3.36

ADJ 205 WT: 715 AGE OF DAM: 4

BW: +4.2 WW: +49 YW: +74 MILK: +23 TM: +47 YG: +25 S

\$ _____

Special thanks to Joe Friesen for all his hard work and dedication

HF 243W *Hamilton Farms* **HF Kodiak 243W**
 HAMI 243W 1511360 January 28 2009

SANDY BAR ADVANTAGE 43M HF KODIAK 5R WILBAR RUBY 955N	TC ADVANTAGE NHF AMF SANDY BAR JEMINA 44K VERMILION YELLOWSTONE NHF AMF WILBAR RUBY 161J
---	---

S A V 004 PREDOMINANT 4438
HF LUCY 181T
HF LUCY 84J

S A V 8180 TRAVELER 004 NHF AMF
S A V EMBLYNETTE 1182
GREENS PREMIUM 7578
HF MISS LUCY 8D

BW: 82 SEP 9/09 WT 730 WPDA: 3.26

ADJ 205 WT: 754 AGE OF DAM: 2

\$ _____

Calves are not creep fed at Hamilton Farms...just grass and milk

HF 244W *Hamilton Farms* **HF Hemi 244W**
 HAMI 244W 1511359 January 28 2009

S A V 004 PREDOMINANT 4438 NHF AMF HF HEMI 151T HF TIBBIE 100M	S A V 8180 TRAVELER 004 NHF AMF S A V EMBLYNETTE 1182 REMITALL ICEMAN 10K HF TIBBIE 86K HF PROGRESS 20K HF TIBBIE 35K RIVERBEND POWERLINE 0050 HF MISS BLACKWOOD LADY 17E
--	--

HF PROGRESS 84N
HF BLACKWOOD LADY 233R
HF BLACKWOOD LADY 26M

BW: 85 SEP 9/09 WT 735 WPDA: 3.28

ADJ 205 WT: 698 AGE OF DAM: 4

BW: +2.5 WW: +40 YW: +69 MILK: +17 TM: +37

\$ _____

Entire Bull Offering Sells with the Select Females to Follow!

Hamilton Bulls - Lots 239W, 243W, 244W

“Keep steadily before you the fact that all true success depends at last upon yourself.”



HF
247W

HF Encore 247W

HAMI 247W 1511366 January 29 2009

D H D TRAVELER 6807 NHF AMF
DUFF ENCORE 702 AMF
O C C DIXIE ERICA 814G

Q A S TRAVELER 23-4 NHF AMF
BEMINDFUL MAID D H D 0807
O C C ANCHOR 771A
O C C DIXIE ERICA 764C
MINBURN FREE LANCER 79D
HF MISS ROSEBUD 11D
EXAR RITO 5072
HF TIBBIE 57D

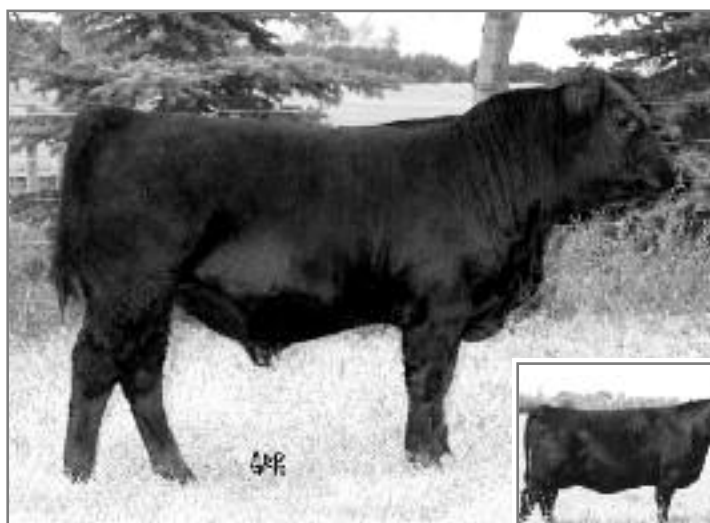
GNAS CRACKER 33G
HF TIBBIE 151J
HF TIBBIE 97G

BW: 89 SEP 9/09 WT 705 WPDA: 3.16

ADJ 205 WT: 665 AGE OF DAM: 10

BW: +2.2 WW: +37 YW: +60 MILK: +16 TM: +34 YG: +23 SC: +0.10

\$ _____



HF TIBBIE 151J

HF
248W

HF Hemi 248W

HAMI 248W 1511357 January 28 2009

S A V 004 PREDOMINANT 4438 NHF AMF
HF HEMI 151T
HF TIBBIE 100M

S A V 8180 TRAVELER 004 NHF AMF
S A V EMBLYNETTE 1182
REMITALL ICEMAN 10K
HF TIBBIE 86K
HYLINE RIGHT TIME 338 NHF AMF
HYLINE ELLEN 86
DOUBLE AA RETO 554'93
DOUBLE AA ANNIE K 589'92

HYLINE RIGHT WAY 781
2HR ANNIE K 23S
DOUBLE AA ANNIE K 291'98

BW: 100 SEP 9/09 WT 860 WPDA: 3.84

ADJ 205 WT: 838 AGE OF DAM: 3

BW: +3.6 WW: +51 YW: +82 MILK: +19 TM: +45 YG: +32

\$ _____



HF
251W

HF Hemi 251W

HAMI 251W 1511369 January 28 2009

S A V 004 PREDOMINANT 4438 NHF AMF
HF HEMI 151T
HF TIBBIE 100M

S A V 8180 TRAVELER 004 NHF AMF
S A V EMBLYNETTE 1182
REMITALL ICEMAN 10K
HF TIBBIE 86K
GREENS PREMIUM 7578
HF ERICA 61F
EXAR RITO 5072
BIG BEAR BETTY 5W

HF JUSTICE 52L
HF BETTY 29N
HF BETTY 115G

BW: 102 SEP 9/09 WT 835 WPDA: 3.74

ADJ 205 WT: 776 AGE OF DAM: 6

BW: +4.6 WW: +46 YW: +80 MILK: +21 TM: +44 YG: +34 SC: +0.33

\$ _____





HF 252W *Hamilton Farms* **HF Hemi 252W**
 HAMI 252W 1511365 January 29 2009

S A V 004 PREDOMINANT 4438 NHF AMF	S A V 8180 TRAVELER 004 NHF AMF
HF HEMI 151T	S A V EMBLYNETTE 1182
HF TIBBIE 100M	REMITALL ICEMAN 10K
	HF TIBBIE 86K
HF PROGRESS 20K	NORTHERN IMPROVEMENT 4480
HF LICORICE 154N	DURALTA 14C ECHO 32E
HF LICORICE 19L	GREENS PREMIUM 7578
	NR LICORICE 6F

BW: 97 SEP 9/09 WT 825 WPDA: 3.70
 ADJ 205 WT: 766 AGE OF DAM: 6
 BW: +2.8 WW: +51 YW: +83 MILK: +22 TM: +47 YG: +33 SC: +0.18

\$ _____



HF 259W *Hamilton Farms* **HF Tiger 259W**
 HAMI 259W 1511370 January 30 2009

HF KODIAK 5R	SANDY BAR ADVANTAGE 43M
HF TIGER 5T	WILBAR RUBY 955N
HF ECHO 84R	TC FREEDOM 104 AMF
	HFDF ECHO 6N
BWB TRAVELER 110P	BWB TRAVELER 1'01 OF 044
HF PRIDE LASS 255T	BWB LASS 52'01 OF ROYCE 741C
LLB PRIDE LASS 59D	ARSF OBSESSION 10B
	WK PRIDE LASS 1424

BW: 70 SEP 9/09 WT 680 WPDA: 3.06
 ADJ 205 WT: 712 AGE OF DAM: 2
 BW: +1.6 WW: +42 YW: +72 MILK: +17 TM: +38 YG: +29

\$ _____



HF 260W *Hamilton Farms* **HF Survivor 260W**
 HAMI 260W 1531636 January 30 2009

HF KODIAK 5R	SANDY BAR ADVANTAGE 43M
HF TIGER 5T	WILBAR RUBY 955N
HF ECHO 84R	TC FREEDOM 104 AMF
	HFDF ECHO 6N
TC FREEDOM 104 AMF	CONNELLY FOREFRONT NHF AMF
HF ECHO 187N	T C RUBY 9095
DURALTA 14C ECHO 32E	HF WALK-ON 14C
	STONEHAVEN MISS PONDEROSA 9U

BW: 90 SEP 9/09 WT 765 WPDA: 3.45
 ADJ 205 WT: 713 AGE OF DAM: 9 (RECIPIENT)
 BW: +2.4 WW: +46 YW: +82 MILK: +23 TM: +46 YG: +35 SC: +0.44

\$ _____



Hamilton Bulls - Lots 252W, 259W, 260W

“How a man plays a game shows something of his character, how he loses shows all of it”



HF 261W

HF Show Time 261W

HAMI 261W 1531637 January 30 2009

HF KODIAK 5R
HF TIGER 5T
HF ECHO 84R

SANDY BAR ADVANTAGE 43M
WILBAR RUBY 955N
TC FREEDOM 104 AMF
HFDF ECHO 6N
CONNEALY FOREFRONT NHF AMF
T C RUBY 9095
HF WALK-ON 14C
STONEHAVEN MISS PONDEROSA 9U

TC FREEDOM 104 AMF
HF ECHO 187N
DURALTA 14C ECHO 32E

BW: 92 SEP 9/09 WT 875 WPDA: 3.94

ADJ 205 WT: 815 AGE OF DAM: 6 (RECIPIENT)

BW: +2.4 WW: +46 YW: +82 MILK: +23 TM: +46 YG: +35 SC: +0.44

\$ _____



HF ECHO 187N

HF 263W

HF Done Right 263W

HAMI 263W 1511376 January 31 2009

BT RIGHT TIME 24J NHF AMF
HF DONE RIGHT 125R
HF ROSEBUD 127K

LEACHMAN RIGHT TIME
SITZ EVERELDA ENTENSE 1905
HF MOST WANTED 46H
HF ROSEBUD 70H
SANDY BAR ADVANTAGE 43M
WILBAR RUBY 955N
WHITESTONE 9FB3 G228
HF TIBBIE 10C

HF KODIAK 5R
HF TIBBIE 62T
HF TIBBIE 27H

BW: 85 SEP 9/09 WT 720 WPDA: 3.26

ADJ 205 WT: 753 AGE OF DAM: 2

BW: +0.3 WW: +40 YW: +76 MILK: +19 TM: +39 YG: +37

\$ _____



HF 265W

HF Encore 265W

HAMI 265W 1511375 January 31 2009

D H D TRAVELER 6807 NHF AMF
DUFF ENCORE 702 AMF
O C C DIXIE ERICA 814G

Q A S TRAVELER 23-4 NHF AMF
BEMINDFUL MAID D H D 0807
O C C ANCHOR 771A
O C C DIXIE ERICA 764C
HF WALKER 107E
HFRF ROSEBUD 72F
LLB PROPHET 174S
QUEENIE OF ARJAY 20L

HF MOST WANTED 46H
HF QUEENIE 101K
BIG BEAR QUEENIE 46X

BW: 100 SEP 9/09 WT 815 WPDA: 3.69

ADJ 205 WT: 763 AGE OF DAM: 9

BW: +2.9 WW: +29 YW: +53 MILK: +13 TM: +28 YG: +24 SC: -0.16

\$ _____



Hamilton Bulls - Lots 261W, 263W, 265W

"A coward gets scared and quits. A hero gets scared, but still goes on"



HF 266W *Hamilton Farms* **HF Tiger 266W**
 HAMI 266W 1511379 February 01 2009

HF KODIAK 5R	SANDY BAR ADVANTAGE 43M
HF TIGER 5T	WILBAR RUBY 955N
HF ECHO 84R	TC FREEDOM 104 AMF
	HFDF ECHO 6N
GREENS PREMIUM 7578	WK ULTIMATUM
HF MAYFLOWER 68L	GREENS LORI 5078
SHELL'S MAYFLOWER 4F	REMINGTON'S BARDOLENE 225D
	MAYFLOWER 1R

BW: 98 SEP 9/09 WT 805 WPDA: 3.66
 ADJ 205 WT: 757 AGE OF DAM: 8
 BW: +3.6 WW: +50 YW: +83 MILK: +23 TM: +47 YG: +33 SC: +0.26

\$ _____



GREENS PREMIUM 7578

HF 267W *Hamilton Farms* **HF Tiger 267W**
 HAMI 267W 1531638 February 01 2009

HF KODIAK 5R	SANDY BAR ADVANTAGE 43M
HF TIGER 5T	WILBAR RUBY 955N
HF ECHO 84R	TC FREEDOM 104 AMF
	HFDF ECHO 6N
REMITALL ICEMAN 10K	DURALTA 111A CHANCE 11H
HF TIBBIE 100M	LLB KEEPSAKE 94H
HF TIBBIE 86K	GREENS PREMIUM 7578
	HF TIBBIE 2D

BW: 110 SEP 9/09 WT 885 WPDA: 4.02
 ADJ 205 WT: 832 AGE OF DAM: 10 (RECIPIENT)
 BW: +3.5 WW: +54 YW: +90 MILK: +28 TM: +55 YG: +36 SC: +0.46

\$ _____



HF TIBBIE 100M

HF 272W *Hamilton Farms* **HF Reliabull 272W**
 HAMI 272W 1511381 February 02 2009

HF PROGRESS 20K	NORTHERN IMPROVEMENT 4480 GF
HF RELIABULL 41S	DURALTA 14C ECHO 32E
HF ANNIE 112P	HF PREMIUM PLUS 74K
	HF ANNIE 42J
SANDY BAR ADVANTAGE 43M	TC ADVANTAGE NHF AMF
HF TIBBIE 333T	SANDY BAR JEMINA 44K
HF TIBBIE 147K	NORTHERN IMPROVEMENT 4480 GF
	MVHF TIBBIE 31Z

BW: 79 SEP 9/09 WT 700 WPDA: 3.20
 ADJ 205 WT: 739 AGE OF DAM: 2
 BW: +1.7 WW: +41 YW: +74 MILK: +20 TM: +40 YG: +33

\$ _____

HF 274W *Hamilton Farms* **HF Encore 274W**
 HAMI 274W 1511383 February 02 2009

D H D TRAVELER 6807 NHF AMF	Q A S TRAVELER 23-4 NHF AMF
DUFF ENCORE 702 AMF	BEMINDFUL MAID D H D 0807
O C C DIXIE ERICA 814G	O C C ANCHOR 771A
	O C C DIXIE ERICA 764C
HF KODIAK 5R	SANDY BAR ADVANTAGE 43M
HF ECHO 79T	WILBAR RUBY 955N
HF ECHO 187N	TC FREEDOM 104 AMF
	DURALTA 14C ECHO 32E

BW: 85 SEP 9/09 WT 695 WPDA: 3.17
 ADJ 205 WT: 735 AGE OF DAM: 2

\$ _____

Hamilton Bulls - Lots 266W, 267W, 272W, 274W



HF 275W *Hamilton Farms* **HF Entourage 275W**
 HAMI 275W 1497243 February 03 2009

HF KODIAK 5R	SANDY BAR ADVANTAGE 43M
HF TIGER 5T	WILBAR RUBY 955N
HF ECHO 84R	TC FREEDOM 104 AMF
	HFDF ECHO 6N
TC FREEDOM 104 AMF	CONNEALY FOREFRONT NHF AMF
HF ECHO 84R	T C RUBY 9095
HFDF ECHO 6N	RIVERBEND POWERLINE 0050
	HF ECHO 83J

BW: 80 SEP 9/09 WT 785 WPDA: 3.60

ADJ 205 WT: 761 AGE OF DAM: 4

BW: +2.4 WW: +52 YW: +92 MILK: +29 TM: +55 YG: +40 SC: +0.55

\$ _____



HF ECHO 84R

HF 276W *Hamilton Farms* **HF Kodiak 276W**
 WYAT 276W 1511468 February 02 2009

SANDY BAR ADVANTAGE 43M	TC ADVANTAGE NHF AMF
HF KODIAK 5R	SANDY BAR JEMINA 44K
WILBAR RUBY 955N	VERMILION YELLOWSTONE NHF AMF
	WILBAR RUBY 161J
HF POWER SOURCE 94M	RIVERBEND POWERLINE 0050
HF BLACKBIRD 144R	DURALTA 14C ECHO 32E
HF BLACKBIRD 99H	EXAR RITO 5072
	HF BLACKBIRD 27C

BW: 79 SEP 9/09 WT 745 WPDA: 3.40

ADJ 205 WT: 720 AGE OF DAM: 4

BW: +2.6 WW: +44 YW: +80 MILK: +23 TM: +45 YG: +36 SC: +0.65

\$ _____



HF BLACKBIRD 99H

HF 279W *Hamilton Farms* **HF Encore 279W**
 HAMI 279W 1511384 February 04 2009

D H D TRAVELER 6807 NHF AMF	Q A S TRAVELER 23-4 NHF AMF
DUFF ENCORE 702 AMF	BEMINDFUL MAID D H D 0807
O C C DIXIE ERICA 814G	O C C ANCHOR 771A
	O C C DIXIE ERICA 764C
W C NORTHERN EDGE 0C04	NORTHERN IMPROVEMENT 4480 GF
HF TIBBIE 78M	EXAR MISS EMULOUS 7581
HF TIBBIE 57D	G D A R TRAVELER 71 NHF AMF
	MVHF TIBBIE 32B

BW: 90 SEP 9/09 WT 685 WPDA: 3.16

ADJ 205 WT: 652 AGE OF DAM: 7

BW: +0.9 WW: +35 YW: +61 MILK: +16 TM: +33 YG: +26 SC: +0.02

\$ _____

HF 286W *Hamilton Farms* **HF Kodiak 286W**
 WYAT 286W 1511469 February 06 2009

SANDY BAR ADVANTAGE 43M	TC ADVANTAGE NHF AMF
HF KODIAK 5R	SANDY BAR JEMINA 44K
WILBAR RUBY 955N	VERMILION YELLOWSTONE NHF AMF
	WILBAR RUBY 161J
HF POWER SOURCE 94M	RIVERBEND POWERLINE 0050
HF BLACKBIRD 197S	DURALTA 14C ECHO 32E
HF BLACKBIRD 99H	EXAR RITO 5072
	HF BLACKBIRD 27C

BW: 73 SEP 9/09 WT 650 WPDA: 3.02

ADJ 205 WT: 665 AGE OF DAM: 3

BW: +2.3 WW: +41 YW: +75 MILK: +23 TM: +44 YG: +33

\$ _____

Hamilton Bulls - Lots 275W, 276W, 279W, 286W

"The best place to find a helping hand is at the end of your own arm"



HF 293W *Hamilton Farms* **HF Hemi 293W**
 HAMI 293W 1511393 February 07 2009

SA V 004 PREDOMINANT 4438 NHF AMF	SA V 8180 TRAVELER 004 NHF AMF
HF HEMI 151T	SA V EMBLYNETTE 1182
HF TIBBIE 100M	REMITALL ICEMAN 10K
	HF TIBBIE 86K
TC ADVANTAGE NHF AMF	KRUGERRAND OF DONAMERE 490
HF ECHO 106S	TC PRIDE 2010
DURALTA 14C ECHO 32E	HF WALK-ON 14C
	STONEHAVEN MISS PONDEROSA 9U

BW: 100 SEP 9/09 WT 795 WPDA: 3.71

ADJ 205 WT: 808 AGE OF DAM: 3

BW: +3.2 WW: +47 YW: +81 MILK: +23 TM: +46 YG: +35 SC: +0.41

\$ _____



HF 301W *Hamilton Farms* **HF Tiger 301W**
 HAMI 301W 1511400 February 09 2009

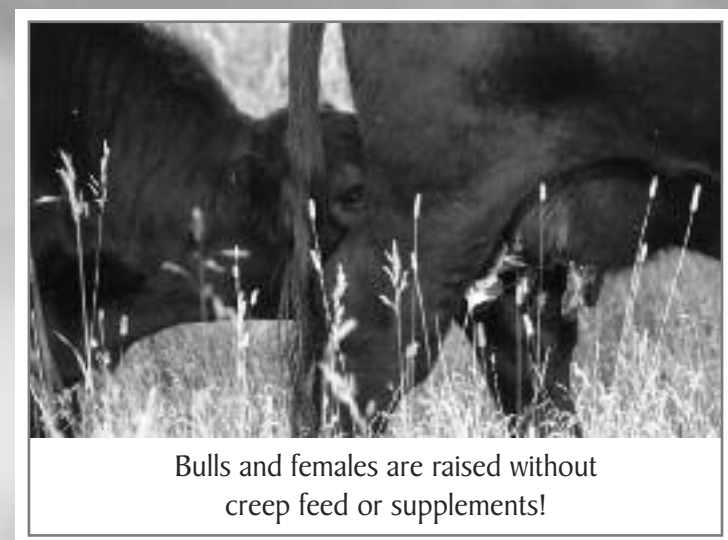
HF KODIAK 5R	SANDY BAR ADVANTAGE 43M
HF TIGER 5T	WILBAR RUBY 955N
HF ECHO 84R	TC FREEDOM 104 AMF
	HFDF ECHO 6N
RIVERBEND POWERLINE 0050	CONNEALY FRONTLINE NHF AMF
HF EVENING TINGE 49T	LEACHMAN BLACKBIRD 8060
HF EVENING TINGE 47P	HF POWER SOURCE 94M
	HF EVENING TINGE 20F

BW: 78 SEP 9/09 WT 700 WPDA: 3.30

ADJ 205 WT: 758 AGE OF DAM: 2

BW: +2.2 WW: +48 YW: +83 MILK: +26 TM: +50 YG: +35

\$ _____



Bulls and females are raised without creep feed or supplements!

HF 302W *Hamilton Farms* **HF Kodiak 302W**
 HAMI 302W 1511402 February 10 2009

SANDY BAR ADVANTAGE 43M	TC ADVANTAGE NHF AMF
HF KODIAK 5R	SANDY BAR JEMINA 44K
WILBAR RUBY 955N	VERMILION YELLOWSTONE NHF AMF
	WILBAR RUBY 161J
DEAHS CUPIDS ARROW	BUFFALOS LOMBARDI A39
HF MISS ANNIE 129L	L&C LONGVIEW HI FIVE
HF MISS ANNIE 22B	P F HAMILTON 9H24
	RANNOCH MISS ANNIE 5'82

BW: 95 SEP 9/09 WT 790 WPDA: 3.74

ADJ 205 WT: 770 AGE OF DAM: 8

BW: +2.5 WW: +41 YW: +67 MILK: +18 TM: +38 YG: +27

\$ _____



“I cannot give you the formula for success, but I can give you the formula for failure—which is: Try to please everyone.”

Hamilton Bulls - Lots 293W, 301W, 302W



Hamilton Farms Bulls

Page 52

HF
308W

HF Encore 308W

HAMI 308W 1511405 February 11 2009

D H D TRAVELER 6807 NHF AMF
DUFF ENCORE 702 AMF
O C C DIXIE ERICA 814G

TC FREEDOM 104 AMF
2HR ANNIE K 3S
ELLIOTT ANNIE K 46N

Q A S TRAVELER 23-4 NHF AMF
BEMINDFUL MAID D H D 0807
O C C ANCHOR 771A
O C C DIXIE ERICA 764C
CONNELLY FOREFRONT NHF AMF
T C RUBY 9095
BON VIEW NEW DESIGN 1407 NHF
DOUBLE AA ANNIE K 291'98

BW: 82 SEP 9/09 WT 755 WPDA: 3.60

ADJ 205 WT: 781 AGE OF DAM: 3

BW: +1.7 WW: +41 YW: +77 MILK: +20 TM: +40 YG: +36

\$ _____



HF
309W

HF Kodiak 309W

HAMI 309W 1511406 February 11 2009

SANDY BAR ADVANTAGE 43M
HF KODIAK 5R
WILBAR RUBY 955N

RIVERBEND POWERLINE 0050
HF ERICA 176P
HF ERICA 61F

TC ADVANTAGE NHF AMF
SANDY BAR JEMINA 44K
VERMILION YELLOWSTONE NHF AMF
WILBAR RUBY 161J
CONNELLY FRONTLINE NHF AMF
LEACHMAN BLACKBIRD 8060
HF WALK-ON 14C
ERICA OF RANNOCH 122C

BW: 80 SEP 9/09 WT 735 WPDA: 3.50

ADJ 205 WT: 719 AGE OF DAM: 5

BW: +2.1 WW: +48 YW: +82 MILK: +23 TM: +47 YG: +34 SC: +0.44

\$ _____



RIVERBEND POWERLINE 0050

HF
310W

HF Kodiak 310W

HAMI 310W 1511407 February 11 2009

BWB TRAVELER 1'01 OF 044
BWB TRAVELER 110P
BWB LASS 52'01 OF ROYCE 741C

NORTHERN IMPROVEMENT 4480
HF TIBBIE 147K
MVHF TIBBIE 31Z

TC ADVANTAGE NHF AMF
SANDY BAR JEMINA 44K
VERMILION YELLOWSTONE NHF AMF
WILBAR RUBY 161J
TC STOCKMAN 365
BLACKCAP OF R R 5367
BROST DAN PATCH
MVF TIBBIE 15T

BW: 90 SEP 9/09 WT 725 WPDA: 3.45

ADJ 205 WT: 710 AGE OF DAM: 9

BW: +2.1 WW: +42 YW: +71 MILK: +15 TM: +36 YG: +29 SC: +0.35

\$ _____



Hamilton Bulls - Lots 308W, 309W, 310W

"Success is the accomplishment of that which most people think can't be done."

HF 315W *Hamilton Farms* **HF Encore 315W**
 HAMI 315W 1511411 February 13 2009

D H D TRAVELER 6807 NHF AMF DUFF ENCORE 702 AMF O C C DIXIE ERICA 814G	Q A S TRAVELER 23-4 NHF AMF BEMINDFUL MAID D H D 0807 O C C ANCHOR 771A O C C DIXIE ERICA 764C NICHOLS EUREKA W57 O G L DUSTY ROSE 128 902 HF WALK-ON 14C STONEHAVEN MISS PONDEROSA 9U
--	---

BW: 89 SEP 9/09 WT 695 WPDA: 3.34

ADJ 205 WT: 686 AGE OF DAM: 6

BW: +3.0 WW: +34 YW: +69 MILK: +15 TM: +32 YG: +35 SC: +0.19

\$ _____



HF 319W *Hamilton Farms* **HF Ideal 319W**
 HAMI 315W 1511417 February 15 2009

PRAIRIELANE IDEAL 7451-2014 SANDY BAR IDEAL 18S SANDY BAR PRIDE 89L	Q A S TRAVELER 23-4 NHF AMF BEMINDFUL MAID D H D 0807 O C C ANCHOR 771A O C C DIXIE ERICA 764C CONNEALY FRONTLINE NHF AMF LEACHMAN BLACKBIRD 8060 HF WALK-ON 14C BLACKWOOD LADY HK 3085
---	--

BW: 70 SEP 9/09 WT 710 WPDA: 3.45

ADJ 205 WT: 707 AGE OF DAM: 5

BW: +1.6 WW: +49 YW: +83 MILK: +18 TM: +42 YG: +34 SC: -0.10

\$ _____



HF 323W *Hamilton Farms* **HF Kodiak 323W**
 HAMI 323W 1511412 February 14 2009

SANDY BAR ADVANTAGE 43M HF KODIAK 5R WILBAR RUBY 955N	TC ADVANTAGE NHF AMF SANDY BAR JEMINA 44K VERMILION YELLOWSTONE NHF AMF WILBAR RUBY 161J TWIN VALLEY PRECISION E161 NHC BT EVERELDA ENTENSE 65J HF NO SURRENDER 37J ULTRA 727 TOP GAL 1J
---	---

BW: 75 SEP 9/09 WT 725 WPDA: 3.50

ADJ 205 WT: 761 AGE OF DAM: 3

BW: +2.6 WW: +43 YW: +77 MILK: +23 TM: +44 YG: +34

\$ _____



"The greatest mistake you can make in life is to continually fear you will make one"

Hamilton Bulls - Lots 315W, 319W, 323W



Hamilton Farms Bulls

Page 54

HF 330W *Hamilton Farms* **HF Hemi 330W**
 HAMI 330W 1530068 February 19 2009

S A V 004 PREDOMINANT 4438 NHF AMF HF HEMI 151T HF TIBBIE 100M	S A V 8180 TRAVELER 004 NHF AMF S A V EMBLYNETTE 1182 REMITALL ICEMAN 10K HF TIBBIE 86K TC STOCKMAN 365 BLACKCAP OF R R 5367 O G L BATTLE CRY 427 128 C C MISTRESS 4149-2177 M
--	---

NORTHERN IMPROVEMENT 448
 HF MISTY'S VALENTINE 166L
 EXAR MISTRESS 9481

BW: 97	SEP 9/09 WT 755	WPDA: 3.74
ADJ 205 WT: 765	AGE OF DAM: 8	
BW: +1.5	WW: +44	YW: +75
MILK: +17	TM: +39	YG: +32

\$ _____

Swiss Tour Group - World Angus Forum, July 09



HF 332W *Hamilton Farms* **HF Hemi 332W**
 HAMI 332W 1511426 February 20 2009

S A V 004 PREDOMINANT 4438 NHF AMF HF HEMI 151T HF TIBBIE 100M	S A V 8180 TRAVELER 004 NHF AMF S A V EMBLYNETTE 1182 REMITALL ICEMAN 10K HF TIBBIE 86K WK ULTIMATUM GREENS LORI 5078 HCC CATTLEMENS CHOICE 13'84 ERICA OF R F 12P
--	---

GREENS PREMIUM 7578
 HF ERICA 44L
 ERICA OF R F 22W

BW: 100	SEP 9/09 WT 705	WPDA: 3.51
ADJ 205 WT: 717	AGE OF DAM: 8	
BW: +4.4	WW: +50	YW: +81
MILK: +16	TM: +41	YG: +32

\$ _____



Sight Unseen Purchase Plan!
 We guarantee full satisfaction upon delivery
 or you don't own them!

HF 334W *Hamilton Farms* **HF Hemi 334W**
 HAMI 334W 1511423 February 20 2009

S A V 004 PREDOMINANT 4438 NHF AMF HF HEMI 151T HF TIBBIE 100M	S A V 8180 TRAVELER 004 NHF AMF S A V EMBLYNETTE 1182 REMITALL ICEMAN 10K HF TIBBIE 86K YOUNG DALE HOGAN 8C WIWA CREEK ERICA 27B 150D NORTHERN IMPROVEMENT 4480 GF EXAR MISTRESS 9481
--	--

WIWA CREEK HOGAN 14'97
 2HR MISTY'S VALENTINE 13R
 HF MISTY'S VALENTINE 166L

BW: 89	SEP 9/09 WT 750	WPDA: 3.73
ADJ 205 WT: 781	AGE OF DAM: 4	
BW: +2.2	WW: +45	YW: +75
MILK: +17	TM: +39	YG: +31

\$ _____



Hamilton Bulls - Lots 330W, 332W, 334W

"Always laugh when you can. It is cheap medicine"

HF 341W *Hamilton Farms* **HF Ideal 341W**
 HAMI 341W 1511432 February 24 2009 TWIN

PRAIRIELANE IDEAL 7451-2014	Q A S TRAVELER 23-4 NHF AMF
SANDY BAR IDEAL 18S	BEMINDFUL MAID D H D 0807
SANDY BAR PRIDE 89L	O C C ANCHOR 771A
	O C C DIXIE ERICA 764C
BALDRIDGE JULIO 157J NHF AMF	BALDRIDGE BOB
HF ROSEBUD 152R	BALDRIDGE BLACKBIRD 211G
HF ROSEBUD 93J	WHITESTONE 9FB3 G228
	HF MISS ROSEBUD 15C

BW: 70 SEP 9/09 WT 650 WPDA: 3.30

ADJ 205 WT: 753 AGE OF DAM: 4

BW: +2.4 WW: +52 YW: +94 MILK: +25 TM: +50 YG: +43 SC: +0.29

\$ _____



HF 342W *Hamilton Farms* **HF Ideal 342W**
 HAMI 342W 1511431 February 24 2009 TWIN

PRAIRIELANE IDEAL 7451-2014	Q A S TRAVELER 23-4 NHF AMF
SANDY BAR IDEAL 18S	BEMINDFUL MAID D H D 0807
SANDY BAR PRIDE 89L	O C C ANCHOR 771A
	O C C DIXIE ERICA 764C
BALDRIDGE JULIO 157J NHF AMF	BALDRIDGE BOB
HF ROSEBUD 152R	BALDRIDGE BLACKBIRD 211G
HF ROSEBUD 93J	WHITESTONE 9FB3 G228
	HF MISS ROSEBUD 15C

BW: 70 SEP 9/09 WT 700 WPDA: 3.55

ADJ 205 WT: 805 AGE OF DAM: 4

BW: +2.4 WW: +52 YW: +94 MILK: +25 TM: +50 YG: +43 SC: +0.29

\$ _____



HF 343W *Hamilton Farms* **HF Tiger 343W**
 HAMI 343W 1531639 February 25 2009

HF KODIAK 5R	SANDY BAR ADVANTAGE 43M
HF TIGER 5T	WILBAR RUBY 955N
HF ECHO 84R	TC FREEDOM 104 AMF
	HFDF ECHO 6N
REMITALL ICEMAN 10K	DURALTA 111A CHANCE 11H
HF TIBBIE 100M	LLB KEEPSAKE 94H
HF TIBBIE 86K	GREENS PREMIUM 7578
	HF TIBBIE 2D

BW: 108 SEP 9/09 WT 795 WPDA: 4.06

ADJ 205 WT: 827 AGE OF DAM: 9 (RECIPIENT)

BW: +3.5 WW: +54 YW: +90 MILK: +28 TM: +55 YG: +36 SC: +0.46

\$ _____



“The only way of finding the limits of the possible is by going beyond them into the impossible.”



HF 350W *Hamilton Farms* **HF Ideal 350W**
 HAMI 350W 1511436 February 27 2009

PRAIRIELANE IDEAL 7451-2014 Q A S TRAVELER 23-4 NHF AMF
 SANDY BAR IDEAL 18S BEMINDFUL MAID D H D 0807
 SANDY BAR PRIDE 89L O C C ANCHOR 771A
 O C C DIXIE ERICA 764C
 RIVERBEND POWERLINE 0050 CONNEALY FRONTLINE NHF AMF
 HF ROSEBUD 198M LEACHMAN BLACKBIRD 8060
 HF ROSEBUD 23G PAPA EQUATOR 2928 NHF AMF
 HF MISS ROSEBUD 15C

BW: 90 SEP 9/09 WT 755 WPDA: 3.89

ADJ 205 WT: 793 AGE OF DAM: 7

BW: +3.0 WW: +54 YW: +95 MILK: +21 TM: +47 YG: +41 SC: +0.01

\$ _____



HF 351W *Hamilton Farms* **HF Wide Load 351W**
 HAMI 351W 1531640 February 27 2009

HF KODIAK 5R SANDY BAR ADVANTAGE 43M
 HF TIGER 5T WILBAR RUBY 955N
 HF ECHO 84R TC FREEDOM 104 AMF
 HFDF ECHO 6N
 TC FREEDOM 104 AMF CONNEALY FOREFRONT NHF AMF
 HF ECHO 187N T C RUBY 9095
 DURALTA 14C ECHO 32E HF WALK-ON 14C
 STONEHAVEN MISS PONDEROSA 9U

BW: 77 SEP 9/09 WT 710 WPDA: 3.66

ADJ 205 WT: 746 AGE OF DAM: 11

BW: +2.4 WW: +46 YW: +82 MILK: +23 TM: +46 YG: +35 SC: +0.44

\$ _____



HF ECHO 187N

HF 367U *Hamilton Farms* **HF Kodiak 367U**
 HAMI 367U 1532109 October 13, 2008

SANDY BAR ADVANTAGE 43M TC ADVANTAGE NHF AMF
 HF KODIAK 5R SANDY BAR JEMINA 44K
 WILBAR RUBY 955N VERMILION YELLOWSTONE NHF AMF
 HF MOST WANTED 46H WILBAR RUBY 161J
 HF ERICA 50K HF WALKER 107E
 HF ERICA 92H HFRF ROSEBUD 72F
 EXAR RITO 5072
 ERICA OF RANNOCH 122C

BW: 74 SEP 9/09 WT WPDA:

ADJ 205 WT: AGE OF DAM: 9

BW: +2.3 WW: +42 YW: +68 MILK: +20 TM: +40 YG: +27 SC: +0.72

\$ _____



Hamilton Bulls - Lots 350W, 351W, 367U

“Speak when you are angry, and you will make the best speech you'll ever regret”



Hamilton Select
FEMALES

Open Heifer Calves
Pages 58-69

Hamilton Open Females



HF PROGRESS 20K

HF 12W HP Tibbie 12W

JHF 12W 1511559 January 05 2009

BW: 82 ADJ 205 WT: 696 OCT 26 WT: 930 AGE OF DAM: 6
 BW: +0.6 WW: +45 YW: +77 MILK: +23 TM: +46 YG: +33 SC: +1.14

This sale feature can best be described as a "power house female", coming off the cow Sept 15/09 at 840 lbs. with all her growth attributed to green grass and mom's milk. There is calving ease on both sides of the pedigree with Progress on the bottom and then Kodiak on the top side, and yet obviously still maintaining plenty of performance. Tibbie 12W is one of the top performing females in this year's calf crop with a full sister in the herd which is one of many Kodiak 2 yr olds that calved out with a beautiful udder, did an awesome job raising their calf, bred back and maintained their body condition very well. Tibbie 12W overpowered her pen mates with an excessive amount of muscle, depth of rib and bone as well as a strong Angus head that has so much character and power you can not overlook this heifer. 139N was Joel's 4-H project in 2004 and 2005 bringing home both club and regional Championships.

- SANDY BAR ADVANTAGE 43M
- HF KODIAK 5R
- WILBAR RUBY 955N
- HF PROGRESS 20K
- HF TIBBIE 139N
- HF TIBBIE 178L
- TC ADVANTAGE NHF AMF
- SANDY BAR JEMINA 44K
- VERMILION YELLOWSTONE NHF AMF
- WILBAR RUBY 161J
- NORTHERN IMPROVEMENT 4480 GF
- DURALTA 14C ECHO 32E
- GNAS CRACKER 33G
- HF TIBBIE 105G

Hamilton Open Females - Lots 12W, 28W



HF 28W HF Erica 28W

HAMI 28W 1511192 January 08 2009

- HF KODIAK 5R
- HF TIGER 5T
- HF ECHO 84R
- HF PROGRESS 20K
- 2HR ERICA 34N
- HF ERICA 44L
- SANDY BAR ADVANTAGE 43M
- WILBAR RUBY 955N
- TC FREEDOM 104 AMF
- HDFD ECHO 6N
- NORTHERN IMPROVEMENT 4480
- DURALTA 14C ECHO 32E
- GREENS PREMIUM 7578
- ERICA OF R F 22W

BW: 81 ADJ 205 WT: 634 OCT 26 WT: 940 AGE OF DAM: 6
 BW: +2.2 WW: +46 YW: +78 MILK: +24 TM: +47 YG: +32

Erica 28W is one of a limited number of "Tiger" females on offer. Tiger has done an outstanding job in his first calf crop, with many of his calves topping the weaning stats as well as competing head to head with Kodiak in the calving ease department. See the footnotes on Tiger in the Reference Sires for more details. Erica 28W is very correct in her lines, extremely long bodied, a feminine lovely fronted female and Tiger has also stamped his progeny with great hair and a super disposition. The Erica cow family has produced sale toppers year after year with females like Erica 26T (\$20,000.00) to Continental Angus, Jim Walker and Gordon Atkins, and a high selling bull calf last year, "Ideal 266U" for \$10,000.00, going to Ring Creek Farm, just to name a few.

"The pessimist sees difficulty in every opportunity. The optimist sees the opportunity in every difficulty"

Hamilton Open Females

HF
45W

HF Tibbie 45W

HAMI 45W 1511219 January 10 2009

PRAIRIELANE IDEAL	IDEAL 7451 OF 8103 4465
SANDY BAR IDEAL 18S	PRAIRIELANE MAX DUCHESS 3050
SANDY BAR PRIDE 89L	SANDY BAR TONTO 61E
	SANDY BAR PRIDE 6H
WHITESTONE WIDESPREAD MB	N BAR EMULATION EXT
HF TIBBIE 35K	M B RACHEL 2173
HF TIBBIE 49C	V D A R NEW TREND 315
	MVF TIBBIE 15T

BW: 73 ADJ 205 WT: 641 OCT 26 WT: 850 AGE OF DAM: 9

BW: +1.2 WW: +47 YW: +84 MILK: +18 TM: +41 YG: +38 SC: -0.14

This heifer will impress you both on paper with her low BW (73 lbs) and her great performance, out of a 9 year old cow. Tibbie 35K produced a Progress bull that we sold half interest to Blackwood Angus, where he was used extensively for years. A feature heifer calf (x Predominant), sold to Bar H Angus (Robin Hogberg) last year for \$7750.00 and here is a fancy "Ideal" heifer to add to her list of the very good ones. This heifer puts it all together providing you with thickness, volume and yet does not give up any femininity with that much mass. Here is a heifer that could easily slide into anyone's show string, Rob would love to have me halter break another one.



HF TIBBIE 35K

HF
48W

HF Echo 48W

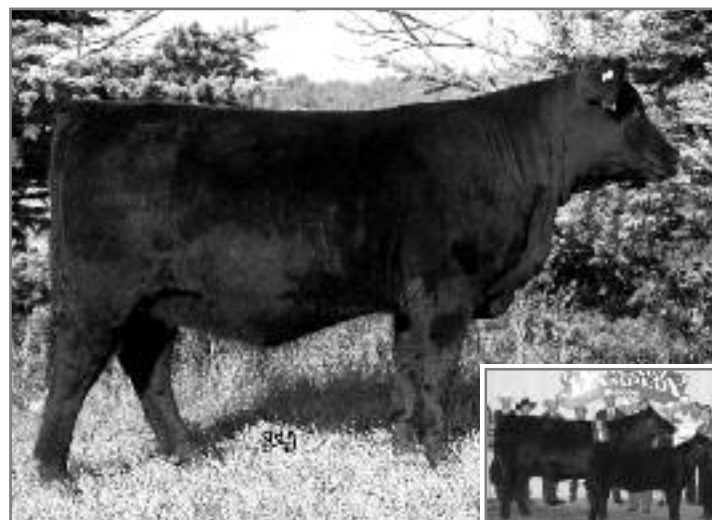
HAMI 48W 1511215 January 10 2009

S A V 004 PREDOMINANT 4438	S A V 8180 TRAVELER 004
HF HEMI 151T	S A V EMBLYNETTE 1182
HF TIBBIE 100M	REMITALL ICEMAN 10K
	HF TIBBIE 86K
TC FREEDOM 104	CONNEALY FOREFRONT
HF ECHO 207N	T C RUBY 9095
DURALTA 14C ECHO 32E	HF WALK-ON 14C
	STONEHAVEN MISS PONDEROSA 9U

BW: 95 ADJ 205 WT: 781 OCT 26 WT: 1035 AGE OF DAM: 6

BW: +4.0 WW: +51 YW: +85 MILK: +22 TM: +47 YG: +35 SC: +0.58

Wow! This is one powerful female and brood cow in the making. Echo 48W has taken the definition of volume to the next level, but she has maintained it in a very well balanced package, with a beautiful front end, bone and muscle shape to put it all together. "Hemi" has certainly added a shot of performance into the mix, but also don't forget what the outstanding cow family (Tibbie 100M) brings to the table. (See Reference Dams). This pedigree has many of the Angus breed notables.....Echo, Freedom, Tibbie and Traveler 004, resulting in Echo 48W who ranked #1 out of a group of 150 heifers at weaning. It takes an above average female to produce your herd sires and Tibbie 48W may quite possibly be the one that can take that task to fruition.



DURALTA 14C ECHO 32E

HF
51W

HF Tibbie 51W

HAMI 51W 1511216 January 10 2009

SANDY BAR ADVANTAGE 43M	TC ADVANTAGE NHF AMF
HF KODIAK 5R	SANDY BAR JEMINA 44K
WILBAR RUBY 955N	VERMILION YELLOWSTONE NHF AMF
	WILBAR RUBY 161J
GREENS PREMIUM 7578	WK ULTIMATUM
HF TIBBIE 62L	GREENS LORI 5078
HF TIBBIE 55F	MVHF DREAMWALKER 29A
	MVHF TIBBIE 32B

BW: 73 ADJ 205 WT: 583 OCT 26 WT: 865 AGE OF DAM: 8

BW: +3.1 WW: +50 YW: +82 MILK: +16 TM: +41 YG: +33 SC: +0.74

Tibbie 51W is a very correct, well muscled, eye appealing Kodiak heifer with a flawless pedigree top and bottom. Rob and I have been commenting lately on the number of older cows that have Green's Premium in the pedigrees and what an impressive job those Premium cows have done over the years. Another bull that did a great job of breeding was Dreamwalker, however he wasn't around for a long time due to a broken leg. Both these bulls are in the bottom side of 51W's lineage.



"Try not to become a man of success but a man of value."

Hamilton Open Females



HF TIBBIE 151J

HF
55W

HF June 55W

HAMI 55W 1511212 January 10 2009

S A V 004 PREDOMINANT 4438	S A V 8180 TRAVELER 004
HF HEMI 151T	S A V EMBLYNETTE 1182
HF TIBBIE 100M	REMITALL ICEMAN 10K
	HF TIBBIE 86K
HF PROGRESS 20K	NORTHERN IMPROVEMENT 4480
2HR JUNE 7N	DURALTA 14C ECHO 32E
HF JUNE 100L	HF NO SURRENDER 37J
	HF JUNE 125H

BW: 76 ADJ 205 WT: 654 OCT 26 WT: 870 AGE OF DAM: 6

BW: +3.9 WW: +47 YW: +74 MILK: +24 TM: +47 YG: +28 SC: +0.53

Take a good long look at 55W's picture because it is a true, natural image of June 55W. She is one solid heifer, both in her muscle expression and also in her structural soundness with a wide top extending from her shoulders to the tip of her tail. She is as deep through her chest floor as she is in her flank. 55W is very long bodied with a very feminine front end which completes the package. June 55W is a maternal sister to HF Cochrane 112U (x Kodiak), who sold to C Bar Livestock (Brent Cheek) last year in our sale for \$7000.00. She is also a maternal sister to 4R who is retained in the herd and who has been one of those females raising the sale toppers repeatedly. Another "Hemi" female that has so much to offer if you study the pedigree, with the power in Hemi's cow family. Tibbie 86K is as good a Green's Premium daughter as you will find, being an "Elite Dam" with 7 calves with an average ratio of 109.

HF
63W

HF Evening Tinge 63W

HAMI 63W 1511221 January 11 2009

SANDY BAR ADVANTAGE 43M	TC ADVANTAGE NHF AMF
HF KODIAK 5R	SANDY BAR JEMINA 44K
WILBAR RUBY 955N	VERMILION YELLOWSTONE NHF AMF
	WILBAR RUBY 161J
NORTHERN IMPROVEMENT 4480	TC STOCKMAN 365
HF EVENING TINGE 127L	BLACKCAP OF R R 5367
HF EVENING TINGE 126J	GREENS PREMIUM 7578
	HF EVENING TINGE 20F

BW: 80 ADJ 205 WT: 657 OCT 26 WT: 855 AGE OF DAM: 8

BW: +1.5 WW: +47 YW: +77 MILK: +22 TM: +45 YG: +31

Evening Tinge is a cow family that has been in the herd from day one and consistently producing in the top end of the herd. The proof is evident as 63W's dam and great grand dam are both designated as "Elite Dams" in the Canadian Angus Assoc. The great grand dam (20F) is 13 yrs old and maintains her youthful appearance with an udder similar to a 4 yr old cow. There are many females from the Evening Tinge cow family retained in the herd which is always a positive indication. 63W's pedigree has low birth and high performance numbers on both sides of the pedigree which is rare, but ever so desirable. Evening Tinge 63W is flawless both on paper and in her physical makeup. We believe this heifer could easily fit into any program with the genetics built into her.

HF
71W

HF Tibbie 71W

HAMI 71W 1511232 January 12 2009

SANDY BAR ADVANTAGE 43M	TC ADVANTAGE NHF AMF
HF KODIAK 5R	SANDY BAR JEMINA 44K
WILBAR RUBY 955N	VERMILION YELLOWSTONE NHF AMF
	WILBAR RUBY 161J
HF NO SURRENDER 37J	O G L BATTLE CRY 427 128
HF TIBBIE 37N	HF TIBBIE 47D
HF TIBBIE 151J	GNAS CRACKER 33G
	HF TIBBIE 97G

BW: 73 ADJ 205 WT: 616 OCT 26 WT: 820 AGE OF DAM: 6

BW: +1.7 WW: +40 YW: +68 MILK: +21 TM: +41 YG: +28 SC: +1.01

Oh yes, sit up and pay attention to this fancy heifer. A Tibbie x Kodiak combination...two of the very prominent names heard repeatedly in the Angus circles. Please refer to the footnotes on Kodiak to familiarize yourself with the top of the pedigree. 71W's dam, grand dam and great grand dam are all still producing in the herd, with Tibbie 97G designated as an "Elite Dam" by the Canadian Angus Assoc. Tibbie 71W has a maternal sister that would be considered as one of the cream of the herd and producing accordingly. Tibbie 71W sure could easily have been a feature heifer or poster girl. She will definitely catch your eye on Sale Day...a moderate framed, very attractive, eye appealing heifer with a very complete and well balanced muscle pattern and great hair to boot. Don't miss this heifer and note her BW of 73 lbs.

Hamilton Open Females - Lots 55W, 63W, 71W

"There is only one person who could ever make you happy, and that person is you."

HF
72W

HF Blackbird 72W

HAMI 72W 1511234 January 13 2009

HF KODIAK 5R
HF BEARS PAW 32T
HFDF ECHO 13N

NORTHERN IMPROVEMENT 4480
HF BLACKBIRD 114K
HF BLACKBIRD 99G

SANDY BAR ADVANTAGE 43M
WILBAR RUBY 955N
RIVERBEND POWERLINE 0050
HF ECHO 83J
TC STOCKMAN 365
BLACKCAP OF R R 5367
O G L BATTLE CRY 427 128
HF BLACKBIRD 27C

BW: 81 ADJ 205 WT: 603 OCT 26 WT: 820 AGE OF DAM: 9

BW: +2.8 WW: +42 YW: +79 MILK: +21 TM: +42 YG: +38 SC: +0.68
We all despise writing footnotes, but what a learning experience it is when you actually pay such close attention to the details of the individual's lineage and cow families in particular and their obvious structure phenotypically. The Blackbird family, in particular 99G was a styler cow in her own right, with achievements too numerous to repeat, but take the time to skim through her footnotes to learn more about the cow family. 114K is a very youthful cow with a flawless udder and numerous progeny to brag about as well. 114K has placed bulls into top operations such as Bar Diamond Ranching (Commercial Breeder of the Year for 2009), Huxley Colony, Vic Rowley, Wendy Chalack and Steve Harvey. Steve's purchase was a high selling heifer (\$4500.00) that went on to be Reserve Late Yearling Champion at WAF 2009. A full sister to Steve Harvey's heifer is the dam of a heifer calf that was Reserve Intermediate Calf Champion at the World Angus Forum, so as you can see the blood runs true as it does with this Bears paw heifer 72W. She is one sweet, moderate framed, nicely patterned heifer that could sure be used as a junior project.



HF
73W

HF Barbara Mchenry 73W

HAMI 73W 1511244 January 13 2009

HF KODIAK 5R
HF TIGER 5T
HF ECHO 84R

EXAR RITO 5072
HF BARBARA MCHENRY 70G
RIVERSTOWN BARBARA MCHENRY 13E

SANDY BAR ADVANTAGE 43M
WILBAR RUBY 955N
TC FREEDOM 104 AMF
HFDF ECHO 6N
RITO 3W3 OF OJ2 RITO 9FB3
SUMMITCREST ELSIE 0802
HF JUST CRUISIN' 5C
LLB BARBARA MCHENRY 24Y

BW: 80 ADJ 205 WT: 692 OCT 26 WT: 905 AGE OF DAM: 12

BW: +2.9 WW: +37 YW: +67 MILK: +24 TM: +42 YG: +30 SC: +0.59
Here is a performance "Tiger" daughter, weaning off the cow on Sept 15th at 805 lbs., with a low birth weight as well at 80 lbs. Her dam 70G is a 12 yr old cow who has certainly been a consistent producer never missing a calving season to date and bred back to calve in early January again.
Note this lovely fronted heifer that is extremely straight in her lines with loads of volume and brood cow written all over her. Tiger has done an extremely great job in his first calf crop with such consistency both with the bull and heifer calves with so few throw aways. Here is a female that will catch your eye on Sale Day with her brood cow appearance and massive volume, a very feminine package....a foundation female in the making.



HF
79W

HF Tibbie 79W

HAMI 79W 1511225 January 12 2009

HF KODIAK 5R
HF BEARS PAW 32T
HFDF ECHO 13N

S A F FOCUS OF E R
2HR TIBBIE 30R
HF TIBBIE 66L

SANDY BAR ADVANTAGE 43M
WILBAR RUBY 955N
RIVERBEND POWERLINE 0050
HF ECHO 83J
S A F FAME NHF AMF
G D A R FOREVER LADY 246
WHITESTONE WIDESPREAD MB
MVHF TIBBIE 31Z

BW: 73 ADJ 205 WT: 662 OCT 26 WT: 865 AGE OF DAM: 4

BW: +2.9 WW: +50 YW: +86 MILK: +24 TM: +49 YG: +37 SC: +0.21
Tibbie 79W is one of four "Bears paw" heifers on offer in the sale this year. Bears paw was the high selling bull in our 2007 Sale going to the Durie family for \$13,500.00 for half interest. Bears paw as you can see from the footnotes in the Reference Sires, is a 7/8 brother to Tiger and very similar in his phenotype. Tibbie 79W has a very moderate 73 lb BW with lots of performance if you take note of her EPD's and actual wts.
Tibbie 79W's grand dam and great grand dam were part of our flush program at one time and have produced many notable show and sale toppers as well as progeny within our herd. Tibbie 79W's granddam is the dam of a high selling bull to Jeff Jamison "Shoelace Joe" for \$7000.00. in our sale 2008. Bears paw's dam - Echo 13N is an "Elite Dam" in the Canadian Angus Assoc. and the dam of our high selling bull in our 2008 sale, HF Extreme 117U going to Southland Angus for \$14,000.00. Tibbie 79W certainly has the potential to be a top producer in your herd.



"You're happiest while you're making the greatest contribution."

Hamilton Open Females



HF 87W *Hamilton Open Females*
HF Evening Tinge 87W
 HAMI 87W 1511230 January 12 2009

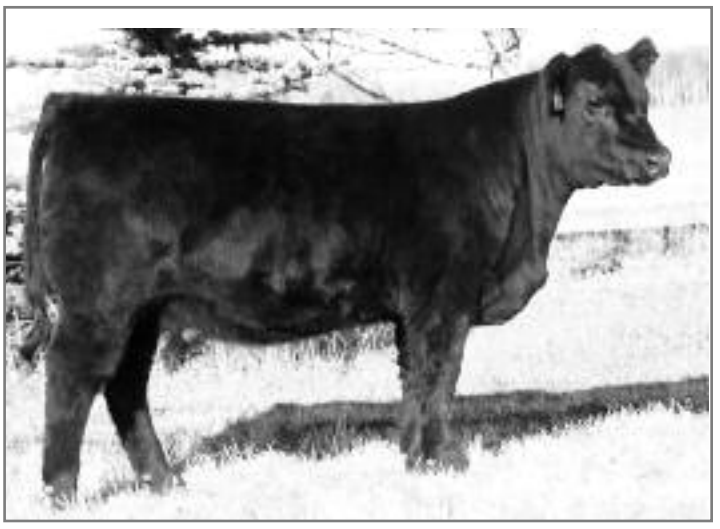
SANDY BAR ADVANTAGE 43M
 HF KODIAK 5R
 WILBAR RUBY 955N

EXAR RITO 5072
 HF EVENING TINGE 68H
 ARDA EVENING TINGLE 38R

TC ADVANTAGE NHF AMF
 SANDY BAR JEMINA 44K
 VERMILION YELLOWSTONE NHF AMF
 WILBAR RUBY 161J
 RITO 3W3 OF QJ2 RITO 9FB3
 SUMMITCREST ELSIE 0802
 SKARSHIP EDUCATOR
 EVENING TINGLE OF BANNER 31M

BW: 85 ADJ 205 WT: 661 OCT 26 WT: 880 AGE OF DAM: 11
 BW: +1.9 WW: +37 YW: +61 MILK: +21 TM: +40 YG: +24 SC: +0.62

Here is a cow family that is truly the definition of longevity. 87W's dam (68H) has produced 9 calves and is still in our herd, a maternal sister (8U) just went to town after 13 calves and the grand dam (38R) left us recently after producing 14 calves, all of which were natural calves – no flushing. A maternal sister (57R) (x Freewheeler) sold to Tyler Nostadt and Wat-Cha Land & Cattle and was later sold in their dispersal for \$20,000.00 to Johnson Livestock. Another full sister went to JD Farms and yet another maternal sister remains in the herd. Here is a heifer that could sure make an impact in your herd, as it appears she'll be around for a long time. The udders in this cow family will withstand the test of time; tight, level udders, with fine small teats.



HF 89W *Hamilton Open Females*
HF Mayflower 89W
 JHF 89W 1497017 January 14 2009

S A V 004 PREDOMINANT 4438
 HF HEMI 151T
 HF TIBBIE 100M

HF PROGRESS 20K
 HF MAYFLOWER 108P
 HF MAYFLOWER 201L

S A V 8180 TRAVELER 004
 S A V EMBLYNETTE 1182
 REMITALL ICEMAN 10K
 HF TIBBIE 86K
 NORTHERN IMPROVEMENT 4480
 DURALTA 14C ECHO 32E
 PEAK DOT WONDER 13J
 HF MAYFLOWER 63J

BW: 95 ADJ 205 WT: 666 OCT 26 WT: 980 AGE OF DAM: 5
 BW: +3.2 WW: +51 YW: +84 MILK: +25 TM: +50 YG: +34

Another heavy duty "Hemi" heifer that could potentially raise you the stout herd bulls and deep bodied broody type of females that we all aspire to raise. The bottom side of Hemi's pedigree – Tibbie 100M has been very amazing with her notable offspring. See the reference dams for more details. Mayflower 89W is unmistakably thick from front to back, as is her dam with depth and spring of rib and good flat bone, and great hair and a super disposition to complete the package. This heifer of Joel's was shown at the WAF 2009 and stood 3rd in a tough class of older heifer calves.



HF 109W *Hamilton Open Females*
HF Tibbie 109W
 HAMI 109W 1511259 January 15 2009

HF KODIAK 5R
 HF BEARS PAW 32T
 HFDF ECHO 13N

GREENS PREMIUM 7578
 HF TIBBIE 151L
 MVHF TIBBIE 42A

SANDY BAR ADVANTAGE 43M
 WILBAR RUBY 955N
 RIVERBEND POWERLINE 0050
 HF ECHO 83J
 WK ULTIMATUM
 GREENS LORI 5078
 ANGUS ACRES TEX 16S
 MVF TIBBIE 15T

BW: 85 ADJ 205 WT: 638 OCT 26 WT: 840 AGE OF DAM: 8
 BW: +3.4 WW: +46 YW: +78 MILK: +16 TM: +39 YG: +32

109W is another Bears paw heifer out of some of the "old" Tibbie genetics with Green's Premium on the top and Angus Acres Tex and Tibbie 15T (the matron of the "Tibbie" name) on the bottom of the pedigree. This pedigree is stacked with some of the most voluminous mother cows that have ever run in these pastures. Tibbie 109W could probably be rated as a shade over moderate, deep bodied and stout, yet still maintaining plenty of femininity. A moderate birth weight (85 lbs.) heifer with very favorable EPD's and plenty of brood cow potential.



Hamilton Open Females - Lots 87W, 89W, 109W

"It's easy to have faith in yourself and have discipline when you're a winner, when you're number one. What you got to have is faith and discipline when you're not a winner"

Hamilton Open Females

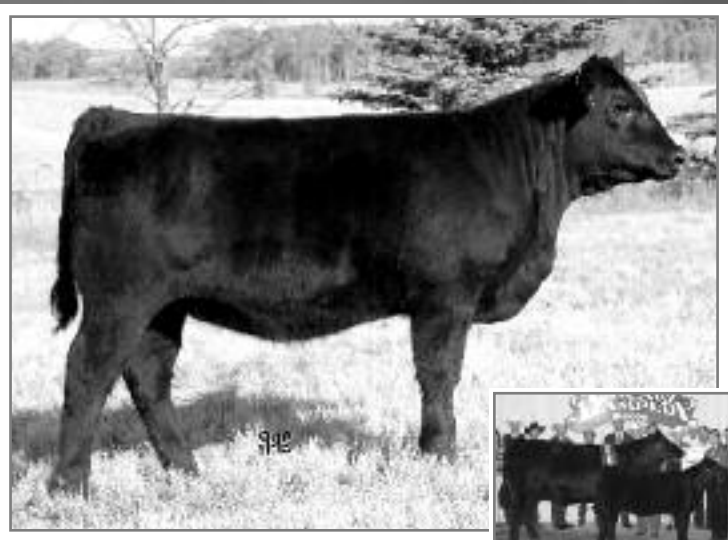


HF Echo 115W

HAMI 115W 1511270 January 16 2009

- S A V 004 PREDOMINANT 4438
- S A V 8180 TRAVELER 004
- HF HEMI 151T
- S A V EMBLYNETTE 1182
- HF TIBBIE 100M
- REMITALL ICEMAN 10K
- HF TIBBIE 86K
- O G L BATTLE CRY 427 128
- NICHOLS EUREKA W57
- HF HEMI 180M
- O G L DUSTY ROSE 128 902
- DURALTA 14C ECHO 32E
- HF WALK-ON 14C
- STONEHAVEN MISS PONDEROSA 9U

BW: 107 ADJ 205 WT: 715 OCT 26 WT: 935 AGE OF DAM: 7
 BW: +4.2 WW: +46 YW: +81 MILK: +20 TM: +43 YG: +36 SC: +0.78
 Yet another performance packed female sired by "Hemi", the high selling bull that sold to Trevor White at the Agribition, Masterpiece Sale for \$35,000.00 for 1/2 interest. See the Hemi footnotes in the Reference Sire section. We truly believe these Hemi females are going to make a positive impact in the herds amongst which they are dispersed. Echo 115W was one of the heaviest heifers at weaning and yet if you watch the video on our website, you will see she walks up headed with so much pride in her stride, she is sure a pleasure to watch and she should add that attractive presence to her progeny. Everything is lined up in this lotpedigree, EPD's and a very attractive heifer - don't miss her.



DURALTA 14C ECHO 32E



HF TIGER 5T - SIRE



HF Evening Tinge 138W

HAMI 138W 1511281 January 17 2009

BW: 70 ADJ 205 WT: 639 OCT 26 WT: 815 AGE OF DAM: 4
 BW: +3.0 WW: +48 YW: +83 MILK: +24 TM: +48 YG: +35 SC: +0.59

- HF KODIAK 5R
- HF TIGER 5T
- HF ECHO 84R

- TC FREEDOM 104 AMF
- SWEETWATER EVENING TINGE 13R
- EBON HILL TINGE 5'00

- SANDY BAR ADVANTAGE 43M
- WILBAR RUBY 955N
- TC FREEDOM 104 AMF
- HFDF ECHO 6N
- CONNELLY FOREFRONT NHF AMF
- T C RUBY 9095
- WIWA CREEK STOCKMAN 43 93
- CHICO TINGE 5E

Here is one of our feature poster girls. She is one sweetheart of a heifer out of a Freedom female we purchased at the Masterpiece Sale from the Sweetwater herd, Ryan and Michelle Hutchison of Melfort, SK...How fitting!
 It won't take you long on sale day to find this special "Tiger" daughter when you are going through the pens. Evening Tinge 138W has the depth in her flank and volume which combined with her muscle shape gives her perfect balance and body type. Her pretty Angus head and refined neck sets into her moderate framed body so nicely it is hard to ignore this heifer. Another characteristic of Tiger progeny is their docile manner which would also make this heifer a great junior project. Note the 70 lb BW and great EPD's to top off this feature lot.

"Nothing is so exhausting as indecision, and nothing is so futile"

Hamilton Open Females - Lots 115W, 138W

Hamilton Open Females



GREENS PREMIUM 7578

HF 185W *Hamilton Open Females*
HF Licorice 185W
 HAMI 185W 1511316 January 21 2009

HF KODIAK 5R	SANDY BAR ADVANTAGE 43M
HF TIGER 5T	WILBAR RUBY 955N
HF ECHO 84R	TC FREEDOM 104 AMF
	HFDF ECHO 6N
GREENS PREMIUM 7578	WK ULTIMATUM
HF LICORICE 19L	GREENS LORI 5078
NR LICORICE 6F	BIG BEAR JACK FLASH 88C
	BIG BEAR MANDA 41Z

BW: 75 ADJ 205 WT: 616 OCT 26 WT: 805 AGE OF DAM: 8
 BW: +2.1 WW: +47 YW: +81 MILK: +19 TM: +42 YG: +34 SC: +0.24
 Another "Tiger" daughter, but possibly a bit of a sleeper as her dam went to town in July with a stifle injury and 185W was left to fend for herself for the remainder of the summer. A little lean at weaning, but she is definitely determined to catch up to her peers. Licorice 185W is a moderate framed, deep bodied heifer which is very characteristic of the Green's Premium progeny with impressive performance numbers and with Tiger on the top side of the lineage, I believe you'll see a big change in this heifer by sale time. Don't miss her! Note the 75 lb. BW.



SILVERTIP 72T - MAT BROTHER

HF 191W *Hamilton Open Females*
HF Erica 191W
 HAMI 191W 1511320 January 22 2009

HF KODIAK 5R	SANDY BAR ADVANTAGE 43M
HF BEARS PAW 32T	WILBAR RUBY 955N
HFDF ECHO 13N	RIVERBEND POWERLINE 0050
	HF ECHO 83J
GREENS PREMIUM 7578	WK ULTIMATUM
HF ERICA 59K	GREENS LORI 5078
BIG BEAR ERICA 54Y	BIG BEAR PROSPECTOR 39W
	BIG BEAR ERICA 31W

BW: 68 ADJ 205 WT: 643 OCT 26 WT: 830 AGE OF DAM: 9
 BW: +2.0 WW: +47 YW: +76 MILK: +20 TM: +43 YG: +30 SC: +0.47
 Wow...I don't know how this cow continues to put up these numbers. She pops out a 68 lb calf, which you kinda frown upon at birth and then brings in these very impressive calves at weaning. This "Elite Dam" has produced bulls by Powerline and Kodiak going to some top commercial herds and repeat buyers like Pat Roach and Dave Woywitka respectively and last year her Kodiak daughter sold in our sale to GMC Cattle Co. Erica 59K is an extremely deep sided Green's Premium cow with a very good udder and great feet and legs. This Bears paw x Tibbie combination should work in any program with the genetics built into this female.



HF ROSE 20J

HF 205W *Hamilton Open Females*
HF Rose 205W
 WYAT 205W 1511465 January 23 2009

SANDY BAR ADVANTAGE 43M	TC ADVANTAGE NHF AMF
HF KODIAK 5R	SANDY BAR JEMINA 44K
WILBAR RUBY 955N	VERMILION YELLOWSTONE NHF AMF
	WILBAR RUBY 161J
TC FREEDOM 104 AMF	CONNEALY FOREFRONT
HF ROSE 212R	T C RUBY 9095
HF ROSE 20J	O G L BATTLE CRY 427 128
	EXAR ROSE 6171

BW: 86 ADJ 205 WT: 638 OCT 26 WT: 800 AGE OF DAM: 4
 BW: +1.5 WW: +45 YW: +84 MILK: +23 TM: +46 YG: +39 SC: +1.17
 Rose is a cow family that has many stories to tell. Rose 212R is a lovely uddered, moderate female with great muscle shape. These are the kind of cows of which you would like to have a herd of clones in your front pasture. The grand dam to 205W is 20J who is designated an "Elite Dam" in the Canadian Angus Assoc. and was also used as a donor cow in our program. We have sold a number of bulls into purebred herds like K-Deen/LLB, Bob and Marjorie Blacklock, Arda Angus, Diamond B Ranches, Wendy Chackalack and Ron Heirons. Commercially, bulls have gone to Echo Sands, Grant Schlekwy, Jenkins Lazy U, Klaudt Ranching, Carolyn & Jody Wimmer and Jim & Carol Hern (Commercial Breeder of the Year 2009) to name a few. The cows have obviously been top producers as we would expect Rose 205W (sired by Kodiak) to follow in their footsteps. 205W is a moderate, easy fleshing female with lots of potential. Don't overlook the impressive EPD's on this heifer - quite a spread from birth to yearling.

Hamilton Open Females - Lots 185W, 191W, 205W

"We are what we repeatedly do. Excellence, therefore, is not an act but a habit."

Hamilton Open Females

HF
Page 65



HF
212W

HF Erica 212W

HAMI 212W 1511330 January 23 2009

D H D TRAVELER 6807
DUFF ENCORE 702 AMF
O C C DIXIE ERICA 814G

Q A S TRAVELER 23-4
BEMINDFUL MAID D H D 0807
O C C ANCHOR 771A
O C C DIXIE ERICA 764C
CONNEALY FRONTLINE
LEACHMAN BLACKBIRD 8060
EXAR RITO 5072
ERICA OF RANNOCH 122C

RIVERBEND POWERLINE 0050
HF ERICA 17P
HF ERICA 92H

BW: 86 ADJ 205 WT: 648 OCT 26 WT: 815 AGE OF DAM: 5

BW: +3.7 WW: +39 YW: +69 MILK: +19 TM: +38 YG: +30

There are four "Duff Encore 702T" heifers on offer in our sale which I believe could be the first Encore progeny available for sale in Canada at public auction. Here is a totally different pedigree on the top and an extremely productive cow family on the bottom of the pedigree. 92H has been a pillar in our herd and her offspring have certainly gone on to make us proud. 29M, a maternal sister to Erica 17P is an "Elite Dam" in the Hirsche Angus herd. We also have two maternal sisters in the herd and a bull sold to Brad Schmidt last year which was part of our Res. Champion Angus Pen of bulls at Agribition 2008. Erica 212W is a very attractive, deep bodied, easy fleshing heifer that we believe will be an impact foundation female or even a show heifer if someone so desires, with that unique pedigree on the top. See the notes in the Reference Sires for more details on Encore.



HF ECHO 49U - DAMS FULL SISTER

HF
220W

HF Echo 220W

HAMI 220W 1511338 January 24 2009

BW: 80 ADJ 205 WT: 732 OCT 26 WT: 830 AGE OF DAM: 2

BT RIGHT TIME 24J
HF DONE RIGHT 125R
HF ROSEBUD 127K

SANDY BAR ADVANTAGE 43M
HF ECHO 120T
HF ECHO 187N

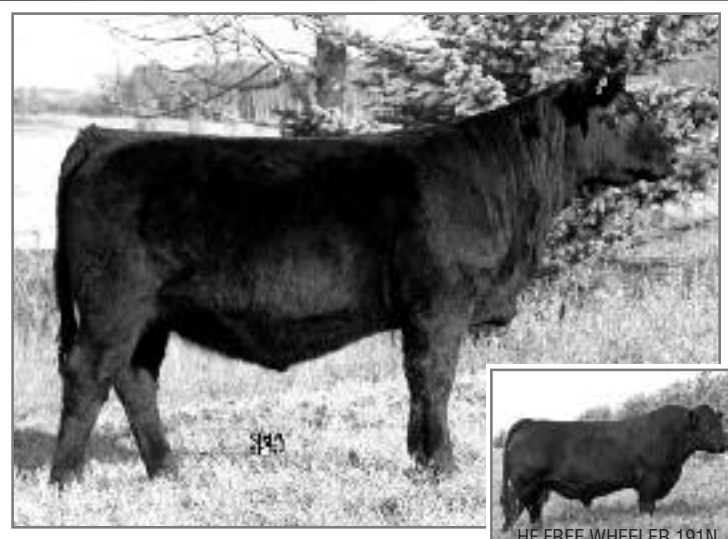
LEACHMAN RIGHT TIME
SITZ EVERELDA ENTENSE 1905
HF MOST WANTED 46H
HF ROSEBUD 70H
TC ADVANTAGE NHF AMF
SANDY BAR JEMINA 44K
TC FREEDOM 104 AMF
DURALTA 14C ECHO 32E

Is this the poster girl you've been waiting for?? If you're looking for that head liner in this year's female section, this could possibly be her! This extremely eye catching heifer puts it all together so nicely, you can't ignore her. She will add value to the top end of most herds. Her dam 120T is a full sister to the Echo 49U that was Champion Female in the Legends of the Fall and went on to win the Cinderella Classic 2008. Raymond Turney, BC purchased a high selling full sister in our 2007 sale and the Enrights also purchased a full sibling at Agribition in 2007 for \$20,000.00, which with her dam 187N went on to win the Beef Supreme Challenge. Yet another sibling is HF Challenger 162U, who was purchased in our sale 2008 by Semex and the list goes on.....Refer to the foot-notes on 187N in the reference dams. Done Right (now deceased), was purchased by Dave Woywitka in 2005 and we retained a semen interest, which we have used predominantly on heifers for calving ease. The first females milking have picture perfect udders and are awesome mothers. Echo 220W posted an 80 lb birth weight and came off her 2 yr old mother Sept 15th at 795 lbs ranking her 4 out of 150 heifers and I must add, all her own doing! You may want to mark this one.

"Work spares us from three evils: boredom, vice, and need."

Hamilton Open Females

Hamilton Open Females - Lots 222W, 240W, 257W



HF 222W *Hamilton Open Females* **HF Star 222W**
 HAMI 222W 1511337 January 24 2009

S A V 004 PREDOMINANT 4438 S A V 8180 TRAVELER 004
 HF HEMI 151T S A V EMBLYNETTE 1182
 HF TIBBIE 100M REMITALL ICEMAN 10K
 HF TIBBIE 86K
 HF FREE WHEELER 191N TC FREEDOM 104 AMF
 HF STAR 143R DURALTA 14C ECHO 32E
 NR STAR 3F BIG BEAR JACK FLASH 88C
 LADY MCB OF BIG BEAR

BW: 87 ADJ 205 WT: 644 OCT 26 WT: 800 AGE OF DAM: 4
 BW: +3.2 WW: +46 YW: +83 MILK: +20 TM: +43 YG: +37 SC: +0.30

This is the youngest "Hemi" heifer in the sale, but she has plenty to offer. She displays average Birth Weight EPD's and her actual BW was 87 lbs. with very much above average numbers for weaning, yearling, milk and Total Maternal. Two maternal siblings sold to Russ and Cindy Sibbald and Broadview Ranch for \$5000.00. Her grand dam just went to town this summer at 13 yrs of age. Hemi has stamped all his calves with that total brood cow type of female which is no surprise when you look at the picture of his outstanding dam Tibbie 100M. Please note the footnotes on 100M and see what the maternal side of the "Hemi" pedigree has to offer.



HF 240W *Hamilton Open Females* **HF Mayflower 240W**
 HAMI 240W 1521296 January 27 2009

HF KODIAK 5R SANDY BAR ADVANTAGE 43M
 HF SUPREME 37T WILBAR RUBY 955N
 HF BLACKBIRD 99H EXAR RITO 5072
 HF BLACKBIRD 27C
 GREENS PREMIUM 7578
 HF JUSTICE 52L HF ERICA 61F
 HF MAYFLOWER 78P REMINGTON'S BARDOLENE 225D
 SCHELL'S MAYFLOWER 4F MAYFLOWER 1R

BW: 102 ADJ 205 WT: 704 OCT 26 WT: 915 AGE OF DAM: 5
 BW: +4.4 WW: +42 YW: +78 MILK: +19 TM: +40 YG: +37 SC: +0.52

Mayflower 78P calved the same day last year and raised a fancy heifer calf (x Regan) that was purchased by Randi-Lynn Giles for \$4000.00. This year her heifer calf is sired by HF Supreme 37T, which is a bull (x Kodiak) out of the Blackbird 99H that Jim Grant purchased from us in 2007 for \$21,500.00. This heifer exhibits a lot of performance, muscle shape and style with plenty of volume. Supreme's dam, Blackbird 99H who has been severely stifled for years, raised an outstanding Tiger bull calf this year that ranked #1 out of 154 bull calves in his contemporary group, not bad for an extremely disabled cow. Here is a powerful female that should definitely pump out the top performing progeny if that fits your needs.



HF 257W *Hamilton Open Females* **HF Pride Lass 257W**
 HAMI 257W 1511371 January 30 2009

BT RIGHT TIME 24J LEACHMAN RIGHT TIME
 HF DONE RIGHT 125R SITZ EVERELDA ENTENSE 1905
 HF ROSEBUD 127K HF MOST WANTED 46H
 HF ROSEBUD 70H
 HF KODIAK 5R SANDY BAR ADVANTAGE 43M
 HF PRIDE LASS 209T WILBAR RUBY 955N
 HF PRIDE LASS 13L HF MOST WANTED 46H
 HF PRIDE LASS 53J

BW: 84 ADJ 205 WT: 653 OCT 26 WT: 730 AGE OF DAM: 2
 BW: +1.9 WW: +40 YW: +72 MILK: +17 TM: +37 YG: +32

Another "Elite Dam" designated by the Canadian Angus Assoc. in this heifer's pedigree with the grand dam Pride Lass 13L. 257W is the 2nd of only two "Done Right" heifers in the female offering, and again out of a 2 yr old, this time a Kodiak daughter. This Done Right heifer is also very fancy, but still maintaining that power in her very well balanced muscle pattern. 257W is a moderate framed, very correct heifer that could sure make some junior proud and don't forget the 10% discount for juniors. Her dam is a beautifully uddered Kodiak daughter that has done a really good job with her first calf. Don't miss this attractive young female.

"You cannot plough a field by turning it over in your mind."

Hamilton Open Females

HF
Page 67

HF
297W

HF Echo 297W

HAMI 297W 1511399 February 09 2009

D H D TRAVELER 6807
DUFF ENCORE 702 AMF
O C C DIXIE ERICA 814G

WHITESTONE 9FB3 G228
HF ECHO 90J
DURALTA 14C ECHO 32E

Q A S TRAVELER 23-4
BEMINDFUL MAID D H D 0807
O C C ANCHOR 771A
O C C DIXIE ERICA 764C
RITO 9FB3 OF 5H11 FULLBACK S V F
FOREVER LADY 1121
HF WALK-ON 14C
STONEHAVEN MISS PONDEROSA 9U

BW: 90 ADJ 205 WT: 575 OCT 26 WT: 665 AGE OF DAM: 10

BW: +4.4 WW: +35 YW: +63 MILK: +16 TM: +33 YG: +29 SC: -0.27
We figured we were fairly clever when we sent some old, crippled, or open cows to town on the 7th of July rather than waiting until the calves were weaned sometime in September when the cow prices had dropped. In some ways it was a good decision, but it did nothing for the calves we left out on some marginal pastures to survive without their mothers.

Here is a heifer calf that might drop under the radar because we sent her 10 yr old mother to town in July. She obviously didn't perform like she could, but has really come on since we weaned and put the sale heifers on a Total Mixed Ration of silage and chopped hay in mid September. Her dam Echo 90J is an "Elite Dam" in the Canadian Angus Assoc. with progeny going to Purebred and Commercial breeders like Jeff Jamison, Johnson Livestock, Norseman Farms, Greg Bacon and Dave Woy-witka. This heifer is made right and has plenty of potential - don't miss on her.



HF ECHO 90J



HF TIBBIE 100M

HF
300W

HF Tibbie 300W

HAMI 300W 1511398 February 09 2009

BW: 100 ADJ 205 WT: 730 OCT 26 WT: 895 AGE OF DAM: 7

BW: +4.1 WW: +47 YW: +81 MILK: +22 TM: +45 YG: +34 SC: -0.03

D H D TRAVELER 6807
DUFF ENCORE 702 AMF
O C C DIXIE ERICA 814G

REMITALL ICEMAN 10K
HF TIBBIE 100M
HF TIBBIE 86K

Q A S TRAVELER 23-4
BEMINDFUL MAID D H D 0807
O C C ANCHOR 771A
O C C DIXIE ERICA 764C
DURALTA 111A CHANCE 11H
LLB KEEPSAKE 94H
GREENS PREMIUM 7578
HF TIBBIE 2D

Yet another Tibbie x Encore match up and outstanding feature lot, however with more of a punch coming from the Tibbie 100M cow. Please skim through the footnotes of 100M in the reference dams to more fully appreciate what this cow has to offer. 300W exhibits an exceptional amount of volume for a heifer calf, which results in performance values in the top ten of her contemporary group of 150 heifers. Possibly even of more significance in the pedigree is 100M's dam, Tibbie 86K, a Green Premium's daughter and who is also designated as an "Elite Dam" since 2006 - including 7 calves with an average ratio of 109. Tibbie 86K was selected by John & Miriam Tilson of Scotland to flush embryos from. Her calf by Tiger is our top performing calf and was first in his class at the WAF 2009. The proof of the value of cow families is extremely evident and we believe this Encore heifer could really ring the bell for her new owner. We debated a long time before we agreed to sell this heifer, but Rob says "Everything is for sale!" Note this heifer's impressive EPD's.

"Work and play are words used to describe the same thing under differing conditions"

Hamilton Open Females

Hamilton Open Females - Lots 305W, 317W, 321W



HF 305W HF Tibbie 305W

HAMI 305W 1511403 February 10 2009

D H D TRAVELER 6807
 DUFF ENCORE 702 AMF
 O C C DIXIE ERICA 814G

HF KODIAK 5R
 HF TIBBIE 86T
 HF TIBBIE 43R

Q A S TRAVELER 23-4
 BEMINDFUL MAID D H D 0807
 O C C ANCHOR 771A
 O C C DIXIE ERICA 764C
 SANDY BAR ADVANTAGE 43M
 WILBAR RUBY 955N
 HF CHALLENGER 42N
 HF TIBBIE 37N

BW: 79 ADJ 205 WT: 659 OCT 26 WT: 675 AGE OF DAM: 2

BW: +2.1 WW: +43 YW: +79 MILK: +19 TM: +40 YG: +37

Another "Encore" moderately framed, stylish heifer out of an exceptional Kodiak 2 yr old, with two cows in the pedigree top and bottom designated as "Elite Dams" by the Canadian Angus Assoc. The pedigree is stacked full with many of the Angus notables such as Stockman 365, Northern Improvement, Green's Premium, Battle Cry, Tibbie and Annie, can you really go wrong? The grand dam Tibbie 43R could sure be added to any show string, but some how she has escaped the halter to date. Tibbie 43R should be capable of becoming an Elite Dam herself soon, as her first calf 86T is one of the top Kodiak heifers we've raised and a full brother sold to Klautd's for \$5000.00. Her third calf is a heifer (x Tiger) that we thought we might just keep around for a while - Tibbie 86T has something special in 305W both because of her different pedigree and her solid, correct and overall natural beauty. She is one sweetheart and she will win your heart, so beware.



HF 317W HF Queenie 317W

HAMI 317W 1511414 February 14 2009

PRAIRIELANE IDEAL 7451-2014
 SANDY BAR IDEAL 18S
 SANDY BAR PRIDE 89L

HF CHALLENGER 42N
 HF QUEENIE 60R
 HF QUEENIE 204N

IDEAL 7451 OF 8103 4465
 PRAIRIELANE MAX DUCHESS 3050
 SANDY BAR TONTO 61E
 SANDY BAR PRIDE 6H
 NORTHERN IMPROVEMENT 4480
 HF MISS ANNIE 5L
 HF MOST WANTED 46H
 HF QUEENIE 97J

BW: 83 ADJ 205 WT: 702 OCT 26 WT: 800 AGE OF DAM: 4

BW: +1.3 WW: +49 YW: +86 MILK: +22 TM: +46 YG: +37 SC: +0.01

Queenie 317W could certainly be described as an "Ideal" female. Queenie is only one of three "Ideal" females offered in the sale, and she will demand your attention on sale day, she simply has that presence about her. Make a point to find Queenie, you will not regret it, as she displays such a square top, great muscle shape, depth, lots of hair and an attractive, but powerful front end. Queenie 317W also has two "elite Dams" in her pedigree top and bottom so once again the strength in those bloodlines rises to the top. This heifer could easily join the show string but Rob says we have too many! Take a look at this heifer you juniors.



HF 321W HF Blackbird 321W

WYAT 321W 1511470 February 15 2009

HF KODIAK 5R
 HF TIGER 5T
 HF ECHO 84R

BWB TRAVELER 110P
 HF BLACKBIRD 125T
 HF BLACKBIRD 85R

SANDY BAR ADVANTAGE 43M
 WILBAR RUBY 955N
 TC FREEDOM 104 AMF
 HFDF ECHO 6N
 BWB TRAVELER 1'01 OF 044
 BWB LASS 52'01 OF ROYCE 741C
 RIVERBEND POWERLINE 0050
 HF BLACKBIRD 99G

BW: 84 ADJ 205 WT: 691 OCT 26 WT: 740 AGE OF DAM: 2

BW: +2.3 WW: +51 YW: +88 MILK: +22 TM: +47 YG: +36

Last but certainly not least is this final "Tiger" sired heifer out of the legendary Blackbird cow family. 321W is going to have a star beside her lot # in your catalogue when you leave the pens before the sale starts, and don't ignore it, she will prove you right. She is a moderate framed heifer that is very correct in her lines, plenty of muscle with a feminine front end and lots of hair and a mother with a beautiful udder. Refer to the Reference Sire and Dam section to learn more about Tiger and Blackbird 99G. This heifer has some very impressive EPD's and actual weights for a heifer's first calf. Don't miss this younger heifer.

"Whoever said, 'It's not whether you win or lose that counts,' probably lost"

Hamilton Open Females



HF 357W *Hamilton Farms* **HF Bessie 357W**
 HAMI 357W 1511441 March 04 2009

LRL WS 101N	WHITESTONE WIDESPREAD MB
JSF REGAN 65R	LRL 101J
HILL VIEW DUCHESS 13C	ANGUS ACRES DANCER 7Z
	WAVENY DUCHESS 13Z
HF PROGRESS 20K	NORTHERN IMPROVEMENT 4480
HF PROGRESS 20K	DURALTA 14C ECHO 32E
HF BESSIE 63M	HF MOST WANTED 46H
	HF BESSIE 120K

BW: 97 ADJ 205 WT: 705 OCT 26 WT: 775 AGE OF DAM: 5
 BW: +1.6 WW: +32 YW: +59 MILK: +12 TM: +28

This March "Regan" heifer certainly doesn't give up anything to the older heifers. There is an "Elite Dam" in the bottom of the pedigree which adds a lot of the performance to the mix. This stylish heifer ranks in the top 25 in the 150 heifers in her contemporary group. Two maternal brothers sold to the Douglas Lake Ranch and Harty T2 Ranch in previous HF Sales.

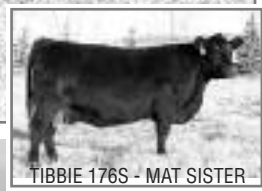


HF 359W *Hamilton Farms* **HF Tibbie 359W**
 HAMI 359W 1511440 March 04 2009

PRAIRIELANE IDEAL 7451-2014	IDEAL 7451 OF 8103 4465
SANDY BAR IDEAL 18S	PRAIRIELANE MAX DUCHESS 3050
SANDY BAR PRIDE 89L	SANDY BAR TONTO 61E
	SANDY BAR PRIDE 6H
HF PREMIUM PLUS 74K	GREENS PREMIUM 7578
HF TIBBIE 214P	HF EVENING TINGE 20F
HF TIBBIE 147K	NORTHERN IMPROVEMENT 4480
	MVHF TIBBIE 31Z

BW: 83 ADJ 205 WT: 653 OCT 26 WT: 735 AGE OF DAM: 5
 BW: +2.0 WW: +52 YW: +87 MILK: +21 TM: +47 YG: +35 SC: -0.39

This Tibbie x Ideal female is just a March 4th baby, however she doesn't give up anything to the older heifers as her numbers are very impressive. With an 83 lb BW and 653 lb Adj 205 day wt she fits right into the mix. Tibbie 214P, her dam, and grand dam are some of the deepest ribbed cows you'll ever come across, with flawless udders, extremely easy fleshing cows with 2 "Elite Dams" again in both the top and bottom of the pedigree. 359W is a dynamic female for her age, but take the time to analyze her and you will probably agree that 359W has plenty to offer even to the most discriminating eye. Her EPD's are very good and her actual wts are 2nd to none. A maternal brother sold to Foxwood Farms for \$5000.00 in 2008 (sired by Peak Dot Fame).



TIBBIE 176S - MAT SISTER

HF Terms *Hamilton Farms* **Terms & Conditions...**

CATTLE INSPECTION: All carry permanent identity tags, corresponding to Sale Lot Numbers. All shall be available for inspection prior to sale.
ALL CATTLE ARE SOLD: Subject to such tests as required for export under regulations of health of animals Branch, Department of Agriculture for Canada - those corresponding to Bureau of Animal Industry requirements.
BREEDING GUARANTEE: All cattle are sound and right, and all with a responsible breeder guarantee of satisfaction. In the event of any unlikely dispute, the regular terms and conditions, standard with the Canadian Angus Association shall apply.
INSURANCE: Ownership risk to purchaser commences when the Auctioneer's hammer falls. Livestock coverage will be available on sale day, from the sale management at any time.
TERMS OF SALE: Are cash or cheque ar par, payable to Clerks of the sale on Sale Day. U.S. Funds will be accepted at the current rate of exchange. No release will be given until satisfactory settlement has been made. We reserve the right to withhold animals from export shipment for whom payments have not been received prior to departure times.
ALL PERSONS: who attend the sale do so at their own risk, and the owners, and sale staff assume no liability, legal or otherwise, for property loss or for any accidents that may occur.
ANNOUNCEMENTS: Errors discovered in the catalogue will be corrected by the announcements from the auction stand at sale time and such corrections will take precedence over the printed material in the catalogue.

"Our greatest glory is not in never falling but in rising every time we fall."

Hamilton Open Females - Lots 357W, 359W



A Successful Year!



HF TIGER 5T AND HIS NEW TRUCK
FARMAIR INTERNATIONAL 2009



HF TIGER 5T - 2009
SUPREME CHAMPION BULL AT FARMAIR INTERNATIONAL



WAF GRAND CHAMPION BULL, WAF - HF TIGER 5T
OWNED WITH RING CREEK FARM, FAIRVIEW AB.



RESERVE CHAMPION SENIOR FEMALE, WAF - HF BLACKCAP
27R & HF SWAGER 75W OWNED WITH KEVIN NELSON



CHAMPION 2 YEAR OLD FEMALE, WAF - HF ERICA 26T &
HF ROCK STAR 67W, OWNED WITH CONTINENTAL,
WALKERBRAE, DR. GORDON ATKINS.



CHAMPION SENIOR YEARLING BULL, WAF
HF EL TIGRE 28U - OWNED WITH RING CREEK FARM



CHAMPION BREEDERS HERD, WORLD ANGUS FORUM



PREMIER SIRE OF THE SHOW, WORLD ANGUS FORUM
HF KODIAK 5R



THE CHAMPION HAND SHAKE!
WORLD ANGUS FORUM



CHAMPION LATE SENIOR YEARLING FEMALE, WAF -
HF EVENING TINGE 193U - OWNED WITH
CONTINENTAL ANGUS AND DIAMOND B RANCH



HF EVENING TINGE 63T AND HER BULL CALF, WAF
HF SABERTOOTH 207W - OWNED BY DR. CORY JONES



PREMIER BREEDER, PREMIER EXHIBITOR, WAF 2009

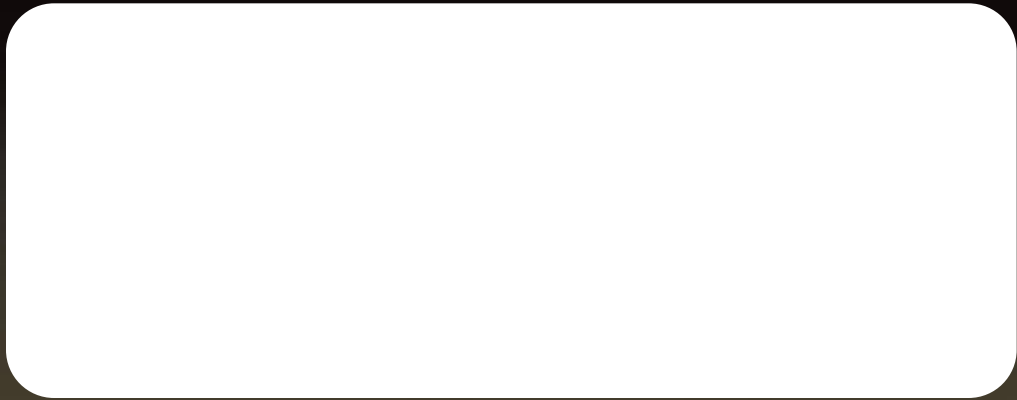
"Great spirits have always encountered violent opposition from mediocre minds."

2008 SALE DAY



Hamilton
FARMS

Box 11, Site 15, RR#2
Cochrane, AB T4C 1A2



Time Sensitive Material

