

GIT R DONE

BULL & FEMALE SALE

Tuesday April 5, 2011 • 1:00 pm

**Windy Willows Farms, Hodgeville, SK
(16 Miles South of Hwy #1 on Hwy #19)**



**Join us for complimentary
"Beef Barbecue Lunch"**
Last Year's Reviews Were Great!

View Catalogue online:
www.optimalbovines.com
www.cattlemanagement.ca

Offering: 83 Lots

- 57 Black Angus Yearling Bulls
- 10 Red Angus Yearling Bulls
- 1 - Black Angus 2 Year Olds
- 15 Angus 2 Year Old Females



You Won't Know - If You Don't Go!

Auctioneer: Steve Dorran(403) 226-2985

Ringmen:

Mark Stock(306) 678-4811

Bob Toner.....(306) 834-7385

Accommodations:

Super 8, Swift Current(306) 778-6088

Best Western, Swift Current(306) 773-4660

Travelodge, Swift Current.....(306) 773-3101

Hodgeville Inn(306) 677-2254

Insurance: Earl Haubrich, EMTAAgencies



sale managed by:

OPTIMAL BOVINES INC.

Rob Holowaychuk
#407, 4808 Ross St.
Red Deer, AB T4N 1X5
Ph: (403) 341-5098
Fax: (403) 343-6133
Bob Toner: (306) 834-7385
Kirk Hurlburt: (306) 222-8210
Luc Noiseux: (450) 379-9989
email: o.b.i@shaw.ca
www.cattlemanagement.ca
www.optimalbovines.com

**Sale Day Phones: Collin's Cell: (306) 677-7544
Rob's Cell: (780) 916-2628 • Bob's Cell: (306) 834-7385**



THE WINDY WILLOWS PROGRAM

Useful information: It is our goal to provide you with information that will help you make accurate bull selection decisions, whatever the traits you are interested in.

Calving Ease:	birth wts, EPDs and CE & CE Elite designations
Growth:	adjusted wts, EPDs and current wts.
Maternal:	Milk EPDs
Carcass:	ultrasound ribeye area, fat thickness and marbling
Fertility:	scrotal circumferences and breeding soundness exam

Current weights and scrotal circumferences will be available sale day or call us!
We'd be happy to show you the dams of the bulls selling; just ask us!

Calving Ease and Birth Weight: Our breeding program has emphasized reasonable birth weights and the average birth weight of our calves has decreased markedly in recent years. Our cows and heifers calve without problems. In 2009 we calved 70 heifers and we assisted only one. Our cows never require assistance except in the rare case of a malpresentation. **You can select calving ease bulls from our program with confidence.**

Bull Development: All of our bulls are grown on grass and mother's milk prior to weaning. They receive no creep feed! After weaning the bulls from both herds are fed together in a large pen and developed on a high protein cereal silage and alfalfa hay ration with mineral/vitamin fortified 14% pellets and rolled barley. This enables the bulls to express their growth potential without excessive fattening.

Customer Service: We would be pleased to assist customers with their bull selections, just ask us! Remember too, we offer **free delivery** within 200 miles or **save \$50 if you pick up your bull on sale day**. We stand behind our bulls 100%. We have confidence in our bulls, but if you have a problem, call us, we want to help!

Sale Eligibility: Only the best bulls sell. Each bull must meet our expectations before he can meet yours guaranteed!

Affordable: Real good bulls at prices you can live with; you get exceptional value from our bulls!

WELCOME TO THE WINDY WILLOWS ANNUAL BULL & FEMALE SALE ...WHERE VALUE EXCEEDS ALL EXPECTATIONS

Windy Willows has developed a herd deep with information, deep in maternal genetics and certainly deep in quality. This year's bull offering is full of quality starting with great hair coats and heaven only knows how valuable that is. The bulls are developed most sensibly, yet display their genetic differences. The Bloodlines are both a combination of popular AI Sires and proven Windy Willows herdsires. The pride and joy at the Sauders are the highly productive cows - ones who have been developed in tough conditions and proven their worth.

Windy Willows has enjoyed many repeat buyers - a true test of a successful breeding program. Once again this offering is performance tested, carcass evaluated and semen tested. The bulls sell with the Windy Willows guarantee and backed with the experienced breeder responsibility.

New this year are the female pairs and breds that are certain to add interest. It has been 42 years since Collin had first purchased his original Angus female and what a development we join in a great sale experience each year.

Once again we at OBI are most willing to help those who are unable to attend. Please do not hesitate to call as we are familiar with the program. Hope to see you sale day and enjoy the beef business together.

Rob Holowaychuk, OBI

CARCASS DATA

In order to use body composition EPD's or ultrasound data to its full potential, a breeder must have an understanding of the ultrasound terminology. Several of the ultrasound measurements are comparable to the familiar carcass measurements. The data is simply collected on yearling bulls and heifers instead of market ready steers. Take a step back from looking at the numbers and become comfortable with the terminology.

MEASUREMENTS

Rib Fat: An external fat measurement taken between the 12th and 13th ribs - the location a carcass would be split into quarters in the cooler. Reported in inches. Rib fat is the main factor in USDA Yield Grade equation.

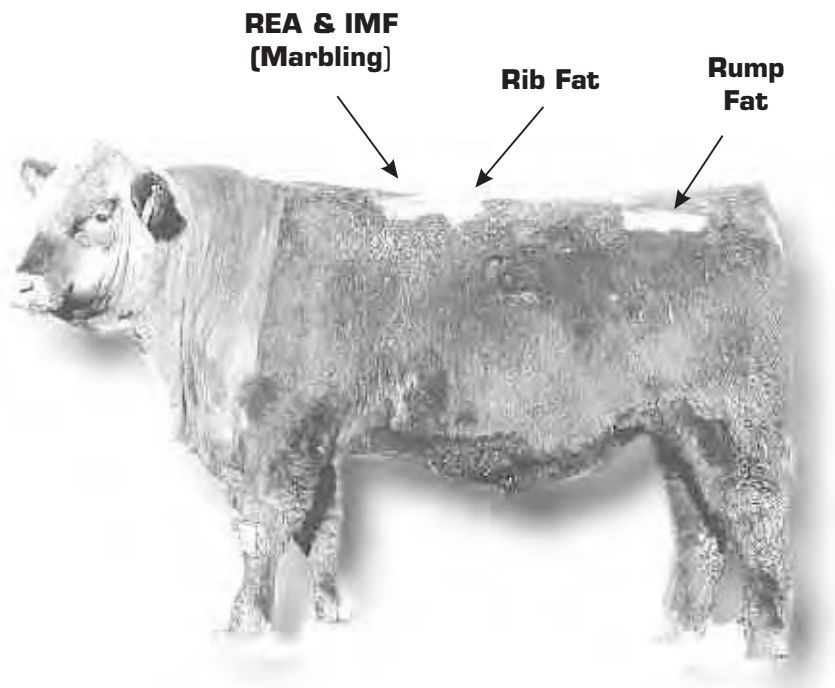
Ribeye Area (REA): An area measurement of the longissimus dorsi, or ribeye muscle. Reported in square inches. This image tends to be the most difficult to collect and requires the most highly skilled interpreting technician. Both the rib fat and ribeye area measurements are taken from the same image.

Rump Fat: An external fat measurement taken from an image collected between the hooks and the pins of the animal. Reported in inches. The rump fat measurement, coupled with the rib fat measurement, is used to determine more accurately the overall external body fat, enhancing the accuracy of predicting percent retail product (PRP). In most cases, an animal will exhibit more fat over the rump than the rib due to the physiological process of "laying on fat". Therefore, more variation is often displayed in the rump fat measurements of a contemporary group than the rib fat. This image is highly repeatable and is the least difficult to collect or interpret.

Intramuscular Fat (%IMF): This measurement determines the amount of fat within the muscle (similar to marbling). Reported in "%". This measurement should be collected when cattle are maintaining a high level of nutrition. The field technician collects four images and the values generated by the interpreting software are averaged for an overall %IMF.

Scan Weight: This weight is an empty weight taken between 7 days before or after the scan date. The scan weight can also be collected at scanning. Adjustments have been calculated using empty body weights; therefore, it is advised the cattle be held off feed overnight before weighing.

The CAA and the AAA have adopted the CUP (Centralized Ultrasound Processing) program for Ultrasounding Carcass Data and are using this information for formulating the Carcass EPDs. The CUP process also requires that the bull be clipped where measurements are taken. All scan data is adjusted to 1 year of age. [Excerpt from the Cattlemens Ultrasound Glossary by Becky Hays Walter & Associates, Inc. d.b.a. The National CUP Lab & Technology Center]



Reading the Results – Ultrasound Scanning Worksheets

Rib eye Area (REA) – The Rib eye area (measured in square inches) is a measurement of muscle in the carcass. Real-time ultrasound measures the rib-eye area within .6-.7 inches. The ideal rib eye area measured in inches is 13.1 in2. Heritability 38%

Percent Intramuscular fat (% IMF) – Marbling is the measurement of percent intramuscular fat between the 12-13 ribs. Percent Intramuscular measured at the CUP laboratory correlates to the visual standard used by the USDA grading system. A comparative chart is listed below.

% IMF	Marbling degree	Marbling Score	US Quality grade	Canada Quality grade
2.3-3.9	Slight 0-40	4.0-4.9	Select	AA
4.0-9.7	Small to moderate	5.0-7.9	Choice	AAA
9.9-12.3	Slightly abundant to moderately abundant	8.0-9.0	Prime	AAA-Prime

The ideal level of marbling in a beef carcass is AAA or higher, based on Canadian Beef Grading Agency Standards. Marbling is moderately heritable [31 %]

Rump Fat thickness – Rump fat thickness (measured in inches) is the amount of external fat on the carcass. Rump fat is an indicator carcass fat and the actual percent retail product from that carcass. Carcass Ultrasound measures the rump fat thickness within .04-.05 inches of the actual fat thickness. The ideal level of backfat is 0.3 inches.

Rib Fat thickness – Rib fat thickness (measured in inches) is a measure of the external fat on the carcass. Rib fat is another indicator of the percent retail product of a carcass. Fat is correlated to percent retail product in the following way – the higher the fat thickness, the lower the percent retail of the carcass. Fat thickness is 30-39% heritable.

WHAT THE NUMBERS MEAN!

Windy Willows Farms have been performance testing our herd on the Canadian Angus Performance Program (CAP) since its inception. We use the information within our own herd and we pride ourselves in providing useful performance information to you so that you can use it to help select the bull or bulls that best suit your operation. We do understand, however, that all these numbers can be mind boggling. This page will try to make some sense of the performance information that is provided in this catalog so that you may use it more effectively.

GROWTH TRAITS

Birth Weight (BW) – the actual weight of the calf taken within 24 hours of birth, not a guess and not a taped estimate.

Calving Ease (CE) – describes the type of birth. Codes used are: U – unassisted, E – easy pull, H – hard pull, M – malpresentation and S – surgical.

Age of Dam (AOD) – age of dam at time of calving. Two year olds, 3 year olds and very old cows tend to have lighter calves at birth.

Weaning Weight (WW) or (Adjusted 205 Day Wt) – the weight taken at weaning and adjusted to 205 days of age, also adjusted for the age of dam.

Weaning Index or Adjusted 205 Day Index – a means of comparing an individual bull's weaning weight to the average weaning weight of his group. Weaning weights and indexes are only comparable within the herd of origin, not between herds.

Yearling Weight (YW) – the weight taken at end of test and adjusted to 365 days of age.

Average Daily Gain (ADG) – the average daily gain while on 112 day gain test. The gain test begins after a 28 day adjustment period to allow bulls from the 4 different herds to adapt to a common environment at the feedlot.

ADG Index – a means of comparing an individual bull's ADG to the average of his group. It is expressed as a percentage of the group ADG.

Weight Per Day of Age (WPDA) – the weight of a bull at end of test divided by his age in days.

WPDA Index – a means of relating an individual bull's WPDA to the average of his group. It is expressed as a percentage of the group WPDA.

What is an EPD? (Expected Progeny Difference) – An EPD is a measure of differences in a trait that will be expected from progeny of different sires. EPDs are expressed in pounds plus (+) or minus (-) a zero standard.

Why are EPDs valuable as a selection tool? – EPDs can be used to compare bulls in different herds within the same breed. They are based on an individual's performance as well as that of his relatives and progeny. They factor out the management and environmental differences that may exist between herds.

Accuracy (Acc) – the more information that is used to calculate an EPD, the more reliable it is. Accuracies are expressed as a number between 0 and 1. The closer the accuracy is to 1, the greater the probability that the EPD will not change with the addition of more information.

BW EPD – the difference in birth weight you would expect between a bull's calves and calves from a bull with a BW EPD of 0. It is a much more accurate indication of expected progeny birth weight than the bull's own BW. All the Black bulls designated as Calving Ease in this catalog have BW EPDs of +3.0 or less. Black bulls designated as Calving Ease Elite have BW EPDs below +1.0.

WW EPD – the difference in weaning weight you would expect between a bull's calves and calves from a bull with a WW EPD of 0. Bulls with higher WW EPDs will sire heavier calves at weaning.

YW EPD – the difference in yearling weight you would expect between a bull's calves and calves from a bull with a YW EPD of 0. Bulls with higher YW EPDs will sire heavier calves at yearling age.

MILK EPD – the difference in weaning weight attributable to milking ability you would expect from a bull's daughters' progeny and progeny of daughters of a bull with a MILK EPD of 0. Bulls with higher MILK EPDs will sire daughters that will have heavier calves at weaning due to their milking ability.

Average EPD – It is helpful to know the average EPD for all calves born in 2010.

	BW	WW	YW	MILK
2010 Black average	+ 2.9	+ 41	+ 72	+ 17
2010 Red average	+ 0.5	+ 25	+ 49	+ 15

It is important to note that Black and Red EPDs cannot be directly compared.

Percentile – a ranking of a bull within the population by percentage. It is helpful to know where a bull ranks in the population for a particular trait.

BULL WARRANTY

We guarantee to provide you with a sound, fertile bull capable of servicing a reasonable number of cows. In the event that your bull is a non-satisfactory breeder the seller will not, under any circumstances, be responsible for more than the original selling price of any bull or female sold in the sale. The consignors will not provide replacement or credit for physical injury or mismanagement. Therefore we stress the importance of insurance on your bull. An insurance agent will be available on sale day.

Calving Ease & Calving Ease Elite Bulls

In response to our customers needs we have designated a group of bulls that we would recommend for heifers based primarily on their Birth Weight EPD. The Black bulls that have been designated Calving Ease have a BW EPD from +1.0 to +3.0 for this important trait. (Red bulls are 0 to +1.4.) The Black bulls designated as Calving Ease Elite have a BW EPD of below +1.0 and are in the top 12% of the breed for low birth weight. (Red bulls are below 0.) Most of these bulls have been bred for calving ease and represent at least two generations of calving ease sires. These designations are guidelines and only you can decide which bulls are most appropriate for your situation.



SOUTH WEST ANIMAL HEALTH CENTRE LTD.

P.O. Box 1650, Swift Current, SK S9H 4G6 Canada
 Phone: (306) 773-4121 (24 Hours) Fax: (306) 773-1811
 Email: ahc@t2.net
 Located on No. 1 Highway West of Swift Current

Windy Willows Angus has been a long time client of South West Animal Health Centre. The herd has been on a comprehensive health program for many years and follows the most up to date recommendations as to vaccination protocols.

The entire herd is on a modified live vaccination protocol which includes IBR, BVD Type I and II, PI3, and BRSV. The young calves receive at least 2 and most often 3 shots of this vaccine as well as 7 or 8 way clostridial and hemophilus by the time they are yearlings.

The purpose of such a vaccination program is to have and sell healthy cattle with a minimal risk of getting sick or transmitting disease. The protocol ensures No BVD carrier calves are born.

All cattle receive a pour on ivermectin in the fall. The calves are weaned in early October and are fed a balanced ration that allows them to grow at their genetic potential.

All bulls are semen evaluated and only satisfactory potential breeders sell in their sale with any non-testers supplying a freezer beef clientel.

Best of luck with your purchase.

Doug Mann, DVM

The Canadian Elite Cow Report

The Canadian Elite Cow Report is an effort to identify superior cows in the Angus breed. Emphasis is placed on early puberty, breeding and early calving, followed by regularity of calving and above-average performance of the offspring. The Elite Cow Report requires a cow to have a minimum of four calves to determine her regularity of calving and ability to consistently produce calves with a superior weaning weight year after year.

We are proud of the number of Elite Cows we have in the Windy Willows herd. A total of 45 of our cows have been designated as Elite Cows and 26 of them are currently in our herd. Maternal ability has been a focus of our program for over 30 years. If you are interested in improving the maternal ability of your cowherd there is no better way than to use a son of a superior cow. We are offering 8 bulls in this sale who are direct sons of Elite dams. Seize the opportunity!

CAN'T MAKE IT TO THE SALE? - TRY THIS!

Sometimes you just can't make it to the sale because of weather, calving, prior commitments or whatever. If you think this might happen to you, here are some options. Call us and plan a trip to Windy Willows to view the bulls at a time convenient for you. We would be pleased to show you the bulls, their sisters, and the cows that produced them. If you can't come to the sale we will make arrangements to enable you to bid by telephone. Just be sure to call us ahead of time so we can line it all up. If you can't make it to the farm at all, we can still help. Feel free to call any of the owners or sale staff and we will be happy to discuss the offering with you and recommend those bulls that will meet your needs. Whether you have seen the bulls or not, our sale staff will be honored to represent you at the sale and put your interests first. We guarantee satisfaction! In the event that the bull purchased for you does not meet your expectations upon delivery, you do not own him!



Michelle, Collin & Hillary

WINDY WILLOWS FARMS

Collin Sauder & Michelle Potapinski

Box 55, Hodgeville, SK, S0H 2B0 • (306) 677-2507 • Cell: (306) 677-7544

Email: windy.willows@sasktel.net

Welcome to the 8th Annual Windy Willows Git 'R Done Bull and Female Sale. We take great pleasure in offering this set of cattle to you for your evaluation. For the first time we are offering two year old heifers with calves at side in our spring sale.

As always, our bulls were managed in a very practical manner. Because of the wet summer and delayed harvest we didn't wean until late October, nearly a full month later than usual. After a 117 day test period the sale group has an ADG of 3.45 lbs/day and an average WPDA of 3.10 lbs. They have access to a large pen for plenty of exercise and must move between feed and water daily. We do our best to develop these bulls in a manner which ensures their fitness and provides for a long breeding career. Remember, only the best 67 bulls of the 108 which started on feed will be offered on April 5.

To aid in your selections, we have once again categorized the bulls into Growth bulls, Calving Ease bulls and Calving Ease Elite. We have evaluated most of the bulls for carcass traits with CUP ultrasound technology. Please see the discussion on ultrasound elsewhere in this catalog and call us if we can be of assistance.

Every bull in this sale has passed a breeding soundness evaluation (semen test) by Dr. Doug Mann and sells with a breeding guarantee. We aim to provide our customers with the best service available and we stand behind our bulls 100%. If you should have a problem we want to be the first to know so that we can deal with it.

We look forward to meeting and visiting with you on April 5. Please come and enjoy a great barbecue beef lunch with refreshments. We'd love to show you an excellent set of bulls that can Git 'R Done for you and a set of pairs that will enhance your herd. Remember our bull purchase program if you can't make it to the sale. If possible, view the bulls prior to the sale at your convenience. Contact us or one of our sale staff and we'll do our best for you.

Collin & Michelle

MINBURN MAIN STREET 146S

DWW 146S FEBRUARY 23 2006 1363099

BW: 97LBS. ADJ 205 DAY WT: 843 LBS.

ADJ 365 DAY WT: 1449 LBS.

STEVENSON FORTUNE 425C

CRESCENT CREEK MAIN EVENT 6H

CRESCENT CREEK ROSEBUD 115F

S: MINBURN MAIN EVENT 181N

G D A R ROGUE 6322

MINBURN ERICA 123H

MINBURN ERICA 116D

MINBURN LANCER 11B

MINBURN LANCER 31F

DWW MINBURN BLACKBIRD 44W

D: MINBURN KEPSAKE 16J

WIWA CREEK TREND 51'93

MINBURN KEPSAKE 78G

MINBURN KEPSAKE 81B

BW	WW	YW	MILK	REA	%IMF	FAT
+6.6	+50	+110	+18	-0.13	-0.01	+0.016

In the spring of 2007 we were looking for a herdsire that would add power, masculinity and ruggedness to his sons and within a few minutes of walking into the Minburn bull pen, I knew we had found him. Main Street came to Windy Willows as the \$13,250 high selling bull of the Minburn Bull Sale after many good cattlemen tried to own him. Main Street is powerfully made with plenty of bone, a big round foot and a burly masculine carriage. He is long bodied with a strong top, wide rump and a long, thick, hair coat. His sons are made exactly the same way and he stamps them all. Roy Rutledge likes to talk about the kind of big hipped, good haired calves that will make it into the top sort pens and these Main Street sons will sire exactly that kind. He sires more performance than any bull we have ever used. While the Main Street sons are cow bulls, their birth weights are very consistent. Main Street has sired over 150 calves here and we have never assisted a cow that was bred to him. Unassisted calving is expected from all our cows. His daughters are broody females, moderate framed with plenty of capacity, well attached udders and abundant milk.

REFERENCE SIRE



1

WINDY WILLOWS MAIN STREET 158X

WW 158X MARCH 13 2010 #1573308

S: MINBURN MAIN STREET 146S

TC STOCKMAN 365
SDTRK GET YA SUM
JWS ANNIES OSCAR

D: WWF SUM ERICA 140N
MINERTS FORTUNE 2000 AMF CAF NHF
WWF FORTUNE ERICA 74J
WINDY WILLOWS ERICA 88B

LMY	RIB EYE	%IMF	RIB FAT	RUMP FAT

	WTs	EPDs
BW	84	+3.6
WW	645	+46
YW	1282	+89
MILK	-	+16
AGE DAM	7	-
TEST ADG	3.95	-

158X may be the most complete son of Main Street to sell this year. He has loads of eye appeal, great hair and the width of top and side that is typical of this sire group. He has caught the attention of several visitors. Perhaps what sets this bull apart is his dam. She is a beautiful cow with an awesome udder and is always in good condition. You will mark this bull high!



WINDY WILLOWS
MAIN STREET 114X
LOT 2

**WE WERE UNABLE TO GET THE CARCASS DATA
INFORMATION IN THE CATALOGUE; ALL CARCASS DATA
ON THESE BULLS CAN BE OBTAINED BY GOING TO:
www.optimalbovines.com / www.cattlemanagement.ca
OR CONTACTING COLLIN SAUDER AT (306) 677-2507**

WINDY WILLOWS MAIN STREET 114X

WW 114X MARCH 04 2010 #1573273

S: MINBURN MAIN STREET 146S

KRUGERRAND OF DONAMERE 490 AMF NHF
SOUTHERN KRUGGERAND 16H
SOUTHERN TALL PRIDE 72W

D: WWF KRUGERRAND BARBARA 138R
S A F FAME AMF CAF NHF
WWF FAMOUS BARBARA 11H
WINDY WILLOWS BARBARA 97B

LMY	RIB EYE	%IMF	RIB FAT	RUMP FAT

	WTs	EPDs
BW	76	+1.9
WW	612	+41
YW	1155	+82
MILK	+15	+15
AGE DAM	5	-
TEST ADG	3.37	-

One of the lowest birth weight sons of Main Street you will find.

WINDY WILLOWS MAIN STREET 141X

TW WW 141X MARCH 08 2010 #1573294

S: MINBURN MAIN STREET 146S

RITO 2RT2 OF 0B5 RR TRAVELER AMF CAF NHF
KMA FOURTRAX 5134
KMA ERISKAY 8044

D: KENOSEE PARK BELLE 5K
MBB CRUZ 7B
KENOSEE PARK BELLE 71H
KENOSEE PARK BELLE 1Y

LMY	RIB EYE	%IMF	RIB FAT	RUMP FAT

	WTs	EPDs
BW	74	+4.3
WW	647	+41
YW	1233	+82
MILK	-	+16
AGE DAM	10	-
TEST ADG	3.63	-

Main Street 141X was a twin and his mother raised both calves, weaning 1340 lbs of calf without creep and breeding back to boot. That's production! All three previous sons are working in commercial herds.

WINDY WILLOWS MAIN STREET 151X 4

WW 151X MARCH 10 2010 #1573304

S: MINBURN MAIN STREET 146S

SCHURRTOP FORTUNE 3261
MINERTS FORTUNE 2000 AMF CAF NHF
MINERTS EDELLA 951

D: WWF FORTUNE ROSEGAY 12J

BON VIEW BANDO 598 AMF CAC
WWF BANDO ROSEGAY 32G
CALLAMERE ROSEGAY 15A

LMY	RIB EYE	%IMF	RIB FAT	RUMP FAT

	WTs	EPDs
BW	90	+5.6
WW	671	+52
YW	1269	+99
MILK	-	+17
AGE DAM	11	-
TEST ADG	3.7	-

The dam, Rosegay 12J is an Elite dam and still going strong at 11 years of age. Good performance on this calf.



WINDY WILLOWS MAIN STREET 154X 5

WW 154X MARCH 12 2010 #1573305

S: MINBURN MAIN STREET 146S

O G L BATTLE CRY 427 128
LLB BATTLE CRY 97L
HARRON GEMSTONE 5G

D: KBJ TIPTOP 691N

KBJ ROGUE II 203H
KBJ TIPTOP 579K
KBJ TIPTOP 425H

LMY	RIB EYE	%IMF	RIB FAT	RUMP FAT

	WTs	EPDs
BW	98	+7.5
WW	593	+51
YW	1253	+95
MILK	-	+11
AGE DAM	7	-
TEST ADG	4.09	-

Main Street 154X gained over 4 lbs per day on a ration designed for 3 lbs. His dam is an easy keeping, good looking cow with a near perfect udder that was purchased from KBJ. Her sons always perform well.

WINDY WILLOWS MAIN STREET 167X 6

TW WW 167X MARCH 14 2010 #1573315

S: MINBURN MAIN STREET 146S

S A F 598 BANDO 5175 AMF CAC
S A V SUCCESSOR 1175 AMF CAC NHF
S A V ABIGALE 6062

D: WWF SUCCESSOR LADY LEE 37R

TC ADVANTAGE AMF CAF NHF
WWF ADVANTAGE LADY LEE 47K
WWF MAX LADY LEE 58D

LMY	RIB EYE	%IMF	RIB FAT	RUMP FAT

	WTs	EPDs
BW	68	+5.4
WW	602	+45
YW	1163	+97
MILK	-	+19
AGE DAM	5	-
TEST ADG	3.48	-

Main Street 167X is a twin and once again his mother raised both calves.

WINDY WILLOWS MAIN STREET 173X 7

WW 173X MARCH 16 2010 #1573319

S: MINBURN MAIN STREET 146S

S A F 598 BANDO 5175 AMF CAC
S A V SUCCESSOR 1175 AMF CAC NHF
S A V ABIGALE 6062

D: WWF SUCCESSOR KEEPSAKE 21R

BON VIEW BANDO 598 AMF CAC
WWF BANDO KEEPSAKE 77G
WWF VAL KEEPSAKE 44B

LMY	RIB EYE	%IMF	RIB FAT	RUMP FAT

	WTs	EPDs
BW	104	+7.5
WW	597	+49
YW	1132	+101
MILK	-	+23
AGE DAM	5	-
TEST ADG	3.32	-

Two full brothers to 173X are working in local commercial herds. This bull's mother always brings in a good one.



WINDY WILLOWS MAIN STREET 182X

WW 182X MARCH 20 2010 #1573328

8

S: MINBURN MAIN STREET 146S

C H QUANTUM 3330
H A R B CINCHA 829 AMF
H A R B JUMBOLEEN D03

D: WWF CINCHA BLACKBIRD 35N

YOUNG DALE HERCULES 810H
WWF HERCULES BLACKBIRD 102L
WWF VENTURE BLACKBIRD 14J

LMY	RIB EYE	%IMF	RIB FAT	RUMP FAT

	WTs	EPDs
BW	96	+6.1
WW	720	+57
YW	1225	+107
MILK	-	+21
AGE DAM	7	-
TEST ADG	3.13	-

Main Street 182X is a long bodied bull from a Cincha daughter with an udder that is to die for. All of these Main Street sons possess excellent hair coats. You won't see slick haired calves in the top sort pens at the fall calf sales.



WINDY WILLOWS MAIN STREET 185X

WW 185X MARCH 20 2010 #1573330

9

S: MINBURN MAIN STREET 146S

HIGH VALLEY 4C6 AMBUSH AMF
BAD LANDS AMBUSH 45M
BAD LANDS BLACKLASS 808H

D: WWF AMBUSH BLACKBIRD 100R

VERMILION DATELINE 7078 AMF CAF NHF
WWF VRD BLACKBIRD 79N
WWF FORTUNE BLACKBIRD 63E

LMY	RIB EYE	%IMF	RIB FAT	RUMP FAT

	WTs	EPDs
BW	96	+6.5
WW	695	+55
YW	1240	+105
MILK	-	+22
AGE DAM	5	-
TEST ADG	3.38	-

Here is another high performing Main Street calf from a beautiful Ambush daughter with an excellent production record.



WINDY WILLOWS
MAIN STREET 185X
LOT 9

10

WINDY WILLOWS MAIN STREET 214X

WW 214X MARCH 27 2010 #1573357

S: MINBURN MAIN STREET 146S

STEVENSON ROYCE 741C CAF NHF
STEVENSON BRUNO 561G CAF NHF
JRS ENCHANTRESS 16A

D: WWF BRUNO KEEPSAKE 114N

MINERTS FORTUNE 2000 AMF CAF NHF
WWF FORTUNE KEEPSAKE 19J
WWF BANDO KEEPSAKE 77G

LMY	RIB EYE	%IMF	RIB FAT	RUMP FAT

	WTs	EPDs
BW	82	+3.0
WW	728	+52
YW	1264	+107
MILK	-	+18
AGE DAM	7	-
TEST ADG	3.94	-

WINDY WILLOWS MAIN STREET 214X - LOT 10



A high performance bull here with a very moderate birth weight. You will like his kind, he is typical Main Street. He is the second highest WPDA bull in the sale weighing 1205 lbs at 10½ months of age. His dam is a Bruno daughter that always gets it done. She is long, stout and feminine with a perfect udder.

WINDY WILLOWS MAIN STREET 220X 11

WW 220X MARCH 29 2010 #1573362

S: MINBURN MAIN STREET 146S

STEVENSON ROYCE 741C CAF NHF
STEVENSON BRUNO 561G CAF NHF
JRS ENCHANTRESS 16A

D: WWF BRUNO BLACKBIRD 35M

TLA SAM'S POWER 84B
WWF SAM'S BLACKBIRD 118G
WWF SHOSHONE ERICA 18W

	WTs	EPDs
BW	90	+5.2
WW	676	+42
YW	1333	+90
MILK	-	+21
AGE DAM	8	-
TEST ADG	4.07	-

LMY	RIB EYE	%IMF	RIB FAT	RUMP FAT

Here's a 3/4 brother to the previous lot and much like him in many ways. A full brother is working at Teepee Ridge Ranch. A maternal sister was a \$7500 bred heifer to Pahl Livestock in the first Grasslands Sale.

REFERENCE SIRE

BAD LANDS RIGHT TIME 78N

CDS 78N APRIL 10 2003 #1172293

BW: 90LBS. ADJ 205 DAY WT: 681 LBS.

ADJ 365 DAY WT: 1170 LBS.

EMULATION N BAR 5522
N BAR EMULATION EXT AMF CAF NHF
N BAR PRIMROSE 2424
S: LEACHMAN RIGHT TIME AMF
TEHAMA BANDO 155 AMF CAF NHF
LEACHMAN ERICA 0025
LEACHMAN ERICA 8058

D H D TRAVELER 6807 AMF NHF
R R DAQUANTAE 789E AMF CAF NHF
BLACKCAP OF R R 5367
D: BAD LANDS DUCHESS 809H
GDAR SVF CHIEF
BAD LANDS DUCHESS 622F
TOMIL DUCHESS GR 125W

BW	WW	YW	MILK	REA	%IMF	FAT
+1.1	+53	+87	+20	+0.06	-0.13	+0.015

Right Time was purchased in the Bad Lands Bull Sale as the best Leachman Right Time son we could find. We lost him after three seasons but were fortunate to have a bank of semen on him that we continue to use. He is an easy calving bull and his daughters have proven to be exceptionally productive females, just what one would expect from a Right Time bred sire. His sons are high performing with plenty of capacity and eye appeal.

WINDY WILLOWS RIGHT TIME 96X 12

WW 96X FEBRUARY 28 2010 #1573500

S: BAD LANDS RIGHT TIME 78N

KRUGERRAND OF DONAMERE 490 AMF NHF
SOUTHERN KRUGGERAND 16H
SOUTHERN TALL PRIDE 72W
D: WWF KRUGERRAND BARBARA 144P
MINERTS FORTUNE 2000 AMF CAF NHF
WWF FORTUNE BARBARA 29K
WWF TRAVELING BARBARA 41D

LMY	RIB EYE	%IMF	RIB FAT	RUMP FAT

	WTs	EPDs
BW	90	+3.5
WW	713	+54
YW	1460	+87
MILK	-	+21
AGE DAM	6	-
TEST ADG	4.63	-

Right Time 96X is something to get excited about! He was our heaviest calf at weaning this year coming off his mother at 810 lbs with no creep or extra care, just mama's milk and grass. He went on to be the fastest gaining calf on feed at 4.63 lbs per day and the heaviest calf at end of test, 1352 lbs, two weeks before his first birthday. He looks the part too, deep sided, strong topped and muscle from end to end. Sound like a terminal bull? Not a chance, his maternal heritage is very strong! His dam, Barbara 144P, is an Elite dam with 5 progeny recording an average weaning ratio of 115. In addition, his full sister produced the heaviest 205 day weight heifer calf from all of our two year olds this year and she is special. This bull can move your program forward, check him out!

WINDY WILLOWS RIGHT TIME 72X
TW WW 72X FEBRUARY 23 2010 #1573482

13

S: BAD LANDS RIGHT TIME 78N

APEX STOCKMAN 061
 WIWA CREEK STOCKMAN 26'95
 WIWA CREEK PRIDE 17'81
D: WWF STOCKMAN ROSEGAY 141L
 BON VIEW BANDO 598 AMF CAC
 WWF BANDO ROSEGAY 32G
 CALLAMERE ROSEGAY 15A

LMY	RIB EYE	%IMF	RIB FAT	RUMP FAT

	WTs	EPDs
BW	70	+2.4
WW	562	+45
YW	1070	+82
MILK	-	+16
AGE DAM	9	-
TEST ADG	3.15	-
CALVING EASE		



WINDY WILLOWS RIGHT TIME 76X
TW WW 76X FEBRUARY 23 2010 #1573486

14

S: BAD LANDS RIGHT TIME 78N

APEX STOCKMAN 061
 WIWA CREEK STOCKMAN 26'95
 WIWA CREEK PRIDE 17'81
D: WWF STOCKMAN ROSEGAY 141L
 BON VIEW BANDO 598 AMF CAC
 WWF BANDO ROSEGAY 32G
 CALLAMERE ROSEGAY 15A

LMY	RIB EYE	%IMF	RIB FAT	RUMP FAT

	WTs	EPDs
BW	70	+2.4
WW	545	+45
YW	1145	+82
MILK	-	+16
AGE DAM	9	-
TEST ADG	3.72	-
CALVING EASE		

72X and 76X are twins from the great old 141L cow. A sister to these bulls is a stalwart producer in the Johnson Livestock herd where she produced a sale feature for them to GMC Cattle Co. and another daughter produced a sale feature for us to Tim Sawers.

WINDY WILLOWS RIGHT TIME 84X
WW 84X FEBRUARY 26 2010 #1573492

15

S: BAD LANDS RIGHT TIME 78N

SCHURRTOP FORTUNE 3261
 MINERTS FORTUNE 2000 AMF CAF NHF
 MINERTS EDELLA 951
D: WWF FORTUNE BARBARA 19K
 WINDY WILLOWS MACKENZIE 52Z
 WINDY WILLOWS BARBARA 97B
 WWF HI SPADE BARBARA 17Z

LMY	RIB EYE	%IMF	RIB FAT	RUMP FAT

	WTs	EPDs
BW	84	+2.1
WW	625	+49
YW	1068	+83
MILK	-	+12
AGE DAM	10	-
TEST ADG	2.74	-
CALVING EASE		

Here is a son of one of the good Fortune 2000 daughters that have been the heart of our program for many years.

WINDY WILLOWS RIGHT TIME 94X
WW 94X FEBRUARY 28 2010 #1573499

16

S: BAD LANDS RIGHT TIME 78N

TC MOONSHINE 001
 FULL MOON 15P
 MFA BETSY 24M
D: WWF FULL MOON KEEPSAKE 159S
 STEVENSON BRUNO 561G CAF NHF
 WWF BRUNO KEEPSAKE 114N
 WWF FORTUNE KEEPSAKE 19J

LMY	RIB EYE	%IMF	RIB FAT	RUMP FAT

	WTs	EPDs
BW	80	+0.0
WW	582	+45
YW	1083	+79
MILK	-	+21
AGE DAM	4	-
TEST ADG	3.1	-
CALVING EASE ELITE		

This stout made bull will be a very easy calving bull suitable for heifers. His dam is a Full Moon daughter from the same dam as the Lot 10 feature bull.



WINDY WILLOWS RIGHT TIME 110X 17

WW 110X MARCH 04 2010 #1573270

S: BAD LANDS RIGHT TIME 78N

SITZ ALLIANCE 6595 AMF NHF
K C F BENNET COALITION SCC AMF CAF NHF
PLEASANT PILL OF CONANGA

D: WWF COALITION BLACKWOOD 95R
Q A S TRAVELER 23-4 AMF CAF NHF
HOLLBROOK BLACKWOOD 18E
HOLLBROOK BLACKWOOD 15C

	WTs	EPDs
BW	92	+3.3
WW	655	+54
YW	1174	+91
MILK	-	+19
AGE DAM	5	-
TEST ADG	3.21	-

LMY	RIB EYE	%IMF	RIB FAT	RUMP FAT

It would be difficult to write a stronger maternal pedigree, Right Time, Alliance and Traveler. The dam is a beautiful daughter of our old Blackwood cow that was flushed a few years ago.



WINDY WILLOWS RIGHT TIME 149X 18

WW 149X MARCH 10 2010 #1573302

S: BAD LANDS RIGHT TIME 78N

B/R NEW DESIGN 036 AMF CAF NHF
BON VIEW NEW DESIGN 878 AMF CAF NHF
BON VIEW GAMMER 85 CAC

D: WWF DESIGNER POPPY ANN 31P
RITO 616 OF 4B20 6807 AMF CAF NHF
WINDY WILLOWS POPPY ANN 12M
FAIRMOUNT POPPY ANN 12K

	WTs	EPDs
BW	104	+5.7
WW	656	+63
YW	1281	+101
MILK	-	+18
AGE DAM	6	-
TEST ADG	3.87	-

LMY	RIB EYE	%IMF	RIB FAT	RUMP FAT

A high performing Right Time son that will add some pounds to your calf crop.



REFERENCE SIRE



CRESCENT CREEK TROUBADOUR 34U

DTZ 34U JANUARY 26 2008 #1435761
BW: 82LBS. ADJ 205 DAY WT: 679 LBS.
ADJ 365 DAY WT: 1273 LBS.

SITZ TRAVELER 8180 AMF CAF NHF
SITZ ALLIANCE 6595 AMF NHF
SITZ BARBARAMERE JET 2698

S: CRESCENT CREEK ALLIANCE 29N
GDAR RUSS 896
KBJ MISS COMPRESS 862K
EVERBLACK MISS COMPRESS 98G

TLA PRIDE'S REVIVAL 85G
CRESCENT CREEK REVIVAL 06J
CRESCENT CREEK QUEEN RUTH 14Z

D: CRESCENT CREEK DUCHESS 51M
VICWIN BRUTUS
SUNMOUND DUCHESS 1Z
SUNMOUND DUCHESS 39W

BW	WW	YW	MILK	REA	%IMF	FAT
+2.0	+46	+76	+15	+0.03	-0.08	+0.017

Troubadour was our pick of the bulls selling in the spring of 2009 and we looked at a lot of them. He came to us as one of the high selling bulls in the Crescent Creek Bull Sale where he was highly sought after. We used him heavily both naturally and by AI. He has proven to be an easy calving sire and his sons exhibit his attractive but smaller head and smooth front end. He sires plenty of muscle and capacity. His daughters are smooth made and feminine and we look forward to their entering production.

19

WINDY WILLOWS TROUBADOUR 92X

WW 92X FEBRUARY 27 2010
#1573497

S: CRESCENT CREEK TROUBADOUR 34U

STEVENSON ROYCE 741C CAF NHF
STEVENSON BRUNO 561G CAF NHF
JRS ENCHANTRESS 16A
D: WWF BRUNO EVELINE 100M
WIWA CREEK STOCKMAN 32'95
THOMASON EVELINE 12J
WIWA CREEK EVELINE III 6'90

	WTs	EPDs
BW	98	+4.5
WW	704	+46
YW	1265	+77
MILK	-	+18
AGE DAM	8	-
TEST ADG	3.48	-

LMY	RIB EYE	%IMF	RIB FAT	RUMP FAT

This calf will catch your eye. He is a standout Troubadour son and there are some good ones! His dam is designated Elite by the Canadian Angus Association. A maternal sister is in the WWF herd and another maternal sister is a feature heifer in this sale.

WINDY WILLOWS TROUBADOUR 47X 20

WW 47X FEBRUARY 18 2010 #1573465

S: CRESCENT CREEK TROUBADOUR 34U

PAPA EQUATOR 2928 AMF NHF
YOUNG DALE HERCULES 810H
YOUNG DALE GRACE 16C
D: WWF HERCULES QUEEN 90L
CENTURY TOUCHSTONE 131
WWF TOUCHSTONE QUEEN 12E
WWF LNDMARK QUEEN MOTHER 1U

	WTs	EPDs
BW	98	+4.9
WW	620	+44
YW	1213	+73
MILK	-	+13
AGE DAM	9	-
TEST ADG	3.68	-

LMY	RIB EYE	%IMF	RIB FAT	RUMP FAT

This bull resembles his sire as much as any son in the offering. You will have to admire his depth of side, muscle and smoothness. It was a toss up between him and 92X for our choice of the Troubadour sons. You decide! Queen 90L is a herd bull producer with sons in several commercial herds.

WINDY WILLOWS TROUBADOUR 30X 21

WW 30X FEBRUARY 14 2010 #1573451

S: CRESCENT CREEK TROUBADOUR 34U

LEACHMAN RIGHT TIME AMF
BAD LANDS RIGHT TIME 78N
BAD LANDS DUCHESS 809H
D: WWF RIGHT TIME BLACKBIRD 145S
WIWA CREEK STOCKMAN 26'95
WWF STOCKMAN BLACKBIRD 128L
WWF SAM'S BLACKBIRD 119G

	WTs	EPDs
BW	92	+3.7
WW	569	+48
YW	1222	+80
MILK	-	+17
AGE DAM	4	-
TEST ADG	4.05	-

LMY	RIB EYE	%IMF	RIB FAT	RUMP FAT

A high gaining bull from a Right Time daughter that has already put a daughter into the herd.

WINDY WILLOWS TROUBADOUR 35X 22

WW 35X FEBRUARY 15 2010 #1573459

S: CRESCENT CREEK TROUBADOUR 34U

GARDENS PRIME TIME AMF CAF NHF
CAR PRIME TIME 013
C A R MISS 871

D: WWF PRIME TIME MISSIE 75M
WIWA CREEK STOCKMAN 26'95
WWF STOCKMAN MISSIE 137K
CALLAMERE MISSIE 72G

LMY	RIB EYE	%IMF	RIB FAT	RUMP FAT

	WTs	EPDs
BW	82	+1.0
WW	626	+44
YW	1149	+81
MILK	-	+14
AGE DAM	8	-
TEST ADG	3.24	-
CALVING EASE		

Troubadour 35X is the natural son of our donor cow, Missie 75M who is the dam of Heavy Metal and 3 Pioneer sons also selling in this sale. This calf as always had the look of a herd bull and will be an easy calving bull with strong maternal qualities.



WINDY WILLOWS TROUBADOUR 36X 23

WW 36X FEBRUARY 15 2010 #1573460

S: CRESCENT CREEK TROUBADOUR 34U

KRUGERRAND OF DONAMERE 490 AMF NHF
SOUTHERN KRUGGERAND 16H
SOUTHERN TALL PRIDE 72W

D: WWF KRUGERRAND BLACKBIRD 215T
WINDY WILLOWS STOCKMAN 120L
WINDY WILLOWS BLACKBIRD 295N
WWF FAMOUS BLACKBIRD 230L

LMY	RIB EYE	%IMF	RIB FAT	RUMP FAT

	WTs	EPDs
BW	70	-0.4
WW	564	+40
YW	1194	+69
MILK	-	+14
AGE DAM	3	-
TEST ADG	3.91	-
CALVING EASE ELITE		

This bull is a looker! His dam is a hard working Kruggerand daughter with an excellent hair coat. Check out the birth weight, here's a good choice for heifers!



WINDY WILLOWS TROUBADOUR 53X 24

WW 53X FEBRUARY 19 2010 #1573468

S: CRESCENT CREEK TROUBADOUR 34U

HIGH VALLEY 4C6 AMBUSH AMF
BAD LANDS AMBUSH 45M
BAD LANDS BLACKLASS 808H

D: WWF AMBUSH JENNIFER 134T
BAD LANDS QUANTUM 016K
WWF QUANTUM JENNIFER 102N
WWF STOCKMAN JENNIFER 139K

LMY	RIB EYE	%IMF	RIB FAT	RUMP FAT

	WTs	EPDs
BW	82	+1.8
WW	603	+40
YW	1140	+70
MILK	-	+15
AGE DAM	3	-
TEST ADG	3.32	-
CALVING EASE		

I have always liked the 53X and rightly so, as his maternal brother was last year's co-high seller to Ian Wasden at Spiritwood. Unfortunately he has a small spot on one eye as a result of a calfhood injury. It does not affect him in any way and we stand behind him 100%.



WINDY WILLOWS TROUBADOUR 55X 25

WW 55X FEBRUARY 20 2010 #1573470

S: CRESCENT CREEK TROUBADOUR 34U

O C C MAGNUM 749M
MERIT MAGNUM 5053
MERIT LADY MCHENRY 123K

D: WWF MAGNUM BLACKBIRD 125T

BAD LANDS AMBUSH 45M
WWF AMBUSH BLACKBIRD 100R
WWF VRD BLACKBIRD 79N

	WTs	EPDs
BW	84	+2.9
WW	647	+50
YW	1158	+80
MILK	-	+16
AGE of DAM	3	-
TEST ADG	3.15	-
CALVING EASE		

LMY	RIB EYE	%IMF	RIB FAT	RUMP FAT

A maternal brother sold to Larry Meyer in last year's sale.



WINDY WILLOWS TROUBADOUR 73X 26

TW WW 73X FEBRUARY 23 2010 #1573483

S: CRESCENT CREEK TROUBADOUR 34U

BON VIEW BANDO 598 AMF CAC
S A F 598 BANDO 5175 AMF CAC
S A F ROYAL LASS 1002

D: WWF BANDO MISSIE 17N

WIWA CREEK STOCKMAN 26'95
WWF STOCKMAN MISSIE 137K
CALLAMERE MISSIE 72G

	WTs	EPDs
BW	70	+2.4
WW	640	+47
YW	1255	+84
MILK	-	+17
AGE of DAM	7	-
TEST ADG	3.81	-
CALVING EASE		

LMY	RIB EYE	%IMF	RIB FAT	RUMP FAT

73X is a high performing Troubadour son with a low birth weight. His dam is a maternal sister to Missie 75M, one of our donor cows. A maternal brother sold to the Seibel Ranch last year.



WINDY WILLOWS TROUBADOUR 78X 27

WW 78X FEBRUARY 24 2010 #1573487

S: CRESCENT CREEK TROUBADOUR 34U

RR SCOTCHMAN 2999
CRESCENT CREEK IMAGERY 116P
CRESCENT CREEK DUCHESS 51M

D: WINDY WILLOWS TIP TOP 23T

BAR-E-L QUANTUM 124L
KBJ TIPTOP 554R
KBJ TIPTOP 264H

	WTs	EPDs
BW	78	+2.5
WW	656	+53
YW	1150	+88
MILK	-	+13
AGE of DAM	3	-
TEST ADG	3.06	-
CALVING EASE		

LMY	RIB EYE	%IMF	RIB FAT	RUMP FAT

The grand dam was a top end selection from a KBJ Celebration Sale. Note that this calf is linebred to 51M, the dam of Troubadour.



WINDY WILLOWS TROUBADOUR 81X 28

WW 81X FEBRUARY 25 2010 #1573490

S: CRESCENT CREEK TROUBADOUR 34U

KRUGERRAND OF DONAMERE 490 AMF NHF
SOUTHERN KRUGGERAND 16H
SOUTHERN TALL PRIDE 72W

D: WWF KRUGERRAND BLACKBIRD 6P

BON VIEW EMULATION EXT 473 AMF CAF NHF
WWF EXT BLACKBIRD 11G
WWF TRENDY BLACKBIRD 47E

	WTs	EPDs
BW	80	+1.4
WW	583	+40
YW	1149	+66
MILK	-	+17
AGE DAM	6	-
TEST ADG	3.5	-
CALVING EASE		

LMY	RIB EYE	%IMF	RIB FAT	RUMP FAT

A maternal brother is working at Grant Ranches



WINDY WILLOWS TROUBADOUR 81X - LOT 28

WINDY WILLOWS TROUBADOUR 134X 29

WW 134X MARCH 07 2010 #1573290

S: CRESCENT CREEK TROUBADOUR 34U

O C C MAGNUM 749M
MERIT MAGNUM 5053
MERIT LADY MCHENRY 123K

D: WWF MAGNUM HEROINE 88T

F A R KRUGERRAND 410H AMF CAF NHF
WWF F KRUGER HEROINE 7P
WWF FRONTLINE HEROINE 105K

	WTs	EPDs
BW	79	+1.8
WW	605	+47
YW	1180	+78
MILK	-	+13
AGE DAM	3	-
TEST ADG	3.56	-
CALVING EASE		

LMY	RIB EYE	%IMF	RIB FAT	RUMP FAT

These Toubadour sons are very uniform, a great opportunity to put together a set of half brothers.



WINDY WILLOWS TROUBADOUR 134X - LOT 29

WINDY WILLOWS TROUBADOUR 194X 30

WW 194X MARCH 22 2010 #1573338

S: CRESCENT CREEK TROUBADOUR 34U

HIGH VALLEY 4C6 AMBUSH AMF
BAD LANDS AMBUSH 45M
BAD LANDS BLACKLASS 808H

D: WWF AMBUSH BLACKLASS 73T

BEAR HILLS TONTO 104C
PENABERA BLACKLASS 13J
GRASSMERE DORRIE 29C

	WTs	EPDs
BW	76	+0.7
WW	643	+43
YW	1203	+66
MILK	-	+14
AGE DAM	3	-
TEST ADG	3.47	-
CALVING EASE ELITE		

LMY	RIB EYE	%IMF	RIB FAT	RUMP FAT

A maternal brother sold to Jayme Corr of Manitoba in last year's sale.

WINDY WILLOWS TROUBADOUR 203X 31

WW 203X MARCH 24 2010 #1573346

S: CRESCENT CREEK TROUBADOUR 34U

WINDY WILLOWS CINCHA 38N
WINDY WILLOWS CINCHA 112R
WWF QUANTUM BARBARA 96M

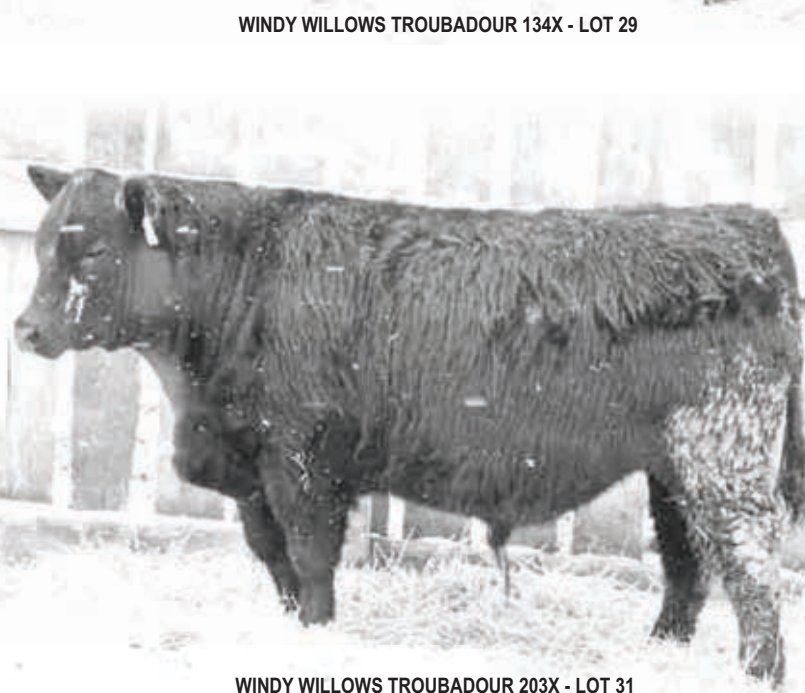
D: WWF CINCHA ERICA 192T

BAD LANDS QUANTUM 016K
WWF QUANTUM ERICA 163N
WWF BRUNO ERICA 95L

	WTs	EPDs
BW	88	+2.6
WW	596	+41
YW	1238	+70
MILK	-	+17
AGE DAM	3	-
TEST ADG	3.98	-
CALVING EASE		

LMY	RIB EYE	%IMF	RIB FAT	RUMP FAT

This young calf is short in stature but has loads of muscle and doesn't have to take a back seat to his older brothers. A maternal sister is a very impressive two year old with her first calf.



WINDY WILLOWS TROUBADOUR 203X - LOT 31

REFERENCE SIRE



S A V FINAL ANSWER 0035

IMP 035K FEBRUARY 22 2000 #1061938 AMF CAF NHF

BW: LBS. ADJ 205 DAY WT: LBS.

ADJ 365 DAY WT: LBS.

TRAVELER 1148 G D A R
G D A R TRAVELER 71 AMF CAF NHF
G D A R MISS BLACKCAP 567

S: SITZ TRAVELER 8180 AMF CAF NHF

G D A R RAINMAKER 340
SITZ EVERELDA ENTENSE 1137
SITZ EVERELDA ENTENSE 2335

TEHAMA BANDO 155 AMF CAF NHF
BON VIEW BANDO 598 AMF CAC
BON VIEW DORA 56

D: S A V EMULOUS 8145

ELLANIN SKY DIVER
S A V SKY EMULOUS 2124
TAIL N 0383

BW	WW	YW	MILK	REA	%IMF	FAT
-1.0	+61	+104	+19	+0.31	+0.39	+0.036

Final Answer is probably the most widely used calving ease bull in North America and with good reason. His calves are consistently low birth weight. We have used him on most of our heifers the last three years and their average birth weight is just over 70 pounds. Despite being so small at birth they really grow! You may be surprised by the performance these Final Answer sons have exhibited. While we recommend his sons for use on heifers, make no mistake, they are much more than calving ease bulls.

32

WINDY WILLOWS

FINAL ANSWER 18X

WW 18X FEBRUARY 11 2010 #1573434

S: S A V FINAL ANSWER 0035 AMF CAF NHF

MINBURN MAIN EVENT 181N
MINBURN MAIN STREET 146S
MINBURN KEEPSAKE 16J

D: WWF MN STREET LADY 5U

GLENCROFT WALLACE 1K
WWF SCOTCH LADY 124N
WWF PUCKETT LADY 243J

	WTs	EPDs
BW	88	+4.0
WW	725	+56
YW	1310	+101
MILK	-	+18
AGE DAM	2	-
TEST ADG	3.62	-

LMY	RIB EYE	%IMF	RIB FAT	RUMP FAT

Final Answer 18X demonstrates the growth that can be achieved through the combination of Final Answer and Main Street. He was the highest indexing bull calf from our two year old heifers with an actual weaning weight of 786 lbs. He is an impressive individual and is loaded with muscle. Be sure to check him out!

WINDY WILLOWS FINAL ANSWER 9X

WW 9X FEBRUARY 08 2010 #1573426

S: S A V FINAL ANSWER 0035 AMF CAF NHF

MINBURN MAIN EVENT 181N
MINBURN MAIN STREET 146S
MINBURN KEEPSAKE 16J

D: WWF MN STREET POPPY ANN 34U

RITO 616 OF 4B20 6807 AMF CAF NHF
WINDY WILLOWS POPPY ANN 12M
FAIRMOUNT POPPY ANN 12K

LMY	RIB EYE	%IMF	RIB FAT	RUMP FAT

	WTs	EPDs
BW	74	+0.5
WW	640	+48
YW	1195	+91
MILK	-	+17
AGE DAM	2	-
TEST ADG	3.44	-
CALVING EASE ELITE		

Here is a ¼ brother to Lot 32 with a lower birth weight. He should work well on heifers.

33



WINDY WILLOWS FINAL ANSWER 11X 34

WW 11X FEBRUARY 09 2010 #1573427

S: S A V FINAL ANSWER 0035 AMF CAF NHF

MINBURN MAIN EVENT 50M
KBJ MAIN EVENT 805S
BT QUEEN 657K

D: WWF MN EVENT JESTRESS 54U
S A F FAME AMF CAF NHF
WWF FAMOUS JESTRESS 15L
MFA JESTRESS 54F

LMY	RIB EYE	%IMF	RIB FAT	RUMP FAT

	WTs	EPDs
BW	70	-0.5
WW	656	+49
YW	1118	+85
MILK	-	+17
AGE DAM	2	-
TEST ADG	2.86	-
CALVING EASE ELITE		

Asure bet Final Answer son that would be a good choice for heifers.



SILAGE CROP

WINDY WILLOWS FINAL ANSWER 16X 35

WW 16X FEBRUARY 10 2010 #1573432

S: S A V FINAL ANSWER 0035 AMF CAF NHF

MINBURN MAIN EVENT 181N
MINBURN MAIN STREET 146S
MINBURN KEEPSAKE 16J

D: WWF MN STREET BLACKBIRD 173U
YOUNG DALE HERCULES 810H
WWF HERCULES BLACKBIRD 98K
WWF STOCKMAN BLACKBIRD 132H

LMY	RIB EYE	%IMF	RIB FAT	RUMP FAT

	WTs	EPDs
BW	78	+1.7
WW	699	+57
YW	1318	+100
MILK	-	+17
AGE DAM	2	-
TEST ADG	3.84	-
CALVING EASE		

Another 3/4 brother to Lot 32 with performance to match.



WINDY WILLOWS FINAL ANSWER 16X - LOT 35

WINDY WILLOWS FINAL ANSWER 33X 36

WW 33X FEBRUARY 14 2010 #1573455

S: S A V FINAL ANSWER 0035 AMF CAF NHF

HIGH VALLEY 4C6 AMBUSH AMF
BAD LANDS AMBUSH 45M
BAD LANDS BLACKCLASS 808H

D: WWF AMBUSH BLACKBIRD 174U
SITZ ALLIANCE 6595 AMF NHF
WWF ALLIANCE BLACKBIRD 105M
WWF STOCKMAN BLACKBIRD 105H

LMY	RIB EYE	%IMF	RIB FAT	RUMP FAT

	WTs	EPDs
BW	80	+1.6
WW	717	+55
YW	1270	+92
MILK	-	+19
AGE DAM	2	-
TEST ADG	3.43	-
CALVING EASE		

Final Answer sons were very popular in last year's sale. His daughters are making excellent cows.

WINDY WILLOWS FINAL ANSWER 271X 37

WW 271X FEBRUARY 25 2010 #1599106

S: S A V FINAL ANSWER 0035 AMF CAF NHF

MINBURN MAIN EVENT 181N
MINBURN MAIN STREET 146S
MINBURN KEEPSAKE 16J

D: WWF MNSTREET BELL 123U
WINDY WILLOWS HERCULES 86K
SPRING VIEW BELL 9M
BELL BLACKCAP 10C

LMY	RIB EYE	%IMF	RIB FAT	RUMP FAT

	WTs	EPDs
BW	83	+1.6
WW	671	+51
YW	1301	+94
MILK	-	+17
AGE DAM	2	-
TEST ADG	3.3	-

Final Answer is responsible for many bulls with a low birth and high growth combination of EPDs or in other words, "spread" bulls. Check out their numbers.



WINDY WILLOWS FINAL ANSWER 271X - LOT 37

REFERENCE SIRE



S A V PIONEER 7301

IMP 7301T FEBRUARY 27 2007 #1481377 AMF CAF NHF
BW: LBS. ADJ 205 DAY WT: LBS. ADJ 365 DAY WT: LBS.

G D A R TRAVELER 71 AMF CAF NHF
SITZ TRAVELER 8180 AMF CAF NHF
SITZ EVERELDA ENTENSE 1137
S: S A V FINAL ANSWER 0035 AMF CAF NHF
BON VIEW BANDO 598 AMF CAC
S A V EMULOUS 8145
S A V SKY EMULOUS 2124

A A R NEW TREND
BOYD NEW DAY 8005 AMF CAF NHF
S V F FOREVER LADY 57D
D: S A V BLACKBIRD 5297
S A F 598 BANDO 5175 AMF CAC
S A V BLACKBIRD 1082
S A V BLACKBIRD 4036

BW	WW	YW	MILK	REA	%IMF	FAT
+1.9	+62	+104	+28	+0.46	+0.40	+0.027

PEDIGREE FOR LOTS 38, 39 & 40

S: S A V PIONEER 7301 AMF CAF NHF

GARDENS PRIME TIME AMF CAF NHF
CAR PRIME TIME 013
C A R MISS 871

D: WWF PRIME TIME MISSIE 75M
WIWA CREEK STOCKMAN 26'95
WWF STOCKMAN MISSIE 137K
CALLAMERE MISSIE 72G

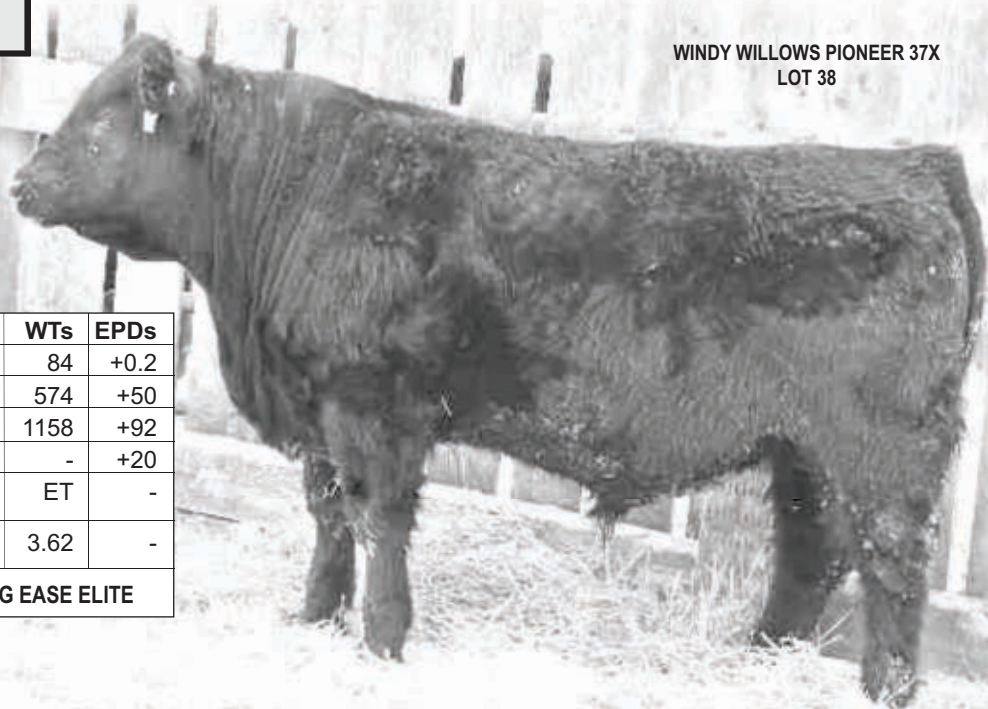
These 3 flush brothers are a genetic treasure of maternal ability and calving ease. Pioneer, Final Answer and Prime Time were all breed leaders for these important traits. The dam, Missie 75M earned her way into our transplant program on the strength of her production. Select one or all three and reap the rewards.

38

WINDY WILLOWS PIONEER 37X
(ET) WW 37X FEBRUARY 15 2010 #1596261

LMY	RIB EYE	%IMF	RIB FAT	RUMP FAT

	WTs	EPDs
BW	84	+0.2
WW	574	+50
YW	1158	+92
MILK	-	+20
AGE DAM	ET	-
TEST ADG	3.62	-
CALVING EASE ELITE		



WINDY WILLOWS PIONEER 37X
LOT 38

WINDY WILLOWS PIONEER 42X
(ET) WW 42X FEBRUARY 17 2010 #1596262

LMY	RIB EYE	%IMF	RIB FAT	RUMP FAT

	WTs	EPDs
BW	82	+0.2
WW	609	+50
YW	1141	+92
MILK	-	+20
AGE DAM	ET	-
TEST ADG	3.3	-
CALVING EASE ELITE		

39

WINDY WILLOWS PIONEER 58X
(ET) WW 58X FEBRUARY 20 2010 #1596263

LMY	RIB EYE	%IMF	RIB FAT	RUMP FAT

	WTs	EPDs
BW	94	+0.2
WW	527	+50
YW	1119	+92
MILK	-	+20
AGE DAM	ET	-
TEST ADG	3.67	-
CALVING EASE ELITE		

40

WINDY WILLOWS PIONEER 46X

WWED 46X FEBRUARY 18 2010 #1585451

S: S A V PIONEER 7301 AMF CAF NHF

A A R NEW TREND
V D A R NEW TREND 315 AMF CAF NHF
V D A R LUCY 704

D: FCR RUBY 25K

BARDOLINE OF PEAK DOT 204R
BATSCOL RUBY 60A
BERGITA BATSCOL 25K

LMY	RIB EYE	%IMF	RIB FAT	RUMP FAT

	WTs	EPDs
BW	46	-5.0
WW	580	+32
YW	1088	+61
MILK	-	+19
AGE DAM	10	-
TEST ADG	3.15	-
CALVING EASE ELITE		

A very attractive Pioneer son out of the Ruby cow, one of New Trend's best.

41



WINDY WILLOWS PIONEER 46X - LOT 41

WINDY WILLOWS PIONEER 48X

WW 48X FEBRUARY 18 2010 #1573466

S: S A V PIONEER 7301 AMF CAF NHF

BAND 234 OF IDEAL 3163
Q A S TRAVELER 23-4 AMF CAF NHF
Q A S BLACKBIRD EVE 601 1

D: HOLLBROOK BLACKWOOD 18E

Q A S TRAVELER 23-4 AMF CAF NHF
HOLLBROOK BLACKWOOD 15C
HOLLBROOK BLACKWOOD 44S

LMY	RIB EYE	%IMF	RIB FAT	RUMP FAT

	WTs	EPDs
BW	84	+1.1
WW	640	+43
YW	1211	+77
MILK	-	+23
AGE DAM	15	-
TEST ADG	3.54	-
CALVING EASE ELITE		

This bull has bred in calving ease, maternal ability and capacity. His mother is the double bred Traveler cow we purchased from Hollbrook Angus as the high seller at a Fall Finale sale. She has been an embryo donor for us and is still working at 15 years of age.

42



WINDY WILLOWS PIONEER 60X

WW 60X FEBRUARY 21 2010 #1573472

S: S A V PIONEER 7301 AMF CAF NHF

G D A R ROGUE 640
KBJ ROGUE II 203H
KBJ QUEEN 69X

D: KBJ ATALANTA 284M

SOUTHOLM ACCUTRON
KBJ ATALANTA 16A
TAF ATALANTA 26N

LMY	RIB EYE	%IMF	RIB FAT	RUMP FAT

	WTs	EPDs
BW	90	+2.8
WW	661	+44
YW	1150	+74
MILK	-	+22
AGE DAM	8	-
TEST ADG	3.03	-
CALVING EASE		

We have gained a great deal of respect for Rogue 203H daughters and acquired the dam of this bull from the KBJ cowherd reduction sale.

43



WINDY WILLOWS PIONEER 60X - LOT 43

WINDY WILLOWS PENDLETON 112X 44

WW 112X MARCH 04 2010 #1573271

S: HARB PENDLETON 765 J H AMF CAF NHF

STEVENS ROYCE 741C CAF NHF
STEVENS BRUNO 561G CAF NHF
JRS ENCHANTRESS 16A

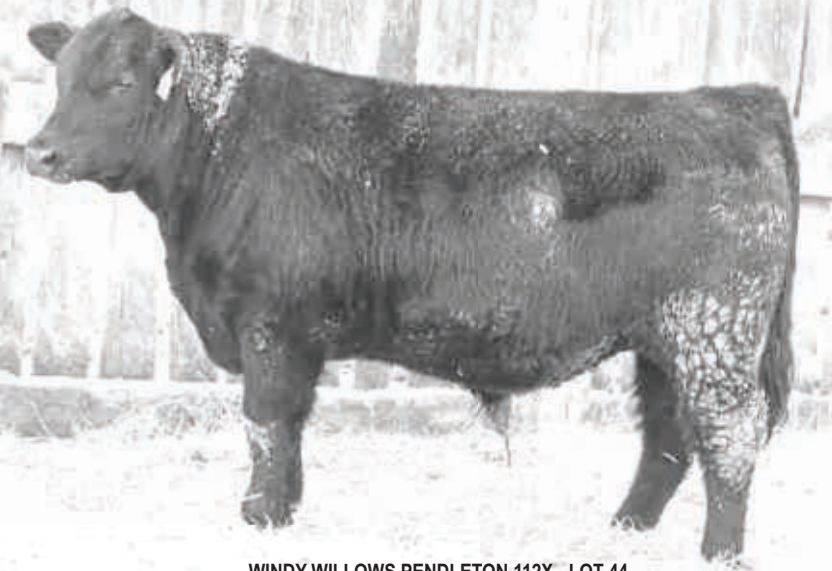
D: WWF BRUNO BLACKBIRD 74M

WIWA CREEK STOCKMAN 26'95
WWF STOCKMAN BLACKBIRD 132H
WWF TOUCHSTONE BLACKBIRD 70D

	WTs	EPDs
BW	72	-0.2
WW	638	+42
YW	1240	+84
MILK	-	+26
AGE DAM	8	-
TEST ADG	3.74	-
CALVING EASE ELITE		

LMY	RIB EYE	%IMF	RIB FAT	RUMP FAT

Pendleton is another Final Answer son we have used with success. One of our feature bulls last year was a son of Pendleton.



WINDY WILLOWS PENDLETON 112X - LOT 44

WINDY WILLOWS BISMARCK 27X 45

WW 27X FEBRUARY 12 2010 #1573446

S: S A V BISMARCK 5682 AMF CAF NHF

S A F 598 BANDO 5175 AMF CAC
L T 598 BANDO 9074 AMF CAF NHF
MILL COULEE BARBARA K 323

D: WWF BANDO BLACKBIRD 29U

BAD LANDS RIGHT TIME 78N
WWF RIGHT TIME BLACKBIRD 145S
WWF STOCKMAN BLACKBIRD 128L

	WTs	EPDs
BW	88	+3.1
WW	668	+56
YW	1023	+98
MILK	-	+26
AGE DAM	2	-
TEST ADG	2.2	-
CALVING EASE		

LMY	RIB EYE	%IMF	RIB FAT	RUMP FAT

Our only son of Bismarck in the sale this year, he is long and smooth and bred to be easy calving.



REFERENCE SIRE



BAD LANDS AMBUSH 45M

CDS 45M APRIL 07 2002 #1121064

BW: 77LBS. ADJ 205 DAY WT: 636 LBS.

ADJ 365 DAY WT: 1145 LBS.

BANDOLIER ESTON DURNES 42B
PARAMONT AMBUSH 2172 AMF CAF NHF
EWS MISS BURGESS 1720
S: HIGH VALLEY 4C6 AMBUSH AMF
RITO 9Q4 OF 1H1 SASQUATCH AMF
HIGH VALLEY GLORIA 1Q2
J NICHOLS GLORIA Y185

LEACHMAN PARAGON
BON VIEW PARAGON 2108
BON VIEW QUEEN M 1084
D: BAD LANDS BLACKCLASS 808H
GDAR SVF CHIEF
BAD LANDS BLACKCLASS 633F
BAD LANDS BLACKCLASS 13'93

BW	WW	YW	MILK	REA	%IMF	FAT
+1.4	+40	+60	+11	-0.28	+0.07	+0.009

Ambush was selected as the high selling bull in the Bad Lands Bull Sale, Fort McLeod, Alberta. He is an extremely fertile bull with an excellent disposition. His full sister at Bad Lands has near perfect teat and udder quality and has been named an Elite Dam by the CAA. Ambush 45M has been used on heifers at Windy Willows with all births being unassisted. Ambush was a very thick, smooth and correct bull. His progeny exhibit tremendous thickness, capacity and performance. Two sons have topped previous bull sales and a daughter was our high selling heifer in the 2005 Grasslands Sale to Pahl Livestock. His daughters are making exceptional cows with beautiful udders and are destined to become the backbone of our cowherd. We lost him 4 years ago but continue to use him by AI.

WINDY WILLOWS AMBUSH 67X**WW 67X FEBRUARY 22 2010 #1573478****S: BAD LANDS AMBUSH 45M**

EMULATION N BAR 5522
 N BAR EMULATION EXT AMF CAF NHF
 N BAR PRIMROSE 2424

D: WWF EXT BLACKBIRD 31K

CENTURY TOUCHSTONE 131
 WWF TOUCHSTONE BLACKBIRD 79E
 WWF VAL EBARD 55B

	WTs	EPDs
BW	72	-0.8
WW	592	+38
YW	1088	+67
MILK	-	+12
AGE DAM	10	-
TEST ADG	3.08	-
CALVING EASE ELITE		

LMY	RIB EYE	%IMF	RIB FAT	RUMP FAT

Ambush 67X is a thick made bull from a very good EXT daughter. A maternal sister is offered in this sale.

WINDY WILLOWS AMBUSH 69X**WW 69X FEBRUARY 22 2010 #1573479****S: BAD LANDS AMBUSH 45M**

MINERTS FORTUNE 2000 AMF CAF NHF
 S A F FAME AMF CAF NHF
 S A F ROYAL LASS 1027

D: WWF FAMOUS LADY SANDY 70J

J R JUICE Z005
 WWF JUICE LADY SANDY 35E
 WWF LNDMARK LADY SANDY 30W

	WTs	EPDs
BW	78	+1.1
WW	620	+39
YW	1145	+65
MILK	-	+9
AGE DAM	11	-
TEST ADG	3.26	-
CALVING EASE ELITE		

LMY	RIB EYE	%IMF	RIB FAT	RUMP FAT

Lots of calving ease in this pedigree. Ambush sons have bred a lot of heifers.

WINDY WILLOWS AMBUSH 80X**WW 80X FEBRUARY 25 2010 #1573489****S: BAD LANDS AMBUSH 45M**

RONAN TEX 56A
 DOUBLE J TEX 234F
 DOUBLE J BAR LASS 62Y

D: FINELL TEX SALLY 6K

DOUBLE J RITO 349D
 FINELL SALLY 2H
 WWF MAX SALLY 19C

	WTs	EPDs
BW	80	+1.1
WW	565	+30
YW	1117	+45
MILK	-	+15
AGE DAM	10	-
TEST ADG	3.42	-
CALVING EASE ELITE		

LMY	RIB EYE	%IMF	RIB FAT	RUMP FAT

The dam here was selected from the Finell dispersal and both her daughters have been retained.

WINDY WILLOWS AMBUSH 105X**WW 105X MARCH 02 2010 #1573266****S: BAD LANDS AMBUSH 45M**

SITZ TRAVELER 8180 AMF CAF NHF
 SITZ ALLIANCE 6595 AMF NHF
 SITZ BARBARAMERE JET 2698

D: WWF ALLIANCE ERICA 25P

WIWA CREEK STOCKMAN 26'95
 WWF STOCKMAN ERICA 71H
 WWF B SKY ERICA 35C

	WTs	EPDs
BW	102	+5.9
WW	652	+48
YW	1222	+77
MILK	-	+16
AGE DAM	6	-
TEST ADG	3.53	-

LMY	RIB EYE	%IMF	RIB FAT	RUMP FAT

Ambush 105X is a high growth Ambush son from a very good Alliance daughter who has 2 daughters in the herd and another sold to Brian & Jennifer Rieger through the Grasslands Sale.

46**47**

WINDY WILLOWS AMBUSH 69X - LOT 47

48

WINDY WILLOWS AMBUSH 105X - LOT 49

WINDY WILLOWS HEAVY METAL 6X 50

WW 6X February 08 2010 #1573424

S: WINDY WILLOWS HEAVY METAL 32T

HIGH VALLEY 4C6 AMBUSH AMF
BAD LANDS AMBUSH 45M
BAD LANDS BLACKCLASS 808H

D: WWF AMBUSH BLACKBIRD 206U

SOUTHERN KRUGGERAND 16H
WWF KRUGGERAND BLACKBIRD 97P
WWF STOCKMAN BLACKBIRD 132H

	WTs	EPDs
BW	74	-0.5
WW	627	+44
YW	1243	+78
MILK	-	+15
AGE DAM	2	-
TEST ADG	3.82	-
CALVING EASE ELITE		

LMY	RIB EYE	%IMF	RIB FAT	RUMP FAT

Heavy Metal is an Iron Man son out of our Missie 75M cow. He has proven to be a very easy calving bull as one would expect from his pedigree. Use this bull on heifers with confidence.



WINDY WILLOWS HEAVY METAL 270X 51

WW 270X February 24 2010 #1599107

S: WINDY WILLOWS HEAVY METAL 32T

KBJ CONQOUR ALL 447J
KBJ KAZAM 654N
HILL TOP LADY FANNY 8J

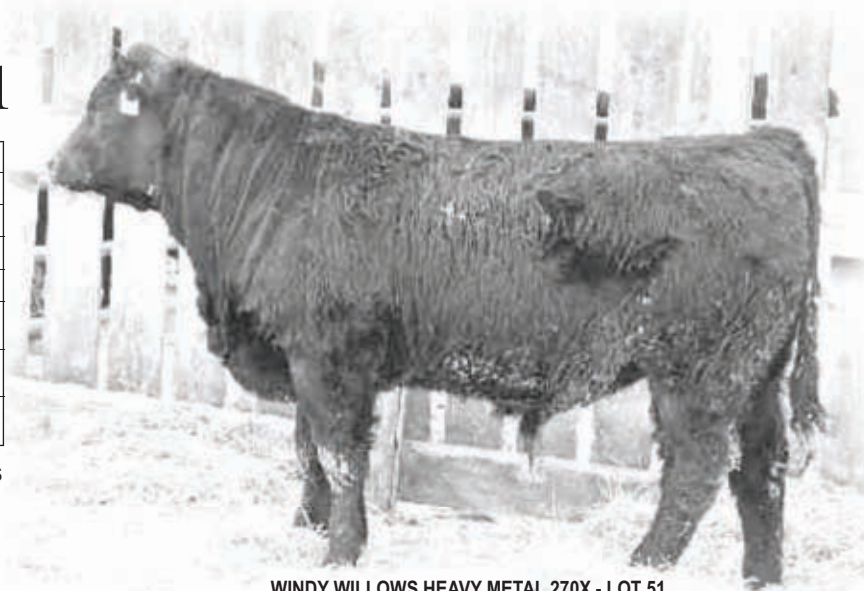
D: WWF KAZAM BARBARA 219U

WIWA CREEK STOCKMAN 26'95
WWF STOCKMAN BARBARA 119H
WWF TT BARBARA 33F

	WTs	EPDs
BW	82	+1.4
WW	680	+49
YW	1273	+88
MILK	-	+13
AGE DAM	2	-
TEST ADG	3.1	-
CALVING EASE		

LMY	RIB EYE	%IMF	RIB FAT	RUMP FAT

This bull missed getting weighed at birth so his calving ease rating is based on a pedigree estimate.



WINDY WILLOWS HEAVY METAL 270X - LOT 51

KBJ KAZAM 654N

KBJ 654N JANUARY 09 2003 #1147992

BW: 97LBS. ADJ 205 DAY WT: 677 LBS.

ADJ 365 DAY WT: 1162 LBS.

BOTANY ANGUS MAX 5A
CRESCENT CREEK MAXIMUM 37C
CRESCENT CREEK QUEEN RUTH 14Z

S: KBJ CONQOUR ALL 447J

TRAVELER OF WLA 1Z
LLB KINCHTRY BEAUTY 403E
DOUBLE J BEAUTY 403A

BIG DRY RANCHERS CHOICE 1673
DFA RANCHER 1E
KNIGHTS BLACKBIRD 9Y

D: HILL TOP LADY FANNY 8J

EVERBLACK LOTTO 649
KBJ LADY FANNY 144D
LLB LADY FANNY 31P

BW	WW	YW	MILK	REA	%IMF	FAT
+4.3	+24	+48	+9	+0.03	+0.47	-0.002

Kazam came to us after seeing service at Breed Creek Angus and KBJ Round Farms. He sires sound, high performing sons with muscle.

REFERENCE SIRE



KBJ CONQOUR ALL 447J - SIRE OF KBJ KAZAM 654N

WINDY WILLOWS KAZAM 172X**WW 172X MARCH 16 2010 #1573318****S: KBJ KAZAM 654N**

SCHURRTOP FORTUNE 3261
 MINERTS FORTUNE 2000 AMF CAF NHF
 MINERTS EDELLA 951

D: WWF FORTUNE BELLE 17J

G D A R EXECUTIVE 727 AMF NHF
 WWF EXECUTIVE BELLE 19G
 HOLLBROOK TRENDY 16B

	WTs	EPDs
BW	88	+5.1
WW	660	+36
YW	1313	+62
MILK	-	+14
AGE DAM	11	-
TEST ADG	4.04	-

LMY	RIB EYE	%IMF	RIB FAT	RUMP FAT

52

→ Kazam 172X is a high growth son of the powerful Kazam bull owned with KBJ and Breed Creek Angus. He gained over 4 lbs per day on feed.

WINDY WILLOWS KAZAM 188X**WW 188X MARCH 21 2010 #1573333****S: KBJ KAZAM 654N**

LEACHMAN RIGHT TIME AMF
 BAD LANDS RIGHT TIME 78N
 BAD LANDS DUCHESS 809H

D: WWF RIGHT TIME BLACKBIRD E 102

S A F FOCUS OF E R AMF CAF NHF
 WWF FOCUS BLACKBIRD E 21L
 WWF CORNHUSKER BLACKBIRD E 36C

	WTs	EPDs
BW	84	+2.7
WW	648	+38
YW	1104	+70
MILK	-	+15
AGE DAM	4	-
TEST ADG	2.83	-
CALVING EASE		

LMY	RIB EYE	%IMF	RIB FAT	RUMP FAT

A maternal sister by Krugerrand 1M sells in this sale.

53

WINDY WILLOWS KAZAM 188X - LOT 53

WINDY WILLOWS KAZAM 195X**WW 195X MARCH 23 2010 #1573339****S: KBJ KAZAM 654N**

PAPA EQUATOR 2928 AMF NHF
 YOUNG DALE HERCULES 810H
 YOUNG DALE GRACE 16C

D: WWF HERCULES BARBARA 152N

WIWA CREEK STOCKMAN 26'95
 WWF STOCKMAN BARBARA 119H
 WWF TT BARBARA 33F

	WTs	EPDs
BW	92	+4.0
WW	607	+33
YW	1217	+65
MILK	-	+13
AGE DAM	7	-
TEST ADG	3.78	-

LMY	RIB EYE	%IMF	RIB FAT	RUMP FAT

Barbara 152N produced a high seller in one of our bull sales and has 2 daughters in the herd.

54**WINDY WILLOWS KAZAM 197X****WW 197X MARCH 23 2010 #1573340****S: KBJ KAZAM 654N**

C H QUANTUM 3330
 H A R B CINCHA 829 AMF
 H A R B JUMBOLEEN D03

D: WWF CINCHA BRIDE 9S

SITZ ALLIANCE 6595 AMF NHF
 WWF ALLIANCE BRIDE 23P
 WWF TT BRIDE 53F

LMY	RIB EYE	%IMF	RIB FAT	RUMP FAT

	WTs	EPDs
BW	82	+2.0
WW	678	+38
YW	1148	+68
MILK	-	+17
AGE DAM	4	-
TEST ADG	2.91	-
CALVING EASE		

Kazam 197X is a long classy calf with a powerful hindquarter.

55

WINDY WILLOWS
KRUGERRAND 343X
WW 343X MARCH 18 2010 #1599108

KRUGERRAND OF DONAMERE 490
 AMF NHF SOUTHERN KRUGGERAND 16H
 SOUTHERN TALL PRIDE 72W 643457
S: WINDY WILLOWS KRUGERRAND 210S
 YOUNG DALE HERCULES 810H
 WWF HERCULES JENNIFER 142K
 WWF INDEPENDENT JENNIFER 44W

TC STOCKMAN 2164 AMF
 MFA STOCKMAN 87G
 ROBAN TONTO'S BLACKBIRD 8B
D: WINDY WILLOWS ATALANTA 219L
 G V CORNHUSKER 584
 WINDY WILLOWS ATALANTA 28B
 EASTONDALE ATLANTA 11Y

	WTs	EPDs
BW	90	+3.0
WW	668	+35
YW	1265	+62
MILK	-	+16
AGE DAM	9	-
TEST ADG	3.38	-

LMY	RIB EYE	%IMF	RIB FAT	RUMP FAT

Krugerrand 210S might just be the best son of our Krugerrand 16H bull that we used for many years. A full brother of 210S was a high selling bull in the 2008 sale to Bad Lands Angus at Patricia AB. You will like the thickness and style in this bull.

56



WINDY WILLOWS
KRUGERRAND 372X
WW 372X MARCH 30 2010 #1599109

KRUGERRAND OF DONAMERE 490
 AMF NHF SOUTHERN KRUGGERAND 16H
 SOUTHERN TALL PRIDE 72W 643457
S: WINDY WILLOWS KRUGERRAND 210S
 YOUNG DALE HERCULES 810H
 WWF HERCULES JENNIFER 142K
 WWF INDEPENDENT JENNIFER 44W

KRUGERRAND OF DONAMERE 490 AMF NHF
 DM KRUGERRAND 15G
 DM BETSY 40B
D: WWF KRUGERRAND ATALANTA 292K
 G V CORNHUSKER 584
 WINDY WILLOWS ATALANTA 28B
 EASTONDALE ATLANTA 11Y

	WTs	EPDs
BW	88	+2.8
WW	643	+31
YW	1194	+57
MILK	-	+13
AGE DAM	10	-
TEST ADG	3.12	-

LMY	RIB EYE	%IMF	RIB FAT	RUMP FAT

A double bred Krugerrand from the same cow family as Lot 56. No wonder they look alike

57



REFERENCE SIRE



RED SIX MILE SAKIC 832S

SIXM 832S FEBRUARY 26 2006 #1332064 OSF

BW: 82LBS. ADJ 205 DAY WT: 911 LBS.

ADJ 365 DAY WT: 1392 LBS.

RED FCC RAMBO 502 OSF
 RED WILDMAN DENALI 19L
 RED TOWAW LAKIMA 1S
S: RED SIX MILE AVIATOR 217P OSF
 RED FLYING K CHIEF 36Y
 RED RSL SUE 400F OSF
 RED C Y STORMY 454Z

 RED BJR BRAVEHEART 3H OSF
 RED SIX MILE CUJO 800M
 RED PTTV PRIDE 3'97 OSF
D: RED SIX MILE SIERA 257P OSF
 RED 77 BAR 556E
 RED BOUNTY B MISS SIERA BAR
 RED RSL MISS SIERA 19A

BW	WW	YW	MILK	REA	%IMF	FAT
+1.1	+44	+68	+20	-0.11	-0.41	-0.020

RED WWF SAKIC 4X

WW 4X FEBRUARY 7 2010 #126698

S: RED SIX MILE SAKIC 832S OSF

RED PBC D0202 6M H0904 OSF MAF
 RED FLYING K CHIEF 7U
 RED FLYING K PRIDE 18H

D: RED WWF QUEEN 78S

RED BVR RAB-STAR 56C MAF OSF
 RED WWF QUEEN 5G
 RED COCKBURN QUEEN 14

LMY	RIB EYE	%IMF	RIB FAT	RUMP FAT

	WTs	EPDs
BW	74	-
WW	604	-
YW	1189	-
MILK	-	-
AGE DAM	4	-
TEST ADG	3.9	-

Here is a long bodied and thick quartered son of the popular Sakic bull at Genex.

58



RED WWF SAKIC 39X

WW 39X FEBRUARY 16 2010 #1573461

S: RED SIX MILE SAKIC 832S OSF

RED GLACIER LOGAN OSF MAF
 RED WWF LOGAN 12G
 RED WWF BARONESS 23E

D: RED WWF LARKEISA 167P

RED SSS BOOMER 803B
 RED WWF LARKEISA 33H
 RED CUMNOCK LARKEISA 380U

LMY	RIB EYE	%IMF	RIB FAT	RUMP FAT

	WTs	EPDs
BW	98	+3.2
WW	616	+40
YW	1187	+61
MILK	-	+20
AGE DAM	6	-
TEST ADG	3.5	-

Sakic 39X was chosen as the favorite Sakic son by several visitors. He has a strong top and a classy look to him. His dam is a big bodied cow with a very nice disposition.

59

RED WWF SAKIC 64X
WW 64X FEBRUARY 22 2010 #1573475

60

S: RED SIX MILE SAKIC 832S OSF

RED BVR RAB-STAR 56C OSF MAF
 RED WWF RAB STAR 66L
 RED HARVEST 74D

D: RED WWF EMPRESS 118P

RED LCHMN GRND CANYON 1244G OSC MAF
 RED WWF EMPRESS 107M OSF
 RED MEADOW CK MOTION LADY 32B

	WTs	EPDs
BW	94	+2.1
WW	580	+30
YW	1183	+50
MILK	-	+18
AGE DAM	6	-
TEST ADG	3.71	-

LMY	RIB EYE	%IMF	RIB FAT	RUMP FAT

A strong bull from the very consistent Empress cow family at Windy Willows. The grand dam, Empress 107M, is an Elite dam.

RED WWF SAKIC 86X
WW 86X FEBRUARY 26 2010 #1593823

61

S: RED SIX MILE SAKIC 832S OSF

RED BUF CRK CHF 824-1658 OSC MAF
 RED LCHMN GRND CANYON 1244G OSC MAF
 RED KRN REBA'S ROBIN OSF

D: RED WWF EMPRESS 107M OSF

RED BRYLOR SAWYER BROWN 3Z
 RED MEADOW CK MOTION LADY 32B
 RED MEADOW CK MAJOR MOTION 10X

	WTs	EPDs
BW	94	+3.1
WW	587	+36
YW	1050	+60
MILK	-	+19
AGE DAM	8	-
TEST ADG	2.85	-

LMY	RIB EYE	%IMF	RIB FAT	RUMP FAT

Also from the Empress family this bull is out of 107M herself, a smaller but highly productive cow with a great udder.

RED WWF SAKIC 145X
WW 145X MARCH 08 2010 #1573297

62

S: RED SIX MILE SAKIC 832S OSF

RED BLUE SPRUCE ZOOK 50H
 RED DWAJO GLADIATOR 32L
 RED DWAJO SUPERIOR 4H OSF

D: RED SOO LINE BARMAID 5206

RED MABES RAMBO TUO
 SSS BARMAID 112M
 SSS BARMAID 581Z

	WTs	EPDs
BW	74	-3.1
WW	550	+21
YW	1169	+40
MILK	-	+25
AGE DAM	5	-
TEST ADG	3.8	-
CALVING EASE ELITE		

LMY	RIB EYE	%IMF	RIB FAT	RUMP FAT

This is the Elite calving ease red bull in the offering. His dam is a very good Gladiator daughter we purchased from Soo Line. Gladiator sires great daughters and they were among the high sellers in the record breaking Soo Line Red Dispersal.



RED WWF SAKIC 145X - LOT 62

RED WWF UPCOUNTRY 21X
WW 21X FEBRUARY 11 2010 #1573439

63

RED SSS ZAMA PINE 37S
 RED SSS REACTOR 439K
 RED SSS DYNA NELLIE 222W

S: RED GRAHAM UPCOUNTRY 717U

RED BJR RAMBLER 5162 OSF
 RED WCF RAMBLER MISS PAT 65N
 RED MEM MISS PATRIOT 47Y

RED U-2 MAXXUM 363N
 RED SHODEREE MAX 171S
 RED SHODEREE NUGGET 208J

D: RED WWF MAX FANNY 73U

RED WWF LOGAN 12G
 RED WWF FANNY 140P
 RED WWF FANNY 84L

	WTs	EPDs
BW	76	-0.3
WW	642	+30
YW	1128	+61
MILK	-	+19
AGE DAM	2	-
TEST ADG	2.97	-
CALVING EASE ELITE		

LMY	RIB EYE	%IMF	RIB FAT	RUMP FAT

Upcountry did a great job with his first calf crop unfortunately we lost him to injury. This good bull should work well on heifers.



RED WWF UPCOUNTRY 29X

WW 29X FEBRUARY 13 2010 #1573449

64

RED SSS ZAMA PINE 37S
RED SSS REACTOR 439K
RED SSS DYNA NELLIE 222W
S: RED GRAHAM UPCOUNTRY 717U
RED BJR RAMBLER 5162 OSF
RED WCF RAMBLER MISS PAT 65N
RED MEM MISS PATRIOT 47Y

RED TER-RON AMBUSH 404P
RED WWF AMBUSH 197S
RED WWF ROSA 23M
D: RED WWF AMBUSH LARKEISA 46U
RED WWF HIGH MARK 5J
RED WWF HIGH LARKEISA 174N
RED WWF LARKEISA 33H

	WTs	EPDs
BW	80	+1.3
WW	617	+35
YW	1141	+64
MILK	-	+15
AGE DAM	2	-
TEST ADG	3.21	-
CALVING EASE		

LMY	RIB EYE	%IMF	RIB FAT	RUMP FAT

Here is another Upcountry son that could find a home with some heifers. Larkeisa 46U has a very good udder with nice small teats.



RED WWF UPCOUNTRY 49X

WW 49X FEBRUARY 18 2010 #1593824

65

RED SSS ZAMA PINE 37S
RED SSS REACTOR 439K
RED SSS DYNA NELLIE 222W
S: RED GRAHAM UPCOUNTRY 717U
RED BJR RAMBLER 5162 OSF
RED WCF RAMBLER MISS PAT 65N
RED MEM MISS PATRIOT 47Y

RED BUF CRK CHF 824-1658 OSC MAF
RED LCHMN GRND CANYON 1244G OSC MAF
RED KRN REBA'S ROBIN OSF
D: RED WWF CLARIT 25M OSF
RED CUMNOCK STAR 139Z
RED BVR CLARIT 76D
RED CLARIT OF TAG-A-LONG 1T

	WTs	EPDs
BW	88	+1.4
WW	619	+30
YW	1140	+61
MILK	-	+19
AGE DAM	8	-
TEST ADG	3.21	-
CALVING EASE		

LMY	RIB EYE	%IMF	RIB FAT	RUMP FAT

The dam, Clarit 25M, is a large deep bodied cow with a nice disposition and excellent feet and udder.



RED WWF RAB STAR 122X

WW 122X MARCH 06 2010 #1573279

66

RED CUMNOCK SCR STAR 753X
RED CUMNOCK STAR 139Z
RED CUMNOCK CHETA 566W
S: RED BVR RAB-STAR 56CMAF OSF
RED RABCHIEF P1632-F7247
RED TIARA OF TAG-A-LONG 57T
RED MISS DANA 18M

RED GLACIER CUB 446 OSF MAF
RED MLK CRK CUB 722 OSF
RED MLK CRK LAKOTA 152-HOBO OSF
D: RED WWF CUB QUEEN 83R
RED BVR RAB-STAR 56C OSF MAF
RED WWF QUEEN 5G
RED COCKBURN QUEEN 14

	WTs	EPDs
BW	83	+0.6
WW	598	+17
YW	1155	+39
MILK	-	+12
AGE DAM	5	-
TEST ADG	3.42	-

LMY	RIB EYE	%IMF	RIB FAT	RUMP FAT

A rare son of Rab Star whose daughters are highly productive wherever they are found.



RED WWF ROCK 221X
WWWS 221X MARCH 30 2010 #1573363

67

RED LAZY MC DIVIDE 8J
 RED TER-RON TITANIC 011M
 RED YY ROSE 011K
S: RED TER-RON ROCK 143P
 RED YY RED KNIGHT 640F OSF
 RED TER-RON MELISSA 143J
 RED BLUE SPRUCE REBELLO 143Y

RED GOLD-BAR LEDGER J 1081L
 RED FLYING S JACKPOT 34N
 RED HOWE MS LASSIE DDH 114F
D: RED S- BUSHY 33T
 RED STOCKMAN OF CUDLOBE 12L
 RED SIX MILE MS BUSHMAN 996N
 RED SIX MILE MS. BUSHMAN 84G

	WTs	EPDs
BW	98	+4.6
WW	668	+20
YW	1168	+34
MILK	-	+20
AGE DAM	3	-
TEST ADG	3.07	-

LMY	RIB EYE	%IMF	RIB FAT	RUMP FAT

The only son of Rock in the sale this year. Rock sons have been very popular in the past and his daughters are certainly proving his worth.



2 YEAR OLD

WINDY WILLOWS MAIN STREET 101W **68**
WW 101W MARCH 3 2009 #1513842

CRESCENT CREEK MAIN EVENT 6H
 MINBURN MAIN EVENT 181N
 MINBURN ERICA 123H
S: MINBURN MAIN STREET 146S
 MINBURN LANCER 31F
 MINBURN KEEPSAKE 16J
 MINBURN KEEPSAKE 78G

ALBERDA TRAVELER AMF NHF CAF
 LLB TRAVELER 79L
 DOUBLE J GLENELLA 542A
D: DRYLAND MELODY 301
 G D A R ROLLS ROYCE 203
 DOUBLE D ELCON 19L
 HCA ELCON E8

	WTs	EPDs
BW	96	+5.5
WW	692	+48
YW	1289	+91
MILK	-	+11
AGE DAM	7	-
TEST ADG	-	-

This Main Street son saw limited service last year in a clean up capacity but now knows his job well. He is made in the Main Street tradition, long, thick and powerful with lots of hair.



"We selected 2 Ambush sons from your 2009 sale for use on our heifers. We rarely leave the yard when our heifers are calving but last year our heifers had no trouble at all. This year some of our purebred heifers are calving to these bulls, and we haven't seen one born yet. We now have enough confidence to leave home for a short while when necessary!"

DENNIS & BETTY BARAGAR
7Z RANCH, MANKOTA, SK



FEMALES

For the first time we are offering females in our Spring Sale. These heifers come right from the heart of our program and all of our major sires are represented. Most, if not all, of these heifers will have calves at foot on sale day by either S A V Final Answer 0035 or Everblack Kodiak 1W, providing the purchaser with a low risk, high value investment opportunity for purebred or commercial herds alike. These heifers have not been highly fitted and were developed practically to ensure a long and productive life.

Windy Willows females have provided previous customers with exceptional value. For example, WWF Windy Blackbird 49R produced the Junior Bull Calf Champion at Agribition 2010 for Wiwa Creek Angus. WWF Advantage Euthalla 42P produced a leadoff and high selling heifer for Johnson Livestock. WWF Alliance Jennifer 6N produced the Bull Calf Champion at the Saskatchewan Gold Show and is now an embryo donor for Forsyth Ranch. WWF Prime Time Heroine 88M produced a highly successful herdsire for Bad Lands Angus. There are many more! The next success story is yours for the choosing!

“New to the Business - Junior Incentive”

As an incentive and a “leg up” to aspiring young Angus breeders we will offer any young individual under the age of 21 whose immediate family does not currently own registered females, a 20% discount on their first registered female purchased in this sale. In addition, we will provide a breeding privilege for the coming breeding season. Please call us for details.



EVERBLACK KODIAK 1W **SERVICE SIRE TO MANY** **OF THE FEMALES IN THE SALE**

Kodiak 1W was bred by Soo Line Cattle Company and purchased from Everblack Angus as the high selling bull in their Common Sense Bull Sale last spring. He is a $\frac{3}{4}$ brother to the \$28,000 Soo Line Kodiak 9194 at Genex. Kodiak is expected to deliver exceptional calving ease, capacity and fleshing ability along with a very popular pedigree.



WWF FA BLACKBIRD 7W
WW 7W JANUARY 29 2009 #1540782

69

G D A R TRAVELER 71 AMF NHF CAF
 SITZ TRAVELER 8180 AMF NHF CAF
 SITZ EVERELDA ENTENSE
S: S A V FINAL ANSWER 0035 AMF NHF CAF
 BON VIEW BANDO 598 AMF CAC
 S A V EMULOUS 8145
 S A V SKY EMULOUS 2124

	WTs	EPDs
BW	72	+0.2
WW	636	+55
YW	972	+91
MILK	-	+16
TM	-	+18

HIGH VALLEY 4C6 AMBUSH MF
 BAD LANDS AMBUSH 45M
 BAD LANDS BLACKLASS 808H
D: WWF AMBUSH BLACKBIRD 127T
 S A F FOCUS OF E R AMF NHF CAF
 WWF FOCUS BLACKBIRD E 21L
 WWF CORNHUSKER BLACKBIRD E

We wanted to offer a top end heifer from each sire group and Blackbird 7W represents the Final Answers very well. She will have a calf at side by Everblack Kodiak 1W.



WWF IN FOCUS ERICA 32W
WW 32W FEBRUARY 06 2009 #1513781

70

S A F FAME AMF CAF NHF
 S A F FOCUS OF E R AMF CAF NHF
 G D A R FOREVER LADY 246
S: MYTTY IN FOCUS AMF CAF NHF
 SITZ ALLIANCE 6595 AMF NHF
 MYTTY COUNTESS 906
 BALDRIDGE COUNTESS 357

	WTs	EPDs
BW	70	+0.4
WW	584	+47
YW	-	+82
MILK	-	+22
TM	-	+46

SOUTHERN KRUGGERAND 16H
 WINDY WILLOWS KRUGGERAND 1M
 SOUTHERN PRIDE 45K
D: WWF KRUGGERAND ERICA 307T
 MFA STOCKMAN 87G
 WINDY WILLOWS ERICA 91J
 WIWA CREEK ERICA 2'88

We didn't get a lot of Mytty In Focus semen but the calves we did get were very pleasing and this heifer is no exception. Exposed to Everblack Kodiak 1W



WWF MN STREET HEROINE 40W
WW 40W FEBRUARY 10 2009 #1513788

71

CRESCENT CREEK MAIN EVENT 6H
 MINBURN MAIN EVENT 181N
 MINBURN ERICA 123H
S: MINBURN MAIN STREET 146S
 MINBURN LANCER 31F
 MINBURN KEEPSAKE 16J
 MINBURN KEEPSAKE 78G

	WTs	EPDs
BW	90	+3.5
WW	558	+41
YW	-	+70
MILK	-	+18
TM	-	+41

CONNEALY DATELINE
 CONNEALY FRONTLINE AMF CAF NHF
 PLEASANT PILL OF CONANGA
D: WWF FRONTLINE HEROINE 105K
 G T MAXIMUM AMF CAF NHF
 WWF MAX HEROINE 73D
 LENLOOK BANDOLIER HEROINE 57Z

Will have an SAV Final Answer calf at side
 2011 BULL CALF FEB 17/11 BW: 72 LBS TATTOO: WW 34Y
 SIRE: SAV FINAL ANSWER 0035





S A V HERITAGE 6295 - SIRE OF LOT 72

WWF HERITAGE BLACKBIRD 63W

WW 63W FEBRUARY 20 2009 #1513809

72

CAR TRACKER 904
CAR DUKE 104
C A R MISS RAINDANCER 421
S: S A V HERITAGE 6295 AMF CAF NHF
S A V 8180 TRAVELER 004 AMF CAF NHF
S A V BLACKCAP MAY 4136
S A V MAY 2397

	WTs	EPDs
BW	102	+5.5
WW	558	+56
YW	-	+102
MILK	-	+23
TM	-	+51

V D A R TRAVELER 722 AMF CAF NHF
V F VENTURE FORWARD AMF CAF NHF
LANDMARK FRED 911
D: FAIRMOUNT BLACKBIRD 44K
BON VIEW BANDO 598 AMF CAC
WWF BANDO BLACKBIRD 18H
WWF REFLECTION EBARD 59Z

S A V Heritage 6295 sires attractive daughters with a little more frame. This is one of his best. Will have a calf at side by SAV Final Answer 0035. 2011 HEIFER CALF FEB 16/11 BW: 74 LBS TATTOO: WW 27Y SIRE: SAV FINAL ANSWER 0035

WWF AMBUSH BLACKBIRD 130W

WW 130W MARCH 14 2009 #1513864

73

PARAMONT AMBUSH 2172 AMF CAF NHF
HIGH VALLEY 4C6 AMBUSH AMF
HIGH VALLEY GLORIA 1Q2
S: BAD LANDS AMBUSH 45M
BON VIEW PARAGON 2108
BAD LANDS BLACKLASS 808H
BAD LANDS BLACKLASS 633F

	WTs	EPDs
BW	90	+3.5
WW	558	+41
YW	-	+70
MILK	-	+18
TM	-	+39

SITZ TRAVELER 8180 AMF CAF NHF
SITZ ALLIANCE 6595 AMF NHF
SITZ BARBARAMERE JET 2698
D: WWF ALLIANCE BLACKBIRD 105M
WIWA CREEK STOCKMAN 26'95
WWF STOCKMAN BLACKBIRD 105H
WWF BRAD EBARD 78B

Blackbird 130W is a fancy Ambush daughter from a dam who has been designated Elite by the CAA . Northern View Angus have an Ambush daughter that has produced 2 high selling bulls for them. You will hear a lot more about one of them! Will have a calf at side by Everblack Kodiak 1W.



WWF MN STREET BARBARA 134W

WW 134W MARCH 14 2009 #1545125

74

CRESCENT CREEK MAIN EVENT 6H
MINBURN MAIN EVENT 181N
MINBURN ERICA 123H
S: MINBURN MAIN STREET 146S
MINBURN LANCER 31F
MINBURN KEEPSAKE 16J
MINBURN KEEPSAKE 78G

	WTs	EPDs
BW	80	+3.3
WW	-	+47
YW	-	+94
MILK	-	+19
TM	-	+43

KRUGERRAND OF DONAMERE 490 AMF NHF
TC ADVANTAGE AMF CAF NHF
TC PRIDE 2010
D: WWF ADVANTAGE BARBARA 29P
YOUNG DALE HERCULES 810H
WWF HERCULES BARBARA 139M
WINDY WILLOWS BARBARA 97B

Will have a calf at side by Everblack Kodiak 1W.



WWF AMBUSH EVELINE 139W
WW 139W MARCH 15 2009 #1513870

75

PARAMONT AMBUSH 2172 AMF CAF NHF
 HIGH VALLEY 4C6 AMBUSH AMF
 HIGH VALLEY GLORIA 1Q2
S: BAD LANDS AMBUSH 45M
 BON VIEW PARAGON 2108
 BAD LANDS BLACKCLASS 808H
 BAD LANDS BLACKCLASS 633F

	WTs	EPDs
BW	90	+3.5
WW	558	+41
YW	-	+70
MILK	-	+18
TM	-	+36

STEVENSON ROYCE 741C CAF NHF
 STEVENSON BRUNO 561G CAF NHF
 JRS ENCHANTRESS 16A
D: WWF BRUNO EVELINE 100M
 WIWA CREEK STOCKMAN 32'95
 THOMASON EVELINE 12J
 WIWA CREEK EVELINE III 6'90

This is a beautifully made heifer setting down an awesome udder and demonstrating why we think so highly of the Ambush daughters. Will have a calf at side by Everblack Kodiak 1W



WWF KRUG POPPY ANN 141W
WW 141W MARCH 15 2009 #1513872

76

KRUGERRAND OF DONAMERE 490 AMF NHF
 SOUTHERN KRUGGERAND 16H
 SOUTHERN TALL PRIDE 72W
S: WINDY WILLOWS KRUGERRAND 1M
 HOFF TRADITION S C 456
 SOUTHERN PRIDE 45K
 SOUTHERN PRIDE 34Z

	WTs	EPDs
BW	82	+1.8
WW	535	+53
YW	-	+89
MILK	-	+17
TM	-	+44

B/R NEW DESIGN 036 AMF CAF NHF
 BON VIEW NEW DESIGN 878 AMF CAF NHF
 BON VIEW GAMMER 85 CAC
D: WWF DESIGNER POPPY ANN 31P
 RITO 616 OF 4B20 6807 AMF CAF NHF
 WINDY WILLOWS POPPY ANN 12M
 FAIRMOUNT POPPY ANN 12K

Will have a calf at side by SAV Final Answer 0035.
 2011 BULL CALF FEB 11/11 BW: 70 LBS TATTOO: WW 15Y
 SIRE: SAV FINAL ANSWER 0035



WWF KRUG BLACKBIRD E 143W
WW 143W MARCH 16 2009 #1513874

77

KRUGERRAND OF DONAMERE 490 AMF NHF
 SOUTHERN KRUGGERAND 16H
 SOUTHERN TALL PRIDE 72W
S: WINDY WILLOWS KRUGERRAND 1M
 HOFF TRADITION S C 456
 SOUTHERN PRIDE 45K
 SOUTHERN PRIDE 34Z

	WTs	EPDs
BW	94	+4
WW	555	+52
YW	-	+87
MILK	-	+20
TM	-	+46

LEACHMAN RIGHT TIME AMF
 BAD LANDS RIGHT TIME 78N
 BAD LANDS DUCHESS 809H
D: WWF RIGHT TIME BLACKBIRD E 102
 S A F FOCUS OF E R AMF CAF NHF
 WWF FOCUS BLACKBIRD E 21L
 WWF CORNHUSKER BLACKBIRD E 36C

Will have a calf at side by Everblack Kodiak 1W.



WWF MN STREET BLACKBIRD 145W
WW 145W MARCH 17 2009 #1513876

78

CRESCENT CREEK MAIN EVENT 6H
 MINBURN MAIN EVENT 181N
 MINBURN ERICA 123H
S: MINBURN MAIN STREET 146S
 MINBURN LANCER 31F
 MINBURN KEEPSAKE 16J
 MINBURN KEEPSAKE 78G

	WTs	EPDs
BW	78	+2.2
WW	494	+45
YW	-	+92
MILK	-	+15
TM	-	+38

EMULATION N BAR 552Z
 N BAR EMULATION EXT AMF CAF NHF
 N BAR PRIMROSE 242Z
D: WWF EXT BLACKBIRD 31K
 CENTURY TOUCHSTONE 131
 WWF TOUCHSTONE BLACKBIRD 79E
 WWF VAL EBARD 55B

Will have a calf at side by Everblack Kodiak 1W.



WWF KRUG HEROINE 156W
WW 156W MARCH 19 2009 #1513887

79

KRUGERRAND OF DONAMERE 490 AMF NHF
 SOUTHERN KRUGGERAND 16H
 SOUTHERN TALL PRIDE 72W
S: WINDY WILLOWS KRUGERRAND 1M
 HOFF TRADITION S C 456
 SOUTHERN PRIDE 45K
 SOUTHERN PRIDE 34Z

	WTs	EPDs
BW	84	+2.6
WW	508	+47
YW	-	+83
MILK	-	+21
TM	-	+45

C H QUANTUM 3330
 H A R B CINCHA 829 AMF
 H A R B JUMBOLEEN D03
D: WWF CINCHA HEROINE 60N
 CONNEALY FRONTLINE AMF CAF NHF
 WWF FRONTLINE HEROINE 105K
 WWF MAX HEROINE 73D

Heroine 60N and Heroine 105K are both Elite Dams. Will have a calf at side by Everblack Kodiak 1W.



WWF AMBUSH BRIDE 178W
WW 178W MARCH 25 2009 #1513911

80

PARAMONT AMBUSH 217Z AMF CAF NHF
 HIGH VALLEY 4C6 AMBUSH AMF
 HIGH VALLEY GLORIA 1Q2
S: BAD LANDS AMBUSH 45M
 BON VIEW PARAGON 2108
 BAD LANDS BLACKLASS 808H
 BAD LANDS BLACKLASS 633F

	WTs	EPDs
BW	86	+1.5
WW	602	+48
YW	-	+74
MILK	-	+18
TM	-	+42

C H QUANTUM 3330
 H A R B CINCHA 829 AMF
 H A R B JUMBOLEEN D03
D: WWF CINCHA BRIDE 9S
 SITZ ALLIANCE 6595 AMF NHF
 WWF ALLIANCE BRIDE 23P
 WWF TT BRIDE 53F

Will have a calf at side by Everblack Kodiak 1W.

WWF KRUG BARBARA 184W
WW 184W MARCH 27 2009 #1513922

81

KRUGERRAND OF DONAMERE 490 AMF NHF
 SOUTHERN KRUGGERAND 16H
 SOUTHERN TALL PRIDE 72W
S: WINDY WILLOWS KRUGERRAND 1M
 HOFF TRADITION S C 456
 SOUTHERN PRIDE 45K
 SOUTHERN PRIDE 34Z

APEX STOCKMAN 061
 WIWA CREEK STOCKMAN 26'95
 WIWA CREEK PRIDE 17'81
D: WWF STOCKMAN BARBARA 119H
 WOODHILL TRIPLE THREAT AMF CAF
 WWF TT BARBARA 33F
 WWF TRAVELING BARBARA 41D

Will have a calf at side by Everblack Kodiak 1W.

RED HEIFER
RED WWF SOAPY 81W
WW 81W FEBRUARY 26 2009 #1513826

83

RED BUF CRK CHF 824-1658 OSC MAF
 RED BFCK CHEROKEE CNYN 4912 OSF MAF
 RED MRM 1431 8611 9109 OSF
S: RED LCC MAJOR LEAGUE A502M OSF MAF
 RED LMAN ROBIN HOOD 1174B OSF
 RED KRN REBA'S ROBIN OSF
 RED KRN REBELLA 805/314

RIVERCREST GREAT NORTHERN 35G
 RED KEN GREAT NORTHERN 7M
 RED KEN MISS PEMA 8H
D: RED WWF SOAPY 9T
 RED LPC SUPER CHIEF 12Z
 RED LPC SOAPY'S SUPER CHIEF 32
 RED LPC DYNA SOAPY 4B

We are only offering one red female, but she is a good one! Soapy 81W's dam came in dam from Soo Line. Will have a calf at side by Red Flying K Wizard 7W , owned with Flying K and the best footed bull we could find. Will have a calf at side by Everblack Kodiak 1W.

	WTs	EPDs
BW	85	+2.3
WW	535	+48
YW	-	+88
MILK	-	+15
TM	-	+39

WWF MN STREET BELLE 195W
WW 195W APRIL 03 2009 #1513942

82

CRESCENT CREEK MAIN EVENT 6H
 MINBURN MAIN EVENT 181N
 MINBURN ERICA 123H
S: MINBURN MAIN STREET 146S
 MINBURN LANCER 31F
 MINBURN KEEPSAKE 16J
 MINBURN KEEPSAKE 78G

PAPA EQUATOR 2928 AMF NHF
 YOUNG DALE HERCULES 810H
 YOUNG DALE GRACE 16C
D: WWF HERCULES BELLE 118L
 G D A R EXECUTIVE 727 AMF NHF
 WWF EXECUTIVE BELLE 19G
 HOLLBROOK TRENDY 16B

Will have a calf at side by Everblack Kodiak 1W.

	WTs	EPDs
BW	82	+3.9
WW	501	+42
YW	-	+87
MILK	-	+17
TM	-	+38



RED WWF SOAPY 81W - LOT 83



Windy Willows would like to thank the following businesses for their contribution towards their Sale.
We do business with all of them. They are good people, with excellent products and services.
We encourage you to support them!

OLYNICK AGRO LTD.

CUSTOM SPRAYING

RYAN OLYNICK
PO Box 149
Morse, SK. S0H 3C0

Cell: 306-829-7711
Ph: 306-829-3204
fax: 306-829-3978

Service isn't a Dept. It's an ATTITUDE!

(306) 677-2675 CELL: (306) 784-7658
FAX (306) 677-2677

BLUE HILL ELECTRIC LTD.

TRENCHING, FARM WIRING, COMMERCIAL WIRING

TERRY KRAUCHEK
Owner

P.O. BOX 277
HODGEVILLE, SK S0H 2B0

LYLE'S CUSTOM CORRAL CLEANING

Ph: (306) 626-3542

Box 97, Pennant, SK S0N 1K0



Pioneer
Co-operative
Association Limited

REG WILSON
Crop Protection Manager
Agro Centre

*150 Central Ave. North
Swift Current, SK, Canada
S9H 0G1

Business (306) 778-6815
Fax (306) 778-6815
Cell (306) 741-8040
Residence (306) 778-2102

EMTA AGENCIES

INSURANCE AGENT

- CALF SHELTERS • COW CAMERAS • SELF-FEEDERS
- BALE FEEDERS, etc.

Earl & Marj Haubrich

306-677-2207

www.emtaagencies.ca

Hodgeville, SK

Jay's Pub & Grill

Jason & Heather Watson
Box 417, Hodgeville, SK
S0H 2B0
Phone 677-2277

Good times... Great food!

SOUTHWEST GENETICS

On farm service for ALL your semen and A.I. supplies
Your source for complete A.I. programs

Phone Stan, the ABS man at

(403) 330-9626

Albert (306) 297-3139 • Cel: (306) 741-0191

Email: amharr@sasktel.net



P.O. Box 64
100 Main Street
Hodgeville, SK S0H 2B0
Phone: 306.677.2388
Fax: 306.677.2289
Toll Free: 800.381.5502
www.innovationcu.ca

HARV'S REPAIR

SPECIALIZING IN ALL
TYPES OF MECHANICAL
REPAIRS & WELDING

(306) 784-2913

Herbert, SK

A big THANK YOU!
to Demar Klassen for
his dedication to helping
us this winter.

Schwartz Land & Livestock

30FT PORTABLE WIND FENCE, PANELS,
FEED PANELS OR CUSTOM FIT TO YOUR NEEDS

Darren: 306- 677-2523

Kelly: 306-677-2447



ANIMAL NUTRITION
Committed to Independent Livestock Production

1616 Sidney Street • Swift Current, SK • S9H 3X3

Bus: (306) 773-3001

Fax: (306) 778-6185

Res: (306) 773-0833

Toll Free: 1-877-773-3001

Barb.Schmidt@eastmanfeeds.com

www.eastmanfeeds.com

BARB SCHMIDT

*Customer Service
Sales Associate*



Structurally sound feet and legs are the product of good genetics, proper nutrition, plenty of exercise and the absence of very high energy rations over extended periods. We do our best to ensure that our bulls have sound feet and legs. Weather permitting, we will once again display our bulls on packed gravel prior to the sale allowing you to assess their feet with ease.

TERMS & CONDITIONS

TERMS: The terms of the sale are cash or cheque payable at par. Settlement to be made immediately after the completion of the sale. The right of property shall not pass until after settlement is made. All settlements must be made with the clerk of the sale before any cattle will be released. All monies are Canadian funds.

BIDS: Every animal entering the sale ring will be sold to the highest bidder.

DISPUTES: In case of disputes, bidding will be reopened between the parties involved. If no further bid is made, the buyer will be the person from whom the auctioneer accepted the last bid. The auctioneer's decision of all disputes is final.

ANNOUNCEMENTS: All announcements made from the auction block will take precedence over the printed matter in the catalogue. Buyers are therefore cautioned to pay close attention to any such announcements.

PURCHASER'S RISK: Each animal becomes the risk of the purchaser as soon as sold.

INSURANCE: Insurance can be arranged for through the sales clerk.

CERTIFICATE OF REGISTRATION: Each animal will carry a Registration Certificate issued by the Canadian Angus Association. A certificate of registry, duly transferred, will be furnished to the buyer after payment has been made.

ACCIDENTS: Although every precaution will be taken to protect the safety and comfort of buyers, neither the sale management nor the auctioneer assume any responsibility in this matter and disclaim any liability, legal or otherwise, in the event of accident or loss of property.

LIABILITIES: All persons attending the sale do so at their own risk and sellers assume no liability, legal or otherwise, for any accidents occurring in or about the premises.

EXPORT TESTING: Required health certificates for cattle being exported will be provided.

FEATURE BULLS



WE WERE UNABLE TO GET THE CARCASS DATA
INFORMATION IN THE CATALOGUE; ALL CARCASS DATA
ON THESE BULLS CAN BE OBTAINED BY GOING TO:
www.optimalbovines.com / www.cattlemanagement.ca
OR CONTACTING COLLIN SAUDER AT (306) 677-2507



OPTIMAL BOVINES INC.
#407, 4808 Ross St.
Red Deer, AB T4N 1X5

GIT R DONE

BULL & FEMALE SALE

