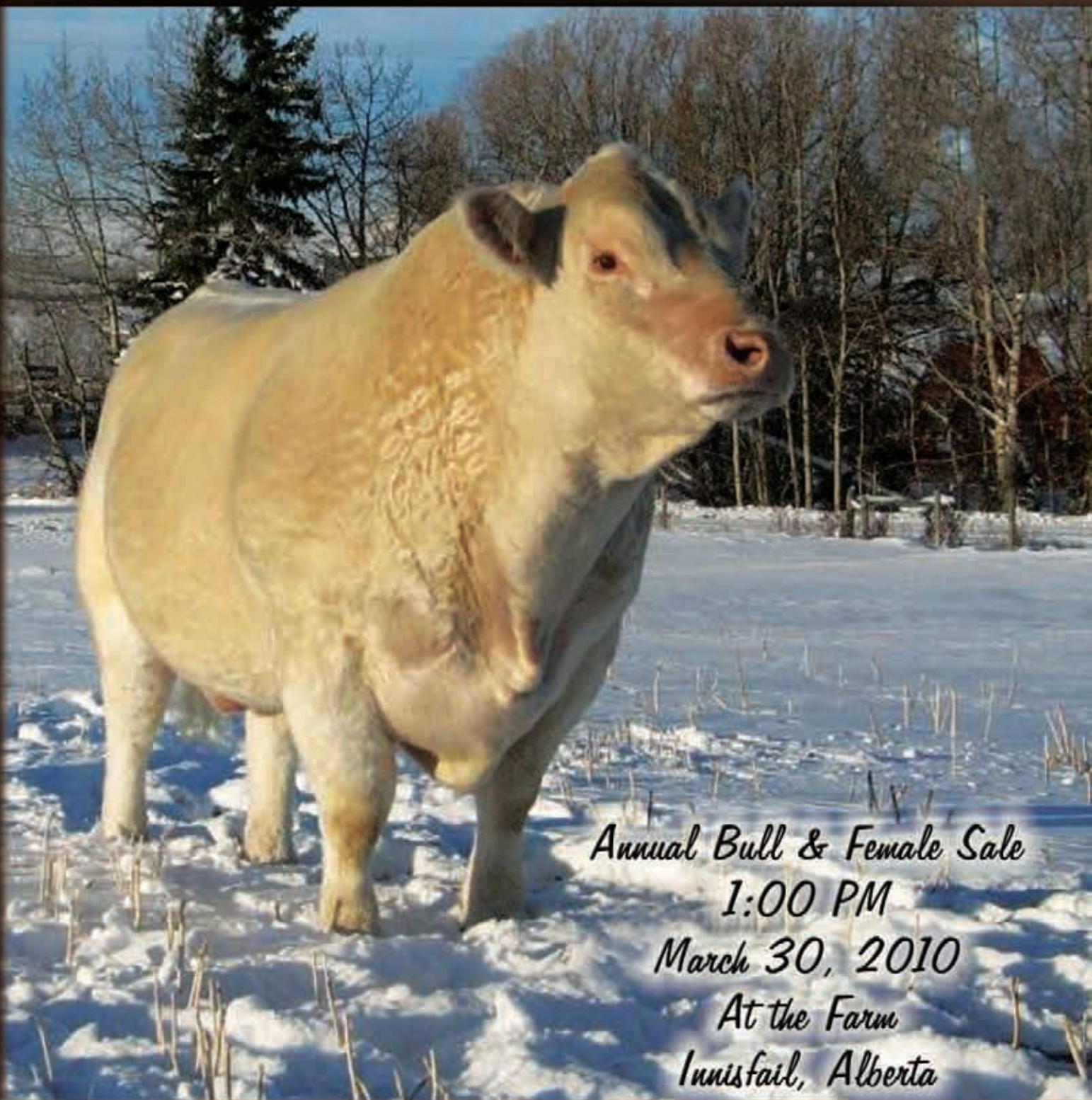


GERRARD

Cattle Company Inc.

Angus

Charolais



*Annual Bull & Female Sale
1:00 PM
March 30, 2010
At the Farm
Innisfail, Alberta*

1CH00958 GERRARD **MONTEZUMA** 6T



Gerrard Roxanne 18P, Dam of Montezuma



NATIONAL Champion Bull
2010 Denver National Western Stock Show

Sire: SVY Freedom PLD 307N MGS: RPJ Impressed 121L Reg: PMC310671

	CE	BW	WW	YW	Milk	TM	SC	CW	REA	FAT	MARR
EPDS	85	1.3	42	77	27	48	N/A	12	0.05	0.28	0.02
ACC	.24	.43	.33	.28	.26	.28		.24	.24	.24	.22
RANK	20%				4% ^b	10% ^b					

Canadian Charolais Association Spring 2010

- ▶ Montezuma offers performance, depth, thickness and length in a smooth-made eye-appealing package.
- ▶ His pedigree is a very solid recipe for productive daughters and sons that will be the highlights of any bull pen.



your **Prof'it** partner™

Genex Cooperative, Inc.

A subsidiary of Cooperative Resources International
USA 888.333.1783 800.927.2855 CAN 888.354.4622 www.crinet.com

GERRARD

Cattle Company Inc.

The Gerrards

Dory & Janine, Alex, Damon & Kane
403-227-5632 Cell 403-302-1016
Dave, Terry & Kurt, 403-227-2503
RR 2, Innisfail, AB T4G 1T7
info@gerrardcattlecompany.com
www.gerrardcattlecompany.com

Sale Staff

Auctioneer, Chris Poley, 306-220-5006

Ringside

Ted Serhienko, T Bar C, 306-221-2711
Craig Flewelling, 403-556-0515
Prairie Cove Consulting, Tim Bullick, 403-350-9858

Media Representatives:

Craig Scott, Charolais Banner, 403-651-9441
Hoss Hammer, KG Country 95.5, 403-872-0376

In an effort to improve the flow and efficiency of the sale and reduce stress on the livestock the cattle will be sold by power point presentation. Please come early and inspect the cattle thoroughly before the sale as they will not be brought through during the sale. We also look forward to working with liveauctions.tv this year to allow our customers to participate in our sale online, for more information on how to register contact liveauctions.tv, Christine Boake at 403-850-6993 or Gerrard Cattle Company.



From the desk at T Bar...

Let me start off by congratulating Gerrard Cattle Company on breeding the 2010 U.S. National Champion Charolais bull. A bull that went through their annual bull sale as a yearling and has several brothers in this year's sale.

This is a true family operation that is passionate about breeding great cattle and this is being recognized across North America. 2010 brings a few changes to marketing at Gerrard Cattle Company; the decision was made to go to a later date to try and avoid some of the frosty challenges of late February. As well, this year the sale will be held at home; this allows you to view the bulls in their own environment and if you want to see the mothers, they are right there too. Another change this year is the addition of females to the sale; the entire 2009 heifer calf crop is being offered in pairs. You select the one you want and the other stays in the Gerrard program. Several of these heifers were shown successfully at Agribition last fall.

This year's line up of bulls is powerful; the white bulls are deep, stout, hairy individuals that will sire the kind of calves that have made the Charolais cross calves legendary in the feedlot industry. New this year is the introduction of Simm/Angus bulls, black bulls with a little extra punch. The Angus division keeps getting more uniform every year, deep, soggy black bulls that come out a great set of momma cows.

You owe it to yourself to come and view this great set of cattle, that are backed up by great breeders that will be there to service your needs in the future. There also very well could be another National Champion in the pen!

If we at T Bar C can be of an assistance prior to or sale day please feel free to call one of us. See you at Gerrard Cattle Company.

Chris

Annual Bull & Female Sale

1:00 PM - Tuesday, March 30th, 2010
At The Farm - Innisfail, Alberta

With Guest Consignor...

Schierman Boys Angus
The Schiermans

Greg: 403-227-2826 Adam: 403-348-1476
RR 2, Innisfail, AB T4G 1T7
Alkali_lake-farms@hotmail.com

*All bulls will be veterinary inspected
and semen tested.*

Insurance - Will be available sale day from Craig Flewelling, 403-556-0515.

Lunch - Please join us for lunch prior to the sale.

Delivery - Free delivery up to 300 kms. - beyond 300 kms. will be at cost.

Terms & Conditions - All animals sell under the standard terms and conditions set out by the Canadian Charolais, Angus and Simmental Associations. All bulls are guaranteed to have passed a semen test before delivery.

Board - Free board on animals until April 30th, 2010. After May 1st, we will keep them for \$2.00 per day. All animals staying at the consignor's place must be insured.

Sight Unseen Purchase - Contact T Bar C Cattle Co. or the consignors and we will be happy to help you with your purchases should you be unable to attend the sale. Satisfaction Guaranteed!



Sale Management

T Bar C Cattle Co. Ltd.

Ted & Mina Serhienko, Chris Poley

4 3342 Millar Avenue

Saskatoon, SK S7K 7G9

Office: 306-933-4200 Fax: 306-934-0744

Ted's Cell: 306-221-2711

Chris' Cell: 306-220-5006

info@tbarc.com www.tbarc.com

View the catalogue online at www.gerrardcattlecompany.com

Gerrard Cattle Company



It is with great pride and excitement that on behalf of the entire Gerrard family I welcome you to the first edition of the Gerrard Cattle Company Bull and Female Sale. After many years of careful sire selection along with rigid culling, we have developed our cowherds to the point where we are confident we can offer high quality Charolais, Angus, and Simmental/Angus seedstock in enough volume to have a viable sale on our own at the farm. We believe this will offer our sale guests an opportunity to get to better know us and our operation. As well, our customers will benefit from the cattle being handled in a much lower stress, healthier manner without the trip to town and back.

Our Charolais division has had the most exciting year we have ever had in 25 years in the Charolais business. The obvious highlight being our high selling bull from the 2008 sale, Gerrard Montezuma 6T, making the supreme finals at both Farmfair and Agribition and wrapping up his show career being declared the 41st US National Champion Bull at Denver's National Western Stock Show in January. We congratulate Pittman Charolais, Thomas Ranch, Polzin Cattle, Genex, and the entire Montezuma syndicate on their success! If Montezuma's initial sales reports from Genex are any indication, he and the entire Freedom

bloodline continue to enjoy incredible acceptance in the North American Charolais industry in both the purebred and commercial cattle sectors. Gerrard Cattle Company is proud to be the home of Freedom. Having this breed legend as our walking bull has made dramatic advancements in the quality and depth of our Charolais herd.

Pilgrim has proven to be the perfect follow up on our Freedom, Evolution, and Bedrock daughters. His calves have shown amazing length of body, depth of rib, muscle shape, and overall performance. Pilgrim has also proven to be an excellent sire for eye appeal and structure. Additionally, at the 2009 Canadian National Show at Agribition, the three Pilgrim calves (two heifers and one bull) exhibited received two class wins, one third in class, Senior Bull calf champion, and reserve National Champion Bull. The two heifers are in this sale offering. We congratulate Footprint Farms, Payne Livestock, and Vogeli Brothers on their Reserve National Champion Bull. We would also like to extend our appreciation to Soderglen Ranches, Airdrie, AB for buying into Pilgrim this past summer and we look forward to working with them as well as Vogelli Bros. and Genex on this powerhouse performance sire.

The Angus herd has been an excellent addition to the Gerrard operation by combining the great maternal cow families developed by the Hollman family over the years with performance Angus sires like SAV Wallstreet, G13 Steel, O'Neils Expedition, MVF Grand Design 72s, and MCC Blackout. This has resulted in a group of high performing, loose hided calves that are structurally sound and are backed up by cow families with the strong maternal genetics and longevity that have put the Angus breed in the dominant position it has in the North American livestock industry. We are particularly excited to offer you our first calves from our new herd bull SAV Wallstreet. His calves are born easily and have the same extra muscle shape and dimension that made their sire so impressive. We would like to thank the Angus breeders from across North America that helped make Wallstreet Semex's top selling Angus sire domestically in 2009. Additionally, from our guest consignor, the Shierman family, we welcome an excellent set of bulls up for offer.

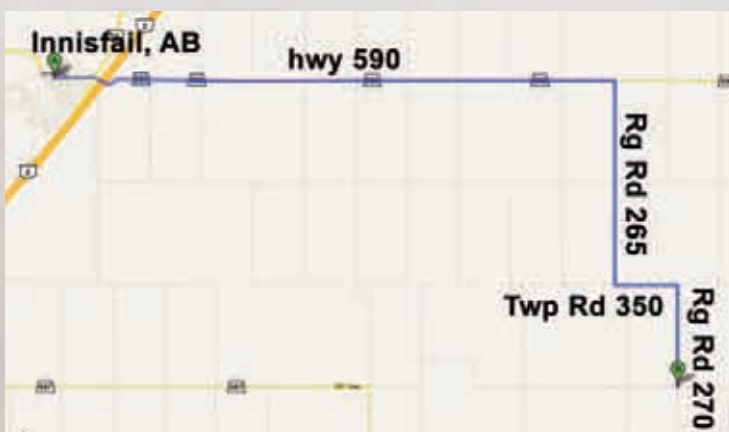
A new addition to our spring sales program is our heifer calf offering. We have taken our entire group of "keeper" heifers in both our purebred Angus and Charolais pens. All the heifers have been catalogued in pairs and will be sold on choice. We feel this is a way to offer our customers our very best genetics while allowing us to build our genetic base for the future. All the heifers have been wintered together on a high roughage ration. These girls have developed so they will be ready to breed and become great mother cows whether in your herd or ours.

Another addition to this year's sale is our hybrid Simmental/Angus bulls. They are all 1/2 and 3/4 brothers out of the ACCI Hustler bull and our purebred Angus cows. They are an option for those who want homozygous polled, homozygous black, low maintenance bulls with the extra shot of performance the Simmental breed can provide. We are very excited about this group of bulls and the extra dimension they bring to our black program.

At Gerrard Cattle Company, the emphasis in all our breeds is powerful, practical genetics that will create profit for our customers after they leave our farm. The genetics offered in this sale represent years of development on these programs with that goal in mind. Our customers can buy Gerrard bulls or females and be confident they are buying the highest quality genetics available anywhere. You deserve nothing less!

The sale cattle are available for viewing anytime before the sale. Give us a call if you want to stop by or you have any other questions. Thank you and see you sale day.

Dory Gerrard



Directions to Gerrard Cattle Company (Corner of Rg Rd 270, Twp Rd 344)

From Innisfail, AB

- 16 km East on hwy 590
- 6.4 km South on Rg Rd 265
- 0.4 km East on Twp Rd 350 (correction line)
- 3.2 km South on Rg Rd 270

From Olds, AB

- Approx 15 km East of QE2 overpass on hwy 27
- 12.8 km North on 791
- 8 km West on 587
- 3.2 km North on Rg Rd 270

From Wimborne, AB

- Approx 8 km North on hwy 805
- 6.4 km West on Twp Rd 344

From Big Valley, AB

- Approx 65 km West on 590
- 6.4 km South on Rg Rd 265
- 0.4 km East on Twp Rd 350 (correction line)
- 3.2 km South on Rg Rd 270

LOT Polled **GERRARD IMPACT 3W**
GCC 3W PMC326546 MALE JAN. 1, 2009

HFCC PLD EVOLUTION 5L
 SVY FREEDOM PLD 307N
 SVY PURRFECT 184L
 LHD CIGAR E46
 DYV PAYNES RADIANT 11R
 MIDWAY JESSIE 57J

SPARROWS ALLIANCE 513G
 HFCC ELVIRA 916J
 RA BIG CAT 9017 PLD
 SVY JUSTLIKEPERFECT 432D
 LHD MR PERFECT Y416
 LHD MS CLASSIC BELL X613
 CIRCLE CEE JUSTICE 601F
 MVM CLAN LADY 74Z

BW: 1.8
 WW: 35
 YW: 66
 MM: 23.6
 TM: 41
 BW: 89 LBS.
 ADJ 205 DW: 738 LBS.
 ADJ 365 DW: 1292 LBS.
 SC: 40 CM.

- Extra length of body
- Powerful muscle expression
- One of the lightest birth weight Charolais bulls in the sale
- Same cow family as Gerrard Tebow 15W



LOT Horned **GERRARD ZEUS 6W**
GCC 6W PMC326547 MALE JAN. 2, 2009

SVY PIONEER 402P
 SVY PILGRIM PLD 655S
 HFCC FRENCHKISS 919J
 SVY FREEDOM PLD 307N
 SVY HIP HOP 602S
 SVY HIP HOP 420P

LT RIO BLANCO 1234 P
 SVY JINGLES 153L
 RGP EUREKA 17E
 QCR FRENCHKISS 33F
 HFCC PLD EVOLUTION 5L
 SVY PURRFECT 184L
 M6 GRID MAKER 104 PET
 SVY HIP HOP 228M

BW: 2.6
 WW: 42
 YW: 83
 MM: 20.6
 TM: 42
 BW: 95 LBS.
 ADJ 205 DW: 675 LBS.
 ADJ 365 DW: 1294 LBS.
 SC: 37 CM.

- Deep bodied, loose hided bull
- Out of the great Hip Hop cow family

CHAROLAIS BREED AVERAGE EPD'S				
BW	WW	YW	MILK	TM
2.0	40.7	77.6	20.4	40.7

LOT Polled **GERRARD EINSTEIN 7W**
GCC 7W PMC326548 MALE JAN. 2, 2009

HFCC PLD EVOLUTION 5L
 SVY FREEDOM PLD 307N
 SVY PURRFECT 184L
 LHD CIGAR E46
 DYV PAYNES TRIXIE 8T
 DYV PAYNES NAOMI 2N

SPARROWS ALLIANCE 513G
 HFCC ELVIRA 916J
 RA BIG CAT 9017 PLD
 SVY JUSTLIKEPERFECT 432D
 LHD MR PERFECT Y416
 LHD MS CLASSIC BELL X613
 CIRCLE CEE JUSTICE 601F
 MVM CLAN LADY 74Z

BW: 4.1
 WW: 41
 YW: 78
 MM: 22.2
 TM: 43
 BW: 96 LBS.
 ADJ 205 DW: 797 LBS.
 ADJ 365 DW: 1338 LBS.
 SC: 40 CM.

- Extra muscle and depth of body
- Very eye appealing, complete made package
- ¾ brother to GCC 15W, 3W, 14W
- Same cow family as 15W, 3W, 8W





"Manhattan"



Gerrard Metro 23U - Maternal brother to 8W



DYV Paynes Natalie 10N - Dam of 8W



DYV Paynes Mary Jane 14M - Dam of 10W

LOT Polled **GERRARD MANHATTAN 8W**
GCC 8W PMC326549 MALE JAN. 2, 2009

HFCC PLD EVOLUTION 5L	SPARROWS ALLIANCE 513G	BW: 1.2
SVY FREEDOM PLD 307N	HFCC ELVIRA 916J	WW: 40
SVY PURRFECT 184L	RA BIG CAT 9017 PLD	YW: 73
	SVY JUSTLIKEPERFECT 432D	MM: 20.7
	KEYS POLLED COMPASS	TM: 41
DYV CLEARCUT 14H	BAR 19 FUTURIST 201B	BW:
DYV PAYNES NATALIE 10N	CHARDEL STEEL 254B	98 LBS.
MRCR FOXY LADY 26E	MRCR FOXY LADY 17U	ADJ 205 DW:
		811 LBS.
		ADJ 365 DW:
		1406 LBS.
		SC:
		39 CM.

- One of the thickest bulls in the sale
- Extra haircoat
- Dam always produces calves at the top of the pen
- Maternal brother sold last year to Home Valley Ranch, Provost, AB

LOT Polled **GERRARD OPTIMUM 10W**
GCC 10W PMC326550 MALE JAN. 2, 2009

HFCC PLD EVOLUTION 5L	SPARROWS ALLIANCE 513G	BW: 3.0
SVY FREEDOM PLD 307N	HFCC ELVIRA 916J	WW: 46
SVY PURRFECT 184L	RA BIG CAT 9017 PLD	YW: 81
	SVY JUSTLIKEPERFECT 432D	MM: 20.5
	KEYS POLLED COMPASS	TM: 43
DYV CLEARCUT 14H	BAR 19 FUTURIST 201B	BW:
DYV PAYNES MARY JANE 14M	CIRCLE CEE JUSTICE 601F	105 LBS.
MIDWAY JESSIE 57J	MVM CLAN LADY 74Z	ADJ 205 DW:
		816 LBS.
		ADJ 365 DW:
		1282 LBS.
		SC:
		41 CM.

- Sharp made, smooth shouldered bull
- Extra length of body

LOT Polled **GERRARD TIMELINE 12W**
GCC 12W PMC326551 **MALE** JAN. 3, 2009

SVY PIONEER 402P
 SVY PILGRIM PLD 655S
 HFCC FRENCHKISS 919J
 HFCC PLD EVOLUTION 5L
 GERRARD AMBER 9R
 GERRARD AMBER 61L

LT RIO BLANCO 1234 P
 SVY JINGLES 153L
 RGP EUREKA 17E
 QCR FRENCHKISS 33F
 SPARROWS ALLIANCE 513G
 HFCC ELVIRA 916J
 SFL JADE 26J
 HVR AMBER 8E

BW: 5.7
 WW: 47
 YW: 82
 MM: 15.7
 TM: 39
 BW: 105 LBS.
 ADJ 205 DW: 744 LBS.
 ADJ 365 DW: 1288 LBS.
 SC: 41 CM.

- Great length of body and performance
- Same cow family as Gerrard Amber 4W, a class winner at Agribition and feature sale heifer



LOT Polled **GERRARD TECUMSEH 13W**
GCC 13W PMC326552 **MALE** JAN. 6, 2009

HFCC PLD EVOLUTION 5L
 SVY FREEDOM PLD 307N
 SVY PURRFACT 184L
 JSR EQUITY 17M
 GERRARD AMBER 1P
 GERRARD AMBER 61L

SPARROWS ALLIANCE 513G
 HFCC ELVIRA 916J
 RA BIG CAT 9017 PLD
 SVY JUSTLIKEPERFECT 432D
 SVY WIDE CUT 20K
 JSR JASMINE 40J
 SFL JADE 26J
 HVR AMBER 8E

BW: 2.0
 WW: 33
 YW: 64
 MM: 20.7
 TM: 37
 BW: 92 LBS.
 ADJ 205 DW: 732 LBS.
 ADJ 365 DW: 1239 LBS.
 SC: 42 CM.

- Deep bodied
- Light birth weight
- Full brother sold to Terry Breitkruz, Penticton, BC



Gerrard Frosty 5U - Full brother to 13W

LOT Polled **GERRARD MASQUERADE 14W**
GCC 14W PMC326553 **MALE** JAN. 11, 2009

HFCC PLD EVOLUTION 5L
 SVY FREEDOM PLD 307N
 SVY PURRFACT 184L
 LHD CIGAR E46
 DYV PAYNES NORMA JEAN 4N
 BAR 19 FUTURIST 201B

SPARROWS ALLIANCE 513G
 HFCC ELVIRA 916J
 RA BIG CAT 9017 PLD
 SVY JUSTLIKEPERFECT 432D
 LHD MR PERFECT Y416
 LHD MS CLASSIC BELL X613
 SVC FUTURIST 809X
 MISS ARLINDALE 835K

BW: 4.3
 WW: 43
 YW: 79
 MM: 20.0
 TM: 42
 BW: 105 LBS.
 ADJ 205 DW: 804 LBS.
 ADJ 365 DW: 1358 LBS.
 SC: 40 CM.

- Extra length of body and volume
- Freedom x Cigar cross works extremely well, check out the ¾ brothers and sisters in the sale
- Full sister in blood sells as lot GCC 20W
- Maternal grand dam is the mother of DYV Clearcut 14H



DYV Paynes Norma Jean 4N - Dam of 14W



"Tebow"



Gerrard Heritage 10U - Maternal brother to 15W



DYV Paynes Nicole 5N - Dam of 15W

LOT Polled **GERRARD TEBOW 15W**
GCC 15W PMC326554 **MALE** **JAN. 14, 2009**

HFCC PLD EVOLUTION 5L	SPARROWS ALLIANCE 513G	BW: 3.5
SVY FREEDOM PLD 307N	HFCC ELVIRA 916J	WW: 43
SVY PURRFECT 184L	RA BIG CAT 9017	YW: 80
	SVY JUSTLIKEPERFECT 432D	MM: 22.1
LHD CIGAR E46	LHD MR PERFECT Y416	TM: 44
DYV PAYNES NICOLE 5N	LHD MS CLASSIC BELL X613	BW:
MVM CLAN LADY 74Z	WILDOR KNIGHT 324R	102 LBS.
	MS MARIAN ACRES JAG 5N	ADJ 205 DW:
		824 LBS.
		ADJ 365 DW:
		1515 LBS.
		SC:
		44 CM.

- Moderate frame combined with powerful performance
- Incredible depth of body
- His dam, DYV 5N, one of the most powerful females we've ever owned
- Anyone who wants to add power to their bull pen and add awesome females to their cowherd needs to own this herdbull
- A maternal brother sold in last year's sale to Nish Charolais, Cardston, AB

LOT Polled **GERRARD ENHANCER 16W**
GCC 16W PMC326555 **MALE** **JAN. 19, 2009**

HFCC PLD EVOLUTION 5L	SPARROWS ALLIANCE 513G	BW: -1.2
SVY FREEDOM PLD 307N	HFCC ELVIRA 916J	WW: 34
SVY PURRFECT 184L	RA BIG CAT 9017 PLD	YW: 62
	SVY JUSTLIKEPERFECT 432D	MM: 23.0
SHAWNEE STEMWINDER 663F	STARR D STEMWINDER P	TM: 40
SHAWNEE MS WILDWOOD 968J	SHAWNEE CADET 11D	BW:
SHAWNEE MS CADET 469D	SHAWNEE EXCELLENCE 149A	90 LBS.
	MS SHAWNEE CADET 346R	ADJ 205 DW:
		797 LBS.
		ADJ 365 DW:
		1266 LBS.
		SC:
		39 CM.

- Low birth with an excellent weaning weight
- Flawless structure
- Outcross pedigree on the bottom side
- Maternal brother sold to Sounding Creek Charolais, Sedilia, AB





"Hemisphere"



Gerrard Montezuma 6T

LOT Polled **GERRARD HEMISPHERE 17W**
 GCC 17W PMC326557 MALE JAN. 19, 2009

HFCC PLD EVOLUTION 5L	SPARROWS ALLIANCE 513G	BW: 3.4
SVY FREEDOM PLD 307N	HFCC ELVIRA 916J	WW: 53
SVY PURRFECT 184L	RA BIG CAT 9017 PLD	YW: 94
	SVY JUSTLIKEPERFECT 432D	MM: 22.3
	PF IMPRESSED 620 P ET	TM: 49
RPJ IMPRESSED 121L	RPJ SUNBURST 979J	BW:
GERRARD SMURFETTE 5N	SVY BEDROCK PLD 816H	105 LBS.
GERRARD SMURFETTE 11L	GERRARD SMURFETTE 25J	ADJ 205 DW:
		864 LBS.
		ADJ 365 DW:
		1526 LBS
		SC:
		38.5 CM.

- 3/4 brother to Montezuma
- Excellent EPDs
- 2nd in class at Agribition
- Incredible thickness and body depth
- Very free moving
- Great temperament
- Freedom son with huge performance
- Full sister sold to Wayne Crosby
- Same cow family as Gerrard Papa Smurf, long time herdsire for Prairie Cove Charolais

LOT Polled **GERRARD PEACEMAKER 23W**
 GCC 23W PMC326559 MALE FEB. 4, 2009

MXS VERMILLION 527R	SOS POLLED DETONATOR 8M	BW: 6.0
SDC TIME OUT 88T	MXS ESPEON 122L	WW: 45
SVY HIP HOP 228M	DYV CLEARCUT 14H	YW: 91
	5-D STARDUST 16Y	MM: 23.7
	HFCC PLD EVOLUTION 5L	TM: 46
SVY FREEDOM PLD 307N	SVY PURRFECT 184L	BW:
SDC SIMONA 51S	EC BRONSON 204 POLLED	107 LBS.
SDC MISS CINDY 45L	SDC MISS EDELWEISS 38J	ADJ 205 DW:
		818 LBS.
		ADJ 365 DW:
		1396 LBS.
		SC:
		38 CM.

- Outcross pedigree
- Strong maternal background combined with excellent performance
- Maternal grandmother used in San Dan's ET program



Peacemaker



LOT Polled **GERRARD HARVARD 27W**
GCC 27W PMC329749 **MALE** **FEB. 26, 2009**

HFCC PLD EVOLUTION 5L	SPARROWS ALLIANCE 513G	BW: 3.5
SVY FREEDOM PLD 307N	HFCC ELVIRA 916J	WW: 43
SVY PURRFECT 184L	RA BIG CAT 9017 PLD	YW: 75
SVY GUARDIAN PLD 969J	SVY JUSTLIKEPERFECT 432D	MM: 24.7
GERRARD CHRYSTAL 1M	SHARPHILLS HURRICANE154D	TM: 46
GERRARD CHRYSTAL 48F	SVY JUSTLIKEPERFECT 432D	BW:
	SVS PRESERVE 7B	97 LBS.
	PRAIRIE COVE MISS 135A	ADJ 205 DW:
		815 LBS.
		ADJ 365 DW:
		1393 LBS.

- Great structure and eye appeal combined with performance
- Maternal sister Gerrard Chrystal 10P is one of the feature cows in our herd
- Maternal grand dam raised herdsire for Effertz Key Ranch, Velva, ND

SC:
36 CM.



LOT Polled **GERRARD PROTOTYPE 29W**
GCC 29W PMC329878 **MALE** **APRIL. 3, 2009**

SVY PIONEER 402P	LT RIO BLANCO 1234 P	BW: 2.8
SVY PILGRIM PLD 655S	SVY JINGLES 153L	WW: 37
HFCC FRENCHKISS 919J	RGF EUREKA 17E	YW: 68
SVY SMOKE EM PLD 491P	QCR FRENCHKISS 33F	MM: 21.8
GERRARD PROUD MARY 7S	LHD CIGAR E46	TM: 40
GERRARD MARIA 87L	SVY HIP HOP 228M	BW:
	SVY BEDROCK PLD 816H	92 LBS.
	GERRARD MARIA 2H	ADJ 205 DW:
		957 LBS.
		ADJ 365 DW:
		1506 LBS.

- Light birth weight with huge 205 day weight
- Youngest bull in the sale but don't be fooled, he has all the amazing performance you can expect from the Pilgrim bloodline

SC:
36 CM.

Reference Sire

SVY Polled **SVYFREEDOM PLD 307N**
307N PMC280878 **MALE** **JAN. 5, 2003**

SPARROWS ALLIANCE 513G	LT WYOMING WIND 4020 PLD	BW: 2.7
HFCC PLD EVOLUTION 5L	CHARDEL PARADISE 513E	WW: 39
HFCC ELVIRA 916J	HTA HARD COPY PLD 621F	YW: 74
RA BIG CAT 9017 PLD	HFCC ELVIRA 36C	MM: 23.9
SVY PURRFECT 184L	JB A J 787G	TM: 43
SVY JUSTLIKEPERFECT 432D	JB MABLE 443D	
	CHARDEL REEBOK	
	MISS KLL CREAM PUFF 728W	

Since 2003, when he showed up at Agribition as a calf, topped the sale at \$51,000 and was declared Reserve Grand Champion bull, Freedom has been setting the standard for Charolais genetics in Canada. While we have filled the page listing just a few of Freedom's show champions and high selling cattle, we need to point out what truly makes Freedom one of the greatest Charolais sires of all time; functional, low maintenance bulls for the Commercial cattleman! Charolais bulls with light birth weights and high weaning weights. Charolais bulls that are thick, loose hided with incredible hair coats. Charolais that have nice disposition, great structure, and longevity. The fact that Freedom throws these traits with such incredible consistency is the main reason that we are confident that Freedom sons and grandsons will be in high demand for a long time to come.

Co-owned with Voegeli Bros Charolais, San Dan Charolais, A. Sparrow Farms and New Country Livestock.



SVY Freedom PLD 307N

LOT Polled **GERRARD STIMULUS 36U**
GCC 36U PMC329875 **MALE** **MAY 11, 2008**

HFCC PLD EVOLUTION 5L
 SVY FREEDOM PLD 307N
 SVY PURRFECT 184L
 JSR EQUITY 17M
 GERRARD CINDY 12P
 GERRARD CINDY 41L

SPARROWS ALLIANCE 513G
 HFCC ELVIRA 916J
 RA BIG CAT 9017 PLD
 SVY JUSTLIKEPERFECT 432D
 SVY WIDE CUT 20K
 JSR JASMINE 40J
 SVY BEDROCK PLD 816H
 GERRARD CINDY 1J

- Long yearling
- Great muscle shape and volume
- Very free moving, athletic bull
- Full brother sold to Jeff Havens, Madden, AB

BW: 3.7
 WW: 39
 YW: 75
 MM: 20.7
 TM: 40
 BW:
 92 LBS.
 ADJ 205 DW:
 782 LBS.
 ADJ 365 DW:
 1324 LBS.
 FEB. 28/10 WT:
 2060 LBS.
 SC:
 42 CM.



Stimulus

LOT Polled **GERRARD CELEBRITY 41U**
GCC 41U PMC329876 **MALE** **JUNE 13, 2008**

HFCC PLD EVOLUTION 5L
 SVY FREEDOM PLD 307N
 SVY PURRFECT 184L
 DYV CLEARCUT 14H
 PAYNES LAURA 7L
 DYV FLAWLESS 9B

SPARROWS ALLIANCE 513G
 HFCC ELVIRA 916J
 RA BIG CAT 9017 PLD
 SVY JUSTLIKEPERFECT 432D
 KEYS POLLED COMPASS
 BAR 19 FUTURIST 201B
 CHARMAC HOUSTON 12X
 LVY RADIANCE 805X

- Long yearling
- Light birth weight, low maintenance bull
- Sound structure
- Maternal brother to Gerrard Kryptonite 40T, herdsire for Seven Quarter Circle Charolais, Williams Lake, B.C.

BW: 1.1
 WW: 38
 YW: 70
 MM: 20.2
 TM: 39
 BW:
 92 LBS.
 ADJ 205 DW:
 769 LBS.
 ADJ 365 DW:
 1367 LBS.
 FEB. 28/10 WT:
 1790 LBS.
 SC:
 41 CM.



Celebrity

LOT Polled **GERRARD HEADWIND 43U**
GCC 43U PMC329877 **MALE** **JUNE 20, 2008**

HFCC PLD EVOLUTION 5L
 SVY FREEDOM PLD 307N
 SVY PURRFECT 184L
 SVY GUARDIAN PLD 969J
 GERRARD ROXANNE 4M
 GERRARD ROXANNE 22E

SPARROWS ALLIANCE 513G
 HFCC ELVIRA 916J
 RA BIG CAT 9017 PLD
 SVY JUSTLIKEPERFECT 432D
 SHARPHILLS HURRICANE154D
 SVY JUSTLIKEPERFECT 432D
 SVC APPLAUSE 127A
 SUNSET ACRES ROXANNE 10Y

- Long yearling
- Extra length of body and performance
- Out of the Roxanne family, the same cow family as Gerrard Montezuma 6T

BW: 4.0
 WW: 43
 YW: 76
 MM: 27.1
 TM: 49
 BW:
 97 LBS.
 ADJ 205 DW:
 800 LBS.
 ADJ 365 DW:
 1424 LBS.
 FEB. 28/10 WT:
 1885 LBS.
 SC:
 43 CM.



Headwind

The Right to Flush 18P



"Roxanne"



Gerrard Montezuma 6T - 41st US National Champion

LOT Polled **GERRARD ROXANNE 18P**
GCC 18P PFC344620 **MALE** **JAN. 18, 2004**

PF IMPRESSED 620 P ET	JWK IMPRESSIVE D040 ET	BW: 1.3
<i>RPJ IMPRESSED 121L</i>	MISS KC CROCUS 904 POLLED	WW: 48
RPJ SUNBURST 979J	E-CEE KATMANDU 200B	YW: 85
	RPJ PERFECTSUNBURST552E	MM: 29.5
	SHARPHILLS HURRICANE154D	TM: 54
SVY GUARDIAN PLD 969J	SVY JUSTLIKEPERFECT 432D	
<i>GERRARD ROXANNE 27M</i>	SVC APPLAUSE 127A	
GERRARD ROXANNE 22E	SUNSET ACRES ROXANNE 10Y	

- Gerrard Roxanne is a performance female with muscle and thickness yet still maintains impressive eye appeal and femininity
- She has produced a bull calf every year since 2006 and every calf has ranked 1st or 2nd in the for their 205 day weight at weaning
- Outcross pedigree with curve bending EPD's

• Offering 1 successful flush in Gerrard Roxanne 18P, the dam of Gerrard Montezuma 6T, the reigning U.S. National Champion Bull and the new bull in the Genex Charolais program.

• Buyer has the opportunity to flush her to any bull in the Gerrard Cattle Company herd bull lineup or to the bull of their choice

• Guarantee of 6 grade 1 embryos

• Flushing will be done at Davis Rairdan International, all flushing related costs are the responsibility of the purchaser

Her Son... Montez



Montez

LOT Polled **GERRARD MONTEZ 26W**
GCC 26W PMC326560 **MALE** **FEB. 23, 2009**

HFCC PLD EVOLUTION 5L	SPARROWS ALLIANCE 513G	BW: 1.3
<i>SVY FREEDOM PLD 307N</i>	HFCC ELVIRA 916J	WW: 46
SVY PURRFECT 184L	RA BIG CAT 9017 PLD	YW: 82
	SVY JUSTLIKEPERFECT 432D	MM: 26.3
	PF IMPRESSED 620 P ET	TM: 49
RPJ IMPRESSED 121L	RPJ SUNBURST 979J	BW:
<i>GERRARD ROXANNE 18P</i>	SVY GUARDIAN PLD 969J	98 LBS.
GERRARD ROXANNE 27M	GERRARD ROXANNE 22E	ADJ 205 DW:
		852 LBS.
		ADJ 365 DW:
		1396 LBS.
		SC:
		38 CM.

- Full brother to reigning U.S. National Champion Montezuma
- 98 lb. birth with 852 lb. 205 day weight
- Lots of length and eye appeal
- Nice temperament
- Awesome EPDs
- Maternal brother sold in last year's sale to Seven Oaks Ranch, Wetaskawin, AB



Gerrard Montezuma 6T



Gerrard Grizzly Bear 22U

Sold in 2009 sale to Seven Oaks Ranch, Wetaskiwin, AB

Choice of GCC 2W and GCC 24W

LOT Polled **GERRARD CHRYSTAL 2W**
GCC 2W PFC377088 FEMALE JAN. 1, 2009

SVY PIONEER 402P	LT RIO BLANCO 1234 P	BW: 5.0
SVY PILGRIM PLD 655S	SVY JINGLES 153L	WW: 53
HFCC FRENCHKISS 919J	RGP EUREKA 17E	YW: 91
	QCR FRENCHKISS 33F	MM: 19.2
HFCC PLD EVOLUTION 5L	SPARROWS ALLIANCE 513G	TM: 46
GERRARD CHRYSTAL 10P	HFCC ELVIRA 916J	BW:
GERRARD CHRYSTAL 1M	SVY GUARDIAN PLD 969J	92 LBS.
	GERRARD CHRYSTAL 48F	

- Sister to GCC 1W
- Dam of a feature female in our herd a full brother sold to the Schulmeister's, Castor AB

Reference Sire

SVY Polled **SVY PILGRIM PLD 655S**
655S PMC303031 MALE JAN. 24, 2006

LT RIO BLANCO 1234 P	WCR PRIME CUT 764 PLD	BW: 4.4
SVSVY PIONEER 402P	LT PRAIRIE MAID 4054	WW: 56
SVY JINGLES 153L	SKYMONT EASE 2078	YW: 104
	WINDYVIEW JIGGLES 2J	MM: 19.8
RGF EUREKA 17E	E-CEE KATMANDU 200B	TM: 48
HFCC FRENCHKISS 919J	AGV MASTERLADY 17Y	
QCR FRENCHKISS 33F	SIR QCR HIGHGEAR 2P	
	QCR DIMPLES 39D	

Pilgrim is level-topped, square hipped with excellent leg structure and as good of feet as you could dream about for your herd sire. He is consistently stamping his calves with length, thickness, muscle, and performance. In the Canadian Charolais Association fall 2008 sire summary Pilgrim's EPDs place him in the top 1% for weaning weight and the top 2% for yearling weight in the Charolais breed. His sons will be our feature sire group in the Progressive Genetics Bull Sale. The truly impressive individual Pilgrim has become combined with power and consistency displayed by his calves makes us confident we have a bull that will be a major force in the Charolais breed for years to come.

Co-owned with Voegeli Bros. Charolais.

LOT Polled **GERRARD SUZY 24W**
GCC 24W PFC377094 FEMALE FEB. 7, 2009

HFCC PLD EVOLUTION 5L	SPARROWS ALLIANCE 513G	BW: 2.7
SVY FREEDOM PLD 307N	HFCC ELVIRA 916J	WW: 47
SVY PURRFECT 184L	RA BIG CAT 9017 PLD	YW: 84
	SVY JUSTLIKEPERFECT 432D	MM: 21.4
RPJ IMPRESSED 121L	PF IMPRESSED 620 P ET	TM: 45
GERRARD SUZY 1R	RPJ SUNBURST 979J	BW:
GERRARD SUSAN 2N	HFCC PLD EVOLUTION 5L	95 LBS.
	GERRARD SUSAN 43L	

- Extra length of body
- Great hair coat
- Smooth shouldered, feminine made heifer
- 3/4 sister to US National Champion, Gerrard Montezuma
- Maternal brother sold last year to Glen Pittman, Milk River, AB



SVY Pilgram PLD 655S

Choice of GCC 1W and GCC 18W



LOT Polled **GERRARD CHRYSTAL 1W**
GCC 1W PFC377087 FEMALE JAN. 1, 2009

SVY PIONEER 402P	LT RIO BLANCO 1234 P	BW: 5.0
<i>SVY PILGRIM PLD 655S</i>	SVY JINGLES 153L	WW: 53
HFCC FRENCHKISS 919J	RGP EUREKA 17E	YW: 91
	QCR FRENCHKISS 33F	MM: 19.2
HFCC PLD EVOLUTION 5L	SPARROWS ALLIANCE 513G	TM: 46
<i>GERRARD CHRYSTAL 10P</i>	HFCC ELVIRA 916J	BW:
GERRARD CHRYSTAL 1M	SVY GUARDIAN PLD 969J	92 LBS.
	GERRARD CHRYSTAL 48F	

- Performance and power combined with eye appeal
- Full brother sold last year to Tony Schulmeister, Castor, AB

Chrystal



LOT Polled **GERRARD SMURFETTE 18W**
GCC 18W PFC377089 FEMALE JAN. 19, 2009

HFCC PLD EVOLUTION 5L	SPARROWS ALLIANCE 513G	BW: 2.8
<i>SVY FREEDOM PLD 307N</i>	HFCC ELVIRA 916J	WW: 43
SVY PURRFECT 184L	RA BIG CAT 9017 PLD	YW: 79
	SVY JUSTLIKEPERFECT 432D	MM: 21.4
JSR EQUITY 17M	SVY WIDE CUT 20K	TM: 43
<i>GERRARD SMURFETTE 22R</i>	JSR JASMINE 40J	BW:
GERRARD SMURFETTE 11L	SVY BEDROCK PLD 816H	92 LBS.
	GERRARD SMURFETTE 25J	

- Great overall package combining sound structure with performance, length of body, and muscle shape
- Out of our powerful Smurfette cow famil
- Same cow family and 3/4 sister family as feature sale bull, GCC 17
- Maternal sister by Pilgrim will be used as a donor female in our ET program

Gerrard Smurfette 1U - Pilgrim X Smurfette 22R
 Paternal sister to 1W and maternal sister to 18W



"18W"

Gerrard



"Amber"

LOT Polled **GERRARD AMBER 4W**
GCC 4W PFC377083 FEMALE JAN. 1, 2009

SVY PIONEER 402P	LT RIO BLANCO 1234 P	BW: 4.4
SVY PILGRIM PLD 655S	SVY JINGLES 153L	WW: 48
HFCC FRENCHKISS 919J	RGP EUREKA 17E	YW: 90
	QCR FRENCHKISS 33F	MM: 19.6
SVY FREEDOM PLD 307N	HFCC PLD EVOLUTION 5L	TM: 44
GERRARD AMBER 2T	SVY PURRFECT 184L	BW:
GERRARD AMBER 1P	JSR EQUITY 17M	90 LBS.
	GERRARD AMBER 61L	

- Class winner Agribition 2009
- Great temperament
- Sound structure and extra eye appeal
- Out of a two year old Freedom daughter
- ¾ sister to GCC 5W



Gerrard Phoenix 3M - Same cow family as GCC 5W

LOT Polled **GERRARD PHOENIX 5W**
GCC 5W PFC377084 FEMALE JAN. 1, 2009

SVY PIONEER 402P	LT RIO BLANCO 1234 P	BW: 4.8
SVY PILGRIM PLD 655S	SVY JINGLES 153L	WW: 53
HFCC FRENCHKISS 919J	RGP EUREKA 17E	YW: 95
	QCR FRENCHKISS 33F	MM: 21.3
SVY FREEDOM PLD 307N	HFCC PLD EVOLUTION 5L	TM: 48
GERRARD PHOENIX 23T	SVY PURRFECT 184L	BW:
GERRARD PHOENIX 18M	SVY GUARDIAN PLD 969J	85 LBS.
	GERRARD PHOENIX 36D	

- Angular made with eye appeal
- Easy moving, sound footed
- Out of a two year old Freedom daughter from our highly productive Phoenix cow family, the same family that produced SVY Polar Bear, high seller at the Lloyd bull sale and herdsire at HEJ Charolais
- ¾ sister to GCC 4W



Phoenix

Charolais Females



Lynda



Spice



DVY Paynes Nice 20N - Dam of 11W



Gerrard Petroleum 14U - Maternal brother to 11W



Gerrard Norma Jean 21U - Full blood sister to 20W

Choice of GCC 9W ...

LOT Polled **GERRARD LYNDA 9W**
GCC 9W PFC377085 FEMALE JAN. 2, 2009

HFCC PLD EVOLUTION 5L	SPARROWS ALLIANCE 513G	BW: 3.3
SVY FREEDOM PLD 307N	HFCC ELVIRA 916J	WW: 42
SVY PURRFECT 184L	RA BIG CAT 9017 PLD	YW: 76
	SVY JUSTLIKEPERFECT 432D	MM: 21.8
SVY SMOKE EM PLD 491P	LHD CIGAR E46	TM: 43
GERRARD LYNDA 20S	SVY HIP HOP 228M	BW:
GERRARD LYNDA 7P	HFCC PLD EVOLUTION 5L	90 LBS.
	GERRARD LINDY 3L	

- Impressive length of body • Very smooth shouldered and clean fronted
- Extra hair coat • Out of a Smokem daughter. Our Smokem cows are beautiful females with great udders

Choice of GCC 11W...

LOT Polled **GERRARD SPICE 11W**
GCC 11W PFC377086 FEMALE JAN. 2, 2009

HFCC PLD EVOLUTION 5L	SPARROWS ALLIANCE 513G	BW: 0.4
SVY FREEDOM PLD 307N	HFCC ELVIRA 916J	WW: 28
SVY PURRFECT 184L	RA BIG CAT 9017 PLD	YW: 57
	SVY JUSTLIKEPERFECT 432D	MM: 22.9
DVY CLEARCUT 14H	KEYS POLLED COMPASS	TM: 37
DVY PAYNES NICE 20N	BAR 19 FUTURIST 201B	BW:
MVM CLAN LADY 74Z	WILDOR KNIGHT 324R	80 LBS.
	MS MARIAN ACRES JAG 5N	

- Freedom x Clearcut cross produces awesome eye appeal, muscle shape, and hair coat
- Same cow family as GCC 15W, 7W, 8W, 3W
- Maternal brother sold last year to Glen Pittman, Milk River, AB

Choice of GCC 20W ...

LOT Polled **GERRARD ROSIE 20W**
GCC 20W PFC377091 FEMALE JAN. 25, 2009

HFCC PLD EVOLUTION 5L	SPARROWS ALLIANCE 513G	BW: 5.8
SVY FREEDOM PLD 307N	HFCC ELVIRA 916J	WW: 41
SVY PURRFECT 184L	RA BIG CAT 9017 PLD	YW: 77
	SVY JUSTLIKEPERFECT 432D	MM: 19.3
LHD CIGAR E46	LHD MR PERFECT Y416	TM: 40
DVY PAYNES ROSIE 4R	LHD MS CLASSIC BELL X613	BW:
BAR 19 FUTURIST 201B	SVC FUTURIST 809X	105 LBS.
	MISS ARLINDALE 835K	

- Great show prospect • Thick, moderate framed with a great front end
- Sound made, free moving • Maternal grandmother is the dam of DVY Clear Cut
- Full sister in blood to sale bull, GCC 14W



Rosie

... and GCC 19W

LOT Polled **GERRARD SOUL SISTER 19W**
GCC 19W PFC377090 FEMALE JAN. 21, 2009

SVY PIONEER 402P	LT RIO BLANCO 1234 P	BW: 4.6
SVY PILGRIM PLD 6555	SVY JINGLES 153L	WW: 47
HFCC FRENCHKISS 919J	RGP EUREKA 17E	YW: 84
HFCC PLD EVOLUTION 5L	QCR FRENCHKISS 33F	MM: 17.0
SVY SOUL SISTER 361N	SPARROWS ALLIANCE 513G	TM: 40
JSR JAZZ 5J	HFCC ELVIRA 916J	BW: 97 LBS.
	JWK IMPRESSIVE D040 ET	
	SD ROYAL FANCY FACE 214F	

- Impressive length of body • Sound structure
- Clean shouldered, feminine made heifer with extra performance
- Daughter of SVY Soul Sister and maternal granddaughter of JSR Jazz, the only Charolais female ever to win Agribition's RBC Beef Supreme Championship

... and GCC 28W

LOT Polled **GERRARD SANDRA 28W**
GCC 28W PFC377096 FEMALE MAR. 8, 2009

SVY PIONEER 402P	LT RIO BLANCO 1234 P	BW: -0.2
SVY PILGRIM PLD 6555	SVY JINGLES 153L	WW: 48
HFCC FRENCHKISS 919J	RGP EUREKA 17E	YW: 81
SVY BEDROCK PLD 816H	QCR FRENCHKISS 33F	MM: 18.3
GERRARD SANDRA 53L	SLY EASTWOOD PLD 32F	TM: 42
GERRARD SANDRA 15J	VMN FAME IS THE NAME634F	BW: 84 LBS.
	GERRARD PAPA SMURF 17F	
	GERRARD SANDRA 51G	

- Easy doing heifer with great performance numbers • Great hair coat
- Maternal brother sold to Jeff Havens, Madden, AB and 3/4 brother, 31U, a feature bull we sold last year to Holen Charolais, Upham, ND

... and GCC 21W

LOT Polled **GERRARD PHOENIX 21W**
GCC 21W PFC377092 FEMALE JAN. 28, 2009

SVY PIONEER 402P	LT RIO BLANCO 1234 P	BW: 3.8
SVY PILGRIM PLD 6555	SVY JINGLES 153L	WW: 449
HFCC FRENCHKISS 919J	RGP EUREKA 17E	YW: 88
SVY FREEDOM PLD 307N	QCR FRENCHKISS 33F	MM: 22.2
GERRARD PHOENIX 21T	HFCC PLD EVOLUTION 5L	TM: 47
GERRARD PHOENIX 7M	SVY PURRFECT 184L	BW: 82 LBS.
	SVY GUARDIAN PLD 969J	
	GERRARD PHOENIX 36D	

- Deep sided, high volume heifer • Great brood cow prospect
- Another powerful female from our Phoenix family
- Full sister in blood to feature sale heifer, GCC 5W
- Maternal grandmother has produced past high selling bulls going to Gordon McFee, Burns Lake, BC and Brent Lange, Millet, AB



Phoenix

Charolais Females



SVY Soul Sister 361N - Dam of 19W



Gerrard Diego 18U - Maternal Brother to 19W
2009 High Seller to High Bluff Stock Farm, Inglis, MB



JSR Jazz 5J - Maternal grandmother to 19W



Sandra



Gerrard Sandra 53L - Dam of 28W



Gerrard Preacher 31U - 3/4 brother to 28W



can't beat the performance of
CHAROLAIS/ANGUS CROSS

Uniform size and the quality of finished cattle are the main reasons Montana rancher, order buyer and cattle feeder, Orville Skogen has stayed with a Charolais/Black Angus cross-breeding program for more than 30 years.

He gets excellent rate of gain on cattle, calves wean around 750 pounds, and many finish for slaughter at 12 to 13 months of age.

"I haven't seen anything that finishes with the uniformity of the Charolais/Angus cross," says Skogen.

Skogen and his wife Arlene operate Skogen's GK Angus Ranch at Fort Shaw, Montana. Their herd includes 700 head of purebred Black Angus cattle, as well as an 800 plus head herd of commercial black cows bred to Charolais bulls that are calved on the open range.

"The Charolais on their own are good cattle, and the Angus on their own are good cattle, but you put them together and they're even better. I raise what I like to buy and what I like to feed and that is the silver calf." "I could feed black nose calves all day long!" "Silver calves are superior feeding cattle. I've been doing this for over 30 years.....you have to feed what produces the most amount of lean red meat, that's where the money is."

"A lot depends on the feeder, but you can put these 750 pound calves in a feedlot and they'll gain an average 3 1/2

pounds per day," says Skogen. "Our mean calving date is March 8 and we'll have some calves finished in March the following year and the majority will finish as 13 and 14 month old calves weighing 1350 to 1400 pounds."

"Anywhere from 70 to 80 percent of the carcasses will grade Choice and 85 percent of them will Yield 1 and 2. We process all finished cattle on a grid of some kind and they always bring more dollars than the commodity market."

"When I have a pen of calves and I look at the grid and the carcass data, the Charolais/Angus cross by far, produces the most uniform cattle."

In his overall herd management program, Skogen breeds Angus cows for maturity and marbling traits, and he favors one bloodline of Charolais bulls for extra heavy muscle and performance and doesn't use a bull with a birthweight under 100 lbs.

"It doesn't matter how good each breed is, there is no competition for what we get out of the hybrid vigor," he says. "That first heterosis really gives us cattle with performance."

We use Charolais bulls with Angus cows because they really compliment each other." "There isn't a better carcass animal in the world for what our standards are than the silver calf."



"Expedition"

LOT **GERRARD EXPEDITION 903W**
GCCA 903W 1517229 **MALE** **JAN. 1, 2009**

	S A F FOCUS OF E R	BW: 2.8
CIRCLE A ADVENTURE 0124	ACF EVERGREEN 8007	WW: 48
ONEILLS EXPEDITION	CIRCLE OAK TRAVELER 524	YW: 92
ONEILLS DELIA 715	ONEILLS DELIA 703	MM: 22
	KRUGERRAND OF DONAMERE 490	TM: 46
TC MAIN FRAME 726	TC PRIDE 3016 US1	BW:
TC CHLOE 1041	TC DIVIDEND 963	84 LBS.
TC CHLOE 6012	APEXETTE CHLOE 5003	ADJ 205 DW:
		760 LBS.
		ADJ 365 DW:
		1426 LBS.
		SC:
		39 CM.

- Very thick topped individual with excellent muscle shape
- Great temperament
- Powerful performance numbers
- The dam, TC Chloe 1041, has been used very successfully in our ET program. This spring we have 12 calves on the ground from her and the quality and the consistency of her offspring is amazing
- A bull from the Chloe cow family recently topped the 2010 TC Ranch bull sale at \$40,000



TC Chloe 1041 - Dam of 903W

LOT **GERRARD WALL STREET 910W**
GCCA 910W 1517237 **MALE** **JAN. 2, 2009**

	S A V 8180 TRAVELER 004	BW: 0.9
S A V NET WORTH 4200	S A V MAY 2410	WW: 44
S A V WALL STREET 7091	CHAMPION HILL TECUMSEH	YW: 78
CHAMPION HILL GEORGINA 2175	L L A GEORGINA 419	MM: 18
	CONNEALY FOREFRONT	TM: 40
TC FOREFRONT 1213	TC PRIDE 2010	BW:
GERRARD LUCY 709T	WAR HALL OF FAME 8023	70 LBS.
4DJ NELLIE LUCY 47N	SUNNY LUCY 013L	ADJ 205 DW:
		721 LBS.
		ADJ 365 DW:
		1274 LBS.
		SC:
		38 CM.

- Very deep bodied, thick made herdbull prospect
- Great calving ease bull



Wall Street



LOT **GERRARD STEEL 917W**
GCCA 917W 1517242 **MALE** **JAN. 4, 2009**

G13 STRUCTURE	TC STOCKMAN 365	BW: 5.8
G 13 STEEL	G13 TRAVELER 9428	WW: 40
G 13 LASSY 9492	LEACHMAN RIGHT TIME	YW: 71
	R&J LASSY 2099	MM: 12
	G D A R ROLLS ROYCE 203	TM: 32
4DJ KRUIZIN ROLLS ROYCE 21K	WHITE LAKE BLACKCAP 51A	BW:
4DJ NERELITE 44N 11	MCRAE'S FOCUS 33F	97 LBS.
MVF ERELITE 2J	DRYLAND EVELYN 508	ADJ 205 DW:
		722 LBS.
		ADJ 365 DW:
		1325 LBS.
		SC:
		36 CM.

- The Steel sons have always stood out because of their power and performance
- Add pounds to your calf crop with this guy



LOT **GERRARD WALL STREET 920W**
GCCA 920W 1517245 **MALE** **JAN. 5, 2009**

S A V NET WORTH 4200	S A V 8180 TRAVELER 004	BW: 1.6
S A V WALL STREET 7091	S A V MAY 2410	WW: 41
CHAMPION HILL GEORGINA 2175	CHAMPION HILL TECUMSEH	YW: 78
	L L A GEORGINA 419	MM: 19
	DMM DIMENSION 111J	TM: 40
4DJ NORTHERNEDGE DIMENSION 22N	HF TIBBIE 95J	BW:
4DJ ROZZELA TIDY BEE 23R	G D A R ROLLS ROYCE 203	78 LBS.
COLDSTREAM TIDY BEE 74K	COLDSTREAM TIDY BEE 64G	ADJ 205 DW:
		672 LBS.
		ADJ 365 DW:
		1242 LBS.
		SC:
		40 CM.

- A Wall Street son that will improve thickness and still work as a calving ease bull
- A heifer from the same cow family, GCCA 944W, is one of the feature heifers in the sale

Reference Sire

IMP **S A V WALL STREET 7091**
7091T 1444420 **MALE** **FEB. 6, 2007**

S A V 8180 TRAVELER 004	SITZ TRAVELER 8180	BW: 2.6
S A V NET WORTH 4200	BOYD FOREVER LADY 8003	WW: 52
S A V MAY 2410	S A F 598 BANDO 5175	YW: 93
	S A V MAY 6269	MM: 27
	N BAR EMULATION EXT	TM: 53
CHAMPION HILL TECUMSEH	CHAMPION HILL BLACKBIRD 33	
CHAMPION HILL GEORGINA 2175	G A R SLEEP EASY 1009	
L L A GEORGINA 419	LYONS GEORGINA 2165	

We are very excited to introduce our new herd bull, Wall Street. Wall Street was one of the highlight bulls in the 2008 Schaff Angus Valley Production sale. In the year since we purchased him, he has been one of the most talked about bulls in the Angus breed, many cattlemen and women from across North America have admired him for his explosive muscle shape, depth of body, and performance. Wall Street is backed up on the maternal side by Champion Hill's incomparable Georgina cow family. The Georginas have become famous for sharp fronted, feminine, highly productive cows with beautiful udders. The Georgina heifers have topped numerous shows including the Grand Champion females at the American Angus Association Jr. National and the National Western Stock Show in Denver. Productive herd bulls inevitably come out of productive cow families and Wall Street comes from one of the best. Many bulls and heifers from the Georgina family have been sale features at the Champion Hill and Schaff Angus Valley Sales. We have a number of Wall Street calves on the ground and calving ease is yet another area where Wall Street has met and exceeded our expectations. His calves have short gestation, light birth weights, and are vigorous at birth. Our first calf heifers calved out 100% unassisted! Wall Street is a unique and exciting herd bull and we look forward to building our Angus program around him in the future. Owned with Serhienko Cattle Company, SK; Michelson Land and Cattle, SK; Soo Line Cattle Company, SK; Poley Hall Partnership, SK and Schaff Angus Valley, ND



S A V Wall Street 7091

"Steel"



4DJ Nippy Blackcap 93N - Dam of 922W

LOT
GCCA 922W **1517246** **GERRARD STEEL 922W** **MALE** **JAN. 7, 2009**

<p>G13 STRUCTURE <i>G 13 STEEL</i> G 13 LASSY 9492</p> <p>CUDLOBE MILLENNIUM 46K <i>4DJ NIPPY BLACKCAP 93N</i> WHITE LAKE BLACKCAP 2J</p>	<p>TC STOCKMAN 365 G13 TRAVELER 9428 LEACHMAN RIGHT TIME R&J LASSY 2099 DAVIS MILLENNIUM 7518 STEVENSON ENCHANTRESS 425F V N A R FAMOUS PLAYERS 53G WHITE LAKE BLACKCAP 2D</p>	<p>BW: 6.1 WW: 47 YW: 80 MM: 15 TM: 39 BW: 95 LBS. ADJ 205 DW: 741 LBS. ADJ 365 DW: 1327 LBS. SC: 43 CM.</p>
---	--	--

- A powerful herdbull prospect out of one of the elite females in our herd
- Very thick and deep bodied
- Sound structure
- Ideal frame size
- Maternal sister is one of the most ideal females you will find anywhere
- A full brother sold last year to River Rock Angus



Gerrard Blackcap 724T - Maternal Sister to 922W

LOT
GCCA 927W **1517249** **GERRARD WALL STREET 927W** **MALE** **JAN. 12, 2009**

<p>S A V NET WORTH 4200 <i>S A V WALL STREET 7091</i> CHAMPION HILL GEORGINA 2175</p> <p>DMM DIMENSION 111J <i>4DJ PURITY BRIDE 11P</i> 4DJ KOLASSAL BRIDE 1K</p>	<p>S A V 8180 TRAVELER 004 S A V MAY 2410 CHAMPION HILL TECUMSEH L L A GEORGINA 419 TC STOCKMAN 365 THERDOWN MISSIE 26S GRAND ISLAND ELMO WHITE LAKE BRIDE 4D</p>	<p>BW: 3.0 WW: 50 YW: 83 MM: 18 TM: 43 BW: 80 LBS. ADJ 205 DW: 812 LBS. ADJ 365 DW: 1407 LBS. SC: 36.5 CM.</p>
---	---	--

- A Wall Street son with the typical thickness and muscle shape plus an extra shot of performance
- Out of another powerful 111J daughter



Wall Street



"Steel 929W"

LOT
GCCA 929W **1517251** **GERRARD STEEL 929W** **MALE** **JAN. 15, 2009**

<p>G13 STRUCTURE <i>G 13 STEEL</i> G 13 LASSY 9492</p> <p>TC FOREFRONT 1213 <i>4DJ PALACE OF ERICA ROSE 52P</i> 4DJ MEMPHIS ERICA ROSE 66M</p>	<p>TC STOCKMAN 365 G13 TRAVELER 9428 LEACHMAN RIGHT TIME R&J LASSY 2099 CONNEALY FOREFRONT TC PRIDE 2010 4DJ KRUIZIN ROLLS ROYCE 21K HI DIAMOND ERICA ROSE 5J</p>	<p>BW: 5.8 WW: 46 YW: 80 MM: 17 TM: 40 BW: 100 LBS. ADJ 205 DW: 797 LBS. ADJ 365 DW: 1517 LBS. SC: 43 CM.</p>
--	---	---

- This bull has always been a stand out
- Amazing length of body
- Very thick topped and carries the muscle shape down into his lower quarter
- Great temperament
- His dam is an excellent 1213 daughter with the kind of udder you should expect for the mother of your herdsire
- Same cow family as sale bull, GCCA 946W, and sale heifer, GCCA 928W

LOT
GCCA 946W **1517258** **GERRARD WALL STREET 946W** **MALE** **FEB. 6, 2009**

<p>S A V NET WORTH 4200 <i>S A V WALL STREET 7091</i> CHAMPION HILL GEORGINA 2175</p> <p>RITO 2100 G D A R <i>HI DIAMOND ERICA ROSE 5J</i> HDAF ERICA ROSE 2G</p>	<p>S A V 8180 TRAVELER 004 S A V MAY 2410 CHAMPION HILL TECUMSEH L L A GEORGINA 419 RITO EVER 865 G D A R BLACKCAP LADY 999 G D A R O G L BATTLE CRY 427 128 ERICA MCB 43'94</p>	<p>BW: 4.5 WW: 42 YW: 77 MM: 21 TM: 42 BW: 90 LBS. ADJ 205 DW: 781 LBS. ADJ 365 DW: 1451 LBS. SC: 41 CM.</p>
---	--	--

- Extra length of body and performance
- Sound structure
- Same cow family as sale bull, GCCA 929W, and sale heifer, 928W
- Dam has a daughter in the Miller Wilson herd and a granddaughter at Remington Cattle Company





4DJ New Love Georgina 37N - Dam of 953W

LOT **GERRARD WALL STREET 950W**
GCCA 950W 1517260 MALE FEB. 8, 2009

S A V NET WORTH 4200	S A V 8180 TRAVELER 004	BW: 3.0
<i>S A V WALL STREET 7091</i>	S A V MAY 2410	WW: 43
CHAMPION HILL GEORGINA 2175	CHAMPION HILL TECUMSEH	YW: 79
	L L A GEORGINA 419	MM: 18
4DJ KRUIZIN ROLLS ROYCE 21K	G D A R ROLLS ROYCE 203	TM: 40
<i>4DJ PHEONA COUNTESS 96P</i>	WHITE LAKE BLACKCAP 51A	BW:
WILLABAR COUNTESS 72C	WILLABAR EXCEL 107Z	82 LBS.
	WILLABAR COUNTESS 135A	ADJ 205 DW:
		749 LBS.
		ADJ 365 DW:
		1394 LBS.
		SC:
		38 CM.

- Very easy doing
- Extra power and muscle
- Deep bodied

LOT **GERRARD GRAND DESIGN 953W**
GCCA 953W 1517263 MALE FEB. 11, 2009

BUSHES GRAND DESIGN	BON VIEW NEW DESIGN 1407	BW: 0.7
<i>MVF GRAND DESIGN 72S</i>	SHS LADY DIVIDEND 872	WW: 59
BROOKMORE MISS EVA 35J	CONNELLY DATELINE	YW: 88
	BROOKMORE MISS EVA 111G	MM: 17
TC FOREFRONT 1213	CONNELLY FOREFRONT	TM: 47
<i>4DJ NEW LOVE GEORGINA 37N</i>	TC PRIDE 2010	BW:
4DJ LOVE ALOT GEORGINA 48L	DMM DIMENSION 111J	82 LBS.
	CHALCO GEORGINA 16E	ADJ 205 DW:
		927 LBS.
		ADJ 365 DW:
		1559 LBS.
		SC:
		39 CM.

- Performance stats second to none
- Extra body depth
- Outcross pedigree
- Maternal brother was last year's high selling Angus bull to Nicholas Brady, Edburg, AB



Design 953W

LOT **GERRARD GRAND DESIGN 956W**
GCCA 956W 1517265 MALE FEB. 14, 2009

BUSHES GRAND DESIGN	BON VIEW NEW DESIGN 1407	BW: 3.4
<i>MVF GRAND DESIGN 72S</i>	BUSHES LADY DIVIDEND 872	WW: 48
BROOKMORE MISS EVA 35J	CONNELLY DATELINE	YW: 77
	BROOKMORE MISS EVA 111G	MM: 21
TC FOREFRONT 1213	CONNELLY FOREFRONT	TM: 45
<i>4DJ NEWEL BLACKCAP 53N</i>	TC PRIDE 2010	BW:
4DJ LADY BLACKCAP 21L	CAF SIDEKICK 7784	93 LBS.
	WHITE LAKE BLACKCAP 37H	ADJ 205 DW:
		837 LBS.
		ADJ 365 DW:
		1528 LBS.
		SC:
		40 CM.

- Add performance and depth of body
- Good temperament
- Length of body
- 3/4 brother to GCCA 953W
- Same cow family as GCCA 960W
- Maternal granddam has achieved elite dam status through the Canadian Angus Association



Design 956W



Design 960W

LOT **GERRARD GRAND DESIGN 960W**
GCCA 960W 1517268 **MALE** **FEB. 23, 2009**

BUSHES GRAND DESIGN	BON VIEW NEW DESIGN 1407	BW: 3.6
<i>MVF GRAND DESIGN 72S</i>	BUSHES LADY DIVIDEND 872	WW: 50
BROOKMORE MISS EVA 35J	CONNEALY DATELINE	YW: 78
	BROOKMORE MISS EVA 111G	MM: 22
TC FOREFRONT 1213	CONNEALY FOREFRONT	TM: 47
<i>GERRARD BLACKCAP764T</i>	TC PRIDE 2010	BW:
4DJ LADY BLACKCAP 21L	CAF SIDEKICK 7784	88 LBS.
	WHITE LAKE BLACKCAP 37H	ADJ 205 DW:
		865 LBS.
		ADJ 365 DW:
		1439 LBS.
		SC:
		41 CM.

- One of the stoutest bulls in the sale
- Extra testicle development
- Good EPDs
- Outcross pedigree
- Same cow family as GCCA 956W
- Maternal granddam has achieved elite dam status through the Canadian Angus Association

"How much and how many?"

"THERE ARE NOT ENOUGH CHAROLAIS CALVES TO FILL ORDERS. Large groups of yellow buckskins or black nosed silvers bring a 5 CENT PREMIUM. The silver steer is the ultimate; when we find large groups of silvers, our feedlot customers respond, "How much and how many?"

- Bill Jameson

JGL JGL Livestock is one of Canada's largest order buyers. They source feeder cattle for feedlots across Canada and the United States.

CANADIAN CHAROLAIS **It's Proven!**

www.charolais.com
1-403-250-9242

Bill Jameson - President JGL Livestock
Moose Jaw, Saskatchewan



Wham

LOT **HILLS OF HOME WHAM 35W**
SGY 35W 1497895 **MALE** **JAN. 4, 2009**

DMM TRACTION 109J	TC STOCKMAN 365	BW: 5.8
<i>DMM POSI-TRACTION 57P</i>	DMM MISS ESSENCE 22B	WW: 45
DMM MISS ESSENCE 90K	ANGUS ACRES BANDY 96X	YW: 78
	JRM MISS ESSENCE 8U	MM: 18
WILLABAR EQUATOR 95J	PAPA EQUATOR 2928	TM: 41
<i>WILLABAR COUNTESS 162M</i>	WILLABAR COUNTESS 17E	BW:
WILLABAR COUNTESS 81H	WILLABAR RIGHT TIME 34E	86 LBS.
	WILLABAR COUNTESS 154Y	ADJ 205 DW:
		758 LBS.
		MAR. 1/10 WT:
		1600 LBS.
		SC:
		43 CM.

This yearling has a great combination of a smooth long profile with a nice wide flat top. His Dam is one of our most powerful donors, with a great udder and stands on a big wide hoof.

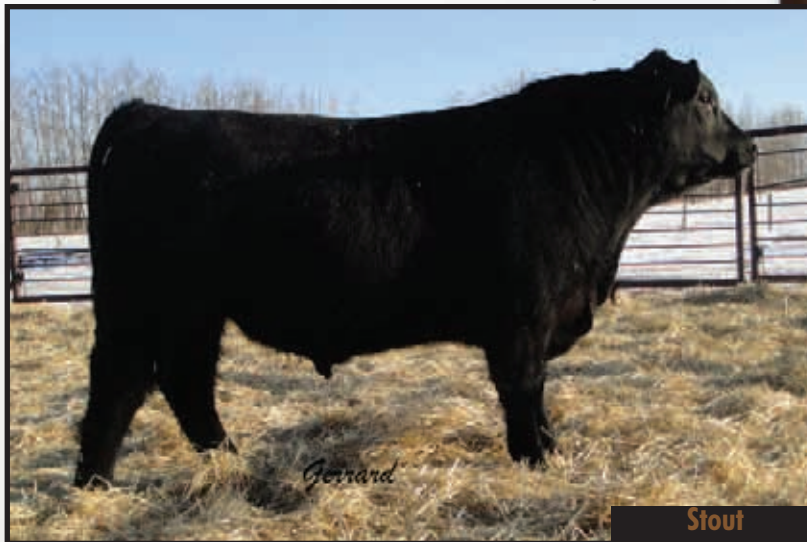
Consigned by Schierman Boys Angus

LOT **HILLS OF HOME STOUT 41'09**
SGY 41W 1488298 **MALE** **JAN. 10, 2009**

TC FREEDOM 104	CONNEALY FOREFRONT	BW: 2.9
<i>TC STOUT 407</i>	T C RUBY 9095	WW: 41
TC PRIDE 2053	VERMILION DATELINE 7078	YW: 70
	TC PRIDE 5045	MM: 20
	BELVIN HILITE 6'98	TM: 41
HILLS OF HOME HILITE 18M	EARLY SUNSET RUBY 22H	BW:
<i>H OF H COUNTESS 14P</i>	PENABERA DEPENABUL 8J	84 LBS.
H OF H COUNTESS 17M	ARDIMERE COUNTESS 27J	ADJ 205 DW:
		711 LBS.
		MAR. 1/10 WT:
		1450 LBS.
		SC:
		39 CM.

This Stout son is exactly what his name says, he has lots middle and a wide hind quarter giving him tremendous width and dimension. His mom is a "can't miss cow" who is an exceptional milker.

Consigned by Schierman Boys Angus



LOT **HILLS OF HOME FREEDOM 96'08**
SGY 96U 1478463 **MALE** **JULY 20, 2008**

CONNEALY FOREFRONT	CONNEALY FRONTLINE	BW: 4.4
<i>TC FREEDOM 104</i>	EILEEN HEARTLAND CONANGA 6443	WW: 46
T C RUBY 9095	TC STOCKMAN 365	YW: 86
	TC RUBY 4068	MM: 20
S A F DIVERSITY 9398	MILLCREEK DIVERSITY	TM: 43
<i>EARLY SUNSET QUEEN 28R</i>	MONITOR MINNIE F C W	BW:
EARLY SUNSET QUEEN 17J	EARLY SUNSET EILEENMERE 25G	78 LBS.
	EARLY SUNSET QUEEN 71G	ADJ 205 DW:
		664 LBS.
		MAR. 1/10 WT:
		1760 LBS.
		SC:
		43 CM.

Use this long yearling bull on heifers or on a group of cows. He has a big hip and smooth shoulders and is exceptionally easy doing. His Dam is a past show heifer and one of our favourite cows.

Consigned by Schierman Boys Angus

LOT **HILLS OF HOME TRACTION 97'08**
SGY 97U 1478462 **MALE** **JULY 21, 2008**

DMM TRACTION 109J	TC STOCKMAN 365	BW: 5.9
<i>DMM POSI-TRACTION 57P</i>	DMM MISS ESSENCE 22B	WW: 43
DMM MISS ESSENCE 90K	ANGUS ACRES BANDY 96X	YW: 76
	JRM MISS ESSENCE 8U	MM: 18
	PAPA EQUATOR 2928	TM: 40
WILLABAR EQUATOR 95J	WILLABAR COUNTESS 17E	BW:
<i>WILLABAR COUNTESS 162M</i>	WILLABAR RIGHT TIME 34E	82 LBS.
WILLABAR COUNTESS 81H	WILLABAR COUNTESS 154Y	ADJ 205 DW:
		646 LBS.
		MAR. 1/10 WT:
		1700 LBS.
		SC:
		43 CM.

As you can tell from his younger brother, this Dam is a consistent producer, this long yearling is almost a mirror image of his younger brother with a little extra breeding power.

Consigned by Schierman Boys Angus



"Traction"

Angus Reference Sires



G 13 Steel

IMP Reference Sire G 13 STEEL
3127N 1424033 MALE MAY 22, 2003

TC STOCKMAN 365	TC STOCKMAN	BW: 5.8
G13 STRUCTURE	TC PRIDE 0014	WW: 53
G13 TRAVELER 9428	ONEILLS RENAULT 982	YW: 93
	G13 PROSPERITY TRAVELER 9266	MM: 19
	N BAR EMULATION EXT	TM: 46
LEACHMAN RIGHT TIME	LEACHMAN ERICA 0025	
G 13 LASSY 9492	R&J EXTRAORDINARY 1345	
R&J LASSY 2099	SCOTCH CAP LASSY 552	

Steel is a powerful son of G13 Structure out of a Leachman Right Time dam. He might be Structure's most impressive son to date. Few bulls come close to matching his muscle mass, shape, and performance. Steel has a big hip and carries his muscle well down into a thick stifle. His calves have amazing eye appeal and confirm his power and performance. His dam stems from the famous Scotch Cap Lassy cow family.



Oneills Expedition

IMP Reference Sire ONEILLS EXPEDITION
014P 1422827 MALE JAN. 28, 2004

S A F FOCUS OF E R	S A F FAME	BW: 5.0
CIRCLE A ADVENTURE 0124	G D A R FOREVER LADY 246	WW: 106
ACF EVERGREEN 8007	TC STOCKMAN 365	MM: 28
	GT PINE SISKIN	TM: 55
	TRAVELER 124 G D A R	BW:
CIRCLE OAK TRAVELER 524	V D A R BEAUTY 228	82 LBS.
ONEILLS DELIA 715	TC STOCKMAN 365	ACT 205 DW:
ONEILLS DELIA 703	ONEILLS DELIA 620	970 LBS.
		ACT 365 DW:
		1599 LBS.

Expedition is an incredible Angus sire that will increase performance volume and pounds. He posts actual weights of an 82 lb. BW, 970 lb. WW and a 1599 lb. YW. Expedition daughters are proving to be feminine and stylish with plenty of volume. Expedition combines performance, efficiency, carcass strength and maternal power.



MCC Blackout 404

IMP Reference Sire MCC BLACKOUT 404
404P 1283254 MALE FEB. 3, 2004

NORTHERN IMPROVEMENT 4480 GF	TC STOCKMAN 365	BW: 2.1
B E B JUNEAU 104	BLACKCAP OF R R 5367	WW: 58
B E B ERICA 963	RITO 9FB3 OF 5H11 FULLBACK	YW: 85
	O S U ERICA 8222	MM: 27
	WEERS DALLAS 1561	TM: 56
J S A R FLATLANDER 765F	FINKS VIXON 765	
RILEY FLAT IDEAL 839	O C C IDEAL 892B	
J A R IDEAL G033	W B BLACKBIRD 1033	

Blackout was used as a calving ease sire for our heifers last year; he was that and much more! His calves show powerful growth, thickness and body depth. When combine that with their amazing look and eye appeal, great hair coats, balanced structure and EPD's, you get one of the most exciting sire groups you'll find anywhere.

BLACK ANGUS BREED AVERAGE EPD'S				
BW	WW	YW	MILK	TM
3.0	40	71	17	37

LOT **GERRARD GEORGINA 901W**
GCCA 901W 1517232 **FEMALE** JAN. 1, 2009

S A V NET WORTH 4200	S A V 8180 TRAVELER 004	BW: 4.0
<i>S A V WALL STREET 7091</i>	S A V MAY 2410	WW: 53
CHAMPION HILL GEORGINA 2175	CHAMPION HILL TECUMSEH	YW: 91
	L L A GEORGINA 419	MM: 25
HF TOMAHAWK 98G	O G L BATTLE CRY 427 128	TM: 52
<i>4DJ KIWI GEORGINA 35K</i>	HF MISS ROSEBUD 15C	BW:
CHALCO GEORGINA 16E	BELVIN BOARDWALK 11'92	90 LBS.
	CHALCO GEORGINA 11C	

- Awesome depth of body and performance
- Extra thickness and hair coat
- Combines many great maternal and performance lines like Wall Street, Net Worth, Battle Cry and EXT
- Mother has been awarded elite dam status by the Canadian Angus Association



LOT **GERRARD TIBBIE 906W**
GCCA 906W 1517231 **FEMALE** JAN. 1, 2009

CIRCLE A ADVENTURE 0124	S A F FOCUS OF E R	BW: 6.5
<i>ONEILLS EXPEDITION</i>	ACF EVERGREEN 8007	WW: 50
ONEILLS DELIA 715	CIRCLE OAK TRAVELER 524	YW: 93
	ONEILLS DELIA 703	MM: 23
LINE RIGHT WAY 781	HYLINE RIGHT TIME 338	TM: 48
<i>4DJ REPLAY R-W TIBBIE 60R</i>	HYLINE ELLEN 86	BW:
4DJ LIBBIE TIBBIE 53L	DMM DIMENSION 111J	90 LBS.
	HF TIBBIE 95J	

- Awesome brood cow prospect out of the Tibbie cow family
- Performance, depth of body and sound structure; all one amazing complete package
- Great performance pedigree combining Expedition and 781
- Maternal granddam now at Lewis Farms, Spruce Grove, AB



Gerrard Alamo 825U
 High selling Angus in our 2009 Sale
 Same cow family as 901W



"Tibbie"



Black Lass

Lot **GERRARD BLACK LASS 902W**
GCCA 902W 1517233 **FEMALE** **JAN. 1, 2009**

B E B JUNEAU 104	NORTHERN IMPROVEMENT 4480	BW: 2.3
MCC BLACKOUT 404	B E B ERICA 963	WW: 48
RILEY FLAT IDEAL 839	J S A R FLATLANDER 765F	YW: 75
	J A R IDEAL G033	MM: 24
	CONNEALY FOREFRONT	TM: 48
TC FOREFRONT 1213	TC PRIDE 2010	BW:
GERRARD BLACKLASS 734T	DMM FLEX 122J	78 LBS.
RJH LEGACY BLACKLASS 71L	4DJ HOPE BLACKLASS 4H	

- Part of our 2009 showstring
- A combination of powerful thickness and eye appeal
- Out of a two year old female going back to the feature cow families in the herd

Lot **GERRARD TIDY BEE 944W**
GCCA 944W 1517257 **FEMALE** **FEB. 4, 2009**

S A V NET WORTH 4200	S A V 8180 TRAVELER 004	BW: 3.3
S A V WALL STREET 7091	S A V MAY 2410	WW: 51
CHAMPION HILL GEORGINA 2175	CHAMPION HILL TECUMSEH	YW: 92
	L L A GEORGINA 419	MM: 20
	G D A R ROYCE 131	TM: 46
G D A R ROLLS ROYCE 203	G D A R FOREVER LADY 719	BW:
COLDSTREAM TIDY BEE 74K	PAPA EQUATOR 2928	82 LBS.
COLDSTREAM TIDY BEE 64G	COLDSTREAM TIDY BEE 10X	A

- Part of our 2009 showstring
- Depth of body and thickness
- Very sound one her feet and legs
- Attractive female but still very powerful
- Great EPDs
- Strong maternal pedigree, Wall Street and Rolls Royce
- Two maternal sisters are feature cows in our herd



Tidy Bee

Lot **GERRARD TIBBIE 904W**
GCCA 904W 1517230 **FEMALE** **JAN. 1, 2009**

CIRCLE A ADVENTURE 0124	S A F FOCUS OF E R	BW: 6.1
ONEILLS EXPEDITION	ACF EVERGREEN 8007	WW: 51
ONEILLS DELIA 715	CIRCLE OAK TRAVELER 524	YW: 99
	ONEILLS DELIA 703	MM: 25
	G D A R ROLLS ROYCE 203	TM: 51
4DJ KRUIZIN ROLLS ROYCE 21K	WHITE LAKE BLACKCAP 51A	BW:
4DJ POT-OF-GOLD TIBBIE 98P	EXAR RITO 5072	95 LBS.
HF TIBBIE 8H	MVHF TIBBIE 40B	

- Great length of body and performance
- The Expedition calves are very powerful cattle
- Out of the famous Tibbie cow family

Lot **GERRARD ELSIEMERE 916W**
GCCA 916W 1517243 **FEMALE** **JAN. 4, 2009**

B E B JUNEAU 104	NORTHERN IMPROVEMENT 4480 GF	BW: 2.6
MCC BLACKOUT 404	B E B ERICA 963	WW: 45
RILEY FLAT IDEAL 839	J S A R FLATLANDER 765F	YW: 72
	J A R IDEAL G033	MM: 21
	CONNEALY FOREFRONT	TM: 44
TC FOREFRONT 1213	TC PRIDE 2010	BW:
GERRARD ELSIEMERE 723T	RIVERBEND POWERLINE 0050	78 LBS.
HF ELSIEMERE 61N	C&C ELSIEMERE 0564	

- Very feminine, clean fronted female
- Great maternal genetics combining MCC Blackout, 1213, and Riverbend Powerline 0050



Tibbie

Choice of GCCA 905W and GCCA 919W

Angus Females

LOT **GERRARD LASS 905W**
GCCA 905W 1517234 **FEMALE** **JAN. 1, 2009**

S A V NET WORTH 4200	S A V 8180 TRAVELER 004	BW: 2.8
<i>S A V WALL STREET 7091</i>	S A V MAY 2410	WW: 45
CHAMPION HILL GEORGINA 2175	CHAMPION HILL TECUMSEH	YW: 78
	L L A GEORGINA 419	MM: 22
TC FOREFRONT 1213	CONNELLY FOREFRONT	TM: 45
<i>GERRARD LASS 727T</i>	TC PRIDE 2010	BW:
RJH MOCHA LASS 14M	4DJ KRUIZIN ROLLS ROYCE 21K	78 LBS.
	DMM DYNA LASS 10K	

- A moderate framed, deep bodied female with the extra muscle shape that identifies the Wall Street cattle
- Dam is a two year old 1213 daughter and maternal granddam is out highly productive 14M cow who also has a great heifer in the sale, GCC 934W



RJH Mocha Lass 14M
 Maternal grandmother to 905W

LOT **GERRARD PRIDE 919W**
GCCA 919W 1517244 **FEMALE** **JAN. 1, 2009**

S A V 8180 TRAVELER 004	SITZ TRAVELER 8180	BW: 4.9
<i>S A V NET WORTH 4200</i>	BOYD FOREVER LADY 8003	WW: 47
S A V MAY 2410	S A F 598 BANDO 5175	YW: 88
	S A V MAY 6269	MM: 22
4DJ NORTHERNEDGE DIMENSION 22N	DMM DIMENSION 111J	TM: 46
<i>GERRARD PRIDE 714T 1466803</i>	HF TIBBIE 95J	BW:
4DJ LA BELLE PRIDE 56L	GLENCROFT WALK-ON ARGYLL 16F	85 LBS.
	WHITE LAKE PRIDE 10C	

- A direct daughter of the breed changing Net Worth
- Both the dam and granddam are picture perfect cows with great udders



Gerrard Clamato 804U - Same cow family as 919W
 Sold to Severtson Land & Cattle in 2009 sale.



Lass



4DJ LA Belle Pride 56L
 Maternal grandmother of 919W



Pride

Blackcap



Gerrard Blackcap 724T - Dam of 911W

Choice of GCCA 911W and GCCA 934W
GERRARD BLACKCAP 911W

Lot **GCCA 911W** 1517236 FEMALE JAN. 2, 2009

B E B JUNEAU 104	NORTHERN IMPROVEMENT 4480 GF	BW: 1.3
<i>MCC BLACKOUT 404</i>	B E B ERICA 963	WW: 49
RILEY FLAT IDEAL 839	J S A R FLATLANDER 765F	YW: 76
	J A R IDEAL G033	MM: 20
	CONNEALY FOREFRONT	TM: 45
TC FOREFRONT 1213	TC PRIDE 2010	BW:
<i>GERRARD BLACKCAP 724T</i>	CUDLOBE MILLENNIUM 46K	70 LBS.
4DJ NIPPY BLACKCAP 93N	WHITE LAKE BLACKCAP 2J	

- Powerful heifer out of one of the great young females in the entire Gerrard Cattle Company program
- Great body depth, thickness, and hair coat
- Maternal granddam, 93N, has been one of the top producers in our Angus program, her 2009 bull calf is a feature bull in this sale and her 2008 bull calf sold in last year's sale to River Rock Angus, Innisfail, AB

Lot **GERRARD LASS 934W**
GCCA 934W 1517253 FEMALE JAN. 19, 2009

G13 STRUCTURE	TC STOCKMAN 365	BW: 5.0
<i>G 13 STEEL</i>	G13 TRAVELER 9428	WW: 47
G 13 LASSY 9492	LEACHMAN RIGHT TIME	YW: 79
	R&J LASSY 2099	MM: 18
	G D A R ROLLS ROYCE 203	TM: 42
4DJ KRUIZIN ROLLS ROYCE 21K	WHITE LAKE BLACKCAP 51A	BW:
<i>RJH MOCHA LASS 14M</i>	DMM DYNASTY 03G	85 LBS.
DMM DYNA LASS 10K	DMM TOP LASS 3G	

- Daughter of Steel with lots of performance and maternal strength
- Cow family is a feature in our herd and goes back to one of the great cow families in the Miller Wilson ET program

Lass 934W



RJH Mocha Lass 14M - Dam of 934W

Choice of GCCA 923W ...

Lot **GERRARD BLACK LASS 923W**
GCCA 923W 1517247 FEMALE JAN. 8, 2009

S A V NET WORTH 4200	S A V 8180 TRAVELER 004	BW: 2.5
<i>S A V WALL STREET 7091</i>	S A V MAY 2410	WW: 47
CHAMPION HILL GEORGINA 2175	CHAMPION HILL TECUMSEH	YW: 86
	L L A GEORGINA 419	MM: 21
	TC STOCKMAN 365	TM: 45
DMM DIMENSION 111J	HEATHERDOWN MISSIE 26S	BW:
<i>4DJ NEVERA BLACKLASS 19N</i>	HF TOMAHAWK 98G	78 LBS.
4DJ JEVERA BLACKLASS 28J	CHALCO BLACK LASS 8C	

- A very thick topped, eye appealing female
- A combination of two of the great herd bulls used in this program, SAV Wall Street and DMM Dimension 111J



Lass 923W

LOT **GERRARD LADY 924W**
GCCA 924W 1526569 **FEMALE** **JAN. 9, 2009**

B E B JUNEAU 104	NORTHERN IMPROVEMENT 4480 GF	BW: 4.9
MCC BLACKOUT 404	B E B ERICA 963	WW: 55
RILEY FLAT IDEAL 839	J S A R FLATLANDER 765F	YW: 84
	J A R IDEAL G033	MM: 25
HYLINE RIGHT WAY 781	HYLINE RIGHT TIME 338	TM: 53
GERRARD LADY 719T	HYLINE ELLEN 86	BW:
DMM LADY 130J	ANGUS ACRES BANDY 96X	80 LBS.
	DMM MISS 17E	

- Part of our 2009 showstring
- Great pedigree combining the style and maternal strength of Blackout with the performance of 781
- Maternal grandmother, DMM 130J, is still a standout in our herd at 11 years of age



Lady 924W

LOT **GERRARD LADY 939W**
GCCA 939W 1517255 **FEMALE** **JAN. 25, 2009**

G13 STRUCTURE	TC STOCKMAN 365	BW: 3.8
G 13 STEEL	G13 TRAVELER 9428	WW: 44
G 13 LASSY 9492	LEACHMAN RIGHT TIME	YW: 79
	R&J LASSY 2099	MM: 17
4DJ KRUIZIN ROLLS ROYCE 21K	G D A R ROLLS ROYCE 203	TM: 39
HBD MOON LIGHT LADY 45M	WHITE LAKE BLACKCAP 51A	BW:
DMM LADY 130J	ANGUS ACRES BANDY 96X	80 LBS.
	DMM MISS 17E	

- Part of our 2009 showstring
- Out of a highly productive cow that has top end calves every year
- Another granddaughter of the powerful DMM 130J female



Lady 939W

... and GCCA 928W

LOT **GERRARD ROSE 928W**
GCCA 928W 1517250 **FEMALE** **JAN. 14, 2009**

G13 STRUCTURE	TC STOCKMAN 365	BW: 2.8
G 13 STEEL	G13 TRAVELER 9428	WW: 40
G 13 LASSY 9492	LEACHMAN RIGHT TIME	YW: 76
	R&J LASSY 2099	MM: 15
TC FOREFRONT 123	CONNEALY FOREFRONT	TM: 35
4DJ NEON ROSE 2N	TC PRIDE 2010	BW:
4DJ ERICA ROSE 34L	DMM DIMENSION 111J	78 LBS.
	HI DIAMOND ERICA ROSE 5J	

- Sharp made, broody female out of a productive cow family
- We have calved out our first Steel daughters and they are heavy milking cows with great udders
- Same cow family as sale bull, GCCA 946W



4DJ Neon Rose 2N - Dam of 928W





Black Lass



Blackbird

4DJ Nifty Blackbird 72N
Maternal grandmother of 941W



Echo



Tibbie

GERRARD BLACK LASS 926W

Lot **GCCA 926W** 1517248 FEMALE JAN. 12, 2009

B E B JUNEAU 104	NORTHERN IMPROVEMENT 4480 GF	BW: 6.0
<i>MCC BLACKOUT 404</i>	B E B ERICA 963	WW: 46
RILEY FLAT IDEAL 839	J S A R FLATLANDER 765F	YW: 74
	J A R IDEAL G033	MM: 18
4DJ KRUIZIN ROLLS ROYCE 21K	G D A R ROLLS ROYCE 203	TM: 41
<i>4DJ NUTTY BLACK LASS 20N</i>	WHITE LAKE BLACKCAP 51A	BW:
CHALCO BLACK LASS 8B	V D A R NEW TREND 315	94 LBS.
	CHALCO BLACK LASS 8Z	

- Another eye appealing Blackout daughter with that extra muscle shape and dimension
- Paternal sister and same cow family as feature sale heifer, GCCA 902W

GERRARD BLACKBIRD 941W

Lot **GCCA 941W** 1517256 FEMALE JAN. 29, 2009

S A V NET WORTH 4200	S A V 8180 TRAVELER 004	BW: 1.9
<i>S A V WALL STREET 7091</i>	S A V MAY 2410	WW: 44
CHAMPION HILL GEORGINA 2175	CHAMPION HILL TECUMSEH	YW: 79
	L L A GEORGINA 419	MM: 20
TC FOREFRONT 1213	CONNEALY FOREFRONT	TM: 42
<i>GERRARD BLACKBIRD 726T</i>	TC PRIDE 2010	BW:
4DJ NIFTY BLACKBIRD 72N	4DJ KRUIZIN ROLLS ROYCE 21K	74 LBS.
	TC BLACKBIRD 5007	

- Very thick made heifer yet still sharp made with eye appeal
- Very balanced EPDs
- Great cow family going back to the TC Blackbird 5007 Cow

GERRARD ECHO 959W

Lot **GCCA 959W** 1517267 FEMALE FEB. 23, 2009

BUSHS GRAND DESIGN	BON VIEW NEW DESIGN 1407	BW: 4.1
<i>MVF GRAND DESIGN 72S</i>	BUSHS LADY DIVIDEND 872	WW: 55
BROOKMORE MISS EVA 35J	CONNEALY DATELINE	YW: 85
	BROOKMORE MISS EVA 111G	MM: 21
RIVERBEND POWERLINE 0050	CONNEALY FRONTLINE	TM: 49
<i>HDFD ECHO 20N</i>	LEACHMAN BLACKBIRD 8060	BW:
HF ECHO 83J	WHITESTONE 9FB3 G228	92 LBS.
	DURALTA 14C ECHO 32E	

- Excellent performance and maternal background
- The Grand Design bred cattle will add lots of depth of body
- The Echo family is one of the most high profile families in Canada
- Her grandmother, 83J, is a past Agribition champion female
- Her dam, 20N, is a flushmate to the mother of HF Bears paw herdsire at Duralta farms and another flushmate is the grandmother of HF Tiger, grand champion bull at the 2010 World Angus Show and the 2010 RBC Supreme Champion at Agribition

GERRARD TIBBIE 964W

Lot **GCCA 964W** 1517270 FEMALE MAR. 4, 2009

BUSHS GRAND DESIGN 1112697	BON VIEW NEW DESIGN 1407	BW: 3.9
<i>MVF GRAND DESIGN 72S</i>	BUSHS LADY DIVIDEND 872	WW: 63
BROOKMORE MISS EVA 35J	CONNEALY DATELINE	YW: 95
	BROOKMORE MISS EVA 111G	MM: 24
RIVERBEND POWERLINE 0050	CONNEALY FRONTLINE	TM: 56
<i>HF TIBBIE 118N</i>	LEACHMAN BLACKBIRD 8060	BW:
HF TIBBIE 86K	GREENS PREMIUM 7578	92 LBS.
	HF TIBBIE 2D	

- High performing, deep bodied female
- Her dam, HF Tibbie 118N, is a great producer and will be used in our ET program this year
- Her granddam, HF Tibbie 86K, has produced a high selling bull at Hamilton Farms bull sale and is also the dam of HF Tibbie 100M, the 2007 RBC Supreme Champion female at Agribition



"Hustler"

LOT Polled **GERRARD HUSTLER 935W**
GCCs 935W -BPRS723103- **MALE** **JAN. 20, 2009**

SS GOLD MINE L42 <i>ACCI HUSTLER 2N</i> CPR KORONA	WLE POWER STROKE GW MISS LUCKY BUCK 858G LRS PREFERRED STOCK 370C BH CRIMSON ROSE 620F G D A R ROLLS ROYCE 203 WHITE LAKE BLACKCAP 51A GINGER HILL DUSTER 89 CHALCO BLACK LASS 8Z	BW: 90 LBS. ADJ WW: 827 LBS. ADJ YW: 1499 LBS SC: 42 CM.
4DJ KRUIZIN ROLLS ROYCE 2 <i>4DJ NASTURTIUM BLACKLASS1</i> CHALCO BLACK LASS 8C		

- One of the elite bulls in the entire sale
- Great pattern thickness and overall balance
- Same cow family as GCCS 931W and sale heifer, GCCA 902W

Reference Sire
FGN Polled **ACCI HUSTLER 2N**
2N -BPG666672- **MALE** **MAR. 23, 2003**

WLE POWER STROKE <i>SS GOLD MINE L42</i> GW MISS LUCKY BUCK 858G	BURNS BULL X339U NICHOLS JOLIETTE C75 LCHMAN LUCKY BUCK 7049C GW MISS BRODERICK 116Z CIRCLE S LEACHMAN 600U LAS MISS PRINCESS 020Z MEYERS BLACKTOP 206Y BH MATTIE 413D	CE: 9.6 BW: 0.1 WW: 25.2 YW: 48.5 MCE: 5.3 MWT: 18.5 MM: 5.9
LRS PREFERRED STOCK 370C <i>CPR KORONA</i> BH CRIMSON ROSE 620F		

Hustler's pedigree combines generations of predictable calving ease with added growth and muscle. His progeny have proven to be extremely consistent and stylish while still providing powerful growth. Hustler has proven to be one of the Simmental breeds leading calving ease sires while still improving fleshing ability and feed efficiency. Homozygous Polled. Homozygous Black.



ACCI Hustler 2N

Simmental/Angus Bulls



4DJ La Belle Pride 56L - Dam of 940W

LOT Polled **GERRARD HUSTLER 940W**
GCCS 940W -BPRS723157- **MALE** **JAN. 29, 2009**

SS GOLD MINE L42	WLE POWER STROKE	BW:
ACC1 HUSTLER 2N	GW MISS LUCKY BUCK 858G	82 LBS.
CPR KORONA	LRs PREFERRED STOCK 370C	ADJ WW:
	BH CRIMSON ROSE 620F	784 LBS.
	HF WALK-ON 14C	ADJ YW:
GLENCROFT WALK-ON ARGYLL	MVF TIBBIE 62D	1331 LBS.
ADJ LA BELLE PRIDE 56L	DA ES RO CASEY 629	SC:
WHITE LAKE PRIDE 10C	LEELANE PRIDE 11M	42 CM.

- Another powerfully thick, deep bodied Hustler son
- His dam, 56L, is an excellent female, a granddaughter sells as lot GCCA 919W
- ¾ brother to GCCS 942W and GCCS 943W

LOT Polled **GERRARD HUSTLER 942W**
GCCS 942W -BPRS723155- **MALE** **JAN. 29, 2009**

SS GOLD MINE L42	WLE POWER STROKE	BW:
ACC1 HUSTLER 2N	GW MISS LUCKY BUCK 858G	105 LBS.
CPR KORONA	LRs PREFERRED STOCK 370C	ADJ WW:
	BH CRIMSON ROSE 620F	912 LBS.
	HF WALK-ON 14C	ADJ YW:
GLENCROFT WALK-ON ARGYLL	MVF TIBBIE 62D	1432 LBS.
GLENCROFT TIPTOP ISLA 10H	RITO 2100 G D A R	SC:
GLENCROFT TIP TOP	BICKFORD TIPTOP 11A	43 CM.

- Lots of lower quarter
- Great hair coat
- Good temperament
- His mother is one of the oldest cows in the herd and is still producing at 12 years of age
- ¾ brother to GCCS 943W and GCCS 940W

LOT Polled **GERRARD HUSTLER 943W**
GCCS 943W -BPRS723156- **MALE** **FEB. 3, 2009**

SS GOLD MINE L42	WLE POWER STROKE	BW:
ACC1 HUSTLER 2N	GW MISS LUCKY BUCK 858G	88 LBS.
CPR KORONA	LRs PREFERRED STOCK 370C	ADJ WW:
	BH CRIMSON ROSE 620F	834 LBS.
	HF WALK-ON 14C	ADJ YW:
GLENCROFT WALK-ON ARGYLL	MVF TIBBIE 62D	1403 LBS.
ADJ LORADO BLACKLASS 60L	GINGER HILL DUSTER 89	SC:
CHALCO BLACK LASS 8C	CHALCO BLACK LASS 8Z	35.5 CM.

- Length of body and performance
- ¾ brother to GCCS 942W and GCCS 940W

Hustler 940W



Gerrard Clamato 804U

Sold to Severtson Land & Cattle last year
 Same cow family as 940W



Hustler 942W



Hustler 943W



Lot **GCCS 921W** Polled **GERRARD HUSTLER 921W**
 -BPRS723099- MALE JAN. 6, 2009

SS GOLD MINE L42
ACCI HUSTLER 2N
 CPR KORONA
 CUDLOBE MILLENNIUM 46K
4DJ MARIGOLD TIDY BEE 24M
 COLDSTREAM TIDY BEE 74K

WLE POWER STROKE
 GW MISS LUCKY BUCK 858G
 LRS PREFERRED STOCK 370C
 BH CRIMSON ROSE 620F
 DAVIS MILLENNIUM 7518
 STEVENSON ENCHANTRESS 425
 G D A R ROLLS ROYCE 203
 COLDSTREAM TIDY BEE 64G

BW:
 98 LBS.
ADJ 205 DW:
 842 LBS.
ADJ 365 DW:
 1396 LBS.
 SC:
 40 CM.

- Excellent muscle shape
- Depth of body
- Same cow family as feature sale heifer GCCA 944W



Lot **GCCS 931W** Polled **GERRARD BLACKOUT 931W**
 -BPRS723102- MALE JAN. 17, 2009

SS GOLD MINE L42
ACCI HUSTLER 2N
 CPR KORONA
 TC FOREFRONT 1213
4DJ NETTE BLACKCLASS 76N
 4DJ LYNETTE BLACKCLASS 57L

WLE POWER STROKE
 GW MISS LUCKY BUCK 858G
 LRS PREFERRED STOCK 370C
 BH CRIMSON ROSE 620F
 CONNEALY FOREFRONT
 TC PRIDE 2010
 GLENCROFT WALK-ON ARGYLL
 CHALCO BLACK LASS 30F

BW:
 89 LBS.
ADJ 205 DW:
 773 LBS.
ADJ 365 DW:
 1372 LBS.
 SC:
 41 CM.

- Deep bodied , loose hidid bull
- Nice temperament
- Out of the same cow family as feature sale heifer, GCCA 902W, and feature Simm /Angus bull, GCCS 935W



Lot **GCCS 938W** Polled **GERRARD HUSTLER 938W**
 -BPRS723104- MALE JAN. 22, 2009

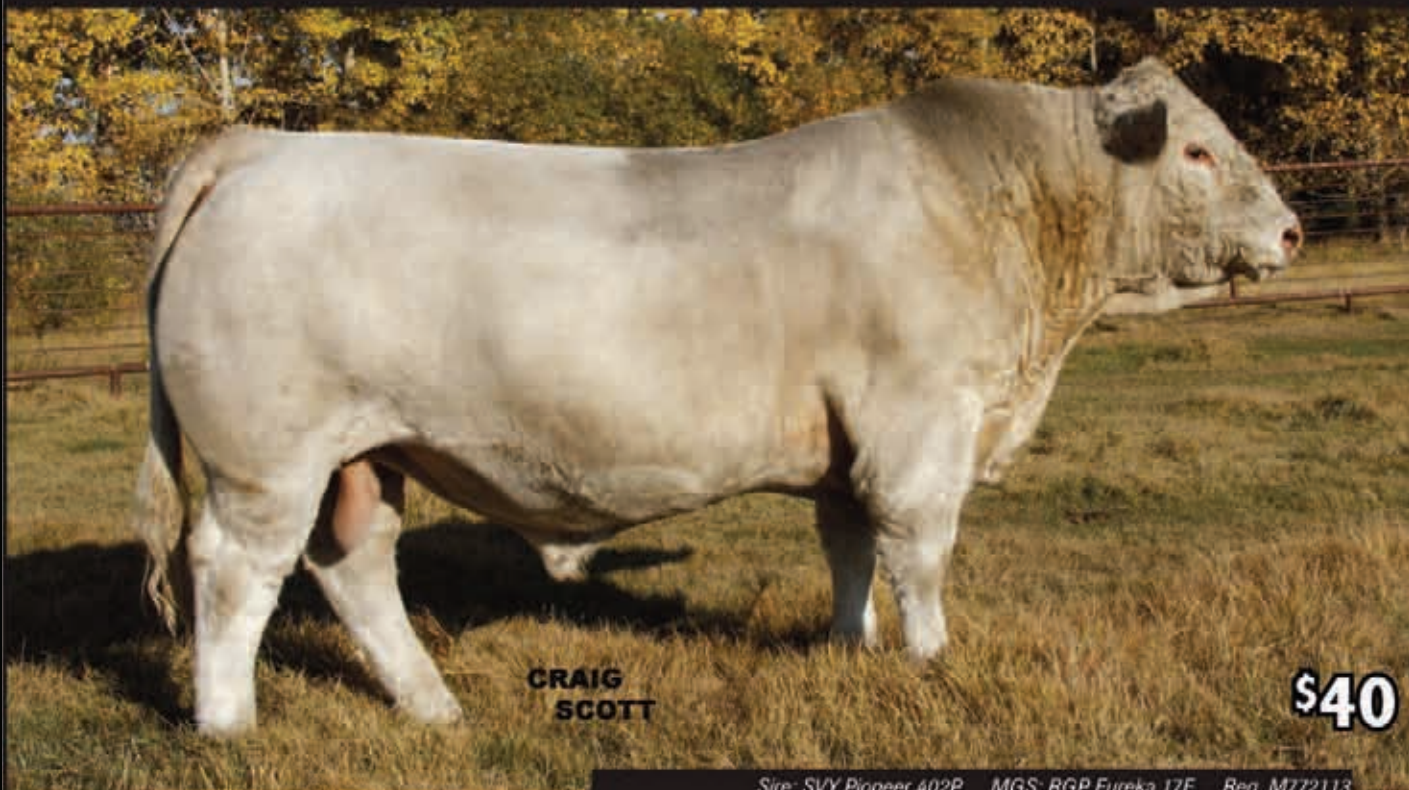
SS GOLD MINE L42
ACCI HUSTLER 2N
 CPR KORONA
 HBR OMAHA CLINT
PRIME TIME'S GRACE 988'99
 YOUNG DALE GRACE 37C

WLE POWER STROKE
 GW MISS LUCKY BUCK 858G
 LRS PREFERRED STOCK 370C
 BH CRIMSON ROSE 620F
 G D A R TRAVELER 71
 MISS WIX 303 OF MC CUMBER
 WSF GRAND SLAM
 YOUNG DALE GRACE 3R

BW:
 92 LBS.
ADJ 205 DW:
 831 LBS.
ADJ 365 DW:
 1344 LBS.
 SC:
 41 CM.

- Extra performance and thickness
- Great longevity, dam is 11 years old

1CH00953 SVY **PILGRIM** PLD 655S



**CRAIG
SCOTT**

\$40

Sire: SVY Pioneer 402P MGS: RGP Eureka 17E Reg. M772113

	CE	BW	WW	YW	Milk	TM	CW	REA	FAT	MARB
EPDS	22	4.4	56	104	19.8	48	24	0.08	0.85	0.07
ACC	.45	.69	.46	.26	.24	.31	.45	.44	.45	.36
RANK			2%	3%		10%	4%			10%



Gerrard Amber 4W, Daughter of Pilgrim

- ▶ One of the best performance-oriented bulls to join the A.I. industry ranks.
- ▶ A unique pedigree to cross on many of the popular bloodlines in the breed. A son was Reserve National Champion at the 2009 Canadian Western Agribition.



Gerrard Preacher 31U, Son of Pilgrim



DVY SVY Warrior 2W, Son of Pilgrim



your **Profit** partner™

Genex Cooperative, Inc.

A subsidiary of Cooperative Resources International
USA 888.333.1783 800.927.2855 CAN 888.354.4622 www.crinet.com

©2016 CRi F2355-02

Created By Today's Publishing