

5th Annual

GEORGIAN ANGUS PREMIER SALE

1:30 pm Saturday, September 11, 2010

Please join us for lunch at noon

CONSIGNORS

GLEN ISLAY ANGUS

Don & Jeannette Currie
RR1 2234 Conc. 11 Nottawa ON L0M 1P0
Ph: 705-445-1526

HARPNEY FARMS

Alan & Dianna Hargrave
Don & Cindy Hargrave
RR2 Proton Station ON N0C 1L0
Ph: 519-923-5192

JPD ANGUS

Darryl & Lori Chalmers
2550 4th Line N RR1 Shanty Bay ON L0L 2L0
Ph: 705-720-0829
John & Pat Duivenvoorden
1672 10th Line Innisfil ON L9S 3P3
Ph: 705-431-0319

DOMAINE TREVALLON FARM

Marc Rioux & Val Caron
839 rang 9 East Palmarolle QC J0Z 3C0
Ph: 819-787-3967

FIRST LINE ANGUS

Brian & Kim Whitwell
560 First Line RR3 Hagersville ON N0A 1H0
Ph: 905-768-5148

HEATHERLEA ANGUS

Gordon & Pat McArthur
Don & Melinda McArthur
17049 Winston Churchill Blvd Caledon ON L7K 1J1
Ph: 519-927-5902

MARKETING AGENT

DjH **Douglas J. Henderson
& Associates Ltd.**

P.O. Box 5900, Lacombe, Alberta T4L 1X4

Doug & Linda Henderson

Phone: (403) 782-3888 Fax: (403) 782-3849 Cel: (403) 350-8541

email: djhenderson@platinum.ca www.hendersoncattle.com

Featuring 52 Lots

62 Head of Quality Angus - Red & Black

29 Bred Yearling Heifers
6 Cows with Heifer Calves
4 Cows with Bull Calves
12 Fancy Single Lot Heifer Calves
1 Embryo Lot

at HARPREY FARMS

Home of the Hargraves

Located at 307483 Centre Line A, Maxwell, ON



Sale Headquarters

Munshaw House Village Inn, Flesherston
Dianna Hargrave at 519-923-5192 to make reservations

Auctioneer

Brent Carey 403-549-2478 Cell: 403-650-9028

Ringmen

Dennis Ericson 780-352-7630; Cell: 780-861-8347

Carl Wright Cell: 519-369-7489; 519-369-3658

Ben Wright 519-374-3335

Sale Consultants

SHANE CASTLE - Swift Current, SK Cell: 306-741-7485
306-778-2181 beverlyhillsangus@sasktel.net

INDIAN RIVER CATTLE SERVICES, Bill Elmhirst
705-295-2708; Cell: 705-761-0896

DOUG ALLEN - Taber, AB

403-223-8008 Cell: 403-634-4588

LAIRD & JOYCE SENFT - Lipton, SK

Cell: Laird 306-331-7587; Joyce Cell: 306-332-8706

Canadian Angus Eastern Fieldman

WAYNE GALLUP - Melbourne, QC
819-826-3026 waynegallup@netrevolution.com

Sale Day Phones

Doug Henderson 403-350-8541

Don Currie 705-715-2234

John Duivenvoorden 705-734-8466

Allan Hargrave 519-379-8186

Don Hargrave 519-375-1500

Gord McArthur 519-942-7152

Brian Whitwell 905-520-6884

HARPREY FARMS

Alan & Dianna Hargrave Cell: 519-379-8186
 Don & Cindy Hargrave Cell: 519-375-1500
 RR2 Proton Station ON N0C 1L0
 Alan: 519-923-5192 Don: 519-922-2654
 email: harprey@bmts.com

The Hargrave family invites you to join us and the consignors Glen Islay, JPD, Domaine Trevallon, First Line and Heatherlea for the Fifth Georgian Angus Premier Sale.

We pride ourselves for being "the program with a purpose". The cattle we produce, whether they are bulls or females, are selected with the commercial cattleman in mind. We feed and market our own animals that are not used for the seedstock sector and we understand what grade and yield economics are.

We welcome your call and visit anytime. All the cattle will be available for viewing on Friday, September 10, 2010. We look forward to seeing you on sale day.

The Hargraves



Alan & Don Hargrave

B

HARPREY ROCKSTAR 12U

Male PSH 12U 1433400 January 12 2008

EXAR BIG TIMBER 1118
JUST-ROCK SOLID 621P 1222907
 JUSTAMERE 509F ANDEE 248H

HYLINE PARADIGM 238
HARPREY MISS MIDDLEBROOK 31M 1134071
 HARPREY MISS MIDDLEBROOK 24J

NORTHERN IMPROVEMENT 4480 GF NHF AMF
 WK TILLIE 7277
 JUSTA 35C BANKER 509F
 JUSTA 46B ANDEE 511F

TC STOCKMAN 365
 HYLINE LUCY 442
 G I NEWTON 4E
 HARPREY MISS MIDDLEBROOK 21F

BW: 94 lbs. Adj. 205D: 751 lbs. Adj. 365D: 1198 lbs.
 EPDs: BW: +2.2 32% WW: +45 21% YW: +78 19%
 Milk: +13 11% TM: +36 YG: +33 19% CE: +3.0 21% MCE: +6.0 7%

Intermediate Bull Calf Champion at the 2008 National Angus Show Royal Winter Fair. A maternal brother was 2007 Reserve Senior Bull Calf at the Royal. Rockstar 12U is a very well muscled son of previous Royal Champion Just-Rock Solid. The Miss Middlebrook's have been a very productive cow family here at Harprey.

A

HARB PENDLETON 765 J H

Male IMP 765R 1471747 NHF AMF February 07 2005

SITZ TRAVELER 8180 NHF AMF
S A V FINAL ANSWER 0035 NHF AMF 1061938
 S A V EMULOUS 8145

H A R B HIGH PLAINS 975 JH NHF AMF
H A R B BLACK LADY 375 J H 14611224
 H A R B BLACK LADY 073 J H

G D A R TRAVELER 71 NHF AMF
 SITZ EVERELDA ENTENSE 1137
 BON VIEW BANDO 598 AMF
 S A V SKY EMULOUS 2124

SITZ ALLIANCE 6595 NHF AMF
 JUANADA ERICA 9024 H A R B
 H A R B CINCHA 829 AMF
 H A R B BLACK LADY G67 J H

EPDs: BW: -0.4 93% WW: +60 89% YW: +104 66% Milk: +24 33%
 TM: +54 YG: +44 66% SC: +1.43 67% CE: +11.0 82% MCE: +10.0 31%

HARB Pendleton is a popular son of SAV Final Answer. Pendleton is a bull with explosive performance and muscle. This is a headline sire in the Genex program.



HARB Pendleton 765 J H



Harprey Rockstar 12U

1 HARPREY BARBARA 9X

Female PSH 9X 1558792 January 13 2010

S A V FINAL ANSWER 0035 NHF AMF
S A V PIONEER 7301 NHF AMF 1481377
S A V BLACKBIRD 5297

SITZ TRAVELER 8180 NHF AMF
S A V EMULOUS 8145
BOYD NEW DAY 8005 NHF AMF
S A V BLACKBIRD 1082

HARPREY DISCOVERY 4F
HARPREY BARBARA 75L 1073537
HARPREY BARBARA 37X

D H D TRAVELER 6807 NHF AMF
CO BOSS PAULINE 56W
MR GLEN ISLAY
PYRAMID BARBARA 59T

BW: 84 lbs.

Harprey Barbara 9X is one of the first daughters of SAV Pioneer 7301 to be offered for sale in Canada. Our Pioneer calves are the most consistent group of calves born in 2010. Her dam is a productive daughter of our now deceased herd sire Harprey Discovery 4F, a son of DHD Traveler 6807.



Lot 1 - Harprey Barbara 9X

2 HARPREY ELINE ERICA 24X

Female PSH 24X 1558805 January 27 2010

BON VIEW NEW DESIGN 878 NHF AMF
W C C SPECIAL DESIGN L309 NHF AMF 1169185
N BAR PRIMROSE 2424

B/R NEW DESIGN 036 NHF AMF
BON VIEW GAMMER 85
EMULATION 31
PRIMROSE N BAR 9962

HARPREY DAYTONA 8P
HARPREY ELINE ERICA 61T 1375136
HARPREY ELINE ERICA 3G

G D A R ROLLS ROYCE 203
HARPREY BARBARA 21G
PAPA EQUATOR 2928 NHF AMF
CO BOSS ELINE ERICA 21T

BW: 90 lbs.

EPDs: BW: +3.8 5% WW: +53 5% YW: +96 5%

Milk: +22 5% TM: +48 YG: +44 5% CE: +1.5 5% MCE: +2.5 5%

Harprey Eline Erica 24X's dam is a maternal sister to the high selling lot in the 2010 Grasstime Sale for Brian Whitwell's First Line Angus. The Eline Erica tribe descends from Co Boss Eline Erica 21T, who was a consistent producer for us. Her sire, WCC Special Design L309, is one of the best sons out of N Bar Primrose 2424, one of the most prolific cows in the Angus industry. A paternal sister, Harprey Pauline 23W is also offered in this sale.



WCC Special Design L309 - Sire of Lot 2

3 HARPREY FLORA 29T

Female PSH 29T 1375120 February 02 2007

G D A R ROLLS ROYCE 203
HARPREY TITANIUM 14L 1070833
HARPREY BARBARA 21G

G D A R ROYCE 131
G D A R FOREVER LADY 719
BON VIEW EMULATION EXT 473 NHF AMF
HARPREY BARBARA 10E

PAPA EQUATOR 2928 NHF AMF
HARPREY FLORA 17M 1093632
HARPREY FLORA 9X

PAPA POWER 096
PAPA ENVIOUS BLACKBIRD 8849
MR GLEN ISLAY
HARPREY FLORA 8N

BW: 86 lbs. Adj. 205D: 542 lbs. Adj. 365D: 906 lbs.

EPDs: BW: +2.9 35% WW: +36 24% YW: +69 22%

Milk: +14 17% TM: +32 YG: +33 22% CE: +2.0 24% MCE: -1.0 14%

Harprey Flora 29T is a young productive daughter of Harprey Titanium 14L, who is now owned by Ferme BMS in Quebec. The Flora tribe established at Harprey came from the Dinedune dispersal. This cow is a maternal sister to our herd sire Harprey Slugger 11U, who was the 2008 National Senior Bull Calf Champion.

Her 2010 bull calf, Harprey Traveler 14X, was born January 19, 2010. He is sired by GDAR SVF Traveler 234D.

Bred April 2, 2010 to Southland Free Ride 68R -1272820-



Lot 3 - Harprey Flora 29T

3A HARPREY TRAVELER 14X

Male PSH 14X 1558797 January 19 2010

SIRE: GDAR SVF TRAVELER 234D NHF AMF 964751

BW: 88 lbs.

EPDs: BW: +4.0 5% WW: +42 5% YW: +75 5%

Milk: +19 5% TM: +40 YG: +33 5% CE: +4.0 5% MCE: +0.5 5%



Lot 4 - Harprey Miss Middlebrook 35R



Lot 6 - Harprey Barbara 46T

4 HARPREY MISS MIDDLEBROOK 35R

Female PSH 35R 1254481 February 06 2005

A A R NEW TREND
PRO TREND 9042 L W NHF AMF 818214
B BAR LASSIE 8658

V D A R SHOSHONE 548
DONNA A A R 74
RITO 2100 G D A R
B BAR LASSIE 7605

K M A HIGHROLLER 5025
HARPREY MISS MIDDLEBROOK 12D 805968
HARPREY MISS MIDDLEBROOK 19Z

HIGHROLLER 9354 OF R R 2300
ERICA LASSIE K M A 2003
MANHATTAN OF INDIAN CREEK
GLEN ISLAY MISS MIDDLEBROOK 14M

BW: 88 lbs. Adj. 205D: 630 lbs. Adj. 365D: 942 lbs.
EPDs: BW: +5.8 39% WW: +37 29% YW: +58 27%
Milk: +17 27% TM: +36 YG: +22 27% CE: -4.0 27% MCE: +2.0 20%

Harprey Miss Middlebrook 35R is from our most productive cow family. It is always difficult to part with a Middlebrook and this cow calf pair is no exception. Her dam, Harprey Miss Middlebrook 12D, has produced Harprey Miss Middlebrook 11K, the 2001 Ontario Show Female of the Year, and Harprey Miss Middlebrook 24G, the 1998 Junior Champion Female at the Royal Winter Fair. This cow's sire, Pro Trend 9042 L W has sired some very good females in our herd. Her 2010 heifer calf Harprey Miss Middlebrook 8X, a January 12, 2010 daughter of S A V Pioneer 7301, should be as productive as all our Middlebrook cows have been.

Bred May 27, 2010 to S A V Pioneer 7301 -1481377-. Exposed to Harprey Hotline 47W -1499067-, a son of Southland Hotline after June 3, 2010.

4A HARPREY MISS MIDDLEBROOK 8X

Female PSH 8X 1558791 January 12 2010

SIRE: S A V PIONEER 7301 NHF AMF 1481377
BW: 78 lbs.



Lot 4A - Harprey Miss Middlebrook 8X

5 SUNRISE BARBARA 97K 7P

Female WIT 7P 1205766 January 25 2004

SVF GDAR 216 LTD
S A F CONNECTION NHF AMF 1083690
S A F ROYAL QUEEN 5084

PAPA FORTE 1921
SUNRISE BARBARA 1921 14M 1102141
GLEN ISLAY BARBARA 18Y

TRAVELER 124 G D A R
G D A R FOREVER LADY 718
BON VIEW BANDO 598 AMF
S A F ROYAL QUEEN 9022

PAPA OPTIMA 9818
PAPA ENVIOUS BLACKBIRD 8832
BROST DAN PATCH
PYRAMID BARBARA 4R

BW: 87 lbs. Adj. 205D: 662 lbs.
EPDs: BW: +2.3 40% WW: +34 29% YW: +69 19%
Milk: +16 29% TM: +33 YG: +35 19% CE: +4.0 31% MCE: +4.0 22%

This female comes from the Sunrise Angus herd of Joel and Irene Thomas of Shelburne. S A F Connection is an EPD trait leader for docility and this cow proves it. This cow traces back to the famous Pyramid Barbara 4R who was one of the best cows in Don Currie's Glen Islay herd.

Bred April 14, 2010 to Southland Free Ride 68R -1272820-. Exposed to Harprey Hotline 47W -1499067- a son of Southland Hotline 36R, June 3 to July 15, 2010.

5A HARPREY FREE RIDE 11X

Male PSH 11X 1558794 January 16 2010

SIRE: SOUTHLAND FREE RIDE 68R 1272820
BW: 98 lbs.

EPDs: BW: +3.5 5% WW: +51 5% YW: +95 5%
Milk: +20 5% TM: +45 YG: +44 5% CE: +1.5 5% MCE: +4.0 5%

6 HARPREY BARBARA 46T

Female PSH 46T 1375129 March 01 2007

G D A R ROLLS ROYCE 203
HARPREY TITANIUM 14L 1070833
HARPREY BARBARA 21G

G D A R ROYCE 131
G D A R FOREVER LADY 719
BON VIEW EMULATION EXT 473 NHF AMF
HARPREY BARBARA 10E

BON VIEW NEW DESIGN 878 NHF AMF
HARPREY BARBARA 16N 1155105
HARPREY BARBARA 25L

B/R NEW DESIGN 036 NHF AMF
BON VIEW GAMMER 85
G D A R ROLLS ROYCE 203
HARPREY BARBARA 8H

BW: 84 lbs. Adj. 205D: 730 lbs. Adj. 365D: 906 lbs.
EPDs: BW: +3.4 35% WW: +48 24% YW: +81 22%
Milk: +19 18% TM: +43 YG: +33 22% CE: +3.0 24% MCE: +1.0 15%

Harprey Barbara 46T is a good Harprey Titanium 14L daughter. Her dam is by Bon View New Design 878, a sire that is noted for calving ease and carcass traits. She descends from Harprey Barbara 8H, a class winner at the Canadian Western Agribition in 1999. Her February heifer calf, Harprey Barbara 50X is a daughter of our herd sire, Harprey Slugger 11U, the 2008 National Senior Bull Calf Champion.

Bred June 27, 2010 to Harprey Hotline 47W-1499067-.

6A HARPREY BARBARA 50X

Female PSH 50X 1558820 February 25 2010

SIRE: HARPREY SLUGGER 11U 1433399

BW: 70 lbs.
EPDs: BW: +3.7 5% WW: +51 5% YW: +84 5%
Milk: +20 5% TM: +45 YG: +33 5% CE: +1.5 5% MCE: +1.5 5%

7 HARPREY TIBBIE 62W

Female PSH 62W 1499078 March 13 2009

CRESCENT CREEK 06 RITO 50L
BAR-E-L RAINMAN 172R 1277880
 BAR-E-L DUCHESS 119M

CRESCENT CREEK REVIVAL 06J
 CRESCENT CREEK LASSIE 33H
 PLAINVIEW SAUGAHATCHEE 31X
 BAR-E-L MAGNOLIA 143K

B/R NEW DESIGN 036 NHF AMF
J D TIBBIE 5M 1092417
 JD TIBBIE 1'97

V D A R NEW TREND 315 NHF AMF
 B/R BLACKCAP EMPRESS 76
 CHAMPION HILL GENERAL STONE
 GREENBUSH TIBBIE 12E

BW: 94 lbs. Adj. 205D: 677 lbs. Adj. 365D: 992 lbs.
 EPDs: BW: +5.0 34% WW: +45 24% YW: +75 14%
 Milk: +17 11% TM: +40 YG: +30 14% CE: -5.0 22% MCE: +0.0 9%

Harprey Tibbie 62W is an outstanding Bar-E-L Rainman 172R daughter. Many visitors have picked her out of our sale grouping. Take note, her dam is a direct daughter of B/R New Design 036 and descends from the great Tibbie tribe developed at Mountain View Farms in Manitoba.

Exposed: June 2 to July 31, 2010 to Harprey Rockstar 12U -1433400-.



Lot 7 - Harprey Tibbie 62W

8 RED HARPREY BLIZZARD 25W

Female PSH 25W 1499051 January 27 2009

RED BRYLOR STALLION 19J MAF
RED BRYLOR STALLION 46M 1112914
 RED BRYLOR BONITA 82F

RED BHC SANDSTONE OSF AMF
 RED PTTV COUNTESS 13'97
 RED LEACHMAN CHIEFDOM 2X
 RED BRYLOR CHEROK 40X

RED BVR RAB-STAR 56C
RED ARWAY BLIZZARD 7L 1066059
 RED KENRAY MISS BLIZZARD 809H

RED CUMNOCK STAR 139Z
 RED TIARA OF TAG-A-LONG 57T
 RED HFAC BLIZZARD 40E
 RED KENRAY MISS DUCHESS 7E

BW: 98 lbs. Adj. 205D: 556 lbs. Adj. 365D: 845 lbs.
 EPDs: BW: +5.8 36% WW: +35 27% YW: +53 22%
 Milk: +3 22% TM: +21 CE: -1.0 19% MCE: +6.0 18% Stay: +10 4%

Red Harprey Blizzard 25W's dam was purchased at the Autumn Colours sale from Arway Angus in Elmvale. This heifer's sire, Red Brylor Stallion 46M was the Canadian Show Bull of the Year in 2004. A paternal sister to this female was sold in the Autumn Colours sale two years ago to JD Lann Cattle Co. in Alberta.

Exposed to Harprey Rockstar 12U -1433400-, the 2008 National Intermediate Bull Calf Champion from June 2 to September 1, 2010. Observed bred.



Lot 8 - Red Harprey Blizzard 25W

9 RED HARPREY SALLY 33W

Female PSH 33W 1499058 February 02 2009

RED GOLD-BAR SCF NITRO K 112N
RED MAJESTIC RUBICON N 124R 1275754
 RED BRA SIERRA 243M

RED GOLD-BAR KING V415 107K
 RED YY BELLE 142L
 RED JCC THUNDER 71H
 RED BRA DELIGHT 043K

RED ROCK CREEK TREK
RED HARPREY SALLY 29G 885239
 HARPREY SALLY 27E

RED RCRA EXPEDITION
 RED SIX MILE GLORIA 546S
 HARPREY SIRLOIN 24C
 RED HARPREY SALLY 21S

BW: 92 lbs. Adj. 205D: 584 lbs. Adj. 365D: 917 lbs.
 EPDs: BW: +2.2 36% WW: +26 26% YW: +48 20%
 Milk: +11 18% TM: +24 CE: +3.0 16% MCE: +1.0 15% Stay: +11 8%

Red Harprey Sally 33W is a daughter of Red Majestic Rubicon N 124R, a many time champion in the show ring. Her dam is a good Red Rock Creek Trek daughter that is still productive at 13 years of age.

Exposed to Harprey Rockstar 12U -1433400-, the 2008 National Intermediate Bull Calf Champion from June 2 to September 1, 2010. Observed bred.



Lot 9 - Red Harprey Sally 33W



Christopher and his Canadian Champion Heifer Showdown 2010

10 **HARPREY LADY PAT 13W**

Female PSH 13W 1499046 January 20 2009

CRESCENT CREEK 06 RITO 50L
BAR-E-L RAINMAN 172R 1277880
BAR-E-L DUCHESS 119M

HARPREY DISCOVERY 4F
HARPREY LADY PAT 50P 1226403
J P D EVENING SUN 44E

CRESCENT CREEK REVIVAL 06J
CRESCENT CREEK LASSIE 33H
PLAINVIEW SAUGHATCHEE 31X
BAR-E-L MAGNOLIA 143K

D H D TRAVELER 6807 NHF AMF
CO BOSS PAULINE 56W
BANNER SUN 23C
ALLEN CROFT EVE 05 44B

BW: 92 lbs. Adj. 205D: 598 lbs. Adj. 365D: 906 lbs.
EPDs: BW: +3.7 33% WW: +38 22% YW: +63 13%
Milk: +15 9% TM: +34 YG: +25 13% CE: -3.0 21% MCE: +2.0 6%

Harprey Lady Pat 13W is a daughter of our senior herd sire Bar-E-L Rainman 172R. A maternal sister sold in the 2008 GAP Sale to Suzanne Hird of Manitoba. This heifer's dam, Harprey Lady Pat 50P is a productive daughter of our now deceased herd sire Harprey Discovery 4F. This heifer's grandam Allencroft Eve 05 44B is held in high regard by John Duivenvoorden.

Sells bred April 7, 2010 to HARB Pendleton 765 J H -1471747-.

Exposed to Harprey Rockstar 12U -1433400-, the 2008 National Intermediate Bull Calf Champion, from June 2 to July 31, 2010.

11 **HARPREY PRIDE 36W**

Female PSH 36W 1499060 February 06 2009

TC FREEDOM 104 NHF AMF
SOUTHLAND HOTLINE 36R 1272495
SOUTHLAND LAUREN 103L

HYLINE PARADIGM 238
GLEN ISLAY PRIDE 21L 1087538
GLEN ISLAY PRIDE 23Y

CONNELLY FOREFRONT NHF AMF
T C RUBY 9095
SCA KRUGERRAND 69G
SCA 49H OF 16E LAUREN

TC STOCKMAN 365
HYLINE LUCY 442
Q A S TRAVELER 23-4 NHF AMF
GLEN ISLAY PRIDE 15W

BW: 90 lbs. Adj. 205D: 661 lbs. Adj. 365D: 959 lbs.
EPDs: BW: +1.8 33% WW: +43 23% YW: +73 14%
Milk: +20 13% TM: +42 YG: +30 14% CE: +6.0 22% MCE: +7.0 10%

Southland Hotline 36R is a popular TC Freedom 104 bred by Shane Cadieux. The dam's sire, Hyline Paradigm 238, had limited use in Canada as the bull was exported early in his career to Argentina. Paradigm sired the 2001 Reserve Heifer Calf Champion and the Junior Get of Sire at the Royal Winter Fair for us.

Bred March 31, 2010 to HARB Pendleton 765 J H -1471747-.

Exposed: June 2 to July 31, 2010 to Harprey Rockstar 12U -1433400-.

12 **HARPREY BARBARA 79W**

Female PSH 79W 1499087 March 24 2009

CRESCENT CREEK 06 RITO 50L
BAR-E-L RAINMAN 172R 1277880
BAR-E-L DUCHESS 119M

BON VIEW NEW DESIGN 878 NHF AMF
HARPREY BARBARA 16N 1155105
HARPREY BARBARA 25L

CRESCENT CREEK REVIVAL 06J
CRESCENT CREEK LASSIE 33H
PLAINVIEW SAUGHATCHEE 31X
BAR-E-L MAGNOLIA 143K

B/R NEW DESIGN 036 NHF AMF
BON VIEW GAMMER 85
G D A R ROLLS ROYCE 203
HARPREY BARBARA 8H

BW: 88 lbs. Adj. 205D: 674 lbs. Adj. 365D: 964 lbs.
EPDs: BW: +4.2 34% WW: +46 23% YW: +79 15%
Milk: +19 11% TM: +42 YG: +34 15% CE: -1.0 23% MCE: +4.0 9%

Harprey Barbara 79W is from the same cow family as Harprey Barbara 46T that is also being offered as Lot 6. This Bar-E-L Rainman 172R daughter fits the pattern of most of his progeny. We have fed a large group of steers sired by this bull that have had outstanding lean yield and grading.

Bred: April 29, 2010 to HARB Pendleton 756 J H -1471747-.

Exposed: June 2 to July 31, 2010 to Harprey Rockstar 12U -1433400-.



Lot 12 - Harprey Barbara 79W

13 HARPREY PAULINE 23W

Female PSH 23W 1499050 January 26 2009

BON VIEW NEW DESIGN 878 NHF AMF
W C C SPECIAL DESIGN L309 NHF AMF 1169185
N BAR PRIMROSE 2424

B/R NEW DESIGN 036 NHF AMF
BON VIEW GAMMER 85
EMULATION 31
PRIMROSE N BAR 9962

HARPREY DAYTONA 8P
HARPREY PAULINE 51T 1375131
HARPREY PAULINE 30M

G D A R ROLLS ROYCE 203
HARPREY BARBARA 21G
S A F PHANTOM
HARPREY PAULINE 6K

BW: 78 lbs. Adj. 205D: 611 lbs. Adj. 365D: 933 lbs.
EPDs: BW: +3.4 30% WW: +53 22% YW: +92 19%
Milk: +21 18% TM: +48 YG: +39 19% CE: +6.0 28% MCE: +4.0 17%

A moderate framed daughter of WCC Special Design L309. Her dam is a maternal sister to Harprey Pauline 49W who is also offered in this sale. The Pauline tribe descends from Co Boss Pauline 56W, who was the dam of our highly regarded herd sire Harprey Discovery 4F.

Exposed June 2 to July 31, 2010 to Harprey Rockstar 12U -1433400-.



Lot 13 - Harprey Pauline 23W

14 HARPREY PAULINE 49W

Female PSH 49W 1499069 February 28 2009

CRESCENT CREEK 06 RITO 50L
BAR-E-L RAINMAN 172R 1277880
BAR-E-L DUCHESS 119M

CRESCENT CREEK REVIVAL 06J
CRESCENT CREEK LASSIE 33H
PLAINVIEW SAUGAHATCHEE 31X
BAR-E-L MAGNOLIA 143K

S A F PHANTOM
HARPREY PAULINE 30M 1119536
HARPREY PAULINE 6K

S A F FAME NHF AMF
G D A R MISS WIX 3325
PAPA UNIVERSE 515 NHF AMF
HARPREY PAULINE 6D

BW: 92 lbs. Adj. 205D: 625 lbs. Adj. 365D: 837 lbs.
EPDs: BW: +3.2 34% WW: +40 23% YW: +66 15%
Milk: +15 11% TM: +35 YG: +26 15% CE: -1.0 23% MCE: +1.0 9%

Another good daughter of Bar-E-L Rainman 172R, whose first daughters are now in their second year of production and all have the making to be outstanding females in the future. The dam is a consistent producer each year and descends from the same Pauline tribe that produced Harprey Discovery 4F.

Exposed June 2 to July 3, 2010 to Harprey Rockstar 12U -1433400-.



Lot 14 - Harprey Pauline 49W

15 HARPREY NARISSA 42W

Female PSH 42W 1499066 February 21 2009

CRESCENT CREEK 06 RITO 50L
BAR-E-L RAINMAN 172R 1277880
BAR-E-L DUCHESS 119M

CRESCENT CREEK REVIVAL 06J
CRESCENT CREEK LASSIE 33H
PLAINVIEW SAUGAHATCHEE 31X
BAR-E-L MAGNOLIA 143K

CLOVER LANE MCGREGOR
CLOVER LANE NARISSA 1180407
CLOVER LANE DIVI 9J

ANKONIAN ELIXIR 100
THREE L'S ROSEBUD 1H
C A FUTURE DIRECTION 5321 NHC AMC
CCCC JUST BARBARA 60F

BW: 108 lbs. Adj. 205D: 552 lbs. Adj. 365D: 845 lbs.
EPDs: BW: +7.3 32% WW: +33 21% YW: +64 12%
Milk: +13 10% TM: +30 YG: +31 12% CE: -11.0 21% MCE: -4.0 7%

This female's dam was purchased from Steve James' Clover Lane herd at the 2003 Ontario Angus Futurity. This is another Bar-E-L Rainman 172R daughter, who continues to sire a consistent group of calves year after year for us.

Bred April 7, 2010 to HARB Pendleton 756 J H -1471747-.

Exposed June 2 to July 31, 2010 to Harprey Rockstar 12U -1433400-.



Lot 15 - Harprey Narissa 42W

Glen Islay

GLEN ISLAY FARM

Don & Jeannette Currie RR 1 2234 Conc. 11, Nottawa, ON L0M 1P0
Ph/Fax: 705-445-1526 Cell: 705-715-2234 doncurrie@glenislays.com

Welcome to the *GAPS* again at Harprey Farms. We were tremendously pleased and even surprised with the acceptance and value placed on our cattle and our breeding program at last year's sale. That made us try even harder this year to bring a group of females that will live up to your expectations.

Good cattle never change and we know that nature does not tolerate extremes, so we continue to use the greatest breeding bulls from a few decades ago as well as younger bulls that meet our criteria for efficiency and longevity.

There are lots of tools widely used to measure and change the genetics of our cattle fairly rapidly but change has not always been progress. As forage feed efficiency and in turn fleshing ability and longevity become more recognized as important along with yield and grade, the influence of bulls like old Bonnie Chance Bardolene 10A and Double AA Bandolier 119'08 are the kind that will be in demand for a very long time to come.

At Glen Islay we continue to be commercially focused, economically driven and motivated by your success. We welcome your call before the sale, at the sale or long after the sale.



Don & Jeannette Currie

Sincerely,
Don



C DOUBLE AA BARDOLIER 119'08

Male RCE 119U 1464905 April 29 2008

DOUBLE AA BARDOLIER 322'03
DOUBLE AA BARDOLIER 47'06 1329580
DOUBLE AA ANNIE K 289'02

DOUBLE AA BARDOLIER 550'00
DOUBLE AA ANNIE K 674'99
DOUBLE AA RITO 206'97
DOUBLE AA ANNIE K 534'92

SASKALTA BARDOLENE 28M
DOUBLE AA ANNIE K 203'06 1329649
DOUBLE AA ANNIE K 414'03

SASKALTA BARDOLENE 182H
SASKALTA EDNA 780G
DOUBLE AA BARDOLENE 22'98
DOUBLE AA ANNIE K 27'00

BW: 73 lbs.

The Double AA herd of Bill and Don Dillabaugh has been supplying hundreds of bulls to ranchers for nearly forty years, and through line breeding to the Bardolene sire line and the Annie K cow family they have been extremely successful with almost exclusively Canadian Genetics. The very popular Double AA Old Post Bandolier was bred and raised at Double AA and discovered as a five year old in a commercial herd. He is now the featured herd sire at three of the largest purebred herds in Canada, Remington Land & Cattle, LLB Angus, and Peak Dot Ranch. The popular Supreme Champion Female at both the 2008 Agribition and the recent World Angus Forum is an Annie K from Soo Line Cattle Co.

We went to the Double AA Bull Sale in March 2009 and bought our choice of their bulls, Double AA Bardolier 119U. He is line bred Bardolene and Annie K on both sides of his pedigree and was the youngest bull in the sale. He only weighed 73 lbs at birth, but at exactly eleven months of age he weighed 1140 lbs, had 35 cm testicles and passed the semen test. He has a great hair coat, ideal structure, thick butted, big wide muzzle and absolutely perfect feet. He has maintained his condition amazingly well on pasture this summer and has a nice temperament. We are extremely pleased with his first calf crop both bulls and heifers and we are offering his first two daughters in this sale.

D NORBEN GARNISH MONTY 18M

Male RDO 18M 1163112 May 07 2002

KRUGERRAND OF DONAMERE 490 NHF AMF
STALBURN GARNISH 3G 912768
STALBURN ROSEBUD 9W

VALLEYSTAR JORGE 22A
NORBEN JORGE HALEY 934645
NORBEN CONCORDE DAPHNE

CH STACKER 7040
DONAMERE BACHEL BEAUTY 288
PYRAMID MISTER 42T
STALBURN ROSEBUD 81T

SCOTCH CAP NHF AMF
RIDEAU BLACKCAP JUDY 7N
DODSWOOD CONCORDE 39A
NORBEN STAR LADY LUCK

BW: 100 lbs.

EPDs: BW: +2.7 49% WW: +29 34% YW: +56 20%

Milk: +6 8% TM: +21 YG: +27 20% CE: +2.0 28% MCE: +5.0 6%

An old friend of mine once said, "good cattle are where you find them and they can be anywhere". Not many people have heard of the Norben herd, started by Noreen and Ruben Desjardins at Beachburg, Ontario and now managed by Trudy and Doug Desjardins. They run approximately 150 commercial cows and only about 20 purebred cows and have only ever sold about 2 or 3 purebred females with papers. They definitely keep all of the best and cull the rest.

We saw Monty as a outstanding calf and as a yearling but it was as a three year old, that he really impressed us and we knew that we just had to use him. We leased him for 60 days for two years, finally managed to buy him. He was as close to my idea of what an Angus bull should be as I have ever seen. He was so good footed, so thick and well made and easy fleshing, our commercial bull customers really admired him. His sire Stalburn Garnish 3G was a high performance, moderate frame bull that has left a wonderful set of females at Norben with the nicest udders you will ever see. The sire of Monty's dam, Valleystar Jorge was a powerful son of Scotch Cap with exceptional muscle expression.

Our Monty sons were an outstanding group at our bull barn every year and were our highest selling sire group. We believe that Monty will have a long lasting positive influence on our herd and his daughters will be some of the best females we have ever offered for sale.

∞ Georgian Angus Premier Sale ∞

E **GLEN ISLAY TRAILBLAZER 9T**

Male JPC 9T 1385320 January 11 2007

ERMUS 3RD OF LADYWELL
JEREMY ERIC OF BRIDGEFOOT 1324065
FAIROAKS JEMIMA ERICA T7

EDEN OF PAKEROA
ERAMA 4TH OF BANKHEAD
YOUNG DALE HOGAN 3Y
FAIROAKS JACKIES ERICA

Q A S TRAVELER 23-4 NHF AMF
GLEN ISLAY ERICA 7G 885771
GLEN ISLAY ERICA 21A

BAND 234 OF IDEAL 3163
Q A S BLACKBIRD EVE 601 1
NELSON BOLD RULER
GLEN ISLAY ERICA 39N

BW: 97 lbs. Adj. 205D: 790 lbs.
EPDs: BW: +3.3 28% WW: +28 16% YW: +46 6%
Milk: +9 10% TM: +23 YG: +18 6% CE: -7.0 19% MCE: -2.0 7%

Jeremy Eric of Bridgefoot was recommended to us by a friend in Tasmania, who bought thirty embryo's from us and appreciated the same values in cattle that we do. We brought in the only semen from Scotland on Jeremy Eric and he has left us some very outstanding progeny. The dam of Trailblazer is well known to many and has generated more income for us than any other cow in our herd currently. The Jeremy Eric and Trailblazer cattle are exceptionally well muscled, good footed and moderate framed. They will improve the yield on most Angus cattle and this fits our commercial bull trade very well. We are using Trailblazer on a group of cows on Manitoulin and another son of Jeremy Eric named Glen Islay Cyrus 22W that you will hear about next year is being used at home. Fresh genetics with tremendous potential.



Lot 16 - Glen Islay Heroine 10X

16 **GLEN ISLAY HEROINE 10X**

Female JPC 10X 1549933 January 19 2010

BARDOLINE LAD OF FAIRALTA 2U
BONNIE CHANCE BARDOLINE 10A 340640
BONNIE CHANCE BLACKCLASS 22

BANDOLIERMERE G V 16P
BLUEBIRD BARDOLINE 81
BLACKMAN OF SOUTHAVEN 2
BONNIE CHANCE BLACKCAP 18

ANGUS ACRES WINSTON 249B
GLEN ISLAY HEROINE 8T 1385325
SASKALTA HEROINE 963J

ANGUS ACRES WINSTON 198X
ANGUS ACRES LADY ALLEGRA 58U
SPRUCE VIEW ESSOTERIC 31A
OLE SASKALTA HEROINE 544E

BW: 89 lbs.
EPDs: BW: +1.5 5% WW: +20 5% YW: +38 5%
Milk: +5 5% TM: +15 YG: +18 5% CE: +0.5 5% MCE: +1.5 5%

A real genetic gem and a pleasing individual to start the Glen Islay consignment. One of the very best yearling bulls at the large Remington Ranch in Alberta came in dam to them from a Bonnie Chance daughter out of a maternal sister to Heroine 8T, that they bought from us two years ago. They have used him on a lot of heifers and many of the heifers in their sale this fall will be bred to him. Saskalta Heroine 963J was our choice of all the cows in the Saskalta mature cow herd dispersal where we bought her and her daughter. We still have 963J and now four of her daughters. The first calf from Heroine 8T is now the herd sire for John and Betty Crowley at Milverton, Ontario.



**Remington King 11W - purchased in dam through this sale,
from the same cow family as Lot 16**

F **BONNIE CHANCE BARDOLINE 10A**

Male CKA 10A 340640 March 24 1069

BANDOLIERMERE GV 16P
BARDOLINE LADY OF FAIRALTA 2U 236784
BLUEBIRD BARDOLINE 81

BANDOLIERMERE G V 100
JEAN OF A L F 2K
BLACKCAP BARDOLIER OF GMR 3
QUEEN MAE 91

BLACKMAN OF SOUTHAVEN 2
BONNIE CHANCE BLACKCLASS 22 153338
BONNIE CHANCE BLACKCAP 18

ESTON COMPRESS 12C
MARSHALL BLACKBIRD 6
WOODLAWN BLACKCAP 8
BONNIE CHANCE FLORA

Snako was born in the Bonnie Chance herd of CK Armistead at Onoway, Alberta, and was purchased by John Moneo of Old Post Ranch, now Peak Dot Ranch when the present senior member of the Moneo family (Terry) was just a kid. When I visited the Moneo's in February 1973, I saw the most outstanding two year old bull, that I had ever seen and was encouraged to try and buy him at the upcoming Regina Bull Sale. That bull was Bardolene of Old Post 5. He set a new record price at the Regina Bull Sale and was purchased by Bill Dillabaugh of Double AA Angus, and the rest is history. Bill based his whole program on sons and grandsons of Old Post 5 and the more that he line bred those cattle the better they became. All of the hundreds of Double AA Bardolene bulls trace to Old Post 5 and Bonnie Chance Bardolene 10A. While at Moneo's that cold February day I was tremendously impressed by the yearling heifers and two year olds and of course the two year old bull Old Post 5 all sired by Bonnie Chance Bardolene 10A. Before I left that day I purchased him and although he was injured at the A.I. stud before I got him home, we still have some of the semen he produced.

After all the hype and promotion of show winners and EPD trait leaders that promise new levels of excellence, we now realize that great cattle never change and that the truly greatest cattle of the 1960's and 1970's in Canada, were as good as the best cattle of the 21st century. Since we went back and started using Bonnie Chance Bardolene 10A about eight years ago we are extremely pleased with the growth, fleshing ability, fertility, structural soundness, and muscle expression of his progeny. His influence will be a very important part of our future. It is noteworthy that the complete Bonnie Chance herd sold to Hackamore Ranch in Mississippi and when Hackmore dispersed in 1973, the sire of Snako sold as an active breeding bull at eleven years of age. Snako's dam sold at 18 years of age with a bull calf at foot and was rebred. Imagine moving from North of Edmonton to Mississippi as old cattle and still being fertile and productive.

Glen Islay



Lot 17 - Glen Islay Magic 16X

17 GLEN ISLAY MAGIC 16X

Female JPC 16X 1549944 January 24 2010

DOUBLE AA BARDOLIER 47'06
DOUBLE AA BARDOLIER 119'08 1464905
DOUBLE AA ANNIE K 203'06

GLEN ISLAY VINTAGE 11S
GLEN ISLAY MAGIC 41U 1440175
GLEN ISLAY MAGIC 17M

DOUBLE AA BARDOLIER 322'03
DOUBLE AA ANNIE K 289'02
SASKALTA BARDOLINE 28M
DOUBLE AA ANNIE K 414'03

BONNIE CHANCE BARDOLINE 10A
GLEN ISLAY BARBARA 16K
GLEN ISLAY BLUE LABEL 27G
GLEN ISLAY MAGIC 2K

BW: 77 lbs.

This is the first calf born from our newest herdsire, Double AA Bardolier 119U and she is fancy and thick. Born unassisted at 77 lbs from a twenty-two month old dam, she is exactly what we wanted from "119U", calving ease with style and growth. On the dam's side, 41U, 17M and 2K are all raising calves at Glen Islay and 39H the dam of 2K is in our ET program. The Magic cow family is definitely one of our favorites and produced two Royal Winter Fair Grand Champion females for us back in our show days. Magic 17M has raised our highest weaning bull calf three different years. She will be in our E.T. program before she leaves the place.



Lot 18 - Glen Islay Lady Ann 18X

18 GLEN ISLAY LADY ANN 18X

Female JPC 18X 1549941 January 25 2010

DOUBLE AA BARDOLIER 47'06
DOUBLE AA BARDOLIER 119'08 1464905
DOUBLE AA ANNIE K 203'06

RONAN R TEX 607S
RONAN R LADY ANN 9U 1455825
RONAN LADY ANN 38J

DOUBLE AA BARDOLIER 322'03
DOUBLE AA ANNIE K 289'02
SASKALTA BARDOLINE 28M
DOUBLE AA ANNIE K 414'03

ANGUS ACRES TEX 16S
RONAN MAGNET 11J
ANGUS ACRES TOM BOY 183E
RONAN LADY ANN 59C

BW: 80 lbs.

This is one we should be keeping, but since virtually all of our bred heifers are bred to Bardolier 119U, we thought we should demonstrate how good a breeding bull that he is. Doug Henderson bought the Ronan R Lady Ann 9U heifer for us and she is really good, beautiful udder, the right size and structurally powerful. This heifer calf is a good example of why we are going back and using a lot of straight Canadian genetics. Our nephew, Devon Benson is using this calf as his 4H project so we will reserve show rights through the Royal Winter Fair.



Lot 19 - Glen Islay Erica 22X

19 GLEN ISLAY ERICA 22X

Female JPC 22X 1549934 January 30 2010

DOUBLE AA BLACKMAN 252'96
DOUBLE AA OLD POST BANDOLIER 1162392
DOUBLE AA ANNIE K 548'99

GLEN ISLAY BUD LITE 6P
GLEN ISLAY ERICA 18T 1385361
GLEN ISLAY ERICA 61P

DOUBLE AA BLACKMAN 24'93
DOUBLE AA ANNIE K 620'91
JOHNSTON BANDOLIER 849E
DOUBLE AA ANNIE K 280'96

ED RENE BUD
GLEN ISLAY PRIDE 1M
GLEN ISLAY STOCKMAN 10J
GLEN ISLAY ERICA 21A

BW: 88 lbs.

EPDs: BW: 1+3.2 5% WW: 1+32 5% YW: 1+51 5%

Milk: 1+11 5% TM: 1+27 YG: 1+20 5% CE: 1 -2.0 5% MCE: 1+2.0 5%

We have a great set of calves by Old Post this year, but not as many heifers as we would like so we are only consigning one to the sale. Old Post has been an international sensation since he was discovered by peak Dot Ranch and Remington Ranch. He may be the most used bull in Australia this year and his sons have already topped the Peak Dot and Remington Bull Sales. Erica 18T is a very shapely three year old daughter of Bud Lite, that has left a great set of cows in the Ron Hierous herd at Tekhummah, Ontario. This heifer is structurally very correct, sweet fronted and extremely long bodied. These Old Post daughters will be great cows that will last for a long time.

20 GLEN ISLAY PRIDE 16W

Female JPC 16W 1511856 January 29 2009

STALBURN GARNISH 3G
NORBEN GARNISH MONTY 18M 1163112
NORBEN JORGE HALEY

BONNIE CHANCE BARDOLENE 10A
GLEN ISLAY PRIDE 31R 1258837
GLEN ISLAY PRIDE 41F

KRUGERRAND OF DONAMERE 490 NHF AMF
STALBURN ROSEBUD 9W
VALLEYSTAR JORGE 22A
NORBEN CONCORDE DAPHNE

BARDOLENE LAD OF FAIRALTA 2U
BONNIE CHANCE BLACKCLASS 22
PAPA RITO T INTENSE DHD 6844
GLEN ISLAY PRIDE 12B

BW: 85 lbs.

EPDs: BW: I+2.1 5% WW: I+24 5% YW: I+45 5%

Milk: I+8 5% TM: I+20 YG: I+21 5% CE: I+2.5 5% MCE: I+4.0 5%

Our Monty daughters have been very popular in past sales and included the high selling heifer last year at \$5,500 to John Crawley at Guelph, Ontario. That heifer was also out of a Bonnie Chance daughter. Pride 41F is raising a good heifer calf again this year at fourteen years of age and a Monty daughter out of 41F sold to Kelsey Stewart in Manitoba last year. Pride 12B was in our E.T. program and was an own daughter of our Pride 23Y cow that produced Glen Islay Blue Label who was Grand Champion at both the Royal Winter Fair and Canadian Western Agribition.

Bred April 1, 2010 to FV 20K King 308M -1117753-

Exposed after April 20, 2010 to Double AA Bardolier 119U -1464905-.



Lot 20 - Glen Islay Pride 16W

21 GLEN ISLAY PRIDE 29W

Female JPC 29W 1511855 February 27 2009

STALBURN GARNISH 3G
NORBEN GARNISH MONTY 18M 1163112
NORBEN JORGE HALEY

BONNIE CHANCE BARDOLENE 10A
GLEN ISLAY PRIDE 57R 1258834
GLEN ISLAY PRIDE 17E

KRUGERRAND OF DONAMERE 490 NHF AMF
STALBURN ROSEBUD 9W
VALLEYSTAR JORGE 22A
NORBEN CONCORDE DAPHNE

BARDOLENE LAD OF FAIRALTA 2U
BONNIE CHANCE BLACKCLASS 22
GLEN ISLAY TITLELIST 24C
GLEN ISLAY PRIDE 23Y

BW: 88 lbs.

This typically attractive daughter of Monty is more than a three quarter sister to the previous lot. We have found that Monty has worked especially well on Bonnie Chance daughters and this combination from this prolific cow family should make this heifer a very good investment.

We are very pleased with the calving ease and the quality of our calves by Double AA Bardolier 119U, so we only bred three heifers A.I. this year and bred everything else to "119U".

Exposed after April 20, 2010 to Double AA Bardolier 119U -1464905-.

Observed bred April 26.



Lot 21 - Glen Islay Pride 29W

22 GLEN ISLAY ERICA 31W

Female JPC 31W 1511851 March 03 2009

STALBURN GARNISH 3G
NORBEN GARNISH MONTY 18M 1163112
NORBEN JORGE HALEY

GLEN ISLAY BLUE LABEL 27M
GLEN ISLAY ERICA 54S 1324602
GLEN ISLAY ERICA 55P

KRUGERRAND OF DONAMERE 490 NHF AMF
STALBURN ROSEBUD 9W
VALLEYSTAR JORGE 22A
NORBEN CONCORDE DAPHNE

GLEN ISLAY BLUE LABEL 27G
PRAIRIELANE 8116 ROSEBUD 0077
GLEN ISLAY OPEONGO 43L
GLEN ISLAY PRIDE 14L

BW: 80 lbs.

EPDs: BW: I+3.7 5% WW: I+33 5% YW: I+60 5%

Milk: I+8 5% TM: I+24 YG: I+28 5% CE: I-0.5 5% MCE: I+3.5 5%

Our cows on Manitoulin Island either calve unassisted or die trying. (We have never lost a cow calving up there). This heifer lost her ears with the frost, but the rest of her is just fine. Blue Label 27M is possibly the best son of old Blue Label 27G who was Grand Champion at both the Royal and Agribition. Blue Label 27M is still working at eight years of age in Eric Millar's good herd and last year we bought four more of his daughters from Eric. This Erica family goes right back to Erica 7G the dam of our Trailblazer bull and the mother of our top selling cow in the first CAPS sale at 6,300 to Kevin McNaughton.

Exposed after April 20, 2010 to Double AA Bardolier 119U-1464905-. Observed bred May 2.



Lot 22 - Glen Islay Erica 31W

Glen Islay

23 GLEN ISLAY ERICA 36W

Female JPC 36W 1511869 March 06 2009

STALBURN GARNISH 3G
NORBEN GARNISH MONTY 18M 1163112
NORBEN JORGE HALEY

KRUGERRAND OF DONAMERE 490 NHF AMF
STALBURN ROSEBUD 9W
VALLEYSTAR JORGE 22A
NORBEN CONCORDE DAPHNE

GLEN ISLAY BATTLE CRY 27L
BEAU VALLEY ERICA 1157613
GLEN ISLAY ERICA 22J

HDAF BATTLECRY 3G OF 24A
GLEN ISLAY MAGGIE 6F
G I NEWTON 4E
GLEN ISLAY ERICA 21A

BW: 82 lbs.

EPDs: BW: I+4.1 5% WW: I+33 5% YW: I+63 5%

Milk: I+7 5% TM: I+24 YG: I+30 5% CE: I -2.0 5% MCE: I+3.5 5%

The daughters of Monty in production have excellent udders that will last with ideal teat size and placement. Erica 22J topped the Blue Water Sale going to Mark and Sue Thorpe and we were able to buy her daughter back as it was the only daughter of Battle Cry we had bred that year. Note that Erica 22J was a maternal sister to our Erica 7G cow that has been a mainstay in our herd and E.T. program. Note also that Battle Cry 27L was Junior Champion at Agribition and Grand Champion at the Royal and Newton 4E was a two time Grand Champion at the Royal.

Exposed after April 20, 2010 to Double AA Bardolier 119U -1464905-. Observed bred May 13.

24 GLEN ISLAY MAGGIE 38W

Female JPC 38W 1505454 Twin March 09 2009

BARDOLINE LAD OF FAIRALTA 2U
BONNIE CHANCE BARDOLINE 10A 340640
BONNIE CHANCE BLACKLASS 22

BANDOLIERMERE G V 16P
BLUEBIRD BARDOLINE 81
BLACKMAN OF SOUTHAVEN 2
BONNIE CHANCE BLACKCAP 18

ANGUS ACRES TEXAS TEA 19M
GLEN ISLAY MAGGIE 5S 1324571
GLEN ISLAY MAGGIE 24L

WACO ESQUIRE 20776
ANGUS ACRES ROYAL VELVET 9J
DMM DYNASTY 03G
GLEN ISLAY LADY M 20F

BW: 76 lbs.

EPDs: BW: I+3.3 5% WW: I+21 5% YW: I+33 5%

Milk: I+6 5% TM: I+16 YG: I+12 5% CE: I -4.5 5% MCE: I -3.0 5%

We have used National Champions, high performance bulls and even been fortunate enough to raise a few, but after over 40 years in Angus we have never used a more consistent bull at producing attractive, fertile and efficient cattle than old Bonnie Chance Bardolene 10A, born in 1969. There is no doubt we can change cattle by using popular bulls that are always extreme in a few traits, but change is not always improvement. The prepotency and consistency of Bonnie Chance 10A is almost unbelievable. Angus Acres Texas Tea 19M was legendary in the Angus Acres herd and all the famous "Tex" bulls like Tex 16S, Tex 56A at LLB Angus and Tex 10X at Wicklow and Glennies all trace to Texas Tea 19M. Dynasty 03G left us a really nice group of females with lots of milk and great udders. Glen Islay Lady M 20F is still going strong and looks great at Heatherlea Angus. This heifer bred to "119U" carries our strong recommendation.

Exposed after April 20, 2010 to Double AA Bardolier 119U -1464905-. Observed bred May 2.

25 GLEN ISLAY PRIDE 52W

Female JPC 52W 1521147 March 23 2009

JEREMY ERIC OF BRIDGEFOOT
GLEN ISLAY TRAILBLAZER 9T 1385320
GLEN ISLAY ERICA 7G

ERMUS 3RD OF LADYWELL
FAIROAKS JEMIMA ERICA T7
Q A S TRAVELER 23-4 NHF AMF
GLEN ISLAY ERICA 21A

BONNIE CHANCE BARDOLINE 10A
GLEN ISLAY PRIDE 10R 1258860
GLEN ISLAY PRIDE 5N

BARDOLINE LAD OF FAIRALTA 2U
BONNIE CHANCE BLACKLASS 22
GLEN ISLAY BLUE LABEL 27G
GLEN ISLAY PRIDE 10K

BW: 92 lbs.

EPDs: BW: I+4.1 5% WW: I+26 5% YW: I+45 5%

Milk: I+10 5% TM: I+22 YG: I+19 5% CE: I -6.0 5% MCE: I -2.5 5%

One of the first daughters of Trailblazer to sell and a chance to own some truly outcross genetics. The dam is a beautiful uddered daughter of Bonnie Chance 10A. Pride 5N was a feature of a previous GAPS and is now one of the very best cows in the herd of Gary & Tara Reynolds. Pride 10K is still in our herd and has a bull calf that we will use next year. This is the same cow family that produced Glen Islay Blue Label 27G that was Grand Champion at both the Royal and the Agribition.

Exposed after April 20, 2010 to Double AA Bardolier 119U -1464905-. Observed bred May 3.



Lot 23 - Glen Islay Erica 36W



Lot 24 - Glen Islay Maggie 38W



Lot 25 - Glen Islay Pride 52W

26 **GLEN ISLAY STARTELL 58W**

Female JPC 58W 1521149 April 03 2009

JEREMY ERIC OF BRIDGEFOOT
GLEN ISLAY TRAILBLAZER 9T 1385320
GLEN ISLAY ERICA 7G

ERMUS 3RD OF LADYWELL
FAIROAKS JEMIMA ERICA T7
Q A S TRAVELER 23-4 NHF AMF
GLEN ISLAY ERICA 21A

RONAN R RANCHER 113M
RONAN R STARTELL 68S 1352753
RONAN STARTELL 7J

BLACKTOF RANCHER 71G
TOP NOTCH ELLEN ERICA 43E
CAMILLA BANDOLIER 84G
RONAN STARTELL 102Z

BW: 81 lbs.

EPDs: BW: I+3.2 5% WW: I+25 5% YW: I+41 5%

Milk: I+10 5% TM: I+22 YG: I+16 5% CE: I -7.0 5% MCE: I -5.0 5%

This is truly an outcross pedigree that deserves respect. Jeremy Eric from the U.K., Traveller 23-4 one of the most dominant sires of great cattle and old Canadian breeding on the dam's side. Ronan Startell 102Z is a maternal sister to the great breeding Angus Acres Tex 16S and that is why we purchased the Startell 68S from Ralph Erdell to add another herd bull producing cow family. It is not surprising that possibly our best bull calf by Old Post this year is out of Startell 68S. Be sure to mark this heifer high on your picks.

Exposed after April 20, 2010 to Double AA Bardolier 119U-1464905-. Observed bred May 5.



Lot 26 - Glen Islay Startell 58W

27 **GLEN ISLAY ROSEBUD P 60W**

Female JPC 60W 1511890 April 09 2009

STALBURN GARNISH 3G
NORBEN GARNISH MONTY 18M 1163112
NORBEN JORGE HALEY

KRUGERRAND OF DONAMERE 490 NHF AMF
STALBURN ROSEBUD 9W
VALLEYSTAR JORGE 22A
NORBEN CONCORDE DAPHNE

PAIRIELANE IDEAL 1418-8116
PAIRIELANE 8116 ROSEBUD 0077 1011874
PAIRIELANE 5122 ROSEBUD 8009

IDEAL 1418 OF 8103 4286 NHF AMF
PAIRIELANE 2054 ESTELLE 4025
BANG 2083 PAIRIELANE 5122
PAIRIELANE 2054 ROSEBUD 6015

BW: 87 lbs.

EPDs: BW: I+4.0 5% WW: I+36 5% YW: I+67 5%

Milk: I+10 5% TM: I+28 YG: I+31 5% CE: I -0.5 5% MCE: I+4.5 5%

We lost Monty due to an injury from a neighbours bull so this will be the last group of Monty daughters we will be selling. The dam of this heifer has done a great job for us since coming from Pairielane as an open heifer. She was Blaine Canning's recommendation and has never missed. Her son by Blue Label at Eric Millar's herd is still going at eight years of age and may be the best breeding son of Blue Label that is around. This heifer is very long bodied and attractive and will be a problem free kind of cow.

Exposed after April 20, 2010 to Double AA Bardolier 119U -1464905-. Observed bred April 21.



Lot 27 - Glen Islay Rosebud P 60W

28 **GLEN ISLAY BARBARA 63W**

Female JPC 63W 1521151 April 23 2009

CONNEALY ONWARD NHF AMF
SUNRISE ONWARD 2T 1373610
SUNRISE MAGGIE 1921 27L

CONNEALY LEAD ON NHF AMF
ALTUNE OF CONANGA 6104
PAPA FORTE 1921
GLEN ISLAY MAGGIE 44J

YOUNG DALE GABRIEL 7L
HEATHERLEA BARBARA 26N 1186618
GLEN ISLAY BARBARA 14E

YOUNG DALE KRUGERRAND 2H
PAT LADY SANDRA 2C
GLEN ISLAY TITLELIST 24C
GLEN ISLAY BARBARA 9A

BW: 90 lbs.

EPDs: BW: I+5.0 5% WW: I+45 5% YW: I+85 5%

Milk: I+16 5% TM: I+38 YG: I+40 5% CE: I -3.0 5% MCE: I+2.5 5%

If you like fancy moderate and thick, then this heifer is sure to suit. We bought her sire with Kevin McNaughton as an outstanding calf from Joel and Irene Thomas. Conneally Onward has become extremely popular even though he died very young, and his sons are in several A.I. Units. A maternal sister to this lot is the most outstanding cow in the good herd of Larry Agar and family and this heifer will be just as good. Note that Barbara 14E was Grand Champion at the Royal Winter Fair and is the mother of the great breeding Glen Islay Bondsman.

Exposed after May 24, 2010 to Double AA Bardolier 119U -1464905-. Observed bred July 12.



Lot 28 - Glen Islay Barbara 63W

Glen Islay

29 GLEN ISLAY OAKLEAF 64W

Female JPC 64W 1521150 May 03 2009

JEREMY ERIC OF BRIDGEFOOT
GLEN ISLAY TRAILBLAZER 9T 1385320
GLEN ISLAY ERICA 7G

SILVER DOME TEXAN 205M
DOUBLE AA OAKLEAF 408'04 1218565
DOUBLE AA OAKLEAF 230'00

ERMUS 3RD OF LADYWELL
FAIROAKS JEMIMA ERICA 7T
Q A S TRAVELER 23-4 NHF AMF
GLEN ISLAY ERICA 21A

ANGUS ACRES TEXAS TEA 19M
SILVER DOME RUBY LAURA 5E
DOUBLE AA BARDOLINE 22'98
DOUBLE AA OAKLEAF 5'97

BW: 76 lbs.

EPDs: BW: I+2.4 5% WW: I+25 5% YW: I+40 5%

Milk: I+11 5% TM: I+23 YG: I+15 5% CE: I -3.0 5% MCE: I+0.5 5%

The dam of this lot came to us from the first Double AA Cow Herd Dispersal and will establish the long admired Oakleaf cow family from Western Canada for us. Oakleaf 408'04 is long bodied, sound footed, good uddered and is raising a top notch bull calf this year. Glen Islay Erica 7G is the high income cow currently at Glen Islay and we are anxious to see these Trailblazer daughters in production. He is currently breeding a group of cows for us and Jim Martin on Manitoulin Island.

Exposed after May 24, 2010 to Double AA Bardolier 119U -1464905-. Observed bred May 24.

30 GLEN ISLAY MAGGIE 65W

Female JPC 65W 1511871 May 11 2009

STALBURN GARNISH 3G
NORBEN GARNISH MONTY 18M 1163112
NORBEN JORGE HALEY

J P D GALILEO
GLEN ISLAY MAGGIE 1N 1152622
GLEN ISLAY MAGGIE 24L

KRUGERRAND OF DONAMERE 490 NHF AMF
STALBURN ROSEBUD 9W
VALLESTAR JORGE 22A
NORBEN CONCORDE DAPHNE

J P D RETROSPECT
ALLENOCROFT BLACKCAP 03 54B
DMM DYNASTY 03G
GLEN ISLAY LADY M 20F

BW: 82 lbs.

EPDs: BW: I+3.4 5% WW: I+30 5% YW: I+53 5%

Milk: I+14 5% TM: I+29 YG: I+24 5% CE: I -2.0 5% MCE: I -1.0 5%

Although we still have some semen for our own use from Monty, we are doing less A.I. because of the strength and predictability of our walking bulls. This may be the last catalogued daughter of Monty you will see for some time and she is a good one. JPD Galileo was Calf Champion at the Royal and has been a reliable calving ease sire. Maggie 24L is a very impressive big cow in our herd and we have six daughters in production. Her dam, Lady M 20F is still in production at Heatherlea and looks very youthful at fourteen years of age.

Exposed after May 24, 2010 to Double AA Bardolier 119U -1464905-. Observed bred June 25.

31 GLEN ISLAY MAGGIE 87W

Female JPC 87W 1547560 ET April 11 2009

R R SCOTCHCAP 9440 NHF AMF
GLEN ISLAY BLUE LABEL 27G 885766
GLEN ISLAY PRIDE 23Y

GLEN ISLAY MASTERPIECE 2Z
LADY MASTER OF MARDON 068B 754995
LADY LADMERE OF MARDON 097W

SCOTCH CAP NHF AMF
BLACKCAP OF R R 5367
Q A S TRAVELER 23-4 NHF AMF
GLEN ISLAY PRIDE 15W

MANHATTAN OF INDIAN CREEK
GLEN ISLAY BARBARA 1W
SIR LADMERE OF MARDON 280S
LADY NORTHLAND OF MARDON 285S

BW: 90 lbs.

This powerful heifer is from our E.T. program, and we are retaining three flush sisters. The full brother to this lot is Oak Manor Blue Chip that we have used very successfully as a calving ease sire and we have several of his daughters in production. We purchased our choice of twenty cows from the large 350 cow herd at Mardon Farms and now after several years the two cows that made the greatest impact for us were Lady Ladmere of Mardon 097W and Lady Jumbo of Mardon 263W who is the mother of Lady M 20F at Heatherlea Angus. Note that Masterpiece 2Z was Reserve Grand Champion at the Royal as a calf before we sold him to Bob Lane in England where he became Grand Champion at the Royal Show in England and left a great set of females for us and for Bob.

Exposed after April 20, 2010 to Double AA Bardolier 119U -1464905-. Observed bred May 12.



Lot 29 - Glen Islay Oakleaf 64W



Lot 30 - Glen Islay Maggie 65W



Lot 31 - Glen Islay Maggie 87W

32 **GLEN ISLAY PRIDE 12N X BARDOLENE'S LAD 500'74**

Embryo Package - 3 Embryos - 1 Pregnancy Guaranteed

BARDOLENE OF OLD POST 5
BARDOLENE'S LAD 500'74 428661
BUFFALO COULEE 17Y

BONNIE CHANCE BARDOLENE 10A
BAMBI OF OLD POST
CRAIGEYRIE BARDOLIER 38V
BUFFALO COULEE NORANDA

BONNIE CHANCE BARDOLENE 10A
GLEN ISLAY PRIDE 12N 1152620
GLEN ISLAY PRIDE 22L

BARDOLENE LAD OF FAIRALTA 2U
BONNIE CHANCE BLACKLASS 22
DMM DYNASTY 03G
GLEN ISLAY PRIDE 12G

This is the oldest of three full sisters in our herd and if we had to disperse our cows this would be the last cow to go. She is as good as an Angus cow can be including the phenotype, fleshing ability, temperament and production. Her mother 22L is always a crowd favorite at our farm. Ed Robertson from Elmvale thinks 22L is our best cow and Ed knows a bit about cows. We have never sold a daughter of 22L and we have three daughters of 12N in production. One of her daughters sired by Angus Acres Winston 249B produced the top selling calf in this sale last year at \$3600. A son of 12N also by Winston 249B is a very impressive two year old and is being bred to about thirty cows at Glen Islay this year. The 2009 heifer calf from 12N sold privately to Daryl and Cathy Faught at Cobden at a long figure.

The sire of these embryos, Bardolene's Lad 500'74 was born in 1974 and all thirty doses of his semen sold last fall for \$425 per dose and his sire's semen, Bardolene of Old Post 5 sold for \$550 per dose. Note that Bardolene of Old Post 5 and Glen Islay Pride 12 are both sired by Bonnie Chance Bardolene 10A. It is amazing how many times the great ones are line bred.

When I judged Agribition in 1974, Bardolene's Lad 500'74 was a May calf in a class of forty plus calves ranging up to January first in age. He placed third and went on to be a Champion in both Canada and USA, twenty-six times in the next two years. These embryos are unique and we are very excited to see the results next spring.

**SELLING THREE EMBRYOS NUMBER ONE QUALITY AND GUARANTEEING
ONE PREGNANCY IF IMPLANTED BY A QUALIFIED TECHNICIAN**



Glen Islay Pride 12N



Bardolene's Lad 500'74



Flush brother to Lot 31 - Oak Manor Blue Chip 3L



Bardolene of Old Post 5

JPD ANGUS

Darryl & Lori Chalmers

2550 4th Line N RR1 Shanty Bay ON L0L 2L0

Ph: 705-720-0829

email: lori@chalmersinc.ca

John & Pat Duivenvoorden

1672 10th Line Innisfil ON L9S 3P3

Ph: 705-431-0319 email: jpdfarm@sympatico.ca



The JPD Crew

John, Pat, Darryl, Lori and family would like to welcome you to the 5th Annual G.A.P. Sale. Although we are at our new location in Oro-Medonte, Ontario and the Chalmers Clan has stepped up their role with the cattle, nothing much has changed. John and Pat continue to play a vital role in all aspects of JPD ANGUS. Our motto is "breeding for cow families" and we live by it. We are very pleased to still be associated with the G.A.P. Sale and look forward to seeing you at Harprey Farms. Be sure to put us on your list of places to visit and come and see our new farm.

Darryl and Lori

G

TJF FREEDOM 172U

Male AEHA 172U 1482761 April 28 2008

TC FREEDOM 104 NHF AMF
WESTERN FREEDOM 505 1291914
WESTERN MISSIE 5N

CONNELLY FOREFRONT NHF AMF
T C RUBY 9095
WESTERN WIDESPREAD 1L
WESTERN 9440 SC MISSIE 900J

TJF FORTUNE 425C TIBBIE 5M
TJF PINEDRIVE NEWTREND 127S 1357372
TJF PINEDRIVE NEW TREND 88N

EASTONDALE FORTUNE 61'99
BABA TIBBIE 2H
TJF PINEDRIVE 16K
LENLOOK HEROINE 31H

BW: 80 lbs. Adj. 205D: 917 lbs.

EPDs: BW: +3.2 34% WW: +61 24% YW: +101 13%

Milk: +26 10% TM: +57 YG: +40 13% CE: +2.0 26% MCE: +6.0 9%

TJF Freedom was selected from the 2009 Triple "J" Farms Sale where he was the youngest bull in the sale and one of the best performers. He placed 4th Canadian Black Show Bull of the Year 2009, was Junior Champion at the 2009 Royal Winter Fair, Expo Beuf Quebec City and Bluewater Gold Show, Barrie Fair.

A powerful young herd sire with a world of future. Note his excellent EPDs.

H

JPD ALLIANCE 6W

Male JPDE 6W 1521173 January 07 2009

SITZ ALLIANCE 6595 NHF AMF
KMK ALLIANCE 6595 187 NHF AMF 1191922
G A R EXT 916 AMF

SITZ TRAVELER 8180 NHF AMF
SITZ BARBARAMERE JET 2698
N BAR EMULATION EXT NHF AMF
G A R BANDO 338

CUDLOBE MILLENNIUM 6M
JPD PRIDE 46S 1372068
ALLENOCROFT PRIDE 05 150P

CUDLOBE MILLENNIUM 46K
CUDLOBE LADY DI 28F
ALLENOCROFT ILLINI 01 144J
ALLENOCROFT PRIDE 01 126G

BW: 87 lbs. Adj. 205D: 888 lbs.

EPDs: BW: +4.7 32% WW: +61 24% YW: +100 16%

Milk: +22 17% TM: +53 YG: +39 16% CE: -6.0 26% MCE: +3.0 15%

JPD Alliance 6W is a smooth made thick young herd sire who at the side of his young dam produced quite a show record including being named Grand Champion Female at Orangeville and 6W won his class at a number of fall shows. A top son of KMK Alliance 6595 187 out of a fabulous young cow.



TJF Freedom 172U



Herdsman Award at Showdown 2010 won by Chalmers & Hargraves

33 J P D PRIDE 7X

Female JPDE 7X 1560229 January 14 2010

SITZ TRAVELER 8180 NHF AMF
S A V FINAL ANSWER 0035 NHF AMF 1061938
S A V EMULOUS 8145

CUDLOBE MILLENNIUM 6M
J P D PRIDE 46S 1372068
ALLENOCROFT PRIDE 05 150P

G D A R TRAVELER 71 NHF AMF
SITZ EVERELDA ENTENSE 1137
BON VIEW BANDO 598 AMF
S A V SKY EMULOUS 2124

CUDLOBE MILLENNIUM 46K
CUDLOBE LADY DI 28F
ALLENOCROFT ILLINI 01 144J
ALLENOCROFT PRIDE 01 126G

BW: 74 lbs.

This is the first heifer out of Evan's 46S Pride cow who won Orangeville last year with her bull calf at side. She is a powerful, easy doing cow and this heifer has been stamped by her. Sired by Final Answer and impressive, she will be shown this year. Be sure to check out Orangeville results.



Lot 33 - J P D Pride 7X

34 JPD BLACK JILT IIX

Female JPDH 11X 1560064 January 21 2010

SITZ TRAVELER 8180 NHF AMF
S A V FINAL ANSWER 0035 NHF AMF 1061938
S A V EMULOUS 8145

ALLENOCROFT BRUNO 02 154L
J P D BLACK JILT 3U 1430378
J P D JILLIAN DLC 36N

G D A R TRAVELER 71 NHF AMF
SITZ EVERELDA ENTENSE 1137
BON VIEW BANDO 598 AMF
S A V SKY EMULOUS 2124

STEVENSON BRUNO 561G NHF
ALLENOCROFT JENNY 01 131H
GLEN ISLAY BONDSMAN 12J
J.P.D. JILLIAN DLC 7G

BW: 84 lbs.

EPDs: BW: I+1.3 5% WW: I+50 5% YW: I+84 5%

Milk: I+20 5% TM: I+45 YG: I+35 5% CE: I+5.0 5% MCE: I+7.0 5%

This heifer calf is the first calf of the 3U heifer shown last year as a yearling and is also sired by Final Answer. She is John's pick of the heifer calves this year. This family of females has made a great impact on the JPD herd and continues to not disappoint. This calf will also be shown this year. Look for us at Orangeville.



Lot 34 - JPD Black Jilt IIX

35 JPD JILLIAN DLC 16X

Female JPDH 16X 1560068 March 02 2010

KMK ALLIANCE 6595 187 NHF AMF
HAWKE POWERSTROKE 216T 1395717
J P D MAID MARION 17P

GLEN ISLAY BONDSMAN 12J
J P D JILLIAN DLC 36N 1149749
J.P.D. JILLIAN DLC 7G

SITZ ALLIANCE 6595 NHF AMF
G A R EXT 916 AMF
GLEN ISLAY BONDSMAN 12J
ALLENOCROFT MISS MARION 03 113H

TC STOCKMAN 365
GLEN ISLAY BARBARA 14E
BANNER SUN 23C
LLB BLACK JILT 301D

BW: 72 lbs.

EPDs: BW: I+4.0 5% WW: I+33 5% YW: I+60 5%

Milk: I+17 5% TM: I+33 YG: I+28 5% CE: I+0.0 5% MCE: I+5.5 5%

This young heifer is out of 36N, which is also the grandmother of 11X and definitely one of Lori's favourites. Sired by Hawke Powerstroke 216T. Her maternal lines are sure to make her an asset to any herd.



Lot 35 - JPD Jillian DLC 16X



Lot 36A - JPD Bismarck 8X



Lot 37 - Allencroft Blackbird 05 29W

36 BEA OF TULLAMORE 37U

Female GWJ 37U 1467053 February 09 2008

TC FREEDOM 104 NHF AMF
SOUTHLAND FULL THROTTLE 15R 1273929
SOUTHLAND DUCHESS 15N

Q A S TRAVELER 23-4 NHF AMF
DIAMOND D BEA 221J 975616
DIAMOND D BEA 121E

CONNEALY FOREFRONT NHF AMF
T C RUBY 9095
DMM FLEX 6L
OMEGA FRENCH DUCHESS

BAND 234 OF IDEAL 3163
Q A S BLACKBIRD EVE 601 1
BLACK MEADOWS CASEY 25B
BLACK VELVET BEA 21A

BW: 84 lbs. Adj. 205D: 506 lbs.

EPDs: BW: +3.7 35% WW: +35 24% YW: +67 13%

Milk: +23 13% TM: +41 YG: +32 13% CE: +0.0 23% MCE: +5.0 10%

Bea of Tullamore 37U born Feb. 9/08 was purchased at the futurity sale by my Dad. She is a great two year old with a fantastic bull calf at side. It is not difficult to see that her milk number is a +23 when you see the calf.

Exposed to TJF Freedom 172U on Apr. 5/10 and observed bred on April 28/10.

36A JPD BISMARCK 8X

Male JPDH 8X 1560061 January 16 2010

SIRE: S A V BISMARCK 5682 NHF AMF 1369591

BW: 84 lbs.

EPDs: BW: +1.9 5% WW: +46 5% YW: +84 5%

Milk: +24 5% TM: +47 YG: +38 5% CE: +5.5 5% MCE: +8.0 5%

Sired by S A V Bismarck 5682, JPD Bismarck 8X is halter broke and easy to handle and would make an excellent herd sire prospect.

37 ALLENCROFT BLACKBIRD 05 29W

Female IGV 29W 1494913 February 07 2009

YOUNG DALE REAL DEAL 18K
YOUNG DALE TOUCH DOWN 36M 1119460
PAT LADY SANDRA 2C

APEX STOCKMAN 061
MERIT HEROINE 8043
RONAN TEX 56A
DOUBLE J SANDRA 452Y

TC STOCKMAN 2164 AMF
ALLENCROFT BLACKBIRD 09 119L 1067383
BIEVER BLACKBIRD 4A

TC STOCKMAN
TC RUBY 5087
ARDA GENERAL 51Y
BIEVER MS BLACKBIRD 4Y

BW: 89 lbs. Adj. 205D: 635 lbs.

EPDs: BW: +4.7 36% WW: +38 26% YW: +67 19%

Milk: +15 20% TM: +34 YG: +29 19% CE: -2.0 25% MCE: +2.0 15%

Allencroft Blackbird 05 29W born Feb. 7/09 is out an Allencroft Blackbird and sired by Young Dale Touch Down. This heifer will shine as a cow.

Bred May 8/10 to SAV Final Answer -1061938-.

Exposed to JPD Alliance 6W -1521173- after May 13/10.



S A V Bismarck 5682 - Sire of Lot 36A



John & Pat's 45th Wedding Anniversary - John, Pat & grandchildren

45 Years!

Domaine Trevallon

DOMAINE TREVALLON

Marc Rioux & Valerie Caron
839 rang 9 east, Palmarolle, QC J0Z 3C0
Ph: 819-787-3967 val.marc@tlb.sympatico.ca

We are very pleased to consign again at the G.A.P. Sale. This year we will offer you progeny that comes from the heart of our program. A special mention to our dearest friends, John & Pat Duivenvoorden who dispersed their entire herd last fall, both of you can now take the time to enjoy life with your wonderful family. Lori and the kids will carry on the fabulous work you have done in raising such a prolific Angus herd. Be sure the tradition will also keep on somewhere in those Rocky Mountains, Northern Quebec and other places across Canada.

Marc and Val



Val, Marc, Simon & Maxim

I LOCUST GROVE WORLD ANGUS 7W

Male WTM 7W 1492109 January 19 2009

O C C EMBLAZON 854E NHF AMF
B C C-J C L EMBLAZON 038-287 1197064
B C C 1531 ELDORENE 826-038

D H D TRAVELER 6807 NHF AMF
DIXIE ERICA OF C H 1019
ROCKN D AMBUSH 1531 NHF AMF
KAPP ELDORENE ERICA ND 826

RITO 9FB3 OF 5H11 FULLBACK NHF AMF
LOCUST GROVE BLACKBIRD 6T 1394645
LOCUST GROVE CT BLACKBIRD 2F

LEACHMAN FULLBACK
RITA 5H11 OF 1B14 RITO 9J9
CENTURY TOUCHSTONE 131
DODSWOOD HI BLACKBIRD 73A

BW: 84 lbs. Adj. 205D: 774 lbs. Adj. 365D: 1238 lbs.
EPDs: BW: +2.6 29% WW: +40 22% YW: +75 16%
Milk: +13 14% TM: +33 YG: +35 16% CE: +1.0 25% MCE: +5.0 12%

Locust Grove World Angus 7W is a promising young herd sire bred by Tom & Judy McDonald. He is sired by the BC CJCL Embazon, a top son of the legendary OCC Emblazon, also note the Ambush, Fullback and Touchstone breeding, every sire on the fourth line was a highly regarded A.I. sire.



Lot 38 - JPD Blackcap 17M

38 J P D BLACKCAP 17M

Female JPDH 17M 1129511 ET January 23 2002

TC STOCKMAN 365
HYLINE PARADIGM 238 1033831
HYLINE LUCY 442

TC STOCKMAN
TC PRIDE 0014
HYLINE TRAVEL AGENT NHF AMF
HYLINE LUCY 549

V D A R NEW TREND 315 NHF AMF
ALLENCROFT BLACKCAP 03 54B 743873
ALLENCROFT BLACKCAP 03 34W

A A R NEW TREND
V D A R LUCY 704
QLC WINCHESTER
ALLENCROFT BLACKCAP R 203

BW: 84 lbs. Adj. 205D: 638 lbs.
EPDs: BW: +2.6 32% WW: +39 26% YW: +69 20%
Milk: +19 31% TM: +39 YG: +29 20% CE: +5.0 23% MCE: +5.0 21%

It is with mixed emotions that we are parting with this great producer, who now carries the status of Elite Cow at the Canadian Angus Association. 17M was an ET calf of Hyline Paradigm 238 and was a cornerstone cow family at JPD Angus. In fact, 17M was one of John's favorite all time cows. The dam, Blackcap 54B was an outstanding cow who left a great set of progeny that continue to stamp out top progeny in many well respected herds. At the 2007 GAP Sale, Joe Bandura bought a sister and we could not resist buying the feature lot, JPDH 10M for \$4,500. Over the years we had the chance to purchase more of these 54B females, and they have never let us down. We feel that this cow could be an endless opportunity to carry outcross genetics into your herd. Don't miss her!!

Exposed: May 15 to August 15, 2010 to Locust Grove World Angus 7W -1492109-.

38A TREV BLACK CRISTO 27X

Male TRV 27X 1546093 March 26 2010

S A NEUTRON 377 NHF AMF
TREV CRISTO 4U 1429719
J P D BLACKCAP 5R

S A F NEUTRON NHF AMF
S A QUEEN SUSAN 102
CUDLOBE MILLENNIUM 6M
J P D BLACKCAP 10M

HYLINE PARADIGM 238
J P D BLACKCAP 17M 1129511
ALLENCROFT BLACKCAP 03 54B

TC STOCKMAN 365
HYLINE LUCY 442
V D A R NEW TREND 315 NHF AMF
ALLENCROFT BLACKCAP 03 34W

BW: 91 lbs.

∞ Georgian Angus Premier Sale ∞

Domaine Trevallon



Lot 39A - Trev Blackcap Power 17X

39 TREV BLACKCAP FREEDOM 5T

Female TRV 5T 1370152 January 16 2007

CONNEALY FOREFRONT NHF AMF
TC FREEDOM 104 NHF AMF 1169224
T C RUBY 9095

GLEN ISLAY BATTLE CRY 27L
HARPREY BLACKCAP 29P 1226409
J P D BLACKCAP 14K

CONNEALY FRONTLINE NHF AMF
EILEEN HEARTLAND CONANGA6443
TC STOCKMAN 365
TC RUBY 4068

HDAF BATTLECRY 3G OF 24A
GLEN ISLAY MAGGIE 6F
ALLEN CROFT POWER DRIVE 01 73B
ALLEN CROFT BLACKCAP 02 62B

BW: 81 lbs. Adj. 205D: 657 lbs. Adj. 365D: 1007 lbs.
EPDs: BW: +3.0 35% WW: +46 26% YW: +83 25%
Milk: +17 20% TM: +40 YG: +38 25% CE: +4.0 27% MCE: +8.0 17%

A young solid cow in the prime of her life. She is a daughter of the popular A.I. bull TC Freedom 104. She is a moderate framed, easy fleshing and good uddered female. She lost her set of twins last year but got rebred right away and now has a beautiful heifer calf at foot sired by Conneally Power One. Her dam, Harprey Blackcap 29P is one of our most precious cows that John bought for us a couple years ago. We are retaining a daughter of 29P and this is why we can offer 5T at the GAP sale.

5T was shown successfully as a calf and as a yearling. She has a nice temperament and is doing a great job of raising her calf. Note also her good set of EPDs. We feel this young cow has the maternal make-up to be a great pasture cow of the future.

Exposed: May 15 to August 15, 2010 to Locust Grove World Angus 7W -1492109-. Observed Bred May 24, 2010.

39A TREV BLACKCAP POWER 17X

Female TRV 17X 1546084 February 13 2010

SIRE: CONNEALY POWER ONE NHF AMF 1404988
BW: 88 lbs.



Lot 40 - Trev Bessie 2X

40 TREV BESSIE 2X

Female TRV 2X Applied January 2 2010

S A V FINAL ANSWER 0035 NHF AMF
S A V PIONEER 7301 NHF AMF 1481377
S A V BLACKBIRD 5297

C A FUTURE DIRECTION 5321 AMC NHC
AJ'S BESSIE 72M 1091534
AJ'S BESSIE 31K

SITZ TRAVELER 8180 NHF AMF
S A V EMULOUS 8145
BOYD NEW DAY 8005 NHF AMF
S A V BLACKBIRD 1082

G A R PRECISION 1680 NHC AMC
C A MISS POWER FIX 308 AMF
CONNEALY FRONTLINE NHF AMF
AJ'S 4S BESSIE VAL 36C

BW: N/A

This is a very good heifer calf out of the popular young sire, SAV Pioneer. TRV 2X is so complete in her structure, length of body and is deep ribbed with a sharp angular front end that will definitely make her very competitive show day.

Her dam is a tremendous cow that is always weaning stunning calves. Last year was not any different with her heifer calf TRV 8W selling to Greg Hill, Ontario. She finished among the top of her class at the Royal Winter Fair and was named recently Reserve Champion at a major junior show.

This stylish young Lady has the potential to do it all, become a great brood cow and very competitive in the show ring. Look at her numbers.

41 TREV BESSIE EMBLAZON 10X

Female TRV 10X 1546079 January 17 2010

O C C EMBLAZON 854E NHF AMF
B C C-J C L EMBLAZON 038-287 1197064
B C C 1531 ELDORNE 826-038

G A R GRID MAKER NHF AMF
TREV GRID BESSIE 18T 1379562
AJ'S BESSIE 72M

D H D TRAVELER 6807 NHF AMF
DIXIE ERICA OF C H 1019
ROCKN D AMBUSH 1531 NHF AMF
KAPP ELDORNE ERICA ND 826

G D A R TRAVELER 044 NHF AMF
G A R PRECISION 2536 NHF AMC
C A FUTURE DIRECTION 5321 NHC AMC
AJ'S BESSIE 31K

BW: 90 lbs.

Here is an outstanding, powerful mid January heifer calf out of Genex A.I. bull, Emblazon 038-287. She is thickly made but fancy on the front end. She comes from the same cow family as TRV 2X, Lot in the sale. Take a good look at this promising show heifer.



Lot 41 - Trev Bessie Emblazon 10X

FIRST LINE ANGUS

Brian & Kim Whitwell
560 First Line, RR 3, Hagersville, ON N0A 1H0
Ph: 905-768-5148 whitbk@xplornet.com

We are extremely pleased to be invited back to participate in the 2010 GAP Sale and would like to thank all the organizers for including us in such a top quality sale.

The animals that we have selected for this sale truly speak for themselves, and we are confident in saying that they are some of the best animals walking off First Line. Please take the time to check out our Pioneer and Heritage calves being offered this year. Our cattle represent a variety of top sires with a common denominator of soundness, depth of body and high performance.

We would like to thank previous buyers of First Line cattle and wish them continuous success in the Angus business. We feel that these offerings will be constructive building blocks and great additions to any herd.

We look forward to seeing you at Harprey Angus Farms in September!

If you have any questions, please do not hesitate to call.



Jerret, Kim, Brian, Kasey & Gavin Whitwell

Sincerely,

Brian, Kim, Gavin, Jerret, and Kasey Whitwell

J

SAV HEAVY HITTER 6347

Male IMP 6347S 1493580 March 06 2006

SITZ TRAVELER 8180 NHF AMF
SAV 8180 TRAVELER 004 NHF AMF 1421804
BOYD FOREVER LADY 8003

SAF 598 BANDO 5175 AMF
SAV BESSIE HEIRESS 1184 13845267
SAV BESSIE HEIRESS 8067

G D A R TRAVELER 71 NHF AMF
SITZ EVERELDA ENTENSE 1137
A A R NEW TREND
S V F FOREVER LADY 57D

BON VIEW BANDO 598 AMF
SAF ROYAL LASS 1002
N BAR EMULATION EXT NHF AMF
SAV BESSIE HEIRESS 6091

EPDs: BW: +5.9 52% WW: +48 41% YW: +90 25%
Milk: +31 22% TM: +55 YG: +42 25% CE: +0.0 35% MCE: +5.0 20%

SAV Heavy Hitter was the \$57,500 top selling bull from the 2007 SAV Sale, a powerful phenotype and performance bull, loads of muscle, dimension and power.



SAV Heavy Hitter 6347

K

SALT CREEK BOB 7003

Male IMP 703T 1487638 AMF January 25 2007

HOFF LIMITED EDITION SC 594 AMF
HOFF INSIGNIA 697 224 14848281
HOFF SUNSHINE S C 33S6

HOFF HEAD OF THE CLASS SC534
HOFF BLACKBIRD S C 244 939 13399741
HOFF TRENDY S C 779

HOFF CHARGER S C 242 NHF AMF
HOFF BOSS LADY S C 3V9
S V F BANDOLIER
HOFF HUSKERS GIRL S C 490

AMDAHLS FIRST CLASS 12
HOFF ULTRESS S C 716
V D A R NEW TREND 315 NHF AMF
HOFF MISS DALLAS OF S C 418

Salt Creek Bob 7003 created a lot of excitement at the Denver National Western Stock Show last year, a stout made, thick, correct herd sire that is an outcross to most Angus cattle, top Hoff breeding on both sides of his pedigree.



Salt Creek Bob 7003



Lot 42 - Eastondale Betsy 55'07

42 EASTONDALE BETSY 55'07

Female VK 55T 1372350 February 13 2007

CAR ICEBERG 056
DRYLAND ICEBERG 231 1141563
 GDAR FOREVER LADY 9136

B.B.A.R. HERO 1267
EASTONDALE BETSY 108'03 1177508
 EASTONDALE BETSY 43'99

LOST LAKE ICEBERG 3438
 C A R LADY TRACKER 620
 G D A R ROYCE 131
 G D A R FOREVER LADY 223

HERO 6267 OF R R 2418
 B.B.A.R. LADY MONOGRAM 167'99
 CONNEALY KINCAID
 DM BETSY 31W

BW: 100 lbs. Adj. 205D: 686 lbs. Adj. 365D: 904 lbs.
 EPDs: BW: +5.4 34% WW: +49 25% YW: +79 23%
 Milk: +16 16% TM: +41 YG: +30 23% CE: -4.0 23% MCE: +2.0 11%

I purchased this heifer from Dale Easton as a bred heifer to Leachman Right Time, and she dropped a nice heifer calf. So, now I have a really good bred heifer out of Betsy and she has another good heifer calf at foot. Sometimes you need to sell the good ones. 55T is a very straight, correct daughter of Dryland Iceberg 231 and the Hero and Connealy Kincaid bulls are on the dam side.

Bred March 26, 2010 to Heavy Hitter 6347 -1493580- Due January 2, 2011.

42A FIRST LINE BETSEY 13X

Female FLA 13X 1546949 January 13 2010

SIRE: S A V HERITAGE 6295 NHF AMF 1481376
 BW: 90 lbs.

Betsey 13X is the typical Heritage heifer calf. She is very long sided, good set of feet and legs, muscle shape and femininity. These Heritage calves are of good disposition and are very pleasant to work with. This heifer is eligible for the Central Ontario Angus \$250 rebate if successfully shown as a 4-H project.



Lot 43 - Marie of First Line 9S

43 MARIE OF FIRST LINE 9S

Female FLA 9S 1348804 January 17 2006

O C C EMBLAZON 854E NHF AMF
B C C-J C L EMBLAZON 038-287 1197064
 B C C 1531 ELDORENE 826-038

FIRST LINE CONSORT 8H
FLA MARIE 13K 1020692
 FIRST LINE MARIE 7F

D H D TRAVELER 6807 NHF AMF
 DIXIE ERICA OF C H 1019
 ROCKN D AMBUSH 1531 NHF AMF
 KAPP ELDORENE ERICA ND 826

RIVERSTOWN CONSORT 34A
 FIRST LINE QUEEN 2E
 RIVERSTOWN CONSORT 34A
 FIRST LINE MARIE 14W

BW: 82 lbs. Adj. 205D: 622 lbs.
 EPDs: BW: +4.1 31% WW: +35 21% YW: +62 14%
 Milk: +9 18% TM: +27 YG: +27 14% CE: +0.0 24% MCE: +3.0 13%

Marie 9S is a very complete young female, right size, right shape, very feminine and a nice tight udder that gets the job done. Her bull calf by Networth sold for \$2,200 off the farm, her last year's bull calf, also by Networth sold in the Pick of The Crop Bull Sale for \$2,500, and her calf at foot is her best calf to date.

Bred May 31, 2010 to Heavy Hitter 6347 -1493580- Due March 9, 2011.

43A FIRST LINE PETERBUILT 27X

Male FLA 27X 1546957 February 13 2010

FIRST LINE PETERBUILT 3T 1397500
 BW: 82 lbs.

This bull calf is packed full of performance. He is longer spined than his brothers or his dam, but has all the correctness of his dam. His sire First Line Peterbuilt 3T was competitively campaigned for two years and contended in the strong 2 year old class at WAF last summer.



Lot 42A - First Line Betsy 13X



Lot 43A - First Line Peterbuilt 27X



Lot 44 - Glen Islay Pride 6R

44 GLEN ISLAY PRIDE 6R

Female JPC 6R 1258861 January 13 2005

GLEN ISLAY BLUE LABEL 27G
OAK MANOR BLUE CHIP 3L 1084222
LADY MASTER OF MARDON 068B

GLEN ISLAY DAQUANTAE 31H
WINDRIDGE PRIDE 5N 1231868
GLEN ISLAY PRIDE 11F

R R SCOTCHCAP 9440 NHF AMF
GLEN ISLAY PRIDE 23Y
GLEN ISLAY MASTERPIECE 2Z
LADY LADMERE OF MARDON 097W

R R DAQUANTAE 789E NHF AMF
GLEN ISLAY ERICA 23E
PAPA EQUATOR 2928 NHF AMF
GLEN ISLAY PRIDE 23Y

BW: 74 lbs. Adj. 205D: 626 lbs.
EPDs: BW: +2.2 33% WW: +37 21% YW: +66 5%
Milk: +20 16% TM: +39 YG: +29 5% CE: +2.0 23% MCE: +5.0 9%

Pride 6R is a smaller framed cow with an almost perfect phenotype and you would expect no less with all the sires represented in her pedigree. Bred May 15, 2010 to Salt Creek Bob 7003 - 1487638- Due February 21, 2011.

44A FIRST LINE G.I. PRIDE 34X

Female FLA 34X 1546963 March 16 2010

SIRE: S A V HERITAGE 6295 NHF AMF 1481376
BW: 83 lbs.

This heifer calf by Heritage has added a little more length of spine and a touch of frame than what her mother has. 34X is very correct with a good disposition. This heifer is eligible for the Central Ontario Angus \$250 rebate if successfully shown as a 4-H project.



Lot 45 - FLA Miss World 24R

45 FLA MISS WORLD 24R

Female FLA 24R 1274769 April 13 2005

BALMORAL'S ENCORE 4K
BLW BALMORALS ENCORE 7M 1129714
QUEEN OF FIRST LINE 2K

ALBERDA TRAVELER 416 NHF AMF
FIRST LINE MISS WORLD 4M 1105053
FLA MISS WORLD Y2K 1K

BC BEAUTYS ENCORE 145
FIRST LINE MARIE 9D
P S POWER PLAY
QUEEN OF FLA 17F

DHD TRAVELER 6807 NHF AMF
ALBERDA QUEEN KIMBERLY 222
B C BEAUTYS ENCORE 145
FIRST LINE MISS WORLD 13C

BW: 91lbs. Adj. 205D: 634lbs.
EPDs: BW: +3.3 31% WW: +37 20% YW: +78 17%
Milk: +15 14% TM: +34 YG: +41 17% CE: +1.0 22% MCE: +2.0 9%

Miss World 24R is a deep bodied, massive female that is typical of this cow family. All which started from the sire of the great grandam 13C which was GT Maximum. Kasey successfully showed 24R as a 4-H project and in the open shows, placing 2nd at the 2006 RAWF and 3rd at the Agribition. Last year Kasey showed 24R's first daughter by Rock Solid successfully as her 4-H project.

Bred to SAV Heritage 6295 -1481376- April 8, 2010 - Due January 15, 2011.

45A FIRST LINE MISS WORLD 25X

Female FLA 25X 1546956 February 6 2010

S A V PIONEER 7301 NHF AMF 1481377
BW: 84 lbs.

This will be one of the first Pioneer heifer calves offered for sale and she is a real good one. She is long bodied, deep ribbed, great muscle shape and thick topped. This heifer is eligible for the Central Ontario Angus \$250 rebate if successfully shown as a 4-H project.



Lot 44A - First Line G.I. Pride 34X



Lot 45A - First Line Miss World 25X



Lot 46 - First Line G.I. Pride 38W

46 FIRST LINE G.I. PRIDE 38W

Female FLA 38W 1489993 March 21 2009

HYLINE RIGHT TIME 338 NHF AMF
BROCKHILL 27S 338 1349144
EASTONDALE BLACKBIRD 4'01

OAK MANOR BLUE CHIP 3L
GLEN ISLAY PRIDE 6R 1258861
WINDRIDGE PRIDE 5N

LEACHMAN RIGHT TIME AMF
HYLINE PRIDE 265
STEVENSON BRUNO 561G NHF
M DOUBLE B BLACKBIRD 4C
GLEN ISLAY BLUE LABEL 27G
LADY MASTER OF MARDON 068B
GLEN ISLAY DAQUANTAE 31H
GLEN ISLAY PRIDE 11F

BW: 72 lbs. Adj. 205D: 640 lbs.
EPDs: BW: +2.2 5% WW: +38 5% YW: +70 5%
Milk: +22 5% TM: +41 YG: +32 5% CE: +3.0 5% MCE: +3.5 5%

Pride 38W is very much like her mother with just a little more depth of rib. Sired by Brockhill 27S 338 the likes of Right Time and Bruno makes for a very attractive pedigree.

Bred May 24, 2010 to SAV New Year 5320 -1405022- - Due March 2, 2011



S A V Heritage 6295

L S A V HERITAGE 6295

Male IMP 6295S 1481376 NHF AMF March 01 2006

CAR TRACKER 904
CAR DUKE 104 13925076
C A R MISS RAINDANCER 421

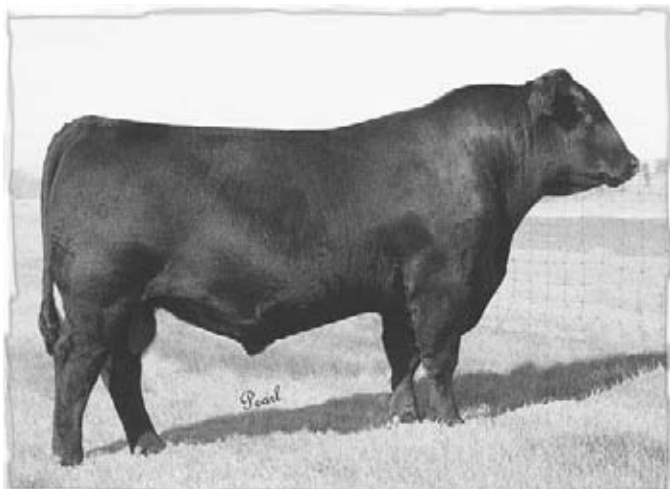
S A V 8180 TRAVELER 004 NHF AMF
S A V BLACKCAP MAY 4136 14739095
S A V MAY 2397

C A R TRACKER 614
LADY NEW TREND 027 C A R
G D A R RAINMAKER 340
C A R LADY 011 RITO 245
SITZ TRAVELER 8180 NHF AMF
BOYD FOREVER LADY 8003
S A F 598 BANDO 5175 AMF
S A V MAY 7238

EPDs: BW: +6.0 84% WW: +72 76% YW: +120 26%
Milk: +28 20% TM: +64 YG: +48 26% CE: -2.0 51% MCE: +4.0 19%

SAV Heritage was the lead off bull in the 2007 SAV Sale. He was the \$45,000 co-second top selling bull. He possesses high weaning and yearling weight EPDs.

His dam is by the great breeding Traveler 004 who has progeny including such greats as SAV Brave 8320, top selling bull in the SAV 2009 Sale to ABS. This is the same cow line that produced Density, Providence, Net Worth and Brilliance.



S A V New Year 5320

M S A V NEW YEAR 5320

Male IMP 5320R 1405022 NHF AMF March 07 2005

A A R NEW TREND
BOYD NEW DAY 8005 NHF AMF 994200
S V F FOREVER LADY 57D

S A F 598 BANDO 5175 AMF
S A V MADAME PRIDE 1093 13845186
S A V MADAME PRIDE 8264

V D A R SHOSHONE 548
DONNA A A R 74
LEACHMAN RIGHT TIME AMF
S V F FOREVER LADY 1128

BON VIEW BANDO 598 AMF
S A F ROYAL LASS 1002
LEACHMAN RIGHT TIME AMF
S A R CRUZS PRIDE 8597

EPDs: BW: +1.1 80% WW: +54 71% YW: +106 57% Milk: +29 24%
TM: +56 YG: +51 57% SC: +0.03 33% CE: +11.0 52% MCE: +8.0 22%

SAV New Year was the \$62,500 third top selling bull in the 2006 SAV Sale, his dam has produced thirty-four progeny averaging \$7875 in the past SAV Sales.

HEATHERLEA ANGUS

Gordon & Pat McArthur
Don & Melinda McArthur
17049 Winston Churchill Blvd, Caledon, ON L7K 1J1
PH: 519-927-5902 clm@explornet.com

We are delighted to be a part of the G.A.P. Sale 2010 and we would like to thank the Hargrave Family for their wonderful hospitality.

The future of the Angus has never looked better. The Canadian Angus Tag Program has helped in part with this demand. The program provides marketing benefits for both the commercial and purebred producer. The females we present in this year's sale are from strong, reliable productive cow families that attest to the longevity and numerous positive traits of the Angus breed.

Don, Melinda, Pat and I look forward to seeing you at the sale.

Gord, Pat, Don and Melinda



The McArthurs

N SHEIDAGHAN IDEAL 13W

Male VMF 13W 1525660 February 18 2009

PAIRIELANE IDEAL 7451-2014
SANDY BAR IDEAL 19S 1310282
RON'S DELIA 22H

IDEAL 7451 OF 8103 4465 NHF AMF
PAIRIELANE MAX DUCHESS 3050
SANDY BAR RAINMAKER 58F
RON'S DELEGATE DELIA 32W

VALLEY BLOSSOM ADVANTAGE 732M
SANDY BAR DELIA 28T 1371737
SANDY BAR DELIA 140K

TC ADVANTAGE NHF AMF
SANDY BAR TILDA 742K
RON'S BARDOLINE 78H
RON'S DELIA 22H

BW: 82 lbs. Adj. 205D: 737 lbs.
EPDs: BW: +2.8 33% WW: +50 21% YW: +85 8%
Milk: +17 9% TM: +42 YG: +35 8% CE: -2.0 24% MCE: +1.0 6%

Sheidaghan Ideal 13W was selected from the famous Short Grass Bull Sale where he was one of the very top bulls.

His tabulation contains the best of Sandy Bar and Prairieland breeding combining the blood lines of Ideal 7451, Rainmaker, TC Advantage and Bardolene.

This uniquely bred bull is now the Junior herd sire at Heatherlea Angus.



HF Progress 20K - Service Sire to Lot 47

47 HEATHERLEA MAGGIE 13W

Female GEM 13W 1487913 January 31 2009

HF FREE WHEELER 191N
HF BEAMER 125S 1331751
HF MISTRESS 6M

TC FREEDOM 104 NHF AMF
DURALTA 14C ECHO 32E
GREENS PREMIUM 7578
EXAR MISTRESS 9481

BR MIDLAND NHF AMF
HEATHERLEA MAGGIE 31P 1230158
GLEN ISLAY MAGGIE 6F

TWIN VALLEY PRECISION E161 NHC AMF
BR ROYAL LASS 7036-19
R R SCOTCHCAP 9440 NHF AMF
LADY ANGUS OF MARDON 174Y

BW: 78 lbs.
EPDs: BW: +1.0 33% WW: +38 23% YW: +70 13%
Milk: +14 11% TM: +33 YG: +32 13% CE: +7.0 21% MCE: +8.0 8%

13W is a really sound young Beamer female with lots of broodiness about her. JPC 6F her grandam produced G.I. Battlecry 27L Grand Champion Bull at the Royal Winter Fair. Her grand-sire BR Midland was a very impressive bull and has been used heavily across the nation ever since he became popular at the world renowned Midland Bull Test, MT where he blew his contemporaries away in ultrasound and performance traits. He passes on excellent carcass potential to his calves.

Bred April 30th to H.F. Progress 20K -1026563-.

Exposed to Sheidaghan Ideal 13W -1525660- after May 2nd. Checked safe - 2.5-3 months - July 19th.



Lot 47 - Heatherlea Maggie 13W



Lot 48 - Heatherlea Maggie 18W

48 HEATHERLEA MAGGIE 18W

Female GEM 18W 1489567 February 19 2009

HF FREE WHEELER 191N
HF BEAMER 125S 1331751
 HF MISTRESS 6M

GLEN ISLAY BONDSMAN 12J
GLEN ISLAY MAGGIE 13L 1060546
 GLEN ISLAY MAGGIE 36H

TC FREEDOM 104 NHF AMF
 DURALTA 14C ECHO 32E
 GREENS PREMIUM 7578
 EXAR MISTRESS 9481
 TC STOCKMAN 365
 GLEN ISLAY BARBARA 14E
 GLEN ISLAY NEWTON 2A
 LADY LADMERE OF MARDON 097W

BW: 105 lbs.

EPDs: BW: +5.3 34% WW: +40 23% YW: +67 12%

Milk: +21 11% TM: +41 YG: +27 12% CE: -7.0 22% MCE: +2.0 7%

GEM 18W is a long bodied stylish heifer with lots of potential ahead of her. Her dam was a class winner at the Royal Winter Fair in Toronto.

Bred April 13th to SAF Connection -10836900. Checked safe - 2.5 months - July 19th.



Lot 49 - Heatherlea Barbara 20W

49 HEATHERLEA BARBARA 20W

Female GEM 20W 1489569 February 22 2009

HF FREE WHEELER 191N
HF BEAMER 125S 1331751
 HF MISTRESS 6M

WAR HALL OF FAME 8023 NHF AMF
HEATHERLEA BARBARA 4S 1347164
 HEATHERLEA BARBARA 27P

TC FREEDOM 104 NHF AMF
 DURALTA 14C ECHO 32E
 GREENS PREMIUM 7578
 EXAR MISTRESS 9481
 S A F FAME NHF AMF
 WAR BANDO 6143 598 7005
 GLEN ISLAY DELEGATE 5M
 HEATHERLEA BARBARA 10M

BW: 98 lbs.

EPDs: BW: +5.3 33% WW: +35 23% YW: +69 12%

Milk: +15 9% TM: +33 YG: +34 12% CE: -7.0 22% MCE: +2.0 7%

This deep bodied productive young female will make a great cow. The Barbara family is a 'never miss' line of females and HF Beamer 125S will only add to her production.

Observed bred May 12th to Sheidaghan Ideal 13W -1525660- our new herd sire purchased at the Short Grass Sale. Checked safe 2.5 months - July 19th.



Lot 50 - Heatherlea Maggie 21W

50 HEATHERLEA MAGGIE 21W

Female GEM 21W 1489570 February 23 2009

HF FREE WHEELER 191N
HF BEAMER 125S 1331751
 HF MISTRESS 6M

WAR HALL OF FAME 8023 NHF AMF
HEATHERLEA MAGGIE 13S 1306419
 HEATHERLEA MAGGIE 31P

TC FREEDOM 104 NHF AMF
 DURALTA 14C ECHO 32E
 GREENS PREMIUM 7578
 EXAR MISTRESS 9481
 S A F FAME NHF AMF
 WAR BANDO 6143 598 7005
 BR MIDLAND NHF AMF
 GLEN ISLAY MAGGIE 6F

BW: 105 lbs.

EPDs: BW: +4.6 33% WW: +42 23% YW: +77 13%

Milk: +14 10% TM: +35 YG: +34 13% CE: -4.0 22% MCE: +4.0 8%

This good Beamer heifer has a beautiful profile. A nice clean front end combined with good depth of rib and strong top. A dependable and strong brood cow in the making for sure.

Observed bred May 14th to Sheidaghan Ideal 13W -1525660-. Checked safe 2 months - July 19th.

51 HEATHERLEA MAGGIE 28W

Female GEM 28W 1494203 March 06 2009

HF FREE WHEELER 191N
HF BEAMER 125S 1331751
HF MISTRESS 6M

TC FREEDOM 104 NHF AMF
DURALTA 14C ECHO 32E
GREENS PREMIUM 7578
EXAR MISTRESS 9481

RIVERBEND POWERLINE 0050
HEATHERLEA MAGGIE 3S 1306425
HEATHERLEA MAGGIE 1N

CONNELLY FRONTLINE NHF AMF
LEACHMAN BLACKBIRD 8060
WAR HALL OF FAME 8023 NHF AMF
GLEN ISLAY MAGGIE 13L

BW: 86 lbs.

EPDs: BW: +2.8 34% WW: +47 23% YW: +80 13%

Milk: +22 10% TM: +46 YG: +33 13% CE: +2.0 22% MCE: +8.0 8%

This Maggie heifer will make a great Angus brood cow. Her grandam and great grandam were both class winners at the RWF. Her grandsire, Riverbend Powerline was Supreme Champion over all breeds at Agribition for Hamilton Farms.

Exposed from May 2nd to Sheidaghan Ideal 13W -1525660-. Checked safe - 2.5 months - July 19th.



Lot 51 - Heatherlea Maggie 28W

52 HEATHERLEA LADY 38W

Female GEM 38W 1537954 April 01 2009

HF FREE WHEELER 191N
HEATHERLEA SPOKESMAN 9T 1373171
GLEN ISLAY MAGGIE 6F

TC FREEDOM 104 NHF AMF
DURALTA 14C ECHO 32E
R R SCOTCHCAP 9440 NHF AMF
LADY ANGUS OF MARDON 174Y

BANNER CONCORD 34X
GLEN ISLAY LADY M 20F 870268
LADY JUMBO OF MARDON 263W

BANNER CONCORD 19S
SPEARHEAD FERNETTA 86'82
SIR JUMBO OF MARDON 15P
LADY MODELLER OF MARDON 336S

BW: 105 lbs.

EPDs: BW: +5.6 5% WW: +29 5% YW: +55 5%

Milk: +15 5% TM: +29 YG: +26 5% CE: -11.0 5% MCE: -5.5 5%

April 1st isn't fooling with this good long bodied classy heifer. Lady 38W is out of G.I. Lady M 20F a great cow we purchased from Don Currie nine years ago and is still going strong. 20F has produced very consistently including one heifer that was Reserve Champion Heifer Calf at Royal Winter Fair. Sired by a Free Wheeler bull we kept for a season before being sold to John Herd in New Liskeard.

Exposed from May 2nd to Sheidaghan Ideal 13W -1525660-. Checked safe - 2 months - July 19th.



Lot 52 - Heatherlea Lady 38W



S A F Connection - Service Sire to Lot 50

Sale Information

DjH

Greetings from DjH...

Welcome to the 5th Annual Georgian Angus Premier Sale for the second year held at Harprey Farms and the same six great consignors as last year.

The 2010 Edition has a great set of bred heifers, young cows, fancy heifer calves and herd sire prospects. Our hosts, Harprey Farms have a great set of bred heifers as well as some hand picked show heifer calves and a herd sire prospect. Glen Islay has an outstanding set of bred heifers as well as some show heifer calves and a great Canadian bred Embryo Lot. JPD Angus is now the Chalmers Family with John and Pat still involved but in more of a coaching role. Make sure you check out their very fancy show heifer calves. Marc & Val's consignment is very strong in the bred female department. First Line Angus has a superb set of young cows with exceptional calves at foot. Gordon & Don McArthur have six outstanding heifers featuring the service of their new herd sire selected from the famous Short Grass Sale.

Again each one of these established operations is putting their best foot forward. These six grass roots operations have a reputation of producing functional, hardworking Angus breeding stock, the cattle from this sale will contribute in a very positive way to the Angus breed. Come for the sale but take in the beautiful setting of the Georgian Triangle known for the pristine waters of Georgian Bay, the world's longest freshwater beach, the historic Blue Mountains and the Niagara escarpment. A perfect place for a holiday and the Fifth Annual Georgian Angus Premier Sale.

If any of the consignors, sale staff or Linda or myself can be of assistance in any way regarding this sale please phone. Hope to see you at this fun event.

Yours truly,
Doug & Linda Henderson

DOUGLAS J. HENDERSON & ASSOCIATES LTD.
P.O. Box 5900, Lacombe, AB T4L 1X4 Phone (403) 782-3888 Fax (403) 782-3849

Terms & Conditions

CATTLE INSPECTION: All carry permanent identity tags, corresponding to Sale Lot Numbers. All shall be available for inspection prior to sale.

ALL CATTLE ARE SOLD: Subject to such tests as required for export under regulations of the Health of Animals Branch, Department of Agriculture for Canada - those corresponding to Bureau of Animal Industry requirements.

BREEDING GUARANTEE: All cattle are sound and right, and all with a responsible breeder guarantee of satisfaction. In the event of any unlikely dispute, the regular terms and conditions, standard with the Canadian Aberdeen Angus Association shall apply.

PREGNANCY: Examinations shall have been conducted prior to sale on all serviced females.

ANNOUNCEMENTS: Errors discovered in the catalogue will be corrected by announcements from the auction stand at sale time and such corrections will take precedence over the printed matter in the catalogue.

MAIL BIDS: May be entrusted in complete confidence to any of the Sale Staff listed or to Douglas J. Henderson & Associates Ltd.

HOLDING AND SHIPMENTS: Approximately one week is required for export transfers and other documents to be processed. Export animals will be held at no charge and under excellent care. Joint export shipping arrangements to attain minimum shipping cost will gladly be made by the sale management if instructions to that effect are provided to clerk of the sale when settlement is made.

TERMS OF SALE: Are cash or cheque at par, payable to Clerks of the Sale on Sale Day, unless prior arrangements have been made. U.S. Funds will be accepted at the current rate of exchange. No release will be given until satisfactory settlement has been made. We reserve the right to withhold animals from export shipment for whom payments have not been received prior to departure times.

EVERY ANIMAL sells to the highest bidder and in cases of disputes, the auctioneer's decision will be final.

INSURANCE: Ownership risk to purchaser commences when the Auctioneer's hammer falls. Livestock coverage will be available at the clerk's desk from the appointed representatives on sale day, also from the sale management at any time.

ALL PERSONS who attend the Sale do so at their own risk, and the Owners, Sale Management and Sale Staff assume no liability, legal or otherwise, for property loss or for any accidents that may occur.

Thanks to All
Buyers & Bidders



Heifers at Glen Islay

∞ Georgian Angus Premier Sale ∞