

12th Annual REAL BULLS FOR REAL COWBOYS

Wednesday, December 7, 2011 • Sale: 1:00pm
VJV Auction Mart, Stavely, Alberta, Canada

On Offer 113 LOTS 105 - YEARLING BULLS & 8 - TWO YEAR OLD BULLS

Sales Staff:

Steve Dorrان, Auctioneer (760) 972-7736
Mark Stock, Ringman (306) 678-4811
Dennis Ericson, Ringman (780) 361-9347
Rob Holowaychuk, OBI (780) 916-2628
Bob Toner, OBI (306) 834-8375
Kirk Hurlburt, OBI (306) 222-8210
Luc Noiseux, OBI (450) 776-0997

Special Reps:

Rob Smith, CAA, CEO
David Bolduc, CAA President
Brian Good, CAA Field Rep.
Dave Callaway, Angus World

Sale Headquarters:

Sportsman Motor Inn, Claresholm, AB
(403) 625-3347 • (403) 625-4042
Bluebird Motel, Claresholm, AB 1-800-661-4891

Terms:

Cattle to be settled for sale day, unless arrangements for PURCHASE PLAN have been made. Paper transfer upon full payment

Catalogue Info:

Footnotes on lots reference the dam's previous progeny performance. Sale Lots include weights at time of catalogue printing

Cudlobe Farms

Dyce & Adrianna Bolduc
(403) 549-2228
David & Margaret Bolduc
(403) 549-3833
Box 9, Stavely, AB T0L 1Z0

View the catalogue online at
www.optimalbovines.com
www.cattlemanagement.ca

EPD Explanation:

This year we again have available carcass EPD's. These EPD's are estimated based on CUP (Centralized Ultrasound Processing) data collected on progeny of our cows and herdsires.

CUDLOBE TOTAL 19Y

UGA 19Y JANUARY 10 2011 #1626624
BW: 82LBS. ADJ WW: 771 LBS. OCT 30 WT: 1070

S: TC TOTAL 410 AMF CAF NHF

BOYD ON TARGET 1083 AMF CAC NHF
STEVENSON MONEYMAKER R185 AMF CAF NHF
STEVENSON CLOVA PRIDE L888 AMF NHF

D: CUDLOBE EUGENIE 9U

STEVENSON RAINMAKER 630G
CUDLOBE EUGENIE SB 2J
CUDLOBE EUGENIE 1G

BW	WW	YW	MILK	SC	REA	IMF	FAT
+2.0	+65	+117	+25	+0.24	+0.53	+0.59	+0.003

RIBEYE AREA

INTRAMUSCULAR
FAT (MARBLING)

FAT
(BACKFAT)

Optimal Bovines Inc.

Rob Holowaychuk
#407, 4808 Ross St.
Red Deer, AB T4N 1X5
Ph: (403) 341-5098
Fax: (403) 343-6133
Bob Toner: (306) 834-7385
Kirk Hurlburt: (306) 222-8210
Luc Noiseux: (450) 776-0997
email: o.b.i@shaw.ca
www.optimalbovines.com
www.cattlemanagement.ca



**Sale Day Phones: VJV Auction Mart (403) 549-2120 • Dyce's Cell (403) 625-0981
David's Cell: (403) 625-0499 • Rob (780) 916-2628 • Bob (306) 834-8375**

Welcome



THE FAMILIES OF CUDLOBE WOULD LIKE TO WELCOME YOU TO OUR TWELFTH ANNUAL BULL SALE

Welcome from the Families of Cudlobe...

We are very excited about the set of bulls to sell in our 12th Bull Sale. Real Bulls for Real Cowboys continues to advance on that same original theme.

As more Angus branded beef programs become successful in Canada we feel our program is targeted to give you the best opportunity to be successful with them. Many programs in our industry are concerned with purple on their wall. The purple we like says "Prime" when it's rolled on your carcass at harvest time.

At Cudlobe we are always at the cutting edge of technology examining, evaluating and advancing our breeding program to provide you with the best available genetics in the industry. This year we are able to provide you SNP evaluation using the Igenity Angus specific panel. This gives us a genetic indication on hard to measure traits like feed efficiency and heifer pregnancy. It also provides additional input on performance and carcass traits. If you have any questions about these evaluations on any of the bulls give us a call.

As our program reaches for the sky, we recognize our feet must be on the ground and good feet, udders and functional phenotypes must first and foremost anchor any successful program. If these bulls don't "get er done" it doesn't matter how many numbers they have.

Hope to see you on sale day for some lunch, a visit and a look at the bulls!

The Families of Cudlobe



MAT BOLDUC



DYCE, ADRIANNA, STEVEN, KAITLYNN & KEVIN BOLDUC



Cudlobe Angus
Is Now on
FACEBOOK
Follow Us!!



DAVID, MARGARET & MAT BOLDUC

OBI WELCOME

Welcome to the 2011 Cudlobe Angus Bull Sale. Cudlobe Angus has continuously used the tools available to them through the CAA. Not only using the quantitative tools but also the current Genomics trend. The results are simply breed leading Angus Bulls that are available with great information. This information simply allows the bull buyer the most helpful improvement tools that can be looked at.

This year we have tried to show you, the prospective bull buyer, the status of the Cudlobe Bull Prospects using a bar graph; the average of the Cudlobe Bulls puts them in the absolute upper percentiles of the breed for most all traits that we measure for. Maternal Traits, Performance Traits and most importantly Carcass Traits; you the buyer can focus on the areas of improvement you may want to increase the most. What an Offering!!

What a Program - the commitment on the part of David, Dyce & Families has put a fully developed offering that has allowed their customers to enable their advantage to be at the front of their market. The folks who Retain Ownership of their product through to the end, can best understand their offspring and capitalize best either of the grid or in developing a highly maternal line of bred heifers.

The acceptance of Cudlobe Angus continues to reach international markets, another feature in the Cudlobe Hat Of Life. Cudlobe Angus continue to produce seedstock for Southern Alberta as well as far reaching corners of the Bull Market. Their commitment remains unwavering in the Angus fraternity - their involvement has the Seniors dedicating time, energy and personal expertise to the CAA. Currently David is the CAA President, a position which carries much responsibility.

The next generation, the Juniors have as well been participants; are well versed in the Angus industry and have served on the CJAA Board and Executive. This Country wide participation comes with a serious effort on the Juniors part.

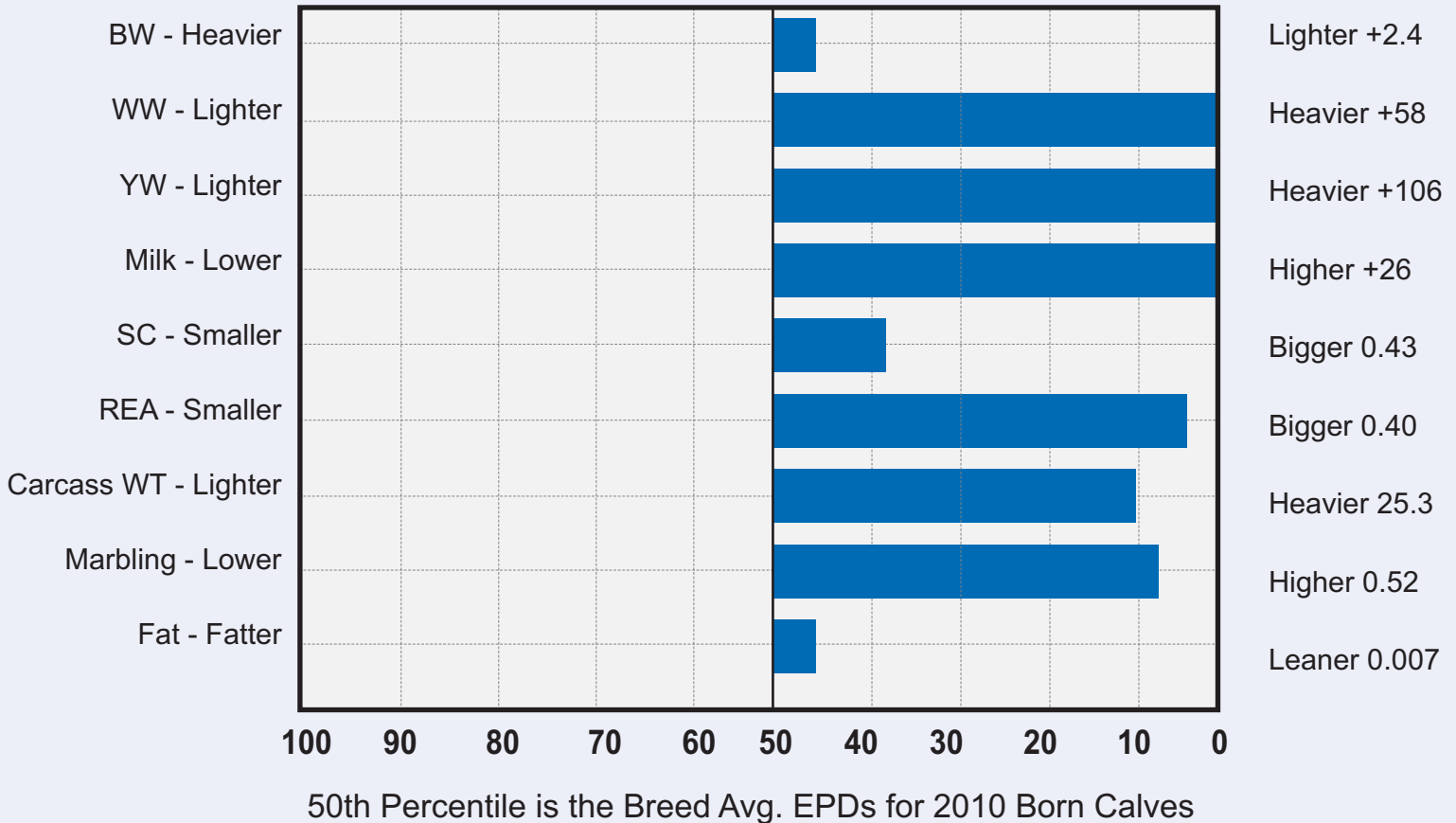
The Bolducs represent a family operation that is a pleasure to work with, carrying a high standard of performance and an even higher standard of service; they should certainly be a source for doing business. AT OBI we believe in the path of information; with being at the sale site before, we are certainly in a position to help with any information or choices you may want to discuss. If you are unable to visit the sale, please do call.

Rob Holowaychuk
OPTIMAL BOVINES INC.

P.S.
Consider the uniqueness of
pedigrees offered AND of
course these are
REAL BULLS FOR REAL COWBOYS
...with great information
PROFILES.

EPD Percentiles for 2011 Cudlobe Bulls

Average (Based on Fall 2011 EPDs Black Angus)



Each Individual Bull that Cudlobe Angus is selling today has its own graph.
Go to www.cdnangus.ca and you can take a look at each of them.

Another Reason Why
Cudlobe Bulls
are **Leading** the Way
in the Angus Industry



Reference Sire



TC TOTAL 410

IMP 0410P JANUARY 16 2004 #1485449

BW: 83LBS. ADJ 205 DAY WT: 852LBS. ADJ 365 DAY WT: 1516LBS.

V D A R NEW TREND 315 AMF NHF CAF
 B/R NEW DESIGN 036 9AMF NHF
 B/R BLACKCAP EMPRESS 76
S: BON VIEW NEW DESIGN 208NHF CAC
 N BAR EMULATION EXT AMF NHF CAF
 BON VIEW ERICA 443
 BON VIW ERICA 1380

G A R PRECISION 1680AMC NHC
 VTWIN VALLEY PRECISION E161 AMF NHC CAF
 W C C BLACKCAP C9
D: TC ERICA EILEEN 2047 NHC AMF
 LEACHMAN RIGHT TIME AMF
 TC ERICA EILEEN 5116
 T C ERICA EILEEN 6006

BW	WW	YW	MILK	SC	REA	IMF	FAT
+3.6	+71	+127	+27	+0.47	+0.68	+0.78	-0.021

Ranks in the TOP 1% for WW, YW, MILK, REA, MARB & CARCASS. Will add an incredible performance boost to any matings. Growth + Maternal + Carcass + Good Looks + Super Disposition = TOTAL. If you like good cattle, you will love TOTALS! They were our top selling sire group last year and again this year, they will be in the running.

CUDLOBE TOTAL 19Y

1

UGA 19Y JANUARY 10 2011 #1626624

BW: 82LBS. ADJ WW: 771 LBS. OCT 30 WT: 1070

S: TC TOTAL 410 AMF CAF NHF

BOYD ON TARGET 1083 AMF CAC NHF
 STEVENSON MONEYMAKER R185 AMF CAF NHF
 STEVENSON CLOVA PRIDE L888 AMF NHF

D: CUDLOBE EUGENIE 9U

STEVENSON RAINMAKER 630G
 CUDLOBE EUGENIE SB 2J
 CUDLOBE EUGENIE 1G

BW	WW	YW	MILK	SC	REA	IMF	FAT
+3.1	+60	+110	+25	+0.55	+0.43	+0.40	+0.006

A big time performance calf. Top 1% for WW and YW.

CUDLOBE TOTAL 5Y

2

UF 5Y JANUARY 3 2011 # 1618449

BW: 75LBS. ADJ WW: 787LBS. OCT 30 WT: 1076

S: TC TOTAL 410

B/R NEW DESIGN 036 AMF NHF CAF
 STEVENSON NEW DESIGN 852K
 STEVENSON ESTELLA 669H

D: CUDLOBE ELINE 11S

STEVENSON EXPEDITION 859K
 CUDLOBE ELINE 42M
 CUDLOBE ELINE 91K

BW	WW	YW	MILK	SC	REA	IMF	FAT
+2.8	+57	+107	+23	+0.24	+0.36	+0.57	-0.009

A total calf with excellent numbers from a cow family that has generated carcass excellence. Grandmother is a 42M who has produced two high sellers. Previous calf to Cross Cattle Co.

CUDLOBE TOTAL 92Y

3

UGA 92Y FEBRUARY 04 2011 #1626678

BW: 79LBS. ADJ WW: 820LBS. OCT 30 WT: 1070

S: TC TOTAL 410 AMF CAF NHF

C A FUTURE DIRECTION 5321 AMC CAF NHC
 BASIN FRANCHISE P142 AMF CAF NHC
 BASIN CHLOE 812L AMF NHF

D: CUDLOBE KATHLEEN 123T NHF

STEVENSON EXPEDITION 859K
 CUDLOBE KATHLEEN 126P
 CUDLOBE KATHLEEN 30D

BW	WW	YW	MILK	SC	REA	IMF	FAT
+2.0	+65	+117	+25	+0.24	+0.53	+0.59	+0.003

2010 Aberdeen son to Niznik Bros.

123T is a picture perfect franchise daughter.

Top 1% for WW & YW and top 5% for REA & Marbling.



CUDLOBE TOTAL 19Y - LOT 1

CUDLOBE TOTAL 59Y

4

UF 59Y JANUARY 23 2011 #1618399

BW: 86LBS. ADJ WW: 726 LBS. OCT 30 WT: 1039

S: TC TOTAL 410 AMF CAF NHF

DAVIS MILLENNIUM 7518
 CUDLOBE MILLENNIUM 46K
 STEVENSON ENCHANTRESS 425F

D: CUDLOBE QUEEN 30M

CUDLOBE BLACK STAR 92X
 CUDLOBE QUEEN 11C
 CUDLOBE QUEEN 43X

BW	WW	YW	MILK	SC	REA	IMF	FAT
+3.9	+58	+102	+23	+0.24	+0.45	+0.40	-0.004

A Total from an elite dam. 30M is a 46K that always delivers.

Reference Sire



CUDLOBE IN FOCUS 5S

UF 5S JANUARY 05 2006 #1333991 NHF
 BW: 68LBS. ADJ 205 DAY WT: 772 LBS. ADJ 365 DAY WT: 1477 LBS.

S A F FAME AMF CAF NHF
 S A F FOCUS OF E R AMF CAF NHF
 G D A R FOREVER LADY 246
S: MYTTY IN FOCUS AMF CAF NHF
 SITZ ALLIANCE 6595 AMF NHF
 MYTTY COUNTESS 906
 BALDRIDGE COUNTESS 357

B/R NEW DESIGN 036 AMF CAF NHF
 BON VIEW NEW DESIGN 1407 AMF CAF NHF
 BON VIEW PRIDE 664
D: CUDLOBE ENCHANTRESS 55M
 PUKETUTU ROBIN 933
 CUDLOBE ENCHANTRESS 47H
 STEVENSON ENCHANTRESS 425F

BW	WW	YW	MILK	SC	REA	IMF	FAT
-4.5	+60	+114	+20	-	+0.43	+0.61	+0.061

This bull is one of the popular bulls in the ORigen Listings. As you can see by his numbers, he ranks in the Top 1% for BW, WW & YW and Top 5% for REA and Marbling. He is a calving ease Giant with explosive growth and carcass numbers. This sire group will impress you. His bull calf progeny have an average of 77 lb BW and Adj 705 on WW. His cow family is the renowned Enchantress Cow Family that is one of our best at home going back to the Enchantress 425F Herd Bull Maker. Co-Owned with Stevenson Angus Ranch & ORigen.



CUDLOBE IN FOCUS UGA 16Y **5**

UGA 16Y JANUARY 9 2011 # 1646691
 BW: 86 ADJ WW: 761 OCT 30: 1115

S: CUDLOBE IN FOCUS 5S 1333991 NHF
 VERMILION YELLOWSTONE AMF NHF CAF
 CUDLOBE YELLOWSTONE 1'03
 CUDLOBE EUGENIE 2J
D: CUDLOBE JEANA 26S
 RITO 2100 G D A R
 RAFTER IR K JEANA 19J
 RAFTER IR ANNIE K JEANA 9E

BW	WW	YW	MILK	SC	REA	IMF	FAT
+2.5	+56	+103	+21	-	+0.11	+0.53	+0.033

2008 859K son to Douglas Lake.
 A great calf to lead off the 5S bulls.
 Thick and deep with a nice carcass profile.
RETAINING 1/3 SEMEN INTEREST.



CUDLOBE IN FOCUS UGA 16Y - LOT 5



CUDLOBE IN FOCUS 35Y - LOT 6

CUDLOBE IN FOCUS 35Y **6**

UF 35Y JANUARY 15 2011 #1618462
 BW: 70LBS. ADJ WW: 840 LBS. OCT 30 WT: 1069

S: CUDLOBE IN FOCUS 5S NHF
 S S TRAVELER 6807 T510 AMF CAF NHF
 S S OBJECTIVE T510 OT26 AMF CAF NHF
 S S MISS RITA R011 7R8 AMF NHF
D: CUDLOBE BONNIE 122W
 CUDLOBE YELLOWSTONE 1'03
 CUDLOBE BONNIE 73T
 CUDLOBE BONNIE 19H

BW	WW	YW	MILK	SC	REA	IMF	FAT
-0.8	+71	+130	+23	-	+0.46	+0.70	+0.025

If numbers mean anything, this calf should be everything.
 122W had exceptional performance as a calf and her first calf is the same.
RETAINING 1/3 SEMEN INTEREST.

CUDLOBE IN FOCUS 8Y

7

JB 8Y JANUARY 13 2011 #1633269
BW: 80LBS. ADJ WW: 784 LBS. OCT 30 WT: 1030

S: CUDLOBE IN FOCUS 5S NHF

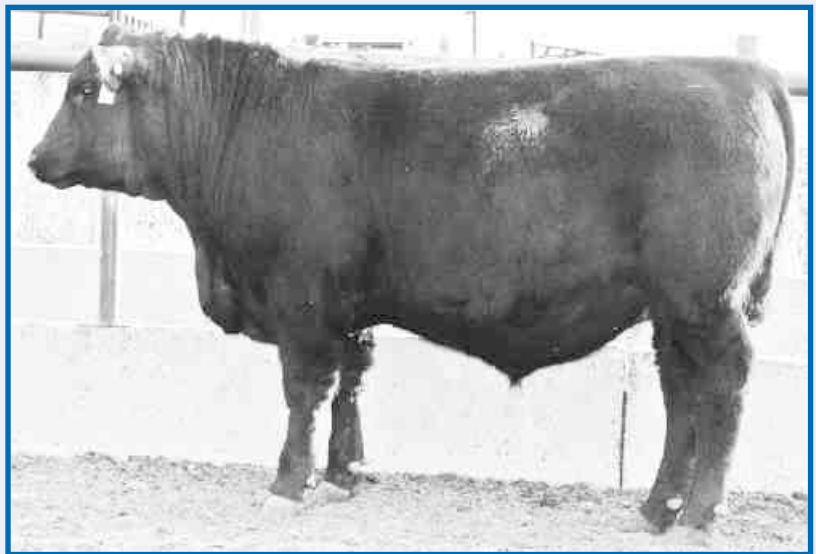
VERMILION PAYWEIGHT J847 AMF CAF NHF
CUDLOBE PAYWEIGHT 8S NHF
CUDLOBE BLACKLASS 38B

D: CUDLOBE QUEEN 5W

VERMILION DATELINE 7078 AMF CAF NHF
CUDLOBE QUEEN 1M
CUDLOBE QUEEN 94E

BW	WW	YW	MILK	SC	REA	IMF	FAT
+1.0	+64	+115	+20	-	+0.40	+0.29	+0.038

This calf is handsome.
His grandmother was a Reserve Champion Female in the National Junior show for Mat.
He shows the same form. Not just a pretty face his performance numbers are drop dead.
You'll be proud of him for a long time.
RETAINING 1/3 SEMEN INTEREST



CUDLOBE IN FOCUS 8Y - LOT 7

CUDLOBE IN FOCUS 59Y

8

UGA 59Y JANUARY 24 2011 #1626654
BW: 78LBS. ADJ WW: 780 LBS. OCT 30 WT: 1059

S: CUDLOBE IN FOCUS 5S NHF

TC STOCKMAN
TC STOCKMAN 365
TC PRIDE 0014

D: CUDLOBE BLACKCAP 40L

CUDLOBE WILD TURKEY 25W
CUDLOBE BLACKCAP 25Y
CUDLOBE BLACKCAP 3W

BW	WW	YW	MILK	SC	REA	IMF	FAT
+0.6	+54	+96	+20	+0.21	+0.41	+0.25	+0.007

Elite dam with a 7/110 ratio.
Sons to Clyde McCoy, Roemmele farms, Niznik Bros., & Roy Hall.
One of the Top 5S sons.
RETAINING 1/3 SEMEN INTEREST.



CUDLOBE IN FOCUS 59Y - LOT 8

CUDLOBE IN FOCUS 40Y

9

UF 40Y JANUARY 17 2011 #1618466
BW: 80LBS. ADJ WW: 725 LBS. OCT 30 WT: 1023

S: CUDLOBE IN FOCUS 5S NHF

S S OBJECTIVE T510 OT26 AMF CAF NHF
QUAKER HILL OBJECTIVE 3J15 AMF CAF NHF
QUAKER HILL QUEEN 1L4 AMF NHF

D: CUDLOBE QUEEN 112U

STEVENSON FORTUNE 415C
CUDLOBE QUEEN 35F
CUDLOBE QUEEN 7P

BW	WW	YW	MILK	SC	REA	IMF	FAT
+0.6	+60	+104	+20	-	+0.48	+0.32	+0.035

112U is a moderate young cow, nice production.
Her first calf last year went to Curtis Harbinson.
These Focus calves are industry changers.



CUDLOBE IN FOCUS 40Y - LOT 9



CUDLOBE IN FOCUS 100Y - LOT 10

CUDLOBE IN FOCUS 100Y

10

TW UGA 100Y FEBRUARY 07 2011 #1626685
 BW: 65LBS. ADJ WW: 790 LBS. OCT 30 WT: 1028

S: CUDLOBE IN FOCUS 5S NHF

VERMILION YELLOWSTONE AMF CAF NHF
 CUDLOBE YELLOWSTONE 1'03
 CUDLOBE EUGENIE 2J

D: CUDLOBE ERELITE 51R

STEVENSON RAINMAKER 630G
 CUDLOBE ERELITE 44L
 CUDLOBE ERELITE 23J

BW	WW	YW	MILK	SC	REA	IMF	FAT
+0.5	+53	+102	+25	+0.16	+0.25	+0.50	+0.032

An excellent 5S son from a superior 1'03 daughter.
 2010 Mile High Son to Rohler Angus.

Reference Sire



TC ABERDEEN 759

IMP 759T JANUARY 27 2007 #1485453 NHF AMF CAF
 BW: 80LBS. ADJ 205 DAY WT: 742LBS. ADJ 365 DAY WT: 1427LBS.

N BAR EMULATION EXT NHF AMF CAF
 B A R EXT TRAVELER 205 NHF AMF CAF
 B A R QUEEN TRAVELER 3015

B/R NEW DESIGN 036 NHF AMF
 BON VIEW NEW DESIGN 208 NHF AMF CAC
 BON VIEW ERICA 443

S: C R A BEXTOR 872 5205 608 NHF AMF CAF D: TC BLACKBIRD 4034

G A R SLEEP EASY 1009 NHF AMF CAF
 CRA LADY JAYE 608 498 S EASY
 HHF 917 LADY 975 498

S A F FAME NHF AMF CAF
 TC BLACKBIRD 1013
 TC BLACKBIRD 9032

BW	WW	YW	MILK	SC	REA	IMF	FAT
+1.1	+61	+107	+31	+0.36	+0.75	+0.67	+0.010

Aberdeen has become of the most talked about and used bulls due to his ability to sire outstanding phenotype, low BW and performance with superior carcass genetics. He ranks in the Top 1% for WW, YW, MILK, REA & CARCASS. Use for low BW, performance, carcass merit and an outcross pedigree. We have only 5 Aberdeen sons in the sale today, so do please take note of them.



TC ABERDEEN 759

CUDLOBE ABERDEEN 61Y

11

UF 61Y JANUARY 23 2011 #1618476
 BW: 86LBS. ADJ WW: 837 LBS. OCT 30 WT: 1116

S: TC ABERDEEN 759 AMF CAF NHF

VERMILION YELLOWSTONE AMF CAF NHF
 CUDLOBE YELLOWSTONE 1'03
 CUDLOBE EUGENIE 2J

D: CUDLOBE QUEEN 79T

CUDLOBE MILLENNIUM 46K
 CUDLOBE QUEEN 30M
 CUDLOBE QUEEN 11C

BW	WW	YW	MILK	SC	REA	IMF	FAT
+4.4	+63	+109	+29	+0.18	+0.47	+0.56	+0.014

This year's heaviest calf off the creek pasture.
 A standout from a month of age, this calf oozes HERDBULL.
 Stout, long and complete you'll like him as a power bull with top 3% REA and 4% Marbling.



CUDLOBE ABERDEEN 61Y - LOT 11



CUDLOBE ABERDEEN 9Y

12

UGA 9Y JANUARY 07 2011 #1626619
 BW: 90LBS. ADJ WW: 753 LBS. OCT 30 WT: 1180

S: TC ABERDEEN 759 AMF CAF NHF

B/R NEW DESIGN 036 AMF CAF NHF
 STEVENSON NEW DESIGN 852K
 STEVENSON ESTELLA 669H

D: CUDLOBE COUNTESS 8P

CUDLOBE STOCKMAN 24H
 CUDLOBE COUNTESS 74K
 MIDNITE COUNTESS 75F

BW	WW	YW	MILK	SC	REA	IMF	FAT
+4.2	+58	+105	+27	+0.39	+0.27	+0.34	-0.009

2007 On Target Son to Blake Mulvey
 3 Replacement Females
 Top 2% for WW, YW & Milk

CUDLOBE ABERDEEN 9Y - LOT 12

CUDLOBE ABERDEEN 6Y

13

KLB 6Y JANUARY 10 2011 #1626721
 BW: 80LBS. ADJ WW: 753 LBS. OCT 30 WT: 1060

S: TC ABERDEEN 759 AMF CAF NHF

S A V 8180 TRAVELER 004 AMF CAF NHF
 S A V MASTERPIECE 5289
 S A V QUEEN 8301

D: REMITALL QUEEN 534U

GDAR RAINMAKER 013
 REMITALL QUEEN 207N
 REMITALL QUEEN 43J

BW	WW	YW	MILK	SC	REA	IMF	FAT
+2.5	+55	+95	+30	+0.18	+0.41	+0.41	+0.031

An excellent Aberdeen son.
 His full sister has won several classes for Kevin at the Juniors this summer.
 Top 2% for WW & YW, Top 1% for Milk.



CUDLOBE ABERDEEN 6Y - LOT 13

CUDLOBE ABERDEEN 25Y

14

UGA 25Y JANUARY 12 2011 #1626629
 BW: 76LBS. ADJ WW: 790 LBS. OCT 30 WT: 1028

S: TC ABERDEEN 759 AMF CAF NHF

VERMILION PAYWEIGHT J847 AMF CAF NHF
 CUDLOBE PAYWEIGHT 8S NHF
 CUDLOBE BLACKCLASS 38B

D: CUDLOBE COUNTESS 17W

BELVIN BLACK MAGIC 42'92
 MIDNITE COUNTESS 75F
 MIDNITE COUNTESS 43D

BW	WW	YW	MILK	SC	REA	IMF	FAT
+2.6	+60	+103	+25	+0.44	+0.50	+0.23	+0.004

Aberdeen's were the Highlight of last year's sale.
 This calf would have fit right in with the top end.
 Two year olds first calf.



CUDLOBE ABERDEEN 25Y - LOT 14

CUDLOBE ABERDEEN 57Y - LOT 15



Another First Time calver with a top notch Aberdeen Son.
Top 5% for WW, YW& Milk and Top 2% for Marbling & REA.

CUDLOBE ABERDEEN 57Y

15

UGA 57Y JANUARY 22 2011 #1626652
BW: 70LBS. ADJ WW: 769 LBS. OCT 30 WT: 965

S: TC ABERDEEN 759 AMF CAF NHF

RIVERBEND MILE HIGH 3718 AMC CAF NHF
DIAMOND MILE HIGH T357 AMF NHF
DIAMOND ENCHANTRESS 3123 AMF NHF

D: CUDLOBE JEANA 71W

STEVENSON EXPEDITION 859K
CUDLOBE JEANA 131P
RAFTER IR K JEANA 19J

BW	WW	YW	MILK	SC	REA	IMF	FAT
+1.1	+53	+97	+26	+0.18	+0.55	+0.63	+0.009

Reference Sire



SITZ JACKSON 431T

IMP 431T FEBRUARY 21 2007 #1539787 AMF CAF NHF
BW: 84LBS. ADJ 205 DAY WT: 791LBS. ADJ 365 DAY WT: 1418LBS.

B/R NEW DESIGN 036 AMF CAF NHF
BON VIEW NEW DESIGN 1407 AMF CAF NHF
BON VIEW PRIDE 664

BON VIEW BANDO 598 AMF CAC
CONNEALY FREIGHTLINER AMF CAF NHF
JOANA ERICA OF CONANGA

S: SITZ NEW DESIGN 458N AMF CAF NHF

D: SITZ EPPIONIA 105P

SITZ TRAVELER 9929
SITZ ELLUNAS ELITE 3308
SITZ ELLUNAS ELITE 2872

SITZ TRAVELER 8180 AMF CAF NHF
SITZ EPPIONIA 120
SITZ EPPIONIA 3565

BW	WW	YW	MILK	SC	REA	IMF	FAT
+2.3	+59	+127	+32	+1.42	+0.14	+0.06	+0.048

Jackson 431T was the \$18,000 2/3 Interest Bull to Genex in the 2008 Sitz Bull Sale. This bull ranks on the Top 1% fro WW, YW, MILK, SC, CARCASS & MARBLING. He has a big EPD spread with Superior Marbling figures. We have the only 5 Progeny on the ground from Sitz Jackson 431T in Canada. 2 Bulls offered here today and 3 females at home.



SITZ JACKSON 431T

CUDLOBE JACKSON 27Y

16

UF 27Y JANUARY 13 2011 #1644136 CAF
BW: 89LBS. ADJ WW: 739 LBS. OCT 30 WT: 1064

S: SITZ JACKSON 431T AMF CAF NHF

S A F 598 BANDO 5175 AMF CAC
BOYD ON TARGET 1083 AMF CAC NHF
BOYD FOREVER LADY 7095

D: CUDLOBE BELLA 16T

STEVENSON BRUNO 561G CAF NHF
CUDLOBE BELLA 26L
CUDLOBE BELLA 48D

BW	WW	YW	MILK	SC	REA	IMF	FAT
+3.3	+55	+110	+31	+0.71	+0.07	+0.64	+0.032

CUDLOBE JACKSON 21Y

17

JB 21Y JANUARY 28 2011 #1633280
BW: 92LBS. ADJ WW: 678 LBS. OCT 30 WT: 940

S: SITZ JACKSON 431T AMF CAF NHF

WHITE OAK PRECISE 6002 AMC CAF NHC
SKYLINE PRECISE 1N
CUDLOBE BLACKLASS 8L

D: CUDLOBE ELLEN ERICA 6R

RAWBURN TRANSFORMER
RAWBURN ELLEN ERICA 7N
CUDLOBE ELLEN ERICA 46D

BW	WW	YW	MILK	SC	REA	IMF	FAT
+4.7	+55	+103	+22	+0.71	+0.11	+0.55	+0.015

A good Jackson calf with top 4% WW, 1% YW as well as top 5% marbling. 2007 Midland Son to Rommens Farms Ltd.

CUDLOBE JACKSON 27Y - LOT 16



An elite performance calf from a young cow with quite a record.
Her first calf to Duckworth and Stevenson's spent time at Origen.
Her next calf is a replacement heifer by Aberdeen.
This calf, her third only adds to the chain.
Not many of these Jacksons around.



Reference Sire



G A R PREDESTINED

IMP 5899J AUGUST 16 1999 #1162499 AMF CAF NHF
 BW: 76LBS. ADJ 205 DAY WT: 696LBS. ADJ 365 DAY WT: 1240LBS.

A A R NEW TREND
 V D A R NEW TREND 315 AMF CAF NHF
 V D A R LUCY 704
S: B/R NEW DESIGN 036 AMF CAF NHF
 K&K TOP GUN
 B/R BLACKCAP EMPRESS 76
 QLC A70 BLKCP EMPRESS E43T

EMULATION N BAR 5522
 N BAR EMULATION EXT AMF CAF NHF
 N BAR PRIMROSE 2424
D: G A R EXT 4206
 D H D TRAVELER 6807 AMF NHF
 G A R 6807 TRAVELER 1432
 G A R 9J9 57

BW	WW	YW	MILK	SC	REA	IMF	FAT
+4.0	+52	+98	+29	+0.29	+0.61	+1.22	+0.042

Ranks in the top 1% for MILK, Marbling & REA. Ranks in the top 5% for WW, YW & Carcass. We used Predestined on our 114S cow and he produced us 3 very thick, powerful cow bulls. The 3 Progeny on offer could be the highest Marbling Bulls to Sell in Canada.

3 FLUSH CALVES FROM THE BONNIE 114S AND PREDESTINED

Excellent Carcass Numbers; Top 1% for REA& Marbling.
 We wanted to produce some females with these carcass genetics.
 There were no females in the flush. Our loss is your gain and here are the bull calves.
 These could be the very highest marbling genetics to sell in Canada this year.
 Niznik Brothers have bought all her bull calves.
 (3 Rito Revenue Sons in 2009)

S: G A R PREDESTINED AMF CAF NHF

B/R NEW DESIGN 323
 BASIN NEW DESIGN 631M
 BASIN EILEENMERE LASS 270E

D: CUDLOBE BONNIE 114S
 CUDLOBE STOCKMAN 24H
 CUDLOBE BONNIE 19L
 CUDLOBE BONNIE 52B

BW	WW	YW	MILK	SC	REA	IMF	FAT
+4.3	+50	+90	+26	+0.15	+0.62	+0.92	+0.013



CUDLOBE PREDESTINED 7Y - LOT 18

CUDLOBE PREDESTINED 7Y

(ET) JB 7Y JANUARY 12 2011 #1643624
 BW: 100LBS. ADJ WW: 687 LBS. OCT 30 WT: 1029

18

CUDLOBE PREDESTINED 41Y

(ET) UF 41Y JANUARY 17 2011 #1643626
 BW: 100LBS. ADJ WW: 680 LBS. OCT 30 WT: 987

19

CUDLOBE PREDESTINED 52Y

(ET) UF 52Y JANUARY 20 2011 #1643627
 BW: 96LBS. ADJ WW: 670 LBS. OCT 30 WT: 904

20

Reference Sire



SITZ UPWARD 307R

IMP 307R MARCH 12 2005 #1385926 AMF CAF NHF
 BW: 85LBS. ADJ 205 DAY WT: 902LBS. ADJ 365 DAY WT: 1395LBS.

CONNEALY LEADTIME AMF CAF NHF
 CONNEALY LEAD ON AMF CAF NHF
 ELIGENCE PLUS OF CONANGA
S: CONNEALY ONWARD AMF CAF NHF
 G A R TRAVELER 1489 AMF CAF
 ALTUNE OF CONANGA 6104
 AVALON 1418 OF CONANGA 6276

SITZ TRAVELER 6802
 SITZ VALUE 7097 AMF CAF NHF
 SITZ EISA EVERGREEN 791
D: SITZ HENRIETTA PRIDE 81M
 O C C GREAT PLAINS 943G AMF CAF NHF
 SITZ HENRIETTA PRIDE 1370
 SITZ HENRIETTA PRIDE 2155

BW	WW	YW	MILK	SC	REA	IMF	FAT
+2.4	+70	+138	+43	+1.28	+0.68	+0.45	+0.007

He was the \$85,000 Bull at the Sitz Bull Sale 2006. He is a very well balanced bull and is very popular over the world and we used him for his power and tremendous marketability. He Ranks in the Top 1% for WW, YW, Milk, SC, Marbling & REA. Quite the genetic package. The sire group will be very popular sale day as they do have a lot of characteristics of their sire.



SITZ UPWARD 307R



CUDLOBE UPWARD 11Y
 LOT 21



CUDLOBE YELLOWSTONE 1'03
 MATERNAL BROTHER TO LOTS 21, 58 & 59

CUDLOBE UPWARD 11Y

21

KLB 11Y JANUARY 23 2011 #1626726
 BW: 95LBS. ADJ WW: 843 LBS. OCT 30 WT: 1128

S: SITZ UPWARD 307R AMF CAF NHF

YOUNG DALE HOGAN 8C
 WIWA CREEK HOGAN 21'96
 WIWA CREEK EVERGREEN 28'85
D: CUDLOBE EUGENIE 2J
 STEVENSON FORTUNE 415C
 CUDLOBE EUGENIE 2F
 CUDLOBE EUGENIE 66B

BW	WW	YW	MILK	SC	REA	IMF	FAT
+6.5	+60	+113	+35	+0.85	+0.35	+0.40	+0.002

11Y is an outstanding Upward Son out of the Dam of Cudlobe Yellowstone 1'03. 1'03 sires more than 300 progeny at Cudlobe with the most producing daughters at Cudlobe.

They have been the foundation of our Carcass Program. A "cow bull" with Top Performance and Carcass EPD's.

CUDLOBE UPWARD 22Y

22

UGA 22Y JANUARY 11 2011 #1626626
 BW: 78LBS. ADJ WW: 778 LBS. OCT 30 WT: 1075

S: SITZ UPWARD 307R AMF CAF NHF

RITO 112 OF 2536 RITO 616 AMF CAF NHF
 CUDLOBE RITO 68R
 CUDLOBE ENCHANTRESS 46N
D: CUDLOBE CLOVA PRIDE 96T
 G D A R RAINMAKER 340
 STEVENSON CLOVA PRIDE 40G
 J R S CLOVA PRIDE 591X

BW	WW	YW	MILK	SC	REA	IMF	FAT
+0.4	+53	+101	+34	+0.64	+0.37	+0.57	+0.011

This Upward son has all the answers. Igenity profile second to none; EPD's off the chart. Now look at the bull, enough said.
RETAINING 1/3 SEMEN INTEREST.



CUDLOBE UPWARD 22Y - LOT 22



CUDLOBE UPWARD 93Y - LOT 23

CUDLOBE UPWARD 93Y

23

UGA 93Y FEBRUARY 04 2011 #1626680
 BW: 81LBS. ADJ WW: 837 LBS. OCT 30 WT: 1113

S: SITZ UPWARD 307R AMF CAF NHF

BASIN RAINMAKER 2844
 STEVENSON RAINMAKER 630G
 J R S ELGA 495W

D: CUDLOBE BLACK LASS 8L

WIWA CREEK HOGAN 21'96
 CUDLOBE BLACK LASS 84J
 CUDLOBE BLACK LASS 83D

BW	WW	YW	MILK	SC	REA	IMF	FAT
+0.3	+57	+110	+34	+0.64	+0.27	+0.20	+0.010

Excellent EPD's and Igenity Profile.
 Lowest Igenity BW Profile

CUDLOBE UPWARD 40Y

24

UGA 40Y JANUARY 17 2011 #1626638
 BW: 79LBS. ADJ WW: 784 LBS. OCT 30 WT: 1015

S: SITZ UPWARD 307R AMF CAF NHF

CONNEALY DATELINE
 VERMILION DATELINE 7078 AMF CAF NHF
 VERMILION BLACKBIRD 5044

D: REMITALL EFFIE 86M

WK RAINMAN 2051
 LLB MINNIE MCHENRY 256H
 DOUBLE J EFFIE 256W

BW	WW	YW	MILK	SC	REA	IMF	FAT
+2.4	+62	+115	+28	+0.88	+0.38	+0.43	+0.002

Elite Dam that produced an Elite Bull with Elite EPD's and Igenity Profile.
 2006 1'03 Son to Cross Cattle Co.
 2009 8S Son to Dusty Hill Cattle Co.
 2010 Objective Son to Harbinson Ranches.



CUDLOBE UPWARD 40Y - LOT 24

CUDLOBE UPWARD 70Y

25

UGA 70Y JANUARY 29 2011 #1643455
 BW: 82LBS. ADJ WW: 801 LBS. OCT 30 WT: 1050

S: SITZ UPWARD 307R AMF CAF NHF

B/R NEW DESIGN 036 AMF CAF NHF
 STEVENSON NEW DESIGN 852K
 STEVENSON ESTELLA 669H

D: CUDLOBE ENCHANTRESS 49N

CONNEALYS DIVIDEND 730
 STEVENSON ENCHANTRESS 425F
 J R S ENCHANTRESS 235Z

BW	WW	YW	MILK	SC	REA	IMF	FAT
+2.7	+60	+115	+33	+0.75	+0.20	+0.25	+0.000

An excellent Upward son out of an excellent Enchantress cow.
 2007 1'03 Son to Glen Wideman.
 2008 On Target Son to Circle Cross Ranching.
 2009 Deluxe Son to Del Giles.
 2010 Ultimate Son to Wilfley Holdings.

CUDLOBE UPWARD 30Y

26

(ET) UGA 30Y JANUARY 14 2011 #1644946
 BW: 77LBS. ADJ WW: 611 LBS. OCT 30 WT: 904

S: SITZ UPWARD 307R AMF CAF NHF

B/R NEW DESIGN 036 AMF CAF NHF
 BON VIEW NEW DESIGN 1407 AMF CAF NHF
 BON VIEW PRIDE 664

D: CUDLOBE ENCHANTRESS 41N

PUKETUTU ROBIN 933
 CUDLOBE ENCHANTRESS 47H
 STEVENSON ENCHANTRESS 425F

BW	WW	YW	MILK	SC	REA	IMF	FAT
+1.1	+52	+102	+35	+0.68	+0.50	+0.44	+0.016

An Upward son with positive Carcass Data.



TC TOTAL 410

Reference Sire 

TC TOTAL 410

IMP 0410P JANUARY 16 2004 #1485449

BW: 83LBS. ADJ 205 DAY WT: 852LBS. ADJ 365 DAY WT: 1516LBS.

V D A R NEW TREND 315 AMF NHF CAF G A R PRECISION 1680AMC NHC
 B/R NEW DESIGN 036 9AMF NHF VTWIN VALLEY PRECISION E161 AMF NHC CAF
 B/R BLACKCAP EMPRESS 76 W C C BLACKCAP C9
S: BON VIEW NEW DESIGN 208NHF CAC **D: TC ERICA EILEEN 2047 NHC AMF**
 N BAR EMULATION EXT AMF NHF CAF LEACHMAN RIGHT TIME AMF
 BON VIEW ERICA 443 TC ERICA EILEEN 5116
 BON VIW ERICA 1380 T C ERICA EILEEN 6006

BW	WW	YW	MILK	SC	REA	IMF	FAT
+3.6	+71	+127	+27	+0.47	+0.68	+0.78	-0.021

Ranks in the TOP 1% for WW, YW, MILK, REA, MARB & CARCASS. Will add an incredible performance boost to any matings. Growth + Maternal + Carcass + Good Looks + Super Disposition = TOTAL. If you like good cattle, you will love TOTALS! They were our top selling sire group last year and again this year, they will be in the running.

CUDLOBE TOTAL 38Y

UGA 38Y JANUARY 16 2011 #1626636

BW: 77LBS. ADJ WW: 732 LBS. OCT 30 WT: 1093

27

S: TC TOTAL 410 AMF CAF NHF

VERMILION DATELINE 7078 AMF CAF NHF
 VERMILION YELLOWSTONE AMF CAF NHF
 VERMILION B JESTRESS 3912

D: CUDLOBE ENCHANTRESS 59M

CONNEALYS DIVIDEND 730
 STEVENSON ENCHANTRESS 425F
 J R S ENCHANTRESS 235Z

BW	WW	YW	MILK	SC	REA	IMF	FAT
+1.9	+55	+102	+20	+0.58	+0.30	+0.79	+0.006

59M is a full sister to the "Cow Maker" 80M
 80M Sired the World Champion Female in 2009.
 80M Sired the Champion Bull & Female at Agribition 2008.
 Has World Champion EPD's.
RETAINING 1/3 SEMEN INTEREST.



CUDLOBE TOTAL 38Y - LOT 27

CUDLOBE TOTAL 52Y

UGA 52Y JANUARY 21 2011 #1626648

BW: 97LBS. ADJ WW: 740 LBS. OCT 30 WT: 1092

28

S: TC TOTAL 410 AMF CAF NHF

VERMILION DATELINE 7078 AMF CAF NHF
 VERMILION YELLOWSTONE AMF CAF NHF
 VERMILION B JESTRESS 3912

D: CUDLOBE ENCHANTRESS 4M

CONNEALYS DIVIDEND 730
 STEVENSON ENCHANTRESS 425F
 J R S ENCHANTRESS 235Z

BW	WW	YW	MILK	SC	REA	IMF	FAT
+6.2	+66	+118	+20	+0.58	+0.35	+0.65	-0.005

Exceptional Igenity Profile.
 2004 852K Son to Del Giles.
 2010 - Had 3 Ultimate Flush Mates to Del Giles, Rommens Farms Ltd. &
 High Seller Last Year to K-Deen Angus & Burt Shantz.



CUDLOBE ULTIMATE 9X
 HIGH SELLER IN LAST YEAR'S SALE; FULL BROTHER TO LOT 28

CUDLOBE TOTAL 119Y

UF 119Y FEBRUARY 17 2011 #1618417

BW: 88LBS. ADJ WW: 778 LBS. OCT 30 WT: 984

29

S: TC TOTAL 410 AMF CAF NHF

SUMMITCREST PRIME CUT 1G42 AMF CAF NHF
LONE STAR PRIMECUT 4M
MVKD MISS ESSENCE 115G

D: CUDLOBE ERICA 143R

WHITE OAK PRECISE 6002 AMC CAF NHC
CUDLOBE ERICA 96N
CUDLOBE ERICA 1L

BW	WW	YW	MILK	SC	REA	IMF	FAT
+4.3	+64	+110	+27	+0.24	+0.50	+0.56	-0.017

143R became an Elite Dam in her first four calves (minimum number)
Every one of her bull calves to Del Giles.
Amazing performance for a young calf. Scores a "10" on Igenity marbling.
RETAINING 1/3 SEMEN INTEREST.



CUDLOBE TOTAL 119Y - LOT 29



CUDLOBE TOTAL 51Y - LOT 30

CUDLOBE TOTAL 51Y

UF 51Y JANUARY 20 2011 #1618396

BW: 92LBS. ADJ WW: 719 LBS. OCT 30 WT: 1006

30

S: TC TOTAL 410 AMF CAF NHF

VERMILION DATELINE 7078 AMF CAF NHF
VERMILION YELLOWSTONE AMF CAF NHF
VERMILION B JESTRESS 3912

D: CUDLOBE BLACKCLASS 1N

STEVENSON RAINMAKER 630G
CUDLOBE BLACKCLASS 78K
CUDLOBE BLACKCLASS 82H

BW	WW	YW	MILK	SC	REA	IMF	FAT
+4.3	+63	+111	+25	+0.24	+0.34	+0.63	-0.006

A good calf from an excellent Elite Dam. Every heifer from 1N has been retained.
Every bull calf has sold in the sale.
Past sale bulls to Sharples, Nizniks and Ron Arendt.
Performance and carcass in a no miss calf.

CUDLOBE TOTAL 20Y

UF 20Y JANUARY 09 2011 #1618456

BW: 89LBS. ADJ WW: 687 LBS. OCT 30 WT: 1007

31

S: TC TOTAL 410 AMF CAF NHF

SITZ ALLIANCE 6595 AMF NHF
KMK ALLIANCE 6595 187 AMF CAF NHF
G A R EXT 916 AMF

D: CUDLOBE BLACKCLASS 74T

CUDLOBE DAN PATCH 77Y
CUDLOBE BLACKCLASS 38B
CUDLOBE BLACKCLASS 11Z

BW	WW	YW	MILK	SC	REA	IMF	FAT
+3.8	+60	+106	+23	+0.30	+0.33	+0.48	+0.006

A Total calf from an excellent mother, going back to 38B.
A performance calf with top 10% carcass numbers. This calf makes my list.

CUDLOBE TOTAL 66Y

UF 66Y JANUARY 25 2011 #1618479

BW: 97LBS. ADJ WW: 720 LBS. OCT 30 WT: 995

32

S: TC TOTAL 410 AMF CAF NHF

VERMILION YELLOWSTONE AMF CAF NHF
CUDLOBE YELLOWSTONE 103
CUDLOBE EUGENIE 2J

D: CUDLOBE QUEEN 41T

STEVENSON FORTUNE 415C
CUDLOBE QUEEN 7J
CUDLOBE QUEEN 74D

BW	WW	YW	MILK	SC	REA	IMF	FAT
+7.3	+62	+105	+24	+0.24	+0.42	+0.65	-0.006

A cow bull with a carcass profile that is excellent.
Grandmother is an Elite Dam.

CUDLOBE TOTAL 88Y

UF 88Y JANUARY 31 2011 #1618406
 BW: 94LBS. ADJ WW: 759 LBS. OCT 30 WT: 984

S: TC TOTAL 410 AMF CAF NHF

B/R NEW DESIGN 036 AMF CAF NHF
 STEVENSON NEW DESIGN 852K
 STEVENSON ESTELLA 669H

D: CUDLOBE ERROLLINE 4P

G D A R EXECUTIVE 727 AMF NHF
 ASPELUND'S ERROLLINE 14'95
 KRISMIA ERROLLINE 1Y

BW	WW	YW	MILK	SC	REA	IMF	FAT
+5.4	+58	+106	+24	+0.24	+0.16	+0.42	-0.024

Cow bull, good carcass. Top 5% on milk.
 Two previous bulls to Nizniks and one to Betty Wideman.

33

PERFORMANCE CATTLE

with function & efficiency

Reference Sire



CUDLOBE IN FOCUS 5S

UF 5S JANUARY 05 2006 #1333991 NHF
 BW: 68LBS. ADJ 205 DAY WT: 772 LBS. ADJ 365 DAY WT: 1477 LBS.

S A F FAME AMF CAF NHF
 S A F FOCUS OF E R AMF CAF NHF
 G D A R FOREVER LADY 246

S: MYTTY IN FOCUS AMF CAF NHF

SITZ ALLIANCE 6595 AMF NHF
 MYTTY COUNTESS 906
 BALDRIDGE COUNTESS 357

B/R NEW DESIGN 036 AMF CAF NHF
 BON VIEW NEW DESIGN 1407 AMF CAF NHF
 BON VIEW PRIDE 664

D: CUDLOBE ENCHANTRESS 55M

PUKETUTU ROBIN 933
 CUDLOBE ENCHANTRESS 47H
 STEVENSON ENCHANTRESS 425F

BW	WW	YW	MILK	SC	REA	IMF	FAT
-4.5	+60	+114	+20	-	+0.43	+0.61	+0.061

This bull is one of the popular bulls in the ORigen Listings. As you can see by his numbers, he ranks in the Top 1% for BW, WW & YW and Top 5% for REA and Marbling. He is a calving ease Giant with explosive growth and carcass numbers. This sire group will impress you. His bull calf progeny have an average of 77 lb BW and Adj 705 on WW. His cow family is the renowned Enchantress Cow Family that is one of our best at home going back to the Enchantress 425F Herd Bull Maker. Co-Owned with Stevenson Angus Ranch & ORigen.



CUDLOBE IN FOCUS 5S

CUDLOBE IN FOCUS 80Y

TW UF 80Y JANUARY 29 2011 #1644137 CAF
 BW: 70LBS. ADJ WW: 716 LBS. OCT 30 WT: 989

S: CUDLOBE IN FOCUS 5S NHF

BON VIEW BANDO 598 AMF CAC
 S A F 598 BANDO 5175 AMF CAC
 S A F ROYAL LASS 1002

D: CUDLOBE ROSEBUD 71N

CUDLOBE CHESTER 61Z
 CUDLOBE ROSEBUD 65D
 CUDLOBE ROSEBUD 13W

BW	WW	YW	MILK	SC	REA	IMF	FAT
+0.3	+54	+102	+20	+0.38	+0.30	+0.44	+0.028

A good Focus calf from the very maternal 71N Bando cow.
 Previous calf to Sam Wambeke.

34

CUDLOBE IN FOCUS 7Y

UGA 7Y JANUARY 05 2011 #1626617
 BW: 80LBS. ADJ WW: 795 LBS. OCT 30 WT: 1089

S: CUDLOBE IN FOCUS 5S NHF

BOYD ON TARGET 1083 AMF CAC NHF
 STEVENSON MONEYMAKER R185 AMF CAF NHF
 STEVENSON CLOVA PRIDE L888 AMF NHF

D: CUDLOBE KYMA 49W

BON VIEW BANDO 598 AMF CAC
 CUDLOBE KYMA 18H CAF
 CUDLOBE KYMA 32F

BW	WW	YW	MILK	SC	REA	IMF	FAT
+1.5	+63	+114	+22	+0.36	+0.27	+0.49	+0.041

Out of a First Calver.
 Excellent Performance EPD's being in the Top 1% for WW & YW.
 One of the lowest Feed Intake on his Igneity Profile.

35



CUDLOBE IN FOCUS 11Y - LOT 36

CUDLOBE IN FOCUS 11Y

36

UF 11Y JANUARY 05 2011 #1618451

BW: 75LBS. ADJ WW: 672 LBS. OCT 30 WT: 978

S: CUDLOBE IN FOCUS 5S NHF

GARDENS EXPEDITION AMF CAF NHF
 STEVENSON EXPEDITION 859K
 STEVENSON QUEEN 4058

D: CUDLOBE QUEEN 60W

CUDLOBE MIDLAND 73R
 CUDLOBE QUEEN 36T
 CUDLOBE QUEEN 34R

BW	WW	YW	MILK	SC	REA	IMF	FAT
-2.0	+52	+91	+19	-	+0.43	+0.42	+0.033

A very good calf from a two year old heifer.
 Stacked calving and carcass with Expedition and Focus.

CUDLOBE IN FOCUS KLB 9Y

37

KLB 9Y JANUARY 19 2011 #1626724

BW: 85LBS. ADJ WW: 791 LBS. OCT 30 WT: 1029

S: CUDLOBE IN FOCUS 5S NHF

CANDOLIER FOREVER 376
 J R JUICE Z005 CAF
 MG'S BLACK DIAMOND

D: STANDARD HILL ELBA 8G

Q A S TRAVELER 23-4 AMF CAF NHF
 TERRLENE ELBA 84A
 TERRLENE ELBA 81X

BW	WW	YW	MILK	SC	REA	IMF	FAT
+1.0	+52	+99	+19	+0.32	+0.01	+0.41	+0.043

Top 10% for WW, YW, Marbling & REA.
 2006 In Focus Son to Bar Diamond Ranching.

CUDLOBE IN FOCUS 30Y

38

UF 30Y JANUARY 14 2011 #1618392

BW: 80LBS. ADJ WW: 651 LBS. OCT 30 WT: 960

S: CUDLOBE IN FOCUS 5S NHF

B/R NEW DESIGN 036 AMF CAF NHF
 STEVENSON NEW DESIGN 852K
 STEVENSON ESTELLA 669H

D: CUDLOBE DELIA 25R

VERMILION YELLOWSTONE AMF CAF NHF
 CUDLOBE DELIA 34M
 CUDLOBE DELIA 27C

BW	WW	YW	MILK	SC	REA	IMF	FAT
+0.5	+51	+98	+19	-	+0.21	+0.51	+0.039

A good 5S calf from an 852K cow with a Yellowstone grandmother.
 Previous bulls to Richard Ferguson and Joe Becker.
 Top 3% yearling, 6% marbling.



CUDLOBE MONEYMAKER 89U

Reference Sire



CUDLOBE MONEYMAKER 89U

(ET) UF 89U FEBRUARY 03 2008 #1472850

BW: 90LBS. ADJ 205 DAY WT: 757 LBS. ADJ 365 DAY WT: 1524 LBS.

S A F 598 BANDO 5175 AMF CAC
 BOYD ON TARGET 1083 AMF CAC NHF
 BOYD FOREVER LADY 7095
 S: STEVENSON MONEYMAKER R185 AMF CAF NHF
 VDAR AMBUSH 2478
 STEVENSON CLOVA PRIDE L888 AMF NHF
 STEVENSON CLOVA PRIDE 712H

B/R NEW DESIGN 036 AMF CAF NHF
 STEVENSON NEW DESIGN 852K
 STEVENSON ESTELLA 669H
 D: CUDLOBE BLACKLASS 19R
 STEVENSON FORTUNE 415C
 CUDLOBE BLACKLASS 95J
 CUDLOBE BLACKLASS 38B

BW	WW	YW	MILK	SC	REA	IMF	FAT
+5.5	+61	+116	+20	-	-0.11	+0.35	+0.027

We kept a Semen Interest in MoneyMaker 89U. He sold to PrairieLane Farms in Manitoba 3 years ago. The Moneymakers as a whole did our program very good over the last few years. Great numbers across the board here as well. His sire group last year was very well accepted and I believe they will be again this year.

CUDLOBE MONEYMAKER 11Y

39

UGA 11Y JANUARY 08 2011 #1626620
BW: 99LBS. ADJ WW: 757 LBS. OCT 30 WT: 1158

S: CUDLOBE MONEYMAKER 89U

GARDENS EXPEDITION AMF CAF NHF
STEVENS ON EXPEDITION 859K
STEVENS ON QUEEN 4058

D: CUDLOBE JEANA 131P

RITO 2100 G D A R
RAFTER IR K JEANA 19J
RAFTER IR ANNIE K JEANA 9E

BW	WW	YW	MILK	SC	REA	IMF	FAT
+6.2	+55	+99	+19	-	+0.07	+0.32	+0.020

131P is an excellent 859K daughter.
3 Heifers retained in herd.
11Y is a "Moneymaker"



CUDLOBE MONEYMAKER 13Y - LOT 40

CUDLOBE MONEYMAKER 13Y

40

UF 13Y JANUARY 07 2011 #1618453
BW: 95LBS. ADJ WW: 687 LBS. OCT 30 WT: 982

S: CUDLOBE MONEYMAKER 89U

GARDENS EXPEDITION AMF CAF NHF
STEVENS ON EXPEDITION 859K
STEVENS ON QUEEN 4058

D: CUDLOBE QUEEN 91U

LONE STAR PRIMECUT 4M
CUDLOBE QUEEN 135P
CUDLOBE QUEEN 54M LO

BW	WW	YW	MILK	SC	REA	IMF	FAT
+6.0	+58	+101	+20	-	+0.16	+0.39	+0.032

A strong Moneymaker calf that shows the bone and thickness they are known for. The three year old mother weaned an excellent Roundup heifer last year. A performance bull for cows here.

CUDLOBE MONEYMAKER 44Y

41

UF 44Y JANUARY 18 2011 #1618468
BW: 90LBS. ADJ WW: 702 LBS. OCT 30 WT: 977

S: CUDLOBE MONEYMAKER 89U

SITZ ALLIANCE 6595 AMF NHF
KMK ALLIANCE 6595 187 AMF CAF NHF
G A R EXT 916 AMF

D: CUDLOBE BLACKCLASS 62T

VERMILION YELLOWSTONE AMF CAF NHF
CUDLOBE BLACKCLASS 1N
CUDLOBE BLACKCLASS 78K

BW	WW	YW	MILK	SC	REA	IMF	FAT
+4.6	+58	+103	+23	-	-0.07	+0.30	+0.024

A Moneymaker calf with lots of style and thickness. Hair is great on these as well.
62T is on her way to the front pasture. Last year's calf to Broadview Ranch.



CUDLOBE MONEYMAKER 44Y - LOT 41

CUDLOBE MONEYMAKER 7Y

42

KMB 7Y JANUARY 12 2011 #1643453

BW: 94LBS. ADJ WW: 748 LBS. OCT 30 WT: 1076

S: CUDLOBE MONEYMAKER 89U

B/R NEW DESIGN 036 AMF CAF NHF
STEVENSON NEW DESIGN 852K
STEVENSON ESTELLA 669H

D: CUDLOBE BELLA 60N

WIWA CREEK HOGAN 2196
CUDLOBE BELLA 84H
CUDLOBE BELLA 66E

BW	WW	YW	MILK	SC	REA	IMF	FAT
+6.3	+54	+101	+21	+0.12	-0.19	+0.21	+0.025

Top 4% for WW, Top 2% for YW.

These 89U sons will be "MoneyMakers".

2005 859K Son to Douglas Lake Cattle Co.

2009 Mile High Son to Robert Jones.

CUDLOBE MONEYMAKER 69Y

43

UF 69Y JANUARY 26 2011 #1618482

BW: 85LBS. ADJ WW: 754 LBS. OCT 30 WT:

S: CUDLOBE MONEYMAKER 89U

GARDENS EXPEDITION AMF CAF NHF
STEVENSON EXPEDITION 859K
STEVENSON QUEEN 4058

D: CUDLOBE BLACKCLASS 3U

VERMILION DATELINE 7078 AMF CAF NHF
CUDLOBE BLACKCLASS 22S
CUDLOBE BLACKCLASS 38B

BW	WW	YW	MILK	SC	REA	IMF	FAT
+3.9	+61	+110	+20	-	+0.12	+0.37	+0.020

Good performance EPD's here. Mother is an Expedition from the very good 22S.

Her first calf went to Sam Wambeke.

Igenity "9" s for WW and YW.

CUDLOBE MONEYMAKER 1Y

44

UGA 1Y JANUARY 01 2011 #1643473

BW: 81LBS. ADJ WW: 741 LBS. OCT 30 WT: 1047

S: CUDLOBE MONEYMAKER 89U

VERMILION PAYWEIGHT J847 AMF CAF NHF
CUDLOBE PAYWEIGHT 8S NHF
CUDLOBE BLACKCLASS 38B

D: CUDLOBE JANGLES 17U

STEVENSON RAINMAKER 630G
CUDLOBE JANGLES 96M
CUDLOBE JANGLES 80Y

BW	WW	YW	MILK	SC	REA	IMF	FAT
+3.0	+53	+99	+23	-	+0.10	+0.05	+0.012

These 8S daughters produce.

17U has brought in a "MoneyMaker".



CUDLOBE MONEYMAKER 1Y - LOT 44

REAL BULLS - REAL DEALS

FINANCING 1/2 SALE DAY - 1/2 ON DELIVERY

FREE WINTERING: Bulls purchased will be wintered free of charge on the same conditioning program as before they were bought. Please do insure these bulls.



S A V BISMARCK 5682

Reference Sire 

S A V BISMARCK 5682

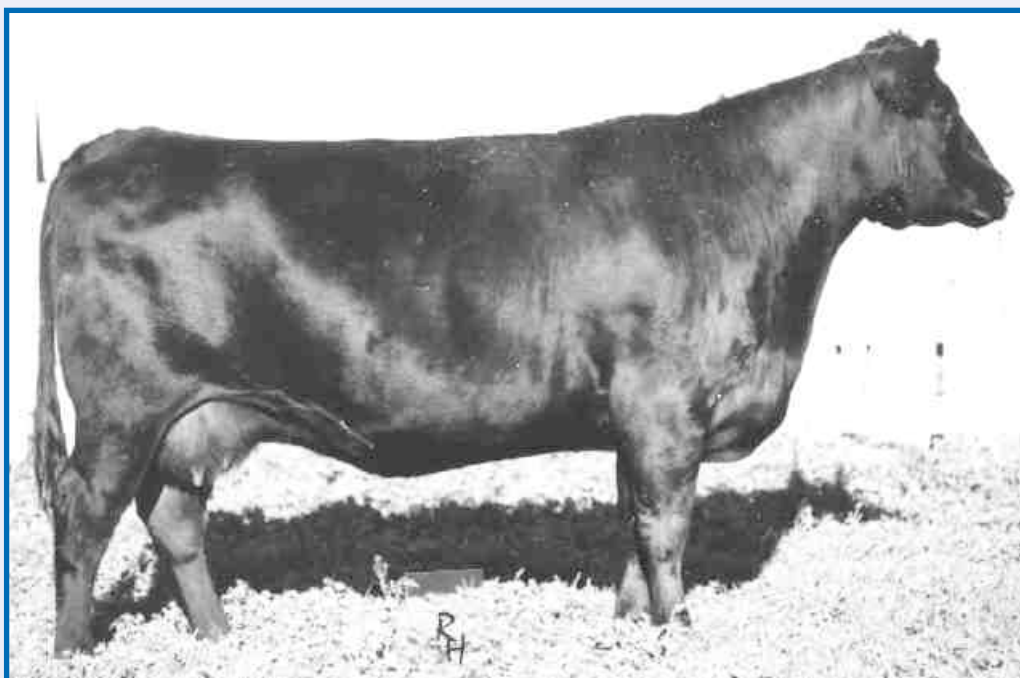
(ET)IMP 5682R FEBRUARY 01 2005 #1369591 AMF CAF NHF
 BW: 76LBS. ADJ 205 DAY WT: 884LBS. ADJ 365 DAY WT: 1596LBS.

D H D TRAVELER 6807 AMF NHF
 G D A R TRAVELER 044 AMF CAF NHF
 G D A R BLACKCAP LADY 840
S: G A R GRID MAKER AMF CAF NHF
 G A R PRECISION 1680 AMC NHC
 G A R PRECISION 2536 AMC NHF
 G A R EXT 2104

A A R NEW TREND
 SCHOENES FIX IT 826 AMF CAF NHF
 SKY HIGH BLACKBIRD 4119
D: S A V ABIGALE 0451
 BON VIEW EMULATION EXT 473 AMF CAF NHF
 S A V ABIGALE 6062
 CIRCLE A ABIGALE 3008

BW	WW	YW	MILK	SC	REA	IMF	FAT
+0.1	+57	+100	+18	+0.91	+0.59	+0.12	+0.016

Bismarck was the No#1 A.I. Sire in the USA. Combined with his numbers, Top 5% for BW, WW, YW, REA and Fat; this bull has done wonders for a lot of programs and here is no exception. 4 Flush Mates sell as Lots 45 to 48 and 2 Other Bulls that we A.I. him to. (Lot 49 & 50).



CUDLOBE ENCHANTRESS 47H - DAM OF LOTS 45 TO 48

The Stevenson Enchantress 425F cow family has surfaced as one of the best documented with 41 Progeny from this great cow, some individuals surface us superior producers. Cudlobe Yellowstone 80M would be 1 such animal, a sire of exceptional note. Another could be “**CUDLOBE ENCHANTRESS 47H**” sired by Puketutu Robin 933 (The New Zealand Outcross Sire). 47H also has Maternal Brothers that have sold to 4DJ Farms (Millennium 46K), Soo Line Cattle CO. (Yellowstone 80M), KBJ Round Farms (Bruno 37L) & Johnson Livestock (Money Maker 41U). 47H has done wonders for our program and has passed it along to these Commercial & Purebred Breeders with Bull Purchases; Glen Wideman, (3) Douglas Lake Cattle CO., Greg Selzler, Flint & Flint, Clark Schlosser, Q Ranch Ltd., (2) Dusty Hill Cattle CO. & Bill Bateman. We also have 10 Females in Herd Producing for us right now, 2 of which are Elite Dams and some are also in our Donor Pen. She is definitely a Herd Changer!! 47H holds a special spot at Cudlobe as she is a great footed, broody cow with extreme fleshing ability. A Superior dam of Distinction at Cudlobe with a great set of SAV Bismarck sons selling.

4 FLUSH CALVES FROM CUDLOBE ENCHANTRESS 47H AND BISMARCK

S: S A V BISMARCK 5682 AMF CAF NHF

STERN 720
PUKETUTU ROBIN 933
PUKETUTU B137

D: CUDLOBE ENCHANTRESS 47H
CONNEALYS DIVIDEND 730
STEVENSON ENCHANTRESS 425F
J R S ENCHANTRESS 235Z

BW	WW	YW	MILK	SC	REA	IMF	FAT
+0.1	+40	+72	+17	+0.50	+0.23	+0.07	+0.012



CUDLOBE BISMARCK 18Y - LOT 45



CUDLOBE BISMARCK 3Y - LOT 47



CUDLOBE BISMARCK 21Y - LOT 48

CUDLOBE BISMARCK 18Y

(ET) UGA 18Y JANUARY 10 2011 #1644944
BW: 80LBS. ADJ WW: 698 LBS. OCT 30 WT: 1008

45

CUDLOBE BISMARCK 67Y

(ET) UGA 67Y JANUARY 28 2011 #1644953
BW: 80LBS. ADJ WW: 746 LBS. OCT 30 WT: 1009

46

CUDLOBE BISMARCK 3Y

(ET) KMB 3Y JANUARY 07 2011 #1644922
BW: 76LBS. ADJ WW: 723 LBS. OCT 30 WT: 1053

47

CUDLOBE BISMARCK 21Y

(ET) UGA 21Y JANUARY 11 2011 #1644945
BW: 80LBS. ADJ WW: 772 LBS. OCT 30 WT: 1056

48

CUDLOBE BISMARCK 15Y

49

UGA 15Y JANUARY 09 2011 #1626623

BW: 81LBS. ADJ WW: 720 LBS. OCT 30 WT: 1054

S: S A V BISMARCK 5682 AMF CAF NHF

HIGH VALLEY 4C6 AMBUSH AMF
JR AMBUSH 100J
J R LETA 063E

D: EBON HILL BLACKCAP 390'02

EBON HILL EASY PIONEER 119'95
EBON HILL BLACKCAP 290'97
EBON HILL BLACKCAP 290'95

BW	WW	YW	MILK	SC	REA	IMF	FAT
+1.2	+41	+76	+19	+0.51	+0.22	+0.13	+0.002

Elite Dam with a 5/110 ratio.

2009 Payweight Son to Rommens Farms Ltd.



CUDLOBE BISMARCK 15Y - LOT 49

CUDLOBE BISMARCK 82Y

50

UGA 82Y FEBRUARY 02 2011 #1626670

BW: 80LBS. ADJ WW: 716 LBS. OCT 30 WT: 998

S: S A V BISMARCK 5682 AMF CAF NHF

CONNELLY FRONTLINE AMF CAF NHF
RIVERBEND POWERLINE 0050
LEACHMAN BLACKBIRD 8060

D: HF EVENING TINGE 142S

NORTHERN IMPROVEMENT 4480 GF AMF CAF NHF
HF EVENING TINGE 127L
HF EVENING TINGE 126J

BW	WW	YW	MILK	SC	REA	IMF	FAT
+2.2	+52	+88	+20	+0.46	+0.30	+0.06	+0.008

Top 10% for WW & YW.



SYDGEN MANDATE 6079

Reference Sire



SYDGEN MANDATE 6079

IMP 6079S JANUARY 09 2006 #1552415 AMF CAF NHF

BW: 76LBS. ADJ 205 DAY WT: 803LBS. ADJ 365 DAY WT: 1421LBS.

D H D TRAVELER 6807 AMF NHF
S S TRAVELER 6807 T510 AMF CAF NHF
S S MISS HI SPADE A114

S: S S OBJECTIVE T510 OT26 AMF CAF NHF

S S RITO RITO R76 R011
S S MISS RITA R011 7R8 AMF NHF
S S MISS ULTRESS U56

S A F FOCUS OF E R AMF CAF NHF
S A F FOCUS J30 AMF CAF NHF
S A F ROYAL QUEEN 5084 CAF

D: SYDGEN GINA 4235

BON VIEW NEW DESIGN 1407 AMF CAF NHF
INNIWAY MS NEW DESIGN 201
INNIWAY MS LUCY 068

BW	WW	YW	MILK	SC	REA	IMF	FAT
+0.3	+67	+128	+32	+1.05	+0.38	+0.75	+0.018

Mandate ranks in the Top 1% for WW, YW, Milk & Marbling; Ranks Top 10% for BW & REA. He could be the best Objective son out there. Another new sire group for our repeat customers to evaluate.

CUDLOBE MANDATE 21Y

51

UF 21Y JANUARY 10 2011 # ?141760

BW: 80LBS. ADJ WW: OCT 30 WT: 1032

S: SYDGEN MANDATE 6079 AMF CAF NHF

GARDENS EXPEDITION AMF NHF CAF
STEVENSON EXPEDITION 859K
STEVENSON QUEEN 4058

D: CUDLOBE ENCHANTRESS 1R

BON VIEW NEW DESIGN 1407 AMF NHF CAF
CUDLOBE ENCHANTRESS 55M
CUDLOBE ENCHANTRESS 47H

BW	WW	YW	MILK	SC	REA	IMF	FAT
-	-	-	-	-	-	-	-

At Catalog time we had to DNA Test this bull so Data is not available on him. He is a very good Mandate Son out of another Flush cow we are using, Enchantress 1R. He is a calving ease bull that will have great numbers like his brothers on the next pages.

CUDLOBE MANDATE 60Y

52

UF 60Y JANUARY 23 2011 #1618475
BW: 88LBS. ADJ WW: 731 LBS. OCT 30 WT: 1020

S: SYDGEN MANDATE 6079 AMF CAF NHF

VERMILION YELLOWSTONE AMF CAF NHF
CUDLOBE YELLOWSTONE 1'03
CUDLOBE EUGENIE 2J

D: CUDLOBE BONNIE 73T

STEVENSON FORTUNE 415C
CUDLOBE BONNIE 19H
CUDLOBE BONNIE 52B

BW	WW	YW	MILK	SC	REA	IMF	FAT
+4.9	+58	+109	+26	+0.78	+0.24	+0.70	+0.003

A strong Mandate calf with strong growth indicators.
Carcass looks good with top 1% marbling.
73T is the grandmother of 35Y in the sale.

CUDLOBE MANDATE 81Y

53

UF 81Y JANUARY 29 2011 #1618486
BW: 89LBS. ADJ WW: 734 LBS. OCT 30 WT: 1009

S: SYDGEN MANDATE 6079 AMF CAF NHF

B/R NEW DESIGN 323
BASIN NEW DESIGN 631M
BASIN EILEENMERE LASS 270E

D: CUDLOBE BONNIE 114S

CUDLOBE STOCKMAN 24H
CUDLOBE BONNIE 19L
CUDLOBE BONNIE 52B

BW	WW	YW	MILK	SC	REA	IMF	FAT
+3.7	+62	+110	+27	+0.53	+0.50	+0.69	-0.018

A flush calf from 114S.
These calves look like they have carcass in them.

CUDLOBE MANDATE 82Y

54

(ET) UF 82Y JANUARY 30 2011 #1643628
BW: 85LBS. ADJ WW: 694 LBS. OCT 30 WT: 958

S: SYDGEN MANDATE 6079 AMF CAF NHF

B/R NEW DESIGN 323
BASIN NEW DESIGN 631M
BASIN EILEENMERE LASS 270E

D: CUDLOBE BONNIE 114S

CUDLOBE STOCKMAN 24H
CUDLOBE BONNIE 19L
CUDLOBE BONNIE 52B

BW	WW	YW	MILK	SC	REA	IMF	FAT
+2.5	+58	+105	+27	+0.53	+0.50	+0.69	-0.018

114S is able to join ribeye with marbling, a difficult task in some cattle.

CUDLOBE MANDATE 342Y

55

UF 342Y JANUARY 17 2011 #1618467
BW: 75LBS. ADJ WW: 735 LBS. OCT 30 WT: 932

S: SYDGEN MANDATE 6079 AMF CAF NHF

MYTTY IN FOCUS AMF CAF NHF
CUDLOBE IN FOCUS 5S NHF
CUDLOBE ENCHANTRESS 55M

D: CUDLOBE BONNIE 98W

STEVENSON FORTUNE 415C
CUDLOBE BONNIE 19H
CUDLOBE BONNIE 52B

BW	WW	YW	MILK	SC	REA	IMF	FAT
+0.8	+62	+113	+22	+0.53	+0.34	+0.59	-0.002

The Mandate calves from 5S should be a natural on heifers.
They grow pretty fast too. Good carcass numbers here.

CUDLOBE MANDATE 8Y

56

(ET) UF 8Y JANUARY 04 2011 #1643630
BW: 78LBS. ADJ WW: 591 LBS. OCT 30 WT: 906

S: SYDGEN MANDATE 6079 AMF CAF NHF

GARDENS EXPEDITION AMF CAF NHF
STEVENSON EXPEDITION 859K
STEVENSON QUEEN 4058

D: CUDLOBE ENCHANTRESS 1R

BON VIEW NEW DESIGN 1407 AMF CAF NHF
CUDLOBE ENCHANTRESS 55M
CUDLOBE ENCHANTRESS 47H

BW	WW	YW	MILK	SC	REA	IMF	FAT
-1.6	+51	+100	+24	+0.53	+0.44	+0.68	+0.018

A real heifer bull here. Top 2% for WW and YW.
Born like a Tonka – turns into a Kenworth.
Check REA and marbling.
1R is a maternal sister to Focus 5S.

CUDLOBE MANDATE 12Y

57

UF 12Y JANUARY 06 2011 #1618452
BW: 92LBS. ADJ WW: 692 LBS. OCT 30 WT: 906

S: SYDGEN MANDATE 6079 AMF CAF NHF

MYTTY IN FOCUS AMF CAF NHF
CUDLOBE IN FOCUS 5S NHF
CUDLOBE ENCHANTRESS 55M

D: CUDLOBE BEAUTY 137W

WILLABAR LEADTIME 154L
CUDLOBE BEAUTY 99P
CUDLOBE BEAUTY 56G

BW	WW	YW	MILK	SC	REA	IMF	FAT
+3.4	+67	+118	+25	+0.53	+0.42	+0.55	-0.005

The Mandate calves out of the 5S two year olds have exceptional numbers and some of the calves are full value.
This is a young two year old that calved early.
The grandmother is an Elite Cow.

CUDLOBE MANDATE 91Y

58

(ET) UGA 91Y FEBRUARY 04 2011 #1644955
 BW: 77LBS. ADJ WW: 765 LBS. OCT 30 WT: 986

S: SYDGEN MANDATE 6079 AMF CAF NHF

YOUNG DALE HOGAN 8C
 WIWA CREEK HOGAN 21'96
 WIWA CREEK EVERGREEN 28'85

D: CUDLOBE EUGENIE 2J

STEVENS FORTUNE 415C
 CUDLOBE EUGENIE 2F
 CUDLOBE EUGENIE 66B

BW	WW	YW	MILK	SC	REA	IMF	FAT
+2.9	+48	+95	+30	+0.74	+0.20	+0.55	-0.011

ET Son out of Cudlobe Yellowstone 1'03's Mother.
 Positive EPD Profile.
 Maternal Brother to Lot 21 & Full Brother to Lot 59.



CUDLOBE MANDATE 91Y - LOT 58

CUDLOBE MANDATE 96Y

59

(ET) UGA 96Y FEBRUARY 06 2011 #1644942
 BW: 82LBS. ADJ WW: 684 LBS. OCT 30 WT: 900

S: SYDGEN MANDATE 6079 AMF CAF NHF

YOUNG DALE HOGAN 8C
 WIWA CREEK HOGAN 21'96
 WIWA CREEK EVERGREEN 28'85

D: CUDLOBE EUGENIE 2J

STEVENS FORTUNE 415C
 CUDLOBE EUGENIE 2F
 CUDLOBE EUGENIE 66B

BW	WW	YW	MILK	SC	REA	IMF	FAT
+2.9	+48	+95	+30	+0.74	+0.20	+0.55	-0.011

ET Son out of the dam of 1'03.
 Again Same Numbers as previous lot, all Positive.
 Full Brother to Lot 58.

WINDY RIDGE ULTRASOUND

Rod Wendorff, UGC Certified
 Box 1023 Raymond, AB T0K 2S0
 (403) 330-3000

It has been lots of fun working with the Bolduc's over the past 10 years. Even before ultrasound, they were selecting proven carcass bulls from the AAA Carcass program. Once ultrasound was recognized as another accurate way to collect carcass data, Dyce and David have been strong supporters of collecting carcass data on every one of their bulls and females when they reach one year of age. Now if you look into the breed EPD's under carcass quality (%IMF) you will see the results of all of these years of selecting top quality carcass data. Cudlobe Angus will have not only the No#1 carcass bull registered in Canada but many in the top of the breed. If you want to increase the marbling in your herd consider a Cudlobe Bull.



TC TOTAL 410

Reference Sire



TC TOTAL 410

IMP 0410P JANUARY 16 2004 #1485449

BW: 83LBS. ADJ 205 DAY WT: 852LBS. ADJ 365 DAY WT: 1516LBS.

V D A R NEW TREND 315 AMF NHF CAF
 B/R NEW DESIGN 036 9AMF NHF
 B/R BLACKCAP EMPRESS 76
 S: BON VIEW NEW DESIGN 208NHF CAC
 N BAR EMULATION EXT AMF NHF CAF
 BON VIEW ERICA 443
 BON VIW ERICA 1380
 G A R PRECISION 1680AMC NHC
 VTWIN VALLEY PRECISION E161 AMF NHC CAF
 W C C BLACKCAP C9
 D: TC ERICA EILEEN 2047 NHC AMF
 LEACHMAN RIGHT TIME AMF
 TC ERICA EILEEN 5116
 T C ERICA EILEEN 6006

BW	WW	YW	MILK	SC	REA	IMF	FAT
+3.6	+71	+127	+27	+0.47	+0.68	+0.78	-0.021

Ranks in the TOP 1% for WW & YW. Will add an incredible performance boost to any matings. Growth + Maternal + Carcass + Good Looks + Super Disposition = TOTAL. If you like good cattle, you will love TOTALS!



CUDLOBE TOTAL 37Y - LOT 60

CUDLOBE TOTAL 37Y

60

UGA 37Y JANUARY 16 2011 #1626635
 BW: 90LBS. ADJ WW: 831 LBS. OCT 30 WT: 1105

S: TC TOTAL 410 AMF CAF NHF

GARDENS EXPEDITION AMF CAF NHF
 STEVENSON EXPEDITION 859K
 STEVENSON QUEEN 4058

D: CUDLOBE ENCHANTRESS 133R

CONNELLYS DIVIDEND 730
 STEVENSON ENCHANTRESS 425F
 J R S ENCHANTRESS 235Z

BW	WW	YW	MILK	SC	REA	IMF	FAT
+3.8	+63	+110	+24	+0.30	+0.48	+0.59	-0.006

Heaviest Actual WW Calf at 947 lbs.
 2008 Payweighth Son to Del Giles.
 2010 MoneyMaker 8U Son to Chris Bell.
 2 Heifers retained in herd.
 Top 1% fro WW & YW and Top 5% for Milk, Marbling & REA, quite the package!
 If you are retaining ownership, mark this guy down.



CUDLOBE TOTAL 13Y - LOT 61

CUDLOBE TOTAL 13Y

61

UGA 13Y JANUARY 08 2011 #1626622
 BW: 83LBS. ADJ WW: 757 LBS. OCT 30 WT: 1113

S: TC TOTAL 410 AMF CAF NHF

GARDENS EXPEDITION AMF CAF NHF
 STEVENSON EXPEDITION 859K
 STEVENSON QUEEN 4058

D: CUDLOBE EXPEDITION 90P

CUDLOBE MILLENNIUM 46K
 CUDLOBE LADY 37M
 GET-A-LONG LADY 224

BW	WW	YW	MILK	SC	REA	IMF	FAT
+2.4	+53	+100	+22	+0.24	+0.41	+0.55	-0.001

Another Total Bull Calf with heavy Actual WW and Oct 30 Weight.
 2007 Yellowstone Son to Riley Ranch.
 2008 Yellowstone Son to Forty Mile Grazing Co-op.
 Mark him down if you retaining ownership in your calves.

CUDLOBE TOTAL 27Y

62

JB 27Y FEBRUARY 04 2011 #1633284
 BW: 89LBS. ADJ WW: 725 LBS. OCT 30 WT: 973

S: TC TOTAL 410 AMF CAF NHF

HOFF GREAT WESTERN S C 456
 RAWBURN TRANSFORMER
 WILLABAR TILDA 7B

D: RAWBURN ELLEN ERICA 7N

CUDLOBE CHESTER 61Z
 CUDLOBE ELLEN ERICA 46D
 CUDLOBE ELLEN ERICA 63Z

BW	WW	YW	MILK	SC	REA	IMF	FAT
+5.0	+60	+102	+22	+0.24	+0.38	+0.33	-0.025

Ellen Erica is an Elite Dam with 6/106.
 This cow looks and produces like an Angus cow should.
 A very good young Total calf here.
 Bulls to Nizniks, Cross' and Harbinsons.

CUDLOBE TOTAL 28Y

63

UF 28Y JANUARY 13 2011 #1618389
 BW: 91LBS. ADJ WW: 666 LBS. OCT 30 WT: 961

S: TC TOTAL 410 AMF CAF NHF

N BAR EMULATION EXT AMF CAF NHF
 DAVIS MILLENNIUM 7518
 FINKS 982 OF 666 N T

D: CUDLOBE BLACKCLASS 62M

CUDLOBE CHESTER 60D
 CUDLOBE BLACKCLASS 82H
 CUDLOBE BLACKCLASS 38B

BW	WW	YW	MILK	SC	REA	IMF	FAT
+4.7	+59	+102	+20	+0.24	+0.41	+0.33	-0.015

A cow bull with performance and carcass.
 62M is a moderate framed cow that always brings in a good one.
 An Elite Dam with previous bulls to Prairie Lane, Gordon Turner and Bill Bateman.

CUDLOBE TOTAL 72Y

UF 72Y JANUARY 27 2011 #1618402

BW: 88LBS. ADJ WW: 737 LBS. OCT 30 WT: 968

64

S: TC TOTAL 410 AMF CAF NHF

GARDENS EXPEDITION AMF CAF NHF
STEVENSON EXPEDITION 859K
STEVENSON QUEEN 4058

D: CUDLOBE QUEEN 52N

CUDLOBE CHESTER 61Z
CUDLOBE QUEEN 74D
CUDLOBE QUEEN 17T

BW	WW	YW	MILK	SC	REA	IMF	FAT
+3.3	+60	+102	+23	+0.24	+0.46	+0.59	-0.010

These Total calves just "pound" out the performance and carcass numbers. 52N has produced some of our best Expedition granddaughters.



CUDLOBE TOTAL 26Y - LOT 65

CUDLOBE TOTAL 45Y

UF 45Y JANUARY 18 2011 #1618394

BW: 88LBS. ADJ WW: 684 LBS. OCT 30 WT: 925

66

S: TC TOTAL 410 AMF CAF NHF

GARDENS FORTUNE 9213 S3 AMF NHF
STEVENSON FORTUNE 415C
JRS PRIDE 973Z

D: CUDLOBE QUEEN 7J

CUDLOBE CHESTER 61Z
CUDLOBE QUEEN 74D
CUDLOBE QUEEN 17T

BW	WW	YW	MILK	SC	REA	IMF	FAT
+5.4	+58	+95	+19	+0.24	+0.35	+0.45	-0.018

A Total calf out of a very old cow with perfect feet and udder. 7J has been an Elite Dam since 2006. 7J is old school, Total is new school, it looks like the math is good.

Claresholm Veterinary Services Ltd.

Box 2350, Claresholm, AB T0L 0T0 (403) 625-3677

C. FANCY, DVM • R. CHISHOLM, DVM
K. WRIGHT, DVM • K. MINISH, DVM

Claresholm Veterinary Services Ltd. has been providing veterinary service and consultation to Cudlobe Farms for over 20 years. The majority of the service provided consists of breeding soundness evaluations of the bulls and pregnancy testing in the cow herd. Health problems are minimized with a good vaccination program and excellent management. Heifer and bull calves are vaccinated in the spring with Bovashield FP 5, One Shot and Ultrabac 7/Somubac and at weaning with Bovashield Gold FP 5, One Shot and Ultrabac 7/Somubac (the comprehensive Pfizer Gold Program to protect against pneumonia and BVD). The cow herd receives a scour-prevention vaccine (Jencine ERC) six weeks prior to calving as well as a vaccine designed to protect against pneumonia in their calves (Cattlemaster 4). The herd has consistently tested negative in the past for Bovine Leucosis and Johne's Disease. We are proud to be associated with the Bolduc's and their cattle operation!

CUDLOBE TOTAL 26Y

UGA 26Y JANUARY 13 2011 #1626630

BW: 79LBS. ADJ WW: 766 LBS. OCT 30 WT: 1043

65

S: TC TOTAL 410 AMF CAF NHF

GARDENS EXPEDITION AMF CAF NHF
STEVENSON EXPEDITION 859K
STEVENSON QUEEN 4058

D: CUDLOBE BLACKCAP 43T

BASIN NEW DESIGN 631M
CUDLOBE BLACKCAP 12R
CUDLOBE BLACKCAP 14M

BW	WW	YW	MILK	SC	REA	IMF	FAT
+1.8	+60	+110	+25	+0.24	+0.56	+0.76	-0.005

26Y pedigree shows that he should have exceptional performance and carcass numbers.

His EPD's and Igenity Profile also support this.

CUDLOBE TOTAL J B 26Y

JB 26Y FEBRUARY 02 2011 #1642287

BW: 90LBS. ADJ WW: 743 LBS. OCT 30 WT: 940

67

S: TC TOTAL 410 AMF CAF NHF

CUDLOBE CHESTER 61Z
CUDLOBE CHESTER 60D
CUDLOBE ELINE 7Y

D: CUDLOBE JANESEA 38H

CUDLOBE STEMWINDER 13N
CUDLOBE JANESEA 5D
ELA SUPER JANESEA 208S

BW	WW	YW	MILK	SC	REA	IMF	FAT
+5.2	+58	+104	+22	+0.24	+0.39	+0.29	-0.016

A good young calf from Mat's old Jan cow. An Elite Dam 11/107, she won the 4-H show many times for him. Previous bulls to Giles, Hicken and Broadview.

CUDLOBE TOTAL 106Y

UF 106Y FEBRUARY 10 2011 #1618411
BW: 90LBS. ADJ WW: 753 LBS. OCT 30 WT: 941

68

S: TC TOTAL 410 AMF CAF NHF

B/R NEW DESIGN 323
BASIN NEW DESIGN 631M
BASIN EILEENMERE LASS 270E

D: CUDLOBE ANNIE 106R

HARMON RANCHERS CHOICE 4860
CUDLOBE ANNIE 56F
ANNIE K MCB 70'94

BW	WW	YW	MILK	SC	REA	IMF	FAT
+4.9	+55	+98	+28	+0.24	+0.44	+0.49	-0.022

A February calf with solid performance and really good carcass numbers. Every calf of 106R's has made the sale. They went to Broadview, Foxtail and Paul Lievaart.

CUDLOBE TOTAL 57Y

UF 57Y JANUARY 22 2011 #1618474
BW: 90LBS. ADJ WW: 705 LBS. OCT 30 WT: 919

69

S: TC TOTAL 410 AMF CAF NHF

BOYD ON TARGET 1083 AMF CAC NHF
STEVENSON MONEYMAKER R185 AMF CAF NHF
STEVENSON CLOVA PRIDE L888 AMF NHF

D: CUDLOBE PRINCESS 96U

STEVENSON RAINMAKER 630G
CUDLOBE PRINCESS 33L
CUDLOBE PRINCESS 11J

BW	WW	YW	MILK	SC	REA	IMF	FAT
+4.9	+62	+113	+25	+0.24	+0.30	+0.50	+0.008

A Total calf from an excellent three year old. The grandmother is an Elite Cow. These Total bulls will generate exotic like performance. Those are good numbers. Last year's calf to Cross'.

CUDLOBE TOTAL KMB 5Y

KMB 5Y JANUARY 07 2011 #1626715
BW: 88LBS. ADJ WW: 706 LBS. OCT 30 WT: 959

70

S: TC TOTAL 410 AMF CAF NHF

B/R NEW DESIGN 323
BASIN NEW DESIGN 631M
BASIN EILEENMERE LASS 270E

D: CUDLOBE BELLA 22T

STEVENSON EXPEDITION 859K
CUDLOBE BELLA 137P
CUDLOBE BELLA 84H

BW	WW	YW	MILK	SC	REA	IMF	FAT
+3.6	+56	+99	+26	+0.24	+0.49	+0.65	-0.004

These New Design 631M daughters are carcass machines. Mark 5Y if you are retaining ownership of your calves.



CUDLOBE TOTAL KMB 5Y - LOT 70



Reference Sire



G A R ULTIMATE

IMP 6226S AUGUST 21 2006 #1552413 AMF CAF NHF
BW: 73 ADJ WW: 812 ADJ WW: 1396

D H D TRAVELER 6807 AMF NHF
S S TRAVELER 6807 T510 AMF CAF NHF
S S MISS HI SPADE A114

S: S S OBJECTIVE T510 OT26 AMF CAF NHF

S S RITO RITO R76 R011
S S MISS RITA R011 7R8 AMF NHF
S S MISS ULTRESS U56

G A R MAXIMUM PAYLOAD 3674
RAB-GAR LOAD UP 4049J AMC CAF
G A R EXT 721

D: G A R LOAD UP 1314 AMC

B/R NEW DESIGN 036 AMF CAF NHF
G A R NEW DESIGN 80 AMC
G A R PRECISION 2536 AMC NHF

BW	WW	YW	MILK	SC	REA	IMF	FAT
+2.4	+62	+102	+27	+0.21	+0.55	+0.81	+0.009

Ultimate topped the Gardiner Angus Ranch Sale at \$100,000. His dam sold for \$56,000 and now is a donor at Deer Valley Farm. Ultimate ranks in the top 1% for WW, YW, MILK, REA & Marbling. Ultimate Sons in last year's sale were very well accepted with the High Seller in his group. Another impressive Ultimates Sell this year again.

CUDLOBE ULTIMATE 1Y

71

(ET) SB 1Y JANUARY 29 2011 #1644941

BW: 80LBS. ADJ WW: 790 LBS. OCT 30 WT: 1125

S: G A R ULTIMATE AMF CAF NHF

VERMILION DATELINE 7078 AMF CAF NHF
VERMILION YELLOWSTONE AMF CAF NHF
VERMILION B JESTRESS 3912

D: CUDLOBE ENCHANTRESS 4M

CONNEALYS DIVIDEND 730
STEVENSON ENCHANTRESS 425F
J R S ENCHANTRESS 235Z

BW	WW	YW	MILK	SC	REA	IMF	FAT
+3.0	+53	+94	+20	+0.45	+0.29	+0.66	+0.010

A full Brother to Last Year's High Seller to K-Deen Angus.
Maternal Brother to Lot 28.

With his actual performance and EPD's he definitely is a front end calf also.
If you sell your calves by the pound, check out his Igenuity.



CUDLOBE ULTIMATE 1Y - LOT 71

CUDLOBE ULTIMATE 9Y

72

KMB 9Y FEBRUARY 07 2011 #1626713

BW: 89LBS. ADJ WW: 767 LBS. OCT 30 WT: 1029

S: G A R ULTIMATE AMF CAF NHF

G D A R TRAVELER 044 AMF CAF NHF
G A R GRID MAKER AMF CAF NHF
G A R PRECISION 2536 AMC NHF

D: CUDLOBE KYMA 19P

CUDLOBE CHESTER 60D
CUDLOBE KYMA 32F
CUDLOBE KYMA 53S

BW	WW	YW	MILK	SC	REA	IMF	FAT
+4.6	+60	+101	+20	+0.25	+0.49	+0.51	-0.004

Top 10% for WW, YW, Marbling & REA.
2006 In Focus Son to Bar Diamond Ranching.



CUDLOBE ULTIMATE 9Y - LOT 72

CUDLOBE ULTIMATE 95Y

73

UGA 95Y FEBRUARY 05 2011 #1626682

BW: 80LBS. ADJ WW: 817 LBS. OCT 30 WT: 1032

S: G A R ULTIMATE AMF CAF NHF

GARDENS EXPEDITION AMF CAF NHF
STEVENSON EXPEDITION 859K
STEVENSON QUEEN 4058

D: CUDLOBE KATHLEEN 126P

CUDLOBE STEMWINDER 13N
CUDLOBE KATHLEEN 30D
CUDLOBE KATHLEEN 29B

BW	WW	YW	MILK	SC	REA	IMF	FAT
+1.4	+54	+91	+24	-0.07	+0.31	+0.43	+0.009

2 Replacement Females Retained.
2008 On Target Son to Cross Cattle Co.

It is the
SERVICE
after the
SALE
that counts!

CUDLOBE ULTIMATE 87Y

74

UGA 87Y FEBRUARY 03 2011 #1626675

BW: 84LBS. ADJ WW: 729 LBS. OCT 30 WT: 984

S: G A R ULTIMATE AMF CAF NHF

GARDENS EXPEDITION AMF CAF NHF
STEVENSON EXPEDITION 859K
STEVENSON QUEEN 4058

D: CUDLOBE ENCHANTRESS 3P

VERMILION YELLOWSTONE AMF CAF NHF
CUDLOBE ENCHANTRESS 4M
STEVENSON ENCHANTRESS 425F

BW	WW	YW	MILK	SC	REA	IMF	FAT
+1.9	+53	+92	+23	+0.11	+0.43	+0.61	+0.015

Top 5% for WW, YW Marbling and REA.
Performance and Carcass; The Name Of The Game!
2008 Ideal Son to Jay Scarff.
2009 8S Son to Del Giles.
Dam 3P was the Highest Ultrasound IMF in 2004.



CUDLOBE ULTIMATE 87Y - LOT 74

CUDLOBE ULTIMATE 98Y

75

UGA 98Y FEBRUARY 06 2011 #1626684

BW: 83LBS. ADJ WW: 724 LBS. OCT 30 WT: 970

S: G A R ULTIMATE AMF CAF NHF

VERMILION YELLOWSTONE AMF CAF NHF
CUDLOBE YELLOWSTONE 1'03
CUDLOBE EUGENIE 2J

D: CUDLOBE EXQUITE LADY 35S

STEVENSON BRUNO 561G CAF NHF
CUDLOBE EXQUISITE LADY 7L
CUDLOBE EXQUISITE LADY 4H

BW	WW	YW	MILK	SC	REA	IMF	FAT
+4.0	+51	+92	+24	+0.11	+0.37	+0.78	+0.025

Top 1% for Marbling.
Top 10% for WW, YW & REA.



Reference Sire



SYDGEN C C & 7

IMP 6099S JANUARY 13 2006 #1552417 AMF CAF NHF

BW: 80LBS. ADJ WW: 840LBS. YW: 1467

TRAVELER 124 G D A R
SVF GDAR 216 LTD
G D A R FOREVER LADY 718

S: S A F CONNECTION AMF CAF NHF

BON VIEW BANDO 598 AMF CAC
S A F ROYAL QUEEN 5084 CAF
S A F ROYAL QUEEN 9022

BON VIEW NEW DESIGN 1407 AMF CAF NHF
SYDGEN 1407 CORONA 2016 AMC CAF NHF
V N A R PERFECTION 142F 180K AMC NHF

D: SYDGEN FOREVER LADY 4087 AMF

S A F NEUTRON AMF CAF NHF
S A F FOREVER LADY 8292
S A F FOREVER LADY 5138

BW	WW	YW	MILK	SC	REA	IMF	FAT
+1.1	+55	+107	+52	+0.61	+0.84	+0.38	-0.016

CC&7 Ranks in the Top 1% fro YW, Milk & REA. Top 10% for WW & Carcass. We do use bulls that have great figures across the board to enhance our program as an Angus Leader in these traits as you can see form the progeny offered. Sydgen CC&7 is the NO#1 Docility Bull in the Breed and he excels in SC and Heifer Pregnancy EPDs. It also needs to be mentioned he comes from the Forever Lady Cow family on both sides. That says a lot!!

Note: Sydgen CC&7 Semen just went up to \$100/Straw!



SYDGEN C C & 7

CUDLOBE C C & 7 55Y

76

TW UGA 55Y JANUARY 22 2011 #1626650

BW: 69LBS. ADJ WW: 775 LBS. OCT 30 WT: 1048

S: SYDGEN C C & 7 AMF CAF NHF

SITZ ALLIANCE 6595 AMF NHF
KMK ALLIANCE 6595 I87 AMF CAF NHF
G A R EXT 916 AMF

D: CUDLOBE MISS EMULOUS KMK 84T

RITO 9M9 OF 2036 SCOTCH CAP AMF NHF
ANKONY MISS EMULOUS V226
ANKONY MISS EMULOUS 24R23

BW	WW	YW	MILK	SC	REA	IMF	FAT
+1.7	+51	+90	+34	+0.35	+0.38	+0.34	+0.008

Top 1% fro Milk, Top 10% for WW,YW and REA.

2009 Franchise Son to Niznik Bros.

Great Numbers across the Board.

RETAINING 1/3 SEMEN INTEREST.



CUDLOBE C C & 7 55Y - LOT 76

CUDLOBE C C & 7 37Y

77

UF 37Y JANUARY 16 2011 #1618463

BW: 90LBS. ADJ WW: 653 LBS. OCT 30 WT: 986

S: SYDGEN C C & 7 AMF CAF NHF

B/R NEW DESIGN 323
BASIN NEW DESIGN 631M
BASIN EILEENMERE LASS 270E

D: CUDLOBE QUEEN 28S

STEVENSON FORTUNE 415C
CUDLOBE QUEEN 7J
CUDLOBE QUEEN 74D

BW	WW	YW	MILK	SC	REA	IMF	FAT
+3.9	+48	+86	+34	+0.33	+0.37	+0.48	-0.020

ACC+7 out of the very productive 28S.

Powerful carcass with a nice disposition.

This bull carries that extra bit of milk if that's what you need.



CUDLOBE C C & 7 48Y

78

UGA 48Y JANUARY 19 2011 #1626644

BW: 80LBS. ADJ WW: 671 LBS. OCT 30 WT: 970

S: SYDGEN C C & 7 AMF CAF NHF

VERMILION YELLOWSTONE AMF CAF NHF
CUDLOBE YELLOWSTONE 80M
STEVENSON ENCHANTRESS 425F

D: CUDLOBE MISS EMULOUS 63R

RITO 9M9 OF 2036 SCOTCH CAP AMF NHF
ANKONY MISS EMULOUS V226
ANKONY MISS EMULOUS 24R23

BW	WW	YW	MILK	SC	REA	IMF	FAT
+2.2	+42	+77	+32	+0.43	+0.37	+0.33	+0.007

CC&7 is the No#1 Docility Bull in the Breed.

His Moderate BW allows him to be used on heifers or cows with excellent results.

2007 859K Son to Cross Cattle Co.

2010 Total Son to Brad Torkelson.



CUDLOBE C C & 7 48Y - LOT 78

CUDLOBE C C & 7 23Y

79

UGA 23Y JANUARY 11 2011 #1626627
BW: 77LBS. ADJ WW: 673 LBS. OCT 30 WT: 973

S: SYDGEN C C & 7 AMF CAF NHF

F A R KRUGERRAND 410H AMF CAF NHF
CUDLOBE KRUGERRAND 21P
CUDLOBE ENCHANTRESS 47H

D: CUDLOBE LUCY 26T

LEACHMAN HOSS
LUCY OF WAYSIDE 9A
LUCY OF ARES 10W

BW	WW	YW	MILK	SC	REA	IMF	FAT
+0.3	+37	+73	+31	+0.39	+0.52	+0.26	+0.003

Positive EPD's across the profile.

CUDLOBE C C & 7 7Y

80

UF 7Y JANUARY 04 2011 #1618386
BW: 80LBS. ADJ WW: 606 LBS. OCT 30 WT: 900

S: SYDGEN C C & 7 AMF CAF NHF

VERMILION DATELINE 7078 AMF CAF NHF
VERMILION YELLOWSTONE AMF CAF NHF
VERMILION B JESTRESS 3912

D: CUDLOBE QUEEN 9M

CUDLOBE SIR EILEENMERE 31S
CUDLOBE QUEEN 75A
CUDLOBE QUEEN 17T

BW	WW	YW	MILK	SC	REA	IMF	FAT
+1.6	+37	+76	+30	+0.33	+0.44	+0.53	-0.006

A very quiet CC+7 calf with excellent carcass.

9M has produced calves for Roy Hall, Nizniks and Baker Land and Cattle.

CUDLOBE C C & 7 61Y

81

UGA 61Y JANUARY 24 2011 #1626655
BW: 86LBS. ADJ WW: 646 LBS. OCT 30 WT: 938

S: SYDGEN C C & 7 AMF CAF NHF

VERMILION YELLOWSTONE AMF CAF NHF
CUDLOBE YELLOWSTONE 1'03
CUDLOBE EUGENIE 2J

D: CUDLOBE ENCHANTRESS 66S

STEVENSON NEW DESIGN 852K
CUDLOBE ENCHANTRESS 49N
STEVENSON ENCHANTRESS 425F

BW	WW	YW	MILK	SC	REA	IMF	FAT
+2.4	+42	+82	+37	+0.33	+0.29	+0.41	-0.009

A stout CC&7 with above average Carcass Data.

2008 859K Son to Dan Hitchner of Abacus Angus.

Reference Sire

CUDLOBE IN FOCUS 5S

UF 5S JANUARY 05 2006 #1333991 NHF
BW: 68LBS. ADJ 205 DAY WT: 772 LBS. ADJ 365 DAY WT: 1477 LBS.

S A F FAME AMF CAF NHF
S A F FOCUS OF E R AMF CAF NHF
G D A R FOREVER LADY 246

S: MYTTY IN FOCUS AMF CAF NHF

SITZ ALLIANCE 6595 AMF NHF
MYTTY COUNTLESS 906
BALDRIDGE COUNTLESS 357

B/R NEW DESIGN 036 AMF CAF NHF
BON VIEW NEW DESIGN 1407 AMF CAF NHF
BON VIEW PRIDE 664

D: CUDLOBE ENCHANTRESS 55M

PUKETUTU ROBIN 933
CUDLOBE ENCHANTRESS 47H
STEVENSON ENCHANTRESS 425F

BW	WW	YW	MILK	SC	REA	IMF	FAT
-4.5	+60	+114	+20	-	+0.43	+0.61	+0.061

This bull is one of the popular bulls in the ORlgen Listings. As you can see by his numbers, he ranks in the Top 1% for BW, WW & YW and Top 5% for REA and Marbling. He is a calving ease Giant with explosive growth and carcass numbers. This sire group will impress you. His bull calf progeny have an average of 77 lb BW and Adj 705 on WW. His cow family is the renowned Enchantress Cow Family that is one of our best at home going back to the Enchantress 425F Herd Bull Maker.

Co-Owned with Stevenson Angus Ranch & ORlgen.



CUDLOBE C C & 7 23Y - LOT 79

CUDLOBE C C & 7 53Y

82

UGA 53Y JANUARY 21 2011 #1644159 CAF
BW: 80LBS. ADJ WW: 671 LBS. OCT 30 WT: 919

S: SYDGEN C C & 7 AMF CAF NHF

S A F 598 BANDO 5175 AMF CAC
BOYD ON TARGET 1083 AMF CAC NHF
BOYD FOREVER LADY 7095

D: CUDLOBE COUNTLESS 5'07

BELVIN BLACK MAGIC 42'92
MIDNITE COUNTLESS 75F
MIDNITE COUNTLESS 43D

BW	WW	YW	MILK	SC	REA	IMF	FAT
+1.6	+43	+83	+33	+0.61	+0.33	+0.25	-0.014

Above average EPD's across the board.



CUDLOBE IN FOCUS 5S

CUDLOBE IN FOCUS 53Y

UF 53Y JANUARY 20 2011 #1618397

BW: 84LBS. ADJ WW: 682 LBS. OCT 30 WT: 973

83

S: CUDLOBE IN FOCUS 5S NHF

CONNELLY LEADTIME AMF CAF NHF
WILLABAR LEADTIME 154L
WILLABAR INA 61H

D: CUDLOBE BONNIE 146R

CUDLOBE STOCKMAN 24H
CUDLOBE BONNIE 19L
CUDLOBE BONNIE 52B

BW	WW	YW	MILK	SC	REA	IMF	FAT
+0.6	+51	+93	+22	-	+0.46	+0.51	+0.014

A good birth weight calf from Focus.
Exceptional carcass numbers all in top 10% for CW, REA and marbling.

CUDLOBE IN FOCUS 9Y

UF 9Y JANUARY 05 2011 #1618450

BW: 79LBS. ADJ WW: 709 LBS. OCT 30 WT: 929

84

S: CUDLOBE IN FOCUS 5S NHF

VERMILION PAYWEIGHT J847 AMF CAF NHF
CUDLOBE PAYWEIGHT 8S NHF
CUDLOBE BLACKLASS 38B

D: CUDLOBE QUEEN 24W

CUDLOBE CHESTER 61Z
CUDLOBE QUEEN 59D
CUDLOBE QUEEN 7P

BW	WW	YW	MILK	SC	REA	IMF	FAT
+0.6	+53	+100	+17	-	+0.42	+0.27	+0.038

A Focus from an 8S.
It is interesting to note 24W has 9 maternal non-transplant sisters in the herd.
Perhaps a cow maker here.

CUDLOBE IN FOCUS 18Y

UF 18Y JANUARY 09 2011 #1618457

BW: 77LBS. ADJ WW: 728 LBS. OCT 30 WT: 944

85

S: CUDLOBE IN FOCUS 5S NHF

VERMILION PAYWEIGHT J847 AMF CAF NHF
CUDLOBE PAYWEIGHT 8S NHF
CUDLOBE BLACKLASS 38B

D: CUDLOBE BLACKLASS 25W

VERMILION YELLOWSTONE AMF CAF NHF
CUDLOBE BLACKLASS 1N
CUDLOBE BLACKLASS 78K

BW	WW	YW	MILK	SC	REA	IMF	FAT
+0.1	+58	+100	+22	-	+0.32	+0.40	+0.034

The 5S x 8S combination has produced exceptional calves.
Sometimes we do get things figured out.
25W is the combination of Payweight and Yellowstone, performance and carcass.
Grandmother is an Elite Dam.

CUDLOBE IN FOCUS 85Y

UGA 85Y FEBRUARY 02 2011 #1626673

BW: 77LBS. ADJ WW: 704 LBS. OCT 30 WT: 942

86

S: CUDLOBE IN FOCUS 5S NHF

DAVIS MILLENNIUM 7518
CUDLOBE MILLENNIUM 46K
STEVENSON ENCHANTRESS 425F

D: CUDLOBE ELNORA 72M

Q A S TRAVELER 23-4 AMF CAF NHF
CUDLOBE ELNORA 61B
CUDLOBE ELNORA 5Z

BW	WW	YW	MILK	SC	REA	IMF	FAT
-0.2	+48	+91	+20	-	+0.29	+0.32	+0.034

These 5S sons are born small but they grow.
Another Bull with Great Numbers.

CUDLOBE IN FOCUS 34Y

JB 34Y FEBRUARY 21 2011 #1633288

BW: 72LBS. ADJ WW: 747 LBS. OCT 30 WT: 904

87

S: CUDLOBE IN FOCUS 5S NHF

CONNELLY FOREFRONT AMF CAF NHF
TC FREEDOM 104 AMF CAF NHF
T C RUBY 9095 CAF

D: CUDLOBE DELIA 38R

CUDLOBE CHESTER 61Z
CUDLOBE DELIA 27C
CUDLOBE DELIA 26A

BW	WW	YW	MILK	SC	REA	IMF	FAT
-1.5	+52	+100	+21	+0.40	+0.39	+0.28	+0.019

Nice birth to yearling spread on this calf.
His mother is a direct daughter of the famous 27C.
38R is the grandmother of last year's high scanning calf.
Should make an excellent heifer bull with lots of grow.



CUDLOBE IN FOCUS 85Y - LOT 86

CUDLOBE IN FOCUS 107Y

88

UF 107Y FEBRUARY 11 2011 # 1618412
BW: 72LBS. ADJ WW: 747 LBS. OCT 30 WT: 922

S: CUDLOBE IN FOCUS 5S NHF

BASIN RAINMAKER 2844
STEVENSON RAINMAKER 630G
J R S ELGA 495W

D: CUDLOBE PRINCESS 33L

STEVENSON FORTUNE 415C
CUDLOBE PRINCESS 11J
CUDLOBE PRINCESS 45A

BW	WW	YW	MILK	SC	REA	IMF	FAT
-1.5	+52	+100	+21	+0.40	+0.39	+0.28	+0.019

Calving would be good here- a 5S from a Rainmaker cow.
33L is an Elite Dam average ratio 116.
Previous bulls to Granum Colony, Circle Cross and Betty Wideman.

CUDLOBE IN FOCUS 12Y

89

KLB 12Y JANUARY 26 2011 #1626727
BW: 86LBS. ADJ WW: 732 LBS. OCT 30 WT: 1043

S: CUDLOBE IN FOCUS 5S NHF

BELVIN MERCEDES 32'02
BELVIN MANAGER 101'03
BELVIN LADY DI 32'95

D: B.J'S LADY 26S

DUSTY DALE MONARCH 916J
SWINDON LADY 42L
PREMIER LADY ANGUS RIDGE 19C

BW	WW	YW	MILK	SC	REA	IMF	FAT
+1.4	+47	+83	+20	-	+0.14	+0.29	+0.034

Stout made 5S son with positive EPD data.
2010 Pendleton Son to Blake Mulvey.

CUDLOBE IN FOCUS 86Y

90

UF 86Y JANUARY 30 2011 #1618488
BW: 77LBS. ADJ WW: 684 LBS. OCT 30 WT: 909

S: CUDLOBE IN FOCUS 5S NHF

BASIN RAINMAKER 2844
STEVENSON RAINMAKER 630G
J R S ELGA 495W

D: CUDLOBE QUEEN 153S

STEVENSON FORTUNE 415C
CUDLOBE QUEEN 35F
CUDLOBE QUEEN 7P

BW	WW	YW	MILK	SC	REA	IMF	FAT
-1.5	+45	+81	+24	-	+0.17	+0.22	+0.041

A sure fire heifer bull here.
A Focus from a Rainmaker is all about maternal and easy fleshing.

CUDLOBE IN FOCUS 10Y

91

KMB 10Y FEBRUARY 22 2011 #1643794
BW: 78LBS. ADJ WW: 685 LBS. OCT 30 WT: 897

S: CUDLOBE IN FOCUS 5S NHF

VERMILION YELLOWSTONE AMF CAF NHF
CUDLOBE YELLOWSTONE 1'03
CUDLOBE EUGENIE 2J

D: CUDLOBE MISS EMULOUS 2T

CUDLOBE MILLENNIUM 46K
CUDLOBE MISS EMULOUS 3M
LONE STAR MISS EMULOUS 3J

BW	WW	YW	MILK	SC	REA	IMF	FAT
-0.6	+47	+93	+22	-	+0.21	+0.50	+0.037

An In Focus with a big spread between BW/YW with every positive carcass data.

CUDLOBE IN FOCUS 16Y

92

JB 16Y JANUARY 20 2011 #1633275
BW: 70LBS. ADJ WW: 695 LBS. OCT 30 WT: 891

S: CUDLOBE IN FOCUS 5S NHF

RIVERBEND MILE HIGH 3718 AMC CAF NHF
DIAMOND MILE HIGH T357 AMF NHF
DIAMOND ENCHANTRESS 3123 AMF NHF

D: CUDLOBE ELINE 72W

STEVENSON EXPEDITION 859K
CUDLOBE ELINE 42M
CUDLOBE ELINE 91K

BW	WW	YW	MILK	SC	REA	IMF	FAT
-2.1	+50	+95	+21	-	+0.43	+0.68	+0.040

Birth weight, Performance, Carcass.
It would be difficult to write a better pedigree for the above three traits.

CUDLOBE IN FOCUS J B 9Y

93

JB 9Y JANUARY 13 2011 # 1642289
BW: 81LBS. ADJ WW: 691 LBS. OCT 30 WT: 895

S: CUDLOBE IN FOCUS 5SNHF

G A R PREDESTINED AMF NHF CAF
RITO REVENUE 5M2 OF 2536 PRE AMF NHF CAF
G A R PRECISION 2536 NHF AMC

D: CUDLOBE ROSEBUD 59W

S A F 598 BANDO 5175 AMF CAC
CUDLOBE ROSEBUD 68N
CUDLOBE ROSEBUD 65D

BW	WW	YW	MILK	SC	REA	IMF	FAT
+0.5	+56	+103	+22	-	+0.48	+0.59	+0.050

A two year old's calf by Focus.
One of the high end carcass calves from Focus in this group.



Reference Sire



CUDLOBE MONEYMAKER 89U

(ET) UF 89U FEBRUARY 03 2008 #1472850

BW: 90LBS. ADJ 205 DAY WT: 757 LBS. ADJ 365 DAY WT: 1524 LBS.

S A F 598 BANDO 5175 AMF CAC
BOYD ON TARGET 1083 AMF CAC NHF
BOYD FOREVER LADY 7095

B/R NEW DESIGN 036 AMF CAF NHF
STEVENSON NEW DESIGN 852K
STEVENSON ESTELLA 669H

S: STEVENSON MONEYMAKER R185 AMF CAF NHF
VDAR AMBUSH 2478

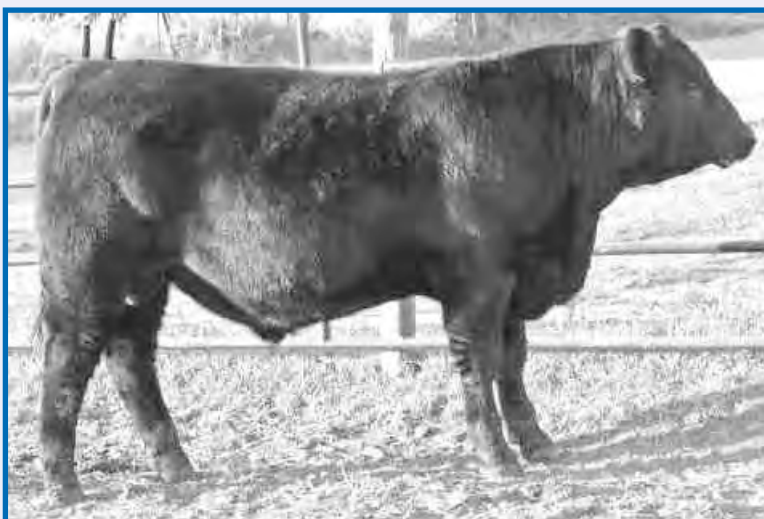
D: CUDLOBE BLACKLASS 19R
STEVENSON FORTUNE 415C

STEVENSON CLOVA PRIDE L888 AMF NHF
STEVENSON CLOVA PRIDE 712H

CUDLOBE BLACKLASS 95J
CUDLOBE BLACKLASS 38B

BW	WW	YW	MILK	SC	REA	IMF	FAT
+5.5	+61	+116	+20	-	-0.11	+0.35	+0.027

We kept a Semen Interest in Moneymaker 89U. He sold to PrairieLane Farms in Manitoba 3 years ago. The Moneymakers as a whole did our program very good over the last few years. Great numbers across the board here as well. His sire group last year was very well accepted and I believe they will be again this year.



CUDLOBE MONEYMAKER 54Y

94

UGA 54Y JANUARY 21 2011 #1626649

BW: 96LBS. ADJ WW: 760 LBS. OCT 30 WT: 1036

S: CUDLOBE MONEYMAKER 89U

YOUNG DALE HOGAN 8C
WIWA CREEK HOGAN 21'96
WIWA CREEK EVERGREEN 28'85

D: CUDLOBE BLACKLASS 111K

HOFF GALAXY S C 9147
CUDLOBE BLACK LASS 27D
BAR DOUBLE M BLACKLASS 3L

BW	WW	YW	MILK	SC	REA	IMF	FAT
+6.2	+53	+102	+19	-	-0.13	+0.22	+0.008

2003 46K Son to Rafter K ranching.
2004 12M Son to Harbinson Ranches.
2005 1'03 Son to Cal Rooke.
2010 Ideal Son to Cross Cattle Co.



CUDLOBE MONEYMAKER 5Y

95

UGA 5Y JANUARY 01 2011 #1626613

BW: 88LBS. ADJ WW: 710 LBS. OCT 30 WT: 1056

S: CUDLOBE MONEYMAKER 89U

SITZ ALLIANCE 6595 AMF NHF
KMK ALLIANCE 6595 187 AMF CAF NHF
G A R EXT 916 AMF

D: CUDLOBE MISS EMULOUS KMK 79T

RITO 9M9 OF 2036 SCOTCH CAP AMF NHF
ANKONY MISS EMULOUS V226
ANKONY MISS EMULOUS 24R23

BW	WW	YW	MILK	SC	REA	IMF	FAT
+4.4	+52	+96	+22	+0.02	+0.00	+0.30	+0.035

These 89U sons are performance machines.
2009 859K son to Richard Ferguson.

CUDLOBE MONEYMAKER 67Y

96

UF 67Y JANUARY 25 2011 #1618478

BW: 90LBS. ADJ WW: 700 LBS. OCT 30 WT: 952

S: CUDLOBE MONEYMAKER 89U

GARDENS EXPEDITION AMF CAF NHF
STEVENSON EXPEDITION 859K
STEVENSON QUEEN 4058

D: CUDLOBE ERICA 115S

CUDLOBE STOCKMAN 24H
CUDLOBE ERICA 1L
CUDLOBE ERICA 36Z

BW	WW	YW	MILK	SC	REA	IMF	FAT
+4.7	+52	+95	+19	-	+0.11	+0.41	+0.010

A nice Moneymaker calf with extra carcass from his Expedition mother. He is a 9 for WW and YW on Igenity.

115S had a previous calf that went to David Sammons.

CUDLOBE MONEYMAKER 55Y

98

UF 55Y JANUARY 21 2011 #1618398

BW: 94LBS. ADJ WW 696 LBS. OCT 30 WT: 940

S: CUDLOBE MONEYMAKER 89U

VERMILION DATELINE 7078 AMF CAF NHF
VERMILION YELLOWSTONE AMF CAF NHF
VERMILION B JESTRESS 3912

D: CUDLOBE ERROLLINE 4M

G D A R EXECUTIVE 727 AMF NHF
ASPELUND'S ERROLLINE 1495
KRISMIA ERROLLINE 1Y

BW	WW	YW	MILK	SC	REA	IMF	FAT
+5.5	+51	+94	+19	-	-0.08	+0.40	+0.014

4M has been an Elite Dam since 2007.

This cow cull has top 10% marbling with top 5% yearling EPD's.

Previous bulls to Stacey Lievaart and Harbinsons.



CUDLOBE MONEYMAKER 55Y - LOT 98

CUDLOBE MONEYMAKER 25Y

99

JB 25Y FEBRUARY 01 2011 #1633283

BW: 95LBS. ADJ 2WW: 689 LBS. OCT 30 WT: 942

S: CUDLOBE MONEYMAKER 89U

SITZ S L S RAINMAKER 7596
GDAR RAINMAKER 013
G D A R RACHEL 3277

D: REMITALL QUEEN 207N

BCC EILEENMERE LAD 11G
REMITALL QUEEN 43J
REMITALL QUEEN GLORIA 50G

BW	WW	YW	MILK	SC	REA	IMF	FAT
+5.7	+50	+91	+22	-	-0.08	+0.22	+0.024

A cow bull out of a powerful mating.

Just a February calf- he will amaze by spring.

CUDLOBE MONEYMAKER 31Y

97

UF 31Y JANUARY 14 2011 #1618390

BW: 92LBS. ADJ WW: 680 LBS. OCT 30 WT: 952

S: CUDLOBE MONEYMAKER 89U

TC STOCKMAN 365
CUDLOBE STOCKMAN 24H
CUDLOBE DELIA 27C

D: CUDLOBE ERICA 1L

CUDLOBE WILD TURKEY 25W
CUDLOBE ERICA 36Z
CUDLOBE ERICA 29U

BW	WW	YW	MILK	SC	REA	IMF	FAT
+5.6	+51	+92	+19	-	+0.00	+0.24	-0.006

1L always calves to the first service and has 5 replacements in the herd.

Only previous bull to Broadview.

This bull will leave some powerful replacement heifers.

CUDLOBE MONEYMAKER 20Y

100

JB 20Y JANUARY 27 2011 #1633278

BW: 89LBS. ADJ WWT: 710 LBS. OCT 30 WT: 900

S: CUDLOBE MONEYMAKER 89U

S S TRAVELER 6807 T510 AMF CAF NHF
S S OBJECTIVE T510 OT26 AMF CAF NHF
S S MISS RITA R011 7R8 AMF NHF

D: CUDLOBE BLACKCLASS 10U

CUDLOBE STOCKMAN 24H
CUDLOBE BLACKCLASS 108M
CUDLOBE BLACKCLASS 38B

BW	WW	YW	MILK	SC	REA	IMF	FAT
+4.8	+59	+107	+23	-	+0.10	+0.33	+0.003

Mat's 10U cow has her second bull in the sale as a three year old.

First calf to Speargrass.

This calf goes back to 38B twice.



CUDLOBE DELUXE 42Y - LOT 101

CUDLOBE DELUXE 42Y

UGA 42Y JANUARY 18 2011 #1640980
 BW: 78LBS. ADJ WW: 846 LBS. OCT 30 WT: 1015

C A FUTURE DIRECTION 5321 AMC CAF NHC VERMILION PAYWEIGHT J847 AMF CAF NHF
 STEVENSON CE DELUXE 1914 AMF CAF NHC CUDLOBE PAYWEIGHT 8S NHF
 FSHK PRIDE 180 NHF CUDLOBE BLACKLASS 38B
S: CUDLOBE DELUXE 44W NHF **D: CUDLOBE BEAUTY LASS 47W**
 STEVENSON NEW DESIGN 852K BON VIEW NEW DESIGN 1407 AMF CAF NHF
 CUDLOBE ENCHANTRESS 49N CHICO BEAUTY LASS 65P
 STEVENSON ENCHANTRESS 425F CHICO BEAUTY LASS 46F

BW	WW	YW	MILK	SC	REA	IMF	FAT
+3.2	+61	+110	+25	-	+0.21	+0.36	+0.016

47W brought home a front pasture bull calf on her first try.
 44W was our pick of the 2009 Deluxe calves and sold to Del Giles.
 He was lost due to a breeding injury in the 2010 breeding season.
 42Y is an example of the magnitude of the loss.
 He was the Number 1 Bull for Weaning Weight with a 118 Ratio.
 Also to remind you he had a BW of only 78 lbs.

101



CUDLOBE DELUXE 90Y - LOT 102

CUDLOBE DELUXE 90Y

UGA 90Y FEBRUARY 04 2011 #1643472
 BW: 78LBS. ADJ WW: 793 LBS. OCT 30 WT: 994

C A FUTURE DIRECTION 5321 AMC CAF NHC G A R PREDESTINED AMF CAF NHF
 STEVENSON CE DELUXE 1914 AMF CAF NHC RITO REVENUE 5M2 OF 2536 PRE AMF CAF NHF
 FSHK PRIDE 180 NHF G A R PRECISION 2536 AMC NHF
S: CUDLOBE DELUXE 44W NHF **D: CUDLOBE ENCHANTRESS 59W**
 STEVENSON NEW DESIGN 852K BON VIEW NEW DESIGN 1407 AMF CAF NHF
 CUDLOBE ENCHANTRESS 49N CUDLOBE ENCHANTRESS 46N
 STEVENSON ENCHANTRESS 425F CUDLOBE ENCHANTRESS 47H

BW	WW	YW	MILK	SC	REA	IMF	FAT
+2.5	+54	+99	+26	-	+0.33	+0.69	+0.035

Another Deluxe 44W calf here with Great Numbers.
 Top 5% in WW, YW, Milk & Marbling and Top 10% in REA.
 You can't expect more from a 2 year old.
 A Calving ease bull that Ratioed 110 on his WW.
 Don't miss these Deluxe Calves just because they are at the back of the catalogue.

102

CUDLOBE DELUXE 62Y

UGA 62Y JANUARY 26 2011 #1626656
 BW: 75LBS. ADJ WW: 686 LBS. OCT 30 WT: 900

C A FUTURE DIRECTION 5321 AMC CAF NHC RIVERBEND MILE HIGH 3718 AMC CAF NHF
 STEVENSON CE DELUXE 1914 AMF CAF NHC DIAMOND MILE HIGH T357 AMF NHF
 FSHK PRIDE 180 NHF DIAMOND ENCHANTRESS 3123 AMF NHF
S: CUDLOBE DELUXE 44W NHF **D: CUDLOBE ENCHANTRESS 82W**
 STEVENSON NEW DESIGN 852K STEVENSON EXPEDITION 859K
 CUDLOBE ENCHANTRESS 49N CUDLOBE ENCHANTRESS 133R
 STEVENSON ENCHANTRESS 425F STEVENSON ENCHANTRESS 425F

BW	WW	YW	MILK	SC	REA	IMF	FAT
+1.9	+45	+84	+25	-	+0.18	+0.69	+0.007

Positive EPD's Across the board.

103

CUDLOBE YELLOWSTONE 91Y

UF 91Y FEBRUARY 02 2011 #1618490
 BW: 86LBS. ADJ WW: 776 LBS. OCT 30 WT: 947

VERMILION YELLOWSTONE AMF CAF NHF S A F FOCUS OF E R AMF CAF NHF
 CUDLOBE YELLOWSTONE 1'03 MYTTY IN FOCUS AMF CAF NHF
 CUDLOBE EUGENIE 2J MYTTY COUNTNESS 906
S: CUDLOBE YELLOWSTONE 14T **D: CUDLOBE ROSEBUD 57U**
 STEVENSON EXPEDITION 859K STEVENSON EXPEDITION 859K
 CUDLOBE ELINE 42M CUDLOBE ROSEBUD 74S
 CUDLOBE ELINE 91K CUDLOBE ROSEBUD 5P

BW	WW	YW	MILK	SC	REA	IMF	FAT
+3.6	+58	+101	+25	-	+0.17	+0.68	+0.016

The only Yellowstone calf in the sale. A cow bull with top 2% marbling.
 Grandmother is the very good 74S.
 57U's previous calf went to Rommens.

104

CUDLOBE MILE HIGH 111Y

UGA 111Y FEBRUARY 25 2011 #1626693

BW: 88LBS. ADJ WW: 766 LBS. OCT 30 WT: 906

BON VIEW NEW DESIGN 1407 AMF CAF NHF
RIVERBEND MILE HIGH 3718 AMC CAF NHF
G A R PRECISION 1919 AMC NHF
S: **DIAMOND MILE HIGH T357 AMF NHF**
C A FUTURE DIRECTION 5321 AMC CAF NHC
DIAMOND ENCHANTRESS 3123 AMF NHF
DIAMOND ENCHANTRESS 990L

B/R NEW DESIGN 036 AMF CAF NHF
STEVENSON NEW DESIGN 852K
STEVENSON ESTELLA 669H
D: **CUDLOBE ERELITE 47P**
STEVENSON FORTUNE 415C
CUDLOBE ERELITE 30H
CUDLOBE ERELITE 4Y

BW	WW	YW	MILK	SC	REA	IMF	FAT
+4.5	+48	+89	+23	-	+0.31	+0.55	+0.010

A young calf filing big shoes, only son out of Mile High.
Elite Dam with a 4/110 Ratio.
2009 Mile High Son to Del Giles.

105



DIAMOND MILE HIGH T357 - SIRE OF LOT 105

2 Year Olds

CUDLOBE IDEAL 127X

UF 127X FEBRUARY 27 2010 #1562937

BW: 94LBS. ADJ WW: 776 LBS. OCT 30 WT: 1988

IDEAL 1418 OF 8103 AMF CAF NHF
PRAIRIELANE IDEAL 1418-0051
PRAIRIELANE 033 ROSEBUD 4034
S: **PRAIRIELANE IDEAL 0051-3011**
PRAIRIELANE BANG 5122-7081
PRAIRIELANE 7801 BLACK 1042
PRAIRIELANE 4002 BLACK 6037

CONNELLY DATELINE
VERMILION DATELINE 7078 AMF CAF NHF
VERMILION BLACKBIRD 5044
D: **CUDLOBE BLACKCLASS 43R**
CUDLOBE DAN PATCH 77Y
CUDLOBE BLACKCLASS 38B
CUDLOBE BLACKCLASS 11Z

BW	WW	YW	MILK	SC	REA	IMF	FAT
+3.4	+59	+107	+20	-	+0.04	+0.06	+0.007

43R is a flush female from 38B.
These are some of the most productive cows in the herd.
Good performance here.

106

CUDLOBE MONEYMAKER UF 119X

UF 119X FEBRUARY 20 2010 #1579871

BW: 98LBS. ADJ WW: 695 LBS. OCT 30 WT: 1915

BOYD ON TARGET 1083 AMF CAC NHF
STEVENSON MONEYMAKER R185 AMF CAF NHF
STEVENSON CLOVA PRIDE L888 AMF NHF
S: **CUDLOBE MONEYMAKER 89U**
STEVENSON NEW DESIGN 852K
CUDLOBE BLACKCLASS 19R
CUDLOBE BLACKCLASS 95J

SUMMITCREST PRIME CUT 1G42 AMF CAF NHF
LONE STAR PRIMECUT 4M
MVKD MISS ESSENCE 115G
D: **CUDLOBE QUEEN 135P**
CUDLOBE MILLENNIUM 46K
CUDLOBE QUEEN 54M
CUDLOBE QUEEN 7J

BW	WW	YW	MILK	SC	REA	IMF	FAT
+5.7	+54	+89	+19	-	-0.02	+0.32	+0.020

A good cow bull here that will breed 'em all.
This bull's great grandmother (7J) is an Elite Cow with a bull in the sale this year.
(LOT 32 - 66Y)

107

CUDLOBE YELLOWSTONE 124X

UF 124X FEBRUARY 24 2010 #1562934

BW: 94LBS. ADJ WW: 751 LBS. OCT 30 WT: 1909

VERMILION YELLOWSTONE AMF CAF NHF
CUDLOBE YELLOWSTONE 103
CUDLOBE EUGENIE 2J
S: **CUDLOBE YELLOWSTONE 14T**
STEVENSON EXPEDITION 859K
CUDLOBE ELINE 42M
CUDLOBE ELINE 91K

B/R NEW DESIGN 323
BASIN NEW DESIGN 631M
BASIN EILEENMERE LASS 270E
D: **CUDLOBE ERICA 102S**
CUDLOBE MILLENNIUM 46K
CUDLOBE ERICA 43M
CUDLOBE ERICA DELIA 16X

BW	WW	YW	MILK	SC	REA	IMF	FAT
+4.7	+50	+85	+23	-	+0.20	+0.54	+0.007

A cow bull with top 5% marbling from Yellowstone 14T.

108

CUDLOBE MONEYMAKER 17X

JB 17X FEBRUARY 19 2010 #1563425

BW: 89LBS. ADJ WW: 695 LBS. OCT 30 WT: 1835

BOYD ON TARGET 1083 AMF CAC NHF
STEVENSON MONEYMAKER R185 AMF CAF NHF
STEVENSON CLOVA PRIDE L888 AMF NHF
S: **CUDLOBE MONEYMAKER 89U**
STEVENSON NEW DESIGN 852K
CUDLOBE BLACKCLASS 19R
CUDLOBE BLACKCLASS 95J

WHITE OAK PRECISE 6002 AMC CAF NHC
SKYLINE PRECISE 1N
CUDLOBE BLACKCLASS 8L
D: **CUDLOBE ELLEN ERICA 6R**
RAWBURN TRANSFORMER
RAWBURN ELLEN ERICA 7N
CUDLOBE ELLEN ERICA 46D

BW	WW	YW	MILK	SC	REA	IMF	FAT
+4.3	+51	+90	+16	-	-0.02	+0.19	+0.004

A powerful Moneymaker from the Ellen Erica line.
Her grandmother and great-grandmother have both sent embryos to the U.K.

109

CUDLOBE IDEAL 134X

UF 134X MARCH 02 2010 #1562946

BW: 97LBS. ADJ WW: 723 LBS. OCT 30 WT: 1830

IDEAL 1418 OF 8103 4286 AMF CAF NHF
PRAIRIELANE IDEAL 1418-0051
PRAIRIELANE 033 ROSEBUD 4034
S: PRAIRIELANE IDEAL 0051-3011
PRAIRIELANE BANG 5122-7081
PRAIRIELANE 7801 BLACK 1042
PRAIRIELANE 4002 BLACK 6037

GARDENS EXPEDITION AMF CAF NHF
STEVENSON EXPEDITION 859K
STEVENSON QUEEN 4058
D: CUDLOBE ERICA 1155
CUDLOBE STOCKMAN 24H
CUDLOBE ERICA 1L
CUDLOBE ERICA 36Z

BW	WW	YW	MILK	SC	REA	IMF	FAT
+3.6	+49	+85	+19	-	+0.09	+0.25	+0.003

This bull will calve quite well with the Ideal and Expedition in his pedigree.

CUDLOBE IDEAL 150X

UF 150X MARCH 08 2010 #1563451

BW: 90LBS. ADJ WW: 736 LBS. OCT 30 WT: 1760

IDEAL 1418 OF 8103 4286 AMF CAF NHF
PRAIRIELANE IDEAL 1418-0051
PRAIRIELANE 033 ROSEBUD 4034
S: PRAIRIELANE IDEAL 0051-3011
PRAIRIELANE BANG 5122-7081
PRAIRIELANE 7801 BLACK 1042
PRAIRIELANE 4002 BLACK 6037

B/R NEW DESIGN 036 AMF CAF NHF
STEVENSON NEW DESIGN 852K
STEVENSON ESTELLA 669H
D: CUDLOBE ELINE 235
CUDLOBE FORTUNE 30F
CUDLOBE ELINE 73H
CUDLOBE ELINE 46C

BW	WW	YW	MILK	SC	REA	IMF	FAT
+3.4	+57	+103	+20	-	-0.20	+0.07	+0.007

A plus 100 yearling on this guy.
Good performance on the dam's side here.

110

CUDLOBE IDEAL 165X

UF 165X MARCH 22 2010 #1563460

BW: 87LBS. ADJ WW: 728 LBS. OCT 30 WT: 1794

IDEAL 1418 OF 8103 4286 AMF CAF NHF
PRAIRIELANE IDEAL 1418-0051
PRAIRIELANE 033 ROSEBUD 4034
S: PRAIRIELANE IDEAL 0051-3011
PRAIRIELANE BANG 5122-7081
PRAIRIELANE 7801 BLACK 1042
PRAIRIELANE 4002 BLACK 6037

B/R NEW DESIGN 323
BASIN NEW DESIGN 631M
BASIN EILEENMERE LASS 270E
D: CUDLOBE QUEEN 25T
CUDLOBE STOCKMAN 24H
CUDLOBE QUEEN 101L
CUDLOBE QUEEN 67H

BW	WW	YW	MILK	SC	REA	IMF	FAT
+2.8	+52	+91	+23	-	+0.03	+0.14	+0.009

A two year old with good form from the easy calving PrairieLane Ideal.

112

CUDLOBE IDEAL 159X

UF 159X MARCH 17 2010 #1563456

BW: 90LBS. ADJ WW: 511 LBS. OCT 30 WT: 1612

IDEAL 1418 OF 8103 4286 AMF CAF NHF
PRAIRIELANE IDEAL 1418-0051
PRAIRIELANE 033 ROSEBUD 4034
S: PRAIRIELANE IDEAL 0051-3011
PRAIRIELANE BANG 5122-7081
PRAIRIELANE 7801 BLACK 1042
PRAIRIELANE 4002 BLACK 6037

B/R NEW DESIGN 323
BASIN NEW DESIGN 631M
BASIN EILEENMERE LASS 270E
D: CUDLOBE BLACKBIRD 124R
CUDLOBE STEMWINDER 41G
CUDLOBE BLACKBIRD 36K
CUDLOBE BLACKBIRD 23U

BW	WW	YW	MILK	SC	REA	IMF	FAT
+2.9	+39	+69	+13	-	+0.02	+0.21	-0.003

The 631 female puts a bit more carcass in this Ideal bull.

111

113



2011 ANGUS SECRETARIAT AT ARGENTINA

DYCE & ADRIANNA, DAVID & MARGARET BOLDUC ATTENDED