



12th Annual
BULL & FEMALE SALE

on the farm 1 mile East of Goodeve and 3 miles North

Monday, April 12, 2010

Lunch at 12:00 noon

Sale at 1:00 pm



2010 Bull Sale April 12, 2010





Crescent Creek Angus

12th Annual Bull & Female Sale

Monday, April 12, 2010 at the farm, Goodeve, SK

Lunch at 12:00 noon Sale at 1:00 pm

Offering ...

**52 Black Angus Yearling Bulls • 12 Red Angus Yearling Bulls
33 Black Angus Yearling Heifers • 8 Red Angus Yearling Heifers
4 Two Year Old Black Angus Bulls**

Sale Day Phones ...

**Rob cell: 780-916-2628 Bob cell: 306-834-7385 Wes cell 306-728-8284
Sale Barn 306-876-4420**

Sale Staff

Auctioneer, Steve Dorran	403-226-2985
Rob Holowaychuk, OBI	780-916-2628
Bob Toner, OBI	306-834-7385
Dennis Ericson	780-352-7630
Craig Flewelling	403-224-2111
Darin Bouchard	204-526-7407
Clayton Hawreliuk	306-621-3824
Gary Rudychuk, Kelvington Stockyards	306-865-7448
Shane Castle, Castlerock Marketing	306-741-7485

Sale Consultant

Kelvington Stockyards, Kelvington, SK	306-327-4642
---	--------------

Special Representatives

Clint Smith, Saskatchewan Angus President	306-478-2470
Belinda Wagner, Saskatchewan Angus Manager	306-757-6133
Chris Poley, Today's Angus Advantage	306-220-2722
Dave Callaway, Angus World	403-549-2234

Insurance

Alameda Agencies, Bonnie Thompson	306-489-2258
---	--------------

Terms of Sale

Cash or cheque at par payable on Sale Day, unless other arrangement have been made prior to Sale. Registration papers will be transferred only upon full and final payment. Announcements from the block will take precedence over printed material in the catalogue.

Payment Terms

- Bulls 60% down sale day, 40% June 1, 2010, two cheques sale day.
- Females 60% down sale day, 40% October 1, 2010, two cheques sale day.
- \$75 Credit if you take your purchase home sale day on purchases over \$2000.

Terms and Conditions

All cattle sell under the standard terms and conditions set forth by the Canadian Angus Association. Precautions have been taken to ensure your safety, neither Owners or Management are responsible for any accidents.

Accommodations

Melville Inn, Melville, SK	306-728-5255
Classic Inn, Melville, SK	306-728-4646
Prince William Motor Inn, Melville, SK	306-728-4546
Ituna Motor Inn, Ituna, SK	306-795-2244

- Enrolled on CAP (Canadian Angus Performance).
- All cattle ROP tested (a firm belief for producing superior beef cattle at Crescent Creek).
- All bulls will be ultrasound scanned for carcass data under the CUP system. CUP data will be available prior to the sale on our website and on sale day.
- All Crescent Creek Sale Cattle are fully guaranteed for both soundness and fertility.
- Bulls will be Semen Tested as well as have Scrotal Measurements (available Sale Day).
- Bulls have been rated (in our opinion) on calving ease ability
 - 1* indicates - Recommended on cows
 - 3 *** indicates - Moderate birth
 - 5 ***** indicates - Calving Ease elite
- Delivery can be arranged with Crescent Creek.
- Crescent Creek's breeding program has developed many 1/2 and 3/4 brothers "Consistency Counts".
- Actual sale weights will be available Sale Day.
- Crescent Creek will keep bulls until May 1. Insurance on sale bulls that are left is encouraged by the buyer.
- Crescent Creek reserves the right to draw semen on any bull.
- **Volume Discount** - 3% on 3 bulls, 4% on 4 bulls, 5% on 5 bulls, 6% on 6 bulls, 7% on 7 bulls, 8% on 8 bulls, 9% on 9 bulls and 10% on 10 or more bulls.

Ultra-sound

Windy Ridge Ultrasound - Rod Wendorff - 403-330-3000

Clipping

Nathan Marin - 306-869-2519

Trans Tech Genetics Ltd.

Dr Vlad Pawlyshyn - Embryo Information - 306-931-2904

Animal Health Service

Dr. Doug Mann, Swift Current, SK - Semen Evaluation - 306-773-4121

Herd Health

Melville Vet Clinic - Dr. Dale Cochrane - 306-728-4456

Crescent Creek Angus

Box 192, Goodeve, SK S0A 1C0
Irene Olynyk ... 306-876-4400
Wes & Kim Olynyk ... Phone/Fax 306-876-4420
www.crescentcreekangus.com

Welcome once again to our 12th Annual Crescent Creek Angus Bull and Female sale. We would like to thank everyone who has used or shown interest in our program in the past. Your patronage and friendship is greatly appreciated.

The past few years have been quite the test of everyone's patience and fortitude. We all are looking for that curve in the road to end and finally straighten out. Through these tough times in our industry, a few things have become quite apparent. Cutting corners, in the end, really ends up costing both financially and genetically. One realizes that only the top end calves are bringing top dollar in a depressed market. Top end bulls do produce top end calves. That has never been a secret but it sure hits home when you need every last penny out of a calf. Genetically we are asking our cows to do more on less. It takes years to build a cow herd - do not compromise your bull selection. We have always selected bulls for performance, calving ease and maternal traits. All these are first and foremost.

The bulls offered this year are, as in the past, full of red meat and muscle. Our bulls are bred and fed for one reason, to be breeding bulls with our customers in mind. We understand you want these fellows to last as long as possible. This, we believe, starts with how they are managed early in life. Our bulls have never been creep fed. They were hand fed a ration of rolled oats and protein pellets with free choice brome hay and wrapped bale silage. This year we fed approximately 10% barley in the ration because of some light oats. I called it the NH 358 ration. The bulls were fed to gain approximately 3 lbs/day. The bulls are free moving and very agile. They have also been ultrasounded through CUP. Ultrasound data will be available approximately two weeks before the sale. Check out our website, or better yet phone. Both the bulls and females are on the CAPP program. All the data you may need to make your selection is available.

The females offered are from the heart of the replacement pen. They represent over 55 years of breeding for the type which the Angus breed is known for. Cow families are very important in our program, thus the reason for seeing so many maternal ½ siblings. Study the pedigrees and you will notice definite genetic outcrosses, something our breed definitely will have to watch for. The females were fed rolled oats, free choice brome hay and wrapped bale silage. They were fed to gain approximately 2 lbs/day. These females have never been pushed to not compromise their ability to become excellent brood cows for a long time.

Both bulls and females have been subjected to a vaccination program utilizing express 5 modified live vaccine. They will have had their pre breeding shot as well as a black leg booster.

We would like to thank everyone who helps put on this special occasion with us. Without your help we could not do it. To our valued repeat customers, again, thank you. Our goal is to supply you with after sale service second to none. I know this is the age of e-mail, cell phones and text messaging. Personally I enjoy a good old fashion phone call, a visit to your place, or ours and a cup of coffee. Thank you for looking over the book and we look forward to seeing you sale day.

The Olynyk's



View the catalogue online at www.cattlemanagement.ca

Welcome to the Crescent Creek Annual Bull & Heifer Sale. One thing is always sure at Crescent Creek: the consistent quality of the offering continues from year to year. The level of consistency is in fact high enough to consider the Crescent Creek program as "The Source".

2010 is a special year at Crescent Creek with the offering of WOS 15W, the son of Lookout Huck and Crescent Creek Rosebud 6R, making him a grandson of the highly recognized and genetically desirable, Figure 8 Tom Boy, outcross extraordinaire and Crescent Creek Rosebud 115F, Premier Dam of the World Angus Forum. The Huck offering are primarily all heifers first calves and what a set they are! The influence of Rosebud 115F runs deep through the Crescent Creek herd as you will also see with the Emblazon sons.

The Red Angus division holds quite a history as well, including the great Annie 22Z influence. The Reds are a uniform calving ease group headed up by WOS 4W and WOS 85W - each stout, balanced herdsire prospects. A quick reflection on the Crescent Creek herd shows that their hard work, careful understanding of cows and strict selection practices has produced a product that not only works at home, but most importantly, works for their customers!

Being familiar with the Crescent Creek program, we at OBI welcome any calls and would be pleased to help with your selections. See you sale day,

Rob H
P.S. *Remember the exciting female offering - cows for the future!*

Optimal Bovines Inc.



#407, 4808 Ross Street
Red Deer, AB T4N 1X5
Office 403-341-5098
Fax 403-343-6133
Email o.b.i@shaw.ca
www.cattlemanagement.ca

Rob Holowaychuk ... 780-916-2628
Bob Toner ... 306-834-7385
Kirk Hurlburt... 306-222-8210
Mark Holowaychuk ... 403-896-4990

The cattle industry is evolving, more than ever before, toward marketing cattle based on carcass merit. Evidence of this trend is seen with the ever-increasing number of packing plants adopting value-based marketing. The traditional method in North America of selling cattle based on live weight is rapidly changing to where payment and premiums are made based on carcass weight and quality. Due to high input costs, we are no longer able to compete on the international trade market for commodity beef; therefore it is in our best interest to produce the high quality beef demanded by our consumers. This change has resulted in the adoption of technology to evaluate live animal carcasses. Ultrasound enables producers to know the carcass merit of their cattle and subsequently, assist them in developing an elite herd where progeny can be marketed for top dollar.

Ultrasound has proven extremely accurate in assessing carcass merit and has been tested repeatedly over the last 50 years. Today ultrasound measurements must be collected by Ultrasound Guidelines Council (UGC) certified field technicians and analyzed by a certified lab and lab technician. Despite small discrepancies in technician and lab biases, ultrasound measurements have proven to be a reliable and accurate method of developing carcass merit EPDs. Because carcass traits are moderately to highly heritable, improvements in herd genetics can be seen in a relatively short period of time. Ultrasound provides producers with one more tool by which they can select traits in order to produce top quality animals.

Percent Intramuscular Fat (%IMF) or Marbling

Due to the grid premiums and incentives to raise AAA (Choice) and Prime cattle, marbling may be the most important economic measurement collected with ultrasound. Ultrasound measures the %IMF in cattle and reports this value as a numerical indicator of marbling. For example, just like birth weight is an indicator of calving ease, %IMF is an indicator of marbling.

It is important to know what values are being represented in the sale catalogs when comparing data and to remember that the value of most concern is always the EPD value.

Quality Grade

%IMF	US	CAN	Marbling Score
2.3 - 3.0	Select -	AA -	4.0 - 4.4
3.1 - 3.9	Select +	AA +	4.5 - 4.9
4.0 - 5.7	Choice -	AAA -	5.0 - 5.9
5.8 - 7.6	Choice o	AAA o	6.0 - 6.9
7.7 - 9.7	Choice +	AAA +	7.0 - 7.9
9.8 - 12.1	Prime -	Prime -	8.0 - 8.9
12.2 +	Prime +	Prime o	9.0 +

Steers and heifers will usually have slightly higher marbling values than bulls of the same age and genetics.

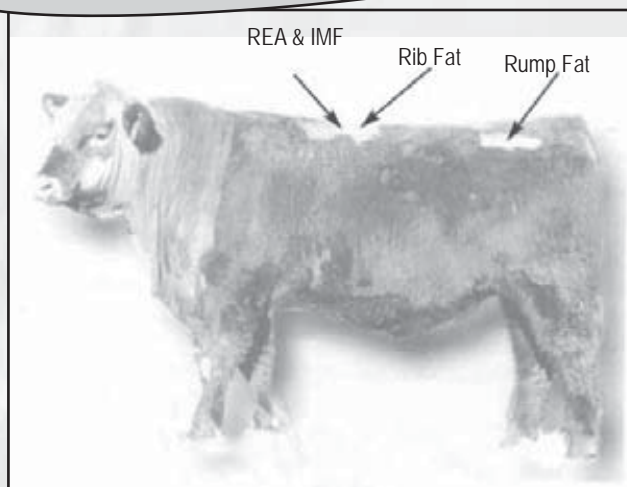
Ribeye Area (REA) and Fat Depth (Rib Fat and Rump Fat)

The ribeye is one of the largest muscle in the body; therefore REA gives an indication of overall carcass muscling. However, REA is influenced by body weight, which often results in the largest ribeye belonging to the heaviest animal. It is important when comparing REAs within contemporary groups to compare data that has been adjusted for age and/or weight.

Recently, a study by John Brethour, of KSU, revealed a significant association between carcass ribeye area and average daily gain just prior to slaughter. Meaning that animals with larger REAs had better gains later in the feeding period. While having a large ribeye is desirable, there are some drawbacks when REA becomes too large. Extremely large ribeyes can lead to a reduction in marbling.

Fat Depth is an important factor that greatly influences lean meat yield. Backfat (Rib Fat) will reduce yield many times what REA will increase yield. Secondly, fat measurements give an indication of an animals fleshing ability. Progeny from cattle with genetics for no fat may finish too slowly, while progeny from cattle with too much fat will incur yield discounts before a desirable carcass is obtained. Furthermore,

Carcass data is to be compared within herd only.



The Angus Associations, both AAA and CAA have adopted the CUP (Centralized Ultrasound Processing) program for Ultrasound Carcass Data and are using this information for formulating Carcass EPDs.

body condition scores (fat depth) in females are related to their ability to reach puberty early, produce milk, and rebreed to maintain shorter calving intervals. Similarly, bulls carrying too much fat may have reduced fertility. The key to breeding for Fat Depth is moderation.

Optimizing Your Investment

- 1) In order to qualify for genetic evaluations (EPDs) cattle must be scanned at the appropriate time. Each association has slight differences, but averages are bulls 320 – 440 days and heifers 320 – 460 days. Heifers are often done later to allow genetic differences to show because they are usually not fed as hard as bulls.
- 2) It is important to scan all cattle in a contemporary group. This provides sufficient information for evaluation and comparison purposes within your herd.
- 3) The value in scanning replacement heifers has often been overlooked. Having carcass merit data on all females entering your herd will greatly improve the value and accuracy of their progeny records. In addition it will allow you to make informed decisions about the carcass merit of females making up your future herd.
- 4) Upon investing money into ultrasounding your cattle, it is essential to promote this information to your customers and potential customers. With premiums being paid for high quality carcasses, more and more commercial producers are asking for scan data. The days of selling commodity beef are limited therefore; it is in your interest to create and market an elite herd of high quality carcass cattle.

Common Misconceptions

There is a common misconception that marbling can be fed into all animals. Although feeding an animal for extended periods of time does increase marbling, the genetics must be there in order for value-based marbling to be pronounced in cattle ready for slaughter without risking over-fat.

Why are my REAs smaller this year than last year, is this a collection or analysis error? While I am not dismissing the occasional technician error, it is important to remember that although carcass merits are determined by genetics, environmental factors do contribute to the phenotype expressed by each animal. Feed type and quality, weather, and sickness are some of the environmental factors that can influence phenotypes expressed from year to year. This is one more reason why comparisons can only be made by EPDs or indexes within a contemporary group.

Windy Ridge Ultrasound

Rod Wendorff, UGC Certified

Home: (403) 752-4066 Cell: (403) 330-3000

Doug Ralph: (403) 315-4799 **Chase Wendorff:** (403) 393-3013

BRONYX EMBLAZON 58T

Male TOT 58T February 04 2007 1430817

D H D TRAVELER 6807 NHF AMF
O C C EMBLAZON 854E
DIXIE ERICA OF C H 1019

Sire: B C C-J C L EMBLAZON 038-287

ROCKN D AMBUSH 1531 NHF AMF
B C C 1531 ELDORENE 826-038
KAPP ELDORENE ERICA ND 826

E X A R SCOTCH CAP 816 NHF AMF
RR SCOTCHMAN 2999
ERICA LASSIE OF R R 8464

Dam: CRESCENT CREEK ROSEBUD 25R

CRESCENT CREEK CHIEF 72L
CRESCENT CREEK ROSEBUD 137N
CRESCENT CREEK ROSEBUD 38K

B Wt	84 lbs
205 Wt	711 lbs
365 Wt	1254 lbs
Scrotal	---
Y Gain	+41
BEPD	+5.1
WEPD	+44
YEPD	+85
Milk	+13
TM	+35

Carcass EPD's:	REA: ---	Marb: ---	Fat: ---
----------------	----------	-----------	----------

BLACK ANGUS Reference Sire



Bronyx Emblazon 58T - 5 Sons Sell

We would like to start our 12th sale book with some new and exciting genetics to offer you. We realize we all are looking for new genetics. Thus we offer outcross genetics to follow on past purchases from our sale. We feel very fortunate to have been able to acquire 58T (Bryce). The bull was bred by Bryce Mawbey (Bronyx Angus) at Unity. It is refreshing to see someone as excited about the Angus breed as Bryce. He has an eye for good cattle. When he phoned us to tell us about this calf I knew it would be worth the trip to see him, and we were not disappointed.

The Emblazon females in our herd are model Angus cows. Moderate frame, flawless udder and have never been thin in their lives. The bulls are outstanding and the females need to be looked at even if you don't need anymore. They are

what the breed is about. Fresh genetics on the top side backed by one of the most prolific cow families we have, backed by bulls that walked our pastures for a long time.

Here are the first Emblazon calves to be sold. They are a very impressive set of bulls. Lots of performance on very sound feet and legs. The Eula cow family is a cornerstone cow family here. The maternal grand dam is 13 years old and as sound as a 4 year old.

Lot

1

CRESCENT CREEK EMBLAZON 56W

Male WOS 56W February 02 2009 1502626

Sire: BRONYX EMBLAZON 58T

C A R IDEAL 650
CAR IDEAL 061
C A R MISS VIKING 601

Dam: CRESCENT CREEK EULA 11S

DWAJO CHIEF 92E
CRESCENT CREEK EULA 63H
CRESCENT CREEK EULA 82A

B Wt	94 lbs
205 Wt	799 lbs
365 Wt	1151 lbs
C Ease	*
Y Gain	+33
BEPD	+5.5
WEPD	+45
YEPD	+77
Milk	+18
TM	+41

EPD's:	REA: ---	Marb: ---	Fat: ---
--------	----------	-----------	----------



RH

Lot #1

Lot
2

CRESCENT CREEK EMBLAZON 81W

Male WOS 81W February 07 2009 1502630

Sire: BRONYX EMBLAZON 58T

GARDENS FORTUNE 9213 S3
STEVENS FORTUNE 425C NHF AMF
J R S ENCHANTRESS 235Z

Dam: CRESCENT CREEK ROSEBUD 31H

RITO 8094 PRAIRIELANE 2060
CRESCENT CREEK ROSEBUD 56F
PRAIRIELANE 9001 ROSEBUD 2011

EPD's: REA: --- Marb: --- Fat: ---

B Wt	81 lbs
205 Wt	799 lbs
365 Wt	1282 lbs
C Ease	**
Y Gain	+34
BEPD	+4.6
WEPD	+47
YEPD	+81
Milk	+13
TM	+37



One of the outstanding bulls in the offering. Extra performance out of one of the best 2999 daughters here. The Emblazon's have that real herd bull look with lots of hair and sound feet and legs.

Lot
3

CRESCENT CREEK EMBLAZON 84W

Male WOS 84W February 08 2009 1502632

Sire: BRONYX EMBLAZON 58T

E X A R SCOTCH CAP 816 NHF AMF
RR SCOTCHMAN 2999
ERICA LASSIE OF R R 8464

Dam: CRESCENT CREEK LADY BATE 98R

GDAR QUANTUM 963
CRESCENT CREEK LADY BATE 6N
CRESCENT CREEK LADY BATE 113H

EPD's: REA: --- Marb: --- Fat: ---

B Wt	80 lbs
205 Wt	776 lbs
365 Wt	1259 lbs
C Ease	****
Y Gain	+40
BEPD	+2.2
WEPD	+47
YEPD	+87
Milk	+15
TM	+39

Another good 58T son out of our never miss 31H cow, who is a direct daughter of Stevenson Fortune 425C. Note the Rosebud 2011 cow on the bottom side. Proven genetics at their best.



Lot
4

CRESCENT CREEK EMBLAZON 89W

Male WOS 89W February 08 2009 1502631

Sire: BRONYX EMBLAZON 58T

O C C TRAVELER 723Z
GDAR TRAVELER 235
GDAR PRIMROSE 0251

Dam: CRESCENT CREEK ERICA 44R

TRAVELER 3173 G D A R
HILOW ERICA 32D
HILOW ERICA 2B

EPD's:	REA: ---	Marb: ---	Fat: ---
--------	----------	-----------	----------

B Wt	102 lbs
205 Wt	767 lbs
365 Wt	1365 lbs
C Ease	*
Y Gain	+34
BEPD	+5.5
WEPD	+40
YEPD	+76
Milk	+18
TM	+38

Lot
5

CRESCENT CREEK EMBLAZON 103W

Male WOS 103W February 11 2009 1528631

Sire: BRONYX EMBLAZON 58T

DRYLAND ICEBERG 231
EASTONDALE ICEBERG 05'04
EASTONDALE COUNTESS 10'01

Dam: DWAJO PRIDE 230S

MINBURN MASTERPLAN 7M
MOBO PRIDE
EVERBLACK PRIDE 8M

EPD's:	REA: ---	Marb: ---	Fat: ---
--------	----------	-----------	----------

B Wt	78 lbs
205 Wt	728 lbs
365 Wt	1171 lbs
C Ease	*****
Y Gain	+38
BEPD	+4.1
WEPD	+39
YEPD	+77
Milk	+15
TM	+35



A definite sale feature, one of my favorites. His mother has a flawless udder as all the GDAR 235 daughters do. Exceptional performance in this bull with an excellent disposition - come sale day it will not be hard to find this fellow. In fact I think I have his pen picked out already. If out cross genetics is your biggest concern, check 89W closely.



Moderate for birth with lots of growth later. The Emblazon son's are very uniform in type with lots of middle, great coats of hair and excellent feet and legs.

MINBURN MAIN EVENT 82R

Male DW 82R February 16 2005 1302667

STEVENSON FORTUNE 425C NHF AMF
CRESCENT CREEK MAIN EVENT 6H
CRESCENT CREEK ROSEBUD 115F

Sire: MINBURN MAIN EVENT 71N

MINBURN LANCER 73B
MINBURN BLACKBIRD 17E
MINBURN BLACKBIRD 23B
JAY EN DEE MASTERPLAN 3
EVERBLACK MASTERPLAN 007
WHISKYJACK TRAVELING LUCY 2Z

Dam: MINBURN JOY 34L

V D A R NEW TREND 315 NHF AMF
HILL VIEW JOY 70D
KBJ PRIDE 707Y

B Wt	90 lbs
205 Wt	740 lbs
365 Wt	1309 lbs
Scrotal	---
Y Gain	+28
BEPD	+4.6
WEPD	+40
YEPD	+69
Milk	+12
TM	+32

Carcass EPD's:	REA: +0.05	Marb: +0.15	Fat: +0.022
----------------	------------	-------------	-------------

Main Event 82R has excelled in performance second to none. If today's market demands more pounds in the fall and bigger carcasses then check these fellows out. These are bulls with large testicles, excellent feet and legs. 82R has excellent feet and a very good disposition. His daughters are now milking and producing some very good calves in our young cow pen. It is a benefit to see how a bull's daughters are producing. The females offered are the best we have, moderate framed and easy doing.



Minburn Main Event 82R - 15 Sons Sell

Lot

6

CRESCENT CREEK MAIN EVENT 1W

Male DTZ 1W January 14 2009 1491188

Sire: MINBURN MAIN EVENT 82R

GDAR SCF CHIEF
DWAJO CHIEF 92E
WICKLOW MISS LUCY 3C

Dam: CRESCENT CREEK IDESSA 91P

S A F FAME 808742 AMF NHF
S A V IDESSA 9109
S A V IDESSA 7174

EPD's:	REA: -0.03	Marb: ---	Fat: -0.004
--------	------------	-----------	-------------

B Wt	70 lbs
205 Wt	668 lbs
365 Wt	1081 lbs
C Ease	***
Y Gain	+28
BEPD	+1.8
WEPD	+40
YEPD	+67
Milk	+11
TM	+31



RH

Lot #6

Lot

7

CRESCENT CREEK MAIN EVENT 3W

Male Twin WOS 3W January 15 2009 1491247

Sire: MINBURN MAIN EVENT 82R

SITZ TRAVELER 8180 NHF AMF
SITZ ALLIANCE 6595 NHF AMF
SITZ BARBARAMERE JET 2698

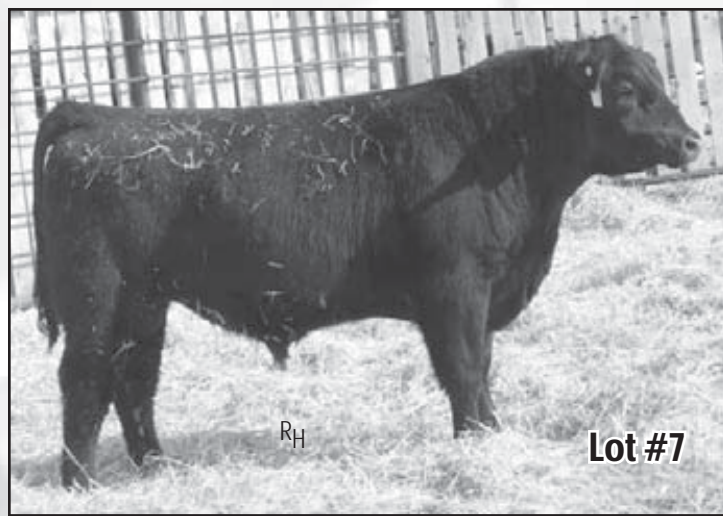
Dam: CRESCENT CREEK PRIDE 53N

ALTA ERIC REVOLUTION 464D
WAVENY PRIDE 77G
WAVENY PRIDE 11B

EPD's:	REA: -0.09	Marb: +0.15	Fat: +0.028
--------	------------	-------------	-------------

B Wt	68 lbs
205 Wt	653 lbs
365 Wt	1096 lbs
C Ease	***
Y Gain	+31
BEPD	+1.3
WEPD	+39
YEPD	+70
Milk	+17
TM	+37

The Main Event bull has left a definite mark on our program. His sons are very stout with extra performance. His daughters are proving to be excellent cows as the proven genetics said they should be. 3W's smaller birth weight is due to being a twin.



RH

Lot #7

Lot
8

CRESCENT CREEK MAIN EVENT 9W

Male WOS 9W January 20 2009 1491244

Sire: MINBURN MAIN EVENT 82R

HYLINE WMR SUPER X 502
MC BEE WMR SUPER X 745
HYLINE PRIDE 833

Dam: HILOW ESTON ANNE 25N

TRAVELER 3173 G D A R
HILOW ESTON ANNE 33F
HILOW ESTON ANNE 44D

EPD's: REA: -0.01 Marb: +0.05 Fat: +0.014

B Wt	92 lbs
205 Wt	614 lbs
365 Wt	1017 lbs
C Ease	**
Y Gain	+23
BE PD	+1.3
WE PD	+31
YE PD	+54
Milk	+13
TM	+29



Lot
9

CRESCENT CREEK MAIN EVENT 13W

Male DTZ 13W January 20 2009 1491178

Sire: MINBURN MAIN EVENT 82R

GDAR SVF CHIEF
DWAJO CHIEF 92E
WICKLOW MISS LUCY 3C

Dam: CRESCENT CREEK LAURA 143M

BATSCHOL STEMWINDER 31D
RON'S LAURA 16F
RON'S DELEGATE LAURA 36B

EPD's: REA: +0.03 Marb: +0.02 Fat: -0.005

B Wt	90 lbs
205 Wt	731 lbs
365 Wt	1134 lbs
C Ease	**
Y Gain	+26
BE PD	+4.6
WE PD	+42
YE PD	+68
Milk	+15
TM	+36



Lot
10

CRESCENT CREEK MAIN EVENT 34W

Male DTZ 34W January 27 2009 1491175

Sire: MINBURN MAIN EVENT 82R

WOODHILL CHECKMATE
CHICO KODIAK 93K
CHICO ERICA KAY 33G

Dam: CRESCENT CREEK PRIDE 27M

CRESCENT CREEK MAXIMUM 54C
CRESCENT CREEK PRIDE 10E
CRESCENT CREEK PRIDE 33X

EPD's: REA: +0.03 Marb: +0.23 Fat: +0.14

B Wt	89 lbs
205 Wt	789 lbs
365 Wt	1171 lbs
C Ease	**
Y Gain	+27
BE PD	+3.4
WE PD	+45
YE PD	+72
Milk	+14
TM	+37



Lot
11

CRESCENT CREEK MAIN EVENT 33W

Male DTZ 33W January 27 2009 1491172

Sire: MINBURN MAIN EVENT 82R

BATSCHOL STEMWINDER 31D
RON'S STEMWINDER 74J
BATSCHOL JENNIFER 14Z

Dam: CRESCENT CREEK HEROINE 13L

RITO 8094 PRAIRIELANE 2060
CRESCENT CREEK HEROINE 8D
CRESCENT CREEK HEROINE 2Z

EPD's: REA: +0.01 Marb: +0.08 Fat: +0.019

B Wt	106 lbs
205 Wt	723 lbs
365 Wt	1268 lbs
C Ease	*
Y Gain	+23
BE PD	+6.5
WE PD	+35
YE PD	+58
Milk	+16
TM	+34

One of the real performance bulls offered. His mother consistently has one of the best calves every year. Another sale feature.



R_H

Lot #11

Lot
12

CRESCENT CREEK MAIN EVENT 35W

Male WOS 35W January 28 2009 1491242

Sire: MINBURN MAIN EVENT 82R

LOVANA
G D A R RAINMAKER 340
LADY BLACKBIRD 987 G D A R

Dam: LLB DUCHESS LARAMIE 314M

BACK ROADS 1418 LEGEND 1582
TAFIKA LEGEND DUCHESS 12K
TAFIKA RITO DUCHESS 41D

EPD's: REA: +0.02 Marb: +0.10 Fat: +0.008

B Wt	85 lbs
205 Wt	740 lbs
365 Wt	1148 lbs
C Ease	***
Y Gain	+27
BE PD	+2.2
WE PD	+39
YE PD	+66
Milk	+17
TM	+37



R_H

Lot #12

Lot
13

CRESCENT CREEK MAIN EVENT 22W

Male WOS 22W January 24 2009 1491229

Sire: MINBURN MAIN EVENT 82R

G D A R ROGUE 6322
MINBURN ROGUE 37H
MINBURN BLACKBIRD 17E

Dam: DRYLAND LADY BATE 147

RITO 8094 PRAIRIELANE 2060
CRESCENT CREEK LADY BATE 44E
CRESCENT CREEK LADY BATE 110B

EPD's: REA: -0.02 Marb: +0.08 Fat: +0.026

Another real good Main Event son. If added weight in the fall is your goal these Main Event sons will fit your needs. A maternal brother sold to Arran Ivey from Ituna in our 2009 sale.

B Wt	94 lbs
205 Wt	715 lbs
365 Wt	1219 lbs
C Ease	**
Y Gain	+35
BE PD	+5.9
WE PD	+37
YE PD	+72
Milk	+15
TM	+34

Lot
17

CRESCENT CREEK MAIN EVENT 181W

Male WOS 181W March 05 2009 1541316

Sire: MINBURN MAIN EVENT 82R

SITZ ALLIANCE 6595 NHF AMF
CRESCENT CREEK ALLIANCE 29N
KBJ MISS COMPRESS 862K

Dam: CRESCENT CREEK PRIDE 181R

CHICO KODIAK 93K
CRESCENT CREEK PRIDE 27M
CRESCENT CREEK PRIDE 10E

EPD's: REA: --- Marb: --- Fat: ---

One of the most eye catching sons of Main Event. The first thing that order buyers look for is performance and eye appeal. This young March bull has that definite advantage.

B Wt	90 lbs
205 Wt	733 lbs
365 Wt	1226 lbs
C Ease	***
Y Gain	+26
BE PD	+3.7
WE PD	+43
YE PD	+70
Milk	+148
TM	+36

Lot
14

CRESCENT CREEK MAIN EVENT 18W

Male DOS 18W January 22 2009 1491438

Sire: MINBURN MAIN EVENT 82R

R R DAQUANTAE 789E
TLA DAQUANTE 9H
DINTER PRIDE OF TERRELENE 13P

Dam: UNIQUE DQ DUCHESS 75'01

DURNES MAC 79B
BAR LU DUCHESS 613F
BAR LU DUCHESS 13X

EPD's: REA: +0.01 Marb: +0.06 Fat: +0.007

B Wt	102 lbs
205 Wt	674 lbs
365 Wt	1047 lbs
C Ease	*
Y Gain	+27
BE PD	+5.7
WE PD	+36
YE PD	+62
Milk	+5
TM	+23

Lot
18

CRESCENT CREEK MAIN EVENT 192W

Male WOS 192W February 16 2009 1491328

Sire: MINBURN MAIN EVENT 82R

E X A R SCOTCH CAP 816 NHF AMF
RR SCOTCHMAN 2999
ERICA LASSIE OF R R 8464

Dam: CRESCENT CREEK ROSEBUD 199S

DWAJO CHIEF 92E
CRESCENT CREEK ROSEBUD 35J
CRESCENT CREEK ROSEBUD 30D

EPD's: REA: --- Marb: --- Fat: ---

B Wt	80 lbs
205 Wt	723 lbs
365 Wt	1171 lbs
C Ease	****
Y Gain	+33
BE PD	+2.9
WE PD	+45
YE PD	+78
Milk	+14
TM	+37

Lot
15

CRESCENT CREEK MAIN EVENT 30W

Male WOS 30W January 26 2009 1491288

Sire: MINBURN MAIN EVENT 82R

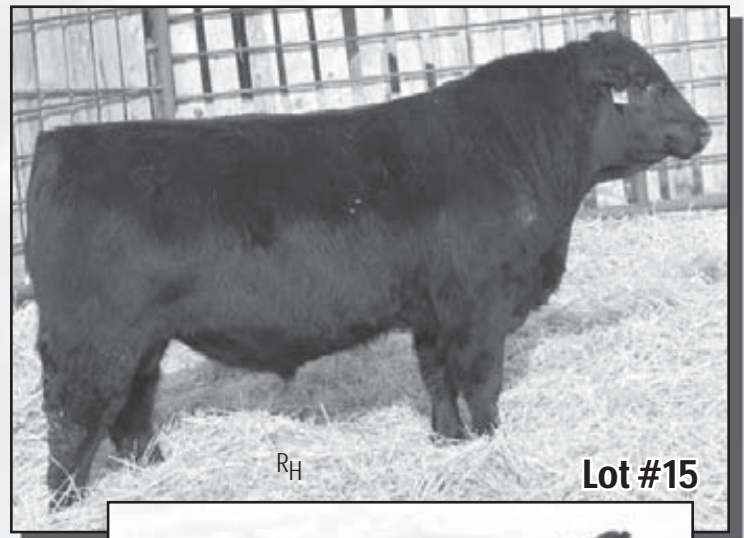
C H QUANTUM 3330
GDAR QUANTUM 963
G D A R MISS KEM 080

Dam: CRESCENT CREEK DUCHESS 56P

C H REVIVAL 104
ASPELUND DUCHESS 81G
DWAJO DUCHESS 8E

EPD's: REA: +0.08 Marb: +0.21 Fat: +0.011

B Wt	84 lbs
205 Wt	693 lbs
365 Wt	1165 lbs
C Ease	***
Y Gain	+25
BE PD	+2.2
WE PD	+32
YE PD	+57
Milk	+15
TM	+31



R_H

Lot #15

Lot
16

CRESCENT CREEK MAIN EVENT 173W

Male WOS 173W March 01 2009 1541313

Sire: MINBURN MAIN EVENT 82R

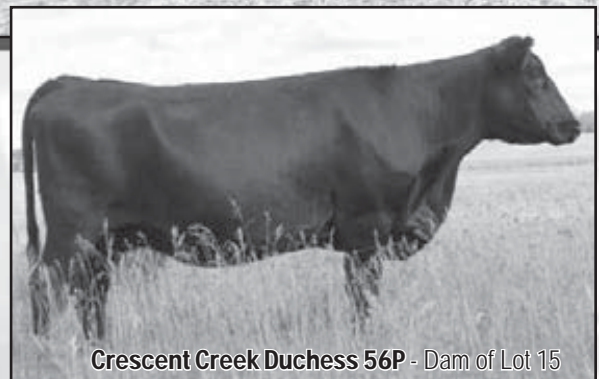
E X A R SCOTCH CAP 816 NHF AMF
RR SCOTCHMAN 2999
ERICA LASSIE OF R R 8464

Dam: CRESCENT CREEK ERICA 133S

TRAVELER 3173 G D A R
HILOW ERICA 32D
HILOW ERICA 2B

EPD's: REA: --- Marb: --- Fat: ---

B Wt	84 lbs
205 Wt	688 lbs
365 Wt	1130 lbs
C Ease	***
Y Gain	+31
BE PD	+2.4
WE PD	+36
YE PD	+67
Milk	+15
TM	+33



Crescent Creek Duchess 56P - Dam of Lot 15

Lot
19

CRESCENT CREEK MAIN EVENT 115W

Male WOS 115W February 13 2009 1491315

Sire: MINBURN MAIN EVENT 82R

E X A R SCOTCH CAP 816 NHF AMF
RR SCOTCHMAN 2999
ERICA LASSIE OF R R 8464

Dam: CRESCENT CREEK ROSEBUD 133R

GDAR QUANTUM 963
CRESCENT CREEK HEROINE 076N
CRESCENT CREEK LADY BATE 61H

B Wt	90 lbs
205 Wt	783 lbs
365 Wt	1316 lbs
C Ease	**
Y Gain	+32
BEPD	+3.6
WEPD	+46
YEPD	+78
Milk	+18
TM	+41

The Main Events all offer the same potential to add pounds on at weaning and yearling. Coupled with the maternal strength of 2999 it only enhances this fellows chances of doing more. Come sale day you will see why.

EPD's: REA: --- Marb: --- Fat: ---



RH

Lot #19

Lot
20

CRESCENT CREEK MAIN EVENT 144W

Male WOS 144W February 20 2009 1491326

Sire: MINBURN MAIN EVENT 82R

WCC ZAF HOOSIER HEARTLAND NHC AMF
KBJ HOOSIER 25P
LLB LADY ANN 388K

Dam: CRESCENT CREEK MARGARET 65S

CRESCENT CREEK QUANTUM 50M
PRETTY VIEW MARGARET 112P
CRESCENT CREEK MARGARET 112C

B Wt	76 lbs
205 Wt	735 lbs
365 Wt	1158 lbs
C Ease	*****
Y Gain	+28
BEPD	+1.8
WEPD	+42
YEPD	+70
Milk	+15
TM	+36

EPD's: REA: +0.08 Marb: +0.21 Fat: +0.011



RH

Lot #20

RR SCOTCHMAN 2999

Male IMP 2999M March 30 2002 1174224

SCOTCH CAP NHF AMF
R R SCOTCHCAP 9440 NHF AMF
BLACKCAP OF R R 5367

Sire: EXAR SCOTCH CAP 816 NHF AMF

N BAR EMULATION EXT NHF AMF
LEACHMAN BLACKCAP 2202
LEACHMAN BLACKCAP 0201
R R 9440 SCOTCH CAP 1483 NHF AMF

R R FERDINAND 758D NHF AMF
BLACKCAP OF R R 5367

Dam: ERICA LASSIE OF R R 8464

LOST LAKE HOME RUN
ERICA LASSIE OF R R 4580
ERICA LASSIE OF R R 8268

B Wt	85 lbs
205 Wt	654 lbs
365 Wt	1267 lbs
Scrotal	+0.59
Y Gain	+46
BEPD	+2.4
WEPD	+53
YEPD	+98
Milk	+17
TM	+44

Carcass EPD's:	REA: -0.10	Marb: +0.02	Fat: +0.062
----------------	------------	-------------	-------------

I really could take a whole page to tell the story of 2999. "The more things change the more they really stay the same." That quote had never been truer than about this bull. If you have not heard by now, after seven years of use, low and behold this summer we got a letter stating our Image Maker was now a Scotchcap.



RR Scotchman 2999 - 13 Sons Sell

But in reality it didn't matter much because nothing had changed. The bull was really the same. He still sires calves that are born easy and have phenomenal growth and excellent carcass data. He still is one of the performance leaders in the breed. His daughters are second to none. They have become the bread and butter of our program, simply because they are flawless. These animals have excellent feet, udder quality and disposition. What more can you ask for? The semen of 2999 in our tank is priceless.

This spring RR Scotchman 2999 took up new residence at Maple Creek, SK. Sheidaghan Angus purchased 1/2 interest in the bull and has already enjoyed the pleasure of owning 2999 offspring. This bull is now spreading his influence as a breeding bull in the south west. Rest assured he will also continue here as well.

Now called Scotchman 2999 is still and will be a cornerstone herd sire here. His maternal influence is amazing. Every year he consistently sires a group of bulls the commercial industry appreciates - sound, functional bulls with large testicles and good hair. His mother is one of the very best purchases we have ever made.

Lot

21

CRESCENT CREEK SCOTCHMAN 39W

Male WOS 39W January 29 2009 1491310

Sire: RR SCOTCHMAN 2999

SITZ ALLIANCE 6595 NHF AMF
T D M ALLIANCE 904
T D M HENRIETTA 3295

Dam: DRYLAND TIERRA 419

MINBURN ROGUE 37H
DRYLAND TIERRA 150
DRYLAND TIERRA 725

B Wt	106 lbs
205 Wt	824 lbs
365 Wt	1172 lbs
C Ease	*
Y Gain	+44
BEPD	+5.8
WEPD	+55
YEPD	+99
Milk	+17
TM	+45

EPD's:	REA: -0.06	Marb: ---	Fat: +0.067
--------	------------	-----------	-------------



RH

Lot #21

Lot
22

CRESCENT CREEK SCOTCHMAN 42W

Male WOS 42W January 30 2009 1491237

Sire: RR SCOTCHMAN 2999

C H QUANTUM 3330
GDAR QUANTUM 963
G D A R MISS KEM 080

Dam: CRESCENT CREEK ROSEBUD 70M

DOUBLE BAR ROGUE
CRESCENT CREEK ROSEBUD 38K
CRESCENT CREEK ROSEBUD 115F

EPD's: REA: -0.13 Marb: +0.11 Fat: +0.025

B Wt	91 lbs
205 Wt	751 lbs
365 Wt	1194 lbs
C Ease	***
Y Gain	+36
BEPD	+2.6
WEPD	+42
YEPD	+77
Milk	+18
TM	+39



Lot
23

CRESCENT CREEK SCOTCHMAN 46W

Male DTZ 46W January 31 2009 1491186

Sire: RR SCOTCHMAN 2999

C H QUANTUM 3330
GDAR QUANTUM 963
G D A R MISS KEM 080

Dam: CRESCENT CREEK LUCY 17P

EVERBLACK MASTERPLAN 007
DWAJO MISS LUCY 33H
WICKLOW MISS LUCY 3C

EPD's: REA: -0.03 Marb: +0.14 Fat: +0.028

B Wt	92 lbs
205 Wt	773 lbs
365 Wt	1226 lbs
C Ease	***
Y Gain	+44
BEPD	+2.8
WEPD	+45
YEPD	+80
Milk	+16
TM	+39



A Scotchman out of the Lucy cow family. The Quantum influence in this fellow makes him a definite leader in maternal power.

Lot
24

CRESCENT CREEK SCOTCHMAN 58W

Male WOS 58W February 02 2009 1491253

Sire: RR SCOTCHMAN 2999

LAMBS OVERDRIVE 45E
SOUTHLAND POWERBALL 128K
DOUBLE J LASS 452A

Dam: CRESCENT CREEK ROSEBUD 99N

DWAJO CHIEF 92E
CRESCENT CREEK ROSEBUD 35J
CRESCENT CREEK ROSEBUD 30D

EPD's: REA: -0.17 Marb: -0.04 Fat: +0.030

B Wt	92 lbs
205 Wt	770 lbs
365 Wt	1223 lbs
C Ease	***
Y Gain	+34
BE PD	+4.0
WE PD	+49
YE PD	+83
Milk	+13
TM	+38



Lot
25

CRESCENT CREEK SCOTCHMAN 101W

Male WOS 101W February 10 2009 1491241

Sire: RR SCOTCHMAN 2999

LOST LAKE ICEBERG 3438
CAR ICEBERG 056
C A R LADY TRACKER 620

Dam: DRYLAND BLUE LASS 273

MVFA OBVIOUS TREND 17F
LLB BLUE LASS 0291K
LLB BLUE LASS 0196F

EPD's: REA: -0.06 Marb: -0.01 Fat: +0.016

B Wt	98 lbs
205 Wt	767 lbs
365 Wt	1210 lbs
C Ease	**
Y Gain	+40
BE PD	+5.0
WE PD	+49
YE PD	+89
Milk	+18
TM	+43

Lot
26

CRESCENT CREEK SCOTCHMAN 110W

Male DTZ 110W February 13 2009 1491166

Sire: RR SCOTCHMAN 2999

G T MAXIMUM NHF AMF
BOTANY ANGUS MAX 5A
BOTANY ANGUS LADY ANN 19T

Dam: CRESCENT CREEK LAWN 109H

TOMIL VON ERIC GR 39W
ANGUS ACRES LAWN 85Z
ANGUS ACRES LAWN 85W

EPD's: REA: -0.18 Marb: +0.11 Fat: +0.038

B Wt	88 lbs
205 Wt	794 lbs
365 Wt	1236 lbs
C Ease	***
Y Gain	+38
BE PD	+3.2
WE PD	+47
YE PD	+84
Milk	+17
TM	+41



A powerful 2999 son out of one of the best Max 5A cows we own. A full brother sold to Ted Elmy at Kelvington last year. The Elmy's have selected some excellent bulls in our past sales.

Lot
27

CRESCENT CREEK SCOTCHMAN 117W

Male DOS 117W February 14 2009 1491439

Sire: RR SCOTCHMAN 2999

C H QUANTUM 3330
GDAR QUANTUM 963
G D A R MISS KEM 080

Dam: CRESCENT CREEK PRIDE 14P

CRESCENT CREEK CHIEF 80G
DWAJO PRIDE 52L
DWAJO PRIDE 26F

EPD's: REA: -0.10 Marb: +0.09 Fat: +0.025

B Wt	106 lbs
205 Wt	800 lbs
365 Wt	1263 lbs
C Ease	*
Y Gain	+33
BEPD	+4.9
WEPD	+43
YEPD	+76
Milk	+18
TM	+40



R_H

Lot #27

Lot
28

CRESCENT CREEK SCOTCHMAN 136W

Male WOS 136W February 18 2009 1491228

Sire: RR SCOTCHMAN 2999

TLA PRIDE'S REVIVAL 85G
CRESCENT CREEK REVIVAL 06J
CRESCENT CREEK QUEEN RUTH 14Z

Dam: CRESCENT CREEK EULA 102L

DWAJO CHIEF 92E
CRESCENT CREEK EULA 142G
CRESCENT CREEK EULA 42E

EPD's: REA: -0.07 Marb: -0.03 Fat: +0.018

B Wt	84 lbs
205 Wt	691 lbs
365 Wt	1179 lbs
C Ease	***
Y Gain	+34
BEPD	+3.7
WEPD	+47
YEPD	+81
Milk	+9
TM	+33



R_H

Lot #28

Another 2999 son with lots of maternal power from the Eula cow family. When you analyze our bull offering you will find bulls that have not been overly fed or pampered. They are free moving with lots of maturity. Your bull buying interests have not been sacrificed for big yearling weights and short life spans. A maternal brother sold to Max Halyk and Niel Perry. Same good eye for cattle but different addresses.

Lot
29

CRESCENT CREEK SCOTCHMAN 158W

Male DTZ 158W February 23 2009 1491190

Sire: RR SCOTCHMAN 2999

TLA PRIDE'S REVIVAL 85G
CRESCENT CREEK REVIVAL 06J
CRESCENT CREEK QUEEN RUTH 14Z

Dam: CRESCENT CREEK BLACKBIRD 122P

R R TRAVELER 0403
R R BLACKBIRD 2406
R R BLACKBIRD 0436

EPD's: REA: -0.09 Marb: +0.06 Fat: +0.026

B Wt	88 lbs
205 Wt	685 lbs
365 Wt	1108 lbs
C Ease	***
Y Gain	+32
BEPD	+4.5
WEPD	+44
YEPD	+77
Milk	+11
TM	+33



**Remember ...
Look for the Clipper Marks ...
If they are clipped - then they
are CUP'ed!**

*Ultrasound data will be available
approximately April 1 - check our website at
www.crescentcreekangus.com*

Lot
30

CRESCENT CREEK SCOTCHMAN 185W

Male DTZ 185W March 08 2009 1491184

Sire: RR SCOTCHMAN 2999

KBJ MR ANGUS 500J
EVERBLACK ROGUE 9L
KBJ BLACK NANCE 851J

Dam: CRESCENT CREEK ROSEBUD 173N

RR HERO 6267
EVERBLACK ROSE BUD 4L
DWAJO ROSE BUD 1J

B Wt	84 lbs
205 Wt	763 lbs
365 Wt	1216 lbs
C Ease	***
Y Gain	+31
BEPD	+1.9
WEPD	+41
YEPD	+71
Milk	+16
TM	+37

EPD's: REA: -0.07 Marb: +0.02 Fat: +0.029



Lot
31

CRESCENT CREEK SCOTCHMAN 190W

Male WOS 190W March 03 2009 1541778

Sire: RR SCOTCHMAN 2999

SITZ ALLIANCE 659S
REMITALL LEGIONAIRE 8L
REMITALL NEONIA 42J

Dam: REMITALL PRIDE 23N

ROYLE-HEAD RIGHT TIME 27E
LLB EMPIRE PRIDE 385K
ASPELUND PRIDE 70G

B Wt	104 lbs
205 Wt	752 lbs
365 Wt	1265 lbs
C Ease	*
Y Gain	+37
BEPD	+5.6
WEPD	+48
YEPD	+85
Milk	+15
TM	+39

EPD's: REA: -0.07 Marb: +0.07 Fat: +0.037



Lot
32

CRESCENT CREEK SCOTCHMAN 198W

Male DOS 198W March 19 2009 1491440

Sire: RR SCOTCHMAN 2999

SITZ TRAVELER 043
AJC H A F TRAVELER 01L
AJC HAF KIRSTEN 45J

Dam: YOUNG DALE ERICA 61P

TRAVELER OF WLA 1Z
DOUBLE J ERICA 183G
DOUBLE J ERICA 335Z

EPD's: REA: +0.03 Marb: +0.03 Fat: +0.050

B Wt	76 lbs
205 Wt	736 lbs
365 Wt	1189 lbs
C Ease	*****
Y Gain	+38
BE PD	+1.0
WE PD	+43
YE PD	+81
Milk	+16
TM	+38



The Olynyk Farm

Lot
33

CRESCENT CREEK SCOTCHMAN 178W

Male WOS 178W March 03 2009 1541315

Sire: RR SCOTCHMAN 2999

GDAR SVF CHIEF
DWAJO CHIEF 92E
WICKLOW MISS LUCY 3C

Dam: CRESCENT CREEK EULA 94L

FREEWAY 276T OF J R S
CRESCENT CREEK EULA 82A
CRESCENT CREEK EULA 30R

EPD's: REA: -0.07 Marb: -0.05 Fat: +0.008

B Wt	84 lbs
205 Wt	756 lbs
365 Wt	1178 lbs
C Ease	**
Y Gain	+35
BE PD	+3.1
WE PD	+45
YE PD	+80
Milk	+17
TM	+40



RH

Lot #33

BEVERLY HILLS FANDANGO 404

Male TCSC 4P January 08 2004 1199945

G D A R ROYCE 131
STEVENSON ROYCE 741C NHF
AHLGRENS ESTELLA 2758 E T E

Sire: STEVENSON BRUNO 561G NHF

KAPP CENTER LINE
JRS ENCHANTRESS 16A
J R S ENCHANTRESS 467U
Q A S TRAVELER 23-4 NHF AMF
D H D TRAVELER 6807 NHF AMF
BEMINDFUL MAID D H D 0807

Dam: H A RITO LADY 1262

PAPA RITO 7046 E 7882
H A RITO LADY 3052
H 96 RITO 7202

B Wt	86 lbs
205 Wt	767 lbs
365 Wt	--- lbs
Scrotal	+0.95
Y Gain	+40
BEPD	+3.2
WEPD	+39
YEPD	+79
Milk	+24
TM	+44

Carcass EPD's:	REA: +0.04	Marb: +0.32	Fat: +0.012
----------------	------------	-------------	-------------

BLACK ANGUS Reference Sire



Beverly Hills Fandango 404 - 5 Sons Sell

Fandango has left an excellent set of bulls here. His sons pose as much natural thickness as any bull used. If lots of muscle and early maturity is your need, these bulls are the ones. His daughters milk very well and have excellent dispositions.

404's mother was one of the elite cows at Shane Castle's, and left more than one herd bull there. Fandango is owned jointly with Don Kraynick at Canora, SK and Shane Castle at Swift Current, SK.

Lot

34

CRESCENT CREEK BRUNO 45W

Male DTZ 45W January 30 2009 1491189

Sire: BEVERLY HILLS FANDANGO 404

O C C TRAVELER 723Z
GDAR TRAVELER 235
GDAR PRIMROSE 0251

Dam: CRESCENT CREEK HEROINE 121P

CRESCENT CREEK REVIVAL 06J
CRESCENT CREEK HEROINE 159M
CRESCENT CREEK HEROINE 68F

B Wt	86 lbs
205 Wt	704 lbs
365 Wt	1212 lbs
C Ease	***
Y Gain	+36
BEPD	+3.6
WEPD	+45
YEPD	+81
Milk	+15
TM	+38

EPD's:	REA: +0.01	Marb: +0.16	Fat: +0.018
--------	------------	-------------	-------------

The Bruno bull has again left a very stout set of sons. Very early maturing with lots of muscle expression are his trade mark. Big crests with lots of curly hair were the norm in Angus cattle of days gone by.

Lot

35

CRESCENT CREEK BRUNO 53W

Male DTZ 53W February 01 2009 1491173

Sire: BEVERLY HILLS FANDANGO 404

BATSCHOL MASTERPLAN
JAY EN DEE MASTERPLAN 3
JAY EN DEE EILEEN 73P

Dam: CRESCENT CREEK PRIDE LADY 34L

FREEWAY 276T OF J R S
CRESCENT CREEK PRIDE LADY 36Y
CRESCENT CREEK JET LADY 51S

B Wt	82 lbs
205 Wt	669 lbs
365 Wt	1090 lbs
C Ease	***
Y Gain	+29
BEPD	+2.9
WEPD	+37
YEPD	+66
Milk	+22
TM	+41

EPD's:	REA: +0.09	Marb: +0.15	Fat: -0.008
--------	------------	-------------	-------------

Once again some sound genetics represented here. When you start to see 10 and 12 year old cows as dam's you know consistency counts. 34L is one of the most consistent cows here.



Lot
36

CRESCENT CREEK BRUNO 50W

Male DTZ 50W February 01 2009 1491180

Sire: BEVERLY HILLS FANDANGO 404

C H QUANTUM 3330
GDAR QUANTUM 963
G D A R MISS KEM 080

Dam: CRESCENT CREEK LADY BATE 6N

BOTANY ANGUS MAX 5A
CRESCENT CREEK LADY BATE 113H
CRESCENT CREEK LADY BATE 48Y

EPD's: REA: --- Marb: --- Fat: ---

Another excellent Bruno son. If you are looking for some 1/2 sibs this sire group puts it all together real nice. Moderate for birth with above average growth. 50W is backed by the maternal influence of the Quantum bull.

B Wt	88 lbs
205 Wt	767 lbs
365 Wt	1159 lbs
C Ease	***
Y Gain	+35
BE PD	+1.5
WE PD	+38
YE PD	+73
Milk	+20
TM	+39



Lot
37

CRESCENT CREEK BRUNO 74W

Male DTZ 74W February 05 2009 1491169

Sire: BEVERLY HILLS FANDANGO 404

GDAR SVF CHIEF
DWAJO CHIEF 92E
WICKLOW MISS LUCY 3C

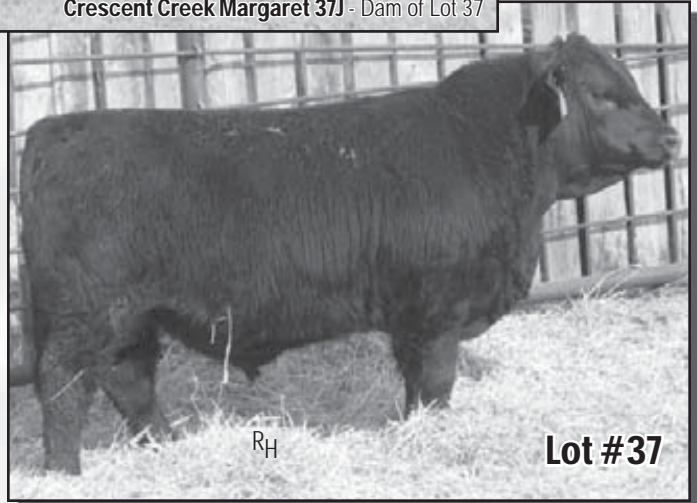
Dam: CRESCENT CREEK MARGARET 37J

GET-A-LONG POWERHOUSE 214
OPALVILLE MARGARET 12'89
OPALVILLE MARGARET 10S

EPD's: REA: +0.20 Marb: -0.06 Fat: -0.009

74W is a very stout Bruno son with a moderate birth weight and good growth. The Bruno son's will sire calves with excellent hair coats and be very easy doing. The daughters are some of the real good young cows. The dam 37J is a stellar producer here - year in and year out the Margaret cow family produces some of the best calves. Shawn and Patty Smith purchased a 37J son last year for their excellent program. They have a definite plan in mind and judging by their success at recent Agribition commercial shows, more than one judge has agreed with them.

B Wt	86 lbs
205 Wt	712 lbs
365 Wt	1134 lbs
C Ease	***
Y Gain	+33
BE PD	+3.7
WE PD	+38
YE PD	+71
Milk	+16
TM	+35



Lot
38

CRESCENT CREEK BRUNO 76W

Male DTZ 76W January 05 2009 1491185

Sire: BEVERLY HILLS FANDANGO 404

LAMBS OVERDRIVE 45E
SOUTHLAND POWERBALL 128K
DOUBLE J LASS 452A

Dam: CRESCENT CREEK LAWN 181N

BOTANY ANGUS MAX 5A
CRESCENT CREEK LAWN 109H
ANGUS ACRES LAWN 85Z

EPD's: REA: +0.19 Marb: -0.09 Fat: +0.009

B Wt	76 lbs
205 Wt	672 lbs
365 Wt	1105 lbs
C Ease	**
Y Gain	+30
BE PD	+1.7
WE PD	+37
YE PD	+67
Milk	+19
TM	+38



CRESCENT CREEK EMBLAZON 07T

Male TW WOS 07T January 19 2007 1380338

D H D TRAVELER 6807 NHF AMF
O C C EMBLAZON 854E
DIXIE ERICA OF C H 1019

Sire: B C C - J C L EMBLAZON 038-287

ROCKN D AMBUSH 1531 NHF AMF
B C C 1531 ELDORENE 826-038
KAPP ELDORENE ERICA ND 826

SITZ ALLIANCE 6595 NHF AMF
SITZ HERITAGE 10709
SITZ EMMA E 707

Dam: CRESCENT CREEK ROSEBUD 10R

RITO 8094 PRAIRIELANE 2060
CRESCENT CREEK ROSEBUD 115F
CRESCENT CREEK ROSEBUD 4C

Carcass EPD's:	REA: +0.19	Marb: +0.31	Fat: -0.006
----------------	------------	-------------	-------------

B Wt	58 lbs
205 Wt	651 lbs
365 Wt	1125 lbs
Scrotal	---
Y Gain	+40
BEPD	+2.5
WEPD	+36
YEPD	+76
Milk	+14
TM	+32



BCC-JGL Emblazon 038-287 - Sire of Emblazon 07T

Emblazon 07T was retained to use on heifers here. He calves very easy and has lots of performance later. He is more than just a "heifer bull". His pedigree is very proven. "Emblazon", "6807" and the well known Rosebud 115F were all part of the reason we retained him for our program. Emblazon is owned jointly with John Orr at Elkhorn, MB.

Lot

39

CRESCENT CREEK 07 EMBLAZON 62W

Male WOS 62W February 03 2009 1502646

Sire: CRESCENT CREEK EMBLAZON 07T

MINBURN MAIN EVENT 71N
MINBURN MAIN EVENT 82R
MINBURN JOY 34L

Dam: CRESCENT CREEK ROSEBUD 150T

SITZ HERITAGE 10709
CRESCENT CREEK ROSEBUD 6R
CRESCENT CREEK ROSEBUD 115F

EPD's:	REA: ---	Marb: ---	Fat: ---
--------	----------	-----------	----------

B Wt	80 lbs
205 Wt	780 lbs
365 Wt	1192 lbs
C Ease	****
Y Gain	+37
BEPD	+2.7
WEPD	+45
YEPD	+81
Milk	+19
TM	+42

The Emblazon 07 calves are an excellent sire group. Moderate for birth they will make excellent choices for a calving ease selection. 62W is a definite sale feature. His maternal side goes back to the Rosebud 115F influence. Congratulations goes out to MWC Angus on their very successful World Forum outing. 115F was named Supreme Dam of that excellent event. Planning makes perfect holds true in what MWC accomplished that day.



Lot #39

Lot

40

CRESCENT CREEK 07 EMBLAZON 124W

Male WOS 124W February 15 2009 1502644

Sire: CRESCENT CREEK EMBLAZON 07T

E X A R SCOTCH CAP 816 NHF AMF
RR SCOTCHMAN 2999
ERICA LASSIE OF R R 8464

Dam: CRESCENT CREEK ROSEBUD 101T

GDAR QUANTUM 963
CRESCENT CREEK ROSEBUD 70M
CRESCENT CREEK ROSEBUD 38K

EPD's:	REA: ---	Marb: ---	Fat: ---
--------	----------	-----------	----------

B Wt	70 lbs
205 Wt	664 lbs
365 Wt	1097 lbs
C Ease	*****
Y Gain	+36
BEPD	+1.1
WEPD	+32
YEPD	+68
Milk	+15
TM	+31

All the 07 sons will make excellent herd bulls - moderate for size, they are thick topped and packed full of natural muscle. Choose any one as they are peas in a pod.



Lot #40

Lot
41

CRESCENT CREEK 07 EMBLAZON 148W

Male WOS 148W February 20 2009 1502649

Sire: CRESCENT CREEK EMBLAZON 07T

C A R IDEAL 650
CAR IDEAL 061
C A R MISS VIKING 601

Dam: CRESCENT CREEK ROSEBUD 217T

DWAJO CHIEF 92E
CRESCENT CREEK ROSEBUD 35J
CRESCENT CREEK ROSEBUD 30D

B Wt	88 lbs
205 Wt	781 lbs
365 Wt	1234 lbs
C Ease	***
Y Gain	+35
BEPD	+4.5
WEPD	+45
YEPD	+81
Milk	+18
TM	+41

EPD's:	REA: ---	Marb: ---	Fat: ---
--------	----------	-----------	----------



Lot
42

CRESCENT CREEK 07 EMBLAZON 159W

Male WOS 159W February 24 2009 1502647

Sire: CRESCENT CREEK EMBLAZON 07T

E X A R SCOTCH CAP 816 NHF AMF
RR SCOTCHMAN 2999
ERICA LASSIE OF R R 8464

Dam: CRESCENT CREEK QUEEN RUTH 155T

TLA PRIDE'S REVIVAL 85G
CRESCENT CREEK QUEEN RUTH 02J
CRESCENT CREEK QUEEN RUTH 14Z

B Wt	82 lbs
205 Wt	752 lbs
365 Wt	1144 lbs
C Ease	****
Y Gain	+38
BEPD	+3.0
WEPD	+45
YEPD	+83
Milk	+12
TM	+35

EPD's:	REA: ---	Marb: ---	Fat: ---
--------	----------	-----------	----------

Summary Statistics
Canadian Angus
Association
Black Angus
Average EPD's
on 2009 calves.

B Wt	+3.0
W Wt	+40
Y Wt	+71
Milk	+17
TM	+37
Y Gain	+31

LOOKOUT HUCK 53T

Male LSF 53T February 04 2007 1374600

ANGUS ACRES TOM BOY 64D
ADELPHI TOM BOY 20H
ADELPHI BURGESS J 39X

Sire: FIGURE 8 ANGUS TOM BOY 509R

FIGURE 8 ANGUS BIG DEAL
FIGURE 8 ANGUS LADY 604J
FIGURE 8 ANGUS LADY 604G

GDAR SVF RUSS 184B
GDAR RUSS 896
G D A R RACHEL 244

Dam: LOOKOUT EDNA 145L

CRESCENT CREEK MAXIMUM 37C
KBJ EDNA 432H
KBJ EDNA 229E

B Wt	83 lbs
205 Wt	677 lbs
365 Wt	1137 lbs
Scrotal	---
Y Gain	+25
BEPD	-1.5
WEPD	+39
YEPD	+64
Milk	+12
TM	+32

Carcass EPD's:	REA: +0.02	Marb: +0.10	Fat: +0.016
----------------	------------	-------------	-------------

BLACK ANGUS Reference Sire



Lookout Huck 53T - 7 Sons Sell

When we were looking for a bull to use on our heifers we wanted more than just some calving ease. When we saw Tomboy 608R at Agribition we wanted some of these exciting new outcross genetics around. Obviously Lookout Stock Farms would be the source of Tomboy sons at that time because he was used there first. When we saw Crescent Creek Max 37C in the background of one of the pedigree's - 53T was the natural choice. If you wonder what influence 37C has had on a program just ask Jim Round at KBJ or Brian Geis.

Lot

43

CRESCENT CREEK HUCK 80W

Male WOS 80W February 06 2009 1541327

Sire: LOOKOUT HUCK 53T

BON VIEW WINTON 1342
PRIDE-O-GOLD WINTON 12P
RRD TIBBIE 12E

Dam: PRIDE-O-GOLD TARA WIN 27T

MVRB PERFECTION 21C
FOXSBURY BLACKCAP GFN 79J
FOXSBURY BLACKCAP FN 60D

B Wt	67 lbs
205 Wt	720 lbs
365 Wt	1173 lbs
C Ease	*****
Y Gain	---
BEPD	---
WEPD	---
YEPD	---
Milk	---
TM	---

EPD's:	REA: ---	Marb: ---	Fat: ---
--------	----------	-----------	----------

The first of what I believe is going to be a very exciting era at Crescent Creek. Huck 53T has done more in one calf crop than most bulls do in a lifetime. Remember his offspring are all off first calf heifers. They come moderate with extra performance. I have never seen calves change more than these ones. His sons are calving ease specialist's. Sleepless nights will be a thing of the past when using them. Check out the maternal side of 80W - you will not see 1342 that close in many pedigrees.



Lot #43

Lot

44

CRESCENT CREEK TOMBOY 104W

Male WOS 104W February 11 2009 15491435

Sire: LOOKOUT HUCK 53T

C A R IDEAL 650
CAR IDEAL 061
C A R MISS VIKING 601

Dam: CRESCENT CREEK EULA 190T

DWAJO CHIEF 92E
CRESCENT CREEK EULA 94L
CRESCENT CREEK EULA 82A

B Wt	74 lbs
205 Wt	799 lbs
365 Wt	1307 lbs
C Ease	*****
Y Gain	+27
BEPD	+1.6
WEPD	+46
YEPD	+73
Milk	+18
TM	+41

EPD's:	REA: ---	Marb: ---	Fat: ---
--------	----------	-----------	----------

Sale feature here according to Wade. Huck sons are all the same. Moderate for birth, excellent growth, large testicles and lots of red meat. If you liked our Pacesetter bulls last year the Huck sons are the same, outcross genetics that are proven. 104W was in our show string at Agribition where he was admired for his herd bull presence. Not overly fed he showed plenty of future. His mother is an excellent CAR Ideal daughter. Check him out sale day and ask Wade for the rest of the story.



Lot #44

Lot

45**CRESCENT CREEK TOMBOY 118W**

Male WOS 118W February 14 2009 1491425

Sire: LOOKOUT HUCK 53TMINBURN MAIN EVENT 71N
MINBURN MAIN EVENT 82R
MINBURN JOY 34L**Dam: CRESCENT CREEK PRIDE 79T**CRESCENT CREEK CHIEF 72L
CRESCENT CREEK PRIDE 155N
CRESCENT CREEK PRIDE 40K

EPD's: REA: --- Marb: --- Fat: ---

All the Huck sons are very uniform. These are calving ease bulls bar none.

B Wt	68 lbs
205 Wt	712 lbs
365 Wt	1095 lbs
C Ease	*****
Y Gain	+27
BEPD	+0.0
WEPD	+42
YEPD	+69
Milk	+12
TM	+33



Lot

46**CRESCENT CREEK TOMBOY 123W**

Male WOS 123W February 15 2009 1491422

Sire: LOOKOUT HUCK 53TMINBURN MAIN EVENT 71N
MINBURN MAIN EVENT 82R
MINBURN JOY 34L**Dam: CRESCENT CREEK TIERRA 63T**T D M ALLIANCE 904
DRYLAND TIERRA 419
DRYLAND TIERRA 150

EPD's: REA: --- Marb: --- Fat: ---

B Wt	67 lbs
205 Wt	746 lbs
365 Wt	1158 lbs
C Ease	*****
Y Gain	+30
BEPD	+1.5
WEPD	+41
YEPD	+70
Milk	+13
TM	+33



Lot

47**CRESCENT CREEK TOMBOY 134W**

Male DOS 134W February 17 2009 1491443

Sire: LOOKOUT HUCK 53TO C C EMBLAZON 854E
B C C-J C L EMBLAZON 038-287
B C C 1531 ELDORENE 826-038**Dam: CRESCENT CREEK NANCE 44T**MINBURN MAIN EVENT 50M
KBJ BLACK NANCE 608R
KBJ BLACK NANCE 851H

EPD's: REA: --- Marb: --- Fat: ---

B Wt	68 lbs
205 Wt	721 lbs
365 Wt	1164 lbs
C Ease	*****
Y Gain	+30
BEPD	-0.9
WEPD	+41
YEPD	+71
Milk	+11
TM	+32



Huck 53T has done more than we expected. He is a true breeding bull. Turned out with 27 heifers, 21 calved in the first cycle, all natural heats and the remainder calved within 10 days later. When it came to calving all you did was tagged calves. What impressed us was the performance in these calves all summer long. If you want a true calving ease bull with some performance and an out cross pedigree to boot, "Huck" is the answer. I really think his females will make excellent cows.

Lot
48

CRESCENT CREEK TOMBOY 15W

Male WOS 15W January 21 2009 1491311

Sire: LOOKOUT HUCK 53T

SITZ ALLIANCE 6595
SITZ HERITAGE 10709
SITZ EMMA E 707

Dam: CRESCENT CREEK ROSEBUD 6R

RITO 8094 PRAIRIELANE 2060
CRESCENT CREEK ROSEBUD 115F
CRESCENT CREEK ROSEBUD 4C

B Wt	90 lbs
205 Wt	773 lbs
365 Wt	1336 lbs
C Ease	***
Y Gain	+33
BE PD	+1.5
WE PD	+43
YE PD	+76
Milk	+20
TM	+42



EPD's: REA: --- Marb: --- Fat: ---



We are very excited to offer this outstanding young herd bull for sale. Crescent Creek Huck 15W offers a real genetic alternative for anyone looking for a change. His sire is backed by one of the most proven outcross bulls in Canada. Tomboy 509R has done an amazing job for all those who chose to try some new blood. What sets 15W apart is his maternal strength. Rosebud 6R has taken over where her dam Rosebud 115F left off. 2010 marked the end of an outstanding era for 115F. She has left a record of producing exceptional offspring second to none, highlighted by being named Supreme Dam at the recent World Angus Forum. Get in on the ground floor of something new and different, but extremely proven.
Selling 1/3 Interest with Shared Possession.



Thank you to our 2009 Buyers...



- Keith & Jodi-Marie Blight
- John Simpson
- Eugene Maystrowich
- Max Halyk
- Neil Perry
- William Turner
- Everygreen Cattle Co.
- Theford Elmy
- Keith Johnson
- Joel, Merril & Armond LeSann
- Joe Scherloski
- Terence Flesjer
- Ron Cordes
- Art Unsworth
- P.F.R.A
- Darin Bouchard
- Gary Gervin
- Rocking S Ranch
- Garnet Putland
- Daryl Bierwagen
- Bull Rush Blacks
- Gordon Petruka
- Hans Mitchel
- Rudy Twardziak
- John Jurzyniec
- Arda Farms
- John Martens
- Pretty View Stock Farm
- Bob Hiduk
- Wade Winters
- John Irving
- Bernard Guenether
- Lynn and Joanne Bloom
- Rick Keays
- Windy Willows Farms
- Thad Trefiak
- Fred Lansdall
- Gerry Hudy
- Bryce Mawbey
- Mel McRea
- Don Barkman
- Allan Henderson
- Lowell Winters
- 2009 Heifers
- David Siever
- Genesis Land Conservancy
- Jordan Sies
- Troy Frick
- Sheidaghan Angus
- Charlie Porter
- Shane Castle
- Jory Payne
- Tracy Wessing
- Gerry Bertholet
- Cam Morgan
- Andrew Bagu

• *Denotes Repeat Buyer*

Congratulations to Shawn & Patty Smith, Rocking S Ranch, Nokomis, SK on their success at Agribition with offspring of Crescent Creek bulls.



Lot
49

CRESCENT CREEK TOMBOY 155W

Male WOS 155W February 23 2009 1491433

Sire: LOOKOUT HUCK 53T

E X A R SCOTCH CAP 816 NHF AMF
RR SCOTCHMAN 2999
ERICA LASSIE OF R R 8464

Dam: CRESCENT CREEK DUCHESS 180T

C H REVIVAL 104
ASPELUND DUCHESS 81G
DWAJO DUCHESS 8E

EPD's: REA: --- Marb: --- Fat: ---

B Wt	84 lbs
205 Wt	812 lbs
365 Wt	1185 lbs
C Ease	*****
Y Gain	+29
BEPD	+2.4
WEPD	+49
YEPD	+78
Milk	+17
TM	+42



Lot
50

CRESCENT CREEK TOMBOY 175W

Male WOS 175W March 03 2009 1541314

Sire: LOOKOUT HUCK 53T

O C C EMBLAZON 854E
B C C-J C L EMBLAZON 038-287
B C C 1531 ELDORENE 826-038

Dam: CRESCENT CREEK LADY BATE 4T

RR SCOTCHMAN 2999
CRESCENT CREEK LADY BATE 98R
CRESCENT CREEK LADY BATE 6N

EPD's: REA: --- Marb: --- Fat: ---

B Wt	74 lbs
205 Wt	698 lbs
365 Wt	1161 lbs
C Ease	*****
Y Gain	+33
BEPD	-0.4
WEPD	+37
YEPD	+71
Milk	+11
TM	+30



Lot
51

CRESCENT CREEK PACESETTER 92W

Male DOS 92W February 09 2009 1502078

WILLABAR AMBUSH 45G
LOOKOUT PACESETTER 258M
GRASSY LANES MILLY 29U

Sire: CRESCENT CREEK PACESETTER 20T

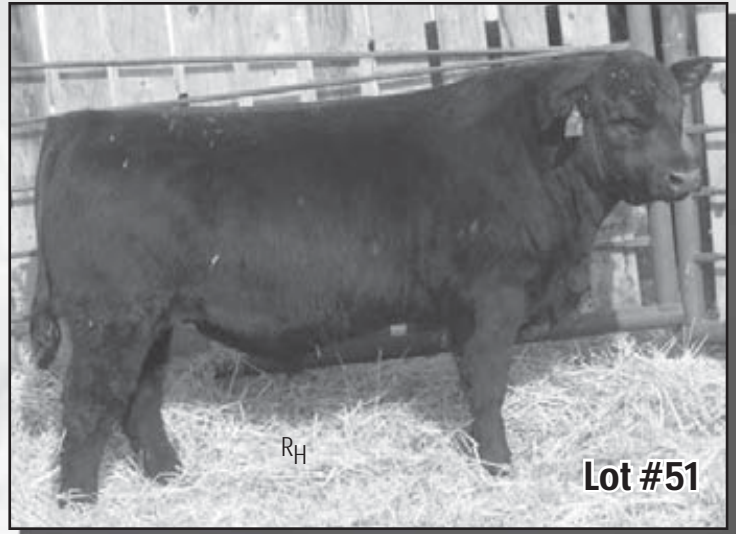
GDAR QUANTUM 963
CRESCENT CREEK BLACKBIRD 138N
CRESCENT CREEK BLACKBIRD 126J
O C C EMBLAZON 854E
B C C-J C L EMBLAZON 038-287
B C C 1531 ELDORENE 826-038

Dam: CRESCENT CREEK EMBLAZON 49T

AJC H A F TRAVELER 01L
YOUNG DALE MCHENRY LASS 101R
MINBURN MCHENRY LASS 22K

B Wt	74 lbs
205 Wt	669 lbs
365 Wt	1132 lbs
C Ease	*****
Y Gain	+32
BEPD	+0.7
WEPD	+32
YEPD	+64
Milk	+13
TM	+29

EPD's:	REA: ---	Marb: ---	Fat: ---
--------	----------	-----------	----------



Lot #51

Every year I like to think we have a bull that could be a herd changer. I believe 165W could be the one, sired by the ever popular Right Time and backed by an excellent cow. His dam is a picture perfect female with a flawless udder and extra depth.

The Crush Maid's were a sale feature for Dryland Angus at their reduction sale. Although we never bought any that day, when the opportunity to purchase one bred to Right Time presented itself, we took advantage. You can take advantage here. Check this young herd bull out.

Retaining 1/3 semen interest.

Lot
52

CRESCENT CREEK RIGHT TIME 165W

Male WOS 165W February 26 2009 ?109189

EMULATION N BAR 5522
N BAR EMULATION EXT
N BAR PRIMROSE 2424

Sire: LEACHMAN RIGHT TIME

TEHAMA BANDO 155
LEACHMAN ERICA 0025
LEACHMAN ERICA 8058
CRESCENT CREEK CHIEF 80G
DRYLAND CHIEF 307
HIGH VALLEY 3D4 OF K821

Dam: DRYLAND CRUSHMAID 732

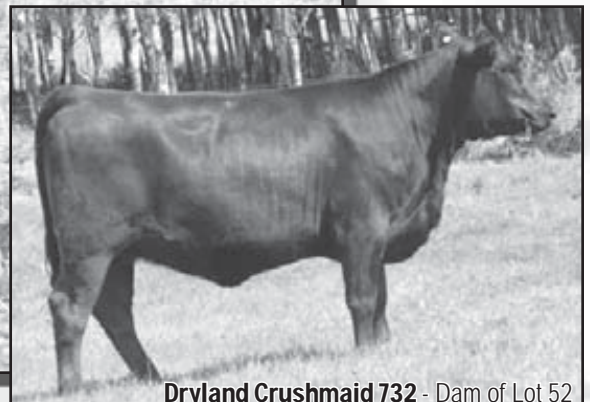
GEIS MAXIMUM 80'01
DRYLAND CRUSH MAID 536
BT CRUSH MAID 89K

B Wt	76 lbs
Act WW	680 lbs
Act YW	1160 lbs
C Ease	****
Y Gain	---
BEPD	---
WEPD	---
YEPD	---
Milk	---
TM	---

EPD's:	REA: ---	Marb: ---	Fat: ---
--------	----------	-----------	----------



Lot #52



Dryland Crushmaid 732 - Dam of Lot 52

RED ANGUS Yearling Bulls

The number of Red bulls are down but the quality runs very deep. The Red bulls in our previous sales have been very affordable considering the very high quality offered. Some will drive for miles to find out they could have purchased as good a bull for less.

We offer some old proven genetics in Suji 18M and 602M. The Chief's once again are powerful performance bulls along with some new genetics in the Triple S bull. Gladiator has done a very good job with his females, becoming some of the really good young Red Angus cows. If looking for a Red bull be sure to check this small but mighty offering out.

Lot
53

RED CRESCENT CREEK SUJI 4W

Male WOS 4W January 17 2009 1499613

BKT STML 751-875
RED BKT SUJI 1513 CN
BKT COC 782 801

Sire: RED FLYING K SUJI 18M

RED STORMY LAD OF LINDO 5C
RED FLYING K LAKINA 14F
RED ALPINE GROVE LAKINA
RED D-BAR CURRENT TREND 9K
RED D-BAR TREND 1M
RED MOOSE CREEK CASI 32E

Dam: RED CRESCENT CREEK CLAIRE 130P

RED LITTLE DE BAXTER 742D
RED FLAT LAKE CLAIRE 62F
RED FLAT LAKE 62A

B Wt	82 lbs
205 Wt	686 lbs
365 Wt	1099 lbs
C Ease	****
CED	+5.0
CEM	+2.0
BEPD	+0.6
WEPD	+19
YEPD	+33
Milk	+15
TM	+24
Stay	+11
HPG	+9

EPD's: REA: +0.25 Marb: -0.07 Back Fat: +0.00



RH

Lot #53

If you require a bull with good hair, extra volume, large testicles and some proven old time genetics, 4W will fit the bill. This fellow will be one of the outstanding bulls offered for sale this spring. Be sure to check him out sale day, definite Red Angus sale feature.

Lot
54

RED CRESCENT CREEK SUJI 21W

Male WOS 21W January 23 2009 1491233

BKT STML 751-875
 RED BKT SUJI 1513 CN
 BKT COC 782 801
Sire: RED FLYING K SUJI 18M
 RED STORMY LAD OF LINDO 5C
 RED FLYING K LAKINA 14F
 RED ALPINE GROVE LAKINA
 RED 77 PATCH O GOLD 641F
 RED BRYLOR GOLD 55H
 RED IRENE 36E
Dam: RED FLAT LAKE HALLIE 29M
 RED FLAT LAKE ESTRA 37E
 RED FLAT LAKE HALLIE 66H
 RED FLAT LAKE 4Y

B Wt	78 lbs
205 Wt	684 lbs
365 Wt	1106 lbs
C Ease	*****
CED	+4.0
CEM	+1.0
BE PD	+1.1
WE PD	+16
YE PD	+32
Milk	+17
TM	+25
Stay	+10
HPG	+9

EPD's: REA: +0.11 Marb: -0.02 Back Fat: +0.00

Another Suji son out of one of the real good Red cows here. 29M has attained Elite cow status under the Canadian Angus Performance Program.



Lot #54

Lot
55

RED CRESCENT CREEK 602M CHIEF 12W

Male WOS 12W January 20 2009 1529469

CHOCTAW CHF 373 OSF
 PBC 373 D0202
 E Y EMPRESS 4
Sire: PBC D0202 6M H3554
 RP TGRR PDE 274
 RED BUD 3
 E Y EMPRESS 4
 RED GET-A-LONG BAXTER 299
 RED LITTLE DE BAXTER 742D
 RED LITTLE DE MISS MEVON 130X
Dam: RED FLAT LAKE CLAIRE 62F
 RED FLAT LAKE 27Y
 RED FLAT LAKE 62A
 RED FLAT LAKE 44W 87

B Wt	79 lbs
205 Wt	640 lbs
365 Wt	1082 lbs
C Ease	*****
CED	+8.0
CEM	+8.0
BE PD	-0.8
WE PD	+14
YE PD	+22
Milk	+8
TM	+15
Stay	+7
HPG	+9

EPD's: REA: -0.13 Marb: +0.09 Back Fat: -0.01



Lot #55

Lot
56

RED CRESCENT CREEK CHIEF 54W

Male WOS 54W February 01 2009 1491314

RED CRESCENT CREEK H0904 52K
 RED CRESCENT CREEK 52 CHF 50N
 RED CRESCENT CREEK REBECCA 32J
Sire: RED CRESCENT CREEK CHIEF 18S
 RED BRYLOR NEW TREND 22D OSF
 RED CRESCENT CREEK ELENA 126N
 RED FLAT LAKE ELENA 22F
 RED D-BAR CURRENT TREND 9K
 RED D-BAR TREND 1M
 RED MOOSE CREEK CASI 32E
Dam: RED CRESCENT CREEK ANNIE 84R
 RED YY RED KNIGHT 640F OSF
 RED CRESCENT CREEK ANNIE 85J
 RED MEM ICECAP ANNIE 22Z

B Wt	94 lbs
205 Wt	688 lbs
365 Wt	1151 lbs
C Ease	**
CED	+1.0
CEM	+4.0
BE PD	+3.8
WE PD	+37
YE PD	+58
Milk	+18
TM	+36
Stay	+12
HPG	+9

EPD's: REA: +0.10 Marb: -0.07 Back Fat: +0.00



Lot #56

One of the true performance bulls in the sale. Extra volume with a wide top and hip are the trademarks of Chief 18S sons. 18S is now seeing service in the excellent commercial herd of Spilchak Farms at Ituna, SK. Colin and Michael understand the value of top herd bull selection as it relates to the economics of success in the cattle business.

Lot
57

RED CRESCENT CREEK CHIEF 72W

Male WOS 72W February 05 2009 1491281

RED CRESCENT CREEK H0904 52K
RED CRESCENT CREEK 52 CHF 50N
RED CRESCENT CREEK REBECCA 32J

Sire: RED CRESCENT CREEK CHIEF 18S

RED BRYLOR NEW TREND 22D OSF
RED CRESCENT CREEK ELENA 126N
RED FLAT LAKE ELENA 22F
RED D-BAR CURRENT TREND 9K
RED D-BAR TREND 1M
RED MOOSE CREEK CASI 32E

Dam: RED CRESCENT CREEK ANNIE 05P

RED FORSTER CHIEF 7182ET
RED CRESCENT CREEK ANNIE 4L
RED CRESCENT CREEK ANNIE 68C

B Wt	84 lbs
205 Wt	770 lbs
365 Wt	1162 lbs
C Ease	***
CED	+3.0
CEM	+4.0
BEPD	+1.7
WEPD	+36
YEPD	+60
Milk	+18
TM	+22
Stay	+10
HPG	+10

EPD's:	REA: ---	Marb: ---	Back Fat: ---
--------	----------	-----------	---------------

The Chief sons offer as much ability to sire calves that will push down the scale come sale time. Free moving with excellent foot structure.



Lot
58

RED CRESCENT CREEK CHIEF 85W

Male WOS 85W February 08 2009 1491282

RED CRESCENT CREEK H0904 52K
RED CRESCENT CREEK 52 CHF 50N
RED CRESCENT CREEK REBECCA 32J

Sire: RED CRESCENT CREEK CHIEF 18S

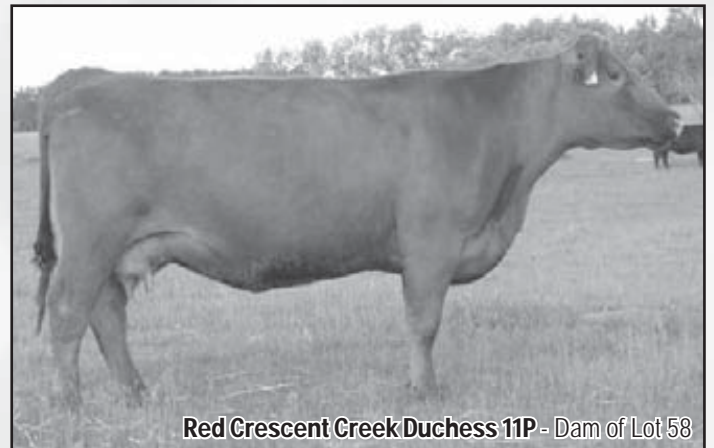
RED BRYLOR NEW TREND 22D OSF
RED CRESCENT CREEK ELENA 126N
RED FLAT LAKE ELENA 22F
RED FCC RAMBO 502 OSF
RED BJR RAMBLER 5162 OSF
BJR GOLDI 355-1122

Dam: RED CRESCENT CREEK DUCHESS 11P

RED TS SHAWTOM
RED CRESCENT CREEK DUCHESS 48C
RED TERRLENE DUCHESS 82Z

B Wt	84 lbs
205 Wt	642 lbs
365 Wt	1105 lbs
C Ease	****
CED	+5.0
CEM	+4.0
BEPD	+0.9
WEPD	+25
YEPD	+50
Milk	+16
TM	+28
Stay	+11
HPG	+10

EPD's:	REA: +0.04	Marb: -0.01	Back Fat: -0.01
--------	------------	-------------	-----------------



Sale feature here. One of the easiest bulls to find in the pen, with excellent disposition and a mother that has never missed producing a great one. Again excellent hair and lots of thickness sum this fellow up.

Lot
59

RED CRESCENT CREEK CHIEF 95W

Male WOS 95W February 09 2009 1491219

RED CRESCENT CREEK H0904 52K
RED CRESCENT CREEK 52 CHF 50N
RED CRESCENT CREEK REBECCA 32J

Sire: RED CRESCENT CREEK CHIEF 18S

RED BRYLOR NEW TREND 22D OSF
RED CRESCENT CREEK ELENA 126N
RED FLAT LAKE ELENA 22F
RED BBCC PRESIDIO 5Z OSF
RED FLAT LAKE ESTRA 37E
RED FLAT LAKE 3W 87

Dam: RED FLAT LAKE HALLIE 66H

RED QUANTOCK 65W
RED FLAT LAKE 4Y
RED FLAT LAKE 12U 86

EPD's:	REA: -0.05	Marb: -0.02	Back Fat: +0.00
--------	------------	-------------	-----------------

B Wt	92 lbs
205 Wt	721 lbs
365 Wt	1104 lbs
C Ease	**
CED	+0.0
CEM	+3.0
BEPD	+4.0
WEPD	+34
YEPD	+56
Milk	+14
TM	+30
Stay	+11
HPG	+10

Summary Statistics
Canadian Angus
Association
Red Angus
Average EPD's
on 2009 calves.

CED	+4.5
CEM	+3.2
B Wt	+0.7
W Wt	+29
Y Wt	+52
Milk	+15
TM	+29
Stay	+9
HPG	+9

Lot
60

RED CRESCENT CREEK BOOM 65W

Male WOS 65W February 03 2009 1491317

RED SSS BOOM TOWN 260D
RED CRCC BOOM 100N
LAZY MC BESS 4K

Sire: RED SSS BOOM 644T

RED BADLANDS BONUS 70Z
RED COMPASS DIVA 122R
RED HR 310 DIVIDE ET 103L
RED D-BAR CURRENT TREND 9K
RED D-BAR TREND 1M
RED MOOSE CREEK CASI 32E

Dam: RED CRESCENT CRK DUCHESS 147R

RED PRETTYVIEW DUKE 5D
RED CRESCENT CREEK DUCHESS 3F
RED TERRENE DUCHESS 82Z

EPD's:	REA: -0.08	Marb: -0.08	Back Fat: -0.01
--------	------------	-------------	-----------------

B Wt	104 lbs
205 Wt	756 lbs
365 Wt	1279 lbs
C Ease	*
CED	-2.0
CEM	+0.0
BEPD	+5.7
WEPD	+44
YEPD	+73
Milk	+20
TM	+42
Stay	+9
HPG	+11



Lot
61

RED CRESCENT CREEK BOOM 171W

Male WOS 171W March 01 2009 1541312

RED SSS BOOM TOWN 260D
RED CRCC BOOM 100N
LAZY MC BESS 4K

Sire: RED SSS BOOM 644T

RED BADLANDS BONUS 70Z
RED COMPASS DIVA 122R
RED HR 310 DIVIDE ET 103L
RED GRL SIR HBO 1B
RED ROD 831H
RED ROD DYNAFIRE 263B

Dam: RED FLAT LAKE ELENA 48M

RED LAZY MC DALTON 14C
RED FLAT LAKE ELENA 22F
RED FLAT LAKE 6U 86

EPD's:	REA: -0.10	Marb: -0.02	Back Fat: -0.01
--------	------------	-------------	-----------------

B Wt	82 lbs
205 Wt	770 lbs
365 Wt	1248 lbs
C Ease	***
CED	+7.0
CEM	+5.0
BEPD	+0.2
WEPD	+32
YEPD	+54
Milk	+15
TM	+31
Stay	+9
HPG	+10



A real stout son of SSS Boom. Nice moderate birth with real growth later. 48M is probably one of the smallest framed cows, but can produce more pound for pound than most.

Lot
62

RED CRESCENT CK GLADIATOR 152W

Male WOS 152W February 23 2009 1491243

- RED BLUE SPRUCE ZOOK 50H
- RED DWAJO GLADIATOR 32L
- RED DWAJO SUPERIOR 4H

Sire: RED SOO GLADIATOR 3172

- RED MEM ICEBERG 4W
- RED MEM ICECAP ANNIE 22Z
- RED MEM CHINNA 26S
- BRYLOR EXECUTIVE 26F
- RED BRYLOR GDAR 727 42H
- RED HF CHARITY 2B

Dam: RED T-S REBECCA 384M

- RED CUMNOCK REALPOWER 79Z
- RED CUMNOCK REBECCA 356B
- RED CUMNOCK REBECCA 27Z

EPD's: REA: +0.22 Marb: +0.00 Back Fat: +0.00

B Wt	78 lbs
205 Wt	632 lbs
365 Wt	1065 lbs
C Ease	*****
CED	+10.0
CEM	+6.0
BEPD	-2.5
WEPD	+21
YEPD	+34
Milk	+14
TM	+24
Stay	+10
HPG	+9



Lot
63

RED CRESCENT CK GLADIATOR 170W

Male WOS 170W March 01 2009 1541311

- RED BLUE SPRUCE ZOOK 50H
- RED DWAJO GLADIATOR 32L
- RED DWAJO SUPERIOR 4H

Sire: RED SOO GLADIATOR 3172

- RED MEM ICEBERG 4W
- RED MEM ICECAP ANNIE 22Z
- RED MEM CHINNA 26S
- SSS BLACK TREND 13B
- RED BRYLOR NEW TREND 22D OSF
- RED MEADOW CK MISS SEAMAN 31A

Dam: RED CRESCENT CREEK ELENA 126N

- RED LAZY MC DALTON 14C
- RED FLAT LAKE ELENA 22F
- RED FLAT LAKE 6U 86

EPD's: REA: +0.19 Marb: -0.02 Back Fat: +0.00

B Wt	88 lbs
205 Wt	715 lbs
365 Wt	1087 lbs
C Ease	*****
CED	+5.0
CEM	+5.0
BEPD	+1.0
WEPD	+33
YEPD	+56
Milk	+19
TM	+36
Stay	+11
HPG	+10

Lot
64

RED CRESCENT CREEK ICEBERG 105W

Male WOS 105W February 11 2009 1491235

- SIX MILE ICEBERG 939P
- RED SIX MILE ICEBERG 569S
- RED SIX MILE BECKY 909P

Sire: RED MEM ICEBERG 4W

- RED MEM GERHARD 25P
- RED MEM DANA STORM 15S
- RED MEM DANA 12P

- TLA NORTHERN SAMURAI
- RED KBJ SAM'S PROSPECTOR 133Z
- KBJ ROUND LASSIE 18T

Dam: RED SUN VALLEY PROSPECT 206

- RITO 2100 G D A R
- C A R 2100 MISS ENVY 206
- U R Q MISS ENVY 806

EPD's: REA: -0.02 Marb: +0.07 Back Fat: -0.01

B Wt	82 lbs
205 Wt	680 lbs
365 Wt	1163 lbs
C Ease	****
CED	+7.0
CEM	+5.0
BEPD	+0.5
WEPD	+28
YEPD	+49
Milk	+6
TM	+20
Stay	+10
HPG	+10

A real genetic piece of work with such breed greats as Rito 2100, Prospector 133Z and Iceberg 4W. Come check him out - you will not be disappointed.

Notes:



Our new baby - Fiona

BLACK ANGUS 2 Year Old Bulls

Lot

65

CRESCENT CREEK ALLIANCE 167U

Male WOS 167U March 19 2008 1471912

SITZ TRAVELER 8180 NHF AMF
SITZ ALLIANCE 6595 NHF AMF
SITZ BARBARAMERE JET 2698

Sire: CRESCENT CREEK ALLIANCE 29N

GDAR RUSS 896
KBJ MISS COMPRESS 862K
EVERBLACK MISS COMPRESS 98G
O C C TRAVELER 723Z
GDAR TRAVELER 235
GDAR PRIMROSE 0251

Dam: CRESCENT CREEK EULA 124R

RITO 8094 PRAIRIELANE 2060
CRESCENT CREEK BARANDA 132G
CRESCENT CREEK BARANDA 7C

B Wt	84 lbs
205 Wt	664 lbs
365 Wt	---
C Ease	*****
Y Gain	+27
BEPD	+2.9
WEPD	+43
YEPD	+70
Milk	+16
TM	+38

EPD's: REA: -0.28 Marb: -0.06 Fat: +0.022

New this year we are offering some very good 2 year old bulls. These are not leftovers. They are younger in age and did not fit the criteria of selling as yearling bulls. They were grown out and never pushed at any time. We have moved some cows back for later calving so you can look forward to seeing a small number of 2 year olds in the future.

These bulls received rolled oats and free choice hay and licked snow all winter with the sun and stars along with poplar slabs for shelter. They will impress you.

Lot

66

CRESCENT CREEK MAIN EVENT 161U

Male DTZ 161U March 16 2008 1435768

CRESCENT CREEK MAIN EVENT 6H
MINBURN MAIN EVENT 71N
MINBURN BLACKBIRD 17E

Sire: MINBURN MAIN EVENT 82R

EVERBLACK MASTERPLAN 007
MINBURN JOY 34L
HILL VIEW JOY 70D
S A F FAME NHF AMF
RRD FAME 1K
RRD TIBBIE 4E

Dam: CRESCENT CREEK IDESSA 164N

S A F FAME NHF AMF
S A V IDESSA 9109
S A V IDESSA 7174

B Wt	86 lbs
205 Wt	528 lbs
365 Wt	920 lbs
C Ease	****
Y Gain	+18
BEPD	+4.6
WEPD	+31
YEPD	+49
Milk	+7
TM	+23

EPD's: REA: --- Marb: --- Fat: ---

Lot

68

CRESCENT CREEK ALLIANCE 194U

Male WOS 194U April 09 2008 1471919

SITZ TRAVELER 8180 NHF AMF
SITZ ALLIANCE 6595 NHF AMF
SITZ BARBARAMERE JET 2698

Sire: CRESCENT CREEK ALLIANCE 29N

GDAR RUSS 896
KBJ MISS COMPRESS 862K
EVERBLACK MISS COMPRESS 98G
E X A R SCOTCH CAP 816 NHF AMF
RR SCOTCHMAN 2999
ERICA LASSIE OF R R 8464

Dam: CRESCENT CREEK ROSEBUD 133R

GDAR QUANTUM 963
CRESCENT CREEK HEROINE 076N
CRESCENT CREEK LADY BATE 61H

B Wt	78 lbs
205 Wt	717 lbs
365 Wt	1149 lbs
C Ease	*****
Y Gain	+32
BEPD	+1.1
WEPD	+47
YEPD	+79
Milk	+20
TM	+43

EPD's: REA: --- Marb: --- Fat: ---

Lot

67

CRESCENT CREEK BRUNO 186U

Male WOS 186U March 29 2008 1471917

STEVENSON ROYCE 741C NHF
STEVENSON BRUNO 561G NHF
JRS ENCHANTRESS 16A

Sire: BEVERLY HILLS FANDANGO 404

D H D TRAVELER 6807 NHF AMF
H A RITO LADY 1262
H A RITO LADY 3052
SITZ ALLIANCE 6595 NHF AMF
CRESCENT CREEK ALLIANCE 29N
KBJ MISS COMPRESS 862K

Dam: CRESCENT CREEK DUCHESS 81R

CRESCENT CREEK REVIVAL 06J
CRESCENT CREEK DUCHESS 51M
SUNMOUND DUCHESS 1Z

B Wt	78 lbs
205 Wt	668 lbs
365 Wt	1139 lbs
C Ease	*****
Y Gain	+35
BEPD	+2.6
WEPD	+45
YEPD	+80
Milk	+21
TM	+43

EPD's: REA: +0.02 Marb: +0.13 Fat: +0.016



Lot #67

BLACK ANGUS - Females

We cannot say enough about the replacement females being offered. They are exactly that. They are replacement quality, not bottom enders or throw aways. They represent the foundation cow families here, who year in and year out, have produced a set of sale bulls second to none. We realize that not everyone is in the building mode right now, but perhaps more so a rebuilding mode. Take the opportunity to purchase females of excellent quality for perhaps ½ the price as in years gone by. This ride is going to smooth out eventually.

Once again we are offering terms on the heifers 60% down sale day, 40% October 1, both cheques left sale day. If you desire, we once again will retain the heifer to be bred to our exciting herd bulls, offering a chance at some very unique breeding opportunities. Last year some females were left and the new owners are very happy with the results.

Study the pedigrees as we offer chances to buy many ½ and ¾ sibs making building a package of affordable genetics very easy. Be Red or Black these heifers are a very exciting young group of replacements. Many "Elite" females have evolved from previous Crescent Creek sales.

Lot
69

CRESCENT CREEK HEROINE 2W

Female DTZ 2W January 15 2009 1491182

CRESCENT CREEK MAIN EVENT 6H
MINBURN MAIN EVENT 71N
MINBURN BLACKBIRD 17E

Sire: MINBURN MAIN EVENT 82R

EVERBLACK MASTERPLAN 007
MINBURN JOY 34L
HILL VIEW JOY 70D
GDAR SVF CHIEF
DWAJO CHIEF 92E
WICKLOW MISS LUCY 3C

Dam: CRESCENT CREEK HEROINE 58N

RITO 8094 PRAIRIELANE 2060
CRESCENT CREEK HEROINE 68F
CRESCENT CREEK HEROINE 81C

B Wt	84 lbs
205 Wt	672 lbs
365 Wt	782 lbs
Y Gain	+29
BEPD	+6.2
WEPD	+44
YEPD	+73
Milk	+12
TM	+33



Minburn Main Event 82R - Sire of Lot 69 - 79

EPD's: REA: +0.07 Marb: +0.07 Fat: -0.009



A real broody Main Event daughter. They are making nice cows. The maternal side is the foundation of our program - Dwajo Chief and 2060 - sound genetics then and now.

Lot
70

CRESCENT CREEK PRIDE 7W

Female DTZ 7W January 19 2009 1491181

CRESCENT CREEK MAIN EVENT 6H
MINBURN MAIN EVENT 71N
MINBURN BLACKBIRD 17E

Sire: MINBURN MAIN EVENT 82R

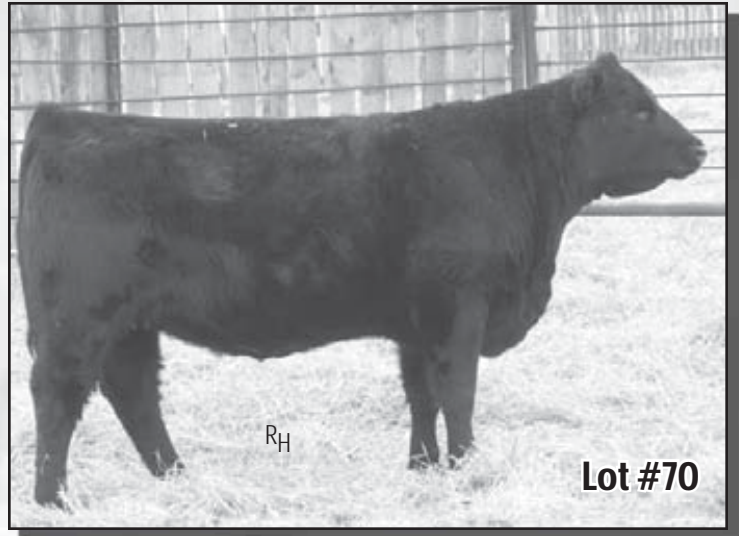
EVERBLACK MASTERPLAN 007
MINBURN JOY 34L
HILL VIEW JOY 70D
C H QUANTUM 3330
GDAR QUANTUM 963
G D A R MISS KEM 080

Dam: CRESCENT CREEK HEROINE 15N

RITO 8094 PRAIRIELANE 2060
CRESCENT CREEK HEROINE 8D
CRESCENT CREEK HEROINE 2Z

B Wt	68 lbs
205 Wt	627 lbs
365 Wt	796 lbs
Y Gain	+26
BEPD	+0.7
WEPD	+33
YEPD	+59
Milk	+16
TM	+33

EPD's: REA: +0.16 Marb: -0.02 Fat: +0.005



Lot
71

CRESCENT CREEK ROSEBUD 26W

Female WOS 26W January 25 2009 1491238

CRESCENT CREEK MAIN EVENT 6H
MINBURN MAIN EVENT 71N
MINBURN BLACKBIRD 17E

Sire: MINBURN MAIN EVENT 82R

EVERBLACK MASTERPLAN 007
MINBURN JOY 34L
HILL VIEW JOY 70D
TLA PRIDE'S REVIVAL 85G
CRESCENT CREEK REVIVAL 06J
CRESCENT CREEK QUEEN RUTH 14Z

Dam: CRESCENT CREEK ROSEBUD 96M

BOTANY ANGUS MAX 5A
CRESCENT CREEK ROSEBUD 134G
CRESCENT CREEK ROSEBUD 32A

B Wt	82 lbs
205 Wt	699 lbs
365 Wt	903 lbs
Y Gain	+32
BEPD	+4.8
WEPD	+52
YEPD	+84
Milk	+7
TM	+33

EPD's: REA: +0.08 Marb: -0.02 Fat: +0.018

The Main Event females offer you chance to assemble a proven package of ½ sibs. The ones here are producing calves with extra performance and eye appeal. The influence of Quantum only strengthens the maternal side.

Rosebud 26W is without a doubt, probably the best heifer in the 2009 heifer crop. We all remember what the pick of heifer calves brought at the World Angus Forum sale. This heifer will become one of the best. Remember it was a Crescent Creek Rosebud who was crowned supreme dam at the recent World Forum Show. 26W a definite sale feature this spring.



Lot
72

CRESCENT CREEK QUEEN RUTH 38W

Female WOS 38W January 28 2009 1491236

CRESCENT CREEK MAIN EVENT 6H
MINBURN MAIN EVENT 71N
MINBURN BLACKBIRD 17E

Sire: MINBURN MAIN EVENT 82R

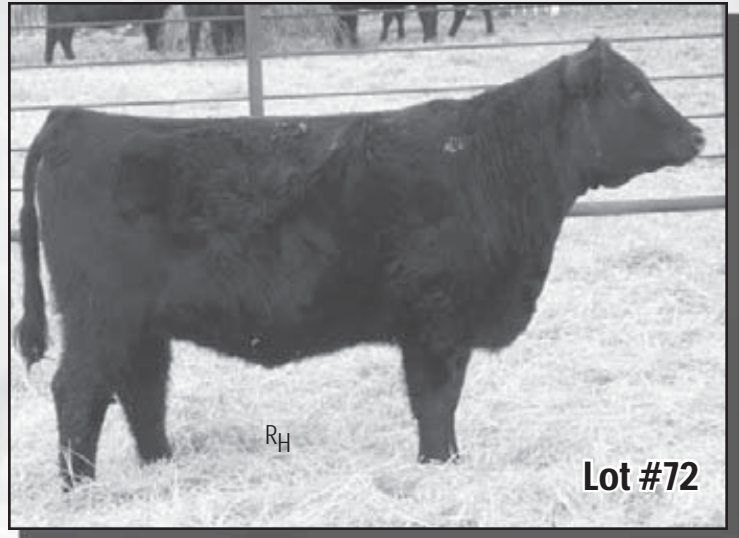
EVERBLACK MASTERPLAN 007
MINBURN JOY 34L
HILL VIEW JOY 70D
TLA PRIDE'S REVIVAL 85G
CRESCENT CREEK REVIVAL 06J
CRESCENT CREEK QUEEN RUTH 14Z

Dam: CRESCENT CREEK QUEEN RUTH 66M

HOFF GREAT WESTERN S C 456
TRAILVIEW EMPIRE PRIDE 127'96
TRAILVIEW EMPIRE PRIDE 27'92

B Wt	74 lbs
205 Wt	599 lbs
365 Wt	853 lbs
Y Gain	+26
BE PD	+3.9
WE PD	+41
YE PD	+66
Milk	+7
TM	+28

EPD's: REA: +0.12 Marb: +0.02 Fat: +0.006



Lot
73

CRESCENT CREEK ROSEBUD 41W

Female WOS 41W January 30 2009 1491301

CRESCENT CREEK MAIN EVENT 6H
MINBURN MAIN EVENT 71N
MINBURN BLACKBIRD 17E

Sire: MINBURN MAIN EVENT 82R

EVERBLACK MASTERPLAN 007
MINBURN JOY 34L
HILL VIEW JOY 70D
C H QUANTUM 3330
GDAR QUANTUM 963
G D A R MISS KEM 080

Dam: CRESCENT CREEK QUEEN RUTH 159P

RIVERSTOWN 2100 6Z
CRESCENT CREEK QUEEN RUTH 59B
CRESCENT CREEK QUEEN RUTH 14Z

B Wt	87 lbs
205 Wt	685 lbs
365 Wt	889 lbs
Y Gain	+25
BE PD	+3.8
WE PD	+36
YE PD	+61
Milk	+14
TM	+32

EPD's: REA: +0.04 Marb: +0.05 Fat: +0.004



Lot
74

CRESCENT CREEK ROSEBUD 121W

Female WOS 121W February 14 2009 1491321

CRESCENT CREEK MAIN EVENT 6H
MINBURN MAIN EVENT 71N
MINBURN BLACKBIRD 17E

Sire: MINBURN MAIN EVENT 82R

EVERBLACK MASTERPLAN 007
MINBURN JOY 34L
HILL VIEW JOY 70D

MC BEE WMR SUPER X 745
DWAJO SUPER X 104N
WICKLOW MISS LUCY 3C

Dam: CRESCENT CREEK ROSEBUD 195R

RAINMAKER PRAIRIELANE 9001
PRAIRIELANE 9001 ROSEBUD 2011
PRAIRIELANE 8002 ROSEBUD 0088

B Wt	78 lbs
205 Wt	663 lbs
365 Wt	827 lbs
Y Gain	+26
BEPD	+3.2
WEPD	+43
YEPD	+69
Milk	+9
TM	+31

EPD's:	REA: ---	Marb: ---	Fat: ---
--------	----------	-----------	----------

Another excellent Rosebud female. 195R would be a direct 2011 daughter out of the outcross Super X bull. Collect as many Rosebud's as possible.



Lot
75

CRESCENT CREEK HEROINE 135W

Female DTZ 135W February 18 2009 1491192

CRESCENT CREEK MAIN EVENT 6H
MINBURN MAIN EVENT 71N
MINBURN BLACKBIRD 17E

Sire: MINBURN MAIN EVENT 82R

EVERBLACK MASTERPLAN 007
MINBURN JOY 34L
HILL VIEW JOY 70D

SITZ ALLIANCE 6595 NHF AMF
CRESCENT CREEK ALLIANCE 29N
KBJ MISS COMPRESS 862K

Dam: CRESCENT CREEK HEROINE 167R

RON'S STEMWINDER 74J
CRESCENT CREEK HEROINE 13L
CRESCENT CREEK HEROINE 8D

B Wt	76 lbs
205 Wt	649 lbs
365 Wt	838 lbs
Y Gain	+26
BEPD	+2.3
WEPD	+40
YEPD	+66
Milk	+15
TM	+35

EPD's:	REA: ---	Marb: ---	Fat: ---
--------	----------	-----------	----------



Lot
76

CRESCENT CREEK ROSEBUD 138W

Female WOS 138W February 18 2009 1491316

CRESCENT CREEK MAIN EVENT 6H
MINBURN MAIN EVENT 71N
MINBURN BLACKBIRD 17E

Sire: MINBURN MAIN EVENT 82R

EVERBLACK MASTERPLAN 007
MINBURN JOY 34L
HILL VIEW JOY 70D

CONNEALY FRONTLINE NHF AMF
GDAR FRONTLINE 261
G D A R FOREVER LADY 27B

Dam: CRESCENT CREEK ROSEBUD 144R

CRESCENT CREEK CHIEF 80G
CRESCENT CREEK ROSEBUD 42M
CRESCENT CREEK ROSEBUD 38D

B Wt	80 lbs
205 Wt	701 lbs
365 Wt	954 lbs
Y Gain	+32
BEPD	+3.6
WEPD	+45
YEPD	+77
Milk	+16
TM	+39

EPD's:	REA: +0.05	Marb: +0.03	Fat: +0.006
--------	------------	-------------	-------------

A moderate framed Rosebud that will make a gem of cow. Lots of volume and eye appeal. Her dam is quickly becoming an outstanding cow.



Lot
77

CRESCENT CREEK LASS 145W

Female DOS 145W February 20 2009 1491441

CRESCENT CREEK MAIN EVENT 6H
MINBURN MAIN EVENT 71N
MINBURN BLACKBIRD 17E

Sire: MINBURN MAIN EVENT 82R

EVERBLACK MASTERPLAN 007
MINBURN JOY 34L
HILL VIEW JOY 70D
SITZ TRAVELER 043
AJC H A F TRAVELER 01L
AJC HAF KIRSTEN 45J

Dam: YOUNG DALE MCHENRY LASS 101R

EVERBLACK MASTERPLAN 007
MINBURN MCHENRY LASS 22K
MINBURN MCHENRY LASS 34H

B Wt	80 lbs
205 Wt	655 lbs
365 Wt	923 lbs
Y Gain	+35
BE PD	+3.6
WE PD	+38
YE PD	+73
Milk	+15
TM	+34

EPD's: REA: --- Marb: --- Fat: ---



Lot
78

CRESCENT CREEK DUCHESS 156W

Female WOS 156W February 23 2009 1491318

CRESCENT CREEK MAIN EVENT 6H
MINBURN MAIN EVENT 71N
MINBURN BLACKBIRD 17E

Sire: MINBURN MAIN EVENT 82R

EVERBLACK MASTERPLAN 007
MINBURN JOY 34L
HILL VIEW JOY 70D
CONNEALY FRONTLINE NHF AMF
GDAR FRONTLINE 261
G D A R FOREVER LADY 27B

Dam: CRESCENT CREEK DUCHESS 153R

RRD FAME 1K
CRESCENT CREEK DUCHESS 154M
CRESCENT CREEK DUCHESS 6E

B Wt	77 lbs
205 Wt	669 lbs
365 Wt	962 lbs
Y Gain	+25
BE PD	+2.2
WE PD	+44
YE PD	+69
Milk	+13
TM	+35

EPD's: REA: --- Marb: --- Fat: ---

Again, moderate in frame but extremely thick. You will quickly see how you could put together a solid group of females.



Lot
79

CRESCENT CREEK ERROLLINE 179W

Female DTZ 179W March 03 2009 1491191

CRESCENT CREEK MAIN EVENT 6H
MINBURN MAIN EVENT 71N
MINBURN BLACKBIRD 17E

Sire: MINBURN MAIN EVENT 82R

EVERBLACK MASTERPLAN 007
MINBURN JOY 34L
HILL VIEW JOY 70D
FINKS 5522-6148
TEHAMA RIVERBEND 802 AMF
TEHAMA ENTELLA D541

Dam: CRESCENT CREEK ERROLLINE 27R

CRESCENT CREEK CHIEF 80G
CRESCENT CREEK ERROLLINE 56L
KBJ EUGENIE 287G

B Wt	84 lbs
205 Wt	693 lbs
365 Wt	877 lbs
Y Gain	+31
BE PD	+5.9
WE PD	+46
YE PD	+77
Milk	+15
TM	+38

EPD's: REA: +0.16 Marb: +0.15 Fat: +0.002

One of the youngest Main Event females that would look great at the end of a halter this summer or next fall. But, more important, she will become an elite cow for someone.



Lot

80

CRESCENT CREEK PRIDE 128W

Female WOS 128W February 16 2009 1491278

R R SCOTCHCAP 9440 NHF AMF
E X A R SCOTCH CAP 816 NHF AMF
LEACHMAN BLACKCAP 2202**Sire: RR SCOTCHMAN 2999**R R FERDINAND 758D NHF AMF
ERICA LASSIE OF R R 8464
ERICA LASSIE OF R R 4580
DWAJO CHIEF 92E
CRESCENT CREEK CHIEF 72L
LAZY J BARDELLA LASS 3D**Dam: CRESCENT CREEK PRIDE 155N**DWAJO CHIEF 92E
CRESCENT CREEK PRIDE 40K
CRESCENT CREEK PRIDE 38Z

B Wt	68 lbs
205 Wt	644 lbs
365 Wt	813 lbs
Y Gain	+38
BE PD	+2.1
WE PD	+44
YE PD	+82
Milk	+15
TM	+37

EPD's: REA: -0.06 Marb: -0.08 Fat: +0.013

As in the past the 2999 daughters are hard to part with. Due to a large heifer crop in 2009, it is easier to part with a few. Both the commercial cattleman as well as seedstock producers have come to appreciate the value of these 2999 daughters.



Lot

81

CRESCENT CREEK BONNIE 149W

Female WOS 149W February 22 2009 1491230

R R SCOTCHCAP 9440 NHF AMF
E X A R SCOTCH CAP 816 NHF AMF
LEACHMAN BLACKCAP 2202**Sire: RR SCOTCHMAN 2999**R R FERDINAND 758D NHF AMF
ERICA LASSIE OF R R 8464
ERICA LASSIE OF R R 4580
LEACHMAN RIGHT TIME
ROYLE-HEAD RIGHT TIME 27E
ROYLE-HEAD ROSEBUD 42C**Dam: LLB BONNIE 236L**WIWA DIAMOND JIM 35'90
DOUBLE J BONNIE 354D
DOUBLE J BONNIE 101W

B Wt	82 lbs
205 Wt	703 lbs
365 Wt	922 lbs
Y Gain	+34
BE PD	+2.9
WE PD	+48
YE PD	+82
Milk	+13
TM	+37

EPD's: REA: -0.16 Marb: -0.02 Fat: +0.022



Lot

82

CRESCENT CREEK BARBARA 157W

Female WOS 157W February 23 2009 1491279

R R SCOTCHCAP 9440 NHF AMF
E X A R SCOTCH CAP 816 NHF AMF
LEACHMAN BLACKCAP 2202**Sire: RR SCOTCHMAN 2999**R R FERDINAND 758D NHF AMF
ERICA LASSIE OF R R 8464
ERICA LASSIE OF R R 4580
GDAR SVF CHIEF
DWAJO CHIEF 92E
WICKLOW MISS LUCY 3C**Dam: CRESCENT CREEK BARANDA 184N**BOTANY ANGUS MAX 5A
CRESCENT CREEK BARANDA 7C
CRESCENT CREEK BARANDA 52Z

B Wt	95 lbs
205 Wt	732 lbs
365 Wt	936 lbs
Y Gain	+35
BE PD	+5.8
WE PD	+49
YE PD	+84
Milk	+17
TM	+42

EPD's: REA: -0.06 Marb: +0.02 Fat: +0.016



Lot
83

CRESCENT CREEK LASSIE 151W

Female WOS 151W February 22 2009 1491218

R R SCOTCHCAP 9440 NHF AMF
E X A R SCOTCH CAP 816 NHF AMF
LEACHMAN BLACKCAP 2202

Sire: RR SCOTCHMAN 2999

R R FERDINAND 758D NHF AMF
ERICA LASSIE OF R R 8464
ERICA LASSIE OF R R 4580
GDAR SVF CHIEF
DWAJO CHIEF 92E
WICKLOW MISS LUCY 3C

Dam: CRESCENT CREEK LASSIE 33H

MARSHALL PRIDE 1749
CRESCENT CREEK PROUD LASSIE 70
PROUD LASSIE 1659

B Wt	82 lbs
205 Wt	718 lbs
365 Wt	946 lbs
Y Gain	+29
BEPD	+3.4
WEPD	+42
YEPD	+71
Milk	+16
TM	+37

A definite sale feature. We would like to be notified first when the first herd bull comes out of the great young female.

EPD's: REA: -0.09 Marb: +0.04 Fat: +0.015



Lot
84

CRESCENT CREEK DUCHESS 169W

Female DTZ 169W March 01 2009 1491179

R R SCOTCHCAP 9440 NHF AMF
E X A R SCOTCH CAP 816 NHF AMF
LEACHMAN BLACKCAP 2202

Sire: RR SCOTCHMAN 2999

R R FERDINAND 758D NHF AMF
ERICA LASSIE OF R R 8464
ERICA LASSIE OF R R 4580
S A F FAME NHF AMF
RRD FAME 1K
RRD TIBBIE 4E

Dam: CRESCENT CREEK DUCHESS 154M

BOTANY ANGUS MAX 5A
CRESCENT CREEK DUCHESS 6E
DUCHESS JLB 5383

B Wt	96 lbs
205 Wt	676 lbs
365 Wt	919 lbs
Y Gain	+31
BEPD	+4.8
WEPD	+44
YEPD	+75
Milk	+13
TM	+35



EPD's: REA: -0.07 Marb: +0.11 Fat: +0.040

Lot
85

CRESCENT CREEK RUBY 10W

Female WOS 10W January 20 2009 1502082

O C C EMBLAZON 854E
B C C-J C L EMBLAZON 038-287
B C C 1531 ELDORENE 826-038

Sire: BRONYX EMBLAZON 58T

RR SCOTCHMAN 2999
CRESCENT CREEK ROSEBUD 25R
CRESCENT CREEK ROSEBUD 137N
BASIN RAINMAKER D S 380U
BASIN RAINMAKER 814Z AMF
BASIN PAMELLA 676X

Dam: KENBERT RAINMAKER RUBY 13R

CRESCENT CREEK CHIEF 93J
KENBERT CHIEF RUBY 35N
KENBERT FAME HEIDI

B Wt	88 lbs
205 Wt	597 lbs
365 Wt	795 lbs
Y Gain	+34
BEPD	+4.2
WEPD	+36
YEPD	+70
Milk	+15
TM	+33

EPD's:	REA: ---	Marb: ---	Fat: ---
--------	----------	-----------	----------



Lot
86

CRESCENT CREEK QUEEN 32W

Female WMO 32W January 27 2009 1502086

O C C EMBLAZON 854E
B C C-J C L EMBLAZON 038-287
B C C 1531 ELDORENE 826-038

Sire: BRONYX EMBLAZON 58T

RR SCOTCHMAN 2999
CRESCENT CREEK ROSEBUD 25R
CRESCENT CREEK ROSEBUD 137N
GDAR QUANTUM 963
CRESCENT CREEK QUANTUM 50M
CRESCENT CREEK EILEEN 2K

Dam: PRETTY VIEW QUEEN 054R

STEVENSON FORTUNE 425C NHF AMF
PRETTY VIEW QUEEN 54H
CRESCENT CREEK QUEEN 96F

B Wt	78 lbs
205 Wt	668 lbs
365 Wt	886 lbs
Y Gain	+34
BEPD	+2.6
WEPD	+40
YEPD	+67
Milk	+11
TM	+31

EPD's:	REA: ---	Marb: ---	Fat: ---
--------	----------	-----------	----------

These are the first 58T daughters offered. We feel confident they will become excellent producers. We have milking ½ sibs to 58T, their udder structure and placement is great.



Lot
87

CRESCENT CREEK BLACK NANCE 6W

Female DOS 6W January 18 2009 1502081

O C C EMBLAZON 854E
B C C-J C L EMBLAZON 038-287
B C C 1531 ELDORENE 826-038

Sire: BRONYX EMBLAZON 58T

RR SCOTCHMAN 2999
CRESCENT CREEK ROSEBUD 25R
CRESCENT CREEK ROSEBUD 137N
CRESCENT CREEK MAIN EVENT 6H
MINBURN MAIN EVENT 50M
KBJ DUCHESS 275D

Dam: KBJ BLACK NANCE 608R

KBJ CHIEF 315D
KBJ BLACK NANCE 851H
KBJ BLACK NANCE 301F

B Wt	68 lbs
205 Wt	554 lbs
365 Wt	763 lbs
Y Gain	+34
BEPD	+1.8
WEPD	+36
YEPD	+69
Milk	+12
TM	+30

EPD's:	REA: ---	Marb: ---	Fat: ---
--------	----------	-----------	----------

Lot
88

CRESCENT CREEK BARDELLA 47W

Female WOS 47W January 31 2009 1502625

O C C EMBLAZON 854E
B C C-J C L EMBLAZON 038-287
B C C 1531 ELDORENE 826-038

Sire: BRONYX EMBLAZON 58T

RR SCOTCHMAN 2999
CRESCENT CREEK ROSEBUD 25R
CRESCENT CREEK ROSEBUD 137N
O C C TRAVELER 723Z
GDAR TRAVELER 235
GDAR PRIMROSE 0251

Dam: CRESCENT CREEK BARDELLA 150S

SASKALTA BARDOLENE 61F
CRESCENT CR BARDELLA LASS 81J
LAZY J BARDELLA LASS 3D

B Wt	77 lbs
205 Wt	632 lbs
365 Wt	860 lbs
Y Gain	+41
BEPD	+4.2
WEPD	+41
YEPD	+82
Milk	+15
TM	+36

EPD's:	REA: ---	Marb: ---	Fat: ---
--------	----------	-----------	----------

Lot
89

CRESCENT CREEK LAURA 73W

Female WOS 73W February 2009 1502629

O C C EMBLAZON 854E
B C C-J C L EMBLAZON 038-287
B C C 1531 ELDORENE 826-038

Sire: BRONYX EMBLAZON 58T

RR SCOTCHMAN 2999
CRESCENT CREEK ROSEBUD 25R
CRESCENT CREEK ROSEBUD 137N
STEVENS BRUNO 561G NHF
BEVERLY HILLS FANDANGO 404
H A RITO LADY 1262

Dam: CRESCENT CREEK LAURA 78S

DWAJO CHIEF 92E
CRESCENT CREEK LAURA 143M
RON'S LAURA 16F

B Wt	92 lbs
205 Wt	586 lbs
365 Wt	885 lbs
Y Gain	+36
BEPD	+6.9
WEPD	+36
YEPD	+73
Milk	+19
TM	+37

EPD's:	REA: ---	Marb: ---	Fat: ---
--------	----------	-----------	----------

Lot
90

CRESCENT CREEK ERROLLINE 91W

Female DTZ 91W February 09 2009 1502634

O C C EMBLAZON 854E
B C C-J C L EMBLAZON 038-287
B C C 1531 ELDORENE 826-038

Sire: BRONYX EMBLAZON 58T

RR SCOTCHMAN 2999
CRESCENT CREEK ROSEBUD 25R
CRESCENT CREEK ROSEBUD 137N
E X A R SCOTCH CAP 816 NHF AMF
RR SCOTCHMAN 2999
ERICA LASSIE OF R R 8464

Dam: CRESCENT CREEK ERROLLINE 52S

CRESCENT CREEK CHIEF 80G
CRESCENT CREEK ERROLLINE 56L
KBJ EUGENIE 287G

B Wt	88 lbs
205 Wt	675 lbs
365 Wt	933 lbs
Y Gain	+40
BEPD	+5.5
WEPD	+45
YEPD	+85
Milk	+15
TM	+38

EPD's:	REA: ---	Marb: ---	Fat: ---
--------	----------	-----------	----------



RH

Lot #90

Another sale feature. The Erroline's have become an excellent cow family. The influence of 2999 only enhances this young female's chances of becoming a superior producer.

Lot
91

CRESCENT CREEK MINA 122W

Female DTZ 122W February 15 2009 1502635

O C C EMBLAZON 854E
B C C-J C L EMBLAZON 038-287
B C C 1531 ELDORENE 826-038

Sire: BRONYX EMBLAZON 58T

RR SCOTCHMAN 2999
CRESCENT CREEK ROSEBUD 25R
CRESCENT CREEK ROSEBUD 137N

O C C TRAVELER 723Z
GDAR TRAVELER 235
GDAR PRIMROSE 0251

Dam: CRESCENT CREEK MINA 56R

DWAJO CHIEF 92E
CRESCENT CREEK MINA 53H
TERRLENE MINA 60Y

B Wt	98 lbs
205 Wt	702 lbs
365 Wt	920 lbs
Y Gain	+35
BEPD	+6.7
WEPD	+41
YEPD	+77
Milk	+15
TM	+36

EPD's:	REA: ---	Marb: ---	Fat: ---
--------	----------	-----------	----------



Lot
92

CRESCENT CREEK ROSEBUD 59W

Female WOS 59W February 02 2009 1491333

ADELPHI TOM BOY 20H
FIGURE 8 ANGUS TOM BOY 509R
FIGURE 8 ANGUS LADY 604J

Sire: LOOKOUT HUCK 53T

GDAR RUSS 896
LOOKOUT EDNA 145L
KBJ EDNA 432H
MINBURN MAIN EVENT 71N
MINBURN MAIN EVENT 82R
MINBURN JOY 34L

Dam: CRESCENT CREEK ROSEBUD 19T

RR SCOTCHMAN 2999
CRESCENT CREEK ROSEBUD 52P
CRESCENT CREEK ROSEBUD 42M

B Wt	54 lbs
205 Wt	656 lbs
365 Wt	934 lbs
Y Gain	+31
BEPD	-1.1
WEPD	+44
YEPD	+75
Milk	+14
TM	+36

EPD's:	REA: ---	Marb: ---	Fat: ---
--------	----------	-----------	----------

The Huck 53T heifers would be an excellent start to providing some refreshing new genetics. 53T's ability to sire such a uniform set of calves is quite an accomplishment. It speaks well of the future of our young cow herd, consisting of mostly 2999 and Ideal daughters. Study these Huck females and realize the excellent conformation with sharp fronts, wide hips and tops they possess.



Lot
93

CRESCENT CREEK RUTH 83W

Female WOS 83W February 08 2009 1491424

ADELPHI TOM BOY 20H
FIGURE 8 ANGUS TOM BOY 509R
FIGURE 8 ANGUS LADY 604J

Sire: LOOKOUT HUCK 53T

GDAR RUSS 896
LOOKOUT EDNA 145L
KBJ EDNA 432H
MINBURN MAIN EVENT 71N
MINBURN MAIN EVENT 82R
MINBURN JOY 34L

Dam: CRESCENT CREEK QUEEN RUTH 71T

RIVERSTOWN 2100 6Z
CRESCENT CREEK QUEEN RUTH 59B
CRESCENT CREEK QUEEN RUTH 14Z

B Wt	76 lbs
205 Wt	652 lbs
365 Wt	871 lbs
Y Gain	+23
BEPD	+2.1
WEPD	+38
YEPD	+61
Milk	+13
TM	+32

EPD's:	REA: ---	Marb: ---	Fat: ---
--------	----------	-----------	----------



Lot
94

CRESCENT CREEK ERICA 107W

Female WOS 107W February 11 2009 1491427

ADELPHI TOM BOY 20H
FIGURE 8 ANGUS TOM BOY 509R
FIGURE 8 ANGUS LADY 604J

Sire: LOOKOUT HUCK 53T

GDAR RUSS 896
LOOKOUT EDNA 145L
KBJ EDNA 432H
STEVENS BRUNO 561G NHF
BEVERLY HILLS FANDANGO 404
H A RITO LADY 1262

Dam: CRESCENT CREEK ERICA 98T

GDAR TRAVELER 235
CRESCENT CREEK ERICA 44R
HILOW ERICA 32D

B Wt	62 lbs
205 Wt	650 lbs
365 Wt	889 lbs
Y Gain	+31
BEPD	-0.4
WEPD	+37
YEPD	+67
Milk	+18
TM	+37

EPD's:	REA: ---	Marb: ---	Fat: ---
--------	----------	-----------	----------



Lot
95

CRESCENT CREEK DANA 108W

Female DTZ 108W February 12 2009 1491194

ADELPHI TOM BOY 20H
FIGURE 8 ANGUS TOM BOY 509R
FIGURE 8 ANGUS LADY 604J

Sire: LOOKOUT HUCK 53T

GDAR RUSS 896
LOOKOUT EDNA 145L
KBJ EDNA 432H
E X A R SCOTCH CAP 816 NHF AMF
RR SCOTCHMAN 2999
ERICA LASSIE OF R R 8464

Dam: CRESCENT CREEK DANA 122T

CRESCENT CREEK CHIEF 80G
CRESCENT CREEK DANA 35M
TERRLENE DANA 32A

B Wt	58 lbs
205 Wt	627 lbs
365 Wt	871 lbs
Y Gain	+24
BEPD	-1.4
WEPD	+38
YEPD	27
Milk	+14
TM	+33

EPD's:	REA: ---	Marb: ---	Fat: ---
--------	----------	-----------	----------



Lot
96

CRESCENT CREEK PRIDE 67W

Female DTZ 67W February 04 2009 1502640

O C C EMBLAZON 854E
B C C J C L EMBLAZON 038-287
B C C 1531 ELDORENE 826-038

Sire: CRESCENT CREEK EMBLAZON 07T

SITZ HERITAGE 10709
CRESCENT CREEK ROSEBUD 10R
CRESCENT CREEK ROSEBUD 115F
E X A R SCOTCH CAP 816 NHF AMF
RR SCOTCHMAN 2999
ERICA LASSIE OF R R 8464

Dam: CRESCENT CREEK PRIDE 28T

CHICO KODIAK 93K
CRESCENT CREEK PRIDE 27M
CRESCENT CREEK PRIDE 10E

B Wt	70 lbs
205 Wt	701 lbs
365 Wt	929 lbs
Y Gain	+36
BEPD	+2.4
WEPD	+44
YEPD	+80
Milk	+17
TM	+39

EPD's:	REA: ---	Marb: ---	Fat: ---
--------	----------	-----------	----------

Lot
97

CRESCENT CREEK DUCHESS 143W

Female DTZ 143W February 19 2009 1541322

IDEAL 033 OF 7365 8263
C A R IDEAL 650
C A R LADY TRAVELER 122

Sire: CAR IDEAL 061

LEACHMAN RIGHT TIME
C A R MISS VIKING 601
LADY VIKING 131 C A R
GDAR SVF CHIEF
DWAJO CHIEF 92E
WICKLOW MISS LUCY 3C

Dam: CRESCENT CREEK DUCHESS 74K

FREEWAY 276T OF J R S
CRESCENT CREEK DUCHESS 30Y
DUCHESS JLB 53'83

B Wt	90 lbs
205 Wt	688 lbs
365 Wt	897 lbs
Y Gain	+26
BEPD	+5.6
WEPD	+38
YEPD	+64
Milk	+18
TM	+36

EPD's:	REA: -0.04	Marb: -0.04	Fat: -0.026
--------	------------	-------------	-------------

Lot
98

CRESCENT CREEK ROSEBUD 161W

Female WOS 161W February 24 2009 1491252

IDEAL 033 OF 7365 8263
C A R IDEAL 650
C A R LADY TRAVELER 122

Sire: CAR IDEAL 061

LEACHMAN RIGHT TIME
C A R MISS VIKING 601
LADY VIKING 131 C A R
C H QUANTUM 3330
GDAR QUANTUM 963
G D A R MISS KEM 080

Dam: CRESCENT CREEK ROSEBUD 83N

RITO 616 OF 4B20 6807 NHF AMF
CRESCENT CREEK ROSEBUD 24L
CRESCENT CREEK ROSEBUD 134G

B Wt	86 lbs
205 Wt	661 lbs
365 Wt	835 lbs
Y Gain	+31
BEPD	+3.6
WEPD	+37
YEPD	+67
Milk	+23
TM	+42

EPD's: REA: -0.01 Marb: +0.22 Fat: -0.001

Lot
100

CRESCENT CREEK DUCHESS 55W

Female DTZ 55W February 02 2009 1491187

STEVENSON ROYCE 741C NHF
STEVENSON BRUNO 561G NHF
JRS ENCHANTRESS 16A

Sire: BEVERLY HILLS FANDANGO 404

D H D TRAVELER 6807 NHF AMF
H A RITO LADY 1262
H A RITO LADY 3052
DWAJO CHIEF 92E
CRESCENT CREEK THUNDER 51L
CRESCENT CREEK QUEEN RUTH 64D

Dam: CRESCENT CREEK DUCHESS 27P

BOTANY ANGUS MAX 5A
CRESCENT CREEK DUCHESS 6E
DUCHESS JLB 53'83

B Wt	88 lbs
205 Wt	703 lbs
365 Wt	981 lbs
Y Gain	+36
BEPD	+5.2
WEPD	+39
YEPD	+74
Milk	+19
TM	+39

EPD's: REA: -0.21 Marb: +0.20 Fat: +0.003



Lot
101

CRESCENT CREEK MARGARET 111W

Female DTZ 111W February 13 2009 1502080

WILLABAR AMBUSH 45G
LOOKOUT PACESETTER 258M
GRASSY LANES MILLY 29U

Sire: CRESCENT CREEK PACESETTER 20T

GDAR QUANTUM 963
CRESCENT CREEK BLACKBIRD 138N
CRESCENT CREEK BLACKBIRD 126J
S A F FAME NHF AMF

Dam: CRESCENT CREEK MARGARET 21M

RRD FAME 1K
RRD TIBBIE 4E
DWAJO CHIEF 92E
CRESCENT CREEK MARGARET 37J
OPALVILLE MARGARET 12'89

B Wt	70 lbs
205 Wt	676 lbs
365 Wt	924 lbs
Y Gain	+22
BEPD	+0.9
WEPD	+36
YEPD	+58
Milk	+12
TM	+30

EPD's: REA: -0.08 Marb: +0.23 Fat: +0.001



Lot
102

RED CRESCENT CREEK ELESATH 66W

Male WOS 66W February 04 2009 1491430

RED HR MR CHEROKEE 6Z	B Wt	84 lbs
RED HR CHEROKEE 53C	205 Wt	633 lbs
RED LUMONT MISS COLA 153Z	365 Wt	852 lbs
Sire: RED CRESCENT CREEK CHEROKEE 66	CEM	+5.0
RED MEM ICEBERG 4W	CEM	+6.0
RED MEM ICECAP ANNIE 22Z	BEPD	+2.8
RED MEM CHINNA 26S	WEPD	+36
RED DWAJO GLADIATOR 32L	YEPD	+54
RED SOO GLADIATOR 317Z	Milk	+12
RED MEM ICECAP ANNIE 22Z	TM	+30
Dam: RED CRESCENT CRK ELESATH 148T	Stay	+11
RED CRESCENT CREEK HI HO 102M	HPG	+8
RED CRESCENT CREEK ELESATH 38P		
RED FLAT LAKE ELSPETH 18E		

EPD's:	REA: ---	Marb: ---	Back Fat: ---
--------	----------	-----------	---------------

Lot
103

RED CRESCENT CREEK LASS 70W

Male WOS 70W February 05 2009 1499615

RED CRESCENT CREEK H0904 52K	B Wt	70 lbs
RED CRESCENT CREEK 52 CHF 50N	205 Wt	512 lbs
RED CRESCENT CREEK REBECCA 32J	365 Wt	736 lbs
Sire: RED CRESCENT CREEK CHIEF 18S	CEM	+8.0
RED BRYLOR NEW TREND 22D OSF	CEM	+7.0
RED CRESCENT CREEK ELENA 126N	BEPD	+2.8
RED FLAT LAKE ELENA 22F	WEPD	+22
LEACHMAN RIGHT TIME	YEPD	+35
ROSEHOLM RIGHT TIME 11G	Milk	+10
RED OXBOW ERELITE 70B	TM	+20
Dam: ROSEHOLM LASS 20J	Stay	+12
RED FCC RAMBO 502 OSF	HPG	+9
OXBOW LASS 3A		
VERMILION LASS 8234		

EPD's:	REA: +0.01	Marb: -0.02	Back Fat: +0.01
--------	------------	-------------	-----------------

Check 70W's maternal side out. Probably one of the very few Right Time daughters to be seen in the Red breed. Moderate for size, she will make a genetic difference.



Lot
104

RED CRESCENT CREEK DUCHESS 102W

Male WOS 102W February 11 2009 1491426

- RED PBC D0202 6M H0904 OSF
- RED FORSTER CHIEF 7182ET
- RED MISS FORSTER CPRTOP 591

Sire: RED CRESCENT CREEK BARON 39L

- RED HR CHEROKEE 53C
- RED CRESCENT CREEK ANNIE 25F
- RED MEM ICECAP ANNIE 22Z
- RED BAR-E-L APPROVAL 4L
- RED BAR-E-L GRID IRON 109P
- RED BAR THREE H FAY 44G

Dam: RED CRESCENT CREEK DUCHESS 91T

- RED BJR RAMBLER 5162 OSF
- RED CRESCENT CREEK DUCHESS 11P
- RED CRESCENT CREEK DUCHESS 48C

B Wt	90 lbs
205 Wt	700 lbs
365 Wt	939 lbs
CEW	-1.0
CEM	+3.0
BEPD	+5.3
WEPD	+41
YEPD	+66
Milk	+19
TM	+39
Stay	+10
HPG	+9

EPD's:	REA: ---	Marb: ---	Back Fat: ---
--------	----------	-----------	---------------



Lot
105

RED CRESCENT CREEK ANNIE 106W

Male WOS 106W February 11 2009 1491291

- RED SSS BOOM TOWN 260D
- RED CRCC BOOM 100N
- LAZY MC BESS 4K

Sire: RED SSS BOOM 644T

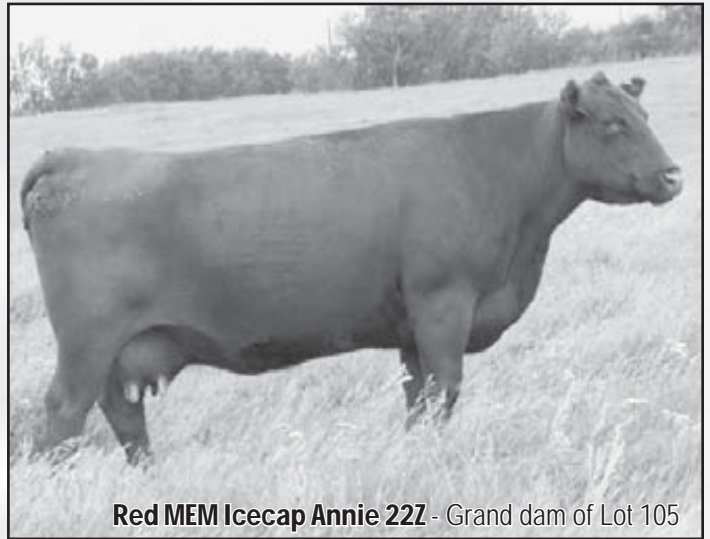
- RED BADLANDS BONUS 702
- RED COMPASS DIVA 122R
- RED HR 310 DIVIDE ET 103L
- RED FCC RAMBO 502 OSF
- RED BJR RAMBLER 5162 OSF
- BJR GOLDI 355-1122

Dam: RED CRESCENT CREEK ANNIE 68P

- RED MEM ICEBERG 4W
- RED MEM ICECAP ANNIE 22Z
- RED MEM CHINNA 26S

B Wt	78 lbs
205 Wt	620 lbs
365 Wt	709 lbs
CEW	+5.0
CEM	+4.0
BEPD	+1.0
WEPD	+29
YEPD	+52
Milk	+18
TM	+33
Stay	+9
HPG	+9

EPD's:	REA: -0.08	Marb: -0.11	Back Fat: -0.01
--------	------------	-------------	-----------------



Lot
106

RED CRESCENT CREEK ANNIE 132W

Male WOS 132W February 17 2009 1491222

- RED SSS BOOM TOWN 260D
- RED CRCC BOOM 100N
- LAZY MC BESS 4K

Sire: RED SSS BOOM 644T

- RED BADLANDS BONUS 702
- RED COMPASS DIVA 122R
- RED HR 310 DIVIDE ET 103L
- RED PBC D0202 6M H0904 OSF
- RED FORSTER CHIEF 7182ET
- RED MISS FORSTER CPRTOP 591

Dam: RED CRESCENT CREEK ANNIE 4L

- RED TS SHAWTOM
- RED CRESCENT CREEK ANNIE 68C
- RED MEM ICECAP ANNIE 22Z

B Wt	84 lbs
205 Wt	662 lbs
365 Wt	876 lbs
CEW	+2.0
CEM	+5.0
BEPD	+3.1
WEPD	+33
YEPD	+52
Milk	+20
TM	+36
Stay	+9
HPG	+10

EPD's:	REA: -0.04	Marb: +0.01	Back Fat: +0.00
--------	------------	-------------	-----------------

Lot
107

RED CRESCENT CREEK DUCHESS 166W

Male WOS 166W February 26 2009 1491234

- RED BLUE SPRUCE ZOOK 50H
- RED DWAJO GLADIATOR 32L
- RED DWAJO SUPERIOR 4H

Sire: RED SOO GLADIATOR 317Z

- RED MEM ICEBERG 4W
- RED MEM ICECAP ANNIE 22Z
- RED MEM CHINNA 26S
- RED GRL SIR HBO 1B
- RED ROD 831H
- RED ROD DYNAFIRE 263B

Dam: RED FLAT LAKE PATRICE 56M

- RED TOWAW CHEROKEE 9R
- RED FLAT LAKE 41Y
- RED FLAT LAKE PAT 1000

B Wt	72 lbs
205 Wt	599 lbs
365 Wt	847 lbs
CEW	+12.0
CEM	+7.0
BEPD	-3.4
WEPD	+21
YEPD	+35
Milk	+10
TM	+21
Stay	+9
HPG	+8

EPD's:	REA: +0.17	Marb: -0.02	Back Fat: +0.00
--------	------------	-------------	-----------------

Lot
108

RED CRESCENT CREEK CLAIRE 177W

Male WOS 177W February 03 2009 1491255

- RED BLUE SPRUCE ZOOK 50H
- RED DWAJO GLADIATOR 32L
- RED DWAJO SUPERIOR 4H

Sire: RED SOO GLADIATOR 3172

- RED MEM ICEBERG 4W
- RED MEM ICECAP ANNIE 22Z
- RED MEM CHINNA 26S
- SSS BLACK TREND 13B
- RED BRYLOR NEW TREND 22D OSF
- RED MEADOW CK MISS SEAMAN 31A

Dam: RED CRESCENT CREEK CLAIRE 110N

- RED LITTLE DE BAXTER 742D
- RED FLAT LAKE CLAIRE 62F
- RED FLAT LAKE 62A

B Wt	80 lbs
205 Wt	609 lbs
365 Wt	868 lbs
CEW	+5.0
CEM	+5.0
BEPD	+0.6
WEPD	+29
YEPD	+46
Milk	+15
TM	+29
Stay	+12
HPG	+10

EPD's:	REA: ---	Marb: ---	Back Fat: ---
--------	----------	-----------	---------------



Lot
109

RED CRESCENT CREEK LADY 202W

Male WOS 202W April 04 2009 1524257

- RED BLUE SPRUCE ZOOK 50H
- RED DWAJO GLADIATOR 32L
- RED DWAJO SUPERIOR 4H

Sire: RED SOO GLADIATOR 3172

- RED MEM ICEBERG 4W
- RED MEM ICECAP ANNIE 22Z
- RED MEM CHINNA 26S
- SSS BLACK TREND 13B
- RED BRYLOR NEW TREND 22D OSF
- RED MEADOW CK MISS SEAMAN 31A

Dam: RED FLAT LAKE MAXINE 12M

- RED KJM SOMETHIN SPECIAL
- RED FLAT LAKE SPECIAL LADY 19B
- RED FLAT LAKE 34W 87

B Wt	70 lbs
205 Wt	713 lbs
365 Wt	912 lbs
CEW	+6.0
CEM	+4.0
BEPD	-0.3
WEPD	+30
YEPD	+56
Milk	+16
TM	+31
Stay	+11
HPG	+10

EPD's:	REA: +0.19	Marb: -0.06	Back Fat: +0.00
--------	------------	-------------	-----------------

*Just an April female, she gives up no performance.
Lots of volume and a very proven pedigree.*



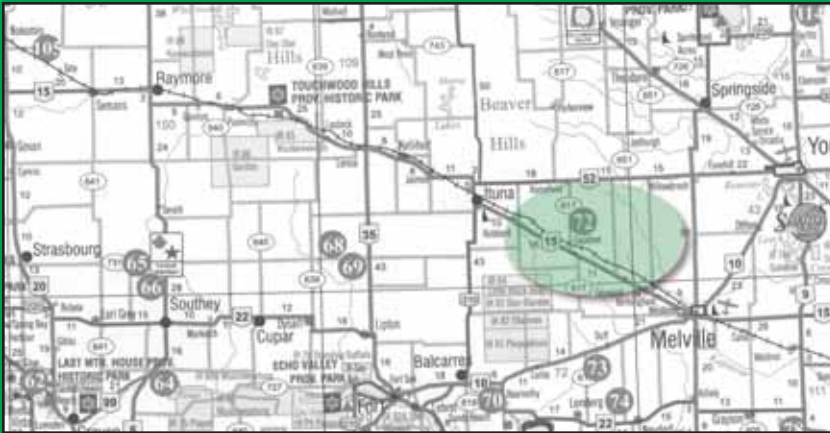


Please join us Monday, April 12, 2010 at
Crescent Creek Angus, Goodeve, SK



Optimal Bovines Inc.
#407, 4808 Ross Street
Red Deer, AB
T4N 1X5

CANADA POST		POSTES CANADA
Postage paid Addressed Admail 03070247		Port payé Médiaposte avec adresse



Directions to
Crescent Creek Angus
1 mile East and 3 miles North of Goodeve, SK
Approximately 1 1/2 hours Northeast of Regina

