



**13th Annual**  
**BULL & FEMALE SALE**

on the farm 1 mile East of Goodeve and 3 miles North

**New Sale Date**

**Saturday, April 2, 2011**

Lunch at 12:00 noon

Sale at 1:00 pm



# 2011 Bull & Female Sale April 2, 2011







# Crescent Creek Angus

## 13<sup>th</sup> Annual Bull & Female Sale

**Saturday, April 2, 2011 at the farm, Goodeve, SK**

**Lunch at 12:00 noon   Sale at 1:00 pm**

### Offering ...

**57 Black Angus Yearling Bulls • 13 Red Angus Yearling Bulls  
36 Black Angus Yearling Heifers**

### Sale Day Phones ...

**Rob cell: 780-916-2628   Bob cell: 306-834-7385   Wes cell 306-728-8284  
Sale Barn 306-876-4420**

#### Sale Staff

Auctioneer, Steve Dorran ..... 403-540-9498 or 760-972-7736  
Rob Holowaychuk, OBI ..... 780-916-2628  
Bob Toner, OBI ..... 306-834-7385  
Craig Flewelling ..... 403-224-2111  
Mark Stock ..... 403-357-8104  
Darin Bouchard ..... 204-526-7407  
Clayton Hawreluk ..... 306-621-3824  
Gary Rudychuk, Kelvington Stockyards ..... 306-865-7448

#### Sale Consultant

Kelvington Stockyards, Kelvington, SK ..... 306-327-4642

#### Special Representatives

Clint Smith, Saskatchewan Angus President ..... 306-478-2470  
Belinda Wagner, Saskatchewan Angus Manager ..... 306-757-6133  
Chris Poley, Today's Angus Advantage ..... 306-220-2722  
Dave Callaway, Angus World ..... 403-549-2234

#### Insurance

Farrell Agencies ..... 306-783-4477  
..... Fax 306-786-7577

#### Terms of Sale

Cash or cheque at par payable on Sale Day, unless other arrangement have been made prior to Sale. Registration papers will be transferred only upon full and final payment. Announcements from the block will take precedence over printed material in the catalogue.

#### Payment Terms

- Bulls 60% down sale day, 40% June 1, 2011, two cheques sale day.
- Females 60% down sale day, 40% October 1, 2011, two cheques sale day.
- \$75 Credit if you take your purchase home sale day on purchases over \$2000.

#### Terms and Conditions

All cattle sell under the standard terms and conditions set forth by the Canadian Angus Association. Precautions have been taken to ensure your safety, neither Owners or Management are responsible for any accidents.

#### Accommodations

Melville Inn, Melville, SK ..... 306-728-5255  
Classic Inn, Melville, SK ..... 306-728-4646  
Prince William Motor Inn, Melville, SK ..... 306-728-4546  
Ituna Motor Inn, Ituna, SK ..... 306-795-2244

**Saturday, April 2, 2011**

- Enrolled on CAP (Canadian Angus Performance).
- All cattle ROP tested (a firm belief for producing superior beef cattle at Crescent Creek).
- All bulls will be ultrasound scanned for carcass data under the CUP system. CUP data will be available prior to the sale on our website and on sale day.
- All Crescent Creek Sale Cattle are **fully guaranteed** for both soundness and fertility.
- Bulls will be Semen Tested as well as have Scrotal Measurements (available Sale Day).
- Bulls have been rated (in our opinion) on calving ease ability
  - 1\* indicates - Recommended on cows
  - 3\*\*\* indicates - Moderate birth
  - 5\*\*\*\*\* indicates - Calving Ease elite
- Delivery can be arranged with Crescent Creek.
- Crescent Creek's breeding program has developed many 1/2 and 3/4 brothers "Consistency Counts".
- Actual sale weights will be available Sale Day.
- Crescent Creek will keep bulls until May 1. Insurance on sale bulls that are left is encouraged by the buyer.
- Crescent Creek reserves the right to draw semen on any bull.
- **Volume Discount** - 3% on 3 bulls, 4% on 4 bulls, 5% on 5 bulls, 6% on 6 bulls, 7% on 7 bulls, 8% on 8 bulls, 9% on 9 bulls and 10% on 10 or more bulls.

#### Ultra-sound

Windy Ridge Ultrasound - Rod Wendorff - 403-330-3000

#### Clipping

Nathan Marin - 306-869-2519

#### Trans Tech Genetics Ltd.

Dr Vlad Pawlyshyn - Embryo Information - 306-931-2904

#### Animal Health Service

Dr. Doug Mann, Swift Current, SK - Semen Evaluation - 306-773-4121

#### Herd Health

Melville Vet Clinic - Dr. Dale Cochrane - 306-728-4456

## Crescent Creek Angus

Box 192, Goodeve, SK S0A 1C0  
 Irene Olynyk ... 306-876-4400  
 Wes & Kim Olynyk ... Phone/Fax 306-876-4420  
 Email: info@crescentcreekangus.com  
 Website: www.crescentcreekangus.com

Once again, welcome to the 13th edition of the Crescent Creek Bull & Female Sale. We would like to thank all of you who have chosen our program in the past and welcome anyone who is considering it for the first time. We are very excited about this year's offering - strong offspring of our own walking bulls, bred and raised here at Crescent Creek, along with some older proven and valued genetics in Fortune 425C and Dynasty bred cattle. This offering is truly an out cross alternative.



Come to our sale and you will again see a set of fresh, athletic, free moving bulls. These fellows are fed for longevity and breeding excellence. They have been hand fed to gain approximately 3 lbs per day. These bulls were never "pushed" at any time. The females are an elite group, representing proven cow families at Crescent Creek. Large groups of ½ sibs that make it easy to assemble a nice fresh, new set of genetics. With the coming of a new year the cattle market seems poised for new highs and enthusiasm. It seems we have turned that corner we have all been looking for. Now more than ever good sire selection will pay dividends more so than at any other time. A quote from a recent article I read has never been truer "Purchases of herd bulls should not be considered a short time expense but rather as a long term investment". Bang on for any sector of the industry.

2011 brings some changes at Crescent Creek, one of them being the new sale date. Be sure to mark down SATURDAY, APRIL 2, 2011 as the day you want to be at Crescent Creek. Everything else here remains constant. We have an excellent set of cattle, hospitality and after sale service second to none. Also 2011 brings an end to an exciting era of breeding Red Angus at Crescent Creek. Due to challenges managing our workload and a never ending exodus of our family workforce, August 14, 2011 will mark the sale of our complete Red Angus herd. If you are thinking of expanding or entering the Red Angus industry, this may be the opportunity you have been waiting for.

Once again a huge THANK YOU to everyone who helps put this special event on. You know who you are and we are eternally grateful for your help and friendship. We invite everyone to stop in anytime to view this exciting offering.

The Olynyk's

All bulls have been ultrasounded through CUP. Ultrasound data will be available approximately 2 weeks before the sale ... check our website or give us a call. Bulls and females have been subjected to a vaccination program utilizing Express 5 modified live vaccine and they will have their pre-breeding shot as well as a black leg booster.

**View the catalogue online at [www.cattlemanagement.ca](http://www.cattlemanagement.ca)**

Welcome to Crescent Creek where again hospitality and fellowship is second to none. Better yet would be the fact that the Olynyk family has developed one of the most recognized and appreciated Angus herds in Canada. The strength in the well bred cow herd continues to allow for a great offering of sale cattle.

The bulls are super sound, consistent in type and certainly unique enough to be a genetic alternative for not only first time breeders but also for the many repeat customers that Crescent Creek have both developed and appreciate. Check out the maternal side of the bulls being used and you will find superior cows as the backbone of the breeding program.

Management practices include using home grown feed stuffs as much as possible, together with great pasture management and animal husbandry practices like true stockmen. CAPP recognized performance testing, together with CUP carcass evaluation and semen testing; all have become regular practices.

Regular informative visits to Crescent Creek have OBI aware and current with much of the program and can assist you with sale day selections if you require.

2 serious considerations for buying Crescent Creek Genetics are:

- #1 The many success stories that customers have enjoyed and
  - #2 The after sale service, running parallel to a most successful seedstock breeder.
- Congratulations on all fronts.

If any of the sale staff or OBI can be of help, please do not hesitate to call. Check out this unique program and we will see you sale day.

Rob Holowaychuk, OBI

## Optimal Bovines Inc.



#407, 4808 Ross Street  
 Red Deer, AB T4N 1X5  
 Office 403-341-5098  
 Fax 403-343-6133  
 Email o.b.i@shaw.ca  
[www.cattlemanagement.ca](http://www.cattlemanagement.ca)

Rob Holowaychuk ... 780-916-2628  
 Bob Toner ... 306-834-7385  
 Kirk Hurlburt... 306-222-8210  
 Mark Holowaychuk ... 403-896-4990



The cattle industry is evolving, more than ever before, toward marketing cattle based on carcass merit. Evidence of this trend is seen with the ever-increasing number of packing plants adopting value-based marketing. The traditional method in North America of selling cattle based on live weight is rapidly changing to where payment and premiums are made based on carcass weight and quality. Due to high input costs, we are no longer able to compete on the international trade market for commodity beef; therefore it is in our best interest to produce the high quality beef demanded by our consumers. This change has resulted in the adoption of technology to evaluate live animal carcasses. Ultrasound enables producers to know the carcass merit of their cattle and subsequently, assist them in developing an elite herd where progeny can be marketed for top dollar.

Ultrasound has proven extremely accurate in assessing carcass merit and has been tested repeatedly over the last 50 years. Today ultrasound measurements must be collected by Ultrasound Guidelines Council (UGC) certified field technicians and analyzed by a certified lab and lab technician. Despite small discrepancies in technician and lab biases, ultrasound measurements have proven to be a reliable and accurate method of developing carcass merit EPDs. Because carcass traits are moderately to highly heritable, improvements in herd genetics can be seen in a relatively short period of time. Ultrasound provides producers with one more tool by which they can select traits in order to produce top quality animals.

## Percent Intramuscular Fat (%IMF) or Marbling

Due to the grid premiums and incentives to raise AAA (Choice) and Prime cattle, marbling may be the most important economic measurement collected with ultrasound. Ultrasound measures the %IMF in cattle and reports this value as a numerical indicator of marbling. For example, just like birth weight is an indicator of calving ease, %IMF is an indicator of marbling.

It is important to know what values are being represented in the sale catalogs when comparing data and to remember that the value of most concern is always the EPD value.

Quality Grade

%IMF	US	CAN	Marbling Score
2.3 - 3.0	Select -	AA -	4.0 - 4.4
3.1 - 3.9	Select +	AA +	4.5 - 4.9
4.0 - 5.7	Choice -	AAA -	5.0 - 5.9
5.8 - 7.6	Choice o	AAA o	6.0 - 6.9
7.7 - 9.7	Choice +	AAA +	7.0 - 7.9
9.8 - 12.1	Prime -	Prime -	8.0 - 8.9
12.2 +	Prime +	Prime o	9.0 +

Steers and heifers will usually have slightly higher marbling values than bulls of the same age and genetics.

## Ribeye Area (REA) and Fat Depth (Rib Fat and Rump Fat)

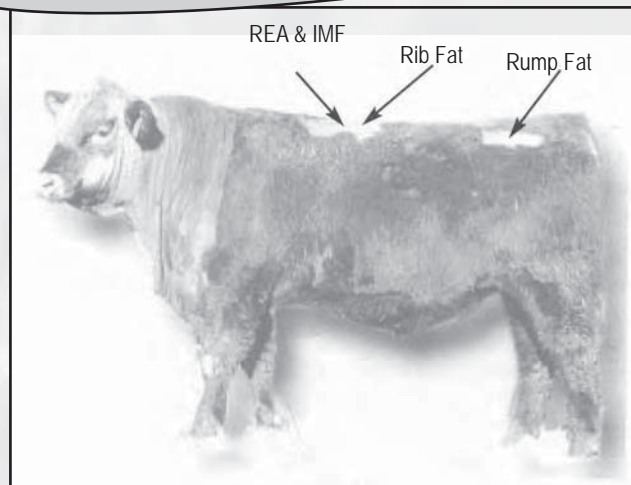
The ribeye is one of the largest muscle in the body; therefore REA gives an indication of overall carcass muscling. However, REA is influenced by body weight, which often results in the largest ribeye belonging to the heaviest animal. It is important when comparing REAs within contemporary groups to compare data that has been adjusted for age and/or weight.

Recently, a study by John Brethour, of KSU, revealed a significant association between carcass ribeye area and average daily gain just prior to slaughter. Meaning that animals with larger REAs had better gains later in the feeding period. While having a large ribeye is desirable, there are some drawbacks when REA becomes too large. Extremely large ribeyes can lead to a reduction in marbling.

Fat Depth is an important factor that greatly influences lean meat yield. Backfat (Rib Fat) will reduce yield many times what REA will increase yield. Secondly, fat measurements give an indication of an animals fleshing ability. Progeny from cattle with genetics for no fat may finish too slowly, while progeny from cattle with too much fat will incur yield discounts before a desirable carcass is obtained. Furthermore,

Saturday, April 2, 2011

*Carcass data is to be compared within herd only.*



*The Angus Associations, both AAA and CAA have adopted the CUP (Centralized Ultrasound Processing) program for Ultrasound Carcass Data and are using this information for formulating Carcass EPD's.*

body condition scores (fat depth) in females are related to their ability to reach puberty early, produce milk, and rebreed to maintain shorter calving intervals. Similarly, bulls carrying too much fat may have reduced fertility. The key to breeding for Fat Depth is moderation.

## Optimizing Your Investment

- 1) In order to qualify for genetic evaluations (EPDs) cattle must be scanned at the appropriate time. Each association has slight differences, but averages are bulls 320 – 440 days and heifers 320 – 460 days. Heifers are often done later to allow genetic differences to show because they are usually not fed as hard as bulls.
- 2) It is important to scan all cattle in a contemporary group. This provides sufficient information for evaluation and comparison purposes within your herd.
- 3) The value in scanning replacement heifers has often been overlooked. Having carcass merit data on all females entering your herd will greatly improve the value and accuracy of their progeny records. In addition it will allow you to make informed decisions about the carcass merit of females making up your future herd.
- 4) Upon investing money into ultrasounding your cattle, it is essential to promote this information to your customers and potential customers. With premiums being paid for high quality carcasses, more and more commercial producers are asking for scan data. The days of selling commodity beef are limited therefore; it is in your interest to create and market an elite herd of high quality carcass cattle.

## Common Misconceptions

There is a common misconception that marbling can be fed into all animals. Although feeding an animal for extended periods of time does increase marbling, the genetics must be there in order for value-based marbling to be pronounced in cattle ready for slaughter without risking over-fat.

Why are my REAs smaller this year than last year, is this a collection or analysis error? While I am not dismissing the occasional technician error, it is important to remember that although carcass merits are determined by genetics, environmental factors do contribute to the phenotype expressed by each animal. Feed type and quality, weather, and sickness are some of the environmental factors that can influence phenotypes expressed from year to year. This is one more reason why comparisons can only be made by EPDs or indexes within a contemporary group.

## Windy Ridge Ultrasound

Rod Wendorff, UGC Certified

Home: (403) 752-4066 Cell: (403) 330-3000

Doug Ralph: (403) 315-4799 Chase Wendorff: (403) 393-3013

**BRONYX EMBLAZON 58T**

Male TOT 58T February 04 2007 1430817

D H D TRAVELER 6807 NHF AMF  
O C C EMBLAZON 854E  
DIXIE ERICA OF C H 1019**Sire: B C C-J C L EMBLAZON 038-287**ROCKN D AMBUSH 1531 NHF AMF  
B C C 1531 ELDORENE 826-038  
KAPP ELDORENE ERICA ND 826  
E X A R SCOTCH CAP 816 NHF AMF  
RR SCOTCHMAN 2999  
ERICA LASSIE OF R R 8464**Dam: CRESCENT CREEK ROSEBUD 25R**CRESCENT CREEK CHIEF 72L  
CRESCENT CREEK ROSEBUD 137N  
CRESCENT CREEK ROSEBUD 38K

B Wt	84 lbs
205 Wt	711 lbs
365 Wt	1254 lbs
BEPD	+6.1
WEPD	+55
YEPD	+95
Milk	+15
TM	+43
Scrotal	---
CED	-6.0
CEM	+0.0

EPD's: REA: +0.18 Marb: +0.15 Fat: +0.000 Carcass Wt: +6

**BLACK ANGUS** Reference Sire**Bronyx Emblazon 58T - 10 Sons Sell**  
Co-owned with Bryce Mawbey, Unity, SK

Lot

**1****CRESCENT CREEK EMBLAZON 13X**

Male DTZ 13X January 23 2010 1548969

**Sire: BRONYX EMBLAZON 58T**TLA PRIDE'S REVIVAL 85G  
CRESCENT CREEK REVIVAL 06J  
CRESCENT CREEK QUEEN RUTH 14Z**Dam: CRESCENT CREEK DUCHESS 51M**VICWIN BRUTUS  
SUNMOUND DUCHESS 1Z  
SUNMOUND DUCHESS 39W

B Wt	95 lbs
205 Wt	734 lbs
365 Wt	1276 lbs
C Ease	**
BEPD	+5.4
WEPD	+54
YEPD	+90
Milk	+12
TM	+39
Scrotal	---

EPD's: REA: +0.08 Marb: -0.03 Fat: -0.003 Carcass Wt: +13

We once again we start our offering with a strong set of Emblazon bulls. We feel these Emblazon sons are what most seedstock producers would like to send out to the industry. Bulls full of muscle and meat on an excellent set of feet and legs. They also have dispositions you can really appreciate.

These are bulls that will give you extra pounds at both weaning and 365 day weights. 58T has done very well here. He seems to cross with any of our sire lines to produce a very uniform set of bulls. His first set of females are making excellent mothers this year at Crescent Creek. They have beautiful udder shape and attachment and excellent mothering instincts. They are a powerful set of bulls and females.



A real herd bull prospect here! His dam Duchess 51M produces the great ones. She has produced herd bulls for Beverly Hills Angus & Windy Willows Farms. This bull is full of character, free moving with large testicles and a herd bull presence. Be sure to check him out.

**Lot #1**



Lot  
**2**

**CRESCENT CREEK EMBLAZON 25X**

Male WOS 25X January 28 2010 1549107

**Sire: BRONYX EMBLAZON 58T**

C H QUANTUM 3330  
GDAR QUANTUM 963  
G D A R MISS KEM 080

**Dam: CRESCENT CREEK HEROINE 076N**

DWAJO CHIEF 92E  
CRESCENT CREEK LADY BATE 61H  
CRESCENT CREEK LADY BATE 93B

EPD's:	REA: +0.05	Marb: +0.08	Fat: -0.010	Carcass Wt: +6
--------	------------	-------------	-------------	----------------

B Wt	92 lbs
205 Wt	779 lbs
365 Wt	1411 lbs
C Ease	***
BEPD	+3.7
WEPD	+50
YEPD	+83
Milk	+18
TM	+43
Scrotal	---

Looking for a bull with lots of muscle, an excellent foot and a never miss dam? 25X is the one. One of the best bulls ever produced here. You will travel miles looking for this kind. The neat thing is a pedigree that can fit in any program. **Retaining 1/3 interest.**

Lot  
**3**

**CRESCENT CREEK EMBLAZON 51X**

Male WOS 51X January 31 2010 1549106

**Sire: BRONYX EMBLAZON 58T**

SITZ TRAVELER 8180 NHF AMF CAF  
SITZ ALLIANCE 6595 NHF AMF  
SITZ BARBARAMERE JET 2698

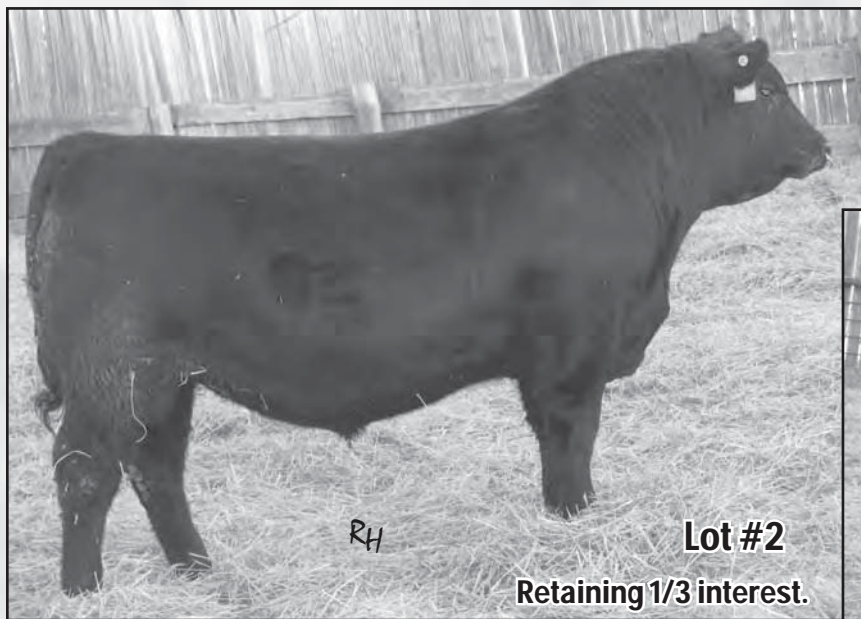
**Dam: CRESCENT CREEK PRIDE 53N**

ALTA ERIC REVOLUTION 464D  
WAVENY PRIDE 77G  
WAVENY PRIDE 11B

EPD's:	REA: +0.02	Marb: +0.06	Fat: +0.017	Carcass Wt: +10
--------	------------	-------------	-------------	-----------------

B Wt	108 lbs
205 Wt	782 lbs
365 Wt	1382 lbs
C Ease	*
BEPD	+7.4
WEPD	+55
YEPD	+93
Milk	+19
TM	+47
Scrotal	---

Powerful pretty well sums this great herd bull prospect up. Again from a never miss female with a great pedigree. 51X will be easy to find come April 2. He will be right next to the sale barn. One of my favorites, 800 lb weaning weights come from this kind of fellow. Who knows what these kind of calves will be worth down the road "long term investment".



RH

**Lot #2**

**Retaining 1/3 interest.**



**Lot #2**

RH



RH

**Lot #3**

*The Bronyx Emblazon 58T sons are very easy to look at. Full of muscle, clean fronted and with crests. When you watch them walk they are free moving and correct. An excellent set of bulls.*

Lot  
**5**

## CRESCENT CREEK EMBLAZON 72X

Male WOS 72X February 04 2010 1549225

**Sire: BRONYX EMBLAZON 58T**

SITZ ALLIANCE 6595 NHF AMF  
CRESCENT CREEK ALLIANCE 29N  
KBJ MISS COMPRESS 862K

**Dam: CRESCENT CREEK ROSEBUD 203T**

RR SCOTCHMAN 2999  
CRESCENT CREEK ROSEBUD 97P  
CRESCENT CREEK ROSEBUD 96M

B Wt	92 lbs
205 Wt	739 lbs
365 Wt	1197 lbs
C Ease	***
BEPD	+5.0
WEPD	+52
YEPD	+90
Milk	+16
TM	+42
Scrotal	---

EPD's:	REA: ---	Marb: ---	Fat: ---	Carcass Wt: ---
--------	----------	-----------	----------	-----------------



Lot  
**4**

## CRESCENT CREEK EMBLAZON 71X

Male DTZ 71X February 04 2010 1548973

**Sire: BRONYX EMBLAZON 58T**

GDAR SVF CHIEF  
DWAJO CHIEF 92E  
WICKLOW MISS LUCY 3C

**Dam: CRESCENT CREEK LAURA 143M**

BATSCHOL STEMWINDER 31D  
RON'S LAURA 16F  
RON'S DELEGATE LAURA 36B

EPD's:	REA: +0.07	Marb: -0.04	Fat: -0.018	Carcass Wt: +5
--------	------------	-------------	-------------	----------------

B Wt	92 lbs
205 Wt	692 lbs
365 Wt	1176 lbs
C Ease	**
BEPD	+5.3
WEPD	+46
YEPD	+78
Milk	+16
TM	+39
Scrotal	---

Lot  
**6**

## CRESCENT CREEK EMBLAZON 93X

Male WOS 93X February 09 2010 1549137

**Sire: BRONYX EMBLAZON 58T**

C H QUANTUM 3330  
GDAR QUANTUM 963  
G D A R MISS KEM 080

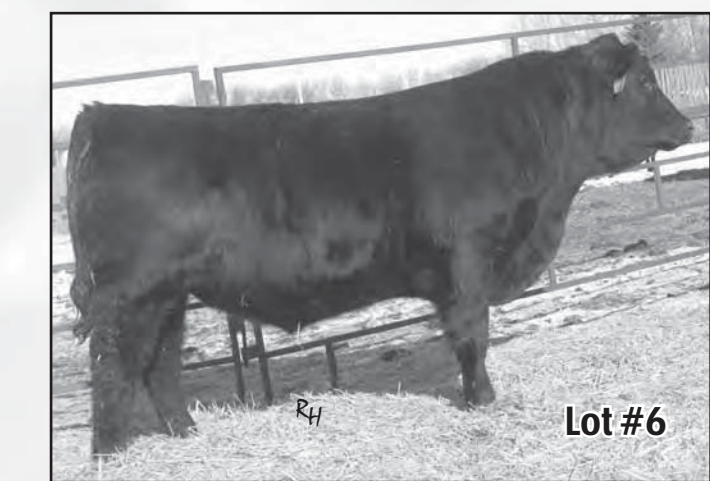
**Dam: CRESCENT CREEK BLACKBIRD 184P**

BOTANY ANGUS MAX 5A  
CRESCENT CREEK BLACKBIRD 49E  
CRESCENT CREEK BLACKBIRD 101Z

EPD's:	REA: +0.06	Marb: +0.08	Fat: +0.007	Carcass Wt: +7
--------	------------	-------------	-------------	----------------

B Wt	80 lbs
205 Wt	743 lbs
365 Wt	1188 lbs
C Ease	****
BEPD	+1.8
WEPD	+48
YEPD	+78
Milk	+15
TM	+39
Scrotal	---

*Another 58T son stamped the same as all others. If you follow pedigrees notice the influence of GDAR 963 Quantum appearing.*



Lot  
**7**

## CRESCENT CREEK EMBLAZON 104X

Male WOS 104X February 09 2010 1549160

**Sire: BRONYX EMBLAZON 58T**

O C C TRAVELER 723Z  
GDAR TRAVELER 235  
GDAR PRIMROSE 0251

**Dam: CRESCENT CREEK LADY BATE 49R**

BOTANY ANGUS MAX 5A  
CRESCENT CREEK LADY BATE 50F  
CRESCENT CREEK LADY BATE 48Y

EPD's:	REA: +0.05	Marb: +0.01	Fat: +0.009	Carcass Wt: +11
--------	------------	-------------	-------------	-----------------

B Wt	88 lbs
205 Wt	761 lbs
365 Wt	1226 lbs
C Ease	***
BEPD	+3.0
WEPD	+50
YEPD	+87
Milk	+17
TM	+42
Scrotal	---





Lot

8

**CRESCENT CREEK EMBLAZON 109X**

Male DTZ 109X February 10 2010 1548965

**Sire: BRONYX EMBLAZON 58T**WOODHILL CHECKMATE  
CHICO KODIAK 93K  
CHICO ERICA KAY 33G**Dam: CRESCENT CREEK PRIDE 27M**CRESCENT CREEK MAXIMUM 54C  
CRESCENT CREEK PRIDE 10E  
CRESCENT CREEK PRIDE 33X

EPD's: REA: +0.07 Marb: +0.15 Fat: +0.005 Carcass Wt: +13

109X is what I as a seedstock producer would like to fill all the pastures with. This bull was exceptional from birth on. Lots of muscle and very deep sided on a great set of feet. His dam never misses on production. This bull will be a herd bull for a long time. Retaining 1/3 interest.

B Wt	94 lbs
205 Wt	752 lbs
365 Wt	1391 lbs
C Ease	**
BEPD	+4.6
WEPD	+49
YEPD	+81
Milk	+15
TM	+40
Scrotal	---

Retaining 1/3 interest.



Lot

9

**CRESCENT CREEK EMBLAZON 4X**

Male Twin DTZ 4X January 20 2010 1548992

**Sire: BRONYX EMBLAZON 58T**C H QUANTUM 3330  
GDAR QUANTUM 963  
G D A R MISS KEM 080**Dam: CRESCENT CREEK LUCY 17P**EVERBLACK MASTERPLAN 007  
DWAJO MISS LUCY 33H  
WICKLOW MISS LUCY 3C

EPD's: REA: +0.11 Marb: +0.15 Fat: +0.000 Carcass Wt: +6

B Wt	68 lbs
205 Wt	624 lbs
365 Wt	986 lbs
C Ease	**
BEPD	+3.7
WEPD	+41
YEPD	+73
Milk	+16
TM	---
Scrotal	+0.26

Lot

10

**CRESCENT CREEK EMBLAZON 04X**

Male Twin DTZ 04X January 20 2010 1548990

**Sire: BRONYX EMBLAZON 58T**C H QUANTUM 3330  
GDAR QUANTUM 963  
G D A R MISS KEM 080**Dam: CRESCENT CREEK LUCY 17P**EVERBLACK MASTERPLAN 007  
DWAJO MISS LUCY 33H  
WICKLOW MISS LUCY 3C

EPD's: REA: +0.11 Marb: +0.15 Fat: +0.000 Carcass Wt: +6

B Wt	66 lbs
205 Wt	608 lbs
365 Wt	1034 lbs
C Ease	**
BEPD	+3.7
WEPD	+41
YEPD	+73
Milk	+16
TM	---
Scrotal	+0.26



Lot #9

An excellent set of 58T twin sons - out of one of the most prolific Quantum daughters here. They have lots of muscle and character. 17P produced the excellent herd bull purchased by Allan & Wanda Henderson, Gainsborough from the 2010 sale.



Lot #9



# BLACK ANGUS Reference Sire

## CRESCENT CREEK EMBLAZON 07T

Male Twin WOS 07T January 19 2007 1380338

D H D TRAVELER 6807 NHF AMF  
O C C EMBLAZON 854E  
DIXIE ERICA OF C H 1019

### Sire: B C C-J C L EMBLAZON 038-287

ROCKN D AMBUSH 1531 NHF AMF  
B C C 1531 ELDORENE 826-038  
KAPP ELDORENE ERICA ND 826  
SITZ ALLIANCE 6595 NHF AMF  
SITZ HERITAGE 10709  
SITZ EMMA E 707

### Dam: CRESCENT CREEK ROSEBUD 10R

RITO 8094 PRAIRIELANE 2060 AMF  
CRESCENT CREEK ROSEBUD 115F  
CRESCENT CREEK ROSEBUD 4C

B Wt	58 lbs
205 Wt	651 lbs
365 Wt	1125 lbs
BEPD	+4.0
WEPD	+34
YEPD	+69
Milk	+14
TM	+31
Scrotal	---
CED	-2.0
CEM	+2.0



**BCC-JGL Emblazon 038-287** - Sire of Emblazon 07T

*If you are looking for a new herd bull I believe this set of bulls could make it very easy. 07T was first used on heifers 2 seasons ago. After seeing the results we quickly turned him out with the mature cows. These fellows are very muscular yet have ample capacity. His females are gems. 07T represents one of the most proven cow families here and with Rosebud 115F appearing you know the results will be predictable. 07T is co-owned with John Orr at Elkhorn, MB. When John purchased 07T he said he was one of the best footed bulls he had ever seen. 8 sons sell.*

Lot

**11**

## CRESCENT CREEK 07 EMBLAZON 139X

Male WOS 139X February 18 2010 1549142

### Sire: CRESCENT CREEK EMBLAZON 07T

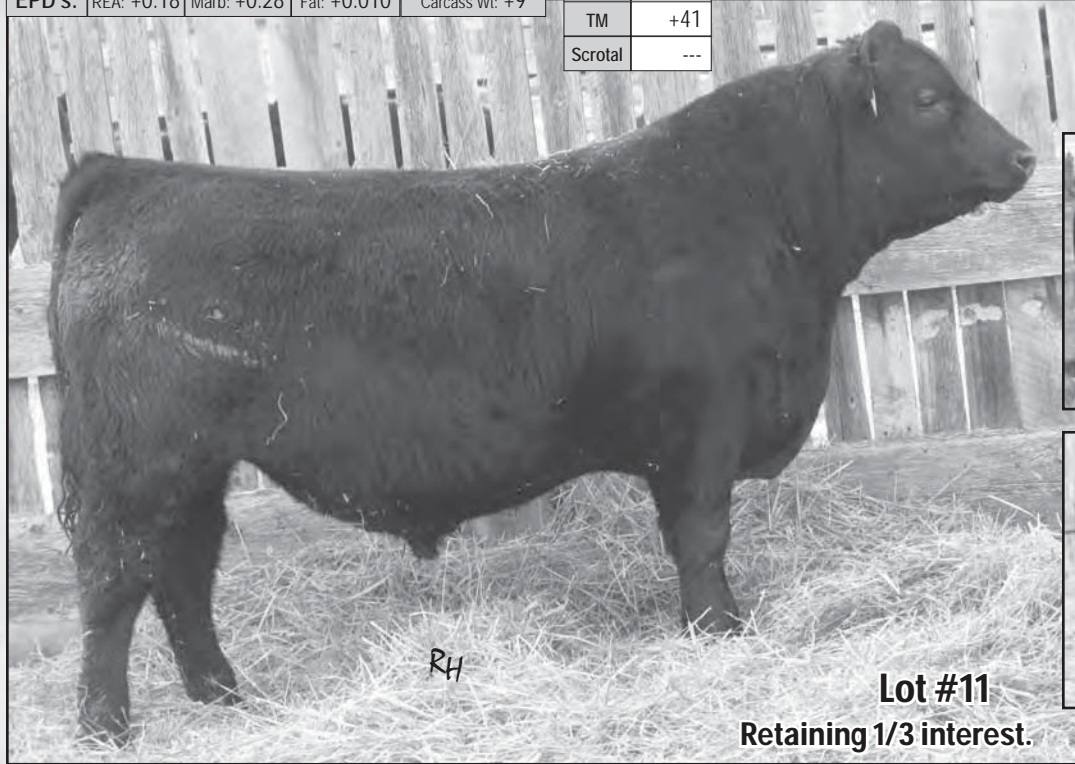
SITZ ALLIANCE 6595 NHF AMF  
SITZ HERITAGE 10709  
SITZ EMMA E 707

### Dam: CRESCENT CREEK ROSEBUD 6R

RITO 8094 PRAIRIELANE 2060 AMF  
CRESCENT CREEK ROSEBUD 115F  
CRESCENT CREEK ROSEBUD 4C

B Wt	92 lbs
205 Wt	743 lbs
365 Wt	1259 lbs
C Ease	***
BEPD	+3.4
WEPD	+40
YEPD	+77
Milk	+21
TM	+41
Scrotal	---

EPD's: REA: +0.18 Marb: +0.28 Fat: +0.010 Carcass Wt: +9



**Lot #11**  
Retaining 1/3 interest.



**Crescent Creek Rosebud 6R**  
Dam of Lot 11



**Crescent Creek Tomboy 15W**  
Maternal brother to Lot 11

*A definite sale feature, 139X is a maternal brother to the record setting Tomboy 15W who was purchased by Bar CR Angus in the last years sale for \$26,000 for 1/3 interest. What an impact he has had since his first calves have appeared. This edition of 6R's offering is no different. Outcross and proven. Check him out. Retaining 1/3 interest.*



Lot

12

**CRESCENT CREEK 07 EMBLAZON 73X**

Male DTZ 73X February 04 2010 1548975

**Sire: CRESCENT CREEK EMBLAZON 07T**S A F FAME NHF AMF CAF  
RRD FAME 1K  
RRD TIBBIE 4E**Dam: CRESCENT CREEK DUCHESS 154M**BOTANY ANGUS MAX 5A  
CRESCENT CREEK DUCHESS 6E  
DUCHESS JLB 53'83

EPD's: REA: +0.08 Marb: +0.28 Fat: +0.014 Carcass Wt: +6

B Wt	90 lbs
205 Wt	620 lbs
365 Wt	1084 lbs
C Ease	***
BEPD	+3.5
WEPD	+31
YEPD	+56
Milk	+10
TM	+26
Scrotal	---

Lot

14

**CRESCENT CRK 07 EMBLAZON 130X**

Male WOS 130X February 17 2010 1549090

**Sire: CRESCENT CREEK EMBLAZON 07T**G D A R ROGUE 6322  
MINBURN ROGUE 37H  
MINBURN BLACKBIRD 17E**Dam: DRYLAND LADY BATE 147**RITO 8094 PRAIRIELANE 2060 AMF  
CRESCENT CREEK LADY BATE 44E  
CRESCENT CREEK LADY BATE 110B

EPD's: REA: +0.04 Marb: +0.20 Fat: +0.020 Carcass Wt: +9

B Wt	88 lbs
205 Wt	695 lbs
365 Wt	1166 lbs
C Ease	***
BEPD	+5.3
WEPD	+38
YEPD	+78
Milk	+17
TM	+36
Scrotal	---

*The Emblazon 07T sons are no different than the 58T sons. Lots of muscle, acceptable birth weight with that herd bull look. 130X is a real herd bull prospect. His dam has produced many bulls from our sale including herdsires for David Siever, Hodgeville and Arran Ivey, Ituna.*

Lot

15

**CRESCENT CREEK 07 EMBLAZON 134X**

Male WOS 134X February 17 2010 1549161

**Sire: CRESCENT CREEK EMBLAZON 07T**SITZ ALLIANCE 6595 NHF AMF  
CRESCENT CREEK ALLIANCE 29N  
KBJ MISS COMPRESS 862K**Dam: CRESCENT CREEK DUCHESS 81R**CRESCENT CREEK REVIVAL 06J  
CRESCENT CREEK DUCHESS 51M  
SUNMOUND DUCHESS 1Z

EPD's: REA: +0.10 Marb: +0.13 Fat: +0.015 Carcass Wt: +7

B Wt	88 lbs
205 Wt	776 lbs
365 Wt	1228 lbs
C Ease	***
BEPD	+2.9
WEPD	+47
YEPD	+79
Milk	+18
TM	+42
Scrotal	---

*Another powerful 07T son. As you study these Emblazon sons you can see it would be very easy to assemble a sire group that would produce steers that can top the market.*

Lot

13

**CRESCENT CREEK EMBLAZON 101X**

Male DTZ 101X February 09 2010 1548977

**Sire: CRESCENT CREEK EMBLAZON 07T**C H QUANTUM 3330  
GDAR QUANTUM 963  
G D A R MISS KEM 080**Dam: CRESCENT CREEK LADY BATE 6N**BOTANY ANGUS MAX 5A  
CRESCENT CREEK LADY BATE 113H  
CRESCENT CREEK LADY BATE 48Y

EPD's: REA: +0.00 Marb: +0.23 Fat: -0.001 Carcass Wt: +3

B Wt	86 lbs
205 Wt	687 lbs
365 Wt	1197 lbs
C Ease	***
BEPD	+1.5
WEPD	+31
YEPD	+62
Milk	+15
TM	+31
Scrotal	---



Lot #13



Lot #14



Lot #15

Lot

16

**CRESCENT CRK 07 EMBLAZON 151X**

Male WOS 151X February 22 2010 1549109

**Sire: CRESCENT CREEK EMBLAZON 07T**

LAMBS OVERDRIVE 45E  
SOUTHLAND POWERBALL 128K  
DOUBLE J LASS 452A

**Dam: CRESCENT CREEK ROSEBUD 99N**

DWAJO CHIEF 92E  
CRESCENT CREEK ROSEBUD 35J  
CRESCENT CREEK ROSEBUD 30D

EPD's:	REA: -0.04	Marb: +0.13	Fat: +0.002	Carcass Wt: +1
--------	------------	-------------	-------------	----------------

B Wt	86 lbs
205 Wt	718 lbs
365 Wt	1208 lbs
C Ease	***
BEPD	+3.6
WEPD	+38
YEPD	+66
Milk	+13
TM	+32
Scrotal	---

Lot

17

**CRESCENT CREEK 07 EMBLAZON 175X**

Male DTZ 175X March 01 2010 1548957

**Sire: CRESCENT CREEK EMBLAZON 07T**

BATSCHOL STEMWINDER 31D  
RON'S STEMWINDER 74J  
BATSCHOL JENNIFER 14Z

**Dam: CRESCENT CREEK HEROINE 13L**

RITO 8094 PRAIRIELANE 2060 AMF  
CRESCENT CREEK HEROINE 8D  
CRESCENT CREEK HEROINE 2Z

EPD's:	REA: +0.09	Marb: +0.14	Fat: +0.014	Carcass Wt: +5
--------	------------	-------------	-------------	----------------

B Wt	100 lbs
205 Wt	720 lbs
365 Wt	1223 lbs
C Ease	*
BEPD	+5.1
WEPD	+32
YEPD	+60
Milk	+16
TM	+32
Scrotal	---

Lot

18

**CRESCENT CREEK 07 EMBLAZON 177X**

Male WOS 177X March 02 2010 1554906

**Sire: CRESCENT CREEK EMBLAZON 07T**

SITZ ALLIANCE 6595 NHF AMF  
CRESCENT CREEK ALLIANCE 29N  
KBJ MISS COMPRESS 862K

**Dam: CRESCENT CREEK PRIDE 181R**

CHICO KODIAK 93K  
CRESCENT CREEK PRIDE 27M  
CRESCENT CREEK PRIDE 10E

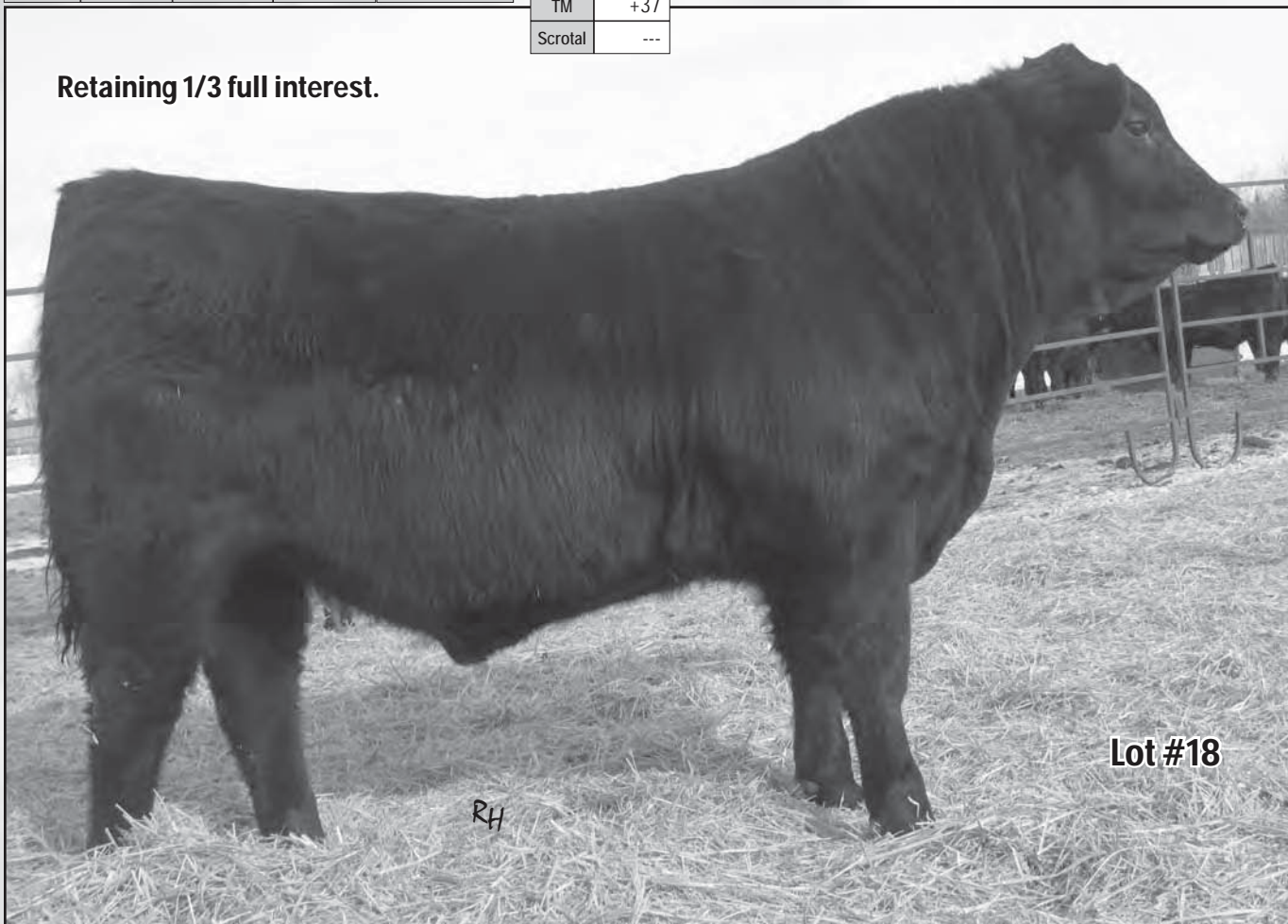
EPD's:	REA: ---	Marb: ---	Fat: ---	Carcass Wt: ---
--------	----------	-----------	----------	-----------------

B Wt	98 lbs
205 Wt	713 lbs
365 Wt	1345 lbs
C Ease	**
BEPD	+4.6
WEPD	+41
YEPD	+70
Milk	+16
TM	+37
Scrotal	---

*#1 bull on the home test. An exciting March born Emblazon son with an excellent hair coat. This bull will create as much interest as perhaps any bull in the sale. He was a standout from birth forward. His feet and legs are flawless as attributed to the 07T sire. This would be an exceptional bull for those who would like to show a bull with a little different twist to create a lot of excitement.*

**Retaining 1/3 full interest.**

**Retaining 1/3 full interest.**



Lot #18



## SILVER DOME DYNASTY 19T

Male SDF 19T February 04 2007 1409039

ESTON M G 4W  
ESTON ENCOUNTER M G 55'71  
BLACKCAP OF A L F 10S

### Sire: WANDERING CRK DYNASTY JRM 2F

BANDOLIERMERE G V 4N  
ROSE G V 37U  
ROSE G V 23N

DURNES WINTON 43D  
DURNES WINTON 14H  
DURNES BEA 14C

### Dam: SILVER DOME OAKLEAF 119L

SILVER DOME WINDER SLEAK 21Z  
SILVER DOME OAKLEAF 19D  
RONAN OAKLEAF 19Z

B Wt	89 lbs
205 Wt	776 lbs
365 Wt	---
BEPD	+2.4
WEPD	+28
YEPD	+40
Milk	+14
TM	+28
Scrotal	---
CED	+0.0
CEM	-3.0

EPD's: REA: --- Marb: --- Fat: --- Carcass Wt: ---

19T was purchased at the Northern Select Sale. He is co-owned with Lookout Stock Farms. When I saw the chance to purchase a straight Canadian bred bull, two things entered into the decision. One was a chance to introduce strong out cross genetics and the other a reflection on a Wandering Creek Dynasty son used some 30 years earlier. The Dynasty cattle at that time were of a muscle pattern that some seedstock producers now may have never seen. Hard muscle, early maturing with large testicles, big crests and an urge to breed 100 cows. The females seemed to last forever with excellent udders in a moderate package. The offspring of 19T seem to have those valuable traits of 30 years ago. We think there is an excellent herd sire prospect in this offspring. Outcross genetics that will be different in any program.

## BLACK ANGUS Reference Sire



Silver Dome Dynasty 19T - 10 Sons Sell

Lot  
**19**

## CRESCENT CREEK DYNASTY 43X

Male WOS 43X January 30 2010 1549213

### Sire: SILVER DOME DYNASTY 19T

MINBURN MAIN EVENT 71N  
MINBURN MAIN EVENT 82R  
MINBURN JOY 34L

### Dam: CRESCENT CREEK DUCHESS 90T

CRESCENT CREEK THUNDER 51L  
CRESCENT CREEK DUCHESS 27P  
CRESCENT CREEK DUCHESS 6E

EPD's: REA: --- Marb: --- Fat: --- Carcass Wt: ---

B Wt	82 lbs
205 Wt	654 lbs
365 Wt	1099 lbs
C Ease	****
BEPD	+3.7
WEPD	+31
YEPD	+52
Milk	+15
TM	+31
Scrotal	---



Lot #19

Lot  
**20**

## CRESCENT CREEK DYNASTY 52X

Male WOS 52X January 31 2010 1549204

### Sire: SILVER DOME DYNASTY 19T

O C C EMBLAZON 854E NHF AMF CAF  
B C C-J C L EMBLAZON 038-287  
B C C 1531 ELDORENE 826-038

### Dam: CRESCENT CREEK ROSEBUD 30T

SITZ HERITAGE 10709  
CRESCENT CREEK ROSEBUD 7R  
CRESCENT CREEK ROSEBUD 115F

EPD's: REA: --- Marb: --- Fat: --- Carcass Wt: ---

B Wt	82 lbs
205 Wt	648 lbs
365 Wt	1048 lbs
C Ease	****
BEPD	+1.2
WEPD	+34
YEPD	+61
Milk	+13
TM	+30
Scrotal	---



Lot #20

A real good bull here. Some performance, yet moderate birth. His dam is an excellent Emblazon daughter going back to Rosebud 115F.

Lot  
**21**

## CRESCENT CREEK DYNASTY 63X

Male WOS 63X February 03 2010 1549215

### Sire: SILVER DOME DYNASTY 19T

STEVENSON BRUNO 561G NHF CAF  
BEVERLY HILLS FANDANGO 404  
H A RITO LADY 1262

### Dam: CRESCENT CREEK ERICA 98T

GDAR TRAVELER 235  
CRESCENT CREEK ERICA 44R  
HILOW ERICA 32D

EPD's: REA: --- Marb: --- Fat: --- Carcass Wt: ---

B Wt	80 lbs
205 Wt	671 lbs
365 Wt	1110 lbs
C Ease	***
BEPD	+2.1
WEPD	+32
YEPD	+56
Milk	+17
TM	+33
Scrotal	---



Lot  
**22**

## CRESCENT CREEK DYNASTY 78X

Male DTZ 78X February 05 2010 1549009

### Sire: SILVER DOME DYNASTY 19T

C A R IDEAL 650  
CAR IDEAL 061  
C A R MISS VIKING 601

### Dam: CRESCENT CREEK BARDELLA 92S

VON ERIC OF BAR LU 90'90  
LAZY J BARDELLA LASS 3D  
DESSA BARDELLA LASS 17B

EPD's: REA: --- Marb: --- Fat: --- Carcass Wt: ---

B Wt	80 lbs
205 Wt	679 lbs
365 Wt	1047 lbs
C Ease	****
BEPD	+2.8
WEPD	+35
YEPD	+55
Milk	+18
TM	+36
Scrotal	---



Lot  
**23**

## CRESCENT CREEK DYNASTY 81X

Male WMO 81X February 05 2010 1549030

### Sire: SILVER DOME DYNASTY 19T

GDAR QUANTUM 963  
CRESCENT CREEK QUANTUM 50M  
CRESCENT CREEK EILEEN 2K

### Dam: PRETTY VIEW QUEEN 054R

STEVENSON FORTUNE 425C NHF AMF CAF  
PRETTY VIEW QUEEN 54H  
CRESCENT CREEK QUEEN 96F

EPD's: REA: --- Marb: --- Fat: --- Carcass Wt: ---

B Wt	81 lbs
205 Wt	676 lbs
365 Wt	1031 lbs
C Ease	****
BEPD	+1.0
WEPD	+31
YEPD	+43
Milk	+12
TM	+28
Scrotal	---

Lot  
**24**

## CRESCENT CREEK DYNASTY 83X

Male WOS 83X February 05 2010 1549202

### Sire: SILVER DOME DYNASTY 19T

MINBURN MAIN EVENT 71N  
MINBURN MAIN EVENT 82R  
MINBURN JOY 34L

### Dam: CRESCENT CREEK IDESSA 16T

DWAJO CHIEF 92E  
CRESCENT CREEK IDESSA 91P  
S A V IDESSA 9109

EPD's: REA: --- Marb: --- Fat: --- Carcass Wt: ---

B Wt	80 lbs
205 Wt	727 lbs
365 Wt	1030 lbs
C Ease	****
BEPD	+2.8
WEPD	+39
YEPD	+61
Milk	+15
TM	+35
Scrotal	---

Lot  
**25**

## CRESCENT CREEK DYNASTY 102X

Male WOS 102X February 09 2010 1549211

### Sire: SILVER DOME DYNASTY 19T

MINBURN MAIN EVENT 71N  
MINBURN MAIN EVENT 82R  
MINBURN JOY 34L

### Dam: CRESCENT CREEK MARGARET 68T

DWAJO CHIEF 92E  
CRESCENT CREEK MARGARET 37J  
OPALVILLE MARGARET 12'89

EPD's: REA: --- Marb: --- Fat: --- Carcass Wt: ---

B Wt	60 lbs
205 Wt	595 lbs
365 Wt	995 lbs
C Ease	*****
BEPD	+0.0
WEPD	+29
YEPD	+49
Milk	+12
TM	+27
Scrotal	---

*The Dynasty sons are all very similar. Moderate for frame, very consistent for birth, yet lots of muscle and character. They would make excellent selections to moderate birth with some genetic difference.*



Lot  
**26**

## CRESCENT CREEK DYNASTY 107X

Male WOS 107X February 10 2010 1549208

**Sire: SILVER DOME DYNASTY 19T**

C A R IDEAL 650

CAR IDEAL 061

C A R MISS VIKING 601

**Dam: CRESCENT CREEK ERICA 46T**

TRAVELER 3173 G D A R

HILOW ERICA 32D

HILOW ERICA 2B

EPD's:	REA: ---	Marb: ---	Fat: ---	Carcass Wt: ---
--------	----------	-----------	----------	-----------------

B Wt	94 lbs
205 Wt	786 lbs
365 Wt	1353 lbs
C Ease	***
BEPD	+4.1
WEPD	+37
YEPD	+57
Milk	+21
TM	+40
Scrotal	---



**Remember ...  
Look for the Clipper Marks ...  
If they are clipped - then they  
are CUP'ed!**

*Ultrasound data will be available  
online mid March - check our website at  
[www.crescentcreekangus.com](http://www.crescentcreekangus.com)*

**Retaining 1/3 interest with shared possession.**



*What a find here! Sale feature bar none, a true genetic alternative with Dynasty and CAR Ideal. 107's Dam is a gem. She's stems back to a great Fall Finale sale selection from Dan Howell. Hi-Low Erica 32D was a never quit cow that produced many sale features. We have four direct daughters in the herd. 107 is herd bull material with a little extra frame for a Dynasty and combined with the maternal power of CAR Ideal, he definitely has something to offer those who are looking for a genetic edge. **Retaining 1/3 interest with shared possession** in the future at the buyer's convenience.*

Lot  
**27**

## CRESCENT CREEK DYNASTY 141X

Male WOS 141X February 19 2010 1549226

**Sire: SILVER DOME DYNASTY 19T**

E X A R SCOTCH CAP 816 NHF AMF CAF  
RR SCOTCHMAN 2999  
ERICA LASSIE OF R R 8464

**Dam: CRESCENT CREEK ROSEBUD 205T**

DOUBLE BAR ROGUE  
CRESCENT CREEK ROSEBUD 38K  
CRESCENT CREEK ROSEBUD 115F

EPD's:	REA: ---	Marb: ---	Fat: ---	Carcass Wt: ---
--------	----------	-----------	----------	-----------------

B Wt	104 lbs
205 Wt	726 lbs
365 Wt	1171 lbs
C Ease	*
BEPD	+5.3
WEPD	+41
YEPD	+67
Milk	+17
TM	+38
Scrotal	---

Lot  
**28**

## CRESCENT CREEK DYNASTY 153X

Male WOS 153X February 23 2010 1549229

**Sire: SILVER DOME DYNASTY 19T**

SITZ ALLIANCE 6595 NHF AMF  
CRESCENT CREEK ALLIANCE 29N  
KBJ MISS COMPRESS 862K

**Dam: CRESCENT CREEK BLACKBIRD 215T**

DWAJO CHIEF 92E  
CRESCENT CREEK BLACKBIRD 20P  
CRESCENT CREEK BLACKBIRD 80E

EPD's:	REA: ---	Marb: ---	Fat: ---	Carcass Wt: ---
--------	----------	-----------	----------	-----------------

B Wt	86 lbs
205 Wt	675 lbs
365 Wt	1249 lbs
C Ease	****
BEPD	+2.5
WEPD	+33
YEPD	+51
Milk	+14
TM	+31
Scrotal	---



**Lot #27**



**Lot #28**

*Another outstanding  
Dynasty with lots of  
muscle and meat in a  
moderate package. Good  
for heifers, as are most  
of the Dynasty's.*

**Mark your Calendar for the  
Crescent Creek  
Red Angus Dispersal Sale  
Sunday, August 14, 2011**



## CRESCENT CREEK PACESETTER 16U

Male KOS 16U January 8 2008 1435898

PARAMONT AMBUSH 2172 NHF AMF CAF  
WILLABAR AMBUSH 45G  
WILLABAR COUNTESS 90A

### Sire: LOOKOUT PACESETTER 258M

ED RENE EILEENMERE 45P  
GRASSY LANES MILLY 29U  
GRASSY LANES MILLY 37S

SITZ ALLIANCE 6595 NHF AMF  
CRESCENT CREEK ALLIANCE 29N  
KBJ MISS COMPRESS 862K

### Dam: CRESCENT CREEK STUMPIE 9R

LOOKOUT PACESETTER 147L  
FIGURE 8 ANGUS STUMPIE 12N  
FIGURE 8 ANGUS STUMPIE 112K

B Wt	70 lbs
205 Wt	618 lbs
365 Wt	1089 lbs
BE PD	-2.8
WE PD	+36
YE PD	+55
Milk	+14
TM	+32
Scrotal	---
CED	+11.0
CEM	+10.0

EPD's: REA: -0.01 Marb: -0.10 Fat: +0.015 Carcass Wt: -3

16U is a bull we selected for our moderate birth weight offering. He has been used on heifers for two seasons with excellent results. Calves are moderate and vigorous, yet have good growth later. His females look like they will make great cows and so they should, his dam and granddam could be two of the best females in the herd and with Pacesetter 258M and Alliance in the pedigree the results were not by chance. Check these bulls out for all your calving ease needs. 6 sons sell.



Lookout Pacesetter 258M - Sire of Pacesetter 16U

Lot  
**29**

## CRESCENT CREEK PACESETTER 16X

Male WOS 16X January 24 2010 1544065

### Sire: CRESCENT CREEK PACESETTER 16U

CONNEALY FRONTLINE NHF AMF CAF  
GDAR FRONTLINE 261  
G D A R FOREVER LADY 27B

### Dam: CRESCENT CREEK DUCHESS 153R

RRD FAME 1K  
CRESCENT CREEK DUCHESS 154M  
CRESCENT CREEK DUCHESS 6E

B Wt	70 lbs
205 Wt	646 lbs
365 Wt	1085 lbs
C Ease	****
BE PD	-2.6
WE PD	+38
YE PD	+61
Milk	+13
TM	+33
Scrotal	---

EPD's: REA: --- Marb: --- Fat: --- Carcass Wt: ---

A very complete Pacesetter son out of the Duchess cow family. Again, if putting together some 1/2 siblings for a heifer program we strongly recommend the Pacesetter sire group. The Pacesetter son's purchased in the past sales have become very good breeding bulls.



Lot #29

Lot  
**30**

## CRESCENT CREEK PACESETTER 26X

Male WOS 26X January 28 2010 1554067

### Sire: CRESCENT CREEK PACESETTER 16U

SITZ ALLIANCE 6595 NHF AMF  
CRESCENT CREEK ALLIANCE 29N  
KBJ MISS COMPRESS 862K

### Dam: CRESCENT CREEK ROSEBUD 169R

RITO 616 OF 4B20 6807 NHF AMF CAF  
CRESCENT CREEK ROSEBUD 24L  
CRESCENT CREEK ROSEBUD 134G

B Wt	66 lbs
205 Wt	617 lbs
365 Wt	1043 lbs
C Ease	*****
BE PD	-3.5
WE PD	+36
YE PD	+61
Milk	+13
TM	+31
Scrotal	---

EPD's: REA: --- Marb: --- Fat: --- Carcass Wt: ---



Lot #30



Lot  
**31**

## CRESCENT CREEK PACESETTER 115X

Male WOS 115X February 11 2010 1554069

**Sire: CRESCENT CREEK PACESETTER 16U**

MINBURN MAIN EVENT 71N  
MINBURN MAIN EVENT 82R  
MINBURN JOY 34L

**Dam: CRESCENT CREEK QUEEN RUTH 9U**

CRESCENT CREEK REVIVAL 06J  
CRESCENT CREEK QUEEN RUTH 66M  
TRAILVIEW EMPIRE PRIDE 127'96

EPD's: REA: --- Marb: --- Fat: --- Carcass Wt: ---

B Wt	64 lbs
205 Wt	689 lbs
365 Wt	1102 lbs
C Ease	****
BEPD	-0.3
WEPD	+39
YEPD	+61
Milk	+13
TM	+33
Scrotal	---



**Lot #31**

Lot  
**32**

## CRESCENT CREEK PACESETTER 117X

Male WOS 117X February 12 2010 1554070

**Sire: CRESCENT CREEK PACESETTER 16U**

MINBURN MAIN EVENT 71N  
MINBURN MAIN EVENT 82R  
MINBURN JOY 34L

**Dam: CRESCENT CREEK LUCY 141U**

DWAJO CHIEF 92E  
CRESCENT CREEK LASSIE 33H  
CRESCENT CREEK PROUD LASSIE 70

EPD's: REA: --- Marb: --- Fat: --- Carcass Wt: ---

B Wt	72 lbs
205 Wt	794 lbs
365 Wt	1110 lbs
C Ease	*****
BEPD	+0.1
WEPD	+44
YEPD	+65
Milk	+18
TM	+40
Scrotal	---



**Lot #32**

Lot  
**33**

## CRESCENT CREEK PACESETTER 149X

Male WOS 149X February 22 2010 1554076

**Sire: CRESCENT CREEK PACESETTER 16U**

MINBURN MAIN EVENT 71N  
MINBURN MAIN EVENT 82R  
MINBURN JOY 34L

**Dam: CRESCENT CREEK PRIDE 21U**

CRESCENT CREEK REVIVAL 06J  
CRESCENT CREEK PRIDE 25L  
CRESCENT CREEK PRIDE 10E

EPD's: REA: --- Marb: --- Fat: --- Carcass Wt: ---

B Wt	70 lbs
205 Wt	652 lbs
365 Wt	---
C Ease	*****
BEPD	+0.6
WEPD	+37
YEPD	+61
Milk	+11
TM	+30
Scrotal	---



**Lot #34**

Lot  
**34**

## CRESCENT CREEK PACESETTER 54X

Male WOS 54X February 01 2010 1549158

PARAMONT AMBUSH 2172 NHF AMF CAF  
WILLABAR AMBUSH 45G  
WILLABAR COUNTESS 90A

**Sire: LOOKOUT PACESETTER 258M**

ED RENE EILEENMERE 45P  
GRASSY LANES MILLY 29U  
GRASSY LANES MILLY 37S  
E X A R SCOTCH CAP 816 NHF AMF CAF  
RR SCOTCHMAN 2999  
ERICA LASSIE OF R R 8464

**Dam: CRESCENT CREEK ROSEBUD 14R**

FREEWAY 276T OF J R S  
CRESCENT CREEK ROSEBUD 43Z  
PRAIRIELANE 5012 DUSTY 7034

EPD's: REA: --- Marb: --- Fat: --- Carcass Wt: ---

B Wt	78 lbs
205 Wt	670 lbs
365 Wt	1057 lbs
C Ease	*****
BEPD	+0.3
WEPD	+38
YEPD	+63
Milk	+15
TM	+34
Scrotal	---



## CUDLOBE MONEYMAKER 79U

Male (ET) UF 79U January 29 2008 1484098

S A F 598 BANDO 5175 AMF CAC  
BOYD ON TARGET 1083 NHF AMF CAC  
BOYD FOREVER LADY 7095

**Sire: STEVENSON MONEYMAKER R185** NHF AMF CAF  
VDAR AMBUSH 2478

STEVENSON CLOVA PRIDE L888 NHF AMF  
STEVENSON CLOVA PRIDE 712H

PARAMONT AMBUSH 2172 NHF AMF CAF  
ROCKN D AMBUSH 1531 NHF AMF CAF  
MS BLACKCAP BAND OF R D 1301

**Dam: STEVENSON CLOVA PRIDE L901** NHF AMF  
GARDENS EXPEDITION NHF AMF CAF  
STEVENSON CLOVA PRIDE 7229  
STEVENSON CLOVA PRIDE 4177

B Wt	83 lbs
205 Wt	741 lbs
365 Wt	1392 lbs
BEPD	+1.6
WEPD	+52
YEPD	+97
Milk	+17
TM	+43
Scrotal	+0.25
CED	+6.0
CEM	+8.0

EPD's: REA: +0.03 Marb: +0.44 Fat: +0.032 Carcass Wt: +13

*Money Maker was selected from the 2009 Cudlobe sale. We were impressed with his maternal strength and the acceptance of the Money Maker line. 79U did not disappoint. He offered moderate birth in an explosive performance package. His bulls have lots of volume and great hair coats. He was lost after one breeding season. With no semen collected we offer a small sampling of excellent females from him. 5 sons sell.*

## BLACK ANGUS Reference Sire



**Stevenson Moneymaker R185** - Sire of Moneymaker 79U

Lot  
**35**

## CRESCENT CREEK MONEYMAN 64X

Male WOS 64X February 03 2010 1555556

**Sire: CUDLOBE MONEYMAKER 79U**

O C C EMBLAZON 854E NHF AMF CAF  
B C C-J C L EMBLAZON 038-287  
B C C 1531 ELDORENE 826-038

**Dam: CRESCENT CREEK LADY ANNE 21T**

LLB NEW FRONTIER 81N  
NORSEMAN LADY ANN 4'05  
EARLY SUNSET LADY ANN 20N

B Wt	78 lbs
205 Wt	---
365 Wt	---
C Ease	****
BEPD	+2.1
WEPD	+40
YEPD	+88
Milk	+12
TM	---
Scrotal	+0.13

EPD's: REA: --- Marb: --- Fat: --- Carcass Wt: ---

*This Moneymaker son is a true example of the sire group. Excellent birth ease in a little bigger package. The Moneymaker's have great feet and legs, with lots of hair. The bull was rightly named as his calves will be "money makers".*



**Lot #35**

Lot  
**36**

## CRESCENT CREEK MONEY MAN 99X

Male WOS 99X February 09 2010 1549230

**Sire: CUDLOBE MONEYMAKER 79U**

C A R IDEAL 650  
CAR IDEAL 061  
C A R MISS VIKING 601

**Dam: CRESCENT CREEK ROSEBUD 217T**

DWAJO CHIEF 92E  
CRESCENT CREEK ROSEBUD 35J  
CRESCENT CREEK ROSEBUD 30D

B Wt	84 lbs
205 Wt	751 lbs
365 Wt	1170 lbs
C Ease	****
BEPD	+2.9
WEPD	+53
YEPD	+90
Milk	+21
TM	+48
Scrotal	---

EPD's: REA: --- Marb: --- Fat: --- Carcass Wt: ---



**Lot #36**

Lot  
**37**

## CRESCENT CREEK MONEY MAN 123X

Male WOS 123X February 14 2010 1549198

**Sire: CUDLOBE MONEYSMAKER 79U**

DRYLAND ICEBERG 231  
EASTONDALE ICEBERG 05'04  
EASTONDALE COUNTESS 10'01

**Dam: DWAJO PRIDE 230S**

MINBURN MASTERPLAN 7M  
MOBO PRIDE  
EVERBLACK PRIDE 8M

EPD's:	REA: ---	Marb: ---	Fat: ---	Carcass Wt: ---
--------	----------	-----------	----------	-----------------

B Wt	80 lbs
205 Wt	649 lbs
365 Wt	1152 lbs
C Ease	****
BEPD	+1.5
WEPD	+38
YEPD	+77
Milk	+15
TM	+34
Scrotal	---

*One of my favorites in this sire group. Good growth with moderate birth.*



**Lot #37**

Lot  
**38**

## CRESCENT CREEK MONEY MAN 135X

Male WOS 135X February 18 2010 1549163

**Sire: CUDLOBE MONEYSMAKER 79U**

E X A R SCOTCH CAP 816 NHF AMF CAF  
RR SCOTCHMAN 2999  
ERICA LASSIE OF R R 8464

**Dam: CRESCENT CREEK LADY BATE 98R**

GDAR QUANTUM 963  
CRESCENT CREEK LADY BATE 6N  
CRESCENT CREEK LADY BATE 113H

EPD's:	REA: ---	Marb: ---	Fat: ---	Carcass Wt: ---
--------	----------	-----------	----------	-----------------

B Wt	76 lbs
205 Wt	728 lbs
365 Wt	1283 lbs
C Ease	*****
BEPD	+0.2
WEPD	+48
YEPD	+88
Milk	+19
TM	+43
Scrotal	---

Lot  
**39**

## CRESCENT CREEK MONEYSMAKER 137X

Male WOS 137X February 18 2010 1555583

**Sire: CUDLOBE MONEYSMAKER 79U**

SITZ ALLIANCE 6595 NHF AMF  
CRESCENT CREEK ALLIANCE 29N  
KBJ MISS COMPRESS 862K

**Dam: CRESCENT CREEK EULA 162R**

DWAJO CHIEF 92E  
CRESCENT CREEK EULA 94L  
CRESCENT CREEK EULA 82A

EPD's:	REA: ---	Marb: ---	Fat: ---	Carcass Wt: ---
--------	----------	-----------	----------	-----------------

B Wt	86 lbs
205 Wt	---
365 Wt	---
C Ease	***
BEPD	+2.2
WEPD	+47
YEPD	+84
Milk	+18
TM	---
Scrotal	+0.13



**Lot #39**

Summary Statistics  
Canadian Angus  
Association  
Black Angus  
Average EPD's  
on 2010 calves.

B Wt	+2.9
W Wt	+41
Y Wt	+72
Milk	+17
TM	+37
CE	+1.3
MCE	+4.3



## CRESCENT CREEK IDEAL 32U

Male WOS 32U January 26 2008 1435820

IDEAL 033 OF 7365 8263  
C A R IDEAL 650  
C A R LADY TRAVELER 122

### Sire: CAR IDEAL 061

LEACHMAN RIGHT TIME AMF  
C A R MISS VIKING 601  
LADY VIKING 131 C A R  
SITZ ALLIANCE 6595 NHF AMF  
SITZ HERITAGE 10709  
SITZ EMMA E 707

### Dam: CRESCENT CREEK ROSEBUD 10R

RITO 8094 PRAIRIELANE 2060 AMF  
CRESCENT CREEK ROSEBUD 115F  
CRESCENT CREEK ROSEBUD 4C

B Wt	84 lbs
205 Wt	707 lbs
365 Wt	1340 lbs
BEPD	+4.3
WEPD	+46
YEPD	+83
Milk	+22
TM	+45
Scrotal	---
CED	-2.0
CEM	+4.0

EPD's: REA: +0.03 Marb: +0.38 Fat: +0.013 Carcass Wt: +13

## BLACK ANGUS Reference Sire



**Crescent Creek Ideal 32U - 3 Sons Sell**

*We retained ½ interest in this young sire with the other ½ being owned by ARDA Angus. We sampled this bull before he left in 2009. The results are excellent as you will see come sale day. 32U will see heavy service at Crescent Creek this spring. His pedigree sets him apart as being a great breeding bull. 5 sons sell.*

Lot  
**40**

## CRESCENT CREEK IDEAL 28X

Male WOS 28X January 28 2010 1549100

### Sire: CRESCENT CREEK IDEAL 32U

C H QUANTUM 3330  
GDAR QUANTUM 963  
G D A R MISS KEM 080

### Dam: CRESCENT CREEK PRIDE 106M

DWAJO CHIEF 92E  
CRESCENT CREEK PRIDE 40K  
CRESCENT CREEK PRIDE 38Z

B Wt	92 lbs
205 Wt	696 lbs
365 Wt	1199 lbs
C Ease	***
BEPD	+4.0
WEPD	+39
YEPD	+68
Milk	+19
TM	+39
Scrotal	---

EPD's: REA: -0.02 Marb: +0.26 Fat: -0.002 Carcass Wt: +5



**Lot #40**

*An excellent herd bull prospect here. His dam is our Gold Medal winner and Division Champion at the recent World Angus Forum in Calgary, quite a feat for someone who is usually just 'happy to be there'. All kidding aside, if you are looking for a bull that has our whole program wrapped up in one package here he is - Quantum, Ideal and 115F ... it doesn't get much better. Well worth the effort to come and see.*



**Crescent Creek Pride 106M**  
Dam of Lot 40

Lot  
**41**

## CRESCENT CREEK IDEAL 57X

Male WOS 57X February 02 2010 1549222

**Sire: CRESCENT CREEK IDEAL 32U**

C A R IDEAL 650  
CAR IDEAL 061  
C A R MISS VIKING 601

**Dam: CRESCENT CREEK EULA 139T**

DWAJO CHIEF 92E  
CRESCENT CREEK EULA 63H  
CRESCENT CREEK EULA 82A

EPD's:	REA: ---	Marb: ---	Fat: ---	Carcass Wt: ---
--------	----------	-----------	----------	-----------------

*Ideal 32U will see a lot of service here this spring.  
His calves are the right kind, sufficient frame  
size with moderate birth and a strong maternal influence.*

B Wt	86 lbs
205 Wt	712 lbs
365 Wt	1138 lbs
C Ease	***
BEPD	+3.5
WEPD	+45
YEPD	+76
Milk	+20
TM	+39
Scrotal	---



Lot  
**42**

## CRESCENT CREEK IDEAL 69X

Male WOS 69X February 04 2010 1549220

**Sire: CRESCENT CREEK IDEAL 32U**

O C C TRAVELER 723Z  
GDAR TRAVELER 235  
GDAR PRIMROSE 0251

**Dam: CRESCENT CREEK EULA 131T**

CRESCENT CREEK REVIVAL 06J  
CRESCENT CREEK EULA 54M  
CRESCENT CREEK EULA 63H

EPD's:	REA: ---	Marb: ---	Fat: ---	Carcass Wt: ---
--------	----------	-----------	----------	-----------------

B Wt	78 lbs
205 Wt	733 lbs
365 Wt	1107 lbs
C Ease	****
BEPD	+1.3
WEPD	+46
YEPD	+77
Milk	+18
TM	+41
Scrotal	---

## BLACK ANGUS Reference Sire



**Crescent Creek Main Event 6H**  
Son of Stevenson Fortune 425C

## STEVENSON FORTUNE 425C

Male IMP 011C March 05 1993 812011 NHF AMF CAF

SCHEARBROOK FORTUNE  
SCHURRTOP FORTUNE 3261  
SCHURRTOP QUEEN 1322

**Sire: GARDENS FORTUNE 9213 S3** AMF

RITO 9J9 OF B156 7T26 AMC  
GREEN GARDEN JILT 612C  
GREEN GARDEN JILT 211 C

N BAR EMULATION 8520  
BASIN EMULATION 5653 NHF AMF CAF  
BASIN ENCHANTRESS 1051

**Dam: J R S ENCHANTRESS 235Z**

RAMBO 465T OF J R S  
J R S ENCHANTRESS 850X  
J R S ENCHANTRESS 260S

EPD's:	REA: -0.14	Marb: +0.24	Fat: +0.016	Carcass Wt: +10
--------	------------	-------------	-------------	-----------------

B Wt	---
205 Wt	---
365 Wt	---
BEPD	+4.1
WEPD	+40
YEPD	+65
Milk	+6
TM	+26
Scrotal	+0.46
CED	-4.0
CEM	+2.0



Lot  
**43**

## CRESCENT CREEK FORTUNE 66X

Male WOS 66X February 03 2010 1549135

**Sire: STEVENSON FORTUNE 425C**

E X A R SCOTCH CAP 816 NHF AMF CAF  
RR SCOTCHMAN 2999  
ERICA LASSIE OF R R 8464

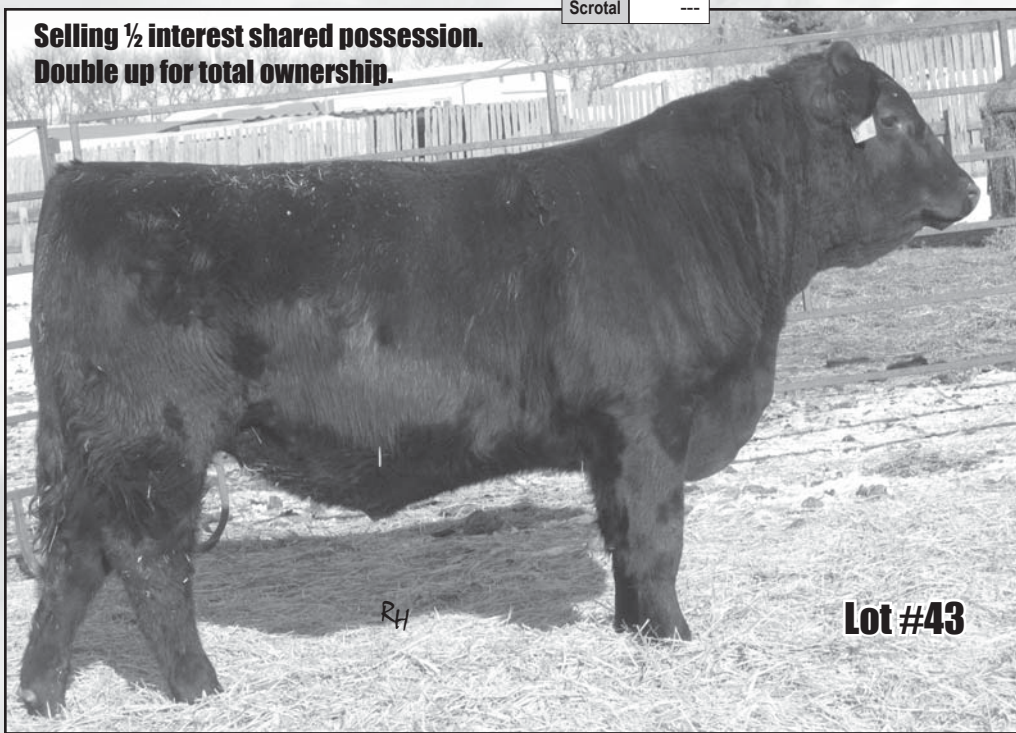
**Dam: CRESCENT CREEK PRIDE 164P**

GDAR QUANTUM 963  
CRESCENT CREEK PRIDE 106M  
CRESCENT CREEK PRIDE 40K

EPD's:	REA: -0.09	Marb: +0.15	Fat: +0.024	Carcass Wt: +11
--------	------------	-------------	-------------	-----------------

B Wt	82 lbs
205 Wt	684 lbs
365 Wt	1020 lbs
C Ease	***
BEPD	+2.4
WEPD	+41
YEPD	+70
Milk	+12
TM	+33
Scrotal	---

**Selling ½ interest shared possession.  
Double up for total ownership.**



Lot  
**44**

## CRESCENT CREEK FORTUNE 67X

Male WOS 67X February 03 2010 1549251

**Sire: STEVENSON FORTUNE 425C**

WILLABAR AMBUSH 45G  
LOOKOUT PACESETTER 258M  
GRASSY LANES MILLY 29U

**Dam: CRESCENT CREEK ROSEBUD 15U**

SITZ HERITAGE 10709  
CRESCENT CREEK ROSEBUD 6R  
CRESCENT CREEK ROSEBUD 115F

EPD's:	REA: ---	Marb: ---	Fat: ---	Carcass Wt: ---
--------	----------	-----------	----------	-----------------

B Wt	72 lbs
205 Wt	740 lbs
365 Wt	1204 lbs
C Ease	****
BEPD	+1.6
WEPD	+47
YEPD	+76
Milk	+15
TM	+39
Scrotal	---

*What a rare find, two excellent son's of the breed great, Fortune 425C. 66X has a great pedigree with 106M and Scotchman 2999. WOS 164P has an excellent Alliance son at Art Unsworth's. 66X is a very unique bull. Lots of character and a real herd bull presence. **Selling ½ interest shared possession. Double up for total ownership.***

**Lot #43**



*67X also has a great pedigree with 6R and Pacesetter. When you find rare semen of this type you choose very special cows. Remember it was 425C and 115F that produced the legendary Crescent Creek Main Event 6H that sold to Minburn Angus. What an influence.*

**Lot #44**



## MINBURN MAIN EVENT 82R

Male DW 82R February 16 2005 1302667

STEVENSON FORTUNE 425C NHF AMF CAF  
CRESCENT CREEK MAIN EVENT 6H  
CRESCENT CREEK ROSEBUD 115F

### Sire: MINBURN MAIN EVENT 71N

MINBURN LANCER 73B  
MINBURN BLACKBIRD 17E  
MINBURN BLACKBIRD 23B

JAY EN DEE MASTERPLAN 3  
EVERBLACK MASTERPLAN 007  
WHISKYJACK TRAVELING LUCY 2Z

### Dam: MINBURN JOY 34L

V D A R NEW TREND 315 NHF AMF CAF  
HILL VIEW JOY 70D  
KBJ PRIDE 707Y

B Wt	90 lbs
205 Wt	740 lbs
365 Wt	1309 lbs
BEPD	+5.3
WEPD	+41
YEPD	+68
Milk	+18
TM	+39
Scrotal	---
CED	-3.0
CEM	+6.0

EPD's: REA: +0.01 Marb: +0.23 Fat: +0.023 Carcass Wt: +4

*Main Event 82R has excelled in performance second to none. If today's market demands more pounds in the fall*

*and bigger carcasses then check these fellows out. These are bulls with large testicles, excellent feet and legs. 82R has excellent feet and a very good disposition. His daughters are now milking and producing some very good calves*

*in our young cow pen. It is a benefit to see how a bull's daughters are producing. The females offered are the best we have, moderate framed and easy doing.*

Lot

45

## CRESCENT CREEK MAIN EVENT 88X

Male DTZ 88X February 07 2010 1548956

### Sire: MINBURN MAIN EVENT 82R

DWAJO CHIEF 92E  
CRESCENT CREEK CHIEF 80G  
CRESCENT CREEK QUEEN RUTH 64D

### Dam: CRESCENT CREEK LADY BATE 6L

BOTANY ANGUS MAX 5A  
CRESCENT CREEK LADY BATE 49G  
CRESCENT CREEK LADY BATE 48Y

EPD's: REA: -0.07 Marb: +0.04 Fat: +0.004 Carcass Wt: +5

B Wt	86 lbs
205 Wt	617 lbs
365 Wt	1095 lbs
C Ease	***
BEPD	+4.4
WEPD	+36
YEPD	+65
Milk	+17
TM	+35
Scrotal	---

## BLACK ANGUS Reference Sire



Minburn Main Event 82R - 6 Sons Sell

Lot

46

## CRESCENT CREEK MAIN EVENT 133X

Male DOS 133X February 17 2010 1549070

### Sire: MINBURN MAIN EVENT 82R

CRESCENT CREEK MAIN EVENT 6H  
MINBURN MAIN EVENT 50M  
KBJ DUCHESS 275D

### Dam: KBJ BLACK NANCE 608R

KBJ CHIEF 315D  
KBJ BLACK NANCE 851H  
KBJ BLACK NANCE 301F

EPD's: REA: -0.06 Marb: +0.22 Fat: +0.015 Carcass Wt: +7

B Wt	88 lbs
205 Wt	623 lbs
365 Wt	1087 lbs
C Ease	***
BEPD	+3.6
WEPD	+35
YEPD	+62
Milk	+14
TM	+32
Scrotal	---



Lot #46



Lot

47

**CRESCENT CREEK MAIN EVENT 156X**

Male DTZ 156X February 24 2010 1548983

**Sire: MINBURN MAIN EVENT 82R**

C H QUANTUM 3330  
GDAR QUANTUM 963  
G D A R MISS KEM 080

**Dam: CRESCENT CREEK HEROINE 15N**

RITO 8094 PRAIRIELANE 2060 AMF  
CRESCENT CREEK HEROINE 8D  
CRESCENT CREEK HEROINE 2Z

EPD's:	REA: -0.03	Marb: +0.21	Fat: +0.007	Carcass Wt: +4
--------	------------	-------------	-------------	----------------

B Wt	100 lbs
205 Wt	752 lbs
365 Wt	1223 lbs
C Ease	*
BEPD	+4.7
WEPD	+37
YEPD	+63
Milk	+19
TM	+38
Scrotal	---



Lot

48

**CRESCENT CREEK MAIN EVENT 182X**

Male DTZ 182X March 03 2010 1548995

**Sire: MINBURN MAIN EVENT 82R**

DWAJO CHIEF 92E  
CRESCENT CREEK THUNDER 51L  
CRESCENT CREEK QUEEN RUTH 64D

**Dam: CRESCENT CREEK DUCHESS 27P**

BOTANY ANGUS MAX 5A  
CRESCENT CREEK DUCHESS 6E  
DUCHESS JLB 53'83

EPD's:	REA: -0.23	Marb: +0.18	Fat: +0.008	Carcass Wt: +4
--------	------------	-------------	-------------	----------------

B Wt	84 lbs
205 Wt	768 lbs
365 Wt	1168 lbs
C Ease	*
BEPD	+4.2
WEPD	+41
YEPD	+70
Milk	+17
TM	+38
Scrotal	---

Lot #47



Lot #49

Lot

49

**CRESCENT CREEK MAIN EVENT 185X**

Male WOS 185X March 04 2010 1598192

**Sire: MINBURN MAIN EVENT 82R**

TLA PRIDE'S REVIVAL 85G  
CRESCENT CREEK REVIVAL 06J  
CRESCENT CREEK QUEEN RUTH 14Z

**Dam: CRESCENT CREEK ROSEBUD 96M**

BOTANY ANGUS MAX 5A  
CRESCENT CREEK ROSEBUD 134G  
CRESCENT CREEK ROSEBUD 32A

EPD's:	REA: ---	Marb: ---	Fat: ---	Carcass Wt: ---
--------	----------	-----------	----------	-----------------

B Wt	105 lbs
205 Wt	651 lbs
365 Wt	1090 lbs
C Ease	*
BEPD	+6.6
WEPD	+36
YEPD	+58
Milk	+7
TM	+25
Scrotal	---

Lot

50

**CRESCENT CREEK MAIN EVENT 197X**

Male DTZ 197X March 10 2010 1548962

**Sire: MINBURN MAIN EVENT 82R**

S A F FAME NHF AMF CAF  
RRD FAME 1K  
RRD TIBBIE 4E

**Dam: CRESCENT CREEK MARGARET 21M**

DWAJO CHIEF 92E  
CRESCENT CREEK MARGARET 37J  
OPALVILLE MARGARET 12'89

EPD's:	REA: +0.06	Marb: +0.27	Fat: +0.007	Carcass Wt: +2
--------	------------	-------------	-------------	----------------

B Wt	92 lbs
205 Wt	707 lbs
365 Wt	1094 lbs
C Ease	***
BEPD	+5.3
WEPD	+36
YEPD	+63
Milk	+15
TM	+33
Scrotal	---

Lot

51

**CRESCENT CREEK MAX 59X**

Male WOS 59X February 02 2010 1549099

SCOTCH CAP NHF AMF CAF  
G T MAXIMUM NHF AMF CAF  
GT MISS TRAVELER 58

**Sire: BOTANY ANGUS MAX 5A**

BETZOLD VIKING B12  
BOTANY ANGUS LADY ANN 19T  
WESTERTOWN ANN OF BAF 21H

C H QUANTUM 3330  
GDAR QUANTUM 963  
G D A R MISS KEM 080

**Dam: CRESCENT CREEK ROSEBUD 70M**

DOUBLE BAR ROGUE  
CRESCENT CREEK ROSEBUD 38K  
CRESCENT CREEK ROSEBUD 115F

B Wt	98 lbs
205 Wt	693 lbs
365 Wt	1222 lbs
C Ease	**
BEPD	+4.0
WEPD	+36
YEPD	+64
Milk	+12
TM	+30
Scrotal	---

EPD's: REA: -0.28 Marb: +0.22 Fat: +0.013 Carcass Wt: +11

*A peek at the past here. For those who would like another chance at "Max 5A" here it is. This fellow's dam is a very good Scotchman 2999 daughter and what great cows they have become. It is interesting to see how Max 5A still leads in the performance end of things.*

Lot

53

**CRESCENT CREEK CANNON 17X**

Male WOS 17X January 24 2010 1593813

HYLINE WMR SUPER X 502  
MC BEE WMR SUPER X 745  
HYLINE PRIDE 833

**Sire: DWAJO SUPER X 104N**

RONAN TEX 10X  
WICKLOW MISS LUCY 3C  
WICKLOW MISS LUCY 7A  
RITO 549 PRAIRIELANE 8094  
RITO 8094 PRAIRIELANE 2060 AMF  
PRAIRIELANE 6003 ROSEBUD 9045

**Dam: CRESCENT CREEK ROSEBUD 115F**

CRESCENT CREEK INDEPENDENCE 22  
CRESCENT CREEK ROSEBUD 4C  
CRESCENT CREEK ROSEBUD 43Z

B Wt	82 lbs
205 Wt	615 lbs
365 Wt	1048 lbs
C Ease	***
BEPD	+2.6
WEPD	+43
YEPD	+73
Milk	+11
TM	---
Scrotal	+0.89

EPD's: REA: -0.10 Marb: +0.10 Fat: -0.002 Carcass Wt: +12

Lot

52

**CRESCENT CREEK FORTY PROOF 61X**

Male WOS 61X February 02 2010 1590031

TC MOONSHINE 001  
BEVERLY HILLS FRL MOONSHINE  
H A BELETTA 0219

**Sire: B HILLS FORTY PROOF 604**

SITZ ALLIANCE 6595 NHF AMF  
CAR MISS BAILEY 139  
C A R MISS HOSTAGE 635

GEIS MAXIMUM 26'95  
GEIS MAXIMUM 80'01  
GEIS RUBY 185'96

**Dam: BEVERLY HILLS D PRIDE 729**

GDAR SVF TRAVELER 228D  
TLA DINTER PRIDE 7L  
TLA DINTER PRIDE 7H

B Wt	88 lbs
205 Wt	699 lbs
365 Wt	1145 lbs
C Ease	***
BEPD	+4.6
WEPD	+44
YEPD	+75
Milk	+15
TM	+33
Scrotal	---

EPD's: REA: +0.00 Marb: +0.20 Fat: +0.023 Carcass Wt: +9



**Crescent Creek Rosebud 115F**  
Dam of Lot 53



*One of the last own sons of the great "Rosebud 115F". This fellow would happen to be a full brother to Dave Johnson's Super X son that he purchased a couple of years back. This young bull could become a very interesting bull. He has tremendous volume and a great hair coat as well as proven maternal strength.*



Lot  
**54**

## CRESCENT CREEK BARDOLIER 195X

Male WOS 195X March 08 2010 1583657

ADELPHI TOM BOY 20H  
FIGURE 8 ANGUS TOM BOY 509R  
FIGURE 8 ANGUS LADY 604J

### Sire: LOOKOUT HUCK 53T

GDAR RUSS 896  
LOOKOUT EDNA 145L  
KBJ EDNA 432H  
GDAR SVF CHIEF  
DWAJO CHIEF 92E  
WICKLOW MISS LUCY 3C

### Dam: CRESCENT CREEK QUEEN RUTH 72N

SUNMOUND ESTON 27F  
CRESCENT CREEK QUEEN RUTH 4H  
CRESCENT CREEK QUEEN RUTH 14Z

B Wt	82 lbs
205 Wt	533 lbs
365 Wt	1030 lbs
C Ease	****
BEPD	+1.1
WEPD	+23
YEPD	+49
Milk	+8
TM	+20
Scrotal	---

EPD's: REA: +0.03 Marb: +0.06 Fat: -0.016 Carcass Wt: +2



Lot #54

Lot  
**55**

## CRESCENT CREEK BARDOLIER 205X

Male DTZ 205X March 18 2010 1587743

ADELPHI TOM BOY 20H  
FIGURE 8 ANGUS TOM BOY 509R  
FIGURE 8 ANGUS LADY 604J

### Sire: LOOKOUT HUCK 53T

GDAR RUSS 896  
LOOKOUT EDNA 145L  
KBJ EDNA 432H  
LAMBS OVERDRIVE 45E  
SOUTHLAND POWERBALL 128K  
DOUBLE J LASS 452A

### Dam: CRESCENT CREEK LAWN 181N

BOTANY ANGUS MAX 5A  
CRESCENT CREEK LAWN 109H  
ANGUS ACRES LAWN 85Z

B Wt	84 lbs
205 Wt	742 lbs
365 Wt	1117 lbs
C Ease	****
BEPD	+1.2
WEPD	+39
YEPD	+64
Milk	+13
TM	+33
Scrotal	---

EPD's: REA: -0.07 Marb: +0.15 Fat: +0.011 Carcass Wt: +8

*Two young Huck 53T son's that come highly recommended for heifers. In 2010 the Huck sons were very well accepted. Bulls with moderate birth weight and good performance. His daughters are great young cows.*



Lot #55

Lot  
**56**

## DGHR CRESCENT CREEK 35X

Male DGHR 35X March 06 2010 1547283

N BAR EMULATION EXT NHF AMF CAF  
B A R EXT TRAVELER 205 NHF AMF CAF  
B A R QUEEN TRAVELER 3015

### Sire: C R A BEXTOR 872 5205 608 NHF AMF CAF

G A R SLEEP EASY 1009 NHF AMF CAF  
CRA LADY JAYE 608 498 S EASY  
HHF 917 LADY 975 498

G D A R TRAVELER 71 NHF AMF CAF  
SITZ TRAVELER 8180 NHF AMF CAF  
SITZ EVERELDA ENTENSE 1137

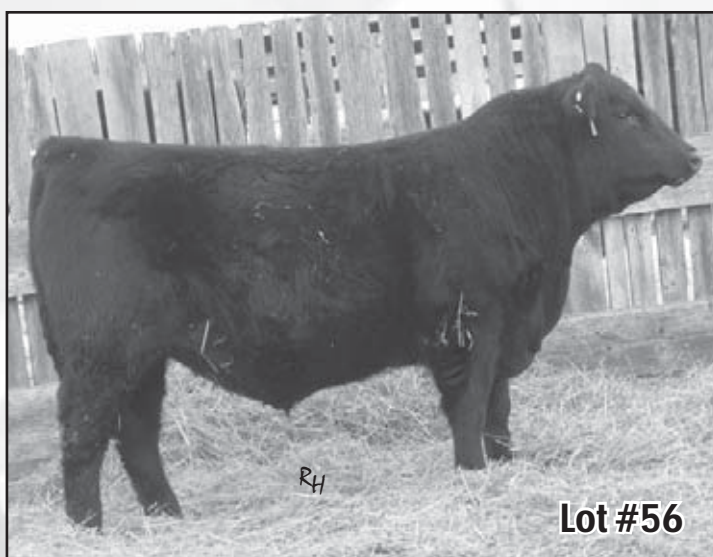
### Dam: CRESCENT CREEK ID ESSA 151L

S A F FAME NHF AMF CAF  
S A V IDESSA 9109  
S A V IDESSA 7174

B Wt	94 lbs
205 Wt	656 lbs
365 Wt	---
C Ease	****
BEPD	+2.7
WEPD	+48
YEPD	+85
Milk	+27
TM	+51
Scrotal	---

EPD's: REA: +0.17 Marb: +0.48 Fat: +0.026 Carcass Wt: +10

*35X offers some time tested genetics in EXT 8180. The Idessa cow family originated in the famed SAV herd. The Idessa's here at Crescent Creek are very productive. 51L is jointly owned with Don Guilford. This young herd bull could make an excellent choice for those who want some strong maternal qualities to add to any program. Don is quite excited about this fellow and so are we.*



Lot #56



Lot

57

**CRESCENT CREEK BRUNO 214X**

Male RC WOS 214X April 12 2010 1590032

STEVENSON BRUNO 561G NHF CAF  
 BEVERLY HILLS FANDANGO 404  
 H A RITO LADY 1262

**Sire: CRESCENT CREEK BRUNO 106U**

RITO 616 OF 4B20 6807 NHF AMF CAF  
 CRESCENT CREEK ROSEBUD 24L  
 CRESCENT CREEK ROSEBUD 134G  
 RED FCC RAMBO 502 OSF  
 RED BJR RAMBLER 5162 OSF  
 BJR GOLDI 355-1122

**Dam: RED CRESCENT CREEK DUCHESS 11P**

RED TS SHAWTOM  
 RED CRESCENT CREEK DUCHESS 48C  
 RED TERRELENE DUCHESS 82Z

B Wt	74 lbs
205 Wt	691 lbs
365 Wt	1246 lbs
C Ease	****
BEPD	-0.7
WEPD	+25
YEPD	+59
Milk	+16
TM	+28
Scrotal	---



**Crescent Creek Bruno 106U**  
*Sire of Lot 57*

EPD's: REA: +0.14 Marb: -0.11 Fat: +0.000 Carcass Wt: +35



**Lot #57**  
**Red Carrier**

*One bull every offering, intrigues a lot of people. I believe 214X is one this year. The youngest bull with perhaps the most herd bull presence. If there is a Red Angus breeder wishing to get in on the ground floor of what could be a real breed changer. His pedigree is flawless; on the top you have all proven greats.*

*Stevenson Bruno, Traveler 6807, Rito 616, and the famed Rosebud. On the bottom you have Samurai, Powerplay, Tomil Gnerem 137N and Rambler 5162. Think about it, time is all you need. In the right hands this calf would be pretty tough on the show road as well, opportunity knocks.*



**Red Crescent Creek Duchess 11P**  
*Dam of Lot 57*



## RED TGA IMAGE 7204T

Male TGA 7204T June 27 2007 1484031

RED PGA RAMBO'S ARNOLD 36  
RED TGA RAMBO 892H  
RED MISS TGA REBELLO 5166

### Sire: RED TGA RAMBO'S IMAGE 5039R

RED ROYAL BODACIOUS 102H  
RED TGA MISS SAMARIE 3210N  
RED TGA MISS SAMARIE 886H  
RED LEACHMAN CHIEFDOM 2X  
RED BOB CLIPPER 45C  
RED BOB CLEOPATRA 15Z

### Dam: RED TGA MS ST SUSAN 935J

RED LEACHMAN CURNT VALUE  
RED PGA MISS CURRENT VALUE 124  
RED ST SUSAN 2114

EPD's:	REA: -0.12	Marb: +0.02	Fat: -0.010
	Yield Grade: -0.06	Carcass Wt: +18	

B Wt	82 lbs
205 Wt	---
365 Wt	---
BEPD	-4.0
WEPD	+16
YEPD	+38
Milk	+14
TM	+22
Scrotal	---
CED	+8.0
CEM	+3.0
Stay	+6
HPG	---



Red TGA Image 7204T - 8 Sons Sell

Lot

58

## RED CRESCENT CREEK IMAGE 18X

Male WOS 18X January 25 2010 1554904

### Sire: RED TGA IMAGE 7204T

RED HR MR CHEROKEE 6Z  
RED HR CHEROKEE 53C  
RED LUMONT MISS COLA 153Z

### Dam: RED CRESCENT CREEK LEMAY 65G

RED LINE DESIGNER 45R  
RED CLAYSMORE LEMAY 14X  
RED CLAYSMORE LEMAY 51R

EPD's:	REA: -0.17	Marb: +0.02	Fat: +0.000
	Yield Grade: -0.07	Carcass Wt: +6	

B Wt	55 lbs
205 Wt	672 lbs
365 Wt	924 lbs
C Ease	*****
BEPD	-5.3
WEPD	+6
YEPD	+22
Milk	+17
TM	+20
Scrotal	---
CED	+14.0
CEM	+4.0
Stay	+7
HPG	+9

A very complete "Image" son out of our Lemay 65G cow. Will make an excellent bull for heifers and you will want to keep all the daughters as they will produce.

We purchased "Image" at the 2009 Bone Creek Ranch Bull Sale. He is co-owned with Dwajo Angus. We were looking for some proven genetics with a strong maternal influence. When you ask Graham Alexander what the cow is like, be assured you will get the whole story. Very few programs have 30 or 40 half sisters producing in their herd, never mind 70 or 80. That fact along with the strict culling program at Bone Creek ensured a strong maternal influence in this bull. "Image" has not disappointed us. His bull calves are the longest spined cattle we have ever raised. You will be impressed!



Lot #58

Lot

59

## RED CRESCENT CREEK IMAGE 35X

Male WOS 35X January 29 2010 1549138

### Sire: RED TGA IMAGE 7204T

RED HOLDEN HI HO 7151 MAF OSF  
RED CRESCENT CREEK HI HO 85M  
RED MEM ICECAP ANNIE 22Z

### Dam: RED CRESCENT CREEK HALLIE 205P

RED BRYLOR GOLD 55H  
RED FLAT LAKE HALLIE 29M  
RED FLAT LAKE HALLIE 66H

EPD's:	REA: -0.15	Marb: -0.17	Fat: -0.040
	Yield Grade: -0.10	Carcass Wt: +25	

B Wt	86 lbs
205 Wt	689 lbs
365 Wt	1127 lbs
C Ease	****
BEPD	-1.1
WEPD	+22
YEPD	+44
Milk	+16
TM	+27
Scrotal	---
CED	+5.0
CEM	+3.0
Stay	+6
HPG	+10



Lot #59



Lot

60

**RED CRESCENT CREEK IMAGE 45X**

Male WOS 45X January 31 2010 1549134

**Sire: RED TGA IMAGE 7204T**

RED D-BAR CURRENT TREND 9K  
 RED D-BAR TREND 1M  
 RED MOOSE CREEK CASI 32E

**Dam: RED CRESCENT CREEK CLAIRE 130P**

RED LITTLE DE BAXTER 742D  
 RED FLAT LAKE CLAIRE 62F  
 RED FLAT LAKE 62A

EPD's:	REA: +0.01	Marb: -0.18	Fat: -0.030
	Yield Grade: -0.15	Carcass Wt: +20	

*One of the longest sided Red bulls here. Again very moderate birth and his dam produced the high selling Suji bull to Lars Lunde in our 2010 sale.*

B Wt	80 lbs
205 Wt	647 lbs
365 Wt	1092 lbs
C Ease	****
BEPD	-2.1
WEPD	+18
YEPD	+37
Milk	+16
TM	+25
Scrotal	---
CED	+6.0
CEM	+3.0
Stay	+8
HPG	+10

Lot

62

**RED CRESCENT CREEK IMAGE 53X**

Male WOS 53X February 01 2010 1549097

**Sire: RED TGA IMAGE 7204T**

TLA NORTHERN SAMURAI  
 RED KBJ SAM'S PROSPECTOR 133Z MAF  
 KBJ ROUND LASSIE 18T

**Dam: RED SUN VALLEY PROSPECT 206**

RITO 2100 G D A R  
 C A R 2100 MISS ENVY 206  
 U R Q MISS ENVY 806

EPD's:	REA: -0.15	Marb: +0.26	Fat: -0.010
	Yield Grade: -0.01	Carcass Wt: +28	

B Wt	72 lbs
205 Wt	754 lbs
365 Wt	1250 lbs
C Ease	****
BEPD	-2.9
WEPD	+23
YEPD	+52
Milk	+14
TM	+26
Scrotal	---
CED	+9.0
CEM	+4.0
Stay	+6
HPG	+12

Lot

61

**RED CRESCENT CREEK IMAGE 49X**

Male WOS 49X January 31 2010 1549112

**Sire: RED TGA IMAGE 7204T**

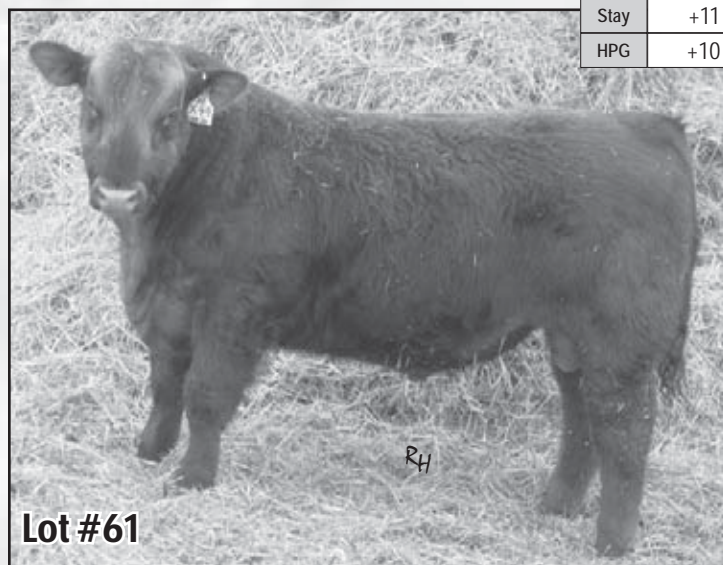
SSS BLACK TREND 13B  
 RED BRYLOR NEW TREND 22D MAF OSF  
 RED MEADOW CK MISS SEAMAN 31A

**Dam: RED CRESCENT CREEK ELENA 126N**

RED LAZY MC DALTON 14C  
 RED FLAT LAKE ELENA 22F  
 RED FLAT LAKE 6U 86

EPD's:	REA: -0.03	Marb: -0.06	Fat: -0.010
	Yield Grade: -0.02	Carcass Wt: +36	

B Wt	102 lbs
205 Wt	709 lbs
365 Wt	1193 lbs
C Ease	*
BEPD	+1.1
WEPD	+28
YEPD	+56
Milk	+15
TM	+29
Scrotal	---
CED	+1.0
CEM	+3.0
Stay	+11
HPG	+10



Lot #61



Lot #62

*Sale feature - Once again Miss Envy 65M has produced a very unique individual - moderate 72 lbs birth with explosive yearling, a rare find. This fellow's pedigree is very good. Check him out sale day.*



Summary Statistics  
Canadian Angus  
Association  
Red Angus  
Average EPD's  
on 2010 calves.

B Wt	+0.5
W Wt	+25
Y Wt	+49
Milk	+15
TM	+27
CED	+4.2
CEM	+3.1
Stay	+9
HPG	+10

Lot  
**63**

## RED CRESCENT CRK RAMBO IMAGE 97X

Male WOS 97X February 09 2010 1549094

**Sire: RED TGA IMAGE 7204T**

RED GRL SIR HBO 1B  
RED ROD 831H  
RED ROD DYNAFIRE 263B

**Dam: RED FLAT LAKE ELENA 48M**

RED LAZY MC DALTON 14C  
RED FLAT LAKE ELENA 22F  
RED FLAT LAKE 6U 86

EPD's:	REA: -0.05	Marb: +0.04	Fat: +0.000
	Yield Grade: -0.09	Carcass Wt: +10	

B Wt	80 lbs
205 Wt	656 lbs
365 Wt	1146 lbs
C Ease	*****
BEPD	-4.2
WEPD	+12
YEPD	+26
Milk	+10
TM	+16
Scrotal	---
CED	+10.0
CEM	+6.0
Stay	+9
HPG	+11



**Lot #63**

*From one of the hardest working Red cows here. The Rambo's Image set of bulls are impressive. Moderate birth with lots of performance. Keep in mind we do not feed our bulls for gain or appearance. The bull's future is of utmost importance. You could easily make these bulls 150 pounds heavier.*



**Red MEM Icecap Annie 22Z**  
Granddam of Lot 64

Lot

**64**

## RED CRESCENT CREEK IMAGE 105X

Male WOS 105X February 10 2010 1549132

**Sire: RED TGA IMAGE 7204T**

RED FCC RAMBO 502 OSF  
RED BJR RAMBLER 5162 OSF  
BJR GOLDI 355-1122

**Dam: RED CRESCENT CREEK ANNIE 68P**

RED MEM ICEBERG 4W  
RED MEM ICECAP ANNIE 22Z  
RED MEM CHINNA 26S

EPD's:	REA: +0.03	Marb: -0.06	Fat: -0.010
	Yield Grade: -0.11	Carcass Wt: +19	

B Wt	82 lbs
205 Wt	702 lbs
365 Wt	1109 lbs
C Ease	*****
BEPD	-2.6
WEPD	+18
YEPD	+36
Milk	+14
TM	+23
Scrotal	---
CED	+8.0
CEM	+4.0
Stay	+7
HPG	+9

*A well bred Rambler X Annie dam. This bull is as long an individual you will ever find. Lots of thickness and a great pedigree top and bottom. A definite herd bull prospect.*



**Lot #64**



## RED CRESCENT CREEK RAMBLER 70P

Male WOS 70P February 02 2004 1218120

RED CV FOUR TIMES  
RED FCC RAMBO 502 OSF  
COPPER LASS 2392

### Sire: RED BJR RAMBLER 5162 OSF

BJR YOGO 002-104  
BJR GOLDI 355-1122  
BJR GOLDI 1706-856  
RED HR MR CHEROKEE 6Z  
RED HR CHEROKEE 53C  
RED LUMONT MISS COLA 153Z

### Dam: RED CRESCENT CREEK LEMAY 65G

RED LINE DESIGNER 45R  
RED CLAYSMORE LEMAY 14X  
RED CLAYSMORE LEMAY 51R

EPD's:	REA: +0.19	Marb: -0.03	Fat: +0.40
	Yield Grade: -0.05	Carcass Wt: +16	

B Wt	78 lbs
205 Wt	736 lbs
365 Wt	1301 lbs
BEPD	-2.4
WEPD	+7
YEPD	+31
Milk	+23
TM	+22
Scrotal	---
CED	+4.0
CEM	+8.0
Stay	+8
HPG	+8

## RED ANGUS Reference Sire



Red Crescent Creek Rambler 70P - 6 Sons Sell

*Rambler is an excellent home raised bull. He offers a very low birth EPD with a big spread for yearling growth. His dam WOS 65G is one of the most prolific producers we have. She has left a son that is good enough for every sale we have had. 70P is an excellent herd bull with great feet and an excellent disposition. Good old time genetics that excel in any program.*

Lot

65

## RED CRESCENT CREEK RAMBLER 132X

Male WOS 132X February 17 2010 1549231

### Sire: RED CRESCENT CREEK RAMBLER 70P

RED BUF CRK ROMEO L081 MAF OSC  
RED GOLD-BAR PANDEMONIUM 113P OSF  
RED GOLD-BAR KURUBA J 213M

### Dam: RED GOLD-BAR DUCHESS PAN 306T

RED D-BAR TREND 1M  
RED CRESCENT CREEK DUCHESS 32P  
RED CRESCENT CREEK DUCHESS 155

EPD's:	REA: +0.11	Marb: -0.05	Fat: +0.010
	Yield Grade: +0.00	Carcass Wt: +40	

B Wt	90 lbs
205 Wt	760 lbs
365 Wt	1173 lbs
C Ease	***
BEPD	+0.9
WEPD	+30
YEPD	+62
Milk	+19
TM	+34
Scrotal	---
CED	+3.0
CEM	+1.0
Stay	+9
HPG	+9



Lot

66

## RED CRESCENT CREEK RAMBLER 168X

Male WOS 168X February 27 2010 1549159

### Sire: RED CRESCENT CREEK RAMBLER 70P

RED D-BAR CURRENT TREND 9K  
RED D-BAR TREND 1M  
RED MOOSE CREEK CASI 32E

### Dam: RED CRESCENT CREEK CLAIRE 23R

RED LITTLE DE BAXTER 742D  
RED FLAT LAKE CLAIRE 62F  
RED FLAT LAKE 62A

EPD's:	REA: +0.22	Marb: -0.15	Fat: +0.000
	Yield Grade: -0.15	Carcass Wt: +16	

B Wt	86 lbs
205 Wt	675 lbs
365 Wt	1159 lbs
C Ease	****
BEPD	+1.6
WEPD	+11
YEPD	+30
Milk	+18
TM	+24
Scrotal	---
CED	+7.0
CEM	+3.0
Stay	+9
HPG	+9



*An excellent "70P" son out of one of our best young Red cows. When you see his mother you will appreciate the completeness of this cow from her feet to her udder to her brood cow look. We really recommend this fellow.*



Lot

67

**RED CRESCENT CREEK RAMBLER 171X**

Male WOS 171X February 28 2010 1549127

**Sire: RED CRESCENT CREEK RAMBLER 70P**

RED D-BAR CURRENT TREND 9K  
 RED D-BAR TREND 1M  
 RED MOOSE CREEK CASI 32E

**Dam: RED CRESCENT CREEK DUCHESS 32P**

RED HR CHEROKEE 53C  
 RED CRESCENT CREEK DUCHESS 155  
 RED CRESCENT CREEK DUCHESS 3F

EPD's:	REA: +0.14	Marb: -0.08	Fat: +0.010
	Yield Grade: -0.06	Carcass Wt: +27	

B Wt	96 lbs
205 Wt	612 lbs
365 Wt	1090 lbs
C Ease	**
BEPD	-0.3
WEPD	+16
YEPD	+43
Milk	+21
TM	+29
Scrotal	---
CED	+4.0
CEM	+0.0
Stay	+9
HPG	+9



Lot

68

**RED CRESCENT CREEK RAMBLER 178X**

Male WOS 178X March 02 2010 1554905

**Sire: RED CRESCENT CREEK RAMBLER 70P**

RED 77 PATCH O GOLD 641F  
 RED BRYLOR GOLD 55H  
 RED IRENE 36E

**Dam: RED FLAT LAKE HALLIE 29M**

RED FLAT LAKE ESTRA 37E  
 RED FLAT LAKE HALLIE 66H  
 RED FLAT LAKE 4Y

EPD's:	REA: -0.01	Marb: -0.12	Fat: +0.000
	Yield Grade: +0.03	Carcass Wt: +42	

B Wt	96 lbs
205 Wt	732 lbs
365 Wt	1085 lbs
C Ease	**
BEPD	+3.4
WEPD	+29
YEPD	+61
Milk	+20
TM	+34
Scrotal	---
CED	+0.0
CEM	+2.0
Stay	+6
HPG	+9



Lot

69

**RED CRESCENT CREEK RAMBLER 202X**

Male WOS 202X March 13 2010 1583648

**Sire: RED CRESCENT CREEK RAMBLER 70P**

SSS BLACK TREND 13B  
 RED BRYLOR NEW TREND 22D  
 RED MEADOW CK MISS SEAMAN 31A

**Dam: RED FLAT LAKE MAXINE 12M**

RED KJM SOMETHIN SPECIAL  
 RED FLAT LAKE SPECIAL LADY 19B  
 RED FLAT LAKE 34W 87

EPD's:	REA: +0.12	Marb: -0.18	Fat: -0.010
	Yield Grade: -0.08	Carcass Wt: +32	

B Wt	86 lbs
205 Wt	666 lbs
365 Wt	1143 lbs
C Ease	****
BEPD	+0.8
WEPD	+20
YEPD	+49
Milk	+18
TM	+28
Scrotal	---
CED	+3.0
CEM	+3.0
Stay	+11
HPG	+9

Lot

70

**RED CRESCENT CREEK RAMBLER 208X**

Male WOS 208X February 20 2010 1549126

**Sire: RED CRESCENT CREEK RAMBLER 70P**

RED D-BAR CURRENT TREND 9K  
 RED D-BAR TREND 1M  
 RED MOOSE CREEK CASI 32E

**Dam: RED CRESCENT CREEK ANNIE 05P**

RED FORSTER CHIEF 7182ET  
 RED CRESCENT CREEK ANNIE 4L  
 RED CRESCENT CREEK ANNIE 68C

EPD's:	REA: +0.27	Marb: -0.10	Fat: +0.010
	Yield Grade: -0.14	Carcass Wt: +17	

B Wt	84 lbs
205 Wt	611 lbs
365 Wt	1024 lbs
C Ease	****
BEPD	-1.0
WEPD	+10
YEPD	+28
Milk	+23
TM	+28
Scrotal	---
CED	+5.0
CEM	+2.0
Stay	+8
HPG	+9

*A young March born bull out of another excellent Annie cow. Buying a son out of an Annie cow never seems to be too far from fault proof.*

## BLACK ANGUS - Open Heifers

Once again we offer an outstanding set of replacement females. We are proud of the fact that you can come and see the sires and mothers off this excellent offering. The home raised bulls are the results of years of selection and culling for the maternal strengths of our breed. The cow families are proven. They are the mothers of strong sets of bulls year after year. This is the heart of the replacement pen. Peek over the fence at what we have retained. These females will work for you the way they do for us. We are quite proud of the number of "elite" females we have under the Canadian Angus Association CAPP Program, for the size of herd we have.

Once again we will offer terms on the females 60% sale day, 40% October 1, both cheques left sale day. Also we have had a number of females left for breeding, taking advantage of our proven calving ease bulls. Ask us about that option, if it fits your plans.

We have assembled groups of ½ and ¾ siblings making your chance of assembling groups easier. This market has turned and younger more productive females will be an asset in the near future.

Due to the dispersal of our Red Angus females all of the Red Angus replacements will be retained and offered for sale on Sunday, August 14, 2011.

### BRONYX EMBLAZON 58T

Male TOT 58T February 04 2007 1430817

D H D TRAVELER 6807 NHF AMF  
O C C EMBLAZON 854E  
DIXIE ERICA OF C H 1019

**Sire: B C C-J C L EMBLAZON 038-287**

ROCKN D AMBUSH 1531 NHF AMF  
B C C 1531 ELDORENE 826-038  
KAPP ELDORENE ERICA ND 826  
E X A R SCOTCH CAP 816 NHF AMF  
RR SCOTCHMAN 2999  
ERICA LASSIE OF R R 8464

**Dam: CRESCENT CREEK ROSEBUD 25R**

CRESCENT CREEK CHIEF 72L  
CRESCENT CREEK ROSEBUD 137N  
CRESCENT CREEK ROSEBUD 38K

B Wt	84 lbs
205 Wt	711 lbs
365 Wt	1254 lbs
BEPD	+6.1
WEPD	+55
YEPD	+95
Milk	+15
TM	+43
Scrotal	---
CED	-6.0
CEM	+0.0

EPD's: REA: +0.18 Marb: +0.15 Fat: +0.000 Carcass Wt: +6

## BLACK ANGUS Reference Sire



Bronyx Emblazon 58T - 9 Daughters Sell

Lot

71

### CRESCENT CREEK HEROINE 7X

Female DTZ 7X January 22 2010 1548960

**Sire: BRONYX EMBLAZON 58T**

BATSCHOL STEMWINDER 31D  
RON'S STEMWINDER 74J  
BATSCHOL JENNIFER 14Z

**Dam: CRESCENT CREEK LADY BATE 111L**

STEVENSON FORTUNE 425C NHF AMF CAF  
CRESCENT CREEK LADY BATE 8H  
CRESCENT CREEK LADY BATE 50F

B Wt	92 lbs
205 Wt	698 lbs
365 Wt	950 lbs
BEPD	+5.0
WEPD	+49
YEPD	+79
Milk	+17
TM	+42
Scrotal	---
CED	-6.0
CEM	+1.0

EPD's: REA: +0.15 Marb: +0.05 Fat: +0.008

Yield Grade: --- Carcass Wt: +10

Mark your Calendar for the  
Crescent Creek  
Red Angus Dispersal Sale  
Sunday, August 14, 2011



Lot

**72****CRESCENT CREEK ESTON ANNE 9X**

Female WOS 9X January 23 2010 1549104

**Sire: BRONYX EMBLAZON 58T**HYLINE WMR SUPER X 502  
MC BEE WMR SUPER X 745  
HYLINE PRIDE 833**Dam: HILOW ESTON ANNE 25N**TRAVELER 3173 G D A R  
HILOW ESTON ANNE 33F  
HILOW ESTON ANNE 44D

EPD's: REA: +0.05 Marb: +0.03 Fat: +0.006

Yield Grade: --- Carcass Wt: +6

B Wt	86 lbs
205 Wt	594 lbs
365 Wt	783 lbs
BEPD	+4.0
WEPD	+42
YEPD	+71
Milk	+14
TM	+35
Scrotal	---
CED	+0.0
CEM	+0.0

*The Emblazon's we have calved out this year have been excellent females. Udder development and mothering ability are what we expect from an Angus female. 9X comes from a hardworking Super X cow from Hi Low Angus.*

**Lot #72**

Lot

**73****CRESCENT CREEK DUCHESS 27X**

Female WOS 27X January 28 2010 1549086

**Sire: BRONYX EMBLAZON 58T**CUDLOBE CHESTER 60D  
CUDLOBE CHESTER 25G  
CUDLOBE ELNORA 60E**Dam: LAMBS DUCHESS 95J**RITO 8094 PRAIRIELANE 2060 AMF  
CRESCENT CREEK DUCHESS 102F  
CRESCENT CREEK DUCHESS 26B

EPD's: REA: --- Marb: --- Fat: ---

Yield Grade: --- Carcass Wt: ---

B Wt	90 lbs
205 Wt	684 lbs
365 Wt	910 lbs
BEPD	+6.2
WEPD	+53
YEPD	+90
Milk	+14
TM	+41
Scrotal	---
CED	-10.0
CEM	-1.0

**Lot #73**

Lot

**74****CRESCENT CREEK ROSEBUD 31X**

Female WOS 31X January 28 2010 1549116

**Sire: BRONYX EMBLAZON 58T**TLA PRIDE'S REVIVAL 85G  
CRESCENT CREEK REVIVAL 06J  
CRESCENT CREEK QUEEN RUTH 14Z**Dam: CRESCENT CREEK ROSEBUD 187N**BOTANY ANGUS MAX 5A  
CRESCENT CREEK ROSEBUD 30D  
CRESCENT CREEK ROSEBUD 43Z

EPD's: REA: -0.04 Marb: +0.00 Fat: +0.004

Yield Grade: --- Carcass Wt: +12

B Wt	90 lbs
205 Wt	663 lbs
365 Wt	927 lbs
BEPD	+6.3
WEPD	+55
YEPD	+89
Milk	+10
TM	+38
Scrotal	---
CED	-9.0
CEM	-4.0

**Lot #74**

Lot

**75****CRESCENT CREEK EULA 41X**

Female WOS 41X January 30 2010 1549089

**Sire: BRONYX EMBLAZON 58T**TLA PRIDE'S REVIVAL 85G  
CRESCENT CREEK REVIVAL 06J  
CRESCENT CREEK QUEEN RUTH 14Z**Dam: CRESCENT CREEK EULA 102L**DWAJO CHIEF 92E  
CRESCENT CREEK EULA 142G  
CRESCENT CREEK EULA 42E

EPD's: REA: +0.07 Marb: -0.01 Fat: -0.011

Yield Grade: --- Carcass Wt: +8

B Wt	88 lbs
205 Wt	583 lbs
365 Wt	772 lbs
BEPD	+6.3
WEPD	+46
YEPD	+78
Milk	+6
TM	+29
Scrotal	---
CED	-8.0
CEM	-2.0

Lot

76

**CRESCENT CREEK DUCHESS 68X**

Female WOS 68X February 04 2010 1549131

**Sire: BRONYX EMBLAZON 58T**C H QUANTUM 3330  
GDAR QUANTUM 963  
G D A R MISS KEM 080**Dam: CRESCENT CREEK DUCHESS 56P**C H REVIVAL 104  
ASPELUND DUCHESS 81G  
DWAJO DUCHESS 8E

EPD's: REA: +0.13 Marb: +0.13 Fat: +0.001

Yield Grade: --- Carcass Wt: +6

B Wt	70 lbs
205 Wt	591 lbs
365 Wt	818 lbs
BEPD	+1.4
WEPD	+36
YEPD	+68
Milk	+16
TM	+34
Scrotal	---
CED	+5.0
CEM	+6.0

One of our favorite 58T daughters. The Duchess cow family has risen to the top of great producers.



Lot

77

**CRESCENT CREEK BARANDA 76X**

Female WOS 76X February 05 2010 1549115

**Sire: BRONYX EMBLAZON 58T**GDAR SVF CHIEF  
DWAJO CHIEF 92E  
WICKLOW MISS LUCY 3C**Dam: CRESCENT CREEK BARANDA 184N**BOTANY ANGUS MAX 5A  
CRESCENT CREEK BARANDA 7C  
CRESCENT CREEK BARANDA 52Z

EPD's: REA: -0.03 Marb: +0.03 Fat: -0.014

Yield Grade: --- Carcass Wt: +7

B Wt	102 lbs
205 Wt	675 lbs
365 Wt	889 lbs
BEPD	+8.1
WEPD	+48
YEPD	+79
Milk	+16
TM	+40
Scrotal	---
CED	-14.0
CEM	-9.0



Lot

78

**CRESCENT CREEK PRIDE 94X**

Female DTZ 94X February 09 2010 1548958

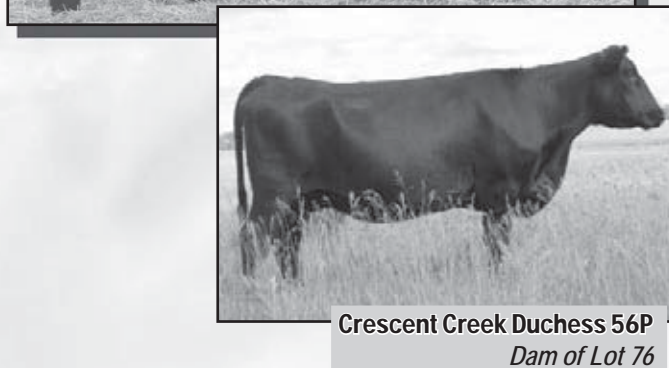
**Sire: BRONYX EMBLAZON 58T**BATSCHOL MASTERPLAN  
JAY EN DEE MASTERPLAN 3  
JAY EN DEE EILEEN 73P**Dam: CRESCENT CREEK PRIDE LADY 34L**FREEWAY 276T OF J R S  
CRESCENT CREEK PRIDE LADY 36Y  
CRESCENT CREEK JET LADY 51S

EPD's: REA: +0.16 Marb: -0.02 Fat: -0.015

Yield Grade: --- Carcass Wt: +7

B Wt	82 lbs
205 Wt	691 lbs
365 Wt	867 lbs
BEPD	+4.6
WEPD	+46
YEPD	+74
Milk	+17
TM	+40
Scrotal	---
CED	-5.0
CEM	+0.0

An excellent 58T daughter out of a Masterplan cow who brings in a good calf every year.



Crescent Creek Duchess 56P  
Dam of Lot 76

Lot

79

**CRESCENT CREEK PRIDE 108X**

Female WOS 108X February 10 2010 1549103

**Sire: BRONYX EMBLAZON 58T**SITZ ALLIANCE 6595 NHF AMF  
REMITALL LEGIONAIRE 8L  
REMITALL NEONIA 42J**Dam: REMITALL PRIDE 23N**ROYLE-HEAD RIGHT TIME 27E  
LLB EMPIRE PRIDE 385K  
ASPELUND PRIDE 70G

EPD's: REA: +0.07 Marb: +0.05 Fat: +0.009

Yield Grade: --- Carcass Wt: +14

B Wt	104 lbs
205 Wt	661 lbs
365 Wt	863 lbs
BEPD	+7.6
WEPD	+49
YEPD	+84
Milk	+14
TM	+39
Scrotal	---
CED	-12.0
CEM	-3.0





# BLACK ANGUS Reference Sire

## CUDLOBE MONEYMAKER 79U

Male (ET) UF 79U January 29 2008 1484098

S A F 598 BANDO 5175 AMF CAC  
BOYD ON TARGET 1083 NHF AMF CAC  
BOYD FOREVER LADY 7095  
**Sire: STEVENSON MONEYMAKER R185** NHF AMF CAF  
VDAR AMBUSH 2478  
STEVENSON CLOVA PRIDE L888 NHF AMF  
STEVENSON CLOVA PRIDE 712H  
PARAMONT AMBUSH 2172 NHF AMF CAF  
ROCKN D AMBUSH 1531 NHF AMF CAF  
MS BLACKCAP BAND OF R D 1301  
**Dam: STEVENSON CLOVA PRIDE L901** NHF AMF  
GARDENS EXPEDITION NHF AMF CAF  
STEVENSON CLOVA PRIDE 7229  
STEVENSON CLOVA PRIDE 4177

B Wt	83 lbs
205 Wt	741 lbs
365 Wt	1392 lbs
BEPD	+1.6
WEPD	+52
YEPD	+97
Milk	+17
TM	+43
Scrotal	+0.25
CED	+6.0
CEM	+8.0

EPD's: REA: +0.03 Marb: +0.44 Fat: +0.032 Carcass Wt: +13



Lot #80



Lot #81



Lot #82

Lot  
**80**

## CRESCENT CREEK ERICA 40X

Female WOS 40X January 30 2010 1555554

**Sire: CUDLOBE MONEYMAKER 79U**

E X A R SCOTCH CAP 816 NHF AMF CAF  
RR SCOTCHMAN 2999  
ERICA LASSIE OF R R 8464

**Dam: CRESCENT CREEK ERICA 133S**

TRAVELER 3173 G D A R  
HILOW ERICA 32D  
HILOW ERICA 2B

EPD's: REA: -0.01 Marb: +0.26 Fat: +0.034  
Yield Grade: --- Carcass Wt: +15

B Wt	80 lbs
205 Wt	---
365 Wt	---
BEPD	+1.2
WEPD	+44
YEPD	+83
Milk	+18
TM	---
Scrotal	---
CED	---
CEM	---

Lot  
**81**

## CRESCENT CREEK QUEEN RUTH 42X

Female Twin WOS 42X January 30 2010 1549207

**Sire: CUDLOBE MONEYMAKER 79U**

E X A R SCOTCH CAP 816 NHF AMF CAF  
RR SCOTCHMAN 2999  
ERICA LASSIE OF R R 8464

**Dam: CRESCENT CREEK QUEEN RUTH 36T**

SASKALTA BARDOLINE 61F  
CRESCENT CREEK QUEEN RUTH 28J  
CRESCENT CREEK QUEEN RUTH 32U

EPD's: REA: --- Marb: --- Fat: ---  
Yield Grade: --- Carcass Wt: +15

B Wt	68 lbs
205 Wt	652 lbs
365 Wt	816 lbs
BEPD	+3.0
WEPD	+47
YEPD	+85
Milk	+15
TM	---
Scrotal	+0.13
CED	---
CEM	---

Lot  
**82**

## CRESCENT CREEK QUEEN RUTH 042X

Female Twin WOS 042X January 30 2010 1549206

**Sire: CUDLOBE MONEYMAKER 79U**

E X A R SCOTCH CAP 816 NHF AMF CAF  
RR SCOTCHMAN 2999  
ERICA LASSIE OF R R 8464

**Dam: CRESCENT CREEK QUEEN RUTH 36T**

SASKALTA BARDOLINE 61F  
CRESCENT CREEK QUEEN RUTH 28J  
CRESCENT CREEK QUEEN RUTH 32U

EPD's: REA: --- Marb: --- Fat: ---  
Yield Grade: --- Carcass Wt: ---

B Wt	70 lbs
205 Wt	602 lbs
365 Wt	854 lbs
BEPD	+3.0
WEPD	+47
YEPD	+85
Milk	+15
TM	---
Scrotal	+0.13
CED	---
CEM	---

Lot

**83****CRESCENT CREEK ROSEBUD 126X**

Female WOS 126X February 16 2010 1549218

**Sire: CUDLOBE MONEYMAKER 79U**E X A R SCOTCH CAP 816 NHF AMF CAF  
RR SCOTCHMAN 2999  
ERICA LASSIE OF R R 8464**Dam: CRESCENT CREEK ROSEBUD 101T**GDAR QUANTUM 963  
CRESCENT CREEK ROSEBUD 70M  
CRESCENT CREEK ROSEBUD 38K

EPD's: REA: -0.06 Marb: +0.26 Fat: +0.032

Yield Grade: --- Carcass Wt: +14

B Wt	68 lbs
205 Wt	626 lbs
365 Wt	922 lbs
BE PD	+2.0
WE PD	+42
YE PD	+81
Milk	+18
TM	---
Scrotal	+0.13
CED	---
CEM	---

**Lot #83**

Lot

**84****CRESCENT CREEK ROSEBUD 0126X**

Female Twin WOS 0126X February 16 2010 1549217

**Sire: CUDLOBE MONEYMAKER 79U**E X A R SCOTCH CAP 816 NHF AMF CAF  
RR SCOTCHMAN 2999  
ERICA LASSIE OF R R 8464**Dam: CRESCENT CREEK ROSEBUD 101T**GDAR QUANTUM 963  
CRESCENT CREEK ROSEBUD 70M  
CRESCENT CREEK ROSEBUD 38K

EPD's: REA: -0.06 Marb: +0.26 Fat: +0.032

Yield Grade: --- Carcass Wt: +14

B Wt	50 lbs
205 Wt	584 lbs
365 Wt	798 lbs
BE PD	+2.0
WE PD	+42
YE PD	+81
Milk	+18
TM	---
Scrotal	+0.13
CED	---
CEM	---

**Lot #84**

Lot

**85****CRESCENT CREEK EULA 179X**

Female WOS 179X March 03 2010 1583643

**Sire: CUDLOBE MONEYMAKER 79U**O C C TRAVELER 723Z  
GDAR TRAVELER 235  
GDAR PRIMROSE 0251**Dam: CRESCENT CREEK EULA 134R**DWAJO CHIEF 92E  
CRESCENT CREEK EULA 63H  
CRESCENT CREEK EULA 82A

EPD's: REA: --- Marb: --- Fat: ---

Yield Grade: --- Carcass Wt: ---

B Wt	86 lbs
205 Wt	610 lbs
365 Wt	874 lbs
BE PD	+2.9
WE PD	+40
YE PD	+75
Milk	+15
TM	+35
Scrotal	---
CED	+2.0
CEM	+6.0

**Lot #85**

Lot

**86****CRESCENT CREEK HEROINE 200X**

Female KOS 200X March 10 2010 1583667

**Sire: CUDLOBE MONEYMAKER 79U**C A R IDEAL 650  
CAR IDEAL 061  
C A R MISS VIKING 601**Dam: CRESCENT CREEK HEROINE 167T**RON'S STEMWINDER 74J  
CRESCENT CREEK HEROINE 13L  
CRESCENT CREEK HEROINE 8D

EPD's: REA: --- Marb: --- Fat: ---

Yield Grade: --- Carcass Wt: ---

B Wt	84 lbs
205 Wt	598 lbs
365 Wt	837 lbs
BE PD	+4.3
WE PD	+38
YE PD	+72
Milk	+18
TM	+37
Scrotal	---
CED	-1.0
CEM	+4.0

**Lot #86**



Lot  
**87**

## CRESCENT CREEK ROSEBUD 204X

Female WOS 204X March 18 2010 1583649

**Sire: CUDLOBE MONEYMAKER 79U**

DWAJO SUPER X 104N  
CRESCENT CREEK SUPER X 188R  
CRESCENT CREEK ROSEBUD 115F

**Dam: CRESCENT CREEK ROSEBUD 25T**

RR SCOTCHMAN 2999  
CRESCENT CREEK ROSEBUD 14R  
CRESCENT CREEK ROSEBUD 43Z

EPD's:	REA: ---	Marb: ---	Fat: ---
	Yield Grade: ---	Carcass Wt: ---	

B Wt	78 lbs
205 Wt	648 lbs
365 Wt	825 lbs
BEPD	+2.5
WEPD	+50
YEPD	+89
Milk	+15
TM	+40
Scrotal	---
CED	+2.0
CEM	+6.0

*The youngest female in the offering, out of a very good Rosebud cow. This female could make an excellent Junior project.*



**PRETTY VIEW**  
Stock Farm Ltd.



Ivan and Phyllis Olynyk  
**306.563.5099**  
ivan@prettyview.net  
www.prettyview.net  
Canora, Saskatchewan

**RODENATOR**  
Pest Control

★

**Northstar**  
Seed  
**CORN & FORAGE**  
seed dealers

PVSE

Beef business consultation - for a "you can do it, hands on way" including grazing, electric fence design and breeding stock selection for lower cost production.

## MINBURN MAIN EVENT 82R

Male DW 82R February 16 2005 1302667

STEVENSON FORTUNE 425C NHF AMF CAF  
CRESCENT CREEK MAIN EVENT 6H  
CRESCENT CREEK ROSEBUD 115F

### Sire: MINBURN MAIN EVENT 71N

MINBURN LANCER 73B  
MINBURN BLACKBIRD 17E  
MINBURN BLACKBIRD 23B

JAY EN DEE MASTERPLAN 3  
EVERBLACK MASTERPLAN 007  
WHISKYJACK TRAVELING LUCY 2Z

### Dam: MINBURN JOY 34L

V D A R NEW TREND 315 NHF AMF CAF  
HILL VIEW JOY 70D  
KBJ PRIDE 707Y

B Wt	90 lbs
205 Wt	740 lbs
365 Wt	1309 lbs
BEPD	+5.3
WEPD	+41
YEPD	+68
Milk	+18
TM	+39
Scrotal	---
CED	-3.0
CEM	+6.0

EPD's: REA: +0.01 Marb: +0.23 Fat: +0.023 Carcass Wt: +4

## BLACK ANGUS Reference Sire



Minburn Main Event 82R - 6 Daughters Sell

Lot

88

## CRESCENT CREEK ROSEBUD 74X

Female WOS 74X February 04 2010 1549113

### Sire: MINBURN MAIN EVENT 82R

C H QUANTUM 3330  
GDAR QUANTUM 963  
G D A R MISS KEM 080

### Dam: CRESCENT CREEK BLACKBIRD 138N

WAVY RITO 6G  
CRESCENT CREEK BLACKBIRD 126J  
CRESCENT CREEK BLACKBIRD 24C

EPD's: REA: -0.11 Marb: +0.26 Fat: +0.017

Yield Grade: --- Carcass Wt: +3

B Wt	62 lbs
205 Wt	611 lbs
365 Wt	819 lbs
BEPD	-0.4
WEPD	+39
YEPD	+68
Milk	+15
TM	+35
Scrotal	---
CED	+9.0
CEM	+11.0

74X could very well be the best heifer in the whole pen. Moderate for size with plenty of volume and extra length. The Blackbird's are an excellent cow family.



Lot #88

Lot

89

## CRESCENT CREEK HEROINE 92X

Female DTZ 92X February 08 2010 1548997

### Sire: MINBURN MAIN EVENT 82R

O C C TRAVELER 723Z  
GDAR TRAVELER 235  
GDAR PRIMROSE 0251

### Dam: CRESCENT CREEK HEROINE 121P

CRESCENT CREEK REVIVAL 06J  
CRESCENT CREEK HEROINE 159M  
CRESCENT CREEK HEROINE 68F

EPD's: REA: -0.03 Marb: +0.15 Fat: +0.024

Yield Grade: --- Carcass Wt: +7

B Wt	92 lbs
205 Wt	646 lbs
365 Wt	904 lbs
BEPD	+5.9
WEPD	+47
YEPD	+78
Milk	+12
TM	+36
Scrotal	---
CED	-7.0
CEM	+3.0



Lot #89



Lot

90

**CRESCENT CREEK PRIDE 119X**

Female WOS 119X February 13 2010 1549114

**Sire: MINBURN MAIN EVENT 82R**DWAJO CHIEF 92E  
CRESCENT CREEK CHIEF 72L  
LAZY J BARDELLA LASS 3D**Dam: CRESCENT CREEK PRIDE 155N**DWAJO CHIEF 92E  
CRESCENT CREEK PRIDE 40K  
CRESCENT CREEK PRIDE 38Z

EPD's: REA: -0.02 Marb: +0.05 Fat: -0.008

Yield Grade: --- Carcass Wt: +1

B Wt	76 lbs
205 Wt	612 lbs
365 Wt	788 lbs
BE PD	+4.2
WE PD	+38
YE PD	+65
Milk	+15
TM	+34
Scrotal	---
CED	-1.0
CEM	+6.0



Lot #90

Lot

91

**CRESCENT CREEK HEROINE 154X**

Female DTZ 154X February 23 2010 1548985

**Sire: MINBURN MAIN EVENT 82R**GDAR SVF CHIEF  
DWAJO CHIEF 92E  
WICKLOW MISS LUCY 3C**Dam: CRESCENT CREEK HEROINE 58N**RITO 8094 PRAIRIELANE 2060 AMF  
CRESCENT CREEK HEROINE 68F  
CRESCENT CREEK HEROINE 81C

EPD's: REA: -0.15 Marb: +0.13 Fat: -0.009

Yield Grade: --- Carcass Wt: +1

B Wt	98 lbs
205 Wt	647 lbs
365 Wt	836 lbs
BE PD	+8.1
WE PD	+44
YE PD	+72
Milk	+14
TM	+36
Scrotal	---
CED	-13.0
CEM	-2.0



Lot #91

Lot

92

**CRESCENT CREEK BONNIE 155X**

Female WOS 155X February 24 2010 1549091

**Sire: MINBURN MAIN EVENT 82R**LEACHMAN RIGHT TIME AMF  
ROYLE-HEAD RIGHT TIME 27E  
ROYLE-HEAD ROSEBUD 42C**Dam: LLB BONNIE 236L**WIWA DIAMOND JIM 35'90  
DOUBLE J BONNIE 354D  
DOUBLE J BONNIE 101W

EPD's: REA: -0.11 Marb: +0.10 Fat: +0.002

Yield Grade: --- Carcass Wt: +4

B Wt	104 lbs
205 Wt	631 lbs
365 Wt	783 lbs
BE PD	+7.3
WE PD	+38
YE PD	+61
Milk	+13
TM	+32
Scrotal	---
CED	-11.0
CEM	-3.0



Lot #92

Lot

93

**CRESCENT CREEK QUEEN RUTH 183X**

Female WOS 183X March 03 2010 1583645

**Sire: MINBURN MAIN EVENT 82R**C H QUANTUM 3330  
GDAR QUANTUM 963  
G D A R MISS KEM 080**Dam: CRESCENT CREEK QUEEN RUTH 159P**RIVERSTOWN 2100 6Z  
CRESCENT CREEK QUEEN RUTH 59B  
CRESCENT CREEK QUEEN RUTH 14Z

EPD's: REA: +0.02 Marb: +0.11 Fat: +0.005

Yield Grade: --- Carcass Wt: +2

B Wt	82 lbs
205 Wt	696 lbs
365 Wt	872 lbs
BE PD	+3.1
WE PD	+37
YE PD	+62
Milk	+17
TM	+36
Scrotal	---
CED	-1.0
CEM	+5.0



Lot #93



## SILVER DOME DYNASTY 19T

Male SDF 19T February 04 2007 1409039

ESTON M G 4W  
ESTON ENCOUNTER M G 55/71  
BLACKCAP OF A L F 10S

**Sire: WANDERING CRK DYNASTY JRM 2F**

BANDOLIERMERE G V 4N  
ROSE G V 37U  
ROSE G V 23N

DURNES WINTON 43D  
DURNES WINTON 14H  
DURNES BEA 14C

**Dam: SILVER DOME OAKLEAF 119L**

SILVER DOME WINDER SLEAK 21Z  
SILVER DOME OAKLEAF 19D  
RONAN OAKLEAF 19Z

B Wt	89 lbs
205 Wt	776 lbs
365 Wt	---
BEPD	+2.4
WEPD	+28
YEPD	+40
Milk	+14
TM	+28
Scrotal	---
CED	+0.0
CEM	-3.0

EPD's: REA: --- Marb: --- Fat: --- Carcass Wt: ---

## BLACK ANGUS Reference Sire



Silver Dome Dynasty 19T - 4 Daughters Sell

Lot

94

## CRESCENT CREEK ROSEBUD 70X

Female WOS 70X February 04 2010 1549203

**Sire: SILVER DOME DYNASTY 19T**

MINBURN MAIN EVENT 71N  
MINBURN MAIN EVENT 82R  
MINBURN JOY 34L

**Dam: CRESCENT CREEK ROSEBUD 19T**

RR SCOTCHMAN 2999  
CRESCENT CREEK ROSEBUD 52P  
CRESCENT CREEK ROSEBUD 42M

B Wt	80 lbs
205 Wt	708 lbs
365 Wt	909 lbs
BEPD	+3.4
WEPD	+44
YEPD	+69
Milk	+19
TM	+41
Scrotal	---
CED	-2.0
CEM	+1.0

EPD's: REA: --- Marb: --- Fat: ---  
Yield Grade: --- Carcass Wt: ---

*A very good cross, with proven genetics in Dynasty and Scotch Cap. The heifers are not fattened for near perfect pictures.*



RH

Lot #94



Lot

95

**CRESCENT CREEK IDESSA 162X**

Female WOS 162X February 26 2010 1549227

**Sire: SILVER DOME DYNASTY 19T**E X A R SCOTCH CAP 816 NHF AMF CAF  
RR SCOTCHMAN 2999  
ERICA LASSIE OF R R 8464**Dam: CRESCENT CREEK IDESSA 208T**S A F FAME NHF AMF CAF  
S A V IDESSA 9109  
S A V IDESSA 7174

EPD's:	REA: ---	Marb: ---	Fat: ---
	Yield Grade: ---	Carcass Wt: ---	

B Wt	78 lbs
205 Wt	608 lbs
365 Wt	835 lbs
BEPD	+2.8
WEPD	+37
YEPD	+58
Milk	+13
TM	+32
Scrotal	---
CED	+1.0
CEM	+4.0



Lot

96

**CRESCENT CREEK LADY BATE 172X**

Female WOS 172X February 28 2010 1549219

**Sire: SILVER DOME DYNASTY 19T**C A R IDEAL 650  
CAR IDEAL 061  
C A R MISS VIKING 601**Dam: CRESCENT CREEK LADY BATE 117T**BOTANY ANGUS MAX 5A  
CRESCENT CREEK LADY BATE 50F  
CRESCENT CREEK LADY BATE 48Y

EPD's:	REA: ---	Marb: ---	Fat: ---
	Yield Grade: ---	Carcass Wt: ---	

B Wt	72 lbs
205 Wt	575 lbs
365 Wt	827 lbs
BEPD	+2.1
WEPD	+28
YEPD	+49
Milk	+18
TM	+32
Scrotal	---
CED	+3.0
CEM	+3.0



Lot

97

**CRESCENT CREEK PRIDE 186X**

Female DTZ 186X March 04 2010 1549011

**Sire: SILVER DOME DYNASTY 19T**E X A R SCOTCH CAP 816 NHF AMF CAF  
RR SCOTCHMAN 2999  
ERICA LASSIE OF R R 8464**Dam: CRESCENT CREEK PRIDE 28T**CHICO KODIAK 93K  
CRESCENT CREEK PRIDE 27M  
CRESCENT CREEK PRIDE 10E

EPD's:	REA: ---	Marb: ---	Fat: ---
	Yield Grade: ---	Carcass Wt: ---	

B Wt	80 lbs
205 Wt	589 lbs
365 Wt	822 lbs
BEPD	+3.5
WEPD	+32
YEPD	+52
Milk	+17
TM	+33
Scrotal	---
CED	-1.0
CEM	-1.0



Lot

98

**CRESCENT CREEK QUEEN RUTH 189X**

Female WOS 189X March 06 2010 1583646

**Sire: SILVER DOME DYNASTY 19T**MINBURN MAIN EVENT 71N  
MINBURN MAIN EVENT 82R  
MINBURN JOY 34L**Dam: CRESCENT CREEK QUEEN RUTH 56T**CRESCENT CREEK REVIVAL 06J  
CRESCENT CREEK QUEEN RUTH 66M  
TRAILVIEW EMPIRE PRIDE 127'96

EPD's:	REA: ---	Marb: ---	Fat: ---
	Yield Grade: ---	Carcass Wt: ---	

B Wt	94 lbs
205 Wt	647 lbs
365 Wt	893 lbs
BEPD	+6.5
WEPD	+38
YEPD	+58
Milk	+13
TM	+32
Scrotal	---
CED	-10.0
CEM	-4.0

Lot

99

**CRESCENT CREEK EULA 160X**

Female WOS 160X February 26 2010 1549256

ADELPHI TOM BOY 20H  
FIGURE 8 ANGUS TOM BOY 509R  
FIGURE 8 ANGUS LADY 604J

**Sire: LOOKOUT HUCK 53T**

GDAR RUSS 896  
LOOKOUT EDNA 145L  
KBJ EDNA 432H

MINBURN MAIN EVENT 71N  
MINBURN MAIN EVENT 82R  
MINBURN JOY 34L

**Dam: CRESCENT CREEK EULA 144U**

DWAJO CHIEF 92E  
CRESCENT CREEK EULA 94L  
CRESCENT CREEK EULA 82A

B Wt	70 lbs
205 Wt	638 lbs
365 Wt	783 lbs
BEPD	+2.1
WEPD	+38
YEPD	+66
Milk	+14
TM	+33
Scrotal	---
CED	+3.0
CEM	+5.0

EPD's:	REA: ---	Marb: ---	Fat: ---
	Yield Grade: ---	Carcass Wt: ---	

Lot

101

**CRESCENT CREEK 84X**

Female WOS 84X February 6 2010 CM274964

**Sire: ANGUS**

RED SIX MILE ICEBERG 569S  
RED MEM ICEBERG 4W  
RED MEM DANA STORM 15S

**Dam: RED CRESCENT CREEK DUCHESS 35U**

RED BJR RAMBLER 5162  
RED CRESCENT CREEK DUCHESS 11P  
RED CRESCENT CREEK DUCHESS 48C

B Wt	58 lbs
205 Wt	637 lbs
365 Wt	826 lbs
BEPD	---
WEPD	---
YEPD	---
Milk	---
TM	---
Scrotal	---
CED	---
CEM	---

EPD's:	REA: ---	Marb: ---	Fat: ---
	Yield Grade: ---	Carcass Wt: ---	

Lot

102

**CRESCENT CREEK ROSEBUD 65X**

Female WOS 65X February 03 2010 1549224

Q A S TRAVELER 23-4 NHF AMF CAF  
TRAVELER 1148 G D A R  
BLACKCAP FOREVER 485 G D A R

**Sire: G D A R TRAVELER 71 NHF AMF CAF**

LAVANA 355 G D A R  
G D A R MISS BLACKCAP 567  
BLACKCAP LADY 384 G D A R

MINBURN MAIN EVENT 71N  
MINBURN MAIN EVENT 82R  
MINBURN JOY 34L

**Dam: CRESCENT CREEK ROSEBUD 150T**

SITZ HERITAGE 10709  
CRESCENT CREEK ROSEBUD 6R  
CRESCENT CREEK ROSEBUD 115F

B Wt	66 lbs
205 Wt	584 lbs
365 Wt	792 lbs
BEPD	+0.0
WEPD	+32
YEPD	+60
Milk	+29
TM	+45
Scrotal	---
CED	+8.0
CEM	+11.0

EPD's:	REA: -0.26	Marb: +0.31	Fat: +0.032
	Yield Grade: ---	Carcass Wt: +4	

*Rare opportunity to purchase a direct Traveler 71 female. Her Dam produced an excellent herd bull purchased by Ivanhoe Angus in last year's sale.*

Lot

100

**CRESCENT CREEK QUEEN RUTH 3X**

Female DTZ 3X January 20 2010 1548953

SCOTCH CAP NHF AMF CAF  
G T MAXIMUM NHF AMF CAF  
GT MISS TRAVELER 58

**Sire: BOTANY ANGUS MAX 5A**

BETZOLD VIKING B12  
BOTANY ANGUS LADY ANN 19T  
WESTERTOWN ANN OF BAF 21H

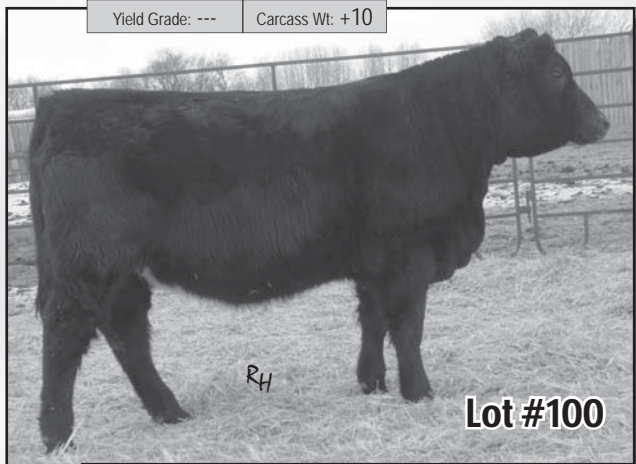
GRASSMERE BRUTUS 15C  
CRESCENT CREEK BRUTUS 105F  
LAZY J BARDELLA LASS 3D

**Dam: CRESCENT CREEK QUEEN RUTH 148H**

S A R JETSTREAM EXTREME 5262  
CRESCENT CREEK QUEEN RUTH 32U  
QUEEN RUTH 1385

B Wt	72 lbs
205 Wt	546 lbs
365 Wt	760 lbs
BEPD	+0.8
WEPD	+30
YEPD	+49
Milk	+5
TM	+20
Scrotal	---
CED	+3.0
CEM	+3.0

EPD's:	REA: -0.15	Marb: +0.17	Fat: +0.020
	Yield Grade: ---	Carcass Wt: +10	





## CRESCENT CREEK EMBLAZON 07T

Male Twin WOS 07T January 19 2007 1380338

D H D TRAVELER 6807 NHF AMF  
O C C EMBLAZON 854E  
DIXIE ERICA OF C H 1019

**Sire: B C C - J C L EMBLAZON 038-287**

ROCKN D AMBUSH 1531 NHF AMF  
B C C 1531 ELDORENE 826-038  
KAPP ELDORENE ERICA ND 826  
SITZ ALLIANCE 6595 NHF AMF  
SITZ HERITAGE 10709  
SITZ EMMA E 707

**Dam: CRESCENT CREEK ROSEBUD 10R**

RITO 8094 PRAIRIELANE 2060 AMF  
CRESCENT CREEK ROSEBUD 115F  
CRESCENT CREEK ROSEBUD 4C

B Wt	58 lbs
205 Wt	651 lbs
365 Wt	1125 lbs
BEPD	+4.0
WEPD	+34
YEPD	+69
Milk	+14
TM	+31
Scrotal	---
CED	-2.0
CEM	+2.0

EPD's: REA: +0.19 Marb: +0.30 Fat: +0.008 Carcass Wt: +3

## BLACK ANGUS Reference Sire



B C C - J C L Emblazon 038-287 - Sire of Emblazon 07T

Lot  
**103**

## CRESCENT CREEK BLUE LASS 166X

Female WOS 166X February 27 2010 1549101

**Sire: CRESCENT CREEK EMBLAZON 07T**

LOST LAKE ICEBERG 3438  
CAR ICEBERG 056  
C A R LADY TRACKER 620

**Dam: DRYLAND BLUE LASS 273**

MVFA OBVIOUS TREND 17F  
LLB BLUE LASS 0291K  
LLB BLUE LASS 0196F

EPD's: REA: +0.09 Marb: +0.17 Fat: -0.012

Yield Grade: --- Carcass Wt: +8

B Wt	86 lbs
205 Wt	614 lbs
365 Wt	860 lbs
BEPD	+4.6
WEPD	+35
YEPD	+69
Milk	+14
TM	+32
Scrotal	---
CED	-4.0
CEM	+1.0



Lot #103

Lot  
**104**

## CRESCENT CREEK LASS 199X

Female DOS 199X March 10 2010 1583664

**Sire: CRESCENT CREEK EMBLAZON 07T**

O C C EMBLAZON 854E NHF AMF CAF  
B C C - J C L EMBLAZON 038-287  
B C C 1531 ELDORENE 826-038

**Dam: CRESCENT CREEK EMBLAZON 49T**

AJCHAF TRAVELER 01L  
YOUNG DALE MCHENRY LASS 101R  
MINBURN MCHENRY LASS 22K

EPD's: REA: +0.17 Marb: +0.27 Fat: +0.006

Yield Grade: --- Carcass Wt: +4

B Wt	88 lbs
205 Wt	657 lbs
365 Wt	872 lbs
BEPD	+4.4
WEPD	+35
YEPD	+76
Milk	+14
TM	+32
Scrotal	---
CED	-2.0
CEM	+1.0



Lot #104

## CRESCENT CREEK PACESETTER 16U

Male KOS 16U January 8 2008 1435898

PARAMONT AMBUSH 2172 NHF AMF CAF  
WILLABAR AMBUSH 45G  
WILLABAR COUNTESS 90A

### Sire: LOOKOUT PACESETTER 258M

ED RENE EILEENMERE 45P  
GRASSY LANES MILLY 29U  
GRASSY LANES MILLY 37S

SITZ ALLIANCE 6595 NHF AMF  
CRESCENT CREEK ALLIANCE 29N  
KBJ MISS COMPRESS 862K

### Dam: CRESCENT CREEK STUMPIE 9R

LOOKOUT PACESETTER 147L  
FIGURE 8 ANGUS STUMPIE 12N  
FIGURE 8 ANGUS STUMPIE 112K

B Wt	70 lbs
205 Wt	618 lbs
365 Wt	1089 lbs
BEPD	-2.8
WEPD	+36
YEPD	+55
Milk	+14
TM	+32
Scrotal	---
CED	+11.0
CEM	+10.0

EPD's: REA: -0.01 Marb: -0.10 Fat: +0.015 Carcass Wt: -3

## BLACK ANGUS Reference Sire



Lookout Pacesetter 258M - Sire of Pacesetter 16U

Lot  
**105**

## CRESCENT CREEK ERICA 11X

Female DOS 11X January 23 2010 1554064

### Sire: CRESCENT CREEK PACESETTER 16U

MINBURN MAIN EVENT 71N  
MINBURN MAIN EVENT 82R  
MINBURN JOY 34L

### Dam: CRESCENT CREEK ERICA 1T

AJC H A F TRAVELER 01L  
YOUNG DALE ERICA 61P  
DOUBLE J ERICA 183G

EPD's: REA: --- Marb: --- Fat: ---  
Yield Grade: --- Carcass Wt: ---

B Wt	70 lbs
205 Wt	629 lbs
365 Wt	856 lbs
BEPD	+0.2
WEPD	+40
YEPD	+62
Milk	+14
TM	+34
Scrotal	---
CED	+6.0
CEM	+8.0

*One of the deepest sided, easiest keeping females offered. The Pacesetter females will make great cows.*



Lot #105

Lot  
**106**

## CRESCENT CREEK DUCHESS 129X

Female WOS 129X February 17 2010 1554072

### Sire: CRESCENT CREEK PACESETTER 16U

E X A R SCOTCH CAP 816 NHF AMF CAF  
RR SCOTCHMAN 2999  
ERICA LASSIE OF R R 8464

### Dam: CRESCENT CREEK DUCHESS 134U

RRD FAME 1K  
CRESCENT CREEK DUCHESS 154M  
CRESCENT CREEK DUCHESS 6E

EPD's: REA: --- Marb: --- Fat: ---  
Yield Grade: --- Carcass Wt: ---

B Wt	70 lbs
205 Wt	654 lbs
365 Wt	881 lbs
BEPD	+0.3
WEPD	+40
YEPD	+66
Milk	+15
TM	+35
Scrotal	---
CED	+7.0
CEM	+8.0





## Many Thanks to our 2010 Buyers ...

\* Denotes Repeat Buyer

Dugdale Agro \*  
Terry Rothenburger  
Fred Lansdall \*  
Lars Lunde  
Freyburn Angus \*  
Dale Quinton \*  
John Jurzyniec \*  
Craig Pihach \*  
P.F.R.A \*  
Maystrowich Farms \*  
David Siever \*  
Jim Manovich \*  
Russell Kast \*

Jerry Hudy \*  
Maurice Betham \*  
Larry Neilson \*  
Pat Gross  
Clint Zubko  
Ryan Ferguson \*  
Charles Oakley  
Mykle Baerg \*  
Garry Krupski  
Gary Gervin  
Heavy Hitters \*  
Allan Henderson \*  
7Z Ranch \*

Joel & Merrill LeSann \*  
Alain DeCorby \*  
Lindsay Horvath  
Nu Horizon Angus\*  
Delvin Good \*  
John Orr\*  
Jason Shambel  
Bar D K Angus \*  
Allan Polegi \*  
Jackie Gibson  
Ivanhoe Angus \*  
Andy Bangu \*

Russell Baron  
Vincent Somogyi  
J.P Simpson \*  
Rod Ottenbriet  
Zuchkan Land & Cattle Co.  
Allan Nesbit  
Don Barkman \*  
Dwajo Angus \*  
Bar CR Angus \*  
Blair Cherneski \*  
Jacob, Joshua, Gabrielle Boyko \*  
Flat Lake Red Angus \*





Optimal Bovines Inc.  
#407, 4808 Ross Street  
Red Deer, AB  
T4N 1X5



Directions to  
Crescent Creek Angus  
1 mile East and 3 miles North of Goodeve, SK  
  
Approximately 1 1/2 hours Northeast of Regina

