

Cornerstone *"More Bang for Your Buck!"*

1:30 P.M.

Bull & Female Sale

"More Bang for Your Buck!"

Saturday, April 19, 2014 • Whitewood Auction Mart, Whitewood, SK



Featuring:

BRIMNER CATTLE CO.

24 Yearling
Charolais Bulls

WRAZ RED ANGUS

32 Yearling Red Angus Bulls
15 Red Angus Open, 12 Commercial Heifers

Cornerstone *"More Bang for Your Buck!"*

1:30 P.M. **Bull & Female Sale**

Saturday, April 19, 2014 • Whitewood Auction Mart, Whitewood, SK

56 BULLS SELL **32 Red Angus Yearlings** • **15 Red Angus Open Heifers**
24 Charolais Yearlings • **12 Commercial Heifers**

Sale Day Phones

Whitewood Livestock..... 306-735-2822
 Kelly Brimmer 306-577-7698
 Phil Birnie 306-577-7440
 Gordon Murray..... 306-646-7980
 Helge By 306-536-4261
 Candace By 306-536-3374
 Brent Carey, Auctioneer 403-650-9028
 Shane Castle, Consultant 306-741-7485
 Gerry Walter, Ontario/Eastern buyer rep.....519-524-0047

Commercial Contacts

Jim Hallberg306-861-0917
 Glen Vargo306-736-7710
 Brian Good, Director of Field Services for the Canadian Angus Association, will have Angus tags available at the sale.

Semen Testing

All bulls will be semen tested prior to sale day by a licensed veterinarian.

Delivery

Free delivery up to 150 kms or bring your trailer sale day and receive a \$50 credit.

Board

Free board for bulls until June 1st, but all bulls left at the farm must be insured.

Insurance

Insurance will be available sale day. All bulls returning to the farm must be insured.

Credit Card Purchases

Mastercard and Visa may be used for payment of your purchases. A 3% surcharge will apply.

Terms & Conditions

The sale will be conducted under the Terms and Conditions of the Canadian Charolais Association and Canadian Angus Association. Copies will be available at the settlement desk on sale day.

Breed Average EPD

	CE	BW	WW	YW	M	TM
Charolais	68	1.7	42	81	20.9	42
Red Angus	2.7	-.6	47	73	16	39

OPEN HOUSE at WRAZ

Saturday, April 5, anytime after 1:30 p.m. until the cows come home.

Presale viewing of the bulls, their sires, dams & siblings with calves at foot. WRAZ ultrasound data will be available. From Wawota: 5 miles E on #48, 1 mile N on #601, 1/4 mile W.

Join us for lunch on sale day

Brimner Cattle Co.

Kelly, Tracey, William & Wyatt Brimmer
 Box 93, Manor, SK S0C 1R0
 T 306-448-2028
 C 306-577-7698

Sale Manager:

By
LIVESTOCK
 306-584-7937

Helge By 306-536-4261
 Candace By 306-536-3374
 charolaisbanner@gmail.com
 www.bylivestock.com

**WR^{ed}Angus
 AZ**
"The program you can count on"

Phil Birnie, Lana Kormos & Family
 Box 461, Wawota, SK S0G 5A0
 T 306-739-2988 • C 306-577-7440 • info@wraz.ca
 Gordon Murray T 306-739-2177 • C 306-646-7980

The Percentage Calving Chart

1. An average cow of any breed should be able to calve 7% of her body weight.
2. Most Charolais cows will weigh between 1400-1800 lb., expected calf weight range 98 to 126 lb.
3. Most Red Angus cows will weigh between 1200 to 1600 lb., expected calf weight range 84 to 112 lb.
4. Calving Ease is MORE important than birth weight because a longer sided calf may calve easily, but the birth weight is higher.

7% Calving Chart	
Cow Wt.	Calf Wt.
1200 lb.	84 lb.
1400 lb.	98 lb.
1600 lb.	112 lb.
1800 lb.	126 lb.



Welcome to the 2014 edition of the Cornerstone Bull Sale, which once again provides some top genetics in both Charolais and Red Angus. This one stop shopping offers you the opportunity to select good Red Angus bulls for the heifers or to make the great British influence cows that are necessary for profitability in the commercial industry. This really is a good set of Red Angus bulls from WRAZ with some definite breeder bulls with lead time genetics. The Charolais bulls again provide calving ease plus performance. The Brimner bulls are good haired, big volume bulls that will work at all levels of the industry, purebred or commercial. Red cows and white bulls have been the Cornerstone of the commercial industry for decades and will continue to be popular from the sale ring to the packing house. Using a quality bull is the first step to herd improvement and they are here in both breeds.

As a bonus this year, there is a larger offering of very good open Red Angus heifers that would be excellent editions to an existing operation or a great place to start your own new purebred herd.

If we can be of any assistance before the sale or on sale day, please don't hesitate to give us a call. We would be happy to help you find a bull that is right for your program.

Sincerely,

Helge & Candace By • **By Livestock** • Tel 306.584.7937 • Cell 306.536.4261



Kelly, Tracy, William & Wyatt Brimner
Box 93, Manor, SK S0C 1R0

306-448-2028 cell 306-577-7698 ktbrim@sasktel.net

BRIMNER CATTLE CO.

Welcome to our 6th Annual Cornerstone Bull Sale!

First off I would like to say thank you to all the past buyers and bidders for their support over the years. What a great time to be in the cattle business! Now more than ever is the time to strive to produce those top cut calves and reap that premium. The easiest way is to breed them to a top quality bull. With today's prices, 3 or 4 cull heifers or cows will but you a quality bull!

The bulls this year are easy doing, thick and hairy. Calving ease and performance bred in.

Feel free to stop in at the farm to see the bulls or call for more info so we can fit the right bull for your program.

See you sale day.

~ Kelly

Reference Sire

MCTAVISH ROCK SOLID 38Y

Sire of Lots 1 - 11

CE 83 BW 1.6 WW 43 YW 97 M 21.6 TM 43



1**BRIMNER BULL 152A**

PMC353902	GBR 152A	13 March 2013
BW 90	205 DW 790	3rd Gen Pld

MERIT 9874W(P)
MCTAVISH ROCK SOLID 38Y(P)
MCTAVISH DUCHESSE 22W(P)
EC NO DOUBT 2022P(P)
HBC VENUS 708T(P)
RPJ VENUS 503R(P)

CE 94
BW -0.8
WW 44
YW 96
M 21.8
TM 44



Herdbull here! This March Rock Solid son is my favorite of the pen! Long and correct. Great hair coat, tons of middle. Everything is right here boys. BW, eye appeal, the total package! A maternal brother working in the Maurice Colleaux herd, Wauchope, SK

2**BRIMNER BULL 19A**

QPMC353869	GBR 19A	6 February 2013
BW 106	205 DW 825	Red Factor, 4th Gen Pld

MERIT 9874W(P)
MCTAVISH ROCK SOLID 38Y(P)
MCTAVISH DUCHESSE 22W(P)
TWINBIRCH LAD 7L(QP)
GBR RUBY 8P(QP)
GBR RED RUBY 40M(QP)

CE 90
BW 1.5
WW 35
YW 75
M 23
TM 41



Take a look at this lad. He is long and thick and look at that hair coat. He was the heaviest calf weaned out of a cherry red, Twin Birch Lad mother.

3**BRIMNER BULL 72A**

CE 80	PMC353880	GBR 72A	19 February 2013
BW 1.3	BW 100	205 DW 777	4th Gen Pld
WW 40			
YW 83			
M 22.4			
TM 42			

72A is the biggest, soggiest bull in the pen. You have to admire the hair coat these Rock Solid sons have. I debated on keeping this guy for our own program but decided to offer him to you. He is an outstanding individual.



BY

MERIT 9874W(P)
MCTAVISH ROCK SOLID 38Y(P)
MCTAVISH DUCHESSE 22W(P)
4-G GRAND PRIX 229M(P)
BRIMNER LADY 4T(QP)
GBR RED MARY 33N(QP)

4**BRIMNER BULL 38A**

CE 86	PMC353872	GBR 38A	11 February 2013
BW -.1	BW 95	205 DW 683	Dbl Pld
WW 36			
YW 77			
M 22.5			
TM 40			

MERIT 9874W(P)
MCTAVISH ROCK SOLID 38Y(P)
MCTAVISH DUCHESSE 22W(P)
SILVER FOXX FOREVER 34F
GBR JESSICA 75K(P)
GBR ADINA 9D(P)

This guy is a tank! Deep, soggy. Great hair coat.



BY

5**BRIMNER BULL 45A**

CE 51	QPMC353875	GBR 45A	12 February 2013
BW 4.3	BW 102	205 DW 727	Red Factor, 4th Gen Pld
WW 44			
YW 93			
M 20.5			
TM 43			

MERIT 9874W(P)
MCTAVISH ROCK SOLID 38Y(P)
MCTAVISH DUCHESSE 22W(P)
ROSSO RED COLE 13S(QP)
GBR LADY 85X(QP)
GBR BUBBLES 82R(QP)

I really like this Rock Solid son. Straight topped and thick. Nice hair coat.



YB



BRIMNER BULL 90A

PMC353886 GBR 90A 22 February 2013
 BW 105 205 DW 697 4th Gen Pld

MERIT 9874W(P)
 MCTAVISH ROCK SOLID 38Y(P)
 MCTAVISH DUCHESSE 22W(P)
 ROSSO RED COLE 13S(QP)
 GBR DELUXE 181W(P)
 GBR LIZZIE 39R(QP)

A long deep bodied Rock Solid son. His dam is one of the nicest uddered females in our herd. Great cow family.

6

CE 60
 BW 3.7
 WW 46
 YW 93
 M 21.8
 TM 45



BRIMNER BULL 111A

PMC353890 GBR 111A 26 February 2013
 BW 106 205 DW 842 3rd Gen Pld

MERIT 9874W(P)
 MCTAVISH ROCK SOLID 38Y(P)
 MCTAVISH DUCHESSE 22W(P)
 SPARROWS COSSACK 11L(P)
 CHARBURG KEEPSAKE 30R(P)
 HCC KINGS KEEPSAKE 23K(P)

Here is a real high performing Rock Solid son. Tremendous capacity. You would love to have a pen of steers out of this guy. 111A was a favorite in the pasture last year.

7

CE 68
 BW 2.9
 WW 43
 YW 90
 M 20.9
 TM 43



BRIMNER BULL 120A

PMC353892 GBR 120A 1 March 2013
 BW 102 205 DW 770 3rd Gen Pld

MERIT 9874W(P)
 MCTAVISH ROCK SOLID 38Y(P)
 MCTAVISH DUCHESSE 22W(P)
 TWINBIRCH LAD 7L(QP)
 GBR LIZZIE 39R(QP)
 GBR JUSTADREAM 31N(P)

Take a look at this soggy, long bodied lad. Lots of hair and out of a great cow family.

8

CE 80
 BW 1.5
 WW 40
 YW 81
 M 26.8
 TM 47

9**BRIMNER BULL 121A**

CE 67	QPMC353894	GBR 121A	1 March 2013
BW 2.1	BW 105	205 DW 689	Red Factor, 4th Gen Pld
WW 41	MERIT 9874W(P)		
YW 86	MCTAVISH ROCK SOLID 38Y(P)		
M 22.7	MCTAVISH DUCHESSE 22W(P)		
TM 43	4-G GRAND PRIX 229M(P)		
	BRIMNER LADY 106T(QP)		
	GBR LADY IN RED 92M(QP)		

Fancy made bull. Great quarter and loads of hair.

**10****BRIMNER BULL 149A**

CE 61	QPMC353900	GBR 149A	11 March 2013
BW 4.2	BW 109	205 DW 742	Red Factor, 4th Gen Pld
WW 49	MERIT 9874W(P)		
YW 98	MCTAVISH ROCK SOLID 38Y(P)		
M 19.6	MCTAVISH DUCHESSE 22W(P)		
TM 44	BELMONT'S BOSS-MAN 11M(QP)		
	BRIMNER LADY 93T(QP)		
	GBR MARY-KATE 54P(P)		

Another typical Rock Solid son. Loads of meat and hair and smooth for calving ease. Maternal brother sold to Tom Trithart, Broadview, last year.

*Reference Sire***BAR J TROJAN 68X**

Sire of Lots 12 - 16

CE 99	BW -5.7	WW 31	YW 61	M 22.7	TM 38
-------	---------	-------	-------	--------	-------

**11****BRIMNER BULL 204A**

CE 79	PMC353910	GBR 204A	6 April 2013
BW 0.8	BW 90	205 DW 809	3rd Gen Pld
WW 47	MERIT 9874W(P)		
YW 97	MCTAVISH ROCK SOLID 38Y(P)		
M 24.6	MCTAVISH DUCHESSE 22W(P)		
TM 48	KMAC SERIO 32S(P)		
	GBR KYRA 154W(P)		
	GBR KYRA 35L(P)		

Another April bull out of a hard working Serio Dam that always brings in a good one. A real thick, smooth made bull.

12**BRIMNER BULL 53A**

PMC353877	GBR 53A	15 February 2013
BW 96	205 DW 730	3rd Gen Pld

BAR J SILVERADO 14S(P)
 BAR J TROJAN 68X(P)
 SOS MISTRESS 142P(P)
 KMAC SERIO 32S(P)
 GBR LADY 28X(P)
 KMAC MS FAITH 72M(P)

CE 85
BW -0.4
WW 45
YW 86
M 21.5
TM 44



This is the pet of the pen and a great son of Bar J Trojan. He puts it all together – eye appeal, hair, guts and great structure. He will fit the bill for anyone.

13**BRIMNER BULL 87A**

PMC353885	GBR 87A	22 February 2013
BW 76	205 DW 749	3rd Gen Pld

BAR J SILVERADO 14S(P)
 BAR J TROJAN 68X(P)
 SOS MISTRESS 142P(P)
 HBC ENCORE 834U(P)
 GBR LADY 76Y(P)
 CHARBURG KEEPSAKE 30R(P)

CE 98
BW -3.6
WW 37
YW 68
M 23.6
TM 42



Herd bull alert! Here is the heifer bull you've been waiting for. This guy puts it all together – very correct, hairy and full of meat. These Trojans are proven calving ease specialists. You'll have him marked on sale day!



14**BRIMNER BULL 173A**

CE 85	PMC353905	GBR 173A	19 March 2013
BW 0.4	BW 90	205 DW 783	3rd Gen Pld
WW 40	BAR J SILVERADO 14S(P)		
YW 79	BAR J TROJAN 68X(P)		
M 23.7	SOS MISTRESS 142P(P)		
TM 44	HBC ENCORE 834U(P)		
	GBR LADY 83Y(P)		
	KSF MISS PINBALL 50R(P)		

What a good job this first calf heifer did on this guy. Trojan sons are made for calving ease.



BY

15**BRIMNER BULL 61A**

CE 91	PMC353878	GBR 61A	16 February 2013
BW -1.8	BW 90	205 DW 676	3rd Gen Pld
WW 40	BAR J SILVERADO 14S(P)		
YW 78	BAR J TROJAN 68X(P)		
M 22.0	SOS MISTRESS 142P(P)		
TM 42	KMAC SERIO 32S(P)		
	GBR CORAL 71W(P)		
	GBR CORAL 75M(P)		

Another good Trojan son made for calving ease with plenty of performance.

16**BRIMNER BULL 207A**

CE 92	PMC353911	GBR 207A	6 April 2013
BW -1.8	BW 94	205 DW 774	3rd Gen Pld
WW 36	BAR J SILVERADO 14S(P)		
YW 71	BAR J TROJAN 68X(P)		
M 23.9	SOS MISTRESS 142P(P)		
TM 42	BELMONT'S INDIANA 9J(QP)		
	GBR REDLADY 120N(QP)		
	GBR PHENOME 52G(P)		

Here is a good April Trojan son. He's long, put together nice with good feet and legs. Maternal brother sold to David Erbach, Melville, last year.

*Reference Sire***G.BROS CREW 607Y**

Sire of Lots 17 - 20

CE 83	BW .2	WW 35	YW 80	M 23	TM 41
-------	-------	-------	-------	------	-------



BY

17**BRIMNER BULL 18A**

CE 90	QPMC353868	GBR 18A	6 February 2013
BW -4	BW 70 (twin)	205 DW 675	Red Factor, 3rd Gen Pld
WW 30	SRK RED MAN 16U(QP)		
YW 66	G.BROS CREW 607Y(QP)		
M 25.2	G.BROS MYRRH 511W(QP)		
TM 40	TWINBIRCH LAD 7L(QP)		
	GBR DORA 5S(QP)		
	GBR AVA 34P(P)		

Here is a good, smooth, well put together, red factor, Crew son. He has a great hair coat and feet and legs. Maternal brother sold to Bernard Ferner, Sedley, last year.

BRIMNER BULL 123A

QPMC353895 GBR 123A 1 March 2013
 BW 100 205 DW 725 Red Factor, 4th Gen Pld

SRK RED MAN 16U(QP)
 G.BROS CREW 607Y(QP)
 G.BROS MYRRH 511W(QP)
 HBC ENCORE 834U(P)
 GBR LADY 60X(P)
 GBR PRAIRIEMAID 68N(QP)

Real correct Crew son with tons of hair.

18

CE 72
 BW 1.7
 WW 42
 YW 83
 M 24.3
 TM 45

BRIMNER BULL 75A

PMC353882 GBR 75A 19 February 2013
 BW 80 (twin) 205 DW 717 4th Gen Pld

SRK RED MAN 16U(QP)
 G.BROS CREW 607Y(QP)
 G.BROS MYRRH 511W(QP)
 BELMONT'S INDIANA 9J(QP)
 GBR PRAIRIEMAID 68N(QP)
 GBR ANDREA 48D(P)

19

CE 81
 BW 0.3
 WW 34
 YW 72
 M 23.9
 TM 41



Here is a real meat machine out of Crew. His dam is probably the deepest cow on the farm and always brings in a good one. A maternal brother sold to Cudmore Farms last year.

BRIMNER BULL 144A

PMC353896 GBR 144A 10 March 2013
 BW 102 205 DW 877 3rd Gen Pld

SRK RED MAN 16U(QP)
 G.BROS CREW 607Y(QP)
 G.BROS MYRRH 511W(QP)
 M6 GRID MAKER 104 PET(P)
 GBR REBECCA 12W(P)
 MERIT REBECCA 7289T(P)

20

CE 75
 BW 1.0
 WW 37
 YW 83
 M 23.1
 TM 42

Reference Sire

PLEASANT DAWN MATCH 465X

Sire of Lots 21 - 24

CE 91 BW .5 WW 50 YW 95 M 20 TM 45



Take a look here. Big topped, big time performance #1 at 205 DW. This is one powerful bull. This March calf is worth a look.

21**BRIMNER BULL 78A**

CE 72	PMC353883	GBR 78A	20 February 2013
BW 1.2	BW 100	205 DW 731	3rd Gen Pld
WW 43	PLEASANT DAWN MAX 70S(QP)		
YW 81	PLEASANTDAWN MATCH 465X(P)		
M 22.7	PLEASANTDAWN PARIS 765U(P)		
TM 44	RGP FLAPJACK 170F(P)		
	GBR CORAL 75M(P)		
	GBR CORAL 71J(P)		

Here is one powerful straight topped P.D. Match son. Great hip and hair.

**22****BRIMNER BULL 86A**

CE 84	PMC353916	GBR 86A	22 February 2013
BW 0.7	BW 100	205 DW 680	4th Gen Pld
WW 47	PLEASANT DAWN MAX 70S(QP)		
YW 93	PLEASANTDAWN MATCH 465X(P)		
M 19.0	PLEASANTDAWN PARIS 765U(P)		
TM 42	PLEASANT DAWN AMOS 3M(P)		
	KMAC MISS HILARY 23R(P)		
	KMAC HILARY 54L(P)		



Take a look here! Long, strong topped, hairy and big hip.

23**BRIMNER BULL 107A**

CE 98	QPMC353888	GBR 107A	25 February 2013
BW -2.3	BW 90	205 DW 717	Red Factor, 4th Gen Pld
WW 40	PLEASANT DAWN MAX 70S(QP)		
YW 76	PLEASANTDAWN MATCH 465X(P)		
M 22.4	PLEASANTDAWN PARIS 765U(P)		
TM 42	4-G RIPTIDE 18S(P)		
	GBR RED RACHEL 13W(QP)		
	BRIMNER LADY 45T(P)		



I really like this guy. Smooth, made with good square hip. Really put together nicely.

24**BRIMNER BULL 203A**

CE 83	PMC353908	GBR 203A	5 April 2013
BW 0.9	BW 95	205 DW 788	Dbl Pld
WW 42	PLEASANT DAWN MAX 70S(QP)		
YW 84	PLEASANTDAWN MATCH 465X(P)		
M 21.8	PLEASANTDAWN PARIS 765U(P)		
TM 43	4-G GRAND PRIX 229M(P)		
	GBR MISS 157S(P)		
	GBR SAMANTHA 6L		



Another favorite of mine. An April bull with loads of performance and eye appeal. His dam is one of those cows you wish you had a hundred of. Take a look at him sale day!



WRAZ RED ANGUS

Welcome to the sixth Annual CORNERSTONE "More Bang for Your Buck" Bull and Female sale!

I would like to take this opportunity to thank you and personally invite you to our 2014 sale at the Whitewood Auction Mart – Highway #1 Whitewood, Sask. The cattle market is exceptional today and there has never been a better time to have a herd of producing females! The yearling bulls and females on offer are sound and ready to go out and work for you. They have developed on mama's milk and grass until we arrived home from Agribition and weaned them November 26. Since then they have been on a TMR. JM Beef does our feed testing and formulates our rations for a gain of

2.75 to 3 lb/day. This rate of gain allows them to grow with their future health and longevity in mind. The bulls are the top end of the 78 bull calves that hit the ground here last spring – none retained or sold before the sale. The open yearling heifers are sound and range from fancy show prospects to broody working females. I believe all the females are of purebred quality and there are definitely some breeder quality bulls in the offering. I expect them to go out and make their new owners money! As always we stand behind the bulls and females we sell 100% – We work hard on honesty and integrity to earn your respect and promise to always be – The program you can count on!

Your next herdsire contributes immensely to the future of your herd as we go forward into the most interesting cattle market that I have experienced to date. Each herd has a different set of goals or needs depending on many factors. Some of you may see an opportunity to produce females to sell into the hottest market in history. Some may be more focused on performance and selling the most pounds of calf at weaning – others may key in on calving ease. Regardless of your program I believe we can help! We would be happy to share the information that we know about their dams, sires and siblings. A good time to do this would be at our **ANNUAL OPEN HOUSE Saturday April 5 at the WRAZ Red Angus Ranch** – five miles east of Wawota, Sask. Come on over anytime after 1:30 and stay till it's over! The bulls and heifers will be on display as well as their dams, sires and siblings. Check out the feet and udders for yourself! We will have the BBQ fired up as long as we need to and there will be hot and cold refreshments. Please join us! Please stop by anytime though if this date does not work for you.

If you are unable to attend on sale day please give Phil, Gordon or any of the sales staff a call or drop by. We look forward to working together to find one that will work for your program. We would be happy to help and we will treat you right!

See you soon,
Phil and Lana



WR^{ed} Angus
Z
"The program you can count on"

Phil Birnie, Lana Kormos & Family
Box 461, Wawota, SK S0G 5A0
T 306-739-2988 • C 306-577-7440
Info@wraz.ca
Gordon Murray
T 306-739-2177 • C 306-646-7980

Reference Sire

RED BRYLOR WRAZ MAKN WAVES 39X

Sire of lots 25 - 26

CE -1.4 WW 67 YW 101 M 18 TM 51 CE 5

Waves 39X is used sparingly by AI. There is very little semen in storage on this bull and he is off the market in Canada. He sold for \$57,000 as a yearling to a group from Kansas - JK/3 fires/5-L. He was Reserve Junior Champion Bull in Denver that year. We were unable to collect any saleable semen on him after he left Canada although he bred naturally just fine and he still does! I was recently at a bull sale in the US and had the opportunity to see him and he looks great! He is a calving ease sire with a lot of shape and muscle. He has as good of foot as you will find on a sire and the same great temperament I remembered.



25

RED WRAZ TIDAL WAVE 56A

BW 1.1	1748042	WRAZ 56A	21 February 2013
WW 59	BW 100	Sept 20 WW 786	Sept 20 WDA 3.73
YW 88			
M 14			
TM 43			
CE 0			

Check out this son of the \$57,000 Red Brylor WRAZ Mak'n Waves 39X. He is very well put together with a great hair coat. Waves is well known as a great footed calving ease sire with a ton of muscle. This fella got a little extra punch from his dam. Have a look at some of the great cows in this pedigree – Cherok 22L, Cherok 19U, Annie 1G and Red Irene 36E! The Waves' females are now proving their worth as well. We have some milking here now and they look good! Check out WRAZ 68A in the heifer section for a sweet made daughter of Waves. These Waves progeny are good but few and far between, only because the bull resides in the US and there was very little saleable semen collected. This guy is a favorite of many that have stopped by!



RED BIEBER MAKIN HAY 9913 OSF MAF
 RED BRYLOR WRAZ MAKN WAVES 39X MAF OSF
 RED BRYLOR CHEROK 19U MAF OSF
 RED FABULOUS FRONT LINE 315N MAF
 RED JET ANNIE IRENE 8810
 RED IRENE 36E

26

RED WRAZ NEW WAVE 24A

BW -1.7	1748038	WRAZ 24A	11 February 2013
WW 55	BW 95	Sept 20 WW 688	Sept 20 WDA 3.11
YW 85			
M 21			
TM 47			
CE 5			

RED BIEBER MAKIN HAY 9913 OSF MAF
 RED BRYLOR WRAZ MAKN WAVES 39X MAF OSF
 RED BRYLOR CHEROK 19U MAF OSF
 T.J.F. FORTUNE 425C TIBBIE 5M
 WRAZ RC CHRISTY 75T (RC)
 RED SVR CHRISTY 9M

A Waves son with a little different twist to his pedigree. His dam 75T is Black/Red carrier female that has proven herself before. She had a powerful black bull in this sale last year to Cudmore Farms and we have a maternal sister in the herd. Pretty nice set of numbers on this guy with the negative BW to above average yearling weight EPD. You will not find many Waves sons on the market and even fewer will be out of a Black female with an Elite Tibbie and Elite sire Fortune 425C in the pedigree!



Reference Sire

DMM CREED 75W

Sire of lot 27

BW 5 WW 83 YW 128 M 20 TM 62 CE -3

DMM Creed 75W – Creed 75W is a black/red carrier we used by AI. We bought a semen package after seeing the structural correctness and power he possessed at Agribition. His dam is very interesting and his female progeny were also very impressive. He was strong in the traits we like to see in a sire not to mention the outcross genetics. CAA Black Angus Show Bull of the year 2011.



27

RED WRAZ CREED 114A

1764692 WRAZ 114A 19 March 2013
 BW 118 Sept 20 WW 798 Sept 20 WDA 4.32

GUMBO GULCH CREED 94S AMF NHF CAF MAF DDF
 DMM CREED 75W CAF OSF MAF AMF NHF (RC)
 RED DMM ESSENCE 156P
 RED VIKSE DV ALL IN 209T
 RED WRAZ SEREBL 57W
 RED KAYMAC SEREBL 760T

BW 6.1
 WW 75
 YW 115
 M 16
 TM 53
 CE -6



Dam: Red WRAZ Serebl 57W



Here is a very stout made power bull by the 2012 Agribition Champion DMM Creed 75W. This guy garnered a lot of attention during the Angus tour this past August. He has some powerful genetics on both sides of his pedigree so he is no heifer bull but he definitely will add pounds and shape to any program. He is wide based and moderate made with an impressive hip and top. He definitely holds the red ribbon in birth to weaning growth. Take note that he is born March 19 and weighed 798 on Sept. 20, 2013. Pretty respectable carcass numbers as well. The Serebl cow family is one of the top cow families here at WRAZ. His dam 57W is moderate and big ribbed and his granddam 760T is a CAA elite dam that has a great one every year. Great granddam 95N is the cornerstone of this cow family. Her proven track record in production made her an easy choice for our flush program. A special thank you to David Valnes - Valnes Ranch Red Angus, South Dakota, for your purchase of the flush on 95N!

Reference Sire

RED BRYLOR JKC GHOST RIDER108Y

Sire of lots 28 - 37

BW 1.8 WW 60 YW 97 M 20 TM 4 CE -5

Ghost Rider is quickly becoming by far the most interesting sire we have used to date at WRAZ. He was selected from the ground up for his foot structure including an impressive amount of heel. He is super easy fleshing and full of red meat and muscle – his conversion of feed is something special. Long bodied with lots of middle and an incredible coat of hair. The female side is impressive as well. His dam Cherok 22L is an impressive individual. She is also dam to full sib Cherok 19U – dam to Red Brylor WRAZ Mak'n Waves 39X. 22L sold to JK/Fair Acres in the US for \$10000 for their ET program (Ghost Rider would be one of those embryos) then she traded again at 10 years of age for \$17000 to Garth Griffin for his ET program. I am not the only one who thinks highly of this cow family! The females are going to be just as awesome – I can't wait until they are milking to prove it.



28**RED WRAZ SPIRIT 32A**

BW -2
WW 46
YW 78
M 16
TM 40
CE 1

1748040	WRAZ 32A	13 February 2013
BW 83	Sept 20 WW 754	Sept 20 WDA 3.44

Here is one of the feature Ghost Rider sons. He made many friends in our pen of bulls this fall at MLE in Brandon, MB, and Agribition – Regina, Sk. This might be the longest Ghost Rider in the offering. He is dark red with plenty of eye appeal and an excellent temperament. He already has that herdbull look! His dam 23U has done it before with a high selling maternal brother by Bucc purchased by Emmat Creek a few years back and is now working in the Hamco herd. Thanks guys! If you are big on EPD take a close look at 32A's very balanced set of numbers as well!

RED FINE LINE MULBERRY 26P OSF AMF MAF
 RED BRYLOR JKC GHOST RIDER108Y
 RED BRYLOR CHEROK 22L
 RED SSS ARSENAL 271S OSF MAF
 RED SSS BLOCKANNA 23U
 RED SSS BLOCKANA 2M

**29****RED WRAZ WIZARD 106A**

BW -1.2
WW 45
YW 73
M 20
TM 43
CE 3

1763425	WRAZ 106A	16 March 2013
BW 73	Sept 20 WW 636	Sept 20 WDA 3.36

Check out this Ghost Rider son if you need one with a lower birth weight! Just 73 lb. at birth and 636 lb. actual weaning weight on Sept 20. That is a WDA of 3.36 lb/day on mama's milk! He has a very balanced set of EPD as well, if you are worried about the numbers. His dam Juanita 8X is maturing into a strong producer. Granddam Juanita 203M is a CAA Elite dam sired by the Elite sire New Trend 22D. If your plan is to produce top notch females, then have a close look here!

RED FINE LINE MULBERRY 26P OSF AMF MAF
 RED BRYLOR JKC GHOST RIDER108Y
 RED BRYLOR CHEROK 22L
 RED TOPLINE RANCHMAN 838
 RED TOP LINE JUANITA 8X
 RED BRYLOR JUANITA 203M





30

RED WRAZ GHOST RIDER 99A

BW 1	1743957	WRAZ 99A	12 March 2013
WW 58	BW 87	Sept 20 WW 732	Sept 20 WDA 3.81
YW 94	RED FINE LINE MULBERRY 26P OSF AMF MAF		
M 19	RED BRYLOR JKC GHOST RIDER108Y		
TM 49	RED BRYLOR CHEROK 22L		
CE -1	RED DIMLER INDEED 105R		
	RED WRAZ MISTRESS 91W		
	RED KMAC MISTRESS 607S		

This is another Ghost Rider son with a tremendous amount of length and a temperament second to none. If you need to add some length and docility, this may be the one for you! His numbers are top 10 for WW, YW and TM, indicating strong maternal with top growth potential. His dam Mistress 91W and grand dam 607S are the most docile females in the herd. Maternal sister to his dam has a fancy daughter WRAZ 127Y in the heifer offering.



31

RED WRAZ KASPER 96A

BW .9	1743956	WRAZ 96A	11 March 2013
WW 58	BW 87	Sept 20 WW 668	Sept 20 WDA 3.46
YW 91	RED FINE LINE MULBERRY 26P OSF AMF MAF		
M 17	RED BRYLOR JKC GHOST RIDER108Y		
TM 46	RED BRYLOR CHEROK 22L		
CE -3	RED DIMLER INDEED 105R		
	RED WRAZ MISS MARIA 70U		
	RED D.J. MISS MARIA 4S		

Here is a good solid son of Ghost Rider from our treasured Maria cow family. The cornerstone of the Maria cow family is 2J – not a power cow but still quietly standing on a perfect foot and consistently producing right on schedule at 15 years of age. If you can keep the factory producing for 15 years or more before replacing them it sure does help out the bottom line! Fertility is way more important to the bottom line on a ranch than some of the other traits the industry keys on. Kasper's dam Maria 70U has the cow family behind her with more power. He is in the top 10% of the breed for WW, YW and Carcass Weight. Last I checked we are still getting paid by the pound so if you want one for some cows that will help push the scale down Kasper may be the one!



32

RED WRAZ PHANTOM 10A

BW -1.1	1743928	WRAZ 10A	3 February 2013
WW 47	BW 77	Sept 20 WW 637	Sept 20 WDA 2.78
YW 73	RED FINE LINE MULBERRY 26P OSF AMF MAF		
M 20	RED BRYLOR JKC GHOST RIDER108Y		
TM 44	RED BRYLOR CHEROK 22L		
CE 2	RED BRYLOR JETER 203U MAC		
	RED BRYLOR MS LOGAN 3X MAF		
	RED PFRA MS LOGAN 109L		

Nice made Ghost Rider son with a thick, dark red coat of hair. Phantom 10A has calving ease in his pedigree. He was 77 lb. at birth – his full brother this year was 71 lb. and grand dam 109L just had a daughter at 70 lbs This is a Ghost Rider son that will work in the heifer pen. Dam 3X has a very nice udder with plenty of milk. Her pedigree is loaded with breed leading female producing sires New Trend and Logan as well as top females Cherok 22L and Annie 1G. Granddam 109L has a son called Walkerton working for Stuart and Kaye Gilbert in the US. She also has another son called Lancaster working for the Wushke's of Emmat Creek Ranch. (There are some nice long bodied sons with great feet and tons of hair for sale at Emmat Creek Ranch just west of Whitewood, SK – give Mark a call and go check them out!)

33 RED WRAZ GHOST RIDER 72A

BW -.9	1764661	WRAZ 72A	26 February 2013
WW 50	BW 83	Sept 20 WW 626	Sept 20 WDA 3.04
YW 84	RED FINE LINE MULBERRY 26P OSF AMF MAF		
M 16	RED BRYLOR JKC GHOST RIDER108Y		
TM 41	RED BRYLOR CHEROK 22L		
CE -1	RED LSF COMBINATION A301M OSF MAF		
	RED D.J. MISS TOTSIE 9T		
	RED S.S. POTEET 102L		

Another one of these long bodied, good haired top end sons of Ghost Rider. His dam, Totsie 9T has produced some other good ones already. Maternal sister WRAZ 10W selected for Red Round Up that was purchased by Sooline then traded in their dispersal as one of the high selling bred heifers to Wildcat Creek Ranch, in Kansas. They took her first calf to Denver as one of their top show heifers. Another maternal sister WRAZ 33Y was purchased at our annual bull and select female sale by Tony Dekeyser of Ram Rod Cattle Co., Medora, MB. Another one was retained here at home. If you have large frame heifers and are not afraid of a little birth weight, this is one of the Ghost Riders that may be of interest to you.

34 RED WRAZ SHADOW 102A

BW -.3	1743984	WRAZ 102A	15 March 2013
WW 50	BW 88	Sept 20 WW 666	Sept 20 WDA 3.52
YW 79	RED FINE LINE MULBERRY 26P OSF AMF MAF		
M 21	RED BRYLOR JKC GHOST RIDER108Y		
TM 46	RED BRYLOR CHEROK 22L		
CE 0	RED SSS BOMBER 789G		
	RED RIVERDALE ANN 281K		
	RED RIVERDALE ANN 16F		

35 RED WRAZ GHOST RIDER 119A

BW .8	1743963	WRAZ 119A	21 March 2013
WW 53	BW 89	Sept 20 WW 618	Sept 20 WDA 3.37
YW 90	RED FINE LINE MULBERRY 26P OSF AMF MAF		
M 22	RED BRYLOR JKC GHOST RIDER108Y		
TM 49	RED BRYLOR CHEROK 22L		
CE -2	RED BRYLOR NEW TREND 22D OSF MAF		
	RED WRAZ FAYET 1W		
	RED DELAR FAYET 760R		



Here is the sleeper in the bunch in my opinion! Love the sire, love the dam – especially her production record! The bulls always make the bull sale – a son named Eagle working in the purebred Pasquia Red Angus herd for Alvin Ginter. Daughters (maternal sisters to Shadow) at Double C and JLL as well as two daughters retained here. Daughter 103Y has a rip of a son (WRAZ 4A) selling today and the other daughter 128Z has calved and she is doing a nice job on her first one. The homework is done here and when you add the great maternal side of Ghost Rider to the mix it will only increase what this bull can do for you. This guy has nice balanced EPD with enough growth to put the pounds on but his real worth will be in the females he leaves behind! If you want to build a herd or produce females to market as breeds this bull would be of great value to your operation.

This Ghost Rider son has a darker red coat of thick long hair. These cattle with hair are more valuable when you take a pen of steers to market or when you live in the deep freeze from Dec to March like we just experienced! They are easier doing cattle and convert their feed more efficiently. That efficiency even showed up on mama's milk and grass. Look at his birth date of March 21 and his actual Sept 20 weight of 618. You may have overlooked him because of his 618 lb. weight but that is 3.37 lb/day! There are some cattle out there that won't do that in the feedlot! This guy also has a double shot of New Trend 22D the proven female maker. His semen is still fetching US \$200 per straw or better if you can find any.

36 RED WRAZ MYSTIC 130A

BW .1	1748053	WRAZ 130A	29 March 2013
WW 54	BW 100	Sept 20 WW 686	Sept 20 WDA 3.6
YW 89	RED FINE LINE MULBERRY 26P OSF AMF MAF		
M 15	RED BRYLOR JKC GHOST RIDER108Y		
TM 42	RED BRYLOR CHEROK 22L		
CE 2	RED PIRO TEMPTATION 328N		
	RED KMAC MISS DI 602S		
	RED KAYMAC DI 106P		



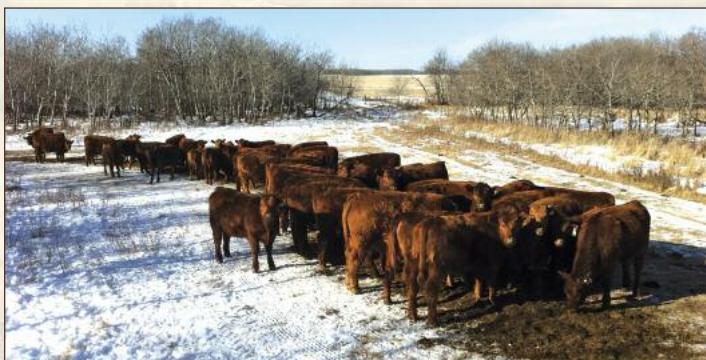
Ghostrider son born March 29 and weighing 636 on Sept 20 - that is 3.6 lb/day on mama's milk. Are you starting to see a pattern here folks? These Ghost Riders are special! They convert feed into pounds of beef like no other sire I have ever used. Once the females are producing I also believe it will only increase his worth to the cattle industry. Mystic's dam 602S is very moderate in stature but not in production! Two maternal sisters to Mystic 130A are working in purebred herds. One is working in the good herd at Cockburn Red Angus and has a bull in their sale this year. (Hope you have a great sale Ward and Trent!) The other one made the trek east to Ontario for Jim Ginn of Ginn Family Farm. (Thanks again Jim I really appreciate the support!). I know this guy is a little young for some of you but the genetics are proven and will add value to any herd.

Two maternal sisters to Mystic 130A are working in purebred herds. One is working in the good herd at Cockburn Red Angus and has a bull in their sale this year. (Hope you have a great sale Ward and Trent!) The other one made the trek east to Ontario for Jim Ginn of Ginn Family Farm. (Thanks again Jim I really appreciate the support!). I know this guy is a little young for some of you but the genetics are proven and will add value to any herd.

37**RED WRAZ GHOST RIDER 137A**

BW 1.5	1743971	WRAZ 137A	5 April 2013
WW 52	BW 86	Sept 20 WW 556	Sept 20 WDA 3.31
YW 82	RED FINE LINE MULBERRY 26P OSF AMF MAF		
M 19	RED BRYLOR JKC GHOST RIDER108Y		
TM 45	RED BRYLOR CHEROK 22L		
CE -3	RED DIMLER INDEED 105R		
	RED WRAZ LOIS 86Y		
	WRAZ RC LOIS 32T (RC)		

This Black/Red Carrier Ghost Rider son is the only black bull in our offering this year. We have plenty of good black breeders in the area so I will leave the blacks up to them for the most part. This guy was born April 5 out of a nice young cow. You might look at his weight on Sept 20 and move on but if you sit down and work it out he is right up there at 3.28 lb/day so here he is today. Some of you are breeding and calving later now so I thought this guy may work for someone. He does have value for your program if you would like to add more hair and feed efficiency to your program but prefer a bull with a black hide.

**38****RED WRAZ HITCH 4A**

1743926	WRAZ 4A	26 January 2013
BW 72	Sept 20 WW 728	Sept 20 WDA 3.48



RED YY HITCH 514R	RED DIMLER INDEED 105R
RED YY HITCH 23X	RED WRAZ ANN 103Y
CROWFOOT PRIDE 5923R (RC)	RED RIVERDALE ANN 281K

BW -1.4	Heifer bull alert here! This guy came into this world at 72 lb. out of a great first calf heifer and never looked back!
WW 55	He is wide based with an impressive amount of bone and a great foot. When you get in behind him the hip and top are there as well as an outstanding coat of hair. His dam WRAZ 103Y has done an admirable job as expected from this cow family! Never underestimate the power of a cow family! Grand dam 281K has a son named Eagle working for Alvin Ginter in the Pasquia Red Angus herd. Elite sires and dams on both sides of this pedigree folks! This one is a definite herdbull prospect.
YW 87	
M 18	
TM 47	
CE 3	

done an admirable job as expected from this cow family! Never underestimate the power of a cow family! Grand dam 281K has a son named Eagle working for Alvin Ginter in the Pasquia Red Angus herd. Elite sires and dams on both sides of this pedigree folks! This one is a definite herdbull prospect.

39**RED WRAZ HITCH 17A**

BW 0	1743930	WRAZ 17A	8 February 2013
WW 60	BW 87	Sept 20 WW 744	Sept 20 WDA 3.32
YW 95	RED YY HITCH 514R		
M 19	RED YY HITCH 23X		
TM 49	CROWFOOT PRIDE 5923R (RC)		
CE 0	RED VIKSE DV ALL IN 209T		
	RED WRAZ LASS 56W		
	RED HAMCO LASS 206T		

Hitch 23X son with lots of style and eye appeal. His dam, Lass 56W has an enviable track record with her first two daughters working in purebred herds – one for Emmat Creek Ranch and one for KenRay Ranch. Granddam 206T is a powerful female that we are currently multiplying by ET. Red WRAZ Hitch 17A has a great set of EPD. Top 10% of the breed for WW, YW, TM, CW. Top 20% or better on Carcass and top 25% for milk. His sire is a proven calving ease sire so this guy is still on the calving ease side but there is a little more punch from the cow side here which shows up in his 87 lb. birth weight. Use on larger frame heifers or test him on the three year olds. The females will be keepers for sure!

*Reference Sire***RED YY HITCH 23X**

Sire of lots 38 - 46

BW -1.6	WW 61	YW 99	M 19	TM 49	CE 3
---------	-------	-------	------	-------	------



Hitch 23X was selected for his gorgeous black dam, his tremendous length of body and his well above average EPD. He is a proven calving ease sire that has been used very successfully on heifers with very consistent and predictable birth weights. He has a good solid foot and his progeny end up having more bone than you would expect. His progeny also have a ton of hair. His dam is CAA Elite and black in color with a little different pedigree than anything we had backed by proven female producing red genetics. The sons are top end heifer bulls and I can't wait for the first females to start milking!

40**RED WRAZ HITCH 8A**

BW -1.8	17460221	WRAZ 8A	31 January 2013
WW 52	BW 74	Sept 20 WW 680	Sept 20 WDA 3.32
YW 87		RED YY HITCH 514R	
M 18		RED YY HITCH 23X	
TM 44		CROWFOOT PRIDE 5923R (RC)	
CE 6		RED PASQUIA ICON 57T	
		RED WRAZ PRIDE 108Y	
		RED KMAC MISS PRIDE 625S	

Another rip of a heifer bull by Red YY Hitch 23X. This one is out of a first calf heifer that was selected for the annual Touch of Class sale in Saskatoon. WRAZ 108Y was purchased by Hector Lamontagne and leased back to me – this is her first calf! Looks like he will be a good investment for you – Thanks again! Just 74 lb. at birth but he grew up to be quite a chunk of calf! These are the kind of heifer bulls I like – they start off light but they have a lot of grow in them. They end up with some bone and meat in them so you have some pounds to sell in the fall. A full sister to 108Y was selected for Red Round Up and sold to Clay Enterprises. Her first calf went back to that same sale and sold to April Ockerman to start a red herd. He has a pretty nice set of numbers as well if you are watching them! This guy would certainly add value to a pen of bred heifers with his high probability of calving ease along with EPD in the top 30% of the breed for growth.

**41****RED WRAZ HITCH 87A**

BW -1.2	1743952	WRAZ 87A	5 March 2013
WW 49	BW 80	Sept 20 WW 690	Sept 20 WDA 3.47
YW 77		RED YY HITCH 514R	
M 19		RED YY HITCH 23X	
TM 43		CROWFOOT PRIDE 5923R (RC)	
CE 3		RED SMW SMACK 31U	
		RED WRAZ KURUBA 89Y	
		RED TJF VIPER 22S	

This son of calving ease sire Hitch 23X has an 80 lb. birth weight and above average EPD on almost all traits. His dam 89Y did a nice job and just calved again on March 6/14. Excellent fertility, excellent udder, excellent foot and a very good mama. This cow family has produced good ones before. Maternal brother to 89Y was purchased by my good friend Bryan Mackenzie to breed some heifers and you will find some of his progeny in the 43rd Annual Brylor Ranch Bull Sale!

**42****RED WRAZ HITCH 20A**

BW -.6	1743931	WRAZ 20A	9 February 2013
WW 59	BW 84	Sept 20 WW 656	Sept 20 WDA 2.94
YW 96		RED YY HITCH 514R	
M 17		RED YY HITCH 23X	
TM 47		CROWFOOT PRIDE 5923R (RC)	
CE 4		RED BASIN SENSATION 702E OSF	
		RED FRASER EMMY 144Y	
		RED FRASER EMMY 978W	

Here is a calving ease Hitch 23X son out of first calf heifer JFRA 144Y that I purchase in the Annual Keystone Classic sale in Brandon, MB. She is a Basin Sensation 702E daughter. Sensation has a Calving Ease EPD in the top 1% of the breed. Hitch 23X is also above breed average on CE. This one should work well in the heifer pen.





43

RED WRAZ HITCH 23A

BW -1.8	1743934	WRAZ 23A	10 February 2013
WW 51	BW 86	Sept 20 WW 686	Sept 20 WDA 3.09
YW 77		RED YY HITCH 514R	
M 15		RED YY HITCH 23X	
TM 40		CROWFOOT PRIDE 5923R (RC)	
CE 5		RED YY SQUIRE 334N ET	
		RED JB WINTER ICECAP 9019	
		RED BROX ICECAP 24N	

Heifer bull here with a very maternal pedigree. EPD for CE and BW are in the top 25% of the breed and still above avg WW and YW EPD. His WDA is over 3 lb/day. His dam JBL 19W was purchased out of a dispersal at Fort Macleod and is proving to be a very good female. Full brother sold to Phillip Draper in this sale last year and they are pleased with how he bred and wintered.

44

RED WRAZ HITCH 45A

BW .5	1743939	WRAZ 45A	18 February 2013
WW 62	BW 92	Sept 20 WW 710	Sept 20 WDA 3.2
YW 97		RED YY HITCH 514R	
M 15		RED YY HITCH 23X	
TM 46		CROWFOOT PRIDE 5923R (RC)	
CE 2		RED DIMLER INDEED 105R	
		RED WRAZ SEREBL 63W	
		RED KMAC SEREBL 95N	

Powerful Hitch son that really catches your eye. His dam Serebl 63W is the largest framed female in the Serebl cow family – one of the top producing cow families here at WRAZ. Granddam Serebl 95N is entering the flush program at the end of April. Expect Hitch 45A to add frame and length as well as overall eye appeal. He is in the top 7% for WW, top 8% YW, top 10% CW, top 15% TM and Stay. Hitch 45A did just a tick under 3.2 lb/day from birth to Sept 20. Pretty darn respectable on mama's milk!



45

RED WRAZ HITCH 52A

BW 1.3	1743943	WRAZ 52A	20 February 2013
WW 56	BW 94	Sept 20 WW 664	Sept 20 WDA 3.13
YW 86		RED YY HITCH 514R	
M 13		RED YY HITCH 23X	
TM 41		CROWFOOT PRIDE 5923R (RC)	
CE 1		RED K ADAMS TYCOON 2T	
		RED WRAZ SHEBA 40X	
		RED D.J. MISS CLAY 10P	

This guy is sired by the calving ease Hitch 23X bull but the dam 40X packs a little more punch in her pedigree. Old Mambo makes some beautiful uddered daughters that milk well but he can also add some birth weight. The bottom side of her pedigree also has some power as well in Bodacious. I would rather see this guy on second calvers or cows even though he is sired by our calving ease sire YY Hitch 23X. He has EPD in the top 15 -20 % in WW, YW with good carcass numbers and a WDA over 3 lb.



46

RED WRAZ HITCH 82A

BW .3	1743951	WRAZ 82A	3 March 2013
WW 61	BW 82	Sept 20 WW 696	Sept 20 WDA 3.46
YW 97		RED YY HITCH 514R	
M 17		RED YY HITCH 23X	
TM 47		CROWFOOT PRIDE 5923R (RC)	
CE 1		RED DIMLER INDEED 105R	
		RED WRAZ DUCHESS 48Y	
		WRAZ RC DUCHESS 31T (RC)	

Here is another Hitch 23X son that is in the top 8% of the breed for both WW, YW and top 10% for TM. His WDA on mama's milk was 3.46 lb/day. He did have an 82 lb. birth weight so you could likely use him on heifers but he has enough punch behind him that I would be happy to see him with a herd of young cows or cows and a few heifers. Good Carcass EPD as well.

Reference Sire

RED SOO LINE GLADIATOR 5413

Sire of lots 47 - 53

BW -4.1 WW 40 YW 64 M 21 TM 41 CE 8

Red Soo Line Gladiator 5413 was selected as a mature bull for his ease of fleshing (he would gain well on hay - no grain required) and calving ease. He calves easily but maintains frame and fleshing ability. His progeny have plenty of eye appeal and the Gladiator females produce well.

47

RED WRAZ GLADIATOR 54A

1748043 WRAZ 54A 21 February 2013
 WW 37 BW 84 Sept 20 WW 706 Sept 20 WDA 3.33

YW 61 RED DWAJO GLADIATOR 32L
 M 16 RED SOO LINE GLADIATOR 5413
 TM 35 RED LPC SUSIE'S MARK 29K
 CE 6 RED KBJ KNIGHT 936L
 RED PASQUIA GERTIE 61T
 RED OK GERTIE 4N

Gladiator is an easy fleshing sire with predictable calving ease. Gladiator 54A will sire progeny that calve easily and profile real nice and grow well. This guy can work for the heifer pen but there is enough grow for the cows. EPD are strong on birth weight and calving ease as well as carcass.

48

RED WRAZ GLADIATOR 65A

1743978 WRAZ 65A 25 February 2013
 WW 43 BW 80 Sept 20 WW 696 Sept 20 WDA 3.36

YW 63 RED DWAJO GLADIATOR 32L
 M 18 RED SOO LINE GLADIATOR 5413
 TM 40 RED LPC SUSIE'S MARK 29K
 CE 2 RED MLK CRK CUB 722 MAF OSF
 RED D.J. MISS CUB 2P
 RED CLAY FIRST MARIA 2J

Real good cow family behind this guy. Gladiator 65A had an 80 lb. birth weight so there is calving ease here but the female side of his pedigree is the stronger trait. This cow family is also incredible in their temperament. His future daughters will be keepers. These Gladiator females produce well and they have lots of eye appeal. This guy's dam is a real nice Cub daughter that easily catches your eye. Maternal sister 7U was selected for Red Round Up and is currently working in Alberta for Corona Creek Cattle Co.

49

RED WRAZ GLADIATOR 90A

1748050 WRAZ 90A 7 March 2013
 WW 54 BW 96 Sept 20 WW 736 Sept 20 WDA 3.74

YW 86 RED DWAJO GLADIATOR 32L
 M 20 RED SOO LINE GLADIATOR 5413
 TM 46 RED LPC SUSIE'S MARK 29K
 CE 5 RED HAMCO MR ROMANCE 103R OSF
 RED KAYMAC TREINA 764T
 RED KAYMAC DI 106P

Good solid son of Gladiator here - he gets noticed in the pen. His dam 764T just made the CAA list of Elite dams in 2013. We have retained two maternal sisters here at WRAZ. Great granddam 149M is a female that virtually every visitor picks out as one of their top picks. Good cow family here. He will give performance and eye appeal. He was the highest WDA of the Gladiator sons at 3.74 lb/day to Sept. 20. Use him to add lbs at weaning and keep his females! Well above average EPD, too.

50

WRAZ 94A

Pending WRAZ 94A 9 March 2013
 WW 46 BW 95 Sept 20 WW 712 Sept 20 WDA 3.65

YW 74 RED DWAJO GLADIATOR 32L
 M 11 RED SOO LINE GLADIATOR 5413
 TM 34 RED LPC SUSIE'S MARK 29K
 CE 8 RED BRYLOR MASTER PLAN 17M MAC
 RED BLAIR'S GIDGET 304W
 RED JCC GIDGET 80P

Real attractive son of Gladiator here. His dam 304W was purchased out of the Blair Ag program as a group of their top three high selling open heifers. He will add eye appeal and pounds at weaning. These Gladiators are also good haired cattle and they are feed efficient easy keepers.



51

RED WRAZ GLADIATOR 98A

1743981 WRAZ 98A 12 March 2013
 WW 47 BW 84 Sept 20 WW 678 Sept 20 WDA 3.53

YW 74 RED DWAJO GLADIATOR 32L
 M 22 RED SOO LINE GLADIATOR 5413
 TM 46 RED LPC SUSIE'S MARK 29K
 CE 6 RED SOO LINE HERCULES 12M
 RED RIVERDALE DYNAMINT 140R
 RED RIVERDALE DYNAMINT 31D

We used Gladiator on a range of cows and his calving ease was quite consistent. The dam, 140R is one of the top cows purchased at the Riverdale dispersal. We purchased a great set of females from the Riverdale dispersal. There is calving ease in this pedigree and he will add milk and mass to his daughters. 140R has produced very well and there are maternal brothers working in the Reid herd at Brandon, MB and Glenn Wilson's good herd near Wawota, SK.





52 RED WRAZ GLADIATOR 101A

BW -8	1743982	WRAZ 101A	14 March 2013
WW 44	BW 93	Sept 20 WW 634	Sept 20 WDA 3.34
YW 64	RED DWAJO GLADIATOR 32L		
M 21	RED SOO LINE GLADIATOR 5413		
TM 43	RED LPC SUSIE'S MARK 29K		
CE 2	RED SSS BOMBER 789G		
	RED RIVERDALE KITTY 230J		
	RED RIVERDALE KIT 28D		

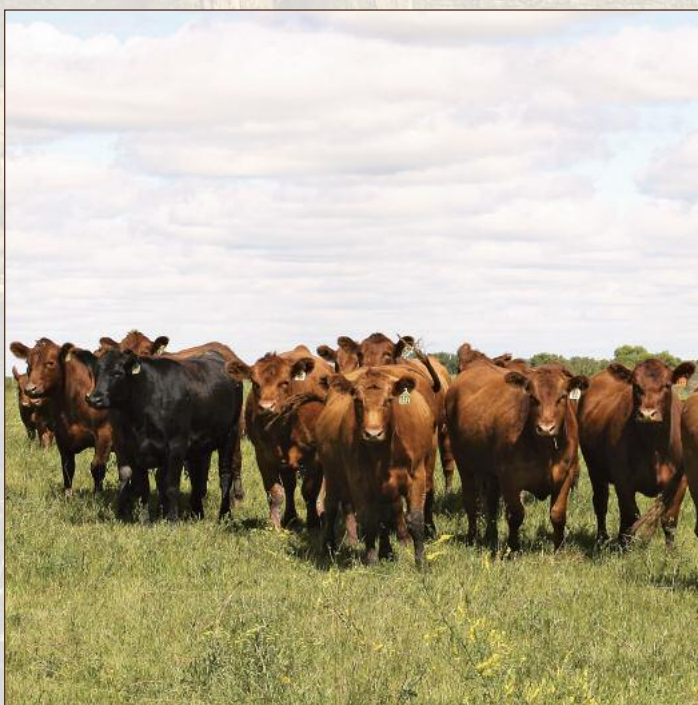
Gladiator son that will sire a strong set of calves at weaning time. His dam is a big powerful CAA Elite dam that I purchased in the package of really good Riverdale cows. These Bomber 789G daughters all turned out very good! Gladiator 101A will sire a great set of steers as well as keeper heifers.



53 RED WRAZ GLADIATOR 118A

BW -3.7	1748052	WRAZ 118A	20 March 2013
WW 40	BW 83	Sept 20 WW 684	Sept 20 WDA 3.64
YW 62	RED DWAJO GLADIATOR 32L		
M 16	RED SOO LINE GLADIATOR 5413		
TM 37	RED LPC SUSIE'S MARK 29K		
CE 8	RED BRYLOR SDL SQUALL 230S OSF MAC		
	RED WRAZ DORITA 13U MAF		
	RED S- DORITA 29R		

If you are looking to improve the amount of hair your next set of calves have then take a close look here. This fella has an incredible long coat of dark red hair. His dam, 13U is a moderate made daughter of Squall with a very good udder and an enviable production record. There are two maternal sisters to this guy working in purebred herds. One for Storebo Farms and one for Wilbar Cattle Co. 13U puts a great dark red coat of hair on her progeny. There are not many Squall progeny out there and that is a real shame. He bred very well and had awesome calving ease. Gladiator 118A would work real well in a pen of heifers. His EPD for BW and CE are in the top 10% or better in the breed.



Reference Sire

RED VRRR TOP STAR Y236

Sire of lots 54 - 55



Top Star Y236 was purchased for his excellent foot and structure as well as his top producing dam in the Valnes Ranch Red Angus program in South Dakota. He is dark red, moderate in frame with plenty of shape and muscle. His strongest traits are the foot under him and the females that will be left by him and his sons.

54**RED WRAZ TOPSTAR 49A**

BW -2.1	1759763	WRAZ 49A	19 February 2013
WW 51	BW 77	Sept 20 WW 664	Sept 20 WDA 3.12
YW 81	RED VRRRA LEAD OVERLOAD 5T OSF		
M 17	RED VRRRA TOP STAR Y236		
TM 42.5	RED VRRRA MS CHEROKEE STAR T2040SF		
CE 6	RED DWAJO JOKERS WILD 47S		
	RED WRAZ WCF PRALEE 022Y		
	RED WCF RAM 1000 PRALEE 2M		

Here is a little different pedigree in a bull named Top Star Y236 that we brought up from my good friend David Valnes in South Dakota. There are Elite females from both sides of the border all through his pedigree. He has decent calving ease and would be ok on larger framed heifers. Top Star 49A weighed 77 lb. at birth and still did above 3 lb/day on mama's milk. His dam is a first calf heifer with supreme calving ease on the bottom side of her pedigree and outcross genetics on top. She did a nice job on this guy as her first calf. Strong set of EPD on this guy with BW, CE in the top 20% of the breed and growth still in the top 30-35%. High marbling EPD as well.

55**RED WRAZ TOP STAR 76A**

BW .5	1759761	WRAZ 76A	1 March 2013
WW 57	BW 92	Sept 20 WW 670	Sept 20 WDA 3.28
YW 90	RED VRRRA LEAD OVERLOAD 5T OSF		
M 22	RED VRRRA TOP STAR Y236		
TM 50	RED VRRRA MS CHEROKEE STAR T204 OSF		
CE 1	RED BRYLOR/WSP KARWEIK 1P MAF		
	RED WRAZ VELESA 3X		
	RED VELESA OF KINARED 502N		



The only other bull sired by Top Star Y236. This is his first set of calves so he was used lightly on a variety of females. He has decent calving ease but his strength will be in his females. This son Top Star 76A weighed 92 lb. at birth with a WDA of 3.28 lb/day. There is a little more jam here from his dam, so likely would be better used on some young cows. There is very strong maternal on both sides of his pedigree if you want to produce some Star females! Very strong EPD for growth, maternal and marbling here folks.

57**RED WRAZ TIARA 6A**

BW .2	1760134	WRAZ 6A	30 January 2013
WW 58	BW 75		
YW 93	RED YY HITCH 514R		
M 15	RED YY HITCH 23X		
TM 44	CROWFOOT PRIDE 5923R (RC)		
CE 1	RED DIMLER INDEED 105R		
	RED WRAZ TIARA 46Y		
	RED HAMCO TIARA 224S		

This Hitch 23X daughter is a moderate framed and stout made with a ton of top in her. She is a well put together and has that broody look about her. Dam 46Y and Granddam both milk well. Solid EPD including carcass and top 10% in growth.

*Reference Sire***RED MLK CRK CUB 722**

Sire of lot 56

BW -2	WW 57	YW 91	M 15	TM 43	CE -10
-------	-------	-------	------	-------	--------

56**WRAZ 316A**

BW -1.3	Registration 1774251	WRAZ 316A	18 January 2013
WW 51	BW 85	Sept 20 WW 694	Sept 20 WDA 2.83
YW 84	RED GLACIER CUB 446 OSF MAF		
M 14	RED MLK CRK CUB 722 MAF OSF		
TM 39	RED MLK CRK LAKOTA 152-HOBO OSF		
CE N/A	RED GET-A-LONG LINE BACKER 109		
	RED WCF LINE 109 RAMBA 20T		
	RED HR RAMBO ET 104L		

Here is a son of Elite sire Red Milk Creek Cub 722. He has lots of frame and he would sire some good solid females with a little more frame. Cub 316A has a pedigree stacked with Elite sires and ET females. Once again I will say never underestimate the power of a cow family. If you are following the WDA on these bulls this guy deserves a big break. He had a long distance truck ride from long time breeder and good friend Gerry Walter – WCF Red Angus near Goderich, Ont. I lease a few cows from Gerry every year and the weight used to calculate his WDA of 2.83 lb/day was my first weight after being weaned and trucked out here.





58 RED WRAZ SEREBL 16A

BW 1.6	1759766	WRAZ 16A	6 February 2013
WW 62	BW 80		
YW 98	RED VVRA LEAD OVERLOAD 5T OSF		
M 17	RED VVRA TOP STAR Y236 1662116		
TM 49	RED VVRA MS CHEROKEE STAR T204 OSF		
CE 0	RED PASQUIA TOAST 15W		
	RED WRAZ SEREBL 14Y		
	RED WRAZ SEREBL 57W		

Here is one from our most powerful cow family. Some have said she could be a show heifer prospect but I will place my bet on her production based on the strength of this Serebl cow family. This is just the first one for her dam 14Y, but the granddam has one of the most powerful bulls in the pen this year in WRAZ 114A. You be the judge, but what I know is this cow family can produce!



59 RED WRAZ LUCY 19A

BW 1.7	1759765	WRAZ 19A	9 February 2013
WW 59	BW 90		
YW 93	RED VVRA LEAD OVERLOAD 5T OSF		
M 14	RED VVRA TOP STAR Y236		
TM N/A	RED VVRA MS CHEROKEE STAR T204 OSF		
CE -3	RED DWAJO JOKERS WILD 47S		
	RED WRAZ WCF LUCY 021Y		
	RED WCF BODACIOUS LUCY 33N		

A little more powerful genetics in this female with the outcross Joker and old Bodacious in her dam's pedigree. Her WW and YW EPD are in the top 10% of the breed. Her sire Y236 is really strong in structure and his foot as well as high in maternal traits. Lucy 19A has a real good dark foot under her as well – the kind of foot you want if you are starting or building a herd.



60 RED WRAZ LANA 25A

BW -.8	1743935	WRAZ 25A	11 February 2013
WW 48	BW 82		
YW 74	RED YY HITCH 514R		
M 20	RED YY HITCH 23X		
TM 43	CROWFOOT PRIDE 5923R (RC)		
CE 2	RED TER-RON ADVANCE 548R		
	RED WRAZ WCF LANA 026Y		
	RED MOOSE CREEK LANA 74K		

Very long bodied heifer with plenty of eye appeal and a ton of hair. She is built for producing big powerful progeny – the kind that make money! Rock solid in the EPD department.

61 RED WRAZ GERTIE 26A

BW -1.4	1764769	WRAZ 26A	11 February 2013
WW 52	BW 83		
YW 87	RED YY HITCH 514R		
M 12	RED YY HITCH 23X		
TM 38	CROWFOOT PRIDE 5923R (RC)		
CE 5	RED BRYLOR MASTER PLAN 17M MAC		
	RED PASQUIA GERTIE 25U MAC		
	RED OK GERTIE 4N		

Real eye appealing, dark red Hitch 23X daughter. Interesting pedigree here with the Elite black dam in Hitch on the sire side and also outcross black genetics on the bottom for her dam as well. Nice EPD – calving ease but still lots of growth.



SPRUCE HILL FARMS
 JOURNEYMAN AG MECHANIC
 LICENSED CUSTOM APPLICATOR

STEVEN DONALD
 Box 911, Moosomin, SK S0G 3N0
 306.435.9458 (cell)
 sjdonald@rfnw.com

Outback
 GUIDANCE

62**RED WRAZ EBONY 5A**

BW -1.4	1759768	WRAZ 5A	28 January 2013
WW 54	BW 73		
YW 85	RED VVRA LEAD OVERLOAD 5T OSF		
M 18	RED VVRA TOP STAR Y236		
TM 46	RED VVRA MS CHEROKEE STAR T204 OSF		
CE 6	RED MRLA 116U		
	RED NU-HORIZON EBONY 117Y		
	RED NU-HORIZON BRANDY 910W		

Stout broody female here folks – the kind that make you money! Her dam 117Y was purchased as an open heifer calf at the annual Keystone Classic, Brandon, MB. What a great place to buy top notch females. This one comes from Kieran, Deb and Kodie Doetzel - the very good people at Nu Horizon Angus near Lipton, SK. Calving ease and tons of growth in this pedigree. The sire was purchased for his correct structure, awesome foot and his top notch dam. Her EPD are real good and exceptional in marbling.

63**RED WRAZ DOLL 42A**

BW 1.3	1743940	WRAZ 42A	18 February 2013
WW 50	BW 101		
YW 83	RED DWAJO GLADIATOR 32L		
M 15	RED SOO LINE GLADIATOR 5413		
TM 39	RED LPC SUSIE'S MARK 29K		
CE 2	RED LETTER ICON 1R		
	RED PASQUIA DOLL 56U		
	RED PASQUIA DOLL 35P		

Here is a real attractive daughter of Gladiator 413R. She has a ton of long dark hair. The Gladiator progeny are easy doing and have good eye appeal. Her dam Doll 56U originates from the good Pasquia herd of Alvin Ginter near Carrot River, SK. Alvin will tell you the Doll cow family is one of his best.

**64****RED WRAZ STARDOM 62A**

BW -.2	1743946	WRAZ 62A	24 February 2013
WW 45	BW 90		
YW 72	RED DWAJO GLADIATOR 32L		
M 21	RED SOO LINE GLADIATOR 5413		
TM 43	RED LPC SUSIE'S MARK 29K		
CE 3	RED PASQUIA ICON 57T		
	RED WRAZ STARDOM 108W		
	RED SANDY SLOPE STARDOM 4		

If you like them deep bodied and big ribbed you may want to check out Stardom 62A. Her dam 108W can really produce them – her first daughter 90Y was selected for the Touch of Class female sale in Saskatoon and sold as a bred to the great people at JJL Livestock, south of Melville. Jarret and Jenna were very pleased with her first calf – a rip of a bull by Hitch 23X.



Hitch and his dam, WRAZ 90Y

**65****RED WRAZ HITCH 61A**

BW 1.7	1743945	WRAZ 61A	24 February 2013
WW 65	BW 90		
YW 102	RED YY HITCH 514R		
M 16	RED YY HITCH 23X		
TM 48	CROWFOOT PRIDE 5923R (RC)		
CE-1	RED K ADAMS TYCOON 2T		
	RED WRAZ SPARKLES 31X		
	RED KAYMAC SPARKLES 748T		

Here is one out of a Tycoon daughter – we parted with Tycoon way too soon! His daughters are flat good – some of the best udders on the place. Dam 31X was chosen to sell in this very sale as a heifer calf but she hurt herself and we had to pull her out. Sparkles 61A is a top end female and she will be a strong producer. Check out her EPD for growth in the top 4% of the breed. The calving ease and maternal greatness behind her sire Hitch 23X will only strengthen the future of this female!

66**WRAZ 68A**

BW -1.5		WRAZ 68A	
WW 59	BW 86		
YW 84	RED BIEBER MAKIN HAY 9913 OSF MAF		
M 18	RED BRYLOR WRAZ MAKN WAVES 39X MAF OSF		
TM 47	RED BRYLOR CHEROK 19U MAF OSF		
CE 4	RED SMW SMACK 31U		
	RED WRAZ CHRISTY 69Y		
	RED TJF RAMBO 22R		

The only Waves female in the offering and she is a good one! I wanted to represent all the sire groups in this offering so here is one from Waves even though I would have liked to keep her. You can't keep 'em all and if you are selling them they need to be good ones. There is very strong maternal in the pedigree behind Christy 68A. Her dam is a Smack and his strongest maternal trait is the udder he can hang on his progeny. Dam to her Waves sire is Cherok 19U – if you ever had a chance to see her udder you will know that this one will have a good one! Calving ease with lots of grow in this package as well.



Sire: RED BRYLOR BIG ROCK 85T



67

RED WRAZ TIFFANY 69A

BW -1.1 1748045 WRAZ 69A 27 February 2013
WW 47 BW 81

YW 76 RED FINE LINE MULBERRY 26P OSF AMF MAF
M 13 RED BRYLOR BIG ROCK 85T OSF MAF
TM 37 RED CYT CHARITY 10P MAF
CE 1 RED CHOPPER K TOP DESIGN 64R
RED KAYMAC TIFFANY 742T
RED KAYMAC BLAZE 117P

This Big Rock daughter has a ton of eye appeal – proud and really attractive! She is the only Big Rock in the offering and she is from the top sheff! Hard to part with? Definitely - but the ones that we want to keep are the ones to sell and the ones to buy! Not a lot of Big Rock progeny for sale in Canada either as he was purchased by a syndicate in the US. His daughters have a super black foot, an excellent dark red coat of hair and they have an udder that is second to none. We have retained a maternal sister 115Z. Tiffany 69A would look awesome in a halter but her true value will be realized in her future production!



68

RED WRAZ ABIGAIL 71A

BW -.2 1759762 WRAZ 71A 27 February 2013
WW 57 BW 89

YW 87 RED VVRA LEAD OVERLOAD 5T OSF
M 19 RED VVRA TOP STAR Y236
TM 46 RED VVRA MS CHEROKEE STAR T204 OSF
CE -2 RED MLK CRK CUB 722 MAF OSF
RED WRAZ ABIGAIL 43W
RED CUMNOCK ABIGAIL 654L

Abigail 71A is one of the top females sired by Top Star Y236. She has a tremendous amount of length yet a ton of middle to her. When I look at her there is always one word that comes to mind – POWERFUL! Her pedigree is full of maternal strength on both sides and her dam 43W had one of the most powerful bulls in this sale last year. He went to work for the real good commercial herd at Tomda Enterprises. Many thanks to Tom and John for your continued support of our program! Abigail 71A displays that same power – that's predictable power and she will pass it on, too.



69

RED WRAZ PTEET 100A

BW 1.5 1760135 WRAZ 100A 13 March 2013
WW 39 BW 93

YW 65 RED SSS BOOMER 803B
M 22 RED RSL BUSTER 522U
TM 42 RED RSL SUE 400F OSF
CE -1 RED CUMNOCK RAMBLER 658L
RED DOUBLE C PTEET 372S
RED DOUBLE C PTEET 562K

Here is a solid female from a son of boomer 803B named RSL Buster 522U. The Boomer daughters we have are great producers. Pteet 100A was an in dam purchase from one of the top cow families at the Double C female production sale in the fall of 2012. Carla and Cameron speak highly of the cow family. We also have a maternal sister Pteet 265X in the herd purchased out of their annual bull and open female sale.

70**RED WRAZ KURUBA 110A**

BW 1.5	1743960	WRAZ 110A	17 March 2013
WW 57	BW 94		
YW 91	RED FINE LINE MULBERRY 26P OSF AMF MAF		
M 13	RED BRYLOR JKC GHOST RIDER108Y		
TM 41	RED BRYLOR CHEROK 22L		
CE 0	RED BUF CRK HOBO 1961 OSF MAF		
	RED GINN HOBO KURUBA		
	RED GINN KNIGHT HAWK KURUBA11T		

As I have said before I wanted to have at least one from each sire group in the offering. That is the only reason this one is on offer. I love what Ghost Rider is doing and I believe he is the most interesting herdsire we have used to date. Kuruba 110A is one of only a handful of Ghost Rider females that have been for sale to date (they are only available at WRAZ and Brylor). She is long and fancy with tons of hair. She is one of the younger heifers in the offering but don't overlook her because of her age. She will mature into an excellent piece to the genetic puzzle.

**71****RED WRAZ MISTRESS 127A**

BW -1.1	1743969	WRAZ 127A	2 April 2013
WW 61	BW 77		
YW 97	RED YY HITCH 514R		
M 18	RED YY HITCH 23X		
TM 49	CROWFOOT PRIDE 5923R (RC)		
CE 2	RED SMW SMACK 31U		
	RED WRAZ MISTRESS 1Y		
	RED KMAC MISTRESS 607S		

This is the youngest heifer in the offering. Well she is last but certainly not least! She is just an April born sweetheart by Hitch 23X – what a beautiful profile. Her picture pretty much says it all. Thank you Grant and Lauralie for such a great picture on such a cold day! Check out her EPD as well. Top 8% for both WW,YW and top 6% for TM.

**COMMERCIAL RED ANGUS HEIFERS****72****PEN OF 3****74****PEN OF 3****73****PEN OF 3****75****PEN OF 3**

Thank you to everyone who attended and bid at last year's sale. Special thanks to these buyers:

BRIMNER

Darrell Petterson
Highway 21 Feeders
Shawn Bennett
Charles Gibson
John Van Eaton
Duane Bartok
Cudmore Farms
Bernard Ferner

Tom Trithart
WCF Red Angus
James Hoehn
Ken & Kevin Wilson
Mylo Urban
Daniel & Diane Kotylak
Randy Sawley
David Erbach
CAB Ranch

WRAZ

Double C Angus
Red Ember Ranch
Maurice Colleaux
Morris & Philip Draper
Alan & Michael Polvi
Dave Kotylak
Robert Muir
Craig & Travis Lincoln

U6 Livestock
Cudmore Farms
Dennis Mauthe
Anton Kreutner
Neil Davis
Brad Goettling
John Wilson
Ernest Hickie
Corey Flaman

Stan Morris
Daniel & Diane Kotylak
Robert & Brenda
Meszaros
WCF Red Angus
Charles Herbst
Tomda Enterprises

Thank you to
CONEXUS

*for supplying the
coffee & cookies*

Thank you to
BREHAUT BROS.
FEEDLOT CLEANING

for supplying the donuts after the sale

By
LIVESTOCK

124 Shannon Road
Regina, SK S4S 5B1
306-584-7937

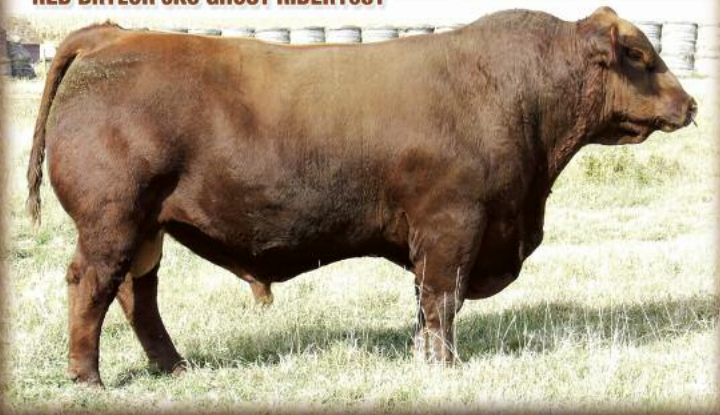
CANADA		POSTES
POST		CANADA
Postage paid		Port payé
Addressed Admail		Médiaposte avec adresse
1015092		

Cornerstone *"More Bang for Your Buck!"*

1:30 P.M. **Bull & Female Sale**

Saturday, April 19, 2014 • Whitewood Auction Mart, Whitewood, SK

RED BRYLOR JKC GHOST RIDER108Y



BRIMNER BULL 152A



RED WRAZ TIDAL WAVE 56A



BRIMNER BULL 87A



WR^{ed}
RA^{ngus}
Z

"The program
you can count on"

Phil Birnie, Lana Kormos and family
Box 461, Wawota, SK S0G 5A0
Info@wraz.ca • www.wraz.ca
T 306-739-2988 • C 306-577-7440
Gordon Murray T 306-739-2177
C 306-646-7980

**Brimner
Cattle Co.**

Kelly, Tracy, William & Wyatt Brimmer
Box 93, Manor, SK S0C 1R0
T 306-448-2028 • C 306-577-7698