

Cornerstone *"More Bang for Bull & Female Sale Your Buck!"*

Featuring:

BRIMNER CATTLE CO.

26 Yearling Charolais Bulls

WRAZ RED ANGUS

38 Yearling Red Angus Bulls

12 Red Angus Open Heifers

24 Commercial Open Heifers



Saturday, April 18, 2015 • 1:30 P.M.

Whitewood Auction Mart, Whitewood, SK

Cornerstone "More Bang for Your Buck!"

1:30 P.M. Bull & Female Sale
Saturday, April 18, 2015 • Whitewood Auction Mart, Whitewood, SK

64 BULLS SELL **38 Red Angus Yearlings • 12 Red Angus Open Heifers**
26 Charolais Yearlings • 24 Commercial Open Heifers

Sale Day Phones

Whitewood Livestock..... 306-735-2822
 Kelly Brimmer 306-577-7698
 Phil Birnie 306-577-7440
 Gordon Murray..... 306-646-7980
 Helge By 306-536-4261
 Candace By 306-536-3374
 Brent Carey, Auctioneer 403-650-9028
 Shane Castle, Consultant 306-741-7485
 Gerry Walter, ON/Eastern rep 519-524-0047/519-524-8879

Commercial Contacts

Jim Hallberg 306-861-0917
 Glen Vargo 306-736-7710
 Rhett Parks 306-735-7813
 Brian Good, Director of Field Services for the Canadian Angus Association, will have Angus tags available at the sale.

U.S. Buyers

We will do the required tests and deliver to the U.S. border at cost as soon after the sale as possible.
 The exchange rate will be announced at the start of the sale.
 Cheramiev Viator, U.S. Buyer Rep 1-979-777-9419 or cheramiev@gmail.com

Semen Testing

All bulls will be semen tested prior to sale day by a licensed veterinarian.

Delivery

Free delivery up to 150 km or bring your trailer sale day and receive a \$50 credit.

Board

Free board for bulls until June 1st, but all bulls left at the farm must be insured.

Insurance

Insurance will be available sale day. All bulls returning to the farm must be insured.

Credit Card Purchases

Mastercard and Visa may be used for payment of your purchases. A 3% surcharge will apply.

Terms & Conditions

The sale will be conducted under the Terms and Conditions of the Canadian Charolais Association and Canadian Angus Association. Copies will be available at the settlement desk on sale day.

Breed Average EPD

	CE	BW	WW	YW	M	TM
Charolais	69	1.7	43	82	21.3	43
Red Angus	2.7	-.6	49	75	16	41

OPEN HOUSE at WRAZ

**Saturday, April 4, anytime after 1:30 p.m.
 until the cows come home.**

*Presale viewing of the bulls, their sires, dams & siblings
 with calves at foot. WRAZ ultrasound data will be available.
 From Wawota: 5 miles E on #48, 1 mile N on #601, 1/4 mile W.*

Join us for lunch on sale day

The Percentage Calving Chart

1. An average cow of any breed should be able to calve 7% of her body weight.
2. Most Charolais cows will weigh between 1400-1800 lb., expected calf weight range 98 to 126 lb.
3. Most Red Angus cows will weigh between 1200 to 1600 lb., expected calf weight range 84 to 112 lb.
4. Calving Ease is MORE important than birth weight because a longer sided calf may calve easily, but the birth weight is higher.

7% Calving Chart	
Cow Wt.	Calf Wt.
1200 lb.	84 lb.
1400 lb.	98 lb.
1600 lb.	112 lb.
1800 lb.	126 lb.

**Brimner
 Cattle Co.**

Kelly, Tracey, William & Wyatt Brimmer
 Box 93, Manor, SK S0C 1R0
 T 306-448-2028 C 306-577-7698

Sale Manager

By
LIVESTOCK

306-584-7937
 Helge By 306-536-4261
 Candace By 306-536-3374
 charolaisbanner@gmail.com
 www.bylivestock.com

WR^{ed}Angus^{us}
*"The program
 you can count on"*

Phil Birnie, Lana Kormos & Family
 Box 461, Wawota, SK S0G 5A0
 T 306-739-2988
 C 306-577-7440 • info@wraz.ca
 Gordon Murray T 306-739-2177
 C 306-646-7980



Welcome to the 2015 edition of the Cornerstone bull sale which again provides some top genetics in both Charolais and Red Angus. This one stop shopping offers you the opportunity to select good Red Angus bulls for the heifers or to make the great British influence cows that are necessary for profitability in the commercial industry. This really is a good set of Red Angus bulls from WRAZ with some definite breeder bulls with lead time genetics. The Charolais bulls again provide calving ease plus performance. The Brimmer bulls are good haired, big volume bulls that will work at all levels of the industry, purebred or commercial. Red cows and white bulls have been the Cornerstone of the commercial industry for decades and will continue to be popular from the sale ring to the packing house. Using a quality bull is the first step to herd improvement and they are here in both breeds.

As a bonus this year, there is a larger offering of very good open Red Angus purebred and commercial Red Angus heifers that would be excellent additions to an existing operation or a great place to start your own new purebred herd.

If Candace or I can be of any assistance before the sale or on sale day, please don't hesitate to give us a call. We would be happy to help you find a bull that is right for your program.

Sincerely,

Helge & Candace By • By Livestock • Tel 306.584.7937 • Cell 306.536.4261



WRAZ RED ANGUS

Welcome to the 7th Annual CORNERSTONE "More Bang for Your Buck" Bull & Female Sale.

I would like to personally thank you for taking the time to open up our catalogue to have a look!

I know there are plenty of catalogues in your mailbox every single day so you have many bulls to choose from. I would like to suggest that we are much more than just a bull sale. I would like you to look at WRAZ as a program. Our program is based on honesty, integrity and sound genetics that will go out and work in the real world. We stand behind our genetics 100% with our promise to always be – the program you can count on! We place great emphasis on the females that make up the WRAZ herd and the herd sires that we use to produce your next herd sire. Each year we cull ruthlessly to keep improving the main herd

of females – really any program is genetically only as strong as the base of females behind it. We start at ground level and by that I mean feet I can stand to look at and functional, well attached udders with plenty of milk and good teat size to be trouble free for the life of that female. This group of 39 bulls is the very top end of a group of 84 males born out of 175 mother cows – none are sold prior to the sale. The bulls on offer are sound and functional and they will all be semen tested by sale day. I would like to suggest to you that our job of supplying bulls to the commercial industry is to constantly search the globe to find and introduce proven genetics that will improve our herd and in turn our commercial customers herds. These traits need to be economically significant and desirable in the marketplace not just the flavour of the month or the latest fad. No matter whether you build widgets or raise beef the secret to financial success is to generate a return on our investment so we have a strong bottom line. If you succeed we succeed! Sounds like a win-win situation to me!

Please do not hesitate to call myself – Phil 306 577 7440 or Gordon 306 646 7980 at any time and/or come out to the WRAZ Red Angus Annual Customer Appreciation and Open House right here at the ranch five miles east of Wawota Saturday, April 4, 2015 any time after 1:30 until the end. The BBQ will be hot later in the afternoon and my fiancée Lana will do her magic with juicy Angus steak cooked to perfection as long as there is someone here to eat them. There will be hot and cold beverages for all ages including the kids. During the open house all of the dams, sires and siblings to the sale bulls and females are right here at the ranch for your appraisal. The females will be milking with calves at foot and the sires will be close by as well. We spend a tremendous amount of time and effort from birth to sale day evaluating the progress of the progeny that are for sale and we would be honoured to have you here to check out the program even if you do not need a bull this year. It does not cost anything to have a look and enjoy some WRAZ hospitality. We would be more than happy to help in the selection of your next herd sire or you can just wander about on your own and check out the program.

Last but not least! Your next herd sire may be the most important decision you have ever made for the future of your program. The market today is very strong and many analysts are forecasting this market to remain strong for the foreseeable future. Time will tell! For those of us who held on to the ole cow's tail and made it through the last 10 years have chewed away at our equity but are still here and sitting in an enviable position with a strong set of producing females. Those of you who got in recently – congratulations on a great decision! One way or another it is a great time to be a part of this beef industry and a great time to replace the lost equity, pay off the cow loan or get a great return on your investment (maybe even all of the above!). My point is there has never been a better time to buy the very best genetics you can! Good bulls that improve your program are always a good decision whether your goal is improving females to market in this very strong replacement female market or adding weaning weight to generate more dollars from your next calf crop.

The investment is recovered in a much shorter time frame at these prices than in the past. One other issue that may catch some off guard in this record market is our friend at CRA – PLEASE REMIT! Wouldn't you rather invest in your own breeding program to own the best breeding bull rather than write a cheque to CRA next spring and never see it again?

Thanks for your time,
Phil & Lana



WR^{ed}Angus
"The program
you can count on" **Z**

Phil Birnie, Lana Kormos & Family
Box 461, Wawota, SK S0G 5A0
T 306-739-2988 • C 306-577-7440
Info@wraz.ca
Gordon Murray
T 306-739-2177 • C 306-646-7980

Reference Sire – Selling 2 Semen Packs



RED BRYLOR JKC GHOST RIDER108Y

Sire of lots 1 - 8

BW 1.3	WW 61	YW 99	M 18	TM 49	CE -3.8
--------	-------	-------	------	-------	---------

I could speak volumes about this excellent Herdsire but I will do this in point form to keep it short. I will say that he is the most influential sire we have used and he will definitely leave his mark here and in other programs across the globe. I believe his legacy in the end will be his top notch females.

- Daughters are now milking and they are excellent uddered with plenty of milk.
- Progeny are very good footed and structurally correct.
- Progeny are well above average at feed conversion and flesh very easily.
- Progeny have a great hair coat
- Progeny are born easily with excellent birth to wean growth
- Progeny are thick and full of muscle and red meat
- He has the ability to add a little frame yet keep progeny stout and easy fleshing

Semen Package A: 10 straws • Semen Package B: 10 straws

These are the last 20 straws of the original 60 straws available in Canada for the 2015 breeding season. Who knows maybe forever!

1

RED WRAZ PHANTOM 12B

1801174 WRAZ 12B 30 January 2014

BW 76 lb Oct 15 WW 810

BW -1.6	WW 51	YW 83	M 15	TM 42	CE 2.7
---------	-------	-------	------	-------	--------

RED FINE LINE MULBERRY 26P OSF AMF MAF DDF
 RED BRYLOR JKC GHOST RIDER108Y DDF
 RED BRYLOR CHEROK 22L
 RED SIX MILE TYPHOON 289T
 RED DOUBLE C ROXIE 293X
 RED DOUBLE C ROXIE 823T



We all have a few that we watch from birth to sale day with high hopes. For me Phantom 12B is the chosen one! Since birth I have loved the shape of his head and his presence when he moves about. You may have seen him in Bull Pen Alley at Agribition or on display at Ag Days in Brandon, MB. He possesses masculinity, a tremendous amount of eye appeal and has plenty of muscle and shape. He is excellent footed and very correct in his structure it is very hard to find a hole in him. We now have daughters of his sire Ghost Rider 108Y milking and we are very pleased. His dam 293X is a Typhoon daughter that was purchased from Double C Angus near Foam Lake (these Typhoon daughters are big ribbed and easy fleshing). Cam, Carla and family put together a very good set of top end, easy keeping broody females for their 2012 production sale and we were very pleased to purchase what we felt were the top end females and their daughters. We retained that first daughter, MEM Red Angus – Randy Mackenzie of Mountain View, AB, purchased the second daughter this past fall as a bred heifer and now 12B will be her first son on offer. This guy is a definite sale feature!

2

RED WRAZ GOLD DIGGER 80B

BW -2.1
WW 47
YW 77
M 20
TM 45
CE 3.1

1801225 WRAZ 80B 18 February 2014
BW 84 Oct 15 WW 714

Definitely a feature of the Ghost Rider sons! The longevity of the Maria cow family alone will float him to the top. His dam 12T is most definitely worthy. Her dam, 3R is a top end producer here and the old Matriarch 2J at 16 years of age will put her 15th natural calf on the straw shortly. 12T is long and dark red with an excellent foot and udder not to mention plenty wide in the top and chisel fronted. Brylor Ranch scooped the full sib sister 53A as high selling red heifer calf out of the Keystone Klassic Sale in Brandon MB feel free to ask Bryan Mackenzie what he thinks of her. Gold Digger 80B is great footed and structurally correct with longevity, fertility, good growth, moderate 84 lb BW and a ton of long dark red hair. His EPDs read very respectable as well. This guy is a HERDBUILDER!



Dam: WRAZ 12T



RED FINE LINE MULBERRY 26P OSF AMF MAF DDF
RED BRYLOR JKC GHOST RIDER108Y DDF
RED BRYLOR CHEROK 22L
RED BUF CRK ROMEO L081 MAF OSC
RED WRAZ MARIA 12T OSF
RED D.J. MISS GOLDIE 3R

3

RED WRAZ GHOSTLY 24B

BW -.2
WW 56
YW 87
M 19
TM 48
CE -4

1793639 WRAZ 24B 3 February 2014
BW 90 lb Oct 15 WW 830

Take a look at the muscle expression and shape that this guy exhibits! He will add some shape and his tremendous potential for growth will add pounds while maintaining that all important eye appeal. His WW, YW and Milk EPDs are all in the top 20%. This fella was in the Bull Pen Alley Pen of 3 at Agribition and on display in Brandon at Ag Days. His dam, 43W is owned by Gordon Murray on lease to WRAZ and she is one of the top producers. A maternal sister to 24B by Top Star was high selling female in this sale last year. The cow family is strong so keep all the females as well. This fella may have lost some ear in our brutal winter but don't hold that against him – he was born inside and completely dry before he went outside but sometimes good mamma's will lick their ears and there they were gone! Definitely a candidate for Herd Sire!



RED FINE LINE MULBERRY 26P OSF AMF MAF DDF
RED BRYLOR JKC GHOST RIDER108Y DDF
RED BRYLOR CHEROK 22L
RED MLK CRK CUB 722 MAF OSF
RED WRAZ ABIGAIL 43W
RED CUMNOCK ABIGAIL 654L



4

RED WRAZ DEMON 19B

BW -.6	1801180	WRAZ 19B	1 February 2014
WW 51	BW 86 lb	Oct 15 WW 748	
YW 82	RED FINE LINE MULBERRY 26P OSF AMF MAF DDF		
M 16	RED BRYLOR JKC GHOST RIDER108Y DDF		
TM 42	RED BRYLOR CHEROK 22L		
CE .8	RED DEER RANGE CACHE 99P		
	RED WRIGHTS CHER 8524U		
	RED WILBAR CHER 524R		

If you are looking for a son of Ghost Rider with an emphasis on keeping back some daughters, this guy is worth a look. His dam 8524U has done it before and his EPDs for Stay (longevity of progeny) and HPG (fertility of progeny) are well above average. He will leave behind a trail of good females and his progeny will also have lots of muscle and shape. Keep all the females and watch the buyers fight over the steers adding \$\$\$ to your bottom line.



5

RED WRAZ GHOST RIDER 40B

BW .2	1801194	WRAZ 40B	9 February 2014
WW 50	BW 84 lb	Oct 15 WW 666	
YW 82	RED FINE LINE MULBERRY 26P OSF AMF MAF DDF		
M 20	RED BRYLOR JKC GHOST RIDER108Y DDF		
TM 45	RED BRYLOR CHEROK 22L		
CE 1.7	RED SIX MILE OUTBACK 219P		
	RED KMAC LADY SENSATION 613S		
	RED KAYMAC SENSATIONAL 101P		

Here is a Ghost Rider son from CAA Elite dam 613S. The CAA designated her as a part of their list of Elite dams in 2012. 40B may not be the first one to grab your eye as he is a little plainer made but the cow family and the pedigree behind him tell the story of a female maker. We have Ghost Rider daughters milking now so I have plenty of confidence in his females. The female side of this pedigree has great female written all over it so don't overlook this one.



6

RED WRAZ GHOST RIDER 76B

BW .2	1801221	WRAZ 76B	17 February 2014
WW 51	BW 83 lb	Oct 15 WW 740	
YW 84	RED FINE LINE MULBERRY 26P OSF AMF MAF DDF		
M 17	RED BRYLOR JKC GHOST RIDER108Y DDF		
TM 43	RED BRYLOR CHEROK 22L		
CE .6	RED TOPLINE RANCHMAN 838		
	RED CG X RED TREND		
	RED TOP LINE LASS 246		

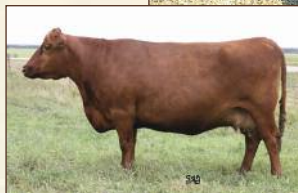
The last 10 or 12 years have been pretty hard on the backbone of the cattle industry – the commercial cow calf producer. Many of us refused to give those females away and chewed away at our equity to maintain those extra mouths to feed. Well if you are reading this footnote it worked! Now there is an opportunity in front of us all that may or may not be there somewhere down the road. With those females we retained now at 10 – 12+ years of age it is time to breed them to proven bloodlines and keep the heifers. The salvage value on these older cows is an opportunity not to be missed at some point in this price cycle. New Trend 22D is well known as a top female producer. Ghost Rider is doing an admirable job and now proven with daughters milking. The dam to this guy has New Trend back in her pedigree too. He has a very good set of EPDs across the board that are particularly high in the important female producing traits of TM and Stay (longevity) as well as top 1% in HPG (fertility).

7

RED WRAZ VISION 93B

BW 1.6	1810379	WRAZ 93B	21 February 2014
WW 53	BW 100 lb	Oct 15 WW 694	
YW 85	RED FINE LINE MULBERRY 26P OSF AMF MAF DDF		
M 16	RED BRYLOR JKC GHOST RIDER108Y DDF		
TM 42	RED BRYLOR CHEROK 22L		
CE -3.4	RED LODI PRINCE 26320SF MAF		
	RED PFRA MS PRINCE 149M		
	RED PFRA CHIEF 138F		

There is usually a sleeper in every sale and this might be the one in our sale. He is a son of Ghost Rider out of a female that almost every visitor picks as one of the top females that you would like a whole herd of. That female would be 149M in this case. We have two maternal sisters to 93B in our herd (had 3 but one was struck by lightning on a hill in the pasture) maternal sister 42X went to Red Round Up as a bred heifer and now walks the pastures at 4 West Cattle Co. This guy has one ear shorter from the nasty winter we had here last year. Mamma was just trying to help when she licked that one ear! Anyway he may have lost a little eye appeal but his genetic value has not changed one bit! Buy him with confidence as I know both of his ears were fully dry and fully there large as life when he left the calving barn.



Dam:
Red PFRA Ms Prince 149M

8

RED WRAZ GHOST RIDER 101B

BW 3.2	1810386	WRAZ 101B	24 February 2014
WW 65	BW 99 lb	Oct 15 WW 778	
YW 102	RED FINE LINE MULBERRY 26P OSF AMF MAF DDF		
M 17	RED BRYLOR JKC GHOST RIDER108Y DDF		
TM 49	RED BRYLOR CHEROK 22L		
CE -4.1	RED K ADAMS TYCOON 2T		
	RED WRAZ SPARKLES 31X		
	RED KAYMAC SPARKLES 748T		

This might be the most powerful sons of Ghost Rider in the whole offering. In many ways he reminds me of his sire the day I picked him out of the great set of bulls that Bryan had on offer. If you are using EPDs as one of the tools for helping you to select a new herd sire this guy's are top 6% in WW and YW as well as top 3% in Carcass Weight. The cow family behind this guy is strong as well. His dam 31X has more frame than most females in our herd but she is put together right and she maintains herself very well. Great granddam, 48M produced Premier 95X that did an admirable job for Cam at Double C until his premature death. I would use that bull in a heartbeat if he was still around. Once again do not overlook the power of a good strong cow family.



RED WRAZ CRIMSON 13B

1801175	WRAZ 13B	30 January 2014
BW 64 lb	Oct 15 WW 678	

RED UBAR SEQUOIA 202 OSF
 RED BCC CRIMSON JEWELS 102U
 RED RAVEN RIVER GOLDIE 47N
 RED BRYLOR BIG ROCK 85T OSF MAF
 RED WRAZ LASS 23X
 RED HAMCO LASS 206T

9

BW -5.8
WW 38
YW 59
M 22
TM 42
CE 11.3



Here is an interesting son of Crimson Jewels out of a Big Rock 85T daughter. The Big Rock daughters are very strong in the udder and milk department. There is not a thing I would change in the way Big Rock hangs an udder under a female. This guy's dam 23X was selected for Red Round Up back in 2010 alongside her dam 206T that we have since flushed. I had the opportunity to buy her back a couple years ago. Big Rock is calving ease and so is Crimson Jewels. This guy's pedigree is big time calving ease and that is definitely through a shorter gestation period. I would be cautious to use this guy if you have been breeding for low birth and possibly shorter gestation and keeping the females. The absolute last thing I want to promote is getting the gestation too short and losing the vigor at birth that we have within the Angus breed. If you have a fair bit of continental breeding in your pen of heifers and want a light BW that could potentially shorten up gestation, then 13B would be a good choice.

RED WRAZ CRIMSON 6B

1801169	WRAZ 6B	28 January 2014
BW 78 lb	Oct 15 WW 714	

RED UBAR SEQUOIA 202 OSF
 RED BCC CRIMSON JEWELS 102U
 RED RAVEN RIVER GOLDIE 47N
 RED BRYLOR WRAZ MAKN WAVES 39X MAF OSF
 RED WRAZ GOLDIE 83Z
 RED RIVERDALE GOLDIE 380L

10

BW -1.9
WW 45
YW 66
M 19
TM 41
CE 6.5



This guy's dam is sired by the \$58,000 Brylor/WRAZ Makn'Waves 39X calving ease bull that went to Kansas in the spring of 2011. There are not many of these females in Canada as he did not freeze semen after he left Canada. His dam has added some frame so 6B has more frame than many of the Crimson Jewels sons. He has a ton of hair and lots of muscle shape and expression with calving ease on both sides of his pedigree. You can use him on heifers.

Reference Sire

RED BCC CRIMSON JEWELS 102U

Sire of lots 9-13

BW -6.5 WW 27 YW 40 M 23 TM 36 CE 13.6

Crimson Jewels was purchased as a proven very easy calving heifer bull. His moderate frame, good foot and thick dark hair coat are passed along to his progeny along with that true heifer bull calving ease. This will be the last set of natural calves off of him. It was a shame with his true calving ease but the big bulls beat him up and an injury to his back leg was sure to recur if we had not let him go.



11

RED WRAZ CRIMSON 5B

BW -4.3	1801168	WRAZ 5B	28 January 2014
WW 30	BW 69 lb	Oct 15 WW 662	
YW 43		RED UBAR SEQUOIA 202 OSF	
M 18		RED BCC CRIMSON JEWELS 102U	
TM 34		RED RAVEN RIVER GOLDIE 47N	
CE 10		RED BAKERS CENTURY	
		RED WRAZ DEBBIE 222Z	
		RED JD LANN DEBBIE 215S	

The sire to this guy is a true calving ease sire. He bred very consistent and I highly recommend his sons for your heifer pen. This guy's dam is a first calf heifer from the Debbie cow family sired by Baker's Century. Baker's Century was Grand Champion Bull at Agribition a few years back. His dam is dark red and moderate with a nice udder. Pretty darn good job to put a bull in the sale pen with her first attempt. You can use this guy on hieifers.

12

RED WRAZ JEWELS 11B

BW -.3	1801173	WRAZ 11B	30 January 2014
WW 48	BW 94 lb	Oct 15 WW 732	
YW 75		RED UBAR SEQUOIA 202 OSF	
M 17		RED BCC CRIMSON JEWELS 102U	
TM 39		RED RAVEN RIVER GOLDIE 47N	
CE 3.2		RED PASQUIA TOAST 15W	
		RED WRAZ TIFFANY 115Z	
		RED KAYMAC TIFFANY 742T	

Here is another son of Crimson Jewels but with more frame. The added frame comes from the Tiffany cow family owned by Gordon Murray. (Heifer 88B is a Tiffany as well) Gord's cows are under lease to WRAZ and are simply part of the whole program. This guy has a little more birth than most of the Crimson sons but he is also longer bodied than most. That length is weight no matter when it crosses the scale. How the animal is put together in terms of head shape, front end structure and length has more to do with calving ease than birth weight. If EPDs are one of the tools you use to assess bulls then the calving ease is very strong in his pedigree. I will let you be the judge as you know your females better than I do. He would certainly work well in a May June program.

Lana & Phil would like to announce their engagement December 23, 2014





13

RED WRAZ CRIMSON 59B

BW -.8	1801209	WRAZ 59B	13 February 2014
WW 52	BW 84 lb	Oct 15 WW 648	
YW 83			
M 21			
TM 47			
CE 5.4			

RED UBAR SEQUOIA 202 OSF
 RED BCC CRIMSON JEWELS 102U
 RED RAVEN RIVER GOLDIE 47N
 RED PASQUIA TOAST 15W
 RED WRAZ VALENTINE 150Z OSF
 RED D.J. MISS VALENTINE 5T OSC

Nice set of numbers on this guy if you are watching EPDs. This is likely the Crimson Jewels son with strongest EPDs for growth as well as calving ease if you are using numbers as a selection tool. The dam to this guy was the donation heifer from the 2013 sale which was raffled off to raise money for Sierra Murray's Canadian Cancer Society Relay for Life team. The winner of the heifer then turned her back to be sold by auction to raise more \$\$ for the Canadian Cancer Society. Andy Bagu purchased 150Z that day and offered her back to us on a lease. We did a fine job of getting her first calf on the ground and nice and dry for a day in the barn before he went out into the deep freeze of 2014 but as fate would have it mamma just had to lick his ears! The genetic worth of this guy is exactly the same as it would be with both ears fully intact so please do not hold that against him!

Reference Sire



RED YY HITCH 23X

Sire of lots 14-17

BW -1.6	WW 66	YW 107	M 18	TM 51	CE 1.9
---------	-------	--------	------	-------	--------

Hitch was also purchased as a female producer with a little different twist to his pedigree. His dam is an extremely easy to find Black Red Carrier female that was one of the high selling females in the Chickadee dispersal a few years back. He is extremely long bodied and very consistently leaves low birth weight progeny. The males are extremely masculine with more to them than you would expect and from all reports so far they have maintained that low birth calving ease. He ended up being our heifer bull until he just got too big and heavy. We liked his bulls enough that he has now gone on to breed cows. The first females are now in production and so far so good.



14

RED WRAZ HITCH 73B

BW -1	1801220	WRAZ 73B	16 February 2014
WW 52	BW 82 lb	Oct 15 WW 684	
YW 80			
M 20			
TM 46			
CE 2.5			

RED YY HITCH 514R
 RED YY HITCH 23X
 CROWFOOT PRIDE 5923R (RC)
 RED TER-RON ADVANCE 548R
 RED WRAZ WCF LANA 047Y
 RED WCF OLY 64P LANA 76T

The sire to this one is very consistent at moderating BW. We successfully used him on heifers until he was just physically too heavy. Hitch 73B would be a good choice if you are looking for consistent calving ease without giving up much growth for cows out on grass or you only have a few heifers you would like to run with a group of cows. The calving ease is there but there is strong growth here as well. Pretty balanced set of EPDs here with well above average growth and milk as well as decent calving ease.

15

RED WRAZ HITCH 87B

BW -2

1810374

WRAZ 87B

20 February 2014

WW 53

BW 79 lb

Oct 15 WW 712

YW 87

M 19

TM 45

CE 3.1

Hitch 87B is definitely one of the feature sons of Hitch 23X. The Hitch sons are very masculine with very consistent moderate birth weights that will blow your mind at weaning. He was strictly a heifer bull for us until we realized what kind of genetic growth potential he has. Those of you using EPDs in your search for the next one may want to check this fella out too. Top 30% or better in BW, MCE, WW, YW, Milk, TM and Top 45% for CE. The Carcass traits are hard to beat as well – REA top 10%, Marbling top 20% and CW top 30%. We were fortunate enough to have the opportunity to purchase a few of the top Typhoon females from Cameron & Carla of Double C Angus over the past few years and the dam to this guy is a daughter of one of those very good females. Thank you to Cam & Carla for that opportunity!



RED YY HITCH 514R

RED YY HITCH 23X

CROWFOOT PRIDE 5923R (RC)

RED SMW DONOVAN 125W

RED WRAZ PTEET 34Z

RED DOUBLE C PTEET 265X

16

RED WRAZ HITCH 103B

BW -3.6

1810388

WRAZ 103B

25 February 2014

WW 44

BW 73 lb

Oct 15 WW 712

YW 69

M 15

TM 38

CE 7.4

RED YY HITCH 514R
 RED YY HITCH 23X
 CROWFOOT PRIDE 5923R (RC)
 RED K ADAMS TYCOON 2T
 RED WRAZ FANCY LADY 33X
 RED PASQUIA FANCY LADY 5T

You won't go wrong with one of these Hitch 23X sons in your heifer pen. The calving ease has been very consistent and some of you might even wonder if they will ever amount to anything! Be patient and you will be surprised by what they look like at weaning time. They will grow better than you ever expected and you will wonder where that mass and bone came from. This guy's dam, 33X is quite moderate with a nice tidy udder. Recommended for the heifer pen.



17

RED WRAZ HITCH 105B

BW -1.5

1810390

WRAZ 105B

27 February 2014

WW 55

BW 89 lb

Oct 15 WW 744

YW 84

M 13

TM 40

CE 3.6

RED YY HITCH 514R
 RED YY HITCH 23X
 CROWFOOT PRIDE 5923R (RC)
 RED YY SQUIRE 334N ET
 RED JB WINTER ICECAP 9019
 RED BROX ICECAP 24N

Here is another Hitch son for a pen of heifers. He had a little more BW than some of the Hitch sons but some of you may want more than a 70 pounder. I am quite confident in the calving ease of these Hitch sons. This guy's dam is very easy fleshing with a ton of dark red hair.



Reference Sire



RED BAKER'S RIDER PRIDE 100Z

Sire of lots 18-22

BW -1.1	WW 50	YW 72	M 15	TM 39	CE 7.8
---------	-------	-------	------	-------	--------

The newest edition I purchased out of the stall at Agribition. He has done an excellent job here and also in Baker's program under the very capable direction of Stuart McIntyre. The females are not yet milking but with the udder development his daughters are showing they will be awesome. I will predict that his females will in the end be his legacy as well.

- Great footed and excellent structured
- Outstanding eye appeal
- Calving ease with good growth to wean
- Tremendous hair coats
- Progeny are moderate framed, stout and easy fleshing with plenty of muscle
- The females look impressive with very good udder development.



18

RED WRAZ CLOUD RIDER 60B

BW -1.2	1801210	WRAZ 60B	14 February 2014
WW 50	BW 97 lb	Oct 15 WW 764	

YW 78	RED BIEBER ROUGH RIDER 10712 OSF
M 14	RED BAKERS RIDER PRIDE 100Z
TM 38	RED BAKERS MINOLA 218N
CE 8.5	RED PIRO TEMPTATION 328N
	RED KMAC MISS DI 602S
	RED KAYMAC DI 106P

If calving ease EPDs need to be strong in your selection criteria, then give this fella a look – top 6 – 8% in the breed. His dam 602S is very interesting. You may not at first glance pick 602S out of the WRAZ herd as she is not phenotypically a standout. It starts to come together when you see her granddam 149M is still here putting bulls in the pen (93B) – the kind of female that some have picked as their pick of our herd (I would own her dam 106P too if I could have). When you realize that 602S was stunted by a teenage pregnancy it helps to understand her genetic value as a very strong producer. There are 2 maternal sisters to 60B in purebred herds – one out in Ontario at Ginn Family Farm and one purchased by Jason Breault working in the Cockburn herd. Maternal brother 130A was a real rip last year but we lost him to a wart that could not be removed from the tool shed. His sire, Rider Pride will only add to the genetic goodness here as he makes them moderate and low maintenance with an excellent coat of hair.



19

RED WRAZ RIDER PRIDE 102B

BW -1.1	1810387	WRAZ 102B	24 February 2014
WW 52	BW 78 lb	Oct 15 WW 670	

YW 81	RED BIEBER ROUGH RIDER 10712 OSF
M 17	RED BAKERS RIDER PRIDE 100Z
TM 43	RED BAKERS MINOLA 218N
CE 7.6	RED PASQUIA TOAST 15W
	RED WRAZ SEREBL 55Z
	RED WRAZ SEREBL 63W

We are pretty happy with the job these young females are doing in our program. This guy is out of a first calf heifer from our strong producing Serebl cow family. Serebl 55Z is a granddaughter of our donor female Serebl 95N. We really feel that these Rider Pride sons are going to leave their mark on the cattle industry. They start out moderate at birth but they put the pounds on very well. The end result is an easy fleshing moderate package that can still push the scale down. If you are looking to improve on temperament, thickness and the ability to flesh easily or add a tremendous coat of hair these Rider Pride sons would be a good choice. If EPDs are on your list of tools this guy has a very good balanced set of numbers.

20**RED WRAZ RIDER PRIDE 20B**

BW -3.6
WW 42
YW 65
M 20
TM 43
CE 8.1

1801181 WRAZ 20B 2 February 2014
BW 66 lb Oct 15 WW 742

Here is a real stout son of our Rider Pride 100Z sire. He is moderate made with lots of top and tons of real dark red hair. He has had the eye appeal to catch your eye all year long. His dam 90Z was selected for Red Round Up alongside her dam where they sold choice and I was very pleased to see the Gibson family of Six Mile Ranch get the cow. Although 90Z is a first calf heifer there is a good strong cow family behind this guy. 20B started out very light at birth and his EPDs say he is the real deal for calving ease as well. With all of that being said he is really stout and when I look at his head I would prefer to see him go out and breed at a place that needs a bull to breed some cows and a few heifers with the same bull but you be the judge of using him for heifers. If you breed for carcass traits take a real close look at this guy! REA top 10% and Marb top 20%.



RED BIEBER ROUGH RIDER 10712 OSF
RED BAKERS RIDER PRIDE 100Z
RED BAKERS MINOLA 218N
RED SMW SMACK 31U
RED WRAZ MARTA 90Z
RED TOPLINE MARTA 807

21**RED WRAZ AUSTIN 130B**

BW 1.1
WW 28
YW 35
M 8
TM 39
CE 4.2

1831419 WRAZ 130B 10 March 2014
BW 89 lb Oct 15 WW 670

We are very pleased with the Rider Pride 100Z progeny. The sire group in general has a great deal of eye appeal and 130B certainly grabs your eye. His dam 109Z has done a tremendous job for her first try and it comes as no surprise since granddam 304W has one of the top end bulls in the sale (WRAZ 46B) and she did last year too. Although Rider Pride is a calving ease sire I would not necessarily use this guy in the heifer pen. I would rather see 130B with a group of cows or three year olds that have already had a calf.



RED BIEBER ROUGH RIDER 10712 OSF
RED BAKERS RIDER PRIDE 100Z
RED BAKERS MINOLA 218N
RED SIX MILE INDEED 802S MAF OSF
RED WRAZ GIDGET 109Z MAF
RED BLAIR'S GIDGET 304W MAC



22

RED WRAZ DRESSLER 133B

BW .1	1814160	WRAZ 133B	14 March 2014
WW 49	BW 94 lb	Oct 15 WW 760	

YW 78	RED BIEBER ROUGH RIDER 10712 OSF
M 19	RED BAKERS RIDER PRIDE 100Z
TM 44	RED BAKERS MINOLA 218N
CE 2.8	RED BRYLOR NEW TREND 22D OSF MAF
	RED WRAZ FAYET 1W
	RED DELAR FAYET 760R

I expect these Rider Pride bulls will be very popular with the cowboys. They are moderate and very sound, solid, red meat bulls with decent calving ease, a ton of hair and lots of eye appeal. If you are using EPDs as a tool in selection this guy has a nice balanced set of numbers for the most part. This fella's dam is a daughter of New Trend – he is commonly known as the top female producer in the Red Angus breed. Have a close look at this one and if you get him bought keep all the females!

Reference Sire



RED MOOSE CREEK SWAYZE 33Z

Sire of lots 23-26

BW 2	WW 64	YW 98	M 11	TM 43	CE -.8
------	-------	-------	------	-------	--------

Swayze 33Z was my pick of the bulls at our good friends at Moose Creek Red Angus. He was the high selling bull that day and he was worth every dollar. He is a moderate but very stout son of Red That'll Do Unbelievable 6U that has a ton of eye appeal. I often find the stouter cattle can tend to lose some of that oh so important eye appeal. He has a very good foot and adds thickness and hair to his progeny. We do not have females milking yet but udder development looks to be very good and his females are very attractive. We will use Swayze on a large group of females this coming breeding season.



23

RED WRAZ SWAYZE 55B

BW 0	1824162	WRAZ 55B	12 February 2014
WW 55	BW 81 lb	Oct 15 WW 744	

YW 92	RED THAT'LL DO UNBELIEVABLE 6U
M 14	RED MOOSE CREEK SWAYZE 33Z
TM 43	RED MOOSE CREEK GRACE 65S
CE -1.2	RED DWAJO JOKERS WILD 47S
	RED WRAZ/WCF FAVORITE 020X
	RED WCF REACTOR FAVORITE 85S

These Swayze 33Z sons are thick yet still have a ton of eye appeal and an excellent thick coat of hair. We will be using Swayze 33Z on a large group of cows this year as we are very pleased with his progeny. I have had my eye on this guy for quite a while and I really think he has a lot to offer. We have retained a maternal sister by Ghost Rider in the herd and she has an impressive udder as a first calf heifer. 55B was moderate at birth and there is lots of grow in this guy. His growth EPDs convey the same message with WW in top 10% and YW in top 15%.

24

RED WRAZ SWAYZE 71B

BW .4	1824161	WRAZ 71B	16 February 2014
WW 53	BW 88 lb	Oct 15 WW 768	
YW 76		RED THAT'LL DO UNBELIEVABLE 6U	
M 10		RED MOOSE CREEK SWAYZE 33Z	
TM 36		RED MOOSE CREEK GRACE 65S	
CE 1.5		RED YY SQUIRE 334N ET	
		RED WRAZ ANNIE IRENE 120X	
		RED JET ANNIE IRENE 8810	

Don't miss out on this one ladies and gentlemen! 71B is one of the few Swayze 33Z sons on offer this year. We will be using this sire on a large group of cows this year. His progeny are consistently stout with lots of hair and they maintain a tremendous amount of eye appeal that I feel sometimes gets lost with the stouter made cattle. His young dam 120X is maturing into a great looking female that has put a bull in the bull pen before. Her first son by Crimson Jewels went to a great home at John Wilson's to cover the heifer pen. Granddam 10U produced last year's high seller by Mak'nWaves that went to the Vikses in AB. Congrats to Dave, Tracee and family on a great sale on Family Day. There are many proven bloodlines within this pedigree.



25

RED WRAZ SWAYZE 82B

BW 1.2	1824159	WRAZ 82B	18 February 2014
WW 61	BW 83 lb	Oct 15 WW 726	
YW 99		RED THAT'LL DO UNBELIEVABLE 6U	
M 15		RED MOOSE CREEK SWAYZE 33Z	
TM 47		RED MOOSE CREEK GRACE 65S	
CE -1.3		RED PASQUIA TOAST 15W	
		RED WRAZ SEREBL 14Y	
		RED WRAZ SEREBL 57W	

If you want to add some pounds to your next calf crop don't stop until you own this guy. Swayze 82B is definitely in the race for the top son of the Swayze 33Z sire group. If EPDs are your guide and adding pounds are your goal, then check out his EPDs. WW Top 10%, YW Top 8%, CW Top 7%. Looking back into the female side you will find our powerful Serebl 95N donor female as well as her daughter 760T that has more than surpassed the criteria for being a donor dam. Don't overlook strong cow families as you search for the next piece in your genetic puzzle.



26

RED WRAZ SWAYZE 146B

BW .4	1824157	WRAZ 146B	20 March 2014
WW 58	BW 81 lb	Oct 15 WW 668	
YW 95		RED THAT'LL DO UNBELIEVABLE 6U	
M 13		RED MOOSE CREEK SWAYZE 33Z	
TM 44		RED MOOSE CREEK GRACE 65S	
CE -4		RED DIMLER INDEED 105R	
		RED WRAZ CUB MARIA 70X	
		RED D.J. MISS CUB 2P	

This one is a big boy from our treasured Maria cow family. He came into this world on March 20 at 81 lb. and never looked back! Swayze 146B will definitely add some pounds to your next calf crop and with the Maria cow family behind him the females will be keepers for sure. Nice moderate birth weight on this guy but there is some jam here in this pedigree so I would rather see him with a group of cows. Growth EPDs are top 15% WW, top 10% YW and top 10% Carcass Weight. Last time I checked we are still getting paid by the pound!



Reference Sire



RED VRRR TOP STAR Y236

Sire of lots 27-35

BW .8	WW 66	YW 102	M 20	TM 53	CE -2.1
-------	-------	--------	------	-------	---------

Top Star was purchased to produce moderate yet stout easy keeping females with extremely good foot and leg structure. He is very good footed, wide based, moderate framed and thick made with adequate muscle expression. His dam is in my opinion the top female in the good Valnes Ranch Red Angus herd in South Dakota. She can maintain her condition on snowballs and still milk like a freight train out of such a well attached beautiful udder.



27

RED WRRAZ TOP STAR 53B

BW .9	1801204	WRRAZ 53B	12 February 2014
WW 63	BW 71 lb	Oct 15 WW 828	

YW 99	RED VRRR LEAD OVERLOAD 5T OSF
M 20	RED VRRR TOP STAR Y236
TM 51	RED VRRR MS CHEROKEE STAR T204 OSF
CE -.5	RED DIMLER INDEED 105R
	RED WRRAZ MISTRESS 91W
	RED KMAC MISTRESS 607S

This is the Top Star son that was in our Bull Pen Alley during Agribition. He was born a twin to a heifer calf so please do not put much faith in his BW if you are using BW as your guide. His dam 91W is moderate in stature and has a temperament second to none. We no longer have the granddam but I remember her vividly – she was a tank of a female yet moderate. If you need a bull that is good natured and very likely to pass that on to his progeny then take a close look at 53B. Maternal brother 99A went to Tom and John Howe of Mossbank last year. He also has some pretty solid numbers if you are using EPDs in your selection criteria. He is Top 5% TM, top 8% WW & YW as well as top 20% Milk.

28

RED WRRAZ TOP STAR 32B

BW -1.3	1801188	WRRAZ 32B	6 February 2014
WW 56	BW 85 lb	Oct 15 WW 732	

YW 87	RED VRRR LEAD OVERLOAD 5T OSF
M 17	RED VRRR TOP STAR Y236
TM 45	RED VRRR MS CHEROKEE STAR T204 OSF
CE 2.9	RED DWJJO JOKERS WILD 47S
	RED WRRAZ WCF PRALEE 022Y
	RED WCF RAM 1000 PRALEE 2M

Full sib to this fella sold to Darrell Petterson in this sale last year. All reports to date are looking good – he bred very well and Darrell says he looks good. These Top Star sons will leave you behind some excellent quality moderate, easy fleshing progeny. His EPDs are top 25% in growth with good milk and if you are after the marbling trait this guy has a Marb EPD in the top 6% of the breed.

Thank
you to...

CONEXUS

for supplying the coffee & cookies

29 RED WRAZ TOP STAR 16B

BW .8	1801178	WRAZ 16B	1 February 2014
WW 58	BW 83 lb	Oct 15 WW 670	

YW 94	RED VVRA LEAD OVERLOAD 5T OSF
M 18	RED VVRA TOP STAR Y236
TM 48	RED VVRA MS CHEROKEE STAR T204 OSF
CE .4	RED SSS ARSON 85U 1467111 OSF MAF
	RED JAS ERICA 18Z
	RED TOPLINE 736

If you need add some hair this son of Top Star has lots of thick, dark, red hair. Top Star is a very good footed structurally correct sire that carries that through in his progeny. If you are watching the carcass EPDs take note of his Marbling. The dam to this one is an Arson daughter that came from JAS Red Angus through the Keystone Classic sale in Brandon. Arson is deceased and his semen regularly fetches \$500/straw. We used Top Star on heifers for two years. This guy would be suitable for some bigger frame heifers or for a May June program.



30 RED WRAZ TOP STAR 35B

BW 1.8	1801190	WRAZ 35B	6 February 2014
WW 58	BW 97 lb	Oct 15 WW 718	

YW 88	RED VVRA LEAD OVERLOAD 5T OSF
M 16	RED VVRA TOP STAR Y236
TM 45	RED VVRA MS CHEROKEE STAR T204 OSF
CE -3.3	RED FABULOUS FRONT LINE 315N MAF
	RED JET ANNIE IRENE 8810
	RED IRENE 36E

This is one of the few Top Stars that could very likely add frame. His dam 10U is a strong producer with last year's high seller to Vikse Family Farm and a daughter 120X has a very good bull in the sale as well. This guy will leave behind an awesome set of female and steers that will feed very well. His growth EPDs are very good and once again top 6% for Marb in these Top Star progeny.



31 RED WRAZ RISING STAR 38B

BW -.6	1801192	WRAZ 38B	8 February 2014
WW 51	BW 80 lb	Oct 15 WW 692	

YW 80	RED VVRA LEAD OVERLOAD 5T OSF
M 19	RED VVRA TOP STAR Y236
TM 46	RED VVRA MS CHEROKEE STAR T204 OSF
CE 1.6	RED SMW DONOVAN 125W
	WRAZ RC DUTCHESS 50Z (RC)
	WRAZ RC DUTCHESS 45X (RC)

A little different twist here with 38B being out of a Black Red Gene Carrier female and Top Star. This will be a little different pedigree if you are in need of some change. This cow family has been good to us and the Tycoon blood in the bottom side is darn good too. Tycoon was a bull that left the herd too soon as the females were excellent producers. Once again the female side of this is real good – 45X and great granddam 31T are still in the herd and her dam 893M would be too but she hurt her hip. Top Star will only add to the maternal goodness of this pedigree.





32

RED WRAZ TOP STAR 57B

BW .6	1801207	WRAZ 57B	13 February 2014
WW 60	BW 89 lb	Oct 15 WW 652	
YW 95	RED VVRA LEAD OVERLOAD 5T OSF		
M 17	RED VVRA TOP STAR Y236		
TM 47	RED VVRA MS CHEROKEE STAR T204 OSF		
CE 2	RED BASIN SENSATION 702E OSF		
	RED FRASER EMMY 144Y		
	RED FRASER EMMY 978W		

This guy has as much style and eye appeal as any of the Top Star sons. His maternal brother by Hitch was selected by Darwin and Rachel Dancsok of High Calibre Red Angus last year. This is the kind of bull that will just quietly go out and make you a good return on your investment. His dam 144Y was a Keystone Classic purchase from Jeff Frazer's good herd near Melita, MB. She is young yet but her record speaks for itself with her first 2 making the bull pen. I would keep a female off her in a heartbeat and this son will be an asset in most any program. Very good TM and Stay EPDs as well as excellent EPDs for growth.

33

RED WRAZ TOP STAR 62B

BW .1	1801212	WRAZ 62B	14 February 2014
WW 60	BW 90 lb	Oct 15 WW 706	
YW 91	RED VVRA LEAD OVERLOAD 5T OSF		
M 19	RED VVRA TOP STAR Y236		
TM 49	RED VVRA MS CHEROKEE STAR T204 OSF		
CE 1.6	RED BRYLOR SDL PASQUALE 213P		
	RED RILEY'S FANCY 28U		
	RED LAMBS FANCY 24S		

Here is another son of Top Star in the top 6% for Marbling. Pretty well all the Top Stars show strength in the Marbling trait. Top Star just cruises along quietly passing on his excellent foot and structural correctness. Top Star Y236's dam is the kind you would take a whole herd of and his females will in time be the legacy he leaves behind. Top Star 62B's dam came to us from Lloyd Cavers through the good Riley dispersal a couple years ago.

34

RED WRAZ TOP STAR 81B

BW 2.2	1810372	WRAZ 81B	18 February 2014
WW 58	BW 96 lb	Oct 15 WW 670	
YW 87	RED VVRA LEAD OVERLOAD 5T OSF		
M 19	RED VVRA TOP STAR Y236		
TM 48	RED VVRA MS CHEROKEE STAR T204 OSF		
CE -2.8	RED SMW SMACK 31U		
	RED WRAZ ROSE 24Y		
	RED PASQUIA ROSE 38T		

This Top Star son has 6 traits in the top 30% if you are using EPDs as a guide. Top Star 81B's dam 24Y is on the top side of moderate with lots to her. There is no shortage of milk behind this guy. Use him on cows and don't be afraid to keep the females.



35

RED WRAZ TOP STAR 106B

BW -2.6	1810391	WRAZ 106B	28 February 2014
WW 54	BW 78 lb	Oct 15 WW 690	
YW 84	RED VVRA LEAD OVERLOAD 5T OSF		
M 20	RED VVRA TOP STAR Y236		
TM 48	RED VVRA MS CHEROKEE STAR T204 OSF		
CE 5.2	RED CHOPPER K RAW DEAL 108L		
	RED KMAC MISTRESS 607S		
	RED GOLDEN DAWN MISTRESS 34M		

As I have said before we bought Top Star Y236 primarily to produce some good females. He is very structurally correct with an excellent foot. I would be happy to have a whole herd of females just like his awesome dam. We have used Top Star on heifers and the dam to this guy moderates birth weight so go ahead and use him on heifers if you need to and then when he gets to big he can graduate to cows. 106B would be a good choice if you only have a few heifers that you would like to put with a group of cows. His dam, 607S has been a good producer with one maternal sister to Jason Breault working in the good Cockburn herd and two here in our herd. Strong maternal strengths here if you want to keep some females.

36

RED WRAZ I-TREND 150B

BW .7	1814168	WRAZ 150B	23 March 2014
WW 51	BW 94 lb	Oct 15 WW 650	

YW 87	RED BRYLOR NEW TREND 22D OSF MAF
M 19	RED CLAY NEW TREND 67X
TM 44	RED LUCKY "C" BARONESS 12P
CE .5	RED PASQUIA ICON 57T
	RED WRAZ PRIDE 50W
	RED KMAC MISS PRIDE 625S

This guy is dark red and easy on the eyes. The dam 50W is a big, dark broody female that was selected for Red Round Up a few years back and ended up at Clay Enterprises. When they decided to market their red herd I was able to purchase her back. This is her first try here for us and I would say she did a pretty darn good job. The sire 67X is a New Trend son that Steven really thinks a lot of over at Clay Enterprises.



37

RED WRAZ THUNDERCLOUD 122B

BW 1.8	1810401	WRAZ 122B	7 March 2014
WW 58	BW 91 lb	Oct 15 WW 692	

YW 94	RED DIMLER INDEED 105R
M 13	RED WRAZ THUNDERCLOUD 61Y
TM 42	RED FREYJA OF KINARED 438N
CE .5	RED LETTER ICON 1R
	RED PASQUIA DOLL 56U
	RED PASQUIA DOLL 35P

We own the sire to this guy Thundercloud 61Y with the McTavish Family. His sons have been popular power bulls for the cow pen. There is lots of performance in these 61Y sired cattle. His dam is a good footed female with a good udder if you are wanting to keep more performance oriented females.



38

WRAZ 160A

BW 1	Applied for	WRAZ 106A	22 December 2013
WW 51	BW 83 lb	Oct 15 WW 848	

YW 78	RED DIMLER INDEED 105R
M 10	RED WRAZ THUNDERCLOUD 61Y
TM 36	RED FREYJA OF KINARED 438N
CE 1.9	RED CHOPPER K TOP DESIGN 64R
	RED WRAZ FREYJA 22U
	RED FREYJA OF KINARED 438N

This one has a little extra age on him – check out how wide based and full of red meat this guy is. He is well put together and he will handle a few more ladies with his extra age. We had a gate come off its hinges and the bulls got into the pairs pen – we ended up with 3 females bred early. Quite the fertility when his dam 22U calved March 1 and she calved again Dec 22!! Perhaps this is your man to build the herd with – his dam is certainly worthy. He will be sire verified by sale time. For now he will be in the catalogue with the sire that is most likely.



3M BEEF Supplies Inc.

David Moffatt

Cell: 306-435-9245 Home: 306-435-2019
sdmoffatt@sasktel.net • Box 24, Moosomin, SK S0G 3N0

All Products Delivered

Distributor of:

- Netwrap
- Silage Plastic & Grain Bags
- Licktubs
- Hay & Silage Innoculants

Thank you to everyone who attended and bid at last year's sale.

Special thanks to these buyers:

B Bar D Charolais, ON,
Darwin Plewis
Bricney Stock Farm
Alex B King
Ernest Hickie
TK Cattle Co., BC
Brian Perras
Greg Els
Ross Petterson
Clipper Cattle Co.
Ellen Hondl, AB
Chad Frecon
Maurice Sorokowski
Wood Valley Ranch

Cudmore Farms
Tom Trithart
Doug Hindmarch
Dave & Shelly Kotylak
Hugh Garrett
Jens Hansen
Vikse Family Farm, AB
Broken T Ranch
Brimner Cattle Co.
Hebert Livestock Ventures
Robert & Brenda Meszaros
Warner Skappel
Gary Hoehn
High Caliber Angus

Dale Minty
Moose Creek Cattle Co.
Tom Howe
Dennis Mauthe
Dwight Flaman
Dave Barrett
Brian Langlois
I.T.S. Farms
Bruce Holloway
Darrell Petterson
Harvey Nixon
Brad Goettling
James Richter
Hamco Cattle Co., MB

Richard Norwig
Robert & Brenda Meszaros
Brent Fry
Windy Willows Farms
JAS Red Angus, MB
Red Ember Ranch
Rambling Rose
Troy Kitz
Triple L Angus
Alain Gaudet
Corey Flaman
Garry Lawrence

Hitch 23X son and his dam WRAZ 90Y, maternal sister to WRAZ 68B – Lot 43



Purebred Red Angus Open Heifers

39

RED WRAZ SIENA 31B

BW -.4	1801187	WRAZ 31B	5 February 2014
WW 48	BW 82 lb	Nov 11 WW 622	
YW 73	RED FINE LINE MULBERRY 26P OSF AMF MAF DDF		
M 12	RED BRYLOR JKC GHOST RIDER108Y DDF		
TM 37	RED BRYLOR CHEROK 22L		
CE -.2	RED K ADAMS TYCOON 2T		
	RED WRAZ SIENA 56X		
	RED JAS SIENA 13R		

This Ghost Rider 108Y daughter has that real broody look about her. We have Ghost Rider daughters milking now and we are very pleased – you really should come and have a look for yourself. The open house is a good time to see the whole program. The dam to this young lady is WRAZ 56X she is a daughter of Tycoon 2T, a Mambo son that we sure do wish we could go back and use again. The Tycoon daughters are really hard to beat and this one will follow in the footsteps of the cow family.



40

RED WRAZ DOLL 37B

BW -1.9	1801191	WRAZ 37B	6 February 2014
WW 55	BW 75 lb	Nov 11 WW 642	
YW 88	RED YY HITCH 514R		
M 10	RED YY HITCH 23X		
TM 38	CROWFOOT PRIDE 5923R (RC)		
CE 5.1	RED BRYLOR MASTER PLAN 17M MAC		
	RED PASQUIA DOLL 19T MAF		
	RED PASQUIA DOLL 9M		

Here is a very sweet made daughter of Hitch 23X. Her dam 19T was selected for Red Round Up back in 2009 with her high selling bull calf Red WRAZ Stingray 3W at side. When the gavel dropped sale day, M & B Angus of Swan Hills, AB owned half of 19T and 100% of the bull calf. Many visitors to the ranch have taken notice of 19T as she has a tremendous amount of eye appeal. The first Hitch daughters are now milking and they are doing a real good job.

41

RED WRAZ TIARA 51B

BW .2	1801203	WRAZ 51B	12 February 2014
WW 60	BW 77 lb	Nov 11 WW 716	
YW 97	RED YY HITCH 514R		
M 16	RED YY HITCH 23X		
TM 46	CROWFOOT PRIDE 5923R (RC)		
CE .6	RED DIMLER INDEED 105R		
	RED WRAZ TIARA 46Y		
	RED HAMCO TIARA 224S		

The dam to this one has a real strong influence by the proven female maker Indeed. Check out her EPDs – Top 10% in WW, YW, CW. Top 15% in MCE, top 20% TM. REA and Marbling are pretty respectable as well. Full sib sister WRAZ 6Y sold in this sale last year to Corrine Langford of Red Ember Ranch. She has been assembling a very nice set of females the last few years so keep an eye out for Red Ember genetics sometime in the not too distant future. Thanks very much for your support and interest in our program Corrine.

42

RED WRAZ BLOCKANNA 54B

BW -1.2	1801205	WRAZ 54B	12 February 2014
WW 46	BW 74 lb	Nov 11 WW 688	
YW 78	RED FINE LINE MULBERRY 26P OSF AMF MAF DDF		
M 14	RED BRYLOR JKC GHOST RIDER108Y DDF		
TM 39	RED BRYLOR CHEROK 22L		
CE 2.5	RED SSS ARSENAL 271S OSF MAF		
	RED SSS BLOCKANNA 23U		
	RED SSS BLOCKANNA 2M		

Here is a definite feature female by Ghost Rider. Blockanna 23U was a Red Round Up purchase as a bred heifer and she has done a great job. Her first son initially sold to Emmatt Creek and then on to the Hamiltons of Hamco Cattle Co. Mark & Pam have a couple of great looking bulls on test coming up in the Southwest Development Centre Sale at Oak Lake, MB in April and the Annual Hamco Cattle Co. Bull Sale is coming up soon at their ranch near Glenboro, MB. Thank you both for your support and interest in our program! Blockanna 54B's full sib brother was second high seller last year to Broken T the good solid purebred herd of Shawn & Laura Tessier – watch for their bulls coming up March 16 in Weyburn at the annual Equinox sale. Good proven cow families are a great investment!



43

RED WRAZ STARDOM 68B

BW .2	1801218	WRAZ 68B	15 February 2014
WW 50	BW 78 lb	Nov 11 WW 666	

YW 81	RED FINE LINE MULBERRY 26P OSF AMF MAF DDF
M 21	RED BRYLOR JKC GHOST RIDER108Y DDF
TM 47	RED BRYLOR CHEROK 22L
CE -2	RED PASQUA ICON 57T
	RED WRAZ STARDOM 108W
	RED SANDY SLOPE STARDOM 47L

Here is another feature Ghost Rider daughter that you will find on sale day. Stardom 68B will grab your attention. Her dam 108W can really get 'er done! 68B's maternal sister 62A was high seller in this sale last year to Collin and Michelle and family of Windy Willows at Hodgeville, SK. Thanks again for your interest in our program Collin! Another maternal sister 90Y sold through the Touch of Class sale in Saskatoon a few years ago and has done a very good job for JLL Livestock at Melville, SK. Give Jarret or Jenna a call and find out what they think of her. Like I have said before – proven cow families are a great investment. Just think for a minute... her first bull calf will quite likely cover the investment you will have to make to own her today.



Dam: Red WRAZ
Stardom 108W



44

RED WRAZ DYNAMINT 86B

BW .2	1810373	WRAZ 86B	19 February 2014
WW 59	BW 80 lb	Nov 11 WW 666	

YW 91	RED VRRRA LEAD OVERLOAD 5T OSF
M 22	RED VRRRA TOP STAR Y236
TM 52	RED VRRRA MS CHEROKEE STAR T204 OSF
CE 1.3	RED SOO LINE HERCULES 12M
	RED RIVERDALE DYNAMINT 140R
	RED RIVERDALE DYNAMINT 31D

Don't miss this excellent Top Star Y236 daughter. We have our first few Top Star daughters milking now this year and they look really good. Dam 140R is a big girl that is really easy keeping. Her progeny always come out with a low to moderate birth weight and then grow like crazy. There are sons working for Glen Wilson, Tomda Enterprises, Reid Red Angus and Hamco Cattle Co. EPDs are interesting with TM in the top 3%, Milk top 10%, CW top 15%, both WW and YW in the top 15%.

45

RED WRAZ TIFFANY 88B

BW 3.4	1810375	WRAZ 88B	20 February 2014
WW 63	BW 99 lb	Nov 11 WW 704	

YW 98	RED FINE LINE MULBERRY 26P OSF AMF MAF DDF
M 10	RED BRYLOR JKC GHOST RIDER108Y DDF
TM 40	RED BRYLOR CHEROK 22L
CE -5.6	RED CHOPPER K TOP DESIGN 64R
	RED KAYMAC TIFFANY 742T
	RED KAYMAC BLAZE 117P

If you like a little more frame take a look at this Ghost Rider daughter. Her dam 742T has been a good solid producer – she has done it before. There is a very eye appealing maternal sister to this one by Big Rock working at Windy Willows, a son at Drake Valley View Farms and a daughter here in our herd. EPDs for WW, YW, CW, HPG, REA all right near the top.

46

RED WRAZ FAYET 100B

BW -1.8	1810385	WRAZ 100B	24 February 2014
WW 55	BW 68 lb	Nov 11 WW 706	

YW 92	RED VRRRA LEAD OVERLOAD 5T OSF
M 22	RED VRRRA TOP STAR Y236
TM 51	RED VRRRA MS CHEROKEE STAR T204 OSF
CE 3.1	RED BRYLOR RED CARPET 154R
	RED BRYLOR FAYETTE 26U
	RED FABULOUS FAYET 15P

Take a close look at this Top Star daughter she is right from the top of the pen. Her dam 26U is a little bigger framed, dark red, very long bodied female with excellent feet and udder. Top Star will quite likely moderate her frame size just the right amount. You will not find many females available from this good old Fayette cow family.



47

RED WRAZ SHEBA 107B

BW .1	1810392	WRAZ 107B	1 March 2014
WW 55	BW 80 lb	Nov 11 WW 670	
YW 86	RED YY HITCH 514R		
M 13	RED YY HITCH 23X		
TM 41	CROWFOOT PRIDE 5923R (RC)		
CE .5	RED K ADAMS TYCOON 2T		
	RED WRAZ SHEBA 40X		
	RED D.J. MISS CLAY 10P		

Check out this Hitch 23X daughter – she will be good. Her dam 40X is a Tycoon 2T daughter and they have all become very strong producers. Full sib maternal brother 52A was a feature in this sale last year and went to our good friends and fellow breeders at Moose Creek Red Angus. Thanks again guys! Don't forget to check out the Moose Creek sale April 13 at the Ippolito ranch. Look at the track record on the young dam to this female. Her first one selling to a long time breeder and now this one selected for this sale. Females like this one that have strong production in the cow family are always a good investment!

48

RED WRAZ LASSIE 142B

BW 3	1814165	WRAZ 142B	18 March 2014
WW 67	BW 99 lb	Nov 11 WW 714	
YW 105	RED YY HITCH 514R		
M 14	RED YY HITCH 23X		
TM 45	CROWFOOT PRIDE 5923R (RC)		
CE -2.5	RED JD LANN INFERNO 213P		
	RED WRAZ/WCF LASSIE 056X		
	RED BRYLOR LASSIE 2P		

Lassie 142B is a top end Hitch 23X daughter. Her dam 056X is a real moderate, dark red female that has done a great job on this one. Look at the growth in this pedigree – Top 4% in both WW and YW as well as top 2% in CW. Above average Marbling as well. This young lady will be a good solid producer.



49

RED WRAZ PTEET 131B

BW .3	1810406	WRAZ 131B	11 March 2014
WW 57	BW 84 lb	Nov 11 WW 670	
YW 93	RED VRRR LEAD OVERLOAD 5T OSF		
M 17	RED VRRR TOP STAR Y236		
TM 45	RED VRRR MS CHEROKEE STAR T204 OSF		
CE .5	RED SIX MILE TYPHOON 289T		
	RED DOUBLE C PTEET 265X		
	RED DOUBLE C PTEET 372S		

Another one of the Top Star females that we really like. You will hear more about this Pteet cow family down the road. Dam 265X is maturing into a great producing female – a maternal sister to 131B has put her first bull calf in the sale this year (87B) and he is certainly worth a look as one of the feature Hitch sons. Once again you won't go wrong buying these ones from these strong producing cow families.

50

RED WRAZ JETTA 170B

BW 1	1814177	WRAZ 170B	13 May 2014
WW 58	BW 98 lb	Nov 11 WW 584	
YW 90	RED VRRR LEAD OVERLOAD 5T OSF		
M 18	RED VRRR TOP STAR Y236		
TM 47	RED VRRR MS CHEROKEE STAR T204 OSF		
CE -2	RED K ADAMS TYCOON 2T		
	RED WRAZ JETTA 41W		
	RED T-K JETTA 19S		

This one is the feature female of the Top Star line. She is just a May 13 so she has done pretty well! This is another female backed by a proven record. Her dam 41W has done it before – maternal brother Red WRAZ Coleman 44Z was a feature in our 2013 sale purchased by U6 Livestock at Wynyard. I just looked through the East Central Bull Sale catalogue – nice offering guys! Looks like Coleman has done a pretty good job for you. All the best in your sale Garnet & Shirley Yewsiuk and family. Once again we are offering you a proven cow family to start a Jetta cow family of your own.



Commercial Red Angus Open Heifers

WRAZ RED ANGUS COMMERCIAL HEIFERS

51 PEN OF 3

53 PEN OF 3

52 PEN OF 3

54 PEN OF 3

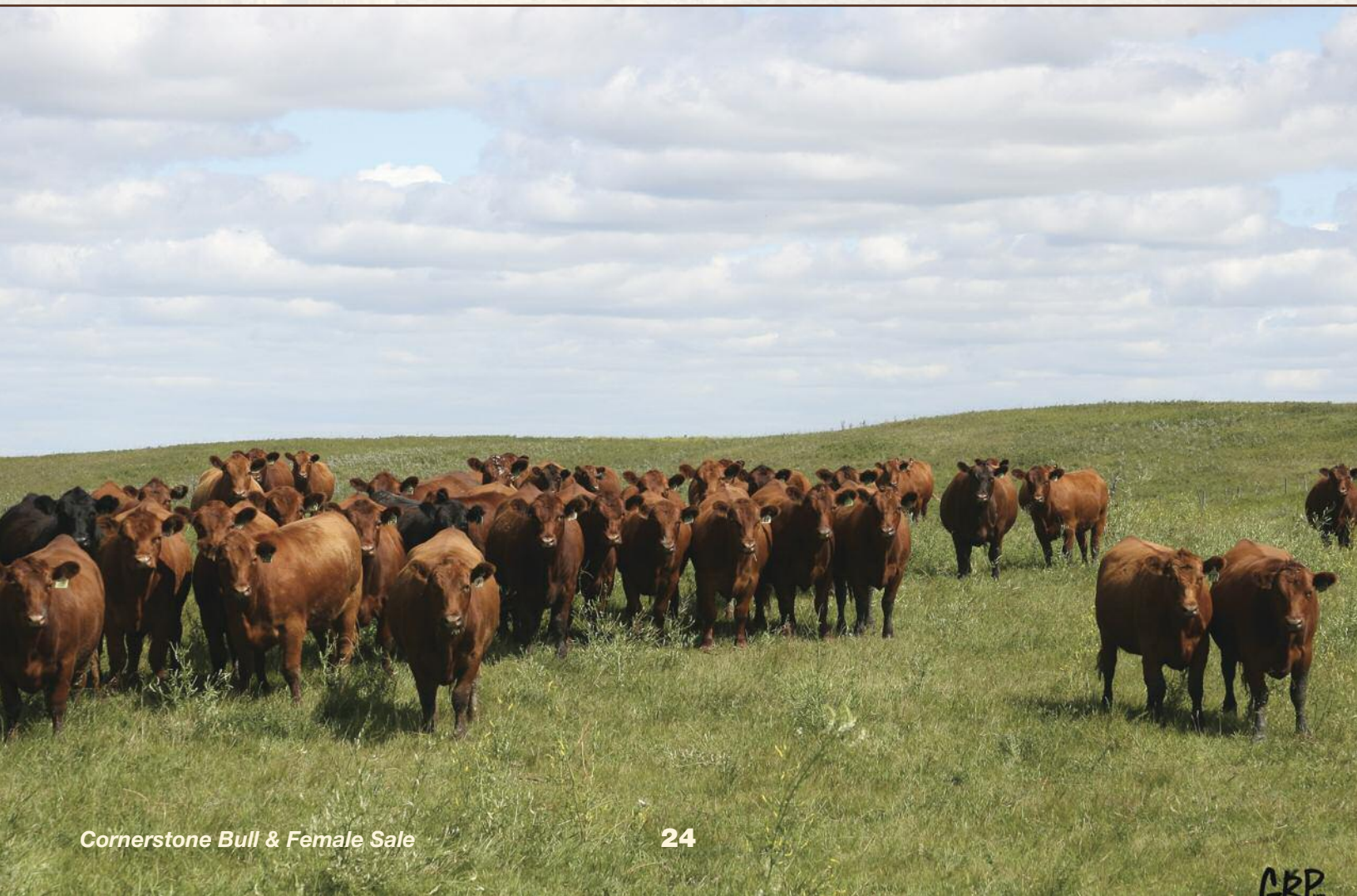
MURRAY CRAWFORD RED ANGUS COMMERCIAL HEIFERS

55 PEN OF 3

57 PEN OF 3

56 PEN OF 3

58 PEN OF 3



BRIMNER CATTLE CO.

*Welcome to the Annual
Cornerstone Bull Sale 2015!*

Great times in the cattle business are here and it really makes you re-evaluate what your cowherd is worth and how you can maximize your profits. Charcross calves have been topping the market all over, so take this time to select a good bull to get the most out of your cows. We have been focusing a lot on calving ease the last few years and the Bar J Trojan sons fit the bill along with enough performance. Having a later sale allows us to grow these bulls out and not push them real hard.

They are an athletic bunch ready to cover your pasture and cows.

A big THANK YOU to our past buyers and bidders for your support. It gives us the encouragement and confidence to do what we do here!

I encourage you to come to the farm to and see the bulls in their natural environment before the sale. If not, see you sale day!

~ Kelly



Kelly, Tracy, William & Wyatt Brimner
Box 93, Manor, SK S0C 1R0
306-448-2028 cell 306-577-7698 ktbrim@sasktel.net

Reference Sire

BAR J TROJAN 68X

Dbl Pld

Sire of lots 59-72

CE 99	BW -5.6	WW 28	YY 57	M 23.6	TM 37
-------	---------	-------	-------	--------	-------

When you find a bull that breeds so well on everything you keep on using him – exceptional calving ease, super quiet and excellent feet. His daughters are great milkers and are docile. The Trojan sons are peas in a pod; smooth made and moderate with natural thickness.



BRIMNER BULL 3B

QPMC360842 GBR 3B 24 January 2014
 BW 82 205 DW 709 Red Factor, 3rd Gen Pld

BAR J SILVERADO 14S(P)
 BAR J TROJAN 68X(P)
 SOS MISTRESS 142P(P)
 G. BROS. STANDOUT 8S(P)
 GBR MISS 7Z(QP)
 GBR RED RACHEL 13W(QP)

59

CE 98
 BW -3.4
 WW 33
 YW 65
 M 21.9
 TM 38



An ideal heifer bull candidate – small head, smooth made and excellent quarter. A real attractive package with a bonus being he is red factored.

BRIMNER BULL 42B

PMC360846 GBR 42B 13 February 2014
 BW 92 205 DW 664 3rd Gen Pld

BAR J SILVERADO 14S(P)
 BAR J TROJAN 68X(P)
 SOS MISTRESS 142P(P)
 ROSSO RED COLE 13S(QP)
 GBR DELUXE 181W(P)
 GBR LIZZIE 39R(QP)

60

CE 73
 BW -.5
 WW 36
 YW 70
 M 21.5
 TM 40



Herd Bull Prospect! It's hard not to like this guy! He has great hair, is thick, soggy and has a great top. Super temperament - always there to get a scratch. His dam is one of my favorite cows in the herd. Awesome uddered. Great maternal traits in this guy!

61

BRIMNER BULL 79B

CE 61
BW -.4
WW 43
YW 83
M 25
TM 46

PMC360853	GBR 79B	20 February 2014
BW 98	205 DW 816	3rd Gen Pld

One of my favourites in the pen. His dam, 154W, always brings in calves with performance. This guy is full of meat, good hair and really strides out nice. He will sire calves that will really push the scales down in the fall.



BAR J SILVERADO 14S(P)
BAR J TROJAN 68X(P)
SOS MISTRESS 142P(P)
KMAC SERIO 32S(P)
GBR KYRA 154W(P)
GBR KYRA 35L(P)

62

BRIMNER BULL 83B

CE 84
BW -1.4
WW 37
YW 73
M 19.6
TM 38

PMC360854	GBR 83B	21 February 2014
BW 94	205 DW 793	3rd Gen Pld

You really have to love the smoothness and tremendous hip in this Trojan son. He has been a favourite of many in the bull pen.



BAR J SILVERADO 14S(P)
BAR J TROJAN 68X(P)
SOS MISTRESS 142P(P)
G. BROS. STANDOUT 8S(P)
GBR LADY 61Y(P)
KMAC MISS HILARY 23R(P)

BRIMNER BULL 96B

PMC360857	GBR 96B	22 February 2014
BW 104	205 DW 803	3rd Gen Pld

BAR J SILVERADO 14S(P)
 BAR J TROJAN 68X(P)
 SOS MISTRESS 142P(P)
 KMAC SERIO 32S(P)
 GBR LADY 102X(P)
 GBR MARY-KATE 54P(P)

63

CE 57
 BW -.3
 WW 43
 YW 84
 M 23.5
 TM 45



This guy is a tank! Look at the haircoat on this soggy rascal. Great temperament, thickness and structure. Real horsepower in this Trojan son.



64 BRIMNER BULL 20B

CE 84	PMC360843	GBR 20B	5 February 2014
BW -2.1	BW 100	205 DW 756	3rd Gen Pld

BAR J SILVERADO 14S(P)
 BAR J TROJAN 68X(P)
 SOS MISTRESS 142P(P)
 HBC ENCORE 834U(P)
 GBR MISS 90Z(P)
 GBR CORAL 75M(P)

A real meat wagon. Smooth made out of a hard-working Encore two year old.

65 BRIMNER BULL 32B

CE 85	PMC360844	GBR 32B	10 February 2014
BW -2.1	BW 92	205 DW 750	3rd Gen Pld/s

BAR J SILVERADO 14S(P)
 BAR J TROJAN 68X(P)
 SOS MISTRESS 142P(P)
 HBC ENCORE 834U(P)
 GBR MISS 128Z(P)
 GBR CORAL 71J(P)

A real sharp Trojan son out of a perfect uddered Encore daughter.

66 BRIMNER BULL 53B

CE 72	PMC360848	GBR 53B	16 February 2014
BW -1.3	BW 90	205 DW 778	3rd Gen Pld

BAR J SILVERADO 14S(P)
 BAR J TROJAN 68X(P)
 SOS MISTRESS 142P(P)
 KMAC SERIO 32S(P)
 GBR LADY 28X(P)
 KMAC MS FAITH 72M(P)

Another typical Trojan son, smooth made, nice birth weight and loads of natural thickness.

67

BRIMNER BULL 35B

CE 67	PMC360845	GBR 35B	11 February 2014
BW -1.4	BW 95	205 DW 763	3rd Gen Pld

WW 32

YW 62

M 23

TM 39

BAR J SILVERADO 14S(P)
BAR J TROJAN 68X(P)
 SOS MISTRESS 142P(P)
 4-G GRAND PRIX 229M(P)
BRIMNER LADY 133T(P)
 GBR CHARLIE'S ANGEL 79K(P)

A Trojan son with a little more stretch. Smooth made with a nice 95 pound birth weight.



68

BRIMNER BULL 50B

CE 81	QPMC360847	GBR 50B	15 February 2014
BW -2.1	BW 100	205 DW 731	Red Factor, 3rd Gen Pld

WW 32

YW 63

M 22.9

TM 39

BAR J SILVERADO 14S(P)
BAR J TROJAN 68X(P)
 SOS MISTRESS 142P(P)
 4-G GRAND PRIX 229M(P)
BRIMNER LADY 106T(QP)
 GBR LADY IN RED 92M(QP)

Good, red factor Trojan son with lots of hair.



69

BRIMNER BULL 111B

CE 86	PMC360859	GBR 111B	24 February 2014
BW -1.6	BW 90	205 DW 660	3rd Gen Pld

WW 36

YW 69

M 23.5

TM 42

BAR J SILVERADO 14S(P)
BAR J TROJAN 68X(P)
 SOS MISTRESS 142P(P)
 HBC ENCORE 834U(P)
GBR LADY 12Y(P)
 GBR MISS 157S(P)

If you are looking for a nice, moderate, easy calving Trojan, take a look here.





70 BRIMNER BULL 124B

CE 53	PMC360862	GBR 124B	27 February 2014
BW .3	BW 99	205 DW 753	3rd Gen Pld
WW 39	BAR J SILVERADO 14S(P)		
YW 76	BAR J TROJAN 68X(P)		
M 23	SOS MISTRESS 142P(P)		
TM 43	GBR POWERHOUSE 60L(P)		
	GBR MARY-KATE 54P(P)		
	GBR VISION 24J(P)		

You have to love how Trojan brings down birthweights on big horsepower cows. 54P always brings in a good one. Typical Trojan hair, thick and made to calve.



71 BRIMNER BULL 144B

CE 86	PMC360864	GBR 144B	2 March 2014
BW -1.9	BW 90	205 DW 765	3rd Gen Pld
WW 34	BAR J SILVERADO 14S(P)		
YW 66	BAR J TROJAN 68X(P)		
M 21.5	SOS MISTRESS 142P(P)		
TM 38	G. BROS. STANDOUT 8S(P)		
	GBR MISS 34Z(P)		
	GBR JESSICA 75K(P)		

You will admire the length and excellent quarter this guy has. Nice small head and real smooth.

72 BRIMNER BULL 136B

CE 96	PMC360863	GBR 136B	28 February 2014
BW -2.7	BW 90	205 DW 685	3rd Gen Pld
WW 33	BAR J SILVERADO 14S(P)		
YW 66	BAR J TROJAN 68X(P)		
M 21.8	SOS MISTRESS 142P(P)		
TM 38	4-G RIPTIDE 18S(P)		
	GBR MISS 57Z(QP)		
	GBR LADY 85X(QP)		

Calving ease bred right-in on both sides of this guy. Sleep easy calving this guy.

Reference Sire

MCTAVISH TUFF 113Z 3rd Gen Pld

Sire of lots 73-75

CE 72	BW .5	WW 49	YW 102	M 28	TM 53
-------	-------	-------	--------	------	-------



73

BRIMNER BULL 61B

CE 47

PMC360850

GBR 61B

17 February 2014

BW 3.3

BW 100

205 DW 717

4th Gen Pld

WW 46

YW 93

M 22.9

TM 46

MERIT ROUNDUP 9508W(P)

MCTAVISH TUFF 113Z(P)

PLEASANT DAWN MAGGIE85X(P)

ROSSO RED COLE 13S(QP)

GBR LADY 85X(QP)

GBR BUBBLES 82R(QP)

Powerful McTavish Tuff son. Long, thick with an awesome haircoat. Maternal brother sold to Jens Hansen, Redvers, last year.



BY

74

BRIMNER BULL 117B

CE 60

PMC360861

GBR 117B

25 February 2014

BW 1.8

BW 91

205 DW 798

4th Gen Pld

WW 49

YW 98

M 25.2

TM 50

MERIT ROUNDUP 9508W(P)

MCTAVISH TUFF 113Z(P)

PLEASANT DAWN MAGGIE85X(P)

KMAC SERIO 32S(P)

GBR LADY 39X(P)

GBR PLUSH 24P(P)

This Tuff son has been a standout from day one. Numbers are right, out of a great perfect uddered dam. He is long, smooth and has a great hair goat. **Herdbull here!**



BY



75

BRIMNER BULL 63B

CE 74	PMC360851	GBR 63B	18 February 2014
BW 1.1	BW 110	205 DW 803	3rd Gen Pld

WW 45	MCTAVISH TUFF 113Z(P)	MERIT ROUNDUP 9508W(P)
YW 90	PLEASANT DAWN MAGGIE85X(P)	
M 25.1	SPARROWS COSSACK 11L(P)	
TM 48	CHARBURG KEPSAKE 30R(P)	HCC KINGS KEPSAKE 23K(P)

Probably the biggest horsepower bull in the offering. Tremendous length, awesome haircoat out of my old standby 30R. Maternal brother sold to Ross and Darrell Petterson, Wawota, last year.

Reference Sire

G.BROS CREW 607Y

Red Factor, Dbl Pld

Sire of lots 76-82

CE 83	BW .4	WW 41	YW 86	M 21.2	TM 42
-------	-------	-------	-------	--------	-------



76

BRIMNER BULL 73B

CE 91	PMC360852	GBR 73B	20 February 2014
BW -1.8	BW 85 Twin	205 DW 675	3rd Gen Pld

WW 36	SRK RED MAN 16U(QP)	Here is a real athletic Crew son. Crew sons are showing great length and performance.
YW 73	G.BROS CREW 607Y(QP)	
M 22	G.BROS MYRRH 511W(QP)	
TM 40	4-G RIPTIDE 18S(P)	
	G.BR RED RACHEL 13W(QP)	
	BRIMNER LADY 45T(P)	

77

BRIMNER BULL 56B

CE 86	QPMC360849	GBR 56B	16 February 2014
BW .3	BW 80 Twin	205 DW 722	Red Factor, 3rd Gen Pld

WW 39	SRK RED MAN 16U(QP)	
YW 78	G.BROS CREW 607Y(QP)	
M 22.3	G.BROS MYRRH 511W(QP)	
TM 42	BROS. STANDOUT 8S(P)	
	GBR LADY 103U(P)	
	GBR CRYSTAL 4L(QP)	

A good red factor Crew son. Long hairy and a tremendous hip. His dam consistently has low birth weight calves.



78

BRIMNER BULL 84B

CE 81	QPMC360855	GBR 84B	21 February 2014
BW .6	BW 100	205 DW 770	Red Factor, 3rd Gen Pld
WW 38	SRK RED MAN 16U(QP)		
YW 77	G.BROS CREW 607Y(QP)		
M 22.1	G.BROS MYRRH 511W(QP)		
TM 41	4-G GRAND PRIX 229M(P)		
	BRIMNER LADY 4T(QP)		
	GBR RED MARY 33N(QP)		

Here is a good, darker red factor Crew son. Long, great set of feet and legs. His maternal brother was our high seller last year to Kings Polled Charolais.



79

BRIMNER BULL 87B

CE 88	QPMC360856	GBR 87B	21 February 2014
BW -.2	BW 102	205 DW 688	Red Factor, 3rd Gen Pld
WW 41	SRK RED MAN 16U(QP)		
YW 83	G.BROS CREW 607Y(QP)		
M 22.5	G.BROS MYRRH 511W(QP)		
TM 43	4-G RIPTIDE 18S(P)		
	GBR LADY 4X(QP)		
	GBR REDLADY 120N(QP)		

Long, smooth made, red factor Crew son out of a powerful Riptide daughter.

80

BRIMNER BULL 100B

CE 89	QPMC360858	GBR 100B	23 February 2014
BW -.2	BW 105	205 DW 771	Red Factor, 3rd Gen Pld
WW 36	SRK RED MAN 16U(QP)		
YW 69	G.BROS CREW 607Y(QP)		
M 24.5	G.BROS MYRRH 511W(QP)		
TM 42	TWINBIRCH LAD 7L(QP)		
	GBR BELLA 87S(QP)		
	GBR JUSTADREAM 31N(P)		

This is a powerful, tan Crew son. Good haired and structurally correct. Maternal brother working in the Ken Wilson herd at Wawota.



81

BRIMNER BULL 114B

CE 84	QPMC360860	GBR 114B	24 February 2014
BW -.4	BW 100	205 DW 698	Red Factor, Dbl Pld
WW 35	SRK RED MAN 16U(QP)		
YW 73	G.BROS CREW 607Y(QP)		
M 21.8	G.BROS MYRRH 511W(QP)		
TM 39	SILVER FOXX FOREVER 34F		
	GBR JESSICA 75K(P)		
	GBR ADINA 9D(P)		

This red factor bull is out of 75K, who is still going strong at 15 years old! Maternal brother went to the Hondls, Bowden, AB, last year.

82

BRIMNER BULL 161B

CE 86	PMC360865	GBR 161B	9 March 2014
BW .6	BW 106	205 DW 753	3rd Gen Pld/s
WW 43	SRK RED MAN 16U(QP)		
YW 78	G.BROS CREW 607Y(QP)		
M 22.1	G.BROS MYRRH 511W(QP)		
TM 43	HBC ENCORE 834U(P)		
	GBR LADY 77X(P)		
	GBR DELUXE TANGO 11M(P)		

Powerful Crew son. Great feet and legs. Ready to cover some ground and cows.

Reference Sire

BRIMNER BULL 205Y

Red Factor, Dbl Pld

Sire of lots 83 & 84

CE 52	BW 2.8	WW 39	YW 77	M 18.7	TM 38
-------	--------	-------	-------	--------	-------

83 BRIMNER BULL 164B

CE N/A	QPMC360866	GBR 164B	11 March 2014
BW 2.8	BW 103	205 DW 808	Red Factor, 3rd Gen Pld
WW 41	ROSSO RED COLE 13S(QP)		
YW 80	BRIMNER BULL 205Y(QP)		
M 21.9	MERIT CARLA 7281T(P)		
TM 43	BELMONT'S INDIANA 9J(QP)		
	GBR REDLADY 120N(QP)		
	GBR PHENOME 52G(P)		

Here is a long bodied, dark red bull. A little younger, but lots of performance out of an Indiana daughter.

84 BRIMNER BULL 177B

CE N/A	PMC360867	GBR 177B	18 March 2014
BW 1.5	BW 90	205 DW 703	3rd Gen Pld
WW 42	ROSSO RED COLE 13S(QP)		
YW 78	BRIMNER BULL 205Y(QP)		
M 21.3	MERIT CARLA 7281T(P)		
TM 42	HBC ENCORE 834U(P)		
	GBR LADY 74Y(P)		
	GBR RED RACHEL 13W(QP)		

Real smooth made bull with excellent hair coat.



Terms & Conditions:

Terms: The terms of the sale are cash or cheque payable immediately after the sale in Canadian funds. All settlements must be made with the sale clerks before cattle will be released. The right of property will not pass until final payment is made.

Bidding: Each animal will sell to the highest bidder. Bidders unable to attend the sale may phone their bids and instructions to the sale manager, auctioneer or special representatives. Bids must be received in sufficient time prior to the sale.

Disputes: Bidding will be reopened between the parties involved. If no further bid is made, the buyer will be the person from whom the auctioneer accepted the last bid. The auctioneer's decision is final.

Announcements: Announcements made from the auction block will take precedence over printed matter in the catalogue. Buyers are cautioned to pay close attention to announcements.

Purchaser's Risk: Each animal becomes the risk of the purchaser as soon as sold. Animals will be cared for at the purchaser's risk for a reasonable length of time. All animals left with the seller must be insured.

Certificate of Registration: Each animal will carry papers issued by the breed Association. A certificate of registry duly transferred will be furnished to the buyer after payment has been made.

Delivery: Assistance will be given in making delivery after the sale. The purchaser agrees shipping arrangements will be at the convenience of the seller, but will be as soon as practical after the sale, at the buyer's risk.

Breeder Guarantee - Bulls: Should any bull fourteen months of age or over, fail to prove a breeder after being used on cows known to be breeders, the matter shall be reported in writing to the seller within six

months following the date of purchase or six months after the bull has reached fourteen months of age. The seller has the right and privilege of six months to prove the bull a breeder. No guarantee is given that semen collected from the bull will freeze.

Exception Guarantee: In case where the animal is subjected to any hormonal or surgical reproductive techniques after the sale, this guarantee shall be null and void. The seller is not responsible for damage caused by foreign bodies after the animal has been sold or for sickness not apparent at sale time. In no event shall the seller be responsible for more than the purchase price.

Accidents: Although every precaution will be taken to protect the safety and comfort of buyers, neither the sale manager, auctioneer, or sellers assume any responsibility and disclaim any liability, legal or otherwise, in the event of accident or loss of property.

By Livestock is only acting as a medium between the buyer and seller and is not responsible for failure on the part of either party to live up to their obligations; or for the truth of any warranties or representations, expressed or implied. By Livestock assumes no obligation to enforce or collect monies between parties. By Livestock assumes no responsibility for any credit extended by the seller to the buyer. Any legal action taken in exceptional cases must be between the buyer and the seller. The buyer must look to the seller for fulfilment of all guarantees and representations.

Insurance: Insurance will be available sale day.

Pictures: By attending the sale you are granting permission for your picture to be used for promotional and advertising purposes relating to the sale.





124 Shannon Road
Regina, SK S4S 5B1
306-584-7937



Cornerstone *"More Bang for Your Buck!"*

1:30 P.M. **Bull & Female Sale**

Saturday, April 18, 2015 • Whitewood Auction Mart, Whitewood, SK

Featuring:

WRAZ RED ANGUS

38 Yearling Red Angus Bulls

12 Red Angus Open Heifers

24 Commercial Open Heifers

BRIMNER CATTLE CO.

26 Yearling Charolais Bulls



Phil Birnie, Lana Kormos and family
Box 461, Wawota, SK S0G 5A0
Info@wraz.ca • www.wraz.ca
T 306-739-2988 • C 306-577-7440
Gordon Murray T 306-739-2177
C 306-646-7980



Kelly, Tracy, William & Wyatt Brimmer
Box 93, Manor, SK S0C 1R0
T 306-448-2028 • C 306-577-7698