

6TH Annual

Chapman
CATTLE COMPANY

100%

**Forage
Raised**

**Angus and Red Angus
2 Year Old Bull Sale**

**1:00 pm
Stettler Auction Mart
Stettler, Alberta**



February 16th

2012

2011 Pasture Sires

Crowfoot Equation 5793R (Reg # 1254914)



OCC Legacy 839L x Tomwall Pied Piper 413

Crowfoot Joker 6172X (Reg # 1316033)



OCC Joker 620J x Tomwall GDAR Royce 964

Sinclair Rito 9R7 (Reg # 1583293)



Rito Revolve 0R5 x Sinclair Net Present Value

HF Undisputed 183U (Reg # 1254914)



HF Kodiak 5R x HF Free Wheeler 191N

More Info Available: www.chapmancattle.com



FEBRUARY

16, 2012

1:00 pm - Thursday

AT STETTLER AUCTION MARKET - STETTLER, AB

- SALE DAY PHONES -

Greg Hayden / Jim Abel: 403-742-2368

Silas Chapman (Cell): 403-741-2099

Blake Chapman (Cell): 403-741-5760

Shane Castle (Cell): 306-741-7485

SALE DAY FAX: 403-742-8151

60 HEAD RED & BLACK TWO YEAR

OLD ANGUS BULLS ON OFFER!!

• '100%' Forage-Developed •

- SALE STAFF -

Auctioneer - Don Raffan

Ph: 250-546-9420 / Cell: 250-558-6789

Joe Ferris	Ring Staff	250-558-8745
Dean Edge	Ring Staff	403-704-0280
Shane Castle	Buyer Rep	306-741-7485

Stettler Auction Mart

Greg Hayden	Buyer Rep	403-742-2368
Jim Abel	Buyer Rep	403-742-2368

PHONE BIDS:

Arrangements can be made with an independent buyer or any of the Sales Staff.

INSURANCE:

The animal does become the responsibility of the purchaser after it is sold. Any bulls returning to Chapman Cattle Company *must be insured*. Insurance available Sale Day from:

STOCKMENS INSURANCE

Larry Toner - Agent
Phone: 306.932.4866
Cell: 306.834.7652 / Fax: 306.932.2071

BE OUR GUESTS:

For Lunch and Presale Cattle Viewing before the sale.

SALE VETERINARIAN:

Stettler Veterinary Service
Dr. Jackie Dobinson - Ph: 403-742-3338

FOR MORE INFORMATION, PLEASE CONTACT:



CHAPMAN CATTLE COMPANY
Silas Chapman - 403-741-2099 (Cell)
P.O. Box 728, Stettler, AB T0C 2L0

silas@chapmancattle.com website: www.chapmancattle.com

Blake Chapman - Ph: 403-742-3829 (H) / 403-741-5760 (C)



Profitable Angus Genetics

BUYER REGISTRATION:

Buyers please register for a buyer number at the office prior to purchasing.

TERMS FOR BULLS:

Cash or cheque payable on Sale Day unless previous arrangements have been made with Chapman Cattle Company.

BREEDING GUARANTEE:

All cattle are sound and right and sell with a "Responsible Breeders Guarantee". All bulls are guaranteed to be structurally sound and to have passed a fertility examination by a licensed Veterinarian. We guarantee satisfaction or we will replace the bull with one of equal value. Should this not be possible, an adjustment will be made to reflect the value of the bull in question or a credit will be given towards the purchase of another bull. All females sell under the terms and conditions in accordance with the Canadian Angus Association.

IDENTIFICATION:

Each animal will carry a CCIA digital frequency tags as well as corresponding Lot tag and tattoo.

DELIVERY ON BULLS:

Upon Settlement, please choose one of the following options and inform the clerk at the time of settlement. Please leave detailed delivery instructions upon doing so.

A. \$100 Discount off of the *Total Invoice* per buyer if bulls are picked up Sale Day

OR -

B. Free Board & Delivery to Central Points

Every attempt will be made to deliver your new bull(s) to your bull pen commencing after the sale and will be done at the expense of Chapman Cattle Company for bulls selling within the Prairie Provinces and BC. All bulls going beyond will be delivered at cost. Chapman Cattle Company assumes no liability of death or injury for bulls returning to the ranch. All bulls **MUST** be insured.

HEALTH:

All sale bulls have been vaccinated with a Clostridial 8-way, Bovi-Shield Gold FP 5VL5, poured with Ivomec, and will be fertility tested and guaranteed sound.

ANNOUNCEMENTS:

Errors in this catalog will be corrected by announcements from the block at sale time and such corrections will take precedent over any printed material. Any disputes will be settled by the auctioneer.

ACCIDENTS:

Although every precaution will be taken, All Persons who attend the Sale do so at their own risk and the owners, management, and Sale Staff assume no liability, and disclaims all liability, legal or otherwise, for any reason.

CERTIFICATE OF REGISTRY:

A certificate of registration duly transferred will be furnished to the buyer by the breeder for each registered animal after complete and full payment has been made.

– PLEASE NOTE –

Scrotal Circumferences & Sale Weights available online and in printed form on Sale Day!

View Catalogue Online: www.chapmancattle.com

Who Moved My Cheese?

Human beings are creatures of habit, which is why Spencer Johnson sold more than ten million copies of his book, *"Who Moved My Cheese?"*

The story is about two mice, Sniff and Scurry, and two "Little people," Hem and Haw, who live in a maze of cheese stations, some filled with cheese and others empty. When Cheese Station C runs out of cheese, the two mice immediately search the maze for other cheese stations, while Hem and Haw overanalyze their situation, convinced that one day the old cheese will return to Station C if they keep on going there.

Haw eventually leaves Station C, realizing he's going to starve if he doesn't start looking for a new station. Along the way he writes messages on the wall like *"Movement In A New Direction Helps You Find New Cheese"* and *"The Quicker You Let Go Of Old Cheese, The Sooner You Find New Cheese,"* which serve to motivate him in his search for new cheese and to remind him that going back isn't the solution; they are also markings for his buddy, Hem, should he decide to follow.

After a little while in the maze, Haw stumbles on a station with a few chunks of new cheese. Even though the types of cheese are strange-looking, like nothing he has ever seen before, he immediately devours them. He puts a few pieces in his pocket to take back to his buddy, Hem, who is still stuck in Station C.

As stubborn as he is starving, Hem turns down Haw's offer of cheese. "I want my own cheese back," he says.

"Suit yourself," Haw says, as he begins to let go of the past (good times at Station C) and adapt to the present. He inscribes the maze wall with more bits of wisdom, like *"Noticing Small Changes Early Helps You Adapt To The Bigger Changes That Are To Come."*

Finally Haw discovers Cheese Station N, the tallest mound of cheese he had ever seen, where his mouse friends Sniff and Scurry welcome him and invite him to eat from the abundant supply. Their full bellies tell Haw that they have been there awhile.

On the largest wall of Cheese Station N, Haw draws a large piece of cheese around all the insights he has gained. They are:

- **Change Happens.** *They Keep Moving The Cheese.*
- **Anticipate Change.** *Get Ready For The Cheese To Move.*
- **Monitor Change.** *Smell The Cheese Often So You Know When It Is Getting Old.*
- **Adapt To Change Quickly.** *The Quicker You Let Go Of Old Cheese, The Sooner You Can Enjoy New Cheese.*
- **Change.** *Move With The Cheese.*
- **Enjoy Change!** *Savor The Adventure And Enjoy The Taste of New Cheese!*
- **Be Ready to Change Quickly And Enjoy It Again and Again.** *They Keep Moving the Cheese.*

The moral of the story is that sooner or later, each of us will experience change within our cattle operations and the cattle industry, and we will all deal with it in different ways. The ones that move on will have a chance to find a new source of cheese, and those that don't...

The '100% Forage-Developed' Bull Sale concept was our 'new cheese' created several years ago after 3 generations of marketing purebred bulls the conventional way. It isn't a new technology; it isn't a unique input; yet it is not a widely adapted science either. In reality, the sale bulls are a positive annual by-product of a cowherd being line-bred for predictable maternal efficiency with reduced mature cow size allowing us to run more cows and wean more pounds per acre.

With this being our 6th bull sale offering exclusively 'Forage-Developed' bulls we now know they will do what we claim based on what our customers tell us. The bulls will spread out your bull investment dollars by breeding more cows over more years. They will maintain and even gain weight while breeding. They are from the 1st two breeding cycles of their dams. Their calves wean right in with other breeder's genetics without compromising calving ease. Fertility is evident due to increased selection pressure within a 100% forage-developed protocol and they sire daughters with all the relevant economic efficiencies to thrive in a grass-based operation.

Please join us February 16, 2012 in Stettler and let us show you our "markings on the wall!"



Silas Chapman



Blake Chapman



The Advantages of Forage-Developed Bulls

What is a 100% ‘Forage-Developed Bull’? This is a bull that has been developed and tested for his ability to perform on an all forage (grass/hay) diet. Typically, most bulls are developed and tested on a high concentrate (grain) ration similar to the rations used to fatten cattle in a feedlot. Even claims of a high-roughage diet may not accurately define how that bull has been developed.

It is common knowledge that these hot feedlot rations will negatively affect a bull’s fertility, digestive system and liver function, as well as the soundness of his feet and legs.

It stands to reason, the bulls that perform best in a forage-raised environment should sire cattle that are also more efficient foragers. Therefore, this is a very important economic trait for ranchers who produce their own replacement females to select for.

Chapman Cattle Company started marketing forage-tested bulls in 2006. Why? the reasons are twofold. First, we believed in the basic concept of forage testing our maternal genetics since we were already moving our cowherd towards a grass-based production system. Second, it provided a way for us to market our late-spring born bull calves as long yearlings.

The bulls are initially weaned in November where they begin their forage testing. They are roughed through their first winter on mixed hay with little, or no, protein supplement. This stage of development always does an excellent job of “separating the men from the boys”.

The bulls will spend their second summer on an all-grass diet. It’s not uncommon for them to gain over 2 pounds per day during the summer. In October, the bulls come off grass and are weighed. This marks the end of their forage test. Since the bulls are run in large groups, our ratios should accurately reflect their true genetic merit when comparing gain.

Continued next page...



Advantages of Forage Developed Bulls

At the end of their forage test, the less efficient and unadapted bulls are culled, as well as those with structural problems. Most of the survivors will be offered for sale in our spring bull sale with a complete breeding soundness guarantee.

Although this program has an extremely high fallout rate, we believe it is the best way to performance test our maternal genetics.

There are several obvious advantages to using older, forage-tested bulls. Since these bulls are older and more mature they are able to handle a heavier workload. Since they are in range condition, in contrast to being overweight, they're able to maintain or gain weight during their first breeding season. Many customers have reiterated testimonials how their Chapman bull was the only bull not to lose condition throughout the breeding season.

Since these bulls have never been confined to smaller pens and/ or forced to eat a high concentrate ration, they will be much healthier and will last much longer. Bull longevity is an extremely important economic trait.

Ultimately, since these bulls have proven their ability to survive and perform in an all-forage environment, they should pass that genetic potential on to their offspring.

CHAPMAN CATTLE COMPANY - Your Source for Forage-Tested Bulls



The "100% Forage-Raised" Bull Advantage!

- *More fertile and will cover more cows.*
- *Will continue to gain weight through 1st breeding season.*
- *No bull's feet or legs ruined due to hot feed.*
- *More years service from forage bulls.*
- *Less injuries and breeding problems.*
- *Bulls are more conditioned to the environment.*
- *Bulls have been put through a rigid test.*

Welcome from Castlerock Marketing



Shane Castle

Welcome to the 2012 version of the Chapman Cattle Co Bull Sale. What a tremendous year this has been in the cattle industry and the forecast looks excellent for much more to come. While we will be entering some new uncharted territory in the industry breaking the previous highs that have been established, I think it's important that we reflect upon the cattle that have enabled cattle producers to endure the tough times. The

answer is keeping our eyes on the mark and knowing what was needed and expected out of the cattle to keep the profit in them.

The same can be said for the breeding at Chapman Cattle Company - they've kept their goal in mind and continually worked towards it. The idea of producing sound, trouble free cattle that have been based on their foraging ability keeping longevity in mind has been front and center. Chapman's herd consists of 500 mother cows calving in the warm season, letting them sort it out on their own. A "hands off" approach has been used to develop this set of cows and has proven itself successful. Likewise, the bulls are rotationally grazed through grass paddocks growing out with plenty of exercise.

The programs utilized by Chapmans share the same vision and have proven themselves in the same efficient, trouble free manner. This no nonsense approach is responsible for the numerous repeat buyers who return with satisfaction that the bulls are in fact doing what they were intended to accomplish.

We invite you to tour the farm prior to the sale to view the bulls or see them when they arrive at the Stettler Auction Mart on Thursday morning, February 16th, prior to the sale where they will be available for viewing until sale time that afternoon.

If you are unable to attend the sale you are encouraged to take part of the "Sight Unseen Purchase Program". Be sure to contact Silas, Blake or myself prior to the sale to enable us to determine your needs and discuss your options with you. This program has been effective for many over the years from all across Canada with great satisfaction.

We look forward to seeing you at the sale or discussing the offering with you.

See you sale day!
Shane Castle



CASTLEROCK MARKETING

Cell: 306-741-7485 Ph: 306-784-2241

www.castlerockmarketing.com





A

SINCLAIR MEMENTO 8RL5

Male IMP 85U February 17 2008 #1510491

R R RITO 707 AMF CAF NHF

SINCLAIR RITO LEGACY 3R9 AMF CAF (1436721)

IDEAL 4465 OF 6807 4286 AMF NHF

N BAR SHADOW X4124

SINCLAIR LADY 06S3 4465 (14587183)

IDEAL 4465 OF 6807 4286 AMF NHF

RITO N BAR

ERISKAY OF ROLLIN ROCK 3

D H D TRAVELER 6807 AMF NHF
E E 4286 OF IDEAL 2240 1254

N BAR EMULATION EXT AMF CAF NHF
N BAR ENCHANTRESS 4908

D H D TRAVELER 6807 AMF NHF
E E 4286 OF IDEAL 2240 1254

BW: 84 lbs. Adj. 205D: 770 lbs. Wl: 115 Adj. 365D: 1256 lbs. Yl: 107 Yr Sc: 34.19

Spring 2012 EPD's

BW:+2.0 WW:+45 YW:+78 Milk:+18 TM:+41

Owned with Sinclair Cattle Company, Warfordsburg, PA. Acquired as the \$11,500 second top-selling bull in the 2009 Sinclair Bull Sale, 8RL5 was a high-capacity, wide-based, thick made bull that is easy fleshing, moderate and exhibits a classic Angus look. His N Bar Shadow X4124 dam is a full sister to Sinclair Telecast 01S3. She combines production ratios of BW 3-95 WW 3-108 YW 3-104 and URE 3-118 and was a feature lot in the 2010 Sinclair Mature Cowherd Dispersal at \$15,000. 8RL5 is the result of a half brother-sister mating being double bred to Ideal 4465 6807 4286.



*N Bar Shadow
X4124 - Maternal
Grandsire of
Reference Sire A*

*RR Rito 707 -
Paternal Grandsire
of Reference Sire A*





1

CHAPMAN MEMENTO 0511X

Male SWC 0511X March 13 2010 #1571503

SIRED BY: SINCLAIR MEMENTO 8RL5 (1510491)

O C C MOONSHINE 740M
CROWFOOT REV ROSE 5900R (1255013)
 CROWFOOT CH REV ROSE 1627L

O C C JUST RIGHT 619J
 O C C DIXIE ERICA 816B
 C&D 455 ROCKETT
 C H REV ROSE 9297

Spring '12 EPD'S: BW:+2.7 WW:+38 YW:+70 Milk:+20 TM:+39					
AOD	BW	Adj 205	WI	Adj 365	YI
5	93	679	102	1079	111

SELLING 2/3 INTEREST & FULL POSSESSION - A phenotypic standout, this legitimate **HERD BULL PROSPECT** will get your attention and impress you with his overall completeness. His outstanding dam is an easy fleshing, deep bodied, neat uddered daughter of OCC Moonshine 740M and is the top daughter in the herd by him.

A feature of the 2006 Crowfoot Dispersal, Rev Rose 5900R, was a top performing heifer of her calf crop posting individual weaning and yearling ratios of 105 and 126 respectively, yet matured into a moderate, fertile, productive cow with a lifetime progeny ratio of 5/104 with 3 daughters in production and a top son sold through last year's bull sale to Tim Smith of Coronation.

We think 0511X is one of the top bulls ever produced at Chapman Cattle Company. Not only did he excel in all traits measurable within a rigorous forage-only environment, but his genetic make-up is loaded with breed greats. Consider the predictability of producing moderate-framed, perfect uddered, easy-fleshing daughters with 6807, Emulation 31, Shoshone and Rito 707 stacked top and bottom into a unique maternal tabulation. 0511X has a heritage of performance, phenotype, and pedigree to be a herd-building sire with a balance of traits. He is not an "outlier" in any trait but solid in many - making him the logical choice to be the leadoff bull for our 2011 Bull sale.



*OCC Moonshine
 740M - Maternal
 Grandsire to Lot #1*



2

CHAPMAN MEMENTO 0505X

Male SWC 0505X February 26 2010 #1571495

SIRED BY: SINCLAIR MEMENTO 8RL5 (1510491)

O C C JOKER 620J
CROWFOOT REV ERICA 5752R (1254877)
 CROWFOOT ERICA 3906N

O C C EMBLAZON 854E AMF CAF NHF OSF
 O C C JUANADA 709V
 BASIN EXPEDITION K47
 CROWFOOT FORKS 755K

Spring '12 EPD'S: BW:+2.7 WW:+38 YW:+65 Milk:+21 TM:+40					
AOD	BW	Adj 205	WI	Adj 365	YI
5	90	710	107	1062	113

SELLING 2/3 INTEREST & FULL POSSESSION - 0505X will be one of the most unique herd bull prospects to sell this year with a pedigree consisting of multiple generations of top females known for fertility, udder quality, and adaptability.

He is moderate framed, deep bodied, wide based, and tracks wide and true as he travels. Linebred for consistency, and stamped with the predictability of sires known to produce top females, 0505X could be utilized as a changer, or would fit a grass-based program where I would expect him to sire the type of easy fleshing, forage efficient cattle that will thrive in even the harshest environments.

One of the best parts about 0505X is his outstanding dam and the cow family behind him. His donor dam, Rev Erica 5752R, is a moderate framed, easy fleshing, good footed daughter of OCC Joker 620J. Her udder is typical of the Joker-bred females and sets the standard for quality with small well placed teats, and snug rear and fore udder attachment. She is the dam to the high-selling bull in our 2010 bull sale, Chapman Joker 8503U, to Ole Farms in AB. Her Shoshone PP 7105-bred granddam, 755K, is best known as the dam of resident herdsire, Crowfoot Equation 5793R. Her great granddam 7289 produced another resident herd sire for us in Crowfoot Bruno 1670L who was the high selling bull in their '02 bull sale, and she later went on to serve as an aged-donor for Ole Farms.



*OCC Emblazon
 854E - Maternal
 Grandsire to Lot #2*



3

CHAPMAN MEMENTO 0513X

Male SWC 0513X March 19 2010 #1571505

SIRED BY: *SINCLAIR MEMENTO 8RL5 (1510491)*

O C C MOONSHINE 740M	O C C JUST RIGHT 619J
CROWFOOT LOVEMERE PET 5791R (1267487)	O C C DIXIE ERICA 816B
CROWFOOT 3778N	BASIN EXPEDITION K47
	CROWFOOT FORKS 774K

Spring '12 EPD'S: BW:+2.9 WW:+33 YW:+66 Milk:+22 TM:+39					
AOD	BW	Adj 205	WI	Adj 365	YI
5	89	637	96	989	101

SELLING 2/3 INTEREST & FULL POSSESSION - A favorite all year, 0513X is moderate-framed, deep bodied, wide-based, and tracks wide and true as he travels. He has that masculine beef bull look, deep from fore rib to flank, and possesses the added muscle and rib dimension demanded by cattlemen today. His dam is a smooth made cow with a neat well-attached udder and another top daughter of OCC Moonshine 740M, making him a 3/4 brother to Lot #1. She has been very productive with another top performing heifer of her calf crop posting individual WR 105 and YR 126 with a lifetime progeny ratio of 5/111 with 3 daughters in production and a herd sire retained from the 2008 calf crop.



4

CHAPMAN MEMENTO 0506X

Male SWC 0506X March 02 2010 #1571496

SIRED BY: *SINCLAIR MEMENTO 8RL5 (1510491)*

SITZ ALLIANCE 6595 AMF NHF	SITZ TRAVELER 8180 AMF CAF NHF
CHAPMAN NELLIE 3306 (1177150)	SITZ BARBARAMERE JET 2698
GLADWALL BELLE L NELLIE 581	LEACHMAN EXT 3500
	GLADWALL BELLE L NELLIE 6250

Spring '12 EPD'S: BW:+3.2 WW:+44 YW:+76 Milk:+21 TM:+43					
AOD	BW	Adj 205	WI	Adj 365	YI
7	95	704	106	1056	108



5 CHAPMAN MEMENTO 0509X

Male SWC 0509X March 05 2010 #1571500

SIRED BY: SINCLAIR MEMENTO 8RL5 (1510491)

O C C MOONSHINE 740M
CROWFOOT CHLOE 5879R (1254993)
 CROWFOOT FORKS 669K

O C C JUST RIGHT 619J
 O C C DIXIE ERICA 816B
 TOMWALL PIED PIPER 413
 GLADWALL B CHLOE 762

Spring '12 EPD'S: BW:+0.1 WW:+36 YW:+62 Milk:+19 TM:+37					
AOD	BW	Adj 205	WI	Adj 365	YI
5	76	633	97	985	101



6 CHAPMAN MEMENTO 0510X

Male SWC 0510X March 07 2010 #1571502

SIRED BY: SINCLAIR MEMENTO 8RL5 (1510491)

CROWFOOT BRUNO 1670L
CHAPMAN DUCHESS 4403 (1201299)
 RED CHAPMAN DUCHESS 103L

STEVENSON BRUNO 561G CAF NHF
 GLADWALL B REV ERICA 7289
 RED OH BOOMER 552E
 RED C C DUCHESS 24G

Spring '12 EPD'S: BW:+3.4 WW:+43 YW:+77 Milk:+21 TM:+43					
AOD	BW	Adj 205	WI	Adj 365	YI
6	89	637	96	989	106



Memento Sons

7

CHAPMAN MEMENTO 0507X

Male SWC 0507X March 02 2010 #1571497

SIRED BY: SINCLAIR MEMENTO 8RL5 (1510491)

O C C MOONSHINE 740M	O C C JUST RIGHT 619J
CROWFOOT ZARA PATRIOT 5865R (1254979)	O C C DIXIE ERICA 816B
PAT ZARA PARTRIO 8148	E 7 AMBUSH 5625
	PAT ZARA PATRIOT 285

Spring '12 EPD'S: BW:+3.4 WW:+39 YW:+65 Milk:+19 TM:+39					
AOD	BW	Adj 205	WI	Adj 365	YI
5	94	701	107	1062	108

8

CHAPMAN MEMENTO 0512X

Male SWC 0512X March 14 2010 #1571504

SIRED BY: SINCLAIR MEMENTO 8RL5 (1510491)

O C C MAGNUM 749M	O C C EUREKA 865E
CROWFOOT BETSEY 5853R (1254968)	O C C JUANADA 818E
CROWFOOT BETSEY 1715L	V F VENTURE FORWARD AMF CAF NHF
	GLADWALL BETSEY 1147

Spring '12 EPD'S: BW:+1.8 WW:+36 YW:+63 Milk:+16 TM:+34					
AOD	BW	Adj 205	WI	Adj 365	YI
5	86	637	96	989	101

9

CHAPMAN MEMENTO 0514X

Male SWC 0514X April 14 2010 #1571506

SIRED BY: SINCLAIR MEMENTO 8RL5 (1510491)

LEACHMAN RIGHT TIME AMF	N BAR EMULATION EXT AMF CAF NHF
CHAPMAN JEANNE 202M (1108816)	LEACHMAN ERICA 0025
GLADWALL JEANNE T 2114	TOMWALL RAINMAKER 8218
	GLADWALL JEANNE T 0238

Spring '12 EPD'S: BW:+1.3 WW:+35 YW:+65 Milk:+15 TM:+33					
AOD	BW	Adj 205	WI	Adj 365	YI
8	81	615	93	967	99

10

CHAPMAN MEMENTO 0527X

Male SWC 0527X April 27 2010 #1571527

SIRED BY: SINCLAIR MEMENTO 8RL5 (1510491)

LEACHMAN RIGHT TIME AMF	N BAR EMULATION EXT AMF CAF NHF
CHAPMAN CHLOE 205M (1108836)	LEACHMAN ERICA 0025
GLADWALL B CHLOE 623	J A R COOL HAND LUKE
	GLADWALL B CHLOE 524

Spring '12 EPD'S: BW:+0.7 WW:+39 YW:+69 Milk:+15 TM:+35					
AOD	BW	Adj 205	WI	Adj 365	YI
8	78	673	104	1025	105

11

CHAPMAN MEMENTO 0545X

Male SWC 0545X May 05 2010 #1571552

SIRED BY: SINCLAIR MEMENTO 8RL5 (1510491)

O C C GLORY 950G	O C C EXODUS 712E
CROWFOOT ZARA JUMBO 5812R (1254932)	O C C DIXIE ERICA 971E
CROWFOOT FORKS 642K	FELTON FAME 2118
	GLADWALL P ZARA JUMBO 8367

Spring '12 EPD'S: BW:+2.0 WW:+43 YW:+74 Milk:+19 TM:+41					
AOD	BW	Adj 205	WI	Adj 365	YI
5	83	715	110	1067	106

12

CHAPMAN MEMENTO 0565X

Male SWC 0565X May 14 2010 #1571589

SIRED BY: SINCLAIR MEMENTO 8RL5 (1510491)

N BAR IMPACT U1253
GLADWALL BELLE L NELLIE 8381 (990880)
 GLADWALL BELLE L NELLIE 581

LEMMON IMPACT
 N BAR CLOVA PRIDE 1696
 LEACHMAN EXT 3500
 GLADWALL BELLE L NELLIE 6250

Spring '12 EPD'S: BW:+1.4 WW:+34 YW:+59 Milk:+15 TM:+32					
AOD	BW	Adj 205	WI	Adj 365	YI
12	86	674	103	1026	105

13

CHAPMAN TELECAST 210X

Male YUS 210X May 05 2010 #1568045

N BAR SHADOW X4124
SINCLAIR TELECAST 01S3 AMF CAF NHF (1481362)
 IDEAL 4465 OF 6807 4286 AMF NHF

N BAR EMULATION EXT AMF CAF NHF
 N BAR ENCHANTRESS 4908
 D H D TRAVELER 6807 AMF NHF
 E E 4286 OF IDEAL 2240 1254

SITZ ALLIANCE 6595 AMF NHF
BAR J P BLOSSOM 5M (1091644)
 BAR J P BLOSSOM 62K

SITZ TRAVELER 8180 AMF CAF NHF
 SITZ BARBARAMERE JET 2698
 GAR COMMITMENT AMF
 PENOSKY BLOSSOM 28U

Spring '12 EPD'S: BW:+2.9 WW:+44 YW:+76 Milk:+22 TM:+44					
AOD	BW	Adj 205	WI	Adj 365	YI
8	85	634	101	986	102



8984 - Paternal Grandam to Lot #14

14

CHAPMAN RITO 020X

Male YUS 020X April 13 2010 #1567991

SINCLAIR RITO LEGACY 3R9 AMF CAF
CHAPMAN RITO LEGACY 218U (1474046)
 PAT LADY ERICA 8984

R R RITO 707 AMF NHF CAF
 IDEAL 4465 OF 6807 4286 AMF NHF
 N BAR IMPACT U1253
 PAT PIED PIPER 921

S B R WATERTON 6148S
CHAPMAN ROSE 802U (1474023)
 CHAPMAN ROSE 631S

LIONHEART OF WICKWIRE
 OCTORARO MISS WIX 803
 CROWFOOT VENTURE 1698L
 CHAPMAN ROSE 429P

Spring '12 EPD'S: BW:-0.9 WW:+42 YW:+71 Milk:+19 TM:+40					
AOD	BW	Adj 205	WI	Adj 365	YI
2	76	734	121	1086	113

View Catalogue Online: www.chapmancattle.com

B



B

CROWFOOT JOKER 6172S

Male CFCC 6172S January 28 2006 #1316033

O C C EMBLAZON 854E AMF CAF NHF OSF	D H D TRAVELER 6807 AMF NHF
O C C JOKER 620J (1079149)	DIXIE ERICA OF C H 1019
O C C JUANADA 709V	COLE CREEK OSCAR 92R
TOMWALL GDAR ROYCE 964	JUANADA OF ROLLIN ROCK 0355
CFCC 1801 (1085514)	G D A R ROYCE 131
GLADWALL PEARL ENECHOR 8155	GLADWALL L BL NELLIE 752
	AMITIE ACRES L EXT 1376
	GLADWALL PEARL ENECHOR 3165

BW: 91 lbs. Adj. 205D: 677 lbs. WI: 112 Adj. 365D: 1094 lbs. YI: 86

Spring 2012 EPD's

BW:+2.6 WW:+37 YW:+62 Milk:+20 TM:+39

A stout & powerful son of OCC Joker, 6172S sires moderate, efficient, & functional cattle ideal for grass-utilization. Sons have added muscle & capacity while daughters have all the bases covered from functionality to beauty.

6172S is powered by an exceptional cow family, his dam being designated a CAA "Elite Dam" in 2006 with a ratio of 113. 6172S progeny come with proven maternal potential as well as favourable carcass traits.

15



15

CHAPMAN JESTER 0504X

Male SWC 0504X February 25 2010 #1571494

SIRED BY: CROWFOOT JOKER 6172S (1316033)

SITZ VALUE 7097 AMF CAF NHF	SITZ TRAVELER 6802
CHAPMAN PRIDE 3309 (1179509)	SITZ EISA EVERGREEN 791
BARBWALL G PRIDE 539	BECKER FARMS CHEYENNE 107
	BAR GAY PRIDE 2120

Spring '12 EPD'S: BW:+3.9 WW:+43 YW:+73 Milk:+20 TM:+42

AOD	BW	Adj 205	WI	Adj 365	YI
7	95	710	107	1062	109



16

CHAPMAN JOKER 0508X

Male SWC 0508X March 04 2010 #1571499

SIRED BY: CROWFOOT JOKER 6172S (1316033)

RED CROWFOOT PM 757G
CHAPMAN PRINCESS 214M (1108831)
 A A R PRINCESS JILL 2011

RED TK POUNDMAKER 69Z
 RED CROWFOOT BIRD 12Z
 NORSEMAN 107 P J M
 A A R PRINCESS JILL 1955

Spring '12 EPD'S: BW:+3.9 WW:+34 YW:+61 Milk:+19 TM:+36					
AOD	BW	Adj 205	WI	Adj 365	YI
8	96	656	98	1008	103



17

CHAPMAN JOKER 0518X

Male SWC 0518X April 24 2010 #1571515

SIRED BY: CROWFOOT JOKER 6172S (1316033)

O C C GLORY 950G
CHAPMAN TILDA 740T (1418596)
 CHAPMAN TILDA 228M

O C C EXODUS 712E
 O C C DIXIE ERICA 971E
 BASIN PARTNER 137H
 SANDY BAR TILDA 7F

Spring '12 EPD'S: BW:+1.9 WW:+36 YW:+64 Milk:+19 TM:+37					
AOD	BW	Adj 205	WI	Adj 365	YI
3	78	660	102	1012	104



18

CHAPMAN JOKER 0519X

Male SWC 0519X April 24 2010 #1571516

SIRED BY: CROWFOOT JOKER 6172S (1316033)

RED SSS JUSTICE 174R
CHAPMAN PRINCESS 751T (1418607)
 CHAPMAN PRINCESS 4413

RED BJR JR 105
 RED SSS EMULY 163C
 CHAPMAN ALLIANCE 262M
 CHAPMAN PRINCESS 214M

Spring '12 EPD'S: BW:+2.9 WW:+33 YW:+58 Milk:+19 TM:+36					
AOD	BW	Adj 205	WI	Adj 365	YI
3	84	654	100	974	101

19

CHAPMAN JOKER 0521X

Male SWC 0521X April 25 2010 #1571518

SIRED BY: CROWFOOT JOKER 6172S (1316033)

RED SSS JUSTICE 174R
CHAPMAN HANNI 768T (1418619)
 CHAPMAN HANNI 4401

RED BJR JR 105
 RED SSS EMULY 163C
 CROWFOOT BRUNO 1670L
 RED CHAPMAN HANNI 002K

Spring '12 EPD'S: BW:+1.6 WW:+35 YW:+62 Milk:+15 TM:+33					
AOD	BW	Adj 205	WI	Adj 365	YI
3	81	636	97	956	98



20

CHAPMAN JOKER 0529X

Male RC SWC 0529X April 27 2010 #1571528

SIRED BY: CROWFOOT JOKER 6172S (1316033)

RED SSS JUSTICE 174R
RED CHAPMAN JESSIE 747T (1418599)
 RED CHAPMAN JESSIE 423P

RED BJR JR 105
 RED SSS EMULY 163C
 RED OH BOOMER 552E
 RED CROWFOOT JESSIE 1090L

Spring '12 EPD'S: BW:+1.3 WW:+27 YW:+48 Milk:+18 TM:+31					
AOD	BW	Adj 205	WI	Adj 365	YI
3	72	738	116	1090	105



21

CHAPMAN JOKER 0547X

Male SWC 0547X May 04 2010 #1651329

SIRED BY: CROWFOOT JOKER 6172S (1316033)

CHAPMAN PAY DAY 4456
CHAPMAN PRIDE 710T (1418576)
 CHAPMAN PRIDE 551R

CROWFOOT VENTURE 1698L
 CHAPMAN NELLIE 210M
 CHAPMAN PARTNER 277M
 CHAPMAN PRIDE 226M

(Proj) Spring '12 EPD'S: BW:+2.9 WW:+39 YW:+67 Milk:+20 TM:+40					
AOD	BW	Adj 205	WI	Adj 365	YI
3	85	694	106	1046	105

22

CHAPMAN JOKER 0599X

Male SWC 099X May 09 2010 Unregistered

CROWFOOT JOKER 6172S
CHAPMAN JOKER 8506U (1468620)
 CROWFOOT LOVEMERE PET 5791R

O C C JOKER 620J
 CFCC 1801L
 O C C MOONSHINE 740M
 CROWFOOT 3778N

RED BAR-E-L ENCORE 89K
RED CHAPMAN GOLDIE 3310 (CM132102)
 RED OH GOLDIE 508E

RED YY RED KNIGHT 640F OSF
 RED ALDER ABG HYJEBU 98G
 RED RCRA WHEEL'O FORTUNE
 RED SEAMAN GOLDIE 29U

Spring '12 EPD'S: n/a					
AOD	BW	Adj 205	WI	Adj 365	YI
2	77	587	122	1086	113



C



C

CROWFOOT EQUATION 5793R

Male CFCC 5793R January 26 2005 #1254914

O C C ECHELON 857E
O C C LEGACY 839 (1193688)
 O C C DIXIE ERICA 960E

D H D TRAVELER 6807 AMF NHF
 DIXIE ERICA OF C H 1019

O C C ANCHOR 771A CAF
 DIXIE ERICA OF R R 4345

TOMWALL PIED PIPER 413
CROWFOOT FORKS 755K (1012951)
 GLADWALL B REV ERICA 7289

SHOSHONE P P 7105
 GLADWALL ROSE OF L 282

A A R OPTIMA 771
 GLADWALL B REV ERICA 1246

BW: 104 lbs. Adj 205D: 663 lbs Adj. 365D: 1190 lbs.

Spring 2012 EPD's

BW:+4.0 WW:+38 YW:+84 Milk:+25 TM:+44

A real powerhouse out of a beautiful Tomwall Pied Piper 413 daughter, a granddaughter of Shoshone PP 7105. We have used this bull heavily & will continue because he has done more things right than any bull we have used so far. His sons pack a lot of muscle, correctness and eye appeal and more power than most OCC-sired cattle we have used. Equation daughters are fabulous to say the least, with lots of capacity and great udders.

Semen Interest owned with Crowfoot Cattle Co., Standard, AB.

23

CHAPMAN EQUATION 160X

Male YUS 160X May 01 2010 #1568033

Sired by: CROWFOOT EQUATION 5793R (1254914)

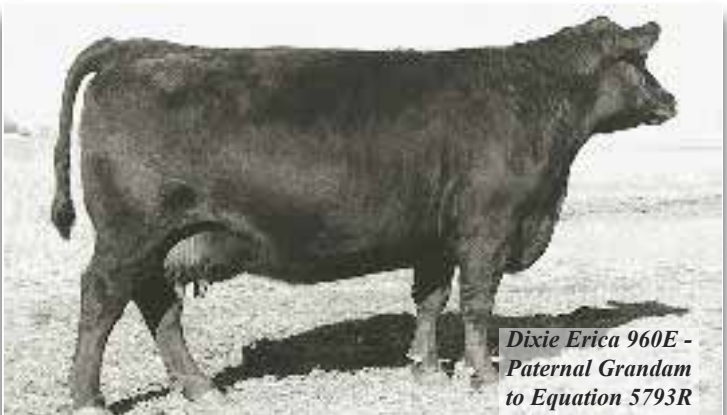
N BAR EMULATION EXT AMF CAF NHF
CHAPMAN EXTACY 765T (1425557)
 PAT LADY ERICA 8984

EMULATION N BAR 5522
 N BAR PRIMROSE 2424

N BAR IMPACT U1253
 PAT PIED PIPER 921

Spring '12 EPD'S: BW:+2.4 WW:+40 YW:+76 Milk:+23 TM:+43

AOD	BW	Adj 205	WI	Adj 365	YI
3	83	655	106	1007	104



Dixie Erica 960E - Paternal Grandam to Equation 5793R



Equation 5793R

24

CHAPMAN EQUATION 190X

Male YUS 190X May 03 2010 #1568042

SIRED BY: CROWFOOT EQUATION 5793R (1254914)

O C C MAGNUM 749M	O C C EUREKA 865E
CROWFOOT PATTIE QUEEN 4584P (1228451)	O C C JUANADA 818E
CROWFOOT PATTIE QUEEN 2552M	O C C HUNTER 928H
	GLADWALL PATTIE QUEEN 640

Spring '12 EPD'S: BW:+2.9 WW:+39 YW:+72 Milk:+20 TM:+40					
AOD	BW	Adj 205	WI	Adj 365	YI
6	94	677	107	1029	107

25

CHAPMAN EQUATION 280X

Male YUS 280X May 12 2010 #1568059

SIRED BY: CROWFOOT EQUATION 5793R (1254914)

CROWFOOT BRUNO 1670L	STEVENSON BRUNO 561G CAF NHF
CHAPMAN ROSE 45P (1228228)	GLADWALL B REV ERICA 7289
GLADWALL ROSE OF L 1173	D V PRIDES COMMODORE
	GLADWALL ROSE OF L 744

Spring '12 EPD'S: BW:+2.3 WW:+38 YW:+71 Milk:+21 TM:+40					
AOD	BW	Adj 205	WI	Adj 365	YI
6	87	673	108	1025	106

26

CHAPMAN EQUATION 0528X

Male SWC 0528X April 27 2010 #1651330

CROWFOOT EQUATION 5793R	O C C LEGACY 839L
CHAPMAN EQUATION 8541U (1468663)	CROWFOOT FORKS 755K
CHAPMAN NELLIE 210M	SITZ ALLIANCE 6595 AMF NHF
	GLADWALL BELLE L NELLIE 581
O C C MOONSHINE 740M	O C C JUST RIGHT 619J
CHAPMAN B PRIDE 8063U (1468669)	O C C DIXIE ERICA 816B
CHAPMAN PRIDE 3327	CROWFOOT BRUNO 1670L
	GLADWALL B GAY PRIDE 5128

Spring '12 EPD'S: BW:+3.6 WW:+34 YW:+65 Milk:+20 TM:+37					
AOD	BW	Adj 205	WI	Adj 365	YI
2	88	703	107	1056	108





D

SAV HERITAGE 6295

Male IMP 6295S March 01 2006 #1481376 AMF CAF NHF

CAR TRACKER 904	CAR TRACKER 614
CAR DUKE 104 (13925076)	LADY NEW TREND 027 CAR
CAR MISS RAINDANCER 421	G D A R RAINMAKER 340
	CAR LADY 011 RITO 245
SAV 8180 TRAVELER 004 AMF CAF NHF	SITZ TRAVELER 8180 AMF CAF NHF
SAV BLACKCAP MAY 4136 CAF (14739095)	BOYD FOREVER LADY 8003
SAV MAY 2397 CAF	S A F 598 BANDO 5175 AMF CAC
	SAV MAY 7238 CAF

BW: 88 lbs Adj. 205D: 965 lbs. Adj. 365D: 1597

Spring 2012 EPD's

BW:+5.9 WW:+74 YW:+134 Milk:+32 TM:+69

Heritage, whose sons combine added length, muscle & performance, soundness and structure, is one of the few 'mainstream' bulls we have sampled in several years to compliment our genetic base with the Tracker 614 bull who has worked very well for Connolly's in Montana.

27

CHAPMAN HERITAGE 180X

Male YUS 180X May 01 2010 #1568035

SIRE BY: SAV HERITAGE 6295 AMF CAF NHF (1481376)

CROWFOOT VENTURE 1698L	BASIN MAX 104J AMF CAF NHF
CHAPMAN PRIDE 721T (1425533)	GLADWALL SARITA 8255
CHAPMAN PRIDE 530R	MC CUMBER 7111 TOTAL VALUE
	BARBWALL G PRIDE 632

Spring '12 EPD'S: BW:+3.5 WW:+50 YW:+97 Milk:+29 TM:+54

AOD	BW	Adj 205	WI	Adj 365	YI
3	89	682	109	1034	107

28

CHAPMAN HERITAGE 250X

Male YUS 250X May 08 2010 #1568053

SIRE BY: SAV HERITAGE 6295 AMF CAF NHF (1481376)

LEACHMAN RIGHT TIME AMF	N BAR EMULATION EXT AMF CAF NHF
CHAPMAN CHLOE 204M (1118167)	LEACHMAN ERICA 0025
GLADWALL B CHLOE 1161	D V PRIDES COMMODORE
	GLADWALL B CHLOE 7212

Spring '12 EPD'S: BW:+3.2 WW:+53 YW:+92 Milk:+22 TM:+49

AOD	BW	Adj 205	WI	Adj 365	YI
8	86	694	112	1046	109

29

CHAPMAN HERITAGE 290X

Male YUS 290X May 15 2010 #1568063

SIRE BY: SAV HERITAGE 6295 AMF CAF NHF (1481376)

O C C MAGNUM 749M	O C C EUREKA 865E
CROWFOOT PRINCENE 4671P (1228535)	O C C JUANADA 818E
CROWFOOT PRINCENE 2575M	BASIN PARTNER 137H
	GLADWALL PRINCENE 7108

Spring '12 EPD'S: BW:+2.8 WW:+54 YW:+94 Milk:+25 TM:+52

AOD	BW	Adj 205	WI	Adj 365	YI
6	86	660	106	1012	105



E

E

MC CUMBER 536P EXT 7196

Male IMP 7196T March 11 2007 #1478134

N BAR EMULATION EXT AMF CAF NHF EMULATION N BAR 5522
 N BAR PRIMROSE 2424
SIRE: SITZ JLS EMULATION EXT 536P (14809623) D H D TRAVELER 6807 AMF NHF
 IDEAL 4465 OF 6807 4286 AMF NHF E E 4286 OF IDEAL 2240 1254

PINE CREEK RIGHT TIME 1147 AMF NHF LEACHMAN RIGHT TIME AMF
LASSIE 434 OF MC CUMBER (14798054) SITZ EVERELDA ENTENSE 1137
 LASSIE 2140 OF MC CUMBER BT NEW TREND 172K
 LASSIE 914 OF MC CUMBER

BW: 92 lbs. Adj 205D: 732 lbs WI: 108 Adj. 365D: 1236 lbs. YI: 100

Spring 2012 EPD's

BW:+1.9 WW:+42 YW:+61 Milk:+28 TM:+49

Extremely long with a lot of muscle expression down his top, 7196 carries this muscle into a big expressive rump and is one very stylish bull. He weaned off his outstanding dam with a 205 day weight of 732 lbs. to ratio 108 and scanned exceptionally with an IMF of 5.23 to ratio 128 and a REA of 13 to ratio 106.

His dam has been a top producer with a WWR 4/109, YWR 4/106, IMF 4/114, and REA 4/111.



30

30

CHAPMAN 536P EXT 0525X

Male RC SWC 0525X April 27 2010 #1571526

SIRE BY: MC CUMBER 536P EXT 7196 (1478134)

RED CROWFOOT PM 757G RED TK POUNDMAKER 69Z
RED CROWFOOT BIEBIRD E 1168 (1051755) RED CROWFOOT BIRD 12Z
 RED CROWFOOT BIEBIRD 319C RED BIEBER TOPPER 2736
 RED CROWFOOT BIEBIRD 16A

Spring '12 EPD'S: BW:+1.4 WW:+31 YW:+56 Milk:+20 TM:+36

AOD	BW	Adj 205	WI	Adj 365	YI
9	95	800	123	1152	105



McCumber Sons

31

CHAPMAN EMULATE 050X

Male YUS 050X April 20 2010 #1567996

SIRE BY: **MC CUMBER 536P EXT 7196 (1478134)**

CROWFOOT VENTURE 1698L
CHAPMAN EILEEN 713T (1425527)
CHAPMAN EILEEN 511R

BASIN MAX 104J AMF CAF NHF
GLADWALL SARITA 8255
MC CUMBER 7111 TOTAL VALUE
CHAPMAN EILEEN 216M

Spring '12 EPD'S: BW:+2.1 WW:+43 YW:+67 Milk:+26 TM:+48					
AOD	BW	Adj 205	WI	Adj 365	YI
3	84	645	103	997	103

32

CHAPMAN EMULATE 120X

Male YUS 120X April 27 2010 #1568019

SIRE BY: **MC CUMBER 536P EXT 7196 (1478134)**

D D A FAHREN 21X
CHAPMAN ROSEBUD 736T (1425543)
BEVALEN ROSEBUD 11K

FAHREN OF WYE UMF 5830
D D A MELISA 549
CAF SIDEKICK 7784
GRACEDALE ROSEBUD 27E

Spring '12 EPD'S: BW:+1.5 WW:+33 YW:+53 Milk:+21 TM:+38					
AOD	BW	Adj 205	WI	Adj 365	YI
3	85	595	95	947	98

33

CHAPMAN EMULATE 300X

Male YUS 300X May 15 2010 #1568064

SIRE BY: **MC CUMBER 536P EXT 7196 (1478134)**

O C C MAGNUM 749M
CROWFOOT JEANNE 4402P (1228315)
CROWFOOT JEANNE T 2458M

O C C EUREKA 865E
O C C JUANADA 818E
HIGH VALLEY 4C6 AMBUSH AMF
CROWFOOT FORKS 480K

Spring '12 EPD'S: BW:+1.3 WW:+45 YW:+66 Milk:+21 TM:+44					
AOD	BW	Adj 205	WI	Adj 365	YI
6	86	707	115	1059	109

34

CHAPMAN EMULATE 320X

Male YUS 320X May 17 2010 #1568070

SIRE BY: **MC CUMBER 536P EXT 7196 (1478134)**

MC CUMBER 7111 TOTAL VALUE
CHAPMAN IDEAL 527R (1276590)
BARBWALL ZARA BOND 469

VERMILION DATELINE 7078 AMF CAF NHF
MISS WIX 7111 OF MCCUMBER
TOMWALL RAINMAKER 0110
B ZARA BAND 192

Spring '12 EPD'S: BW:+2.1 WW:+39 YW:+57 Milk:+25 TM:+45					
AOD	BW	Adj 205	WI	Adj 365	YI
5	86	732	119	1084	111

35

CHAPMAN EMULATE 330X

Male YUS 330X May 17 2010 #1568068

SIRE BY: **MC CUMBER 536P EXT 7196 (1478134)**

CHAPMAN ALLIANCE 262M
CHAPMAN ROSE LEE 785T (1425571)
BARBWALL P ROSE LEE 5140

SITZ ALLIANCE 6595 AMF NHF
GLADWALL G EILEEN 6339
SHOSHONE LANCE 2315
BAR PATRIOT ROSE LEE B 2120

Spring '12 EPD'S: BW:+2.5 WW:+38 YW:+58 Milk:+24 TM:+43					
AOD	BW	Adj 205	WI	Adj 365	YI
5	86	610	97	962	103

36

CHAPMAN EMULATE 340X

Male YUS 340X May 23 2010 #1568074

SIRED BY: MC CUMBER 536P EXT 7196 (1478134)

CROWFOOT BRUNO 1670L
CHAPMAN ROSE 318N (1196493)
 GLADWALL ROSE OF L 1173

STEVENSON BRUNO 561G CAF NHF
 GLADWALL B REV ERICA 7289
 D V PRIDES COMMODORE
 GLADWALL ROSE OF L 744

Spring '12 EPD'S: BW:+1.4 WW:+36 YW:+55 Milk:+22 TM:+40					
AOD	BW	Adj 205	WI	Adj 365	YI
7	86	638	102	990	101

37

CHAPMAN VALUE 110X

Male YUS 110X April 26 2010 #1568017

VERMILION DATELINE 7078 AMF CAF NHF
MC CUMBER 7111 TOTAL VALUE (1269236)
 MISS WIX 7111 OF MCCUMBER

CONNEALY DATELINE
 VERMILION BLACKBIRD 5044
 G D A R TRAVELER 71 AMF CAF NHF
 MISS WIX 365 OF MC CUMBER
 O C C GLORY 950G
 GLADWALL PINTOP 6105
 V D A R RITO 953 AMF
 CHAPMAN EILEEN 217M

CHAPMAN GLORY 467P
CHAPMAN EILEEN 779T (1425568)
 CHAPMAN EILEEN 449P

Spring '12 EPD'S: BW:+1.9 WW:+31 YW:+56 Milk:+18 TM:+34					
AOD	BW	Adj 205	WI	Adj 365	YI
3	86	660	106	1012	97



38

CHAPMAN SHOCO 0502X

Black/Red Carrier

Male RC SWC 0502X February 23 2010 #1571492

RED SHOCO DATA OSF MAF
RED SHODEREE DATA 73U (1443844)
 RED SHODEREE MISTY 8N

RED SHOCO SIR ROBIN
 RED VDAR BLACKANA 303
 RED BJD KERMIT 95K
 RED CRIPPS VALUE 912J

RED 5L NORSEMAN KING 2291 OSF MAF
CROWFOOT BARDOLENE 5066R (1254660)
 CROWFOOT BARDOLENE 9133J

RED VGW KING OF THE WEST OSF MAF
 RED NORSEMAN 1312 PJM
 BASIN AMBUSH 3905 AMF CAF NHF
 BASIN BARDOLENE 121G

Spring '12 EPD'S: W:-2.7 WW:+16 YW:+39 Milk:+18 TM:+26					
AOD	BW	Adj 205	WI	Adj 365	YI
5	92	550	80	902	103

39

CHAPMAN KIWI 130X

3/4 Australian Pedigree

Male YUS 130X April 27 2010 #1568021

SHALOM WAIGROUP EXTRA
SHALOM WAIGROUP 519/94 (1327588)
 NIRVANA DULCIE 124-74

PINEBANK 627/89
 KIND PAT 437 OF COMMODORE
 NIRVANA B32
 DULICE OF ULSTER

PINEBANK WAIGROUP 41/97
CHAPMAN KIWI 634S (1339283)
 BARBWALL P ROSE LEE 5140

PINEBANK WAIG 31/95
 PINEBANK 639/88
 SHOSHONE LANCE 2315
 BAR PATRIOT ROSE LEE B 2120

Spring '12 EPD'S: BW:+0.1 WW:+23 YW:+40 Milk:+4 TM:16					
AOD	BW	Adj 205	WI	Adj 365	YI
4	78	622	100	974	100

F



F

CHAPMAN LEGACY 026S

Male YUS 026S January 29 2006 #1339280

O C C ECHELON 857E
O C C LEGACY 839L (1193688)
 O C C DIXIE ERICA 960E

N BAR IMPACT U1253
PAT LADY ERICA 8984 (990548)
 PAT PIED PIPER 921

D H D TRAVELER 6807 AMF NHF
 DIXIE ERICA OF C H 1019
 O C C ANCHOR 771A CAF
 DIXIE ERICA OF R R 4345

LEMMON IMPACT
 N BAR CLOVA PRIDE 1696
 SHOSHONE P P 7105
 PAT LADY ERICA 613

BW: 81 lbs. Adj. 205D: 742 lbs.

Spring 2012 EPD's

BW:+0.9 WW:+19 YW:+42 Milk:+17 TM:+27

026S is a paternal brother to Crowfoot Equation 5793R who was purchased in-dam from Crowfoot Cattle Co in 2005. His donor dam, Pat Lady Erica 8984, is perhaps the best cow Crowfoot has sold to-date when considering the amount of sale features the CFCC prefix has produced. She has combined weaning and yearling ratios of 108 and 110 respectively and is extremely sound as a fourteen year old cow. Sons of 026S exhibit traditional Angus characteristics with built-in calving-ease and maternal characteristics.



*Paternal Grandam
 of Chapman
 Legacy 026S*

40

CHAPMAN LEGACY 030X

Male YUS 030X April 19 2010 #1567994

SIRED BY: CHAPMAN LEGACY 026S (1339280)

CROWFOOT BRUNO 1670L
CHAPMAN ROSE 43P (1228231)
 GLADWALL ROSE OF L 6242

STEVENSON BRUNO 561G CAF NHF
 GLADWALL B REV ERICA 7289
 N BAR TRANSITION A583
 GLADWALL ROSE OF L 4226

Spring '12 EPD'S: BW:+1.5 WW:+30 YW:+55 Milk:+22 TM:+37

AOD	BW	Adj 205	WI	Adj 365	YI
6	87	646	103	998	104

41

CHAPMAN LEGACY 060X

Male YUS 060X April 22 2010 #1567999

SIRE BY: **CHAPMAN LEGACY 026S (1339280)**

CROWFOOT MACHO 4549P
CHAPMAN EILEEN 809U (1491561)
 CHAPMAN EILEEN 449P

O C C MAGNUM 749M
 CROWFOOT BLACKBIRD 2537M
 V D A R RITO 953 AMF
 CHAPMAN EILEEN 217M

Spring '12 EPD'S: BW:+1.4 WW:+24 YW:+48 Milk:+16 TM:+28					
AOD	BW	Adj 205	WI	Adj 365	YI
2	79	551	87	903	94

42

CHAPMAN LEGACY 080X

Male YUS 080X April 23 2010 #1568004

SIRE BY: **CHAPMAN LEGACY 026S (1339280)**

CROWFOOT VENTURE 1698L
CHAPMAN ERICA 42P (1241127)
 CHAPMAN ERICA 207M

BASIN MAX 104J AMF CAF NHF
 GLADWALL SARITA 8255
 SITZ ALLIANCE 6595 AMF NHF
 PAT B ERICA 620

Spring '12 EPD'S: BW:+0.5 WW:+28 YW:+56 Milk:+24 TM:+38					
AOD	BW	Adj 205	WI	Adj 365	YI
6	86	674	109	1026	106

43

CHAPMAN LEGACY 310X

Male YUS 310X May 16 2010 #1568066

SIRE BY: **CHAPMAN LEGACY 026S (1339280)**

MC CUMBER 7111 TOTAL VALUE
CHAPMAN EILEEN 511R (1276584)
 CHAPMAN EILEEN 216M

VERMILION DATELINE 7078 AMF CAF NHF
 MISS WIX 7111 OF MCCUMBER
 CROWFOOT AMBUSH 9137J
 GLADWALL G V EILEEN 6230

Spring '12 EPD'S: BW:+1.6 WW:+28 YW:+51 Milk:+20 TM:+34					
AOD	BW	Adj 205	WI	Adj 365	YI
5	84	610	97	962	99



216M - Dam of Legacy 380X

44

CHAPMAN LEGACY 380X

Male YUS 380X June 02 2010 #1568081

SIRE BY: **CHAPMAN LEGACY 026S (1339280)**

CROWFOOT AMBUSH 9137J
CHAPMAN EILEEN 216M (1126053)
 GLADWALL G V EILEEN 6230

BASIN AMBUSH 3905 AMF CAF NHF
 STEVENSON HEATHER 499G
 N BAR IMPACT V53
 GLADWALL G V EILEEN 4101

Spring '12 EPD'S: BW:-0.2 WW:+25 YW:+45 Milk:+20 TM:+33					
AOD	BW	Adj 205	WI	Adj 365	YI
8	80	649	105	1001	103



OCC Legacy 839L - Grandsire of 8022U and sire of Chapman Legacy 026S & Crowfoot Equation 5793R

G

CROWFOOT 8022U

Male (ET) CFCC 8022U February 07 2008 #1458618

O C C LEGACY 839L
HILLFIRE LEGACY 422 (1226329)
 HILL FIRE BLK CAP ANN 915

C H ALLIANCE 9339
CROWFOOT BLACKBIRD 1687 (1061396)
 C H BLACKBIRD 9717

O C C ECHELON 857E
 O C C DIXIE ERICA 960E
 CONNEALY KINCAID
 VALLEYHILLS BLACKCAP ANN 37G

SITZ ALLIANCE 6595 AMF NHF
 C H ERICA LASSIE 7266
 J R SHARPSHOOTER
 C H BLACKBIRD 6604

BW: 101 lbs. Adj. 205D: 722 lbs.

Spring 2012 EPD's

BW:+5.4 WW:+30 YW:+49 Milk:+11 TM:+26

Leased in 2009 as a top yearling prospect out of the Crowfoot program, '8022' adds another dimension of OCC Legacy 839L combined with a donor dam having been designated Elite with the Canadian Angus Association with a lifetime progeny ratio 5/106, and is also the dam of Crowfoot Mechanic 5789R.



45

CHAPMAN LEGACY 0532X

Male SWC 0532X May 01 2010 #1571539

SIRED BY: CROWFOOT 8022U (1458618)

CROWFOOT BRUNO 1670L
CHAPMAN JEANNE 4402 (1201298)
 GLADWALL JEANNE T 2114

STEVENSON BRUNO 561G CAF NHF
 GLADWALL B REV ERICA 7289
 TOMWALL RAINMAKER 8218
 GLADWALL JEANNE T 0238

Spring '12 EPD'S: BW:+4.0 WW:+33 YW:+54 Milk:+12 TM:+29

AOD	BW	Adj 205	WI	Adj 365	YI
6	94	700	106	1052	108

46

CHAPMAN LEGACY 0540X

Male SWC 0540X May 04 2010 #1571550

SIRED BY: CROWFOOT 8022U (1458618)

BASIN PARTNER 137H
CHAPMAN TILDA 228M (1118350)
 SANDY BAR TILDA 7F

BASIN EMULATION 178C
 BASIN TROJAN ERICA D S 637Y AMF
 BAR 20 RAINMAKER 344D
 SB TILDA 13C

Spring '12 EPD'S: BW:+2.7 WW:+34 YW:+55 Milk:+17 TM:+34					
AOD	BW	Adj 205	WI	Adj 365	YI
8	78	701	109	1053	108



407P - Dam of Legacy 0557X

47

CHAPMAN LEGACY 0557X

Male SWC 0557X May 10 2010 #1571574

SIRED BY: CROWFOOT 8022U (1458618)

BOYD NEW DAY 8005 AMF CAF NHF
CHAPMAN LADY 4407 (1201307)
 HAPPYVALE LADY 43L

A A R NEW TREND
 S V F FOREVER LADY 57D
 MVF STOCKMAN 122H
 LLB LADY 220G

Spring '12 EPD'S: BW:+3.9 WW:+33 YW:+63 Milk:+16 TM:+33					
AOD	BW	Adj 205	WI	Adj 365	YI
6	92	639	96	992	102

48

CHAPMAN LEGACY 0566X

Male SWC 0566X May 13 2010 #1571587

SIRED BY: CROWFOOT 8022U (1458618)

S A V 004 PREDOMINANT 4438 AMF CAF NHF
CHAPMAN ERICA 660S (1347049)
 HAPPYVALE ERICA 182N

S A V 8180 TRAVELER 004 AMF CAF NHF
 S A V EMBLYNETTE 1182
 R P 3RD BUSHWACKER
 LLB ERICA ENERGY 639F

Spring '12 EPD'S: BW:+3.7 WW:+38 YW:+63 Milk:+16 TM:+35					
AOD	BW	Adj 205	WI	Adj 365	YI
4	86	677	103	1030	105

49

CHAPMAN LEGACY 0569X

Male SWC 0569X May 15 2010 #1571592

SIRED BY: CROWFOOT 8022U (1458618)

CROWFOOT VENTURE 1698L
CHAPMAN ZARA BAND 625S (1347036)
 CHAPMAN ZARA BAND 438P

BASIN MAX 104J AMF CAF NHF
 GLADWALL SARITA 825S
 LEACHMAN RIGHT TIME AMF
 GLADWALL B ZARA BAND 635S

Spring '12 EPD'S: BW:+4.3 WW:+31 YW:+57 Milk:+14 TM:+30					
AOD	BW	Adj 205	WI	Adj 365	YI
4	95	671	101	1023	105



50

CHAPMAN LEGACY 0571X

Male SWC 0571X May 17 2010 #1571598

SIRE BY: **CROWFOOT 8022U (1458618)**

TOMWALL NB IMPACT U1253 6238
CROWFOOT ELINE LASS 9163 (990595)
 GLADWALL ELINE LASS 7376

N BAR IMPACT U1253
 GLADWALL GEORGINA 497
 E 7 AMBUSH 5625
 GLADWALL ELINE LASS 5283

Spring '12 EPD'S: BW:+3.7 WW:+34 YW:+56 Milk:+16 TM:+33					
AOD	BW	Adj 205	WI	Adj 365	YI
11	87	714	110	1066	109



239M- Dam of Valier 0572X

51

CHAPMAN VALIER 0572X

Male SWC 0572X May 17 2010 #1571599

SIRE BY: **CROWFOOT 8022U (1458618)**

O C C EMBLAZON 854E AMF CAF NHF OSF
DDA HOLLY 239 (1496154)
 DDA HOLLY 084

D H D TRAVELER 6807 AMF NHF
 DIXIE ERICA OF C H 1019
 SHOSHONE 130-6357
 D D A HOLLY 427

Spring '12 EPD'S: BW:+5.2 WW:+35 YW:+51 Milk:+13 TM:+31					
AOD	BW	Adj 205	WI	Adj 365	YI
8	98	655	97	1007	103

52

CHAPMAN LEGACY 0588X

Male SWC 0588X June 09 2010 #1571619

SIRE BY: **CROWFOOT 8022U (1458618)**

CHAPMAN ALLIANCE 262M
CHAPMAN TILDA 4414 (1213938)
 CHAPMAN TILDA 228M

SITZ ALLIANCE 6595 AMF NHF
 GLADWALL G EILEEN 6339
 BASIN PARTNER 137H
 SANDY BAR TILDA 7F

Spring '12 EPD'S: BW:+3.6 WW:+38 YW:+59 Milk:+19 TM:+38					
AOD	BW	Adj 205	WI	Adj 365	YI
6	86	738	114	1090	112



H RED CROWFOOT COWBOY 7206T

Male CFCC 7206T January 24 2007 #1412374

RED VGW KING OF THE WEST OSF MAF	RED VGW ACE 613
RED 5L NORSEMAN KING 2291 OSF MAF (1234936)	RED VGW MT TABITHA 9633
RED NORSEMAN 1312 PJM	376 P J M 141
	P J M POWERPOINT 2009
RED CROWFOOT OLE'S OSCAR 2042M OSF MAF	RED MLK CRK CUB 722 OSF MAF
CROWFOOT BLACKBIRD 4739P (1196071)	RED CROWFOOT OMEGA 9179J
CROWFOOT BLACKBIRD 2719M	LEACHMAN RIGHT TIME AMF
	C H BLACKBIRD 9984

BW: 80 lbs. Adj. 205D: 658 lbs.

Spring 2012 EPD's

BW:-4.1 WW:+3 YW:+21 Milk:+23 TM:+25

Owned by Crowfoot Cattle Company, Standard, AB, 7206T is a very interesting bull in stature and pedigree. Leased in 2009 to inject the maternal efficiencies of Norseman King, he combines calving ease in the top 1% of the breed, milk in the top 10%, and has Leachman Right Time, Ole's Oscar, and Forever of Wye in his pedigree. Sons balance true Red Angus calving ease with the other economically relevant traits necessary to be a low-input, low-inputting cow/calf operation.



53 RED CHAPMAN COWBOY 0587X

Male SWC 0587X June 03 2010 #1571615

SIRED BY: RED CROWFOOT COWBOY 7206T (1412374)

RED BAR-E-L APPROVAL 4L	RED TER-RON CARLTON 810H
RED CHAPMAN RACHEL 521R (1278005)	RED BAR-E-L CLASS 10J
RED CROWFOOT GREEN 1014L	RED OH BOOMER 552E
	RED CROWFOOT GREEN 683F

Spring '12 EPD'S: BW:-1.2 WW:+19 YW:+42 Milk:+16 TM:+25

AOD	BW	Adj 205	WI	Adj 365	YI
5	83	654	100	1007	103



Cowboy 7206T Sons (Red Angus)

54

CHAPMAN COWBOY 0515X

*Black/Red
Carrier*

Male RC SWC 0515X April 19 2010 #1571511

SIRED BY: RED CROWFOOT COWBOY 7206T (1412374)

CROWFOOT VENTURE 1698L
CHAPMAN PRIDE 4409 (1201309)
CHAPMAN PRIDE 226M

BASIN MAX 104J AMF CAF NHF
GLADWALL SARITA 8255
RED OH BOOMER 552E
KLUZAK PRIDE 25G

Spring '12 EPD'S: BW:-1.7 WW:+12 YW:+37 Milk:+25 TM:+31					
AOD	BW	Adj 205	WI	Adj 365	YI
6	72	613	95	965	99



55

CHAPMAN COWBOY 0536X

*Black/Red
Carrier*

Male RC SWC 0536X April 30 2010 #1571537

SIRED BY: RED CROWFOOT COWBOY 7206T (1412374)

CROWFOOT VENTURE 1698L
CHAPMAN PRINCESS 619S (1347032)
CHAPMAN PRINCESS 4413

BASIN MAX 104J AMF CAF NHF
GLADWALL SARITA 8255
CHAPMAN ALLIANCE 262M
CHAPMAN PRINCESS 214M

Spring '12 EPD'S: BW:-2.1 WW:+14 YW:+45 Milk:+26 TM:+33					
AOD	BW	Adj 205	WI	Adj 365	YI
4	93	697	106	1049	108



56

RED CHAPMAN COWBOY 0537X

Male TW SWC 0537X May 03 2010 #1571543

SIRED BY: RED CROWFOOT COWBOY 7206T (1412374)

RED OH BOOMER 552E
RED CROWFOOT GREEN 1014 (1084855)
RED CROWFOOT GREEN 683F

RED SSS BOOMER 803B
RED O H MISS RIO 62A
RED CROWFOOT HEAVENLY 443D
RED TOM GREEN GTG 84D

Spring '12 EPD'S: BW:-2.2 WW:+15 YW:+37 Milk:+14 TM:+22					
AOD	BW	Adj 205	WI	Adj 365	YI
9	74	676	100	1028	105



Cowboy 7206T Sons

57

RED CHAPMAN COWBOY 0539X

Male SWC 0539X May 04 2010 #1571549

SIRED BY: RED CROWFOOT COWBOY 7206T (1412374)

RED OH BOOMER 552E
RED CHAPMAN JESSIE 423P (1227552)
RED CROWFOOT JESSIE 1090L

RED SSS BOOMER 803B
RED O H MISS RIO 62A
RED CROWFOOT TAJ MAHAL 410D
RED CROWFOOT JESSIE 654F

Spring '12 EPD'S: BW:-0.8 WW:+21 YW:+45 Milk:+18 TM:+29					
AOD	BW	Adj 205	WI	Adj 365	YI
6	81	725	112	1077	110

58

RED CHAPMAN COWBOY 0543X

Male SWC 0543X May 06 2010 #1571557

SIRED BY: RED CROWFOOT COWBOY 7206T (1412374)

RED CROWFOOT BIG DADDY 2058M
RED CHAPMAN PHOEBE 430P (1248903)
RED CHAPMAN PINE 804H

RED MLK CRK CUB 722 OSF MAF
RED CROWFOOT BLACKBIRD 9173J
RED OH BOOMER 552E
RED O H LADY PINE 76B

Spring '12 EPD'S: BW:-0.4 WW:+21 YW:+52 Milk:+17 TM:+28					
AOD	BW	Adj 205	WI	Adj 365	YI
6	75	674	105	1027	105

59

CHAPMAN COWBOY 0591X

Male RC SWC 0591X June 08 2010 #1571617

SIRED BY: RED CROWFOOT COWBOY 7206T (1412374)

CHAPMAN ALLIANCE 262M
CHAPMAN PRINCESS 4413 (1213936)
CHAPMAN PRINCESS 214M

SITZ ALLIANCE 6595 AMF NHF
GLADWALL G EILEEN 6339
RED CROWFOOT PM 757G
A A R PRINCESS JILL 2011

Spring '12 EPD'S: BW:-1.0 WW:+18 YW:+47 Milk:+23 TM:+32					
AOD	BW	Adj 205	WI	Adj 365	YI
6	84	721	111	1073	110

60

RED CHAPMAN BOOMER 040X

Male TW YUS 040X April 20 2010 #1567997

RED SSS BOOMER 803B
RED OH BOOMER 552E (868671)
RED O H MISS RIO 62A

RED BUF CRK DYNAMICS 6224
RED CHAPMAN PINEMARIE 230M (1118295)
RED CHAPMAN GOLDIE 908J

RED FCC RAMBO 502 OSF
RED SSS MISS HIGH LASS 352X
RED LEACHMAN FRONTRUNNER 8241
3R MISS UNIQUE

RED BUF CRK DYNAMICS 3820 AMF OSF MAF
RED BUF CRK PINEMRIE1487 OSF
RED OH BOOMER 552E
RED OH GOLDIE 508E

Spring '12 EPD'S: BW:+2.0 WW:+34 YW:+63 Milk:+12 TM:+29					
AOD	BW	Adj 205	WI	Adj 365	YI
8	68	608	100	960	100



Boomer 803B
Paternal
Grandsire to
Lot #60



Profitable Angus Genetics!

BUYER'S NOTES

Lot # _____

Lot # _____

Lot # _____

Lot # _____

Lot # _____

Lot # _____

Lot # _____

Lot # _____

Lot # _____

Lot # _____

Lot # _____

Lot # _____

Lot # _____

Lot # _____

Lot # _____

Lot # _____

Lot # _____

Lot # _____

Lot # _____

Lot # _____

Lot # _____

Lot # _____

Lot # _____

To the bidders and buyers and all who participated in our sale in any way, we extend a heartfelt thank you. We know that the success of our business depends upon good customers and we certainly do appreciate your support and wish you every success with your purchases! If you have any questions, please feel free to contact us and, if you are in our area, do stop in. We are proud of our cattle and would be pleased to show you our program.

Chapman Cattle Company

Silas Chapman
403-741-2099 (C)

Blake Chapman
403-742-3829 (H)
403-741-5760 (C)

References: Borchard, Theresa J., Who Moved My Cheese? Keep Moving the Cheese, <http://psychcentral.com/blog/archives/2011/02/13/who-movedmy-cheese-keep-moving-the-cheese/> (visited 03, January, 2012)

Photo credits used with permission and courtesy of Sinclair Cattle Company, Warfordsburg, PA & Crowfoot Cattle Co.

2011 Pasture Sires

Coleman Missing Link 9267 (Reg # 1648867)



*OCC Missing
Link 830M*

OCC Missing Link 830M x SAV 8180 Traveler 004

McCumber 536P EXT 7196 (Reg #15913233)



SITZ JLS Emulation Ext 536P x Pine Creek Right Time 1147

Chapman Rito Legacy 218U (Reg # 1474046)



*Sinclair Rito
Legacy 3R9*

Sinclair Rito Legacy 3R9 x N Bar Impact U1253

Red Bar-E-L Gambler 87X (Reg # 1567613)



Red Lazy MC Cowboy Cut 26U x Red Bar-E-L Approval 4L

More Info Available: www.chapmancattle.com

Chapman Cattle Co.
Box 728,
Stettler, AB
T0C 2L0

R P G \ P R G	CANADA	POSTES
	POST	CANADA
	Postage paid	Port payé
	Addressed Admail	Médiaposte avec adresse
	7249987	

RETURN POSTAGE GUARANTEED
PORT DE RETOUR GARANTI



100% FORAGE RAISED
Angus & Red Angus
2 Year Old Bull Sale



Chapman
CATTLE COMPANY

February 16, 2012

1:00 pm • Stettler Auction Mart • Stettler, AB

PRINTED IN CANADA / FOR FREE DISTRIBUTION