

5th Annual

Chapman Cattle Company



**FORAGE DEVELOPED
2 YEAR OLD BULL SALE**

70 HEAD ON OFFER

• Red Angus • Black Angus • Hybrid Angus x Sim
... plus 20 BRED ANGUS FEMALES

February 10th
2011



**SALE: 1:00 P.M.
STETTLER AUCTION MART
Stettler, Alberta**

www.chapmancattle.com



SINCLAIR CLASSIC 9RN3

ELIMINATOR 302
SIRE: RITO N BAR
 ELBERTA OF N BAR 2

PAPA RITO T INTENSE DHD 6844
DAM: SINCLAIR LADY 1C8 4465
 IDEAL 4465 OF 6807 4286

HENKES ELIMINATOR 36
 BEMINDFUL MAID GM

ELBAN G OF SH2
 ELBERTA OF N BAR

PAPA RITO TRAVELER 4807
 BLACKCAP MCHENRY DHD 4810
 DHD TRAVELER 6807
 EE 4286 OF IDEAL 2240 1254

BW: 90 Adj. WW: 685 WR: 102 Adj. YW: 1175 YR: 106 Yr Sc: 41

CED	Birth	Wng	Yrlng	Milk	Scrot	CW	Marb	RE	Fat
5	2.3	30	52	13	0.86	12	-0.03	0.07	-0.10

Pedigree-wise, 9RN3 is a rare line bred breed treasure from the Lady family and sired by the original Rito N Bar who, born in 1960, established a strong performance base in the Angus breed and is best known as the sire of RR Rito 707. The third generation Sinclair Lady donor dam balances a progeny birth ratio of 96 with a progeny weaning and yearling ratio of 116 and 108 respectively on four natural calves and ranks in the top two percent among all current dams in the Angus breed for Milk EPD, tracing three times in three generations to QAS Traveler 23-4 and numerous times to both RR Rito 707 and Rito N Bar.

Sire: Rito N Bar

Dam: Sinclair Lady 1C8 4465



SINCLAIR RITO 9R7

RR RITO 707
SIRE: RITO REVOLVE 045
 IDEAL 1456 OF 8103 8114

SINCLAIR NET PRESENT VALUE
DAM: K BTY 6PV5 25F3
 SINCLAIR K BTY 25F3 Z189

RITO N BAR
 ERISKAY OF ROLLIN ROCK 3

IDEAL 8103 OF ELDO 5110 5213
 IDEAL 8114 OF ELDO 5110 3127

N BAR PRIME TIME D806
 IDEAL 4465 OF 6807 4286

EMULATION N BAR 5522
 N BAR KNOCHTRY BEAUTY 1740

BW: 98 Adj. WW: 742 WR: 114 Adj. YW: 1355 YR: 122 Yr Sc: 40

CED	Birth	Wng	Yrlng	Milk	Scrot	CW	Marb	RE	Fat
-1	3.7	48	96	19	0.59	23	-0.01	0.08	0.027

9R7 is a high capacity, wide based, thick made bull that is old line Rito, ensuring correctness and functionality. In fact, the dam of his sire, 0R5, traces 19 times to RR Rito 707. 9R7 has a classy, masculine beef bull look along with a wide, deep quarter and excellent scrotal development, and has the performance, phenotype, and pedigree to be a herd-building sire with a balance of traits.

Rito Revolve 0R5

Ideal 4465 of 6807 4286

RR Rito 707





FEBRUARY

10, 2011

1:00 pm - Thursday

AT STETTLER AUCTION MARKET - STETTLER, AB

- SALE DAY PHONES -

Greg Hayden / Jim Abel: 403-742-2368

Silas Chapman (Cell): 403-741-2099

Blake Chapman (Cell): 403-741-5760

Shane Castle (Cell): 306-741.7485

SALE DAY FAX: 403-742-8151

***90 HEAD RED & BLACK
ANGUS ON OFFER!!***

- **70 '100%' Forage-Developed 2 Year Old Bulls**

60 Black Angus 7 Red Angus

3 FleckAngus

- **20 Young Registered Females**

- SALE STAFF -

Don Raffan	Auctioneer	250-546-9420
	Don's Cell	250-558-6789
Joe Ferris	Ring Staff	250-558-8745
Dean Edge	Ring Staff	403-704-0280
Shane Castle	Ring Staff	306-741-7485

Stettler Auction Mart

Greg Hayden	Buyer Rep	403-742-2368
Jim Abel	Buyer Rep	403-742-2368

PHONE BIDS:

Arrangements can be made with an independent buyer or any of the Sales Staff.

INSURANCE:

The animal does become the responsibility of the purchaser after it is sold. Any bulls returning to Chapman Cattle Company *must be insured*. Insurance available Sale Day from:

Stockmens Insurance

Larry Toner - Agent

Phone: 306.932.4866

Cell: 306.834.7652 / Fax: 306.932.2071

BE OUR GUESTS:

For Lunch and Presale Cattle Viewing before the sale.

SALE VETERINARIAN:

Stettler Veterinary Service

Dr. Jackie Dobinson - Ph: 403-742-3338

FOR MORE INFORMATION, PLEASE CONTACT:



**CHAPMAN CATTLE COMPANY
Silas Chapman - 403-741-2099 (Cell)**

P.O. Box 728, Stettler, AB T0C 2L0

silas@chapmancattle.com

website: www.chapmancattle.com

Blake Chapman - Ph: 403-742-3829 (H) / 403-741-5760 (C)



Profitable Angus Genetics

BUYER REGISTRATION:

Buyers please register for a buyer number at the office prior to purchasing.

TERMS FOR BULLS:

Cash or cheque payable on Sale Day unless previous arrangements have been made with Chapman Cattle Company.

BREEDING GUARANTEE:

All cattle are sound and right and sell with a “Responsible Breeders Guarantee”. All bulls are guaranteed to be structurally sound and to have passed a fertility examination by a licensed Veterinarian. We guarantee satisfaction or we will replace the bull with one of equal value. Should this not be possible, an adjustment will be made to reflect the value of the bull in question or a credit will be given towards the purchase of another bull. All females sell under the terms and conditions in accordance with the Canadian Angus Association.

IDENTIFICATION:

Each animal will carry a CCIA digital frequency tags as well as corresponding Lot tag and tattoo.

DELIVERY ON BULLS:

Upon Settlement, please choose one of the following options and inform the clerk at the time of settlement. Please leave detailed delivery instructions upon doing so.

- A. \$100 Discount off of the *Total Invoice* per buyer if bulls are picked up Sale Day

OR -

- B. Free Board & Delivery

Every attempt will be made to deliver your new bull(s) to your bull pen commencing after the sale and will be done at the expense of Chapman Cattle Company for bulls selling within the Prairie Provinces and BC. All bulls going beyond will be delivered at cost. Chapman Cattle Company assumes no liability of death or injury for bulls returning to the ranch. All bulls **MUST** be insured.

Note: No delivery or discounts on the females.

DELIVERY ON FEMALES:

All females are to be picked up at the Stettler Auction Mart immediately following the sale unless prior arrangements have been made with Chapman Cattle Company.

HEALTH:

All sale bulls have been vaccinated with a Clostridial 8-way, Bovi-Shield Gold FP 5VL5, poured with Ivomec, and will be fertility tested and guaranteed sound by Dr. Jackie Dobinson, Stettler Veterinary Clinic. *All sale females* have been vaccinated with a Clostridial 8-way, Bovi-Shield Gold FP 5VL5, and poured with Noromectin.

ANNOUNCEMENTS:

Errors in this catalog will be corrected by announcements from the block at sale time and such corrections will take precedent over any printed material. Any disputes will be settled by the auctioneer.

ACCIDENTS:

Although every precaution will be taken, All Persons who attend the Sale do so at their own risk and the owners, management, and Sale Staff assume no liability, and disclaims all liability, legal or otherwise, for any reason.

CERTIFICATE OF REGISTRY:

A certificate of registration duly transferred will be furnished to the buyer by the breeder for each registered animal after complete and full payment has been made.

– PLEASE NOTE –

Scrotal Circumferences & Sale Weights available online and in printed form on Sale Day!



Profitable Angus Genetics

Welcome to the 5th Annual **Chapman** Cattle Company *Bull and Female Sale*

Welcome the Annual Chapman Cattle Co 5th Annual Bull & Female Sale - the 2011 edition!

It's with great enthusiasm that we have the privilege to work with some of the great students of the Angus breed. If you know Silas and Blake at all, you know the time, energy, miles and money it has taken to shape and sculpt the herd into what it is today. The herd has been based around a forage based, common sense approach with not only the genetics it takes to make this program work but also the culling to bring forth a set of cattle that are proven to work. Repeat customers have expressed sincere satisfaction with the cattle and that they do exactly what Chapman Cattle Co says they will do.

The last couple years the terms, "forage based", "feed efficiency" and "grass efficient" have been tossed around quite easily. When breeders like this are talking the talk before it becomes the "vogue" words of the day, you know you are entering a business relationship with people that are serious about attaining goals. These goals are not only theirs but your goals of reproducing cattle that will exist well in most any environment, the selection criteria is pretty simple like most any business and that is to maximize profits.

The pedigrees on offer are more than just the "Who's Who" of the Angus breed but they are cattle that have performed in harsh scenarios and passed with flying colors. Equation, Joker, Macho, Moonshine, Legacy, Net Present Value, Telecast and 7196 have all been catalysts in developing maternal, functional cattle. Also on offer is a set of calves to sell by DDA Fahren 5Z and SBR Waterton 6148, who are neat combinations of Fahren of Wye and Lodge of Wye respectively. If you are looking for Red bulls with true calving ease, check out the Rambler sons selling. Also included are three deep, soggy Angus/ Simmental hybrid bulls that really hit the mark. Registered cows and bred heifers are also on offer that are the mates to these bulls that have been well accepted in the commercial industry.

If you have been searching for a program that offers cattle that have been truly raised on forage their entire life, have a look as opportunity knocks! There is no need to search for cattle like this in Australia, Scotland or the United States as Silas and Blake have made the genetics available for you to appraise on February 10th, 2011. You won't be disappointed.

If you would like more information on the Chapman Cattle Co program and the cattle on offer feel free to contact Silas, Blake or myself - we would be happy to answer your questions.

Remember the sight unseen purchase plan where your satisfaction is guaranteed!

See you sale day!

Shane Castle - Castlerock Marketing

Cell: 306-741-7485

Home: 306-784-2241

View Catalogue Online: www.chapmancattle.com



Blake Chapman

403-742-3829 (Home)

403-741-5760 (Cell)



Silas Chapman

403-741-2099 (Cell)



The Advantages of Forage-Developed Bulls

What is a 100% ‘Forage-Developed Bull’? This is a bull that has been developed and tested for his ability to perform on an all forage (grass/hay) diet. Typically, most bulls are developed and tested on a high concentrate (grain) ration similar to the rations used to fatten cattle in a feedlot. Even claims of a high-roughage diet may not accurately define how that bull has been developed.

It is common knowledge that these hot feedlot rations will negatively affect a bull’s fertility, digestive system and liver function, as well as the soundness of his feet and legs.

It stands to reason, the bulls that perform best in a forage-raised environment should sire cattle that are also more efficient foragers. Therefore, this is a very important economic trait for ranchers who produce their own replacement females to select for.

Chapman Cattle Company started marketing forage-tested bulls in 2006. Why? the reasons are twofold. First, we believed in the basic concept of forage testing our maternal genetics since we were already moving our cowherd towards a grass-based production system. Second, it provided a way for us to market our late-spring born bull calves as long yearlings.

The bulls are initially weaned in November where they begin their forage testing. They are roughed through their first winter on mixed hay with little, or no, protein supplement. This stage of development always does an excellent job of “separating the men from the boys”.

The bulls will spend their second summer on an all-grass diet. It’s not uncommon for them to gain over 2 pounds per day during the summer. In October, the bulls come off grass and are weighed. This marks the end of their forage test. Since the bulls are run in large groups, our ratios should accurately reflect their true genetic merit when comparing gain.

Continued next page...

At the end of their forage test, the less efficient and unadapted bulls are culled, as well as those with structural problems. Most of the survivors will be offered for sale in our spring bull sale with a complete breeding soundness guarantee.

Although this program has an extremely high fall-out rate, we believe it is the best way to performance test our maternal genetics.

There are several obvious advantages to using older, forage-tested bulls. Since these bulls are older and more mature they are able to handle a heavier workload. Since they are in range condition, in contrast to being overweight, they're able to maintain or gain weight during their first breeding season. Many customers have reiterated testimonials how their Chapman bull was the only bull not to lose condition throughout the breeding season.

Since these bulls have never been confined to smaller pens and/ or forced to eat a high concentrate ration, they will be much healthier and will last much longer. Bull longevity is an extremely important economic trait.

Ultimately, since these bulls have proven their ability to survive and perform in an all-forage environment, they should pass that genetic potential on to their offspring.

CHAPMAN CATTLE COMPANY - Your Source for Forage-Tested Bulls



The "100% Forage-Raised" Bull Advantage!

- *More fertile and will cover more cows.*
- *Will continue to gain weight through 1st breeding season.*
- *No bull's feet or legs ruined due to hot feed.*
- *More years service from forage bulls.*
- *Less injuries and breeding problems.*
- *Bulls are more conditioned to the environment.*
- *Bulls have been put through a rigid test.*

Ref Sire A



A RED CROWFOOT RAMBLER 1038L

Male CFCC 1038L 1051504 January 15 2001

RED BJR RAMBLER 5162 OSF
RED VGW RAMBLER 1000 OSF (970204)
 RED VGW UMPIRE YUMA 9266

RED FCC RAMBO 502 OSF
 BJR GOLDI 355-1122
 RED LMB UMPIRE 1000-Z22
 RED VGW KING YUMA 9045

MVHF INNOVATOR 49B
CROWFOOT VERNICE 907J (957632)
 RED CROWFOOT VERNICE 133B

TC STOCKMAN
 MVF TIBBIE 15T
 RED BLUE SPRUCE CHEROKEE 61X
 RED BLUE SPRUCE VERNICE 133P

BW: 72 lbs. Adj. 205D: 600 lbs. Adj. 365D: 1110 lbs.

'11 EPD'S: BW: -7.5 WW: +11 YW: +10 Milk: +18 Mat: +13

One of the heavier muscled Red Angus bulls in the breed, '1038L' is extremely easy fleshing and athletic. No matter how many cows he covered, he stayed thick and muscled. For a bull of his stature, his specialty was calving ease, yet he has had sons work in several notable purebred.

Feel confident that his sons will provide you with traditional Red Angus low labour calving ease so often overlooked in search of muscle and performance.

1 RED CHAPMAN RAMBLER 9528W

Male TW SWC 9528W April 25 2009 #1531389

SIRED BY: RED CROWFOOT RAMBLER 1038L (1051504)

RED OH BOOMER 552E
RED CHAPMAN SCAARA 439P (1227556)
 RED MISS SCAARA 486E

RED SSS BOOMER 803B
 RED O H MISS RIO 62A
 RED LAZY MC DALTON 14C
 RED FOX HILL SCAARA 9048

'11 EPD'S: BW:-2.9 WW:+13 YW:+37 Milk:+17 TM:+23

AOD	BW	Adj 205	WI
5	84	688	100

2 RED CHAPMAN RAMBLER 9536W

Male SWC 9536W May 02 2009 #1531396

SIRED BY: RED CROWFOOT RAMBLER 1038L (1051504)

RED BAR-E-L ENCORE 89K
RED CHAPMAN MISS RIO 225M (1129943)
 RED CHAPMAN MISS RIO 909J

RED YY RED KNIGHT 640F OSF
 RED ALDER ABG HYJEBU 98G
 RED LMAN KING ROB 8621 MAF OSF
 RED O H MISS RIO 81A

'11 EPD'S: BW:-4.0 WW:+16 YW:+42 Milk:+17 TM:+25

AOD	BW	Adj 205	WI
7	73	701	111



Rambler Sons (Red Angus)

3

RED CHAPMAN RAMBLER 9543W

Male SWC 9543W May 09 2009 #1594783

SIRE BY: **RED CROWFOOT RAMBLER 1038L (1051504)**

RED OH BOOMER 552E	RED SSS BOOMER 803B
RED CROWFOOT GREEN 1015L (1084856)	RED O H MISS RIO 62A
RED CROWFOOT GREEN 683F	RED CROWFOOT HEAVENLY 443D
	RED TOM GREEN GTG 84D

'11 EPD'S: BW:-5.5 WW:+7 YW:+31 Milk:+15 TM:+19			
AOD	BW	Adj 205	WI
8	67	606	95

4

RED CHAPMAN RAMBLER 9544W

Male SWC 9544W May 09 2009 #1531402

SIRE BY: **RED CROWFOOT RAMBLER 1038L (1051504)**

RED BAR-E-L APPROVAL 4L	RED TER-RON CARLTON 810H
RED CHAPMAN RACHEL 521R (1278005)	RED BAR-E-L CLASS 10J
RED CROWFOOT GREEN 1014L	RED OH BOOMER 552E
	RED CROWFOOT GREEN 683F

'11 EPD'S: BW:-3.6 WW:+11 YW:+35 Milk:+15 TM:+20			
AOD	BW	Adj 205	WI
4	74	615	96

5

RED CHAPMAN RAMBLER 9557W

Male SWC 9557W May 25 2009 #1594787

SIRE BY: **RED CROWFOOT RAMBLER 1038L (1051504)**

RED CROWFOOT DOUBLE DUTY 2126M	SSS TWILIGHT 460K
RED CHAPMAN PRISCILLA 419P (1248906)	CFCC 20K
RED CROWFOOT GREEN 1015L	RED OH BOOMER 552E
	RED CROWFOOT GREEN 683F

'11 EPD'S: BW:-2.8 WW:+22 YW:+52 Milk:+10 TM:+21			
AOD	BW	Adj 205	WI
5	83	699	109

6

RED CHAPMAN 1038 269W

Male YUS 269W May 18 2009 #1526193

SIRE BY: **RED CROWFOOT RAMBLER 1038L (1051504)**

RED CROWFOOT PM 757G	RED TK POUNDMAKER 69Z
RED CROWFOOT BIEBIRD E 1168L (1051755)	RED CROWFOOT BIRD 12Z
RED CROWFOOT BIEBIRD 319C	RED BIEBER TOPPER 2736
	RED CROWFOOT BIEBIRD 16A

'11 EPD'S: BW:-2.6 WW:+7 YW:+33 Milk:+16 TM:+19			
AOD	BW	Adj 205	WI
8	84	650	96

7

RED CHAPMAN 1038 339W

Male YUS 339W May 26 2009 #1526204

SIRE BY: **RED CROWFOOT RAMBLER 1038L (1051504)**

RED BUF CRK DYNAMICS 6224	RED BUF CRK DYNAMICS 3820 MAF OSF
RED CHAPMAN BIEBIRD 315N (1197827)	RED BUF CRK PINEMRIE1487 OSF
RED CROWFOOT BIEBIRD E 1168L	RED CROWFOOT PM 757G
	RED CROWFOOT BIEBIRD 319C

'11 EPD'S: BW:-3.8 WW:+12 YW:+38 Milk:+18 TM:+24			
AOD	BW	Adj 205	WI
6	82	735	111

Ref Sire B



B CROWFOOT EQUATION 5793R

Male CFCC 5793R 1254914 January 26 2005 DC182876

O C C ECHELON 857E
O C C LEGACY 839L - 1193688
 O C C DIXIE ERICA 960E

TOMWALL PIED PIPER 413
CROWFOOT FORKS 755K - 1012951
 GLADWALL B REV ERICA 7289

D H D TRAVELER 6807
 DIXIE ERICA OF C H 1019

O C C ANCHOR 771A
 DIXIE ERICA OF R R 4345

SHOSHONE P P 7105
 GLADWALL ROSE OF L 282

A A R OPTIMA 771
 GLADWALL B REV ERICA 1246

BW: 104 lbs. Adj. 205D: 663 lbs. Adj. 365D: 1190 lbs.

'11 EPD'S: BW: +3.8 WW: +38 YW: +87 Milk: +27 Mat: +46

A real powerhouse out of a beautiful Tomwall Pied Piper 413 daughter, a granddaughter of Shoshone PP 7105. We have used this bull heavily & will continue because he has done more things right than any bull we have used so far. His sons pack a lot of muscle, correctness and eye appeal and more power than most OCC-sired cattle we have used. Equation daughters are fabulous to say the least, with lots of capacity and great udders.

Semen Interest owned with Crowfoot Cattle Co., Standard, AB.

8 CHAPMAN EQUATION 9518W

Male SWC 9518W April 20 2009 #1531380

Sired by: CROWFOOT EQUATION 5793R (1254914)

CROWFOOT BRUNO 1670L
CHAPMAN SARITA 3321 (1175130)
 GLADWALL SARITA 644

STEVENSON BRUNO 561G NHF CAF
 GLADWALL B REV ERICA 7289

N BAR IMPACT V53
 GLADWALL SARITA 444

'11 EPD'S: BW:+2.0 WW:+36 YW:+72 Milk:+24 TM:+42

AOD	BW	Adj 205	WI
6	87	647	102

9 CHAPMAN WALLING 9519W

Male SWC 9519W April 20 2009 #1531381

Sired by: CROWFOOT EQUATION 5793R (1254914)

BOYD NEW DAY 8005 NHF AMF CAF
CHAPMAN LADY 4407 (1201307)
 HAPPYVALE LADY 43L

A A R NEW TREND
 S V F FOREVER LADY 57D

MVF STOCKMAN 122H
 LLB LADY 220G

'11 EPD'S: BW:+2.2 WW:+42 YW:+92 Milk:+25 TM:+46

AOD	BW	Adj 205	WI
7	88	690	110



Equation Sons (Black Angus)

10

TWA EQUATION 114W

Male TWA 114W April 22 2009 #1542356

SIRE BY: **CROWFOOT EQUATION 5793R (1254914)**

MC CUMBER 7111 TOTAL VALUE
CHAPMAN ROSE 534R (1278018)
GLADWALL ROSE OF L 661

VERMILION DATELINE 7078 NHF AMF CAF
MISS WIX 7111 OF MCCUMBER
WESTWIND FINESSE 1113
GLADWALL ROSE OF L 3231

'11 EPD'S (Proj): BW:+4.3 WW:+41 YW:+73 Milk:+22 TM: +42			
AOD	BW	Adj 205	WI
4	82	758	107

11

CHAPMAN EQUATION 9524W

Male SWC 9524W April 24 2009 #1531385

SIRE BY: **CROWFOOT EQUATION 5793R (1254914)**

LEACHMAN RIGHT TIME AMF
CHAPMAN CHLOE 205M (1108836)
GLADWALL B CHLOE 623

N BAR EMULATION EXT NHF AMF CAF
LEACHMAN ERICA 0025
J A R COOL HAND LUKE
GLADWALL B CHLOE 524

'11 EPD'S: BW:+2.9 WW:+32 YW:+73 Milk:+19 TM:+35			
AOD	BW	Adj 205	WI
7	90	610	95

12

CHAPMAN EQUATION 9525W

Male SWC 9525W April 24 2009 #1531386

SIRE BY: **CROWFOOT EQUATION 5793R (1254914)**

SITZ ALLIANCE 6595 NHF AMF
CHAPMAN CHLOE 3320 (1177153)
GLADWALL B CHLOE 623

SITZ TRAVELER 8180 NHF AMF CAF
SITZ BARBARAMERE JET 2698
J A R COOL HAND LUKE
GLADWALL B CHLOE 524

'11 EPD'S: BW:+1.5 WW:+34 YW:+77 Milk:+22 TM:+39			
AOD	BW	Adj 205	WI
6	83	634	100

13

CHAPMAN EQUATION 9526W

Male SWC 9526W April 24 2009 #1531387

SIRE BY: **CROWFOOT EQUATION 5793R (1254914)**

CROWFOOT VENTURE 1698L
CHAPMAN ROSE 4405 (1201305)
CHAPMAN ROSE 208M

BASIN MAX 104J NHF AMF CAF
GLADWALL SARITA 8255
LEACHMAN RIGHT TIME AMF
GLADWALL ROSE OF L 661

'11 EPD'S: BW:+0.5 WW:+30 YW:+80 Milk:+20 TM:+35			
AOD	BW	Adj 205	WI
5	75	561	89

14

CHAPMAN EQUATION 9529W

Male SWC 9529W April 28 2009 #1531390

SIRE BY: **CROWFOOT EQUATION 5793R (1254914)**

TOMWALL NB IMPACT U1253 6238
CROWFOOT ELINE LASS 9163 (990595)
GLADWALL ELINE LASS 7376

N BAR IMPACT U1253
GLADWALL GEORGINA 497
E 7 AMBUSH 5625
GLADWALL ELINE LASS 5283

'11 EPD'S: BW:+2.6 WW:+35 YW:+75 Milk:+24 TM:+42			
AOD	BW	Adj 205	WI
10	85	634	100



Equation Sons (Black Angus)

15

CHAPMAN EQUATION 9532W

Male SWC 9532W April 30 2009 #1531393

SIRE BY: CROWFOOT EQUATION 5793R (1254914)

O C C GLORY 950G
CHAPMAN SARITA 443P (1231861)
GLADWALL SARITA 644

O C C EXODUS 712E
O C C DIXIE ERICA 971E
N BAR IMPACT V53
GLADWALL SARITA 444

'11 EPD'S: BW:+3.5 WW:+30 YW:+67 Milk:+18 TM:+33			
AOD	BW	Adj 205	WI
5	94	575	88

16

TWA EQUATION 120W

Male TWA 120W April 30 2009 #1542353

SIRE BY: CROWFOOT EQUATION 5793R (1254914)

CROWFOOT VENTURE 1698L
CHAPMAN NELLIE 506R (1277983)
CHAPMAN NELLIE 3306

BASIN MAX 104J NHF AMF CAF
GLADWALL SARITA 8255
SITZ ALLIANCE 6595 NHF AMF
GLADWALL BELLE L NELLIE 581

'11 EPD'S (Proj): BW:+3.4 WW:+39 YW:+82 Milk:+25 TM:+44			
AOD	BW	Adj 205	WI
4	85	753	106

17

CHAPMAN EQUATION 9533W

Male SWC 9533W May 01 2009 #1531394

SIRE BY: CROWFOOT EQUATION 5793R (1254914)

LEACHMAN RIGHT TIME AMF
CHAPMAN CHLOE 428P (1227553)
GLADWALL B CHLOE 623

N BAR EMULATION EXT NHF AMF CAF
LEACHMAN ERICA 0025
J A R COOL HAND LUKE
GLADWALL B CHLOE 524

'11 EPD'S: BW:+3.4 WW:+34 YW:+70 Milk:+20 TM:+37			
AOD	BW	Adj 205	WI
5	95	637	99

18

CHAPMAN EQUATION 9541W

Male SWC 9541W May 07 2009 #1531400

SIRE BY: CROWFOOT EQUATION 5793R (1254914)

LEACHMAN EXT 3500
GLADWALL BELLE L NELLIE 581 (991136)
GLADWALL BELLE L NELLIE 6250

N BAR EMULATION EXT NHF AMF CAF
LEACHMAN BURGESS 1003
PAT POWER PACK 4148
GLADWALL BELLE L NELLIE 412

'11 EPD'S: BW:+2.5 WW:+25 YW:+54 Milk:+18 TM:+31			
AOD	BW	Adj 205	WI
14	92	646	98

19

CHAPMAN 5793 219W

Male YUS 219W May 07 2009 #1526178

SIRE BY: CROWFOOT EQUATION 5793R (1254914)

CROWFOOT AMBUSH 9137J
CHAPMAN EILEEN 217M (1126054)
GLADWALL G V EILEEN 6230

BASIN AMBUSH 3905 NHF AMF CAF
STEVENSON HEATHER 499G
N BAR IMPACT V53
GLADWALL G V EILEEN 4101

'11 EPD'S: BW:+0.4 WW:+32 YW:+62 Milk:+22 TM:+38			
AOD	BW	Adj 205	WI
7	78	675	101



Equation Sons (Black Angus)

20

TWA EQUATION 129W

Male TWA 129W May 10 2009 #1542354

SIRE BY: **CROWFOOT EQUATION 5793R (1254914)**

CROWFOOT VENTURE 1698L
CHAPMAN ERICA 514R (1277978)
CHAPMAN ERICA 3329

BASIN MAX 104J NHF AMF CAF
GLADWALL SARITA 8255
CROWFOOT BRUNO 1670L
PAT LADY ERICA 513

'11 EPD'S (Proj): BW:+3.0 WW:+27 YW:+77 Milk:+27 TM:+40			
AOD	BW	Adj 205	WI
4	85	628	86

21

CHAPMAN EQUATION 9548W

Male SWC 9548W May 11 2009 #1531406

SIRE BY: **CROWFOOT EQUATION 5793R (1254914)**

CROWFOOT VENTURE 1698L
CHAPMAN BLACK LADY 3302 (1175105)
WINDOVER BLACK LADY 74L

BASIN MAX 104J NHF AMF CAF
GLADWALL SARITA 8255
CARLSON 598 BANDO 3185
HARMON BLACK LADY 6117

'11 EPD'S: BW:+1.1 WW:+28 YW:+75 Milk:+23 TM:+37			
AOD	BW	Adj 205	WI
7	81	608	96

22

CHAPMAN EQUATION 9551W

Male SWC 9551W May 14 2009 #1531409

SIRE BY: **CROWFOOT EQUATION 5793R (1254914)**

LEACHMAN RIGHT TIME AMF
CHAPMAN KAWICH LADY 434P (1227555)
GLADWALL KAWICH LADY 6171

N BAR EMULATION EXT NHF AMF CAF
LEACHMAN ERICA 0025
N BAR IMPACT U1253
GLADWALL KAWICH LADY 4186

'11 EPD'S: BW:+1.0 WW:+35 YW:+74 Milk:+22 TM:+40			
AOD	BW	Adj 205	WI
5	84	653	104

23

CHAPMAN EQUATION 9552W

Male SWC 9552W May 14 2009 #1531410

SIRE BY: **CROWFOOT EQUATION 5793R (1254914)**

CROWFOOT VENTURE 1698L
CHAPMAN IDELLETTE 442P (1249650)
PARKE AVENUE IDELETTE 63M

BASIN MAX 104J NHF AMF CAF
GLADWALL SARITA 8255
HAPPYVALE FLYER 13K
HAPPYVALE ENID QUALITY 196K

'11 EPD'S: BW:+2.6 WW:+36 YW:+80 Milk:+23 TM:+41			
AOD	BW	Adj 205	WI
5	96	674	105

24

CHAPMAN 5793 279W

Male YUS 279W May 19 2009 #1526196

SIRE BY: **CROWFOOT EQUATION 5793R (1254914)**

V D A R RITO 953 AMF
CHAPMAN EILEEN 449P (1228244)
CHAPMAN EILEEN 217M

RITO 2100 G D A R
MISS WIX 903 OF MC CUMBER
CROWFOOT AMBUSH 9137J
GLADWALL G V EILEEN 6230

'11 EPD'S: BW:+1.7 WW:+30 YW:+67 Milk:+25 TM:+40			
AOD	BW	Adj 205	WI
5	85	666	99

25

CHAPMAN EQUATION 9558W

Male SWC 9558W May 30 2009 #1531413

SIRE BY: **CROWFOOT EQUATION 5793R** (1254914)

BASIN PARTNER 137H
CHAPMAN PRIDE 218M (1108833)
 GLADWALL B PRIDE 1265

BASIN EMULATION 178C
 BASIN TROJAN ERICA D S 637Y AMF
 RAMBO 465T OF J R S
 GLADWALL B PRIDE 465

'11 EPD'S: BW:+0.9 WW:+27 YW:+59 Milk:+23 TM:+37			
AOD	BW	Adj 205	WI
7	76	642	103

26

CHAPMAN EQUATION 9559W

Male RC SWC 9559W May 30 2009 #1531414

SIRE BY: **CROWFOOT EQUATION 5793R** (1254914)

RED MABES RAMBO TUO
RED CROWFOOT BLACKBIRD 1044L (1051521)
 RED CROWFOOT BLACKBIRD 867H

RED FCC RAMBO 502 OSF
 RED MABES TUO TUO
 RED CROWFOOT LOGAN 649F
 RED CROWFOOT BLACKBIRD 32C

'11 EPD'S: BW:+2.1 WW:+32 YW:+67 Milk:+20 TM:+36			
AOD	BW	Adj 205	WI
8	96	721	110

27

CHAPMAN EQUATION 9560W

Male SWC 9560W June 01 2009 #1531415

SIRE BY: **CROWFOOT EQUATION 5793R** (1254914)

VDAR DATABANK 1061 CAF
CHAPMAN PRINCENE 422P (1249646)
 GLADWALL PRINCENE 2179

VERMILION DATELINE 7078 NHF AMF CAF
 V D A R LUCY 605
 D V PRIDES COMMODORE
 GLADWALL PRINCENE 9190

'11 EPD'S: BW:+2.8 WW:+32 YW:+75 Milk:+16 TM:+32			
AOD	BW	Adj 205	WI
5	87	624	98

28

CHAPMAN EQUATION 9561W

Male SWC 9561W June 01 2009 #1531416

SIRE BY: **CROWFOOT EQUATION 5793R** (1254914)

SITZ ALLIANCE 6595 NHF AMF
HAPPYVALE BLOSSOM 4M (1186589)
 HAPPYVALE BLOSSOM 102K

SITZ TRAVELER 8180 NHF AMF CAF
 SITZ BARBARAMERE JET 2698
 BAR J P TOUCHDOWN 6E
 HAPPYVALE BLOSSOM 1D

'11 EPD'S: BW:+0.9 WW:+42 YW:+82 Milk:+23 TM:+44			
AOD	BW	Adj 205	WI
7	82	747	121



839L - sire
of Equation



C

CROWFOOT JOKER 6172S

Male CFCC 6172S 1316033 January 28 2006 DC185632

O C C EMBLAZON 854E
O C C JOKER 620J (1079149)
 O C C JUANADA 709V US

D H D TRAVELER 6807 AMF NHF
 DIXIE ERICA OF C H 1019
 COLE CREEK OSCAR 92R
 JUANADA OF ROLLIN ROCK 0355

TOMWALL GDAR ROYCE 964
CFCC 1801L (1085514)
 GLADWALL PEARL ENECHOR 8155

G D A R ROYCE 131
 GLADWALL L BL NELLIE 752
 AMITIE ACRES L EXT 1376
 GLADWALL PEARL ENECHOR 3165

BW: 91 lbs. Adj. 205D: 677 lbs. Adj. 365D: 1094 lbs.

'11 EPD'S: BW: +2.4 WW: +38 YW: +59 Milk: +19 Mat: +38

A stout & powerful son of OCC Joker, 6172S sires moderate, efficient, & functional cattle ideal for grass-utilization. Sons have added muscle & capacity while daughters have all the bases covered from functionality to beauty.

6172S is powered by an exceptional cow family, his dam being designated a CAA "Elite Dam" in 2006 with a ratio of 113. 6172S progeny come with proven maternal potential as well as favourable carcass traits.

29

CHAPMAN JOKER 9523W

Male SWC 9523W April 24 2009 #1531384

SIRED BY: CROWFOOT JOKER 6172S (1316033)

S A V 004 PREDOMINANT 4438 NHF AMF CAF
CHAPMAN KAWICH LADY 647S (1347041)
 GLADWALL KAWICH LADY 6186

S A V 8180 TRAVELER 004 NHF AMF CAF
 S A V EMBLYNETTE 1182
 SHOSHONE PRINCE 6135
 GLADWALL KAWICH LADY 9218

'11 EPD'S: BW:+1.5 WW:+34 YW:+55 Milk:+15 TM:+32

AOD	BW	Adj 205	WI
3	75	586	90

30

TWA JOKER 116W

Male TWA 116W April 24 2009 #1542349

SIRED BY: CROWFOOT JOKER 6172S (1316033)

HAPPYVALE FLYER 13K
PARKE AVENUE IDELETTE 63M (1118540)
 HAPPYVALE ENID QUALITY 196K

SUMMITCREST HI FLYER 3B18 NHF AMF CAF
 HAPPYVALE NEONIA 120H
 YOUNKIN SPECTRUM 6038
 YOUNKIN ENID QUALITY 3664

'11 EPD'S (Proj): BW:+0.5 WW:+36 YW:+63 Milk:+18 TM:+36

AOD	BW	Adj 205	WI
7	73	689	98

31

CHAPMAN 9527W

Male SWC 9527W April 25 2009 #1531388

SIRE BY: **CROWFOOT JOKER 6172S (1316033)**

CHAPMAN MR. MARBLES 258M
CHAPMAN G PRIDE 672S (1464398)
 CHAPMAN PRIDE 215M

SITZ ALLIANCE 6595 NHF AMF
 GLADWALL KAWICH LADY 6171
 BASIN PARTNER 137H
 BARBWALL G PRIDE 310

'11 EPD'S: BW:+1.4 WW:+33 YW:+53 Milk:+22 TM:+39			
AOD	BW	Adj 205	WI
3	82	694	108

32

CHAPMAN JOKER 9531W

Male SWC 9531W April 30 2009 #1531392

SIRE BY: **CROWFOOT JOKER 6172S (1316033)**

BLACK GEM RAIN AGAIN 340N
CHAPMAN LOVEMERE 607S (1347026)
 CROWFOOT LOVEMERE R 9221

G D A R RAINMAKER 340
 LANDMARK FREDA 911
 N BAR TRANSITION A583
 BARBWALL LOVEMERE R 330

'11 EPD'S: BW:+2.0 WW:+33 YW:+54 Milk:+20 TM:+37			
AOD	BW	Adj 205	WI
3	84	677	105

33

CHAPMAN JOKER 9535W

Male SWC 9535W May 01 2009 #1531395

SIRE BY: **CROWFOOT JOKER 6172S (1316033)**

N BAR IMPACT U1253
GLADWALL BELLE L NELLIE 8381 (990880)
 GLADWALL BELLE L NELLIE 581

LEMMON IMPACT
 N BAR CLOVA PRIDE 1696
 LEACHMAN EXT 3500
 GLADWALL BELLE L NELLIE 6250

'11 EPD'S: BW:+1.1 WW:+31 YW:+50 Milk:+16 TM:+32			
AOD	BW	Adj 205	WI
11	85	664	106

34

CHAPMAN JOKER 9537W

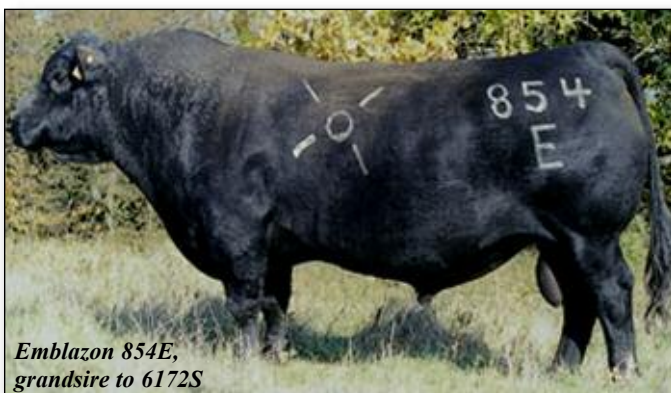
Male SWC 9537W May 02 2009 #1531397

SIRE BY: **CROWFOOT JOKER 6172S (1316033)**

SITZ ALLIANCE 6595 NHF AMF
HAPPYVALE DELIA 35S (1344631)
 SWENCO DELIA 13H

SITZ TRAVELER 8180 NHF AMF CAF
 SITZ BARBARAMERE JET 2698
 GET-A-LONG CAST IRON 359
 SWENCO DELIA 26A

'11 EPD'S: BW:+2.0 WW:+34 YW:+57 Milk:+20 TM:+37			
AOD	BW	Adj 205	WI
3	83	655	101



*Emblazon 854E,
 grandsire to 6172S*



Ref Sire C

Joker 6172S

35

CHAPMAN JOKER 9538W

Male RC SWC 9538W May 04 2009 #1531398

SIRED BY: CROWFOOT JOKER 6172S (1316033)

RED OH BOOMER 552E
RED CHAPMAN PINE 804H (944293)
 RED O H LADY PINE 76B

RED SSS BOOMER 803B
 RED O H MISS RIO 62A
 RED LAZY M ZAMA PINE 3W
 RED MEADOW LAKE REBECCA 8W

'11 EPD'S: BW:+3.8 WW:+44 YW:+79 Milk:+11 TM:+33			
AOD	BW	Adj 205	WI
11	98	721	110

36

CHAPMAN JOKER 9540W

Male SWC 9540W May 05 2009 #1531399

SIRED BY: CROWFOOT JOKER 6172S (1316033)

CROWFOOT VENTURE 1698L
CHAPMAN ZARA BAND 625S (1347036)
 CHAPMAN ZARA BAND 438P

BASIN MAX 104J NHF AMF CAF
 GLADWALL SARITA 8255
 LEACHMAN RIGHT TIME AMF
 GLADWALL B ZARA BAND 6355

'11 EPD'S: BW:+2.7 WW:+32 YW:+62 Milk:+18 TM:+34			
AOD	BW	Adj 205	WI
3	90	635	96

37

CHAPMAN JOKER 9545W

Male SWC 9545W May 09 2009 #1531403

SIRED BY: CROWFOOT JOKER 6172S (1316033)

S A V 004 PREDOMINANT 4438 NHF AMF CAF
CHAPMAN ROSE 644S (1347040)
 GLADWALL ROSE OF L 661

S A V 8180 TRAVELER 004 NHF AMF CAF
 S A V EMBLYNETTE 1182
 WESTWIND FINESSE 1113
 GLADWALL ROSE OF L 3231

'11 EPD'S: '11 EPD'S: BW:+3.1 WW:+38 YW:+63 Milk:+17 TM:+36			
AOD	BW	Adj 205	WI
3	95	651	98

38

CHAPMAN JOKER 9546W

Male SWC 9546W May 10 2009 #1531404

SIRED BY: CROWFOOT JOKER 6172S (1316033)

BECKER FARMS CHEYENNE 107
BARBWALL G PRIDE 539 (991210)
 BAR GAY PRIDE 2120

S A F POWER FIX NHF AMF CAF
 BECKER FARMS QUEEN 515
 A A R CORNHUSKER 238
 BAR GAY PRIDE 4120

'11 EPD'S (Proj): BW:+0.1 WW:+27 YW:+52 Milk:+16 TM: +29			
AOD	BW	Adj 205	WI
14	74	622	100

Ref Sire D



D

SITZ ALLIANCE 6595 NHF AMF

Male IMP 6595E 1036949 #1036949

G D A R TRAVELER 71 AMF NHF CAF	TRAVELER 1148 G D A R
SITZ TRAVELER 8180 AMF NHF CAF (866597)	G D A R MISS BLACKCAP 567
SITZ EVERELDA ENTENSE 1137	G D A R RAINMAKER 340
	SITZ EVERELDA ENTENSE 2335
3 BAR SPIKE 1766	SKARSHIP SARATOGA
SITZ BARBARAMERE JET 2698 (US11056748)	3 BAR BLACKBIRD 2728
SITZ BARAMERE JET 155	VANCE TOP DAWG
	SITZ BARBARAMERE JET 663

BW: n/a Adj. 205D: n/a Adj. 365D: n/a

'11 EPD'S: BW: +2.9 WW: +51 YW: +94 Milk: +30 Mat: +56

For longevity, scrotal measurement, milk, weaning and yearling weight and undisputed great female progeny, '6595' ranks near the top. Wherever and whenever progeny are offered, there is a strong demand for his genetics. The son selling is a meat-wagon and out of a smaller-framed but picture-perfect OCC Legacy 839L daughter.

39

CHAPMAN WAR CRY 9504W

Male SWC 9504W March 02 2009 #1531372

Sired by: SITZ ALLIANCE 6595 NHF AMF (1036949)

O C C LEGACY 839L	O C C ECHELON 857E
CROWFOOT BELLE NELLIE 4716P (1207900)	O C C DIXIE ERICA 960E
CROWFOOT BELLE L NELLIE 2646M	SITZ ALLIANCE 6595 NHF AMF
	GLADWALL BELLE L NELLIE 6286

'11 EPD'S: BW:+2.4 WW:+47 YW:+73 Milk:+26 TM:+50

AOD	BW	Adj 205	WI
5	92	746	96



Dam of Lot #39

E

CHAPMAN LEGACY 026S

Male YUS 026S January 29 2006 #1339280

O C C ECHELON 857E
O C C LEGACY 839L (1193688)
 O C C DIXIE ERICA 960E

N BAR IMPACT U1253
PAT LADY ERICA 8984 (990548)
 PAT PIED PIPER 921

D H D TRAVELER 6807 NHF AMF
 DIXIE ERICA OF C H 1019

O C C ANCHOR 771A
 DIXIE ERICA OF R R 4345

LEMMON IMPACT
 N BAR CLOVA PRIDE 1696

SHOSHONE P P 7105
 PAT LADY ERICA 613

BW: 81 lbs. Adj. 205D: 742 lbs. WI: 104

'11 EPD'S: BW:+1.0 WW:+19 YW:+42 Milk:+19 TM:+29

026S is a paternal brother to Crowfoot Equation 5793R who was purchased in-dam from Crowfoot Cattle Co in 2005. His donor dam, Pat Lady Erica 8984, is perhaps the best cow Crowfoot has sold to-date when considering the amount of sale features the CFCC prefix has produced for other breeders in a post-dispersal era. She has combined weaning and yearling ratios of 108 and 110 respectively and is extremely sound as a fourteen year old cow. Sons of 026S exhibit traditional Angus characteristics with built-in calving-ease and maternal characteristics.



Dam of Legacy 026S

40

CHAPMAN 026 059W

Male YUS 059W April 08 2009 #1526141

SIRE BY: CHAPMAN LEGACY 026S (1339280)

CHAPMAN GLORY 467P
CHAPMAN EILEEN 791T (1425578)
 CHAPMAN EILEEN 217M

O C C GLORY 950G
 GLADWALL PINTOP 6105
 CROWFOOT AMBUSH 9137J
 GLADWALL G V EILEEN 6230

'11 EPD'S: BW:+0.8 WW:+25 YW:+50 Milk:+18 TM:+31

AOD	BW	Adj 205	WI
2	78	692	105

41

CHAPMAN 026 169W

Male YUS 169W May 03 2009 #1526168

SIRE BY: CHAPMAN LEGACY 026S (1339280)

N BAR TRANSITION A583
GLADWALL ROSE OF L 6242 (991096)
 GLADWALL ROSE OF L 4226

GARDENS TRANSITION 7205 S1
 N BAR KINCHTRY BEAUTY X3711
 SHOSHONE P P 7105
 GLADWALL ROSE OF L 282

'11 EPD'S: BW:+0.3 WW:+30 YW:+52 Milk:+19 TM:+34

AOD	BW	Adj 205	WI
13	80	735	112

43

CHAPMAN 026 359W

Male YUS 359W June 01 2009 #1526206

SIRE BY: CHAPMAN LEGACY 026S (1339280)

CROWFOOT VENTURE 1698L
CHAPMAN ERICA 42P (1241127)
 CHAPMAN ERICA 207M

BASIN MAX 104J NHF AMF CAF
 GLADWALL SARITA 8255
 SITZ ALLIANCE 6595 NHF AMF
 PAT B ERICA 620

'11 EPD'S: BW:+0.2 WW:+23 YW:+48 Milk:+24 TM:+36

AOD	BW	Adj 205	WI
5	83	677	101

Ref Sire F



F CROWFOOT MACHO 4549P

Male CFCC 4549P 1228422 May 23 2004 DC182875

O C C EUREKA 865E
O C C MAGNUM 749M - 1189883
 O C C JUANADA 818E

O C C BACKSTOP 888B
 BLACKBIRD OF R R 1204
 O C C CORNERSTONE 890C
 O C C JUANADA 775C

SITZ ALLIANCE 6595
CROWFOOT BLACKBIRD 2537M - 1126171
 GLADWALL BLACKBIRD 8237

SITZ TRAVELER 8180
 SITZ BARBARAMERE JET 2698
 AMITIE ACRES L EXT 1376
 GLADWALL BLACKBIRD 4346

BW: 70 lbs. Adj. 205D: 697 lbs. Adj. 365D: 1005 lbs.

'11 EPD'S: BW:+2.2 WW: +37 YW: +61 Milk: +10 Mat: +29

Macho's sire, OCC Magnum, was at our place as a yearling in the drought of 2002. We really appreciated him for his depth of quarter, feet and legs and muscle expression. Macho is no different and has bred true to his pedigree backed by a strong Sitz Alliance 6595 dam.

Macho's sons exhibit the same phenotype and are a great option to use on heifers or cows without sacrificing growth or calving ease.

43 CHAPMAN MACHO 9507W

Male SWC 9507W March 12 2009 #1594943

SIRE BY: CROWFOOT MACHO 4549P (1228422)

CROWFOOT EQUATION 5793R
CHAPMAN JEANNE 750T (1418606)
 CHAPMAN JEANNE 202M

O C C LEGACY 839L
 CROWFOOT FORKS 755K
 LEACHMAN RIGHT TIME AMF
 GLADWALL JEANNE T 2114

'11 EPD'S (Proj): BW:+2.4 WW:+37 YW:+76 Milk:+15 TM:+28

AOD	BW	Adj 205	WI
2	84	650	100

44 CHAPMAN MACHO 9508W

Male SWC 9508W March 15 2009 #1594944

SIRE BY: CROWFOOT MACHO 4549P (1228422)

CHAPMAN ALLIANCE 262M
CHAPMAN PATRICIA 726T (1418586)
 CHAPMAN PATRICIA 4406

SITZ ALLIANCE 6595 NHF AMF
 GLADWALL G EILEEN 6339
 BOYD NEW DAY 8005 NHF AMF CAF
 HAPPYVALE PATRICIA 121L

'11 EPD'S (Proj): BW:+2.5 WW:+39 YW:+71 Milk:+15 TM:+34

AOD	BW	Adj 205	WI
2	85	639	98



Macho Sons (Black Angus)

45

CHAPMAN MACHO 9512W

Male SWC 9512W March 22 2009 #1531375

SIRE BY: **CROWFOOT MACHO 4549P (1228422)**

RED SSS JUSTICE 174R
CHAPMAN PRINCESS 751T (1418607)
CHAPMAN PRINCESS 4413

RED BJR JR 105
RED SSS EMULY 163C
CHAPMAN ALLIANCE 262M
CHAPMAN PRINCESS 214M

'11 EPD'S: BW:+3.9 WW:+40 YW:+65 Milk:+14 TM:+34			
AOD	BW	Adj 205	WI
2	92	731	113

46

CHAPMAN MACHO 9515W

Male SWC 9515W April 09 2009 #1531378

SIRE BY: **CROWFOOT MACHO 4549P (1228422)**

RED SSS JUSTICE 174R
CHAPMAN HANNI 768T (1418619)
CHAPMAN HANNI 4401

RED BJR JR 105
RED SSS EMULY 163C
CROWFOOT BRUNO 1670L
RED CHAPMAN HANNI 002K

'11 EPD'S: BW:+2.1 WW:+34 YW:+62 Milk:+9 TM:+26			
AOD	BW	Adj 205	WI
2	84	627	96

47

CHAPMAN MACHO 9516W

Male SWC 9516W April 11 2009 #1531379

SIRE BY: **CROWFOOT MACHO 4549P (1228422)**

CHAPMAN ALLIANCE 262M
CHAPMAN NEONIA 774T (1418624)
HAPPYVALE T. NEONIA 131L

SITZ ALLIANCE 6595 NHF AMF
GLADWALL G EILEEN 6339
BACK ROADS 1418 LEGEND 1582
TAFIKA 22D NEONIA 96F

'11 EPD'S: BW:+1.6 WW:+41 YW:+68 Milk:+16 TM:+37			
AOD	BW	Adj 205	WI
2	79	667	104

48

CHAPMAN MACHO 9521W

Male SWC 9521W April 21 2009 #1531382

SIRE BY: **CROWFOOT MACHO 4549P (1228422)**

DDA EMBLAZON 27C NHF AMF CAF
CHAPMAN IDELETTE 764T (1481699)
HAPPYVALE NJP IDELETTE 111M

O C C EMBLAZON 854E NHF AMF CAF
D D A MELISA 824
HAPPYVALE FLYER 13K
HAPPYVALE NP IDELETTE 108K

'11 EPD'S: BW:+2.8 WW:+41 YW:+65 Milk:+14 TM:+35			
AOD	BW	Adj 205	WI
2	80	651	101

49

CHAPMAN 4549 109W

Male YUS 109W April 25 2009 #1526155

SIRE BY: **CROWFOOT MACHO 4549P (1228422)**

CROWFOOT VENTURE 1698L
CHAPMAN ZARA 615S (1339227)
CHAPMAN ZARA 427P

BASIN MAX 104J NHF AMF CAF
GLADWALL SARITA 8255
VDAR DATABANK 1061 CAF
BARBWALL B ZARA 646

'11 EPD'S: BW:+1.5 WW:+35 YW:+66 Milk:+14 TM:+32			
AOD	BW	Adj 205	WI
3	84	684	102



Macho Sons (Black Angus)

50

CHAPMAN 4549 119W

Male YUS 119W April 29 2009 #1526158

SIRE BY: **CROWFOOT MACHO 4549P (1228422)**

D D A FAHREN 21X
CHAPMAN ROSE 627S (1349561)
GLADWALL ROSE OF L 6310

FAHREN OF WYE UMF 5830
D D A MELISA 549
N BAR TRANSITION A583
GLADWALL ROSE OF L 196

'11 EPD'S: BW:-0.2 WW:+38 YW:+59 Milk:+13 TM:+32			
AOD	BW	Adj 205	WI
3	83	743	112

51

CHAPMAN 4549 159W

Male YUS 159W April 30 2009 #1526162

SIRE BY: **CROWFOOT MACHO 4549P (1228422)**

CROWFOOT VENTURE 1698L
CHAPMAN ROSE 631S (1339284)
CHAPMAN ROSE 429P

BASIN MAX 104J NHF AMF CAF
GLADWALL SARITA 8255
O C C GLORY 950G
GLADWALL ROSE OF L 6310

'11 EPD'S: BW:+1.2 WW:+35 YW:+63 Milk:+14 TM:+32			
AOD	BW	Adj 205	WI
3	83	677	101

52

CHAPMAN 4549 179W

Male YUS 179W May 07 2009 #1526173

SIRE BY: **CROWFOOT MACHO 4549P (1228422)**

CROWFOOT BRUNO 1670L
CHAPMAN ELEVATE 325N (1196492)
GLADWALL ELEVATE 1101

STEVENSON BRUNO 561G NHF CAF
GLADWALL B REV ERICA 7289
SHOSHONE P P 7105
GLADWALL ELEVATE 9314

'11 EPD'S: BW:+1.9 WW:+35 YW:+60 Milk:+15 TM:+33			
AOD	BW	Adj 205	WI
6	88	733	110



Extra's Son (Black Angus)

53

CHAPMAN EXTRA H6 9505W

Male SWC 9505W March 07 2009 #1560794

N BAR EMULATION EXT AMF NHF CAF
NICHOLS EXTRA H6 AMF NHF CAF (1142711)
NICHOLS EILEEN MAY F261

EMULATION N BAR 5522
N BAR PRIMROSE 2424
NICHOLS BLACK INK D220
NICHOLS EILEEN MAY B241

SITZ ALLIANCE 9160
CROWFOOT 3896N (1151783)
CROWFOOT PEARL 1828L

SITZ ALLIANCE 6595 NHF AMF
SITZ BLACKCAP EFFIE 4088
TOMWALL GDAR ROYCE 916
GLADWALL L PEARL 7192

'11 EPD'S: BW:+1.7 WW:+62 YW:+102 Milk:+28 TM:+59			
AOD	BW	Adj 205	WI
6	93	858	112

As a rule, if we outsource genetics to use via AI, it is from a program similar to ours in order to maintain uniformity, consistency and predictability in our cattle, so not a lot of experience with Extra H6 as the following lot came in-dam, but H6 sired one extremely long-bodied performance bull here with excellent numbers across the board in all traits. His granddam 1828L produced a previous sale-topper to Wayne Chesney and will see ET work in 2011.



Nichols Extra - sire of Lot #53



H

DDA FAHREN 5Z

Male DDA 5Z January 20 1999 #13299980 (US)

Fenland of Wye
FAHREN OF WYE UMF 5830 (US10762574)
 Florelle of Wye Umf 5229
 Candor of Wye Umf 7328
D D A ZELDA 791 (US 12773582)
 Miss Diamond Jumbo 580

Favour of Wye
 Fine of Wye
 Butler of Wye
 Frannie of Wye
 Leonid of Wye
 Clova of Wye Umf 6723
 Black Browe Jumbo 37P
 Diamond Henretta 368

BW: n/a Adj. 205D: n/a Adj. 365D: n/a
'11 EPD'S: BW: +1.1 WW: +29 YW: +41 Milk: +7 Mat: +21

If you like maternal, functional cattle that flesh and last in the herd for many years, a DDA Fahren 5Z son would be a great choice. His mother is eleven years old, his grandmother stayed in production until her death at 20 years, and great grandmother died at 22 years.

The two sons selling were purchased in-dam from Deboo's in Montana and are a neat combination of OCC Emblazon and Wye.

54

CHAPMAN VALIER 9517W

Male SWC 9517W April 16 2009 #1594937

SIRED BY: DDA FAHREN 5Z (13299980)

O C C EMBLAZON 854E NHF AMF CAF
DDA HOLLY 239 (1496154)
 DDA HOLLY 084

D H D TRAVELER 6807 NHF AMF
 DIXIE ERICA OF C H 1019
 SHOSHONE 130-6357
 D D A HOLLY 427

'11 EPD'S (Proj): BW:+1.5 WW:+33 YW:+44 Milk:+11 TM:+27			
AOD	BW	Adj 205	WI
7	88	600	93

55

CHAPMAN DOC DEBOO 9534W

Male SWC 9534W May 01 2009 #1594939

SIRED BY: DDA FAHREN 5Z (13299980)

O C C EMBLAZON 854E NHF AMF CAF
DDA TINA 362 (1496153)
 D D A TINA 613

D H D TRAVELER 6807 NHF AMF
 DIXIE ERICA OF C H 1019
 D D A BARTOR
 D D A TINA 441

'11 EPD'S (Proj): BW:+1.8 WW:+35 YW:+46 Milk:+7 TM:+24			
AOD	BW	Adj 205	WI
6	87	662	105

Ref Sire I



MC CUMBER 536P EXT 7196

Male IMP 7196T March 11 2007 #1478134

N BAR EMULATION EXT NHF AMF CAF EMULATION N BAR 5522
SITZ JLS EMULATION EXT 536P (14809623) N BAR PRIMROSE 2424
 IDEAL 4465 OF 6807 4286 NHF AMF D H D TRAVELER 6807 NHF AMF
 E E 4286 OF IDEAL 2240 1254
 PINE CREEK RIGHT TIME 1147 NHF AMF LEACHMAN RIGHT TIME AMF
LASSIE 434 OF MC CUMBER (14798054) SITZ EVERELDA ENTENSE 1137
 LASSIE 2140 OF MC CUMBER BT NEW TREND 172K
 LASSIE 914 OF MC CUMBER

Performance n/a

'11 EPD'S: BW:+2.7 WW:+36 YW:+63 Milk:+27 TM:+45

7196 is extremely long with a lot of muscle expression down his top. He carries this muscle out into a big expressive rump and is one of the more stylish bulls in the group. He weaned off his outstanding dam with a 205 day weight of 732 lbs. to ratio 108 and scanned exceptionally with an IMF of 5.23 to ratio 128 and a REA of 13 to ratio 106.

His dam has been a top producer with a WWR 4/109, YWR 4/106, IMF 4/114, and REA 4/111.

56

TWA 7196 EXT 121W

Male TWA 121W May 01 2009 #1542351

SIRED BY: MC CUMBER 536P EXT 7196 (1478134)

CROWFOOT AMBUSH 9137J BASIN AMBUSH 3905 NHF AMF CAF
CHAPMAN ZARA 213M (1118273) STEVENSON HEATHER 499G
 BARBWALL B ZARA 646 AMBUSH BANDO 01
 BARBWALL B ZARA 433

'11 EPD'S (Proj): BW:+3.8 WW:+34 YW:+58 Milk:+23 TM:+40

AOD	BW	Adj 205	WI
7	87	710	99

57

TWA NET PROFIT 139W

Male TWA 139W May 14 2009 #1574852

SIRED BY: MC CUMBER 536P EXT 7196 (1478134)

SITZ TRAVELER 9929 D H D TRAVELER 6807 NHF AMF
CHAPMAN EILEEN 311N (1197826) SITZ EVERELDA ENTENSE 1137
 GLADWALL G EILEEN 6339 TOMWALL B EMULATION 070
 GLADWALL G EILEEN 1993

'11 EPD'S (Proj): BW:+5.3 WW:+44 YW:+64 Milk:+24 TM:+46

AOD	BW	Adj 205	WI
6	89	766	107

7196 Sons (Black Angus)

58

TWA 7196 EXT 151W

Male TWA 151W May 25 2009 #1544506

SIRED BY: MC CUMBER 536P EXT 7196 (1478134)

O C C MOONSHINE 740M
CROWFOOT GEORGINA 4818P (1207988)
 CROWFOOT FORKS 703K

O C C JUST RIGHT 619J
 O C C DIXIE ERICA 816B
 N BAR TRANSITION A583
 GLADWALL GEORGINA 626I

'11 EPD'S: BW:+1.5 WW:+36 YW:+59 Milk:+19 TM:+37			
AOD	BW	Adj 205	WI
5	79	688	97

59

CHAPMAN 7196 349W

Male YUS 349W May 31 2009 #1533036

SIRED BY: MC CUMBER 536P EXT 7196 (1478134)

O C C MAGNUM 749M
CROWFOOT PRINCENE 4671P (1228535)
 CROWFOOT PRINCENE 2575M

O C C EUREKA 865E
 O C C JUANADA 818E
 BASIN PARTNER 137H
 GLADWALL PRINCENE 7108

'11 EPD'S: BW:+0.3 WW:+41 YW:+63 Milk:+23 TM:+44			
AOD	BW	Adj 205	WI
5	79	759	116

2711's Son (Black Angus)

J

CROWFOOT 2711M

Male OFCC 2711M January 27 2001 #1096517

N BAR EMULATION EXT AMF NHF CAF
LEACHMAN RIGHT TIME AMF (779510)
 LEACHMAN ERICA 0025

H A STACKER 2077
GLADWALL B CHLOE 7135 (991036)
 M A R B CHLOE 266

EMULATION N BAR 5522
 N BAR PRIMROSE 2424
 TEHAMA BANDO 1551499 AMF NHF CAF
 LEACHMAN ERICA 8058
 C H STACKER 7040
 H 96 BLACK BELLE 7441
 TOMWALL B EMULATION 070
 GLADWALL B CHLOE 701

BW: 84 lbs. Adj. 205D: 671 lbs. Adj. 365D: 1181 lbs.
'11 EPD'S: BW: +3.3 WW: +47 YW: +82 Milk: +17 Mat: +41

'2711' was walked here to carry forward the Right Time influence, and saw service with some very good cows. Don't let his WI fool you, we calve just a handful of purchased cows early, so small contemporary groups can skew ratio's. Lot 60's dam has the phenotype and production capacity to warrant her in the top 5 of 500 purebred cows. If you are looking for a bull to sire replacements, Lot 60 has that rare herd bull potential.

Ref. Sire J



60

CHAPMAN WILLIE 9503W

Male SWC 9503W February 21 2009 #1531370

SIRED BY: CROWFOOT 2711M (1096517)

O C C MOONSHINE 740M
CROWFOOT REV ROSE 5900R (1255013)
 CROWFOOT CH REV ROSE 1627L

O C C JUST RIGHT 619J
 O C C DIXIE ERICA 816B
 C&D 455 ROCKETT
 C H REV ROSE 9297

'11 EPD'S: BW:+2.1 WW:+45 YW:+79 Milk:+20 TM:+43			
AOD	BW	Adj 205	WI
4	88	737	95



Waterton Sons (Black Angus)

K

S B R WATERTON 6148S

Male IMP 6148S March 04 2006 #1385001

LODGE OF WYE
LIONHEART OF WICKWIRE (14416976)
LORINDA OF WICKWIRE

EMULATION 31
OCTORARO MISS WIX 803 (13221398)
OCTORARO MISS WIX 419

CAREER OF WYE
LORENA OF WYE
FRAMEWORK OF WYE
LOCENE OF WICKWIRE
F C R ELATION LAD 652
MISS EMULOUS 243
RITO 2RT2 OF 0B5 RR TRAVELER NHF AMF
OCTORARO MISS WIX 206

BW: 76 lbs. Adj. 205D: 645 lbs. Adj. 365D: 1076 lbs.

'11 EPD'S: BW:+1.0 WW:+27 YW:+45 Milk:+9 TM:+23

6148 is a unique genetic tool acquired as a calf from Saddle Butte Ranch in Geysers, MT. His pedigree brings the great phenotype of Lodge of Wye to our herd. Lodge sold for \$250,000 and was free of genetic defects. 6148 was used exclusively on heifers and his sons will carry forward the same calving ease, vigour at birth, growth and the Angus type we are looking for.

61

CHAPMAN 6148 029W

Male YUS 029W April 01 2009 #1526135

SIRE BY: S B R WATERTON 6148S (1385001)

CROWFOOT VENTURE 1698L
CHAPMAN EILEEN 713T (1425527)
CHAPMAN EILEEN 511R

BASIN MAX 104J NHF AMF CAF
GLADWALL SARITA 8255
MC CUMBER 7111 TOTAL VALUE
CHAPMAN EILEEN 216M

'11 EPD'S: BW:+0.7 WW:+36 YW:+65 Milk:+17 TM:+35

AOD	BW	Adj 205	WI
2	76	704	107

62

CHAPMAN 6148 069W

Male YUS 069W April 08 2009 #1526143

SIRE BY: S B R WATERTON 6148S (1385001)

D D A FAHREN 21X
CHAPMAN ERICA 754T (1425550)
CHAPMAN ERICA 207M

FAHREN OF WYE UMF 5830
D D A MELISA 549
SITZ ALLIANCE 6595 NHF AMF
PAT B ERICA 620

'11 EPD'S: BW:+1.2 WW:+29 YW:+52 Milk:+15 TM:+30

AOD	BW	Adj 205	WI
2	81	682	102

63

CHAPMAN 6148 089W

Male YUS 089W April 14 2009 #1526148

SIRE BY: S B R WATERTON 6148S (1385001)

CROWFOOT MACHO 4549P
CHAPMAN ZARA 731T (1425541)
BARBWALL B ZARA 646

O C C MAGNUM 749M
CROWFOOT BLACKBIRD 2537M
AMBUSH BANDO 01
BARBWALL B ZARA 433

2010 Service Sire on yearling heifers.

'11 EPD'S: BW:+2.1 WW:+30 YW:+52 Milk:+10 TM:+25

AOD	BW	Adj 205	WI
2	84	634	93

64

CHAPMAN 6148 099W

Male YUS 099W April 16 2009 #1526152

SIRE BY: S B R WATERTON 6148S (1385001)

D D A FAHREN 21X
CHAPMAN BIEBIRD 737T (1425542)
RED CROWFOOT BIEBIRD E 1168L

FAHREN OF WYE UMF 5830
D D A MELISA 549
RED CROWFOOT PM 757G
RED CROWFOOT BIEBIRD 319C

'11 EPD'S: BW:+1.1 WW:+28 YW:+51 Milk:+12 TM:+26

AOD	BW	Adj 205	WI
2	80	672	101



Ref Sire L

L O C C MOONSHINE 740M

Male IMP 740M March 22 2002 #1189882

O C C EMBLAZON 854E
O C C JUST RIGHT 619J (13492456)
 O C C JUANADA 709V

D H D TRAVELER 6807 NHF AMF
 DIXIE ERICA OF C H 1019
 COLE CREEK OSCAR 92R
 JUANADA OF ROLLIN ROCK 0355

D H D TRAVELER 6807 NHF AMF
O C C DIXIE ERICA 816B (11770426)
 DIXIE ERICA OF C H 1019

Q A S TRAVELER 23-4 NHF AMF
 BEMINDFUL MAID D H D 0807
 PBC 707 1M F0203
 DIXIE ERICA OF C H 615

Performance n/a

'11 EPD'S: BW:-0.2 WW:+23 YW:+52 Milk:+19 TM:+31

Used naturally in 2007 & 2008, "740M" is a son of OCC Just Right 619J, a full brother to OCC Joker 620J, and out of OCC Dixie Erica 816B the famous "birthmark" cow, who is a full sister to both OCC Emblazon 854E and OCC Echelon 857E.

"740M" is a thick-made, long-bodied bull who sires calves with calving ease that possess the real Angus look. Daughters are highly productive and efficient.

65 CHAPMAN MOONSHINE 9501W

Male SWC 9501W February 16 2009 #1531369

SIRED BY: O C C MOONSHINE 740M (1189882)

RED CROWFOOT PM 757G
CHAPMAN PRINCESS 214M (1108831)
 A A R PRINCESS JILL 2011

RED TK POUNDMAKER 69Z
 RED CROWFOOT BIRD 12Z
 NORSEMAN 107 P J M
 A A R PRINCESS JILL 1955

'11 EPD'S: BW:+1.2 WW:+29 YW:+62 Milk:+19 TM:+34

AOD	BW	Adj 205	WI
7	87	629	96

66 CHAPMAN MOONSHINE 9509W

Male SWC 9509W February 21 2009 #1531371

SIRED BY: O C C MOONSHINE 740M (1189882)

CROWFOOT BRUNO 1670L
CHAPMAN DUCHESS 4403 (1201299)
 RED CHAPMAN DUCHESS 103L

STEVENSON BRUNO 561G NHF CAF
 GLADWALL B REV ERICA 7289
 RED OH BOOMER 552E
 RED C C DUCHESS 24G

'11 EPD'S: BW:+2.3 WW:+41 YW:+73 Milk:+22 TM:+43

AOD	BW	Adj 205	WI
5	92	751	97

M SINCLAIR NET PRESENT VALUE

Male (ET) IMP 288M September 10 2002 #1477174 NHF AMF CAF

GARDENS PRIME TIME NHF AMF CAF	RR TRAVELER 5204 NHF AMF CAF
N BAR PRIME TIME D806 NHF AMF CAF (981359)	GREEN GARDEN SUSIE 1246 S1
N BAR MISS EMULOUS A404	N BAR EMULATION EXT 252
	N BAR MISS EMULOUS X3091
D H D TRAVELER 6807 NHF AMF	Q A S TRAVELER 23-4 NHF AMF CAF
IDEAL 4465 OF 6807 4286 NHF AMF (12211413)	BEMINDFUL MAID D H D 0807
E E 4286 OF IDEAL 2240 1254	EE 30 1254 OF IDEAL 5254 960
	EE 30 2240 OF IDEAL 8245 960

Performance n/a

'11 EPD'S: BW:-1.7 WW:+48 YW:+85 Milk:+27 TM:+51

A son of the Sinclair feed-efficiency matriarch, Ideal 4465 of 6807 4286, who carries on the calving-ease and carcass legacy of his proven Pathfinder Sire, N Bar Prime Time D806.

His sons selling will be a very useful calving ease and maternal tool while maintaining growth, moderating frame and promoting positive carcass traits.



Ref Sire M

67

CHAPMAN NPV 139W

Male YUS 139W April 30 2009 #1526160

SIRED BY: SINCLAIR NET PRESENT VALUE NHF AMF CAF (1477174)

CROWFOOT VENTURE 1698L	BASIN MAX 104J NHF AMF CAF
CHAPMAN ROSEBUD 328N (1196503)	GLADWALL SARITA 8255
BEVALEN ROSEBUD 3L	BAR-E-L MCC 365 ICON 20H
	BEVALEN ROSEBUD 12J

'11 EPD'S: BW:+0.2 WW:+38 YW:+73 Milk:+28 TM:+47

AOD	BW	Adj 205	WI
6	84	720	108

68

CHAPMAN NPV 149W

Male YUS 149W April 30 2009 #1526161

SIRED BY: SINCLAIR NET PRESENT VALUE NHF AMF CAF (1477174)

HIGH VALLEY 4C6 AMBUSH AMF	PARAMONT AMBUSH 2172 NHF AMF CAF
CHAPMAN ZARA 206M (1118169)	HIGH VALLEY GLORIA 1Q2
GLADWALL B ZARA 387	BECKER FARMS CHEYENNE 107
	GLADWALL B ZARA 6933

'11 EPD'S: BW:-0.2 WW:+40 YW:+71 Milk:+20 TM:+40

AOD	BW	Adj 205	WI
7	84	697	104

69

CHAPMAN NPV 299W

Male YUS 299W May 22 2009 #1526201

SIRED BY: SINCLAIR NET PRESENT VALUE NHF AMF CAF (1477174)

O C C MAGNUM 749M	O C C EUREKA 865E
CROWFOOT PATTIE QUEEN 4584P (1228451)	O C C JUANADA 818E
CROWFOOT PATTIE QUEEN 2552M	O C C HUNTER 928H
	GLADWALL PATTIE QUEEN 640

2010 Service Sire on yearling heifers.

'11 EPD'S: BW:-0.9 WW:+41 YW:+71 Milk:+20 TM:+41

AOD	BW	Adj 205	WI
5	82	705	106



N SINCLAIR TELECAST 01S3

Male (ET) IMP 0013N September 12 2003 #1481362 NHF AMF CAF

N BAR EMULATION EXT NHF AMF CAF
N BAR SHADOW X4124 (12128600)
 N BAR ENCHANTRESS 4908

D H D TRAVELER 6807 NHF AMF
IDEAL 4465 OF 6807 4286 NHF AMF (12211413)
 E E 4286 OF IDEAL 2240 1254

EMULATION N BAR 5522
 N BAR PRIMROSE 2424
 BASIN EMULATION 5953
 COFFEY ENCHANTRESS 424

Q A S TRAVELER 23-4 NHF AMF CAF
 BEMINDFUL MAID D H D 0807
 EE 30 1254 OF IDEAL 5254 960
 EE 30 2240 OF IDEAL 8245 960

Performance n/a				
'11 EPD'S: BW:+3.4 WW:+51 YW:+85 Milk:+17 TM:+43				

A maternal brother to Net Present Value sired by the premier female sire, N Bar Shadow X4124, who is a son of EXT.

We purchased the 2nd high selling bull in the 2009 Sinclair Bull Sale that was produced by a full sister to Telecast.

The sons selling possess calving ease and have strong numbers across the board, backed by mainstay 'Alliance'-sired dams.

70 CHAPMAN TELECAST 199W

Male YUS 199W May 07 2009 #1526175

SIRED BY: SINCLAIR TELECAST 01S3 NHF AMF CAF (1481362)

SITZ ALLIANCE 6595 NHF AMF
CHAPMAN ERICA 207M (1118170)
 PAT B ERICA 620

SITZ TRAVELER 8180 NHF AMF CAF
 SITZ BARBARAMERE JET 2698
 TOMWALL PIED PIPER 4220
 PAT B ERICA 6156

'11 EPD'S: BW:+0.1 WW:+46 YW:+77 Milk:+22 TM:+45				
AOD	BW	Adj 205	WI	
7	76	748	114	

71 CHAPMAN TELECAST 259W

Male YUS 259W May 17 2009 #1526192

SIRED BY: SINCLAIR TELECAST 01S3 NHF AMF CAF (1481362)

C H ALLIANCE 9339
CHAPMAN ROSE 212M (1118185)
 GLADWALL ROSE OF L 6310

SITZ ALLIANCE 6595 NHF AMF
 C H ERICA LASSIE 7266
 N BAR TRANSITION A583
 GLADWALL ROSE OF L 196

'11 EPD'S: BW:+2.7 WW:+45 YW:+73 Milk:+17 TM:+40				
AOD	BW	Adj 205	WI	
7	86	749	113	



0

MFI PAXTON 7027T

Black FleckAngus Bull MFI 27T February 26 2007 #687831

O C C FOCUS 813F	BASIN RAINMAKER 654X
O C C PAXTON 730P	DIXIE ERICA OF CH 1019
O C C BLACKBIRD 736K	O C C GREAT PLAINS 943G
	O C C BLACKBIRD 824G
PRL HOUSTON 005H	ROGANT
MFI LOLITA 5162	MS PRL NITE-ANCHOR 109B
ANCHOR "T" LOLITA 22Z	KNIGHT MR T 255T
	ANCHOR "T" RENATA 5T

BW: 98 lbs. WI: 103 YI: 100
'11 EPD'S: n/a

The following three lots are ¾ Angus, ¼ Simmental 'hybrids' and are very deep, soggy and really put a foot down on all four corners.

'7027T' is sired by OCC Paxton 730P, who's pedigree comes by the same grass-based OCC genetics as do our resident Angus sires. These bulls are moderate with lots of volume, possess a blended Angus look and carry the increased performance ideal for use on a straight bred herd

72

CHAPMAN PAXTON 914W

Male SWC 914W March 31 2009 Unreg FleckAngus

SIRED BY: MFI PAXTON 7027T

DAM: ANGUS COW

'11 EPD'S: n/a			
AOD	BW	ACT WW	ACT YW
3	89	710	1104

73

CHAPMAN PAXTON 999W

Male SWC 999W April 19 2009 Unreg FleckAngus

SIRED BY: MFI PAXTON 7027T

DAM: ANGUS COW

'11 EPD'S: n/a			
AOD	BW	Adj 205	WI
3	92	674	1017

74

CHAPMAN PAXTON 933W

Male SWC 933W May 10 2009 Unreg FleckAngus

SIRED BY: MFI PAXTON 7027T

DAM: ANGUS COW

'11 EPD'S: n/a			
AOD	BW	Adj 205	WI
3	94	688	1043



75

CHAPMAN ROSE 901W

Female YUS 901W March 28 2009 #1526132

LIONHEART OF WICKWIRE

S B R WATERTON 6148S (1385001)

OCTORARO MISS WIX 803

CROWFOOT MACHO 4549P

CHAPMAN ROSE 727T (1425537)

CHAPMAN ROSE 303N

'11 EPD'S: BW: 2.2 WW: 29 YW: 52 Milk: 7 TM: 22

BW: 80 lbs. Adj 205: 542 lbs. Adj 365: 690 lbs.

BRED HEIFER

Exposed: July 8 - July 16 to CHAPMAN RITO LEGACY 218U
(Sinclair Rito Legacy 3R9 x N Bar Impact U1253)

Exposed: July 24 - Sept 17 to CHAPMAN NPV 299W
(Sinclair Net Present Value x OCC Magnum 749M)

76

CHAPMAN BLACKBIRD 903W

Female YUS 903W April 02 2009 #1526137

LIONHEART OF WICKWIRE

S B R WATERTON 6148S (1385001)

OCTORARO MISS WIX 803

CROWFOOT MACHO 4549P

CHAPMAN BLACKBIRD 735T (1425544)

BEVALEN BLACKBIRD 7K

'11 EPD'S: BW: 0.6 WW: 27 YW: 48 Milk: 11 TM: 25

BW: 68 lbs. Adj 205: 552 lbs. Adj 365: 700 lbs.

BRED HEIFER

Exposed: July 8 - July 16 to CHAPMAN RITO LEGACY 218U
(Sinclair Rito Legacy 3R9 x N Bar Impact U1253)

Exposed: July 24 - Sept 17 to CHAPMAN NPV 299W
(Sinclair Net Present Value x OCC Magnum 749M)

77

CHAPMAN FAHREN 922W

Female YUS 922W May 04 2009 #1526169

O C C MAGNUM 749M

CROWFOOT MACHO 4549P (1228422)

CROWFOOT BLACKBIRD 2537M

D D A FAHREN 21X

CHAPMAN FAHREN 630S (1349563)

GRACEDALE BEATRICE AUDREY 12K

'11 EPD'S: BW: 2.7 WW: 29 YW: 63 Milk: 12 TM: 27

BW: 84 lbs. Adj 205: 538 lbs. Adj 365: 756 lbs.

BRED HEIFER

Exposed: July 8 - July 16 to CHAPMAN RITO LEGACY 218U
(Sinclair Rito Legacy 3R9 x N Bar Impact U1253)

Exposed: July 24 - Sept 17 to CHAPMAN NPV 299W
(Sinclair Net Present Value x OCC Magnum 749M)



Profitable Angus Females

78

CHAPMAN DELLA 923W

Female YUS 923W May 04 2009 #1526170

O C C LEGACY 839L

CHAPMAN LEGACY 026S (1339280)

PAT LADY ERICA 8984

MC CUMBER 7111 TOTAL VALUE

CHAPMAN DELLA 513R (1276585)

GLADWALL L DELLA 606

'11 EPD'S: BW: 1.1 WW: 27 YW: 52 Milk: 18 TM: 32		
BW: 77 lbs.	Adj 205: 591 lbs.	Adj 365: 700 lbs.
BRED HEIFER		

Exposed: July 8 - Sept. 10 to CHAPMAN 6148 089W

(SBR Waterton 6148 x Crowfoot Macho 4549P)

79

CHAPMAN BLACK LADY 9036W

Female SWC 9036W April 28 2009 #1531332

O C C LEGACY 839L

CROWFOOT EQUATION 5793R (1254914)

CROWFOOT FORKS 755K

CROWFOOT BRUNO 1670L

CHAPMAN BLACK LADY 4415 (1201310)

WINDOVER BLACK LADY 74L

'11 EPD'S: BW: 1.7 WW: 33 YW: 73 Milk: 21 TM: 38		
BW: 75 lbs.	Adj 205: 585 lbs.	Adj 365: 689 lbs.
BRED HEIFER		

Exposed: July 4 - Sept. 4 to SINCLAIR HYDRO 90K6

(OCC Kiddo 832K x N Bar Explosion)

80

CHAPMAN EILEEN 927W

Female YUS 927W May 07 2009 #1526177

O C C LEGACY 839L

CHAPMAN LEGACY 026S (1339280)

PAT LADY ERICA 8984

D D A FAHREN 21X

CHAPMAN EILEEN 686S (1349575)

CHAPMAN EILEEN 305N

'11 EPD'S: BW: 0.4 WW: 25 YW: 52 Milk: 15 TM: 28		
BW: 78 lbs.	Adj 205: 559 lbs.	Adj 365: 707 lbs.
BRED HEIFER		

Exposed: July 8 - July 16 to CHAPMAN RITO LEGACY 218U

(Sinclair Rito Legacy 3R9 x N Bar Impact U1253)

Exposed: July 24 - Sept 17 to CHAPMAN NPV 299W

(Sinclair Net Present Value x OCC Magnum 749M)

SERVICE SIRE

CHAPMAN 6148 089W

Male SWC 089W April 14 2009 #1526148

LIONHEART OF WICKWIRE

S B R WATERTON 6148S (1385001)

OCTORARO MISS WIX 803

CROWFOOT MACHO 4549P

CHAPMAN ZARA 731T (1425541)

BARBWALL B ZARA 646

LODGE OF WYE
LORINDA OF WICKWIRE

EMULATION 31
OCTORARO MISS WIX 419

O C C MAGNUM 749M
CROWFOOT BLACKBIRD 2537M

AMBUSH BANDO 01
BARBWALL B ZARA 433

'11 EPD'S: BW:+2.1 WW:+30 YW:+52 Milk:+10 TM:+25		
BW: 84 lbs.	Adj 205: 634 lbs.	WI: 93
SERVICE SIRE TO LOTS #78, #81 - #88		



Profitable Angus Females

81

CHAPMAN KIWI 929W

Female YUS 929W May 09 2009 #1526180

SHALOM WAIGROUP EXTRA

SHALOM WAIGROUP 519/94 (1327588)

NIRVANA DULCIE 124-74

PINEBANK WAIGROUP 41/97

CHAPMAN KIWI 634S (1339283)

BARBWALL P ROSE LEE 5140

'11 EPD'S: BW: 0.9 WW: 16 YW: 27 Milk: 4 TM: 12		
BW: 80 lbs.	Adj 205: 576 lbs.	Adj 365: 675 lbs.
BRED HEIFER		

Exposed: July 8 - Sept. 10 to CHAPMAN 6148 089W

(SBR Waterton 6148 x Crowfoot Macho 4549P)

82

CHAPMAN EILEEN 930W

Female YUS 930W May 11 2009 #1526181

R R RITO 707 NHF AMF CAF

SINCLAIR RITO LEGACY 3R9 AMF CAF (1436721)

IDEAL 4465 OF 6807 4286 NHF AMF

D D A FAHREN 21X

CHAPMAN EILEEN 636S (1349565)

CHAPMAN EILEEN 216M

'11 EPD'S: BW:-0.9 WW: 29 YW: 50 Milk: 17 TM: 32		
BW: 68 lbs.	Adj 205: 585 lbs.	Adj 365: 634 lbs.
BRED HEIFER		

Exposed: July 8 - Sept. 10 to CHAPMAN 6148 089W

(SBR Waterton 6148 x Crowfoot Macho 4549P)

83

CHAPMAN KIWI 931W

Female YUS 931W May 13 2009 #1526182

SHALOM WAIGROUP EXTRA

SHALOM WAIGROUP 519/94 (1327588)

NIRVANA DULCIE 124-74

CROWFOOT VENTURE 1698L

CHAPMAN GLORIA 613S (1339226)

CHAPMAN GLORIA 424P

'11 EPD'S: BW: 0.8 WW: 17 YW: 35 Milk: 7 TM: 16		
BW: 83 lbs.	Adj 205: 637 lbs.	Adj 365: 716 lbs.
BRED HEIFER		

Exposed: July 8 - Sept. 10 to CHAPMAN 6148 089W

(SBR Waterton 6148 x Crowfoot Macho 4549P)

84

CHAPMAN MAXINE 932W

Female YUS 932W May 14 2009 #1526184

N BAR SHADOW X4124

SINCLAIR TELECAST 01S3 NHF AMF CAF (1481362)

IDEAL 4465 OF 6807 4286 NHF AMF

WHITNEY CREEK MAXIMUS 24

CHAPMAN MAXINE 611S (1339225)

CROWFOOT JEANNE 4402P

'11 EPD'S: BW: 1.5 WW: 40 YW: 71 Milk: 15 TM: 35		
BW: 84 lbs.	Adj 205: 615 lbs.	Adj 365: 734 lbs.
BRED HEIFER		

Exposed: July 8 - Sept. 10 to CHAPMAN 6148 089W

(SBR Waterton 6148 x Crowfoot Macho 4549P)



Profitable Angus Females

85

RED CHAPMAN BIEBIRD 935W

Female YUS 935W May 15 2009 #1526187

RED VGW RAMBLER 1000 OSF

RED CROWFOOT RAMBLER 1038L (1051504)

CROWFOOT VERNICE 907J

RED LCC MAJOR LEAGUE A502M MAF OSF

RED CHAPMAN BIEBIRD 531R (1299529)

RED CROWFOOT BIEBIRD E 1168L

'11 EPD'S: BW: -3.9 WW: 1 YW: 16 Milk: 17 TM: 18		
BW: 79 lbs.	Adj 205: 523 lbs.	Adj 365: 632 lbs.
BRED HEIFER		

Exposed: July 8 - Sept. 10 to CHAPMAN 6148 089W

(SBR Waterton 6148 x Crowfoot Macho 4549P)

86

CHAPMAN BLOSSOM 945W

Female YUS 945W May 23 2009 #1533032

SITZ JLS EMULATION EXT 536P

MC CUMBER 536P EXT 7196 (1478134)

LASSIE 434 OF MC CUMBER

VDAR DATABANK 1061 CAF

CHAPMAN BLOSSOM 426P (1230153)

BAR J P BLOSSOM 62K

'11 EPD'S: BW: 1.6 WW: 37 YW: 71 Milk: 24 TM: 43		
BW: 80 lbs.	Adj 205: 629 lbs.	Adj 365: 777 lbs.
BRED HEIFER		

Exposed: July 8 - Sept. 10 to CHAPMAN 6148 089W

(SBR Waterton 6148 x Crowfoot Macho 4549P)

87

CHAPMAN EILEEN 947W

Female YUS 947W May 24 2009 #1526203

N BAR PRIME TIME D806 NHF AMF CAF

SINCLAIR NET PRESENT VALUE NHF AMF CAF (1477174)

IDEAL 4465 OF 6807 4286 NHF AMF

VERMILION DATELINE 7078 NHF AMF CAF

CHAPMAN EILEEN 305N (1196501)

GLADWALL G V EILEEN 6230

'11 EPD'S: BW: -0.3 WW: 42 YW: 73 Milk: 21 TM: 42		
BW: 80 lbs.	Adj 205: 593 lbs.	Adj 365: 701 lbs.
BRED HEIFER		

Exposed: July 8 - Sept. 10 to CHAPMAN 6148 089W

(SBR Waterton 6148 x Crowfoot Macho 4549P)

88

CHAPMAN SHAWN 950W

Female YUS 950W June 01 2009 #1533037

SITZ JLS EMULATION EXT 536P

MC CUMBER 536P EXT 7196 (1478134)

LASSIE 434 OF MC CUMBER

O C C MOONSHINE 740M

CROWFOOT SHAWN 4132P (1207815)

RED CFCC 58K

'11 EPD'S: BW: 2 WW: 37 YW: 68 Milk: 22 TM: 41		
BW: 87 lbs.	Adj 205: 675 lbs.	Adj 365: 843 lbs.
BRED HEIFER		

Exposed: July 8 - Sept. 10 to CHAPMAN 6148 089W

(SBR Waterton 6148 x Crowfoot Macho 4549P)

89

CHAPMAN NEONIA 9087W

Male SWC 9087W June 11 2009 #1594946

O C C LEGACY 839L

CROWFOOT EQUATION 5793R (1254914)

CROWFOOT FORKS 755K

BOYD NEW DAY 8005 AMF NHF CAF

CHAPMAN NEONIA 4408 (1213939)

HAPPYVALE T. NEONIA 131L

'11 EPD'S: BW: 2 WW: 94 YW: 24 Milk: 17 TM: 49		
BW: 79 lbs.	Adj 205: 720 lbs.	Adj 365: 848 lbs.
BRED HEIFER		

Exposed: July 4 - Sept. 4 to SINCLAIR HYDRO 90K6
(OCC Kidde 832K x N Bar Explosion)



Crowfoot Joker 6172S - Service Sire to Cow Lots # 90 - #94

90

CHAPMAN BLACK LADY 4415

Female SWC 415P April 06 2004 #1201310

STEVENSON BRUNO 561G NHF CAF

CROWFOOT BRUNO 1670L (1061383)

GLADWALL B REV ERICA 7289

CARLSON 598 BANDO 3185

WINDOVER BLACK LADY 74L (1045752)

HARMON BLACK LADY 6117

'11 EPD'S: BW: 1.6 WW: 29 YW: 61 Milk: 16 TM: 31		
BW: 86 lbs.	Adj 205: 649 lbs.	Adj 365: 674 lbs.
Lifetime Prod. Avgs. Wng: 93 Yrlng: 112		

Exposed: July 4 - September 6 to CROWFOOT JOKER 6172S
(OCC Joker 920J x Tomwall GDAR Royce 964)

91

CHAPMAN PRIDE 416P

Female TW SWC 416P April 10 2004 #1230144

VERMILION DATELINE 7078 NHF AMF CAF

VDAR DATABANK 1061 CAF (1194666)

V D A R LUCY 605

D V PRIDES COMMODORE

BARWALL G PRIDE 310 (991205)

BAR GAY PRIDE 032

'11 EPD'S: BW: 0.6 WW: 33 YW: 62 Milk: 12 TM: 29		
BW: 60 lbs.	Adj 205: 576 lbs.	Adj 365: 733 lbs.
Lifetime Prod. Avgs. Wng: 95 Yrlng: 100		

Exposed: July 4 - September 6 to CROWFOOT JOKER 6172S
(OCC Joker 920J x Tomwall GDAR Royce 964)

92

CHAPMAN PRIDE 417P

Female TW SWC 417P April 10 2004 #1230145

VERMILION DATELINE 7078 NHF AMF CAF

VDAR DATABANK 1061 CAF (1194666)

V D A R LUCY 605

D V PRIDES COMMODORE

BARBWALL G PRIDE 310 (991205)

BAR GAY PRIDE 032

'11 EPD'S: BW:-0.4 WW: 32 YW: 60 Milk: 11 TM: 27		
BW: 61 lbs.	Adj 205: 531 lbs.	Adj 365: 791 lbs.
Lifetime Prod. Avgs. Wng: 98 Yrlng: 117		

Exposed: July 4 - September 6 to CROWFOOT JOKER 6172S
(OCC Joker 920J x Tomwall GDAR Royce 964)

93

CHAPMAN PATRICIA 4406

Female SWC 406P February 17 2004 #1201306

A A R NEW TREND

BOYD NEW DAY 8005 NHF AMF CAF (994200)

S V F FOREVER LADY 57D

BACK ROADS 1418 LEGEND 1582

HAPPYVALE PATRICIA 121L (1084628)

YOUNKIN PATRICIA 445

'11 EPD'S BW: 0.5 WW: 42 YW: 86 Milk: 15 TM: 36		
BW: 67 lbs.	Adj 205: 609 lbs.	Adj 365: 822 lbs.
Lifetime Prod. Avgs. Wng: 99 Yrlng: 84		

Exposed: July 4 - September 6 to CROWFOOT JOKER 6172S
(OCC Joker 920J x Tomwall GDAR Royce 964)

94

CHAPMAN NEONIA 4408

Female SWC 408P February 21 2004 #1213939

A A R NEW TREND

BOYD NEW DAY 8005 NHF AMF CAF (994200)

S V F FOREVER LADY 57D

BACK ROADS 1418 LEGEND 1582

HAPPYVALE T. NEONIA 131L (1071341)

TAFIKA 22D NEONIA 96F

'11 EPD'S: BW: 2.6 WW: 51 YW: 92 Milk: 22 TM: 48		
BW: 84 lbs.	Adj 205: 684 lbs.	Adj 365: 830 lbs.
Lifetime Prod. Avgs. Wng: 107 Yrlng: 136		

Exposed: July 4 - September 6 to CROWFOOT JOKER 6172S
(OCC Joker 920J x Tomwall GDAR Royce 964)



EXPECTED PROGENY DIFFERENCES (EPDS)



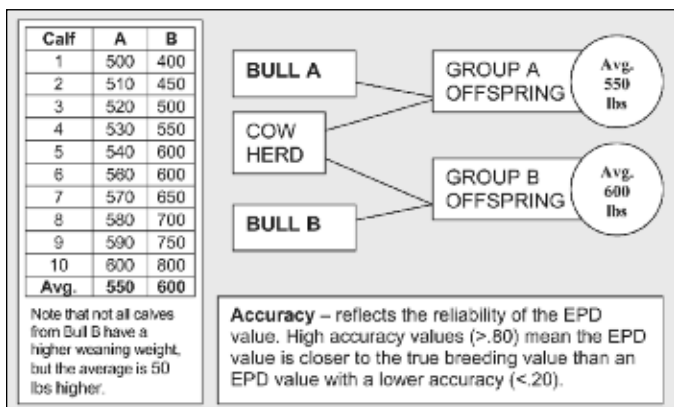
Statistics generated for individual cattle through national genetic evaluations.

EPDs:

- ✓ allow breeders to estimate a young animal's breeding value as a parent
- ✓ allow a fair comparison of breeding value by removing environmental bias such as climate, feed and special management
- ✓ best tool available to compare animals between herd, countries and year of birth
- ✓ help breeders make informed decisions regarding breeding stock selection by evaluating numerous traits such as growth-related traits (BW, WW, YW, Milk), carcass (REA, FAT, %IMF, etc.) and reproductive efficiency (CE, MCE, SC)
- ✓ estimate the group performance of one parent compared to the group performance of another parent, *assuming similar mates*

EPD's evaluate group averages and offspring's performance. They can not predict individual performance or weights.

For example, if Bull A (weaning weight EPD of +10) and Bull B (WW of +60) were randomly mated with ten similar cows, we would expect the group average weaning weight of Bull A's offspring to be 50 lbs. lighter than that of Bull B's (60 - 10 = 50).



To evaluate seedstock, use EPDs, pedigree and visual assessment. With EPDs, the concept of “intermediate optimums” works best. Selection for one trait or for extremes generally results in unexpected consequences due to genetic correlations - for example, intense selection for high yearling weight will also increase birth weight. Successful cattle breeding requires a thoughtful and balanced approach to optimize fertility, growth and carcass merit while improving profitability and efficiency.





Affordable Angus Genetics!

BUYER'S NOTES

Lot # _____

Lot # _____

Lot # _____

Lot # _____

Lot # _____

Lot # _____

Lot # _____

Lot # _____

Lot # _____

Lot # _____

Lot # _____

Lot # _____

Lot # _____

Lot # _____

Lot # _____

Lot # _____

Lot # _____

Lot # _____

Lot # _____

Lot # _____

Lot # _____

Lot # _____

Lot # _____

Lot # _____

Lot # _____

Lot # _____

To the bidders and buyers and all who participated in our sale in any way, we extend a heartfelt thank you. We know that the success of our business depends upon good customers and we certainly do appreciate your support and wish you every success with your purchases! If you have any questions, please feel free to contact us and, if you are in our area, do stop in. We are proud of our cattle and would be pleased to show you our program.

Chapman Cattle Company

Silas Chapman 403-741-2099 (C)	Blake Chapman 403-742-3829 (H) 403-741-5760 (C)
--	--



SINCLAIR ORIGINAL X 9X3

EMULATION N BAR 5522
SIRE: N BAR EMULATION EXT
 N BAR PRIMROSE 2424

RR RITO 707
DAM: SINCLAIR LADY 3R1 4465
 IDEAL 4465 OF 6807 4286

EMULATION 31
 ANKONY 8F78 LASS 8F275
 EMULATION 31
 PRIMROSE N BAR 9962
 RITO N BAR
 ERISKAY OF ROLLIN ROCK 3
 DHD TRAVELER 6807
 EE 4286 OF IDEAL 2240 1254

BW: 88 Adj. WW: 762 WR: 114 Adj. YW: 1234 YR: 112 Yr Sc: 38

CED	Birth	Wng	Yrlng	Milk	Scrot	CW	Marb	RE	Fat
6	2.2	46	80	19	0.06	24	-0.04	0.21	0.028

A balanced trait, super complete son of EXT. His dam was the \$25,000 high-selling cow in the 2009 Sinclair Female Sale and combines a progeny birth ratio of 93 posting a WR/104 and YR/105 on 3 natural calves from the flush that also produced the ABS Global sire, Sinclair Rito Legacy 3R9, and the dam of Sinclair Picasso making 9X3 a full brother in blood to Picasso.

9X3 is backed by the timeless blending of the proven genetics of the foundation performance sire, RR Rito 707, EXT and the Sinclair feed-efficiency matriarch, Ideal 4465 of 6807 4286.

Sire: N Bar Emulation EXT

Dam: Sinclair Lady 3R1 4465



SINCLAIR IN TIME 9RT10

N BAR EMULATION EXT
SIRE: LEACHMAN RIGHT TIME
 LEACHMAN ERICA 0025

BASIN EMULATION 5953
DAM: N BAR ENCHANTRESS 4908
 COFFEY ENCHANTRESS 424

EMULATION N BAR 5522
 N BAR PRIMROSE 2424
 TE HAMA BANDO 155
 LEACHMAN ERICA 8058
 N BAR EMULATION 8520
 BASIN PAMELA 2161
 JETLINEROF CONANGA
 COFFEY ENCHANTRESS 1032

BW: 74 Adj. WW: 621 WR: 100 Adj. YW: n/a YR: n/a Yr Sc: n/a

CED	Birth	Wng	Yrlng	Milk	Scrot	CW	Marb	RE	Fat
4	0.7	31	60	21	0.14	9	-0.09	-0.1	0.022

9RT10, with the style, structure & maternal heritage to move a cow herd to a whole new level, is a product of the mating of Pathfinder sire, Right Time, and donor dam, N Bar Enchantress 4908, Tom Elliott & Jeff Ward's favourite cow from the N Bar foundation. Best known as the dam of premier female sire, N Bar Shadow X4124, she holds a progeny BR/98 combined with a WR/111 YR/107 on 9 natural calves.

Leachman Right Time N Bar Enchantress 4908 N Bar Shadow X4124

